

The Open Group..OG0-023.by.Kenta.59q

Website: www.VCEplus.io

Twitter: https://twitter.com/VCE_Plus

Exam Code: OG0-023

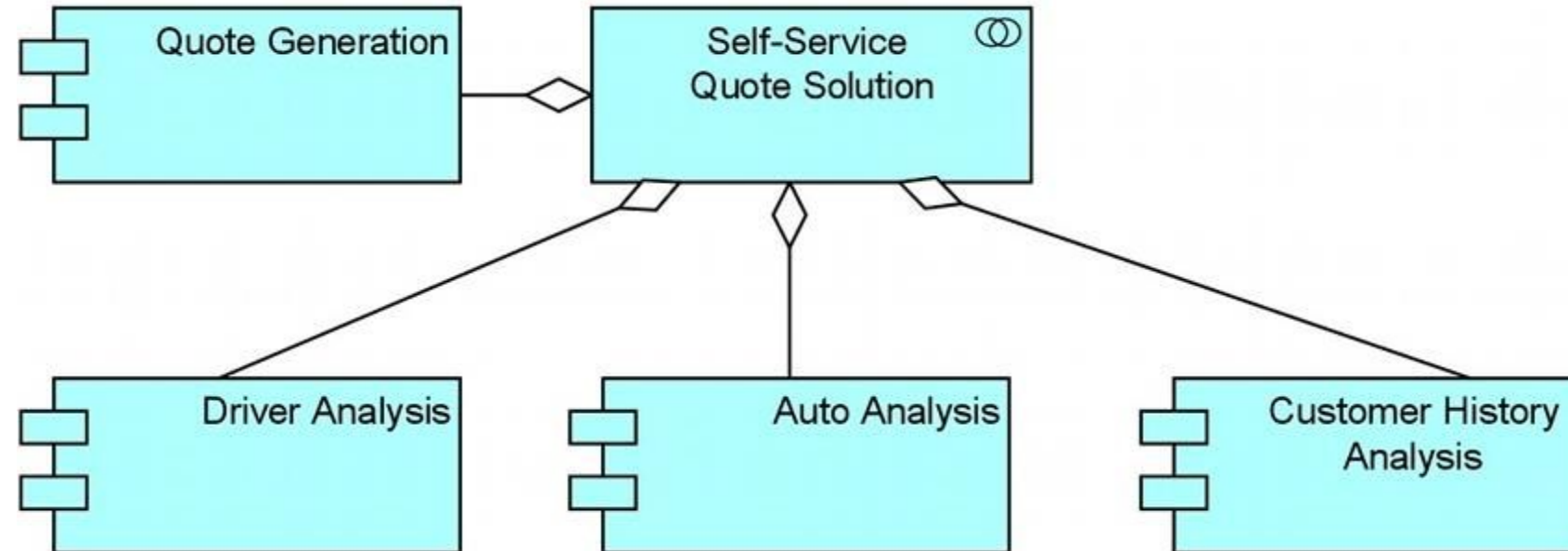
Exam Name: ArchiMate 2 Combined Part 1 and 2 ination



Exam A

QUESTION 1

Consider the following diagram representing part of a key PRO-FIT capability: self-service online price quotes for its auto insurance customers:



Which of the following answers best interprets this diagram?

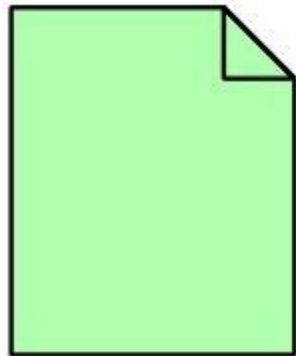
- A. The Self-Service Quote Solution is an application service that uses four separate application components
- B. The Self-Service Quote Solution is an application collaboration that includes four application components that work together
- C. The Self-Service Quote Solution is an application component that accesses four different types of data objects
- D. The Self-Service Quote Solution is an application component that collaborates with four service modules

Correct Answer: B

Section:

QUESTION 2

Consider the following symbol:



Which of the following best describes what this symbol represents?

- A. A modular, deployable, and replaceable part of a software system that encapsulates its behavior and data and exposes these through a set of interfaces
- B. A perceptible form of the information carried by a business object
- C. A physical piece of data used or produced in software development, or by system deployment and operation

D. A software environment for specific types of components and objects that are deployed on it

Correct Answer: C

Section:

QUESTION 3

The Project viewpoint is primarily used to model the management of architecture change.

Which one of the following cannot be shown in a Project view?

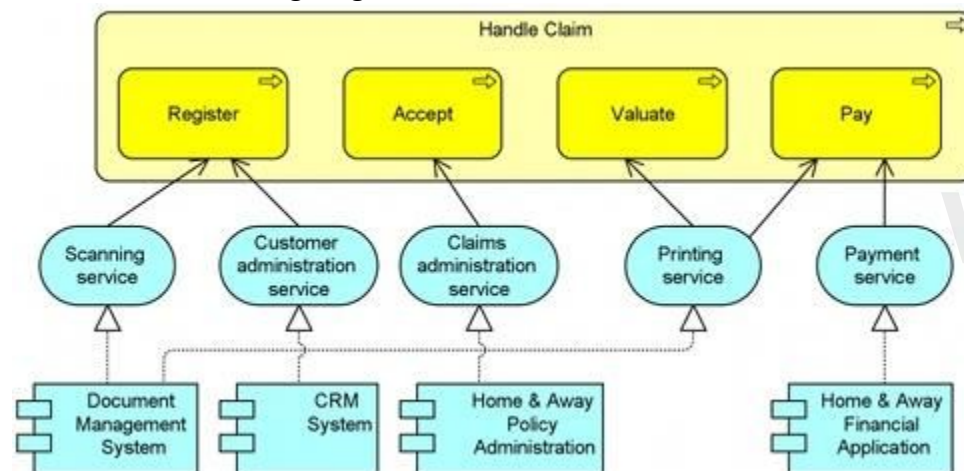
- A. Resourcing of projects
- B. The main differences between the baseline and the target architecture
- C. The motivation for projects
- D. The results produced by different projects

Correct Answer: B

Section:

QUESTION 4

Consider the following diagram:



In which phase of the TOGAF Architecture Development Method (ADM) would such a view be most applicable?

- A. Preliminary Phase
- B. Phase B: Business Architecture
- C. Phase C: Information Systems Architectures
- D. Phase D: Technology Architecture

Correct Answer: C

Section:

QUESTION 5

Within the Implementation & Migration Extension, which concept is the only one that models behavior?

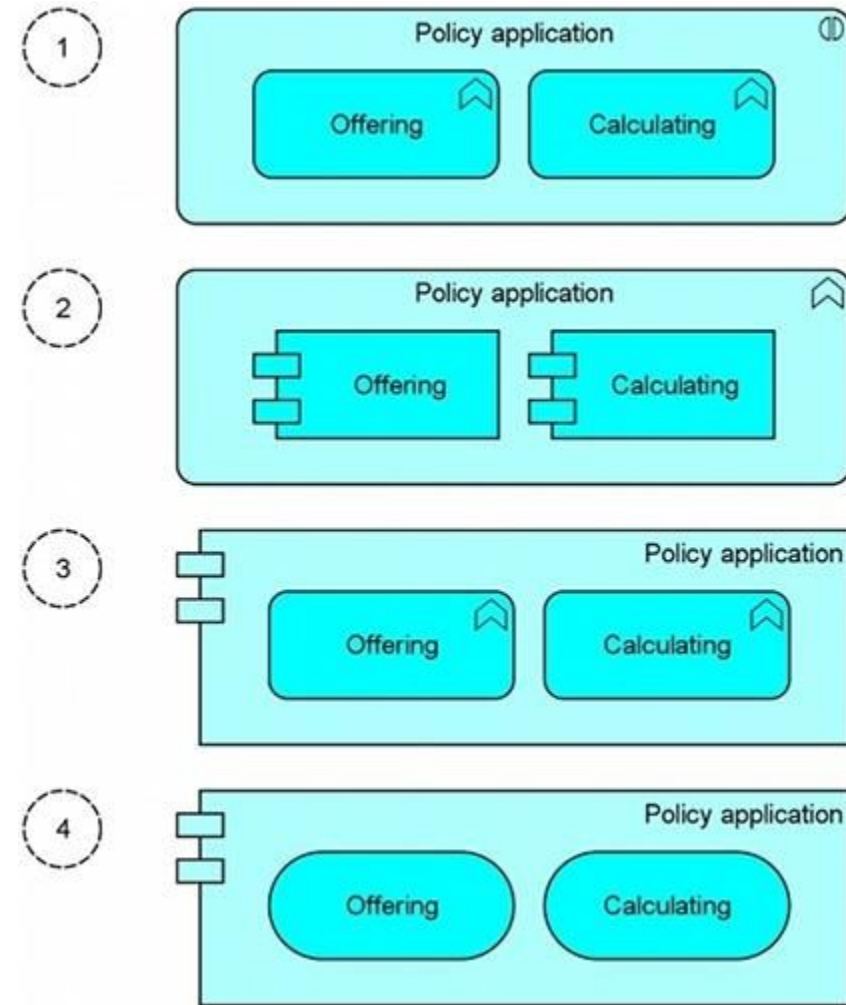
- A. Deliverable
- B. Plateau
- C. Gap
- D. Work Package

Correct Answer: D

Section:

QUESTION 6

Consider the following four diagrams:



Which diagram depicts a "Policy application" as an application component with the two application functions "Offering" and "Calculating"?

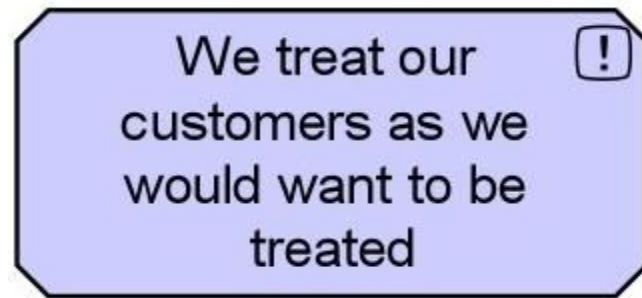
- A. Diagram 1
- B. Diagram 2
- C. Diagram 3
- D. Diagram 4

Correct Answer: C

Section:

QUESTION 7

Consider the following symbol that represents information about a major systems and process transformation project:



What concept does this symbol represent?

- A. A constraint
- B. A principle
- C. A goal
- D. A requirement

Correct Answer: B

Section:

QUESTION 8

Scenario

Please read this scenario prior to answering the question

The ArchiSurance enterprise document management infrastructure provides critical support for myriad types of documents and document-based transactions, many of which are executed in high volume each day. At the core of the infrastructure is the document management systems software, which has three major modules: a document engine that stores, retrieves and performs a variety of operations on documents, a workflow engine that hosts document management applications, and an application engine, which hosts the most sophisticated applications. The application engine invokes the document and workflow engines as necessary when hosting application components that require their services.

The claim management application component is critical to ArchiSurance business operations. It is hosted by the application engine, and launches whenever an individual files a new claim. The claim management component requires different documents to demonstrate proof of loss depending on the type of claim filed, the type of insurance that is in force, and various other circumstances. When the correct documents are filed and verified by an intake operator, proof of loss is complete, and the claim management component assigns the claim to a claim analyst by reading and updating analyst status data and applying business rules stored as data.

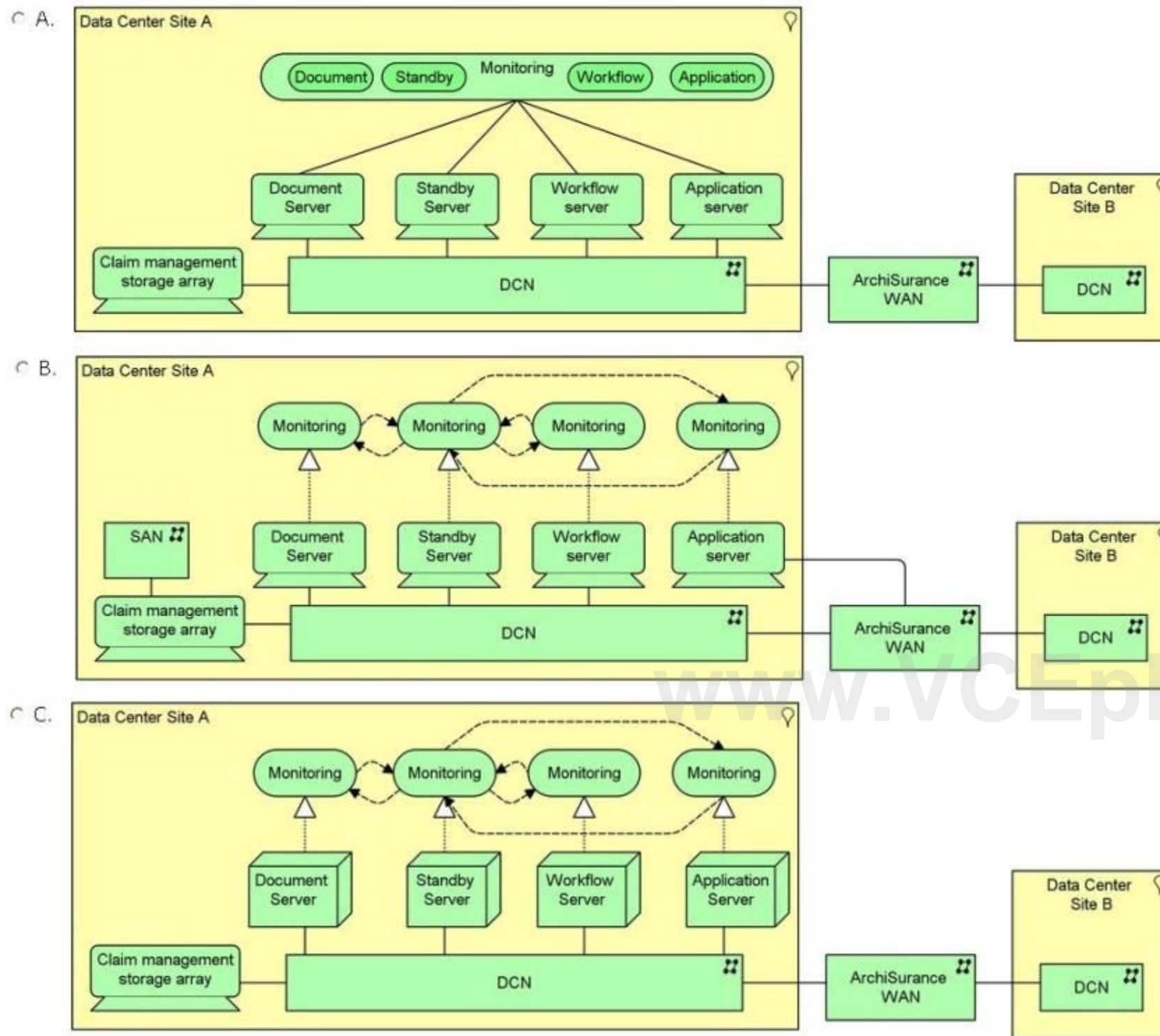
Due to its business-critical nature, the document management solution is hosted redundantly at two geographically separate data center sites known as Site A and Site B. Both sites provide identical infrastructure. Each site contains a highly available data center network (DCN) that is connected to the highly available ArchiSurance wide area network (WAN). Each claim management server is connected to its site DCN, and each DCN is a converged network that connects both servers and storage arrays, including a physical storage array dedicated to the claim management application. Each site contains four high-powered separate physical servers rules stored as data.

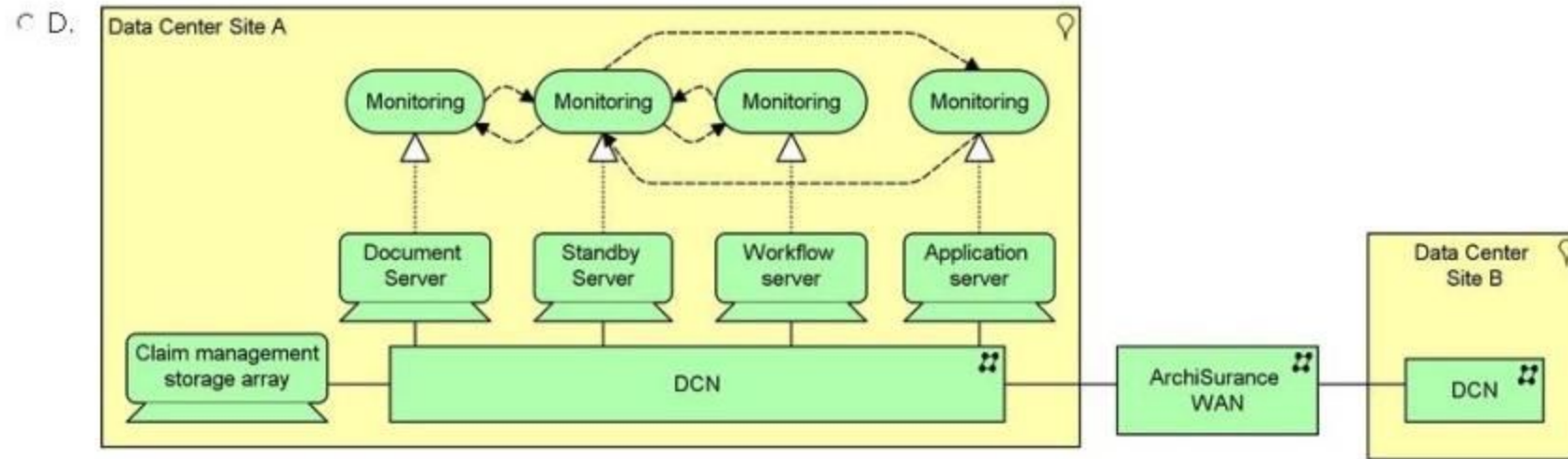
Due to its business-critical nature, the document management solution is hosted redundantly at two geographically separate data center sites known as Site A and Site B. Both sites provide identical infrastructure. Each site contains a highly available data center network (DCN) that is connected to the highly available ArchiSurance wide area network (WAN). Each claim management server is connected to its site DCN, and each DCN is a converged network that connects both servers and storage arrays, including a physical storage array dedicated to the claim management application. Each site contains four high-powered separate physical servers dedicated to the claim management application. At any one time, one server is on standby while the other three servers are, respectively, hosting the document, workflow and application engines. Each active server provides a monitoring service that is in constant two-way communication with the monitoring service on the standby server. If a server fails, the surviving monitoring services perform a failover sequence to assume failed server's workload if it was active. The surviving monitoring services also alert the operations team on duty.

Refer to the Scenario

A new IT manager has asked you to model the infrastructure hardware and networks that supports document management, including the data center sites, servers, storage, and networks as well as the services necessary for automated failover within a server cluster. Since the two data centers provide identical document management infrastructure, for Site B it is only necessary to show the associated networking.

Which is the best answer?





- A. Option A
- B. Option B
- C. Option C
- D. Option D

Correct Answer: D

Section:

QUESTION 9

Scenario

Please read this scenario prior to answering the question

The ArchiSurance IT Operations (IT Ops) department has five core responsibilities, and continuously executes a core business process for each responsibility. (1) The Batch Ops process makes sure that batch jobs execute completely, successfully, and on time, consistent with their service level agreements (SLAs). (2) The Online Ops process makes sure that all web applications and content delivery services are available and performing according to their SLAs. (3) The Security Ops process protects ArchiSurance IT operations from being damaged by malicious or careless incidents. (4) The User Support process assists users of ArchiSurance systems with problems or requests. (5) The Continuous Improvement process monitors and measures the performance of each of the other processes and works to solve problems and optimize use of ArchiSurance resources. In order to enable monitoring, each of the other processes generates monitoring data that is read by the Continuous Improvement process.

The processes in the System Ops category, which are Batch Ops, Online Ops and Security Qds, each have a separate sub-process for incident management. These sub-processes are triggered, respectively, by Batch, Online and Security Incidents. One of the first steps in each incident management sub-process, is to pass an Incident Alert to each of the other System Ops processes. This is accomplished by posting the alert to the Alert Buffer.

The Batch Ops process uses a schedule that lists all batch jobs and their dependencies. The schedule is used by two Batch Ops sub-processes. The Batch Planning sub-process updates this schedule for use by the Execution Management sub-process.

The Batch Ops process uses a number of applications that interact with each other. The Batch Scheduler application enables users to manage a database of jobs, job schedules and dependencies, and launches batch jobs according to the database. The Batch Monitor application uses the job schedules as a reference to monitor job execution, and reports all exceptional conditions to the both the Batch Scheduler and the Incident Handler applications via the Alert Buffer described earlier in the scenario. The Incident Handler refers to a set of business rules to determine the systems and individuals that must be notified of each incident. Based on these determinations, the Incident Handler produces appropriate notifications.

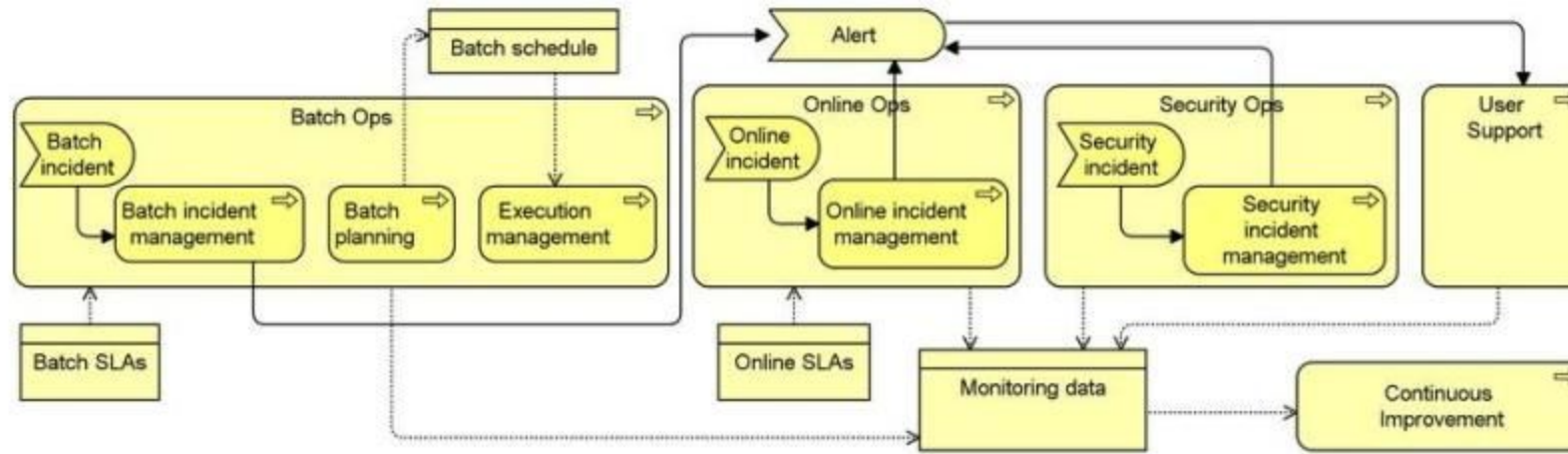
Due to their criticality, the Batch Scheduler, Batch Monitor and Incident Handler applications are hosted redundantly in multiple geographically distributed data centers. In each data center, the three applications are hosted on a fully redundant virtual server cluster. Each cluster is connected to two site local area networks, each of which connects to a separate physical storage array.

Refer to the scenario

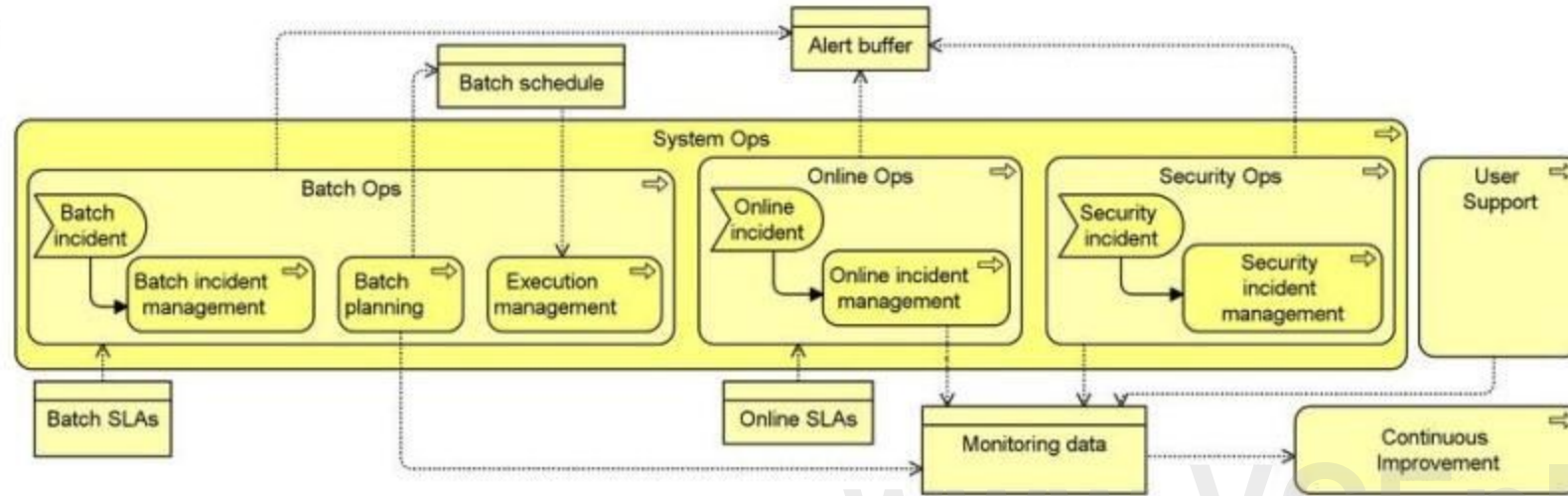
As part of an IT service management initiative, you have been asked to model the operations management business processes and sub-processes, including their relationships, the events that trigger them and the information they exchange.

Which answer provides the most complete and accurate model?

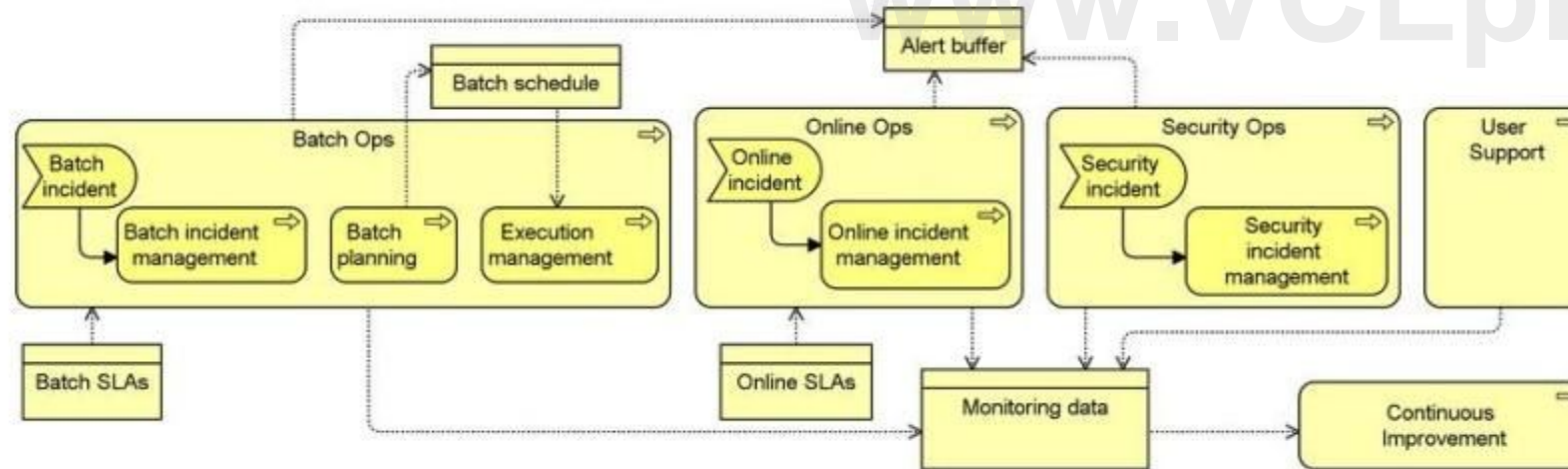
A.



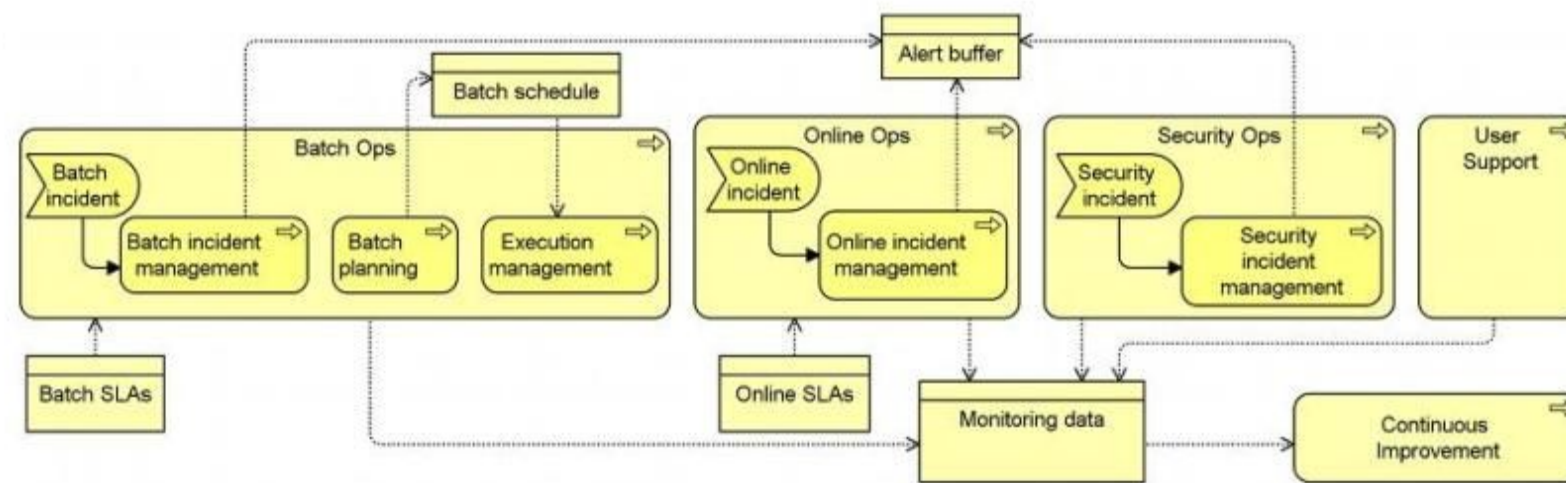
B.



C.



D.



- A. Option A
- B. Option B
- C. Option C
- D. Option D

Correct Answer: D

Section:

QUESTION 10

Scenario

Please read this scenario prior to answering the Question

The daily mutual fund trading cycle consists of four key processes: Transaction capture, pricing, trading and reconciliation. Transaction capture consists of two sub-processes: manual exchange and loans and distributions (LSD). For transaction capture, retirement plan participants use an online account management application to enter manual fund exchange transactions. For LSD, plan participants use a separate application to enter requests. The L&D application determines whether the request can be fulfilled based on the mutual fund balances held in each plan balances and a set of business rules. Each day's captured manual exchange transactions accumulate in a transaction database.

ArchiSurance contracts with a third-party information service to receive a file of mutual fund prices at the close of each trading day.

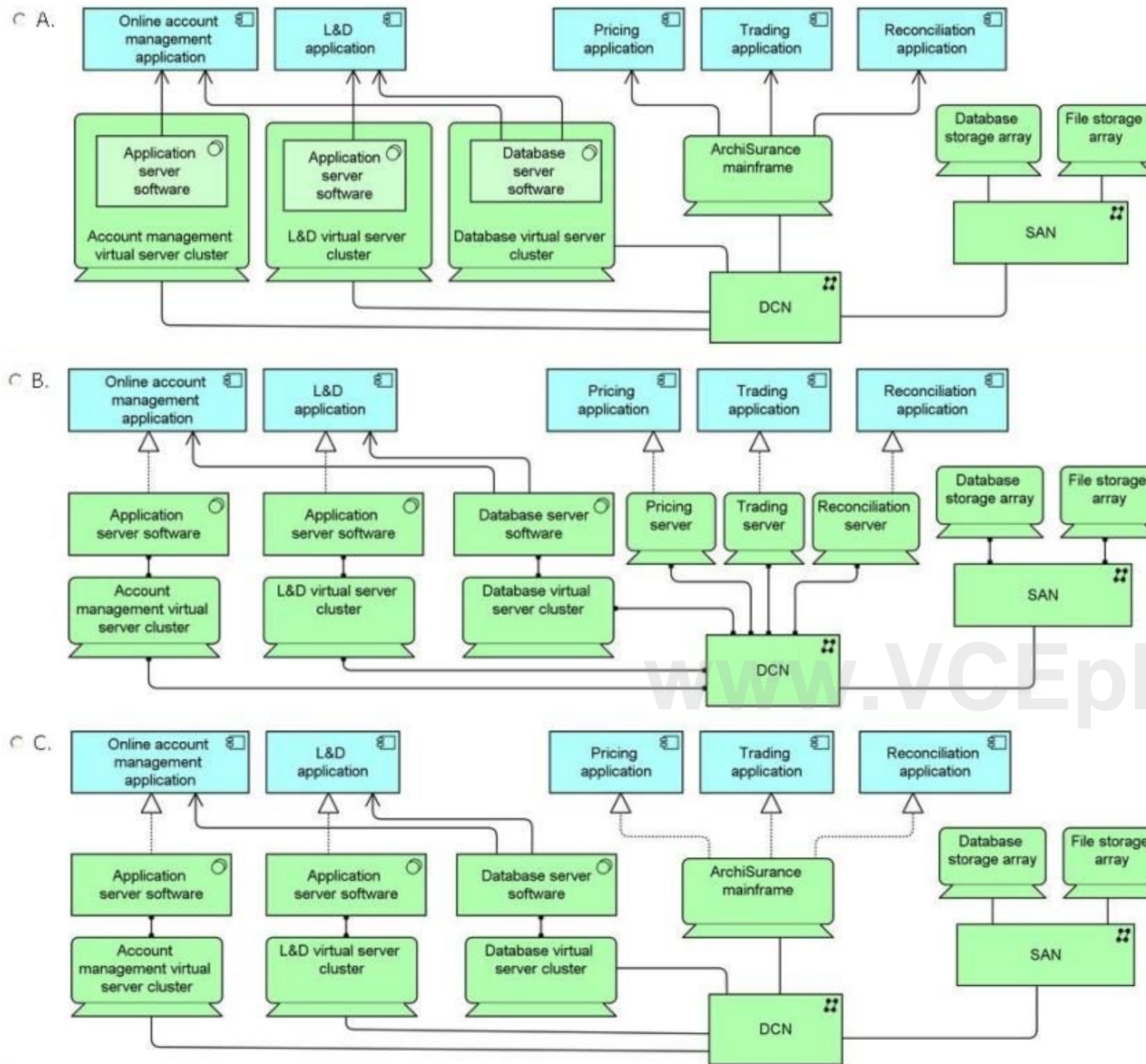
The pricing application uses this file to convert captured transaction into trades, and then validates each trade against the mutual fund balances held in each plan. The pricing generates a trade file with the minimum number of trades necessary. The trading application sends this file to an external trading service. When the trading application receives a confirmation file back from the trading service, it passes it to the reconciliation application, which updates the plan recordkeeping database.

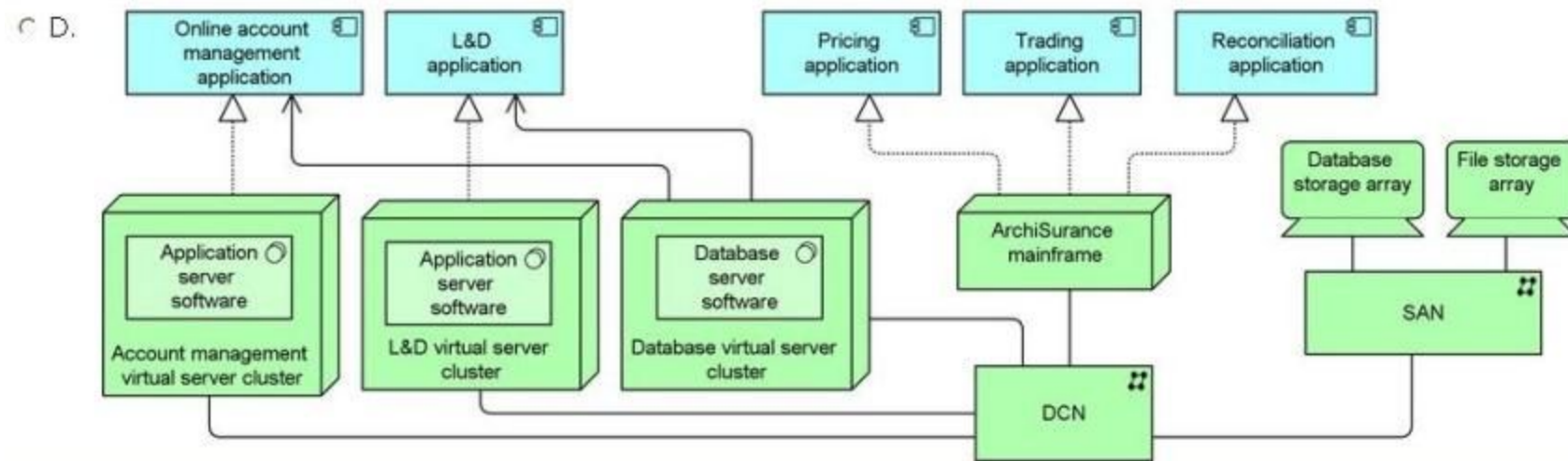
The account management and LSD applications are hosted on separate application server clusters. Each cluster is a physically separate host that runs application server software on a set of virtualized hosts. All of these applications use a database server infrastructure that is hosted on another separate cluster of virtualized servers also on a dedicated physical host. The pricing, consolidation, trading and reconciliation applications, however, are batch applications that run on the ArchiSurance mainframe computer. All application hosts are connected via a converged data center network (DCN), which also connects them to a storage area network (SAN) as well as a wide area network (WAN) that is used to communicate with the external trading service. The SAN includes two physically separate storage arrays, one of which holds data for all databases, and another that holds data for all files.

Refer to the Scenario

You have been asked by a team of IT auditors to show the applications used for daily trading and the infrastructure that underlies them, including all ArchiSurance servers, storage arrays and networks. It is not necessary to model the WAN or other external infrastructure.

Which answer best describes the applications and infrastructure?





- A. Option A
- B. Option B
- C. Option C
- D. Option D

Correct Answer: C
Section:

QUESTION 11

Scenario

Please read this scenario prior to answering the question

The ArchiSuranceTo Go mobile consumer solution is increasingly important to ArchiSurance, which uses it to sell and renew insurance products, provide customer service, enable accurate and convenient home recordkeeping, and capture and process claims. The solution consists of three components. The Consultant lets customers review their existing coverage, and update it based on common life events, such as getting a new car, moving into a new home, or having a family member move in or out. If necessary, they can speak or chat with a customer service representative. The Home Manager helps customers photograph and catalogue their valuable possessions in order to support the filing of accurate claims in case of loss or damage. The Claim Manager enables customers to quickly file a claim for loss or damage to an insured auto, home or possession. It enables customers to describe the incident by referencing information captured with the Consultant and the Home Manager applications. In addition, it allows the customer to add photographs, audio, video and text to support a claim, submit the claim, and monitor its progress.

The ArchiSuranceTo Go components rely on a number of application services hosted by ArchiSurance. The first is an Auto Identification and Description (AID) service that the Consultant uses to validate and complete auto information entered by customers. The second service, Home Identification and Description (HID) performs the same function for home information, and is used by the Home Manager. The Consultant also uses the Virtual Agent service to guide customers as they select coverage options, the Payment Processor service to arrange premium payments, and the Coverage Activator service to generate policies and put them in force.

ArchiSurance to Go also relies on a number of infrastructure services. The Home Manager uses a Multimedia Repository service to store and retrieve information about insured homes. The Claim Manager also uses this service for claim information entered by customers. All three components of ArchiSuranceTo Go use a Personal Security service to register and authenticate customers, and to manage their profiles.

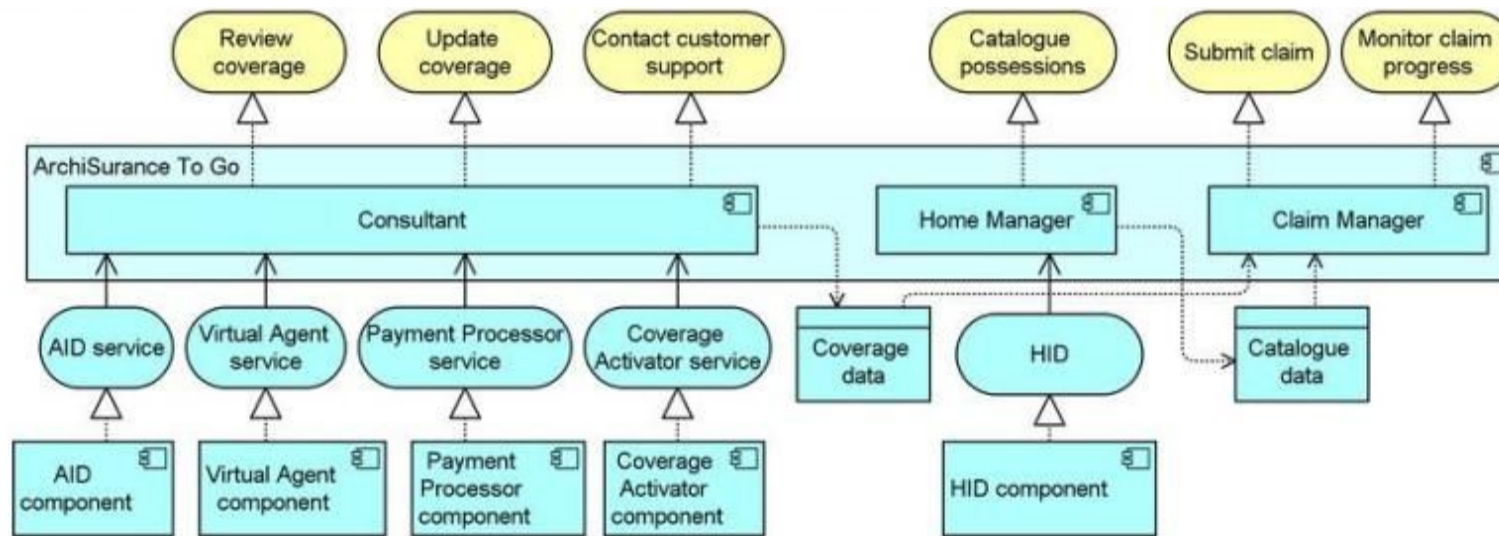
Each application service is realized by an application component with the same name. Also, each infrastructure service is realized by a system software environment with the same name. ArchiSurance hosts both the application components and system software environments in a virtualized server pool within its data center. Each service has its own virtual server. Each server is connected to a data center network (DCN) which in turn connects to a commercial wide area network (WAN).

Refer to the Scenario

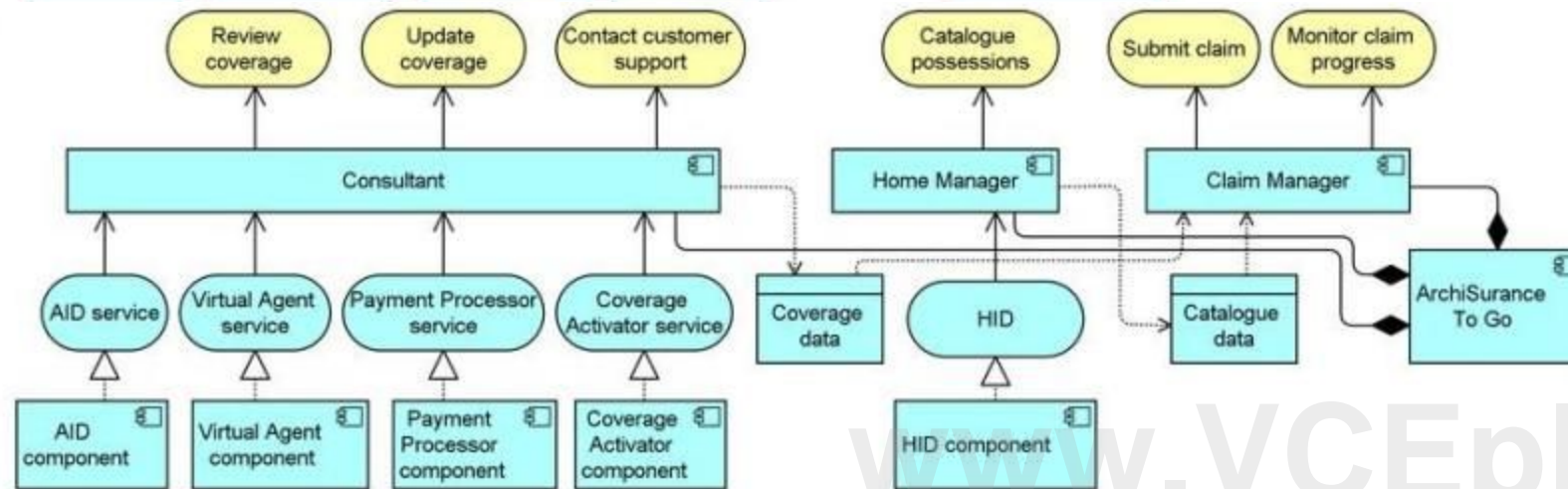
The marketing department would like a better understanding of the business services that ArchiSuranceTo Go delivers, and the application services and components that are used to deliver those business services. The marketing department would also like to understand the data accessed directly by the interactive application components.

Which answer provides the best explanation?

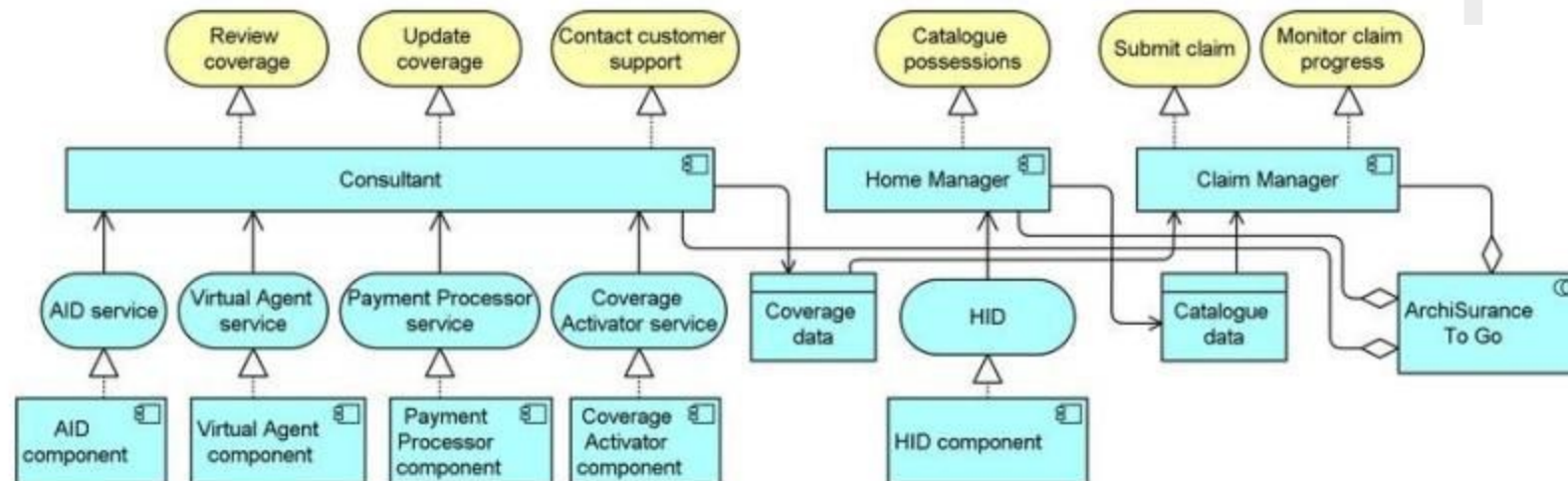
C A.



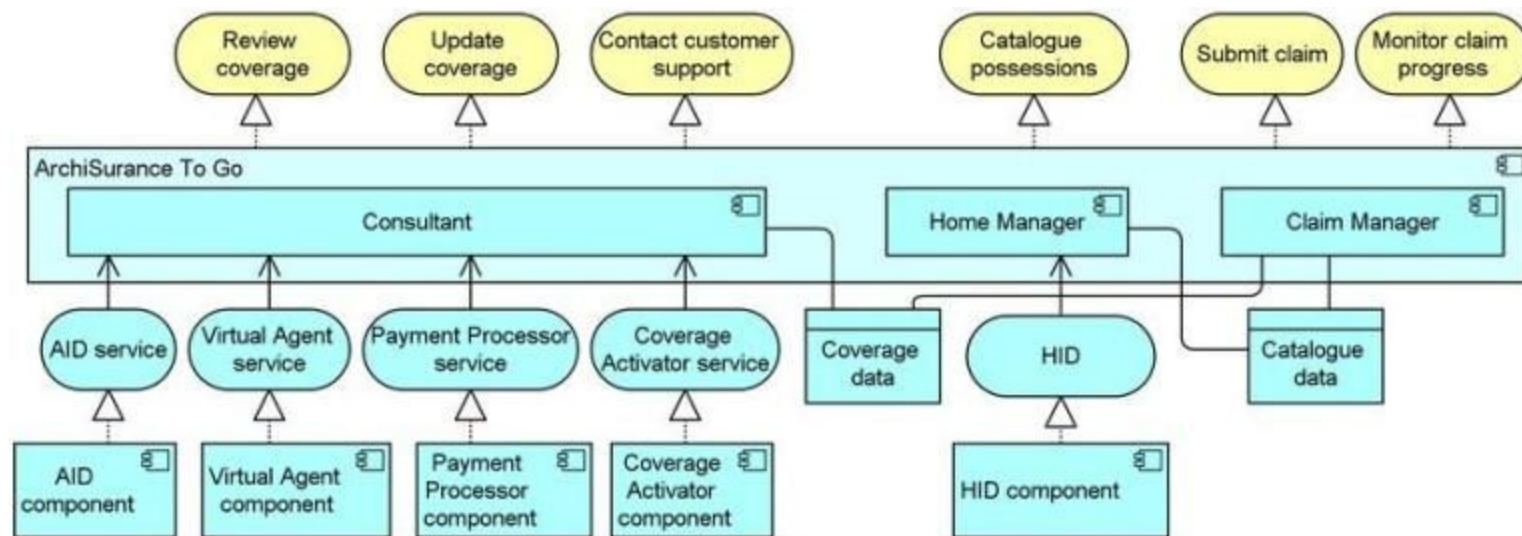
C B.



C C.



C. D.



- A. Option A
- B. Option B
- C. Option C
- D. Option D

Correct Answer: A

Section:

QUESTION 12

Scenario

Please read this scenario prior to answering the question

ArchiSurance senior management, board members, customers and major stockholders have long been concerned about disaster resiliency in light of the company's heavy reliance on a single data center. The data center is located in an area that is prone to flooding and earthquakes, according to expert assessments done by consultants retained for this purpose. In addition, the data center is located under a busy cafeteria, and water occasionally leaks through its ceiling.

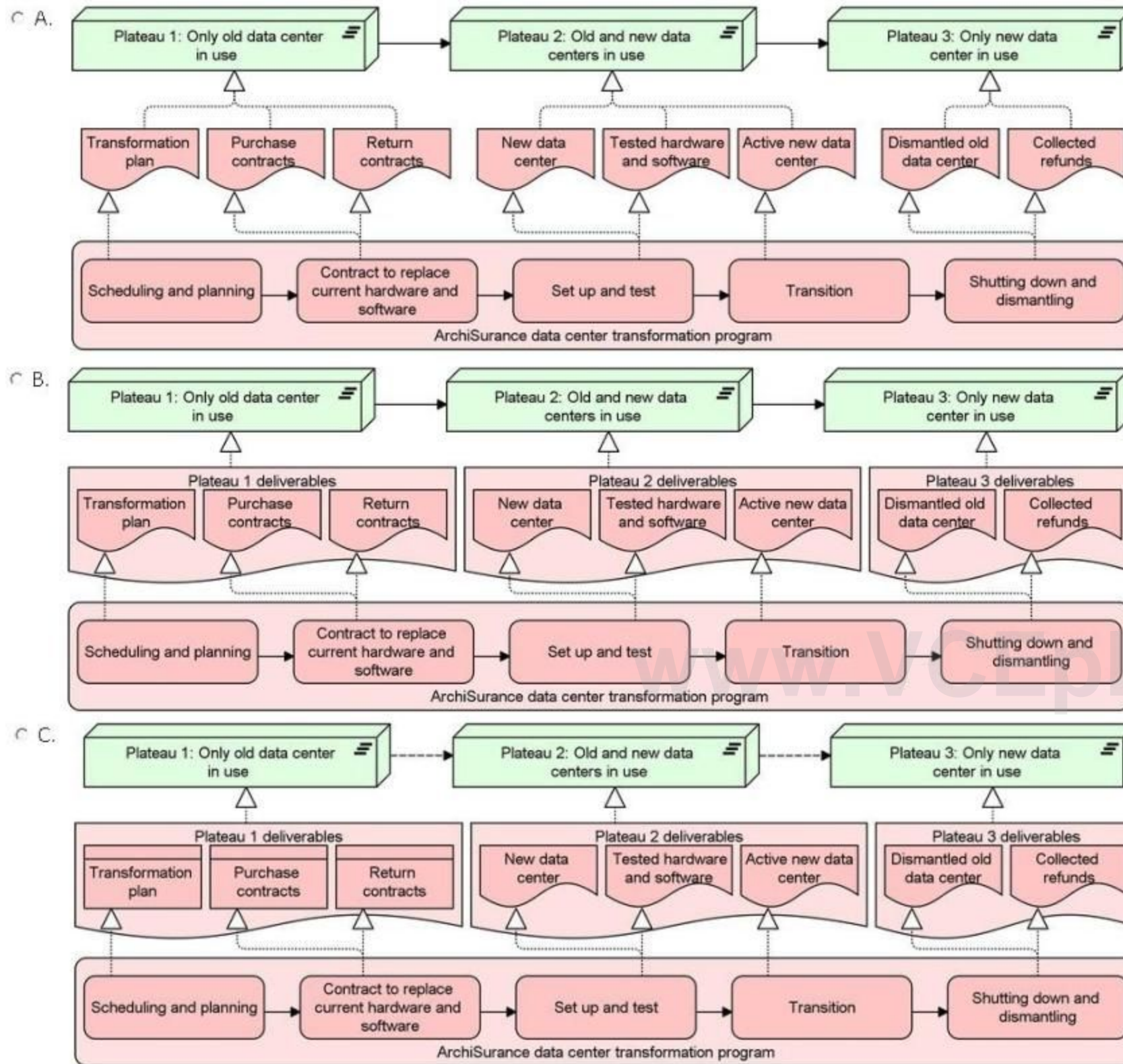
To address these problems, ArchiSurance has developed a plan to move from its current data center to a pair of ready-to-use data centers in separate cities. The data center move is designed to reduce the risk of business interruption, reduce both planned and unplanned downtime for critical applications, and reassure ArchiSurance stakeholders. However, a number of limitations make the planned transition to the new data centers particularly challenging. A number of critical ArchiSurance applications cannot be offline for more than an hour, and any downtime for these application must only occur in certain four-hour windows each weekend. Also, the move cannot occur during quarterly or year-end closing periods in order to avoid interrupting critical processing. Fulfillment of these specific type of requirements will reduce the risk of business interruption from the data center move activities themselves.

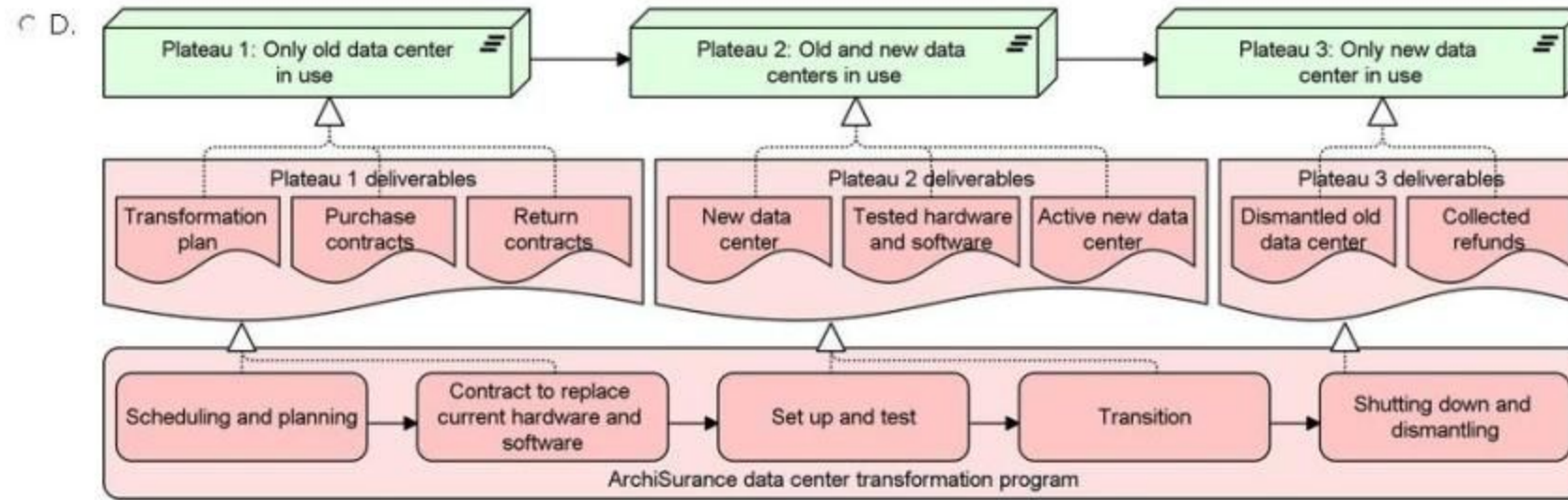
ArchiSurance management has therefore planned a multi-phase data center transformation program. All of the activities in each phase are necessary to ensure a progression of stable and fully functional data center configurations. The first phase consists of detailed scheduling and planning to produce a comprehensive transformation plan that meets ArchiSurance timing and scheduling requirements During the second phase, ArchiSurance is to contract for the hardware and software required for the new datacenters, as well for refunds for the hardware and software to be returned from the current data center once it is shut down. During the third phase, the new data centers are to be set up, and the new hardware and software are to be tested in parallel with what is already in production. The actual transition between the old and new data centers occurs in the fourth phase, and the fifth phase involves shutting down and dismantling the old data center, and returning its hardware and software for contracted refunds. Phases two through five are each to be initiated when specific conditions are met in the previous phase.

Refer to the Scenario

The newly hired program manager for data center transformation has asked you to describe the program implementation plan. You must express each of the plan phases as a separate work package with specific deliverables. You must also show the relationships between phases along with how each phase contributes to a particular stable data center state.

Which answer provides the best description?





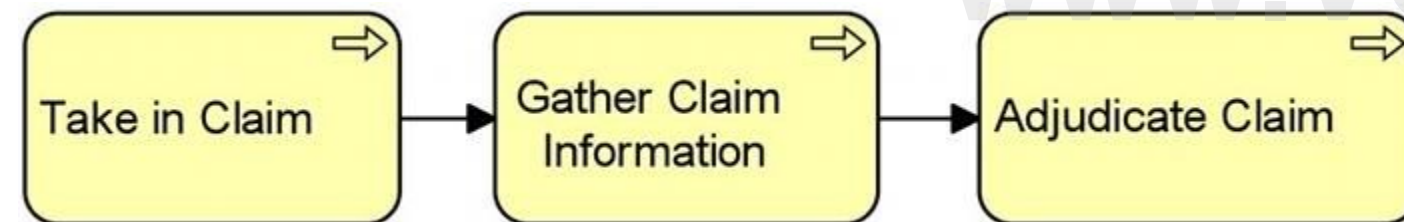
- A. Option A
- B. Option B
- C. Option C
- D. Option D

Correct Answer: B

Section:

QUESTION 13

Consider the following diagram:



What does the diagram express about the relationship between the three processes?

- A. Take in Claim passes information to Gather Claim Information, and Gather Claim Information passes information to Adjudicate Claim
- B. Take in Claim triggers Gather Claim Information, and Gather Claim Information triggers Adjudicate Claim
- C. Take in Claim is used by Gather Claim Information, and Gather Claim Information is used by Adjudicate Claim
- D. The three processes may execute in parallel, although they don't have to

Correct Answer: B

Section:

QUESTION 14

At ArchiSurance, risk assessment is part of an activity used to determine the adequacy of the company's financial reserves against future claims and fluctuations in the value of its investments.



Which ArchiMate relationship should be used to express the forwarding of risk assessment findings for the reserve evaluation process?

- A. Access
- B. Assignment
- C. Association
- D. Flow

Correct Answer: D
Section:

QUESTION 15

Which of the following phases of the TOGAF ADM correspond most closely to the ArchiMate Motivation Extension?

- A. Preliminary, Architecture Vision, Requirements Management
- B. Opportunities and Solutions, Migration Planning, Implementation Governance
- C. Architecture Change Management
- D. Business Architecture, Information Systems Architectures, Technology Architecture

Correct Answer: A
Section:

QUESTION 16

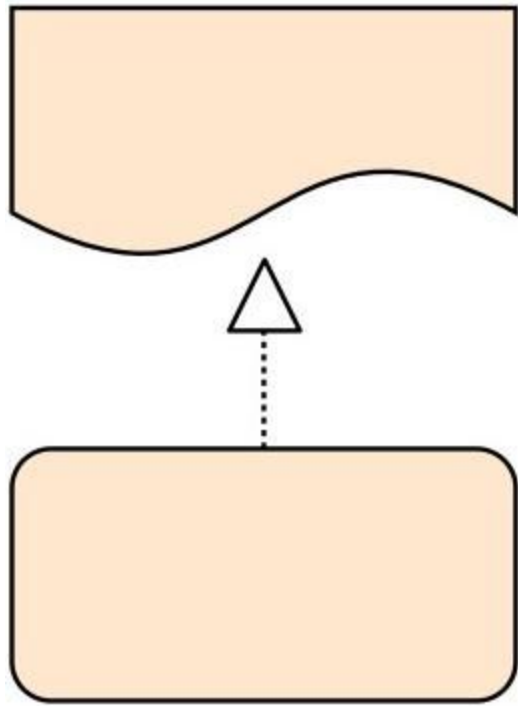
The Application Co-operation viewpoint describes the relationships between application components in terms of the information flows between them, or in terms of the services they offer and use. Which of the following concepts cannot be used in an Application Co-operation view?

- A. Business object
- B. Location
- C. Application interface
- D. Data object

Correct Answer: A
Section:

QUESTION 17

Consider the following diagram:



Which of the following best describes what this diagram represents?

- A. A work package that realizes a deliverable
- B. A business process that realizes a representation
- C. A work package that realizes a gap
- D. A plateau that realizes a gap

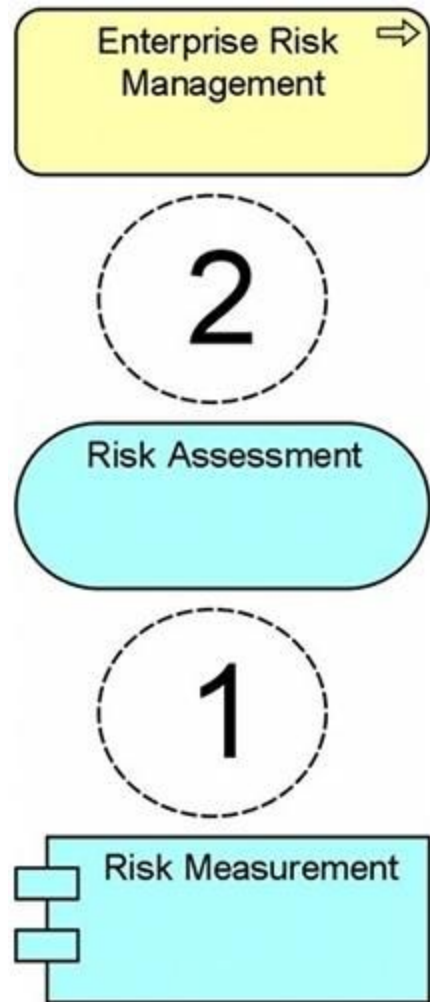
Correct Answer: A

Section:

QUESTION 18

ArchiSurance, a Risk Assessment service provided by a Risk Measurement application enables actuaries to assess and mitigate financial risks as part of the Enterprise Risk Management process.

www.VCEplus.io



Which combination of relationships, when added to this diagram, would best represent this situation?

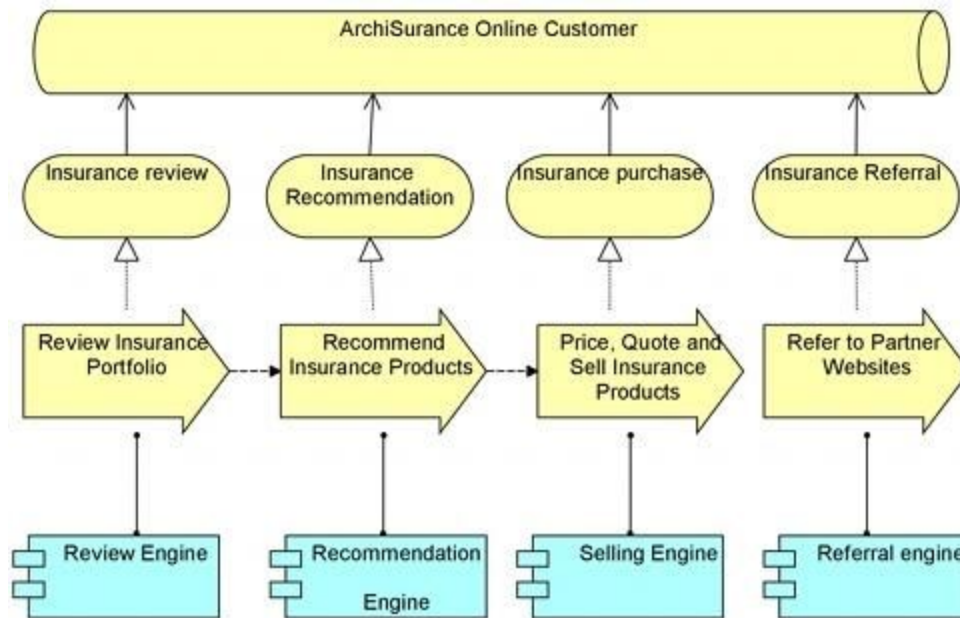
- A. 1. Realization and 2. Assignment
- B. 1. Used by and 2. Realization
- C. 1. Realization and 2. Realization
- D. 1. Realization and 2. Used By

Correct Answer: D

Section:

QUESTION 19

The following is an example model for the ArchiMate Service Realization viewpoint:



Which stakeholder concerns does the Service Realization viewpoint address?

- A. Added value of business processes, consistency and completeness, responsibilities
- B. Identification of competencies, authority and responsibilities
- C. Application dependencies, performance, scalability
- D. Structures and dependencies of the used data and information

Correct Answer: A

Section:

www.VCEplus.io

QUESTION 20

Which ArchiMate viewpoint is most suitable to show the realization of constraints by core elements?

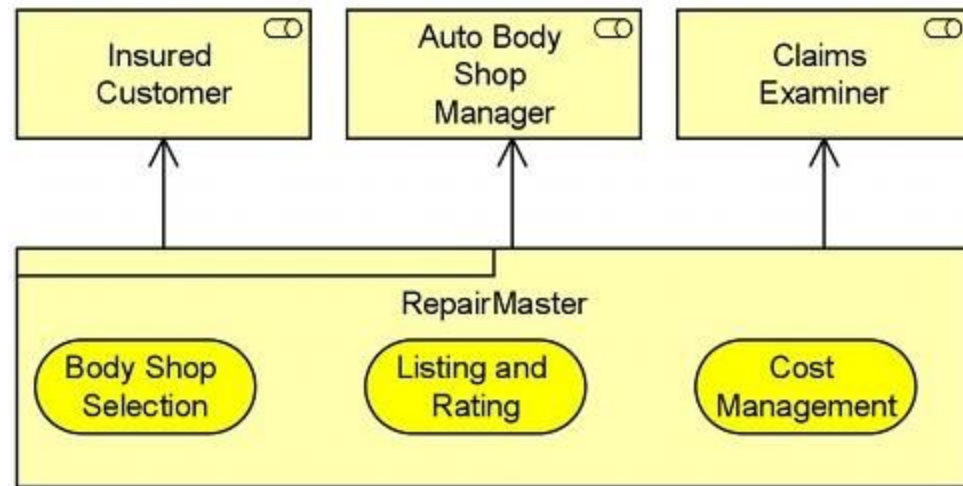
- A. Requirements Realization viewpoint
- B. Implementation & Deployment viewpoint
- C. Goal Realization viewpoint
- D. Motivation viewpoint

Correct Answer: A

Section:

QUESTION 21

The PRO-FIT division of ArchiSurance has a new offering that is described by the following diagram:



Which of the following statements most accurately interprets this diagram?

- A. RepairMaster is a business product that includes three services and is used by three different roles
- B. RepairMaster is a business service that includes three products and is used by three different business actors
- C. RepairMaster is a business object that holds information about three different services, and is accessed by three different roles
- D. RepairMaster is a business product that delivers three different kinds of value to the three different roles that use it

Correct Answer: A

Section:

QUESTION 22

Consider the following statement:

1. An application component is a self-contained unit of functionality.
2. An application component may perform one or more application functions.
3. The name of an application component should preferably be a noun.

Which of the following answers regarding the statement is correct?

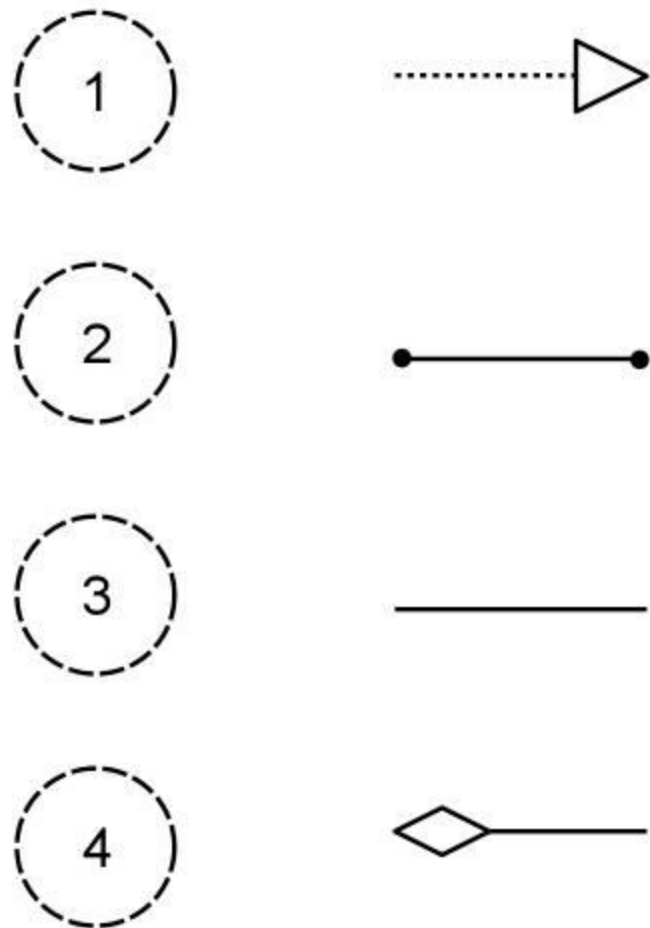
- A. 1 and 2 are correct, 3 is not correct
- B. 2 and 3 are correct, 1 is not correct
- C. 1 and 3 are correct, 2 is not correct
- D. 1, 2 and 3 are all correct

Correct Answer: D

Section:

QUESTION 23

Consider the following four relationships, in the context of derived structural relationships:



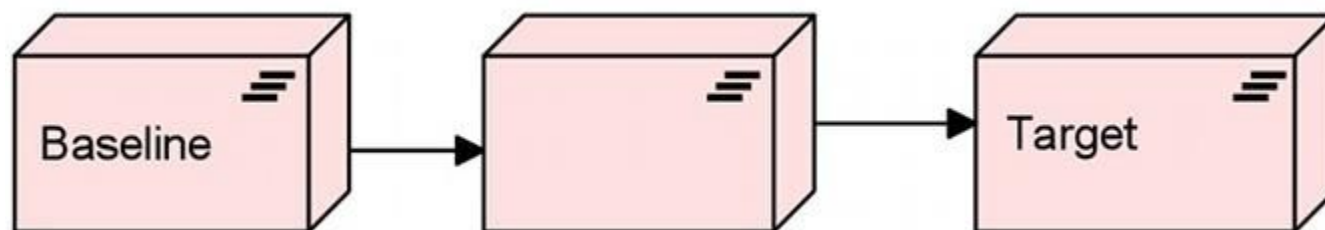
Which of the following answers lists the four relationships ordered from the strongest relationship to the weakest relationship?

- A. 1, 2, 3, 4
- B. 1, 2, 4, 3
- C. 4, 2, 1, 3
- D. 4, 1, 2, 3

Correct Answer: C
Section:

QUESTION 24

Consider the following diagram, which represents a migration from a Baseline to a Target Architecture:



Which of the following answers best interprets the unlabeled symbol in the middle of the diagram?

- A. It represents a relatively stable intermediate state during the migration from the Baseline to the Target Architectures
- B. It represents a project that progresses the architecture from Baseline to Target
- C. It represents the deliverables necessary to transform the architecture from Baseline to Target
- D. It represents a conceptual point of transition between the two architectures, but one that is unlikely to exist in reality for more than an instant

Correct Answer: A

Section:

QUESTION 25

Which application layer concept is defined as a passive element?

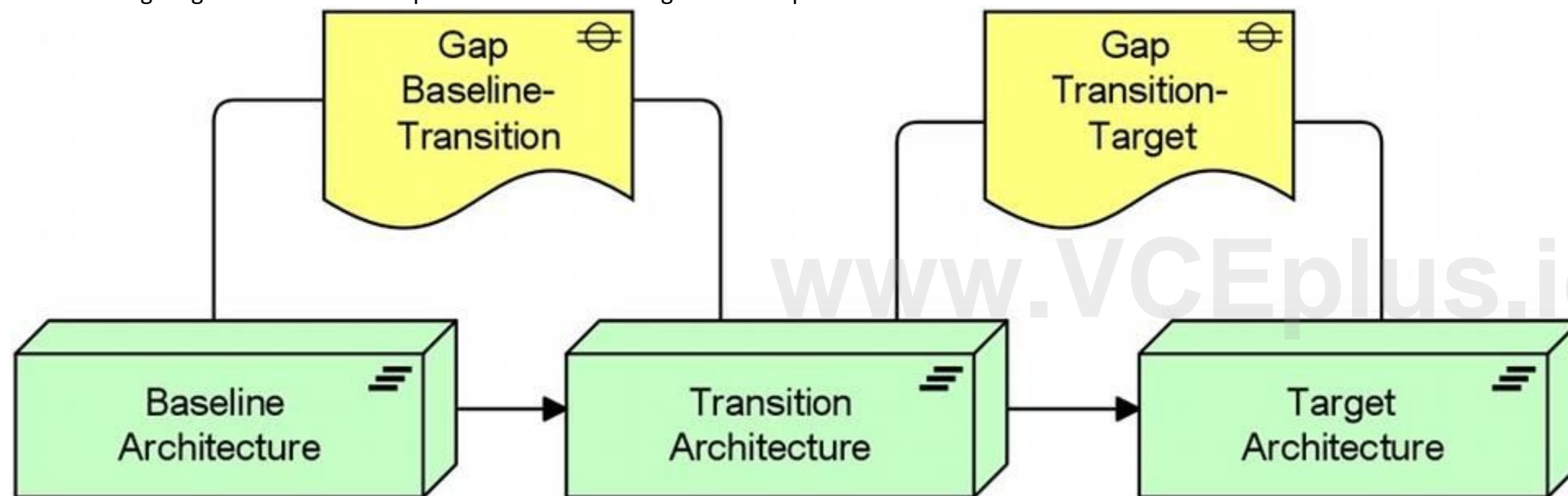
- A. Application component
- B. Application function
- C. Data object
- D. Business object

Correct Answer: C

Section:

QUESTION 26

The following diagram shows an example of the use of the Migration viewpoint:



Which of the following best describes a reason for using this viewpoint?

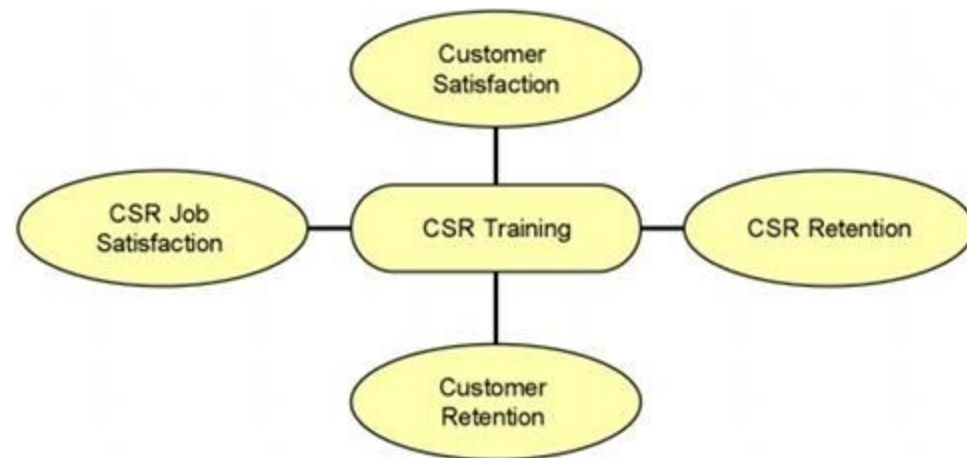
- A. To model the management of architecture change
- B. To help determine the priorities of implementation projects
- C. To relate programs and projects to the parts of the architecture that they implement
- D. To help in planning the transition from the current architecture to a desired future architecture

Correct Answer: D

Section:

QUESTION 27

Consider the following diagram, in which CSR stands for Customer Service Representative:



Which of the following statement is expressed by the diagram?

- A. CSR Training has four key modules, each focusing on a different topic
- B. The CSR Training business service is valuable in four different ways
- C. CSR Training is a basic service, upon which four sub-services depend
- D. CSR Training accesses four different types of information

Correct Answer: B

Section:

QUESTION 28

Which ArchiMate concept describes the behavior of a business collaboration?

- A. A business interaction
- B. A business event
- C. A business process
- D. A business service

Correct Answer: A

Section:

QUESTION 29

Consider the following symbol, which represents information about a transformation project at ArchiSurance involving systems and business processes:



Which of the following statements correctly expresses the meaning of the symbol?

- A. The ArchiSurance legal department has determined the impact of the new regulations

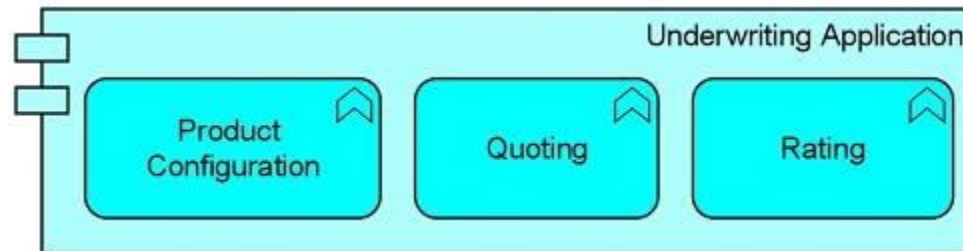
- B. The project must satisfy requirements for additional reporting
- C. The additional reporting requirements in new insurance regulations are driving change at ArchiSurance
- D. The project's systems must be flexible enough to accommodate any future changes in reporting requirements

Correct Answer: C

Section:

QUESTION 30

Consider the following diagram:



What does the diagram express about the Underwriting Application?

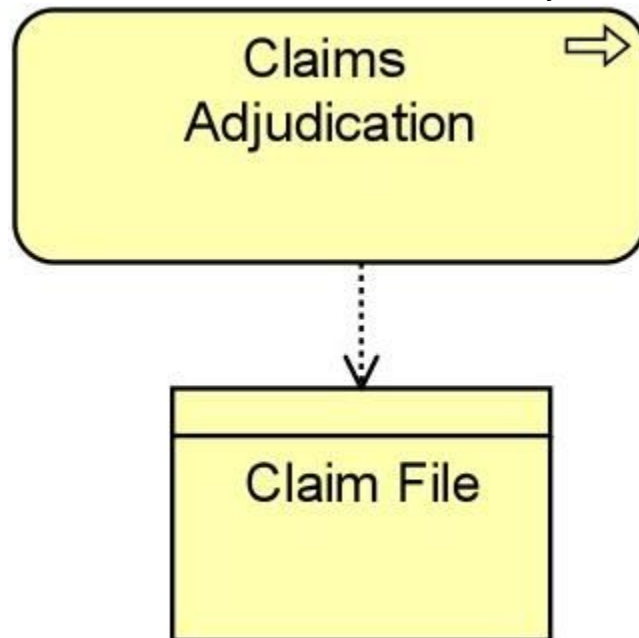
- A. It has three distinct components
- B. It processes three different types of data objects
- C. It performs three different functions
- D. It groups together three components that are not a part of the Underwriting Application

Correct Answer: C

Section:

QUESTION 31

All ArchiSurance divisions use a Claims Adjudication Process specific to their lines of business to determine whether a claim should be paid as well as the payment amount, Consider the following diagram:



Which of the following statements is expressed by the diagram?

- A. The Claims Adjudication Process realizes the Claim File
- B. Claims are filed after the Claims Adjudication process is complete

- C. The Claims Adjudication team relies on the Claim File to get its work done
- D. The Claims Adjudication process accesses the Claim File

Correct Answer: D

Section:

QUESTION 32

What Implementation & Migration Extension concept is used to model the outcome of an analysis of the differences between two architectural states?

- A. Transition
- B. Gap
- C. Work Package
- D. Deliverable

Correct Answer: B

Section:

QUESTION 33

The ArchiMate modeling language can be used to describe different types of architecture and the relationships between them. Which of the following lists the three main layers of the ArchiMate language?

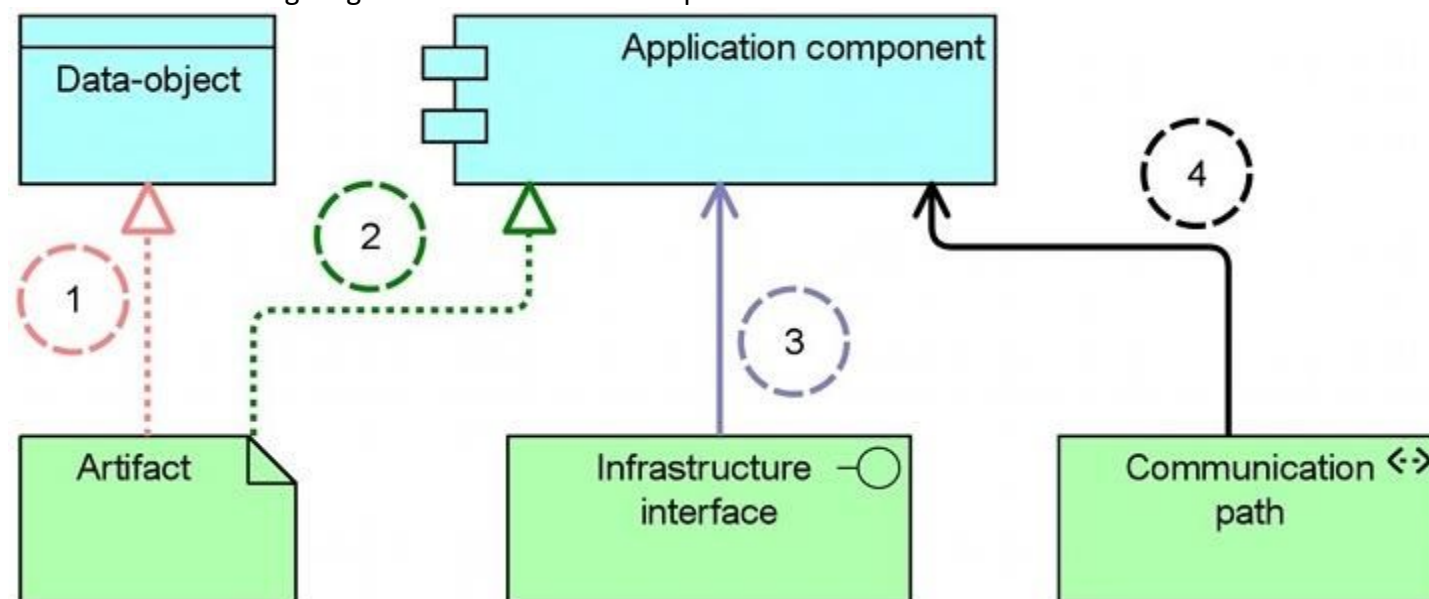
- A. Business, Information, and Application
- B. Application, Data, and Technology
- C. Business, Application, and Technology
- D. Business, Integration, and Infrastructure

Correct Answer: C

Section:

QUESTION 34

Consider the following diagram with four relationships modeled:



Which relationship modeled in the diagram is not allowed to connect the application layer with the technology layer?

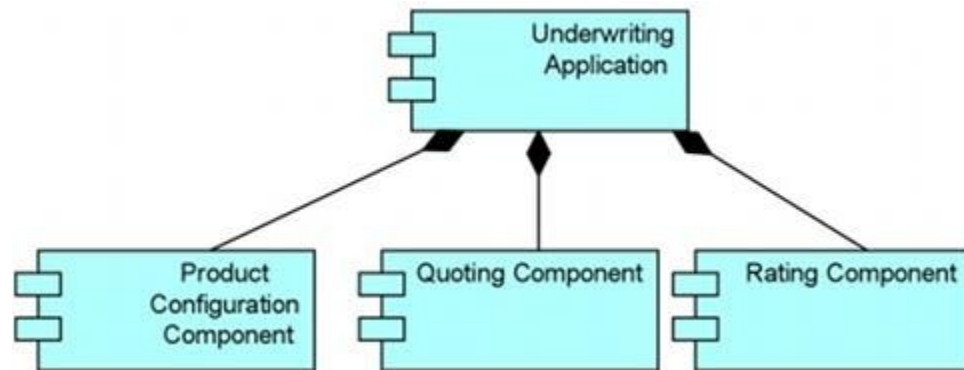
- A. Relationship 1
- B. Relationship 2
- C. Relationship 3
- D. Relationship 4

Correct Answer: D

Section:

QUESTION 35

Consider the following diagram:



What does the diagram express about the structure of the Underwriting Application?

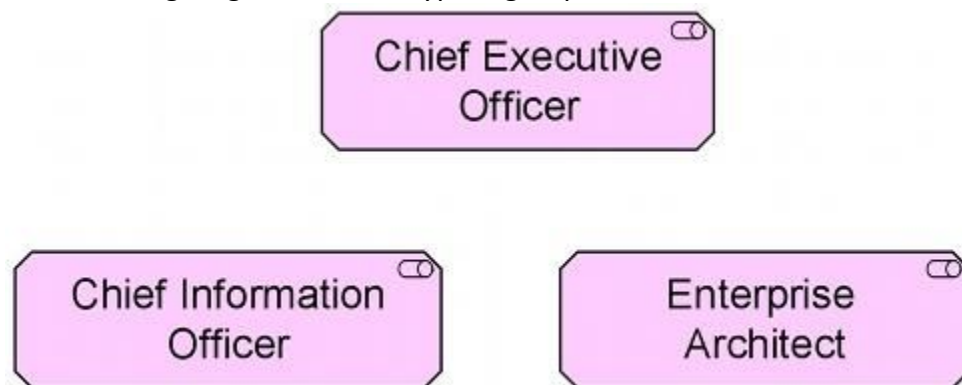
- A. The Underwriting Application groups together a number of modules that are either free-standing or part of other applications
- B. The Underwriting Application is composed of three application components
- C. The Underwriting Application invokes three other modules
- D. The Underwriting Application performs three functions

Correct Answer: B

Section:

QUESTION 36

The following diagram shows a typical group of stakeholders:



Which ArchiMate viewpoint abstraction level would support these stakeholders for the purpose of change management?

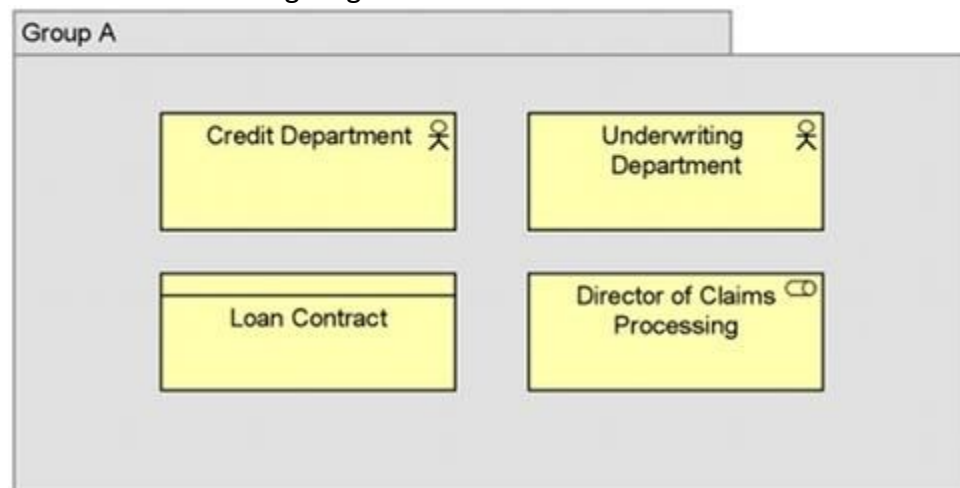
- A. Coherence
- B. Designing
- C. Details
- D. Overview

Correct Answer: D

Section:

QUESTION 37

Consider the following diagram:



Which of the following best describes the relationship between the four objects in Group A?

- A. The objects share information
- B. The objects are collaborating on a key initiative
- C. The objects were instantiated at the same time
- D. The objects belong together based on some common characteristic

Correct Answer: D

Section:

QUESTION 38

Consider the following symbol, which represents information about a transformation project at ArchiSurance involving systems and business processes:



Which of the following statements correctly expresses the meaning of the symbol?

- A. The Board of Directors will use the transformed systems
- B. The Board of Directors has a business role in the project
- C. The transformed systems will store information of interest to the Board of Directors
- D. The Board of Directors has concerns about the project

Correct Answer: D

Section:

QUESTION 39

According to the ISO/IEC 40210 standard, which of the following statements is NOT correct?

- A. A view conforms to a viewpoint
- B. A viewpoint always addresses one or more stakeholders
- C. A concern is always important to one or more stakeholders
- D. A viewpoint always covers exactly one concern

Correct Answer: D

Section:

QUESTION 40

Which of the following statements about ArchiMate viewpoint classification is correct?

- A. There are three purpose dimensions and three abstraction levels
- B. There are two purpose dimensions and three abstraction layers
- C. There are four purpose dimensions and two abstraction levels
- D. There are three purpose dimensions and four abstraction layers

Correct Answer: A

Section:

QUESTION 41

Consider the following diagram using the Implementation and Migration extension:



Which of the following statements correctly describes the concepts shown in the diagram?

- A. Business processes
- B. Plateau and deliverables
- C. Project components
- D. Work packages

Correct Answer: D

Section:

QUESTION 42

ArchiMate is a visual modeling language for enterprise architecture.

Which of the following answers best describes the primary reason for developing an enterprise architecture?

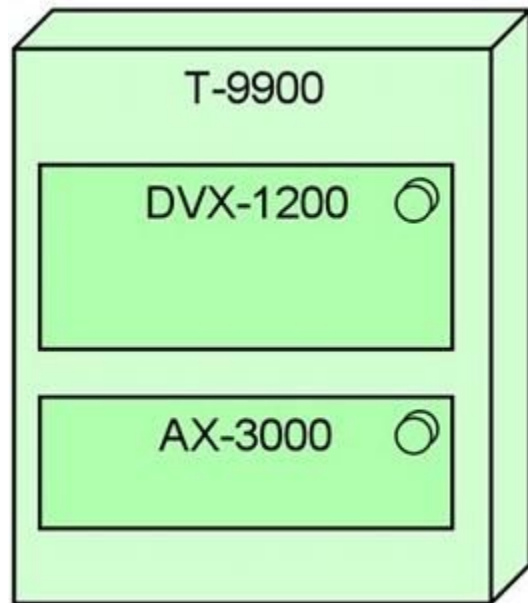
- A. To support an organization in aligning its business structure, business processes, and information systems with its strategic goals
- B. To simplify the information systems within an organization and make them more efficient
- C. To enable an organization to proactively develop the best knowledge and expertise to support its IT and business process portfolio
- D. To ensure that the organization as a whole sees the value of its information systems

Correct Answer: A

Section:

QUESTION 43

The diagram below shows key elements of the configuration of ArchiSurance's newest and most powerful high-end server, which is a model T-9900:



Which of the following descriptions of the configuration is most consistent with the diagram?

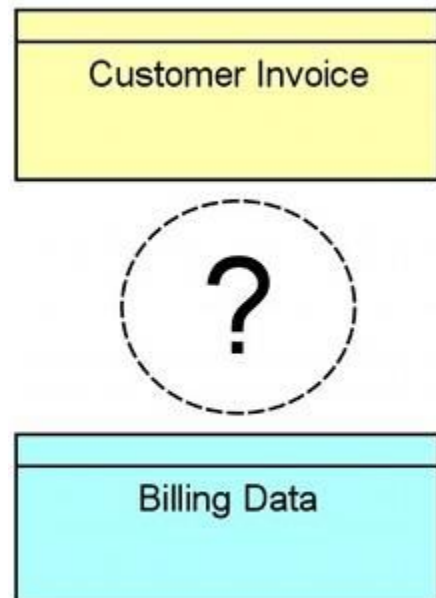
- A. The T-9900 is fitted with a DVX-1200 cooling system and AX-3000 onboard disk array
- B. The T-9900 is running PRO-FIT's custom, internally-developed DVX-1200 software for enterprise risk analysis and is fitted with an AX-3000 onboard disk array
- C. The T-9900 node is running DVX-1200 middleware and the AX-3000 operating system software
- D. The T-9900 is an assembly of DVX-1200 processing units and AX-3000 high-speed memory arrays

Correct Answer: C

Section:

QUESTION 44

Billing data is a digital representation of a customer invoice.



Which ArchiMate relationship most closely represents the relationship between the billing data and the customer invoice in the diagram?

- A. The Customer Invoice realizes the Billing Data
- B. The Billing Data realizes the Customer Invoice
- C. The Customer Invoice uses the Billing Data
- D. The Customer Invoice is assigned to the Billing Data

Correct Answer: B

Section:

QUESTION 45

What is the generic name in the ArchiMate language for the concept of an object on which behavior is performed?

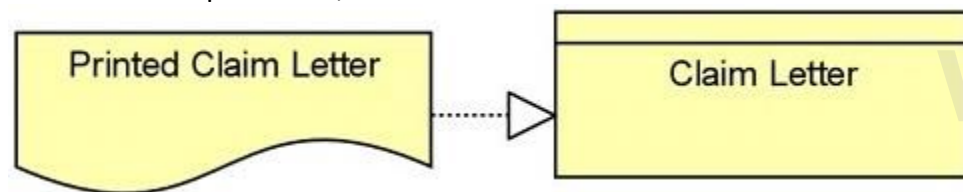
- A. Passive structure element
- B. Data object
- C. Active structure element
- D. Passive data object

Correct Answer: A

Section:

QUESTION 46

After a claim is processed, ArchiSurance notifies the claimant with a Claim Letter.



Which of the following answers correctly interprets the diagram?

- A. Printed Claim Letters are scanned and stored online
- B. Claim letters have two forms: printed and electronic
- C. A Printed Claim Letter realizes a Claim Letter business object
- D. Copies of Printed Claim Letters are stored in a Claim Letter filing cabinet
- E. Printed Claim Letters are read from the Claim Letter object

Correct Answer: C

Section:

QUESTION 47

Which standard ArchiMate viewpoint focuses on the (internal) structure of a company, a department, or a network of companies, and identifies authorities and responsibilities?

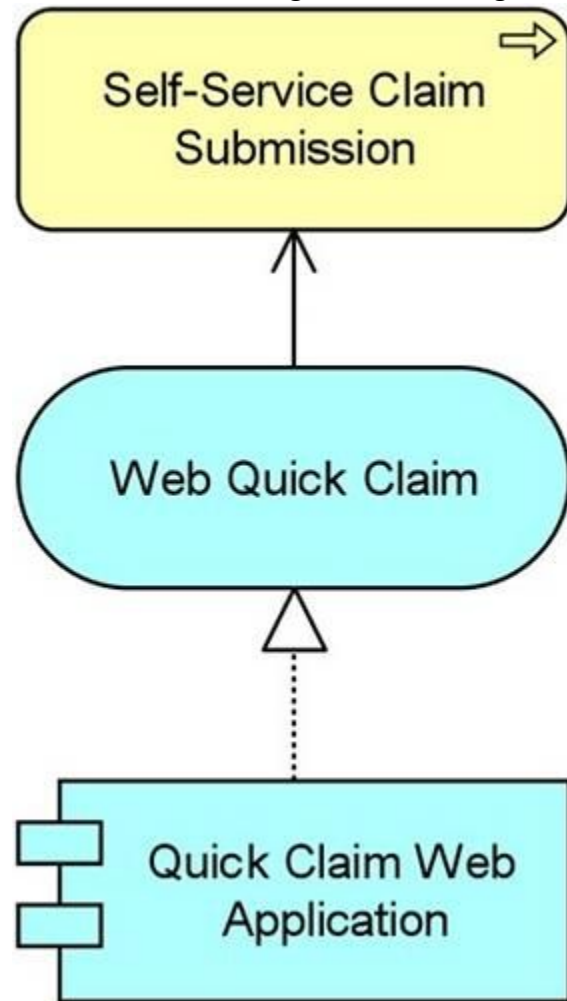
- A. Actor Co-operation viewpoint
- B. Organizational viewpoint
- C. Business Function viewpoint
- D. Business Process Co-operation viewpoint

Correct Answer: B

Section:

QUESTION 48

Consider the following ArchiMate diagram:



www.VCEplus.io

Which ArchiMate Layers are represented by concepts in this diagram?

- A. Business and Technology
- B. Business and Application
- C. Application and Infrastructure
- D. Process and Software

Correct Answer: B

Section:

QUESTION 49

In general, what concept would you use to define a point of access where an application service is made available to another application component?

- A. Application service
- B. Application function
- C. Application interface
- D. Application interaction

Correct Answer: C

Section:

QUESTION 50

Which of the following best defines "architecture" in the context of the ArchiMate standard?

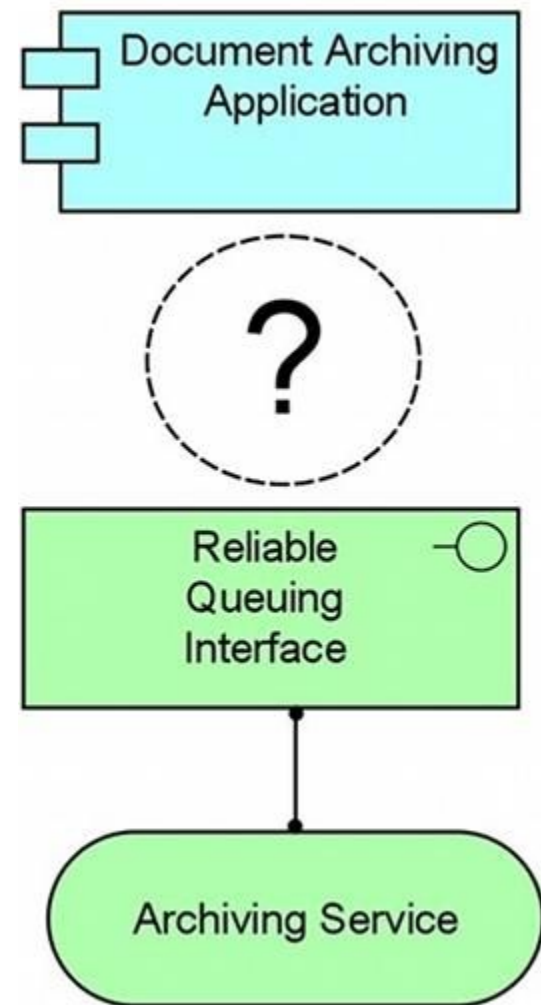
- A. A high-level summary of a system that is accessible to non-technical executives and other stakeholders
- B. A formal description of a system, or a detailed plan of the system at component level to guide its implementation
- C. A description of each component of a system in sufficient detail to ensure that the component is designed and built correctly in every respect
- D. An enumeration of the key concepts and philosophies that motivate and shape a major system

Correct Answer: B

Section:

QUESTION 51

The Document Archiving application relies on an archiving service, which it accesses through a reliable queuing interface.



Which relationship would most accurately describe this situation?

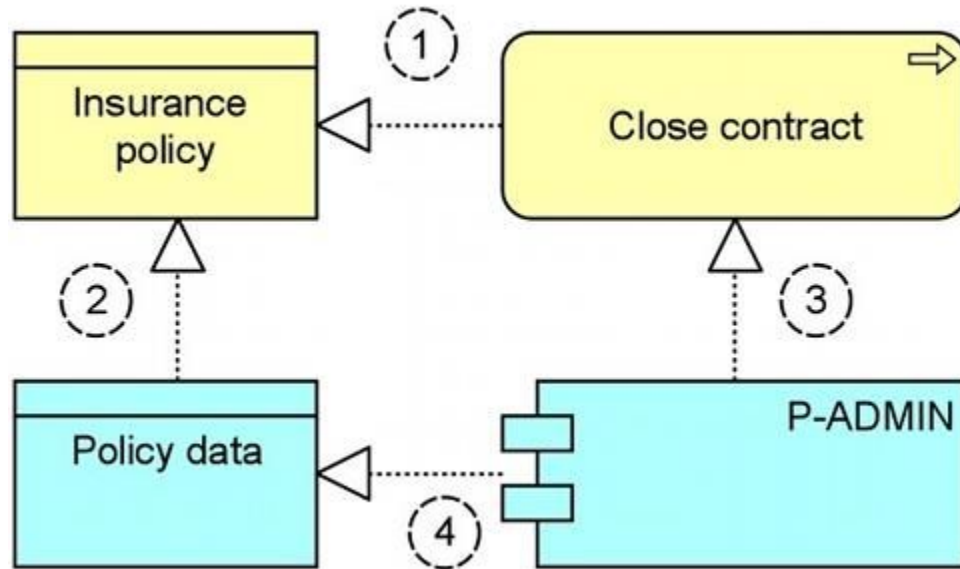
- A. Assignment
- B. Realization
- C. Used By
- D. Triggering

Correct Answer: C

Section:

QUESTION 52

Consider the following diagram:



Which of the numbered relationships is correct according to the ArchiMate metamodel?

- A. Number 1
- B. Number 2
- C. Number 3
- D. Number 4

Correct Answer: B

Section:

QUESTION 53

The team of business architects at ArchiSurance wants to tailor ArchiMate to the specific needs and characteristics of their organization.

Which of the following options to tailor the language is not advisable?

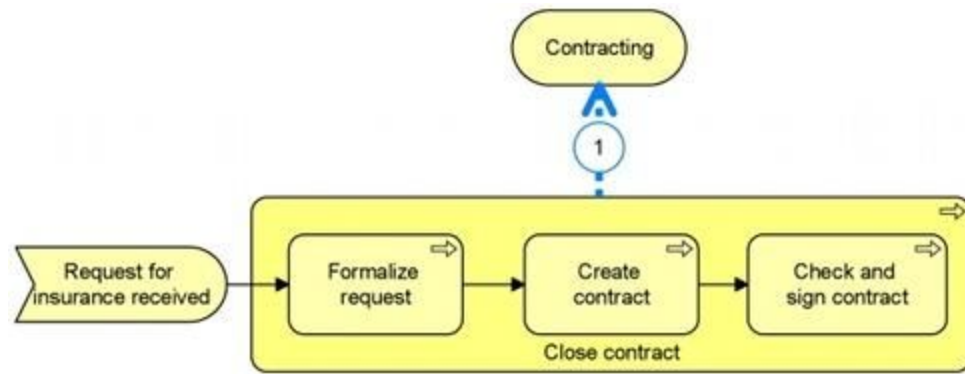
- A. Select a subset of the ArchiMate concepts and relationships
- B. Add new organization-specific concepts and relationships to the business layer metamodel
- C. Define organization-specific specializations of existing business layer concepts
- D. Add organization-specific attributes to existing business layer concepts

Correct Answer: B

Section:

QUESTION 54

Consider the following diagram which shows the service Contracting that is delivered by the business process Close contract.



What is the most appropriate ArchiMate relationship to be used for (1)?

- A. Assignment
- B. Realization
- C. Aggregation
- D. Used by

Correct Answer: B
Section:

QUESTION 55

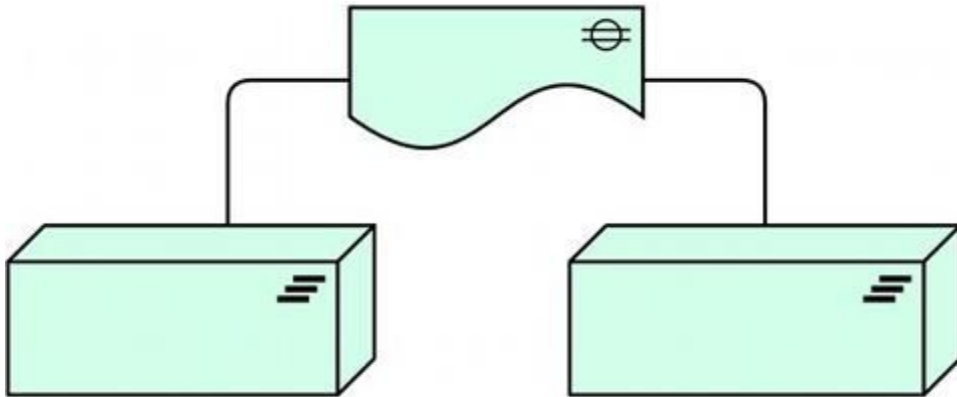
Which of the following answers correctly describes the junction relationship?

- A. It connects structural relationships of different types
- B. It connects dynamic relationships of the same type
- C. It connects dynamic relationships of different types
- D. It connects structural relationships of the same type

Correct Answer: B
Section:

QUESTION 56

Consider the following diagram:



Which of the following best describes what this diagram represents?

- A. Two plateaus with a transition architecture
- B. A deliverable exchanged between two projects
- C. A gap associated with two plateaus

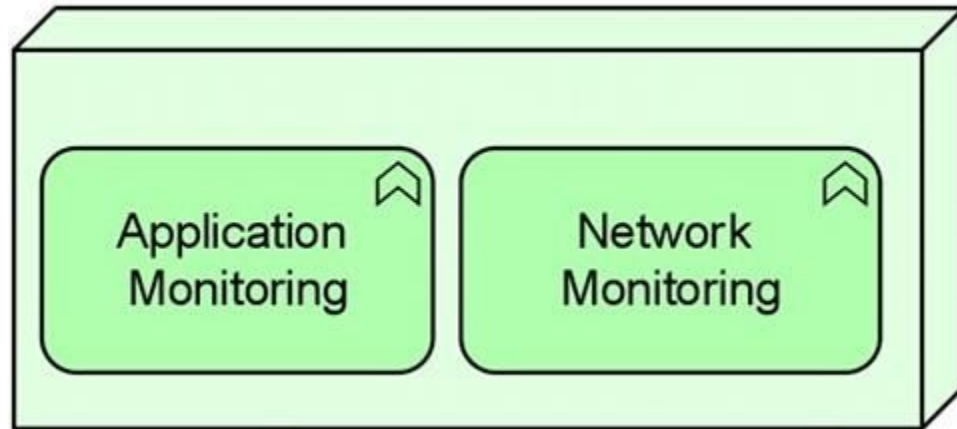
D. Two nodes connected by a communication path

Correct Answer: C

Section:

QUESTION 57

Consider the following diagram:



Which of the following best describes what this diagram represents?

- A. A node with two system software environments. One performs Application Monitoring, the other Network Monitoring
- B. A node that performs two functions: Application Monitoring and Network Monitoring
- C. A node that processes two types of data, pertaining respectively to Application Monitoring and Network Monitoring
- D. A node with application components. One performs Application Monitoring, the other Network Monitoring

Correct Answer: B

Section:

QUESTION 58

Which of the following answers contains only concepts within the scope of the ArchiMate Implementation and Migration extension?

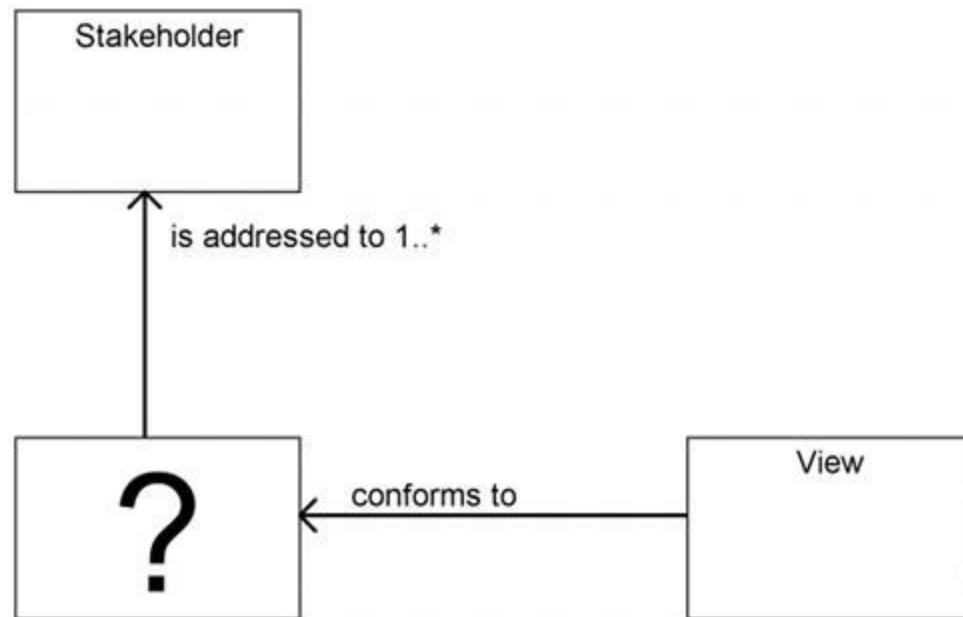
- A. Work Package, Artifact, Plateau, Driver
- B. Work Package, Deliverable, Plateau, Gap
- C. Project, Work Package, Deliverable, Plateau
- D. Project, Resource, Deliverable, Gap

Correct Answer: B

Section:

QUESTION 59

The following diagram illustrates the relationship between Stakeholders and Views:



According to the ISO/IEC 40210 standard, how should the box in the lower left corner be labeled?

- A. Viewpoint
- B. Concern
- C. Architectural Description
- D. Model

Correct Answer: A

Section:

www.VCEplus.io