

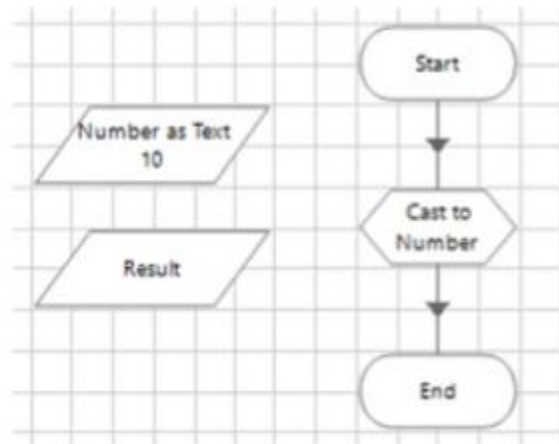
Exam Code: ASDEV01

Exam Name: Blue Prism Certified Associate Developer

Exam A

QUESTION 1

Examine the following Blue Prism Process diagram:



The 'Number as Text' data item is configured as text data item: and has an initial value of 10 The 'Result' data item is configured as a number data item.

The 'Cast to Number' Calculation stage must output the text value stored in the 'Number as Text1 data item, to the Result data item

Which of the following expressions would you use in the 'Cast to Number1 Calculation stage to set the value of the 'Result' data item?

- A. [Number as Text]
- B. Convert(Number as Text 'NUMBER')
- C. Cast([Number as Text])
- D. Cast([Number as Text. TEXT])

Correct Answer: B

Section:

Explanation:

This is the correct expression to use in the calculation stage to set the value of the result data item. It uses the convert function to convert the text value stored in the number as text data item to a number value. The other options are either incorrect or used for different purposes.

Reference: https://portal.blueprism.com/sites/default/files/2021-05/Blue%20Prism%20Certification%20-%20Associate%20Developer%20-%20Certification%20Overview_0.pdf (page 14)

QUESTION 2

DRAG DROP

Drag and drop the Blue Prism debug tool names on the left, onto the placement boxes (A- E) so that the dropped tool name corresponds with the debug tool description beside it:

Select and Place:

Go or Play	A	Executes the current stage and any underlying layers of logic in a single step.
Step	B	Runs the Process from the current point forward to the end of the flowchart.
Step over	C	Executes the remaining Stages on the current Page.
Step out	D	Pauses the execution at its current point.
Pause	E	Executes one Stage at a time within a Process.

Correct Answer:

	Step over	Executes the current stage and any underlying layers of logic in a single step.
	Go or Play	Runs the Process from the current point forward to the end of the flowchart.
	Step out	Executes the remaining Stages on the current Page.
	Pause	Pauses the execution at its current point.
	Step	Executes one Stage at a time within a Process.

Section:

Explanation:

QUESTION 3

Which of the following are true about a Blue Prism Breakpoint?

(Select all items that apply)

- A. The Process can be run in Control Room and the session will stop once it reaches the stage which has been assigned a Breakpoint
- B. A Breakpoint will force the Process to terminate
- C. The Developer can run the Process in Studio and the Process will stop at the stage which has been assigned a Breakpoint.

- D. Breakpoints are ignored when a Process is run in Control Room
- E. A Breakpoint will pause a Process for a defined period of time, at the stage which has been assigned the Breakpoint Once this time has elapsed, the Process will move onto the next stage.

Correct Answer: C, D

Section:

Explanation:

These are the correct statements about a Blue Prism breakpoint. It allows the developer to pause the execution of a process or object in studio and inspect the data items and stages. It has no effect when a process is run in control room. The other options are either incorrect or describe different features of Blue Prism.

Reference: https://bpdocs.blueprism.com/bp-6-10/en-us/helpDebug.htm?TocPath=Interface%7CStudio%7CProcess%20studio%7C_____7 (page 2)

QUESTION 4

Blue Prism Processes can be built across multiple workspaces - broken up into individual tasks, that each sit on their own Pages What name is given to this?

- A. Linking
- B. Layering of Logic
- C. Circular Path
- D. Linear Diagram

Correct Answer: B

Section:

Explanation:

This is the correct name given to the practice of building Blue Prism processes across multiple workspaces and pages. It allows the developer to organize and reuse the logic in a modular way. The other options are either incorrect or describe different aspects of Blue Prism.

Reference: https://bpdocs.blueprism.com/bp-6-10/en-us/helpDebug.htm?TocPath=Interface%7CStudio%7CProcess%20studio%7C_____7 (page 1)

QUESTION 5

Which of the following are true about the use of Blue Prism Process templates'?

(Select all items which apply)

- A. Process development time is reduced by using a template
- B. They provide consistency across all processes, making processes easier to understand and support
- C. They promote proven Blue Prism Best Practices
- D. There is no requirement to train Process Developers in Blue Prism development
- E. Templates are auto generated scripts that perform interactions with business applications therefore there is no additional development time

Correct Answer: A, B, C

Section:

Explanation:

These are the correct benefits of using a Blue Prism process template. It allows the developer to follow a standard structure and design for all processes, and save time and effort by reusing common elements. The other options are either incorrect or describe different scenarios.

Reference: https://portal.blueprism.com/sites/default/files/2021-05/Blue%20Prism%20Certification%20-%20Associate%20Developer%20-%20Certification%20Overview_0.pdf (page 9)

QUESTION 6

Which of the following values are valid Blue Prism Control Room session status values'?

- A. Pending
- B. Suspended
- C. Finished

- D. Faulted
- E. Terminated
- F. Running
- G. Paused

Correct Answer: A, C, D, E, F

Section:

Explanation:

They indicate the current state of a process session that is being executed by a digital worker. The other options are either invalid or not related to session status.

Reference: https://bpdocs.blueprism.com/bp-6-10/en-us/helpDebug.htm?TocPath=Interface%7CStudio%7CProcess%20studio%7C_____7 (page 3)

QUESTION 7

User name and password information which is used by a Blue Prism Process to log into a business application, should be stored where?

- A. In a local hidden file
- B. In a password protected file
- C. In Credential Manager
- D. Environment Variable
- E. In Data Items in the Process
- F. In a shared Excel file

Correct Answer: C

Section:

Explanation:

This is the correct place to store user name and password information that is used by a Blue Prism process to log into a business application. It allows the developer to securely store and manage credentials that can be used by multiple processes and objects. The other options are either insecure or not supported by Blue Prism.

Reference: https://bpdocs.blueprism.com/bp-6-10/en-us/helpDebug.htm?TocPath=Interface%7CStudio%7CProcess%20studio%7C_____7 (page 4)

QUESTION 8

Which area of Blue Prism is used to set up and edit Credential information?

- A. Control Room
- B. Process Studio
- C. Credential Store on the Digital Worker
- D. Object Studio
- E. The Security group in Blue Prism System area

Correct Answer: E

Section:

Explanation:

This is the correct area of Blue Prism where credential information can be set up and edited. It allows the user to create and manage credential records that can be accessed by processes and objects. The other options are either incorrect or not related to credential management.

Reference: https://bpdocs.blueprism.com/bp-6-10/en-us/helpDebug.htm?TocPath=Interface%7CStudio%7CProcess%20studio%7C_____7 (page 4)

QUESTION 9

Which of the following are examples of a Business Exception? (Select all items which apply)

- A. A business requirement states that Blue Prism should not process any customer transfer requests when the value of the request is greater than \$10,000 Blue Prism has successfully read the value of the transfer request - the value was \$16 000
- B. The data input to the process has been validated and failed
- C. Blue Prism has detected an unexpected pop-up window
- D. A Blue Prism Wait stage has timed out waiting for a particular element in a web page

Correct Answer: A, B

Section:

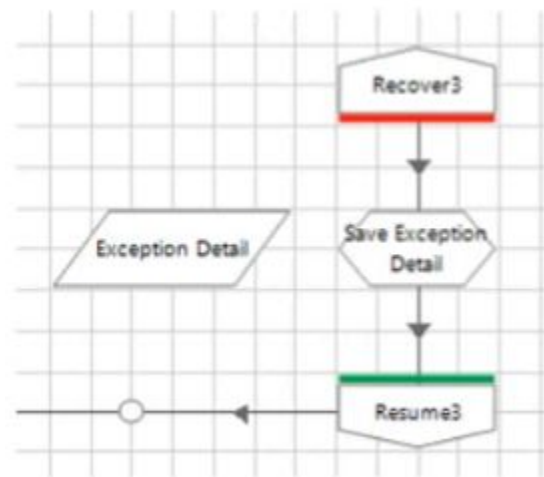
Explanation:

These are examples of business exceptions, which are exceptions that occur due to business rules or data validation issues. The other options are examples of system exceptions, which are exceptions that occur due to technical issues or unexpected events in the application or environment.

Reference: https://portal.blueprism.com/sites/default/files/2021-05/Blue%20Prism%20Certification%20-%20Associate%20Developer%20-%20Certification%20Overview_0.pdf (page 15)

QUESTION 10

Examine the following recover flow taken from a Blue Prism Process:



www.VCEplus.io

The 'Exception Detail' data item has no initial value and has a data type of text

The Calculation stage 'Save Exception Detail' will output the current exception detail to the 'Exception Detail' data item

What expression would you use in the 'Save Exception Detail' stage to achieve this?

- A. Current Exception Detail

Correct Answer: A

Section:

Explanation:

This is the correct expression to use in the calculation stage to output the current exception detail to the data item. It uses the built-in object CurrentException and its property Detail to get the value of the exception detail.

Reference: https://portal.blueprism.com/sites/default/files/2021-05/Blue%20Prism%20Certification%20-%20Associate%20Developer%20-%20Certification%20Overview_0.pdf (page 15)

QUESTION 11

Which of the following statements are correct when considering an element's attributes in Application Modeller?

(Select all items which apply)

- A. Attributes which are included in the element match criteria contain a tick in the Match column of Application Modeller
- B. The initial selection of attributes made by Blue Prism will always be the optimum attribute set to use to match the element
- C. The attributes displayed in Application Modeller are provided to Blue Prism by the target business application
- D. The attribute list will always contain the same entries regardless of the target application or element

Correct Answer: A, C

Section:

Explanation:

These statements are correct because they describe how Blue Prism identifies and interacts with the elements of the target application using the attributes provided by the application. The other statements are incorrect because Blue Prism does not always select the optimum attribute set and the attribute list may vary depending on the application or element type.

Reference: https://portal.blueprism.com/sites/default/files/2021-05/Blue%20Prism%20Certification%20-%20Associate%20Developer%20-%20Certification%20Overview_0.pdf (page 12)

QUESTION 12

Which of the following statements are correct about Blue Prism data items'?

(Select all items which apply)

- A. The value of a Blue Prism Data Item which has the Exposure setting configured as Session can be updated from within the System area of Blue Prism
- B. Blue Prism Data Item values can only assigned or updated from within a Process or Object diagram
- C. The value of a Blue Prism Data Item which has the Exposure setting configured as Session can be updated from Blue Prism Control Room
- D. Blue Prism Data Item values can be updated from Control Room if the Data Item visibility setting is disabled
- E. The value of a Blue Prism Data Item which has the Exposure setting configured as Environment, can be updated from Blue Prism Control Room
- F. The value of a Blue Prism Data Item which has the Exposure setting configured as Environment, can be updated from within the System area of Blue Prism

Correct Answer: C, E, F

Section:

Explanation:

These statements are correct because they describe how Blue Prism data items can be updated depending on their exposure and visibility settings. The other statements are incorrect because Blue Prism data items can also be updated from within a Business Object diagram, and data items with visibility setting disabled cannot be updated from Control Room.

Reference: https://portal.blueprism.com/sites/default/files/2021-05/Blue%20Prism%20Certification%20-%20Associate%20Developer%20-%20Certification%20Overview_0.pdf (page 13)

QUESTION 13

How would you change the visibility of a Blue Prism Data Item so the value could be read or edited from other Pages in the Process?

- A. Variables area of System
- B. Open Data Properties for the Data Item and disable / uncheck the visibility setting
- C. Open Data Properties for the Data Item and enable / check the visibility setting
- D. Environment area of System

Correct Answer: C

Section:

Explanation:

This is the correct way to change the visibility of a data item so that it can be accessed from other pages in the same process. The other options are either irrelevant or incorrect.

Reference: https://portal.blueprism.com/sites/default/files/2021-05/Blue%20Prism%20Certification%20-%20Associate%20Developer%20-%20Certification%20Overview_0.pdf (page 13)

QUESTION 14

What is a Blue Prism Collection?

- A. It is special type of stage in Blue Prism which collects data from various sources, which is then used in the Process
- B. It is a container for multiple Blue Prism stages
- C. It is a special type of Data Item which can hold multiple rows and columns of data similar to an Excel Worksheet or a table of data
- D. It is a feature which can group multiple Data Items together, simplifying your diagram

Correct Answer: C

Section:

Explanation:

This is the correct definition of a Blue Prism collection. The other options are either incorrect or describe different features of Blue Prism.

Reference: https://portal.blueprism.com/sites/default/files/2021-05/Blue%20Prism%20Certification%20-%20Associate%20Developer%20-%20Certification%20Overview_0.pdf (page 14)

QUESTION 15

Which of the following statements best describes a Blue Prism Local Data Item?

- A. Blue Prism Data items which can only be accessed from the Main Page of the Process
- B. Blue Prism Data items which can be accessed from any Page in the same Process
- C. Blue Prism Data items which can be accessed from any Page in any Process in the same local environment
- D. Blue Prism Data items which can only be accessed from the Page in the Process where the item is placed

Correct Answer: D

Section:

Explanation:

This is the correct definition of a local data item. The other options are either incorrect or describe different types of data items.

Reference: https://portal.blueprism.com/sites/default/files/2021-05/Blue%20Prism%20Certification%20-%20Associate%20Developer%20-%20Certification%20Overview_0.pdf (page 13)

QUESTION 16

In Blue Prism, what is a stage Expression?

- A. A formula which is used to produce a value
- B. An output from a Decision stage
- C. The description of a Blue Prism stage
- D. The output from a Calculation stage

Correct Answer: A

Section:

Explanation:

A stage expression is a formula that can be entered into any stage in Blue Prism to produce a value or perform an action. It can use variables, functions, operators and constants to create complex expressions that can manipulate data or control the flow of the process.

Reference: https://portal.blueprism.com/sites/default/files/2021-05/Blue%20Prism%20Certification%20-%20Associate%20Developer%20-%20Certification%20Overview_0.pdf

QUESTION 17

What is a Blue Prism Process?

- A. A business flow diagram
- B. A computer application
- C. A business flow chart
- D. A graphical representation of a working computer program which automates manual repetitive tasks

Correct Answer: D

Section:

Explanation:

A Blue Prism process is a graphical representation of a working computer program that automates manual repetitive tasks using business objects and stages. A process can be run by an operator or scheduled by a control room.

Reference:2<https://www.koenig-solutions.com/blue-prism-associate-developer-course>

QUESTION 18

Process rules or logic are evaluated in Blue Prism using which type of stage?

- A. Evaluate
- B. Decision
- C. Validate
- D. Calculation
- E. Logic

Correct Answer: B

Section:

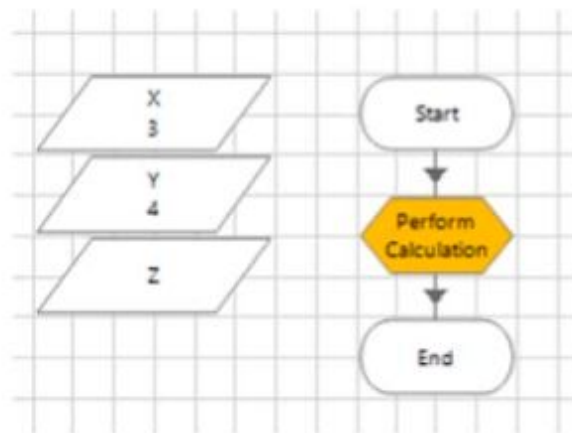
Explanation:

A decision stage is used to evaluate process rules or logic and branch the process flow based on the outcome of the evaluation. A decision stage can have multiple outcomes and can use expressions to compare values or check conditions¹.

Reference:1https://portal.blueprism.com/sites/default/files/2021-05/Blue%20Prism%20Certification%20-%20Associate%20Developer%20-%20Certification%20Overview_0.pdf

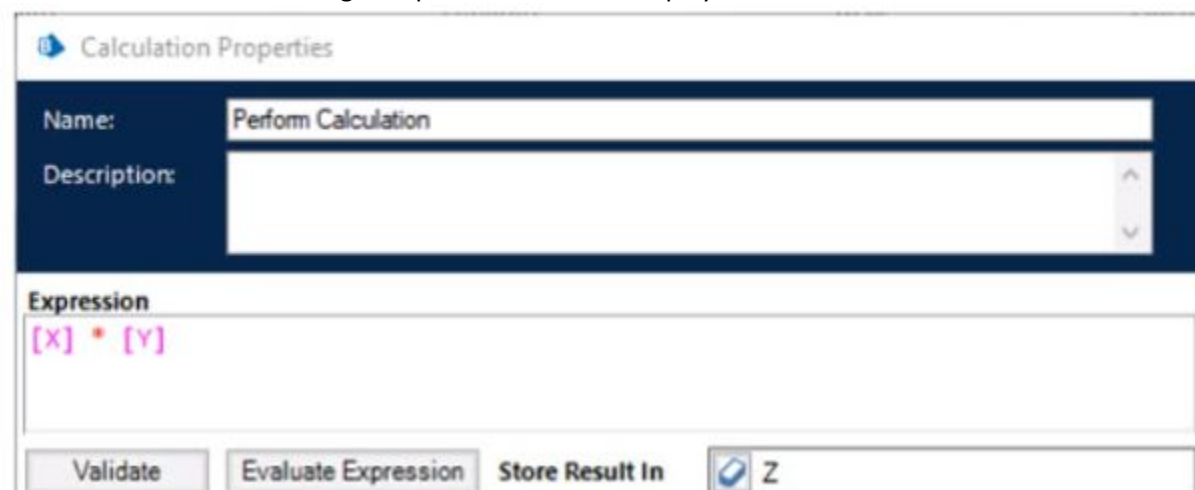
QUESTION 19

Examine the following Blue Prism Process diagram:



www.VCEplus.io

The initial values of the data items are displayed in the diagram above All 3 data items are configured as Number
The 'Perform Calculation' stage Properties window is displayed below:



Calculation Properties

Name: Perform Calculation

Description:

Expression: $[X] * [Y]$

Validate Evaluate Expression Store Result In ☒ Z

When this diagram is run through the the End stage, what will the current value of the Z data item be?

- A. -1

- B. [X]*[Y]
- C. An Internal Exception will be thrown as the Expression contains multiple blank spaces
- D. 0
- E. 12

Correct Answer: E

Section:

Explanation:

The calculation stage will assign the value of [X][Y] to the Z data item, which is 34 = 12. The blank spaces in the expression do not affect the calculation¹.

Reference:1<https://bpdocs.blueprism.com/bp-6-9/en-us/frmStagePropertiesCalculation.htm>

QUESTION 20

Which of the following items can be used in Blue Prism to transmit values between Process Pages?

(Select all items which apply)

- A. Input Parameters
- B. Lookup Stages
- C. Output Parameters
- D. Calculation Stages
- E. Data Items

Correct Answer: A, C, E

Section:

Explanation:

Input parameters, output parameters and data items can be used to transmit values between process pages by passing or returning values from one page to another². Lookup stages and calculation stages are not used for this purpose, as they are used to retrieve values from collections or perform calculations on values³.

Reference:2<https://bpdocs.blueprism.com/bp-6-10/en-us/helpProcessPages.htm>3<https://bpdocs.blueprism.com/bp-6-10/en-us/helpCalculationsAndDecisions.htm>

QUESTION 21

Examine the following Process flow:



The data item 'City 1' is configured as a Text data item and has an initial value of 'Liverpool'.

The data item 'City 2' is configured as a Text data item and has an initial value of 'Manchester'.

The data item 'City 3' is configured as a Text data item and has an initial value of 'London'.

The data item 'List of Cities' is configured as a Text data item and has no initial value.

The 'Calc 1' stage is configured as follows:

Name:

Description:

Expression

Validate Evaluate Expression Store Result In

The 'Calc 2' stage is configured as follows:

Calculation Properties

Name:

Description:

Expression

Validate Evaluate Expression Store Result In

What will the value of the list of Cities' data item be after the Process flow has run?

- A. Manchester. London
- B. An Exception will be thrown as a data item with a Text data type cannot store a list of text values
- C. Liverpool Manchester.London

Correct Answer: C

Section:

Explanation:

The calculation stage will append the values of City 1, City 2 and City 3 to the List of Cities data item, separated by spaces. The text data type can store words or phrases as well as numerical identifiers, and it has no character limit if the data is input by another method than manual.

Reference: <https://bpdocs.blueprism.com/bp-7-0/en-us/help/Datatypes.htm>

QUESTION 22

DRAG DROP

Drag and drop the Blue Prism stage names on the left into the placement boxes (A - E) so that the dropped stage names correspond with the image of the Blue Prism stage beside it:

Select and Place:

Process Stage



Multi Calc



Block Stage



Action Stage

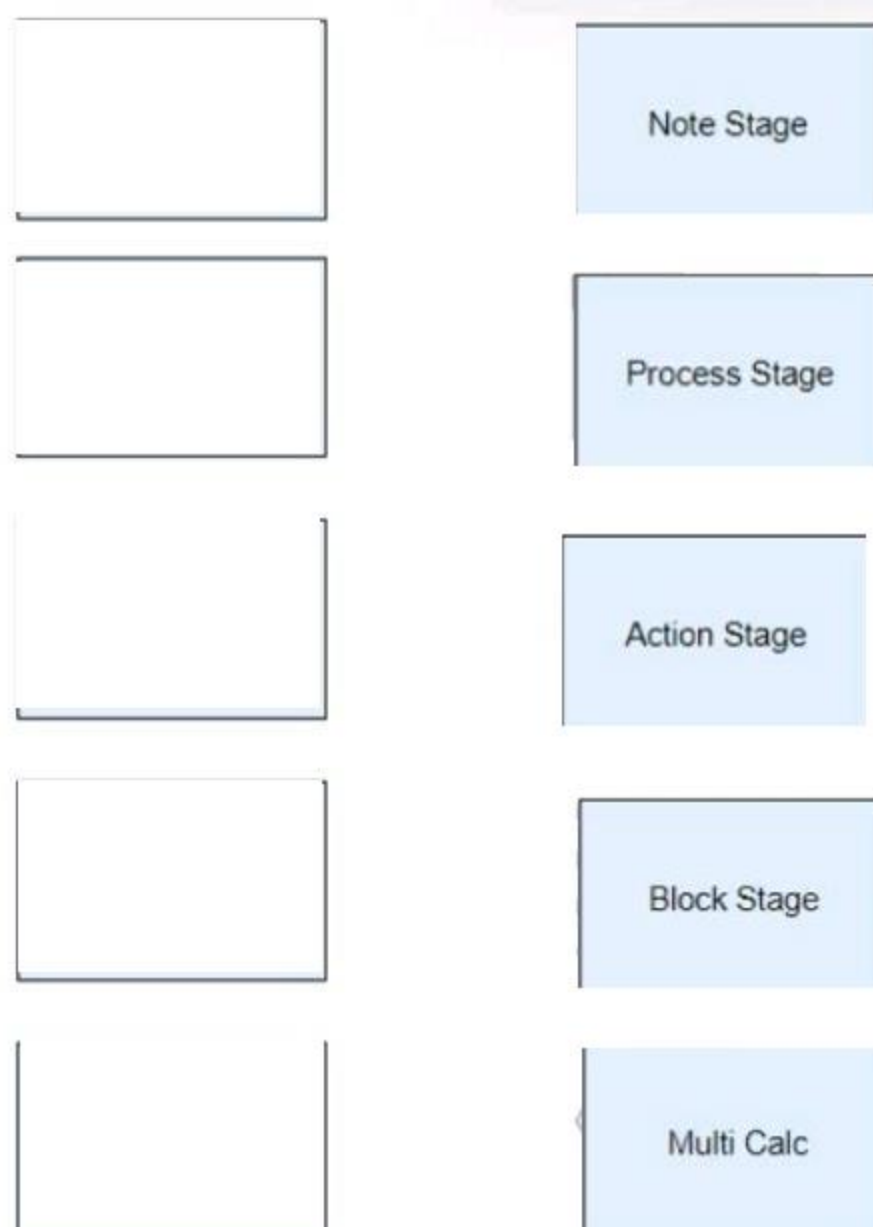


Note Stage



www.VCEplus.io

Correct Answer:



www.VCEplus.io

Section:

Explanation:

QUESTION 23

What is a Blue Prism Expression?

- A. The output from a Calculation stage
- B. The output from a Decision stage
- C. It is information provided in a Note stage
- D. A formula used to produce a value

Correct Answer: D

Section:

Explanation:

A Blue Prism expression is a formula that can be entered into any stage to produce a value or perform an action. It can use data items, operators, functions and constants to create complex expressions that can manipulate data or control the flow of the process.

Reference: <https://bpdocs.blueprism.com/bp-6-10/en-us/helpCalculationsAndDecisions.htm>

QUESTION 24

A Blue Prism Process reads data about a customer from an online form which includes their date of birth. A Process must determine if the customer is under the age of 18 before processing the customer request. What type of Blue Prism stage would you use to test the customer's age?

- A. Calculation stage
- B. Business Rule stage
- C. Validation stage
- D. Decision stage

Correct Answer: D

Section:

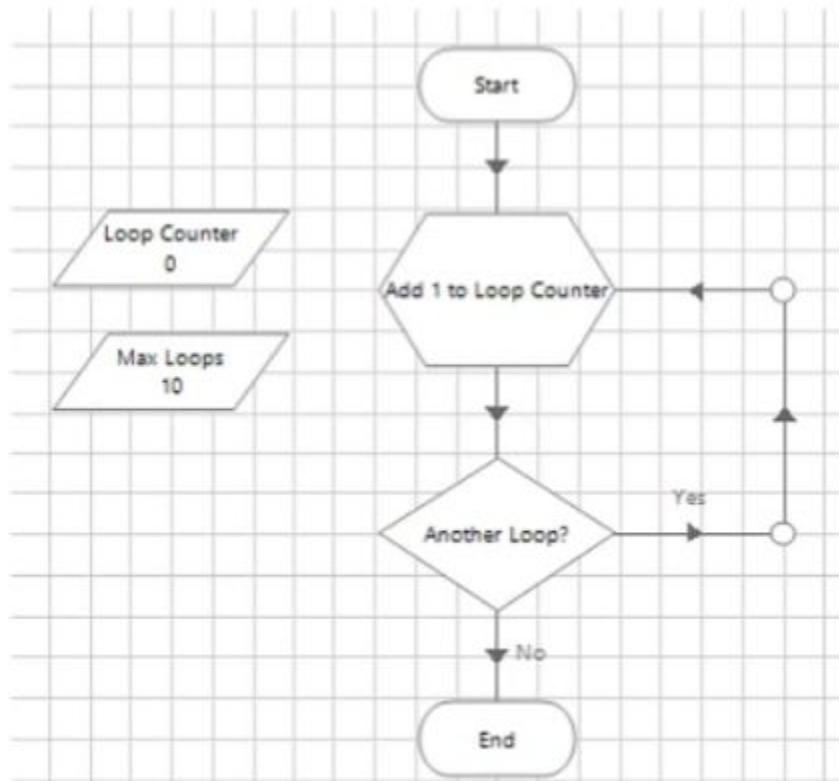
Explanation:

A decision stage is used to evaluate process rules or logic and branch the process flow based on the outcome of the evaluation. A decision stage can have multiple outcomes and can use expressions to compare values or check conditions. In this case, a decision stage can be used to compare the customer's date of birth with the current date and determine if they are under 18 or not.

Reference: <https://bpdocs.blueprism.com/bp-6-10/en-us/helpCalculationsAndDecisions.htm>

QUESTION 25

Examine the following diagram from a Blue Prism Process:



This is an example of a common looping diagram which you will see within Blue Prism Processes. What is the name given for this type of flow diagram?

- A. Blue Prism Loop stage
- B. Circular Path
- C. Infinite Loop
- D. Layers of Logic

Correct Answer: B

Section:

Explanation:

A circular path is a type of flow diagram that uses links to create a loop in the process flow, which can be repeated until a certain condition is met or an exception is thrown. A circular path typically consists of a decision stage,

a loop end stage and a loop start stage3.

Reference: 2<https://bpdocs.blueprism.com/bp-6-10/en-us/helpProcessFlow.htm>3<https://bpdocs.blueprism.com/bp-6-10/en-us/helpLooping.htm>

QUESTION 26

Which area of Blue Prism would you use to develop a Blue Prism Process?

- A. Application Navigator
- B. Process Studio
- C. Application Modeller
- D. Development Studio
- E. Object Studio

Correct Answer: B

Section:

Explanation:

Process Studio is the area of Blue Prism where processes are created and edited using stages and links to form graphical representations of working computer programs that automate manual repetitive tasks. Process Studio provides various tools and features to design, test and debug processes.

Reference: <https://bpdocs.blueprism.com/bp-6-10/en-us/helpProcessStudio.htm> <https://www.koenig-solutions.com/blue-prism-associate-developer-course>

www.VCEplus.io