

Microsoft.Premium.MD-102.30q - DEMO

Number: MD-102  
Passing Score: 800  
Time Limit: 120 min  
File Version:



**Exam Code: MD-102**

**Exam Name:** Endpoint Administrator

**Website:** [www.VCEplus.io](http://www.VCEplus.io)

**Twitter:** [www.twitter.com/VCE\\_Plus](https://twitter.com/VCE_Plus)

Exam A

QUESTION 1

Which user can enroll Device6 in Intune?

- A. User4 and User2 only
- B. User4 and User 1 only
- C. User1, User2, User3, and User4
- D. User4. User Land User2 only

Correct Answer: B

Section:

Explanation:

QUESTION 2

HOTSPOT

For each of the following statements, select Yes if the statement is true. Otherwise, select No. NOTE:

Each correct selection is worth one point.

Hot Area:

Statements	Yes	No
If User1 adds a shortcut to the desktop of Device1, when User1 signs in to Device3, the same shortcut will appear on the desktop.	<input type="radio"/>	<input type="radio"/>
If User1 sets the desktop background to blue on Device2, when User1 signs in to Device4, the desktop background will be blue.	<input type="radio"/>	<input type="radio"/>
If User2 increases the size of the font in the command prompt of Device2, when User2 signs in to Device3, the command prompt will show the increased font size.	<input type="radio"/>	<input type="radio"/>

Answer Area:

Statements	Yes	No
If User1 adds a shortcut to the desktop of Device1, when User1 signs in to Device3, the same shortcut will appear on the desktop.	<input checked="" type="radio"/>	<input type="radio"/>
If User1 sets the desktop background to blue on Device2, when User1 signs in to Device4, the desktop background will be blue.	<input type="radio"/>	<input checked="" type="radio"/>
If User2 increases the size of the font in the command prompt of Device2, when User2 signs in to Device3, the command prompt will show the increased font size.	<input type="radio"/>	<input checked="" type="radio"/>

Section:

Explanation:

QUESTION 3

Which users can purchase and assign App1?

- A. User3 only
- B. User1 and User3 only
- C. User1, User2, User3, and User4

- D. User1, User3, and User4 only
- E. User3 and User4 only

Correct Answer: B

Section:

Explanation:

Reference:

<https://docs.microsoft.com/en-us/microsoft-store/acquire-apps-microsoft-store-for-business>

<https://docs.microsoft.com/en-us/microsoft-store/assign-apps-to-employees>

QUESTION 4

HOTSPOT

You implement the planned changes for Connection1 and Connection2

How many VPN connections will there be for User1 when the user signs in to Device 1 and Devke2?

To answer select the appropriate options in the answer area.

NOTE; Each correct selection is worth one point.

Hot Area:

Answer Area



The image shows a screenshot of a hot spot question interface. It contains two identical vertical lists of numbers (1 through 5) for selection. The first list is labeled 'Device1:' and the second is labeled 'Device2:'. The interface is overlaid with a large, diagonal watermark reading 'VCEplus.io'.

Answer Area:

Answer Area

Device1:	<input type="checkbox"/>
	1
	2
Device2:	<input checked="" type="checkbox"/>
	3
	4
	5

Device2:	<input type="checkbox"/>
	1
	2
	3
	<input checked="" type="checkbox"/>
	4
	5

Section:

Explanation:

QUESTION 5

HOTSPOT

User1 and User2 plan to use Sync your settings.

On which devices can the users use Sync your settings? To answer, select the appropriate options in the answer area.

NOTE: Each correct selection is worth one point.

Hot Area:

Answer Area

User1:	<input type="checkbox"/>
	No devices
	Device4 and Device5 only
	Device1, Device2 and Device3 only
	Device1, Device2, Device3, Device4, and Device5

User2:	<input type="checkbox"/>
	No devices
	Device4 and Device5 only
	Device1, Device2 and Device3 only
	Device1, Device2, Device3, Device4, and Device5

Answer Area:

**Answer Area**

User1:

No devices

Device4 and Device5 only

Device1, Device2 and Device3 only

Device1, Device2, Device3, Device4, and Device5

User2:

No devices

Device4 and Device5 only

Device1, Device2 and Device3 only

Device1, Device2, Device3, Device4, and Device5

**Section:**

**Explanation:**

Reference:

<https://www.jeffgilb.com/managing-local-administrators-with-azure-ad-and-intune/>

**QUESTION 6**

You need to ensure that computer objects can be created as part of the Windows Autopilot deployment. The solution must meet the technical requirements. To what should you grant the right to create the computer objects?

- A. Server2
- B. Server1
- C. GroupA
- D. DC1

**Correct Answer: B**

**Section:**

**Explanation:**

Reference:

<https://blog.matrixpost.net/set-up-windows-autopilot-production-environment-part-2/>

**QUESTION 7**

**HOTSPOT**

For each of the following statements, select Yes if the statement is true. Otherwise, select No.  
NOTE: Each correct selection is worth one point.

**Hot Area:**

Statements	Yes	No
Device1 is marked as compliant.	<input type="radio"/>	<input type="radio"/>
Device4 is marked as compliant.	<input type="radio"/>	<input type="radio"/>
Device5 is marked as compliant.	<input type="radio"/>	<input type="radio"/>

**Answer Area:**



Statements	Yes	No
Device1 is marked as compliant.	<input checked="" type="radio"/>	<input type="radio"/>
Device4 is marked as compliant.	<input type="radio"/>	<input checked="" type="radio"/>
Device5 is marked as compliant.	<input checked="" type="radio"/>	<input type="radio"/>

Section:

Explanation:

#### QUESTION 8

HOTSPOT

For each of the following statements, select Yes if the statement is true. Otherwise, select No.

NOTE: Each correct selection is worth one point.

Hot Area:

Statements	Yes	No
User1 can create a file named D:\Folder1\file1.txt on Device4 by using Notepad.	<input type="radio"/>	<input type="radio"/>
User2 can remove D:\Folder1 from the list of protected folders on Device2.	<input type="radio"/>	<input type="radio"/>
User3 can create a file named C:\Users\User3\Desktop\file1.txt on Device2 by running a custom Windows PowerShell script.	<input type="radio"/>	<input type="radio"/>

Answer Area:

Statements	Yes	No
User1 can create a file named D:\Folder1\file1.txt on Device4 by using Notepad.	<input type="radio"/>	<input checked="" type="radio"/>
User2 can remove D:\Folder1 from the list of protected folders on Device2.	<input checked="" type="radio"/>	<input type="radio"/>
User3 can create a file named C:\Users\User3\Desktop\file1.txt on Device2 by running a custom Windows PowerShell script.	<input type="radio"/>	<input checked="" type="radio"/>

Section:

Explanation:

#### QUESTION 9

You implement Boundary1 based on the planned changes.

Which devices have a network boundary of 192.168.1.0/24 applied?

- A. Device2 only
- B. Device3 only
- C. Device 1, Device2, and Device5 only
- D. Device 1, Device2, Device3, and Device4 only

**Correct Answer: D**

**Section:**

**Explanation:**

Reference:

<https://docs.microsoft.com/en-us/mem/intune/configuration/network-boundary-windows>

#### QUESTION 10

Which devices are registered by using the Windows Autopilot deployment service?

- A. Device1 only
- B. Device3 only
- C. Device1 and Device3 only
- D. Device1, Device2, and Device3

**Correct Answer: C**

**Section:**

**Explanation:**

Scenario: Windows Autopilot Configuration

Assignments

Included groups: Group1

Excluded groups: Group2

Device1 is member of Group1.

Device2 is member of Group1 and member of Group2.

Device3 is member of Group1.

Group1 and Group2 have a Membership type of Assigned.

Exclusion takes precedence over inclusion in the following same group type scenarios.

Reference: <https://learn.microsoft.com/en-us/mem/intune/apps/apps-inc-exl-assignments>

#### QUESTION 11

You need to capture the required information for the sales department computers to meet the technical requirements.

Which Windows PowerShell command should you run first?

- A. Install-Module WindowsAutoPilotIntune
- B. Install-Script Get-WindowsAutoPilotInfo
- C. Import-AutoPilotCSV
- D. Get-WindowsAutoPilotInfo

**Correct Answer: B**

**Section:**

**Explanation:**

Reference:

<https://docs.microsoft.com/en-us/windows/deployment/windows-autopilot/existing-devices> "This topic describes how to convert Windows 7 or Windows 8.1 domain-joined computers to

Windows 10 devices joined to either Azure Active Directory or Active Directory (Hybrid Azure AD

Join) by using Windows Autopilot"

#### QUESTION 12

**HOTSPOT**

You need to resolve the performance issues in the Los Angeles office.  
How should you configure the update settings? To answer, select the appropriate options in the answer area.  
NOTE: Each correct selection is worth one point.

Hot Area:

Change Delivery Optimization download mode to:

Bypass mode
HTTP blended with internet peering
HTTP blended with peering behind same NAT
Simple download mode with no peering

Update Active Hours Start to:

10 AM
11 AM
10 PM
11 PM

Update Active Hours End to:

10 AM
11 AM
10 PM
11 PM

Answer Area:



Change Delivery Optimization download mode to:

Bypass mode
HTTP blended with internet peering
HTTP blended with peering behind same NAT
Simple download mode with no peering

Update Active Hours Start to:

10 AM
11 AM
10 PM
11 PM

Update Active Hours End to:

10 AM
11 AM
10 PM
11 PM

Section:

Explanation:

Reference:

<https://docs.microsoft.com/en-us/windows/deployment/update/waas-delivery-optimization>

<https://2pintsoftware.com/delivery-optimization-dl-mode/>

### QUESTION 13

What should you configure to meet the technical requirements for the Azure AD-joined computers?

- A. Windows Hello for Business from the Microsoft Intune blade in the Azure portal.
- B. The Accounts options in an endpoint protection profile.
- C. The Password Policy settings in a Group Policy object (GPO).
- D. A password policy from the Microsoft Office 365 portal.

Correct Answer: A

Section:

Explanation:

Reference:

<https://docs.microsoft.com/en-us/windows/security/identity-protection/hello-for-business/hellomanage-inorganization>

### QUESTION 14

HOTSPOT

You need to meet the OOB requirements for Windows AutoPilot.

Which two settings should you configure from the Azure Active Directory blade? To answer, select the appropriate settings in the answer area.

NOTE: Each correct selection is worth one point.

Hot Area:

<b>Overview</b>
Getting started
<b>Manage</b>
Users
Groups
Organizational relationships
Roles and administrators
Enterprise applications
Devices
App registrations
App registrations (Preview)
Application proxy
Licenses
Azure AD Connect
Custom domain names
Mobility (MDM and MAM)
Password reset
Company branding
User settings
Properties
Notifications settings

Answer Area:

www.VCEplus.io

## Overview

Getting started

### Manage

Users
Groups
Organizational relationships
Roles and administrators
Enterprise applications
Devices
App registrations
App registrations (Preview)
Application proxy
Licenses
Azure AD Connect
Custom domain names
Mobility (MDM and MAM)
Password reset
Company branding
User settings
Properties
Notifications settings

www.VCEplus.io

Section:

Explanation:

Reference:

<https://blogs.msdn.microsoft.com/sgern/2018/10/11/intune-intune-and-autopilot-part-3-preparingyour-environment/>

<https://blogs.msdn.microsoft.com/sgern/2018/11/27/intune-intune-and-autopilot-part-4-enrollyour-first-device/>

**QUESTION 15**

What should you use to meet the technical requirements for Azure DevOps?

- A. An app protection policy
- B. Windows Information Protection (WIP)
- C. Conditional access
- D. A device configuration profile

**Correct Answer: C**

**Section:**

**Explanation:**

Reference:

<https://docs.microsoft.com/en-us/azure/devops/organizations/accounts/manage-conditionalaccess?view=azure-devops>

**QUESTION 16**

**HOTSPOT**

You need to recommend a solution to meet the device management requirements.

What should you include in the recommendation? To answer, select the appropriate options in the answer area.

NOTE: Each correct selection is worth one point.

**Hot Area:**

**For the Research department employees:**

<input type="checkbox"/>	An app configuration policy
<input type="checkbox"/>	An app protection policy
<input type="checkbox"/>	Azure information Protection
<input type="checkbox"/>	iOS app provisioning profiles

**For the Sales department employees:**

<input type="checkbox"/>	An app configuration policy
<input type="checkbox"/>	An app protection policy
<input type="checkbox"/>	Azure information Protection
<input type="checkbox"/>	iOS app provisioning profiles

**Answer Area:**

For the Research department employees:

<input checked="" type="checkbox"/>
An app configuration policy
An app protection policy
Azure information Protection
iOS app provisioning profiles

For the Sales department employees:

<input checked="" type="checkbox"/>
An app configuration policy
An app protection policy
Azure information Protection
iOS app provisioning profiles

Section:

Explanation:

Reference:

<https://github.com/MicrosoftDocs/IntuneDocs/blob/master/intune/app-protection-policy.md>

<https://docs.microsoft.com/en-us/azure/information-protection/configure-usage-rights#do-notforward-option-for-emails>

#### QUESTION 17

HOTSPOT

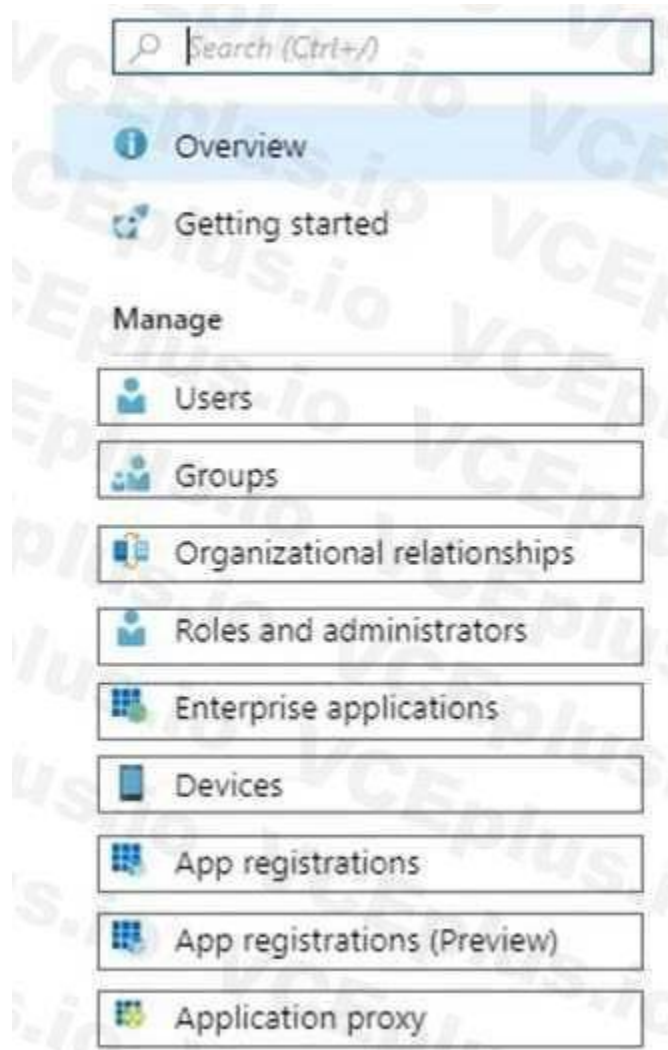
You need to meet the technical requirements for Windows AutoPilot.

Which two settings should you configure from the Azure Active Directory blade? To answer, select the appropriate settings in the answer area.

NOTE: Each correct selection is worth one point.

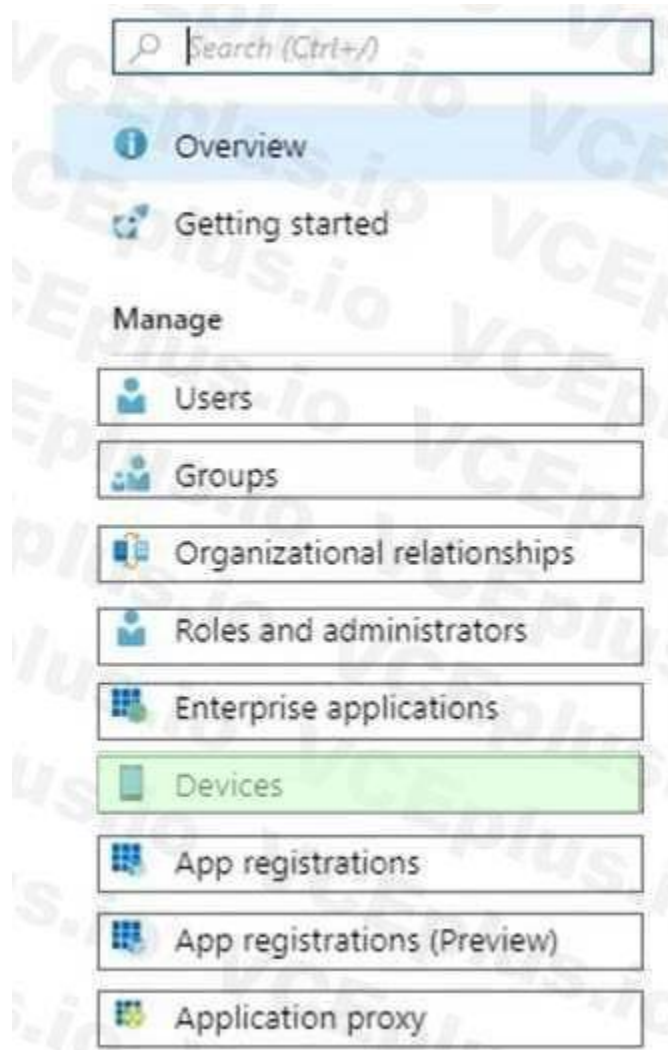
Hot Area:





[www.VCEplus.io](http://www.VCEplus.io)

Answer Area:



www.VCEplus.io

**Section:**

**Explanation:**

Reference:

<https://docs.microsoft.com/en-us/windows/deployment/windows-autopilot/windows-autopilotreset>

**QUESTION 18**

What should you upgrade before you can configure the environment to support co-management?

- A. the domain functional level
- B. Configuration Manager
- C. the domain controllers
- D. Windows Server Update Services (WSUS)

**Correct Answer: B**

**Section:**

**Explanation:**

Reference:

<https://docs.microsoft.com/en-us/sccm/comanage/tutorial-co-manage-clients>

**QUESTION 19**

You need to meet the device management requirements for the developers.

What should you implement?

- A. folder redirection
- B. Enterprise State Roaming
- C. home folders
- D. known folder redirection in Microsoft OneDrive

**Correct Answer: B**

**Section:**

**Explanation:**

Litware identifies the following device management requirements:

Ensure that Microsoft Edge Favorites are accessible from all computers to which the developers sign in.

Enterprise State Roaming allows for the synchronization of Microsoft Edge browser setting, including favorites and reading list, across devices.

Reference:

<https://docs.microsoft.com/en-us/azure/active-directory/devices/enterprise-state-roamingwindows-settings-reference>

#### **QUESTION 20**

HOTSPOT

You have a Microsoft 365 subscription.

You use Microsoft Intune Suite to manage devices.

You have the iOS app protection policy shown in the following exhibit.

www.VCEplus.io

Access requirements		
PIN for access	Require	
PIN type	Numeric	
Simple PIN	Allow	
Select minimum PIN length	6	
Touch ID instead of PIN for access (iOS 8+/iPadOS)	Allow	
Override biometrics with PIN after timeout	Require	
Timeout (minutes of inactivity)	30	
Face ID instead of PIN for access (iOS 11+/iPadOS)	Block	
PIN reset after number of days	No	
Number of days	0	
App PIN when device PIN is set	Require	
Work or school account credentials for access	Require	
Recheck the access requirements after (minutes of inactivity)	30	
Conditional launch		
Setting	Value	Action
Max PIN attempts	5	Reset PIN
Offline grace period	720	Block access (minutes)
Offline grace period	90	Wipe data (days)
Jailbroken/rooted devices		Block access

Use the drop-down menus to select the answer choice that completes each statement based on the information presented in the graphic. NOTE: Each correct selection is worth one point,

Answer:

Hot Area:

Answer Area

After 30 minutes of inactivity, a user will be prompted for their [answer choice].

PIN only  
account credentials only  
PIN only  
PIN and account credentials

Entering the wrong PIN five times will [answer choice].

block access  
block access  
reset the app PIN  
reset the device PIN  
wipe company data

Answer Area:

Answer Area

After 30 minutes of inactivity, a user will be prompted for their [answer choice].

PIN only  
account credentials only  
PIN only  
PIN and account credentials

Entering the wrong PIN five times will [answer choice].

block access  
block access  
reset the app PIN  
reset the device PIN  
wipe company data

Section:

Explanation:

Box 1 = PIN only

Box 2 = reset the PIN app iOS/iPadOS app protection policy settings - Microsoft Intune | Microsoft Learn

<https://learn.microsoft.com/en-us/mem/intune/apps/app-protection-policy-settings-ios>

QUESTION 21

DRAG DROP

You have a Microsoft 365 E5 subscription and a computer that runs Windows 11.

You need to create a customized installation of Microsoft 365 Apps for enterprise.

Which four actions should you perform in sequence? To answer, move the appropriate cmdlets from the list of cmdlets to the answer area and arrange them in the correct order.

Select and Place:



**Actions**

- Run setup.exe and specify the /packager switch.
- Download the Microsoft Office Deployment Tool (ODT) and run the self-extracting executable (.exe) file.
- Edit the XML configuration file.
- Run setup.exe and specify the /download switch.
- Run setup.exe and specify the /configure switch.

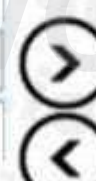
**Answer Area**



**Correct Answer:**

**Actions**

- Run setup.exe and specify the /packager switch.
- 
- 
- 
- 



- Download the Microsoft Office Deployment Tool (ODT) and run the self-extracting executable (.exe) file.
- Edit the XML configuration file.
- Run setup.exe and specify the /download switch.
- Run setup.exe and specify the /configure switch.

**Section:**

**Explanation:**

1. Download ODT application
2. Create a configuration file (XML)
3. setup.exe /download to download the installation files
4. setup.exe /configure to deploy the application

<https://learn.microsoft.com/en-us/deployoffice/deploy-microsoft-365-apps-local-source>

**QUESTION 22**

You have devices enrolled in Microsoft Intune as shown in the following table.

Name	Platform
Device1	Windows 10
Device2	Windows 11
Device3	Android
Device4	iOS

On which devices can you apply app configuration policies?

- A. Device2 only
- B. Device1 and Device2 only
- C. Device3 and Device4 only
- D. Device2, Device3, and Device4 only
- E. Device1, Device2, Device B, and Device4

**Correct Answer: D**

**Section:**

**Explanation:**

The correct answer is D because app configuration policies can be applied to managed devices and managed apps<sup>1</sup>. Managed devices are enrolled and managed by Intune, while managed apps are integrated with Intune App SDK or wrapped using the Intune Wrapping Tool<sup>1</sup>. Device2, Device3, and Device4 are either enrolled in Intune or have managed apps installed, so they can receive app configuration policies<sup>2</sup>. Device1 is not enrolled in any MDM solution and does not have any managed apps installed, so it cannot receive app configuration policies<sup>2</sup>. Reference: 1: App configuration policies for Microsoft Intune | Microsoft Learn <https://learn.microsoft.com/enus/mem/intune/apps/app-configuration-policies-overview> 2: Policy sets - Microsoft Intune | Microsoft Learn <https://learn.microsoft.com/en-us/mem/intune/fundamentals/policy-sets>

#### QUESTION 23

HOTSPOT

You have an Azure AD tenant named contoso.com that contains the devices shown in the following table.

Name	Operating system
Device1	Windows 10
Device2	Android 8.0
Device3	Android 9
Device4	iOS 11.0
Device5	iOS 11.4.1

All devices contain an app named App1 and are enrolled in Microsoft Intune.

You need to prevent users from copying data from App1 and pasting the data into other apps.

Which type of policy and how many policies should you create in Intune? To answer, select the appropriate options in the answer area.

NOTE: Each correct selection is worth one point.

**Hot Area:**



Answer Area:



Section:

Explanation:

Policy type: App protection policy Minimum number of policies: 1 Comprehensive Explanation of

Correct Answer Only: The correct answer is app protection policy because it allows you to customize the settings of apps for iOS/iPadOS or Android devices1. One of the settings you can configure is

Restrict cut, copy, and paste between other apps, which lets you prevent users from copying data from App1 and pasting the data into other apps2. You only need one policy to apply this setting to all devices that

have App1 installed1. Reference: 1: App configuration policies for Microsoft Intune | Microsoft Learn <https://learn.microsoft.com/en-us/mem/intune/apps/app-configuration-policiesoverview> 2: Troubleshoot

restricting cut, copy, and paste between applications - Intune | Microsoft Learn <https://learn.microsoft.com/en-us/troubleshoot/mem/intune/app-protectionpolicies/> troubleshoot-cut-copy-paste

QUESTION 24

You have a Microsoft 365 subscription that uses Microsoft Intune Suite.

You use Microsoft Intune to manage devices.

You plan to deploy two apps named App1 and App2 to all Windows devices. App1 must be installed before App2.

From the Intune admin center, you create and deploy two Windows app (Win32) apps.

You need to ensure that App1 is installed before App2 on every device.

What should you configure?

- A. the App1 deployment configurations
- B. a dynamic device group
- C. a detection rule
- D. the App2 deployment configurations

**Correct Answer: D**

**Section:**

**Explanation:**

The correct answer is D because you can configure the dependencies for a Win32 app in the deployment configurations1. Dependencies are other Win32 apps that must be installed before your Win32 app can be installed1. You can add Win32 app dependencies only after your Win32 app has been added and uploaded to Intune2. In this case, you need to configure the App2 deployment configurations to add App1 as a dependency2. Reference: 1: Microsoft Intune Win32 App Dependencies - MEndpointMgr <https://msendpointmgr.com/2019/06/03/new-intune-featurewin32-app-dependencies/> 2: Add and assign Win32 apps to Microsoft Intune | Microsoft Learn

<https://learn.microsoft.com/en-us/mem/intune/apps/apps-win32-add>

#### QUESTION 25

You have a Microsoft Intune subscription.

You have devices enrolled in intune as shown in the following table.

Name	Operating system
Device1	Android 8.1.0
Device2	Android 9
Device3	iOS 11.4.1
Device4	iOS 12.3.1
Device5	iOS 12.3.2

An app named App1 is installed on each device.

What is the minimum number of app configuration policies required to manage App1 ?

- A. 1
- B. 2
- C. 3
- D. 4
- E. 5

**Correct Answer: B**

**Section:**

**Explanation:**

The correct answer is B because you need to create two app configuration policies for managed devices, one for iOS/iPadOS devices and one for Android devices1. App configuration policies let you customize the settings of apps for iOS/iPadOS or Android devices1. The settings are assigned to user groups and applied when the app runs1. The app developer or supplier provides the configuration settings (keys and values) that are exposed to Intune1. You can't use a single app configuration policy for both iOS/iPadOS and Android devices because they have different configuration settings2.

Reference: 1: App configuration policies for Microsoft Intune | Microsoft Learn

<https://learn.microsoft.com/en-us/mem/intune/apps/app-configuration-policies-overview> 2: Add app configuration policies for managed iOS/iPadOS devices | Microsoft Learn

<https://learn.microsoft.com/en-us/mem/intune/apps/app-configuration-policies-use-ios>

#### QUESTION 26

You have a Microsoft 365 E5 subscription that contains 100 iOS devices enrolled in Microsoft Intune.

You need to deploy a custom line-of-business (LOB) app to the devices by using Intune.



Which extension should you select for the app package file?

- A. .intunemac
- B. apk
- C. .ipa
- D. .appx

**Correct Answer: C**

**Section:**

**Explanation:**

iOS/iPadOS LOB apps: Select Line-of-business app as the app type, select the App package file, and then enter an iOS/iPadOS installation file with the extension .ipa.

Reference:

<https://docs.microsoft.com/en-us/mem/intune/apps/apps-add>

#### QUESTION 27

You have a Microsoft 365 E5 subscription that contains a user named User1 and a web app named Appl.

App1 must only accept modern authentication requests.

You plan to create a Conditional Access policy named CAPolicy1 that will have the following settings:

- Assignments
- Users or workload identities: User1
- Cloud apps or actions: App1
- Access controls
- Grant: Block access

You need to block only legacy authentication requests to Appl. Which condition should you add to CAPolicy1?

- A. Filter for devices
- B. Device platforms
- C. User risk
- D. Sign-in risk
- E. Client apps

**Correct Answer: E**

**Section:**

**Explanation:**

you can use the client apps condition to block legacy authentication requests to App11. Legacy authentication is a term that refers to authentication protocols that do not support modern authentication features such as multi-factor authentication or conditional access2. Examples of legacy authentication protocols include Basic Authentication, Digest Authentication, NTLM, and Kerberos2. To block legacy authentication requests, you need to configure the client apps condition to include Other clients, which covers any client that uses legacy authentication protocols13.

Reference: 1: Conditional Access: Block legacy authentication | Microsoft Learn <https://learn.microsoft.com/en-us/mem/identity-protection/conditional-access/block-legacyauthentication> 2: What is legacy authentication? | Microsoft Learn <https://learn.microsoft.com/enus/mem/identity-protection/conditional-access/legacy-authentication> 3: Client apps condition in Azure Active Directory Conditional Access | Microsoft Learn <https://learn.microsoft.com/enus/mem/identity-protection/conditional-access/client-apps-condition>

#### QUESTION 28

HOTSPOT

You have a Microsoft 365 subscription.

All users have Microsoft 365 apps deployed.

You need to configure Microsoft 365 apps to meet the following requirements:

- Enable the automatic installation of WebView2 Runtime.
- Prevent users from submitting feedback.

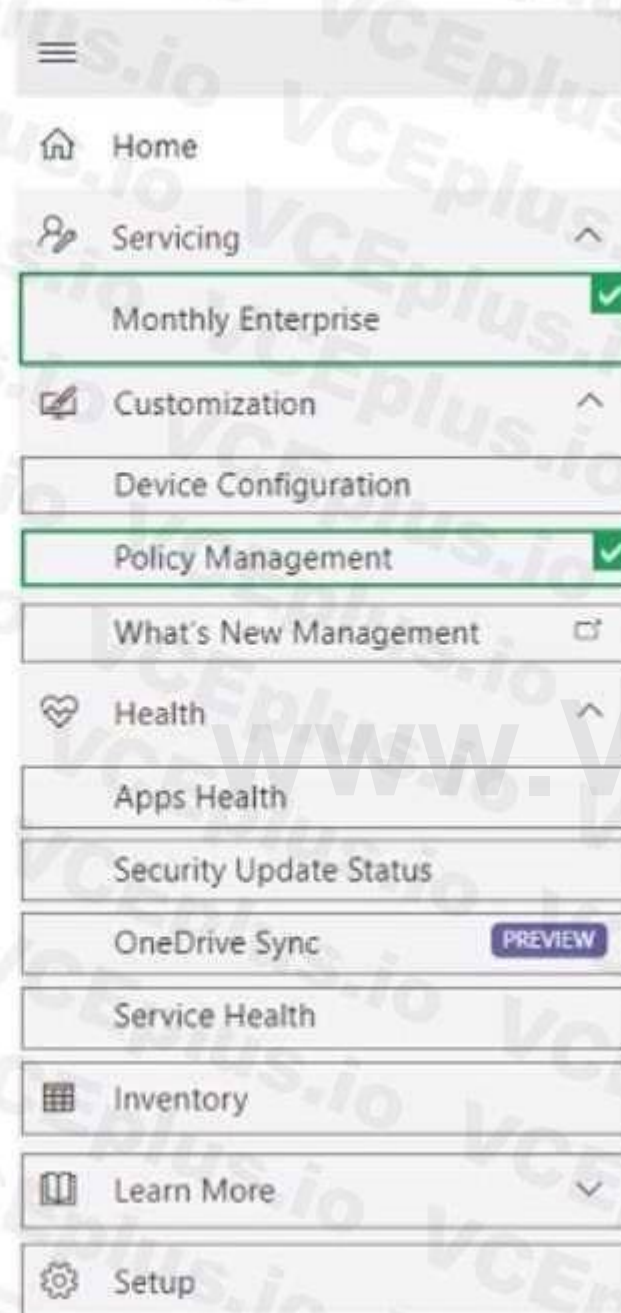
Which two settings should you configure in the Microsoft 365 Apps admin center? To answer, select the appropriate settings in the answer area.

NOTE: Each correct selection is worth one point.

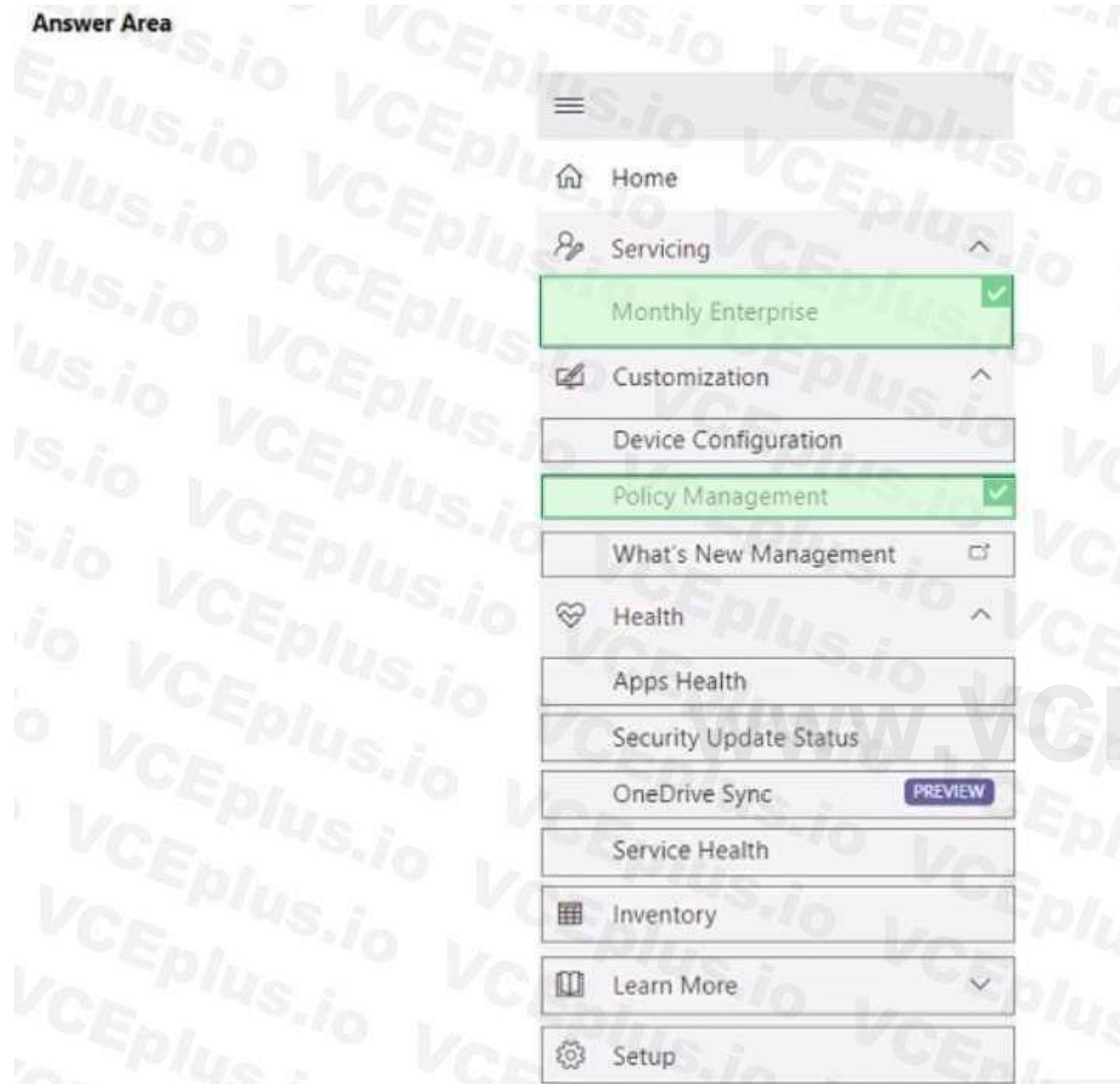


Hot Area:

Answer Area



Answer Area:



**Section:**

**Explanation:**

**QUESTION 29**

You have a Microsoft 365 subscription.

You have 10 computers that run Windows 10 and are enrolled in mobile device management (MDM).

You need to deploy the Microsoft 365 Apps for enterprise suite to all the computers.

What should you do?

A. From the Microsoft Intune admin center, create a Windows 10 device profile.

B. From Azure AD, add an app registration.

- C. From Azure AD, add an enterprise application.
- D. From the Microsoft Intune admin center, add an app.

**Correct Answer: D**

**Section:**

**Explanation:**

To deploy Microsoft 365 Apps for enterprise to Windows 10 devices that are enrolled in Intune, you need to add an app of type "Windows 10 app (Win32)" in the Microsoft Intune admin center and configure the app settings. You can then assign the app to groups of users or devices. Reference:

<https://docs.microsoft.com/en-us/mem/intune/apps/apps-win32-app-management>

**QUESTION 30**

You have a Microsoft 365 subscription that uses Microsoft Intune Suite.

You use Microsoft Intune to manage devices.

You have a Windows 11 device named Device1 that is enrolled in Intune. Device1 has been offline for 30 days.

You need to remove Device1 from Intune immediately. The solution must ensure that if the device checks in again, any apps and data provisioned by Intune are removed. User-installed apps, personal data, and OEM-installed apps must be retained.

What should you use?

- A. a Delete action
- B. a Retire action
- C. a Fresh Start action
- D. an Autopilot Reset action

**Correct Answer: B**

**Section:**

**Explanation:**

A retire action removes a device from Intune management and removes any apps and data provisioned by Intune. User-installed apps, personal data, and OEM-installed apps are retained. A retire action can be performed on devices that are offline for more than 30 days. Reference:

<https://docs.microsoft.com/en-us/mem/intune/remote-actions/devices-wipe>