



**Exam Code: NS0-527**

**Exam Name:** NetApp Certified Implementation Engineer - Data Protection

**Website:** <https://VCEup.com/>

**Team-Support:** <https://VCEplus.io/>



Question No: 1

Your manager requires you to protect a production SVM called svm01 by using SVM-DR. Your manager insists that all configuration and data LUNs be replicated to the DR cluster. The destination SVM should be called drsvm01. You set up an SVM-DR relationship between the clusters, specifying that the – identity- preserve option is set to true. After the initial replication completes, you discover that the iSCSI LIF configuration has not been replicated to drsvm01.

What should you do to solve this problem?

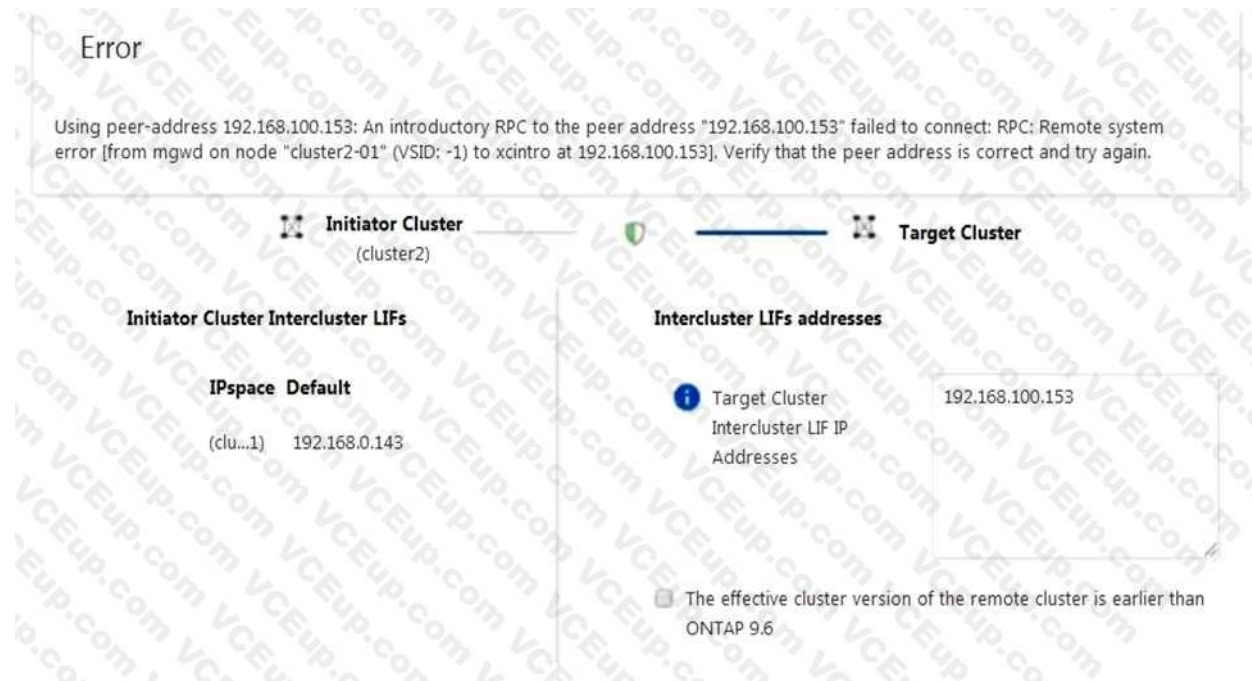
- A. Run the relationship a second time and check the configuration again.
- B. Manually create and configure the iSCSI LIFs on drsvm01.
- C. Set up a new relationship without using the -identity-preserve option.
- D. Add the FC protocol to the destination and configure the FC LIFs.

Answer: C

Explanation:

Question No: 2

Click the Exhibit button.



You are configuring cluster peering from cluster2 to cluster1 on your ONTAP 9.7 clusters using ONTAP System Manager. You are given the details shown below to set up the cluster peer relationship. You want to determine why the peering has failed.

Cluster2 intercluster LIF IP: 192.168.0.143 Subnet: 255.255.255.0 Port: e0e passphrase: netapp1234 Cluster1 intercluster LIF IP: 192.168.0.153 Subnet: 255.255.255.0 Port: e0e passphrase: netapp1234 Referring to the exhibit, which statement is correct?

- A. The Source Cluster IP is incorrect.
- B. The Target Cluster Passphrase is incorrect.
- C. The Target Cluster IP is incorrect.
- D. The Source Cluster Passphrase is incorrect.

Answer: CD

Explanation:

Question No: 3

You are the administrator of your company's ONTAP clusters. You are asked to provide a disaster recovery solution between your primary AFF A400 cluster and your FAS2720 cluster with the highest possible availability at the lowest possible price.

In this scenario, which product will satisfy this requirement?

A. MetroCluster

B. SM-S

C. SnapMirror

D. SVM-DR

Answer: A

Explanation:

Reference: <https://blog.netapp.com/disaster-recovery-solution-for-enterprise-apps/>

Question No: 4

Application data needs to be replicated between two FAS9000 clusters running ONTAP 9.7 for DR purposes only. The application has 50 data volumes to be replicated concurrently. You also require that the application can run from the DR site should the production site suffer a disaster.

Data Protection Cluster Limits		Scope:
		HA Pair
<a href="#">Maximum number of NDMP sessions</a>	36	
<a href="#">Maximum number of data protection (DP) mirrors and/or SnapVault relationships</a>	2,000	
<a href="#">Maximum number of data protection (DP) mirrors and/or SnapVault relationships for FabricPool</a>	N/A	
<a href="#">Maximum number of load sharing (LS) mirrors</a>	N/A	
<a href="#">Maximum number of concurrent Snap Mirror or SnapVault transfers</a>	200	
<a href="#">Maximum fan-out from source for DP mirror</a>	N/A	
<a href="#">Maximum fan-out from source for LS mirror</a>	N/A	
<a href="#">Maximum number of clusters that can be peered</a>	255	
<a href="#">Maximum Number of constituent volumes in a SnapMirror relationship</a>	1,000	
<a href="#">Maximum number of concurrent NDAS relationship transfers</a>	64	
<a href="#">Maximum number of SnapMirror Synchronous relationships</a>	40	

Referring to the exhibit, what would you use to satisfy the requirements?

- A. SnapVault backups can be used to replicate all the application volumes.
- B. Load sharing can be used to concurrently replicate the data between both systems.
- C. SnapMirror Synchronous can be used to replicate the all the application volumes.
- D. SnapMirror can be used to replicate all the data volumes concurrently.

Answer: A

Explanation:

Question No: 5

You experience a node outage as a result of a component failure in a high-availability (HA) pair. You replace the failed component and get the node booted up again, but are unable to perform the giveback operation. The onscreen error is:

"Connected to partner, Takeover is not possible: Storage failover mailbox disk state is invalid, Local node has encountered errors while reading the storage failover partner's mailbox disks. Local node missing partner disks" What are two ways to solve this problem? (Choose two.)

- A. Correct the shelf cabling errors.
- B. Destroy the root aggregate.
- C. Correct the failover group configuration.
- D. Destroy the mailboxes on both nodes.

Answer: AC

Explanation:

Question No: 6

You have just deployed a new AFF A400 cluster running ONTAP 9.7 that currently has no data aggregates created. You want to ensure that all new data aggregates are encrypted before you migrate production data to the new AFF A400 cluster.

In this scenario, which two actions would you use to accomplish this task? (Choose two.)

- A. After you create data aggregates, convert them to a NetApp Aggregate Encryption aggregate including root aggregates.
- B. Ensure that you have the NetApp Volume Encryption license installed.
- C. Ensure that the AFF A400 has self-encrypting drives.
- D. After you create a data aggregate, verify that it is encrypted by default.

Answer: AD

Explanation:

Question No: 7

You are the administrator of an ONTAP 9.7 cluster. You configured an hourly Snapshot schedule for all volumes. One of your users accidentally deleted an important spreadsheet file on an SMB share. This file must be restored within a minimum amount of time.

Which two actions satisfy this requirement? (Choose two.)

- A. On the cluster CLI, issue the volume clone restore command.
- B. On the cluster CLI, issue the volume snapshot restore-file command.
- C. In Windows Explorer, right-click on the SMB share where the file was deleted, go to "Previous Versions" and select the file, then copy it to the original location.
- D. In ONTAP System Manager, navigate to the volume where the share resides, click on "Snapshot Copies" and restore the latest Snapshot copy.

Answer: BC

Explanation:

Question No: 8

You are asked to re-purpose a NetApp FAS cluster. You need to verify that all encrypted data has been securely erased.

Which two features would allow you to securely re-purpose the array? (Choose two.)

- A. Secure Purge
- B. SnapLock Compliance
- C. Disk Sanitize
- D. NetApp Aggregate Encryption

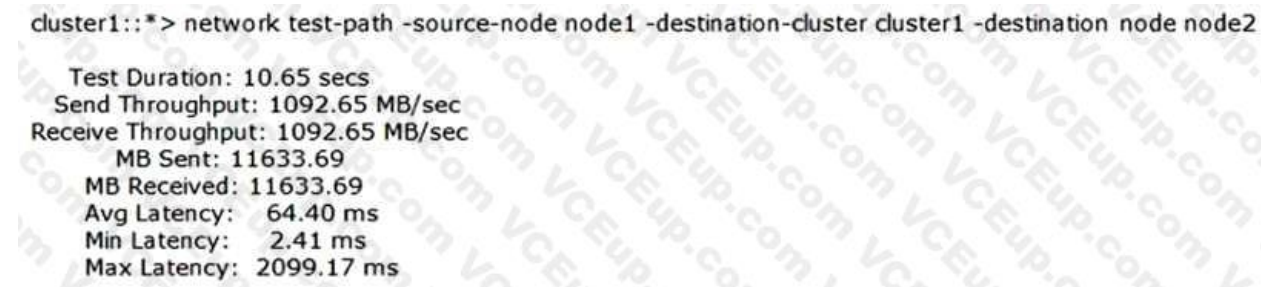
Answer: AD

Explanation:

Reference: <https://docs.netapp.com/ontap-9/index.jsp?topic=%2Fcom.netapp.doc.pownve%2FGUID-EAD13D8E-0219-45B6-A2C6-B25B76C9CA1A.html>

Question No: 9

Click the Exhibit button.



```
cluster1::*> network test-path -source-node node1 -destination-cluster cluster1 -destination node node2
Test Duration: 10.65 secs
Send Throughput: 1092.65 MB/sec
Receive Throughput: 1092.65 MB/sec
MB Sent: 11633.69
MB Received: 11633.69
Avg Latency: 64.40 ms
Min Latency: 2.41 ms
Max Latency: 2099.17 ms
```

You need to verify that you have a 10 Gb path between two clusters for SnapMirror traffic. Referring to the exhibit, how fast is the network path between the clusters?

- A. 10 Mb
- B. 100 Mb
- C. 1 Gb
- D. 10 Gb

Answer: C

Explanation:

Reference: <https://docs.netapp.com/ontap-9/topic/com.netapp.doc.dot-cmnmg/Network%20and%20LIF%20management.pdf>

Question No: 10

Which two statements are correct about configuring a peering connection between clusters?

(Choose two.)

- A. The LIFs should be on the same subnet.
- B. You must use at least one intercluster LIF per node.
- C. You must use one cluster LIF per node per network.
- D. The intercluster LIFs must have full connectivity to each other.

Answer: BD

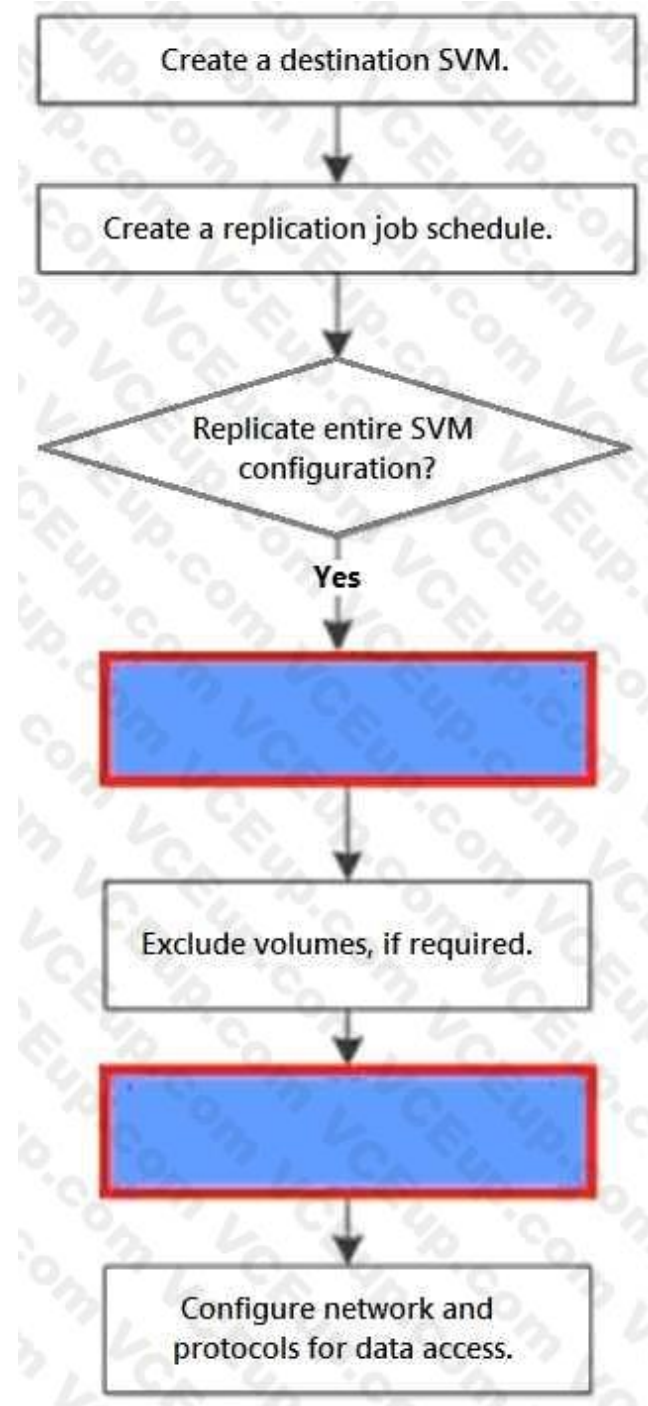


Explanation:

Reference: <https://docs.netapp.com/ontap-9/index.jsp?topic=%2Fcom.netapp.doc.powcsp%2FGUID-0F81B700-7B79-456F-9C89-3A7D6451AEB6.html>

Question No: 11

Click the Exhibit button.



You must set up SVM replication for the first time using CLI. This replication will be used for DR purposes. The SVM configuration does not need to be replicated at this time. In this configuration, you will be reusing a default policy.

Referring to the exhibit, what are two missing steps from the SVM replication workflow? (Choose two.)

A. Exclude specific LIFs and protocols from the replication policy.

- B. Create a relationship with the id-preserve option set to false.
- C. Initialize the newly created SnapMirror relationship.
- D. Initialize the relationship with the id-preserve option set to true.

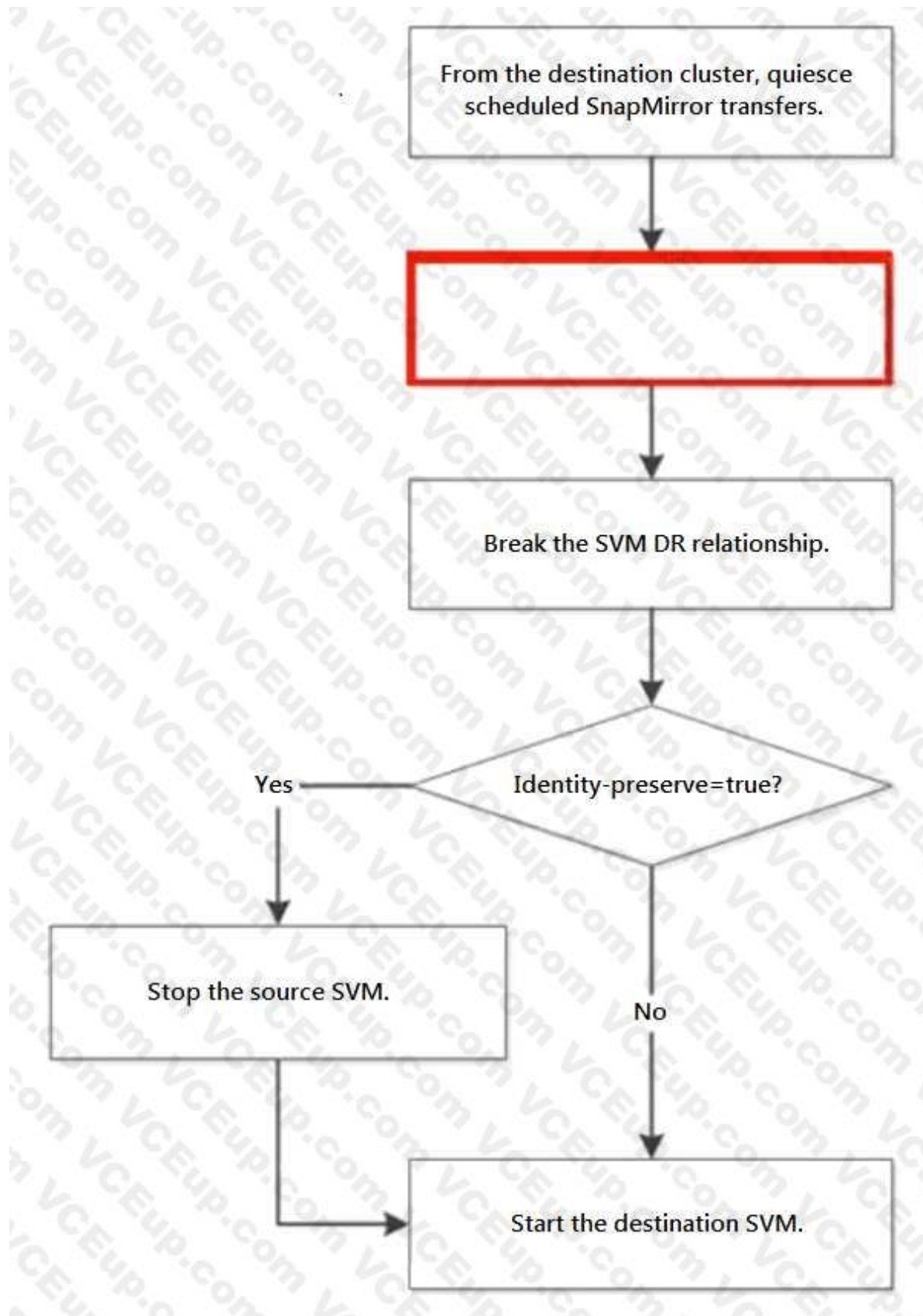
Answer: BD

Explanation:

Question No: 12

Click the Exhibit button.





In an ONTAP environment, an SVM-DR relationship exists between your AFF A220 cluster and your FAS2720 cluster, with identity preserve enabled. You are asked to test the disaster recovery workflow in an upcoming maintenance window.

Referring to the exhibit, which step should be performed next to test the recovery workflow?

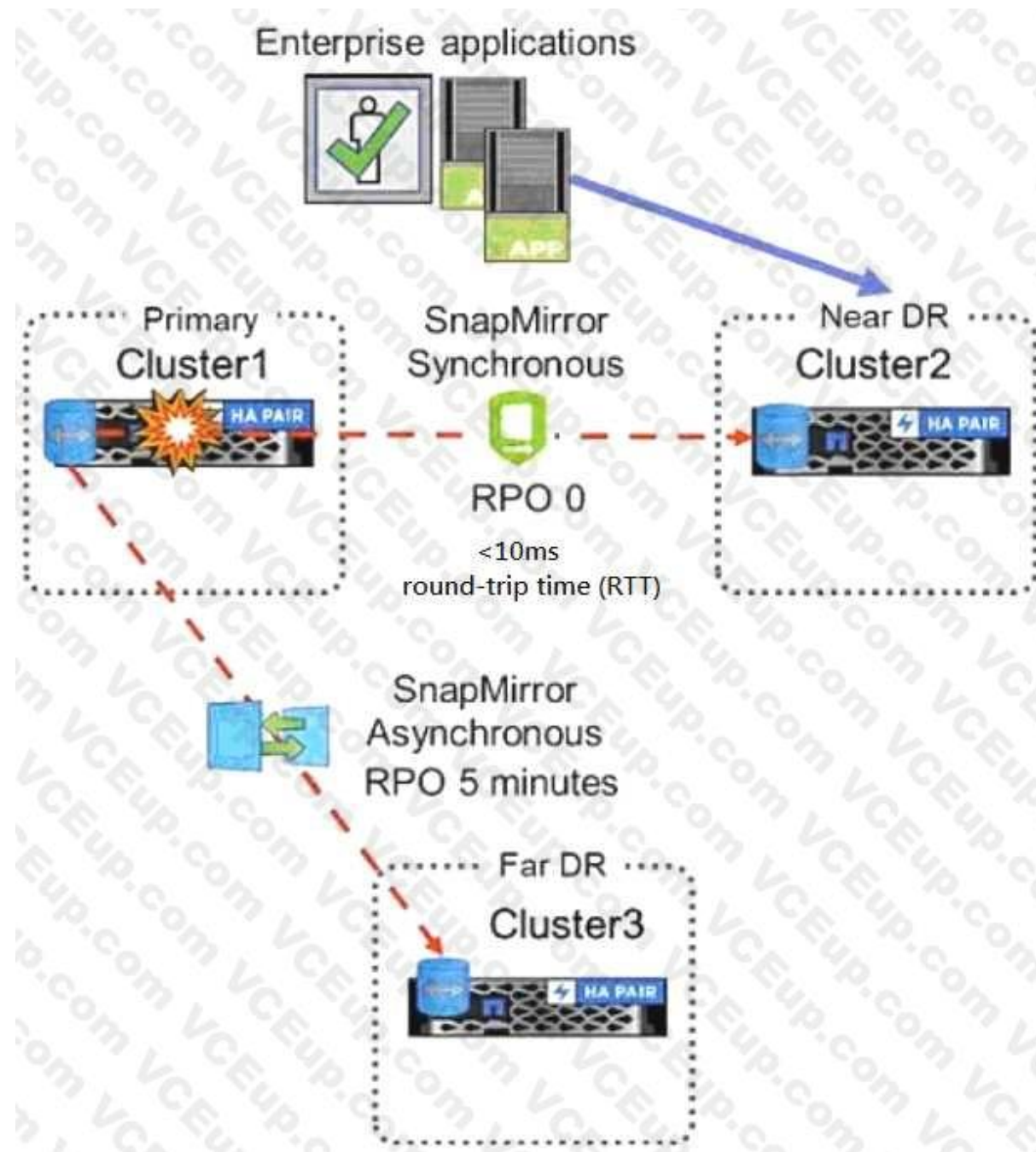
- A. Delete the SVM-DR relationship.
- B. Pause any ongoing transfers.
- C. Abort any ongoing transfers.
- D. Update any ongoing transfers.

Answer: C

Explanation:

Question No: 13

Click the Exhibit button.



Referring to the exhibit, which three would be used to configure the three-way Data Center Disaster Recovery topology replication schedules? (Choose three.)

- A. Active IQ Unified Manager
- B. Active IQ
- C. ONTAP CLI
- D. ONTAP Select
- E. ONTAP System Manager

Answer: CDE

Explanation:

Reference: [http://197.253.9.244/ontap%209-5/Cluster%20Admin/2\\_Student%20Guide/STRSW-ILTONTAPADM\\_StudentGuide.pdf](http://197.253.9.244/ontap%209-5/Cluster%20Admin/2_Student%20Guide/STRSW-ILTONTAPADM_StudentGuide.pdf)

Question No: 14

You want to use a Fabric Pool to store destination SnapMirror data to an external capacity tier. Which tiering policy would be used in this scenario?

- A. auto
- B. snapshot-only
- C. none
- D. backup

Answer: D

Explanation:

Reference: <https://community.netapp.com/t5/ONTAP-Discussions/FabricPool-tiering-Policy/tdp/138250>

Question No: 15

You must manually upgrade your company's 8-node cluster from ONTAP 9.5 to ONTAP 9.7. Due to the sensitivity of the data that is being stored on the cluster, it is company policy to perform these upgrades one node at a time.

What are two steps that you must perform to accomplish this task? (Choose two.)

- A. Terminate active NFS connections.
- B. Move Epsilon to maintain cluster quorum.
- C. Terminate active SMB connections.
- D. Change disk ownership.

Answer: BC

Explanation:

Question No: 16

To assist with capacity planning, your supervisor wants to receive weekly capacity summary reports using e- mail for all on-premises ONTAP clusters. You are asked to implement a solution that has no additional software licensing costs.

Which action accomplishes this task?

- A. Configure Cloud Insights Premium Edition.
- B. Create a capacity dashboard in Active IQ Digital Advisor.
- C. Configure capacity and utilization reports in Active IQ Unified Manager.
- D. Configure Cloud Insights Basic Edition.

Answer: C

Explanation:

Question No: 17

You are asked to enable WORM technology on a large amount of legal data. The legal team asks that a designated user group have the ability to delete files as needed.

What would satisfy the legal team's requirements?

- A. SnapLock Enterprise
- B. SnapVault
- C. SnapCenter Plug-in for Microsoft SQL Server
- D. SnapLock Compliance

Answer: A

Explanation:

Reference: <https://csclub.uwaterloo.ca/~ehashman/netapp/ontap/archive.pdf> (147)

Question No: 18

An ONTAP administrator is trying to configure a three-way-disaster recovery solution. Cluster 2 is within 50 km of Cluster 1, the primary cluster, with an RTT of 7 ms. Cluster 3 is over 300 km from Cluster 1 with an RTT of 29 ms.

In this scenario, what are two topologies that would accomplish this task? (Choose two.)

- A. a cascade topology from Cluster 1 to Cluster 2 with SnapMirror Synchronous, and then SnapMirror asynchronous from Cluster 2 to Cluster 3
- B. a fan out topology with SnapMirror Synchronous from Cluster 1 to Cluster 2 and SnapMirror Synchronous to Cluster 3
- C. a fan out topology with SnapMirror Synchronous from Cluster 1 to Cluster 2 and SnapMirror asynchronous from Cluster 1 to Cluster 3
- D. a cascade topology from Cluster 1 to Cluster 2 with SnapMirror Synchronous, and then SnapMirror Synchronous from Cluster 2 to Cluster 3

Answer: AC

Explanation:

Question No: 19

Your backup cluster reached both the maximum number of parallel replication transfers and the maximum number of FlexVol volumes per node. You need to increase these maximum numbers.

In this scenario, which license you would install on the destination to accomplish this task?

- A. SnapRestore License
- B. SnapMirror Sync License
- C. Data Protection Optimized License

D. SnapVault License

Answer: B

Explanation:

Reference: <https://library.netapp.com/ecmdocs/ECMP1608428/html/GUID-5C697C7D-FB33-4F4F-8CC4-A8646CD7561B.html>

Question No: 20

A customer wants a new solution that reaches a near-zero recovery time objective (RTO) and a zero recovery point objective (RPO).

In this scenario, which NetApp solution satisfies the requirements?

A. NDMP

B. MetroCluster

C. SnapMirror

D. SnapVault

Answer: C

Explanation:

Reference: <https://blog.netapp.com/effective-disaster-recovery-solution>

Question No: 21

You want to write custom workflows to perform disaster recovery operations for your environment in OnCommand Workflow Automation.

In this scenario, which two scripting languages would be used to accomplish this task? (Choose two.)

A. Perl

B. Powershell

C. PHP

D. Python

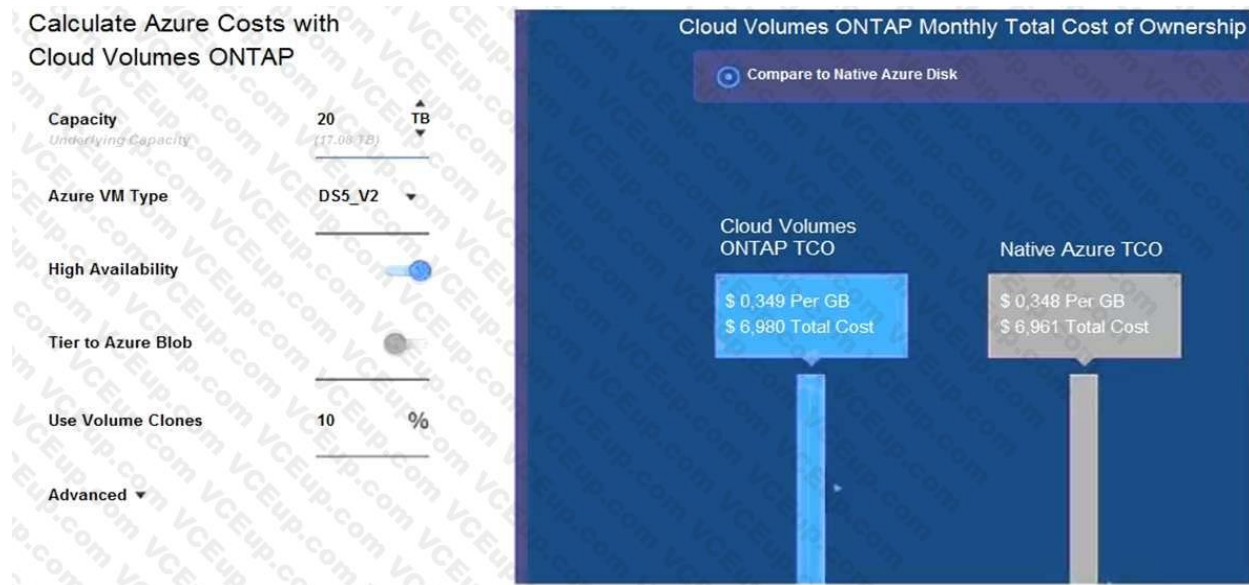
Answer: AB

Explanation:

Reference: [https://library.netapp.com/ecm/ecm\\_download\\_file/ECMP12470054](https://library.netapp.com/ecm/ecm_download_file/ECMP12470054) (8)

Question No: 22

Click the Exhibit button.



Using the NetApp Cloud TCO calculator, a customer wants to determine whether running Cloud Volumes ONTAP in Azure will be more cost effective than running native cloud services.

Referring to the exhibit, which action would satisfy the requirement?

- A. Turn off High Availability.
- B. Change the Azure VM Type to DS3\_V2.
- C. Turn on Tier to Azure Blob.
- D. Change the Azure VM Type to DS14\_V2.

Answer: B

Explanation:

Reference: <https://cloud.netapp.com/azure-calculator>

Question No: 23

Your DevOps team reported that one virtual machine on a VMware datastore has been corrupted due to a ransomware attack.

In this scenario, which two methods would solve the issue? (Choose two.)

- A. Restore the Snapshot copy of the volume from ONTAP System Manager.
- B. Restore the VM using SnapCenter Plug-in for VMware vSphere.
- C. Restore the datastore using SnapCenter Plug-in for VMware vSphere.
- D. Clone the volume's Snapshot copy prior to the attack, mount, and storage vMotion.

Answer: CD

Explanation:

Question No: 24

You are running a NetApp AFF A220 cluster. Each node has one volume. You create Snapshot copies on both volumes every four hours and keep the copies for 30 days. You are running out of disk space and want to free up space.

In this scenario, what do you do?



- A. Add a disk shelf with NL-SAS HDDs.
- B. Activate aggregate-inline deduplication.
- C. Add a capacity tier and set the tiering policy to snapshot-only.
- D. Activate aggregate-background deduplication.

Answer: B

Explanation:

Reference: [https://www.state.wv.us/admin/purchase/Bids/FY2020/B\\_0702\\_TAX2000000001\\_03.pdf](https://www.state.wv.us/admin/purchase/Bids/FY2020/B_0702_TAX2000000001_03.pdf)

Question No: 25

Click the Exhibit button.



```

aff::> cluster peer ping
Node: aff-01      Destination Cluster: aff
Destination Node IP Address  Count TTL RTT(ms) Status
-----
aff-01      10.193.67.58      1  64  0.053  interface_reachable
aff-01      192.168.89.100     1  64  0.061  interface_reachable
aff-02      10.193.67.60      1  64  0.173  interface_reachable
aff-02      192.168.89.101     1  64  0.428  interface_reachable

Node: aff-01      Destination Cluster: ontap9-tme-8040
Destination Node IP Address  Count TTL RTT(ms) Status
-----
ontap9-tme-8040-01 192.168.90.200     1  63  0.602  interface_reachable
ontap9-tme-8040-02 192.168.90.201     1  63  0.584  interface_reachable

Node: aff-01      Destination Cluster: tme-ontap-prd
Destination Node IP Address  Count TTL RTT(ms) Status
-----
tme-ontap-prd-01 10.193.67.21      1  64  0.174  interface_reachable
tme-ontap-prd-02 10.193.67.22      1  64  0.17   interface_reachable

Node: aff-02      Destination Cluster: aff
Destination Node IP Address  Count TTL RTT(ms) Status
-----
aff-01      10.193.67.58      1  64  0.178  interface_reachable
aff-01      192.168.89.100     1  64  0.188  interface_reachable
aff-02      10.193.67.60      1  64  0.054  interface_reachable
aff-02      192.168.89.101     1  64  0.057  interface_reachable

Node: aff-02      Destination Cluster: ontap9-tme-8040
Destination Node IP Address  Count TTL RTT(ms) Status
-----
ontap9-tme-8040-01 192.168.90.200     1  63  0.569  interface_reachable
ontap9-tme-8040-02 192.168.90.201     1  63  0.627  interface_reachable

Node: aff-02      Destination Cluster: tme-ontap-prd
Destination Node IP Address  Count TTL RTT(ms) Status
-----
tme-ontap-prd-01 10.193.67.21      1  64  0.179  interface_reachable
tme-ontap-prd-02 10.193.67.22      1  64  0.177  interface_reachable
16 entries were displayed.

```

You are asked to set up a SnapMirror relationship to protect some Oracle DB volumes on both nodes of the aff-01 and aff-02 clusters. You are using the 1 Gb network and the other nodes all have free space to support the mirror.

Referring to the exhibit, which two nodes would provide the least network transfer time for the relationship? (Choose two.)

- A. aff-01 to tme-ontap-prd-01
- B. aff-02 to tme-ontap-prd-02
- C. aff-02 to ontap9-tme-8040-02
- D. aff-02 to ontap9-tme-8040-01

Answer: BC

Explanation:

Question No: 26

A customer has just purchased a new 2-node AFF A220 cluster running ONTAP 9.7 and moved the older 4- node FAS2650 cluster running ONTAP 9.5 to an off-site location. They want to configure replication to the FAS2650 cluster for both disaster recovery and long-term archiving.

In this scenario, how would the customer accomplish this task?

- A. Upgrade the FAS2650 cluster to ONTAP 9.7, then configure SnapMirror with type TDP.
- B. Leave the ONTAP versions, then configure SnapMirror with type XDP.
- C. Downgrade the AFF A220 cluster to ONTAP 9.5, then configure SnapMirror with type XDP.
- D. Leave the ONTAP versions, then configure SnapMirror with type DP.

Answer: A

Explanation:

Question No: 27

Your customer wants to implement a solution to protect only a select number of NFSv3 volumes in a particular aggregate that stores their mission-critical application data. The customer wants the volume's data replicated to secondary storage and have application write operations fail if they cannot be replicated. The customer needs to maintain a zero RPO and a very low RTO.

In this scenario, which solution satisfies these requirements?

- A. SnapMirror Synchronous using Sync mode
- B. Mirrored aggregates using SyncMirror
- C. SnapMirror Synchronous using StrictSync mode
- D. Mirrored SVMs using MetroCluster

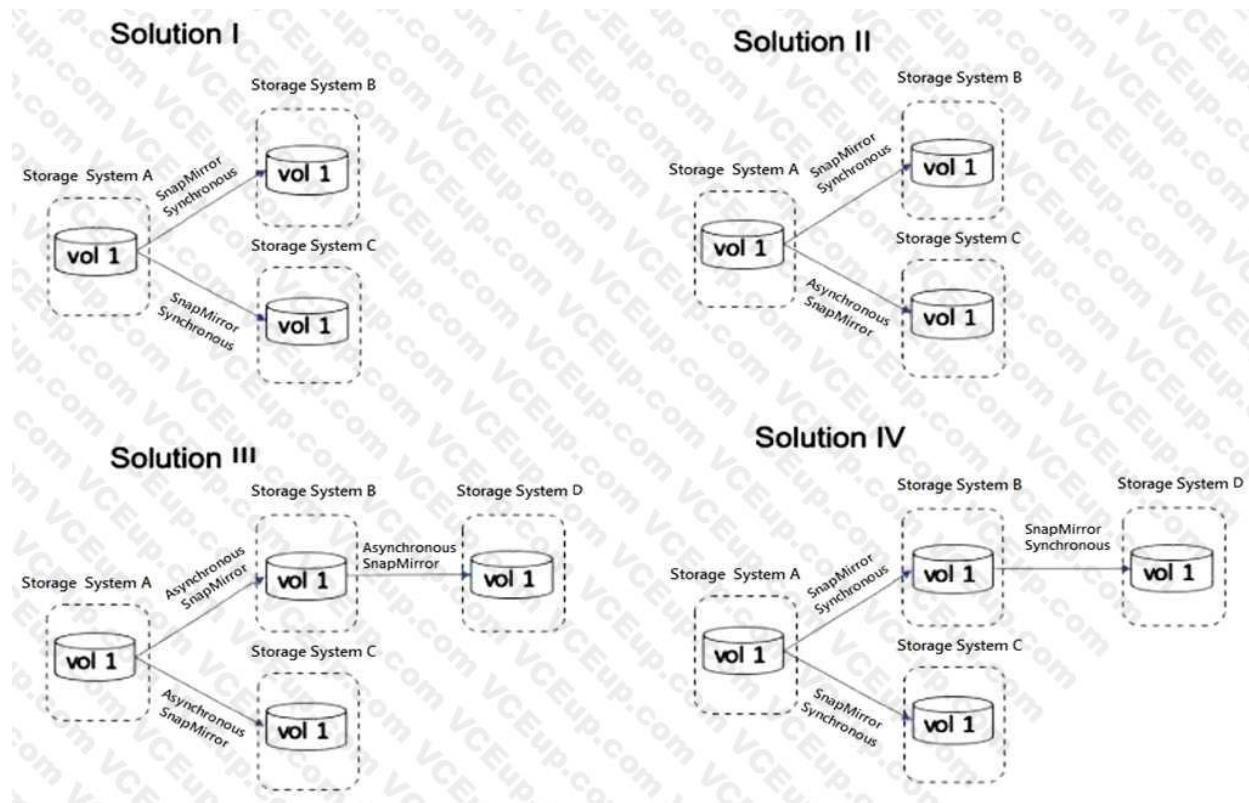
Answer: B

Explanation:

Reference: <http://randomventure.blogspot.com/2015/10/netapp-from-ground-up.html>

Question No: 28

Click the Exhibit button.



A customer wants to have a local mirror and a remote mirror of their data.

Referring to the exhibit, which two solutions satisfy these requirements? (Choose two.)

- A. Solution I
- B. Solution IV
- C. Solution II
- D. Solution III

Answer: BC

Explanation:

Question No: 29

What are three methods of configuring SnapMirror replication relationships? (Choose three.)

- A. Use Active IQ.
- B. Use the ONTAP command line.
- C. Use OnCommand Insight.
- D. Use ONTAP System Manager.
- E. Use Active IQ Unified Manager.

Answer: CDE

Explanation:

Question No: 30

You are asked to implement a NetApp solution that has high availability with transparent failover between two data centers.

Which two solutions satisfy this requirement? (Choose two.)

- A. ONTAP Select
- B. SnapVault
- C. SnapMirror Sync
- D. MetroCluster

Answer: BD

Explanation:

Reference: <https://www.netapp.com/ja/media/13480-tr4705.pdf>

Question No: 31

A customer is running ONTAP 9.7 on a FAS2720 cluster that has 12 x 4 TB NL-SAS drives in the chassis with capacity running low. You decide to use Fabric Pool technology to solve this problem.

What does the customer need to do to accomplish this task?

- A. Add an SSD aggregate.
- B. Purchase a Data Protection Optimized (DPO) license.
- C. Use the CLI and add a capacity pool.
- D. Use the wizard and add a capacity pool.

Answer: A

Explanation:

Reference: <http://docs.netapp.com/ontap-9/index.jsp?topic=%2Fcom.netapp.doc.dot-mgng-stortier-fp%2FGUID-8E421CC9-1DE1-492F-A84C-9EB1B0177807.html>

Question No: 32

You are asked to provision some new storage for VMware. Which two tools are available to perform this task? (Choose two.)

- A. OnCommand Insight
- B. Virtual Storage Console
- C. ONTAP System Manager
- D. SnapCenter Plug-in for VMware vSphere

Answer: BC

Explanation:

Reference: [https://docs.netapp.com/us-en/ontap/task\\_san\\_provision\\_vmware.html](https://docs.netapp.com/us-en/ontap/task_san_provision_vmware.html)

Question No: 33

Using ONTAP System Manager, you are asked to replicate all the volumes contained in a Storage VM to a remote ONTAP 9.7 system for quick disaster recovery.



Which two steps need to be completed to accomplish this task? (Choose two.)

- A. Create a SnapMirror relationship for each volume.
- B. Create a cluster peering relationship.
- C. Create an SVM-DR relationship.
- D. Create an SVM peering relationship.

Answer: BD

Explanation:

Question No: 34

Click the Exhibit button.

Hypervisor (OS)	Hypervisor Management Client (Hos...)	ONTAP OS (NETAPP OS)
Search Components <input type="checkbox"/> VMware ESXi 6.7 <input type="checkbox"/> VMware ESXi 6.7 (Update 1) <input type="checkbox"/> VMware ESXi 6.7 (Update 2) <input type="checkbox"/> VMware ESXi 6.7 (Update 3) <input checked="" type="checkbox"/> VMware ESXi 7.0 <input type="checkbox"/> VMware ESXi 6.0 <input type="checkbox"/> VMware ESXi 6.0 (Update 1) <input type="checkbox"/> VMware ESXi 6.0 (Update 3a)	Search Components <input type="checkbox"/> VMware vCenter server 6.5 Update3 <input type="checkbox"/> VMware vCenter server 6.7 <input type="checkbox"/> VMware vCenter server 6.7 Update1 <input type="checkbox"/> VMware vCenter server 6.7 Update2 <input type="checkbox"/> VMware vCenter server 6.7 Update3 <input checked="" type="checkbox"/> VMware vCenter server 7.0 <input type="checkbox"/> VMware ESXi 6.5 Update3 <input type="checkbox"/> VMware vCenter server 6.0 Update3b	Search Components <input type="checkbox"/> ONTAP 9.1 <input type="checkbox"/> ONTAP 9.2 <input type="checkbox"/> ONTAP 9.3 <input type="checkbox"/> ONTAP 9.4 <input type="checkbox"/> ONTAP 9.5 <input checked="" type="checkbox"/> ONTAP 9.6 <input type="checkbox"/> ONTAP 9.7 <input type="checkbox"/> [EOVS] Clustered Data
<b>SnapCenter Host Plugin</b> Search Components <input type="checkbox"/> SnapCenter Plug-in 4.2.1 for Microsoft Windows <input type="checkbox"/> SnapCenter Plug-in 4.2.1 for UNIX <input type="checkbox"/> SnapCenter Plug-in 4.3 for Microsoft Windows <input type="checkbox"/> SnapCenter Plug-in 4.3 for UNIX <input type="checkbox"/> SnapCenter Plug-in 4.3.1 for Microsoft Windows <input type="checkbox"/> SnapCenter Plug-in 4.3.1 for UNIX <input type="checkbox"/> SnapCenter Plug-in 3.0 for Microsoft Windows <input type="checkbox"/> SnapCenter Plug-in 3.0 for UNIX	<b>SnapCenter Hypervisor Plugin</b> Search Components <input type="checkbox"/> SnapCenter Plug-in 4.3 for VMware vSphere <input type="checkbox"/> SnapCenter Plug-in 3.0 for VMware vSphere <input type="checkbox"/> SnapCenter Plug-in 3.0.1 for VMware vSphere <input type="checkbox"/> SnapCenter Plug-in 4.0 for VMware vSphere <input type="checkbox"/> SnapCenter Plug-in 4.1 for VMware vSphere <input type="checkbox"/> SnapCenter Plug-in 4.1.1 for VMware vSphere <input type="checkbox"/> SnapCenter Plug-in 4.2 for VMware vSphere <input type="checkbox"/> SnapCenter Plug-in 4.2.1 for VMware vSphere	<b>SnapCenter Server</b> Search Components <input type="checkbox"/> SnapCenter Server 4.2.1 <input type="checkbox"/> SnapCenter Server 4.3 <input type="checkbox"/> SnapCenter Server 4.3.1 <input type="checkbox"/> SnapCenter Server 3.0 <input type="checkbox"/> SnapCenter Server 3.0.1 <input type="checkbox"/> SnapCenter Server 4.0 <input type="checkbox"/> SnapCenter Server 4.1 <input type="checkbox"/> SnapCenter Server 4.1.1

An AFF A700 administrator is told that the VMware environment will be upgraded to vSphere 7 and it will continue to use NFSv3 for their datastores.

Referring to the exhibit, which version of SnapCenter Hypervisor Plugin and SnapCenter Server should they use?

- A. SnapCenter Plug-in 4.2.1 and SnapCenter Server 4.2.1
- B. SnapCenter Plug-in 4.3.1 and SnapCenter Server 4.3.1
- C. SnapCenter Plug-in 4.3 and SnapCenter Server 4.1
- D. SnapCenter Plug-in 4.3 and SnapCenter Server 4.3

Answer: C

Explanation:

Reference: [https://library.netapp.com/ecm/ecm\\_download\\_file/ECMLP2863451](https://library.netapp.com/ecm/ecm_download_file/ECMLP2863451)

Question No: 35

You are asked to perform a NetApp Snapshot copy single-file restore on a corrupted thin-provisioned LUN that is 10 GB in size and is currently at 80% full.

How much additional free space do you need in the volume to perform this operation?

- A. 20 GB
- B. 10 GB
- C. 16 GB
- D. 8 GB

Answer: B

Explanation:

Question No: 36

You have a SnapMirror relationship established between two sites and want to verify that the data on the DR site is usable without disturbing the source.

In this scenario, which three steps are required to accomplish this task? (Choose three.)

- A. Resynchronize the destination to the source volume, then update the source volume.
- B. Resume the SnapMirror destination, then update the SnapMirror destination.
- C. Quiesce the SnapMirror destination, then break the SnapMirror destination.
- D. Reverse the SnapMirror source and destination, then re-initialize SnapMirror.
- E. Configure the destination volume for data access, then access the data volume from a client.

Answer: ACD

Explanation:

Question No: 37

You are asked to protect your user's HomeDir volume by keeping one weekly Snapshot copy for 52 weeks, one monthly Snapshot copy for six months, and one daily Snapshot copy for 90 days.

Which two statements describe how to accomplish this task? (Choose two.)

- A. Create a single job schedule for weekly, monthly, and daily.
- B. Create individual job schedules for weekly, monthly, and daily.
- C. Create a policy to include the new job schedules.
- D. Create a separate policy for weekly, monthly, and daily.

Answer: AC

Explanation:

Question No: 38

A customer has a MetroCluster configuration and wants to automate the disaster recovery process for unplanned automatic switchover.

Which NetApp tool would accomplish this task?

- A. ONTAP System Manager
- B. SnapCenter

- C. ONTAP Mediator
- D. Active IQ Unified Manager

Answer: D

Explanation:

Question No: 39

You are planning to deploy MetroCluster IP. As part of the implementation strategy, you are asked to verify that you have the relevant hardware for the deployment.

Which two elements are required to deploy your solution? (Choose two.)

- A. storage controllers
- B. FC network switches
- C. cluster peering network
- D. iSCSI Ethernet switches

Answer: CD

Explanation:

Question No: 40

A company has a 4-node FAS9000 fabric MetroCluster cluster separated by 101 km. Site A has an unmirrored HDD aggregate. An FC-VI card fails in one of the nodes in site A and a switchover occurs.

Which statement is correct in this scenario?

- A. The aggregate is accessible using Site A's surviving node.
- B. Only SSD aggregates are accessible.
- C. The distance is not supported.
- D. The aggregate is accessible using Site B's cluster.

Answer: D

Explanation:

Question No: 41

What are two ways to determine if your SnapMirror relationships are up-to-date? (Choose two.)

- A. Use Active IQ and navigate to Cluster -> Volumes -> Protection.
- B. Use Active IQ Unified Manager and navigate to Protection -> Volume Relationships.
- C. Use ONTAP System Manager and navigate to Protection -> Volume Relationships on the destination cluster.
- D. Use ONTAP System Manager and navigate to Protection -> Volume Relationships on the source cluster.

Answer: AC

Explanation:

Question No: 42



Click the Exhibit button.

```
select::> vol show -fields used -volume Engineering,Marketing
vserver volume      used
-----
VS1      Engineering  2.13TB
VS1      Marketing    2.62TB

2 entries were displayed.
```

Your customer is deploying SnapCenter to protect volumes on an ONTAP Select cluster.

Referring to the exhibit, which licensing is required to protect the Engineering and Marketing volumes?

- A. a SnapManagerSuite controller-based license
- B. a 3 TB SnapCenter capacity-based license
- C. a 5 TB SnapCenter capacity-based license
- D. a SnapProtectApps controller-based license

Answer: D

Explanation:

Question No: 43

A company just installed SnapCenter to help manage their ONTAP 9.7 environment. The database administrator wants to add new volumes with LUNs for a 10 TB Oracle database.

Which two tools would accomplish this task? (Choose two.)

- A. SnapCenter Plug-in for Oracle Database
- B. OnCommand Insight
- C. ONTAP System Manager
- D. Active IQ Unified Manager

Answer: AB

Explanation:

Reference: [http://197.253.9.244/ontap%209-5/Cluster%20Admin/2\\_Student%20Guide/STRSW-ILTONTAPADM\\_StudentGuide.pdf](http://197.253.9.244/ontap%209-5/Cluster%20Admin/2_Student%20Guide/STRSW-ILTONTAPADM_StudentGuide.pdf)

Question No: 44

During NDMP incremental backups, you want to reduce the time spent finding the changed data between two Snapshot copies.

In this scenario, which ONTAP feature will accomplish this task?

- A. compaction
- B. deduplication
- C. SnapDiff

D. SnapLock

Answer: C

Explanation:

Reference: <https://www.rubrik.com/en/blog/products-solutions/20/1/nas-backup-rpo-changelistsnapshots>

Question No: 45

You are configuring a SnapMirror replication between a source volume with adaptive compression enabled and a destination volume with secondary compression enabled.

In this scenario; which statement is correct?

- A. Blocks are uncompressed at the source and transferred to the destination.
- B. Logical replication with storage efficiency is used.
- C. Storage efficiency (compressed and deduplicated blocks) is preserved during data transfer.
- D. Data is recompressed using the source volume's compression type.

Answer: C

Explanation:

Reference:

[https://kb.netapp.com/Advice\\_and\\_Troubleshooting/Data\\_Protection\\_and\\_Security/SnapMirror/SnapMirror\\_storage\\_efficiency\\_configurations\\_and\\_behavior](https://kb.netapp.com/Advice_and_Troubleshooting/Data_Protection_and_Security/SnapMirror/SnapMirror_storage_efficiency_configurations_and_behavior)

Question No: 46

A FAS2750 cluster administrator experiences network issues during replication updates that pass over a low- bandwidth WAN link to their DR site. They also replicate locally to another cluster for testing and development. The administrator wants to enable network compression only on the existing WAN Link SnapMirror jobs.

In this scenario, which statement is correct?

- A. Network compression must be enabled when initializing the replica, the current jobs need to be deleted and new ones created.
- B. Network compression is a global option and it cannot be used.
- C. The current DR transfers must be aborted and the option enabled on each job, then resume the transfer.
- D. Network compression is possible but not on a FAS2750.

Answer: C

Explanation:

Question No: 47

Which two types of volumes support NDMP backup? (Choose two.)

- A. FlexCache
- B. Flash Pool
- C. FlexVol
- D. FlexGroup

Answer: CD

Explanation:

Question No: 48

When installing a new AFF A700s, you notice that the HA interconnect adapters use miniSAS HD. You subsequently consult Hardware Universe to find out that only 0.5M cables are supported. Due to the importance of the system data fields that use this link, you delay the installation until you can acquire 0.5M cables.

In this scenario, which two system data fields are communicated between HA pairs over the interconnect adapters? (Choose two.)

- A. NVRAM mirroring
- B. heartbeat signal
- C. intercluster peering
- D. data LIF location

Answer: AC

Explanation:

Question No: 49

Click the Exhibit button.

Name	Storage VM	Status	Capacity (available   total)	Protection
mworthen_src1_lun	mworthen_src1	Online	27.16 MB   3.03 GB	
STATUS Online	EXPORT POLICY default	TYPE Read Write	STORAGE EFFICIENCY Enabled	SNAPSHOT COPIES (LOCAL) STATUS Unprotected
STYLE FlexVol	QUOTA Off	QOS POLICY GROUP -	QOS POLICY GROUP pg10	SNAPMIRROR (LOCAL OR REMOTE) STATUS Unprotected
SPACE RESERVATION Thin Provisioned				SNAPSHOT POLICY none
my_vol	svm_argn	Online	474.57 MB   500 MB	
STATUS Online	EXPORT POLICY default	TYPE Read Write	STORAGE EFFICIENCY Enabled	SNAPSHOT COPIES (LOCAL) STATUS Protected
STYLE FlexVol	QUOTA Off	QOS POLICY GROUP pg10	QOS POLICY GROUP pg10	SNAPMIRROR (LOCAL OR REMOTE) STATUS Unprotected
SPACE RESERVATION Thin Provisioned				SNAPSHOT POLICY default
new_work_vol	AFF_SAN_DEFAULT_SVM	Online	3.32 GB   25.77 GB	
STATUS Online	EXPORT POLICY default	TYPE Read Write	STORAGE EFFICIENCY Enabled	SNAPSHOT COPIES (LOCAL) STATUS Unprotected
STYLE FlexVol	QUOTA Off	QOS POLICY GROUP -	QOS POLICY GROUP -	SNAPMIRROR (LOCAL OR REMOTE) STATUS Unprotected
SPACE RESERVATION Thin Provisioned				SNAPSHOT POLICY none
project_a	svm_fabricpool	Online	3.32 GB   25.77 GB	
STATUS Online	EXPORT POLICY fabricpool	TYPE Read Write	STORAGE EFFICIENCY Enabled	SNAPSHOT COPIES (LOCAL) STATUS Protected
STYLE FlexVol	QUOTA Off	QOS POLICY GROUP -	QOS POLICY GROUP -	SNAPMIRROR (LOCAL OR REMOTE) PROJECTED ON CLUSTER aff
SPACE RESERVATION Thin Provisioned				PROJECTED ON VOLUME project_a_dest
				STATUS Mirrored
				PROJECTION POLICY Asynchronous

Referring to the exhibit, which volume has the highest level of protection assigned to it?

- A. project\_a
- B. mworthen\_src1\_lun
- C. my\_vol
- D. new\_work\_vol

Answer: B

Explanation:

Question No: 50

Which two NetApp features would help you to recover from a file share that was encrypted by a ransomware event? (Choose two.)

- A. SnapLock

B. SnapMirror

C. SnapRestore

D. Snapshot

Answer: AB

Explanation:

Reference: <https://blog.netapp.com/fighting-ransomware-recover-data>

Question No: 51

You noticed that your SnapVault relationship is healthy but that the destination volume does not have any Snapshot copies.

In this scenario, what should be performed to solve the problem?

A. Set up volume destination free space.

B. Set up volume source free space.

C. Use the snapvault update command.

D. Configure a rule with the Snapshot label.

Answer: C

Explanation:

Question No: 52

You have a NAS volume that contains 250 GB of data with a daily change rate of 10%. You want to keep seven daily Snapshot copies.

In this scenario, what should the minimum copies of the volume be?

A. 325 GB

B. 550 GB

C. 250 GB

D. 425 GB

Answer: B

Explanation:

Reference: <https://library.netapp.com/ecmdocs/ECMP1368845/html/GUID-3AA3830F-FA54-4BA1-8309-AF0809B1CF73.html>

Question No: 53

Click the Exhibit button.

Volume Relationships								
<div> <span>+ Create</span> <span>Edit</span> <span>Delete</span> <span>Operations</span> <span>Refresh</span> </div>								
Source Storage Vi...	Source Volume	Destination V...	Destination Sto...	Is Healthy	Relation...	Transfer...	Relationshi...	Lag Time
svm_fabricpool	demo_volume	demo_volume_dest	svm_fabricpool	Yes	Snapmirror...	Idle	Asynchrono...	14hr(s) 26 ...
svm_fabricpool	demo_volume	demo_volume_DR	svm_fabricpool	Yes	Snapmirror...	Idle	Asynchrono...	31 mins(s)
svm_fabricpool	project_a	project_a_dest	svm_fabricpool	Yes	Snapmirror...	Idle	Asynchrono...	31 mins(s)
svm_fabricpool	project_b	project_b_dest	svm_fabricpool	Yes	Snapmirror...	Idle	Asynchrono...	31 mins(s)
svm_fabricpool	project_c	project_bsnappvau...	svm_jlantz	Yes	Snapmirror...	Idle	Asynchrono...	31 mins(s)

A customer wants to ensure that their volumes are protected. In ONTAP System Manager, under the Protection section, you see the screen that is shown in the exhibit. The company has an asynchronous mirror policy of less than a 60-minute lag.

Referring to the exhibit, which volume has a lag that exceeds the company policy?

- A. svm\_fabricpool:demo\_volume -> svm\_fabricpool:demo\_volume\_dest
- B. svm\_fabricpool:project\_a -> svm\_fabricpool:project\_a\_dest
- C. svm\_fabricpool:demo\_volume -> svm\_fabricpool:demo\_volume\_DR
- D. svm\_fabricpool:project\_b -> svm\_fabricpool:project\_b\_dest

Answer: C

Explanation:

Question No: 54

You are using Veeam Backup & Replication to create Snapshot-based backups of your VMware environment running ONTAP. You added your primary and secondary ONTAP cluster to the Veeam Storage inventory.

However, you are unable to select your secondary ONTAP cluster as a secondary target for your Veeam backup job.

In ONTAP System Manager, which action solves this problem?

- A. Select "Make Snapshot directory visible" for each volume that you want to back up.
- B. Create a vsadmin account to grant cluster access to Veeam for each volume that you want to back up.
- C. Change the security style to NTFS for the volume you want to back up.
- D. Initialize SnapVault for the volume that you want to back up.

Answer: D

Explanation:

Question No: 55

You are the administrator of an ONTAP cluster, where the majority of users are using Linux machines with home directories mounted using NFS. You keep six daily, four weekly, and one monthly Snapshot copy locally. However, you do not replicate the data to another instance of ONTAP. One of your users reports having accidentally deleted a file, but does not remember the self-serve restore procedure.

How does the user restore the file without having administrator privileges on the cluster?

- A. Issue the snapshot restore-file command.
- B. Copy the deleted file from the .snapshot directory.
- C. Issue the volume snapshot restore command.

D. Using ONTAP System Manager, restore the volume from a Snapshot copy.

Answer: B

Explanation:

Question No: 56

You want to use SnapCenter to restore an MS SQL database on iSCSI LUNs from a previous application- consistent snapshot.

In this scenario, what is required to accomplish this task?

- A. Confirm multipathing for iSCSI is enabled on the host.
- B. Confirm that the database server is running on the host.
- C. Confirm that the database server is not running on the host.
- D. Confirm that the iSCSI service is disabled on the host.

Answer: B

Explanation:

Question No: 57

You want to create an application-consistent Snapshot copy by using SnapCenter software. What is required to accomplish this task?

- A. NetApp NFS Plug-in for VMware VAAI
- B. SnapDrive for Windows Server
- C. VMware VM Tools
- D. Plug-in for Microsoft Exchange

Answer: B

Explanation:

Question No: 58

You have successfully deployed a primary and a secondary ONTAP cluster. You want to set up an intercluster SnapMirror relationship between your primary and secondary sites.

In this scenario, which two actions are required before accomplishing this task? (Choose two.)

- A. NDMP must be enabled.
- B. The SVMs must be peered.
- C. The primary and secondary clusters must be peered.
- D. The Snapshot schedule must be configured.

Answer: A,B

Explanation:

Question No: 59

A customer wants to set up an SVM DR relationship to protect a source SVM that is dedicated for NAS file services. The source and destination clusters are running ONTAP 9.5.



In this scenario, which application accomplishes this task?

- A. OnCommand Unified Manager
- B. OnCommand System Manager
- C. SnapCenter
- D. Snap Creator

Answer: B

Explanation:

Question No: 60

After deploying an ONTAP Select 2 node HA cluster at a remote site, you successfully perform manual takeover and giveback before placing the cluster into production. After the cluster runs in production for a week, you notice that you can no longer perform a manual takeover.

In this scenario, what are two causes of this problem? (Choose two.)

- A. There is a network disruption between sites.
- B. ONTAP Deploy has been deleted.
- C. The vSphere HA service has failed.
- D. The HA interconnect cables have been removed.

Answer: A,D

Explanation:

Question No: 61

A customer's infrastructure consists of multiple ONTAP clusters, both physical and virtual. The clusters replicate some data with each other. You want to generate a comprehensive report of all the replication that is present on the infrastructure.

In this scenario, which tool accomplishes this task?

- A. OnCommand System Manager
- B. Storage Replication Adapter
- C. OnCommand Unified Manager
- D. OnCommand Workflow Automation

Answer: A

Explanation:

Question No: 62

You have set up a SnapMirror relationship between two SVMs for data protection. The data in the source volume is unavailable due to an event related to a virus infection leading to data corruption.

In this scenario, which three actions are required to activate the SnapMirror destination volume and provide data access to the users? (Choose three.)

- A. Perform a SnapMirror quiesce operation.
- B. Disable the source volume by taking it offline.

C. Configure the destination volume for data access.

D. Verify the status of the source and destination volumes.

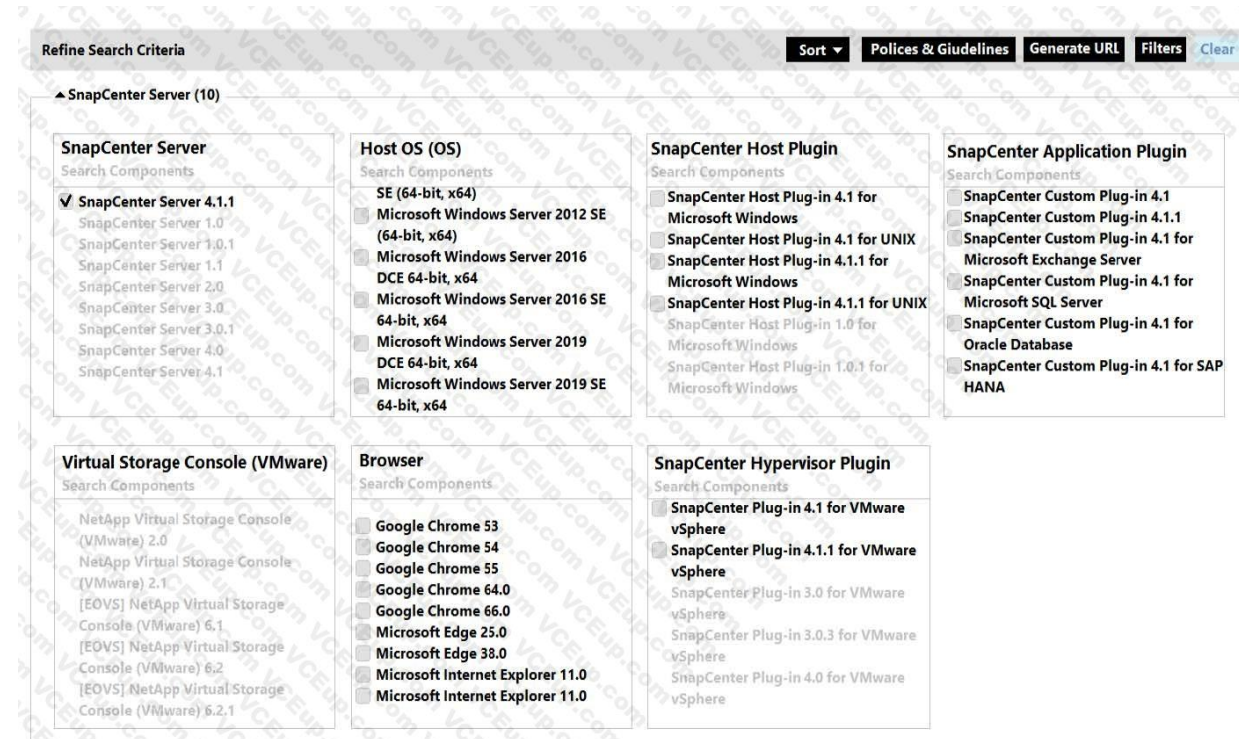
E. Perform a SnapMirror break operation.

Answer: C,D,E

Explanation:

Question No: 63

Click the Exhibit button.



The screenshot shows the SnapCenter search criteria interface. At the top, there is a 'Refine Search Criteria' bar with buttons for 'Sort', 'Policies & Guidelines', 'Generate URL', 'Filters', and 'Clear'. Below this, the search results are organized into several categories:

- SnapCenter Server (10)**
  - SnapCenter Server**
    - ☒ SnapCenter Server 4.1.1
    - SnapCenter Server 1.0
    - SnapCenter Server 1.0.1
    - SnapCenter Server 1.1
    - SnapCenter Server 2.0
    - SnapCenter Server 3.0
    - SnapCenter Server 3.0.1
    - SnapCenter Server 4.0
    - SnapCenter Server 4.1
  - Host OS (OS)**
    - SE (64-bit, x64)
    - ☒ Microsoft Windows Server 2012 SE (64-bit, x64)
    - ☒ Microsoft Windows Server 2016 DCE 64-bit, x64
    - ☒ Microsoft Windows Server 2016 SE 64-bit, x64
    - ☒ Microsoft Windows Server 2019 DCE 64-bit, x64
    - ☒ Microsoft Windows Server 2019 SE 64-bit, x64
  - SnapCenter Host Plugin**
    - ☒ SnapCenter Host Plug-in 4.1 for Microsoft Windows
    - ☒ SnapCenter Host Plug-in 4.1 for UNIX
    - ☒ SnapCenter Host Plug-in 4.1.1 for Microsoft Windows
    - ☒ SnapCenter Host Plug-in 4.1.1 for UNIX
    - SnapCenter Host Plug-in 1.0 for Microsoft Windows
    - SnapCenter Host Plug-in 1.0.1 for Microsoft Windows
  - SnapCenter Application Plugin**
    - SnapCenter Custom Plug-in 4.1
    - SnapCenter Custom Plug-in 4.1.1
    - SnapCenter Custom Plug-in 4.1 for Microsoft Exchange Server
    - SnapCenter Custom Plug-in 4.1 for Microsoft SQL Server
    - SnapCenter Custom Plug-in 4.1 for Oracle Database
    - SnapCenter Custom Plug-in 4.1 for SAP HANA
- Virtual Storage Console (VMware)**
  - NetApp Virtual Storage Console (VMware) 2.0
  - NetApp Virtual Storage Console (VMware) 2.1
  - [EOVS] NetApp Virtual Storage Console (VMware) 6.1
  - [EOVS] NetApp Virtual Storage Console (VMware) 6.2
  - [EOVS] NetApp Virtual Storage Console (VMware) 6.2.1
- Browser**
  - ☒ Google Chrome 53
  - ☒ Google Chrome 54
  - ☒ Google Chrome 55
  - ☒ Google Chrome 64.0
  - ☒ Google Chrome 66.0
  - ☒ Microsoft Edge 25.0
  - ☒ Microsoft Edge 38.0
  - ☒ Microsoft Internet Explorer 11.0
  - ☒ Microsoft Internet Explorer 11.0
- SnapCenter Hypervisor Plugin**
  - ☒ SnapCenter Plug-in 4.1 for VMware vSphere
  - ☒ SnapCenter Plug-in 4.1.1 for VMware vSphere
  - SnapCenter Plug-in 3.0 for VMware vSphere
  - SnapCenter Plug-in 3.0.3 for VMware vSphere
  - SnapCenter Plug-in 4.0 for VMware vSphere

Referring to the exhibit, what two Search Criteria check boxes need to be used to provide a supported solution for protecting Windows Server 2019 DCE 64-bit, x64 host using local NetApp LUNs with SnapCenter Server 4.1.1? (Choose two.)

A. SnapCenter Application Plugin

B. SnapCenter Host Plugin

C. Browser

D. Host OS (OS)

Answer: B,D

Explanation:

Question No: 64

You are deploying a mission-critical business application for a healthcare customer that, according to government policies and regulations, requires zero data loss.

In this scenario, which NetApp solution enables you to set up data replication at a volume level to satisfy your business needs?

- A. MetroCluster
- B. SnapMirror-Synchronous
- C. SnapShot Copies
- D. SyncMirror

Answer: B

Explanation:

Question No: 65

A customer is using SnapMirror to replicate their data to a remote site. They notice that storage efficiency is not preserved, and the amount of data at the destination is higher than expected.

In this scenario, which configuration in the destination volume would cause this issue?

- A. Post process deduplication is enabled on the destination.
- B. The volumes are not thin-provisioned on the destination.
- C. Post process compression is enabled on the destination.
- D. There is an existing FlexClone volume on the destination.

Answer: D

Explanation:

Question No: 66

You have deployed volume-level replication with NetApp Synchronous SnapMirror replication technology.

In this scenario, which two statements are true? (Choose two.)

- A. In Sync mode, the application I/O fails if the write to the secondary storage is not completed, thereby ensuring that the primary and secondary storage are identical.
- B. In StrictSync mode, the application is allowed to continue writing to the primary storage if the write to the secondary storage is not completed.
- C. In Sync mode, the application is allowed to continue writing to the primary storage if the write to the secondary storage is not completed.
- D. In StrictSync mode, the application I/O fails if the write to the secondary storage is not completed, thereby ensuring that the primary and secondary storage are identical.

Answer: C,D

Explanation:

Question No: 67

A customer has deployed OnCommand Unified Manager and wants to use it to manage their data protection relationships within their NetApp storage infrastructure.

In this scenario, which additional component must be deployed to satisfy this requirement?

- A. OnCommand System Manager
- B. NetApp SnapCenter
- C. OnCommand Cloud Manager
- D. OnCommand Workflow Automation

Answer: D

Explanation:

Question No: 68

Click the Exhibit button.

Supported Adapter Cards - FAS9000 (Single Chassis HA Pair (FAS9000A)) 9.5 ONTAP

Priority	Category	Bus Type	Mktg Part No.	Mfg Part No	Description	Optional Module	Supported Speed(s)	Min ONTAP	Max Qty	Priority Slot Assignment
1	NVRAM	IO Module	X93140A	111-03190	NVRAM10 32GB	Not supported		9.1RC2. 9.2RC1 9.3RC1. 9.4RC1. 9.5RC1.	1	6
2	Networking	IO Module	X91440A	111-02590	2p 40GbE NIC Cu Op	OSPF Optional	ETH: 10/40 Gbps	9.1RC2. 9.2RC1. 9.3RC1. 9.4RC1. 9.5RC1.	8	4, 6, 9, 1, 10, 2, 11, 3, 7, 5
3	Block Access	IO Module	X91135A	111-03789	4p 32Gb FC SFP+Op	SFP+ Included	FC: 8/16/32 Gbps FC-NVMe: 16/32 Gbps	9.3RC1. 9.4RC1. 9.5RC1.	8	9, 1, 10, 2, 11, 3, 7, 8
4	Block Access	IO Module	X91134A	111-03431	2 p 32Gb FC Op	SFP+ Included	FC: 8/16/32 Gbps FC-NVMe: 16/32 Gbps	9.1RC2. 9.2RC1. 9.3RC1. 9.4RC1. 9.5RC1.	8	9, 1, 10, 2, 11, 3, 7, 5, 8
5	Performance Acceleration	IO Module	X9170A	111-00421	Flash Cache.1.0TB NVMe, Module	Not supported		9.1RC2. 9.2RC1. 9.3RC1. 9.4RC1. 9.5RC1.	2	61, 62
6	Performance Acceleration	IO Module	X9172A	108-00423	Flash Cache.4.0TB NVMe, Module	Not supported		9.1RC2. 9.2RC1. 9.3RC1. 9.4RC1. 9.5RC1.	2	61, 62
7	Block Access	IO Module	X91143A	111-02397	4p 16Gb 10Gb UTA2 Cu Op	SFP+ Optional	ETH: 1/10 Gbps FC: 4/8/16 Gbps	9.1RC2. 9.2RC1. 9.3RC1. 9.4RC1. 9.5RC1.	8	9, 1, 10, 2, 11, 3, 7, 5, 8
8	Networking	IO Module	X91143A	111-02397	4p 16Gb 10Gb UTA2 Cu Op	SFP+ Optional	ETH: 1/10 Gbps FC: 4/8/16 Gbps	9.1RC2. 9.2RC1. 9.3RC1. 9.4RC1. 9.5RC1.	8	9, 1, 10, 2, 11, 3, 7, 5, 8
9	Networking	IO Module	X91120A	111-02399	4p 10GBASE-T NIC	Not supported	ETH: 1/10 Gbps	9.1RC2. 9.2RC1. 9.3RC1. 9.4RC1. 9.5RC1.	8	9, 1, 10, 2, 11, 3, 7, 5, 8
10	Storage	IO Module	X91135A	111-03789	4p 32Gb FC SFP+ Op	SFP+ Included	FC: 8/16/32 Gbps FC-NVMe: 16/32 Gbps	9.3RC1. 9.4RC1. 9.5RC1.	8	9, 1, 10, 2, 11, 3, 7, 8
11	Storage	IO Module	X91143A	111-02397	4p 16 Gb 10Gb UTA2 Cu Op	SFP+ Optional	ETH: 1/10 Gbps FC: 4/8/16 Gbps	9.1RC2. 9.2RC1. 9.3RC1. 9.4RC1. 9.5RC1.	8	9, 1, 10, 2, 11, 3, 7, 5, 8

A customer needs to add an additional X91143A card into a FAS9000 to allow mirroring between the production system and the disaster recovery FAS9000 platform. Slots 1, 4, 6, 8, and 9 have cards in them.

Referring to the exhibit, in which slot should you install the card?

- A. 5
- B. 10
- C. 3
- D. 7

Answer: D

Explanation:

Question No: 69

A customer has a 2-node ONTAP Select HA cluster deployed on the same site. The ONTAP Deploy VM has been accidentally deleted. The 2-node ONTAP Select HA cluster is still serving data, but the storage failover capability has been disabled.

In this scenario, what would you do to reestablish the storage failover capability on your cluster?

- A. Deploy two ONTAP Deploy VMs and a new 2-node ONTAP Select cluster and then migrate the data.
- B. Deploy a secondary ONTAP Deploy VM and restore the 2-node cluster quorum.
- C. Deploy two single-node ONTAP Select clusters and migrate all exiting data.

D. Deploy a new 4-node ONTAP Select cluster and distribute data from the existing cluster.

Answer: C

Explanation:

Question No: 70

A customer is planning the cloud strategy for their Microsoft SQL databases and must be able to protect them from outages. They are planning on using multiple cloud providers for their solution with their current NetApp storage system.

In this scenario, which two products are required to satisfy their backup management needs?

(Choose two.)

A. Cloud Volumes ONTAP

B. SnapCenter

C. CloudSync

D. FlashPool

Answer: A,B

Explanation:

Question No: 71

Your customer wants to deploy 40 ONTAP clusters in their environment to protect client databases, Windows host file systems, applications, and virtual machines. One of the primary monitoring and system management requirements is to use a centralized dashboard for all application-consistent backups and REST API integration.

In this scenario, which NetApp management tool satisfies the requirements?

A. Element Manager

B. SnapCenter

C. OnCommand Unified Manager

D. OnCommand System Manager

Answer: B

Explanation:

Question No: 72

Your customer wants to implement SVM DR, but the customer is not certain whether the identitypreserve parameter should be enabled. The customer explains that the source and destination clusters are in different network subnets.

In this scenario, which SVM DR solution should the customer use?

A. SVM DR using the identity-preserve parameter disabled and the default SnapMirror policy.

B. SVM DR using the identity-preserve parameter enabled and then administratively take the data LIFs offline on the DR cluster.

C. SVM DR with the identity-preserve parameter enabled and a SnapMirror policy with the discardconfigs network parameter.

D. SVM DR with the identity-preserve parameter enabled and the default SnapMirror policy.

Answer: D



Explanation:

Question No: 73

Click the Exhibit button.

```

Source Path: svm1:volume1
Destination Path: svm2:volume1_1_BK
Relationship Type: XDR
Relationship Group Type: none
SnapMirror Schedule: -
SnapMirror Policy Type: sync-mirror
SnapMirror Policy: Sync
Tries Limit: -
Throttle (KB/sec): unlimited
Mirror State: Snapmirrored
Relationship Status: OutOfSync
Snapshot Checkpoint: -
Newest Snapshot: snapmirror.6046316f-5a35-11e9-84ef-
00505689957a_2159386282.2019-04-09_125605
Newest Snapshot Timestamp: 04/09 12:55:55
Exported Snapshot: snapmirror.6046316f-5a35-11e9-84ef-
00505689957a_2159386282.2019-04-09_125605
Exported Snapshot Timestamp: 04/09 12:55:55
Healthy: false
Unhealthy reason: Transfer failed. (Job initiated abort)
Destination Volume Node: cluster1-02
Relationship ID: ceb5ee6e-5ac6-11e9-8670-005056894144
Last Transfer Type: resync
Last Transfer Size: 9.22KB
Last Transfer Network Compression Ratio: 1:1
Last Transfer Duration: 0:0:11
Last Transfer From: svm1:volume1
Last Transfer End Timestamp: 04/09 12:56:06
Progress Last Updated: -
Relationship Capability: 8.2 and above
Lag Time: 0:0:5

```

Referring to the exhibit, which two statements are true? (Choose two.)

- A. The source volume is available for I/O.
- B. A manual re-synchronization is not needed.
- C. The source volume is unavailable for I/O
- D. A manual re-synchronization is needed.

Answer: C,D

Explanation:

Question No: 74

Which two tools would you use to verify that an Oracle database has an application-consistent snapshot taken? (Choose two.)

- A. SnapManager for Oracle

- B. OnCommand System Manager
- C. SnapCenter
- D. OnCommand Unified Manager

Answer: A,C

Explanation:

Question No: 75

You want to configure peering between two existing ONTAP HA clusters.

In this scenario, which three steps would you perform to accomplish this task? (Choose three.)

- A. Create a cluster peering relationship.
- B. Create intracluster LIFs.
- C. Create intercluster LIFs.
- D. Create a SVM peering relationship.
- E. Create iSCSI LIFs.

Answer: A,C,D

Explanation:

Question No: 76

An administrator notices that a NAS volume has been filled completely by active data and Snapshot copies that have expanded over the Snap reserve. The volume is no longer writable.

In this scenario, which two actions must you take to make the volume writable again? (Choose two.)

- A. Delete Snapshot copies until space is available.
- B. Delete the files in the active file system.
- C. Delete the SnapMirror relationships.
- D. Delete the SnapVault relationships.

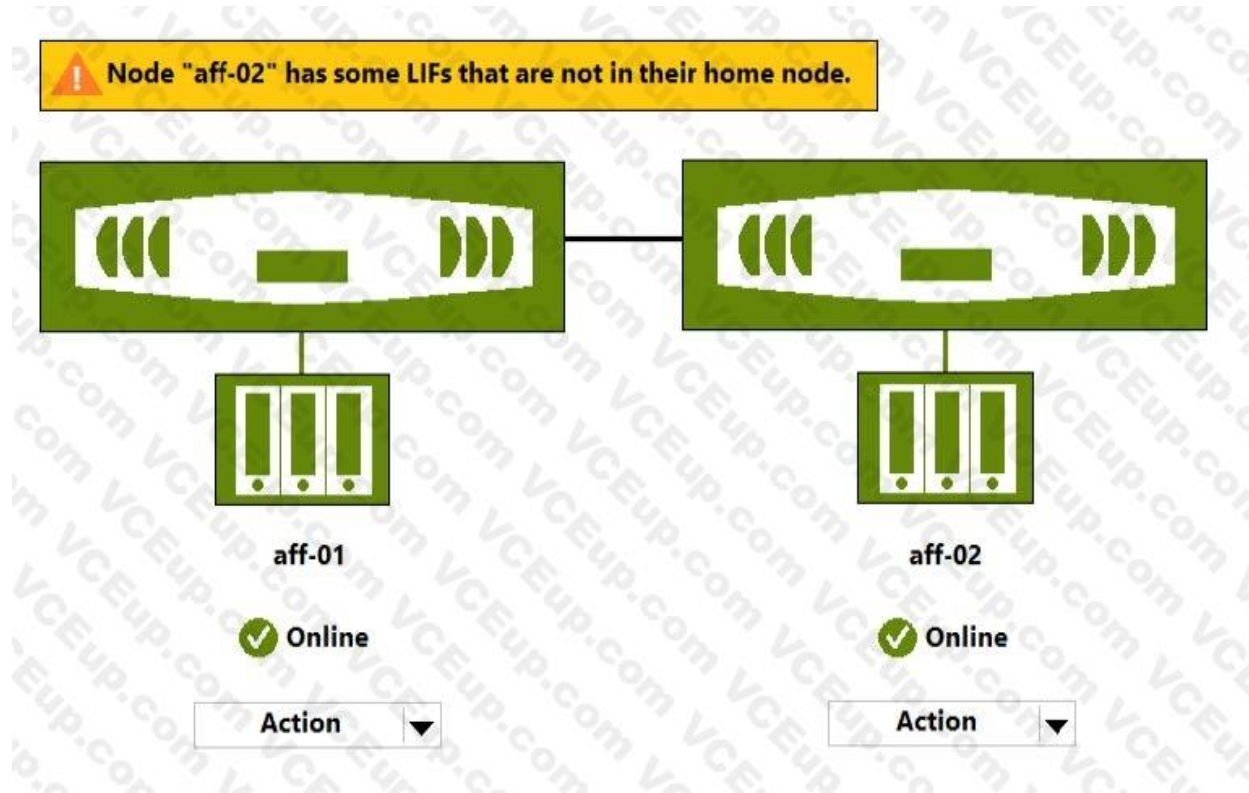
Answer: A,D

Explanation:

Question No: 77

Click the Exhibit button.





Referring to the exhibit, what must be performed on nodes aff-01 and aff-02 to allow them to failover and giveback properly?

- A. Disconnect the HA connection between the nodes.
- B. Reboot aff-02 to resolve the LIF issue.
- C. No additional action is necessary.
- D. Move the LIFs to their home ports.

Answer: D

Explanation:

Question No: 78

Click the Exhibit button.

Machine	Storage type
Physical server	FC-connected LUNs
	iSCSI-connected LUNs
	NFS-connected volumes
VMware ESX	RDM LUNs connected by an FC or iSCSI ESXi HBA
	iSCSI LUNs connected directly to the guest system by the iSCSI initiator
	VDMKs on VMFS or NFS datastores
	NFS volumes connected directly to the guest system

A customer is interested in using SnapCenter to support Snapshot copies with their Oracle DB. They virtualized their environment but do not have any block protocols available.

In this solution, which protocol shown in the exhibit is supported?

- A. NFS
- B. SMB3
- C. iSCSI
- D. FC

Answer: A

Explanation:

Question No: 79

You are creating a SnapVault relationship and have concerns about the available capacity on the destination.

In this scenario, which three factors must you consider when you size the destination volume?

(Choose three.)

- A. the autogrow settings on the source volume
- B. the size of the source volume
- C. the number of Snapshot copies to retain on the destination
- D. the rate of data increase on the source
- E. the number of Snapshot copies to retain on the source

Answer: A,C,E

Explanation:

Question No: 80

A customer wants to enforce prompt tiering when the cooling threshold has been reached. They want to do this even though the data may have been deleted or the data continues to exist in the primary file system.

In this scenario, which tiering policy should be used?

- A. Auto
- B. Snapshot-only
- C. Backup
- D. None

Answer: A

Explanation:

Question No: 81

You need to backup Exchange, MS SQL, and VMware virtual machines with application consistency.

Which tool accomplishes this task?

- A. OnCommand System Manager
- B. VMware vSphere Web client
- C. SnapCenter
- D. OnCommand Unified Manager

Answer: C

Explanation:

Question No: 82

You are working for a customer that has deployed a large FlexGroup with ONTAP 9.5. This FlexGroup has a SnapMirror relationship to a system at a disaster recovery site. The FlexGroup is nearly full and needs to be expanded to accommodate additional data.

In this scenario, what must you do to expand the FlexGroup and ensure that the data remains protected?

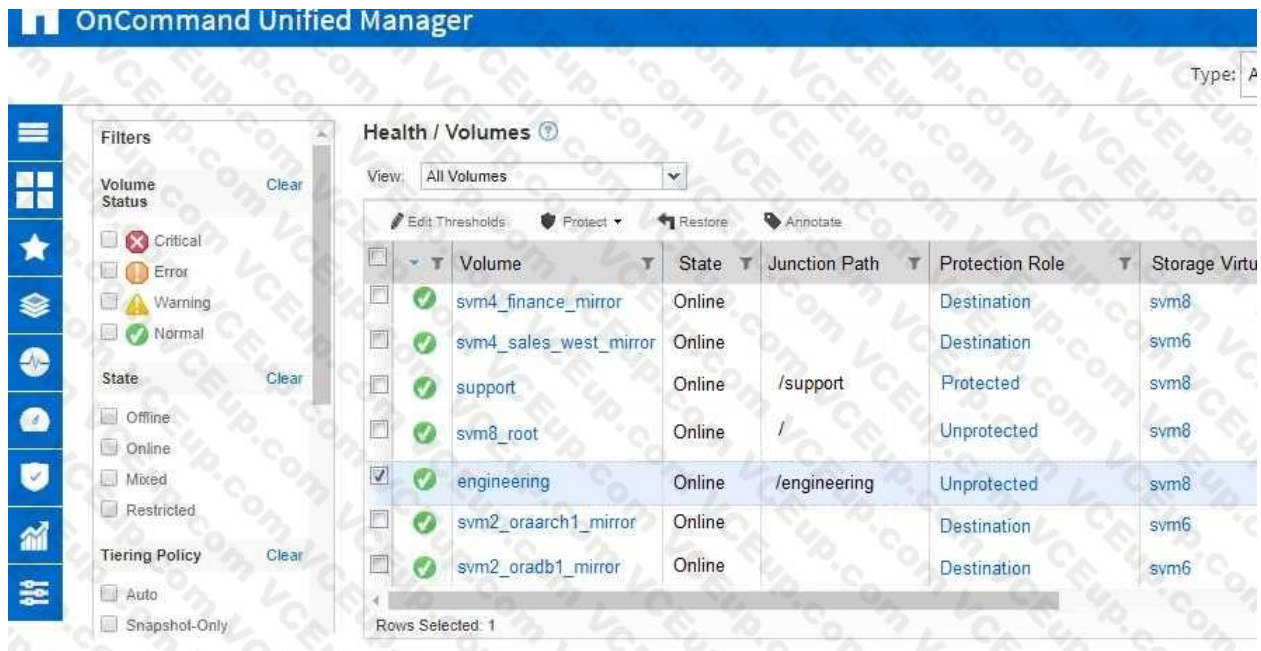
- A. Break the SnapMirror relationship, expand the source FlexGroup, and update the SnapMirror.
- B. Offline the source FlexGroup, add additional volumes, bring it online, and update the SnapMirror.
- C. Expand the source FlexGroup nondisruptively, and update the SnapMirror.
- D. Break the SnapMirror relationship, expand the source FlexGroup, and re-baseline the SnapMirror.

Answer: D

Explanation:

Question No: 83

Click the Exhibit button.



You want to restore a file from the engineering volume that is shown in the exhibit. When you click Restore in OnCommand Unified Manager, there are no files available to restore.

Referring to the exhibit, what caused this problem?

- A. The engineering volume is currently online.
- B. Workflow Automation is not configured to restore files from Snapshot copies.
- C. No Snapshot copies exist for the engineering volume.
- D. The engineering volume is unprotected.

Answer: B

Explanation:

Question No: 84

A client has a FlexVol volume that is 10 TB in size and is nearly full. The volume has a Snapshot reserve of 5%, that is currently utilized at 120%. They have chosen to enable ONTAP to automatically delete the oldest Snapshot copies with a volume threshold trigger in order to free space within the volume when it becomes necessary.

In this scenario, what amount of space would be made available to the client, without additional intervention?

- A. 1000 GB
- B. 500 GB
- C. 50 GB
- D. 100 GB

Answer: A

Explanation:

Question No: 85

A customer has ONTAP 9.5 clusters running at two nearby locations. The customer wants a zero RPO for one mission-critical volume.

In this scenario, which two NetApp solutions satisfy this requirement while using the existing ONTAP clusters? (Choose two.)

- A. SnapMirror Synchronous in StrictSync mode
- B. FabricPool
- C. SnapMirror Synchronous in Sync mode
- D. SyncMirror

Answer: A,C

Explanation:

Question No: 86

A customer wants to assign a user to a build-in SnapCenter RBAC Role that will allow them to review and start existing SnapMirror processes only.

In this scenario, which Role will allow the customer to accomplish this task?

- A. App Backup and Clone Admin
- B. Infrastructure Admin
- C. Backup and Clone Viewer
- D. SnapCenter Admin

Answer: D

Explanation:

Question No: 87

When you configure a SnapLock feature, where should the ComplianceClock be initialized?

- A. on each aggregate that hosts a SnapLock volume
- B. on each SVM that hosts a SnapLock volume
- C. on each node that hosts a SnapLock aggregate
- D. on all the nodes of the cluster

Answer: C

Explanation:

Question No: 88

A volume on a FabricPool-enabled aggregate is consuming 10 TB of the performance tier and 90 TB of the cloud tier. A SnapMirror copy needs to be created on a FabricPool-enabled peer cluster at a disaster recovery location.

In this scenario, how much data is transferred when the SnapMirror relationship is initialized?

- A. 100 TB
- B. 200 TB
- C. 10 TB
- D. 90 TB

Answer: A

Explanation:

Question No: 89

Click the Exhibit button.

SnapShot Name	SnapShot Time	SnapShot Delta
Nightly.0	12:05 am	5 GB
Hourly.0	10:00 pm	10 GB
Hourly.1	6:00 pm	25 GB
Hourly.2	2:00 pm	10 GB
Hourly.3	10:00 am	25 GB
Hourly.4	6:00 am	5 GB

A client has a SnapMirror relationship between two sites that is scheduled to run once a day at 12:15 a.m. They have a network connection between two sites that provides 100 Mbps on bandwidth. By performing the backup at this time, they can maximize their bandwidth use.

Referring to the exhibit, how long does the SnapMirror update take to finish?

- A. one hour
- B. four hours
- C. three hours
- D. two hours

Answer: D

Explanation:

Question No: 90

A customer has developed a new application that uses Oracle with an AFF system to help track all of their shipping trucks around the world. The customer wants to ensure that application-consistent backups are offloaded to the cloud.

In this scenario, which two solutions enable the customer to satisfy these requirements? (Choose two.)

- A. FabricPool
- B. Flash Pool
- C. SnapCenter
- D. FlexClone

Answer: A,C

Explanation:

Question No: 91

A storage administrator is reviewing NAS volume space allocation and is concerned that the Snapshot copies that are recently created to protect the volumes are not storing the data from the volumes. One volume contains over 20 GB of data, although the latest SnapShot copy contains only 198 KB of data.



In this scenario, which statement is true?

- A. ONTAP references metadata when creating Snapshot copies instead of copying data blocks.
- B. The Snapshot policy is defined to create the Snapshot copy with only the most recent data changes.
- C. ONTAP uses data from all Snapshot copies when restoring of the volume is necessary.
- D. The Snapshot copies are created by using a background process that takes time to build.

Answer: A

Explanation:

Question No: 92

You are creating daily SnapVault backups of a NAS volume that contains the data for your business critical application. You discover that corruption began two weeks ago on the data on that volume.

In this scenario, which statement is true?

- A. The restore is disruptive, and all of the most recent Snapshot copies are preserved.
- B. The restore is nondisruptive, and all of the most recent Snapshot copies are preserved.
- C. The restore is disruptive, and all Snapshot copies that are older than two weeks are preserved.
- D. The restore is nondisruptive, and all Snapshot copies that are older than two weeks are preserved.

Answer: C

Explanation:

Question No: 93

Click the Exhibit button.



The screenshot shows the 'Relationships' tab in the Veeam Backup & Replication console. It displays a single relationship between two clusters. The relationship is named 'snap\_src1' and is of type 'Mirror'. The source volume is 'mirror\_me' and the destination volume is 'mirror\_me\_dest'. The destination storage is 'snap\_src1'. The relationship is healthy and has been initialized.

Source Storage Virtual...	Source Volume	Destination Vol...	Destination Storag...
snap_src1	mirror_me	mirror_me_dest	snap_src1

Source Location:	snap_src1:mirror_me	Is Healthy:	Yes
Destination Location:	snap_src1_mirror_me_dest	Relationship State:	Uninitialized
Source Cluster:	cluster1	Network Compression	Not Applicable
Destination Cluster:	cluster1	Ratio:	
Transfer Schedule:	None		
Data Transfer Rate:	Unlimited		
Lag Time:	None		

Details | Policy Details | Snapshot Copies

Your customer wants to protect a volume and replicate it to a secondary volume. The customer has tried to configure this relationship using OnCommand System Manager. Upon reviewing this newly configured relationship, you discover that the configuration does not satisfy the customer's stated requirements.

Referring to the exhibit, what should you do to ensure that the volume is protected?

- A. Delete the relationship and recreate it.
- B. Resynchronize the relationship.
- C. Initialize the relationship.
- D. Change the schedule to hourly.

Answer: A

Explanation:

Question No: 94

Which two cloud providers allow you to provision Cloud Volumes ONTAP as a SnapMirror destination? (Choose two.)

- A. Azure
- B. DigitalOcean
- C. AWS
- D. RackSpace

Answer: A,C

Explanation:

Question No: 95

Click the Exhibit button.

OnCommand Unified Manager

☰

☐

★

📁

🏠

📄

📊

🔧

## Protection / Volume Relationships ?

View: All Volume Relationships

	Extend Protection	Edit	About	Quisce	Break	Remove	Resume	Resynchronize	Initialize/Update
	☐	☑	☑	☑	☑	☑	☑	☑	☑
	☑	☑	☑	☑	☑	☑	☑	☑	☑
	☑	☑	☑	☑	☑	☑	☑	☑	☑
	☑	☑	☑	☑	☑	☑	☑	☑	☑
	☑	☑	☑	☑	☑	☑	☑	☑	☑
	☑	☑	☑	☑	☑	☑	☑	☑	☑
	☑	☑	☑	☑	☑	☑	☑	☑	☑
	☑	☑	☑	☑	☑	☑	☑	☑	☑
	☑	☑	☑	☑	☑	☑	☑	☑	☑
	☑	☑	☑	☑	☑	☑	☑	☑	☑
	☑	☑	☑	☑	☑	☑	☑	☑	☑
	☑	☑	☑	☑	☑	☑	☑	☑	☑
	☑	☑	☑	☑	☑	☑	☑	☑	☑
	☑	☑	☑	☑	☑	☑	☑	☑	☑
	☑	☑	☑	☑	☑	☑	☑	☑	☑
	☑	☑	☑	☑	☑	☑	☑	☑	☑
	☑	☑	☑	☑	☑	☑	☑	☑	☑
	☑	☑	☑	☑	☑	☑	☑	☑	☑
	☑	☑	☑	☑	☑	☑	☑	☑	☑
	☑	☑	☑	☑	☑	☑	☑	☑	☑
	☑	☑	☑	☑	☑	☑	☑	☑	☑
	☑	☑	☑	☑	☑	☑	☑	☑	☑
	☑	☑	☑	☑	☑	☑	☑	☑	☑
	☑	☑	☑	☑	☑	☑	☑	☑	☑
	☑	☑	☑	☑	☑	☑	☑	☑	☑
	☑	☑	☑	☑	☑	☑	☑	☑	☑
	☑	☑	☑	☑	☑	☑	☑	☑	☑
	☑	☑	☑	☑	☑	☑	☑	☑	☑
	☑	☑	☑	☑	☑	☑	☑	☑	☑
	☑	☑	☑	☑	☑	☑	☑	☑	☑
	☑	☑	☑	☑	☑	☑	☑	☑	☑
	☑	☑	☑	☑	☑	☑	☑	☑	☑
	☑	☑	☑	☑	☑	☑	☑	☑	☑
	☑	☑	☑	☑	☑	☑	☑	☑	☑
	☑	☑	☑	☑	☑	☑	☑	☑	☑
	☑	☑	☑	☑	☑	☑	☑	☑	☑
	☑	☑	☑	☑	☑	☑	☑	☑	☑
	☑	☑	☑	☑	☑	☑	☑	☑	☑
	☑	☑	☑	☑	☑	☑	☑	☑	☑
	☑	☑	☑	☑	☑	☑	☑	☑	☑
	☑	☑	☑	☑	☑	☑	☑	☑	☑
	☑	☑	☑	☑	☑	☑	☑	☑	☑
	☑	☑	☑	☑	☑	☑	☑	☑	☑
	☑	☑	☑	☑	☑	☑	☑	☑	☑
	☑	☑	☑	☑	☑	☑	☑	☑	☑
	☑	☑	☑	☑	☑	☑	☑	☑	☑
	☑	☑	☑	☑	☑	☑	☑	☑	☑
	☑	☑	☑	☑	☑	☑	☑	☑	☑
	☑	☑	☑	☑	☑	☑	☑	☑	☑
	☑	☑	☑	☑	☑	☑	☑	☑	☑
	☑	☑	☑	☑	☑	☑	☑	☑	☑
	☑	☑	☑	☑	☑	☑	☑	☑	☑
	☑	☑	☑	☑	☑	☑	☑	☑	☑
	☑	☑	☑	☑	☑	☑	☑	☑	☑
	☑	☑	☑	☑	☑	☑	☑	☑	☑
	☑	☑	☑	☑	☑	☑	☑	☑	☑
	☑	☑	☑	☑	☑	☑	☑	☑	☑
	☑	☑	☑	☑	☑	☑	☑	☑	☑
	☑	☑	☑	☑	☑	☑	☑	☑	☑
	☑	☑	☑	☑	☑	☑	☑	☑	☑
	☑	☑	☑	☑	☑	☑	☑	☑	☑
	☑	☑	☑	☑	☑	☑	☑	☑	☑
	☑	☑	☑	☑	☑	☑	☑	☑	☑
	☑	☑	☑	☑	☑	☑	☑	☑	☑
	☑	☑	☑	☑	☑	☑	☑	☑	☑
	☑	☑	☑	☑	☑	☑	☑	☑	☑
	☑	☑	☑	☑	☑	☑	☑	☑	☑
	☑	☑	☑	☑	☑	☑	☑	☑	☑
	☑	☑	☑	☑	☑	☑	☑	☑	☑
	☑	☑	☑	☑	☑	☑	☑	☑	☑
	☑	☑	☑	☑	☑	☑	☑	☑	☑
	☑	☑	☑	☑	☑	☑	☑	☑	☑
	☑	☑	☑	☑	☑	☑	☑	☑	☑
	☑	☑	☑	☑	☑	☑	☑	☑	☑
	☑	☑	☑	☑	☑	☑	☑	☑	☑
	☑	☑	☑	☑	☑	☑	☑	☑	☑
	☑	☑	☑	☑	☑	☑	☑	☑	☑
	☑	☑	☑	☑	☑	☑	☑	☑	☑
	☑	☑	☑	☑	☑	☑	☑	☑	☑
	☑	☑	☑	☑	☑	☑	☑	☑	☑
	☑	☑	☑	☑	☑	☑	☑	☑	☑
	☑	☑	☑	☑	☑	☑	☑	☑	☑
	☑	☑	☑	☑	☑	☑	☑	☑	☑
	☑	☑	☑	☑	☑	☑	☑	☑	☑
	☑	☑	☑	☑	☑	☑	☑	☑	☑
	☑	☑	☑	☑	☑	☑	☑	☑	☑
	☑	☑	☑	☑	☑	☑	☑	☑	☑
	☑	☑	☑	☑	☑	☑	☑	☑	☑
	☑	☑	☑	☑	☑	☑	☑	☑	☑
	☑	☑	☑	☑	☑	☑	☑	☑	☑
	☑	☑	☑	☑	☑	☑	☑	☑	☑
	☑	☑	☑	☑	☑	☑	☑	☑	☑
	☑	☑	☑	☑	☑	☑	☑	☑	☑
	☑	☑	☑	☑	☑	☑	☑	☑	☑
	☑	☑	☑	☑	☑	☑	☑	☑	☑
	☑	☑	☑	☑	☑	☑	☑	☑	☑
	☑	☑	☑	☑	☑	☑	☑	☑	☑
	☑	☑	☑	☑	☑	☑	☑	☑	☑
	☑	☑	☑	☑	☑	☑	☑	☑	☑
	☑	☑	☑	☑	☑	☑	☑	☑	☑
	☑	☑	☑	☑	☑	☑	☑	☑	☑
	☑	☑	☑	☑	☑	☑	☑	☑	☑
	☑	☑	☑	☑	☑	☑	☑	☑	☑
	☑	☑	☑	☑	☑	☑	☑	☑	☑
	☑	☑	☑	☑	☑	☑	☑	☑	☑
	☑	☑	☑	☑	☑	☑	☑	☑	☑

You have been receiving the lag status error notifications shown in the exhibit.

What must you do to correct this problem?

- A. Resynchronize the relationship.
- B. Add a schedule to the relationship.
- C. Fan out the relationship.
- D. Quiesce the relationship.

Answer: A

Explanation:

Question No: 96

A customer has application data corruption on a LUN that is in a volume with six other data LUNs.

The customer needs to restore the corrupted LUN from a Snapshot copy without affecting the other six LUNs.

Which process would accomplish this task?

- A. Use volume SnapRestore.
- B. Use LUN mapping.
- C. Use the volume Snapshot partial-restore file.
- D. Use a single-file restore.

Answer: D

Explanation:

<https://library.netapp.com/ecmdocs/ECMP1196784/html/GUID-17286F40-08CA-4EB0-8788-3F3F70D185C4.html>

Question No: 97

An administrator wants to use SnapCenter 4.2 to back up and restore both their VMware Horizon environment and Microsoft SQL attached database.

In this scenario, which service account role should be configured to accomplish this task?

- A. sysadmin
- B. operator
- C. backup
- D. administrator

Answer: A

Explanation:

Question No: 98

You want to determine the amount of cold data that can be tiered from a FabricPool-enabled aggregate.

In this scenario, which feature satisfies this requirement?

- A. Inactive Data Reporting

- B. Information Lifecycle Management
- C. Object Store Profiler
- D. Auto Balance

Answer: A

Explanation:

First available in ONTAP 9.4, inactive data reporting (IDR) is an excellent tool for determining the amount of inactive (cold) data that can be tiered from an aggregate. IDR is enabled by default on FabricPool aggregates. More important, you can enable it on non-FabricPool aggregates by using the ONTAP CLI, to get visibility on how much you can gain by deploying FabricPool.

Question No: 99

A customer is using SnapCenter and they want to see details about: 1.) unprotected databases outside of resource groups, 2.) databases that have not been backed up during the report period, 3.) databases that belong to a resource group for which backups have failed, and 4.) the database SnapVault status.

In this scenario, which report type satisfies the requirements?

- A. Backup Report
- B. Clone Report
- C. Plug-in Report
- D. Restore Report

Answer: C

Explanation:

Question No: 100

You are monitoring data protection relationships of type XDR using OnCommand System Manager running ONTAP 9.5. In the GUI, you click Protection -> Volume Relationships.

In this scenario, which status in the Relationship State field must be displayed to ensure that the relationships are working as expected?

- A. SnapMirrored
- B. Uninitialized
- C. InSync
- D. Quiesced

Answer: C

Explanation:

Question No: 101

A customer wants to set up SNMP to monitor their ONTAP platforms. Because of security reasons, they need strong authentication and data encryption?

In this scenario, which SNMP version satisfies these requirements?

- A. v1
- B. v3
- C. v2

D. v2c

Answer: B

Explanation:

Question No: 102

Your customer needs to activate a destination SVM DR following a disaster.

In this situation, which two actions should be performed? (Choose two.)

A. Shut down the source cluster.

B. From the destination cluster, break the SVM DR relationship.

C. From the source cluster, break the SVM DR relationship.

D. Start the destination SVM.

Answer: A,D

Explanation:

Question No: 103

You want to modify the existing Snapshot copy schedule to allow for more granularity in your ability to recover data after a corruption or loss.

In this scenario, which two tools allow you to accomplish this task (Choose two.)

A. OnCommand System Manager

B. OnCommand Unified Manager

C. NetApp SnapCenter

D. ONTAP CLI

Answer: B,D

Explanation:

Question No: 104

Which two configurations would be used to protect volumes in a production ONTAP system at two different disaster recovery (DR) locations? (Choose two.)

A. SnapMirror in a fan-out topology

B. SVM DR in a cascade topology

C. SnapMirror in a cascade topology

D. SVM DR in a fan-out topology

Answer: A,B

Explanation:

Question No: 105

You are asked to protect your customer's Exchange environment. You deploy SnapCenter 4.1 and the plug-in for Microsoft Exchange Server. While creating the backup policy, you select the Full and Log Backup from the list of supported backup types.

In this scenario, what would the Full and Log Backup type allow you to protect within Exchange?

- A. all databases but no transaction logs
- B. all databases and all transaction logs
- C. all uncommitted transaction logs and all of the databases
- D. all transaction logs but none of the databases

Answer: B

Explanation:

Question No: 106

Your customer is running an older cluster that uses Data ONTAP 8.1 Cluster-Mode. They would like to create a SnapMirror relationship with their new ONTAP 9.5 cluster.

In this scenario, what must the customer do to create the SnapMirror relationship?

- A. The customer can create a DP type SnapMirror relationship without needing to perform an upgrade.
- B. The customer must first upgrade the Data ONTAP 8.1 Cluster-Mode storage array to at least ONTAP 9.1 and then create the XDP SnapMirror relationship.
- C. The customer must first upgrade the Data ONTAP 8.1 Cluster-Mode storage array to at least ONTAP 8.3 and then create the XDP SnapMirror relationship.
- D. The customer can create a XDP type SnapMirror relationship without needing to perform an upgrade.

Answer: C

Explanation:

Question No: 107

You are asked to implement a DR solution to protect employee home directories on the primary cluster. The solution should provide an PRO of one hour, disaster recovery and archiving configured on the same destination volume of the DR cluster. Your solution should also reduce the amount of secondary storage requirements and use lower network traffic on the WAN links.

In this scenario, which NetApp replication technology satisfies these requirements?

- A. SnapMirror-Sync
- B. SyncMirror
- C. MetroCluster
- D. SnapMirror

Answer: D

Explanation:

Question No: 108

A client has two regional offices that use SnapMirror cross-site replication to host disaster-recovery mirrors for both offices. A co-worker at one office is requesting read/write access to one of the volume mirrors. You must accomplish this task without interrupting data access or replication.

In this scenario. how should you proceed?



- A. Create a FlexVol volume on the destination cluster so that it is writeable for the co-worker.
- B. Create a FlexClone volume based on one of the Snapshot copies at the destination so that it is writeable for the co-worker.
- C. Break the SnapMirror relationship between the local and remote clusters, and make the destination volume writeable for the co-worker.
- D. Modify the export policy on the destination mirror volume so that it is now writeable for the coworker.

Answer: B

Explanation:

Question No: 109

Data on an AFF system is replicated using SnapMirror to a FAS system that is configured with NL-SASbased storage.

In this scenario, which storage efficiency is lost on the SnapMirror destination?

- A. compaction
- B. compression
- C. aggregate-level deduplication
- D. volume-level deduplication

Answer: B

Explanation:

Question No: 110

Click the Exhibit button.



Your customer has recently implemented a FabricPool solution that uses the default configuration.

They notice that no data has moved to the cloud tier. Your customer is concerned that FabricPool might not be functioning properly.

Referring to the exhibit, what is causing the problem?

- A. The performance tier is not 50% full.
- B. The performance tier is not 90% full.
- C. The performance tier is not 75% full.

D. The performance tier is not 100% full.

Answer: A

Explanation:

Question No: 111

You recently set up a SnapMirror relationship with a daily update schedule. You want to verify that the updates are being performed daily.

Which two actions inside OnCommand System Manager would you ensure that the SnapMirror transfers are occurring daily? (Choose two.)

A. In the Jobs window, verify that all manual Snapshot copy operations have completed in the past 24 hours.

B. In the Jobs window, verify that all SnapMirror jobs have completed within the past 24 hours.

C. In the Relationships window, verify that the relationship state was broken in the past 24 hours.

D. In the Relationships window, verify that the lag time is less than 24 hours.

Answer: B,D

Explanation:

Question No: 112

Which two NetApp technologies allow for synchronous replication of data between two remote sites? (Choose two.)

A. SyncMirror

B. SnapVault

C. Metro Cluster

D. SnapMirror

Answer: B,D

Explanation:

Question No: 113

A customer is running multiple Oracle DBs over NFS. The volumes are replicated using SnapMirror to a secondary site, which also hosts the development and test systems. They want to streamline the creation of test environments on the secondary site so that they will not have to manually use FlexClone to clone multiple volumes for each request.

In this scenario, which tool satisfies these requirements?

A. Snap Creator Framework

B. OnCommand Unified Manager

C. NetApp Service Level Manager

D. OnCommand Workflow Automation

Answer: A

Explanation:

Question No: 114

You want to set up an important management solution that must comply with FIPS 140-2. The solution should support a multi-clusters environment and should provide centralized management of the encryption keys.

In this scenario, which solution accomplishes the task?

- A. NetApp Storage Encryption (NSE) with external key management using the Key Management Interoperability Protocol (KMIP)
- B. NetApp Volume Encryption (NVE) with onboard key manager using the Key Management Interoperability Protocol (KMIP)
- C. NetApp Storage Encryption (NSE) with onboard key manager using the Key Management Interoperability Protocol (KMIP)
- D. NetApp Volume Encryption (NVE) with external key management server using the Key Management Interoperability Protocol (KMIP)

Answer: D

Explanation:

Question No: 115

You have two ONTAP clusters, cluster1 and cluster2. Cluster1 has an SVM serving SMB3 data and you want to protect it by replicating it to cluster2 using SVM DR. The source and destination subnets are identical. You want to retain the CIFS server security of the SVM at the destination site.

In this scenario, which three steps would you take to configure the SVM DR relationship? (Choose three.)

- A. Configure the network for data access on the destination SVM.
- B. Create the SnapMirror relationship with the id-preserve option set to true.
- C. Create the destination SVM with the dp-destination subtype.
- D. Create a CIFS server on the destination SVM.
- E. Initialize the SnapMirror relationship.

Answer: A,B,D

Explanation:

Question No: 116

You are given the vsadmin account credentials for an SVM that is delegated to you by your organization's shared services group. You are asked to verify that all of the volumes in your SVM are protected with SnapMirror.

In this scenario, what would you use to accomplish this task?

- A. OnCommand System Manager
- B. OnCommand Unified Manager
- C. XCP
- D. CLI

Answer: D

Explanation:

Question No: 117

You have an environment with multiple database servers that are performing scheduled nightly dumps. These dumps vary in both the time to complete and the size of data produced. You need to ensure that there is always enough room in the volume for the data and that a nightly SnapMirror update does not take place until the database dump process is complete.

In this scenario, which NetApp tool ensures that this process is completed every night?

- A. OnCommand Unified Manager
- B. OnCommand Insight
- C. OnCommand Workflow Automation
- D. OnCommand System Manager

Answer: D

Explanation:

Question No: 118

You are upgrading your Data ONTAP cluster from clustered Data ONTAP 8.3 to clustered Data ONTAP 9.1. Which two actions must be performed for the SnapMirror relationships?

(Choose two.)

- A. Break existing SnapMirror relationships.
- B. Delete the obsolete SnapMirror Snapshot copies which were created in Data ONTAP 8.3.
- C. After the upgrade, resynchronize, and resume SnapMirror relationships.
- D. Delete and re-create SnapMirror relationships.

Answer: AC

Explanation:

Question No: 119

You have multiple load-sharing destinations for a volume in a storage virtual machine. The source volume has become unavailable and you want to make one of the destination volumes the new source.

What happens to the original source volume?

- A. The promote operation deletes the original source volume.
- B. The promote operation takes the original source volume offline.
- C. The initialize operation deletes the original source volume.
- D. The original source volume goes offline.

Answer: A

Explanation:

([https://library.netapp.com/ecm/ecm\\_download\\_file/ECMP1653502](https://library.netapp.com/ecm/ecm_download_file/ECMP1653502))

Question No: 120

A volume has been filled completely by active data and Snapshot copies.

What must you do to make the volume writable again?

- A. Delete files in the active file system.
- B. Delete any SnapMirror relationships.
- C. Delete enough Snapshot copies until space is available.

D. Modify the Snapshot reserve.

Answer: C

Explanation:

(<https://library.netapp.com/ecmdocs/ECMP1217273/html/GUID-866A2386-BE9D-474E-99A9-7A16143DBF74.html>)

Question No: 121

For DR purposes, data must be replicated between on-premises clusters and multiple public clouds.

In this scenario, which solution would simplify management?

A. Cloud Volumes ONTAP

B. Cloud Manager

C. Cloud Sync

D. Cloud Insights

Answer: B

Explanation:

Question No: 122

You configured a SnapMirror relationship with a default policy for the daily mirroring of a volume which contains financial data. Although the data is critical, it only changes on a monthly basis.

Using OnCommand System Manager, which two actions would change the frequency of the SnapMirror updates? (Choose two.)

A. Select or create a different schedule.

B. Edit the parameters of the default schedule.

C. Select or create a different policy.

D. Edit the parameters of the default policy.

Answer: C, D

Explanation:

(<https://library.netapp.com/ecmdocs/ECMP1610202/html/snapmirror/policy/create.html>)

Question No: 123

Which two NetApp products reduce the backup time and create a consistent backup for a primary Oracle target?

(Choose two.)

A. SnapMirror for Open Systems

B. Open Systems SnapVault

C. SnapManager for Oracle

D. SnapProtect

Answer: CD

Explanation:

Question No: 124

You do not want to impact your ongoing SnapMirror relationship between your primary and secondary site. Which step must be taken prior to creating a FlexClone at the disaster recovery site?

- A. Cascade the SnapMirror destination volume to another SnapMirror destination.
- B. Create a Snapshot copy of the SnapMirror destination volume.
- C. Cascade the SnapMirror destination volume to another SnapVault destination.
- D. Create a Snapshot copy of the SnapMirror source volume and wait for it to transfer.

Answer: D

Explanation:

Question No: 125

You want to conserve disk space in your SnapVault destinations. You enable storage efficiency on each of the secondary volumes.

Which two statements are true in this scenario? (Choose two.)

- A. Storage efficiency can be enabled on the secondary volume and SnapVault will manage the schedule.
- B. Storage efficiency can be enabled on the secondary volume, but a manual schedule will need to be assigned.
- C. If storage efficiency is enabled on the primary volume, it will be preserved on the secondary volume.
- D. SnapVault implicitly uses storage efficiency.

Answer: A & C

Explanation:

(<https://library.netapp.com/ecmdocs/ECMP1196819/html/GUID-33E5E672-6719-4C76-97F7-F1D1CF7C8185.html>)

Question No: 126

You want to set up protection relationships at the time of provisioning one or more primary volumes in the source cluster in ONTAP. Which NetApp management tool enables you to accomplish this task?

- A. SnapCenter
- B. OnCommand System Manager
- C. ONTAPCLI
- D. OnCommand Unified Manager

Answer: B

Explanation:

Question No: 127

Your customer wants to ensure that the SnapMirror relationships are easily managed in a bidirectional, multi-cluster environment. Which version of clustered Data ONTAP would you recommend?

- A. clustered Data ONTAP 9.1
- B. clustered Data ONTAP 8.2.3



- C. clustered Data ONTAP 8.3
- D. clustered Data ONTAP 8.1.4

Answer: A

Explanation:

Question No: 128

Exhibit:

Options	Value
SnapMirror Policy Type	MirrorAndVault
Hourly Snapshot Copy Schedule	6:05 a.m., 12:05 p.m., 6:05 p.m.
Daily Snapshot Copy Schedule	12:10 a.m.
Daily SnapMirror Replication Schedule	2:15 a.m.
Average Snapshot Delta	50 GB
Dedicated Bandwidth for Replication	1 Gbps

You are configuring a SnapMirror relationship to capture all daily activities and archive them.

Information about the environment is shown in the exhibit.

In this scenario, how much data must be transferred during the scheduled SnapMirror update?

- A. 50 GB
- B. 250 GB
- C. 200 GB
- D. 150 GB

Answer: C

Explanation:

Question No: 129

A previous administrator had configured an external backup system to use node-scoped NDMP for backups, but you want to change this system to use SVM-scoped NDMP. How do you make this change in ONTAP?

- A. Turn off node-scoped NDMP on the SVMs being backed up.
- B. Restart the NDMP service on the cluster.
- C. Restart the NDMP service on the SVMs being backed up.
- D. Turn off node-scoped NDMP on the cluster.

Answer: D

Explanation:

Question No: 130

You want to ensure that you are using compatible hardware and software versions with your MetroCluster installation. Which tool would accomplish this task?

- A. Hardware Universe

B. System-Level Diagnostics tool (SLDIAG tool)

C. OneCollect

D. Interoperability Matrix Tool

Answer: D

Explanation:

Question No: 131

Your disaster recovery strategy requires a mirror, an archive, and a tape backup. Which software would you recommend for this scenario?

A. OnCommand System Manager

B. OnCommand Workflow Automation

C. SnapProtect

D. OnCommand Unified Manager

Answer: C

Explanation:

Question No: 132

You have deployed a 4-node fabric MetroCluster configuration for cross-site disaster-recovery protection. In this scenario, which two statements are correct for an automatic unplanned switchover (AUSO) operation?

(Choose two.)

A. AUSO is triggered in the event of a site-wide controller failure to provide nondisruptive operations.

B. AUSO is triggered in the event of a complete site-wide failure to provide nondisruptive operations.

C. AUSO is triggered in the event of a site-wide switch failure to provide nondisruptive operations.

D. AUSO is enabled by default on a MetroCluster cluster.

Answer: AD

Explanation:

Question No: 133

A client is planning to configure a SnapMirror relationship between two sites. Normally their ISP provides network throughput of 100 Mbps; however, they can arrange to have this burst to 1 Gbps for a period of time at an additional cost.

Their intention is to back up 400 GB of Snapshot data each day using the burst option to keep the replication time to a minimum. In this scenario, how much burst time do they need to purchase?

A. 15 minutes

B. 30 minutes

C. 45 minutes

D. 60 minutes

Answer: D

Explanation:

Question No: 134

What are two NetApp data protection solutions? (Choose two.)

- A. RecoverPoint
- B. SnapMirror
- C. TimeFinder
- D. SnapVault

Answer: B, D

Explanation:

(<http://www.storagefreak.net/2013/11/snapvault-vs-snapmirror-what-is-the-difference>)

Question No: 135

Click the Exhibit button.



Commvault IntelliSnap and NetApp SnapCenter are both being used to back up the same Microsoft SQL Server database.

Referring to the exhibit, which action will SnapCenter perform on the Microsoft SQL transaction logs?

- A. move
- B. keep
- C. delete
- D. truncate

Answer: D

Explanation:

Question No: 136

Your customer is concerned that his volume might run out of space. Which two volume command options would be used to resolve this problem?

(Choose two.)

- A. snapshot autodelete
- B. autosize
- C. space-guarantee
- D. filesystem-size-fixed

Answer: AB

Explanation:

Question No: 137

You want to generate performance-related reports and alerts using the OnCommand Unified Manager 6.x server. Which two additional tasks must be completed to enable these features?

(Choose two.)

- A. Create a local user with limited Event Publisher role privileges
- B. Install and configure OnCommand Workflow Automation.
- C. Configure a connection between the Unified Manager server and OnCommand System Manager.
- D. Configure a connection between the Unified Manager server and a Performance Manager server.

Answer: AD

Explanation:

Question No: 138

You have a network outage that affects client access to site

- A. You need to temporarily reverse the SnapMirror relationship of a volume to serve data from site B.

Which two steps must you perform first?

(Choose two.)

- A. Take the source volume offline.
- B. Break the SnapMirror relationship.
- C. Delete the SnapMirror relationship.
- D. Abort the SnapMirror relationship.

Answer: AB

Explanation:

Question No: 139

You are asked to provide a solution that will allow a client to copy the data stored in a FlexVol volume to a remote tape system for archiving. You are using a cluster-aware backup application to perform this task.

Which three actions are required when you configure this solution for your client? (Choose three.)

- A. Configure NDMP at the SVM level.
- B. Configure multiple LIFs for SVM-scoped NDMP.
- C. Configure NDMP at the node level.
- D. Create a backup user account on the cluster.
- E. Configure a LIF for node-scoped NDMP.

Answer: C,D,E

Explanation:

Question No: 140

You are performing a routine health check for a customer and need to determine if the disk shelf firmware is up to date. From My AutoSupport, which report would you use?

- A. Transition Advisor
- B. Visualization
- C. Upgrade Advisor
- D. Event Viewer

Answer: B

Explanation:

Question No: 141

You must determine if there have been any backup problems overnight. Which two reports in OnCommand Unified Manager 6.2 would provide you with the required information?

(Choose two.)

- A. Unresolved Incidents and Risks area
- B. On Command Unified Manager Dashboard
- C. On Command Cluster Events Details
- D. On Command Job Events Details

Answer: BD

Explanation:

Question No: 142

You have a SolidFire cluster running SolidFire Element Operating System 10.1 and are asked to replicate to an existing ONTAP cluster.

Which ONTAP destination is supported?

- A. ONTAP Select with the MirrorAllSnapshots policy
- B. FAS9000 with the MirrorAndVault policy
- C. ONTAP Cloud with the MirrorLatest policy

D. AFF A700 with the XDPDefault policy

Answer: C

Explanation:

Question No: 143

You are copying your data and replicating it off site. What is the called?

A. a backup

B. a demonstration

C. a version

D. a Snapshot

Answer: A

Explanation:

Question No: 144

You have deployed IntelliSnap to list NetApp Snapshot copies in volumes on your ONTAP system, schedule new backups on unprotected volumes, and implement archiving to your remote AltaVault system.

Which additional NetApp product does IntelliSnap require to perform all of these actions?

A. OnCommand Insight

B. OnCommand Unified Manager

C. OnCommand System Manager

D. OnCommand Performance Manager

Answer: B

Explanation:

Question No: 145

Which attribute does Data ONTAP use the identify Snapshot copies between primary and secondary FlexVol volumes in a SnapVault relationship?

A. FlexVol name

B. Snapshot prefix

C. SnapMirror policy

D. SnapMirror label

Answer: D

Explanation:

Question No: 146

A customer has a new cloud strategy. They want to replicate mission-critical SAN volumes to the cloud for DR. Which NetApp technology satisfies the requirement?

A. Cloud Sync service



- B. Fabric Pool technology
- C. Cloud Volumes Service
- D. Cloud Volumes ONTAP

Answer: D

Explanation:

Question No: 147

Exhibit:

Details	Info (1)		
Back-end Switch (Switch)	Back-end Switch Firmware (Switch ...	Disk Shelf	ISL Type
Cisco Nexus 3232C	Cisco NX-OS Firmware 7.0(3)17(5a)	DS212C	CWDM
		DS2246	DWDM
		DS224C	TDM
		DS4246	
		DS460C	
Max ISL Distance (Max Distance)	Max Roundtrip ISL Latency	Max Supported ISL Speed (ISL Spee...	NV Interconnect Part
700 Km	7ms	40 Gbps	X91146A
NetApp Controller (Storage Contro...	Number of ISLs	ONTAP OS (NETAPP OS)	
AFF A800	4	ONTAP 9.5	

Referring to the exhibit, You have a MetroCluster IP solution that uses Cisco Nexus 3232C back-end switches for a maximum ISL distance of 700 km. What is the maximum round trip ISL latency that is supported in this scenario?

- A. 7 ms
- B. 10 ms
- C. 14 ms
- D. 20 ms

Answer: A

Explanation:

Question No: 148

To ensure enough bandwidth for other applications, you want to restrict all replication bandwidth on your destination cluster.

How would you accomplish this task?

- A. Using OnCommand System Manager on your source cluster, create a QoS policy on the source.
- B. Using the ONTAP CLI, enable global throttling on the source cluster.
- C. Using OnCommand System Manager on your destination cluster, create a QoS policy on the destination.
- D. Using the ONTAP CLI, enable global throttling on the destination cluster.

Answer: B

Explanation:

Question No: 149

A customer has a MetroCluster solution and wants to automate the disaster-recovery process. The customer wants to control the switchover between the sites.

Which NetApp tool would satisfy these requirements?

- A. OnCommand Unified Manager
- B. MetroCluster Tiebreaker
- C. OnCommand System Manager
- D. OnCommand SnapCenter

Answer: B

Explanation:

Question No: 150

You received an alert from OnCommand Unified Manager (OCUM) that a NetApp FlexVol is almost out of space. Which three actions are available to perform from the OCUM events detail Web page?

(Choose three.)

- A. Acknowledge the event.
- B. Mark the event as "resolved".
- C. Create a job to move the FlexVol.
- D. Increase the capacity of the FlexVol.
- E. Add a note to the event.

Answer: ABE

Explanation:

Question No: 151

A client has a primary data center that is located in a coastal area where the forecast is calling for a Category 5 hurricane to make landfall in three days. The client's data is protected using NetApp SVM SnapMirror replication technology with identity-preserve that is enabled. The data is mirrored to a destination cluster outside of the affected area. The client has scheduled a controlled maintenance window for tomorrow to ensure that dependable operations are maintained.

Which three steps must be taken to accomplish this task? (Choose three.)

- A. You must break the SnapMirror relationship on each individual volume between the source and the destination clusters.
- B. You must configure the destination SVM volumes for data access.
- C. You must reboot each server in your infrastructure so that they can access the data from the destination volumes.
- D. You must break the SnapMirror relationship between the source and the destination SVMs.
- E. You must stop the source SVM before activating the destination SVM.

Answer: B,D,E

Explanation:

Question No: 152

Click the Exhibit button.

**Destination Volume**

Cluster: **cluster-1**

Storage Virtual Machine: **vs0(peered)** Browse...

Volume: ☒ New Volume ☐ Select Volume

Volume name: **svm1\_vol\_2\_vault**

Aggregate: **aggr1** Browse...

☒ Enable dedupe 70.13 GB available (of 70.14GB)

An employee's computer and mapped home folder has been encrypted with ransomware. You are asked to restore the data from a SnapVault repository.

Referring to the exhibit, what happens when the volume is restored?

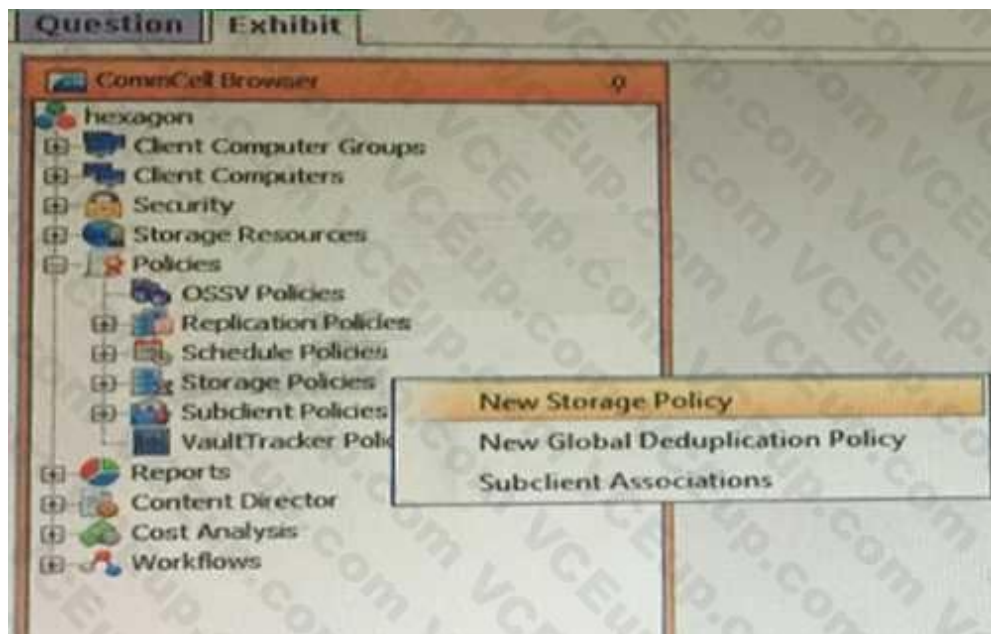
- A. All files in the volume are restored.
- B. The restore is performed locally.
- C. The original data is decrypted in place.
- D. Only files that have changed in the volume are restored.

Answer: A

Explanation:

Question No: 153

Click the Exhibit button.



You have a SnapProtect v11 environment as shown in the exhibit. What are the two default Snapshot copies created automatically after creating a Storage Policy.

(Choose two.)

- A. Primary (Tape)
- B. Primary (Classic)

C. Primary (NetApp)

D. primary (Snap)

Answer: BD

Explanation:

Question No: 154

You have a NAS volume containing 100 GB of data and daily change rate of 10%. You want to keep seven daily Snapshot copies. What is the minimum size for the volume?

A. 170 GB

B. 100 GB

C. 110 GB

D. 220 GB

Answer: A

Explanation:

Question No: 155

Which NetApp technology helps to protect against ransomware attacks?

A. SnapLock

B. SyncMirror

C. NetApp Volume Encryption

D. NetApp Aggregate Encryption

Answer: A

Explanation:

Question No: 156

You decide to enable SnapMirror network compression on your NetApp clustered Data ONTAP environment. Which two statements are correct about enabling this feature?

(Choose two.)

A. The data is compressed only while it traverses the network.

B. The data transfer between the clusters must use the NDMP protocol.

C. You may only enable SnapMirror network compression on one HA pair in a cluster, and traffic 1-1 is limited to routing through those nodes.

D. The compression engine creates multiple transfer threads corresponding to the number of CPUs on the source storage system.

Answer: AD

Explanation: