

JPR-961.VCEplus.premium.exam.65q

Number: JPR-961  
Passing Score: 800  
Time Limit: 120 min  
File Version: 1.0



**Website:** <https://vceplus.com> - <https://vceplus.co>  
**VCE to PDF Converter:** <https://vceplus.com/vce-to-pdf/>  
**Facebook:** <https://www.facebook.com/VCE.For.All.VN/>  
**Twitter :** [https://twitter.com/VCE\\_Plus](https://twitter.com/VCE_Plus)

JPR-961

Juniper Networks Certified Internet Expert (JNCIE-SP)



Version 1.0

## Exam A

### QUESTION 1

You have recently added a Windows Server Web Edition system to your company's private network. The server is used to host the company's private Web site. Users are complaining that response time is often slow. You want to analyze the traffic coming to and from the Web server. What should you do?

- A. Open Task Manager and use the Networking tab to gather network statistics.
- B. Open System Monitor to capture and analyze network traffic.
- C. Open Network Diagnostics to analyze the traffic coming to and from the Web server.
- D. Install Network Monitor on the Web server to capture and analyze network traffic.

**Correct Answer:** D

**Section:** (none)

**Explanation**

**Explanation/Reference:**

### QUESTION 2

You administer a Windows Server Active Directory domain for your company. The domain is divided into two subnets. Subnet A uses the network address 192.168.12.0/24, and Subnet B uses the network address 192.168.14.0/24. All domain controllers and member servers are Windows Server computers, and all clients are Windows 2000 Professional computers.

Clients in Subnet A obtain TCP/IP settings from a DHCP server named DHCP\_A, which resides in Subnet A. Clients in Subnet B cannot obtain DHCP settings at all, even though you configured a scope for Subnet B on DHCP\_A. Your need to enable clients on Subnet B to automatically obtain TCP/IP settings from DHCP\_A. What should you install on Subnet B?

- A. a primary DNS server
- B. an SUS server
- C. a DHCP relay agent
- D. a master DNS server
- E. an SMTP server

**Correct Answer:** C

**Section:** (none)

**Explanation**

**Explanation/Reference:**

### QUESTION 3

You administer your company's network. A single-domain Active Directory forest is configured on the network. All servers run Windows Server.

The network contains a server named Server5 that hosts confidential business data. Access to Server5 must be restricted to only a few authorized personnel. You must ensure that those users, including designated Server5 administrators, cannot share Server5's desktop with other users. What should you do?

- A. Disable Remote Assistance in the local policy on Server5.
- B. Create a new OU, move Server5 to the OU, create a GPO that disables Remote Assistance, and link the GPO to the OU.
- C. Create a new OU, move Server5 to the OU, create a GPO that disables Remote Desktop, and link the GPO to the OU.
- D. Disable Remote Desktop in the local policy on Server5.
- E. Disable Remote Assistance in System Properties on Server5.
- F. Disable Remote Desktop in System Properties on Server5.

**Correct Answer:** B

**Section:** (none)

**Explanation**

**Explanation/Reference:**

### QUESTION 4

You are the security administrator for your company. The company's network supports 500 users. All network server computers run Windows Server. All network client computers run Windows XP Professional. All domain account logon events are audited.

A human resources manager requests that you produce a listing of the times and dates a user named JohnP logged on to the domain. The user was assigned to a client computer named HR09.

You should achieve this objective while reviewing the minimum amount of information. What should you do? (Choose two. Each correct answer presents part of the solution.)

- A. Create a filter that will list all events for the JohnP user account.
- B. Use the Find option to list only the events for the JohnP user account.
- C. Open Event Viewer and access the security log on each domain controller.
- D. Use the Find option to list only the events for the HR09 computer account.
- E. Create a filter that will list only the events for the HR09 computer account.
- F. Log onto HR09 as a local administrator, and open Event Viewer to view the local security log.

**Correct Answer:** AC

**Section:** (none)

**Explanation**

**Explanation/Reference:**

#### QUESTION 5

You are the DNS administrator for TXGlobal, which is headquartered in Dallas and has branch offices in Austin, Houston, San Antonio and El Paso. The headquarters location hosts the parent domain, txglobal.com. Each branch office has been delegated a child domain. Austin hosts austin.txglobal.com, Houston hosts houston.txglobal.com, San Antonio hosts sanantonio.txglobal.com, and El Paso hosts elpaso.txglobal.com.

The primary DNS server in Dallas is named TXDNS. The primary DNS servers in the branch offices are named AUSDNS, HOUDNS, SADNS and EPDNS. The secondary DNS servers in the branch offices are named AUSDNS-2, HOUDNS2, SADNS-2, and EPDNS-2.

To increase fault tolerance, you want to add another secondary DNS server in each location. The new DNS servers will be named AUSDNS-3, HOUDNS-3, SADNS-3, and EPDNS-3. You want TXDNS to be aware that the new servers are authoritative for their respective zones.

Which server or servers should host one or more stub zones?

- A. AUSDNS, HOUDNS, SADNS and EPDNS
- B. AUSDNS-3, HOUDNS-3, SADNS-3 and EPDNS-3
- C. all of the DNS servers within the child domains
- D. TXDNS

**Correct Answer:** D

**Section:** (none)

**Explanation**

**Explanation/Reference:**

#### QUESTION 6

You are a network administrator for your company. The company network consists of two Active Directory forests. Verigon.com is the single-domain forest that contains all user accounts and resources for the corporate network, except the resources that are allocated to the Development department. Dev.corp is the single-domain forest that is used only by the Development department. You configure an external trust between the two domains.

Developers must be able to log on from their computers to the verigon.com domain. In the verigon.com forest, you create a new user principal name (UPN) suffix of dev.corp and configure UPNs for the developers' user accounts in the verigon.com domain with this suffix. Developers report that they cannot log on to the verigon.com domain from their computers, which belong to the dev.corp domain, by using their UPNs. You must enable developers to log on to the verigon.com domain from their computers by using UPNs. What should you do?

- A. Replace the external trust with a forest trust.
- B. Change the UPN suffix for the developers' user accounts to verigon.com.
- C. Configure selective authentication on the trust.
- D. Configure domain-wide authentication on the trust.

**Correct Answer:** A

**Section:** (none)

**Explanation**

**Explanation/Reference:**

#### QUESTION 7

You are the administrator for your company's network. Your company's logical network design consists of a single Active Directory domain. All servers have the Windows Server operating system installed. All client computers run Windows XP Professional.

Woody is the manager for the company. He uses his client computer to read and edit large documents from the publishing department. The computer is configured with a single basic disk consisting of two partitions. One partition is used as the boot and system partition. The other partition hosts user data folders. Both partitions are formatted using NTFS. The user data partition contains shared folders and files that use both share and NTFS permissions to grant access to employees in the editorial department.

Woody informs you that his computer is beginning to perform at a speed that is moderately slower than other client computers in the editorial department. You use System Monitor and discover that a disk bottleneck exists.

How can Woody improve performance on this computer?

- A. Defragment the hard disk.
- B. Reformat the data partition using FAT32.
- C. Convert the hard disk to a dynamic disk.
- D. Delete the two existing partitions on the hard disk, and create a single partition.

**Correct Answer:** A

**Section:** (none)

**Explanation**

**Explanation/Reference:**

#### QUESTION 8

You are your company's network administrator. The network consists of a single subnet. All servers run Windows Server. The network is connected to the Internet through a private WAN link. A computer named Server1 provides Internet access for the network. Server1 is equipped with two NICs, and Internet Connection Sharing (ICS) is enabled on the NIC that is connected to the Internet.

Your company employs several telecommuters who work from their homes. The remote employees require some files that contain information about the company's business operations. Those files are updated on a daily basis. To provide the remote employees with those files, you set up an FTP site on a computer named FTPSrv.

You must ensure that the users on the corporate network can access Internet Web sites and that the remote employees can download the necessary files from FTPSrv. The corporate network must be protected against possible Internetbased attacks. Access to the corporate network from the Internet must be restricted to only the FTP site on FTPSrv. What should you do?

- A. On FTPSrv, enable Internet Connection Firewall, and specify that FTP traffic be allowed to pass to FTPSrv.
- B. On Server1, enable Internet Connection Firewall, and specify that FTP traffic be allowed to pass to FTPSrv.
- C. Configure Server1 to use IPSec for all communications on the NIC that is connected to the Internet.
- D. On Server1, enable Internet Connection Firewall, and configure it to allow only HTTP and FTP traffic to pass to the corporate network.

**Correct Answer:** B

**Section:** (none)

**Explanation**

**Explanation/Reference:**

#### QUESTION 9

Mark works as a Network Administrator for ABC.com. The company has a Windows single domain-based Active Directory network. The network has five Windows member servers and 200 Windows XP Professional client computers. The network has a Windows Server that works as a DNS server. The DNS server contains the following types of resource records: • Name Server (NS) resource record

- A resource record
- PTR resource record
- SRV resource record
- MX resource record

Mark updates the A resource record. Which of the following types of resource records can be associated with the A resource record and needs to be updated?

- A. The associated PTR resource record needs to be updated.
- B. The associated SRV resource record needs to be updated.
- C. The associated MX resource record needs to be updated.
- D. The associated NS resource record needs to be updated.

**Correct Answer:** A

**Section:** (none)

**Explanation**

**Explanation/Reference:**

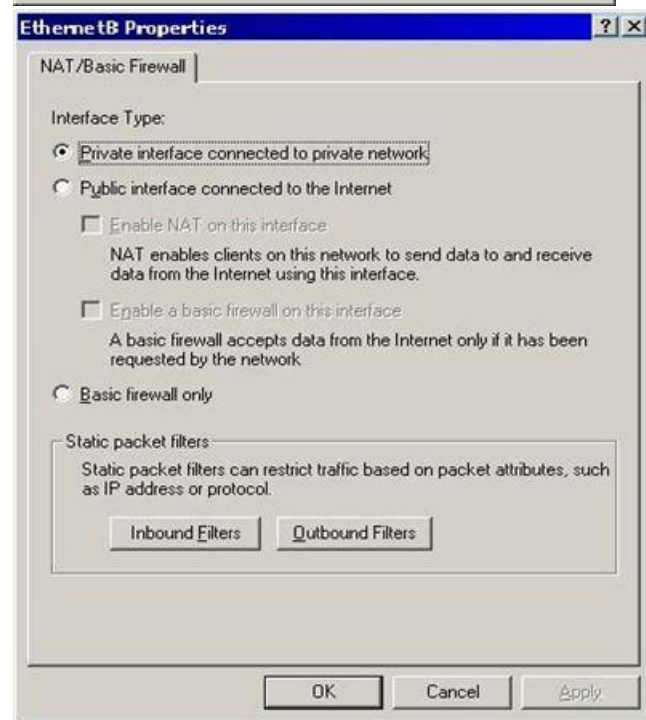
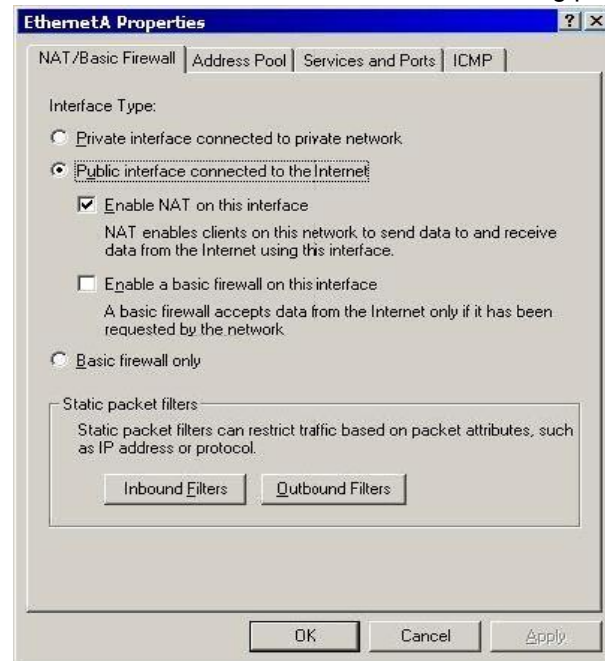
# QUESTION 10

Andrew works as a Network Administrator for ABC.com. The company has a Windows domain-based network. The company has two Windows servers and 150 Windows Professional client computers. The company has a Windows server named NATSERV that has a dial-up connection to the Internet.

NATSERV has two network interfaces named EthernetA and EthernetB .

EthernetA is connected to the LAN and has an IP address of 192.168.1.121. EthernetB is connected to the Internet and has an IP address of 132.103.102.71. The client computers on the LAN connect to the Internet by using NATSERV. NAT also has Routing and Remote Access installed.

Andrew enables the NAT/Basic Firewall routing protocol on NATSERV. The configuration of the NAT/Basic Firewall routing on NATSERV is shown in the image below:



The client computers on the network are unable to connect to the Internet. When Andrew tries to ping 132.103.102.71 from the client computers on the local network, he receives a message as shown in the image below:

```

C:\WINNTADV\system32\cmd.exe
C:\>ping 132.103.102.71
Pinging 132.103.102.71 with 32 bytes of data:
Request timed out.
Request timed out.
Request timed out.
Request timed out.

Ping statistics for 132.103.102.71:
    Packets: Sent = 4, Received = 0, Lost = 4 (100% loss),
    Approximate round trip times in milli-seconds:
        Minimum = 0ms, Maximum = 0ms, Average = 0ms
C:\>_

```

Andrew wants to ensure that the client computers on the local network are able to connect to the Internet.

What will he do to accomplish this?

Each correct answer represents a part of the solution. (Choose two.)

- A. For EthernetB, configure Outbound Filters under Static packet filters.
- B. For EthernetA, configure Inbound Filters under Static packet filters.
- C. For EthernetA, configure NAT/Basic Firewall as 'Private interface connected to private network'.
- D. For EthernetB, configure NAT/Basic Firewall as 'Public interface connected to the Internet'.

**Correct Answer:** CD

**Section:** (none)

**Explanation**

**Explanation/Reference:**

#### QUESTION 11

Mark works as a Network Administrator for ABC.com. The company has a Windows domainbased network. The domain contains four Windows servers and 500 Windows Professional client computers.

The company's Marketing department uses a member server named Fserv that stores confidential files. The files are stored in a folder named DATA. The Marketing department users are members of a group named Market. The NTFS permissions on the DATA folder and files in that folder allow access only to the Administrators group and the Market group.

The NTFS permissions are configured to allow full control on the DATA folder. The share permissions are the default permissions. Mark wants to track users who attempt to gain access to files in the DATA folder on Fserv. For this purpose, he configures auditing on the DATA folder and files in that folder. He configures auditing on the Failed attempts for each access type on the Everyone group. When he checks the auditing configuration by attempting to access the files with a domain user account that does not have access permissions to the files, he receives an "Access Denied" message. However, this Failed attempt does not appear in the security log on Fserv. What will Mark do to resolve the issue?

- A. Grant the Generate security audits privilege to the Fserv computer account.
- B. Enable the Audit object access policy for Failed and Successful attempts in a new Group Policy object (GPO) that applies only to Fserv.
- C. Configure the auditing entries to apply to the Administrators group and the Market group, instead of the Everyone group.
- D. Enable the Audit object access policy for Failed attempts in a new Group Policy object (GPO) that applies only to Fserv.

**Correct Answer:** D

**Section:** (none)

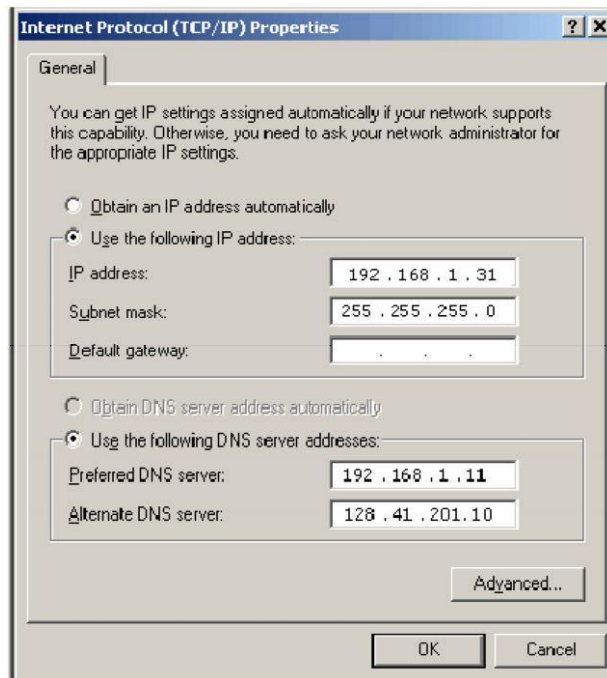
**Explanation**

**Explanation/Reference:**

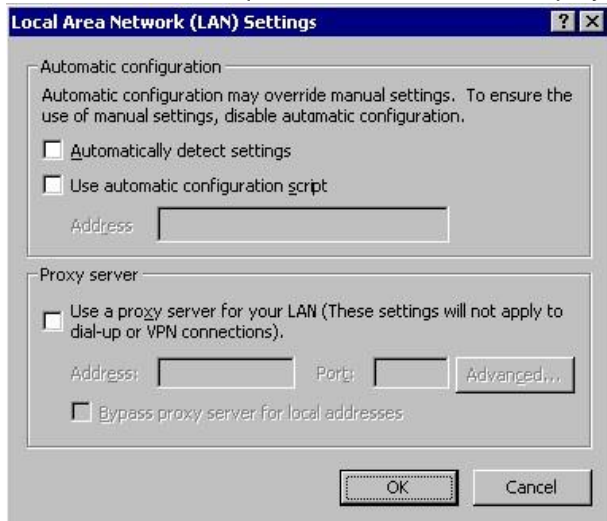
#### QUESTION 12

Mark works as a Network Administrator for ABC.com. The company has a Windows domainbased network. The network has six Windows member servers and 120 Windows XP Professional client computers. All the member servers are using static IP configuration. Five of the member servers work as Intranet Web servers, and one of them named ISERV works as a Routing and Remote Access server. The NAT/Basic routing protocol is enabled to route traffic between the local network and the Internet. ISERV's internal IP address is 192.168.1.1. The Web servers' static IP configuration is shown in the image below:





The Web servers require Internet access to display Web pages from the Internet. The Web servers are configured with the Internet Explorer LAN settings as shown in the image below:



The users on the intranet report that only the local Web pages stored on the Web servers are displayed. Mark attempts to view the Web pages on the Internet from one of the Web servers, but he is unable to do so. Mark wants all the Web servers to be able to access the Web pages on the Internet. What will he do to accomplish this?

- A. On the TCP/IP Properties page on the Web servers, configure the default gateway as 192.168.1.1.
- B. Configure the Web servers to receive IP addresses from the DHCP server.
- C. In the LAN settings dialog box on all the Web servers, configure port 80.
- D. On the TCP/IP Properties page on the Web servers, configure the default gateway as 255.255.255.0.

**Correct Answer:** A

**Section:** (none)

**Explanation**

**Explanation/Reference:**

### QUESTION 13

You work as a Network Administrator for ABC.com. The company has a Windows domainbased network. In order to automate the TCP/IP configuration for the client computers in the network, you install the DHCP Server service on a

Windows member server. You want to ensure that all the network printers always use the same IP address. In order to accomplish this, you create IP address reservations for the network printers while creating the DHCP scope. You also define an exclusion range for the printers. Now, none of the printers are receiving the IP addresses. However, the client computers are not experiencing this problem. What will you do to resolve the issue? A. Remove the exclusion range for the addresses that are being used by the printers.

- B. Assign the IP addresses to the printers manually.
- C. Run the IPCONFIG /release command-line utility on the printers.
- D. Remove the client reservations for the addresses that are being used by the printers.

**Correct Answer:** A

**Section:** (none)

**Explanation**

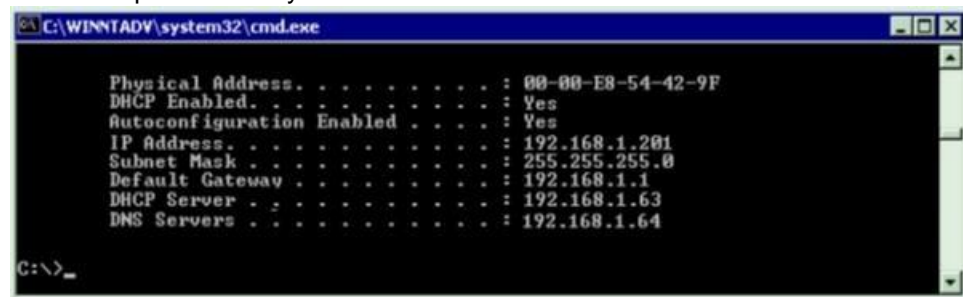
**Explanation/Reference:**

#### QUESTION 14

Mark works as a Network Administrator for ABC.com. The company has a Windows Active Directorybased single domain single forest network. The network contains five member servers and 110 Windows XP Professional client computers. The client computers in the network receive IP addresses from the DHCP server.

One of the member servers named DBSERV works as a database server. Mark configures the DHCP server to lease the reserved IP address 192.168.1.10 to DBSERV. He also creates an A record for DBSERV on the DNS server that uses the IP address 192.168.1.10.

Users complain that they are unable to access DBSERV. Mark runs the IPCONFIG /all command from the command prompt on DBSERV. He finds the following results:



```

C:\WINNTADV\system32\cmd.exe

Physical Address. . . . . : 00-00-E8-54-42-9F
DHCP Enabled. . . . . : Yes
Autoconfiguration Enabled . . . . : Yes
IP Address. . . . . : 192.168.1.201
Subnet Mask . . . . . : 255.255.255.0
Default Gateway . . . . . : 192.168.1.1
DHCP Server . . . . . : 192.168.1.63
DNS Servers . . . . . : 192.168.1.64

C:\>_
  
```



Now, Mark wants to ensure that DBSERV receives the IP address 192.168.1.10. What will he do to accomplish this?

- A. Write the MAC address of the DBSERV network adapter with dashes in the client reservation.
- B. Change the MAC address in the client reservation setting.
- C. Authorize the DHCP server.
- D. Remove the A record for DBSERV from the DNS server.

**Correct Answer:** B

**Section:** (none)

**Explanation**

**Explanation/Reference:**

#### QUESTION 15

Mark works as a Network Administrator for ABC.com. The company has its headquarters at New York and a branch office at Miami. The headquarters has a Windows domain-based network named Nettech.com. The network has three Windows member servers and 120 Windows XP Professional client computers. One of the member servers named DNSServ is working as a DNS server. The branch office in Miami also has a Windows domain-based network named Nettech1.com.

One Windows member server named DNSServ1 is working as a primary DNS server in Nettech1.com. DNSServ is a secondary zone server for Nettech1.com. Mark wants to monitor the notification traffic between these two domains and keep a record of when the primary DNS server for Nettech1.com informs DNSServ if there are available changes in the Nettech1.com zone. What will he do to accomplish this?

- A. Enable debug logging on DNSServ by selecting the Log packets for debugging check box and select the Notification check box.
- B. Configure auditing on DNSServ.
- C. Enable debug logging on DNSServ by selecting the Log packets for debugging check box.
- D. Execute the REPLMON command on DNSServ.

**Correct Answer:** A



**Section: (none)**

**Explanation**

**Explanation/Reference:**

**QUESTION 16**

Mark works as a Network Administrator for ABC.com. The company has a Windows domainbased network. The network contains two domain controllers, four Windows member servers, and 300 Windows XP Professional client computers. One of the member servers named RRASSRV works as a Routing and Remote Access Server. RRAS is configured as a VPN server. A company employee named Rick works from a remote location. Rick daily connects to RRASSRV by using a VPN connection and uploads daily reports on RRASSRV. He is the only person who connects to RRASSRV by using the VPN connection. Mark notices that Rick is able to access the other computers on the network while he is connected to RRASSRV. Mark wants to prevent Rick from accessing the other computers on the network. What will he do to accomplish this?

- A. In the Routing and Remote Access management console on RRASSRV, click the IP tab page in the server properties dialog box and deselect the Enable IP routing check box.
- B. In the Routing and Remote Access management console on RRASSRV, click the General tab page in the server properties dialog box and deselect the Remote access server check box.
- C. In the Routing and Remote Access management console on RRASSRV, click the PPP tab page in the server properties dialog box and deselect the Multilink connections check box.
- D. In the Routing and Remote Access management console on RRASSRV, click the IP tab page in the server properties dialog box and disable the IP routing radio button.

**Correct Answer: A**

**Section: (none)**

**Explanation**

**Explanation/Reference:**

**QUESTION 17**

A beta version of an application you're testing to send and receive data on your network does not seem to be sending compressed data before sending packets across the network. You're looking at the architecture of the application to see if you can determine where the problem likely originates. Using the OSI model, from where is the problem probably originating?

- A. Transport layer
- B. Application layer
- C. Presentation layer
- D. Physical layer



**Correct Answer: C**

**Section: (none)**

**Explanation**

**Explanation/Reference:**

**QUESTION 18** Your firm is designing a new software driver that will employ a proprietary method of flow control for data being sent across a network medium. On which layer of the OSI model would be this flow control likely be implemented?

- A. Application
- B. Data Link
- C. Transport
- D. Media Access Control

**Correct Answer: B**

**Section: (none)**

**Explanation**

**Explanation/Reference:**

**QUESTION 19**

Your corporate network uses variable length subnetting to make more efficient use of IP addresses. One of the IP addresses for a host is 131.39.161.17 with a subnet mask of 255.255.248.0. What is the proper notation for the network to which this host is connected?

- A. 131.39.160.0/21
- B. 131.36.161.0/20

C. 131.39.161.17/21

D. 131.36.160.0/20

**Correct Answer:** A

**Section:** (none)

**Explanation**

**Explanation/Reference:**

#### QUESTION 20

You need to create several subnets for your corporate network. Each subnet should have no more than two host addresses available per subnet. You have a subnet with the address of 136.42.255.0/24. What are the first two subnet addresses that would be created in this configuration?

A. 136.42.255.0/31, 136.42.255.4/31

B. 136.42.255.2/30, 136.42.255.4/30

C. 136.42.255.4/29, 136.42.255.8/29

D. 136.42.255.0/30, 136.42.255.4/30

**Correct Answer:** D

**Section:** (none)

**Explanation**

**Explanation/Reference:**

#### QUESTION 21

Jennifer, the network administrator at a chain of bakery stores called The Cheesecake Factory, recently upgraded the corporate office of a single segmented network to one that supports four separate virtual networks, or Virtual Local Area Network segments (VLANs). Jennifer is very conscious of production change and thus contacted the systems group in order to make sure all the technical aspects of the project were met. Jennifer wanted to make sure that when all the client workstations were on the new network segments, they were still able to gain IP connectivity to the rest of the network as they had before. The Cheesecake Factory has been running a Windows Server Active Directory domain at the Windows 2000 mixed functional level for over two months. Jennifer created four network segments and labeled them VLAN1, VLAN2, VLAN3, and VLAN4. VLAN1 was the original network and hosts the original DHCP server, called SERVER1. Its network address did not change. The systems team decided to put DHCP Relay Agents on VLAN2 and VLAN3, configured to relay DHCP messages to the original DHCP server on VLAN1. Due to a reluctance to permit more DHCP broadcast traffic than the router could handle, Jennifer suggested to her systems team that VLAN4 should host its own DHCP server. The systems group installed another DHCP server on VLAN4, set up the appropriate DHCP scopes on that server and set up the additional DHCP scopes for VLAN2 and VLAN3 on SERVER1. After the work was completed, all clients on all VLANs seemed to be working fine for about two weeks, until Jennifer got a call from the Help Desk stating that the users in the warehouse cannot boot up from their diskless workstations, where they run monthly accounting statistics, but can connect from all other workstations. Jennifer looks at her network diagram and determines that the warehouse is located on VLAN4. She also checks with users in the accounting department on VLAN1 to see if they can connect using their diskless workstations. They tell Jennifer that they can and have had no problems. What did the systems team most likely forget to do?

A. Install a DHCP Relay Agent on VLAN4.

B. Configure a BOOTP table on the new DHCP server on VLAN4.

C. Replace the router with an RFC 2131 compliant router.

D. Cold boot all the diskless workstations.

**Correct Answer:** B

**Section:** (none)

**Explanation**

**Explanation/Reference:**

#### QUESTION 22

Ceste has been working for the client services department at a local bank in Richmond, Virginia for over a year. He is responsible for client connectivity to the corporate network backbone. Ceste is a member of the DHCP Users group and uses his privileges as a member of this group to gauge the status of DHCP leases and available IP addresses. Jamie is a systems engineer for the same bank, and is responsible for the back-end configuration of all DHCP servers and scope configuration. He is a member of both the Domain Users and DHCP Administrators groups. On Monday morning, SERVER2, the DHCP server servicing the first and second floor of the bank, crashes. SERVER2 sits on the same network segment as the first floor users' client machines. The second floor network segment has a Windows Server server with RRAS and a DHCP Relay Agent configured. Ceste is the first to be alerted that clients are unable to obtain an IP address, and further notices that he cannot connect to the DHCP Console on SERVER2. He notifies Jamie, telling him that he thinks SERVER2 has crashed. Jamie is already in the process of activating all the pre-existing backup scopes for all the DHCP network segments at the bank. He tells Ceste to have all users on the first and second floor reboot their machines and everything should work. About 10 minutes later, Jamie receives a call from Ceste with the news that all first floor users' computers are now working, but nobody on the second floor can connect to any of their daily resources. What did Jamie forget to do in order to be fully prepared for this type of disaster?

A. Add the IP address of the backup DHCP server to the DHCP Relay Agents.

- B. Configure a DHCP Relay Agent for the backup DHCP server.
- C. Authorize the backup DHCP server.
- D. Activate the DHCP scopes.

**Correct Answer:** A

**Section:** (none)

**Explanation**

**Explanation/Reference:**

#### QUESTION 23

You work in the shipping and receiving warehouse for a small OEM computer supply company called The T-Group. It is your job as a desktop engineer to make sure that all clients are able to log on and authenticate to the corporate office from their NT 4.0 workstations. Currently, your client base of five workstations point to a WINS server at the corporate office to resolve logon and to authenticate to the correct domain controller. You get word that the systems engineering team is converting the functional level of the current Windows Server interim mode Active Directory domain over the weekend. They are raising the domain level to Windows Server native mode. You call the manager of this group and inquire about any changes you may need to make, so that your warehouse clients can still authenticate on Monday. Robert said that nothing would affect logon authentication, and in fact logon should be a lot quicker because he was removing some legacy protocols and services. Nervous about what he meant by this, as he is notorious for abrupt change without the correct research, you sit back and wait. Contrary to what was told to you, on Monday morning none of your NT 4.0 clients could log on. Knowing a little about network resolution, and more about Robert, you have a hunch and try to log on to using your Windows 2000 laptop machine that you built for emergencies. As you suspected, you are able to log on without a problem. You call Robert and ask him if he uninstalled the WINS server because he had heard that Windows Server no longer required NetBIOS. Robert replied, Yes. What can you do to quickly get your workstations logging onto the network again?

- A. Distribute an LMHOSTS file using the #PRE and #DOM tags with the name and IP address of the new PDC Emulator and have everybody reboot.
- B. Edit the default LMHOSTS file on everybody's workstation and use the #PRE and #DOM tags with the name and IP address of the new PDC Emulator.
- C. Install WINS on one of the NT 4.0 workstations and have all your clients point to it.
- D. Install a WINS proxy agent on one of your NT 4.0 workstations and have everybody point to it.

**Correct Answer:** A

**Section:** (none)

**Explanation**

**Explanation/Reference:**



#### QUESTION 24

As the network administrator, Kristy decides to implement the ability for clients to dial-in to the network to allow them the option to work from home if they want to, by installing and configuring an RRAS server. Kristy's internal network consists of a Windows 2000 domain, a single DNS and WINS server, multiple segmented broadcast domains, and a single DHCP server, configured to distribute the following information via four different IP address scopes:

- Server (local option)
- Router (local option)
- WINS Server (local option)
- Node Type (global option)
- Domain Name (global option)
- ARP Timeout (local)

Kristy installs her RRAS server and configures the DHCP Relay Agent to point to the only internal DHCP server. She then configures a fifth DHCP scope to accommodate the DMZ network into which she has installed her RRAS server. Kristy hopes to be able to offer both internal Web mail and resource access to her NT 4.0 file server in the same way she is able to successfully offer it now to only internal users. Kristy composes an e-mail with detailed instructions on how to set up her Windows ME laptop users with the correct VPN settings to dial-in the company RRAS server. With the e-mail, Kristy asks for feedback as to ease of installation, setup, connectivity, speed, resource access, and so on. A few days later, Kristy receives e-mails from most of the users she sent the e-mail to. All of them said that they were able to access e-mail just fine and that the speeds were great. They also said they were able to browse the Internet without a problem, but none of them could access any of the file server resources that they needed to do their work. What is the easiest thing Kristy can do to facilitate this need?

- A. Change the DNS server to a global option in DHCP
- B. Change the WINS server to a global option in DHCP
- C. Change the node type to a local option for each scope in DHCP
- D. Add another WINS server to facilitate the dial-in users

**Correct Answer:** B

**Section:** (none)

**Explanation**

**Explanation/Reference:**

**QUESTION 25**

Your network is running three DNS servers, NS1, NS2, and NS3. NS1 is running Windows Server, whereas NS2 and NS3 are still running Windows NT 4.0. In reviewing the error log on NS1, you notice an error that lists NOTIMPL(4) being returned by NS3. What does this error indicate?

- A. NS3 does not support extended DNS (EDNS0).
- B. NS1 does not support extended DNS (EDNS0).
- C. The OPT record received from NS3 contained an illegal Time-To-Live.
- D. The OPT record needs to be added to all three name servers.

**Correct Answer:** A

**Section:** (none)

**Explanation**

**Explanation/Reference:**

**QUESTION 26**

You've just created a new zone in DNS on a Windows Server -based computer. You check the zone and notice that the only records in it are the SOA and NS RRs. You check the configuration and see that the zone is configured to accept dynamic updates. What should you do next?

- A. Manually add all RR for the zone including A, CNAME, PTR, and SRV records.
- B. Manually add A RR for all hosts that cannot use dynamic updating.
- C. Manually add A RR and PTR RR for all hosts that will be using dynamic updating.
- D. Manually initiate a zone transfer to replicate all the needed RR to the new zone.

**Correct Answer:** B

**Section:** (none)

**Explanation**

**Explanation/Reference:**

**QUESTION 27**

The ABC.com network consists of a single Active Directory domain named ABC.com. All client computers on the ABC.com network run Windows XP Professional.

You use your client computer named ABC-WS294. You want to use Microsoft Baseline Security Analyzer (MBSA) on ABC-WS294 to analyze network servers for security vulnerabilities.

Which of the following services are the minimum required to be running on the network servers for you to scan them with MBSA? (Choose all that apply.)

- A. Remote Registry.
- B. Workstation service.
- C. Server service.
- D. Print Spooler service.

**Correct Answer:** AC

**Section:** (none)

**Explanation**

**Explanation/Reference:**

**QUESTION 28**

You are using WINS Forward Lookup integration in your mixed UNIX/Windows environment to allow your DNS-only UNIX clients to use only their configured Windows Server DNS server to query and resolve resolution requests for downlevel Windows NT 4.0 machines' NetBIOS names. This has been working well for your company for several months. You are informed that over the next several weeks, the Windows NT 4.0 servers are being moved to a different subnet in order to create a separate broadcast domain. They will still continue to register with the same WINS server, but their IP addresses will be changing, and they will no longer be able to be accessed via broadcasts. As these servers start their migration to the new subnet you begin to receive calls only from your UNIX community, complaining that they can no longer access servers that have moved until a day or so later. What can you do to fix the problem for all future migrated servers?

- A. Type nbtstat -RR on the migrated NT servers.
- B. Increase the TTL for WINS forward lookup records.

- C. Type ipconfig /registerdns on the migrated NT servers.
- D. Decrease the TTL for WINS forward lookups records.

**Correct Answer:** D

**Section:** (none)

**Explanation**

**Explanation/Reference:**

#### QUESTION 29

The president of your company has asked you if VPN technology could benefit the company. What is the greatest benefit provided by VPN?

- A. VPN solutions provide secure connectivity at a significant price savings compared to long distance analog or dedicated circuit connections.
- B. VPN solutions utilize fewer resources than dedicated circuits or analog connections.
- C. VPN solutions provide better remote control capabilities than other third-party alternatives.
- D. VPN solutions provide higher speed connections than dedicated circuits or analog connections.

**Correct Answer:** A

**Section:** (none)

**Explanation**

**Explanation/Reference:**

#### QUESTION 30

Your company's corporate security policy is very strict. No username or password information may be passed over the Internet without using the strongest encryption available. Your company does not yet have a certificate infrastructure in place. Which of these methods would be the best choice for VPN authentication to ensure that you are within your company's corporate security policy requirements?

- A. MS-CHAP v2
- B. PAP
- C. CHAP
- D. SPAP

**Correct Answer:** A

**Section:** (none)

**Explanation**

**Explanation/Reference:**

#### QUESTION 31

Katherine has been asked for her opinion on increasing the fault tolerance of the corporate network, which uses TCP/IP, Active Directory, and Windows 2000 computers. Specifically, the one DNS server on subnet A. Users may run into serious problems if that machine ever experiences downtime, or if the link between the two subnets goes down. Each subnet has its own Windows domain controller. What would you suggest to provide fault tolerance for the network?

- A. Set up a secondary DNS server on subnet B Configure the primary DNS server on subnet A to send notifications of zone changes to the secondary DNS server.
- B. Configure DNS on both domain controllers using Active Directory Integrated zones.
- C. Install a caching-only DNS server on subnet B.
- D. Set up a secondary DNS server on subnet B and configure it to request refreshes from the master DNS server on subnet A.

**Correct Answer:** B

**Section:** (none)

**Explanation**

**Explanation/Reference:**

#### QUESTION 32

The ABC.com network consists of a single Active Directory domain named ABC.com. All servers are configured with Windows Server and all client computers with Windows XP Professional. At present there are 100 servers in an organizational unit named Terminal Servers, configured to run Terminal Services.

The Terminal Servers host in-house applications. Only ABC.com users with Power Users group membership can run these in-house applications.

A new ABC.com security policy states that the Power Users Group must be empty on all servers.

How would you ensure that the in-house applications will be available to users on the servers when the new security requirement is enabled? (Choose two.)

- A. Set up a GPO in link it to the Terminal Servers OU.
- B. Set up the Compatws.inf security template to allow the Local Users group to run the legacy applications. C. Import the Compatws.inf template into the GPO.
- C. Change the legacy application executable file permissions to allow the Local Users group Full Control permission.
- D. Place the Domain Users group on the Local Administrators group on the Terminal Servers.
- E. Set up the Terminal Servers to run in Application Mode.
- F. Set up the Terminal Servers to run in Remote Administration Mode.

**Correct Answer:** AB

**Section:** (none)

**Explanation**

**Explanation/Reference:**

#### QUESTION 33

Jim is configuring the IP security policy for a computer running Windows Server.

Some of the client computers on the network are not IPSec aware, while others are. Jim wants all data to be encrypted and still allow those computers that do not support IPSec to authenticate.

Which of the following settings should he select? (Choose all that apply.)

- A. Server (request security)
- B. Client (request security)
- C. Client (respond only)
- D. Server Secure (require security)



**Correct Answer:** AC

**Section:** (none)

**Explanation**

**Explanation/Reference:**

#### QUESTION 34

John is the network administrator for a Windows Server network. Software Update Services will be used to deploy updates throughout the network. John wants to deploy the Automatic Updates settings for all clients through a group policy object. He opens the appropriate GPO but cannot find any automatic update settings. What is causing the problem?

- A. The settings cannot be configured through a group policy object.
- B. John does not have administrative privileges.
- C. The Automatic Updates ADM template has not been loaded.
- D. Software Update Services has not been installed.

**Correct Answer:** C

**Section:** (none)

**Explanation**

**Explanation/Reference:**

#### QUESTION 35

You work as It Admin at ABC.com. The ABC.com network consists of a domain named ABC.com. The servers at the ABC.com network run Windows Server. The ABC.com network has a file server named ABC-SR18. ABC-SR18 hosts shared folders.



During your routine monitoring, you notice that ABC-SR18 has a connectivity issue. To investigate further you run Network Monitor, but notices that during capturing, network packets were dropped.

What actions must you take to minimize the dropping of packets while monitoring ABC-SR18?

- A. You should configure a persistent demand-dial connection.
- B. You should configure a two-way initiated demand-dial connection.
- C. You should use dedicated capture mode when utilizing the Network Monitor.
- D. You should select the Do not overwrite events option in the Event Viewer.

**Correct Answer:** C

**Section:** (none)

**Explanation**

**Explanation/Reference:**

#### QUESTION 36

You work as the network administrator at ABC.com. The ABC.com network consists of a single Active Directory domain named ABC.com. The servers at the ABC.com network run Windows Server and the workstations, Windows XP Professional.

The ABC.com network has a DNS server named ABC-SR03 that does name resolution for host on the Internet. ABC.com users complain that they do not get the correct site when trying to access Web site known to them.

What actions must you take to stop this from happening without disrupting production?

- A. You should restart the DNS Server service.
- B. You should select the Secure cache against pollution setting.
- C. You should run the ipconfig/flushdns on ABC-SR03.
- D. You should run the ipconfig/registerdns on ABC-SR03.

**Correct Answer:** B

**Section:** (none)

**Explanation**

**Explanation/Reference:**

#### QUESTION 37

You work as the network administrator at ABC.com. The ABC.com network has a domain named ABC.com. The servers at the ABC.com network run Windows Server and the workstations, Windows XP Professional.

The ABC.com network has a server named ABC-SR10 that runs Windows Server Update Services (WSUS). During synchronization you notice that you cannot connect to the Windows Update servers, however, you can access to other Web site not residing in the intranet.

What actions must you take to connect to the Windows Update servers?

- A. You must run the ipconfig/registerdns.
- B. You must configure the forwarders on ABC-SR10.
- C. You must set the authentication to the proxy server in the WSUS settings.
- D. You must run the gpupdate /force command on ABC-SR10.

**Correct Answer:** C

**Section:** (none)

**Explanation**

**Explanation/Reference:**

#### QUESTION 38

You work as the network administrator at ABC.com. The ABC.com network has a domain named ABC.com. The servers at the ABC.com network run Windows Server. ABC.com has a subsidiary named Test Labs, Inc. that has a domain named testlabs.com.

The ABC.com network has a DNS server named ABC-SR05. ABC-SR05 acts as a secondary zone for testlabs.com

What actions must you take to track when the DNS server at Test Labs, Inc. sends notifications of modifications in the zone of testlabs.com to ABC-SR05?

- A. You must run the gpresult command in verbose mode.
- B. You must select debug logging and set the log to store Notification events on ABC- SR05.
- C. You must run the secdit command in analysis mode.
- D. You must configure a two-way initiated demand-dial connection.

**Correct Answer:** B

**Section:** (none)

**Explanation**

**Explanation/Reference:**

#### QUESTION 39

You work as the network administrator at ABC.com. The ABC.com network consists of a domain named ABC.com. The servers at the ABC.com network run Windows Server.

The ABC.com network has a Web server named ABC-SR11. During a routine monitoring you notice an increase in network traffic. Due to this you need to find out the MAC address of the workstation that initiated the transfers and the command that was used. However, your action must not affect ABC-SR11.

What actions must you take?

- A. You must run the ipconfig/registerdns.
- B. You must use the Netmon utility.
- C. You must capture the IP traffic to ABC-SR11.
- D. You must Enable Server Message Block (SMB) signing on all the workstations.

**Correct Answer:** C

**Section:** (none)

**Explanation**

**Explanation/Reference:**

#### QUESTION 40

You are the network administrator for Verigon Research. The network contains Windows Server and Windows XP Professional computers in a single Active Directory domain.

Field researchers have been issued Windows XP Professional laptop computers to use when performing research in remote locations. When they return to the office, they need to connect these laptops to the corporate network. You decide to create a 802.1x wireless network for the research department laptops. You create a separate subnet on which you install a wireless access point. You configure a Windows Server computer named RAD1 to be a Remote Access Dial In User Authentication Service (RADIUS) server for the researchers. The wireless access points are RADIUS clients.

You must select a protocol for this wireless network to use. The protocol you select must support the use of certificates, and must provide the strongest authentication and enhanced security. Which protocol should you use?

- A. Extensible Authentication Protocol - Message Digest 5 (EAP-MD5)
- B. Extensible Authentication Protocol - Transport Layer Security (EAP-TLS)
- C. Extensible Authentication Protocol - Microsoft Challenge Handshake Protocol v2 (EAP-MS-CHAP v2)
- D. Protected EAP (PEAP) with EAP-TLS
- E. Protected EAP (PEAP) with EAP-MD5
- F. Protected EAP (PEAP) with EAP-MS-CHAP v2

**Correct Answer:** D

**Section:** (none)

**Explanation**

**Explanation/Reference:**

#### QUESTION 41

You work as the network administrator at ABC.com. The ABC.com network has a domain named ABC.com. The servers at the ABC.com network run Windows Server and the workstations, Windows XP Professional.

The ABC.com network has a Web server named ABC-SR10 that has the Internet Information Services (IIS) 6.0 installed. ABC-SR10 hosts a Web site that can be reached from the internal network and the Internet. The internal traffic at ABC.com needs authentication without a secure protocol to access the Web site; however Internet traffic needs to authenticate with a secure protocol.

What actions must you take to ensure that the all accesses to ABC-SR10 use a secure protocol?

- A. You need to configure the log to capture Notification events.
- B. You need to apply the hisecdc.inf predefined security template.
- C. You need to monitor network traffic and IIS logs.
- D. You need to apply a custom security template.

**Correct Answer:** C

**Section:** (none)

**Explanation**

**Explanation/Reference:**

#### QUESTION 42

You work as the network administrator at ABC.com. The ABC.com network has a domain named ABC.com. The servers at the ABC.com network run Windows Server and the workstations, Windows XP Professional.

The ABC.com network has two servers, named ABC-SR30 and ABC-SR31, which contain file with sensitive company information. You create a new OU named SenSrv and move ABC-SR30 and ABC-SR31 to the new OU. You then create a new GPO that and configure it to encrypt all network connections. You then link the GPO to the SenSrv OU.

How would you check to see if encrypted connections to ABC-SR30 and ABC-SR31 are taking place?

- A. By opening the Resultant Set of Policy console.
- B. By running the Microsoft Baseline Security Analyzer (MBSA).
- C. By applying the hisecdc.inf predefined security template.
- D. By opening the IP Security Monitor console.



**Correct Answer:** D

**Section:** (none)

**Explanation**

**Explanation/Reference:**

#### QUESTION 43

You work as a network administrator for ABC.com. The ABC.com network consists of a single Active Directory domain named ABC.com. There are currently 120 Web servers running Windows Server and are contained in an Organizational Unit (OU) named ABC\_WebServers

ABC.com management took a decision to uABCrade all Web servers to Windows Server. You disable all services on the Web servers that are not required. After running the IIS Lockdown Wizard on a recently deployed web server, you discover that services such as NNTP that are not required are still enabled on the Web server.

How can you ensure that the services that are not required are forever disabled on the Web servers without affecting the other servers on the network? (Choose two.)

- A. Set up a GPO that will change the startup type for the services to Automatic.
- B. By linking the GPO to the ABC\_WebServers OU.
- C. Set up a GPO with the Hisecws.inf security template imported into the GPO.
- D. By linking the GPO to the domain.
- E. Set up a GPO in order to set the startup type of the redundant services to Disabled.
- F. By linking the GPO to the Domain Controllers OU.
- G. Set up a GPO in order to apply a startup script to stop the redundant services.

**Correct Answer:** BE

**Section:** (none)

**Explanation**

**Explanation/Reference:**

**QUESTION 44**

You are working as the administrator at ABC.com. ABC.com has headquarters in London and branch offices in Berlin, Minsk, and Athens. The Berlin, Minsk and Athens branch offices each have a Windows Server domain controller named ABC-DC01, ABC-DC02 and ABC-DC03 respectively. All client computers on the ABC.com network run Windows XP Professional.

One morning users at the Minsk branch office complain that they are experiencing intermittent problems authenticating to the domain. You believe that a specific client computer is the cause of this issue and so need to discover the IP address client computer.

How would you capture authentication event details on ABC-DC02 in the Minsk branch office?

- A. By monitoring the logon events using the SysMon utility.
- B. By recording the connections to the NETLOGON share using the SysMon utility.
- C. By recording the authentication events with the NetMon utility.
- D. By monitoring the authentication events using the Performance and Reliability Monitor.

**Correct Answer: C**

**Section: (none)**

**Explanation**

**Explanation/Reference:**

**QUESTION 45**

You are working as the administrator at ABC.com. Part of your job description includes the deployment of applications on the ABC.com network. To this end you operate by testing new application deployment in a test environment prior to deployment on the production network.

The new application that should be tested requires 2 processors and 3 GB of RAM to run successfully. Further requirements of this application also include shared folders and installation of software on client computers. You install the application on a Windows Server Web Edition computer and install the application on 30 test client computers.

During routine monitoring you discover that only a small amount of client computers are able to connect and run the application. You decide to turn off the computers that are able to make a connection and discover that the computers that failed to open the application can now run the application.

How would you ensure that all client computers can connect to the server and run the application?

- A. By running a second instance of the application on the server.
- B. By increasing the Request Queue Limit on the Default Application Pool.
- C. By modifying the test server operating system to Windows Server Standard Edition.
- D. By increasing the amount of RAM in the server to 4GB.

**Correct Answer: C**

**Section: (none)**

**Explanation**

**Explanation/Reference:**

**QUESTION 46**

You are an Enterprise administrator for ABC.com. All servers on the corporate network run Windows Server and all client computers run Windows XP.

The network contains a server named ABC-SR01 that has Routing and Remote Access service and a modem installed which connects to an external phone line.

A partner company uses a dial-up connection to connect to ABC-SR01 to upload product and inventory information. This connection happens between the hours of 1:00am and 2:00am every morning and uses a domain user account to log on to ABC-SR01.

You have been asked by the security officer to secure the connection.

How can you ensure that the dial-up connection is initiated only from the partner company and that access is restricted to just ABC-SR01? (Choose three.)

- A. Set up the log on hours restriction for the domain user account to restrict the log on to between the hours of 1:00am and 2:00am.

- B. Set up a local user account on ABC-SR01. Have the dial-up connection configured to log on with this account.
- C. Set up the remote access policy on ABC-SR01 to allow the connection for the specified user account between the hours of 1:00am and 2:00am.
- D. Set up the remote access policy with the Verify Caller ID option to only allow calling from the phone number of the partner company modem.
- E. Set up the remote access policy to allow access to the domain user account only.

**Correct Answer:** BCD

**Section:** (none)

**Explanation**

**Explanation/Reference:**

#### QUESTION 47

The ABC.com network consists of a single Active Directory domain named ABC.com. All servers on the ABC.com network run Windows Server.

ABC.com contains a Development department. ABC.com contains a domain controller named ABC-SR24 which is also configured as a DNS Server. A ABC.com employee named Clive Wilson works in the Development department. One morning Clive Wilson complains that he cannot connect to another network server.

During investigation, you notice that nslookup queries sometimes take a long time and sometimes fail altogether.

You suspect that there is a problem with ABC-SR24.

How would you configure monitoring on ABC-SR24 so that you can review individual name resolution queries?

- A. Use System Monitor to monitor host resolution queries on ABC-SR24.
- B. Use Event Viewer to view the DNS event log on ABC-SR24.
- C. Select the Log packets for debugging option on the Debug Logging tab in the DNS server properties on ABC-SR24.
- D. Use Network Monitor to capture DNS query packets on ABC-SR24.

**Correct Answer:** C

**Section:** (none)

**Explanation**

**Explanation/Reference:**



#### QUESTION 48

You are working as the administrator at ABC.com. The network consists of a single Active Directory domain named ABC.com with the domain functional level set at Windows Server. All network servers run Windows Server and all client computers run Windows XP Professional.

The ABC.com domain is divided into organizational units (OU). All the resource servers are contained in an OU named ABC\_SERVERS and the workstations are contained in an OU named ABC\_CLIENTS. All resource servers operate at near capacity during business hours. All workstations have low resource usage during business hours.

You received instructions to configure baseline security templates for the resource servers and the workstations. To this end you configured two baseline security templates named ABC\_SERVERS.inf and ABC\_CLIENTS.inf respectively. The ABC\_SERVERS.inf template contains many configuration settings. Applying the ABC\_SERVERS.inf template would have a performance impact on the servers. The ABC\_CLIENTS.inf contains just a few settings so applying this template would not adversely affect the performance of the workstations.

How would you apply the security templates so that the settings will be periodically enforced whilst ensuring that the solution reduces the impact on the resource servers? (Choose three.)

- A. By setting up a GPO named SERVER-GPO and link it to the ABC\_SERVERS OU.
- B. By having the ABC\_SERVERS.inf template imported into SERVER-GPO.
- C. By having the ABC\_SERVERS.inf and the ABC\_CLIENTS.inf templates imported into the Default Domain Policy GPO.
- D. By scheduling SECEDIT on each resource server to regularly apply the ABC\_SERVERS.inf settings during off-peak hours.
- E. By having a GPO named CLIENT-GPO created and linked to the ABC\_CLIENTS OU.
- F. By having the ABC\_CLIENTS.inf template imported into CLIENT-GPO.
- G. By having SERVER-GPO and CLIENT-GPO linked to the domain.

**Correct Answer:** DEF

**Section: (none)**

**Explanation**

**Explanation/Reference:**

**QUESTION 49**

You are working as the administrator at ABC.com. The ABC.com network consists of a single Active Directory domain named ABC.com. The ABC.com network contains a DMZ that contains a two-node Network Load Balancing cluster, which is located in a data centre that is physically impenetrable to unauthorized persons.

The cluster servers run Windows Server Web Edition and host an e-commerce website. The NLB cluster uses a virtual IP address that can be accessed from the Internet.

What can you do to mitigate the cluster's most obvious security vulnerability?

- A. Configure the cluster to require IPSec.
- B. Configure the network cards to use packet filtering on all inbound traffic to the cluster.
- C. Use EFS on the server hard disks.
- D. Configure intrusion detection the servers on the DMZ.
- E. Configure Mac addressing on the servers in the DMZ.

**Correct Answer: B**

**Section: (none)**

**Explanation**

**Explanation/Reference:**

**QUESTION 50**

You are working for an administrator for ABC.com. The ABC.com network consists of a single Active Directory domain named ABC.com. All the servers on the network run Windows Server servers.

You have configured four servers in a network load balancing cluster. You need to enable the cluster in unicast mode although each server only has one network card. After your configuration, the NLB cluster has successfully converged.

You discover that you can optimize the use of the cluster by moving a specific application to each node of the cluster. However for this application to execute, all the nodes of the cluster must be configured by a Network Load Balancing Port Rule.

When you open Network Load Balancing Manager on one of the NLB nodes, you receive a message saying that Network Load Balancing Manager is unable to see the other nodes in the cluster.

How can you add a port rule to the cluster nodes?

- A. By opening Network Load Balancing Manager on a different host.
- B. By creating an additional virtual IP address on the cluster.
- C. By modifying the Network Connection Properties on every host.
- D. By removing each host from the cluster before creating the port rule.

**Correct Answer: C**

**Section: (none)**

**Explanation**

**Explanation/Reference:**

**QUESTION 51**

You are working as an administrator for ABC.com. The network consists of a single Active Directory domain named ABC.com. All server run Windows Server and all client computer run Windows XP Professional.

The ABC.com departments are organized into organizational units (OUs). The Administration OU is named ABC\_ADMIN, and the Sales OU is named PABC\_SALES. All file servers for all departments are located in their respective OUs. The ABC\_SALES OU is a child OU of the ABC\_ADMIN OU.

A new ABC.com written security policy states that servers in the ABC\_ADMIN OU should be highly secure. All communications with ABC-ADMIN servers should be encrypted. The security policy also states that auditing should be enabled for file and folder deletion on Sales servers. Communications with the Sales servers should not be encrypted.



How should you configure Group Policy for the ABC\_Admin and ABC\_Sales OU? (Choose three.)

- A. Configure a GPO to apply the Hisecws.inf security template. Link this GPO to the ABC\_ADMIN OU.
- B. Configure a GPO to enable the Audit object access audit policy on computer objects. Link this GPO to the ABC\_SALES OU.
- C. Configure a GPO to apply the Hisecws.inf security template. Link this GPO to the ABC\_Sales OU.
- D. Configure a GPO to enable the Audit object access audit policy on computer objects. Link this GPO to the ABC\_ADMIN OU.
- E. Block group policy inheritance on the ABC\_ADMIN OU.F. Block group policy inheritance on the ABC\_SALES OU.

**Correct Answer:** ABF

**Section:** (none)

**Explanation**

**Explanation/Reference:**

#### QUESTION 52

You are working as an administrator at ABC.com. The ABC.com network consists of a single Active Directory domain named ABC.com which contains Windows Server servers Windows XP Professional client computers.

You want to improve network security and need to pinpoint all computers that have the known vulnerabilities.

What should you do to automate the process of collecting information on existing vulnerabilities for each computer, on a nightly basis?

- A. By scheduling secedit to compare the security settings with a baseline and run on a nightly basis.
- B. By installing Anti-Virus software on the computers and configuring the software to update on a nightly basis.
- C. By configuring a scheduled task to run the mbsaccli utility on a nightly basis.
- D. By having Microsoft Baseline Security Analyzer (MBSA) installed on a server on the network.
- E. By configuring Automatic Updates to use a local SUS server and run on a nightly basis.
- F. You configuring Automatic Updates to run on a nightly basis and use the Microsoft Updates servers.

**Correct Answer:** C

**Section:** (none)

**Explanation**

**Explanation/Reference:**



**QUESTION 53** All the servers on the network run Windows Server server and all the client computers run Windows XP.

The network contains three domain controllers named ABC-DC1, ABC-DC2 and ABC-DC3. The System State Data of each domain controller is backed up on a nightly basis.

Recently an organizational unit (OU) has been mistakenly deleted from the AD.

What is the quickest way to restore the deleted OU?

- A. Reboot the domain controller in Safe Mode then use Windows Backup.
- B. Reboot the domain controller in Directory Services Restore Mode then perform an authoritative restore of the subtree where the OU was deleted using the Ntdsutil utility.
- C. Reboot the domain controller in Directory Services Restore Mode then perform a non-authoritative restore of the subtree where the OU was deleted using the Ntdsutil utility.
- D. Reboot the domain controller using the Last Known Good Configuration.
- E. Use Active Directory Sites and Services to force replication from another domain controller.

**Correct Answer:** B

**Section:** (none)

**Explanation**

**Explanation/Reference:**

#### QUESTION 54

The ABC.com network consists of a single Active Directory domain named ABC.com. All servers on the ABC.com network run Windows Server and all client computers run Windows XP Professional.

ABC.com contains a file server named ABC-SR24. ABC-SR24 hosts the home folders for all ABC.com users.

After about a month the ABC.com users raised complaints regarding the unacceptable long time their home folder takes to open at certain times during the day.

You need to determine the reason for the poor performance. You verify that the processor and memory usage is low. You suspect the hard disk may be the cause of the bottleneck.

How would you verify that the hard disk is the problem?

- A. Use System Monitor to view the LogicalDisk and PhysicalDisk counters during a period of poor performance.
- B. Use Task Manager to view the page faults counter.
- C. Configure Auditing on the home folders.
- D. Use Network Monitor to view the amount of network traffic to and from the server.

**Correct Answer:** A

**Section:** (none)

**Explanation**

**Explanation/Reference:**

#### QUESTION 55

The ABC.com network consists of a single Active Directory domain named ABC.com. All servers on the ABC.com network run Windows Server and all client computers run Windows XP Professional.

A domain controller named ABC-DC1 is configured as a DNS server. DC1 hosts the DNS zone for the ABC.com internal LAN.

An external DNS server named ABC-DNS1 hosts the DNS zone for the ABC.com external website and is configured with root hints. ABC-DNS1 is outside of the network firewall.

You need to protect the client computers by minimizing the risk of DNS-related attacks from the Internet, without impacting on their access to Internet-based sites.

How should you configure the DNS servers and client computers?

- A. DNS forwarding should be configured on ABC-DNS1 for ABC-DC1 and client computers must be configured to use ABC-DC1.
- B. The firewall should be configured to block all DNS traffic.
- C. DNS forwarding should be configured on ABC-DC1 for ABC-DNS1 and client computers must be configured to use ABC-DNS1.
- D. A root zone should be added to ABC-DC1 and client computers must be configured to use ABC-DC1.

**Correct Answer:** A

**Section:** (none)

**Explanation**

**Explanation/Reference:**

#### QUESTION 56

The ABC.com network consists of a single Active Directory domain named ABC.com. All computers on the ABC.com network are members of the ABC.com domain.

You install a new server named ABC-CA1 and configure it as a Certification Authority for the ABC.com domain.

How would you enable an Active Directory global group named CA-Admins to issue, revoke and approve certificates without assigning more permissions than necessary?

- A. Make the CA-Admins group also members of the Domain Admins group in the domain.
- B. Make the CA-Admins group also members of the local Administrators group on ABC-CA1.
- C. Grant the CA-Admins group Full Control permission to the Certificated Template container in the Active Directory.
- D. Make the CA-Admins group members of the Cert Publishers group in Active Directory.
- E. Grant the Certificate Managers role to the CA-Admins group.

**Correct Answer:** E

**Section:** (none)

**Explanation**

**Explanation/Reference:**

**QUESTION 57**

The ABC.com network consists of a single Active Directory domain named ABC.com. All servers on the ABC.com network run Windows Server and all client computers run Windows XP Professional. The ABC.com network contains an application server named ABC-SR20.

You had to reboot ABC-SR20 after you installed a new service on it but the logon screen was not displayed once ABC-SR20 has rebooted. Your attempts to restore the server by using the Last Known Good Configuration and Safe Mode startup options also fail. You restore ABC-SR20 from backup. After later researching the problem, you discover that the service you installed was not compatible with a driver.

How could you configure the servers to enable you to recover from this type of failure as quickly as possible if this type of problem happens again?

- A. By checking the hardware compatibility list before installing the service.
- B. By installing the Recovery Console on the servers.
- C. By configuring Automated System Recovery (ASR) backups.
- D. By configuring the server hard disks in a RAID system.

**Correct Answer:** B

**Section:** (none)

**Explanation**

**Explanation/Reference:**

**QUESTION 58**

The ABC.com network consists of a single Active Directory domain named ABC.com. All the servers on the network run Windows Server servers and all the client computers run Windows XP.

The network contains a two node server cluster for file sharing that has been created using two Windows Server Enterprise Edition servers named ABC-SR01 and ABC-SR02. Both servers contain a single hard disk containing the system volume. Both servers connect to a shared storage array which hosts the shared folders.

ABC-SR01 is configured as the preferred owner of the file sharing resources. To prepare your network for any disaster recovery, you decide to take regular backups using the Backup or Restore Wizard.

A Full backup of the shared folders is taken every night.

A Full backup of ABC-SR01 and ABC-SR02 is taken every Saturday night.

Incremental backups of ABC-SR01 and ABC-SR02 are taken every night. System State Data backups and Automated System Recovery (ASR) of both servers are taken every night.

During a routine monitoring check on Friday you discover that ABC-SR02 has gone offline.

How can you recover the cluster as soon as possible? (Choose all that apply.)

- A. Evict ABC-SR02 from the cluster.
- B. Restore the last full backup then restore the last incremental backup.
- C. Restore the last full backup then restore the last incremental backup and the last System State backup.
- D. Perform an ASR restore on ABC-SR02.
- E. Add ABC-SR02 back into the cluster.

**Correct Answer:** ADE

**Section:** (none)

**Explanation**

**Explanation/Reference:**

**QUESTION 59**

The ABC.com network consists of a single Active Directory domain named ABC.com. All servers on the ABC.com network run Windows Server and all client computers run Windows XP Professional.

A server named ABC-SR12 contains two volumes named Drive D and Drive E and has been designated to function as an application server.

The application on ABC-SR12 is a custom application that is currently used by the ABC.com Sales Department. The application has been installed on the ABC-SR12 Drive D. You configure the application database on Drive D, and you configure the application to store its database transaction log files on the ABC-SR12 Drive E.

After a few days, Sales users report that the application has failed. You investigate the cause of the failure and discover that the ABC-SR12 Drive E is almost completely filled with the application's transaction log files.

You back up the database and delete the log files and the application runs successfully.

You want to design a solution that keeps the application running. The log files should not be deleted unless the database has been backed up.

What should you do to keep the application running? (Choose two.)

- A. Enable file compression on the E: drive.
- B. Have a script created that will back up the database then delete the log files.
- C. Configure an alert on ABC-SR12 to run the script when there is less than 25 percent of free space on the E-drive.
- D. Configure a script to delete the log files.
- E. Create a scheduled task to run the script every week.

**Correct Answer:** BC

**Section:** (none)

**Explanation**

**Explanation/Reference:**

**QUESTION 60** The ABC.com network consists of a single Active Directory domain named ABC.com.

You want to improve the security on the Windows Server domain controllers by configuring enhanced password policies and audit settings.

Which security template should you apply to the domain controllers?

- A. Setup security.inf.
- B. Hisecws.inf.
- C. DC security.inf.
- D. Securews.inf.
- E. Securedc.inf.
- F. Compatws.inf.
- G. Rootsec.inf.



**Correct Answer:** E

**Section:** (none)

**Explanation**

**Explanation/Reference:**

**QUESTION 61**

The ABC.com network consists of a single Active Directory domain named ABC.com. ABC.com has its headquarters in Chicago and several branch offices at various locations throughout the country. All servers on the ABC.com network run Windows Server.

You are in the process of configuring a VPN connection between the Chicago office and a branch office in Dallas using Windows Server computers running Routing and Remote Access (RRAS).

A ABC.com written security policy states that the requirements below must be met:

- Data transmitted over the VPN must be encrypted with end to end encryption.
  - The VPN connection authentication should be at the computer level rather than at user level and with no credential information transmitted over the internet.
- How should you configure the VPN?

(Choose two.)

- A. Use a PPTP connection.
- B. Use EAP-TLS authentication.
- C. Use a PPP connection.

- D. Use MS-CHAP v2 authentication.
- E. Use MS-CHAP authentication.
- F. Use PAP authentication.
- G. Use an L2TP/IPSec connection.

**Correct Answer:** BG

**Section:** (none)

**Explanation**

**Explanation/Reference:**

**QUESTION 62** All servers on the corporate network run Windows Server and all clients run Windows XP.

You have been asked to install a new application called App1 for the network users. The application needs two processors and 3GB RAM to run successfully.

To test App1, you assemble a server named ABC-AppSrv with 4GB RAM and two processors and install Windows Standard Edition 32-bit on it. You install App1 on the server and install the client component of the application on 20 client computers.

When you execute the application, you discover that the application is running very slowly on the 20 client computers. When you disconnect some of the client computers, the application runs faster on the remaining client computers.

How can you improve the performance of App1?

- A. Install the 64-bit version of Windows Server on ABC-AppSrv.
- B. Use Task Manager to increase the priority of App1 on ABC-AppSrv.
- C. Add more RAM to ABC-AppSrv.
- D. Change the operating system on ABC-AppSrv to Windows Server Enterprise Edition.
- E. Add the /3GB switch to the boot.ini file.

**Correct Answer:** E

**Section:** (none)

**Explanation**

**Explanation/Reference:**

**QUESTION 63** The ABC.com network consists of a single Active Directory domain named ABC.com.

You deploy an enterprise certification authority (CA) on a Windows Server computer named ABC-CA1. The primary purpose of the CA is issue company users with digital certificates to enable them to authenticate with the new company Intranet website.

You create a new certificate template named Web Authentication. You enable the Web Authentication certificate template on ABC-CA1 and configure the default domain group policy so that users who log on to the domain receive a Web Authentication certificate.

The following morning users complain that they do not have certificates which can be used to authenticate to the Intranet Web site.

How can you ensure the users are issued with a certificate?

- A. By configuring ABC-CA1 to be an Enterprise Subordinate CA of a public CA such as Verisign.
- B. By modifying the permissions of the Web Authentication certificate template to give the Domain Users group the Allow – Autoenroll permission.
- C. By adding your Domain Admin user account to the Cert Managers group in Active Directory.
- D. By configuring the Default Domain Controllers GPO to assign the certificates to users when they log on.

**Correct Answer:** B

**Section:** (none)

**Explanation**

**Explanation/Reference:**



**QUESTION 64**

The ABC.com network consists of a single Active Directory domain named ABC.com. All servers on the ABC.com network run Windows Server. The ABC.com network also contains a file server named ABC-SR10.

A ABC.com user named Rory Allen complains that when connecting to ABC-SR10, it often takes quite some time to respond. Other users report the same problem.

Your investigations reveal that the network interface on ABC-SR10 has a large load during times when the server is slow to respond. You suspect that one of the network computers is causing the problem.

How would you identify the problematic machine?

- A. By examining the event logs on ABC-SR10.
- B. By viewing the Local Area Connection status on ABC-SR10.
- C. By using Network Monitor to inspect the network traffic on the client computers.
- D. By using System Monitor to inspect the performance monitor counters on ABC-SR10.
- E. By examining the event logs on the client computers.
- F. By using System Monitor to inspect the performance monitor counters on the client computers.
- G. By using Network Monitor to inspect the network traffic on ABC-SR10.

**Correct Answer:** G

**Section:** (none)

**Explanation**

**Explanation/Reference:**

**QUESTION 65**

The ABC.com network consists of a single Active Directory domain named ABC.com. All servers on the ABC.com network run Windows Server Enterprise Edition and all client computers run Windows XP Professional. ABC.com has its headquarters in Chicago and a branch office in Dallas.

The Chicago and Dallas offices are connected by permanent leased line connection with a hardware router at each end of the connection.

Currently all client computers in both offices receive their IP configurations from a single Windows Server 2003 server located in the Chicago office.

You are designing a new DHCP architecture to improve the performance and reliability of the system.

How would you ensure that DHCP services will continue to function in the event of a failure of any single component? (Choose two.)

- A. Set up two Windows Server computers as a DHCP server cluster in the Chicago office.
- B. Install two Windows Server computers as a DHCP server cluster in the Dallas office.
- C. Configure a Windows Server computer at the Dallas office as a DHCP relay agent.
- D. Install a Windows Server computer as an additional DHCP server in the Dallas office.
- E. Set up a Windows Server 2003 computer at the Chicago office as a DHCP relay agent.
- F. Configure one DHCP server to handle 75 percent of the IP address scope and the other DHCP server to handle 25 percent.

**Correct Answer:** AB

**Section:** (none)

**Explanation**

**Explanation/Reference:**