

NS0-526.VCEplus.premium.exam.57q

Number: NS0-526
Passing Score: 800
Time Limit: 120 min
File Version: 1.0



Website: <https://vceplus.com> - <https://vceplus.co>
VCE to PDF Converter: <https://vceplus.com/vce-to-pdf/>
Facebook: <https://www.facebook.com/VCE.For.All.VN/>
Twitter : https://twitter.com/VCE_Plus

NS0-526

Certified Implementation Engineer, Data Protection



Exam A

QUESTION 1

Your manager requires you to protect a production SVM called svm01 by using SVM-DR. Your manager insists that all configuration and data LUNs be replicated to the DR cluster. The destination SVM should be called drsvm01. You set up an SVM-DR relationship between the clusters, specifying that the `-identity-preserve` option is set to true. After the initial replication completes, you discover that the iSCSI LIF configuration has not been replicated to drsvm01.

What should you do to solve this problem?

- A. Run the relationship a second time and check the configuration again.
- B. Manually create and configure the iSCSI LIFs on drsvm01.
- C. Set up a new relationship without using the `-identity-preserve` option.
- D. Add the FC protocol to the destination and configure the FC LIFs.

Correct Answer: C

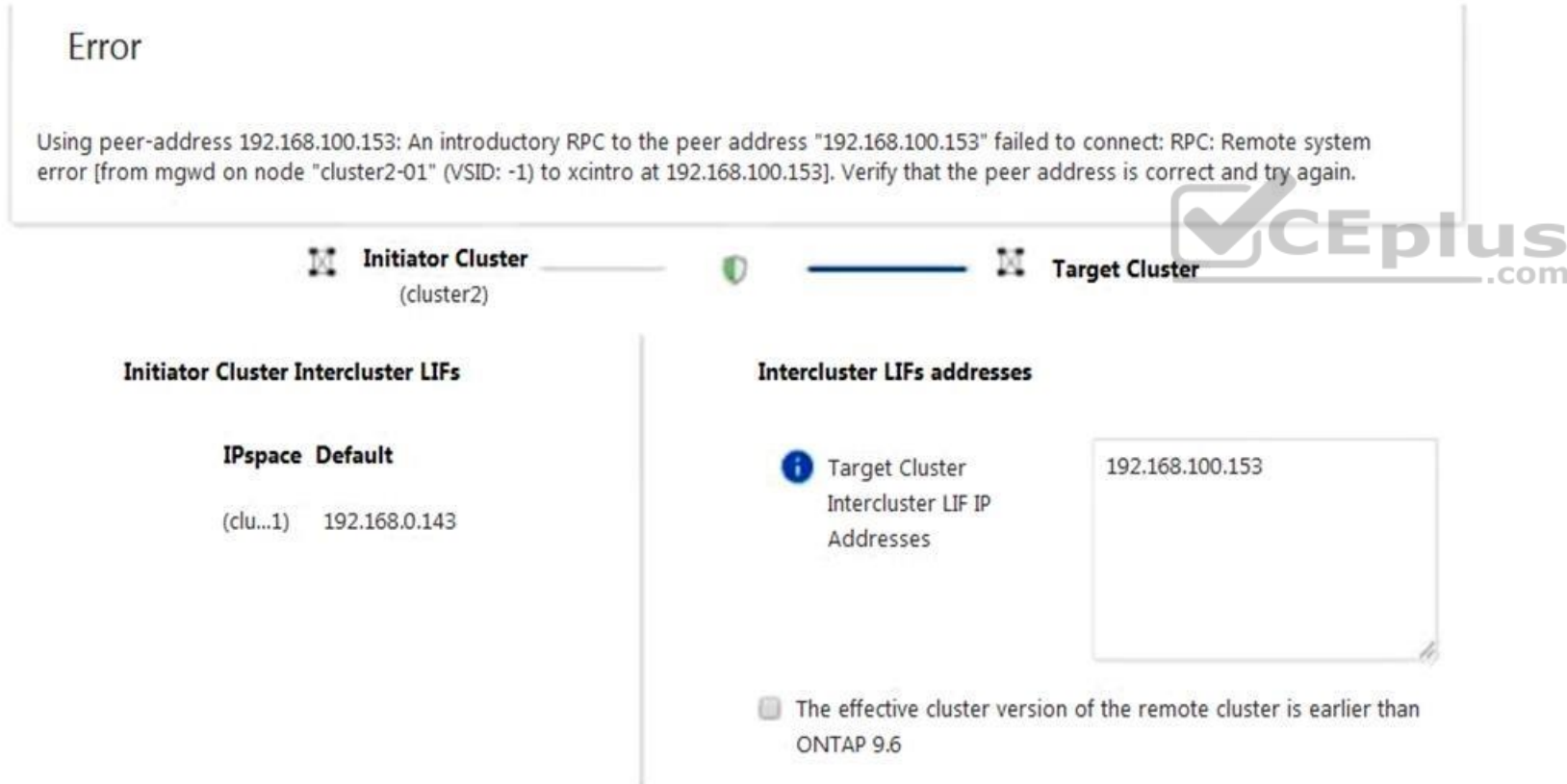
Section: (none)

Explanation

Explanation/Reference:

QUESTION 2

Click the Exhibit button.



Error

Using peer-address 192.168.100.153: An introductory RPC to the peer address "192.168.100.153" failed to connect: RPC: Remote system error [from mgwd on node "cluster2-01" (VSID: -1) to xcintro at 192.168.100.153]. Verify that the peer address is correct and try again.

Initiator Cluster (cluster2) **Target Cluster**

Initiator Cluster Intercluster LIFs

IPspace Default

(clu...1) 192.168.0.143

Intercluster LIFs addresses

Target Cluster Intercluster LIF IP Addresses

192.168.100.153

☐ The effective cluster version of the remote cluster is earlier than ONTAP 9.6

You are configuring cluster peering from cluster2 to cluster1 on your ONTAP 9.7 clusters using ONTAP System Manager. You are given the details shown below to set up the cluster peer relationship. You want to determine why the peering has failed.

Cluster2 intercluster LIF IP: 192.168.0.143 Subnet: 255.255.255.0 Port: e0e passphrase: netapp1234

Cluster1 intercluster LIF IP: 192.168.0.153 Subnet: 255.255.255.0 Port: e0e passphrase: netapp1234

Referring to the exhibit, which statement is correct?

- A. The Source Cluster IP is incorrect.
- B. The Target Cluster Passphrase is incorrect.

- C. The Target Cluster IP is incorrect.
- D. The Source Cluster Passphrase is incorrect.

Correct Answer: CD

Section: (none)

Explanation

Explanation/Reference:

QUESTION 3

You are the administrator of your company's ONTAP clusters. You are asked to provide a disaster recovery solution between your primary AFF A400 cluster and your FAS2720 cluster with the highest possible availability at the lowest possible price.

In this scenario, which product will satisfy this requirement?

- A. MetroCluster
- B. SM-S
- C. SnapMirror
- D. SVM-DR

Correct Answer: A

Section: (none)

Explanation

Explanation/Reference:

Reference: <https://blog.netapp.com/disaster-recovery-solution-for-enterprise-apps/>

QUESTION 4

Application data needs to be replicated between two FAS9000 clusters running ONTAP 9.7 for DR purposes only. The application has 50 data volumes to be replicated concurrently. You also require that the application can run from the DR site should the production site suffer a disaster.

| Data Protection Cluster Limits | | Scope: |
|--|--|---------|
| | | HA Pair |
| Maximum number of NDMP sessions | | 36 |
| Maximum number of data protection (DP) mirrors and/or SnapVault relationships | | 2,000 |
| Maximum number of data protection (DP) mirrors and/or SnapVault relationships for FabricPool | | N/A |
| Maximum number of load sharing (LS) mirrors | | N/A |
| Maximum number of concurrent Snap Mirror of SnapVault transfers | | 200 |
| Maximum fan-out from source for DP mirror | | N/A |
| Maximum fan-out from source for LS mirror | | N/A |
| Maximum number of clusters that can be peered | | 255 |
| Maximum Number of constituent volumes in a SnapMirror relationship | | 1,000 |
| Maximum number of concurrent NDAS relationship transfers | | 64 |
| Maximum number of SnapMirror Synchronous relationships | | 40 |



Referring to the exhibit, what would you use to satisfy the requirements?

- A. SnapVault backups can be used to replicate all the application volumes.
- B. Load sharing can be used to concurrently replicate the data between both systems.
- C. SnapMirror Synchronous can be used to replicate the all the application volumes.
- D. SnapMirror can be used to replicate all the data volumes concurrently.

Correct Answer: A

Section: (none)

Explanation

Explanation/Reference:

QUESTION 5

You experience a node outage as a result of a component failure in a high-availability (HA) pair. You replace the failed component and get the node booted up again, but are unable to perform the giveback operation. The onscreen error is:

"Connected to partner, Takeover is not possible: Storage failover mailbox disk state is invalid, Local node has encountered errors while reading the storage failover partner's mailbox disks. Local node missing partner disks"

What are two ways to solve this problem? (Choose two.)

- A. Correct the shelf cabling errors.
- B. Destroy the root aggregate.
- C. Correct the failover group configuration.
- D. Destroy the mailboxes on both nodes.

Correct Answer: AC

Section: (none)

Explanation

Explanation/Reference:

QUESTION 6

You have just deployed a new AFF A400 cluster running ONTAP 9.7 that currently has no data aggregates created. You want to ensure that all new data aggregates are encrypted before you migrate production data to the new AFF A400 cluster.

In this scenario, which two actions would you use to accomplish this task? (Choose two.)

- A. After you create data aggregates, convert them to a NetApp Aggregate Encryption aggregate including root aggregates.
- B. Ensure that you have the NetApp Volume Encryption license installed.
- C. Ensure that the AFF A400 has self-encrypting drives.
- D. After you create a data aggregate, verify that it is encrypted by default.

Correct Answer: AD

Section: (none)

Explanation

Explanation/Reference:

QUESTION 7

You are the administrator of an ONTAP 9.7 cluster. You configured an hourly Snapshot schedule for all volumes. One of your users accidentally deleted an important spreadsheet file on an SMB share. This file must be restored within a minimum amount of time.

Which two actions satisfy this requirement? (Choose two.)

- A. On the cluster CLI, issue the `volume clone restore` command.
- B. On the cluster CLI, issue the `volume snapshot restore-file` command.
- C. In Windows Explorer, right-click on the SMB share where the file was deleted, go to "Previous Versions" and select the file, then copy it to the original location.
- D. In ONTAP System Manager, navigate to the volume where the share resides, click on "Snapshot Copies" and restore the latest Snapshot copy.

Correct Answer: BC

Section: (none)

Explanation

Explanation/Reference:

QUESTION 8

You are asked to re-purpose a NetApp FAS cluster. You need to verify that all encrypted data has been securely erased.

Which two features would allow you to securely re-purpose the array? (Choose two.)

- A. Secure Purge
- B. SnapLock Compliance
- C. Disk Sanitize
- D. NetApp Aggregate Encryption

Correct Answer: AD

Section: (none)

Explanation

Explanation/Reference:

Reference: <https://docs.netapp.com/ontap-9/index.jsp?topic=%2Fcom.netapp.doc.pow-nve%2FGUID-EAD13D8E-0219-45B6-A2C6-B25B76C9CA1A.html>

QUESTION 9

Click the Exhibit button.

```
cluster1::*> network test-path -source-node node1 -destination-cluster cluster1 -destination node node2
```

```
Test Duration: 10.65 secs
Send Throughput: 1092.65 MB/sec
Receive Throughput: 1092.65 MB/sec
  MB Sent: 11633.69
  MB Received: 11633.69
  Avg Latency: 64.40 ms
  Min Latency: 2.41 ms
  Max Latency: 2099.17 ms
```

You need to verify that you have a 10 Gb path between two clusters for SnapMirror traffic.

Referring to the exhibit, how fast is the network path between the clusters?

- A. 10 Mb
- B. 100 Mb
- C. 1 Gb
- D. 10 Gb

Correct Answer: C

Section: (none)

Explanation



Explanation/Reference:

Reference: <https://docs.netapp.com/ontap-9/topic/com.netapp.doc.dot-cm-nmg/Network%20and%20LIF%20management.pdf>

QUESTION 10 Which two statements are correct about configuring a peering connection between clusters? (Choose two.)

- A. The LIFs should be on the same subnet.
- B. You must use at least one intercluster LIF per node.
- C. You must use one cluster LIF per node per network.
- D. The intercluster LIFs must have full connectivity to each other.

Correct Answer: BD

Section: (none)

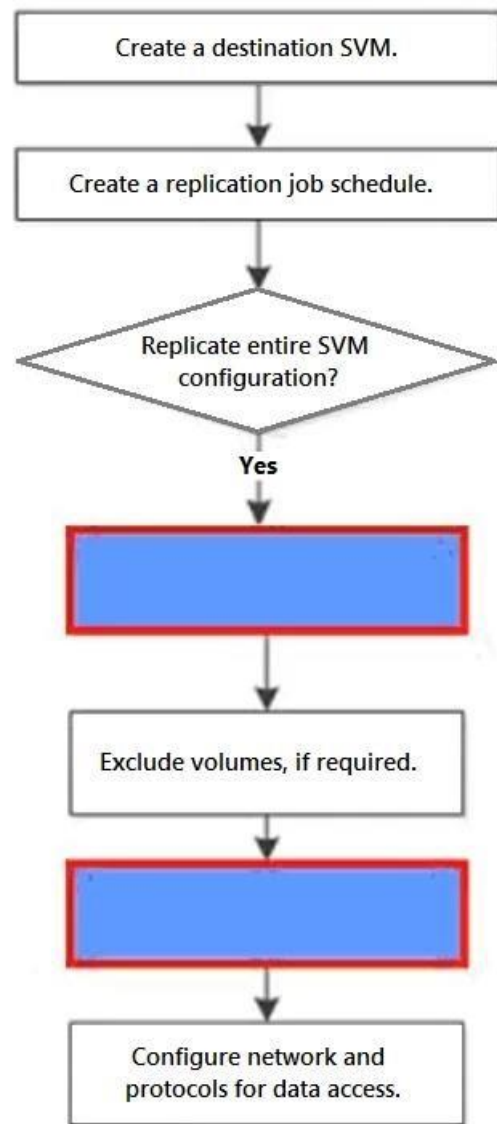
Explanation

Explanation/Reference:

Reference: <https://docs.netapp.com/ontap-9/index.jsp?topic=%2Fcom.netapp.doc.pow-csp%2FGUID-0F81B700-7B79-456F-9C89-3A7D6451AEB6.html>

QUESTION 11

Click the Exhibit button.



You must set up SVM replication for the first time using CLI. This replication will be used for DR purposes. The SVM configuration does not need to be replicated at this time. In this configuration, you will be reusing a default policy. Referring to the exhibit, what are two missing steps from the SVM replication workflow? (Choose two.)

- A. Exclude specific LIFs and protocols from the replication policy.
- B. Create a relationship with the `id-preserve` option set to `false`.
- C. Initialize the newly created SnapMirror relationship.
- D. Initialize the relationship with the `id-preserve` option set to `true`.

Correct Answer: BD

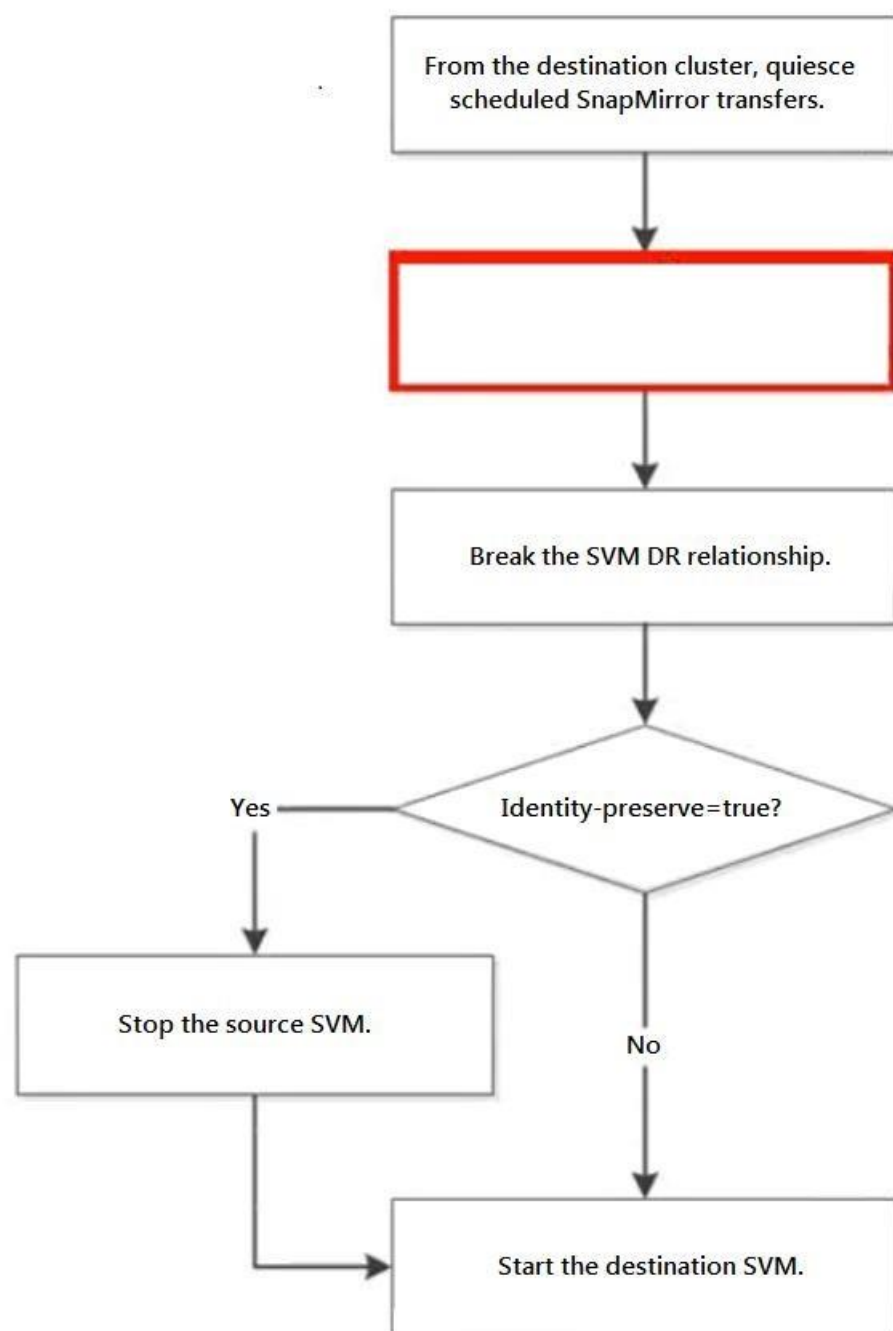
Section: (none)

Explanation

Explanation/Reference:

QUESTION 12

Click the Exhibit button.



In an ONTAP environment, an SVM-DR relationship exists between your AFF A220 cluster and your FAS2720 cluster, with `identity preserve` enabled. You are asked to test the disaster recovery workflow in an upcoming maintenance window.

Referring to the exhibit, which step should be performed next to test the recovery workflow?

- A. Delete the SVM-DR relationship.
- B. Pause any ongoing transfers.
- C. Abort any ongoing transfers.
- D. Update any ongoing transfers.

Correct Answer: C

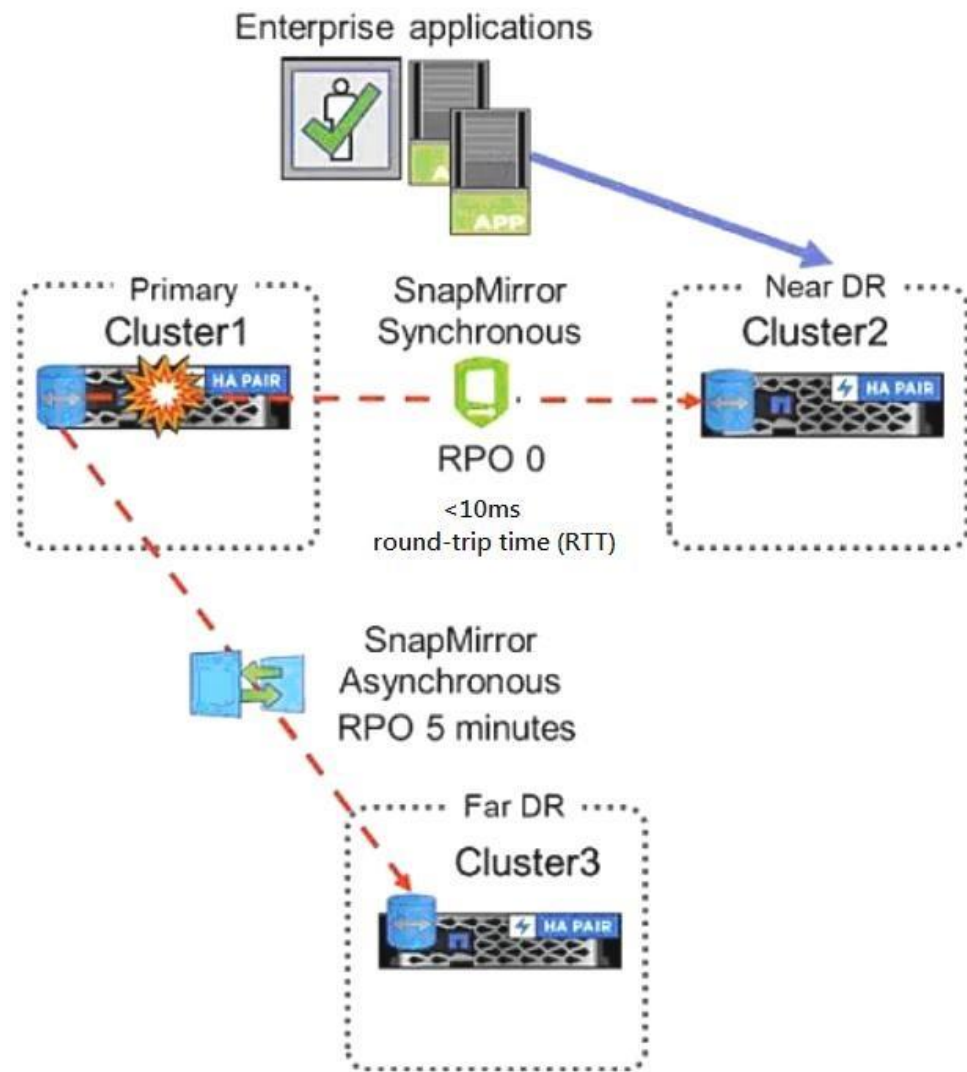
Section: (none)

Explanation

Explanation/Reference:

QUESTION 13

Click the Exhibit button.



Referring to the exhibit, which three would be used to configure the three-way Data Center Disaster Recovery topology replication schedules? (Choose three.)

- A. Active IQ Unified Manager
- B. Active IQ
- C. ONTAP CLI
- D. ONTAP Select
- E. ONTAP System Manager

Correct Answer: CDE

Section: (none)

Explanation

Explanation/Reference:

Reference: http://197.253.9.244/ontap%209-5/Cluster%20Admin/2_Student%20Guide/STRSW-ILT-ONTAPADM_StudentGuide.pdf

QUESTION 14 You want to use a Fabric Pool to store destination SnapMirror data to an external capacity tier.

Which tiering policy would be used in this scenario?

- A. auto
- B. snapshot-only

- C. none
- D. backup

Correct Answer: D

Section: (none)

Explanation

Explanation/Reference:

Reference: <https://community.netapp.com/t5/ONTAP-Discussions/FabricPool-tiering-Policy/td-p/138250>

QUESTION 15 You must manually upgrade your company's 8-node cluster from ONTAP 9.5 to ONTAP 9.7. Due to the sensitivity of the data that is being stored on the cluster, it is company policy to perform these upgrades one node at a time. What are two steps that you must perform to accomplish this task? (Choose two.)

- A. Terminate active NFS connections.
- B. Move Epsilon to maintain cluster quorum.
- C. Terminate active SMB connections.
- D. Change disk ownership.

Correct Answer: BC

Section: (none)

Explanation

Explanation/Reference:

QUESTION 16 To assist with capacity planning, your supervisor wants to receive weekly capacity summary reports using e-mail for all on-premises ONTAP clusters. You are asked to implement a solution that has no additional software licensing costs.

Which action accomplishes this task?

- A. Configure Cloud Insights Premium Edition.
- B. Create a capacity dashboard in Active IQ Digital Advisor.
- C. Configure capacity and utilization reports in Active IQ Unified Manager.
- D. Configure Cloud Insights Basic Edition.

Correct Answer: C

Section: (none)

Explanation

Explanation/Reference:

QUESTION 17

You are asked to enable WORM technology on a large amount of legal data. The legal team asks that a designated user group have the ability to delete files as needed.

What would satisfy the legal team's requirements?

- A. SnapLock Enterprise
- B. SnapVault
- C. SnapCenter Plug-in for Microsoft SQL Server
- D. SnapLock Compliance

Correct Answer: A

Section: (none)

Explanation

Explanation/Reference:

Reference: <https://csclub.uwaterloo.ca/~ehashman/netapp/ontap/archive.pdf> (147)



QUESTION 18

An ONTAP administrator is trying to configure a three-way-disaster recovery solution. Cluster 2 is within 50 km of Cluster 1, the primary cluster, with an RTT of 7 ms. Cluster 3 is over 300 km from Cluster 1 with an RTT of 29 ms.

In this scenario, what are two topologies that would accomplish this task? (Choose two.)

- A. a cascade topology from Cluster 1 to Cluster 2 with SnapMirror Synchronous, and then SnapMirror asynchronous from Cluster 2 to Cluster 3
- B. a fan out topology with SnapMirror Synchronous from Cluster 1 to Cluster 2 and SnapMirror Synchronous to Cluster 3
- C. a fan out topology with SnapMirror Synchronous from Cluster 1 to Cluster 2 and SnapMirror asynchronous from Cluster 1 to Cluster 3
- D. a cascade topology from Cluster 1 to Cluster 2 with SnapMirror Synchronous, and then SnapMirror Synchronous from Cluster 2 to Cluster 3

Correct Answer: AC

Section: (none)

Explanation

Explanation/Reference:

QUESTION 19

Your backup cluster reached both the maximum number of parallel replication transfers and the maximum number of FlexVol volumes per node. You need to increase these maximum numbers.

In this scenario, which license you would install on the destination to accomplish this task?

- A. SnapRestore License
- B. SnapMirror Sync License
- C. Data Protection Optimized License
- D. SnapVault License

Correct Answer: B

Section: (none)

Explanation



Explanation/Reference:

Reference: <https://library.netapp.com/ecmdocs/ECMP1608428/html/GUID-5C697C7D-FB33-4F4F-8CC4-A8646CD7561B.html>

QUESTION 20

A customer wants a new solution that reaches a near-zero recovery time objective (RTO) and a zero recovery point objective (RPO).

In this scenario, which NetApp solution satisfies the requirements?

- A. NDMP
- B. MetroCluster
- C. SnapMirror
- D. SnapVault

Correct Answer: C

Section: (none)

Explanation

Explanation/Reference:

Reference: <https://blog.netapp.com/effective-disaster-recovery-solution>

QUESTION 21

You want to write custom workflows to perform disaster recovery operations for your environment in OnCommand Workflow Automation.

In this scenario, which two scripting languages would be used to accomplish this task? (Choose two.)

- A. Perl
- B. Powershell
- C. PHP

D. Python

Correct Answer: AB

Section: (none)

Explanation

Explanation/Reference:

Reference: https://library.netapp.com/ecm/ecm_download_file/ECMP12470054 (8)

QUESTION 22

Click the Exhibit button.

Calculate Azure Costs with Cloud Volumes ONTAP

Capacity TB
Underlying Capacity (17.08 TB)

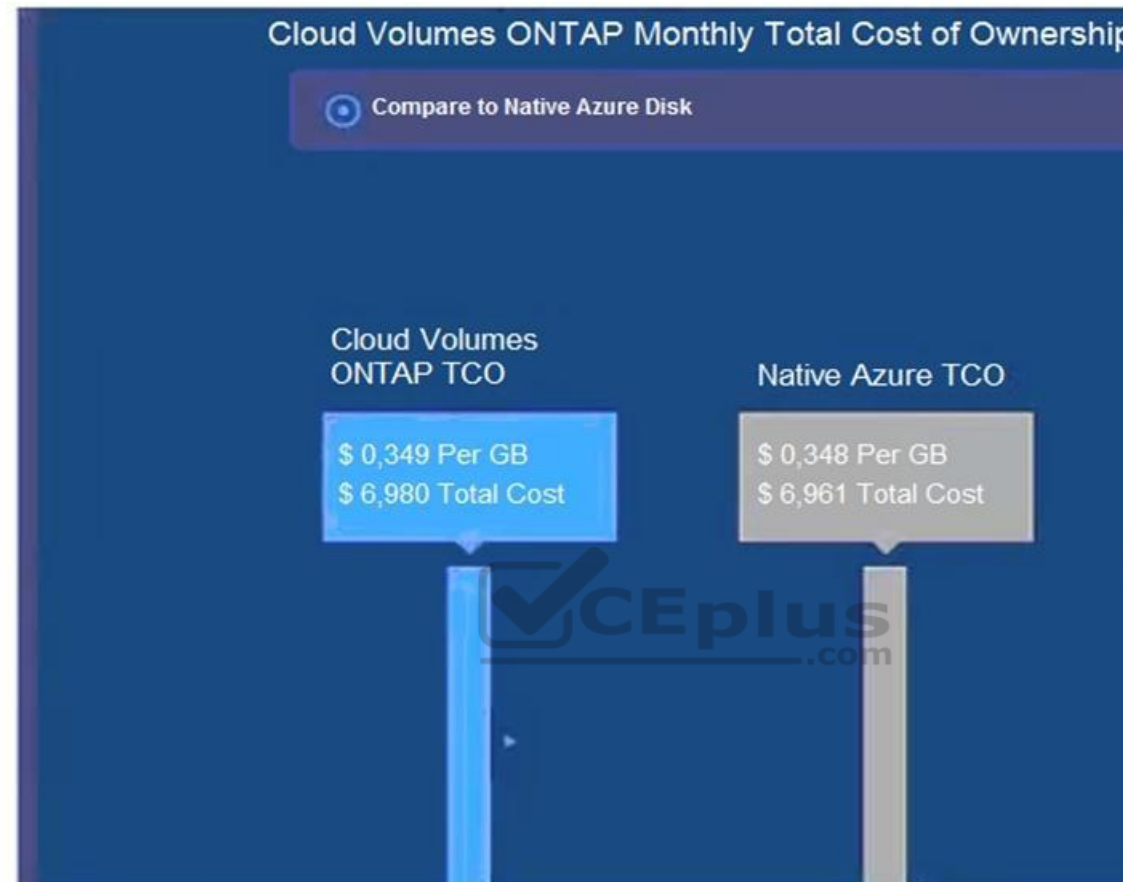
Azure VM Type

High Availability ☒

Tier to Azure Blob ☐

Use Volume Clones %

Advanced ▾



Using the NetApp Cloud TCO calculator, a customer wants to determine whether running Cloud Volumes ONTAP in Azure will be more cost effective than running native cloud services.

Referring to the exhibit, which action would satisfy the requirement?

- A. Turn off High Availability.
- B. Change the Azure VM Type to DS3_V2.
- C. Turn on Tier to Azure Blob.
- D. Change the Azure VM Type to DS14_V2.

Correct Answer: B

Section: (none)

Explanation

Explanation/Reference:

Reference: <https://cloud.netapp.com/azure-calculator>

QUESTION 23

Your DevOps team reported that one virtual machine on a VMware datastore has been corrupted due to a ransomware attack.

In this scenario, which two methods would solve the issue? (Choose two.)

- A. Restore the Snapshot copy of the volume from ONTAP System Manager.
- B. Restore the VM using SnapCenter Plug-in for VMware vSphere.
- C. Restore the datastore using SnapCenter Plug-in for VMware vSphere.
- D. Clone the volume's Snapshot copy prior to the attack, mount, and storage vMotion.

Correct Answer: CD

Section: (none)

Explanation

Explanation/Reference:

QUESTION 24 You are running a NetApp AFF A220 cluster. Each node has one volume. You create Snapshot copies on both volumes every four hours and keep the copies for 30 days. You are running out of disk space and want to free up space.

In this scenario, what do you do?

- A. Add a disk shelf with NL-SAS HDDs.
- B. Activate aggregate-inline deduplication.
- C. Add a capacity tier and set the tiering policy to `snapshot-only`.
- D. Activate aggregate-background deduplication.

Correct Answer: B

Section: (none)

Explanation

Explanation/Reference:

Reference: https://www.state.wv.us/admin/purchase/Bids/FY2020/B_0702_TAX2000000001_03.pdf



QUESTION 25

Click the Exhibit button.

```

aff::> cluster peer ping
Node: aff-01      Destination Cluster: aff
Destination Node IP Address  Count  TTL RTT(ms) Status
-----
aff-01      10.193.67.58      1  64  0.053 interface_reachable
aff-01      192.168.89.100    1  64  0.061 interface_reachable
aff-02      10.193.67.60      1  64  0.173 interface_reachable
aff-02      192.168.89.101    1  64  0.428 interface_reachable

Node: aff-01      Destination Cluster: ontap9-tme-8040
Destination Node IP Address  Count  TTL RTT(ms) Status
-----
ontap9-tme-8040-01 192.168.90.200    1  63  0.602 interface_reachable
ontap9-tme-8040-02 192.168.90.201    1  63  0.584 interface_reachable

Node: aff-01      Destination Cluster: tme-ontap-prd
Destination Node IP Address  Count  TTL RTT(ms) Status
-----
tme-ontap-prd-01 10.193.67.21      1  64  0.174 interface_reachable
tme-ontap-prd-02 10.193.67.22      1  64  0.17  interface_reachable

Node: aff-02      Destination Cluster: aff
Destination Node IP Address  Count  TTL RTT(ms) Status
-----
aff-01      10.193.67.58      1  64  0.178 interface_reachable
aff-01      192.168.89.100    1  64  0.188 interface_reachable
aff-02      10.193.67.60      1  64  0.054 interface_reachable
aff-02      192.168.89.101    1  64  0.057 interface_reachable

Node: aff-02      Destination Cluster: ontap9-tme-8040
Destination Node IP Address  Count  TTL RTT(ms) Status
-----
ontap9-tme-8040-01 192.168.90.200    1  63  0.569 interface_reachable
ontap9-tme-8040-02 192.168.90.201    1  63  0.627 interface_reachable

Node: aff-02      Destination Cluster: tme-ontap-prd
Destination Node IP Address  Count  TTL RTT(ms) Status
-----
tme-ontap-prd-01 10.193.67.21      1  64  0.179 interface_reachable
tme-ontap-prd-02 10.193.67.22      1  64  0.177 interface_reachable
16 entries were displayed.

```



You are asked to set up a SnapMirror relationship to protect some Oracle DB volumes on both nodes of the aff-01 and aff-02 clusters. You are using the 1 Gb network and the other nodes all have free space to support the mirror.

Referring to the exhibit, which two nodes would provide the least network transfer time for the relationship? (Choose two.)

- A. aff-01 to tme-ontap-prd-01
- B. aff-02 to tme-ontap-prd-02
- C. aff-02 to ontap9-tme-8040-02
- D. aff-02 to ontap9-tme-8040-01

Correct Answer: BC

Section: (none)

Explanation

Explanation/Reference:

QUESTION 26

A customer has just purchased a new 2-node AFF A220 cluster running ONTAP 9.7 and moved the older 4-node FAS2650 cluster running ONTAP 9.5 to an off-site location. They want to configure replication to the FAS2650 cluster for both disaster recovery and long-term archiving.

In this scenario, how would the customer accomplish this task?

- A. Upgrade the FAS2650 cluster to ONTAP 9.7, then configure SnapMirror with type TDP.

- B. Leave the ONTAP versions, then configure SnapMirror with type XDP.
- C. Downgrade the AFF A220 cluster to ONTAP 9.5, then configure SnapMirror with type XDP.
- D. Leave the ONTAP versions, then configure SnapMirror with type DP.

Correct Answer: A

Section: (none)

Explanation

Explanation/Reference:

QUESTION 27

Your customer wants to implement a solution to protect only a select number of NFSv3 volumes in a particular aggregate that stores their mission-critical application data. The customer wants the volume's data replicated to secondary storage and have application write operations fail if they cannot be replicated. The customer needs to maintain a zero RPO and a very low RTO.

In this scenario, which solution satisfies these requirements?

- A. SnapMirror Synchronous using Sync mode
- B. Mirrored aggregates using SyncMirror
- C. SnapMirror Synchronous using StrictSync mode
- D. Mirrored SVMs using MetroCluster

Correct Answer: B

Section: (none)

Explanation

Explanation/Reference:

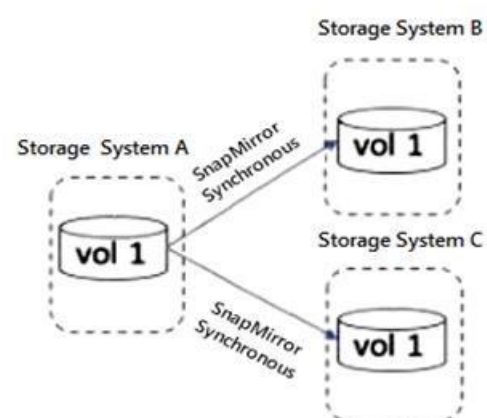
Reference: <http://randomventure.blogspot.com/2015/10/netapp-from-ground-up.html>

QUESTION 28

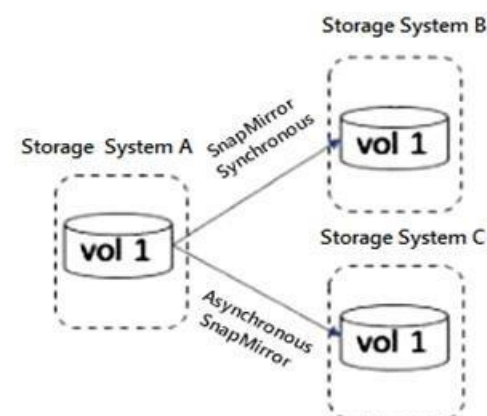
Click the Exhibit button.



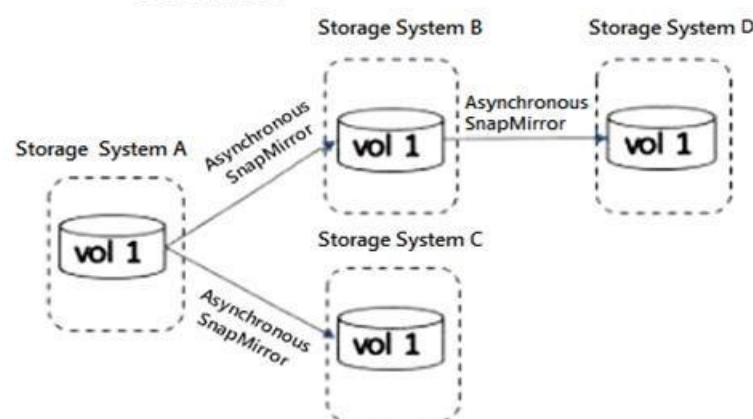
Solution I



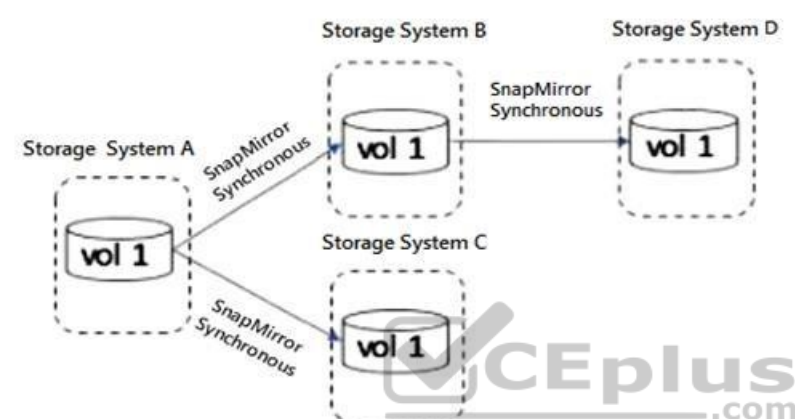
Solution II



Solution III



Solution IV



A customer wants to have a local mirror and a remote mirror of their data.

Referring to the exhibit, which two solutions satisfy these requirements? (Choose two.)

- A. Solution I
- B. Solution IV
- C. Solution II
- D. Solution III

Correct Answer: BC

Section: (none)

Explanation

Explanation/Reference:

QUESTION 29 What are three methods of configuring SnapMirror replication relationships? (Choose three.)

- A. Use Active IQ.
- B. Use the ONTAP command line.
- C. Use OnCommand Insight.
- D. Use ONTAP System Manager.
- E. Use Active IQ Unified Manager.

Correct Answer: CDE

Section: (none)

Explanation

Explanation/Reference:

QUESTION 30

You are asked to implement a NetApp solution that has high availability with transparent failover between two data centers. Which

two solutions satisfy this requirement? (Choose two.)

- A. ONTAP Select
- B. SnapVault
- C. SnapMirror Sync
- D. MetroCluster

Correct Answer: BD

Section: (none)

Explanation

Explanation/Reference:

Reference: <https://www.netapp.com/ja/media/13480-tr4705.pdf>

QUESTION 31

A customer is running ONTAP 9.7 on a FAS2720 cluster that has 12 x 4 TB NL-SAS drives in the chassis with capacity running low. You decide to use Fabric Pool technology to solve this problem.

What does the customer need to do to accomplish this task?

- A. Add an SSD aggregate.
- B. Purchase a Data Protection Optimized (DPO) license.
- C. Use the CLI and add a capacity pool.
- D. Use the wizard and add a capacity pool.



Correct Answer: A

Section: (none)

Explanation

Explanation/Reference:

Reference: <http://docs.netapp.com/ontap-9/index.jsp?topic=%2Fcom.netapp.doc.dot-mgng-stor-tier-fp%2FGUID-8E421CC9-1DE1-492F-A84C-9EB1B0177807.html>

QUESTION 32 You are asked to provision some new storage for VMware.

Which two tools are available to perform this task? (Choose two.)

- A. OnCommand Insight
- B. Virtual Storage Console
- C. ONTAP System Manager
- D. SnapCenter Plug-in for VMware vSphere

Correct Answer: BC

Section: (none)

Explanation

Explanation/Reference:

Reference: https://docs.netapp.com/us-en/ontap/task_san_provision_vmware.html

QUESTION 33

Using ONTAP System Manager, you are asked to replicate all the volumes contained in a Storage VM to a remote ONTAP 9.7 system for quick disaster recovery.

Which two steps need to be completed to accomplish this task? (Choose two.)

- A. Create a SnapMirror relationship for each volume.
- B. Create a cluster peering relationship.
- C. Create an SVM-DR relationship.
- D. Create an SVM peering relationship.

Correct Answer: BD

Section: (none)

Explanation

Explanation/Reference:

QUESTION 34

Click the Exhibit button.

| Hypervisor (OS) | Hypervisor Management Client (Hos...) | ONTAP OS (NETAPP OS) |
|---|--|---|
| Search Components | Search Components | Search Components |
| <input type="checkbox"/> VMware ESXi 6.7 <input type="checkbox"/> VMware ESXi 6.7 (Update 1) <input type="checkbox"/> VMware ESXi 6.7 (Update 2) <input type="checkbox"/> VMware ESXi 6.7 (Update 3) <input checked="" type="checkbox"/> VMware ESXi 7.0 <input type="checkbox"/> VMware ESXi 6.0 <input type="checkbox"/> VMware ESXi 6.0 (Update 1) <input type="checkbox"/> VMware ESXi 6.0 (Update 3a) | <input type="checkbox"/> VMware vCenter server 6.5 Update3 <input type="checkbox"/> VMware vCenter server 6.7 <input type="checkbox"/> VMware vCenter server 6.7 Update1 <input type="checkbox"/> VMware vCenter server 6.7 Update2 <input type="checkbox"/> VMware vCenter server 6.7 Update3 <input checked="" type="checkbox"/> VMware vCenter server 7.0 <input type="checkbox"/> VMware ESXi 6.5 Update3 <input type="checkbox"/> VMware vCenter server 6.0 Update3b | <input type="checkbox"/> ONTAP 9.1 <input type="checkbox"/> ONTAP 9.2 <input type="checkbox"/> ONTAP 9.3 <input type="checkbox"/> ONTAP 9.4 <input type="checkbox"/> ONTAP 9.5 <input checked="" type="checkbox"/> ONTAP 9.6 <input type="checkbox"/> ONTAP 9.7 <input type="checkbox"/> [EOVS] Clustered Data |

| SnapCenter Host Plugin | SnapCenter Hypervisor Plugin | SnapCenter Server |
|--|--|--|
| Search Components | Search Components | Search Components |
| <input type="checkbox"/> SnapCenter Plug-in 4.2.1 for Microsoft Windows <input type="checkbox"/> SnapCenter Plug-in 4.2.1 for UNIX <input type="checkbox"/> SnapCenter Plug-in 4.3 for Microsoft Windows <input type="checkbox"/> SnapCenter Plug-in 4.3 for UNIX <input type="checkbox"/> SnapCenter Plug-in 4.3.1 for Microsoft Windows <input type="checkbox"/> SnapCenter Plug-in 4.3.1 for UNIX <input type="checkbox"/> SnapCenter Plug-in 3.0 for Microsoft Windows <input type="checkbox"/> SnapCenter Plug-in 3.0 for UNIX | <input type="checkbox"/> SnapCenter Plug-in 4.3 for VMware vSphere <input type="checkbox"/> SnapCenter Plug-in 3.0 for VMware vSphere <input type="checkbox"/> SnapCenter Plug-in 3.0.1 for VMware vSphere <input type="checkbox"/> SnapCenter Plug-in 4.0 for VMware vSphere <input type="checkbox"/> SnapCenter Plug-in 4.1 for VMware vSphere <input type="checkbox"/> SnapCenter Plug-in 4.1.1 for VMware vSphere <input type="checkbox"/> SnapCenter Plug-in 4.2 for VMware vSphere <input type="checkbox"/> SnapCenter Plug-in 4.2.1 for VMware vSphere | <input type="checkbox"/> SnapCenter Server 4.2.1 <input type="checkbox"/> SnapCenter Server 4.3 <input type="checkbox"/> SnapCenter Server 4.3.1 <input type="checkbox"/> SnapCenter Server 3.0 <input type="checkbox"/> SnapCenter Server 3.0.1 <input type="checkbox"/> SnapCenter Server 4.0 <input type="checkbox"/> SnapCenter Server 4.1 <input type="checkbox"/> SnapCenter Server 4.1.1 |

An AFF A700 administrator is told that the VMware environment will be upgraded to vSphere 7 and it will continue to use NFSv3 for their datastores.

Referring to the exhibit, which version of SnapCenter Hypervisor Plugin and SnapCenter Server should they use?

- A. SnapCenter Plug-in 4.2.1 and SnapCenter Server 4.2.1
- B. SnapCenter Plug-in 4.3.1 and SnapCenter Server 4.3.1
- C. SnapCenter Plug-in 4.3 and SnapCenter Server 4.1
- D. SnapCenter Plug-in 4.3 and SnapCenter Server 4.3

Correct Answer: C

Section: (none)

Explanation

Explanation/Reference:

Reference: https://library.netapp.com/ecm/ecm_download_file/ECMLP2863451

QUESTION 35

You are asked to perform a NetApp Snapshot copy single-file restore on a corrupted thin-provisioned LUN that is 10 GB in size and is currently at 80% full.

How much additional free space do you need in the volume to perform this operation?

- A. 20 GB
- B. 10 GB
- C. 16 GB
- D. 8 GB

Correct Answer: B

Section: (none)

Explanation

Explanation/Reference:

QUESTION 36

You have a SnapMirror relationship established between two sites and want to verify that the data on the DR site is usable without disturbing the source.

In this scenario, which three steps are required to accomplish this task? (Choose three.)

- A. Resynchronize the destination to the source volume, then update the source volume.
- B. Resume the SnapMirror destination, then update the SnapMirror destination.
- C. Quiesce the SnapMirror destination, then break the SnapMirror destination.
- D. Reverse the SnapMirror source and destination, then re-initialize SnapMirror.
- E. Configure the destination volume for data access, then access the data volume from a client.

Correct Answer: ACD

Section: (none)

Explanation

Explanation/Reference:



QUESTION 37

You are asked to protect your user's HomeDir volume by keeping one weekly Snapshot copy for 52 weeks, one monthly Snapshot copy for six months, and one daily Snapshot copy for 90 days. Which

two statements describe how to accomplish this task? (Choose two.)

- A. Create a single job schedule for weekly, monthly, and daily.
- B. Create individual job schedules for weekly, monthly, and daily.
- C. Create a policy to include the new job schedules.
- D. Create a separate policy for weekly, monthly, and daily.

Correct Answer: AC

Section: (none)

Explanation

Explanation/Reference:

QUESTION 38

A customer has a MetroCluster configuration and wants to automate the disaster recovery process for unplanned automatic switchover.

Which NetApp tool would accomplish this task?

- A. ONTAP System Manager
- B. SnapCenter
- C. ONTAP Mediator
- D. Active IQ Unified Manager

Correct Answer: D

Section: (none)

Explanation

Explanation/Reference:

QUESTION 39

You are planning to deploy MetroCluster IP. As part of the implementation strategy, you are asked to verify that you have the relevant hardware for the deployment.

Which two elements are required to deploy your solution? (Choose two.)

- A. storage controllers
- B. FC network switches
- C. cluster peering network
- D. iSCSI Ethernet switches

Correct Answer: CD

Section: (none)

Explanation

Explanation/Reference:

QUESTION 40

A company has a 4-node FAS9000 fabric MetroCluster cluster separated by 101 km. Site A has an unmirrored HDD aggregate. An FC-VI card fails in one of the nodes in site A and a switchover occurs.

Which statement is correct in this scenario?

- A. The aggregate is accessible using Site A's surviving node.
- B. Only SSD aggregates are accessible.
- C. The distance is not supported.
- D. The aggregate is accessible using Site B's cluster.



Correct Answer: D

Section: (none)

Explanation

Explanation/Reference:

QUESTION 41 What are two ways to determine if your SnapMirror relationships are up-to-date? (Choose two.)

- A. Use Active IQ and navigate to Cluster -> Volumes -> Protection.
- B. Use Active IQ Unified Manager and navigate to Protection -> Volume Relationships.
- C. Use ONTAP System Manager and navigate to Protection -> Volume Relationships on the destination cluster.
- D. Use ONTAP System Manager and navigate to Protection -> Volume Relationships on the source cluster.

Correct Answer: AC

Section: (none)

Explanation

Explanation/Reference:

QUESTION 42

Click the Exhibit button.

```
select::> vol show -fields used -volume Engineering,Marketing
vserver volume      used
-----
VS1      Engineering  2.13TB
VS1      Marketing    2.62TB

2      entries were displayed.
```

Your customer is deploying SnapCenter to protect volumes on an ONTAP Select cluster.

Referring to the exhibit, which licensing is required to protect the Engineering and Marketing volumes?

- A. a SnapManagerSuite controller-based license
- B. a 3 TB SnapCenter capacity-based license
- C. a 5 TB SnapCenter capacity-based license
- D. a SnapProtectApps controller-based license

Correct Answer: D

Section: (none)

Explanation

Explanation/Reference:

QUESTION 43

A company just installed SnapCenter to help manage their ONTAP 9.7 environment. The database administrator wants to add new volumes with LUNs for a 10 TB Oracle database.

Which two tools would accomplish this task? (Choose two.)

- A. SnapCenter Plug-in for Oracle Database
- B. OnCommand Insight
- C. ONTAP System Manager
- D. Active IQ Unified Manager

Correct Answer: AB

Section: (none)

Explanation

Explanation/Reference:

Reference: http://197.253.9.244/ontap%209-5/Cluster%20Admin/2_Student%20Guide/STRSW-ILT-ONTAPADM_StudentGuide.pdf

QUESTION 44 During NDMP incremental backups, you want to reduce the time spent finding the changed data between two Snapshot copies.

In this scenario, which ONTAP feature will accomplish this task?

- A. compaction
- B. deduplication
- C. SnapDiff
- D. SnapLock

Correct Answer: C

Section: (none)

Explanation

Explanation/Reference:

Reference: <https://www.rubrik.com/en/blog/products-solutions/20/1/nas-backup-rpo-changelist-snapshots>

QUESTION 45

You are configuring a SnapMirror replication between a source volume with adaptive compression enabled and a destination volume with secondary compression enabled.

In this scenario; which statement is correct?

- A. Blocks are uncompressed at the source and transferred to the destination.
- B. Logical replication with storage efficiency is used.
- C. Storage efficiency (compressed and deduplicated blocks) is preserved during data transfer.
- D. Data is recompressed using the source volume's compression type.

Correct Answer: C

Section: (none)

Explanation

Explanation/Reference:

Reference: https://kb.netapp.com/Advice_and_Troubleshooting/Data_Protection_and_Security/SnapMirror/SnapMirror_storage_efficiency_configurations_and_behavior

QUESTION 46

A FAS2750 cluster administrator experiences network issues during replication updates that pass over a low-bandwidth WAN link to their DR site. They also replicate locally to another cluster for testing and development. The administrator wants to enable network compression only on the existing WAN Link SnapMirror jobs.

In this scenario, which statement is correct?

- A. Network compression must be enabled when initializing the replica, the current jobs need to be deleted and new ones created.
- B. Network compression is a global option and it cannot be used.
- C. The current DR transfers must be aborted and the option enabled on each job, then resume the transfer.
- D. Network compression is possible but not on a FAS2750.

Correct Answer: C

Section: (none)

Explanation

Explanation/Reference:

**QUESTION 47**

Which two types of volumes support NDMP backup? (Choose two.)

- A. FlexCache
- B. Flash Pool
- C. FlexVol
- D. FlexGroup

Correct Answer: CD

Section: (none)

Explanation

Explanation/Reference:

QUESTION 48

When installing a new AFF A700s, you notice that the HA interconnect adapters use miniSAS HD. You subsequently consult Hardware Universe to find out that only 0.5M cables are supported. Due to the importance of the system data fields that use this link, you delay the installation until you can acquire 0.5M cables.

In this scenario, which two system data fields are communicated between HA pairs over the interconnect adapters? (Choose two.)

- A. NVRAM mirroring
- B. heartbeat signal
- C. intercluster peering
- D. data LIF location

Correct Answer: AC

Section: (none)

Explanation

Explanation/Reference:

QUESTION 49

Click the Exhibit button.

| <input type="checkbox"/> | Name | Storage VM | Status | Capacity (available total) | Protection |
|--------------------------|---------------------------------------|-----------------------------|--------------------|-------------------------------|---|
| <input type="checkbox"/> | mworthen_src1_lun | mworthen_src1 | Online | 27.16 MB 3.03 GB | |
| | STATUS Online | EXPORT POLICY default | TYPE Read Write | STORAGE EFFICIENCY Enabled | SNAPSHOT COPIES (LOCAL) STATUS Unprotected |
| | STYLE FlexVol | QUOTA Off | | QOS POLICY GROUP - | SNAPMIRROR (LOCAL OR REMOTE) STATUS Unprotected |
| | SPACE RESERVATION Thin Provisioned | | | SNAPSHOT POLICY none | |
| <input type="checkbox"/> | my_vol | svm_argn | Online | 474.57 MB 500 MB | |
| | STATUS Online | EXPORT POLICY default | TYPE Read Write | STORAGE EFFICIENCY Enabled | SNAPSHOT COPIES (LOCAL) STATUS Protected |
| | STYLE FlexVol | QUOTA Off | | QOS POLICY GROUP pg10 | SNAPMIRROR (LOCAL OR REMOTE) STATUS Unprotected |
| | SPACE RESERVATION Thin Provisioned | | | SNAPSHOT POLICY default | |
| <input type="checkbox"/> | new_work_vol | AFF_SAN_DEFAULT_SVM | Online | 3.32 GB 25.77 GB | |
| | STATUS Online | EXPORT POLICY default | TYPE Read Write | STORAGE EFFICIENCY Enabled | SNAPSHOT COPIES (LOCAL) STATUS Unprotected |
| | STYLE FlexVol | QUOTA Off | | QOS POLICY GROUP - | SNAPMIRROR (LOCAL OR REMOTE) STATUS Unprotected |
| | SPACE RESERVATION Thin Provisioned | | | SNAPSHOT POLICY none | |
| <input type="checkbox"/> | project_a | svm_fabricpool | Online | 3.32 GB 25.77 GB | |
| | STATUS Online | EXPORT POLICY fabricpool | TYPE Read Write | STORAGE EFFICIENCY Enabled | SNAPSHOT COPIES (LOCAL) STATUS Protected |
| | STYLE FlexVol | QUOTA Off | | QOS POLICY GROUP - | SNAPMIRROR (LOCAL OR REMOTE) PROJECTED ON CLUSTER aff |
| | SPACE RESERVATION Thin Provisioned | | | SNAPSHOT POLICY default | PROJECTED ON VOLUME project_a_dest |
| | | | | | STATUS Mirrored |
| | | | | | PROJECTION POLICY Asynchronous |

Referring to the exhibit, which volume has the highest level of protection assigned to it?

- A. project_a
- B. mworthen_src1_lun
- C. my_vol
- D. new_work_vol

Correct Answer: B

Section: (none)

Explanation

Explanation/Reference:

QUESTION 50 Which two NetApp features would help you to recover from a file share that was encrypted by a ransomware event?
(Choose two.)

- A. SnapLock
- B. SnapMirror
- C. SnapRestore
- D. Snapshot

Correct Answer: AB

Section: (none)

Explanation

Explanation/Reference:

Reference: <https://blog.netapp.com/fighting-ransomware-recover-data>

QUESTION 51 You noticed that your SnapVault relationship is healthy but that the destination volume does not have any Snapshot copies.

In this scenario, what should be performed to solve the problem?

- A. Set up volume destination free space.
- B. Set up volume source free space.
- C. Use the `snapvault update` command.
- D. Configure a rule with the Snapshot label.



Correct Answer: C

Section: (none)

Explanation

Explanation/Reference:

QUESTION 52 You have a NAS volume that contains 250 GB of data with a daily change rate of 10%. You want to keep seven daily Snapshot copies.

In this scenario, what should the minimum copies of the volume be?

- A. 325 GB
- B. 550 GB
- C. 250 GB
- D. 425 GB

Correct Answer: B

Section: (none)

Explanation

Explanation/Reference:

Reference: <https://library.netapp.com/ecmdocs/ECMP1368845/html/GUID-3AA3830F-FA54-4BA1-8309-AF0809B1CF73.html> **QUESTION 53**

Click the Exhibit button.

Volume Relationships

| Source Storage Vi... | Source Volume | Destination V... | Destination Sto... | Is Healthy | Relation.... | Transfer.... | Relationshi... | Lag Time |
|----------------------|---------------|---------------------|--------------------|------------|---------------|--------------|----------------|----------------|
| swm_fabricpool | demo_volume | demo_volume_dest | swm_fabricpool | Yes | Snapmirror... | Idle | Asynchrono... | 14hr(s) 26 ... |
| swm_fabricpool | demo_volume | demo_volume_DR | swm_fabricpool | Yes | Snapmirror... | Idle | Asynchrono... | 31 mins(s) |
| swm_fabricpool | project_a | project_a_dest | swm_fabricpool | Yes | Snapmirror... | Idle | Asynchrono... | 31 mins(s) |
| swm_fabricpool | project_b | project_b_dest | swm_fabricpool | Yes | Snapmirror... | Idle | Asynchrono... | 31 mins(s) |
| swm_fabricpool | project_c | project_bsnapvau... | swm_jlantz | Yes | Snapmirror... | Idle | Asynchrono... | 31 mins(s) |

A customer wants to ensure that their volumes are protected. In ONTAP System Manager, under the Protection section, you see the screen that is shown in the exhibit. The company has an asynchronous mirror policy of less than a 60minute lag.

Referring to the exhibit, which volume has a lag that exceeds the company policy?

- A. svm_fabricpool:demo_volume -> svm_fabricpool:demo_volume_dest
- B. svm_fabricpool:project_a -> svm_fabricpool:project_a_dest
- C. svm_fabricpool:demo_volume -> svm_fabricpool:demo_volume_DR
- D. svm_fabricpool:project_b -> svm_fabricpool:project_b_dest

Correct Answer: C

Section: (none)

Explanation

Explanation/Reference:



QUESTION 54

You are using Veeam Backup & Replication to create Snapshot-based backups of your VMware environment running ONTAP. You added your primary and secondary ONTAP cluster to the Veeam Storage inventory. However, you are unable to select your secondary ONTAP cluster as a secondary target for your Veeam backup job.

In ONTAP System Manager, which action solves this problem?

- A. Select "Make Snapshot directory visible" for each volume that you want to back up.
- B. Create a vsadmin account to grant cluster access to Veeam for each volume that you want to back up.
- C. Change the security style to NTFS for the volume you want to back up.
- D. Initialize SnapVault for the volume that you want to back up.

Correct Answer: D

Section: (none)

Explanation

Explanation/Reference:

QUESTION 55

You are the administrator of an ONTAP cluster, where the majority of users are using Linux machines with home directories mounted using NFS. You keep six daily, four weekly, and one monthly Snapshot copy locally. However, you do not replicate the data to another instance of ONTAP. One of your users reports having accidentally deleted a file, but does not remember the self-serve restore procedure.

How does the user restore the file without having administrator privileges on the cluster? A.

Issue the `snapshot restore-file` command.

- B. Copy the deleted file from the `.snapshot` directory.
- C. Issue the `volume snapshot restore` command.

D. Using ONTAP System Manager, restore the volume from a Snapshot copy.

Correct Answer: B

Section: (none)

Explanation

Explanation/Reference:

QUESTION 56 You want to use SnapCenter to restore an MS SQL database on iSCSI LUNs from a previous application-consistent snapshot.

In this scenario, what is required to accomplish this task?

- A. Confirm multipathing for iSCSI is enabled on the host.
- B. Confirm that the database server is running on the host.
- C. Confirm that the database server is not running on the host.
- D. Confirm that the iSCSI service is disabled on the host.

Correct Answer: B

Section: (none)

Explanation

Explanation/Reference:

QUESTION 57 You want to create an application-consistent Snapshot copy by using SnapCenter software.

What is required to accomplish this task?

- A. NetApp NFS Plug-in for VMware VAAI
- B. SnapDrive for Windows Server
- C. VMware VM Tools
- D. Plug-in for Microsoft Exchange

Correct Answer: B

Section: (none)

Explanation

Explanation/Reference:

