

JN0-250.VCEplus.premium.exam.65q

Number: JN0-250
Passing Score: 800
Time Limit: 120 min
File Version: 1.0



Website: <https://vceplus.com> - <https://vceplus.co>
VCE to PDF Converter: <https://vceplus.com/vce-to-pdf/>
Facebook: <https://www.facebook.com/VCE.For.All.VN/>
Twitter : https://twitter.com/VCE_Plus

JN0-250

Mist AI, Associate (JNCIA-MistAI)



Exam A

QUESTION 1

You work as a network administrator for ABC.com. The ABC.com network consists of a single Active Directory domain named ABC.com. There are currently 120 Web servers running Windows Server and are contained in an Organizational Unit (OU) named ABC_WebServers

ABC.com management took a decision to upgrade all Web servers to Windows Server. You disable all services on the Web servers that are not required. After running the IIS Lockdown Wizard on a recently deployed web server, you discover that services such as NNTP that are not required are still enabled on the Web server.

How can you ensure that the services that are not required are forever disabled on the Web servers without affecting the other servers on the network? (Choose two.)

- A. Set up a GPO that will change the startup type for the services to Automatic.
- B. By linking the GPO to the ABC_WebServers OU.
- C. Set up a GPO with the Hisecws.inf security template imported into the GPO.
- D. By linking the GPO to the domain.
- E. Set up a GPO in order to set the startup type of the redundant services to Disabled.
- F. By linking the GPO to the Domain Controllers OU.
- G. Set up a GPO in order to apply a startup script to stop the redundant services.

Correct Answer: BE

Section: (none)

Explanation

Explanation/Reference:

QUESTION 2

You are working as the administrator at ABC.com. Part of your job description includes the deployment of applications on the ABC.com network. To this end you operate by testing new application deployment in a test environment prior to deployment on the production network.

The new application that should be tested requires 2 processors and 3 GB of RAM to run successfully. Further requirements of this application also include shared folders and installation of software on client computers. You install the application on a Windows Server Web Edition computer and install the application on 30 test client computers.

During routine monitoring you discover that only a small amount of client computers are able to connect and run the application. You decide to turn off the computers that are able to make a connection and discover that the computers that failed to open the application can now run the application.

How would you ensure that all client computers can connect to the server and run the application?

- A. By running a second instance of the application on the server.
- B. By increasing the Request Queue Limit on the Default Application Pool.
- C. By modifying the test server operating system to Windows Server Standard Edition.
- D. By increasing the amount of RAM in the server to 4GB.

Correct Answer: C

Section: (none)

Explanation

Explanation/Reference:

QUESTION 3

The ABC.com network consists of a single Active Directory domain named ABC.com. All servers on the ABC.com network run Windows Server.

ABC.com contains a Development department. ABC.com contains a domain controller named ABC-SR24 which is also configured as a DNS Server. A ABC.com employee named Clive Wilson works in the Development department. One morning Clive Wilson complains that he cannot connect to another network server.

During investigation, you notice that nslookup queries sometimes take a long time and sometimes fail altogether.

You suspect that there is a problem with ABC-SR24.

How would you configure monitoring on ABC-SR24 so that you can review individual name resolution queries?

- A. Use System Monitor to monitor host resolution queries on ABC-SR24.
- B. Use Event Viewer to view the DNS event log on ABC-SR24.
- C. Select the Log packets for debugging option on the Debug Logging tab in the DNS server properties on ABC-SR24.
- D. Use Network Monitor to capture DNS query packets on ABC-SR24.

Correct Answer: C

Section: (none)

Explanation

Explanation/Reference:

QUESTION 4

You are working as the administrator at ABC.com. The ABC.com network consists of a single Active Directory domain named ABC.com. The ABC.com network contains a DMZ that contains a two-node Network Load Balancing cluster, which is located in a data centre that is physically impenetrable to unauthorized persons.

The cluster servers run Windows Server Web Edition and host an e-commerce website. The NLB cluster uses a virtual IP address that can be accessed from the Internet.

What can you do to mitigate the cluster's most obvious security vulnerability?

- A. Configure the cluster to require IPSec.
- B. Configure the network cards to use packet filtering on all inbound traffic to the cluster.
- C. Use EFS on the server hard disks.
- D. Configure intrusion detection the servers on the DMZ.
- E. Configure Mac addressing on the servers in the DMZ.

Correct Answer: B

Section: (none)

Explanation

Explanation/Reference:



QUESTION 5

You are working for an administrator for ABC.com. The ABC.com network consists of a single Active Directory domain named ABC.com. All the servers on the network run Windows Server servers.

You have configured four servers in a network load balancing cluster. You need to enable the cluster in unicast mode although each server only has one network card. After your configuration, the NLB cluster has successfully converged.

You discover that you can optimize the use of the cluster by moving a specific application to each node of the cluster. However for this application to execute, all the nodes of the cluster must be configured by a Network Load Balancing Port Rule.

When you open Network Load Balancing Manager on one of the NLB nodes, you receive a message saying that Network Load Balancing Manager is unable to see the other nodes in the cluster.

How can you add a port rule to the cluster nodes?

- A. By opening Network Load Balancing Manager on a different host.
- B. By creating an additional virtual IP address on the cluster.
- C. By modifying the Network Connection Properties on every host.
- D. By removing each host from the cluster before creating the port rule.

Correct Answer: C

Section: (none)

Explanation

Explanation/Reference:

QUESTION 6

The ABC.com network consists of a single Active Directory domain named ABC.com. All computers on the ABC.com network are members of the ABC.com domain.

You install a new server named ABC-CA1 and configure it as a Certification Authority for the ABC.com domain.

How would you enable an Active Directory global group named CA-Admins to issue, revoke and approve certificates without assigning more permissions than necessary?

- A. Make the CA-Admins group also members of the Domain Admins group in the domain.
- B. Make the CA-Admins group also members of the local Administrators group on ABC-CA1.
- C. Grant the CA-Admins group Full Control permission to the Certificated Template container in the Active Directory.
- D. Make the CA-Admins group members of the Cert Publishers group in Active Directory.
- E. Grant the Certificate Managers role to the CA-Admins group.

Correct Answer: E

Section: (none)

Explanation

Explanation/Reference:

QUESTION 7 The ABC.com network consists of a single Active Directory domain named ABC.com.

You want to improve the security on the Windows Server domain controllers by configuring enhanced password policies and audit settings.

Which security template should you apply to the domain controllers?

- A. Setup security.inf.
- B. Hisecws.inf.
- C. DC security.inf.
- D. Securews.inf.
- E. Securedc.inf.
- F. Compatws.inf.
- G. Rootsec.inf.



Correct Answer: E

Section: (none)

Explanation

Explanation/Reference:

QUESTION 8

The ABC.com network consists of a single Active Directory domain named ABC.com. ABC.com has its headquarters in Chicago and several branch offices at various locations throughout the country. All servers on the ABC.com network run Windows Server.

You are in the process of configuring a VPN connection between the Chicago office and a branch office in Dallas using Windows Server computers running Routing and Remote Access (RRAS).

A ABC.com written security policy states that the requirements below must be met:

- Data transmitted over the VPN must be encrypted with end to end encryption.
- The VPN connection authentication should be at the computer level rather than at user level and with no credential information transmitted over the internet. How should you configure the VPN?

(Choose two.)

- A. Use a PPTP connection.
- B. Use EAP-TLS authentication.
- C. Use a PPP connection.
- D. Use MS-CHAP v2 authentication.
- E. Use MS-CHAP authentication.
- F. Use PAP authentication.
- G. Use an L2TP/IPSec connection.

Correct Answer: BG

Section: (none)

Explanation

Explanation/Reference:

QUESTION 9 The ABC.com network consists of a single Active Directory domain named ABC.com.

You deploy an enterprise certification authority (CA) on a Windows Server computer named ABC-CA1. The primary purpose of the CA is issue company users with digital certificates to enable them to authenticate with the new company Intranet website.

You create a new certificate template named Web Authentication. You enable the Web Authentication certificate template on ABC-CA1 and configure the default domain group policy so that users who log on to the domain receive a Web Authentication certificate.

The following morning users complain that they do not have certificates which can be used to authenticate to the Intranet Web site.

How can you ensure the users are issued with a certificate?

- A. By configuring ABC-CA1 to be an Enterprise Subordinate CA of a public CA such as Verisign.
- B. By modifying the permissions of the Web Authentication certificate template to give the Domain Users group the Allow – Autoenroll permission.
- C. By adding your Domain Admin user account to the Cert Managers group in Active Directory.
- D. By configuring the Default Domain Controllers GPO to assign the certificates to users when they log on.

Correct Answer: B

Section: (none)

Explanation

Explanation/Reference:



QUESTION 10

The ABC.com network consists of a single Active Directory domain named ABC.com. All servers on the ABC.com network run Windows Server. The ABC.com network also contains a file server named ABC-SR10.

A ABC.com user named Rory Allen complains that when connecting to ABC-SR10, it often takes quite some time to respond. Other users report the same problem.

Your investigations reveal that the network interface on ABC-SR10 has a large load during times when the server is slow to respond. You suspect that one of the network computers is causing the problem.

How would you identify the problematic machine?

- A. By examining the event logs on ABC-SR10.
- B. By viewing the Local Area Connection status on ABC-SR10.
- C. By using Network Monitor to inspect the network traffic on the client computers.
- D. By using System Monitor to inspect the performance monitor counters on ABC-SR10.
- E. By examining the event logs on the client computers.
- F. By using System Monitor to inspect the performance monitor counters on the client computers.
- G. By using Network Monitor to inspect the network traffic on ABC-SR10.

Correct Answer: G

Section: (none)

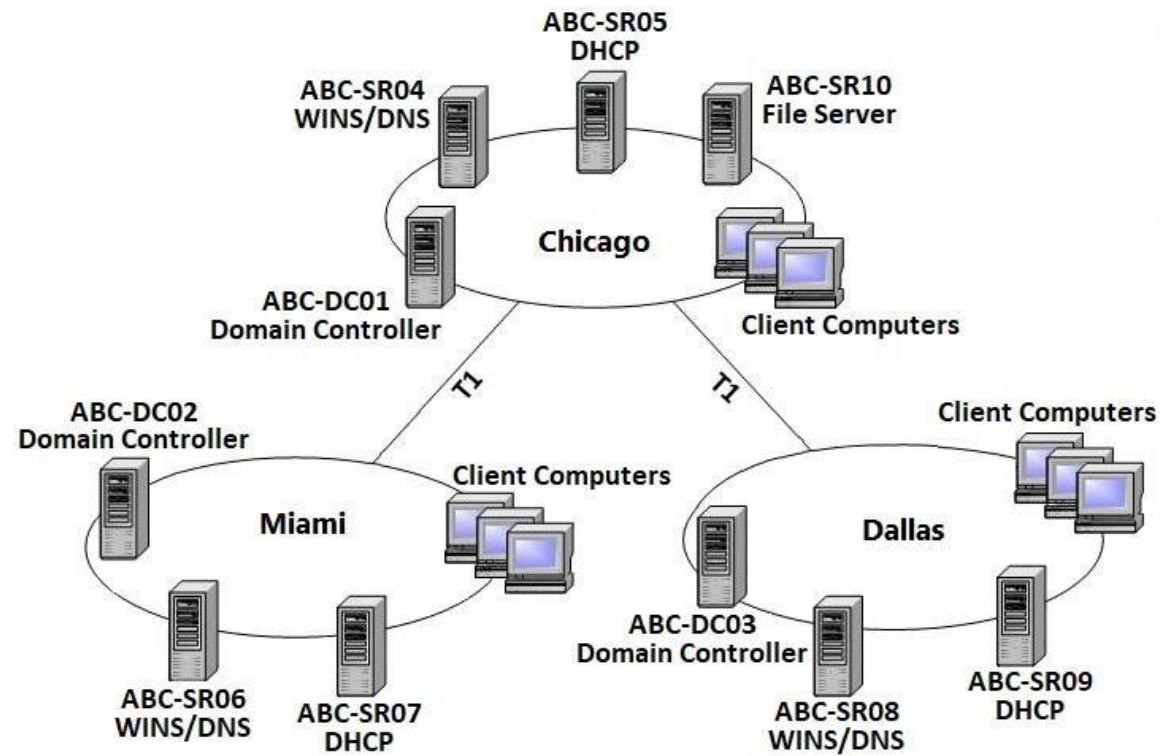
Explanation

Explanation/Reference:

QUESTION 11

The ABC.com network consists of a single Active Directory domain named ABC.com. All servers on the ABC.com network run Windows Server.

ABC.com has its headquarters in Chicago and two branch offices in Dallas and Miami. The branch offices are connected to the headquarters by means of T1 WAN links. The network at each office is configured as a separate Active Directory site as shown below.



ABC.com users in all three sites require access to a file server named ABC-SR10 that is located in the Chicago site.

Users in the Miami and Dallas offices are complaining about the unacceptable file server performance during peak working hours. You want to design a solution that provides fault tolerance for the file server and minimizes traffic over the WAN links during office hours.

Which solution would you recommend?

- A. Implement a Distributed File System (DFS) with the DFS root in the Chicago office and DFS replicas in the Dallas and Miami offices. Configure replication to occur during off-peak hours.
- B. Install Windows Server file servers in the Dallas and Miami offices. Use the File Replication Service to replicate the folders during off-peak hours.
- C. Implement a two-node file server cluster in the Chicago office using Microsoft Cluster Services.
- D. Implement a two-node file server cluster in each office using Microsoft Cluster Services.

Correct Answer: A

Section: (none)

Explanation

Explanation/Reference:

QUESTION 12

The company consists of an Active Directory domain called ABC.com. All servers on the corporate network run Windows Server.

The network contains a server that runs Internet Authentication Service (IAS) called ABC-SR01. ABC-SR01 also runs the Routing and Remote Access service to provide VPN access to the network for external users. During routine monitoring you discover that an external unauthorized user is trying to access the network through ABC-SR01.

How would you set up ABC-SR01 to log the IP addresses of the remote computers when they attempt to connect to the network using the VPN connection?

- A. Log the details of the access attempts by the VPN users by using IAS to configure the Authentication requests option enabled in the Remote Access Logging.
- B. Log the details of the access attempts by the VPN users by configuring the Routing and Remote Access service to log all IPsec connections.
- C. Log the details of the access attempts by the VPN users by enabling auditing of TCP/IP.sys.
- D. Log the details of the access attempts by the VPN users by enabling auditing of all Account Logon events on a domain controller.

Correct Answer: A

Section: (none)

Explanation

Explanation/Reference:

QUESTION 13

The ABC.com network consists of a single Active Directory domain named ABC.com. All servers on the ABC.com network run Windows Server.

ABC.com contains a member server named ABC-SR24. ABC-SR24 is configured as a File and Print server and hosts shared folders for all ABC.com users.

One morning a ABC.com user named Dean Austin complains that ABC-SR24 responds poorly at various times throughout the day. You suspect that the poor performance is caused by broadcast traffic on the ABC.com network.

What would be the best way to monitor ABC-SR24 while minimizing administrative effort?

- A. Use System Monitor to monitor the Datagrams/sec counter in the UDPv4 object.
- B. Double click on the Local Area Connection and view the status of the network connection.
- C. Open Task Manager and monitor the Networking tab.
- D. Configure an alert in Performance Monitor to send you an alert when the Datagrams/sec counter in the UDPv4 object is high.

Correct Answer: D

Section: (none)

Explanation

Explanation/Reference:

QUESTION 14

The ABC.com network consists of a single Active Directory domain named ABC.com. All servers on the ABC.com network run Windows Server.

The ABC.com domain contains two Active Directory sites named ABC-Site1 and ABC-Site2. ABC-Site1 contains a domain controller named ABC-DC1. ABC-Site2 contains a domain controller named ABC-DC2. Each domain controller is configured as a DNS server and hosts the ABC.com Active Directory Integrated Zone.

Users in ABC-Site2 report that they are unable to log on to the domain.

On a client computer in ABC-Site2, you run the “nslookup ABC-DC2” command. The command returns the IP address of ABC-DC2.

You open Active Directory Users and Computers on the client computer but you are unable to connect to ABC-DC2.

How can you resolve this problem?

- A. Run the ipconfig /registerdns command on ABC-DC2.
- B. Configure a secondary zone on ABC-DC2 for the ABC.com domain and force replication from ABC-DC1.
- C. Use Active Directory Sites and Services to force Active Directory replication.
- D. Use the Services console to restart the Net Logon service on ABC-DC2.

Correct Answer: D

Section: (none)

Explanation

Explanation/Reference:

QUESTION 15

The ABC.com network consists of a single Active Directory domain named ABC.com. All servers on the ABC.com network run Windows Server. Your instruction is to set up a child domain named us.ABC.com.

You install Windows Server on a new standalone server named ABC-DC03 and manually assign an IP address. You attempt to run dcpromo to promote ABC-DC03 to a domain controller. You select the new domain in an existing forest option. The wizard prompts you for the network credentials to join the us.ABC.com to the ABC.com forest. You then receive an error message indicating that a domain controller in the ABC.com domain cannot be found.

How can you ensure that ABC-DC03 can be promoted to a domain controller in the us.ABC.com domain?

- A. By installing the DNS Server service on ABC-DC03.
- B. By creating a host (A) record for ABC-DC03 on a DNS server in the ABC.com domain.
- C. By first joining ABC-DC03 to a workgroup named us.ABC.com.
- D. By having the ABC-DC03 client DNS settings configured to use a DNS server in the ABC.com domain.
- E. By creating a delegation on a ABC.com DNS server to delegate the us.ABC.com zone to ABC-DC03.

Correct Answer: D

Section: (none)

Explanation

Explanation/Reference:

QUESTION 16

The ABC.com network consists of a single Active Directory domain named ABC.com. All the servers on the network run Windows Server servers.

The network contains a file server named ABC-SR24. ABC-SR24 hosts shared folders for users in the Sales department.

All shared folders are backed up using a Normal backup on a weekly basis over the weekend. An incremental backup of the shared folders is taken every night.

A Copy backup of the shared folders is taken every Thursday night after the incremental backup. On Friday morning, the Sales manager reports that he has accidentally deleted an important file. He asks you to restore the file as quickly as possible. He doesn't know when the file was last modified.

From which backup tape or tapes should you restore the file?

- A. The last normal backup and the last incremental backup.
- B. The last normal backup and the incremental backups from Monday, Tuesday, Wednesday and Thursday.
- C. The last incremental backup.
- D. The last normal backup.
- E. The last Copy backup.

Correct Answer: E

Section: (none)

Explanation

Explanation/Reference:



QUESTION 17

The ABC.com network consists of a single Active Directory domain named ABC.com. All servers on the ABC.com network run Windows Server.

ABC.com has a main office in Chicago and a branch office in Miami. The two offices are configured as Active Directory sites and are connected by a 56Kbps WAN link which is available only during office hours.

The Miami site contains a domain controller named ABC-DC02.

A ABC.com user named Andy Reid works in the Miami office. One morning Andy Reid complains that the response times on the WAN link is slow. You then investigate the problem and discover that the problem is due to Active Directory replication activity.

How can you reduce the traffic going over the WAN connection?

- A. By moving the computer object for ABC-DC02 to the Active Directory site for the Chicago office.
- B. By configuring ABC-DC02 as a DNS server.
- C. By having the replication interval decreased on the site link between the two sites.
- D. By having the replication interval increased on the site link between the two sites.
- E. By removing the Global Catalog from ABC-DC02 and enabling universal group membership in the Miami office.

Correct Answer: D

Section: (none)

Explanation

Explanation/Reference:

QUESTION 18

You are the server administrator for SRV05 which is a Windows Server Standard Edition file server in your domain. Your backup strategy utilizes one full backup and then daily differential backups. SRV05 has eight 72GB SCSI3 10,000RPM drives in an external drive array for data and are set up using hardware RAID 5. SRV05 also has two additional 72GB SCSI3 10,000RPM drives internal to the system and they are configured in a RAID 1 arrangement. This volume holds the system and boot partitions for the server's operating systems and a small amount of local application data.

The full back up is performed each Saturday at 9:00PM EST. The full back up takes 2 hours. The daily differential backups are performed each day at 9:00PM, Monday through Friday. There is no full backup nor differential backup performed on Sunday. The amount of time needed for the differential backups varies but it is never less than 20 minutes and the maximum time never exceeds 75 minutes.

DNS07 has a hard disk failure in the external array at approximately 6:00PM on a Saturday. At 7:20PM a second drive in the external array also fails. What needs to be done to bring the server back to working order so that users can access the data on the server?

Select the best answer.

- A. The failed drives need to be replaced and the data needs to be restored from the full backup.
- B. The failed drives need to be replaced and the data needs to be restored from the full backup and all of the differential backups.
- C. The failed drives need to be replaced. Nothing additional needs to be done because the RAID configuration allows the system to continue to run.
- D. The failed drives need to be replaced and the data needs to be restored from the full backup and the last differential backup.

Correct Answer: D

Section: (none)

Explanation

Explanation/Reference:

QUESTION 19

You work as a Network Administrator for ABC.com. The company has a Windows Active Directory-based single domain single forest network. The functional level of the forest is Windows Server. The company's headquarters is located at Los Angeles. The company has three branch offices located at San Jose, Oakland, and San Francisco. The company's network is shown in the image below:



All the offices are connected to each other by using 56Kbps demand-dial connections. The branch offices and the headquarters are required to communicate with each other on a regular basis. As you are using demand-dial connections, you do not want the routing updates to be broadcast throughout the network. However, for reliable communications, any changes to the network should be sent to the routers configured on the network. Every router in the network is a server running Windows Server. Which of the following protocols will you use on the routers?

- A. RIP 1
- B. CHAP
- C. RIP 2
- D. OSPF

Correct Answer: C

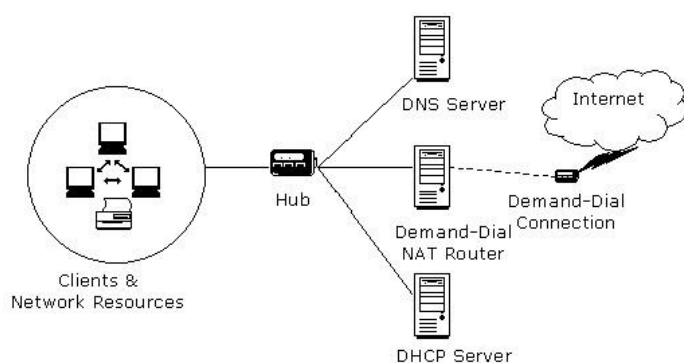
Section: (none)

Explanation

Explanation/Reference:

QUESTION 20

You work as a Network Administrator for Venus ABC.com. The company has a Windows Active Directory-based single domain single forest network. The functional level of the forest is Windows Server. The company wants to expand its network. The clients on the network require Internet connectivity through the router. You plan to install NAT for this purpose. The network plan of the company is shown in the image below:



As the number of clients is quite high, a Class A private network range is required. Which of the following is the correct Class A network address range that is set aside for private use and barred from routing over the network?

- A. 10.0.0.0 to 10.255.255.255
- B. 172.16.0.0 to 172.31.255.255
- C. 192.168.0.0 to 192.168.255.255
- D. 111.0.0.0 to 111.255.255.255

Correct Answer: A

Section: (none)

Explanation

Explanation/Reference:

QUESTION 21

You work as a Network Administrator for ABC.com. The company has a Windows Active Directory-based single domain single forest network. The functional level of the forest is Windows Server. An application named Accounts is installed on the network. The Accounts application uses a shared folder named AccFolder to keep all its data. The AccFolder folder is placed on a file server named uCFileServer. All users in the network use the application to update the accounts information of various clients of the company. The application opens various data files to work upon. You are required to accomplish the following tasks:

- All files in the AccFolder folder should be backed up automatically twice daily.
- The backup process should take a backup of all the open files in the folder.

In order to accomplish the tasks, you take the following steps:

- Configure the Backup and Restore Wizard to take a backup of AccFolder.
- Unselect the Disable volume shadow copy check box in the Backup and Restore Wizard.
- Set the schedule of the Backup and Restore Wizard to take a backup every 12 hours through the Advanced Schedule Options.

What will happen after taking the required steps?

- A. The backup process will take a backup of all the open files in the folder.
- B. Both tasks will be accomplished.
- C. All the files in the AccFolder folder will be backed up automatically twice daily.
- D. None of the tasks will be accomplished.

Correct Answer: B

Section: (none)

Explanation

Explanation/Reference:

QUESTION 22

You work as a Network Administrator for ABC.com. The company has a Windows Active Directory-based single domain single forest network. The functional level of the forest is Windows Server. An intranet-based Web site is required to be installed on the network. Two servers are available for installing the application. You are required to accomplish the following tasks:

- The Web site should be available all the time for the clients.
- Both servers should be capable of fulfilling the clients' requests at a time.

You take the following steps:

- Create a two-node server cluster.
- Configure one server as an active server and the other as a passive server.

Which of the required tasks will be accomplished by taking these steps?

- A. Both servers will be capable of fulfilling the clients' requests at a time.
- B. None of the tasks will be accomplished.
- C. The Web site will be available all the time for the clients.
- D. Both tasks will be accomplished.

Correct Answer: C

Section: (none)

Explanation

Explanation/Reference:

QUESTION 23

You administer your company's network. The network consists of a single Active Directory domain. All servers run Windows Server. The network contains a two-node server cluster. The company's security expert informs you that the password on the domain user account that is used for the Cluster service has been compromised and must be changed immediately. Your actions should cause minimal or no disruption of the services provided by the cluster because the cluster is running a mission-critical application. Which of the following should you do?

- A. Use Active Directory Users and Computers to reset the password.
- B. Use the Services console to change the password on any one of the cluster nodes.
- C. Use the Cluster command with the appropriate options.
- D. Use the dsmod user command with the appropriate options.
- E. Use the dsmod computer command with the appropriate options.

Correct Answer: C

Section: (none)

Explanation

Explanation/Reference:



QUESTION 24

You are the network administrator for your company's network. The network consists of two Active Directory domains: lmiweb.com and hr.lmiweb.com. The lmiweb.com domain supports most of the company's user accounts and resources. The hr.lmiweb.com domain contains the user accounts and resources for the company's human resources department.

The company has deployed an extensive 802.11b wireless network. Access points (APs) have been deployed throughout the company to provide users in all departments with wireless connectivity and serve as bridges to the wired LAN. A total of 325 users, including all members of hr.lmiweb.com, have been issued laptops with 802.11bcompliant network adapters. No other computers have wireless connectivity. All wireless LANs have Wired Equivalent Privacy (WEP) enabled to secure these communications.

Human resources users work throughout the company providing employee training and informational seminars. These users require access to the wireless LAN in all company locations. You must ensure that all human resources data is as secure as possible as it is transmitted across the wireless LAN. Only users with accounts in only specific users/computers groups should be able to access the human resources division's wireless LAN. In addition, users without accounts in this domain should not be able to view or select the LAN from their list of available networks. What should you do? Each correct answer presents part of the solution. (Choose three.)

- A. Configure MAC filtering on each department's wireless LAN.
- B. Configure MAC filtering on the human resources wireless LAN.
- C. Enable Service Set Identifier (SSID) broadcasting on each department's access point.
- D. Configure a unique Service Set Identifier (SSID) for each department's wireless LAN.
- E. Configure a unique Service Set Identifier (SSID) for the human resources wireless LAN.
- F. Enable Service Set Identifier (SSID) broadcasting on all the human resources access points.
- G. Disable Service Set Identifier (SSID) broadcasting on all the human resources access points.

Correct Answer: BEG

Section: (none)

Explanation

Explanation/Reference:

QUESTION 25

You are the network administrator for your company. The network consists of a single Active Directory domain with five domain controllers that run Windows Server, Enterprise Edition. You are updating the public key infrastructure (PKI) for your company. Issuing Certification Authorities (CAs) have been provided certificates with a validity period of five years. Certificates are issued to enable network users to encrypt files on their computers. Basic EFS certificates have been issued and have been configured with the default validity period. You want to configure all new EFS certificates so that they are valid for up to three years. What should you do? Each correct answer presents part of the solution. (Choose all that apply.)

- A. Duplicate and rename the Basic EFS certificate template.
- B. Open the Basic EFS certificate template Properties dialog box.
- C. Select the General tab and edit the validity period.
- D. Select the General tab and edit the renewal period.
- E. Select the Security tab and change the permission for the Administrators group to Enroll.

Correct Answer: AC

Section: (none)

Explanation

Explanation/Reference:

QUESTION 26

You administer your company's Web site, which contains executable programs. You want to provide the highest level of trust to Internet users who download your programs, and you want to ensure that users' browsers will allow them to download the programs. Your company's network includes an enterprise root Certification Authority (CA) and an issuing enterprise subordinate CA. Which of the following actions should you take?

- A. Request a Code Signing certificate from your company's enterprise subordinate CA.
- B. Request a Code Signing certificate from a commercial CA.
- C. Request a User Signature Only certificate from your company's enterprise subordinate CA.
- D. Request a User Signature Only certificate from a commercial CA.

Correct Answer: B

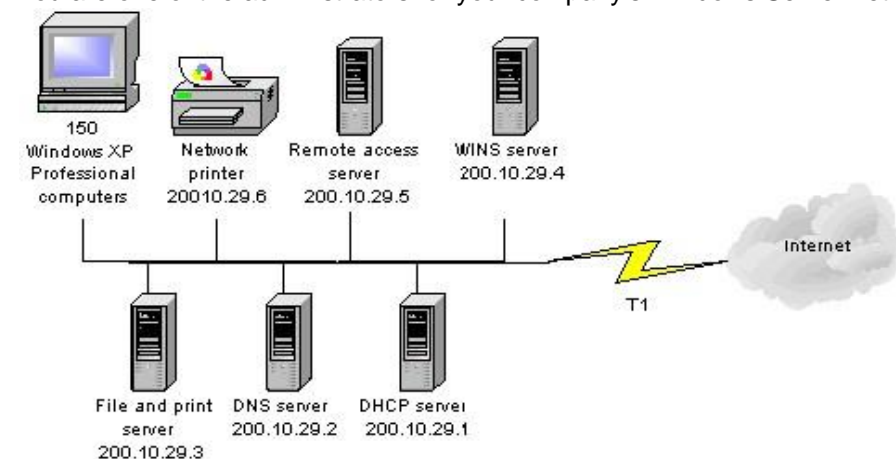
Section: (none)

Explanation

Explanation/Reference:

QUESTION 27

You are one of the administrators for your company's Windows Server network. The relevant portion of the network is presented in the following exhibit.



All servers, client computers and one network print device are currently configured with static IP addresses. The network IP address is 200.10.29.0. A DHCP server has been deployed but has not yet been configured. You must configure a new scope that will provide the existing client computers with IP configurations. The new scope should support an additional 25 new client computers that will be deployed within the next two months. Which settings should be included in the new DHCP scope? Each correct answer presents part of the solution. (Choose three.)

- A. subnet mask: 255.255.255.0
- B. subnet mask: 255.255.255.128

- C. DHCP scope starting IP address: 200.10.29.7
DHCP scope ending IP address: 200.10.29.254
- D. DHCP scope starting IP address: 200.10.29.1
DHCP scope ending IP address: 200.10.29.254
- E. DHCP scope exclusion range starting IP address: 200.10.29.1DHCP scope exclusion range ending IP address: 200.10.29.6
- F. DHCP scope exclusion range starting IP address: 200.10.29.1
DHCP scope exclusion range ending IP address: 200.10.29.254

Correct Answer: ADE

Section: (none)

Explanation

Explanation/Reference:

QUESTION 28

You administer your company's Windows network. The network consists of 25 Windows Server computers. The network contains an offline root Certification Authority (CA) located in the main office and a subordinate issuing CA in the main office and each of the remaining four retail locations.

One of the four retail locations has been purchased and will operate as a franchise. You must ensure that resources on the company network will not accept certificates from the associated subordinate CA in this retail location after the sale is completed. Your solution must use a minimum amount of administrative effort.

What should you do? Each correct answer presents part of the solution. (Choose three.)

- A. On the company's root CA, revoke the certificate of the subordinate CA.
- B. Disconnect the subordinate CA from the network.
- C. On the subordinate CA, remove the CA software and remove the CA files.
- D. On the subordinate CA, revoke the certificates that it has issued.
- E. Publish a new Certificate Revocation List.
- F. Copy the Edb.log file from the root CA to its Certification Distribution Point on your network.
- G. Copy the Edb.log file from the subordinate CA to its Certification Distribution Point on your network.
- H. Copy the Certificate Revocation List file to the Certificate Distribution Point on your network.



Correct Answer: AEH

Section: (none)

Explanation

Explanation/Reference:

QUESTION 29

You are the backup administrator for your company. You are responsible for ensuring that all data on ten files servers are protected against data loss. Normal business hours from 8 A.M. to 5 P.M., Monday through Friday, are observed. Network access is prohibited outside normal business hours.

A member server named File1 contains shared folder accessed by users in the sales department. The disk structure of File1 is shown in the following exhibit:

Volume	Hosts	Disk Size	Available Space
C	System and Boot Files	9 GB	2.54 GB
D	Shared Folders and User Profiles	25 GB	9.8 GB
F	Shared Folders	75 GB	53.35 GB

You have scheduled a daily backup of File1 as shown in the exhibit. (Click the Exhibit(s) button.) Users in the Sales department frequently leave documents open on their desktops when they leave work. These users occasionally request that you restore a previous version of a file from backup. However, some of these files are not included in recent backup sets. You must modify the backup procedures for File1 so that all files, including open documents, will be included in the daily backup. You also want to provide users with the ability to restore their files.

What should you do? Each correct answer presents part of the solution. (Choose all that apply.)

- A. Move all shared user data folders from drive D to drive F.
- B. Move all shared folders user data from drive F to drive D.
- C. Enable Shadow Copies of Shared Folders on drive F.
- D. Enable Volume shadow copy for the scheduled backup job.

- E. Select the Disable volume shadow copy option for the scheduled backup job.
- F. Install the Previous Versions Client software on all Sales department computers.
- G. Create a new daily backup job by using the same settings, but clear the Disable volume shadow copy option.

Correct Answer: ACFG

Section: (none)

Explanation

Explanation/Reference:

QUESTION 30

You are proposing the purchase of a new e-mail server for your corporate network. You have specified a new server from a major OEM manufacturer that is configured with a powerful quad-processor configuration, hot-swappable hard drives, and redundant power supplies and network adapters, with a three-year onsite warranty. Due to a budget crunch, the chairperson of the budget committee has suggested that the company can make do with a less powerful workgroup server from a local computer store. This server has only a single processor and no redundancy features, and a one-year onsite warranty. What reasons can you provide the budget committee members that might convince them to authorize the purchase of the server that you specified, even though it has a higher price tag? (Choose two.)

- A. A more powerful server will provide better performance and scalability as the company's needs grow over time.
- B. Redundant hardware components will increase the server's availability to service the needs of the company's users and customers.
- C. The extended warranty on the more powerful server will increase support costs over time, since you're paying to cover the machine under warranty for three times as long.
- D. Windows Server requires at least a dual-processor configuration.

Correct Answer: AB

Section: (none)

Explanation

Explanation/Reference:

QUESTION 31

The only protocol used by your network is TCP/IP, despite the fact that workstations in the organization do not have access to the Internet. A user has been accessing files on server on your network and now wants to connect to a Web server that is used as part of the company's intranet. The user enters the URL of the Web site into Internet Explorer.

Which of the following servers will be used to provide information needed to connect to the Web server?

- A. DHCP server
- B. DNS server
- C. WINS server
- D. File server

Correct Answer: B

Section: (none)

Explanation

Explanation/Reference:

QUESTION 32

You want to set up a discussion group that can be accessed over the corporate intranet, so that users can view and post messages in a forum that can be viewed by other employees. Which of the following services would you use to implement this functionality?

- A. HTTP
- B. FTP
- C. NNTP
- D. SMTP

Correct Answer: C

Section: (none)

Explanation

Explanation/Reference:

QUESTION 33

Which of the following addresses is suitable for dividing into at least nine subnets, each with the ability to support 200 hosts per network?

- A. 10.1.1.0/24
- B. 10.1.1.0/20
- C. 10.1.1.0/19
- D. 10.1.1.0/22

Correct Answer: BC

Section: (none)

Explanation

Explanation/Reference:

QUESTION 34

You work as It Admin at ABC.com. The ABC.com network consists of a domain named ABC.com. The servers at the ABC.com network run Windows Server. The ABC.com network has a file server named ABC-SR18. ABC-SR18 hosts shared folders.

During your routine monitoring, you notice that ABC-SR18 has a connectivity issue. To investigate further you run Network Monitor, but notices that during capturing, network packets were dropped.

What actions must you take to minimize the dropping of packets while monitoring ABC-SR18?

- A. You should configure a persistent demand-dial connection.
- B. You should configure a two-way initiated demand-dial connection.
- C. You should use dedicated capture mode when utilizing the Network Monitor.
- D. You should select the Do not overwrite events option in the Event Viewer.

Correct Answer: C

Section: (none)

Explanation

Explanation/Reference:

QUESTION 35

You work as the network administrator at ABC.com. The ABC.com network consists of a single Active Directory domain named ABC.com. The servers at the ABC.com network run Windows Server and the workstations, Windows Professional.

The ABC.com network has a DNS server named ABC-SR03 that does name resolution for host on the Internet. ABC.com users complain that they do not get the correct site when trying to access Web site known to them.

What actions must you take to stop this from happening without disrupting production?

- A. You should restart the DNS Server service.
- B. You should select the Secure cache against pollution setting.
- C. You should run the ipconfig/flushdns on ABC-SR03.
- D. You should run the ipconfig/registerdns on ABC-SR03.

Correct Answer: B

Section: (none)

Explanation

Explanation/Reference:

QUESTION 36

You work as the network administrator at ABC.com. The ABC.com network has a domain named ABC.com. The servers at the ABC.com network run Windows Server and the workstations, Windows Professional.

The ABC.com network has a server named ABC-SR10 that runs Windows Server Update Services (WSUS). During synchronization you notice that you cannot connect to the Windows Update servers, however, you can access to other Web site not residing in the intranet.

What actions must you take to connect to the Windows Update servers?

- A. You must run the ipconfig/registerdns.
- B. You must configure the forwarders on ABC-SR10.
- C. You must set the authentication to the proxy server in the WSUS settings.
- D. You must run the gpupdate /force command on ABC-SR10.

Correct Answer: C

Section: (none)

Explanation

Explanation/Reference:

QUESTION 37

You work as the network administrator at ABC.com. The ABC.com network has a domain named ABC.com. The servers at the ABC.com network run Windows Server. ABC.com has a subsidiary named Test Labs, Inc. that has a domain named testlabs.com.

The ABC.com network has a DNS server named ABC-SR05. ABC-SR05 acts as a secondary zone for testlabs.com

What actions must you take to track when the DNS server at Test Labs, Inc. sends notifications of modifications in the zone of testlabs.com to ABC-SR05?

- A. You must run the gpresult command in verbose mode.
- B. You must select debug logging and set the log to store Notification events on ABC- SR05.
- C. You must run the secedit command in analysis mode.
- D. You must configure a two-way initiated demand-dial connection.

Correct Answer: B

Section: (none)

Explanation

Explanation/Reference:

QUESTION 38

You work as the network administrator at ABC.com. The ABC.com network consists of a domain named ABC.com. The servers at the ABC.com network run Windows Server.

The ABC.com network has a Web server named ABC-SR11. During a routine monitoring you notice an increase in network traffic. Due to this you need to find out the MAC address of the workstation that initiated the transfers and the command that was used. However, you action must not effect ABC-SR11.

What actions must you take?

- A. You must run the ipconfig/registerdns.
- B. You must use the Netmon utility.
- C. You must capture the IP traffic to ABC-SR11.
- D. You must Enable Server Message Block (SMB) signing on all the workstations.

Correct Answer: C

Section: (none)

Explanation

Explanation/Reference:

QUESTION 39

You are the network administrator for Verigon Research. The network contains Windows Server and Windows Professional computers in a single Active Directory domain.

Field researchers have been issued Windows Professional laptop computers to use when performing research in remote locations. When they return to the office, they need to connect these laptops to the corporate network. You decide to create a 802.1x wireless network for the research department laptops. You create a separate subnet on which you install a wireless access point. You configure a Windows Server computer named RAD1 to be a Remote Access Dial In User Authentication Service (RADIUS) server for the researchers. The wireless access points are RADIUS clients. You must select a protocol for this wireless network to use. The protocol you select must support the use of certificates, and must provide the strongest authentication and enhanced security. Which protocol should you use?

- A. Extensible Authentication Protocol - Message Digest 5 (EAP-MD5)
- B. Extensible Authentication Protocol - Transport Layer Security (EAP-TLS)
- C. Extensible Authentication Protocol - Microsoft Challenge Handshake Protocol v2 (EAP-MS-CHAP v2)
- D. Protected EAP (PEAP) with EAP-TLS
- E. Protected EAP (PEAP) with EAP-MD5
- F. Protected EAP (PEAP) with EAP-MS-CHAP v2

Correct Answer: D

Section: (none)

Explanation

Explanation/Reference:

QUESTION 40

You work as the network administrator at ABC.com. The ABC.com network has a domain named ABC.com. The servers at the ABC.com network run Windows Server and the workstations, Windows Professional.

The ABC.com network has a Web server named ABC-SR10 that has the Internet Information Services (IIS) 6.0 installed. ABC-SR10 hosts a Web site that can be reached from the internal network and the Internet. The internal traffic at ABC.com needs authentication without a secure protocol to access the Web site; however Internet traffic needs to authenticate with a secure protocol.

What actions must you take to ensure that the all accesses to ABC-SR10 use a secure protocol?

- A. You need to configure the log to capture Notification events.
- B. You need to apply the hisecdc.inf predefined security template.
- C. You need to monitor network traffic and IIS logs.
- D. You need to apply a custom security template.



Correct Answer: C

Section: (none)

Explanation

Explanation/Reference:

QUESTION 41

You work as the network administrator at ABC.com. The ABC.com network has a domain named ABC.com. The servers at the ABC.com network run Windows Server and the workstations, Windows Professional.

The ABC.com network has two servers, named ABC-SR30 and ABC-SR31, which contain file with sensitive company information. You create a new OU named SenSrv and move ABC-SR30 and ABC-SR31 to the new OU. You then create a new GPO that and configure it to encrypt all network connections. You then link the GPO to the SenSrv OU.

How would you check to see if encrypted connections to ABC-SR30 and ABC-SR31 are taking place?

- A. By opening the Resultant Set of Policy console.
- B. By running the Microsoft Baseline Security Analyzer (MBSA).
- C. By applying the hisecdc.inf predefined security template.
- D. By opening the IP Security Monitor console.

Correct Answer: D

Section: (none)

Explanation

Explanation/Reference:

QUESTION 42

You work as the network administrator at ABC.com. The ABC.com network consists of a domain named ABC.com. The servers at the ABC.com network run Windows Server and the workstations, Windows Professional. The ABC.com network has a DNS server named DEF-SR03.

ABC.com changes ISPs. Now you receive complaints that ABC.com users cannot connect to Web sites on the Internet by using the URL of the Web site.

You configure your workstation with the DNS server address of the new ISP. You can now connect to Web sites by entering their URL in the browser.

How would you configure ABC-SR03 to allow all users to connect to Internet Web sites without causing connectivity problems on the internal network?

- A. You need run the Oclist.exe command and the Security Configuration and Analysis console on ABC-SR03.
- B. You need to utilize the default root hints of ABC-SR03 and set up a forwarder to the new ISP.
- C. You need run the Dcgpofix on ABC-SR03 and set up forwarding to the new ISP.
- D. You need to disable recursion and run the Security Configuration and Analysis console on ABC-SR03.

Correct Answer: B

Section: (none)

Explanation

Explanation/Reference:

QUESTION 43

You work as the network administrator at ABC.com. The ABC.com network consists of a domain named ABC.com. The servers at the ABC.com network run Windows Server and the workstations, Windows Professional.

ABC.com has a Web server named ABC-SR10 which is connected to the Internet. During the course of the day you have received instructions from the CIO to use System Monitor to determine how much bandwidth is used on ABC-SR10's Internet connection. You decide to use the Bytes Total/sec counter with a sample rate of 10 seconds. You also plan to archive the logs once a day. Due to limited hard drive space, you need to prevent the logs from getting too big.

What actions must you take to?

- A. You should disable recursion.
- B. You should create a one-way initiated demand-dial connection.
- C. You should configure an alert trigger when the Datagrams/sec counter is high.
- D. You should keep ABC-SR10 on the existing counter and set the sample rate to 60 seconds.



Correct Answer: D

Section: (none)

Explanation

Explanation/Reference:

QUESTION 44

You work as the network administrator at ABC.com. The ABC.com network consists of a domain named ABC.com.

ABC.com has several subsidiary companies whose Web sites and DNS zones are hosted on servers at ABC.com.

What actions must you take to allow the DNS server at ABC.com to generate a report of the listed zones on a weekly basis?

- A. You need to utilize the ipconfig/registerdns.
- B. You need to NetMon utility on the DNS server.
- C. You need to utilize the dnscmd utility on the DNS server.
- D. You need to utilize the ADSIEdit utility on the DNS server.

Correct Answer: C

Section: (none)

Explanation

Explanation/Reference:

QUESTION 45

You work as the network administrator at ABC.com. The ABC.com network has a domain named ABC.com. The servers at the ABC.com network run Windows Server and the workstations, Windows Professional.

The ABC.com network has a server named ABC-SR18, which contains file with sensitive company information. You receive instructions to ensure that network connections to ABC-SR18 are encrypted using IPSec. You decide to implement the Server (Request Security) IPSec policy on ABC-SR18. You later discover that there are still workstations connecting to ABC-SR18 that do not use IPSec.

What actions must you take to on ABC-SR18 to have all workstations use IPSec when connecting to ABC-SR18?

- A. You need to run the wuaucit /detectnow command.
- B. You need to assign the Secure Server (Require Security) IPSec policy.
- C. You need to run the Security Configuration and Analysis console.
- D. You need to use Kerberos authentication.

Correct Answer: B

Section: (none)

Explanation

Explanation/Reference:

QUESTION 46

You work as the network administrator at ABC.com. The ABC.com network has of a domain named ABC.com. The servers at the ABC.com network run Windows Server and the workstations, Windows Professional.

The ABC.com network contains a server named ABC-SR20. ABC-SR20 contains an in-house application that runs as a service named NetApp1, which fails from time to time. During the course of the day you have received instructions from the CIO to implement the following process for NetApp1:

- The NetApp1 service should be restarted if it fails after running for at least a day.
- ABC-SR20 should be restart if the NetApp1 service fails unsuccessful the entire workday, the server should be rebooted.

What actions must you take to implement this plan? (Choose all that apply.)

- A. You need to enable the Master Key perfect forward secrecy (PFS).
- B. You need to set up the response to the first and second failure to restart NetApp1.
- C. You need to apply the Securews.inf security template.
- D. You need to set up the Reset fail count after value for NetApp1 to 1 day.
- E. You need to disable all services that are not required.



Correct Answer: BD

Section: (none)

Explanation

Explanation/Reference:

QUESTION 47

You work as the network administrator at ABC.com. The ABC.com network has a domain named ABC.com. The servers at the ABC.com network run Windows Server and the workstations, Windows Professional.

The ABC.com network has a Web server named ABC-SR24 that has the IIS 6.0 installed and hosts Web site that is only accessible from the internal network. You configure the Web site to use only secure HTTP. How would you check if HTTPS connections to the Web site are being rejected?

- A. You need to use the NetMon utility on ABC-SR24.
- B. You need to use the Network Monitor to log the network traffic.
- C. You need to use the Event Viewer to examine the logged event entries.
- D. You need to check the log files of the IIS on ABC-SR24.

Correct Answer: D

Section: (none)

Explanation

Explanation/Reference:

QUESTION 48

You work as the network administrator at ABC.com. The ABC.com network has a domain named ABC.com. The servers at the ABC.com network run Windows Server and the workstations, Windows Professional. ABC.com network has a domain controller named ABC-DC01.

ABC.com employees complain that it sometimes takes a while to log on to ABC-DC01. You have also notice that replications between the other domain controllers and ABC-DC01 is sluggish at times.

You have received instruction to identify the cause of these problems and need determine if the problem is linked to a shortage of hardware resources on ABC-DC01.

What actions must you take first?

- A. You need to configure an alert trigger in the Datagrams/sec counter.
- B. You need to track ABC-DC01's queue lengths.
- C. You need to monitor the LogicalDisk, PhysicalDisk, Processor, Memory and Network Interface performance objects.
- D. You need to use a trace log to capture Page faults, File details, Network TCP/IP, and Process creations/deletions events.

Correct Answer: B

Section: (none)

Explanation

Explanation/Reference:

QUESTION 49

You administer your company's Windows domain. The domain contains 10 Windows Server computers, 750 Windows Professional computers, and 300 Windows NT 4.0 Workstation computers Four of the Windows Server computers are DHCP servers, and two of the Windows Server computers are DNS servers. All network computers are configured to use DHCP. All four DHCP servers are configured with scopes for every subnet in the network.

You configure the DHCP servers to always register and update client computer information in DNS. To increase security, you configure DNS to only allow secure updates.

Immediately following this, you discover that the resource records for the DHCP clients are no longer updated when IP addresses change. You want the resource records for the client computers to have the most recent information. What should you do?

- A. Add the computer accounts of the four DHCP servers to the DNSUpdateProxy global security group.
- B. Add the computer accounts of the two DNS servers to the DHCP Users domain local security group.
- C. Add the computer accounts of the four DHCP servers to the DNSAdmins domain local security group.
- D. Configure the four DHCP servers to enable updates for DNS client computers that do not support dynamic update.
- E. Configure the DHCP server to not release the DHCP lease for Windows Professional computers and the Windows NT 4.0 Workstation computers at shutdown.
- F. Configure the two DNS servers to use a Time to Live (TTL) interval on resource records that are shorter than the lease time used by the DHCP servers.

Correct Answer: A

Section: (none)

Explanation

Explanation/Reference:

QUESTION 50

You work as the network administrator at ABC.com. The ABC.com network consists of a domain named ABC.com. The servers at the ABC.com network run Windows Server and the workstations, Windows Professional. ABC.com has a server named ABC-TS12 that has the Terminal Server services installed. ABC-TS12 is used by the employees to access their applications and connect to the Internet.

A ABC.com employee named Andy Reid complains that when he logs on to ABC-TS12, he cannot change the security settings of Internet Explorer on his client computer.

What actions must you take to resolve this problem?

- A. You need to enable the Configure Automatic Update setting on the workstations.
- B. You need to enable the Reschedule Automatic Updates scheduled installations option on the workstations.
- C. You need to remove the Internet Explorer Enhanced Security Configuration on ABC-TS12.
- D. You need to enable the user-level Terminal Server setting.

Correct Answer: C

Section: (none)

Explanation

Explanation/Reference:

QUESTION 51

You work as the network administrator at ABC.com. The ABC.com network consists of a domain named ABC.com. The servers at the ABC.com network run Windows Server and the workstations run a mix of operating systems.

The ABC.com network has a multi-homed named ABC-SR24 that has the Routing and Remote Access Service (RRAS) installed. A new ABC.com security policy requires that ABC-SR24 be configured to only support connections from computers running Windows 95, Windows 98, Windows 2000 Professional, and Windows Professional.

What actions must you take to use a secure authentication method suitable for the operating system?

- A. You need to enable Kerberos V5.
- B. You need to enable NTLMv2.
- C. You need to enable MS-CHAP Version 1 and 2.
- D. You need to enable EAP-TLS.

Correct Answer: C

Section: (none)

Explanation

Explanation/Reference:

QUESTION 52

You work as the network administrator at ABC.com. The ABC.com network has a domain named ABC.com. The servers at the ABC.com network run Windows Server and the workstations, Windows Professional.

ABC.com is only utilizing Kerberos authentication on the internal network. During the course of the day you receive a complaint from a ABC.com employee named Mia Hamm that she gets an Access denied error when she tries to access a member server named ABC-SR05.

What actions must you take to check that Kerberos authentication is working properly on Mia Hamm's workstation?

- A. You need to use the netdom command.
- B. You need to use the netdiag command.
- C. You need to use the dcgpofix command.
- D. You need to use the HFNetChk command.

Correct Answer: B

Section: (none)

Explanation

Explanation/Reference:

QUESTION 53

You work as the network administrator at ABC.com. The ABC.com network has a domain named ABC.com. The servers at the ABC.com network run Windows Server and the workstations, Windows Professional.

The Default Domain Policy has been updated recently through a security template file. The security template file contained a number of security configuration settings.

You notice that a server named ABC-SR05 can no longer run a program that is operational on other network servers which have a similar configuration. You suspect that additional security settings could have been added to the local security policy on ABC-SR05.

You want to run a utility on ABC-SR05 to compare the current security settings on ABC-SR05 to that of the security template file. You want to use a tool that will automatically identify all settings that might have been added to the local security policy on ABC-SR05.

What actions must you take on ABC-SR05?

- A. Run the ADSIEdit on ABC-SR05.
- B. Run the Security Configuration and Analysis console on ABC-SR05.
- C. Run gpresult.exe on ABC-SR05.
- D. Run the Dcgpofix on ABC-SR05.

Correct Answer: B

Section: (none)

Explanation

Explanation/Reference:

QUESTION 54

You work as the network administrator at ABC.com. The ABC.com network has a domain named ABC.com. The servers at the ABC.com network run Windows Server and the workstations, Windows Professional.

The ABC.com network has two servers named ABC-SR10 and ABC-SR11. ABC-SR10 runs Windows Server Update Services (WSUS) and ABC-SR11 is a file server. You want all approved critical updates to be applied to ABC-SR11 as soon as possible.

What actions must you take?

- A. You should run the Dcgpofix command on the ABC-SR01.
- B. You should run the Secedit command on the ABC-SR01.
- C. You should run the wuaclt /detectnow command on each of the five high-visibility servers.
- D. None of the above

Correct Answer: C

Section: (none)

Explanation

Explanation/Reference:

QUESTION 55

You have just installed the DHCP service on a stand-alone Windows Server system. You place the server on one of the subnets. You soon discover that clients are not leasing an IP address from the server. You open the DHCP console and see that the DHCP service is not started. What should you do?

- A. Reinstall the DHCP service.
- B. Add the DHCP server to the domain.
- C. Authorize the DHCP server.
- D. Check the system event log to find any clues as to why the service will not start.

Correct Answer: D

Section: (none)

Explanation

Explanation/Reference:

QUESTION 56

You work as the network administrator at ABC.com. The ABC.com network has a domain named ABC.com. The servers at the ABC.com network run Windows Server and the workstations, Windows Professional.

The ABC.com domain uses only Kerberos authentication to servers. One morning a user named Mia Hamm complains that she received an error message when attempting to connect to the server.

What actions must you take to assess the Kerberos authentication on Mia Hamm's computer?

- A. You should run the msixec.exe.
- B. You should run the netdiag.
- C. You should run the lpsetupui.exe.
- D. You should run the Dcgpofix.

Correct Answer: B

Section: (none)

Explanation

Explanation/Reference:

QUESTION 57

Felicia is the network administrator for a Windows Server network. There are several junior network administrators employed. Felicia suspects that changes have been made to the security settings on several servers. There is a standard security template with which all new servers are configured. What tool can Felicia use to verify the current security settings against those within the original template? Select the best answer.

- A. Active Directory Users and Computers
- B. System Monitor
- C. Security Templates
- D. Security Configuration and Analysis
- E. IP Security Monitor

Correct Answer: D

Section: (none)

Explanation

Explanation/Reference:

QUESTION 58

You work as the network administrator at ABC.com. The ABC.com network consists of a domain named ABC.com. The servers at the ABC.com network run Windows Server and the workstations, Windows Professional.

The ABC.com network has a server named ABC-SR11 that runs Windows Server Update Services (WSUS). ABC-SR11 has very little hard drive space. Therefore workstations must download critical updates from the Microsoft Web site.

What actions must you take to make sure that the workstations download only approved updates from the Web site?

- A. You should disable the Network Monitor capture filter.
- B. You should set the synchronization option to not store updates locally.
- C. You should enable the Disable recursion option.
- D. You should apply the Setup security.inf security template.

Correct Answer: B

Section: (none)

Explanation

Explanation/Reference:

QUESTION 59

You work as the network administrator at ABC.com. The ABC.com network is a forest with a domain named ABC.com. ABC.com has its headquarters in Dallas and a branch office in Phoenix. The servers at the ABC.com network run Windows Server and the workstations, Windows Professional.

Headquarters has a server named ABC-SR01 that has Windows Server Update Services (WSUS) Server installed and contains their updates. You receive an instruction from the CIO to configure a WSUS server called ABC-SR02 in the branch office to receive the same updates as the computers at headquarters. The branch office should however obtain their updates from ABC-SR02.

What action must you take?

- A. You should run the Security Configuration and Analysis console at the Phoenix office.
- B. You should run gpupdate /force command on the entire client computer in the Phoenix office.
- C. You should set up ABC-SR02 in order to inherit all settings from ABC-SR01 and assign the Phoenix client computers to the GPO.
- D. You should run wuaclt /detectnow on the entire client computer in the Phoenix office.

Correct Answer: C

Section: (none)

Explanation

Explanation/Reference:

QUESTION 60

You work as the network administrator at ABC.com. The ABC.com network has a domain named ABC.com. The servers at the ABC.com network run Windows Server and the workstations, Windows Professional.

During the course of the day you have received instructions from the CIO to implement Windows Server Update Services (WSUS) on a server named ABC-SR10. However, ABC0SR10 has limited disk space so you must conserve disk space usage. You must also ensure that all updates are approved before they are applied.

What steps must you take after clearing the Automatically Approve Updates for Installation checkbox and opening the WSUS console? (Choose all that apply.)

- A. You should modify the Revisions to Updates setting to deselect the automatically approve all updates.
- B. You should set the demand-dial connection to Persistent.
- C. You should execute the gpupdate command on all client computers.
- D. You should modify the Advanced Synchronization Options dialog box to stop the locally stored updates.
- E. You should apply the Setup security.inf security template.
- F. You should deselect the Automatically Approve Updates for Installation checkbox.

Correct Answer: ADF

Section: (none)

Explanation

Explanation/Reference:

QUESTION 61

You work as the network administrator at ABC.com. The ABC.com network consists of a domain named ABC.com. The servers at the ABC.com network run Windows Server and the workstations, Windows Professional.

ABC.com contains a Web server named ABC-SR12. During the course of the day you receive instructions to find out number of network users accessing ABC-SR12.

What actions must you take?

- A. You should run the wuaucit /detectnow.
- B. You should look at the current Sessions.
- C. You should run the Net start /show all.
- D. You should run the Ipsecmon.



Correct Answer: B

Section: (none)

Explanation

Explanation/Reference:

QUESTION 62

You work as the network administrator at ABC.com. The ABC.com network consists of a domain named ABC.com. The servers at the ABC.com network run Windows Server and the workstations, Windows Professional.

What actions must you take to check which approved updates have been replaced with new updates, with the least amount effort?

- A. You need to run the Net start /show all on the WSUS server.
- B. You need to display the WSUS Updates update view.
- C. You need to run the wuaucit /detectnow command on the WSUS server.
- D. You need to disable round robin on the WSUS server.

Correct Answer: B

Section: (none)

Explanation

Explanation/Reference:

QUESTION 63

You work as the network administrator at ABC.com. The ABC.com network consists of a domain named ABC.com. The servers at the ABC.com network run Windows Server and the workstations, Windows Professional.

Which of the following commands can be used to perform automated management of ABC.com's DNS servers?

- A. You should use the gpresult.exe.
- B. You should use the msixec.exe.
- C. You should use the wuauclt.exe.
- D. You should use the Dnscmd.exe.

Correct Answer: D

Section: (none)

Explanation

Explanation/Reference:

QUESTION 64

You work as the network administrator at ABC.com. The ABC.com network has a domain named ABC.com. The servers at the ABC.com network run Windows Server and the workstations, Windows Professional Service Pack 2.

ABC.com makes use of a firewall between their intranet and the Internet. The firewall is configured to allow only HTTP traffic through. You have implemented a DNS server named ABC-SR04 with the default settings.

What actions must you take to make sure that ABC-SR04 can perform name resolution for Internet names?

- A. You should use port 110.
- B. You should use port 53.
- C. You should use port 80.
- D. You should use port 443.

Correct Answer: B

Section: (none)

Explanation

Explanation/Reference:



QUESTION 65

You work as the network administrator at ABC.com. The ABC.com network consists of a domain named ABC.com. The servers at the ABC.com network run Windows Server and the workstations, Windows Professional.

You have implemented a VPN server named ABC-SR10 that has Routing and Remote Access Services (RRAS) installed.

What actions must you take to configure trace logging? A.

You should use the Secedit /analyze.

- B. You should use the Netcap.exe tool.
- C. You should use the Dnscmd.exe.
- D. You should use the Msconfig.exe.

Correct Answer: B

Section: (none)

Explanation

Explanation/Reference: