



**Exam Code:** NCP-DS

**Exam Name:** Nutanix Certified Professional - Data Services

**Website:** [www.VCEplus.io](http://www.VCEplus.io) - [www.VCEup.com](http://www.VCEup.com)

VCEup

Question No: 1

An administrator needs to upgrade Files in a dark site environment without LCM, Which set of actions should the administrator perform?

- A. Setup a web server and point prism to it to fetch the bits and then click Upgrade.
- B. Run any NCC checks related to Files and trigger an upgrade from Prism.
- C. Download the metadata and binary bits from the portal, upload then to prism and click Upgrade.
- D. Connect the cluster to the internet to perform the upgrade through prism.

Answer: C

Explanation: [https://support-portal.nutanix.com/page/documents/details?targetId=Acropolis-UpgradeGuidev5\\_18:Acropolis-Upgrade-Guide-v5\\_18](https://support-portal.nutanix.com/page/documents/details?targetId=Acropolis-UpgradeGuidev5_18:Acropolis-Upgrade-Guide-v5_18)

Question No: 2

An administrator has been asked to create a new user account for an auditor during an audit event. The auditor will write data to a Files share. For confidentiality reasons the auditor's tasks should be not analyzed by the system. How should the administrator configure File Analytics to accomplish this task?

- A. Restrict Files access for the auditor
- B. Create a dedicated share for the auditor in Files
- C. Define a blacklisting rule in File Analytics
- D. Grant anonymous access to the share used by the auditor.

Answer: C

Explanation:

[https://support-portal.nutanix.com/page/documents/details?targetId=File-Analyticsv3\\_0:anaanalytics-blacklisting-c.html](https://support-portal.nutanix.com/page/documents/details?targetId=File-Analyticsv3_0:anaanalytics-blacklisting-c.html)

Question No: 3

What fields are included in Object Store alerts?

- A. Alert Time, Alert Type, Severity, Title, Message, UUID
- B. Title, Source, Impact, severity, resolved, Acknowledged and Create Time
- C. Name, Description, Severity, Created and Silenced
- D. Severity, Issues, Create Time, Last Occurred, Status, Entities, Documentation

Answer: C

Explanation:

[https://support-portal.nutanix.com/page/documents/details?targetId=Objectsv3\\_1:v31-viewosalerts-t.html](https://support-portal.nutanix.com/page/documents/details?targetId=Objectsv3_1:v31-viewosalerts-t.html)

Question No: 4

www.VCEplus.io

A company has implemented a new Retention policy requiring all Human

Resources Documents with these characteristics:

- Able to be stored for 7 years and then automatically deleted.
- Previous versions of the document must be retained for a minimum for 1 year.

The company is currently using objects as the backend storage for all data. Which action best enforces the Retention Policy?

- A. Deploy a new bucket named “humanresources” and Enable Versioning with Permanently delete past versions after 2 years. Additionally enable Lifecycle Policies to Expire current objects after 7 years.
- B. Deploy a new bucket named “Human Resources” and Enable Versioning with Permanently delete past versions after 1 year. Additionally enable Lifecycle Policies to expire current objects after 7 years.
- C. Deploy a new bucket name “Human Resources” and apply WORM for 7 years.

Have the administrator write a script to clear out the data once the retention period is reached.

- D. Deploy a new bucket named “humanresources” and Enable Versioning with Permanently delete past versions after 7 years. Additionally enable Lifecycle Policies to Expire current objects after 1 year.

Answer: A

Explanation:

[https://support-portal.nutanix.com/page/documents/details?targetId=Objectsv3\\_1:v31-objectssalient-features-c.html](https://support-portal.nutanix.com/page/documents/details?targetId=Objectsv3_1:v31-objectssalient-features-c.html)

Question No: 5

Refer to the exhibit.



An administrator has been informed that a new workload will be deployed in six months with these characteristics.

- CPU: 210 GHz
- Memory: 600 GiB
- Storage: 11.72 TiB

Upon receiving the new project notification, the administrator creates a scenario to determine whether or not the Nutanix cluster has enough space capacity to properly handle the new workload.

Why is the Overall Cluster runway showing that cluster resources are not exhausted (red color)?

- A. Target analysis timeframe starts after additional resources are added.
- B. There are enough available resources to support the new workload.
- C. Additional resources will be added before the new workload is added
- D. Target analysis timeframe ends before the new workload is added.

Answer: D

Explanation:

[https://support-portal.nutanix.com/page/documents/details?targetId=Prism-CentralGuide-Prismv5\\_19:mul-resource-planning-runway-view-pc-r.html](https://support-portal.nutanix.com/page/documents/details?targetId=Prism-CentralGuide-Prismv5_19:mul-resource-planning-runway-view-pc-r.html)

Question No: 6

Which two configuration elements can an administrator find in the File Server -> FILE SERVER DETAILS tab? (choose two.)

- A. Share/Export Count.
- B. Total Number of Files.
- C. DNS Domain Name.
- D. Quarantined Files.

Answer: A, C

Question No: 7

Which feature ensures that a host failure's impact on a Files cluster will be minimal?

- A. VM-VM affinity rules
- B. VM-Host affinity rules
- C. VM-VM anti-affinity rules
- D. VM-Host anti-affinity rules

Answer: B

Question No: 8

Where can an administrator find the latency associated with a Files SMB Share?

- A. FSVM performance
- B. File Analytics Health
- C. ncli > fs get-file-servers-usage
- D. File Server Performance Tab

Answer: D

Question No: 9

What is the most likely cause of an Objects bucket that is shared with multiple users to approach its assigned capacity limit?

- A. Objects store capacity includes snapshots.
- B. Some multi-part operations are pending.
- C. Malware infections is causing the usage.
- D. Other users have written to the bucket.

Answer: D

Question No: 10

An administrator is tasked with creating an Objects store with the following settings ?

- Medium performance (around 10,000 requests per second)
- 10 TiB capacity
- Versioning disabled
- Hosted on an AHV cluster

Immediately after creation, the administrator is asked to change the name of Objects store.

How will the administrator achieve this request?

- A. Enable versioning and then rename the Objects store, disable versioning.
- B. Delete and recreate a new Objects store with the updated name.
- C. The Objects store can only be renamed if hosted on ESXi.
- D. Update the name of the Objects store by using a CORS XML file.

Answer: B

Question No: 11

An administrator wants to centralize the storage of CCTV data from all its branches in a remote datacenter. To meet compliance standards, the requirements for this solution are as follows:

- Data must be kept for a minimum of 10 years
- Data must be accessible for use at any time
- Data must be secure

How should the administrator satisfy these requirements?

A. Create a Volume Group and mount to a server

2) Configure a LifeCycle policy for a 10year retention

3) Enable encryption on the vDisks

B.

1) Create an Objects bucket

2) Configure WORM for a 10year retention

3) Replace Objects's self-signed certificate with a CA-signed certificate

C.

1) Create a Storage Container

2) Configure WORM for a 10year retention3) Replace Prism Element's self-signed certificate with a CA-signed certificate

D. Create a Files share

2) Configure a Lifecycle policy for a 10 year retention

3) Enable encryption on SMB protocol

Answer: A

Question No: 12

What are the three main metrics monitored for each Files instance and per share?

- A. Concurrent Connections, Throughput and OP sizes
- B. Access time, IOPS and Throughput
- C. Bandwidth, Speed and IOPS
- D. Latency, Throughput and IOPS

Answer: C

Question No: 13

The Compliance department would like the administrator to have the ability to revert documents to previous versions. How should the administrator facilitate this request?

- A. Configure protection snapshots on the File Server
- B. Enable Self-Service Restore on the Share/Export
- C. Configure Protection snapshots on the Share/Export
- D. Enable Self-Service Restore on the File Server

Answer: A

Question No: 14

An administrator is determining the most recent operation a user performed on the share cifs1 within the last 24 hours? How should the administrator complete this task in File Analytics?

- A. In the Anomalies section, view the anomaly rule created for the user with an interval of 24 hours.
- B. In the Audit Trails section, search for the cifs1 share and view the actions on the share over the past 24hour range
- C. In the Audit Trails section, search for the user and view their last operations.
- D. In the Anomalies section, select Users exceed an operation count threshold and input the 24hour range for share cifs1

Answer: D

Question No: 15

An administrator is upgrading Files. When running the pre upgrade check, the following message is generated:

FileServer in HA state

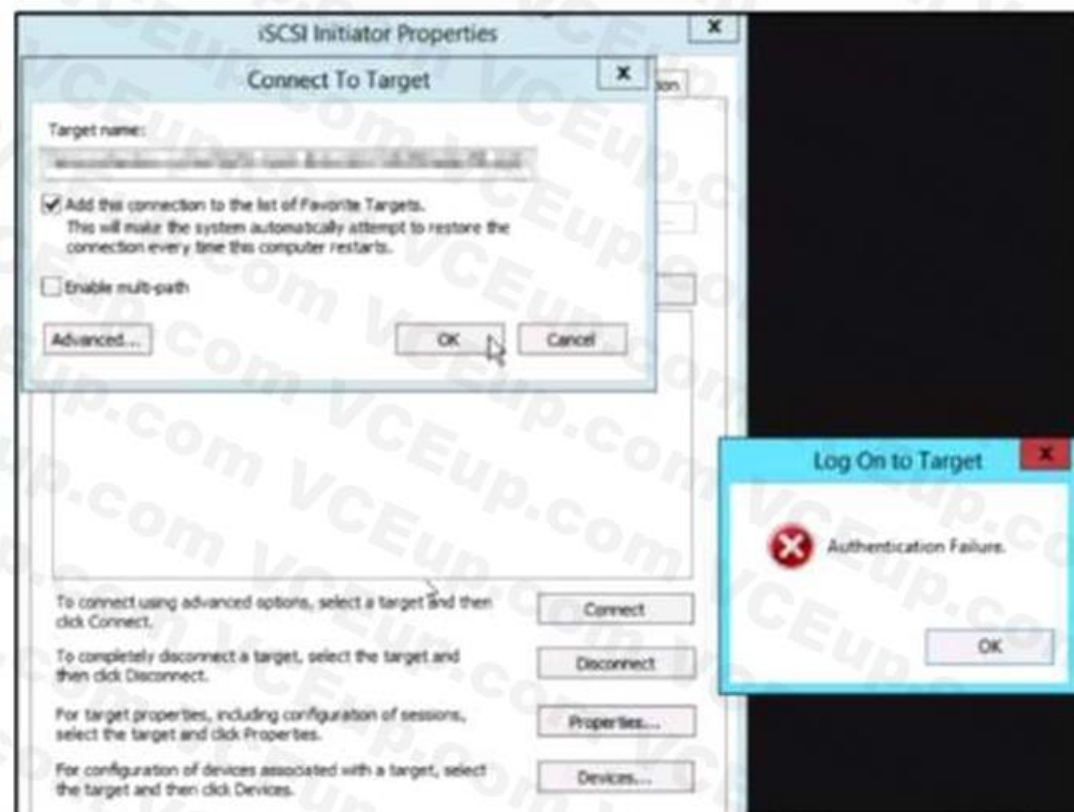
Which two steps should the administrator take to resolve this error message? (Choose two.)

- A. Check if Stargate services are running.
- B. Check for alerts for NVB being down.
- C. Check if Zookeeper services are running
- D. Verify FSVM is booted and not stuck

Answer: B,D

Question No: 16

Refer to the exhibit.



An administrator reports that a Volume Group (VG) is no longer accessible on their server.

Upon attempting to reconnect, an error is displayed , as shown in the exhibit.

Which condition would cause this error?

- A. The client is trying to access the wrong target.
- B. MPIO is enabled for the volume group
- C. Encryption is enabled for the container hosting the VG.
- D. The wrong CHAP secret has been configured.

Answer: A

Question No: 17

Which two statements are true about object counts in an object store?

- A. Upload counts are included in the object counts
- B. Each upload of a multipart upload is counted as a separate object until the object is finalized.
- C. Each upload of a multipart upload is counted as a separate object
- D. Upload Counts are not included in the object counts

Answer: CD



Question No: 18

A company has two Files clusters for their workloads. Once cluster is running VDI workloads and another one is running Big Data (large file ingestion) workloads. The administrator is planning to optimize the workload performance on the cluster where the VDI workloads are running.

The administrator needs to complete these requirements

- Determine the current workload type on the cluster.
- Optimize the file share for operations such as small overwrites into larger files Which two actions should the administrator take to satisfy this requirement? (choose two)

A. Set the share workload type to sequential

B. Execute command `afs share.edit share-name share_workload_type=default`

C. Set the share workload type to random

D. Execute command `afs share.io_size_distribution`

Answer: A,D

Question No: 19

An adminster has a new requirement to separate management and block storage network traffic for bare-metal workloads. What should the administrator do to satisfy this requirement?

A. Add a second virtual NIC to CVMs, configure them in prism.

B. Configure Backplane LAN to isolate hypervisor traffic

C. Configure Management LAN to segment internal communication.

D. Enable Volumes network segmentation

Answer: C

Question No: 20

An administrator has received the following alert:

File Server In Heterogeneous State

What is the reason for this alert?

A. The FSVMs do not match in their CPU or memory configuration.

B. The FSVMs are not distributed properly on the hosts in the cluster

C. Performance of the File Server is optimal and the alert can be ignored

D. The hosts where the FSVMs run do not match in their CPU or memory configuration.

Answer: B

Question No: 21

An administrator followed best practice using Prism Central to perform an upgrade to objects.

However, the following warning was received:

A Nutanix Objects Upgrade failed to complete properly.

The administrator needs to review the logs specific to the upgrade process.

Which 2 log files should the administrator review to determine the failure? (Choose Two)

A. /home/Nutanix/aoss/logs/aoss\_service\_manager.out

B. /home/Nutanix/msp/logs/msp\_controller.out

C. /home/Nutanix/data/logs/aoss\_service\_manager.out

D. /home/Nutanix/data/logs/msp\_controller.out

Answer: C,D

Question No: 22

An administrator is experiencing the following objects failure error message:

IAM service is not healthy

The object store domain entries appear grayed out in the user interface, as shown in the exhibit.

Which commands should the administrator execute to identify the failure source?

A. A mspcli cluster\_list

B mspcli status -u <UUID-UUID-UUID-UUID>

B. A mspctl cluster\_objects

B mspctl status -u <UUID-UUID-UUID-UUID>

C. A mspcli cluster\_objects

B mspcli status -u <UUID-UUID-UUID-UUID>

D. A mspctl cluster\_list

B mspctl status -u <UUID-UUID-UUID-UUID>

Answer: C

Question No: 23

An administrator must configure the storage environment to allow 40 physical and virtual clients to access the same storage simultaneously in a secured manner, while each client has an activeconnection and works with a portion of the data. The client should not be able to talk directly to the CVMs subset.

Which solution should the administrator implement to satisfy this requirement?

- A. Implement objects with RBAC access and 40 buckets and enable ISCSI network segmentation
- B. Implement calm with a blueprint which deploys 40 windows file servers connected to AD on a separate subset.
- C. Implement Files with one network only and create a distributed share with ABE enabled and 40 folders in it.
- D. Implement Volumes with default number of virtual targets per VG,CHAP and network segmentation.

Answer: A

Question No: 24

An administrator needs to configure a Nutanix cluster to support a clustered application running on two bare-metal servers. This application required shared storage with block-level locking for use with its native failover mechanism.

Which option satisfies these requirements?

- A. An SMB standard share with ABE enabled
- B. A volumes instance with external Client Access
- C. An RF2 storage container with file system whitelist
- D. An NFS distributed share and enable Blocked File Types

Answer: B

Question No: 25

An administrator needs to deploy a new Linux log collector package which creates a directory for each monitored item. The logs would be analyzed by a Windows application.

Which action should the administrator take that will provide the best performance and simplicity?

- A. Create an Objects bucket with versioning enabled.
- B. Create a Files distributed share with multi-protocol access.
- C. Assign a Volume vDisk to the Linux Collector VM.
- D. Configure File Analytics to analyze the collected logs.

Answer: C

Question No: 26

A company decided to switch their existing windows file server to a new Files instance. After successfully deploying Files, an administrator now needs to plan to reduce the impact of any potential outage. As the source file server resides across the WAN from the destination file server over an unreliable network connection.

The administrator needs to ensure there is minimal impact to data already copied, should a network outage occur. How should the administrator meet this requirement?

- A. Use rsync in incremental Copy mode.
- B. Check where the data copy failed and restart from that location
- C. Use a method allowing files to be copied in restartable mode.

D. Use Microsoft DFS-R to replicate the files.

Answer: A

Question No: 27

Users from the brazil HQ office are complaining that they are not able to save data stored on the company's Files solution. The save process often fails and they are unable to work.

While troubleshooting, the storage administrator observes that the share auth process times out. Files is connected to a domain controller located in the UK.

What should the administrator do to solve the problem?

A. Check the Active Directory Domain Trust settings

B. Leave the UK Domain and join the Brazil domain

C. Use afs commands on an FSVM to set the local DC as preferred

D. Ask the affected users to install the latest security patches and reboot.

Answer: D

Question No: 28

An administrator of an existing Nutanix cluster running Kubernetes with multiple PODs notices that NCC checks report that some volume groups experience the following error:

Node x.x.x.x:

FAIL: Volume Group pvc-XXXXXX-XXXX-XXXX-XXXX-XXXXXXXXXXXX space usage (90%) The administrator checks the volume group usage from the Kubernetes pod and get different usage results. The current stats are 55% used space.

The results of the NCC check do not match what manually-executed checks report.

What is the cause of this behavior ?

A. The garbage collection process has yet to run.

B. The NCC checks need to be updated to the latest version.

C. Volumes has not received the needed UNMAP commands.

D. Kubernetes is not correctly reporting its storage usage.

Answer: B

Question No: 29

A company's Marketing department requires the ability to recover files hosted in a Files share.

They also require the ability to restore files with a timeframe of 14 days.

Which two configurations are required to meet these requirements? ( Choose Two)

A. Enable Self service restore at share level.

- B. Install Nutanix Guest Tools on clients who need to perform Self service Restore.
- C. Change the Protection domain settings to keep at least 14 days of snapshots.
- D. Change Default settings in the protection configuration window

Answer: A,D

Question No: 30

An administrator has deployed a new backup software suite and needs to meet the following requirements:

- Use S3-Compatible Storage
- Provide One-Year retention
- Protect from deletions or overwrites for one year.
- Meet regulatory requirements

Which setting should the administrator apply to a newly-created objects bucket to ensure the requirements are met?

- A. Apply a bucket Lifecycle Policy with a one-year expiration
- B. Configure the bucket WORM policy with a one-tear retention.
- C. Apply an object versioning policy with one-year retention.
- D. Configure a Lifecycle Policy to overwrite one-year old data in the bucket.

Answer: C

Question No: 31

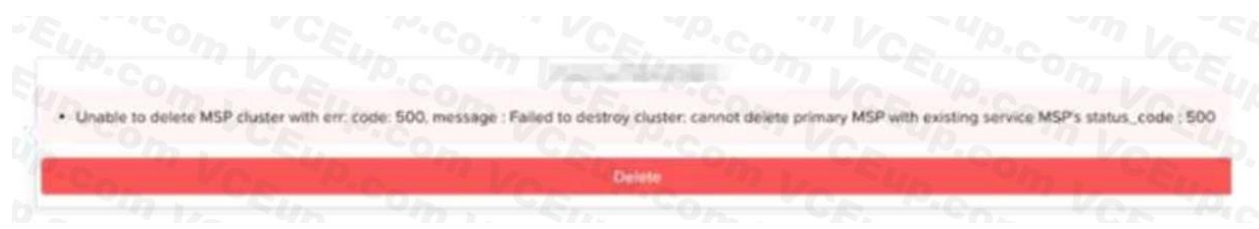
A storage administrator has been given the task of migrating data from an old storage system to a Files scale-out system. While assessing the assigned task the administrator notes that 2000 home directories with VSS enabled need to be migrated How should the administrator satisfy this need?

- A. Create a Distributed share with ABE enabled
- B. Configure a Standard share with SSR and ABE enabled
- C. Create a Distributed share with SSR and ABE enabled
- D. Configure a Standard share with ABE enabled

Answer: B

Question No: 32

Exhibit.



An administrator is experiencing the Objects error message shown in the exhibit The administrator needs to verify these health aspects of the underlying Kubernetes MSP cluster

- All pods are healthy and running
- All nodes are ready
- All components in Kubernetes platform are healthy

Which commands should the administrator execute to obtain these health validations?

A.

- kubectl get pods-all-namespaces
- kubectl get nodes -o wide
- kubectl get componentstatus

B. kubectl get cluster pods --all-namespaces kubectl get cluster nodes -o wide

- kubectl get cluster component status

C.

- kubectl config pods --all-namespaces
- kubectl config nodes -o wide kubectl config componentstatus

D.

- kubectl config show-kind pods --all-namespaces kubectl config show-kind nodes -o wide
- kubectl config show-kind componentstatus

Answer: A

Question No: 33

An administrator is upgrading Objects when the following error message is shown type (UPGRADE) : code: 500, message: error in processing pod: application post failed: image update failed: unable to pull docker image 444585393164.dkr.ecr.uswest-2.amazonaws.com/nutanix-msp/Poseidon-zookeeper:buckets-1.0: err Max retries done: exit status 1 status\_code: 500 How should the administrator resolve this error

- A. Manually upload the docker image to the bucket and rerun the upgrade
- B. Upgrade NCC and Objects service via LCM
- C. Manually upgrade Objects Manager to the latest version

D. Perform Inventory then upgrade MSP and Objects Manager via LCM

Answer: D

Question No: 34

An administrator is not able to create an SMB share on a new Files cluster, which is up and running.

Which action should the administrator take to resolve this issue?

- A. Verify Files has configured roles
- B. Update the AD configuration
- C. Check if Files Analytics has been deployed
- D. Specify Share Path when creating the SMB share

Answer: B

Question No: 35

An administrator needs to configure a Files share with these requirements:

Supports 100 virtual desktop users • Share would host user data

Share is limited to 1 TB, evenly distributed across users Optimized for best I/O performance within the current environment Which two configuration actions should the administrator take to meet these requirements?

(Choose two.)

- A. Create a distributed share
- B. Configure a standard share
- C. Enable ABE on the share
- D. Add a quota policy to the share

Answer: AC

Question No: 36

An existing Objects bucket was created for backups with these requirements:

- WORM policy of one year
- Versioning policy of one year
- Lifecycle policy of three years

A recent audit has reported a compliance failure. Data that should be retained for three years has been deleted prematurely.

How should the administrator resolve the compliance failure within Objects?

- A. Modify the existing bucket versioning policy from one year to three years
- B. Modify the existing bucket WORM policy from one year to three years.
- C. Create a tiering policy to store deleted data on cold storage for three years
- D. Recreate a new bucket with the retention policy of three years.

Answer: B

Question No: 37

A company is implementing Files and has these requirements

- Six departments
- Each department needs to access its own shared namespace
- 18,000 users

Given the nature of the workload the administrator has decided to scale up by adding the maximum amount of CPU and RAM What should the administrator implement to satisfy the stated requirements?

- A. Six standard shares with 3.000 concurrent sessions
- B. The administrator should create a distributed share
- C. The administrator should create a standard share
- D. Six distributed shares with 18.000 concurrent sessions

Answer: D

Question No: 38

The CIO has informed the administrator that the CFO is unable to upload a presentation for the board of directors to their home directory After reviewing the users home directory, the administrator was able to determine that other presentations were previously uploaded without any issues What Files configuration is causing this issue?

- A. The Quote Policy has been configured with a Hard Limit and the presentation file size is larger than the available space
- B. The presentation file format is on the Blocked File Type list on the file server
- C. The Quota Policy has been configured with a Soft Limit and the presentation file size is larger than the available space
- D. The presentation file format is on the Blocked File Types list on the share

Answer: C

Question No: 39

Which action will improve the performance of a database server storage using Volumes that is experiencing persistent slow queries?

- A. Enable Flash Mode on the Volume Group
- B. Disable deduplication on storage pool



C. Upgrade CPUs on FSVMs running databases

D. Create dedicated container for databases

Answer: B

Question No: 40

Which two configuration items are mandatory for deploying a Files cluster? (Choose two.)

A. Configure two networks

B. Configure a DNS server

C. Configure an NTP server

D. Configure a AHV managed network

Answer: AC

Question No: 41

An administrator wants to replicate an Objects bucket between two clusters, managed by separate Prism Central instances.

Which step must the administrator take into account when planning to set up streaming replication?

A. The clusters must be defined on each Prism Central instance as an Availability Zone.

B. The clusters must be defined on each Prism Central instance in a Protection Policy

C. The dusters, managed by different Prism Central instances, do not allow replication of buckets

D. The clusters must be defined on each Prism Central Instance in a Protection Domain.

Answer: D

Question No: 42

An administrator performed an upgrade to Prism Central. However, after reviewing the configuration, Objects is enabled but was not upgraded to the latest version. The Objects configuration is showing enabled for the environment and Prism Element has been updated on the cluster How should the administrator resolve this issue?

A. Reapply the Prism Central upgrade

B. Restart Objects service and rerun the upgrade.

C. Upgrade NCC and rerun the upgrade

D. Perform LCM Inventory and apply updates

Answer: B

Question No: 43

An administrator configured WORM on an existing Objects bucket at 4 p.m. on Monday. During the configuration, the administrator did not select Enable Version. At 8 am, the next morning a ticket was submitted to update the bucket to include versioning. What are the correct steps to make the requested change?

- A. Create a new bucket with Enable Version selected and migrate all data since versioning cannot be changed after 12 hours once WORM is enabled
- B. Disable WORM and reconfigure with Enable Version and Enable WORM checked as it has been less than 24 hours since WORM was enabled
- C. Update the WORM settings to Enable Version as that setting can be turned on at any point after WO is enabled
- D. Create a new bucket with Enable Version selected and migrate all data since versioning cannot be changed immediately after WORM is enabled.

Answer: B

Question No: 44

A company requires that object data that is unused for a period of 12 months should be moved to AWS Glacier. This should be applied immediately to all new and existing data within the organization. An administrator creates and applies the tiering rule, but observes that no existing data is moved from buckets where the tiering rule is applied, despite being created over 12 months ago.

What is the reason for data over 12 months old failing to tier?

- A. Enable versioning has not been selected on the Tiering Endpoint configuration,
- B. The category has not been added to existing data.
- C. Tiering lifecycle policies are non-retroactive.
- D. The Apply to existing data option has not been selected on the life cycle rule.

Answer: A

Question No: 45

The solution must meet the following criteria:

- Data is available even if one of the CVMs is down
  - There will be 5 Exchange databases, one per VM
  - Must support a lot of random write activity
  - Guest OS re-configuration must not be needed in case of CVM outages
  - Must be possible to replicate all Exchange VMs and data to a DR data center
- Which product and configuration meets the requirements?
- A. Volumes on a 5 (or more) nodes cluster with multiple disks per VG; MPIO disabled a protection domain with all the VGs and VMs
  - B. Files on a 5 (or more) nodes cluster with a general purpose share per Exchange VM; SSR enabled; use the natively created protection domain
  - C. Volumes on a 5 (or more) nodes cluster with a single disks per VG; MPIO enabled: metro availability enabled on the container which holds the VMs and VGs
  - D. Files on a 5 for more) nodes cluster with a distributed share DSF enabled create a separate schedule with 1 hour replication frequency

Answer: C

Question No: 46

An administrator experiences a failed Objects store deployment, as shown in the exhibit.

Which are the two primary logs that should be reviewed to triage deployment issues?

A. /home/nutanix/data/logs/aoss service manager.out

/home/nutanix/data/logs/msp\_controller.out

B. /home/nutanix/data/logs/genesis.out

/home/nutanix/data/logs/msp\_controller.out

C. /home/nutanix/data/logs/install.out

/home/nutanix/data/logs/msp\_controller.out

D. /home/nutanix/data/logs/insights collector.out

/home/nutanix/data/logs/msp\_controller.out

Answer: A

Question No: 47

An administrator's organization is migrating to Files. The administrator has been asked to provision the appropriate access for the Nutanix administrators and Help Desk.

Which two actions will ensure the required access? (Choose two.)

A. Grant the Help Desk File Server Admin access.

B. Grant the Nutanix administrator File Server Admin access

C. Grant the Nutanix administrator Backup Admin access.

D. Grant the Help Desk Backup Admin access.

Answer: BD

Question No: 48

An administrator needs to configure Windows Server Failover Clustering (WSFC) in a Nutanix environment using storage provided by the Nutanix cluster.

Which two prerequisites are required to accomplish this task? (Choose two.)

A. Configure a Data Services IP on the Nutanix cluster.

B. Record the IQNs or IPs of the WSFC virtual machines

C. Ensure the WSFC clients are on the same subnet as the Nutanix cluster

D. Verify that the WSFC clients have one-way CHAP configured

Answer: AD

Question No: 49

A database application that is already leveraging Volumes with a single vDisk is experiencing performance issues.

How should the administrator solve the problem without reconfiguring the Guest OS?

- A. Add more Volume Groups with one vDisk each.
- B. Enable Jumbo Frames at CVM level.
- C. Convert Volume Group to direct attach vDisk.
- D. Add more vDisks to the Volume Group

Answer: A

Question No: 50

An existing Objects bucket was created for backups with these parameters:

• WORM policy of three years Versioning policy of two years Lifecycle policy of two years The customer reports that the cluster is nearly full due to backups created during a recent crypto locker attack. The customer would like to automatically delete backups older than one year to free up space in the cluster How should the administrator change settings within Objects?

- A. Create a new bucket with the WORM policy of two years.
- B. Modify the existing bucket lifecycle policy from two years to one year
- C. Create a new bucket with the lifecycle policy of one year.
- D. Modify the existing bucket WORM policy from three years to one year

Answer: A

Question No: 51

An administrator is deploying a new Files cluster. After ensuring that best practices have been followed, the administrator begins the deployment Network segmentation for Volumes is not configured.

After some time, the administrator observes that the deployment failed and was rolled back.

After further investigation, the administrator discovers that the CVM was not able to ping the IP addresses of all FSVMs.

How should the administrator resolve this issue?

- A. Open a support ticket and report the installation bug.
- B. Ensure that the back-end IPs are in the same VLAN as the CVM IP.
- C. Inform the networking team that LLDP is incorrectly configured.
- D. Disable the firewall on the CVM to prevent blocked packets

Answer: C

Question No: 52

A VM was created with Volume Groups connected directly with AHV, The vDisks are presented to the guest OS through the virtual SCSI controller and Volume Group load balancer functionality is not enabled.

What will happen to the VM if an administrator attempts to live migrate it?

- A. The Volume Group attachments will disconnect and will need to be reconnected to the VM after migration
- B. The VM cannot be migrated unless the Volume Group attachments are disconnected prior to initiating migration
- C. The Volume Group attachments will migrate but you need to configure Volume Group VM attachment with load balancing prior to initiating migration
- D. The Volume Group attachments will migrate and will be hosted by the local CVM.

Answer: B

Question No: 53

A developer requires API access to a S3 destination for storage. The environment is currently configured as:

- 4 node Nutanix cluster
- Both Files and Objects have been deployed
- Active Directory access has been configured for Files and Objects

How would an administrator grant Read-Write access for the developer?

- A • Create a new Share/Export within Files supporting multi-protocol access.
  - Check the checkbox to Enable API Access
- B. Click + Add People under User Accounts within Objects and add the developer account
  - Click the checkbox to enable Kerberos Token Authentication
  - Create a new Bucket and add the user.
- C. Create a new Share/Export within Files supporting multi-protocol access.
  - The developer can utilize the REST API to write to the destination.
- D. Click + Add People under Access Keys within Objects and add the developer account.

Download the Access Key and provide it to the developer.

- Create a new Bucket and add the user.

Answer: D

Question No: 54

A company has a number of thin clients which need to boot over the network. The company is using Volumes for this project.

Which two components are needed to meet these requirements? (Choose two.)

- A. A VG per client with a Disk for boot
- B. A compatible Ethernet adapter per client
- C. A DHCP server pointing to the Nutanix cluster
- D. A client with MPIO access to the VG

Answer: AD

Question No: 55

An administrator is upgrading Files and receives the following error message:

Failed to reach FileServer

In which two ways should the administrator resolve this issue? (Choose two.)

- A. ssh into Minerva CVM Leader and execute command cluster start
- B. ssh into Minerva CVM Leader and execute command esis stop minerva\_cvm
- C. ssh into the FSVM and execute command minerva stop fsmv
- D. ssh into the FSVM and execute command cluster restart

Answer: A,C

Question No: 56

In a healthy shared cluster, what behaviour is expected of the FSVMs when a host fails?

- A. All FSVMs are configured with affinity on their local host and cannot be restarted on other hosts.
- B. All FSVMs are running on a single host and will be restarted on the remaining hosts.
- C. Each FSVM runs on its own host along with user VMs and will be restarted on an available host
- D. Each FSVM runs on its own host and affinity rules ensure they can be restarted on another host.

Answer: B

Question No: 57

An administrator installed a new Log Analyzer which collects data from physical endpoints Data collected needs to be accessible and editable for three years after which the data must be deleted to optimize storage consumption Which setting should the administrator apply to meet these requirements?

- A. Create a WORM enabled bucket with Lifecycle policy to expire the current objects after three years
- B. Create a Storage Container with a Lifecycle policy to expire the current version after three Years
- C. Create a bucket with a Lifecycle policy to expire the current objects after three years.
- D. Create a Files share with a Lifecycle policy to win the Current files are three years

Answer: A

Question No: 58

Which administrator action within Files will enable the monitoring of users files for malware and viruses?

- A. Leave the threat detection to the local machine's antivirus application
- B. Connect to an Internet Content Adaptation Protocol (ICAP) server
- C. Install antivirus on a server and mount the share for scan
- D. Install ClamAV on each FSVM

Answer: D

Question No: 59

The marketing department has complained that they are unable to upload or modify MOV files on all marketing file shares in Files During troubleshooting, the administrator has found that all users are unable to upload MOV files to any share What is preventing files from being uploaded?

- A. Files administrator has added the MOV file extension to the Blocked File Types on the file server.
- B. Files administrator has added the MOV file extension to the Blocked File Types on the marketing department share
- C. Authentication on the share has been set None
- D. Authentication on the share has been set to Kerberos (AD)

Answer: C

Question No: 60

During a recent audit the auditors discovered several shares that were unencrypted. To remediate the audit item the administrator enabled Encrypt SMB3 Messages on the accounting, finance, and facilities shares. After encryption was enabled several users have reported that they are no longer able to access the shares What is causing this issue?

- A. Advanced Encryption Standard 128 & 256 are disabled in Linux or Mac OS.
- B. The users are accessing the shares from Linux or Mac OS.
- C. Advanced Encryption Standard 128 & 256 are disabled in Windows 7
- D. The users are accessing the shares from Windows 7 and 8 desktops

Answer: B

Question No: 61

An administrator needs to analyze data created by a custom application, which writes data into an SMB share hosted on Files This application uses custom-built file extensions such as .xyz, zzz. The administrator needs to provide a collapsed view of space usage number of files, and changes within a given time frame.

How should the administrator provide the required information?

- A. Create a new File Server Resource Manager MMC and use File Screens

- B. Configure a SNMP server with Nutanix MIBs and use Excel to analyze traps
- C. Add a new file category in File Analytics and use File Distribution View
- D. Go to Files select the share used by the application and point to Usage View

Answer: C

Question No: 62

Which two network requirements must an administrator take into consideration when configuring and defining client and storage networks? (Choose two.)

- A. Ensure there is one IP address available for the storage network
- B. Ensure there is one IP address available for client network
- C. The Client and storage networks must have separate subnets.
- D. Ensure the client and storage networks use a tagged VLAN

Answer: BD

Question No: 63

A company uses a Nutanix 3-node cluster environment. In Prism Pro, the Capacity Runway shows these capacity values:Max Capacity 6 TiB Effective Capacity 4 TiB The company wants to upgrade the environment to use an RF3 container and also requires all cluster nodes to be the same model.

What must the effective capacity of the Nutanix cluster be to support the new RF3 container?

- A. 6 TiB
- B. 9 TiB
- C. 4 TiB
- D. 10 TiB

Answer: A

Question No: 64

An administrator is implementing a storage solution with these requirements:

- Is easily searchable
- Natively supports disaster recovery • Access to each item needs to be fast
- Can scale to petabytes of data
- Users are granted access after authentication • User data is isolated, but could be shared How should the administrator satisfy these requirements?

- A. Configure Calm with an application per user
- B. Deploy Objects with AD integration



C. Implement Volumes with CHAP

D. Use Files distributed share with ABE

Answer: C

Question No: 65

An administrator is building a new application server and has decided to use post-process compression for the file server and inline compression for the database components.

The current environment has these characteristics:

- Two Volume Groups named VG1 and VG2.
- A Storage Container named SC1 with inlinecompression.
- A Storage Container named SC2 with post-process compression.

Which action should the administrator take to most efficiently satisfy this requirement?

A. Within SC1. create one vDisk in VG1 and one vDisk in VG2.

B. Within VG1, create one vDisk in SC1 and within VG2. create one Disk in SC2.

C. Within VG1, create one Disk in SC1 and one Disk in SC2

D. Within SC1, create one Disk in VG1 and within SC2. create one Disk in VG2

Answer: B

Question No: 66

An administrator is notified by a user about a problem regarding a file within a Files share.

The file AIC.docx is being periodically deleted by another user. The administrator is asked to collect information about who is deleting this file.

How should the administrator collect the required information in File Analytics

A. Use File Operations on the dashboard for the docx

B. Use Audit Trails and search for file Anc.doex

C. Configure Alert Notification for file and does

D. Configure Anomaly Rules for file ARC, docx

Answer: D

Question No: 67

An administrator is managing a 4-node Nutanix cluster and will use Capacity Runway to provide resource consumption trend analysis to management The administrator wants to have Capacity Runway consider two node failures in its calculations, What should the administrator do to accomplish this task?

A. Create a RF3 storage container

B. Reserve capacity for failure

C. Create a new scenario increasing current workload by 20%

D. Add another node to the default scenario

Answer: AC

Question No: 68

An administrator has been informed of a new project, which requires expanding the capacity of the project team's Volume Group without disrupting availability or affecting performance Which steps should the administrator take to achieve this?

A. Clone the existing Volume Group to a larger instance and switch to the new Volume Group

B. Add new dishes to the Volume Group and wait for the Volume Group to auto-resize

C. Create a new larger Volume Group and migrate the files

D. Add new data to the Volume Group and expand the Volume Group online

Answer: B

Question No: 69

Email distribution lists in the company have been redesigned and IT now has a new distribution list dedicated for all alerts In File Analytics how should an administrator change the recipient list to receive email alerts?

A. Click on the gear icon select Define Anomaly Rules and update the field Anomaly Email Recipients

B. Click on the gear icon, select SMTP configuration and update the field Recipient List

C. Select User menu in the top right corner and click on Collect Logs

D. Click on the gear icon select Update AD/LDAP configuration and update the field Username

Answer: B

Question No: 70

An administrator has selected Files for the file server implementation in the company. The following key requirements for the environment have been specified:

- All files written on the shares need to be scanned for viruses
- Certain file types must never be created or copied to any of the shares
- End users must be able to restore previous file versions or deleted files on their own
- Each user should not be able to write more than 100 GB of data on any share Which configuration will meet the above requirements?

A. File Blocking and ICAP on the shares, and Quota policies. ABE and ICAP integration on the Files cluster

B. File Blocking and Quota policies on the Files cluster, and SSR and ICAP integration on the shares

C. File Blocking and Quota policies on the Files cluster, and ABE and ICAP integration on the shares

D. File Blocking and ICAP on the Files cluster, and Quota policies SSR and ICAP integration on the shares

Answer: D

Question No: 71

An administrator has received multiple trouble tickets from users who are unable to access a particular Distributed share.

While troubleshooting the administrator observes that data located on FSVM 3 can be accessed but the data located on FSVMs 1 and 2 is inaccessible. The administrator receives this message when attempting to access data on FSVMs 1 and 2 Network object not found Both FSVM 1 and 2 nodes successfully reply to pings and the administrator is able to access data via the node IP What must the administrator check as a next step?

- A. Check if user permissions are configured correctly
- B. Check if Kerberos\_time\_skew is logged on the client
- C. Check if SMB1 is enabled on FSVM node 1 and 2
- D. Check if all DNS records are created on the DNS server.

Answer: C

Question No: 72

Due to a new IP addressing plan for the Desktops network, an administrator needs to change the Files client-side network Which action should the administrator perform first?

- A. Power off the FSVMs
- B. Stop the Files service
- C. Create a new managed virtual network
- D. Remove existing DNS entries

Answer: B

Question No: 73

An administrator receive a warning message concerning file server hosted in a 3 node cluster The Prism management console recommends optimizing Files resources How should the administrator resolve this issue

- A. Scale out by adding a new FSVM in the cluster
- B. Apply the recommendation to rebalance
- C. Scale up the FSVMs resources
- D. Increase the CVM: CPU and RAM

Answer: A

Question No: 74

The administrator is migrating users' home directories from a legacy SAN to Files. The administrator wants to make sure that the users can only access their home directory, and that when a new employee logs in for the first time, a home directory is automatically created.

What should the administrator do to satisfy these requirements?

- A. Create a Standard SMB share and edit folder permissions using the MMC plugin.

- B. Create a Standard NFS share and set the default access to Read-only.
- C. Create a Distributed NFS share and set the default access to No Access
- D. Create a Distributed SMB share and edit folder permissions using the MMC plugin.

Answer: B

Question No: 75

An administrator needs to create a new Volume Group named vg101 to share storage to four client initiators using the CLI command: `vg.create vg101 shared=true` After creating the Volume Group, the administrator needs to add disks to the new Volume Group and attach the Initiator IQNs for each host Which next two commands must the administrator run to complete this task? (Choose two.)

- A. `vg.attach_external va name initiator name= <initiator iqn>`
- B. `vg.disk create vg201 container=container name create size=disk size`
- C. `vg. attach_external vg101. attach external initiator name <initiator iqn>`
- D. `vg.disk create vgl01 create size-disk size container container name index= <index_num`

Answer:A,B

Question No: 76

An administrator is using Objects for the company's DevOps department.

The administrator must ensure that the data meets regulatory compliance requirements for many critical sectors and still gives users the option to recover from accidental overwrite or unwanted modification of an object.

Which two components should the administrator enable to complete this task? (Choose two.)

- A. Windows Previous Versions (WPS)
- B. Self Service Restore (SSR)
- C. Object versioning
- D. Write-Once-Read-Many (WORM)

Answer: C

Question No: 77

An administrator needs to deploy Files Analytics (FA). After logging into the Prism management console using personal credentials, the administrator is not able to deploy the Virtual Appliance What action is needed to resolve this issue?

- A. Move FA to another storage container.
- B. Download the FA Virtual Appliance.
- C. Perform FA deployment in Prism Central
- D. Deploy FA using the admin user account

Answer: A

Question No: 78

An administrator has deployed a new Files cluster within a Windows environment.

After some days, the Files environment is not able to synchronize users with the Active Directory server anymore. The administrator observes a large time difference between the Files environment and the Active Directory server that is responsible for the behavior. How should the administrator prevent the Files environment and the AD Server from having such a time difference in future?

- A. Use Opoolntp.org as the NTP Server for the AD Server
- B. Use the same NTP Servers for the Files environment and the AD Server
- C. Connect to every FSVM and edit the time manually
- D. Use 0.pool.ntp.org as the NTP Server for the Files environment

Answer: B

Question No: 79

A company is using a vSphere-based 5-node Nutanix cluster. Currently, the cluster is using three full HCI nodes and two storage-only nodes. VMs are configured with Volumes with multiple vDisks.

Which statement about Volumes Load Balancing is correct?

- A. Disks can be redirected to all CVMs within the cluster
- B. vDisks are managed by the CVM, which hosts the VM
- C. vDisks are managed by the two storage-only nodes
- D. vDisks can be redirected only to the three full HD nodes

Answer: A

Question No: 80

An administrator needs to ensure maximum performance, throughput and redundancy for the company's Oracle RAC implementation, while using the native method for securing workloads.

Which configuration meets these requirements?

- A. Files with a general purpose share and File Blocking
- B. Volumes with CHAP and multiple Disks
- C. Volumes with MPIIO and a single vDisk
- D. Files with a distributed share and ABE

Answer: C

Question No: 81

An administrator needs to configure VMs in an in-guest cluster running on a vSphere environment. This configuration is for a critical database workload in a demilitarized zone.

The company's Risk Management department requires that data traffic not be exposed to other types of traffic. What should the administrator do to comply with the Risk Management department's requirements?

- A. Mount shared Disks within the VMs as an RDM.
- B. Enable NAT for Data Services IP Address.
- C. Control iSCSI access through the firewall.
- D. Enable iSCSI Network Segmentation

Answer: B

Question No: 82

The Files administrator has received reports from users in the accounting department that they can see folders that they don't have permission to access. The accounting department manager has requested that employees should only be able to see folders that they have permission to access How would a Files administrator ensure that users in the Accounting share can only see folders they have permission to access?

- A. Remove File Blocking on the accounting shares
- B. Remove read-only access to shares users should not access
- C. Enable Access-Based Enumeration on the accounting share
- D. Enable Access-Based Enumeration on the File Server

Answer: D

Question No: 83

What happens to an FSVM during a node failure in a 3-node cluster?

- A. Due to host affinity rules, the FSVM will not restart
- B. The FSVM will automatically restart on one of the remaining nodes.
- C. The FSVM must be manually restarted on one of the remaining nodes.
- D. A new FSVM must be deployed to the cluster.

Answer: B

Question No: 84

An administrator has mapped a Volume Group named VG1 to a VM. Due to changes in the application running inside the VM, two additional volumes are required. At the time of creation, the VM was assigned to a Protection Domain named PD1.

Which two steps should the administrator take to add the additional volumes to the VM while maintaining data protection? (Choose two)

- A. Add two additional Disks to VG1
- B. Add the new vDisks to the same Consistency Group
- C. Manually update PD1 to include the newly created Disks

D. Map the new vDisks as volumes to the VM

Answer: AC

Question No: 85

A company's IT security policy requires that all network traffic must be secure, and no web browser certificate error warnings should be accepted by end users.

An administrator is tasked with configuring Objects so that it uses a certificate from an internal Certificate Authority (CA).

How should the administrator configure Objects to meet the security policy?

- A. Import the Private key with a Subject Alternate Name of the company domain.
- B. Import the Private key and certificate files from the internal CA
- C. Regenerate the CSR and download certificates from the internal CA
- D. Regenerate the self-signed certificate with RSA 2048 as the bit type.

Answer: B

Question No: 86

While preparing for migrating data from a legacy storage environment to a new Files scaleout file server, the administrator make the following notes Requirements

- Number of home directories: 4000
- Number of Departmental shares: 1
- Everyone is permitted to accessing it
- All users use the same Departmental share

The administrator deploys Files using the following configuration:

- Number of FSVMS: 3
- VCPU & RAM/FSVM: 4vCPU,12GB
- One Distributed share & ABE enabled for
- One Standard share for the Departmental share

Does this configuration satisfy the project's requirements?

- A. No, the project needs two distributed shares, 4 FSVMS, 24 vCPU & 128GB RAM
- B. No, the project needs two distributed shares, 4 FSVMS, 6 VCPU & 32GB RAM
- C. No, the project needs 4 FSVMS, 4 VCPU & 12GB RAM
- D. Yes, the listed configuration elements satisfy the requirements the Home Directories

www.VCEplus.io

Answer: D

Question No: 87

A company has deployed several Files clusters, which are managed by a single File Analytics instance. An administrator is trying to get File Distribution by Type information, but the data shown in the GUI seems to be incorrect What should the administrator do in order to get the correct data?

- A. Verify that the right File server view is being observed
- B. Install another File Analytics instance for the file server being managed
- C. Modify the administrator's Role Based Access Control settings
- D. Create a new dashboard to manage the desired file server

Answer: A

Question No: 88

What are the three predefined resource profiles when deploying Objects?

- A. Small, Medium, and Heavy
- B. Light Medium, and Large
- C. Light Medium, and Heavy
- D. Small, Medium, and Large

Answer: C

Question No: 89

A company has distributed a new document bundle, entitled Health and Security Policies to all employees H has to verify if key users have opened the document How can an administrator support this request with File Analytics

- A. Use Audit Trails search for Files View Audit and filter by operations
- B. Use Audit Trails search for Users, View Audit and filter by file
- C. Select the file from the Top 5 Accessed list then filter by user
- D. Select the User from the Top 5 Active Users list the filter by file

Answer: B

Question No: 90

After migrating to Files for the company's users home directories, the administrator started receiving complaints that accessing certain files will often result in long wait times before the file is even opened or an access denied error message after four minutes Upon further investigation, the administrator has determined that the files in question are very large audio and videos Which two actions should the administrator take to mitigate this issue! (Choose two

- A. Uncheck the Block access to files if scan cannot be completed (recommended) option in the ICAP settings for the Files cluster.
- B. Enable the Scan on Read option and decrease resources for the ICAP server



- C. Enable the Scan on Write option increase resources for the ICAP server
- D. Add the extensions of the affected the types to the ICAP s Exclude File Types field in the ICAP settings for the Files cluster.

Answer: A,D

Question No: 91

An administrator is using Volumes for its mission critical environments to support its highly transactional Oracle database. Users have reported that recent queries to the database are very slow and the response times have increased as the database has grown The administrator noticed that the database server is built using a single large vDisk for the database and logs How should the administrator resolve this issue?

- A. Increase vDisk size for the mission-critical workload and enable flash-mode.
- B. Use between four and eight vDisks for the mission-critical workload
- C. Increase vDisk size for the mission-critical workload and enable VGLB
- D. Increase the iSCSI MaxTransferlength of the clients.

Answer: C

Question No: 92

An administrator has to enable both Linux and Windows machines to access the same share served by a Files cluster.

The parameters are as follows:

- Most of the clients are Windows machines
- All users have Active Directory (AD) Accounts
- All Linux clients are part of the same class 8 network, everyone else must be denied access over NFS
- .mp3 files are not allowed on the share

How should the administrator configure the multi-protocol share to achieve these requirements?

- A.
  - NFS as the primary protocol SMB with LDAP authentication as secondary
  - Enable Default Access (For All Clients) with CIDR notation values
  - Configure the ICAP settings to deny mp3 files

- B.
  - SMB as the primary protocol NFS with AD authentication as secondary
  - Enable Default Access (For All Clients) with CIDR notation values
  - Select the Blocked File Types checkbox

C.

- SMB as the primary protocol NFS with AD authentication as secondary –
- Enable Default Access (For All Clients) with Netgroups notation values
- Configure the ICAP settings to deny mp3 files

D.

- NFS as the primary protocol SMB with LDAP authentication as secondary
- Enable Default Access (For All Clients) with Netgroups notation values
- Select the Blocked File Types checkbox

Answer: C

Question No: 93

An administrator would like to convert an existing Volume Group with an attached external Windows client to use Volumes The administrator has taken these actions . Disconnect any existing SCSI targets Remove targets from the Favorite Targets tab

- Remove targets from the Discovery tab

Which action must the administrator take next to complete this task?

- A. Connect with MPIO to the iSCSI Data Services IP
- B. Connect without MPIO to the Cluster Virtual IP
- C. Connect without MPIO to the iSCSI Data Services IP
- D. Connect with MPIO to the Cluster Virtual IP

Answer: C

Question No: 94

An administrator is upgrading Files and receives the following error

File Server preupgrade check failed with cause (s) FileServer in HA state A FSVM was noted to be powered off and was successfully powered back on Which command result will now enable the administrator to successfully reattempt the upgrade?

- A. nutanix@FSVM\$ afs ha.minerva check\_ha\_state The state of the HA should display True
- B. nutanix@FSVM\$ afs ha.minerva check ha state The state of the HA should display false
- C. nutanix@FSVM\$ afs ha. Isv\_check\_ha\_state The state of the HA should display False
- D. nutanix@FSVM\$ afs ha.fsVm check ha state The state of the HA should display True

Answer: B

Question No: 95

A company has two clusters which run several Files instances on each, as well as a legacy 3- tier cluster analyzed using Files Analytics (FA).

How should this company implement Files Analytics?

- A. Deploy two FA one per Nutanix cluster
- B. Deploy as many FA as Files running instances
- C. Install FA package on any VM running in the company's environment
- D. Install one FA on the legacy cluster to monitor Nutanix clusters

Answer: D

Question No: 96

An administrator manages a vSphere-based Nutanix cluster and has enabled Flash Mode for extremely latency sensitive The administrator recently migrated several workloads from this cluster to another cluster with higher CFU and migration, users complained about the VM performance of the latency sensitive workloads. What must the administrator to resolve this issue?

- A. Manually fingerprint the migrated
- B. Flash Mode can only be enabled on the VM curing the world
- C. Flash usage exceeds 20% of the new SSD capacity tier
- D. Manually enable Flash Mode on the migrated workloads

Answer: A

Question No: 97

Why should an administrator avoid allocating over half the RAM on a host to a FSVM?

- A. The FSVM has a set memory.configuration.
- B. The FSVM would experience host swapping of memory
- C. The FSVM would cross NUMA node boundaries
- D. The FSVM would be in a single NUMA node boundary

Answer: A

Question No: 98

Recently, many important files were deleted from a specific folder within a Files share. The administrator is asked to provide a list of were deleted.

Within File Analytics, how can the administrator determine which files have been deleted in that specific timeframe!

- A. Select <User menu in the top right corner and dick on Collect Logs
- B. Use Audit Trails search for Users View Audit and filter by operations
- C. Use Anomalies Define Anomaly Rules and create a rule to warn when files are deleted

D. Use Audit Trails search for Folders View Audit and enter a date range

Answer: B

[www.VCEplus.io](http://www.VCEplus.io)