

DES-1241.prepaway.premium.exam.60q

Number: DES-1241
Passing Score: 800
Time Limit: 120 min
File Version: 1.0



Website: <https://vceplus.com>

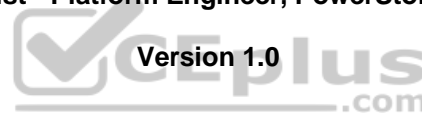
VCE to PDF Converter: <https://vceplus.com/vce-to-pdf/>

Facebook: <https://www.facebook.com/VCE.For.All.VN/>

Twitter : https://twitter.com/VCE_Plus

DES-1241

Specialist - Platform Engineer, PowerStore Exam



Exam A

QUESTION 1

What describes Dell EMC PowerStore X front-end cabling?

- A. Uses internal VMware virtual switching and does not require a management network
- B. Storage and management use the same LACP bonded cable connection
- C. Uses VLTi data switch interconnectivity to support vMotion networks
- D. Management and discovery use the same cables and connections as storage

Correct Answer: C

Section: (none)

Explanation

Explanation/Reference:

QUESTION 2 Through which network do external hosts connect to the cluster for data access?

- A. Management
- B. ICM
- C. ICD
- D. Storage

Correct Answer: D

Section: (none)

Explanation

Explanation/Reference:

Reference: https://topics-cdn.dell.com/pdf/pwrstr-hcg_en-us.pdf



QUESTION 3 A Storage Administrator is adding an appliance into an existing Dell EMC PowerStore T cluster.

What is different about the management network configuration for the new appliance compared to configuring an initial appliance for the cluster?

- A. All the needed management IP addresses for the new appliance must be pre-configured on the cluster
- B. Additional appliance does not require a cluster management IP address
- C. Additional appliance inherits all its management IPs from the existing appliance
- D. All the needed management IP addresses for the new appliance are auto-generated by the cluster

Correct Answer: D

Section: (none)

Explanation

Explanation/Reference:

QUESTION 4 What describes the power requirements for Dell EMC PowerStore?

- A. Lower model numbered systems require less AC line current than higher model numbered systems
- B. T models require less total power than X models
- C. X models require less total power than T models
- D. Lower model numbered systems require less input voltage (VAC) than higher model numbered systems

Correct Answer: A

Section: (none)

Explanation

Explanation/Reference:

Reference: <https://www.dell.com/support/manuals/pk/en/pkbsd1/powerstore/pwrstr-plang/power-requirements?guid=guid-21e142df-e22c-4bbc-8978-7c6124753654&lang=en-us>

QUESTION 5 What is the last step when adding a drive to a Dell EMC PowerStore system?

- A. Verify the new drive is seen
- B. Add the drive to the pool
- C. Backup the keystore
- D. Zero the drive

Correct Answer: A

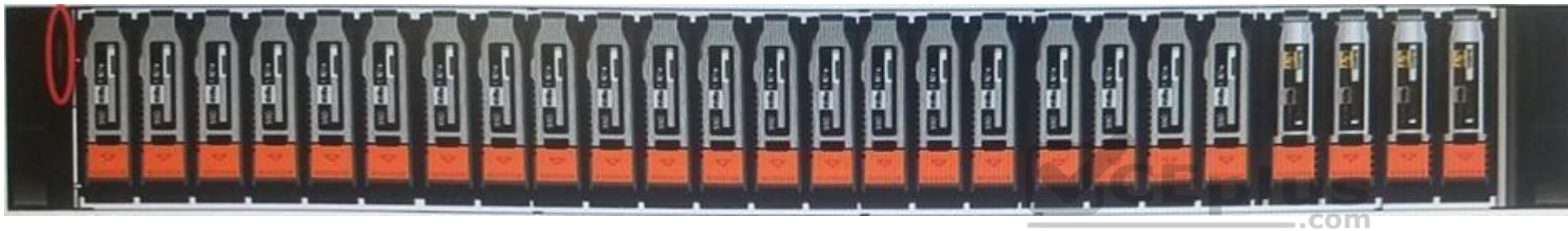
Section: (none)

Explanation

Explanation/Reference:

Reference: <https://www.dell.com/support/manuals/pk/en/pkbsd1/powerstore-9000t/pwrstr-isg/install-a-25-drive?guid=guid-bddae51e-a561-4e84-bc0a-c2e99a43f033&lang=en-us>

QUESTION 6



Refer to the exhibit.

A Storage Administrator is troubleshooting a Dell EMC PowerStore T hardware issue. They observe that the base enclosure LED circled is blue. What does this indicate?

- A. Base enclosure hardware is operating normally
- B. Base enclosure has a component hardware fault
- C. Cluster has only a single appliance
- D. Appliance has a node in service mode

Correct Answer: A

Section: (none)

Explanation

Explanation/Reference:

Reference: <https://www.dell.com/support/manuals/pk/en/pkbsd1/powerstore-9000t/pwrstr-isg/embedded-module-leds?guid=guid-bc07892c-75cf-43b6-8f17-8a4c49001aeb&lang=en-us>

QUESTION 7 A Storage Administrator needs to connect through SSH to run svc commands. How is the SSH session configured?

- A. Appliance IP address using port 22
- B. NAS server IP address using port 26
- C. NAS server IP address using port 22
- D. Appliance IP address using port 26

Correct Answer: C

Section: (none)

Explanation**Explanation/Reference:**

QUESTION 8 Which port is used to SSH from one Dell EMC PowerStore appliance to another?

- A. 22
- B. 26
- C. 443
- D. 21

Correct Answer: A

Section: (none)

Explanation**Explanation/Reference:**

Reference: https://topics-cdn.dell.com/pdf/pwrstr-scg_en-us.pdf

QUESTION 9

During Dell EMC PowerStore startup, both appliance nodes have rebooted in service mode. What must be done first to avoid management software conflicts?

- A. Reboot node B
- B. Clear the boot mode
- C. Disable node B boot mode
- D. Return node A to normal mode

Correct Answer: D

Section: (none)

Explanation**Explanation/Reference:**

Reference: <https://www.dell.com/support/manuals/pk/en/pkbsd1/powerstore-1000/pwrstr-isg/power-control-procedure-considerations?guid=guid-4352c94e-0ae7-4a2e-8593-9ae135bb9e34&lang=en-us>

QUESTION 10

DRAG DROP

When connecting a PowerStore base enclosure to 2 expansion enclosures, match the base SAS ports in column A to their corresponding expansion LCC ports in column B.

Select and Place:

Correct Answer:

Section: (none)

Explanation**Explanation/Reference:**

Reference: <https://www.dell.com/support/manuals/pk/en/pkbsd1/powerstore-1000/pwrstr-isg/cable-the-base-enclosure-to-the-expansion-enclosure?guid=guid-d68d049f-2b77-489f-b1ab-553f4f3de8aa&lang=en-us>

QUESTION 11

Refer to the exhibit.

```
#(conf-range-eth1/1/55-1/1/56) vlt-domain 1
#(conf-vlt-1) discovery-interface ethernet 1/1/55-1/1/56
#(conf-vlt-1) backup destination 172.17.57.30
```

What is the result of the network configuration shown for a Dell EMC PowerStore T?

- A. Interfaces are configured for remote replication traffic
- B. Interfaces are configured for PowerStore discovery traffic
- C. Ports 1/1/55 and 1/1/56 are added to a new LACP domain
- D. Ports 1/1/55 and 1/1/56 are added to the VLTi domain

Correct Answer: B

Section: (none)

Explanation

Explanation/Reference:

QUESTION 12 How is a defective DIMM displayed in Dell EMC PowerStore Manager?

- A. Orange with an empty state
- B. Blue with a faulted state
- C. Orange with a faulted state
- D. Blue with an empty state

Correct Answer: C

Section: (none)

Explanation

Explanation/Reference:

QUESTION 13

Refer to the exhibit.



A Storage Administrator noticed a solid amber LED. What does this mean?

- A. Drive identification on
- B. Drive rebuilding
- C. Power up
- D. Drive faulted

Correct Answer: D

Section: (none)

Explanation

Explanation/Reference:

Reference: <https://www.dell.com/support/article/en-pk/sln321266/powerstore-understanding-led-colors-and-states-for-troubleshooting?lang=en>

QUESTION 14 What is a step in configuring the ToR data switches for a Dell EMC PowerStore X?

- A. Configure a port for the discovery laptop
- B. Create VLANs for NAS servers
- C. Create node A port-channel
- D. Configure LACP uplink to management switch

Correct Answer: B

Section: (none)

Explanation

Explanation/Reference:

Reference: <https://www.dell.com/support/manuals/pk/en/pkbsd1/powerstore-9000t/pwrstr-ntwk-cfg/configure-port-interfaces-for-powerstore-x-model-node-connectivity?guid=guid-ef6b40ef-82a3-4ebf-99bf-a7bea8d6a586&lang=en-us>

QUESTION 15 A Storage Administrator encounters a Snapshot issue on a Dell EMC PowerStore X system.

The administrator engages support and they determine the Snapshot issue is a known code bug within the OS version of PowerStore code. How can support address the problem in a timely manner?

- A. Disable the Snapshots feature to avoid encountering the code bug
- B. Upgrade the Snapshot portion of code within the OS
- C. Upgrade the PowerStore with a hotfix that corrects the code bug
- D. Wait for a new full OS release that corrects the code bug

Correct Answer: C

Section: (none)

Explanation

Explanation/Reference:



QUESTION 16 What does the output of the PSTCLI command “nas_server show” display from a Dell EMC PowerStore T?

- A. If NAS servers are present if they are either NFS or Licensed
- B. Memory utilization and thread count for NFS NAS servers
- C. If NAS servers are present and if they are either Started or Degraded
- D. SIDs of SMB NAS servers joined to the AD Domain

Correct Answer: A

Section: (none)

Explanation

Explanation/Reference:

QUESTION 17 What are the recommended number of network switches in a Dell EMC PowerStore T environment?

- A. 1
- B. 2
- C. 3
- D. 4

Correct Answer: A

Section: (none)

Explanation

Explanation/Reference:

Reference: <https://www.dell.com/support/manuals/pk/en/pkbsd1/powerstore-9000t/pwrstr-ntwk-plang/powerstore-t-model-appliance-networks?guid=guid-97a3e988-c1bc-4f51-a445-3af23f19da1b&lang=en-us>

QUESTION 18 How many nodes are in the base enclosure?

- A. 2 nodes configured as Active-Standby
- B. 1 node with dual connectivity
- C. 1 node with high availability enabled
- D. 2 nodes configured as Active-Active

Correct Answer: D

Section: (none)

Explanation

Explanation/Reference:

Reference: <https://www.dell.com/support/manuals/pk/en/pkbsd1/powerstore-9000t/pwrstr-hwg/base-enclosure-component-overview?guid=guid-7914a554-6943-402e-bd38-3e893163657e&lang=en-us>

QUESTION 19

Which component is hot-swappable?

- A. SFP
- B. Fan
- C. BBU
- D. Expansion IO module

Correct Answer: D

Section: (none)

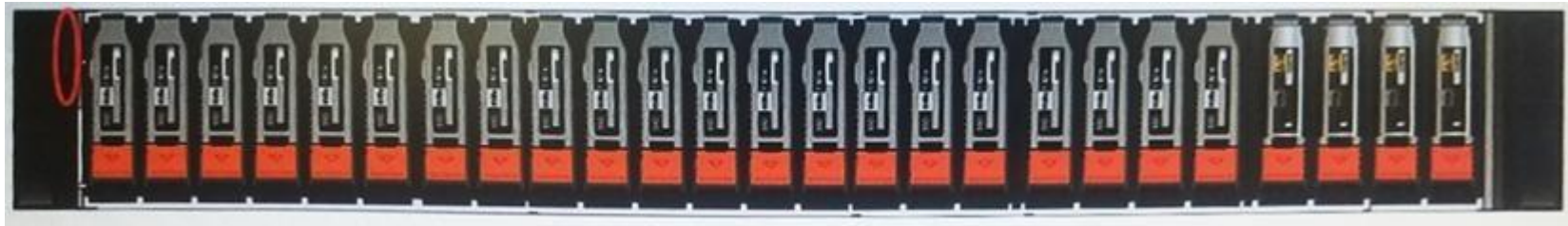
Explanation

Explanation/Reference:

Reference: https://topics-cdn.dell.com/pdf/pwrstr-hwg_en-us.pdf (15)



QUESTION 20



Refer to the exhibit.

What is indicated when the circled LED on the base enclosure is illuminated amber?

- A. Base enclosure power-on
- B. Cluster discovery state
- C. Cluster service mode
- D. Base enclosure fault

Correct Answer: A

Section: (none)

Explanation

Explanation/Reference:

QUESTION 21



Refer to the exhibit.

What is indicated when the circled LED on the node embedded module is illuminated solid amber?

- A. System is booting
- B. Module is faulted
- C. Node is faulted
- D. Cluster is uninitialized

Correct Answer: B

Section: (none)

Explanation

Explanation/Reference:

Reference: <https://www.dell.com/support/article/en-pk/sln321266/powerstore-understanding-led-colors-and-states-for-troubleshooting?lang=en>

QUESTION 22

What Dell EMC PowerStore reference provides the user access to the entire set of product documentation, knowledge base articles, and product warranty and contracts?

- A. SolVe Desktop and Online
- B. Dell EMC Online Support
- C. Dell EMC PowerStore Series Product Page
- D. PowerStore Manager in App (Offline) Help



Correct Answer: C

Section: (none)

Explanation

Explanation/Reference:

QUESTION 23

A Storage Administrator needs to add drives to a base enclosure of a Dell EMC PowerStore 7000T system. The system currently contains 10 750 GB NVMe SCM drives.

Which drive configuration maximizes the base enclosure capacity?

- A. 11 15360 GB NVMe SSD drives in slots 10 - 20
- B. 13 15360 GB NVMe SSD drives in slots 10 - 22
- C. 11 750 GB NVMe SCM drives in slots 10 - 20
- D. 13 750 GB NVMe SCM drives in slots 10 - 22

Correct Answer: C

Section: (none)

Explanation

Explanation/Reference:

QUESTION 24 Which Dell EMC PowerStore network uses an appliance backplane?

- A. ICD
- B. MPIO
- C. Inter-node
- D. Inter-cluster management

Correct Answer: C

Section: (none)

Explanation

Explanation/Reference:

Reference: <https://blocksandfiles.com/2020/05/05/dell-emc-powerstore-midrange-array-launch-analysis/>

QUESTION 25 From where can a data collection be initiated within Dell EMC PowerStore Manager?

- A. Appliance, node, and storage resource
- B. Cluster, appliance, and alerts
- C. Cluster, appliance, and event log
- D. Node, storage resource, and alerts

Correct Answer: A

Section: (none)

Explanation

Explanation/Reference:

QUESTION 26

What is the maximum number of base enclosures in a cluster when planning a Dell EMC PowerStore T installation?

- A. 1
- B. 2
- C. 3
- D. 4

Correct Answer: D

Section: (none)

Explanation

Explanation/Reference:

Reference: <https://www.dellemc.com/en-us/collaterals/unauth/white-papers/products/storage/h18149-dell-emc-powerstore-platform-introduction.pdf>

QUESTION 27 A Storage Administrator has just installed PSTCLI on a Linux client. The administrator is unfamiliar with the PSTCLI command list. How can the administrator get a list of all PSTCLI commands from the cli> prompt?

- A. Type the <Ctrl>+keys together
- B. Press the <Tab> key
- C. Use the show all command
- D. Use the help all command

Correct Answer: B

Section: (none)

Explanation

Explanation/Reference:

QUESTION 28

Which component is a CRU?

- A. Base enclosure
- B. Expansion enclosure
- C. Battery Backup Unit
- D. Nodes

Correct Answer: A

Section: (none)

Explanation

Explanation/Reference:

QUESTION 29 How many fan module failures can a node tolerate?

- A. 0
- B. 1
- C. 2
- D. 3

Correct Answer: B

Section: (none)

Explanation

Explanation/Reference:

Reference: <https://www.dell.com/en-us/collaterals/unauth/white-papers/products/storage/h18149-dell-emc-powerstore-platform-introduction.pdf> (14)

QUESTION 30 What method is used to power down a Dell EMC PowerStore system in a true emergency situation?

- A. Run svc_node shutdown
- B. Power Down Cluster in PowerStore GUI
- C. Turn off the cabinet switches
- D. Remove base enclosure power cables

Correct Answer: C

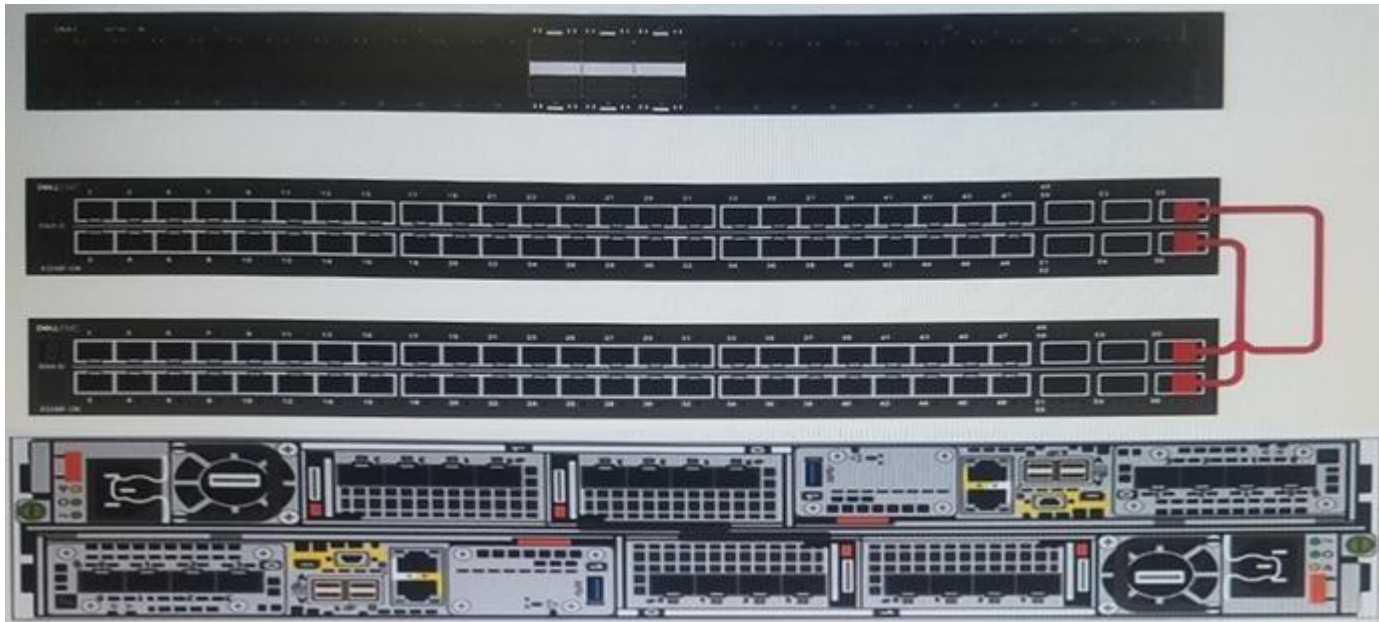
Section: (none)

Explanation

Explanation/Reference:

Reference: <https://www.dell.com/support/manuals/pk/en/pkbsd1/powerstore-1000/pwrstr-isg/power-control-procedure-considerations?guid=guid-4352c94e-0ae7-4a2e-8593-9ae135bb9e34&lang=en-us>

QUESTION 31



Refer to the exhibit.

What type of cable is used for the ToR switch configuration shown for the S5248F-ON switches?

- A. 10 GigE Cat 6 Ethernet RJ-45
- B. 25 GigE Twinax
- C. 100 GigE QSFP28
- D. 10 GigE SFP optical cable

Correct Answer: C

Section: (none)

Explanation

Explanation/Reference:

Reference: <https://www.dellemc.com/resources/en-us/asset/technical-guides-support-information/solutions/h18242-ready-stack-powerstore-dg.pdf?dgc=SM&cid=170850&lid=spr3492306896&linkId=93885839>

QUESTION 32 What is the alert severity if the license expiration date is within a week?

- A. Warning
- B. Minor
- C. Major
- D. Information

Correct Answer: A

Section: (none)

Explanation

Explanation/Reference:

QUESTION 33

DRAG DROP

Match the correct non-disruptive upgrade process step (answer column) with the correct sub-step (match column).

Select and Place:

Correct Answer:

Section: (none)

Explanation

Explanation/Reference:

QUESTION 34 Which formats are available to list alerts?

- A. Standard, NVP, CSV and JSON
- B. Table, XLS, CSV and JSON
- C. Table, NVP, CSV and XLS
- D. Table, NVP, CSV and JSON

Correct Answer: C

Section: (none)

Explanation

Explanation/Reference:

QUESTION 35 What guidance must to be considered for Service LAN port access of a Dell EMC PowerStore appliance?

- A. Always connect multiple appliances to the same hub or switch
- B. Never connect multiple appliances to the same hub or switch
- C. Never connect the Service laptop directly to the appliance Service LAN port
- D. Always removed the management port connections on the appliance

Correct Answer: B

Section: (none)

Explanation

Explanation/Reference:

Reference: <https://www.dell.com/support/article/en-pk/sln321624/powerstore-ssh-and-powerstore-manager-access-using-the-service-lan-ports?lang=en>

QUESTION 36 What does the output of the command “svc_diag list --basic” show?

- A. Failover status
- B. Master_appliance_ID
- C. License status
- D. Boot mode

Correct Answer: B

Section: (none)

Explanation

Explanation/Reference:

QUESTION 37 Under which condition does the Dell EMC PowerStore equipment in the rack require additional stability?

- A. Low temperatures B. Unstable humidity
- C. Unstable environments
- D. High temperatures



Correct Answer: C

Section: (none)

Explanation

Explanation/Reference:

QUESTION 38 What is the result of setting a VLAN ID of 0 on a network when running ICW for Dell EMC PowerStore?

- A. Network will pass tagged traffic
- B. Static route is set
- C. Network will pass untagged traffic
- D. Default route is set

Correct Answer: C

Section: (none)

Explanation

Explanation/Reference:

Reference: https://topics-cdn.dell.com/pdf/pwrstr-ntwk-plang_en-us.pdf (22)

QUESTION 39 Which component is only replaceable by qualified personnel?

- A. Battery backup unit
- B. Embedded I/O module
- C. Memory module
- D. 4-Port mezzanine card

Correct Answer: C

Section: (none)

Explanation

Explanation/Reference:

QUESTION 40

Which LED combination shows a connected and working node?

- A. power LED: steady green fault LED: amber
- B. power LED: blinking green fault LED: off
- C. power LED: blinking green fault LED: blue
- D. power: LED: steady green fault LED: off

Correct Answer: A

Section: (none)

Explanation

Explanation/Reference:

QUESTION 41 During an emergency event an ESD-Kit is unavailable for FRU replacement. How can the work proceed?

- A. If FRU does not contain ESD-Kit, continue without it
- B. Order "Emergency ESD-Kit" ASAP
- C. Follow precautions described in the "Emergency Procedure"
- D. Use package material to build "provisional ESD-Kit"



Correct Answer: C
Section: (none)
Explanation

Explanation/Reference:

QUESTION 42

DRAG DROP

Order the steps to prepare for an NDU process.

Select and Place:

Correct Answer:

Section: (none)
Explanation

Explanation/Reference:

QUESTION 43 In an unpopulated rack, at what U mark is the base enclosure racked?

- A. 3
- B. 4
- C. 2
- D. 1

Correct Answer: A
Section: (none)
Explanation



Explanation/Reference:

Reference: <http://webcache.googleusercontent.com/search?q=cache:naUEN-U6kPwJ:dunmer.net/guides/powerstore-implementation/PowerStore%252BInstallation%252B-%252BParticipant%252BGuide.pdf+%&cd=3&hl=en&ct=clnk&gl=pk&client=ubuntu>

QUESTION 44 Which Dell EMC PowerStore model reserves the last two slots of the base enclosure for NVMe NVRAM?

- A. 3000
- B. 5000
- C. 7000
- D. 9000

Correct Answer: A
Section: (none)
Explanation

Explanation/Reference:

Reference: <https://www.dell.com/en-us/collaterals/unauth/white-papers/products/storage/h18241-dell-emc-powerstore-best-practices-guide.pdf> (9)

QUESTION 45

What does the command “svc_journaltl | grep ‘Mar 25 23:00’” do?

- A. Ignores log messages from the specified date
- B. Retrieves log messages from the specified date
- C. Deletes all logs before the specified date
- D. Rotates the log based on the specified date

Correct Answer: B

Section: (none)

Explanation

Explanation/Reference:

QUESTION 46 For what is the “svc_container_mgmt status CP” command used?

- A. Clears the Control Path audit log
- B. Resets the Data Path root access
- C. Checks the status of the Control Path
- D. Checks the status of the Data Path

Correct Answer: C

Section: (none)

Explanation

Explanation/Reference:

Reference: <http://webcache.googleusercontent.com/search?q=cache:ZhvW4-xt2TEJ:dunmer.net/guides/powerstore-implementation/PowerStore%252BBasic%252BTroubleshooting%252BExternal%252B-%252BParticipant%252BGuide.pdf+%26cd=3&hl=en&ct=clnk&gl=pk&client=ubuntu>

QUESTION 47 A Storage Administrator notices a Major alert present in Dell EMC PowerStore Manager relating to data protection. What action within the alert details slide-out panel is helpful in troubleshooting the data protection problem?

- A. View the Associated Events for earlier related alerts
- B. Examine Notifications to obtain a list of corrective actions
- C. Acknowledge the alert to clear and resolve the problem
- D. Access the Repair Flow link to schedule a support engagement



Correct Answer: B

Section: (none)

Explanation

Explanation/Reference:

QUESTION 48



Refer to the exhibit.

A Storage Administrator noticed a drive LED blinking blue. What does this indicate?

- A. Is faulted
- B. Access activity
- C. Power up
- D. Identification is on

Correct Answer: C

Section: (none)

Explanation

Explanation/Reference:

QUESTION 49 What is the protocol used for the storage network?

- A. FC
- B. NFS
- C. SMB
- D. iSCSI

Correct Answer: D

Section: (none)

Explanation

Explanation/Reference:

Reference: <https://www.dell.com/en-us/collaterals/unauth/white-papers/products/storage/h18149-dell-emc-powerstore-platform-introduction.pdf> (23)

QUESTION 50 When planning for a Dell EMC PowerStore T implementation, how many IP addresses are required for the storage network?

- A. 2
- B. 1
- C. 3
- D. 4

Correct Answer: C

Section: (none)

Explanation

Explanation/Reference:

Reference: https://topics-cdn.dell.com/pdf/pwrstr-ntwk-plang_en-us.pdf (22)

QUESTION 51

```
#(conf-if-eth1/1/1) description "Node A management port"
#(conf-if-eth1/1/1) switchport access vlan 1
#(conf-if-eth1/1/1) switchport mode trunk
#(conf-if-eth1/1/1) switchport trunk allowed vlan 1501
#(conf-if-eth1/1/1) no shutdown
```

Refer to the exhibit.

What is the result of the network configuration show for a Dell EMC PowerStore T node A management port?

- A. VLAN 1 and VLAN 1501 pass tagged traffic

- B. VLAN 1 passes tagged traffic, VLAN 1501 passes untagged traffic
- C. VLAN 1 passes untagged traffic, VLAN 1501 passes tagged traffic
- D. VLAN 1 and VLAN 1501 pass untagged traffic

Correct Answer: D

Section: (none)

Explanation

Explanation/Reference:

QUESTION 52

DRAG DROP

Correctly order the steps of the embedded module replacement procedure.

Select and Place:

Correct Answer:

Section: (none)

Explanation

Explanation/Reference:

Reference:

https://topics-cdn.dell.com/pdf/pwrstr-isg_en-us.pdf

QUESTION 53 What is the maximum number of expansion enclosures that a single Dell EMC PowerStore appliance supports?

- A. 2
- B. 3
- C. 4
- D. 6



Correct Answer: B

Section: (none)

Explanation

Explanation/Reference:

Reference: <https://www.dell.com/resources/en-us/asset/data-sheets/products/storage/h18143-dell-emc-powerstore-family-spec-sheet.pdf> (1)

QUESTION 54

While on-site installing a Dell EMC PowerStore T system, the node A embedded module management Ethernet port link LED is off. What does this indicate?

- A. Network connection is established
- B. No network connection is established
- C. Port speed is 1 GB/s
- D. Port speed is 10 GB/s

Correct Answer: B

Section: (none)

Explanation

Explanation/Reference:

Reference: <https://www.dell.com/support/manuals/pk/en/pkbsd1/powerstore-9000t/pwrstr-isg/embedded-module-leds?guid=guid-bc07892c-75cf-43b6-8f17-8a4c49001aeb&lang=en-us>

QUESTION 55 Which network traffic is encrypted using IPsec?

- A. OOB network
- B. ICD network
- C. Inter-node network
- D. ICM network

Correct Answer: D

Section: (none)

Explanation

Explanation/Reference:

Reference: <https://www.dell.com/support/manuals/pk/en/pkbsd1/powerstore-9000t/pwrstr-ntwk-plang/powerstore-t-model-appliance-networks?guid=guid-97a3e988-c1bc-4f51-a445-3af23f19da1b&lang=en-us>

QUESTION 56

A Storage Administrator wants to upgrade a two appliance Dell EMC PowerStore cluster. Which Commit options need to be chosen to have all appliances upgraded in the last step?

- A. Appliance, Cluster
- B. Appliance, Appliance
- C. Cluster, Appliance
- D. Cluster, Cluster

Correct Answer: B

Section: (none)

Explanation

Explanation/Reference:

QUESTION 57 Which option is used when running the journalctl command to query log messages regardless of capitalization?

- A. option --casesensitive=YES/NO
- B. option -quotes
- C. option -ignorecase
- D. option --casesensitive=TRUE/FALSE

Correct Answer: C

Section: (none)

Explanation

Explanation/Reference:

QUESTION 58 A Storage Administrator notices two fans in a Dell EMC PowerStore are faulted. What describes the system behavior in this circumstance?

- A. A five-minute timer starts upon the second fan fault and the system shuts down automatically after the timer expires
- B. CPU clock speed is reduced by 50% to lower internal temperatures and the system continues normal operations
- C. An increased fan speed signal is sent to the surviving fans and the system continues normal operations
- D. Upon the second fan fault, all host I/O is terminated immediately and the PowerStore goes through the halt and vault process and shuts down

Correct Answer: D

Section: (none)

Explanation

Explanation/Reference:

QUESTION 59 Which network is used for internal communication?

- A. Intra-Cluster Data
- B. Intra-Cluster Management
- C. NAD Network
- D. Inter-Node Network

Correct Answer: B

Section: (none)

Explanation

Explanation/Reference:

QUESTION 60

What describes Dell EMC PowerStore X power down?

- A. PowerStore X node, appliance, or cluster power down is done entirely with vCenter server commands
- B. Powering down a PowerStore X node, appliance, or cluster is done in the same manner as a PowerStore T
- C. PowerStore X node, appliance, or cluster power down utilizes the VSi plugin to perform the needed vCenter server operations
- D. Powering down a PowerStore X node, appliance, or cluster requires additional vCenter server commands

Correct Answer: D

Section: (none)

Explanation

Explanation/Reference: