

HPE6-A72.VCEplus.premium.exam.59q

Number: HPE6-A72  
Passing Score: 800  
Time Limit: 120 min  
File Version: 1.0



**Website:** <https://vceplus.com> - <https://vceplus.co>  
**VCE to PDF Converter:** <https://vceplus.com/vce-to-pdf/>  
**Facebook:** <https://www.facebook.com/VCE.For.All.VN/>  
**Twitter :** [https://twitter.com/VCE\\_Plus](https://twitter.com/VCE_Plus)

HPE6-A72

Aruba Certified Switching Associate Exam



## Exam A

### QUESTION 1

Core# **configure**

**terminal**

Core(config)# **vrf Green**

Core(config-vrf)# **exit**

Core(config)#

Core(config)# **interface vlan 50** Core(config-if-vlan)#  
?

Given the configuration on the **CORE** switch shown above, what command would follow to assign the switched virtual interface (SVI) vlan 50 to the VRF created?

- A. Core(config-if-vlan)# **vrf attach Green**
- B. Core(config-if-vlan)# **ip vpn-instance Green**
- C. Core(config-if-vlan)# **ip vrf forwarding Green**
- D. Core(config-if-vlan)# **routing-context Green vrf**

**Correct Answer: A**

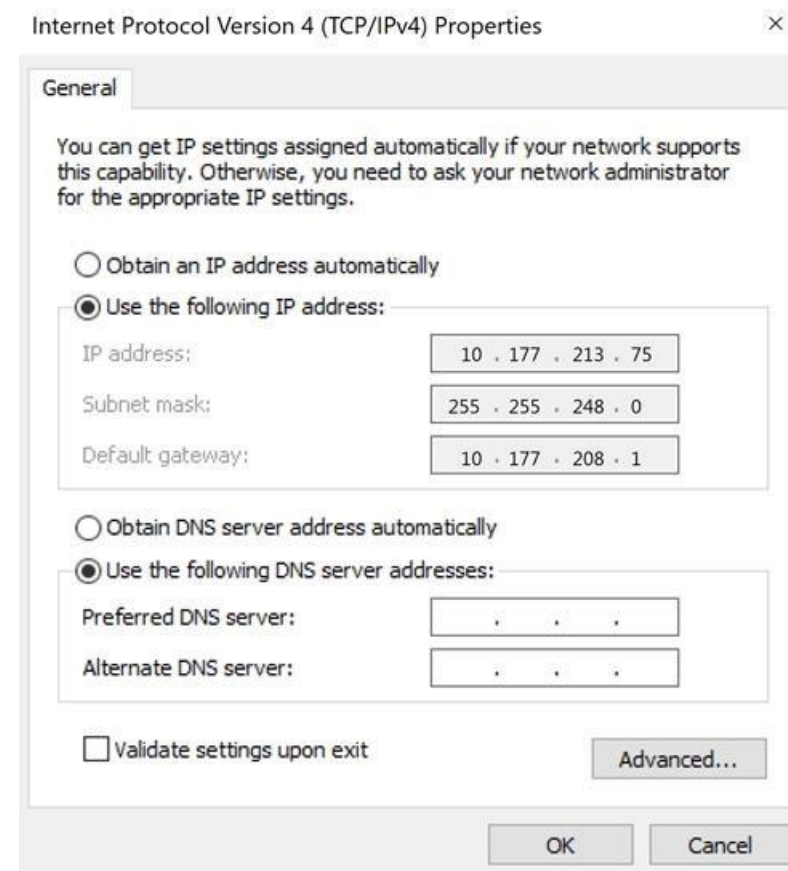
**Section: (none)**

**Explanation**

**Explanation/Reference:**

### QUESTION 2

Refer to the exhibit.




Using the static IP address configured above, what is the converted binary value of the third octet assigned to the local interface?

- A. 11010101
- B. 10110001

C. 01001011  
D. 11111000

**Correct Answer:** A  
**Section:** (none)  
**Explanation**

**Explanation/Reference:**

### QUESTION 3

DRAG DROP

Match the switching term to the correct definition.

**Select and Place:**

Term	Definition
Broadcast Domain	defines the group of devices that are on the same network segment that are capable of receiving and responding to frames destined to FF:FF:FF:FF:FF:FF
Collision Domain	the FIB used by switches matching known-source mac-addresses to the layer one port they are learned on
CSMA/CD	the mechanism used by Compute NICs and Switchports operating in half-duplex to detect and recover from frame collisions
Forwarding Table	the segment of a network connected by a shared medium, such as a hub, that is affected when two or more frames are sent at the same time

**Correct Answer:**

Term	Definition
Broadcast Domain	defines the group of devices that are on the same network segment that are capable of receiving and responding to frames destined to FF:FF:FF:FF:FF:FF
Collision Domain	the segment of a network connected by a shared medium, such as a hub, that is affected when two or more frames are sent at the same time
CSMA/CD	the mechanism used by Compute NICs and Switchports operating in half-duplex to detect and recover from frame collisions
Forwarding Table	the FIB used by switches matching known-source mac-addresses to the layer one port they are learned on

**Section: (none)**  
**Explanation**

**Explanation/Reference:**

**QUESTION 4** What is the correct description of a Multi-Layer Switch?

- A. a switch with Layer 3 routing capabilities but lacks any Layer 1 features as a consequence
- B. any switch that supports PoE, LLDP-MED and Flow Control
- C. has all the functionality of a Layer 2 switch and most of the functionality of a Layer 3 router
- D. multi-Layer refers specifically to using chassis switches with several line cards over stack port switches

**Correct Answer: C**  
**Section: (none)**  
**Explanation**

**Explanation/Reference:**

**QUESTION 5** What is true about VSX?  
(Choose two.)

- A. VSX is ideal for Campus access layer deployments where ease of deployment is needed.
- B. VSX allows upgrading members with near zero downtime or loss of packets.
- C. VSX is available on all Aruba OS-CX switches except the 6300F model.
- D. VSX is implemented on static port switches. VSX-plus needed to stack chassis together.
- E. VSX run separate control planes to reduce latency and improve performance.

**Correct Answer: BE**  
**Section: (none)**  
**Explanation**

**Explanation/Reference:**

**QUESTION 6**

Refer to the exhibit.

```
Core-1# show interface mgmt
  Address Mode           : static
  Admin State            : up
  Mac Address            : 90:20:c2:bc:8e:01
  IPv4 address/subnet-mask : 10.1.1.1/24
  Default gateway IPv4    : 10.1.1.254
  IPv6 address/prefix     :
  IPv6 link local address/prefix:
  Default gateway IPv6    :
  Primary Nameserver      : 10.254.1.21
  Secondary Nameserver    :
Core-1# ping 10.1.1.254
connect: Network is unreachable
Core-1#
```

What change on Core-1 will result in a successful ping to 10.1.1.254 from the management interface?

- A. Use the command **ping 10.1.1.254 vrf mgmt**
- B. Use the command **ping 10.1.1.254/24**
- C. Change the Core-1 management address to **10.1.1.1/25** first
- D. The destination **10.1.1.254** requires configuring a static route

**Correct Answer:** A

**Section:** (none)

**Explanation**

**Explanation/Reference:**



#### QUESTION 7

```
ServiceOS login: admin
SVOS> password
Enter password: *****
Confirm password: *****
```

The login password to access an Aruba AOS-CX was lost. After connecting to the switch console port, a reboot is performed and the Service OS console is accessed as shown above.

What is the default password that is required for the admin account while under the Service OS console?

- A. No password is set for this account.
- B. "password"
- C. "forgetme!"
- D. The same login password that has lost originally.

**Correct Answer:** C

**Section:** (none)

**Explanation**

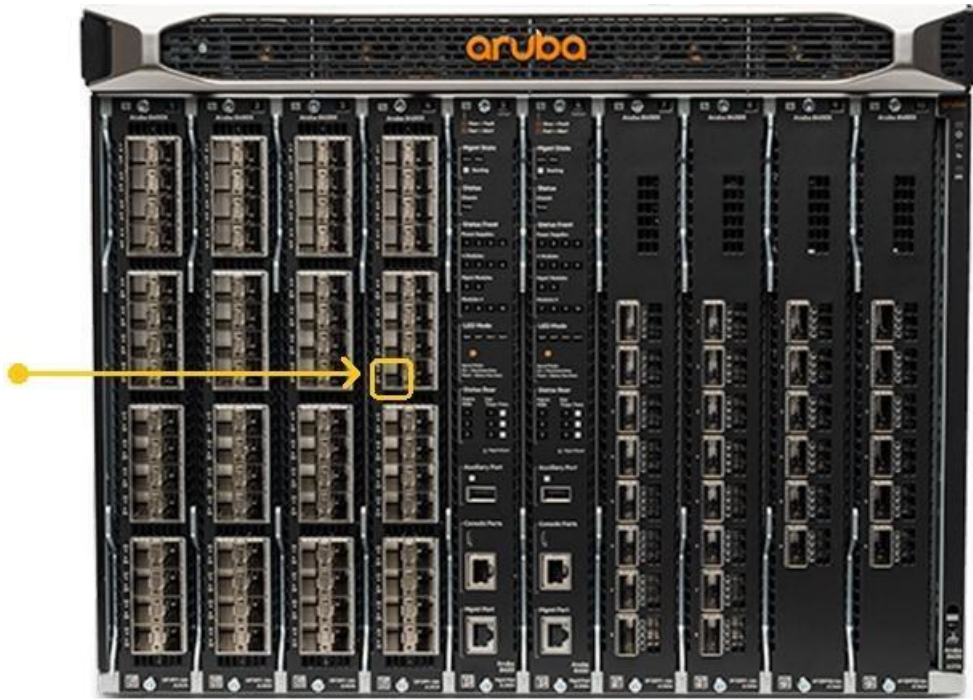
**Explanation/Reference:**

Reference: [https://www.arubanetworks.com/techdocs/ArubaOS\\_83\\_Web\\_Help/Content/ArubaFrameStyles/Management\\_Uutilities/enab\\_radsec\\_reset\\_admin\\_enabl\\_pwd.htm](https://www.arubanetworks.com/techdocs/ArubaOS_83_Web_Help/Content/ArubaFrameStyles/Management_Uutilities/enab_radsec_reset_admin_enabl_pwd.htm)

#### QUESTION 8

Refer to the exhibit.





The Aruba 8400 in the exhibit is member 2 of a VSX stack.

Which command will enter the interface sub configuration mode for the port, indicated by the orange square?

- A. 8400(config)# interface 2/4/15
- B. 8400(config)# interface 1/7/16
- C. 8400(config)# interface 1/4/15
- D. 8400(config)# interface 2/3/17



**Correct Answer:** A

**Section:** (none)

**Explanation**

**Explanation/Reference:**

**QUESTION 9** What are two features of the three-tier designs?

(Choose two.)

- A. removes the distribution layer in favor of a spine-leaf design used in modern data center deployments
- B. adds a distribution layer to free up resources from the Core for improved performance and routing throughput
- C. a more scalable design over by leveraging a distribution layer to handle Layer 3 routing and access control in large deployments
- D. uses only Layer 2 access on the Access and the Core with Layer 3 routing and access control provided at the distribution layer
- E. is considered legacy by requiring a large flat layer-two broadcast domain from Core to Access and should be avoided

**Correct Answer:** BC

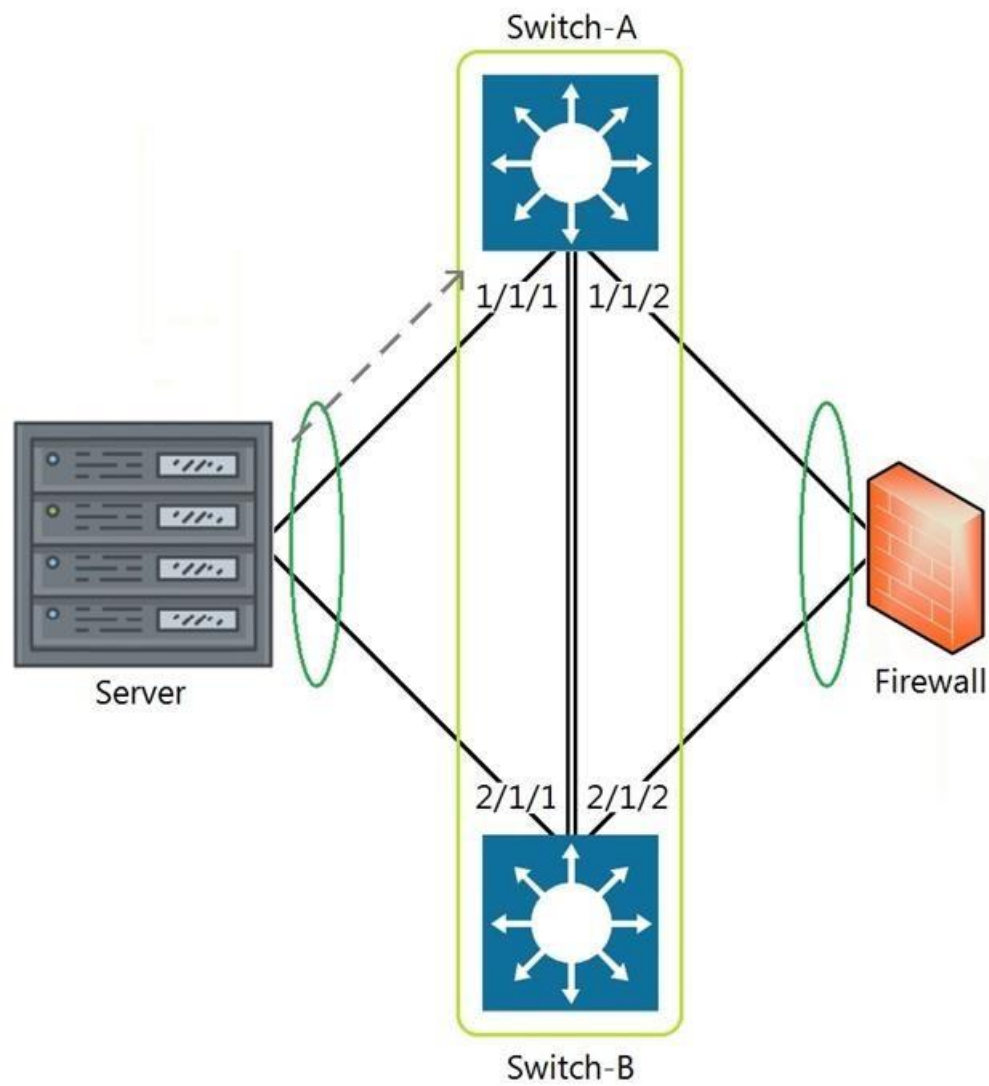
**Section:** (none)

**Explanation**

**Explanation/Reference:**

**QUESTION 10**

Refer to the exhibit.



The above scenario shows a packet from the Server destined for the Firewall. Switch-A and Switch-B are bundled as VSF stack. The LAG between the VSF stack and the firewall indicates a hash function to forward the packet on port 2/1/2.

Which statement is true regarding how Switch-A will forward the packet?

- A. Switch-A will forward the packet on port 1/1/2. VSF will override the typical LAG hash function used for the physical interface selection.
- B. Switch-A will drop the packet. Multi-Chassis lag to multi-chassis lag is not a supported feature of VSF.
- C. Switch-A will encapsulate the packet using GRE to forward to Switch-B in order for the packet to egress on port 2/1/2 per the hash function.
- D. Switch-A will forward the packet along the VSF link to Switch-B so that it will egress on port 2/1/2 per the hash function.

**Correct Answer:** D

**Section:** (none)

**Explanation**

**Explanation/Reference:**

#### QUESTION 11

DRAG DROP

Match each description to the correct term.

**Select and Place:**

Term	Description
ASIC	<input type="text"/>
Control Plane	<input type="text"/>
Data Plane	<input type="text"/>
Management Plane	<input type="text"/>

Correct Answer:

Term	Description
ASIC	<input type="text"/>
Control Plane	<input type="text"/>
Data Plane	<input type="text"/>
Management Plane	<input type="text"/>

Section: (none)  
Explanation

Explanation/Reference:

**QUESTION 12** The section in blue can be ignored.

```
SW1(config)# interface 1/1/1-1/1/2
SW1(config-if-<1/1/1-1/1/2)# vlan access 2
SW1(config-if-<1/1/1-1/1/2)# exit
SW1(config)# interface 1/1/11-1/1/17
SW1(config-if-<1/1/11-1/1/17)# vlan access 17 SW1(config-if-<1/1/11-1/1/17)# exit
```

After completing the above commands, what is the expected output of **show vlan** with no other vlan commanded having been added?



SW1# show vlan

VLAN	Name	Status	Reason	Type	Interfaces
1	DEFAULT_VLAN_1	up	ok	default	1/1/2
2		up	ok	static	1/1/2
11		up	ok	static	1/1/17
12		up	ok	static	1/1/17
13		up	ok	static	1/1/17
14		up	ok	static	1/1/17
15		up	ok	static	1/1/17
16		up	ok	static	1/1/17
17		up	ok	static	1/1/17

SW1# show vlan

VLAN	Name	Status	Reason	Type	Interfaces
1	DEFAULT_VLAN_1	up	ok	default	1/1/1-1/1/24
2		up	ok	static	1/1/1-1/1/2
17		up	ok	static	1/1/11-1/1/17

SW1# show vlan

VLAN	Name	Status	Reason	Type	Interfaces
2	DEFAULT_VLAN_2	up	ok	static	1/1/1-1/1/2
17		up	ok	static	1/1/11-1/1/17

SW1# show vlan

VLAN	Name	Status	Reason	Type	Interfaces
1	DEFAULT_VLAN_1	up	ok	default	<output omitted>
2		up	ok	static	1/1/1-1/1/2
17		up	ok	static	1/1/11-1/1/17

A.



B.

C.

D.

Correct Answer: D

Section: (none)

Explanation

Explanation/Reference:

**QUESTION 13** What are two OSPF attributes within the hello messages that must match to successfully establish neighbor relationships? (Choose two.)

- A. Router ID
- B. Priority
- C. Hello and Dead intervals
- D. Area ID
- E. Process ID

**Correct Answer:** CD

**Section:** (none)

**Explanation**

**Explanation/Reference:**

**QUESTION 14** Your customer has 349 users in a two-story building.

What are two benefits of a 2-Tier design? (Choose two.)

- A. Layer 2 and Layer 3 protocols run close to the endpoints to better implement ACL and QoS policy at the edge.
- B. Improved performance by offloading processing from the Access layer to the Core.
- C. Use of layer 2 switches at the access layer can process and route traffic from attached APs.
- D. Support for WAN/MPLS, Internet, and Data Center directly on the Collapsed core.
- E. Provides a more cost effective solution given that no additional switches are required for a third tier.

**Correct Answer:** AE

**Section:** (none)

**Explanation**

**Explanation/Reference:**



**QUESTION 15** Which two options are the Layer 3 Routing protocols? (Choose two.)

- A. BGP
- B. LLDP
- C. OSPFD. MPLS
- E. 802.3ad

**Correct Answer:** AC

**Section:** (none)

**Explanation**

**Explanation/Reference:**

**QUESTION 16** What are the commands to disable SSH and HTTPS services from the default VRF?

- A. Core-1(config)# no ssh server  
Core-1(config)# no https-server
- B. Core-1# no ssh server vrf default  
Core-1# no https-server vrf default
- C. Core-1(config)# no ssh server enable  
Core-1(config)# no https-server enable

D. Core-1(config)# no ssh server vrf default  
Core-1(config)# no https-server vrf default

**Correct Answer:** D

**Section:** (none)

**Explanation**

**Explanation/Reference:**

**QUESTION 17** What are two primary concerns regarding layer two loops in a redundant topology? (Choose two.)

- A. routing loops
- B. costs associated with upgrading from copper to fiber
- C. multiple frame copies leading to instability of the MAC address table
- D. security issues with a redundant loop indicating to hackers that a back-door exists
- E. broadcast storms

**Correct Answer:** CD

**Section:** (none)

**Explanation**

**Explanation/Reference:**

**QUESTION 18** What command will save your configuration on an Aruba AOS-CX switch so that your changes automatically load on next reboot?

- A. copy running-config checkpoint startup-config
- B. copy startup-config running-config
- C. copy running-config initial-checkpoint
- D. copy running-config default



**Correct Answer:** A

**Section:** (none)

**Explanation**

**Explanation/Reference:**

**QUESTION 19** What is the binary conversion of the hexadecimal value 0x2001?

- A. 0010 0001
- B. 0002 0000 0000 0001
- C. 0011 0000 0000 0001
- D. 0010 0000 0000 0001

**Correct Answer:** D

**Section:** (none)

**Explanation**

**Explanation/Reference:**

**QUESTION 20** What command displays information regarding the secondary image installed on an AOS-CX switch?

- A. **show secondary**
- B. **show version detail**

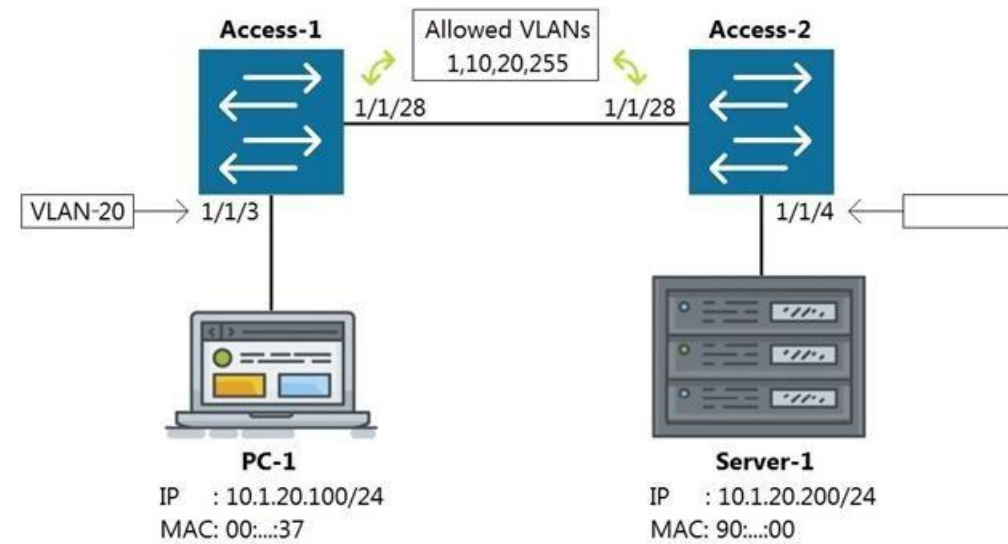
- C. show version
- D. show images

**Correct Answer:** D  
**Section:** (none)  
**Explanation**

**Explanation/Reference:**

#### QUESTION 21

Refer to the exhibit



Which command on **Access-2 port 1/1/4** will enable connectivity between PC-1 and Server-1 without any routing enabled in the network?

- A. Access-2 (config-if-1/1/4)# vlan access 1, 10, 20, 255
- B. Access-2 (config-if-1/1/4)# vlan access 20
- C. Access-2 (config-if-1/1/4)# vlan 20 untag 1/1/4
- D. Access-2 (config-if-1/1/4)# vlan trunk allow 1, 10, 255

**Correct Answer:** B  
**Section:** (none)  
**Explanation**

**Explanation/Reference:**

**QUESTION 22** What connectivity commands are available on AOS-CX switches? (Choose two.)

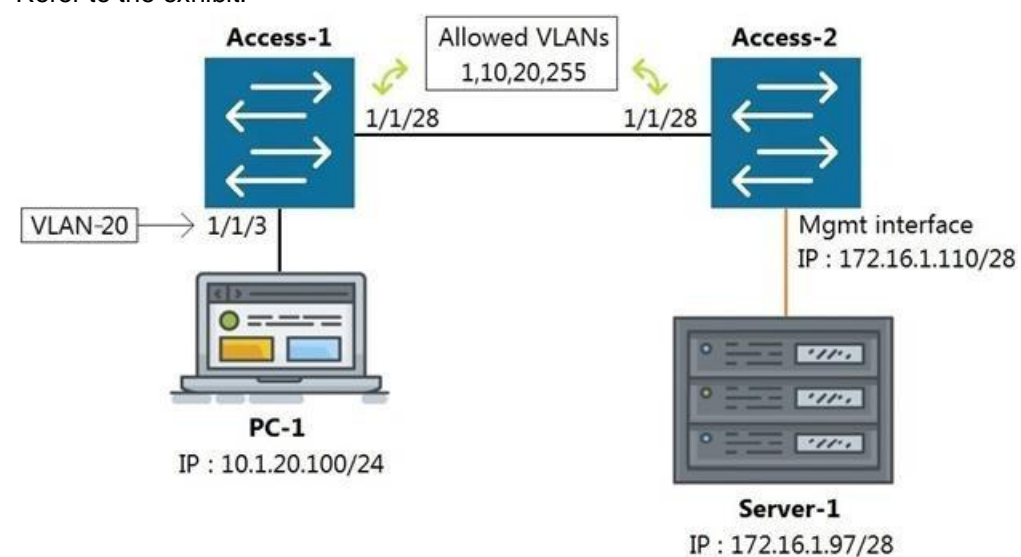
- A. netstatus
- B. traceroute
- C. ping
- D. pathping
- E. tracert

**Correct Answer:** BC  
**Section:** (none)  
**Explanation**

**Explanation/Reference:**

### QUESTION 23

Refer to the exhibit.



All switches are running Aruba OS-CX. While working in the terminal of Access-2, you are unable to reach Server-1 using SSH.

What is the correct command to ping Server-1 from Access-2 to test reachability?

- A. Access-2# ping6 172.16.1.97 vrf mgmt
- B. Access-2# ping 172.16.1.97
- C. Access-2# ping 172.16.1.97 vrf default
- D. Access-2# ping 172.16.1.97 vrf mgmt

**Correct Answer:** D

**Section:** (none)

**Explanation**

**Explanation/Reference:**

**QUESTION 24** Which statement is correct regarding powering an Aruba Access Point?

- A. PoE or PoE+ is only used with Ethernet that is carried over multi-mode fiber cabling.
- B. Using switchports for this reason is unnecessary, because Aruba Access Points typically use an AC to DC power adapter to draw power.
- C. PoE or PoE+ enabled switchports are rarely used given concerns about causing electrical interference, with the data also carried over Ethernet cabling.
- D. Most administrators use PoE or PoE+ enabled switchports to provide both Ethernet connectivity and power to the AP.

**Correct Answer:** D

**Section:** (none)

**Explanation**

**Explanation/Reference:**

**QUESTION 25** What is a benefit of choosing a 3-Tier design with routing at the Aggregation layer?

- A. Better Core router performance by offloading processing
- B. Shifting endpoint access to the Aggregation layer from the Access layer
- C. Using access control lists (ACLs) at the Core to improve performance
- D. Connecting WAN/MPLS and Data center access to the Aggregation layer



**Correct Answer:** A

**Section:** (none)

**Explanation**

**Explanation/Reference:**

#### QUESTION 26

Refer to the exhibit.

T11-Access-2# show lldp configuration

```
LLDP Global Configuration
=====
```

```
LLDP Enabled           : Yes
LLDP Transmit Interval : 30
LLDP Hold Time Multiplier : 4
LLDP Transmit Delay Interval : 2
LLDP Reinit Time Interval : 2
```

```
TLVs Advertised
=====
```

```
Management Address
Port Description
Port VLAN-ID
System Capabilities
System Description
System Name
OUI
```

```
LLDP Port Configuration
=====
```

PORT	TX-ENABLED	RX-ENABLED
1/1/1	Yes	Yes
1/1/2	Yes	Yes
<--- output omitted --->		
1/1/27	Yes	Yes
1/1/28	Yes	Yes



What configuration is needed in order for "show LLDP configuration" to show this output?

- A. none; LLDP is enabled by default on Aruba switches
- B. configuring LLDP both globally and on the interfaces
- C. enabling LLDP on the interfaces only
- D. configuring LLDP globally only

**Correct Answer:** A

**Section:** (none)

**Explanation**

**Explanation/Reference:**

**QUESTION 27** What are the benefits of a 3-Tier design over a 2-Tier? (Choose two.)

- A. Offloading processing from the Core without routing at the Access layer.
- B. Can use lower speed links between Core to Aggregation and Aggregation to Access given the use of an Aggregation layer.
- C. Lowering the cost of a deployment due to needing less switches overall.
- D. Better scalability in a campus with a large number of buildings.

E. Gaining the flexibility to connect the Data-Center to any Access layer switch.

**Correct Answer:** AD

**Section:** (none)

**Explanation**

**Explanation/Reference:**

#### QUESTION 28

Refer to the exhibit.

VLAN	Name	Mode	Mapping
1	DEFAULT_VLAN_1	native-untagged	port
10	Sales	trunk	port
20	Service	trunk	port
30	Customer	trunk	port

Which command produces the above output?

- A. `show interface port 1/1/10 trunk`
- B. `show vlan port 1/1/10`
- C. `show trunk port 1/1/10 extended`
- D. `show interface port 1/1/10 switchport`

**Correct Answer:** C

**Section:** (none)

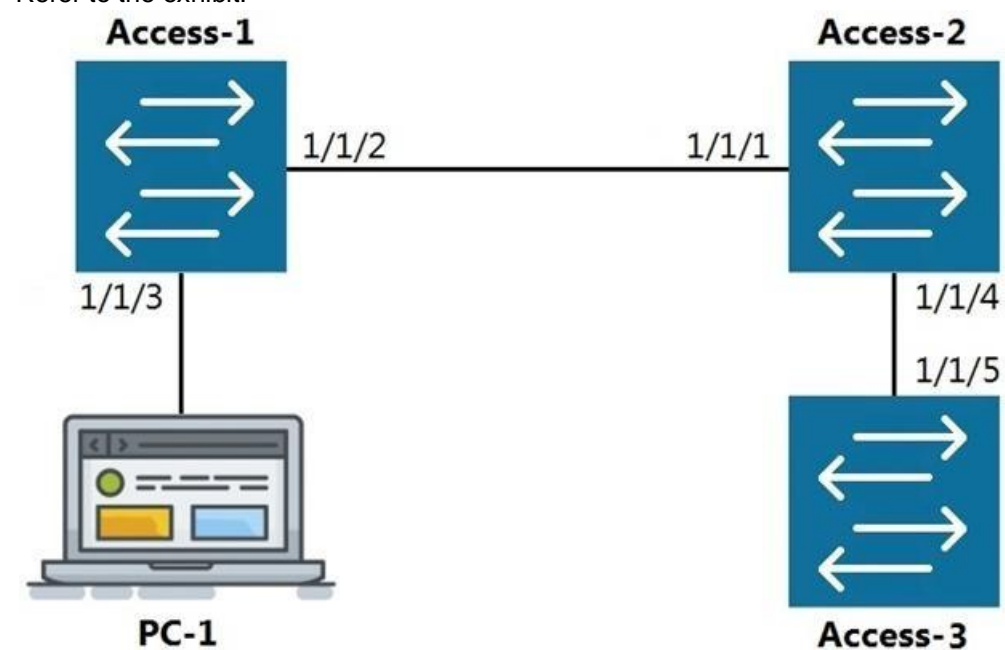
**Explanation**

**Explanation/Reference:**



#### QUESTION 29

Refer to the exhibit.



LLDP

The command **show LLDP neighbor-info** gets typed into **Access-1**. All switches are Aruba OS-CX switches.

What is the output of this command? A.

```

LOCAL-PORT  CHASSIS-ID      PORT-ID  PORT-DESC  TTL  SYS-NAME
-----
1/1/1        90:20:c2:bc:ed:00  1/1/2    1/1/2      120  Access-2
1/1/5        90:20:c2:bc:ef:00  1/1/2    1/1/2      120  Access-3
LOCAL-PORT  CHASSIS-ID      PORT-ID  PORT-DESC  TTL  SYS-NAME
-----
1/1/1        90:20:c2:bc:ed:00  1/1/2    1/1/2      120  Access-2
LOCAL-PORT  CHASSIS-ID      PORT-ID  PORT-DESC  TTL  SYS-NAME
-----
1/1/2        90:20:c2:bc:ed:00  1/1/1    1/1/1      120  Access-2
1/1/2        90:20:c2:bc:ef:00  1/1/5    1/1/5      120  Access-3
LOCAL-PORT  CHASSIS-ID      PORT-ID  PORT-DESC  TTL  SYS-NAME
-----
1/1/2        90:20:c2:bc:ed:00  1/1/1    1/1/1      120  Access-2

```

B. C.

D.



**Correct Answer:** D

**Section:** (none)

**Explanation**

**Explanation/Reference:**

**QUESTION 30** Which command will suppress LLDP messages from egressing on a given port while still allowing LLDP to be enabled on the switch?

- A. switch(config-if)# **no lldp interface (port) transmit**
- B. switch(config-if)# **no lldp transmit**
- C. switch(config-if)# **no lldp receive**
- D. switch(config)# **no lldp**

**Correct Answer:** B

**Section:** (none)

**Explanation**

**Explanation/Reference:**

**QUESTION 31** What is the process where a compute device converts logical data bits into the correct physical representation depending on the media?

- A. Demodulation

- B. Modulation
- C. Propagation
- D. Encapsulation

**Correct Answer:** D

**Section:** (none)

**Explanation**

**Explanation/Reference:**

**QUESTION 32** Which two statements are true regarding Checkpoints on Aruba switches? (Choose two.)

- A. Rolling back to a prior checkpoint triggers a reboot of the switch.
- B. Stacking switches using VSF or VSX will disable the Checkpoint feature.
- C. A checkpoint is a snapshot of the running-configuration and relevant metadata at the time the checkpoint was created.
- D. System-generated checkpoints are created after a configuration change and 5 minutes of inactivity.
- E. Checkpoints are available on AOS 5400R switches, as well as on all AOS-CX switches.

**Correct Answer:** CE

**Section:** (none)

**Explanation**

**Explanation/Reference:**

**QUESTION 33** Which two port characteristics must match between LAG interfaces? (Choose two.)

- A. Port number
- B. Duplex
- C. Member ID
- D. Media type
- E. Chassis number



**Correct Answer:** BD

**Section:** (none)

**Explanation**

**Explanation/Reference:**

**QUESTION 34** The customer has 778 developers testing computer games on the network.

Which two actions resolve Broadcast storms? (Choose two.)

- A. Manually disable the redundant link to immediately resolve the impacted portion of the network.
- B. Utilize Spanning Tree to dynamically disable all redundant links in a segment.
- C. Setting switch ports to half-duplex will resolve Broadcast storms using Carrier Sense Multiple-Access Collision Detection (CSMA/CD).
- D. Enable single Area Open Shortest Path First (OSPF) on all Layer 2 switches, but do not enable routing.
- E. Utilize Spanning Tree to dynamically block Designated ports in addition to Alternate ports.

**Correct Answer:** AB

**Section:** (none)

**Explanation**

**Explanation/Reference:**

### QUESTION 35

```
Interface 1/1/1 is up
Admin state is up
Link transitions: 1
Description: TO_PC-1
Hardware: Ethernet, MAC Address: 00:11:22:33:44:55
MTU 1500
Type 1GbT Full-
duplex qos
trust none
Speed 1000 Mb/s
Auto-negotiation is on
Flow-control: off
Error-control: off
MDI mode: MDIX
VLAN Mode: access
Access VLAN: 1111
```

Which command will produce the above output?

- A. show interface vlan 1111
- B. show interface 1/1/1
- C. show interface gigabit 1/1/1
- D. show vlan 1111

**Correct Answer: B**

**Section: (none)**

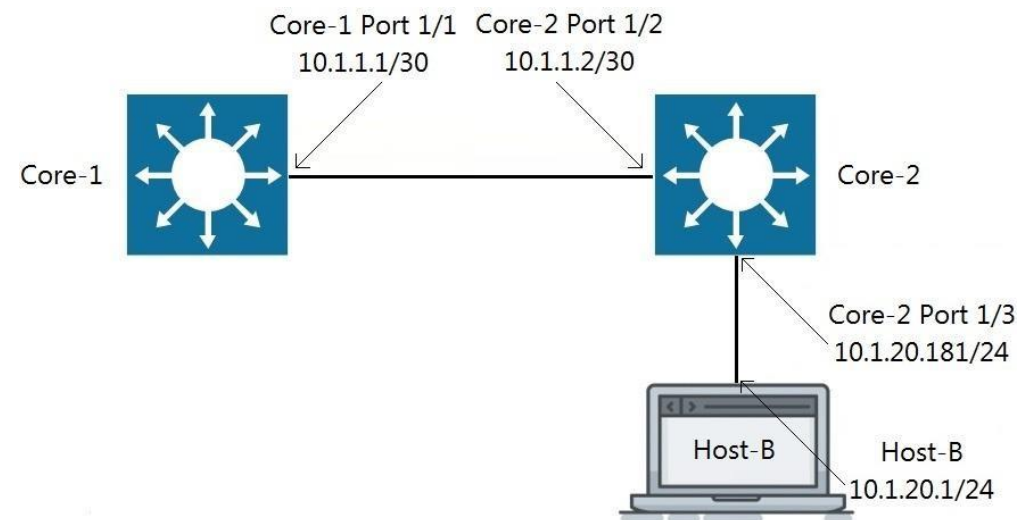
**Explanation**

**Explanation/Reference:**



### QUESTION 36

Refer to the exhibit.



Traffic is failing between Core-1 and Host-B. IP addressing has correctly been applied, and all interfaces are attached to the vrf GREEN.

Which configuration will correct the issue?

- A. Core-2(config)# ip route 0.0.0.0/0 10.1.1.1 vrf GREEN  
Host-B: assign the default-gateway address 10.1.20.181
- B. Core-1(config)# ip route 10.1.20.0/24 10.1.1.2 vrf GREENHost-B: assign the default-gateway address 10.1.20.181
- C. Core-1(config)# ip route 10.1.20.0/24 10.1.1.2 vrf GREENHost-B: assign the default-gateway address 10.1.20.1



D. Host-B: assign the default-gateway address 10.1.20.181

**Correct Answer:** B

**Section:** (none)

**Explanation**

**Explanation/Reference:**

**QUESTION 37** What is an available command on an Aruba AOS-CX switch that would back up the secondary image to a secure remote repository?

- A. backup secondary sftp://admin@10.1.1.21/GL.10.04.0003.swi
- B. copy secondary sftp://admin@10.1.1.21/GL.10.04.0003.swi
- C. copy sftp://admin@10.1.1.21/GL.10.04.0003.swi secondary
- D. copy secondary tftp://admin@10.1.1.21/GL.10.04.0003.swi

**Correct Answer:** B

**Section:** (none)

**Explanation**

**Explanation/Reference:**

**QUESTION 38**

Refer to the exhibit.

watchlog/3	0	0	0
dbus-daemon	0	0	15
intfd	0	0	11
ext4-rsv-conver	0	0	0
scsi_eh_6	0	0	0
cpuhp/3	0	0	0
kworker/4:0	0	0	0
scsi_tmf_4	0	0	0
kworker/5:1H	0	0	0
smartd	0	0	3
fault-handler	0	0	10
btd	0	0	12
portd	0	0	12
migration/4	0	0	0
scsi_tmf_1	0	0	0
kworker/2:0H	0	0	0
kauditd	0	0	0
rmond	0	0	9
certmgr	0	0	13
icmp6_unreachab	0	0	0
Core-1#			



The above output is the result of issuing the command **show system resource-utilization**.

What command should be used to enable terminal output line by line or page by page?

- A. The command **page**
- B. The command **terminal length 30**
- C. The command **more**
- D. The command **less**

**Correct Answer:** A

**Section:** (none)

**Explanation**

**Explanation/Reference:**

**QUESTION 39**

Refer to the exhibit.



You are in the process of configuring VSF between Access-1 and Access-2. Access-1 has been configured as the VSF Master.

What is a valid configuration for Access-2 to join the VSF stack?

- A. Access-2# configure  
Access-2(config)# vsf member 1  
Access-2(config)# vsf renumber-to 2  
Access-2(vsf-member-1)# link 2 2/1/28  
Access-2(vsf-member-1)# exit  
This will save the VSF configuration and reboot the switch.  
Do you want to continue (y/n)? y
- B. Access-2# configure  
Access-2(config)# vsf member 2  
Access-2(vsf-member-1)# link 2 1/1/28  
Access-2(vsf-member-1)# exit  
This will save the VSF configuration and reboot the switch.  
Do you want to continue (y/n)? y
- C. Access-2# configure  
Access-2(config)# vsf member 2  
Access-2(vsf-member-1)# link 1 1/1/28  
Access-2(vsf-member-1)# exit  
This will save the VSF configuration and reboot the switch.  
Do you want to continue (y/n)? y
- D. Access-2# configure  
Access-2(config)# vsf member 1  
Access-2(vsf-member-1)# link 1 1/1/28  
Access-2(vsf-member-1)# exit  
Access-2(config)# vsf renumber-to 2  
This will save the VSF configuration and reboot the switch.  
Do you want to continue (y/n)? y



**Correct Answer:** C

**Section:** (none)

**Explanation**

**Explanation/Reference:**

#### QUESTION 40

DRAG DROP

Match each description to the correct management tool for Aruba AOS-CX.

Select and Place:

Management Tools	Answer Area	Description
	Management Tool	
NetEdit		can run as an OVA
Aruba CX Mobile App		requires AOS-CX switches to support HTTPS, SSH, and REST access
		connects to switches via Bluetooth or Wi-Fi
		includes a feature for stacking automation
		supports SNMPv2c to discover third-party devices

Correct Answer:

Management Tools	Answer Area	Description
	Management Tool	
NetEdit	NetEdit	can run as an OVA
Aruba CX Mobile App	NetEdit	requires AOS-CX switches to support HTTPS, SSH, and REST access
	Aruba CX Mobile App	connects to switches via Bluetooth or Wi-Fi
	Aruba CX Mobile App	includes a feature for stacking automation
	NetEdit	supports SNMPv2c to discover third-party devices

Section: (none)

Explanation

Explanation/Reference:

#### QUESTION 41

Refer to the exhibit

```
Access-1(config)# show vlan
```

VLAN	Name	Status	Reason	Type	Interfaces
1	DEFAULT_VLAN_1	up	ok	default	1/1/1-1/1/28
50	Engineering	down	no_member_port	static	

What is true regarding VLAN 50 according to the diagram above?

- A. VLAN 50 is part of a switched virtual interface (SVI) that was never routed causing it to be down.
- B. Since VLAN 50 has not been assigned to any enabled physical port, the status is down.
- C. VLAN 50 is assigned only to Trunk ports which is why no ports are listed under interfaces.
- D. VLAN 50 was never added to the vlan-database and therefore is in a down state.

Correct Answer: B

Section: (none)

Explanation

Explanation/Reference:

#### QUESTION 42

Which command can be used to find the serial number of an Aruba OS-CX switch?

- A. The command **inventory**
- B. The command **version**
- C. The command **show running-configuration**
- D. The command **show system**

**Correct Answer:** D

**Section:** (none)

**Explanation**

**Explanation/Reference:**

#### QUESTION 43

DRAG DROP

Match the term to the correct description.

**Select and Place:**

Term	Description
BGP	used for creating backup routes by implementing a higher administrative distance
Floating Static Routes	a distance vector protocol
OSPFv2	an ipv4 link-state routing protocol that runs within an Autonomous System
OSPFv3	used to route traffic between Autonomous Systems
RIPv2	a routing protocol capable of routing IPv6 packets

**Correct Answer:**

Term		Description
BGP	Floating Static Routes	used for creating backup routes by implementing a higher administrative distance
Floating Static Routes	RIPv2	a distance vector protocol
OSPFv2	OSPFv2	an ipv4 link-state routing protocol that runs within an Autonomous System
OSPFv3	BGP	used to route traffic between Autonomous Systems
RIPv2	OSPFv3	a routing protocol capable of routing IPv6 packets

**Section: (none)**

**Explanation**

**Explanation/Reference:**

**QUESTION 44** Which statement is true regarding modern switching requirements?

- A. Most older legacy switches had high port bandwidth utilization and were future proof designed to meet today's power-over-Ethernet needs.
- B. Requirements for PoE are normally addressed using AC to DC power adapters. Concerns for port security for IoT devices are usually addressed using default wired encryption that all 802.3 Ethernet switches provide.
- C. While APs are common, most clients are still docked and only require traditional wired connections with only the occasional dedicated PoE switch to provide power for the low number of devices needed.
- D. Clients tend to prefer wireless connections, raising the need for PoE port access. There is also a growing amount of IoT devices that require security and port authentication options.

**Correct Answer: D**

**Section: (none)**

**Explanation**

**Explanation/Reference:**

**QUESTION 45** Which two statements accurately describe the features of NetEdit? (Choose two.)

- A. NetEdit can be used to configure and validate any third-party device that supports SSH and REST access.
- B. NetEdit includes trial licensing for up to 10 nodes.
- C. NetEdit can perform configuration and compliance validation.
- D. NetEdit supports viewing and editing multiple devices using a single deployment plan.
- E. NetEdit can run on a mobile device using Android or Apple IOS.

**Correct Answer: CD**

**Section: (none)**

**Explanation**

**Explanation/Reference:**

**QUESTION 46**

What are two mechanisms supported on AOS-CX 6300 switches used in Multi-active Detection to determine the status of the Primary member? (Choose two.)

- A. Management interface split detection



- B. Peer switch-based detection
- C. Loopback keepalives
- D. ARP-based
- E. BFD

**Correct Answer:** AD

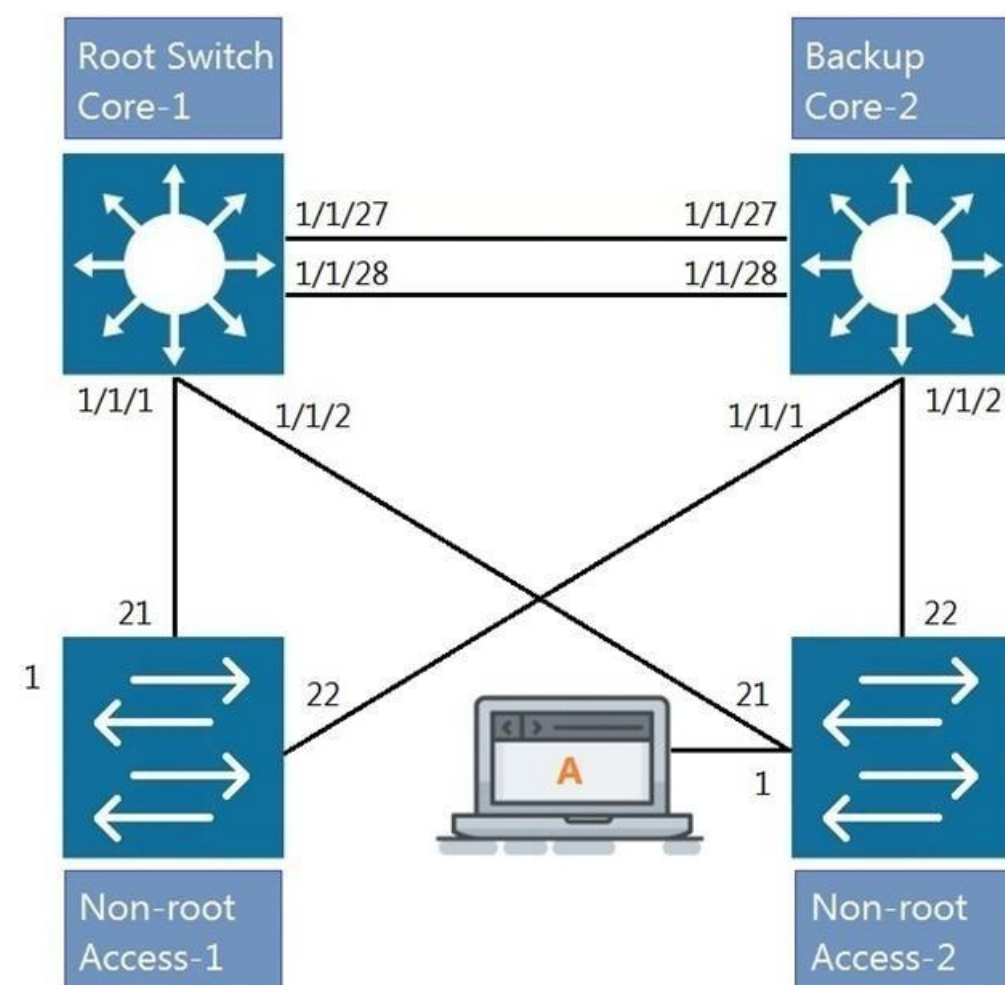
**Section:** (none)

**Explanation**

**Explanation/Reference:**

#### QUESTION 47

Refer to the exhibit.



All four switches in the diagram have been configured with the region name "Aruba1".

What two other MSTP configurations must match for switches within the same MST region? (Choose two.)

- A. MST region type
- B. MST Bridge ID
- C. MST version number
- D. MST revision number
- E. MST VLAN to instance mapping

**Correct Answer:** DE

**Section:** (none)

**Explanation**

**Explanation/Reference:**

**QUESTION 48** Which two types of routes can be found in the IP routing table of an Aruba AOS-CX switch? (Choose two.)

- A. Local
- B. EIGRP
- C. BGP
- D. ISIS
- E. RIPvng

**Correct Answer:** AC

**Section:** (none)

**Explanation**

**Explanation/Reference:**

**QUESTION 49** Which port or ports should be allowed through a firewall so that an AOS-CX switch can act as an SNMP Agent?

- A. UDP 1812 and UDP 1813
- B. UDP 161
- C. TCP 443
- D. UDP 162

**Correct Answer:** B

**Section:** (none)

**Explanation**

**Explanation/Reference:**

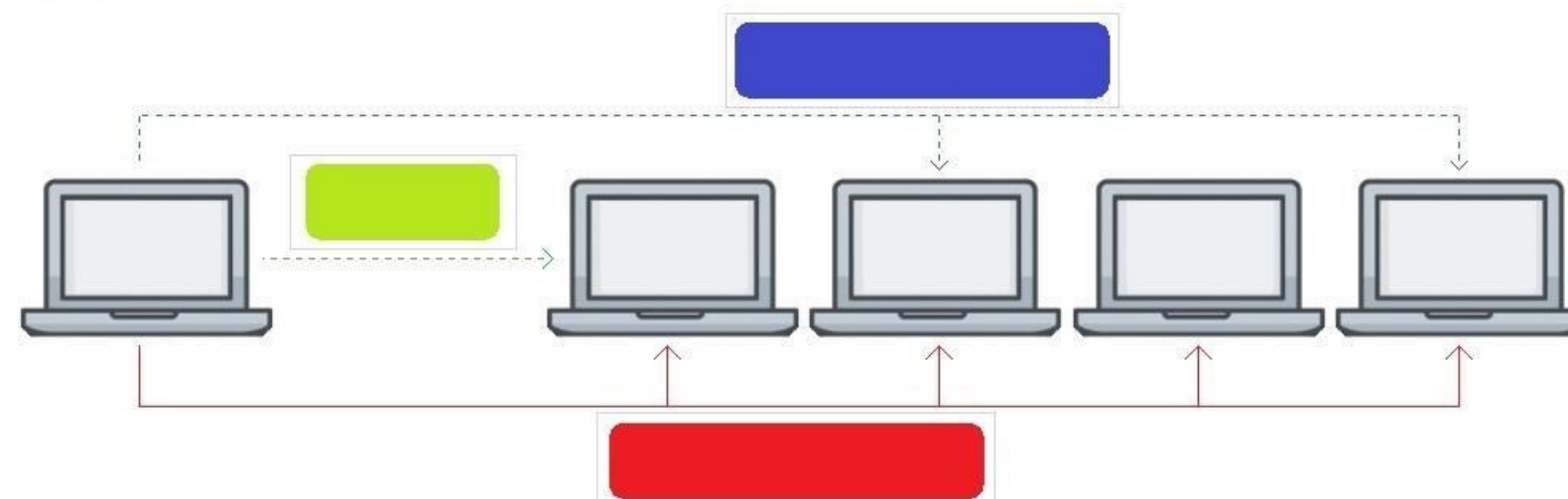
**QUESTION 50**

**HOTSPOT**

Click on the colored box that corresponds with the line that best represents Unicast traffic flow.

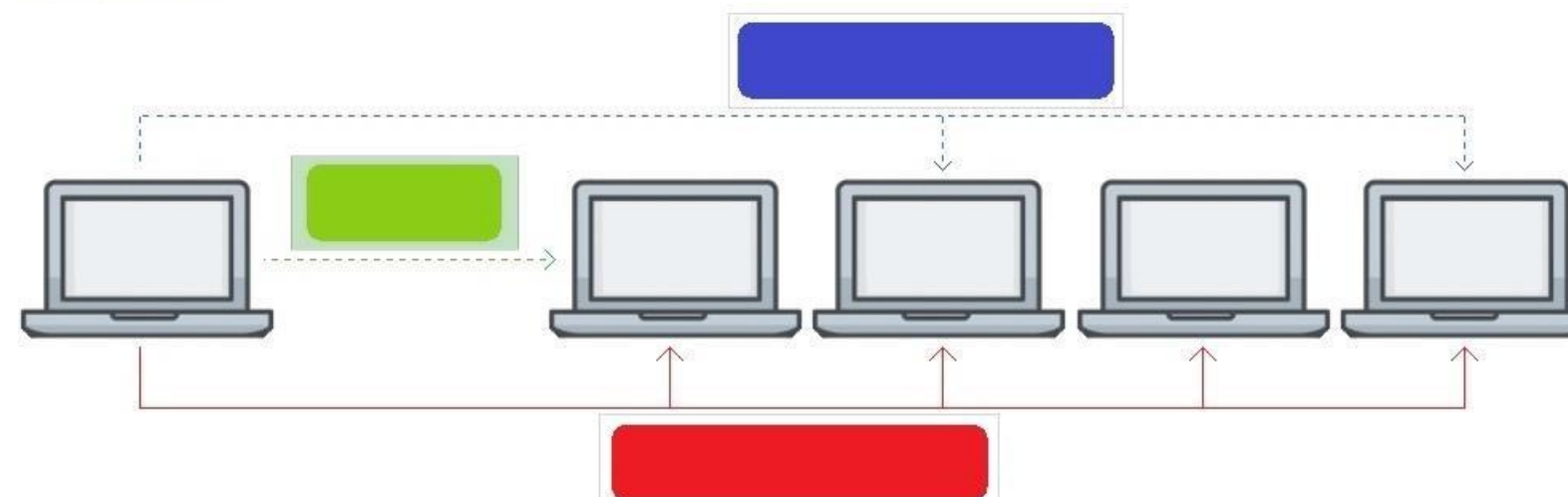
**Hot Area:**

**Answer Area**



**Correct Answer:**

### Answer Area



Section: (none)

Explanation

Explanation/Reference:

### QUESTION 51

DRAG DROP

Match the terms to the correct layer of the OSI model.

Select and Place:

Layer		Term
Transport Layer		Frames
Network Layer		Packets
Physical Layer		RF Signals
Data Link Layer		Segments

Correct Answer:

Layer		Term
Transport Layer	Data Link Layer	Frames
Network Layer	Network Layer	Packets
Physical Layer	Physical Layer	RF Signals
Data Link Layer	Transport Layer	Segments

Section: (none)

Explanation

Explanation/Reference:

**QUESTION 52** You have completed a successful VSF stack between two switches.

Without manually assigning a backup switch, what is the expected output when issuing a show vsf command? A.

```
T1-6300-A# show vsf
<omitted>
Mbr  Mac Address      type    Status ID
-----
1    88:3a:30:a3:e5:40  JL660A  Commander
2    88:3a:30:a6:d9:80  JL660A  Secondary
```

```
T1-6300-A# show vsf
<omitted>
Mbr  Mac Address      type    Status ID
-----
1    88:3a:30:a3:e5:40  JL660A  Primary
2    88:3a:30:a6:d9:80  JL660A  Secondary
```

```
T1-6300-A# show vsf
<omitted>
Mbr  Mac Address      type    Status ID
-----
1    88:3a:30:a3:e5:40  JL660A  Master
2    88:3a:30:a6:d9:80  JL660A  Member
```

```
T1-6300-A# show vsf
<omitted>
Mbr  Mac Address      type    Status ID
-----
1    88:3a:30:a3:e5:40  JL660A  Master
2    88:3a:30:a6:d9:80  JL660A  Standby
```

B. C.

D.



**Correct Answer:** D  
**Section:** (none)  
**Explanation**

**Explanation/Reference:**

**QUESTION 53** What are two methods for remotely managing an Aruba AOS-CX switch? (Choose two.)

- A. SNMPv2c
- B. HTTPS
- C. USB-C console
- D. Telnet
- E. SSH

**Correct Answer:** BE  
**Section:** (none)  
**Explanation**

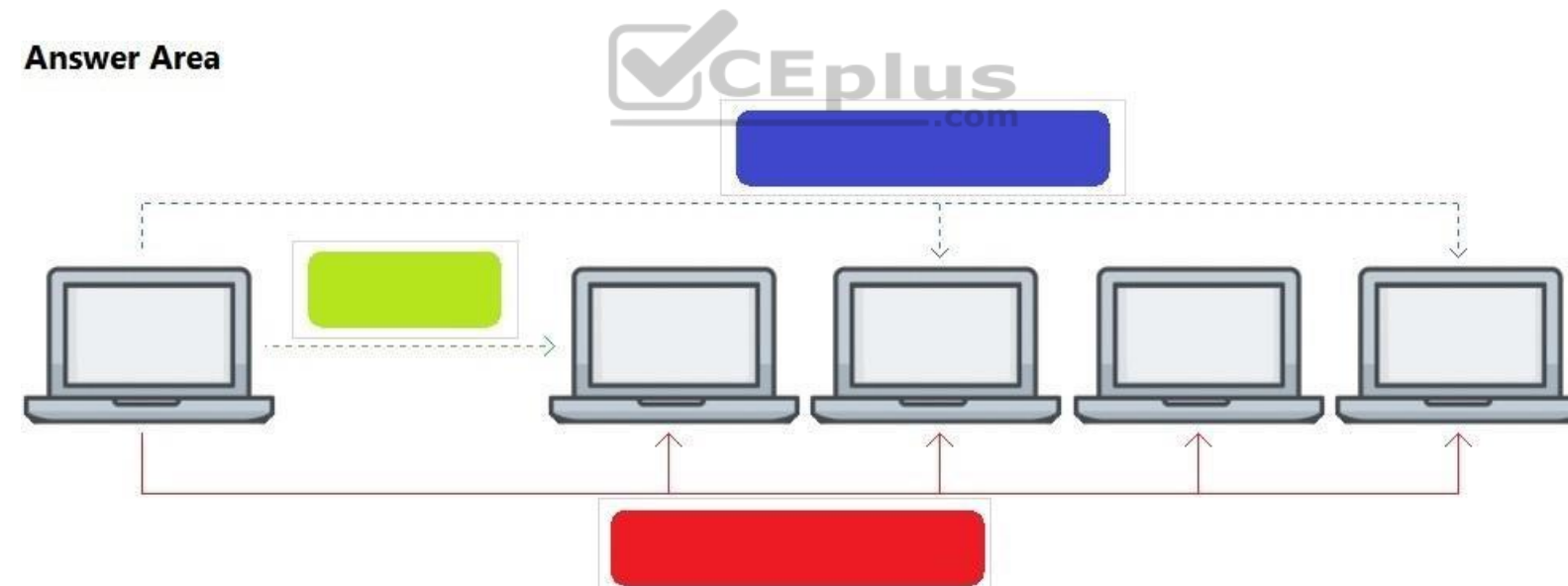
**Explanation/Reference:**

**QUESTION 54**  
HOTSPOT

Click on the colored box that corresponds with the line that best represents Broadcast traffic flow.

**Hot Area:**

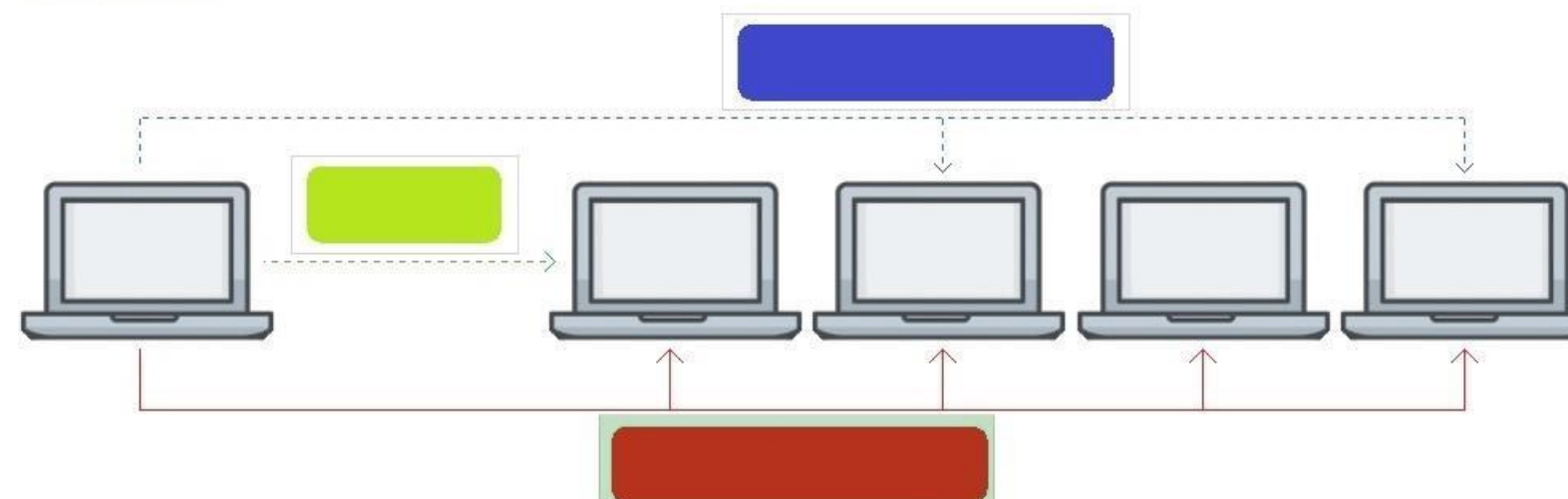
**Answer Area**



**Correct Answer:**



## Answer Area



Section: (none)

Explanation

Explanation/Reference:

### QUESTION 55

Refer to the exhibit.

SW1# show vlan

VLAN	Name	Status	Reason	Type	Interfaces
1	DEFAULT_VLAN_1	up	ok	default	<output omitted>
10	Engineering	up	ok	static	1/1/1-1/1/7
20	Guest	up	ok	static	1/1/11-1/1/14

The above command was applied to an Aruba AOS-CX 6300M 24-port switch with 4-port SFP56 uplinks. All ports are set as access switchports.

Which ports carry VLAN 1 traffic?

- A. 1/1/8, 1/1/10, 1/1/5-1/1/24
- B. 1/1/1-1/1/28
- C. 1/1/1-1/1/24
- D. 1/1/8-1/1/10, 1/1/5-1/1/28

Correct Answer: D

Section: (none)

Explanation

Explanation/Reference:

### QUESTION 56

Core(config)# user admin password

Core(config)# interface mgmt

Core(config-if-mgmt)# ip static 10.254.16.89/22

Core(config-if-mgmt)# default-gateway 10.254.19.129

Core(config)# ssh server vrf mgmt

Core(config)# https-server vrf mgmt

You are tasked with configuring the Core switch to be managed by NetEdit. Currently, the Core switch is at factory-default settings.

Which two steps are missing? (Choose two.)

- A. Core(config)# https-server rest access-mode read-write
- B. Core(config-if-mgmt)# no shutdown
- C. Core(config-if-mgmt)# no tftp-server
- D. Core(config-if-mgmt)# enable
- E. Core(config)# https-server rest access-mode read-only

**Correct Answer:** AB

**Section:** (none)

**Explanation**

**Explanation/Reference:**

**QUESTION 57** Which two commands will save the running-config so that changes will be loaded automatically on the next reboot?  
(Choose two.)

- A. write memory
- B. save
- C. copy config config1 config startup-config
- D. copy running-config startup-config
- E. copy running-config checkpoint boot-config

**Correct Answer:** AD

**Section:** (none)

**Explanation**

**Explanation/Reference:**

**QUESTION 58**

DRAG DROP

Match the available stacking feature to the correct AOS-CX switch model. Stacking features may be used more than once.

**Select and Place:**

Stacking Feature	Answer Area	
<input type="text" value="VSF"/>	Stacking Feature	AOS-CX Switch Model
<input type="text" value="VSX"/>	<input type="text"/>	6300M
	<input type="text"/>	6300F
	<input type="text"/>	8320
	<input type="text"/>	8400
	<input type="text"/>	6400

**Correct Answer:**

**Stacking Feature**

VSF
VSX

**Answer Area**

Stacking Feature	AOS-CX Switch Model
VSF	6300M
VSF	6300F
VSX	8320
VSX	8400
VSX	6400

**Section: (none)**

**Explanation**

**Explanation/Reference:**

**QUESTION 59**

Which two options are correct regarding the IEEE 802.11ax standard? (Choose two.)

- A. allows transmissions of up to 4.8Gbps
- B. is an emerging satellite connection standard to allow wireless access anywhere in the world
- C. operates only in the 5GHz similar to 802.11ac
- D. operates in both the 2.4GHz and 5GHz radios bands
- E. is the first WLAN standard to no longer use electromagnetic signals to transmit data

**Correct Answer: AD**

**Section: (none)**

**Explanation**

**Explanation/Reference:**