

Microsoft.PL-100.vDec-2023.by.Razy.120q

Number: PL-100
Passing Score: 800
Time Limit: 120
File Version: 22.0

Exam Code: PL-100
Exam Name: Microsoft Power Platform App Maker

01 - Design solutions

QUESTION 1

You are creating a multi-page canvas app that loads tabular data from an external data source.

Once loaded, the data must be available to all screens within the canvas app.

You need to reduce the number of times that the app must retrieve data from the data source.

Which two data stores can you use? Each correct answer presents a complete solution.

NOTE: Each correct selection is worth one point.

- A. parameter
- B. global variable
- C. collection
- D. environment variable

Correct Answer: C, D

Section:

Explanation:

C: A special kind of data source is the Collection, which is local to the app and not backed by a connection to a service in the cloud, so the information can not be shared across devices for the same user or between users.

Collections can be loaded and saved locally.

D: Don't use environment variables if you only have one environment. Use collection variables. Having a single environment connected to the collection creates more overhead.

Reference: <https://docs.microsoft.com/en-us/powerapps/maker/canvas-apps/working-with-data-sources>

QUESTION 2

You are creating a model-driven app that allows users to create and edit a list of existing accounts. You need to display a list of all active accounts.

Which user interface components should you use?

- A. view
- B. gallery
- C. data table
- D. form

Correct Answer: A

Section:

Explanation:

With Power Apps apps, use views to define how a list of rows for a specific table is displayed in the application.

Reference:

<https://docs.microsoft.com/en-us/powerapps/maker/model-driven-apps/create-edit-views>

QUESTION 3

Each maker at a company has a separate Common Data Service environment. You are customizing a canvas app. You create two new entities in your environment. You are leaving for a vacation. Another maker will continue customizing the app in your absence.

You need to transfer the work to the other maker and ensure that you can work on the updated app when you return from your vacation. What should you export?

- A. an unmanaged solution that includes all customizations
- B. the default solution

- C. a managed solution that includes all customizations
- D. the app

Correct Answer: A

Section:

Explanation:

Unmanaged Solution: The beginning state of solution is the unmanaged solution state. During this phase, you can add, edit, update, remove, delete, and test any of the components of the solution. Incorrect Answers:

C: Managed Solution: A managed solution is a finalized solution that can be distributed and installed. They are created by exporting an unmanaged solution by setting restrictions to prevent any further customizations. The whole point of Managed is locking down the Component states so they cannot be edited. Deleting the Managed Solution will remove all its customisations as well as data contained. Managed Solutions become read only once deployed so they cannot be manipulated.

Reference: <https://powerusers.microsoft.com/t5/Power-Apps-Pro-Dev-ISV/Managed-vs-Unmanaged/td-p/495685>

QUESTION 4

Note: This question-is part of a series of questions that present the same scenario. Each question-in the series contains a unique solution that might meet the stated goals. Some question-sets might have more than one correct solution, while others might not have a correct solution.

After you answer a question-in this section, you will NOT be able to return to it. As a result, these questions will not appear in the review screen. You build a canvas app for a manufacturing company. The company receives parts and materials from many vendors. You create a form to collect information from packing slips. Receivers must be able to take a picture of packing slips to receive materials instead of manually entering data in the app. You need to ensure that users can scan packing slip information into the form.

Proposed solution: Use a Category classification model.

Does the solution meet the goal?

- A. Yes
- B. No

Correct Answer: B

Section:

Explanation:

A Category classification model categorizes text by its meaning.

Reference: <https://knowledgefrommanish.com/powerplatform/ai-builder-entity-extraction-ai-model/>

QUESTION 5

Note: This question-is part of a series of questions that present the same scenario. Each question-in the series contains a unique solution that might meet the stated goals. Some question-sets might have more than one correct solution, while others might not have a correct solution.

After you answer a question-in this section, you will NOT be able to return to it. As a result, these questions will not appear in the review screen. You build a canvas app for a manufacturing company. The company receives parts and materials from many vendors. You create a form to collect information from packing slips. Receivers must be able to take a picture of packing slips to receive materials instead of manually entering data in the app. You need to ensure that users can scan packing slip information into the form.

Proposed solution: Use an Entity Extraction model.

Does the solution meet the goal?

- A. Yes
- B. No

Correct Answer: B

Section:

Explanation:

Instead use the Use a Text Recognition model.

Note: Create a canvas app and add the text recognizer AI Builder component to your screen. This component takes a photo or loads an image from the local device, and then processes it to detect and extract text based on the text recognition prebuilt model. If it detects text in the image, the component outputs the text and identifies the instances by showing a rectangle for each instance in the image.

Incorrect Answers:

AI Builder entity extraction models recognize specific data in the text that you target based on your business needs. The model identifies key elements in the text and then classifies them into predefined categories. This can help you transform unstructured data into structured data that's machine-readable. You can then apply processing to retrieve information, extract facts, and answer questions.

Reference:

<https://knowledgefrommanish.com/powerplatform/ai-builder-entity-extraction-ai-model/>

<https://docs.microsoft.com/en-us/ai-builder/prebuilt-text-recognizer-component-in-powerapps>

QUESTION 6

Note: This question-is part of a series of questions that present the same scenario. Each question-in the series contains a unique solution that might meet the stated goals. Some question-sets might have more than one correct solution, while others might not have a correct solution.

After you answer a question-in this section, you will NOT be able to return to it. As a result, these questions will not appear in the review screen.

You build a canvas app for a manufacturing company. The company receives parts and materials from many vendors. You create a form to collect information from packing slips.

Receivers must be able to take a picture of packing slips to receive materials instead of manually entering data in the app.

You need to ensure that users can scan packing slip information into the form.

Proposed solution: Use a Key Phrase Extraction model.

Does the solution meet the goal?

A. Yes

B. No

Correct Answer: B

Section:

Explanation:

The key phrase extraction prebuilt model identifies the main points in a text document.

Reference:

<https://docs.microsoft.com/en-us/ai-builder/prebuilt-key-phrase>

QUESTION 7

You are an app designer for a hotel.

The hotel wants to create an app to help the housekeeping staff schedule work.

You need to create a new environment for the app.

Where should you create the environment?

A. Power Platform Admin center

B. Power Apps Maker portal

C. Dynamics 365 Admin center

Correct Answer: A

Section:

Explanation:

Manage environment in the Power Platform admin center.

Reference: <https://docs.microsoft.com/en-us/power-platform/admin/create-environment>

QUESTION 8

A company delivers products to multiple communities. The company creates a canvas app connected to a Common Data Service database. The app tracks communities to see where the delivery volume is the highest. Drivers must enter delivery information on a form that uses an entity named Delivery. Depot staff must enter information on a pick-up form that uses an entity named Pick-up. Each form contains a community field that is based on a shared list across both forms.

You need to create the community field.

Which type of field should you create?

- A. local option set
- B. text
- C. global option set
- D. text area

Correct Answer: C

Section:

Explanation:

Can use a global option set, no need to use localized option sets.

Note: In PowerApps Option set is one of the field types you can use in your Entity. The information type that Option Set stores is a list of text values. And here comes the Option Set advantage - once you define its text values you can centrally managed it.

Reference:

<https://powerapps.microsoft.com/en-us/blog/option-sets-and-many-to-many-relationships-for-canvas-apps/>

QUESTION 9

A company has an on-premises system that stores product information. The company plans to replace the information with a Power Platform solution that uses the Common Data Service. The Power Platform solution needs to use data from the product information system.

You need to transform and import the data from the product information system.

Which two tools should you use? Each correct answer presents part of the solution.

NOTE: Each correct selection is worth one point.

- A. Dataflow
- B. Business process flow
- C. Power BI Desktop
- D. Data gateway

Correct Answer: A, D

Section:

Explanation:

The on-premises data gateway acts as a bridge to provide quick and secure data transfer between on-premises data (data that isn't in the cloud) and several Microsoft cloud services. These cloud services include Power BI, PowerApps, Power Automate, Azure Analysis Services, and Azure Logic Apps. By using a gateway, organizations can keep databases and other data sources on their on-premises networks, yet securely use that on-premises data in cloud services. Can use the Power Platform dataflows to load entity in CDS with the option to transform data.

Reference: <https://docs.microsoft.com/en-us/power-bi/connect-data/service-gateway-onprem> <https://nishantrana.me/2020/07/07/load-data-from-sql-on-premise-to-cds-common-data-service-using-power-platform-dataflows-in-power-apps/>

QUESTION 10

In a Common Data Service database, you create a canvas app and a custom entity. The app also reads data from the Account entity in the Common Data Service database. Entity access permissions will be controlled by the Common Data Service User security role. You create a Common Data Service solution. You need to replicate the changes to a new Common Data Service database.

Which two components should you include with the canvas app? Each correct answer presents part of the solution. NOTE: Each correct selection is worth one point.

- A. Custom entity
- B. Account entity
- C. Common Data Service User security role
- D. Sitemap

Correct Answer: B, C

Section:

QUESTION 11

Note: This question-is part of a series of questions that present the same scenario. Each question-in the series contains a unique solution that might meet the stated goals. Some question-sets might have more than one correct solution, while others might not have a correct solution.

After you answer a question-in this section, you will NOT be able to return to it. As a result, these questions will not appear in the review screen. You build a canvas app for a manufacturing company. The company receives parts and materials from many vendors. You create a form to collect information from packing slips. Receivers must be able to take a picture of packing slips to receive materials instead of manually entering data in the app. You need to ensure that users can scan packing slip information into the form.

Proposed solution: Use a Text Recognition model.

Does the solution meet the goal?

- A. Yes
- B. No

Correct Answer: A

Section:

Explanation:

Create a canvas app and add the text recognizer AI Builder component to your screen. This component takes a photo or loads an image from the local device, and then processes it to detect and extract text based on the text recognition prebuilt model. If it detects text in the image, the component outputs the text and identifies the instances by showing a rectangle for each instance in the image.

Reference:

<https://docs.microsoft.com/en-us/ai-builder/prebuilt-text-recognizer-component-in-powerapps>

QUESTION 12

DRAG DROP

A company uses Power Automate and Power Apps to streamline business processes.

You need to use AI Builder to analyze customer reviews of the company's products.

In which order should you perform the actions? To answer, move all actions from the list of actions to the answer area and arrange them in the correct order.

Select and Place:

Action

Publish the model.
Connect data to the model.
Train the model.
Use the model in a Power Automate flow.

Answer Area

Correct Answer:

Action

Answer Area

Connect data to the model.

Train the model.

Publish the model.

Use the model in a Power Automate flow.

Section:

Explanation:

Step 1: Connect data to the model.

First create an AI Builder form processing model for the customer reviews you want to process.

Power Apps | AI Builder

Environment: All internal users

Contoso orders | Save and close

Model summary

Review your model's details below. If everything looks good, select Train. [Learn more about training](#)

Model type
Prediction

Owner
Rena Lawrence

Data source
Common Data Service

Historical outcome
Order > Order Status

Filters
3 conditions

Entity ↑	Fields
Invoice	20
Primary Contact (Contact)	80

Back Train

Quick tips

Get help or send feedback
Get the answers you need, or tell us about your experiences.

Get help

Step 2: Train the model.

Step 3: Publish the model.

Step 4: Use the model in a Power Automate flow.

Once you train and publish the model, create a solution-aware flow in Power Automate.

Reference:

<https://powerapps.microsoft.com/en-us/blog/introducing-simplified-ai-builder-experience-in-power-automate/>

QUESTION 13

HOTSPOT

Rangers in national parks report wildlife they encounter during patrols. The rangers record observations in a notebook when they are on patrol. The rangers manually enter observation data when they are in the office. You are designing an app that allows rangers to record their observations while they are on patrol. The wildlife is modeled as a custom table named Wildlife. The model has relationships to the annotation entity and to a custom entity named Wildlife Details. In the Wildlife Details entity, rangers capture more information as they observe an animal’s habitat. When observing wildlife, rangers must indicate whether an animal requires medical attention. The app must synchronize and save data to Common Data Service when connectivity is available.

You need to design the app.

What should you do? To answer, select the appropriate options in the answer area.

NOTE: Each correct selection is worth one point.

Hot Area:

Answer Area

Requirement	Action
Enter notes related to wildlife records.	<div><div></div><div><div>Enable the Wildlife entity and annotation entity for mobile offline.</div><div>Enable the attachments entity and the annotation entity for mobile offline.</div><div>Enable the Wildlife entity for mobile offline and enable attachments on the Wildlife entity.</div><div>Enable the Wildlife entity for mobile offline and use the timeline control for the Wildlife form.</div></div></div>
Enter wildlife details as related records.	<div><div></div><div><div>Allow feedback on the Wildlife Details entity.</div><div>Enable the Wildlife Details entity for mobile offline.</div><div>Enable change tracking on the Wildlife Details entity.</div><div>Enable attachments on the Wildlife Details entity and enable the Wildlife Details entity for mobile offline.</div></div></div>
Indicate that an animal requires medical attention.	<div><div></div><div><div>Create a business rule.</div><div>Create a business process.</div><div>Create a Power Automate flow.</div></div></div>

Answer Area:

Answer Area

Requirement	Action
Enter notes related to wildlife records.	<div>▼</div> <div> <div>Enable the Wildlife entity and annotation entity for mobile offline.</div> <div>Enable the attachments entity and the annotation entity for mobile offline.</div> <div>Enable the Wildlife entity for mobile offline and enable attachments on the Wildlife entity.</div> <div>Enable the Wildlife entity for mobile offline and use the timeline control for the Wildlife form.</div> </div>
Enter wildlife details as related records.	<div>▼</div> <div> <div>Allow feedback on the Wildlife Details entity.</div> <div>Enable the Wildlife Details entity for mobile offline.</div> <div>Enable change tracking on the Wildlife Details entity.</div> <div>Enable attachments on the Wildlife Details entity and enable the Wildlife Details entity for mobile offline.</div> </div>
Indicate that an animal requires medical attention.	<div>▼</div> <div> <div>Create a business rule.</div> <div>Create a business process.</div> <div>Create a Power Automate flow.</div> </div>

Section:

Explanation:

Box 1: Enable the Wildlife entity and the annotation entity for mobile offline

Note: As part of the 2020 Wave 2 release, we made generally available offline capabilities for model driven apps for users of Power Apps. Makers and administrators can now configure apps to be available offline on a user's device, and users can continue to complete their tasks against the local cache on their phone even with intermittent or no network connectivity. When the network is re-established, the users' changes are seamlessly synchronized back to the cloud.

Box 2: Enable attachments on the Wildlife Details entity and enable Wildlife Details entity for mobile offline.

Box 3: Create a business process.

Business process flows. Ensure that people enter data consistently and follow the same steps every time they work in an app by creating a business process flow.

Note: Power Automate includes several types of processes, each designed for a different purpose:

Automated flows. Create a flow that performs one or more tasks automatically after it's triggered by an event. Button flows.

Scheduled flows. Create a flow that performs one or more tasks on a schedule such as once a day, on a specific date, or after a certain time. Business process flows. Ensure that people enter data consistently and follow the same steps every time they work in an app by creating a business process flow. Workflows and actions. Dynamics 365 customizers may be familiar with the classic Microsoft Dataverse processes, which are workflows and actions.

Reference:

<https://powerapps.microsoft.com/en-us/blog/mobile-offline-for-power-apps/>

<https://docs.microsoft.com/en-us/powerapps/maker/model-driven-apps/guide-staff-through-common-tasks-processes>

QUESTION 14

A company plans to roll out several Power Apps apps to multiple business units across international operations.

The apps must be managed through an application lifecycle management (ALM) solution to provide a consistent and predictable use experience. All changes to the app must be traceable and documented in a single location.

You must be able to revert to a previous version of an app. The app release cycles must be as streamlined as possible.

You need to create an application for the apps.

Which two tools should you use? Each correct answer presents part of the solution.

NOTE: Each correct selection is worth one point.

- A. Microsoft Azure DevOps
- B. Microsoft Visual Studio
- C. Lifecycle Services
- D. AppSource
- E. Common Data Service

Correct Answer: A, D

Section:

Explanation:

A: DevOps is the combining of two historically disparate disciplines: software development and IT operations. The primary goal of DevOps is to shorten the software development lifecycle and provide continuous integration and continuous delivery (CI/CD) with high software quality. You can use Power Apps build tools to automate common build and deployment tasks related to Power Apps if your DevOps platform is Azure DevOps.

D: Microsoft AppSource is now embedded in the Dynamics 365 home page and throughout the common navigation. It now includes a private gallery of apps available to you within your company. Select Get more apps from the home page or task pane, and navigate to the My Organization tab to see apps that are available to you.

Reference:

<https://docs.microsoft.com/en-us/power-platform/alm/devops-build-tools>

<https://docs.microsoft.com/en-us/powerapps/user/app-source>

QUESTION 15

A company is consolidating communications processes by using Microsoft Teams and Microsoft Power Platform technologies.

A Power Automate flow monitors social media channels to identify high-impact trends.

When the Power Automate flow identifies the trends, consistently formatted and standardized feedback must be collected from the channel members within Teams.

You need to streamline the Power Automate and Teams communication process.

What should you use?

- A. AI Builder
- B. Common Data Service business process flows
- C. Adaptive cards
- D. Integrated approval flows

Correct Answer: A

Section:

Explanation:

"Microsoft Power Platform and AI Builder components allowed us to quickly deliver an innovative and well-integrated solution within our Dynamics 365 platform for our marketing and sales business partners. The platform is a game-changer in this new world of rapid app delivery."

Jim Parker: Web and Collaboration Services Manager

Reference:

<https://customers.microsoft.com/en-au/story/810656-hexion-manufacturing-power-platform>

QUESTION 16

DRAG DROP

A company is building multiple Power Apps apps to support a mobile sales team.

The apps must all share a common control that has custom properties.

You need to create a solution for the apps.

Which objects should you use? To answer, drag the appropriate objects to the correct requirements. Each object may be used once, more than once, or not at all. You may need to drag the split bar between panes or scroll to view content.

NOTE: Each correct selection is worth one point.

Select and Place:

Answer Area

Objects	Requirement	Object
Entity	Reuse the custom control for multiple canvas apps.	
Component		
Component library	Receive input data through a custom property.	
Component framework		

Correct Answer:

Answer Area

Objects	Requirement	Object
Entity	Reuse the custom control for multiple canvas apps.	Component library
	Receive input data through a custom property.	Component
Component framework		

Section:

Explanation:

Box 1: Component library

Components are reusable building blocks for canvas apps so that app makers can create custom controls to use inside an app, or across apps using a component library. Components can use advanced features such as custom properties and enable complex capabilities.

By creating a component library, app makers easily share and update one or more components with other makers.

Component libraries are containers of component definitions that make it easy to:

Discover and search components.

Publish updates.

Notify app makers of available component updates.

Box 2: Component

A component can receive input values and emit data if you create one or more custom properties.

Reference:

QUESTION 17

DRAG DROP

You are designing a canvas app.

You need to select user interface controls to include in the app.

Which control should you use? To answer, drag the appropriate controls to the correct requirements. Each control may be used once, more than once, or not at all. You may need to drag the split bar between panes or scroll to view content.

NOTE: Each correct selection is worth one point.

Select and Place:

Answer Area

Controls	Requirement	Control
List box	Allow users to select multiple items in a list.	
Radio		
Combo box	Allow users to select multiple items from a list of options by typing in a phrase.	
Drop-down list		

Correct Answer:

Answer Area

Controls	Requirement	Control
	Allow users to select multiple items in a list.	List box
Radio		
	Allow users to select multiple items from a list of options by typing in a phrase.	Combo box
Drop-down list		

Section:

Explanation:

Box 1: List box

A List Box control always shows all available choices (unlike a Drop down control) and in which the user can choose more than one item at a time (unlike a Radio control).

Box 2: Combo box

A Combo box control allows you to search for items you will select. The search is performed server-side on the SearchField property so performance is not affected by large data sources. Single or multi-select mode is configured via the SelectMultiple property. When searching for items to select, for each item you can choose to show a single data value, two values, or a picture and two values (Person) by modifying the Layout settings in the Data pane. Reference: <https://docs.microsoft.com/en-us/powerapps/maker/canvas-apps/controls/control-list-box> <https://docs.microsoft.com/en-us/powerapps/maker/canvas-apps/controls/control-combo-box>

QUESTION 18

HOTSPOT

A company uses a model-driven app. You create a Power BI sales report. The executive of the company wants all users to see tiles from the report in the model-driven app. You need to ensure all users can see the tiles. What should you do? To answer, select the appropriate options in the answer area. NOTE: Each correct selection is worth one point.

Hot Area:

Answer Area

Step	Setting
Allow addition of Power BI visualization tiles.	<div><div></div><div>Power Platform Environment settings Power Apps settings Power BI Service settings Power BI Desktop settings</div></div>
Add tiles to a dashboard.	<div><div></div><div>Create a personal dashboard Create a Power BI dashboard. Create a system dashboard.</div></div>
Allow users to view tiles.	<div><div></div><div>Share tile and share dashboard. Share report and share dashboard. Share tile and publish dashboard. Share report and publish dashboard.</div></div>

Answer Area:

Answer Area

Step	Setting
Allow addition of Power BI visualization tiles.	<div><div></div><div>Power Platform Environment settings</div><div>Power Apps settings</div><div>Power BI Service settings</div><div>Power BI Desktop settings</div></div>
Add tiles to a dashboard.	<div><div></div><div>Create a personal dashboard</div><div>Create a Power BI dashboard.</div><div>Create a system dashboard.</div></div>
Allow users to view tiles.	<div><div></div><div>Share tile and share dashboard.</div><div>Share report and share dashboard.</div><div>Share tile and publish dashboard.</div><div>Share report and publish dashboard.</div></div>

Section:

Explanation:

Box 1: Power Platform Environment settings

Before users can embed Power BI visualizations on personal dashboards, the organization-wide setting must be enabled. 1. In the Power Platform admin center, select an environment.

2. Select Settings > Product > Features.

3. Under Embedded content set Power BI visualization embedding to On to enable or Off to disable.

4. Select Save.

Box 2: Create a personal dashboard

You can embed Power BI tiles on your personal dashboard.

1. Open your app and go to Dashboards.

2. Select an existing personal dashboard or select New to create one.

3. On the dashboard, select an area where you want the tile to appear, and then select Power BI Tile on the toolbar.

4. Add new Power BI tile.

5. In the Power BI Tile dialog, select the workspace and then select the Power BI tile that you want to display on your dashboard. Select Enable for mobile if you want to make the tile available for Dynamics 365 for tablets and Dynamics 365 for phones.

6. Select another area of the dashboard and repeat this step to add another Power BI tile, or other component, such as a chart or list, to your dashboard. 7. Select Save to save your dashboard.

Box 3: Share report and share dashboard.

To share your personal dashboard that contains Power BI visualizations you must configure sharing in both Dataverse and Power BI, and the user or group must have the same credentials and appropriate level of access in both services. To share your personal dashboard in your app, go to Dashboards. In the list of dashboards, select the personal dashboard you want, and then select SHARE DASHBOARD.

Reference:

<https://docs.microsoft.com/en-us/power-platform/admin/use-power-bi#embed--visualizations-on-personal-dashboards>

QUESTION 19

You create a Power Platform solution. Solution data is stored in a variety of documented cloud services.

You need to configure the data sources.

What should you do?

- A. Create a data gateway.
- B. Use a content pack.
- C. Create a custom data connector.
- D. Add metadata to standard entities.

Correct Answer: D

Section:

Explanation:

Common Data Model is built upon a rich and extensible metadata definition system that enables you to describe and share your own semantically enhanced data types and structured tags, capturing valuable business insight which can be integrated and enriched with heterogeneous data to deliver actionable intelligence.

Common Data Model can be used by various applications and services including Microsoft Dataverse, Dynamics 365, Microsoft Power Platform, and Azure ensuring that all of your services can access the same data.

Note: A wide variety of applications and services can easily access data in a data lake, however, each consumer must understand the format and meaning of the data before it can provide value. The Common Data Model simplifies this process by providing a metadata system that describes the data and standard entities to which producers can map.

Reference:

<https://docs.microsoft.com/en-us/common-data-model/use>

02 - Design solutions

This is a case study. Case studies are not timed separately. You can use as much exam time as you would like to complete each case. However, there may be additional case studies and sections on this exam. You must manage your time to ensure that you are able to complete all questions included on this exam in the time provided.

To answer the questions included in a case study, you will need to reference information that is provided in the case study. Case studies might contain exhibits and other resources that provide more information about the scenario that is described in the case study. Each question is independent of the other questions in this case study.

At the end of this case study, a review screen will appear. This screen allows you to review your answers and to make changes before you move to the next section of the exam. After you begin a new section, you cannot return to this section.

To start the case study

To display the first question in this case study, click the Next button. Use the buttons in the left pane to explore the content of the case study before you answer the questions. Clicking these buttons displays information such as business requirements, existing environment, and problem statements. When you are ready to answer a question, click the Question button to return to the question.

Background

Overview

Wide World Importers is an importer and supplier of fair trade, handmade home goods to independent retailers in North America. The company has a partner company named Tailwind Traders.

One of the products that the company manufactures was recently featured on several major television talk shows and has become very popular.

Wide World Importers is expanding their prospective sales operations to new markets and plans to engage current customers in a more direct manner.

Current environment

Sales representatives submit weekly status reports to regional managers. There is no standardized format for these status reports. The process for managing status reports is challenging.

Wide World Importers has decided to use Microsoft 365, Microsoft Azure, and Power Platform for future app development. Both Wide World Importers and Tailwind Traders have identical Microsoft SharePoint and Azure configurations. Both companies use separate tenants.

Requirements

Application

You must create a mobile app to streamline the creation of status reports by sales representatives. You must make the same app available to Tailwind Traders. The mobile app must meet the following requirements:

- Provides features to plan and predict capacity resource requirements for current and upcoming orders in the pipeline.

Minimize the use of code.

Use formulas and expressions when necessary.

Support a variety of visual layouts.

Use a SharePoint list to store information about regional managers and sales representatives.
Use Azure SQL Database to store other data.
Status reports

Information type	Values
Category	Pipelines, Work/life balance, Coaching/Mentoring, or Communications
Status	At Risk, Acceptable, or Great
Notes	Notes as appropriate

Sales representatives must provide a weekly status report for all work processes each Monday. Representatives must enter the following information for each process:
If a sales representative submits a status report and assigns the At Risk status to a process, the app must prompt the sales representative to enter a detailed description for the risk. This information must be emailed to the regional manager. If the category is Work/life balance, the information must be carbon copied to the human resources department. If a sales representative does not submit a weekly status report by an agreed upon deadline, the system must send an email to remind the sales representative. The app must be able to run both online and offline. If the mobile device on which the app runs is connected to the internet, the app must immediately submit the status report. You must display a visual indicator in the app so that sales representatives know whether the app is offline before submitting reports. When data is submitted offline, the data must be stored in the app until the app is back online.

Technical
Regardless of the UI layouts, the data recorded must be standardized in the Azure DB tables. You must use global variables in the app.

Deployment
Before deploying the app to production, you must ensure that the app conforms to Microsoft accessibility and performance guidelines. The completed app and all supporting components must be provided to Tailwind Traders. Tailwind Traders must not be able to make changes to any of the components. You must use the following version control numbering scheme:
- Major: The last two digits of the year the app is packaged
- Minor: Two digits that represent the month when the app is packaged
- Build: A number that is incremented to represent significant changes to the app
- Revision: The incremented revision for a package
New versions of the application must completely replace previous versions of the app. When identifying versions of the app solution, all dependencies, entities, and user interfaces components must be identified to avoid any unintentional issues caused by reverting individual components to a previous version. Previous versions of the mobile app must be available for roll back purposes. All versions of software that have been used in production must be retained for five years.

Issues
The mobile app has been live for several months. Eight versions of the app have been released since the initial version of the app was deployed to sales representatives. You must revert the app to an earlier version and redesign some features. User1 often works in a warehouse that does not have internet connectivity. User1 needs to edit an existing status report and submit a new status report. Several sales representatives have accessibility restrictions. User2 is visually impaired and cannot see images. User3 is unable to use a mouse.

QUESTION 1

You need to provide the app to Tailwind Traders.
What should you do?

- A. Within Managed Properties, set the value of the Allow customizations option to true. Export the app as a managed solution.
- B. Use the Share App feature.

- C. Within Managed Properties, set the value of the Allow customizations option to false. Export the app as a managed solution.
- D. Within Managed Properties, set the value of the Allow customizations option to false. Export the app as an unmanaged solution.

Correct Answer: C

Section:

Explanation:

Scenario: The completed app and all supporting components must be provided to Tailwind Traders. Tailwind Traders must not be able to make changes to any of the components. Managed Solution: A managed solution is a finalized solution that can be distributed and installed. They are created by exporting an unmanaged solution by setting restrictions to prevent any further customizations. The whole point of Managed is locking down the Component states so they cannot be edited. Deleting the Managed Solution will remove all its customisations as well as data contained. Managed Solutions become read only once deployed so they cannot be manipulated. Reference: <https://powerusers.microsoft.com/t5/Power-Apps-Pro-Dev-ISV/Managed-vs-Unmanaged/td-p/495685>

QUESTION 2

DRAG DROP

You need to ensure that the app can support the needs of User2 and User3, and meets the production deployment requirements.

Which tools should you use? To answer, select the appropriate tool in the answer area.

NOTE: Each correct selection is worth one point.

Select and Place:

Tools

Solution Checker
App Checker
Object Detector
Preview the app

Answer Area

Requirement	Tool
Accessibility	Tool
Deployment	Tool

Correct Answer:

Tools

Object Detector
Preview the app

Answer Area

Requirement	Tool
Accessibility	App Checker
Deployment	Solution Checker

Section:

Explanation:

Box 1: App Checker

Scenario: Several sales representatives have accessibility restrictions. User2 is visually impaired and cannot see images. User3 is unable to use a mouse. Users who have vision, hearing, or other impairments can use your canvas app more easily and successfully if you consider accessibility as you design how the app looks and behaves. If you're not sure how to make your app more accessible, you can run the AppChecker Accessibility checker in Power Apps Studio.

Box 2: Solution Checker

Scenario: Before deploying the app to production, you must ensure that the app conforms to Microsoft accessibility and performance guidelines.

Use solution checker to validate your model-driven apps in Power Apps.

Reference:

<https://docs.microsoft.com/en-us/powerapps/maker/canvas-apps/accessibility-checker>

<https://docs.microsoft.com/en-us/powerapps/maker/common-data-service/use-powerapps-checker>

QUESTION 3

HOTSPOT

You need to resolve the issue for User1.

What should you use? To answer, select the appropriate options in the answer area.

NOTE: Each correct selection is worth one point.

Hot Area:

Requirement

Submit a status report.

Option

- Dynamics 365 mobile app
- Power Apps Studio
- Power Apps mobile app
- Azure mobile app

Edit an existing status report.

- Azure SQL Database
- Connector
- SQL Lite DB
- Collections

Answer Area:

CEplus Answer Area

Requirement	Option
Submit a status report.	<div>▼</div> <ul style="list-style-type: none"> Dynamics 365 mobile app Power Apps Studio Power Apps mobile app Azure mobile app
Edit an existing status report.	<div>▼</div> <ul style="list-style-type: none"> Azure SQL Database Connector SQL Lite DB Collections

Section:

Explanation:

Box 1: Power Apps mobile app

Scenario:

User1 often works in a warehouse that does not have internet connectivity.

User1 needs to edit an existing status report and submit a new status report.

The app must be able to run both online and offline. If the mobile device on which the app runs is connected to the internet, the app must immediately submit the status report.

You can build offline capabilities in your PowerApps app so your app users can access some data or save some data even when they don't have an internet connection.

Box 2: Connector

Scenario: Azure SQL Database is used to store other data

Use the SQL Server connector to connect to SQL Server, in either Azure or an on-premises database, so that you can manage your data with create, read, update, and delete operations.

Reference:

<https://powerapps.microsoft.com/en-us/blog/implementing-offline-capability-in-your-app/>

QUESTION 4

DRAG DROP

You need to modify the app design to meet the accessibility needs of the sales associates.

Which properties should you configure? To answer, drag the appropriate properties to the correct restrictions. Each property may be used once, more than once, or not at all. You may need to drag the split bar between panes or scroll to view content.

NOTE: Each correct selection is worth one point.

Select and Place:

Answer Area

Properties	Restriction	Property
TabIndex		
DisplayMode	Design for User2	
AccessibleLabel	Design for User3	
Tooltip		

Correct Answer:

Answer Area

Properties	Restriction	Property
DisplayMode	Design for User2	AccessibleLabel
	Design for User3	TabIndex
Tooltip		

Section:

Explanation:

Box 1: AccessibleLabel

Scenario: Before deploying the app to production, you must ensure that the app conforms to Microsoft accessibility and performance guidelines. User2 is visually impaired and cannot see images.

AccessibleLabel is a label for screen readers.

An empty value for Image, Icon, and Shape controls will hide the controls from screen reader users.

Box 2: TabIndex

User3 is unable to use a mouse.

TabIndex determines if the control participates in keyboard navigation.

Keyboard navigation is an important aspect of any app. For many, the keyboard is more efficient than using touch or a mouse. The navigation order should:

Mirror what is seen visually.

Only have a tab stop at controls that are interactive.

Follow either an intuitive across and then down "Z" order or a down and then across "reverse-N" order.

QUESTION 5

You need to create the mobile app.

Which type of app should you create?

- A. model-driven app
- B. portal app
- C. Microsoft 365 web app
- D. canvas app

Correct Answer: D

Section:

Explanation:

An accessible canvas app will allow users with vision, hearing, and other impairments to successfully use the app. In addition to being a requirement for many governments and organizations, following the below guidelines increases usability for all users, regardless of their abilities.

Reference:

<https://docs.microsoft.com/en-us/powerapps/maker/canvas-apps/accessible-apps>

03 - Design solutions

This is a case study. Case studies are not timed separately. You can use as much exam time as you would like to complete each case. However, there may be additional case studies and sections on this exam. You must manage your time to ensure that you are able to complete all questions included on this exam in the time provided.

To answer the questions included in a case study, you will need to reference information that is provided in the case study. Case studies might contain exhibits and other resources that provide more information about the scenario that is described in the case study. Each question is independent of the other questions in this case study.

At the end of this case study, a review screen will appear. This screen allows you to review your answers and to make changes before you move to the next section of the exam. After you begin a new section, you cannot return to this section.

To start the case study

To display the first question in this case study, click the Next button. Use the buttons in the left pane to explore the content of the case study before you answer the questions. Clicking these buttons displays information such as business requirements, existing environment, and problem statements. When you are ready to answer a question, click the Question button to return to the question.

Background

Overview

Contoso, Ltd. produces industrial furnaces. The company is struggling to meet increased demand in production orders.

The company has corporate offices and manufacturing plants in Germany. The company also has offices and manufacturing plants in other regions of the world.

The company purchases a plant from another company. The plant has been in operation for over 25 years.

Current environment

Accounting system and purchasing

Operations for the company are managed very informally. Only a small number of long-term employees are aware of all manufacturing processes.

Manufacturing and planning

The company has a cloud-based ERP/accounting system and uses the General Ledger, Accounts Receivable, and Accounts Payable modules. The current system does not have any modules that handle shop floor or manufacturing planning functionality.

Employee information is maintained only within the accounting system. Access to the information is strictly controlled due to privacy regulations and company policies. All purchasing of raw materials is performed based on bills of material (BOMs) generated by the engineering department when engineering prints are created. The corporate office uses Dynamics 365 Finance. The operations manager reports that Dynamics 365 Finance will not be implemented for the manufacturing plants for at least five years.

Sales

The plant that Contoso, Ltd. acquires uses Microsoft Excel workbooks and Microsoft Word documents to track the sales pipeline, requests for quote responses, and work estimates. The documents are stored on shared network drives. Printed engineering drawings are sometimes accidentally used across orders. This results in rework, cost over runs, and missed deliveries. The company uses Job Traveler documents to detail the operations that need to be performed and the materials needed for a given job number.

Requirements

Solution

Requests for quotes are currently stored in a Sales Log workbook. The workbook includes the following information:

- Customer request number
- Customer name
- Description

- Estimated value of the sale
- Status of the Request for Quote (RFQ) with the values of Won, Lost, No Bid, and Cancelled
- Names of the sales manager, salesperson, and estimator
- Name of the product line
- Date the quote was sent to the customer
- Approximate start and finish dates of the project
- Date the order was received, if won
- Job number, which is assigned if won

- The company has a formal process in place for managing estimates. Some sales quotes lack required supporting documentation including estimates for labor and materials even though a formal process is in place. The company wants to incorporate the formal process as part of an app.

The company has a formal process in place for managing estimates. Some sales quotes lack required supporting documentation including estimates for labor and materials even though a formal process is in place. The company wants to incorporate the formal process as part of an app.

Salespeople often do not set status of RFQs in the Sales Log to Won when a sale is closed and the customer purchase order is received. An accurate sales pipeline and win/loss information cannot currently be reported because the close probability field in the Sales Log is being set to 100% when a sale is closed and 0% when a sale is lost. Setting up a folder system on the network drive by a customer had not improved the hand-off of the current version of the sales quote to manufacturing.

General

You plan to create a solution that uses Microsoft Teams and Power Platform.

You must convert the Sales Log workbook to a Common Data Service database.

Each department will have a separate Teams channel. Employees must only be able to access the channel for their department. All employees and management will have read access to a general company channel. The Teams site must include the following channels:

Sales

The Sales dashboard must reside in the Sales channel and must include information about active quotes, sales pipeline, and year-to-date sales KPIs for sales quotas by region. All Sales-related documents must be stored in folders in the files location for this channel. Document versioning will be enabled. You must store the 10 most recent versions of a document.

Manufacturing

A dashboard that shows a capacity Heat map by month as well as expected sales that are likely to close for the next month. A sortable listing of all in-process jobs from the Job Setup table, by customer, start date, and product. Printed paper drawings must no longer be used. The drawings must be stored in folders in the files location for the manufacturing channel.

You must create the following apps:

Time Tracking

You must create a canvas app to track time for each employee on mobile devices. The app must include the following:

a Sign-in screen

a screen to list the week's time entries for the employee

a screen to edit current time entries for the employee

The app must meet the following requirements:

- Provides features to plan and predict capacity resource requirements for current and upcoming orders in the pipeline.

The app must store its data in the existing on-premises Microsoft SQL Server instance.

Employees must only be able to access their own time tracking records from the app.

Employees must record all time spent in the fabrication of each customer job.

Employees must only be able to modify time records for the current and previous day.

Employees must be able to scan their badges to check in and out of work. Each badge contains the employee name and a current picture. A QR code must be added to all employee badges. The code must include the employee's number.

Job Traveler documents must be printed as PDF documents and must include UPC E barcodes for the job number and task number. The barcodes will be used with the time tracking application.

Sales

The Sales app must meet the following requirements:

- Provides features to plan and predict capacity resource requirements for current and upcoming orders in the pipeline.

Provide a central location for all sales pipeline and quote information that is easily accessible and maintains all of the versions of the estimate, quote, and engineering documents. Include a dashboard that shows all currently active quotes, their status in the sales cycle, the probability of closing, and estimated manufacturing and installation dates, by customer, product division, status, and salesperson. The Sales Log app must enforce process standards related to the completion of estimates and supporting materials needed during the sales lifecycle. Automatically perform the following actions immediately when a sale is won:

- Generate a sequential job number.

- Copy key sales information to the Job Setup entity used by manufacturing.

If the sale is lost, the Status field must be set to Lost and the reason for the loss must be entered into a provided text field. The reason must be added to the end of the description field. Ensure that employees can easily update the Sales Log even if they are at a customer site.

Manufacturing and planning

The app must meet the following requirements:

Provides features to plan and predict capacity resource requirements for current and upcoming orders in the pipeline. Replace paper timesheets and track check-in, check-out, breaks, and the time spent on each job task.

Record time elapsed while performing work and for viewing of engineering drawings.

The Job Setup entity must store its data in the existing on-premises SQL Server instance.

Job Traveler documents must be generated as a PDF document and printed from the Job Setup entity.

Issues

Users report that the customer request number is difficult to interpret. They request that you change the number to a system generated sequential number. The operations manager reports that users often incorrectly sign in to the time tracking app. The operations manager asks that the time tracking app display the employee's photo once they have scanned their badge. Users want to be able to see their weekly total time entered from all screens.

Testers report that they can see time entries in the Time Tracker app, not just their own. Additionally, they can also edit any existing time entries.

QUESTION 1

You need to modify the entity form to resolve the customer request number issue.

What should you do?

- A. Use a calculated field
- B. Change the data type of the customer request number field to Lookup
- C. Change the data type of the customer request number field to Autonumber

Correct Answer: C

Section:

Explanation:

Scenario: Users report that the customer request number is difficult to interpret. They request that you change the number to a system generated sequential number. Autonumber columns are columns that automatically generate alphanumeric strings whenever they are created. Incorrect Answers:

B: The LookUp function finds the first record in a table that satisfies a formula.

Reference: <https://docs.microsoft.com/en-us/powerapps/maker/data-platform/autonumber-fields>

QUESTION 2

You need to connect to the data source for the Job Setup app.

What should you do?

- A. Configure a scheduled synchronization with the Common Data Service database
- B. Configure SQL Server database permissions
- C. Create a stored procedure that retrieves time records for a specific employee
- D. Configure an on-premises data gateway

Correct Answer: D

Section:

Explanation:

Scenario: The Job Setup entity must store its data in the existing on-premises SQL Server instance. The on-premises data gateway acts as a bridge to provide quick and secure data transfer between on-premises data (data that isn't in the cloud) and several Microsoft cloud services. These cloud services include Power BI, Power Apps, Power Automate, Azure Analysis Services, and Azure Logic Apps. By using a gateway, organizations can keep databases and other data sources on their on-premises networks, yet securely use that on-premises data in cloud services.

Reference: <https://docs.microsoft.com/en-us/powerapps/maker/canvas-apps/gateway-reference>

QUESTION 3

HOTSPOT

You need to implement features for the solution.

Which Power Platform component should you use for each feature? To answer, select the appropriate options in the answer area.

NOTE: Each correct selection is worth one point.

Hot Area:

Answer Area

Feature	Component
Mobile app for Sales Log workbook	<div>▼</div> <div>Canvas app</div> <div>Model-driven app</div> <div>Power Virtual Agents chatbot</div>
Embed KPIs for sales quotas by region	<div>▼</div> <div>Content Pack</div> <div>Power BI Desktop</div> <div>Power BI service</div>
Transfer of key sales information to the Job Setup entity	<div>▼</div> <div>Power Automate</div> <div>Business process flow</div> <div>Power Virtual Agents</div>

Answer Area:

Answer Area

Feature	Component
Mobile app for Sales Log workbook	<div>▼</div> <div>Canvas app</div> <div>Model-driven app</div> <div>Power Virtual Agents chatbot</div>
Embed KPIs for sales quotas by region	<div>▼</div> <div>Content Pack</div> <div>Power BI Desktop</div> <div>Power BI service</div>
Transfer of key sales information to the Job Setup entity	<div>▼</div> <div>Power Automate</div> <div>Business process flow</div> <div>Power Virtual Agents</div>

Section:

Explanation:

Box 1: Model-driven app

The Sales app must meet the following requirements:

• Provide a central location for all sales pipeline and quote information that is easily accessible and maintains all of the versions of the estimate, quote, and engineering documents.

Provide a central location for all sales pipeline and quote information that is easily accessible and maintains all of the versions of the estimate, quote, and engineering documents.

Compared to canvas apps, model-driven apps in PowerApps are based on underlying data — specifically, the data stored in Common Data Service (CDS).

Box 2: Power BI Desktop

You can create a KPI in Power BI Desktop.

1. Open your report editor in Power BI Desktop then select a report on which you are working.

2. On your right, you will see a Visualizations pane and a Fields pane.

3. From the Visualizations pane, select the KPI visual.

4. Etc.

Box 3: Power Automate

QUESTION 4

HOTSPOT

You need to resolve the issues found during testing.

Which option should you use? To answer, select the appropriate options in the answer area.

NOTE: Each correct selection is worth one point.

Hot Area:

Answer Area

Issue

Option

Testers see all time entries.

	▼
Hierarchical security	
Security group	
Security role	

Testers are able to edit existing time entries.

	▼
Control property	
Field-level security	
Security role	

Managers cannot see required information.

	▼
Access team template	
Field-level security	
Hierarchical security	

Answer Area:

Answer Area	
Issue	Option
Testers see all time entries.	<div><div></div><div>Hierarchical security</div><div>Security group</div><div>Security role</div></div>
Testers are able to edit existing time entries.	<div><div></div><div>Control property</div><div>Field-level security</div><div>Security role</div></div>
Managers cannot see required information.	<div><div></div><div>Access team template</div><div>Field-level security</div><div>Hierarchical security</div></div>

Section:

Explanation:

Box 1: Security role

Scenario: Employees must only be able to access their own time tracking records from the app.

Testers report that they can see time entries in the Time Tracker app, not just their own.

Box 2: Field-level security

Scenario: Employees must only be able to modify time records for the current and previous day.

Testers report that they can edit any existing time entries.

Box 3: Hierarchical security

You use field security tables to apply field-level security, which restricts field access to specified users and teams.

QUESTION 5

You need to resolve the user’s issue with the time tracking app.

Which two actions should you perform? Each correct answer presents part of the solution.

NOTE: Each correct selection is worth one point.

- A. Add a component to the time tracking screen for tracking total time.
- B. Create a new component inside of the component library for the time tracking app.
- C. Upload the component to AppSource.
- D. Add the Total Time field to the screen and set the value of the field property to Rollup.

Correct Answer: A, B

Section:**Explanation:**

Scenario Issue: Users want to be able to see their weekly total time entered from all screens.

A component library provides a centralized and managed repository of components for reusability.

Reference:

<https://docs.microsoft.com/en-us/powerapps/maker/canvas-apps/component-library>

01 - Create solutions**QUESTION 1**

You are creating a canvas app. You plan to use variables that are scoped to a screen to store values. You need to create and update the value of the variables.

Which three functions can you use? Each correct answer presents a complete solution.

NOTE: Each correct selection is worth one point.

- A. Collect
- B. Patch
- C. Navigate
- D. Set
- E. UpdateContext

Correct Answer: B, C, E

Section:**Explanation:**

B: Use the Patch function to modify records in complex situations. Such as, when you do updates that require no user interaction or use forms that span multiple screens.

CE: Context variables are scoped for Screen. They are great for passing values to a screen, much like parameters to a procedure in other languages. Can be referenced from only one screen. Functions available for context variables:

UpdateContext

Navigate

Note:

Use the UpdateContext function to create a context variable, which temporarily holds a piece of information, such as the number of times the user has selected a button or the result of a data operation.

Context variables are also preserved when a user navigates between screens. You can use Navigate to set one or more context variables for the screen that the formula will display, which is the only way to set a context variable from outside the screen.

Reference:

<https://docs.microsoft.com/en-us/powerapps/maker/canvas-apps/functions/function-patch>

<https://docs.microsoft.com/en-us/powerapps/maker/canvas-apps/functions/function-navigate>

<https://docs.microsoft.com/en-us/powerapps/maker/canvas-apps/functions/function-updatecontext>

QUESTION 2

You are creating a canvas app.

You need to store and retrieve small amounts of data on a local device when the app is offline.

Which set of functions should you use?

- A. SaveData, LoadData
- B. Set, Patch
- C. Patch, Collect
- D. Set, Collect

Correct Answer: A

Section:

Explanation:

LoadData and SaveData combine to form a simple mechanism to store small amounts of data on a local device. By using these functions, you can add simple offline capabilities to your app.

Reference: <https://docs.microsoft.com/en-us/powerapps/maker/canvas-apps/offline-apps>

QUESTION 3

You are creating a canvas app.

You need to display a limited list of choices to the end user. You must standardize the values and appearance of the list across all forms. Which two actions should you perform? Each correct answer presents part of the solution.

NOTE: Each correct selection is worth one point.

- A. Add a drop-down field in the app
- B. Create a Global Option Set
- C. Add a new business rule
- D. Add a component to the component library

Correct Answer: A, B

Section:**Explanation:**

A global Option Set can be shared across entities.

Reference: <https://powerapps.microsoft.com/en-us/blog/option-sets-and-many-to-many-relationships-for-canvas-apps/>

QUESTION 4

Note: This question-is part of a series of questions that present the same scenario. Each question-in the series contains a unique solution that might meet the stated goals. Some question-sets might have more than one correct solution, while others might not have a correct solution.

After you answer a question-in this section, you will NOT be able to return to it. As a result, these questions will not appear in the review screen. A company has locations in multiple countries and regions across four continents.

The company stores the total amount of each order in the local currency of the country/region where the customer is located. The company stores the applicable exchange rates in a custom US dollars (USD) exchange rate table. You need to create a visualization that displays the total amount of orders by country/region in USD. Proposed solution:

Create a custom column that converts the order total to USD by using the relationship between order local currency and the USD exchange rate table in Power BI Desktop and display this column in a Power BI chart by country/region. Does the solution meet the goal?

- A. Yes
- B. No

Correct Answer: B

Section:**Explanation:**

Instead use a calculated field.

Need to calculate the exchange rate in USD.

Calculated columns are calculated in real-time when they are retrieved.

Reference:

<https://docs.microsoft.com/en-us/powerapps/developer/data-platform/calculated-rollup-attributes>

QUESTION 5

You are an app maker. You are creating a canvas app.

You do not have access to Power BI.

You need to add charts to the app.

Which three chart types can you add directly to the canvas app? Each correct answer presents a complete solution. NOTE: Each correct selection is worth one point.

- A. pie
- B. area
- C. funnel
- D. column
- E. line

Correct Answer: A, D, E

Section:

Explanation:

You can use line charts, pie charts, and bar charts to display your data in a canvas app.

Add a bar chart to display your data:

1. On the Home tab, add a screen.
2. On the Insert tab, select Charts, and then select Column Chart.

Reference:

<https://docs.microsoft.com/en-us/powerapps/maker/canvas-apps/use-line-pie-bar-chart>

QUESTION 6

Note: This question is part of a series of questions that present the same scenario. Each question in the series contains a unique solution that might meet the stated goals. Some question sets might have more than one correct solution, while others might not have a correct solution.

After you answer a question in this section, you will NOT be able to return to it. As a result, these questions will not appear in the review screen.

You are creating a canvas app that displays a list of accounts.

Users must be able to select an account and view details for the account. The app must include a feature that brings the user back to the list of accounts.

You add a blank screen named Screen_Accounts and add a gallery named Gallery_Accounts to the screen. You set the data source of Gallery_Accounts to Accounts and add another blank screen named Screen_AccountDetail.

You need to complete the app.

Solution:

Add an edit form to Screen_AccountDetail and set the Default Mode of the form to View.

Set the OnSelect property of Gallery_Accounts to Navigate(Screen_AccountDetail).

Set the data source of the form to Accounts.

Set the Item property of the form to Selected.

Add a back icon on Screen_AccountDetail and set its OnSelect property to Navigate(Screen_Accounts).

Does the solution meet the goal?

- A. Yes
- B. No

Correct Answer: A

Section:

Explanation:

View, edit, or create an item, save the contents, and reset the controls in an Edit form control.

FormMode.View: The form is populated with an existing record but the user cannot modify the values of the fields. This function is often invoked from the OnSelect formula of a Button or Image control.

Reference:

<https://docs.microsoft.com/en-us/powerapps/maker/canvas-apps/functions/function-form>

QUESTION 7

Note: This question is part of a series of questions that present the same scenario. Each question in the series contains a unique solution that might meet the stated goals. Some question sets might have more than one correct solution, while others might not have a correct solution.

After you answer a question in this section, you will NOT be able to return to it. As a result, these questions will not appear in the review screen.

You are creating a canvas app that displays a list of accounts.

Users must be able to select an account and view details for the account. The app must include a feature that brings the user back to the list of accounts.

You add a blank screen named Screen_Accounts and add a gallery named Gallery_Accounts to the screen. You set the data source of Gallery_Accounts to Accounts and add another blank screen named Screen_AccountDetail. You need to complete the app.

Solution:

Add an edit form to Screen_AccountDetail and set the Default Mode of the form to New

Set the OnSelect property of Gallery_Accounts to Navigate(Screen_AccountDetail).

Set the data source of the form to Accounts.

Set the Item property of the form to Selected.

Add a back icon on Screen_AccountDetail and set its OnSelect property to Navigate(Screen_Accounts).

Does the solution meet the goal?

A. Yes

B. No

Correct Answer: B

Section:

Explanation:

FormMode.New: the form is populated with default values and the user can modify the values of the fields. Once complete, the user can add the record to the data source.

Reference:

<https://docs.microsoft.com/en-us/powerapps/maker/canvas-apps/functions/function-form>

QUESTION 8

Note: This question is part of a series of questions that present the same scenario. Each question in the series contains a unique solution that might meet the stated goals. Some question sets might have more than one correct solution, while others might not have a correct solution.

After you answer a question in this section, you will NOT be able to return to it. As a result, these questions will not appear in the review screen.

You are creating a canvas app that displays a list of accounts.

Users must be able to select an account and view details for the account. The app must include a feature that brings the user back to the list of accounts.

You add a blank screen named Screen_Accounts and add a gallery named Gallery_Accounts to the screen. You set the data source of Gallery_Accounts to Accounts and add another blank screen named Screen_AccountDetail.

You need to complete the app.

Solution:

Add a display form to Screen_AccountDetail.

Set the OnSelect property of Gallery_Accounts to Navigate(Screen_AccountDetail).

Set the data source of the form to Accounts.

Set the Item property of the form to Selected.

Add a back icon on Screen_AccountDetail and set its OnSelect property to Navigate(Screen_Accounts).

Does the solution meet the goal?

A. Yes

B. No

Correct Answer: A

Section:

Explanation:

If you add a Display form control, the user can display all fields of a record or only the fields that you specify.

Reference: <https://docs.microsoft.com/en-us/powerapps/maker/canvas-apps/controls/control-form-detail>

QUESTION 9

You are developing a canvas app to monitor time. The app includes a Text Input control named TIC1 and a Timer control named TIM1. You need to set TIM1 to a default value.

What should you do?

- A. In the OnChange property of TIC1, set the value of the Text property for TIC1 to a context variable that stores the duration value. Assign the value of the variable to the OnTimerStart property for TIM1.
- B. Assign the Text property of TIC1 to the Duration property of TIM1.
- C. Assign the Text property of TIC1 to the OnSelect property of a TIM1.
- D. Write code in the OnChange property of TIC1 that assigns the value of the Duration property of the Timer control to Text property of the TIC1. In the OnChange property of TIC1, assign the value to the Duration property for TIM1.

Correct Answer: D

Section:

Explanation:

The OnTimerStart, OnTimerEnd and OnSelect are the configurations where you can add your code.

Reference:

<https://sharepains.com/2019/08/22/all-about-timers-in-powerapps/>

QUESTION 10

You create and publish a canvas app component library to perform complex calculations.

You discover an error in one of the calculations. You correct the issue and publish the component library. A co-worker uses the original version of the component library in a canvas app. You need to ensure that the co-worker uses the updated version of the component library.

What should you do?

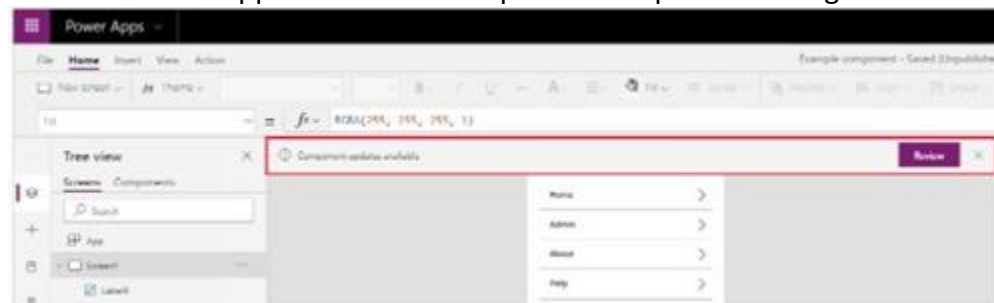
- A. Export the updated component library and instruct the co-worker to import the updated version into the canvas app
- B. Inform the co-worker to edit the canvas app and manually add the updated version of the component library
- C. Instruct the co-worker to edit the canvas app and update the component library

Correct Answer: C

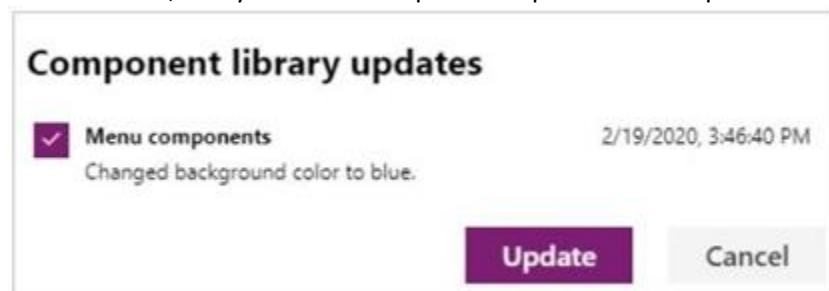
Section:

Explanation:

You can modify an existing component library and save any changes with additional version notes. However, the updated component library version must be published for use in existing apps that use the component library. Makers of other apps are notified of updated components being available. The notification appears when makers edit the apps in canvas app studio. They can choose to update the components:



Select Review, and you'll see the option to update the component:



Reference:

<https://docs.microsoft.com/en-us/powerapps/maker/canvas-apps/component-library>

QUESTION 11

DRAG DROP

You are configuring a new Common Data Service environment by using the Power Apps Maker portal.

You need to create an entity that uses the prefix xyz.

Which four actions should you perform in sequence? To answer, move the appropriate actions from the list of actions to the answer area and arrange them in the correct order.

Select and Place:

Actions

- Create an entity in the new solution.
- Enter the entity Display Name and use the existing prefix.
- Add a new solution.
- Enter the entity Display Name and modify the prefix to **xyz**.
- Add a new publisher with the prefix **xyz**.

Answer Area

Correct Answer:

Actions

-
- Enter the entity Display Name and use the existing prefix.
-
-
-

Answer Area

- Add a new publisher with the prefix **xyz**.
- Add a new solution.
- Create an entity in the new solution.
- Enter the entity Display Name and modify the prefix to **xyz**.

Section:

Explanation:

Reference:

<https://docs.microsoft.com/en-us/powerapps/maker/common-data-service/data-platform-create-entity>

QUESTION 12

Note: This question-is part of a series of questions that present the same scenario. Each question-in the series contains a unique solution that might meet the stated goals. Some question-sets might have more than one correct solution, while others might not have a correct solution.

After you answer a question-in this section, you will NOT be able to return to it. As a result, these questions will not appear in the review screen. A company has locations in multiple countries and regions across four continents.

The company stores the total amount of each order in the local currency of the country/region where the customer is located. The company stores the applicable exchange rates in a custom US dollars (USD) exchange rate table. You need to create a visualization that displays the total amount of orders by country/region in USD. Proposed solution:

Create a custom rollup field of type currency on the country/region table that aggregates all the total amounts for the orders from that country/region and display this rollup field in a Power BI chart. Does the solution meet the goal?

- A. Yes
- B. No

Correct Answer: B

Section:

Explanation:

Instead use a calculated field.

Need to calculate the exchange rate in USD.

Calculated columns are calculated in real-time when they are retrieved.

Reference:

<https://docs.microsoft.com/en-us/powerapps/developer/data-platform/calculated-rollup-attributes>

QUESTION 13

Note: This question is part of a series of questions that present the same scenario. Each question in the series contains a unique solution that might meet the stated goals. Some question sets might have more than one correct solution, while others might not have a correct solution.

After you answer a question in this section, you will NOT be able to return to it. As a result, these questions will not appear in the review screen.

A company has locations in multiple countries and regions across four continents.

The company stores the total amount of each order in the local currency of the country/region where the customer is located. The company stores the applicable exchange rates in a custom US dollars (USD) exchange rate table.

You need to create a visualization that displays the total amount of orders by country/region in USD.

Proposed solution:

Create a custom calculated field of type currency on the order table that converts the order total to USD and displays the total amounts by region in a Power BI chart.

Does the solution meet the goal?

A. Yes

B. No

Correct Answer: A

Section:

Explanation:

Instead use a calculated field.

Need to calculate the exchange rate in USD.

Calculated columns are calculated in real-time when they are retrieved.

Reference:

<https://docs.microsoft.com/en-us/powerapps/developer/data-platform/calculated-rollup-attributes>

QUESTION 14

DRAG DROP

You create an app with multiple screens.

Test users report that the size and type of gallery displayed on each screen are different. You must improve the consistency for the app screens.

You need to create a reusable gallery that displays information based on the current record.

Which three actions should you perform in sequence? To answer, move the appropriate actions from the list of actions to the answer area and arrange them in the correct order.

NOTE: More than one order of answer choices is correct. You will receive credit for any of the correct orders you select.

Select and Place:

Actions

Add a gallery control.

Add an input property.

Create a component.

Add a screen.

Create a form.

Add an output property.

Answer Area

Correct Answer:

Actions

Create a component.

Create a form.

Add an output property.

Answer Area

Add a gallery control.

Add a screen.

Add an input property.

Section:**Explanation:**

Step 1: Add a gallery control

Add a gallery to a blank screen

1. On the Insert tab, select Gallery, and then select Vertical.

2. On the Properties tab of the right-hand pane, open the Items list, and then select your Gallery

Step 2: Add a screen

Add a gallery in a screen

1. On the Home tab, select New screen > List screen.

A screen that contains a Gallery control and other controls, such as a search bar, appears.

Step 3: Add an input property

Input property is how a component receives data to be used in the component.

Incorrect Answers:

Output property is used to emit data or component state. For example, the Selected property on a Gallery control is an output property.

Reference:

<https://docs.microsoft.com/en-us/powerapps/maker/canvas-apps/add-gallery>

<https://docs.microsoft.com/en-us/powerapps/maker/canvas-apps/create-component>

QUESTION 15

HOTSPOT

A coworker creates a canvas app.

The canvas app contains the following formula. The formula is attached to the OnVisible property of the first screen that users see:

```
Collect(
Toolbox,
{
    Tool: "Hammer",
    Quantity: 1
},
{
    Tool: "Screwdriver",
    Quantity: 2
}
)
```

You are updating the canvas app.

For each of the following statements, select Yes if the statement is true. Otherwise, select No.

NOTE: Each correct selection is worth one point.

Hot Area:

Answer Area	Yes	No
The formula will update multiple records in a data source named Toolbox if the records exist.	<input type="radio"/>	<input type="radio"/>
A local collection is created to store data if a data source named Toolbox does not already exist.	<input type="radio"/>	<input type="radio"/>
If a collection named Toolbox exists the formula will clear any existing records before making any changes.	<input type="radio"/>	<input type="radio"/>

Answer Area:

Answer Area	Yes	No
The formula will update multiple records in a data source named Toolbox if the records exist.	<input type="radio"/>	<input checked="" type="radio"/>
A local collection is created to store data if a data source named Toolbox does not already exist.	<input checked="" type="radio"/>	<input type="radio"/>
If a collection named Toolbox exists the formula will clear any existing records before making any changes.	<input type="radio"/>	<input checked="" type="radio"/>

Section:

Explanation:

Box 1: No

Records are added, not updated.

Box 2: Yes

The Collect function adds records to a data source.

Syntax: Collect(DataSource, Item, ...)

DataSource – Required. The data source that you want to add data to. If it doesn't already exist, a new collection is created. Item(s) - Required. One or more records or tables to add to the data source.

Box 3: No

No records are cleared.

Reference:

<https://docs.microsoft.com/en-us/powerapps/maker/canvas-apps/functions/function-clear-collect-clearcollect>

QUESTION 16

You create a Power Platform solution. Solution data is stored in a variety of documented cloud services. You must also be able to connect to one or more industry data sources.

You need to configure the data sources.

What should you do?

- A. Create a business process flow.
- B. Create a data policy template.
- C. Create a UI flow.
- D. Use an existing data connector.

Correct Answer: D

Section:

Explanation:

In Power Apps, add a data connection to an existing canvas app or to an app that you're building from scratch. Your app can connect to SharePoint, Common Data Service, Salesforce, OneDrive, or many other data sources.

Note:

Add data source

1. In the center pane, select connect to data to open the Data pane.
2. Select Add data source.
3. If the list of connections includes the one that you want, select it to add it to the app. Otherwise, skip to the next step.



 Import from Excel
Add static data to your app

 Common Data Service 

 Office 365 Outlook

 OneDrive

4. Select New connection to display a list of connections.



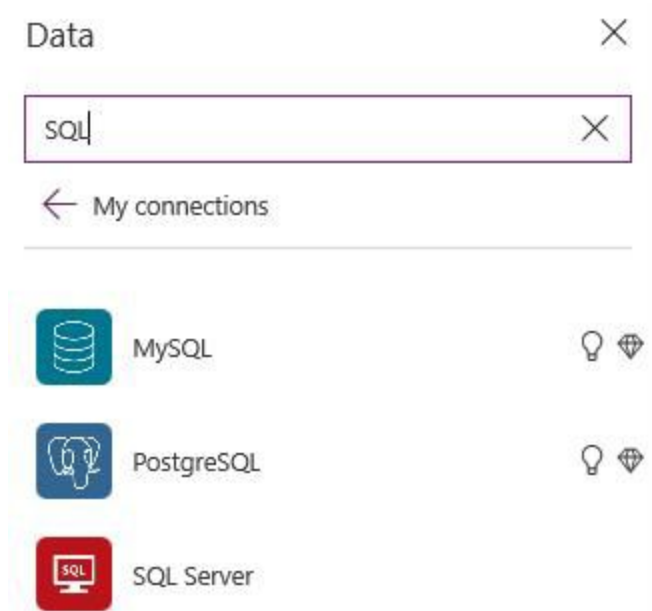
 Import from Excel
Add static data to your app

 Common Data Service 

 Office 365 Outlook

 OneDrive

5. In the search bar, type or paste the first few letters of the connection you want, and then select the connection when it appears.



6. Select Create to both create the connection and add it to your app.

Reference:

<https://docs.microsoft.com/en-us/powerapps/maker/canvas-apps/add-data-connection>

QUESTION 17

You use a Microsoft SharePoint list to record information about customers.

You must perform a series of actions only when a new item is added to a SharePoint list.

You need to configure a Power Automate flow.

Which trigger should you use?

- A. When an item is created
- B. When an item is created or modified
- C. When a file is created (properties only)
- D. For a selected item

Correct Answer: A

Section:

Explanation:

Trigger - When an item is created Triggers when an item is created.

MS Flow will trigger when an item is created in the list. It will return all list item properties which can be used in the Flow. Incorrect Answers:

D: Trigger - For a selected item

This trigger allows you to start a flow for a selected item in a SharePoint list or library. You can use the columns of the list or library as output parameters. For a file, you can use the "identifier" column to get file content. This is basically one which will trigger a flow when an item is selected and you want the user to trigger workflow manually.

Reference: <https://www.c-sharpcorner.com/article/sharepoint-based-triggers-in-ms-flow-part-2/>

QUESTION 18

A company has a Common Data Service custom entity that stores customer account data.

You need to create a relationship between the custom entity and the Account entity.

Which two tools can you use? Each correct answer presents a complete solution.

NOTE: Each correct selection is worth one point.

- A. Power Platform Admin center
- B. Power Apps solution explorer

- C. Power Apps Maker portal
- D. SQL Server Management Studio
- E. Visual Studio Code

Correct Answer: B, C

Section:

Explanation:

There are two designers you can use to create and edit 1:N (one-to-many) or N:1 (many-to-one) relationships:

You can create and edit 1:N (one-to-many) or N:1 (many-to-one) entity relationships in Power Apps portal You can create and edit create and edit 1:N (one-to-many) or N:1 (many-to-one) entity relationships using solution explorer

Reference: <https://docs.microsoft.com/en-us/powerapps/maker/common-data-service/create-edit-1n-relationships>

QUESTION 19

You create a canvas app for technicians at a computer store. You assign technicians cases to work on. The technicians update cases at the end of customer site visit. The manager wants the technicians to sell warranties to the customers. If a customer agrees to purchase a warranty, technicians use the canvas app to immediately alert the sales team, and then the technician records details about the warranty into the app.

You need to create a flow to alert the sales team.

Which type of trigger should you use?

- A. Flow button for mobile
- B. Power Apps
- C. Office 365 Outlook
- D. Common Data Service

Correct Answer: A

Section:

Explanation:

Create a button flow to run routine tasks by simply tapping a button. Customize your flow by allowing the user to provide specific details that will be used when the flow runs. Note: There are many repetitive tasks that we all wish we could run with just a tap of a button. For example, you may need to quickly email your team to remind them to join the daily team sync, or you may want to start a new Visual Studio Codespaces build of your code base after you've been notified that there are no more checkins planned for the day. Button flows allow you to accomplish these and many other tasks simply by tapping a button on your mobile device.

Reference: <https://docs.microsoft.com/en-us/power-automate/button-flow-with-user-input-tokens>

QUESTION 20

You are an app maker.

You want to create apps and track customizations as part of the default solution.

You need to determine the impact of performing the work in the default solution.

What should you conclude?

- A. The default solution does not contain all components and customizations from all solutions in the environment.
- B. The prefix used when creating components as part of the default solution can be set to a specific value.
- C. The default solution cannot be exported and distributed to another environment.

Correct Answer: C

Section:

Explanation:

Default Solution. This is a special solution that contains all components in the system. The default solution is useful for discovering all the components and configurations in your system.

Why you shouldn't use the default solutions to manage customizations

There are a few reasons why you shouldn't create apps and make customizations in either of the default solutions:

- The default solution can't be exported; therefore, you can't distribute the default solution to another environment.

The default solution can't be exported; therefore, you can't distribute the default solution to another environment. The default solution contains all components and customizations from all solutions in the environment. By default, all enabled

users can create apps and customize components in the Common Data Services Default Solution. It's difficult to locate or identify the customizations you've made in the environment by using either default solution. When you use either default solution to create components, you'll also use the default publisher assigned to the solution. This often results in the wrong publisher prefix being applied to some components.

Reference:
<https://docs.microsoft.com/en-us/power-platform/alm/use-solutions-for-your-customizations>

QUESTION 21

You are creating an app for an organization’s human resources (HR) department. You create an Employee entity in an unmanaged Common Data Service solution. Another user creates the following Power Automate flows separately from the solution:

Flow	Description
FlowA	Send email to the HR manager when a new document is uploaded to Microsoft SharePoint.
FlowB	Send email to the HR manager after a user selects a document in Microsoft OneDrive for Business and runs the flow.
FlowC	Send email to the HR manager at 8 AM daily if new documents are uploaded in Microsoft OneDrive for Business since the previous day.
FlowD	Send email to the HR manager when a new employee record is added.

You need to incorporate the flows that can be added to the solution.

Which two flows can you include? Each correct selection presents a complete solution.

NOTE: Each correct selection is worth one point.

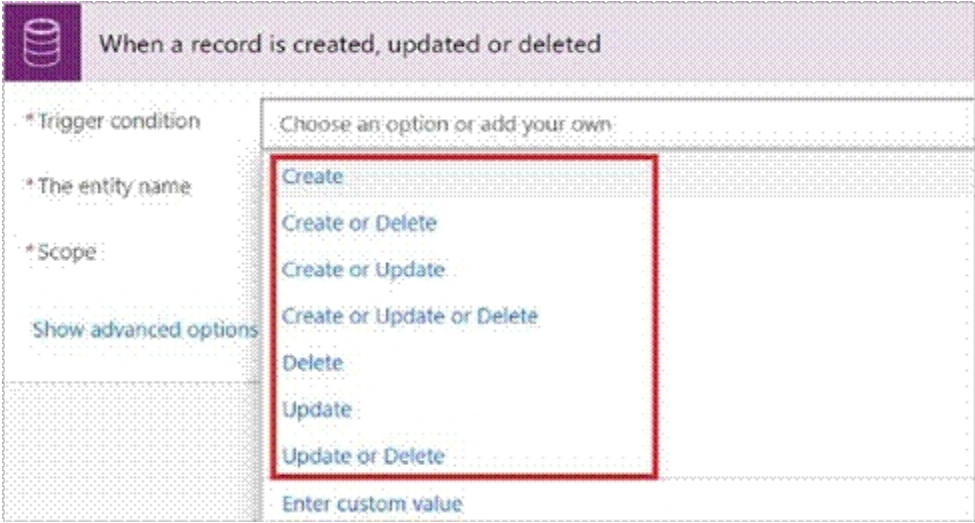
- A. FlowA
- B. FlowB
- C. FlowC
- D. FlowD

Correct Answer: A, D

Section:

Explanation:

You can add any of these conditions to determine precisely when your flow is triggered.



Reference:
<https://docs.microsoft.com/en-us/power-automate/connection-cds-native>

QUESTION 22

You create a canvas app named Hardware Order that suggests computer hardware to customers.

A value must be entered for the EmployeeID field when creating a new order if the value in the OrderType field does not contain the prefix test. You need to configure the business rule.

Which two actions should you perform? Each correct answer presents part of the complete solution.

NOTE: Each correct selection is worth one point.

- A. Set the scope of the business rule to Entity.
- B. Add a Recommendation action and configure it to enter the order type.
- C. Set the scope of the business rule to All Forms.
- D. Use the following condition expression:
(OrderType Does not begin with [test]) AND (Modified By Does not contain data)

Correct Answer: A, D

Section:

Explanation:

A: If you're building a Canvas app, you must use Entity as the scope.

D: A business rule needs a condition.

Reference: <https://docs.microsoft.com/en-us/powerapps/maker/common-data-service/data-platform-create-business-rule>

QUESTION 23

A company uses data loss prevention (DLP) policies. You have a Power Automate flow that posts Twitter mentions into a Microsoft SharePoint list. You are not able to activate the flow.

You need to troubleshoot the issue.

What are two possible reasons why you cannot activate the flow? Each correct answer presents a complete solution. NOTE: Each correct selection is worth one point.

- A. You are not assigned the Power Platform Admin role.
- B. You placed all connectors into the Business group within the DLP policy.
- C. You placed all connectors into the Non-Business group within the DLP policy.
- D. You are not assigned the Environment Admin role.

Correct Answer: B, D

Section:

Explanation:

D: DLP policies are created in the Power Platform admin center. They affect Power Platform canvas apps and Power Automate flows. To create a DLP policy, you need to be a tenant admin or have the Environment Admin role.

B: This table describes how the DLP policy you created affects data connections in apps and flows.

Connector matrix	SharePoint (Business)
SharePoint (Business)	Allowed
Salesforce (Business)	Allowed
Outlook.com (Non-Business)	Denied
Facebook (Blocked)	Denied
Twitter (Blocked)	Denied

Note: Any connector that resides in the Non-Business data group—such as Outlook.com—won't share data with apps and flows by using SharePoint or Salesforce connectors. Facebook and Twitter connectors are altogether blocked from being used in any app or flow in non-test environments such as production or default environments.

Reference:

<https://docs.microsoft.com/en-us/power-platform/admin/wp-data-loss-prevention>

QUESTION 24

DRAG DROP

You have the following Common Data Service entities: BusinessContracts and BusinessAccounts.

You need to configure an N:N relationship between the two entities.

Which three actions should you perform in sequence? To answer, move the appropriate actions from the list of actions to the answer area and arrange them in the correct order.

Select and Place:

Actions

Select **Add relationship** and then select the many-to-many relationship option.

Select the BusinessAccounts entity as the related entity.

Open the relationship tab of the BusinessContracts entity.

Choose the Relationship Name and Relationship Entity Prefix.

Answer Area

Correct Answer:

Actions

Choose the Relationship Name and Relationship Entity Prefix.

Answer Area

- Open the relationship tab of the BusinessContracts entity.
- Select **Add relationship** and then select the many-to-many relationship option.
- Select the BusinessAccounts entity as the related entity.



Section:

Explanation:

Step 1: Open the relationship tab of the BusinessContracts entity.
View entity relationships
From the Power Apps portal, select either Model-driven or Canvas design mode.
Select Data > Entities and select the entity that has the relationships you want to view.
With the Relationships tab selected, you can select the following views:
Step 2: Select Add relationship..
Create relationships
While viewing entity relationships, in the command bar, select Add relationship and choose Many-to-many.
Step 3: Select the BusinessAccounts entity as the related entity.
Reference:
<https://docs.microsoft.com/en-us/powerapps/maker/common-data-service/create-edit-nn-relationships-portal>

QUESTION 25

DRAG DROP

You are an app builder for a medical office. The medical office uses activities to book appointments and business process flows to track patient status. The cleaning staff wants the app to connect directly to a Microsoft Excel workbook to track cleaning tasks. The office does not have access to reporting tools including Power BI.
You need to create apps for the following groups of users. Apps must not require customizations or the use of additional products.

Groups	Comments	Requirements
Reception area staff	Users will access the app only from desktop devices in the office.	Users must be able to access contacts and display activities as a doughnut chart.
Medical staff	Users will access the app from tablet devices.	Users must be able to access activities and business process flows.
Cleaning staff	Users will access the app only from mobile phone devices.	Users must be able to interact with a checklist to mark cleaning tasks as completed.

Which type of app should you build for each group? To answer, drag the appropriate app types to the correct groups. Each app type may be used once, more than once, or not at all. You may need to drag the split bar between panes or scroll to view content.
NOTE: Each correct selection is worth one point.

Select and Place:

App types

Canvas app

Model-driven app

Embedded canvas app

Correct Answer:

App types

Answer Area

Group

Reception area staff

Medical staff

Cleaning staff

App type

App type

App type

App type

Answer Area

Group

Reception area staff

Medical staff

Cleaning staff

App type

Canvas app

Embedded canvas app

Model-driven app

Section:

Explanation:

Reference:

<https://docs.microsoft.com/en-us/powerapps/maker/model-driven-apps/embedded-canvas-app-guidelines>

<https://global.hitachi-solutions.com/blog/canvas-vs-model-driven-apps>

QUESTION 26

DRAG DROP

You plan to create apps for a company.

You need to identify the Power Platform tools required.

What should you use? To answer, drag the appropriate tools to the correct requirements. Each tool may be used once, more than once, or not at all. You may need to drag the split bar between panes or scroll to view content.

NOTE: Each correct selection is worth one point.

Select and Place:

Tools

Power Virtual Agents bot

Power Automate

Canvas app

Model-driven app

Answer Area**Requirement**

Create an app with a customized user interface that allows users to quickly create support tickets.

Create an app that uses a guided business process to navigate through all records associated with a support ticket.

Send an email to a customer support manager every time a support ticket is created.

Create an automated chat tool that guides a customer through the support ticket creation process.

Tool

Tool

Tool

Tool

Tool

Correct Answer:**Tools****Answer Area****Requirement**

Create an app with a customized user interface that allows users to quickly create support tickets.

Create an app that uses a guided business process to navigate through all records associated with a support ticket.

Send an email to a customer support manager every time a support ticket is created.

Create an automated chat tool that guides a customer through the support ticket creation process.

Tool

Canvas app

Model-driven app

Power Automate

Power Virtual Agents bot

Section:**Explanation:**

Box 1: Canvas App

Box 2: Model-driven app

Model-driven app design is a component-focused approach to app development. Model-driven app design doesn't require code and the apps you make can be simple or very complex. Unlike canvas app development where the designer has complete control over app layout, with model-driven apps much of the layout is determined for you and largely designated by the components you add to the app.

Box 3: Power Automate

Power Automate is a service that helps you create automated workflows between your favorite apps and services to synchronize files, get notifications, collect data, and more.

Box 4: Power Virtual Agents bot

When you create bots with Power Virtual Agents, you author and edit topics.

Topics are discrete conversation paths that, when used together within a single bot, allow for users to have a conversation with a bot that feels natural and flows appropriately.

Creating a bot with Power Virtual Agents is easy to do with the no-code authoring canvas, and there are a number of ways you can manage how topics interact, how you want the conversation to flow, and what it should feel like.

Reference:

<https://docs.microsoft.com/en-us/power-virtual-agents/authoring-fundamentals>

<https://docs.microsoft.com/en-us/power-automate>

QUESTION 27**DRAG DROP**

You are an app maker for a college. You create an app for student enrollment. The app captures the education level of the applicants. The education level at the time of enrollment is an option set in the student entity. The entity includes three levels:

High school

College

Bachelor

You must split the College option into two option sets:

College – 1 Year

College – 2 years

The split must not impact existing data.

You need to create the two option sets.

Which three actions should you perform in sequence? To answer, move the appropriate actions from the list of actions to the answer area and arrange them in the correct order.

Select and Place:

Actions

- Open the maker app and navigate to the student table
- Publish the student entity
- Save the student table
- Open settings in the Power Platform admin center
- Create new options for College - 1 Year and College - 2 years

Answer Area

Navigation icons: > < ^ v

Correct Answer:

Actions

-
-
- Save the student table
- Open settings in the Power Platform admin center
-

Answer Area

- Open the maker app and navigate to the student table
- Create new options for College - 1 Year and College - 2 years
- Publish the student entity

Navigation icons: > < ^ v

Section:

Explanation:

QUESTION 28

DRAG DROP

You have an existing Power Apps environment.

You need to create a Common Data Service database for the environment.

Which three actions should you perform in sequence? To answer, move the appropriate actions from the list of actions to the answer area and arrange them in the correct order.

Select and Place:

Actions

- Select **Create my database**
- Configure currency and language settings
- Configure database collation settings
- Set the environment type to **Production**
- Select an existing environment

Answer Area

Navigation icons: > < ↑ ↓

Correct Answer:

Actions

-
-
- Configure database collation settings
- Set the environment type to **Production**
-

Answer Area

- Select an existing environment
- Select **Create my database**
- Configure currency and language settings

Navigation icons: > < ↑ ↓

Section:

Explanation:

- Step 1: Select an existing environment
Add a database in the admin center:
1. In the admin center, in the left navigation pane, select Environments.
 2. Select the environment to which you want to add the database.
- Step 2: Select Create my database
3. Select + Add database
- Step 3: Configure currency and language settings
4. Enter the following, and then select Add.

Setting	Description
Language	The default language for this environment.
Currency	The base currency used for reporting.
Enable Dynamics 365 apps	Select Yes and make a selection to automatically deploy apps such as Dynamics 365 Sales and Dynamics 365 Customer Service.
Deploy sample apps and data	Select Yes to include sample apps and data. Sample data gives you something to experiment with as you learn. You must select No for Enable Dynamics 365 apps for this setting to appear.
Security group	Select a security group to restrict access to this environment.

Reference:
<https://docs.microsoft.com/en-us/power-platform/admin/create-database>

QUESTION 29

HOTSPOT

You are creating a Power Automate flow.

You have an array that contains items with different color attributes. You plan to filter the array by using the following filter expression within the flow:

@or(equals(item()['color'], 'red'),contains(item()['color'],'blue'))

The filter returns results only when the expression resolves to true.

For each of the following statements, select Yes if the statement is true. Otherwise, select No.

NOTE: Each correct selection is worth one point.

Hot Area:

Answer Area

Statements	Yes	No
The filter expression yields a result if the array contains the color orange	<input type="radio"/>	<input type="radio"/>
The filter expression yields a result if the array contains the color red	<input type="radio"/>	<input type="radio"/>
The filter expression yields a result if the array contains the color sky blue	<input type="radio"/>	<input type="radio"/>

Answer Area:

Answer Area

Statements	Yes	No
The filter expression yields a result if the array contains the color orange	<input type="radio"/>	<input checked="" type="radio"/>
The filter expression yields a result if the array contains the color red	<input checked="" type="radio"/>	<input type="radio"/>
The filter expression yields a result if the array contains the color sky blue	<input checked="" type="radio"/>	<input type="radio"/>

Section:

Explanation:

Box 1: No

Box 2: Yes

The item color must be red, or item color contains blue.

Box 3: Yes

QUESTION 30

DRAG DROP

You have a model-driven app that has an entity named Marinas. You have an entity named Boats that list the boats associated with each marina.

You must add a list of boats to the Marinas form. You must also add an option for users to select different views including boat owners and marina members. You need to embed the list of boats associated with a Marina record in the entity form.

In which order should you perform the actions? To answer, move all actions from the list of actions to the answer area and arrange them in the correct order.

Select and Place:

Actions

Add a Subgrid component to a form

Select **Show related records** and then select the related entity and default view for the subgrid

Save and publish the form

Select the **Allow users to change view** option

Answer Area

Correct Answer:

Actions

Answer Area

Add a Subgrid component to a form

Select **Show related records** and then select the related entity and default view for the subgrid

Select the **Allow users to change view** option

Save and publish the form

Section:

Explanation:

Step 1: Add a Subgrid component to a form

You add a subgrid component the same way as you add any other component.

Step 2: Select Show related records and then select the related entity and default view for the subgrid Configure a subgrid component.
Properties available to configure when using a subgrid component on a form using the form designer include:
Show related rows
When selected, the subgrid displays only rows related to the current row that is displayed on the form. Step 3: Select the Allow users to change view option
Configure a subgrid component.
Properties available to configure when using a subgrid component on a form using the form designer include:
Allow users to change view
When selected, app users can change from the Default view to another view of the table selected in the Table property.
Step 4: Save and publish the form
Reference:
<https://docs.microsoft.com/en-us/powerapps/maker/model-driven-apps/form-designer-add-configure-subgrid>

QUESTION 31
DRAG DROP
You create the following apps for a company that provides financial guidance services: a model-driven app for financial advisers that work in the company’s offices and a canvas app for remote financial advisers.
You need to create business rules for a custom counselling entity used by all financial advisers.
Who will be affected by the business rules?
To answer, drag the appropriate financial adviser types to the correct business rules. Each financial adviser type may be used once, more than once, or not at all. You may need to drag the split bat between panes or scroll to view content.
NOTE: Each correct selection is worth one point.

Select and Place:

Financial adviser types

Office-based financial advisers only

Remote financial advisers only

Office-based and remote financial advisers

Answer Area

Business rule

Set a field value with the scope set to Entity

Clear a field value with the scope set to All Forms

Set visibility of a field with the scope set to Entity

Financial adviser type

Financial adviser type

Financial adviser type

Correct Answer:

Financial adviser types	Answer Area	Financial adviser type
Office-based financial advisers only	Set a field value with the scope set to Entity	Office-based and remote financial advisers
Remote financial advisers only	Clear a field value with the scope set to All Forms	Office-based financial advisers only
Office-based and remote financial advisers	Set visibility of a field with the scope set to Entity	Office-based financial advisers only

Section:

Explanation:

Box 1: Office-based and remote financial advisers

Model driven apps can use all actions available on business rules, however not all business rule actions are available for canvas apps at this time.

Box 2: Office-based financial advisers only

If you're building a Canvas app, you must use table as the scope (not All forms, not a specific form)

Box 3: Office-based financial advisers only

The following actions are not available on Canvas apps :

Show or hide columns

Enable or disable columns

Create business recommendations based on business intelligence.

Reference:

<https://docs.microsoft.com/en-us/powerapps/maker/data-platform/data-platform-create-business-rule>

QUESTION 32

HOTSPOT

You need to store a list of products and their colors. You have a Power Apps app that includes the following elements:

a text box for the product name

a drop-down list for the product color

a button to add a product to the list

a status message that shows whether the addition of a product to the list was successful

The button uses the following formula:

```
Collect(
colProductList,
{
Product: txtProductName.Text, Color: drpColors.Selected.Value
}
);
Set(
vStatusMessage, "Added '" & txtProductName.Text & "'"
);
timStatusMessage.Start;
```

For each of the following statements, select Yes if the statement is true. Otherwise, select No.

NOTE: Each correct selection is worth one point.

Hot Area:

Answer Area

Statements	Yes	No
You must explicitly declare the collection before you can add product names and colors to the collection.	<input type="radio"/>	<input type="radio"/>
The formula stores the product name and the color in a collection.	<input type="radio"/>	<input type="radio"/>
vStatusMessage is a context variable that is used to store the status message.	<input type="radio"/>	<input type="radio"/>

Answer Area:

Answer Area

Statements	Yes	No
You must explicitly declare the collection before you can add product names and colors to the collection.	<input type="radio"/>	<input checked="" type="radio"/>
The formula stores the product name and the color in a collection.	<input checked="" type="radio"/>	<input type="radio"/>
vStatusMessage is a context variable that is used to store the status message.	<input type="radio"/>	<input checked="" type="radio"/>

Section:

Explanation:

Box 1: No

The Collect function adds records to a data source. If the data source doesn't already exist, a collection is created.

Box 2: Yes

Box 3: No

Use the Set function to set the value of a global variable, which temporarily holds a piece of information, such as the number of times the user has selected a button or the result of a data operation.

Reference:

<https://docs.microsoft.com/en-us/powerapps/maker/canvas-apps/functions/function-clear-collect-clearcollect>

<https://docs.microsoft.com/en-us/powerapps/maker/canvas-apps/functions/function-set>

QUESTION 33

DRAG DROP

A company must use a Power Apps app custom control that is exported from a different canvas Power Apps app.

You need to insert the custom control into the Power Apps app.

Where should you complete the actions? To answer, drag the appropriate locations to the correct actions. Each location may be used once, more than once, or not at all. You may need to drag the split bar between panes or scroll to view content.

NOTE: Each correct selection is worth one point.

Select and Place:

Objects

Display

Components

Screens

Answer Area

Action

Location

Import a custom control from a file.

Add an alignment to the custom control to display it in the middle of the Power Apps app screen.

Correct Answer:

Objects

Screens

Answer Area

Action

Location

Import a custom control from a file.

Components

Add an alignment to the custom control to display it in the middle of the Power Apps app screen.

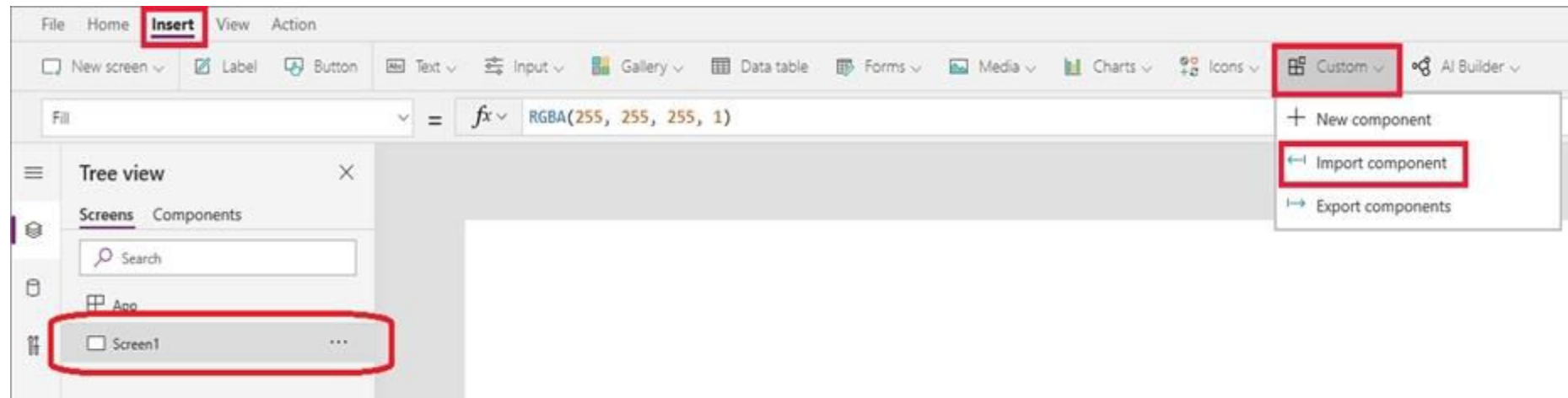
Display

Section:

Explanation:

Box 1: Components

1. To add code components to a canvas app:
2. Navigate to Power Apps Studio.
3. Create a new canvas app or edit an existing app to which you want to add the code component.
4. Go to Insert > Custom > Import component.



Box 2: Display

Reference:

<https://docs.microsoft.com/en-us/powerapps/developer/component-framework/component-framework-for-canvas-apps>

QUESTION 34

You are developing a canvas app to monitor time. The app includes a Text Input control named TIC1 and a Timer control named TIM1.

You need to set TIM1 to a default value.

What should you do?

- A. In the OnChange property of TIC1, set the value of the Text property for TIC1 to a context variable that stores the duration value. Assign the value of the variable to the OnTimerStart property for TIM1.
- B. Assign the Text property of TIC1 to the Duration property of TIM1.
- C. Assign the Text property of TIC1 to the OnSelect property of a TIM1.
- D. Add the clock icon to the app and use the OnSelect property to set the Duration property for TIM1.

Correct Answer: D

Section:

Explanation:

The OnTimerStart, OnTimerEnd and OnSelect are the configurations where you can add your code.

Reference:

<https://sharepains.com/2019/08/22/all-about-timers-in-powerapps/>

QUESTION 35

HOTSPOT

A company is building a Power Apps app to track key project tasks.

Users assign three tasks a risk status on a scale of 0 to 100 by using slider input controls named RiskStatus on the app. The highest risks use the risk status value of 100.

Task name	Slider input control name
Task1	RiskStatus1 [0–100]
Task2	RiskStatus2 [0–100]
Task3	RiskStatus3 [0–100]

If the combined value of all the tasks is 150 or above, a header bar on the screen must display the text HIGH RISK.

You need to configure a solution to change the text on the header bar.

How should you configure the app? To answer, select the appropriate options in the answer area.

NOTE: Each correct selection is worth one point.

Hot Area:

Answer Area

Requirement

Configuration

Where should you apply logic to change the text?

On the header control.
On each RiskStatus slider input.
In the global variables of the Power Apps app.
On the OnStart property of the Power Apps app.

Which formula should you use?

SUM(RiskStatus1.value,RiskStatus2.value,RiskStatus3.value)>=150? "HIGH RISK" : " "
IF(SUM(RiskStatus1.value,RiskStatus2.value,RiskStatus3.value)<150, " ", HIGH RISK)
Updateif((RiskStatus1.value+RiskStatus2.value+RiskStatus3.value)>=150, "HIGH RISK")
UpdateContext(IF(RiskStatus1.value+RiskStatus2.value+RiskStatus3.value>=150), "HIGH RISK")

Answer Area:

Answer Area

Requirement

Configuration

Where should you apply logic to change the text?

On the header control.
On each RiskStatus slider input.
In the global variables of the Power Apps app.
On the OnStart property of the Power Apps app.

Which formula should you use?

SUM(RiskStatus1.value,RiskStatus2.value,RiskStatus3.value)>=150? "HIGH RISK" : " "
IF(SUM(RiskStatus1.value,RiskStatus2.value,RiskStatus3.value)<150, " ", HIGH RISK)
Updateif((RiskStatus1.value+RiskStatus2.value+RiskStatus3.value)>=150, "HIGH RISK")
UpdateContext(IF(RiskStatus1.value+RiskStatus2.value+RiskStatus3.value>=150), "HIGH RISK")

Section:

Explanation:

Box 1: On each RiskStatus slider input

You can change the value based on input.

Box 2: Updateif(..)

Use the Updateif function to modify one or more values in one or more records that match one or more conditions. The condition can be any formula that results in a true or false and can reference columns of the data source by name. The function evaluates the condition for each record and modifies any record for which the result is true.

Reference:

<https://docs.microsoft.com/en-us/powerapps/maker/canvas-apps/working-with-formulas#change-a-value-based-on-input>

<https://docs.microsoft.com/en-us/powerapps/maker/canvas-apps/functions/function-update-updateif>

QUESTION 36

HOTSPOT

A company is building a Power Apps app to track key project tasks. Users assign tasks a risk status on a scale of 0 to 100 by using a slider input control named RiskStatus on the app. The highest risks use the risk status value of 100. For each task, the user selects a button named RiskLevel to send the name of the task and RiskStatus number to key project stakeholders. The color of the button must change to the color listed in the following table based on the value of the RiskStatus control. The default color for the button is green.

RiskStatus slider value	Risk description	RiskLevel button color
0–50	No/Low risk	Green
51–100	High risk	Red

You need to configure the solution to change the color of the RiskLevel button. How should you configure the app? To answer, select the appropriate options in the answer area. NOTE: Each correct selection is worth one point.

Hot Area:

Answer Area

Question

Response

Where do you enter the formula to change the button color?

On the RiskStatus slider.

On the RiskLevel button.

In the variables of the Power Apps app.

On the OnStart property of the Power Apps app.

Which formula should you use?

If (RiskStatus.Value > 75) (return Red;)

If (RiskStatus.Value > 75, Red, Green)

If (RiskStatus.Value > 75 ? Red : Green)

RiskLevel.Fill = RiskStatus.Value > 75 ? Red : Green;

Answer Area:

Answer Area

Question

Response

Where do you enter the formula to change the button color?

	▼
On the RiskStatus slider.	
On the RiskLevel button.	
In the variables of the Power Apps app.	
On the OnStart property of the Power Apps app.	

Which formula should you use?

	▼
If (RiskStatus.Value > 75) (return Red;)	
If (RiskStatus.Value > 75, Red, Green)	
If (RiskStatus.Value > 75 ? Red : Green)	
RiskLevel.Fill = RiskStatus.Value > 75 ? Red : Green;	

Section:

Explanation:

Box 1: On the RiskLevel button.

On the RiskLevel button fill property.

Box 2: Risklevel.Fill = RiskStatus.Value > 75 ? Red : Green;

Most every type of control in a Power App, has a Fill property, for the fill color.

Reference:

<https://wonderlaura.com/2020/07/23/power-apps-gallery-conditional-formatting/>

QUESTION 37

HOTSPOT

A company creates a Power Apps app that allows service representatives to record information about on-site client visits. Service representatives perform a one-hour site visit with each client each quarter.

Service representatives use the app to perform the following activities:

View their scheduled visits for the day.

Record notes from service visits.

Schedule service technicians for issues uncovered during site visits.

Scan and upload service quote forms to a folder named Service Quote folder on Microsoft OneDrive once the customer has signed a service quote.

Service quotes that are over \$10,000 are automatically sent to the service manager for review and approval.

Visits that are not closed at the end of the day are automatically moved to the following day unless it is the last day of the quarter. All client visits not performed for the quarter are escalated to the service manager for follow-up.

You need to create flows to meet the requirements.

Which type of flows should you use? To answer, select the appropriate options in the answer area.

NOTE: Each correct selection is worth one point.

Hot Area:

Answer Area

Requirement

Type of flow

Move client visits not completed for the day.

	▼
Scheduled flow	
Automated flow	
Adaptive card flow	
Team flow	

Approve service quote.

	▼
Automated flow	
Button flow	
Scheduled flow	
Team flow	

Answer Area:

Answer Area

Requirement

Type of flow

Move client visits not completed for the day.

Scheduled flow

Automated flow

Adaptive card flow

Team flow

Approve service quote.

Automated flow

Button flow

Scheduled flow

Team flow

Section:

Explanation:

Box 1: Adaptive card flow

Adaptive Cards are a platform-agnostic method of sharing and displaying blocks of information without the complexity of customizing CSS or HTML to render them.

Directing content to Teams channels:

Post your own adaptive card as the Flow bot to a channel

This action posts an adaptive card as a Flow bot to a specific Teams channel. In this case, you will be prompted for Teams instance, and a channel where the card will be posted. The flow-maker will have to have access to the Teams instance in order to post an adaptive card there. In this case, only URL buttons function by redirecting to the URL configured within the flow.

Box 2: Button flow

Create a button flow to run routine tasks by simply tapping a button. Customize your flow by allowing the user to provide specific details that will be used when the flow runs.

Reference:

<https://docs.microsoft.com/en-us/power-automate/overview-adaptive-cards>

<https://docs.microsoft.com/en-us/power-automate/button-flow-with-user-input-tokens>

QUESTION 38

You complete work on a new canvas app in a development environment and add the app to a solution. You export the solution from the development environment and import the solution into a production environment.

After several days you notice that the background color for the canvas app in the production environment has changed from white to grey.

You need to determine why the background color changed.

What are two possible causes for the background color change? Each correct answer presents a complete solution.

NOTE: Each correct selection is worth one point.

- A. You recently changed the Office 365 theme.
- B. You exported a managed copy of the solution and imported the solution as an unmanaged solution. You modified the canvas app in the unmanaged solution.
- C. You exported and imported an unmanaged copy of the solution and a co-worker modified the canvas app.

D. You chose a different theme from the Theme menu inside the canvas app.

Correct Answer: A, C

Section:

Explanation:

A: You can create a custom look and feel (a theme), for your app by making changes to the default colors and visual elements provided in the uncustomized system.

C: Unmanaged Solution: The beginning state of solution is the unmanaged solution state. During this phase, you can add, edit, update, remove, delete, and test any of the components of the solution. You also have the ability to create restrictions on the components within the solution.

Note: Managed Solution: A managed solution is a finalized solution that can be distributed and installed. They are created by exporting an unmanaged solution by setting restrictions to prevent any further customizations. The whole point of Managed is locking down the Component states so they cannot be edited.

Reference:

<https://powerusers.microsoft.com/t5/Power-Apps-Pro-Dev-ISV/Managed-vs-Unmanaged/td-p/495685>

<https://docs.microsoft.com/en-us/powerapps/maker/model-driven-apps/create-themes-organization-branding>

QUESTION 39

DRAG DROP

You create a canvas app for a store.

The logo must appear as the background image for the app. A loading spinner must display on the screen as the app loads.

You need to add the features to the app.

What should you modify? To answer, drag the appropriate form areas to the correct requests. Each form area may be used once, more than once, or not at all. You may need to drag the split bar between panes or scroll to view content.

NOTE: Each correct selection is worth one point.

Select and Place:

Answer Area

Screen areas	Feature request	Screen area
<div>Form</div> <div>Gallery</div>	Add logo.	<div></div>
<div>Screen</div>	Add loading spinner.	<div></div>

Correct Answer:

Answer Area

Screen areas	Feature request	Screen area
<div>Form</div> <div>Gallery</div>	Add logo.	<div>Screen</div>
<div>Screen</div>	Add loading spinner.	<div>Screen</div>

Section:

Explanation:

Box 1: Screen

You can add an image to a screen in several different ways. One way is to upload an image to the app, go to the Media tab, and then click on the image to add it to a screen.

Note: Configure graphical elements in your app, including images, photos, and elements of a pen control.

BackgroundImage – The name of an image file that appears in the background of a screen.

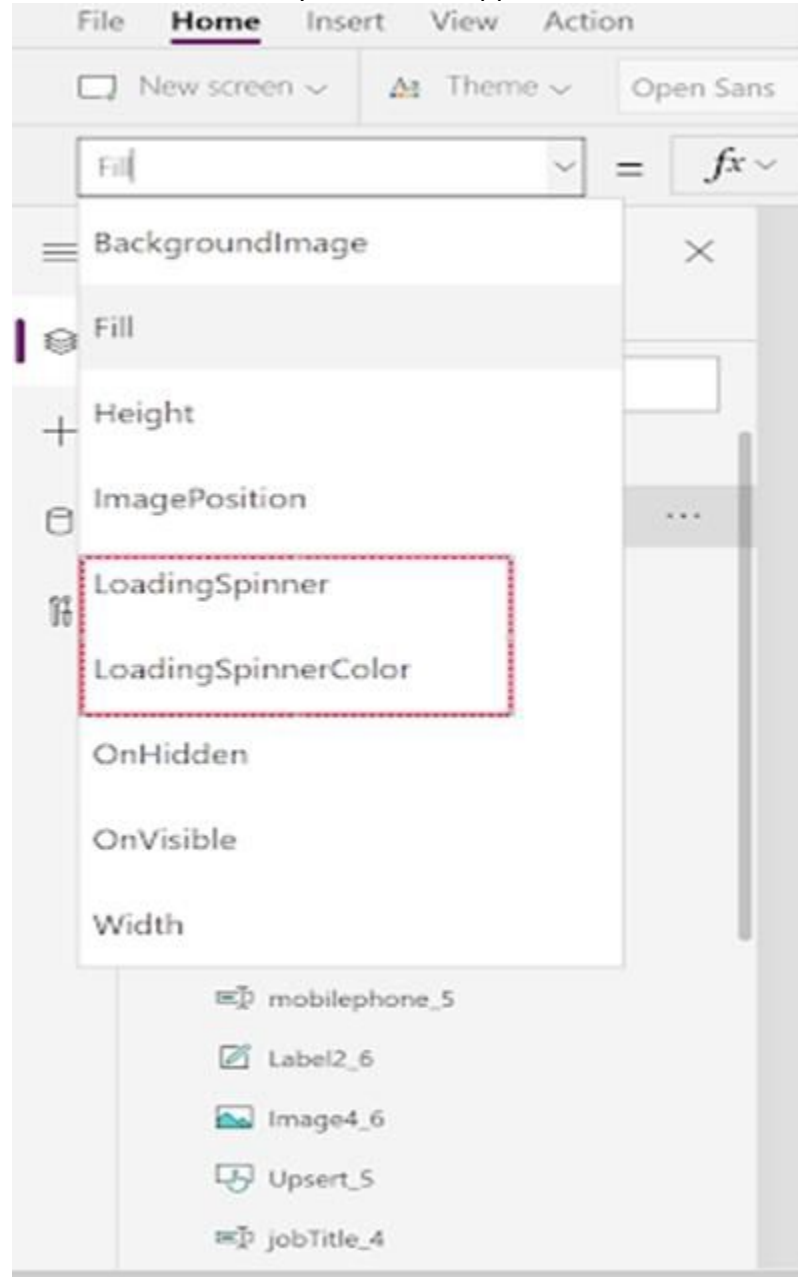
Applies to the Screen control.

Box 2: Screen

Out Of Box Canvas App, provide a property called LoadingSpinner and LoadingSpinnerColor.

LoadingSpinner property is used to displaying a Canvas App OOB Loader Image unless your screen finishes loading.

Click on the Screen in your Canvas App and then You'll be able to see LoadingSpinner and LoadingSpinnerColor Property.



Reference:

<https://docs.microsoft.com/en-us/powerapps/maker/canvas-apps/controls/properties-visual>

<https://arpitmscrmhunt.blogspot.com/2020/04/powerapps-display-loading-icon-until.html>

02 -Create solutions

This is a case study. Case studies are not timed separately. You can use as much exam time as you would like to complete each case. However, there may be additional case studies and sections on this exam. You must manage your time to ensure that you are able to complete all questions included on this exam in the time provided.

To answer the questions included in a case study, you will need to reference information that is provided in the case study. Case studies might contain exhibits and other resources that provide more information about the scenario that is described in the case study. Each question is independent of the other questions in this case study.

At the end of this case study, a review screen will appear. This screen allows you to review your answers and to make changes before you move to the next section of the exam. After you begin a new section, you cannot return to this section.

To start the case study

To display the first question in this case study, click the Next button. Use the buttons in the left pane to explore the content of the case study before you answer the questions. Clicking these buttons displays information such as business requirements, existing environment, and problem statements. When you are ready to answer a question, click the Question button to return to the question.

Background

Overview

Contoso, Ltd. produces industrial furnaces. The company is struggling to meet increased demand in production orders.

The company has corporate offices and manufacturing plants in Germany. The company also has offices and manufacturing plants in other regions of the world.

The company purchases a plant from another company. The plant has been in operation for over 25 years.

Current environment

Accounting system and purchasing

Operations for the company are managed very informally. Only a small number of long-term employees are aware of all manufacturing processes.

Manufacturing and planning

The company has a cloud-based ERP/accounting system and uses the General Ledger, Accounts Receivable, and Accounts Payable modules. The current system does not have any modules that handle shop floor or manufacturing planning functionality.

Employee information is maintained only within the accounting system. Access to the information is strictly controlled due to privacy regulations and company policies. All purchasing of raw materials is performed based on bills of material (BOMs) generated by the engineering department when engineering prints are created. The corporate office uses Dynamics 365 Finance. The operations manager reports that Dynamics 365 Finance will not be implemented for the manufacturing plants for at least five years.

Sales

The plant that Contoso, Ltd. acquires uses Microsoft Excel workbooks and Microsoft Word documents to track the sales pipeline, requests for quote responses, and work estimates. The documents are stored on shared network drives. Printed engineering drawings are sometimes accidentally used across orders. This results in rework, cost over runs, and missed deliveries. The company uses Job Traveler documents to detail the operations that need to be performed and the materials needed for a given job number.

Requirements

Solution

Requests for quotes are currently stored in a Sales Log workbook. The workbook includes the following information:

- Customer request number
- Customer name
- Description
- Estimated value of the sale
- Status of the Request for Quote (RFQ) with the values of Won, Lost, No Bid, and Cancelled
- Names of the sales manager, salesperson, and estimator
- Name of the product line
- Date the quote was sent to the customer
- Approximate start and finish dates of the project
- Date the order was received, if won
- Job number, which is assigned if won

•The company has a formal process in place for managing estimates. Some sales quotes lack required supporting documentation including estimates for labor and materials even though a formal process is in place. The company wants to incorporate the formal process as part of an app.

The company has a formal process in place for managing estimates. Some sales quotes lack required supporting documentation including estimates for labor and materials even though a formal process is in place. The company wants to incorporate the formal process as part of an app.

Salespeople often do not set status of RFQs in the Sales Log to Won when a sale is closed and the customer purchase order is received. An accurate sales pipeline and win/loss information cannot currently be reported because the close probability field in the Sales Log is being set to 100% when a sale is closed and 0% when a sale is lost. Setting up a folder system on the network drive by a customer had not improved the hand-off of the current version of the sales quote to manufacturing.

General

You plan to create a solution that uses Microsoft Teams and Power Platform.

You must convert the Sales Log workbook to a Common Data Service database.

Each department will have a separate Teams channel. Employees must only be able to access the channel for their department. All employees and management will have read access to a general company channel. The Teams site must include the following channels:

Sales

The Sales dashboard must reside in the Sales channel and must include information about active quotes, sales pipeline, and year-to-date sales KPIs for sales quotas by region. All Sales-related documents must be stored in folders in the files

location for this channel. Document versioning will be enabled. You must store the 10 most recent versions of a document.

Manufacturing

A dashboard that shows a capacity Heat map by month as well as expected sales that are likely to close for the next month. A sortable listing of all in-process jobs from the Job Setup table, by customer, start date, and product. Printed paper drawings must no longer be used. The drawings must be stored in folders in the files location for the manufacturing channel.

You must create the following apps:

Time Tracking

You must create a canvas app to track time for each employee on mobile devices. The app must include the following:

a Sign-in screen

a screen to list the week's time entries for the employee

a screen to edit current time entries for the employee

The app must meet the following requirements:

The app must store its data in the existing on-premises Microsoft SQL Server instance.

Employees must only be able to access their own time tracking records from the app.

Employees must record all time spent in the fabrication of each customer job.

Employees must only be able to modify time records for the current and previous day.

Employees must be able to scan their badges to check in and out of work. Each badge contains the employee name and a current picture. A QR code must be added to all employee badges. The code must include the employee's number.

Job Traveler documents must be printed as PDF documents and must include UPC E barcodes for the job number and task number. The barcodes will be used with the time tracking application.

Sales

The Sales app must meet the following requirements:

Provide a central location for all sales pipeline and quote information that is easily accessible and maintains all of the versions of the estimate, quote, and engineering documents. Include a dashboard that shows all currently active quotes, their status in the sales cycle, the probability of closing, and estimated manufacturing and installation dates, by customer, product division, status, and salesperson. The Sales Log app must enforce process standards related to the completion of estimates and supporting materials needed during the sales lifecycle. Automatically perform the following actions immediately when a sale is won:

- Generate a sequential job number.

- Copy key sales information to the Job Setup entity used by manufacturing.

If the sale is lost, the Status field must be set to Lost and the reason for the loss must be entered into a provided text field. The reason must be added to the end of the description field. Ensure that employees can easily update the Sales Log even if they are at a customer site.

Manufacturing and planning

The app must meet the following requirements:

Provides features to plan and predict capacity resource requirements for current and upcoming orders in the pipeline. Replace paper timesheets and track check-in, check-out, breaks, and the time spent on each job task. Record time elapsed while performing work and for viewing of engineering drawings.

The Job Setup entity must store its data in the existing on-premises SQL Server instance.

Job Traveler documents must be generated as a PDF document and printed from the Job Setup entity.

Issues

Users report that the customer request number is difficult to interpret. They request that you change the number to a system generated sequential number. The operations manager reports that users often incorrectly sign in to the time tracking app. The operations manager asks that the time tracking app display the employee's photo once they have scanned their badge. Users want to be able to see their weekly total time entered from all screens.

Testers report that they can see time entries in the Time Tracker app, not just their own. Additionally, they can also edit any existing time entries.

QUESTION 1

You need to implement the change requested by the operations manager.

Which control should you use?

- A. Camera
- B. Shape
- C. Add picture
- D. Image

Correct Answer: D

Section:

Explanation:

Scenario: The operations manager asks that the time tracking app display the employee's photo once they have scanned their badge. Image control in Power Apps is a control that shows an image from, for example, a local file or a data source. Incorrect Answers:

C: Add Picture: With this control users can take photos or upload image files from their device and update the data source with this content. On a mobile device the user is presented with the device's choice dialog to choose

between taking a photo or selecting one already available.

This control is a grouped control containing two controls: an Image and an Add picture button. The Image control shows the uploaded image or a placeholder if no image has been uploaded. The Add picture button prompts for an image to be uploaded.

Not: If you add one or more Image controls to your app, you can show individual images that aren't part of a data set, or you can incorporate images from records in data sources.

Reference: <https://docs.microsoft.com/en-us/powerapps/maker/canvas-apps/controls/control-image>

QUESTION 2

You need to implement logic in the app for lost sales.

What should you do?

- A. Set the probabilities field to zero percent.
- B. Define a business rule for the Sales Log edit form.
- C. Enable field security on the Won/Lost field.
- D. Create a formula for the Description field that uses the Update function.

Correct Answer: B

Section:

Explanation:

Scenario: Requests for quotes are currently stored in a Sales Log workbook. The workbook includes the following information:

Status of the Request for Quote (RFQ) with the values of Won, Lost, No Bid, and Cancelled

Salespeople often do not set status of RFQs in the Sales Log to Won when a sale is closed and the customer purchase order is received. You can create business rules and recommendations to apply logic and validations without writing code or creating plug-ins. Business rules provide a simple interface to implement and maintain fast-changing and commonly used rules. Business rules defined for an entity apply to both canvas apps and model-driven apps if the entity is used in the app.

Reference: <https://docs.microsoft.com/en-us/powerapps/maker/common-data-service/data-platform-create-business-rule>

QUESTION 3

HOTSPOT

You need to meet the requirement for the time tracking app.

Which controls should you use? To answer, select the appropriate options in the answer area.

NOTE: Each correct selection is worth one point.

Hot Area:

number into the app.

Read the employee's number into the app.

Display a photo of an employee when the employee badge is read.

	▼
Card	
Rating	
Slider	
Timer	
	▼
Barcode-scanner	
Card	
Image	
Shape	
	▼
Camera	
Card	
Icon	
Image	

Explanation:

A Timer control in Power Apps is a control that can determine how your app responds after a certain amount of time passes.

The Barcode scanner control for canvas apps scans barcodes, QR codes, and data-matrix codes on an Android or iOS device.

Image control in Power Apps is a control that shows an image from, for example, a local file or a data source. If you add one or more Image controls to your app, you can show individual images that aren't part of a data set, or you can incorporate images from records in data sources.

<https://docs.microsoft.com/en-us/powerapps/maker/canvas-apps/controls/control-new-barcode-scanner>

<https://docs.microsoft.com/en-us/powerapps/maker/canvas-apps/controls/control-image>

HOTSPOT

You need to configure the system to meet the requirements.

What should you use? To answer, select the appropriate options in the answer area.

NOTE: Each correct selection is worth one point.

Answer Area

Feature

Create the relationship between the Job Setup and Time Tracking entities.

Configure ownership for the Time Tracking entity.

Setting

	▼
1:N	
N:N	
Self-referential	
	▼
Business-owned	
Organization-owned	
User or Team owned	

Answer Area:

Answer Area

Feature

Create the relationship between the Job Setup and Time Tracking entities.

Configure ownership for the Time Tracking entity.

Setting

	▼
1:N	
N:N	
Self-referential	
	▼
Business-owned	
Organization-owned	
User or Team owned	

Section:

Explanation:

Box 1: 1:N

Scenario: A sortable listing of all in-process jobs from the Job Setup table, by customer, start date, and product.

Box 2: User or Team owned

Scenario: Employees must only be able to access their own time tracking records from the app.

User or team: Data belongs to a user or a team. Actions that can be performed on these records can be controlled on a user level.

Reference:

QUESTION 5

HOTSPOT

You need to configure the system to meet the sales requirements.
What should you do? To answer, select the appropriate options in the answer area.
NOTE: Each correct selection is worth one point.

Hot Area:

✓CEplus.com

Answer Area

Requirement	Action
Ensure that work estimates are complete before entering estimated sales values into the Sales Log.	<div><div></div><div>Use a Business Process flow</div><div>Use a UI flow</div></div>
Prevent modification of timesheet entries by an employee.	<div><div></div><div>Add a custom control to the Business Process flow</div><div>Use a formula to set the DisplayMode property</div><div>Use a business rule</div></div>

✓CEplus.com

Answer Area:

Overview

Wide World Importers is an importer and supplier of fair trade, handmade home goods to independent retailers in North America. The company has a partner company named Tailwind Traders.

One of the products that the company manufactures was recently featured on several major television talk shows and has become very popular.

Wide World Importers is expanding their prospective sales operations to new markets and plans to engage current customers in a more direct manner.

Current environment

Sales representatives submit weekly status reports to regional managers. There is no standardized format for these status reports. The process for managing status reports is challenging.

Wide World Importers has decided to use Microsoft 365, Microsoft Azure, and Power Platform for future app development. Both Wide World Importers and Tailwind Traders have identical Microsoft SharePoint and Azure configurations. Both companies use separate tenants.

Requirements

Application

You must create a mobile app to streamline the creation of status reports by sales representatives. You must make the same app available to Tailwind Traders. The mobile app must meet the following requirements:

Minimize the use of code.

Use formulas and expressions when necessary.

Support a variety of visual layouts.

Use a SharePoint list to store information about regional managers and sales representatives.

Use Azure SQL Database to store other data.

Status reports

Sales representatives must provide a weekly status report for all work processes each Monday.

Representatives must enter the following information for each process:

Information type	Values
Category	Pipelines, Work/life balance, Coaching/Mentoring, or Communications
Status	At Risk, Acceptable, or Great
Notes	Notes as appropriate

If a sales representative submits a status report and assigns the At Risk status to a process, the app must prompt the sales representative to enter a detailed description for the risk. This information must be emailed to the regional manager. If the category is Work/life balance, the information must be carbon copied to the human resources department. If a sales representative does not submit a weekly status report by an agreed upon deadline, the system must send an email to remind the sales representative. The app must be able to run both online and offline. If the mobile device on which the app runs is connected to the internet, the app must immediately submit the status report. You must display a visual indicator in the app so that sales representatives know whether the app is offline before submitting reports. When data is submitted offline, the data must be stored in the app until the app is back online.

Technical

Regardless of the UI layouts, the data recorded must be standardized in the Azure DB tables. You must use global variables in the app.

Deployment

Before deploying the app to production, you must ensure that the app conforms to Microsoft accessibility and performance guidelines. The completed app and all supporting components must be provided to Tailwind Traders.

Tailwind Traders must not be able to make changes to any of the components.

You must use the following version control numbering scheme:

Major: The last two digits of the year the app is packaged

Minor: Two digits that represent the month when the app is packaged

Build: A number that is incremented to represent significant changes to the app

Revision: The incremented revision for a package

New versions of the application must completely replace previous versions of the app.

When identifying versions of the app solution, all dependencies, entities, and user interfaces components must be identified to avoid any unintentional issues caused by reverting individual components to a previous version. Previous versions of

the mobile app must be available for roll back purposes.

All versions of software that have been used in production must be retained for five years.

Issues

The mobile app has been live for several months. Eight versions of the app have been released since the initial version of the app was deployed to sales representatives. You must revert the app to an earlier version and redesign some features.

User1 often works in a warehouse that does not have internet connectivity. User1 needs to edit an existing status report and submit a new status report.

Several sales representatives have accessibility restrictions. User2 is visually impaired and cannot see images. User3 is unable to use a mouse.

QUESTION 1

You need to meet the requirements for sales representative that submit status reports.

How should you configure the flow?

- A. Add a parallel branch that uses the value of a dynamic content variable
- B. Add a number functions action that evaluates the risk value by using a static variable to determine if an email is required
- C. Add a condition that evaluates the risk value by using a dynamic content variable
- D. Add a data operation action that evaluates a dynamic content variable

Correct Answer: C

Section:

Explanation:

Salespeople often do not set status of RFQs in the Sales Log to Won when a sale is closed and the customer purchase order is received. Include a dashboard that shows all currently active quotes, their status in the sales cycle, the probability of closing, and estimated manufacturing and installation dates, by customer, product division, status, and salesperson.

QUESTION 2

HOTSPOT

You need to configure the app to meet the requirements.

Which object properties should you configure? To answer, select the appropriate options in the answer area.

NOTE: Each correct selection is worth one point.

Hot Area:

Answer Area

Requirement

Provide a visual indicator when the app is offline.

Store data when the app is offline.

Property

Visible
OnSelect
DisplayMode
Fill

OnSelect
LoadData
SubmitForm
Now

Answer Area:

Answer Area

Requirement

Provide a visual indicator when the app is offline.

Store data when the app is offline.

Property

Visible
OnSelect
DisplayMode
Fill

OnSelect
LoadData
SubmitForm
Now

Section:

Explanation:

Box 1: Fill

Scenario: You must display a visual indicator in the app so that sales representatives know whether the app is offline before submitting reports.

Fill – The background color of a control.

Incorrect Answers:
DisplayMode - The mode to use for data cards and controls within the form control.
Box 2: SubmitForm
Scenario: When data is submitted offline, the data must be stored in the app until the app is back online.
Use the SubmitForm function in the OnSelect property of a Button control to save any changes in a Form control to the data source.
Reference:
<https://docs.microsoft.com/en-us/powerapps/maker/canvas-apps/controls/control-screen>
<https://docs.microsoft.com/en-us/powerapps/maker/canvas-apps/functions/function-form>

QUESTION 3

HOTSPOT
You need to roll back the mobile app to an earlier version.
What should you do? To answer, select the appropriate options in the answer area.
NOTE: Each correct selection is worth one point.

Hot Area:

Answer Area

Requirement	Action
Identify the currently published version and view version notes.	
	View the session details page for the app in Power Apps Studio.
	View environment details for the app in the Power Platform Admin portal.
	View details for the app in the Power Apps Maker portal.
Revert to an earlier version of the app.	
	Select Restore on the previous version of the app.
	Export the previous version of the app and import as a new version.
	Delete versions of the app until the desired version is the most recent.

Answer Area:

Answer Area

Requirement

Identify the currently published version and view version notes.

Action

View the session details page for the app in Power Apps Studio.
View environment details for the app in the Power Platform Admin portal.
View details for the app in the Power Apps Maker portal.

Revert to an earlier version of the app.

Select Restore on the previous version of the app.
Export the previous version of the app and import as a new version.
Delete versions of the app until the desired version is the most recent.

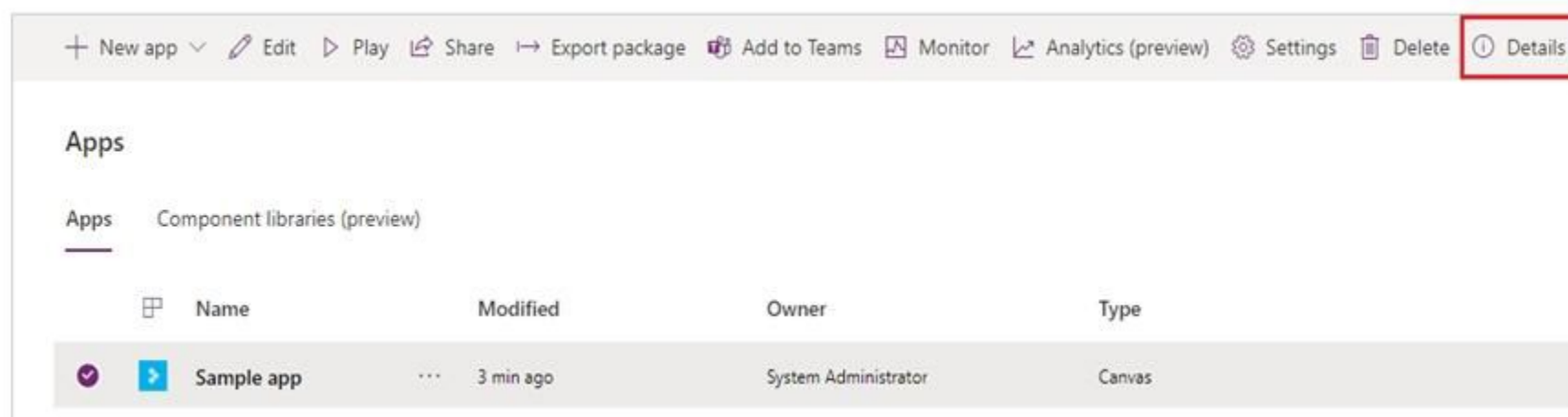
Section:

Explanation:

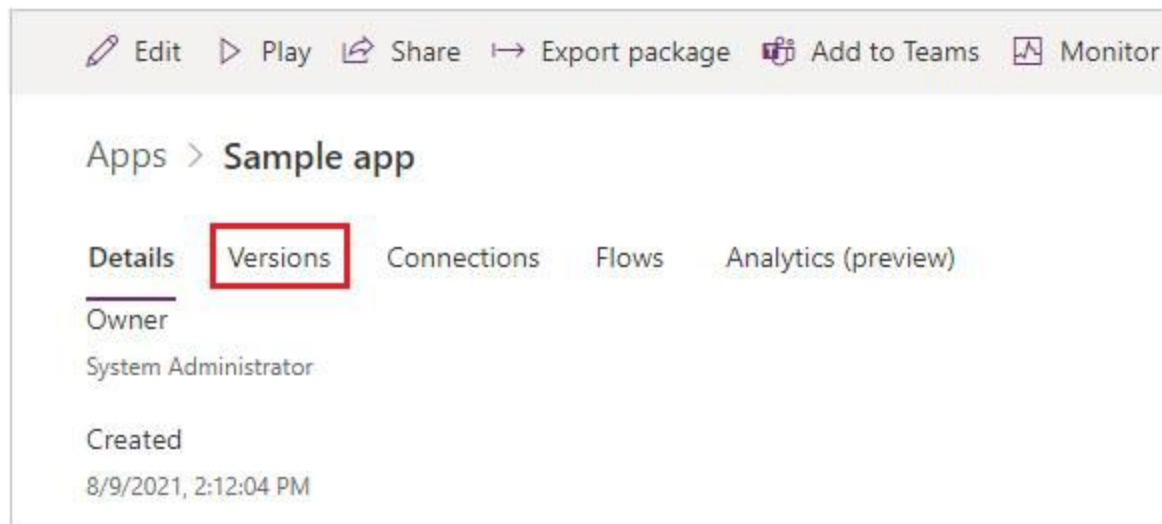
Box 1: View details for the app in the Power Apps Maker portal.

Scenario: Previous versions of the mobile app must be available for roll back purposes.

1. Sign in to Power Apps.
2. Select Apps from the left-pane.
3. Select Apps.
4. Select your app.
5. Select Details.



6. Select Versions.



Box 2: Select Restore on the previous version of the app.

Scenario: All versions of software that have been used in production must be retained for five years.

Restore an app from your account

1. Sign in to Power Apps.
2. Select Apps from the left-pane.
3. Select Apps.
4. Select your app.
5. Select Details.
6. Select Details option.
7. Select Versions.
8. Select Versions.
9. Select the app version that you want to restore.
10. Select Restore.
11. Select Restore.
12. Confirm by selecting Restore again.

Reference:

<https://docs.microsoft.com/en-us/powerapps/maker/canvas-apps/restore-an-app>

Exam G

QUESTION 1

Note: This question-is part of a series of questions that present the same scenario. Each question-in the series contains a unique solution that might meet the stated goals. Some question-sets might have more than one correct solution, while others might not have a correct solution.

After you answer a question-in this section, you will NOT be able to return to it. As a result, these questions will not appear in the review screen.

A company is deploying Microsoft Power Platform components to streamline a job candidate screening process.

The human resources (HR) representatives of the company plan to attend school career fairs. The HR representatives must qualify and enter potential job candidates into a Power Apps app. The HR representatives must enter the following information for each candidate:

Field name	Data type	Criteria for follow up
Name	Text	No
Degree	Text	Yes
First available hire date	Date	Yes
Initial impression	Integer 0-10	Yes
Resume	Picture	No
Not currently viable	Boolean	Yes
Follow up	Boolean	NA

If a candidate is currently unqualified for a job position but would eventually qualify based on follow-up criteria, the follow-up checkbox must be selected or cleared in the system immediately. The company plans to create a similar Power Apps app that will contain the same business use case, but for internal employees and promotions. You need to create a Power Apps app solution to automatically mark the candidate for follow up.

Proposed solution: Create a Power Automate flow with conditions that use entered data as default data. Does the solution meet the goal?

A. Yes

B. No

Correct Answer: B

Section:

Explanation:

Instead use Common Data Service workflow with a PowerQuery on the data entity.

Note: Process (Workflow) table/entity reference is a set of logical rules that define the steps necessary to automate a specific business process, task, or set of actions to be performed. Common Data Service workflow support: Filter triggers based on which attributes change - You can control which field changes trigger your automated flows. For example, trigger your flow only when the status field changes while ignoring all other fields that may change.

Reference:

<https://docs.microsoft.com/en-us/business-applications-release-notes/april19/microsoft-flow/automated-parity-classic-common-data-service-workflows>

QUESTION 2

Note: This question-is part of a series of questions that present the same scenario. Each question-in the series contains a unique solution that might meet the stated goals. Some question-sets might have more than one correct solution, while others might not have a correct solution.

After you answer a question-in this section, you will NOT be able to return to it. As a result, these questions will not appear in the review screen. A company is deploying Microsoft Power Platform components to streamline a job candidate screening process. The human resources (HR) representatives of the company plan to attend school career fairs. The HR representatives must qualify and enter potential job candidates into a Power Apps app.

The HR representatives must enter the following information for each candidate:

Field name	Data type	Criteria for follow up
Name	Text	No
Degree	Text	Yes
First available hire date	Date	Yes
Initial impression	Integer 0-10	Yes
Resume	Picture	No
Not currently viable	Boolean	Yes
Follow up	Boolean	NA

If a candidate is currently unqualified for a job position but would eventually qualify based on follow-up criteria, the follow-up checkbox must be selected or cleared in the system immediately. The company plans to create a similar Power Apps app that will contain the same business use case, but for internal employees and promotions. You need to create a Power Apps app solution to automatically mark the candidate for follow up.

Proposed solution: Create a custom action that has defined dataflows.
Does the solution meet the goal?

- A. Yes
- B. No

Correct Answer: B

Section:

Explanation:

Instead use Common Data Service workflow with a PowerQuery on the data entity.

Note: Process (Workflow) table/entity reference is a set of logical rules that define the steps necessary to automate a specific business process, task, or set of actions to be performed. Common Data Service workflow support: Filter triggers based on which attributes change - You can control which field changes trigger your automated flows. For example, trigger your flow only when the status field changes while ignoring all other fields that may change.

Reference:

<https://docs.microsoft.com/en-us/business-applications-release-notes/april19/microsoft-flow/automated-parity-classic-common-data-service-workflows>

QUESTION 3

Note: This question-is part of a series of questions that present the same scenario. Each question-in the series contains a unique solution that might meet the stated goals. Some question-sets might have more than one correct solution, while others might not have a correct solution.
After you answer a question-in this section, you will NOT be able to return to it. As a result, these questions will not appear in the review screen. A company is deploying Microsoft Power Platform components to streamline a job candidate screening process. The human resources (HR) representatives of the company plan to attend school career fairs. The HR representatives must qualify and enter potential job candidates into a Power Apps app. The HR representatives must enter the following information for each candidate:

Field name	Data type	Criteria for follow up
Name	Text	No
Degree	Text	Yes
First available hire date	Date	Yes
Initial impression	Integer 0-10	Yes
Resume	Picture	No
Not currently viable	Boolean	Yes
Follow up	Boolean	NA

If a candidate is currently unqualified for a job position but would eventually qualify based on follow-up criteria, the follow-up checkbox must be selected or cleared in the system immediately. The company plans to create a similar Power Apps app that will contain the same business use case, but for internal employees and promotions. You need to create a Power Apps app solution to automatically mark the candidate for follow up.

Proposed solution: Use a Common Data Service workflow with a PowerQuery on the data entity.

Does the solution meet the goal?

- A. Yes
- B. No

Correct Answer: A

Section:

Explanation:

Process (Workflow) table/entity reference is a set of logical rules that define the steps necessary to automate a specific business process, task, or set of actions to be performed. Common Data Service workflow support: Filter triggers based on which attributes change - You can control which field changes trigger your automated flows. For example, trigger your flow only when the status field changes while ignoring all other fields that may change.

Reference:

<https://docs.microsoft.com/en-us/business-applications-release-notes/april19/microsoft-flow/automated-parity-classic-common-data-service-workflows>

QUESTION 4

A company is using Power Virtual Agents in Microsoft Teams to expose Microsoft Dataverse data to employees. You create a chatbot that retrieves a list of customers by postal code from a Dataverse table. The chatbot will accept requests from a user and must connect to Dataverse to retrieve the data. You need to connect the chatbot to the Dataverse table.

What should you use?

- A. Table
- B. Power Apps
- C. Microsoft Teams
- D. Power Virtual Agents
- E. Power Automate

Correct Answer: C

Section:

Explanation:

Dataverse for Teams is the "lite" version of Dataverse. It is a low-code platform designed to build relatively simple (but still powerful) apps, using a user-friendly interface and remaining within Microsoft Teams. This new update means that users now have the possibility to create Power Apps apps, Power Automate flows and Power Virtual Agents bots without leaving the Teams platform.

Reference: <https://docs.microsoft.com/en-us/learn/paths/work-power-platform-teams/> <https://docs.microsoft.com/enus/learn/modules/create-chatbot-power-virtual-agents-dataverse-teams/5-call-action-pull-data>

QUESTION 5

You create a Power Platform solution. Solution data is stored in a variety of documented cloud services. You need to configure the data sources.

What should you do?

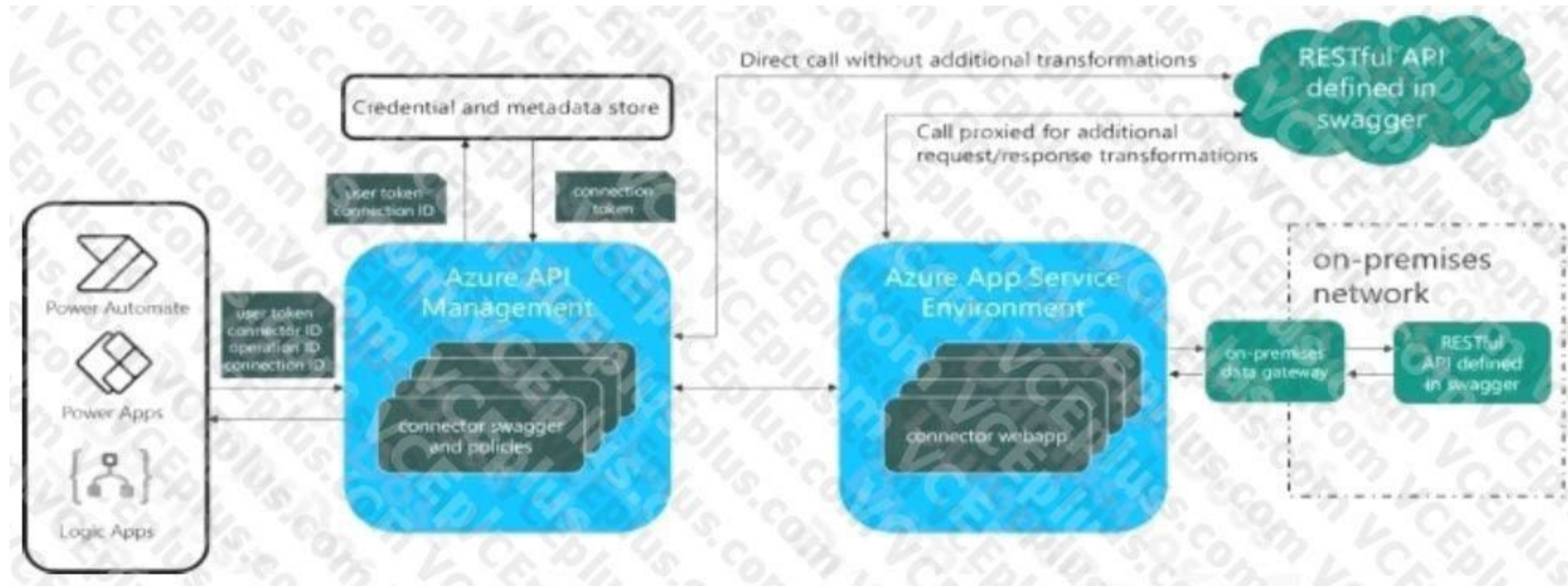
- A. Create a data policy template
- B. Add metadata to standard entities
- C. Create a UI flow
- D. Use an existing data connector

Correct Answer: D

Section:

Explanation:

Microsoft's large ecosystem of software as a service (SaaS) connectors enables you to connect apps, data, and devices in the cloud. Examples of popular connectors include Salesforce, Office 365, Twitter, Dropbox, Google services, and more.



Reference:

<https://docs.microsoft.com/en-us/connectors/connectors>

QUESTION 6

You work in a warehouse. You build an app for physical inventory counts that is used by different staff members. The typical count takes 14 hours. The app has a warehouse screen with a gallery that contains the aisles in the warehouse. When a staff member selects an aisle record, another screen displays all the items stored in that aisle. The staff must know how long each aisle takes to do a physical inventory count.

You need to add logic to the app.

What should you do?

- A. Configure a timer control, add it to the aisle screen, and then reset it when exiting the aisle screen
- B. Create and configure a stopwatch custom control, and then add it to the gallery
- C. Create and configure a stopwatch custom component, and then add it to the aisle screen
- D. Configure a timer control, add it to the gallery, and then reset it when the selection changes

Correct Answer: C

Section:

QUESTION 7

Note: This question-is part of a series of questions that present the same scenario. Each question-in the series contains a unique solution that might meet the stated goals. Some question-sets might have more than one correct solution, while others might not have a correct solution.

After you answer a question-in this section, you will NOT be able to return to it. As a result, these questions will not appear in the review screen.

A company has locations in multiple countries and regions across four continents.

The company stores the total amount of each order in the local currency of the country/region where the customer is located. The company stores the applicable exchange rates in a custom US dollars (USD) exchange rate table.

You need to create a visualization that displays the total amount of orders by country/region in USD. Proposed solution: Create a model-driven chart on the country/region table that aggregates the total amount of the orders by country/region.

Does the solution meet the goal?

- A. Yes
- B. No

Correct Answer: B

Section:

Explanation:

Instead use a calculated field.

Need to calculate the exchange rate in USD.

Calculated columns are calculated in real-time when they are retrieved.

Reference:

<https://docs.microsoft.com/en-us/powerapps/developer/data-platform/calculated-rollup-attributes>

QUESTION 8

The postal service uses a system based on the Common Data Service to manage the delivery of packages. To improve the delivery service, the management requires the delivery staff to use personal cell phones to communicate the location and the exact time of each delivery.

You need to design a solution.

What should you do?

- A. Create a button flow with user input for the delivery time and location
- B. Create a button flow with full address and date trigger tokens
- C. Create a UI flow that sends the delivery time and location
- D. Create a button flow with full address and timestamp trigger tokens

Correct Answer: B

Section:

QUESTION 9

You create a new solution publisher and include a publisher prefix value.

Which two actions can you perform? Each correct answer presents a complete solution.

NOTE: Each correct selection is worth one point.

- A. You can change contact details of a publisher after you create the publisher
- B. When you change a solution publisher prefix, you can change the schema name for existing components
- C. You can change the schema name of a publisher after creating the publisher
- D. You can add a component from one solution to another solution that has a different publisher

Correct Answer: A, D

Section:

Explanation:

Once you introduce a publisher for a component in a managed solution, you can't change the publisher for the component. Incorrect Answers:

B: When you change a solution publisher prefix, you should do it before you create any new apps or metadata items because you can't change the names of metadata items after they're created.

Reference:

<https://docs.microsoft.com/en-us/power-platform/alm/solution-concepts-alm#solution-publisher>

QUESTION 10

A clothing retailer is creating a Power Virtual Agents chatbot in Microsoft Teams. The chatbot will use Microsoft Dataverse for Teams to provide sales metrics by store. A user wants to be able to ask the chatbot to see all the sales for pants.

You need to configure the chatbot to provide sales data for pants even when a user enters the terms jeans, slacks, or trousers. Which chatbot component should you use?

- A. Skills
- B. Tables

- C. Topics
- D. Supported languages
- E. Entities

Correct Answer: E

Section:

Explanation:

Closed list entities let you define a list of items. This is best used for small lists that are easy to manage and that have simple item labels. You can add synonyms to manually expand the matching logic for each item in the entity's list. For example, in the "hiking" item, you can add "trekking" and "mountaineering" as synonyms.

Edit synonyms

Think about other words and expressions your customer might use to mean the following:

"hiking"

mountaineering

Add

trekking



Done

Cancel

Reference:

<https://docs.microsoft.com/en-us/power-virtual-agents/advanced-entities-slot-filling>

QUESTION 11

A company creates an app that uses Microsoft Dataverse tables.

The app creator wants to verify that the app is operating as expected by using a sample set of real-world data. You need to import the sample data into Dataverse tables.

Which two technologies can you use? Each correct answer presents a complete solution.

NOTE: Each correct selection is worth one point.

- A. Power BI
- B. SharePoint
- C. Power Query
- D. Dataflows

Correct Answer: C, D

Section:

Explanation:

C: You can create a table in Dataverse and fill that table with data from an OData feed by using Power Query. You can use the same techniques to integrate data from these online and on-premises sources, among others:

SQL Server

Salesforce

IBM DB2

Access

Excel

Web APIs

OData feeds Text files

D: You can create a new Dataverse table that stores all the metadata from the dataflow run. For every refresh of a dataflow, a record is added to this table. You can also store metadata for multiple dataflow runs in the same table.

Reference: <https://docs.microsoft.com/en-us/power-query/dataflows/load-dataflow-metadata-into-dataverse-table> <https://docs.microsoft.com/en-us/power-query/dataflows/add-data-power-query>

QUESTION 12

You create an app with multiple screens.

Test users report that the size and type of gallery displayed on each screen are different. You must improve the consistency for the app screens.

You need to create a reusable gallery that displays information based on the current record.

Which three actions should you perform?

NOTE: Each correct selection is worth one point.

- A. Add a gallery control
- B. Add an input property
- C. Create a component
- D. Create a form
- E. Add a screen
- F. Add an output property

Correct Answer: A, B, C

Section:

Explanation:

Reference: <https://docs.microsoft.com/en-us/powerapps/maker/canvas-apps/add-gallery> <https://docs.microsoft.com/en-us/powerapps/maker/canvas-apps/create-component>

QUESTION 13

Engineers in an organization plan to attend an international product show. The engineers must be able to capture information about presented products based on personal assessment and interest. The engineers must capture the information by taking pictures of the booth, brochures, and other product-specific materials. You need to provide a button flow to streamline the process. Which two AI Builder models should you use? Each correct answer presents part of the solution. NOTE: Each correct selection is worth one point.

- A. Language detection
- B. Sentiment analysis
- C. Category classification
- D. Business card reader
- E. Form processing

Correct Answer: A, D
Section:
Explanation:

QUESTION 14

DRAG DROP
A company is creating Power Apps apps for their customer service team. You must create a final released solution to export to their test environment that cannot be changed in the new environment. You need to determine the types of solutions to use. Which type of solution should you use? To answer, drag the appropriate solution types to the correct conditions. Each solution type may be used once, more than once, or not at all. You may need to drag the split bar between panes or scroll to view content. NOTE: Each correct selection is worth one point.

Select and Place:

Select and Place:

Solution type

Managed

Unmanaged

Answer Area

Condition

Assign a publisher for the first time

Export the solution

Solution type

Solution type

Solution type

Correct Answer:

Select and Place:

Solution type	Answer Area	Solution type
	Condition	
	Assign a publisher for the first time	Unmanaged
	Export the solution	Managed

Section:

Explanation:

Box 1: Unmanaged

Unmanaged solutions are used in development environments while you make changes to your application. Box 2: Managed

Managed solutions are used to deploy to any environment that isn't a development environment for that solution.

Reference: <https://docs.microsoft.com/en-us/power-platform/alm/solution-concepts-alm>

QUESTION 15

DRAG DROP

A company uses data from a publicly available web service. You plan to create a tabular report by using Power BI Desktop to visualize data from the web service. The data returned in one column is numeric and must be converted to a corresponding text value.

The most up-to-date version of the data must always be used.

You need to create the report and make it available only to co workers.

Which four actions should you perform in sequence? To answer, move the appropriate actions from the list of actions to the answer area and arrange them in the correct order. NOTE: More than one order of answer choices is correct. You will receive credit for any of the correct orders you select

Select and Place:

Actions	Answer area
Create a connection to the web service.	
Publish to the Power BI service.	
Create a table and input the data from the web service.	
Perform data transformation.	
Create the visualization.	
Publish to AppSource.	

Correct Answer:

Actions	Answer area
Create a connection to the web service.	Create a table and input the data from the web service.
Publish to the Power BI service.	Perform data transformation.
	Create the visualization.
	Publish to AppSource.

Section:

Explanation:

QUESTION 16

HOTSPOT

The customer service team of a company uses a model-driven app to log customer interactions. The app contains two tables: one to track customer interactions and one to track products. The team requires an interactive dashboard to display the activities. The dashboard must display the products that have the most complaints. Each chart must display the associated data. You need to create the dashboard. Which features should you use? To answer, select the appropriate options in the answer area.

NOTE: Each correct selection is worth one point.

Hot Area:

Activity	Feature
Display customer interactions and products.	Single-stream dashboard Multi-stream dashboard Single-stream dashboard Standard dashboard
Display charts with associated data.	Default Chart Show Chart Only Display Chart Selection Default Chart

Answer Area:

Activity	Feature
Display customer interactions and products.	Single-stream dashboard Multi-stream dashboard Single-stream dashboard Standard dashboard
Display charts with associated data.	Default Chart Show Chart Only Display Chart Selection Default Chart

Section:

Explanation:

QUESTION 17

DRAG DROP

A commercial bakery uses art inventory system to track ingredients consumed in their production line. The workers use iPads to interact with the system and reserve the ingredients for the next batch. Data from the system is extracted as a .csv file.

You need to create a Power BI report from the extracted data by using only an iPad.

Which five actions should you perform in sequence? To answer, move the appropriate actions from the list of actions to the answer area and arrange them in the correct order.

Select and Place:

Actions	Answer Area
Select manual data.	
Log into the Power BI service.	
Install Power BI Desktop and log in.	
Select Create .	
Select Use first row as headers .	
Paste the data.	

Correct Answer:

Actions	Answer Area
Select manual data.	Log into the Power BI service.
	Install Power BI Desktop and log in.
	Select Create .
	Select Use first row as headers .
	Paste the data.

Section:

Explanation:

QUESTION 18

DRAG DROP

A company uses Microsoft Power Platform. All users in the company have read/write and create access to SharePoint. You create a canvas app that displays data from a SharePoint list. A group of users must use the app without the ability to change the data source. You need to shore the app with the users.

What should you do? To answer, drag the appropriate actions to the correct components. Each action may be used once, more than once, or not at all. You may need to drag the split bar between panes or scroll to view content. NOTE: Each correct selection is worth one point.

Select and Place:

Actions	Answer Area	Component	Action
Send all users an email invitation.		Canvas app	
Enable Can use permission.		SharePoint connection	
Set the users as co-owners.			
Enable Can edit permission.			

Correct Answer:

Actions	Answer Area	Component	Action
		Canvas app	Send all users an email invitation.
		SharePoint connection	Enable Can use permission.
Set the users as co-owners.			
Enable Can edit permission.			

Section:
Explanation:

QUESTION 19
DRAG DROP
A company uses Power Apps. The company has a SharePoint list that contains the names of partner organizations and the country/region of the partners The company requires a canvas app that has a gallery screen to display the information in the SharePoint list. Users must be able to:

- * Return results for the exact word that was searched.
- * View the latest records at the top of the gallery.
- * Use a dropdown control to list the countries/regions of the partners. The list must display each country/region only once. You need to create the gallery screen in a canvas app.

Which functions should you use? To answer, drag the appropriate functions to the correct activities. Each function may be used once, more than once, or not at all. You may need to drag the split bar between panes or scroll to view content.

Functions	Answer Area	Activity	Function
Match		Return results for the exact word that was searched.	
Sort		View latest entry at the top	
Distinct		Display duplicate countries/regions only once.	
IsMatch			

Correct Answer:

Functions	Answer Area	Activity	Function
<input type="text"/>	Return results for the exact word that was searched. View latest entry at the top Display duplicate countries/regions only once.	<input type="text"/>
<input type="text"/>			Match
<input type="text"/>			Sort
<input type="text"/>			Distinct

Section:

Explanation:

QUESTION 20

HOTSPOT

A company uses Power Apps and Microsoft Data verse. You need to perform the following activities:

- * Create a model-driven app.
- * Design navigation for the app
- * Show an approval name field on the form if the amount is greater than \$1,000.

Which features should you use? To answer, select the appropriate options in the answer are a. NOTE: Each correct selection is worth one point.

Hot Area:

Activity	Feature
Create model driven app.	App designer App designer Solution checker App checker
Design app navigation.	Site map Site map Solutions area Table designer
Show approval name field if amount > \$1,000.	Table designer Form designer Table designer Business rule designer

Answer Area:

Activity	Feature
Create model driven app.	App designer App designer Solution checker App checker
Design app navigation.	Site map Site map Solutions area Table designer
Show approval name field if amount > \$1,000.	Table designer Form designer Table designer Business rule designer

Section:
Explanation:

QUESTION 21
DRAG DROP

A company uses Power Apps and Microsoft Dataverse.

The company has model driven apps across multiple Microsoft Dataverse environments in the same tenant. You must grant privileges to Power Apps makers to achieve the following:

- Share model-driven apps in multiple Microsoft Dataverse environments.
- Share model-driven apps in only one of the Microsoft Dataverse environments and view only table records that they create themselves. You need to share the model-driven app with users by using the principle of least privilege.

Which security role privilege should you grant for each requirement? To answer, drag the appropriate security roles to the correct requirements. Each security the may be used once, more than once, or not at all. You may need to drag the split bar between panes or scroll to view content.

NOTE: Each correct answer is worth one point.

Select and Place:

Security roles

System Customizer

Microsoft Power Platform Administrator

Environment Maker

Answer Area

Requirement

Share in all Microsoft Dataverse environments.

Share in one environment and view only table records they create.

Security role

Correct Answer:

Security roles

Microsoft Power Platform Administrator

Answer Area

Requirement

Share in all Microsoft Dataverse environments.

Share in one environment and view only table records they create.

Security role

Environment Maker

System Customizer

Section:
Explanation:

QUESTION 22

A company uses Power Apps in a single Microsoft Dataverse environment.

Users are divided into two groups about not a canvas app should work. The company decides that each group of users will try a version of the app for one week and switch to the other version of the app the following week.

You need to manage the app creation.

What should you do?

A. Create one app with two different version numbers.

B. Create one app with two different version notes.

- C. Create two apps with the same name.
- D. Create two apps with different app names.

Correct Answer: A
Section:

QUESTION 23
DRAG DROP

You are Designing a Power Virtual Agents chatbot in Microsoft Teams. You create an outline to describe how a conversation should be structured. You need to configure the chatbot. Which chatbot component should you use? To answer, drag the appropriate components to the correct conversation elements. Each component may be used once, more than once, or not at all. You may need to drag the spirt bar between panes or scroll to view content.
NOTE: Each correct selection is worth one point.

Select and Place:

Components

Topic

Trigger phrase

Conversation node

Answer Area

Conversation element

A user enters the following text in the chatbot:
What is the weather?

The chatbot responds: **Where do you live?**

Component

Correct Answer:

Components

Trigger phrase

Answer Area

Conversation element

A user enters the following text in the chatbot:
What is the weather?

The chatbot responds: **Where do you live?**

Component

Topic

Conversation node

Section:
Explanation:

QUESTION 24

A company uses Power Apps. You embed a canvas app in a model-driven app form. You need to bind the app to a form component. Which form component should you use?

- A. Section
- B. View
- C. Column
- D. Tab

Correct Answer: C
Section:

QUESTION 25
HOTSPOT

A company uses Power Apps. The company has a model-driven app that accesses a Microsoft Dataverse table. The app is shared with ail users who all have the Basic User security role. You must prevent the users from running and sharing the app.

What should you do? To answer, select the appropriate options in the answer area

NOTE: Each correct selection is worth one point.

Hot Area:

Requirement	Action
Prevent users from running the app.	<div>Turn off the app.</div> <div>Export the app.</div> <div>Turn off the app.</div> <div>Remove access to the table.</div>
Prevent users from sharing the app.	<div>Remove access to the table.</div> <div>Export the app.</div> <div>Turn off the app.</div> <div>Remove access to the table.</div>

Answer Area:

Requirement	Action
Prevent users from running the app.	<div>Turn off the app.</div> <div>Export the app.</div> <div>Turn off the app.</div> <div>Remove access to the table.</div>
Prevent users from sharing the app.	<div>Remove access to the table.</div> <div>Export the app.</div> <div>Turn off the app.</div> <div>Remove access to the table.</div>

Section:
Explanation:

QUESTION 26

A company uses Power Apps and Microsoft Dataverse. The company has a managed solution in the production environment You make changes to the solution m the development environment. Some components are unused. The changes to the solution must be reflected in the production environment

You need to ensure that all unused components are removed.

What should you do?

- A. Create a new solution
- B. Upgrade the solution.
- C. Update the solution.

D. Patch the solution.

Correct Answer: B

Section:

QUESTION 27

You design a canvas app that has multiple screens. Each screen will have multiple button controls.

The button controls must all have the same background color. You must be able to change the color from one location for all buttons. You need to configure the button fill property.

What should you do?

- A. Update the Fill property to a variable created by using the Navigate function.
- B. Update the Fill property to a variable created by using the Set function.
- C. Select all the buttons while holding the Ctrl key, and then change the color property.
- D. Use a background image property in place of setting a color property.

Correct Answer: A

Section:

QUESTION 28

You create a personal view.

You need to ensure that other users can access the view.

What should you do?

- A. Email the users a link to the view.
- B. Set the view as the default view.
- C. Share the view with the users.
- D. Assign the view to the users.

Correct Answer: C

Section:

QUESTION 29

DRAG DROP

An insurance broker uses a Microsoft Dataverse environment with custom tables. You create a Power Apps app to manage vehicle insurance policies.

The app has a drop-down field that allows users to categorize a policy holder's driving record. This category field is not mandatory.

You need to ensure that insurance agents enter the correct categories when creating a new vehicle policy.

Which three actions should you perform in sequence? To answer, move the appropriate actions from the list of actions to the answer area and arrange them in the correct order.

Select and Place:

Actions

In the vehicle policy table, click on Add subcomponents and navigate to Business rules.

Add a Recommendation card, select the driver record drop-down field and enter the recommendation details.

In the vehicle policy table, navigate to Business rules.

Add a business rule and enter a meaningful business rule name.

Click on the Condition card, select the Vehicle Policy and check for new driver.

Answer area



Correct Answer:

Actions

In the vehicle policy table, click on Add subcomponents and navigate to Business rules.

Add a Recommendation card, select the driver record drop-down field and enter the recommendation details.

Answer area

In the vehicle policy table, navigate to Business rules.

Add a business rule and enter a meaningful business rule name.

Click on the Condition card, select the Vehicle Policy and check for new driver.



Section:

Explanation:

In the vehicle policy table, navigate to Business rules.

Add a business rule and enter a meaningful business rule name.

Click on the Condition card, select the Vehicle Policy and check for new driver.

Export the custom view to an Excel dynamic pivot table

QUESTION 30
You significantly modify a canvas app.
You need to generate a new app version.
What should you do?

- A. Publish the app.
- B. Update the major version number.
- C. Update the version notes.
- D. Update the minor version number.
- E. Save the app.

Correct Answer: A
Section:

QUESTION 31
DRAG DROP
You use Microsoft Dynamics 365 Sales.
Business processes must use data from multiple applications.
You need to implement the correct type of automation.
Which flow type should you use? To answer, drag the appropriate flow types to the correct application types. Each flow type may be used once, more than once, or not at all. You may need to drag the split bar between panes or scroll to view content.
NOTE: Each correct selection is worth one point.

Select and Place:

Flow Types

cloud flow

desktop flow

business process flow

Answer Area

Application Type

Update a record after it was created as part of a sales process

Extract a list of prices from a competitor's website

Flow Type

Correct Answer:

Flow Types

desktop flow

Answer Area

Application Type

Update a record after it was created as part of a sales process

Extract a list of prices from a competitor's website

Flow Type

business process flow

cloud flow

Section:

Explanation:

QUESTION 32

DRAG DROP

You are developing an app that warehouse workers will run on their phones to perform inventory counts.

You need to design the app.

Which type of control should you use? To answer, drag the appropriate control types to the correct requirements. Each control type may be used once, more than once, or not at all. You may need to drag the split bar between panes or scroll to view content.

NOTE: Each correct selection presents a complete solution.

Select and Place:

Control types

Text box

Combo box

Slider

Radio

Answer Area

Requirement

Capture decimal numbers.

Select multiple products from a list.

Set the status of a product.

Control type

Correct Answer:

Control types

Slider

Answer Area

Requirement

Capture decimal numbers.

Select multiple products from a list.

Set the status of a product.

Control type

Text box

Combo box

Radio

Section:

Explanation:

QUESTION 33

A company has hundreds of warehouses. You are developing an app for the shipping department at the company. The app must be able to provide the warehouse address for shipments. You need to create the warehouse field on the app form. Which field type should you use?

- A. Lookup
- B. Choice

- C. Choices
- D. Text

Correct Answer: A
Section:

QUESTION 34

You create a weekly report app as a canvas app. The data source for the app is a Microsoft SharePoint list.

The file that contains the weekly report must be attached to each submission made in the app. Employees must modify the report through the canvas app after the initial submission.

The manager must be notified by email when an employee updates the report.

You need to create cloud flows.

Which SharePoint trigger should you use?

- A. When an item is created
- B. When an item or file is modified
- C. When a file is created (properties only)
- D. When a file is created in a folder

Correct Answer: B
Section:

QUESTION 35

HOTSPOT

You create an expense claim app for a manufacturing company. Employees use the app to enter details of their expenses and upload receipts.

The company has an on-premises finance system with no APIs.

The company requires an automation to enable the manager to approve employee claim requests when they are submitted.

After a claim request is approved, the expense details must be entered in the on-premises finance system.

You need to create the flow.

Which flow type should you use for each requirement? To answer, select the appropriate options in the answer area.

NOTE: Each correct selection is worth one point.

Hot Area:

Flow types

Requirement

Approve employee claim requests when they are submitted.

Enter the expense details in the on-premises finance system.

Flow type

Automated flow

Automated flow

Scheduled flow

Instant flow

Cloud flow

Cloud flow

Desktop flow

Business process flow

Answer Area:
Flow types

Requirement

Approve employee claim requests when they are submitted.

Enter the expense details in the on-premises finance system.

Flow type

Automated flow

Automated flow

Scheduled flow

Instant flow

Cloud flow

Cloud flow

Desktop flow

Business process flow

Section:
Explanation:

QUESTION 36

A company has 500 vendor records stored in a SQL table. Each record contains the vendor's name, email address, mobile number, and company address. The procurement team wants to view the vendor records by using Power Apps. The team must be able to change the list results by applying filters. You need to display the vendor records in a canvas app. Which control should you use?

- A. Text
- B. Form
- C. Chart
- D. Gallery

Correct Answer: D

Section:

QUESTION 37

DRAG DROP

You create a canvas app.

You need to ensure that there are no screen reader issues in the app.

Which three actions should you perform in sequence? To answer, move the appropriate actions from the list of actions to the answer area and arrange them in the correct order.

Select and Place:

Actions

Open Test Studio.

Select **Formula**.

Open the App checker.

Select **Accessibility**.

Select **Error**.

Answer Area

>

<

^

v

Correct Answer:

Actions

Open Test Studio.

Select **Formula**.

Answer Area

Open the App checker.

Select **Accessibility**.

Select **Error**.

>

<

^

v

Section:

Explanation:

Open the App checker.

Select Accessibility.

Select Error.

QUESTION 38

HOTSPOT

You create a Power Automate cloud flow that runs when a user creates a Microsoft Dataverse lead record.

The cloud flow must update a custom score column on the lead record based on other column values. The flow must perform the following activities:

* Update the Microsoft Dataverse record.

* Evaluate whether the Microsoft Dataverse record should be updated.

You need to configure the flow components.

Which components should you use? To answer, select the appropriate options in the answer area.
NOTE: Each correct selection is worth one point.

Hot Area:

Answer Area

Requirement	Component
Update the Microsoft Dataverse record.	<div>Action</div> <div>Action</div> <div>Trigger</div> <div>Function</div>
Evaluate whether the Microsoft Dataverse record should be updated.	<div>Condition</div> <div>Action</div> <div>Condition</div> <div>Data operation</div>

Answer Area:

Answer Area

Requirement	Component
Update the Microsoft Dataverse record.	<div>Action</div> <div>Action</div> <div>Trigger</div> <div>Function</div>
Evaluate whether the Microsoft Dataverse record should be updated.	<div>Condition</div> <div>Action</div> <div>Condition</div> <div>Data operation</div>

Section:
Explanation:

QUESTION 39

DRAG DROP

A company uses Power Apps. You design the interface for a new model-driven app. Users must interact with data from records related to the primary record form in the following ways:

- * Use related business process flows.
- * Display primary and related form columns.

You need to configure the forms without using additional customizations.

Which form types should you use? To answer, drag the appropriate form types to the correct requirements. Each form type may be used once, more than once, or not at all. You may need to drag the split bar between panes or scroll to view content.

NOTE: Each correct answer is worth one point.

Select and Place:

Form types

Quick view form

Main form dialog

Quick create form

Main form component control

Answer Area

Requirement

Use related business process flows.

Display related columns along with other primary form columns.

Form type

Correct Answer:

Form types

Quick create form

Main form component control

Answer Area

Requirement

Use related business process flows.

Display related columns along with other primary form columns.

Form type

Main form dialog

Quick view form

Section:

Explanation:

QUESTION 40

HOTSPOT

A company uses Microsoft Power Platform. The company categorizes customers into Specialty shop, Grocery store, Wholesaler, and Seasonal market groups by using a custom choice type column. The staff uses a model-driven app with an interactive dashboard that displays all customer details needed in their processes.

You must update the app to provide the following functionality:

- * Display selected customers by type in the interactive dashboard.
- * Search for customers across multiple tables by postal code by entering any number of characters.

You need to configure the system.

Which configuration options should you use? To answer, select the appropriate options in the answer area.

NOTE: Each correct selection is worth one point.

Hot Area:

Answer Area

Requirement

Display customers by type.

Search by postal code.

Configuration

Enable sync with global choice.	▼
Enable the global filter.	
Enable the searchable property.	
Enable sync with global choice.	
Enable the sortable property.	

Enable the searchable property.	▼
Find by setting in quick find.	
Filter by setting in quick find.	
Enable the searchable property.	
Enable the global filter on the postal code.	

Answer Area: Answer Area

Requirement

Display customers by type.

Search by postal code.

Configuration

Enable sync with global choice.	▼
Enable the global filter.	
Enable the searchable property.	
Enable sync with global choice.	
Enable the sortable property.	

Enable the searchable property.	▼
Find by setting in quick find.	
Filter by setting in quick find.	
Enable the searchable property.	
Enable the global filter on the postal code.	

Section: Explanation:

QUESTION 41

A company uses Microsoft Teams. A coworker creates a chatbot.

The coworker observes unexpected behavior with the chatbot.

You need to troubleshoot the chatbot.

Which two actions should you recommend to the coworker? Each correct answer presents part of the solution.

NOTE: Each correct selection is worth one point.

- A. Ask the coworker to assign you to the owner role for the team.
- B. In Advanced tools, select Monitor.
- C. Ask the coworker to add you to their team.
- D. Select the chatbot and then select the Share button.

Correct Answer: A, B
Section:

QUESTION 42
HOTSPOT

A company uses Power Apps and Microsoft Dataverse. You create a model-driven app that has no flows, workflows, or plug-ins. The app requires a main form that has a form field named reference number. The reference number must perform the following activities:

- * Autogenerate when new records are created.
- * Follow the format xx/yy, where xx is an incremental number and yy indicates the last two digits of the current year.

You need to ensure that each record created in the Microsoft Dataverse table follows this format. Which features should you use? To answer, select the appropriate options in the answer area. NOTE: Each correct selection is worth one point.

Answer Area

Activity	Feature
Choose data type.	<div>Auto-number</div> <div>Whole number</div> <div>Date</div> <div>Auto-number</div> <div>Text</div>
Create format.	<div>{SEQNUM:2}/{DATETIMEUTC:yy}</div> <div>{SEQNUM:2}/{DATETIMEUTC:yy}</div> <div>{SEQNUM:2}/{DATETIMEUTC:2}</div> <div>{SEQNUM:##}/{DATETIMEUTC:yy}</div>
Set seed value.	<div>10</div> <div>#1</div> <div>100</div> <div>10</div>

Answer:

Answer Area

Activity	Feature
Choose data type.	<div>Auto-number ▼</div> <div>Whole number</div> <div>Date</div> <div>Auto-number</div> <div>Text</div>
Create format.	<div>{SEQNUM:2}/{DATETIMEUTC:yy} ▼</div> <div>{SEQNUM:2}/{DATETIMEUTC:yy}</div> <div>{SEQNUM:2}/{DATETIMEUTC:2}</div> <div>{SEQNUM:##}/{DATETIMEUTC:yy}</div>
Set seed value.	<div>10 ▼</div> <div>#1</div> <div>100</div> <div>10</div>

Hot Area:

Answer Area

Activity	Feature
Choose data type.	<div>Auto-number ▼</div> <div>Whole number</div> <div>Date</div> <div>Auto-number</div> <div>Text</div>
Create format.	<div>{SEQNUM:2}/{DATETIMEUTC:yy} ▼</div> <div>{SEQNUM:2}/{DATETIMEUTC:yy}</div> <div>{SEQNUM:2}/{DATETIMEUTC:2}</div> <div>{SEQNUM:##}/{DATETIMEUTC:yy}</div>
Set seed value.	<div>10 ▼</div> <div>#1</div> <div>100</div> <div>10</div>

Answer Area:

Answer Area

Activity	Feature
Choose data type.	<div>Auto-number ▼</div> <div>Whole number</div> <div>Date</div> <div>Auto-number</div> <div>Text</div>
Create format.	<div>{SEQNUM:2}/{DATETIMEUTC:vv} ▼</div> <div>{SEQNUM:2}/{DATETIMEUTC:yy}</div> <div>{SEQNUM:2}/{DATETIMEUTC:2}</div> <div>{SEQNUM:##}/{DATETIMEUTC:yy}</div>
Set seed value.	<div>10 ▼</div> <div>#1</div> <div>100</div> <div>10</div>

Section:
Explanation:

QUESTION 43

An inside sales staff uses three model-driven apps for their sales process. Each app includes the same custom specialized component. You must standardize the inside and outside sales process by creating a canvas app that has the same functionality as the three model-driven apps. You do not have administrator permissions. You need to incorporate the logic of the custom component in the outside sales canvas app. Where should you build the custom component?

- A. Custom control
- B. Component library
- C. Any of the three apps
- D. Solution

Correct Answer: B
Section:

QUESTION 44

A company receives its marketing campaign performance report as a Microsoft Excel file. The company stores the file in Microsoft SharePoint. A user updates the Excel file daily with updated data. The company needs a solution that automatically displays the latest analytics. You need to create a basic report that contains pie charts that display the most profitable channels. You need to propose the right solution. Solution: Microsoft Power BI report querying Excel file using its path. Does the solution meet the goal?

- A. Yes
- B. No

Correct Answer: A
Section: