

**010-151**

Number: 010-151  
Passing Score: 800  
Time Limit: 120 min  
File Version: 1



**VCE to PDF Converter :** <https://vceplus.com/vce-to-pdf/>

**Facebook:** <https://www.facebook.com/VCE.For.All.VN/>

**Twitter :** [https://twitter.com/VCE\\_Plus](https://twitter.com/VCE_Plus)

**Google+ :** <https://plus.google.com/+Vcepluscom>

**LinkedIn :** <https://www.linkedin.com/company/vceplus>

**Exam Code: 010-151**

**Exam Name: Cisco Certified Technician (CCT) for Data Center**

**010-151**

**QUESTION 1**

Which method is a TCP/IP-based protocol for establishing and managing connections between IP-based storage devices, hosts, and clients?

- A. FCIP
- B. iFCP
- C. iSCSI
- D. FCoE

**Correct Answer: C**

**Section: (none)**

**Explanation**

**Explanation/Reference:**

**QUESTION 2**

Which method does FCIP use to enable connectivity of geographically distributed Fibre Channel SANs over IP?

- A. routing
- B. tunneling
- C. handshaking
- D. transporting

**Correct Answer: B**

**Section: (none)**

**Explanation**

**Explanation/Reference:**

**QUESTION 3**

Which important feature on the front end is provided to the clients by multiple servers that access the same storage devices across the SAN?

- A. recovery
- B. redundancy
- C. resiliency
- D. security

E. storage

**Correct Answer:** B

**Section:** (none)

**Explanation**

**Explanation/Reference:**

#### **QUESTION 4**

The Ethernet specification details several different fiber optic media types. What is the wire transmission speed for 100BASE-FX Ethernet?

- A. 10 Mb/s
- B. 100 Mb/s
- C. 1000 Mb/s
- D. 10000 Mb/s

**Correct Answer:** B

**Section:** (none)

**Explanation**

**Explanation/Reference:**



#### **QUESTION 5**

Which fiber optic cable type is used most often with a Subscriber connector?

- A. dual-mode
- B. single-mode
- C. straight-mode
- D. multi-mode
- E. subscriber-mode

**Correct Answer:** B

**Section:** (none)

**Explanation**

**Explanation/Reference:**

**QUESTION 6**

Which type of connection across the network does a SAN allow for multiple servers to access an unlimited amount of storage devices?

- A. any-to-many
- B. many-to-any
- C. any-to-any
- D. any-to-one
- E. one-to-any
- F. one-to-one

**Correct Answer:** C

**Section:** (none)

**Explanation**

**Explanation/Reference:**

**QUESTION 7**

Which two statements about the Ethernet media are true? (Choose two.)

- A. A twisted-pair cable system has each pair of wires twisted together to reduce electromagnetic interference.
- B. Compared to multimode fiber, the single-mode fiber is designed for shorter distances with higher cost.
- C. 40 Gigabit Ethernet twinax cables deploy Enhanced Quad Small Form Factor Pluggable (QSFP+) connectors.
- D. The twinax cables can be found in either a shielded twisted-pair or an unshielded twisted-pair variation.

**Correct Answer:** AC

**Section:** (none)

**Explanation**

**Explanation/Reference:**

**QUESTION 8**

What is the wire transmission speed for 100GBASE-ER4 Ethernet?

- A. 100 Mb/s
- B. 1 Gb/s

- C. 10 Gb/s
- D. 100 Gb/s

**Correct Answer:** D

**Section:** (none)

**Explanation**

**Explanation/Reference:**

#### QUESTION 9

Which two statements about PCIe are true? (Choose two.)

- A. The PCIe link is built around dedicated unidirectional couples of serial, point-to-point connections known as lanes.
- B. You can install a PCI Express x8 adapter into an x4 slot.
- C. The PCIe standard is a bus-based system in which all the devices share the same bidirectional, 32-bit or 64-bit, parallel signal path.
- D. The PCIe 1.0 standard doubles the transfer rate compared to PCIe 2.0.
- E. A link that is composed of four lanes is called an x4 link.

**Correct Answer:** AE

**Section:** (none)

**Explanation**

**Explanation/Reference:**

#### QUESTION 10

Which three statements about FCoE are true? (Choose three.)

- A. Allows Fibre Channel and Ethernet networks to share a single, integrated infrastructure.
- B. Encapsulates Fibre Channel frames into Ethernet frames, which allows them to run alongside traditional IP traffic.
- C. Increases capital costs due to the difficulty to manage.
- D. Consolidates I/O traffic in the data center.

**Correct Answer:** ABD

**Section:** (none)

**Explanation**

**Explanation/Reference:**

**QUESTION 11**

Which cable is used to access the command-line interface of a Cisco UCS 6120XP Fabric Interconnects?

- A. KVM cable
- B. console cable
- C. Ethernet cable
- D. SFP+ Ethernet transceiver cable

**Correct Answer:** B

**Section:** (none)

**Explanation**

**Explanation/Reference:**

**QUESTION 12**

Where do you find the model number of a Cisco MDS 9200 Series chassis?

- A. on the top front of the chassis next to the serial number
- B. on the bottom front of the chassis next to the Cisco logo
- C. on the top front of the chassis next to the Cisco logo
- D. on the bottom front of the chassis next to the serial number

**Correct Answer:** C

**Section:** (none)

**Explanation**

**Explanation/Reference:**

**QUESTION 13**

How do you find the serial number of a Cisco UCS 5108 Blade Server chassis?

- A. Use the Cisco UCS Admin.
- B. Use the Cisco UCS Application.
- C. Use the Cisco UCS Assistant.
- D. Use the Cisco UCS Manager.

**Correct Answer:** D

**Section:** (none)

**Explanation**

**Explanation/Reference:**

**QUESTION 14**

What does the system status LED look like when an over temperature or major alarm occurs on the Cisco UCS 6120XP Fabric Interconnect?

- A. Amber
- B. Red
- C. Blinking amber
- D. Blinking red

**Correct Answer:** C

**Section:** (none)

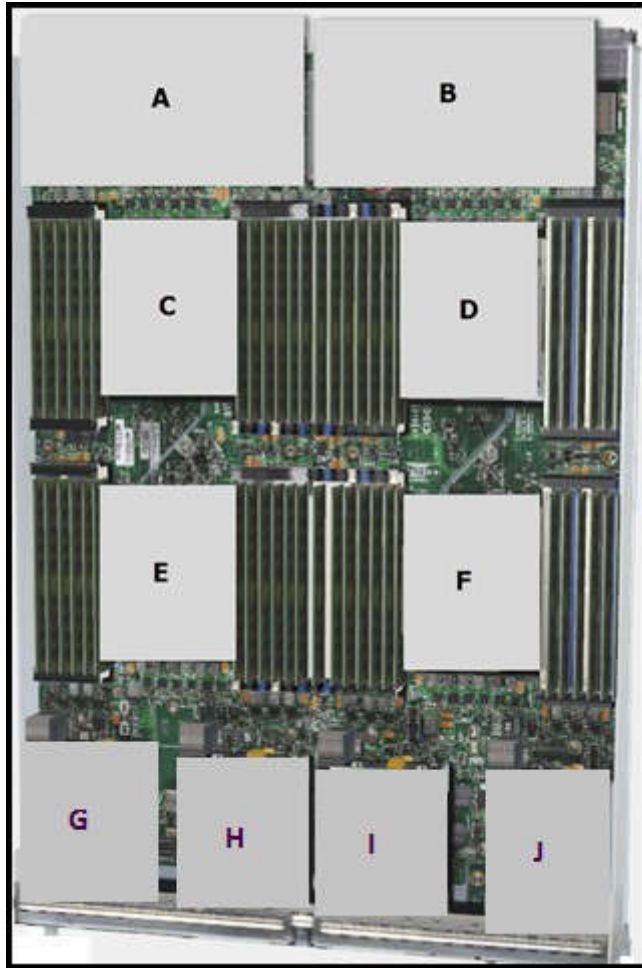
**Explanation**

**Explanation/Reference:**



**QUESTION 15**

Refer to the exhibit.



Which item does F represent?

- A. HDD 1
- B. TFP Module
- C. SuperCap Module
- D. CPU 2
- E. CMOS Battery



**Correct Answer:** D

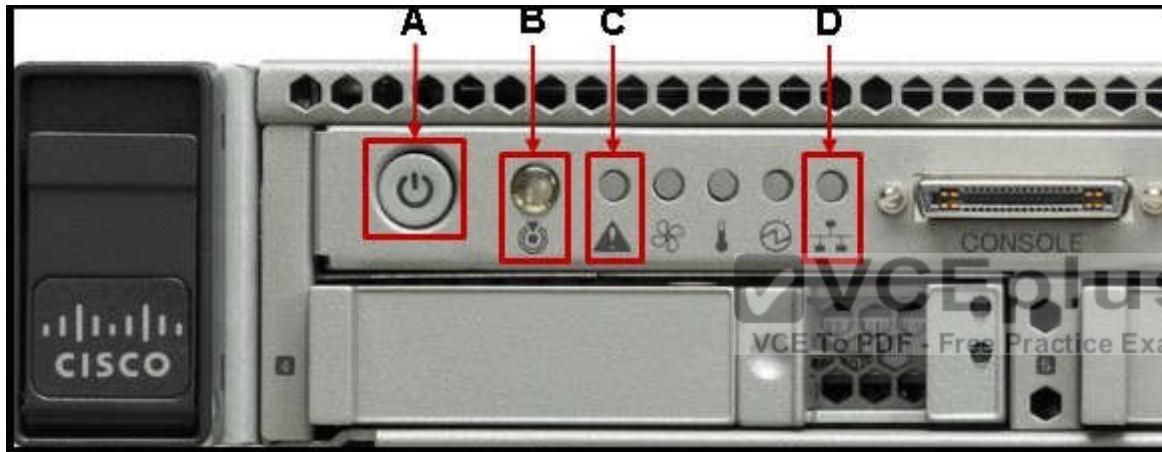
**Section:** (none)

**Explanation**

**Explanation/Reference:**

**QUESTION 16**

Refer to the exhibit.



Which statement correctly identifies the front panel LEDs on the Cisco UCS C220 Server?

- A. A is power button and power status LED; B is identification button and LED; C is system status LED; D is network link activity LED.
- B. A is network link activity LED; B is system status LED; C is power button and power status LED; D is identification button and LED.
- C. A is system status LED; B is network link activity LED; C is power button and power status LED; D is identification button and LED.
- D. A is network link activity LED; B is system status LED; C is identification button and LED; D is power button and power status LED.

**Correct Answer:** A

**Section:** (none)

**Explanation**

**Explanation/Reference:**

**QUESTION 17**

Which processor option is supported in the Cisco UCS C420 M3 Server?

- A. up to two Intel Xeon E5-4600 series multicore processors
- B. up to two Intel Xeon E7-4800 series multicore processors
- C. up to four Intel Xeon E5-4600 series multicore processors
- D. two or four Intel Xeon E7-8800 series multicore processors

**Correct Answer:** C

**Section:** (none)

**Explanation**

**Explanation/Reference:**

**QUESTION 18**

Which two major components does a Cisco Nexus 1000V Series Switch have? (Choose two.)

- A. Virtual Fiber Channel Module
- B. Virtual Ethernet Module
- C. Virtual Supervisor Module
- D. Virtual Memory Controller Module
- E. Virtual Network Module



**Correct Answer:** BC

**Section:** (none)

**Explanation**

**Explanation/Reference:**

**QUESTION 19**

Which Cisco Nexus 5000 Series model supports 1/10G BASE-T ports?

- A. Cisco Nexus 5548P
- B. Cisco Nexus 5548UP
- C. Cisco Nexus 5596UP

D. Cisco Nexus 5596T

**Correct Answer:** D

**Section:** (none)

**Explanation**

**Explanation/Reference:**

**QUESTION 20**

Which Cisco MDS model supports the most Fibre Channel ports per chassis?

- A. MDS 9513
- B. MDS 9509
- C. MDS 9506
- D. MDS 9250i

**Correct Answer:** A

**Section:** (none)

**Explanation**

**Explanation/Reference:**



**QUESTION 21**

Refer to the exhibit.



Which Cisco MDS chassis supports the 48-Port 16-Gbps Fibre Channel Switching Module?

- A. MDS 9509
- B. MDS 9513
- C. MDS 9710
- D. MDS 9506

**Correct Answer:** C

**Section:** (none)

**Explanation**

**Explanation/Reference:**

**QUESTION 22**

Refer to the exhibit.



What is the name of this rack-mount server?

- A. Cisco UCS C220 Rack-Mount Server
- B. Cisco UCS C240 Rack-Mount Server
- C. Cisco UCS C420 Rack-Mount Server
- D. Cisco UCS C460 Rack-Mount Server

**Correct Answer:** C

**Section:** (none)

**Explanation**

**Explanation/Reference:**



### QUESTION 23

Which supervisor module is supported by a Cisco Nexus 7700 Series Switch?

- A. first-generation supervisor module
- B. second-generation supervisor module (Sup2)
- C. second-generation supervisor enhanced module (Sup2E)
- D. third-generation supervisor enhanced module (Sup3E)

**Correct Answer:** C

**Section:** (none)

**Explanation**

**Explanation/Reference:**

**QUESTION 24**

Which type of optics module is supported by a 12-port 100 GE Cisco Nexus 7700 F3 Series I/O module?

- A. CPAK
- B. QSFP+
- C. SFP/SFP+
- D. CFP

**Correct Answer:** A

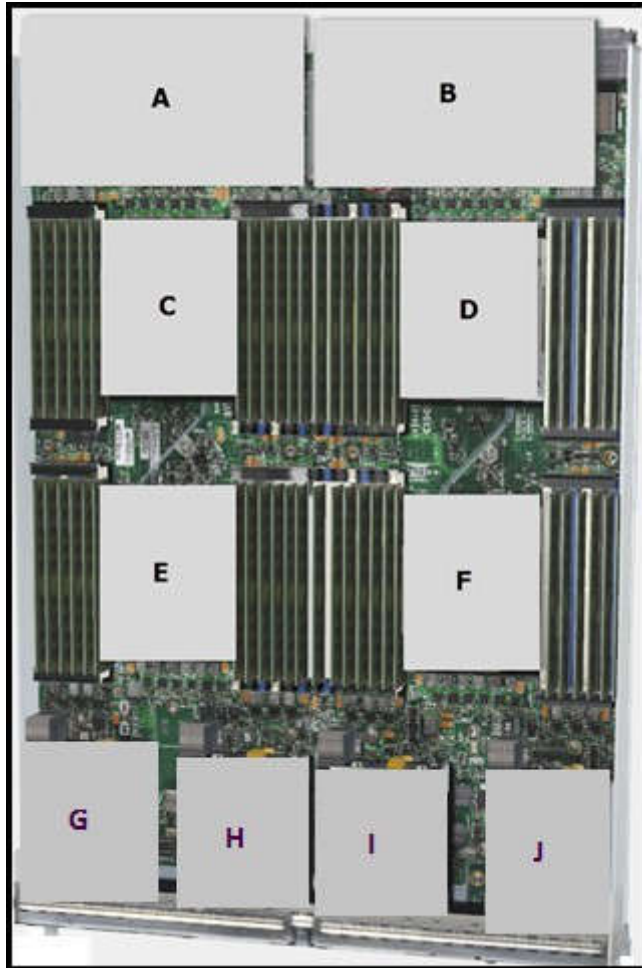
**Section:** (none)

**Explanation**

**Explanation/Reference:**

**QUESTION 25**

Refer to the exhibit.



Which item does A represent?

- A. Emulex Adapter Card for Cisco UCS B420 M3 Blade Servers
- B. Virtual Interface Card for Cisco UCS B420 M3 Blade Servers
- C. mLOM for Cisco UCS B420 M3 Blade Servers
- D. Virtual Emulex Adapter Card for Cisco UCS B420 M3 Blade Servers
- E. SuperCap module for Cisco UCS B420 M3 Blade Servers

**Correct Answer:** C

**Section:** (none)

**Explanation**

**Explanation/Reference:**

**QUESTION 26**

Refer to the exhibit.





The screenshot shows the Cisco Unified Computing System Manager (UCS Manager) interface. The left sidebar displays a 'Fault Summary' and navigation tabs for 'Equipment', 'Servers', 'LUN', 'SAN', 'VM', and 'Admin'. The main area shows a tree view of the UCS Manager hierarchy, including 'Chassis 1', 'IO Modules', 'Servers', 'Fabric Interconnects', and 'Rack-Mounted Servers'. A table lists the components and their versions. Callouts A, B, C, and D point to specific rows in the table.

Name	Model	Running Version	Startup Version	Backup Version	Update Status	Recovery Status
UCS Manager		4.2(1m)	1.4(1m)	N/A	N/A	ready
Chassis 1	Cisco UCS 5103					
IO Module 1	Cisco UCS 2104XP	1.4(1m)	1.4(1m)	1.4(1)	ready	ready
IO Module 2	Cisco UCS 2104XP	1.4(1m)	1.4(1m)	1.4(1)	ready	ready
Server 1 (vince)	Cisco UCS B200 M1					
Interface Card 1	Cisco UCS M81KR	1.4(1m)	1.4(1m)	1.4(1)	ready	ready
EIOS	Cisco UCS B200 M1	S550C-1.4.1.0.120820101100	S550C-1.4.1.1.0.120820101100	N/A	N/A	ready
CLMC Controller	Cisco UCS B200 M1	1.4(1m)	1.4(1m)	1.4(1)	ready	ready
Server 2	Cisco UCS B200 M1					
Server 6	Cisco B200 M1					
Server 7	Cisco UCS B200 M1					
Server 8	Cisco UCS B200 M1					
Fabric Interconnect A (primary)	Cisco UCS 6.40XP	4.2(1)N1(1.4m)	4.2(1)N1(1.4m)	N/A	N/A	ready
Kernel		4.2(1)N1(1.4m)	4.2(1)N1(1.4m)	N/A	N/A	ready
System		4.2(1)N1(1.4m)	4.2(1)N1(1.4m)	N/A	N/A	ready
Fabric Interconnect B (subordinate)	Cisco UCS 6.40XP	4.2(1)N1(1.4m)	4.2(1)N1(1.4m)	N/A	N/A	ready
Kernel		4.2(1)N1(1.4m)	4.2(1)N1(1.4m)	N/A	N/A	ready
System		4.2(1)N1(1.4m)	4.2(1)N1(1.4m)	N/A	N/A	ready
Rack-Mounted Servers						
Servers						

Which call-out accurately shows the current running version of the Cisco UCS Manager management software?

- A. A - UCS Manager running version 1.4(1m)
- B. B - IO Module 1 running version 1.4(1m)

- C. C - Interface Card 1 running version 1.4(1m)
- D. D - Kernel running version 4.2(1)N(1.4m)

**Correct Answer:** A

**Section:** (none)

**Explanation**

**Explanation/Reference:**

#### QUESTION 27

Which command-line interface mode is best described by this prompt?

UCS-switch-A (nxos)#

- A. maintenance mode
- B. EXEC mode
- C. local management mode
- D. global configuration mode
- E. Cisco IOS mode

**Correct Answer:** B

**Section:** (none)

**Explanation**

**Explanation/Reference:**

#### QUESTION 28

Which command can be used to exit to EXEC mode from this current mode?

switch(config-if) #

- A. Ctrl-C
- B. Ctrl-L
- C. quit
- D. exit
- E. end

**Correct Answer:** E  
**Section:** (none)  
**Explanation**

**Explanation/Reference:**

**QUESTION 29**  
Refer to the exhibit.



**Cisco Unified Computing System Manager - F16100-1**

**Fault Summary**

0 33 2 16

Equipment Servers LAN SAN VM Admin

Filter: All

Equipment

- Chassis
  - Chassis 1
    - Fans
    - IO Modules
      - IO Module 1
        - Backplane Ports
        - Fabric Ports
      - IO Module 2
    - PSUs
    - Servers
  - Rock Mounts
  - FCX
  - Servers
- Fabric Interconnects
  - Fabric Interconnect A (primary)
    - Fixed Module
      - Appliance Ports
      - Hot Storage Ports
      - Monitoring Ethernet Ports
      - Server Ports
      - Unconfigured Ethernet Ports
      - Uplink Ethernet Ports
    - Expansion Module 2
    - Fans
    - PSUs
  - Fabric Interconnect B (subordinate)

**General** Physical Ports Fans PSUs Physical Display Faults Events Statistics

**Fault Summary**

0 3 0 4

**Status**

Overall Status: **operable**

Ethernet Mode: **switch**

FC Mode: **end-host**

**Actions**

- Internal Fabric Manager
- LAN Uplinks Manager
- NAS Appliance Manager
- SAN Uplinks Manager
- SAN Storage Manager
- Enable All Ports
- Disable All Ports
- Enable All Server Ports
- Disable All Server Ports
- Enable All Uplink Ethernet Ports
- Disable All Uplink Ethernet Ports
- Enable All Uplink FC Ports

**Physical Display**

Up Admin Link Down

**Properties**

Name: **A**

Product Name: **Cisco UCS 6140XP**

Vendor: **Cisco**

Revision: **0**

Available Memory: **1.052**

PID: **Y10-56200**

Serial Number (SN): **551132702X0**

Total Memory: **3.422 (GB)**

**Part Details**

**Local Storage Information**

**Access**

**High Availability Details**

**VLAN Port Count**

**Firmware**

Boot-loader Version: **v1.3.0(09/00/09)**

Kernel Version: **4.2(1)N1(1.4m)**

System Version: **4.2(1)N1(1.4m)**

Where is the best place to see whether the system is ready for a Fabric Interconnect failover?

- A. A - Overall Status operable
- B. B - L1 Connection
- C. C - Part Details
- D. D - Access
- E. E - High Availability Details

**Correct Answer:** E

**Section:** (none)

**Explanation**

**Explanation/Reference:**

#### **QUESTION 30**

Which command saves the active configuration to NVRAM?

- A. copy startup-config running-config
- B. copy active-config backup-config
- C. copy running-config startup-config
- D. copy backup-config active-config

**Correct Answer:** C

**Section:** (none)

**Explanation**

**Explanation/Reference:**

#### **QUESTION 31**

Refer to the exhibit.



**Fault Summary**

0 47 2 16

Equipment Servers LAN SAN VM Admin

Filter: All

Equipment

- Chassis
  - Chassis 1 (Rack1)
    - Fans
    - IO Modules
      - IO Module 1
        - Backplane Ports
        - Fabric Ports
      - IO Module 2
    - PSUs
      - Psu 1
      - Psu 2
      - Psu 3
      - Psu 4
    - Servers
      - Server 1
      - Server 2
      - Server 6
      - Server 7
      - Server 8
  - Rack-Mounts
    - FEX
    - Servers
  - Fabric Interconnects
    - Fabric Interconnect A (subordinate)
      - Fixed Module
      - Expansion Module 2
      - Fans
      - PSUs
    - Fabric Interconnect B (primary)
      - Fixed Module
      - Expansion Module 2

Equipment Fabric Interconnects Fabric Interconnect A (subordinate) Fabric Interconnect A (subordinate)

General Physical Ports Fans PSUs Physical Display Faults Events Statistics

**Fault Summary**

0 3 0 1

**Status**

Overall Status: **operable**  
Ethernet Mode: **switch**  
FC Mode: **end-host**

**Physical Display**

Up Admin Down Fail Link Down

**Properties**

Name: **A**  
Product Name: **Cisco UCS 6140-P**  
Vendor: **Cisco Systems, Inc**  
Revision: **0**  
Available Memory: **1.69G (GB)**  
PID: **N10-SG200**  
Serial Number (SN): **SS1132202X0**  
Total Memory: **3.422 (GB)**

**Part Details**

**Local Storage Information**

**Access**

**High Availability Details**

**VLAN Port Count**

**Firmware**

Boot loader Version: **v1.3.0(09/08/09)**  
Kernel Version: **4.2(1)N1(1.4m)**  
System Version: **4.2(1)N1(1.4m)**  
Package Version: **1.4(1m)A**

**Actions**

- Internal Fabric Manager
- LAN Uplinks Manager
- NAS Appliance Manager
- SAN Uplinks Manager
- SAN Storage Manager
- Enable All Ports
- Disable All Ports
- Enable All Server Ports
- Disable All Server Ports
- Enable All Uplink Ethernet Ports
- Disable All Uplink Ethernet Ports
- Enable All Uplink FC Ports
- Disable All Uplink FC Ports

Where is the best place to see bootflash free space?

- A. A - Available Memory
- B. B - Total Memory
- C. C - Local Storage Information
- D. D - High Availability Details

**Correct Answer: C**

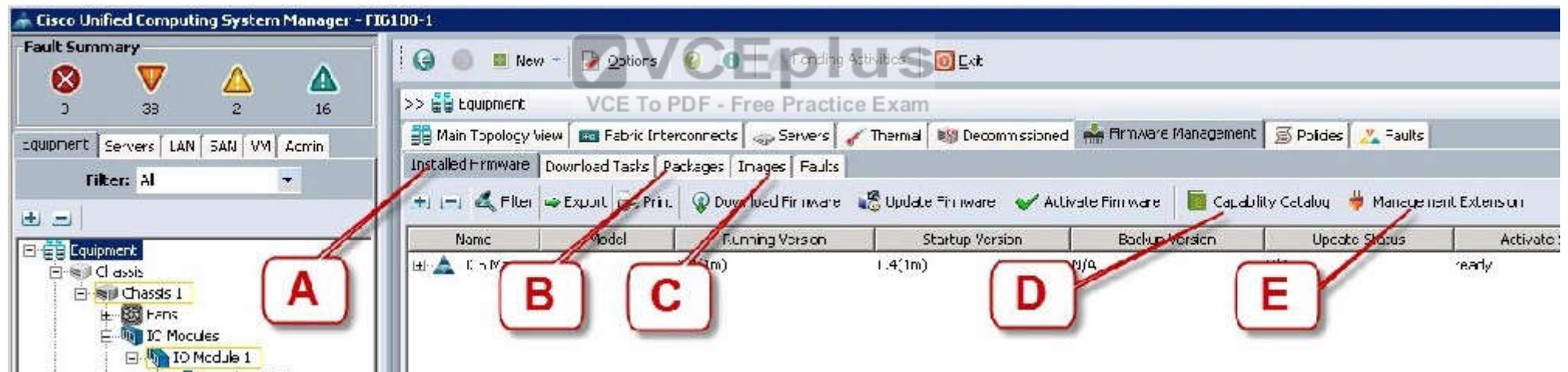
**Section: (none)**

**Explanation**

**Explanation/Reference:**

### QUESTION 32

Refer to the exhibit.



Where is the best place to find the B200 BIOS version used in a specific Cisco UCS Manager version?

- A. A - Installed Firmware
- B. B - Packages
- C. C - Images
- D. D - Capability Catalog

E. E - Management Extension

**Correct Answer:** B

**Section:** (none)

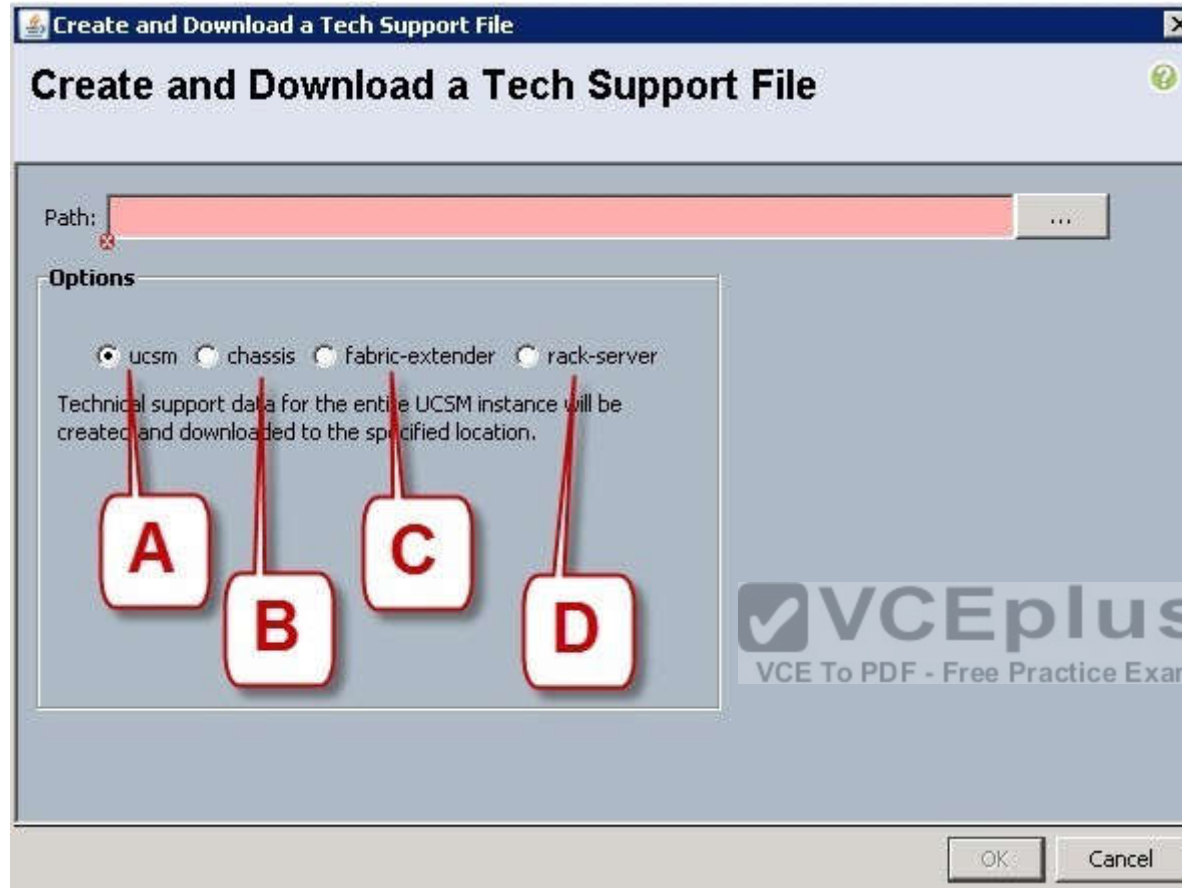
**Explanation**

**Explanation/Reference:**

**QUESTION 33**

Refer to the exhibit.





Which option should you select to get the output of the show tech-support detail command for the Cisco UCS B-Series blade?

- A. A - ucsm
- B. B - chassis
- C. C - fabric-extender
- D. D - rack-server

**Correct Answer:** B

**Section:** (none)

**Explanation**

**Explanation/Reference:****QUESTION 34**

Which command syntax is correct to reset the admin password when the switch is in the kickstart prompt "switch(boot) #"?

- A. exec -> admin-password <password>
- B. connect local-mgmt -> admin-password <password>
- C. configure terminal -> admin-password <password>
- D. connect nxos -> admin-password <password>
- E. admin-password <password>

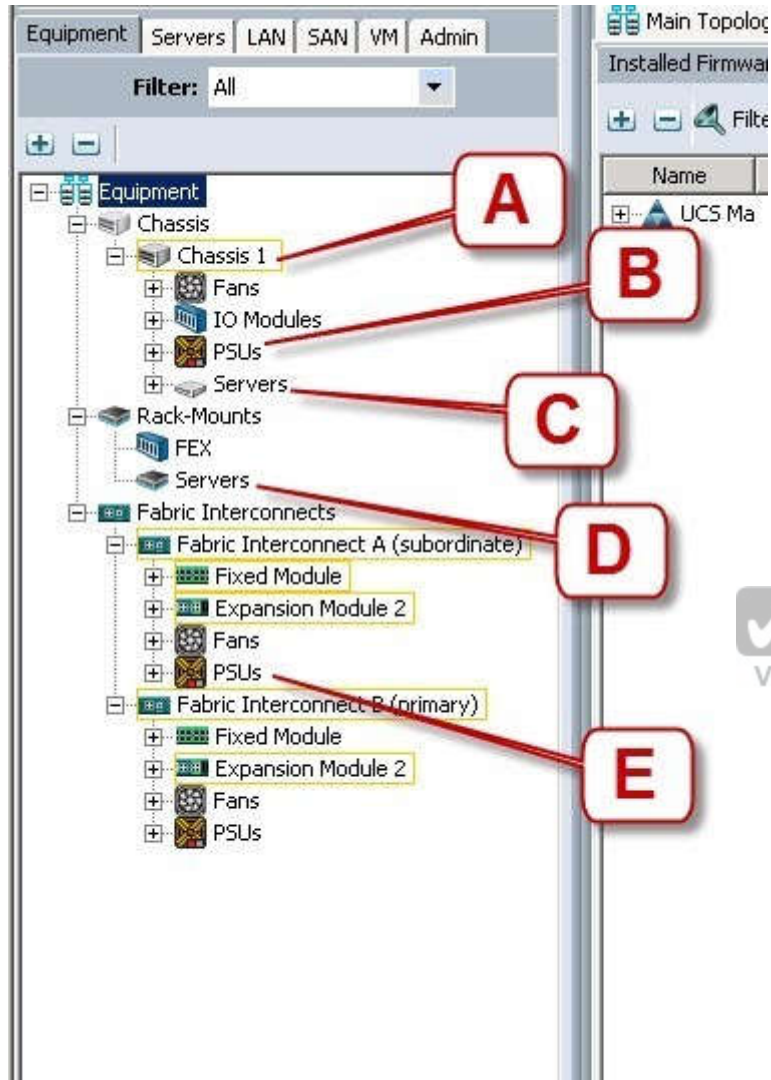
**Correct Answer:** C

**Section:** (none)

**Explanation**

**Explanation/Reference:****QUESTION 35**

Refer to the exhibit.



Where is the best place to see the power supply status of the blade server enclosure?

- A. A - Chassis 1
- B. B - Chassis 1 - PSUs

- C. C - Chassis1 - Servers
- D. D - Rack-Mounts - Servers
- E. E - Fabric Interconnects A - PSUs

**Correct Answer:** B

**Section:** (none)

**Explanation**

**Explanation/Reference:**

### QUESTION 36

To do a password recovery on a Cisco NX-OS Switch, which option shows the correct syntax to display the bootflash contents at the switch(boot)#?

- A. display bootflash:
- B. show bootflash:
- C. dir bootflash:
- D. find bootflash:

**Correct Answer:** C

**Section:** (none)

**Explanation**

**Explanation/Reference:**



### QUESTION 37

Which Cisco NX-OS command displays kernel uptime?

- A. show module
- B. show version
- C. show license
- D. show boot
- E. show interface

**Correct Answer:** B

**Section:** (none)

**Explanation**

**Explanation/Reference:****QUESTION 38**

Which two commands display the version of Cisco NX-OS code that the device is currently running on? (Choose two.)

- A. show version
- B. show module
- C. show interface
- D. show boot
- E. show license

**Correct Answer:** AB

**Section:** (none)

**Explanation**

**Explanation/Reference:****QUESTION 39**

On the Sensors page from the CIMC view, which four tabs are displayed to view further information? (Choose four.)

- A. Power Supply
- B. Fan
- C. Memory
- D. CPU
- E. LEDs
- F. Temperature

**Correct Answer:** ABEF

**Section:** (none)

**Explanation**

**Explanation/Reference:****QUESTION 40**

Which three options are the minimum browser requirements to log into the Cisco CIMC GUI? (Choose three.)

- A. Java 1.6 or higher
- B. HTTP and HTTPS enabled
- C. Adobe Flash Player 10 or higher
- D. Internet Explorer version 10
- E. Firefox 26.0
- F. Adobe Shockwave Player 11 or higher

**Correct Answer:** ABC

**Section:** (none)

**Explanation**

**Explanation/Reference:**

#### QUESTION 41

Which tool does a network administrator not need when installing hardware?

- A. cable tester
- B. wrench set
- C. cable wraps
- D. needle-nose pliers
- E. PCMCIA memory
- F. soldering iron with grounded tip



**Correct Answer:** F

**Section:** (none)

**Explanation**

**Explanation/Reference:**

#### QUESTION 42

When the Cisco UCS Manager is used to verify the B- or C-Series device, which two types of Overall Status are acceptable and do not indicate a failure? (Choose two.)

- A. Online
- B. OK

- C. Unassociated
- D. Active

**Correct Answer:** BC

**Section:** (none)

**Explanation**

**Explanation/Reference:**

#### **QUESTION 43**

What is the correct path to verify the Overall Status of Chassis 1 | Server 3?

- A. Equipment Tab > Chassis > Chassis 1 > Servers > Server 3 Status tab
- B. Equipment Tab > Chassis > Chassis 1 > Servers > Server 3 General tab
- C. Equipment Tab > Chassis > Chassis 1 > Servers > Server 3 FSM tab
- D. Servers Tab > Chassis > Server 3 General tab
- E. Status Tab > Chassis > Chassis 1 > Servers > Server 3
- F. Admin Tab > Chassis > Chassis 1 > Servers > Server 3 General tab

**Correct Answer:** B

**Section:** (none)

**Explanation**

**Explanation/Reference:**

#### **QUESTION 44**

If the Overall Status for a Cisco UCS B-Series Blade Server indicates a failure in the Cisco UCS Manager, such as discovery-failed, which statement is true?

- A. The server shuts down.
- B. The server automatically reboots reboot in 3 minutes.
- C. The endpoints on that server cannot be upgraded.
- D. The server is online, but the administrator cannot assign a service profile to that blade.

**Correct Answer:** C

**Section:** (none)

**Explanation**

**Explanation/Reference:****QUESTION 45**

Which action should the administrator take before physically removing a blade server for maintenance or replacement?

- A. Force the server to shut down.
- B. Disassociate the service profile.
- C. Decommission the server.
- D. Perform a graceful shutdown of the server.

**Correct Answer:** C

**Section:** (none)

**Explanation**

**Explanation/Reference:****QUESTION 46**

Which three statements about powering down a Cisco UCS C-Series Rack-Mount Server to perform maintenance or replacement are true? (Choose three.)

- A. Standby power mode: Power is supplied only to the service processor and the cooling fans, and it is safe to power off the server from this mode.
- B. Power status LED. Green indicates that the server is in main power mode and can be safely powered off.
- C. Graceful shutdown: Press and release the power button. The operating system performs a graceful shutdown, and the server goes to standby mode, which is indicated by an amber power status LED.
- D. Disconnect the power cords from the power supplies in your server to completely power off the server.
- E. Only an emergency shutdown can be performed using the power button on the server front panel.
- F. The Cisco UCS C-Series Rack-Mount Server has only one power mode.

**Correct Answer:** ACD

**Section:** (none)

**Explanation**

**Explanation/Reference:****QUESTION 47**

Which three components are hot swappable in a Cisco UCS Blade Server and Chassis? (Choose three.)



- A. Fabric Extender
- B. Power supply
- C. Heat sink
- D. SAS Hard Drive
- E. 2x8GB Kit DIMMs
- F. Mezzanine card

**Correct Answer:** ABD

**Section:** (none)

**Explanation**

**Explanation/Reference:**

#### QUESTION 48

Which five things should the administrator verify after performing maintenance or replacing a blade server? (Choose five.)

- A. blade server status
- B. hard drive status
- C. host OS boot status
- D. CPU status
- E. mezzanine card status
- F. memory DIMM status
- G. fan and power status

**Correct Answer:** ABDEF

**Section:** (none)

**Explanation**

**Explanation/Reference:**

#### QUESTION 49

Which two statements about DIMM replacement in Cisco UCS Servers are true? (Choose two.)

- A. In blade servers, DIMMs can be installed in either 1, 2, 4, or 8 DIMMs per channel.
- B. Rack-mount and blade servers have memory fault LEDs that indicate which DIMM requires attention.

- C. In servers that require pairs of DIMMs, the pairs must be identical (manufacturer, size, part #, and so on).
- D. If the memory in a server is not fully populated, you can install DIMMs in any open slot.

**Correct Answer:** AC

**Section:** (none)

**Explanation**

**Explanation/Reference:**

#### QUESTION 50

Which three tools are necessary to console into a Cisco UCS C-Series Rack-Mount Server? (Choose three.)

- A. Cisco DB-9-to-RJ-45 console cable
- B. laptop
- C. monitor
- D. keyboard
- E. KVM dongle
- F. USB serial adapter

**Correct Answer:** CDE

**Section:** (none)

**Explanation**

**Explanation/Reference:**

#### QUESTION 51

After installation or replacement of a Cisco UCS C-Series Rack-Mount Server, the host does not boot.

Which four options should be verified? (Choose four.)

- A. Verify the power source to the equipment.
- B. Check for loose HDD cables.
- C. Reseat the DIMMs, CPU, and PCI cards.
- D. Verify that power supplies are receiving power.
- E. Reseat the mezzanine card connector.
- F. Check the CPU sockets for bent pins.

G. Check the Cisco IMC for fan faults.

**Correct Answer:** ACDF

**Section:** (none)

**Explanation**

**Explanation/Reference:**

#### QUESTION 52

Which three firmware components does the Host Upgrade Utility upgrade? (Choose three.)

- A. Fabric Interconnect firmware
- B. LAN on Motherboard
- C. Cisco UCS Manager
- D. CIMC
- E. System BIOS

**Correct Answer:** BDE

**Section:** (none)

**Explanation**

**Explanation/Reference:**



#### QUESTION 53

Which two commands allow you to view the state of high availability between the two clustered Fabric Interconnects? (Choose two.)

- A. show cluster state extended
- B. show cluster extended-state
- C. show cluster HA status
- D. show cluster state

**Correct Answer:** BD

**Section:** (none)

**Explanation**

**Explanation/Reference:**

**QUESTION 54**

Which three troubleshooting procedures do you perform when there is no power to a Cisco UCS B250 M2 Blade Server? (Choose three.)

- A. Decommission and acknowledge the blade.
- B. Check the back of the blade to ensure that there is no damage to the connection that goes into chassis.
- C. Reseat the memory DIMMs.
- D. Check the CPU sockets for bent pins.
- E. Reseat the blade in the same slot in the chassis.
- F. Move the blade to another slot in the chassis.

**Correct Answer:** BEF

**Section:** (none)

**Explanation**

**Explanation/Reference:**

**QUESTION 55**

Which two remote file system methods are used in the training material to transfer firmware to the Fabric Interconnect? (Choose two.)

- A. FTPS
- B. FTP
- C. TFTP
- D. RSH

**Correct Answer:** BC

**Section:** (none)

**Explanation**

**Explanation/Reference:**

**QUESTION 56**

On which three devices can the Host Upgrade Utility be performed? (Choose three.)

- A. C420
- B. C230

- C. B230
- D. B210
- E. C210
- F. B460
- G. C240

**Correct Answer:** AEG

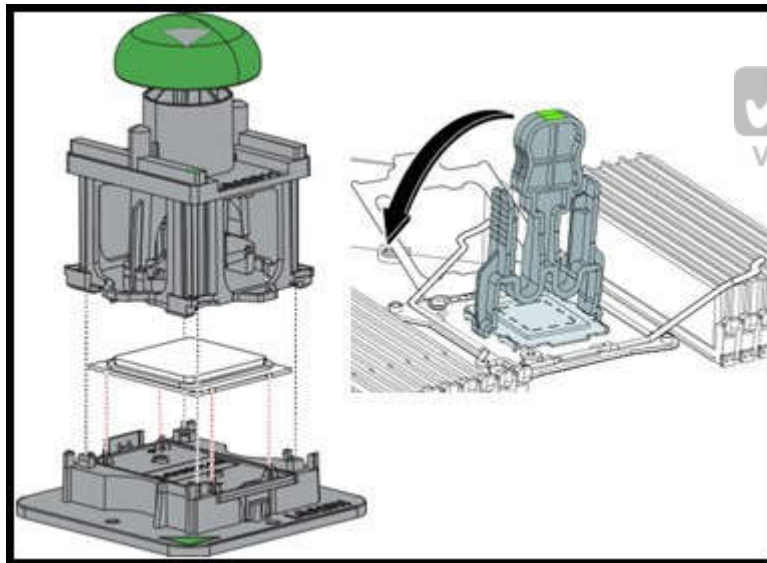
**Section:** (none)

**Explanation**

**Explanation/Reference:**

**QUESTION 57**

Refer to the exhibit.



This image shows a CPU Pick-and-Place tool and a CPU Socket Protective Cap Removal tool.

Which types of Cisco UCS servers and Intel Xeon processors do these tools support?

- A. Cisco UCS B22 Blade Server, C22 Rack Server, and C24 Rack Server with Intel Xeon E5- 2400 Series processors
- B. Cisco UCS B22 Blade Server, C22 Rack Server, and C24 Rack Server with Intel Xeon E5- 2600 Series processors
- C. Cisco UCS B200 M3 Blade Server, B420 M3 Blade Server, C220 Rack Server, C240 Rack Server, and C420 Rack Server with Intel Xeon E5-2400 Series processors
- D. Cisco UCS B200 M3 Blade Server, B420 M3 Blade Server, C220 Rack Server, C240 Rack Server, and C420 Rack Server with Intel Xeon E5-2600 Series processors

**Correct Answer:** D

**Section:** (none)

**Explanation**

**Explanation/Reference:**

#### QUESTION 58

When a host firmware package policy is created, what must it be associated with to upgrade the BIOS?

- A. blade or blade pool
- B. service profile
- C. boot policy
- D. service template

**Correct Answer:** B

**Section:** (none)

**Explanation**

**Explanation/Reference:**

#### QUESTION 59

Up to what speed can Category 5 UTP cable transmit data?

- A. 10 Mb/s
- B. 100 Mb/s
- C. 1000 Mb/s
- D. 10000 Mb/s

**Correct Answer:** C

**Section:** (none)

**Explanation****Explanation/Reference:****QUESTION 60**

Up to what speed can Category 5e UTP cable transmit data?

- A. 10 Mb/s
- B. 100 Mb/s
- C. 1000 Mb/s
- D. 10000 Mb/s

**Correct Answer:** C

**Section:** (none)

**Explanation****Explanation/Reference:****QUESTION 61**

What is the maximum distance that the 40GBASE-LR4 Ethernet standard can span?

- A. 550 m
- B. 10 km
- C. 40 km
- D. 80 km

**Correct Answer:** B

**Section:** (none)

**Explanation****Explanation/Reference:****QUESTION 62**

Refer to the exhibit.



Which three options are features of the Cisco UCS 6248UP Fabric Interconnect front panel? (Choose three.)

- A. Console port
- B. FCoE port
- C. 10 Gb/s port
- D. Fan module
- E. USB port

**Correct Answer:** ADE

**Section:** (none)

**Explanation**

**Explanation/Reference:**

### QUESTION 63

Which two statements about the Cisco Nexus 5596UP switch are true? (Choose two.)

- A. Its power supplies and fan trays are hot-swappable.
- B. It supports unified ports.
- C. It is offered in a one-rack-unit form factor.
- D. It has one expansion slot.
- E. It supports up to 96 10G BASE-T ports.

**Correct Answer:** AB

**Section:** (none)

**Explanation**

**Explanation/Reference:**



**QUESTION 64**

Which two Cisco Nexus switches provide the foundation of the Cisco Application Centric Infrastructure? (Choose two.)

- A. Cisco Nexus 7718 switch
- B. Cisco Nexus 9508 switch
- C. Cisco Nexus 7710 switch
- D. Cisco Nexus 93128TX switch
- E. Cisco Nexus 6004 switch

**Correct Answer:** BD

**Section:** (none)

**Explanation**

**Explanation/Reference:**

**QUESTION 65**

Which type of optics module is supported by a 6-port 40 GE Cisco Nexus 7000 M2 Series I/O module?

- A. CPAK
- B. QSFP+
- C. SFP/SFP+
- D. CFP

**Correct Answer:** B

**Section:** (none)

**Explanation**

**Explanation/Reference:**

**QUESTION 66**

How many 10GBASE-T port licenses are preinstalled on a Cisco Nexus 3064-32T?

- A. 16
- B. 32
- C. 48

D. 64

**Correct Answer:** B

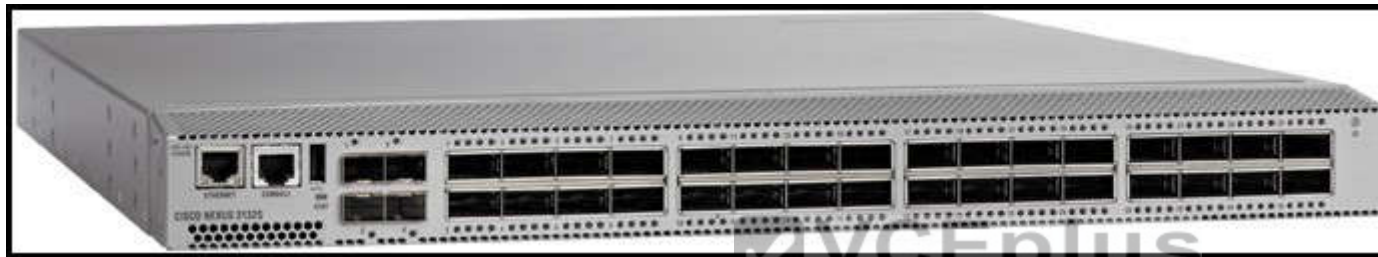
**Section:** (none)

**Explanation**

**Explanation/Reference:**

**QUESTION 67**

Refer to the exhibit.



What is the name of this Cisco Nexus 3000 Series Switch?

- A. Cisco Nexus 3132Q
- B. Cisco Nexus 3172PQ
- C. Cisco Nexus 3524
- D. Cisco Nexus 3016

**Correct Answer:** A

**Section:** (none)

**Explanation**

**Explanation/Reference:**

**QUESTION 68**

What is the maximum number of supervisor modules that the Cisco MDS 9710 Switch supports?

- A. 1

- B. 2
- C. 4
- D. 6
- E. 8

**Correct Answer:** B

**Section:** (none)

**Explanation**

**Explanation/Reference:**

#### **QUESTION 69**

Which device provides analysis of Fibre Channel traffic without any network disruption?

- A. Cisco MDS 9000 Data Analyzer Adapter
- B. Cisco MDS 9000 Port Analyzer Adapter
- C. Cisco MDS 9000 Channel Analyzer Device
- D. Cisco MDS 9000 Channel Analyzer Adapter

**Correct Answer:** B

**Section:** (none)

**Explanation**

**Explanation/Reference:**

#### **QUESTION 70**

Which three steps do you perform to troubleshoot when a rack server powers on with no video? (Choose three.)

- A. Check that the front I/O dongle is properly seated.
- B. Check the front I/O cable connection to the motherboard.
- C. Check for memory subsystem failure.
- D. Verify the power source to equipment.
- E. Reseat the DIMMs, CPU, and PCI cards.

**Correct Answer:** ABC

**Section:** (none)

**Explanation****Explanation/Reference:****QUESTION 71**

Drag the password recovery procedures on a Cisco NX-OS switch from the left to the right and place them in order.

**Select and Place:**

Drag the password recovery procedures on a Cisco NX-OS switch from the left to the right and place them in order	
Log in to the switch using the new administrator password.	Step 1
Reset the network administrator password.	Step 2
Load the Cisco NX-OS system software image.	Step 3
Power-cycle the switch.	Step 4
Reset the new password to ensure that it is also the Simple Network Management Protocol (or SNMP) password.	Step 5
To enter the boot prompt mode, press the Ctrl-J key sequence from the console port session when the switch begins the Cisco NX-OS software boot sequence.	Step 6
Save the configuration.	Step 7
Display the bootflash: contents to locate the Cisco NX-OS software image.	Step 8

**Correct Answer:**

Drag the password recovery procedures on a Cisco NX-OS switch from the left to the right and place them in order	
	Power-cycle the switch.
	To enter the boot prompt mode, press the Ctrl-J key sequence from the console port session when the switch begins the Cisco NX-OS software boot sequence.
	Reset the network administrator password.
	Display the bootflash: contents to locate the Cisco NX-OS software image.
	Load the Cisco NX-OS system software image.
	Log in to the switch using the new administrator password.
	Reset the new password to ensure that it is also the Simple Network Management Protocol (or SNMP) password.
	Save the configuration.

**Section: (none)**

**Explanation**

**Explanation/Reference:**

**QUESTION 72**

Drag the cable or connector on the left to the correct interface on the right.

**Select and Place:**

Drag the cable or connector on the left to the correct interface on the right.	
KVM dongle	Fabric Interconnect to Fabric Extender
straight-through Ethernet cable	console port
mini USB cable	MDS
Twinax cable	C-Series Rack Server
Fiber Channel SFP	from laptop to Management Port
rolled RJ-45 cable	
SAS cable	

**Correct Answer:**

Drag the cable or connector on the left to the correct interface on the right.

	Twinx cable
	rolled RJ-45 cable
mini USB cable	Fiber Channel SFP
	KVM dongle
	straight-through Ethernet cable
SAS cable	

**Section: (none)**

**Explanation**

**Explanation/Reference:**