

300-630.VCEplus.premium.exam.60q

Number: 300-630  
Passing Score: 800  
Time Limit: 120 min  
File Version: 1.0



**Website:** <https://vceplus.com> - <https://vceplus.co>  
**VCE to PDF Converter:** <https://vceplus.com/vce-to-pdf/>  
**Facebook:** <https://www.facebook.com/VCE.For.All.VN/>  
**Twitter :** [https://twitter.com/VCE\\_Plus](https://twitter.com/VCE_Plus)

300-630

Implementing Cisco Application Centric Infrastructure - Advanced

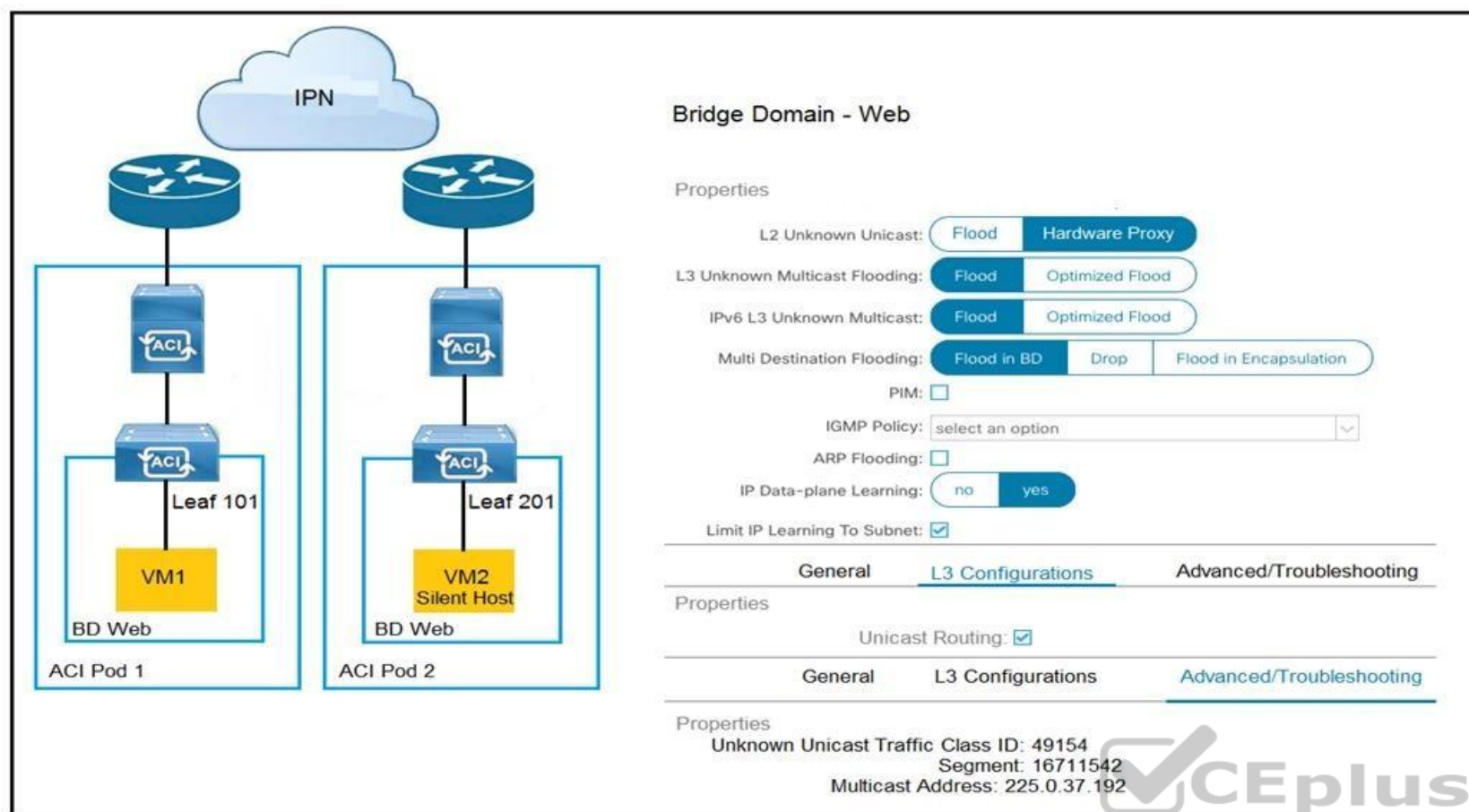


#### Sections

1. ACI Packet Forwarding
2. Advanced ACI Policies and Integrations
3. Multipod
4. Multisite
5. Traditional network with ACI

Exam A

QUESTION 1



Refer to the exhibit. How is the ARP request from VM1 forwarded when VM2 is not learned in the Cisco ACI fabric?

- A. Leaf 101 forwards the ARP request to one of the proxy VTEP spines.
- B. POD1 spine responds to the ARP request after the POD1 COOP is updated with the VM2 location.
- C. Leaf 101 encapsulates the ARP request into a multicast packet that is destined to 225.0.37.192.
- D. Leaf 101 switch consumers the ARP reply of VM2 to update the local endpoint table.

**Correct Answer:** A

**Section:** ACI Packet Forwarding

**Explanation**

**Explanation/Reference:**

**QUESTION 2** Which approach does Cisco ACI use to achieve multidestination packet forwarding between leaf switches in the same fabric?

- A. Map VXLAN VTEP to the multicast group
- B. Map VXLAN to PIM-SM protocol
- C. Map VXLAN VNI to the multicast group
- D. Map VXLAN to PIM-DM protocol

**Correct Answer:** C

**Section:** ACI Packet Forwarding

**Explanation**

**Explanation/Reference:**

### QUESTION 3

What does the VXLAN source port add to the overlay packet forwarding when it uses the hash of Layer 2, Layer 3, and Layer 4 headers of the inner packet?

- A. ECMP
- B. TCP optimization
- C. disabled fragmentation
- D. jumbo frames

**Correct Answer:** A

**Section:** ACI Packet Forwarding

**Explanation**

**Explanation/Reference:**

Reference: <https://www.cisco.com/c/en/us/support/docs/lan-switching/vlan/212682-virtual-extensible-lan-and-ethernet-virt.html>

### QUESTION 4

Which two actions are the Cisco best practices to configure NIC teaming load balancing for Cisco UCS B-Series blades that are connected to the Cisco ACI leaf switches? (Choose two.)

- A. Create vPC+
- B. Enable LACP active mode
- C. Create PAgP
- D. Create vPC
- E. Enable MAC pinning

**Correct Answer:** BE

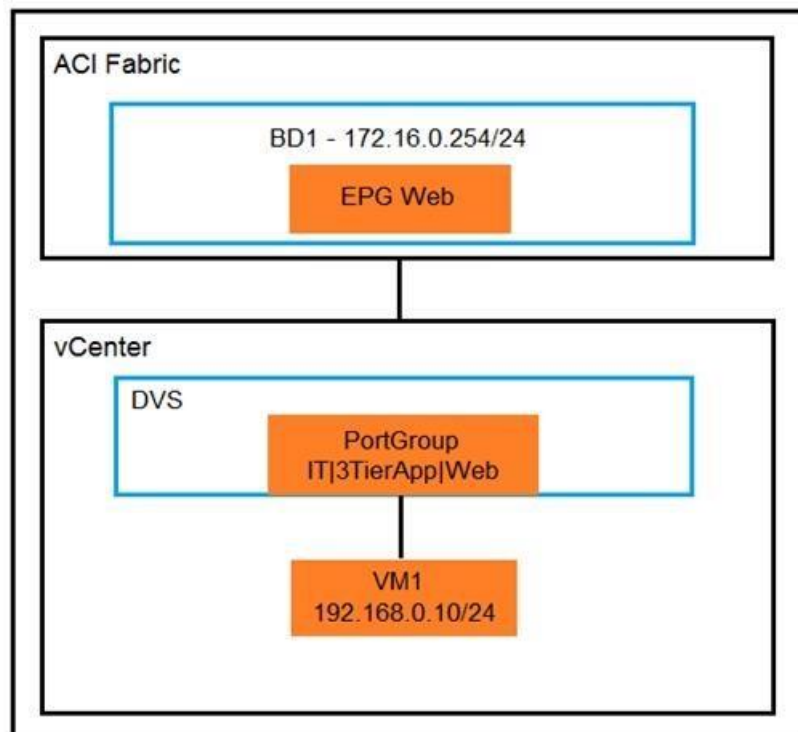
**Section:** ACI Packet Forwarding

**Explanation**

**Explanation/Reference:**



### QUESTION 5



An organization migrates its virtualized servers from a legacy environment to Cisco ACI. VM1 is incorrectly attached to PortGroup IT|3TierApp|Web. Which action limits IP address learning in BD1?

- A. Enable Enforce Subnet Check

- B. Enable Rouge Endpoint Control
- C. Enable GARP-based EP Move Detection Mode
- D. Disable Remote EP Learn

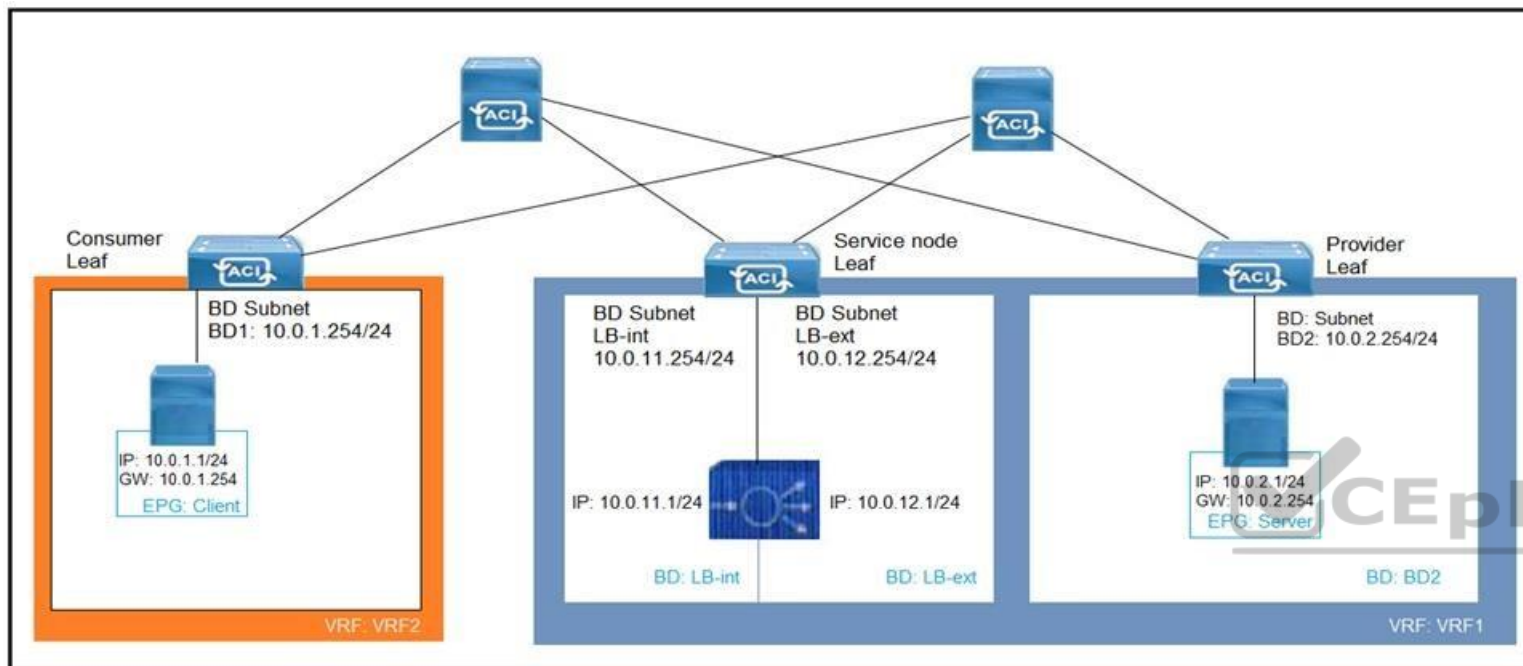
**Correct Answer: C**

**Section: ACI Packet Forwarding**

**Explanation**

**Explanation/Reference:**

#### QUESTION 6



Refer to the exhibit. What must be configured to allow the PBR node (LB-int) to monitor the availability of the endpoint that is in the EPG server?

- A. Endpoint Dataplane Learning
- B. Unicast Route disabled for client and server bridge domains
- C. PBR node tracking
- D. Direct Connect in the service graph template

**Correct Answer: A**

**Section: ACI Packet Forwarding**

**Explanation**

**Explanation/Reference:**

#### QUESTION 7

An engineer must limit local and remote endpoint learning to the bridge domain subnet. Which action should be taken inside the Cisco APIC?

- A. Disable Remote EP Learn
- B. Enable Enforce Subnet Check
- C. Disable Endpoint Dataplane Learning
- D. Enable Limit IP Learning to Subnet

**Correct Answer:** B  
**Section:** ACI Packet Forwarding  
**Explanation**

**Explanation/Reference:**

Reference: <https://www.cisco.com/c/en/us/solutions/collateral/data-center-virtualization/application-centric-infrastructure/white-paper-c11-739989.html>

**QUESTION 8** What is the purpose of the Forwarding Tag (FTAG) in Cisco ACI?

- A. FTAG is used in Cisco ACI to add a label to the iVXLAN traffic in the fabric to apply the correct policy.
- B. FTAG is used in Cisco ACI to add a label to the VXLAN traffic in the fabric to apply the correct policy.
- C. FTAG trees in Cisco ACI are used to load balance unicast traffic.
- D. FTAG trees in Cisco ACI are used to load balance multi-destination traffic.

**Correct Answer:** D  
**Section:** ACI Packet Forwarding  
**Explanation**

**Explanation/Reference:**

Reference: [https://www.cisco.com/c/en/us/td/docs/switches/datacenter/aci/apic/sw/1-x/aci-fundamentals/b\\_ACI-Fundamentals/b\\_ACI-Fundamentals\\_chapter\\_010010.html#concept\\_1E8BF286E1C043EF839D80935FDF9F50](https://www.cisco.com/c/en/us/td/docs/switches/datacenter/aci/apic/sw/1-x/aci-fundamentals/b_ACI-Fundamentals/b_ACI-Fundamentals_chapter_010010.html#concept_1E8BF286E1C043EF839D80935FDF9F50)

**QUESTION 9**  
 DRAG DROP

A leaf receives unicast traffic that is destined to an unknown source, and spine proxy is enabled in the corresponding bridge domain. Drag and drop the Cisco ACI forwarding operations from the left into the order the operation occurs on the right.

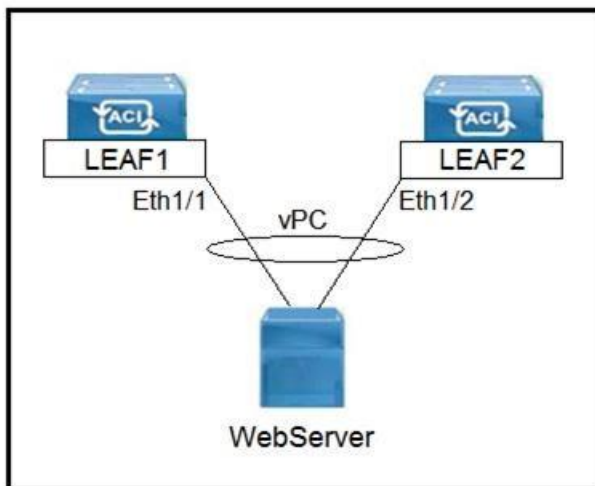
**Select and Place:**

**Correct Answer:**

**Section:** ACI Packet Forwarding  
**Explanation**

**Explanation/Reference:**

**QUESTION 10**



Refer to the exhibit. Which three actions should be taken to implement the vPC in the Cisco ACI fabric? (Choose three.)

- A. Select a common vPC interface policy group
- B. Select individual interface profiles

- C. Select common interface profiles
- D. Select individual switch profiles
- E. Select common switch profiles

**Correct Answer:** ABE

**Section:** Advanced ACI Policies and Integrations

**Explanation**

**Explanation/Reference:**

**QUESTION 11** Which action should be taken in Cisco ACI to reassign a unique globally scoped pcTag to an EPG that provides a global contract?

- A. Configure subnets that are treated as virtual IP
- B. Configure subnets that advertise externally
- C. Configure subnets that are shared between VRFs
- D. Configure subnets that are private to VRF

**Correct Answer:** C

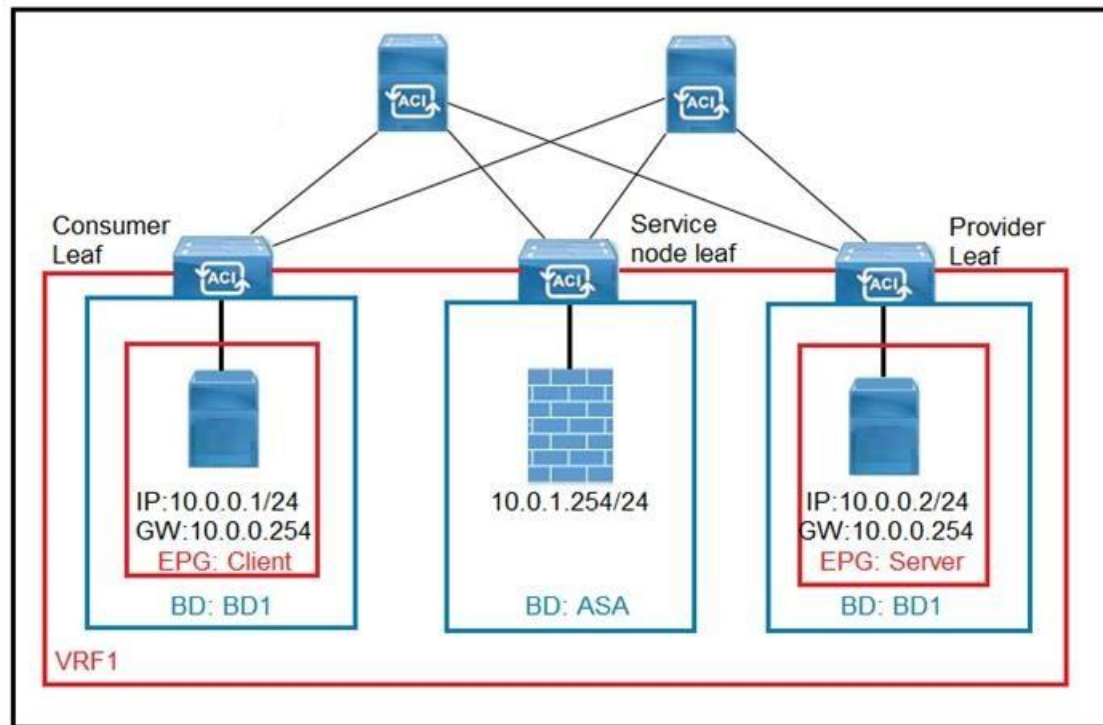
**Section:** Advanced ACI Policies and Integrations

**Explanation**

**Explanation/Reference:**

Reference: <https://www.cisco.com/c/en/us/support/docs/cloud-systems-management/application-policy-infrastructure-controller-apic/119023-technote-apic-00.html>

**QUESTION 12**



Refer to the exhibit. What must be configured in the service graph to redirect HTTP traffic between the EPG client and EPG server to go through the Cisco ASA firewall?

- A. contract filter to allow ARP and HTTP
- B. precise filter to allow only HTTP traffic
- C. contract with no filter
- D. permit-all contract filter

Correct Answer: A

Section: Advanced ACI Policies and Integrations

Explanation

Explanation/Reference:

### QUESTION 13

Filter - SSH

[Policy](#) [Faults](#) [History](#)

Properties

Name: SSH

Alias:

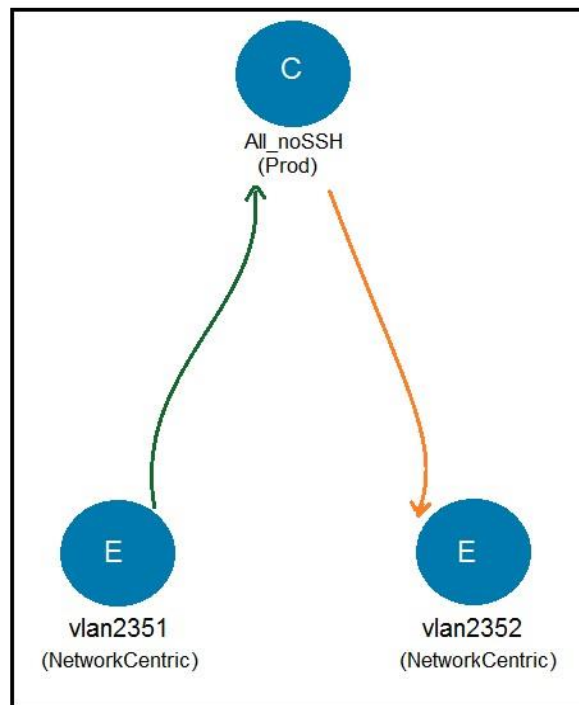
Description: optional

Tags:   
enter tags separated by comma

Global Alias:

Entries:

Name	Alias	EtherType	ARP Flag	IP Protocol	Match Only Fragment	Stateful	Source Port/Range		Destination Port/Range	
							From	To	From	To
ssh		IP		tcp	False	False	unspecified	unspecified	22	22



Refer to the exhibits. Which subject must be configured for the All\_noSSH contract to allow all IP traffic except SSH between the two EPGs?



Apply Both Directions: false  
Reverse Filter Ports: ☐

Filters:

Name	Action	Priority
common/ip	permit	default level
Prod/SSH	Deny	highest priority

Apply Both Directions: false  
Reverse Filter Ports: ☐

Filters:

Name	Action	Priority
common/ip	permit	default level
Prod/SSH	Deny	lowest priority

Apply Both Directions: true  
Reverse Filter Ports: ☐

Filters:

Name	Tenant	Action	Priority
SSH	Prod	Deny	highest priority
ip	common	permit	default level

Apply Both Directions: true  
Reverse Filter Ports: ☒

Filters:

Name	Tenant	Action	Priority
SSH	Prod	Deny	lowest priority
ip	common	permit	default level

A.

B.



C.

D.

**Correct Answer: D**

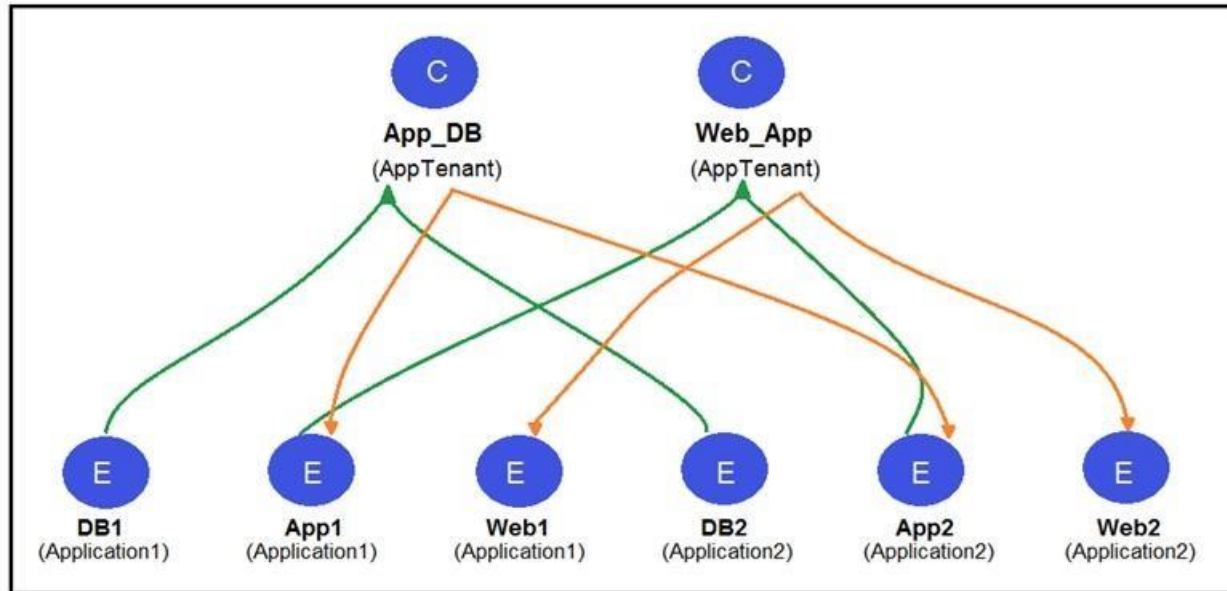
**Section: Advanced ACI Policies and Integrations**

**Explanation**

**Explanation/Reference:**

Reference: [https://www.cisco.com/c/en/us/td/docs/switches/datacenter/aci/apic/sw/1-x/ACI\\_Best\\_Practices/b\\_ACI\\_Best\\_Practices/b\\_ACI\\_Best\\_Practices\\_chapter\\_010.html](https://www.cisco.com/c/en/us/td/docs/switches/datacenter/aci/apic/sw/1-x/ACI_Best_Practices/b_ACI_Best_Practices/b_ACI_Best_Practices_chapter_010.html)

**QUESTION 14**



Refer to the exhibit. Two application profiles are configured in the same tenant and different VRFs. Which contract scope is configured to allow communication between the two application profiles?

- A. global
- B. VRF
- C. application
- D. tenant

**Correct Answer: D**

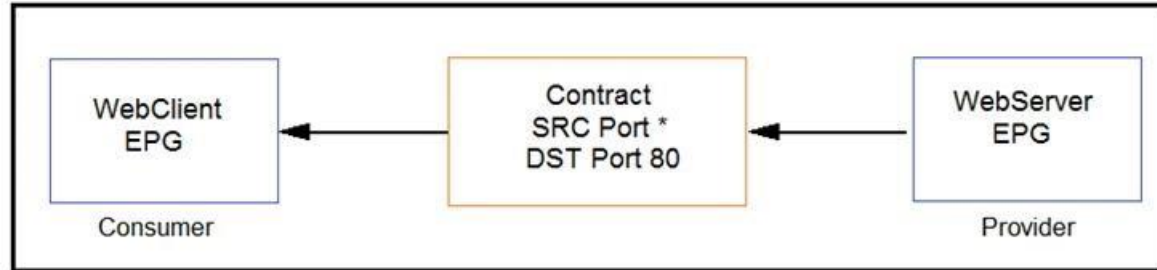
## Section: Advanced ACI Policies and Integrations

### Explanation

#### Explanation/Reference:

Reference: [https://www.cisco.com/c/en/us/td/docs/switches/datacenter/aci/apic/sw/1-x/Operating\\_ACI/guide/b\\_Cisco\\_Operating\\_ACI/b\\_Cisco\\_Operating\\_ACI\\_chapter\\_01000.html](https://www.cisco.com/c/en/us/td/docs/switches/datacenter/aci/apic/sw/1-x/Operating_ACI/guide/b_Cisco_Operating_ACI/b_Cisco_Operating_ACI_chapter_01000.html) **QUESTION**

15



Refer to the exhibit. Which combination of flags in the Cisco ACI contract allows a client in WebClient EPG to establish an HTTP connection toward a server in WebServer EPG?

- A. Apply Both Direction ENABLED and Reverse Port Filter ENABLED
- B. Apply Both Direction DISABLED and Reverse Port Filter DISABLED
- C. Apply Both Direction DISABLED and Reverse Port Filter ENABLED
- D. Apply Both Direction ENABLED and Reverse Port Filter DISABLED

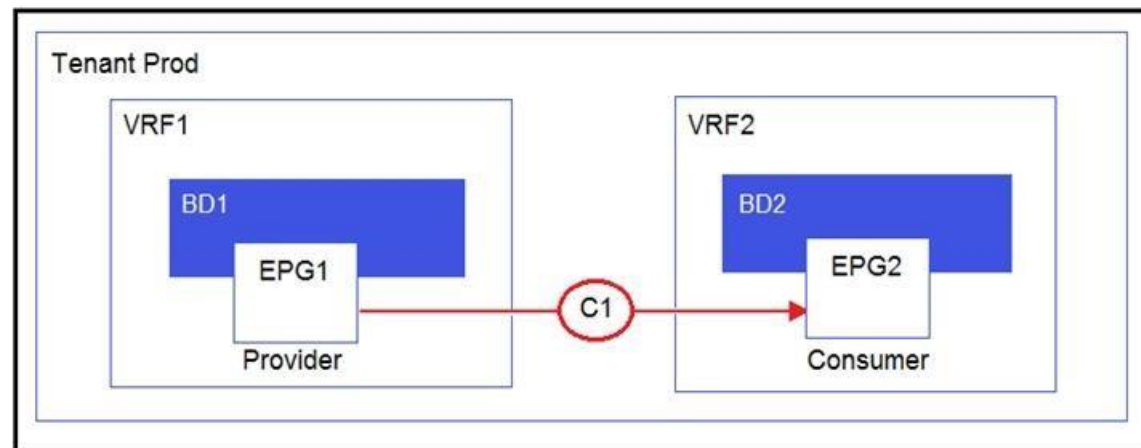
**Correct Answer: C**

## Section: Advanced ACI Policies and Integrations

### Explanation

#### Explanation/Reference:

**QUESTION 16**



Refer to the exhibit. Which two configurations enable inter-VRF communication? (Choose two.)

- A. Set the subnet scope to Shared Between VRFs
- B. Enable Advertise Externally under the subnet scope
- C. Change the contract scope to Tenant
- D. Change the subject scope to VRF
- E. Export the contract and import as a contract interface

**Correct Answer: BE**

## Section: Advanced ACI Policies and Integrations

### Explanation

#### Explanation/Reference:

#### QUESTION 17

Which two actions should be taken to ensure a scalable solution when multiple EPGs in a VRF require unrestricted communication? (Choose two.)

- A. Configure a taboo contract between the EPGs that require unrestricted communication between each other.
- B. Enable Preferred Group Member under the EPG Collection for VRF section.
- C. Set the VRF policy control enforcement preference to Unenforced.
- D. Set the EPGs that require unrestricted communication between each other as preferred group members.
- E. Set the EPGs that require policy enforcement between each other as preferred group members.

**Correct Answer:** CD

**Section:** Advanced ACI Policies and Integrations

**Explanation**

**Explanation/Reference:**

Reference: [https://www.cisco.com/c/en/us/td/docs/switches/datacenter/aci/apic/sw/4-x/basic-configuration/Cisco-APIC-Basic-Configuration-Guide-42x/Cisco-APIC-Basic-Configuration-Guide-42x\\_chapter\\_0110.html](https://www.cisco.com/c/en/us/td/docs/switches/datacenter/aci/apic/sw/4-x/basic-configuration/Cisco-APIC-Basic-Configuration-Guide-42x/Cisco-APIC-Basic-Configuration-Guide-42x_chapter_0110.html)

**QUESTION 18** Which two components must be configured as stretched to establish intra-VRF communication between two EPGs that are deployed in different sites and different bridge domains? (Choose two.)

- A. contract
- B. tenant
- C. application profile
- D. bridge domain
- E. EPG

**Correct Answer:** DE

**Section:** Advanced ACI Policies and Integrations

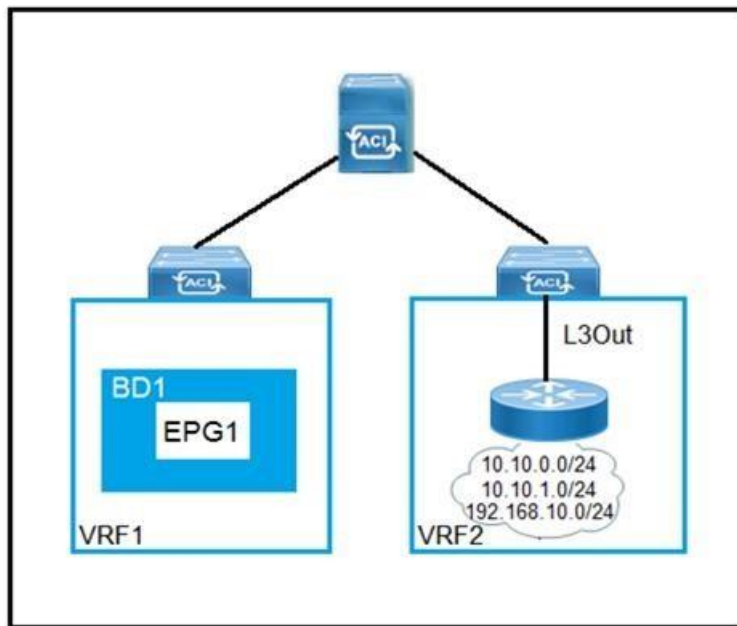
**Explanation**

**Explanation/Reference:**

Reference: <https://www.cisco.com/c/en/us/solutions/collateral/data-center-virtualization/application-centric-infrastructure/white-paper-c11-739609.html>

#### QUESTION 19

DRAG DROP



Refer to the exhibit. Drag and drop the subnets and flags from the left into the External Network Instance Profile policies on the right to create a setup that advertises only 10.10.0.0/24 and 10.10.1.0/24 prefixes in VRF1 and establishes connectivity between VRFs. Not all options are used.

Select and Place:

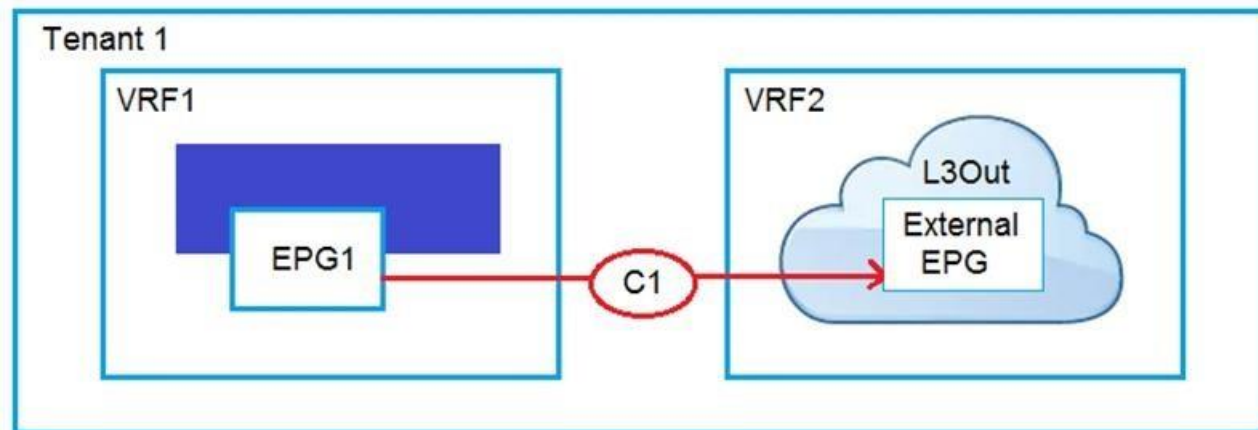
Correct Answer:

Section: Advanced ACI Policies and Integrations

Explanation

Explanation/Reference:

#### QUESTION 20



Refer to the exhibit. An engineer must have communication between EPG1 in VRF1 and External EPG in VRF2. Which three actions should be taken for the defined subnets in the L3Out External EPG to accomplish this goal? (Choose three.)

- A. Enable Shared Route Control Subnet
- B. Enable External Subnets for External EPG
- C. Enable Export Route Control Subnet
- D. Enable Shared Security Import Subnet
- E. Enable Aggregate Shared Routes
- F. Enable Import Route Control Subnet



Correct Answer: CDF

Section: Advanced ACI Policies and Integrations

Explanation

Explanation/Reference:

Reference: <https://www.cisco.com/c/en/us/solutions/collateral/data-center-virtualization/application-centric-infrastructure/guide-c07-743150.html>

#### QUESTION 21

DRAG DROP

Drag and drop the tenant implementation designs from the left onto the outcomes of the design when a greenfield Cisco ACI fabric is deployed on the right.

Select and Place:

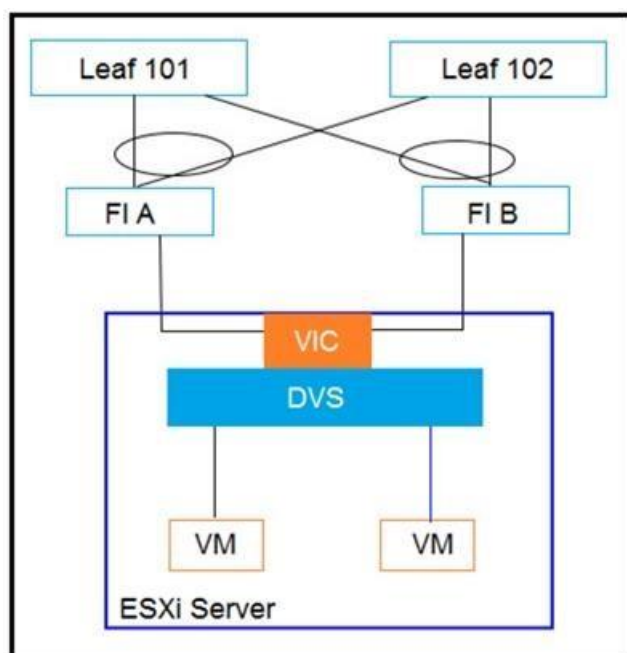
Correct Answer:

Section: Advanced ACI Policies and Integrations

Explanation

Explanation/Reference:

#### QUESTION 22



Refer to the exhibit. Between Cisco UCS FIs and Cisco ACI leaf switches, CDP is disabled, the LLDP is enabled, and LACP is in Active mode. Which two discovery protocols and load-balancing mechanism combinations can be implemented for the DVS? (Choose two.)

- A. CDP enabled, LLDP disabled, and LACP Active
- B. CDP disabled, LLDP enabled, and MAC Pinning
- C. CDP enabled, LLDP disabled, and MAC Pinning
- D. CDP enabled, LLDP enabled, and LACP Active
- E. CDP enabled, LLDP disabled, and LACP Passive
- F. CDP disabled, LLDP enabled, and LACP Passive

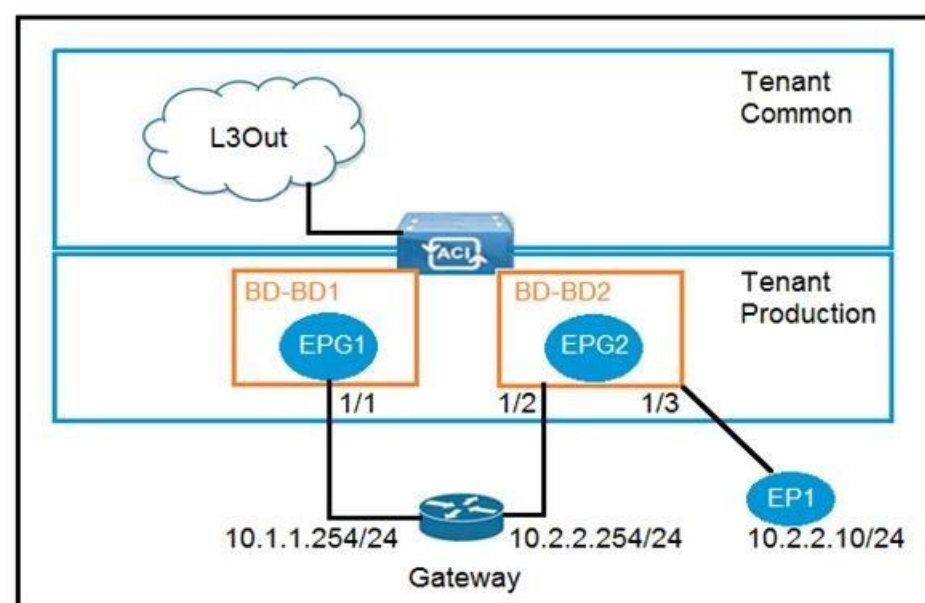
**Correct Answer:** BE

**Section:** Advanced ACI Policies and Integrations

**Explanation**

**Explanation/Reference:**

#### QUESTION 23



Refer to the exhibit. An engineer wants to avoid connectivity problems for the endpoint EP1 when it reaches an external L3Out network through the gateway 10.2.2.254/24. Which two configurations must be implemented in BD-BD2? (Choose two.)

- A. Disable unicast routing
- B. Enable IP data plane learning for the VRF
- C. Disable ARP flooding
- D. Enable ARP flooding
- E. Enable unicast routing

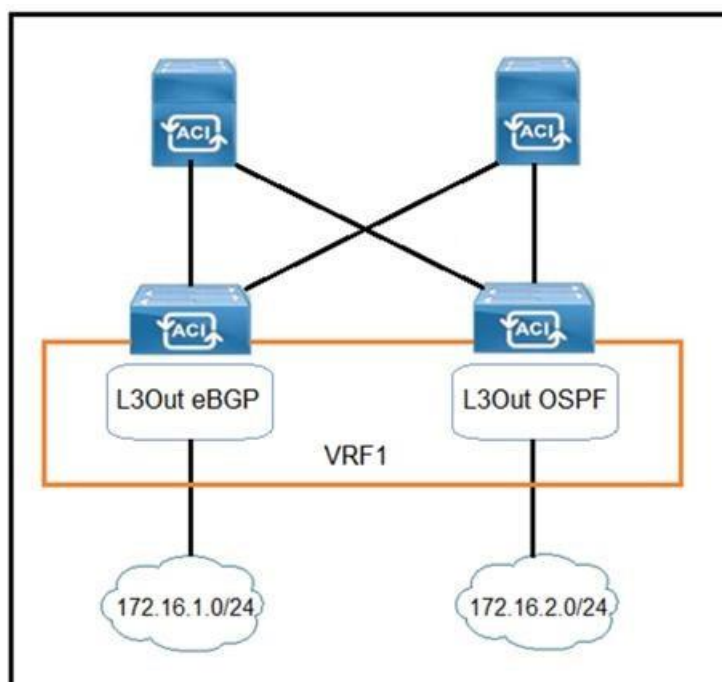
**Correct Answer:** AC

**Section:** Advanced ACI Policies and Integrations

**Explanation**

**Explanation/Reference:**

#### QUESTION 24



Refer to the exhibit. Which configuration must be implemented on L3Out EBGp to advertise out of the fabric 172.16.2.0/24 network that is learned from L3Out OSPF? A.

Create Subnet  
Specify the Subnet

IP Address:   
address/mask

scope: ☒ Export Route Control Subnet  
☐ Import Route Control Subnet  
☐ External Subnets for the External EPG  
☐ Shared Route Control Subnet  
☐ Shared Security Import Subnet

Create Subnet  
Specify the Subnet

IP Address:   
address/mask

scope: ☒ Export Route Control Subnet  
☐ Import Route Control Subnet  
☐ External Subnets for the External EPG  
☐ Shared Route Control Subnet  
☐ Shared Security Import Subnet

B.

Create Subnet  
Specify the Subnet

IP Address:   
address/mask

scope: ☐ Export Route Control Subnet  
☐ Import Route Control Subnet  
☒ External Subnets for the External EPG  
☐ Shared Route Control Subnet  
☐ Shared Security Import Subnet

Create Subnet  
Specify the Subnet

IP Address:   
address/mask

scope: ☐ Export Route Control Subnet  
☐ Import Route Control Subnet  
☒ External Subnets for the External EPG  
☐ Shared Route Control Subnet  
☐ Shared Security Import Subnet

C.





D.

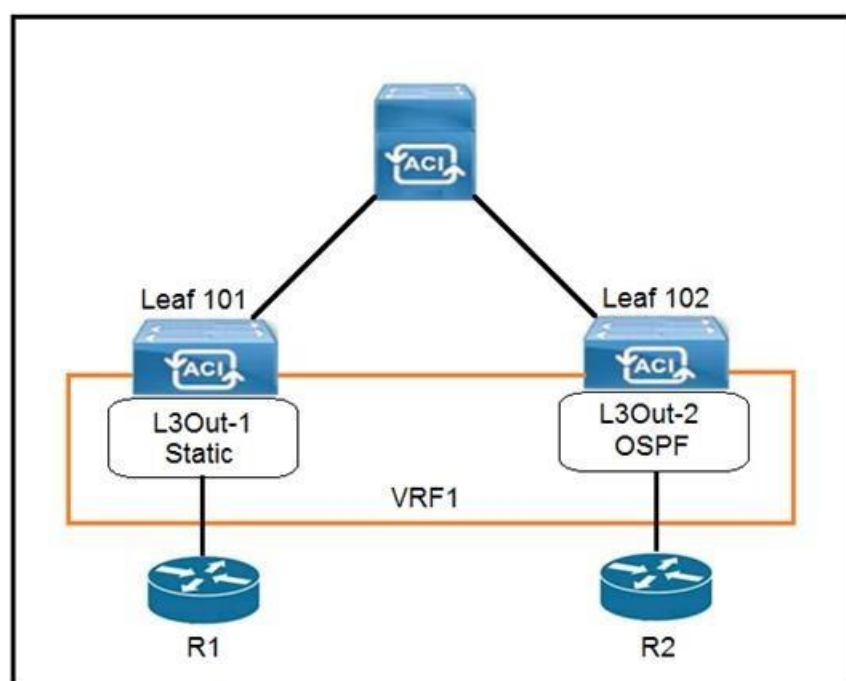
**Correct Answer: A**

**Section: Advanced ACI Policies and Integrations**

**Explanation**

**Explanation/Reference:**

#### QUESTION 25



Refer to the exhibit. The 0.0.0.0/0 is configured as a default static route on L3Out-1. Which action should be taken for the 0.0.0.0/0 prefix to advertise out on L3Out-2 OSPF?

- A. Enable Shared Security Import Subnet
- B. Enable Aggregate Export Subnet
- C. Enable Shared Route Control Subnet
- D. Enable Export Route Control Subnet

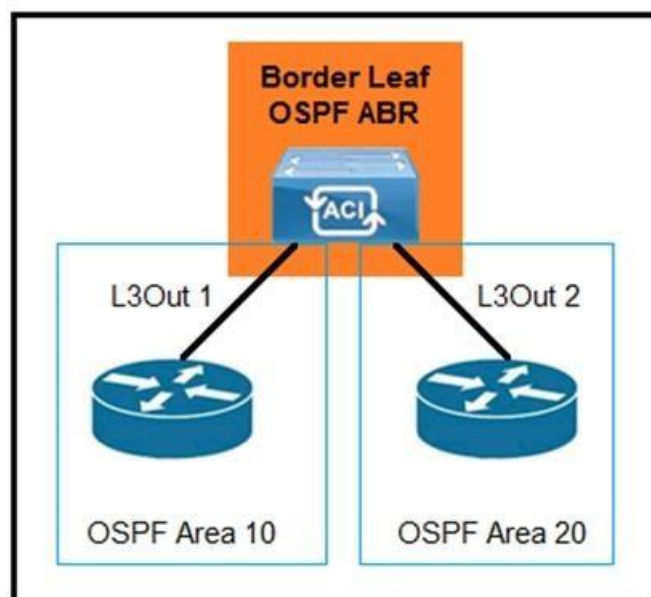
**Correct Answer: B**

**Section: Advanced ACI Policies and Integrations**

**Explanation**

**Explanation/Reference:**

**QUESTION 26**



Refer to the exhibit. Which configuration must be implemented to allow intra-VRF transit routing between the two external routers?

- A. Deploy both areas under the same L3Out policy
- B. Change one of the areas to area 0
- C. Configure OSPF virtual links
- D. Modify L3Out 1 to use the same OSPF area as L3Out 2

**Correct Answer: A**

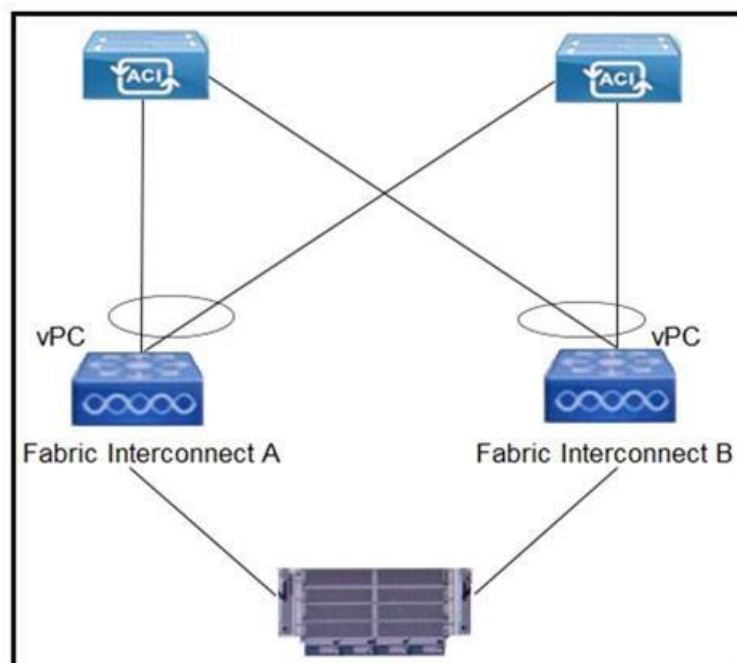
**Section: Advanced ACI Policies and Integrations**

**Explanation**

**Explanation/Reference:**



**QUESTION 27**



Refer to the exhibit. Which configuration mode must be selected for the VMM vSwitch Port Channel policy to avoid MAC flapping on the Cisco UCS FIs and Cisco ACI leaf switches?

- A. LACP Passive
- B. MAC Pinning
- C. LACP Active
- D. Static Channel – Mode On

**Correct Answer:** B

**Section:** Advanced ACI Policies and Integrations

**Explanation**

**Explanation/Reference:**

**QUESTION 28** A cloud provider must make a pair of firewalls available to all tenants. Each tenant defines its own service graph. Where should the Layer 4 to Layer 7 service be configured to accomplish this goal?

- A. management tenant B. infrastructure tenant
- C. user tenant
- D. common tenant

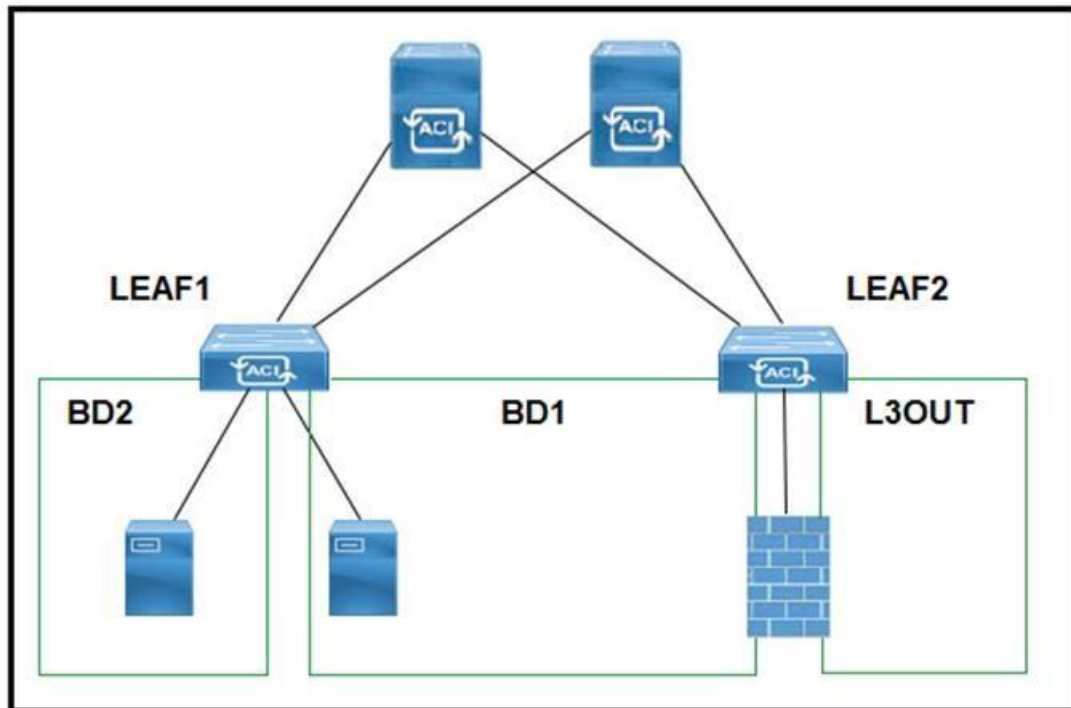
**Correct Answer:** C

**Section:** Advanced ACI Policies and Integrations

**Explanation**

**Explanation/Reference:**

**QUESTION 29**



Refer to the exhibit. A customer experiences resource overconsumption on one of its border leaf switches. Which action should be taken to reduce the consumption on this switch?

- A. Disable VRF Policy Control Enforcement
- B. Disable IP Data Plane Learning
- C. Migrate L3Outs to another switch

D. Disable Remote EP Learning

**Correct Answer:** B

**Section:** Advanced ACI Policies and Integrations

**Explanation**

**Explanation/Reference:**

**QUESTION 30**

Which feature should be disabled on a bridge domain when a default gateway for endpoints is on an external device instead of a Cisco ACI bridge domain SVI?

- A. unicast routing
- B. ARP flooding
- C. unknown unicast flooding
- D. proxy ARP

**Correct Answer:** C

**Section:** Advanced ACI Policies and Integrations

**Explanation**

**Explanation/Reference:**

**QUESTION 31** An organization expands a Cisco ACI Multi-Pod from two to six pods and must ensure that the control plane scales. What should be configured in the IPN to ensure that BUM traffic is forwarded efficiently across the IPN?

- A. spine headend replication
- B. BIDIR-PIM
- C. MP-BGP
- D. MSDP



**Correct Answer:** B

**Section:** Multipod

**Explanation**

**Explanation/Reference:**

Reference: <https://www.cisco.com/c/en/us/solutions/collateral/data-center-virtualization/application-centric-infrastructure/white-paper-c11-737855.html>

**QUESTION 32**

An engineer designs a Cisco ACI Multi-Pod solution that requires a pair of active-standby firewalls in different pods for external connectivity. How should the firewalls be implemented?

- A. PBR for routed firewalls
- B. separate L3Out peerings for routed firewalls
- C. routed firewall for the default gateway
- D. transparent firewalls

**Correct Answer:** D

**Section:** Multipod

**Explanation**

**Explanation/Reference:**

Reference: <https://www.cisco.com/c/en/us/solutions/collateral/data-center-virtualization/application-centric-infrastructure/white-paper-c11-739571.html>

**QUESTION 33** How is broadcast forwarded in Cisco ACI Multi-Pod after ARP flooding is enabled?

- A. For the specific bridge domain, all spines forward the broadcast frames to IPN routers

- B. Broadcast frames are forwarded inside the pod and across the IPN using the multicast address that is associated to the bridge domain
- C. Within a pod, the ingress leaf switch floods the broadcast frame on all fabric ports
- D. Ingress replication is used on the spines to forward broadcast frames in the IPN infrastructure

**Correct Answer:** A

**Section:** Multipod

**Explanation**

**Explanation/Reference:**

#### QUESTION 34

An engineer configures a Cisco ACI Multi-Pod for disaster recovery. Which action should be taken for the new nodes to be discoverable by the existing Cisco APICs?

- A. Enable subinterfaces with dot1q tagging on all links between the IPN routers.
- B. Configure IGMPv3 on the interfaces of IPN routers that face the Cisco ACI spine.
- C. Enable DHCP relay on all links that are connected to Cisco ACI spines on IPN devices.
- D. Configure BGP as the underlay protocol in IPN.

**Correct Answer:** B

**Section:** Multipod

**Explanation**

**Explanation/Reference:**

#### QUESTION 35

Which firewall connection allows for the integration of service nodes in transparent mode with a Cisco ACI Multi-Pod setup?

- A. active-standby mode across pods
- B. active-active mode per pods for communication between internal endpoints
- C. active-standby mode per pods for communication between endpoints and external networks
- D. active-active mode across pods

**Correct Answer:** A

**Section:** Multipod

**Explanation**

**Explanation/Reference:**

Reference: <https://www.cisco.com/c/en/us/solutions/collateral/data-center-virtualization/application-centric-infrastructure/white-paper-c11-739571.html> (table 1)

#### QUESTION 36

An engineer configures a new Cisco ACI Multi-Pod setup. Which action should be taken for fabric discovery to be successful for the nodes in Pod 2?

- A. Select the Route Reflector field in Pod Peering
- B. Enable the DSCP class-cos translation policy for Layer 3 traffic
- C. Configure POD 2 Data Plane TEP under the Pod Connection Profile
- D. Add the IPN subnet under the Fabric External Routing Profile

**Correct Answer:** D

**Section:** Multipod

**Explanation**

**Explanation/Reference:**

**QUESTION 37** An engineer configures a new Cisco ACI Multi-Pod and must set up the link between the spine and the IPN device. Which three actions should be taken to accomplish this goal? (Choose three.)

- A. Enable MP-BGP routing
- B. Enable BIDIR-PIM protocol
- C. Enable PIM-SM protocol
- D. Enable OSPF routing
- E. Enable IS-IS routing
- F. Enable DHCP relay

**Correct Answer:** ABF

**Section:** Multipod

**Explanation**

**Explanation/Reference:**

**QUESTION 38** An organization deploys active-active data centers and active-standby firewalls in each data center. Which action should be taken in a Cisco ACI Multi-Pod to maintain traffic symmetry through the firewalls?

- A. Enable Endpoint Dataplane Learning
- B. Disable service node Health Tracking
- C. Enable Pod ID Aware Redirection
- D. Disable Resilient Hashing

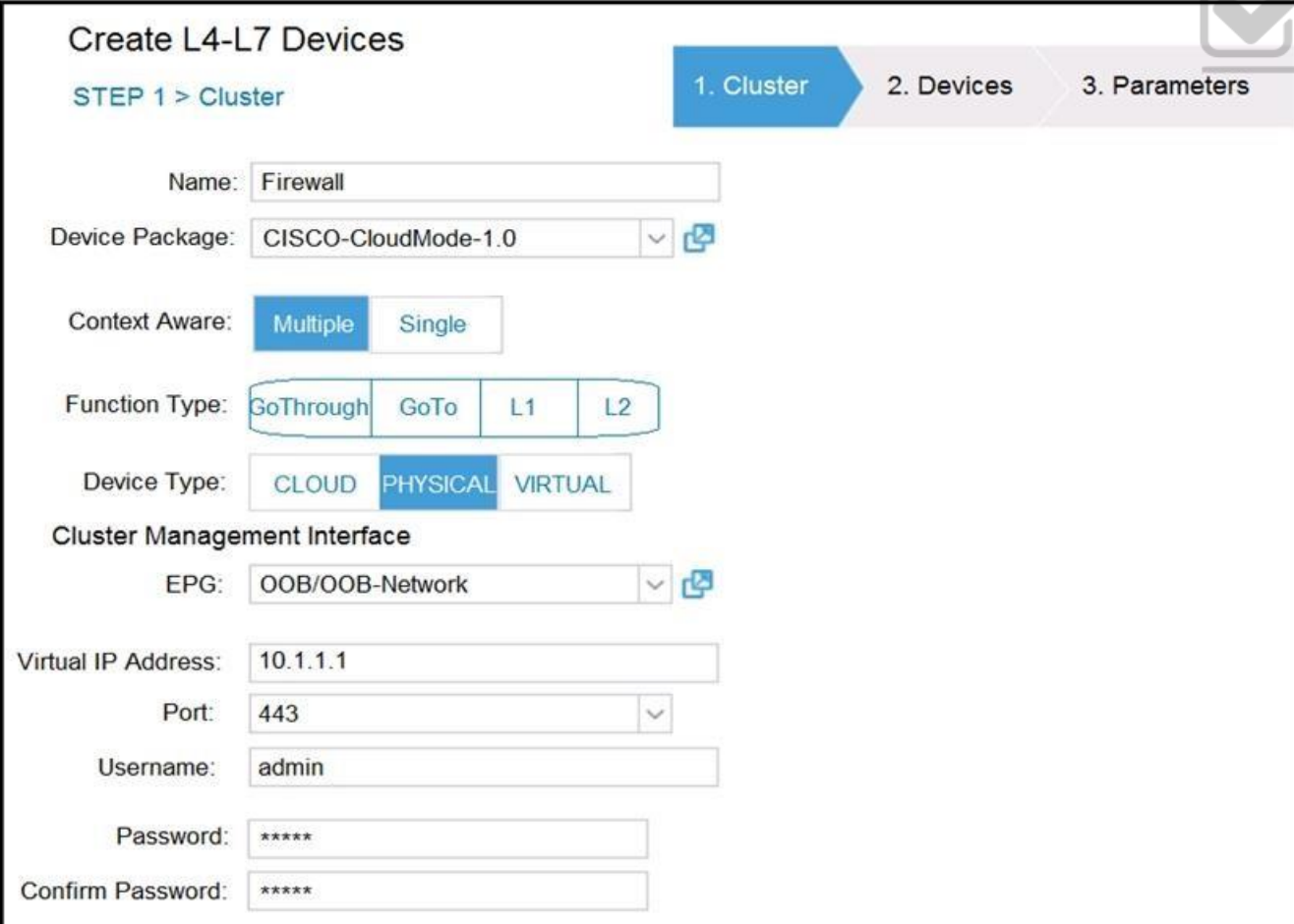
**Correct Answer:** B

**Section:** Multipod

**Explanation**

**Explanation/Reference:**


**QUESTION 39**



**Create L4-L7 Devices**

**STEP 1 > Cluster**    1. Cluster    2. Devices    3. Parameters

Name:


Device Package:  

Context Aware: ☒ Multiple    ☐ Single

Function Type: ☒ GoThrough    ☐ GoTo    ☐ L1    ☐ L2

Device Type: ☐ CLOUD    ☒ PHYSICAL    ☐ VIRTUAL

**Cluster Management Interface**

EPG:  

Virtual IP Address:

Port:

Username:

Password:

Confirm Password:

Refer to the exhibit. A network engineer configures a Layer 4 to Layer 7 device for an outside routed firewall that is connected to POD-1 inside a Cisco ACI fabric that consists of two pods. All traffic from POD-1 or POD-2 that uses the L3Out should pass through the routed firewall. Which Function Type must be implemented in the service graph for POD-2 to use L3Out?

- A. GoThrough
- B. L1
- C. GoTo
- D. L2

**Correct Answer:** D

**Section:** Multipod

**Explanation**

**Explanation/Reference:**

#### QUESTION 40

What is the advantage of implementing an active-active firewall cluster that is stretched across separate pods when anycast services are configured?

- A. A different MAC/IP combination can be configured for the firewall in each pod.
- B. The local pod anycast node is preferred by the local spines.
- C. A cluster can be deployed in transparent mode across pods.
- D. Local traffic in a pod is load-balanced between the clustered firewalls.

**Correct Answer:** A

**Section:** Multipod

**Explanation**

**Explanation/Reference:**

**QUESTION 41** A network engineer configured an active-active firewall cluster that is stretched across separate pods in the Cisco ACI fabric. Which two implementation setups for anycast services are available? (Choose two.)

- A. Modify the Cisco ACI contract scope
- B. Modify the MAC address on the second firewall
- C. Configure the firewalls behind an EPG subnet
- D. Deselect No Default SVI Gateway under EPG Subnet
- E. Deploy a Layer 4 to Layer 7 service graph with PBR

**Correct Answer:** BC

**Section:** Multipod

**Explanation**

**Explanation/Reference:**

#### QUESTION 42

An existing Cisco ACI Multi-Site setup with default fabric settings contains endpoints that communicate with an MTU of 1500. What is the minimum MTU value that must be supported by the ISN to allow control plane endpoint information exchange between sites?

- A. 9000
- B. 1554
- C. 9100
- D. 1600

**Correct Answer:** C

**Section:** Multisite

**Explanation**



**Explanation/Reference:**

Reference: <https://www.cisco.com/c/en/us/support/docs/cloud-systems-management/application-policy-infrastructure-controller-apic/214270-configure-aci-multi-site-deployment.html>

**QUESTION 43** An engineer configures a new Cisco ACI Multi-Site Orchestrator node to join an MSO cluster. Which two components are necessary to ensure that the new node has IP connectivity in this configuration? (Choose two.)

- A. Cisco ACI spine interfaces that are connected to ISN
- B. Cisco APICs over the OOB management network
- C. existing Cisco ACI Multi-Site Orchestrator node
- D. management IP of ESXi hosts where the controllers are deployed
- E. OOB interface of ISN

**Correct Answer:** BC

**Section:** Multisite

**Explanation**

**Explanation/Reference:**

Reference: <https://www.cisco.com/c/en/us/solutions/collateral/data-center-virtualization/application-centric-infrastructure/white-paper-c11-739609.html>

**QUESTION 44** In a Cisco ACI Multi-Site fabric, the Inter-Site BUM Traffic Allow option is enabled in a specific stretched bridge domain. What is used to forward BUM traffic to all endpoints in the same broadcast domain?

- A. ingress replication on the spines in the source site
- B. egress replication on the source leaf switches
- C. egress replication on the destination leaf switches
- D. ingress replication on the spines in the destination site

**Correct Answer:** D

**Section:** Multisite

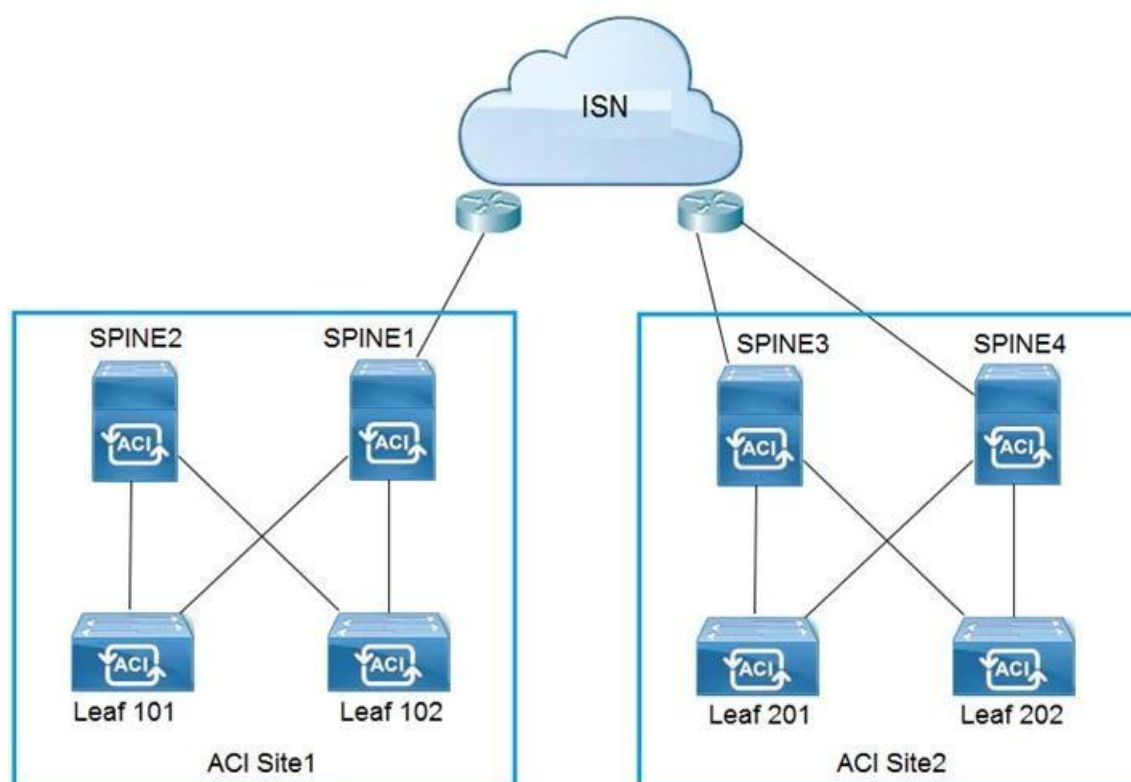
**Explanation**

**Explanation/Reference:**

Reference: <http://yves-louis.com/DCI/?p=1277>

**QUESTION 45**





Refer to the exhibit. Which two configuration steps are required in ISN for Cisco ACI Multi-Site setup? (Choose two.)

- A. Connect Spine2 to ISN routers.
- B. Configure BIDIR-PIM throughout the ISN
- C. Increase ISN MTU to support the maximum MTU that is sent by endpoints
- D. Configure OSPF between spines and ISN routers
- E. Enable IGMPv3 on ISN routers



**Correct Answer:** DE

**Section:** Multisite

**Explanation**

**Explanation/Reference:**

#### QUESTION 46

An engineer creates the objects that must be deployed at each site in Cisco ACI Multi-Site Orchestrator. Which action should be taken before the schema can be associated with the newly configured site?

- A. Attach the templates to the newly configured site
- B. Configure a provider for the Cisco ACI Multi-Site Orchestrator
- C. Import existing policies from an existing tenant to Cisco ACI Multi-Site Orchestrator
- D. Configure the Infra Site-Specific Settings

**Correct Answer:** A

**Section:** Multisite

**Explanation**

**Explanation/Reference:**

#### QUESTION 47

DRAG DROP

An engineer deploys a Cisco ACI Multi-Site Orchestrator for the first time. Drag and drop the actions from the left into the steps on the right to add a site and deploy new Cisco ACI objects to the fabric. Not all actions are used.

Select and Place:

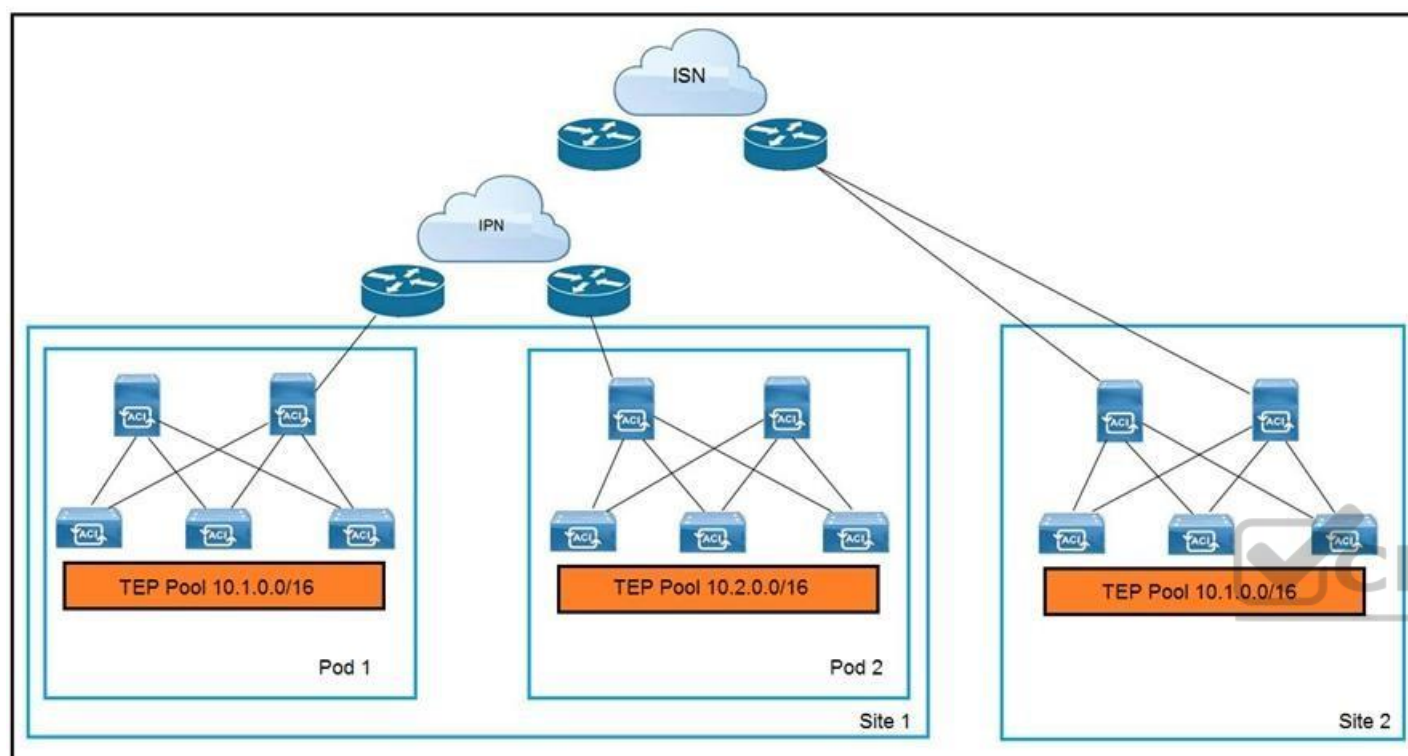
Correct Answer:

Section: Multisite

Explanation

Explanation/Reference:

#### QUESTION 48



Refer to the exhibit. An engineer extends a Cisco ACI Multi-Pod setup to a Cisco ACI Multi-Site implementation. Which action allows the interconnection?

- A. Configure BIDIR-PIM in the IPN and ISN
- B. Use dedicated uplinks on Site 1 spines for ISN connections
- C. Connect all spines to the IPN and ISN
- D. Filter the advertisement of the Site 2 TEP pool into the IPN

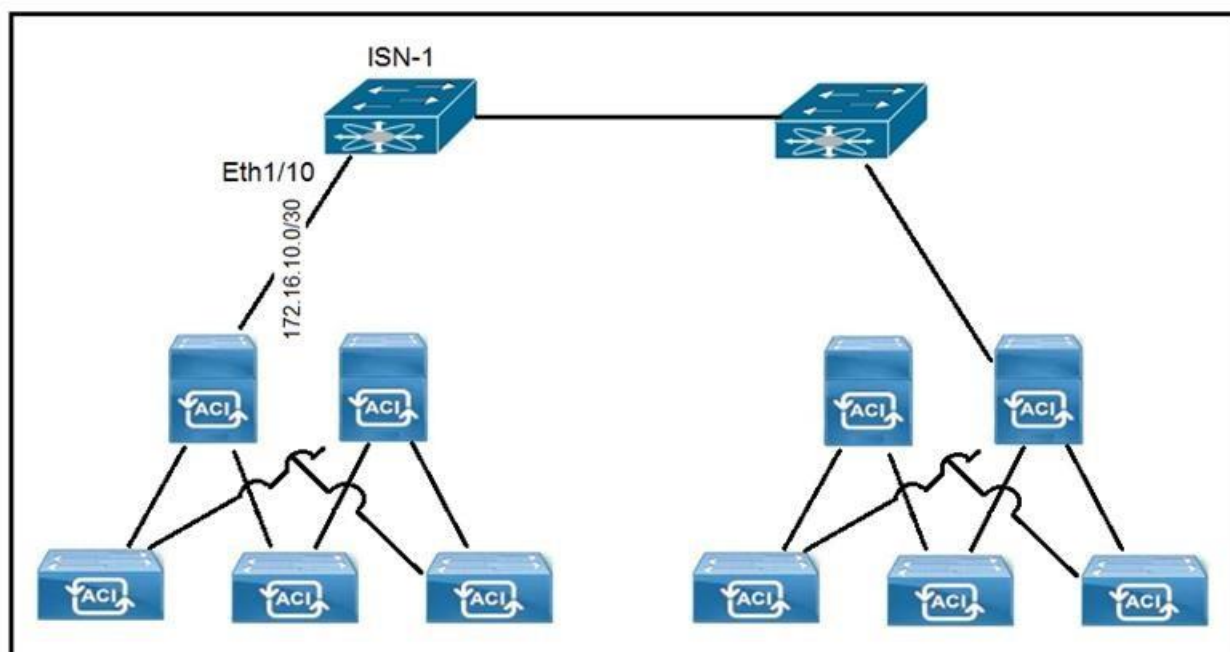
Correct Answer: A

Section: Multisite

Explanation

Explanation/Reference:

#### QUESTION 49



Refer to the exhibit. A customer implements Cisco ACI Multi-Site with default MTU settings between two sites. Which configuration should be applied on the interface Eth1/10 on the ISN-1 device? A.

```
interface Ethernet1/10.4
mtu 9150
encapsulation dot1q 100
vrf member intersite
ip address 172.16.10.1/30
ip ospf network point-to-point
ip router ospf intersite area 0.0.0.1
no shutdown
```

```
interface Ethernet1/10.4
mtu 9150
encapsulation dot1q 4
vrf member intersite
ip address 172.16.10.1/30
ip ospf network point-to-point
ip router ospf intersite area 0.0.0.1
no shutdown
```

```
interface Ethernet1/10.44
mtu 2240
encapsulation dot1q 4
vrf member intersite
ip address 172.16.10.1/30
ip router ospf intersite area 0.0.0.1
no shutdown
```

B.

C.

```
interface Ethernet1/10.4
mtu 2240
encapsulation dot1q 40
vrf member intersite
ip address 172.16.10.1/30
ip ospf network point-to-point
ip router ospf 1 area 0.0.0.1
D. no shutdown
```

**Correct Answer:** A

**Section:** Multisite

**Explanation**

**Explanation/Reference:**

**QUESTION 50** What is a use of the Overlay Multicast TEP in Cisco ACI Multi-Site communication?

- A. to perform headend replication
- B. to act as the source IP for BUM traffic
- C. to establish MP-BGP adjacencies with remote spines
- D. to send and receive unicast VXLAN data plane traffic

**Correct Answer:** B

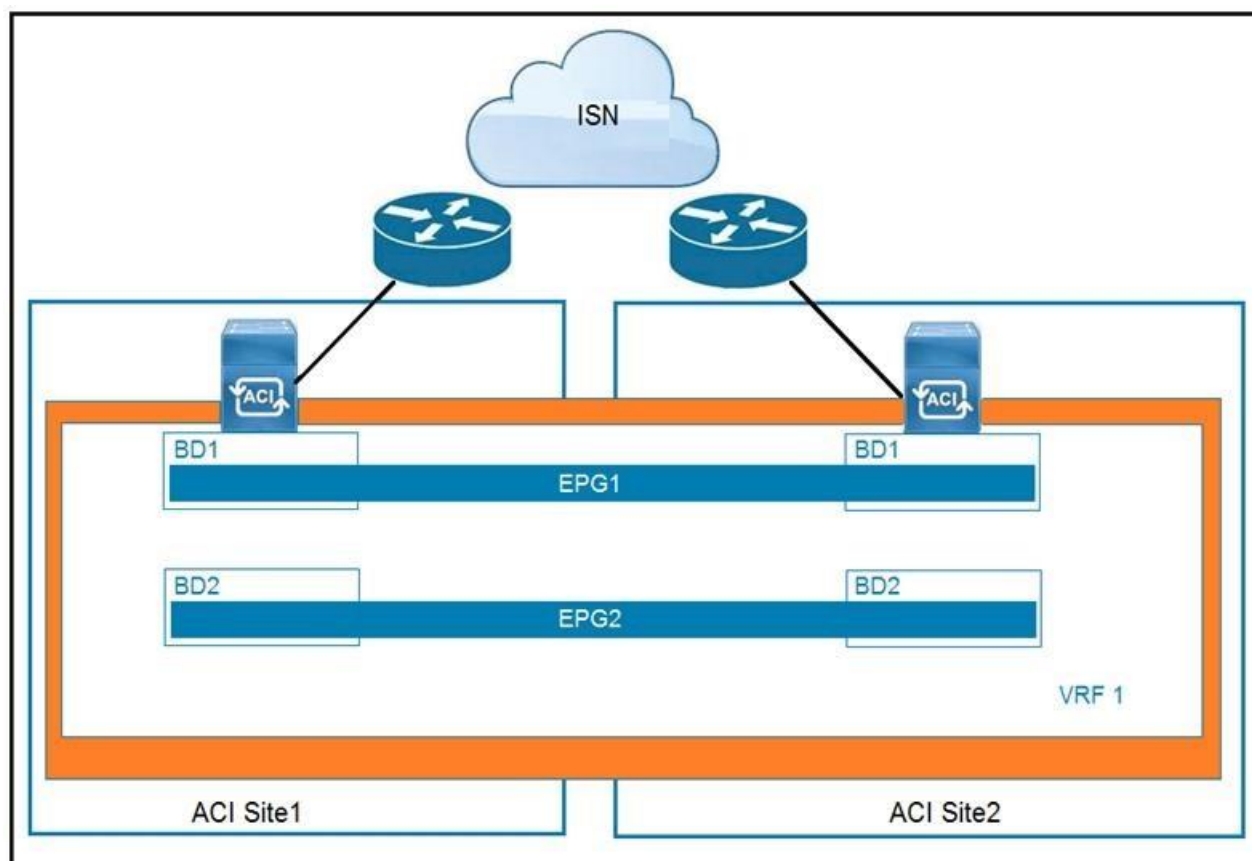
**Section:** Multisite

**Explanation**

**Explanation/Reference:**

Reference: <https://www.cisco.com/c/en/us/solutions/collateral/data-center-virtualization/application-centric-infrastructure/white-paper-c11-739609.html#CiscoACIMultiSiteoverlaydataplane>

**QUESTION 51**



Refer to the exhibit. Which feature is available across sites if EPGs are stretched?

- A. active-active high-availability firewall clustering
- B. Layer 3 routing between sites
- C. Layer 2 flooding across sites
- D. live virtual machine migration

**Correct Answer:** B

**Section:** Multisite

**Explanation**

**Explanation/Reference:**

Reference: [https://www.cisco.com/c/en/us/td/docs/switches/datacenter/aci/aci\\_multi-site/sw/1x/fundamentals/b\\_Cisco\\_ACI\\_Multi-Site\\_Fundamentals/b\\_ACI\\_Multi-Zone\\_Fundamentals\\_chapter\\_01.pdf](https://www.cisco.com/c/en/us/td/docs/switches/datacenter/aci/aci_multi-site/sw/1x/fundamentals/b_Cisco_ACI_Multi-Site_Fundamentals/b_ACI_Multi-Zone_Fundamentals_chapter_01.pdf) (6)

#### QUESTION 52

What is a characteristic of a stretched bridge domain solution between Cisco ACI sites with Layer 2 flood disabled?

- A. The application profile that is associated to the bridge domain have local significance in each site.
- B. The tenant and VRF that associated to the bridge domain have local significance in each site.
- C. Headend replication is used for BUM traffic between sites.
- D. IP mobility is ensured between sites for disaster recovery.

**Correct Answer:** B

**Section:** Multisite

**Explanation**

**Explanation/Reference:**

#### QUESTION 53

What are two characteristics of Cisco ACI and Spanning Tree Protocol interaction? (Choose two.)

- A. When a TCN BPDU is received in a VLAN, Cisco ACI flushes the endpoints for the associated encapsulation.
- B. STP BPDUs are dropped due to MCP.
- C. MST BPDUs are flooded correctly in Cisco ACI fabric without additional configuration.
- D. BPDU filter and BPDU guard can be configured on Cisco ACI leaf edge ports.
- E. Cisco ACI must be configured as the STP root for all VLANs.

**Correct Answer:** DE

**Section:** Traditional network with ACI Explanation

**Explanation/Reference:**

Reference: [https://www.cisco.com/c/en/us/td/docs/switches/datacenter/aci/aci\\_virtual\\_edge/configuration/1-x/b\\_Virtual\\_Edge\\_Config\\_Guide\\_1\\_2\\_2/b\\_Virtual\\_Edge\\_Config\\_Guide\\_1\\_2\\_2\\_chapter\\_0101.html](https://www.cisco.com/c/en/us/td/docs/switches/datacenter/aci/aci_virtual_edge/configuration/1-x/b_Virtual_Edge_Config_Guide_1_2_2/b_Virtual_Edge_Config_Guide_1_2_2_chapter_0101.html)

**QUESTION 54** Where are STP BPDUs flooded in Cisco ACI fabric?

- A. in the bridge domain VLAN
- B. in the native VLAN ID
- C. in the access encapsulation VLAN part of different VLAN pools
- D. in the VNID that is assigned to the FD VLAN

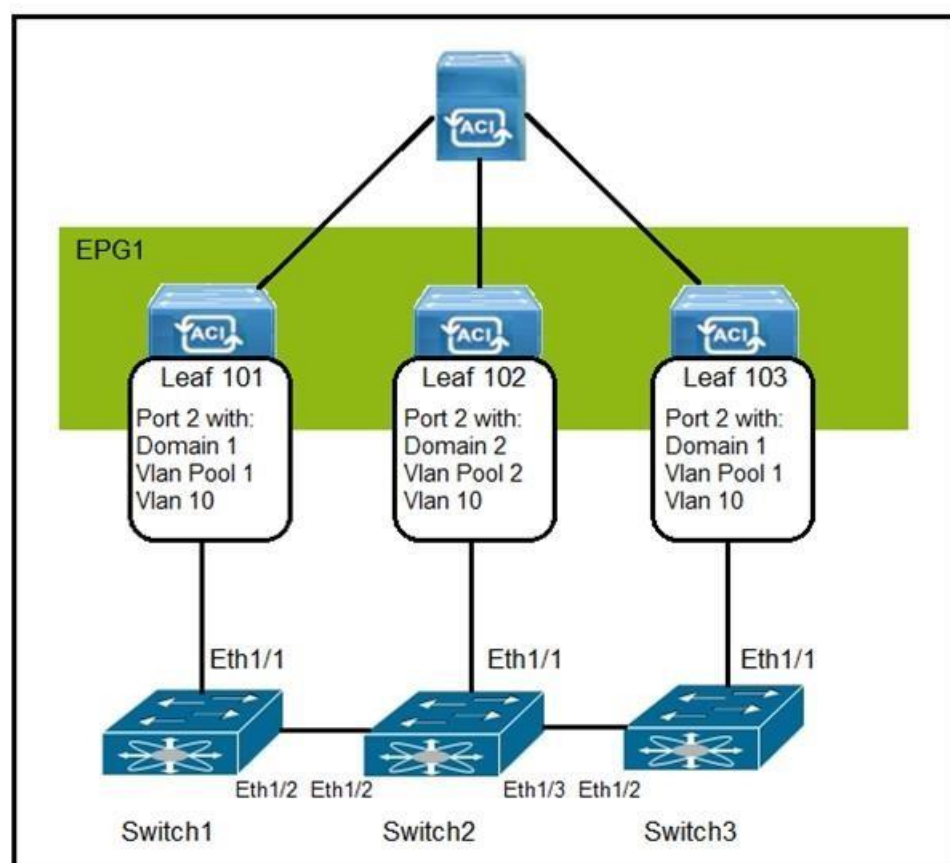
**Correct Answer:** A

**Section:** Traditional network with ACI Explanation

**Explanation/Reference:**

Reference: <https://www.cisco.com/c/en/us/solutions/collateral/data-center-virtualization/application-centric-infrastructure/white-paper-c11-737909.html>

**QUESTION 55**



Refer to the exhibit. How are the STP BPDUs forwarded over Cisco ACI fabric?

- A. STP BPDUs that are generated by Switch2 are received by Switch1 and Switch3.



- B. Cisco ACI fabric drops all STP BPDUs that are generated by the external switches.
- C. Cisco ACI acts as the STP root for all three external switches.
- D. STP BPDUs that are generated by Switch1 are received only by Switch3.

**Correct Answer:** A

**Section:** Traditional network with ACI Explanation

**Explanation/Reference:**

Reference: <https://www.linkedin.com/pulse/cisco-aci-network-behaviour-stptcn-how-identify-loop-ankit-kulshresta>

**QUESTION 56** What are two characteristics of Cisco ACI interaction with MSTP?  
(Choose two.)

- A. A Cisco ACI leaf flushes all local endpoints in the received EPG when an MSTP TCN frame is received.
- B. A static path binding is required for native VLAN to carry the MST BPDUs in existing EPGs.
- C. Mis-cabling protocol is used to snoop the MSTP TCN packets.
- D. A dedicated EPG must be created for the native VLAN ID with static bindings toward the MSTP-enabled switches.
- E. The PVST simulation must be configured on external network switches to support MSTP.

**Correct Answer:** CD

**Section:** Traditional network with ACI Explanation

**Explanation/Reference:**

**QUESTION 57** Cisco ACI fabric is migrated from network-centric mode to application-centric mode. What is possible in an application-centric design?

- A. remapping of VLAN pools
- B. migration of bare metal servers to virtual machines
- C. creation of additional EPGs under one bridge domain
- D. Cisco ACI VMM integration with hypervisors



**Correct Answer:** C

**Section:** Traditional network with ACI Explanation

**Explanation/Reference:**

**QUESTION 58** What is a design implication for Cisco ACI using an application-centric approach?

- A. Multiple VLANs and/or multiple EPGs are under one bridge domain
- B. VLAN numbers are in the names of the bridge domain and EPG objects
- C. One EPG is mapped to multiple bridge domains
- D. One VLAN equals one EPG equals one bridge domain

**Correct Answer:** C

**Section:** Traditional network with ACI Explanation

**Explanation/Reference:**

**QUESTION 59** What are two characteristics of network-centric design in Cisco ACI?  
(Choose two.)

- A. There is open communication between EPGs
- B. EPGs are used for microsegmentation
- C. EPGs are different security zones
- D. Applications define the network requirements

E. A bridge domain has one subnet and one EPG

**Correct Answer:** BE

**Section:** Traditional network with ACI Explanation

**Explanation/Reference:**

**QUESTION 60**

DRAG DROP

An engineer must migrate servers from a legacy data center infrastructure to a Cisco ACI fabric. Drag and drop the steps from the left into the order that they must be completed on the right to ensure the least amount of downtime.

**Select and Place:**

**Correct Answer:**

**Section:** Traditional network with ACI Explanation

**Explanation/Reference:**

