

4A0-C02.VCEplus.premium.exam.79q

Number: 4A0-C02  
Passing Score: 800  
Time Limit: 120 min  
File Version: 1.0



Website: <https://vceplus.com>

VCE to PDF Converter: <https://vceplus.com/vce-to-pdf/>

Facebook: <https://www.facebook.com/VCE.For.All.VN/>

Twitter : [https://twitter.com/VCE\\_Plus](https://twitter.com/VCE_Plus)

4A0-C02

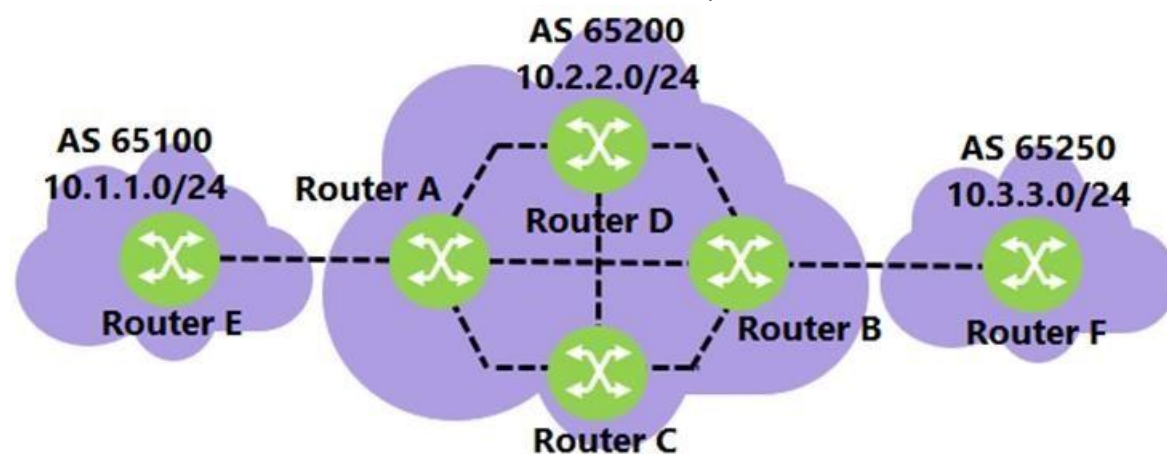
Nokia SRA Composite Exam



## Exam A

### QUESTION 1

Over which BGP session will router B learn the 10.1.1.0/24 prefix?



- A. The session between router A and router B.
- B. The session between router C and router B.
- C. The session between router D and router B.
- D. Router B will learn the prefix over all of the sessions, then it will choose the best route.

**Correct Answer:** A

**Section:** (none)

**Explanation**

**Explanation/Reference:**



**QUESTION 2** A Nokia 7750 SR receives a route from an eBGP peer without a MED. What MED value is sent to iBGP peers?

- A. 100
- B. 250
- C. The IGP cost
- D. None

**Correct Answer:** D

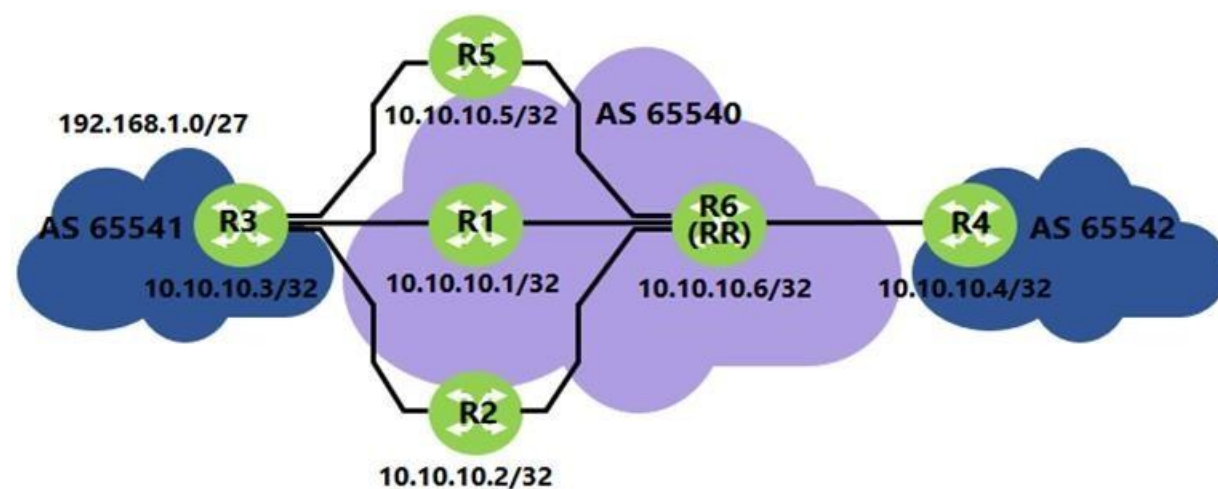
**Section:** (none)

**Explanation**

**Explanation/Reference:**

### QUESTION 3

Router R6 is a route reflector with clients R1, R2, and R5. Router R3 advertises the prefix 192.168.1.0/27 to routers R1, R2, and R5. How many routes for prefix 192.168.1.0/27 will router R6 receive?



- A ..... 2
- B ..... 2
- CD
- .
- No
- ne..... 2

**Correct Answer:** C  
**Section:** (none)  
**Explanation**

**Explanation/Reference:**



**QUESTION 4** Which of the following describes BGP route processing on the Nokia 7750 SR?

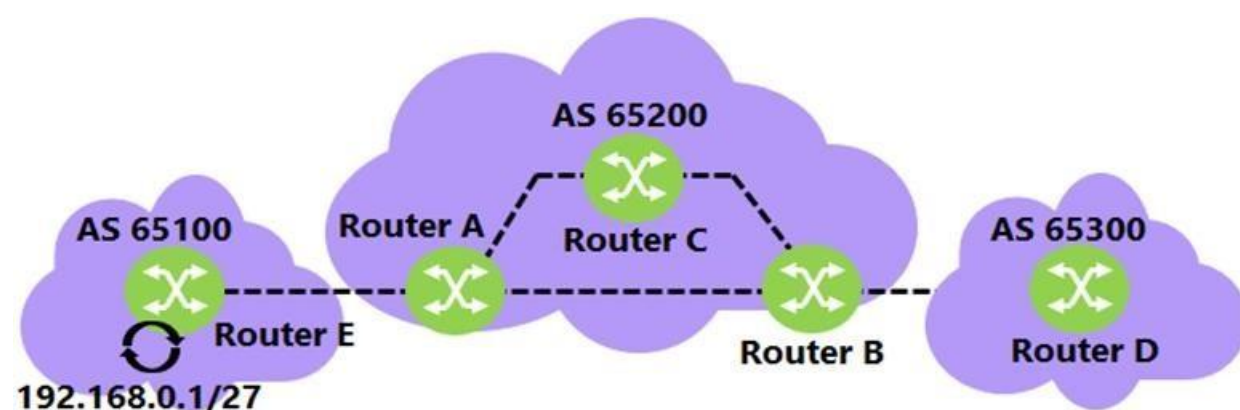
- A. If no import policy is specified, all valid BGP routes are passed to the BGP route selection process.
- B. If no export policy is specified, all non-BGP routes are populated into RIB-Out.
- C. If no import policy is specified, all BGP routes are populated into the route table.
- D. If no import policy is specified, only valid BGP routes are populated into RIB-Out.

**Correct Answer:** A  
**Section:** (none)  
**Explanation**

**Explanation/Reference:**

**QUESTION 5**

Assuming router A is configured with “next-hop-self”, what does the BGP update for prefix 192.168.0.1/27 contain when it arrives at router B?



- A. AS Path of 65200 65100, Next Hop of router A.
- B. AS Path of 65200 65100, Next Hop of router E.
- C. AS Path of 65100, Next Hop of router A.
- D. AS Path of 65100, Next Hop of router E.

**Correct Answer:** A

**Section:** (none)

**Explanation**

**Explanation/Reference:**

#### QUESTION 6

What is the result of configuring the following policy statement as a BGP import policy on the Nokia 7750 SR?

policy-statement "Policy-1"

```
entry 10
  from
    protocol bgp
    prefix-list "List-1" "List-2"
  exit
  action reject
  exit
exit
default-action accept
```

- A. All BGP routes are accepted.
- B. All routes matching prefix lists "List-1" and "List-2" are rejected.
- C. BGP routes matching prefix lists "List-1" or "List-2" are rejected.
- D. BGP routes matching prefix lists "List-1" and "List-2" are rejected.

**Correct Answer:** C

**Section:** (none)

**Explanation**

**Explanation/Reference:**

**QUESTION 7** What kind of BGP attribute is the Multi\_Exit\_Disc?

- A. Optional transitive attribute
- B. Optional non-transitive attribute
- C. Well-known mandatory attribute
- D. Well-known discretionary attribute

**Correct Answer:** B

**Section:** (none)

**Explanation**

**Explanation/Reference:**

**QUESTION 8** Which of the following statements about the connections between eBGP peers is TRUE?

- A. eBGP peers typically use system addresses for session establishment.
- B. eBGP peers are managed under a single administration.
- C. eBGP peers do not propagate updates learned through iBGP.
- D. eBGP peers are usually directly connected to each other.

**Correct Answer:** D

**Section:** (none)

**Explanation**

**Explanation/Reference:**



**QUESTION 9** What are the well-known mandatory BGP attributes?

- A. Origin, Next Hop, and Local Preference.
- B. Local Preference, AS Path, and Next Hop.
- C. Aggregator, Next Hop, and AS Path.
- D. AS Path, Next Hop, and Origin.

**Correct Answer:** D

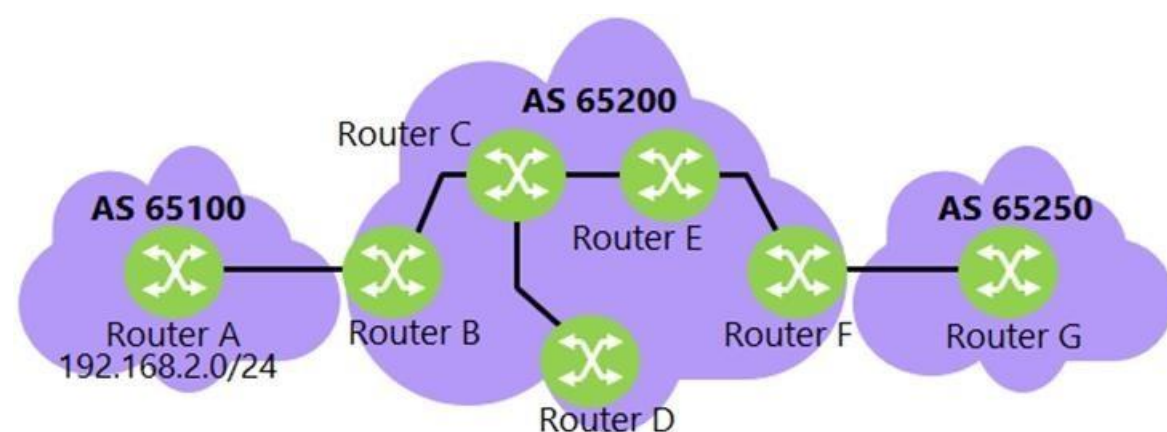
**Section:** (none)

**Explanation**

**Explanation/Reference:**

**QUESTION 10**

Routers C and E are route reflectors. When the update for prefix 192.168.2.0/24 is received on router C, what will be the Originator\_ID attribute?



- A. The router ID of router A.
- B. The router ID of router B.C. The router ID of router C.
- D. It will not be set.

**Correct Answer:** B

**Section:** (none)

**Explanation**

**Explanation/Reference:**

**QUESTION 11** How are policy direction and data flow related on the Nokia 7750 SR?

- A. Import policies affect ingress data flow.
- B. Export policies affect ingress data flow.
- C. Both import and export policies affect ingress data flow.
- D. Policy direction and data flow are independent.



**Correct Answer:** D

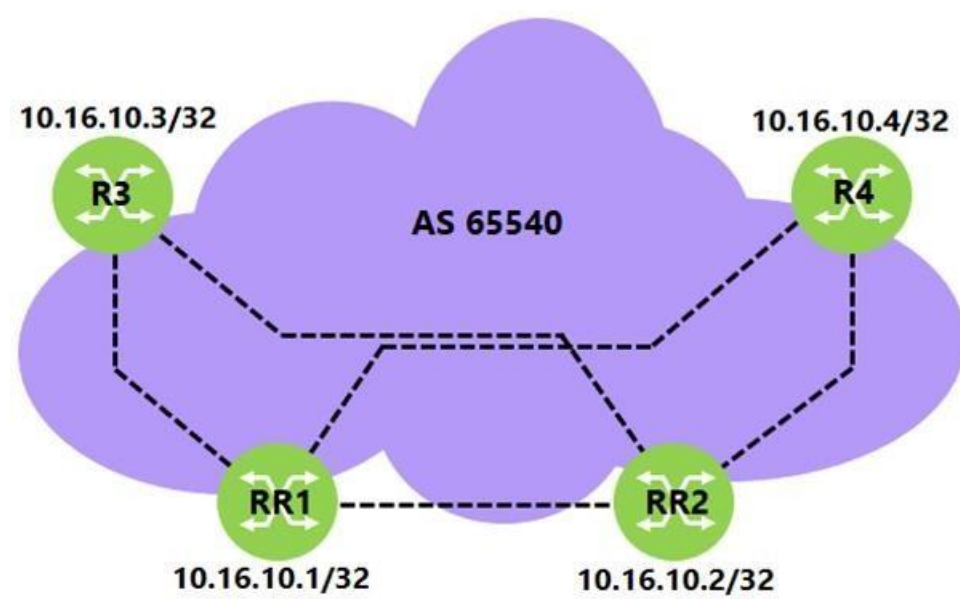
**Section:** (none)

**Explanation**

**Explanation/Reference:**

**QUESTION 12**

Router RR1 and RR2 are redundant route reflectors for client R3 and R4. Which of the following is a valid configuration on router R3?



```
R3>config>router>bgp# info
```

```
-----  
group "AS 65540 iBGP"
```

```
peer-as 65540
```

```
neighbor 10.16.10.1
```

```
exit
```

```
neighbor 10.16.10.2
```

```
exit
```

```
exit
```

```
R3>config>router>bgp# info
```

```
-----  
group "AS 65540 iBGP"
```

```
peer-as 65540
```

```
neighbor 10.16.10.1
```

```
cluster 10.16.10.1
```

```
exit
```

```
neighbor 10.16.10.2
```

```
cluster 10.16.10.2
```

```
exit
```

```
neighbor 10.16.10.4
```

```
exit
```

```
exit
```



A.

B.

```
R3>config>router>bgp# info
```

```
-----  
group "AS 65540 iBGP"  
  peer-as 65540  
  neighbor 10.16.10.1  
    cluster 10.16.10.1  
  exit  
  neighbor 10.16.10.2  
    cluster 10.16.10.2  
  exit  
exit
```

```
R3>config>router>bgp# info
```

```
-----  
group "AS 65540 iBGP"  
  peer-as 65540  
  neighbor 10.16.10.1  
    cluster 10.16.10.3  
  exit  
  neighbor 10.16.10.2  
    cluster 10.16.10.3  
  exit  
exit
```

C.



D.

**Correct Answer: C**

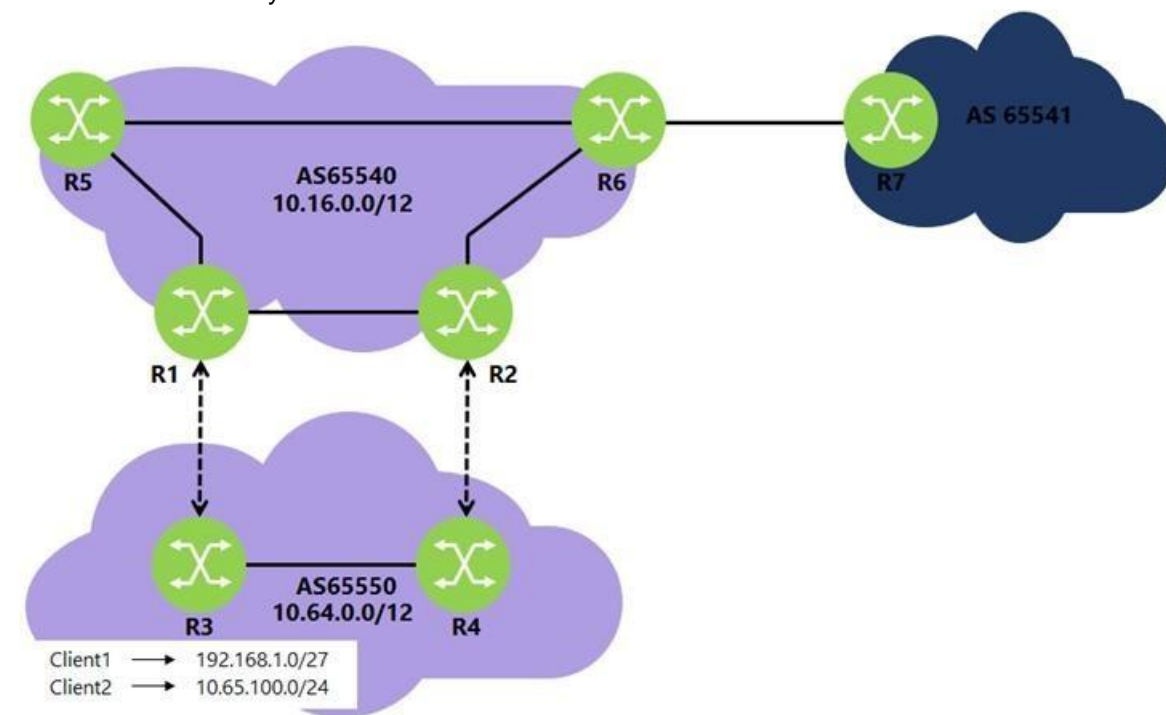
**Section: (none)**

**Explanation**

**Explanation/Reference:**

**QUESTION 13**

AS 65550 owns CIDR block 10.64.0.0/12. Router R3 advertises Client1 and Client2 networks into BGP. Router R6 creates an aggregate using "configure router aggregate 10.64.0.0/12" and advertises it to AS 65541. Which of the following routes are received by router R7?



- A. Client1, Client2, and the aggregate.
- B. Only the aggregate.
- C. Only Client1 and the aggregate.
- D. Only Client2 and the aggregate.

**Correct Answer:** C

**Section:** (none)

**Explanation**

**Explanation/Reference:**

**QUESTION 14** Which of the following about BGP Path Identifier is FALSE?

- A. Path-ID is a four-octet identifier pre-pended to the NLRI field of a BGP update.
- B. Path-ID is an optional transitive attribute used to advertise multiple paths.
- C. Path-ID uniquely identifies each path advertised to a neighbor.
- D. A BGP speaker that re-advertises a route must generate its own Path-ID.

**Correct Answer:** B

**Section:** (none)

**Explanation**

**Explanation/Reference:**

**QUESTION 15** What is the purpose of configuring a triggered-policy on a Nokia 7750 SR?

- A. Policy changes are delayed until the peer router with the affected routes reboots.
- B. Policy changes are delayed until route updates for affected BGP routes are received from peers.
- C. Policy changes are delayed until BGP sessions are cleared or BGP is reset.
- D. Policy changes are delayed until the router reboots.

**Correct Answer:** C

**Section:** (none)

**Explanation**

**Explanation/Reference:**

**QUESTION 16** Which of the following is NOT a BGP message type?

- A. Route-Refresh
- B. OpenSent
- C. Notification
- D. Update
- E. Keepalive

**Correct Answer:** B

**Section:** (none)

**Explanation**

**Explanation/Reference:**

**QUESTION 17** Which regular expression will match the AS Path of a route originating in remote AS 65100?

- A. ".+ 65100"
- B. "65100.+"
- C. ". \* 65100.\*"

D. "65100"

**Correct Answer:** A

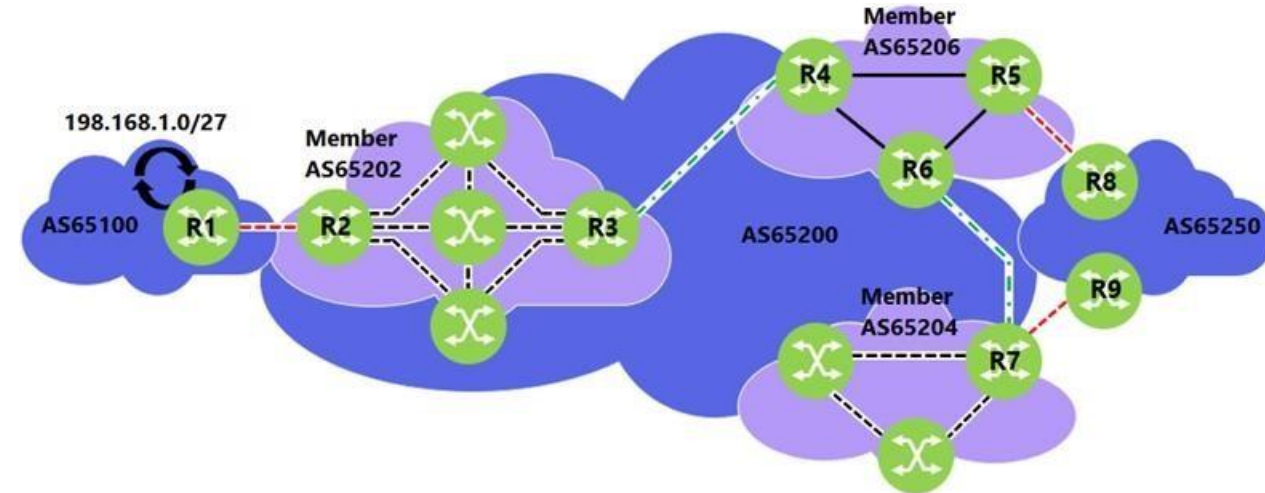
**Section:** (none)

**Explanation**

**Explanation/Reference:**

#### QUESTION 18

AS 65100 is advertising 192.168.1.0/27 into BGP. Which of the following AS Paths would the prefix 192.168.1.0/27 contain when viewed on router R8?



- A. 65200 (65206 65202) 65100
- B. (65206 65202) 65100
- C. 65250 (65206 65202) 65100
- D. 65200 65100



**Correct Answer:** D

**Section:** (none)

**Explanation**

**Explanation/Reference:**

#### QUESTION 19

A Nokia 7750 SR is configured with a policy to export directly connected networks to BGP. Which of the following commands verifies that the export was successful?

- A. show router route-table
- B. show router bgp routes
- C. show router bgp routes <prefix> hunt
- D. show router bgp neighbor <ip-address> received-routes

**Correct Answer:** C

**Section:** (none)

**Explanation**

**Explanation/Reference:**

**QUESTION 20** Which of the following statements regarding BGP FRR is FALSE?

- A. The router must receive several BGP routes to compute a backup path.

- B. BGP FRR can be triggered by BFD.
- C. The backup path can use the same next-hop as the primary path.
- D. BGP peer-tracking can be used to improve BGP FRR failure detection times.

**Correct Answer:** C

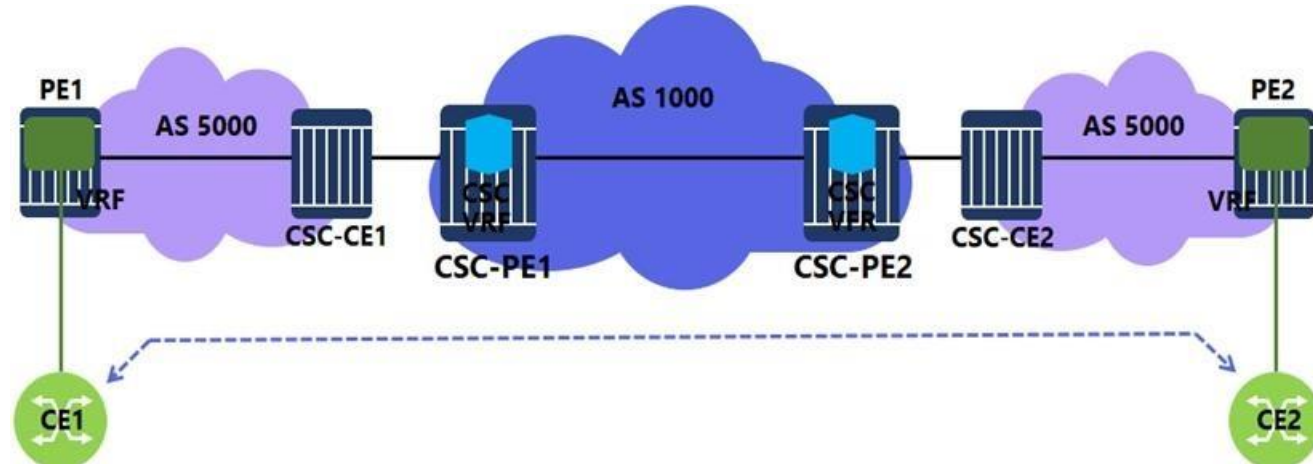
**Section:** (none)

**Explanation**

**Explanation/Reference:**

#### QUESTION 21

A Carrier Supporting Carrier (CSC) VPRN is configured on a Nokia 7750 SR for a customer carrier offering VPRN services. Which of the following about this configuration is FALSE?



- A. In the CSC VPRN, configure an eBGP session between CSC-PE and CSC-CE and use the CLI command “advertise-label vpn-ipv4” to enable the advertisement of VPN-IPv4 routes.
- B. When the customer carrier uses the same autonomous system number in various sites, use the CLI command “loop-detect off” to disable the loop detection functionality on CSC-CE and PE routers.
- C. On the CSC-PE routers, use the CLI command “carrier-carrier-vpn” to configure the VPRN service as CSC.
- D. Configure an iBGP session between PE1 and PE2 and use the CLI command “family vpn-ipv4” to directly exchange end-customer routes learned from CE1 and CE2.

**Correct Answer:** A

**Section:** (none)

**Explanation**

**Explanation/Reference:**

**QUESTION 22** Which of the following is a benefit of a hub and spoke VPRN topology?

- A. Reduced number of VPN tunnels that need to be managed.
- B. Optimal routing between all sites.
- C. Limited configuration required on the hub PE device.
- D. Site to site redundancy support.

**Correct Answer:** A

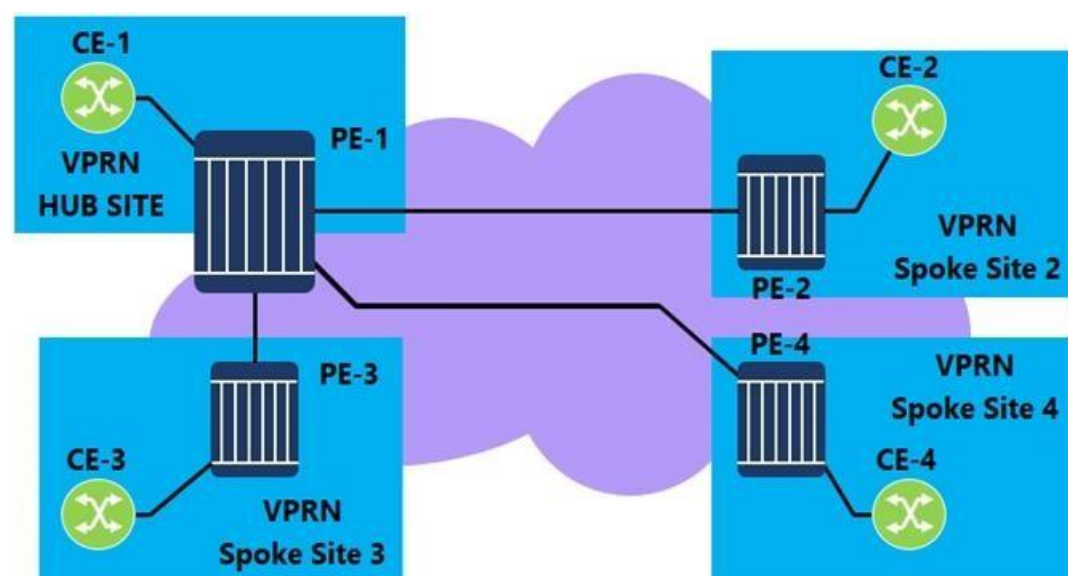
**Section:** (none)

**Explanation**

**Explanation/Reference:**

#### QUESTION 23

Community lists are configured for the PE hub and spoke VPRN. Which communities should be imported by the VPRN service on PE1?



community "Hub\_Site" members "target:65100:1"  
community "Spoke\_Sites" members "target:65100:2"

- A. "Spoke\_Sites"
- B. "Hub\_Site"
- C. "Spoke\_Sites" and "Hub\_Site"
- D. No communities should be imported.

**Correct Answer:** B

**Section:** (none)

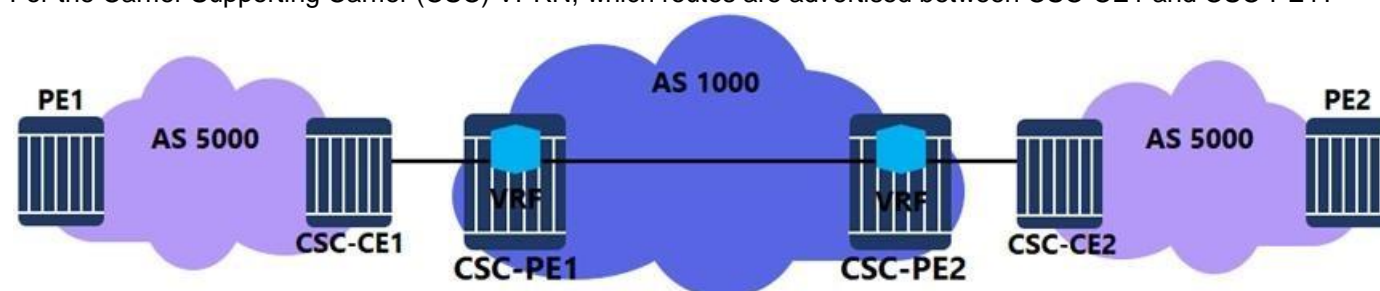
**Explanation**

**Explanation/Reference:**



#### QUESTION 24

For the Carrier Supporting Carrier (CSC) VPRN, which routes are advertised between CSC-CE1 and CSC-PE1?



- A. VPN-IPv4 routes for all PE system addresses in AS 1000.
- B. BGP labeled IPv4 routes for all PE system addresses in AS 1000.
- C. VPN-IPv4 routes for all PE system addresses in AS 5000.
- D. BGP labeled IPv4 routes for all PE system addresses in AS 5000.

**Correct Answer:** D

**Section:** (none)

**Explanation**

**Explanation/Reference:**

**QUESTION 25** Which of the following statements about the Route Target is TRUE?

- A. The Route Target is added to an IPv4 route to create the VPN-IPv4 route.
- B. The Route Target is an extended community string that identifies VPN membership.
- C. A route can only have one Route Target.
- D. The Route Target is a 64-bit value added to customer prefixes to make them unique.

**Correct Answer:** B

**Section:** (none)

**Explanation**

**Explanation/Reference:**

**QUESTION 26** Which of the following statements about the configuration of an inter-AS model C VPRN is FALSE?

- A. MP-iBGP sessions must be configured between the PE routers in each AS.
- B. LDP must be configured in each AS.
- C. MP-eBGP sessions must be configured between the ASBRs.
- D. The ASBRs must be configured with “enable-inter-as-vpn”.

**Correct Answer:** D

**Section:** (none)

**Explanation**

**Explanation/Reference:**

**QUESTION 27** Which of the following statements about inter-AS model B VPRN is FALSE?

- A. Model B does not require the configuration of VPRN instances on the ASBRs.
- B. The ASBRs exchange data packets that are encapsulated with a transport label and a service label.
- C. The route target advertised in one AS is maintained and used in the remote AS.
- D. The CLI command “configure router bgp enable-inter-as-vpn” is required on the ASBRs.



**Correct Answer:** B

**Section:** (none)

**Explanation**

**Explanation/Reference:**

**QUESTION 28** What operation does a P device perform when it receives a labeled packet for a VPRN service?

- A. It forwards the packet based on the label signaled by MP-BGP.
- B. It decrements the TTL and forwards the packet based on the inner label.
- C. It swaps the outer label then forwards the packet.
- D. The P router does not perform any operations on labeled packets.

**Correct Answer:** C

**Section:** (none)

**Explanation**

**Explanation/Reference:**

**QUESTION 29** Which of the following statements about the Inter-AS model A VPRN is TRUE?

- A. It is the most scalable of the Inter-AS models.
- B. VRF configuration is not required on the ASBRs.
- C. Most routers that support VPRN functionality do not support model A by default.
- D. It is not necessary to run MPLS at the boundary between autonomous systems.

**Correct Answer:** D

**Section:** (none)

**Explanation**

**Explanation/Reference:**

**QUESTION 30** You are configuring a VPLS spoke termination to a VPRN on a Nokia 7750 SR. The spoke SDP is running over a NULL encapsulated network port. The best practice is to set the VPRN interface “ip-mtu” equal to what value?

- A. The SDP path MTU minus 14
- B. The LMTU found in ‘show router ldp bindings’ on the VPLS side of the spoke SDP
- C. The configured service-mtu of the VPLS service
- D. The LMTU found in ‘show router ldp bindings’ on the VPLS side of the spoke SDP minus 14
- E. The SPD path MTU

**Correct Answer:** B

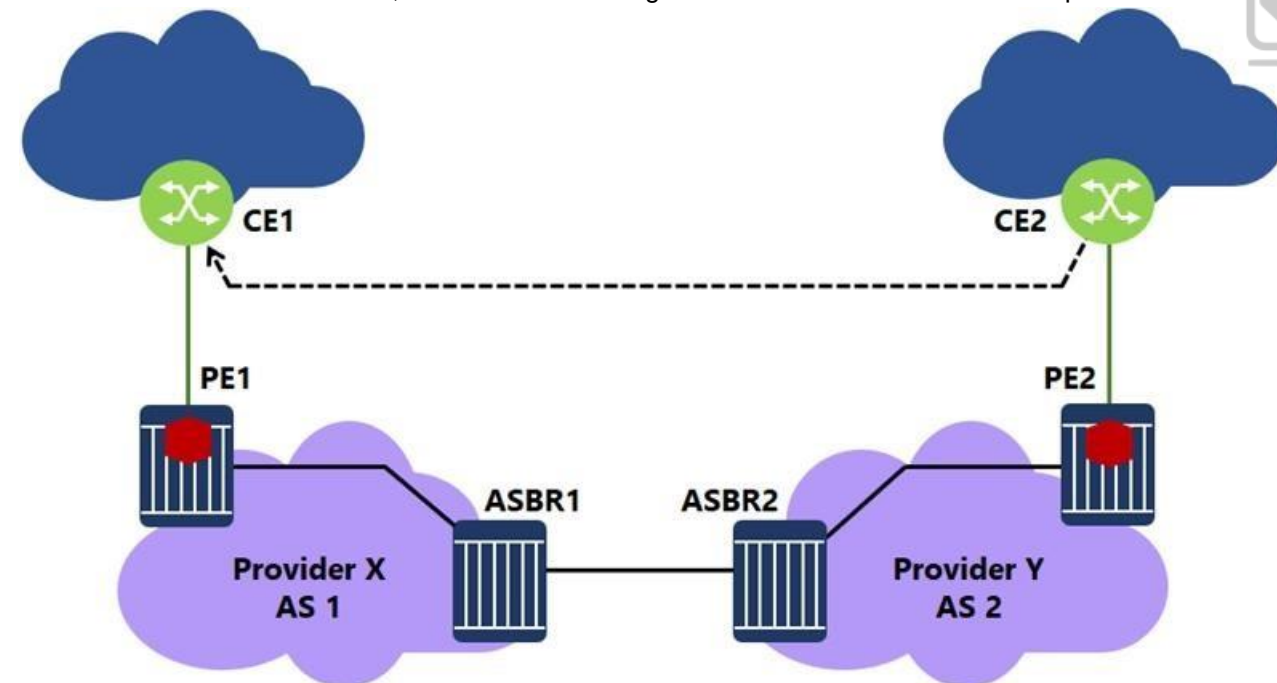
**Section:** (none)

**Explanation**

**Explanation/Reference:**

**QUESTION 31**

For the Inter-AS model B VPRN, which of the following is FALSE when CE2 sends an IP packet to 192.168.1.1?



- A. PE2 pushes one label on the IP packet and forwards it to ASBR2.
- B. ASBR2 forwards the IP packet with one label to ASBR1.
- C. ASBR1 forwards the IP packet with two labels to PE1.
- D. PE1 forwards an unlabeled IP packet to CE1.

**Correct Answer:** B

**Section: (none)**

**Explanation**

**Explanation/Reference:**

**QUESTION 32**

Based on the VPRN BGP decision process, which of the following routes is selected first if the command “PE1>config>service>vprn> bgp best-path-selection as-path-ignore” is executed?

- A. The route learned from an eBGP peer.
- B. The route with the lowest Origin.
- C. The route with the lowest originator ID or BGP Identifier.
- D. The route with the shortest AS path.

**Correct Answer: B**

**Section: (none)**

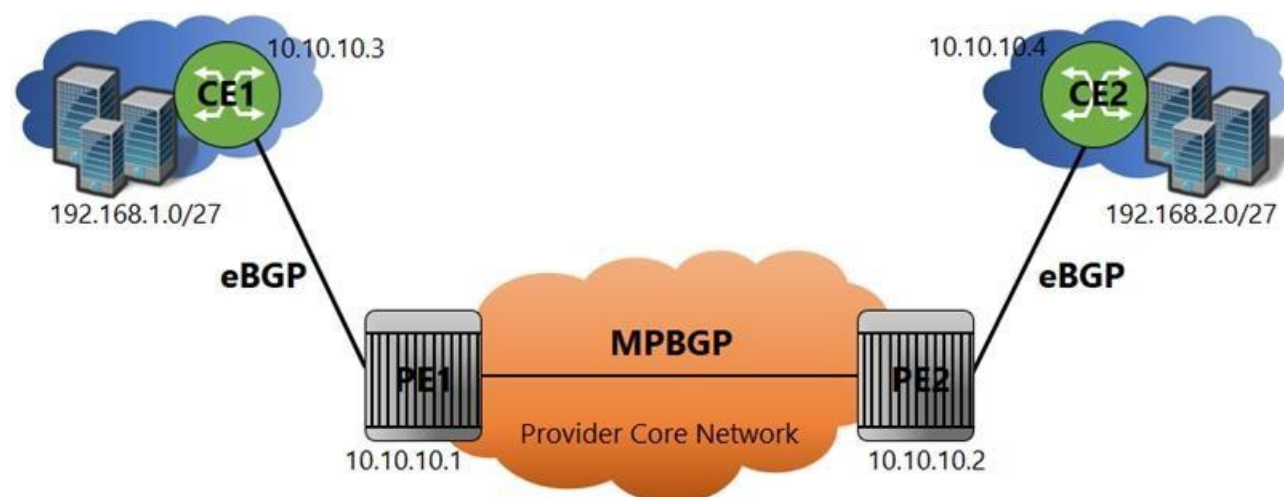
**Explanation**

**Explanation/Reference:**

**QUESTION 33**

Which of the following statements best describes the output?





```
*A:PE2# show router bgp neighbor 10.10.10.1 received-routes vpn-ipv4
=====
BGP Router ID:10.10.10.2      AS:64496      Local AS:64496
=====
Legend -
Status codes : u - used, s - suppressed, h - history, d - decayed, * - valid
Origin codes : i - IGP, e - EGP, ? - incomplete, > - best
=====
BGP VPN-IPv4 Routes
=====
Flag Network                      LocalPref MED
  NextHop
  As-Path
-----
u*>i 64496:1:10.1.3.0/27            100      None
      10.10.10.1
      No As-Path
u*>? 64496:1:10.10.10.3/32         100      None
      10.10.10.1
      No As-Path
u*>? 64496:1:192.168.1.0/27        100      None
      10.10.10.1
      No As-Path
-----
Routes : 3
```



- A. The AS-Path is not present because a policy is configured on PE2 to set it to null.
- B. The AS-Path is not present because a policy is configured on CE1 to set it to null.
- C. The AS-Path is not present because a policy is configured on PE1 to set it to null.
- D. The AS-Path is not present because VPN-IPv4 routes do not propagate the IPv4 AS-Path BGP attribute.

**Correct Answer: C**

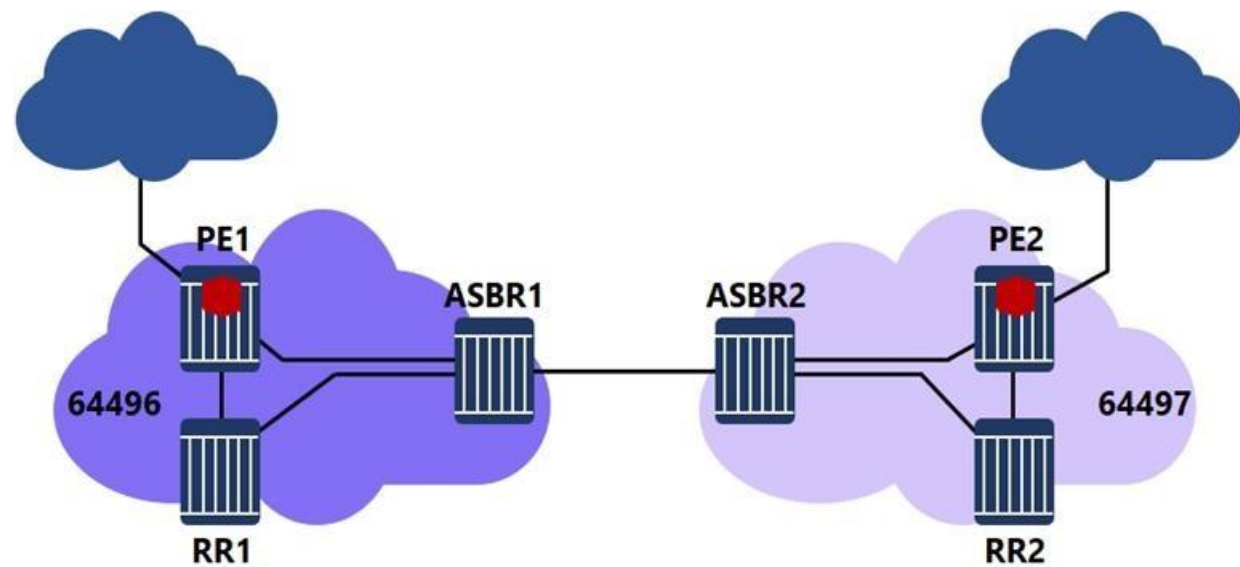
**Section: (none)**

**Explanation**

**Explanation/Reference:**

#### QUESTION 34

For the Inter-AS model C VPRN, which of the following is FALSE when an IP packet is sent from 192.1.1.1 to 192.2.1.1?



- A. PE1 pushes three labels on the IP packet: a VPN label, a BGP label, and an LDP transport label.
- B. ASBR1 pops the LDP label, swaps the BGP label and forwards the IP packet to ASBR2.
- C. ASBR2 swaps the BGP label and pushes an LDP transport label.
- D. PE2 pops all labels and forwards the unlabeled packet to its destination.

**Correct Answer:** B

**Section:** (none)

**Explanation**

**Explanation/Reference:**



**QUESTION 35** Which of the following statements about Carrier Supporting Carrier (CSC) VPRN is FALSE?

- A. CSC does not allow a customer carrier to offer Layer 2 services to its end customers.
- B. A CSC VPRN is configured on the network provider's CSC-PE routers.
- C. CSC eliminates the need for customer carriers to build and maintain their own MPLS backbone.
- D. The network provider provides an MPLS VPN backbone to the customer carrier.

**Correct Answer:** A

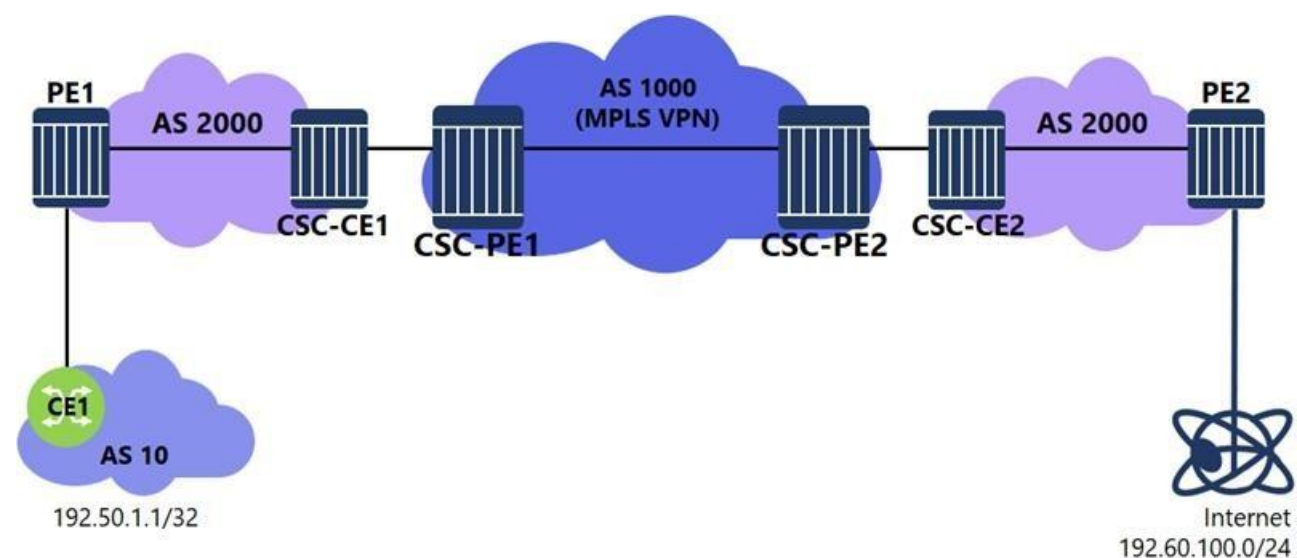
**Section:** (none)

**Explanation**

**Explanation/Reference:**

**QUESTION 36**

A Carrier Supporting Carrier (CSC) VPRN is configured on a Nokia 7750 SR for a customer carrier who is an Internet Service Provider (ISP). Which of the following configuration steps is NOT required?



- A. Configuring labeled eBGP sessions between CSC-CE and CSC-PE routers.
- B. Configuring a policy on each CSC-CE to advertise local PE addresses to the network provider.
- C. Configuring labeled iBGP sessions between PEs residing in different customer carrier sites.
- D. Advertising the received system addresses of remote PEs using either iBGP or IGP/LDP within each customer carrier site.

**Correct Answer: C**

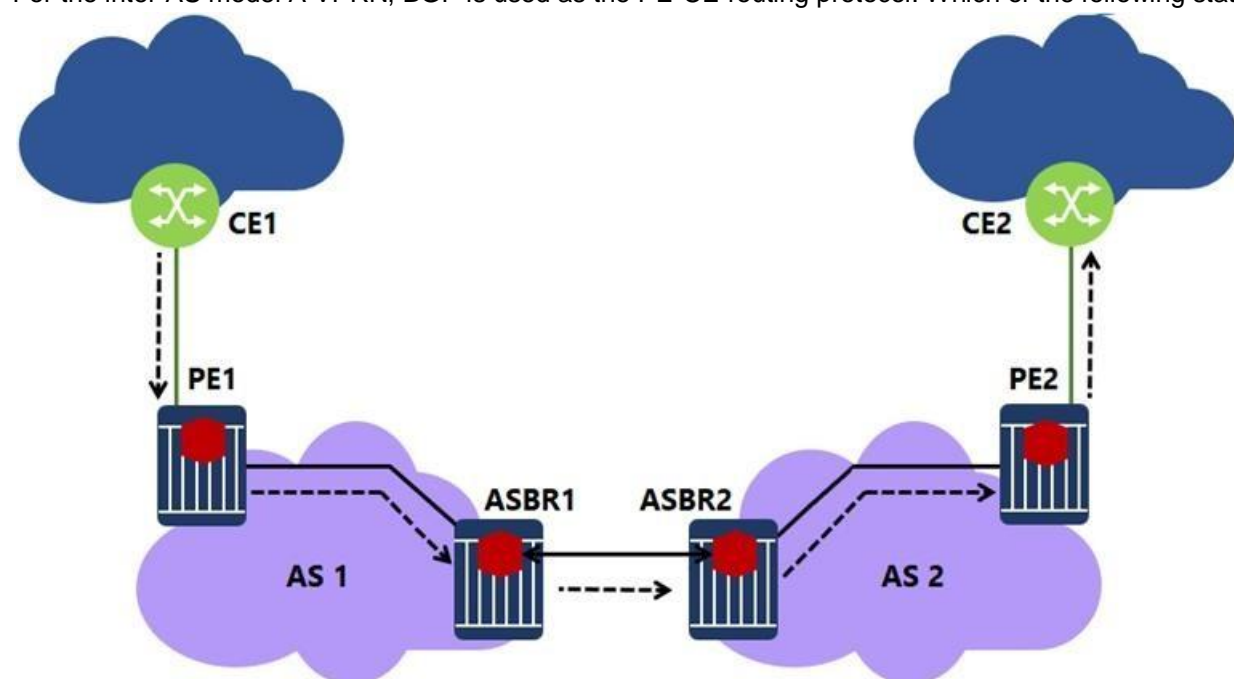
**Section: (none)**

**Explanation**

**Explanation/Reference:**

#### QUESTION 37

For the inter-AS model A VPRN, BGP is used as the PE-CE routing protocol. Which of the following statements about the control plane operation is TRUE?



- A. PE1 sends an IPv4 update for prefix 192.168.1.0/27 via MP-BGP to ASBR1.
- B. ASBR1 sends an IPv4 update for prefix 192.168.1.0/27 ASBR2.
- C. ASBR1 transforms an IPv4 update for prefix 192.168.1.0/27 to a VPN-IPv4 route and allocates VPN label V1 and sends the update to ASBR2.
- D. ASBR2 accepts a VPN-IPv4 update from ASBR1, then sends the update to PE2 via MP-BGP.

**Correct Answer:** B

**Section:** (none)

**Explanation**

**Explanation/Reference:**

**QUESTION 38** How was standard BGP modified to allow it to carry routing information for VPRNs?

- A. By using the MED attribute to carry the OSPF metric
- B. By adding an additional field to the BGP Update to carry the transport label
- C. By using the Cluster List attribute to carry the network prefix
- D. By defining support for the VPN-IPv4 address family

**Correct Answer:** D

**Section:** (none)

**Explanation**

**Explanation/Reference:**

**QUESTION 39** Which of the following about a Nokia 7750 SR MP-BGP update is FALSE? Assume default behavior.

- A. An MP-BGP update carries an MPLS label that is used as the service label for a VPRN.
- B. There can be multiple Route Targets per route in an MP-BGP update.
- C. There can only be one Route Distinguisher per route in an MP-BGP update.
- D. On a specific PE, the MP-BGP updates for prefixes from a single VPRN carry different labels.
- E. Traditional BGP attributes and MP-BGP attributes are present in an MP-BGP update.



**Correct Answer:** D

**Section:** (none)

**Explanation**

**Explanation/Reference:**

**QUESTION 40** Which of the following statements about assigning one Route Distinguisher per VPN is TRUE?

- A. This approach is recommended when multiple sites advertise the same prefix.
- B. This approach limits the opportunities for load balancing.
- C. This approach requires additional memory on the PEs to store more routes.
- D. This approach is recommended for extranet VPN.

**Correct Answer:** B

**Section:** (none)

**Explanation**

**Explanation/Reference:**

**QUESTION 41**

Which of the following statements about VPLS 333 is TRUE?

```
A:PE-B# show service id 333 stp
```

```
=====
Stp info, Service 333
=====
```

```
Bridge Id       : 80:00:00:16:4d:1c:e9:b8  Top. Change Count : 6
Root Bridge     : 80:00:00:03:fa:40:a2:9c  Stp Oper State    : Up
Primary Bridge  : This Bridge              Topology Change   : Inactive
Mode            : Rstp                     Last Top. Change  : 0d 00:00:58
Vcp Active Prot.: Rstp
Root Port       : 2048                     External RPC      : 10
=====
```

```
Stp port info
=====
```

Sap/Sdp Id	Oper- State	Port- Role	Port- State	Port- Num	Oper- Edge	Link- Type	Active Prot.
1/1/1	Up	Root	Forward	2048	False	Pt-pt	Rstp

```
=====
```

- A. This bridge's relative distance from the root bridge is 6.
- B. This bridge is the root bridge.
- C. SAP 1/1/1 is an edge port.
- D. This bridge is closest to the root bridge within the VPLS mesh.

**Correct Answer:** D

**Section:** (none)

**Explanation**

**Explanation/Reference:**



**QUESTION 42** Which of the following describes the setting of the I-SID on the Nokia 7750 SR?

- A. The I-SID is set to 0 by default.
- B. The I-SID can be explicitly configured.
- C. The I-SID is always set to the B-VPLS service-ID.
- D. The I-SID is always set to the I-VPLS service-ID.

**Correct Answer:** B

**Section:** (none)

**Explanation**

**Explanation/Reference:**

**QUESTION 43** Which of the following statements about G.8032 Ethernet Ring Protection is FALSE?

- A. Uses standard Ethernet dot1q and QinQ encapsulation.
- B. Requires IS-IS as the protocol to carry control information.
- C. Ethernet Ring APS is a defined ITU standard.
- D. Standard Ethernet forwarding, learning, and flooding rules apply.

**Correct Answer:** B

**Section:** (none)

**Explanation****Explanation/Reference:****QUESTION 44**

In a LDP VPLS using BGP auto-discovery, which of the following parameters is identified by the MP-BGP extended community "l2-vpn/vrf-imp"?

- A. VSI-ID, which identifies the PE router.
- B. VPLS-ID, which identifies the PE router.
- C. VSI-ID, which identifies a specific VPLS service.
- D. VPLS-ID, which identifies a specific VPLS service.

**Correct Answer:** D

**Section:** (none)

**Explanation****Explanation/Reference:****QUESTION 45**

If a label block has a label base of 131052, VBS of 10, and VBO of 1, what is the last label and its associated VE-ID in the block?

- A. Label 131043, VE-ID 1
- B. Label 131061, VE-ID 1
- C. Label 130143, VE-ID 10
- D. Label 131061, VE-ID 10

**Correct Answer:** D

**Section:** (none)

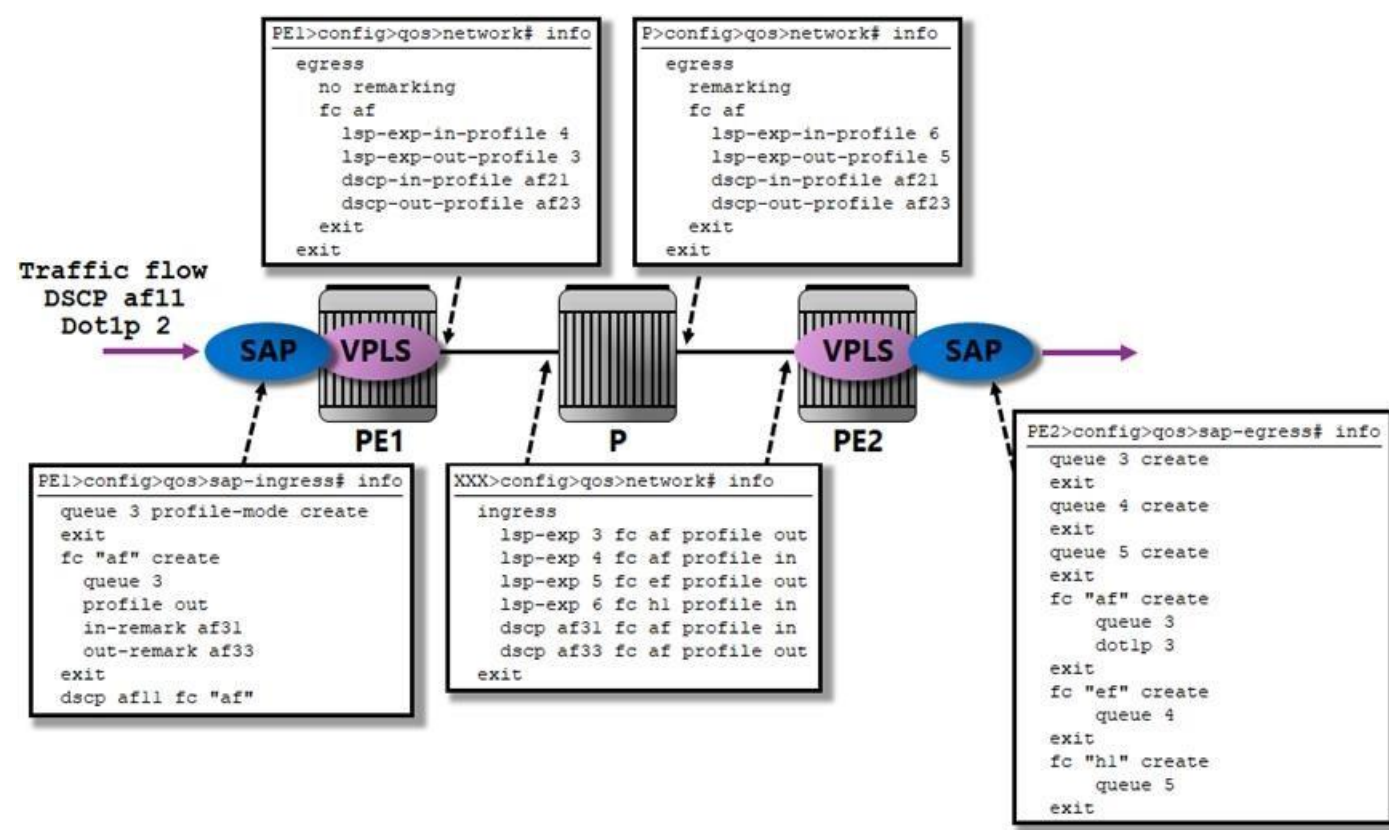
**Explanation****Explanation/Reference:**

Reference:

[https://documentation.nokia.com/html/0\\_add-h-f/93-0267-HTML/7X50\\_Advanced\\_Configuration\\_Guide/BGP-VPLS.pdf](https://documentation.nokia.com/html/0_add-h-f/93-0267-HTML/7X50_Advanced_Configuration_Guide/BGP-VPLS.pdf)

**QUESTION 46**

Packets arrive at the VPLS SAP on PE1 with a DSCP marking of af11 and Dot1p of 2. According to the QoS policies applied at routers PE1, P, and PE2, what is the dot1p value of packets egressing router PE2? All the SDPs are MPLSencapsulated, and all interfaces are using their default trust states.



- A. 2
- B. 3
- C. 5
- D. 6



**Correct Answer:** C

**Section:** (none)

**Explanation**

**Explanation/Reference:**

**QUESTION 47** Which of the following statements about active/passive pseudowire is FALSE?

- A. An endpoint can be associated with four different spoke SDPs within a service.
- B. One endpoint SDP is active, while the others are in standby.
- C. BGP signals the pseudowire status between the MDU and PE devices.
- D. Transmit/Receive and learning is disabled on the standby SDPs.

**Correct Answer:** D

**Section:** (none)

**Explanation**

**Explanation/Reference:**

**QUESTION 48** Which of the following statements about LAGs is FALSE?

- A. Multiple ports can be aggregated into a virtual port.
- B. LAG is a single virtual port with 1 or more physical ports.

- C. LAGs can minimize the impact of a single port failure.  
D. LAGs are vendor-specific.

**Correct Answer:** D

**Section:** (none)

**Explanation**

**Explanation/Reference:**

Reference: [https://documentation.nokia.com/cgi-bin/dbaccessfilename.cgi/9300720902REV2\\_V1\\_7750%20SR%200](https://documentation.nokia.com/cgi-bin/dbaccessfilename.cgi/9300720902REV2_V1_7750%20SR%200)

#### QUESTION 49

Based upon the exhibit, which of the following statements about LAG 1 is TRUE?

```
A:VPLSV3_PE1# show lag 1 detail
=====
LAG Details
=====
Details
-----
Lag-id          : 1                Mode          : access
Adm             : up              Opr           : up
Thres. Exceeded Cnt : 10          Port Threshold : 2
Thres. Last Cleared : 04/29/2015 07:38:38 Threshold Action : down
Dynamic Cost     : false          Encap Type     : dot1q
Configured Address : 60:2c:ff:00:01:41 Lag-IfIndex    : 1342177281
Hardware Address  : 60:2c:ff:00:01:41 Adapt Qos (access) : distribute
...
LACP            : enabled          Mode          : active
LACP Transmit Intvl : fast        LACP xmit stdby : enabled
Selection Criteria : highest-count Slave-to-partner : disabled
...
System ID       : 60:2c:ff:00:00:00 System Priority : 32768
Admin Key       : 40000            Oper Key       : 32769
Prtr System Id  : 60:30:ff:00:00:00 Prtr System Priority : 32768
Prtr Oper Key   : 32768
Standby Signaling : lacp
Port weight speed : 0 gbps        Number/Weight Up : 3
Weight Threshold : 0              Threshold Action : down
...
MC Peer Address  : 10.10.10.2      MC Peer Lag-id : 1
MC System Id     : 00:00:00:00:00:01 MC System Priority : 32768
MC Admin Key     : 32769           MC Active/Standby : active
MC Lacp ID in use : true           MC extended timeout : false
MC Selection Logic : local master decided
MC Config Mismatch : no mismatch
-----
Port-id      Adm  Act/Stdby Opr  Primary  Sub-group  Forced  Prio
-----
1/1/2        up   active  up   yes      1          -       32768
1/2/1        up   active  up           1          -       32768
1/2/2        up   active  up           1          -       32768
```



- A. PE1 is the master.  
B. The system-ID used by the CE device is 60:2c:ff:00:00:00.  
C. The Admin Key used by the CE device is 40000.  
D. There is a configuration error between the two MC peers.

**Correct Answer:** A

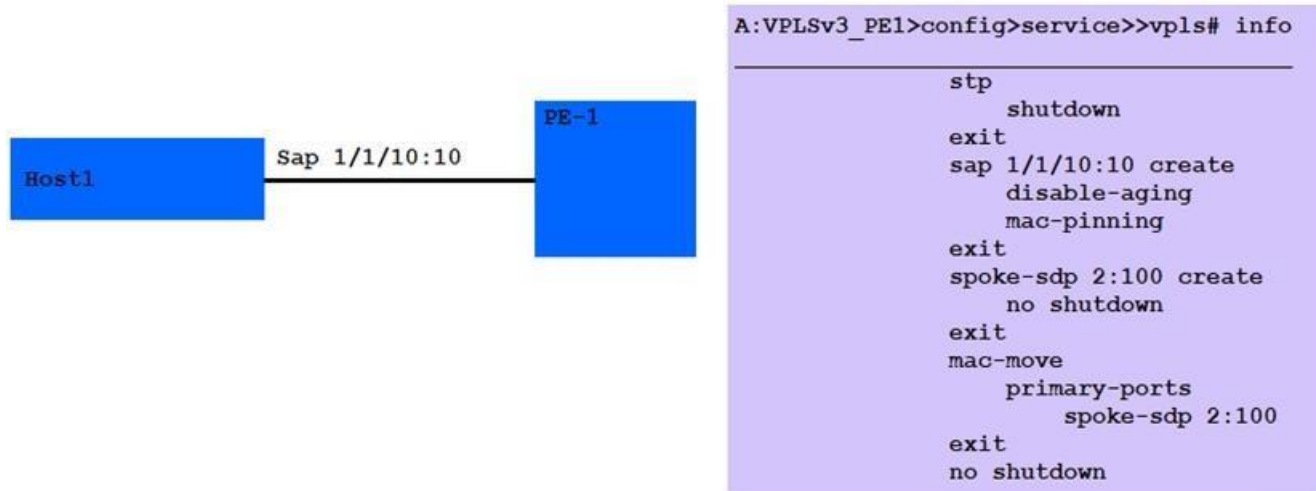
**Section:** (none)

**Explanation**

**Explanation/Reference:**

#### QUESTION 50

Host 1 sends its first Ethernet frame into the VPLS. Which of the following statements about MAC learning is TRUE?



- A. Host 1 MAC will be learned on the SAP until it ages out.
- B. Host 1 MAC will be learned on the SAP until it is re-learned on the SDP.
- C. Host 1 MAC will be learned on the SAP and cannot age out or be re-learned locally.
- D. Host 1 MAC will be learned on the SAP until it ages out or is re-learned on the SDP.

**Correct Answer:** C

**Section:** (none)

**Explanation**

**Explanation/Reference:**

Reference: [https://documentation.nokia.com/html/0\\_add-h-f/93-0098-09-01/7750\\_SR\\_OS\\_Triple\\_Play\\_Guide/TriplePlay-con-security.html#1302218](https://documentation.nokia.com/html/0_add-h-f/93-0098-09-01/7750_SR_OS_Triple_Play_Guide/TriplePlay-con-security.html#1302218)

#### QUESTION 51

Which of the following statements about the VPLS FDB is TRUE?

```

A:VPLSv3_PE1>config>service>vpls# info
-----
fdb-table-size 10
fdb-table-low-wmark 40
fdb-table-high-wmark 60
stp
  shutdown
exit
sap lag-1:100 create
exit
mesh-sdp 2:100 create
  no shutdown
exit
mesh-sdp 3:100 create
  no shutdown
exit
no shutdown
  
```

- A. An alarm will be raised when the FDB occupancy reaches 5 MAC entries.
- B. An alarm will be cleared when the FDB occupancy drops below 6 MAC entries.
- C. An alarm will be raised when the FDB occupancy reaches 7 MAC entries.
- D. An alarm will be cleared when the FDB occupancy drops below 10 MAC entries.

**Correct Answer:** C

Section: (none)

Explanation

Explanation/Reference:

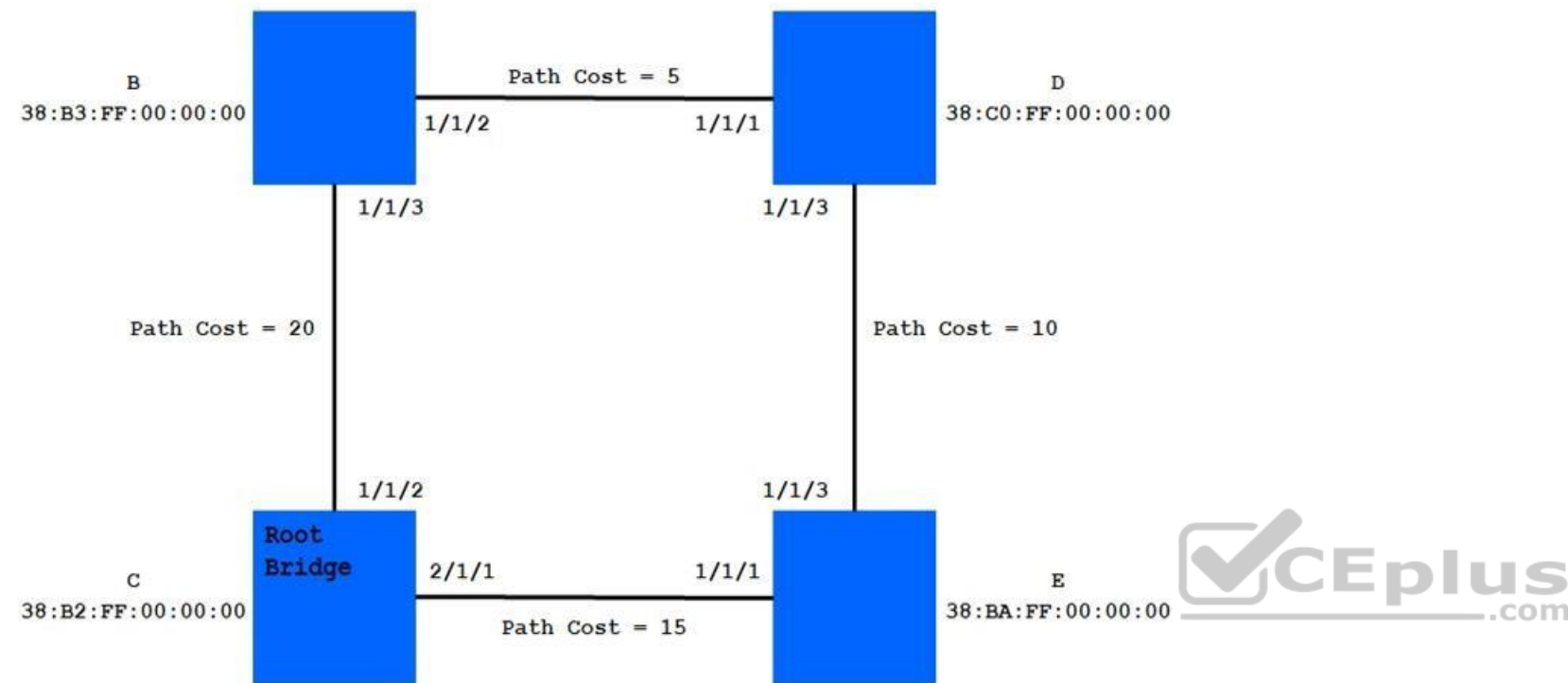
Reference:

[https://infocenter.nokia.com/public/7705SAR70R4A/index.jsp?topic=%2Fcom.sar.services%2Fhtml%2Fvpls\\_commands.html](https://infocenter.nokia.com/public/7705SAR70R4A/index.jsp?topic=%2Fcom.sar.services%2Fhtml%2Fvpls_commands.html)

### QUESTION 52

RSTP is running in the network. Which port will become the alternate port?

Bridge priority for all bridges = 32768



- A. Bridge B 1/1/3
- B. Bridge B 1/1/2
- C. Bridge D 1/1/1
- D. Bridge D 1/1/3
- E. Bridge E 1/1/1

Correct Answer: D

Section: (none)

Explanation

Explanation/Reference:

### QUESTION 53

For periodic traffic between hosts, which of the following statements about the use of remote and local age timers is TRUE on the Nokia 7750 SR?

- A. The lower the age-time, the higher the probability of flooding of unknown traffic.
- B. The higher the age-time, the higher the probability of flooding of unknown traffic.
- C. The local and remote age timers are, by default, the same value.
- D. There is no relationship between the age-timers and the probability of flooding of unknown traffic.

Correct Answer: D

Section: (none)

Explanation

**Explanation/Reference:**

**QUESTION 54**

What is PBB also known as?

- A. H-VPLS
- B. IEEE 802.1ag
- C. MAC aggregation
- D. MAC-in-MAC

**Correct Answer:** D

**Section:** (none)

**Explanation**

**Explanation/Reference:**

**QUESTION 55** How is MAC learning achieved in traditional Ethernet switches?

- A. As frames leave the switch, the DA is populated into the FDB.
- B. As frames enter the switch, the DA is populated into the FDB.
- C. As frames leave the switch, the SA is populated into the FDB.
- D. As frames enter the switch, the SA is populated into the FDB.

**Correct Answer:** D

**Section:** (none)

**Explanation**

**Explanation/Reference:**



**QUESTION 56**

The following VPLS services have been configured. Which of the following statements is TRUE?

```
vpls 1 customer 1
sap 1/1/1:0

vpls 2 customer 2
sap 1/1/1:100

vpls 3 customer 3
sap 1/1/1:300
```

- A. All untagged frames will be forwarded to VPLS 1.
- B. All frames with more than one VLAN tag will be dropped.
- C. A frame with an outer VLAN tag of 300 and inner VLAN tag of 100 will be forwarded to VPLS 2.
- D. A frame with a single VLAN tag of 500 will be forwarded to VPLS 1.
- E. A frame with an outer VLAN tag of 500 and inner VLAN tag of 300 will be forwarded to VPLS 3.

**Correct Answer:** A

**Section:** (none)

**Explanation**

**Explanation/Reference:**

**QUESTION 57** Which of the following is used by the far end PE node to identify a specific VPLS?

- A. SDP ID
- B. Service ID
- C. VC Label
- D. Transport Label
- E. Customer ID

**Correct Answer:** A

**Section:** (none)

**Explanation**

**Explanation/Reference:**

Reference: [https://documentation.nokia.com/html/0\\_add-h-f/93-0076-10-01/7750\\_SR\\_OS\\_Services\\_Guide/services\\_vpls.html](https://documentation.nokia.com/html/0_add-h-f/93-0076-10-01/7750_SR_OS_Services_Guide/services_vpls.html)

**QUESTION 58** Which of the following statements about a Management VPLS is TRUE?

- A. Operates in transparent mode.
- B. Inherits SAP and SDP state from uVPLS.
- C. Does not carry customer traffic.
- D. Runs one instance of RSTP per VPLS.

**Correct Answer:** C

**Section:** (none)

**Explanation**

**Explanation/Reference:**



**QUESTION 59** Which of the following is a characteristic of using a spoke SDP in an H-VPLS design?

- A. Simplifies signaling.
- B. Increases requirement for replication.
- C. Increases MDU configuration complexity.
- D. Increases the complexity of an inter-domain connectivity solution.

**Correct Answer:** A

**Section:** (none)

**Explanation**

**Explanation/Reference:**

Reference: [https://documentation.nokia.com/html/0\\_add-h-f/93-0076-10-01/7750\\_SR\\_OS\\_Services\\_Guide/services.html](https://documentation.nokia.com/html/0_add-h-f/93-0076-10-01/7750_SR_OS_Services_Guide/services.html)

**QUESTION 60**

A VPLS is configured with service MTU of 2000 and a Q-in-Q SAP. What is the minimum MTU required for the SAP to become operational?

- A. 2008
- B. 2004
- C. 2000
- D. 1992

**Correct Answer:** D

**Section:** (none)

**Explanation**

**Explanation/Reference:**

**QUESTION 61** Where can network-queue policies be applied on a Nokia 7750 SR?

- A. On access port egress.
- B. On network port ingress.
- C. On MDA ingress.
- D. On IOM egress.

**Correct Answer:** B

**Section:** (none)

**Explanation**

**Explanation/Reference:**

Reference: [https://infocenter.nokia.com/public/7750SR150R5A/topic/com.sr.qos/html/network\\_queue.html](https://infocenter.nokia.com/public/7750SR150R5A/topic/com.sr.qos/html/network_queue.html)

**QUESTION 62**

According to the SAP-egress policy configured and applied, which queue will AF traffic use?

```
*A:R1>config>qos# info
-----
--- Output omitted ---
queue-group-templates
  egress
    queue-group "exam" create
      queue 1 best-effort create
      exit
      queue 2 best-effort create
      exit
      queue 3 best-effort create
      exit
      fc af create
        queue 2
      exit
      fc ef create
        queue 3
      exit
    exit
  exit
exit
sap-egress 10 create
  queue 1 create
  exit
  policer 1 create
  exit
  fc af create
    policer 1 group "exam" instance 1 queue 3
  exit
  default-fc af
exit
-----
*A:R1>config>qos# exit all
*A:R1#
*A:R1# configure port 1/1/6 ethernet access egress queue-group "exam" create
*A:R1# configure service epipe 1 sap 1/1/6 egress qos 10
```



- A. Queue 3, because it is explicitly defined in the SAP-egress policy.
- B. Queue 2, because it is explicitly configured in the queue-group template.
- C. The default, queue 1, because there is a mismatch between the mapping in the SAP-egress policy and in the queue-group template.

D. AF traffic is dropped because there is a mismatch between the mapping in the SAP-egress policy and in the queue-group template.

**Correct Answer:** B

**Section:** (none)

**Explanation**

**Explanation/Reference:**

**QUESTION 63** Which of the following statements about the default scheduler in the Nokia 7750 SR is TRUE?

- A. A queue will be serviced as expedited if all of the forwarding classes mapped to it are expedited, regardless of its configured type.
- B. A queue will be serviced as best-effort if all of the forwarding classes mapped to it are best-effort, regardless of its configured type.
- C. A queue will be serviced as expedited if at least one of the forwarding classes mapped to it is expedited, regardless of its configured type.
- D. A queue will be serviced as expedited if its type is configured as expedited, regardless of the forwarding classes mapped to it.

**Correct Answer:** A

**Section:** (none)

**Explanation**

**Explanation/Reference:**

Reference:

<https://infocenter.nokia.com/public/7750SR1910R1A/index.jsp?topic=%2Fcom.nr.qos%2Fhtml%2Fqos.html>

**QUESTION 64**

In the image shown below, the network QoS policy is applied properly to a Nokia 7750 SR. An MPLS packet with dot1p=1, EXP=4, and DSCP=AF is received. Which forwarding class and profile is assigned to this packet?

```
*A:R1>config>qos>network# info
-----
      ingress
        dscp ef fc ef profile in
        lsp-exp 5 fc h1 profile out
      exit
    egress
    exit
-----
```



- A. EF, in
- B. H1, out
- C. BE, out
- D. L1, in

**Correct Answer:** A

**Section:** (none)

**Explanation**

**Explanation/Reference:**

**QUESTION 65**

Which of the following is an example of something that CAN be done with hierarchical policing (CFHP) but CANNOT be done with standalone policers?

- A. Limiting the maximum forwarding rate of each individual policer and, at the same time, marking packets as in-profile or out-of-profile.
- B. Putting packets in a buffer as they are received, and marking packets as in-profile or out-of-profile as they are removed from the buffer.
- C. Rate-limiting the collective output of several policers, and to reallocate bandwidth that is not utilized by some policers to other policers that need to use it.
- D. Rate-limiting the collective output of several policers towards each egress FFPC, while maintaining control of the maximum overall forwarding rate.

**Correct Answer:** C

Section: (none)

Explanation

Explanation/Reference:

#### QUESTION 66

In the image shown below, the SAP-ingress policy is applied to a Nokia 7750 SR. A packet is received from an IP address 192.168.2.2 with DSCP set to AF. Which forwarding class and priority level is assigned to this packet?

```
*A:R1>config>qos>sap-ingress# info
-----
queue 1 create
exit
queue 3 create
    rate 7000 cir 2000
exit
queue 4 create
    rate 2500 cir 500
exit
queue 11 multipoint create
exit
fc "ef" create
    queue 3
exit
fc "h2" create
    queue 4
exit
ip-criteria
    entry 10 create
        match
            dscp ef
        exit
        action fc "ef" priority high
    exit
    entry 20 create
        match
            src-ip 192.168.1.1/32
        exit
        action fc "h2" priority low
    exit
exit
-----
```



- A. NC, low
- B. NC, high
- C. BE, low
- D. BE, high

Correct Answer: B

Section: (none)

Explanation

Explanation/Reference:

**QUESTION 67** Which of the following about self-generated traffic QoS is TRUE?

- A. The DSCP marking stays nc1 for all applications; only the internal forwarding class is manipulated across different applications.

- B. DSCP bits can be set per application, per routing instance.
- C. The internal forwarding class for self-generated traffic is set once and applied to the base router and all VPRN instances.
- D. Self-generated traffic can be marked at Layer 2 no matter what encapsulation is used on the network interfaces.

**Correct Answer:** B

**Section:** (none)

**Explanation**

**Explanation/Reference:**

#### QUESTION 68

If packets egressing a SAP do not match any criteria defined in the SAP-egress policy, which forwarding class will these packets be assigned to?

- A. The default forwarding class defined in the SAP-egress policy.
- B. The forwarding class inherited from network ingress classification.
- C. Best Effort.
- D. If there is no match, packets will be dropped.

**Correct Answer:** A

**Section:** (none)

**Explanation**

**Explanation/Reference:**

#### QUESTION 69

A profile-mode queue is configured with the following attributes: MBS = 10 KB, CBS = 5 KB and High-Priority-Only = 30%. Assume there is no CBS oversubscription, and the slope-policy is disabled. If the current queue depth is 8 KB, what will happen to an in-profile packet?

- A. It will be discarded because the high-priority-only threshold is exceeded.
- B. It will be stored in the queue's reserved buffer space and become out-of-profile.
- C. It will be stored in the queue's reserved buffer space and remain in-profile.
- D. It will be contend for shared buffer space with packets from other queues.



**Correct Answer:** C

**Section:** (none)

**Explanation**

**Explanation/Reference:**

Reference: [https://documentation.nokia.com/html/0\\_add-h-f/93-0267-HTML/7X50\\_Advanced\\_Configuration\\_Guide/QoS\\_arch.html](https://documentation.nokia.com/html/0_add-h-f/93-0267-HTML/7X50_Advanced_Configuration_Guide/QoS_arch.html)

**QUESTION 70** Which of the following about a queue's rate parameters is TRUE?

- A. PIR cannot be greater than CIR.
- B. PIR cannot be equal to CIR.
- C. PIR cannot be less than CIR.
- D. If only PIR is configured, CIR is set to the same value as PIR.

**Correct Answer:** C

**Section:** (none)

**Explanation**

**Explanation/Reference:**

Reference:

[https://documentation.nokia.com/html/0\\_add-h-f/93-0077-HTML/7750\\_SR\\_OS\\_QoS\\_Guide/QoS.pdf](https://documentation.nokia.com/html/0_add-h-f/93-0077-HTML/7750_SR_OS_QoS_Guide/QoS.pdf)

**QUESTION 71** Which of the following is NOT one of the four elements in the Nokia 7750 SR QoS solution?

- A. Marking/Remarking
- B. Classification
- C. Encapsulation
- D. Scheduling

**Correct Answer:** C

**Section:** (none)

**Explanation**

**Explanation/Reference:**

Reference: [https://documentation.nokia.com/html/0\\_add-h-f/93-0267-HTML/7X50\\_Advanced\\_Configuration\\_Guide/QoS\\_arch.html](https://documentation.nokia.com/html/0_add-h-f/93-0267-HTML/7X50_Advanced_Configuration_Guide/QoS_arch.html)

**QUESTION 72**

According to the SAP-ingress QoS policy shown, what needs to be the depth of the CIR bucket of policer 5, as a minimum, for forwarded packets to start being marked as out-of-profile?

```
*A:R1>config>qos>sap-ingress# info
```

```
-----  
--- Output omitted ---  
policer 5 create  
  mbs 20  
  cbs 10  
  high-prio-only 10  
exit  
policer 6 create  
  mbs 24  
  cbs 24  
  high-prio-only 90  
exit  
fc ef create  
  policer 6  
exit  
fc l1 create  
  policer 5  
exit  
fc l2 create  
  policer 5  
exit  
dot1p 1 fc "12"  
dot1p 5 fc "ef"  
dscp "ef" fc "ef" priority high  
default-fc l1  
default-priority low  
-----
```



- A. 1,000 tokens
- B. 2,000 tokens
- C. 10,000 tokens
- D. 20,000 tokens

**Correct Answer:** D

**Section:** (none)

**Explanation**

**Explanation/Reference:**

**QUESTION 73** Which of the following fields in frames belonging to a Layer 3 service CANNOT be marked or remarked on SAP-egress?

- A. Dot1p
- B. EXP
- C. DSCP
- D. PREC

**Correct Answer:** B

**Section:** (none)

**Explanation**

**Explanation/Reference:**

**QUESTION 74** When using an egress port scheduler, which scheduling loop priority are orphaned queues serviced on?

- A. 1st
- B. 8th
- C. 9th
- D. 17th

**Correct Answer:** A

**Section:** (none)

**Explanation**

**Explanation/Reference:**

Reference: [https://documentation.nokia.com/html/0\\_add-h-f/93-0077-10-01/7750\\_SR\\_OS\\_QoS\\_Guide/QoS-scheduler-policy.html](https://documentation.nokia.com/html/0_add-h-f/93-0077-10-01/7750_SR_OS_QoS_Guide/QoS-scheduler-policy.html)

**QUESTION 75** Which of the following statements defines the servicing rate?

- A. It is the rate at which a traffic stream is offered to a queue.
- B. It is the rate at which packets are forwarded out of a queue.
- C. It is the minimum rate at which packets may be forwarded out of a queue.
- D. It is the maximum rate at which packets may be forwarded out of a queue.

**Correct Answer:** C

**Section:** (none)

**Explanation**

**Explanation/Reference:**

**QUESTION 76** Which of the following is NOT used for packet classification at SAP-ingress?

- A. EXP bits in the MPLS header.
- B. The service ID of the service to which the SAP belongs.
- C. The frame's source and destination MAC addresses.
- D. The packet's source and destination IP addresses.

**Correct Answer:** B

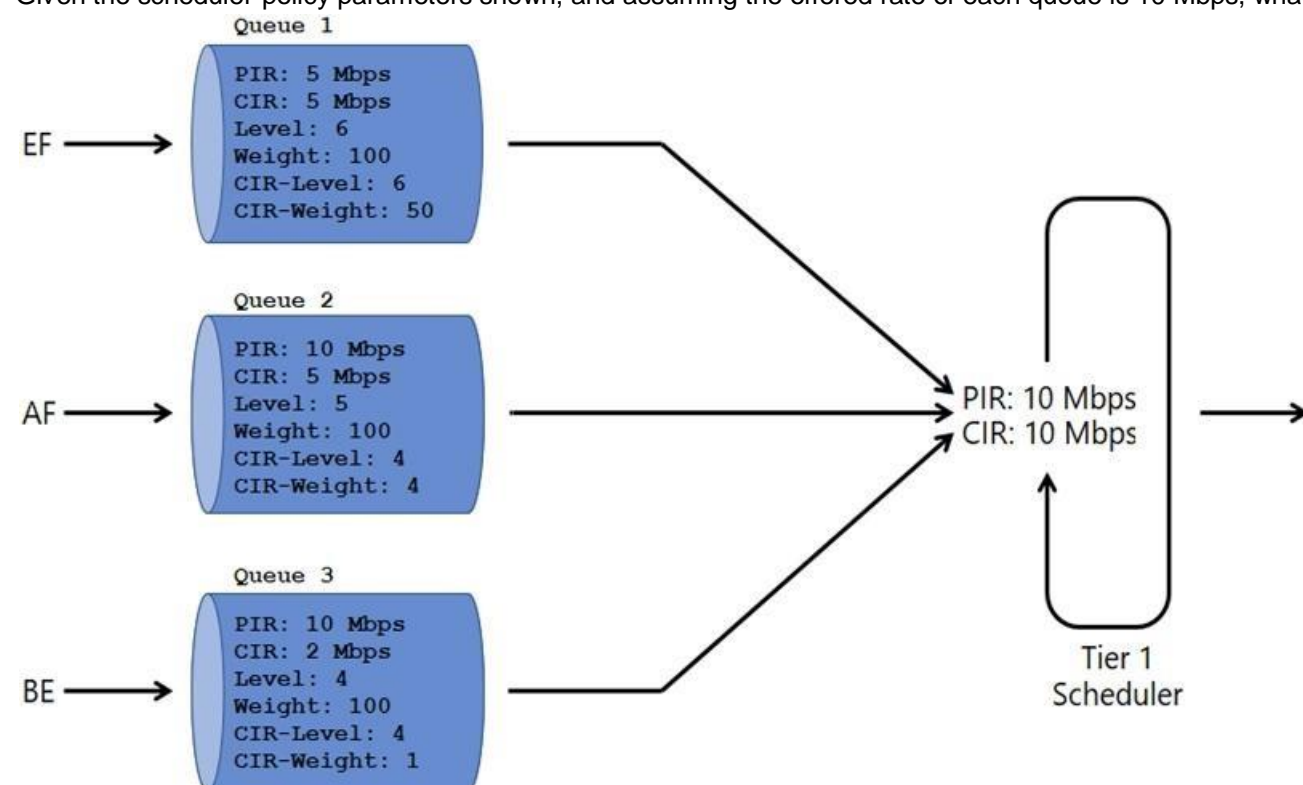
**Section:** (none)

**Explanation**

**Explanation/Reference:**

# QUESTION 77

Given the scheduler-policy parameters shown, and assuming the offered rate of each queue is 10 Mbps, what are the operational PIR and CIR for queue 2?



- A. PIR = 1 Mbps, CIR = 1 Mbps
- B. PIR = 4 Mbps, CIR = 4 Mbps
- C. PIR = 10 Mbps, CIR = 1 Mbps
- D. PIR = 5 Mbps, CIR = 1.25 Mbps
- E. PIR = 5 Mbps, CIR = 4 Mbps

**Correct Answer:** B

**Section:** (none)

**Explanation**

**Explanation/Reference:**

**QUESTION 78** Which of the following features of the Nokia 7750 SR prevents Head of Line blocking in the default queuing model?

- A. Every forwarding class can be associated with its own queue without sharing with other forwarding classes.
- B. A 3-tier scheduling policy can be applied at SAP-ingress/SAP-egress.
- C. For each unicast queue in a SAP-ingress or network-queue policy, there is a separate hardware queue for each destination FFPC.
- D. Policing can be deployed instead of queuing at ingress.

**Correct Answer:** C

**Section:** (none)

**Explanation**

**Explanation/Reference:**

# QUESTION 79

According to the SAP-ingress QoS policy shown, which packets have a higher priority to enter queue 6?

```
*A:R1>config>qos>sap-ingress# info
```

```
-----  
--- Output omitted ---  
queue 5 priority-mode create  
  mbs 20  
  cbs 10  
  high-prio-only 10  
exit  
queue 6 profile-mode create  
  mbs 24  
  cbs 24  
  high-prio-only 90  
exit  
fc ef create  
  queue 6  
exit  
fc "ef.in" create  
  profile in  
exit  
fc "ef.out" create  
  profile out  
exit  
fc 12 create  
  queue 5  
exit  
dot1p fc "12"  
dot1p 5 fc "ef.in" priority low  
dscp "ef" fc "ef.out" priority high  
default-fc 11  
default-priority high  
-----
```



- A. Those marked with dot1p = 5.
- B. Those marked with dscp = "ef".
- C. All packets mapped to queue 6 have the same priority to use the available buffer space.
- D. There are no packets mapped to queue 6.

**Correct Answer:** C

**Section:** (none)

**Explanation**

**Explanation/Reference:**