

300-820.VCEplus.premium.exam.60q

Number: 300-820
Passing Score: 800
Time Limit: 120 min
File Version: 1.0



Website: <https://vceplus.com>

VCE to PDF Converter: <https://vceplus.com/vce-to-pdf/>

Facebook: <https://www.facebook.com/VCE.For.All.VN/>

Twitter : https://twitter.com/VCE_Plus

300-820

Collaboration Cloud & Edge Implementation (CLCEI)



Exam A

QUESTION 1

Jabber cannot log in via Mobile and Remote Access. You inspect Expressway-C logs and see this error message:

XCP_JABBERD Detail="Unable to connect to host '%IP%', port 7400:(111) Connection refused"

Which is the cause of this issue?

- A. Rich Media Session licenses are not activated on Expressway-E.
- B. Expressway-E is listening on the wrong IP interface.
- C. The destination port for Expressway-E is set to 7400 instead of 8443 on the Expressway-C.
- D. The XCP Service is not activated on Expressway-E.

Correct Answer: B

Section: (none)

Explanation


Explanation/Reference:

QUESTION 2

```
XmppSDK.dll #0, 201, Recv:<iq id='uid:527a7fe7:00000cfe:00000000' type='error'><bind
xmlns='urn:ietf:params:xml:ns:xmpp-stanzas' /></error></iq>

XmppSDK.dll #0, CXmppClient::onResourceBindError

XmppSDK.dll #0, 39, CTriClient::HandleDisconnect, reason:16
```



Refer to the exhibit. While troubleshooting Cisco Jabber login issues, there are some error messages.

Why is the Jabber client unable to sign in?

- A. down Cisco Unified Communications Manager server
- B. XMPP bind failures
- C. incorrect login credentials
- D. service discovery issues

Correct Answer: B

Section: (none)

Explanation

Explanation/Reference:

QUESTION 3 What is the purpose of using ICE for Mobile and Remote Access endpoints in the Cisco Collaboration infrastructure?

- A. ICE controls the bandwidth usage for Cisco Collaboration endpoints if the endpoints are located outside the company network.
- B. ICE enables Cisco Collaboration endpoints to determine if there is direct connectivity between them.
- C. ICE uses FAST updates to optimize the video quality in case of packet loss. This technology is available only from Cisco Unified CM version 11.5 and later.
- D. ICE enablement allows for the Cisco Collaboration endpoint to register through Expressway servers to Cisco Unified Communications Manager behind a firewall.

Correct Answer: B

Section: (none)

Explanation

Explanation/Reference:

QUESTION 4

A company already has a Cisco Unified Communications Manager for internal audio and video traffic, but it requires video communication with external partners and customers. It is important to ensure security for the deployment and the connectivity.

What must be set up to enable this requirement?

- A. Cisco Unified Border Element and Cisco ASA Firewall
- B. Cisco Unified Border Element and Cisco Firepower Firewall
- C. Cisco Expressway-C and Cisco Expressway-E
- D. Cisco Expressway-C and Cisco Unified Border Element

Correct Answer: C

Section: (none)

Explanation

Explanation/Reference:

QUESTION 5 When deploying an Expressway Core and Expressway Edge cluster for mobile and remote access, which TLS verify subject name must be configured on the Expressway-E UC traversal zone?

- A. Webex CUSP Cluster Name
- B. Expressway-E Cluster Name
- C. Cisco Unified Communications Manager Publisher FQDN
- D. Expressway-C Cluster Name



Correct Answer: B

Section: (none)

Explanation

Explanation/Reference:

QUESTION 6

When an Expressway-E is configured for static NAT, which Session Description Protocol attribute is modified to reflect the NAT address?

- A. SDP b-line
- B. SIP record route
- C. SDP c-line
- D. SDP m-line

Correct Answer: C

Section: (none)

Explanation

Explanation/Reference:

QUESTION 7

```
Module="network.ldap" Level="INFO": Detail="Authentication credential found
in directory for identity: expresswayturn"

Module="developer.nomodule" Level="WARN"
CodeLocation="ppcmains/sip/sipproxy/
SipProxyAuthentication.cpp(686)" Method="SipProxyAuthentication::
checkDigestSAResponse" Thread="0x7a2485cb0700": calculated response does not
match supplied response,
calculatedResponse=769c8f488b71eebdf28b61ab1dc9f5e9,
response=319a0bb365dccf98c1bb7b3ce350f6cc

Event="Authentication Failed" Service="SIP" Src-ip="10.1.1.161"
Src-port="25713" Detail="Incorrect authentication credential for user"
Protocol="TLS" Method="OPTIONS" Level="1"
```

Refer to the exhibit. Mobile Cisco Jabber cannot register with on-premises Cisco Unified Communications Manager using Mobile and Remote Access. Some logs were captured on Expressway Edge.

Which action corrects this problem?

- A. Ensure that the peer address does not match the Common Name on certificate.
- B. Ensure that the _cisco-uds SRV record has been configured.
- C. Ensure that the credential has been entered correctly.
- D. Ensure that the SIP domains are added on Expressway Core.



Correct Answer: C

Section: (none)

Explanation

Explanation/Reference:

QUESTION 8 Which two statements about Expressway media traversal are true?
(Choose two.)

- A. Expressway Control is the traversal server installed in the DMZ.
- B. The Expressway Edge must be put in a firewall DMZ segment.
- C. Cisco Unified Communications Manager zone can be either traversal server or client.
- D. The Unified Communications traversal zone can be used for Mobile and Remote Access.
- E. Both Expressway Edge interfaces can be NATed.

Correct Answer: BD

Section: (none)

Explanation

Explanation/Reference:

QUESTION 9 Which zone is required between Expressway-E and Expressway-C in Mobile and Remote Access deployments?

- A. Unified Communications traversal zone

- B. neighbor zone
- C. DNS zone
- D. traversal zone

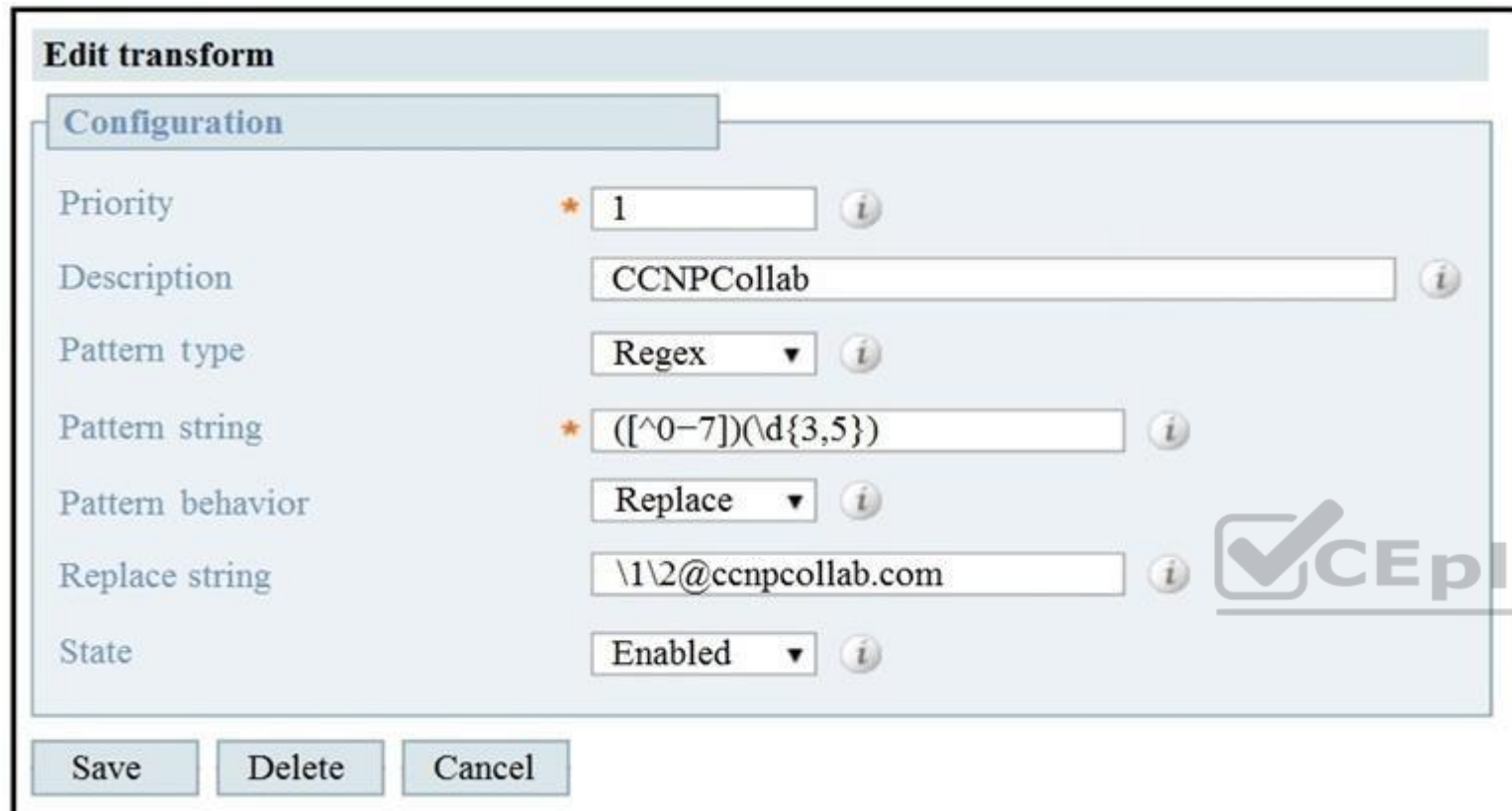
Correct Answer: A

Section: (none)

Explanation

Explanation/Reference:

QUESTION 10



Edit transform

Configuration

Priority: 1

Description: CCNPCollab

Pattern type: Regex

Pattern string: $([^0-7])(\d{3,5})$

Pattern behavior: Replace

Replace string: $\backslash 1 \backslash 2 @ c c n p c o l l a b . c o m$

State: Enabled

Buttons: Save, Delete, Cancel

Refer to the exhibit. What is the result of a transformation applied to alias 88514?

- A. 98851@ccnpcollab.com
- B. 88513@ccnpcollab.com
- C. 88514@ccnpcollab.com
- D. 88515@ccnpcollab.com

Correct Answer: A

Section: (none)

Explanation

Explanation/Reference:

QUESTION 11 Which part of a hybrid cloud-based deployment with Cisco Webex Messenger Service is used for meeting capabilities?

- A. Cisco Unified CM is always used for meeting capabilities.
- B. Depending on the media flow, the Webex Meeting Center or local Cisco Unified CM meeting resources are used for meeting capabilities.
- C. Depending on the origin of the user, the Webex Meeting Center or local Cisco Unified Communications Manager meeting resources are used for meeting capabilities.

D. Cisco Webex Meeting Center is always used for meeting capabilities.

Correct Answer: A

Section: (none)

Explanation

Explanation/Reference:

QUESTION 12

For a Mobile and Remote Access deployment, which server's certificate must include the Unified registration domain as a Subject Alternate Name?

- A. Expressway-C server certificate
- B. Cisco Unified Communications Manager server certificate
- C. Expressway-E server certificate
- D. Expressway-C and Expressway-E server certificate

Correct Answer: C

Section: (none)

Explanation

Explanation/Reference:

QUESTION 13 Which step is required when configuring Cisco Webex Hybrid Message Service?

- A. Register Expressway-C Connector Hosts to the Cisco Webex Cloud.
- B. Register Expressway-C to Cisco Unified Communications Manager.
- C. Add Expressway-C and Cisco Unified CM to the Cisco Webex Cloud.
- D. Add Cisco Unity Connection to Expressway-E.



Correct Answer: A

Section: (none)

Explanation

Explanation/Reference:

QUESTION 14

When configuring a Cisco Expressway solution and need to design the dial plan with various rules for URIs and numbers coming through the device. To do so, it is important that some dial plan rules are applied in a certain order. When configuring the transform section, you must know the range of the priorities.

Which range is correct?

- A. any number in the drop-down menu
- B. any number in the dialog box
- C. any number between 1-128
- D. any number between 1-65534

Correct Answer: D

Section: (none)

Explanation

Explanation/Reference:

QUESTION 15

Which zone is required on a B2B deployment between Expressway-C and Expressway-E?

- A. traversal zone
- B. DNS zone
- C. default zone
- D. neighbor zone

Correct Answer: A

Section: (none)

Explanation

Explanation/Reference:

QUESTION 16 Which mode should be used when Call Policy is configured on Expressways?

- A. extended CPL
- B. local CPL, policy service, and off
- C. on
- D. remote CPL

Correct Answer: C

Section: (none)

Explanation

Explanation/Reference:

QUESTION 17 Which service is available in a cloud-based deployment using Cisco Webex Messenger?

- A. Presence
- B. Phone services
- C. Voicemail
- D. Call forward services

Correct Answer: A

Section: (none)

Explanation

Explanation/Reference:

QUESTION 18 Which describes what could be done on the Expressway-E to successfully route calls from Expressway-C on the internal network to the Internet?

- A. Application layer gateway could be enabled to bridge the media traffic.
- B. A static NAT route could be added to the firewall to bridge the two networks.
- C. The Expressway-E could be enabled for Dual-NIC capability.
- D. The Expressway-E could be enabled for interworking.

Correct Answer: C

Section: (none)

Explanation

Explanation/Reference:

QUESTION 19



When designing the call control on a Cisco Expressway Core, which is the sequence of dial plan functions?

- A. transforms, CPL, user policy, search rules
- B. search rules, zones, local zones
- C. DNS zone, local zone, search rules
- D. search rules, transforms

Correct Answer: D

Section: (none)

Explanation

Explanation/Reference:

QUESTION 20 Which statement about the Cisco Webex hybrid service is true?

- A. Expressway Connector is required for an on-premises Exchange server.
- B. Hybrid Message service works only with Jabber cloud deployment.
- C. Directory Connector is required for Azure AD.
- D. Directory Connector must be deployed for OBTP to work with on-premises video devices.

Correct Answer: D

Section: (none)

Explanation

Explanation/Reference:

QUESTION 21

A company is installing Cisco Collaboration infrastructure and one of the requirements is that they must be able to communicate with many external parties that are using H.323 and SIP. Internally they want to register the endpoints only on SIP.

Which functionality would describe the feature that needs to be enabled and where to achieve this?

- A. Interworking in Expressway-C
- B. Transcoding in Cisco Unified Communications Manager
- C. Transcoding in Expressway-C
- D. Interworking in Cisco Unified Communications Manager

Correct Answer: B

Section: (none)

Explanation

Explanation/Reference:

QUESTION 22 Which configuration is required when implementing Mobile and Remote Access on Cisco Expressway?

- A. IPS
- B. SAML authentication
- C. Cisco Unified CM publisher address
- D. SSO

Correct Answer: C

Section: (none)

Explanation

Explanation/Reference:

QUESTION 23 A Jabber user is being prompted to trust the Expressway-E certificate when using Mobile and Remote Access. The administrator has validated that the Expressway-E certificate is being trusted by the machine running the Jabber client.

What else can be done to solve this problem?

- A. Create a new CSR with new information on the SAN field.
- B. Include Cisco Unified Communications Manager registration domain in the Expressway-E certificate as a SAN.
- C. Change the domain name.
- D. Change the FQDN of the Expressway.

Correct Answer: B

Section: (none)

Explanation

Explanation/Reference:

QUESTION 24 Which two items are configured when deploying a B2B collaboration solution?
(Choose two.)

- A. SIP trunk between Cisco Unified Communications Manager and Cisco Expressway-C
- B. search rules in Cisco Expressway-E
- C. SIP trunk between Cisco Unified Communications Manager and Cisco Expressway-E
- D. traversal client on a Cisco Expressway-E
- E. DNS zone on a Cisco Expressway-C

Correct Answer: AB

Section: (none)

Explanation

Explanation/Reference:

QUESTION 25 Which two statements about Cisco Webex Video Mesh Nodes are true?
(Choose two.)

- A. When Expressway Core works with VMN clusters, Expressway Core decides which VMN is used for signaling/media connection.
- B. Cloud-registered devices choose a VMN cluster based on the lowest STUN round trip delay.
- C. The cascading traffic between VMN must bypass the firewall.
- D. When Cisco Unified Communications Manager works with multiple VMNs, Cisco Unified CM decides which VMN is used for signaling connection.
- E. A VMN can terminate a media connection while operating in maintenance mode.

Correct Answer: BD

Section: (none)

Explanation

Explanation/Reference:

QUESTION 26

What is a key configuration requirement for Hybrid Message Service High Availability deployment with multiple IM and Presence clusters? A.

You must have the Intercluster Sync Agent working across your IM and Presence clusters.

B. You must have the Intercluster Lookup Service working across all of your IM and Presence clusters.



- C. Your IM and Presence Service clusters must have Multiple Device Messaging disabled.
- D. AXL service should be activated only on the publisher of each IM and Presence cluster.

Correct Answer: A

Section: (none)

Explanation

Explanation/Reference:

QUESTION 27 Which DNS record and port combination must be resolved externally for Mobile and Remote Access to be used?

- A. _collab-edge on port 8443
- B. _cisco-uds-edge on port 5061
- C. _collab-edge on port 5061
- D. _cisco-uds on port 8443

Correct Answer: A

Section: (none)

Explanation

Explanation/Reference:

QUESTION 28 Cisco Collaboration endpoints are exchanging encrypted signaling messages.

What is one major complication in implementing NAT ALG for voice and video devices?

- A. Internal endpoints cannot use addresses from the private address space.
- B. The NAT ALG cannot inspect the contents of encrypted signaling messages.
- C. NAT ALG introduces jitter in the voice path.
- D. Source addresses cannot provide the destination addresses that remote endpoints should use for return packets.

Correct Answer: B

Section: (none)

Explanation

Explanation/Reference:

QUESTION 29 Which step is taken when configuring a Cisco Expressway solution?

- A. Configure the Expressway-E by using a non-traversal server zone.
- B. Enable static NAT on the Expressway-E only.
- C. Disable H.323 mode on the Expressway-E.
- D. Enable H.323 H.460.19 demultiplexing mode on the Expressway-C.

Correct Answer: B

Section: (none)

Explanation

Explanation/Reference:

QUESTION 30 What are two reasons why port 8443 is unreachable from the Internet to the Expressway-E?
(Choose two.)

- A. The MRA license is missing on the Expressway-E.
- B. The Unified Communications zone is down.
- C. Transform is not configured on Expressway-E.
- D. The SRV record for _cisco-uds is misconfigured.
- E. The firewall is blocking the port.

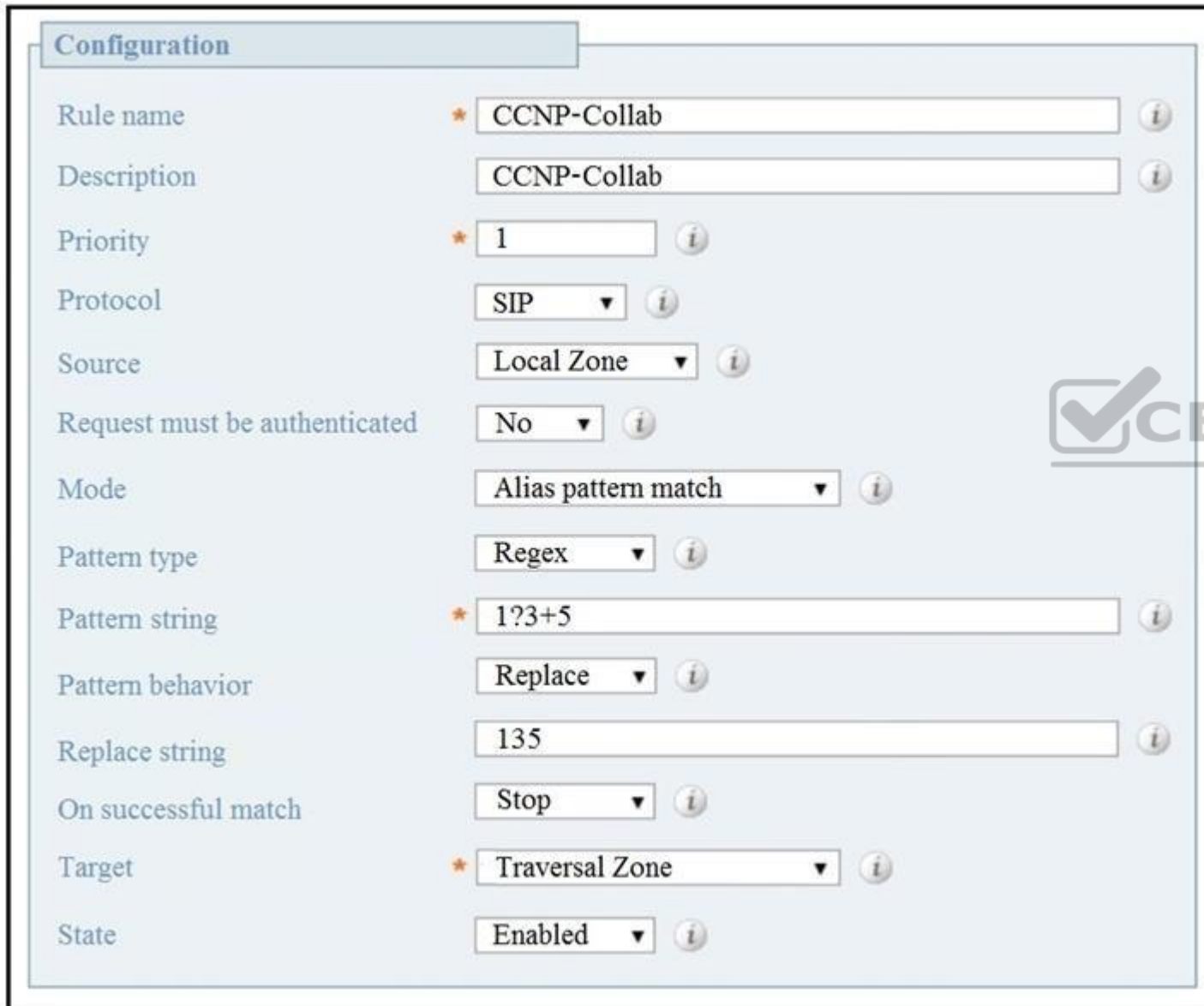
Correct Answer: DE

Section: (none)

Explanation

Explanation/Reference:

QUESTION 31



The screenshot shows the configuration for a search rule named "CCNP-Collab". The configuration is as follows:

Field	Value
Rule name	CCNP-Collab
Description	CCNP-Collab
Priority	1
Protocol	SIP
Source	Local Zone
Request must be authenticated	No
Mode	Alias pattern match
Pattern type	Regex
Pattern string	1?3+5
Pattern behavior	Replace
Replace string	135
On successful match	Stop
Target	Traversal Zone
State	Enabled

Refer to the exhibit. When configuring a search rule that routes calls to a zone, what occurs when 13358 is dialed?

- A. 13358 is replaced by 135, and then is sent to the local zone.
- B. 13358 is replaced by 135 and remains in the same zone.
- C. 13358 is replaced by 135, and then is sent to the traversal zone.
- D. 13358 is sent directly to the traversal zone.

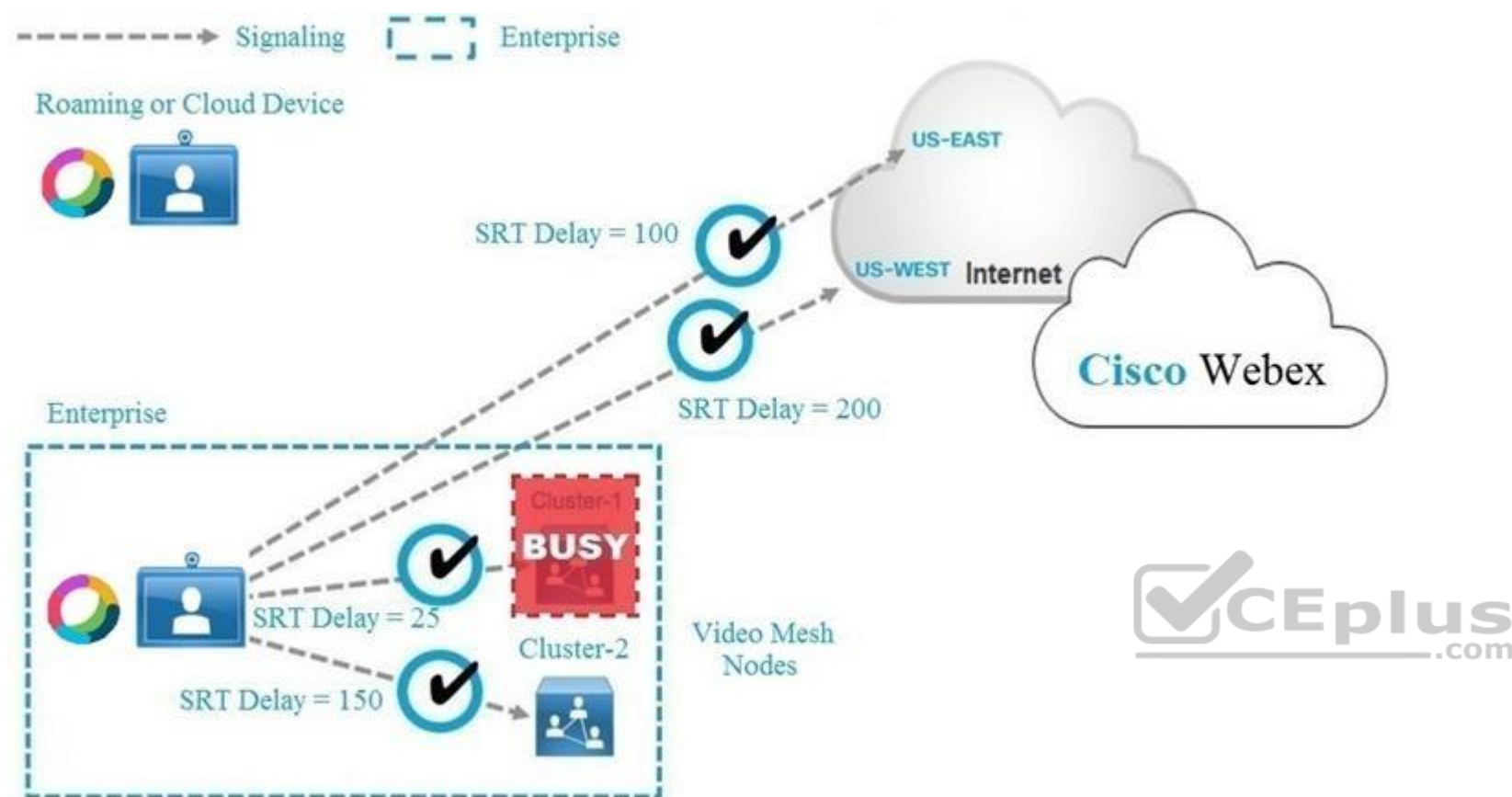
Correct Answer: C

Section: (none)

Explanation

Explanation/Reference:

QUESTION 32



Refer to the exhibit. If the Webex Teams device cannot connect to Video Mesh Cluster-1 because it is busy, which media node does the Webex Teams device connect to next?

- A. Both Cloud Node US-EAST and US-WEST
- B. Video Mesh Cluster-2
- C. Cloud Node US-EAST
- D. Cloud Node US-WEST

Correct Answer: B

Section: (none)

Explanation

Explanation/Reference:

QUESTION 33

Create transform You are here: [Configuration](#) > [Dial plan](#) > [Transform](#) > [Create transform](#)

Configuration

Priority: ⓘ

Description: ⓘ

Pattern type: ⓘ

Pattern string: ⓘ

Pattern behavior: ⓘ

Replace string: ⓘ

State: ⓘ

Refer to the exhibit. Which description of the transformation is true?

- A. It converts 4123@exp-name.exp.domain:<port> to 4123@exp.domain
- B. It changes all patterns that begin with 4123@exp-name.exp.domain:<port> to 1@exp.domain
- C. It changes 413@exp-name.exp.domain:<port> to 413@exp.domain
- D. It converts 4.3@exp-name.exp.domain:<port> to 1@exp.domain



Correct Answer: A

Section: (none)

Explanation

Explanation/Reference:

QUESTION 34 Which media encryption mode can be configured on an Expressway zone?

- A. Advanced Encryption Standard
- B. IPsec
- C. Triple Data Encryption Standard
- D. force unencrypted

Correct Answer: A

Section: (none)

Explanation

Explanation/Reference:

QUESTION 35 What is the purpose of a transform in the Expressway server?

- A. A transform has the function as a neighbor zone in the Expressway. It creates a connection with another server.

- B. A transform changes the audio codec when the call goes through the Expressway.
- C. A transform is used to route calls to a destination.
- D. A transform changes an alias that matches certain criteria into another alias.

Correct Answer: D

Section: (none)

Explanation

Explanation/Reference:

QUESTION 36 A Cisco Webex Hybrid Video Mesh Node can be installed in the DMZ and on the internal network.

Which statement is true?

- A. Webex Cloud supports either a DMZ-based Mesh Node for security or an internal-based Mesh Node for media control only.
- B. Installing a Video Mesh Node in the DMZ requires you to open TCP and UDP port 4444 in your internal firewall for full clustering functionality.
- C. Installing a Video Mesh Node in the DMZ requires the external firewall to allow UDP traffic from ANY port to the address of the Video Mesh Nodes via port 5004.
- D. Using internal Video Mesh Node also works due to Mobile and Remote Access setup for Webex Teams clients. A DMZ node is added for extra security.

Correct Answer: C

Section: (none)

Explanation

Explanation/Reference:

QUESTION 37 An organization with a domain name of example.com.

Which two SRV records are valid for a SIP and H.323 communication? (Choose two.)

- A. _sips._tcp.example.com
- B. _sips._udp.example.com
- C. _h323ls._udp.example.com
- D. _h323ls._tcp.example.com
- E. _collab-edge._tls.example.com

Correct Answer: AC

Section: (none)

Explanation

Explanation/Reference:

QUESTION 38 Which two statements about Mobile and Remote Access certificate are true? (Choose two.)

- A. Expressway Core can use private CA signed certificate.
- B. You must upload the root certificates in the phone trust store.
- C. Expressway must generate certificate signing request.
- D. Expressway Edge must use public CA signed certificate.
- E. The Jabber client can work with public or private CA signed certificate.

Correct Answer: CD

Section: (none)



Explanation

Explanation/Reference:

QUESTION 39 In a Mobile and Remote Access deployment, where must communications be encrypted with TLS?

- A. Cisco Expressway-E and endpoints outside the enterprise
- B. Cisco Expressway-C, Cisco Unified Communications Manager, and IM&P
- C. Cisco Expressway-C, Cisco Expressway-E, and Cisco Unified Communications Manager
- D. Cisco Expressway-C, Cisco Expressway-E, and endpoints outside the enterprise

Correct Answer: A

Section: (none)

Explanation

Explanation/Reference:

QUESTION 40 What is the Cisco-recommended key length in bits for a Cisco Expressway certificate?

- A. 1024
- B. 2048
- C. 4096
- D. 8192

Correct Answer: C

Section: (none)

Explanation

Explanation/Reference:



QUESTION 41 A company has enabled ICE to optimize call flows and improve video quality between their Cisco Collaboration endpoints internally and externally.

For which reason would you see activity on the TURN server when a call is established between two external endpoints?

- A. The video call is using encryption, which is not supported by ICE with CUCM 12.5
- B. ICE cannot reduce the packet loss on the link
- C. A STUN cannot punch holes in the firewall
- D. The video call is using 4K resolution, which is not supported by ICE with CUCM 12.5

Correct Answer: A

Section: (none)

Explanation

Explanation/Reference:

QUESTION 42 Where are voice calls handled in a Cisco Jabber hybrid cloud-based deployment with Cisco Webex Platform Service?

- A. Voice calls use Webex Calling platform for call control and use hybrid media nodes for local conferencing.
- B. Voice calls use local media nodes to keep traffic internal for internal traffic and use Webex Calling for external calls.
- C. Voice call use Cisco Unified Communications Manager for local calls and Webex Calling for external calls.
- D. Voice calls use local Cisco Unified Communications Manager for all calls.

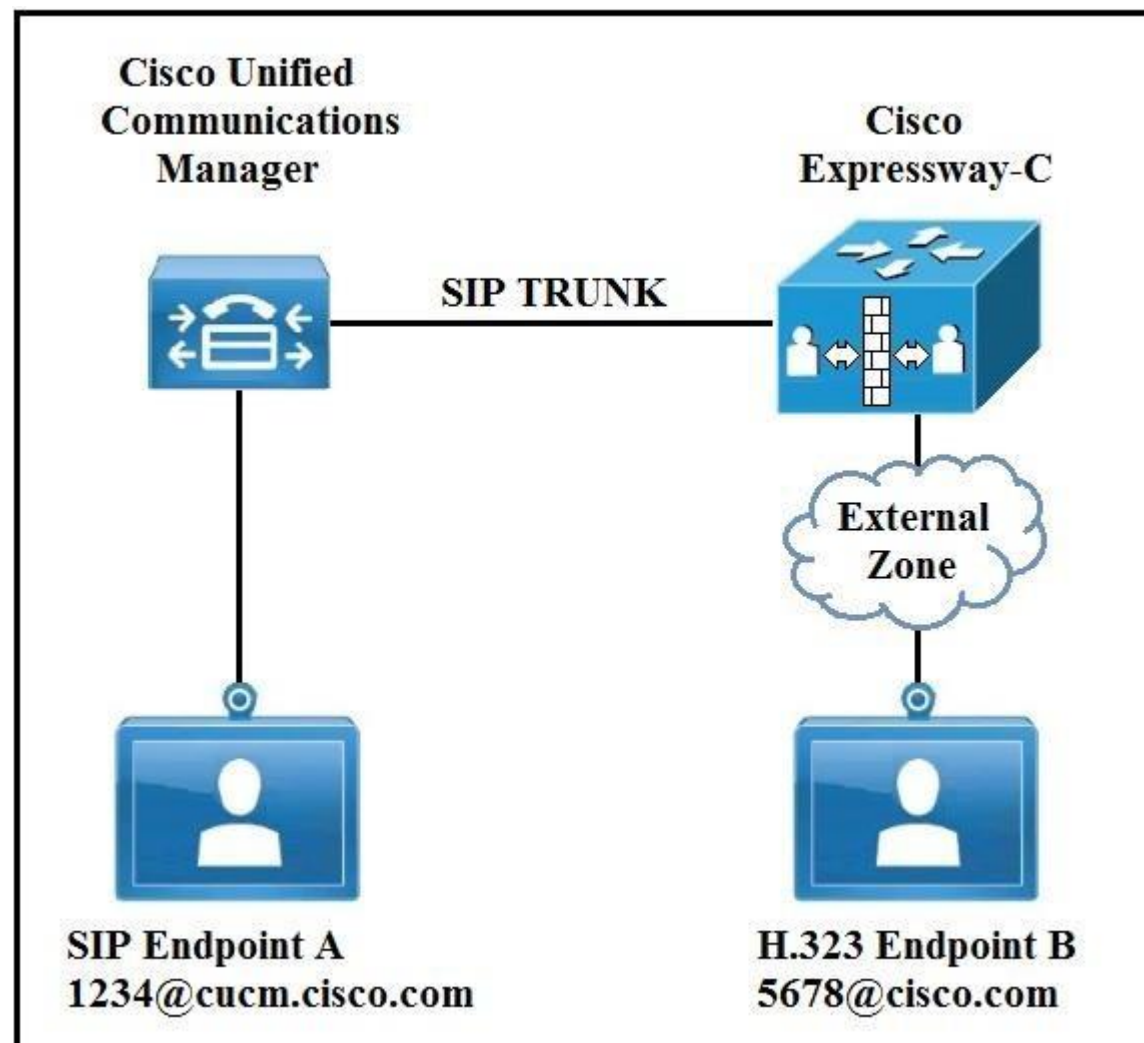
Correct Answer: D

Section: (none)

Explanation

Explanation/Reference:

QUESTION 43



Refer to the exhibit. In an environment SIP devices are registered to CUCM and H.323 devices to VCS.

What would be required to enable these calls to setup correctly?

- A. Create a presearch transform.
- B. Change the domain of SIP endpoint A to cisco.com.
- C. Disable SIP in the external zone.
- D. Change the interworking mode to On.

Correct Answer: D

Section: (none)

Explanation

Explanation/Reference:

QUESTION 44

(\d{3}) (\d{3}) (\d{3}) (\d{3})

Refer to the exhibit. Which two numbers match the regular expression? (Choose two.)

- A. d20d16d20d22
- B. 2091652010224
- C. 209165200225
- D. d209d165d200d224
- E. 209165200224

Correct Answer: CE

Section: (none)

Explanation

Explanation/Reference:

QUESTION 45 Which step is required when configuring cloud and hybrid deployments for Cisco Jabber?

- A. Add the Jabber user to Cisco Unity Connection.
- B. Add the Jabber user to Expressway-E.C. Add the Jabber user to Expressway-C.
- D. Add Jabber Users to the Cisco Webex Administration Tool.

Correct Answer: D

Section: (none)

Explanation

Explanation/Reference:



QUESTION 46 Which two licenses are required for the B2B feature to work? (Choose two.)

- A. Traversal Server
- B. TURN Relays
- C. Rich Media Sessions
- D. Advanced Networking
- E. Device Provisioning

Correct Answer: CE

Section: (none)

Explanation

Explanation/Reference:

QUESTION 47 An Expressway-E is configured using a single NIC with NAT.

How must the Expressway-C traversal client zone be configured to connect to the Expressway-E?

- A. TLS verify must be enabled.
- B. The zone profile must be set to default.

- C. The peer address must be the Expressway-E NAT address.
D. The peer address must be the Expressway-E LAN 1 IP address.

Correct Answer: C

Section: (none)

Explanation

Explanation/Reference:

QUESTION 48

	Expressway-E
Rule name	Enter Block ISDN call for example
Description	Enter Block everything (including nonregistered endpoints)
Priority	Enter 41
Protocol	<i>Any</i>
Source	
Request must be authenticated	<i>No</i>
Mode	<i>Alias pattern match</i>
Pattern type	<i>Regex</i>
Pattern string	Enter (9\d+) (.*) (@example.com)
Pattern behavior	<i>Replace</i>
Replace string	Enter do-not-route-this-call for example
On successful match	<i>Stop</i>
Target	<i>TraversalZone</i>
State	<i>Enabled</i>

Refer to the exhibit. An ISDN gateway is registered to Expressway-C with a prefix of 9 and/or it has a neighbor zone specified that routes calls starting with a 9.

Which value should be entered into the "Source" field to prevent toll fraud regardless at origin of the call?

- A. Traversal Zone
B. Any
C. Neighbor Zone
D. All

Correct Answer: D

Section: (none)

Explanation

Explanation/Reference:

QUESTION 49

When determining why Mobile and Remote Access to Cisco TelePresence equipment does not work anymore for an organization. There are several administrators and configuration changes could have happened without anyone knowing. Internal communication seems to be working, but no external system can register or call anywhere. Gathering symptoms, you also discover that no internal systems can call out either.

What is TraversalZone missing that causes this issue?

- A. link to the DefaultZone
- B. pipe to the DefaultZone
- C. SIP trunk to the DefaultZone
- D. route pattern to the DefaultZone

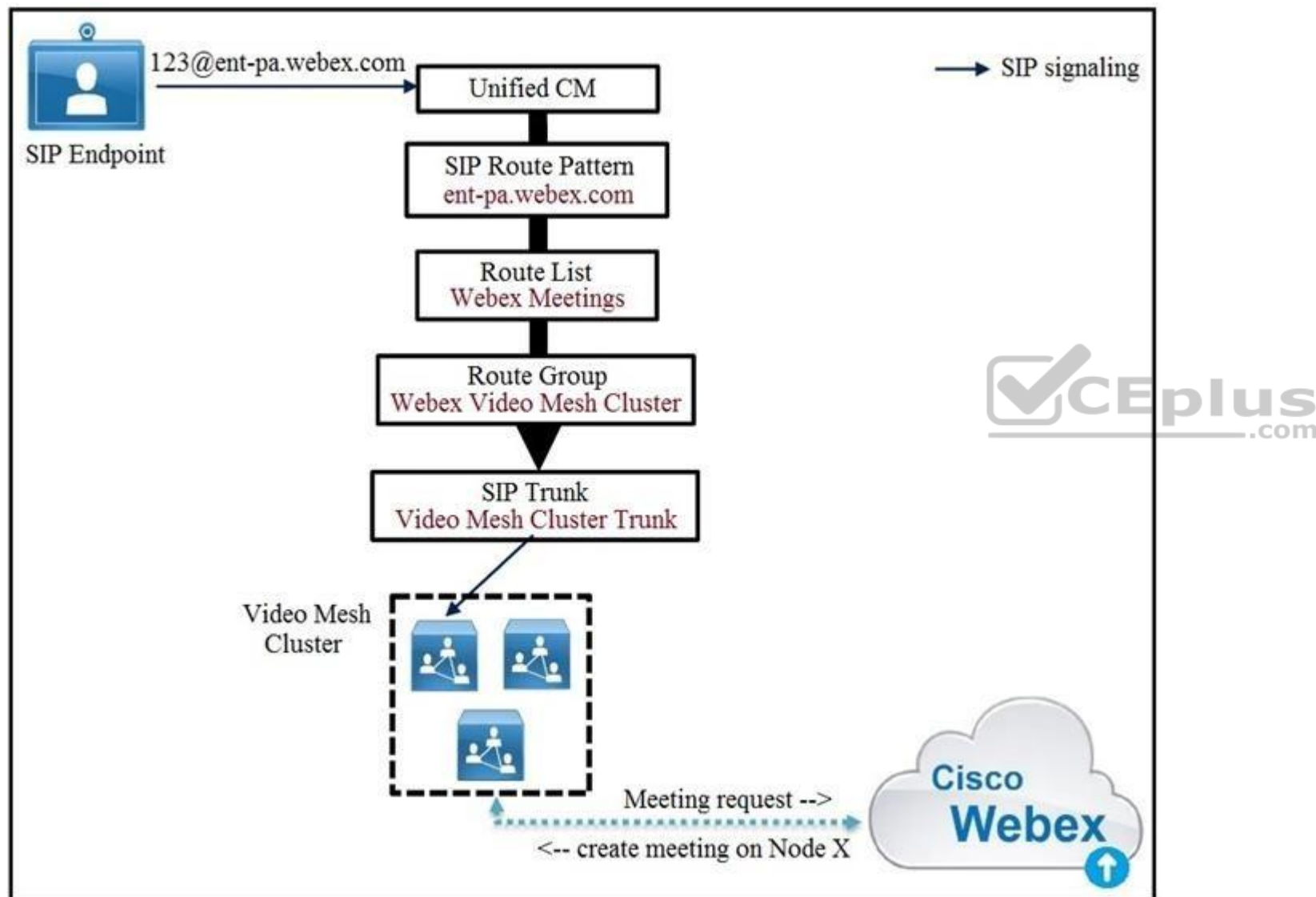
Correct Answer: C

Section: (none)

Explanation

Explanation/Reference:

QUESTION 50



Refer to the exhibit. Cisco Unified Communications Manager routes the call via the Webex Meetings route list and route group to the Video Mesh cluster Node#1 in the Video Mesh cluster is hosting the meeting and has reached full capacity, but other nodes in the cluster still have spare capacity.

What happens to the participant's call?

- A. Another node in the cluster is used and an intra-cluster cascade between the two Video Mesh nodes is formed.
- B. The call is queued.
- C. The call fails.

D. Another node in the cluster is used and an intra-cluster cascade between Webex and the new Video Mesh node is formed.

Correct Answer: D

Section: (none)

Explanation

Explanation/Reference:

QUESTION 51

```
C:\Users\Administrator>nslookup
Default Server: Win2016-AD.example.com
Address: 192.168.10.10

> set type=all
> _cisco-uds._tcp.example.com4
Server: Win2016-AD.example.com
Address: 192.168.10.10

_cisco-uds._tcp.example.com      SRV service location:
    priority      = 10
    weight        = 10
    port          = 8443
    svr hostname  = cucm.example.com

> _collab-edge._tls.example.com
Server: Win2016-AD.example.com
Address: 192.168.10.10

_collab-edge._tls.example.com    SRV service location:
    priority      = 10
    weight        = 10
    port          = 8443
    svr hostname  = expressway-e.example.com

>
```

Refer to the exhibit. When a Jabber user attempts to connect from outside of the organization, the user enters the login information as "user@example.com" and receives the error "Cannot find your services Automatically". The engineer tries to resolve SRV records used by Jabber.

DNS A record "expressway-e.example.com" points to the Expressway-E IP and "cucm.example.com" points to the Cisco Unified Communications Manager.

Which change resolves the DNS problem?

- A. Change cisco-uds to point to the Expressway-E FQDN.
- B. Change the collab-edge record to point to 5061.
- C. Remove the cisco-uds SRV record for the external DNS.
- D. Change the priority of the SRV record for cisco-uds.

Correct Answer: C

Section: (none)

Explanation

Explanation/Reference:

QUESTION 52

An organization wants to enable a Cisco Webex connector to synchronize all employees automatically with Cisco Webex instead of using a manual list.

Where is the Webex Hybrid Directory Service configured?

- A. Install Cisco Directory Connector on a Microsoft Windows Domain server and configure the software and Webex Control Hub.
- B. Enable the directory service in Cisco Unified Communications Manager under Cisco Unified Serviceability and add the service in Webex Control Hub.
- C. Enable the directory service on Cisco Expressway Edge for Office 365 or Cisco Expressway Core for internal Active Directory and add the service in Webex Control Hub.
- D. Install the Cisco Express Connector and configure the device in Cisco Unified Communications Manager under Cisco Unified Serviceability and add the service in Webex Control Hub.

Correct Answer: A

Section: (none)

Explanation

Explanation/Reference:

QUESTION 53 Which role does Call Policy play when preventing toll fraud on Expressways?

- A. It controls which calls are allowed, which calls are rejected, and which calls are redirected to a different destination.
- B. It changes the calling and called number on a call.
- C. It changes the audio protocol used by a call through Expressways.
- D. It changes the audio codec used in a call through Expressways.

Correct Answer: A

Section: (none)

Explanation

Explanation/Reference:



QUESTION 54 An administrator has been asked to configure Video Mesh signaling traffic to route through a proxy.

Which is an available proxy type in the Video Mesh node configuration to support this deployment model?

- A. Transparent Explicit Proxy
- B. Transparent Inspecting Proxy
- C. Reverse Proxy
- D. Distorting Proxy

Correct Answer: B

Section: (none)

Explanation

Explanation/Reference:

QUESTION 55 What is one of the user-related prerequisites for Jabber Team Messaging Mode Installation?

- A. Create user accounts in Cisco Webex Control Hub only.
- B. Create user accounts in Cisco Unified Communications Manager only.
- C. Create user accounts in Cisco Unified IM and Presence.
- D. Create user accounts in Cisco Unified CM and Cisco Webex Control Hub.

Correct Answer: D

Section: (none)

Explanation

Explanation/Reference:

QUESTION 56

What happens to the encrypted signaling traffic of a collaboration device if you place it inside a firewall with private IP addresses and try to make a call over IP without any collaboration infrastructure?

- A. The signaling makes it back to the endpoint because the firewall is an application layer gateway and provides address translation.
- B. Encrypted IP traffic for collaboration devices always is trusted by the firewall.
- C. The signaling does not make it back to the endpoint because the firewall cannot inspect encrypted traffic.
- D. The signaling makes it back to the endpoint because the endpoint sent the private address to the external endpoint.

Correct Answer: B

Section: (none)

Explanation

Explanation/Reference:

QUESTION 57

Which entry in the public (external) DNS is valid to configure DNS SRV records for a Cisco Mobile and Remote Access solution?

- A. _cisco-uds._tcp.<domain>
- B. _cisco-mra._tls.<domain>
- C. _collab-edge._tls.<domain>
- D. _cisco-expwy._tls.<domain>



Correct Answer: A

Section: (none)

Explanation

Explanation/Reference:

QUESTION 58 Which statement about scheduling Expressway backups is true?

- A. It is not supported on the application.
- B. It is allowed from the application CLI of the Expressway only.
- C. It is allowed from the application CLI and GUI of the Expressway.
- D. It is allowed from the application GUI of the Expressway only.

Correct Answer: C

Section: (none)

Explanation

Explanation/Reference:

QUESTION 59

Expressway-C Traversal Zone:

SIP: Failed to connect to 192.168.1.6:7001

Expressway-C Event Log shows the following:

2019-10-23T11:01:51.925-04:00 : Event="Outbound TLS Negotiation Error" Service="SIP" Src-ip="192.168.1.5" Src-port="27204"
Dst-ip="192.168.1.6" Dst-port="7003" Detail="tlsv1 alert unknown ca"
Protocol="TLS" Common-name="amer-expressway01.example.com" Level="1" UTCtime="2019-10-23 15:01:51,923"

Expressway-C server certificate shows the following decoded output:

Certificate:

Data:

Version: 3 (0x2)

Serial Number: 1 (0x1)

Signature Algorithm: sha256WithRSAEncryption

Issuer: O=Temporary CA fce4028e-92ba-4cbc-9e71-08b959888af4, OU=Temporary CA fce4028e-92ba-4cbc-9e71-08b959888af4,
CN=Temporary CA fce4028e-92ba-4cbc-9e71-08b959888af4

Refer to the exhibit. An Expressway-C and Expressway-E are configured for B2B calling and the Expressway-E zone is set to TLS Verify. Currently, calls do not reach the Expressway-C. The Traversal Client zone on the Expressway-C for B2B reports the information in the exhibit for the Peer 1 address.

Which action resolves this error?

- A. Configure the Expressway-C Traversal Client zone Peer 1 address with the fully qualified domain name of the Expressway-E.
- B. Configure the Expressway-C Traversal Client zone transport protocol with TCP.
- C. Add a server certificate to the Expressway-C that is signed by a certificate authority.
- D. Add an intermediate certificate to the Expressway-C that is signed by a certificate authority.

Correct Answer: D

Section: (none)

Explanation

Explanation/Reference:

QUESTION 60

With QoS enabled, which two statements about the Cisco Webex Video Mesh Node signaling and media traffic are true? (Choose two.)

- A. From VMN to CUCM SIP endpoints, the source UDP ports from 52500 to 62999 is used for audio traffic.
- B. From VMN to Webex Teams clients, the source UDP port 5004 is used for video traffic.
- C. From Webex cloud to VMN, the source UDP port 9000 is used for audio traffic.
- D. From VMN to video endpoints, the destination UDP port 5004 is used for audio traffic.
- E. From VMN to Webex cloud, the destination UDP port 9000 is used for video traffic.

Correct Answer: AB

Section: (none)

Explanation

Explanation/Reference:

