

N10-007.153q

Number: N10-007
Passing Score: 800
Time Limit: 120 min

N10-007



Website: <https://vceplus.com>

VCE to PDF Converter: <https://vceplus.com/vce-to-pdf/>

Facebook: <https://www.facebook.com/VCE.For.All.VN/>

Twitter : https://twitter.com/VCE_Plus

<https://www.vceplus.com/>

CompTIA Network+ Certification Exam

Exam A

QUESTION 1

A network technician is deploying mobile phones for a company's sales staff. Salespeople frequently travel nationally and internationally to meet with clients, and often have to roam or switch cellular providers. Which of the following standards is the BEST option to fit the requirements?

- A. GSM
- B. TDM
- C. CDMA
- D. PSTN
- E. MIMO

Correct Answer: A

Section: (none)

Explanation

Explanation/Reference:

QUESTION 2

A network administrator has been given a network of 172.16.85.0/21 and wants to know the usable range of IP addresses on that subnet. Which of the following indicates the correct IP address range?



<https://www.vceplus.com/>

- A. 172.16.80.0-172.16.85.254
- B. 172.16.80.0-172.16.88.255
- C. 172.16.80.1-172.16.87.254
- D. 172.16.80.1-172.16.85.255

Correct Answer: C

<https://www.vceplus.com/>

Section: (none)

Explanation

Explanation/Reference:

QUESTION 3

A network technician is troubleshooting wireless network issues in a crowded office complex and suspects there is interference from nearby wireless networks. Which of the following should the technician perform to discover possible interference?

- A. Site survey
- B. Vulnerability scanning
- C. Wardriving
- D. Checking logical diagram
- E. Bandwidth test

Correct Answer: A

Section: (none)

Explanation

Explanation/Reference:



QUESTION 4

A network technician is troubleshooting an issue and has established a theory of probable cause. Which of the following steps should the network technician take

NEXT?

- A. Test the possible solution
- B. Question the users
- C. Determine what has changed
- D. Document the theory

Correct Answer: A

Section: (none)

Explanation

Explanation/Reference:

QUESTION 5

A network technician has discovered a rogue access point under an empty cubicle desk. Which of the following should the technician perform to ensure another cannot be placed on the network?

- A. Disable unused ports on switches
- B. Enable DHCP guard to detect rogue servers
- C. Configure WPA2 on all access points
- D. Use TACACS+ authentication

Correct Answer: B

Section: (none)

Explanation

Explanation/Reference:

QUESTION 6

Which of the following provides the ability to deploy consistent access point configurations from a central location?

- A. Wireless controller
- B. AAA server
- C. WiFi-protected setup
- D. Proxy server
- E. VPN concentrator

Correct Answer: A

Section: (none)

Explanation

Explanation/Reference:

QUESTION 7

A network technician is configuring a wireless network at a branch office. Users at this office work with large files and must be able to access their files on the server quickly. Which of the following 802.11 standards provides the MOST bandwidth?

- A. a

- B. ac
- C. g
- D. n

Correct Answer: B



Section: (none)

Explanation

Explanation/Reference:

QUESTION 8

A network administrator configures a router with the following IP address information:

Gigabit Ethernet 1 Interface: 10.10.0.1/24

Serial 0 Interface: 10.10.0.253/30

Clients are connected to a switch on the gigabit Ethernet interface; the ISP is connected to the Serial 0 interface. When the router configuration is complete and client devices are reconfigured, all clients report that they are unable to connect to the Internet. Which of the following is the MOST likely reason?

- A. The router was configured with an incorrect IP address
- B. The router was configured with an incorrect default gateway
- C. The router was configured with an incorrect subnet mask
- D. The router was configured with an incorrect loopback address

Correct Answer: C

Section: (none)

Explanation

Explanation/Reference:

QUESTION 9

A penetration tester has been tasked with reconnaissance to determine which ports are open on the network. Which of the following tasks should be done FIRST? (Choose two.)

- A. Network scan
- B. Banner grab
- C. Tracert
- D. DHCP server check
- E. Brute-force attack

AC

Explanation/Reference:

QUESTION 10

Users are reporting Internet connectivity issues. The network administrator wants to determine if the issues are internal to the company network or if there is an issue with the ISP. Which of the following tools should be used to BEST determine where the outage is occurring?

- A. traceroute
- B. ping
- C. nslookup
- D. netstat

Correct Answer: A

Section: (none)

Explanation

Explanation/Reference:



QUESTION 11

Which of the following security mechanisms dynamically assigns a Layer 2 address and restricts traffic only to that Layer 2 address?

- A. Sticky MAC
- B. 802.1x
- C. ACL
- D. NAC

Correct Answer: A

Section: (none)

Explanation

Explanation/Reference:

Correct Answer:

Section: (none)

Explanation

QUESTION 12

Which of the following is a vulnerable system designed to detect and log unauthorized access?

- A. SIEM
- B. Honeypot
- C. DMZ
- D. Proxy server

Correct Answer: B

Section: (none)

Explanation

Explanation/Reference:

QUESTION 13

According to the OSI model, at which of the following layers is data encapsulated into a packet?

- A. Layer 2
- B. Layer 3
- C. Layer 4
- D. Layer 5
- E. Layer 6



Correct Answer: B

Section: (none)

Explanation

Explanation/Reference:

QUESTION 14

Which of the following WAN technologies is MOST preferred when developing a VoIP system with 23 concurrent channels?

- A. DSL
- B. POTS
- C. T1

D. DOCSISC **Explanation/Reference:**

QUESTION 15

A junior network technician is setting up a new email server on the company network. Which of the following default ports should the technician ensure is open on the firewall so the new email server can relay email?

- A. 23
- B. 25
- C. 110
- D. 143

Correct Answer: B

Section: (none)

Explanation

Explanation/Reference:



QUESTION 16

Which of the following policies would Joe, a user, have to agree to when he brings in his personal tablet to connect to the company's guest wireless Internet?

- A. NDA
- B. IRP
- C. BYOD
- D. SLA

Correct Answer: C

Section: (none)

Explanation

Explanation/Reference:

Correct Answer:

Section: (none)

Explanation

QUESTION 17

In a service provider network, a company has an existing IP address scheme. Company A's network currently uses the following scheme:

Subnet 1: 192.168.1.0/26
Subnet 2: 192.168.1.65/26

Company b uses the following scheme:

Subnet 1: 192.168.1.50/28

The network administrator cannot force the customer to update its IP scheme. Considering this, which of the following is the BEST way for the company to connect these networks?

- A. DMZ
- B. PAT
- C. NAT
- D. VLAN

Correct Answer: C

Section: (none)

Explanation



Explanation/Reference:

QUESTION 18

A network engineer is designing a new network for a remote site. The remote site consists of ten desktop computers, ten VoIP phones, and two network printers. In addition, two of the desktop computers at the remote site will be used by managers who should be on a separate network from the other eight computers. Which of the following represents the BEST configuration for the remote site?

- A. One router connected to one 24-port switch configured with three VLANs: one for the manager's computers and printer, one for the other computers and printer, and one for the VoIP phones
- B. Two routers with each router connected to a 12-port switch, with a firewall connected to the switch connected to the manager's desktop computers, VoIP phones, and printer
- C. One router connected to one 12-port switch configured for the manager's computers, phones, and printer, and one 12-port switch configured for the other computers, VoIP phones, and printer
- D. One router connected to one 24-port switch configured with two VLANs: one for the manager's computers, VoIP phones, and printer, and one for the other computers, VoIP phones, and printer

A

Explanation/Reference:

QUESTION 19

A network technician is troubleshooting an end-user connectivity problem. The network technician goes to the appropriate IDF but is unable to identify the appropriate cable due to poor labeling. Which of the following should the network technician use to help identify the appropriate cable?

- A. Tone generator
- B. Multimeter
- C. OTDR
- D. Loopback adapter

Correct Answer: A

Section: (none)

Explanation

Explanation/Reference:



QUESTION 20

A network technician notices the site-to-site VPN and Internet connection have not come back up at a branch office after a recent power outage. Which of the following is an out-of-band method the technician would MOST likely utilize to check the branch office's router status?

- A. Use a modem to console into the router
- B. Walk a user through troubleshooting the connection
- C. Travel to the branch office
- D. Hire a contractor to go on-site

Correct Answer: A

Section: (none)

Explanation

Explanation/Reference:

Correct Answer:

Section: (none)

Explanation

QUESTION 21

A network technician is considering opening ports on the firewall for an upcoming VoIP PBX implementation. Which of the following protocols is the technician MOST likely to consider? (Choose three.)





<https://www.vceplus.com/>

- A. SIP
- B. NTP
- C. H.323
- D. SMB
- E. ICMP
- F. RTP
- G. IPSec
- H. RDP

Correct Answer: ACF

Section: (none)

Explanation

Explanation/Reference:

QUESTION 22

A device operating at Layer 3 of the OSI model uses which of the following protocols to determine the path to a different network?

- A. STP
- B. RTP
- C. RIP
- D. NTP
- E. SIP

Correct Answer: C



<https://www.vceplus.com/>

Section: (none)

Explanation

Explanation/Reference:

QUESTION 23

A network administrator is setting up a web-based application that needs to be continually accessible to the end users. Which of the following concepts would BEST ensure this requirement?

- A. High availability
- B. Snapshots
- C. NIC teaming
- D. Cold site

Correct Answer: A

Section: (none)

Explanation

Explanation/Reference:



QUESTION 24

Which of the following devices should a network administrator configure on the outermost part of the network?

- A. Media converter
- B. Switch
- C. Modem
- D. Firewall

Correct Answer: D

Section: (none)

Explanation

Explanation/Reference:

QUESTION 25

A network technician receives a call from a user who is experiencing network connectivity issues. The network technician questions the user and learns the user brought in a personal wired router to use multiple computers and connect to the network. Which of the following has the user MOST likely introduced to the network?

- A. Rogue DHCP server
- B. Evil twin
- C. VLAN mismatch
- D. Honeypot

Correct Answer: A

Section: (none)

Explanation

Explanation/Reference:

QUESTION 26

A technician is setting up a direct connection between two older PCs so they can communicate but not be on the corporate network. The technician does not have access to a spare switch but does have spare Cat 6 cables, RJ-45 plugs, and a crimping tool. The technician cuts off one end of the cable. Which of the following should the technician do to make a crossover cable before crimping the new plug?

- A. Reverse the wires leading to pins 1 and 2
- B. Reverse the wires leading to pins 1 and 3
- C. Reverse the wires leading to pins 2 and 3
- D. Reverse the wires leading to pins 2 and 4

Correct Answer: D

Section: (none)

Explanation

Explanation/Reference:

QUESTION 27

Which of the following is the number of broadcast domain that are created when using an unmanaged 12-port switch?

- A. 0
- B. 1

- C. 2
- D. 6
- E. 12

Correct Answer: B

Section: (none)

Explanation

Explanation/Reference:

QUESTION 28

A network engineer wants to segment the network into multiple broadcast domains. Which of the following devices would allow for communication between the segments?

- A. Layer 2 switch
- B. Layer 3 switch
- C. Bridge
- D. Load balancer

Correct Answer: B

Section: (none)

Explanation

Explanation/Reference:



QUESTION 29

The Chief Information Officer (CIO) has noticed the corporate wireless signal is available in the parking lot. Management requests that the wireless network be changed so it is no longer accessible in public areas, without affecting the availability inside the building. Which of the following should be changed on the network?

- A. Power levels
- B. Overcapacity
- C. Distance limitations
- D. Channel overlap

Correct Answer: A

Section: (none)

Explanation

Explanation/Reference:

QUESTION 30

A network technician is assisting the security team with some traffic captures. The security team wants to capture all traffic on a single subnet between the router and the core switch. To do so, the team must ensure there is only a single collision and broadcast domain between the router and the switch from which they will collect traffic. Which of the following should the technician install to BEST meet the goal?

- A. Bridge
- B. Crossover cable
- C. Hub
- D. Media converter

Correct Answer: C

Section: (none)

Explanation

Explanation/Reference:

QUESTION 31

Based on networks 10.8.16.0/22 and 10.8.31.0/21, which of the following is the BEST summarized CIDR notation?

- A. 10.8.0.0/16
- B. 10.8.0.0/19
- C. 10.8.0.0/20
- D. 10.0.0.0/24

Correct Answer: A

Section: (none)

Explanation

Explanation/Reference:

QUESTION 32

A technician discovers that multiple switches require a major update. Which of the following policies should be followed?

- A. Change management policy

- B. Remote access policy
- C. Acceptable use policy
- D. Memorandum of understanding

Correct Answer: A

Section: (none)

Explanation

Explanation/Reference:

QUESTION 33

A technician is troubleshooting a point-to-point fiber-optic connection. The technician is at a remote site and has no connectivity to the main site. The technician confirms the switch and the send-and-receive light levels are within acceptable range. Both fiber SFPs are confirmed as working. Which of the following should the technician use to reveal the location of the fault?

- A. OTDR
- B. Light meter
- C. Tone generator
- D. CSU/DSU



Correct Answer: A

Section: (none)

Explanation

Explanation/Reference:

QUESTION 34

A Chief Information Officer (CIO) wants to move some IT services to a cloud service offering. However, the network administrator still wants to be able to control some parts of the cloud service's networking components. Which of the following should be leveraged to complete this task?

- A. IaaS
- B. PaaS
- C. SaaS
- D. DaaS

Correct Answer: B

Section: (none)

Explanation

Explanation/Reference:

QUESTION 35

Client PCs are unable to receive addressing information from a newly configured interface on a router. Which of the following should be added to allow the clients to connect?

- A. DHCP lease time
- B. IP helper
- C. TTL
- D. DNS record type

Correct Answer: B

Section: (none)

Explanation

Explanation/Reference:



QUESTION 36

When enabling jumbo frames on a network device, which of the following parameters is being adjusted?

- A. Speed
- B. Duplex
- C. MTU
- D. TTL

Correct Answer: C

Section: (none)

Explanation

Explanation/Reference:

QUESTION 37

A technician logs onto a system using Telnet because SSH is unavailable. SSH is enabled on the target device, and access is allowed from all subnets. The technician discovers a critical step was missed. Which of the following would allow SSH to function properly?

- A. Perform file hashing
- B. Generate new keys
- C. Update firmware
- D. Change default credentials

Correct Answer: B

Section: (none)

Explanation

Explanation/Reference:

QUESTION 38

A network administrator wants to ensure sensitive data is not exfiltrated from the system electronically. Which of the following should be implemented?

- A. DLP
- B. AUP
- C. NDA
- D. SLA



Correct Answer: A

Section: (none)

Explanation

Explanation/Reference:

QUESTION 39

A technician is setting up a branch office on a point-to-point connection. Which of the following IP network blocks is the MOST efficient use of IP address space for the router connections between the two sites?

- A. /24
- B. /25
- C. /30

D. /32

Correct Answer: C

Section: (none)

Explanation

Explanation/Reference:

QUESTION 40

A technician is upgrading the firmware on an older KVM switch. The specifications call for a serial port to connect to the computer on one side, and an Ethernet jack to connect to the switch on the other side. Which of the following connectors does the technician need for this cable? (Choose two.)

- A. RG-9
- B. DB-9
- C. RJ-11
- D. DB-25
- E. RJ-45
- F. BNC

Correct Answer: BE

Section: (none)

Explanation

Explanation/Reference:

QUESTION 41

An end-user device requires a specific IP address every time it connects to the corporate network; however, corporate policy does not allow the use of static IP addresses. Which of the following will allow the request to be fulfilled without breaking the corporate policy?

- A. DHCP relay
- B. DHCP exclusion
- C. DHCP option
- D. DHCP reservation

Correct Answer: D



Section: (none)

Explanation

Explanation/Reference:

QUESTION 42

A technician is planning a remote-access strategy to manage routers and switches on a dedicated management network. The management network is segregated from the production network and uses site-to-site VPN connections. Some of the equipment does not support encryption. Which of the following should the technician choose that all the equipment would support?

- A. Telnet
- B. SSL
- C. SSH
- D. IPSec

Correct Answer: A

Section: (none)

Explanation

Explanation/Reference:



QUESTION 43

Which of the following protocols do MOST MITM attacks utilize?

- A. ARP
- B. SIP
- C. FTP
- D. SCP

Correct Answer: A

Section: (none)

Explanation

Explanation/Reference:

QUESTION 44

An ISP technician gets a call from a business that just changed equipment but can no longer connect to the Internet. The technician checks the ARP table on the ISP switch, and there is no corresponding MAC address present. Instead, the entry is "Incomplete". Which of the following could cause this condition?

- A. VLAN mismatch
- B. Duplex/Speed mismatch
- C. Duplicate IP address
- D. TX/RX reverse

Correct Answer: B

Section: (none)

Explanation

Explanation/Reference:

QUESTION 45

A systems administrator has recently purchased and installed a large electronic signage screen for the company's parking garage. The screen's management software was installed on a server with public IP address to allow remote management. The systems administrator is now troubleshooting an issue with the screen displaying unknown, random, and inappropriate messages. Which of the following is MOST effective in resolving this issue?

- A. Changing the management software's default credentials
- B. Disabling unnecessary services from the server and management software
- C. Changing the management software's default port
- D. Replacing the management software's self-signed certificate with a valid certificate

Correct Answer: A

Section: (none)

Explanation

Explanation/Reference:

QUESTION 46

A technician is investigating a server performance issue. The technician has gathered the server utilization statistics. Which of the following should the technician use to determine which statistics are not in the normal range?

- A. Baseline review
- B. Vulnerability scan

- C. System life-cycle report
- D. Archiving logs

Correct Answer: A

Section: (none)

Explanation

Explanation/Reference:

QUESTION 47

Which of the following devices, if implemented, would result in decreased administration time of an 802.11 network running centralized authentication services? (Choose two.)

- A. VPN concentrator
- B. Proxy server
- C. Wireless controller
- D. RADIUS server
- E. Multilayer switch

Correct Answer: CD

Section: (none)

Explanation

Explanation/Reference:

QUESTION 48

A technician must determine if a web page user's visits are connecting to a suspicious website's IP address in the background. Which of the following tools would provide the information on TCP connections?

- A. netstat
- B. tracert
- C. arp
- D. ipconfig
- E. route



Correct Answer: A

Section: (none)

Explanation

Explanation/Reference:

QUESTION 49

An administrator is moving to a new office. There will be several network runs through the ceiling area of the office. Which of the following is the BEST to utilize in these areas?

- A. Single-mode fiber-optic cabling
- B. Cat 5e-rated cabling
- C. Cat 6-rated cabling
- D. Plenum-rated cabling

Correct Answer: D

Section: (none)

Explanation

Explanation/Reference:



QUESTION 50

A network technician receives a spool of Cat 6a cable and is asked to build several cables for a new set of Ethernet runs between devices. Which of the following tools are MOST likely needed to complete the task? (Choose three.)

- A. Wire stripper
- B. Cable crimper
- C. RJ-11 connectors
- D. RJ-45 connectors
- E. Multimeter
- F. Punchdown tool
- G. Tone generator

Correct Answer: ABD

Section: (none)

Explanation

Explanation/Reference:

QUESTION 51

As part of a transition from a static to a dynamic routing protocol on an organization's internal network, the routing protocol must support IPv4 and VLSM. Based on those requirements, which of the following should the network administrator use? (Choose two.)

- A. OSPF
- B. IS-IS
- C. RIPv1
- D. BGP
- E. VRRP

Correct Answer: AB

Section: (none)

Explanation

Explanation/Reference:



QUESTION 52

A telecommunications provider has just deployed a new OC-12 circuit at a customer site. While the circuit showed no errors from the provider end to the customer's demarcation point, a network administrator is trying to determine the cause of dropped packets and errors on the circuit. Which of the following should the network administrator do to rule out any problems at Layer 1? (Choose two.)

- A. Use a loopback at the demark and router, and check for a link light
- B. Use an OTDR to validate the cable integrity
- C. Use a pinout tester to validate the cable integrity
- D. Use a multimeter to validate the cable integrity
- E. Check for any devices that may be causing EMI on the cable
- F. Clean the cables to be sure they are free of dust and debris

Correct Answer: AB

Section: (none)

Explanation

Explanation/Reference:

QUESTION 53

A single PRI can deliver multiple voice calls simultaneously using which of the following Layer 1 technologies?

- A. Time division multiplexing
- B. Analog circuit switching
- C. CSMA/CD
- D. Time division spread spectrum

Correct Answer: A

Section: (none)

Explanation

Explanation/Reference:

QUESTION 54

A network technician is diagnosing a time-out issue generated from an end user's web browser. The web browser issues standard HTTP get and post commands to interact with the website. Given this information, the technician would like to analyze the entire TCP handshake of the HTTP requests offline. Which of the following tools would allow the technician to view the handshake?

- A. Packet analyzer
- B. Port analyzer
- C. SNMP traps
- D. Spectrum analyzer



Correct Answer: A

Section: (none)

Explanation

Explanation/Reference:

QUESTION 55

A customer cannot access a company's secure website. The company's network security is reviewing the firewall for the server and finds the following output:

| Time | Action | Src IP | Src Port | Dst IP | Dst Port |
|------|--------|------------|----------|-----------|----------|
| 0902 | Allow | 12.73.15.5 | 31865 | 10.5.0.10 | 80 |
| 1005 | Deny | 12.73.15.5 | 31866 | 10.5.0.10 | 443 |
| 1006 | Deny | 12.73.15.5 | 31890 | 10.5.0.10 | 443 |

Which of the following changes should be made to allow all customers to access the company's secure website?

- A. Allow any any 10.5.0.10 443
- B. Allow any any 12.73.15.5 443
- C. Allow 10.5.0.10 443 any any
- D. Allow 10.5.0.10 any 10.5.0.10 80

Correct Answer: C

Section: (none)

Explanation

Explanation/Reference:

QUESTION 56

Which of the following MUST be implemented to share metrics between routing protocols within the same router?

- A. Routing loop
- B. Routing table
- C. Route redistribution
- D. Dynamic routes



Correct Answer: B

Section: (none)

Explanation

Explanation/Reference:

QUESTION 57

An engineer is reviewing the implementation requirements for an upcoming project. The basic requirements identified by the customer include the following: ▪ WLAN architecture supporting speeds in excess of 150 Mbps

- Clientless remote network access
- Port-based network access control

Which of the following solution sets properly addresses all of the identified requirements?

- A. 802.11a, IPSec VPN, 802.1x
- B. 802.11ac, MPLS, 802.3

- C. 802.11b, PPTP, 802.1x
- D. 802.11g, MS-CHAP, 802.16
- E. 802.11n, SSL-VPN, 802.1x

Correct Answer: E

Section: (none)

Explanation

Explanation/Reference:

QUESTION 58

Which of the following is used to classify network data for the purpose of providing QoS?

- A. STP
- B. VLANs
- C. SIP
- D. DSCP

Correct Answer: D

Section: (none)

Explanation

Explanation/Reference:



QUESTION 59

A network technician needs to separate a web server listening on port 80 from the internal LAN and secure the server from the public Internet. The web server should be accessible to the public Internet over port 80 but not the private LAN. Currently, the network is segmented with a network-based firewall using the following IP addressing scheme on each interface:

| Zone | Interface | IP Address |
|---------|-----------|-------------|
| Public | eth0 | 10.0.0.1/24 |
| DMZ | eth1 | 10.0.1.1/24 |
| Private | eth2 | 10.0.2.1/24 |

Which of the following ones should the technician use to place the web server and which of the following firewall rules should the technician configure?

- A. Place the web server in the public zone with an inbound rule from eth0 interface to accept traffic over port 80 designated to the web server
- B. Place the web server in the DMZ with an inbound rule from eth0 interface to eth1 to accept traffic over port 80 designated to the web server
- C. Place the web server in the private zone with an inbound rule from eth2 interface to eth1 to accept traffic over port 80 designated to the web server
- D. Place the web server in the DMZ with an inbound rule from eth1 interface to eth0 to accept traffic over port 80 designated to the web server

Correct Answer: B

Section: (none)

Explanation

Explanation/Reference:

QUESTION 60

A company recently upgraded all of its printers to networked multifunction devices. Users can print to the new devices, but they would also like the ability to scan and fax files from their computers. Which of the following should the technician update to allow this functionality?

- A. Device software
- B. Printer drivers
- C. Printer firmware
- D. NIC drivers



Correct Answer: C

Section: (none)

Explanation

Explanation/Reference:

QUESTION 61

A disgruntled employee executes a man-in-the-middle attack on the company network. Layer 2 traffic destined for the gateway is redirected to the employee's computer. This type of attack is an example of:



<https://www.vceplus.com/>

- A. ARP cache poisoning
- B. IP spoofing
- C. amplified DNS attack
- D. evil twin

Correct Answer: A

Section: (none)

Explanation

Explanation/Reference:

QUESTION 62

The process of attempting to exploit a weakness in a network after being given permission by the company is known as:

- A. penetration testing
- B. vulnerability scanning
- C. reconnaissance
- D. social engineering

Correct Answer: A

Section: (none)

Explanation

Explanation/Reference:

QUESTION 63

<https://www.vceplus.com/>

A company has contracted with an outside vendor to perform a service that will provide hardware, software, and procedures in case of a catastrophic failure of the primary datacenter. The Chief Information Officer (CIO) is concerned because this contract does not include a long-term strategy for extended outages. Which of the following should the CIO complete?

- A. Disaster recovery plan
- B. Business continuity plan
- C. Service level agreement
- D. First responder training

Correct Answer: B

Section: (none)

Explanation

Explanation/Reference:

QUESTION 64

A network engineer is designing a new IDF in an old building. The engineer determines the equipment will fit in a two-post rack, and there is power available for this equipment. Which of the following would be the FIRST issue to remediate?

- A. Air flow and cooling
- B. UPS capability
- C. Circuit labeling
- D. Power redundancy

Correct Answer: A

Section: (none)

Explanation

Explanation/Reference:

QUESTION 65

Which of the following DNS records needs to be configured for SMTP traffic?

- A. MX
- B. CNAME
- C. AAAA
- D. PTR

Correct Answer: A

Section: (none)

Explanation

Explanation/Reference:

QUESTION 66

In which of the following ways does a DDoS attack differ from a spoofing attack?

- A. DDoS attacks target multiple networks
- B. Spoofing attacks originate from a single host
- C. DDoS attacks are launched from multiple hosts
- D. Spoofing attacks require physical presence

Correct Answer: C

Section: (none)

Explanation

Explanation/Reference:

QUESTION 67

A user checks an IP address using an external website. The address is different than the one the user sees when opening a command prompt and typing in `ipconfig/all`. The user does not understand why the two tools show different IP addresses. This is BEST explained by the interworking of:

- A. network devices
- B. packet flow
- C. public/private networks
- D. traffic-routing protocols

Correct Answer: C

Section: (none)

Explanation

Explanation/Reference:

QUESTION 68

Which of the following communication media can carry many voice, data, and video channels simultaneously over multiple frequencies?

- A. Broadband
- B. Baseband
- C. Analog modem
- D. CSMA

Correct Answer: A

Section: (none)

Explanation

Explanation/Reference:

QUESTION 69

To replace a defective UPS, the network administrator must take the switch offline. The administrator wants to be able to perform maintenance UPS in the future without affecting the availability of the attached switch. Which of the following would BEST allow this to happen?

- A. Add a redundant power supply to the switch
- B. Implement stacking on the switches in the rack
- C. Add a second UPS into the rack
- D. Install a power converter for the switch



Correct Answer: A

Section: (none)

Explanation

Explanation/Reference:

QUESTION 70

A forensic first responder arrives at the scene where an employee is suspected to have committed a computer-based crime. Which of the following should the first responder do FIRST?

- A. Document the scene
- B. Take pictures upon arrival
- C. Secure the area
- D. Implement chain of custody

Correct Answer: C

Section: (none)

Explanation

Explanation/Reference:

QUESTION 71

A small town is attempting to attract tourists who visit larger nearby cities. A network engineer is asked to implement a network encompassing the five-block town center and nearby businesses. The inclusion of smartphones and portable devices is crucial to the plan. Which of the following is the network engineer being asked to implement?

- A. LAN
- B. PAN
- C. MAN
- D. WAN

Correct Answer: C

Section: (none)

Explanation

Explanation/Reference:



QUESTION 72

An employee wishes to use a personal cell phone for work-related purposes, including storage of sensitive company data, during long business trips. Which of the following is needed to protect BOTH the employee and the company?

- A. An NDA ensuring work data stored on the personal phone remains confidential
- B. An AUP covering how a personal phone may be used for work matters
- C. A consent to monitoring policy covering company audits of the personal phone
- D. Real-time remote monitoring of the phone's activity and usage

Correct Answer: D

Section: (none)

Explanation

Explanation/Reference:

QUESTION 73

Which of the following protocols can be both connection-oriented and connectionless?

- A. 20 FTP
- B. 53 DNS
- C. 67 DHCP
- D. 80 HTTP

Correct Answer: B

Section: (none)

Explanation

Explanation/Reference:

QUESTION 74

Which of the following BEST describes the differences between VLAN hopping and session hijacking?

- A. VLAN hopping involves the unauthorized transition from one VLAN to another to gain additional access. Session hijacking involves overriding a user's web connection to execute commands
- B. VLAN hopping is a brute force attack executed to gain additional access. Session hijacking involves physically disrupting a network connection
- C. VLAN hopping involves overriding a user network connection to execute malicious commands. Session hijacking involves compromising a host to elevate privileges
- D. VLAN hopping is the act of exploiting poor VLAN tagging. Session hijacking is a web-based attack aimed at privilege escalation

Correct Answer: A

Section: (none)

Explanation

Explanation/Reference:

QUESTION 75

An analyst is developing a proof of concept of a wireless-based attack as part of a penetration test against an organization's network. As part of the attack, the analyst launches a fake access point matching the SSID of the organization's guest access network. When a user connects to the fake access point, the analyst allows the traffic to flow through the access point to the legitimate site while the data traversing the network is logged for latest analysis and exploitation. Which of the following attacks has the analyst successfully performed in this scenario?

- A. Bluesnarfing
- B. Session hijacking
- C. MAC spoofing
- D. VLAN hopping
- E. Man-in-the-middle

Correct Answer: E

Section: (none)

Explanation

Explanation/Reference:

QUESTION 76

A network administrator receives a call from the sales department requesting ports 20 and 21 be opened on the company's firewall to allow customers to retrieve a large file. Which of the following should the administrator perform BEFORE making the needed changes? (Choose two.)

- A. Document the reason for the request
- B. Scan the file for malware to protect the sales department's computers
- C. Follow the company's approval process for the implementation
- D. Install a TFTP server for the customers to use for the transfer
- E. Create a honeypot to store the file on for the customers to use
- F. Write the SLA for the sales department authorizing the change

Correct Answer: AC

Section: (none)

Explanation

Explanation/Reference:

QUESTION 77

A user reports that a laptop cannot connect to the Internet despite the fact the wireless Internet was functioning on it yesterday. The user did not modify the laptop in any way, and the wireless Internet is functional on other users' laptops. Which of the following issues should be reviewed to help the user to connect to the wireless network?

- A. Wireless switch toggled off
- B. WAP settings

- C. WLAN IP address out of scope
- D. Wireless controller misconfiguration

Correct Answer: A

Section: (none)

Explanation

Explanation/Reference:

QUESTION 78

A network administrator wants to increase the confidentiality of the system by hardening the authentication process. Currently, the users log in using usernames and passwords to access the system. Which of the following will increase the authentication factor to three?

- A. Adding a fingerprint reader to each workstation and providing a RSA authentication token
- B. Adding a fingerprint reader and retina scanner
- C. Using a smart card and RSA token
- D. Enforcing a stronger password policy and using a hand geometry scan

Correct Answer: A

Section: (none)

Explanation

Explanation/Reference:

QUESTION 79

A network technician is building a network for a small office. The office currently has cable TV and now requires access to the Internet without adding any cabling other than what is already in place. Which of the following solutions should the technician install to meet these requirements?

- A. DOCSIS modem
- B. Wireless router
- C. DSL modem
- D. Access point

Correct Answer: A

Section: (none)

Explanation

Explanation/Reference:

QUESTION 80

A network engineer arrives at work and discovers that many users are having problems when attempting to connect to the company network shared drives. The network operations center (NOC) technician just completed server upgrades the night before. To which of the following documents should the NOC technician refer to determine what potentially caused the connectivity problem?

- A. Network maps
- B. Cable management
- C. Release notes
- D. Change management

Correct Answer: D

Section: (none)

Explanation

Explanation/Reference:



QUESTION 81

Which of the following VPN protocols establishes a secure session that can be initiated using a browser?

- A. IPSec
- B. SSL VPN
- C. PTP
- D. PPTP

Correct Answer: B

Section: (none)

Explanation

Explanation/Reference:

QUESTION 82

A technician is setting up a public guest network for visitors to access the Internet that must be separate from the corporate network. Which of the following are the BEST steps for the technician to take with minimum overhead configuration? (Choose two.)

- A. Enable SSID broadcasting to identify the guest network
- B. Configure visitor devices to use static IP addresses
- C. Enable two-factor authentication on visitor devices
- D. Configure the access point to use WPA2-AES encryption
- E. Ensure the access point is not running in mixed mode

Correct Answer: AB

Section: (none)

Explanation

Explanation/Reference:

QUESTION 83

When choosing a type of storage that integrates with the existing network infrastructure, the storage must be easily configurable to share files and can communicate with all existing clients over TCP/IP. Which of the following is the BEST technology for the network administrator to implement?

- A. iSCSI
- B. Fibre Channel
- C. NAS
- D. DAS



Correct Answer: C

Section: (none)

Explanation

Explanation/Reference:

QUESTION 84

A network technician is installing a new network switch is looking for an appropriate fiber optic patch cable. The fiber optic patch panel uses a twist-style connector. The switch uses a SFP module. Which of the following connector types should the fiber patch cable have?

- A. LC
- B. ST
- C. SC
- D. MTRJ
- E. MTP

Correct Answer: B

Section: (none)

Explanation

Explanation/Reference:

QUESTION 85

Which of the following WAN technologies utilizes the concept of virtual circuits and point-multipoint connections?

- A. ISDN
- B. MPLS
- C. PRI
- D. Broadband cable
- E. Frame relay

Correct Answer: E

Section: (none)

Explanation

Explanation/Reference:

QUESTION 86

A network administrator wishes to ensure there are no unnecessary open communication paths into a server. Using a port scanner, the administrator finds that ports are reported as closed. Which of the following BEST explains this response?

- A. The ports belong to an active system and are denying requests
- B. The ports are associated with deprecated services
- C. The ports do not belong to a live system
- D. The ports replied with a SYN/ACK response

Correct Answer: B

Section: (none)

Explanation

Explanation/Reference:

QUESTION 87



Users are reporting issues with slow connection speeds and a loss of connectivity on the newly installed wireless network. The issues are intermittent but seem to occur most often around midday. Which of the following is the MOST likely cause?

- A. There is interference from small appliances
- B. The signal coverage area is too small
- C. Not enough DHCP addresses have been allotted
- D. The DNS cache on the users' computers has become corrupt

Correct Answer: C

Section: (none)

Explanation

Explanation/Reference:

QUESTION 88

A technician has installed a Linux server in the tax office. The server can access most of the resources on the network, but it cannot connect to another server that has a share for backup. The technician learns that the target server is on a different subnet. Which of the following tools should the technician use to ensure the Linux server can reach the backup location?

- A. netstat
- B. traceroute
- C. route
- D. dig
- E. ifconfig

Correct Answer: B

Section: (none)

Explanation

Explanation/Reference:

QUESTION 89

Which of the following WAN technologies provides a guaranteed throughput rate?

- A. DSL

- B. T-1
- C. Cable broadband
- D. Dial-up

Correct Answer: B

Section: (none)

Explanation

Explanation/Reference:

QUESTION 90

Which of the following is the SHORTEST way to write 2001:0000:0d58:0000:0000:0095:7565:0001 in proper IPv6 shorthand?

- A. 2001::d58::95:7565:1
- B. 2001:0:d58:0:0:95:7565:1
- C. 2001:0:d58::95:7565:1
- D. 2001:0:0d58::95:7565:1

Correct Answer: C

Section: (none)

Explanation

Explanation/Reference:

QUESTION 91

A network administrator needs to transmit traffic to geographically diverse sites to improve performance. Which of the following devices would BEST direct traffic to the remote sites?

- A. Hub
- B. Bridge
- C. Switch
- D. Router

Correct Answer: D

Section: (none)

Explanation



Explanation/Reference:

QUESTION 92

Which of the following should a technician investigate when using a network baseline to troubleshoot?

- A. Tracing a network wire connectivity issue from the datacenter to a host.
- B. Determining if the server performance is degraded.
- C. Changes that have been made to the network configuration.
- D. Location of networking equipment in a rack.

Correct Answer: B

Section: (none)

Explanation

Explanation/Reference:

QUESTION 93

A technician needs to upgrade a SOHO wireless router's firmware. The technician resets the router to factory settings and installs the new firmware. The technician enters the DHCP information and sets the SSID. Which of the following configurations would provide the MOST protection from advance hackers?

- A. Disable the broadcasting of the SSID.
- B. Enable WPA2 authentication for all hosts.
- C. Use private addressing for the DHCP scope.
- D. Install unidirectional antennas.

Correct Answer: B

Section: (none)

Explanation

Explanation/Reference:

QUESTION 94

A technician notices clients are receiving a 169.254.x.x IP address following the upgrade of a server. Which of the following ports should the technician check on the local server firewall?

- A. ports 20 and 21

- B. ports 67 and 68
- C. ports 80 and 443
- D. port 123 and 8080

Correct Answer: B

Section: (none)

Explanation

Explanation/Reference:

QUESTION 95

Which of the following datacenter security methodologies is MOST likely to remain usable during a network outage?

- A. biometric scanners
- B. door locks
- C. video surveillance
- D. motion detectors

Correct Answer: B

Section: (none)

Explanation

Explanation/Reference:

QUESTION 96

A network technician is implementing a solution on the network to hide the workstation internal IP addresses across a WAN. Which of the following is the technician configuring?

- A. QoS
- B. DMZ
- C. RIP
- D. NAT

Correct Answer: D



Section: (none)

Explanation

Explanation/Reference:

QUESTION 97

Employees want the ability to use personal devices on the guest network while working out at the company gym. In order to meet the request, which of the following policies requires employee adherence?

- A. AUP
- B. SLA
- C. NDA
- D. MOU

Correct Answer: A

Section: (none)

Explanation

Explanation/Reference:



QUESTION 98

Which of the following BEST describes the BGP routing protocol?



<https://www.vceplus.com/>

- A. distance vector
- B. hybrid
- C. static

<https://www.vceplus.com/>

D. link state

Correct Answer: B

Section: (none)

Explanation

Explanation/Reference:

QUESTION 99

A customer is reporting difficulty connecting some devices after replacing a wireless router with a new wireless 802.11ac router. The SSID, encryption and password are the same as the previous router. A technician goes on-site and notices the devices that are no longer connecting appear to be several years ago. Which of the following is MOST likely the problem?

- A. the password needs to be re-entered.
- B. there is a security type mismatch.
- C. there is insufficient antenna power.
- D. there is a frequency mismatch.
- E. the channel has changed.

Correct Answer: D

Section: (none)

Explanation

Explanation/Reference:

QUESTION 100

Multiple users are reporting that they are unable to access the network. The ENTIRE network is shown in the diagram. PCs are not statically assigned IP addresses. The following devices will display settings:

- WorkstationA
- WorkstationB
- WorkstationC
- WorkstationD
- WorkstationE
- WorkstationF
- WorkstationG



- Laptop1
- Laptop2
- DHCP server1
- DHCP server2

Review the settings and select the box in the diagram that identifies the device causing the issue. Only one device can be selected at a time.

After checking the device that is causing the issue, select the second tab in the lower left hand corner. Identify the reason as to why some users are unable to access the network.

Instructions:

When the simulation is complete, select the Done button to submit.

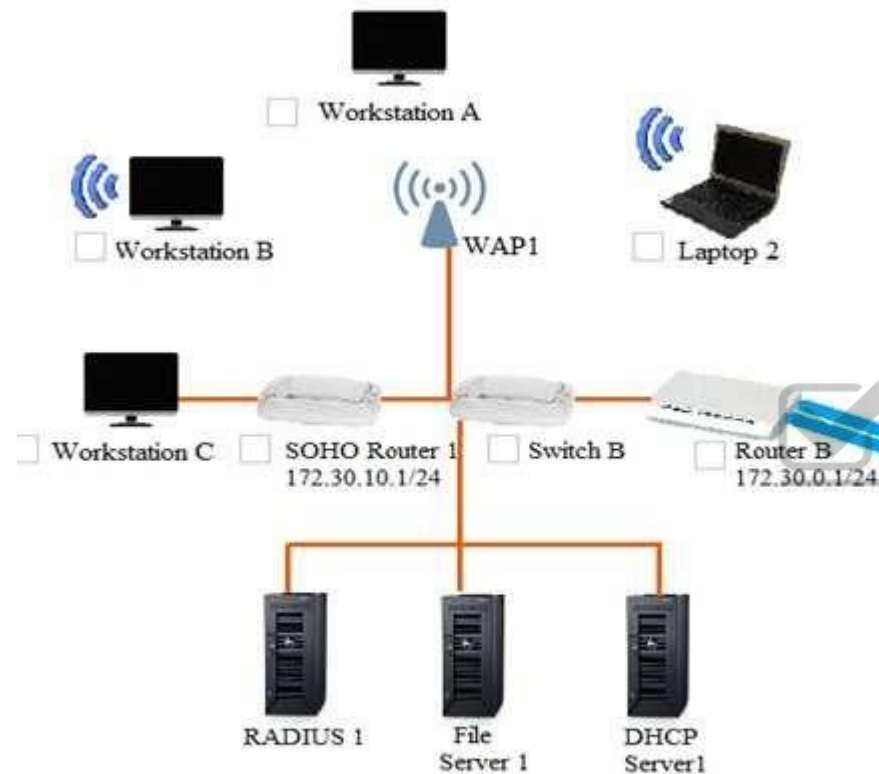
Part 1



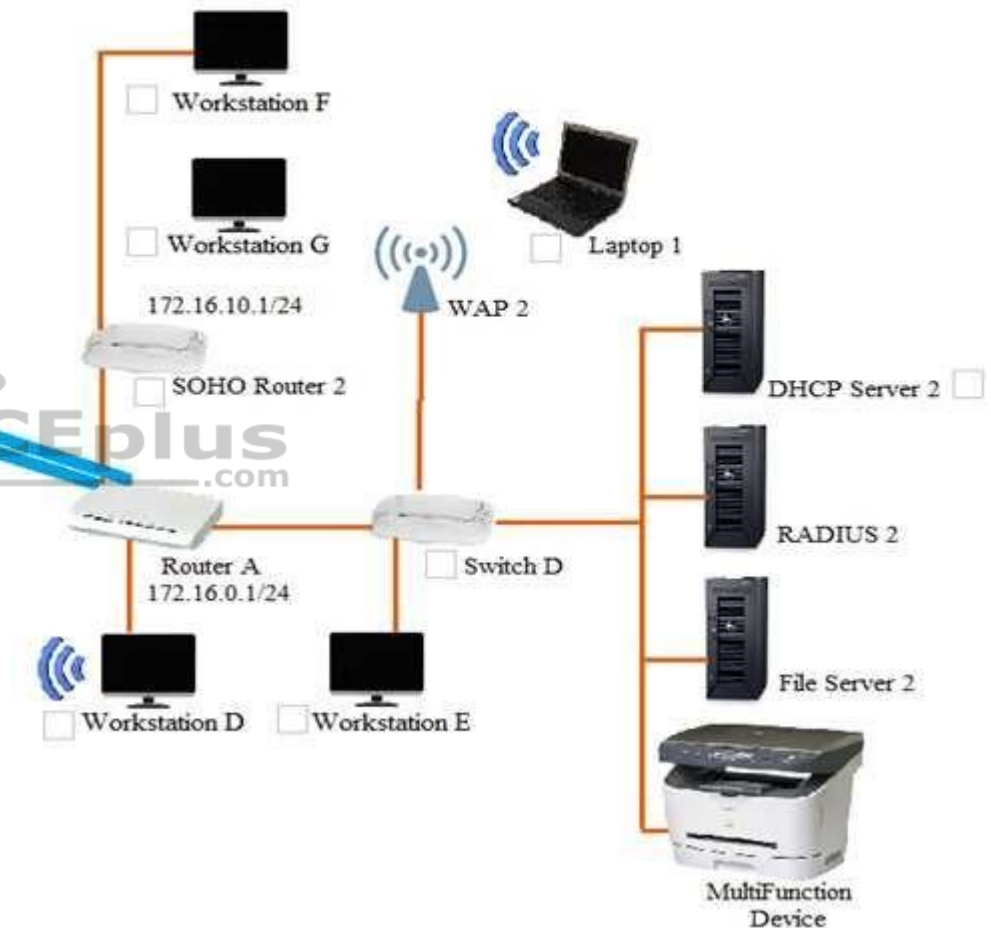
Site A and B Network Diagram

Instructions: Only one device can be selected at a time. Please ensure you complete Part 1 and Part 2 of the simulation.

SITE A



SITE B



WORKSTATION A

| | |
|------------|---------------|
| IP Address | 172.30.0.10 |
| Netmask | 255.255.255.0 |
| Gateway | 172.30.0.1 |

WORKSTATION B

| | |
|------------|---------------|
| IP Address | 172.30.0.14 |
| Netmask | 255.255.255.0 |
| Gateway | 172.30.10.1 |

WORKSTATION C

| | |
|------------|----------------|
| IP Address | 169.254.200.67 |
| Netmask | 255.255.255.0 |
| Gateway | |

WORKSTATION D

| | |
|------------|---------------|
| IP Address | 172.16.0.221 |
| Netmask | 255.255.255.0 |
| Gateway | 172.16.0.1 |

WORKSTATION E

| | |
|------------|---------------|
| IP Address | 172.16.0.21 |
| Netmask | 255.255.255.0 |
| Gateway | 172.16.0.1 |

WORKSTATION F

| | |
|------------|---------------|
| IP Address | 172.16.10.43 |
| Netmask | 255.255.255.0 |
| Gateway | 172.16.10.1 |

WORKSTATION G

| | |
|------------|---------------|
| IP Address | 172.16.10.120 |
| Netmask | 255.255.255.0 |
| Gateway | 172.16.10.1 |

LAPTOP 1

| | |
|------------|---------------|
| IP Address | 172.16.0.220 |
| Netmask | 255.255.255.0 |
| Gateway | 172.16.0.1 |

LAPTOP 2

| | |
|------------|---------------|
| IP Address | 172.30.0.12 |
| Netmask | 255.255.255.0 |
| Gateway | 172.30.0.1 |

DHCP SERVER 1

| | |
|------------|---------------|
| IP Address | 172.30.0.5 |
| Netmask | 255.255.255.0 |
| Gateway | 172.30.0.1 |

| | |
|-----------------|--------------------------|
| DHCP Scope | 172.30.0.10-250 |
| Gateway | 172.30.0.1 |
| DNS Servers | 10.200.2.20, 10.200.3.20 |
| DHCP Lease Time | 8 days |

| DHCP SERVER 2 | |
|-----------------------------------|--------------------------|
| IP Address | 172.30.0.5 |
| Netmask | 255.255.255.0 |
| Gateway | 172.16.0.1 |
| | |
| DHCP Scope | 172.16.0.10-250 |
| Gateway | 172.16.0.1 |
| DNS Servers | 10.200.2.20, 10.200.3.20 |
| DHCP Lease Time | 8 days |
| <input type="button" value="OK"/> | |



Part 2

Identify the reason as to why some users are unable to access the network.

- A. Workstation(s) are plugged into switch ports configured with half duplex.
- B. The site-to-site router was configured with the incorrect ACL.
- C. DHCP server scope is full and is not providing IP addresses.
- D. WAN and LAN ports are reversed on the router.
- E. STP had disabled some of the ports on the switch.
- F. The NIC driver is not installed.
- G. A wireless client is unable to associate to the AP.

Correct Answer: G

Section: (none)

Explanation

Explanation/Reference:

QUESTION 101

Which of the following should be performed to verify that unnecessary services are disabled on all switches in an environment?

- A. Packet capturing
- B. Port scanning
- C. Log scanning
- D. Baseline review

Correct Answer: B

Section: (none)

Explanation

Explanation/Reference:

QUESTION 102

A technician is sent to a remote office to set up a device to connect to the Internet. The company standards document requires stateful inspection. Which of the following should the technician install?

- A. Router
- B. Multiplayer switch
- C. Firewall
- D. Bridge

Correct Answer: C

Section: (none)

Explanation

Explanation/Reference:

QUESTION 103

A technician is assigned to secure a basic wireless network. Which of the following authentication protocols should the technician use to perform this task? (Choose two.)

- A. RDP
- B. SNMP
- C. WPA2

- D. EAP
- E. SSL

Correct Answer: CD

Section: (none)

Explanation

Explanation/Reference:

QUESTION 104

A technician is investigating the cause of a network outage. Which of the following documents should be checked to rule out configuration issues?

- A. Change management records
- B. Inventory management
- C. Network log files
- D. Logical diagrams

Correct Answer: A

Section: (none)

Explanation

Explanation/Reference:

QUESTION 105

A junior network technician receives a help desk ticket from an end user who is having trouble accessing a web application that was working the previous day. After talking with the end user and gathering information about the issue, which of the following would be the most likely course of action for the technician to perform NEXT?

- A. Establish a theory of probable cause.
- B. Escalate the ticket to a senior technician.
- C. Implement the solution.
- D. Document the findings and outcomes.

Correct Answer: A

Section: (none)



Explanation**Explanation/Reference:****QUESTION 106**

A system administrator receives reports from users of odd behavior in regard to a recently installed server. While reviewing the server network configuration, the systems administrator does both a forward and a reverse DNS lookup on the host, along with the network adapter configuration.

```
$ host server.company.com
server.company.com has address 129.168.0.100
server.company.com is handled by 100 mail.company.com
$ host 192.168.0.100
100.0.168.192.in-addr.arpa domain name pointer web.company.com
$ host web.company.com
server.company.com has address 129.168.0.50
server.company.com is handled by 100 mail.company.com
$ ifconfig -a
eth0Link encap:Ethernet HWaddr 00:30:48:9D:06:73
Inet addr:192.168.0.100 Bcast:192.168.0.255 Mask:255.255.255.0
UP BROADCAST RUNNING MULTICAST MTU:1500 Metric:1
lo0Link encap:Local Loopback
inet addr:127.0.0.1 Mask:255.0.0.0
UP LOOPBACK RUNNING MTU:16436 Metric:1
```

Which of the following is the problem identified in the output above?

- A. There is no reverse DNS entry for this host.
- B. The server IP address is incorrectly configured.
- C. The DNS lookup entry is incorrectly configured.
- D. The reverse DNS entry is pointing to a different host.

Correct Answer: C

Section: (none)

Explanation**Explanation/Reference:**

QUESTION 107

A network technician at a small office upgrades the LAN switch. After the upgrade, a user reports being unable to access network resources. When the technician checks the switchport, the LED light is not lit. Which of the following should the technician check FIRST?

- A. The device is using the correct cable type.
- B. The switchport is functioning properly.
- C. The device is connected to the switch.
- D. The switch is connected to the router.

Correct Answer: C

Section: (none)

Explanation

Explanation/Reference:

QUESTION 108

A network administrator wants to employ a username and password authentication system for guest WiFi. Which of the following is the BEST option to provide this type of authentication?

- A. Port security
- B. MAC filtering
- C. Network access control
- D. Captive portal

Correct Answer: D

Section: (none)

Explanation

Explanation/Reference:

QUESTION 109

A network technician is configuring user access to a VPN concentrator and has been advised to use a protocol that supports encryption over UDP. Which of the following protocols has the technician MOST likely configured for client use?

- A. TFTP
- B. DTLS

- C. DNS
- D. SNMP

Correct Answer: B

Section: (none)

Explanation

Explanation/Reference:

QUESTION 110

A switch has detected duplicate broadcast messages sourced from a second port. The broadcasts continue to be transmitted and duplicated until the amount of traffic causes severe performance issues. Which of the following should be configured to prevent this behavior?

- A. BPDU guard
- B. DHCP snooping
- C. ARP protection
- D. Spanning tree

Correct Answer: D

Section: (none)

Explanation

Explanation/Reference:

QUESTION 111

A Chief Information Officer (CIO) is concentrated about an attacker gaining administrative access to the company's network devices. Which of the following is the MOST secure way to prevent this?

- A. ACL allowing only HTTP
- B. ACL allowing only Telnet
- C. Out-of-band modem
- D. Out-of-band console router

Correct Answer: D

Section: (none)

Explanation



Explanation/Reference:

QUESTION 112

The Chief Executive Officer's (CEO's) tablet cannot connect to the wireless network from the corner office. A network technician verified the tablet can connect to the wireless network in other areas of the building. The distance between the office and the 802.11ac WAP is 150ft (46m), and there are a few cubicles in between. Which of the following is the MOST likely cause of the tablet not connecting?

- A. Absorption
- B. Reflection
- C. Distance
- D. Refraction
- E. Attenuation

Correct Answer: C

Section: (none)

Explanation

Explanation/Reference:



QUESTION 113

A company has two geographically separate locations that need to connect using a VPN. Which of the following devices must be specifically configured to allow VPN traffic into the network?

- A. Firewall
- B. Switch
- C. Router
- D. Modem

Correct Answer: A

Section: (none)

Explanation

Explanation/Reference:

QUESTION 114

A technician is working on a new machine that has been procured for testing and development. The machine will run a hypervisor and host several operating systems of various types so the development team can test the company's applications in a variety of environments. The technician wants the virtual machines to be available to communicate with each other without leaving the hypervisor. Which of the following is the BEST solution to the problem?

- A. The technician should connect the machine to its own separate switch.
- B. The technician should add a route in each virtual machine to the default gateway.
- C. The technician should configure a virtual switch.
- D. The technician should set up individual routes between the machines.

Correct Answer: C

Section: (none)

Explanation

Explanation/Reference:

QUESTION 115

A network technician is repurposing a switch that has been in storage for some time. The device has been wiped to factory defaults. Which of the following should be done FIRST to ensure the device has been hardened before configuration?

- A. Generate new keys.
- B. Disable unused ports.
- C. Check for updated firmware.
- D. Configure the default VLAN.

Correct Answer: C

Section: (none)

Explanation

Explanation/Reference:

QUESTION 116

A technician is setting up a wireless access point in a coffee shop. The shop is not concerned with security but only wants to allow customers to have access. Which of the following configurations should the technician deploy?

- A. Use a pre-shared key.
- B. Set up EAP.

- C. Configure RADIUS.
- D. Configure MAC filtering.

Correct Answer: A

Section: (none)

Explanation

Explanation/Reference:

QUESTION 117

A network administrator is assigned to run and connect a Cat 6e Ethernet cable between two nodes in a datacenter. Which of the following connector types should the network administrator use to terminate this cable?

- A. DB-9
- B. RS-232
- C. DB-25
- D. RJ-45

Correct Answer: D

Section: (none)

Explanation

Explanation/Reference:

QUESTION 118

Management has requested that services be available within 72 hours of a disaster. Budget is a major concern. A contract is signed with a company that has plenty of space, and the technician will have the option of putting infrastructure equipment in place. Which of the following BEST describes this business continuity strategy?

- A. Cold site
- B. Differential backup
- C. Hot site
- D. Incremental backup
- E. Warm site
- F. Full backup



Correct Answer: A

Section: (none)

Explanation

Explanation/Reference:

QUESTION 119

A network technician is planning to update the firmware on a router on the network. The technician has downloaded the file from the vendor's website. Before installing the firmware update, which of the following steps should the technician perform to ensure file integrity?

- A. Perform antivirus and anti-malware scans of the file.
- B. Perform a hash on the file for comparison with the vendor's hash.
- C. Download the file a second time and compare the version numbers.
- D. Compare the hash of the file to the previous firmware update.

Correct Answer: B

Section: (none)

Explanation

Explanation/Reference:



QUESTION 120

A network technician performs a wireless site survey at a company building and identifies that the cafeteria is not covered by a wireless signal. The cafeteria is located in a medium-size, square-shaped room. Which of the following types of WAP antenna should the technician install in the center of the cafeteria to provide the BEST coverage?

- A. Unidirectional
- B. Parabolic
- C. Omnidirectional
- D. Yagi

Correct Answer: C

Section: (none)

Explanation

Explanation/Reference:

QUESTION 121

An entire enterprise cannot access a specific website. The network technician knows the website was accessible last week. The technician can also ping the website. Which of the following is the technician MOST likely to find upon investigation?

- A. The firewall is misconfigured.
- B. The network is being hit by a zero-day attack.
- C. The SSL certificate is untrusted.
- D. The SSL certificate has expired.

Correct Answer: D

Section: (none)

Explanation

Explanation/Reference:

QUESTION 122

At which of the following OSI model layers would a router operate?

- A. Physical
- B. Network
- C. Transport
- D. Data link



Correct Answer: B

Section: (none)

Explanation

Explanation/Reference:

QUESTION 123

Which of the following backup techniques is used to capture all the data that has changed since the last full backup?

- A. Incremental
- B. Replica
- C. Differential
- D. Snapshot

Correct Answer: C

Section: (none)

Explanation

Explanation/Reference:

QUESTION 124

A network administrator frequently needs to assist users with troubleshooting network hardware remotely, but the users are non-technical and unfamiliar with network devices. Which of the following would BEST help the administrator and users during hands-on troubleshooting?

- A. Logical diagrams
- B. MDF documentation
- C. Equipment labeling
- D. Standard operating procedures

Correct Answer: D

Section: (none)

Explanation

Explanation/Reference:



QUESTION 125

A technician is observing brownout issues at a smaller office. At least once a week, the edge switch power cycles. Which of the following should the technician do to resolve the issue?

- A. Install a new switch
- B. Install a UPS
- C. Replace the switch uplink cable.
- D. Install a new electrical circuit.

Correct Answer: B

Section: (none)

Explanation

Explanation/Reference:

QUESTION 126

A technician is troubleshooting a workstation's network connectivity and wants to confirm which switchport corresponds to the wall jack the PC is using. Which of the following concepts would BEST help the technician?

- A. Consistent labeling
- B. Change management
- C. Standard work instructions
- D. Inventory management
- E. Network baseline

Correct Answer: A

Section: (none)

Explanation

Explanation/Reference:

QUESTION 127

Under which of the following layers of the OSI model do ATM cells operate?

- A. Data link
- B. Network
- C. Session
- D. Transport
- E. Presentation

Correct Answer: A

Section: (none)

Explanation

Explanation/Reference:

QUESTION 128

A new building needs to be joined to an existing network, but management has decided that running fiber is too expensive. Since the buildings are about 1000ft (305m) apart, the IT department has been asked to propose alternatives. Which of the following is the BEST device to add to each building to facilitate the extension of the network while meeting budgetary demands?

- A. Switch
- B. Router
- C. Media converter
- D. PRP wireless

Correct Answer: D

Section: (none)

Explanation

Explanation/Reference:

QUESTION 129

A home user has purchased a new smart TV to stream online video services. The smart TV is unable to connect to the wireless network after several attempts. After returning from vacation, the home user tries again and can connect the TV to the wireless network. However, the user notices a laptop is no longer able to connect to the network. Which of the following is the MOST likely cause?

- A. The DHCP scope has been exhausted.
- B. The security passcode has been changed.
- C. The SSID is hidden.
- D. The AP configuration was reset.



Correct Answer: A

Section: (none)

Explanation

Explanation/Reference:

QUESTION 130

A security guard notices an authorized individual, who is dressed like a lab technician, has entered a secure area of the hospital with a large group. Which of the following security attacks is taking place?

- A. Evil twin
- B. Social engineering
- C. Insider threat
- D. Phishing

Correct Answer: B

Section: (none)

Explanation

Explanation/Reference:

QUESTION 131

Which of the following DNS record types allows IPv6 records to be resolved to DNS names?

- A. PTR
- B. A
- C. AAAA
- D. SRV

Correct Answer: C

Section: (none)

Explanation

Explanation/Reference:



QUESTION 132

A network administrator is redesigning network security after an attack. During the attack, an attacker used open cubicle locations to attach devices to the network. The administrator wants to be able to monitor future attacks in a safe environment and determine the method of attack. Which of the following should the administrator do to BEST meet this requirement?

- A. Create a VLAN for the unused ports and create a honeypot on the VLAN.
- B. Install a BPDU guard on switchports and enable STP.
- C. Create a DMZ for public servers and secure a segment for the internal network.
- D. Install antivirus software and set an ACL on the servers.

Correct Answer: A

Section: (none)

Explanation

Explanation/Reference:

QUESTION 133

A company has just refreshed the hardware in its datacenter with new 10G Ethernet switches. A technician wishes to set up a new storage area network but must use existing infrastructure. Which of the following storage standards should the technician use?

- A. iSCSI
- B. Fibre Channel
- C. NAS
- D. InfiniBand

Correct Answer: C

Section: (none)

Explanation

Explanation/Reference:

QUESTION 134

A network technician is installing a new SOHO branch office that requires the use of a DOCSIS-compatible modem. The modem needs to be connected to the ISP's network at the demarc. Which of the following cable types should be used?

- A. UTP
- B. Multimode
- C. Coaxial
- D. Serial

Correct Answer: C

Section: (none)

Explanation

Explanation/Reference:

QUESTION 135

A technician needs to order cable that meets 10GBaseT and fire safety requirements for an installation between a drop ceiling and a standard ceiling. Which of the following should the technician order to ensure compliance with the requirements?

- A. PVC Cat 5
- B. Plenum Cat 5e

- C. Plenum Cat 6a
- D. PVC Cat 7

Correct Answer: C

Section: (none)

Explanation

Explanation/Reference:

QUESTION 136

Which of the following physical security devices is used to detect unauthorized server room access?

- A. Access badge
- B. Biometrics
- C. Smart card
- D. Video surveillance

Correct Answer: D

Section: (none)

Explanation

Explanation/Reference:



QUESTION 137

A network technician recently installed a new server on a network. The technician must ensure the server does not have any unnecessary services running. The IP address of the server is 204.211.38.50. Which of the following commands would allow the technician to make this determination?

- A. `nmap`
- B. `pathping`
- C. `route`
- D. `nslookup`

Correct Answer: A

Section: (none)

Explanation

Explanation/Reference:**QUESTION 138**

A technician is allocating the IP address space needed for a new remote office. This office will contain the engineering staff with six employees and the digital marketing staff with 55 employees. The technician has decided to allocate the 192.168.1.0/24 block to the remote office. The engineering staff has been allocated the 192.168.1.64/29 subnet. Using the LEAST amount of space possible, which of the following would be the last usable IP address in the engineering subnet?

- A. 192.168.1.62
- B. 192.168.1.63
- C. 192.168.1.70
- D. 192.168.1.71

Correct Answer: A

Section: (none)

Explanation

Explanation/Reference:**QUESTION 139**

An administrator is troubleshooting a user's intermittent wireless connectivity issue. Other users across the hallway can connect and use the wireless network properly. Upon inspection of the connection details, the administrator finds the following:

| | |
|--------|--------------|
| SSID | Company-WiFi |
| Signal | 5% |
| SNR | 2 |

Which of the following is MOST likely the cause of the poor wireless connection?

- A. Channel overlap
- B. Overcapacity
- C. Incorrect antenna type
- D. Latency

Correct Answer: C

Section: (none)

Explanation

Explanation/Reference:

QUESTION 140

A VoIP system will require 23 concurrent voice channels and one signaling channel. Which of the following types of WAN service would provide the BEST connectivity to the PSTN?

- A. PRI
- B. BRI
- C. E1/E3
- D. DSL

Correct Answer: A

Section: (none)

Explanation

Explanation/Reference:



QUESTION 141

A network administrator is going to be performing a major upgrade to the network. Which of the following should the administrator use in case of a failure?

- A. Baseline report
- B. Vulnerability report
- C. Rollback plan
- D. Business continuity plan

Correct Answer: C

Section: (none)

Explanation

Explanation/Reference:

QUESTION 142

Which of the following is networking stand-alone hardware that will permit any WiFi-compliant device to connect to a wired network?

- A. Wireless hub
- B. Wireless firewall
- C. Wireless access point
- D. Wireless bridge

Correct Answer: C

Section: (none)

Explanation

Explanation/Reference:

QUESTION 143

Which of the following devices are MOST often responsible for 802.1q tagging? (Choose two.)

- A. Switch
- B. Router
- C. IDS
- D. Hub
- E. IPS
- F. Network tap



Correct Answer: AB

Section: (none)

Explanation

Explanation/Reference:

QUESTION 144

A network technician is installing a new wireless network in a small office. Due to environmental concerns, the customer wants the network to run exclusively on the

5GHz frequency. Which of the following wireless technologies should the technician install to BEST meet this requirement? (Choose two.)

- A. 802.11ac
- B. 802.11b
- C. 802.11g
- D. 802.11n

- E. Bluetooth
- F. Z-Wave

Correct Answer: AD

Section: (none)

Explanation

Explanation/Reference:

QUESTION 145

Which of the following concepts would BEST describe when a company chooses to use a third-party vendor to host and administer a critical application?

- A. SaaS
- B. IaaS
- C. PaaS
- D. CASB

Correct Answer: C

Section: (none)

Explanation

Explanation/Reference:



QUESTION 146

Ann, a new employee within a department, cannot print to any of the printers in the department or access any of the resources that others can. However, she can access the Internet. The network engineer has confirmed that Ann's account has been set up the same as the others. There are no access lists restricting Ann's access. Which of the following could be the issue for this lack of access?

- A. Duplex/speed mismatch
- B. VLAN mismatch
- C. DNS server issue
- D. DHCP server issue
- E. Spanning tree blocked ports

Correct Answer: B

Section: (none)

Explanation

Explanation/Reference:

QUESTION 147

A technician is configuring a printer for a client. The technician connects the printer to the network, but is unsure how to determine its switchport. Which of the following should the technician do FIRST to locate the switchport?

- A. Perform a DNS lookup on the server.
- B. Set up an SSH session to the desktop.
- C. Reference the ARP table in the router.
- D. Configure port security on the switch.

Correct Answer: C

Section: (none)

Explanation

Explanation/Reference:



QUESTION 148

A technician is connecting a PC to a switchport. At the wiring closet, the technician is unable to identify which cable goes from patch panel A connected to the switch to patch panel B connected to the PC. Which of the following tools should the technician use to resolve the issue?

- A. Cable tester
- B. Multimeter
- C. Tone generator
- D. OTDR

Correct Answer: C

Section: (none)

Explanation

Explanation/Reference:

QUESTION 149

A technician wants to deploy a network that will require wireless client devices to prompt for a username and password before granting access to the wireless network. Which of the following must be configured to implement this solution?

- A. EAP-PEAP
- B. CCMP-AES
- C. WPA2-PSK
- D. TKIP-RC4

Correct Answer: A

Section: (none)

Explanation

Explanation/Reference:

QUESTION 150

Users in a school lab are reporting slow connections to the servers and the Internet. Other users in the school have no issues. The lab has 25 computers and is connected with a single 1Gb Ethernet connection on Cat 5e wiring to an unmanaged switch. There are also three spare Cat 5e cable runs, which are not in use. The school wants to double the connection speed between the lab and the servers without running new cables. Which of the following would be the BEST solution?

- A. Plug in a second spare cable at each end to double the speed.
- B. Replace the switches with ones that utilize port bonding and use the spare cables.
- C. Replace the switches with 10Gb switches and utilize the existing cabling.
- D. Plug in a second cable and set one port to TX and one port to RX.

Correct Answer: B

Section: (none)

Explanation

Explanation/Reference:

QUESTION 151

A technician is downloading an ISO from a vendor's website. To ensure the integrity of the download, which of the following should be verified?

- A. File size
- B. Vendor URL

- C. File hashing
- D. Encryption

Correct Answer: C

Section: (none)

Explanation

Explanation/Reference:

QUESTION 152

Users on a LAN segment are reporting a loss of connectivity to network services. The client PCs have been assigned with 169.254.X.X IP addresses. Which of the following IP address schemas is being utilized?

- A. Private IP
- B. Static IP
- C. APIPA
- D. Loopback

Correct Answer: C

Section: (none)

Explanation



Explanation/Reference:

QUESTION 153

A network administrator has created a new VLAN for the server and clients within the accounting department and wants to outline how it integrates with the existing network. Which of the following should the administrator create?

- A. Logical diagram
- B. Physical diagram
- C. Rack diagram
- D. Configuration diagram

Correct Answer: A

Section: (none)

Explanation

Explanation/Reference:



<https://www.vceplus.com/>



<https://www.vceplus.com/>