

**N10-007.189q**

Number: N10-007  
Passing Score: 800  
Time Limit: 120 min

**N10-007**



**Website:** <https://vceplus.com>  
**VCE to PDF Converter:** <https://vceplus.com/vce-to-pdf/>  
**Facebook:** <https://www.facebook.com/VCE.For.All.VN/>  
**Twitter :** [https://twitter.com/VCE\\_Plus](https://twitter.com/VCE_Plus)

<https://vceplus.com/>

<https://vceplus.com/>

## CompTIA Network+ Certification Exam

### Exam A

#### QUESTION 1

Which of the following policies would Joe, a user, have to agree to when he brings in his personal tablet to connect to the company's guest wireless Internet?

- A. NDA
- B. IRP
- C. BYOD
- D. SLA

**Correct Answer: C**

**Section: (none)**

**Explanation**

**Explanation/Reference:**

#### QUESTION 2

In a service provider network, a company has an existing IP address scheme. Company A's network currently uses the following scheme:

Subnet 1: 192.168.1.0/26  
Subnet 2: 192.168.1.65/26

Company b uses the following scheme:

Subnet 1: 192.168.1.50/28

The network administrator cannot force the customer to update its IP scheme. Considering this, which of the following is the BEST way for the company to connect these networks?



<https://vceplus.com/>

- A. DMZ
- B. PAT
- C. NAT
  
- D. VLAN

**Correct Answer:** C

**Section:** (none)

**Explanation**

**Explanation/Reference:**

### QUESTION 3

A network engineer is designing a new network for a remote site. The remote site consists of ten desktop computers, ten VoIP phones, and two network printers. In addition, two of the desktop computers at the remote site will be used by managers who should be on a separate network from the other eight computers. Which of the following represents the BEST configuration for the remote site?

- A. One router connected to one 24-port switch configured with three VLANs: one for the manager's computers and printer, one for the other computers and printer, and one for the VoIP phones
- B. Two routers with each router connected to a 12-port switch, with a firewall connected to the switch connected to the manager's desktop computers, VoIP phones, and printer
- C. One router connected to one 12-port switch configured for the manager's computers, phones, and printer, and one 12-port switch configured for the other computers, VoIP phones, and printer
- D. One router connected to one 24-port switch configured with two VLANs: one for the manager's computers, VoIP phones, and printer, and one for the other computers, VoIP phones, and printer

**Correct Answer:** A

**Section:** (none)

**Explanation**

**Explanation/Reference:**

### QUESTION 4

<https://vceplus.com/>

A network technician is troubleshooting an end-user connectivity problem. The network technician goes to the appropriate IDF but is unable to identify the appropriate cable due to poor labeling. Which of the following should the network technician use to help identify the appropriate cable?

- A. Tone generator
- B. Multimeter
- C. OTDR
- D. Loopback adapter

**Correct Answer:** A

**Section:** (none)

**Explanation**

**Explanation/Reference:**

#### QUESTION 5

A network technician notices the site-to-site VPN and Internet connection have not come back up at a branch office after a recent power outage. Which of the following is an out-of-band method the technician would MOST likely utilize to check the branch office's router status?

- A. Use a modem to console into the router
- B. Walk a user through troubleshooting the connection
- C. Travel to the branch office
- D. Hire a contractor to go on-site



**Correct Answer:** A

**Section:** (none)

**Explanation**

**Explanation/Reference:**

#### QUESTION 6

A network technician is considering opening ports on the firewall for an upcoming VoIP PBX implementation. Which of the following protocols is the technician MOST likely to consider? (Choose three.)

- A. SIP
- B. NTP
- C. H.323

- D. SMB
- E. ICMP
- F. RTP
- G. IPSec
- H. RDP

**Correct Answer:** ACF

**Section:** (none)

**Explanation**

**Explanation/Reference:**

#### QUESTION 7

Which of the following is the number of broadcast domain that are created when using an unmanaged 12-port switch?

- A. 0
- B. 1
- C. 2
- D. 6
- E. 12



**Correct Answer:** B

**Section:** (none)

**Explanation**

**Explanation/Reference:**

#### QUESTION 8

A network engineer wants to segment the network into multiple broadcast domains. Which of the following devices would allow for communication between the segments?

- A. Layer 2 switch
- B. Layer 3 switch
- C. Bridge
- D. Load balancer

**Correct Answer:** B

**Section:** (none)

**Explanation**

**Explanation/Reference:**

#### **QUESTION 9**

The Chief Information Officer (CIO) has noticed the corporate wireless signal is available in the parking lot. Management requests that the wireless network be changed so it is no longer accessible in public areas, without affecting the availability inside the building. Which of the following should be changed on the network?

- A. Power levels
- B. Overcapacity
- C. Distance limitations
- D. Channel overlap

**Correct Answer:** A

**Section:** (none)

**Explanation**

**Explanation/Reference:**



#### **QUESTION 10**

A network technician is assisting the security team with some traffic captures. The security team wants to capture all traffic on a single subnet between the router and the core switch. To do so, the team must ensure there is only a single collision and broadcast domain between the router and the switch from which they will collect traffic. Which of the following should the technician install to BEST meet the goal?

- A. Bridge
- B. Crossover cable
- C. Hub
- D. Media converter

**Correct Answer:** C

**Section:** (none)

**Explanation**

**Explanation/Reference:**

**QUESTION 11**

Based on networks 10.8.16.0/22 and 10.8.31.0/21, which of the following is the BEST summarized CIDR notation?

- A. 10.8.0.0/16
- B. 10.8.0.0/19
- C. 10.8.0.0/20
- D. 10.0.0.0/24

**Correct Answer:** A

**Section:** (none)

**Explanation**

**Explanation/Reference:**

**QUESTION 12**

A technician discovers that multiple switches require a major update. Which of the following policies should be followed?

- A. Change management policy
- B. Remote access policy
- C. Acceptable use policy
- D. Memorandum of understanding

**Correct Answer:** A

**Section:** (none)

**Explanation**

**Explanation/Reference:**

**QUESTION 13**

A technician is troubleshooting a point-to-point fiber-optic connection. The technician is at a remote site and has no connectivity to the main site. The technician confirms the switch and the send-and-receive light levels are within acceptable range. Both fiber SFPs are confirmed as working. Which of the following should the technician use to reveal the location of the fault?

- A. OTDR

- B. Light meter
- C. Tone generator
- D. CSU/DSU

**Correct Answer:** A

**Section:** (none)

**Explanation**

**Explanation/Reference:**

#### QUESTION 14

A Chief Information Officer (CIO) wants to move some IT services to a cloud service offering. However, the network administrator still wants to be able to control some parts of the cloud service's networking components. Which of the following should be leveraged to complete this task?

- A. IaaS
- B. PaaS
- C. SaaS
- D. DaaS

**Correct Answer:** B

**Section:** (none)

**Explanation**



**Explanation/Reference:**

#### QUESTION 15

Client PCs are unable to receive addressing information from a newly configured interface on a router. Which of the following should be added to allow the clients to connect?

- A. DHCP lease time
- B. IP helper
- C. TTL
- D. DNS record type

**Correct Answer:** B

**Section:** (none)

**Explanation**



**Explanation/Reference:**

**QUESTION 16**

When enabling jumbo frames on a network device, which of the following parameters is being adjusted?

- A. Speed
- B. Duplex
- C. MTU
- D. TTL

**Correct Answer: C**

**Section: (none)**

**Explanation**

**Explanation/Reference:**

**QUESTION 17**

A technician logs onto a system using Telnet because SSH is unavailable. SSH is enabled on the target device, and access is allowed from all subnets. The technician discovers a critical step was missed. Which of the following would allow SSH to function properly?

- A. Perform file hashing
- B. Generate new keys
- C. Update firmware
- D. Change default credentials

**Correct Answer: B**

**Section: (none)**

**Explanation**

**Explanation/Reference:**

**QUESTION 18**

A network administrator wants to ensure sensitive data is not exfiltrated from the system electronically. Which of the following should be implemented?



<https://vceplus.com/>

- A. DLP
- B. AUP
- C. NDA
- D. SLA

**Correct Answer:** A

**Section:** (none)

**Explanation**

**Explanation/Reference:**



#### QUESTION 19

An office network consists of one two-port router connected to a 12-port switch. A four-port hub is also connected to the switch. On this particular network, which of the following is the number of collision domain that exist?

- A. 3
- B. 12
- C. 13
- D. 14
- E. 15

**Correct Answer:** D

**Section:** (none)

**Explanation**

**Explanation/Reference:**

<https://vceplus.com/>

**QUESTION 20**

A network technician wants to remotely and securely access the desktop of a Linux workstation. The desktop is running remote control software without encryption. Which of the following should the technician use to secure the connection?

- A. SSH in tunnel mode
- B. RDP set to console connection
- C. EAP-PEAP
- D. SFTP

**Correct Answer:** A

**Section:** (none)

**Explanation**

**Explanation/Reference:**

**QUESTION 21**

Which of the following should current network performance be compared against to determine network anomalies?

- A. Baseline
- B. Traffic analysis
- C. Packet capture
- D. Logs



**Correct Answer:** A

**Section:** (none)

**Explanation**

**Explanation/Reference:**

**QUESTION 22**

A network administrator configures an email server to use secure protocols. When the upgrade is completed, which of the following ports on the firewall should be configured to allow for connectivity? (Choose three.)

- A. TCP 25
- B. TCP 110
- C. TCP 143
- D. TCP 389

- E. TCP 587
- F. TCP 993
- G. TCP 995

**Correct Answer:** EFG

**Section:** (none)

**Explanation**

**Explanation/Reference:**

### QUESTION 23

After a server outage, a technician discovers that a physically damaged fiber cable appears to be the problem. After replacing the cable, the server will still not connect to the network. Upon inspecting the cable at the server end, the technician discovers light can be seen through one of the two fiber strands. Which of the following should the technician do FIRST to reconnect the server to the network?

- A. Reverse the fiber strands of the cable and reconnect them to the server
- B. Use a TDR to test both strands of a new replacement cable prior to connecting it to the server
- C. Replace the server's single-mode fiber cable with multimode fiber
- D. Move the fiber cable to different port on the switch where both strands function

**Correct Answer:** A

**Section:** (none)

**Explanation**

**Explanation/Reference:**

### QUESTION 24

The backup server connects to a NAS device using block-level storage over Ethernet. The performance is very slow, however, and the network technician suspects the performance issues are network related. Which of the following should the technician do to improve performance?

- A. Utilize UDP to eliminate packet overhead
- B. Turn off MDIX settings on the NAS and server switchports
- C. Enable jumbo frames on the NAS and server
- D. Encapsulate the storage traffic in a GRE tunnel

**Correct Answer:** C

**Section: (none)**

**Explanation**

**Explanation/Reference:**

**QUESTION 25**

A technician is trying to determine the IP address of a customer's router. The customer has an IP address of 192.168.1.55/24. Which of the following is the address of the customer's router?

- A. 192.168.0.55
- B. 192.168.1.0
- C. 192.168.1.1
- D. 192.168.5.5
- E. 255.255.255.0

**Correct Answer: C**

**Section: (none)**

**Explanation**

**Explanation/Reference:**



**QUESTION 26**

A network technician is able to connect the switches between two offices, but the offices cannot communicate with each other, as each office uses a different IP addressing scheme. Which of the following devices needs to be installed between the switches to allow communication?

- A. Bridge
- B. Access point
- C. Router
- D. Range extender

**Correct Answer: C**

**Section: (none)**

**Explanation**

**Explanation/Reference:**

**QUESTION 27**

A network technician is working on a proposal for email migration from an on-premises email system to a vendor-hosted email in the cloud. The technician needs to explain to management what type of cloud model will be utilized with the cloud-hosted email. Which of the following cloud models should the technician identify in the proposal?

- A. IaaS
- B. PaaS
- C. SaaS
- D. MaaS

**Correct Answer:** C

**Section:** (none)

**Explanation**

**Explanation/Reference:**

**QUESTION 28**

Which of the following is the correct port number for NTP?

- A. 25
- B. 69
- C. 123
- D. 161



**Correct Answer:** C

**Section:** (none)

**Explanation**

**Explanation/Reference:**

**QUESTION 29**

A network technician is connecting two switches together. Which of the following protocols should the technician use to increase speed and fault tolerance?

- A. SIP
- B. BGP
- C. LACP
- D. LLDP

**Correct Answer:** C

**Section:** (none)

**Explanation**

**Explanation/Reference:**

### **QUESTION 30**

A company has a web-based application that is used by many different departments. The company has experienced some overload of resources on the database server. The network administrator implements a network device in between the servers and the database. Which of the following BEST describes the purpose of this device?

- A. Content filtering and network analysis
- B. Load balancing and providing high availability
- C. Port sniffing and protocol analysis
- D. Clustering and NIC teaming

**Correct Answer:** B

**Section:** (none)

**Explanation**

**Explanation/Reference:**



### **QUESTION 31**

A technician is replacing a switch at a branch office and discovers the existing backbone cable does not fit in the new switch. The fiber patch panel has circular connections. The new switch has a transceiver that accepts a smaller square adapter of two strands. Which of the following patch cables would the technician need to complete the installation?

- A. LC to SC
- B. SC to ST
- C. LC to ST
- D. ST to ST
- E. SC to SC

**Correct Answer:** C

**Section:** (none)

**Explanation**

**Explanation/Reference:**

**QUESTION 32**

A computer lab on a campus network was recently reconfigured using recycled network cables. One of the 24 computers in the lab is unable to connect to the network after the upgrade. A network technician successfully uses the cable in question to connect directly to another computer. Which of the following is MOST likely issue with the cable?

- A. The cable is a crossover cable
- B. The cable is rollover cable
- C. The cable has bent pins
- D. The cable is a Cat 5 cable

**Correct Answer: A**

**Section: (none)**

**Explanation**

**Explanation/Reference:**



**QUESTION 33**

Which of the following is a reason why a business may be hesitant to move sensitive data to a SaaS cloud service?

- A. Decreased performance of internal network
- B. Loss of full control over data resources
- C. Increased malware exposure
- D. Incompatibility with the current network

**Correct Answer: B**

**Section: (none)**

**Explanation**

**Explanation/Reference:**

**QUESTION 34**

Users have been experiencing slow network response times, and management has asked the network technician to provide evidence of network improvement. After optimizing the network, which of the following would be required?



- A. IDF/MDF documentation
- B. Change management
- C. Performance baseline
- D. Physical diagram

**Correct Answer:** C

**Section:** (none)

**Explanation**

**Explanation/Reference:**

#### QUESTION 35

Which of the following **MUST** be implemented to share metrics between routing protocols within the same router?

- A. Routing loop B.  
Routing table
- C. Route redistribution
- D. Dynamic routes

**Correct Answer:** B

**Section:** (none)

**Explanation**

**Explanation/Reference:**

#### QUESTION 36

An engineer is reviewing the implementation requirements for an upcoming project. The basic requirements identified by the customer include the following:

- WLAN architecture supporting speeds in excess of 150 Mbps
- Clientless remote network access

- Port-based network access control

Which of the following solution sets properly addresses all of the identified requirements?

- A. 802.11a, IPSec VPN, 802.1x
- B. 802.11ac, MPLS, 802.3
- C. 802.11b, PPTP, 802.1x
- D. 802.11g, MS-CHAP, 802.16



E. 802.11n, SSL-VPN, 802.1x

**Correct Answer:** E

**Section:** (none)

**Explanation**

**Explanation/Reference:**

### QUESTION 37

Which of the following is used to classify network data for the purpose of providing QoS?

- A. STP
- B. VLANs
- C. SIP
- D. DSCP

**Correct Answer:** D

**Section:** (none)

**Explanation**

**Explanation/Reference:**



### QUESTION 38

A network technician needs to separate a web server listening on port 80 from the internal LAN and secure the server from the public Internet. The web server should be accessible to the public Internet over port 80 but not the private LAN. Currently, the network is segmented with a network-based firewall using the following IP addressing scheme on each interface:

Zone	Interface	IP Address
Public	eth0	10.0.0.1/24
DMZ	eth1	10.0.1.1/24
Private	eth2	10.0.2.1/24

Which of the following ones should the technician use to place the web server and which of the following firewall rules should the technician configure?

- A. Place the web server in the public zone with an inbound rule from eth0 interface to accept traffic over port 80 designated to the web server
- B. Place the web server in the DMZ with an inbound rule from eth0 interface to eth1 to accept traffic over port 80 designated to the web server
- C. Place the web server in the private zone with an inbound rule from eth2 interface to eth1 to accept traffic over port 80 designated to the web server
- D. Place the web server in the DMZ with an inbound rule from eth1 interface to eth0 to accept traffic over port 80 designated to the web server

**Correct Answer:** B

**Section:** (none)

**Explanation**

**Explanation/Reference:**

#### **QUESTION 39**

A company recently upgraded all of its printers to networked multifunction devices. Users can print to the new devices, but they would also like the ability to scan and fax files from their computers. Which of the following should the technician update to allow this functionality?

- A. Device software
- B. Printer drivers
- C. Printer firmware
- D. NIC drivers



**Correct Answer:** C

**Section:** (none)

**Explanation**

**Explanation/Reference:**

#### **QUESTION 40**

A disgruntled employee executes a man-in-the-middle attack on the company network. Layer 2 traffic destined for the gateway is redirected to the employee's computer. This type of attack is an example of:

- A. ARP cache poisoning
- B. IP spoofing
- C. amplified DNS attack
- D. evil twin

**Correct Answer:** A

**Section:** (none)

**Explanation**

**Explanation/Reference:**

#### **QUESTION 41**

The process of attempting to exploit a weakness in a network after being given permission by the company is known as:

- A. penetration testing
- B. vulnerability scanning
- C. reconnaissance
- D. social engineering

**Correct Answer:** A

**Section:** (none)

**Explanation**

**Explanation/Reference:**



#### **QUESTION 42**

A company has contracted with an outside vendor to perform a service that will provide hardware, software, and procedures in case of a catastrophic failure of the primary datacenter. The Chief Information Officer (CIO) is concerned because this contract does not include a long-term strategy for extended outages. Which of the following should the CIO complete?

- A. Disaster recovery plan
- B. Business continuity plan
- C. Service level agreement
- D. First responder training

**Correct Answer:** B

**Section:** (none)

**Explanation**

**Explanation/Reference:**

**QUESTION 43**

A typical cell tower will have microwave and cellular antennas. Which of the following network topologies do these represent? (Choose two.)

- A. Point-to-multipoint
- B. Bus
- C. Point-to-point
- D. Mesh
- E. Peer-peer
- F. Ring

**Correct Answer:** CD

**Section:** (none)

**Explanation**

**Explanation/Reference:**

**QUESTION 44**

A network administrator has a monitoring system in place that is currently polling hundreds of network devices at regular intervals. The continuous polling is causing high CPU utilization on the server. Which of the following tasks should the administrator perform to resolve the CPU issue while maintaining full monitoring capabilities?

- A. Remove SNMP polling and configure SNMP traps on each network device
- B. Remove SNMP polling and implement `snmpwalk` on each network device
- C. Upgrade SNMP to the latest version to mitigate vulnerabilities
- D. Modify SNMP polling to poll only during business hours

**Correct Answer:** A

**Section:** (none)

**Explanation**

**Explanation/Reference:**

**QUESTION 45**

A contractor is setting up and configuring conference rooms for a convention. The contractor sets up each room in the conference center to allow wired Internet access going to individual tables. The contractor measured the distance between the hotel's patch panel to the jack, and the distance is within Cat 5e specifications. The contractor is concerned that the room will be out of specification if cables are run in each room from the wall jacks. Which of the following actions should the contractor take to ensure the cable runs meet specifications and the network functions properly?

- A. Place a switch at the hotel's patch panel for connecting each room's cables
- B. Place a switch on each table to ensure strong connectivity
- C. Place repeaters between the patch panel and the rooms
- D. place a switch at the wall jack and run the cables in the room from there

**Correct Answer:** A

**Section:** (none)

**Explanation**

**Explanation/Reference:**

#### **QUESTION 46**

Users are reporting their network is extremely slow. The technician discovers pings to external host have excessive response times. However, internal pings to printers and other PCs have acceptable response times. Which of the following steps should the technician take NEXT?

- A. Determine if any network equipment was replaced recently
- B. Verify malware has not disabled the users' PC firewalls
- C. Replace users' network cables with known-good network cables
- D. Power cycle the web server

**Correct Answer:** A

**Section:** (none)

**Explanation**

**Explanation/Reference:**

#### **QUESTION 47**

Which of the following is a system of notation that uses base 16 rather than base 10?

- A. Hex
- B. Octal
- C. Binary
- D. CIDR

**Correct Answer:** A

**Section: (none)**

**Explanation**

**Explanation/Reference:**

**QUESTION 48**

A network administrator would like to collect information from several networking devices using SNMP. Which of the following SNMP options should a network administrator use to ensure the data transferred is confidential?

- A. authpriv
- B. SHA
- C. MD5
- D. Authentication passphrase

**Correct Answer: A**

**Section: (none)**

**Explanation**

**Explanation/Reference:**



**QUESTION 49**

The IT manager at a small firm is in the process of renegotiating an SLA with the organization's ISP. As part of the agreement, the organization will agree to a dynamic bandwidth plan to provide 150Mbps of bandwidth. However, if the ISP determines that a host on the organization's internal network produces malicious traffic, the ISP reserves the right to reduce available bandwidth to 1.5 Mbps. Which of the following policies is being agreed to in the SLA?

- A. Session hijacking
- B. Blocking
- C. Throttling
- D. Data usage limits
- E. Bandwidth quotas

**Correct Answer: C**

**Section: (none)**

**Explanation**

**Explanation/Reference:**

**QUESTION 50**

A network technician has just configured NAC for connections using Cat 6 cables. However, none of the Windows clients can connect to the network. Which of the following components should the technician check on the Windows workstations? (Choose two.)

- A. Start the Wired AutoConfig service in the Services console
- B. Enable IEEE 802.1q Authentication in Network Interface Card Properties
- C. Enable IEEE 802.1x Authentication in Network Interface Card Properties
- D. Start the Wireless AutoConfig service in the Services console
- E. Enable IEEE 802.3 Ethernet IPv6 in Network Interface Card Properties

**Correct Answer:** AC

**Section:** (none)

**Explanation**

**Explanation/Reference:**

**QUESTION 51**

The security manager reports that individual systems involved in policy or security violations or incidents cannot be located quickly. The security manager notices the hostnames all appear to be randomly generated characters. Which of the following would BEST assist the security manager identifying systems involved in security incidents?

- A. Enforce port security to require system authentication
- B. Implement a standardized UNC
- C. Label existing systems with current hostnames
- D. Forward the DHCP logs to the security manager every day

**Correct Answer:** B

**Section:** (none)

**Explanation**

**Explanation/Reference:**

**QUESTION 52**

A building is equipped with light sensors that turn off the fluorescent lights when natural light is above a certain brightness. Users report experiencing network connection issues only during certain hours. The west side of the building experiences connectivity issues in the morning hours and the east side near the end of the day. At night the connectivity issues affect the entire building. Which of the following could be the cause of the connectivity issues?

- A. Light sensors are interfering with the network



- B. EMI from the lights is interfering with the network cables
- C. Network wiring is run perpendicular to electrical conduit
- D. Temperature changes are causing attenuation in copper cabling

**Correct Answer:** C

**Section:** (none)

**Explanation**

**Explanation/Reference:**

#### **QUESTION 53**

A network technician configures a firewall's ACL to allow outgoing traffic for several popular services such as email and web browsing. However, after the firewall's deployment, users are still unable to retrieve their emails. Which of the following would BEST resolve this issue?

- A. Allow the firewall to accept inbound traffic to ports 25, 67, 179, and 3389
- B. Allow the firewall to accept inbound traffic to ports 80, 110, 143, and 443
- C. Set the firewall to operate in transparent mode
- D. Allow the firewall to accept inbound traffic to ports 21, 53, 69, and 123

**Correct Answer:** B

**Section:** (none)

**Explanation**

**Explanation/Reference:**

#### **QUESTION 54**

A network security technician observes multiple attempts to scan network hosts and devices. All the attempts originate from a single host on the network. Which of the following threats is MOST likely involved?

- A. Smurf attack
- B. Rogue AP
- C. Compromised system
- D. Unintentional DoS

**Correct Answer:** C

**Section: (none)**

**Explanation**

**Explanation/Reference:**

**QUESTION 55**

Which of the following would be the MOST efficient subnet mask for a point-to-point link?

- A. /28
- B. /29
- C. /31
- D. /32

**Correct Answer: C**

**Section: (none)**

**Explanation**

**Explanation/Reference:**



**QUESTION 56**

An office user cannot access local network drives but has full access to the Internet. A technician troubleshoots the issue and observes the following output of the `ipconfig` command:

## Windows IP Configuration

Ethernet LAN Adapter: 980GTS  
Connection-specific DNS Suffix: ...comptia.net  
IPv4 Address: .....10.0.5.99  
Subnet Mask: .....255.255.255.0  
Default Gateway: ...10.0.5.1

Wireless LAN Adapter: FastWifi 99  
Connection-specific DNS Suffix: ...guestwireless.local  
IPv4 Address: .....172.16.0.5  
Subnet Mask: .....255.255.255.0  
Default Gateway: ...172.16.0.254

Which of the following would MOST likely allow the network drives to be accessed?

- A. Update the WLAN adapter driver
- B. Disable the WLAN adapter
- C. Check the wireless DHCP configuration
- D. Disable the LAN adapter



**Correct Answer: B**

**Section: (none)**

**Explanation**

**Explanation/Reference:**

### QUESTION 57

Ann, a network technician, has just installed a fiber switch in a datacenter. To run the fiber cabling, Ann plans the cable route over the top of the rack using the cable trays, down to the switch, coiling up any excess cable. As Ann configures the switch, she notices several messages in the logging buffer stating the receive signal of the SFP is too weak. Which of the following is MOST likely the cause of the errors in the logging buffer?

- A. Bend radius exceeded
- B. Fiber cable mismatch
- C. Fiber type mismatch
- D. Bad fiber switch

**Correct Answer:** A

**Section:** (none)

**Explanation**

**Explanation/Reference:**

#### **QUESTION 58**

Which of the following wireless connection types utilize MIMO on non-overlapping channels? (Choose two.)

- A. 802.11a
- B. 802.11ac
- C. 802.11b
- D. 802.11g
- E. 802.11n

**Correct Answer:** BE

**Section:** (none)

**Explanation**

**Explanation/Reference:**



#### **QUESTION 59**

A network technician is creating a new subnet for 488 host machines. The technician is told to use a class B address scheme when making the subnet and is instructed to leave as much room as possible for additional subnets of the same size. Which of the following subnets would fulfill these requirements?

- A. 10.5.4.0/22
- B. 10.233.2.0/23
- C. 172.16.0.0/22
- D. 172.18.0.0/23
- E. 192.168.25.0/24

**Correct Answer:** D

**Section:** (none)

**Explanation**

**Explanation/Reference:**

**QUESTION 60**

A network engineer is designing a new IDF in an old building. The engineer determines the equipment will fit in a two-post rack, and there is power available for this equipment. Which of the following would be the FIRST issue to remediate?

- A. Air flow and cooling
- B. UPS capability
- C. Circuit labeling
- D. Power redundancy

**Correct Answer:** A

**Section:** (none)

**Explanation**

**Explanation/Reference:**

**QUESTION 61**

Which of the following DNS records needs to be configured for SMTP traffic?

- A. MX
- B. CNAME
- C. AAAA
- D. PTR

**Correct Answer:** A

**Section:** (none)

**Explanation**

**Explanation/Reference:**

**QUESTION 62**

In which of the following ways does a DDoS attack differ from a spoofing attack?

- A. DDoS attacks target multiple networks
- B. Spoofing attacks originate from a single host
- C. DDoS attacks are launched from multiple hosts
- D. Spoofing attacks require physical presence

**Correct Answer:** C

**Section:** (none)

**Explanation**

**Explanation/Reference:**

#### **QUESTION 63**

A user checks an IP address using an external website. The address is different than the one the user sees when opening a command prompt and typing in `ipconfig/all`. The user does not understand why the two tools show different IP addresses. This is BEST explained by the interworking of:

- A. network devices
- B. packet flow
- C. public/private networks
- D. traffic-routing protocols

**Correct Answer:** C

**Section:** (none)

**Explanation**

**Explanation/Reference:**



#### **QUESTION 64**

Which of the following communication media can carry many voice, data, and video channels simultaneously over multiple frequencies?

- A. Broadband
- B. Baseband
- C. Analog modem
- D. CSMA

**Correct Answer:** A

**Section:** (none)

**Explanation**

**Explanation/Reference:**

**QUESTION 65**

To replace a defective UPS, the network administrator must take the switch offline. The administrator wants to be able to perform maintenance UPS in the future without affecting the availability of the attached switch. Which of the following would BEST allow this to happen?

- A. Add a redundant power supply to the switch
- B. Implement stacking on the switches in the rack
- C. Add a second UPS into the rack
- D. Install a power converter for the switch

**Correct Answer:** A

**Section:** (none)

**Explanation**

**Explanation/Reference:**

**QUESTION 66**

A forensic first responder arrives at the scene where an employee is suspected to have committed a computer-based crime. Which of the following should the first responder do FIRST?

- A. Document the scene
- B. Take pictures upon arrival
- C. Secure the area
- D. Implement chain of custody

**Correct Answer:** C

**Section:** (none)

**Explanation**

**Explanation/Reference:**

**QUESTION 67**

A small town is attempting to attract tourists who visit larger nearby cities. A network engineer is asked to implement a network encompassing the five-block town center and nearby businesses. The inclusion of smartphones and portable devices is crucial to the plan. Which of the following is the network engineer being asked to implement?

- A. LAN
- B. PAN

- C. MAN
- D. WAN

**Correct Answer:** C

**Section:** (none)

**Explanation**

**Explanation/Reference:**

#### **QUESTION 68**

An employee wishes to use a personal cell phone for work-related purposes, including storage of sensitive company data, during long business trips. Which of the following is needed to protect BOTH the employee and the company?

- A. An NDA ensuring work data stored on the personal phone remains confidential
- B. An AUP covering how a personal phone may be used for work matters
- C. A consent to monitoring policy covering company audits of the personal phone
- D. Real-time remote monitoring of the phone's activity and usage

**Correct Answer:** D

**Section:** (none)

**Explanation**

**Explanation/Reference:**

#### **QUESTION 69**

Which of the following protocols can be both connection-oriented and connectionless?

- A. 20 FTP
- B. 53 DNS
- C. 67 DHCP
- D. 80 HTTP

**Correct Answer:** B

**Section:** (none)

**Explanation**

**Explanation/Reference:**



**QUESTION 70**

Which of the following BEST describes the differences between VLAN hopping and session hijacking?

- A. VLAN hopping involves the unauthorized transition from one VLAN to another to gain additional access. Session hijacking involves overriding a user's web connection to execute commands
- B. VLAN hopping is a brute force attack executed to gain additional access. Session hijacking involves physically disrupting a network connection
- C. VLAN hopping involves overriding a user network connection to execute malicious commands. Session hijacking involves compromising a host to elevate privileges
- D. VLAN hopping is the act of exploiting poor VLAN tagging. Session hijacking is a web-based attack aimed at privilege escalation

**Correct Answer:** A

**Section:** (none)

**Explanation**

**Explanation/Reference:**

**QUESTION 71**

An analyst is developing a proof of concept of a wireless-based attack as part of a penetration test against an organization's network. As part of the attack, the analyst launches a fake access point matching the SSID of the organization's guest access network. When a user connects to the fake access point, the analyst allows the traffic to flow through the access point to the legitimate site while the data traversing the network is logged for latest analysis and exploitation. Which of the following attacks has the analyst successfully performed in this scenario?

- A. Bluesnarfing
- B. Session hijacking
- C. MAC spoofing
- D. VLAN hopping
- E. Man-in-the-middle

**Correct Answer:** E

**Section:** (none)

**Explanation**

**Explanation/Reference:**

**QUESTION 72**

A network administrator receives a call from the sales department requesting ports 20 and 21 be opened on the company's firewall to allow customers to retrieve a large file. Which of the following should the administrator perform BEFORE making the needed changes? (Choose two.)



<https://vceplus.com/>

- A. Document the reason for the request
- B. Scan the file for malware to protect the sales department's computers
- C. Follow the company's approval process for the implementation
- D. Install a TFTP server for the customers to use for the transfer
- E. Create a honeypot to store the file on for the customers to use
- F. Write the SLA for the sales department authorizing the change

**Correct Answer:** AC

**Section:** (none)

**Explanation**

**Explanation/Reference:**

### QUESTION 73

A user reports that a laptop cannot connect to the Internet despite the fact the wireless Internet was functioning on it yesterday. The user did not modify the laptop in any way, and the wireless Internet is functional on other users' laptops. Which of the following issues should be reviewed to help the user to connect to the wireless network?

- A. Wireless switch toggled off
- B. WAP settings
- C. WLAN IP address out of scope
- D. Wireless controller misconfiguration

<https://vceplus.com/>

**Correct Answer:** A

**Section:** (none)

**Explanation**

**Explanation/Reference:**

#### **QUESTION 74**

A network administrator wants to increase the confidentiality of the system by hardening the authentication process. Currently, the users log in using usernames and passwords to access the system. Which of the following will increase the authentication factor to three?

- A. Adding a fingerprint reader to each workstation and providing a RSA authentication token
- B. Adding a fingerprint reader and retina scanner
- C. Using a smart card and RSA token
- D. Enforcing a stronger password policy and using a hand geometry scan

**Correct Answer:** A

**Section:** (none)

**Explanation**

**Explanation/Reference:**



#### **QUESTION 75**

A network technician is building a network for a small office. The office currently has cable TV and now requires access to the Internet without adding any cabling other than what is already in place. Which of the following solutions should the technician install to meet these requirements?

- A. DOCSIS modem
- B. Wireless router
- C. DSL modem
- D. Access point

**Correct Answer:** A

**Section:** (none)

**Explanation**

**Explanation/Reference:**

**QUESTION 76**

A network engineer arrives at work and discovers that many users are having problems when attempting to connect to the company network shared drives. The network operations center (NOC) technician just completed server upgrades the night before. To which of the following documents should the NOC technician refer to determine what potentially caused the connectivity problem?

- A. Network maps
- B. Cable management
- C. Release notes
- D. Change management

**Correct Answer:** D

**Section:** (none)

**Explanation**

**Explanation/Reference:**

**QUESTION 77**

Which of the following VPN protocols establishes a secure session that can be initiated using a browser?

- A. IPSec
- B. SSL VPN
- C. PTP
- D. PPTP

**Correct Answer:** B

**Section:** (none)

**Explanation**

**Explanation/Reference:**

**QUESTION 78**

A technician is setting up a public guest network for visitors to access the Internet that must be separate from the corporate network. Which of the following are the BEST steps for the technician to take with minimum overhead configuration? (Choose two.)

- A. Enable SSID broadcasting to identify the guest network
- B. Configure visitor devices to use static IP addresses

- C. Enable two-factor authentication on visitor devices
- D. Configure the access point to use WPA2-AES encryption
- E. Ensure the access point is not running in mixed mode

**Correct Answer:** AB

**Section:** (none)

**Explanation**

**Explanation/Reference:**

#### QUESTION 79

Which of the following is the SHORTEST way to write 2001:0000:0d58:0000:0000:0095:7565:0001 in proper IPv6 shorthand?

- A. 2001::d58::95:7565:1
- B. 2001:0:d58:0:0:95:7565:1
- C. 2001:0:d58::95:7565:1
- D. 2001:0:0d58::95:7565:1

**Correct Answer:** C

**Section:** (none)

**Explanation**

**Explanation/Reference:**

#### QUESTION 80

A network administrator needs to transmit traffic to geographically diverse sites to improve performance. Which of the following devices would BEST direct traffic to the remote sites?

- A. Hub
- B. Bridge
- C. Switch
- D. Router

**Correct Answer:** D



**Section: (none)**

**Explanation**

**Explanation/Reference:**

#### **QUESTION 81**

Which of the following should a technician investigate when using a network baseline to troubleshoot?

- A. Tracing a network wire connectivity issue from the datacenter to a host.
- B. Determining if the server performance is degraded.
- C. Changes that have been made to the network configuration.
- D. Location of networking equipment in a rack.

**Correct Answer: B**

**Section: (none)**

**Explanation**

**Explanation/Reference:**



#### **QUESTION 82**

A technician needs to upgrade a SOHO wireless router's firmware. The technician resets the router to factory settings and installs the new firmware. The technician enters the DHCP information and sets the SSID. Which of the following configurations would provide the MOST protection from advance hackers?

- A. Disable the broadcasting of the SSID.
- B. Enable WPA2 authentication for all hosts.
- C. Use private addressing for the DHCP scope.
- D. Install unidirectional antennas.

**Correct Answer: B**

**Section: (none)**

**Explanation**

**Explanation/Reference:**

#### **QUESTION 83**

A technician notices clients are receiving a 169.254.x.x IP address following the upgrade of a server. Which of the following ports should the technician check on the local server firewall?

- A. ports 20 and 21
- B. ports 67 and 68
- C. ports 80 and 443
- D. port 123 and 8080

**Correct Answer:** B

**Section:** (none)

**Explanation**

**Explanation/Reference:**

#### QUESTION 84

Which of the following datacenter security methodologies is MOST likely to remain usable during a network outage?

- A. biometric scanners
- B. door locks
- C. video surveillance
- D. motion detectors



**Correct Answer:** B

**Section:** (none)

**Explanation**

**Explanation/Reference:**

#### QUESTION 85

A network technician is implementing a solution on the network to hide the workstation internal IP addresses across a WAN. Which of the following is the technician configuring?

- A. QoS
- B. DMZ
- C. RIP

D. NAT

**Correct Answer:** D

**Section:** (none)

**Explanation**

**Explanation/Reference:**

#### **QUESTION 86**

Employees want the ability to use personal devices on the guest network while working out at the company gym. In order to meet the request, which of the following policies requires employee adherence?

A. AUP

B. SLA

C. NDA

D. MOU

**Correct Answer:** A

**Section:** (none)

**Explanation**

**Explanation/Reference:**



#### **QUESTION 87**

Which of the following BEST describes the BGP routing protocol?

A. distance vector

B. hybrid

C. static

D. link state

**Correct Answer:** B

**Section:** (none)

**Explanation**

**Explanation/Reference:**



**QUESTION 88**

A customer is reporting difficulty connecting some devices after replacing a wireless router with a new wireless 802.11ac router. The SSID, encryption and password are the same as the previous router. A technician goes on-site and notices the devices that are no longer connecting appear to be several years ago. Which of the following is MOST likely the problem?

- A. the password needs to be re-entered.
- B. there is a security type mismatch.
- C. there is insufficient antenna power.
- D. there is a frequency mismatch.
- E. the channel has changed.

**Correct Answer:** D

**Section:** (none)

**Explanation**

**Explanation/Reference:**

**QUESTION 89**

Multiple users are reporting that they are unable to access the network. The ENTIRE network is shown in the diagram. PCs are not statically assigned IP addresses. The following devices will display settings:

- WorkstationA
- WorkstationB
- WorkstationC
- WorkstationD
- WorkstationE
- WorkstationF
- WorkstationG
- Laptop1
- Laptop2
- DHCP server1
- DHCP server2

Review the settings and select the box in the diagram that identifies the device causing the issue. Only one device can be selected at a time.

After checking the device that is causing the issue, select the second tab in the lower left hand corner. Identify the reason as to why some users are unable to access the network.

Instructions:

When the simulation is complete, select the Done button to submit.

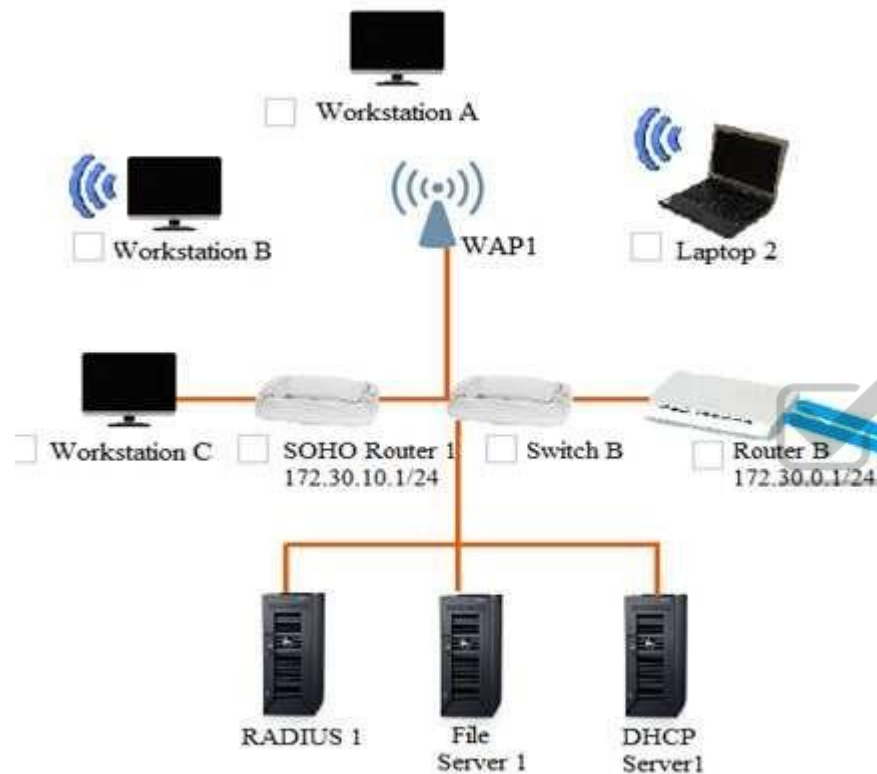
Part 1



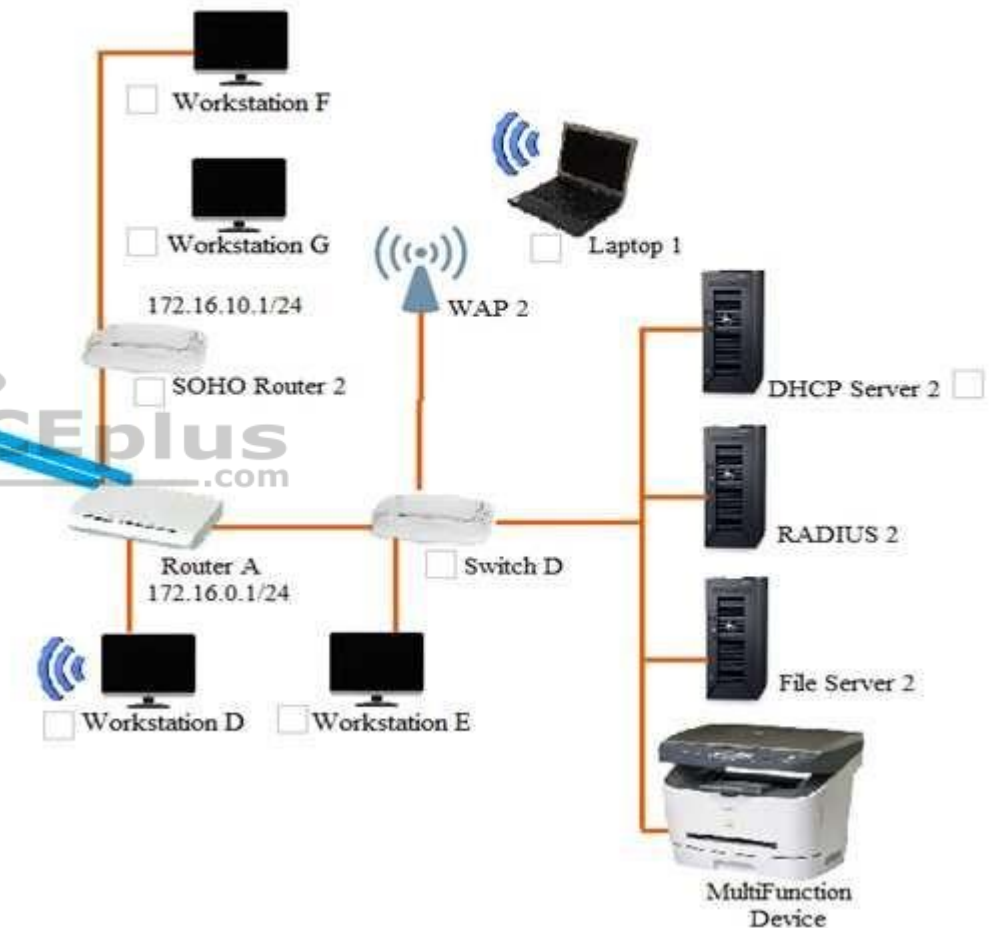
## Site A and B Network Diagram

**Instructions:** Only one device can be selected at a time. Please ensure you complete Part 1 and Part 2 of the simulation.

### SITE A



### SITE B



**WORKSTATION A**

IP Address	172.30.0.10
Netmask	255.255.255.0
Gateway	172.30.0.1

**WORKSTATION B**

IP Address	172.30.0.14
Netmask	255.255.255.0
Gateway	172.30.10.1

**WORKSTATION C**

IP Address	169.254.200.67
Netmask	255.255.255.0
Gateway	

**WORKSTATION D**

IP Address	172.16.0.221
Netmask	255.255.255.0
Gateway	172.16.0.1

**WORKSTATION E**

IP Address	172.16.0.21
Netmask	255.255.255.0
Gateway	172.16.0.1

**WORKSTATION F**

IP Address	172.16.10.43
Netmask	255.255.255.0
Gateway	172.16.10.1

**WORKSTATION G**

IP Address	172.16.10.120
Netmask	255.255.255.0
Gateway	172.16.10.1

**LAPTOP 1**

IP Address	172.16.0.220
Netmask	255.255.255.0
Gateway	172.16.0.1

**LAPTOP 2**

IP Address	172.30.0.12
Netmask	255.255.255.0
Gateway	172.30.0.1

**DHCP SERVER 1**

IP Address	172.30.0.5
Netmask	255.255.255.0
Gateway	172.30.0.1

DHCP Scope	172.30.0.10-250
Gateway	172.30.0.1
DNS Servers	10.200.2.20, 10.200.3.20
DHCP Lease Time	8 days

DHCP SERVER 2	
IP Address	172.30.0.5
Netmask	255.255.255.0
Gateway	172.16.0.1
DHCP Scope	172.16.0.10-250
Gateway	172.16.0.1
DNS Servers	10.200.2.20, 10.200.3.20
DHCP Lease Time	8 days
<input type="button" value="OK"/>	



## Part 2

Identify the reason as to why some users are unable to access the network.

- A. Workstation(s) are plugged into switch ports configured with half duplex.
- B. The site-to-site router was configured with the incorrect ACL.
- C. DHCP server scope is full and is not providing IP addresses.
- D. WAN and LAN ports are reversed on the router.
- E. STP had disabled some of the ports on the switch.
- F. The NIC driver is not installed.
- G. A wireless client is unable to associate to the AP.

**Correct Answer:** G

**Section:** (none)

**Explanation**

**Explanation/Reference:**



**QUESTION 90**

Which of the following should be performed to verify that unnecessary services are disabled on all switches in an environment?

- A. Packet capturing
- B. Port scanning
- C. Log scanning
- D. Baseline review

**Correct Answer: B**

**Section: (none)**

**Explanation**

**Explanation/Reference:**

**QUESTION 91**

A technician is sent to a remote office to set up a device to connect to the Internet. The company standards document requires stateful inspection. Which of the following should the technician install?

- A. Router
- B. Multiplayer switch
- C. Firewall
- D. Bridge

**Correct Answer: C**

**Section: (none)**

**Explanation**

**Explanation/Reference:**

**QUESTION 92**

A technician is assigned to secure a basic wireless network. Which of the following authentication protocols should the technician use to perform this task? (Choose two.)

- A. RDP
- B. SNMP
- C. WPA2

- D. EAP
- E. SSL

**Correct Answer:** CD

**Section:** (none)

**Explanation**

**Explanation/Reference:**

#### **QUESTION 93**

A technician is investigating the cause of a network outage. Which of the following documents should be checked to rule out configuration issues?

- A. Change management records
- B. Inventory management
- C. Network log files
- D. Logical diagrams

**Correct Answer:** A

**Section:** (none)

**Explanation**

**Explanation/Reference:**

#### **QUESTION 94**

A junior network technician receives a help desk ticket from an end user who is having trouble accessing a web application that was working the previous day. After talking with the end user and gathering information about the issue, which of the following would be the most likely course of action for the technician to perform NEXT?

- A. Establish a theory of probable cause.
- B. Escalate the ticket to a senior technician.
- C. Implement the solution.
- D. Document the findings and outcomes.

**Correct Answer:** A

**Section:** (none)

**Explanation****Explanation/Reference:****QUESTION 95**

A system administrator receives reports from users of odd behavior in regard to a recently installed server. While reviewing the server network configuration, the systems administrator does both a forward and a reverse DNS lookup on the host, along with the network adapter configuration.

```
$ host server.company.com
server.company.com has address 129.168.0.100
server.company.com is handled by 100 mail.company.com
$ host 192.168.0.100
100.0.168.192.in-addr.arpa domain name pointer web.company.com
$ host web.company.com
server.company.com has address 129.168.0.50
server.company.com is handled by 100 mail.company.com
$ ifconfig -a
eth0Link encap:Ethernet HWaddr 00:30:48:9D:06:73
Inet addr:192.168.0.100 Bcast:192.168.0.255 Mask:255.255.255.0
UP BROADCAST RUNNING MULTICAST MTU:1500 Metric:1
lo0Link encap:Local Loopback
inet addr:127.0.0.1 Mask:255.0.0.0
UP LOOPBACK RUNNING MTU:16436 Metric:1
```

Which of the following is the problem identified in the output above?

- A. There is no reverse DNS entry for this host.
- B. The server IP address is incorrectly configured.
- C. The DNS lookup entry is incorrectly configured.
- D. The reverse DNS entry is pointing to a different host.

**Correct Answer: C**

**Section: (none)**

**Explanation****Explanation/Reference:**

**QUESTION 96**

A network technician at a small office upgrades the LAN switch. After the upgrade, a user reports being unable to access network resources. When the technician checks the switchport, the LED light is not lit. Which of the following should the technician check FIRST?

- A. The device is using the correct cable type.
- B. The switchport is functioning properly.
- C. The device is connected to the switch.
- D. The switch is connected to the router.

**Correct Answer:** C

**Section:** (none)

**Explanation**

**Explanation/Reference:**

**QUESTION 97**

A network administrator wants to employ a username and password authentication system for guest WiFi. Which of the following is the BEST option to provide this type of authentication?

- A. Port security
- B. MAC filtering
- C. Network access control
- D. Captive portal

**Correct Answer:** D

**Section:** (none)

**Explanation**

**Explanation/Reference:**

**QUESTION 98**

A technician is responsible for configuring a new firewall. The hardware team has already installed, powered, and connected the system. Which of the following types of documentation should the technician utilize to complete the task?

- A. Rack diagram
- B. IDF/MDF documentation

- C. Network performance baseline
- D. Logical and physical diagrams

**Correct Answer:** D

**Section:** (none)

**Explanation**

**Explanation/Reference:**

#### **QUESTION 99**

Which of the following storage network technologies inherently leverages block-level storage?

- A. NAS
- B. SAN
- C. FCoE
- D. iSCSI
- E. FTP

**Correct Answer:** A

**Section:** (none)

**Explanation**

**Explanation/Reference:**

#### **QUESTION 100**

Which of the following networking devices operates at Layer1?

- A. Router
- B. Firewall
- C. Hub
- D. Bridge

**Correct Answer:** C

**Section:** (none)

**Explanation**



**Explanation/Reference:**

**QUESTION 101**

A disgruntled employee decides to leak critical information about a company's new product. The employee places keyloggers on the department's computers, allowing the information to be sent out to the Internet. Which of the following attacks is occurring?

- A. Man-in-the-middle
- B. Logic bomb
- C. Insider threat
- D. Social engineering

**Correct Answer: C**

**Section: (none)**

**Explanation**

**Explanation/Reference:**

**QUESTION 102**

A network technician needs to set up an access method for Ann, a manager, to work from home. Ann needs to locally mapped corporate resources to perform her job. Which of the following would provide secure access to the corporate resources?

- A. Utilize an SSH connection to the corporate server.
- B. Use TFTP to transfer files to corporate resources.
- C. Allow RDP through an external firewall.
- D. Connect utilizing client-to-site VPN.

**Correct Answer: D**

**Section: (none)**

**Explanation**

**Explanation/Reference:**

**QUESTION 103**

Which of the following DNS record types is an alias?

- A. CNAME
- B. PTR

C. NS D. SRV

**Correct Answer:** A

**Section:** (none)

**Explanation**

**Explanation/Reference:**

#### **QUESTION 104**

A recently constructed building makes use of glass and natural light. Users in the building are reporting poor cellular connectivity and speeds. Which of the following is MOST likely the cause?

- A. Absorption
- B. Channel overlap
- C. Reflection
- D. Frequency mismatch

**Correct Answer:** C

**Section:** (none)

**Explanation**

**Explanation/Reference:**



#### **QUESTION 105**

A network technician is working on a new switch implementation to expand the network. Which of the following is the BEST option to ensure the implementation goes according to business requirements?

- A. AUP
- B. NDA
- C. SOP
- D. SLA

**Correct Answer:** C

**Section:** (none)

**Explanation**

**Explanation/Reference:**

**QUESTION 106**

A technician is utilizing SNMPv3 to monitor network statistics. Which of the following actions would occur immediately of a server's utilization spikes above the prescribed value?

- A. A trap message is sent via UDP to the monitoring workstation.
- B. The SET function pushes an alert to the MIB database.
- C. The object identifier is modified and reported during the next monitoring cycle.
- D. A response message is sent from the agent to the manager.

**Correct Answer:** A

**Section:** (none)

**Explanation**

**Explanation/Reference:**

**QUESTION 107**

In which of the following scenarios should a technician use a cross-over cable to provide connectivity?

- A. PC to switch
- B. Switch to AP
- C. Router to switch
- D. Router to modem
- E. PC to PC

**Correct Answer:** E

**Section:** (none)

**Explanation**

**Explanation/Reference:**

**QUESTION 108**

802.11n clients currently have no way to connect to the network. Which of the following devices should be implemented to let the clients connect?

- A. Router
- B. Range extender



- C. VoIP endpoint
- D. Access point

**Correct Answer:** D

**Section:** (none)

**Explanation**

**Explanation/Reference:**

#### QUESTION 109

A network technician is setting up a new router. Since it is exposed to the public, which of the following are the BEST steps the technician should take when setting up this device? (Choose two.)

- A. Disable unnecessary services.
- B. Use private IP addresses.
- C. Allow remote management access.
- D. Disable the console port.
- E. Enable encryption.
- F. Upgrade to the latest firmware.



**Correct Answer:** AF

**Section:** (none)

**Explanation**

**Explanation/Reference:**

#### QUESTION 110

A network technician is configuring user access to a VPN concentrator and has been advised to use a protocol that supports encryption over UDP. Which of the following protocols has the technician MOST likely configured for client use?

- A. TFTP
- B. DTLS
- C. DNS
- D. SNMP

**Correct Answer:** B

**Section: (none)**

**Explanation**

**Explanation/Reference:**

**QUESTION 111**

A switch has detected duplicate broadcast messages sourced from a second port. The broadcasts continue to be transmitted and duplicated until the amount of traffic causes severe performance issues. Which of the following should be configured to prevent this behavior?

- A. BPDU guard
- B. DHCP snooping
- C. ARP protection
- D. Spanning tree

**Correct Answer: D**

**Section: (none)**

**Explanation**

**Explanation/Reference:**



**QUESTION 112**

A Chief Information Officer (CIO) is concentrated about an attacker gaining administrative access to the company's network devices. Which of the following is the MOST secure way to prevent this?

- A. ACL allowing only HTTP
- B. ACL allowing only Telnet
- C. Out-of-band modem
- D. Out-of-band console router

**Correct Answer: D**

**Section: (none)**

**Explanation**

**Explanation/Reference:**

**QUESTION 113**

The Chief Executive Officer's (CEO's) tablet cannot connect to the wireless network from the corner office. A network technician verified the tablet can connect to the wireless network in other areas of the building. The distance between the office and the 802.11ac WAP is 150ft (46m), and there are a few cubicles in between. Which of the following is the MOST likely cause of the tablet not connecting?

- A. Absorption
- B. Reflection
- C. Distance
- D. Refraction
- E. Attenuation

**Correct Answer:** C

**Section:** (none)

**Explanation**

**Explanation/Reference:**

#### QUESTION 114

A company has two geographically separate locations that need to connect using a VPN. Which of the following devices must be specifically configured to allow VPN traffic into the network?

- A. Firewall
- B. Switch
- C. Router
- D. Modem

**Correct Answer:** A

**Section:** (none)

**Explanation**

**Explanation/Reference:**

#### QUESTION 115

A technician is working on a new machine that has been procured for testing and development. The machine will run a hypervisor and host several operating systems of various types so the development team can test the company's applications in a variety of environments. The technician wants the virtual machines to be available to communicate with each other without leaving the hypervisor. Which of the following is the BEST solution to the problem?

- A. The technician should connect the machine to its own separate switch.

- B. The technician should add a route in each virtual machine to the default gateway.
- C. The technician should configure a virtual switch.
- D. The technician should set up individual routes between the machines.

**Correct Answer:** C

**Section:** (none)

**Explanation**

**Explanation/Reference:**

#### **QUESTION 116**

Which of the following provides two-factor authentication?

- A. Username + password
- B. Smart card + PIN
- C. Fingerprint + retina scan
- D. Key fob + ID card

**Correct Answer:** B

**Section:** (none)

**Explanation**

**Explanation/Reference:**

#### **QUESTION 117**

A technician set up a new SOHO network recently. The installed router has four Ethernet ports, however, the customer has seven devices that need wired connections. Which of the following should the technician do to BEST meet the customer's requirements?

- A. Install a six-port switch.
- B. Configure port forwarding on the router.
- C. Install WAPs near the devices.
- D. Configure the switchports as EtherChannel ports.

**Correct Answer:** A

**Section:** (none)



**Explanation**

**Explanation/Reference:**

**QUESTION 118**

A technician is performing a maintenance task on a weekly basis and wants to ensure the task is properly documented and able to be performed by other technicians. Which of the following types of documentation should the technician complete?

- A. Standard operating procedure
- B. Work order
- C. Performance baseline
- D. Logical diagram
- E. Change management

**Correct Answer: A**

**Section: (none)**

**Explanation**

**Explanation/Reference:**



**QUESTION 119**

A company is allowing its employees to use their personal computers, tablets, and IoT devices while at work. However, there are rules and guidelines to which employees must adhere. Which of the following documents applies to these employees?

- A. NDA
- B. SOP
- C. BYOD
- D. SLA

**Correct Answer: C**

**Section: (none)**

**Explanation**

**Explanation/Reference:**

**QUESTION 120**

Which of the following are characteristics of jumbo frames? (Choose two.)

- A. Commonly used on SAN
- B. MTU size greater than 1500
- C. MTU size greater than 10000
- D. Commonly used on IaaS
- E. MTU size greater than 12000

**Correct Answer:** AB

**Section:** (none)

**Explanation**

**Explanation/Reference:**

**QUESTION 121**

A network administrator gets a call regarding intermittent network outages across the country. Which of the following should be used to connect to the network so the administrator can troubleshoot this issue from home? (Choose two.)

- A. FTP
- B. SMTP
- C. VPN
- D. SSH
- E. SNMP

**Correct Answer:** CD

**Section:** (none)

**Explanation**

**Explanation/Reference:**

**QUESTION 122**

A network technician downloaded new firmware for the company firewall. Which of the following should the network technician verify to ensure the downloaded file is correct and complete?

- A. File hash

- B. File date
- C. File type
- D. File size

**Correct Answer:** A

**Section:** (none)

**Explanation**

**Explanation/Reference:**

### QUESTION 123

A technician is troubleshooting network connectivity issues with a remote host. Which of the following tools would BEST inform the technician of nodes between the client and the remote host? (Choose two.)

- A. tracer
- B. ping
- C. tcpdump
- D. pathping
- E. netstat
- F. nslookup
- G. route



**Correct Answer:** AD

**Section:** (none)

**Explanation**

**Explanation/Reference:**

### QUESTION 124

Which of the following will listen on the line to ensure there is no traffic transmitting and implement a back-off timer if a collision occurs?

- A. CSMA/CD
- B. CSMA/CA

C. MPLSD. OSPF

**Correct Answer:** A

**Section:** (none)

**Explanation**

**Explanation/Reference:**

#### **QUESTION 125**

A network technician receives a call from a branch office about a problem with its wireless connectivity. The user states the office is hosting a large meeting that includes some online training with local businesses. The guest users have all brought devices to connect to the guest network at the branch office. All users are connected to a single WAP and are reporting that connections keep dropping and network speeds are unusable. Which of the following is the MOST likely cause of this issue?

- A. DHCP exhaustion
- B. Channel overlapping
- C. Interference
- D. Overcapacity

**Correct Answer:** D

**Section:** (none)

**Explanation**

**Explanation/Reference:**

#### **QUESTION 126**

Which of the following BEST describes an exploit?

- A. A router with default credentials
- B. An open mail relay server
- C. An SNMPv1 private community
- D. A privilege escalation script

**Correct Answer:** D

**Section:** (none)

**Explanation**





**Explanation/Reference:**

**QUESTION 127**

A server in a LAN was configured to act as a gateway between all company computers and an external network. Which of the following networking devices offers the ability to increase both performance and security?

- A. Load balancer
- B. IDS
- C. Proxy server
- D. Wireless controller

**Correct Answer: C**

**Section: (none)**

**Explanation**

**Explanation/Reference:**

**QUESTION 128**

A technician is setting up VoIP phones on a wireless network. Users report that calls are choppy and sometimes dropped. The technician has measured two characteristics using simple command-line tools that verify the problem. Which of the following characteristics did the technician measure? (Choose two.)

- A. Reflection
- B. Latency
- C. Interference
- D. Packet loss
- E. Signal-to-noise ratio
- F. Attenuation

**Correct Answer: BD**

**Section: (none)**

**Explanation**

**Explanation/Reference:**

**QUESTION 129**

Which of the following ports should a network technician open on a firewall to back up the configuration and operating system files of a router to a remote server using the FASTEST method possible?

- A. UDP port 22
- B. TCP port 22
- C. TCP port 25
- D. UDP port 53
- E. UDP port 69

**Correct Answer:** E

**Section:** (none)

**Explanation**

**Explanation/Reference:**

#### QUESTION 130

A technician is replacing a failed SOHO router for a customer who has an existing switch, cable modem, and static IP address. The user has a web server that faces the Internet so users can visit and leave comments. Which of the following BEST describes the correct configuration for this customer's requirements?

- A. The modem is placed in bridge mode, the router is placed behind the modem, and the web server is placed behind the router.
- B. The router is placed in bridge mode, the modem is placed behind the router, and the web server is placed behind the modem.
- C. The web server is placed in bridge mode, the router is placed behind the web server, and the modem is placed behind the router.
- D. The switch is placed in bridge mode, the modem is placed behind the router, and the router is placed behind the modem.

**Correct Answer:** A

**Section:** (none)

**Explanation**

**Explanation/Reference:**

#### QUESTION 131

A network technician is attempting to troubleshoot a connectivity issue. The issue is only reported during the evening hours, and only a single workstation loses connectivity. Which of the following is the MOST likely cause of the issue?

- A. The router has a time-based ACL, applied for the network segment.
- B. A light source is creating EMI interference, affecting the UTP cabling.

- C. Nightly backups are consuming excessive bandwidth.
- D. The user has violated the AUP, and Internet access has been restricted.

**Correct Answer:** D

**Section:** (none)

**Explanation**

**Explanation/Reference:**

#### QUESTION 132

A network administrator is redesigning network security after an attack. During the attack, an attacker used open cubicle locations to attach devices to the network. The administrator wants to be able to monitor future attacks in a safe environment and determine the method of attack. Which of the following should the administrator do to BEST meet this requirement?



<https://vceplus.com/>

- A. Create a VLAN for the unused ports and create a honeypot on the VLAN.
- B. Install a BPDU guard on switchports and enable STP.
- C. Create a DMZ for public servers and secure a segment for the internal network.
- D. Install antivirus software and set an ACL on the servers.

**Correct Answer:** A

**Section:** (none)

**Explanation**

**Explanation/Reference:**

#### QUESTION 133

<https://vceplus.com/>

A company has just refreshed the hardware in its datacenter with new 10G Ethernet switches. A technician wishes to set up a new storage area network but must use existing infrastructure. Which of the following storage standards should the technician use?

- A. iSCSI
- B. Fibre Channel
- C. NAS
- D. InfiniBand

**Correct Answer:** C

**Section:** (none)

**Explanation**

**Explanation/Reference:**

#### QUESTION 134

A network technician needs to install a new access switch. After installing the new switch, the technician begins to move connections from the old switch to the new switch. The old switch used a GBIC with SC connectors, and the new switch uses an SFP with LC connectors. After connecting the SC connector to the SC-to-LC adapter and plugging it into the switch, the link does not come up as expected. Which of the following should a network technician perform NEXT?

- A. Replace SFP with a new one.
- B. Fall back to the old switch.
- C. Transpose the fiber pairs.
- D. Replace multimode with single-mode cable.

**Correct Answer:** C

**Section:** (none)

**Explanation**

**Explanation/Reference:**

#### QUESTION 135

A network technician is installing a new SOHO branch office that requires the use of a DOCSIS-compatible modem. The modem needs to be connected to the ISP's network at the demarc. Which of the following cable types should be used?

- A. UTP
- B. Multimode

- C. Coaxial
- D. Serial

**Correct Answer:** C

**Section:** (none)

**Explanation**

**Explanation/Reference:**

**QUESTION 136**

A technician needs to order cable that meets 10GBaseT and fire safety requirements for an installation between a drop ceiling and a standard ceiling. Which of the following should the technician order to ensure compliance with the requirements?

- A. PVC Cat 5
- B. Plenum Cat 5e
- C. Plenum Cat 6a
- D. PVC Cat 7

**Correct Answer:** C

**Section:** (none)

**Explanation**



**Explanation/Reference:**

**QUESTION 137**

Which of the following physical security devices is used to detect unauthorized server room access?

- A. Access badge
- B. Biometrics
- C. Smart card
- D. Video surveillance

**Correct Answer:** D

**Section:** (none)

**Explanation**

**Explanation/Reference:**

**QUESTION 138**

A network technician recently installed a new server on a network. The technician must ensure the server does not have any unnecessary services running. The IP address of the server is 204.211.38.50. Which of the following commands would allow the technician to make this determination?

- A. nmap
- B. pathping
- C. route
- D. nslookup

**Correct Answer:** A

**Section:** (none)

**Explanation**

**Explanation/Reference:**

**QUESTION 139**

Joe, an employee at a large regional bank, wants to receive company email on his personal smartphone and tablet. To authenticate on the mail server, he must first install a custom security application on those mobile devices. Which of the following policies would BEST enforce this requirement?

- A. Incident response policy
- B. BYOD policy
- C. DLP policy
- D. Remote access policy

**Correct Answer:** B

**Section:** (none)

**Explanation**

**Explanation/Reference:**

**QUESTION 140**

A technician is allocating the IP address space needed for a new remote office. This office will contain the engineering staff with six employees and the digital marketing staff with 55 employees. The technician has decided to allocate the 192.168.1.0/24 block to the remote office. The engineering staff has been allocated the 192.168.1.64/29 subnet. Using the LEAST amount of space possible, which of the following would be the last usable IP address in the engineering subnet?

- A. 192.168.1.62

- B. 192.168.1.63
- C. 192.168.1.70
- D. 192.168.1.71

**Correct Answer:** A

**Section:** (none)

**Explanation**

**Explanation/Reference:**

#### QUESTION 141

An administrator is troubleshooting a user's intermittent wireless connectivity issue. Other users across the hallway can connect and use the wireless network properly. Upon inspection of the connection details, the administrator finds the following:

SSID	Company-WiFi
Signal	5%
SNR	2

Which of the following is MOST likely the cause of the poor wireless connection?

- A. Channel overlap
- B. Overcapacity
- C. Incorrect antenna type
- D. Latency

**Correct Answer:** C

**Section:** (none)

**Explanation**

**Explanation/Reference:**

#### QUESTION 142

A network administrator is going to be performing a major upgrade to the network. Which of the following should the administrator use in case of a failure?

- A. Baseline report

- B. Vulnerability report
- C. Rollback plan
- D. Business continuity plan

**Correct Answer:** C

**Section:** (none)

**Explanation**

**Explanation/Reference:**

#### **QUESTION 143**

A web application is unable to authenticate customers so they can access their bills. The server administrator has tested the LDAP query but is not receiving results. Which of the following is the NEXT step the server administrator should take to correct the problem?

- A. Check port 636 to see if it is being blocked.
- B. Change service port 636 to port 389.
- C. Restart the web server.
- D. Verify the browser is using port 443.

**Correct Answer:** A

**Section:** (none)

**Explanation**

**Explanation/Reference:**

#### **QUESTION 144**

Which of the following is networking stand-alone hardware that will permit any WiFi-compliant device to connect to a wired network?

- A. Wireless hub
- B. Wireless firewall
- C. Wireless access point
- D. Wireless bridge

**Correct Answer:** C

**Section:** (none)

**Explanation**





**Explanation/Reference:**

**QUESTION 145**

Which of the following devices are MOST often responsible for 802.1q tagging? (Choose two.)

- A. Switch
- B. Router
- C. IDS
- D. Hub
- E. IPS
- F. Network tap

**Correct Answer:** AB

**Section:** (none)

**Explanation**

**Explanation/Reference:**



**QUESTION 146**

A network technician is installing a new wireless network in a small office. Due to environmental concerns, the customer wants the network to run exclusively on the

5GHz frequency. Which of the following wireless technologies should the technician install to BEST meet this requirement? (Choose two.)

- A. 802.11ac
- B. 802.11b
- C. 802.11g
- D. 802.11n
- E. Bluetooth
- F. Z-Wave

**Correct Answer:** AD

**Section:** (none)

**Explanation**

**Explanation/Reference:**

**QUESTION 147**

A content filter is set to analyze XML and JSON that users access from the Internet. At which of the following layers is this analysis taking place?

- A. 1
- B. 3
- C. 5
- D. 7
- E. 6

**Correct Answer:** E

**Section:** (none)

**Explanation**

**Explanation/Reference:**

**QUESTION 148**

Ann, a new employee within a department, cannot print to any of the printers in the department or access any of the resources that others can. However, she can access the Internet. The network engineer has confirmed that Ann's account has been set up the same as the others. There are no access lists restricting Ann's access. Which of the following could be the issue for this lack of access?

- A. Duplex/speed mismatch
- B. VLAN mismatch
- C. DNS server issue
- D. DHCP server issue
- E. Spanning tree blocked ports

**Correct Answer:** B

**Section:** (none)

**Explanation**

**Explanation/Reference:**

**QUESTION 149**

A technician is configuring a printer for a client. The technician connects the printer to the network, but is unsure how to determine its switchport. Which of the following should the technician do FIRST to locate the switchport?

- A. Perform a DNS lookup on the server.
- B. Set up an SSH session to the desktop.
- C. Reference the ARP table in the router.
- D. Configure port security on the switch.

**Correct Answer:** C

**Section:** (none)

**Explanation**

**Explanation/Reference:**

#### **QUESTION 150**

An administrator wants to implement an additional authentication factor to the remote SSH servers. Which of the following accomplishes this goal with the principle of “something you have”?

- A. Certificate
- B. Pattern
- C. Password
- D. Fingerprint



**Correct Answer:** A

**Section:** (none)

**Explanation**

**Explanation/Reference:**

#### **QUESTION 151**

Users on a LAN segment are reporting a loss of connectivity to network services. The client PCs have been assigned with 169.254.X.X IP addresses. Which of the following IP address schemas is being utilized?

- A. Private IP
- B. Static IP
- C. APIPA
- D. Loopback

**Correct Answer:** C

**Section: (none)**

**Explanation**

**Explanation/Reference:**

**QUESTION 152**

A network administrator has created a new VLAN for the server and clients within the accounting department and wants to outline how it integrates with the existing network. Which of the following should the administrator create?

- A. Logical diagram
- B. Physical diagram
- C. Rack diagram
- D. Configuration diagram

**Correct Answer: A**

**Section: (none)**

**Explanation**

**Explanation/Reference:**



**QUESTION 153**

Which of the following would indicate that a circuit speed should be increased?

- A. Low latency
- B. Low bandwidth consumption
- C. High number of SIEM alerts
- D. High packet drops

**Correct Answer: D**

**Section: (none)**

**Explanation**

**Explanation/Reference:**

**QUESTION 154**

A technician has installed an older IP camera as a temporary replacement for a recently failed newer one. The technician notices that when the camera's video stream is off, the ping roundtrip time between the camera and the network DVR is consistently less than 1ms without dropped packets. When the camera video stream is turned on, the ping roundtrip time increases dramatically, and network communication is slow and inconsistent. Which of the following is MOST likely the issue in this scenario?

- A. VLAN mismatch
- B. Duplex mismatch
- C. Cat 6 RX/TX reversed
- D. Damaged cable

**Correct Answer:** B

**Section:** (none)

**Explanation**

**Explanation/Reference:**

#### QUESTION 155

Wireless users have been experiencing connectivity problems. Investigation shows neighboring wireless appliances, which are not connected to the network, have been on the same 5GHz frequency to communicate. Which of the following wireless performance problem concepts defines this issue?

- A. Interference
- B. Distance limitation
- C. Signal-to-noise ratio
- D. Absorption

**Correct Answer:** A

**Section:** (none)

**Explanation**

**Explanation/Reference:**

#### QUESTION 156

Which of the following BEST explains the purpose of signature management as a mitigation technique?

- A. Hardening devices
- B. Segmenting the network

- C. Detecting malicious activity
- D. Restricting user credentials

**Correct Answer:** C

**Section:** (none)

**Explanation**

**Explanation/Reference:**

#### **QUESTION 157**

A network technician installs a web server on the firewall. Which of the following methods should the technician implement to allow access to outside users without giving access to the inside network?

- A. VLAN
- B. DMZ
- C. SNMP
- D. NTP

**Correct Answer:** B

**Section:** (none)

**Explanation**

**Explanation/Reference:**

#### **QUESTION 158**

Management has requested that a wireless solution be installed at a new office. Which of the following is the FIRST thing the network technician should do?

- A. Order equipment
- B. Create network diagrams
- C. Perform a site survey
- D. Create an SSID.

**Correct Answer:** C

**Section:** (none)

**Explanation**



**Explanation/Reference:**

**QUESTION 159**

A technician has deployed an additional DHCP server for redundancy. Clients in certain subnets are not receiving DHCP leases from the new DHCP server. Which of the following is the MOST likely cause?

- A. The new DHCP server's IP address was not added to the router's IP helper list.
- B. The new DHCP server is not receiving the requests from the clients.
- C. The ARP cache of the new DHCP server needs to be updated.
- D. The ARP table on the router needs to be cleared.

**Correct Answer: A**

**Section: (none)**

**Explanation**

**Explanation/Reference:**

**QUESTION 160**

Greater bandwidth and availability are required between two switches. Each switch has multiple 100Mb Ethernet ports available. Which of the following should a technician implement to help achieve these requirements?

- A. Spanning tree
- B. Clustering
- C. Power management
- D. Port aggregation

**Correct Answer: D**

**Section: (none)**

**Explanation**

**Explanation/Reference:**

**QUESTION 161**

A technician is configuring a new server with an IP address of 10.35.113.47 on the 10.35.112.0 subnet to allow for the maximum number of hosts. When configuring network settings, which of the following is the correct subnet mask?

- A. 10.35.112.0/30
- B. 10.35.112.0/24
- C. 255.255.240.0
- D. 255.255.248.0
- E. 255.255.255.0

**Correct Answer:** C

**Section:** (none)

**Explanation**

**Explanation/Reference:**

**QUESTION 162**

A user reports intermittent performance issues on a segment of the network. According to the troubleshooting methodology, which of the following steps should the technician do NEXT after collecting initial information from the customer?

- A. Document findings, actions, and outcomes.
- B. Establish a theory of probable cause.
- C. Establish a plan of action to resolve the problem.
- D. Duplicate the problem, if possible.



**Correct Answer:** D

**Section:** (none)

**Explanation**

**Explanation/Reference:**

**QUESTION 163**

Which of the following protocols is associated with a three-way handshake?

- A. UDP
- B. ICMP
- C. GRE
- D. TCP

**Correct Answer:** D

**Section:** (none)



**Explanation**

**Explanation/Reference:**

**QUESTION 164**

Which of the following would a company place at the edge of its network if it wants to view and control which Internet applications are being used?

- A. VPN concentrator
- B. NGFW
- C. IDS/IPS
- D. Proxy server

**Correct Answer: B**

**Section: (none)**

**Explanation**

**Explanation/Reference:**

**QUESTION 165**

Which of the following should be configured on the network to achieve performance for the FCoE storage traffic?

- A. PoE
- B. DHCP snooping
- C. Jumbo frames
- D. Virtual IP

**Correct Answer: C**

**Section: (none)**

**Explanation**

**Explanation/Reference:**

**QUESTION 166**

A network administrator wants to narrow the scope of a subnet to two usable IP addresses within a class C network. Which of the following is the correct CIDR notation?

- A. 10.10.50.0/30
- B. 172.16.20.0/30
- C. 192.1.0.124/30
- D. 192.168.0.192/24
- E. 192.170.10.0/24

**Correct Answer:** C

**Section:** (none)

**Explanation**

**Explanation/Reference:**

#### QUESTION 167

A network technician notices that most of the nodes in the 10.10.74.0/23 address space return either 1 or 2 node hop after running a `tracert`, however, some of the new servers are showing a hop count larger than 10. Which of the following is the MOST likely reason for this?

- A. New servers are being provisioned in the cloud.
- B. Those servers have host-based firewalls.
- C. Some of the servers are configured to use different gateways.
- D. Part of the subnet is configured to use different VLANs.



**Correct Answer:** A

**Section:** (none)

**Explanation**

**Explanation/Reference:**

#### QUESTION 168

A technician has installed multiple new PC clients and is connecting them to the network. Only one client is receiving IP addressing information. Which of the following should the technician verify as the NEXT troubleshooting step?

- A. DHCP scope
- B. DHCP lease
- C. Default gateway
- D. DNS zone

**Correct Answer:** A

**Section:** (none)

**Explanation**

**Explanation/Reference:**

**QUESTION 169**

Which of the following WAN technologies swaps the header on a packet when internally switching from one provider router to another?

- A. ATM
- B. Frame relay
- C. MPLS
- D. PPP

**Correct Answer:** C

**Section:** (none)

**Explanation**

**Explanation/Reference:**



**QUESTION 170**

A network administrator is purchasing a mobile phone for a manager who is traveling internationally. The phone needs to be able to make and receive calls in multiple countries outside of North America. Which of the following cellular technologies should the administrator look for in the phone?

- A. CDMA
- B. GSM
- C. TDMA
- D. CSMA

**Correct Answer:** B

**Section:** (none)

**Explanation**

**Explanation/Reference:**

**QUESTION 171**

A network administrator is downloading a large patch that will be uploaded to several enterprise switches simultaneously during the day's upgrade cycle. Which of the following should the administrator do to help ensure the upgrade process will be less likely to cause problems with the switches?

- A. Confirm the patch's MD5 hash prior to the upgrade.
- B. Schedule the switches to reboot after an appropriate amount of time.
- C. Download each switch's current configuration before the upgrade.
- D. Utilize FTP rather than TFTP to upload the patch.

**Correct Answer: C**

**Section: (none)**

**Explanation**

**Explanation/Reference:**

**QUESTION 172**

A network technician is segmenting network traffic into various broadcast domains. Which of the following should the network technician utilize?

- A. VLAN
- B. STP
- C. ACL
- D. BPDU



**Correct Answer: A**

**Section: (none)**

**Explanation**

**Explanation/Reference:**

**QUESTION 173**

After rebooting a PC, a user is no longer able to connect to the corporate network. As a test, the technician plugs a different laptop into the same network jack and receives an IP address of 169.254.112.137. Which of the following is MOST likely causing the issue?

- A. DHCP scope exhaustion
- B. Improper DNS setting
- C. Incorrect ACL setting
- D. Port-security violation

**Correct Answer:** A

**Section:** (none)

**Explanation**

**Explanation/Reference:**

#### **QUESTION 174**

A network technician travels to a remote office to set up a new SOHO for the company. Wireless networking should be used at the remote office. The network technician sets up all the related wireless network equipment, and the last step is to connect the users' devices to the company network. To complete this step, which of the following should be used to secure the remote network location?

- A. Host-based firewalls
- B. WPA2/WPA C. Open access
- D. Port filtering

**Correct Answer:** B

**Section:** (none)

**Explanation**

**Explanation/Reference:**



#### **QUESTION 175**

The length of an IPv6 address is:

- A. 32 bits
- B. 64 bits
- C. 128 bits
- D. 256 bits

**Correct Answer:** C

**Section:** (none)

**Explanation**

**Explanation/Reference:**

**QUESTION 176**

A network technician is troubleshooting a problem with a user's client-to-site VPN connection. The user is unable to establish a connection to the server, but the error message that appears on screen does not contain useful information. Which of the following should the technician do NEXT to troubleshoot the issue?

- A. Reconfigure the user's VPN connection in the router to fix profile corruption.
- B. Inform the user that provisioning sometimes fails and the connection needs to be attempted again.
- C. Review the logs in the VPN client to check for any informational messages.
- D. Verify the system has the latest OS patches installed.

**Correct Answer: C**

**Section: (none)**

**Explanation**

**Explanation/Reference:**

**QUESTION 177**

Management requires remote access to network devices when the ISP is down. Which of the following devices would provide the BEST solution?

- A. Router
- B. Firewall
- C. Bridge
- D. Modem



**Correct Answer: D**

**Section: (none)**

**Explanation**

**Explanation/Reference:**

**QUESTION 178**

A network technician is performing a firmware upgrade on a switch. The firmware needs to be downloaded to the device. Which of the following methods should the technician use to retrieve the updated firmware?

- A. RDP
- B. SSH
- C. TFTP

D. Telnet

**Correct Answer:** C

**Section:** (none)

**Explanation**

**Explanation/Reference:**

#### QUESTION 179

A network technician is assisting a user who is experiencing connectivity problems with the VPN. The technician has confirmed the VPN is functioning and other users at the site cannot access the Internet. Which of the following commands would MOST likely be used to further troubleshoot?

A. `tracert`

B. `netstat`

C. `arp`

D. `dig`

**Correct Answer:** A

**Section:** (none)

**Explanation**

**Explanation/Reference:**

#### QUESTION 180

According to the troubleshooting methodology, which of the following steps will help a technician gather information about a network problem? (Select TWO).

A. Test solutions.

B. Duplicate the problem

C. Establish a theory of probable cause

D. Question users

E. Implement preventive measures.

F. Document findings

**Correct Answer:** BD

**Section: (none)**

**Explanation**

**Explanation/Reference:**

#### **QUESTION 181**

A user reports network resources can no longer be accessed. The PC reports a link but will only accept static IP addresses. The technician pings other devices on the subnet, but the PC displays the message `Destination unreachable`. Which of the following are MOST likely the causes of this issue? (Select TWO).

- A. Damaged cables
- B. Crosstalk
- C. Bent pins
- D. TX/RX reverse
- E. VLAN mismatch
- F. Duplex mismatch

**Correct Answer: CE**

**Section: (none)**

**Explanation**



**Explanation/Reference:**

#### **QUESTION 182**

Users have been experiencing connection timeout issues when using a web-based program. The network technician determines the problem happened due to a TTL setting that was set too low on the firewall. Which of the following BEST enabled the network technician to reach this conclusion?

- A. Reviewing application logs
- B. Reviewing a baseline report
- C. Reviewing a vulnerability scan
- D. Reviewing SLA requirements

**Correct Answer: A**

**Section: (none)**

**Explanation**

**Explanation/Reference:**



**QUESTION 183**

A network technician is installing a new wireless network for a client. The client has experienced issues with other building tenants connecting to the wireless network and utilizing the bandwidth. The client wants to prevent this from happening by using certificate-based authentication. Which of the following technologies should the network administrator implement?

- A. WPA-PSK
- B. EAP-TLS
- C. AES-CCMP
- D. WEP-TKIP

**Correct Answer:** B

**Section:** (none)

**Explanation**

**Explanation/Reference:**

**QUESTION 184**

A network administrator is installing a campus network of two routers, 24 switches, 76 APs, and 492 VoIP phone sets. Which of the following additional devices should the administrator install to help manage this network?

- A. VoIP PBX
- B. Content filter
- C. RADIUS server
- D. Wireless controller

**Correct Answer:** D

**Section:** (none)

**Explanation**

**Explanation/Reference:**

**QUESTION 185**

A technician arrives at a new building to find cabling has been run and terminated, but only the wall ports have been labeled. Which of the following tools should be utilized to BEST facilitate labeling the patch panel?

- A. Tone generator
- B. Cable tester

- C. Multimeter
- D. Loopback adapter

**Correct Answer:** B

**Section:** (none)

**Explanation**

**Explanation/Reference:**

#### **QUESTION 186**

Which of the following policies prohibits a network administrator from using spare servers in the datacenter to mine bitcoins?

- A. NDA
- B. BYOD
- C. AUP D. MOU

**Correct Answer:** C

**Section:** (none)

**Explanation**

**Explanation/Reference:**



#### **QUESTION 187**

A network technician has finished configuring a new DHCP for a network. To ensure proper functionality, which of the following ports should be allowed on the server's local firewall? (Select TWO).

- A. 20
- B. 21
- C. 53
- D. 67
- E. 68
- F. 389

**Correct Answer:** DE

**Section:** (none)

**Explanation**

**Explanation/Reference:**

**QUESTION 188**

A few weeks after starting a new position, Joe, a junior network administrator, receives a call from an internal number asking for his username and password to update some records. Joe realizes this may be a type of attack on the network, since he has full access to network resources. Which of the following attacks is described?

- A. Logic bomb
- B. Social engineering
- C. Trojan horse
- D. Insider threat

**Correct Answer: B**

**Section: (none)**

**Explanation**

**Explanation/Reference:**

**QUESTION 189**

Which of the following operate only within the UDP protocol?

- A. Frames
- B. Datagrams
- C. Segments
- D. Packets

**Correct Answer: B**

**Section: (none)**

**Explanation**

**Explanation/Reference:**





<https://vceplus.com/>



<https://vceplus.com/>