

VCS-279.43q

Number: VCS-279
Passing Score: 800
Time Limit: 120 min

VCS-279



Website: <https://vceplus.com>
VCE to PDF Converter: <https://vceplus.com/vce-to-pdf/>
Facebook: <https://www.facebook.com/VCE.For.All.VN/>
Twitter : https://twitter.com/VCE_Plus

<https://vceplus.com/>

Administration of Veritas NetBackup 8.1.2 and NetBackup Appliances 3.1.2

Exam A

QUESTION 1

Which command can an administrator run to test and analyze connections between master servers, media servers, and clients for multiple NetBackup ports?



<https://vceplus.com/>

- A. bpererror
- B. bpconfig
- C. bpresolver
- D. bptestnetconn

Correct Answer: D

Section: (none)

Explanation

Explanation/Reference:



QUESTION 2

Storage Lifecycle Policy (SLP) `SLP1` is used to perform a backup and duplication. The backup is always a small, 100MB backup. The master server host properties for SLP Parameters are set to the default values.

How can the administrator ensure the duplications run as soon as possible after the backup completes?

- A. reduce the "Job submission interval" setting to 0
- B. reduce the "Minimum size per duplication job" setting to 50MB
- C. right-click `SLP1` and select Manual Relocation to Final Destination
- D. increase the "Priority for secondary operations" in the SLP

Correct Answer: B

Section: (none)

Explanation

Explanation/Reference:

QUESTION 3

Where can an administrator change the Data Buffer on Disk value using the Appliance Web Console?

- A. Manage > Host
- B. Manage > Storage
- C. Settings > Network
- D. Manage > Host > Advanced

Correct Answer: A

Section: (none)

Explanation

Explanation/Reference:

QUESTION 4

An administrator wants deduplication clients in a remote office to perform backups so less data is sent over the wide area network (WAN).

Which action should the administrator perform to reduce the total amount of data sent over the WAN?

- A. set client attributes to "Always use the media server"
- B. set client attributes to "Always use client-side deduplication"
- C. set the deduplication disk pool to "Limit I/O streams"
- D. enable deduplication stream handlers for the clients

Correct Answer: B

Section: (none)

Explanation

Explanation/Reference:

QUESTION 5

Which command should an administrator run to display all images written to both disk and tape for a particular client?

- A. `bplist`
- B. `bpimmedia`

- C. `bpmedia`
- D. `bpclntcmd`

Correct Answer: B

Section: (none)

Explanation

Explanation/Reference:

QUESTION 6

Which steps should an administrator perform to run an upgrade pre-check for multiple Windows and Linux clients using VxUpdate, without performing the upgrade?

- A. run a pre-check for each client manually using the `nbinstallcmd` command
- B. configure the pre-check to run for all clients concurrently in Deployment Policies > Schedules
- C. run a pre-check for each client manually using the `nbrepo` command
- D. configure the pre-check to run for all clients concurrently in Deployment Policies > Attributes

Correct Answer: B

Section: (none)

Explanation

Explanation/Reference:

QUESTION 7

What is the Certificate Authority (CA) for NetBackup?

- A. an OpsCenter Server
- B. a media server
- C. a master server
- D. an Appliance Management Server

Correct Answer: C

Section: (none)

Explanation

Explanation/Reference:

QUESTION 8

An administrator is adding a new media server appliance to an existing NetBackup appliance master server.

What is the correct sequence to configure the new appliance in the NetBackup domain?

- A. configure the new media server, the configuration process automatically adds the new server to the master server
- B. configure the new media server, then manually add the new media server to the master server's `bp.conf`
- C. configure the new media server, then add the new media server to the master server in the web console under > Host properties > Media Servers > Configure Media Server
- D. add the new media server to the master server in the Web console under Manage > Additional Servers, then configure the new media server

Correct Answer: D

Section: (none)

Explanation

Explanation/Reference:

QUESTION 9

Which configuration file should an administrator modify to seed the local fingerprint caching configuration on a NetBackup MSDP client?

- A. `spa.cfg`
- B. `pd.conf`
- C. `contentrouter.cfg`
- D. `agent.cfg`

Correct Answer: B

Section: (none)

Explanation

Explanation/Reference:

QUESTION 10

An administrator navigates to NetBackup Management > Catalog, and selects Action: Import. After clicking the Search Now button, the following message appears:

INF - Found no images matching the selection criteria that were ready for phase 2 import.

Which step must the administrator perform in order to get search results?

- A. increase the "Catalog cleanup wait time" in the Clean-up host property
- B. run the "Recover the catalogs" wizard
- C. enable Catalog > Override default priority, and increase the Job Priority value
- D. run the Initiate Import command in the Catalog > Action menu

Correct Answer: D

Section: (none)

Explanation

Explanation/Reference:

QUESTION 11

An administrator is performing a backup and receives the following error message:

129 Message: Disk storage unit is full

Which NetBackup command should the administrator use to report the potential free space of AdvancedDisk storage units?

- A. nbdevquery
- B. nbdiscover
- C. nbemmcmd
- D. bpdbrm

Correct Answer: A

Section: (none)

Explanation

Explanation/Reference:

QUESTION 12

An administrator has a master server running over 50,000 jobs per day.

What can the administrator do to reduce the load on the master server?

- A. replicate the backups to another master server domain
- B. configure a new master server to distribute the backup load
- C. add additional media servers to the environment
- D. configure client-side deduplication and load balancing media servers

Correct Answer: C

Section: (none)

Explanation

Explanation/Reference:

QUESTION 13

Which storage unit group selection causes NetBackup to choose the least recently selected storage unit in the list as each new job is started?

- A. Prioritized
- B. Failover
- C. Round Robin
- D. Media Server Load Balancing

Correct Answer: C

Section: (none)

Explanation

Explanation/Reference:

QUESTION 14

Which two tasks should an administrator perform prior to upgrading NetBackup Appliances to version 3.1.2? (Choose two.)

- A. obtain necessary third-party plug-ins
- B. decrease the size of the configuration volume
- C. reset the appliance user password to the default value
- D. delete previously downloaded release updates, client packages, and client add-ons
- E. use the Migration Utility to capture pre-upgrade settings within a NetBackup Catalog Backup

Correct Answer: AD

Section: (none)

Explanation

Explanation/Reference:

QUESTION 15

Backup jobs end with the following series of messages in the Job Details:

```
Error bpbrm (pid=41876) db_FLISTsend failed: Unable to connect to the database (2505)
12/05/2013 15:39:45 - job 63389 was restarted as job 63390
Failed to get status code information (2505)
```

Which process is failing to respond?

- A. nbjm
- B. nbemm
- C. bpdbrm
- D. bpbrm

Correct Answer: C

Section: (none)

Explanation



Explanation/Reference:

QUESTION 16

An administrator has a master server named `master1`. When the administrator runs the `bpcIntcmd -pn` command on the client, the administrator receives the following output:

```
bpcIntcmd -pn expecting
response from master2
client_01.domain.com client_01 192.168.0.30 3815
```

What is a possible cause for this output?



<https://vceplus.com/> A. The

host file needs to be changed on the master server.

- B. The client has lost connectivity to the master server.
- C. The SAN connection to the master server needs to be configured.
- D. The `bp.conf` of the client needs to be updated.

Correct Answer: B

Section: (none)

Explanation

Explanation/Reference:



QUESTION 17

Which command should an administrator use to generate a list of all files backed up on a client for a specific backup job?

- A. `bpimage`
- B. `bplist`
- C. `bpimagelist`
- D. `bpdbjobs`

Correct Answer: B

Section: (none)

Explanation

Explanation/Reference:

QUESTION 18

Which supported step should an administrator perform to ensure all operating system logs are sent from an appliance to a central logging server running Linux?

- A. configure access to the appliance logs with the `share open` command
- B. configure syslog forwarding in the appliance CLISH
- C. configure syslog forwarding in OpsCenter
- D. configure a `cron` job on the appliance to copy the logs

Correct Answer: A

Section: (none)

Explanation

Explanation/Reference:

QUESTION 19

Which command should an administrator run on each appliance as part of completing the pre-upgrade tasks?

- A. Support > Cleanup
- B. Manage > Software > UpgradeStatus
- C. Support > Test Software
- D. Manage > NetBackupCLI > List



Correct Answer: B

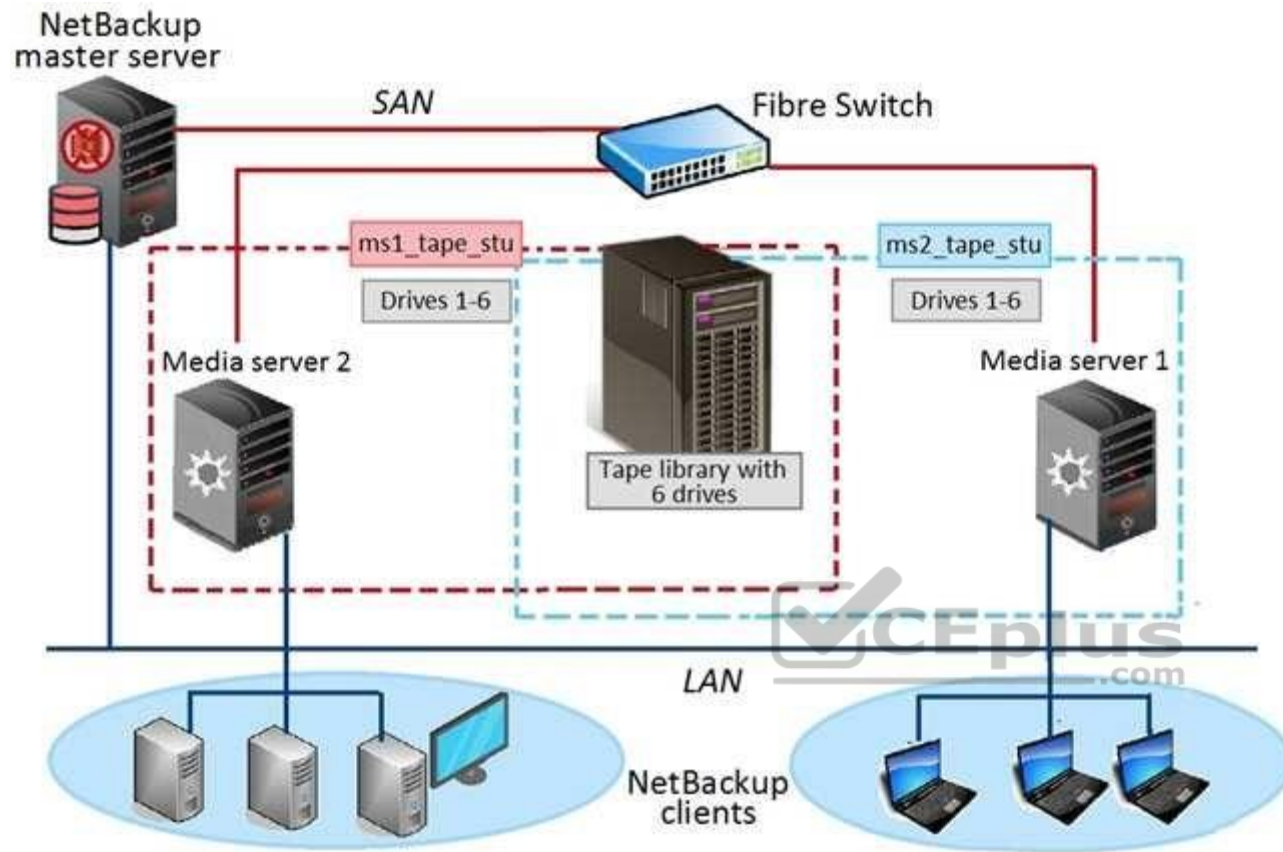
Section: (none)

Explanation

Explanation/Reference:

QUESTION 20

Refer to the exhibit.



Two media servers, sharing a library with 6 tape drives, exist in the NetBackup environment displayed in the exhibit. Both weekly Full and daily Differential Incremental backups need to run for the clients and each schedule has a different retention period. Because of network topology, some clients back up to Media server 1 and some back up to Media server 2. The environment suffers from multiple status 96 failures during the backup window.

How can the administrator minimize the number of failures?

- A. increase the "Media unmount delay"
- B. configure media multiplexing
- C. enable backups to span tape media
- D. enable media sharing

Correct Answer: D

Section: (none)

Explanation

Explanation/Reference:

QUESTION 21

An administrator is comparing the NetBackup Accelerator and NetBackup FlashBackup features to determine which feature should be used for backup of a very large file system with millions of files.

Which consideration is irrelevant when determining whether to use NetBackup Accelerator or NetBackup FlashBackup in the situation?

- A. the file system change rate
- B. the file system storage capacity
- C. the type of file system being used
- D. the file system folder depth

Correct Answer: A

Section: (none)

Explanation



Explanation/Reference:

QUESTION 22

Where in the NetBackup Administration Console should an administrator look to determine whether an AdvancedDisk storage server is configured?

- A. NetBackup Management > Storage
- B. Media and Device Management > Device Monitor
- C. Media and Device Management > Devices
- D. Media and Device Management > Credentials

Correct Answer: D

Section: (none)

Explanation

Explanation/Reference:

QUESTION 23

Prior to initiating a restore, an administrator realizes that media needed for the restore was written by a server that is unavailable. The administrator does have another server that can perform the restore and that is connected to the same library.

Which two commands can the administrator perform to change the server ownership, so the restore can be performed? (Choose two.)

- A. bpimage
- B. bpimmedia
- C. bpimagelist
- D. bpmedia
- E. bpimport

Correct Answer: AD

Section: (none)

Explanation

Explanation/Reference:

**QUESTION 24**

An administrator is experiencing a backup failure, which may be due to lack of connection between the media and master server. The status of the media server is shown below:

Media server showing offline

Which command can the administrator run to change the status of the media server?

- A. bptestbpcd
- B. nbdb_admin
- C. nbemmcmd
- D. bpminlicense

Correct Answer: C

Section: (none)

Explanation

Explanation/Reference:**QUESTION 25**

An AdvancedDisk storage unit consistently reaches capacity, causing older, staged backups to expire.

How can the administrator control the prioritization of images that get removed?

- A. change the priority for secondary storage lifecycle operations
- B. use Data Classification
- C. change the priority of relocation jobs in the staging schedule
- D. modify Retention Levels

Correct Answer: D

Section: (none)

Explanation

Explanation/Reference:**QUESTION 26**

An administrator tries to suspend an active job from the NetBackup Activity Monitor, but discovers that the option is grayed out.

What is preventing the administrator from suspending the job?

- A. Child jobs are still active.
- B. The parent job is still active.
- C. Multiplexing is enabled.
- D. Checkpoint restart is disabled.

Correct Answer: D

Section: (none)

Explanation

Explanation/Reference:**QUESTION 27**

Where can an administrator configure cloud storage throttling?

- A. NetBackup Management > Host Properties > Media Servers > Scalable Storage
- B. NetBackup Management > Host Properties > Master Servers > Scalable Storage
- C. NetBackup Management > Storage > Storage Unit > Properties of the cloud storage unit
- D. NetBackup Management > Host Properties > Clients > Scalable Storage

Correct Answer: A

Section: (none)

Explanation

Explanation/Reference:

QUESTION 28

An administrator creates a Storage Lifecycle Policy (SLP) to take advantage of optimized duplication. The backup and subsequent duplication jobs launch as configured in the SLP.

What may cause the secondary duplication job to run as non-optimized?

- A. Optimized duplication requires the media servers to be configured as Fibre Transport media servers.
- B. Optimized duplication is unsupported when a storage unit group is the target of the duplication.
- C. Both compression and encryption attributes are disabled in the backup policy.
- D. Both source and destination storage servers have only one media server in common.

Correct Answer: A

Section: (none)

Explanation

Explanation/Reference:

QUESTION 29

An administrator took media server `mediaA` offline for maintenance and set up a new media server `mediaB` with access to the previously backed up data. When restores are performed for data that was backed up by `mediaA`, the restores fail.

Which setting must the administrator modify to allow successful restores?

- A. from the master server, run `bpimage` to change the host name of the media server from `mediaA` to `mediaB`
- B. set "Enable unrestricted media sharing for all media servers" in the master server host properties in the Media section

- C. in the BAR console, change the “Server to use for backup and restores” setting to `mediaB`
- D. verify both media servers are set up in the master server host properties in the “Restore Failover” section

Correct Answer: D

Section: (none)

Explanation

Explanation/Reference:

QUESTION 30

Where in the Backup, Archive, and Restore interface on a Microsoft Windows Client would an administrator define the source client for a restore job?

- A. Select for Restore > Restore from Normal Backup
- B. File > NetBackup Client Properties > General
- C. File > NetBackup Client Properties > Host Properties
- D. File > Specify NetBackup Machines and Policy Type

Correct Answer: D

Section: (none)

Explanation



Explanation/Reference:

QUESTION 31

Which authentication method should an administrator run as a command in the NetBackup Appliance Shell Menu (CLISH), under Settings > Security > Authentication, to configure and manage Network Information Service (NIS) user registration?

- A. LDAP
- B. ActiveDirectory
- C. Kerberos
- D. LocalUser

Correct Answer: C

Section: (none)

Explanation

Explanation/Reference:

QUESTION 32

What is required to implement Auto Image Replication?

- A. BasicDisk or AdvancedDisk storage units and at least one master server
- B. OST-compliant storage or MSDP and at least one master server
- C. OST-compliant storage or MSDP and at least two master servers
- D. BasicDisk or AdvancedDisk storage units and at least two master servers

Correct Answer: C

Section: (none)

Explanation

Explanation/Reference:

QUESTION 33

What must be confirmed during an interactive installation or upgrade to ensure certificate deployment is secure?

- A. the SHA1 fingerprint of the certificate authority (CA)
- B. the Hostname of the master server
- C. the admin/root password of the master server
- D. the MD5 fingerprint of the certificate authority (CA)



Correct Answer: D

Section: (none)

Explanation

Explanation/Reference:

QUESTION 34

How can an administrator locate NetBackup job activity using the appliance interfaces?

- A. NetBackup Appliance Shell Menu (CLISH) > Monitor
- B. NetBackup Appliance Shell Menu (CLISH) > Reports
- C. NetBackup Appliance Web Console > Monitor
- D. NetBackup Appliance Shell Menu (CLISH) > Support

Correct Answer: A

Section: (none)

Explanation

Explanation/Reference:

QUESTION 35

Which feature is compatible with the NBU-Catalog policy type?

- A. Disable client-side deduplication
- B. Bare Metal Restore
- C. Checkpoint restart
- D. Enable granular recovery

Correct Answer: B

Section: (none)

Explanation

Explanation/Reference:



<https://vceplus.com/>

QUESTION 36

Backups are failing with status code 96 because tapes have NOT returned to the scratch volume pool after all the images on the tapes have expired.

What may be preventing the media from returning to the scratch pool?

- A. The media was created in volume pools other than the scratch pool.
- B. The media is in an off-site location.
- C. The media was written with multiplexed images.

D. The media is in a Suspended state.

Correct Answer: A

Section: (none)

Explanation

Explanation/Reference:

QUESTION 37

An administrator needs to recover the NetBackup master server catalog at a disaster recovery site, but the DR files are unavailable.

Which command should the administrator use to recreate the DR file?

- A. bprecover
- B. nbcatsync
- C. bpimport
- D. cat_import

Correct Answer: C

Section: (none)

Explanation

Explanation/Reference:

QUESTION 38

An administrator configures a policy to perform file system backups of multiple client systems using the “Allow multiple data streams” feature. All other policy attributes are at default settings.

Which master server host property must be configured to enable the backup job from all clients to run concurrently?

- A. Policy storage unit > Maximum concurrent jobs
- B. Global Attributes > Maximum jobs per client
- C. Client Attributes > Maximum data streams
- D. Policy storage unit > Enable multiplexing

Correct Answer: B



Section: (none)

Explanation

Explanation/Reference:

QUESTION 39

Which step should an administrator perform to be able to view intrusion detection security events for multiple NetBackup Appliances from a central location?

- A. configure an SDCS Management Server
- B. register the appliances in OpsCenter
- C. configure syslog forwarding
- D. configure AutoSupport

Correct Answer: A

Section: (none)

Explanation

Explanation/Reference:

QUESTION 40

An administrator observes intermittent connectivity issues between the appliance and clients.

Which NetBackup Appliance Shell Menu (CLISH) command can the administrator use to assist in diagnosing the problem?

- A. Main_Menu > Support > DataCollect
- B. Main_Menu > Support > NBDNA
- C. Main_Menu > Support > iostat
- D. Main_Menu > Network > Show Status

Correct Answer: A

Section: (none)

Explanation

Explanation/Reference:

QUESTION 41

An administrator has a backup policy with the following policy attributes:

3 paths listed in the Backup Selections list

5 clients listed in the Clients list

"Allow multiple data streams" is selected

"Limit jobs per policy" is set to 4

How many jobs go Active when the job is started, excluding parent jobs, assuming there are enough storage resources to handle the expected jobs?

- A. 3
- B. 4
- C. 12
- D. 15

Correct Answer: B

Section: (none)

Explanation

Explanation/Reference:

QUESTION 42

How can an administrator view the `bpbrm` log files on an appliance using the NetBackup Appliance Shell Menu (CLISH) interface?

- A. Support > Logs > Share
- B. Support > Logs > Browse
- C. Support > Logs > Upload
- D. Support > Logs > VxLogView

Correct Answer: D

Section: (none)

Explanation

Explanation/Reference:

QUESTION 43

A new storage shelf is added to an existing appliance.

Which command under Manage > Storage must the administrator perform first after a new shelf is connected to the appliance and the appliance is powered on?

- A. Add
- B. Scan
- C. Resize
- D. Edit

Correct Answer: C

Section: (none)

Explanation

Explanation/Reference:

