

300-610.premium.95q - DEMO

Number: 300-610
Passing Score: 800
Time Limit: 120 min



300-610

Designing Cisco Data Center Infrastructure

Sections

1. Network Design
2. Compute Design
3. Storage Network Design
4. Automation Design



Exam A**QUESTION 1**

What is an advantage of using OTV as compared to VPLS for data center redundancy?

- A. prevents loops on point-to-point links
- B. provides head-end replication
- C. uses a proactive MAC advertisement
- D. provides full-mesh connectivity

Correct Answer: A

Section: Network Design

Explanation

Explanation/Reference:

Reference: <https://community.cisco.com/t5/data-center-documents/understanding-overlay-transport-virtualization-otv/ta-p/3151502#toc-hld-1043251551>

QUESTION 2

DRAG DROP

A failure occurs on the network between two BFD and OSPF neighbors. Drag and drop the protocol actions from the left into the correct order on the right.

Select and Place:

Correct Answer:

Section: Network Design

Explanation

Explanation/Reference:

Reference: https://www.cisco.com/c/en/us/td/docs/ios/12_0s/feature/guide/fs_bfd.html#wp1238898

QUESTION 3 Which multicast rendezvous point redundancy mode is valid for Bidirectional PIM?

- A. Embedded RP
- B. Phantom RP
- C. MSDP
- D. PIM anycast RP

Correct Answer: D

Section: Network Design

Explanation

Explanation/Reference:

Reference: https://www.cisco.com/c/en/us/products/collateral/ios-nx-os-software/ip-multicast/whitepaper_c11-508498.html

QUESTION 4 An engineer deploys LISP VM mobility.

Which feature is configured on the interfaces that have VM mobility enabled?

- A. IP redirects
- B. flow control
- C. proxy ARP
- D. HSRP

Correct Answer: C

Section: Network Design**Explanation****Explanation/Reference:**

Reference: https://www.cisco.com/c/en/us/td/docs/switches/datacenter/sw/nx-os/lisp/configuration/guide/b_NX-OS_LISP_Configuration_Guide/b_NX-OS_LISP_Configuration_Guide_chapter_010.html

QUESTION 5 What are two advantages of using Cisco vPC over traditional access layer designs?
(Choose two.)

- A. supports Layer 3 port channels
- B. disables spanning-tree
- C. no spanning-tree blocked ports
- D. uses all available uplink bandwidth
- E. maintains a single control plane

Correct Answer: CD

Section: Network Design**Explanation****Explanation/Reference:**

Reference: https://www.cisco.com/c/dam/en/us/td/docs/switches/datacenter/sw/design/vpc_design/vpc_best_practices_design_guide.pdf

QUESTION 6

DRAG DROP

Drag the appropriate from the left onto the current UDLD modes of operation on the right.

Select and Place:

Correct Answer:

Section: Network Design**Explanation****Explanation/Reference:**

Reference: <https://www.cisco.com/c/en/us/support/docs/lan-switching/spanning-tree-protocol/10591-77.html>

QUESTION 7 What is a design consideration when implementing FSPF?

- A. Routes are based on the domain ID.
- B. Routes are based on the distance vector protocol.
- C. FSPF runs only on F Ports.
- D. FSPF runs on a per-chassis basis.

Correct Answer: A

Section: Network Design**Explanation****Explanation/Reference:**

Reference: https://www.cisco.com/c/en/us/td/docs/switches/datacenter/mds9000/sw/5_0/configuration/guides/fabric/nxos/cli_fabric/fspf.html

QUESTION 8

Which two features are provided by deploying an OOB management network in a Cisco Nexus data center? (Choose two.)

- A. Layer 3 path for monitoring purposes
- B. Layer 2 path for server traffic
- C. Layer 2 path for a vPC peer link
- D. Layer 3 path for vPC keepalive packets
- E. Layer 3 path for server traffic

Correct Answer: BC
Section: Network Design
Explanation

Explanation/Reference:

Reference: <https://www.cisco.com/c/dam/en/us/td/docs/solutions/CVD/Aug2014/CVD-DataCenterDesignGuide-AUG14.pdf>

QUESTION 9

The management of the Cisco Nexus switches is provided over an isolated out-of-band network. The VDC feature is configured on the Cisco Nexus core switches.

How is out-of-band management access provided for each VDC?

- A. All the VDC have the same out-of-band IP address.
- B. Each VDC has a dedicated out-of-band Ethernet management port.
- C. Each VDC has a unique out-of-band IP address from the same IP subnet.
- D. Each VDC has a unique out-of-band IP address from different IP subnets among VDCs.

Correct Answer: C
Section: Network Design
Explanation

Explanation/Reference:

QUESTION 10 Which two configurations allow for routing traffic between two VDCs? (Choose two.)

- A. Connect the VDCs to an external Layer 3 device.
- B. Cross-connect the ports between the VDCs.
- C. Create VRF-aware software infrastructure interfaces.
- D. Create a policy map in the default VDC that routes traffic between the VDCs.
- E. Create interfaces in the VDC that can be accessed by another VDC.

Correct Answer: AD
Section: Network Design
Explanation

Explanation/Reference:

QUESTION 11 Which protocol prevents fiber failures from causing a Layer 2 loop in a dark fiber DCI?

- A. BFD
- B. UDLD
- C. MCP
- D. LLDP

Correct Answer: B
Section: Network Design
Explanation

Explanation/Reference:

QUESTION 12

DRAG DROP

Drag and drop the data center technologies from the left onto the correct descriptions on the right. Not all technologies are used.

Select and Place:

Correct Answer:

Section: Network Design
Explanation

Explanation/Reference:

QUESTION 13 What are two characteristics of VRF-Lite on the Cisco NX-OS platform? (Choose two.)

- A. Layer 3 interfaces can belong to multiple VRFs.
- B. VRF-Lite interfaces can be Layer 2.
- C. Overlapping IP addresses are permitted on different VRFs.
- D. Interfaces that belong to VRFs can be physical or logical.
- E. VRF-Lite interfaces support MPLS.

Correct Answer: CD

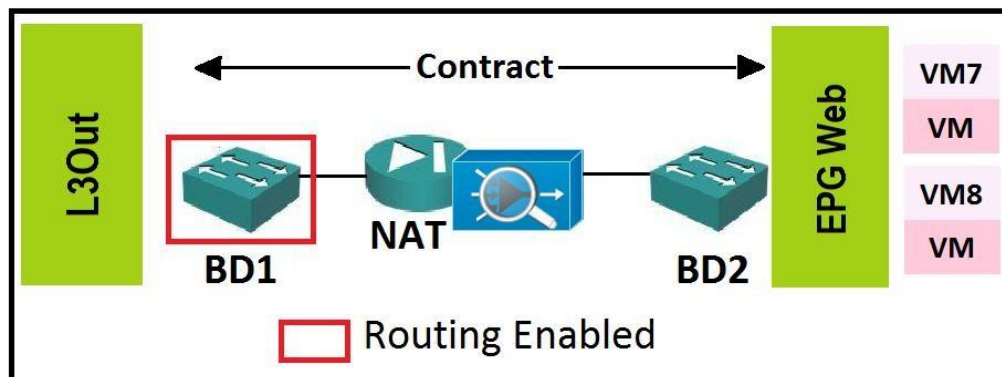
Section: Network Design
Explanation

Explanation/Reference:

Reference: https://www.cisco.com/c/en/us/td/docs/routers/connectedgrid/cgr1000/ios/software/15_4_1_cg/vrf_cgr1000.html

QUESTION 14

Refer to the exhibit.



VCEUp

What must be the default gateway of the servers in EPG Web?

- A. subnet address of BD1
- B. subnet address of L3Out
- C. subnet address of BD2
- D. NAT appliance

Correct Answer: D

Section: Network Design
Explanation

Explanation/Reference:

QUESTION 15

Which element is the main functional component of the architecture that separates the internal fabric and the external network that connects sites when VXLAN EVPN is deployed multisite?

- A. border leaf

- B. service leaf
- C. border gateway
- D. service gateway

Correct Answer: C

Section: Network Design

Explanation

Explanation/Reference:

Reference: https://dcloud-cms.cisco.com/demo_news/cisco-dcnm-11-3-for-vxlan-evpn-multi-site-deployments-lab-v1

QUESTION 16

Which feature must be configured to connect a classical Ethernet network to a data center network so that the data center network appears to be one large switch?

- A. vPC+
- B. UDLD
- C. EVPN
- D. OSPF

Correct Answer: C

Section: Network Design

Explanation

Explanation/Reference:

QUESTION 17 When planning to deploy a load-balancing service as a managed node, which ACI configuration must be included?

- A. BGP ECMP
- B. Layer 4 to Layer 7 device package
- C. inline load-balancing device
- D. ITD

Correct Answer: B

Section: Network Design

Explanation

Explanation/Reference:

Reference: https://www.cisco.com/c/en/us/td/docs/switches/datacenter/aci/apic/sw/1-x/ACI_Best_Practices/b_ACI_Best_Practices/b_ACI_Best_Practices_chapter_0110.html

QUESTION 18 What are two reasons to select OTV as the DCI solution to connect multisite topologies? (Choose two.)

- A. It propagates hosts reachability without support of traffic flooding.
- B. Layer 3 failures do not propagate beyond the OTV edge device.
- C. It extends the spanning tree between data centers.
- D. It is an open standard.
- E. It constrains HSRP hello messages to each data center.

Correct Answer: BC

Section: Network Design

Explanation

Explanation/Reference:

Reference: https://www.cisco.com/c/en/us/td/docs/solutions/Enterprise/Data_Center/DCI/whitepaper/DCI3_OTV_Intro/DCI_1.html

QUESTION 19 Which technology enables Layer 2 extension between remote data center sites?

- A. FCIP
- B. GRE
- C. DMVPN
- D. OTV

Correct Answer: D

Section: Network Design

Explanation

Explanation/Reference:

Reference: <https://netcraftsmen.com/spanning-layer-2-between-data-centers/>

QUESTION 20

DRAG DROP

Drag and drop the Cisco Nexus 7000 Series Switch resources from the left onto the correct groups on the right.

Select and Place:

Correct Answer:

Section: Network Design

Explanation

Explanation/Reference:

Reference: https://www.cisco.com/c/en/us/td/docs/switches/datacenter/sw/nx-os/virtual_device_context/configuration/guide/b-7k-Cisco-Nexus-7000-Series-NX-OS-Virtual-Device-Context-Configuration-Guide/creating-vdc.html

QUESTION 21

An engineer must use OTV for Layer 2 connectivity between data centers to support virtual machine mobility between the customer sites. To support this requirement, the engineer must ensure the existence of the same default gateway on both sites. Additionally, the operations team reports high bandwidth utilization on site A and wants to optimize the outbound traffic flows to use a local DC exit point.

Which feature must be used to meet these requirements?

- A. data group
- B. FHRP filter
- C. ARP filter
- D. control group

Correct Answer: D

Section: Network Design

Explanation

Explanation/Reference:

QUESTION 22 An engineer is designing a disaster recovery solution. In the event of a node failure, the solution should either direct all of the traffic to another node, or load-balance the traffic across the remaining nodes.

Which solution should be implemented in the design?

- A. active/active
- B. cold standby
- C. active/passive
- D. warm standby

Correct Answer: A

Section: Network Design**Explanation****Explanation/Reference:****QUESTION 23**

A company runs mission-critical infrastructure in a single data center. Due to business growth, it plans to open more data centers in the coming years. A network engineer is asked to recommend a network technology for data center interconnection that allows scalability and seamless VM mobility while providing maximum security and fault isolation between data centers.

Which technology must be used to meet these requirements?

- A. TrustSec
- B. OTV
- C. CloudSec
- D. UDLD

Correct Answer: B

Section: Network Design**Explanation****Explanation/Reference:**

QUESTION 24 An engineer must design a multitenant solution using Cisco 7709 switches. The solution must support separate routing instances, separate spanning tree domains, and separate firewalls for each tenant.

Which solution meets these requirements?

- A. vPC
- B. VDC
- C. CFSD. VRF

Correct Answer: B

Section: Network Design**Explanation****Explanation/Reference:**

Reference: https://www.cisco.com/c/en/us/td/docs/solutions/Enterprise/Data_Center/VMDC/2-2/design_guide/vmdcDesign22/VMDC_2-2_DG_2.htm

QUESTION 25 An engineer is designing a Cisco Nexus 7000 Series disaster recovery site using the data center interconnect solution to provide gateway redundancy and needs to ensure that devices use gateways in their own data centers.

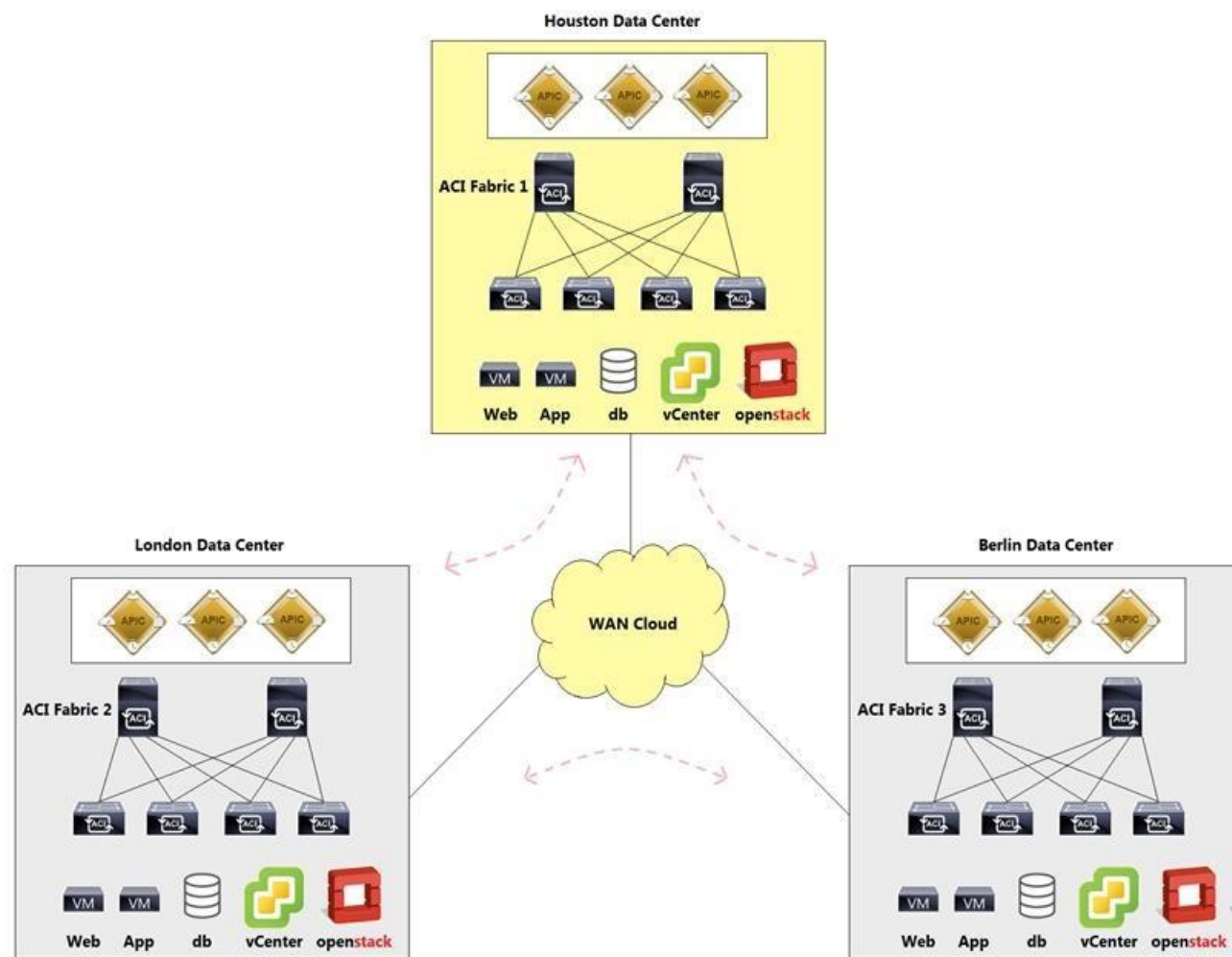
Which design approach should be used to accomplish this goal?

- A. CFS localized to its own data center
- B. vPC localized to its own data center
- C. FHRP localized to its own data center
- D. STP localized to its own data center

Correct Answer: C

Section: Network Design**Explanation****Explanation/Reference:****QUESTION 26**

Refer to the exhibit.



A cloud service provider deployed three geographically separated Cisco ACI data centers. One of the customers needs to host a clustered application that is spread across the three data centers. The cluster nodes that host the application need a Layer 2 topology to communicate with each other.

Which Cisco ACI topology design meets these requirements?

- A. Multi-Cloud
- B. Multi-Site
- C. Multi-Pod over OSPF EVPN
- D. Multi-Pod over MP-BGP EVPN

Correct Answer: D

Section: Network Design

Explanation

Explanation/Reference:

QUESTION 27

An engineer finishes the initial set up of a VXLAN EVPN network. The engineer is asked to plan for external connectivity that supports redundancy and extends multiple virtual routing and forwarding domains. The requirement is to use the same default gateway addressing across all leaf switches that belong to the VXLAN network.

Which two solutions must be used to meet these requirements? (Choose two.)

- A. Distributed Anycast Gateway
- B. VRF-Lite
- C. Inter-Site Network
- D. DC Interconnect

E. Spanning Tree Protocol

Correct Answer: AD

Section: Network Design

Explanation

Explanation/Reference:

Reference: <https://www.cisco.com/c/en/us/td/docs/switches/datacenter/pf/configuration/guide/b-pf-configuration/Introducing-Cisco-Programmable-Fabric-VXLAN-EVPN.html>

QUESTION 28

An engineer must configure an interface for managing and orchestrating a Cisco Nexus device. The interface must be operational if the data and control planes crash, support IPv4 and IPv6 addressing, and have access to its own VRF instance.

Which interface should be used to meet these requirements?

- A. physical interface
- B. interface VLAN
- C. management interface
- D. loopback interface

Correct Answer: C

Section: Network Design

Explanation

Explanation/Reference:

QUESTION 29

An engineer is implementing management access to a Cisco Nexus platform. The customer requires a solution that provides isolation between the data and control planes, in addition to management that uses encryption and authentication. The customer will manage the device using both IPv4 and IPv6.

Which two components should be used to meet these requirements? (Choose two.)

- A. mgmt0 interface
- B. SSH protocol
- C. SNMP
- D. SVI interface
- E. Telnet protocol

Correct Answer: BC

Section: Network Design

Explanation

Explanation/Reference:

QUESTION 30

An engineer must design a VXLAN EVPN network. The solution should optimize broadcast, unknown unicast, and multicast (BUM) and short BUM replication, and use PIM anycast RP.

Which solution should be included in the design?

- A. head-end replication
- B. PIM sparse mode
- C. PIM dense mode
- D. ingress replication

Correct Answer: D

Section: Network Design

Explanation

Explanation/Reference:

Reference: <https://www.cisco.com/c/en/us/products/collateral/switches/nexus-9000-series-switches/white-paper-c11-739942.html>

QUESTION 31

A network engineer designs a Cisco Nexus data center network for a client-server farm using a pair of Nexus 9000 Series Switches in a vPC setup. Each server connects with two interfaces to both Nexus switches. The Nexus switches must always initiate the negotiation with the server.

Which feature should be used in this design to ensure traffic is forwarded from the server to the data center network?

- A. PAgP mode desirable
- B. LACP mode auto
- C. LACP mode active
- D. PAgP mode auto

Correct Answer: C

Section: Network Design

Explanation

Explanation/Reference:

Reference: https://www.cisco.com/c/en/us/td/docs/ios/12_2sb/feature/guide/gigeth.html

QUESTION 32

After experiencing traffic disruptions from the failure of a single router, a customer asks an engineer to design a solution that will prevent this from occurring in the future. While examining the customer's environment, the engineer discovers that the routers are manufactured by a variety of different vendors, and they have varying amounts of CPU and memory resources. Additionally, several of the customer's applications require the ability to fine-tune the load-balancing parameters between multiple gateway routers.

Which solution should be used to meet these requirements?

- A. VRRP
- B. FHRP
- C. HSRP
- D. GLBP

Correct Answer: A

Section: Network Design

Explanation

Explanation/Reference:**QUESTION 33**

An engineer must build a VXLAN flood-and-learn network. The customer requires the solution to be based on the IETF documented practice in RFC 7348. The solution must use broadcast, unknown unicast, and multicast (BUM) and include the efficient BUM and short BUM replication modes that use only shared trees.

Which technology meets these requirements?

- A. MVPN
- B. PIM sparse mode
- C. PIM SSM
- D. Bidirectional PIM

Correct Answer: B

Section: Network Design

Explanation

Explanation/Reference:

Reference: https://www.cisco.com/c/en/us/td/docs/unified_computing/ucs/UCS_CVDs/flexpod_esxi70_vxlan_evpn_design.html

QUESTION 34 An engineer must secure the payload traversing across the DCI. The solution must support confidentiality and integrity and it must be open standard. The solution must encrypt Ethernet frames regardless of the upper layer protocol used.

Which technology must be used to support these requirements?

- A. GRE
- B. OTV
- C. MACsec
- D. IPsec

Correct Answer: C

Section: Network Design

Explanation

Explanation/Reference:

Reference:

<https://developers.redhat.com/blog/2016/10/14/macsec-a-different-solution-to-encrypt-network-traffic/>

QUESTION 35

An engineer must interconnect two geographically separated data centers. The service provider offers a Layer 2 Metro Ethernet link. The strict security policy requires that the information that is shared between two sites must be sent encrypted. The application deployed between two sites requires a line-rate throughput regardless of the packet size and speed.

Which solution meets these requirements?

- A. L2TPv2
- B. IPsec
- C. MACsec
- D. L2TPv3

Correct Answer: C

Section: Network Design

Explanation

Explanation/Reference:

QUESTION 36

An engineer configured the OSPF protocol in the vPC topology. During the catastrophic failure of one of the vPC member switches, the traffic was routed to a black hole. This route was caused by the long convergence time caused by the delay of the vPC member switch reboot. After the failure, the engineer rebooted both switches, but the secondary switch powered on before the primary one. It caused all the vPCs to be shut down due to consistency-check violations.

Which two features must be used to prevent these situations from happening in the future? (Choose two.)

- A. peer-gateway
- B. ip arp synchronize
- C. delay restore
- D. auto-recovery
- E. system priority

Correct Answer: CD

Section: Network Design

Explanation

Explanation/Reference:

QUESTION 37

DRAG DROP

Drag and drop the feature descriptions from the left onto the correct UCS Fabric Interconnect modes on the right.

Select and Place:

Links are active-active.	End-Host Mode
MAC address learning occurs on the uplink ports.	
STP runs on the uplink ports.	Switch Mode
This is the default mode of operation.	

Correct Answer:

Links are active-active.	End-Host Mode
MAC address learning occurs on the uplink ports.	
STP runs on the uplink ports.	Switch Mode
This is the default mode of operation.	

Section: Compute Design
Explanation

Explanation/Reference:

Reference: https://www.cisco.com/c/en/us/solutions/collateral/data-center-virtualization/unified-computing/whitepaper_c11-701962.html

QUESTION 38 Which two statements describe Ethernet switching mode on Cisco UCS 6100 Series Fabric Interconnects? (Choose two.)

- A. STP runs on the uplink ports of each VLAN, as defined by PVST+.
- B. STP runs on the uplink ports of each VLAN, as defined by MSTP.
- C. The STP parameter configuration is unsupported.
- D. The STP parameter configuration is supported.
- E. STP runs on the server ports.

Correct Answer: AC

Section: Compute Design
Explanation

Explanation/Reference:

Reference: https://www.cisco.com/c/en/us/solutions/collateral/data-center-virtualization/unified-computing/whitepaper_c11-701962.html

QUESTION 39 A Cisco UCS instance has four interfaces on a UCS VIC.

Where on the fabric interconnect does each interface terminate?

- A. vPC
- B. virtual interface
- C. port channel
- D. physical port

Correct Answer: B

Section: Compute Design

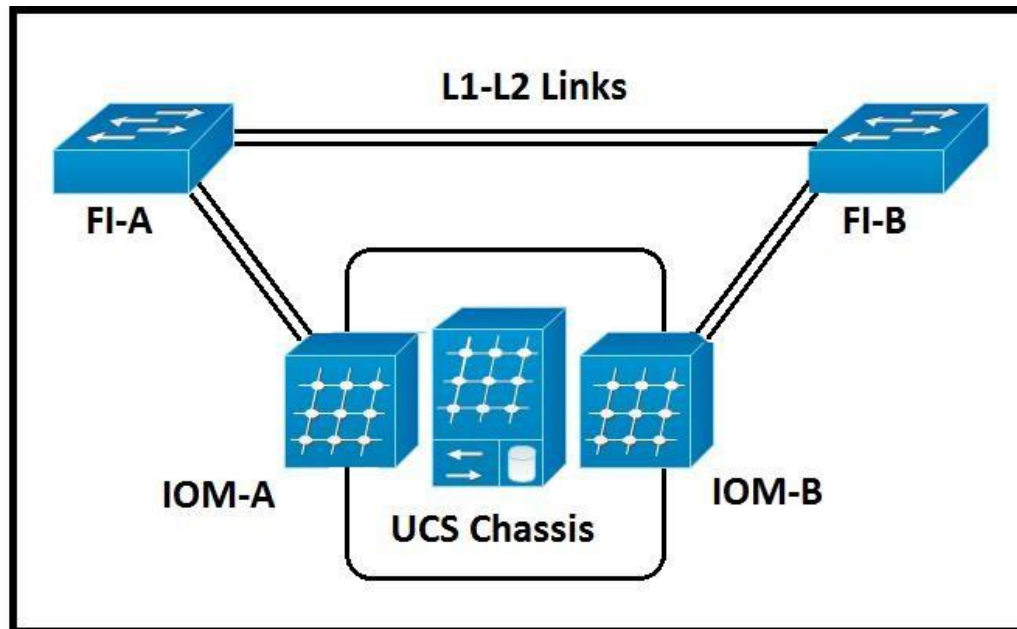
Explanation

Explanation/Reference:

Reference: <https://www.cisco.com/c/dam/en/us/products/collateral/servers-unified-computing/ucs-6300-series-fabric-interconnects/cisco-unified-fabric.pdf>

QUESTION 40

Refer to the exhibit.



A Cisco UCS chassis that has two IOMs is discovered. The chassis discovery policy creates a fabric port channel.

What is the result of this policy?

- A. Cisco UCS Manager creates two separate fabric port channels.
- B. Cisco UCS Manager creates a single fabric port channel.
- C. The port channel is disabled until an administrator enables it manually.
- D. Each uplink that connects an IOM is configured as a discrete link.

Correct Answer: A

Section: Compute Design

Explanation

Explanation/Reference:

QUESTION 41

DRAG DROP

Drag and drop the configurations from the left onto the correct policies on the right.

Select and Place:

Correct Answer:

Section: Compute Design
Explanation

Explanation/Reference:

Reference: https://www.cisco.com/c/en/us/td/docs/unified_computing/ucs/sw/gui/config/guide/2-2/b_UCSM_GUI_Configuration_Guide_2_2/configuring_network_related_policies.html#task_7F03A03C719A4A44B8ACFAD73AADC73C

QUESTION 42

An engineer is designing a Multichassis EtherChannel topology in which two switches must appear as a single device to a third downstream switch. Which

two technologies meet this requirement? (Choose two.)

- A. HSRP
- B. VSS
- C. vPC
- D. 802.1q
- E. FEX

Correct Answer: BC

Section: Compute Design
Explanation

Explanation/Reference:

Reference: https://www.cisco.com/c/dam/en/us/products/collateral/switches/nexus-7000-series-switches/C07-572835-00_NX-OS_vPC_DG.pdf

QUESTION 43 What is an advantage of Cisco HyperFlex Edge as compared to Cisco HyperFlex Standard Clusters?

- A. Cisco Intersight automatically creates an invisible cloud witness.
- B. Cisco UCS 5108 Blade Server chassis provides SEEPROM connectivity to solve split-brain scenarios.
- C. Cisco UCS Manager provides service profile portability across nodes.
- D. Cisco HyperFlex Edge provides native container support through the KVM hypervisor.

Correct Answer: A

Section: Compute Design
Explanation

Explanation/Reference:

Reference: <https://www.cisco.com/c/dam/en/us/products/collateral/hyperconverged-infrastructure/hyperflex-hx-series/whitepaper-c11-741999.pdf>

QUESTION 44 Which approach splits a pair of clustered fabric interconnects into two standalone devices?

- A. Run the **disable fips-mode** command on each fabric interconnect.
- B. Run the **connect local-management** command on each fabric interconnect.
- C. Erase the configuration of both fabric interconnects.
- D. Unplug the Layer 1 and Layer 2 interfaces between the devices.

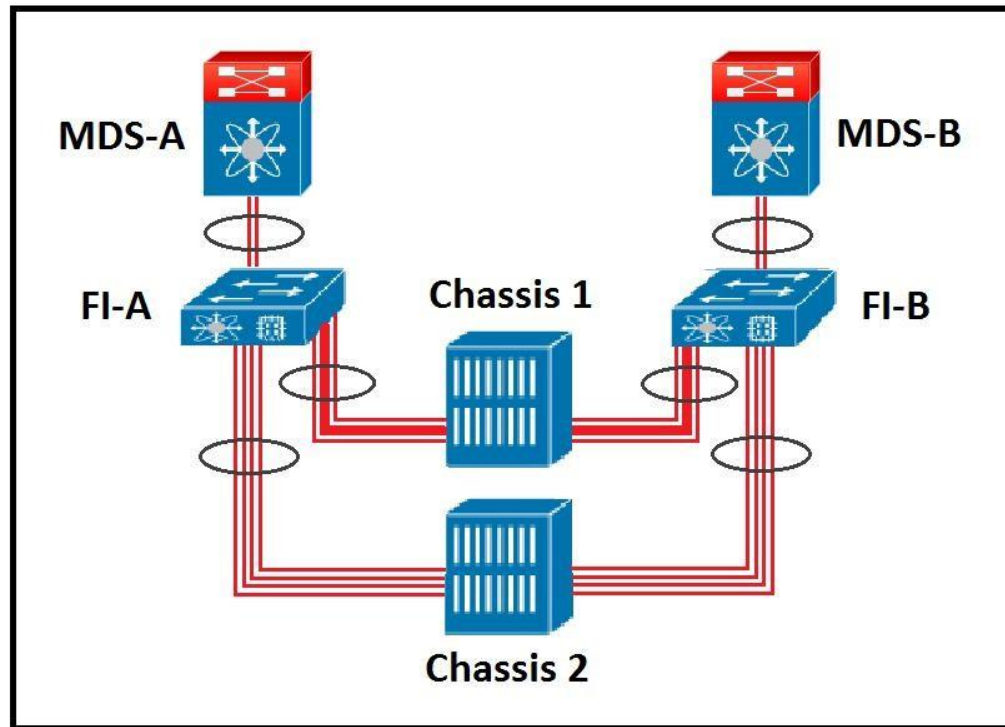
Correct Answer: D

Section: Compute Design
Explanation

Explanation/Reference:

QUESTION 45

Refer to the exhibit.



An engineer must assign multiple Fibre Channel IDs to a single port channel.

Which two features must be enabled this goal? (Choose two.)

- A. SAN Pin Groups on the Cisco UCS Fabric Interconnects.
- B. NPV feature on the Cisco MDS Series.
- C. end-host mode feature on the Cisco UCS Fabric Interconnects
- D. NPIV feature on the Cisco MDS Series
- E. Smart Zoning feature on the Cisco UCS Fabric Interconnects

Correct Answer: BD

Section: Compute Design

Explanation

Explanation/Reference:

QUESTION 46 Which type of encoding is used on 8-Gbps links as compared to 10-Gbps links?

- A. 8-Gbps links use 64B/66B encoding, and 10-Gbps links use 8B/10B encoding.
- B. 8-Gbps links use 8B/10B encoding, and 10-Gbps links use 64B/66B encoding.
- C. 8-Gbps links and 10-Gbps links use 8B/10B encoding.
- D. 8-Gbps links and 10-Gbps links use 64B/66B encoding.

Correct Answer: B

Section: Compute Design

Explanation

Explanation/Reference:

Reference: https://www.iol.unh.edu/sites/default/files/knowledgebase/10gec/10GbE_CI49.pdf

QUESTION 47 Which Cisco HyperFlex feature provides virtual machine-level cost scaling for desktop virtualization growth?

- A. HyperFlex Edge support
- B. encryption offload cards
- C. dedicated compute nodes
- D. fabric interconnects

Correct Answer: A

Section: Compute Design

Explanation

Explanation/Reference:

QUESTION 48

Which two vSphere features must be included in the design of a Cisco HyperFlex systems stretched cluster? (Choose two.)

- A. HA
- B. VSSC. FT
- D. VDP
- E. DRS

Correct Answer: AE

Section: Compute Design

Explanation

Explanation/Reference:

Reference: https://www.cisco.com/c/en/us/td/docs/hyperconverged_systems/HyperFlex_HX_DataPlatformSoftware/HyperFlex_Stretched_Cluster/3_5/b_HyperFlex_Systems_Stretched_Cluster_Guide_3_5.pdf

QUESTION 49

DRAG DROP

Drag and drop the components from the left onto the descriptions on the right that indicate what occurs to Fibre Channel fabric when that component fails.

Select and Place:

Correct Answer:

Section: Compute Design

Explanation

Explanation/Reference:

QUESTION 50

What can be implemented on Cisco Nexus 5600 Series Switches for link redundancy within a Fibre Channel fabric?

- A. vPC+
- B. E-Trunk
- C. SAN port channel
- D. LACP port channel

Correct Answer: D

Section: Compute Design

Explanation

Explanation/Reference:

QUESTION 51

A network architect proposes a distinct Fibre Channel fabric to be used for a Cisco UCS blade server that hosts critical applications.

Which action should be implemented for the Fibre Channel traffic from the vHBA of this server to pass through the I/O Module in the Cisco UCS chassis to a specified uplink Fibre Channel port?

- A. Update the applied global QoS policy.
- B. Update the applied Fibre Channel adapter policy.
- C. Enable Persistent Binding in the vHBA policy.
- D. Include a SAN pin group in the vHBA policy.

Correct Answer: B

Section: Compute Design

Explanation

Explanation/Reference:

QUESTION 52

An engineer is experiencing performance issues on a Cisco UCS blade server. The B-Series blade server contains four CPUs, most of which are idle. The engineer notices that the CPU is suffering from too many requests sent by the NIC. Additionally, the number of queues appears to be insufficient and only a single CPU is processing the network traffic.

Which policy must be used to alleviate these issues?

- A. LAN connectivity
- B. dynamic vNIC connection
- C. Ethernet adapterD. vNIC placement

Correct Answer: B

Section: Compute Design

Explanation

Explanation/Reference:

Reference: https://www.cisco.com/c/en/us/td/docs/unified_computing/ucs/ucs-manager/GUI-User-Guides/Server-Mgmt/3-1/b_Cisco_UCS_Manager_Server_Mgmt_Guide_3_1/server_related_policies.html

QUESTION 53

A network engineer is designing a Cisco Hyperflex infrastructure. The infrastructure will be connected to an external SAN fiber channel array and must support Microsoft clustering.

Which storage connectivity method must be used to meet these requirements?

- A. Fibre Channel over Ethernet
- B. Internet Small Computer Systems Interface
- C. raw device mapping
- D. server message block

Correct Answer: A

Section: Compute Design

Explanation

Explanation/Reference:

Reference: https://www.cisco.com/c/en/us/td/docs/hyperconverged_systems/HyperFlex_HX_DataPlatformSoftware/Network_External_Storage_Management_Guide/b_HyperFlex_Systems_Network_and_External_Storage_Management_Guide_3_0/b_HyperFlex_Systems_Network_and_External_Storage_Management_Guide_3_0_chapter_010.html

QUESTION 54

An engineer installs a B-Series server in a Cisco UCS chassis that contains a pair of UCS-IOM-2208XP I/O modules. The full bandwidth of the I/O module must be utilized.

Which two elements should be used in this environment? (Choose two.)

- A. four twinax cables from each I/O module to each fabric interconnect
- B. Cisco UCS VIC 1225

- C. eight twinax cables from each I/O module to each fabric interconnect
- D. Cisco UCS M81KR
- E. Cisco UCS VIC 1280

Correct Answer: CE
Section: Compute Design
Explanation

Explanation/Reference:

Reference: <https://www.connection.com/product/cisco-vic-1280-dual-40gb-capable-2nd-gen-virtual-interface-card/ucs-vic-m82-8p/13785476>

QUESTION 55

A network engineer is implementing Cisco UCS Manager with Cisco UCS Central integration. The company's strict security policies require that the logical profile of virtual network adapters and logical addressing assigned to Cisco UCS servers be managed by the Cisco UCS Manager. The users must also be prevented from being able to acknowledge pending activities in the Cisco UCS Manager. Which two profiles must be used to meet these requirements? (Choose two.)

- A. global maintenance
- B. local service
- C. local power
- D. restricted chassis
- E. public network control

Correct Answer: BE
Section: Compute Design
Explanation

Explanation/Reference:

QUESTION 56 A network engineer must design a Cisco HyperFlex solution based on these requirements:

- two clusters in the main data center consisting of five HyperFlex nodes
- one edge node for the remote branch
- cluster nodes that use one rack unit of space

Which two devices should be used in the remote branch cluster for this design? (Choose two.)

- A. UCS B200
- B. Gigabit Ethernet Switch
- C. Fabric Interconnect 6300
- D. HX240cE. HX220c

Correct Answer: AD
Section: Compute Design
Explanation

Explanation/Reference:

Reference: https://www.cisco.com/c/en_in/products/hyperconverged-infrastructure/hyperflex-hx240c-m4-nodes-ucs-b200-blade-servers/index.html

QUESTION 57

A customer needs to deploy a three-tier network architecture that will consist of web, app, and other business-critical applications. The solution will include Cisco UCS 6324 Fabric Interconnects managing B and C series servers. The fabric interconnects will be connected to the Cisco Nexus 7706 Series Switch for network access. A storage array will be directly connected to the UCS fabric interconnects.

Which UCS deployment type must be used to meet these requirements?

- A. UCS interconnect in Ethernet switching mode
- UCS interconnect in Fibre Channel switching mode

- Fabric Interconnects uplinked to the Nexus device using an LACP port-channel in passive mode
- B. UCS interconnect in Ethernet end-host mode
 - UCS interconnect in Fibre Channel end-host mode
 - Fabric Interconnects uplinked to the Nexus device using an LACP port-channel in passive mode
- C. UCS interconnect in Ethernet end-host mode
 - UCS interconnect in Fibre Channel switching mode
 - Fabric Interconnects uplinked to the Nexus device using an LACP port-channel in active mode
- D. UCS interconnect in Ethernet switching mode
 - UCS interconnect in Fibre Channel end-host mode
 - Fabric Interconnects uplinked to the Nexus device using an LACP port-channel in active mode

Correct Answer: D

Section: Compute Design

Explanation

Explanation/Reference:

QUESTION 58

A client in a commercial building installs a Cisco blade server in the multitenant Cisco UCS blade infrastructure. To cut operating costs, the client's data center is shared with other organizations. The client asks an engineer to prevent third parties from accessing their equipment and from accessing BIOS-related information when booting a server. Which two policies must be used to meet these requirements? (Choose two.)

- A. post error pause
- B. CDN control
- C. ASPM support
- D. front panel lockout
- E. quiet boot

Correct Answer: DE

Section: Compute Design

Explanation

Explanation/Reference:

Reference: https://www.cisco.com/c/en/us/td/docs/unified_computing/ucs/ucs-manager/GUI-User-Guides/Server-Mgmt/3-2/b_Cisco_UCS_Manager_Server_Mgmt_Guide_3_2/b_Cisco_UCS_Manager_Server_Mgmt_Guide_3_2_chapter_01110.html

QUESTION 59

An engineer must connect an existing Cisco UCS Fabric Interconnect to an IP-based storage array. The connection must be a port channel made directly between the fabric interconnect expansion module and the storage array. The engineer must also consider that the environment is running FCoE for storage and uses QoS to prioritize traffic.

Which port type should be used to meet these requirements?

- A. network
- B. uplink
- C. server
- D. appliance

Correct Answer: B

Section: Compute Design

Explanation

Explanation/Reference:

QUESTION 60 An engineer designs a Cisco UCS solution that must provide guaranteed and deterministic bandwidth to a specific server in the environment. The solution must apply to network and storage traffic of C-Series and B-Series servers.

Which solution should be included to meet these requirements?

- A. Pin the vNICs and the vHBAs of the service profile to dedicated uplink ports.
- B. Pin the IOM ports of the service profile to dedicated server ports.
- C. Pin the server ports of the service profile to dedicated uplink ports.
- D. Pin the vNICs and vHBAs of the service profile to dedicated server ports.

Correct Answer: C

Section: Compute Design

Explanation

Explanation/Reference:

Reference: https://www.cisco.com/c/dam/global/en_uk/products/servers-unified-computing/CiscoUCSSolutionOverviewUKIWeb.pdf

QUESTION 61

Which factor determines the choice of platform designing a Cisco HyperFlex infrastructure to support computer-aided design applications?

- A. network speed
- B. GPU support
- C. storage capacity
- D. processor count

Correct Answer: C

Section: Storage Network Design

Explanation

Explanation/Reference:

QUESTION 62

What is the disadvantage of asynchronous storage replication as compared to synchronous storage replication in a disaster recovery design?

- A. reduction in application performance
- B. distance limitations
- C. specific backup requirements
- D. potential data loss

Correct Answer: D

Section: Storage Network Design

Explanation

Explanation/Reference:

Reference: <https://www.evidian.com/products/high-availability-software-for-application-clustering/synchronous-replication-vs-asynchronous-replication/>

QUESTION 63 Where does Cisco UCS handle Fibre Channel traffic failover?

- A. on a Cisco UCS Fabric Interconnect ASIC in Fibre Channel switching mode
- B. on the host, by using multipathing software
- C. in the hardware on the Cisco UCS VIC 12xx adapter or later
- D. in the hardware on any Cisco UCS VIC adapter

Correct Answer: B

Section: Storage Network Design

Explanation

Explanation/Reference:

Reference: https://www.cisco.com/c/en/us/solutions/collateral/data-center-virtualization/unified-computing/whitepaper_c11-701962.html

QUESTION 64 Which mode must be enabled on a Cisco UCS Fabric Interconnect to connect directly to a storage array?

- A. NPIV mode
- B. FC end-host mode
- C. NPV mode
- D. FC switching mode

Correct Answer: D

Section: Storage Network Design

Explanation

Explanation/Reference:

Reference: https://www.cisco.com/c/en/us/td/docs/unified_computing/ucs/ucs-manager/GUI-User-Guides/Storage-Mgmt/3-1/b_UCSM_GUI_Storage_Management_Guide_3_1/b_UCSM_GUI_Storage_Management_Guide_3_1_chapter_01110.html

QUESTION 65

DRAG DROP

Drag and drop the technologies from the left onto the correct descriptions on the right.

Select and Place:

Correct Answer:

Section: Storage Network Design

Explanation

Explanation/Reference:

QUESTION 66 Which two naming formats identify target or initiator iSCSI nodes?

(Choose two.)

- A. WWPN
- B. EUI
- C. IQN
- D. WWNN
- E. OUI

Correct Answer: CD

Section: Storage Network Design

Explanation

Explanation/Reference:

Reference: https://www.cisco.com/en/US/docs/storage/san_switches/mds9000/sw/rel_3_x/configuration/guides/cli_3_3_1/ciscsi.html

QUESTION 67 What influences the number of ISLs that are required between Cisco MDS

Series switches?

- A. FCoE protocol
- B. type of storage
- C. end-to-end oversubscription ratio
- D. N Port virtualization

Correct Answer: C

Section: Storage Network Design

Explanation

Explanation/Reference:

Reference: <https://www.cisco.com/c/en/us/products/collateral/storage-networking/mds-9700-series-multilayer-directors/white-paper-c11-729697.html>

QUESTION 68 Which type fields can an engineer use to identify an iSCSI participant? (Choose two.)

- A. type
- B. preshared keyC. port number
- D. identifying tag
- E. hostname

Correct Answer: CE

Section: Storage Network Design

Explanation

Explanation/Reference:

Reference: <https://en.wikipedia.org/wiki/iSCSI>

QUESTION 69

Refer to the exhibit.

```
Switch(config-sys-qos)# show policy-map system
Type network-qos policy-maps
=====
policy-map type network-qos system
  class type network-qos class-fcoe
    match qos-group 1
    pause no-drop
    mtu 2000
  class type network-qos class-default
    match qos-group 0
    mtu 1500
Service-policy (qos) input: system
policy statistics status: disabled
Class-map (qos) : class-fcoe (match-any)
  Match : cos 3
  set qos-group 1
Class-map (qos) : class-default (match-any)
  Match: any
  set qos-group 0
```

VCEUp

The FCoE packets fail to be forwarded through the switch.

What is the minimum MTU QoS requirement for the FCoE to work?

- A. 9000 bytes
- B. 2000 bytes
- C. 2158 bytes
- D. 2240 bytes

Correct Answer: B

Section: Storage Network Design

Explanation

Explanation/Reference:

QUESTION 70 Which Ethernet to Cisco Fabric Interconnect connectivity configuration is supported when FCoE is implemented?

- A. VSS that has unified uplinks
- B. Ethernet and unified ports on the same port channel
- C. vPC that has unified uplinks
- D. cross-connections with pinning

Correct Answer: C

Section: Storage Network Design

Explanation

Explanation/Reference:

Reference: <https://www.cisco.com/c/en/us/support/docs/servers-unified-computing/ucs-manager/116188-configure-fcoe-00.html#anc11>

QUESTION 71 Which two configuration methods can be used to deploy QoS to Cisco MDS Series switches? (Choose two.)

- A. zone-based QoS
- B. multiple QoS policies that match individual devices
- C. VSAN-based QoS
- D. FCoE VLAN-based QoS
- E. multiple QoS policies that match multiple devices

Correct Answer: AC

Section: Storage Network Design

Explanation

Explanation/Reference:

Reference: https://www.cisco.com/c/en/us/td/docs/switches/datacenter/mds9000/sw/7_3/configuration/qos/cisco_mds9000_qos_config_guide/configuring_qos.html

QUESTION 72 An engineer is designing a data center that uses FCIP.

How is QoS configured in this environment?

- A. A separate DSCP value and CoPP must be configured for all FCIP traffic and another for all of the FCIP frames in the data connection.
- B. A separate DSCP value must be configured for all FCIP VSAN traffic.
- C. A separate DSCP value and priority queuing must be configured for all FCIP traffic.
- D. Two separate DSCP values must be configured, one for all of the FCIP frames in the control TCP connection and another for all of the FCIP frames in the data connection.

Correct Answer: D

Section: Storage Network Design

Explanation

Explanation/Reference:

Reference: https://www.cisco.com/c/en/us/td/docs/switches/datacenter/mds9000/sw/5_0/configuration/guides/ipsvc/nxos/ipsvc/cfcip.html

QUESTION 73

Which two methods mitigate congestion in a SAN network? (Choose two.)

- A. Configure ER_RDY to allow splitting of each ISL between switches into separate virtual links.
- B. Use the **port-monitor** command to detect slow drain devices.
- C. Configure the port channel to enable individual buffer-to-buffer credits.
- D. Configure the port monitor to allow categorization of a specific device as slow.
- E. Configure the flow control for the FC to use R_RDY.

Correct Answer: BD

Section: Storage Network Design

Explanation

Explanation/Reference:

Reference: https://www.cisco.com/c/en/us/td/docs/switches/datacenter/mds9000/sw/8_x/config/interfaces/cisco_mds9000_interfaces_config_guide_8x/congestion_avoidance_isolation.html

QUESTION 74

DRAG DROP

Drag and drop the SAN components from the left onto the correct design considerations on the right.

Select and Place:

Correct Answer:

Section: Storage Network Design
Explanation

Explanation/Reference:

QUESTION 75

An engineer is expanding an existing iSCSI environment and must choose an addressing scheme. When checking one of the devices, the engineer discovers this target device naming used: {prefix}.2019-

01.com.acme123:00.ffd0cb21.bcb392817521

Which addressing scheme was used in the environment?

- A. Network Address Authority
- B. Extended Unique Identifier
- C. iSCSI Qualified Name
- D. Fibre Channel ID

Correct Answer: B

Section: Storage Network Design
Explanation

Explanation/Reference:

Reference: https://www.cisco.com/c/en/us/td/docs/unified_computing/ucs/ucs-manager/GUI-User-Guides/Server-Mgmt/3-1/b_Cisco_UCS_Manager_Server_Mgmt_Guide_3_1/server_boot.html

QUESTION 76

A storage engineer requires a solution that achieves multiple paths between a server and storage array. The design must support complete traffic isolation and support a 50% growth in the next year.

Which FCoE solution meets these requirements?

- A. single switch with multiple links
- B. at least two VSANs across the fabric
- C. at least two FC zone sets with multiple zones
- D. single VSAN across the fabric

Correct Answer: B

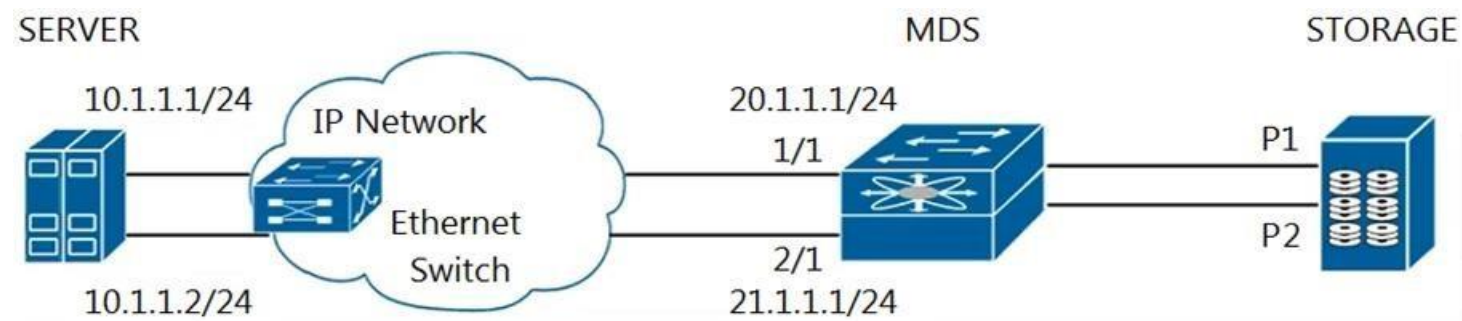
Section: Storage Network Design
Explanation

Explanation/Reference:

Reference: https://www.cisco.com/c/en/us/td/docs/switches/datacenter/mds9000/sw/5_2/configuration/guides/dmm/dmmcfg/toplgy.html

QUESTION 77

Refer to the exhibit.



A high-availability setup for iSCSI is designed with the host running iSCSI multipath software. Each IP storage port on the MDS switch exports the same two Fibre Channel target ports with different iSCSI target names.

In this design, how many iSCSI sessions are created from the host so that recovery occurs if any component fails?

- A. 2
- B. 3
- C. 4
- D. 5

Correct Answer: C

Section: Storage Network Design

Explanation

Explanation/Reference:

Reference: https://www.cisco.com/en/US/docs/storage/san_switches/mds9000/sw/rel_3_x/configuration/guides/cli_3_4_x/ciscsi.html#wp3002576

QUESTION 78

A network architect designs a high-availability architecture for the Cisco UCS Fabric Interconnects that are installed in a data center. The architecture must support clustering and redundancy.

Which architecture meets these requirements?

- A. dual connections from port L1 to L1 and one connection from port L1 to L1 with twinax cables
- B. dual connections from port L1 to L2 and one connection from port L2 to L1 with twinax cables
- C. dual connections from port L1 to L2 and one connection from port L2 to L1 with Ethernet cables
- D. dual connections from port L1 to L1 and one connection from port L2 to L2 with Ethernet cables

Correct Answer: D

Section: Storage Network Design

Explanation

Explanation/Reference:

Reference: https://subscription.packtpub.com/book/networking_and_servers/9781782170662/10/ch10lv1sec92/configuring-high-availability-clustering

QUESTION 79 Which two automation requirements can be met by using Puppet? (Choose two.)

- A. Push configuration updates immediately to servers.
- B. Enable clients to pull changes to configuration files.
- C. Enable clients to pull changes without installing an agent.
- D. Provide support for writing new modules in Python.
- E. Enable one-off infrastructure changes to be performed manually.

Correct Answer: AB

Section: Automation Design

Explanation

Explanation/Reference:

Reference: https://www.cisco.com/c/dam/en/us/products/collateral/servers-unified-computing/ucs-c-series-rack-servers/whitepaper_c11-740103.pdf

QUESTION 80 Which orchestration tool should be used for the management and analytics of servers across multiple sites?

- A. Cisco Intersight
- B. Cisco Nexus Fabric Manager
- C. Cisco UCS Manager
- D. Cisco Data Center Network Manager

Correct Answer: A

Section: Automation Design

Explanation

Explanation/Reference:

Reference: https://www.cisco.com/c/en_in/products/servers-unified-computing/intersight/index.html

QUESTION 81 Which authentication software natively runs within the CLI of Cisco NX-OS devices?

- A. Python
- B. Ansible
- C. Puppet
- D. Chef

Correct Answer: B

Section: Automation Design

Explanation

Explanation/Reference:

QUESTION 82 Which orchestration tool provides a graphical interface to manage LAN and SAN fabrics?

- A. Cisco Virtual Topology System
- B. Cisco Data Center Network Manager
- C. Cisco Nexus Fabric Manager
- D. Cisco CloudCenter

Correct Answer: B

Section: Automation Design

Explanation

Explanation/Reference:

Reference: https://www.cisco.com/c/en/us/td/docs/switches/datacenter/sw/DCNM_OLH/SAN_Client/fmhelp/fmc.html#34479

QUESTION 83

DRAG DROP

Drag the requirements from the left onto the correct policy types on the right.

Select and Place:

Support tagging policies.	Cisco Intersight Global Policy
Scrub disks on disassociation.	
Synchronize server power state.	
Create a utility partition on a SD card.	
Implement Hypervisor password policies.	Cisco UCS Manager Local Policy

Correct Answer:

Support tagging policies.	Cisco Intersight Global Policy
Scrub disks on disassociation.	Implement Hypervisor password policies.
Synchronize server power state.	Synchronize server power state.
Create a utility partition on a SD card.	Support tagging policies.
Implement Hypervisor password policies.	Cisco UCS Manager Local Policy
	Scrub disks on disassociation.
	Create a utility partition on a SD card.

Section: Automation Design
Explanation

Explanation/Reference:

QUESTION 84

Which two configurations are available by using a service profile template in Cisco UCS Manager? (Choose two.)

- A. number of vHBAs
- B. ARP entries
- C. UUID assignment
- D. VXLAN membership
- E. target server

Correct Answer: AC
Section: Automation Design
Explanation

Explanation/Reference:

Reference: https://www.cisco.com/c/en/us/td/docs/unified_computing/ucs/sw/cli/config/guide/2-2/b_UCSM_CLI_Configuration_Guide_2_2/b_UCSM_CLI_Configuration_Guide_2_2_chapter_0100000.html

QUESTION 85 Which two types of service profile templates does Cisco UCS support? (Choose two.)

- A. initial
- B. permanent
- C. updating
- D. temporary
- E. connected

Correct Answer: AC
Section: Automation Design
Explanation

Explanation/Reference:

Reference: https://www.cisco.com/en/US/docs/unified_computing/ucs/sw/gui/config/guide/141/UCSM_GUI_Configuration_Guide_141_chapter28.html#concept_C9D27CE2AA1245EA976DAA79F5BC6808

QUESTION 86 Which pools are used when a vNIC template is created in Cisco UCS Manager?

- A. WWPN
- B. UUID
- C. MAC
- D. IP

Correct Answer: C
Section: Automation Design
Explanation

Explanation/Reference:

Reference: https://www.cisco.com/c/en/us/td/docs/unified_computing/ucs/ucs-manager/GUI-User-Guides/Network-Mgmt/3-1/b_UCSM_Network_Mgmt_Guide_3_1/b_UCSM_Network_Mgmt_Guide_3_1_chapter_0111.html

QUESTION 87

Refer to the exhibit.

Create vHBA Template

Name :

Description :

Fabric ID : ☒ A ☐ B

Redundancy

Redundancy Type : ☒ No Redundancy ☐ Primary Template ☐ Secondary Template

Select VSAN :

Template Type : ☒ Initial Template ☐ Updating Template

Max Data Field Size :

WWPN Pool :

QoS Policy :

Pin Group :

Stats Threshold Policy :

Which template is used when a vHBA template pair is created for a specific server that inherits its attributes from an existing template?

- A. Secondary
- B. Initial
- C. Updating
- D. Primary

Correct Answer: B

Section: Automation Design

Explanation

Explanation/Reference:

QUESTION 88 Which address pool is used when a vHBA template is created?

- A. MAC
- B. WWPN
- C. IP
- D. UUID

Correct Answer: B

Section: Automation Design

Explanation

Explanation/Reference:

Reference: https://www.cisco.com/c/en/us/td/docs/unified_computing/ucs/sw/gui/config/guide/2-1/b_UCSM_GUI_Configuration_Guide_2_1/b_UCSM_GUI_Configuration_Guide_2_1_chapter_011010.html

QUESTION 89 What are two functions of a Network Services Orchestrator in an NFV environment?
(Choose two.)

- A. It operates at the resource-facing services layer and provides overall lifecycle management at the network service level.
- B. It provides an API-based northbound interface for transparent integration with systems that operate at the resource-facing services layer.
- C. It provides a standards-based southbound interface for transparent integration with systems that operate at the customer-facing services layer.
- D. It provides a standards-based northbound interface for transparent integration with systems that operate at the customer-facing services layer.
- E. It operates at the customer-facing services layer and provides the management interface for the virtual network devices.

Correct Answer: AB
Section: Automation Design
Explanation

Explanation/Reference:

Reference: https://www.cisco.com/c/en/us/td/docs/net_mgmt/msx/3_4/solution_overview/Cisco_VMS_Sol_Overview.pdf

QUESTION 90

Which feature provides a sandbox to convert NX-OS CLI commands to REST-based scripts on Cisco Nexus 7700 Series Switches?

- A. NX-API
- B. Postman
- C. Bash shell
- D. Guest shell

Correct Answer: A
Section: Automation Design
Explanation

Explanation/Reference:

Reference: https://www.cisco.com/c/en/us/td/docs/switches/datacenter/nexus9000/sw/7-x/programmability/guide/b_Cisco_Nexus_9000_Series_NX-OS_Programmability_Guide_7x/b_Cisco_Nexus_9000_Series_NX-OS_Programmability_Guide_7x_chapter_010010.html

QUESTION 91

An engineer manages hundreds of Cisco Nexus 3000 Series and 9000 Series Switches that are installed at several data centers and wants to use one of the built-in automation tools of the Cisco NX-OS Guest Shell to automate daily activities. The engineer requires a tool that uses imperative language, has extensive library support, and is object-oriented.

Which automation tool should be used to meet these requirements?

- A. Python
- B. Bash
- C. Perl
- D. YAML

Correct Answer: A
Section: Automation Design
Explanation

Explanation/Reference:

QUESTION 92

A company must introduce a scalable network automation tool to deploy, configure, and manage thousands of network devices and servers. The company servers already have been security-hardened and must not have any additional software installed on them. The security policy mandates the use of a secure communication protocol that supports authentication and encryption for managing the servers.

Which two automation tools must be used to meet these requirements? (Choose two.)

- A. Ansible
- B. CFEngine
- C. SaltStack
- D. Chef
- E. Puppet

Correct Answer: CE
Section: Automation Design
Explanation

Explanation/Reference:

QUESTION 93 Which two automation requirements are met when Puppet is used? (Choose two.)

- A. Enable clients to pull changes without installing an agent.
- B. Enable clients to pull changes to configuration files.
- C. Enable one-off infrastructure changes to be performed manually.
- D. Immediately push configuration updates to servers.
- E. Provide support for writing new modules in Python.

Correct Answer: AD

Section: Automation Design

Explanation

Explanation/Reference:

Reference: <https://blogs.cisco.com/datacenter/cisco-nx-os-and-puppet-agentless-data-center-automation>

QUESTION 94

An engineer wants to eliminate the manual process of checking the system hardware and firmware against a specified hardware compatibility tool. The tool must be able to manage an extensive list of devices including Cisco HyperFlex, MDS, and Nexus switches. The tool must manage hardware in multiple data centers so it should be deployed on public cloud infrastructure.

Which tool meets these requirements?

- A. Cisco Tetration
- B. Cisco Data Center Network Manager
- C. Cisco UCS Director
- D. Cisco Intersight

Correct Answer: D

Section: Automation Design

Explanation

Explanation/Reference:

Reference: <https://www.cisco.com/c/en/us/products/collateral/cloud-systems-management/intersight/datasheet-c78-739433.html>

QUESTION 95

A network design must include a solution to run CLI commands remotely on Cisco Nexus 9000 Series Switches. The customer's security policy requires secure login credentials and an encrypted underlying transport. The command output will be processed using tools that support XML or JSON encoding.

Which two components should be included in the design? (Choose two.)

- A. NX-API
- B. HTTPS
- C. HTTP
- D. Bash shell
- E. SSH

Correct Answer: AB

Section: Automation Design

Explanation

Explanation/Reference:

Reference: https://www.cisco.com/c/en/us/td/docs/switches/datacenter/nexus9000/sw/6-x/programmability/guide/b_Cisco_Nexus_9000_Series_NX-OS_Programmability_Guide/b_Cisco_Nexus_9000_Series_NX-OS_Programmability_Configuration_Guide_chapter_0101.html