

Cisco.VCEup.com.350-601.2022-July-15.195q

Number: 350-601  
Passing Score: 800  
Time Limit: 120 min



**Exam Code: 350-601**

**Exam Name:** Implementing Cisco Data Center Core Technologies (DCCOR)

**Certification Provider:** Cisco

**Sections**

1. Network
2. Compute
3. Storage Network
4. Automation
5. Security



## Exam A

## QUESTION 1

Which virtual MAC address is the default for HSRP version 2 group 10?

- A. 0000.5E00.0110
- B. 0000.0C9F.F00A
- C. 3784.0898.1C0A
- D. 0000.0C9F.F010

**Correct Answer: B**

**Section: Network**

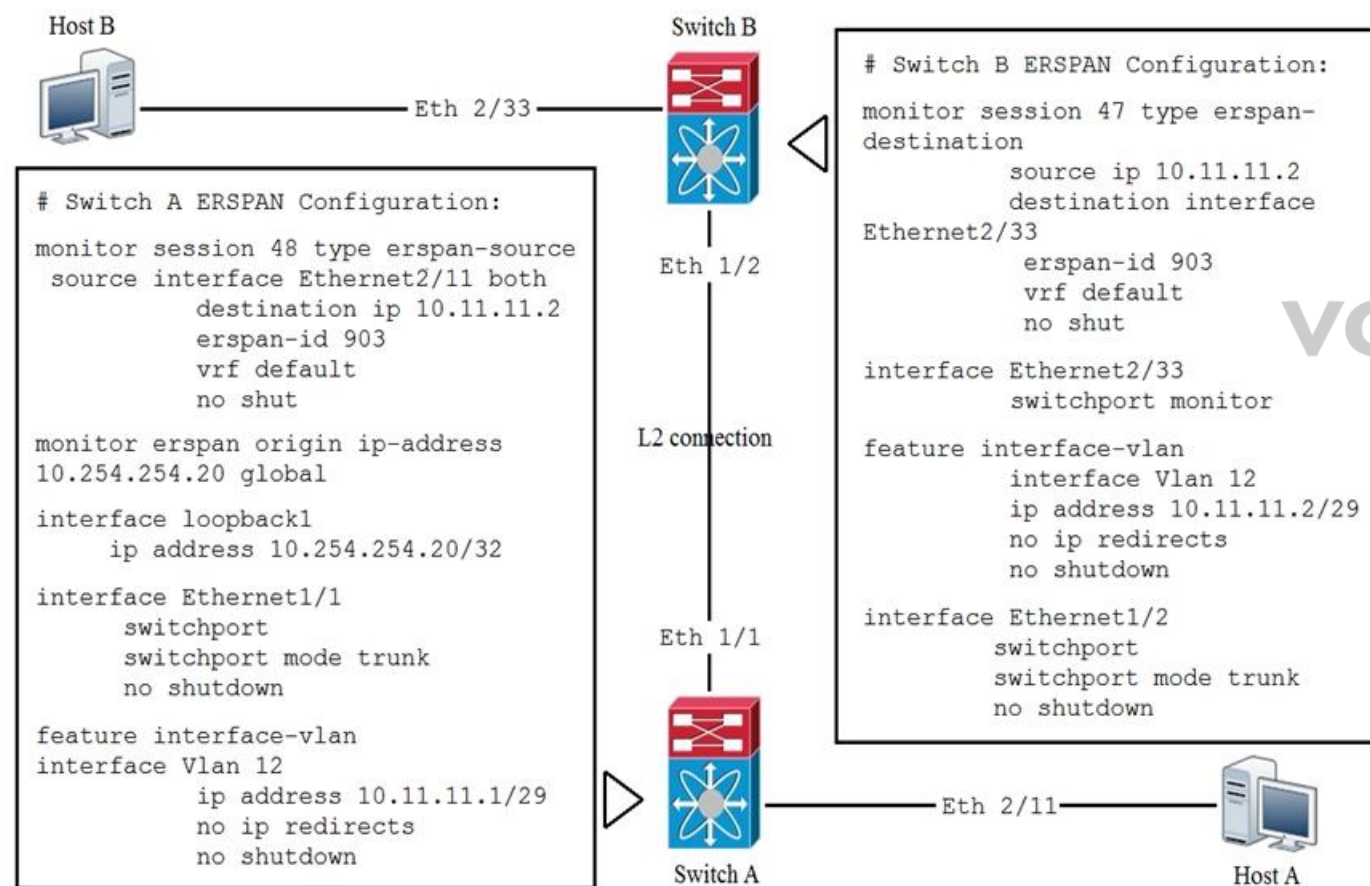
**Explanation**

**Explanation/Reference:**

Section: Network

## QUESTION 2

Refer to the exhibit.



Which statement about the ERSpan configuration in this environment is true?

- A. The session number of the source of ERSpan spanned traffic must have a session ID of 47 for the traffic analyzer to receive the traffic.
- B. Host B is the source of ERSpan spanned traffic and host A is the traffic analyzer.
- C. The session number of the source of ERSpan spanned traffic must have a session ID of 48 for the traffic analyzer to receive the traffic.
- D. Host A is the source of ERSpan spanned traffic and host B is the traffic analyzer.

**Correct Answer: D**

**Section: Network**

**Explanation**

**Explanation/Reference:**  
Section: Network

### QUESTION 3

Refer to the exhibit.

```
ACI-Leaf1# show ip route vrf DATACENTER:DC
10.20.1.0/24, ubest/mbest: 1/0, attached, direct, pervasive
    *via 10.0.8.65%overlay-1, [1/0], 4w3d, static
172.16.100.0/24, ubest/mbest: 1/0
    *via 10.1.168.95%overlay-1, [200/5], 3wod, bgp-132, internal, tag 132 (mpls-vpn)
172.16.99.0/24, ubest/mbest: 1/0
    *via 10.0.1.14, [20/0], 3wod, bgp-132, external, tag 200
```

Which two statements about the routing table of the leaf switch are true? (Choose two.)

- A. 10.20.1.0/24 is a BD subnet in ACI.
- B. The next hop 10.0.1.14 for route 172.16.99.0/24 is the TEP address of a border leaf in ACI.
- C. 172.16.100.0/24 is a BD subnet in ACI.
- D. The next hop 10.1.168.95 for route 172.16.100.0/24 is the TEP address of a border leaf in ACI.
- E. The next hop 10.0.8.65 for route 10.20.1.0/24 is the TEP address of a border leaf in ACI.

**Correct Answer:** AE  
**Section:** Network  
**Explanation**

**Explanation/Reference:**  
Section: Network

### QUESTION 4

Which mroute state is created when Bidirectional PIM is deployed at a site?

- A. \*,G
- B. MVPN Type-6
- C. MVPN Type-7
- D. S,G

**Correct Answer:** A  
**Section:** Network  
**Explanation**

**Explanation/Reference:**  
Section: Network

### QUESTION 5

Refer to the exhibit.

```
N7K-1
interface Vlan165
  no shutdown
  no ip redirects
  ip address 10.16.165.2/27
  no ipv6 redirects
  hsrp version 2
  hsrp 165
    preempt
    priority 150
    ip 10.16.165.1

vpc domain 100
  role priority 100
  peer-keepalive destination 10.1.1.2 source 10.1.1.1
vrf default
  delay restore 60
  peer-gateway
  auto-recovery
  ip arp synchronize
```

```
N7K-2
interface Vlan165
  no shutdown
  no ip redirects
  ip address 10.16.165.3/27
  no ipv6 redirects
  hsrp version 2
  hsrp 165
    priority 50
    ip 10.16.165.1

vpc domain 100
  role priority 200
  peer-keepalive destination 10.1.1.1 source 10.1.1.2
vrf default
  delay restore 60
  peer-gateway
  auto-recovery
  ip arp synchronize
```

VCEup

Which statement about the default gateway configuration of the vPC is true?

- A. Either switch can act as the active default gateway.
- B. N7K-1 acts as the default gateway for all traffic.
- C. N7K-2 forwards traffic that is destined for the default gateway by using the peer link.
- D. N7K-2 acts as the default gateway for all traffic.

**Correct Answer:** A

**Section:** Network

**Explanation**

**Explanation/Reference:**

Section: Network

**QUESTION 6**

Refer to the exhibit.

```
Start time: Mon Apr 15 09:23:01 2019
Last election time: Mon Apr 15 09:24:24 2019
A: UP, PRIMARY
B: UP, SUBORDINATE
A: memb state UP, lead state PRIMARY, mgmt services state: UP
B: memb state UP, lead state SUBORDINATE, mgmt services state: UP
heartbeat state PRIMARY_OK
INTERNAL NETWORK INTERFACES:
eth1, UP
eth2, UP
HA NOT READY
No device connected to this Fabric Interconnect
```

What must be connected to clear the HA NOT READY status?

- A. Layer 1-Layer 2 ports
- B. server chassis
- C. management ports
- D. network uplinks

**Correct Answer: B****Section: Network****Explanation****Explanation/Reference:**

Section: Network

**QUESTION 7**

A small remote office is set to connect to the regional hub site via NSSA ASBR.  
Which type of LSA is sent to the remote office OSPF area?

- A. type 7 LSA
- B. type 1 LSA
- C. type 5 LSA
- D. type 3 LSA

**Correct Answer: A****Section: Network****Explanation****Explanation/Reference:**

Section: Network

**QUESTION 8**

Which adjacency server configuration makes two OTV edge devices located in the same site bring up the dual-site adjacency?

A. Nexus-1:

```
interface Ethernet1/2  
ip address 20.1.1.1/24
```

```
interface Overlay200  
otv use-adjacency-server 20.1.1.2 unicast-only  
otv join-interface Ethernet1/2
```

Nexus-2:

```
interface Ethernet1/2  
ip address 20.1.1.2/24
```

```
interface Overlay200  
otv use-adjacency-server 20.1.1.1 unicast-only  
otv join-interface Ethernet1/2
```

B. Nexus-1:

```
interface Ethernet1/2  
ip address 20.1.1.1/24
```

```
interface Overlay200  
otv adjacency-server unicast-only  
otv join-interface Ethernet1/2
```

Nexus-2:

```
interface Ethernet1/2  
ip address 20.1.1.2/24
```

```
interface Overlay200  
otv join-interface Ethernet1/2  
otv adjacency-server unicast-only  
otv use-adjacency-server 20.1.1.1 unicast-only
```



C. Nexus-1:

```
interface Ethernet1/2  
ip address 20.1.1.1/24
```

```
interface Overlay200  
otv adjacency-server unicast-only  
otv join-interface Ethernet1/2
```

Nexus-2:

```
interface Ethernet1/2  
ip address 20.1.1.2/24
```

```
interface Overlay200  
otv adjacency-server unicast-only  
otv join-interface Ethernet1/2
```

D. Nexus-1:

```
interface Ethernet1/2  
ip address 20.1.1.1/24
```

```
interface Overlay200  
otv use-adjacency-server 20.1.1.1 unicast-only  
otv adjacency-server unicast-only  
otv join-interface Ethernet1/2
```

Nexus-2:

```
interface Ethernet1/2  
ip address 20.1.1.2/24
```

```
interface Overlay200  
otv use-adjacency-server 20.1.1.2 unicast-only  
otv adjacency-server unicast-only  
otv join-interface Ethernet1/2
```

**Correct Answer:** B

**Section:** Network

**Explanation**

**Explanation/Reference:**

Section: Network

**QUESTION 9**

Refer to the exhibit.

```

N7K-1
spanning-tree vlan 1-10 priority 8192

vpc domain 100
  role priority 100
  peer-keepalive destination 10.1.1.2 source 10.1.1.1
vrf default
  delay restore 60
  peer-switch
  auto-recovery
  ip arp synchronize

N7K-2
spanning-tree vlan 1-10 priority 8192

vpc domain 100
  role priority 200
  peer-keepalive destination 10.1.1.1 source 10.1.1.2
vrf default
  delay restore 60
  peer-switch
  auto-recovery
  ip arp synchronize

```

VCEup

The STP priority of N7K-1 and N7K-2 are the lowest in the network.

Which statement describes STP on the vPC?

- A. N7K-1 and N7K-2 appear as a single STP root.
- B. N7K-1 appears as the STP root.
- C. N7K-1 preempts N7K-2 as the STP root.
- D. N7K-2 appears as the STP root.

**Correct Answer:** A

**Section:** Network

**Explanation**

**Explanation/Reference:**

Section: Network

#### QUESTION 10

The engineer must configure SPAN on a Cisco Nexus 5000 Series Switch to get a capture of the traffic from these applications for an in-depth packet analysis. Which two SPAN characteristics must be considered? (Choose two.)

- A. SPAN source ports can be monitored in multiple SPAN sessions.
- B. The Ethernet, FC, vFC, port channel, SAN port channel can be used as SPAN source ports.
- C. A SPAN source port cannot be a destination SPAN port.
- D. Only Ethernet, FC, vFC, port channel port types can be used as SPAN source ports.
- E. The rx/tx option is available for VLAN or VSAN SPAN sessions.

**Correct Answer:** BC

**Section:** Network

**Explanation**



**Explanation/Reference:**  
Section: Network

**QUESTION 11**

Host1 is in VLAN100 located in DataCenter1 and Host2 is in VLAN200 located in DataCenter2.  
Which OTV VLAN mapping configuration allows Layer 2 connectivity between these two hosts?

A. DC1:  
**interface Overlay1**  
**otv extend-vlan 100**  
**otv vlan mapping 100 to 200**

DC2:  
**interface Overlay1**  
**otv extend-vlan 100**  
**otv vlan mapping 100 to 200**

B. DC1:  
**interface Overlay1**  
**otv extend-vlan 100**  
**otv vlan mapping 100 to 200**

DC2:  
**interface Overlay1**  
**otv extend-vlan 200**

C. DC1:  
**interface Overlay1**  
**otv extend-vlan 100**

DC2:  
**interface Overlay2**  
**otv extend-vlan 200**

D. DC1:  
**interface Overlay1**  
**otv extend-vlan 100**

DC2:  
**interface Overlay1**  
**otv extend-vlan 200**

**Correct Answer: A**  
**Section: Network**  
**Explanation**

**Explanation/Reference:**  
Section: Network

**QUESTION 12**

Refer to the exhibit.

```
switch(config)# interface Ethernet 2/2
switch(config)# ip address 172.23.231.240/23
switch(config)# ip verify unicast source reachable-via rx
```

What is configured as a result of running these commands?

- A. loose unicast RPF
- B. strict unicast RPF
- C. IP Source Guard
- D. reverse lookup for outbound packets

**Correct Answer: B**

**Section: Network**

**Explanation**

**Explanation/Reference:**

Section: Network

#### QUESTION 13

Which configuration implements static ingress replication?

- A. **interface nve 1**  
**member vni 3716135**  
**ingress-replication protocol bgp**
- B. **interface nve 1**  
**member vni 3716135**  
**peer vtep 10.0.0.4**
- C. **interface nve 1**  
**member vni 3716135**  
**peer vtep 10.0.0.4**  
**ingress-replication protocol static**  
**peer-ip 10.0.0.4**
- D. **interface nve 1**  
**member vni 3716135**  
**ingress-replication protocol static**  
**peer-ip 10.0.0.4**

**Correct Answer: D**

**Section: Network**

**Explanation**

**Explanation/Reference:**

Section: Network

#### QUESTION 14

Refer to the exhibit.

```
OTV-Site1# show otv
OTV Overlay Information
Site Identifier 0000.0000.0111
Overlay interface Overlay200
VPN name: Overlay200
VPN state: UP
Extended vlans: 178 2500-2563 (Total:65)
Join interface(s): Eth1/2 (20.1.1.1)
Site vlan: 1999 (up)
AED-Capable: Yes
Capability: Unicast-Only
Is Adjacency Server: Yes
Adjacency Server(s): 20.1.1.1/20.2.1.1
```

A network engineer is setting up a multihomed OTV network. The first site has been set up with a primary and secondary adjacency server.

Which configuration must be added on the remote OTV AEDs site?

- A. **interface Overlay200**  
**otv join-interface Ethernet1/2**  
**otv extend-vlan 178, 2500-2563**  
**otv use-adjacency-server 20.1.1.1 unicast-only**
- B. **interface Overlay200**  
**otv join-interface Ethernet1/2**  
**otv extend-vlan 178, 2500-2563**
- C. **interface Overlay200**  
**otv join-interface Ethernet1/2**  
**otv extend-vlan 178, 2500-2563**  
**otv use-adjacency-server 20.1.1.1 20.2.1.1 unicast-only**
- D. **interface Overlay200**  
**otv join-interface Ethernet1/2**  
**otv extend-vlan 178, 2500-2563**  
**otv adjacency-server unicast-only**

**Correct Answer: C**

**Section: Network**

**Explanation**

**Explanation/Reference:**

Section: Network

#### QUESTION 15

A customer has a requirement to deploy a cloud service and needs to have full control over the underlying OS, data and applications. Which cloud model meets this requirement?

- A. MaaS
- B. PaaS
- C. SaaS
- D. IaaS



**Correct Answer:** D  
**Section:** Network  
**Explanation**

**Explanation/Reference:**  
Section: Network

**QUESTION 16**  
Refer to the exhibit.

```
Nexus# show vpc peer-keepalive | i Keepalive
```

```
--Keepalive interval : 1000 msec
--Keepalive timeout : 5 seconds
--Keepalive hold timeout : 3 seconds
--Keepalive vrf : management
--Keepalive udp port : 3200
--Keepalive tos : 192
```

```
Nexus# ethanalyzer local interface mgmt limit-captured-frames 1000
```

```
Capturing on mgmt0
```

```
2019-06-15 12:01:51.242597 192.168.254.11 -> 192.168.254.3 ICMP Echo (ping) request
2019-06-15 12:01:51.242860 192.168.254.3 -> 192.168.254.11 ICMP Echo (ping) reply
2019-06-15 11:50:15.975474 192.168.254.1 -> 192.168.254.3 TCP 47540 > bootps [SYN] Seq=0 Win=1024 Len=0 MSS=1460
2019-06-15 11:50:15.975547 192.168.254.3 -> 192.168.254.1 TCP 29 > 47540 [RST, A CK] Seq=1 Ack=1 Win=0 Len=0
2019-06-15 11:50:15.975564 192.168.254.1 -> 192.168.254.3 TCP 47540 > 44 [SYN] Seq=0 Win=1024 Len=0 MSS=1460
2019-06-15 11:50:15.975924 192.168.254.1 -> 192.168.254.3 TCP 47540 > discard [SYN] Seq=0 Win=1024 Len=0 MSS=1460
2019-06-15 11:50:15.976027 192.168.254.1 -> 192.168.254.3 TCP 47540 > 97 [SYN] Seq=0 Win=1024 Len=0 MSS=1460
2019-06-15 11:50:15.976381 192.168.254.1 -> 192.168.254.3 TCP 47540 > 35 [SYN] Seq=0 Win=1024 Len=0 MSS=1460
2019-06-15 11:50:16.661845 192.168.254.3 -> 192.168.254.4 UDP Source port: 3200 Destination port: 3200
2019-06-15 11:50:16.761147 00:8e:73:a2:41:13 -> 01:80:c2:00:00:00 STP Conf. Root = 8192/10/ec:e1:a9:df:6c:80 Cost = 22 Port = 0x8013
2019-06-15 11:50:16.853248 192.168.254.4 -> 192.168.254.3 UDP Source port: 3200 Destination port: 3200
2019-06-15 11:50:17.326253 192.168.254.1 -> 192.168.254.3 SSH Encrypted request packet len=52
2019-06-15 11:50:17.327313 192.168.254.3 -> 192.168.254.1 SSH Encrypted response packet len=1348
2019-06-15 11:50:17.377246 192.168.254.4 -> 239.255.70.83 UDP Source port: 7546 Destination port: 7546
2019-06-15 11:50:17.552215 192.168.254.1 -> 192.168.254.3 TCP 14139 > ssh [ACK] Seq=365 Ack=11277 Win=63546 Len=0
2019-06-15 11:50:17.661764 192.168.254.3 -> 192.168.254.4 UDP Source port: 3200 Destination port: 3200
2019-06-15 11:50:17.653242 192.168.254.4 -> 192.168.254.3 UDP Source port: 3200 Destination port: 3200
2019-06-15 11:50:17.872637 8c:60:4f:aa:c2:e1 -> 01:80:c2:00:00:0e LLDP Chassis Id = 8c:60:4f:aa:c2:e1 Port Id = mgmt0 TTL = 120
2019-06-15 11:50:08.173056 192.168.254.3 -> 192.168.254.2 NTP NTP client
2019-06-15 11:50:08.173256 192.168.254.2 -> 192.168.254.3 NTP NTP server
```

A flapping link issue has been reported on the vPC keepalive link. A packet capture has been activated on the Cisco Nexus switch.

What is the destination IP address of the vPC keepalive packets that are sent by the switch?

- A. 192.168.254.4
- B. 192.168.254.1
- C. 192.168.254.2
- D. 239.255.70.83

**Correct Answer:** A

**Section: Network****Explanation****Explanation/Reference:**

Section: Network

**QUESTION 17**

Due to a major version change, an engineer must perform a software upgrade on a Cisco Nexus Series switch.

Which two technologies should be implemented to reduce disruptions to the network during the upgrade? (Choose two.)

- A. vPC
- B. HSRP
- C. VDC
- D. MLAG
- E. PAgP

**Correct Answer:** AC

**Section: Network****Explanation****Explanation/Reference:**

Section: Network

**QUESTION 18**

Refer to the exhibit.

```
restart pim
```

What is the result of running the command presented?

- A. Multicast traffic forwarding is suspended.
- B. MRIB is flushed.
- C. The PIM database is deleted.
- D. PIM join messages are suspended.

**Correct Answer:** C

**Section: Network****Explanation****Explanation/Reference:**

Section: Network

**QUESTION 19**

Refer to the exhibit.

```
Nexus(config)# show checkpoint summary
```

```
User Checkpoint Summary
```

```
-----
```

```
1) BeforeL3:
```

```
Created by admin
```

```
Created at Mon, 15:25:08 31 Dec 2018
```

```
Size is 9,345 bytes
```

```
Description: None
```

```
System Checkpoint Summary
```

```
-----
```

```
2) system-fm-vrrp:
```

```
Created by admin
```

```
Created at Fri, 09:57:02 14 Jun 2019
```

```
Size is 20,865 bytes
```

```
Description: Created by Feature Manager.
```

```
3) system-fm-hsrp_engine:
```

```
Created by admin
```

```
Created at Fri, 09:57:28 14 Jun 2019
```

```
Size is 20,852 bytes
```

```
Description: Created by Feature Manager.
```

What is the reason the system-fm-vrrp checkpoint was created?

- A. The VRRP process crashed and the checkpoint was automatically created.
- B. The VRRP service restarted and the checkpoint was automatically created.
- C. The network administrator manually created it.
- D. The VRRP-enabled feature has been disabled.

**Correct Answer:** D

**Section:** Network

**Explanation**

**Explanation/Reference:**

Section: Network

#### QUESTION 20

What are two capabilities of the Cisco Network Assurance Engine? (Choose two.)

- A. It validates that devices comply with network security policies.
- B. It predicts the impact of changes to the network.
- C. It predicts the network load on a data center.
- D. It ensures that network performance meets an SLA.
- E. It verifies the speed of network packet flows by using telemetry.

**Correct Answer:** AB

**Section:** Network

**Explanation**

**Explanation/Reference:**

Section: Network

#### QUESTION 21

What is an advantage of streaming telemetry over SNMP?

- A. on-change traps sent to a receiver



- B. periodic push-based subscription messages
- C. periodic polling of the device status
- D. MD5-based authentication on polling

**Correct Answer: B**

**Section: Network**

**Explanation**

**Explanation/Reference:**

Section: Network

#### QUESTION 22

APIC EPG Resolution Immediacy is set to "Immediate".

Which statement is true about the Deployment Immediacy for VMM domains associated to EPGs?

- A. If "On demand" is selected, the policy is programmed in the hardware only when the first packet is received through the data path.
- B. If "Immediate" is selected, the policy is programmed in the hardware as soon as the leaf is booted.
- C. The "Immediate" and "On demand" options require a port group to be created on the VDS.
- D. If "On demand" is selected, the policy is programmed in the hardware only when the APIC detects a VM created in the EPG.

**Correct Answer: A**

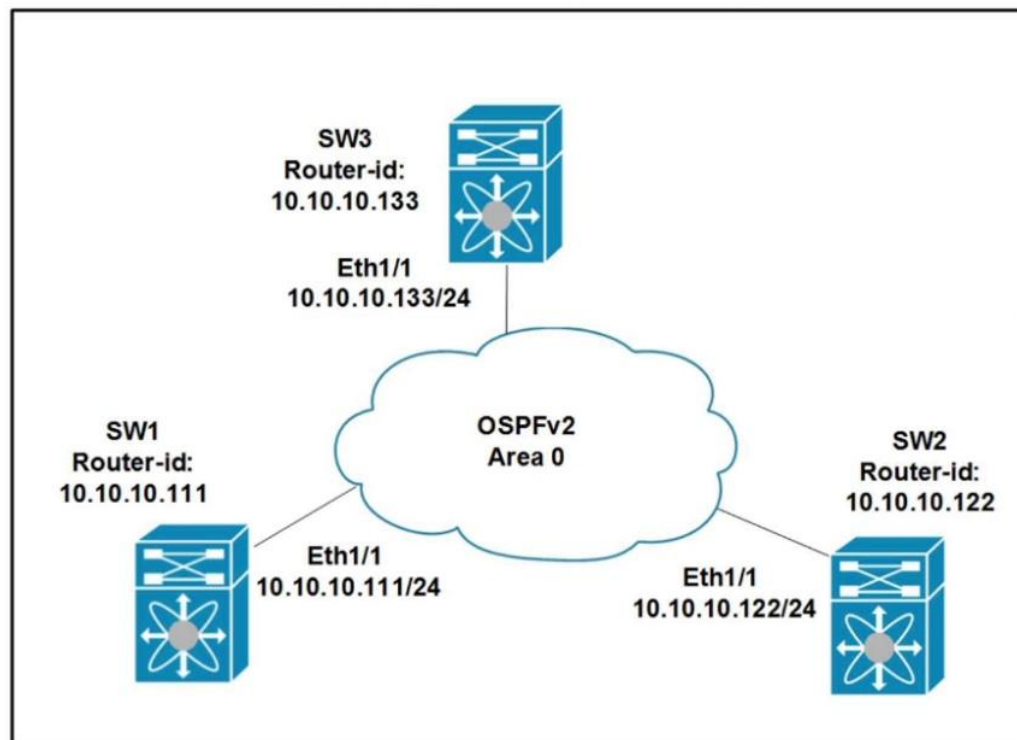
**Section: Network**

**Explanation**

**Explanation/Reference:**

Section: Network

#### QUESTION 23



VCEup

Refer to the exhibit. All switches are configured with the default OSPF priority. Which configuration should be applied to ensure that the SW2 Cisco Nexus switch controls the LSA floods and advertises the network to the remaining nodes in the OSPFv2 area?

- A. SW2# configure terminal  
SW2 (config)# interface ethernet 1/1  
SW2 (config-if)# ip ospf priority 255
- B. SW2# configure terminal

- SW2 (config)# interface ethernet 1/1
- SW2 (config-if)# ip ospf priority 1
- C. SW2# configure terminal
- SW2 (config)# router ospf 1
- SW2 (config-router)# router-id 10.10.10.22
- D. SW2# configure terminal
- SW2 (config)# interface ethernet 1/1
- SW2 (config-if)# ip ospf priority 0

**Correct Answer:** A

**Section:** Network

**Explanation**

**Explanation/Reference:**

Section: Network

Reference:

[https://www.cisco.com/c/m/en\\_us/techdoc/dc/reference/cli/nxos/commands/ospf/ip-ospf-priority.html](https://www.cisco.com/c/m/en_us/techdoc/dc/reference/cli/nxos/commands/ospf/ip-ospf-priority.html)

#### QUESTION 24

An engineer must configure a Nexus 7000 series switch for HSRP on VLAN 100. When fully functional, the router must be the active master. Which set of commands must be used to implement the scenario?

- A. feature hsrp
- interface vlan100
- ip address 10.1.1.2 255.255.255.0
- priority 255
- preempt
- hsrp version 2
- hsrp 1000
- ip 10.1.1.1
- B. feature-set hsrp
- interface vlan100
- ip address 10.1.1.2 255.255.255.0
- priority 20
- preempt
- hsrp version 2
- hsrp 1000
- ip 10.1.1.1
- C. feature-set hsrp
- interface vlan100
- ip address 10.1.1.2 255.255.255.0
- priority 80
- preempt
- hsrp version 2
- hsrp 1000
- ip 10.1.1.1
- D. feature hsrp
- interface vlan100
- ip address 10.1.1.2 255.255.255.0
- priority 240
- preempt
- hsrp version 2
- hsrp 1000
- ip 10.1.1.1

**Correct Answer:** A

**Section:** Network

**Explanation**

**Explanation/Reference:**

Section: Network

Reference: <https://www.google.com/search?q=hsrp+priority&oq=hsrp+priority&aqs=chrome..69i57j0l2j0i20i263i395j0i395l6.5307j1j4&sourceid=chrome&ie=UTF-8>

**QUESTION 25**

Which MAC address is an HSRP version 2?

- A. 3842.4250.0000
- B. 0000.0C07.AC1H
- C. 0000.0C9F.F0C8
- D. 0100.5E7F.FFFF

**Correct Answer: C**

**Section: Network**

**Explanation**

**Explanation/Reference:**

Section: Network

Reference: [https://www.cisco.com/c/en/us/td/docs/ios-xml/ios/ipapp\\_fhrp/configuration/xr-3s/fhrp-xr-3s-book/fhrp-hsrp-v2.html](https://www.cisco.com/c/en/us/td/docs/ios-xml/ios/ipapp_fhrp/configuration/xr-3s/fhrp-xr-3s-book/fhrp-hsrp-v2.html)

**QUESTION 26**

```
switch# show vpc brief
```

Legend:

(\*) - local vPC is down, forwarding via vPC peer-link

```
vPC domain id          : 10
Peer status             : peer adjacency formed ok
vPC keep-alive status   : peer is alive
Configuration consistency status : success
Type-2 consistency status : success
vPC role                : primary
Number of vPCs configured : 1
Peer Gateway            : Enabled
Dual-active excluded VLANs : -
```

vPC Peer-link status

```
-----
id  Port  Status  Active vlans
--  ---  -
1   Po20  up      100-105
```

vPC status

```
-----
id  Port  Status  Consistency  Reason          Active vlans
--  ---  -
7   Po7   up      success      success          100-104
8   Po8   up      success      success          100-102
9   Po9   up      success      success          100-103
```

VCEup

Refer to the exhibit. Which VLANs are capable to be assigned on vPC interfaces?

- A. 100-102
- B. 100-103
- C. 100-104
- D. 100-105

**Correct Answer:** D  
**Section:** Network  
**Explanation**

**Explanation/Reference:**  
Section: Network

#### QUESTION 27

An engineer need to implement a solution that prevents loops from occurring accidentally by connecting a switch to interface Ethernet1/1. The port is designated to be used for host connectivity. Which configuration should be implemented?

- A. switch# configure terminal  
switch(config)# interface Ethernet1/1  
switch(config-if)# spanning-tree bpduguard enable
- B. switch# configure terminal  
switch(config)# interface Ethernet1/1  
switch(config-if)# spanning-tree guard loop
- C. switch# configure terminal  
switch(config)# interface Ethernet1/1  
switch(config-if)# spanning-tree loopguard default
- D. switch# configure terminal  
switch(config)# interface Ethernet1/1  
switch(config-if)# spanning-tree bpdufilter enable

**Correct Answer:** A  
**Section:** Network  
**Explanation**

**Explanation/Reference:**  
Section: Network

Reference:  
[https://www.cisco.com/c/m/en\\_us/techdoc/dc/reference/cli/nxos/commands/12/spanning-tree-bpduguard.html#:~:text=To%20enable%20bridge%20protocol%20data,no%20form%20of%20this%20command.](https://www.cisco.com/c/m/en_us/techdoc/dc/reference/cli/nxos/commands/12/spanning-tree-bpduguard.html#:~:text=To%20enable%20bridge%20protocol%20data,no%20form%20of%20this%20command.)

#### QUESTION 28

A network engineer repeatedly saves a configuration on Catalyst switches to NVRAM using the write memory command. Which action should be taken to implement the same action on Nexus switches?

- A. Use the alias command to use the write memory command.
- B. Use the wri command to use the copy running-config startup-config command.
- C. Use the exit command to leave the configuration mode and save the configuration automatically.
- D. Use the write memory command to save the configuration.

**Correct Answer:** A  
**Section:** Network  
**Explanation**

**Explanation/Reference:**  
Section: Network

Reference:  
<https://community.cisco.com/t5/switching/write-command-on-nexus-switches/td-p/1958386>

#### QUESTION 29

What occurs when running the command install deactivate <filename> while a software maintenance upgrade is performed on a Cisco Nexus 9000 Series switch?

- A. The current set of packages is committed.
- B. The package features for the line card are disabled.
- C. The package is removed from the switch.
- D. The current upgrade stops.

**Correct Answer:** B  
**Section:** Network  
**Explanation**

**Explanation/Reference:**  
 Section: Network

Reference:  
[https://www.cisco.com/c/en/us/td/docs/switches/datacenter/nexus9000/sw/6-x/system\\_management/configuration/guide/b\\_Cisco\\_Nexus\\_9000\\_Series\\_NX-OS\\_System\\_Management\\_Configuration\\_Guide/sm\\_smu.html#task\\_B8B0F5BA80BE41AEA93197F560665648](https://www.cisco.com/c/en/us/td/docs/switches/datacenter/nexus9000/sw/6-x/system_management/configuration/guide/b_Cisco_Nexus_9000_Series_NX-OS_System_Management_Configuration_Guide/sm_smu.html#task_B8B0F5BA80BE41AEA93197F560665648)

#### QUESTION 30

An engineer installed a new Nexus switch with the mgm0 interface in vrf management. Connectivity to the rest of the network needs to be tested from the guest shell of the NX-OS. Which command tests connectivity from the guest shell of the NX-OS?

- A. [guestshell@guestshell ~]\$ dohost "ping vrf management 173.37.145.84"
- B. [guestshell@guestshell ~]\$ chvrf management ping 173.37.145.84
- C. [guestshell@guestshell ~]\$ ping 173.37.145.84 vrf management
- D. [guestshell@guestshell ~]\$ iping vrf management ip 173.37.145.84

**Correct Answer:** B  
**Section:** Network  
**Explanation**

**Explanation/Reference:**  
 Section: Network

Reference: [https://www.cisco.com/c/en/us/td/docs/switches/datacenter/nexus9000/sw/7-x/programmability/guide/b\\_Cisco\\_Nexus\\_9000\\_Series\\_NX-OS\\_Programmability\\_Guide\\_7x/Guest\\_Shell.html](https://www.cisco.com/c/en/us/td/docs/switches/datacenter/nexus9000/sw/7-x/programmability/guide/b_Cisco_Nexus_9000_Series_NX-OS_Programmability_Guide_7x/Guest_Shell.html)

#### QUESTION 31

A DNS server with IP address 192.168.1.1 is deployed in a data center. A network engineer must configure a Cisco UCS Fabric Interconnect to use this DNS. Which configuration should be applied?

- A. **fi-cl-mgmt-A# scope fabric-interconnect a**  
**fi-cl-mgmt-A /fabric-interconnect # set name 192.168.1.1**  
**fi-cl-mgmt-A /fabric-interconnect # scope system**  
**fi-cl-mgmt-A /system # commit-buffer**
- B. **fi-cl-mgmt-A# scope system**  
**fi-cl-mgmt-A /system # create dns 192.168.1.1**  
**fi-cl-mgmt-A /system\* # commit-buffer**
- C. **fi-cl-mgmt-A# scope fabric-interconnect a**  
**fi-cl-mgmt-A /fabric-interconnect # set name 192.168.1.1**  
**fi-cl-mgmt-A /fabric-interconnect\* # commit-buffer**
- D. **fi-cl-mgmt-A# scope system**  
**fi-cl-mgmt-A /system # scope services**  
**fi-cl-mgmt-A /system/services # create dns 192.168.1.1**  
**fi-cl-mgmt-A /system/services\* # commit-buffer**

**Correct Answer:** D  
**Section:** Network  
**Explanation**

**Explanation/Reference:**  
 Section: Network

Reference: [https://www.cisco.com/c/en/us/td/docs/unified\\_computing/ucs/sw/cli/config/guide/1-3-1/b\\_CLI\\_Config\\_Guide\\_1\\_3\\_1/CLI\\_Config\\_Guide\\_1\\_3\\_1\\_chapter11.pdf](https://www.cisco.com/c/en/us/td/docs/unified_computing/ucs/sw/cli/config/guide/1-3-1/b_CLI_Config_Guide_1_3_1/CLI_Config_Guide_1_3_1_chapter11.pdf)

#### QUESTION 32

```

monitor fabric session mySession
  description "This is my fabric ERSPAN session"
  destination tenant t1 application app1 epg epg1 destination-ip 192.0.20.123 source-ip-prefix 10.0.20.1
  erspan-id 100
  ip dscp 42
  ip ttl 16
  mtu 9216
  exit
source interface eth 1/1 switch 101
  direction tx
  filter tenant t1 bd bd1
  filter tenant t1 vrf vrf1
no shut

```

Refer to the exhibit. An engineer needs to implement a monitoring session that should meet the following requirements:

- Monitor traffic from leaf to leaf switches on a Cisco ACI network
- Support filtering traffic from Bridge Domain or VRF

Which configuration must be added to meet these requirements?

- A. interface eth 1/2 leaf 101
- B. application epg epg1 app1
- C. interface eth 1/2 switch 101
- D. application app1 epg epg1

**Correct Answer:** D

**Section:** Network

**Explanation**

**Explanation/Reference:**

Section: Network

Reference:

[https://www.cisco.com/c/en/us/td/docs/switches/datacenter/aci/apic/sw/1-x/troubleshooting/b\\_APIC\\_Troubleshooting/b\\_APIC\\_Troubleshooting\\_chapter\\_0110.html](https://www.cisco.com/c/en/us/td/docs/switches/datacenter/aci/apic/sw/1-x/troubleshooting/b_APIC_Troubleshooting/b_APIC_Troubleshooting_chapter_0110.html)

### QUESTION 33

An engineer is implementing OTV on a transport that supports multicast. The solution needs to meet the following requirements:

- Establish adjacency to the remote peer by using multicast.
- Enable OTV advertisements for VLAN 100 to the other site.

Which two commands should be configured to meet these requirements? (Choose two.)

- A. otv extend-vlan 100
- B. otv site-vlan 100
- C. otv use-adjacency-server 172.27.255.94
- D. otv data-group 232.2.2.0/28
- E. otv control-group 232.1.1.1

**Correct Answer:** DE

**Section:** Network

**Explanation**

**Explanation/Reference:**



Section: Network

Reference: <https://www.ciscopress.com/articles/article.asp?p=2999385&seqNum=2>

**QUESTION 34**

An engineer needs to create a new user in the local user database on Cisco UCS Fabric Interconnect. The user needs permissions to change the following configuration inside UCS Manager version 3.1:

- vNIC and vHBA profiles
- Fan speed and power redundancy profile of UCS Manager

Which two roles must be assigned to a user to achieve this goal? (Choose two.)

- A. facility-manager
- B. server-equipment
- C. operations
- D. server-profile
- E. server-compute

**Correct Answer:** BE

**Section:** Network

**Explanation**

**Explanation/Reference:**

Section: Network

Reference: [https://www.cisco.com/c/en/us/td/docs/unified\\_computing/ucs/ucs-manager/GUI-User-Guides/Admin-Management/3-1/b\\_Cisco\\_UCS\\_Admin\\_Mgmt\\_Guide\\_3\\_1/b\\_UCSM\\_Admin\\_Mgmt\\_Guide\\_chapter\\_01.html](https://www.cisco.com/c/en/us/td/docs/unified_computing/ucs/ucs-manager/GUI-User-Guides/Admin-Management/3-1/b_Cisco_UCS_Admin_Mgmt_Guide_3_1/b_UCSM_Admin_Mgmt_Guide_chapter_01.html)

**QUESTION 35**

```

SWB# ethanalyzer local interface mgmt brief limit-captured-frames 50
Capturing on mgmt0
1.130599 192.168.254.1 -> 192.168.254.13 TCP 60 29652 > ssh [ACK] Seq=1 Ack=53
Win=32449 Len=0
1.136261 00:8e:73:a2:41:0e -> Spanning-tree-(for-bridges)_00 STP 60 Conf. Root =
8192/10/ec:e1:a9:df:6c:80 Cost = 22 Port = 0x800e
1.373417 192.168.254.13 -> 192.168.254.1 SSH 106 Encrypted response packet len=52
1.570377 192.168.254.1 -> 192.168.254.13 TCP 60 29652 > ssh [ACK] Seq=1 Ack=105
Win=32786 Len=0
1.815558 192.168.254.13 -> 192.168.254.1 SSH 106 Encrypted response packet len=52
2.021840 192.168.254.1 -> 192.168.254.13 TCP 60 29652 > ssh [ACK] Seq=1 Ack=157
Win=32773 Len=0
2.525173 192.168.254.13 -> 192.168.254.1 SSH 106 Encrypted response packet len=52
2.731382 192.168.254.1 -> 192.168.254.13 TCP 60 29652 > ssh [ACK] Seq=1 Ack=209
Win=32760 Len=0
2.947365 192.168.254.13 -> 192.168.254.1 NTP 90 NTP Version 2, client
2.947623 192.168.254.1 -> 192.168.254.13 NTP 90 NTP Version 2, server
3.138157 00:8e:73:a2:41:0e -> Spanning-tree-(for-bridges)_00 STP 60 Conf. Root =
8192/10/ec:e1:a9:df:6c:80 Cost = 22 Port = 0x800e
3.139400 192.168.254.13 -> 192.168.254.1 SSH 106 Encrypted response packet len=52
3.270728 192.168.254.4 -> 239.255.70.83 UDP 166 Source port: cfs Destination port:
cfs
3.341123 192.168.254.1 -> 192.168.254.13 TCP 60 29652 > ssh [ACK] Seq=1 Ack=261
Win=32747 Len=0
3.835409 192.168.254.13 -> 192.168.254.1 SSH 106 Encrypted response packet len=52
4.041411 192.168.254.1 -> 192.168.254.13 TCP 60 29652 > ssh [ACK] Seq=1 Ack=313
Win=32734 Len=0
4.535284 192.168.254.13 -> 192.168.254.1 SSH 106 Encrypted response packet len=52
4.741072 192.168.254.1 -> 192.168.254.13 TCP 60 29652 > ssh [ACK] Seq=1 Ack=365
Win=32721 Len=0
4.947308 192.168.254.13 -> 192.168.254.1 NTP 90 NTP Version 2, client
4.947519 192.168.254.1 -> 192.168.254.13 NTP 90 NTP Version 2, server
5.139627 00:8e:73:a2:41:0e -> Spanning-tree-(for-bridges)_00 STP 60 Conf. Root =
8192/10/ec:e1:a9:df:6c:80 Cost = 22 Port = 0x800e
5.140867 192.168.254.13 -> 192.168.254.1 SSH 106 Encrypted response packet len=52

```

VCEup

Refer to the exhibit. Cisco Fabric Services is enabled in the network. Which type of IP address is used by the Cisco Fabric Services protocol?

- A. IPv4 multicast address
- B. IPv4 unicast address
- C. IPv4 gateway address
- D. IPv4 anycast address

**Correct Answer:** A

**Section:** Network

**Explanation**

**Explanation/Reference:**

Section: Network

Reference: <https://www.cisco.com/c/en/us/td/docs/switches/datacenter/nexus5000/sw/configuration/guide/fm/FabricManager/cfs.pdf>

**QUESTION 36**

```
switch# show install all impact epld n9000-epld.9.2.1.img
Compatibility check:
Module      Type      Upgradable      Impact      Reason
-----
1           SUP      YES             disruptive   Module Upgradable
```

Retrieving EPLD versions... Please wait.

Images will be upgraded according to following table:

Module	Type	EPLD	Running-Version	New-Version	Upg-Required
1	SUP	MI FPGA	0x23	0x23	No
1	SUP	IO FPGA	0x06	0x06	No
1	SUP	MI FPGA2	0x23	0x23	No

Refer to the exhibit. A network engineer plans to upgrade the current software images of a Cisco Nexus switch. What is the impact of starting the EPLD upgrade?

- A. The switch reboots one time for the new EPLD versions to take effect.
- B. The switch reboots multiple times for the new EPLD versions to take effect.
- C. The switch skips the EPLD upgrade for each EPLD device of the switch.
- D. The switch skips the EPLD upgrade for MIFPGA and proceeds with the other EPLD devices.

**Correct Answer: C**

**Section: Network**

**Explanation**

**Explanation/Reference:**

Section: Network

#### QUESTION 37

Which method must a network engineer use to upgrade the BIOS firmware or a Cisco UCS standalone C-Series rack-mount server?

- A. Use the U-ACPI Interface.
- B. Use the Cisco host upgrade utility.
- C. Use the Cisco hardware upgrade utility.
- D. Use the Cisco host firmware policy.

**Correct Answer: B**

**Section: Compute**

**Explanation**

**Explanation/Reference:**

Section: Compute

#### QUESTION 38

Which action must be performed before renumbering a Cisco UCS chassis?

- A. Run the shut and no shut command on the connected ports.
- B. Move the chassis to new ports on fabric interconnect.
- C. Decommission the chassis.
- D. Re-acknowledge the chassis.

**Correct Answer: C**

**Section: Compute****Explanation****Explanation/Reference:**

Section: Compute

**QUESTION 39**

A server engineer wants to control power usage on a Cisco UCS C-Series rack server down to the component level. Which two components support specific power limits? (Choose two.)

- A. storage controller
- B. network controller
- C. processor
- D. graphic card
- E. memory

**Correct Answer:** AB

**Section: Compute****Explanation****Explanation/Reference:**

Section: Compute

**QUESTION 40**

An engineer is implementing an import operation in Cisco UCS Manager. What is the impact of performing this operation?

- A. Information is modified on the management plane only.
- B. A configuration is imported from a higher release to a lower release.
- C. It is possible to schedule an import operation.
- D. Only a configuration file that was exported from the same Cisco UCS Manager is allowed to be imported.

**Correct Answer:** A

**Section: Compute****Explanation****Explanation/Reference:**

Section: Compute

**QUESTION 41**

An engineer wants to create a backup of Cisco UCS Manager for disaster recovery purposes. What are two characteristics of a full state backup of a Cisco UCS Manager database? (Choose two.)

- A. contains all of the runtime states and statuses but not the configurations
- B. performs a complete binary dump of the database as a .bin file
- C. performs a complete binary dump of the database as a .sql file
- D. performs a complete binary dump of the database as a .txz file
- E. contains all of the configurations

**Correct Answer:** BE

**Section: Compute****Explanation****Explanation/Reference:**

Section: Compute

**QUESTION 42**

What happens to the default host firmware policy after a Cisco UCS Manager upgrade?

- A. It is assigned to all the service profiles that include a host firmware policy.
- B. It is replaced by a new default policy without any firmware entries.
- C. It is set to match the host firmware policy.
- D. It is updated to contain the firmware entries of all the components.

**Correct Answer:** A

**Section:** Compute

**Explanation**

**Explanation/Reference:**

Section: Compute

**QUESTION 43**

An engineer is asked to use SaaS to manage Cisco computing.  
Which two items are needed to accomplish the task? (Choose two.)

- A. Intersight
- B. UCS Central
- C. Device/Claim ID
- D. Node name/Serial Number
- E. UCS Manager

**Correct Answer:** AE

**Section:** Compute

**Explanation**

**Explanation/Reference:**

Section: Compute

**QUESTION 44**

An engineer is configuring a backup operation on the existing Cisco UCS environment using a logical configuration.  
Which configuration is expected to be saved by using this backup type?

- A. systems
- B. roles
- C. servers
- D. service profiles

**Correct Answer:** D

**Section:** Compute

**Explanation**

**Explanation/Reference:**

Section: Compute

**QUESTION 45**

An engineer is seeking the most optimal on demand CPU performance while configuring the BIOS settings of a UCS C-series rack mount server.  
What setting will accomplish this goal?

- A. C6 Retention
- B. C6 non-Retention
- C. C2 state
- D. C0/C1 state

**Correct Answer:** A

**Section:** Compute

**Explanation**

**Explanation/Reference:**

Section: Compute

**QUESTION 46**

An engineer is duplicating an existing Cisco UCS setup at a new site.

What are two characteristics of a logical configuration backup of a Cisco UCS Manager database? (Choose two.)

- A. contains the configured organizations and locales
- B. contains the VLAN and VSAN configurations
- C. contains the AAA and RBAC configurations
- D. contains all of the configurations
- E. contains a file with an extension.tgz that stores all of the configurations

**Correct Answer:** BC

**Section:** Compute

**Explanation**

**Explanation/Reference:**

Section: Compute

**QUESTION 47**

Refer to the exhibit.

**Install Infrastructure Firmware**

**1 Prerequisites**

**2 Install Infrastructure Firmware**

**Firmware System Status**

Firmware Installer : ↑ **Ready**

**Actions**

Cancel Infrastructure Upgrade

**Properties**

Name : **default**

Description : Infrastructure Pack

Infra Pack : 3.2(2d)A

Service Pack : <not set>

Force : ☒

Evacuate : ☐

**Infrastructure Upgrade Schedule**

Admin State : **Untriggered**

Owner : **Local**

Max Number Of Concurrent Tasks : **Unlimited**

Start Time : 2018-03-11 00:44:5

☒ Upgrade Now

< Prev Next > **Finish** Cancel

Which two Cisco UCS components are upgraded as a result of the configuration? (Choose two.)

- A. IOMs
- B. Cisco UCS Manager
- C. board controller
- D. adapters
- E. BIOS

**Correct Answer:** AC

**Section:** Compute

**Explanation**



**Explanation/Reference:**

Section: Compute

**QUESTION 48**

Which two settings must be configured before enabling a Cisco UCS Manager domain for Cisco Intersight connectivity? (Choose two.)

- A. SMTP servers
- B. SMTP reply-to address
- C. NTP servers
- D. syslog redirection
- E. DNS servers

**Correct Answer:** CE

**Section:** Compute

**Explanation**

**Explanation/Reference:**

Section: Compute

**QUESTION 49**

An engineer must configure Cisco IMC server management NIC for autonegotiation. Which setting should be selected?

- A. shared LOM
- B. Cisco card
- C. dedicated
- D. shared LOM EXT

**Correct Answer:** C

**Section:** Compute

**Explanation**

**Explanation/Reference:**

Section: Compute

**QUESTION 50**

A network engineer is adding a Cisco HyperFlex data platform to the Cisco Intersight management portal. Which two components are required for Intersight to claim the Cisco HyperFlex data platform? (Choose two.)

- A. device FQDN
- B. device claim code
- C. device public IP address
- D. device ID
- E. device serial number

**Correct Answer:** BD

**Section:** Compute

**Explanation**

**Explanation/Reference:**

Section: Compute

**QUESTION 51**

Where is the witness deployed in a two-node Cisco HyperFlex Edge deployment?

- A. to the HyperFlex Edge two-node cluster
- B. to Cisco Intersight
- C. to a third-party cloud provider

D. to an additional server with network access to HyperFlex Edge

**Correct Answer:** B

**Section:** Compute

**Explanation**

**Explanation/Reference:**

Section: Compute

#### QUESTION 52

Refer to the exhibit.

```
UCS-A# scope adapter 1/1/1
UCS-A# /chassis/server/adapter # show image
Name                               Type      Version    State
-----
ucs-m81kr-vic.2.2.1b.bin  Adapter  2.2(1b)    Active

UCS-A# /chassis/server/adapter # update firmware 2.2(1b)
UCS-A# /chassis/server/adapter* # activate firmware 2.2(1b)
set-startup-only
UCS-A# /chassis/server/adapter* # commit-buffer
UCS-A# /chassis/server/adapter #
```

What is the result of this series of commands?

- A. It reboots the server immediately.
- B. It activates the firmware on the next adapter boot.
- C. It updates the firmware on adapter 1/1/1 immediately.
- D. It verifies the firmware update on the server.

**Correct Answer:** B

**Section:** Compute

**Explanation**

**Explanation/Reference:**

Section: Compute

#### QUESTION 53

What is the benefit of adding Cisco HyperFlex Hardware Acceleration Cards to a HyperFlex deployment?

- A. increased compression efficiency
- B. increased network throughput
- C. GPU acceleration
- D. offline encryption acceleration

**Correct Answer:** A

**Section:** Compute

**Explanation**

**Explanation/Reference:**

Section: Compute

#### QUESTION 54

When the default firmware package is set to a new version, which type of policy determines the timing of server reboots during the firmware upgrade?

- A. diagnostics
- B. maintenance
- C. local disk

D. BIOS

**Correct Answer:** B  
**Section:** Compute  
**Explanation**

**Explanation/Reference:**  
Section: Compute

**QUESTION 55**

Which two hypervisors does Cisco HyperFlex support? (Choose two.)

- A. OpenStack
- B. Citrix XenServer
- C. VMware vSphere
- D. RedHat KVM
- E. Microsoft Hyper-V

**Correct Answer:** CE  
**Section:** Compute  
**Explanation**

**Explanation/Reference:**  
Section: Compute

**QUESTION 56**

An engineer changed a configuration and must perform a rollback.  
Which statement applies to a Cisco Nexus 5600 Series Switch?

- A. The configuration rollback functionality is disabled when FCoE is enabled.
- B. A system checkpoint is generated automatically when the running configuration is saved to NVRAM.
- C. A user who is assigned to the network-operator user role is allowed to perform a rollback.
- D. Errors are skipped when an atomic rollback type is triggered.

**Correct Answer:** A  
**Section:** Compute  
**Explanation**

**Explanation/Reference:**  
Section: Compute

**QUESTION 57**

Which statement describes the rolling EPLD upgrade on a Cisco MDS 9000 Series Switch?

- A. The standby supervisor module is capable of performing the upgrade.
- B. Only the modules that are being upgraded are disrupted.
- C. All modules on the switch are disrupted.
- D. An EPLD upgrade is nondisruptive.

**Correct Answer:** B  
**Section:** Compute  
**Explanation**

**Explanation/Reference:**  
Section: Compute

**QUESTION 58**

Which command reduces the amount of time it takes to complete the ISSU on a Cisco Nexus 7000 Series Switch that has dual supervisor modules and two I/O modules?

- A. insinstall all epld bootflash:<image> parallel
- B. install all kickstart <image> system <image> parallel
- C. install all kickstart <image> system <image>
- D. install all epld bootflash: <image>

**Correct Answer: B**

**Section: Compute**

**Explanation**

**Explanation/Reference:**

Section: Compute

#### QUESTION 59

Which two statements describe the process of performing an EPLD upgrade on a Cisco MDS 9000 Series Switch? (Choose two.)

- A. The upgrade is performed from the standby supervisor module.
- B. The upgrade process disrupts only the module that is being upgraded.
- C. The upgrade is performed on the active supervisor.
- D. If an upgrade is interrupted, the upgrade continues after a connection is restored.
- E. Modules must be online to be upgraded.

**Correct Answer: AB**

**Section: Compute**

**Explanation**

**Explanation/Reference:**

Section: Compute

#### QUESTION 60

Which two statements describe the process of upgrading an EPLD on a Cisco MDS 9000 Series Switch? (Choose two.)

- A. EPLDs are only capable to be upgraded to the latest EPLD image.
- B. EPLD upgrades are capable to be completed without powering down the module during the upgrade.
- C. An upgrade verification identifies the impact of each EPLD upgrade.
- D. The EPLDs for all the modules on a switch must be upgraded at the same time.
- E. EPLDs are capable to be upgraded without replacing the hardware.

**Correct Answer: CE**

**Section: Compute**

**Explanation**

**Explanation/Reference:**

Section: Compute

#### QUESTION 61

Refer to the exhibit.

```
show install all impact epld bootflash:n9000-epld.6.1.2.I3.1.img
```

What is the outcome of this command when the EPLD is updated on a Cisco Nexus 9000 Series Switch?

- A. displays the compatibility of the EPLD upgrade and the image in the bootflash
- B. shows a simulated upgrade of the EPLD
- C. upgrades the EPLD on the switch disruptively
- D. displays the impact of the upgrade on the operation of the switch

**Correct Answer:** A  
**Section:** Compute  
**Explanation**

**Explanation/Reference:**  
Section: Compute

#### QUESTION 62

Multiple roles are applied to a user on the Cisco MDS 9000 Series Switch.  
Which statement describes the result of this configuration?

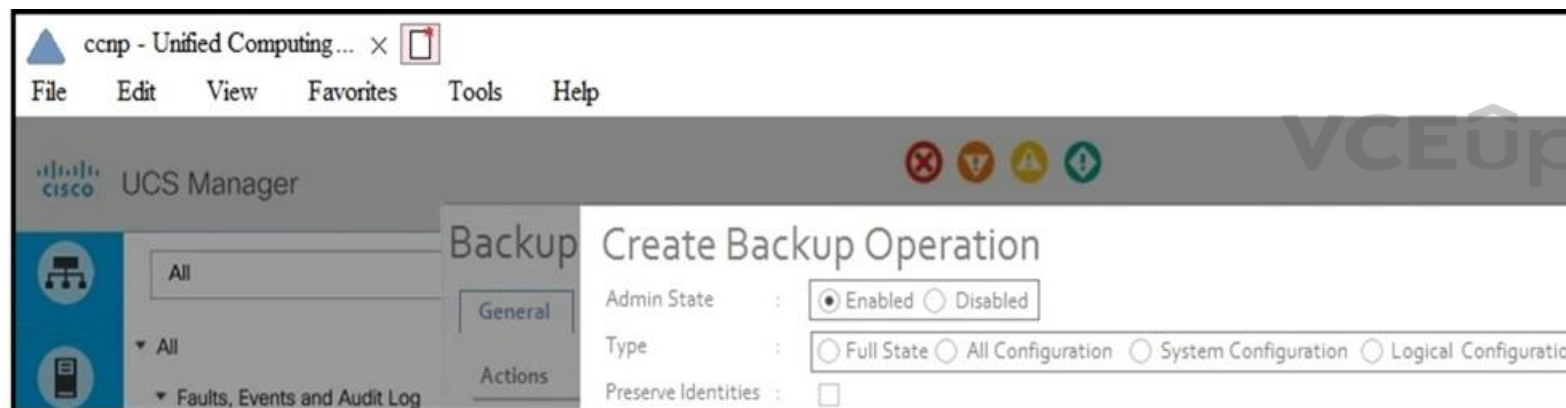
- A. The last role assigned takes precedence over previous roles.
- B. Access to a command takes priority over being denied access to a command.
- C. Any commands that have conflicting settings between roles are denied.
- D. The first role assigned takes precedence over subsequent roles.

**Correct Answer:** B  
**Section:** Compute  
**Explanation**

**Explanation/Reference:**  
Section: Compute

#### QUESTION 63

Refer to the exhibit.



Which backup operation type does not include the Preserve Identities feature?

- A. full state
- B. all configuration
- C. logical configuration
- D. system configuration

**Correct Answer:** C  
**Section:** Compute  
**Explanation**

**Explanation/Reference:**  
Section: Compute

#### QUESTION 64

Refer to the exhibit.

```

CISCO-UCS-A# scope org /
CISCO-UCS-A /org* # create service-profile Ciscot instance
CISCO-UCS-A /org/service-profile* # set bios-policy bios1
CISCO-UCS-A /org/service-profile* # set boot-policy boot1
CISCO-UCS-A /org/service-profile* # set ext-mgmt-ip-state none
CISCO-UCS-A /org/service-profile* # set host-fw-policy ipmi-user987
CISCO-UCS-A /org/service-profile* # set identity dynamic-uuid derived
CISCO-UCS-A /org/service-profile* # set ipmi-access-profile ipmil
CISCO-UCS-A /org/service-profile* # set local-disk-policy locall
CISCO-UCS-A /org/service-profile* # set maint-policy maint1
CISCO-UCS-A /org/service-profile* # set mgmt-fw-policy mgmt1
CISCO-UCS-A /org/service-profile* # set power-control-policy power1
CISCO-UCS-A /org/service-profile* # set scrub-policy scrub1
CISCO-UCS-A /org/service-profile* # set sol-policy soll
CISCO-UCS-A /org/service-profile* # set stats-policy stats1
CISCO-UCS-A /org/service-profile* # set user-label Cisco
CISCO-UCS-A /org/service-profile* # vcon-policy vconnpolicy
CISCO-UCS-A /org/service-profile* # commit-buffer
CISCO-UCS-A /org/service-profile #

```

What is a characteristic presented in the service profile of the UUID?

- A. unique system generated
- B. allocated from a UUID pool
- C. vendor assigned
- D. based on the hardware

**Correct Answer: B**

**Section: Compute**

**Explanation**

**Explanation/Reference:**

Section: Compute

#### QUESTION 65

Refer to the exhibit.

```

FI-1# scope org /
FI-1 /org # create maint-policy maintenance
FI-1 /org/maint-policy* # set reboot-policy timer-automatic
FI-1 /org/maint-policy* # set soft-shutdown-timer never

```

Which action must be taken before the maintenance policy can be committed?

- A. Specify a maintenance time by selecting a schedule.
- B. Associate a service profile to the maintenance policy.
- C. Set the soft shutdown timer to a specific time.
- D. Set the policy to apply the changes on the next reboot.

**Correct Answer: A**

**Section: Compute**

**Explanation**

**Explanation/Reference:**

Section: Compute

#### QUESTION 66

Which two firmware packages are included in the Cisco UCS C-Series Rack-Mount UCS-Managed Server Software bundle? (Choose two.)

- A. CIMC
- B. BIOS
- C. PSU



- D. system
- E. third-party

**Correct Answer:** AB

**Section:** Compute

**Explanation**

**Explanation/Reference:**

Section: Compute

Reference:  
[https://www.cisco.com/c/en/us/td/docs/unified\\_computing/ucs/ucs-manager/GUI-User-Guides/Firmware-Mgmt/3-1/b\\_UCSM\\_GUI\\_Firmware\\_Management\\_Guide\\_3\\_1/b\\_UCSM\\_GUI\\_Firmware\\_Management\\_Guide\\_3\\_1\\_chapter\\_011.html](https://www.cisco.com/c/en/us/td/docs/unified_computing/ucs/ucs-manager/GUI-User-Guides/Firmware-Mgmt/3-1/b_UCSM_GUI_Firmware_Management_Guide_3_1/b_UCSM_GUI_Firmware_Management_Guide_3_1_chapter_011.html)

**QUESTION 67**

A UCS B-Series server located in B5108 chassis 1 slot 1 is currently unavailable. The server needs to be associated with a specific service profile when it becomes available. Which associate service profile option should be selected to accomplish this goal?

- A. restrict migration
- B. server pool
- C. server
- D. custom server

**Correct Answer:** C

**Section:** Compute

**Explanation**

**Explanation/Reference:**

Section: Compute

**QUESTION 68**

A Cisco UCS C-Series server is installed at a data center. The server should be managed by the Cisco UCS Manager by using a single cable for management and data traffic. Which configuration should be applied after the physical connection is established?

- A. UCS-A# scope server 1  
UCS-A /server# scope cimc  
UCS-A /server/cimc # scope mgmt-conn sideband  
UCS-A /server/cimc # mgmt-conn-state enabled  
UCS-A /server/cimc/mgmt-conn\* # commit-buffer
- B. UCS-A# scope chassis 1  
UCS-A /chassis# scope cimc  
UCS-A /chassis/cimc # scope mgmt-conn sideband  
UCS-A /chassis/cimc/mgmt-conn # mgmt-conn-state enabled  
UCS-A /chassis/cimc/mgmt-conn\* # commit-buffer
- C. UCS-A# scope chassis 1  
UCS-A /chassis# scope cimc  
UCS-A /chassis /cimc # set mgmt-conn-state enabled  
UCS-A /chassis /cimc/mgmt-conn\* # commit-buffer
- D. UCS-A# scope server 1  
UCS-A /server# scope cimc  
UCS-A /server/cimc # scope mgmt-conn sideband  
UCS-A /server/cimc/mgmt-conn #set mgmt-conn-state enabled  
UCS-A /server/cimc/mgmt-conn\* # commit-buffer

**Correct Answer:** D

**Section:** Compute

**Explanation**

**Explanation/Reference:**

Section: Compute

Reference:

[https://www.cisco.com/c/en/us/td/docs/unified\\_computing/ucs/c-series\\_integration/ucsm3-1/b\\_C-Series-Integration\\_UCSM3-1/b\\_C-Series-Integration\\_UCSM3-1\\_chapter\\_010.html](https://www.cisco.com/c/en/us/td/docs/unified_computing/ucs/c-series_integration/ucsm3-1/b_C-Series-Integration_UCSM3-1/b_C-Series-Integration_UCSM3-1_chapter_010.html)

**QUESTION 69**

Enter the configuration method. (console/gui) ? console

Enter the setup mode; setup newly or restore from backup.  
(setup/restore) ? restore

**NOTE:**

To configure Fabric interconnect using a backup file on a remote server, you will need to setup management interface.

The management interface will be re-configured (if necessary), based on information stored in the backup file.

Continue to restore this Fabric interconnect from a backup file  
(yes/no) ? yes

Physical Switch Mgmt0 IPv4 address : 192.168.10.10

Physical Switch Mgmt0 IPv4 netmask : 255.255.255.0

IPv4 address of the default gateway : 192.168.10.1

Enter the protocol to get backup file (scp/ftp/tftp/sftp) ? scp

Enter the IP address of backup server: 20.10.20.10

Enter fully qualified backup file name: Backup.bak

Enter user ID: user

Enter password:

Retrieved backup configuration file.

Configuration file – Ok

VCEup

Refer to the exhibit. Which type of backup is required to restore a Cisco UCS configuration?

- A. system configuration
- B. all configuration
- C. full state
- D. logical configuration

**Correct Answer: C**

**Section: Compute**

**Explanation**

**Explanation/Reference:**

Section: Compute

Reference: [https://www.cisco.com/en/US/docs/unified\\_computing/ucs/sw/gui/config/guide/141/UCSM\\_GUI\\_Configuration\\_Guide\\_141\\_chapter43.html](https://www.cisco.com/en/US/docs/unified_computing/ucs/sw/gui/config/guide/141/UCSM_GUI_Configuration_Guide_141_chapter43.html)

**QUESTION 70**

Which server policy is used to install new Cisco IMC software on a server?

- A. hypervisor firmware policy
- B. host firmware policy
- C. BIOS software policy
- D. Cisco IMC software policy

**Correct Answer: D**

**Section: Compute****Explanation****Explanation/Reference:**

Section: Compute

**QUESTION 71**

What are two requirements when planning a Cisco HyperFlex All Flash standard cluster installation using three HX240c M5 servers? (Choose two.)

- A. If the Jumbo MTU option in the HyperFlex installer is enabled, then jumbo frames do not have to be enabled on the upstream switches.
- B. This cluster deployment type must support a mix of HDD and SSD.
- C. The servers must be discovered, unassociated, and connected to each fabric interconnect.
- D. If the Jumbo MTU option in the HyperFlex installer is enabled, then jumbo frames must also be enabled on the upstream switches.
- E. The hypervisors must be installed to Cisco FlexFlash SD cards.

**Correct Answer: CD****Section: Compute****Explanation****Explanation/Reference:**

Section: Compute

Reference: [https://www.cisco.com/c/en/us/td/docs/hyperconverged\\_systems/HyperFlex\\_HX\\_DataPlatformSoftware/AdminGuide/3\\_5/b\\_HyperFlexSystems\\_AdministrationGuide\\_3\\_5/b\\_HyperFlexSystems\\_AdministrationGuide\\_3\\_5\\_chapter\\_01111.html](https://www.cisco.com/c/en/us/td/docs/hyperconverged_systems/HyperFlex_HX_DataPlatformSoftware/AdminGuide/3_5/b_HyperFlexSystems_AdministrationGuide_3_5/b_HyperFlexSystems_AdministrationGuide_3_5_chapter_01111.html)

**QUESTION 72**

```
UCS-A# scope eth-traffic-mon
UCS-A /eth-traffic-mon # scope fabric a
UCS-A /eth-traffic-mon/fabric # create eth-mon-session Monitor33
UCS-A /eth-traffic-mon/fabric/eth-mon-session/dest-interface* #
commit-buffer
UCS-A /eth-traffic-mon/fabric/eth-mon-session/dest-interface #

UCS-A# scope service-profile org / serviceprofile1
UCS-A /org/service-profile # scope vnic ether-dynamic-prot-008
UCS-A /org/service-profile/vnic # create mon-src Monitor23
UCS-A /org/service-profile/vnic/mon-src* # commit-buffer
UCS-A /org/service-profile/vnic/mon-src #

UCS-A# scope eth-traffic-mon
UCS-A /eth-traffic-mon # scope fabric a
UCS-A /eth-traffic-mon/fabric # scope eth-mon-session Monitor33
UCS-A /eth-traffic-mon/fabric/eth-mon-session # enable
UCS-A /eth-traffic-mon/fabric/eth-mon-session* # commit-buffer
```

VCEup

Refer to the exhibit. Service degradation is reported on a VM that is deployed on a Cisco UCS blade server. The traffic from the vNIC is required to SPAN in both directions to a packet analyzer that is connected to UCS-A slot 2 port 12. Which two commands are needed to complete the configuration? (Choose two.)

- A. UCS-A /org/service-profile/vnic/mon-src\* # set direction receive transmit
- B. UCS-A /eth-traffic-mon/fabric/eth-mon-session\* # create dest-interface 2 12
- C. UCS-A /eth-traffic-mon/fabric/eth-mon-session # activate
- D. UCS-A /eth-traffic-mon/fabric/eth-mon-session\* # create eth-mon-session/dest-interface 2 12
- E. UCS-A /org/service-profile/vnic/mon-src\* # set direction both

**Correct Answer:** BE

**Section:** Compute

**Explanation**

**Explanation/Reference:**

Section: Compute

Reference: [https://www.cisco.com/en/US/docs/unified\\_computing/ucs/sw/cli/config/guide/1.4.1/CLI\\_Config\\_Guide\\_1\\_4\\_1\\_chapter42.html](https://www.cisco.com/en/US/docs/unified_computing/ucs/sw/cli/config/guide/1.4.1/CLI_Config_Guide_1_4_1_chapter42.html)

**QUESTION 73**

An engineer updated firmware on Fabric Interconnects and activates it. However, the endpoint fails to boot from the new firmware image. What is expected to occur in this case?

- A. The system defaults to and boots into kickstart image
- B. The system defaults to and boots into GOLD firmware image
- C. The system defaults to the GOLD firmware image
- D. The system defaults to the backup image version

**Correct Answer:** D

**Section:** Compute

**Explanation**

**Explanation/Reference:**

Section: Compute

Reference:  
[https://www.cisco.com/c/en/us/td/docs/unified\\_computing/ucs/ucs-manager/CLI-User-Guides/Firmware-Mgmt/4-0/b\\_UCSM\\_CLI\\_Firmware\\_Management\\_Guide\\_4-0/b\\_UCSM\\_CLI\\_Firmware\\_Management\\_Guide\\_4-0\\_chapter\\_011.html](https://www.cisco.com/c/en/us/td/docs/unified_computing/ucs/ucs-manager/CLI-User-Guides/Firmware-Mgmt/4-0/b_UCSM_CLI_Firmware_Management_Guide_4-0/b_UCSM_CLI_Firmware_Management_Guide_4-0_chapter_011.html)

**QUESTION 74**

Which service profile is affected if the default host firmware policy in Cisco UCS Manager is changed?

- A. any service profile that uses the global-default host firmware policy
- B. any service profile that uses a user-created host firmware policy
- C. any service profile that has no host firmware policy defined
- D. any service profile that is not in the root sub-org

**Correct Answer:** A

**Section:** Compute

**Explanation**

**Explanation/Reference:**

Section: Compute

**QUESTION 75**

What is an advantage of NFS as compared to Fibre Channel?

- A. NFS removes the impact of IP overhead.
- B. NFS enables thin provisioning for LUNs.
- C. NFS provides direct access to the underlying storage hardware.
- D. NFS provides the dynamic allocation of storage capacity.

**Correct Answer:** B

**Section:** Storage Network

**Explanation**

**Explanation/Reference:**

Section: Storage Network

**QUESTION 76**

Which statement is true about upgrading the firmware on a Cisco MDS storage switch with dual supervisors?

- A. Supervisors can be upgraded independently to test the new firmware.
- B. The new firmware is loaded on the standby supervisor first.
- C. Both supervisors load the new firmware and then the active supervisor reboots.
- D. The standby supervisor must be offline before the firmware upgrade begins.

**Correct Answer: B**

**Section: Storage Network**

**Explanation**

**Explanation/Reference:**

Section: Storage Network

#### QUESTION 77

A Cisco MDS 9000 Series Storage Switch has reloaded unexpectedly. Where does the engineer look for the latest core dump file?

- A. /mnt/recovery
- B. /mnt/core
- C. /mnt/logs
- D. /mnt/pss

**Correct Answer: D**

**Section: Storage Network**

**Explanation**

**Explanation/Reference:**

Section: Storage Network

#### QUESTION 78

An engineer must implement a Cisco UCS system at a customer site. One of the requirements is to implement SAN boot. The storage system maps the source WWPN to a unique LUN. Which method does Cisco recommend to configure the SAN boot?

- A. Define the vHBAs as bootable and leave the boot target definition empty.
- B. Create a SAN boot policy in which every initiator is mapped to a different target LUN.
- C. Define the vHBAs as bootable and leave the default values on the boot target definition.
- D. Create a SAN boot policy in which every initiator is mapped to the same target LUN.

**Correct Answer: D**

**Section: Storage Network**

**Explanation**

**Explanation/Reference:**

Section: Storage Network

#### QUESTION 79

In an FCoE environment, for which two sets of data must an interface that implements the PAUSE mechanism always provision sufficient ingress buffer? (Choose two.)

- A. frames that were sent with high credit
- B. frames that were sent on the link but not yet received
- C. frames that were processed and transmitted by the transmitter after the PAUSE frame left the sender
- D. frames that were processed and transmitted by the transmitter before the PAUSE frame left the sender
- E. frames that were sent on the link and received

**Correct Answer: BD**

**Section: Storage Network**

**Explanation**

**Explanation/Reference:**

Section: Storage Network



**QUESTION 80**

What are two types of FC/FCoE oversubscription ratios? (Choose two.)

- A. switch processing power to end-node processing power
- B. port bandwidth to uplink bandwidth
- C. server storage to end-node count
- D. edge ISL bandwidth to core ISL bandwidth
- E. host bandwidth to storage bandwidth

**Correct Answer:** DE

**Section:** Storage Network

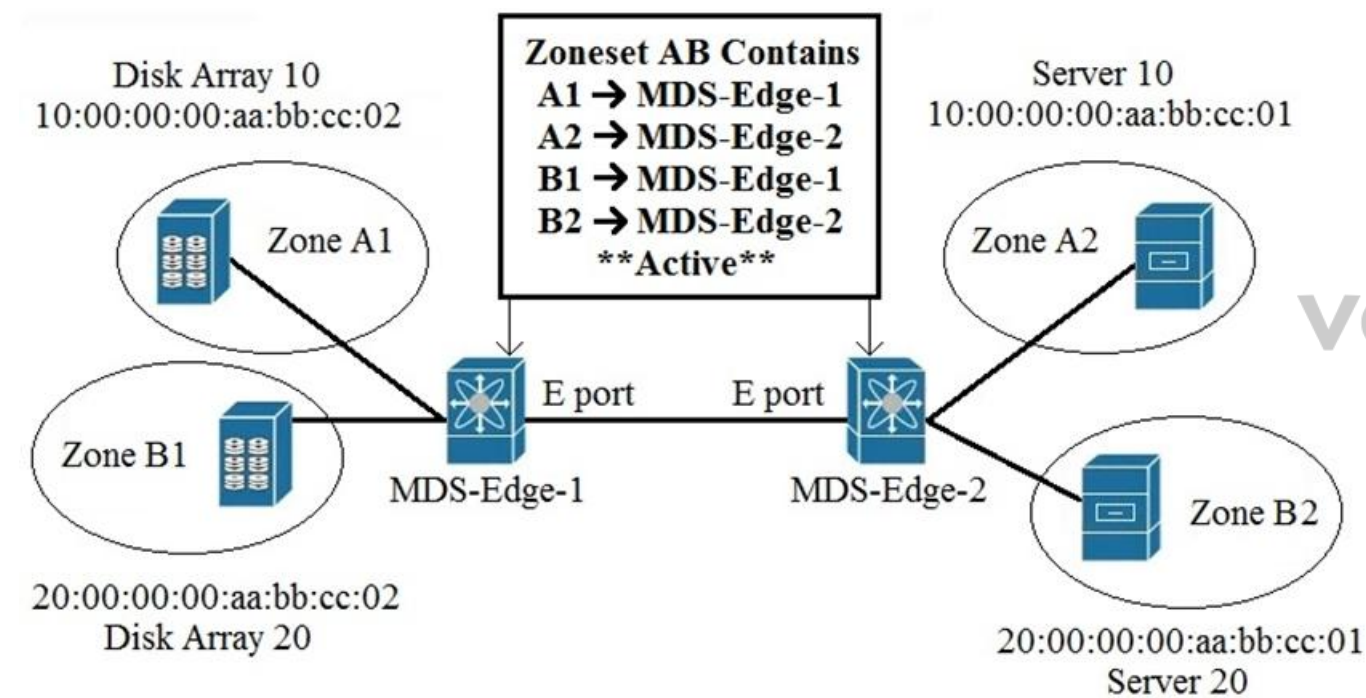
**Explanation**

**Explanation/Reference:**

Section: Storage Network

**QUESTION 81**

Refer to the exhibit.



An engineer is implementing zoning on two Cisco MDS switches. After the implementation is finished, E Ports that connect the two Cisco MDS switches become isolated.

What is wrong with the implementation?

- A. Zones are local to the MDS switch and name service must be used to activate the connection between E Ports.
- B. Different zone set names must be configured on both MDS switches.
- C. Zones must have the same name on both MDS switches for the E Ports to function.
- D. E Ports on both MDS switches must be configured as F Ports for the zoning to function.

**Correct Answer:** A

**Section:** Storage Network

**Explanation**

**Explanation/Reference:**

Section: Storage Network

**QUESTION 82**



An engineer is implementing FCoE.  
Which aspect of DCBXP on a Cisco Nexus switch affects this implementation?

- A. It requires that LLDP transmit and LLDP receive are enabled on the FCoE interface.
- B. It uses the Cisco Fabric Services protocol to exchange parameters between two peer links.
- C. It provides the authentication of peers on the Cisco Nexus switch.
- D. It always is enabled on 10/100-Mbps native Ethernet ports.

**Correct Answer:** A  
**Section:** Storage Network  
**Explanation**

**Explanation/Reference:**  
Section: Storage Network

#### QUESTION 83

Which product includes prebuilt templates that are available to be used to customize fabric deployments?

- A. Cisco Tetration
- B. Cisco Data Center Network Manager
- C. Cisco ACI
- D. Cisco UCS Manager

**Correct Answer:** B  
**Section:** Storage Network  
**Explanation**

**Explanation/Reference:**  
Section: Storage Network

#### QUESTION 84

Which statement describes the MAC address that the FCoE Initialization Protocol chooses for use by an E-Node in an FCoE implementation?

- A. The FCoE Initialization Protocol uses a 24-bit FC-MAP and concatenates a 24-bit Fibre Channel ID to create a fabric-provided MAC address.
- B. The FCoE Initialization Protocol uses the burned-in MAC address of the converged network adapter for all FCoE operations.
- C. FCoE does not use a MAC address. The FCoE Initialization Protocol is used to acquire a Fibre Channel ID, and the address is used for all FCoE communications in the same way as Fibre Channel Protocol.
- D. The FCoE Initialization Protocol uses 01.00.0C as the first 24 bits of the MAC address and appends a 24-bit Fibre Channel ID to derive a full 48-bit FCoE MAC address.

**Correct Answer:** A  
**Section:** Storage Network  
**Explanation**

**Explanation/Reference:**  
Section: Storage Network

#### QUESTION 85

Which statement describes monitoring Fibre Channel traffic on a Cisco UCS 6332 Fabric Interconnect?

- A. Fibre Channel traffic is monitored only on one vHBA per server.
- B. Fibre Channel traffic is capable to be monitored as it is encapsulated as FCoE.
- C. The monitoring of Fibre Channel traffic is limited to the default VSAN.
- D. The destination port for monitoring must be an unassigned Fibre Channel port.

**Correct Answer:** A  
**Section:** Storage Network  
**Explanation**

**Explanation/Reference:**  
Section: Storage Network

**QUESTION 86**

An engineer is implementing NPV mode on a Cisco MDS 9000 Series Switch. Which action must be taken?

- A. NPIV must be enabled on the upstream switch.
- B. The FCNS database must be disabled in the fabric.
- C. A port channel must be configured to the upstream switch.
- D. All switches in the fabric must be Cisco MDS switches.

**Correct Answer:** A

**Section:** Storage Network

**Explanation**

**Explanation/Reference:**

Section: Storage Network

**QUESTION 87**

Which two statements describe modifying Cisco UCS user accounts? (Choose two.)

- A. Disabling a user account maintains all of the data in the Cisco UCS Fabric Interconnect.
- B. The admin account is used only to log on by using SSH.
- C. The password of the user account must contain a minimum of 10 characters.
- D. Local user accounts override the same account on a remote authentication server, such as TACACS, RADIUS, or LDAP.
- E. The password of the user account expires in 30 days.

**Correct Answer:** AD

**Section:** Storage Network

**Explanation**

VCEUp

**Explanation/Reference:**

Section: Storage Network

**QUESTION 88**

An engineer must ensure fabric redundancy when implementing NPV mode on a Cisco MDS 9000 Series Switch. Which action enables fabric redundancy?

- A. Use TE ports to connect to upstream switches.
- B. Add a port channel to upstream switches.
- C. Configure the NPV devices to use an external FLOGI database.
- D. Connect the NPV devices to multiple upstream switches.

**Correct Answer:** B

**Section:** Storage Network

**Explanation**

**Explanation/Reference:**

Section: Storage Network

Reference: [https://www.cisco.com/c/en/us/td/docs/switches/datacenter/mds9000/sw/5\\_0/configuration/guides/int/nxos/cli\\_interfaces/pc.html](https://www.cisco.com/c/en/us/td/docs/switches/datacenter/mds9000/sw/5_0/configuration/guides/int/nxos/cli_interfaces/pc.html)

**QUESTION 89**

An engineer is converting a Cisco MDS switch to support NPIV mode. What should be considered when implementing the solution?

- A. It requires mapping of external interface traffic.
- B. It must be enabled on VSAN 1 only.
- C. It must be enabled globally on all VSANs.
- D. It requires the FLOGI database to be disabled.

**Correct Answer:** C  
**Section:** Storage Network  
**Explanation**

**Explanation/Reference:**  
Section: Storage Network

**QUESTION 90**  
Refer to the exhibit.

```
N5K-1(config)#interface fc2/3
N5K-1(config-if)#switchport mode sd
N5K-1(config-if)# no shutdown
```

What is the result of implementing this configuration?

- A. The Fibre Channel interface is configured for SPAN.
- B. The Fibre Channel interface is configured for source distribution.
- C. The Fibre Channel interface is configured for FSPF.
- D. The Fibre Channel interface is configured for synchronization distribution.

**Correct Answer:** A  
**Section:** Storage Network  
**Explanation**

**Explanation/Reference:**  
Section: Storage Network

**QUESTION 91**  
Which configuration statically assigns VSAN membership to a virtual Fibre Channel interface?

- A. switch(config-vsan-db)# vsan 100 interface vfc 31
- B. switch(config-vsan-db)# vsan 100 fc 3/1
- C. switch(config-vsan-db)# vsan 100 bind interface fc 3/1
- D. switch(config-vsan-db)# vsan 100 bind interface vfc 31

**Correct Answer:** A  
**Section:** Storage Network  
**Explanation**

**Explanation/Reference:**  
Section: Storage Network

Reference: <https://www.cisco.com/c/en/us/td/docs/switches/datacenter/nexus5000/sw/configuration/guide/cli/CLIConfigurationGuide/vsan.html>

**QUESTION 92**

```
vlan 10
 fcoe vsan 10

interface ethernet 1/3
 spanning-tree port type edge trunk
 switchport mode trunk
 switchport trunk allowed vlan 1, 10
```

Refer to the exhibit. An engineer must configure FCoE on a Cisco Nexus switch. Which two command sets complete this configuration? (Choose two.)

- A. vsan database  
vsan 10 interface vfc 10
- B. interface vfc 10    bind interface ethernet 1/3    no shut
- C. vsan database  
vsan 10 interface ethernet 1/3
- D. interface vfc 10    bind interface fcoe-vfc 1/3    no shut
- E. interface fcoe 10    bind interface ethernet 1/3    no shut

**Correct Answer:** AB

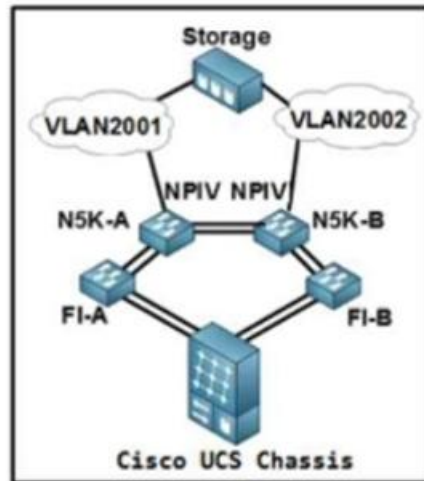
**Section:** Storage Network

**Explanation**

**Explanation/Reference:**

Section: Storage Network

**QUESTION 93**



**Create VSAN**

**Create VSAN**

Name:

**FC Zoning Settings**

FC Zoning: ☒ Disabled ☐ Enabled

Do **NOT** enable local zoning if fabric interconnect is connected to an upstream FC/FCoE switch.

☒ Common/Global ☐ Fabric A ☐ Fabric B ☐ Both Fabrics Configured Differently

You are creating a global VSAN that maps to the same VSAN ID in all available fabrics. A VLAN can be used to carry FCoE traffic and can be mapped to this VSAN.

Enter the VSAN ID that maps to this VSAN. Enter the VLAN ID that maps to this VSAN.

VSAN ID:  FCoE VLAN:

VCEUp

Refer to the exhibit. An engineer is configuring a VSAN on the network. Which option must be selected to create the VSAN?

- A. Common/Global
- B. Fabric B
- C. FC Zoning Enabled
- D. Fabric A

**Correct Answer:** A  
**Section:** Storage Network  
**Explanation**

**Explanation/Reference:**

Section: Storage Network

**QUESTION 94**

An engineer is configuring a vHBA template in UCS Manager. The engineer needs to specify the logical addresses used by the vHBA and the path through which the SAN traffic flows. Which two resources must be specified in the vHBA template? (Choose two.)

- A. MAC addresses
- B. WWPN Pool
- C. WWNN
- D. Fabric ID
- E. VLAN ID

**Correct Answer:** BD

**Section:** Storage Network

**Explanation**

**Explanation/Reference:**

Section: Storage Network

Reference:

[https://www.cisco.com/c/en/us/products/collateral/servers-unified-computing/ucs-manager/whitepaper\\_c11-697337.html](https://www.cisco.com/c/en/us/products/collateral/servers-unified-computing/ucs-manager/whitepaper_c11-697337.html)

**QUESTION 95**

```
MDSSWITCH# config terminal
MDSSWITCH (config)# fcip profile 1
MDSSWITCH (config-profile)# ip address 192.0.1.10
MDSSWITCH (config-profile)# port 5000
MDSSWITCH (config-profile)# tcp max-bandwidth-mbps 5000
MDSSWITCH (config-profile)# min-available-bandwidth-mbps 4000 round-trip-time-ms 1
MDSSWITCH (config-profile)# exit
MDSSWITCH (config)# interface fcip 1
MDSSWITCH (config-if)# use-profile 1
MDSSWITCH (config-if)# peer-info ipaddr 192.0.1.11
MDSSWITCH (config-if)# tcp-connections 1
MDSSWITCH (config-if)# ip-compression mode2
MDSSWITCH (config-if)# no shutdown
MDSSWITCH (config-if)# exit
MDSSWITCH (config)# interface ipStorage 1/1
MDSSWITCH (config-if)# ip address 192.0.1.10 255.255.255.0
MDSSWITCH (config-if)# switchport mtu 2500
MDSSWITCH (config-if)# no shutdown
MDSSWITCH (config-if)# end
```

VCEUp

Refer to the exhibit. An engineer configures FCIP on a Cisco MDS 9000 Series switch. What is the result of implementing the configuration?

- A. The switch attempts to make two TCP connections.
- B. Compression is performed by using hardware.
- C. Compression is performed by using software.
- D. Mode2 is enabled by default.

**Correct Answer:** B

**Section:** Storage Network



**Explanation****Explanation/Reference:**

Section: Storage Network

Reference:

[https://www.cisco.com/c/en/us/td/docs/switches/datacenter/mds9000/sw/8\\_x/config/ip\\_services/ipsvc/cfcip.html](https://www.cisco.com/c/en/us/td/docs/switches/datacenter/mds9000/sw/8_x/config/ip_services/ipsvc/cfcip.html)

**QUESTION 96**

The FCoE technology is used in a data center and the MDS switches are configured as Fibre Channel Forwarders. Which configuration should be applied to an MDS switch in order to be used as the best switch to connect by the CNAs in the fabric?

- A. fcoe fcf-priority 512
- B. fcoe fcf-priority 0
- C. no fcoe fcf-priority
- D. fcoe fcf-priority 1024

**Correct Answer: B**

**Section: Storage Network**

**Explanation****Explanation/Reference:**

Section: Storage Network

Reference:

[https://www.cisco.com/c/en/us/td/docs/switches/datacenter/nexus5000/sw/fcoe/521n11/b\\_5k\\_FCoE\\_Config\\_521N11/b\\_5k\\_FCoE\\_Config\\_521N11\\_chapter\\_011.pdf](https://www.cisco.com/c/en/us/td/docs/switches/datacenter/nexus5000/sw/fcoe/521n11/b_5k_FCoE_Config_521N11/b_5k_FCoE_Config_521N11_chapter_011.pdf)

**QUESTION 97**

```
N5K-Core# configure terminal
Enter configuration commands, one per line. End with CNTL/Z.
N5K-Core(config)# interface fc2/1
N5K-Core(config-if)# switchport speed 4000
N5K-Core(config-if)# no shutdown
N5K-Core(config)# interface fc2/2
N5K-Core(config-if)# no shutdown
N5K-Core(config)# monitor session 1
N5K-Core(config-monitor)# source interface fc2/1
N5K-Core(config-monitor)# destination interface fc2/2
N5K-Core(config-monitor)# no shutdown
```

VCEUp

Refer to the exhibit. An engineer implements SPAN configuration on an Nexus 5000 series switch. Which two commands are necessary to complete the SPAN session configuration?

- A. Configure switchport speed 4000 under interface fc2/2.
- B. Configure the switchport monitor under interface fc2/2.
- C. Configure session type fc under monitor session 1.
- D. Configure the switchport mode SD under interface fc2/1.
- E. Configure the switchport mode SD under interface fc2/2.

**Correct Answer: AE**

**Section: Storage Network**

**Explanation****Explanation/Reference:**

Section: Storage Network

Reference:

<https://www.cisco.com/c/en/us/td/docs/switches/datacenter/nexus5000/sw/configuration/guide/cli/CLIConfigurationGuide/Span.html>

**QUESTION 98**

What is a recommended design choice in a topology for multipathing iSCSI traffic?

- A. single initiator to dual targets
- B. two NICs bonded together on the initiator
- C. dual initiators to a single target with bonded interfaces
- D. initiators and targets in separate subnets

**Correct Answer: D**

**Section: Storage Network**

**Explanation**

**Explanation/Reference:**

Section: Storage Network

**QUESTION 99**

Which two actions should be taken before an upgrade is started on a Cisco MDS switch? (Choose two.)

- A. disable Cisco Fabric Services
- B. check the impact of the upgrade using the show install all impact command
- C. free up space on the USB3 device by deleting old Cisco NX-OS image files
- D. make the primary supervisor the active supervisor
- E. back up the configuration

**Correct Answer: BE**

**Section: Storage Network**

**Explanation**

**Explanation/Reference:**

Section: Storage Network

Reference:

[https://www.cisco.com/c/en/us/td/docs/switches/datacenter/mds9000/sw/5\\_2/upgrade/guides/nx-os/upgrade.html](https://www.cisco.com/c/en/us/td/docs/switches/datacenter/mds9000/sw/5_2/upgrade/guides/nx-os/upgrade.html)

**QUESTION 100**

Which two methods are available to manage an ACI REST API session authentication when a user is unauthenticated? (Choose two.)

- A. POST to aaaUserLogin
- B. GET to aaaListDomains
- C. GET aaaRefresh
- D. DELETE to aaaLogout
- E. POST to aaaLogin

**Correct Answer: CE**

**Section: Automation**

**Explanation**

**Explanation/Reference:**

Section: Automation

**QUESTION 101**

A customer has a requirement for an automation solution that supports periodically acquiring configuration from a centralized server and aligning UCS servers to their desired state. Which open-source tool meets this requirement?

- A. SaltStack
- B. Kubernetes

- C. Puppet
- D. Terraform

**Correct Answer:** C  
**Section:** Automation  
**Explanation**

**Explanation/Reference:**  
Section: Automation

#### QUESTION 102

An administrator needs to configure an automated policy to shut down a link when a given threshold is exceeded on MDS switch. Which feature needs to be used?

- A. RMON
- B. EEM
- C. Call Home
- D. Scheduler

**Correct Answer:** B  
**Section:** Automation  
**Explanation**

**Explanation/Reference:**  
Section: Automation

#### QUESTION 103

What is an advantage of using Ansible for automation as compared to Puppet and Chef?

- A. Ansible performs automation without installing a software agent on the target node.
- B. Ansible abstracts a scenario so that one set of configuration settings can be used across multiple operating systems.
- C. Ansible automates the enforcement of configuration settings.
- D. Ansible configures a set of CLI commands on a device by using NETCONF.

**Correct Answer:** A  
**Section:** Automation  
**Explanation**

**Explanation/Reference:**  
Section: Automation

#### QUESTION 104

What is required for using Ansible with HTTP/HTTPS protocol in a Cisco NX-OS environment?

- A. XML management interface
- B. SSH
- C. Open Agent Container
- D. NX-API

**Correct Answer:** D  
**Section:** Automation  
**Explanation**

**Explanation/Reference:**  
Section: Automation

#### QUESTION 105

What is required for using Puppet in a Cisco NX-OS environment?

- A. OpenNP
- B. XML management interface
- C. NX-API
- D. Open Agent Container

**Correct Answer:** D

**Section:** Automation

**Explanation**

**Explanation/Reference:**

Section: Automation

**QUESTION 106**

Refer to the exhibit.

**Python Code:**

```

import requests
import json

url='http://lab-93180bdlf-sw1/ins'
switchuser='dazfre'
switchpassword='Clscorox0'

myheaders={'content-type' 'application/json'})
payload={
  "ins_api": {
    "version": "1.0",
    "type": "cli_show",
    "chunk": "0",
    "sid": "1",
    "input": "configure terminal ; feature hsrp",
    "output_format": "json"
  }
}
response = requests.post(url,data=json.dumps(payload),
headers=myheaders,auth=(switchuser,switchpassword))

print(response.text)

ERROR MESSAGE:
{
  "ins_api": {
    "type": "cli_show",
    "version": "1.0",
    "sid": "eoc",
    "outputs": {
      "output": [{
        "clierror": "% invalid command\n",
        "input": "configure terminal",
        "msg": "input CLI command error",
        "code": "400"
      },{
        "clierror": "% invalid command\n",
        "input": "feature hsrp",
        "msg": "input CLI command error",
        "code": "400"
      }]
    }
  }
}

```

VCEup

Why does the Python code for Cisco NX-API print an error message?

- A. The JSON is not a supported format for the NX-API.
- B. The "type" is wrong in the header of the request and should be "cli\_conf"
- C. NX-API does not allow configuration for features via the requests module.
- D. The "type" is wrong in the body of the request and should be "cli\_conf"

**Correct Answer: C**  
**Section: Automation**  
**Explanation**

**Explanation/Reference:**

Section: Automation

**QUESTION 107**

Which two components should be checked when a Cisco Nexus 9000 Series Switch fails to boot using POAP? (Choose two.)

- A. POAP feature license
- B. DHCP server to bootstrap IP information
- C. image noted in the script file against switch bootflash
- D. script signed with security key
- E. TFTP server that contains the configuration script

**Correct Answer:** BE

**Section:** Automation

**Explanation**

**Explanation/Reference:**

Section: Automation

**QUESTION 108**

A POAP-enabled Cisco Nexus switch will not enter POAP mode.

Which two conditions should be verified? (Choose two.)

- A. No startup configuration is available.
- B. The switch is in bootup process.
- C. The license file is missing on the switch.
- D. Bootflash must contain a special directory named POAP with poap.py file.
- E. No Cisco NX-OS image is present on the bootflash.

**Correct Answer:** AB

**Section:** Automation

**Explanation**

**Explanation/Reference:**

Section: Automation

**QUESTION 109**

An engineer enters these commands while in EEM on a Cisco Nexus 9000 Series Switch

```
event manager applet Backup-config
event timer watchdog time 1800 name timer
event cli match "copy running-config startup-config"
```

What is the result of applying this configuration?

- A. It generates an error because no action is mentioned.
- B. It executes the copy running-config startup-confing command.
- C. It saves the running configuration every 1800 seconds.
- D. It blocks the copy running-config startup-config command.

**Correct Answer:** A

**Section:** Automation

**Explanation**

**Explanation/Reference:**

Section: Automation

**QUESTION 110**



An engineer must modify an overridden policy by changing the number of FCNS database entries to 1500 and then generate a message. What configuration will accomplish this task?

- A. event manager applet fcns\_policy override \_\_fcns\_entries\_max\_per\_switch  
action 1.0 syslog priority errors "CNS DB entries have reached the EEM limit"  
action 2.0 policy-default
- B. event manager applet fcns\_policy override \_\_fcns\_entries\_max\_per\_switch  
action 1.0 syslog priority errors "CNS DB entries have reached the EEM limit"  
action 2.0 policy-default
- C. event manager applet fcns\_policy override \_\_fcns\_entries\_max\_per\_switch  
event fcns entries max-per-switch 1500  
action 1.0 syslog priority warnings msg FCNS DB entries have reached the EEM limit
- D. event manager applet fcns\_policy  
action 1.0 syslog priority warnings msg FCNS DB entries have reached the EEM limit  
action 2.0 event-default

**Correct Answer: C**  
**Section: Automation**  
**Explanation**

**Explanation/Reference:**  
 Section: Automation

**QUESTION 111**  
 Refer to the exhibit.

```
<?xml version="1.0" encoding="UTF-8"?><imdata totalCount="1"><error  
code="403" text="Token was invalid (Error: Token timeout)"/></imdata>
```

An engineer configures a new application profile using REST API and receives this error message.

Which method can be used before the application profile can be configured?

- A. GET to aaaListDomains
- B. POST to aaaRefresh
- C. POST to aaaLogin
- D. POST to aaaLogout

**Correct Answer: C**  
**Section: Automation**  
**Explanation**

**Explanation/Reference:**  
 Section: Automation

**QUESTION 112**  
 An engineer is asked to manage a large-scale data center and collect information from multiple Cisco NX-OS devices using Cisco NX-OS Data Management Engine model. Which technology should be used to accomplish this goal?

- A. NETCONF
- B. NX Yang
- C. NX-API REST
- D. JSON-RPC

**Correct Answer: C**  
**Section: Automation**  
**Explanation**

**Explanation/Reference:**

Section: Automation

**QUESTION 113**

A network architect is asked to design and manage geographically distributed data centers across cities and decides to use a Multi-Site Orchestrator deployment. How many orchestrators should be deployed?

- A. 5
- B. 3
- C. 4
- D. 2

**Correct Answer: B**

**Section: Automation**

**Explanation**

**Explanation/Reference:**

Section: Automation

**QUESTION 114**

Which configuration generates a syslog message when CPU utilization is higher than 60%?

- A. event manager applet HIGH-CPU  
event snmp oid 1.3.6.1.4.1.9.9.109.1.1.1.6.1 get-type exact entry-op gt 60 poll-interval 5  
action 1.0 syslog priority notifications msg "cpu high"
- B. event manager applet HIGH-CPU  
event snmp oid 1.3.6.1.4.1.9.9.109.1.1.1.6.1 get-type exact entry-op lt 60 poll-interval 5  
action 1.0 syslog priority notifications msg "cpu high"
- C. event manager applet HIGH-CPU  
event snmp oid 1.3.6.1.4.1.9.9.109.1.1.1.6.1 get-type next entry-op gt 60 poll-interval 5  
action 1.0 syslog priority notifications msg "cpu high"
- D. event manager applet HIGH-CPU  
event snmp oid 1.3.6.1.4.1.9.9.109.1.1.1.6.1 get-type next entry-op lt 60 poll-interval 5  
action 1.0 syslog priority notifications msg "cpu high"

**Correct Answer: A**

**Section: Automation**

**Explanation**

**Explanation/Reference:**

Section: Automation

**QUESTION 115**

Which feature must be enabled to support the use of JSON and XML encodings when a Cisco Nexus 7000 Series Switch is deployed?

- A. Bash shell
- B. NX-API
- C. Open Agent Container
- D. LLDP

**Correct Answer: B**

**Section: Automation**

**Explanation**

**Explanation/Reference:**

Section: Automation

**QUESTION 116**

An engineer needs a utility to translate traditional Nexus CLI inputs and generate Python code using XML and JSON message formats. The solution needs to be available on a Nexus 7700 series switch. Which utility should be used?

- A. NX-API Sandbox
- B. NX-OS JSON-RPC
- C. Guest Shell for NX-OS
- D. Open NX-OS

**Correct Answer:** A  
**Section:** Automation  
**Explanation**

**Explanation/Reference:**  
 Section: Automation

Reference:  
<https://developer.cisco.com/docs/nx-os/#!nx-api-cli-developer-sandbox>

#### QUESTION 117

```
n9k2# guestshell
[guestshell@guestshell ~]$ python
Python 2.7.5 (default, Jun 17 2014, 18:11:42)
[GCC 4.8.2 20140120 (Red Hat 4.8.2-16)] on linux2
Type "help", "copyright", "credits" or "license" for more information.
>>>
```

An engineer must use the python module in the guest shell of the Cisco Nexus 9000 Series switch to shutdown port Ethernet 1/4. Which command set will accomplish this?

- A. `from cli import *`  
`cli("conf t")`  
`cli("interface eth1/4")`  
`cli("shutdown")`
- B. `from cisco import cli`  
`cli("conf t" ; "interface eth1/4" ; "shut")`
- C. `from cli import *`  
`cli("conf t ; interface eth1/4 ; shut")`
- D. `from cisco import cli`  
`cli("conf t ; interface eth1/4")`  
`cli("shutdown")`

**Correct Answer:** C  
**Section:** Automation  
**Explanation**

**Explanation/Reference:**  
 Section: Automation

Reference: <https://www.ciscolive.com/c/dam/r/ciscolive/apjc/docs/2016/pdf/DEVNET-1077.pdf>

#### QUESTION 118

The Cisco Nexus switch Generic Online Diagnostics policy for a **PortLoopback** test requires 10 consecutive failures to error disable the port. The customer wants to change it to 5 consecutive failures. Which configuration applies the changes for module 1 only?

- A. `Nexus(config)# event manager applet custom-PortLoopback override __PortLoopback`  
`Nexus(config-applet)# event gold mod all test PortLoopback testing-type bootup consecutive-failure 5`  
`Nexus(config-applet)# action 1 publish-event`
- B. `Nexus(config)# event manager applet custom-PortLoopback override __PortLoopback`  
`Nexus(config-applet)# event gold mod 1 test PortLoopback testing-type bootup consecutive-failure 5`  
`Nexus(config-applet)# action 1 publish-event`
- C. `Nexus(config)# event manager applet custom-PortLoopback override __PortLoopback`  
`Nexus(config-applet)# event gold mod all test PortLoopback testing-type monitoring consecutive-failure 5`

Nexus(config-applet)# action 1 policy-default  
 D. Nexus(config)# event manager applet custom-PortLoopback override \_\_PortLoopback  
 Nexus(config-applet)# event gold mod 1 test PortLoopback testing-type monitoring consecutive-failure 5  
 Nexus(config-applet)# action 1 policy-default

**Correct Answer:** D  
**Section:** Automation  
**Explanation**

**Explanation/Reference:**  
 Section: Automation

Reference: <https://www.ciscolive.com/c/dam/r/ciscolive/us/docs/2017/pdf/BRKDCN-3234.pdf>

#### QUESTION 119

```
import time
import cli

date= time.strftime('%Y%m%d')
file=
cli.execute ('copy running-config ftp://10.183.249.182/FusionSW/' +file)
exit()
```

Refer to the exhibit. Which command needs to be added to the line starting with the “file” keyword to have the generated running-config file with the name ‘fusion-config\_’ and current date?

- A. str('fusion-config\_') + date
- B. ('fusion-config\_') + date
- C. ('fusion-config\_ + date')
- D. string(('fusion-config\_') + date)

**Correct Answer:** A  
**Section:** Automation  
**Explanation**

**Explanation/Reference:**  
 Section: Automation

#### QUESTION 120

An engineer must configure RBAC in Cisco UCS Manager in an existing data center environment. Which two roles are suitable for configuring LAN connectivity policies? (Choose two.)

- A. server-profile
- B. network-admin
- C. operations
- D. enable
- E. admin

**Correct Answer:** BE  
**Section:** Security  
**Explanation**

**Explanation/Reference:**  
 Section: Security

#### QUESTION 121

An engineer is enabling port security on a Cisco MDS 9000 Series Switch.

Which feature of enabling port security on a Cisco MDS 9000 Series Switch must be considered?

- A. It is distributed by using Cisco Fabric Services.
- B. It authorizes only the configured sWWN to participate in the fabric.
- C. It always learns about switches that are logging in.
- D. It binds the fabric at the switch level.

**Correct Answer:** A

**Section:** Security

**Explanation**

**Explanation/Reference:**

Section: Security

#### QUESTION 122

An engineer has a primary fabric that is named UCS-A and a secondary fabric that is named UCS-B. A certificate request that has a subject name of **sjc2016** for a keyring that is named **kr2016** needs to be created. The cluster IP address is 10.68.68.68.

Which command set creates this certificate request?

- A. UCS-A # **scope keyring kr2016**  
UCS-A /keyring # **create certreq 10.68.68.68 sjc2016**  
UCS-A /keyring\* # **commit-buffer**
- B. UCS-B # **scope keyring kr2016**  
UCS-B /keyring # **create certreq ip 10.68.68.68 subject-name sjc2016**  
UCS-B /keyring\* # **commit-both**
- C. UCS-B# **scope security**  
UCS-B /security # **scope keyring kr2016**  
UCS-B /security/keyring # **set certreq 10.68.68.68 sjc2016**  
UCS-B /security/keyring\* # **commit-both**
- D. UCS-A# **scope security**  
UCS-A /security # **scope keyring kr2016**  
UCS-A /security/keyring # **create certreq ip 10.68.68.68 subject-name sjc2016**  
UCS-A /security/keyring\* # **commit-buffer**

**Correct Answer:** D

**Section:** Security

**Explanation**

**Explanation/Reference:**

Section: Security

#### QUESTION 123

What is a feature of NFS?

- A. zone-based access control
- B. Kerberos-based security model
- C. block-based file access
- D. role-based access control

**Correct Answer:** B

**Section:** Security

**Explanation**

**Explanation/Reference:**

Section: Security

#### QUESTION 124

Port security is enabled on a Cisco MDS 9000 Series Switch.

Which statement is true?

- A. Port security can be enabled only globally and affects all VSANs.
- B. Any devices currently logged in must be added manually to the device database.
- C. Auto-learning is always enabled automatically when port security is enabled.
- D. Cisco Fabric Services must be disabled before enabling port security.

**Correct Answer: C**

**Section: Security**

**Explanation**

**Explanation/Reference:**

Section: Security

#### QUESTION 125

When a strict CoPP policy is implemented, which statement describes an event during which packets are dropped?

- A. A large system image is copied to a switch by using the default VRF.
- B. Fifteen SSH sessions remain connected to the switch.
- C. A ping sweep is performed on a network that is connected through a switch.
- D. A web server that is connected to a switch is affected by a DDoS attack.

**Correct Answer: D**

**Section: Security**

**Explanation**

**Explanation/Reference:**

Section: Security

#### QUESTION 126

A host in EPG Client wants to talk to a webserver in EPG Web. A contract with default settings is defined between EPG Client and EPG Web, which allows TCP communication initiated by the client toward the webserver with TCP destination port 80.

Which statement describes this scenario?

- A. If EPG Web is made a preferred group member, a contract between EPG Client and EPG Web is no longer required for the host in EPG Client to reach the webserver in EPG Web.
- B. If vzAny is configured to consume and provide a "deny all" contract, traffic between EPG Client and EPG Web is no longer allowed.
- C. The host in EPG Client is allowed to connect to TCP destination port 80 on the webserver in EPG Web. The webserver will not be allowed to initiate a separate TCP connection to a host port with TCP source port 80.
- D. The host in EPG Client is allowed to connect to TCP destination port 80 on the webserver in EPG Web. The webserver is allowed to initiate a separate TCP connection to a host port with TCP source port 80.

**Correct Answer: D**

**Section: Security**

**Explanation**

**Explanation/Reference:**

Section: Security

#### QUESTION 127

An engineer is running an ACI fabric, has VMM integration with VMware vCenter, and wants to enable microsegmentation based on vCenter VM attributes.

Which statement describes microsegmentation in this scenario?

- A. ACI does not support microsegmentation based on vCenter VM attributes. The network attributes should be used for microsegmentation.
- B. When enabled, microsegmentation performs distributed switching and routing on the ESXi hosts.
- C. Microsegmentation is supported only using AVE or AVS.
- D. An ACI microsegmented EPG automatically creates a port group with a private VLAN configured on a VMware vCenter distributed virtual switch.

**Correct Answer: D**

**Section: Security**

**Explanation**



**Explanation/Reference:**

Section: Security

**QUESTION 128**

Which two authentication types does Cisco UCS Manager support when configuring authentication? (Choose two.)

- A. PAM
- B. local
- C. 802.1X
- D. Kerberos
- E. LDAP

**Correct Answer:** BE**Section:** Security**Explanation****Explanation/Reference:**

Section: Security

**QUESTION 129**

Refer to the exhibit.

```
NEXUS (config) # feature tacacs+
NEXUS (config) # tacacs-server timeout 5
NEXUS (config) # tacacs-server directed-request
NEXUS (config) # tacacs-server deadtime 0
NEXUS (config) # tacacs server host 10.1.50.20 port 49
NEXUS (config) # tacacs-server host 10.1.50.20 key 7 "Flwhg123" timeout 1
NEXUS (config) # aaa group server tacacs+ ISE
NEXUS (config-tacacs+) # server 10.1.50.20
NEXUS (config-tacacs+) # deadtime 10
NEXUS (config-tacacs+) # use-vrf management
NEXUS (config-tacacs+) # source-interface mgmt 0
NEXUS (config) # aaa authentication login default group ISE
```

VCEup

What is the result of implementing this configuration?

- A. The switch queries the TACACS+ server by using an encrypted text PAP login.
- B. The TACACS+ server uses the type-6 encrypted format.
- C. The switch queries the TACACS+ server by using a clear text PAP login.
- D. The timeout value on the TACACS+ server is 10 seconds.

**Correct Answer:** D**Section:** Security**Explanation****Explanation/Reference:**

Section: Security

**QUESTION 130**

Refer to the exhibit.

>> All > User Management > User Services User Services

Locales Roles Locally Authenticated Users Remotely Authenticated Users Sessions CIMC Sessions Banners Events FSM

Properties

Password Strength Check: ☒

Password Profile

Change Interval:  History Count:

No Change Interval:  Change Count:

Change During Interval: ☒ Enable ☐ Disable

+ - Export Print

Name	
+ admin	
+ test	

Save Changes Reset Values

Which setting must be configured to prevent the reuse of passwords?

- A. Change Interval
- B. No Change Interval
- C. History Count
- D. Change Count

**Correct Answer:** C

**Section:** Security

**Explanation**

**Explanation/Reference:**

Section: Security

#### QUESTION 131

Port security is statically configured on a Cisco Nexus 7700 Series switch and F3 line card. The switch is configured with an Advanced Services license. Which two actions delete secured MAC addresses from the interface? (Choose two.)

- A. The address must be removed from the configuration.
- B. Shutdown and then no shutdown must be run on the interface.
- C. The device must be restarted manually.
- D. The address must reach the age limit that is configured for the interface.
- E. The interface must be converted to a routed port.

**Correct Answer:** AE

**Section:** Security

**Explanation**

**Explanation/Reference:**

Section: Security

#### QUESTION 132

An engineer is configuring AAA authentication on an MDS 9000 switch. The LDAP server is located under the IP 10.10.2.2. The data sent to the LDAP server should be encrypted. Which command should be used to meet these requirements?

- A. ldap-server 10.10.2.2 port 443
- B. ldap-server 10.10.2.2 key SSL\_KEY
- C. ldap-server host 10.10.2.2 key SSL\_KEY
- D. ldap-server host 10.10.2.2 enable-ssl

**Correct Answer:** D

**Section:** Security

**Explanation**

**Explanation/Reference:**

Section: Security

Reference: [https://www.cisco.com/c/en/us/td/docs/switches/datacenter/mds9000/sw/6\\_2/configuration/guides/security/nx-os/sec\\_cli\\_6-x/cradtac1.html](https://www.cisco.com/c/en/us/td/docs/switches/datacenter/mds9000/sw/6_2/configuration/guides/security/nx-os/sec_cli_6-x/cradtac1.html)

#### QUESTION 133

```
NEXUS(config)# radius-server timeout 15
NEXUS(config)# ip radius source-interface Vlan100
NEXUS(config)# radius-server host 10.1.50.31 key 7 "Fewhg1234"
authentication accounting
NEXUS(config)# aaa group server radius RADIUS
NEXUS(config-radius)# server 10.1.50.31
NEXUS(config-radius)# deadtime 10
NEXUS(config-radius)# use-vrf management
NEXUS(config-radius)# source-interface mgmt 0
NEXUS(config)# aaa authentication login default group RADIUS
```

VCEUp

Refer to the exhibit. What is the result of implementing the configuration?

- A. The RADIUS server timeout value is 15 milliseconds.
- B. RADIUS traffic is sourced from the VLAN 200 interface.
- C. Users specify the RADIUS server when they log in.
- D. Only the RADIUS server is used for authentication.

**Correct Answer:** D

**Section:** Security

**Explanation**

**Explanation/Reference:**

Section: Security

#### QUESTION 134

```
switch (config) # feature dhcp
switch (config) # ip dhcp snooping
switch (config) # service dhcp
switch (config) # ip dhcp snooping vlan 100,200,250-252
switch (config) # ip dhcp relay information option
```

Refer to the exhibit. Which action is taken to ensure that the relay agent forwards the DHCP BOOTREQUEST packet to a DHCP server?

- A. Configure the IP address of the DHCP server.
- B. Verify the DHCP snooping bindings.

- C. Configure the interface of the DHCP server as untrusted.  
D. Enable the DHCP relay agent.

**Correct Answer:** B

**Section:** Security

**Explanation**

**Explanation/Reference:**

Section: Security

Reference: [https://www.cisco.com/en/US/docs/ios/12\\_4t/ip\\_addr/configuration/guide/htdhcpre.html](https://www.cisco.com/en/US/docs/ios/12_4t/ip_addr/configuration/guide/htdhcpre.html)

#### QUESTION 135

DRAG DROP

An engineer is implementing NetFlow on a Cisco Nexus 7000 Series Switch.

Drag and drop the NetFlow commands from the left into the correct order they must be entered on the right.

**Select and Place:**

N7K-1(config)# interface <interface> N7K-1(config-if)# ip flow monitor NetflowMonitor input	Step 1
N7K-1(config)# feature netflow	Step 2
N7K-1(config)# flow exporter NetflowMonitor N7K-1(config)# flow record NetflowMonitor	Step 3
N7K-1(config)# flow monitor NetflowMonitor	Step 4

**Correct Answer:**

	N7K-1(config)# feature netflow
	N7K-1(config)# flow exporter NetflowMonitor N7K-1(config)# flow record NetflowMonitor
	N7K-1(config)# flow monitor NetflowMonitor
	N7K-1(config)# interface <interface> N7K-1(config-if)# ip flow monitor NetflowMonitor input

**Section:** Network

**Explanation**

**Explanation/Reference:**

Reference: <https://www.cisco.com/c/en/us/support/docs/switches/nexus-7000-series-switches/112213-netflow-nexus7000-nsox-configex.html>

**QUESTION 136**  
DRAG DROP

```
; Router 2 configuration
interface loopback1
  ip address 10.10.32.121/30
  ip ospf network point-to-point
  ip router ospf 1 area 0.0.0.0
  ip pim sparse-mode

ip pim rp-address 10.10.32.122 group-list 225.0.0.0/8 bi-dir
```

Refer to the exhibit. In a bidirectional PIM network using Phantom RP as an RP redundancy mechanism, two Cisco NX-OS routers have these requirements:

- R1 must be the active RP.
- R2 must be the backup RP that is used only if R1 is not reachable.

Drag and drop the configuration steps to complete the configuration for Router 2. Not all configuration steps are used.

**Select and Place:**

```
; Router 2 configuration
interface loopback1
  ip address 
  ip ospf network 
  ip router ospf 1 area 0.0.0.0
  ip pim 
  ip pim rp-address  group-list 225.0.0.0/8 bi-dir
```

10.10.32.121/32

point-to-point

10.10.32.121/29

sparse-mode

10.10.32.121

broadcast

10.10.32.122

dense-mode

**Correct Answer:**



```
; Router 2 configuration
interface loopback1
  ip address 10.10.32.121/29
  ip ospf network point-to-point
  ip router ospf 1 area 0.0.0.0
  ip pim sparse-mode
  ip pim rp-address 10.10.32.122 group-list 225.0.0.0/8 bi-dir
```

10.10.32.121/32	
10.10.32.121	broadcast
	dense-mode

**Section: Network**  
**Explanation**

**Explanation/Reference:**

Reference:

<https://community.cisco.com/t5/networking-documents/rp-redundancy-with-pim-bidir-phantom-rp/ta-p/3117191>

**QUESTION 137**

DRAG DROP

An engineer deploys a custom guest shell rootfs onto multiple switches.

Drag and drop the steps from the left into the correct order on the right.

Export the Guest Shell rootfs.

**Select and Place:**



Customize the guest shell rootfs.	Step 1
Export the Guest Shell rootfs.	Step 2
Store it in a file server.	Step 3
Import the Guest Shell rootfs to other switches.	Step 4
Install the specific Guest Shell across devices simultaneously.	Step 5

Correct Answer:

	Customize the guest shell rootfs.
	Export the Guest Shell rootfs.
	Store it in a file server.
	Import the Guest Shell rootfs to other switches.
	Install the specific Guest Shell across devices simultaneously.

Section: Compute  
Explanation

Explanation/Reference:

**QUESTION 138**  
DRAG DROP

An engineer is configuring VNTag between a virtualized server and a Cisco Nexus 5500 Series switch.

Drag and drop the configuration steps from the left into the correct order on the right.

Select and Place:

Configure support for VNTag mode on the interface that connects to the server.	Step 1
Configure the vNICs of the server.	Step 2
Configure the server to support NIV mode.	Step 3
Enable the virtualization feature set.	Step 4
Configure the port profile.	Step 5
Install the virtualization feature set.	Step 6

Correct Answer:

	Install the virtualization feature set.
	Enable the virtualization feature set.
	Configure the port profile.
	Configure support for VNTag mode on the interface that connects to the server.
	Configure the vNICs of the server.
	Configure the server to support NIV mode.

**Section: Compute**  
**Explanation**

**Explanation/Reference:**

Reference:

[https://www.cisco.com/c/en/us/td/docs/switches/datacenter/nexus5500/sw/adapter-fex/6x/b\\_5500\\_Adapter\\_FEX\\_Config\\_6x/b\\_5500\\_Adapter\\_FEX\\_Config\\_602N11\\_chapter\\_010.html](https://www.cisco.com/c/en/us/td/docs/switches/datacenter/nexus5500/sw/adapter-fex/6x/b_5500_Adapter_FEX_Config_6x/b_5500_Adapter_FEX_Config_602N11_chapter_010.html)

**QUESTION 139**  
**DRAG DROP**

Drag and drop the characteristics from the left onto the correct storage systems on the right.

**Select and Place:**

expensive and complex to manage	NAS
moderately expensive and simple to configure	
most resilient, highly scalable, and high-performance storage	
appliance providing file system access	
lacks scalability, performance, and advanced features	SAN

Correct Answer:

	NAS
	lacks scalability, performance, and advanced features
	moderately expensive and simple to configure
	appliance providing file system access
	SAN
	expensive and complex to manage
	most resilient, highly scalable, and high-performance storage

Section: Storage Network  
Explanation

Explanation/Reference:

**QUESTION 140**  
DRAG DROP

An engineer must recover configuration on a Cisco MDS 9000 Series switch from a previous version that was backed up to bootflash and then verify the restoration.

Drag and drop the commands on the left to the correct order on the right.

Select and Place:

copy bootflash:<configuration_file> running-config	Step 1
copy running-config startup-config	Step 2
show startup-config	Step 3
write erase	Step 4
reload	Step 5

Correct Answer:

	write erase
	reload
	copy bootflash:<configuration_file> running-config
	copy running-config startup-config
	show startup-config

**Section: Storage Network**  
**Explanation**

**Explanation/Reference:**

**QUESTION 141**  
DRAG DROP

Drag and drop the characteristics from the left onto the NAS protocols on the right. Some characteristics are used more than once.



Select and Place:

used to boot VHDX files

used to boot VMDK files

uses lease-based model for file locking

used to provide shared storage for hypervisors

#### NFS

#### SMB/CIFS

Correct Answer:

used to boot VHDX files

used to boot VMDK files

uses lease-based model for file locking

used to provide shared storage for hypervisors

#### NFS

used to boot VHDX files

uses lease-based model for file locking

used to provide shared storage for hypervisors

#### SMB/CIFS

used to boot VMDK files

used to provide shared storage for hypervisors

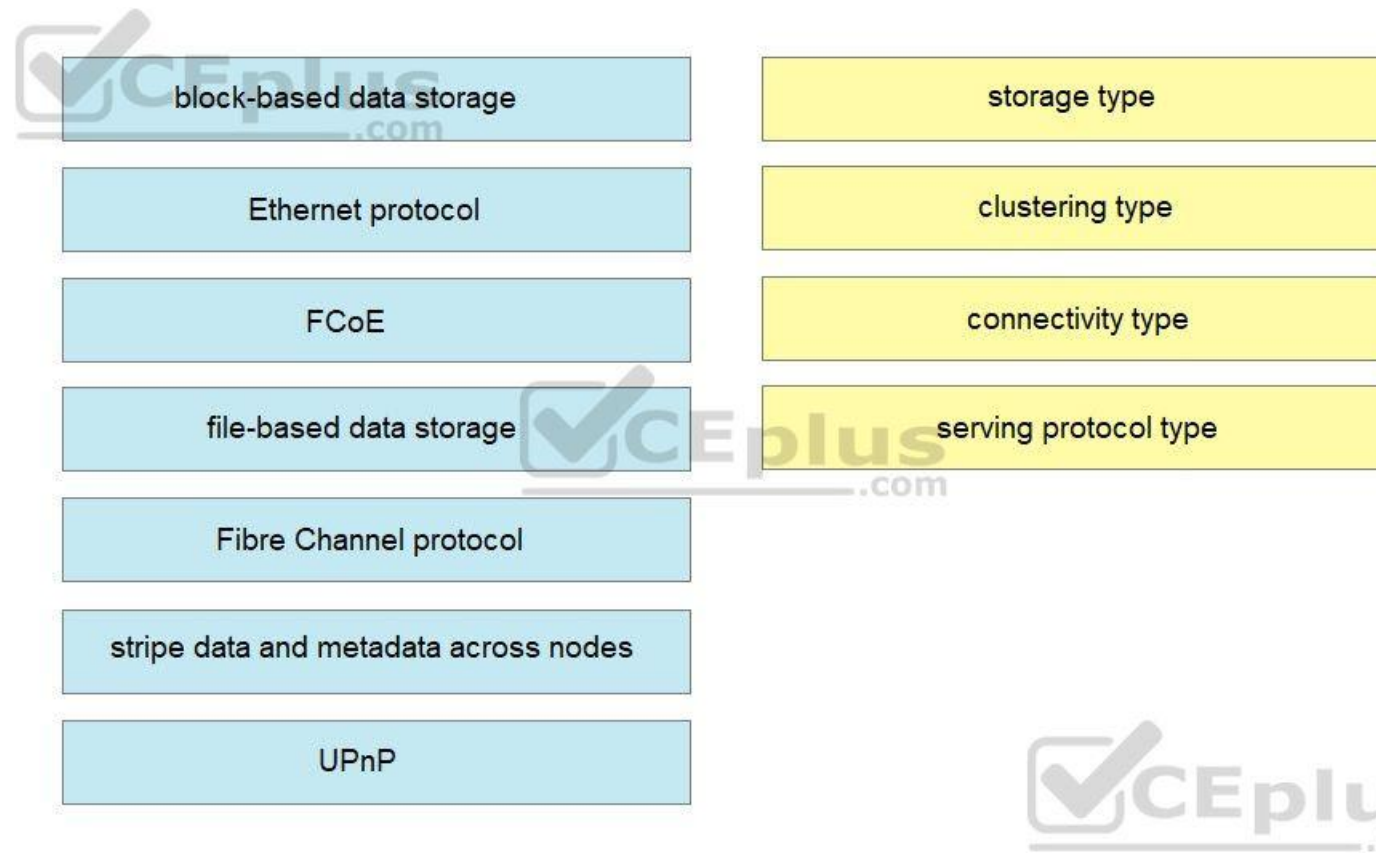
Section: Storage Network  
Explanation

Explanation/Reference:

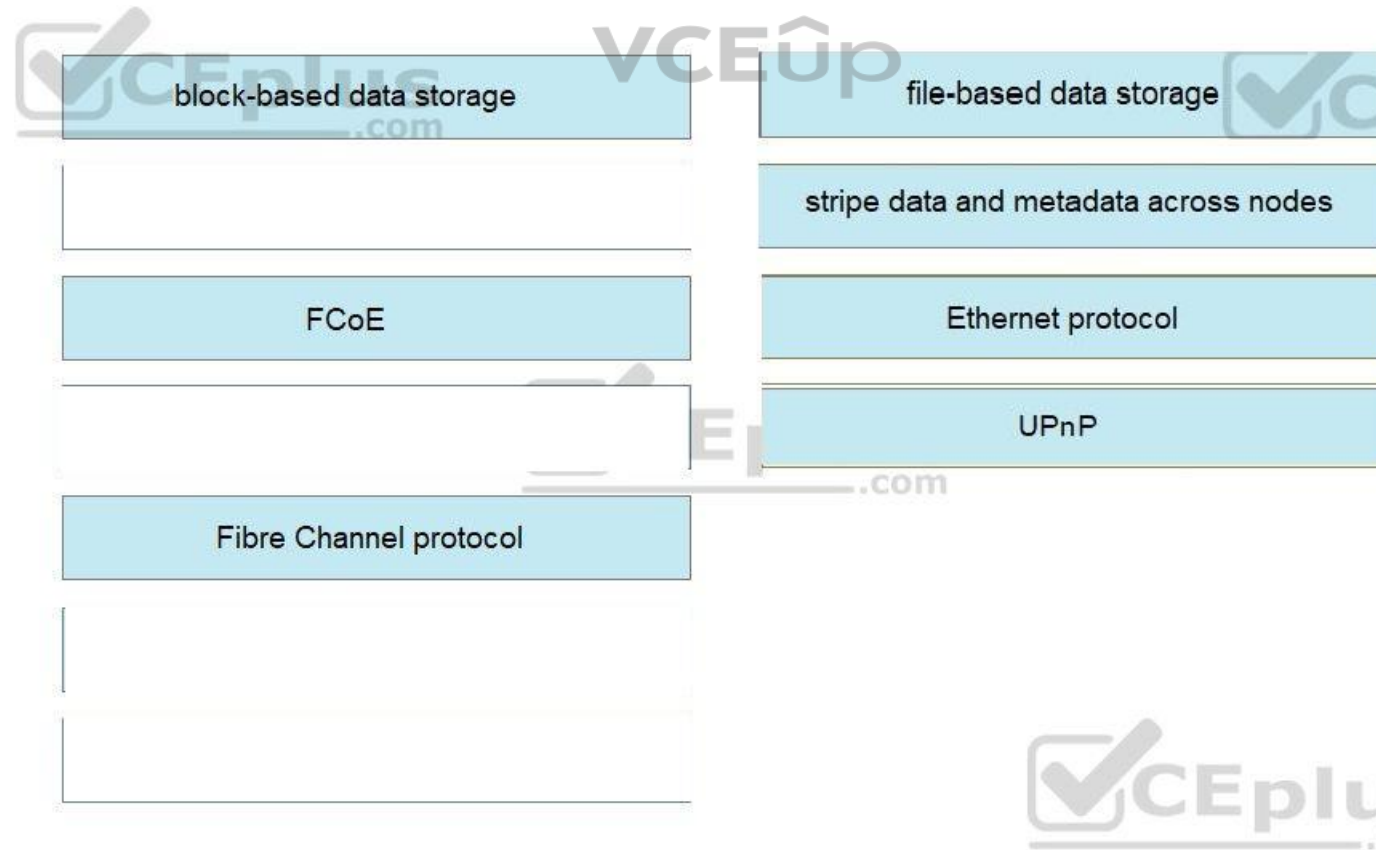
QUESTION 142  
DRAG DROP

Drag and drop the NAS features from the left onto the NAS descriptions on the right. Not all features are used.

Select and Place:



Correct Answer:



Section: Storage Network  
Explanation

Explanation/Reference:



Reference:  
[https://en.wikipedia.org/wiki/Network-attached\\_storage](https://en.wikipedia.org/wiki/Network-attached_storage)

**QUESTION 143**  
DRAG DROP

A storage engineer must configure zoning on a Cisco MDS 9000 Series switch. Drag and drop the actions from the left into the order on the right.

**Select and Place:**

zone name Zone1 vsan 4	Step 1
member pwwn 10:00:00:23:45:67:89:ac	Step 2
zoneset activate name Zoneset1 vsan 4	Step 3
member Zone1	Step 4
copy running-config startup-config	Step 5
zoneset name Zoneset1 vsan 4	Step 6

**Correct Answer:**

	zone name Zone1 vsan 4
	member pwwn 10:00:00:23:45:67:89:ac
	zoneset activate name Zoneset1 vsan 4
	member Zone1
	zoneset name Zoneset1 vsan 4
	copy running-config startup-config

**Section: Storage Network**  
**Explanation**

**Explanation/Reference:**

Reference:  
[https://www.cisco.com/c/en/us/td/docs/switches/datacenter/mds9000/sw/6\\_2/configuration/guides/fabric/nx-os/nx\\_os\\_fabric/zone.html](https://www.cisco.com/c/en/us/td/docs/switches/datacenter/mds9000/sw/6_2/configuration/guides/fabric/nx-os/nx_os_fabric/zone.html)

**QUESTION 144**  
DRAG DROP

An engineer deploys a custom Guest Shell rootfs on a Nexus 9000 Series Switch. Drag and drop the steps from the left into the order required to deploy the solution on the right. Not all options are used.

Select and Place:

Customize the Guest Shell rootfs.	Step 1
Export the Guest Shell rootfs.	Step 2
Configure the virtual service.	Step 3
Import the Guest Shell rootfs to other switches.	Step 4
Install the specific Guest Shell across devices simultaneously.	Step 5
Store it in a file server.	

Correct Answer:

	Customize the Guest Shell rootfs.
	Export the Guest Shell rootfs.
Configure the virtual service.	Store it in a file server.
	Import the Guest Shell rootfs to other switches.
	Install the specific Guest Shell across devices simultaneously.

**Section: Automation****Explanation****Explanation/Reference:**

Reference:

[https://www.cisco.com/c/en/us/td/docs/switches/datacenter/nexus9000/sw/7-x/programmability/guide/b\\_Cisco\\_Nexus\\_9000\\_Series\\_NX-OS\\_Programmability\\_Guide\\_7x/Guest\\_Shell.html](https://www.cisco.com/c/en/us/td/docs/switches/datacenter/nexus9000/sw/7-x/programmability/guide/b_Cisco_Nexus_9000_Series_NX-OS_Programmability_Guide_7x/Guest_Shell.html)<https://www.ciscolive.com/c/dam/r/ciscolive/us/docs/2018/pdf/BRKDCN-2015.pdf>**QUESTION 145****DRAG DROP**

A network engineer must implement RBAC on Cisco MDS 9000 Series Multilayer Switches.

Drag and drop the Cisco MDS 9000 Series roles from the left onto the categories they belong to on the right.

**Select and Place:**

System Defined

User Defined

san-operator
global-admin
server-admin
storage-admin
network-admin
network-operator

Correct Answer:

System Defined
network-admin
network-operator
server-admin

User Defined
san-operator
storage-admin
global-admin


Section: Security

**Explanation****Explanation/Reference:**

Reference: [https://www.cisco.com/c/en/us/td/docs/unified\\_computing/ucs/ucs-manager/GUI-User-Guides/Admin-Management/3-1/b\\_Cisco\\_UCS\\_Admin\\_Mgmt\\_Guide\\_3\\_1/b\\_UCSM\\_Admin\\_Mgmt\\_Guide\\_chapter\\_01.html](https://www.cisco.com/c/en/us/td/docs/unified_computing/ucs/ucs-manager/GUI-User-Guides/Admin-Management/3-1/b_Cisco_UCS_Admin_Mgmt_Guide_3_1/b_UCSM_Admin_Mgmt_Guide_chapter_01.html)

**QUESTION 146****DRAG DROP**

An engineer is implementing security on the Cisco MDS 9000 switch.

Drag and drop the descriptions from the left onto the correct security features on the right.

**Select and Place:**

can be distributed via fabric services	<b>Fabric Binding</b>
uses the Exchange Fabric Membership Data protocol	Target 1
allows a preconfigured set of Fibre Channel devices to logically connect to SAN ports	Target 2
prevent unauthorized switches from joining the fabric or disrupting current fabric operations	<b>Port Security</b>
	Target 3
	Target 4

**Correct Answer:**

	<b>Fabric Binding</b>
	uses the Exchange Fabric Membership Data protocol
	allows a preconfigured set of Fibre Channel devices to logically connect to SAN ports
	<b>Port Security</b>
	can be distributed via fabric services
	prevent unauthorized switches from joining the fabric or disrupting current fabric operations

**Section: Security****Explanation****Explanation/Reference:**



**QUESTION 147**  
DRAG DROP

Drag and drop the storage technologies from the left onto the correct descriptions on the right.

Select and Place:

NFSv2	uses client machine authentication
Kerberos	uses users authentication
NFSv4	authenticates clients and servers in NFSv4
RADIUS	authenticates clients to corporate directory systems

Correct Answer:

	NFSv2
	NFSv4
	Kerberos
	RADIUS

**Section: Security**  
**Explanation**

**Explanation/Reference:**

**QUESTION 148**

Which behavior defines streaming telemetry as a push model in Cisco devices?

- A. Events and network changes generate telemetry data
- B. Monitoring clients are pulling data from the network to see real-time statistics
- C. JSON encoded telemetry data is transported using the gRPC protocol
- D. The network devices send data in JSON or GPB format to configure endpoints

**Correct Answer: D**  
**Section: Network**  
**Explanation**

**Explanation/Reference:**  
Section: Network



**QUESTION 149**

After a Cisco Nexus 7000 Series Switch chassis replacement, the administrator discovers that all vPC-enabled LACP port channels are reinitialized. The administrator wants to prevent this issue the next time the chassis is replaced. Which two actions must be taken to meet this requirement before the isolated device is reloaded? (Choose two.)

- A. Change the vPC system-priority of the replacement chassis to a higher value than the peer
- B. Set the vPC MAC address to a higher value than the peer
- C. Configure auto-recovery to the disable state on both peers
- D. Set the vPC MAC address to a lower value than the peer
- E. Change the vPC system-priority of the replacement chassis to a lower value than the peer

**Correct Answer:** AC

**Section:** Network

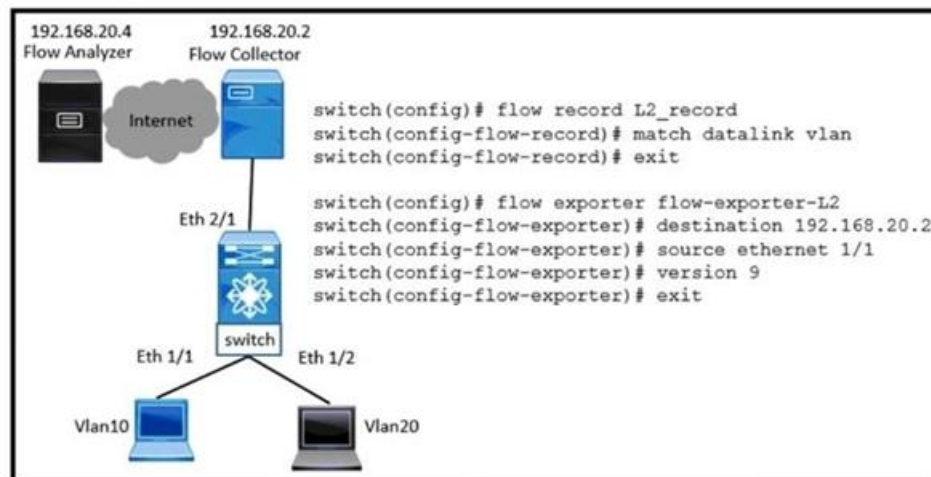
**Explanation**

**Explanation/Reference:**

Section: Network

**QUESTION 150**

Refer to the exhibit. VLAN 10 is experiencing delays and packet drops when the traffic is forwarded through the switch. The destination flow analyzer accepts traffic captures of not more than 30 seconds. Which configuration implements the traffic capture that meets the requirements?



VCEup

- A. 

```
switch(config)# flow timeout 30000
switch(config)# interface ethernet 1/1
switch(config-if)# switchport
switch(config-if)# switchport access vlan 10
switch(config-if)# ip flow monitor L2_monitor output
```
- B. 

```
switch(config)# interface ethernet 1/1
switch(config-if)# flow timeout 30
switch(config-if)# switchport access vlan 10
switch(config-if)# mac packet-classify
switch(config-if)# ip flow monitor L2_monitor input
```
- C. 

```
switch(config)# interface ethernet 1/1
switch(config)# flow timeout 30000
switch(config-if)# switchport
switch(config-if)# layer2-switched flow monitor L2_monitor output
switch(config-if)# switchport access vlan 10
```
- D. 

```
switch(config)# flow timeout 30
switch(config)# interface ethernet 1/1
switch(config-if)# switchport
switch(config-if)# switchport access vlan 10
switch(config-if)# mac packet-classify
switch(config-if)# layer2-switched flow monitor L2_monitor input
```

**Correct Answer:** D

**Section:** Network

**Explanation**

**Explanation/Reference:**

Section: Network

**QUESTION 151**

An engineer performs a set of configuration changes for the vPC domain using Session Manager. Which two commands are used to verify the configuration and apply the device changes when no errors are returned? (Choose two.)

- A. commit
- B. verify
- C. apply
- D. checkpoint
- E. write

**Correct Answer:** AE**Section:** Network**Explanation****Explanation/Reference:**

Section: Network

**QUESTION 152**

Refer to the exhibit. An engineer must monitor all LAN traffic on Fabric A from a blade server. Which source should be configured in the test-span monitor session to complete this task?

LAN / Traffic Monitoring Sessions / Fabric A / Monitor Session test-span

General Faults Events

Actions	Properties
Set Destination	Name : test-span
Clear Destination	Admin State : <input checked="" type="radio"/> Enabled <input type="radio"/> Disabled
Delete	Destination : sys/switch-A/slot-1/switch-ether/port-17
	Admin Speed : <input type="radio"/> 1 Gbps <input checked="" type="radio"/> 10 Gbps <input type="radio"/> 40 Gbps
	Operational State : Down
	Operational State Reason : No Sources Configured
	Configuration Success : Yes
	Configuration Failure Reason :
	Sources

- A. all uplink FCoE ports
- B. all vNICs from the service profile that correspond to this server
- C. all uplink Ethernet ports
- D. all vHBAs from the service profile that correspond to this server

**Correct Answer:** B**Section:** Network**Explanation****Explanation/Reference:**

Section: Network

Reference:

[https://www.cisco.com/en/US/docs/unified\\_computing/ucs/sw/gui/config/guide/141/UCSM\\_GUI\\_Configuration](https://www.cisco.com/en/US/docs/unified_computing/ucs/sw/gui/config/guide/141/UCSM_GUI_Configuration)**QUESTION 153**

An engineer configured an environment that contains the vPC and non-vPC switches. However, it was noticed that the downstream non-vPC switches do not receive the same STP bridge ID from the upstream vPC switch peers. Which vPC feature must be implemented to ensure that vPC and non-vPC switches receive the same STP bridge ID from the upstream vPC switch peers?

- A. vpc local role-priority 4000
- B. peer-switch

- C. system-mac 0123.4567.89ab
- D. peer-gateway

**Correct Answer:** B  
**Section:** Network  
**Explanation**

**Explanation/Reference:**  
Section: Network

Reference: [https://www.cisco.com/c/en/us/td/docs/switches/datacenter/nexus9000/sw/6-x/interfaces/configuration/guide/b\\_Cisco\\_Nexus\\_9000\\_Series\\_NX-OS\\_Interfaces\\_Configuration\\_Guide/b\\_Cisco\\_Nexus\\_9000\\_Series\\_NX-OS\\_Interfaces\\_Configuration\\_Guide\\_chapter\\_0111.html](https://www.cisco.com/c/en/us/td/docs/switches/datacenter/nexus9000/sw/6-x/interfaces/configuration/guide/b_Cisco_Nexus_9000_Series_NX-OS_Interfaces_Configuration_Guide/b_Cisco_Nexus_9000_Series_NX-OS_Interfaces_Configuration_Guide_chapter_0111.html)

#### QUESTION 154

A network architect wants to propose a scalable network monitoring solution in which data is repeatedly acquired from network devices. The solution must use a push model and provide close to real-time access to operational data. Which technology must be used to meet these requirements?

- A. CLI-based scripting
- B. logging
- C. SNMPv3
- D. streaming telemetry

**Correct Answer:** D  
**Section:** Network  
**Explanation**

**Explanation/Reference:**  
Section: Network

Reference:  
<https://blogs.cisco.com/developer/its-time-to-move-away-from-snmp-and-cli-and-use-model-driven-telemetry>

#### QUESTION 155

A Cisco MDS 9000 Series Switch is configured for SAN Analytics and SAN Telemetry Streaming. An engineer must enable analytics for NVMe on interfaces in the range of fc1/1-12. Due to a large amount of traffic generated in the SAN environment, the data must be collected at regular intervals of 60 seconds from ports fc1/1-12 and then for ports fc1/13-24 for the next 60 seconds. Ports in the range fc1/13-24 were already enabled for analytics. Which set of commands must be used to meet these requirements?

- A. 

```
analytics port-sampling module 1 size 12 interval 60000

interface fc1/1-12
analytics fc-scsi
analytics fc-nvme
```
- B. 

```
analytics port-sampling module 1 size 12 interval 60

interface fc1/1-12
analytics type fc-nvme
```
- C. 

```
interface fc1/1-12
port-sampling module 1 size 12 interval 60
analytics nvme
```
- D. 

```
interface fc1/1-12
port-sampling module 1 size 12 interval 60000
analytics type fc-scsi
```

**Correct Answer:** B  
**Section:** Network  
**Explanation**

**Explanation/Reference:**  
Section: Network

Reference: [https://www.cisco.com/c/en/us/td/docs/switches/datacenter/mds9000/sw/8\\_x/config/san\\_analytics/cisco-mds9000-san-analytics-telemetry-streaming-config-guide-8x/configuring\\_san\\_telemetry-streaming.html](https://www.cisco.com/c/en/us/td/docs/switches/datacenter/mds9000/sw/8_x/config/san_analytics/cisco-mds9000-san-analytics-telemetry-streaming-config-guide-8x/configuring_san_telemetry-streaming.html)

**QUESTION 156**

A customer needs a tool to take advantage of the CI/CD model to streamline its operations and optimize cost. The customer wants to integrate the solution with the Cisco products it currently uses, including Cisco ACI networking and Cisco UCS servers. The solution should also provide on-premises Kubernetes and AppDynamics performance monitoring. Because of the security requirements, the solution should not install a local client on products under management. Which orchestration solution meets these requirements?

- A. Cisco UCS Director
- B. Cisco CloudCenter
- C. Cisco APIC
- D. Cisco DCNM

**Correct Answer: B**

**Section: Network**

**Explanation**

**Explanation/Reference:**

Section: Network

**QUESTION 157**

A customer wants to offload some of its order processing to a public cloud environment. The customer environment is based on Cisco ACI and uses Puppet with containerized applications. The operations team requires a solution to orchestrate and optimize the cost of the new solution. Which product must be used to meet these requirements?

- A. Cisco Workload Optimization Manager
- B. Cisco CloudCenter
- C. Cisco Intersight
- D. Cisco Data Center Network Manager

**Correct Answer: B**

**Section: Network**

**Explanation**

**Explanation/Reference:**

Section: Network

**QUESTION 158**

An engineer must configure OSPF routing on Cisco Nexus 9000 Series Switches. The IP subnet of the Eth1/2 interfaces for both switches must be advertised via OSPF. However, these interfaces must not establish OSPF adjacency or send routing updates. The current OSPF adjacency over the interfaces Eth1/1 on SW1 and Eth1/1 on SW2 must remain unaffected. Which configuration must be applied to both Nexus switches to meet these requirements?

- A. 

```
interface ethernet 1/2
passive-interface default
```
- B. 

```
interface ethernet 1/2
ip ospf network point-to-point
```
- C. 

```
interface ethernet 1/2
ip ospf passive-interface
```
- D. 

```
interface ethernet 1/2
no ip ospf passive-interface
```

**Correct Answer: C**

**Section: Network**

**Explanation**

**Explanation/Reference:**

Section: Network

Reference:

[https://www.cisco.com/c/en/us/td/docs/switches/datacenter/nexus9000/sw/6-x/unicast/configuration/guide/l3\\_cli\\_nxos/l3\\_ospf.html](https://www.cisco.com/c/en/us/td/docs/switches/datacenter/nexus9000/sw/6-x/unicast/configuration/guide/l3_cli_nxos/l3_ospf.html)

**QUESTION 159**

A network engineer must perform a backup and restore of the Cisco Nexus 5000 Series Switch configuration. The backup must be made to an external backup server. The only protocol permitted between the Cisco Nexus switch and the backup server is UDP. The backup must be used when the current working configuration of the switch gets corrupted. Which set of steps must be taken to meet these requirements?

- A. 1. Perform a running-config backup to an SFTP server.  
2. Copy backup-config from the SFTP server to the running-config file.
- B. 1. Perform a startup-config backup to a TFTP server.  
2. Copy backup-config from the backup server to the running-config file.
- C. 1. Perform a running-config backup to an SCP server.  
2. Copy running-config in the boot flash to the running-config file.
- D. 1. Perform a startup-config backup to an FTP server.  
2. Copy startup-config in the boot flash to the running-config file.

**Correct Answer: B**

**Section: Network**

**Explanation**

**Explanation/Reference:**

Section: Network

#### QUESTION 160

Refer to the exhibit. Which command is run from the Guest Shell to set the description on the first five interfaces of the Cisco Nexus switch?

```
interface Ethernet1/1
description Server1
interface Ethernet1/2
description Server2
interface Ethernet1/3
description Server3
interface Ethernet1/4
description Server4
interface Ethernet1/5
description Server5
```

VCEUp

- A. [guestshell@guestshell ~]\$ for x in {1..5}; dohost "conf t ; interface eth1/\$x ; description Server\$x";
- B. [guestshell@guestshell ~]\$ for x in {1..5}; do dohost "conf t ; interface eth1/\$x ; description Server\$x"; done
- C. [guestshell@guestshell ~]\$ for x in {1..5}; do dohost "conf t"; "interface eth1/\$x" ; "description Server\$x"; done
- D. [guestshell@guestshell ~]\$ for x in {1..5}; dohost "conf t ; interface eth1/\$x ; description Server\$x";

**Correct Answer: A**

**Section: Network**

**Explanation**

**Explanation/Reference:**

Section: Network

Reference:

[https://www.cisco.com/c/en/us/td/docs/switches/datacenter/nexus9000/sw/7-x/programmability/guide/b\\_Cisco\\_Nexus\\_9000\\_Series\\_NX-OS\\_Programmability\\_Guide\\_7x/Guest\\_Shell.html](https://www.cisco.com/c/en/us/td/docs/switches/datacenter/nexus9000/sw/7-x/programmability/guide/b_Cisco_Nexus_9000_Series_NX-OS_Programmability_Guide_7x/Guest_Shell.html)

#### QUESTION 161

An engineer must configure multiple EPGs on a single access port in a large Cisco ACI fabric without using VMM integration. The relevant access policies and tenant policies have been created. A single AAEP is used to configure the access ports in the fabric. Which two additional steps must be taken to complete the configuration? (Choose two.)

- A. The EPGs must link directly to the corresponding AAEP
- B. A contract must be defined between the EPGs
- C. The EPGs must be configured as static ports
- D. The corresponding bridge domains must be configured in legacy mode
- E. The EPGs must be linked to the correct physical domain

**Correct Answer: BE**

**Section: Network**

**Explanation**

**Explanation/Reference:**

Section: Network

**QUESTION 162**

Several production and development database servers exist in the same EPG and IP subnet. The IT security policy is to prevent connections between production and development. Which attribute must be used to assign the servers to different microsegments?

- A. data center
- B. VM name
- C. IP address
- D. VMM domain

**Correct Answer: B**

**Section: Network**

**Explanation**

**Explanation/Reference:**

Section: Network

Reference:

[https://www.cisco.com/c/en/us/td/docs/switches/datacenter/aci/apic/sw/3-x/virtualization/b\\_ACI\\_Virtualization\\_Guide\\_3\\_1\\_1/b\\_ACI\\_Virtualization\\_Guide\\_3\\_1\\_1\\_chapter\\_0100.html#concept\\_D527CF389D4440E69A288093516B3643](https://www.cisco.com/c/en/us/td/docs/switches/datacenter/aci/apic/sw/3-x/virtualization/b_ACI_Virtualization_Guide_3_1_1/b_ACI_Virtualization_Guide_3_1_1_chapter_0100.html#concept_D527CF389D4440E69A288093516B3643)

**QUESTION 163**

An environment consists of a Cisco MDS 9000 Series Switch that uses port channels. An engineer must ensure that frames between the source and the destination follow the same links for a specific flow. Subsequent flows are allowed to use a different link. Which load balancing method should be used to accomplish this goal?

- A. src-id/dst-id
- B. src-dst-oui
- C. src-dst-port
- D. src-id/dst-id/oxid

**Correct Answer: D**

**Section: Network**

**Explanation**

**Explanation/Reference:**

Section: Network

Reference:

[https://www.cisco.com/c/en/us/td/docs/switches/datacenter/mds9000/sw/6\\_2/configuration/guides/interfaces/nx-os/cli\\_interfaces/pc.html](https://www.cisco.com/c/en/us/td/docs/switches/datacenter/mds9000/sw/6_2/configuration/guides/interfaces/nx-os/cli_interfaces/pc.html)

**QUESTION 164**

An engineer is implementing Cisco Intersight in a secure environment. The environment must use LDAP directory service and ensure information integrity and confidentiality. Which two steps must be taken to implement the solution? (Choose two.)

- A. Enable Certificate Signing Request in Cisco Intersight
- B. Add a trusted root LDAP certificate to Cisco Intersight
- C. Enable Encryption for LDAP
- D. Add a self-signed LDAP certificate to Cisco Intersight
- E. Add a trusted OAuth token to Cisco Intersight

**Correct Answer: AB**

**Section: Compute**

**Explanation**

**Explanation/Reference:**

Section: Compute

**QUESTION 165**

Due to a domain name change at a customer site, a Cisco UCS cluster must be renamed. An engineer must recommend a solution to ensure that the Cisco UCS Manager is available over HTTPS.



Which action accomplishes this goal?

- A. Regenerate the default key ring certificate manually
- B. Reinstall the cluster to generate the default key ring certificate
- C. Reboot the SSO component of the Cisco UCS Manager
- D. Generate a new default key ring certificate from the Cisco UCS Manager

**Correct Answer:** A

**Section:** Compute

**Explanation**

**Explanation/Reference:**

Section: Compute

Reference:

[https://www.cisco.com/c/en/us/td/docs/unified\\_computing/ucs/sw/cli/config/guide/2-0/b\\_UCSM\\_CLI\\_Configuration\\_Guide\\_2\\_0/b\\_UCSM\\_CLI\\_Configuration\\_Guide\\_2\\_0\\_chapter\\_0110.pdf](https://www.cisco.com/c/en/us/td/docs/unified_computing/ucs/sw/cli/config/guide/2-0/b_UCSM_CLI_Configuration_Guide_2_0/b_UCSM_CLI_Configuration_Guide_2_0_chapter_0110.pdf)

#### QUESTION 166

An engineer needs to make an XML backup of Cisco UCS Manager. The backup should be transferred using an authenticated and encrypted tunnel, and it should contain all system and service profiles configuration. Which command must be implemented to meet these requirements?

- A. copy running-config scp://user@host35/backups/all-config9.bak all-configuration
- B. create backup scp://user@host35/backups/all-config9.bak all-configuration
- C. create file scp://user@host35/backups/all-config9.bak all-configuration
- D. copy startup-config scp://user@host35/backups/all-config9.bak all-configuration

**Correct Answer:** A

**Section:** Compute

**Explanation**

**Explanation/Reference:**

Section: Compute

#### QUESTION 167

A network architect considers a Cisco HyperFlex design solution for a company. The proposed solution is for a virtual environment that is not performance-sensitive, but the solution must have high storage capacity and a low cost. Which Cisco HyperFlex storage configuration should be used?

- A. Hybrid
- B. All-SAN
- C. All-NVMe
- D. All-Flash

**Correct Answer:** A

**Section:** Compute

**Explanation**

**Explanation/Reference:**

Section: Compute

Reference:

[https://www.cisco.com/c/en/us/td/docs/unified\\_computing/ucs/UCS\\_CVDs/hx\\_4\\_vsi\\_vmware\\_esxi.html](https://www.cisco.com/c/en/us/td/docs/unified_computing/ucs/UCS_CVDs/hx_4_vsi_vmware_esxi.html)

#### QUESTION 168

The Cisco Nexus 5600 Series Switch experiences occasional packet drops on interface ethernet 1/16. An engineer wants to implement a SPAN session to investigate the issue further. The network analyzer to which the packets must be directed is located on interface 1/3. The analyzer is limited on disk space available for traffic capture, so the Nexus switch should send only the relevant data. Which two command sets configure the SPAN session that meets these requirements? (Choose two.)

- A. `span session 2`  
`type SPAN-on-DROP`  
`destination interface ethernet 1/3`  
`source interface ethernet 1/16`
- B. `interface ethernet 1/3`  
`switchport monitor`
- C. `monitor session 2 type SPAN-on-DROP`  
`destination interface ethernet 1/3`  
`source interface ethernet 1/16`
- D. `monitor session 2`  
`destination interface ethernet 1/3`  
`span interface ethernet 1/16`
- E. `interface ethernet 1/3`  
`switchport span`

**Correct Answer:** BC

**Section:** Compute

**Explanation**

**Explanation/Reference:**

Section: Compute

Reference:

[https://www.cisco.com/c/en/us/td/docs/switches/datacenter/nexus6000/sw/system\\_management/6x/b\\_6k\\_System\\_Mgmt\\_Config\\_6x/b\\_6k\\_System\\_Mgmt\\_Config\\_602N11\\_chapter\\_01111.pdf](https://www.cisco.com/c/en/us/td/docs/switches/datacenter/nexus6000/sw/system_management/6x/b_6k_System_Mgmt_Config_6x/b_6k_System_Mgmt_Config_602N11_chapter_01111.pdf)

#### QUESTION 169

An engineer needs to monitor ingress traffic that arrives at interface Ethernet 1/3 that belongs to a Cisco Nexus 5600 Series Switch. The traffic analyzer machine located at interface Ethernet 1/5 is already monitoring other production, and the traffic analyzer must not be impacted by the traffic captured from the interface Eth1/3. The operations team allocated a traffic budget for the new monitoring session of 1 Gbps to meet this requirement. Which set of commands configures the SPAN session?

- A. `interface Ethernet 1/3`  
`monitor session 2`  
`destination interface ethernet 1/5`  
`source interface rx`  
  
`interface Ethernet 1/5`  
`monitor rate-limit 1G`
- B. `interface Ethernet 1/3`  
`monitor rate-limit 1G`  
`destination interface ethernet 1/5`  
`source interface rx`  
  
`interface Ethernet 1/5`  
`monitor session 2`  
`destination interface tx`
- C. `interface Ethernet 1/3`  
`switchport monitor rate-limit 1G`  
  
`monitor session 2`  
`destination interface ethernet 1/5`  
`source interface Eth 1/3`
- D. `interface Ethernet 1/3 rx`  
`switchport mode SD`  
`switchport monitor rate-limit 1G`  
`monitor session2`  
`destination interface ethernet 1/5`

**Correct Answer:** C

**Section:** Compute

**Explanation**

**Explanation/Reference:**

Section: Compute

#### QUESTION 170

An engineer needs to perform a backup of user roles and locales from Cisco UCS Manager to replicate the setting to a different fabric interconnect. The engineer wants to review the file before importing it to a target fabric interconnect. Which backup type must be selected to meet these requirements?

- A. logical configuration
- B. full state
- C. system configuration
- D. all configuration

**Correct Answer: C**

**Section: Compute**

**Explanation**

**Explanation/Reference:**

Section: Compute

Reference:

[https://www.cisco.com/en/US/docs/unified\\_computing/ucs/sw/gui/config/guide/141/UCSM\\_GUI\\_Configuration\\_Guide\\_141\\_chapter43.html](https://www.cisco.com/en/US/docs/unified_computing/ucs/sw/gui/config/guide/141/UCSM_GUI_Configuration_Guide_141_chapter43.html)

#### QUESTION 171

An engineer creates a service profile in Cisco UCS Manager and must assign a policy that reboots blades when changes are applied. The changes must be applied only after user acknowledgment. Which two policies must be configured to meet these requirements? (Choose two.)

- A. Reboot Policy
- B. Boot Policy
- C. Power Control Policy
- D. Global Policy
- E. Maintenance Policy

**Correct Answer: AE**

**Section: Compute**

**Explanation**

**Explanation/Reference:**

Section: Compute

Reference:

[https://www.cisco.com/c/en/us/td/docs/unified\\_computing/ucs/ucs-manager/GUI-User-Guides/Admin-Management/3-1/b\\_Cisco\\_UCS\\_Admin\\_Mgmt\\_Guide\\_3\\_1/b\\_Cisco\\_UCS\\_Admin\\_Mgmt\\_Guide\\_3\\_1\\_chapter\\_01011.html](https://www.cisco.com/c/en/us/td/docs/unified_computing/ucs/ucs-manager/GUI-User-Guides/Admin-Management/3-1/b_Cisco_UCS_Admin_Mgmt_Guide_3_1/b_Cisco_UCS_Admin_Mgmt_Guide_3_1_chapter_01011.html)

#### QUESTION 172

A network engineer plans to upgrade the firmware of a Cisco UCS B-Series chassis by using the Auto Install feature. Which component is upgraded during the infrastructure firmware upgrade stage?

- A. Adapter
- B. Cisco IMC
- C. I/O Modules
- D. BIOS

**Correct Answer: C**

**Section: Compute**

**Explanation**

**Explanation/Reference:**

Section: Compute

Reference:

[https://www.cisco.com/c/en/us/td/docs/unified\\_computing/ucs/sw/firmware-mgmt/gui/2-2/b\\_GUI\\_Firmware\\_Management\\_22/b\\_GUI\\_Firmware\\_Management\\_22\\_chapter\\_0101.html#task\\_8F47F9CA290F447589F9384E0B55DC30](https://www.cisco.com/c/en/us/td/docs/unified_computing/ucs/sw/firmware-mgmt/gui/2-2/b_GUI_Firmware_Management_22/b_GUI_Firmware_Management_22_chapter_0101.html#task_8F47F9CA290F447589F9384E0B55DC30)

#### QUESTION 173

An engineer must build a lab replica of a Cisco UCS production environment. The file must be imported into a new Cisco UCS cluster using a Cisco UCS Manager GUI. The file must be in XML format and be exported from Cisco UCS Manager using encrypted method. Which two configuration parameters should be selected to meet these requirements? (Choose two.)

- A. Type: Full state

- B. Type: Logical configuration
- C. Protocol: TFTP
- D. Type: All configuration
- E. Protocol: SCP

**Correct Answer:** DE

**Section:** Compute

**Explanation**

**Explanation/Reference:**

Section: Compute

Reference:

[https://www.cisco.com/en/US/docs/unified\\_computing/ucs/sw/gui/config/guide/141/UCSM\\_GUI\\_Configuration\\_Guide\\_141\\_chapter43.html](https://www.cisco.com/en/US/docs/unified_computing/ucs/sw/gui/config/guide/141/UCSM_GUI_Configuration_Guide_141_chapter43.html)

#### QUESTION 174

A network engineer must configure a power redundancy policy on a Cisco UCS C-Series Rack Server. The power redundancy must support two power sources being used to power the server. Which configuration should be applied to meet the requirement?

- A. 

```
server# scope org /
server /org # scope psu-policy
server /org/psu-policy # set redundancy N+1
server /org/psu-policy* # commit-buffer
```
- B. 

```
server# scope org /
server /org # scope psu-policy
server /org/psu-policy # set redundancy grid
server /org/psu-policy* # commit-buffer
```
- C. 

```
server# scope org /
server /org # scope psu-policy
server /org/psu-policy # set psu-redundancy-policy N+1
server /org/psu-redundancy-policy* # commit-buffer
```
- D. 

```
server# scope org /
server /org # scope psu-policy
server /org/psu-policy # set psu-redundancy-policy grid
server /org/psu-redundancy-policy* # commit-buffer
```

VCEUp

**Correct Answer:** B

**Section:** Compute

**Explanation**

**Explanation/Reference:**

Section: Compute

Reference:

[https://www.cisco.com/en/US/docs/unified\\_computing/ucs/sw/cli/config/guide/1.4.1/CLI\\_Config\\_Guide\\_1\\_4\\_1\\_chapter28.html](https://www.cisco.com/en/US/docs/unified_computing/ucs/sw/cli/config/guide/1.4.1/CLI_Config_Guide_1_4_1_chapter28.html)

#### QUESTION 175

A Cisco UCS user called "Employee1" accidentally changed the boot policy of the Cisco UCS server at the Cisco UCS Manager root level. This change impacted all service profiles, and their storage connectivity was lost. The system administrator wants to prevent this issue from recurring in the future. The new security policy mandates that access must be restricted up to the organization level and prevent other users from modifying root policies. Which action must be taken to meet these requirements?

- A. Modify the privilege level assigned to the user
- B. Assign users to a specific Cisco UCS locale
- C. Assign the user "Employee1" the network-operator role
- D. Define a custom user role and assign it to users

**Correct Answer:** A

**Section:** Compute

**Explanation**

**Explanation/Reference:**

Section: Compute

Reference:

[https://www.cisco.com/c/en/us/td/docs/unified\\_computing/ucs/ucs-manager/GUI-User-Guides/Admin-Management/3-1/b\\_Cisco\\_UCS\\_Admin\\_Mgmt\\_Guide\\_3\\_1/b\\_UCSM\\_Admin\\_Mgmt\\_Guide\\_chapter\\_01.html#concept\\_E41FB2D2F363406EAC1011CC59B5D4BB](https://www.cisco.com/c/en/us/td/docs/unified_computing/ucs/ucs-manager/GUI-User-Guides/Admin-Management/3-1/b_Cisco_UCS_Admin_Mgmt_Guide_3_1/b_UCSM_Admin_Mgmt_Guide_chapter_01.html#concept_E41FB2D2F363406EAC1011CC59B5D4BB)

**QUESTION 176**

A new employee must be granted access to add VLANs into an existing Cisco UCS Manager and configure NTP synchronization with date and time zone settings. Which two privileges must be granted to the employee to complete the task? (Choose two.)

- A. Service Profile Compute (ls-compute)
- B. Ext LAN Policy (ext-lan-policy)
- C. Service Profile Network Policy (ls-network-policy)
- D. Service Profile Config (ls-config)
- E. Ext LAN Config (ext-lan-security)

**Correct Answer:** DE

**Section:** Compute

**Explanation**

**Explanation/Reference:**

Section: Compute

Reference:

[https://www.cisco.com/c/en/us/td/docs/unified\\_computing/ucs/ucs-manager/Reference-Docs/Privileges/4-0/UCSM-Privileges-4\\_0/UCSM-Privileges-4\\_0\\_chapter\\_01.html](https://www.cisco.com/c/en/us/td/docs/unified_computing/ucs/ucs-manager/Reference-Docs/Privileges/4-0/UCSM-Privileges-4_0/UCSM-Privileges-4_0_chapter_01.html)

**QUESTION 177**

Which solution provides remote and direct file-level access to users and systems?

- A. direct-attached storage
- B. Fibre Channel over Ethernet
- C. network-attached storage
- D. storage area network

**Correct Answer:** C

**Section:** Storage Network

**Explanation**

**Explanation/Reference:**

Section: Storage Network

**QUESTION 178**

Which storage protocol reduces file locks by using leasing?

- A. SMB
- B. NFS 3
- C. NFS 4
- D. CIFS

**Correct Answer:** A

**Section:** Storage Network

**Explanation**

**Explanation/Reference:**

Section: Storage Network

Reference:

<https://www.ciscolive.com/c/dam/r/ciscolive/apjc/docs/2016/pdf/BRKCOM-1211.pdf>

**QUESTION 179**

A customer data center is configured for distribution of user roles, call home, and NTP. The data center was split into two geographically separate locations called DC1 and DC2. The requirement is for the user role configurations to be distributed in DC1 and for NTP and call home features to be constrained to DC2. Which two configuration sets must be used to meet these requirements? (Choose two.)

- A. ! On Data Center 1  
configure terminal  
cfs 1  
roles  
aaa
- B. ! On Data Center 1  
configure terminal  
cfs region 1  
ntp  
callhome
- C. ! On Data Center 1  
configure terminal  
cfs 1  
ntp  
callhome
- D. ! On Data Center 2  
configure terminal  
cfs region 2  
roles
- E. ! On Data Center 2  
configure terminal  
cfs 2  
roles  
aaa

**Correct Answer:** BD

**Section:** Storage Network

**Explanation**

**Explanation/Reference:**

Section: Storage Network

#### QUESTION 180

Refer to the exhibit. An engineer must distribute all the host ports to use all eight configured FEX uplinks. The solution must minimize disruption if an uplink fails. Which action accomplishes this objective?

```
NEXUS# configure terminal
NEXUS# locator-led fex 100
NEXUS(config)# feature fex
NEXUS(config)# fex 100
NEXUS(config-fex)# type N2232TM
NEXUS(config-fex)# serial JAF1427BQLG
NEXUS(config)# interface ethernet 1/24-32
NEXUS(config-if)# switchport
NEXUS(config-if)# switchport mode fex-fabric
NEXUS(config-if)# fex associate 100
NEXUS(config-if)# no shutdown

NEXUS # show fex 100 detail
FEX: 100 Description: FEX0100 state: Online
FEX version: 5.0(2)N1(1) [Switch version: 5.0(2)N1(1)]
FEX Interim version: 5.0(2)N1(0.205)
Switch Interim version: 5.0(2)N1(0.205)
Extender Model: N2K-C2232TM, Extender Serial: JAF1427BQLG
Part No: 73-13373-01
Card Id: 132, Mac Addr: 68:ef:bd:62:2a:42, Num Macs: 64
Module Sw Gen: 21 [Switch Sw Gen: 21]
post level: complete
pinning-mode: static    Max-links: 1
Fabric port for control traffic: Eth1/29
Fabric interface state:
  Eth1/25 - Interface Up. State: Active
  Eth1/26 - Interface Up. State: Active
  Eth1/27 - Interface Up. State: Active
  Eth1/28 - Interface Up. State: Active
  Eth1/29 - Interface Up. State: Active
  Eth1/30 - Interface Up. State: Active
  Eth1/31 - Interface Up. State: Active
  Eth1/32 - Interface Up. State: Active
```

- A. Set the pinning max-links value to 8
- B. Configure the eight uplinks in a port channel
- C. Change the supported FEX type
- D. Statically assign each host interface to a fabric uplink

**Correct Answer:** A



**Section: Storage Network****Explanation****Explanation/Reference:**

Section: Storage Network

**QUESTION 181**

An engineer must start a software upgrade on a Cisco Nexus 5000 Series Switch during a zone merge. What is the result of this action?

- A. The upgrade stops
- B. The zone merge pauses until the upgrade completes
- C. The zone merge stops
- D. The zone merge executes and then the upgrade completes

**Correct Answer: A**

**Section: Storage Network****Explanation****Explanation/Reference:**

Section: Storage Network

Reference: [https://www.cisco.com/c/en/us/td/docs/switches/datacenter/nexus5000/sw/upgrade/503\\_N1\\_1/n5000\\_upgrade\\_downgrade\\_503\\_n1\\_1.html](https://www.cisco.com/c/en/us/td/docs/switches/datacenter/nexus5000/sw/upgrade/503_N1_1/n5000_upgrade_downgrade_503_n1_1.html)

**QUESTION 182**

A network engineer needs to upgrade the EPLDs of the fabric modules for a Cisco MDS director-class switch. In which order are components reloaded during the process?

- A. one fabric module at the time
- B. all fabric modules followed by the entire switching platform
- C. all fabric modules in parallel
- D. one module and one supervisor at the time

**Correct Answer: A**

**Section: Storage Network****Explanation****Explanation/Reference:**

Section: Storage Network

**QUESTION 183**

What is a characteristic of EPLD updates on Cisco MDS 9000 Series Switches?

- A. EPLD bundles are released separately from a Cisco MDS NX-OS release
- B. EPLD packages update hardware functionality on a device
- C. EPLD updates are nondisruptive to traffic flow
- D. EPLD updates are installed only via the Cisco DCNM GUI

**Correct Answer: B**

**Section: Storage Network****Explanation****Explanation/Reference:**

Section: Storage Network

Reference:

[https://www.cisco.com/c/en/us/td/docs/switches/datacenter/nexus9000/sw/92x/epld-rn/nxos\\_n9K\\_epldRN\\_924.html](https://www.cisco.com/c/en/us/td/docs/switches/datacenter/nexus9000/sw/92x/epld-rn/nxos_n9K_epldRN_924.html)

**QUESTION 184**

A network engineer must create an EEM script that saves a copy of the running configuration on bootflash and writes a message to syslog when a user saves the configuration to a Cisco Nexus switch. Which configuration set should be applied to complete this task?

- A. event manager applet local- backup  
event cli match "copy running-config startup-config"  
action 1 cli copy running-config bootflash:/current\_config.txt  
action 2 syslog msg Configuration saved and copied to bootflash
- B. event manager applet local- backup  
event cli match "copy running-config startup-config"  
action 1 cli copy running-config bootflash:/current\_config.txt  
action 2 syslog msg Configuration saved and copied to bootflash  
action 3 event-default
- C. event manager applet local- backup  
event cli match "write memory"  
action 1 cli copy running-config bootflash:/current\_config.txt  
action 2 snmp-trap strdata "Configuration saved and copied to bootflash"
- D. event manager applet local- backup  
event cli match "write memory"  
action 1 cli copy running-config bootflash:/current\_config.txt  
action 2 syslog msg Configuration saved and copied to bootflash  
action 3 event-default

**Correct Answer: B**

**Section: Automation**

**Explanation**

**Explanation/Reference:**

Section: Automation

Reference:

[https://www.cisco.com/c/en/us/td/docs/switches/datacenter/nexus9000/sw/7-x/system\\_management/configuration/guide/b\\_Cisco\\_Nexus\\_9000\\_Series\\_NX-OS\\_System\\_Management\\_Configuration\\_Guide\\_7x/b\\_Cisco\\_Nexus\\_9000\\_Series\\_NX-OS\\_System\\_Management\\_Configuration\\_Guide\\_7x\\_chapter\\_01110.html](https://www.cisco.com/c/en/us/td/docs/switches/datacenter/nexus9000/sw/7-x/system_management/configuration/guide/b_Cisco_Nexus_9000_Series_NX-OS_System_Management_Configuration_Guide_7x/b_Cisco_Nexus_9000_Series_NX-OS_System_Management_Configuration_Guide_7x_chapter_01110.html)

#### QUESTION 185

Which data interchange format is presented in this output?

```
{
  "totalCount": "1",
  "imdata": [
    {
      "fabricNode": {
        "attributes": {
          "address": "10.0.40.65",
          "apicType": "apic",
          "dn": "topology/pod-1/node-201",
          "id": "201",
          "lastStateModTs": "2020-09-07T10:20:57.236+00:00",
          "modTs": "2020-09-07T10:21:18.912+00:00",
          "model": "N9K-C9336PQ",
          "monPolDn": "uni/fabric/monfab-default",
          "role": "spine",
          "serial": "FDO39185372J",
          "uid": "0",
          "vendor": "Cisco Systems, Inc",
        }
      }
    }
  ]
}
```

- A. CSS
- B. YAML
- C. XML
- D. JSON

**Correct Answer: D**

**Section: Automation**

**Explanation**

**Explanation/Reference:**

Section: Automation

#### QUESTION 186

An engineer requires a solution to automate the configuration and deployment of remote network for a customer. The engineer must keep these considerations in mind:

The customer's environment is based on industry-accepted standards and requires a solution that meets these standards.

The security requirements mandate the use of a secure transport mechanism between the automation software and target devices such as SSH or TLS.

The solution must be based on a human-readable and easy to parse format such as XML or JSON.  
Which solution must be used to meet these requirements?

- A. Ansible
- B. REST API
- C. NETCONF
- D. SNMP

**Correct Answer:** A  
**Section:** Automation  
**Explanation**

**Explanation/Reference:**  
Section: Automation

#### QUESTION 187

Which data structure results from running this Python code?

```
>>> import json
>>> f = open('fname.json', 'r')
>>> var1 = json.load(f)
>>> var1
{'u'bd': u'bd1', u'ap': {'u'eggs': [{'u'name': u'app'}, {'u'name': u'web'}], {'u'name': u'db'}], u'name': u'OnlineStore'}, u'name': u'39185372', u'pvn': u'pvn1'}
```

- A. tuple
- B. dictionary
- C. set
- D. list

**Correct Answer:** B  
**Section:** Automation  
**Explanation**

**Explanation/Reference:**  
Section: Automation

Reference: <https://www.geeksforgeeks.org/read-json-file-using-python/>

#### QUESTION 188

Refer to the exhibit. What is the result of executing this Python code?

```
import time
import cli

date= time.strftime('%Y%m%d')
file= ('fusion-config_' + date
cli.execute ('copy running-config ftp://10.183.249.182/FusionSW/' + file)
exit()
```

- A. It sends the switch configuration to Cisco TAC
- B. It sends a Cisco device backup to a remote destination
- C. It schedules a backup on a Cisco switch using EEM
- D. It backs up Cisco switches to Cisco Prime Infrastructure

**Correct Answer:** B  
**Section:** Automation  
**Explanation**

**Explanation/Reference:**  
Section: Automation

#### QUESTION 189

Refer to the exhibit. A network engineer requires remote access via SSH to a Cisco MDS 9000 Series Switch. The solution must support secure access using the local user database when the RADIUS servers are unreachable from the

switches. Which command meets these requirements?

```
switch# show radius-server
Global RADIUS shared secret:*****
retransmission count:5
timeout value:10
following RADIUS servers are configured:
  myradius.cisco.users.com:
    available for authentication on port:1812
    available for accounting on port:1813
  172.22.91.37:
    available for authentication on port:1812
    available for accounting on port:1813
    RADIUS shared secret:*****
  10.10.0.0:
    available for authentication on port:1812
    available for accounting on port:1813
    RADIUS shared secret:*****

switch# show radius-server groups
total number of groups:4
following RADIUS server groups are configured:
  group radius:
    server: all configured radius servers
  group Group1:
    server: Server3 on auth-port 1812, acct-port 1813
    server: Server5 on auth-port 1812, acct-port 1813
  group Group5:
```

- A. aaa authentication none
- B. aaa authentication login default group radius
- C. aaa authentication login default fallback error local
- D. aaa authentication login default group local

**Correct Answer: C**

**Section: Security**

**Explanation**

**Explanation/Reference:**

Section: Security

Reference:

[https://www.cisco.com/c/en/us/td/docs/switches/datacenter/nexus9000/sw/6-x/security/configuration/guide/b\\_Cisco\\_Nexus\\_9000\\_Series\\_NX-OS\\_Security\\_Configuration\\_Guide/b\\_Cisco\\_Nexus\\_9000\\_Series\\_NX-OS\\_Security\\_Configuration\\_Guide\\_chapter\\_0111.html](https://www.cisco.com/c/en/us/td/docs/switches/datacenter/nexus9000/sw/6-x/security/configuration/guide/b_Cisco_Nexus_9000_Series_NX-OS_Security_Configuration_Guide/b_Cisco_Nexus_9000_Series_NX-OS_Security_Configuration_Guide_chapter_0111.html)

#### QUESTION 190

A network administrator must configure an extra keyring in Cisco UCS Manager. The key must provide a high level of encryption and secure authentication when users use the web interface. Which configuration command set must be applied to meet these requirements?

- A. 

```
set https keyring kring7984
set https cipher-suite-mode high
set https tls-protocol tls1-2
commit-buffer
```
- B. 

```
set https keyring kring7984
set https cipher-suite-mode high
set https ssl-protocol tls1-2
commit-buffer
```
- C. 

```
set https keyring kring7984
set https cipher-suite-mode secure
set https ssl-protocol tls1-2
commit-buffer
```
- D. 

```
set https keyring kring7984
set https cipher-suite-mode secure
set https tls-protocol tls1-2
commit-buffer
```

**Correct Answer: B**

**Section: Security**

**Explanation**

**Explanation/Reference:**

Section: Security

Reference: [https://www.cisco.com/c/en/us/td/docs/unified\\_computing/ucs/ucs-manager/CLI-User-Guides/Admin-Management/3-1/b\\_Cisco\\_UCS\\_Manager\\_CLI\\_Administration\\_Mgmt\\_Guide\\_3\\_1/b\\_Cisco\\_UCS\\_Manager\\_CLI\\_Administration\\_Mgmt\\_Guide\\_3\\_1\\_chapter\\_0110.html](https://www.cisco.com/c/en/us/td/docs/unified_computing/ucs/ucs-manager/CLI-User-Guides/Admin-Management/3-1/b_Cisco_UCS_Manager_CLI_Administration_Mgmt_Guide_3_1/b_Cisco_UCS_Manager_CLI_Administration_Mgmt_Guide_3_1_chapter_0110.html)

**QUESTION 191**

An engineer must configure HTTPS secure management for Cisco UCS Manager using a key ring named kr2016 and a key size of 1024 bits. The environment consists of a primary fabric interconnect named UCS-A and a secondary fabric interconnect named UCS-B. Which command sequence must be used to accomplish this goal?

- A. 

```
UCS-B# scope security
UCS-B /security # keyring kr2016
UCS-B /security/keyring* # set mod mod1024
UCS-A /security/keyring* # commit-buffer
```
- B. 

```
UCS-A# scope security
UCS-A /security # create keyring kr2016
UCS-A /security/keyring* # set modulus mod1024
UCS-A /security/keyring* # commit-buffer
```
- C. 

```
UCS-A# scope security
UCS-A /security # keyring name kr2016
UCS-A /security/keyring* # set size 1024
UCS-A /security/keyring* # commit-buffer
```
- D. 

```
UCS-B# scope security
UCS-B /security # create keyring kr2016
UCS-B /security/keyring* # set size mod1024
UCS-A /security/keyring* # commit-buffer
```

**Correct Answer: B****Section: Security****Explanation****Explanation/Reference:**

Section: Security

Reference:

[https://www.cisco.com/c/en/us/td/docs/unified\\_computing/ucs/ucs-manager/CLI-User-Guides/Admin-Management/4-0/b\\_Cisco\\_UCS\\_Manager\\_CLI\\_Administration\\_Mgmt\\_Guide\\_4-0/b\\_Cisco\\_UCS\\_Manager\\_CLI\\_Administration\\_Mgmt\\_Guide\\_4-0\\_chapter\\_0110.html](https://www.cisco.com/c/en/us/td/docs/unified_computing/ucs/ucs-manager/CLI-User-Guides/Admin-Management/4-0/b_Cisco_UCS_Manager_CLI_Administration_Mgmt_Guide_4-0/b_Cisco_UCS_Manager_CLI_Administration_Mgmt_Guide_4-0_chapter_0110.html)

**QUESTION 192**

A network engineer needs to configure system logging on the MDS switch. The messages must be displayed with the severity level of "warning" and above. For security reasons, the users must be logged out of the console after 5 minutes of inactivity. Which configuration must be applied to meet these requirements?

- A. 

```
MDS-A(config)# logging console 5
MDS-A(config-console)# exec-timeout 300
```
- B. 

```
MDS-A(config)# line console
MDS-A(config-console)# speed 38400
MDS-A(config-console)# exec-timeout 5
MDS-A(config)# logging console 4
```
- C. 

```
MDS-A(config)# logging line 4
MDS-A(config-console)# session-limit 300
```
- D. 

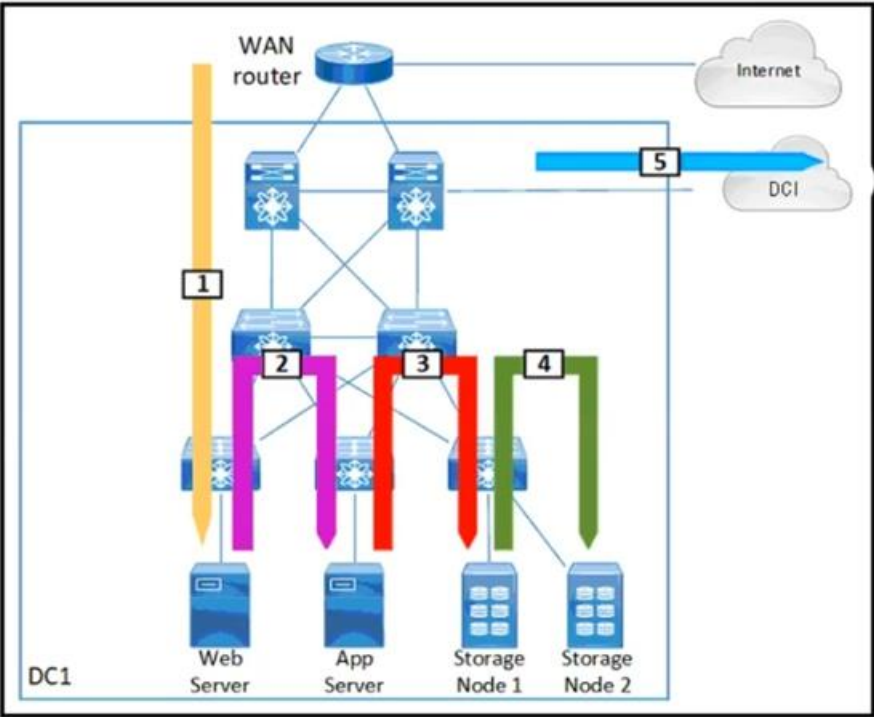
```
MDS-A(config)# console
MDS-A(config-console)# speed 38400
MDS-A(config-console)# session-limit 5
MDS-A(config)# logging console 5
```

**Correct Answer: B****Section: Security****Explanation****Explanation/Reference:**

Section: Security

Reference: [https://www.cisco.com/c/en/us/td/docs/switches/datacenter/mds9000/sw/6\\_2/configuration/guides/fundamentals/b\\_Cisco\\_MDS\\_9000\\_Series\\_NX-OS\\_Fundamentals\\_Configuration\\_Guide/b\\_Cisco\\_MDS\\_9000\\_Series\\_NX-OS\\_Fundamentals\\_Configuration\\_Guide\\_chapter\\_0110.html](https://www.cisco.com/c/en/us/td/docs/switches/datacenter/mds9000/sw/6_2/configuration/guides/fundamentals/b_Cisco_MDS_9000_Series_NX-OS_Fundamentals_Configuration_Guide/b_Cisco_MDS_9000_Series_NX-OS_Fundamentals_Configuration_Guide_chapter_0110.html)

**QUESTION 193**  
 DRAG DROP



Refer to the exhibit. Drag and drop each traffic flow type from the left onto the corresponding number on the right. Not all traffic flow types are used.

Select and Place:

Inter-Data Center	1
East-West	2
North-West	3
North-South	4
South-West	5
Storage Traffic	
Storage Replication	

Correct Answer:



	North-South
	East-West
North-West	Storage Traffic
	Storage Replication
South-West	Inter-Data Center

Section: Network  
Explanation

Explanation/Reference:

VCEup

**QUESTION 194**  
DRAG DROP

A network engineer is asked to describe the cloud infrastructure models from the perspective of their operation and access to resources. Drag and drop the descriptions from the left onto the appropriate characteristics on the right.

Select and Place:

Provisioned for open use	Private cloud
At least two or more separate cloud infrastructures are connected together to facilitate hosted data and application portability	Community cloud
Owned, managed, and operated by one or more organizations or teams	Public cloud
Owned, managed, and operated by a single organization	Hybrid cloud

Correct Answer:

	Owned, managed, and operated by a single organization
	Owned, managed, and operated by one or more organizations or teams
	Provisioned for open use
	At least two or more separate cloud infrastructures are connected together to facilitate hosted data and application portability

**Section: Network**  
**Explanation**

**Explanation/Reference:**

**QUESTION 195**  
**DRAG DROP**

An engineer must shut down the Ethernet 1/2 interface when the Ethernet 4/5 interface state is down. Drag and drop the CLI commands from the bottom onto the blanks in the exhibit to implement this EEM. Not all commands are used.

**Select and Place:**

```

switch# configure terminal
switch(config)# track 1 
switch(config-track)# end

switch(config)# event manager applet track_4_5_down
switch(config-applet)# event track 1 state down
switch(config-applet)# action 1 syslog msg EEM applet
track_4_5_down shutting down port eth1/2 due to eth4/5
being down
switch(config-applet)# action 2 cli conf term

switch(config-applet)# action 3 cli 
switch(config-applet)# action 4 cli 
switch(config-applet)# end

```

**Correct Answer:**

```
switch# configure terminal
switch(config)# track 1 interface ethernet 4/5
switch(config-track)# end

switch(config)# event manager applet track_4_5_down
switch(config-applet)# event track 1 state down
switch(config-applet)# action 1 syslog msg EEM applet
track_4_5_down shutting down port eth1/2 due to eth4/5
being down
switch(config-applet)# action 2 cli conf term
switch(config-applet)# action 3 cli interface ethernet 1/2
switch(config-applet)# action 4 cli shut
switch(config-applet)# end
```

no shut

Section: Automation  
Explanation

Explanation/Reference: