

Microsoft.MB-500.vJan-2024.by.Isac.77q

Website: www.VCEplus.io

Twitter: https://twitter.com/VCE_Plus

Exam Code: MB-500

Exam Name: Microsoft Dynamics 365: Finance and Operations Apps Developer



01 - Plan Architecture and Solution Design

Case study

This is a case study. Case studies are not timed separately. You can use as much exam time as you would like to complete each case. However, there may be additional case studies and sections on this exam. You must manage your time to ensure that you are able to complete all questions included on this exam in the time provided.

To answer the questions included in a case study, you will need to reference information that is provided in the case study. Case studies might contain exhibits and other resources that provide more information about the scenario that is described in the case study. Each question is independent of the other questions in this case study.

At the end of this case study, a review screen will appear. This screen allows you to review your answers and to make changes before you move to the next section of the exam. After you begin a new section, you cannot return to this section.

To start the case study To display the first question in this case study, click the Next button. Use the buttons in the left pane to explore the content of the case study before you answer the questions. Clicking these buttons displays information such as business requirements, existing environment, and problem statements. If the case study has an All Information tab, note that the information displayed is identical to the information displayed on the subsequent tabs. When you are ready to answer a question, click the Question button to return to the question.

Background

Wide World Importers sell office supplies, furniture, and fittings to their customers across the United States. The company has the following locations:

a retail store in Seattle a warehouse in Seattle a customer support and call center in Atlanta a team of field workers that provide furniture installation services at customer sites.

Wide World Importers plans to implement Dynamics 365 Finance and Microsoft Azure cloud platform features.

Current environment

Customers may place orders by email, phone, or by using the company's website. The company authorizes and processes credit card transactions by using a web-based application. Customer, inventory, supplier, and other master and transactional data is stored in a legacy database.

The company collects feedback from customers by phone or a form on the company's website and maintains the data in a Microsoft Excel workbook.

Wide World Importers runs on-premises applications to manage payroll and workers compensation. The company has a set of Microsoft Power BI dashboards that present data from a reporting database.

The company creates a Lifecycle Services (LCS) implementation project and completes Dynamics 365 Finance onboarding.

The company maintains production, quality assurance (QA), development, user acceptance testing (UAT), and build environments.

Requirements

General

You must configure a cloud-based Dynamics 365 Finance development environment and enable code extension that support updates.

You must configure version control and a Build environment.

You must migrate all legacy data to the new system.

You must implement best practices for X++ coding, the data model, caching, and security.

All new code must be unit tested in a development environment and then validated by the QA team before code is added to source control.

Business processes

You must configure vendor trade agreements.

Products must be shipped directly from suppliers to customers depending on customer location to save indirect costs.

You must collect customer feedback on products shipped directly from vendors.

You must deploy code to a UAT environment for testing before deploying code to production.

You must validate all entries for the purchase order creation form.

You must develop a web portal that allows customers to browse products, place orders, and check order status. Product data for the web portal must be integrated as periodic batches.

Business systems You must install and configure a third-party solution for credit card processing within Dynamics 365 Finance. The third-party company will provide a deployable package.

The workers compensation application must be able to call an API to update worker compensation details in Dynamics 365 Finance.

You must develop a process to import payroll journals into the system.

You must configure the warehouse mobile device portal for warehouse operations.

You must install a third-party solution to support web portal integration. The solution is supplied as a source code model file.

Vendor exclusion list

You must develop a new solution to maintain a Vendor exclusion list for each customer and item combination. The solution must meet the following requirements:

Isolate all new vendor exclusion codes as a new assembly by creating a table named VendExclusions.

Create an index for the table named PrimaryIdx that uses the following fields: CustAccount, ItemId, VendAccount.

Ensure that users can open the Vendor Exclusion list report from the customer master form. The list must display the customer account, Item ID, and Vendor account fields.

Implement the Excel integration for the Vendor Exclusion List form.

Provide functionality to periodically export the Vendor exclusion list to prepare reports by using standard reporting capabilities of Dynamics 365 Unified Operations.

Develop necessary security permissions to view and maintain the new Vendor exclusion list functionality and reporting. Users with maintain rights will be able create, update, and delete the exclusion list. Permissions must be assigned to security roles to match company security model.

Maintain referential integrity with other tables.

Users must be presented with a warning message before a direct delivery purchase order is created for a vendor in exclusion list.

Sales managers must be alerted when a new exclusion record is added to the system.

Security

You must implement the record level audit feature to identify the users who created the record.

Grant specific users rights to maintain the vendor exclusion list by using Excel.

You must implement validation to check whether a proposed direct delivery purchase order vendor is on the exclusion list for the customer and product combination.

Issues

User1 is not able to access many features in the system. You must provide User1 administrator rights.

A sales manager suspects a data-related issue in the vendor exclusion list. User1 must identify the user who created the referenced exclusion records.

Developer2 joins the company and does not have access to a development environment or source control.

User2 reports performance issues when they generate direct delivery purchase orders after current updates are applied.

User2 reports that they cannot access new functionality and reports.

QUESTION 1

You need to apply a form pattern to the Vendor exclusion list.

Which pattern should you use?

- A. Workspace
- B. Simple List
- C. List Page
- D. List View

www.VCEplus.io

Correct Answer: C

Section:

QUESTION 2

You need to meet the requirements for the purchase order creation form.

What are two possible ways to achieve this goal? Each correct answer presents a complete solution.

NOTE: each correct selection is worth one point.

- A. Create a class and add a form data source event handler method to the class.
- B. In Application Explorer, create a table extension and implement validation.
- C. In Application Explorer, create a form extension and implement validation.
- D. Implement Chain of Command (CoC) and method wrapping by creating a form extension class.

Correct Answer: C, D

Section:

Explanation:

Scenario:

Users must be presented with a warning message before a direct delivery purchase order is created for a vendor in exclusion list.

You must implement validation to check whether a proposed direct delivery purchase order vendor is on the exclusion list for the customer and product combination.

QUESTION 3

HOTSPOT

You need to create the new table for the vendor exclusion list.
What should you do? To answer, select the appropriate options in the answer area.
NOTE: Each correct selection is worth one point.

Hot Area:

Answer Area

What should you create?

	▼
a table extension for Vendors and a relation for Vendor exclusions	<input type="checkbox"/>
a relation between the Vendor exclusions table and the Vendors table	<input type="checkbox"/>
a table extension for Vendors and add a Delete Action for Vendor exclusions	<input type="checkbox"/>

For which property on the relationship node should you set a value?

	▼
Delete Action	<input type="checkbox"/>
Validate	<input type="checkbox"/>
OnDelete	<input type="checkbox"/>
Relationship Type	<input type="checkbox"/>

Answer Area:

Answer Area

What should you create?

	▼
a table extension for Vendors and a relation for Vendor exclusions	<input checked="" type="checkbox"/>
a relation between the Vendor exclusions table and the Vendors table	<input type="checkbox"/>
a table extension for Vendors and add a Delete Action for Vendor exclusions	<input type="checkbox"/>

For which property on the relationship node should you set a value?

	▼
Delete Action	<input type="checkbox"/>
Validate	<input type="checkbox"/>
OnDelete	<input type="checkbox"/>
Relationship Type	<input checked="" type="checkbox"/>

Section:

Explanation:

Scenario: You must develop a new solution to maintain a Vendor exclusion list for each customer and item combination. The solution must meet the following requirements:

Isolate all new vendor exclusion codes as a new assembly by creating a table named VendExclusions.

Create an index for the table named PrimaryIdx that uses the following fields: CustAccount, ItemId, VendAccount.

Ensure that users can open the Vendor Exclusion list report from the customer master form. The list must display the customer account, Item ID, and Vendor account fields.

Maintain referential integrity with other tables.

Box 1: a table extension for Vendors and relation for the Vendor exclusions

Box 2: Relationship Type

Reference:

<https://docs.microsoft.com/en-us/dynamics365/fin-ops-core/dev-itpro/data-entities/develop-composite-data-entities>

QUESTION 4

DRAG DROP

You need to develop, test, and deploy the Vendor Exclusion list solution.

What should you create? To answer, drag the appropriate objects to the correct actions. Each element may be used once, more than once, or not at all. You may need to drag the split bar between panes or scroll to view content.

NOTE: Each correct selection is worth one point.

Select and Place:

Objects to create	Action	Object to create
existing model	Create a new deployable unit.	
new model	Object to add.	
deployable package	Create, manage, and group elements.	
package	Distribute the solution to customers.	
model file		
project		

Correct Answer:

Objects to create	Action	Object to create
existing model	Create a new deployable unit.	package
	Object to add.	new model
	Create, manage, and group elements.	deployable package
model file	Distribute the solution to customers.	project

Section:

Explanation:

Box 1: package An AOT package is a deployment and compilation unit of one or more models that can be applied to an environment. It includes model metadata, binaries, reports and other associated resources. One or more AOT packages can be packaged into a deployable package, which is the vehicle used for deployment of code (and customizations) on demo, sandbox, and production environments.

Box 2: New model Model - You configure your model to refer to two other models. This enables your model to reference metadata and code elements that are in other packages.

Box 3: project Project - You create a project and then associate your project to your new model. You add elements to your project, which are also added to your model. Specifically, you add an extended data type (EDT). You also add a table that you populate with fields and a method.

Box 4: deployable package

Reference:

<https://docs.microsoft.com/en-us/dynamics365/fin-ops-core/dev-itpro/dev-tools/create-data-model-elements>

02 - Plan Architecture and Solution Design**Case study**

This is a case study. Case studies are not timed separately. You can use as much exam time as you would like to complete each case. However, there may be additional case studies and sections on this exam. You must manage your time to ensure that you are able to complete all questions included on this exam in the time provided.

To answer the questions included in a case study, you will need to reference information that is provided in the case study. Case studies might contain exhibits and other resources that provide more information about the scenario that is described in the case study. Each question is independent of the other questions in this case study.

At the end of this case study, a review screen will appear. This screen allows you to review your answers and to make changes before you move to the next section of the exam. After you begin a new section, you cannot return to this section.

To start the case study To display the first question in this case study, click the Next button. Use the buttons in the left pane to explore the content of the case study before you answer the questions. Clicking these buttons displays information such as business requirements, existing environment, and problem statements. If the case study has an All Information tab, note that the information displayed is identical to the information displayed on the subsequent tabs. When you are ready to answer a question, click the Question button to return to the question.

Background**Overview**

First Up Consultants provides Commercial Cleaning services to its clients. The company purchases all its cleaning supplies from Best For You Organics Company.

First Up Consultants is using a cloud-based Dynamics 365 Finance instance. The system has a foundation table named CashDisc that contains one cash discount record for each cash discount type.

Best For You Organics Company invoices First Up Consultants and allows cash discounts based on how fast an invoice is paid. First Up Consultants is entitled to a two percent discount from Best for You Organics for any invoice that is paid within 10 days and has a minimum invoice amount of \$2,500.

Business requirements

All new and extended objects must be located in an existing model named FinanceExt. The creation of new models is not permitted.

Best For You Organics Company requires that First Up Consultants apply specific minimum invoice amounts to each cash discount record. A cash discount may only be applied when the minimum invoice amount requirement has been met.

The new field must be added to the CashDisc form grid with the allowable visible number of characters set to 10.

First Up Consultants must retrieve the required Cash Discount methods and corresponding minimum invoice amounts directly from Best For You Organics Company's enterprise resource planning (ERP) system.

The Chief Financial Officer (CFO) requires the following reports:

A report that shows all outstanding invoices, their cash discount types including the new minimum threshold applicable, and the amount of the discount. The report must only be accessed by users who are members of the Accounts Payable Manager role.

Payable Manager role.

You must create a Microsoft Excel workbook that lists unpaid invoices to Best For You Organics Company that have a due date earlier than 5/1/2019 and an Invoice Amount between \$20,000 and \$100,000.

Cash discounts for unpaid invoices must be updated with the new minimum invoice amounts.

Technical requirements**Vendor Invoices Past Due form**

You must be able to filter the grid on the Vendor Invoices Past Due form. By default, you must filter the form based on the Due Date, Invoice Amount, and Vendor columns. Users must be able to apply reusable user-specific filters to a page using multiple fields.

CashDisc form

You must extend the CashDisc form to add a new field named MinimumInvoiceAmount to the form. You must add a new Extended Data Type to the extension model for the new field. The new field must be added above the discount method field. The field must display 10 characters.

The accounts payable manager and the accounts payable clerk have Delete access to the form. You must alter permissions to limit accounts payable clerks to have only View access to the form.

Cash Discount Records report You must create a report that shows a list of CashDisc records. You must include the MinimumInvoiceAmount field and filtered data by using the CashDisc.DiscMethod field. Applicable security objects must be created in the existing "FinanceExt" model and configured so the report is accessible by those users to the accounts payable role.

Batch jobs

You must create a batch job that runs on the last day of each month to update the current unpaid invoices with changes in the minimum invoice amount. The job must meet the following requirements:

Accept the following parameters: Vendor, DueDate.

Be callable by an Action menu item.

Allow users to specify vendors to include in the job.

Use SysOperation Framework for all batch jobs.

You must create a batch job to identify modified CashDisc.MinimumInvoiceAmount values and apply these to open Purchase Lines.

QUESTION 1

You need to configure filtering for the Vendor Past Due Invoices form.

Which two filtering types can you use? Each correct answer presents a complete solution.

NOTE: Each correct selection is worth one point.

- A. QuickFilter
- B. Advanced Filter
- C. Grid Column Filtering
- D. Filter pane

Correct Answer: A, C

Section:

Explanation:

A: QuickFilter: A framework-provided filtering mechanism that can appear above any list or grid, and that provides fast single-column filtering.

C: Grid column filtering: The user can define filter conditions and perform single-column sorting by using a drop dialog that is opened from the grid column header.

Scenario: You must create a batch job that runs on the last day of each month to update the current unpaid invoices with changes in the minimum invoice amount. The job must meet the following requirements:

Allow users to specify vendors to include in the job.

Accept the following parameters: Vendor, DueDate.

Be callable by an Action menu item.

Use SysOperation Framework for all batch jobs.

Reference: <https://docs.microsoft.com/en-us/dynamics365/fin-ops-core/dev-itpro/user-interface/filtering>

QUESTION 2

You need to configure models for the project.

What are two possible ways to achieve the goal? Each correct answer presents a complete solution.

NOTE: Each correct selection is worth one point.

- A. Create a new model that extends the existing FinanceExt model.
- B. Overlay the existing FinanceExt model and populate the solution definition.
- C. Extend the existing FinanceExt model and populate the project model definition.
- D. Modify the DefaultModelForNewProject setting in the DefaultConfig.xml file and name the model FinanceExt.

Correct Answer: B, C

Section:

Explanation:

03 - Plan Architecture and Solution Design

QUESTION 1

Note: This question-is part of a series of questions that present the same scenario. Each question-in the series contains a unique solution that might meet the stated goals. Some question-sets might have more than one

correct solution, while others might not have a correct solution.

After you answer a question-in this section, you will NOT be able to return to it. As a result, these questions will not appear in the review screen.

You create a new form in a project.

You need to display tabs in a vertical alignment.

Solution: Apply the Operational Workspaces pattern.

Does the solution meet the goal?

A. Yes

B. No

Correct Answer: A

Section:

Explanation:

Reference: <https://docs.microsoft.com/en-us/dynamics365/fin-ops-core/dev-itpro/user-interface/workspace-form-pattern>

QUESTION 2

Note: This question-is part of a series of questions that present the same scenario. Each question-in the series contains a unique solution that might meet the stated goals. Some question-sets might have more than one correct solution, while others might not have a correct solution.

After you answer a question-in this section, you will NOT be able to return to it. As a result, these questions will not appear in the review screen.

You create a new form in a project.

You need to display tabs in a vertical alignment.

Solution: Apply the Details Master pattern.

Does the solution meet the goal?

A. Yes

B. No

Correct Answer: A

Section:

Explanation:

Reference: <https://docs.microsoft.com/en-us/dynamics365/fin-ops-core/dev-itpro/user-interface/details-master-form-pattern>

QUESTION 3

You are a Dynamics 365 Finance developer. You have a virtual machine that includes Visual Studio.

You need to display the elements by model.

What should you do?

- A. Select Model management from the menu and then select View all package dependencies.
- B. Right-click the Application Object Tree (AOT) node in Application Explorer and select Model View.
- C. Select Metadata Search from the Dynamics 365 menu.
- D. Select Model Management from the menu and then select Refresh Models.

Correct Answer: B

Section:

Explanation:

1. In Microsoft Visual Studio, on the Dynamics 365 menu, click Model Management > Refresh Models.

2. Open Application Explorer by clicking View > Application Explorer.

3. Right-click the AOT root node, and then click Model view.

A list of installed models is displayed.

Reference: <https://docs.microsoft.com/en-us/dynamics365/fin-ops-core/dev-itpro/dev-tools/manage-runtime-packages>

QUESTION 4

You need to prepare to deploy a software deployable package to a test environment.

What are two possible ways to achieve the goal?

Each correct answer presents a complete solution.

NOTE: Each correct selection is worth one point.

- A. In Visual Studio, export the project and upload the project to the asset library.
- B. In Azure DevOps, queue a build from the corresponding branch and upload the model to the asset library.
- C. In Azure DevOps, queue a build from the corresponding branch and upload the package to the asset library.
- D. In Visual Studio, create a Dynamics 365 deployment package and upload the package to the asset library.

Correct Answer: C, D

Section:

Explanation:

C: Dynamics Lifecycle Services (LCS) Asset Upload : Upload a software deployable package to an LCS project's Asset Library. This task is only available as a release pipeline task. It requires an LCS connection to be setup in the Azure

DevOps project's service connections.

D: Deployable packages can be created by using Visual Studio dev tools.

After a deployable package is created, it must be uploaded to the Lifecycle Services (LCS) project's asset library.

Reference: <https://marketplace.visualstudio.com/items?itemName=Dyn365FinOps.dynamics365-finops-tools> <https://docs.microsoft.com/en-us/dynamics365/fin-ops-core/dev-itpro/deployment/create-apply-deployable-package>

QUESTION 5

You are a Dynamics 365 Finance developer.

You need to create an extension class.

Which action should you perform?

- A. Mark the class as final.
- B. Add the class buffer as the first parameter.
- C. Mark the class as protected.
- D. Mark the class as public.

Correct Answer: A

Section:

Explanation:

Extension classes are final classes that are adorned with the ExtensionOf attribute and that also have a name that has the _Extension suffix. Because the classes are instantiated by the runtime system, it's not meaningful to derive from the extension class. Therefore, the extension class must be marked as final.

Reference: <https://docs.microsoft.com/en-us/dynamics365/fin-ops-core/dev-itpro/extensibility/method-wrapping-coc>

QUESTION 6

You are training a new Dynamics 365 Finance developer.

You need to explain the relationships between models, packages, and projects to the new hire.

Which three design concepts should you explain? Each correct answer presents a complete solution.

NOTE: Each correct selection is worth one point.

- A. A project can contain elements from multiple models.
- B. A model is a group or collection of elements that constitute a distributable software solution.

www.VCEplus.io

- C. A Visual Studio project can belong to more than one model.
- D. A model is a design time concept.
- E. A package is a deployment unit that may contain one or more models.

Correct Answer: B, D, E

Section:

Explanation:

B: A model is a group of elements, such as metadata and source files, that typically constitute a distributable software solution and includes customizations of an existing solution.

D: A model is a design-time concept, for example a warehouse management model or a project accounting model.

E: A package is a deployment and compilation unit of one or more models.

Reference:

<https://docs.microsoft.com/en-us/dynamics365/fin-ops-core/dev-itpro/dev-tools/models>

QUESTION 7

You are a Dynamics 365 Finance developer. You have two tables as shown in the following exhibit:



You need to configure Table1 to ensure that records cannot be deleted from Table1 if Table2 contains related records.

Which value should you use for the OnDelete property?

- A. None
- B. Cascade
- C. Cascade + Restricted
- D. Restricted

Correct Answer: D

Section:

Explanation:

Example of Restricted

Suppose we have two tables (Customer & Order) and the relation is of One-To-Many i.e Customer can have many orders.

So on a parent table i.e.(Customer) if I set a delete action property to "RESTRICTED" for Order table. Then If I go and delete the record from a Customer table. It will first check the record in the child table and if exist that warning prompt saying that first we need to delete a record from child table.

Incorrect Answers:

B: Example of Cascade:

Suppose we have two tables (Customer & Order) and the relation is of One-To-Many i.e. Customer can have many orders.

So on a parent table i.e.(Customer) if I set a delete action property to "CASCADE" for Order table. Then If I go and delete the record from a Customer table. It will also delete all the related records in Order table automatically.

C: Example of Cascade + Restricted Suppose we have three tables (Person ,Customer & Order) Now Person is a parent of Customer table, and Customer is a parent of Order table having (One-To-Many) relations If I set a Delete action property on Person table to "CASCADE" for customer table and If I set a Delete Action property on a CUSTOMER table for Order table to "CASCADE +RESTRICTED".

So if I delete a record from Customer table then It will first check the record in the child table(order table) and if exist that warning prompt saying that first we need to delete a record from child table.

But if I delete a record from Person table it will automatically delete a record in Customer table and all records related to customer table in Order table would also be deleted.

Reference:

<https://amazingax.wordpress.com/2013/01/13/microsoft-dynamics-ax-2012example-of-cascaderestricted-and-cascade-restricted-delete-action-property-for-a-table-relation/>

QUESTION 8

Note: This question-is part of a series of questions that present the same scenario. Each question-in the series contains a unique solution that might meet the stated goals. Some question-sets might have more than one correct solution, while others might not have a correct solution.

After you answer a question-in this section, you will NOT be able to return to it. As a result, these questions will not appear in the review screen.

You create a new form in a project.

You need to display tabs in a vertical alignment.
 Solution: Apply the Simple List pattern.
 Does the solution meet the goal?

- A. Yes
- B. No

Correct Answer: A

Section:

Explanation:

Reference:

<https://docs.microsoft.com/sv-se/dynamics365/fin-ops-core/dev-itpro/user-interface/simple-list-details-form-pattern>

QUESTION 9

HOTSPOT

You are a Dynamics 365 Finance developer.

You need to monitor system performance.

Which tools should you use? To answer, select the appropriate option in the answer area.

NOTE: Each correct selection is worth one point.

Hot Area:

Answer Area

Requirement	Tool
Review overall health of the system, as well as currently running processes and historical data.	<div>▼</div> <div>LCS Environment Monitoring tool</div> <div>Fiddler</div> <div>Trace Parser</div> <div>SQL Profiler</div>
Review the load time and latency of different forms.	<div>▼</div> <div>LCS Environment Monitoring tool</div> <div>Fiddler</div> <div>Trace Parser</div> <div>SQL Profiler</div>
Review a single process and see the code and SQL statements that are being run.	<div>▼</div> <div>LCS Environment Monitoring tool</div> <div>Fiddler</div> <div>Trace Parser</div> <div>SQL Profiler</div>

Answer Area:

Answer Area

Requirement	Tool
Review overall health of the system, as well as currently running processes and historical data.	<div>▼</div> <div>LCS Environment Monitoring tool</div> <div>Fiddler</div> <div>Trace Parser</div> <div>SQL Profiler</div>
Review the load time and latency of different forms.	<div>▼</div> <div>LCS Environment Monitoring tool</div> <div>Fiddler</div> <div>Trace Parser</div> <div>SQL Profiler</div>
Review a single process and see the code and SQL statements that are being run.	<div>▼</div> <div>LCS Environment Monitoring tool</div> <div>Fiddler</div> <div>Trace Parser</div> <div>SQL Profiler</div>

Section:

Explanation:

Box 1: LCS Environment Monitoring tool Microsoft Dynamics Lifecycle Services (LCS) provides to help you monitor, diagnose, and analyze the health of the Finance and Operations environments that you manage.

Box 2: Trace Parser

You can use the Trace parser to consume traces and analyze performance in your deployment.

Box 3: SQL Profiler

Incorrect Answers:

Fiddler:

Fiddler can help in different ways with Dynamics 365 troubleshooting, including determine what errors are being reported, and by speeding up the JavaScript development process.

Reference:

<https://docs.microsoft.com/en-us/dynamics365/fin-ops-core/dev-itpro/lifecycle-services/monitoring-diagnostics>

QUESTION 10

HOTSPOT

You have a Dynamics 365 Finance development environment.

You must add default filters to the fleet management form. You must view only sales that occur in the current sales period and where the Customer name field contains the text Wholesales.

You need to configure filtering.

What should you do? To answer, select the appropriate options in the answer area.

NOTE: Each correct selection is worth one point.

Hot Area:

Answer Area

Element Value

SysQuery method

	▼
addRangesFromKeyData	
range	
packRangeAndSortOrder	
mergeFilters	

SysQueryRangeUtil

	▼
lessThanDate	
currentDate	
dateRange	
monthRange	

Filter clause

	▼
*Wholesales	
..Wholesales	
Wholesales*	
Wholesales	

Answer Area:

Answer Area

Element

Value

SysQuery method

	▼
addRangesFromKeyData	
range	
packRangeAndSortOrder	
mergeFilters	

SysQueryRangeUtil

	▼
lessThanDate	
currentDate	
dateRange	
monthRange	

Filter clause

	▼
*Wholesales	
..Wholesales	
Wholesales*	
Wholesales	

Section:

Explanation:

QUESTION 11

DRAG DROP

You are configuring your developer environment by using Team Explorer.

There are several developers working on a customization.

You need to ensure that all code is checked in and then merged to the appropriate branches.

In which order should you perform the actions? To answer, move all actions from the list of actions to the answer area and arrange them in the correct order.

NOTE: More than one order of answer choices is correct. You will receive credit for any of the correct orders you select.

Select and Place:

Answer Area

Actions

Map the Microsoft Azure DevOps project to your local developer machine.

Create a test branch.

Create a dev branch.

Connect to the Microsoft Azure DevOps project.

Create a main branch.

Correct Answer:

Answer Area

Actions

Connect to the Microsoft Azure DevOps project.

Create a main branch.

Create a dev branch.

Map the Microsoft Azure DevOps project to your local developer machine.

Create a test branch.

Section:

Explanation:

Reference:

<https://docs.microsoft.com/en-us/azure/devops/repos/tfvc/branching-strategies-with-tfvc?view=azure-devops>

QUESTION 12

DRAG DROP

You are a Dynamics 365 Finance developer.

Users must be able to view a filtered customer list from within a workspace.

You need to add the customer form to a workspace.

Which four actions should you perform in sequence? To answer, move the appropriate actions from the list of actions to the answer area and arrange them on the correct order.

Select and Place:

Actions	Answer Area
Navigate to the Workspace form and select Find form to add .	
Select Workspace and Presentation options .	
Select the Options action pane tab and then select Add to workspace .	
Open the customer form and apply filters to the grid.	
Select Configure .	
Select the General menu item then select Add to workspace .	

Correct Answer:

Answer Area

Actions

Navigate to the Workspace form and select **Find form to add**.

Select **Workspace and Presentation options**.

Open the customer form and apply filters to the grid.

Select the General menu item then select **Add to workspace**.

Select the **Options** action pane tab and then select **Add to workspace**.

Select **Configure**.

Section:

Explanation:

Step 1: Open the customer form and apply filters to the grid.

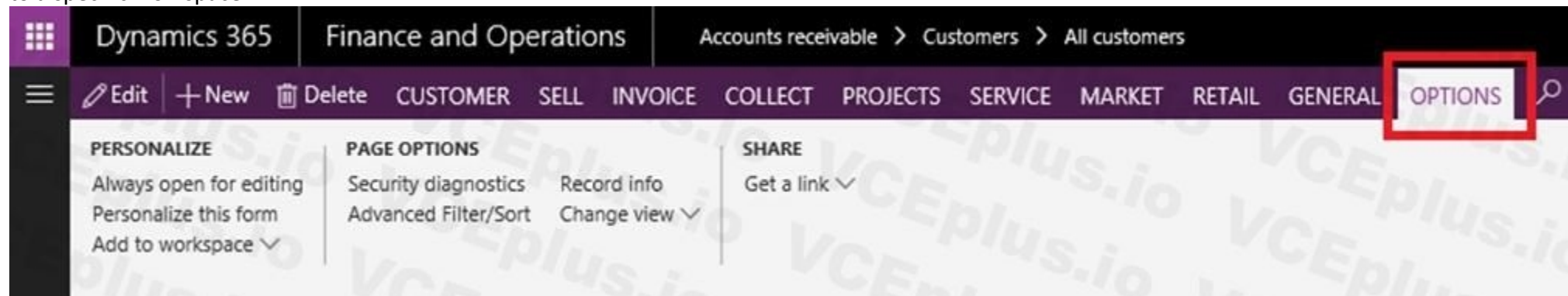
To add a list to a workspace, first sort or filter the list on the page so that it shows the information as you want it to appear in the workspace.

Step 2: Select the General menu item then select Add to workspace

This workspace will be selected in step 3.

Step 3: Select the Options actions pane tab and then select Add to workspace.

For some pages that include lists, the Add to workspace personalization feature is available in the Personalize group on the Options tab of the Action Pane. This feature lets you push relevant information from the current list to a specific workspace.



PERSONALIZE

Always open for editing

Personalize this form

Add to workspace ▾

Add to workspace

Workspace

Presentation

Tile

Configure

Step 4: Select Configure

After you select Configure, a dialog box appears, where you can select the columns that should appear in the list in the workspace.

Reference:

<https://docs.microsoft.com/en-us/dynamics365/fin-ops-core/fin-ops/get-started/personalize-user-experience>

QUESTION 13

DRAG DROP

You are a Dynamics 365 Finance developer.

You need to troubleshoot performance issues for a client.

Which Lifecycle Services (LCS) tools should you use for each environment? To answer, drag the appropriate environment types to the correct tools. Each environment type may be used once, more than once, or not at all. You may need to drag the split bar between panes scroll to view content.

NOTE: Each correct selection is worth one point.

Select and Place:

Environment types	Tool	Environment type
User Acceptance Testing (UAT) only	Activity Monitoring	
Build only	SQL Insights	
User Acceptance Testing (UAT) and Build	System Diagnostics	

Correct Answer:

Answer Area		
Environment types	Tool	Environment type
	Activity Monitoring	User Acceptance Testing (UAT) and Build
	SQL Insights	User Acceptance Testing (UAT) only
	System Diagnostics	Build only

Section:

Explanation:

Box 1: User Acceptance Testing (UAT) and Build

Box 2: User Acceptance Testing (UAT) Only

Not all environments contain all the tools. The following table shows the tools that are available for each type of environment.

Environment type	Tools
Production systems	<ul style="list-style-type: none"> Activity monitoring Environment monitoring SQL insights System diagnostics
User acceptance testing (UAT)/sandbox	<ul style="list-style-type: none"> Activity monitoring SQL insights System diagnostics
Demo/build	<ul style="list-style-type: none"> Activity monitoring System diagnostics

Box 3: Build only

Reference:

<http://axhelper.com/?p=16527>

QUESTION 14

DRAG DROP

You need to map the Dynamics 365 Finance components into the standard models.

Which component belongs to which model? To answer, drag the appropriate models to the correct components. Each model may be used once, more than once, or not at all. You may need to drag the split bar between panes or scroll to view content.

NOTE: Each correct selection is worth one point.

Select and Place:

Models	Answer Area	
	Component Model	
Application Platform	Number Sequence	
Application Suite	Global Address Book	
Application Foundation	Workflow & Services	
	SSRS Reporting	

Correct Answer:

Models	Answer Area	
	Component Model	
Application Platform	Number Sequence	
Application Suite	Global Address Book	
Application Foundation	Workflow & Services	
	SSRS Reporting	

Section:

Explanation:

Reference:

<https://docs.microsoft.com/en-us/dynamics365/fin-ops-core/dev-itpro/dev-tools/application-stack-server-architecture>

QUESTION 15

Note: This question is part of a series of questions that present the same scenario. Each question in the series contains a unique solution that might meet the stated goals. Some question sets might have more than one correct solution, while others might not have a correct solution.

After you answer a question in this section, you will NOT be able to return to it. As a result, these questions will not appear in the review screen.

You create a new form in a project.

You need to display tabs in a vertical alignment.

Solution: Apply the Table of Contents pattern.

Does the solution meet the goal?

- A. Yes
- B. No

Correct Answer: B

Section:

Explanation:

Reference:

<https://docs.microsoft.com/en-us/dynamics365/fin-ops-core/dev-itpro/user-interface/table-of-contents-form-pattern>

QUESTION 16

DRAG DROP

A company uses Dynamics 365 Supply Chain Management.

You need to monitor system performance.

Which tool should you use? To answer, drag the appropriate tools to the correct requirements. Each tool may be used once, more than once, or not at all. You may need to drag the split bar between panes or scroll to view content.

NOTE: Each correct selection is worth one point.

Select and Place:

Tools

Activity monitoring

SQL insights

Health metrics

Answer Area

Requirement	Tool
Determine what a user was doing during a specific time period	Tool
Identify the number of distinct user sessions	Tool
View a list of transaction locks	Tool

Correct Answer:

Tools	Requirement	Tool
Activity monitoring	Determine what a user was doing during a specific time period	Activity monitoring
SQL insights	Identify the number of distinct user sessions	Activity monitoring
Health metrics	View a list of transaction locks	SQL insights

Section:

Explanation:

Reference:

<https://docs.microsoft.com/en-us/dynamics365/fin-ops-core/dev-itpro/lifecycle-services/monitoring-diagnostics>

<https://docs.microsoft.com/en-us/dynamics365/fin-ops-core/dev-itpro/lifecycle-services/performance-troubleshooting>

01 - Developer Tools

Case study

This is a case study. Case studies are not timed separately. You can use as much exam time as you would like to complete each case. However, there may be additional case studies and sections on this exam. You must manage your time to ensure that you are able to complete all questions included on this exam in the time provided.

To answer the questions included in a case study, you will need to reference information that is provided in the case study. Case studies might contain exhibits and other resources that provide more information about the scenario that is described in the case study. Each question is independent of the other questions in this case study.

At the end of this case study, a review screen will appear. This screen allows you to review your answers and to make changes before you move to the next section of the exam. After you begin a new section, you cannot return to this section.

To start the case study To display the first question in this case study, click the Next button. Use the buttons in the left pane to explore the content of the case study before you answer the questions. Clicking these buttons displays information such as business requirements, existing environment, and problem statements. If the case study has an All Information tab, note that the information displayed is identical to the information displayed on the subsequent tabs. When you are ready to answer a question, click the Question button to return to the question.

Background

Wide World Importers sell office supplies, furniture, and fittings to their customers across the United States. The company has the following locations:

a retail store in Seattle a warehouse in Seattle a customer support and call center in Atlanta a team of field workers that provide furniture installation services at customer sites.

Wide World Importers plans to implement Dynamics 365 Finance and Microsoft Azure cloud platform features.

Current environment

Customers may place orders by email, phone, or by using the company's website. The company authorizes and processes credit card transactions by using a web-based application. Customer, inventory, supplier, and other master and transactional data is stored in a legacy database.

The company collects feedback from customers by phone or a form on the company's website and maintains the data in a Microsoft Excel workbook.

Wide World Importers runs on-premises applications to manage payroll and workers compensation. The company has a set of Microsoft Power BI dashboards that present data from a reporting database.

The company creates a Lifecycle Services (LCS) implementation project and completes Dynamics 365 Finance onboarding.

The company maintains production, quality assurance (QA), development, user acceptance testing (UAT), and build environments.

Requirements

General

You must configure a cloud-based Dynamics 365 Finance development environment and enable code extension that support updates.

You must configure version control and a Build environment.

You must migrate all legacy data to the new system.

You must implement best practices for X++ coding, the data model, caching, and security.

All new code must be unit tested in a development environment and then validated by the QA team before code is added to source control.

Business processes

You must configure vendor trade agreements.

Products must be shipped directly from suppliers to customers depending on customer location to save indirect costs.

You must collect customer feedback on products shipped directly from vendors.

You must deploy code to a UAT environment for testing before deploying code to production.

You must validate all entries for the purchase order creation form.

You must develop a web portal that allows customers to browse products, place orders, and check order status. Product data for the web portal must be integrated as periodic batches.

Business systems You must install and configure a third-party solution for credit card processing within Dynamics 365 Finance. The third-party company will provide a deployable package.

The workers compensation application must be able to call an API to update worker compensation details in Dynamics 365 Finance.

You must develop a process to import payroll journals into the system.

You must configure the warehouse mobile device portal for warehouse operations.

You must install a third-party solution to support web portal integration. The solution is supplied as a source code model file.

Vendor exclusion list

You must develop a new solution to maintain a Vendor exclusion list for each customer and item combination. The solution must meet the following requirements:

Isolate all new vendor exclusion codes as a new assembly by creating a table named VendExclusions.

Create an index for the table named PrimaryIdx that uses the following fields: CustAccount, ItemId, VendAccount.

Ensure that users can open the Vendor Exclusion list report from the customer master form. The list must display the customer account, Item ID, and Vendor account fields.

Implement the Excel integration for the Vendor Exclusion List form.

Provide functionality to periodically export the Vendor exclusion list to prepare reports by using standard reporting capabilities of Dynamics 365 Unified Operations.

Develop necessary security permissions to view and maintain the new Vendor exclusion list functionality and reporting. Users with maintain rights will be able create, update, and delete the exclusion list. Permissions must be assigned to security roles to match company security model.

Maintain referential integrity with other tables.

Users must be presented with a warning message before a direct delivery purchase order is created for a vendor in exclusion list.

Sales managers must be alerted when a new exclusion record is added to the system.

Security

You must implement the record level audit feature to identify the users who created the record.

Grant specific users rights to maintain the vendor exclusion list by using Excel.

You must implement validation to check whether a proposed direct delivery purchase order vendor is on the exclusion list for the customer and product combination.

Issues

User1 is not able to access many features in the system. You must provide User1 administrator rights.

A sales manager suspects a data-related issue in the vendor exclusion list. User1 must identify the user who created the referenced exclusion records.

Developer2 joins the company and does not have access to a development environment or source control.

User2 reports performance issues when they generate direct delivery purchase orders after current updates are applied.

User2 reports that they cannot access new functionality and reports.

QUESTION 1

DRAG DROP

You need to deploy the web portal integration solution.

Which four actions should you perform in sequence? To answer, move the appropriate actions from the list of actions to the answer area and arrange them in the correct order.

Select and Place:

Actions

Add the package to source control and check in changes.

Build and create a deployment package.

Import the model into a Development environment.

Synchronize the models in the Developer environment by using **Get latest** feature.

Import the model into the Build environment.

Import the model into a QA environment.

Import the deployment package in another development environment.

Answer Area

Correct Answer:

www.VCEplus.io

Actions	Answer Area
	Add the package to source control and check in changes.
	Import the model into a Development environment.
	Synchronize the models in the Developer environment by using Get latest feature.
	Build and create a deployment package.
Import the model into the Build environment.	
Import the model into a QA environment.	
Import the deployment package in another development environment.	

Section:

Explanation:

Scenario: You must install and configure a third-party solution for credit card processing within Dynamics 365 Finance. The third-party company will provide a deployable package.

You must develop a web portal that allows customers to browse products, place orders, and check order status. Product data for the web portal must be integrated as periodic batches.

You must configure the warehouse mobile device portal for warehouse operations.

You must install a third-party solution to support web portal integration. The solution is supplied as a source code model file.

Step 1: Add the package to source control and check in the changes.

Deployable packages from third parties can be manually installed on a development VM, and the installed artifacts can then be added to source control.

Step 2: Import the model into a Development environment.

Install a model in a development environment

Step 3: Synchronize the models in the Developer environment by using Get latest feature Because the models and runtime packages are in source control, other developers who use other development environments can just synchronize the models and packages to their workspace by using the Get latest feature of source control.

Step 4: Build and create a deployment package The build process will include this runtime package in the final deployable package. This allows customers to take the deployable package from the build and have one package to deploy to their environments. The one package includes both custom solutions and all the third party solutions.

Reference:

<https://docs.microsoft.com/en-us/dynamics365/fin-ops-core/dev-itpro/dev-tools/manage-runtime-packages>

<https://docs.microsoft.com/en-us/dynamics365/fin-ops-core/dev-itpro/dev-tools/manage-runtime-packages#deploying-third-party-code>

02 - Developer Tools

QUESTION 1

You are a Dynamics 365 Finance developer. You are testing a workflow in a user acceptance testing environment.

You need to ensure that a specific user can accept purchase requisitions only if the requisition is in a specific status. Which two options can you configure to achieve the goal? Each correct answer presents a complete solution.
NOTE: Each correct selection is worth one point.

- A. manual decision
- B. approval process
- C. conditional decision
- D. automated task
- E. manual task

Correct Answer: B, C

Section:

Explanation:

B: The approval step that you're configuring might be required only if specific conditions are met.

C: A conditional decision is a point at which a workflow divides into two branches. The system determines which branch is used by evaluating the submitted document to determine whether it meets specific conditions.

Reference: <https://docs.microsoft.com/en-sg/dynamics365/fin-ops-core/fin-ops/organization-administration/configure-conditional-decision-workflow>

QUESTION 2

You are a Dynamics 365 Supply Chain Management developer.

You are working on a project by using Visual Studio.

Several users check out a custom form version control and modify the form.

You need to find the user that has added a specific line of code to the form.

What should you do?

- A. Open the object in Object Designer, select the title of the object, and then right-click View History.
- B. In Solution Explorer, navigate to the object and right-click View History.
- C. Using Visual Studio, navigate to the object. Add the object to a new solution, and then right-click View History.
- D. Using Visual Studio, navigate to the object in Application Explorer and right-click View History.

Correct Answer: D

Section:

Explanation:

In Visual Studio, Go to source control explorer > Select the object > right click > View history

Reference: <https://dynamicsuser.net/ax/f/developers/93354/how-to-rollback-a-change-set-completely-automatically-in-tfs>

QUESTION 3

You are a Dynamics 365 Finance developer.

You need to ensure that an integration is triggered when a specific process starts.

Which tool should you use to retrieve the status from the Production order?

- A. Batch job
- B. Periodic flow
- C. Business event
- D. Recurring Data Entity export

Correct Answer: C

Section:

Explanation:

Business events can be used as triggers from D365FO in Power Automate/MS Flow in an end to end way.

Reference: <https://community.dynamics.com/ax/b/happyd365fo/posts/triggers-using-business-event-in-power-automate-and-microsoft-dynamics-365-finance-and-operations>

QUESTION 4

HOTSPOT

You create the following cloud-based Dynamics 365 Finance environments:

Name	Comments
Development	Visual Studio workspace is configured and connected to an Azure DevOps branch.
Build	A Build pipeline is configured.
Standard Acceptance Test	This is a sandbox environment for testing customizations.

A developer creates code extensions in the Development environment. The developer checks the code changes into an Azure DevOps branch.

You need to deploy the code changes to the Standard Acceptance Test environment.

What should you do? To answer, select the appropriate options in the answer area.

NOTE: Each correct selection is worth one point.

Hot Area:

Answer Area

How should you prepare the package?

	▼
Export the Visual Studio project as an .axpp file.	
Build the code in a DevOps pipeline.	
Export the Visual Studio solution as a file.	

In which section of the Lifecycle Services (LCS) should you store the package?

	▼
Work items	
Solution management	
Asset library	

How should you install the customization?

	▼
Select Maintain and then Apply updates.	
Select Maintain and then Upgrade.	
Select LCS project and then Business process modeler.	
Select LCS project and then Code upgrade.	

Answer Area:

Answer Area

How should you prepare the package?

Export the Visual Studio project as an .axpp file.
Build the code in a DevOps pipeline.
Export the Visual Studio solution as a file.

In which section of the Lifecycle Services (LCS) should you store the package?

Work items
Solution management
Asset library

How should you install the customization?

Select Maintain and then Apply updates.
Select Maintain and then Upgrade.
Select LCS project and then Business process modeler.
Select LCS project and then Code upgrade.

Section:

Explanation:

Box 1: Build the code in the DevOps pipeline.

Box 2: Asset library

Run the export to the Asset library in Microsoft Dynamics Lifecycle Services (LCS).

Box 3: Select Maintain and Apply updates.

eprovision the target environment If you copy a database between environments, the copied database won't be fully functional until you run the Environment reprovisioning tool to make sure that all Commerce components are up to date.

Follow these steps to run the Environment reprovisioning tool.

1. In your project's Asset Library, in the Software deployable packages section, click Import.
2. From the list of shared assets, select the Environment Reprovisioning Tool.
3. On the Environment details page for your target environment, select Maintain > Apply updates.
4. Select the Environment Reprovisioning tool that you uploaded earlier, and then select Apply to apply the package.
5. Monitor the progress of the package deployment.

Reference:

<https://docs.microsoft.com/en-us/dynamics365/fin-ops-core/dev-itpro/database/dbmovement-scenario-exportuat#back-up-to-the-asset-library>

QUESTION 5

You are a Dynamics 365 Finance developer. You make changes to an existing custom class.

The code comparison tool shows version conflicts between your version and the latest checked-in version of the custom class.

In Visual Studio, you open the Source Control Explorer. You locate the latest changeset for the class and you open the changeset in Team Explorer.

You need to compare the latest code that is in source control with the code that you created.

Which option should you use?

- A. Compare with Workspace Version

- B. Compare with Previous Version
- C. View History
- D. Compare with Latest Version

Correct Answer: D

Section:

Explanation:

Reference:

<https://docs.microsoft.com/en-us/azure/devops/repos/tfvc/compare-files?view=azure-devops>

QUESTION 6

DRAG DROP

A company implements Dynamics 365 finance and operations apps.

You are developing code to consume OData service endpoints. You complete the application registration process and gather the details required to create a C# console application.

You need to ensure that the console application interacts with Dynamics 365 Finance OData services.

Which three actions should you perform in sequence? To answer, move the appropriate actions from the list of actions to the answer area and arrange them in the correct order.

Select and Place:

Actions

Add the custom OData service endpoints in the ODataClient list.

Add the OData v4 client code generator.

Point the MetadataDocumentUri variable to the Dynamics 365 Finance instance.

Generate proxy classes.

Answer Area

⬅️

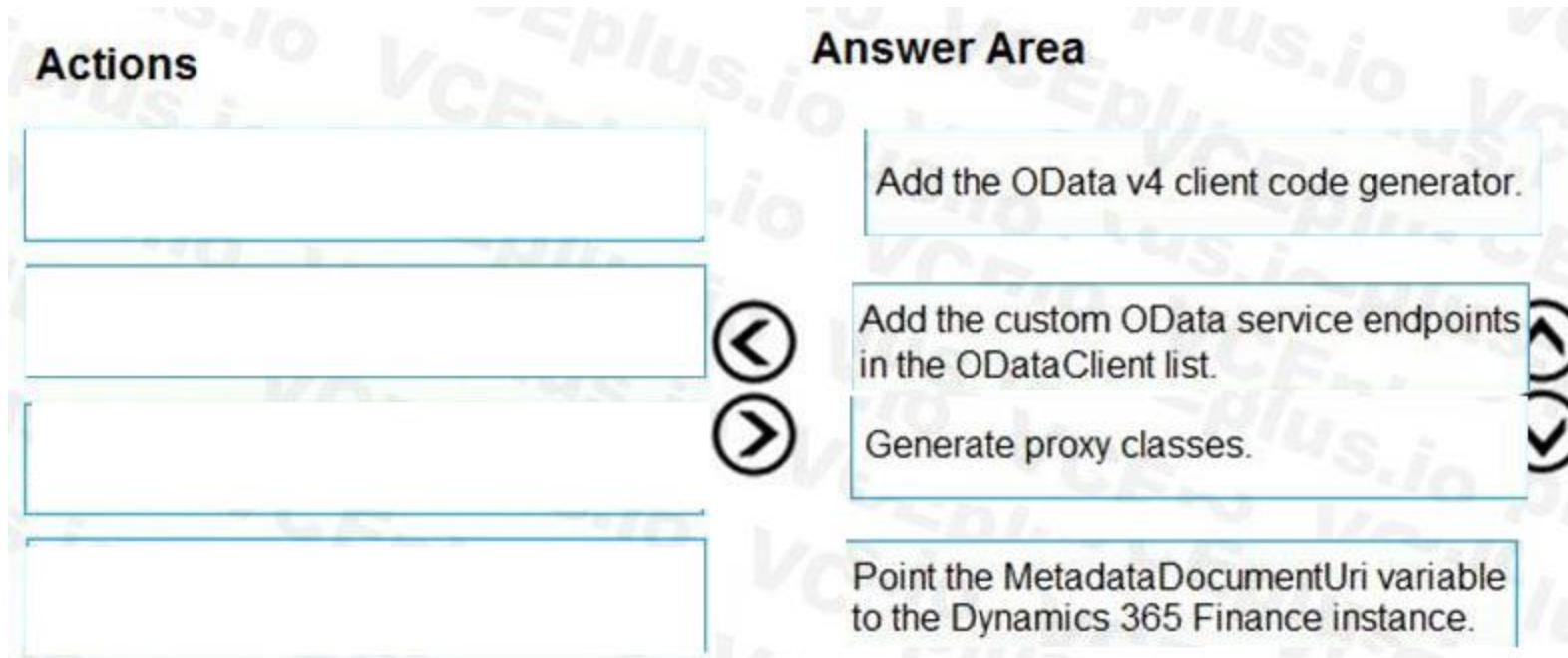
➡️

⬆️

⬆️

www.VCEplus.io

Correct Answer:



Section:

Explanation:

Step 1: Add the OData v4 client code generator

Install OData Client Code Generator

Step 2: Add the custom OData service endpoints to the ODataClient list After you downloaded, installed the OData V4 Client Code Generator and restart the Visual Studio you will be able to find and add 'OData Client' item into our project.

Step 3: Generate proxy classes

Step 4: Point the MetadataDocumentUri variable to the Dynamics 365 Finance instance

You need to set MetadataDocumentUri, which is generated by the OData Code Generator.

Reference:

<https://devblogs.microsoft.com/odata/tutorial-sample-how-to-use-odata-client-code-generator-to-generate-client-side-proxy-class/>

<https://www.netwoven.com/2018/05/29/how-to-create-client-side-odata-proxy-dll-for-microsoft-dynamics-365-for-finance-and-operations-ax/>

01 - Develop and Test Code

QUESTION 1

You are a Dynamics 365 Finance developer. You create an integer variable named totalSales.

You need to display the value from totalSales in an info statement.

Which three code segments can you use? Each correct answer presents a complete solution.

NOTE: Each correct selection is worth one point.

- A. `info(int2str(totalSales));`
- B. `info(totalSales);`
- C. `info(any2str(totalSales));`
- D. `info(strfmt("%1", totalSales));`
- E. `info(strLine(totalSales, 1));`

A. Option A

B. Option B

C. Option C

- D. Option D
- E. Option E

Correct Answer: A, C, D

Section:

Explanation:

A: int2Str converts an integer to the equivalent string.

C: any2Str converts an anytype value to a str value. The anytype data type is a placeholder for any data type.

D: Example:

```
void MyMethod() { for (int i = 0; i < 10; i++) { info(strfmt("i is %1", i)); } }
```

Reference:

<https://docs.microsoft.com/en-us/dynamics365/fin-ops-core/dev-itpro/dev-ref/xpp-variables-data-types>

<https://docs.microsoft.com/en-us/dynamics365/fin-ops-core/dev-itpro/dev-ref/xpp-data-primitive#anytype>

QUESTION 2

You are a Dynamics 365 Finance developer.

You have a table named FMVehicle that contains a field named VehicleId. The table has an index named VehicleIdIdx on the VehicleId field. You declare a table buffer named vehicle to refer to the table.

You need to select all records from the FMVehicle table in ascending order based on VehicleId field in the vehicle variable.

Which embedded-SQL statement should you use?

- A. `select vehicle index VehicleId;`
- B. `select vehicle order by VehicleId;`
- C. `select VehicleId from vehicle order by VehicleId asc;`
- D. `select vehicle order by VehicleId desc;`

- A. Option A
- B. Option B
- C. Option C
- D. Option D

Correct Answer: C

Section:

Explanation:

All select statements use a table variable to fetch records. The results of a select statement are returned in a table buffer variable, here vehicle.

Reference: <https://docs.microsoft.com/en-us/dynamics365/fin-ops-core/dev-itpro/dev-ref/xpp-data-query>

QUESTION 3

You are a Dynamics 365 Finance developer. You create a class.

You need to mark the class to ensure that when code is compiled, the process fails if a specific method is called in the source code.

Which attribute should you use?

- A. SysEntryPointAttribute
- B. getAttributes
- C. SysAttribute
- D. SysObsoleteAttribute

Correct Answer: D

Section:

Explanation:

One use of the SysObsoleteAttribute class is to notify the compiler that the compile should fail if a particular method is called in the source code. The compiler rejects the compile, and displays the specific message that is stored in this use of the attribute.

Reference:

<https://docs.microsoft.com/en-us/dynamics365/fin-ops-core/dev-itpro/dev-ref/xpp-attribute-classes>

QUESTION 4

You are using the SysTest framework to test code in Visual Studio.

You need to create a unit test class.

Which three attributes can you use to create the class? Each correct answer presents a complete solution.

NOTE: Each correct selection is worth one point.

- A. TestFilter
- B. Priority
- C. Owner
- D. EntryPoint
- E. Test Property

Correct Answer: B, C, E

Section:

Explanation:

The SysTest framework now supports the major test attributes in the adaptor to be on par with the MSTest framework adaptor. This includes attributes like Category, Owner, Priority, and Test Property.

Note:

The Priority attribute SysTestPriority, which requires an integer value, is now available. A priority can only be specified once, but is supported on both the class and method level, with method level taking precedence over class level.

The Owner attribute, SysTestOwner, has also been added. This attribute was technically already supported for filtering in the Test Toolbox window, but the attribute itself was missing in X++. Similar to Priority, an owner can only be specified once and is supported on both the class and method level, with the method level taking precedence.

SysTestProperty specifies a property and a value (two strings), and can now be used in the Test Toolbox window in Visual Studio. Test Property can be specified multiple times, and can exist on both the class and method level.

Reference:

<https://docs.microsoft.com/en-us/dynamics365/fin-ops-core/dev-itpro/perf-test/systest-filtering>

QUESTION 5

HOTSPOT

You have the following class definition:

```
class UnitConv
{
    public static real PoundsToKilograms(real _pounds)
    {
        return _pounds * 0.45359237;
    }
    public static real FahrenheitCelsius(real _fahrenheit)
    {
        return (_fahrenheit - 32) = 5/9;
    }
}
```

You need to create an extension class and create a new static method in it that converts miles to kilometers and then call the method from another class.

How should you complete the code and call the method? To answer, select the appropriate options in the answer area.

NOTE: Each correct selection is worth one point.

Hot Area:

Answer Area

Extension class definition:

`[ExtensionOf(classStr(UnitConv))]`

	▼
final class CustUnitConv_Extension	
final class UnitConv_MyExtension	
static class UnitConvMy_Extension	
class UnitConv_Extension	

```
{
    public static CaseMileage MiToKm(CaseMileage _miles)
    {
        return _miles * 1.609344;
    }
}
```

Call the method:

	▼
var km = UnitConv::MiToKm(62.1371);	
CaseMileage km = UnitConv_MyExtension::MiToKm(62.1371);	
UnitConvMy_Extension cUC = new UnitConv(); int km = cUC.MiToKm(62.1371);	
UnitConv_Extension uCE = new UnitConv(); real km = uCE.MiToKm(62.1371);	

Answer Area:

Answer Area

Extension class definition:

```
[ExtensionOf(classStr(UnitConv))]
```

	▼
final class CustUnitConv_Extension	
final class UnitConv_MyExtension	
static class UnitConvMy_Extension	
class UnitConv_Extension	

```
{
    public static CaseMileage MiToKm(CaseMileage _miles)
    {
        return _miles * 1.609344;
    }
}
```

Call the method:

	▼
var km = UnitConv::MiToKm(62.1371);	
CaseMileage km = UnitConv_MyExtension::MiToKm(62.1371);	
UnitConvMy_Extension cUC = new UnitConv(); int km = cUC.MiToKm(62.1371);	
UnitConv_Extension uCE = new UnitConv(); real km = uCE.MiToKm(62.1371);	

Section:

Explanation:

Box 1: final class UnitConv_MyExtension

Box 2: var km = UnitConv::miToKm(62.1371);

Reference:

<https://docs.microsoft.com/en-us/dynamics365/fin-ops-core/dev-itpro/extensibility/method-wrapping-coc>

QUESTION 6

HOTSPOT

You are the Dynamics 365 Finance Developer.

You have the following class definition:

```
class WebShopOrderValidations
{
    public static void checkQtyValue(int Qty = 0)
    {
        ...
    }
}
```

You need to create an extension class and wrap the method by using Chain of Command (CoC), if the value of the Qty variable is less than 5, the code must cause an exception.

How should you complete the code segment? To answer, select the appropriate options in the answer area.

NOTE: Each correct selection is worth one point.

Hot Area:

Answer Area

[ExtensionOf(classStr(WebShopOrderValidations))]

	▼
final class WebShopOrdVal_Extension	
final class WebShopOrderValidations_MyExtension	
static class WebShopOrderValidationsMy_Extension	
class WebShopOrderValidations_Extension	

{

	▼
public static void checkQtyValue(int Qty)	
public void checkQtyValue(int Qty)	
public static int checkQtyValue(int Qty)	
public static void checkQtyValue(int Qty = 0)	

```
{
    next checkQtyValue(Qty);
    if (Qty < 5)
    {
        throw error("Quantity cannot be smaller than 5");
    }
}
```

Answer Area:

Answer Area

[ExtensionOf(classStr(WebShopOrderValidations))]

▼
final class WebShopOrdVal_Extension
final class WebShopOrderValidations_MyExtension
static class WebShopOrderValidationsMy_Extension
class WebShopOrderValidations_Extension

▼
public static void checkQtyValue(int Qty)
public void checkQtyValue(int Qty)
public static int checkQtyValue(int Qty)
public static void checkQtyValue(int Qty = 0)

```
{
    next checkQtyValue(Qty);
    if (Qty < 5)
    {
        throw error("Quantity cannot be smaller than 5");
    }
}
```

Section:

Explanation:

Box 1: final class WebShopOrderVal_Extension

Box 2: public static void checkQtyValue(int Qty)

Incorrect Answers:

Public void ...

If a static method is the target that will be wrapped, the method in the extension must be qualified by using the static keyword.

Int Qty=0

The method signature in the wrapper method must not include the default value of the parameter.

Public int

Reference:

<https://docs.microsoft.com/en-us/dynamics365/fin-ops-core/dev-itpro/extensibility/method-wrapping-coc>

QUESTION 7

HOTSPOT

You have the following code:


```
[SysEntryPointAttributeRole]
class CashDiscountDP extends SRSReportDataProviderBase
{
    CashDiscountTmp cashDiscountTmp;
    [SRSReportDataSetAttribute(tableStr(CashDiscountTmp))]
    public CashDiscountTmp getCashDiscountTmp()
    {
        select cashDiscountTmp;
        return cashDiscountTmp;
    }
    public boolean processReport()
    {
        ...
    }
}
```

For each of the following statements, select Yes if the statement is true. Otherwise, select No.
NOTE: Each correct selection is worth one point.

Hot Area:

Answer Area

Statement	Yes	No
You can use the class as an entry point for a security privilege.	<input type="radio"/>	<input type="radio"/>
The class allows SQL Server Reporting Services to retrieve data for the report.	<input type="radio"/>	<input type="radio"/>
processReport() has the correct method signature.	<input type="radio"/>	<input type="radio"/>

Answer Area:

Answer Area	Statement	Yes	No
	You can use the class as an entry point for a security privilege.	<input checked="" type="radio"/>	<input type="radio"/>
	The class allows SQL Server Reporting Services to retrieve data for the report.	<input checked="" type="radio"/>	<input type="radio"/>
	processReport() has the correct method signature.	<input type="radio"/>	<input checked="" type="radio"/>

Section:

Explanation:

Box 1: Yes

Here CashDiscountDP is the name of the secure server method that is tagged with the SysEntryPointAttribute attribute.

Box 2: Yes

To define a report data provider class An RDP class extends the SRSReportDataProviderBase class. You set the SRSReportParameterAttribute attribute to the data contract you created for the RDP class.

Box 3: No

Instead:

```
public void processReport()
```

Reference:

<https://docs.microsoft.com/en-us/dynamicsax-2012/developer/security-privilege-properties>

<https://docs.microsoft.com/en-us/dynamicsax-2012/appuser-itpro/how-to-use-a-report-data-provider-class-in-a-report>

QUESTION 8

DRAG DROP

You create a Visual Studio project named ProductUpdates.

You must update data in a table named ProductTable. You must be able to run the code from Visual Studio.

You need to create an X++ class.

Which four actions should you perform in sequence? To answer, move the appropriate actions from the list of actions to the answer area and arrange them in the correct order.

Select and Place:

Answer Area

Actions

Add the ExtensionOf attribute to the class.

Set the class as the startup object.

Write database manipulation code in the class.

Build and run the class.

Create a runnable class and add it to the ProductUpdates project.

Create a class extension of the ProductTable and add it to the ProductUpdates project.

Correct Answer:

Answer Area

Actions

Add the ExtensionOf attribute to the class.

Create a class extension of the ProductTable and add it to the ProductUpdates project.

Create a runnable class and add it to the ProductUpdates project.

Write database manipulation code in the class.

Build and run the class.

Set the class as the startup object.

www.VCEplus.io

Section:

Explanation:

Reference:

<https://community.dynamics.com/365/financeandoperations/b/daxology/posts/runnable-class>

QUESTION 9

HOTSPOT

You are a Dynamics 365 Finance developer. You have the following code: (Line numbers are created for reference only.)


```
01 class TestQuestion
02 {
03     public static void main(Args _args)
04     {
05         TestQuestion testQuestion = new testQuestion();
06         testQuestion.run();
07     }
08     public void run()
09     {
10         TmpFrmVirtual tmpFrmVirtual;
11         str salesId;
12         int salesQty
13         tmpFrmVirtual.Id = "SID1234";
14         salesQty = 5;
15         this.updateValues(tmpFrmVirtual, int2Str(salesQty));
16         info(tmpFrmVirtual.Id);
17         info(salesQty);
18     }
19     public void updateValues(TmpFrmVirtual _tmpFrmVirtual, str _salesQty)
20     {
21         TmpFrmVirtual tmpFrmVirtual = _tmpFrmVirtual;
22         int salesQty = _str2int(salesQty);
23         tmpFrmVirtual.Id = "SID1234"-Updated";
24         salesQty = 10;
25     }
26 }
```

Which values does the info() method return? To answer, select the appropriate option in the answer area.

NOTE: Each correct selection is worth one point.

Hot Area:

Answer Area

Parameter	Value
tmpFrmVirtual.Id	<div>▼</div> <div>SID1234</div> <div>SID1234-Updated</div> <div>SID1234 SID1234-Updated</div>
salesQty	<div>▼</div> <div>5</div> <div>10</div> <div>15</div>

Answer Area:

Answer Area

Parameter	Value
tmpFrmVirtual.Id	<div>▼</div> <div>SID1234</div> <div>SID1234-Updated</div> <div>SID1234 SID1234-Updated</div>
salesQty	<div>▼</div> <div>5</div> <div>10</div> <div>15</div>

Section:

Explanation:

Box 1: SID1234

Parameters All methods have their own scope. A method can take one or more parameters. Within the scope of the method, these parameters are treated as local variables and are initialized with a value from the parameter in the method call. All parameters are passed by value, which means that you can't change the value of the original variable. You can change only the local variable in the method. This local variable is a copy of the original variable.

Box 2: 5

Reference:

<https://docs.microsoft.com/en-us/dynamics365/fin-ops-core/dev-itpro/dev-ref/xpp-classes-methods>

QUESTION 10**HOTSPOT**

You have a Dynamics 365 Finance environment.

You have the following code: (Line numbers are included for reference only.)

```
01 class SalesPriceDiscount
02 {
03     ...
04     public void calculatePrice
05     {
06         ...
07     }
08     public static AmountCur getDiscount(Percent markup)
09     {
10         ...
11     }
12 }
13 [ExtensionOf(classStr(SalesPriceDiscount))]
14 final class SalesPriceDiscountMy_Extension
15 {
16     public void calculatePrice()
17     {
18         ...
19         next calculatePrice()
20         ...
21     }
22 }
```

For each of the following statements, select Yes if the statement is true. Otherwise, select No.

NOTE: Each correct selection is worth one point.

Hot Area:

Answer Area

Statement	Yes	No
The calculatePrice() method in the extension class can access and manage public and protected methods and variables of the base class.	<input type="radio"/>	<input type="radio"/>
You can modify the calculatePrice() method in the extension class by adding conditional logic at line 20.	<input type="radio"/>	<input type="radio"/>
The static method getDiscount() in Line 10 of the base class can be wrapped and extended by adding business logic to the extension class.	<input type="radio"/>	<input type="radio"/>
The extension class can be instantiated by running the following code: <pre>SalesPriceDiscountMy_Extension myInstance = new SalesPriceDiscountMy_Extension();</pre>	<input type="radio"/>	<input type="radio"/>

Answer Area:

Answer Area

Statement	Yes	No
The calculatePrice() method in the extension class can access and manage public and protected methods and variables of the base class.	<input checked="" type="radio"/>	<input type="radio"/>
You can modify the calculatePrice() method in the extension class by adding conditional logic at line 20.	<input checked="" type="radio"/>	<input type="radio"/>
The static method getDiscount() in Line 10 of the base class can be wrapped and extended by adding business logic to the extension class.	<input checked="" type="radio"/>	<input type="radio"/>
The extension class can be instantiated by running the following code: <pre>SalesPriceDiscountMy_Extension myInstance = new SalesPriceDiscountMy_Extension();</pre>	<input type="radio"/>	<input checked="" type="radio"/>

Section:

Explanation:

Box 1: Yes

Class extension - Method wrapping and Chain of Command.

The functionality for class extension, or class augmentation, has been improved. You can now wrap logic around methods that are defined in the base class that you're augmenting. You can extend the logic of public and protected methods without having to use event handlers. When you wrap a method, you can also access public and protected methods, and variables of the base class. In this way, you can start transactions and easily manage state variables that are associated with your class.

Box 2: Yes In the following example, the wrapper around doSomething and the required use of the next keyword create a Chain of Command (CoC) for the method. CoC is a design pattern where a request is handled by a series of receivers. The pattern supports loose coupling of the sender and the receivers [ExtensionOf(classStr(BusinessLogic1))] final class BusinessLogic1_Extension { str doSomething(int arg) { // Part 1 var s = next doSomething(arg + 4); // Part 2 return s; } }

Box 3: Yes Instance and static methods can be wrapped by extension classes. If a static method is the target that will be wrapped, the method in the extension must be qualified by using the static keyword.

Box 4: No

Wrapper methods must always call next.

Note: Wrapper methods in an extension class must always call next, so that the next method in the chain and, finally, the original implementation are always called. This restriction helps guarantee that every method in the chain contributes to the result.

In the current implementation of this restriction, the call to next must be in the first-level statements in the method body.

Here are some important rules:

Calls to next can't be done conditionally inside an if statement.

Calls to next can't be done in while, do-while, or for loop statements.

A next statement can't be preceded by a return statement.

Because logical expressions are optimized, calls to next can't occur in logical expressions. At runtime, the execution of the complete expression isn't guaranteed.

Reference:

<https://docs.microsoft.com/en-us/dynamics365/fin-ops-core/dev-itpro/extensibility/method-wrapping-coc>

QUESTION 11

HOTSPOT

You are a Dynamics 365 Finance developer.

You have the following code: (Line numbers are included for reference only.)

www.VCEplus.io

```
01 public void tryMethod(int a, int b)
02 {
03     try
04     {
05         info("One");
06         int c = a/b;
07         info("Two");
08     }
09     catch
10     {
11         info("Three");
12         if (a == 2);
13         {
14             return;
15         }
16         else if (a == 3)
17         {
18             b = 3;
19             retry;
20         }
21     }
22     finally
23     {
24         info("Four");
25     }
26     info("Five");
27 }
```

www.VCEplus.io

You need to evaluate the code.

What is the correct output for the method? To answer, select the appropriate option in the answer area.

NOTE: Each correct selection is worth one point.

Hot Area:

Answer Area

Method	Output
tryMethod(5,2);	<div>▼</div> <div>One, Two, Four, Five</div> <div>One, Two, Five</div> <div>One, Three, Four, Five</div>
tryMethod(4,0);	<div>▼</div> <div>One, Three, Four, Five</div> <div>One, Four, Five</div> <div>One, Two, Four, Five</div>
tryMethod(2,0);	<div>▼</div> <div>One, Three, Four</div> <div>One, Three</div> <div>One, Three, Four, Five</div>
tryMethod(3,0);	<div>▼</div> <div>One, Two, Four, Five</div> <div>One, Three, One, Two, Four, Five</div> <div>One, Three, Four, One, Two, Four, Five</div>

Answer Area:

Answer Area	
Method	Output
tryMethod(5, 2);	<div>▼</div> <div>One, Two, Four, Five</div> <div>One, Two, Five</div> <div>One, Three, Four, Five</div>
tryMethod(4, 0);	<div>▼</div> <div>One, Three, Four, Five</div> <div>One, Four, Five</div> <div>One, Two, Four, Five</div>
tryMethod(2, 0);	<div>▼</div> <div>One, Three, Four</div> <div>One, Three</div> <div>One, Three, Four, Five</div>
tryMethod(3, 0);	<div>▼</div> <div>One, Two, Four, Five</div> <div>One, Three, One, Two, Four, Five</div> <div>One, Three, Four, One, Two, Four, Five</div>

Section:

Explanation:

Box 1: One, Two, Four, Five

The statements in the finally clause are executed when control leaves the try block, either normally or through an exception.

Box 2: One, Three, Four, Five

Box 3: One, Three

Return ends the call.

Box 4: One, Three, One, Two, Four, Five

Retry restarts the try statement.

Reference:

<https://docs.microsoft.com/en-us/dynamics365/fin-ops-core/dev-itpro/dev-ref/xpp-exceptions>

QUESTION 12

HOTSPOT

You have the following code:


```
public void CompareValues ()
{
    Date myDate = str2date('01/08/1901',123);
    boolean result1, result2, result3;
    result1 = (myDate + 1 == str2date('02/08/1901', 123));
    result2 = (int2str(real2int(myDate)) + 1 == str2date('02/08/1901', 123));
}
```

For each of the following statements, select Yes if the statement is true. Otherwise, select No.
NOTE: Each correct selection is worth one point.

Hot Area:

Statement	Yes	No
The value of result1 = true	<input type="radio"/>	<input type="radio"/>
The value of result2 = true	<input type="radio"/>	<input type="radio"/>

Answer Area:

Statement	Yes	No
The value of result1 = true	<input checked="" type="radio"/>	<input type="radio"/>
The value of result2 = true	<input type="radio"/>	<input checked="" type="radio"/>

Section:

Explanation:

Box 1: Yes

Add 1 to a date adds one day.

Box 2: No

You cannot do a real2int conversion on a Date.

Reference:

<https://docs.microsoft.com/en-us/dynamics365/customerengagement/on-premises/customize/types-of-fields>

QUESTION 13

You are a Dynamics 365 Finance developer.

You have a table named FMVehicle that contains a field named VehicleId. The table has an index named VehicleIdIdx on the VehicleId field. You declare a table buffer named vehicle to refer to the table.

You need to select all records from the FMVehicle table in ascending order based on VehicleId field in the vehicle variable.

Which embedded-SQL statement should you use?

- A. `select vehicle index VehicleId;`
- B. `select vehicle index VehicleIdIdx;`
- C. `select VehicleId from vehicle order by VehicleIdIdx asc;`
- D. `select vehicle order by VehicleId desc;`

- A. Option A
- B. Option B
- C. Option C
- D. Option D

Correct Answer: B

Section:

Explanation:

The 'index VehicleIdIdx' statement will cause an Order By Asc of the fields contained in the index. In this case, that means an Order By Asc of the VehicleID field.

QUESTION 14

DRAG DROP

You create a Visual Studio project named CustomerDetailUpdate.

You must update data in a table named CustTable. You must be able to run the code from Visual Studio.

In which order should you perform the actions? To answer, move all actions from the list of actions to the answer area and arrange them in the correct order.

Select and Place:

Actions

Create a runnable class and add the class to the CustomerDetailUpdate project

Set the class as the startup project and run the class

Build the project

Write code in the class to update the customer table

Answer Area



Correct Answer:

Actions	Answer Area
	Create a runnable class and add the class to the CustomerDetailUpdate project
	Write code in the class to update the customer table
	Build the project
	Set the class as the startup project and run the class

Section:

Explanation:

Reference:

<https://community.dynamics.com/365/financeandoperations/b/daxology/posts/runnable-class>

QUESTION 15

You create a new class.

Class compilation must fail if a specific method in the source code is called.

You need to mark the class with the appropriate attribute.

Which attribute should you use?

- A. SysAppSecurityAttribute
- B. SysTestCategory
- C. SysObsoleteAttribute
- D. SysAttribute

Correct Answer: C

Section:

Explanation:

Reference:

<https://docs.microsoft.com/en-us/dynamicsax-2012/developer/overview-of-attribute-classes>

01 - Implement Reporting

Case study

This is a case study. Case studies are not timed separately. You can use as much exam time as you would like to complete each case. However, there may be additional case studies and sections on this exam. You must manage your time to ensure that you are able to complete all questions included on this exam in the time provided.

To answer the questions included in a case study, you will need to reference information that is provided in the case study. Case studies might contain exhibits and other resources that provide more information about the scenario that is described in the case study. Each question is independent of the other questions in this case study.

At the end of this case study, a review screen will appear. This screen allows you to review your answers and to make changes before you move to the next section of the exam. After you begin a new section, you cannot return to this section.

To start the case study To display the first question in this case study, click the Next button. Use the buttons in the left pane to explore the content of the case study before you answer the questions. Clicking these buttons

displays information such as business requirements, existing environment, and problem statements. If the case study has an All Information tab, note that the information displayed is identical to the information displayed on the subsequent tabs. When you are ready to answer a question, click the Question button to return to the question.

Background

Wide World Importers sell office supplies, furniture, and fittings to their customers across the United States. The company has the following locations:

a retail store in Seattle a warehouse in Seattle a customer support and call center in Atlanta a team of field workers that provide furniture installation services at customer sites.

Wide World Importers plans to implement Dynamics 365 Finance and Microsoft Azure cloud platform features.

Current environment

Customers may place orders by email, phone, or by using the company's website. The company authorizes and processes credit card transactions by using a web-based application. Customer, inventory, supplier, and other master and transactional data is stored in a legacy database.

The company collects feedback from customers by phone or a form on the company's website and maintains the data in a Microsoft Excel workbook.

Wide World Importers runs on-premises applications to manage payroll and workers compensation. The company has a set of Microsoft Power BI dashboards that present data from a reporting database.

The company creates a Lifecycle Services (LCS) implementation project and completes Dynamics 365 Finance onboarding.

The company maintains production, quality assurance (QA), development, user acceptance testing (UAT), and build environments.

Requirements

General

You must configure a cloud-based Dynamics 365 Finance development environment and enable code extension that support updates.

You must configure version control and a Build environment.

You must migrate all legacy data to the new system.

You must implement best practices for X++ coding, the data model, caching, and security.

All new code must be unit tested in a development environment and then validated by the QA team before code is added to source control.

Business processes

You must configure vendor trade agreements.

Products must be shipped directly from suppliers to customers depending on customer location to save indirect costs.

You must collect customer feedback on products shipped directly from vendors.

You must deploy code to a UAT environment for testing before deploying code to production.

You must validate all entries for the purchase order creation form.

You must develop a web portal that allows customers to browse products, place orders, and check order status. Product data for the web portal must be integrated as periodic batches.

Business systems You must install and configure a third-party solution for credit card processing within Dynamics 365 Finance. The third-party company will provide a deployable package.

The workers compensation application must be able to call an API to update worker compensation details in Dynamics 365 Finance.

You must develop a process to import payroll journals into the system.

You must configure the warehouse mobile device portal for warehouse operations.

You must install a third-party solution to support web portal integration. The solution is supplied as a source code model file.

Vendor exclusion list

You must develop a new solution to maintain a Vendor exclusion list for each customer and item combination. The solution must meet the following requirements:

Isolate all new vendor exclusion codes as a new assembly by creating a table named VendExclusions.

Create an index for the table named PrimaryIdx that uses the following fields: CustAccount, ItemId, VendAccount.

Ensure that users can open the Vendor Exclusion list report from the customer master form. The list must display the customer account, Item ID, and Vendor account fields.

Implement the Excel integration for the Vendor Exclusion List form.

Provide functionality to periodically export the Vendor exclusion list to prepare reports by using standard reporting capabilities of Dynamics 365 Unified Operations.

Develop necessary security permissions to view and maintain the new Vendor exclusion list functionality and reporting. Users with maintain rights will be able create, update, and delete the exclusion list. Permissions must be assigned to security roles to match company security model.

Maintain referential integrity with other tables.

Users must be presented with a warning message before a direct delivery purchase order is created for a vendor in exclusion list.

Sales managers must be alerted when a new exclusion record is added to the system.

Security

You must implement the record level audit feature to identify the users who created the record.

Grant specific users rights to maintain the vendor exclusion list by using Excel.

You must implement validation to check whether a proposed direct delivery purchase order vendor is on the exclusion list for the customer and product combination.

Issues

User1 is not able to access many features in the system. You must provide User1 administrator rights.

A sales manager suspects a data-related issue in the vendor exclusion list. User1 must identify the user who created the referenced exclusion records.
 Developer2 joins the company and does not have access to a development environment or source control.
 User2 reports performance issues when they generate direct delivery purchase orders after current updates are applied.
 User2 reports that they cannot access new functionality and reports.

QUESTION 1

HOTSPOT

You need to implement the reporting requirements for the Vendor exclusion list.

Which options you should use? To answer, select the appropriate options in the answer area.

NOTE: Each correct selection is worth one point.

Hot Area:

Requirement	Option
Implement reporting.	<div>▼</div> <div>Power Platform</div> <div>SQL Server Reporting Services</div> <div>Financial Reporting</div>
Automatically set the query range based on session context.	<div>▼</div> <div>Controller class</div> <div>ReportDataProvider class</div> <div>UIBuilder class</div>

Answer Area:

Requirement	Option
Implement reporting.	<div>▼</div> <div>Power Platform</div> <div>SQL Server Reporting Services</div> <div>Financial Reporting</div>
Automatically set the query range based on session context.	<div>▼</div> <div>Controller class</div> <div>ReportDataProvider class</div> <div>UIBuilder class</div>

Section:

Explanation:

Scenario: Provide functionality to periodically export the Vendor exclusion list to prepare reports by using standard reporting capabilities of Dynamics 365 Finance.

Box 1: Financial Reporting

The financial reporting functions are available to users who have the appropriate privileges and duties assigned to them through their security roles.

Box 2: UIBuilder class

Example:

Defining parameters defaulting using code

1. In Solution Explorer, double-click on the FMRentalsByCustUIBuilder class to open the designer.

2. Locate the class build method and update the initialization code.

The parameter initialization code sets the default values of the report execution relative to today's date. Use the classes UIBuilder to override the framework's default handling of report parameters. Additional extension scenarios supported include:

Automatically set query ranges based on session context using Controller classes

Reference:

<https://docs.microsoft.com/en-us/dynamics365/fin-ops-core/dev-itpro/analytics/create-nextgen-reporting-solutions>

<https://docs.microsoft.com/en-us/dynamics365/finance/general-ledger/financial-reporting-getting-started>

02 - Implement Reporting

Case study

This is a case study. Case studies are not timed separately. You can use as much exam time as you would like to complete each case. However, there may be additional case studies and sections on this exam. You must manage your time to ensure that you are able to complete all questions included on this exam in the time provided.

To answer the questions included in a case study, you will need to reference information that is provided in the case study. Case studies might contain exhibits and other resources that provide more information about the scenario that is described in the case study. Each question is independent of the other questions in this case study.

At the end of this case study, a review screen will appear. This screen allows you to review your answers and to make changes before you move to the next section of the exam. After you begin a new section, you cannot return to this section.

To start the case study To display the first question in this case study, click the Next button. Use the buttons in the left pane to explore the content of the case study before you answer the questions. Clicking these buttons displays information such as business requirements, existing environment, and problem statements. If the case study has an All Information tab, note that the information displayed is identical to the information displayed on the subsequent tabs. When you are ready to answer a question, click the Question button to return to the question.

Background

Overview

First Up Consultants provides Commercial Cleaning services to its clients. The company purchases all its cleaning supplies from Best For You Organics Company.

First Up Consultants is using a cloud-based Dynamics 365 Finance instance. The system has a foundation table named CashDisc that contains one cash discount record for each cash discount type.

Best For You Organics Company invoices First Up Consultants and allows cash discounts based on how fast an invoice is paid. First Up Consultants is entitled to a two percent discount from Best for You Organics for any invoice that is paid within 10 days and has a minimum invoice amount of \$2,500.

Business requirements

All new and extended objects must be located in an existing model named FinanceExt. The creation of new models is not permitted.

Best For You Organics Company requires that First Up Consultants apply specific minimum invoice amounts to each cash discount record. A cash discount may only be applied when the minimum invoice amount requirement has been met.

The new field must be added to the CashDisc form grid with the allowable visible number of characters set to 10.

First Up Consultants must retrieve the required Cash Discount methods and corresponding minimum invoice amounts directly from Best For You Organics Company's enterprise resource planning (ERP) system.

The Chief Financial Officer (CFO) requires the following reports:

A report that shows all outstanding invoices, their cash discount types including the new minimum threshold applicable, and the amount of the discount. The report must only be accessed by users who are members of the Accounts

Payable Manager role.

You must create a Microsoft Excel workbook that lists unpaid invoices to Best For You Organics Company that have a due date earlier than 5/1/2019 and an Invoice Amount between \$20,000 and \$100,000.

Cash discounts for unpaid invoices must be updated with the new minimum invoice amounts.

Technical requirements

Vendor Invoices Past Due form

You must be able to filter the grid on the Vendor Invoices Past Due form. By default, you must filter the form based on the Due Date, Invoice Amount, and Vendor columns. Users must be able to apply reusable user-specific filters to a page using multiple fields.

CashDisc form

You must extend the CashDisc form to add a new field named MinimumInvoiceAmount to the form. You must add a new Extended Data Type to the extension model for the new field. The new field must be added above the

discount method field. The field must display 10 characters.

The accounts payable manager and the accounts payable clerk have Delete access to the form. You must alter permissions to limit accounts payable clerks to have only View access to the form.

Cash Discount Records report You must create a report that shows a list of CashDisc records. You must include the MinimumInvoiceAmount field and filtered data by using the CashDisc.DiscMethod field. Applicable security objects must be created in the existing "FinanceExt" model and configured so the report is accessible by those users to the accounts payable role.

Batch jobs

You must create a batch job that runs on the last day of each month to update the current unpaid invoices with changes in the minimum invoice amount. The job must meet the following requirements:

Accept the following parameters: Vendor, DueDate.

Be callable by an Action menu item.

Allow users to specify vendors to include in the job.

Use SysOperation Framework for all batch jobs.

You must create a batch job to identify modified CashDisc.MinimumInvoiceAmount values and apply these to open Purchase Lines.

QUESTION 1

DRAG DROP

You need to create the outstanding invoice report for the CFO.

Which attributes should you use? To answer, drag the appropriate attributes to the requirements. Each attribute answer may be used once, more than once, or not at all. You may need to drag the split between panes or scroll to view content.

NOTE: Each correct selection is worth one point.

Select and Place:

Attributes	Requirement	Attribute
SRSReportParameterAttribute	Identify the class that provides parameters for the report.	
SysOperationDisplayOrderAttribute	Enable contract parameters in the report dialog.	
DataMemberAttribute	Indicate the contract name in the data provider class.	
DataContractAttribute		

Correct Answer:

Attributes	Requirement	Attribute
	Identify the class that provides parameters for the report.	DataContractAttribute
SysOperationDisplayOrderAttribute	Enable contract parameters in the report dialog.	DataMemberAttribute
	Indicate the contract name in the data provider class.	SRSReportParameterAttribute

Section:

Explanation:

Scenario: The Chief Financial Officer (CFO) requires the following reports:

A report that shows all outstanding invoices, their cash discount types including the new minimum threshold applicable, and the amount of the discount. The report must only be accessed by users who are members of the Accounts

Payable Manager role.

Box 1: DataContractAttribute DataContractAttribute – This attribute is applied to an X++ class and specifies that the class can be used as a data contract (that it should be serialized).

Box 2: DataMemberAttribute DataMemberAttribute – This attribute is applied to a parm (parameter) method on an X++ data contract class and specifies that the data member should be serialized.

Box 3: SRSReportParameterAttribute

You set the SRSReportParameterAttribute attribute to the data contract you created for the RDP class.

Reference:

<https://docs.microsoft.com/en-us/dynamicsax-2012/appuser-itpro/how-to-use-a-report-data-provider-class-in-a-report>

Exam I

QUESTION 1

DRAG DROP

You are creating a new class and adding methods to the class.

You need to control extensibility capabilities of some of the methods in the class.

Which attribute should you use? To answer, drag the appropriate attributes to the correct requirements. Each attribute may be used once, more than once, or not at all. You may need to drag the split bar between panes or scroll to view content.

NOTE: Each correct selection is worth one point.

Select and Place:

Attributes	Answer Area								
<div><div>[Hookable(true)]</div><div>[Wrappable(false)]</div><div>[Replaceable]</div></div>	<table><thead><tr><th>Requirement</th><th>Attribute</th></tr></thead><tbody><tr><td>Extenders must be able to subscribe to pre- and post-event handlers.</td><td></td></tr><tr><td>Extenders must not be able to use chain of command (CoC) to wrap a specific method.</td><td></td></tr><tr><td>Extenders must be able to wrap the method but must not be required to call next in the chain of command (CoC).</td><td></td></tr></tbody></table>	Requirement	Attribute	Extenders must be able to subscribe to pre- and post-event handlers.		Extenders must not be able to use chain of command (CoC) to wrap a specific method.		Extenders must be able to wrap the method but must not be required to call next in the chain of command (CoC).	
Requirement	Attribute								
Extenders must be able to subscribe to pre- and post-event handlers.									
Extenders must not be able to use chain of command (CoC) to wrap a specific method.									
Extenders must be able to wrap the method but must not be required to call next in the chain of command (CoC).									

Correct Answer:

Attributes	Answer Area								
<div><div></div><div></div><div></div></div>	<table><thead><tr><th>Requirement</th><th>Attribute</th></tr></thead><tbody><tr><td>Extenders must be able to subscribe to pre- and post-event handlers.</td><td>[Hookable(true)]</td></tr><tr><td>Extenders must not be able to use chain of command (CoC) to wrap a specific method.</td><td>[Wrappable(false)]</td></tr><tr><td>Extenders must be able to wrap the method but must not be required to call next in the chain of command (CoC).</td><td>[Replaceable]</td></tr></tbody></table>	Requirement	Attribute	Extenders must be able to subscribe to pre- and post-event handlers.	[Hookable(true)]	Extenders must not be able to use chain of command (CoC) to wrap a specific method.	[Wrappable(false)]	Extenders must be able to wrap the method but must not be required to call next in the chain of command (CoC).	[Replaceable]
Requirement	Attribute								
Extenders must be able to subscribe to pre- and post-event handlers.	[Hookable(true)]								
Extenders must not be able to use chain of command (CoC) to wrap a specific method.	[Wrappable(false)]								
Extenders must be able to wrap the method but must not be required to call next in the chain of command (CoC).	[Replaceable]								

Section:

Explanation:

Attributes	Answer Area								
<div><div>[Hookable(true)]</div><div>[Wrappable(false)]</div><div>[Replaceable]</div></div>	<table><thead><tr><th>Requirement</th><th>Attribute</th></tr></thead><tbody><tr><td>Extenders must be able to subscribe to pre- and post-event handlers.</td><td>[Hookable(true)]</td></tr><tr><td>Extenders must not be able to use chain of command (CoC) to wrap a specific method.</td><td>[Wrappable(false)]</td></tr><tr><td>Extenders must be able to wrap the method but must not be required to call next in the chain of command (CoC).</td><td>[Replaceable]</td></tr></tbody></table>	Requirement	Attribute	Extenders must be able to subscribe to pre- and post-event handlers.	[Hookable(true)]	Extenders must not be able to use chain of command (CoC) to wrap a specific method.	[Wrappable(false)]	Extenders must be able to wrap the method but must not be required to call next in the chain of command (CoC).	[Replaceable]
Requirement	Attribute								
Extenders must be able to subscribe to pre- and post-event handlers.	[Hookable(true)]								
Extenders must not be able to use chain of command (CoC) to wrap a specific method.	[Wrappable(false)]								
Extenders must be able to wrap the method but must not be required to call next in the chain of command (CoC).	[Replaceable]								

QUESTION 2

DRAG DROP

A company uses Dynamics 365 Supply Chain Management.

You are developing multiple integrations.

You need to select the appropriate integration models for the integrations.

Which integration model should you select? To answer, drag the appropriate data integration models to the correct requirements. Each data integration model may be used once, more than once, or not at all. You may need to drag the split bar between panes or scroll to view content.

NOTE: Each correct selection is worth one point.

Select and Place:

Data integration models

Custom service

Dual-write

Azure Data Lake integration

OData

Answer Area

Requirement

Users must be able to view changes in near real time in Dynamics 365 when they create or make changes to a product in an external system.

Update and synchronize customer information in Dynamics 365 Supply Chain Management that is created or updated in Dynamics 365 Sales.

Share information about the on-hand quantity of products in near real time with an external web-based e-commerce application that supports the SOAP protocol.

Data integration model

Correct Answer:

Data integration models

Custom service

Dual-write

Azure Data Lake integration

OData

Answer Area

Requirement

Users must be able to view changes in near real time in Dynamics 365 when they create or make changes to a product in an external system.

Update and synchronize customer information in Dynamics 365 Supply Chain Management that is created or updated in Dynamics 365 Sales.

Share information about the on-hand quantity of products in near real time with an external web-based e-commerce application that supports the SOAP protocol.

Data integration model

OData

Custom service

OData

Section:

Explanation:

Data integration models

Custom service	Azure Data Lake integration
Dual-write	OData

Answer Area

Requirement

Users must be able to view changes in near real time in Dynamics 365 when they create or make changes to a product in an external system.

OData

Update and synchronize customer information in Dynamics 365 Supply Chain Management that is created or updated in Dynamics 365 Sales.

Custom service

Share information about the on-hand quantity of products in near real time with an external web-based e-commerce application that supports the SOAP protocol.

OData

QUESTION 3

DRAG DROP

A company uses Dynamics 365 Finance.
You create the following tables.

Table	Requirement
TableA	Delete related data from other tables when data is deleted from TableA.
TableB	Prevent deletion of data from TableB if related data exists in another table.
TableC	Delete data if specific conditions are met.

You need to configure the system to meet the requirements.

Which delete actions should you use? To answer, drag the appropriate delete action types to the correct scenarios. Each delete action may be used once, more than once, or not at all. You may need to drag the split bar between panes or scroll to view content.

NOTE: Each correct selection is worth one point.

Select and Place:

Delete actions

Cascade
Restricted
Cascade+Restricted

Answer Area

Table

TableA
TableB
TableC

Delete action

Correct Answer:

Delete actions

Answer Area

Table

TableA
TableB
TableC

Delete action

Cascade
Restricted
Cascade+Restricted

Section:

Explanation:

QUESTION 4

You develop apps for Dynamics 365 Supply Cham Management.

You need to track changes only for sales header information by using data entities.
Which change tracking option should you use?

- A. Enable primary table
- B. Disable change tracking
- C. Enable entire entity
- D. Enable custom query

Correct Answer: D
Section:

QUESTION 5

Note: This question is part of a series of questions that present the same scenario. Each question in the series contains a unique solution that might meet the stated goals. Some question sets might have more than one correct solution, while others might not have a correct solution.

After you answer a question in this section, you will NOT be able to return to it. As a result, these questions will not appear in the review screen.

You must extend the class SalesLineType and add a new method that returns the day of week for the system's current date as an integer value.

You need to create a class that extends SalesLineType and adds the new method.

Solution: You create the following code:

```
[ExtensionOf(classStr(SalesLineType))]  
final class mySalesLineType_myExtension  
{  
    public int extensionMethodDayOfWeek()  
    {  
        return dayofwk(systemDateGet());  
    }  
}
```

Does the solution meet the goal?

Select and Place:

Actions

Add a Runnable class to the project.

Open Visual Studio as a non-administrator.

Add an extension to the project.

Open Visual Studio as an administrator.

Create a new project.

Add a new class to the project.

Extend the SysTestCase class in the class declaration.

Add methods to the class and decorate the methods with the [SysTestMethod] attribute.

Answer area

1

2

3

4

5

Correct Answer:

Actions	Answer area
Add a Runnable class to the project.	1 Open Visual Studio as an administrator.
Open Visual Studio as a non-administrator.	2 Create a new project.
Add an extension to the project.	3 Add a new class to the project.
	4 Extend the SysTestCase class in the class declaration.
	5 Add methods to the class and decorate the methods with the [SysTestMethod] attribute.

Section:

Explanation:

Open Visual Studio as an administrator.
Create a new project.
Add a new class to project.
Extend the SysTestCase class in the class declaration.
Add methods to the class decorate the methods with the [SystestMethod] attribute

QUESTION 6

A developer submits code for a quality assurance review. Several lines of code use the var data type.
You need to validate the segments tor the correct X++structure.
Which code statement will pass validation?

- A. var var1 = systemDateGet (); var1 = var1 ? today(); "No today";
- B. var var1 = true ? 10:"10"
- C. var var1 = true; var1 = true ? 10:falase;
- D. var var1 = (var1 >= false) ? true :10;

Correct Answer: A

Section:

QUESTION 7

You have a table in which multiple properties must be changed. Multiple table properties are locked down at the base table and must not be overwritten.
You need to modify the table properties by extending the table.
Which table property can you populate in a table extension by using the property sheet?

- A. Created by
- B. Table group
- C. Configuration key
- D. Cache lookup

Correct Answer: A

Section:

QUESTION 8

You are a Dynamics 365 Finance developer. You have the following Extended Data Types (EDTs):

Name	Comments
AccountBase	Root EDT
Accountid	Derives from AccountBase

You plan to modify the properties of the EDTs by using an extension. You need to determine which operations can be performed. Which operation is possible?

- A. Create art extension for Accountid and decrease the field size.
- B. Create an extension for AccountBase and modify the Form Help property.
- C. Create a derived EDT for Accountid and increase the field size.
- D. Create a derived EOT for AccountBase and increase the field size.

Correct Answer: B
Section:

QUESTION 9

DRAG DROP

A company uses Dynamics 365 Finance.

You must create two data entities:

- The first entity must allow access to customer groups by using OData.
- The second entity must be able to bulk export customer data by using a batch process.

You need to enable the properties for each entity you create.

Which properties should you enable? To answer, drag the appropriate properties to the correct requirements. Each property may be used once, more than once, or not at all. You may need to drag the split bar between panes or scroll to view content.

NOTE: Each correct selection is worth one point.

Select and Place:

Properties

Public API

Data management capabilities

Is Read Only

Set-based SQL operations

Requirement

Customer groups entity

Customer data entity

Property

Correct Answer:

Properties

Data management capabilities

Is Read Only

Requirement

Customer groups entity

Customer data entity

Property

Public API

Set-based SQL operations

Section:

Explanation:

QUESTION 10

A company uses Dynamics 365 Finance.
Two processes attempt to update the same customer record at the same time. One of the updates fails.
You need to resolve the issue by overriding the table concurrency model.
Which Select statement should you use?

- A. select firstlyonly optimisticLock custTable where custTable.AccountNum -- "@eoeei'
- B. select firstlyonly forupdate CustTable where CustTable.AccountNum '000001*';
- C. select firstlyonly pessimisticlock custTable where CustTable. AccountNum -- '000001*';
- D. select firstlyonly firstFest custTable where custTable.AccountNum -- '000001';

Correct Answer: C

Section:

QUESTION 11

DRAG DROP

A company uses Dynamics 365 Finance.
You must use QueryBuilder classes to implement a query that loops through all customers for whom the customer group equals EXT. You need to implement the query. You declare and initialize a query Object.
You need to run the query.
in which order should you perform the actions? To answer, move all actions from the list of actions to the answer area and arrange them in the correct order.

Select and Place:

Actions

Declare a QueryBuildRange object and add a range for the CustGroup field on the QueryBuildDataSource.

Loop through the QueryRun object by using the Next method.

Declare and initialize the QueryRun object by using the query object.

Declare a QueryBuildDataSource object. Call the addDataSource method on the query object and assign it to the QueryBuildDataSource by using CustTable.

Add a value to range for the CustGroup EXT to the QueryBuildRange object.

➤

➤

1

2

3

4

Answer area

Correct Answer:

Actions

Declare a QueryBuildRange object and add a range for the CustGroup field on the QueryBuildDataSource.

➤

➤

1

2

3

4

Answer area

1 Declare a QueryBuildDataSource object. Call the addDataSource method on the query object and assign it to the QueryBuildDataSource by using CustTable.

2 Add a value to range for the CustGroup EXT to the QueryBuildRange object.

3 Loop through the QueryRun object by using the Next method.

4 Declare and initialize the QueryRun object by using the query object.

Section:

Explanation:

Declare a QueryBuildDataSource object...
Add a value to range for the CustGroup EXT to the QueryBuildRange object.
Loop through the QueryRun object by using the Next method.
Declare and initialize the QueryRun object by using the query object.

QUESTION 12

A company uses Dynamics 365 Finance.
You implement an extension of a method named calc in Class

A. The calc method:

- Accepts an integer as an input parameter.
- Returns an integer as an output parameter.

You must implement an extension to:

- Extend the calc method.
- Prevent the standard code from running if the value of the input parameter is greater than 10-

You need to implement the correct solution. Which code segment should you use?

B.

```
public int calc(int _value)
{
    if (_value > 10)
    {
        throw error('The value cannot be greater than 10.');
```

C.

```
public int calc(int _value)
{
    if (_value > 10)
    {
        throw error('The value cannot be greater than 10.');
```

D.

```
public int calc(int _value)
{
    int ret = next calc(_value);
    if (_value > 10)
    {
        throw error('The value cannot be greater than 10.');
```

E.

```
public int calc(int _value)
{
    int ret;
    if (_value <= 10)
    {
        ret = next calc(_value);
    }
    return ret;
}
```

Correct Answer: C

Section:

QUESTION 13

A company uses Dynamics 365 Finance.

You have an entity named Vend Vend or V2 Entity. You add a new column to the entity. You need to ensure that the new column is available in the entity (or data transfer activity. Which two actions should you perform? Each correct answer presents part of the solution. NOTE; Each correct selection is worth one point.

- A. Select the Modify target mapping button on the Entity list page.
- B. Select the Generate mapping button on the Mapping details form.
- C. Select the Entity structure button on the Entity page.
- D. Select the Validate button on the Entity list page.

Correct Answer: B, D
Section:

QUESTION 14

HOTSPOT

You are a Dynamics 365 Finance developer.
You have the following source control branches:

Branch	Associated environment
Dev	Development
Main	Test

You need to move the list of changesets from the development environment to the test environment.
What should you do? To answer, select the appropriate options in the answer area.
NOTE: Each correct selection is worth one point.

Hot Area:

Answer Area

Action	Branch
Select a starting branch for the merge operation.	Dev
Select the source branch.	Dev
Select the destination branch.	Main

Answer Area:

Answer Area

Action	Branch
Select a starting branch for the merge operation.	Dev
Select the source branch.	Dev
Select the destination branch.	Main

Section:

Explanation:

QUESTION 15

HOTSPOT

A company wants to Integrate Dynamics 365 Finance with third-party applications.

You need to select integration patterns for various scenarios.

Which integration patterns should you use? To answer, select the appropriate options In the answer area.

NOTE: Each correct selection is worth one point.

Hot Area:

Answer Area

Scenario	Data integration API
A customer calls customer support and asks to change their address information in real time.	<input type="checkbox"/> OData service endpoints <input type="checkbox"/> Batch data API <input checked="" type="checkbox"/> Custom web service <input type="checkbox"/> OData service endpoints
A company receives a large volume of purchase orders from a front-end system that runs on-premises. The orders must periodically be sent to Dynamics 365 Finance for processing and management.	<input type="checkbox"/> Batch data API <input checked="" type="checkbox"/> Batch data API <input type="checkbox"/> Custom web service <input type="checkbox"/> OData service endpoints
A company defines and configures products by using a third-party application that is hosted on-premises. This company wants to move the information from the on-premises application to Dynamics 365 Finance in real time.	<input type="checkbox"/> Custom web service <input type="checkbox"/> Batch data API <input checked="" type="checkbox"/> Custom web service <input type="checkbox"/> OData service endpoints

Answer Area:

Answer Area

Scenario	Data integration API
A customer calls customer support and asks to change their address information in real time.	<input type="checkbox"/> OData service endpoints <input type="checkbox"/> Batch data API <input type="checkbox"/> Custom web service <input checked="" type="checkbox"/> OData service endpoints
A company receives a large volume of purchase orders from a front-end system that runs on-premises. The orders must periodically be sent to Dynamics 365 Finance for processing and management.	<input type="checkbox"/> Batch data API <input checked="" type="checkbox"/> Batch data API <input type="checkbox"/> Custom web service <input type="checkbox"/> OData service endpoints
A company defines and configures products by using a third-party application that is hosted on-premises. This company wants to move the information from the on-premises application to Dynamics 365 Finance in real time.	<input type="checkbox"/> Custom web service <input type="checkbox"/> Batch data API <input checked="" type="checkbox"/> Custom web service <input type="checkbox"/> OData service endpoints

Section:

Explanation:

QUESTION 16

HOTSPOT

You are a Dynamics 365 Finance developer. You have The following code:

```

01 class TestQuestion
02 {
03     public static void main(Args _args)
04     {
05         TestQuestion testQuestion = new testQuestion();
06         testQuestion.run();
07     }
08     public void run()
09     {
10         TmpFrmVirtual tmpFrmVirtual;
11         str salesId;
12         int salesQty;
13         tmpFrmVirtual.Id = "SID1234";
14         salesQty = 5;
15         this.updateValues(tmpFrmVirtual, int2Str(salesQty));
16         info(tmpFrmVirtual.Id);
17         info(salesQty);
18     }
19     public void updateValues(TmpFrmVirtual _tmpFrmVirtual, str _salesQty)
20     {
21         TmpFrmVirtual tmpFrmVirtual = _tmpFrmVirtual;
22         int salesQty = _str2int(salesQty);
23         tmpFrmVirtual.Id = "SID1234-Updated";
24         salesQty = 10;

```

Which values does the info() method return? To answer, select the appropriate option in the answer area.
NOTE: Each correct selection is worth one point.

Hot Area:

Answer Area

Parameter	Value
tmpFrmVirtual.Id	<input type="text" value="SID1234"/> <div> SID1234 SID1234-Updated SID1234 SID1234-Updated </div>
salesQty	<input type="text" value="5"/> <div> 5 10 15 </div>

Answer Area:

Answer Area

Parameter	Value
tmpFrmVirtual.Id	<input type="text" value="SID1234"/> <div> SID1234 SID1234-Updated SID1234 SID1234-Updated </div>
salesQty	<input type="text" value="5"/> <div> 5 10 15 </div>

Section:

Explanation:

QUESTION 17
HOTSPOT

You are implementing record-level security by using Extensible Data Security (XDS) in Dynamics 365 Finance.
Users must be permitted to view sales orders only from customers they manage.
You need to configure the CustGroup form.
Which options should you use? To answer, select the appropriate options in the answer area.
NOTE: Each correct selection is worth one point.

Hot Area:

Answer Area

Requirement	Option
Restrict CustGroup to a value of 12.	<input type="checkbox"/> Simple query <input type="checkbox"/> Composite query <input checked="" type="checkbox"/> Simple query <input type="checkbox"/> View
Evaluate whether a policy should be applied.	<input type="checkbox"/> Context string <input checked="" type="checkbox"/> Constraint table <input type="checkbox"/> Primary table
Set a policy to secure a primary table.	<input type="checkbox"/> Constraint table <input checked="" type="checkbox"/> Constraint table <input type="checkbox"/> Context string <input type="checkbox"/> Primary table
Set a policy for a specific user role.	<input type="checkbox"/> RoleName <input checked="" type="checkbox"/> RoleName <input type="checkbox"/> RoleProperty

Answer Area:

Answer Area

Requirement	Option
Restrict CustGroup to a value of 12.	<input type="checkbox"/> Simple query <input type="checkbox"/> Composite query <input checked="" type="checkbox"/> Simple query <input type="checkbox"/> View
Evaluate whether a policy should be applied.	<input type="checkbox"/> Context string <input checked="" type="checkbox"/> Constraint table <input type="checkbox"/> Primary table
Set a policy to secure a primary table.	<input type="checkbox"/> Constraint table <input checked="" type="checkbox"/> Constraint table <input type="checkbox"/> Context string <input type="checkbox"/> Primary table
Set a policy for a specific user role.	<input type="checkbox"/> RoleName <input checked="" type="checkbox"/> RoleName <input type="checkbox"/> RoleProperty

Section:

Explanation:

QUESTION 18

You are adding a new field to the SalesTable form.
You must use an extension to add a status field onto the form.
You need to create the extension in the Application Object Tree (AOT) and add the extension to the demo Extensions model.
Solution: Navigate to the user interface forms node for the SalesTable form and modify the form.

Does the solution meet the goal?

- A. Yes
- B. No

Correct Answer: B
Section:

QUESTION 19

HOTSPOT

You develop a customization for Dynamics 365 Supply Chain Management.

You need to optimize performance for this customization.

Which concurrency control options should you implement? To answer, select the appropriate options in the answer area.

NOTE: Each correct selection is worth one point.

Hot Area:

Lock records as soon as they are retrieved from a data source	<div><div></div><div>Optimistic</div><div>Pessimistic</div></div>
Minimize the resources that are used to lock records during updates	<div><div></div><div>Optimistic</div><div>Pessimistic</div></div>

Answer Area:

Lock records as soon as they are retrieved from a data source	<div><div></div><div>Optimistic</div><div>Pessimistic</div></div>
Minimize the resources that are used to lock records during updates	<div><div></div><div>Optimistic</div><div>Pessimistic</div></div>

Section:
Explanation:

QUESTION 20

You must extend CarType and add a new element named MUV to CarType.

You need to develop a solution that meets the requirements.

Solution: Set the is Extensible property to false for the CarType enumeration. Create a new enumeration to add the MUV element.

Does the solution meet the goal?

- A. Yes
- B. No

Correct Answer: B
Section:

QUESTION 21
You create an extension of ProjTable.
You need to configure the extension.
Which three table properties can you modify in the extension? Each correct answer presents a complete solution.
NOTE; Each correct selection is worth one point.

- A. Label
- B. Preview Part Ref
- C. Form Ref
- D. Modified Date Time
- E. TitleField

Correct Answer: B, C, D
Section:

QUESTION 22
DRAG DROP
A banking company is creating custom functionality to consolidate and post financial transactions.
You need to create menu items for the following business processes:

- Process1 - Automatically check new transactions against validation rules every hour.
- Process2 - Manually review and correct transactions that have errors. No preprocessing is done.
- Process3 - Export transactions to another system when they successfully post.

You need to select the menu item type for each process.
Which menu item types should you use? To answer, drag the appropriate menu item types to the correct processes. Each menu item type may be used once, more than once, or not at all. You may need to drag the split bar between panes or scroll to view content.
NOTE: Each correct selection is worth one point.

Select and Place:

Menu item types

Action

Display

Output

Answer Area

Process

Process1

Process2

Process3

Menu item type

Correct Answer:

Menu item types	Answer Area	Process	Menu item type
		Process1	Action
		Process2	Display
		Process3	Output

Section:
Explanation:

QUESTION 23
DRAG DROP

A company has a cloud-based installation of Dynamics 365 Finance. The company also has Dynamics 365 Sales and Customer Service systems. The company implements an analytical reports solution. You need to select the applicable storage feature for each requirement. Which storage feature should you use to meet each requirement? To answer, drag the appropriate storage options to the correct requirements. Each storage option may be used once, more than once, or not at all. You may need to drag the split bar between panes or scroll to view content.

Select and Place:

Storage types	Requirement	Storage
Entity store	Import data from various systems into one reporting database and extend tables.	
Bring your own database	Develop and extend Power BI reports and publish automatically through the application deployment lifecycle.	

Correct Answer:

Storage types	Requirement	Storage
	Import data from various systems into one reporting database and extend tables.	Bring your own database
	Develop and extend Power BI reports and publish automatically through the application deployment lifecycle.	Entity store

Section:
Explanation:

QUESTION 24
DRAG DROP

A company uses Dynamics 365 finance and operations apps. The company plans to integrate third-party products with Dynamics 365 Finance. You need to select the appropriate data integration option for each scenario. Which data integration option should you select? To answer, drag the appropriate data integration options to the correct scenarios. Each data integration option may be used once, more than once, or not at all. You may need to drag the split bar between panes or scroll to view content.

Select and Place:

Data integration options

Batch data API	Custom service
OData	

Answer Area

Scenario

Move asset status information from an on-premises application to Dynamics 365 Finance in near real time by using a publicly exposed data entity.

Provide information from Dynamics 365 Finance to a website to display item prices in near real time by using the SOAP protocol.

Import vendor invoices into Dynamics 365 Finance at the end of each business day.

Data integration option

Correct Answer:

Data integration options

Answer Area

Scenario

Move asset status information from an on-premises application to Dynamics 365 Finance in near real time by using a publicly exposed data entity.

Provide information from Dynamics 365 Finance to a website to display item prices in near real time by using the SOAP protocol.

Import vendor invoices into Dynamics 365 Finance at the end of each business day.

Data integration option

OData
Custom service
Batch data API

Section:

Explanation:

QUESTION 25

HOTSPOT

You are a Dynamics 365 Finance developer. You check out elements from version control in order to make modifications.

You need to check in the modified elements to version control.

What should you do? To answer, select the appropriate option in the answer area.

NOTE: Each correct selection is worth one point.

Hot Area:

Answer Area

Right-click the modified element and select:

Get latest version
Source Control Annotate
Check out for edit
Get latest version
Add files to source control

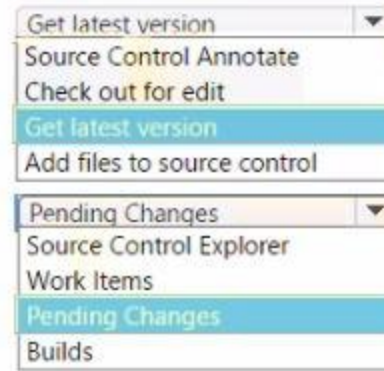
In Team Explorer, check in changes using the following option:

Pending Changes
Source Control Explorer
Work Items
Pending Changes
Builds

Answer Area:

Answer Area

Right-click the modified element and select:



In Team Explorer, check in changes using the following option:

Section:

Explanation:

QUESTION 26

DRAG DROP

A company is implementing Dynamics 365 Finance.

You are extending the standard fixed asset functionality to develop a new feature.

You need to select the appropriate components for the solution.

Which components should you use? To answer, drag the appropriate components to the correct requirements. Each component may be used once, more than once, or not at all. You may need to drag the split bar between panes or scroll to view content.

NOTE: Each correct selection is worth one point.

Select and Place:

Component

Model	Package
Project	

Answer Area

www.VCEplus.io

Requirement

Group elements for deployment as a unit.

Manage and organize a group of elements during development.

Component

Correct Answer:

Component

Project	

Answer Area

Requirement

Group elements for deployment as a unit.

Manage and organize a group of elements during development.

Component

Package
Model

Section:

Explanation:

QUESTION 27

Note: This question is part of a series of questions that present the same scenario. Each question in the series contains a unique solution. Determine whether the solution meets the stated goals. Some question sets might have more than one correct solution, while others might not have a correct solution.

After you answer a question in this section, you will NOT be able to return to it. As a result, these questions will not appear in the review screen.

A company uses Dynamics 365 finance and operations apps.

You have a custom enumeration named CarType. The enumeration has the following elements: Sedan, SUV.

You must extend CarType and add a new element named MUV to CarType.

You need to develop a solution that meets the requirements.

Solution: Set the Is Extensible property to true for the CarType enumeration. Add the MUV element to the CarType base enumeration.

Does the solution meet the goal?

A. Yes

B. No

Correct Answer: B

Section:

QUESTION 28

Note: This question is part of a series of questions that present the same scenario. Each question in the series contains a unique solution that might meet the stated goals. Some question sets might have more than one correct solution, while others might not have a correct solution.

After you answer a question in this section, you will NOT be able to return to it. As a result, these questions will not appear in the review screen.

A company is automating manual processes in the Dynamics 365 finance and operations apps. The company has the following batch groups and priorities configured:

Batch Group Name	Priority
BATCHGROUP1	Normal
BATCHGROUP2	High
BATCHGROUP3	Critical
BATCHGROUP4	Reserved

The batch processes run during the following times of day:

Batch Active Period	Active From (local time)	Active To (local time)
LUNCHBREAK	12:00 PM	1:00 PM
AFTERHOURS	5:00 PM	8:00 AM

The company requires a process that meets the following requirements:

- * Runs every weekday.
- * Runs outside of work hours.
- * Runs with at least a high priority.

You need to automate the manual process.

Solution: Create a batch job to have an active period of AFTERHOURS and a recurrence of Daily. Select the Every Weekday setting, and set the batch job to run as part of BATCHGROUP2.

Does the solution meet the goal?

A. Yes

B. No

Correct Answer: B

Section:

QUESTION 29

Note: This question is part of a series of questions that present the same scenario. Each question in the series contains a unique solution that might meet the stated goals. Some question sets might have more than one correct solution, while others might not have a correct solution.

After you answer a question in this section, you will NOT be able to return to it. As a result, these questions will not appear in the review screen.

A company is automating manual processes in the Dynamics 365 finance and operations apps. The company has the following batch groups and priorities configured:

Batch Group Name	Priority
BATCHGROUP1	Normal
BATCHGROUP2	High
BATCHGROUP3	Critical
BATCHGROUP4	Reserved

The batch processes run during the following times of day:

Batch Active Period	Active From (local time)	Active To (local time)
LUNCHBREAK	12:00 PM	1:00 PM
AFTERHOURS	5:00 PM	8:00 AM

The company requires a process that meets the following requirements:

- * Runs every weekday.
- * Runs outside of work hours.
- * Runs with at least a high priority.

You need to automate the manual process.

Solution: Create a batch job to have an active period of AFTERHOURS and a batch job recurrence of Daily. Set the batch job to run as part of BATCHGROUP2.

Does the solution meet the goal?

- A. Yes
- B. No

Correct Answer: B

Section:

www.VCEplus.io

QUESTION 30

DRAG DROP

You create a table in Dynamics 365 Finance.

You must create a unique index from an existing field named FMAssetId

You need to set the index as the primary key of the table after you create the index.

Which four actions should you perform in sequence? To answer, move the appropriate actions from the list of actions to the answer area and arrange them in the correct order.

Select and Place:

Actions

- In the table properties, set the index in the clustered index property.
- In the index node, change the alternate key property to Yes.
- Drag the FMAssetId field to the Indexes node.
- In the Indexes node in the table designer, select New index.
- Drag the FMAssetId field to the new index.
- In the Indexes node, change the allow duplicates property to No.
- In the table properties, set the index in the primary index property.

Answer area



Correct Answer:

Actions	Answer area
In the table properties, set the index in the clustered index property.	In the Indexes node in the table designer, select New index.
In the index node, change the alternate key property to Yes.	Drag the FMAssetId field to the new index.
Drag the FMAssetId field to the Indexes node.	In the Indexes node, change the allow duplicates property to No.
	In the table properties, set the index in the primary index property.

Section:

Explanation:

In the Indexes node in the table designer, select New index.

Drag the FMAssetId field to the new index.

In the Indexes node, change the allow duplicates property to No.

In the table properties, set the index in the primary index property.

QUESTION 31

DRAG DROP

A company uses Dynamics 365 Finance. The company is implementing an independent software vendor (ISV) solution.

You overlay the ISV code to add functionality to the solution.

You need to configure code compare options.

Which code compare option should you use? To answer, drag the appropriate code compare options to the correct scenarios. Each code compare option may be used once, more than once, or not at all. You may need to drag the split bar between panes or scroll to view content.

NOTE: Each correct selection is worth one point.

Select and Place:

Code compare options	Answer Area								
Compare and merge code	<table border="1"> <thead> <tr> <th>Scenario</th> <th>Code compare option</th> </tr> </thead> <tbody> <tr> <td>Compare the custom code with the code in the ISV solution.</td> <td></td> </tr> <tr> <td>Compare the code with the code in the ISV solution to identify and resolve conflicts.</td> <td></td> </tr> <tr> <td>Compare elements of a form with those in the ISV solution.</td> <td></td> </tr> </tbody> </table>	Scenario	Code compare option	Compare the custom code with the code in the ISV solution.		Compare the code with the code in the ISV solution to identify and resolve conflicts.		Compare elements of a form with those in the ISV solution.	
Scenario	Code compare option								
Compare the custom code with the code in the ISV solution.									
Compare the code with the code in the ISV solution to identify and resolve conflicts.									
Compare elements of a form with those in the ISV solution.									
Compare code with baseline									
Compare metadata with baseline									

Correct Answer:

Code compare options

Answer Area

-
-
-
-

Scenario

Compare the custom code with the code in the ISV solution.

Compare the code with the code in the ISV solution to identify and resolve conflicts.

Compare elements of a form with those in the ISV solution.

Code compare option

Section:

Explanation:

www.VCEplus.io