

DES-5121.VCEplus.premium.exam.65q

Number: DES-5121  
Passing Score: 800  
Time Limit: 120 min  
File Version: 1.0



**Website:** <https://vceplus.com>

**VCE to PDF Converter:** <https://vceplus.com/vce-to-pdf/>

**Facebook:** <https://www.facebook.com/VCE.For.All.VN/>

**Twitter :** [https://twitter.com/VCE\\_Plus](https://twitter.com/VCE_Plus)

DES-5121

Specialist – Implementation Engineer, Campus Networking Exam



## Exam A

### QUESTION 1

If a VRRP Master router is rebooted, what is the default behavior once it comes back online?

- A. An election occurs to determine which router will have the Master role
- B. Original VRRP Master will take back control of the Master role
- C. Original VRRP Backup will retain the Master role
- D. VRRP Master role is determined by the router with the lowest MAC address

**Correct Answer:** B

**Section:** (none)

**Explanation**

**Explanation/Reference:**

### QUESTION 2

If a group of routers are running VRRP with a virtual router ID of 155, which MAC address will be used to respond to the ARP requests for the virtual IP?

- A. 0000-5E00-0155
- B. 0000-5E00-019B
- C. 0001-5500-005E
- D. 0001-9B00-005E

**Correct Answer:** B

**Section:** (none)

**Explanation**

**Explanation/Reference:**



### QUESTION 3

An administrator just finished configuring a Dell EMC N-Series switch. After rebooting the switch, the administrator notices that all the configuration settings just entered are gone.

Which command did the administrator fail to enter?

- A. `Copy running-config startup-config`
- B. `Copy running-config backup-config`
- C. `Copy startup-config backup-config`
- D. `Copy startup-config running-config`

**Correct Answer:** A

**Section:** (none)

**Explanation**

**Explanation/Reference:**

**QUESTION 4** When configuring a PBR route-map, what are the configurable "SET" options?

- A. `set ip source`, `set ip next-hop`, and `set ip default next-hop`
- B. `set ip next-hop`, `set ip source`, and `set ip precedence`
- C. `set ip next-hop`, `set ip default next-hop`, and `set ip precedence`

D. set ip source, set ip default next-hop and set ip precedence

**Correct Answer:** C

**Section:** (none)

**Explanation**

**Explanation/Reference:**

#### QUESTION 5

A user's host with an IP address of 172.16.1.22/24 is attempting to FTP a file from the server with IP address 10.1.1.99; however, they are unable to connect.

Which access-list is preventing this traffic?

- A. # ip access-list ACL1  
# deny ip any host 10.1.1.99
- B. # ip access-list ACL2  
# permit ip 172.16.1.0 0.0.0.255 any
- C. # ip access-list ACL3  
# deny ip any 172.16.2.0 0.0.0.255
- D. # ip access-list ACL4  
# permit ip host 172.16.1.22 host 10.1.1.99

**Correct Answer:** A

**Section:** (none)

**Explanation**

**Explanation/Reference:**



#### QUESTION 6

When setting up VoIP, you decide that you want to use LLDP. LLDP is enabled by default and LLDP Transmit Management Information and Notification modes are enabled.

What additional steps need to be performed?

- A. Enable ISDP and enable LLDP-MED confignotification
- B. Disable ISDP and enable LLDP-MED confignotification
- C. Enable ISDP and disable LLDP-MED confignotification
- D. Disable ISDP and disable LLDP-MED confignotification

**Correct Answer:** B

**Section:** (none)

**Explanation**

**Explanation/Reference:**

**QUESTION 7** After setting up the VoIP configuration, a network administrator issues the following commands with the results shown:

```
console# show voice vlan Administrative
Mode.....Enable
```

```
console# show voice vlan it gi 1/0/2
Interface.....Gi1/0/2
Voice VLAN Interface Mode.....Enabled
Voice VLAN ID.....10
Voice VLAN COS Overwrite.....False
Voice VLAN DSCP Value.....46
```

Voice VLAN Port Status.....Enabled  
Voice VLAN Authentication.....Disabled

Based on this information, what is the Layer 3 QoS value?

- A. 5
- B. 10
- C. 46
- D. Gi1/0/2

**Correct Answer:** C

**Section:** (none)

**Explanation**

**Explanation/Reference:**

**QUESTION 8** What is the IP protocol number, in decimal, assigned by IANA for VRRP?

- A. 25
- B. 112
- C. 443
- D. 1443

**Correct Answer:** B

**Section:** (none)

**Explanation**

**Explanation/Reference:**



**QUESTION 9**

What is the recommended maximum number of routers, per area, when using OSPF?

- A. 50
- B. 100C. 200
- D. 255

**Correct Answer:** A

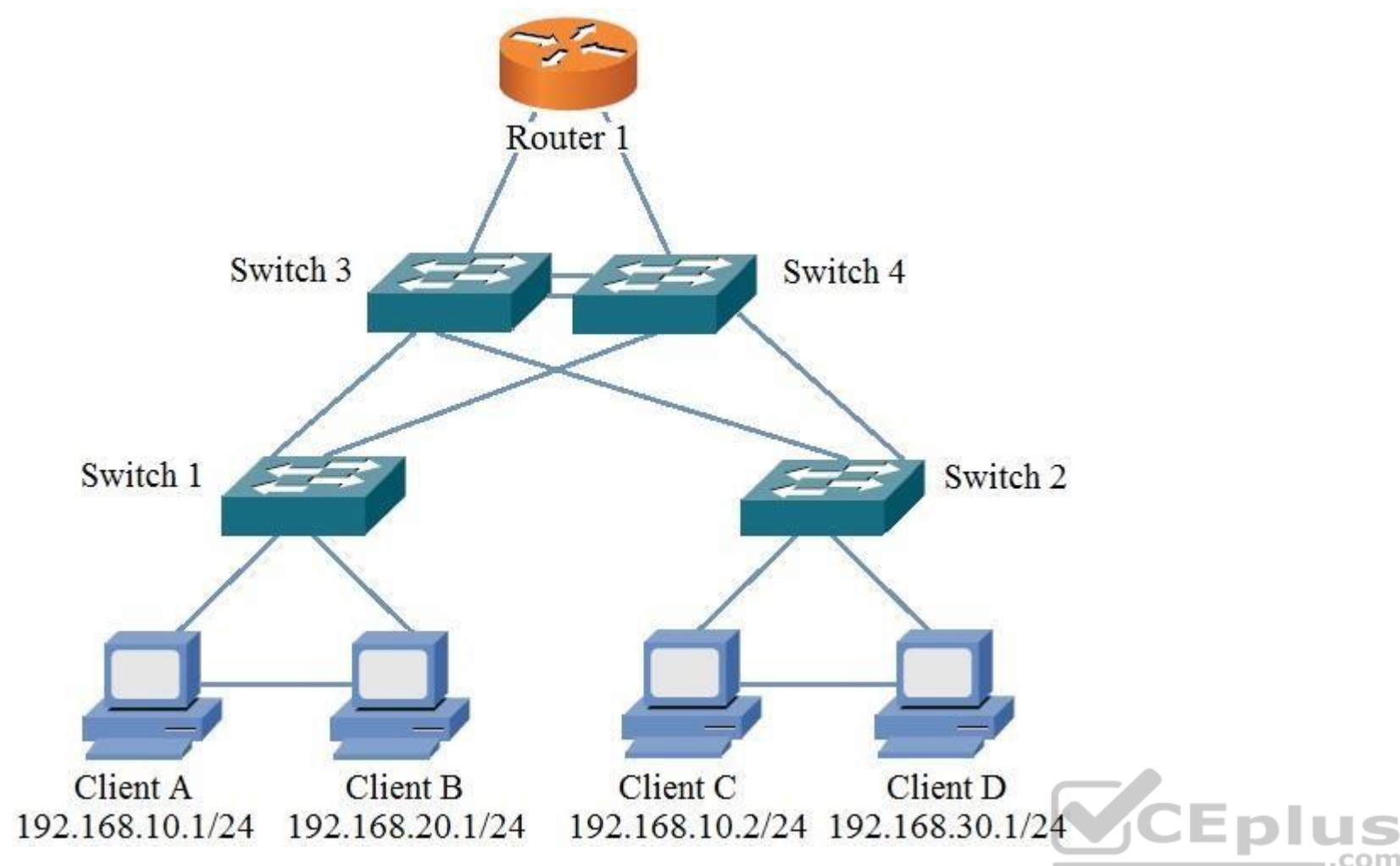
**Section:** (none)

**Explanation**

**Explanation/Reference:**

**QUESTION 10**

Refer to the Exhibit.



If Client B sends a packet to Client A, what is the highest level of the network hierarchy that the packet will transverse?

- A. Distribution
- B. Network
- C. Access
- D. Core

**Correct Answer:** D

**Section:** (none)

**Explanation**

**Explanation/Reference:**

**QUESTION 11** When configuring a Dell EMC N-Series switch for voice traffic, which settings are needed?

- A. Enable voice VLAN
  - Set each-interface to LLDP share all VoIP related parameters
  - Set switchport mode to general
- B. Create a VLAN for voice
  - Set each interface to ISDP share all VoIP related parameters
  - Set switchport mode to general
- C. Enable voice VLAN
  - Set each interface to LLDP share all VoIP related parameters
  - Set switchport mode to hybrid
- D. Enable voice VLAN

Set each interface to ISDP share all VoIP related parameters Set  
switchport mode to general

**Correct Answer:** A

**Section:** (none)

**Explanation**

**Explanation/Reference:**

#### QUESTION 12

What is the interaction between CDP, ISDP, and LLDP when communicating configuration information from a Dell EMC Campus networking switch to a Cisco VoIP phone?

- A. N-Series switches can be configured to use LLDP or CDP to communicate configuration information with Cisco devices
- B. N-Series switches can be configured to use only CDP to communicate configuration information with Cisco devices
- C. N-Series switches can be configured to use ISDP or CDP to communicate configuration information with Cisco devices
- D. N-Series switches can be configured to use ISDP or LLDP to communicate configuration information with Cisco devices

**Correct Answer:** D

**Section:** (none)

**Explanation**

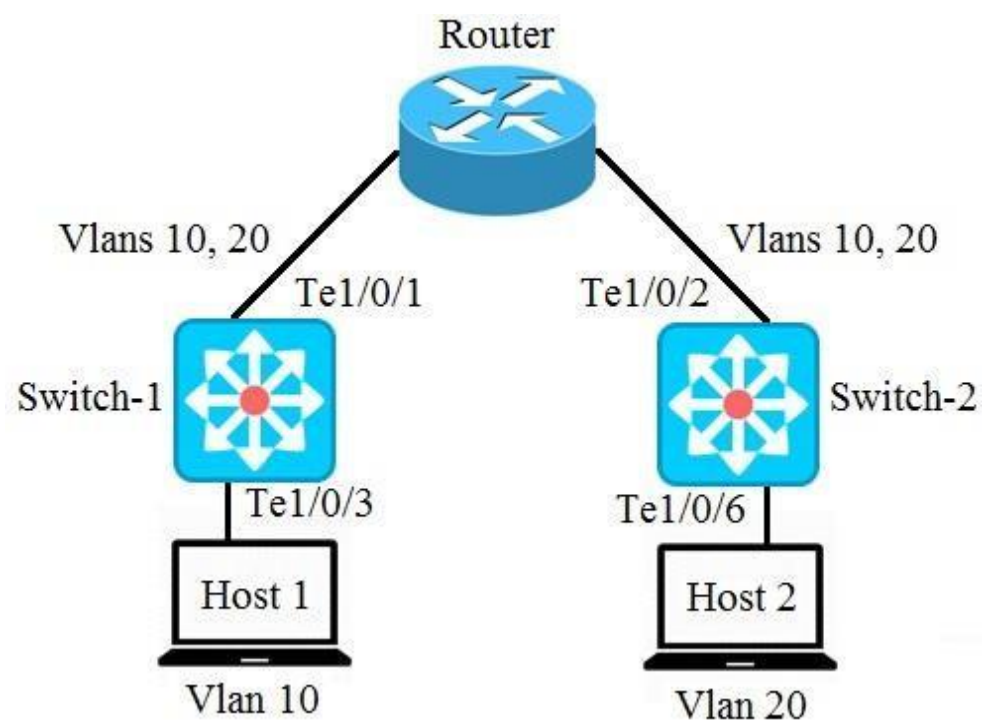
**Explanation/Reference:**

#### QUESTION 13

```
Switch-1(config)# interface tengigabitethernet 1/0/1
Switch-1(config)# switchport mode access
Switch-1(config)# switchport trunk allowed vlan 10, 20
Switch-1(config)#
Switch-1(config)# interface tengigabitethernet 1/0/3
Switch-1(config)# switchport mode access
Switch-1(config)# switchport access vlan 10
```

```
Switch-2(config)# interface tengigabitethernet 1/0/2
Switch-2(config)# switchport mode trunk
Switch-2(config)# switchport trunk allowed vlan 10, 20
Switch-2(config)#
Switch-2(config)# interface tengigabitethernet 1/0/6
Switch-2(config)# switchport mode access
Switch-2(config)# switchport access vlan 20
```





A network administrator is troubleshooting why Host 1 cannot communicate with Host 2.

Based on the switch output shown in the exhibit, what is the reason for the communication issue?

- A. Port Te1/0/1 on Switch-1 is configured incorrectly
- B. Port Te1/0/2 on Switch-2 is configured incorrectly
- C. Port Te1/0/3 for Host 1 is configured incorrectly on Switch-1
- D. Port Te1/0/6 for Host 2 is configured incorrectly on Switch-2



**Correct Answer:** A

**Section:** (none)

**Explanation**

**Explanation/Reference:**

**QUESTION 14** What are key features of the Dell EMC N4064 or N4064F switches?

- A. Up to 640 Gbps switch fabric capacity and hot swap expansion module support for dual QSFP+ (8 x 10GbE)
- B. Up to 1.0 Tbps switch fabric capacity and up to 48-line rate 10GbE ports per switch
- C. Up to 1.2 Tbps switch fabric capacity and up to 64-line rate 10GbE ports per switch
- D. Up to 48-line rate 10GbE ports per switch and hot swap expansion module support for dual QSFP+ (8 x 10GbE)

**Correct Answer:** A

**Section:** (none)

**Explanation**

**Explanation/Reference:**

Reference: [https://i.dell.com/sites/csdocuments/Shared-Content\\_data-Sheets\\_Documents/en/aa/Dell\\_Networking\\_N4000\\_Series\\_SpecSheet.pdf](https://i.dell.com/sites/csdocuments/Shared-Content_data-Sheets_Documents/en/aa/Dell_Networking_N4000_Series_SpecSheet.pdf)

**QUESTION 15** A user's workstation has an IP phone connected to a Dell EMC N-Series switch.

What is the recommended number of VLANs that should be configured on the switch port?

- A. 0
- B. 1
- C. 2
- D. 3

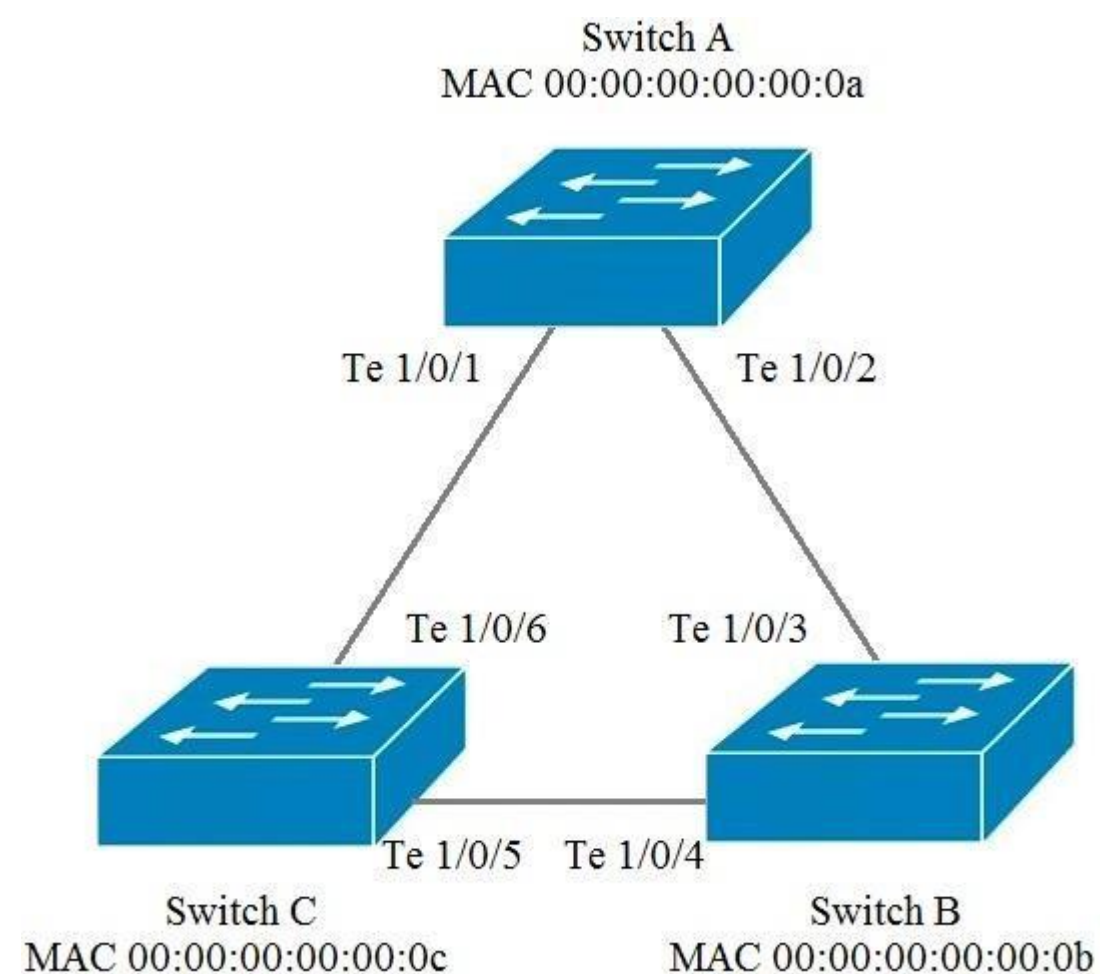
**Correct Answer:** C

**Section:** (none)

**Explanation**

**Explanation/Reference:**

#### QUESTION 16



The exhibit represents a topology with all Dell EMC N4000 Series switches with RSTP enabled. In addition, the switches are using the default configuration on all ports and protocols.

Which port number will be blocked by spanning tree?

- A. Te 1/0/3
- B. Te 1/0/4
- C. Te 1/0/5
- D. Te 1/0/6

**Correct Answer:** C

**Section:** (none)

**Explanation**

**Explanation/Reference:**



# QUESTION 17

DRAG DROP

Match the DSCP class selectors with their description.

Select and Place:

DSCP class	Description
Class 0	Expedited Forwarding
Class 1	Best Effort
Class 5	Reserved for network control traffic
Class 6	Assured Forwarding

Correct Answer:

DSCP class	Description
Class 0	Class 5
Class 1	Class 0
Class 5	Class 6
Class 6	Class 1

Section: (none)

Explanation

Explanation/Reference:

# QUESTION 18

Refer to the exhibit.

```
console#show ip access-list broadcast

IP ACL Name: broadcast

Outbound Interface(s):
Gi1/0/1

Rule Number: 1000
Action.....deny
Match All.....FALSE
Protocol.....255 (ip)
Source IP Address.....any
Destination IP Address.....255.255.255.255
Destination IP Mask.....255.255.255.255
ACL Hit Count.....0

Rule Number: 1010
Action.....permit
Match All.....TRUE
ACL Hit Count.....0
```



A network administrator has created an ACL to block broadcast traffic to their server on port Gi1/0/1.

Why is the ACL not functioning as desired?

- A. ACL is not applied in the correct direction
- B. ACLs do not support broadcast traffic
- C. Destination address mask is incorrect
- D. Destination IP address is incorrect

**Correct Answer:** A

**Section:** (none)

**Explanation**

**Explanation/Reference:**

**QUESTION 19** A user's workstation is connected to an IP phone that is connected to a Dell EMC N-Series switch.

Which type of traffic is typically tagged or untagged?

- A. Data = tagged, Voice = untagged
- B. Data = untagged, Voice = untagged
- C. Data = tagged, Voice = tagged
- D. Data = untagged, Voice = tagged

**Correct Answer:** D

**Section: (none)**

**Explanation**

**Explanation/Reference:**

Reference: <https://www.dell.com/support/article/en-us/how12385/how-to-enable-the-voice-vlan-feature-on-dell-emc-networking-n-series-switches?lang=en>

**QUESTION 20** What happens when a match is found for an ACL with 15 entries?

- A. All packets which match that entry are forwarded
- B. Action from that entry is performed and the rest of the entries in the ACL are processed
- C. All packets which match that entry are dropped
- D. Action from that entry is performed and the ACL is exited

**Correct Answer: D**

**Section: (none)**

**Explanation**

**Explanation/Reference:**

**QUESTION 21**

DRAG DROP

What is the typical sequence of steps to upgrade the firmware of a Dell EMC N-Series switch?

**Select and Place:**

Copy the firmware image from the TFTP server to the switch	Step 1
Configure and start the TFTP server	Step 2
Update the boot code on the switch and reboot	Step 3
Backup the running-config to a TFTP server	Step 4
Select the new image for the next boot	Step 5

**Correct Answer:**

Copy the firmware image from the TFTP server to the switch	Configure and start the TFTP server
Configure and start the TFTP server	Backup the running-config to a TFTP server
Update the boot code on the switch and reboot	Copy the firmware image from the TFTP server to the switch
Backup the running-config to a TFTP server	Select the new image for the next boot
Select the new image for the next boot	Update the boot code on the switch and reboot

**Section: (none)**

**Explanation**

**Explanation/Reference:**

**QUESTION 22** Which interface on a Dell EMC N-Series switch provides the most security for management?

- A. VLAN
- B. Ethernet
- C. Loopback
- D. Out-of-band

**Correct Answer: D**

**Section: (none)**

**Explanation**

**Explanation/Reference:**

**QUESTION 23**

When configuring a Dell EMC N-Series switch for VoIP and QoS, what is one QoS setting that ensures voice traffic is prioritized in the presence of other network traffic?

- A. LLDP protocol setting
- B. ISDP protocol setting
- C. Classification setting
- D. VLAN spanning tree setting

**Correct Answer: C**

**Section: (none)**

**Explanation**

**Explanation/Reference:**

**QUESTION 24**

A customer is upgrading their campus network Access layer switches. They require 2-10GbE uplinks, 48-1GbE ports with PoE, and stacking capability of up to 12 units.

Which Dell EMC N-Series model will meet the customer's requirements?

- A. N1100 Series
- B. N1500 Series
- C. N2000 Series
- D. N4000 Series

**Correct Answer: C**

**Section: (none)**

**Explanation**

**Explanation/Reference:**

Reference: [https://www.dellemc.com/resources/en-us/asset/data-sheets/products/networking/dell\\_emc\\_powerswitch\\_n2000\\_series\\_specsheet.pdf](https://www.dellemc.com/resources/en-us/asset/data-sheets/products/networking/dell_emc_powerswitch_n2000_series_specsheet.pdf)

#### QUESTION 25

You are tasked with deploying a single Dell EMC N-Series switch with a 2-port port-channel to uplink to an existing upstream switch. The following reflects the upstream switch configuration:

```
N4032F#show running-config interface tengigabitethernet 1/0/5 channel-group 1 mode on
N4032F#show running-config interface tengigabitethernet 1/0/6 channel-group 1 mode on
```

Which type of port-channel should be configured to successfully uplink?

- A. Active
- B. MLAG
- C. Static
- D. Passive



**Correct Answer: C**

**Section: (none)**

**Explanation**

**Explanation/Reference:**

**QUESTION 26** A switch interface has been properly configured for static port security with one defined allowable MAC address. However, when the network administrator plugs a switch into that port, multiple devices are still allowed access to the network.

Where must port security also be enabled to have an effect?

- A. Enabled globally on the switch
- B. Enabled on all attached devices
- C. Enabled on all switches in the network
- D. Enabled on all interfaces of the switch

**Correct Answer: A**

**Section: (none)**

**Explanation**

**Explanation/Reference:**

Reference: <https://www.dell.com/support/article/en-us/how10392/how-to-configure-mac-based-port-security-on-dell-n2000-n3000-and-n4000-series-switches?lang=en>

#### QUESTION 27

In a traditional campus network design using a three-tier hierarchical model, what are the key attributes of the Core layer in this model?

- A. Provides a wide range of services, is highly available, and operates in an active-passive mode
- B. Provides a limited set of services, is highly available, and operates in an always-on mode

- C. Provides a wide range of services, is highly available, and operates in an always-on mode
- D. Provides a limited set of services, is highly available, and operates in an active-passive mode

**Correct Answer:** B

**Section:** (none)

**Explanation**

**Explanation/Reference:**

**QUESTION 28** Which default security level can be assigned to limit access of a specific user to a Dell EMC N-Series switch?

- A. Level 0 B. Level 1
- C. Level 5
- D. Level 15

**Correct Answer:** A

**Section:** (none)

**Explanation**

**Explanation/Reference:**

Reference: [https://www.dell.com/support/manuals/us/en/04/force10-s4048-on/s4048\\_on\\_9.9.0.0\\_config\\_pub-v1/configuring-privilege-levels?guid=guid-2fa480e0-1660-41d8-8ac2-45aa90d5bb71&lang=en-us](https://www.dell.com/support/manuals/us/en/04/force10-s4048-on/s4048_on_9.9.0.0_config_pub-v1/configuring-privilege-levels?guid=guid-2fa480e0-1660-41d8-8ac2-45aa90d5bb71&lang=en-us)

**QUESTION 29** Which ports on a spanning tree root switch are always forwarding?

- A. Alternate ports
- B. Designated ports
- C. Backup ports
- D. Root ports



**Correct Answer:** B

**Section:** (none)

**Explanation**

**Explanation/Reference:**

**QUESTION 30** To which destination MAC address are MLAG peer-keepalive packets sent?

- A. 01:00:B5:00:00:00
- B. 01:00:C5:00:00:00
- C. B5:00:01:00:00:00
- D. C5:00:01:00:00:00

**Correct Answer:** A

**Section:** (none)

**Explanation**

**Explanation/Reference:**

Reference: <https://www.manualslib.com/manual/858353/Dell-Networking-N4000-Series.html?page=941>

**QUESTION 31**

You need to configure OSPF on a DNOS 6 switch and have entered the following:



```
Switch-1(config)# ip routing
Switch-1(config)# interface vlan 20
Switch-1(config-if-vlan20)# ip address 10.1.20.1 255.255.255.0
```

```
Switch-1(config)# router ospf
Switch-1(config-router)# router-id 10.1.1.1
```

Based on the information referenced above, what is missing from the configuration?

- A. area 0 is missing from the ip routing command
- B. ip ospf area 0 is missing from the interface vlan 20 section
- C. router ospf is missing the routing instance
- D. area 0 is missing from the router-id command

**Correct Answer: B**

**Section: (none)**

**Explanation**

**Explanation/Reference:**

#### QUESTION 32

A network administrator is setting up several stacks in their network that includes different Dell EMC N-Series models.

Which N-Series switch models require mini-SAS stacking cables?

- A. N1100 and N1500 B. N1500 and N3000 C. N2000 and N3000
- D. N3000 and N4000



**Correct Answer: C**

**Section: (none)**

**Explanation**

**Explanation/Reference:**

Reference: <https://cdn.cnetcontent.com/syndication/mediaserverredirect/c1ddae5629f69c40c5da9c0d36cb045f/original.pdf>

#### QUESTION 33

A network administrator added a new Dell EMC N-Series switch into their network with RSTP configured. The spanning-tree priority on all existing switches has been left at the default value.

If the administrator wants this new switch to become the spanning tree root, which command should be used?

- A. spanning-tree priority 4096
- B. spanning-tree priority 32768 C. spanning-tree priority 36864
- D. spanning-tree priority 61440

**Correct Answer: A**

**Section: (none)**

**Explanation**

**Explanation/Reference:**

Reference: <https://www.dell.com/support/article/en-us/how10394/how-to-manage-rapid-spanning-tree-rstp-thru-command-line-on-dell-networking-powerconnect-switches?lang=en>

#### QUESTION 34

A network administrator has configured a 4-port port-channel between two Dell EMC Campus networking switches. The physical interfaces show as administratively up and operationally up on both switches. However, the port-channel shows as operationally up on Switch A and operationally down on Switch B.

What is a potential reason for the inconsistent port-channel state?

- A. Switch A is configured to use dynamic port-channels and Switch B is configured to use static port-channels
- B. Ports in the port-channel on Switch A are all the same speed but the ports in the port-channel on Switch B are a mix of speeds
- C. Switch A is configured using `channel-group # mode on` and Switch B is configured using `channel-group # mode auto`
- D. N-Series supports a maximum number of physical interfaces that can be included in port-channels on a per-device basis

**Correct Answer:** C

**Section:** (none)

**Explanation**

**Explanation/Reference:**

**QUESTION 35** What describes the POE+ capabilities of the Dell EMC N1100P Series?

- A. Supported on any of the first half of switch ports or the first 12 switch ports, whichever is fewer. May only be enabled on a maximum of half of the supported ports.
- B. Supported on any of the first 12 switch ports or all switch ports, whichever is fewer. May only be enabled on a maximum of half of the supported ports.
- C. Supported on all of the first 12 switch ports or all switch ports, whichever is fewer.
- D. Supported on all of the first half of switch ports or the first 12 switch ports, whichever is fewer.

**Correct Answer:** B

**Section:** (none)

**Explanation**

**Explanation/Reference:**



**QUESTION 36**

Which port security method converts existing dynamically learned MAC addresses on an interface to this mode and not age out?

- A. Static
- B. MAC address
- C. Sticky
- D. Dynamic

**Correct Answer:** D

**Section:** (none)

**Explanation**

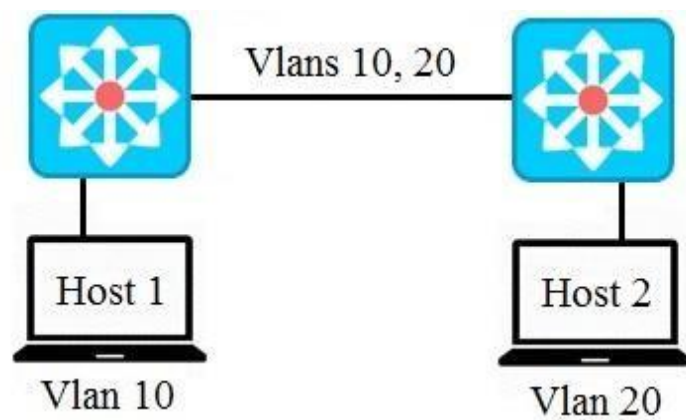
**Explanation/Reference:**

Reference: <https://www.dell.com/support/manuals/us/en/04/networking-s4148f-on/smartfabric-os-user-guide-10-5-1/port-security?guid=guid-c27a9d47-ea59-48cc-b19d-90a9f6d52629&lang=en-us>

**QUESTION 37**

Refer to the Exhibit.





A network administrator needs to configure the switches to allow traffic to communicate from Host 1 to Host 2.

Which recommended switch port mode should the interconnecting switch ports be configured?

- A. Access
- B. Trunk
- C. VLAN Stacking
- D. Hybrid

**Correct Answer: B**

**Section: (none)**

**Explanation**

**Explanation/Reference:**

**QUESTION 38** Two switches are part of the same VRRP group with the following priorities configured:

Switch1: Priority 110

Switch2: Priority 90

Switch2 is required to be the Master if interface GigabitEthernet 0/2 on Switch1 fails.

Which configuration should be part of the setup?

- A. Switch1(conf-if-vlan10)# vrrp 1 track interface vlan 20 decrement 100  
Switch1(conf-if-vlan10)# no vrrp 1 preempt
- B. Switch2(conf-if-vlan10)# vrrp 1 track interface vlan 20 decrement 100  
Switch2(conf-if-vlan10)# no vrrp 1 preempt
- C. Switch1(conf-if-vlan10)# vrrp 1 track interface vlan 20 decrement 100  
Switch1(conf-if-vlan10)# vrrp 1 preempt
- D. Switch2(conf-if-vlan10)# vrrp 1 track interface vlan 20 decrement 100  
Switch2(conf-if-vlan10)# vrrp 1 preempt

**Correct Answer: C**

**Section: (none)**

**Explanation**

**Explanation/Reference:**

**QUESTION 39** Which technologies can be implemented when configuring policy-based routing?

- A. Policy-maps, Extended ACLs, and MAC ACLs
- B. Policy-maps, Route-maps, and Extended ACLs
- C. Route-maps, Extended ACLs, and MAC ACLs
- D. Route-maps, Policy-maps, and MAC ACLs

**Correct Answer:** B

**Section:** (none)

**Explanation**

**Explanation/Reference:**

**QUESTION 40** A network has two switches with the following IP addresses:

Switch1: 192.168.1.240

Switch2: 192.168.1.241

The administrator wants to add VRRP on an existing switch configuration using the virtual IP 192.168.1.240.

What is a VRRP requirement for this configuration?

- A. Priority 241 on Switch2
- B. Priority 255 on Switch1
- C. Virtual Router ID 1
- D. Virtual Router ID 240

**Correct Answer:** B

**Section:** (none)

**Explanation**

**Explanation/Reference:**



**QUESTION 41**

Which RSTP-PV features are embedded and cannot be disabled?

- A. DirectLink Rapid Convergence and DirectLink Fast Rapid Convergence
- B. IndirectLink Rapid Convergence and IndirectLink Fast Rapid Convergence
- C. DirectLink Rapid Convergence and IndirectLink Fast Rapid Convergence
- D. DirectLink Fast Rapid Convergence and IndirectLink Rapid Convergence

**Correct Answer:** C

**Section:** (none)

**Explanation**

**Explanation/Reference:**

Reference: <https://www.manualslib.com/manual/858353/Dell-Networking-N4000-Series.html?page=724>

**QUESTION 42** A Master switch failed in a Dell EMC N-Series three-unit switch stack and the Standby switch assumed the role of Master.

What happens when the failed Master switch rejoins the stack after the new Master has taken over?

- A. Switch joins the stack as the Standby
- B. Switch must be manually configured to rejoin the stack
- C. Switch joins the stack as a Member
- D. Switch joins the stack and resumes as the Master

**Correct Answer:** C

**Section:** (none)

**Explanation**

**Explanation/Reference:**

**QUESTION 43**

What is the maximum number of dynamic MAC addresses that can be learned on a Dell EMC N-Series switchport that is configured for dynamic locking?

- A. 100
- B. 300
- C. 400
- D. 600

**Correct Answer:** A

**Section:** (none)

**Explanation**

**Explanation/Reference:**

Reference: <https://www.dell.com/support/article/en-us/how10392/how-to-configure-mac-based-port-security-on-dell-n2000-n3000-and-n4000-series-switches?lang=en>

**QUESTION 44** A network administrator is setting up a Class 5 powered device in their network.

Which Dell EMC N-Serve switch model(s) will support this device?

- A. N1100P and N2000P
- B. N1500P
- C. N2000 and N3000P
- D. N3000P only



**Correct Answer:** C

**Section:** (none)

**Explanation**

**Explanation/Reference:**

**QUESTION 45** Which switchport mode is recommended for ports on a Dell EMC N-Series switch with IP phones using voice VLAN?

- A. Access
- B. Active
- C. Hybrid
- D. General

**Correct Answer:** D

**Section:** (none)

**Explanation**

**Explanation/Reference:**

**QUESTION 46** Which AAA method is only used for 802.1x and never returns an error?

- A. local
- B. enable

- C. ias
- D. line

**Correct Answer:** C

**Section:** (none)

**Explanation**

**Explanation/Reference:**

Reference: [http://ftp.dell.com/manuals/all-products/esuprt\\_ser\\_stor\\_net/esuprt\\_networking/powerconnect-8100\\_concept%20guide2\\_en-us.pdf](http://ftp.dell.com/manuals/all-products/esuprt_ser_stor_net/esuprt_networking/powerconnect-8100_concept%20guide2_en-us.pdf) page 209

**QUESTION 47** Which Layer 3 protocol does MLAG support?

- A. None
- B. Static Routing
- C. OSPFD. RIPv2

**Correct Answer:** A

**Section:** (none)

**Explanation**

**Explanation/Reference:**

Reference: [http://files.rakurs.su/IT/Kommytatory/Dell/N4000/powerconnect\\_nx00-usingmlag-whtppr\\_en-us.pdf](http://files.rakurs.su/IT/Kommytatory/Dell/N4000/powerconnect_nx00-usingmlag-whtppr_en-us.pdf)

**QUESTION 48** In a PoE environment, what information does the Network Policy TLV exchange between the PSE and PD?

- A. Required Power, VLAN ID, and DSCP Value
- B. VLAN ID, IEEE Priority, and DSCP Value
- C. IEEE Priority, Required Power, and VLAN ID
- D. DSCP Value, Required Power, and IEEE Priority



**Correct Answer:** B

**Section:** (none)

**Explanation**

**Explanation/Reference:**

Reference: [http://ftp.dell.com/manuals/all-products/esuprt\\_ser\\_stor\\_net/esuprt\\_networking/poweredge-m-io-aggregator\\_Concept-Guide4\\_en-us.pdf](http://ftp.dell.com/manuals/all-products/esuprt_ser_stor_net/esuprt_networking/poweredge-m-io-aggregator_Concept-Guide4_en-us.pdf) page 162

**QUESTION 49** Which function does a VRRP backup router perform?

- A. Sends keepalive advertisements to the other backup routers
- B. Processes and responds to ARP requests
- C. Forwards packets to the Master with a destination IP of the virtual IP address
- D. Receives packets with the virtual MAC address as the destination for other backup routers

**Correct Answer:** D

**Section:** (none)

**Explanation**

**Explanation/Reference:**

**QUESTION 50**

Which commands should a network administrator use to configure a RADIUS server on a Dell EMC N-Series switch?

- A. Switch-1(config)# radius 10.1.1.111

- ```
Switch-1(config-radius)# name RADIUS-Server Switch-1(config-  
radius)# key secretkey
```
- B. Switch-1(config)# radius server auth 10.1.1.111  
Switch-1(config-radius)# name RADIUS-Server  
Switch-1(config-radius)# key "secretkey"
- C. Switch-1(config)# radius auth 10.1.1.111  
Switch-1(config-radius)# name "RADIUS-Server"  
Switch-1(config-radius)# key "secretKey"
- D. Switch-1(config)# radius auth server 10.1.1.111  
Switch-1(config-radius)# name RADIUS-Server  
Switch-1(config-radius)# key "secretKey"

**Correct Answer:** B

**Section:** (none)

**Explanation**

**Explanation/Reference:**

**QUESTION 51** A network administrator is planning a PoE budget for their network.

What is the PoE source maximum power budget for a Class 4 end device?

- A. 12.95 watts
- B. 15.4 watts
- C. 34.2 watts
- D. 60 watts

**Correct Answer:** C

**Section:** (none)

**Explanation**

**Explanation/Reference:**

Reference: [http://ftp.dell.com/manuals/all-products/esuprt\\_ser\\_stor\\_net/esuprt\\_networking/esuprt\\_net\\_fxd\\_prt\\_swchgs/networking-n3000-series\\_User's-Guide10\\_en-us.pdf](http://ftp.dell.com/manuals/all-products/esuprt_ser_stor_net/esuprt_networking/esuprt_net_fxd_prt_swchgs/networking-n3000-series_User's-Guide10_en-us.pdf) page 82

**QUESTION 52**

A Dell EMC N-Series switch is configured to uplink to a customer switch using two separate 4-port port-channels configured as trunks. Both switches are configured with 16 VLANs and RSTP.

How will VLAN traffic be distributed across the port-channels?

- A. All VLANs are allowed across a single port-channel
- B. A single VLAN is allowed across each port-channel
- C. All VLANs are allowed across both port-channels
- D. Eight VLANs are allowed across each port-channel

**Correct Answer:** A

**Section:** (none)

**Explanation**

**Explanation/Reference:**

**QUESTION 53**

N4032F#show interfaces status

| Port    | Description | Duplex | Speed | Neg  | Link State | Flow Ctrl | M | VLAN |
|---------|-------------|--------|-------|------|------------|-----------|---|------|
| Te1/0/5 |             | Full   | 1000  | Auto | Up         | Off       | A | 1    |
| Te1/0/6 |             | Full   | 1000  | Auto | Up         | Off       | A | 1    |

| Port    | Description | Link State | M | VLAN |
|---------|-------------|------------|---|------|
| Channel |             | Up         | A | 1    |
| Pol     |             |            |   |      |

N4032F#show interfaces port-channel 1

| Channel | Ports                    | Ch-Type | Hash Type | Min-Links | Local Prf | Rx Util | Tx Util |
|---------|--------------------------|---------|-----------|-----------|-----------|---------|---------|
| Pol     | Active: Te1/0/5, Te1/0/6 | Dynamic | 7         | 1         | Disabled  | 0       | 0       |

Hash Algorithm Type

- 1 - Source MAC, VLAN, EtherType, source module and port Id
- 2 - Destination MAC, VLAN, EtherType, source module and port Id
- 3 - Source IP and source TCP/UDP port
- 4 - Destination IP and destination TCP/UDP port
- 5 - Source/Destination MAC, VLAN, EtherType, source MODID/port
- 6 - Source/Destination IP and source/destination TCP/UDP port
- 7 - Enhanced hashing mode

A network administrator has reported poor network performance to an application server. After reviewing the logs, you determine that the server is using 100 percent of the available bandwidth on its network port. As shown in the exhibit, you configure a second link and a 2-member port-channel to an application server in an effort to increase performance. However, during testing, the network performance has not improved.

What is a possible reason why there has been no increase in the performance?

- A. Application is using a single I/O flow
- B. File server needs to be configured with LACP
- C. Minimum links needs to be increased to "2"
- D. Port-channel needs load balancing enabled

**Correct Answer:** A

**Section:** (none)

**Explanation**

**Explanation/Reference:**

**QUESTION 54** What is a recommended configuration for an MLAG peer-link on a Dell EMC N-Series switch?

- A. Spanning tree must be disabled
- B. Spanning tree must be enabled
- C. Link must be a trunk port
- D. Link must contain multiple interfaces

**Correct Answer:** B

**Section:** (none)

**Explanation**

**Explanation/Reference:**

**QUESTION 55** Which type of an attack is considered MAC poisoning?

- A. Duplicating the MAC address of a legitimate device so frames are forwarded to the incorrect port
- B. Host imitating a trunk port by using tagging and trunking protocols
- C. Flooding MAC addresses to the switch to fill its CAM table, causing the switch to act as a hub
- D. Host on a VLAN gaining unauthorized access to other VLANs on the network

**Correct Answer:** A

**Section:** (none)

**Explanation**

**Explanation/Reference:**

**QUESTION 56**

N4032F#show interfaces status

| Port    | Description | Duplex | Speed | Neg | Link State | Flow Ctrl | M | VLAN |
|---------|-------------|--------|-------|-----|------------|-----------|---|------|
| Te1/0/5 |             | Full   | 100   | Off | Up         | On        | A | 1    |
| Te1/0/6 |             | Full   | 1000  | Off | Up         | Off       | A | 1    |

| Port Channel | Description | Link State | M | VLAN |
|--------------|-------------|------------|---|------|
| Po1          |             | Up         | A | 1    |

N4032F#show interfaces port-channel 1

| Channel | Ports                                | Ch-Type | Hash Type | Min-Links | Local Prf | Rx Util | Tx Util |
|---------|--------------------------------------|---------|-----------|-----------|-----------|---------|---------|
| Po1     | Active: Te1/0/5<br>Inactive: Te1/0/6 | Dynamic | 7         | 1         | Disabled  | 0       | 0       |

Hash Algorithm Type

- 1 - Source MAC, VLAN, EtherType, source module and port Id
- 2 - Destination MAC, VLAN, EtherType, source module and port Id
- 3 - Source IP and source TCP/UDP port
- 4 - Destination IP and destination TCP/UDP port
- 5 - Source/Destination MAC, VLAN, EtherType, source MODID/port
- 6 - Source/Destination IP and source/destination TCP/UDP port
- 7 - Enhanced hashing mode

N4032F#

A Dell EMC N-Series switch has been configured with a 2-member port-channel; however, only one link is currently active.

Based on the exhibit, why is only one link active?

- A. Minimum links value for Po1 is set to "1"
- B. Hash algorithm is configured for active-passive
- C. Te1/0/6 interface is administratively disabled
- D. Speed setting is different between ports

**Correct Answer:** D

**Section:** (none)

**Explanation**

**Explanation/Reference:**

**QUESTION 57** If VoIP traffic uses multiple QoS prioritization schemes, what refers to VoIP traffic?

- A. COS 2, DSCP 22, AF B.
- COS 2, DSCP 46, EF C.
- COS 5, DSCP 42, AF
- D. COS 5, DSCP 46, EF

**Correct Answer:** D

**Section:** (none)

**Explanation**

**Explanation/Reference:**

**QUESTION 58** In order to alter a packet's routing direction, which packet layers can policy-based routing use?

- A. Transport, Network, Link Layer, and Physical
- B. Link Layer, Physical, Presentation, and Session
- C. Network, Link Layer, Physical, and Session
- D. Application, Transport, Network, and Link Layer

**Correct Answer:** A

**Section:** (none)

**Explanation**

**Explanation/Reference:**

**QUESTION 59** A network administrator wants to configure an ACL to deny traffic for a specific source IP and source UDP port.

Which type of ACL should be used?

- A. Layer 2 Standard ACL
- B. Layer 2 Extended ACL
- C. Layer 3 Standard ACL
- D. Layer 3 Extended ACL

**Correct Answer:** D

**Section:** (none)

**Explanation**

**Explanation/Reference:**

**QUESTION 60** How does the weighted Queue Scheduler prioritize packets?

- A. Scheduler prioritizes weighted queues over any strict queues
- B. Weights are calculated based on the number of packets
- C. Weights are used to calculate the number of bytes
- D. Weight is assigned to each port

**Correct Answer:** C

**Section:** (none)

**Explanation**

**Explanation/Reference:**



Reference: <https://infohub.delltechnologies.com/static/media/6582046d-70f0-4ab6-ba72-2c0b9cf26649.pdf> page 6

**QUESTION 61** Which packet characteristics can policy-based routing be configured to match against?

- A. TTL, TCP Port, and L3 Packet Length
- B. L3 Packet Length, TTL, and 802.1p Priority
- C. TCP Port, L3 Packet Length, and 802.1p Priority
- D. TCP Port, TTL, and 802.1p Priority

**Correct Answer:** C

**Section:** (none)

**Explanation**

**Explanation/Reference:**

**QUESTION 62** Which spanning tree feature will prevent unnecessary timeouts from DHCP servers?

- A. PortFast
- B. Loop Guard
- C. BPDU Flooding
- D. Root Guard

**Correct Answer:** A

**Section:** (none)

**Explanation**

**Explanation/Reference:**

Reference: <https://www.dell.com/community/Networking-General/Advice-on-basic-STP-and-network-design/td-p/4434346>

**QUESTION 63** Refer to the Exhibit.

```
Switch-1(config)# radius server host 10.1.1.111
Switch-1(config-radius)# key "secretkey"
Switch-1(config-radius)# exit
Switch-1(config)# aaa authentication login "LOCAL-AUTH" local
Switch-1(config)# aaa authentication login "REMOTE-AUTH" radius local
Switch-1(config)# aaa authentication enable "REMOTE-AUTH" radius enable
Switch-1(config)# aaa authentication login default tacacs local
Switch-1(config)# aaa authentication enable default tacacs enable
Switch-1(config)# line telnet
Switch-1(config-telnet)# login authentication "REMOTE-AUTH"
Switch-1(config-telnet)# exit
Switch-1(config)# line ssh
Switch-1(config-ssh)# login authentication default
Switch-1(config)# exit
Switch-1(config)# line console
Switch-1(config-line)# login authentication "LOCAL-AUTH" Switch-1(config-
line)# exit
```

Which authentication method will be used if a user tries to log into the switch when accessing through SSH?

- A. RADIUS, then fails over to a local user account
- B. Local user account
- C. TACACS, then fails over to a local user account
- D. None

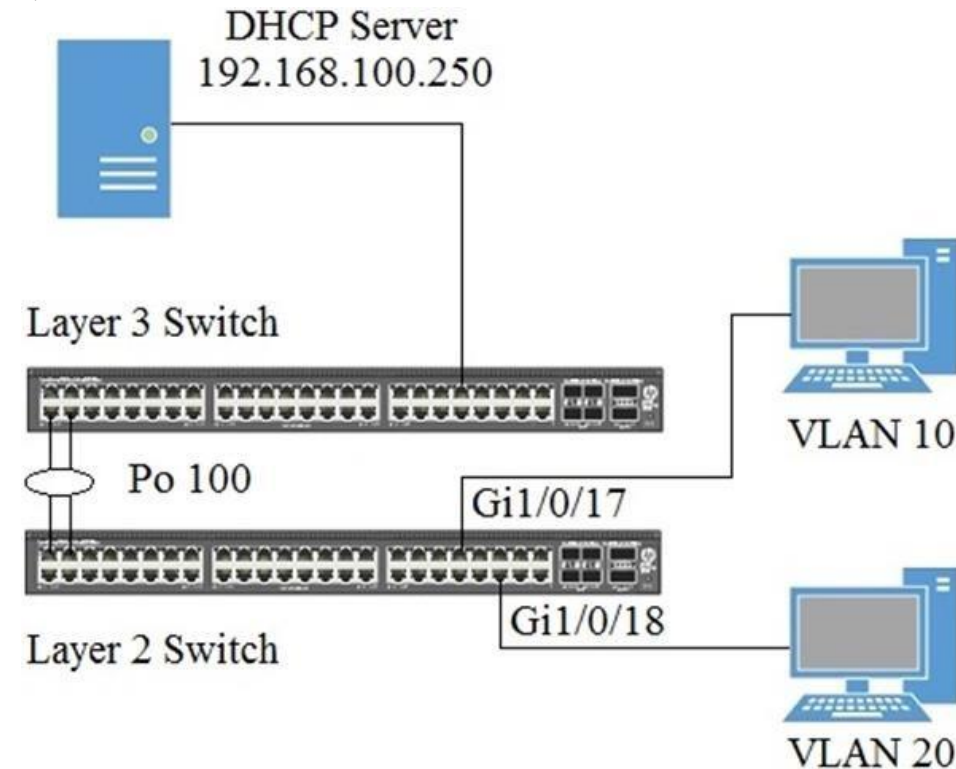
Correct Answer: C

Section: (none)

Explanation

Explanation/Reference:

#### QUESTION 64



Based on the exhibit, which configuration on interface Gi1/0/18 will allow the DHCP request to reach the DHCP server for the specified VLAN?

#### A. Configuration A:

```
console(config-if-Gi1/0/18)# switchport mode general console(config-if-Gi1/0/18)# switchport general pvid 20 console(config-if-Gi1/0/18)# switchport general allowed vlan add 20 console(config-if-Gi1/0/18)# switchport general allowed vlan remove 1
```

#### B. Configuration B:

```
console(config-if-Gi1/0/18)# switchport access vlan 10 console(config-if-Gi1/0/18)# service-policy in dhcp_250 console(config-if-Gi1/0/18)# switchport general allowed vlan add 20 console(config-if-Gi1/0/18)# switchport general allowed vlan remove 1
```

#### C. Configuration C:

```
console(config-if-Gi1/0/18)# switchport access vlan 10 console(config-if-Gi1/0/18)# ip dhcp snooping trust console(config-if-Gi1/0/18)# switchport general allowed vlan add 20 console(config-if-Gi1/0/18)# switchport general allowed vlan remove 1
```

#### D. Configuration D:

```
console(config-if-Gi1/0/18)# channel-group 100 mode active console(config-if-Gi1/0/18)# switchport access vlan 250 console(config-if-Gi1/0/18)# switchport general allowed vlan add 20 console(config-if-Gi1/0/18)# switchport general allowed vlan remove 1
```

Correct Answer: A

Section: (none)

Explanation

Explanation/Reference:

**QUESTION 65** How many untagged VLANs are allowed on a switchport mode trunk interface?

- A. 0
- B. 1
- C. 128
- D. 4096

**Correct Answer:** B

**Section:** (none)

**Explanation**

**Explanation/Reference:**

