

70-744

Number: 70-744
Passing Score: 800
Time Limit: 120 min
File Version: 1

70-744



Website: <https://vceplus.com>

VCE to PDF Converter: <https://vceplus.com/vce-to-pdf/>

Facebook: <https://www.facebook.com/VCE.For.All.VN/>

Twitter : https://twitter.com/VCE_Plus

<https://vceplus.com/>

Exam A

QUESTION 1

Note: This question is part of a series of questions that present the same scenario. Each question in the series contains a unique solution that might meet the stated goals. Some question sets might have more than one correct solution, while others might not have a correct solution.

After you answer a question in this sections, you will NOT be able to return to it. As a result, these questions will not appear in the review screen.

Your network contains an Active Directory forest named contoso.com. All servers run Windows Server 2016. The forest contains 2,000 client computers that run Windows 10. All client computers are deployed from a customized Windows image.

You need to deploy 10 Privileged Access Workstations (PAWs). The solution must ensure that administrators can access several client applications used by all users.

Solution: You deploy 10 physical computers and configure them as PAWs. You deploy 10 additional computers and configure them by using the customized Windows image.



<https://vceplus.com/> Does this

meet the goal?

- A. Yes
- B. No

Correct Answer: A

Section: (none)

Explanation

Explanation/Reference:

Explanation:

References: <https://technet.microsoft.com/en-us/windows-server-docs/security/securing-privileged-access/privileged-access-workstations>

QUESTION 2

Note: This question is part of a series of questions that present the same scenario. Each question in the series contains a unique solution that might meet the stated goals. Some question sets might have more than one correct solution, while others might not have a correct solution.

After you answer a question in this sections, you will NOT be able to return to it. As a result, these questions will not appear in the review screen.

Your network contains an Active Directory forest named contoso.com. All servers run Windows Server 2016. The forest contains 2,000 client computers that run Windows 10. All client computers are deployed from a customized Windows image.

You need to deploy 10 Privileged Access Workstations (PAWs). The solution must ensure that administrators can access several client applications used by all users.

Solution: You deploy one physical computer and configure it as Hyper-V host that runs Windows Server 2016. You create 10 virtual machines and configure each one as a PAW.

Does this meet the goal?

- A. Yes
- B. No

Correct Answer: B

Section: (none)

Explanation

Explanation/Reference:

Explanation:

References: <https://technet.microsoft.com/en-us/windows-server-docs/security/securing-privileged-access/privileged-access-workstations>

QUESTION 3

Note: This question is part of a series of questions that present the same scenario. Each question in the series contains a unique solution that might meet the stated goals. Some question sets might have more than one correct solution, while others might not have a correct solution.

After you answer a question in this sections, you will NOT be able to return to it. As a result, these questions will not appear in the review screen.

Your network contain an Active Directory domain named contoso.com. The domain contains a computer named Computer1 that runs Windows 10. Computer1 connects to a home network and a corporate network.

The corporate network uses the 172.16.0.0/24 address space internally.

Computer1 runs an application named App1 that listens to port 8080.

You need to prevent connections to App1 when Computer1 is connected to the home network.

Solution: From Group Policy Management, you create an AppLocker rule.

Does this meet the goal?

- A. Yes
- B. No

Correct Answer: B

Section: (none)

Explanation

Explanation/Reference:

Explanation:

References: [https://technet.microsoft.com/en-us/library/dd759068\(v=ws.11\).aspx](https://technet.microsoft.com/en-us/library/dd759068(v=ws.11).aspx)



QUESTION 4

Note: This question is part of a series of questions that present the same scenario. Each question in the series contains a unique solution that might meet the stated goals. Some question sets might have more than one correct solution, while others might not have a correct solution.

After you answer a question in this sections, you will NOT be able to return to it. As a result, these questions will not appear in the review screen.

Your network contain an Active Directory domain named contoso.com. The domain contains a computer named Computer1 that runs Windows 10. Computer1 connects to a home network and a corporate network.

The corporate network uses the 172.16.0.0/24 address space internally.

Computer1 runs an application named App1 that listens to port 8080.

You need to prevent connections to App1 when Computer1 is connected to the home network.

Solution: From Group Policy Management, you create software restriction policy.

Does this meet the goal?

- A. Yes

B. No

Correct Answer: B

Section: (none)

Explanation

Explanation/Reference:

Explanation:

References: [https://technet.microsoft.com/en-us/library/hh831534\(v=ws.11\).aspx](https://technet.microsoft.com/en-us/library/hh831534(v=ws.11).aspx)

QUESTION 5

Note: This question is part of a series of questions that present the same scenario. Each question in the series contains a unique solution that might meet the stated goals. Some question sets might have more than one correct solution, while others might not have a correct solution.

After you answer a question in this sections, you will NOT be able to return to it. As a result, these questions will not appear in the review screen.

Your network contain an Active Directory domain named contoso.com. The domain contains a computer named Computer1 that runs Windows 10. Computer1 connects to a home network and a corporate network.

The corporate network uses the 172.16.0.0/24 address space internally.

Computer1 runs an application named App1 that listens to port 8080.

You need to prevent connections to App1 when Computer1 is connected to the home network.

Solution: From Windows Firewall in the Control Panel, you add an application and allow the application to communicate through the firewall on a Private network.

Does this meet the goal?

A. Yes

B. No

Correct Answer: B

Section: (none)

Explanation

Explanation/Reference:

Explanation:

References: <http://www.online-tech-tips.com/windows-10/adjust-windows-10-firewall-settings/>

QUESTION 6

Note: This question is part of a series of questions that present the same scenario. Each question in the series contains a unique solution that might meet the stated goals. Some question sets might have more than one correct solution, while others might not have a correct solution.

After you answer a question in this sections, you will NOT be able to return to it. As a result, these questions will not appear in the review screen.

Your network contains an Active Directory domain named contoso.com. All servers run Windows Server 2016. All client computers run Windows 10.

The relevant objects in the domain are configured as shown in the following table.

Server name	Object	Organizational unit (OU) name
Server1	Computer account	Servers
Server2	Computer account	Servers
User1	User account	Operations Users

You need to assign User1 the right to restore files and folders on Server1 and Server2.

Solution: You create a Group Policy object (GPO), you link the GPO to the Servers OU, and then you modify the Users Rights Assignment in the GPO.

Does this meet the goal?

- A. Yes
- B. No

Correct Answer: B

Section: (none)

Explanation

Explanation/Reference:

Explanation:

References: [https://technet.microsoft.com/en-us/library/cc771990\(v=ws.11\).aspx](https://technet.microsoft.com/en-us/library/cc771990(v=ws.11).aspx)

QUESTION 7

Note: This question is part of a series of questions that present the same scenario. Each question in the series contains a unique solution that might meet the stated goals. Some question sets might have more than one correct solution, while others might not have a correct solution.

After you answer a question in this sections, you will NOT be able to return to it. As a result, these questions will not appear in the review screen.

Your network contains an Active Directory domain named contoso.com. All servers run Windows Server 2016. All client computers run Windows 10.

The relevant objects in the domain are configured as shown in the following table.

Server name	Object	Organizational unit (OU) name
Server1	Computer account	Servers
Server2	Computer account	Servers
User1	User account	Operations Users

You need to assign User1 the right to restore files and folders on Server1 and Server2.

Solution: You add User1 to the Backup Operators group in contoso.com.

Does this meet the goal?

- A. Yes
- B. No

Correct Answer: A

Section: (none)

Explanation

Explanation/Reference:

Explanation:

References: [https://technet.microsoft.com/en-us/library/cc771990\(v=ws.11\).aspx](https://technet.microsoft.com/en-us/library/cc771990(v=ws.11).aspx)

QUESTION 8

Your network contains an Active Directory forest named contoso.com. The forest functional level is Windows Server 2012. All servers run Windows Server 2016.

You create a new bastion forest named admin.contoso.com. The forest functional level of admin.contoso.com is Windows Server 2012 R2.

You need to implement a Privileged Access Management (PAM) solution.

Which two actions should you perform? Each correct answer presents part of the solution.

- A. Raise the forest functional level of admin.contoso.com.
- B. Deploy Microsoft Identity Management (MIM) 2016 to admin.contoso.com.
- C. Configure contoso.com to trust admin.contoso.com.
- D. Deploy Microsoft Identity Management (MIM) 2016 to contoso.com.
- E. Raise the forest functional level of contoso.com.
- F. Configure admin.contoso.com to trust contoso.com.

Correct Answer: BC

Section: (none)

Explanation

Explanation/Reference:

Explanation:

References: <https://docs.microsoft.com/en-us/microsoft-identity-manager/pam/hardware-software-requirements> <https://docs.microsoft.com/en-us/microsoft-identity-manager/pam/planning-bastion-environment>

QUESTION 9

Your network contains an Active Directory domain named contoso.com. The domain contains two servers named Server1 and Server2 that run Windows Server 2016.

Server1 is configured as a domain controller.

You configure Server1 as a Just Enough Administration (JEA) endpoint. You configure the required JEA rights for a user named User1.

You need to tell User1 how to manage Active Directory objects from Server2.

What should you tell User1 to do first on Server2?

- A. From a command prompt, runntdsutil.exe.
- B. From Windows PowerShell, run the Import-Module cmdlet.
- C. From Windows PowerShell, run the Enter-PSSession cmdlet.

D. Install the management consoles for Active Directory, and then launch Active Directory Users and Computers.

Correct Answer: C

Section: (none)

Explanation

Explanation/Reference:

Explanation:

References: <https://blogs.technet.microsoft.com/privatecloud/2014/05/14/just-enough-administration-step-by-step/>

QUESTION 10

Your network contains an Active Directory domain named contoso.com. The domain contains 100 servers.

You deploy the Local Administrator Password Solution (LAPS) to the network.

You deploy a new server named FinanceServer5, and join FinanceServer5 to the domain.

You need to ensure that the passwords of the local administrators of FinanceServer5 are available to the LAPS administrators.

What should you do?

- A. On FinanceServer5, register AdmPwd.dll.
- B. On FinanceServer5, install the LAPS Windows PowerShell module.
- C. In the domain, modify the permissions for the computer account of FinanceServer5.
- D. In the domain, modify the permissions of the Domain Controllers organizational unit (OU).

Correct Answer: A

Section: (none)

Explanation

Explanation/Reference:

Explanation:

References: <https://gallery.technet.microsoft.com/Step-by-Step-Deploy-Local-7c9ef772>

QUESTION 11

Your network contains an Active Directory domain named contoso.com. The domain contains four servers. The servers are configured as shown in the following table.

Server name	Configuration	Operating system
DC1	Domain controller	Windows Server 2012 R2
DC2	Domain controller	Windows Server 2012
FS1	File server	Windows Server 2016
FS2	File server	Windows Server 2012 R2

You need to manage FS1 and FS2 by using Just Enough Administration (JEA).

What should you do before you can implement JEA?

- A. Install Microsoft.NET Framework 4.6.2 on FS2.
- B. Install Microsoft.NET Framework 4.6.2 on FS1.
- C. Install Windows Management Framework 5.0 on FS2.
- D. Upgrade DC1 to Windows Server 2016.



Correct Answer: C

Section: (none)

Explanation

Explanation/Reference:

Explanation:

References: <https://blogs.technet.microsoft.com/privatecloud/2014/05/14/just-enough-administration-step-by-step/>

QUESTION 12

Your network contains two single-domain Active Directory forests named contoso.com and contosoadmin.com. Contosoadmin.com contains all of the user accounts used to manage the servers in contoso.com.

You need to recommend a workstation solution that provides the highest level of protection from vulnerabilities and attacks.

What should you include in the recommendation?

- A. Provide a Privileged Access Workstation (PAW) for each user account in both forests. Join each PAW to the contoso.com domain.
- B. Provide a Privileged Access Workstation (PAW) for each user in the contoso.com forest. Join each PAW to the contoso.com domain.
- C. Provide a Privileged Access Workstation (PAW) for each administrator. Join each PAW to the contoso.com domain.
- D. Provide a Privileged Access Workstation (PAW) for each administrator. Join each PAW to the contosoadmin.com domain.

Correct Answer: D

Section: (none)

Explanation

Explanation/Reference:

Explanation:

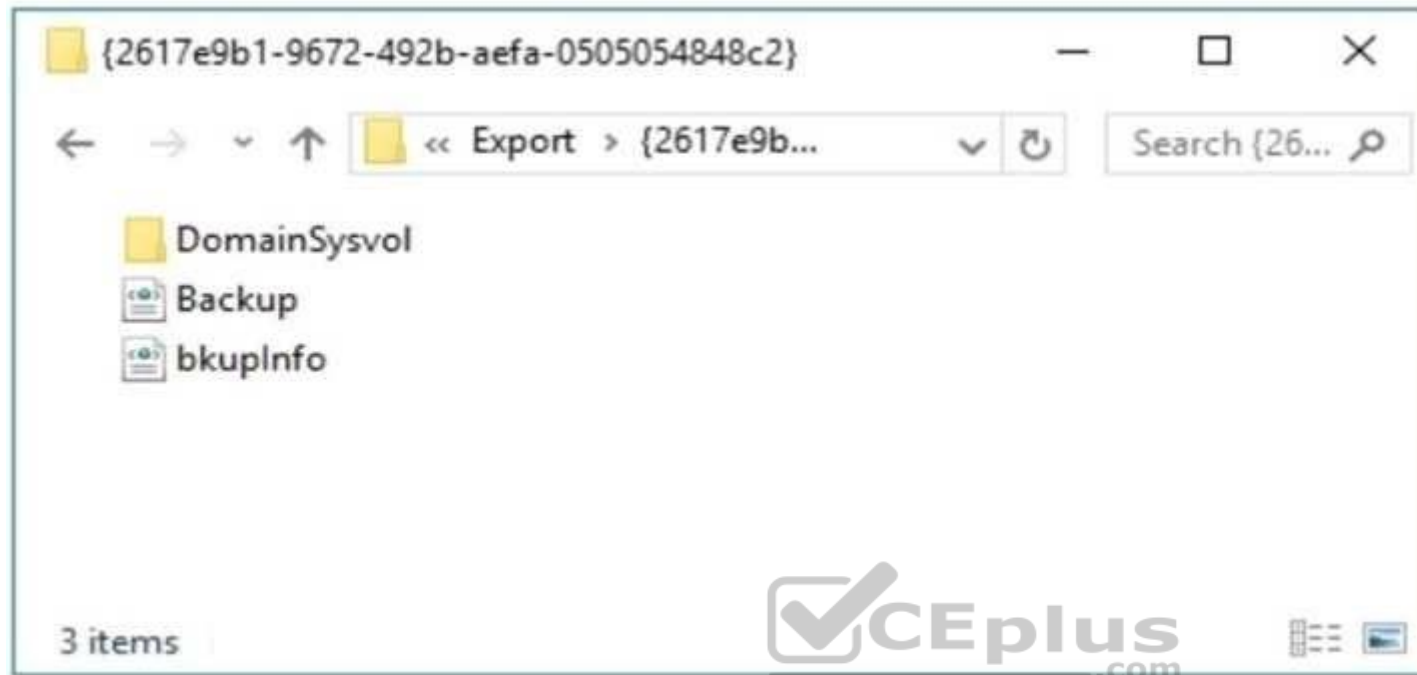
References: <https://docs.microsoft.com/en-us/windows-server/identity/securing-privileged-access/privileged-access-workstations>

QUESTION 13

Your network contains an Active Directory domain named contoso.com. All domain controllers run Windows Server 2016.

The domain contains a server named Server1 that has Microsoft Security Compliance Manager (SCM) 4.0 installed.

You export the baseline shown in the following exhibit.



You have a server named Server2 that is a member of a workgroup.

You copy the {2617e9b1-9672-492b-aefa-0505054848c2} folder to Server2.

You need to deploy the baseline settings to Server2.

What should you do?

- A. Download, install, and then run the Lgpo.exe command.
- B. From Group Policy Management, import a Group Policy object (GPO).
- C. From Windows PowerShell, run the Restore-GPO cmdlet.
- D. From Windows PowerShell, run the Import-GPO cmdlet.
- E. From a command prompt, run the secedit.exe command and specify the/import parameter.

Correct Answer: D

Section: (none)

Explanation

Explanation/Reference:

Explanation:

References: <https://anytecho.wordpress.com/2015/05/22/importing-group-policies-using-powershell-almost/>

QUESTION 14

Your network contains an Active Directory domain named contoso.com. The domain contains a server named Server1 that runs Windows Server 2016.

A technician is testing the deployment of Credential Guard on Server1.

You need to verify whether Credential Guard is enabled on Server1.

What should you do?

- A. From a command prompt, run the credwiz.exe command.
- B. From Task Manager, review the processes listed on the Details tab.
- C. From Server Manager, click Local Server, and review the properties of Server1.
- D. From Windows PowerShell, run the Get-WSManCredSSP cmdlet.
- E. From a command prompt, run the tsecimp.exe command.
- F. From Control Panel, open **Credential Manager**, and review the list of Windows Credentials.

Correct Answer: B

Section: (none)

Explanation

Explanation/Reference:

References: <https://yungchou.wordpress.com/2016/10/10/credential-guard-made-easy-in-windows-10-version-1607/>

QUESTION 15

Your network contains an Active Directory domain named contoso.com.

You install the Windows Server Update Services server role on a member server named Server1. Server1 runs Windows Server 2016.

You need to ensure that a user named User1 can perform the following tasks:

- View the Windows Server Update Services (WSUS) configuration.
- Generate WSUS update reports.

The solution must use the principle of least privilege.

What should you do on Server1?

- A. Modify the permissions of the ReportWebService virtual folder from the WSUS Administration website.
- B. Add User1 to the WSUS Reporters local group.
- C. Add User1 to the WSUS Administrators local group.
- D. Run wsusutil.exe and specify the postinstall parameter.

Correct Answer: C

Section: (none)

Explanation

Explanation/Reference:

Explanation:

References: [https://technet.microsoft.com/en-us/library/hh852346\(v=ws.11\).aspx#BKMK_ConfigComputerGroups](https://technet.microsoft.com/en-us/library/hh852346(v=ws.11).aspx#BKMK_ConfigComputerGroups)



QUESTION 16

Your network contains an Active Directory domain named contoso.com. The domain contains a server named Server5 that has the Windows Server Update Services server role installed.

You need to configure Windows Server Update Services (WSUS) on Server5 to use SSL.

You install a certificate in the local Computer store.

Which two tools should you use? Each correct answer presents part of the solution.

- A. Wsusutil
- B. Netsh
- C. Internet Information Services (IIS) Manager
- D. Server Manager
- E. Update Services

Correct Answer: AE

Section: (none)

Explanation

Explanation/Reference:

Explanation:

References: [https://technet.microsoft.com/en-us/library/hh852346\(v=ws.11\).aspx#bkmk_3.5.ConfigSSL](https://technet.microsoft.com/en-us/library/hh852346(v=ws.11).aspx#bkmk_3.5.ConfigSSL)

QUESTION 17

Your network contains an Active Directory domain named contoso.com. The domain contains 1,000 client computers that run Windows 8.1 and 1,000 client computers that run Windows 10.

You deploy a Windows Server Update Services (WSUS) server. You create a computer group for each organizational unit (OU) that contains client computers. You configure all of the client computers to receive updates from WSUS.

You discover that all of the client computers appear in the Unassigned Computers computer group in the Update Services console.

You need to ensure that the client computers are added automatically to the computer group that corresponds to the location of the computer account in Active Directory.

Which two actions should you perform? Each correct answer presents part of the solution.

- A. From Group Policy objects (GPOs), configure the Enable client-side targeting setting.
- B. From the Update Services console, configure the Computers option.
- C. From Active Directory Users and Computers, create a domain local distribution group for each WSUS computer group.
- D. From Active Directory Users and Computers, modify the flags attribute of each OU.

Correct Answer: AB

Section: (none)

Explanation

Explanation/Reference:

Explanation:

References:

<https://technet.microsoft.com/en-us/library/dd252762.aspx> [https://technet.microsoft.com/en-us/library/cc720433\(v=ws.10\).aspx](https://technet.microsoft.com/en-us/library/cc720433(v=ws.10).aspx)

QUESTION 18

Note: This question is part of a series of questions that use the same or similar answer choices. An answer choice may be correct for more than one question in the series. Each question is independent of the other questions in this series. Information and details provided in a question apply only to that question.

Your network contains an Active Directory domain named contoso.com. The domain contains a server named Server1 that runs Windows Server 2016.

Server1 has a volume named Volume1.

A central access policy named Policy1 is deployed to the domain.

You need to apply Policy1 to Volume1.

Which tool should you use?

- A. File Explorer
- B. Shared Folders
- C. Server Manager
- D. Disk Management
- E. Storage Explorer
- F. Computer Management
- G. System Configuration
- H. File Server Resource Manager (FSRM)



Correct Answer: A

Section: (none)

Explanation

Explanation/Reference:

Explanation:

References: https://docs.microsoft.com/en-us/windows-server/identity/solution-guides/deploy-a-central-access-policy--demonstration-steps-#BKMK_1.4

QUESTION 19

Note: This question is part of a series of questions that use the same or similar answer choices. An answer choice may be correct for more than one question in the series. Each question is independent of the other questions in this series. Information and details provided in a question apply only to that question.

Your network contains an Active Directory domain named contoso.com. The domain contains a server named Server1 that runs Windows Server 2016.

Server1 has a shared folder named Share1.

You need to ensure that all access to Share1 uses SMB Encryption.



<https://vceplus.com/>

Which tool should you use?

- A. File Explorer
- B. Shared Folders
- C. Server Manager
- D. Disk Management
- E. Storage Explorer
- F. Computer Management
- G. System Configuration
- H. File Server Resource Manager (FSRM)



Correct Answer: C

Section: (none)

Explanation

Explanation/Reference:

Explanation:

References: <https://support.microsoft.com/en-za/help/2696547/how-to-enable-and-disable-smbv1,-smbv2,-and-smbv3-in-windows-vista,-windows-server-2008,-windows-7,windows-server-2008-r2,-windows-8,-and-windows-server-2012> <https://blogs.technet.microsoft.com/filecab/2012/05/03/smb-3-security-enhancements-in-windows-server-2012/>

QUESTION 20

Note: This question is part of a series of questions that use the same or similar answer choices. An answer choice may be correct for more than one question in the series. Each question is independent of the other questions in this series. Information and details provided in a question apply only to that question.

Your network contains an Active Directory domain named contoso.com. The domain contains a server named Server1 that runs Windows Server 2016 and a Nano Server named Nano1.

Nano1 has two volumes named C and D.

You are signed in to Server1.

You need to configure Data Deduplication on Nano1.

Which tool should you use?

- A. File Explorer
- B. Shared Folders
- C. Server Manager
- D. Disk Management
- E. Storage Explorer
- F. Computer Management
- G. System Configuration
- H. File Server Resource Manager (FSRM)



Correct Answer: C

Section: (none)

Explanation

Explanation/Reference:

Explanation:

References: [https://technet.microsoft.com/en-us/library/hh831434\(v=ws.11\).aspx](https://technet.microsoft.com/en-us/library/hh831434(v=ws.11).aspx)

QUESTION 21

Note: This question is part of a series of questions that use the same or similar answer choices. An answer choice may be correct for more than one question in the series. Each question is independent of the other questions in this series. Information and details provided in a question apply only to that question.

Your network contains an Active Directory domain named contoso.com. The domain contains a server named Server1 that runs Windows Server 2016.

Server1 has a volume named Volume1.

Dynamic Access Control is configured. A resource property named Property1 was created in the domain.

You need to ensure that Property1 is set to a value of Big for all of the files in Volume1 that are larger than 10 MB.

Which tool should you use?

- A. File Explorer
- B. Shared Folders
- C. Server Manager
- D. Disk Management
- E. Storage Explorer
- F. Computer Management
- G. System Configuration
- H. File Server Resource Manager (FSRM)

Correct Answer: H

Section: (none)

Explanation

Explanation/Reference:

Explanation:

References: [https://technet.microsoft.com/en-us/library/cc732431\(v=ws.11\).aspx](https://technet.microsoft.com/en-us/library/cc732431(v=ws.11).aspx)



QUESTION 22

Note: This question is part of a series of questions that use the same scenario. For your convenience, the scenario is repeated in each question. Each question presents a different goal and answer choices, but the text of the scenario is exactly the same in each question in this series.

Your network contains an Active Directory domain named contoso.com. The functional level of the forest and the domain is Windows Server 2008 R2.

The domain contains the servers configured as shown in the following table.

Server name	Configuration
Nano1	Nano Server
Nano2	Nano Server
Server2	File server that has a shared folder named DATA
Server3	DNS server that has a DNSSEC-signed zone named adatum.com
Server4	Hyper-V host
Server1	Application server

All servers run Windows Server 2016. All client computers run Windows 10.

You have an organizational unit (OU) named Marketing that contains the computers in the marketing department. You have an OU named Finance that contains the computers in the finance department. You have an OU named AppServers that contains application servers. A Group Policy object (GPO) named GP1 is linked to the Marketing OU. A GPO named GP2 is linked to the AppServers OU.

You install Windows Defender on Nano1.

You need to execute D:\Folder1 on Nano1 from being scanned by Windows Defender.

Which cmdlet should you run?

- A. Set-StorageSetting
- B. Set-FsmFileScreenException
- C. Set-MpPreference
- D. Set-DtcAdvancedSetting

Correct Answer: C

Section: (none)

Explanation

Explanation/Reference:

Explanation:

References: <http://www.thomasmaurer.ch/2016/07/how-to-disable-and-configure-windows-defender-on-windows-server-2016-using-powershell/>

QUESTION 23

Note: This question is part of a series of questions that use the same scenario. For your convenience, the scenario is repeated in each question. Each question presents a different goal and answer choices, but the text of the scenario is exactly the same in each question in this series.

Your network contains an Active Directory domain named contoso.com. The functional level of the forest and the domain is Windows Server 2008 R2.

The domain contains the servers configured as shown in the following table.

Server name	Configuration
Nano1	Nano Server
Nano2	Nano Server
Server2	File server that has a shared folder named DATA
Server3	DNS server that has a DNSSEC-signed zone named adatum.com
Server4	Hyper-V host
Server1	Application server

All servers run Windows Server 2016. All client computers run Windows 10.

You have an organizational unit (OU) named Marketing that contains the computers in the marketing department. You have an OU named Finance that contains the computers in the finance department. You have an OU named AppServers that contains application servers. A Group Policy object (GPO) named GP1 is linked to the Marketing OU. A GPO named GP2 is linked to the AppServers OU.

You install Windows Defender on Nano1.

You need to ensure that the marketing department computers validate DNS responses from adatum.com.

Which setting should you configure in the Computer Configuration node of GP1?

- A. TCPIP Settings from Administrative Templates
- B. Connection Security Rule from Windows Settings
- C. DNS Client from Administrative Templates
- D. Name Resolution Policy from Windows Settings

Correct Answer: D

Section: (none)

Explanation

Explanation/Reference:

Explanation:

References: [https://technet.microsoft.com/en-us/library/ee649182\(v=ws.10\).aspx](https://technet.microsoft.com/en-us/library/ee649182(v=ws.10).aspx)

QUESTION 24

Note: This question is part of a series of questions that use the same scenario. For your convenience, the scenario is repeated in each question. Each question presents a different goal and answer choices, but the text of the scenario is exactly the same in each question in this series.

Your network contains an Active Directory domain named contoso.com. The functional level of the forest and the domain is Windows Server 2008 R2.

The domain contains the servers configured as shown in the following table.

Server name	Configuration
Nano1	Nano Server
Nano2	Nano Server
Server2	File server that has a shared folder named DATA
Server3	DNS server that has a DNSSEC-signed zone named adatum.com
Server4	Hyper-V host
Server1	Application server

All servers run Windows Server 2016. All client computers run Windows 10.

You have an organizational unit (OU) named Marketing that contains the computers in the marketing department. You have an OU named Finance that contains the computers in the finance department. You have an OU named AppServers that contains application servers. A Group Policy object (GPO) named GP1 is linked to the Marketing OU. A GPO named GP2 is linked to the AppServers OU.

You install Windows Defender on Nano1.

You need to ensure that you can deploy a shielded virtual machine to Server4.

Which server role should you deploy?

- A. Hyper-V
- B. Device Health Attestation
- C. Network Controller

D. Host Guardian Service

Correct Answer: D

Section: (none)

Explanation

Explanation/Reference:

Explanation:

References: <https://blogs.technet.microsoft.com/datacentersecurity/2016/03/16/windows-server-2016-and-host-guardian-service-for-shielded-vms/>

QUESTION 25

Note: This question is part of a series of questions that use the same scenario. For your convenience, the scenario is repeated in each question. Each question presents a different goal and answer choices, but the text of the scenario is exactly the same in each question in this series.

Your network contains an Active Directory domain named contoso.com. The functional level of the forest and the domain is Windows Server 2008 R2.

The domain contains the servers configured as shown in the following table.

Server name	Configuration
Nano1	Nano Server
Nano2	Nano Server
Server2	File server that has a shared folder named DATA
Server3	DNS server that has a DNSSEC-signed zone named adatum.com
Server4	Hyper-V host
Server1	Application server

All servers run Windows Server 2016. All client computers run Windows 10.

You have an organizational unit (OU) named Marketing that contains the computers in the marketing department. You have an OU named Finance that contains the computers in the finance department. You have an OU named AppServers that contains application servers. A Group Policy object (GPO) named GP1 is linked to the Marketing OU. A GPO named GP2 is linked to the AppServers OU.

You install Windows Defender on Nano1.

You need to disable SMB 1.0 on Server2.

What should you do?

- A. From File Server Resource Manager, create a classification rule.
- B. From the properties of each network adapter on Server2, modify the bindings.
- C. From Windows PowerShell, run the Set-SmbClientConfiguration cmdlet.
- D. From Server Manager, remove a Windows feature.

Correct Answer: D

Section: (none)

Explanation

Explanation/Reference:

Explanation:

References:

<https://support.microsoft.com/en-za/help/2696547/how-to-enable-and-disable-smbv1,-smbv2,-and-smbv3-in-windows-vista,-windows-server-2008,-windows-7,-windows-server-2008-r2,-windows-8,-and-windows-server-2012>

QUESTION 26

Your network contains an Active Directory domain named contoso.com.

You are deploying Microsoft Advanced Threat Analytics (ATA).

You create a user named User1.

You need to configure the user account of User1 as a Honeytoken account.

Which information must you use to configure the Honeytoken account?

- A. The SAM account name of User1
- B. The Globally Unique Identifier (GUID) of User1
- C. the SID of User1
- D. the UPN of User1

Correct Answer: C

Section: (none)

Explanation

Explanation/Reference:

QUESTION 27

Your network contains an Active Directory domain named contoso.com.

You create a Microsoft Operations Management Suite (OMS) workspace.

You need to connect several computers directly to the workspace.

Which two pieces of information do you require? Each correct answer presents part of the solution.

- A. the ID of the workspace
- B. the name of the workspace
- C. the URL of the workspace
- D. the key of the workspace

Correct Answer: AD

Section: (none)

Explanation

Explanation/Reference:

Explanation:

References: <https://docs.microsoft.com/en-us/azure/log-analytics/log-analytics-windows-agents>

**QUESTION 28**

Your network contains an Active Directory domain named contoso.com. The domain contains a server named Server1 that runs Windows Server 2016.

You have an organizational unit (OU) named Administration that contains the computer account of Server1.

You import the Active Directory module to Server1.

You create a Group Policy object (GPO) named GPO1. You link GPO1 to the Administration OU.

You need to log an event each time an Active Directory cmdlet is executed successfully from Server1.

What should you do?

- A. From Advanced Audit Policy in GPO1, configure auditing for directory service changes.

- B. Run the(Get-Module ActiveDirectory).LogPipelineExecutionDetails = \$falsecommand.
- C. Run the(Get-Module ActiveDirectory).LogPipelineExecutionDetails = \$truecommand.
- D. From Advanced Audit Policy in GPO1, configure for other privilege use events.
- E. From Administrative Templates in GPO1, configure an Event Logging policy.

Correct Answer: C

Section: (none)

Explanation

Explanation/Reference:

Explanation:

References: <https://www.petri.com/enable-powershell-logging>

QUESTION 29

Your network contains an Active Directory domain named contoso.com.

You are deploying Microsoft Advanced Threat Analytics (ATA) to the domain.

You install the ATA Center on server named Server1 and the ATA Gateway on a server named Server2.

You need to ensure that Server2 can collect NTLM authentication events.

What should you configure?

- A. the domain controllers to forward Event ID 4776 to Server2
- B. the domain controllers to forward Event ID 1000 to Server1
- C. Server2 to forward Event ID 1026 to Server1
- D. Server1 to forward Event ID 1000 to Server 2

Correct Answer: A

Section: (none)

Explanation

Explanation/Reference:

Explanation:

References:

<http://winrook.blogspot.co.za/2015/12/configuring-windows-event-forwarding.html>

QUESTION 30

Your network contains an Active Directory forest named contoso.com.

The network is connected to the Internet.

You have 100 point-of-sale (POS) devices that run Windows 10. The devices cannot access the Internet.

You deploy Microsoft Operations Management Suite (OMS).

You need to use OMS to collect and analyze data from the POS devices.

What should you do first?

- A. Deploy Windows Server Gateway to the network.
- B. Install the OMS Log Analytics Forwarder on the network.
- C. Install Microsoft Data Management Gateway on the network.
- D. Install the Simple Network Management Protocol (SNMP) feature on the devices.
- E. Add the Microsoft NDIS Capture service to the network adapter of the devices.

Correct Answer: B

Section: (none)

Explanation

Explanation/Reference:

Explanation:

References: <https://blogs.technet.microsoft.com/msoms/2016/03/17/oms-log-analytics-forwarder/>

QUESTION 31

Your network contains an Active Directory forest named contoso.com. The forest functional level is Windows Server 2012. The forest contains a single domain. The domain contains multiple Hyper-V hosts.

You plan to deploy guarded hosts.

You deploy a new server named Server22 to a workgroup.

You need to configure Server22 as a Host Guardian Service server.

What should you do before you initialize the Host Guardian Service on Server22?

- A. Install the Active Directory Domain Services server role on Server22.
- B. Obtain a certificate.
- C. Raise the forest functional level.
- D. Join Server22 to the domain.

Correct Answer: D

Section: (none)

Explanation

Explanation/Reference:

Explanation:

References: <https://docs.microsoft.com/en-us/windows-server/virtualization/guarded-fabric-shielded-vm/guarded-fabric-prepare-for-hgs#prerequisites-for-the-host-guardianservice>

QUESTION 32

Note: This question is part of a series of questions that present the same scenario. Each question in the series contains a unique solution that might meet the stated goals. Some question sets might have more than one correct solution, while others might not have a correct solution.

After you answer a question in this sections, you will NOT be able to return to it. As a result, these questions will not appear in the review screen.

You network contains an Active Directory forest named contoso.com. All domain controllers run Windows Server 2016. Member servers run either Windows Server 2012 R2 or Windows Server 2016. Client computers run either Windows 8.1 or Windows 10.

You need to ensure that when users access files in shared folders on the network, the files are encrypted when they are transferred over the network.

Solution: You disable SMB 1.0 on all the computers in the domain, and then you enable the Encrypt data access option on each file share.

Does this meet the goal?

- A. Yes
- B. No

Correct Answer: B

Section: (none)

Explanation

Explanation/Reference:

QUESTION 33

Note: This question is part of a series of questions that present the same scenario. Each question in the series contains a unique solution that might meet the stated goals. Some question sets might have more than one correct solution, while others might not have a correct solution.

After you answer a question in this sections, you will NOT be able to return to it. As a result, these questions will not appear in the review screen.

You network contains an Active Directory forest named contoso.com. All domain controllers run Windows Server 2016. Member servers run either Windows Server 2012 R2 or Windows Server 2016. Client computers run either Windows 8.1 or Windows 10.

You need to ensure that when users access files in shared folders on the network, the files are encrypted when they are transferred over the network.

Solution: You enable access-based enumeration on all the file shares.

Does this meet the goal?

A. Yes

B. No

Correct Answer: B

Section: (none)

Explanation

Explanation/Reference:

QUESTION 34

Note: This question is part of a series of questions that present the same scenario. Each question in the series contains a unique solution that might meet the stated goals. Some question sets might have more than one correct solution, while others might not have a correct solution.

After you answer a question in this sections, you will NOT be able to return to it. As a result, these questions will not appear in the review screen.

You deploy Windows Server 2016 to a server named Server1.

You need to ensure that you can run Windows Containers on Server1.

Solution: On Server1, you enable the Containers feature, and then you install the PowerShell for Docker module. You restart the server.

Does this meet the goal?

- A. Yes
- B. No

Correct Answer: A

Section: (none)

Explanation

Explanation/Reference:

References: <https://docs.microsoft.com/en-us/virtualization/windowscontainers/deploy-containers/deploy-containers-on-server>

QUESTION 35

Note: This question is part of a series of questions that present the same scenario. Each question in the series contains a unique solution that might meet the stated goals. Some question sets might have more than one correct solution, while others might not have a correct solution.

After you answer a question in this sections, you will NOT be able to return to it. As a result, these questions will not appear in the review screen.

You deploy Windows Server 2016 to a server named Server1.

You need to ensure that you can run Windows Containers on Server1.

Solution: On Server1, you enable the Containers feature, and then you install the Hyper-V server role. You restart the server.

Does this meet the goal?

- A. Yes
- B. No

Correct Answer: B

Section: (none)

Explanation

Explanation/Reference:

References: <https://docs.microsoft.com/en-us/virtualization/windowscontainers/deploy-containers/deploy-containers-on-server>

QUESTION 36

Note: This question is part of a series of questions that present the same scenario. Each question in the series contains a unique solution that might meet the stated goals. Some question sets might have more than one correct solution, while others might not have a correct solution.

After you answer a question in this sections, you will NOT be able to return to it. As a result, these questions will not appear in the review screen.

You deploy Windows Server 2016 to a server named Server1.

You need to ensure that you can run Windows Containers on Server1.

Solution: On Server1, you enable the Containers feature, and then you restart the server.

Does this meet the goal?

- A. Yes
- B. No

Correct Answer: B

Section: (none)

Explanation

Explanation/Reference:

References: <https://docs.microsoft.com/en-us/virtualization/windowscontainers/deploy-containers/deploy-containers-on-server>



QUESTION 37

Note: This question is part of a series of questions that present the same scenario. Each question in the series contains a unique solution that might meet the stated goals. Some question sets might have more than one correct solution, while others might not have a correct solution.

After you answer a question in this sections, you will NOT be able to return to it. As a result, these questions will not appear in the review screen.

Your network contains an Active Directory domain named contoso.com. The domain contains a server named Server1 that runs Windows Server 2016.

You need to prevent NTLM authentication on Server1.

Solution: From a Group Policy, you configure the Security Options.

Does this meet the goal?

- A. Yes

B. No

Correct Answer: A

Section: (none)

Explanation

Explanation/Reference:

References: <https://www.rootusers.com/implement-ntlm-blocking-in-windows-server-2016/>

QUESTION 38

Note: This question is part of a series of questions that present the same scenario. Each question in the series contains a unique solution that might meet the stated goals. Some question sets might have more than one correct solution, while others might not have a correct solution.

After you answer a question in this sections, you will NOT be able to return to it. As a result, these questions will not appear in the review screen.

Your network contains an Active Directory domain named contoso.com. The domain contains a server named Server1 that runs Windows Server 2016.

You need to prevent NTLM authentication on Server1.

Solution: From Windows PowerShell, you run the **Disable-WindowsOptionalFeature** cmdlet.

Does this meet the goal?

A. Yes

B. No

Correct Answer: B

Section: (none)

Explanation

Explanation/Reference:

References: <https://www.rootusers.com/implement-ntlm-blocking-in-windows-server-2016/>

QUESTION 39

Note: This question is part of a series of questions that present the same scenario. Each question in the series contains a unique solution that might meet the stated goals. Some question sets might have more than one correct solution, while others might not have a correct solution.

After you answer a question in this sections, you will NOT be able to return to it. As a result, these questions will not appear in the review screen.

Your network contains an Active Directory domain named contoso.com. The domain contains a server named Server1 that runs Windows Server 2016.

You need to prevent NTLM authentication on Server1.

Solution: From Windows PowerShell, you run the **New-ADAuthenticationPolicy** cmdlet.

Does this meet the goal?

- A. Yes
- B. No

Correct Answer: B

Section: (none)

Explanation

Explanation/Reference:

References: <https://www.rootusers.com/implement-ntlm-blocking-in-windows-server-2016/>

QUESTION 40

You are creating a Nano Server image for the deployment of 10 servers.

You need to configure the servers as guarded hosts that use Trusted Platform Module (TPM) attestation.

Which three packages should you include in the Nano Server image? Each correct answer presents part of the solution.

- A. Microsoft-NanoServer-SCVMM-Compute-Package
- B. Microsoft-NanoServer-SecureStartup-Package
- C. Microsoft-NanoServer-Compute-Package
- D. Microsoft-NanoServer-ShieldedVM-Package
- E. Microsoft-NanoServer-Storage-Package
- F. Microsoft-NanoServer-SCVMM- Package

Correct Answer: BCD

Section: (none)

Explanation

Explanation/Reference:

References: <https://docs.microsoft.com/en-us/system-center/vmm/guarded-deploy-host?toc=/windows-server/virtualization/> <https://docs.microsoft.com/en-us/windows-server/get-started/deploy-nano-server>

QUESTION 41

Your network contains an Active Directory domain named contoso.com. The domain contains several shielded virtual machines.

You deploy a new server named Server1 that runs Windows Server 2016.

You install the Hyper-V server role on Server1.

You need to ensure that you can host shielded virtual machines on Server1.

What should you install on Server1?

- A. Host Guardian Hyper-V Support
- B. the Windows Biometric Framework (WBF)
- C. VM Shielding Tools for Fabric Management
- D. BitLocker Network Unlock

Correct Answer: A

Section: (none)

Explanation



Explanation/Reference:

References: <https://docs.microsoft.com/en-us/windows-server/security/guarded-fabric-shielded-vm/guarded-fabric-guarded-host-prerequisites>

QUESTION 42

Your network contains an Active Directory domain named contoso.com.

You deploy a server named Server1 that runs Windows Server 2016. Server1 is in a workgroup.

You need to collect the logs from Server1 by using Log Analytics in Microsoft Operations Management Suite (OMS).

What should you do first?

- A. Create an event subscription
- B. Create a Data Collector-Set
- C. Install Microsoft Monitoring Agent on Server1
- D. Join Server1 to the domain

Correct Answer: C

Section: (none)

Explanation

Explanation/Reference:

References: <https://docs.microsoft.com/en-us/azure/log-analytics/log-analytics-windows-agents>

QUESTION 43

Note: This question is part of a series of questions that use the same scenario. For your convenience, the scenario is repeated in each question. Each question presents a different goal and answer choices, but the text of the scenario is exactly the same in each question in this series.

Start of repeated scenario.

Your company has a marketing department.

The network contains an Active Directory domain named contoso.com. The domain contains the servers configured as shown in the following table.

Server name	Domain or workgroup	Configuration
Server1	Domain	Windows Server Update Services (WSUS) server
Server2	Domain	Server that has a Trusted Platform Module (TPM)
Server3	Domain	Member server that will be configured for Just Enough Administration (JEA)
Server4	Domain	Application server
Server5	Workgroup	Web server
VM1	Domain	Generation 2 virtual machine
VM2	Domain	DHCP server

All servers run Windows Server 2016. All client computers run Windows 10 and are domain members. All laptops are protected by using BitLocker Drive Encryption (BitLocker).

You have an organizational unit (OU) named OU1 that contains the computer accounts of application servers. An OU named OU2 contains the computer accounts of the computers in the marketing department. A Group Policy object (GPO) named GP1 is linked to OU1. A GPO named GP2 is linked to OU2.

All computers receive updates from Server1. You create an update rule named Update1.

End of repeated scenario.

You need to create a Role Capability file on Server3. Which file should you create?

- A. File1.ini
- B. File1.ps1
- C. File1.xml
- D. File1.psrc

Correct Answer: D

Section: (none)

Explanation

Explanation/Reference:

References: <https://docs.microsoft.com/en-us/powershell/scripting/learn/remoting/jea/role-capabilities?view=powershell-7>

QUESTION 44

Note: This question is part of a series of questions that use the same scenario. For your convenience, the scenario is repeated in each question. Each question presents a different goal and answer choices, but the text of the scenario is exactly the same in each question in this series.

Start of repeated scenario.

Your company has a marketing department.

The network contains an Active Directory domain named contoso.com. The domain contains the servers configured as shown in the following table.

Server name	Domain or workgroup	Configuration
Server1	Domain	Windows Server Update Services (WSUS) server
Server2	Domain	Server that has a Trusted Platform Module (TPM)
Server3	Domain	Member server that will be configured for Just Enough Administration (JEA)
Server4	Domain	Application server
Server5	Workgroup	Web server
VM1	Domain	Generation 2 virtual machine
VM2	Domain	DHCP server

All servers run Windows Server 2016. All client computers run Windows 10 and are domain members. All laptops are protected by using BitLocker Drive Encryption (BitLocker).

You have an organizational unit (OU) named OU1 that contains the computer accounts of application servers. An OU named OU2 contains the computer accounts of the computers in the marketing department. A Group Policy object (GPO) named GP1 is linked to OU1. A GPO named GP2 is linked to OU2.

All computers receive updates from Server1.

You create an update rule named Update1.

End of repeated scenario.

You need to implement BitLocker Network Unlock for all of the laptops. Which server role should you deploy to the network?

- A. Host Guardian Service
- B. Device Health Attestation
- C. Windows Deployment Services
- D. Network Controller

Correct Answer: C

Section: (none)

Explanation

Explanation/Reference:

References: <https://docs.microsoft.com/en-us/windows/device-security/bitlocker/bitlocker-how-to-enable-network-unlock>

QUESTION 45

Note: This question is part of a series of questions that use the same scenario. For your convenience, the scenario is repeated in each question. Each question presents a different goal and answer choices, but the text of the scenario is exactly the same in each question in this series.

Start of repeated scenario.

Your company has a marketing department.

The network contains an Active Directory domain named contoso.com. The domain contains the servers configured as shown in the following table.

Server name	Domain or workgroup	Configuration
Server1	Domain	Windows Server Update Services (WSUS) server
Server2	Domain	Server that has a Trusted Platform Module (TPM)
Server3	Domain	Member server that will be configured for Just Enough Administration (JEA)
Server4	Domain	Application server
Server5	Workgroup	Web server
VM1	Domain	Generation 2 virtual machine
VM2	Domain	DHCP server

All servers run Windows Server 2016. All client computers run Windows 10 and are domain members. All laptops are protected by using BitLocker Drive Encryption (BitLocker).

You have an organizational unit (OU) named OU1 that contains the computer accounts of application servers. An OU named OU2 contains the computer accounts of the computers in the marketing department. A Group Policy object (GPO) named GP1 is linked to OU1. A GPO named GP2 is linked to OU2.

All computers receive updates from Server1. You create an update rule named Update1.

End of repeated scenario.

You need to ensure that AppLocker rules will apply to the marketing department computers. What should you do?

- A. From the properties of OU2, modify the COM+ partition Set.
- B. In GP2, configure the Startup type for the Application Identity service.
- C. In GP2, configure the Startup type for the Application Management service.
- D. From the properties of OU2, modify the Security settings.

Correct Answer: B

Section: (none)

Explanation

Explanation/Reference:

References: <https://docs.microsoft.com/en-us/windows/device-security/applocker/configure-the-application-identity-service>

QUESTION 46

Your network contains an Active Directory domain named contoso.com. The domain contains a certification authority (CA).

You need to implement code integrity policies and sign them by using certificates issued by the CA.

You plan to use the same certificate to sign policies on multiple computers.

You duplicate the Code Signing certificate template and name the new template CodeIntegrity.

How should you configure the CodeIntegrity template?

- A. Enable the Allow private key to be exported setting and modify the Key Usage extension.
- B. Disable the Allow private key to be exported setting and modify the Application Policies extension.
- C. Disable the Allow private key to be exported setting and disable the Basic Constraints extension.
- D. Enable the Allow private key to be exported setting and enable the Basic Constraints extension

Correct Answer: D

Section: (none)

Explanation

Explanation/Reference:

References: <https://blogs.technet.microsoft.com/ukplatforms/2017/05/04/create-code-integrity-signing-certificate/> **QUESTION 47**

Your network contains an Active Directory domain named contoso.com. The domain contains 100 servers.

You deploy the Local Administrator Password Solution (LAPS) to the network.

You discover that the members of a group named FinanceAdministrators can view the password of the local Administrator accounts on the servers in an organizational unit (OU) named FinanceServers.

You need to prevent the FinanceAdministrators members from viewing the local administrators' passwords on the servers in FinanceServers. Which permission should you remove from FinanceAdministrators?

- A. all extended rights
- B. read all properties
- C. read permissions
- D. list contents

Correct Answer: A

Section: (none)

Explanation

Explanation/Reference:

References: <https://4sysops.com/archives/set-up-microsoft-laps-local-administrator-password-solution-in-active-directory/>

QUESTION 48

Your network contains an Active Directory Domain named contoso.com. The domain contains 10 servers that run Windows Server 2016 and 800 client computers that run Windows 10.

You need to configure the domain to meet the following requirements:

- Users must be locked out from their computer if they enter an incorrect password twice.
- Users must only be able to unlock a locked account by using a one-time password that is sent to their mobile phone.

You deploy all the components of Microsoft Identity Manager (MIM) 2016.

Which three actions should you perform before you deploy the MIM add-ins and extensions? Each correct answer presents part of the solution.

- A. Deploy a Multi-Factor Authentication provider and copy the required certificates to the MIM server.
- B. From a Group Policy object (GPO), configure Public Key Policies.
- C. From the MIM Portal, configure the Owner Approval Workflow.

- D. Deploy a Multi-Factor Authentication provider and copy the required certificates to the client computers.
- E. From the MIM Portal, configure the Password Reset AuthN Workflow.
- F. From a Group Policy object (GPO), configure Security Settings.

Correct Answer: AEF

Section: (none)

Explanation

Explanation/Reference:

References: <https://docs.microsoft.com/en-us/microsoft-identity-manager/working-with-self-service-password-reset>

QUESTION 49

You plan to enable Credential Guard on four servers. Credential Guard secrets will be bound to the TPM.

The servers run Windows Server 2016 and are configured as shown in the following table.

Server name	Trusted Platform Module (TPM) version	UEFI firmware version	Hypervisor installed	Platform
Server1	1.2	2.3.2	Hyper-V	Physical
Server2	2.0	2.3.1 c	Hyper-V	Physical
Server3	2.0	2.3.2	None	Physical
Server4	2.0	2.3.2	Hyper-V	Generation 2 virtual machine

You need to identify which server you must modify to support the planned implementation.

Which server should you identify?

- A. Server1
- B. Server2

- C. Server3
- D. Server4

Correct Answer: D

Section: (none)

Explanation

Explanation/Reference:

References: <https://docs.microsoft.com/en-us/windows/access-protection/credential-guard/credential-guard-requirements>

QUESTION 50

Your network contains an Active Directory domain named contoso.com. The domain contains two servers named Server1 and Server2. The domain has Dynamic Access Control enabled.

Server1 contains a folder named C:\Folder1. Folder1 is shared as Share1.

You need to audit all access to the contents of Folder1 from Server2. The solution must minimize the number of event log entries.

Which two audit policies should you enable on Server1? Each correct answer presents part of the solution.

NOTE: Each correct selection is worth one point.

- A. Global Object Access- File System
- B. Object Access – Audit Detailed File Share
- C. Object Access – Audit Other Object Access Events
- D. Object Access – Audit File System
- E. Object Access – Audit File Share

Correct Answer: BE

Section: (none)

Explanation

Explanation/Reference:

References:

<https://docs.microsoft.com/en-us/windows/security/threat-protection/auditing/audit-detailed-file-share> <https://docs.microsoft.com/en-us/windows/security/threat-protection/auditing/audit-file-share>

QUESTION 51

You implement Just Enough Administration (JEA) on several file servers that run Windows Server 2016. The Role Capability file from a server named Server5 contains the following code.

```
VisibleCmdlets = 'Set-Acl',  
@{  
  Name = 'Stop-Process'  
  Parameters = @{ Name = 'Name'; ValidateSet = 'proc' }  
},  
'SmbShare\Set-*'  
'SmbShare\Get-*'
```

Which action can be performed by a user who connects to Server5?

- A. View the NTFS permissions of any folder.
- B. Stop any process.
- C. Create a new file share.
- D. Modify the properties of any share.



Correct Answer: D

Section: (none)

Explanation

Explanation/Reference:

References:

<https://docs.microsoft.com/en-us/powershell/scripting/learn/remoting/jea/role-capabilities?view=powershell-7> <https://technet.microsoft.com/en-us/itpro/powershell/windows/smbshare/set-smbshare>

QUESTION 52

Your network contains an Active Directory forest named corp.contoso.com.

You are implementing Privileged Access Management (PAM) by using a bastion forest named priv.contoso.com.

You need to create shadow groups in priv.contoso.com.

Which cmdlet should you use?

- A. **New-RoleGroup**
- B. **New-PamRole**
- C. **New-ADGroup**
- D. **New-PamGroup**

Correct Answer: D

Section: (none)

Explanation

Explanation/Reference:

References: <https://docs.microsoft.com/en-us/powershell/identitymanager/mimpam/vlatest/new-pamgroup>

QUESTION 53

Your network contains an Active Directory forest named contoso.com. The forest contains three domains. All domain controllers run Windows Server 2016.

You deploy a second Active Directory forest named admin.contoso.com. The forest contains a domain member server named Server1. Server1 has Microsoft Identity Manager (MIM) 2016 deployed.

You need to implement Privileged Access Management (PAM) and to use admin.contoso.com as an administrative forest.

Which two actions should you perform? Each correct answer presents part of the solution.

- A. From Server1, run the **New-PAMTrust** cmdlet.
- B. From a domain controller in contoso.com, run the **New-PAMDomainConfiguration** cmdlet.
- C. From a domain controller in admin.contoso.com, run the **New-PAMTrust** cmdlet.
- D. From a domain controller in contoso.com, run the **New-PAMTrust** cmdlet.
- E. From a domain controller in admin.contoso.com, run the **New-PAMDomainConfiguration** cmdlet.
- F. From Server1, run the **New-PAMDomainConfiguration** cmdlet.

Correct Answer: AF

Section: (none)

Explanation

Explanation/Reference: References: <https://docs.microsoft.com/en-us/microsoft-identity-manager/pam/configuring-mim-environment-for-pam> <https://docs.microsoft.com/en-us/microsoft-identity-manager/pam/step-5-establish-trust-between-priv-corp-forests> **QUESTION 54**

Note: This question is part of a series of questions that present the same scenario. Each question in the series contains a unique solution that might meet the stated goals. Some question sets might have more than one correct solution, while others might not have a correct solution.

After you answer a question in this sections, you will NOT be able to return to it. As a result, these questions will not appear in the review screen.

Your network contains an Active Directory domain named contoso.com. The domain contains a computer named Computer1 that runs Windows10.

The network uses the 172.16.0.0/16 address space.

Computer1 has an application named App1.exe that is located in D:\Apps\. App1.exe is configured to accept connections on TCP port 8080.

You need to ensure that App1.exe can accept connections only when Computer1 is connected to the corporate network.

Solution: You run the **New-NetFirewallRule -DisplayName "Rule1" -Direction Inbound -LocalPort 8080 -Protocol TCP -Action Allow -Profile Domain** command.

Does this meet the goal?

- A. Yes
- B. No

Correct Answer: B

Section: (none)

Explanation

Explanation/Reference:



QUESTION 55

Note: This question is part of a series of questions that present the same scenario. Each question in the series contains a unique solution that might meet the stated goals. Some question sets might have more than one correct solution, while others might not have a correct solution.

After you answer a question in this sections, you will NOT be able to return to it. As a result, these questions will not appear in the review screen.

Your network contains an Active Directory domain named contoso.com. The domain contains a computer named Computer1 that runs Windows10.

The network uses the 172.16.0.0/16 address space.

Computer1 has an application named App1.exe that is located in D:\Apps\. App1.exe is configured to accept connections on TCP port 8080.

You need to ensure that App1.exe can accept connections only when Computer1 is connected to the corporate network.

Solution: You run the **New-NetFirewallRule -DisplayName "Rule1" -Direction Inbound -Program "D:\Apps\App1.exe" -Action Allow -Profile Domain** command.

Does this meet the goal?

- A. Yes
- B. No

Correct Answer: A

Section: (none)

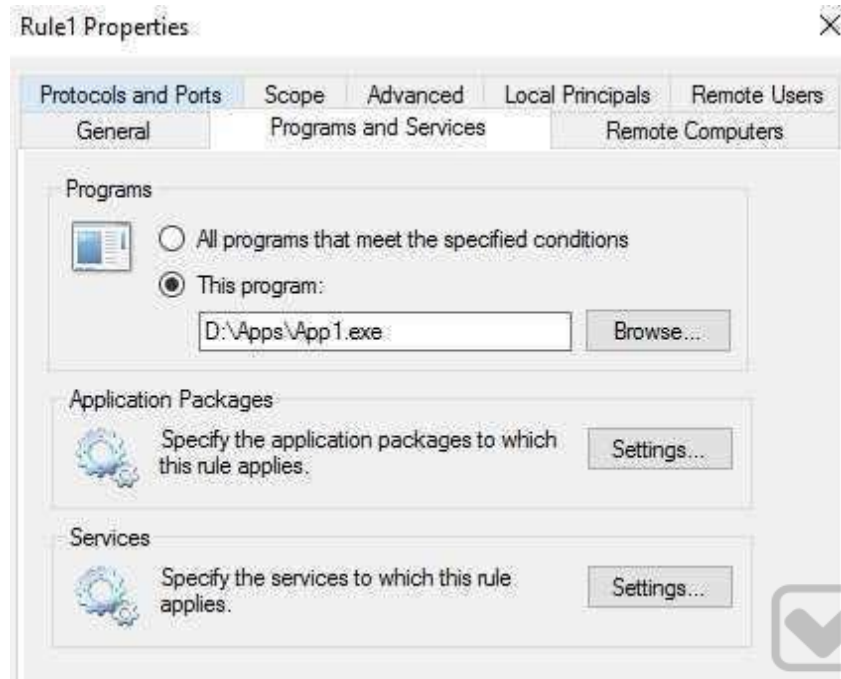
Explanation

Explanation/Reference:

Explanation:

```
PS C:\> New-NetFirewallRule -DisplayName "Rule1" -Direction Inbound -Program "D:\Apps\App1.exe" -Action Allow -Profile Domain

Name                : {27cb5030-bd59-41df-b4d8-d37e97941dad}
DisplayName          : Rule1
Description          :
DisplayGroup        :
Group               :
Enabled             : True
Profile             : Domain
Platform            : {}
Direction           : Inbound
Action              : Allow
EdgeTraversalPolicy : Block
LooseSourceMapping  : False
LocalOnlyMapping    : False
Owner               :
PrimaryStatus       : OK
Status              : The rule was parsed successfully from the store. (65536)
EnforcementStatus   : NotApplicable
PolicyStoreSource   : PersistentStore
PolicyStoreSourceType : Local
```



QUESTION 56

Note: This question is part of a series of questions that present the same scenario. Each question in the series contains a unique solution that might meet the stated goals. Some question sets might have more than one correct solution, while others might not have a correct solution.

After you answer a question in this sections, you will NOT be able to return to it. As a result, these questions will not appear in the review screen.

Your network contains an Active Directory domain named contoso.com. The domain contains a server named Server1 that runs Windows Server 2016.

You need to prevent NTLM authentication on Server1.

Solution: From a Group Policy, you configure the Kerberos Policy.

Does this meet the goal?

- A. Yes
- B. No

Correct Answer: B

Section: (none)

Explanation

Explanation/Reference:

References: <https://www.rootusers.com/implement-ntlm-blocking-in-windows-server-2016/>

QUESTION 57

Note: This question is part of a series of questions that present the same scenario. Each question in the series contains a unique solution that might meet the stated goals. Some question sets might have more than one correct solution, while others might not have a correct solution.

After you answer a question in this sections, you will **NOT** be able to return to it. As a result, these questions will not appear in the review screen.

You manage a file server that runs Windows Server 2016. The file server contains the volumes configured as shown in the following table.

Volume label	Volume letter	Size(TB)	Format
System	C	4	NTFS
HRFiles	H	8	NTFS
SalesFiles	J	8	ReFS
DevFiles	K	10	NTFS
BackUp	L	6	ReFS

You need to encrypt DevFiles by using BitLocker Drive Encryption (BitLocker).

Solution: You run the **Lock-BitLocker** cmdlet.

Does this meet the goal?

A. Yes

B. No

Correct Answer: B

Section: (none)

Explanation

Explanation/Reference:

References: <https://docs.microsoft.com/en-us/powershell/module/bitlocker/lock-bitlocker?view=win10-ps>

QUESTION 58

Note: This question is part of a series of questions that present the same scenario. Each question in the series contains a unique solution that might meet the stated goals. Some question sets might have more than one correct solution, while others might not have a correct solution.

After you answer a question in this sections, you will NOT be able to return to it. As a result, these questions will not appear in the review screen.

You manage a file server that runs Windows Server 2016. The file server contains the volumes configured as shown in the following table.

Volume label	Volume letter	Size(TB)	Format
System	C	4	NTFS
HRFiles	H	8	NTFS
SalesFiles	J	8	ReFS
DevFiles	K	10	NTFS
BackUp	L	6	ReFS

You need to encrypt DevFiles by using BitLocker Drive Encryption (BitLocker).

Solution: You run the **manage-bde.exe** command and specify the **-on** parameter.

Does this meet the goal?

- A. Yes
- B. No

Correct Answer: A

Section: (none)

Explanation

Explanation/Reference:

References: <https://docs.microsoft.com/en-us/windows-server/administration/windows-commands/manage-bde-on>

QUESTION 59

Note: This question is part of a series of questions that present the same scenario. Each question in the series contains a unique solution that might meet the stated goals. Some question sets might have more than one correct solution, while others might not have a correct solution.

After you answer a question in this sections, you will NOT be able to return to it. As a result, these questions will not appear in the review screen.

You manage a file server that runs Windows Server 2016. The file server contains the volumes configured as shown in the following table.

Volume label	Volume letter	Size(TB)	Format
System	C	4	NTFS
HRFiles	H	8	NTFS
SalesFiles	J	8	ReFS
DevFiles	K	10	NTFS
BackUp	L	6	ReFS

You need to encrypt DevFiles by using BitLocker Drive Encryption (BitLocker).

Solution: You run the **Enable-BitLocker** cmdlet.

Does this meet the goal?

- A. Yes
- B. No

Correct Answer: A

Section: (none)

Explanation

Explanation/Reference:

References: <https://docs.microsoft.com/en-us/powershell/module/bitlocker/enable-bitlocker?view=win10-ps>

QUESTION 60

You are building a guarded fabric.

You need to configure Admin-trusted attestation.

Which cmdlet should you use?

- A. **Add-HgsAttestationHostGroup**
- B. **Add-HgsAttestationTpmPolicy**
- C. **Add-HgsAttestationTpmHost**
- D. **Add-HgsAttestationCIPolicy**

Correct Answer: A

Section: (none)

Explanation

Explanation/Reference:

References: <https://docs.microsoft.com/en-us/windows-server/virtualization/guarded-fabric-shielded-vm/guarded-fabric-add-host-information-for-admin-trustedattestation>

QUESTION 61

Your network contains an Active Directory domain named contoso.com.

You download Microsoft Security Compliance Toolkit 1.0 and all the security baselines.

You need to deploy one of the security baselines to all the computers in an organizational unit (OU) named OU1.

What should you do?

- A. Run **1gpo.exe** and specify the /g parameter. From Policy Analyzer, click **Add**.
- B. From Group Policy Management, create and link a Group Policy object (GPO). Select the GPO and run the Import Settings Wizard.
- C. From Group Policy Management, click **Group Policy Objects**, and then click **Manage Backups...**
- D. From Group Policy Management, create and link a Group Policy object (GPO). Run **1gpo.exe** and specify the /g parameter.

Correct Answer: B

Section: (none)

Explanation

Explanation/Reference:

<https://docs.microsoft.com/en-us/windows-server/identity/ad-fs/deployment/distribute-certificates-to-client-computers-by-using-group-policy>

QUESTION 62

You have a virtual machine named FS1 that runs Windows Server 2016.

FS1 has the shared folders shown in the following table.

Share name	Folder path
Users	D:\Users
CorpData	D:\Data
UserArchives	D:\Archives

You need to ensure that each user can store 10 GB of files in \\FS1\Users.

What should you do?

- A. From File Explorer, open the properties of volume D, and then modify the Quota settings.
- B. Install the File Server Resource Manager role service, and then create a file screen.
- C. From File Explorer, open the properties of D:\Users, and then modify the Advanced sharing settings.
- D. Install the File Server Resource Manager role service, and then create a quota.

Correct Answer: D

Section: (none)

Explanation

Explanation/Reference:

References: <https://docs.microsoft.com/en-us/windows-server/storage/fsrm/create-quota>

QUESTION 63

Your network contains an Active Directory domain named contoso.com. The domain contains domain controllers that run Windows Server 2016.

The Job Title attribute for a domain user named User1 has a value of Sales Manager.

User1 runs **whoami/claims** and receives the following output.

USER CLAIMS INFORMATION				
Claim Name	Claim ID	Flags	Type	Values
"Country"	ad://ext/Country:88d469316297e518		String	"US"
Kerberos support for Dynamic Access Control on this device has been disabled.				

You need to ensure that the security token of User1 has a claim for Job Title.

What should you do?

- A. From Active Directory Users and Computers, modify the properties of the User1 account.
- B. From a Group Policy object(GPO), configure KDC support for claims, compound authentication, and Kerberos armoring.
- C. From Active Directory Administrative Center, add a claim type.
- D. From Windows PowerShell, run the **New-ADClaimTransformPolicy** cmdlet and specify the *-Name* parameter.

Correct Answer: C

Section: (none)

Explanation

Explanation/Reference:

References: <https://www.nyazit.com/how-to-configure-dynamic-access-control-in-windows-server-2012-r2-2/>

QUESTION 64

You have a file server named Server1 that runs Windows Server 2016.

A new policy states that ZIP files must not be stored on Server1.

An administrator creates a file screen filter as shown in the following output.

Active	: False
Description	:
IncludeGroup	: {Compressed Files}
MatchesTemplate	: False
Notification	: {MSFT_FSRMAction, MSFT_FSRMAction}
Path	: C:\
Template	
PSComputerName	

You need to prevent users from storing ZIP files on Server1.

What should you do?

- A. Change the filter to active.
- B. Enable Quota Management on all the drives.
- C. Add a template to the filter.
- D. Configure File System (Global Object Access Auditing).



Correct Answer: A

Section: (none)

Explanation

Explanation/Reference:

References: <https://docs.microsoft.com/en-us/windows-server/storage/fsrm/create-file-screen>

QUESTION 65

You implement Log Analytics in Microsoft Operations Management Suite (OMS) on all servers that run Windows Server 2016.

You need to generate a daily report that identifies which servers restarted during the last 24 hours.

Which query should you use?

- A. EventLog:Application EventId:6009 Type:Event TimeGenerated>NOW-24HOURS
- B. EventLog:System EventId:6009 Type:Event TimeGenerated>NOW+24HOURS
- C. EventLog:System EventId:6009 Type:Event TimeGenerated>NOW-24HOURS
- D. EventLog:Application EventId:6009 Type:Event TimeGenerated>NOW+24HOURS

Correct Answer: C

Section: (none)

Explanation

Explanation/Reference:

QUESTION 66

Your network contains an Active Directory domain.

Microsoft Advanced Threat Analytics (ATA) is deployed to the domain.

A database administrator named DBA1 suspects that her user account was compromised.

Which three events can you identify by using ATA? Each correct answer presents a complete solution.

NOTE: Each correct selection is worth one point.

- A. Domain computers into which DBA1 recently signed.
- B. Phishing attempts that targeted DBA1.
- C. The last time DBA1 experienced a failed logon attempt.
- D. Spam messages received by DBA1.
- E. Servers that DBA1 recently accessed.

Correct Answer: ACE

Section: (none)

Explanation

Explanation/Reference:

References: <https://github.com/MicrosoftDocs/ATADocs/blob/master/ATADocs/suspicious-activity-guide.md>

QUESTION 67

Your network has an internal network and a perimeter network. Only the servers on the perimeter network can access the Internet. You create a Microsoft Operations Management Suite (OMS) instance in Microsoft Azure.

You deploy Microsoft Monitoring Agent to all the servers on both the networks.

You discover that only the servers on the perimeter network report to OMS.

You need to ensure that all the servers report to OMS.

What should you do?

- A. Install a Web Application Proxy on the perimeter network and install an OMS Gateway on the internal network. Publish the OMS Gateway from the Web Application Proxy.
- B. Install a Web Application Proxy and an OMS Gateway on the perimeter network. Publish the OMS Gateway from the Web Application Proxy.
- C. Configure the network firewalls to allow the internal servers to access the IP addresses of the Azure OMS instance by using TCP port 443.
- D. On the internal servers, run the **Add-AzureRmUsageConnect** cmdlet and specify the *-AdminUri* parameter.

Correct Answer: A

Section: (none)

Explanation



Explanation/Reference:

References: <https://docs.microsoft.com/en-us/azure/log-analytics/log-analytics-oms-gateway>

QUESTION 68

You have a server named Server1 that runs Windows Server 2016.

You configure Just Enough Administration (JEA) on Server1.

You need to view a list of commands that will be available to a user named User1 when User1 establishes a JEA session to Server1.

Which cmdlet should you use?

- A. **Get-PSSessionCapability**
- B. **Trace-Command**
- C. **Show-Command**
- D. **Get-PSSessionConfiguration**

Correct Answer: A

Section: (none)

Explanation

Explanation/Reference:

References: <https://docs.microsoft.com/en-us/powershell/module/Microsoft.PowerShell.Core/get-pssessioncapability?view=powershell-6&viewFallbackFrom=powershell-5.0>.

QUESTION 69

Note: This question is part of a series of questions that use the same or similar answer choices. An answer choice may be correct for more than one question in the series. Each question is independent of the other questions in this series. Information and details provided in a question apply only to that question.

You have a server named Server1 that runs Windows Server 2016.

You need to identify the default action for the inbound traffic when Server1 connects to the domain.

Which cmdlet should you use?



<https://vceplus.com/>

- A. **Get-NetIPSecRule**
- B. **Get-NetFirewallRule**
- C. **Get-NetFirewallProfile**
- D. **Get-NetFirewallSetting**
- E. **Get-NetFirewallPortFilter**
- F. **Get-NetFirewallAddressFilter**
- G. **Get-NetFirewallSecurityFilter**

H. Get-NetFirewallApplicationFilter

Correct Answer: C

Section: (none)

Explanation

Explanation/Reference:

References: <https://docs.microsoft.com/en-us/powershell/module/netsecurity/get-netfirewallprofile?view=win10-ps>

QUESTION 70

Note: This question is part of a series of questions that use the same or similar answer choices. An answer choice may be correct for more than one question in the series. Each question is independent of the other questions in this series. Information and details provided in a question apply only to that question.

You have a server named Server1 that runs Windows Server 2016.

You need to identify whether any connection security rules are configured on Server1.

Which cmdlet should you use?

- A. **Get-NetIPSecRule**
- B. **Get-NetFirewallRule**
- C. **Get-NetFirewallProfile**
- D. **Get-NetFirewallSetting**
- E. **Get-NetFirewallPortFilter**
- F. **Get-NetFirewallAddressFilter**
- G. **Get-NetFirewallSecurityFilter**
- H. **Get-NetFirewallApplicationFilter**

Correct Answer: A

Section: (none)

Explanation

Explanation/Reference:

References: <https://docs.microsoft.com/en-us/powershell/module/netsecurity/get-netipsecrule?view=win10-ps>

QUESTION 71

Your network contains an Active Directory domain named contoso.com. The domain contains two DNS servers that run Windows Server 2016. The servers host two zones named contoso.com and admin.contoso.com.

You sign both zones.

You need to ensure that all client computers in the domain validate the zone records when they query the zone.

What should you deploy?

- A. a Microsoft Security Compliance manager (SCM) policy
- B. a Name Resolution Policy Table (NRPT)
- C. a zone transfer policy
- D. a connection security rule

Correct Answer: B

Section: (none)

Explanation

Explanation/Reference:

References: <https://nedimmehic.org/2017/04/04/how-to-deploy-and-configure-dns-2016-part5/>

QUESTION 72

Note: This question is part of a series of questions that present the same scenario. Each question in the series contains a unique solution that might meet the stated goals. Some question sets might have more than one correct solution, while others might not have a correct solution.

After you answer a question in this section, you will NOT be able to return to it. As a result, these questions will not appear in the review screen.

Your network contains an Active Directory domain named contoso.com. All servers run Windows Server 2016. All client computers run Windows 10.

The relevant objects in the domain are configured as shown in the following table.

Server name	Object	Organizational unit (OU) name
Server1	Computer account	Servers
Server2	Computer account	Servers
User1	User account	Operations Users

You need to assign User1 the right to restore files and folders on Server1 and Server2.

Solution: You add User1 to the Backup Operators group on Server1 and Server2.

Does this meet the goal?

- A. Yes
- B. No

Correct Answer: A

Section: (none)

Explanation

Explanation/Reference:

References: [https://technet.microsoft.com/en-us/library/cc771990\(v=ws.11\).aspx](https://technet.microsoft.com/en-us/library/cc771990(v=ws.11).aspx)

QUESTION 73

Note: This question is part of a series of questions that present the same scenario. Each question in the series contains a unique solution that might meet the stated goals. Some question sets might have more than one correct solution, while others might not have a correct solution.

After you answer a question in this section, you will NOT be able to return to it. As a result, these questions will not appear in the review screen.

Your network contains an Active Directory forest named contoso.com. All servers run Windows Server 2016. The forest contains 2,000 client computers that run Windows 10. All client computers are deployed from a customized Windows image.

You need to deploy 10 Privileged Access Workstations (PAWs). The solution must ensure that administrators can access several client applications used by all users.

Solution: You deploy 10 physical computers and configure them as virtualization hosts. You configure the operating system on each host as a PAW. You create a guest virtual machine by using the customized Windows image.

Does this meet the goal?

- A. Yes
- B. No

Correct Answer: B

Section: (none)

Explanation

Explanation/Reference:

References:

<https://technet.microsoft.com/en-us/windows-server-docs/security/securing-privileged-access/privileged-access-workstations>

QUESTION 74

Note: This question is part of a series of questions that present the same scenario. Each question in the series contains a unique solution that might meet the stated goals. Some question sets might have more than one correct solution, while others might not have a correct solution.

After you answer a question in this section, you will NOT be able to return to it. As a result, these questions will not appear in the review screen.

Your network contains an Active Directory domain named contoso.com. The domain contains a computer named Computer1 that runs Windows10.

The network uses the 172.16.0.0/16 address space.

Computer1 has an application named App1.exe that is located in D:\Apps\. App1.exe is configured to accept connections on TCP port 8080.

You need to ensure that App1.exe can accept connections only when Computer1 is connected to the corporate network.

Solution: You configure an inbound rule that allows the TCP protocol on port 8080 and applies to all profiles.

Does this meet the goal?

- A. Yes
- B. No

Correct Answer: B

Section: (none)

Explanation

Explanation/Reference:

QUESTION 75

You have a Hyper-V host named Hyper1 that has a virtual machine named FS1. FS1 is a file server that contains sensitive data.

You need to secure FS1 to meet the following requirements:

- Prevent console access to FS1.
- Prevent data from being extracted from the VHDX file of FS1.

Which two actions should you perform? Each correct answer presents part of the solution.

NOTE: Each correct selection is worth one point.

- A. Disable all the Hyper-V integration services for FS1.
- B. On Hyper1, enable BitLocker Drive Encryption (BitLocker) for the drive that contains the VHDX file for FS1.
- C. Disable the virtualization extensions for FS1.
- D. Enable shielding for FS1.
- E. Enable BitLocker Drive Encryption (BitLocker) for all the volumes on FS1.

Correct Answer: DE

Section: (none)

Explanation

Explanation/Reference: References: <https://docs.microsoft.com/en-us/windows-server/security/guarded-fabric-shielded-vm/guarded-fabric-and-shielded-vm>

QUESTION 76

You deploy the Host Guardian Service (HGS).

You have several Hyper-V that have older hardware and Trusted Platform Modules (TPMs) version 1.2.

You discover that the Hyper-V hosts cannot start shielded virtual machines.

You need to configure HGS to ensure that the older Hyper-V hosts can host shielded virtual machines.

What should you do?

- A. Run the **Set-HgsServer** cmdlet and specify the **–TrustActiveDirectory** parameter.
- B. Run the **Clear-HgsServer** cmdlet and specify the **–Clustername** parameter.
- C. Run the **Clear-HgsServer** cmdlet and specify the **–Force** parameter.
- D. Run the **Set-HgsServer** cmdlet and specify the **–TrustTpm** parameter.

Correct Answer: A

Section: (none)

Explanation

Explanation/Reference:

References:

<https://blogs.technet.microsoft.com/datacentersecurity/2016/03/16/windows-server-2016-and-host-guardian-service-for-shielded-vms/>

<https://docs.microsoft.com/en-us/powershell/module/hgsserver/set-hgsserver?view=win10-ps>

QUESTION 77

You enable and configure PowerShell Script Block Logging.

You need to view which script blocks were executed by using Windows PowerShell scripts.

What should you do?

- A. Open the log files in %LocalAppData%\Microsoft\Windows\PowerShell
- B. View the Microsoft-Windows-PowerShell/Operational event log
- C. View the Windows PowerShell event log
- D. Open the log files in %SYSTEMROOT%/Logs

Correct Answer: B

Section: (none)

Explanation

Explanation/Reference:

References: https://docs.microsoft.com/en-us/powershell/wmf/5.0/audit_script

QUESTION 78

Your network contains an Active Directory domain named contoso.com. The domain contains two servers named Server1 and Server2 that run Windows Server 2016.

The Microsoft Advanced Threat Analytics (ATA) Center service is installed on Server1.

The domain contains the users shown in the following table.

Name	Group membership
User1	Contoso\Server Operators
User2	Contoso\Key Admins
User3	Server1\Administrators
User4	Server1\Network Configuration Operators
User5	Server1\Power Users
User6	Server1\Microsoft Advanced Threat Analytics Administrators
User7	Server1\Microsoft Advanced Threat Analytics Users
User8	Server1\Microsoft Advanced Threat Analytics Viewers

You are installing ATA Gateway on Server2.

You need to specify a Gateway Registration account.

Which account should you use?

- A. User8
- B. User5
- C. User7

D. User3

Correct Answer: D

Section: (none)

Explanation

Explanation/Reference:

References: <https://docs.microsoft.com/en-us/advanced-threat-analytics/install-ata-step1>

QUESTION 79

Your network contains an Active Directory forest named Corp. The forest functional level is Windows Server 2016.

You deploy a new forest named Priv and set the forest functional level to Windows Server 2016.

You need to implement Privileged Access Management (PAM).

What should you do next?

- A. Install Microsoft Identity Manager (MIM) on a server in the Priv forest.
- B. Install Microsoft Identity Manager (MIM) in the Corp forest.
- C. Create shadow accounts in the Priv forest.
- D. Create shadow accounts in the Corp forest.

Correct Answer: C

Section: (none)

Explanation

Explanation/Reference:

References: <https://www.petri.com/windows-server-2016-set-privileged-access-management>

QUESTION 80

Your network contains several secured subnets that are disconnected from the Internet.

One of the secured subnets contains a server named Server1 that runs Windows Server 2016.

You implement Log Analytics in Microsoft Operations Management Suite (OMS) for the servers that connect to the Internet.

You need to ensure that Log Analytics can collect logs from Server1.

Which two actions should you perform? Each correct answer presents part of the solution.

- A. Install Microsoft Monitoring Agent on Server1.
- B. Install the OMS Log Analytics Forwarder on Server1.
- C. Create a scheduled task on Server1.
- D. Install the OMS Log Analytics Forwarder on a server that has Internet connectivity.
- E. Create an event subscription on a server that has Internet connectivity.

Correct Answer: AE

Section: (none)

Explanation

Explanation/Reference:

References: <https://docs.microsoft.com/en-us/azure/log-analytics/log-analytics-oms-gateway>

QUESTION 81

Your network contains an Active Directory forest named contoso.com. You deploy another Active Directory forest named admin.contoso.com.

You create a trust relationship between the two forests. The trust relationship has the following configurations:

- SID history is disabled
- SID filtering is disabled

You need to implement Privileged Access Management (PAM) and to specify admin.contoso.com as an administrative forest. What should you do?

- A. Run **netdom.exe** and specify the **/quarantine** switch.
- B. Enable SID filtering on the trust.
- C. Run **netdom.exe** and specify the **/transitive** switch.
- D. Enable SID history on the trust.

Correct Answer: C

Section: (none)

Explanation

Explanation/Reference:

References: <https://www.petri.com/windows-server-2016-set-privileged-access-management>

QUESTION 82

Your network contains an internal network and a perimeter network. The internal network contains an Active Directory forest named contoso.com.

You deploy five servers to the perimeter network. All of the servers run Windows Server 2016 and are the members of a workgroup.

You need to apply a security baseline named Perimeter.inf to the servers in the perimeter network.

What should you use to apply Perimeter.inf?

- A. Security Configuration and Analysis
- B. Group Policy Management
- C. System Configuration
- D. Server Manager

Correct Answer: A

Section: (none)

Explanation

**Explanation/Reference:**

References: <https://4sysops.com/archives/security-compliance-manager-deploy-baselines/#deploy-a-baseline-to-a-workgroup-server>

QUESTION 83

Your network contains an Active Directory domain named contoso.com. The domain contains four servers. The servers are configured as shown in the following table.

Server name	Configuration	Operating system
DC1	Domain controller	Windows Server 2012 R2
DC2	Domain controller	Windows Server 2012
FS1	File server	Windows Server 2016
FS2	File server	Windows Server 2012 R2

You need to manage FS1 and FS2 by using Just Enough Administration (JEA).

What should you do before you can implement JEA?

- A. Upgrade DC2 to Windows Server 2016.
- B. Deploy Microsoft Identity Manager (MIM) 2016 to the domain.
- C. Upgrade FS2 to Windows Server 2016.
- D. Upgrade DC1 to Windows Server 2016.

Correct Answer: C

Section: (none)

Explanation

Explanation/Reference:

References: <https://docs.microsoft.com/en-us/powershell/jea/prerequisites>

QUESTION 84

You have a Hyper-V host named Server1 that runs Windows Server 2016.

Server1 has a generation 2 virtual machine named VM1 that runs Windows 10.

You need to ensure that you can turn on BitLocker Drive Encryption (BitLocker) for drive C on VM1.

What should you do?

- A. From the settings of VM1, configure Integration Services
- B. From Server1, configure the Enforce drive encryption type on fixed data drives Group Policy setting.
- C. From the settings of VM1, enable a Trusted Platform Module(TPM).
- D. From the settings of VM1, enable Secure Boot.

Correct Answer: C

Section: (none)

Explanation

Explanation/Reference:

References: <https://docs.microsoft.com/en-us/windows-server/virtualization/hyper-v/learn-more/generation-2-virtual-machine-security-settings-for-hyper-v>

QUESTION 85

You have a server named Server1 that runs Windows Server 2016.

Windows Defender on Server1 has the following configurations.



```
DisableArchiveScanning : False
DisableAutoExclusions: False
DisableBehaviourMonitoring: False
DisableBlockAtFirstSeen: False
DisableCatchupFullScan: True
DisableCatchupQuickScan: True
DisableEmailScanning: True
DisableIntrusionPreventionSystem:
DisableIOAVProtection: False
DisablePrivacyMode: False
DisableRealtimeMonitoring: False
DisableRemovableDriveScanning: True
DisableRestorePoint: True
DisableScanningMappedNetworkDrivesForFullScan: True
DisableScanningNetworkFiles: False
DisableScriptScanning: True
ExclusionExtension: {*.exe}
ExclusionPath: {C:\Folder1}
ExclusionProcess :
```

Server1 has the following files:

- C:\Folder1\File1.exe
- C:\Folder2\File2.bat
- C:\Folder2\File3.com

Which files will be scanned for malware?

- A. File1.exe and File3.com only
- B. File2.bat only

- C. File1.exe, File2.bat, and File3.com
- D. File1.exe only
- E. File2.bat and File3.com only
- F. File3.com only

Correct Answer: E

Section: (none)

Explanation

Explanation/Reference:

References: <https://docs.microsoft.com/en-us/windows/security/threat-protection/windows-defender-antivirus/configure-extension-file-exclusions-windows-defender-antivirus>

QUESTION 86

You have a Host Guardian Service (HGS) and a guarded host.

You have a VHDX file that contains an image of Windows Server 2016.

You need to provision a virtual machine by using a shielded template.

Which three files should you create? Each correct answer presents part of the solution.

NOTE: Each correct selection is worth one point.

- A. a TPM baseline policy file
- B. a TPM identifier file
- C. a shielding data .pdk file
- D. a signature for the .vhdx file
- E. an unattended.xml file

Correct Answer: CDE

Section: (none)

Explanation

Explanation/Reference:

References:

<https://docs.microsoft.com/en-us/windows-server/security/guarded-fabric-shielded-vm/guarded-fabric-create-a-shielded-vm-template> <https://docs.microsoft.com/en-us/windows-server/security/guarded-fabric-shielded-vm/guarded-fabric-tenant-creates-shielding-data>

QUESTION 87

Note: This question is part of a series of questions that present the same scenario. Each question in the series contains a unique solution that might meet the stated goals. Some question sets might have more than one correct solution, while others might not have a correct solution.

After you answer a question in this section, you will NOT be able to return to it. As a result, these questions will not appear in the review screen.

You deploy Windows Server 2016 to a server named Server1.

You need to ensure that you can run Windows Containers on Server1.

Solution: On server1, you install the DockerMsftProvider PowerShell and the Docker package. You restart the server.

Does this meet the goal?

- A. Yes
- B. No

Correct Answer: A

Section: (none)

Explanation

Explanation/Reference:

References: <https://docs.microsoft.com/en-us/virtualization/windowscontainers/deploy-containers/deploy-containers-on-server>

QUESTION 88

Note: This question is part of a series of questions that present the same scenario. Each question in the series contains a unique solution that might meet the stated goals. Some question sets might have more than one correct solution, while others might not have a correct solution.

After you answer a question in this section, you will NOT be able to return to it. As a result, these questions will not appear in the review screen.

Your network contains an Active Directory domain named contoso.com. All client computers run Windows 10.

You plan to deploy a Remote Desktop connection solution for the client computers.

You have four available servers in the domain that can be configured as Remote Desktop servers. The servers are configured as shown in the following table.

Server name	Operating system	Location
Server1	Windows Server 2012 R2	on-premises
Server2	Windows Server 2016	Microsoft Azure
Server3	Windows Server 2016	on-premises
Server4	Windows Server 2012 R2	Microsoft Azure

You need to ensure that all Remote Desktop connections can be protected by using Remote Credential Guard.

Solution: You deploy the Remote Desktop connection solution by using Server4.

Does this meet the goal?

- A. Yes
- B. No

Correct Answer: B

Section: (none)

Explanation



Explanation/Reference:

References: <https://docs.microsoft.com/en-us/windows/security/identity-protection/remote-credential-guard>

QUESTION 89

Note: This question is part of a series of questions that present the same scenario. Each question in the series contains a unique solution that might meet the stated goals. Some question sets might have more than one correct solution, while others might not have a correct solution.

After you answer a question in this section, you will NOT be able to return to it. As a result, these questions will not appear in the review screen.

Your network contains an Active Directory domain named contoso.com. All client computers run Windows 10.

You plan to deploy a Remote Desktop connection solution for the client computers.

You have four available servers in the domain that can be configured as Remote Desktop servers. The servers are configured as shown in the following table.

Server name	Operating system	Location
Server1	Windows Server 2012 R2	on-premises
Server2	Windows Server 2016	Microsoft Azure
Server3	Windows Server 2016	on-premises
Server4	Windows Server 2012 R2	Microsoft Azure

You need to ensure that all Remote Desktop connections can be protected by using Remote Credential Guard.

Solution: You deploy the Remote Desktop connection solution by using Server3.

Does this meet the goal?

- A. Yes
- B. No

Correct Answer: A

Section: (none)

Explanation



Explanation/Reference:

References: <https://docs.microsoft.com/en-us/windows/security/identity-protection/remote-credential-guard>

QUESTION 90

Your network contains an Active Directory domain named contoso.com. The domain contains a server named Server1.

You implement the Host Guardian Service (HGS) configured for admin-trusted attestation.

You install the Hyper-V server role on Server1.

You need to add Server1 to the guarded hosts.

What should you do?

- A. On Server1, install the Host Guardian Hyper-V Support feature and a computer certificate from a trusted certification authority (CA).

- B. On Server1, install the Device Health Attestation server role and a computer certificate from a trusted certification authority (CA).
- C. Install the Host Guardian Hyper-V Support feature on Server1 and add Server1 to a domain security group.
- D. Install the Device Health Attestation server role on Server1 and add Server1 to a domain security group.

Correct Answer: C

Section: (none)

Explanation

Explanation/Reference:

References: <https://docs.microsoft.com/en-us/windows-server/security/guarded-fabric-shielded-vm/guarded-fabric-guarded-host-prerequisites>
<https://docs.microsoft.com/en-us/windows-server/security/guarded-fabric-shielded-vm/guarded-fabric-admin-trusted-attestation-creating-a-security-group>

QUESTION 91

You have a guarded fabric that consists of the servers shown in the following table.

Name	Configuration
Server1	Host Guardian Service (HGS)
Server2	Host Guardian Service (HGS)
Server3	Host Guardian Service (HGS)
Server4	Hyper-V host
Server5	Hyper-V host

You need to ensure that you can start the shielded virtual machines on the Hyper-V hosts if the Hyper-V hosts cannot connect to the HGS.

What should you do?

- A. On Server1, run **Set-HgsKeyProtectionConfiguration**.
- B. On Server1, Server2, and Server3, configure admin-trusted attestation.
- C. On Server1, run **Set-HgsKeyProtectionAttestationSignerCertificatePolicy**.
- D. On Server4, and Server5, disable the heartbeat integration service on the shielded virtual machines.

Correct Answer: B

Section: (none)

Explanation

Explanation/Reference:

References: <https://docs.microsoft.com/en-us/windows-server/security/guarded-fabric-shielded-vm/guarded-fabric-admin-trusted-attestation-creating-a-security-group>

QUESTION 92

Your network contains an Active Directory domain named contoso.com. The domain contains servers that run Windows Server 2016.

You enable Remote Credential Guard on a server named Server1.

You have an administrative computer named Computer1 that runs Windows10. Computer 1 is configured to require Remote Credential Guard.

You sign in to Computer1 as Contoso\User1.

You need to establish a remote Desktop session to Server1 as Contoso\ServerAdmin1.

What should you do first?

- A. Run the **mstsc.exe /remoteGuard** command.
- B. Install the Universal Windows Platform (UWP) Remote Desktop application.
- C. Sign in to Computer1 as Contoso\ServerAdmin1.
- D. Turn on virtualization based security.

Correct Answer: C

Section: (none)

Explanation

Explanation/Reference:

References: <https://docs.microsoft.com/en-us/windows/security/identity-protection/remote-credential-guard#reqs>

QUESTION 93

Your network contains an Active Directory domain named contoso.com. The domain contains domain controllers that run Windows Server 2016.

A Group Policy object (GPO) named GPO1 is applied to all of the domain controllers. GPO1 has a Globally Unique Identifier (GUID) of 6AC1786C-016F-11D2945F-00C04fB984F9.

You need to create a new baseline that contains the settings from GPO1.

What should you do first?

- A. Copy the \\contoso.com\\sysvol\\contoso.com\\Policies\\{6AC1786C-016F-11D2-945F-00C04fB984F9} folder to Server1.
- B. From Windows PowerShell, run the **Backup-GPO** cmdlet.
- C. Modify the permissions of the \\contoso.com\\sysvol\\contoso.com\\Policies\\6AC1786-016F-11D2-945F-00C04fB984F9) folder.
- D. From Windows PowerShell, run the **Copy-GPO** cmdlet.

Correct Answer: B

Section: (none)

Explanation

Explanation/Reference:

References: <https://docs.microsoft.com/en-us/powershell/module/grouppolicy/backup-gpo?view=win10-ps>

QUESTION 94

Your network contains an Active Directory domain named contoso.com. The domain contains a server named Server1 that runs Windows Server 2016.

A technician is testing the deployment of Credential Guard on Server1.

You need to verify whether Credential Guard is enabled on Server1.

What should you do?

- A. From Control Panel, open **Credential Manager**, and review the list of Windows Credentials.
- B. From System Information, review System Summary.
- C. From a command prompt, run the tsecimp.exe command.
- D. From Server Manager, click Local Server, and review the properties of Server1.

Correct Answer: B

Section: (none)

Explanation

Explanation/Reference:

Reference: <https://docs.microsoft.com/en-us/windows/security/identity-protection/credential-guard/credential-guard-manage>

QUESTION 95

You have a Hyper-V host named Server1 that runs Windows Server 2016.

Server1 has a generation 2 virtual machine named VM1 that runs Windows 10.

You need to ensure that you can turn on BitLocker Drive Encryption (BitLocker) for drive C on VM1.

What should you do?

- A. From VM1, configure the require additional authentication at startup Group Policy setting.
- B. From the settings of VM1, enable Secure Boot.
- C. From Server1, install the BitLocker feature.
- D. From VM1, configure the Enforce drive encryption type on fixed data drives Group Policy setting.

Correct Answer: A

Section: (none)

Explanation

Explanation/Reference:

Reference: <https://www.dell.com/support/article/za/en/zadhs1/sln171842/using-the-group-policy-editor-to-enable-bitlocker-authentication-in-the-pre-bootenvironment-for-windows-7-8-8-1-10?lang=en>

QUESTION 96

Your network contains an internal network and a perimeter network. The internal network contains an Active Directory forest named contoso.com.

You deploy five servers to the perimeter network. All of the servers run Windows Server 2016 and are the members of a workgroup.

You need to apply a security baseline named Perimeter.inf to the servers in the perimeter network.

What should you use to apply Perimeter.inf?

- A. System Configuration
- B. Microsoft Security Compliance manager (SCM) 4.0
- C. Security Templates
- D. Local Computer Policy

Correct Answer: C

Section: (none)

Explanation

Explanation/Reference:

QUESTION 97

Your network contains an Active Directory domain named contoso.com.

All DNS servers host an Active Directory-integrated zone for the domain that is DNSSEC-signed. All the DNS servers have a trust anchor installed for a DNS zone named fabrikam.com.

For all the computers in the domain, you configure a name resolution policy that enforces DNSSEC validation for the contoso.com and fabrikam.com DNS namespaces.

You need to verify whether the trust anchor is valid.

What should you do?

- A. On a domain-joined computer, run **Resolve-DnsName** to query a DNS server that hosts the fabrikam.com zone for a DNS record in the fabrikam.com zone.
- B. On a domain-joined computer, run **Resolve-DnsName** to query a domain controller for a DNS record in the fabrikam.com zone.
- C. On a domain-joined computer, run **Get-DnsServerZone**.
- D. On a domain controller, run **Get-DnsServerDnsZoneSetting**.

Correct Answer: A

Section: (none)

Explanation

Explanation/Reference: References: [https://docs.microsoft.com/en-us/previous-versions/windows/it-pro/windows-server-2012-r2-and-2012/dn593652\(v%3Dws.11\)](https://docs.microsoft.com/en-us/previous-versions/windows/it-pro/windows-server-2012-r2-and-2012/dn593652(v%3Dws.11))

QUESTION 98

You have several virtual machines that run in a hosted data center on Hyper-V hosts.

The hosting provider recently updated the service offering in its Hyper-V environment to include a new Host Guardian Service (HSG).

You plan to use the Shielding Data File Wizard to create a data file that will include password information and an RDP file. The file will be used to create new shielded virtual machines in the fabric of the hosting provider.

What do you require from the hosting provider to complete the wizard?

- A. an XML file that contains the names of all the Hyper-V hosts in the fabric.

- B. an XML file that contains virtual machine configuration data from the Hyper-V hosts
- C. a CER file that contains a certificate from the provider
- D. an XML file that contains guardian metadata

Correct Answer: D

Section: (none)

Explanation

Explanation/Reference:

References: <https://docs.microsoft.com/en-us/windows-server/security/guarded-fabric-shielded-vm/guarded-fabric-tenant-creates-shielding-data>

QUESTION 99

Note: This question is part of a series of questions that present the same scenario. Each question in the series contains a unique solution that might meet the stated goals. Some question sets might have more than one correct solution, while others might not have a correct solution.

After you answer a question in this section, you will NOT be able to return to it. As a result, these questions will not appear in the review screen.

You manage a file server that runs Windows Server 2016. The file server contains the volumes configured as shown in the following table.

Volume label	Volume letter	Size(TB) ^m	Format
System	C	4	NTFS
HRFiles	H	8	NTFS
SalesFiles	J	8	ReFS
DevFiles	K	10	NTFS
BackUp	L	6	ReFS

You need to encrypt DevFiles by using BitLocker Drive Encryption (BitLocker).

Solution: You run the **manage-bde.exe** command and specify the **-lock** parameter.

Does this meet the goal?

- A. Yes
- B. No

Correct Answer: B

Section: (none)

Explanation

Explanation/Reference:

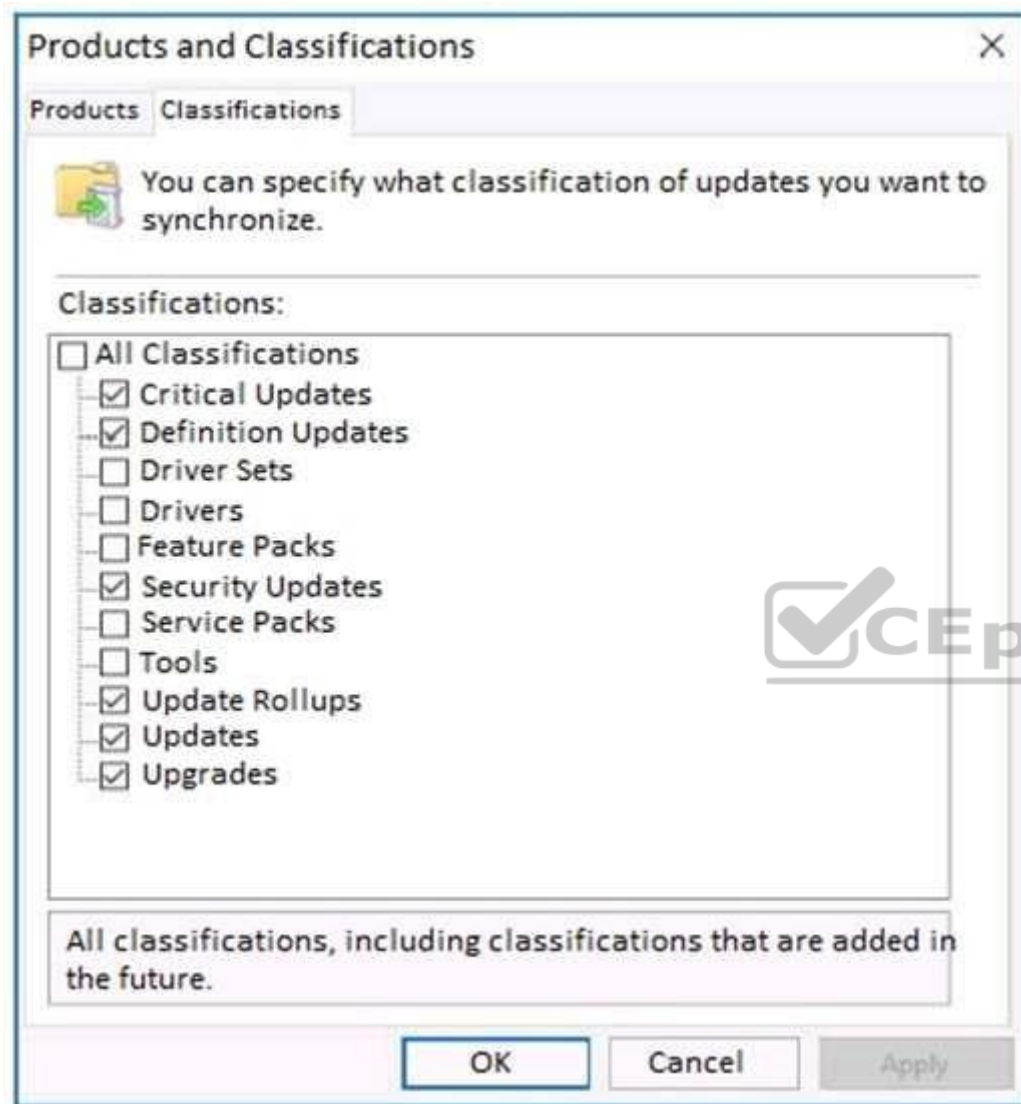
References:

<https://docs.microsoft.com/en-us/windows-server/administration/windows-commands/manage-bde-lock>

QUESTION 100

You have several servers that run Windows Server 2016. All the servers were recently configured to use a new Windows Server Update Services (WSUS) server named WSUS1. WSUS1 is configured to download updates as shown in the exhibit. (Click the **Exhibit** tab.)





You discover that the servers have out-of-date Windows Defender definitions. The servers receive security updates from WSUS1.

You need to ensure that the servers receive the latest Windows Defender definitions.

What should you do?

- A. Create a new computer group in WSUS
- B. Create an auto-approval rule in WSUS
- C. Modify the products and classifications in WSUS
- D. Create a new Group Policy object (GPO) that contains the Automatic Updates settings

Correct Answer: D

Section: (none)

Explanation

Explanation/Reference:

References:

<https://docs.microsoft.com/en-us/windows/security/threat-protection/windows-defender-antivirus/manage-protection-update-schedule-windows-defender-antivirus>

QUESTION 101

You have a server named Server1.

You need to configure Windows Defender to perform a full scan every day at 21:00.

What should you do?

- A. From Control Panel, configure the Security and Maintenance settings
- B. Run the **Set-ScheduledJob** cmdlet
- C. From the Setting app, modify the Windows Defender settings
- D. Run the **Set-MpPreference** cmdlet

Correct Answer: D

Section: (none)

Explanation

Explanation/Reference:

References:

<https://docs.microsoft.com/en-us/powershell/module/defender/set-mppreference?view=win10-ps>

QUESTION 102

You have a server named Server1 that runs Windows Server 2016. Server1 contains a folder named Folder1. Folder1 is shared as Share1.

You need to enable SMB encryption for Share1.

What should you do?

- A. From Shared Folders, modify the Security settings of Share1
- B. From File and Storage Services in Server Manager, modify the properties of Share1
- C. From File Explorer, modify the Advanced Sharing settings of Share1
- D. From File Explorer, modify the Security settings of Folder1

Correct Answer: B

Section: (none)

Explanation

Explanation/Reference:

References:

<https://docs.microsoft.com/en-us/windows-server/storage/file-server/smb-security>

QUESTION 103

Your network contains an Active Directory domain named contoso.com. The domain contains 1,000 client computers that run Windows 10.

A security audit reveals that the network recently experienced a Pass-the-Hash attack. The attack was initiated from a client computer and accessed Active Directory objects restricted to the members of the Domain Admins group.

You need to minimize the impact of another successful Pass-the-Hash attack on the domain.

What should you recommend?

- A. Move the computer accounts of the domain controllers to a new organizational unit (OU). Remove the permissions to the new OU from the Domain Admins group.
- B. Configure the Domain Admins groups as a restricted group.
- C. Remove all the members from the Domain Admins group, and then remove the Domain Admins group from all other groups.
- D. Instruct all administrators to use a restricted Remote Desktop connection when they sign in to a client computer

Correct Answer: B

Section: (none)

Explanation

Explanation/Reference:

References:

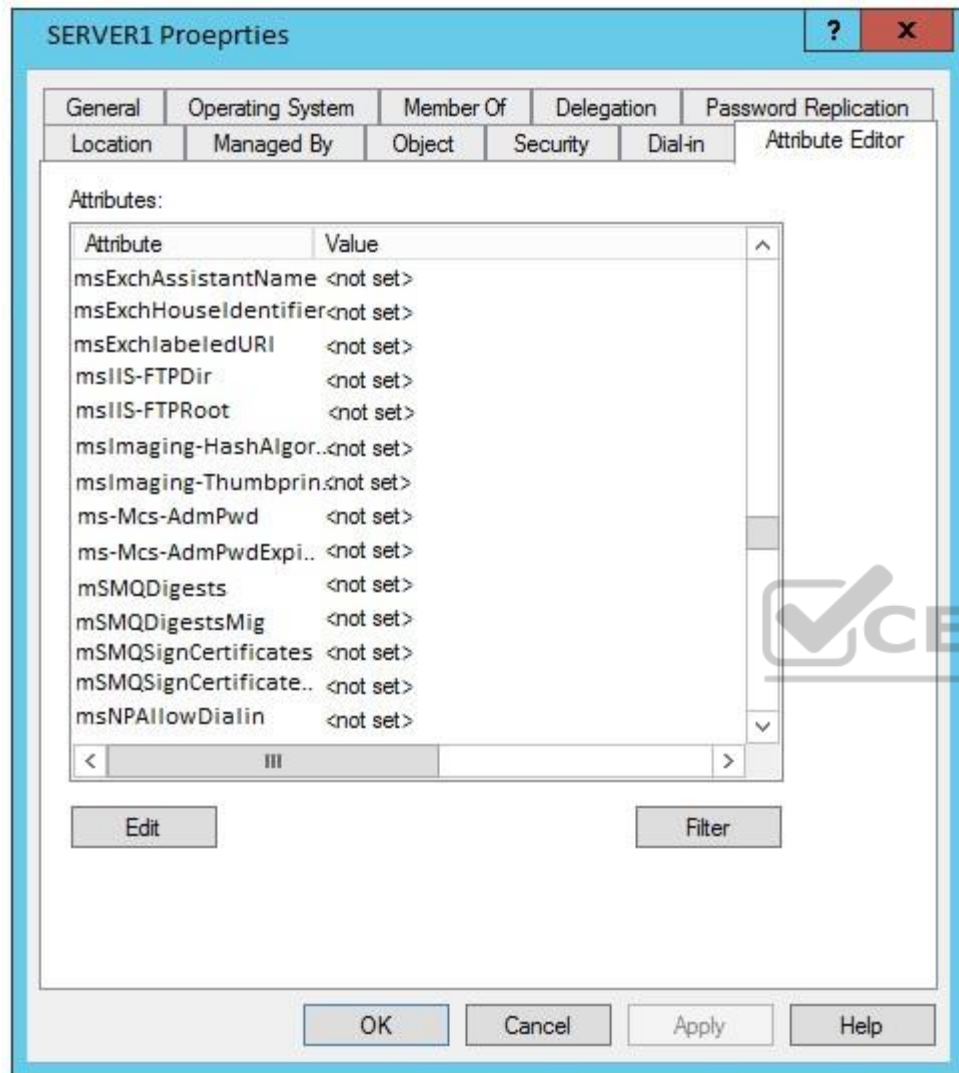
[https://download.microsoft.com/download/7/7/a/77abc5bd-8320-41af-863c-6ecfb10cb4b9/mitigating%20pass-the-hash%20\(pth\)%20attacks%20and%20other%20credential%20theft%20techniques_english.pdf](https://download.microsoft.com/download/7/7/a/77abc5bd-8320-41af-863c-6ecfb10cb4b9/mitigating%20pass-the-hash%20(pth)%20attacks%20and%20other%20credential%20theft%20techniques_english.pdf)

QUESTION 104

Your network contains an Active Directory domain named contoso.com. The domain contains an organizational unit (OU) named OU1.

OU1 contains a server named Server1. The properties of Server1 are shown in the Server1 exhibit. (Click the Server1 tab.)





You create a Group Policy object (GPO) linked to OU1. You configure the GPO as shown in the LAPS exhibit. (Click the LAPS tab.)



You need to ensure that the password of the local Administrator of Server1 is managed by using Local Administrator Password Solution (LAPS).

Which cmdlet should you run?

- A. **Reset-AdmPwdPassword**
- B. **Set-AdmPwdComputerSelfPermission**
- C. **Update-AdmPwdADSchema**
- D. **Set-AdmPwdResetPasswordPermission**



Correct Answer: C

Section: (none)

Explanation

Explanation/Reference:

References:

<http://techgenix.com/deploying-laps/>

QUESTION 105

Note: This question is part of a series of questions that use the same or similar answer choices. An answer choice may be correct for more than one question in the series. Each question is independent of the other questions in this series. Information and details provided in a question apply only to that question.

Your network contains an Active Directory domain named contoso.com. The domain contains a server named Server1 that runs Windows Server 2016.

Multiple resource properties are defined in the domain.

Server1 has a volume named Volume1.

You need to view the classification properties that have been configured on Volume1.

Which tool should you use?

- A. File Explorer
- B. Shared Folders
- C. Server Manager
- D. Disk Management
- E. Storage Explorer
- F. Computer Management
- G. System Configuration
- H. File Server Resource Manager (FSRM)

Correct Answer: A

Section: (none)

Explanation

Explanation/Reference:

References:

<https://blog.netwrix.com/2018/05/22/microsoft-file-classification-infrastructure-fci-explained/>



QUESTION 106

Note: This question is part of a series of questions that use the same scenario. For your convenience, the scenario is repeated in each question. Each question presents a different goal and answer choices, but the text of the scenario is exactly the same in each question in this series.

Start of repeated scenario.

Your company has a marketing department.

The network contains an Active Directory domain named contoso.com. The domain contains the servers configured as shown in the following table.

Server name	Domain or workgroup	Configuration
Server1	Domain	Windows Server Update Services (WSUS) server
Server2	Domain	Server that has a Trusted Platform Module (TPM)
Server3	Domain	Member server that will be configured for Just Enough Administration (JEA)
Server4	Domain	Application server
Server5	Workgroup	Web server
VM1	Domain	Generation 2 virtual machine
VM2	Domain	DHCP server

All servers run Windows Server 2016. All client computers run Windows 10 and are domain members. All laptops are protected by using BitLocker Drive Encryption (BitLocker).

You have an organizational unit (OU) named OU1 that contains the computer accounts of application servers. An OU named OU2 contains the computer accounts of the computers in the marketing department. A Group Policy object (GPO) named GP1 is linked to OU1. A GPO named GP2 is linked to OU2.

All computers receive updates from Server1. You create an update rule named Update1.

End of repeated scenario.

You need to ensure that you can view Windows PowerShell code that was generated dynamically and executed on the computers in OU1.

What should you configure in GP1?

- A. Object Access/Audit Application Generated from the advanced audit policy
- B. Turn on PowerShell Script Block Logging from the PowerShell settings
- C. Turn on Module Logging from the PowerShell settings
- D. Object Access/Audit Other Object Access Events from the advanced audit policy

Correct Answer: B

Section: (none)

Explanation

Explanation/Reference:

References:

<https://docs.microsoft.com/en-us/powershell/wmf/whats-new/script-logging>

QUESTION 107

Note: This question is part of a series of questions that use the same scenario. For your convenience, the scenario is repeated in each question. Each question presents a different goal and answer choices, but the text of the scenario is exactly the same in each question in this series.

Start of repeated scenario.

Your company has a marketing department.

The network contains an Active Directory domain named contoso.com. The domain contains the servers configured as shown in the following table.

Server name	Domain or workgroup	Configuration
Server1	Domain	Windows Server Update Services (WSUS) server
Server2	Domain	Server that has a Trusted Platform Module (TPM)
Server3	Domain	Member server that will be configured for Just Enough Administration (JEA)
Server4	Domain	Application server
Server5	Workgroup	Web server
VM1	Domain	Generation 2 virtual machine
VM2	Domain	DHCP server

All servers run Windows Server 2016. All client computers run Windows 10 and are domain members. All laptops are protected by using BitLocker Drive Encryption (BitLocker).

You have an organizational unit (OU) named OU1 that contains the computer accounts of application servers. An OU named OU2 contains the computer accounts of the computers in the marketing department. A Group Policy object (GPO) named GP1 is linked to OU1. A GPO named GP2 is linked to OU2.

All computers receive updates from Server1. You create an update rule named Update1.

End of repeated scenario.

You need to ensure that you can encrypt the operating system drive of VM1 by using BitLocker.

Which Group Policy should you configure?

- A. Configure use of hardware-based encryption for operating system drives
- B. Configure TPM platform validation profile for native UEFI firmware configurations
- C. Require additional authentication at startup
- D. Configure TPM platform validation profile for BIOS-based firmware configurations

Correct Answer: C

Section: (none)

Explanation

Explanation/Reference:

References: <https://www.dell.com/support/article/za/en/zadhs1/sln171842/using-the-group-policy-editor-to-enable-bitlocker-authentication-in-the-pre-boot-environment-forwindows-7-8-8-1-10?lang=en>

QUESTION 108

Your network contains an Active Directory domain named contoso.com. The domain contains a server named Server1.

On Server1, administrators plan to use several scripts that have the .ps1 extension.

You need to ensure that when code is generated from the scripts, an event containing the details of the code is logged in the Operational log.

Which Group Policy setting or settings should you configure?

- A. Audit Process Creation and Audit Process Termination
- B. Turn on PowerShell Transcription
- C. Enable Protected Event Logging
- D. Turn on PowerShell Script Block Logging

Correct Answer: D

Section: (none)

Explanation

Explanation/Reference:

References:

<https://docs.microsoft.com/en-us/powershell/wmf/whats-new/script-logging>

QUESTION 109

Your network contains an Active Directory domain named contoso.com. The domain contains a server named Server1 that runs Windows Server 2016.

The local administrator credentials of Server1 are managed by using the Local Administrator Password Solution (LAPS).

You need to retrieve the password of the Administrator account on Server1.

What should you do?

- A. From Windows PowerShell on Server1, run the **Get-ADFineGrainedPasswordPolicy** cmdlet and specify the **–Credential** parameter
- B. From Active Directory Users and Computers, open the properties of Server1 and view the value of the **ms-Mcs-AdmPwd** attribute
- C. From Active Directory Users and Computers, open the properties of Administrator and view the value of the **userPassword** attribute
- D. From Windows PowerShell on Server1, run the **Get-ADUser** cmdlet and specify the **–Credential** parameter

Correct Answer: B

Section: (none)

Explanation

Explanation/Reference:

References:

<http://woshub.com/manage-local-administrator-passwords-with-laps/>



QUESTION 110

Your network contains an Active Directory domain named contoso.com. The domain contains 100 servers.

You deploy the Local Administrator Password Solution (LAPS) to the network.

You need to view the password of the local administrator of a server named Server5.

Which tool should you use?

- A. Computer Management
- B. Accounts from the Settings app
- C. Server Manager
- D. Active Directory Users and Computers

Correct Answer: D

Section: (none)

Explanation

Explanation/Reference:

References:

<https://blogs.technet.microsoft.com/askpfeplat/2015/12/28/local-administrator-password-solution-lapsimplementation-hints-and-security-nerdcommentaryincludingmini-threat-model/>

QUESTION 111

Your network contains an Active Directory domain named contoso.com. The domain contains multiple servers that run either Windows Server 2012 or Windows Server 2012 R2.

You plan to implement Just Enough Administration (JEA) to manage all of the servers.

What should you install on each server to ensure that the servers can be managed by using JEA?

- A. Remote Server Administration Tools (RSAT)
- B. Management Odata Internet Information Services (IIS) Extension
- C. Windows Management Framework 5.1
- D. Microsoft .NET Framework 3.5 Service Pack 1 (SP1)



Correct Answer: C

Section: (none)

Explanation

Explanation/Reference:

References: <https://docs.microsoft.com/en-us/powershell/scripting/learn/remoting/jea/prerequisites?view=powershell-6>

QUESTION 112

Your network contains an Active Directory domain named contoso.com.

The domain contains two global groups named Group1 and Group2. A user named User1 is a member of Group1.

You have an organizational unit (OU) named OU1 that contains the computer accounts of computers that contain sensitive data. A Group Policy object (GPO) named GPO1 is linked to OU1. OU1 contains a computer account named Computer1.

GPO1 has the User Rights Assignment configured as shown in the following table.

Policy name	Security setting
Allow log on locally	Contoso\Group1, Administrators, Domain Admins
Deny log on locally	Contoso\Group2

You need to prevent User1 from signing in to Computer1.

What should you do?

- A. Remove User1 to Group2
- B. In GPO1, add Group1 as a restricted group
- C. On Computer1, modify the Allow log on locally user right
- D. In GPO1, add Group2 as a restricted group

Correct Answer: A

Section: (none)

Explanation

Explanation/Reference:

Explanation:

“Deny log on locally”

Computer Configuration\Windows Settings\Security Settings\Local Policies\User Rights Assignment

Determines which users are prevented from logging on at the computer.

This policy setting supercedes the Allow Log on locally policy setting if an account is subject to both policies.

Therefore, adding User1 to Group2 will let User1 to inherit both policy, and then prevent User1 to sign in to Computer1.

References:

<https://technet.microsoft.com/en-us/library/cc957048.aspx>

QUESTION 113

Your network contains an Active Directory domain.

You plan to implement Dynamic Access Control.

You need to create a central access rule that will grant permissions to users who have the **Department** attribute set to **Finance**. The users must have access to resources that have the **Department** property set to **Finance**.

Which two actions should you perform before you create the central access rule? Each correct answer presents part of the solution.

NOTE: Each correct selection is worth one point.

- A. Enable a claim type
- B. Create a central access policy
- C. Create a resource property list
- D. Enable a resource property
- E. Create a claim type

Correct Answer: CE

Section: (none)

Explanation

Explanation/Reference:

References:

<https://docs.microsoft.com/en-us/windows-server/identity/solution-guides/deploy-a-central-access-policy--demonstration-steps->

QUESTION 114

Your network contains two Active Directory forests named corp.contoso.com and priv.contoso.com. Both forests have only a single domain. The priv.contoso.com domain contains a server named Server1 that runs Windows Server 2016.

You install Microsoft Identity Manager (MIM) 2016 on Server1.

You plan to deploy MIM-based Privileged Access Management (PAM) between the two forests.

You run New-PAMTrust in the priv.contoso.com domain.

You need to configure the trust relationship between the forests to support the PAM deployment.

Which three settings should you configure for the trust? Each correct answer presents part of the solution.

NOTE: Each correct selection is worth one point.

- A. quarantine to no
- B. enablesidhistory to yes
- C. transitive to no
- D. enablepimtrust to yes

E. foresttransitive to no

Correct Answer: ABD

Section: (none)

Explanation

Explanation/Reference:

References:

<https://docs.microsoft.com/en-us/microsoft-identity-manager/pam/step-5-establish-trust-between-priv-corp-forests>

QUESTION 115

Note: This question is part of a series of questions that present the same scenario. Each question in the series contains a unique solution that might meet the stated goals. Some question sets might have more than one correct solution, while others might not have a correct solution.

After you answer a question in this section, you will NOT be able to return to it. As a result, these questions will not appear in the review screen.

Your network contains an Active Directory domain named contoso.com. The domain contains multiple Hyper-V hosts.

You need to deploy several critical line-of-business applications to the network to meet the following requirements:

- The resources of the applications must be isolated from the physical host.
- Each application must be prevented from accessing the resources of the other applications.
- The configurations of the applications must be accessible only from the operating system that hosts the application.

Solution: You deploy one Hyper-V container to host all of the applications.

Does this meet the goal?

A. Yes

B. No

Correct Answer: B

Section: (none)

Explanation

Explanation/Reference:

References:

<https://docs.microsoft.com/en-us/virtualization/windowscontainers/about/>

QUESTION 116

Your network contains an Active Directory domain named contoso.com. The domain contains a server named Server1 that runs Windows Server 2016.

You have an organizational unit (OU) named Administration that contains the computer account of Server1.

You import the Active Directory module to Server1.

You create a Group Policy object (GPO) named GPO1. You link GPO1 to the Administration OU.

You need to log an event each time an Active Directory cmdlet is executed successfully from Server1.

What should you do?

- A. From Advanced Audit Policy in GPO1, configure auditing for directory service changes.
- B. Run the **Add-NetEventProvider-Name "Microsoft-Active-Directory" -MatchAnyKeyword** PowerShell command
- C. From Advanced Audit Policy in GPO1, configure auditing for other privilege use events.
- D. From Administrative Templates in GPO1, configure a Windows PowerShell policy.

Correct Answer: D

Section: (none)

Explanation

Explanation/Reference:

References:

<https://www.petri.com/enable-powershell-logging>



QUESTION 117

Your network contains an Active Directory forest named contoso.com. The forest functional level is Windows Server 2012. The forest contains 20 member servers that are configured as file servers. All domain controllers run Windows Server 2016.

You create a new forest named contosoadmin.com.

You need to use the Enhanced Security Administrative Environment (ESAE) approach for the administration of the resources in contoso.com.

Which two actions should you perform? Each correct answer presents part of the solution.

- A. Configure contoso.com to trust contosoadmin.com.
- B. From the properties of the trust, enable selective authentication.
- C. Configure contosoadmin.com to trust contoso.com.

- D. From the properties of the trust, enable forest-wide authentication.
- E. Configure a two-way trust between both forests.

Correct Answer: AB

Section: (none)

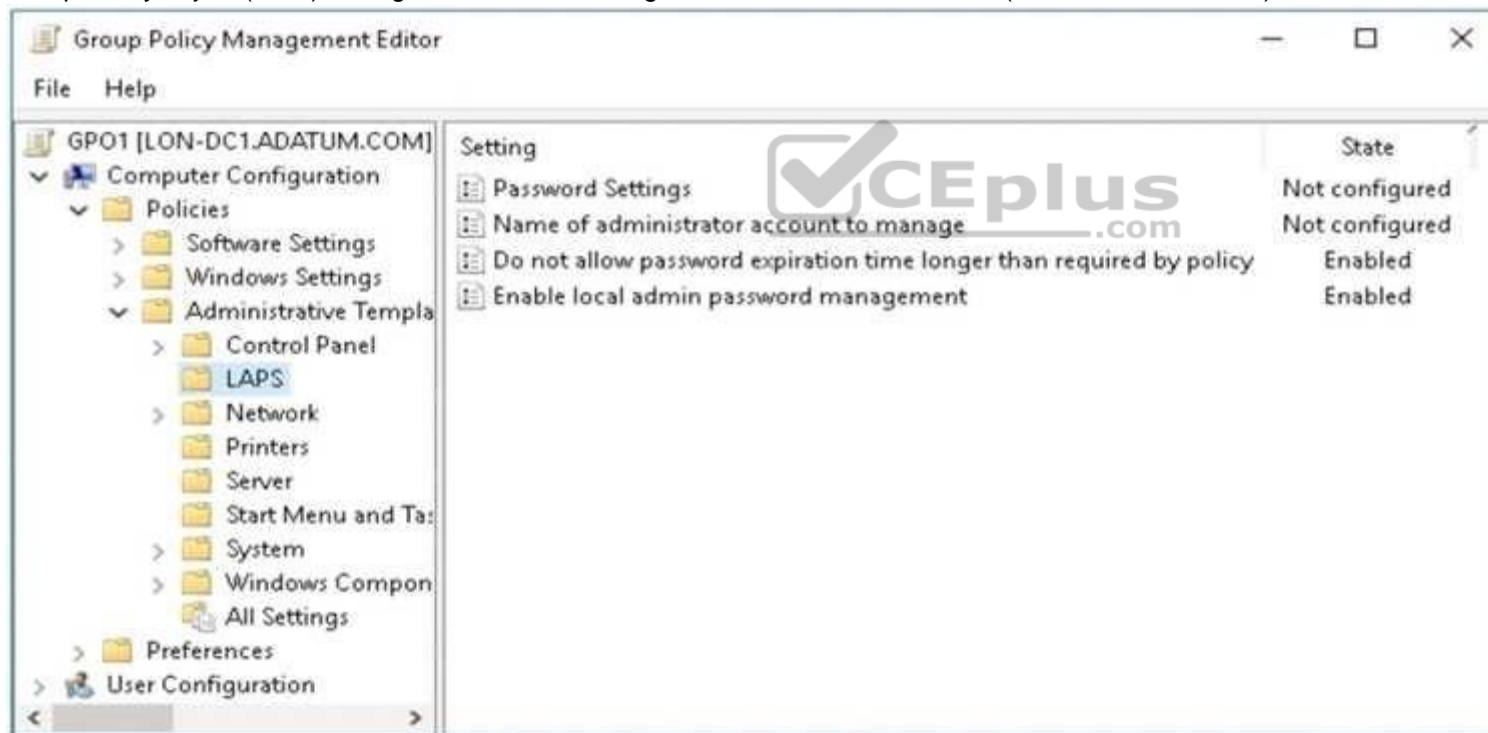
Explanation

Explanation/Reference:

References: <https://docs.microsoft.com/en-us/windows-server/identity/securing-privileged-access/securing-privileged-access-reference-material#esae-administrative-forestdesign-approach>

QUESTION 118

Your network contains an Active Directory domain. All the computers in the domain are configured for the Local Administrator Password Solution (LAPS). The Group Policy object (GPO) settings for LAPS are configured as shown in the exhibit. (Click the **Exhibit** tab.)



You provide a technician with the local administrator password for a computer named Computer1.

What is the maximum amount of time the password will be valid?

- A. 30 minutes
- B. 3 days
- C. 30 days
- D. 365 days

Correct Answer: C

Section: (none)

Explanation

Explanation/Reference:

References:

https://www.reddit.com/r/sysadmin/comments/712049/laps_password_expiration_time_password_age/

QUESTION 119

Your network contains an Active Directory domain named contoso.com. The domain contains a file server named FS1 that runs Windows Server 2016. FS1 has a share named SecureFolder.

You need to track all users who access the contents of SecureFolder.

Which two actions should you perform? Each correct answer presents part of the solution.

NOTE: Each correct selection is worth one point.

- A. From the Default Domain Controller Group Policy object (GPO), enable Audit object access.
- B. From File Explorer, modify the Advanced security settings of SecureFolder.
- C. From File Explorer, modify the Advanced sharing settings of SecureFolder.
- D. Create a Group Policy object (GPO) and enable Audit object access.

Correct Answer: BD

Section: (none)

Explanation

Explanation/Reference:

References:

<https://www.rootusers.com/configure-file-access-auditing-in-windows-server-2016/>

QUESTION 120

Note: This question is part of a series of questions that present the same scenario. Each question in the series contains a unique solution that might meet the stated goals. Some question sets might have more than one correct solution, while others might not have a correct solution.

After you answer a question in this section, you will NOT be able to return to it. As a result, these questions will not appear in the review screen.

Your network contains an Active Directory domain named contoso.com. All client computers run Windows 10.

You plan to deploy a Remote Desktop connection solution for the client computers.

You have four available servers in the domain that can be configured as Remote Desktop servers. The servers are configured as shown in the following table.

Server name	Operating system	Location
Server1	Windows Server 2012 R2	on-premises
Server2	Windows Server 2016	Microsoft Azure
Server3	Windows Server 2016	on-premises
Server4	Windows Server 2012 R2	Microsoft Azure

You need to ensure that all Remote Desktop connections can be protected by using Remote Credential Guard.

Solution: You deploy the Remote Desktop connection solution by using Server2.

Does this meet the goal?

- A. Yes
- B. No

Correct Answer: B

Section: (none)

Explanation

Explanation/Reference:

References:

<https://docs.microsoft.com/en-us/windows/security/identity-protection/remote-credential-guard>

QUESTION 121

Your network contains an Active Directory domain named contoso.com. The domain contains a server named Server1 that runs Windows Server 2016.

You deploy Advanced Threat Analytics (ATA) to Server1.

You need to move the ATA database to a different folder.

Which configuration file should you modify?

- A. Config.json
- B. Web.config
- C. Config.xml
- D. Mongod.cfg

Correct Answer: D

Section: (none)

Explanation

Explanation/Reference:

References: <https://docs.microsoft.com/en-us/advanced-threat-analytics/ata-database-management>



<https://vceplus.com/>