

MS-700

Number: MS-700
Passing Score: 800
Time Limit: 120 min
File Version: 1

MS-700



Website: <https://vceplus.com>
VCE to PDF Converter: <https://vceplus.com/vce-to-pdf/>
Facebook: <https://www.facebook.com/VCE.For.All.VN/>
Twitter : https://twitter.com/VCE_Plus

<https://vceplus.com/>

Plan and Configure a Microsoft Teams Environment

Question Set 1

QUESTION 1

Note: This question is part of a series of questions that present the same scenario. Each question in the series contains a unique solution that might meet the stated goals. Some question sets might have more than one correct solution, while others might not have a correct solution.

After you answer a question in this section, you will NOT be able to return to it. As a result, these questions will not appear in the review screen.

Your company has a Microsoft 365 subscription.

You plan to configure the environment to allow external users to collaborate in Microsoft Teams by using guest access.

The company implements a new security policy that has the following requirements:

- Only guest users from specific domains must be allowed to connect to collaborate by using Microsoft Teams.
- Guest users must be prevented from inviting other guests.

You need to recommend a solution to meet the security policy requirements.

Solution: From the Microsoft Teams admin center, you modify the global meeting policy.



<https://vceplus.com/> Does this

meet the goal?

- A. Yes
- B. No

Correct Answer: B

Section: (none)

Explanation

Explanation/Reference:

QUESTION 2

Note: This question is part of a series of questions that present the same scenario. Each question in the series contains a unique solution that might meet the stated goals. Some question sets might have more than one correct solution, while others might not have a correct solution.

After you answer a question in this section, you will NOT be able to return to it. As a result, these questions will not appear in the review screen.

Your company has a Microsoft 365 subscription.

You plan to configure the environment to allow external users to collaborate in Microsoft Teams by using guest access.

The company implements a new security policy that has the following requirements:

- Only guest users from specific domains must be allowed to connect to collaborate by using Microsoft Teams. ▪
- Guest users must be prevented from inviting other guests.

You need to recommend a solution to meet the security policy requirements.

Solution: From PowerShell, you run the `New-AzureADPolicy` and `Set-AzureADPolicy` cmdlets.

Does this meet the goal?

- A. Yes
- B. No

Correct Answer: B

Section: (none)

Explanation

Explanation/Reference:

QUESTION 3

Note: This question is part of a series of questions that present the same scenario. Each question in the series contains a unique solution that might meet the stated goals. Some question sets might have more than one correct solution, while others might not have a correct solution.

After you answer a question in this section, you will NOT be able to return to it. As a result, these questions will not appear in the review screen.

Your company has a Microsoft 365 subscription.

You plan to configure the environment to allow external users to collaborate in Microsoft Teams by using guest access.

The company implements a new security policy that has the following requirements:

- Only guest users from specific domains must be allowed to connect to collaborate by using Microsoft Teams. ▪
- Guest users must be prevented from inviting other guests.

You need to recommend a solution to meet the security policy requirements.

Solution: From the Azure Active Directory, you modify the External collaboration settings.

Does this meet the goal?

- A. Yes
- B. No

Correct Answer: A

Section: (none)

Explanation

Explanation/Reference:



QUESTION 4

Note: This question is part of a series of questions that present the same scenario. Each question in the series contains a unique solution that might meet the stated goals. Some question sets might have more than one correct solution, while others might not have a correct solution.

After you answer a question in this section, you will NOT be able to return to it. As a result, these questions will not appear in the review screen.

Your company has a Microsoft 365 subscription that uses an Azure Active Directory (Azure AD) tenant named contoso.com.

You need to prevent guest users in the tenant from using cameras during Microsoft Teams meetings.

Solution: From the Azure Active Directory admin center, you modify the External collaboration settings.

Does this meet the goal?

- A. Yes
- B. No

Correct Answer: B

Section: (none)

Explanation

Explanation/Reference:

QUESTION 5

Note: This question is part of a series of questions that present the same scenario. Each question in the series contains a unique solution that might meet the stated goals. Some question sets might have more than one correct solution, while others might not have a correct solution.

After you answer a question in this section, you will NOT be able to return to it. As a result, these questions will not appear in the review screen.

Your company has a Microsoft 365 subscription that uses an Azure Active Directory (Azure AD) tenant named contoso.com.

You need to prevent guest users in the tenant from using cameras during Microsoft Teams meetings.

Solution: From Microsoft Teams admin center, you modify the External collaboration settings.

Does this meet the goal?

A. Yes

B. No



Correct Answer: A

Section: (none)

Explanation

Explanation/Reference:

QUESTION 6

Note: This question is part of a series of questions that present the same scenario. Each question in the series contains a unique solution that might meet the stated goals. Some question sets might have more than one correct solution, while others might not have a correct solution.

After you answer a question in this section, you will NOT be able to return to it. As a result, these questions will not appear in the review screen.

Your company has a Microsoft 365 subscription that uses an Azure Active Directory (Azure AD) tenant named contoso.com.

You need to prevent guest users in the tenant from using cameras during Microsoft Teams meetings.

Solution: From the Microsoft 365 admin center, you modify the Sharing settings.

Does this meet the goal?

A. Yes B.
No



<https://vceplus.com/>

Correct Answer: B

Section: (none)

Explanation

Explanation/Reference:



QUESTION 7

Note: This question is part of a series of questions that present the same scenario. Each question in the series contains a unique solution that might meet the stated goals. Some question sets might have more than one correct solution, while others might not have a correct solution.

After you answer a question in this section, you will NOT be able to return to it. As a result, these questions will not appear in the review screen.

Your company has a Microsoft 365 subscription.

You need to prevent a user named User1 from permanently deleting private chats in Microsoft Teams.

Solution: You place the mailbox of User1 on Litigation Hold.

Does this meet the goal?

A. Yes
B. No

Correct Answer: A

Section: (none)

Explanation

Explanation/Reference:

QUESTION 8

Note: This question is part of a series of questions that present the same scenario. Each question in the series contains a unique solution that might meet the stated goals. Some question sets might have more than one correct solution, while others might not have a correct solution.

After you answer a question in this section, you will NOT be able to return to it. As a result, these questions will not appear in the review screen.

Your company has a Microsoft 365 subscription.

You need to prevent a user named User1 from permanently deleting private chats in Microsoft Teams.

Solution: You create an In-Place Hold for the Microsoft SharePoint site used by Microsoft Team.

Does this meet the goal?

A. Yes

B. No



Correct Answer: B

Section: (none)

Explanation

Explanation/Reference:

QUESTION 9

Note: This question is part of a series of questions that present the same scenario. Each question in the series contains a unique solution that might meet the stated goals. Some question sets might have more than one correct solution, while others might not have a correct solution.

After you answer a question in this section, you will NOT be able to return to it. As a result, these questions will not appear in the review screen.

Your company has a Microsoft 365 subscription.

You need to prevent a user named User1 from permanently deleting private chats in Microsoft Teams.

Solution: You place the group mailboxes used by Microsoft Teams on Litigation Hold.

Does this meet the goal?

- A. Yes
- B. No

Correct Answer: B

Section: (none)

Explanation

Explanation/Reference:

QUESTION 10

You are a Microsoft Teams administrator for your company.

All the teams used by the company's legal department must meet the following compliance requirements:

- Each team must expire 365 days after it is created.
- All team content must be deleted when the team expires.
- An administrator must be able to restore deleted team content for 30 days.

What should you do?

- A. From the Microsoft Teams admin center, modify the teams policy.
- B. From PowerShell, run the `New-AzureADMSGGroupLifecyclePolicy` cmdlet.
- C. From the Security & Compliance admin center, create a data loss prevention (DLP) policy.
- D. From the Microsoft 365 admin center, modify the Office 365 group settings.

Correct Answer: B

Section: (none)

Explanation

Explanation/Reference:

Reference: <https://docs.microsoft.com/en-us/azure/active-directory/users-groups-roles/groups-lifecycle>
<https://docs.microsoft.com/en-us/powershell/module/azuread/new-azureadmsgrouplifecyclepolicy?view=azureadps-2.0>

QUESTION 11

Your company has a Microsoft 365 subscription that contains 20 teams.

You need to ensure that a team named Team1 is identified as Highly Confidential in the Microsoft Teams client.

What should you use?

- A. a classification label in the Azure Active Directory admin center
- B. a sensitivity label in the Security & Compliance admin center
- C. a supervisor policy in the Security & Compliance admin center
- D. a teams policy in the Microsoft Teams admin center

Correct Answer: A

Section: (none)

Explanation

Explanation/Reference:

QUESTION 12

Your company has a Microsoft 365 subscription.

You attempt to review call quality by location.

When you sign in to the Microsoft Call Quality Dashboard, you discover that no locations are defined.

You need to ensure that all the call quality information in the dashboard is segmented by location.

What should you do first?

- A. From the Microsoft Teams admin center, configure reporting labels.
- B. From an administrator's computer, run the Network Testing Companion.
- C. From PowerShell, run the `Set-CsQoEConfiguration` cmdlet.
- D. From the Microsoft Teams admin center, run the Network Planner.

Correct Answer: A

Section: (none)

Explanation

Explanation/Reference:



Reference: <https://docs.microsoft.com/en-us/microsoftteams/learn-more-about-site-upload>

QUESTION 13

Your company uses Microsoft Teams.

The company has the departments and teams shown in the following table.

Department name	Team name
Sales	Team1
Research and Development	Team2
Finance	Team3

You need to recommend a solution to prevent the users in each department from inviting users from other departments to their team.

What should you include in the recommendation?

- A. app permission policies
- B. Azure Information Protection
- C. supervision policies
- D. information barrier policies



Correct Answer: D

Section: (none)

Explanation

Explanation/Reference:

QUESTION 14

Your company has a Microsoft 365 E5 subscription.

The company uses Microsoft Skype for Business Online and plans to upgrade to Microsoft Teams.

The network contains the following devices:

- 100 computers that run Windows 10
- 50 Android devices
- 50 iPhone devices

All the devices have the Skype for Business app installed.

You need to deploy Microsoft Teams to all the devices.

What should you do?

- A. From the Microsoft Teams admin center, set Download the Teams app in the background for Skype for Business users to **On**.
- B. Create a Group Policy Object (GPO) that contains an app package, and then link the GPO.
- C. From the Microsoft Teams admin center, create an app setup policy that includes the Microsoft Teams app, and then assign the policy to all users.
- D. From the Microsoft Intune, push Microsoft Teams to all the devices.

Correct Answer: A

Section: (none)

Explanation

Explanation/Reference:



QUESTION 15

Your company has a Microsoft 365 subscription that contains several teams.

The company's security policy states that an administrator must be notified when a new team is created by using the Build a team from scratch option.

You need to configure the environment to meet the security policy requirement.

What should you do?

- A. From the Security & Compliance admin center, create a supervision policy.
- B. From the Security & Compliance admin center, create an alert policy.
- C. From the Azure Active Directory admin center, create a protection notification.
- D. From the Microsoft Teams admin center, modify the global teams policy.

Correct Answer: B

Section: (none)

Explanation

Explanation/Reference:**QUESTION 16**

Users report poor quality during Microsoft Teams audio conferences.

You run a network trace during an audio conference from a user's device as shown in the following exhibit.

Frame Details:	X
Checksum: 0 (0x0)	
SourceAddress: 10.10.10.110	
DestinationAddress: 52.114.188.31	
0-Tcp: Flags=...A...., SrcPort=50008, DstPort=HTTPS (443), PayloadLen=0,	
SrcPort: 50008	
DstPort: HTTPS (443)	
SequenceNumber: 4077031237 (0xF3028F45)	
E AcknowledgementNumber: 223214542 (0xD4DFD5E)	
E B DataOffset: 80 (0x50)	
O Flags: ...A	
Window: 1025 (scale factor 0x8) = 262400	
Checksum: 0x524, Disregarded	
UrgentPointer: 0 (0x0)	

What causes the poor quality of the audio conferences?

- A. The source port range for audio is too narrow.
- B. The source port for audio is above 50,000.
- C. The UDP traffic is being limited.
- D. The TLS traffic is being limited.

Correct Answer: C

Section: (none)

Explanation

Explanation/Reference:

QUESTION 17

Your company has a Microsoft 365 subscription.

All users have a computer that runs Windows 10 and has Microsoft Teams installed.

A user reports the following issues:

- Users lose their connection during screen sharing.
- The user selection process takes too long to complete.
- The Microsoft Teams client crashes and restarts automatically.

You need to view the Microsoft Teams debug logs to troubleshoot the issues.

What should you do?

- A. From the Microsoft Teams client, select **F1**. Open the ETL files in the **%Appdata%\Microsoft\Teams** folder.
- B. From the Microsoft Teams client, select **Ctrl+Alt+Shift+1**. Open the log files in the **%Userprofile%\Downloads** folder.
- C. From Event Viewer, open the Application log and filter the log for a keyword of MSTeams.
- D. Right-click the Microsoft Teams icon in the application tray, and then select **Get logs**. Open Logs.txt in the **%Appdata%\Microsoft\Teams** folder.

Correct Answer: B

Section: (none)

Explanation

Explanation/Reference:

Reference:

<https://docs.microsoft.com/en-us/microsoftteams/log-files>

QUESTION 18

You have an Active Directory user named User1.

You need to ensure that User1 can view the following reports:

- Microsoft Teams user activity report
- Microsoft Teams device usage report

The solution must limit the ability of User1 to make changes to Microsoft 365 services.

Which role should you assign to User1?

- A. Teams Service Administrator
- B. Reports reader
- C. Teams Communications Support Specialist
- D. Message Center reader

Correct Answer: B

Section: (none)

Explanation

Explanation/Reference:

Reference: <https://docs.microsoft.com/en-us/microsoftteams/teams-activity-reports>

QUESTION 19

Your company has a Microsoft 365 subscription.

The company deploys Microsoft Teams for 5,000 users.

You need to generate a report that contains the following information:

- The number of active Microsoft Teams users during the last seven days. ▪
- The number of active team channels during the last seven days.

Which usage reports should you run?

- A. Teams device usage
- B. Teams live event usage
- C. Teams user activity
- D. Teams usage

Correct Answer: D

Section: (none)

Explanation

Explanation/Reference:

Reference: <https://docs.microsoft.com/en-us/microsoftteams/teams-analytics-and-reports/teams-usage-report>

QUESTION 20

Your company has a Microsoft Office 365 subscription.

The company has a Microsoft Teams group named Group1.

You need to remove inactive users from Group1. The members of Group1 must be validated every month.

What should you use?

- A. supervision policies in the Security & Compliance admin center
- B. access reviews in the Azure Active Directory admin center
- C. eDiscovery cases in the Security & Compliance admin center
- D. usage reports in the Microsoft Teams admin center

Correct Answer: B

Section: (none)

Explanation

Explanation/Reference:



Plan and Configure a Microsoft Teams Environment

Testlet 2

Case study

This is a case study. **Case studies are not timed separately. You can use as much exam time as you would like to complete each case.** However, there may be additional case studies and sections on this exam. You must manage your time to ensure that you are able to complete all questions included on this exam in the time provided.

To answer the questions included in a case study, you will need to reference information that is provided in the case study. Case studies might contain exhibits and other resources that provide more information about the scenario that is described in the case study. Each question is independent of the other questions in this case study.

At the end of this case study, a review screen will appear. This screen allows you to review your answers and to make changes before you move to the next section of the exam. After you begin a new section, you cannot return to this section.

To start the case study

To display the first question in this case study, click the **Next** button. Use the buttons in the left pane to explore the content of the case study before you answer the questions. Clicking these buttons displays information such as business requirement, existing environment, and problem statements. If the case study has an **All Information** tab, note that the information displayed is identical to the information displayed on the subsequent tabs. When you are ready to answer a question, click the **Question** button to return to the question. **Overview**

Contoso, Ltd. is a pharmaceutical company that has 3,000 users in offices across North America.

Existing Environment

Active Directory

The network contains an on-premises Active Directory domain. All user accounts are in departmental organizational units (OUs).

Microsoft Office 365

All users are assigned a Microsoft Office 365 E5 license and are enabled for the following services:

- Microsoft Yammer
- Microsoft Exchange Online
- Microsoft SharePoint Online
- Microsoft OneDrive for Business
- Azure Active Directory (Azure AD)
- Azure AD dynamic group membership

Microsoft Skype for Business

Contoso has an on-premises deployment of Microsoft Skype for Business Server 2015. All the latest cumulative updates are installed on all the servers. The following services are used in Skype for Business Server 2015:

- Meetings
- PSTN calling
- Instant messaging (IM)
- Federation to external companies

Departments

Contoso has the following departments:

- IT
- Sales
- Human resources (HR)
- Research and deployment (R&D)

All groups are created by using dynamic group membership that use the department attribute.

Requirements

Business goals

Contoso identifies the following business goals:

- Migrate the maximum number of users to Microsoft Teams. ▪
- Minimize administrative effort.

Device requirements

Contoso identifies the following device requirements:

- Replace Skype for Business IP phones with Microsoft Teams phones.
- All Microsoft Teams phones must be set to lock automatically after 60 seconds.

Meeting and Live Event Requirements

Contoso identifies the following meeting and live event requirements:

- Requirement1: Guest users must be able to join live events.
 - Requirement2: Guest users must always wait in a meeting lobby.
 - Requirement3: Contoso users must always bypass the meeting lobby when they join meetings by using the Microsoft Teams client. ▪
- Requirement4: After the upgrade to Microsoft Teams, all meetings must be scheduled by using Microsoft Teams.

Calling Requirements

Contoso identifies the following calling requirements:

- Migrate all existing auto attendants and response groups to Office 365. ▪
- Minimize the on-premises PSTN infrastructure.

Technical Requirements

Guest users must be prevented from making private calls.

Security Requirements

Contoso has the following security requirements for the Microsoft Teams deployment:

- The number of ports allowed on the company's firewall must be limited.
- Team names must be prevented from containing the name of any products produced by Contoso.
- Users in the R&D group must be prevented from sending chat messages to users in other departments.
- To meet the company's compliance policy, users in the sales department must continue to use on-premises Skype for Business for IM and calling only. **Pilot**

Project

Contoso begins a pilot project for the upgrade to Microsoft Teams.

You identify the following issues during the pilot project:

- Microsoft Teams users report that they often receive continuous notifications from the Microsoft Teams client for 20 minutes. ▪
- Two pilot users in the HR department report that they are not members of the HR team.

QUESTION 1

You need to configure the environment to meet the security requirements for the R&D group.

What should you do first?

- A. Start the information barrier policy application.

- B. Add an identity provider.
- C. Create two information barrier segments.
- D. Create one information barrier policy.

Correct Answer: C

Section: (none)

Explanation

Explanation/Reference:

Explanation:

Create information barrier segments first, then create information barrier policy based on the segments then start the information barrier application.

Reference: <https://docs.microsoft.com/en-us/microsoft-365/compliance/information-barriers-policies>

QUESTION 2

You need to configure the user accounts of the sales department users to meet the security requirements.

What should you do for each user?

- A. From the Microsoft Teams admin center, set the Microsoft Teams upgrade policy to **Skype for Business with Teams collaboration and meetings** coexistence mode.
- B. From PowerShell, run the `Grant-CsTeamsUpgradePolicy -PolicyName SfBWithTeamsCollab cmdlet`.
- C. From PowerShell, run the `Grant-CsTeamsUpgradePolicy -PolicyName Islands cmdlet`.
- D. From the Microsoft Teams admin center, set the Microsoft Teams upgrade policy to **Skype for Business only** coexistence mode.

Correct Answer: A

Section: (none)

Explanation

Explanation/Reference:

Reference: <https://docs.microsoft.com/en-us/microsoftteams/teams-and-skypeforbusiness-coexistence-and-interoperability> **Plan and Configure a Microsoft Teams Environment**

Testlet 3

Case study

This is a case study. **Case studies are not timed separately. You can use as much exam time as you would like to complete each case.** However, there may be additional case studies and sections on this exam. You must manage your time to ensure that you are able to complete all questions included on this exam in the time provided.

To answer the questions included in a case study, you will need to reference information that is provided in the case study. Case studies might contain exhibits and other resources that provide more information about the scenario that is described in the case study. Each question is independent of the other questions in this case study.

At the end of this case study, a review screen will appear. This screen allows you to review your answers and to make changes before you move to the next section of the exam. After you begin a new section, you cannot return to this section.

To start the case study

To display the first question in this case study, click the **Next** button. Use the buttons in the left pane to explore the content of the case study before you answer the questions. Clicking these buttons displays information such as business requirement, existing environment, and problem statements. If the case study has an **All Information** tab, note that the information displayed is identical to the information displayed on the subsequent tabs. When you are ready to answer a question, click the **Question** button to return to the question.

Overview

General overview

Litware, Inc. is an international manufacturing company that has 4,000 users. The company has the following four departments:

- IT
- HR
- R&D
- Sales

Physical locations

Litware has two main offices. The offices are located in New York and London.

All offices connect to each other by using a WAN link. Each office connects directly to the Internet.

Existing environment

All user accounts have an Azure Active Directory Premium Plan P1 license.

Litware has a Microsoft 365 subscription that has Office 365 Enterprise E3 licenses for all users. All the E3 products and services are enabled for each user.

Litware uses Microsoft Skype for Business Online.

Requirements

Planned Upgrade

Litware identifies the following requirements for a planned upgrade from Skype for Business Online to Microsoft Teams:

- Provide high quality audio, video, and online meeting experience for Microsoft Teams end users. ▪
 - Implement a data retention solution in Microsoft Teams.
 - Minimize costs and administrative effort. ▪
- Use the principle of least privilege.

For the sales department, Litware plans to create a team that dynamically updates its membership when users leave and join the department.

Department Upgrade Requirements

Litware plans to implement upgrade requirements for the departments as shown in the following table.



Department name	Requirement
Sales	Must use Microsoft Teams and Skype for Business. Must receive incoming chats and calls by using the same client that initiated the communication.
HR	Must use Microsoft Teams for collaboration and meetings. Must maintain Skype for Business as the preferred client for chat and calling.
IT and R&D	Must use only Microsoft Teams for chat, meetings, calling, and collaboration.

Microsoft Teams Requirements

All teams must meet the following requirements:

- Only users in a partner company that uses a domain named fabrikam.com must be able to collaborate in teams by using guest accounts.
- Only users in the compliance department of Litware must be able to create teams.

Planned Network Tasks

Litware identifies the following network validation tasks:

- An administrator named Admin5 must be able to review the required bandwidth to support audio conferencing, video conferencing, and screen sharing in Microsoft Teams.
- An administrator named Admin6 must be able to review network issues that cause poor call quality reported by users.

Data Retention Requirements

Litware identifies the following data retention requirements:

- Requirement1: All messages in team collaborations must be deleted after seven years.

- Requirement2: all files used in team collaborations must be retained for five years. ▪
- Requirement3: All files used in personal chats must be retained for five years.

Device Requirements

You provide Microsoft Teams-certified IP phones to users in the IT and R&D departments. Each device must meet the following requirements:

- The time zone on the phones used by the R&D department must be set to UTC-8.
- The time zone on the phones used by the IT department must be set to UTC-5.
- All phones must lock automatically after 60 seconds of inactivity. **Voice Pilot**

Requirements

Litware wants to pilot Phone System as a calling solution for 20 IT department users. The pilot project will receive phone numbers from Microsoft Teams.

Collaboration and Meeting Requirements

Litware identifies the following collaboration and meeting requirements:

- Cloud recording must be disabled for all Microsoft Teams meetings organized by users in the HR departments only. ▪
- Meeting email invitations must be customized to include the Logo URL, Legal URL, and Help URL of Litware.

QUESTION 1

You need to implement a solution to meet the Microsoft Teams requirements for the compliance department.

What should you do first?

- A. Add all the compliance department users as members of an org-wide team.
- B. Add all the compliance department users to a universal security group.
- C. Add all the compliance department users to an Office 365 group.
- D. Assign the Teams Communications Support Engineer role to all the compliance department users.

Correct Answer: B

Section: (none)

Explanation

Explanation/Reference:

QUESTION 2

You need to configure the IP phones to meet the device requirements.

What is the minimum number of configuration profiles you should create?

- A. 1
- B. 2
- C. 3
- D. 4

Correct Answer: B

Section: (none)

Explanation

Explanation/Reference:



Manage Chat, Calling, and Meetings

Question Set 1

QUESTION 1

Your company has a Microsoft 365 subscription.

A user invites an external user to join a Microsoft Teams meeting by using a Microsoft Outlook meeting invitation.

The external user cannot join the meeting.

You need to ensure that all external users can join Microsoft Team meetings.

What should you do from the Microsoft Teams admin center?

- A. From Guest access in the Org-wide settings, set Allow guest access in Microsoft Teams to **On**.
- B. Edit the Meeting settings and set Anonymous users can join a meeting to **On**.
- C. Edit the global meeting policy and set Allow scheduling private meetings to **On**.
- D. Edit the live events policy and set Who can join live events to **Everyone**.

Correct Answer: B

Section: (none)

Explanation

Explanation/Reference:

Reference: <https://docs.microsoft.com/en-us/microsoftteams/meeting-settings-in-teams>

QUESTION 2

Your company has a Microsoft 365 subscription.

A user named User5 cannot establish call from Microsoft Teams.

You review the Microsoft Teams client for User5 and discover that the dial pad is unavailable.

Other users at the company can establish calls successfully.

You need to ensure that User5 can establish calls.

Which two actions should you perform? Each correct answer represents part of the solution.

NOTE: Each correct selection is worth one point.

- A. Modify the caller ID properties of User5.
- B. Assign a Phone System license to User5.
- C. Assign a SIP address to User5.
- D. Assign an app setup policy to User5.
- E. Enable User5 for Enterprise Voice.

Correct Answer: E

Section: (none)

Explanation

Explanation/Reference:

QUESTION 3

Your company has a Microsoft 365 subscription that uses Phone System and Calling Plans.

You plan to implement a toll phone number for the helpdesk.

You need to implement the following call features for the helpdesk phone number:

- Must include a greeting and hold music
- Must bypass menu options when a call is established to the helpdesk

What two resources should you create? Each correct answer presents part of the solution.

NOTE: Each correct selection is worth one point.

- A. a call queue
- B. a call park
- C. an auto attendant
- D. a resource account
- E. a calling policy

Correct Answer: AD

Section: (none)

Explanation**Explanation/Reference:**

Reference: <https://docs.microsoft.com/en-us/microsoftteams/create-a-phone-system-call-queue>

QUESTION 4

You have an org wide team named Team1.

The members of Team1 report that they receive an excessive amount of notifications from channel messages.

You need to reduce the amount of notifications by implementing the following changes:

- Allow only global administrators to create new posts in the General channel. ▪ Prevent @mentions for the org-wide team members.

Which two actions should you perform from the Microsoft Teams client? Each correct answer presents part of the solution.

NOTE: Each correct selection is worth one point.

- A. From the Team1 settings, clear **Give members the option to edit their messages**.
- B. From the General Channel settings of Team1, set the channel moderation preference to **Anyone can post; show alert that postings will notify everyone (recommended for large teams)**.
- C. From the General Channel settings of Team1, set the channel moderation preference to **Only owners can post messages**.
- D. From the Team1 settings, disable all the Fun stuff settings.
- E. From the Team1 settings, set Show members the option to @team or @[team name] to **Off**.

Correct Answer: CE

Section: (none)

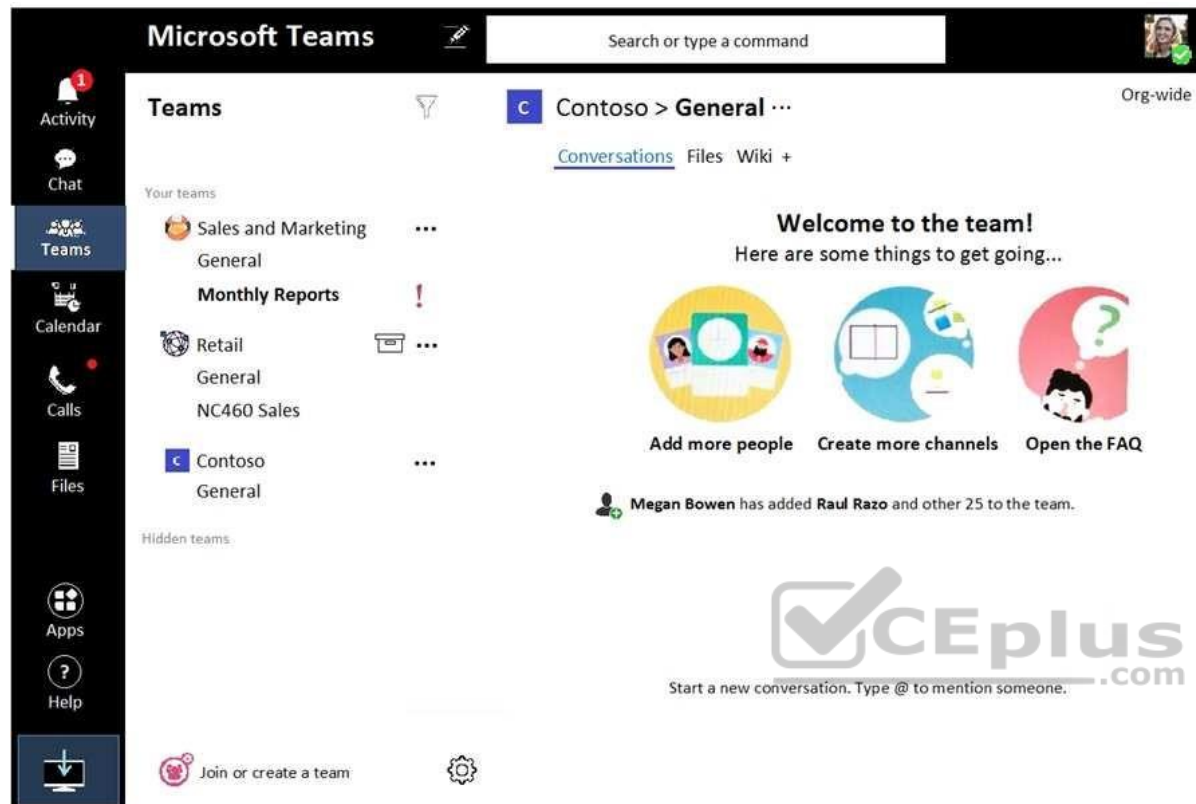
Explanation**Explanation/Reference:**

Reference: <https://docs.microsoft.com/en-us/microsoftteams/create-an-org-wide-team>

QUESTION 5

Your company has a Microsoft 365 subscription.

From the Microsoft Teams client, you review the teams shown in the exhibit. (Click the **Exhibit** tab.)



Members of the Retail team report that they cannot create channels.

You need to ensure that the Retail team members can create channels.

Which two actions should you perform? Each correct answer presents a complete solution.

NOTE: Each correct selection is worth one point.

- A. From the Azure Active Directory admin center, change the membership type of the Office 365 group for the Retail team to **Assigned**.
- B. From the Microsoft Teams client, promote all the Retail team members to an owner role.
- C. From the Microsoft Teams admin center, unarchive the Retail team.
- D. Instruct the Retail team owner to restore the team by using the Microsoft Teams client.

E. From PowerShell, modify the information barrier policy.

Correct Answer: CD

Section: (none)

Explanation

Explanation/Reference:



<https://vceplus.com/>

