

70-735.39q

Number: 70-735  
Passing Score: 800  
Time Limit: 120 min

70-735



**Website:** <https://vceplus.com>

**VCE to PDF Converter:** <https://vceplus.com/vce-to-pdf/>

**Facebook:** <https://www.facebook.com/VCE.For.All.VN/>

**Twitter :** [https://twitter.com/VCE\\_Plus](https://twitter.com/VCE_Plus)

<https://www.vceplus.com/>

**OEM Manufacturing and Deployment for Windows 10**

**Exam A**

**QUESTION 1**

Note: This question is part of a series of questions that present the same scenario. Each question in the series contains a unique solution that might meet the stated goals. Some question sets might have more than one correct solution, while others might not have a correct solution.

After you answer a question in this sections, you will NOT be able to return to it. As a result, these questions will not appear in the review screen.

You are building a new image of Windows 10 that contains a push-button reset solution.

You need to test whether push-button reset works as expected.

Solution: You start the computer from the installation media for Windows 10. You click Troubleshoot, you click System Restore, you click the Windows 10 installation, and then you restore a system restore point.

Does this meet the goal?

- A. Yes
- B. No

**Correct Answer: B**

**Section: (none)**

**Explanation**

**Explanation/Reference:**

Explanation:

References:

<https://support.microsoft.com/en-us/help/12415/windows-10-recovery-options> <https://docs.microsoft.com/en-us/windows-hardware/manufacture/desktop/push-button-reset-overview>

## QUESTION 2

Note: This question is part of a series of questions that present the same scenario. Each question in the series contains a unique solution that might meet the stated goals. Some question sets might have more than one correct solution, while others might not have a correct solution.

After you answer a question in this sections, you will NOT be able to return to it. As a result, these questions will not appear in the review screen.

You mount an image of Windows 10.





<https://www.vceplus.com/>

You download 10 Windows 10 update packages to separate folders. Some of the update packages contain dependencies to the other update packages. You are unaware of the specific dependencies.

You need to add all the update packages to the image in the correct order.

Solution: You run `dism.exe/Get-Packages`, and then you pipe the output to `dism.exe/Add-Package`.

Does this meet the goal?

- A. Yes
- B. No



**Correct Answer:** B

**Section:** (none)

**Explanation**

**Explanation/Reference:**

Explanation: References: <https://docs.microsoft.com/en-us/windows-hardware/manufacture/desktop/add-or-remove-packages-offline-using-dism>

### QUESTION 3

Note: This question is part of a series of questions that present the same scenario. Each question in the series contains a unique solution that might meet the stated goals. Some question sets might have more than one correct solution, while others might not have a correct solution.

After you answer a question in this sections, you will NOT be able to return to it. As a result, these questions will not appear in the review screen.

You mount an image of Windows 10.

You download 10 Windows 10 update packages to separate folders. Some of the update packages contain dependencies to the other update packages. You are unaware of the specific dependencies.

You need to add all the update packages to the image in the correct order.

Solution: You copy all the updates to the same folder. You run `dism.exe/Add-Package` once and specify the `/PackagePath` parameter once.

Does this meet the goal?

A. Yes

B. No

**Correct Answer: B**

**Section: (none)**

**Explanation**

**Explanation/Reference:**

Explanation:

References: <https://docs.microsoft.com/en-us/windows-hardware/manufacture/desktop/add-or-remove-packages-offline-using-dism>

#### QUESTION 4

Note: This question is part of a series of questions that present the same scenario. Each question in the series contains a unique solution that might meet the stated goals. Some question sets might have more than one correct solution, while others might not have a correct solution.

After you answer a question in this sections, you will NOT be able to return to it. As a result, these questions will not appear in the review screen.

You mount an image of Windows 10.

You download 10 Windows 10 update packages to separate folders. Some of the update packages contain dependencies to the other update packages. You are unaware of the specific dependencies.

You need to add all the update packages to the image in the correct order.

Solution: You run `dism.exe/Add-Package` once and specify the `/PackagePath` parameter for each folder that contains the updates.

Does this meet the goal?

A. Yes

B. No

**Correct Answer: B**

**Section: (none)**

**Explanation**

**Explanation/Reference:**

Explanation: References

**QUESTION 5**

Note: This question is part of a series of questions that present the same scenario. Each question in the series contains a unique solution that might meet the stated goals. Some question sets might have more than one correct solution, while others might not have a correct solution.

After you answer a question in this sections, you will NOT be able to return to it. As a result, these questions will not appear in the review screen.

You are configuring a reference computer for a new UEFI-based deployment image of the 64-bit version of Windows 10. The reference computer has two physical hard disk drives.

You need to configure a partition on Disk 0 to support a recovery partition.

Solution: You create an MSR partition of 120 MB that uses the ReFS file system.

Does this meet the goal?

- A. Yes
- B. No

**Correct Answer: B**

**Section: (none)**

**Explanation**

**Explanation/Reference:**

Explanation:

References: <https://docs.microsoft.com/en-us/windows-hardware/manufacture/desktop/configure-uefigpt-based-hard-drive-partitions>

**QUESTION 6**

Note: This question is part of a series of questions that present the same scenario. Each question in the series contains a unique solution that might meet the stated goals. Some question sets might have more than one correct solution, while others might not have a correct solution.

After you answer a question in this sections, you will NOT be able to return to it. As a result, these questions will not appear in the review screen.

You are configuring a reference computer for a new UEFI-based deployment image of the 64-bit version of Windows 10. The reference computer has two physical hard disk drives.

You need to configure a partition on Disk 0 to support a recovery partition.

Solution: You create a primary partition of 250 MB that uses the NTFS file system.

Does this meet the goal?

- A. Yes
- B. No

**Correct Answer:** B

**Section:** (none)

**Explanation**

**Explanation/Reference:**

Explanation:

This partition must be at least 300 MB

References: <https://docs.microsoft.com/en-us/windows-hardware/manufacture/desktop/configure-uefigpt-based-hard-drive-partitions>

### QUESTION 7

Note: This question is part of a series of questions that present the same scenario. Each question in the series contains a unique solution that might meet the stated goals. Some question sets might have more than one correct solution, while others might not have a correct solution.

After you answer a question in this sections, you will NOT be able to return to it. As a result, these questions will not appear in the review screen.

You are configuring a reference computer for a new UEFI-based deployment image of the 64-bit version of Windows 10. The reference computer has two physical hard disk drives.

You need to configure a partition on Disk 0 to support a recovery partition.

Solution: You create an EFI system partition of 150 MB that uses the NTFS file system.

Does this meet the goal?

- A. Yes
- B. No

**Correct Answer:** B

**Section:** (none)

**Explanation**

**Explanation/Reference:**

Explanation:

References: <https://docs.microsoft.com/en-us/windows-hardware/manufacture/desktop/configure-uefigpt-based-hard-drive-partitions>

#### QUESTION 8

You plan to create an image of Windows 10 that contains a push-button reset solution. The solution will have custom settings for each edition of Windows 10.

You need to prepare the push-button reset solution.

What should you include in the solution?

- A. an unattended file and a bare metal recovery configuration
- B. an unattended file and extensibility scripts
- C. extensibility scripts and system restore points
- D. a bare metal recovery configuration and Scanstate packages

**Correct Answer: B**

**Section: (none)**

**Explanation**

**Explanation/Reference:**

Explanation:

References: <https://docs.microsoft.com/en-us/windows-hardware/manufacture/desktop/add-a-script-to-push-button-reset-features>

#### QUESTION 9

You deploy Windows 10 and Microsoft Office 2016 to a test computer.

You plan to capture an image of the test computer, and then to deploy the image to computers that will be sold to your customers.

You need to ensure that when a customer first starts an Office application, the customer is prompted to try, buy, or activate Office.

What should you run on the test computer before the capture?

- A. officedeploymenttool.exe
- B. setup.exe/admin
- C. oemsetup.cmd Mode=OEM
- D. setup.exe/configure

**Correct Answer: C**

**Section: (none)**

**Explanation**

**Explanation/Reference:**

Explanation:

References: <https://docs.microsoft.com/en-us/windows-hardware/manufacture/desktop/prepare-a-snapshot-of-the-pc-generalize-and-capture-windows-images-blue-sxs>

**QUESTION 10**

You have an image of Windows 10.

You discover that files in the Windows Component Store are corrupt.

You need to repair the files in the component store.

What should you do?

- A. Run dism.exe and specify the /Cleanup-Image and the /RestoreHealth parameters.
- B. Run dism.exe and specify the /Cleanup-Image and the /StartComponentCleanup parameters.
- C. Run sfc.exe and specify the /scanfile and /offwindir parameters.
- D. Run sfc.exe and specify the /scannow parameter.

**Correct Answer: A**

**Section: (none)**

**Explanation**

**Explanation/Reference:**

Explanation:

**QUESTION 11**

You have a computer that runs Windows 10. The computer starts in UEFI mode and has a 64-bit processor.

You insert a USB key in the computer. The USB key has a drive letter of F.

You need to ensure that you can start the computer by using Windows Preinstallation Environment (Windows PE) from the USB key.

Which two commands should you run? Each correct answer presents part of the solution.

NOTE: Each correct selection is worth one point.

A. makewinpemedia.cmd /UFD C:\WinPe F:



- B. makewinpemedia.cmd /ISO C:\WinPe F:
- C. copype.cmd amd64 C:\WinPe
- D. dism.exe /Export-Image /SourceImageFile:C:\WinPE\boot.wim/SourceIndex:1/DestinationImageFile:F:\boot.wim
- E. copype.cmd x86 C:\WinPe

**Correct Answer:** AE

**Section:** (none)

**Explanation**

**Explanation/Reference:**

Explanation:

References: <https://docs.microsoft.com/en-us/windows-hardware/manufacture/desktop/winpe-create-usb-bootable-drive>

## QUESTION 12

You are preparing a push-button reset solution.

You extract a Windows Recovery Environment (Windows RE) boot image from an image of Windows 10.

You plan to use scanstate.exe to capture several Windows desktop applications.

Which two folders from the Windows Assessment and Deployment Kit (Windows ADK) should you include in the Windows RE build environment?

- A. User State Migration Tool (USMT) and Windows Preinstallation Environment
- B. Windows Preinstallation Environment and Common
- C. User State Migration Tool (USMT) and Windows Setup
- D. Windows Setup and Deployment Tools

**Correct Answer:** C

**Section:** (none)

**Explanation**

**Explanation/Reference:**

Explanation:

References: <https://docs.microsoft.com/en-us/windows-hardware/manufacture/desktop/deploy-push-button-reset-features>

## QUESTION 13

You deploy an image of Windows 10 to a computer, and then you install Microsoft Office 2016 on the computer.

You plan to deliver the computer to a customer.

You need to ensure that the computer meets the terms of the OEM license agreement. The solution must ensure that the customer can customize the Windows operating system, create user accounts, name the computer, and perform other tasks.

Which sysprep.exe parameter should you specify?

- A. /mode
- B. /generalize
- C. /audit
- D. /oobe

**Correct Answer:** D

**Section:** (none)

**Explanation**

**Explanation/Reference:**

Explanation:

References: <https://docs.microsoft.com/en-us/windows-hardware/manufacture/desktop/sysprep-command-line-options>

#### **QUESTION 14**

You have an image of Windows 10 that runs the Windows 10 Anniversary Update.

You plan to deploy the image to several new computers.

You add Microsoft Office 2016 to the image.

You need to ensure that when the image is deployed, users will see the Office 2016 tiles on the Start menu as shown in the exhibit. (Click the Exhibit tab.)



What should you do?

- A. Create a LayoutModification.xml file and save the file in the C:\Users\Default\AppData\Local\Microsoft\Windows\Shell\ folder.
- B. Modify the DefaultLayouts.xml file and save the file in the C:\Users\Default\AppData\Local\Microsoft\WindowsApps\ folder.
- C. Modify the DefaultLayouts.xml file and save the file in the C:\Users\Default\AppData\Local\Microsoft\Windows\Shell\ folder.
- D. Create a LayoutModification.xml file and save the file in the C:\Users\Default\AppData\Local\Microsoft\WindowsApps\ folder.

**Correct Answer:** A

**Section:** (none)

**Explanation**

**Explanation/Reference:**

Explanation:

#### QUESTION 15

You are testing the push-button reset feature.

When you attempt to recover a computer, you discover that after each restart, the computer enters the Installing Windows phase.

You discover that a third-party antivirus application is captured in the customization package.

You need to modify the image to ensure that the push-button reset can complete successfully.

What should you do first?

- A. Run scanstate.exe and specify the /hardlink parameter.
- B. Copy the subfolders of the Windows Assessment and Deployment KIT (Windows ADK) files from the User State Migration Tool (USMT) and Windows Setup.
- C. In the Scanstate configuration file, modify the Migrate attribute for the antivirus application.
- D. Run dism.exe and specify the /Cleanup-Wim and /Cleanup-MountPoints parameters.

**Correct Answer:** B

**Section:** (none)

**Explanation**

**Explanation/Reference:**

Explanation:

#### QUESTION 16

You deploy an image of Windows 10.

From audit mode, you install several applications for a customer, and then you run sysprep.exe/oobe/quit.

You need to identify whether any errors occurred when you ran sysprep.exe.

Which folder contains the log files?

- A. %WINDIR%\Logs
- B. %WINDIR%\System32\LogFiles
- C. %WINDIR%\Panther\
- D. %WINDIR%\System32\Sysprep\Panther

**Correct Answer:** C

**Section:** (none)

**Explanation**

**Explanation/Reference:**

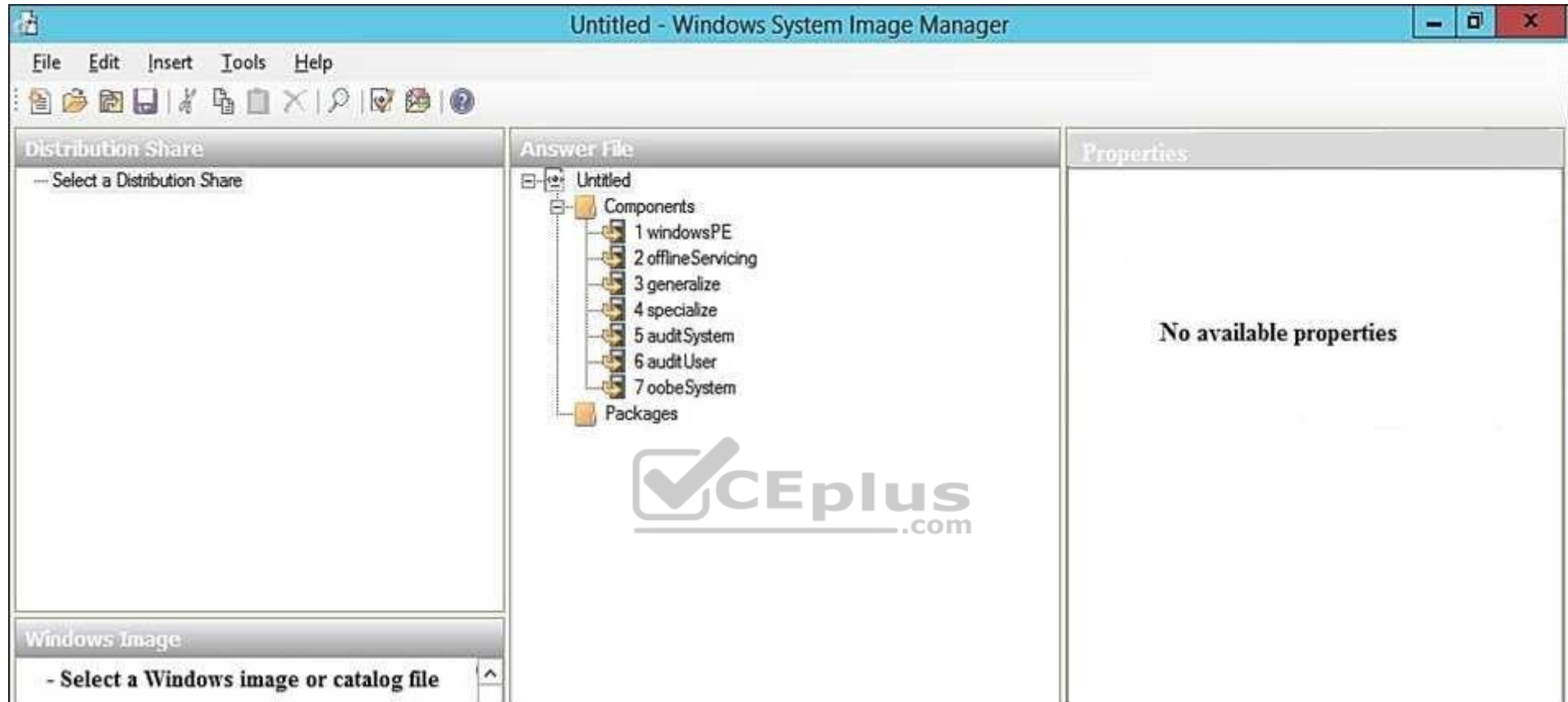
Explanation:

#### QUESTION 17

You have a computer named Computer1 that runs Windows 10.

On Computer1, you have a DVD that contains the installation source files of Windows 10 Pro.

You open Windows System Image Manager as shown in the exhibit. (Click the Exhibit tab.)



You need to configure the answer file for Windows 10 by using Windows System Image Manager (Windows SIM).

What should you do first?

- A. Copy the installation files for Windows 10 to a hard disk.
- B. Create a catalog file (.clg).
- C. Select a distribution share.
- D. Select an image of Windows 10.

**Correct Answer:** A

**Section:** (none)

**Explanation**

**Explanation/Reference:**

Explanation:

References: [https://technet.microsoft.com/en-us/library/cc749317\(v=ws.10\).aspx](https://technet.microsoft.com/en-us/library/cc749317(v=ws.10).aspx)

### QUESTION 18

You create the working directories for a custom Windows Preinstallation Environment (Windows PE) image.

You need to create an ISO image of Windows PE that can be written to a DVD. The ISO image must be bootable.

Which command should you use?

- A. bcdboot.exe
- B. oscdimg.exe
- C. bootsect.exe
- D. etfsboot.exe



**Correct Answer:** B

**Section:** (none)

**Explanation**

**Explanation/Reference:**

Explanation:

References: <https://docs.microsoft.com/en-us/windows-hardware/manufacture/desktop/oscdimg-command-line-options>

### QUESTION 19

You use an answer file to automate the installation of Windows 10.

You need to add your company's support information to computers that you deploy.



<https://www.vceplus.com/>

Which component should you add to the answer file?

- A. Microsoft-Windows-Setup
- B. Microsoft-Windows-PnpCustomizationsNonWinPE
- C. Microsoft-Windows-Shell-Setup
- D. Microsoft-Windows-Deployment

**Correct Answer:** C

**Section:** (none)

**Explanation**

**Explanation/Reference:**

Explanation:

References: <https://docs.microsoft.com/en-us/windows-hardware/customize/desktop/unattend/microsoft-windows-shell-setup-oeminformation>

## QUESTION 20

This question requires that you evaluate the underlined text to determine if it is correct.

To provide the default product key for OEM activation, you create an answer file by using Windows System Image Manager (Windows SIM), and you add the Microsoft-Windows-Shell-Setup component and the ProductKey component to the generalize pass.

Review the underlined text. If it makes the statement correct, select "No change is needed." If the statement is incorrect, select the answer choice that makes the statement correct.

- A. No change is needed.
- B. auditSystem pass
- C. specialize pass



D. windowsPE pass

**Correct Answer:** C

**Section:** (none)

**Explanation**

**Explanation/Reference:**

Explanation:

References: <https://docs.microsoft.com/en-us/windows-hardware/customize/desktop/unattend/microsoft-windows-shell-setup-productkey> **QUESTION 21**

You have a server named Server1 that runs Windows Server 2016. Server1 is located on a network that is disconnected from the Internet.

You have a computer named Computer1 that runs Windows 10.

You download the Windows Assessment and Deployment Kit (Windows ADK) setup on Computer1.

You need to create an installation source on a USB drive that can be used to install Windows ADK on Server1.

Which installation option should you use when you run the Windows ADK setup on Computer1?

- A. /list
- B. /layout
- C. /ceip
- D. /features
- E. /installpath

**Correct Answer:** B

**Section:** (none)

**Explanation**

**Explanation/Reference:**

Explanation:

References: <https://technet.microsoft.com/en-gb/library/dn621908.aspx>

**QUESTION 22**

You have an image of Windows 10 named Image1.wim. Image1.wim contains a Windows Recovery Environment (Windows RE) image.



You need to add a driver to Windows RE.

Which tool or cmdlet should you use?

- A. Windows Imaging and Configuration Designer (Windows ICD)
- B. Windows System Image Manager (Windows SIM)
- C. dism.exe
- D. Add-AppxProvisionedPackage

**Correct Answer:** C

**Section:** (none)

**Explanation**

**Explanation/Reference:**

References: <https://docs.microsoft.com/en-us/windows-hardware/manufacture/desktop/customize-windows-re>

#### QUESTION 23

You have a reference image of the 64-bit version of Windows 10. The reference image contains an application named App1.

You need to ensure that App1 is pinned to the Start menu.

Which tool or tools should you use to apply the custom Start layout to the image?

- A. image.exe and Windows Preinstallation Environment (Windows PE)
- B. dism.exe and File Explorer
- C. Microsoft Application Compatibility Toolkit (ACT)
- D. Windows System Image Manager (Windows SIM)

**Correct Answer:** D

**Section:** (none)

**Explanation**

**Explanation/Reference:**

Explanation:

References: <https://docs.microsoft.com/en-us/windows-hardware/manufacture/desktop/customize-the-start-screen>

#### QUESTION 24

You have a Windows Recovery Environment (Windows RE) image.

You make changes to applications, languages, and updates in the image.

After the changes, the size of the image increases to 500 MB.

You need to modify the deployment script to ensure that the recovery partition has the required amount of free space. The solution must minimize the space of the recovery partition.

To which size should you set the recovery partition?

- A. 550 MB
- B. 820 MB
- C. 1024 MB
- D. 1524 MB

**Correct Answer:** B

**Section:** (none)

**Explanation**

**Explanation/Reference:**

Explanation:

References: <https://docs.microsoft.com/en-us/windows-hardware/manufacture/desktop/configure-uefigpt-based-hard-drive-partitions>

#### **QUESTION 25**

You have a generalized image of the 64-bit version of Windows 10. The image is released to the Out-of-Box-Experience (OOBE).

You need to ensure that when the image is deployed to a computer, the computer starts in audit mode.

What should you do?

- A. Create an answer file, and then copy the answer file to the image.
- B. When the computer starts, press SHIFT+F10, and then run sysprep.exe /audit.
- C. Create a provisioning package, and then copy the provisioning package to the image.
- D. When the computer starts, press SHIFT+F10, and then run imagex.exe.

**Correct Answer:** A

**Section:** (none)

### Explanation

#### Explanation/Reference:

Explanation:

References: <https://docs.microsoft.com/en-us/windows-hardware/manufacture/desktop/boot-windows-to-audit-mode-or-oobe>

#### QUESTION 26

You have an image of Windows 10.

You plan to deploy the image to a new computer.

You run sysprep.exe /generalize /oobe /shutdown, and then you capture the image.

You deploy the image to the computer.

You add an application and a driver to the online image.

You need to prepare the computer for the end user.

Which command should you run?

- A. sysprep.exe /oobe
- B. sysprep.exe /generalize /audit
- C. dism.exe /Apply-Image
- D. imagex.exe /capture

**Correct Answer:** A

**Section:** (none)

### Explanation

#### Explanation/Reference:

Explanation: References: <https://docs.microsoft.com/en-us/windows-hardware/manufacture/desktop/boot-windows-to-audit-mode-or-oobe>

#### QUESTION 27

You plan to deploy a new image of Windows 10.

You mount the image and preinstall an app from the Windows Store.



You need to manually test whether the app runs as expected.

What should you do first?

- A. Start the computer, press SHIFT+10, and then run sfc.exe.
- B. Remove the license file from the package files, and then start the computer in audit mode.
- C. Start the computer in audit mode, and then create a new user profile.
- D. Start the computer, and then complete the Out-of-Box-Experience (OOBE).

**Correct Answer:** D

**Section:** (none)

**Explanation**

**Explanation/Reference:**

Explanation:

#### QUESTION 28

You have an image of Windows 10.

You obtain a feature update for Windows 10.

You need to include the feature update in the image. The solution must minimize the size of the image.

What should you do?

- A. Mount the image. Run `dism.exe /Add-Package`, and then run `dism.exe /Optimize-Image`. Unmount the image.
- B. Deploy the image to a computer. Install the feature update. Optimize the drive, and then capture the image.
- C. Download the new installation media for Windows 10. Install Windows 10 on a computer, and then capture the image.
- D. Mount the image. Run `dism.exe /Add-Package`, and then run `dism.exe /Cleanup-Wim`. Unmount the image.

**Correct Answer:** C

**Section:** (none)

**Explanation**

**Explanation/Reference:**

Explanation:

#### QUESTION 29

Note: This question is part of a series of questions that use the same or similar answer choices. An answer choice may be correct for more than one question in the series. Each question is independent of the other questions in this series. Information and details provided in a question apply only to that question.

You have a computer named Computer1 that runs Windows 10. Computer1 has the Windows Assessment and Deployment Kit (Windows ADK) installed.

You are building a new image of Windows 10.

You have several pictures that you plan to make available as desktop backgrounds.

You copy the installation media for Windows 10 to Computer1.

You need to ensure that the Windows 10 image contains the desktop backgrounds.

What should you do first?

- A. Mount the Install.wim file.
- B. Mount the Boot.wim file.
- C. Modify the Winpeshl.ini file.
- D. Create an answer file.
- E. Modify the Windows.ini file.
- F. Create a provisioning package.
- G. Load a catalog file (.clg).
- H. Create a cabinet file (.cab).



**Correct Answer:** A

**Section:** (none)

**Explanation**

**Explanation/Reference:**

Explanation:

### QUESTION 30

Note: This question is part of a series of questions that use the same or similar answer choices. An answer choice may be correct for more than one question in the series. Each question is independent of the other questions in this series. Information and details provided in a question apply only to that question.

You have a computer named Computer1 that runs Windows 10. Computer1 has the Windows Assessment and Deployment Kit (Windows ADK) installed.

You create the working directories for the customization of a Windows Preinstallation Environment (Windows PE) image.

You need to modify the regional setting used in Windows PE.

What should you do first?

- A. Mount the Install.wim file.
- B. Mount the Boot.wim file.
- C. Modify the Winpeshl.ini file.
- D. Create an answer file.
- E. Modify the Windows.ini file.
- F. Create a provisioning package.
- G. Load a catalog file (.clg).
- H. Create a cabinet file (.cab).

**Correct Answer:** B

**Section:** (none)

**Explanation**

**Explanation/Reference:**

Explanation:

References: <https://docs.microsoft.com/en-us/windows-hardware/manufacture/desktop/winpe-add-packages--optional-components-reference>

### QUESTION 31

Note: This question is part of a series of questions that use the same or similar answer choices. An answer choice may be correct for more than one question in the series. Each question is independent of the other questions in this series. Information and details provided in a question apply only to that question.

You have a computer named Computer1 that runs Windows 10. Computer1 has the Windows Assessment and Deployment Kit (Windows ADK) installed.

You create the working directories for the customization of a Windows Preinstallation Environment (Windows PE) image.

You need to add scripting support to Windows PE.

What should you do first?

- A. Mount the Install.wim file.
- B. Mount the Boot.wim file.
- C. Modify the Winpeshl.ini file.
- D. Create an answer file.
- E. Modify the Windows.ini file.
- F. Create a provisioning package.
- G. Load a catalog file (.clg).

H. Create a cabinet file (.cab).

**Correct Answer:** B

**Section:** (none)

**Explanation**

**Explanation/Reference:**

Explanation:

References: <https://docs.microsoft.com/en-us/windows-hardware/manufacture/desktop/winpe-adding-powershell-support-to-windows-pe>

### QUESTION 32

Note: This question is part of a series of questions that use the same or similar answer choices. An answer choice may be correct for more than one question in the series. Each question is independent of the other questions in this series. Information and details provided in a question apply only to that question.

You have a computer named Computer1 that runs Windows 10. Computer1 has the Windows Assessment and Deployment Kit (Windows ADK) installed.

You are building a new image of Windows 10.

You need to specify how the hard disk will be partitioned during the Windows 10 installation.

What should you do?

- A. Mount the Install.wim file.
- B. Mount the Boot.wim file.
- C. Modify the Winpeshl.ini file.
- D. Create an answer file.
- E. Modify the Windows.ini file.
- F. Create a provisioning package.
- G. Load a catalog file (.clg).
- H. Create a cabinet file (.cab).

**Correct Answer:** D

**Section:** (none)

**Explanation**

**Explanation/Reference:**

Explanation:

### QUESTION 33

Note: This question is part of a series of questions that use the same or similar answer choices. An answer choice may be correct for more than one question in the series. Each question is independent of the other questions in this series. Information and details provided in a question apply only to that question.

You have a computer named Computer1 that runs Windows 10. Computer1 has the Windows Assessment and Deployment Kit (Windows ADK) installed.

You are building a new image of Windows 10.

You copy the installation media for Windows 10 to Computer1.

You need to add drivers to the Windows 10 image.

What should you do first?

- A. Mount the Install.wim file.
- B. Mount the Boot.wim file.
- C. Modify the Winpeshl.ini file.
- D. Create an answer file.
- E. Modify the Windows.ini file.
- F. Create a provisioning package.
- G. Load a catalog file (.clg).
- H. Create a cabinet file (.cab).



**Correct Answer:** A

**Section:** (none)

**Explanation**

**Explanation/Reference:**

Explanation:

### QUESTION 34

Note: This question is part of a series of questions that use the same or similar answer choices. An answer choice may be correct for more than one question in the series. Each question is independent of the other questions in this series. Information and details provided in a question apply only to that question.

You have an image of Windows 10 that you plan to deploy to a new computer.

You need to add the latest cumulative updates to the image.

Which parameter should you specify when you run dism.exe?



- A. /Add-Capability
- B. /Add-Driver
- C. /Add-Package
- D. /Add-ProvisionedAppxPackage
- E. /Apply-CustomDataImage
- F. /Apply-Image
- G. /Apply-Unattend
- H. /Export-Image

**Correct Answer: C**

**Section: (none)**

**Explanation**

**Explanation/Reference:**

Explanation:

References: <https://docs.microsoft.com/en-us/windows-hardware/manufacture/desktop/servicing-the-image-with-windows-updates-sxs>

### QUESTION 35

Note: This question is part of a series of questions that use the same or similar answer choices. An answer choice may be correct for more than one question in the series. Each question is independent of the other questions in this series. Information and details provided in a question apply only to that question.

You have an image of Windows 10 for a new desktop computer model. The computer uses specific out-of-box device drivers stored in the INF format.

You need to update the drivers by using an answer file.

Which parameter should you specify when you run dism.exe?

- A. /Add-Capability
- B. /Add-Driver
- C. /Add-Package
- D. /Add-ProvisionedAppxPackage
- E. /Apply-CustomDataImage
- F. /Apply-Image
- G. /Apply-UnattendH. /Export-Image

**Correct Answer: B**

**Section: (none)**

### Explanation

#### Explanation/Reference:

Explanation:

#### QUESTION 36

Note: This question is part of a series of questions that use the same or similar answer choices. An answer choice may be correct for more than one question in the series. Each question is independent of the other questions in this series. Information and details provided in a question apply only to that question.

You have an image of Windows 10 that you plan to deploy to a new computer.

You need to apply a Universal Windows Platform (UWP) app to the image.

Which parameter should you specify when you run dism.exe?

- A. /Add-Capability
- B. /Add-Driver
- C. /Add-Package
- D. /Add-ProvisionedAppxPackage
- E. /Apply-CustomDataImage
- F. /Apply-Image
- G. /Apply-Unattend
- H. /Export-Image



**Correct Answer:** D

**Section:** (none)

### Explanation

#### Explanation/Reference:

Explanation:

References: <https://docs.microsoft.com/en-us/windows-hardware/manufacture/desktop/add-universal-apps-sxs>

#### QUESTION 37

Note: This question is part of a series of questions that use the same or similar answer choices. An answer choice may be correct for more than one question in the series. Each question is independent of the other questions in this series. Information and details provided in a question apply only to that question.

You have an image of Windows 10 for a new desktop computer model.

You plan to deploy the computer to multiple regions around the world.

You need to add new languages to the image by using Features on Demand language packs.

Which parameter should you specify when you run `dism.exe`?

- A. /Add-Capability
- B. /Add-Driver
- C. /Add-Package
- D. /Add-ProvisionedAppxPackage
- E. /Apply-CustomDataImage
- F. /Apply-Image
- G. /Apply-Unattend
- H. /Export-Image

**Correct Answer:** C

**Section:** (none)

**Explanation**

**Explanation/Reference:**

Explanation:

References: <https://docs.microsoft.com/en-us/windows-hardware/manufacture/desktop/add-drivers-langs-universal-apps-sxs>



### QUESTION 38

Note: This question is part of a series of questions that use the same or similar answer choices. An answer choice may be correct for more than one question in the series. Each question is independent of the other questions in this series. Information and details provided in a question apply only to that question.

You have a custom image of Windows 10.

You need to deploy the image to a computer.

Which parameter should you specify when you run `dism.exe`?

- A. /Add-Capability
- B. /Add-Driver
- C. /Add-Package
- D. /Add-ProvisionedAppxPackage

- E. /Apply-CustomDataImage
- F. /Apply-Image
- G. /Apply-Unattend
- H. /Export-Image

**Correct Answer:** F

**Section:** (none)

**Explanation**

**Explanation/Reference:**

Explanation:

### QUESTION 39

**Note:** This question is part of a series of questions that present the same scenario. Each question in the series contains a unique solution that might meet the stated goals. Some question sets might have more than one correct solution, while others might not have a correct solution.

**After you answer a question in this sections, you will NOT be able to return to it. As a result, these questions will not appear in the review screen.**

You are building a new image of Windows 10 that contains a push-button reset solution.

You need to test whether push-button reset works as expected.

Solution: You start the computer from the installation media for Windows 10. You click **Troubleshoot**, and then you click **System Image Recovery**.

Does this meet the goal?

- A. Yes
- B. No

**Correct Answer:** B

**Section:** (none)

**Explanation**

**Explanation/Reference:**



<https://www.vceplus.com/>

