

70-735.exam.35q

Number: 70-735
Passing Score: 800
Time Limit: 120 min



Website: <https://vceplus.com>
VCE to PDF Converter: <https://vceplus.com/vce-to-pdf/>
Facebook: <https://www.facebook.com/VCE.For.All.VN/>
Twitter : https://twitter.com/VCE_Plus

<https://www.vceplus.com/>

70-735

OEM Manufacturing and Deployment for Windows 10

Exam A

QUESTION 1

Note: This question is part of a series of questions that present the same scenario. Each question in the series contains a unique solution that might meet the stated goals. Some question sets might have more than one correct solution, while others might not have a correct solution.

After you answer a question in this sections, you will NOT be able to return to it. As a result, these questions will not appear in the review screen.

You mount an image of Windows 10.

You download 10 Windows 10 update packages to separate folders. Some of the update packages contain dependencies to the other update packages. You are unaware of the specific dependencies.

You need to add all the update packages to the image in the correct order.

Solution: You copy all the updates to the same folder. You run `dism.exe/Add-Package` once and specify the `/PackagePath` parameter once.

Does this meet the goal?



<https://www.vceplus.com/>



- A. Yes
- B. No

Correct Answer: B

Section: (none)

Explanation

Explanation/Reference:

Explanation:

References: <https://docs.microsoft.com/en-us/windows-hardware/manufacture/desktop/add-or-remove-packages-offline-using-dism>

QUESTION 2

Note: This question is part of a series of questions that present the same scenario. Each question in the series contains a unique solution that might meet the stated goals. Some question sets might have more than one correct solution, while others might not have a correct solution.

After you answer a question in this sections, you will NOT be able to return to it. As a result, these questions will not appear in the review screen.

You mount an image of Windows 10.

You download 10 Windows 10 update packages to separate folders. Some of the update packages contain dependencies to the other update packages. You are unaware of the specific dependencies.

You need to add all the update packages to the image in the correct order.

Solution: You run `dism.exe/Add-Package` once and specify the `/PackagePath` parameter for each folder that contains the updates.

Does this meet the goal?

- A. Yes
- B. No

Correct Answer: B

Section: (none)

Explanation

Explanation/Reference:

Explanation:
References



QUESTION 3

Note: This question is part of a series of questions that present the same scenario. Each question in the series contains a unique solution that might meet the stated goals. Some question sets might have more than one correct solution, while others might not have a correct solution.

After you answer a question in this sections, you will NOT be able to return to it. As a result, these questions will not appear in the review screen.

You are configuring a reference computer for a new UEFI-based deployment image of the 64-bit version of Windows 10. The reference computer has two physical hard disk drives.

You need to configure a partition on Disk 0 to support a recovery partition.

Solution: You create an MSR partition of 120 MB that uses the ReFS file system.

Does this meet the goal?

- A. Yes
- B. No

Correct Answer: B

Section: (none)

Explanation

Explanation/Reference:

Explanation: References: <https://docs.microsoft.com/en-us/windows-hardware/manufacture/desktop/configure-uefigpt-based-hard-drive-partitions>

QUESTION 4

Note: This question is part of a series of questions that present the same scenario. Each question in the series contains a unique solution that might meet the stated goals. Some question sets might have more than one correct solution, while others might not have a correct solution.

After you answer a question in this sections, you will NOT be able to return to it. As a result, these questions will not appear in the review screen.

You are configuring a reference computer for a new UEFI-based deployment image of the 64-bit version of Windows 10. The reference computer has two physical hard disk drives.

You need to configure a partition on Disk 0 to support a recovery partition.

Solution: You create a primary partition of 250 MB that uses the NTFS file system.

Does this meet the goal?

A. Yes

B. No

Correct Answer: B

Section: (none)

Explanation

Explanation/Reference:

Explanation:

This partition must be at least 300 MB

References: <https://docs.microsoft.com/en-us/windows-hardware/manufacture/desktop/configure-uefigpt-based-hard-drive-partitions>

QUESTION 5

Note: This question is part of a series of questions that present the same scenario. Each question in the series contains a unique solution that might meet the stated goals. Some question sets might have more than one correct solution, while others might not have a correct solution.

After you answer a question in this sections, you will NOT be able to return to it. As a result, these questions will not appear in the review screen.

You are configuring a reference computer for a new UEFI-based deployment image of the 64-bit version of Windows 10. The reference computer has two physical hard disk drives.

You need to configure a partition on Disk 0 to support a recovery partition.

Solution: You create an EFI system partition of 150 MB that uses the NTFS file system.

Does this meet the goal?

- A. Yes
- B. No

Correct Answer: B

Section: (none)

Explanation

Explanation/Reference:

Explanation:

References: <https://docs.microsoft.com/en-us/windows-hardware/manufacture/desktop/configure-uefigpt-based-hard-drive-partitions>

QUESTION 6

You plan to create an image of Windows 10 that contains a push-button reset solution. The solution will have custom settings for each edition of Windows 10.

You need to prepare the push-button reset solution.

What should you include in the solution?

- A. an unattended file and a bare metal recovery configuration
- B. an unattended file and extensibility scripts
- C. extensibility scripts and system restore points
- D. a bare metal recovery configuration and Scanstate packages

Correct Answer: B

Section: (none)

Explanation

Explanation/Reference:

Explanation:

References: <https://docs.microsoft.com/en-us/windows-hardware/manufacture/desktop/add-a-script-to-push-button-reset-features>

QUESTION 7 HOTSPOT

You have a reference computer that runs Windows 10. The computer contains a provisioning package named Package1.ppkg. Package1.ppkg is located in C:\Packages\.

You plan to create an image of the reference computer.

You run sysprep.exe on the computer, and then you start the computer by using Windows Preinstallation Environment (Windows PE).

You need to ensure that the image uses the least amount of disk space possible.

How should you complete the command? To answer, select the appropriate options in the answer area.

NOTE: Each correct selection is worth one point.

Hot Area:




Answer Area

dism.exe

	▼
/Add-ProvisioningPackage	
/Append-Image	
/Apply-CustomDataImage	

	▼
/Compact	
/SingleInstance	
/Verify	
/WIMBoot	

	▼	:C:\packages\package1.ppkg/ImagePath:C:\
/ApplyDrive		
/Configfile		
/Confirmtrustedfile		
/CustomDataImage		
/Skipplatformcheck		



Correct Answer:


Answer Area

dism.exe

	▼
/Add-ProvisioningPackage	
/Append-Image	
/Apply-CustomDataImage	

	▼
/Compact	
/SingleInstance	
/Verify	
/WIMBoot	

	▼	:C:\packages\package1.ppkg/ImagePath:C:\
/ApplyDrive		
/Configfile		
/Confirmtrustedfile		
/CustomDataImage		
/Skipplatformcheck		



Section: (none)

Explanation

Explanation/Reference:

QUESTION 8

You deploy Windows 10 and Microsoft Office 2016 to a test computer.

You plan to capture an image of the test computer, and then to deploy the image to computers that will be sold to your customers.

You need to ensure that when a customer first starts an Office application, the customer is prompted to try, buy, or activate Office.

What should you run on the test computer before the capture?



<https://www.vceplus.com/>

- A. officedeploymenttool.exe
- B. setup.exe/admin
- C. oemsetup.cmd Mode=OEM
- D. setup.exe/configure

Correct Answer: C

Section: (none)

Explanation

Explanation/Reference:

Explanation:

References: <https://docs.microsoft.com/en-us/windows-hardware/manufacture/desktop/prepare-a-snapshot-of-the-pc-generalize-and-capture-windows-images-blue-sxs>

QUESTION 9

You have a computer that runs Windows 10. The computer starts in UEFI mode and has a 64-bit processor.

You insert a USB key in the computer. The USB key has a drive letter of F.

You need to ensure that you can start the computer by using Windows Preinstallation Environment (Windows PE) from the USB key.

Which two commands should you run? Each correct answer presents part of the solution.

NOTE: Each correct selection is worth one point.

- A. makewinpemedia.cmd /UFD C:\WinPe F:
- B. makewinpemedia.cmd /ISO C:\WinPe F:



- C. copyype.cmd amd64 C:\WinPe
- D. dism.exe /Export-Image /SourceImageFile:C:\WinPE\boot.wim/SourceIndex:1/DestinationImageFile:F:\boot.wim
- E. copyype.cmd x86 C:\WinPe

Correct Answer: AE

Section: (none)

Explanation

Explanation/Reference:

Explanation: References: <https://docs.microsoft.com/en-us/windows-hardware/manufacture/desktop/winpe-create-usb-bootable-drive>

QUESTION 10

HOTSPOT

You have an image of Windows 10 Anniversary Update.

You plan to deploy the image to several new computers.

You must add Microsoft Office 2016 to the image.

You have a Configuration.xml file that will be used to deploy Office 2016. The contents of the file are shown in the following exhibit.



```
<Configuration>
  <Add OfficeClientEdition="32" Channel="Current">
    <Product ID="O365ProPlusRetail">
      <Language ID="en-us" />
      <Language ID="fr-fr" />
      <Language ID="de-de" />
      <ExcludeApp ID="Access" />
      <ExcludeApp ID="Groove" />
    </Product>
  </Add>
  <Display Level="Full" AcceptEULA="FALSE" />
  <Property Name="AUTOACTIVATE" Value="0" />
  <Property Name="FORCEAPPSHUTDOWN" Value="FALSE" />
  <Property Name="SharedComputerLicensing" Value="0" />
  <Property Name="PinIconsToTaskbar" Value="FALSE" />
</Configuration>
```

Use the drop-down menus to select the answer choice that completes each statement based on the information presented in the graphic.

NOTE: Each correct selection is worth one point.

Hot Area:

Answer Area

The user interface for the Office 2016 installation will be in [answer choice].

	▼
English	
French	
German	

Office 2016 will be installed in [answer choice] mode.

	▼
Interactive	
Shared Licensing	
Silent	

Correct Answer:
Answer Area



The user interface for the Office 2016 installation will be in [answer choice].

	▼
English	
French	
German	

Office 2016 will be installed in [answer choice] mode.

	▼
Interactive	
Shared Licensing	
Silent	

Section: (none)

Explanation

Explanation/Reference:

Explanation:

References: <https://support.office.com/en-gb/article/Configuration-options-for-the-Office-2016-Deployment-Tool-d3879f0d-766c-469c-9440-0a9a2a905ca8>

QUESTION 11

You have an image of Windows 10 that runs the Windows 10 Anniversary Update.

You plan to deploy the image to several new computers.

You add Microsoft Office 2016 to the image.

You need to ensure that when the image is deployed, users will see the Office 2016 tiles on the Start menu as shown in the exhibit. (Click the Exhibit tab.)



What should you do?

- A. Create a LayoutModification.xml file and save the file in the C:\Users\Default\AppData\Local\Microsoft\Windows\Shell\ folder.
- B. Modify the DefaultLayouts.xml file and save the file in the C:\Users\Default\AppData\Local\Microsoft\WindowsApps\ folder.

- C. Modify the DefaultLayouts.xml file and save the file in the C:\Users\Default\AppData\Local\Microsoft\Windows\Shell\ folder.
- D. Create a LayoutModification.xml file and save the file in the C:\Users\Default\AppData\Local\Microsoft\WindowsApps\ folder.

Correct Answer: A

Section: (none)

Explanation

Explanation/Reference:

Explanation:

QUESTION 12

You are testing the push-button reset feature.

When you attempt to recover a computer, you discover that after each restart, the computer enters the Installing Windows phase.

You discover that a third-party antivirus application is captured in the customization package.

You need to modify the image to ensure that the push-button reset can complete successfully.

What should you do first?

- A. Run scanstate.exe and specify the /hardlink parameter.
- B. Copy the subfolders of the Windows Assessment and Deployment KIT (Windows ADK) files from the User State Migration Tool (USMT) and Windows Setup.
- C. In the Scanstate configuration file, modify the Migrate attribute for the antivirus application.
- D. Run dism.exe and specify the /Cleanup-Wim and /Cleanup-MountPoints parameters.

Correct Answer: B

Section: (none)

Explanation

Explanation/Reference:

Explanation:

QUESTION 13

You deploy an image of Windows 10.

From audit mode, you install several applications for a customer, and then you run sysprep.exe/oobe/quit.

You need to identify whether any errors occurred when you ran sysprep.exe.

Which folder contains the log files?

- A. %WINDIR%\Logs
- B. %WINDIR%\System32\LogFiles
- C. %WINDIR%\Panther\
- D. %WINDIR%\System32\Sysprep\Panther

Correct Answer: C

Section: (none)

Explanation

Explanation/Reference:

Explanation:

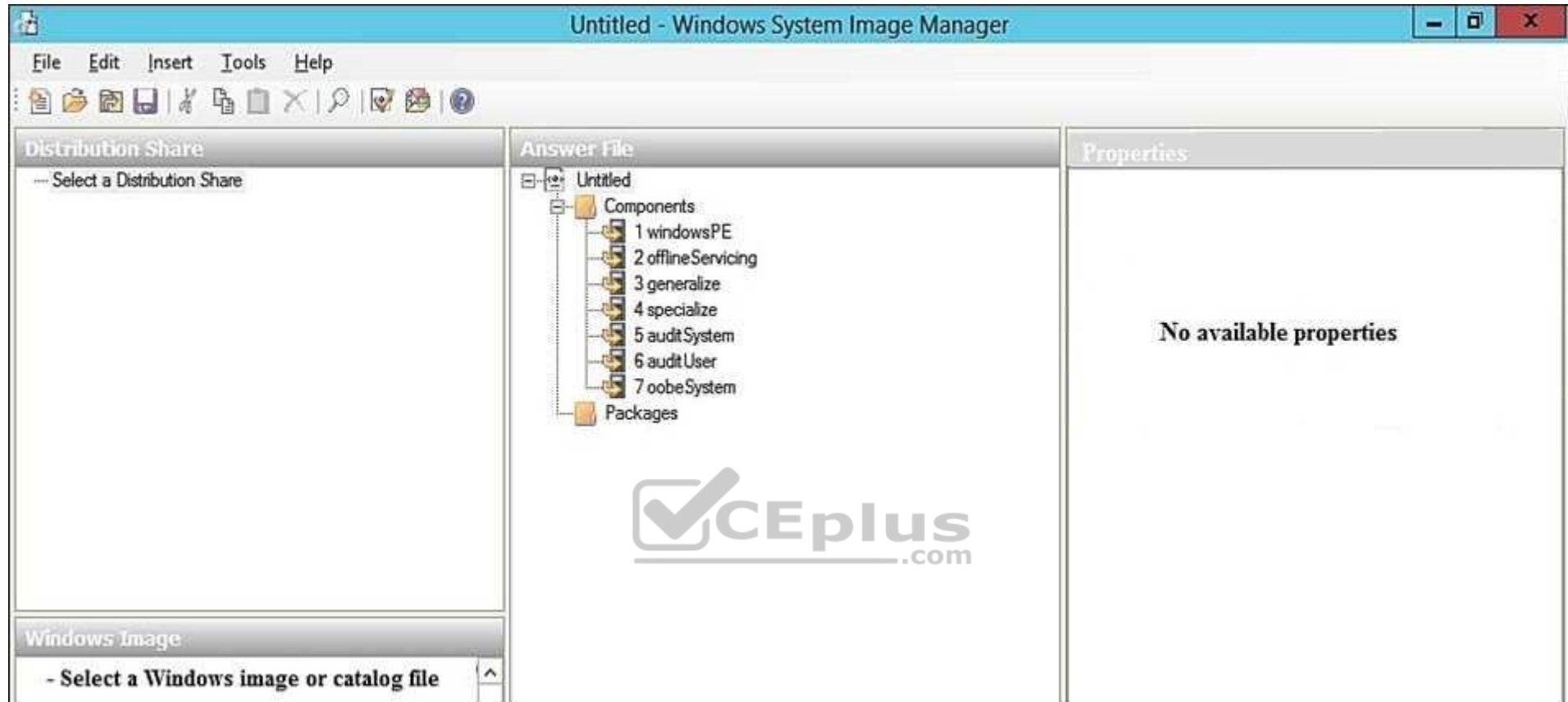
QUESTION 14

You have a computer named Computer1 that runs Windows 10.

On Computer1, you have a DVD that contains the installation source files of Windows 10 Pro.

You open Windows System Image Manager as shown in the exhibit. (Click the Exhibit tab.)





You need to configure the answer file for Windows 10 by using Windows System Image Manager (Windows SIM).

What should you do first?

- A. Copy the installation files for Windows 10 to a hard disk.
- B. Create a catalog file (.clg).
- C. Select a distribution share.
- D. Select an image of Windows 10.

Correct Answer: A

Section: (none)

Explanation

Explanation/Reference:

Explanation:

References: [https://technet.microsoft.com/en-us/library/cc749317\(v=ws.10\).aspx](https://technet.microsoft.com/en-us/library/cc749317(v=ws.10).aspx)

QUESTION 15

You deploy an image of Windows 10 to several computers by using an answer file. The answer file contains the following information.

```
<OEMInformation>
  <Manufacturer>Fabrikam, Inc.</Manufacturer>
  <SupportHours>8 AM - 8 PM (CST) Monday - Friday</SupportHours>
  <SupportPhone>1-800-555-1212</SupportPhone>
  <SupportURL>HTTP://SUPPORT.FABRIKAM.COM</SupportURL>
  <Logo>%windir%\system32\oobe\info\fabrikam.bmp</Logo>
</OEMInformation>
```

You need to verify whether the support information is displayed in Windows.

What should you do?

- A. From the Start menu, open Msconfig.
- B. From the Settings app, click System, and then click About.
- C. From the Start menu, open Msinfo32.
- D. From Control Panel, open System.

Correct Answer: D

Section: (none)

Explanation

Explanation/Reference:

Explanation:

This is a tricky question. The support information is displayed in two places as defined in answers B and D. However, the logo will only be displayed in the System Control Panel applet.

QUESTION 16

You plan to deploy a Windows Preinstallation Environment (Windows PE) image.

Your company uses a graphical application to help installers choose an installation method for Windows 10.

The application must be started by using the following command.

installerGui.bat/Full/Interactive

You need to configure Windows PE to run the graphical application during startup.

Which two actions should you perform? Each correct answer presents part of the solution.

NOTE: Each correct selection is worth one point.

- A. Create a [boot loader] section in the INI file and add the command.
- B. Create a Boot.ini file in the root folder of the image.
- C. Create a Winpeshl.ini file in the \Windows\System32 folder of the image.
- D. Create a [LaunchApp] section in the INI file and add the command.
- E. Create a [LaunchApps] section in the INI file and add the command.

Correct Answer: CE

Section: (none)

Explanation

Explanation/Reference:

Explanation:

References: <https://docs.microsoft.com/en-us/windows-hardware/manufacture/desktop/winpeshlini-reference-launching-an-app-when-winpe-starts>

QUESTION 17

You create the working directories for a custom Windows Preinstallation Environment (Windows PE) image.

You need to create an ISO image of Windows PE that can be written to a DVD. The ISO image must be bootable.

Which command should you use?

- A. bcdboot.exe
- B. oscdimg.exe
- C. bootsect.exe

D. etfsboot.exe

Correct Answer: B

Section: (none)

Explanation

Explanation/Reference:

Explanation:

References: <https://docs.microsoft.com/en-us/windows-hardware/manufacture/desktop/oscdimg-command-line-options>

QUESTION 18

You use an answer file to automate the installation of Windows 10.

You need to add your company's support information to computers that you deploy.

Which component should you add to the answer file?

- A. Microsoft-Windows-Setup
- B. Microsoft-Windows-PnpCustomizationsNonWinPE
- C. Microsoft-Windows-Shell-Setup
- D. Microsoft-Windows-Deployment



Correct Answer: C

Section: (none)

Explanation

Explanation/Reference:

Explanation:

References: <https://docs.microsoft.com/en-us/windows-hardware/customize/desktop/unattend/microsoft-windows-shell-setup-oeminformation>

QUESTION 19

This question requires that you evaluate the underlined text to determine if it is correct.

To provide the default product key for OEM activation, you create an answer file by using Windows System Image Manager (Windows SIM), and you add the Microsoft-Windows-Shell-Setup component and the ProductKey component to the generalize pass.

Review the underlined text. If it makes the statement correct, select “No change is needed.” If the statement is incorrect, select the answer choice that makes the statement correct.



<https://www.vceplus.com/>

- A. No change is needed.
- B. auditSystem pass
- C. specialize pass
- D. windowsPE pass

Correct Answer: C
Section: (none)
Explanation



Explanation/Reference:

Explanation:

References: <https://docs.microsoft.com/en-us/windows-hardware/customize/desktop/unattend/microsoft-windows-shell-setup-productkey>

QUESTION 20

You have an image of Windows 10 named Image1.wim. Image1.wim contains a Windows Recovery Environment (Windows RE) image.

You need to add a driver to Windows RE.

Which tool or cmdlet should you use?

- A. Windows Imaging and Configuration Designer (Windows ICD)
- B. Windows System Image Manager (Windows SIM)
- C. dism.exe
- D. Add-AppxProvisionedPackage

Correct Answer: C

Section: (none)

Explanation

Explanation/Reference:

References: <https://docs.microsoft.com/en-us/windows-hardware/manufacture/desktop/customize-windows-re>

QUESTION 21

You have a reference image of the 64-bit version of Windows 10. The reference image contains an application named App1.

You need to ensure that App1 is pinned to the Start menu.

Which tool or tools should you use to apply the custom Start layout to the image?

- A. image.exe and Windows Preinstallation Environment (Windows PE)
- B. dism.exe and File Explorer
- C. Microsoft Application Compatibility Toolkit (ACT)
- D. Windows System Image Manager (Windows SIM)

Correct Answer: D

Section: (none)

Explanation

Explanation/Reference:

Explanation:

References: <https://docs.microsoft.com/en-us/windows-hardware/manufacture/desktop/customize-the-start-screen>

QUESTION 22

You have a Windows Recovery Environment (Windows RE) image.

You make changes to applications, languages, and updates in the image.

After the changes, the size of the image increases to 500 MB.

You need to modify the deployment script to ensure that the recovery partition has the required amount of free space. The solution must minimize the space of the recovery partition.

To which size should you set the recovery partition?



- A. 550 MB
- B. 820 MB
- C. 1024 MB
- D. 1524 MB

Correct Answer: B

Section: (none)

Explanation

Explanation/Reference:

Explanation:

References: <https://docs.microsoft.com/en-us/windows-hardware/manufacture/desktop/configure-uefigpt-based-hard-drive-partitions>

QUESTION 23

You have an image of Windows 10.

You obtain a feature update for Windows 10.

You need to include the feature update in the image. The solution must minimize the size of the image.

What should you do?

- A. Mount the image. Run `dism.exe /Add-Package`, and then run `dism.exe /Optimize-Image`. Unmount the image.
- B. Deploy the image to a computer. Install the feature update. Optimize the drive, and then capture the image.
- C. Download the new installation media for Windows 10. Install Windows 10 on a computer, and then capture the image.
- D. Mount the image. Run `dism.exe /Add-Package`, and then run `dism.exe /Cleanup-Wim`. Unmount the image.

Correct Answer: C

Section: (none)

Explanation

Explanation/Reference:

Explanation:

QUESTION 24

DRAG DROP

You need to add drivers to an offline image of Windows 10 by using an answer file.

How should you complete the answer file? To answer, drag the appropriate values to the correct locations. Each value may be used once, more than once, or not at all. You may need to drag the split bar between panes or scroll to view content.

Values	Answer Area
OfflineServicing	<?xml version="1.0"?><unattend xmlns="urn:schemas-microsoft-com:unattend" xmlns:wcm="http://schemas.microsoft.com/WMIConfig/2003/managed" >
Microsoft-Windows-Shell-Setup	<settings pass="Value" >
WindowsPe	<component name="Value" >
Microsoft-Windows-PnpCustomizationsNonWinPE	publicKeyToken="31bf385ad364e35" language="neutral" >
	<DriverPaths>
	<PathAndCredentials wcm:keyValue="1">
	<Path>\\server\share\drivers</Path>
	<Credentials>
	<Domain>Fabrikam</Domain>
	<Username>MyUserName</Username>

NOTE: Each correct selection is worth one point.

Select and Place:

Correct Answer:

Section: (none)

Explanation

Explanation/Reference:

QUESTION 25

Values

Answer Area

```
<?xml version="1.0"?><unattend xmlns="urn:schemas-microsoft-com:unattend"
  xmlns:wcm="http://schemas.microsoft.com/WMIConfig/2003/
  <settings pass="OfflineServicing">
    <component name="Microsoft-Windows-
      PnpCustomizationsNonWinPE"
      publicKeyToken="31bf385ad364e35" language="ne
    <DriverPaths>
      <PathAndCredentials wcm:keyValue="1">
        <Path>\\server\share\drivers</Path>
        <Credentials>
          <Domain>Fabrikam</Domain>
          <Username>MyUserName</Username>
```



Note: This question is part of a series of questions that use the same or similar answer choices. An answer choice may be correct for more than one question in the series. Each question is independent of the other questions in this series. Information and details provided in a question apply only to that question.

You have a computer named Computer1 that runs Windows 10. Computer1 has the Windows Assessment and Deployment Kit (Windows ADK) installed.

You are building a new image of Windows 10.

You have several pictures that you plan to make available as desktop backgrounds.

You copy the installation media for Windows 10 to Computer1.

You need to ensure that the Windows 10 image contains the desktop backgrounds.

What should you do first?

- A. Mount the Install.wim file.
- B. Mount the Boot.wim file.

- C. Modify the Winpeshl.ini file.
- D. Create an answer file.
- E. Modify the Windows.ini file.
- F. Create a provisioning package.
- G. Load a catalog file (.clg).
- H. Create a cabinet file (.cab).

Correct Answer: A

Section: (none)

Explanation

Explanation/Reference:

Explanation:

QUESTION 26

Note: This question is part of a series of questions that use the same or similar answer choices. An answer choice may be correct for more than one question in the series. Each question is independent of the other questions in this series. Information and details provided in a question apply only to that question.

You have a computer named Computer1 that runs Windows 10. Computer1 has the Windows Assessment and Deployment Kit (Windows ADK) installed.

You create the working directories for the customization of a Windows Preinstallation Environment (Windows PE) image.

You need to modify the regional setting used in Windows PE.

What should you do first?

- A. Mount the Install.wim file.
- B. Mount the Boot.wim file.
- C. Modify the Winpeshl.ini file.
- D. Create an answer file.
- E. Modify the Windows.ini file.
- F. Create a provisioning package.
- G. Load a catalog file (.clg).
- H. Create a cabinet file (.cab).

Correct Answer: B

Section: (none)

Explanation

Explanation/Reference:

Explanation:

References: <https://docs.microsoft.com/en-us/windows-hardware/manufacture/desktop/winpe-add-packages--optional-components-reference>

QUESTION 27

Note: This question is part of a series of questions that use the same or similar answer choices. An answer choice may be correct for more than one question in the series. Each question is independent of the other questions in this series. Information and details provided in a question apply only to that question.

You have a computer named Computer1 that runs Windows 10. Computer1 has the Windows Assessment and Deployment Kit (Windows ADK) installed.

You create the working directories for the customization of a Windows Preinstallation Environment (Windows PE) image.

You need to add scripting support to Windows PE.

What should you do first?

- A. Mount the Install.wim file.
- B. Mount the Boot.wim file.
- C. Modify the Winpeshl.ini file.
- D. Create an answer file.
- E. Modify the Windows.ini file.
- F. Create a provisioning package.
- G. Load a catalog file (.clg).
- H. Create a cabinet file (.cab).

Correct Answer: B

Section: (none)

Explanation

Explanation/Reference:

Explanation:

References: <https://docs.microsoft.com/en-us/windows-hardware/manufacture/desktop/winpe-adding-powershell-support-to-windows-pe>



QUESTION 28

Note: This question is part of a series of questions that use the same or similar answer choices. An answer choice may be correct for more than one question in the series. Each question is independent of the other questions in this series. Information and details provided in a question apply only to that question.

You have a computer named Computer1 that runs Windows 10. Computer1 has the Windows Assessment and Deployment Kit (Windows ADK) installed.

You are building a new image of Windows 10.

You need to specify how the hard disk will be partitioned during the Windows 10 installation.

What should you do?

- A. Mount the Install.wim file.
- B. Mount the Boot.wim file.
- C. Modify the Winpeshl.ini file.
- D. Create an answer file.
- E. Modify the Windows.ini file.
- F. Create a provisioning package.
- G. Load a catalog file (.clg).
- H. Create a cabinet file (.cab).



Correct Answer: D

Section: (none)

Explanation

Explanation/Reference:

Explanation:

QUESTION 29

Note: This question is part of a series of questions that use the same or similar answer choices. An answer choice may be correct for more than one question in the series. Each question is independent of the other questions in this series. Information and details provided in a question apply only to that question.

You install Windows 10 on several devices.

You need to add a trusted root certificate to the devices. You must achieve the goal without reinstalling Windows 10.

What should you do?

- A. Mount the Install.wim file.

- B. Mount the Boot.wim file.
- C. Modify the Winpeshl.ini file.
- D. Create an answer file.
- E. Modify the Windows.ini file.
- F. Create a provisioning package.
- G. Load a catalog file (.clg).
- H. Create a cabinet file (.cab).

Correct Answer: F

Section: (none)

Explanation

Explanation/Reference:

Explanation:

QUESTION 30

Note: This question is part of a series of questions that use the same or similar answer choices. An answer choice may be correct for more than one question in the series. Each question is independent of the other questions in this series. Information and details provided in a question apply only to that question.

You have a computer named Computer1 that runs Windows 10. Computer1 has the Windows Assessment and Deployment Kit (Windows ADK) installed.

You are building a new image of Windows 10.

You copy the installation media for Windows 10 to Computer1.

You need to add drivers to the Windows 10 image.

What should you do first?

- A. Mount the Install.wim file.
- B. Mount the Boot.wim file.
- C. Modify the Winpeshl.ini file.
- D. Create an answer file.
- E. Modify the Windows.ini file.
- F. Create a provisioning package.
- G. Load a catalog file (.clg).
- H. Create a cabinet file (.cab).

Correct Answer: A

Section: (none)

Explanation

Explanation/Reference:

Explanation:

QUESTION 31

Note: This question is part of a series of questions that use the same or similar answer choices. An answer choice may be correct for more than one question in the series. Each question is independent of the other questions in this series. Information and details provided in a question apply only to that question.

You have a computer named Computer1 that runs Windows 10. Computer1 has the Windows Assessment and Deployment Kit (Windows ADK) installed.

You are building a new image of Windows 10.

You have a network share that contains the driver files. Each driver is comprised of an INF file and several DLL files.

You need to add the drivers to computers that are installed by using the Windows 10 image. You must achieve the goal without adding the drivers to the image.

What should you do?

- A. Mount the Install.wim file.
- B. Mount the Boot.wim file.
- C. Modify the Winpeshl.ini file.
- D. Create an answer file.
- E. Modify the Windows.ini file.
- F. Create a provisioning package.
- G. Load a catalog file (.clg).
- H. Create a cabinet file (.cab).

Correct Answer: D

Section: (none)

Explanation

Explanation/Reference:

Explanation:

QUESTION 32

Note: This question is part of a series of questions that use the same or similar answer choices. An answer choice may be correct for more than one question in the series. Each question is independent of the other questions in this series. Information and details provided in a question apply only to that question.

You have an image of Windows 10 that you plan to deploy to a new computer.

You need to add the latest cumulative updates to the image.

Which parameter should you specify when you run dism.exe?

- A. /Add-Capability
- B. /Add-Driver
- C. /Add-Package
- D. /Add-ProvisionedAppxPackage
- E. /Apply-CustomDataImage
- F. /Apply-Image
- G. /Apply-Unattend
- H. /Export-Image

Correct Answer: C

Section: (none)

Explanation



Explanation/Reference:

Explanation:

References: <https://docs.microsoft.com/en-us/windows-hardware/manufacture/desktop/servicing-the-image-with-windows-updates-sxs>

QUESTION 33

Note: This question is part of a series of questions that use the same or similar answer choices. An answer choice may be correct for more than one question in the series. Each question is independent of the other questions in this series. Information and details provided in a question apply only to that question.

You have an image of Windows 10 for a new desktop computer model. The computer uses specific out-of-box device drivers stored in the INF format.

You need to update the drivers by using an answer file.

Which parameter should you specify when you run dism.exe?

- A. /Add-Capability
- B. /Add-Driver

- C. /Add-Package
- D. /Add-ProvisionedAppxPackage
- E. /Apply-CustomDataImage
- F. /Apply-Image
- G. /Apply-UnattendH. /Export-Image

Correct Answer: B

Section: (none)

Explanation

Explanation/Reference:

Explanation:

QUESTION 34

Note: This question is part of a series of questions that use the same or similar answer choices. An answer choice may be correct for more than one question in the series. Each question is independent of the other questions in this series. Information and details provided in a question apply only to that question.

You have an image of Windows 10 for a new desktop computer model.

You plan to deploy the computer to multiple regions around the world.

You need to add new languages to the image by using Features on Demand language packs.

Which parameter should you specify when you run dism.exe?

- A. /Add-Capability
- B. /Add-Driver
- C. /Add-Package
- D. /Add-ProvisionedAppxPackage
- E. /Apply-CustomDataImage
- F. /Apply-Image
- G. /Apply-Unattend
- H. /Export-Image

Correct Answer: C

Section: (none)

Explanation

Explanation/Reference:

Explanation: References: <https://docs.microsoft.com/en-us/windows-hardware/manufacture/desktop/add-drivers-langs-universal-apps-sxs>

QUESTION 35

Note: This question is part of a series of questions that use the same or similar answer choices. An answer choice may be correct for more than one question in the series. Each question is independent of the other questions in this series. Information and details provided in a question apply only to that question.

You have a custom image of Windows 10.

You need to deploy the image to a computer.

Which parameter should you specify when you run dism.exe?

- A. /Add-Capability
- B. /Add-Driver
- C. /Add-Package
- D. /Add-ProvisionedAppxPackage
- E. /Apply-CustomDataImage
- F. /Apply-Image
- G. /Apply-Unattend
- H. /Export-Image

Correct Answer: F

Section: (none)

Explanation

Explanation/Reference:

Explanation:



<https://www.vceplus.com/>

