

98-367.exam.69q

Number: 98-367
Passing Score: 800
Time Limit: 120 min



Website: <https://vceplus.com>

VCE to PDF Converter: <https://vceplus.com/vce-to-pdf/>

Facebook: <https://www.facebook.com/VCE.For.All.VN/>

Twitter : https://twitter.com/VCE_Plus

<https://vceplus.com/>

98-367

Security fundamentals

Exam A

QUESTION 1

To prevent users from copying data to removable media, you should:



<https://vceplus.com/>

- A. Lock the computer cases
- B. Apply a group policy
- C. Disable copy and paste
- D. Store media in a locked room

Correct Answer: B

Section: (none)

Explanation

Explanation/Reference:

Reference: <http://blogs.technet.com/b/askds/archive/2008/08/25/removable-storage-group-policy-and-windows-server-2008-and-windows-vista.aspx>

QUESTION 2

You are an intern at Wide World Importers and help manage 1000 workstations. All the workstations are members of an Active Domain.

You need to push out an internal certificate to Internet Explorer on all workstations.

What is the quickest method to do this?

- A. Local policy
- B. Logon script
- C. Windows Update
- D. Group policy

Correct Answer: A



Section: (none)

Explanation

Explanation/Reference:

QUESTION 3

In Internet Explorer 8, the InPrivate Browsing feature prevents:

- A. Unauthorized private data input.
- B. Unencrypted communication between the client computer and the server.
- C. User credentials from being sent over the Internet.
- D. Any session data from being stored on the computer.

Correct Answer: D

Section: (none)

Explanation

Explanation/Reference:

Reference: <http://windows.microsoft.com/en-us/windows/what-is-inprivate-browsing>

QUESTION 4

The purpose of a digital certificate is to verify that a:

- A. Public key belongs to a sender.
- B. Computer is virus-free.
- C. Private key belongs to a sender.
- D. Digital document is complete.

Correct Answer: A

Section: (none)

Explanation

Explanation/Reference:

Explanation:

In cryptography, a public key certificate (also known as a digital certificate or identity certificate) is an electronic document that uses a digital signature to bind a public key with an identity.

QUESTION 5

A mail system administrator scans for viruses in incoming emails to increase the speed of mail processing.

Select the correct answer if the underlined text does not make the statement correct. Select "No change is needed" if the underlined text makes the statement correct.

- A. Decrease the chances of a virus getting to a client machine
- B. Verify that the senders of the messages are legitimate C. Ensure that all links in the messages are trustworthy
- D. No change is needed.

Correct Answer: A

Section: (none)

Explanation

Explanation/Reference:

QUESTION 6

You are volunteering at an organization that gets a brand new web server. To make the server more secure, you should add a second administrator account.

Select the correct answer if the underlined text does not make the statement correct. Select "No change is needed" if the underlined text makes the statement correct.

- A. Disable unused services
- B. Enable LM authenticationC. Enable NTLM authentication
- D. No change is needed.

Correct Answer: A

Section: (none)

Explanation

Explanation/Reference:

QUESTION 7

Role separation improves server security by:



<https://vceplus.com/>

- A. Enforcing principle of least privilege.
- B. Installing applications on separate hard disks.
- C. Physically separating high security servers from other servers.
- D. Placing servers on separate VLANs.

Correct Answer: A

Section: (none)

Explanation

Explanation/Reference:



QUESTION 8

The Windows Firewall protects computers from unauthorized network connections.

Select the correct answer if the underlined text does not make the statement correct. Select "No change is needed" if the underlined text makes the statement correct.

- A. Email viruses
- B. Phishing scams
- C. Unencrypted network access
- D. No change is needed

Correct Answer: D

Section: (none)

Explanation

Explanation/Reference:

QUESTION 9

Coho Winery wants to increase their web presence and hires you to set up a new web server. Coho already has servers for their business and would like to avoid purchasing a new one.

Which server is best to use as a web server, considering the security and performance concerns?

- A. SQL Server
- B. File Server
- C. Domain Controller
- D. Application Server

Correct Answer: C

Section: (none)

Explanation

Explanation/Reference:

QUESTION 10

A user who receives a large number of emails selling prescription medicine is probably receiving pharming mail.

Select the correct answer if the underlined text does not make the statement correct. Select "No change is needed" if the underlined text makes the statement correct.

- A. Malware
- B. Spoofed mail
- C. Spam
- D. No change is needed.

Correct Answer: C

Section: (none)

Explanation

Explanation/Reference:

QUESTION 11

The client computers on your network are stable and do not need any new features.

Which is a benefit of applying operating system updates to these clients?

- A. Keep the software licensed
- B. Keep the server ports available
- C. Update the hardware firewall
- D. Close existing vulnerabilities

Correct Answer: D

Section: (none)

Explanation

Explanation/Reference:

QUESTION 12

Which password attack uses all possible alpha numeric combinations?

- A. Social engineering
- B. Brute force attack
- C. Dictionary attack
- D. Rainbow table attack



Correct Answer: C

Section: (none)

Explanation

Explanation/Reference:

QUESTION 13

A digitally signed e-mail message:

- A. Validates the recipient
- B. Validates the sender
- C. Is encrypted
- D. Is virus-free

Correct Answer: B

Section: (none)

Explanation

Explanation/Reference:

Explanation:

By digitally signing a message, you apply your unique digital mark to the message. The digital signature includes your certificate and public key. This information proves to the recipient that you signed the contents of the message and not an imposter, and that the contents have not been altered in transit.

Reference: <http://office.microsoft.com/en-us/outlook-help/secure-messages-with-a-digital-signature-HP001230539.aspx>

QUESTION 14

Passwords that contain recognizable words are vulnerable to a:

- A. Denial of Service attack
- B. Hashing attack
- C. Dictionary attack
- D. Replay attack

Correct Answer: C

Section: (none)

Explanation

Explanation/Reference:

Explanation:

A dictionary attack is a method of breaking into a password-protected computer or server by systematically entering every word in a dictionary as a password. A dictionary attack can also be used in an attempt to find the key necessary to decrypt an encrypted message or document.

Dictionary attacks work because many computer users and businesses insist on using ordinary words as passwords. Dictionary attacks are rarely successful against systems that employ multiple-word phrases, and unsuccessful against systems that employ random combinations of uppercase and lowercase letters mixed up with numerals.

Reference: <http://searchsecurity.techtarget.com/definition/dictionary-attack>

QUESTION 15

Account lockout policies are used to prevent which type of security attack?

- A. Brute force attacks
- B. Users sharing passwords
- C. Social engineering
- D. Passwords being reused immediately

Correct Answer: A

Section: (none)

Explanation

Explanation/Reference:

QUESTION 16

What is the standard or basic collection of NTFS permissions?



<https://vceplus.com/>

- A. Read and execute, read, write, full control, modify, list folder contents
- B. Change permissions, read permissions, write permissions
- C. Read attributes, list folder/read data, traverse folder/execute file
- D. Create files/write data, create folders/append data, take ownership

Correct Answer: A

Section: (none)

Explanation

Explanation/Reference:

Reference: <http://technet.microsoft.com/en-us/library/bb727008.aspx>

QUESTION 17

Which is the minimum requirement to create BitLocker-To-Go media on a client computer?

- A. Windows XP Professional Service Pack 3
- B. Windows Vista Enterprise Edition
- C. Windows 7 Enterprise Edition
- D. Windows 2000 Professional Service Pack 4

Correct Answer: A

Section: (none)

Explanation

Explanation/Reference:

QUESTION 18

Which enables you to change the permissions on a folder?

- A. Take ownership
- B. Extended attributes
- C. Auditing
- D. Modify

Correct Answer: D

Section: (none)

Explanation

Explanation/Reference:

QUESTION 19

A group of users has access to Folder A and all of its contents. You need to prevent some of the users from accessing a subfolder inside Folder A.

What should you do first?

- A. Disable folder sharing
- B. Hide the folder
- C. Change the owner
- D. Block inheritance

Correct Answer: A

Section: (none)

Explanation

Explanation/Reference:

QUESTION 20

What are three examples of two-factor authentication? (Choose three.)

- A. A fingerprint and a pattern
- B. A password and a smart card

- C. A username and a password
- D. A password and a pin number
- E. A pin number and a debit card

Correct Answer: ABE

Section: (none)

Explanation

Explanation/Reference:

Explanation:

At minimum two-factor authentication requires two out of three regulatory-approved authentication variables such as:

- Something you know (like the PIN on your bank card or email password).
- Something you have (the physical bank card or a authenticator token). ▪

Something you are (biometrics like your finger print or iris pattern).

QUESTION 21

You need to limit the programs that can run on client computers to a specific list.

Which technology should you implement?

- A. Windows Security Center
- B. Security Accounts Manager
- C. System Configuration Utility
- D. AppLocker group policies



Correct Answer: A

Section: (none)

Explanation

Explanation/Reference:

QUESTION 22

The purpose of User Account Control (UAC) is to:

- A. Encrypt the user's account
- B. Limit the privileges of software
- C. Secure your data from corruption
- D. Facilitate Internet filtering

Correct Answer: B

Section: (none)

Explanation

Explanation/Reference:

Explanation:

User Account Control (UAC) is a technology and security infrastructure introduced with Microsoft's Windows machines. It aims to improve the security of Microsoft Windows by limiting application software to standard user privileges until an administrator authorizes an increase or elevation. In this way, only applications trusted by the user may receive administrative privileges, and malware should be kept from compromising the operating system.

QUESTION 23

What does implementing Windows Server Update Services (WSUS) allow a company to manage?

- A. Shared private encryption key updates
- B. Updates to Group Policy Objects
- C. Active Directory server replication
- D. Windows updates for workstations and servers

Correct Answer: D

Section: (none)

Explanation



Explanation/Reference:

QUESTION 24

The purpose of Microsoft Baseline Security Analyzer is to:

- A. List system vulnerabilities.
- B. Apply all current patches to a server.
- C. Set permissions to a default level.
- D. Correct a company's security state.

Correct Answer: A

Section: (none)

Explanation

Explanation/Reference:

QUESTION 25

The Graphic Design Institute hires you to help them set up a server for their 20-person team.

As a general practice of hardening the server, you start by performing which two tasks? (Choose two.)

- A. Disable the guest account.
- B. Rename the admin account.
- C. Remove the account lockout policy.
- D. Format partitions with FAT32.

Correct Answer: AB

Section: (none)

Explanation

Explanation/Reference:

QUESTION 26

What is a common method for password collection?



<https://vceplus.com/>

- A. Email attachments
- B. Back door intrusions
- C. SQL Injection
- D. Network sniffers

Correct Answer: D

Section: (none)

Explanation

Explanation/Reference:

QUESTION 27

Which provides the highest level of security in a firewall?

- A. Stateful inspection
- B. Outbound packet filters
- C. Stateless inspection
- D. Inbound packet filters

Correct Answer: A

Section: (none)

Explanation

Explanation/Reference:

QUESTION 28

The primary method of authentication in an SSL connection is passwords.

To answer, choose the option "No change is needed" if the underlined text is correct. If the underlined text is not correct, choose the correct answer.

- A. No change is needed
- B. Certificates
- C. IPsec
- D. Biometrics

Correct Answer: B

Section: (none)

Explanation

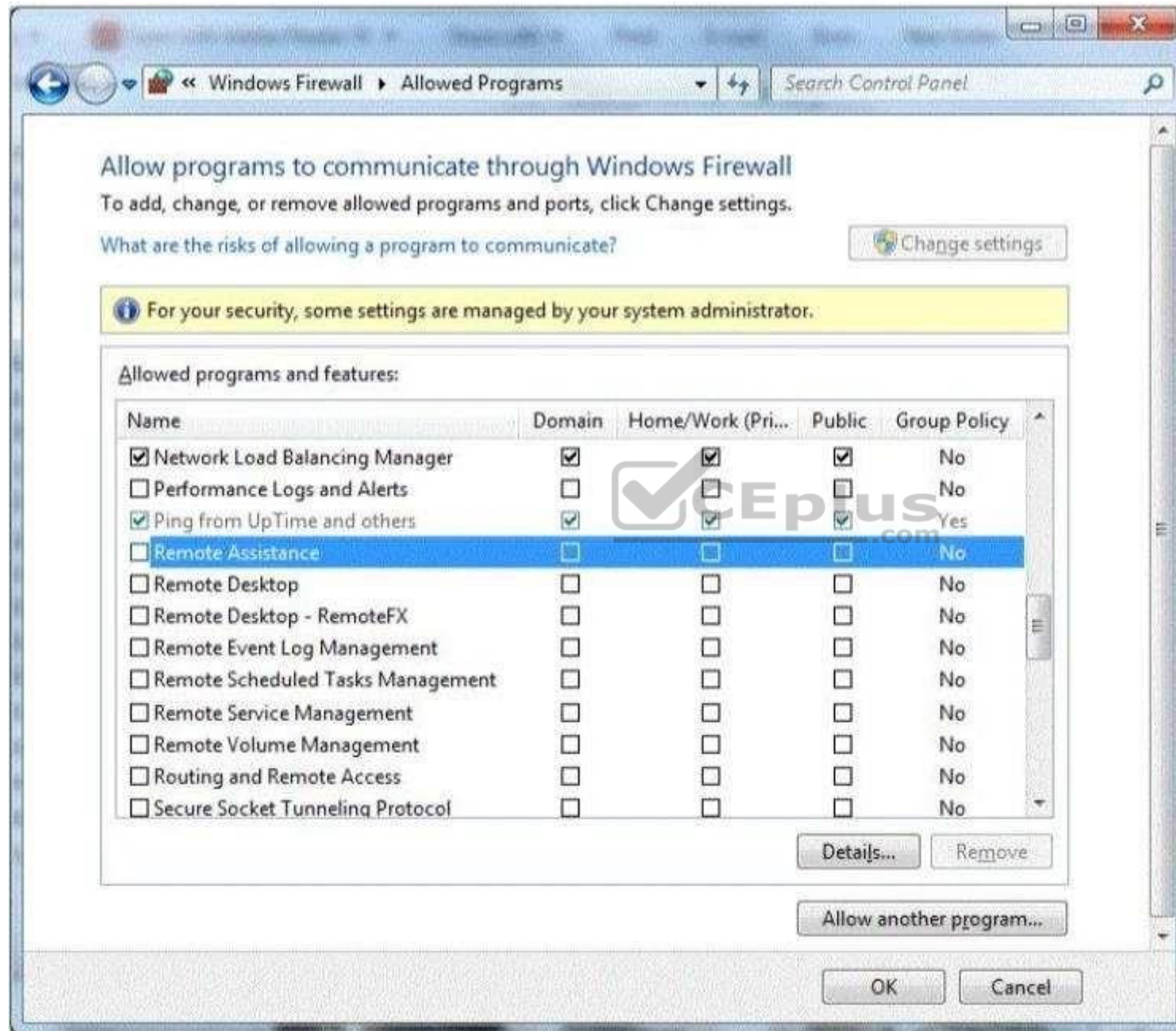
Explanation/Reference:

Reference: https://www.geocerts.com/ssl/understanding_authentication

QUESTION 29

You are setting up Remote Desktop on your computer. Your computer is a member of a domain.

Your firewall configuration is shown in the following image:



You need to allow Remote Desktop to be able to get through your firewall for users on your company's network.

Which settings should you enable?

- A. Remote Assistance: Home/Work (Private)
- B. Remote Desktop: Public
- C. Remote Desktop: Home/Work (Private)
- D. Remote Assistance: Domain

Correct Answer: A

Section: (none)

Explanation

Explanation/Reference:

QUESTION 30

You are trying to connect to an FTP server on the Internet from a computer in a school lab. You cannot get a connection. You try on another computer with the same results. The computers in the lab are able to browse the Internet.

You are able to connect to this FTP server from home.

What could be blocking the connection to the server?

- A. A layer-2 switch
- B. A wireless access point
- C. A firewall
- D. A layer-2 hub

Correct Answer: C

Section: (none)

Explanation

Explanation/Reference:

QUESTION 31

What does NAT do?

- A. It encrypts and authenticates IP packets.
- B. It provides caching and reduces network traffic.

- C. It translates public IP addresses to private addresses and vice versa.
- D. It analyzes incoming and outgoing traffic packets.

Correct Answer: C

Section: (none)

Explanation

Explanation/Reference:

Reference: http://en.wikipedia.org/wiki/Network_address_translation

QUESTION 32

The default password length for a Windows Server domain controller is:

- A. 0
- B. 5
- C. 7
- D. 14

Correct Answer: C

Section: (none)

Explanation



Explanation/Reference:

QUESTION 33

HOTSPOT

For each of the following statements, select Yes if the statement is true. Otherwise, select No. Each correct selection is worth one point.

Hot Area:

Answer Area

	Yes	No
There are several built-in basic audit policies and advanced audit policies in Windows.	<input type="radio"/>	<input type="radio"/>
Advanced audit policies applied by a Group Policy are compatible with a basic audit policy.	<input type="radio"/>	<input type="radio"/>
A system access control list (SACL) enables administrators to log attempts to access a secured object.	<input type="radio"/>	<input type="radio"/>

Correct Answer:

Answer Area

	Yes	No
There are several built-in basic audit policies and advanced audit policies in Windows.	<input checked="" type="radio"/>	<input type="radio"/>
Advanced audit policies applied by a Group Policy are compatible with a basic audit policy.	<input type="radio"/>	<input checked="" type="radio"/>
A system access control list (SACL) enables administrators to log attempts to access a secured object.	<input checked="" type="radio"/>	<input type="radio"/>

Section: (none)
Explanation

Explanation/Reference:

QUESTION 34

You create a web server for your school. When users visit your site, they get a certificate error that says your site is not trusted.

What should you do to fix this problem?

- A. Install a certificate from a trusted Certificate Authority (CA).
- B. Use a digital signature.
- C. Generate a certificate request.
- D. Enable Public Keys on your website.

Correct Answer: A

Section: (none)

Explanation

Explanation/Reference:

QUESTION 35

What is an example of non-propagating malicious code?

- A. A back door
- B. A hoax
- C. A Trojan horse
- D. A worm

Correct Answer: A

Section: (none)

Explanation

Explanation/Reference:

QUESTION 36

A brute force attack:

- A. Uses response filtering
- B. Tries all possible password variations
- C. Uses the strongest possible algorithms



D. Targets all the ports

Correct Answer: B

Section: (none)

Explanation

Explanation/Reference:

QUESTION 37

Humongous Insurance is an online healthcare insurance company. During an annual security audit a security firm tests the strength of the company's password policy and suggests that Humongous Insurance implement password history policy.

What is the likely reason that the security firm suggests this?

- A. Past passwords were easily cracked by the brute force method.
- B. Past passwords of users contained dictionary words.
- C. Previous password breaches involved use of past passwords.
- D. Past passwords lacked complexity and special characters.

Correct Answer: B

Section: (none)

Explanation

Explanation/Reference:

QUESTION 38

The WPA2 PreShared Key (PSK) is created by using a passphrase (password) and salting it with the WPS PIN.

Select the correct answer if the underlined text does not make the statement correct. Select "No change is needed" if the underlined text makes the statement correct.



<https://vceplus.com/>

- A. Service Set Identifier (SSID)
- B. Admin password
- C. WEP key
- D. No change is needed

Correct Answer: A

Section: (none)

Explanation

Explanation/Reference:

QUESTION 39

What are three major attack vectors that a social engineering hacker may use? (Choose three.)

- A. Telephone
- B. Reverse social engineering
- C. Waste management
- D. Honey pot systemsE. Firewall interface



Correct Answer: ABC

Section: (none)

Explanation

Explanation/Reference:

QUESTION 40

Which two security settings can be controlled by using group policy? (Choose two.)

- A. Password complexity
- B. Access to the Run... command
- C. Automatic file locking
- D. Encrypted access from a smart phone

Correct Answer: AB

Section: (none)

Explanation

Explanation/Reference:

Reference: <http://technet.microsoft.com/en-us/library/cc875814.aspx>

QUESTION 41

Cookies impact security by enabling: (Choose two.)

- A. Storage of Web site passwords.
- B. Higher security Web site protections.
- C. Secure Sockets Layer (SSL).
- D. Web sites to track browsing habits.

Correct Answer: AD

Section: (none)

Explanation

Explanation/Reference:

Reference: http://en.wikipedia.org/wiki/HTTP_cookie



QUESTION 42

To keep third-party content providers from tracking your movements on the web, enable InPrivate Browsing.

Select the correct answer if the underlined text does not make the statement correct. Select "No change is needed" if the underlined text makes the statement correct.

- A. InPrivate Filtering
- B. SmartScreen Filter
- C. Compatibility Mode
- D. No change is needed

Correct Answer: A

Section: (none)

Explanation

Explanation/Reference:

QUESTION 43

Which enables access to all of the logged-in user's capabilities on a computer?

- A. Java applets
- B. ActiveX controls
- C. Active Server Pages (ASP)
- D. Microsoft Silverlight

Correct Answer: B

Section: (none)

Explanation

Explanation/Reference:

QUESTION 44

You need to install a domain controller in a branch office. You also need to secure the information on the domain controller. You will be unable to physically secure the server.

Which should you implement?

- A. Read-Only Domain Controller
- B. Point-to-Point Tunneling Protocol (PPTP)
- C. Layer 2 Tunneling Protocol (L2TP)
- D. Server Core Domain Controller

Correct Answer: A

Section: (none)

Explanation

Explanation/Reference:

Explanation:

A read-only domain controller (RODC) is a new type of domain controller in the Windows Server® 2008 operating system. With an RODC, organizations can easily deploy a domain controller in locations where physical security cannot be guaranteed. An RODC hosts read-only partitions of the Active Directory® Domain Services (AD DS) database.

Explanation: [http://technet.microsoft.com/en-us/library/cc732801\(v=ws.10\).aspx](http://technet.microsoft.com/en-us/library/cc732801(v=ws.10).aspx)

QUESTION 45

E-mail spoofing:

- A. Forwards e-mail messages to all contacts

- B. Copies e-mail messages sent from a specific user
- C. Obscures the true e-mail sender
- D. Modifies e-mail routing logs

Correct Answer: C

Section: (none)

Explanation

Explanation/Reference:

Reference: <http://www.microsoft.com/mscorp/safety/technologies/senderid/technology.msp>

QUESTION 46

What is the primary advantage of using Active Directory Integrated Zones?

- A. Zone encryption
- B. Password protection
- C. Non-repudiation
- D. Secure replication

Correct Answer: D

Section: (none)

Explanation

Explanation/Reference:

Reference: <http://books.google.com/books?id=CYy-2LBZCVgC&pg=PA201&dq=%22Active+Directory+Integrated+Zones%22,+Secure+replication&hl=en&sa=X&ei=9s92U-v1KI-zyASjzILIDg&ved=0CE0Q6AEwAQ#v=onepage&q=%22Active%20Directory%20Integrated%20Zones%22%2C%20Secure%20replication&f=false>

QUESTION 47

Where should you lock up the backup tapes for your servers?

- A. The server room
- B. A filing cabinet
- C. The tape library
- D. An offsite fire safe

Correct Answer: D

Section: (none)

Explanation



Explanation/Reference:

Explanation:

Backup tapes should be stored off site, preferably in a fire safe, so that the data is available should a fire, flood, or other disaster affect the location where the servers are.

QUESTION 48

Which is a special folder permission?

- A. Read
- B. Modify
- C. Write
- D. Delete

Correct Answer: D

Section: (none)

Explanation

Explanation/Reference:

Reference: <http://support.microsoft.com/kb/308419>

**QUESTION 49**

When conducting a security audit the first step is to:

- A. Inventory the company's technology assets
- B. Install auditing software on your servers
- C. Set up the system logs to audit security events
- D. Set up a virus quarantine area

Correct Answer: A

Section: (none)

Explanation

Explanation/Reference:

QUESTION 50

You are an intern at Litware, Inc. Your manager asks you to make password guess attempts harder by limiting login attempts on company computers.

What should you do?

- A. Enforce password sniffing.

- B. Enforce password history.
- C. Make password complexity requirements higher.
- D. Implement account lockout policy.

Correct Answer: D

Section: (none)

Explanation

Explanation/Reference:

Reference: <http://technet.microsoft.com/en-us/library/dd277400.aspx>

QUESTION 51

You need to grant a set of users write access to a file on a network share. You should add the users to:



<https://vceplus.com/>

- A. A security group
- B. The Authenticated Users group
- C. The Everyone group
- D. A distribution group

Correct Answer: B

Section: (none)

Explanation

Explanation/Reference:

QUESTION 52

Setting a minimum password age restricts when users can:

- A. Request a password reset
- B. Change their passwords

- C. Log on by using their passwords
- D. Set their own password expiration

Correct Answer: B

Section: (none)

Explanation

Explanation/Reference:

Explanation:

Configure the minimum password age to be more than 0 if you want Enforce password history to be effective. Without a minimum password age, users can cycle through passwords repeatedly until they get to an old favorite.

QUESTION 53

HOTSPOT

For each of the following statements, select Yes if the statement is true. Otherwise, select No. Each correct selection is worth one point.

Hot Area:

Answer Area



If your computer is on a domain, your network administrator can reset your password.

Yes

No

☐☐

An administrator account can reset a password for a standard user account.

☐☐

There is a risk of losing access to encrypted files if a password is reset.

☐☐

Correct Answer:

Answer Area

	Yes	No
If your computer is on a domain, your network administrator can reset your password.	<input checked="" type="radio"/>	<input type="radio"/>
An administrator account can reset a password for a standard user account.	<input checked="" type="radio"/>	<input type="radio"/>
There is a risk of losing access to encrypted files if a password is reset.	<input checked="" type="radio"/>	<input type="radio"/>

Section: (none)

Explanation

Explanation/Reference:



QUESTION 54

Basic security questions used to reset a password are susceptible to:

- A. Hashing
- B. Social engineering
- C. Network sniffing
- D. Trojan horses

Correct Answer: B

Section: (none)

Explanation

Explanation/Reference:

Reference: http://en.wikipedia.org/wiki/Self-service_password_reset

QUESTION 55

You suspect a user's computer is infected by a virus.

What should you do first?

- A. Restart the computer in safe mode
- B. Replace the computer's hard disk drive
- C. Disconnect the computer from the network
- D. Install antivirus software on the computer

Correct Answer: D

Section: (none)

Explanation

Explanation/Reference:

QUESTION 56

You create a new file in a folder that has inheritance enabled.

By default, the new file:

- A. Takes the permissions of the parent folder
- B. Does not take any permissions
- C. Takes the permissions of other folders in the same directory
- D. Takes the permissions of other files in the same directory



Correct Answer: A

Section: (none)

Explanation

Explanation/Reference:

Reference: https://www.microsoft.com/resources/documentation/windows/xp/all/proddocs/en-us/acl_inherit_permissions.mspx?mfr=true

QUESTION 57

Password history policies are used to prevent:

- A. Brute force attacks
- B. Users from sharing passwords
- C. Social engineering
- D. Passwords from being reused immediately

Correct Answer: D

Section: (none)

Explanation

Explanation/Reference:

Explanation:

This security setting determines the number of unique new passwords that have to be associated with a user account before an old password can be reused. The value must be between 0 and 24 passwords.

This policy enables administrators to enhance security by ensuring that old passwords are not reused continually.

Reference: [http://technet.microsoft.com/en-us/library/cc758950\(v=ws.10\).aspx](http://technet.microsoft.com/en-us/library/cc758950(v=ws.10).aspx)

QUESTION 58

The Active Directory controls, enforces, and assigns security policies and access rights for all users.

Select the correct answer if the underlined text does not make the statement correct. Select "No change is needed" if the underlined text makes the statement correct.

- A. NTFS permissions
- B. User Account Control
- C. Registry
- D. No change is needed

Correct Answer: D

Section: (none)

Explanation



Explanation/Reference:

QUESTION 59

Creating MD5 hash for files is an example of ensuring what?

- A. Confidentiality
- B. Availability
- C. Least privilege
- D. Integrity

Correct Answer: D

Section: (none)

Explanation

Explanation/Reference:

Explanation:

The MD5 message-digest algorithm is a widely used cryptographic hash function producing a 128-bit (16-byte) hash value, typically expressed in text format as a 32 digit hexadecimal number. MD5 has been utilized in a wide variety of cryptographic applications, and is also commonly used to verify data integrity.

QUESTION 60

Which three elements does HTTPS encrypt? (Choose three.)

- A. Browser cookies
- B. Server IP address
- C. Port numbers
- D. Website URL
- E. Login information

Correct Answer: ADE

Section: (none)

Explanation

Explanation/Reference:

Reference: <http://stackoverflow.com/questions/499591/are-https-urls-encrypted>

QUESTION 61

The company that you work for wants to set up a secure network, but they do not have any servers.

Which three security methods require the use of a server? (Choose three.)

- A. 802.1x
- B. WPA2 Personal
- C. WPA2 Enterprise
- D. RADIUS
- E. 802.11ac

Correct Answer: ACD

Section: (none)

Explanation

Explanation/Reference:

QUESTION 62

This question requires that you evaluate the underlined text to determine if it is correct.

The first line of defense against attacks from the Internet is a software firewall.

Select the correct answer if the underlined text does not make the statement correct. Select "No change is needed" if the underlined text makes the statement correct.

- A. hardware firewall
- B. virus software
- C. radius server
- D. No change is needed

Correct Answer: A

Section: (none)

Explanation

Explanation/Reference:

QUESTION 63

Which attack listens to network traffic of a computer resource?



<https://vceplus.com/>

- A. Resource gathering
- B. Denial of service
- C. ARP poisoning
- D. Eavesdropping
- E. Logic bomb

Correct Answer: D

Section: (none)

Explanation

Explanation/Reference:

Explanation:

Eavesdropping

In general, the majority of network communications occur in an unsecured or "cleartext" format, which allows an attacker who has gained access to data paths in your network to "listen in" or interpret (read) the traffic. When an attacker is eavesdropping on your communications, it is referred to as sniffing or snooping. The ability of an eavesdropper to monitor the network is generally the biggest security problem that administrators face in an enterprise. Without strong encryption services that are based on cryptography, your data can be read by others as it traverses the network.

QUESTION 64

Which of the following describes a VLAN?

- A. It connects multiple networks and routes data packets.
- B. It is a logical broadcast domain across physical subnets.
- C. It is a subnetwork that reveals a company's externally facing resources to the public network.
- D. It allows different network protocols to communicate between different network segments.

Correct Answer: B

Section: (none)

Explanation

Explanation/Reference:

Explanation:

VLAN (Virtual Local Network) is a logically separate IP subnetwork which allow multiple IP networks and subnets to exist on the same-switched network. VLAN is a logical broadcast domain that can span multiple physical LAN segments. It is a modern way administrators configure switches into virtual local-area networks (VLANs) to improve network performance by separating large Layer 2 broadcast domains into smaller ones.

QUESTION 65

A network sniffer is software or hardware that:

- A. Records user activity and transmits it to the server
- B. Captures and analyzes network communication
- C. Protects workstations from intrusions
- D. Catalogs network data to create a secure index

Correct Answer: B

Section: (none)

Explanation

Explanation/Reference:

Explanation:

A network sniffer is a computer tool that captures network data in the form of low-level packets. Network sniffers can be used for technical troubleshooting and analyzing the communication.

QUESTION 66

You would implement a wireless intrusion prevention system to:

- A. Prevent wireless interference
- B. Detect wireless packet theft
- C. Prevent rogue wireless access points
- D. Enforce SSID broadcasting

Correct Answer: C

Section: (none)

Explanation

Explanation/Reference:

Reference: http://en.wikipedia.org/wiki/Wireless_intrusion_prevention_system

QUESTION 67

The manager of a coffee shop hires you to securely set up WiFi in the shop.

To keep computer users from seeing each other, what should you use with an access point?

- A. Client bridge mode
- B. Client isolation mode
- C. MAC address filtering
- D. Client mode

Correct Answer: B

Section: (none)

Explanation

Explanation/Reference:

Explanation:

Wireless Client Isolation is a unique security feature for wireless networks. When Client Isolation is enabled any and all devices connected to the wireless LAN will be unable to talk to each other.

QUESTION 68

E-mail bombing attacks a specific entity by:

- A. Redirecting all e-mail to another entity
- B. Sending high volumes of e-mail
- C. Tracing e-mail to the destination address

D. Triggering high levels of security alerts

Correct Answer: B

Section: (none)

Explanation

Explanation/Reference:

Explanation:

In Internet usage, an email bomb is a form of net abuse consisting of sending huge volumes of email to an address in an attempt to overflow the mailbox or overwhelm the server where the email address is hosted in a denial-of-service attack.

QUESTION 69

How does the sender policy framework (SPF) aim to reduce spoofed email?

- A. It provides a list of IP address ranges for particular domains so senders can be verified.
- B. It includes an XML policy file with each email that confirms the validity of the message.
- C. It lists servers that may legitimately forward mail for a particular domain.
- D. It provides an encryption key so that authenticity of an email message can be validated

Correct Answer: A

Section: (none)

Explanation

Explanation/Reference:



<https://vceplus.com/>