

AZ-100.exam.48q

Number: AZ-100
Passing Score: 800
Time Limit: 120 min



Website: <https://vceplus.com>
VCE to PDF Converter: <https://vceplus.com/vce-to-pdf/>
Facebook: <https://www.facebook.com/VCE.For.All.VN/>
Twitter : https://twitter.com/VCE_Plus

<https://vceplus.com/>

AZ-100

Microsoft Azure Infrastructure and Deployment (beta)

Question Set 1

QUESTION 1

You have 100 Azure subscriptions. All the subscriptions are associated to the same Azure Active Directory (Azure AD) tenant named contoso.com.

You are a global administrator.

You plan to create a report that lists all the resources across all the subscriptions.

You need to ensure that you can view all the resources in all the subscriptions.

What should you do?

- A. From the Azure portal, modify the profile settings of your account.
- B. From Windows PowerShell, run the **Add-AzureADAdministrativeUnitMember** cmdlet.
- C. From Windows PowerShell, run the **New-AzureADUserAppRoleAssignment** cmdlet.
- D. From the Azure portal, modify the properties of the Azure AD tenant.

Correct Answer: C

Section: [none]

Explanation

Explanation/Reference:

Explanation:

The New-AzureADUserAppRoleAssignment cmdlet assigns a user to an application role in Azure Active Directory (AD). Use it for the application report.

References: <https://docs.microsoft.com/en-us/powershell/module/azuread/new-azureaduserapproleassignment?view=azureadps-2.0>

QUESTION 2

Note: This question is part of a series of questions that present the same scenario. Each question in the series contains a unique solution that might meet the stated goals. Some question sets might have more than one correct solution, while others might not have a correct solution.

After you answer a question in this section, you will NOT be able to return to it. As a result, these questions will not appear in the review screen.

You have an Azure subscription named Subscription1. Subscription1 contains a resource group named RG1. RG1 contains resources that were deployed by using templates.

You need to view the date and time when the resources were created in RG1.

Solution: From the Subscriptions blade, you select the subscription, and then click **Programmatic deployment**.

Does this meet the goal?

- A. Yes
- B. No

Correct Answer: B

Section: [none]

Explanation

Explanation/Reference:

QUESTION 3

Note: This question is part of a series of questions that present the same scenario. Each question in the series contains a unique solution that might meet the stated goals. Some question sets might have more than one correct solution, while others might not have a correct solution.

After you answer a question in this section, you will NOT be able to return to it. As a result, these questions will not appear in the review screen.

You have an Azure subscription named Subscription1. Subscription1 contains a resource group named RG1. RG1 contains resources that were deployed by using templates.

You need to view the date and time when the resources were created in RG1.

Solution: From the RG1 blade, you click **Deployments**.

Does this meet the goal?



<https://vceplus.com/>

A. Yes

B. No

Correct Answer: A

Section: [none]

Explanation

Explanation/Reference:

QUESTION 4

Note: This question is part of a series of questions that present the same scenario. Each question in the series contains a unique solution that might meet the stated goals. Some question sets might have more than one correct solution, while others might not have a correct solution.

After you answer a question in this section, you will NOT be able to return to it. As a result, these questions will not appear in the review screen.

You have an Azure subscription named Subscription1. Subscription1 contains a resource group named RG1. RG1 contains resources that were deployed by using templates.

You need to view the date and time when the resources were created in RG1.

Solution: From the Subscriptions blade, you select the subscription, and then click **Resource providers**.

Does this meet the goal?

- A. Yes
- B. No

Correct Answer: B

Section: [none]

Explanation

Explanation/Reference:



QUESTION 5

Note: This question is part of a series of questions that present the same scenario. Each question in the series contains a unique solution that might meet the stated goals. Some question sets might have more than one correct solution, while others might not have a correct solution.

After you answer a question in this section, you will NOT be able to return to it. As a result, these questions will not appear in the review screen.

You have an Azure subscription named Subscription1. Subscription1 contains a resource group named RG1. RG1 contains resources that were deployed by using templates.

You need to view the date and time when the resources were created in RG1.

Solution: From the RG1 blade, you click **Automation script**.

Does this meet the goal?

- A. Yes
- B. No

Correct Answer: B

Section: [none]

Explanation

Explanation/Reference:



Testlet 2

This is a case study. **Case studies are not timed separately. You can use as much exam time as you would like to complete each case.** However, there may be additional case studies and sections on this exam. You must manage your time to ensure that you are able to complete all questions included on this exam in the time provided.

To answer the questions included in a case study, you will need to reference information that is provided in the case study. Case studies might contain exhibits and other resources that provide more information about the scenario that is described in the case study. Each question is independent of the other questions in this case study.

At the end of this case study, a review screen will appear. This screen allows you to review your answers and to make changes before you move to the next section of the exam. After you begin a new section, you cannot return to this section.

To start the case study

To display the first question in this case study, click the **Next** button. Use the buttons in the left pane to explore the content of the case study before you answer the questions. Clicking these buttons displays information such as business requirements, existing environment, and problem statements. If the case study has an **All Information** tab, note that the information displayed is identical to the information displayed on the subsequent tabs. When you are ready to answer a question, click the **Question** button to return to the question.

Overview

Humongous Insurance is an insurance company that has three offices in Miami, Tokyo and Bangkok. Each office has 5,000 users.

Existing Environment

Active Directory Environment

Humongous Insurance has a single-domain Active Directory forest named humongousinsurance.com. The functional level of the forest is Windows Server 2012.

You recently provisioned an Azure Active Directory (Azure AD) tenant.

Network Infrastructure

Each office has a local data center that contains all the servers for that office. Each office has a dedicated connection to the Internet.

Each office has several link load balancers that provide access to the servers.

Active Directory Issue

Several users in humongousinsurance.com have UPNs that contain special characters.

You suspect that some of the characters are unsupported in Azure AD.

Licensing Issue

You attempt to assign a license in Azure to several users and receive the following error message: "Licenses not assigned. License agreement failed for one user." You verify that the Azure subscription has the available licenses.

Requirements

Planned Changes

Humongous Insurance plans to open a new office in Paris. The Paris office will contain 1,000 users who will be hired during the next 12 months. All the resources used by the Paris office users will be hosted in Azure.

Planned Azure AD Infrastructure

The on-premises Active Directory domain will be synchronized to Azure AD.

All client computers in the Paris office will be joined to an Azure AD domain.

Planned Azure Networking Infrastructure

You plan to create the following networking resources in a resource group named All_Resources:

- Default Azure system routes that will be the only routes used to route traffic
- A virtual network named Paris-VNet that will contain two subnets named Subnet1 and Subnet2
- A virtual network named ClientResources-VNet that will contain one subnet named ClientSubnet
- A virtual network named AllOffices-VNet that will contain two subnets named Subnet3 and Subnet4

You plan to enable peering between Paris-VNet and AllOffices-VNet. You will enable the **Use remote gateways** setting for the Paris-VNet peerings.

You plan to create a private DNS zone named humongousinsurance.local and set the registration network to the ClientResources-VNet virtual network.

Planned Azure Computer Infrastructure

Each subnet will contain several virtual machines that will run either Windows Server 2012 R2, Windows Server 2016, or Red Hat Linux.

Department Requirements

Humongous Insurance identifies the following requirements for the company's departments:

- Web administrators will deploy Azure web apps for the marketing department. Each web app will be added to a separate resource group. The initial configuration of the web apps will be identical. The web administrators have permission to deploy web apps to resource groups.
- During the testing phase, auditors in the finance department must be able to review all Azure costs from the past week.

Authentication Requirements

Users in the Miami office must use Azure Active Directory Seamless Single Sign-on (Azure AD Seamless SSO) when accessing resources in Azure.

QUESTION 1

DRAG DROP

You need to prepare the environment to ensure that the web administrators can deploy the web apps as quickly as possible.

Which three actions should you perform in sequence? To answer, move the appropriate actions from the list of actions to the answer area and arrange them in the correct order.

Select and Place:

Actions

From the Templates service, select the template, and then share the template to the web administrators.

Create a resource group, and then deploy a web app to the resource group.

From the Automation script blade of the resource group, click the **Parameters** tab.

From the Automation script blade of the resource group, click **Deploy**.

From the Automation Accounts service, add an automation account.

From the Automation script blade of the resource group, click **Add to library**.

Answer Area



Correct Answer:

Actions

Create a resource group, and then deploy a web app to the resource group.

From the Automation script blade of the resource group, click the **Parameters** tab.

From the Automation script blade of the resource group, click **Add to library**.

Answer Area

From the Automation Accounts service, add an automation account.

From the Automation script blade of the resource group, click **Deploy**.

From the Templates service, select the template, and then share the template to the web administrators.



Section: [none]

Explanation

Explanation/Reference:

Explanation:

Step 1:

First you create a storage account using the Azure portal.

Step 2:

Select Automation options at the bottom of the screen. The portal shows the template on the Template tab.

Deploy: Deploy the Azure storage account to Azure.

Step 3:
Share the template.

Scenario: Web administrators will deploy Azure web apps for the marketing department. Each web app will be added to a separate resource group. The initial configuration of the web apps will be identical. The web administrators have permission to deploy web apps to resource groups.

References: <https://docs.microsoft.com/en-us/azure/azure-resource-manager/resource-manager-quickstart-create-templates-use-the-portal>

QUESTION 2

Which blade should you instruct the finance department auditors to use?

- A. Partner information
- B. Cost analysis
- C. External services
- D. Invoices

Correct Answer: D

Section: [none]

Explanation

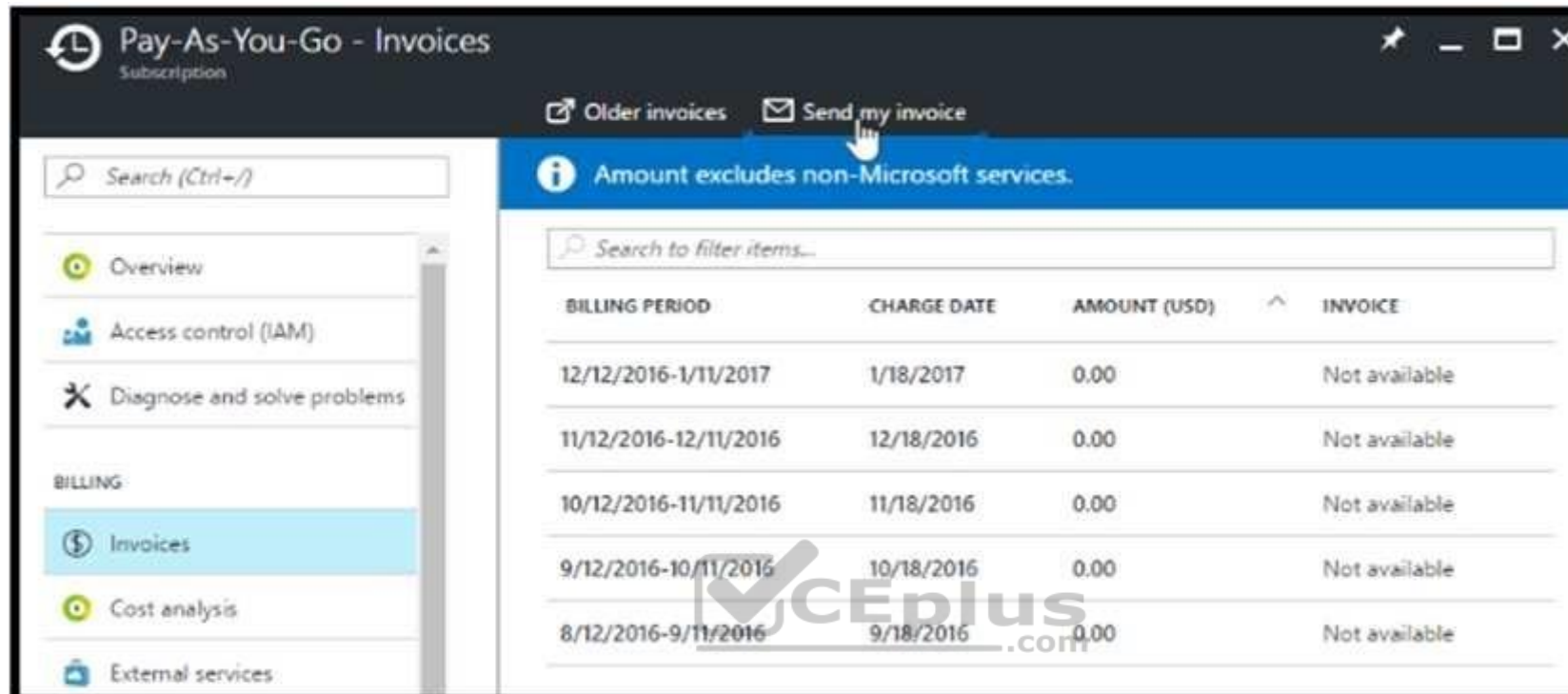


Explanation/Reference:

Explanation:

You can opt in and configure additional recipients to receive your Azure invoice in an email. This feature may not be available for certain subscriptions such as support offers, Enterprise Agreements, or Azure in Open.

1. Select your subscription from the Subscriptions page. Opt-in for each subscription you own. Click Invoices then Email my invoice.



2. Click Opt in and accept the terms.

Scenario: During the testing phase, auditors in the finance department must be able to review all Azure costs from the past week.

References: <https://docs.microsoft.com/en-us/azure/billing/billing-download-azure-invoice-daily-usage-date>

Testlet 3

This is a case study. **Case studies are not timed separately. You can use as much exam time as you would like to complete each case.** However, there may be additional case studies and sections on this exam. You must manage your time to ensure that you are able to complete all questions included on this exam in the time provided.

To answer the questions included in a case study, you will need to reference information that is provided in the case study. Case studies might contain exhibits and other resources that provide more information about the scenario that is described in the case study. Each question is independent of the other questions in this case study.

At the end of this case study, a review screen will appear. This screen allows you to review your answers and to make changes before you move to the next section of the exam. After you begin a new section, you cannot return to this section.

To start the case study

To display the first question in this case study, click the **Next** button. Use the buttons in the left pane to explore the content of the case study before you answer the questions. Clicking these buttons displays information such as business requirements, existing environment, and problem statements. If the case study has an **All Information** tab, note that the information displayed is identical to the information displayed on the subsequent tabs. When you are ready to answer a question, click the **Question** button to return to the question.

Overview

Contoso, Ltd. is a manufacturing company that has offices worldwide. Contoso works with partner organizations to bring products to market.

Contoso products are manufactured by using blueprint files that the company authors and maintains.

Existing Environment

Currently, Contoso uses multiple types of servers for business operations, including the following:

- File servers
- Domain controllers
- Microsoft SQL Server servers

Your network contains an Active Directory forest named contoso.com. All servers and client computers are joined to Active Directory.

You have a public-facing application named App1. App1 is comprised of the following three tiers:

- A SQL database
- A web front end
- A processing middle tier

Each tier is comprised of five virtual machines. Users access the web front end by using HTTPS only.

Requirements

Planned Changes

Contoso plans to implement the following changes to the infrastructure:

- Move all the tiers of App1 to Azure.
- Move the existing product blueprint files to Azure Blob storage.
- Create a hybrid directory to support an upcoming Microsoft Office 365 migration project.

Technical Requirements

Contoso must meet the following technical requirements:

- Move all the virtual machines for App1 to Azure.
- Minimize the number of open ports between the App1 tiers.

- Ensure that all the virtual machines for App1 are protected by backups.
 - Copy the blueprint files to Azure over the Internet.
 - Ensure that the blueprint files are stored in the archive storage tier.
 - Ensure that partner access to the blueprint files is secured and temporary.
 - Prevent user passwords or hashes of passwords from being stored in Azure.
 - Use unmanaged standard storage for the hard disks of the virtual machines.
 - Ensure that when users join devices to Azure Active Directory (Azure AD), the users use a mobile phone to verify their identity. ▪
- Minimize administrative effort whenever possible.

User Requirements

Contoso identifies the following requirements for users:

- Ensure that only users who are part of a group named Pilot can join devices to Azure AD.
 - Designate a new user named Admin1 as the service administrator of the Azure subscription. ▪
- Admin1 must receive email alerts regarding service outages.
- Ensure that a new user named User3 can create network objects for the Azure subscription.

QUESTION 1

You need to meet the user requirement for Admin1.

What should you do?

- A. From the Subscriptions blade, select the subscription, and then modify the Properties.
- B. From the Subscriptions blade, select the subscription, and then modify the Access control (IAM) settings.
- C. From the Azure Active Directory blade, modify the Properties.
- D. From the Azure Active Directory blade, modify the Groups.

Correct Answer: A

Section: [none]

Explanation

Explanation/Reference:

Explanation:

Change the Service administrator for an Azure subscription

1. Sign in to Account Center as the Account administrator.
2. Select a subscription.
3. On the right side, select Edit subscription details.

Scenario: Designate a new user named Admin1 as the service administrator of the Azure subscription.

References: <https://docs.microsoft.com/en-us/azure/billing/billing-add-change-azure-subscription-administrator>



Question Set 1

QUESTION 1

You plan to automate the deployment of a virtual machine scale set that uses the Windows Server 2016 Datacenter image.

You need to ensure that when the scale set virtual machines are provisioned, they have web server components installed.

Which two actions should you perform? Each correct answer presents part of the solution.

NOTE Each correct selection is worth one point.

- A. Modify the **extensionProfile** section of the Azure Resource Manager template.
- B. Create a new virtual machine scale set in the Azure portal.
- C. Create an Azure policy.
- D. Create an automation account.
- E. Upload a configuration script.

Correct Answer: AB

Section: [none]

Explanation



Explanation/Reference:

Explanation:

Virtual Machine Scale Sets can be used with the Azure Desired State Configuration (DSC) extension handler. Virtual machine scale sets provide a way to deploy and manage large numbers of virtual machines, and can elastically scale in and out in response to load. DSC is used to configure the VMs as they come online so they are running the production software.

References: <https://docs.microsoft.com/en-us/azure/virtual-machine-scale-sets/virtual-machine-scale-sets-dsc>

QUESTION 2

You have an Azure subscription that contains a virtual machine named VM1. VM1 hosts a line-of-business application that is available 24 hours a day. VM1 has one network interface and one managed disk. VM1 uses the D4s v3 size.

You plan to make the following changes to VM1:

- Change the size to D8s v3.
- Add a 500-GB managed disk.
- Add the Puppet Agent extension.
- Attach an additional network interface.

Which change will cause downtime for VM1?

- A. Add a 500-GB managed disk.
- B. Attach an additional network interface.
- C. Add the Puppet Agent extension.
- D. Change the size to D8s v3.

Correct Answer: D

Section: [none]

Explanation

Explanation/Reference:

Explanation:

While resizing the VM it must be in a stopped state.

References: <https://azure.microsoft.com/en-us/blog/resize-virtual-machines/>

QUESTION 3

Note: This question is part of a series of questions that present the same scenario. Each question in the series contains a unique solution that might meet the stated goals. Some question sets might have more than one correct solution, while others might not have a correct solution.

After you answer a question in this section, you will NOT be able to return to it. As a result, these questions will not appear in the review screen.

You have an Azure virtual machine named VM1. VM1 was deployed by using a custom Azure Resource Manager template named ARM1.json.

You receive a notification that VM1 will be affected by maintenance.

You need to move VM1 to a different host immediately.

Solution: From the Redeploy blade, you click **Redeploy**.

Does this meet the goal?



<https://vceplus.com/>

A. Yes

B. No

Correct Answer: A

Section: [none]

Explanation

Explanation/Reference:

Explanation:

When you redeploy a VM, it moves the VM to a new node within the Azure infrastructure and then powers it back on, retaining all your configuration options and associated resources.

References: <https://docs.microsoft.com/en-us/azure/virtual-machines/windows/redeploy-to-new-node>

QUESTION 4

Note: This question is part of a series of questions that present the same scenario. Each question in the series contains a unique solution that might meet the stated goals. Some question sets might have more than one correct solution, while others might not have a correct solution.

After you answer a question in this section, you will NOT be able to return to it. As a result, these questions will not appear in the review screen.

You have an Azure virtual machine named VM1. VM1 was deployed by using a custom Azure Resource Manager template named ARM1.json.

You receive a notification that VM1 will be affected by maintenance.

You need to move VM1 to a different host immediately.

Solution: From the Overview blade, you move the virtual machine to a different resource group.

Does this meet the goal?

A. Yes

B. No

Correct Answer: B

Section: [none]

Explanation

Explanation/Reference:

Explanation:

You should redeploy the VM.

References: <https://docs.microsoft.com/en-us/azure/virtual-machines/windows/redeploy-to-new-node>

QUESTION 5

You have an Azure subscription named Subscription1.

You deploy a Linux virtual machine named VM1 to Subscription1.

You need to monitor the metrics and the logs of VM1.

What should you use?

- A. Linux Diagnostic Extension (LAD) 3.0
- B. Azure Analysis Services
- C. the AzurePerformanceDiagnostics extension
- D. Azure HDInsight

Correct Answer: C

Section: [none]

Explanation



Explanation/Reference:

Explanation:

You can use extensions to configure diagnostics on your VMs to collect additional metric data.

The basic host metrics are available, but to see more granular and VM-specific metrics, you need to install the Azure diagnostics extension on the VM. The Azure diagnostics extension allows additional monitoring and diagnostics data to be retrieved from the VM.

References: <https://docs.microsoft.com/en-us/azure/virtual-machines/linux/tutorial-monitoring>

Question Set 1

QUESTION 1

You have two subscriptions named Subscription1 and Subscription2. Each subscription is associated to a different Azure AD tenant.

Subscription1 contains a virtual network named VNet1. VNet1 contains an Azure virtual machine named VM1 and has an IP address space of 10.0.0.0/16.

Subscription2 contains a virtual network named VNet2. VNet2 contains an Azure virtual machine named VM2 and has an IP address space of 10.10.0.0/24.

You need to connect VNet1 to VNet2.

What should you do first?

- A. Move VNet1 to Subscription2.
- B. Modify the IP address space of VNet2.
- C. Provision virtual network gateways.
- D. Move VM1 to Subscription2.

Correct Answer: C

Section: [none]

Explanation

Explanation/Reference:

Explanation:

The virtual networks can be in the same or different regions, and from the same or different subscriptions. When connecting VNets from different subscriptions, the subscriptions do not need to be associated with the same Active Directory tenant.

Configuring a VNet-to-VNet connection is a good way to easily connect VNets. Connecting a virtual network to another virtual network using the VNet-to-VNet connection type (VNet2VNet) is similar to creating a Site-to-Site IPsec connection to an on-premises location. Both connectivity types use a VPN gateway to provide a secure tunnel using IPsec/IKE, and both function the same way when communicating.

The local network gateway for each VNet treats the other VNet as a local site. This lets you specify additional address space for the local network gateway in order to route traffic.

References: <https://docs.microsoft.com/en-us/azure/vpn-gateway/vpn-gateway-howto-vnet-vnet-resource-manager-portal>

QUESTION 2

HOTSPOT

You have an Azure subscription named Subscription1. Subscription1 contains a virtual machine named VM1.

You install and configure a web server and a DNS server on VM1.

VM1 has the effective network security rules shown in the following exhibit.

Network Interface: vm1900 **Effective security rules** **Topology**
 Virtual network/subnet: **VMRG-vnet/default** Public IP: **104.40.215.211** Private IP: **10.0.0.5** Accelerated networking: **Disabled**

INBOUND PORT RULES

Network security group **VM1-nsg** (attached to network interface: **vm1900**)
 Impacts 0 subnets, 1 network interfaces

Add inbound port rule

PRIORITY	NAME	PORT	PROTOCOL	SOURCE	DESTINATION	ACTION
900	Rule2	50-60	Any	Any	Any	Deny
1000	default-allow-rdp	3389	TCP	Any	Any	Allow
1010	Rule1	50-500	TCP	Any	Any	Allow
65000	AllowVnetInBound	Any	Any	VirtualNet...	VirtualNet...	Allow
65001	AllowAzureLoadBalan...	Any	Any	AzureLoad...	Any	Allow
65500	DenyAllInBound	Any	Any	Any	Any	Deny

OUTBOUND PORT RULES

Network security group **VM1-nsg** (attached to network interface: **vm1900**)
 Impacts 0 subnets, 1 network interfaces

Add outbound port

PRIORITY	NAME	PORT	PROTOCOL	SOURCE	DESTINATION	ACTION
1000	Rule3	80	Any	Any	Any	Deny
65000	AllowVnetOutBound	Any	Any	VirtualNet...	VirtualNet...	Allow
65001	AllowInternetOutBou...	Any	Any	Any	Internet	Allow
65500	DenyAllOutBound	Any	Any	Any	Any	Deny

Use the drop-down menus to select the answer choice that completes each statement based on the information presented in the graphic.

NOTE: Each correct selection is worth one point.

Hot Area:

Answer Area

Internet users [**answer choice**].

	▼
can connect to only the DNS server on VM1	
can connect to only the web server on VM1	
can connect to the web server and the DNS server on VM1	
cannot connect to the web server and the DNS server on VM1	

If you delete Rule2, Internet users [**answer choice**].

	▼
can connect to only the DNS server on VM1	
can connect to only the web server on VM1	
can connect to the web server and the DNS server on VM1	
cannot connect to the web server and the DNS server on VM1	

Correct Answer:

Answer Area

Internet users [**answer choice**].

	▼
can connect to only the DNS server on VM1	
can connect to only the web server on VM1	
can connect to the web server and the DNS server on VM1	
cannot connect to the web server and the DNS server on VM1	

If you delete Rule2, Internet users [**answer choice**].

	▼
can connect to only the DNS server on VM1	
can connect to only the web server on VM1	
can connect to the web server and the DNS server on VM1	
cannot connect to the web server and the DNS server on VM1	

Section: [none]

Explanation

Explanation/Reference:

Explanation:

Box 1:

Rule2 blocks ports 50-60, which includes port 53, the DNS port. Internet users can reach to the Web server, since it uses port 80.

Box 2:

If Rule2 is removed internet users can reach the DNS server as well.

Note: Rules are processed in priority order, with lower numbers processed before higher numbers, because lower numbers have higher priority. Once traffic matches a rule, processing stops. As a result, any rules that exist with lower priorities (higher numbers) that have the same attributes as rules with higher priorities are not processed.

References: <https://docs.microsoft.com/en-us/azure/virtual-network/security-overview>

QUESTION 3

Your company has an Azure subscription named Subscription1.

The company also has two on-premises servers named Server1 and Server2 that run Windows Server 2016. Server1 is configured as a DNS server that has a primary DNS zone named adatum.com. Adatum.com contains 1,000 DNS records.

You manage Server1 and Subscription1 from Server2. Server2 has the following tools installed:

- The DNS Manager console
- Azure PowerShell ▪
- Azure CLI 2.0

You need to move the adatum.com zone to Subscription1. The solution must minimize administrative effort.

What should you use?

- A. Azure PowerShell
- B. Azure CLI
- C. the Azure portal
- D. the DNS Manager console

Correct Answer: B

Section: [none]

Explanation



Explanation/Reference:

Explanation:

Azure DNS supports importing and exporting zone files by using the Azure command-line interface (CLI). Zone file import is not currently supported via Azure PowerShell or the Azure portal.

References: <https://docs.microsoft.com/en-us/azure/dns/dns-import-export>

QUESTION 4

You have an Azure subscription that contains the resources in the following table.

Name	Type	Details
VNet1	Virtual network	<i>Not applicable</i>
Subnet1	Subnet	Hosted on VNet1
VM1	Virtual machine	On Subnet1
VM2	Virtual machine	On Subnet1

VM1 and VM2 are deployed from the same template and host line-of-business applications accessed by using Remote Desktop. You configure the network security group (NSG) shown in the exhibit. (Click the **Exhibit** button.)

→ Move  Delete

Resource group [\(change\)](#)
ProductionRG

Security rules
1 inbound, 1 outbound

Location
North Europe

Associated with
0 subnets, 0 network interfaces





Subscription [\(change\)](#)
Production subscription

Subscription ID
14d26092-8e42-4ea7-b770-9dcef70fb1ea





Tags [\(change\)](#)
[Click here to add tags](#)



Inbound security rules

PRIORITY	NAME	PORT	PROTOCOL	SOURCE	DESTINATION	ACTION
1500	Port_80	80	TCP	Internet	Any	 Deny ...
65000	AllowVnetInBound	Any	Any	VirtualNetwork	VirtualNetwork	 Allow ...
65001	AllowAzureLoadBalancerInBound	Any	Any	AzureLoadBalancer	Any	 Allow ...
65500	DenyAllBound	Any	Any	Any	Any	 Deny ...

Outbound security rules

PRIORITY	NAME	PORT	PROTOCOL	SOURCE	DESTINATION	ACTION
1000	DenyWebSites	80	TCP	Any	Internet	 Deny ...
65000	AllowVnetOutBound	Any	Any	VirtualNetwork	VirtualNetwork	 Allow ...
65001	AllowInternetOutBound	Any	Any	Any	Internet	 Allow ...
65500	DenyAllOutBound	Any	Any	Any	Any	 Deny ...

You need to prevent users of VM1 and VM2 from accessing websites on the Internet over TCP port 80.

What should you do?

- A. Associate the NSG to Subnet1.
- B. Disassociate the NSG from a network interface.
- C. Change the DenyWebSites outbound security rule.
- D. Change the Port_80 inbound security rule.

Correct Answer: A

Section: [none]

Explanation

Explanation/Reference:

Explanation:

You can associate or dissociate a network security group from a network interface or subnet.

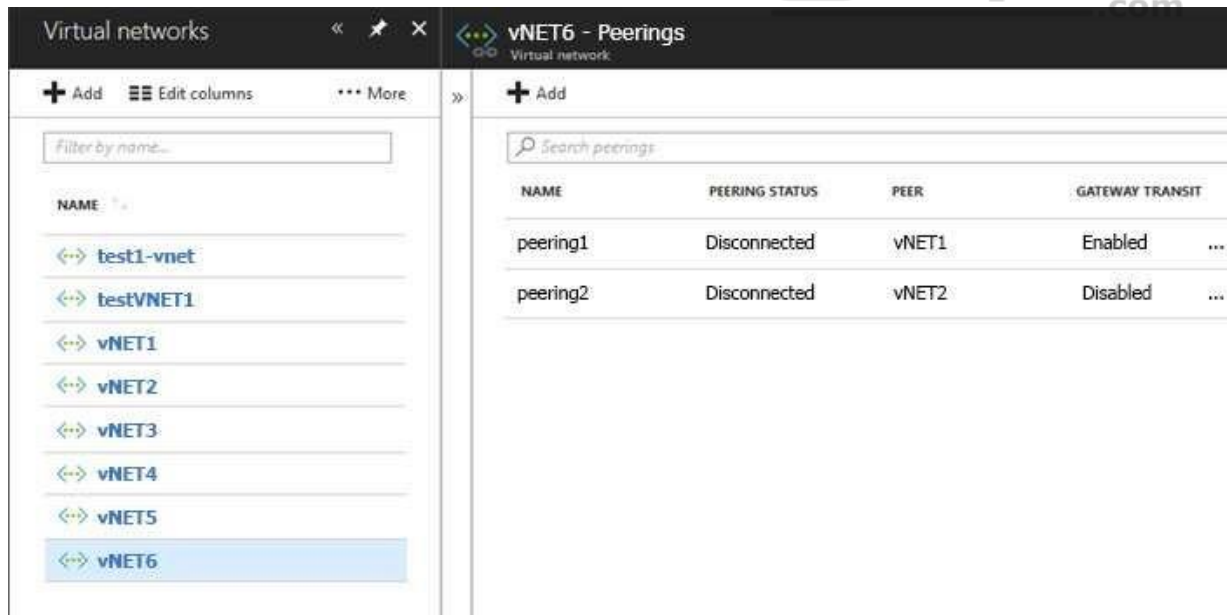
The NSG has the appropriate rule to block users from accessing the Internet. We just need to associate it with Subnet1.

References: <https://docs.microsoft.com/en-us/azure/virtual-network/manage-network-security-group>

QUESTION 5

HOTSPOT

You have peering configured as shown in the following exhibit.



The screenshot shows the Azure portal interface for configuring virtual network peerings. On the left, a list of virtual networks is displayed, with 'vNET6' selected. On the right, the 'vNET6 - Peerings' configuration page is shown, displaying a table of existing peerings.

NAME	PEERING STATUS	PEER	GATEWAY TRANSIT
peering1	Disconnected	vNET1	Enabled
peering2	Disconnected	vNET2	Disabled

Use the drop-down menus to select the answer choice that completes each statement based on the information presented in the graphic.

NOTE: Each correct selection is worth one point.

Hot Area:

Answer Area

Hosts on vNET6 can communicate with hosts on [answer choice].

	▼
vNET6 only	
vNET6 and vNET1 only	
vNET6, vNET1, and vNET2 only	
all the virtual networks in the subscription	

To change the status of the peering connection to vNET1 to **Connected**, you must first [answer choice].

	▼
add a service endpoint	
add a subnet	
delete peering1	
modify the address space	

Correct Answer:

Answer Area

Hosts on vNET6 can communicate with hosts on [answer choice].

	▼
vNET6 only	
vNET6 and vNET1 only	
vNET6, vNET1, and vNET2 only	
all the virtual networks in the subscription	

To change the status of the peering connection to vNET1 to **Connected**, you must first [answer choice].

	▼
add a service endpoint	
add a subnet	
delete peering1	
modify the address space	

Section: [none]

Explanation

Explanation/Reference:

Explanation:

Box 1: vNET6 only

Box 2: Modify the address space

The virtual networks you peer must have non-overlapping IP address spaces.

References: <https://docs.microsoft.com/en-us/azure/virtual-network/virtual-network-manage-peering#requirements-and-constraints>

QUESTION 6

You have an Azure subscription that contains the resources in the following table.

Name	Type	Azure region	Resource group
VNet1	Virtual network	West US	RG2
VNet2	Virtual network	West US	RG1
VNet3	Virtual network	East US	RG1
NSG1	Network security group (NSG)	East US	RG2

To which subnets can you apply NSG1?

- A. the subnets on VNet2 only
- B. the subnets on VNet1 only
- C. the subnets on VNet2 and VNet3 only
- D. the subnets on VNet1, VNet2, and VNet3
- E. the subnets on VNet3 only

Correct Answer: E

Section: [none]

Explanation

Explanation/Reference:

Explanation:

All Azure resources are created in an Azure region and subscription. A resource can only be created in a virtual network that exists in the same region and subscription as the resource.

References: <https://docs.microsoft.com/en-us/azure/virtual-network/virtual-network-vnet-plan-design-arm>

QUESTION 7

You create an Azure Storage account named contosostorage.

You plan to create a file share named data.

Users need to map a drive to the data file share from home computers that run Windows 10.

Which port should be open between the home computers and the data file share?

- A. 80
- B. 443
- C. 445

D. 3389

Correct Answer: C

Section: [none]

Explanation

Explanation/Reference:

Explanation:

Ensure port 445 is open: The SMB protocol requires TCP port 445 to be open; connections will fail if port 445 is blocked.

References: <https://docs.microsoft.com/en-us/azure/storage/files/storage-how-to-use-files-windows>

QUESTION 8

DRAG DROP

You have an Azure subscription. The subscription includes a virtual network named VNet1. Currently, VNet1 does not contain any subnets.

You plan to create subnets on VNet1 and to use application security groups to restrict the traffic between the subnets. You need to create the application security groups and to assign them to the subnets.

Which four cmdlets should you run in sequence? To answer, move the appropriate cmdlets from the list of cmdlets to the answer area and arrange them in the correct order.

Select and Place:

Cmdlets

New-AzureRmVirtualNetwork

New-AzureRmNetworkSecurityGroup

New-AzureRmApplicationSecurityGroup

New-AzureRmNetworkSecurityRuleConfig

Add-AzureRmVirtualNetworkSubnetConfig



Answer Area



Correct Answer:

Cmdlets

New-AzureRmApplicationSecurityGroup

Answer Area

New-AzureRmNetworkSecurityRuleConfig

New-AzureRmNetworkSecurityGroup

Add-AzureRmVirtualNetworkSubnetConfig

New-AzureRmVirtualNetwork



Section: [none]

Explanation

Explanation/Reference:

Explanation:

Step 1: New-AzureRmNetworkSecurityRuleConfig

Step 2: New-AzureRmNetworkSecurityGroup

Step 3: New-AzureRmVirtualNetworkSubnetConfig

Step 4: New-AzureRmVirtualNetwork

Example: Create a virtual network with a subnet referencing a network security group

New-AzureRmResourceGroup -Name TestResourceGroup -Location centralus

\$rdpRule = New-AzureRmNetworkSecurityRuleConfig -Name rdp-rule -Description "Allow RDP" -Access Allow -Protocol Tcp -Direction Inbound -Priority 100
SourceAddressPrefix Internet -SourcePortRange * -DestinationAddressPrefix * -DestinationPortRange 3389

\$networkSecurityGroup = New-AzureRmNetworkSecurityGroup -ResourceGroupName TestResourceGroup -Location centralus -Name "NSG-FrontEnd"
SecurityRules \$rdpRule



```
$frontendSubnet = New-AzureRmVirtualNetworkSubnetConfig -Name frontendSubnet -AddressPrefix "10.0.1.0/24" -NetworkSecurityGroup  
$networkSecurityGroup
```

```
$backendSubnet = New-AzureRmVirtualNetworkSubnetConfig -Name backendSubnet -AddressPrefix "10.0.2.0/24" -NetworkSecurityGroup  
$networkSecurityGroup
```

```
New-AzureRmVirtualNetwork -Name MyVirtualNetwork -ResourceGroupName TestResourceGroup -Location centralus -AddressPrefix "10.0.0.0/16" -Subnet  
$frontendSubnet,$backendSubnet
```

References: <https://docs.microsoft.com/en-us/powershell/module/azurermlnetwork/new-azurermlvirtualnetwork?view=azurermps-6.7.0>

QUESTION 9

You have an Azure subscription that contains the resources in the following table.

Name	Type
ASG1	Application security group
NSG1	Network security group (NSG)
Subnet1	Subnet
VNet1	Virtual network
NIC1	Network interface
VM1	Virtual machine



Subnet1 is associated to VNet1. NIC1 attaches VM1 to Subnet1.

You need to apply ASG1 to VM1.

What should you do?

- A. Modify the properties of NSG1.
- B. Modify the properties of ASG1.
- C. Associate NIC1 to ASG1.

Correct Answer: B

Section: [none]

Explanation

Explanation/Reference:

Explanation:

When you deploy VMs, make them members of the appropriate ASGs.
You associate the ASG with a subnet.

References: <https://azure.microsoft.com/en-us/blog/applicationsecuritygroups/>

QUESTION 10

Note: This question is part of a series of questions that present the same scenario. Each question in the series contains a unique solution that might meet the stated goals. Some question sets might have more than one correct solution, while others might not have a correct solution.

After you answer a question in this section, you will NOT be able to return to it. As a result, these questions will not appear in the review screen.

You have an Azure subscription that contains 10 virtual networks. The virtual networks are hosted in separate resource groups.

Another administrator plans to create several network security groups (NSGs) in the subscription.

You need to ensure that when an NSG is created, it automatically blocks TCP port 8080 between the virtual networks.

Solution: From the Resource providers blade, you unregister the Microsoft.ClassicNetwork provider.

Does this meet the goal?

- A. Yes
- B. No

Correct Answer: B

Section: [none]

Explanation

Explanation/Reference:

Explanation:

Use a policy definition.

QUESTION 11

Note: This question is part of a series of questions that present the same scenario. Each question in the series contains a unique solution that might meet the stated goals. Some question sets might have more than one correct solution, while others might not have a correct solution.

After you answer a question in this section, you will NOT be able to return to it. As a result, these questions will not appear in the review screen.

You have an Azure subscription that contains 10 virtual networks. The virtual networks are hosted in separate resource groups.

Another administrator plans to create several network security groups (NSGs) in the subscription.

You need to ensure that when an NSG is created, it automatically blocks TCP port 8080 between the virtual networks.

Solution: You configure a custom policy definition, and then you assign the policy to the subscription.



Does this meet the goal?



<https://vceplus.com/>

- A. Yes
- B. No

Correct Answer: A

Section: [none]

Explanation

Explanation/Reference:

Explanation:

Resource policy definition used by Azure Policy enables you to establish conventions for resources in your organization by describing when the policy is enforced and what effect to take. By defining conventions, you can control costs and more easily manage your resources.

References: <https://docs.microsoft.com/en-us/azure/azure-policy/policy-definition>

QUESTION 12

Note: This question is part of a series of questions that present the same scenario. Each question in the series contains a unique solution that might meet the stated goals. Some question sets might have more than one correct solution, while others might not have a correct solution.

After you answer a question in this section, you will NOT be able to return to it. As a result, these questions will not appear in the review screen.

You have an Azure subscription that contains 10 virtual networks. The virtual networks are hosted in separate resource groups.

Another administrator plans to create several network security groups (NSGs) in the subscription.

You need to ensure that when an NSG is created, it automatically blocks TCP port 8080 between the virtual networks.

Solution: You create a resource lock, and then you assign the lock to the subscription.

Does this meet the goal?

- A. Yes
- B. No

Correct Answer: B

Section: [none]

Explanation

Explanation/Reference:

Explanation:

How can I freeze or lock my production/critical Azure resources from accidental deletion? There is way to do this with both ASM and ARM resources using Azure resource lock.

References: <https://blogs.msdn.microsoft.com/azureedu/2016/04/27/using-azure-resource-manager-policy-and-azure-lock-to-control-your-azure-resources/>

QUESTION 13

Note: This question is part of a series of questions that present the same scenario. Each question in the series contains a unique solution that might meet the stated goals. Some question sets might have more than one correct solution, while others might not have a correct solution.

After you answer a question in this section, you will NOT be able to return to it. As a result, these questions will not appear in the review screen.

Your company registers a domain name of contoso.com.

You create an Azure DNS zone named contoso.com, and then you add an A record to the zone for a host named www that has an IP address of 131.107.1.10.

You discover that Internet hosts are unable to resolve www.contoso.com to the 131.107.1.10 IP address.

You need to resolve the name resolution issue.

Solution: You modify the name servers at the domain registrar.

Does this meet the goal?

- A. Yes
- B. No

Correct Answer: B

Section: [none]

Explanation

Explanation/Reference:

Explanation:

Modify the Name Server (NS) record.

References: <https://docs.microsoft.com/en-us/azure/dns/dns-delegate-domain-azure-dns>

QUESTION 14

Note: This question is part of a series of questions that present the same scenario. Each question in the series contains a unique solution that might meet the stated goals. Some question sets might have more than one correct solution, while others might not have a correct solution.

After you answer a question in this section, you will NOT be able to return to it. As a result, these questions will not appear in the review screen.

Your company registers a domain name of contoso.com.

You create an Azure DNS zone named contoso.com, and then you add an A record to the zone for a host named www that has an IP address of 131.107.1.10.

You discover that Internet hosts are unable to resolve www.contoso.com to the 131.107.1.10 IP address.

You need to resolve the name resolution issue.

Solution: You add an NS record to the contoso.com zone.

Does this meet the goal?

- A. Yes
- B. No



Correct Answer: A

Section: [none]

Explanation

Explanation/Reference:

Explanation:

Before you can delegate your DNS zone to Azure DNS, you need to know the name servers for your zone. The NS record set contains the names of the Azure DNS name servers assigned to the zone.

References: <https://docs.microsoft.com/en-us/azure/dns/dns-delegate-domain-azure-dns>

Question Set 1

QUESTION 1

You download an Azure Resource Manager template based on an existing virtual machine. The template will be used to deploy 100 virtual machines.

You need to modify the template to reference an administrative password. You must prevent the password from being stored in plain text.

What should you create to store the password?

- A. Azure Active Directory (AD) Identity Protection and an Azure policy
- B. a Recovery Services vault and a backup policy
- C. an Azure Key Vault and an access policy
- D. an Azure Storage account and an access policy

Correct Answer: C

Section: [none]

Explanation

Explanation/Reference:

Explanation:

You can use a template that allows you to deploy a simple Windows VM by retrieving the password that is stored in a Key Vault. Therefore, the password is never put in plain text in the template parameter file.

References: <https://azure.microsoft.com/en-us/resources/templates/101-vm-secure-password/>

QUESTION 2

You have an Azure Active Directory (Azure AD) tenant named contosocloud.onmicrosoft.com.

Your company has a public DNS zone for contoso.com.

You add contoso.com as a custom domain name to Azure AD.

You need to ensure that Azure can verify the domain name.

Which type of DNS record should you create?

- A. RRSIG
- B. PTR
- C. DNSKEY
- D. TXT

Correct Answer: D

Section: [none]

Explanation

Explanation/Reference:

Explanation:

Create the TXT record. App Services uses this record only at configuration time to verify that you own the custom domain. You can delete this TXT record after your custom domain is validated and configured in App Service.

References: <https://docs.microsoft.com/en-us/azure/dns/dns-web-sites-custom-domain>

QUESTION 3

You have an Azure Active Directory (Azure AD) domain that contains 5,000 user accounts. You create a new user account named AdminUser1.

You need to assign the User administrator administrative role to AdminUser1.

What should you do from the user account properties?

- A. From the Directory role blade, modify the directory role.
- B. From the Groups blade, invite the user account to a new group.
- C. From the Licenses blade, assign a new license.

Correct Answer: A

Section: [none]

Explanation

Explanation/Reference:

Explanation:

Assign a role to a user

1. Sign in to the Azure portal with an account that's a global admin or privileged role admin for the directory.
2. Select Azure Active Directory, select Users, and then select a specific user from the list.
3. For the selected user, select Directory role, select Add role, and then pick the appropriate admin roles from the Directory roles list, such as Conditional access administrator.
4. Press Select to save.

References: <https://docs.microsoft.com/en-us/azure/active-directory/fundamentals/active-directory-users-assign-role-azure-portal>

QUESTION 4

You have an Active Directory forest named contoso.com.

You install and configure Azure AD Connect to use password hash synchronization as the single sign-on (SSO) method. Staging mode is enabled.

You review the synchronization results and discover that the Synchronization Service Manager does not display any sync jobs.

You need to ensure that the synchronization completes successfully.

What should you do?



<https://vceplus.com/>

- A. From Synchronization Service Manager, run a full import.
- B. Run Azure AD Connect and set the SSO method to Pass-through Authentication.
- C. From Azure PowerShell, run Start-AdSyncSyncCycle -PolicyType Initial.
- D. Run Azure AD Connect and disable staging mode.

Correct Answer: D

Section: [none]

Explanation

Explanation/Reference:

Explanation:

Staging mode must be disabled. If the Azure AD Connect server is in staging mode, password hash synchronization is temporarily disabled.

References: <https://docs.microsoft.com/en-us/azure/active-directory/connect/active-directory-aadconnectsync-troubleshoot-password-hash-synchronization#nopasswords-are-synchronized-troubleshoot-by-using-the-troubleshooting-task>

Question Set 2

QUESTION 1

You have an Azure subscription named Subscription1 that is used by several departments at your company. Subscription1 contains the resources in the following table:

Name	Type
Storage1	Storage account
RG1	Resource group
Container1	Blob container
Share1	File share

Another administrator deploys a virtual machine named VM1 and an Azure Storage account named Storage2 by using a single Azure Resource Manager template.

You need to view the template used for the deployment.

From which blade can you view the template that was used for the deployment?

- A. RG1
- B. VM1
- C. Storage1
- D. Container1

Correct Answer: A

Section: [none]

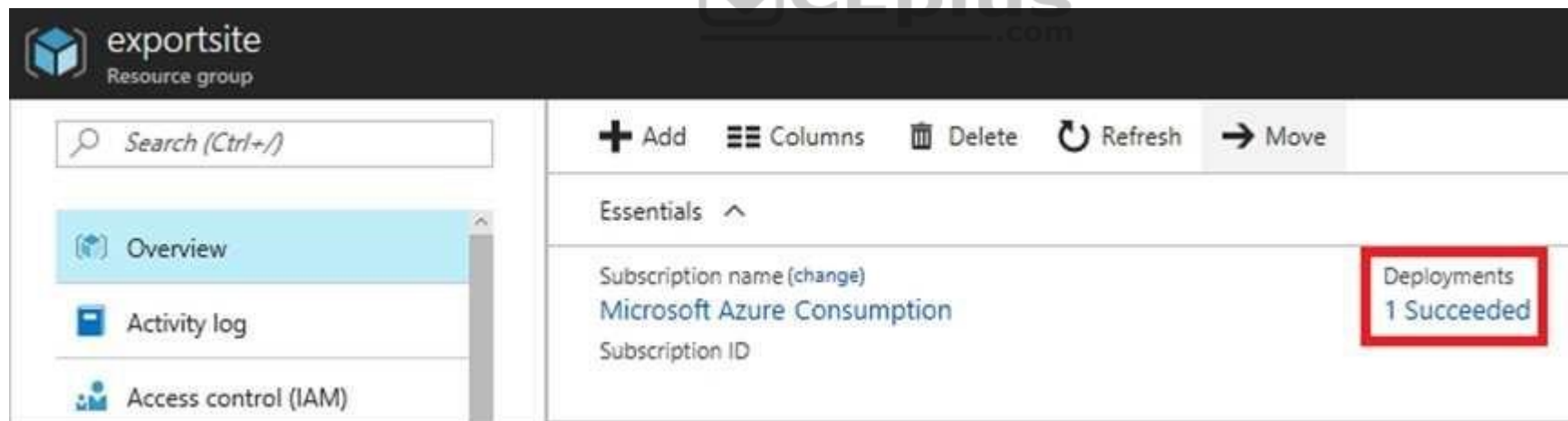
Explanation

Explanation/Reference:

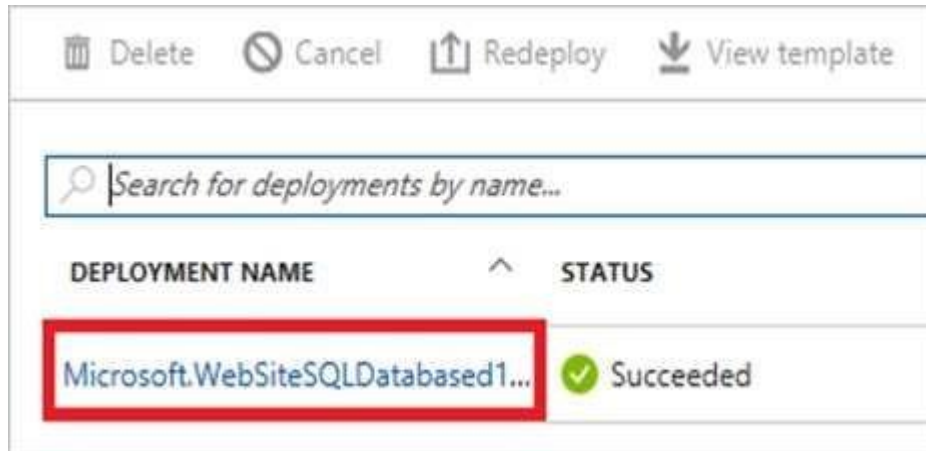
Explanation:

1. View template from deployment history

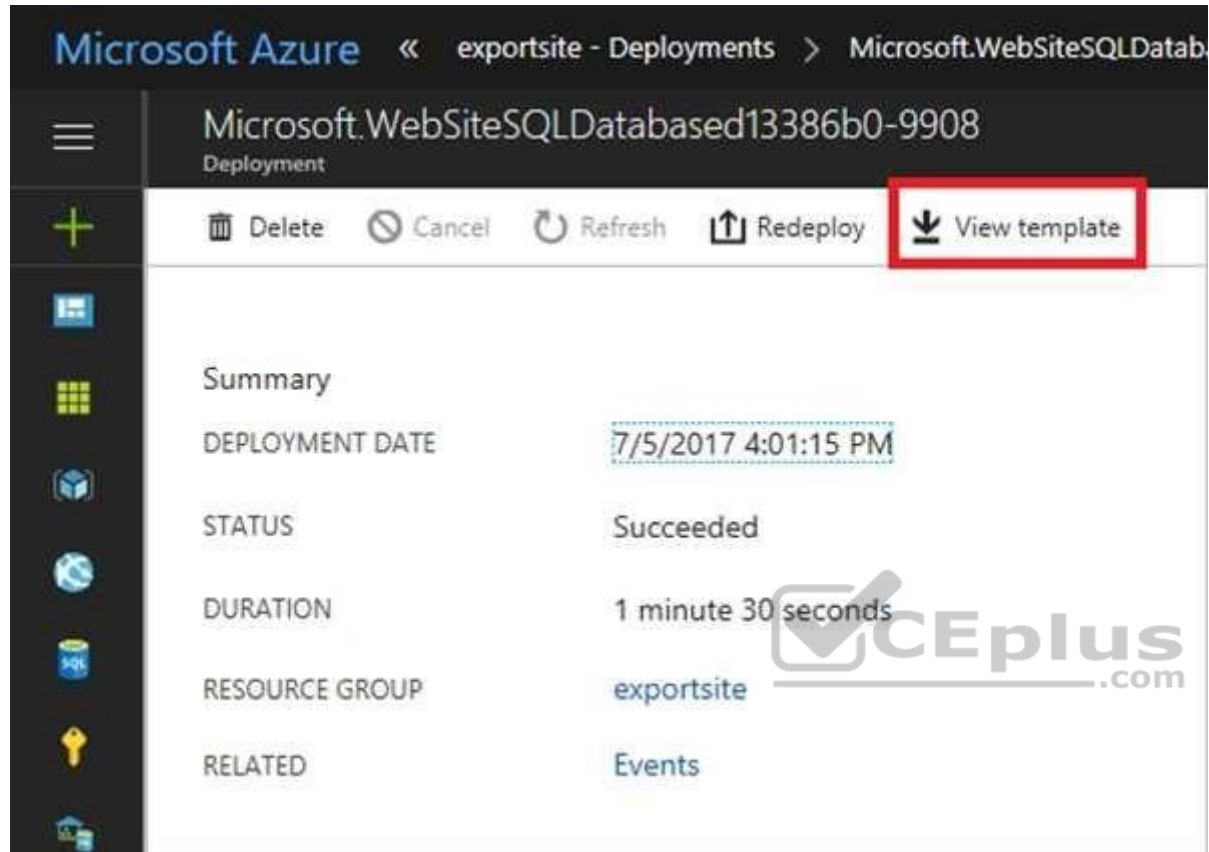
Go to the resource group for your new resource group. Notice that the portal shows the result of the last deployment. Select this link.



2. You see a history of deployments for the group. In your case, the portal probably lists only one deployment. Select this deployment.



The portal displays a summary of the deployment. The summary includes the status of the deployment and its operations and the values that you provided for parameters. To see the template that you used for the deployment, select View template.



References: <https://docs.microsoft.com/en-us/azure/azure-resource-manager/resource-manager-export-template>

QUESTION 2

DRAG DROP

You have two Azure virtual machines named VM1 and VM2. VM1 has a single data disk named Disk1. You need to attach Disk1 to VM2. The solution must minimize downtime for both virtual machines.

Which four actions should you perform in sequence? To answer, move the appropriate actions from the list of actions to the answer area and arrange them in the correct order.

Select and Place:

Actions

Start VM2.

Stop VM1.

Start VM1.

Detach Disk1 from VM1.

Attach Disk1 to VM2.

Stop VM2.

Answer Area



Correct Answer:

Actions

Start VM2.

Stop VM2.

Answer Area

Stop VM1.

Detach Disk1 from VM1.

Start VM1.

Attach Disk1 to VM2.



Section: [none]

Explanation

Explanation/Reference:

Explanation:

Step 1: Stop VM1.

Step 2: Detach Disk1 from VM1.

Step 3: Start VM1.

Detach a data disk using the portal

1. In the left menu, select Virtual Machines.
2. Select the virtual machine that has the data disk you want to detach and click Stop to deallocate the VM.
3. In the virtual machine pane, select Disks.
4. At the top of the Disks pane, select Edit.

5. In the Disks pane, to the far right of the data disk that you would like to detach, click the Detach button image detach button.
6. After the disk has been removed, click Save on the top of the pane.
7. In the virtual machine pane, click Overview and then click the Start button at the top of the pane to restart the VM.
8. The disk stays in storage but is no longer attached to a virtual machine.

Step 4: Attach Disk1 to VM2

Attach an existing disk

Follow these steps to reattach an existing available data disk to a running VM.

1. Select a running VM for which you want to reattach a data disk.
2. From the menu on the left, select Disks.
3. Select Attach existing to attach an available data disk to the VM.
4. From the Attach existing disk pane, select OK.

References:

<https://docs.microsoft.com/en-us/azure/virtual-machines/windows/detach-disk> <https://docs.microsoft.com/en-us/azure/lab-services/devtest-lab-attach-detach-data-disk>

QUESTION 3

You have an Azure subscription.

You plan to use Azure Resource Manager templates to deploy 50 Azure virtual machines that will be part of the same availability set.

You need to ensure that as many virtual machines as possible are available if the fabric fails or during servicing.

How should you configure the template? To answer, select the appropriate options in the answer area.

NOTE: Each correct selection is worth one point.

```
{
  "$schema": "https://schema.management.azure.com/schemas/2015-01-01/deploymentTemplate.json#",
  "contentVersion": "1.0.0.0",
  "parameters": {},
  "resources": [
    {
      "type": "Microsoft.Compute/availabilitySets",
      "name": "ha",
      "apiVersion": "2017-12-01",
      "location": "eastus",
      "properties": {
        "platformFaultDomainCount": ,
        "platformUpdateDomainCount": 
      }
    }
  ]
}
```

Select two alternatives below.

- A. platformFaultDomainCount: 0
- B. platformFaultDomainCount: 1
- C. platformFaultDomainCount: 2
- D. platformFaultDomainCount: 3
- E. platformFaultDomainCount: 4
- F. platformUpdateDomainCount: 10
- G. platformUpdateDomainCount: 20
- H. platformUpdateDomainCount: 25 I. platformUpdateDomainCount: 30 J. platformUpdateDomainCount: 40

K. platformUpdateDomainCount: 50

Correct Answer: CG

Section: [none]

Explanation

Explanation/Reference:

Explanation:

Use two fault domains.

2 or 3 is max, depending on which region you are in.

Use 20 for platformUpdateDomainCount

Increasing the update domain (platformUpdateDomainCount) helps with capacity and availability planning when the platform reboots nodes. A higher number for the pool (20 is max) means that fewer of their nodes in any given availability set would be rebooted at once.

References:

<https://www.itprotoday.com/microsoft-azure/check-if-azure-region-supports-2-or-3-fault-domains-managed-disks> <https://github.com/Azure/acs-engine/issues/1030>

QUESTION 4

You have an Azure subscription named Subscription1. Subscription1 contains the resource groups in the following table.

Name	Azure region	Policy
RG1	West Europe	Policy1
RG2	North Europe	Policy2
RG3	France Central	Policy3

RG1 has a web app named WebApp1. WebApp1 is located in West Europe.

You move WebApp1 to RG2. What is the effect of the move?

- A. The App Service plan to WebApp1 moves to North Europe. Policy2 applies to WebApp1.
- B. The App Service plan to WebApp1 moves to North Europe. Policy1 applies to WebApp1.
- C. The App Service plan to WebApp1 remains to West Europe. Policy2 applies to WebApp1.
- D. The App Service plan to WebApp1 remains to West Europe. Policy1 applies to WebApp1.

Correct Answer: C

Section: [none]

Explanation

Explanation/Reference:

Explanation:

You can move an app to another App Service plan, as long as the source plan and the target plan are in the same resource group and geographical region. The region in which your app runs is the region of the App Service plan it's in. However, you cannot change an App Service plan's region.

References: <https://docs.microsoft.com/en-us/azure/app-service/app-service-plan-manage>

QUESTION 5

You have a resource group named RG1. RG1 contains an Azure Storage account named storageaccount1 and a virtual machine named VM1 that runs Windows Server 2016. Storageaccount1 contains the disk files for VM1. You apply a ReadOnly lock to RG1.

What can you do from the Azure portal?

- A. Generate an automation script for RG1.
- B. View the keys of storageaccount1.
- C. Upload a blob to storageaccount1.
- D. Start VM1.



Correct Answer: B

Section: [none]

Explanation

Explanation/Reference:

Explanation:

ReadOnly means authorized users can read a resource, but they can't delete or update the resource. Applying this lock is similar to restricting all authorized users to the permissions granted by the Reader role.

References: <https://docs.microsoft.com/en-us/azure/azure-resource-manager/resource-group-lock-resources>

QUESTION 6

You configure Azure AD Connect for Azure Active Directory Seamless Single Sign-On (Azure AD Seamless SSO) for an on-premises network. Users report that when they attempt to access myapps.microsoft.com, they are prompted multiple times to sign in and are forced to use an account name that ends with onmicrosoft.com.

You discover that there is a UPN mismatch between Azure AD and the on-premises Active Directory. You need to ensure that the users can use single-sign on (SSO) to access Azure resources.

What should you do first?

- A. From the on-premises network, deploy Active Directory Federation Services (AD FS).
- B. From Azure AD, add and verify a custom domain name.
- C. From the on-premises network, request a new certificate that contains the Active Directory domain name.
- D. From the server that runs Azure AD Connect, modify the filtering options.

Correct Answer: B

Section: [none]

Explanation

Explanation/Reference:

Explanation:

Azure AD Connect lists the UPN suffixes that are defined for the domains and tries to match them with a custom domain in Azure AD. Then it helps you with the appropriate action that needs to be taken. The Azure AD sign-in page lists the UPN suffixes that are defined for on-premises Active Directory and displays the corresponding status against each suffix. The status values can be one of the following:

- State: Verified

Azure AD Connect found a matching verified domain in Azure AD. All users for this domain can sign in by using their on-premises credentials.

- State: Not verified

Azure AD Connect found a matching custom domain in Azure AD, but it isn't verified. The UPN suffix of the users of this domain will be changed to the default .onmicrosoft.com suffix after synchronization if the domain isn't verified. ▪ Action Required: Verify the custom domain in Azure AD.

References: <https://docs.microsoft.com/en-us/azure/active-directory/hybrid/plan-connect-user-signin>

QUESTION 7

You have two Azure Active Directory (Azure AD) tenants named contoso.com and fabrikam.com.

You have a Microsoft account that you use to sign in to both tenants.

You need to configure the default sign-in tenant for the Azure portal.



<https://vceplus.com/>

What should you do?

- A. From the Azure portal, configure the portal settings.
- B. From the Azure portal, change the directory.
- C. From Azure Cloud Shell, run **Set-AzureRmContext**.
- D. From Azure Cloud Shell, run **Set-AzureRmSubscription**.

Correct Answer: B

Section: [none]

Explanation

Explanation/Reference:

Explanation:

Change the subscription directory in the Azure portal.

The classic portal feature Edit Directory, that allows you to associate an existing subscription to your Azure Active Directory (AAD), is now available in Azure portal. It used to be available only to Service Admins with Microsoft accounts, but now it's available to users with AAD accounts as well.

To get started:

1. Go to Subscriptions.
2. Select a subscription.
3. Select Change directory.

Incorrect Answers:

C: The Set-AzureRmContext cmdlet sets authentication information for cmdlets that you run in the current session. The context includes tenant, subscription, and environment information.

References: <https://azure.microsoft.com/en-us/updates/edit-directory-now-in-new-portal/>

QUESTION 8

You sign up for Azure Active Directory (Azure AD) Premium.

You need to add a user named admin1@contoso.com as an administrator on all the computers that will be joined to the Azure AD domain.

What should you configure in Azure AD?

- A. Device settings from the Devices blade.

- B. General settings from the Groups blade.
- C. User settings from the Users blade.
- D. Providers from the MFA Server blade.

Correct Answer: C

Section: [none]

Explanation

Explanation/Reference:

Explanation:

When you connect a Windows device with Azure AD using an Azure AD join, Azure AD adds the following security principles to the local administrators group on the device:

- The Azure AD global administrator role
- The Azure AD device administrator role ▪

The user performing the Azure AD join

In the Azure portal, you can manage the device administrator role on the Devices page. To open the Devices page:

1. Sign in to your Azure portal as a global administrator or device administrator.
2. On the left navbar, click Azure Active Directory.
3. In the Manage section, click Devices.
4. On the Devices page, click Device settings.
5. To modify the device administrator role, configure Additional local administrators on Azure AD joined devices.

References: <https://docs.microsoft.com/en-us/azure/active-directory/devices/assign-local-admin>

QUESTION 9

You have an Azure Active Directory (Azure AD) tenant named contosocloud.onmicrosoft.com.

Your company has a public DNS zone for contoso.com.

You add contoso.com as a custom domain name to Azure AD.

You need to ensure that Azure can verify the domain name.

Which type of DNS record should you create?

- A. NSEC
- B. SRV
- C. PTR

D. TXT

Correct Answer: D

Section: [none]

Explanation

Explanation/Reference:

Explanation:

Create the TXT record. App Services uses this record only at configuration time to verify that you own the custom domain. You can delete this TXT record after your custom domain is validated and configured in App Service.

References: <https://docs.microsoft.com/en-us/azure/dns/dns-web-sites-custom-domain>

QUESTION 10

Note: This question is part of a series of questions that present the same scenario. Each question in the series contains a unique solution that might meet the stated goals. Some question sets might have more than one correct solution, while others might not have a correct solution.

After you answer a question in this section, you will NOT be able to return to it. As a result, these questions will not appear in the review screen.

Your company registers a domain name of contoso.com.

You create an Azure DNS zone named contoso.com, and then you add an A record to the zone for a host named www that has an IP address of 131.107.1.10.

You discover that Internet hosts are unable to resolve www.contoso.com to the 131.107.1.10 IP address.

You need to resolve the name resolution issue.

Solution: You create a PTR record for www in the contoso.com zone.

Does this meet the goal?

A. Yes

B. No

Correct Answer: B

Section: [none]

Explanation

Explanation/Reference:

Explanation:

Modify the Name Server (NS) record.

References: <https://docs.microsoft.com/en-us/azure/dns/dns-delegate-domain-azure-dns>

QUESTION 11

Note: This question is part of a series of questions that present the same scenario. Each question in the series contains a unique solution that might meet the stated goals. Some question sets might have more than one correct solution, while others might not have a correct solution.

After you answer a question in this section, you will NOT be able to return to it. As a result, these questions will not appear in the review screen.

You have an Azure subscription that contains 10 virtual networks. The virtual networks are hosted in separate resource groups.

Another administrator plans to create several network security groups (NSGs) in the subscription.

You need to ensure that when an NSG is created, it automatically blocks TCP port 8080 between the virtual networks.

Solution: You assign a built-in policy definition to the subscription.

Does this meet the goal?

- A. Yes
- B. No

Correct Answer: B

Section: [none]

Explanation

Explanation/Reference:

Explanation:

Use a custom policy definition.

QUESTION 12

HOTSPOT

You have a virtual network named VNet1 that has the configuration shown in the following exhibit.



```
PS C:\> Get-AzureRmVirtualNetwork -Name VNet1 -ResourceGroupName Production

Name                : VNet1
ResourceGroupName   : Production
Location            : westus
Id                  : /subscriptions/14d26092-8e42-4ea7-b770-9dcef70fb1ea/resourceGroups/Production/providers/Microsoft.Network/virtualNetworks/VNet1
Etag                 : W/"76f7edd6-d022-455b-aeae-376059318e5d"
ResourceGuid        : 562696cc-b2ba-4cc5-9619-0a735d6c34c7
ProvisioningState    : Succeeded
Tags                :
AddressSpace        : {
                        "AddressPrefixes": [
                          "10.2.0.0/16"
                        ]
                      }
DhcpOptions         : {}
Subnets            : [
                        {
                          "Name": "default",
                          "Etag": "W/"76f7edd6-d022-455b-aeae-376059318e5d\"",
                          "Id": "/subscriptions/14d26092-8e42-4ea7-b770-9dcef70fb1ea/resourceGroups/Production/providers/Microsoft.Network/virtualNetworks/VNet1/subnets/default",
                          "AddressPrefix": "10.2.0.0/24",
                          "IpConfigurations": [],
                          "ResourceNavigationLinks": [],
                          "ServiceEndpoints": [],
                          "ProvisioningState": "Succeeded"
                        }
                      ]
VirtualNetworkPeerings : []
EnabledDDoSProtection : false
EnableVmProtection    : false
```

Use the drop-down menus to select the answer choice that completes each statement based on the information presented in the graphic.

NOTE: Each correct selection is worth one point.

Hot Area:



Answer Area

Before a virtual machine on VNet1 can receive an IP address from 192.168.1.0/24, you must first **[answer choice]**.

- | |
|-------------------------|
| add a network interface |
| add a subnet |
| add an address space |
| delete a subnet |
| delete an address space |

Before a virtual machine on VNet1 can receive an IP address from 10.2.1.0/24, you must first **[answer choice]**.

- | |
|-------------------------|
| add a network interface |
| add a subnet |
| add an address space |
| delete a subnet |
| delete an address space |

Correct Answer:

Answer Area

Before a virtual machine on VNet1 can receive an IP address from 192.168.1.0/24, you must first **[answer choice]**.

add a network interface
add a subnet
add an address space
delete a subnet
delete an address space

Before a virtual machine on VNet1 can receive an IP address from 10.2.1.0/24, you must first **[answer choice]**.

add a network interface
add a subnet
add an address space
delete a subnet
delete an address space



Section: [none]

Explanation

Explanation/Reference:

Explanation:

Box 1: add a subnet

Your IaaS virtual machines (VMs) and PaaS role instances in a virtual network automatically receive a private IP address from a range that you specify, based on the subnet they are connected to. We need to add the 192.168.1.0/24 subnet.

Box 2: add a network interface

The 10.2.1.0/24 network exists. We need to add a network interface.

References: <https://docs.microsoft.com/en-us/azure/virtual-network/virtual-networks-static-private-ip-arm-pportal>

QUESTION 13

You have an Azure DNS zone named adatum.com. You need to delegate a subdomain named research.adatum.com to a different DNS server in Azure. What should you do?

- A. Create an PTR record named research in the adatum.com zone.
- B. Create an NS record named research in the adatum.com zone.
- C. Modify the SOA record of adatum.com.
- D. Create an A record named ".research in the adatum.com zone.

Correct Answer: D

Section: [none]

Explanation

Explanation/Reference:

Explanation:

Configure A records for the domains and sub domains.

References: <http://www.stefanjohansson.org/2012/12/how-to-configure-custom-dns-names-for-multiple-subdomain-based-azure-web-sites/>

QUESTION 14

You have an Azure subscription that contains a storage account named account1.

You plan to upload the disk files of a virtual machine to account1 from your on-premises network. The on-premises network uses a public IP address space of 131.107.1.0/24.

You plan to use the disk files to provision an Azure virtual machine named VM1. VM1 will be attached to a virtual network named VNet1. VNet1 uses an IP address space of 192.168.0.0/24.

You need to configure account1 to meet the following requirements:

- Ensure that you can upload the disk files to account1.
 - Ensure that you can attach the disks to VM1. ▪
- Prevent all other access to account1.

Which two actions should you perform? Each correct selection presents part of the solution.

NOTE: Each correct selection is worth one point.

- A. From the Firewalls and virtual networks blade of account1, add the 131.107.1.0/24 IP address range.
- B. From the Firewalls and virtual networks blade of account1, select **Selected networks**.
- C. From the Firewalls and virtual networks blade of account1, add VNet1.
- D. From the Firewalls and virtual networks blade of account1, select **Allow trusted Microsoft services to access this storage account**.
- E. From the Service endpoints blade of VNet1, add a service endpoint.

Correct Answer: BE

Section: [none]

Explanation

Explanation/Reference:

Explanation:

B: By default, storage accounts accept connections from clients on any network. To limit access to selected networks, you must first change the default action.

Azure portal

1. Navigate to the storage account you want to secure.
2. Click on the settings menu called Firewalls and virtual networks.
3. To deny access by default, choose to allow access from 'Selected networks'. To allow traffic from all networks, choose to allow access from 'All networks'.
4. Click Save to apply your changes.

E: Grant access from a Virtual Network

Storage accounts can be configured to allow access only from specific Azure Virtual Networks.

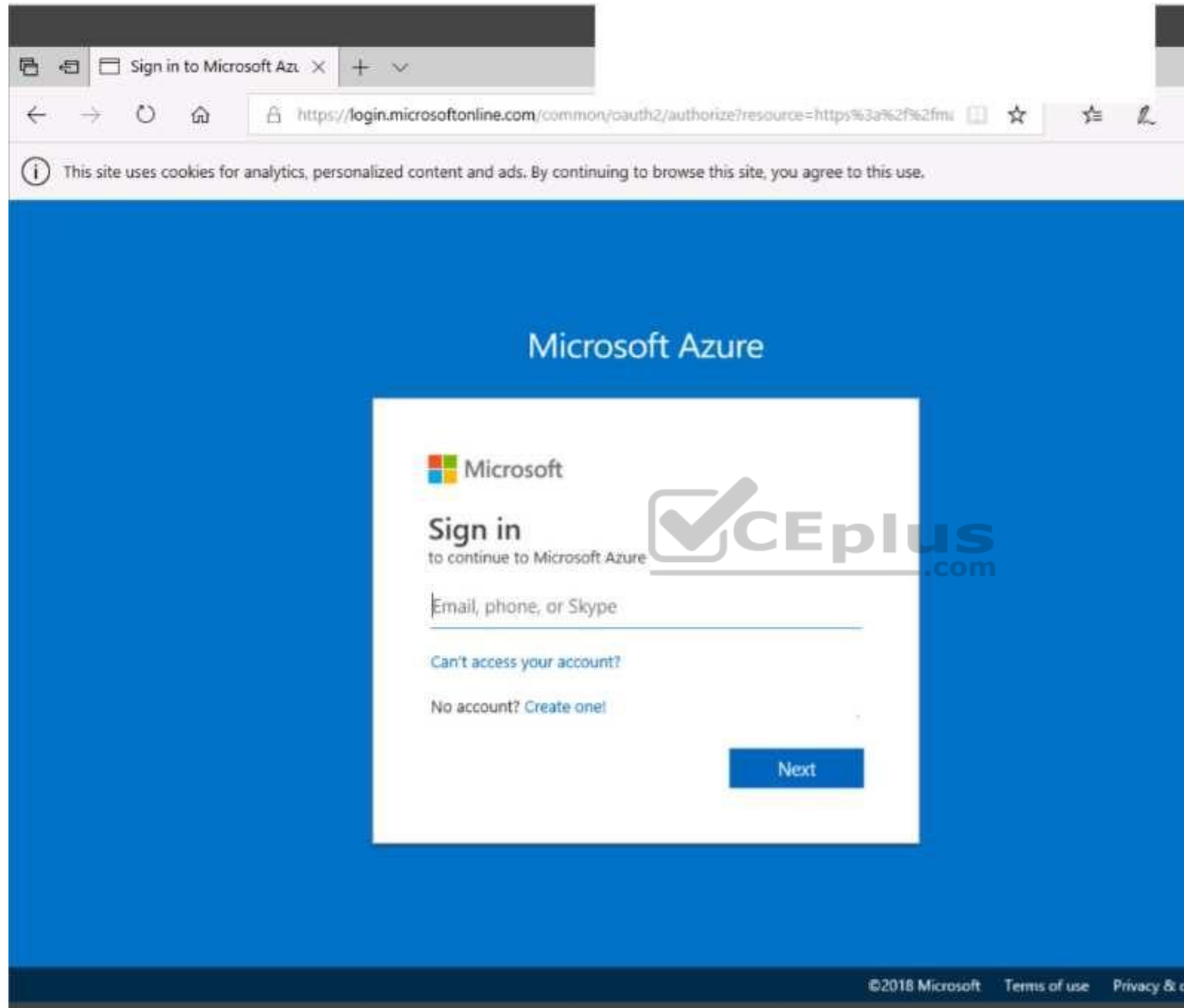
By enabling a Service Endpoint for Azure Storage within the Virtual Network, traffic is ensured an optimal route to the Azure Storage service. The identities of the virtual network and the subnet are also transmitted with each request.

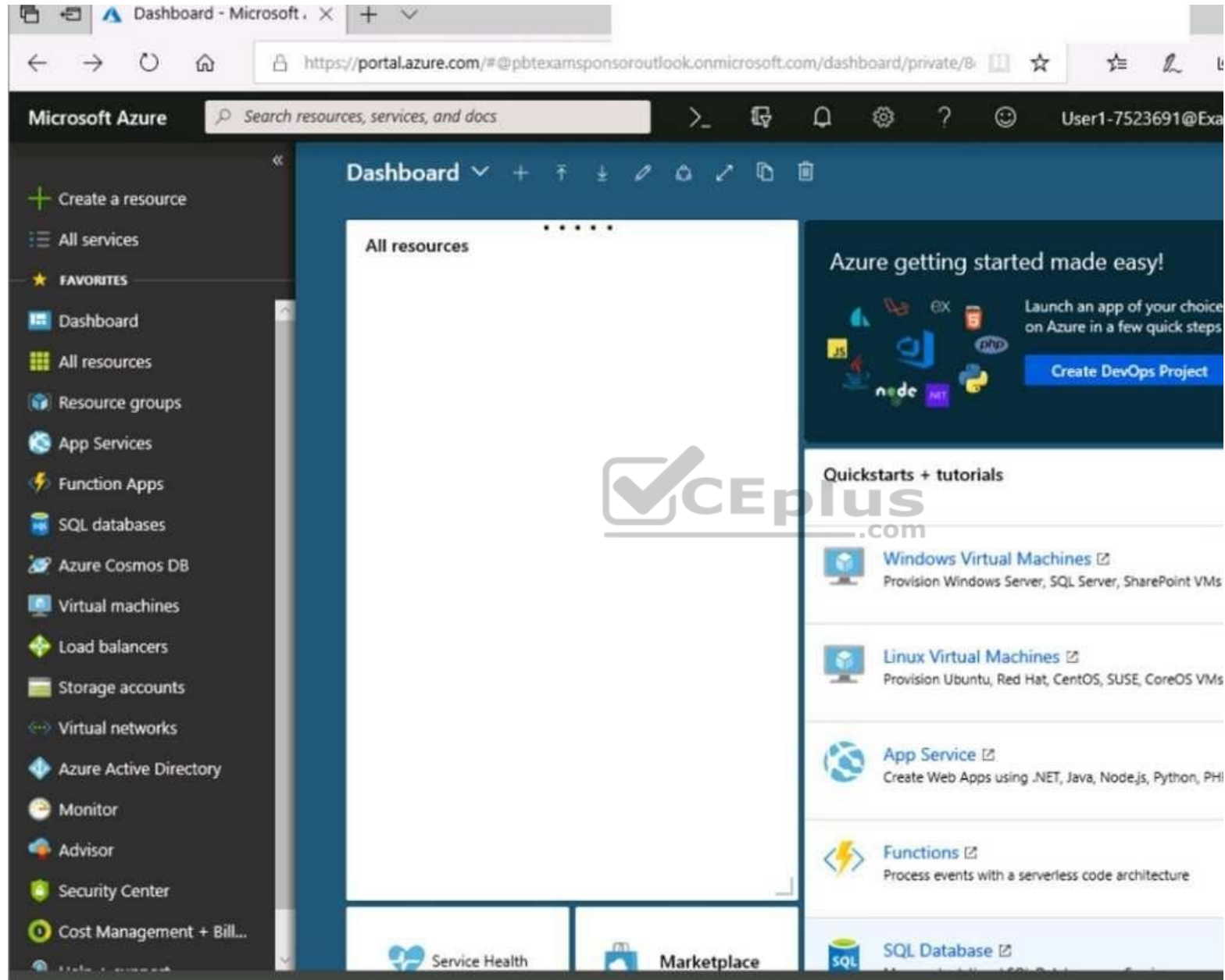
References: <https://docs.microsoft.com/en-us/azure/storage/common/storage-network-security>

QUESTION 15

SIMULATION

Click to expand each objective. To connect to the Azure portal, type <https://portal.azure.com> in the browser address bar.







When you are finished performing all the tasks, click the 'Next' button.

Note that you cannot return to the lab once you click the 'Next' button. Scoring occurs in the background while you complete the rest of the exam.

Overview

The following section of the exam is a lab. In this section, you will perform a set of tasks in a live environment. While most functionality will be available to you as it would be in a live environment, some functionality (e.g., copy and paste, ability to navigate to external websites) will not be possible by design.

Scoring is based on the outcome of performing the tasks stated in the lab. In other words, it doesn't matter how you accomplish the task, if you successfully perform it, you will earn credit for that task.

Labs are not timed separately, and this exam may have more than one lab that you must complete. You can use as much time as you would like to complete each lab. But, you should manage your time appropriately to ensure that you are able to complete the lab(s) and all other sections of the exam in the time provided.

Please note that once you submit your work by clicking the Next button within a lab, you will NOT be able to return to the lab.

To start the lab

You may start the lab by clicking the Next button.

You plan to store media files in the rg1lod7523691n1 storage account.

You need to configure the storage account to store the media files. The solution must ensure that only users who have access keys can download the media files and that the files are accessible only over HTTPS.

What should you do from Azure portal?

Correct Answer: See solution below.

Section: [none]

Explanation

Explanation/Reference:

Explanation:

We should create an Azure file share.

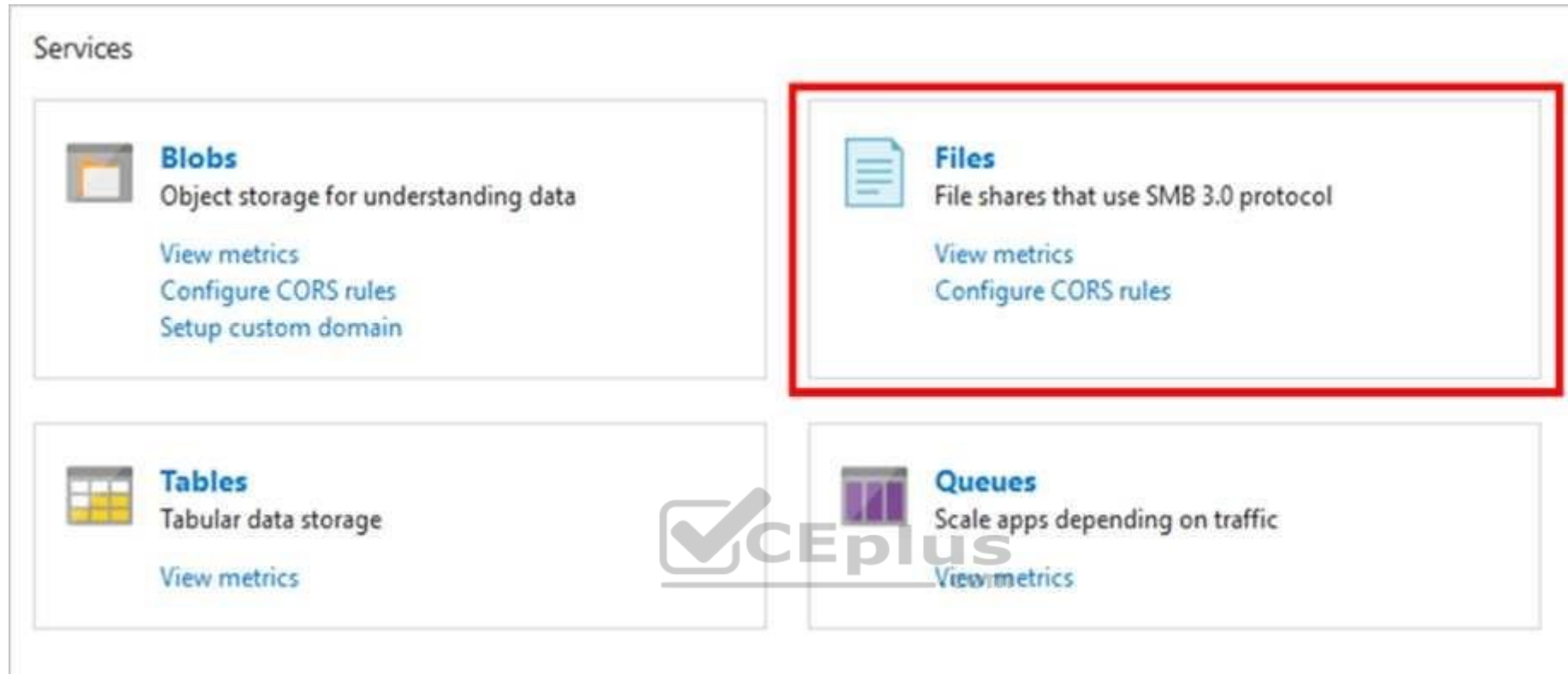
Step 1: In the Azure portal, select All services. In the list of resources, type Storage Accounts. As you begin typing, the list filters based on your input. Select Storage Accounts.

On the Storage Accounts window that appears.

Step 2: Locate the rg1lod7523691n1 storage account.

Step 3: On the storage account page, in the Services section, select Files.





Step 4: On the menu at the top of the File service page, click + File share. The New file share page drops down.

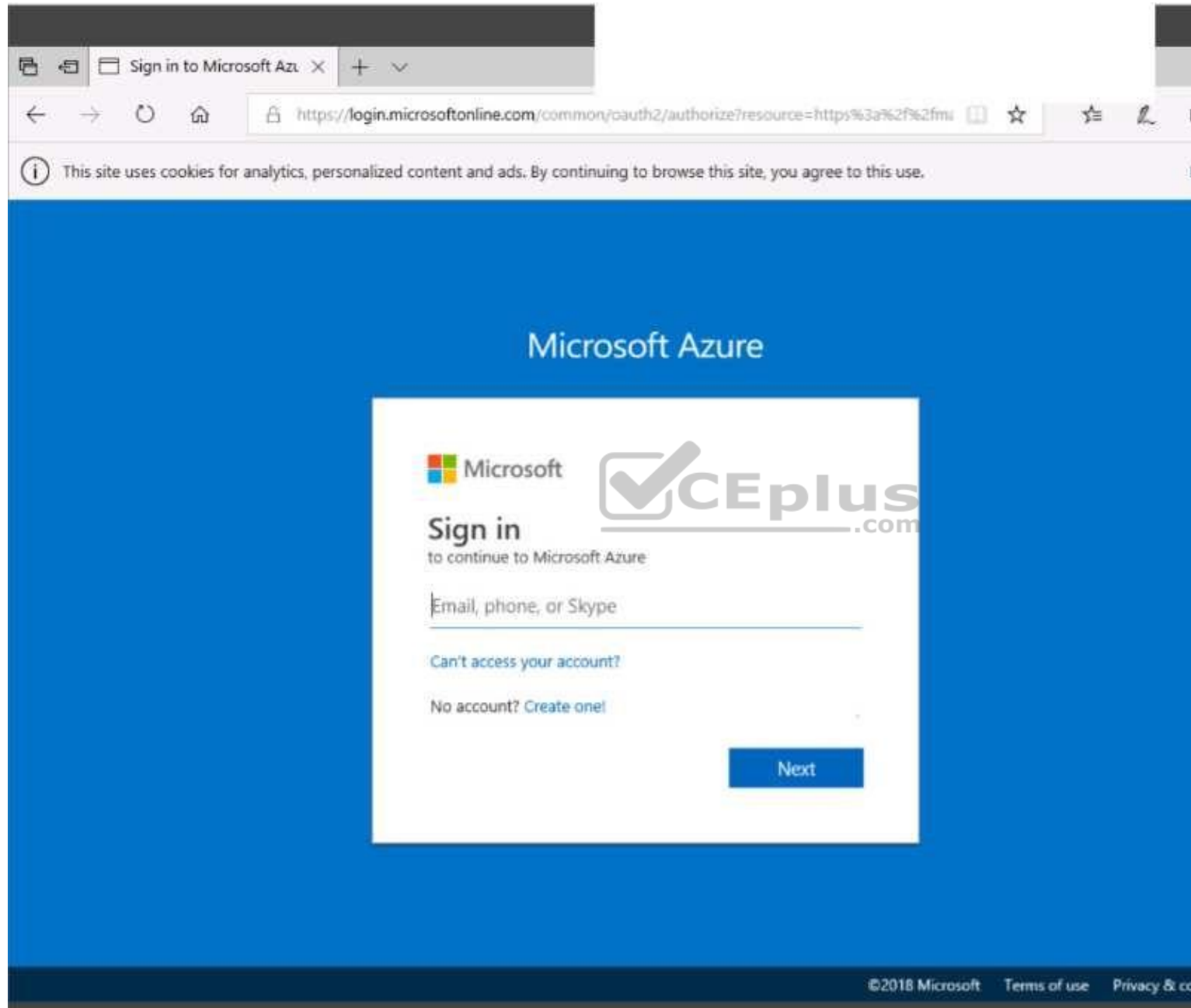
Step 5: In Name type myshare. Click OK to create the Azure file share.

References: <https://docs.microsoft.com/en-us/azure/storage/files/storage-how-to-use-files-portal>

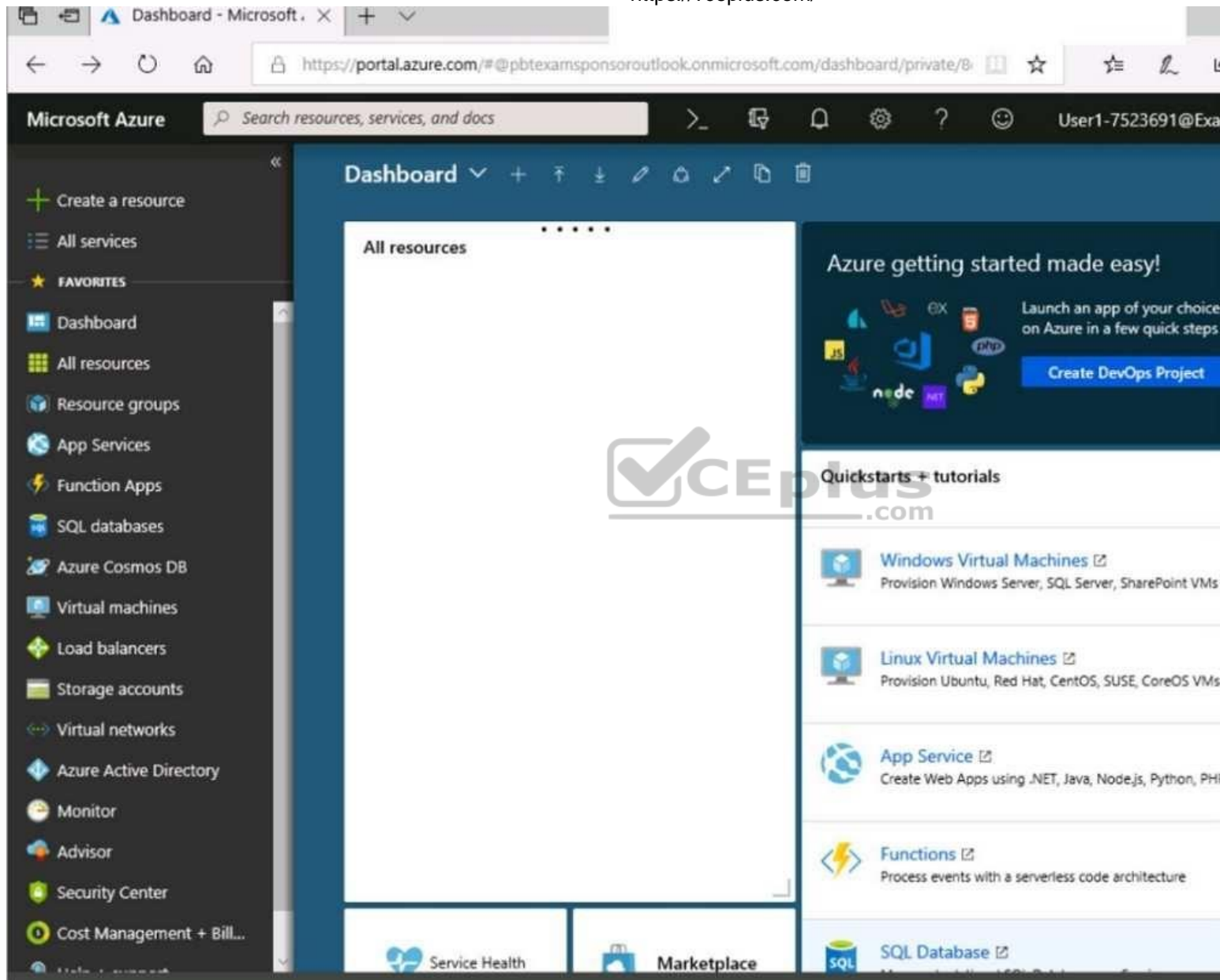
QUESTION 16

SIMULATION

Click to expand each objective. To connect to the Azure portal, type <https://portal.azure.com> in the browser address bar.



<https://vceplus.com/>





When you are finished performing all the tasks, click the 'Next' button.

Note that you cannot return to the lab once you click the 'Next' button. Scoring occurs in the background while you complete the rest of the exam.

Overview

The following section of the exam is a lab. In this section, you will perform a set of tasks in a live environment. While most functionality will be available to you as it would be in a live environment, some functionality (e.g., copy and paste, ability to navigate to external websites) will not be possible by design. Scoring is based on the outcome of performing the tasks stated in the lab. In other words, it doesn't matter how you accomplish the task, if you successfully perform it, you will earn credit for that task.

Labs are not timed separately, and this exam may have more than one lab that you must complete. You can use as much time as you would like to complete each lab. But, you should manage your time appropriately to ensure that you are able to complete the lab(s) and all other sections of the exam in the time provided.

Please note that once you submit your work by clicking the Next button within a lab, you will NOT be able to return to the lab.

To start the lab

You may start the lab by clicking the Next button.

Another administrator attempts to establish connectivity between two virtual networks named VNET1 and VNET2.

<https://vceplus.com/>

The administrator reports that connections across the virtual networks fail.

You need to ensure that network connections can be established successfully between VNET1 and VNET2 as quickly as possible.

What should you do from the Azure portal?

Correct Answer: See solution below.

Section: [none]

Explanation

Explanation/Reference:

Explanation:

You can connect one VNet to another VNet using either a Virtual network peering, or an Azure VPN Gateway.

To create a virtual network gateway

Step1 : In the portal, on the left side, click +Create a resource and type 'virtual network gateway' in search. Locate Virtual network gateway in the search return and click the entry. On the Virtual network gateway page, click Create at the bottom of the page to open the Create virtual network gateway page.

Step 2: On the Create virtual network gateway page, fill in the values for your virtual network gateway.



Create virtual network gateway

* Name ?

Gateway type ?

☒ VPN ☐ ExpressRoute

VPN type ?

☒ Route-based ☐ Policy-based

* SKU ?

VpnGw1

☐ Enable active-active mode ?

* Virtual network ?

Choose a virtual network

* Public IP address ?

☒ Create new ☐ Use existing



^ Configure public IP address

SKU

* Assignment

☒ Dynamic ☐ Static

☐ Configure BGP ASN ⓘ

* Subscription

Windows Azure Internal Consumption ▼

Resource group ⓘ

-

* Location ⓘ

▼

Create Automation options

Name: Name your gateway. This is not the same as naming a gateway subnet. It's the name of the gateway object you are creating.

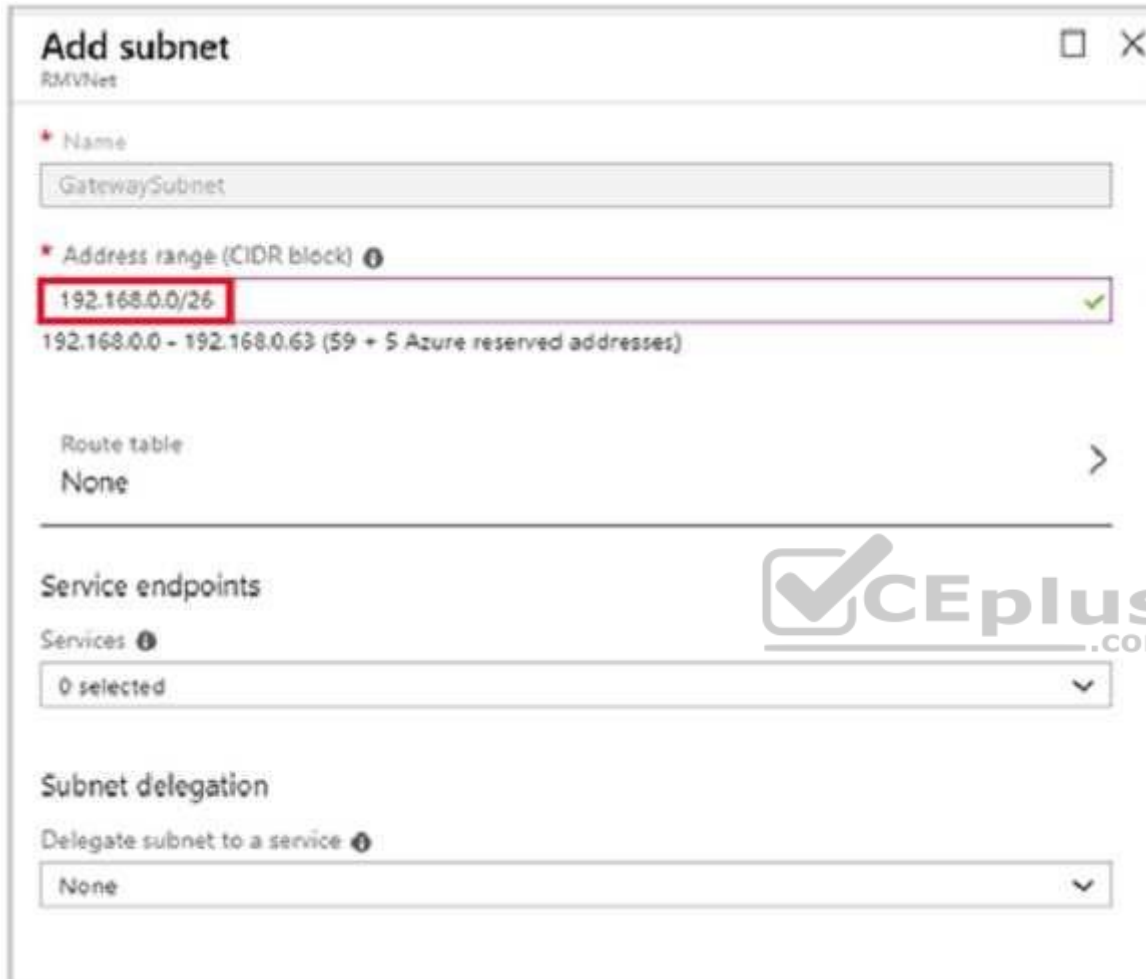
Gateway type: Select VPN. VPN gateways use the virtual network gateway type VPN.

Virtual network: Choose the virtual network to which you want to add this gateway. Click Virtual network to open the 'Choose a virtual network' page. Select the VNet. If you don't see your VNet, make sure the Location field is pointing to the region in which your virtual network is located.

Gateway subnet address range: You will only see this setting if you did not previously create a gateway subnet for your virtual network. If you previously created a valid gateway subnet, this setting will not appear.

<https://vceplus.com/>

Step 4: Select Create New to create a Gateway subnet.



Add subnet

RMVNet

* Name

GatewaySubnet

* Address range (CIDR block) ⓘ

192.168.0.0/26 ✓

192.168.0.0 - 192.168.0.63 (59 + 5 Azure reserved addresses)

Route table

None >

Service endpoints

Services ⓘ

0 selected ▼

Subnet delegation

Delegate subnet to a service ⓘ

None ▼

Step 5: Click Create to begin creating the VPN gateway. The settings are validated and you'll see the "Deploying Virtual network gateway" tile on the dashboard. Creating a gateway can take up to 45 minutes. You may need to refresh your portal page to see the completed status.

References: <https://docs.microsoft.com/en-us/azure/vpn-gateway/vpn-gateway-howto-vnet-vnet-resource-manager-portal?>

QUESTION 17

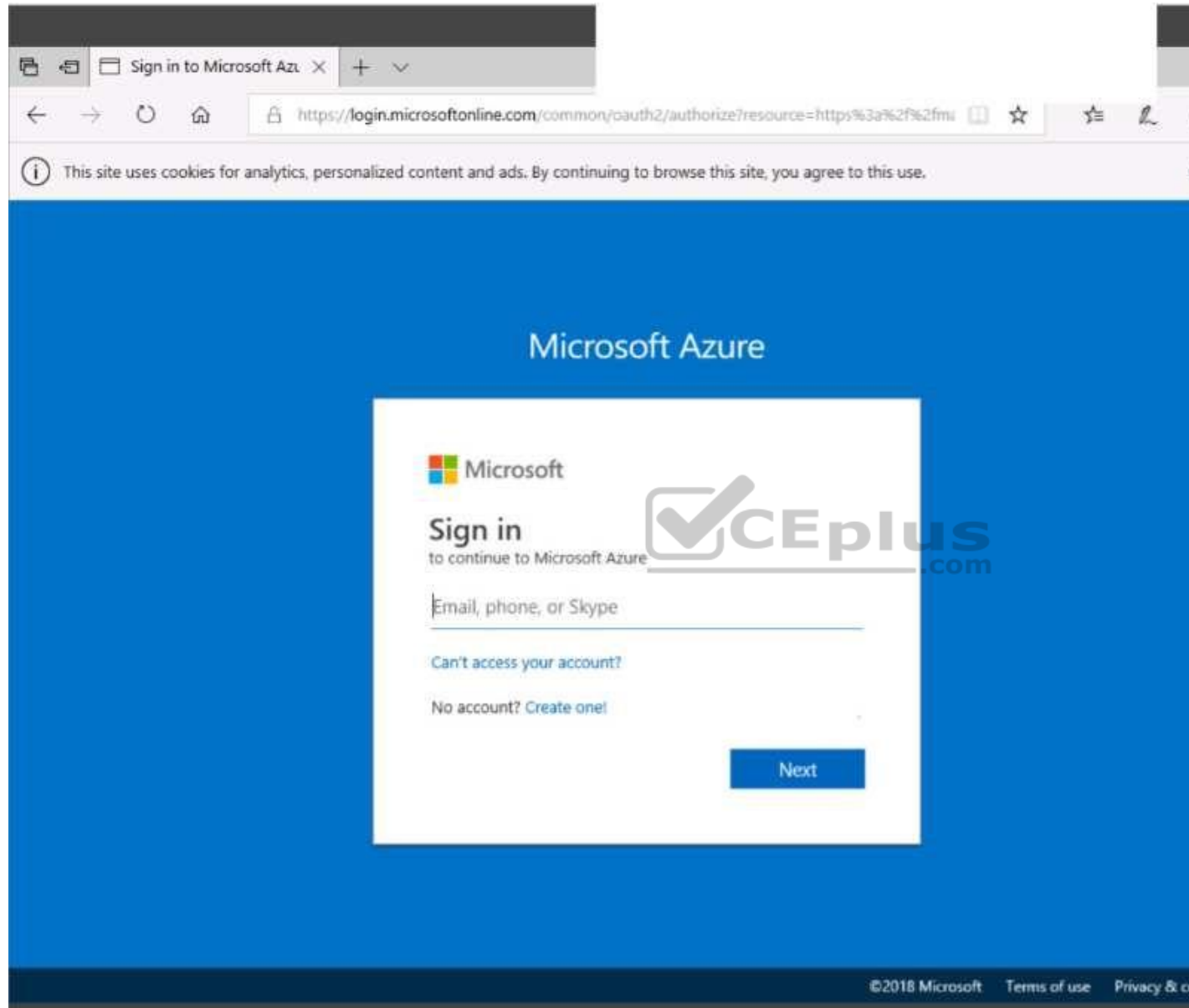
SIMULATION

<https://vceplus.com/>

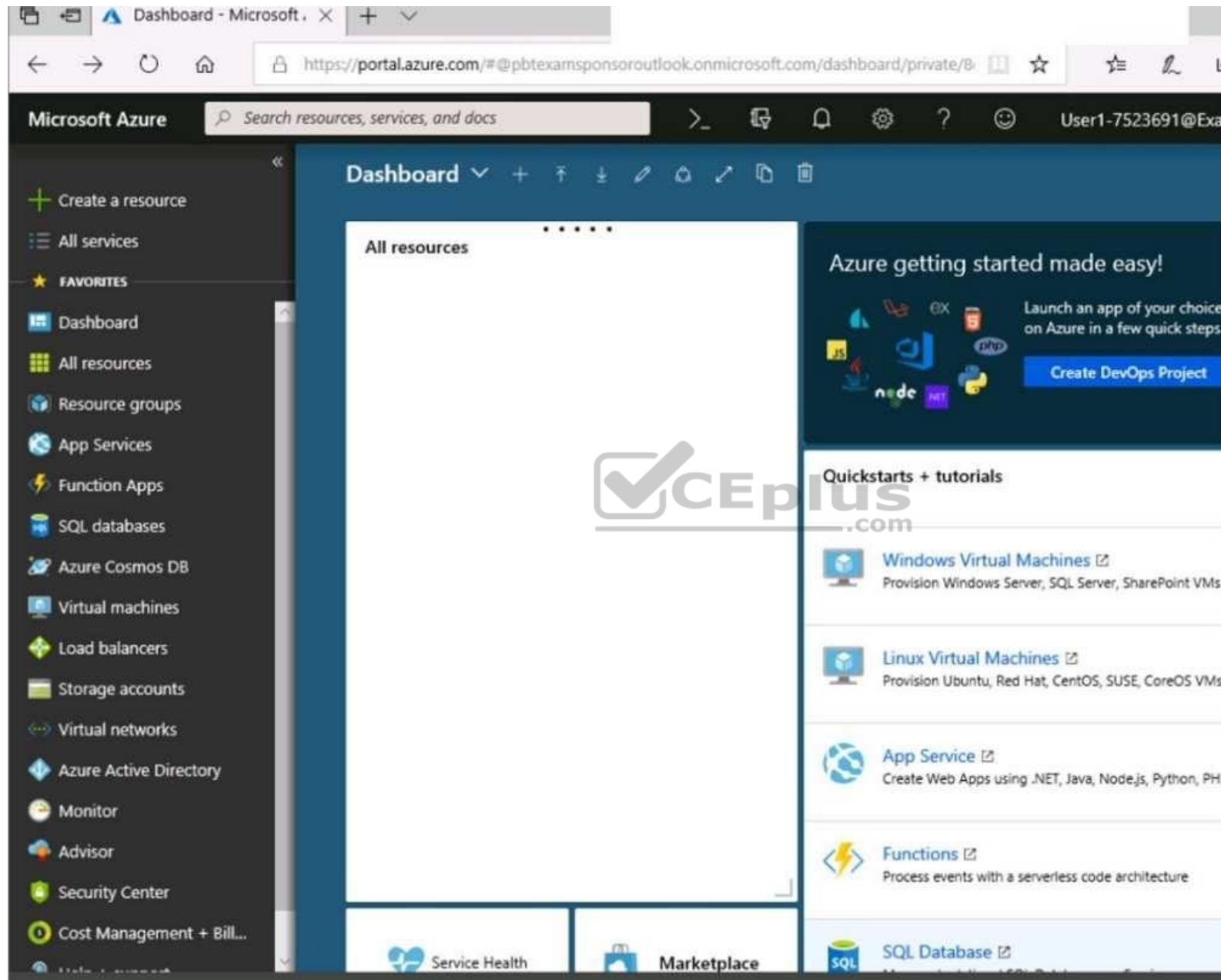
Click to expand each objective. To connect to the Azure portal, type <https://portal.azure.com> in the browser address bar.



<https://vceplus.com/>



<https://vceplus.com/>



<https://vceplus.com/>

<https://vceplus.com/>



[Home](#) > [Storage accounts](#) > Create storage account

Create storage account

✓ Validation passed

[Basics](#) [Advanced](#) [Tags](#) [Review + create](#)

BASICS

Subscription	Microsoft AZ-100 5
Resource group	corpdata7523690
Location	East US
Storage account name	corpdata7523690n1
Deployment model	Resource manager
Account kind	StorageV2 (general purpose v2)
Replication	Read-access geo-redundant storage (RA-GRS)
Performance	Standard
Access tier (default)	Hot

ADVANCED

Secure transfer required	Enabled
Hierarchical namespace	Disabled

Create

Previous

Next

[Download a template for automation](#)

<https://vceplus.com/>

[Home](#) > [Storage accounts](#) > Create storage account

Create storage account

*** Submitting deployment...

Submitting the deployment template for resource 'corpdata7523690'.

[Basics](#) [Advanced](#) [Tags](#) [Review + create](#)

BASICS

Subscription	Microsoft AZ-100 5
Resource group	corpdata7523690
Location	East US
Storage account name	corpdata7523690n1
Deployment model	Resource manager
Account kind	StorageV2 (general purpose v2)
Replication	Read-access geo-redundant storage (RA-GRS)
Performance	Standard
Access tier (default)	Hot

ADVANCED

Secure transfer required	Enabled
Hierarchical namespace	Disabled


<https://vceplus.com/>

[Home](#) > Microsoft.StorageAccount-20181011170335 - Overview

Microsoft.StorageAccount-20181011170335 - Overview

Deployment

 Delete  Cancel  Redeploy  Refresh

 Overview

 Outputs

 Inputs

 Template

... Your deployment is underway

Check the status of your deployment, manage resources, or troubleshoot deployment issues. Pin this page to your dashboard to easily find it next time.



Deployment

name: Microsoft.StorageAccount-20181011170335

Subscription: [Microsoft AZ-100-5](#)

Resource group: [corpdata10d7523690](#)

DEPLOYMENT DETAILS [\(Download\)](#)

Start time: 10/11/2018 5:04:06 PM

Duration: 17 seconds

Correlation ID: bd0806a4-d1bd-42db-be6b-55e0ec38f49b

RESOURCE	TYPE	STATUS	OPERATI...
----------	------	--------	------------

No results.

<https://vceplus.com/>

[Home](#) > [Virtual machines](#) > Create a virtual machine

Create a virtual machine

! Validation failed. Required information is missing or not valid.

[Basics](#) • [Disks](#) [Networking](#) [Management](#) [Guest config](#) [Tags](#) [Review + create](#)

PRODUCT DETAILS

Ubuntu Server 18.04 LTS

by Canonical

[Terms of use](#) | [Privacy policy](#)

Standard D2s v3

by Microsoft

[Terms of use](#) | [Privacy policy](#)

Pricing not available for this offering

View [Pricing details](#) for more information.

Subscription credits apply. 

0.0960 USD/hr

[Pricing for other VM sizes](#)

TERMS

By clicking "Create", I (a) agree to the legal terms and privacy statement(s) associated with the Marketplace offering(s) listed above; (b) authorize Microsoft to bill my current payment method for the fees associated with the offering(s), with the same billing frequency as my Azure subscription; and (c) agree that Microsoft may share my contact, usage and transactional information with the provider(s) of the offering(s) for support, billing and other transactional activities. Microsoft does not provide rights for third-party offerings. See the [Azure Marketplace Terms](#) for additional details.

When you are finished performing all the tasks, click the 'Next' button.

Note that you cannot return to the lab once you click the 'Next' button. Scoring occurs in the background while you complete the rest of the exam.

<https://vceplus.com/>

Overview

The following section of the exam is a lab. In this section, you will perform a set of tasks in a live environment. While most functionality will be available to you as it would be in a live environment, some functionality (e.g., copy and paste, ability to navigate to external websites) will not be possible by design. Scoring is based on the outcome of performing the tasks stated in the lab. In other words, it doesn't matter how you accomplish the task, if you successfully perform it, you will earn credit for that task.

Labs are not timed separately, and this exam may have more than one lab that you must complete. You can use as much time as you would like to complete each lab. But, you should manage your time appropriately to ensure that you are able to complete the lab(s) and all other sections of the exam in the time provided.

Please note that once you submit your work by clicking the Next button within a lab, you will NOT be able to return to the lab.

To start the lab

You may start the lab by clicking the Next button.

You need to deploy an Azure virtual machine named VM1004a based on the Ubuntu Server 17.10 image, and then to configure VM1004a to meet the following requirements:

- The virtual machine must contain data disks that can store at least 15 TB of data.
- The data disks must be able to provide at least 2,000 IOPS.
- Storage costs must be minimized.

What should you do from the Azure portal?

Correct Answer: See solution below.

Section: [none]

Explanation

Explanation/Reference:

Explanation:

1. Open the Azure portal.
2. On the left menu, select All resources. You can sort the resources by Type to easily find your images.
3. Select the image you want to use from the list. The image Overview page opens.
4. Select Create VM from the menu.
5. Enter the virtual machine information.

Select VM1004a as the name for the first Virtual machine.

The user name and password entered here will be used to log in to the virtual machine. When complete, select OK. You can create the new VM in an existing resource group, or choose Create new to create a new resource group to store the VM.

6. Select a size for the VM. To see more sizes, select View all or change the Supported disk type filter.

To support 15 TB of data you would need a Premium disk.

<https://vceplus.com/>

7. Under Settings, make changes as necessary and select OK.
8. On the summary page, you should see your image name listed as a Private image. Select Ok to start the virtual machine deployment. References:

<https://docs.microsoft.com/en-us/azure/virtual-machines/windows/create-vm-generalized-managed>



<https://vceplus.com/>



<https://vceplus.com/>