

70-698.108q

Number: 70-698
Passing Score: 800
Time Limit: 120 min

70-698



Website: <https://vceplus.com>

VCE to PDF Converter: <https://vceplus.com/vce-to-pdf/>

Facebook: <https://www.facebook.com/VCE.For.All.VN/>

Twitter : https://twitter.com/VCE_Plus

<https://vceplus.com/>

Installing and Configuring Windows 10

Exam A

QUESTION 1

In this section, you will see one or more sets of questions with the same scenario and problem. Each question presents a unique solution to the problem, and you must determine whether the solution meets the stated goals. Any of the solutions might solve the problem. It is also possible that none of the solutions solve the problem.

Once you answer a question in this section, you will NOT be able to return to it. As a result, these questions will not appear in the review screen.

Note: This question is part of a series of questions that present the same scenario. Each question in the series contains a unique solution. Determine whether the solution meets the stated goals.

You have a computer named Computer1 that runs Windows 10.

File History is turned on.

The user of Computer1 reports that previous versions of D:\Folder\File1.doc are unavailable from the Previous Versions tab.

You need to ensure that the previous versions of the file are created.

Solution: Modify the Backup settings in the Settings app.

Does this meet the goal?

- A. Yes
- B. No

Correct Answer: A

Section: (none)

Explanation



Explanation/Reference: Explanation: <http://www.pcworld.com/article/2974385/windows/how-to-use-windows-10s-file-history-backup-feature.html>

QUESTION 2

In this section, you will see one or more sets of questions with the same scenario and problem. Each question presents a unique solution to the problem, and you must determine whether the solution meets the stated goals. Any of the solutions might solve the problem. It is also possible that none of the solutions solve the problem.

Once you answer a question in this section, you will NOT be able to return to it. As a result, these questions will not appear in the review screen.

Note: This question is part of a series of questions that present the same scenario. Each question in the series contains a unique solution. Determine whether the solution meets the stated goals.

You have a computer named Computer1 that runs Windows 10.

File History is turned on.

The user of Computer1 reports that previous versions of D:\Folder\File1.doc are unavailable from the Previous Versions tab.

You need to ensure that the previous versions of the file are created.

Solution: Turn on System Protection for drive D.



<https://vceplus.com/> Does this meet

the goal?

- A. Yes
- B. No

Correct Answer: B

Section: (none)

Explanation

Explanation/Reference: Explanation: <http://www.pcworld.com/article/2974385/windows/how-to-use-windows-10s-file-history-backup-feature.html>

QUESTION 3

In this section, you will see one or more sets of questions with the same scenario and problem. Each question presents a unique solution to the problem, and you must determine whether the solution meets the stated goals. Any of the solutions might solve the problem. It is also possible that none of the solutions solve the problem.

Once you answer a question in this section, you will NOT be able to return to it. As a result, these questions will not appear in the review screen.

Note: This question is part of a series of questions that present the same scenario. Each question in the series contains a unique solution. Determine whether the solution meets the stated goals.

You have a computer named Computer1 that runs Windows 10.



File History is turned on.

The user of Computer1 reports that previous versions of D:\Folder\File1.doc are unavailable from the Previous Versions tab.

You need to ensure that the previous versions of the file are created.

Solution: Create a backup of drive D by using Backup and Restore (Windows 7).

Does this meet the goal?

- A. Yes
- B. No

Correct Answer: B

Section: (none)

Explanation

Explanation/Reference:

Explanation:

Creating a backup of drive D will only create a single one-off backup of the files; it will not previous versions of files are created.

References: <http://www.pcworld.com/article/2974385/windows/how-to-use-windows-10s-file-history-backup-feature.html>

QUESTION 4

In this section, you will see one or more sets of questions with the same scenario and problem. Each question presents a unique solution to the problem, and you must determine whether the solution meets the stated goals. Any of the solutions might solve the problem. It is also possible that none of the solutions solve the problem.

Once you answer a question in this section, you will NOT be able to return to it. As a result, these questions will not appear in the review screen.

Note: This question is part of a series of questions that present the same scenario. Each question in the series contains a unique solution. Determine whether the solution meets the stated goals.

Your network contains a single Active Directory domain named contoso.com. The domain contains two computers named Computer1 and Computer2.

A user named User1 is a member of the local Administrators group on Computer1 and Computer2.

User1 fails to access the Event Viewer logs on Computer2 from Computer1. User1 can connect to Computer2 remotely by using Computer Management.

You need to ensure that User1 can use Event Viewer on Computer1 to remotely view the Event Viewer logs on Computer2.

Solution: You start the Remote Registry services on Computer2.

Does this meet the goal?

- A. Yes
- B. No

Correct Answer: B

Section: (none)

Explanation

Explanation/Reference: Explanation:

[https://technet.microsoft.com/en-us/library/cc754820\(v=ws.11\).aspx](https://technet.microsoft.com/en-us/library/cc754820(v=ws.11).aspx)

QUESTION 5

In this section, you will see one or more sets of questions with the same scenario and problem. Each question presents a unique solution to the problem, and you must determine whether the solution meets the stated goals. Any of the solutions might solve the problem. It is also possible that none of the solutions solve the problem.

Once you answer a question in this section, you will NOT be able to return to it. As a result, these questions will not appear in the review screen.

Note: This question is part of a series of questions that present the same scenario. Each question in the series contains a unique solution. Determine whether the solution meets the stated goals.

Your network contains a single Active Directory domain named contoso.com. The domain contains two computers named Computer1 and Computer2.

A user named User1 is a member of the local Administrators group on Computer1 and Computer2.

User1 fails to access the Event Viewer logs on Computer2 from Computer1. User1 can connect to Computer2 remotely by using Computer Management.

You need to ensure that User1 can use Event Viewer on Computer1 to remotely view the Event Viewer logs on Computer2.

Solution: You run Enable-PSRemoting on Computer1.

Does this meet the goal?

- A. Yes
- B. No

Correct Answer: B

Section: (none)

Explanation

Explanation/Reference: Explanation: <http://www.howtogeek.com/117192/how-to-run-powershell-commands-on-remote-computers/>

QUESTION 6

In this section, you will see one or more sets of questions with the same scenario and problem. Each question presents a unique solution to the problem, and you must determine whether the solution meets the stated goals. Any of the solutions might solve the problem. It is also possible that none of the solutions solve the problem.

Once you answer a question in this section, you will NOT be able to return to it. As a result, these questions will not appear in the review screen.

Note: This question is part of a series of questions that present the same scenario. Each question in the series contains a unique solution. Determine whether the solution meets the stated goals.

Your network contains a single Active Directory domain named contoso.com. The domain contains two computers named Computer1 and Computer2.

A user named User1 is a member of the local Administrators group on Computer1 and Computer2.

User1 fails to access the Event Viewer logs on Computer2 from Computer1. User1 can connect to Computer2 remotely by using Computer Management.

You need to ensure that User1 can use Event Viewer on Computer1 to remotely view the Event Viewer logs on Computer2.

Solution: You run winrm quickconfig on Computer2.

Does this meet the goal?

A. Yes

B. No

Correct Answer: B

Section: (none)

Explanation

Explanation/Reference: Explanation:

[https://msdn.microsoft.com/en-us/library/aa384372\(v=vs.85\).aspx](https://msdn.microsoft.com/en-us/library/aa384372(v=vs.85).aspx)

QUESTION 7

You have a computer that has a local printer.

You need to share the printer.

Which two tools can you use to achieve the goal? Each correct answer presents a complete solution.

- A. net share from a command prompt
- B. Devices and Printers from Control Panel
- C. Set-PrintConfiguration from Windows PowerShell
- D. Set-Printer from Windows PowerShell
- E. Printers & scanners from the Settings app

Correct Answer: BD

Section: (none)

Explanation

Explanation/Reference:

Explanation:

<http://www.addictivetips.com/windows-tips/how-to-share-a-usb-printer-over-your-network-in-windows-10/> [https://technet.microsoft.com/en-us/library/hh918366\(v=wps.630\).aspx](https://technet.microsoft.com/en-us/library/hh918366(v=wps.630).aspx)

QUESTION 8

A user has a laptop named Computer1 that runs Windows 10 and has a 64-bit application named App1 installed.

App1 fails to launch and generates an error message indicating that the application is not supported on this version of Windows.

You need to ensure that App1 can run successfully.

What should you do?

- A. Create a package that includes App1 by using the Windows Imaging and Configuration Designer (Windows ICD).
- B. Create a fix in the Compatibility Administrator.
- C. Run App1 in the Standard User Analyzer (SUA).
- D. Use the Application Compatibility Manager (ACM) to create an inventory package.

Correct Answer: B

Section: (none)

Explanation

Explanation/Reference: Explanation: [https://msdn.microsoft.com/en-us/library/windows/desktop/dd744763\(v=vs.85\).aspx](https://msdn.microsoft.com/en-us/library/windows/desktop/dd744763(v=vs.85).aspx)

QUESTION 9

You have a laptop that has a high resolution display.

The Change the size of the text, apps, and other items setting is set to 175%.

You install a desktop application name App1.

When you start App1, the visual elements are misaligned, and the application interface does not appear as expected.

You need to ensure that App1 is displayed properly without affecting how other applications are displayed.

What should you do?

- A. Create an AppX package for App1.
- B. Run App1 as an administrator.
- C. Modify the Compatibility settings of App1.
- D. Configure an AppLocker rule for App1.



Correct Answer: C

Section: (none)

Explanation

Explanation/Reference:

Explanation:

QUESTION 10

A user has a computer that runs Windows 10.

The user reports that it takes a very long time to start the computer.

You need to identify which user applications cause the greatest delays when starting the computer.

Which tool should you use?

- A. Performance Monitor
- B. System Configuration
- C. Resource Monitor
- D. Task Manager

Correct Answer: D

Section: (none)

Explanation

Explanation/Reference: Explanation: <http://www.pcadvisor.co.uk/how-to/windows/how-change-windows-10-startup-programs-stop-apps-opening-3615075/>

QUESTION 11

You have a computer named Computer1 that has the following four hard disk drives installed:

- Drive 1: A 500-GB OS volume
- Drive 2: A 400-GB data volume
- Drive3: A 400-GB empty volume
- Drive 4: A 500-GB empty volume

You need to create a two-way mirror by using Storage Spaces. The solution must minimize data loss.

Which drives should you use?

- A. Drive 1 and Drive 2
- B. Drive 1 and Drive 4
- C. Drive 2 and Drive 3
- D. Drive 3 and Drive 4

Correct Answer: D

Section: (none)

Explanation

Explanation/Reference:

Explanation:

<http://www.windowscentral.com/how-use-storage-spaces-windows-10>

QUESTION 12

Your company is developing a Universal Windows Platform (UWP) app named App1. App1 is not published in the Microsoft Store for Business.

You are provided with an AppX package for App1.

You need to install App1 locally.

What should you do first?

- A. From a Group Policy object (GPO), add a software installation package.
- B. From the Settings app, modify the For developers setting.
- C. Set the AppX Deployment Service (AppXSVC) to Automatic and restart the computer.
- D. Disable User Account Control (UAC).

Correct Answer: B

Section: (none)

Explanation

Explanation/Reference: Explanation: <https://msdn.microsoft.com/windows/uwp/get-started/enable-your-device-for-development>

QUESTION 13

You purchase licenses for several apps from the Windows Store and you list the apps in your Windows Store for Business.

You need to tell users how to install the apps.

What should you instruct the users to use?

- A. the Windows Store app and a Microsoft account
- B. a web browser and a Microsoft Azure Active Directory (Azure AD) account
- C. the Windows Store app and a Microsoft Azure Active Directory (Azure AD) account
- D. a web browser and a Microsoft account

Correct Answer: C

Section: (none)

Explanation

Explanation/Reference: Explanation: <https://technet.microsoft.com/en-us/itpro/windows/manage/distribute-apps-from-your-private-store>

QUESTION 14

Note: This question is part of a series of questions that use the same scenario. For your convenience, the scenario is repeated in each question. Each question presents a different goal and answer choices, but the text of the scenario is exactly the same in each question in this series.

Start of repeated scenario

Your network contains a single Active Directory domain named adatum.com.

The network contains five servers configured as shown in the following table:

Server name	Domain/workgroup	Role
DC1	Adatum.com	Domain controller
DC2	Adatum.com	Domain controller
Server1	Adatum.com	Member server
Server2	Adatum.com	Member server
Test_Server	Workgroup	File server

All of the servers run Windows Server 2012 R2.

Test_Server has a shared folder named ShareA. Only local users have permissions to ShareA.

The network contains a mainframe computer that is administered by using the Telnet protocol.

The domain contains four client computers configured as shown in the following table:

Computer name	Primary user
Computer1	User1
Computer2	User2
Computer3	User3
Computer4	User4

All of the client computers run the 64-bit version of Windows 10. User3 frequently accesses ShareA. Remote Desktop is enabled on Computer4.

Your company identifies the following requirements:

- Ensure that you can test unsigned device drivers on Computer1.
 - Enable Credential Guard on Computer2.
 - Run commands and cmdlets remotely on Computer2.
 - Configure User Account Control (UAC) on Computer3 to prompt administrators for credentials when elevated privileges are required. ▪
- Ensure that User1 can view and interact with a desktop session of User3.
- Ensure that User2 can use Telnet to manage the mainframe.
 - Ensure that User4 can use Remote Desktop to access Computer4 remotely.

End of repeated scenario

You need to configure Computer3 to meet the UAC requirement.

What should you use?

- A. User Account Control Settings
- B. Credential Manager
- C. Security Options in the Computer Configuration of the Local Computer Policy.
- D. Security Settings in the User Computer of the Local Computer Policy.

Correct Answer: D

Section: (none)

Explanation

Explanation/Reference:

References: <https://www.tenforums.com/tutorials/112621-change-uac-prompt-behavior-administrators-windows.html>

QUESTION 15

Note: This question is part of a series of questions that use the same scenario. For your convenience, the scenario is repeated in each question. Each question presents a different goal and answer choices, but the text of the scenario is exactly the same in each question in this series.

Start of repeated scenario

Your network contains a single Active Directory domain named adatum.com.

The network contains five servers configured as shown in the following table:

Server name	Domain/workgroup	Role
DC1	Adatum.com	Domain controller
DC2	Adatum.com	Domain controller
Server1	Adatum.com	Member server
Server2	Adatum.com	Member server
Test_Server	Workgroup	File server

All of the servers run Windows Server 2012 R2.

Test_Server has a shared folder named ShareA. Only local users have permissions to ShareA.

The network contains a mainframe computer that is administered by using the Telnet protocol.

The domain contains four client computers configured as shown in the following table:

Computer name	Primary user
Computer1	User1
Computer2	User2
Computer3	User3
Computer4	User4

All of the client computers run the 64-bit version of Windows 10. User3 frequently accesses ShareA. Remote Desktop is enabled on Computer4.

Your company identifies the following requirements:

- Ensure that you can test unsigned device drivers on Computer1.
 - Enable Credential Guard on Computer2.
 - Run commands and cmdlets remotely on Computer2.
 - Configure User Account Control (UAC) on Computer3 to prompt administrators for credentials when elevated privileges are required. ▪
- Ensure that User1 can view and interact with a desktop session of User3.
- Ensure that User2 can use Telnet to manage the mainframe.
 - Ensure that User4 can use Remote Desktop to access Computer4 remotely.

End of repeated scenario

On Test_Server, you reset the password for User3.
You need to ensure that User3 can access ShareA.
Which tool should you instruct User3 to use on Computer3?

- A. the Get-Credential cmdlet
- B. Credential Manager
- C. Authorization Manager
- D. Active Directory Users and Computers

Correct Answer: B

Section: (none)

Explanation

Explanation/Reference: Explanation: <http://www.digitalcitizen.life/credential-manager-where-windows-stores-passwords-other-login-details>

QUESTION 16

Note: This question is part of a series of questions that use the same scenario. For your convenience, the scenario is repeated in each question. Each question presents a different goal and answer choices, but the text of the scenario is exactly the same in each question in this series.

Start of repeated scenario

Your network contains a single Active Directory domain named adatum.com.

The network contains five servers configured as shown in the following table:

Server name	Domain/workgroup	Role
DC1	Adatum.com	Domain controller
DC2	Adatum.com	Domain controller
Server1	Adatum.com	Member server
Server2	Adatum.com	Member server
Test_Server	Workgroup	File server

All of the servers run Windows Server 2012 R2.

Test_Server has a shared folder named ShareA. Only local users have permissions to ShareA.

The network contains a mainframe computer that is administered by using the Telnet protocol.

The domain contains four client computers configured as shown in the following table:

Computer name	Primary user
Computer1	User1
Computer2	User2
Computer3	User3
Computer4	User4

All of the client computers run the 64-bit version of Windows 10. User3 frequently accesses ShareA. Remote Desktop is enabled on Computer4.

Your company identifies the following requirements:

- Ensure that you can test unsigned device drivers on Computer1.
- Enable Credential Guard on Computer2.
- Run commands and cmdlets remotely on Computer2.
- Configure User Account Control (UAC) on Computer3 to prompt administrators for credentials when elevated privileges are required. ▪

Ensure that User1 can view and interact with a desktop session of User3.

- Ensure that User2 can use Telnet to manage the mainframe.
- Ensure that User4 can use Remote Desktop to access Computer4 remotely.

End of repeated scenario

You need to meet the Credential Guard requirement of Computer2.

Which two Windows features should you install? Each correct answer presents part of the solution.

- A. Windows Process Activation Service (WAS)
- B. Embedded BootExperience
- C. Isolated User Mode
- D. Windows Identity Foundation 3.5
- E. Hyper-V Hypervisor

Correct Answer: CE

Section: (none)

Explanation

Explanation/Reference:

Explanation:

<https://technet.microsoft.com/en-us/itpro/windows/keep-secure/credential-guard> <https://blogs.technet.microsoft.com/ash/2016/03/02/windows-10-device-guard-and-credential-guard-demystified/>

QUESTION 17

Note: This question is part of a series of questions that use the same scenario. For your convenience, the scenario is repeated in each question. Each question presents a different goal and answer choices, but the text of the scenario is exactly the same in each question in this series.

Start of repeated scenario

Your network contains a single Active Directory domain named adatum.com.

The network contains five servers configured as shown in the following table:

Server name	Domain/workgroup	Role
DC1	Adatum.com	Domain controller
DC2	Adatum.com	Domain controller
Server1	Adatum.com	Member server
Server2	Adatum.com	Member server
Test_Server	Workgroup	File server

All of the servers run Windows Server 2012 R2.

Test_Server has a shared folder named ShareA. Only local users have permissions to ShareA.

The network contains a mainframe computer that is administered by using the Telnet protocol.

The domain contains four client computers configured as shown in the following table:

Computer name	Primary user
Computer1	User1
Computer2	User2
Computer3	User3
Computer4	User4

All of the client computers run the 64-bit version of Windows 10. User3 frequently accesses ShareA. Remote Desktop is enabled on Computer4.

Your company identifies the following requirements:

- Ensure that you can test unsigned device drivers on Computer1.
 - Enable Credential Guard on Computer2.
 - Run commands and cmdlets remotely on Computer2.
 - Configure User Account Control (UAC) on Computer3 to prompt administrators for credentials when elevated privileges are required.
- Ensure that User1 can view and interact with a desktop session of User3.
- Ensure that User2 can use Telnet to manage the mainframe.
 - Ensure that User4 can use Remote Desktop to access Computer4 remotely.

End of repeated scenario

You need to meet the requirement of User2.

What should you do?

- A. Run tlntadmn.exe
- B. Install a Windows feature.
- C. Modify the membership of the TelnetClients group.
- D. Configure Windows Firewall.

Correct Answer: B

Section: (none)

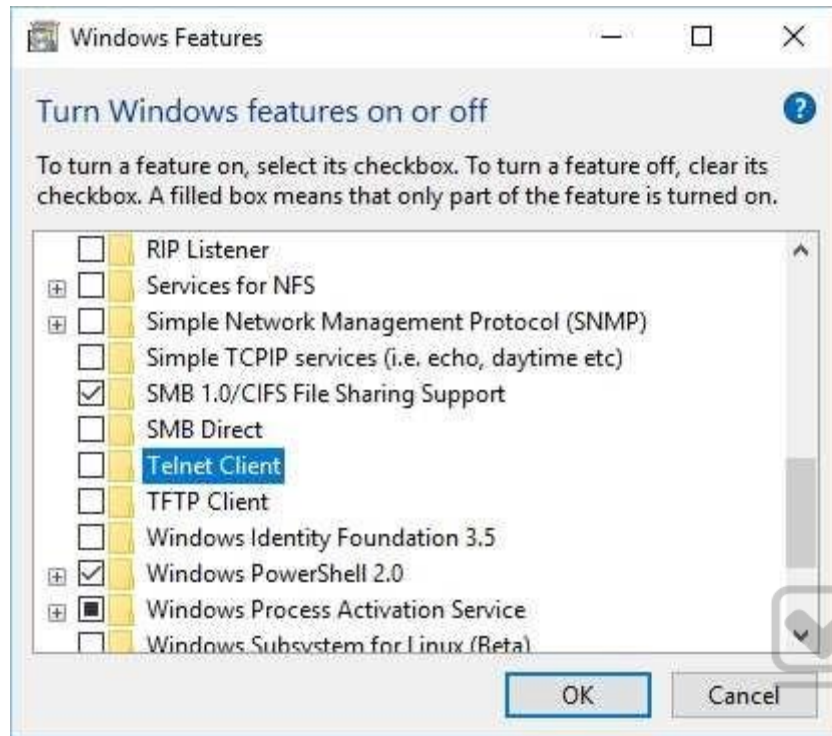
Explanation

Explanation/Reference:

Explanation:

You need the Telnet Client to manage a Telnet Server. The Telnet Client is not installed by default.





QUESTION 18

Note: This question is part of a series of questions that use the same set of answer choices. Each answer choice may be used once, more than once, or not at all.

Your network contains a single Active Directory domain. The domain contains a VPN server that supports all of the VPN protocols.

A user named User1 works from home and has a desktop computer that runs Windows 10 Pro. User1 has an application named App1 that requires access to a server on the corporate network. User1 creates a VPN connection on the computer.

You need to ensure that when User1 opens App1, App1 can access the required data.

What should you do?

- A. Click Turn on password protected sharing.
- B. Disable Network Discovery.
- C. Modify the Profile settings of an incoming firewall rule.

- D. Run the Add-VpnConnectionTriggerApplication cmdlet.
- E. Run the New-NetFirewallRule cmdlet and specify the- Direction Outbound parameter.
- F. Run the New-VpnConnection cmdlet.
- G. Run the Set-NetConnectionProfile cmdlet.
- H. Run the Set-VPNConnection cmdlet.

Correct Answer: D

Section: (none)

Explanation

Explanation/Reference: Explanation:

<https://technet.microsoft.com/itpro/powershell/windows/vpnclient/add-vpnconnectiontriggerapplication>

QUESTION 19

Note: This question is part of a series of questions that use the same set of answer choices. Each answer choice may be used once, more than once, or not at all.

You have 10 computers that run Windows 10 Pro. The computers are in a workgroup.

A computer named PC_User1 has shared folder named Share1. Users are not prompted for credentials when they access Share1.

You modify the permissions on Share1 so that the share is shared only to a user named User1.

You need to ensure that when users from other computers in the workgroup access Share1, they must authenticate by using the credentials of User1.

What should you do?

- A. Click Turn on password protected sharing.
- B. Disable Network Discovery.
- C. Modify the Profile settings of an incoming firewall rule.
- D. Run the Add-VpnConnectionTriggerApplication cmdlet.
- E. Run the New-NetFirewallRule cmdlet and specify the- Direction Outbound parameter.
- F. Run the New-VpnConnection cmdlet.
- G. Run the Set-NetConnectionProfile cmdlet.
- H. Run the Set-VPNConnection cmdlet.

Correct Answer: A

Section: (none)

Explanation

Explanation/Reference: Explanation: <http://www.isunshare.com/windows-10/turn-off-or-on-password-protected-sharing-in-windows-10.html>

QUESTION 20

Note: This question is part of a series of questions that use the same set of answer choices. Each answer choice may be used once, more than once, or not at all.

Your network contains a single Active Directory domain. The domain contains a VPN server that supports all of the VPN protocols.

From a computer that runs Windows 10 Pro, a user named User1 creates an SSTP VPN connection to a network named VPN1.

User1 successfully connects to the VPN server. When User1 roams between different Wi-Fi access points, the user loses the connection to the corporate network and must manually re-establish the VPN connection.

You need to ensure that VPN1 automatically maintains the connection while the user roams between Wi-Fi access points.



<https://vceplus.com/> What should

you do?

- A. Click Turn on password protected sharing.
- B. Disable Network Discovery.
- C. Modify the Profile settings of an incoming firewall rule.
- D. Run the Add-VpnConnectionTriggerApplication cmdlet.
- E. Run the New-NetFirewallRule cmdlet and specify the- Direction Outbound parameter.
- F. Run the New-VpnConnection cmdlet.
- G. Run the Set-NetConnectionProfile cmdlet.
- H. Run the Set-VPNConnection cmdlet.

Correct Answer: H

Section: (none)

Explanation

Explanation/Reference:

Explanation:

We need to reconfigure the VPN connection to use IKEv2. We can do this with the Set-VPNConnection cmdlet with the -TunnelType parameter.

References: [https://docs.microsoft.com/en-us/previous-versions/windows/it-pro/windows-server-2008-R2-and-2008/dd637803\(v=ws.10\)](https://docs.microsoft.com/en-us/previous-versions/windows/it-pro/windows-server-2008-R2-and-2008/dd637803(v=ws.10))

<https://docs.microsoft.com/en-us/powershell/module/vpnclient/set-vpnconnection?view=win10-ps>

QUESTION 21

Note: This question is part of a series of questions that use the same set of answer choices. Each answer choice may be used once, more than once, or not at all.

You have a computer named Computer1 that has storage configured as shown in the following table:

Disk name	Size	Storage pool name
Disk1	200 GB	Pool1
Disk2	100 GB	Pool1
Disk3	500 GB	Pool1
Disk4	500 GB	Pool2
Disk5	500 GB	Pool2
Disk6	800 GB	None
Disk7	100 GB	Pool3
Disk8	100 GB	Pool3

Pool1 contains a storage space named Space1 that is 300 GB.

Pool3 contains a storage space named Space2 that is 100 GB.

Pool2 is empty.

You need to add a storage space to Pool2.

What should you use?

- A. Add-PhysicalDisk
- B. Diskpart
- C. New-VirtualDisk
- D. Remove-PhysicalDisk
- E. Resize-VirtualDisk
- F. Set-StoragePool
- G. Subst
- H. Update-Disk

Correct Answer: C

Section: (none)

Explanation

Explanation/Reference: Explanation: <https://technet.microsoft.com/en-us/itpro/powershell/windows/storage/new-virtualdisk>

QUESTION 22

Note: This question is part of a series of questions that use the same set of answer choices. Each answer choice may be used once, more than once, or not at all.

You have a computer named Computer1 that has storage configured as shown in the following table:

Disk name	Size	Storage pool name
Disk1	200 GB	Pool1
Disk2	100 GB	Pool1
Disk3	500 GB	Pool1
Disk4	500 GB	Pool2
Disk5	500 GB	Pool2
Disk6	800 GB	None
Disk7	100 GB	Pool3
Disk8	100 GB	Pool3

Pool1 contains a storage space named Space1 that is 300 GB.

Pool3 contains a storage space named Space2 that is 100 GB.

Pool2 is empty.

You need to add Disk7 to Pool1.

What should you use first?

- A. Add-PhysicalDisk
- B. Diskpart
- C. New-VirtualDisk
- D. Remove-PhysicalDisk
- E. Resize-VirtualDisk
- F. Set-StoragePool
- G. Subst
- H. Update-Disk

Correct Answer: D

Section: (none)

Explanation



Explanation/Reference: Explanation:

<https://technet.microsoft.com/itpro/powershell/windows/storage/remove-physicaldisk>

QUESTION 23

Note: This question is part of a series of questions that use the same set of answer choices. Each answer choice may be used once, more than once, or not at all.

You have a computer that has a dual-boot configuration. Windows 10 Enterprise is installed on the local disk. Windows 10 Pro is installed in a VHDX file named Disk1.vhdx. Both of the installations are 64-bit versions.

You start the computer to Windows 10 Enterprise.

You need to ensure that you can install an unsigned driver to Windows 10 Pro when the computer starts in Windows 10 Pro.

What should you run?

- A. Add-WindowsImage

- B. bcdboot.exe
- C. bcdedit.exe
- D. bootcfg.exe
- E. bootim.exe
- F. bootsect.exe
- G. diskpart.exe
- H. Expand-WindowsImage

Correct Answer: C

Section: (none)

Explanation

Explanation/Reference: Explanation: <http://www.drivethelife.com/windows-drivers/how-to-disable-driver-signature-enforcement-on-windows-10-8-7-xp-vista.html#part3>

QUESTION 24

Note: This question is part of a series of questions that use the same set of answer choices. Each answer choice may be used once, more than once, or not at all.

You have a computer named Computer1.

Computer1 has a virtual hard disk (VHD) named Disk1.vhdx. Disk1.vhdx has an NTFS partition, which is visible in File Explorer as drive E.

You need to apply a Windows 10 image to drive E.

What should you run?

- A. Add-WindowsImage
- B. bcdboot.exe
- C. bcdedit.exe
- D. bootcfg.exe
- E. bootim.exe
- F. bootsect.exe
- G. diskpart.exe
- H. Expand-WindowsImage

Correct Answer: H

Section: (none)

Explanation

Explanation/Reference:

Explanation:

QUESTION 25

Note: This question is part of a series of questions that use the same scenario. For your convenience, the scenario is repeated in each question. Each question presents a different goal and answer choices, but the text of the scenario is exactly the same in each question in this series.

Start of repeated scenario

Your network contains a single Active Directory domain named contoso.com. All computers are members of the domain and run the 64-bit version of Windows 10 Enterprise.

On a test computer named Computer_Test1, you pin several company-specific applications in a group named Contoso Apps, and then you export the Start menu layout to a file named Contoso.xml.

You install Client Hyper-V on a computer named Computer6.

You identify the following requirements:

- Install the Hyper-V feature on a computer named Computer1.
 - Use virtual smart card authentication on a computer named Computer2.
 - Enable Secure Boot on a computer named Computer3.
 - Connect a computer named Computer4 to a projector by using Miracast.
 - Ensure that a user named User1 can use keyboard shortcuts by pressing one key at a time.
 - Ensure that you can share the clipboard between Computer6 and the virtual machines running on Computer6.
- Add the Contoso Apps group to the Start menu of a computer named Computer7.

End of repeated scenario

You install all of the Contoso apps on Computer7.

You need to meet the requirements of Computer7.

What should you do?

A. Run the Import-StartLayout cmdlet.

- B. Copy Contoso.xml to the C:\Users\Default\Start menu folder.
- C. Configure the Start Menu and Taskbar settings in a Group Policy.
- D. Copy Contoso.xml to the C:\ProgramData\Microsoft\Windows\Start Menu folder.

Correct Answer: A

Section: (none)

Explanation

Explanation/Reference: Explanation: <https://blogs.technet.microsoft.com/deploymentguys/2016/03/07/windows-10-start-layout-customization/#Exporting>

QUESTION 26

Note: This question is part of a series of questions that use the same scenario. For your convenience, the scenario is repeated in each question. Each question presents a different goal and answer choices, but the text of the scenario is exactly the same in each question in this series.

Start of repeated scenario

Your network contains a single Active Directory domain named contoso.com. All computers are members of the domain and run the 64-bit version of Windows 10 Enterprise.

On a test computer named Computer_Test1, you pin several company-specific applications in a group named Contoso Apps, and then you export the Start menu layout to a file named Contoso.xml.

You install Client Hyper-V on a computer named Computer6.

You identify the following requirements:

- Install the Hyper-V feature on a computer named Computer1.
- Use virtual smart card authentication on a computer named Computer2.
- Enable Secure Boot on a computer named Computer3.
- Connect a computer named Computer4 to a projector by using Miracast.
- Ensure that a user named User1 can use keyboard shortcuts by pressing one key at a time.
- Ensure that you can share the clipboard between Computer6 and the virtual machines running on Computer6.

Add the Contoso Apps group to the Start menu of a computer named Computer7.

End of repeated scenario

Which hardware feature must Computer4 support?

- A. a Wi-Fi adapter
- B. a Bluetooth adapter
- C. an HDMI port
- D. a MiniDisplayPort connector

Correct Answer: A

Section: (none)

Explanation

Explanation/Reference: Explanation: <https://www.microsoft.com/en-us/windows/windows-10-specifications#sysreqs>

QUESTION 27

Note: This question is part of a series of questions that use the same scenario. For your convenience, the scenario is repeated in each question. Each question presents a different goal and answer choices, but the text of the scenario is exactly the same in each question in this series.

Start of repeated scenario

Your network contains a single Active Directory domain named contoso.com. All computers are members of the domain and run the 64-bit version of Windows 10 Enterprise.

On a test computer named Computer_Test1, you pin several company-specific applications in a group named Contoso Apps, and then you export the Start menu layout to a file named Contoso.xml.

You install Client Hyper-V on a computer named Computer6.

You identify the following requirements:

- Install the Hyper-V feature on a computer named Computer1.
- Use virtual smart card authentication on a computer named Computer2.
- Enable Secure Boot on a computer named Computer3.
- Connect a computer named Computer4 to a projector by using Miracast.
- Ensure that a user named User1 can use keyboard shortcuts by pressing one key at a time.
- Ensure that you can share the clipboard between Computer6 and the virtual machines running on Computer6.
- Add the Contoso Apps group to the Start menu of a computer named Computer7.

End of repeated scenario

You need to meet the requirement of Computer6.

What should you configure?

- A. NUMA spanning
- B. enhanced session mode
- C. Hyper-V Guest Service Interface
- D. RemoteFX

Correct Answer: B

Section: (none)

Explanation

Explanation/Reference: Explanation: <https://technet.microsoft.com/en-us/windows-server-docs/compute/hyper-v/learn-more/use-local-resources-on-hyper-v-virtual-machine-with-vmconnect>

QUESTION 28

You have a computer named Computer1.

You obtain a new driver for a device installed on Computer1. The driver package is stored in C:\Drivers and includes the following files: ▪

Driver.inf

- Driver.dll
 - Driver.sys ▪
- Driver.cat

You need to install the driver on Computer1 by using File Explorer.

Which file should you use to initiate the installation?

- A. Driver.sys
- B. Driver.dll
- C. Driver.cat
- D. Driver.inf

Correct Answer: D

Section: (none)

Explanation

Explanation/Reference:

Explanation:

Right-click on the .inf file and select Install.

QUESTION 29

You have four computers configured as shown in the following table:

Computer name	Trusted Platform Module (TPM) version	Wi-Fi Direct support	Second Level Address Translation (SLAT)-capable processor support	Camera type
Computer1	None	No	Yes	Webcam and illuminated infrared camera
Computer2	1.2	Yes	Yes	illuminated infrared camera
Computer3	2.0	No	Yes	Webcam
Computer4	2.0	Yes	No	Webcam

You need to deploy Windows 10 Enterprise. The deployment must support Miracast, BitLocker Drive Encryption (BitLocker), and Windows Hello with facial recognition.

On which computer should you install Windows 10?

- A. Computer1
- B. Computer2
- C. Computer3
- D. Computer4

Correct Answer: B

Section: (none)

Explanation

Explanation/Reference: Explanation: <https://www.microsoft.com/en-us/windows/windows-10-specifications#sysreqs>

QUESTION 30

Your network contains a single Active Directory domain that has a Key Management Service (KMS) host.

You deploy Windows 10 to several laptops.

You need to ensure that Windows 10 is activated on the laptops immediately.

Which command should you run?

- A. `ospp.vbs/act`
- B. `slmgr.vbs/dli`
- C. `slmgr.vbs/ato`
- D. `ospp.vbs/dstatus`

Correct Answer: C

Section: (none)

Explanation

Explanation/Reference: Explanation:

[https://technet.microsoft.com/en-us/library/dn502540\(v=ws.11\).aspx](https://technet.microsoft.com/en-us/library/dn502540(v=ws.11).aspx)

QUESTION 31

Your network contains a single Active Directory domain. The domain contains two computers named Computer1 and Computer2.

From Computer1, you need to view the installed devices and their associated drivers on Computer2.

What should you use?

- A. the `Get-PnpDevice` cmdlet
- B. the `Get-WindowsDriver` cmdlet
- C. the `Get-OdbcDriver` cmdlet
- D. the `driverquery.exe` command

Correct Answer: D

Section: (none)

Explanation

Explanation/Reference: Explanation:

<https://blogs.technet.microsoft.com/askperf/2011/10/21/two-minute-drill-driverquery-exe/>

QUESTION 32

You need to create a script to verify the activation status on 100 computers.

What should you use in the script?

- A. the sfc.exe command and the/scannow parameter
- B. the sfc.exe command and the/verifyonly parameter
- C. the slmgr.vbs script and the /ipk parameter
- D. the slmgr.vbs script and the /dli parameter

Correct Answer: D

Section: (none)

Explanation

Explanation/Reference: Explanation:

[https://technet.microsoft.com/en-us/library/dn502540\(v=ws.11\).aspx](https://technet.microsoft.com/en-us/library/dn502540(v=ws.11).aspx)

QUESTION 33

You have a computer that runs the 32-bit version of Windows 7 Professional with Service Pack 1.

You need to perform an in-place upgrade to Windows 10.

Which two editions of Windows 10 can you upgrade the computer to? Each correct answer presents a complete solution.

- A. the 32-bit version of Windows 10 Pro
- B. the 64-bit version of Windows 10 Pro
- C. the 32-bit version of Windows 10 Enterprise



- D. the 64-bit version of Windows 10 Enterprise
- E. the 32-bit version of Windows 10 Home

Correct Answer: AC

Section: (none)

Explanation

Explanation/Reference:

Explanation:

References: <https://docs.microsoft.com/en-us/windows/deployment/upgrade/windows-10-upgrade-paths>

QUESTION 34

You have five computers that run Windows 8.1 Pro.

You need to perform an upgrade installation of Windows 10 on the computers.

What are two possible ways to achieve the goal? Each correct answer presents a complete solution.

- A. Apply an image of Windows 10 by running imagex.exe.
- B. Start the computers from Windows PE, and then run setup.exe from a network share that contains the Windows 10 installation source files.
- C. While signed in to Windows 8.1 Pro, run setup.exe from a network share that contains the Windows 10 installation source files.
- D. Start the computers from a bootable USB drive that contains the Windows 10 source files.
- E. Apply updates by using Windows Update.

Correct Answer: CE

Section: (none)

Explanation

Explanation/Reference:

Explanation:

<http://www.laptopmag.com/articles/how-to-upgrade-windows-10> <https://www.groovypost.com/howto/upgrade-windows-8-1-to-windows-10/>

QUESTION 35

You have computers that run Windows 10.

You need to identify both active malware instances and past malware instances from the last three months.

Which command should you run?

- A. Get-EventSubscriber
- B. Get-MpThreatCatalog
- C. Get-WindowsErrorReporting
- D. Get-MpThreatDetection

Correct Answer: D

Section: (none)

Explanation

Explanation/Reference: Explanation:

<https://technet.microsoft.com/en-us/library/dn433290.aspx>

QUESTION 36

Your networks contain a single Active Directory domain.

On a domain controller, an administrator creates a custom Microsoft Management Console (MMC) that uses the Active Directory Users and Computer snap-in.

The domain contains a computer named Computer1 that runs Windows 10. You use the computer to perform management tasks. You copy the custom MMC to the computer.

You need to ensure that you can use MMC and all of the features of the MMC.

What should you do on Computer1?

- A. Enable the Sideload apps developer feature.
- B. Install the Remote Server Administration Tools (RSAT).
- C. Install the Microsoft Application Compatibility Toolkit (ACT).
- D. Disable User Account Control (UAC).

Correct Answer: B

Section: (none)

Explanation

Explanation/Reference:

Explanation:

<http://blogs.msmvps.com/acefekay/2012/08/24/delegate-active-directory-users-and-computers-aduc-then-create-a-custom-aduc-mmc/>

QUESTION 37

You have a computer named Computer1 that runs Windows 10.

Computer1 has two volumes named C and D. Volume C is formatted NTFS and volume D is formatted exFAT.

You need to ensure that you can recover files stored in D:\Data.

What should you use?

- A. System Restore points
- B. File History
- C. wbadmin.exe
- D. Backup and Restore (Windows 7)

Correct Answer: B

Section: (none)

Explanation

Explanation/Reference:

Explanation:



QUESTION 38

You have a computer that runs Windows 10 Pro.

You receive a SMART alert that the hard disk drive will fail soon.

You connect a second external hard disk drive to the computer.

You need to create a backup that you can use to restore the operating system and the user documents to a replacement drive.

What should you use?

- A. vssadmin.exe
- B. wbadmin.exe
- C. Start-WBBackup
- D. Start-OBBackup

Correct Answer: B

Section: (none)

Explanation

Explanation/Reference: Explanation: <http://www.backup-utility.com/windows-10/windows-10-wbadmin-4348.html>

QUESTION 39

A user reports that a computer was slower than expect during the last week.

You need to identify any application failures that occurred during the last week.

Which tool should you use?

- A. Performance Monitor
- B. Task Manager
- C. Resource Monitor
- D. Reliability Monitor

Correct Answer: D

Section: (none)

Explanation

Explanation/Reference: Explanation: <http://www.pcworld.com/article/2999237/windows/how-to-use-windows-10s-reliability-monitor-to-fix-and-fine-tune-your-pc.html>

QUESTION 40

You have a computer named Computer1 that runs Windows 10. Computer1 has a printer named Printer1 installed.

You need to configure the settings of Printer1 remotely from another computer.

Which tool should you use on the remote computer?

- A. Device Manager from Control Panel
- B. Print Management from Administrative Tools
- C. Printers & scanners from the Setting app
- D. Devices and Printers from Control Panel



Correct Answer: B

Section: (none)

Explanation

Explanation/Reference:

Explanation:

[https://technet.microsoft.com/en-us/library/cc753109\(v=ws.10\).aspx](https://technet.microsoft.com/en-us/library/cc753109(v=ws.10).aspx) <http://www.howto-connect.com/print-management-tool-in-windows-10/>

QUESTION 41

Your network contains a single Active Directory domain. The domain contains a computer that runs Windows 10.

You plan to use the computer to test applications.

You need to install Windows Insider Preview builds on the computer.

What should you do?

- A. From Group Policy, configure the Add features to Windows 10 settings.
- B. From the Settings app, configure the Advanced options for Windows Update.
- C. From Group Policy, configure the Windows Update settings.
- D. From the Settings app, select Developer mode.

Correct Answer: B

Section: (none)

Explanation

Explanation/Reference: Explanation: <http://www.howtogeek.com/224826/how-to-become-a-windows-insider-and-test-new-windows-10-features/>

QUESTION 42

You have a computer named Computer1 that has the following stored credentials:

- A Windows credential for accessing a shared folder on a workgroup computer
- A Windows credential for accessing Remote Desktop
- A Windows credential for accessing an HTTP URL
- A web credential for accessing an HTTPS URL
- A web credential for accessing an HTTP URL

Which two passwords can be viewed in clear text from Credential Manager on Computer1?

Note: Each correct selection is worth one point.

- A. the web credential for accessing the HTTPS URL
- B. the Windows credential for accessing the shared folder
- C. the Windows credential for accessing the HTTP URL
- D. the Windows credential for accessing Remote Desktop
- E. the web credential for accessing the HTTP URL

Correct Answer: AE

Section: (none)

Explanation

Explanation/Reference:

Explanation:

Only web credentials can be displayed. Windows credentials can never be displayed.

QUESTION 43

You have a computer named Computer1 that is configured to install updates from Windows Server Update Services (WSUS).

Microsoft releases a new Windows update that is not approved in WSUS.

You need to install the update on Computer1.

What should you do?

- A. From a command prompt, run gpupdate /force /sync.
- B. Click Check online for updates from Microsoft Updates, and then check for updates.
- C. Clear the defer upgrades check box, and then check for updates.
- D. From Windows PowerShell, run the Get-WindowsUpdateLog cmdlet, and then run the Update-Module cmdlet.

Correct Answer: B

Section: (none)

Explanation

Explanation/Reference:

Explanation:

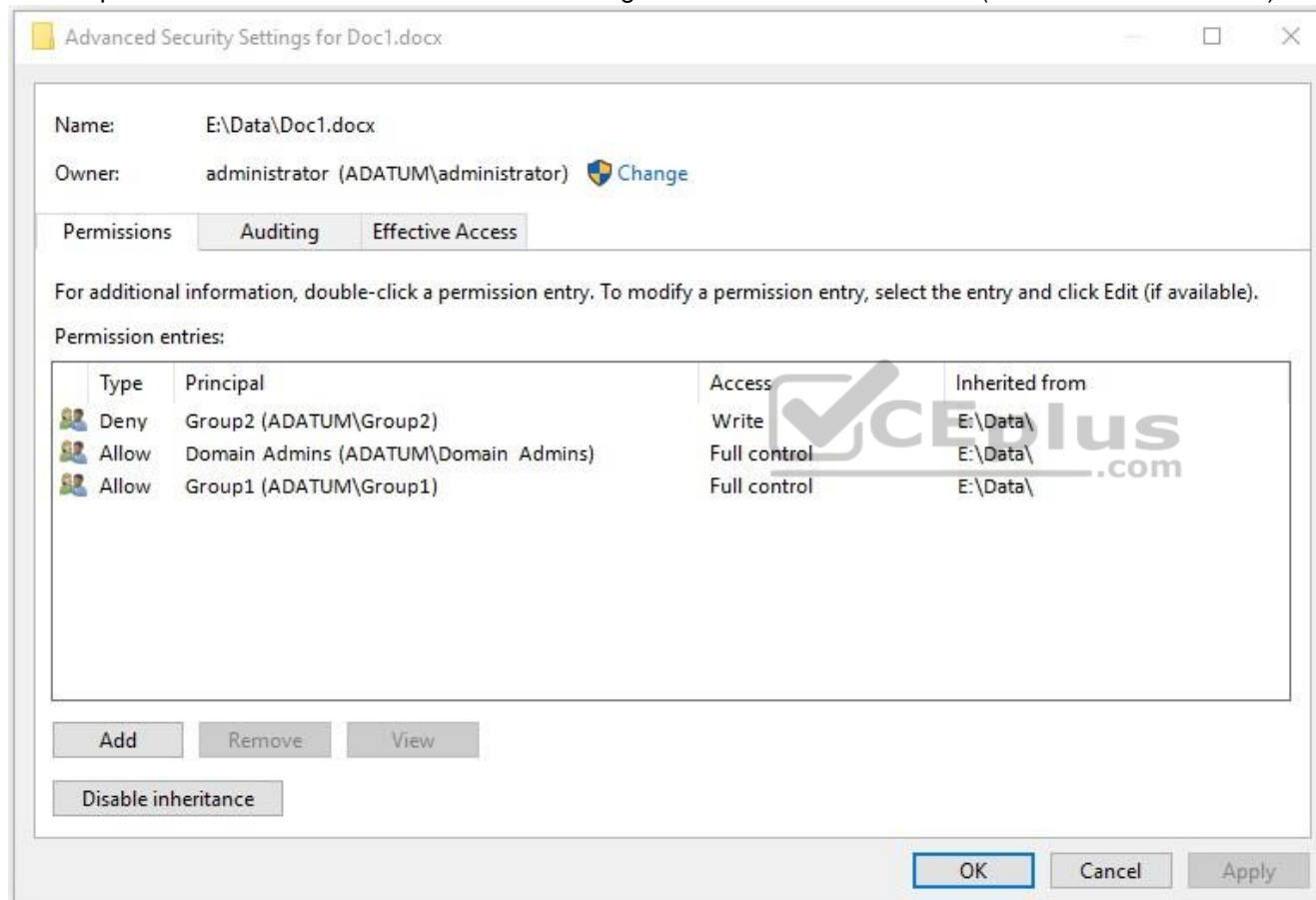
QUESTION 44

You have a computer named Computer1.

A user named User1 is a member of two groups named Group1 and Group2.

You have a file named Doc1.docx that is located in E:\Data.

The file permissions for E:\Data\Doc1.docx are configured as shown in the exhibit. (Click the Exhibit button.)



You need to provide User1 with Write access to Doc1.docx.
What should you do?

A. Grant User1 Full control access to folder E:\Data.

- B. Remove User1 from Group2 and instruct the user to sign out, and then sign back in.
- C. Grant User1 Full control access to the E:\Data\Doc1.docx file, disable inheritance for the file, and then convert the inherited permissions to explicit permissions for the file.
- D. Grant User1 Write access to folder E.

Correct Answer: B

Section: (none)

Explanation

Explanation/Reference:

Explanation:

Group2 is denied access. This will override all other permissions.

QUESTION 45

You have a laptop named Computer1 that runs Windows 10.

Computer1 connects to a wireless network named WiFi1 and a wireless network named WiFi2. WiFi1 has poor signal and the connection drops frequently. WiFi2 is available only during certain times of the day. WiFi2 has a stronger signal that is more reliable than WiFi1.

You need to configure Computer1 to use WiFi2 whenever possible. WiFi1 should be used when WiFi2 is unavailable.

Which three settings should you configure? Each correct answer presents part of the solution.

- A. From the properties of WiFi2, select Connect even if the network is not broadcasting its name (SSID)
- B. From the properties of WiFi1, select Connect automatically when this network is in range.
- C. From the properties of WiFi1, select Enable WLAN connection settings.
- D. From the properties of WiFi2, select Connect automatically when this network is in range.
- E. From the properties of WiFi1, select Look for other wireless networks while connected to this network.
- F. From the properties of WiFi2, select Look for other wireless networks while connected to this network.

Correct Answer: BDE

Section: (none)

Explanation

Explanation/Reference:

Explanation:

QUESTION 46

You have a computer named Computer1 that runs Windows 10.

On Computer1, C:\Folder1 has the permissions configured as shown in the following table.

Type	Principal	Access	Applies To
Deny	Contoso\User1	Read	This folder, subfolders and files
Allow	Computer1\Administrators	Full control	This folder, subfolders and files
Allow	Contoso\Domain Users	Read & execute	This folder, subfolders and files

You share C:\Folder1 as Folder1 and you grant access to the Everyone group.

Folder1 has the following share settings:

```
ShareState           : Online
AvailabilityType     : NonClustered
ShareType            : FileSystemDirectory
FolderEnumerationMode : AccessBased
CachingMode          : Manual
SmbInstance          : Default
CATimeout            : 0
ConcurrentUserLimit  : 0
EncryptData          : False
Name                 : Folder1
Path                 : C:\Folder1
Scoped               : False
ScopeName            : *
SecurityDescriptor    : O:BAG:DUD:(A;;0x1200a9;;;WD)
```

What level of access does User1 have to Folder1?

- A. User1 cannot see the Folder1 share on the network and cannot connect to Folder1.
- B. User1 can see the Folder1 share on the network and can connect to Folder1.
- C. User1 cannot see the Folder1 share on the network but can connect to Folder1.
- D. User1 can see the Folder1 share on the network but cannot connect to Folder1.

Correct Answer: A

Section: (none)

Explanation

Explanation/Reference: Explanation:

[https://technet.microsoft.com/en-us/library/jj635727\(v=wps.630\).aspx](https://technet.microsoft.com/en-us/library/jj635727(v=wps.630).aspx)

QUESTION 47

Note: This question is part of a series of questions that present the same scenario. Each question in the series contains a unique solution. Determine whether the solution meets the stated goals.

Your network contains a single Active Directory domain named contoso.com.
The domain contains two computers named Computer1 and Computer2.

A user named User1 is a member of the local Administrators group on Computer1 and Computer2.
User1 fails to remotely manage the devices on Computer2 by using Device Manager on Computer1.
User1 can connect to Computer2 remotely by using Computer Management.

You need to ensure that User1 can disable a device on Computer2 remotely.

Solution: You start the Plug and play and Remote Registry services on Computer2.

Does this meet the goal?

A. Yes

B. No

Correct Answer: B

Section: (none)

Explanation

Explanation/Reference:

Explanation:

http://winintro.com/?Category=Windows_10_2016&Policy=Microsoft.Policies.DeviceInstallation%3A%3ADeviceManagement_RPCInterface_Allow

QUESTION 48

Note: This question is part of a series of questions that present the same scenario. Each question in the series contains a unique solution. Determine whether the solution meets the stated goals.

Your network contains a single Active Directory domain named contoso.com. The domain contains two computers named Computer1 and Computer2.

A user named User1 is a member of the local Administrators group on Computer1 and Computer2.

User1 fails to remotely manage the devices on Computer2 by using Device Manager on Computer1.

User1 can connect to Computer2 remotely by using Computer Management.

You need to ensure that User1 can disable a device on Computer2 remotely.

Solution: You enable the Allow remote access to the Plug and Play interface Group Policy setting on Computer2.

Does this meet the goal?

A. Yes

B. No

Correct Answer: B

Section: (none)

Explanation



Explanation/Reference:

Explanation:

QUESTION 49

Note: This question is part of a series of questions that present the same scenario. Each question in the series contains a unique solution. Determine whether the solution meets the stated goals.

While performing maintenance on a computer, you open Indexing Options, and then you click Pause.

You complete the computer maintenance.

You need to resume indexing.

Solution: From the Services console, you restart the Windows Search service.

Does this meet the goal?

- A. Yes
- B. No

Correct Answer: A

Section: (none)

Explanation

Explanation/Reference: Explanation: <http://kb.ischool.uw.edu/how-to-startrestart-the-windows-search-service/>

QUESTION 50

Note: This question is part of a series of questions that present the same scenario. Each question in the series contains a unique solution. Determine whether the solution meets the stated goals.

While performing maintenance on a computer, you open Indexing Options, and then you click Pause.

You complete the computer maintenance.

You need to resume indexing.

Solution: You sign out of Windows, and then you sign back in.

Does this meet the goal?

- A. Yes
- B. No

Correct Answer: B

Section: (none)

Explanation

Explanation/Reference:

Explanation:

<http://www.techbuzz.in/restart-or-resume-windows-indexing-services-after-pausing.php>

QUESTION 51

Note: This question is part of a series of questions that use the same set of answer choices. Each answer choice may be used once, more than once, or not at all.

You have a computer named Computer1 that has storage configured as shown in the following table.

Disk name	Size	Storage pool name
Disk1	200 GB	Pool1
Disk2	100 GB	Pool1
Disk3	500 GB	Pool1
Disk4	500 GB	Pool2
Disk5	500 GB	Pool2
Disk6	800 GB	None
Disk7	100 GB	Pool3
Disk8	100 GB	Pool3

Pool1 contains a storage space named Space1 that is 300 GB. Pool3 contains a storage space named Space2 that is 100 GB. Pool2 is empty.

You need to configure Space2 to be 200 GB.

What should you use?

- A. Add-PhysicalDisk
- B. Diskpart
- C. New-VirtualDisk
- D. Remove-PhysicalDisk
- E. Resize-VirtualDisk
- F. Set-StoragePool
- G. Subst
- H. Update-Disk

Correct Answer: E

Section: (none)

Explanation

Explanation/Reference:

Explanation: References: <https://docs.microsoft.com/en-us/windows-server/storage/storage-spaces/resize-volumes>

QUESTION 52

Note: This question is part of a series of questions that use the same set of answer choices. Each answer choice may be used once, more than once, or not at all.

A user connects to a wireless network and receives the following message:

"Do you want to allow your PC to be discoverable by other PCs and devices on this network?"

The user clicks No. The user is unable to browse to the shared folders of other computers on the network by using File Explorer.

You need to ensure that the user can browse to the other computers.

What should you do?

- A. Click Turn on password protected sharing.
- B. Disable Network Discovery.
- C. Modify the Profile settings of an incoming firewall rule.
- D. Run the Add-VpnConnectionTriggerApplication cmdlet.
- E. Run the New-NetFirewallRule cmdlet and specify the -Direction Outbound parameter.
- F. Run the New-VpnConnection cmdlet.
- G. Run the Set-NetConnectionProfile cmdlet.
- H. Run the Set-VPNConnection cmdlet.

Correct Answer: G

Section: (none)

Explanation

Explanation/Reference:

Explanation:

<https://technet.microsoft.com/itpro/powershell/windows/netconnection/set-netconnectionprofile> <https://www.itechtics.com/change-network-type-windows-10/>

QUESTION 53

Note: This question is part of a series of questions that use the same set of answer choices. Each answer choice may be used once, more than once, or not at all.

Your network contains a single Active Directory domain. The domain contains computers that run Windows 10 Enterprise.

The computers are configured as shown in the following table:

Computer name	Primary user	Computer type
PC_User1	User1	Laptop
PC_User2	User2	Laptop
PC_User3	User3	Laptop

When User1 works remotely, the user fails to access shared folders on the corporate network.

When User 2 and User3 work remotely, they successfully connect to the shared folders on the corporate network.

You need to ensure that User1 can connect to the shared folders without user interaction.

What should you do?

- A. Click Turn on password protected sharing.
- B. Disable Network Discovery.
- C. Modify the Profile settings of an incoming firewall rule.
- D. Run the Add-VpnConnectionTriggerApplication cmdlet.
- E. Run the New-NetFirewallRule cmdlet and specify the -Direction Outbound parameter.
- F. Run the New-VpnConnection cmdlet.
- G. Run the Set-NetConnectionProfile cmdlet.
- H. Run the Set-VPNConnection cmdlet

Correct Answer: D

Section: (none)

Explanation

Explanation/Reference:

Explanation:

<https://technet.microsoft.com/itpro/powershell/windows/vpnclient/add-vpnconnectiontriggerapplication>

QUESTION 54

Note: This question is part of a series of questions that use the same scenario. For your convenience, the scenario is repeated in each question. Each question presents a different goal and answer choices, but the text of the scenario is exactly the same in each question in this series.

Start of repeated scenario

Your network contains a single Active Directory domain named adatum.com. The network contains five servers configured as shown in the following table.

Server name	Domain/workgroup	Role
DC1	Adatum.com	Domain controller
DC2	Adatum.com	Domain controller
Server1	Adatum.com	Member server
Server2	Adatum.com	Member server
Test_Server	Workgroup	File server

All of the servers run Windows Server 2012 R2.

Test_Server has a shared folder named ShareA. Only local users have permissions to ShareA.

The network contains a mainframe computer that is administered by using the Telnet protocol.

The domain contains four client computers configured as shown in the following table:

Computer name	Primary user
Computer1	User1
Computer2	User2
Computer3	User3
Computer4	User4

All of the client computers run the 64-bit version of Windows 10. User3 frequently accesses ShareA. Remote Desktop is enabled on Computer4.

Your company identifies the following requirements:

- Ensure that you can test unsigned device drivers on Computer1
- Enable Credential Guard on Computer2.
- Run commands and cmdlets remotely on computer2.

- Configure User Account control (UAC) on Computer3 to prompt administrators for credentials when elevated privileges are required. ▪
- Ensure that User1 can view and interact with a desktop session of User3.
- Ensure that User2 can use Telnet to manage the mainframe.
 - Ensure that User4 can use Remote Desktop to access Computer4 remotely.

End of repeated scenario

You need to meet the requirement of Computer1.
Which tool should you use on Computer1?

- A. BCD Edit
- B. Device Manager
- C. Bootcfg
- D. System Properties

Correct Answer: A

Section: (none)

Explanation

Explanation/Reference: Explanation: <http://www.drivethelife.com/windows-drivers/how-to-disable-driver-signature-enforcement-on-windows-10-8-7-xp-vista.html>

QUESTION 55

Note: This question is part of a series of questions that use the same scenario. For your convenience, the scenario is repeated in each question. Each question presents a different goal and answer choices, but the text of the scenario is exactly the same in each question in this series.

Start of repeated scenario

Your network contains a single Active Directory domain named adatum.com. The network contains five servers configured as shown in the following table.

Server name	Domain/workgroup	Role
DC1	Adatum.com	Domain controller
DC2	Adatum.com	Domain controller
Server1	Adatum.com	Member server
Server2	Adatum.com	Member server
Test_Server	Workgroup	File server

All of the servers run Windows Server 2012 R2.

Test_Server has a shared folder named ShareA. Only local users have permissions to ShareA.

The network contains a mainframe computer that is administered by using the Telnet protocol.

The domain contains four client computers configured as shown in the following table:

Computer name	Primary user
Computer1	User1
Computer2	User2
Computer3	User3
Computer4	User4



All of the client computers run the 64-bit version of Windows 10. User3 frequently accesses ShareA. Remote Desktop is enabled on Computer4.

Your company identifies the following requirements:

- Ensure that you can test unsigned device drivers on Computer1 ▪
- Enable Credential Guard on Computer2.
- Run commands and cmdlets remotely on computer2.
- Configure User Account control (UAC) on Computer3 to prompt administrators for credentials when elevated privileges are required. ▪
- Ensure that User1 can view and interact with a desktop session of User3.
- Ensure that User2 can use Telnet to manage the mainframe.
- Ensure that User4 can use Remote Desktop to access Computer4 remotely.

End of repeated scenario

You need to recommend a solution to meet the requirements of User1.

What should you include in the recommendation?

- A. Remote Access Connection Manager
- B. Remote Desktop
- C. Remote Assistance
- D. Windows PowerShell Remoting

Correct Answer: C

Section: (none)

Explanation

Explanation/Reference:

Explanation:

<http://www.technig.com/set-up-windows-remote-assistance/>

QUESTION 56

Note: This question is part of a series of questions that use the same scenario. For your convenience, the scenario is repeated in each question. Each question presents a different goal and answer choices, but the text of the scenario is exactly the same in each question in this series.

Start of repeated scenario

Your network contains a single Active Directory domain named adatum.com. The network contains five servers configured as shown in the following table.

Server name	Domain/workgroup	Role
DC1	Adatum.com	Domain controller
DC2	Adatum.com	Domain controller
Server1	Adatum.com	Member server
Server2	Adatum.com	Member server
Test_Server	Workgroup	File server

All of the servers run Windows Server 2012 R2.

Test_Server has a shared folder named ShareA. Only local users have permissions to ShareA.

The network contains a mainframe computer that is administered by using the Telnet protocol.

The domain contains four client computers configured as shown in the following table:

Computer name	Primary user
Computer1	User1
Computer2	User2
Computer3	User3
Computer4	User4

All of the client computers run the 64-bit version of Windows 10. User3 frequently accesses ShareA. Remote Desktop is enabled on Computer4.

Your company identifies the following requirements:

- Ensure that you can test unsigned device drivers on Computer1 ▪
- Enable Credential Guard on Computer2.
- Run commands and cmdlets remotely on computer2.
- Configure User Account control (UAC) on Computer3 to prompt administrators for credentials when elevated privileges are required. ▪
- Ensure that User1 can view and interact with a desktop session of User3.
- Ensure that User2 can use Telnet to manage the mainframe.
- Ensure that User4 can use Remote Desktop to access Computer4 remotely.

End of repeated scenario

You need to meet the requirement of User4.

What should you do?

- A. Install a Universal Windows Platform (UWP) application.
- B. Modify the membership of a local group.
- C. Install a Windows feature.
- D. Modify the settings of the primary network adapter.

Correct Answer: B

Section: (none)

Explanation

Explanation/Reference:

Explanation:

QUESTION 57

You have a Key Management Service (KMS) host and an administrative workstation named Computer1.

From Computer1, you need to validate the activation status on a computer named Computer2.

What should you run?

- A. Get-RDLicenseConfiguration computer2
- B. slmgr.vbs computer2 /dlv
- C. winrs.exe -r:Computer2 netdom.exe
- D. ospp.vbs /tokact:computer2

Correct Answer: B

Section: (none)

Explanation

Explanation/Reference: Explanation: <http://www.howtogeek.com/245445/how-to-use-slmgr-to-change-remove-or-extend-your-windows-license/>

QUESTION 58

You have two computers named Computer1 and Computer2 that run Windows 10. On Computer1, you create a provisioning package named Package1.

You plan to apply the provisioning package to Computer2.

Which file must be applied to Computer2?

- A. Package1.icdproj.xml
- B. Customizations.xml
- C. Package1.ppkg
- D. Package1.cat

Correct Answer: C

Section: (none)

Explanation

Explanation/Reference:

Explanation:

<https://msdn.microsoft.com/en-us/windows/hardware/comm>

n-

us/windows/hardware/comm

ercialize/manufacture/deskto
p/dism-provisioning-
package-command-line-
options

QUESTION 59

Note: This question is part of a series of questions that use the same scenario. For your convenience, the scenario is repeated in each question. Each question presents a different goal and answer choices, but the text of the scenario exactly the same in each question in this series.

Start of repeated scenario

Your network contains a single Active Directory domain named contoso.com. All computers are members of the domain and run the 64-bit version of Windows 10 Enterprise. On a test computer named Computer_Test1, you pin several company-specific applications in a group named Contoso Apps, and then you export the start menu layout to a file named contoso.xml. You install Client Hyper-V on a computer named Computer6.

You identify the following requirements:

- Install the Hyper V feature on a computer named Computer1.
- Use virtual smart card authentication on a computer named Computer2.
- Enable Secure Boot on a computer named Computer3.
- Connect a computer named Computer4 to a projector by using Miracast.
- Ensure that a user named User1 can use keyboard shortcuts by pressing one key at a time.
- Ensure that you can share the clipboard between Computer6 and the virtual machines running on Computer6.

Add the Contoso Apps group to the Start menu of a computer named Computer7.

End of repeated scenario

Which hardware feature must Computer2 support?

- A. a smart card reader
- B. Second Level Address Translation (SLAT)
- C. Trusted Platform Module (TPM)
- D. Unified Extensible Firmware Interface (UEFI)

Correct Answer: C

Section: (none)

Explanation

Explanation/Reference: Explanation: <https://blogs.technet.microsoft.com/askds/2016/05/11/setting-up-virtual-smart-card-logon-using-virtual-tpm-for-windows-10-hyper-v-vm-guests/>

QUESTION 60

Note: This question is part of a series of questions that use the same scenario. For your convenience, the scenario is repeated in each question. Each question presents a different goal and answer choices, but the text of the scenario exactly the same in each question in this series.

Start of repeated scenario

Your network contains a single Active Directory domain named contoso.com. All computers are members of the domain and run the 64-bit version of Windows 10 Enterprise. On a test computer named Computer_Test1, you pin several company-specific applications in a group named Contoso Apps, and then you export the start menu layout to a file named contoso.xml. You install Client Hyper-V on a computer named Computer6.

You identify the following requirements:

- Install the Hyper V feature on a computer named Computer1.
 - Use virtual smart card authentication on a computer named Computer2.
 - Enable Secure Boot on a computer named Computer3.
 - Connect a computer named Computer4 to a projector by using Miracast.
 - Ensure that a user named User1 can use keyboard shortcuts by pressing one key at a time.
 - Ensure that you can share the clipboard between Computer6 and the virtual machines running on Computer6. ▪
- Add the Contoso Apps group to the Start menu of a computer named Computer7.

End of repeated scenario

Which hardware component is required for Computer1?

- A. Trusted Platform Module (TPM)
- B. Trusted Boot
- C. Second Level Address Translation (SLAT)
- D. Secure Boot

Correct Answer: C

Section: (none)

Explanation

Explanation/Reference:

Explanation: [https://www.microsoft.com/en-us/windows/windows-10-](https://www.microsoft.com/en-us/windows/windows-10-specifications)

[specifications](https://www.microsoft.com/en-us/windows/windows-10-specifications)

QUESTION 61

Note: This question is part of a series of questions that use the same scenario. For your convenience, the scenario is repeated in each question. Each question presents a different goal and answer choices, but the text of the scenario exactly the same in each question in this series.

Start of repeated scenario

Your network contains a single Active Directory domain named contoso.com. All computers are members of the domain and run the 64-bit version of Windows 10 Enterprise. On a test computer named Computer_Test1, you pin several company-specific applications in a group named Contoso Apps, and then you export the start menu layout to a file named contoso.xml. You install Client Hyper-V on a computer named Computer6.

You identify the following requirements:

- Install the Hyper V feature on a computer named Computer1.
- Use virtual smart card authentication on a computer named Computer2.
- Enable Secure Boot on a computer named Computer3.
- Connect a computer named Computer4 to a projector by using Miracast.
- Ensure that a user named User1 can use keyboard shortcuts by pressing one key at a time.
- Ensure that you can share the clipboard between Computer6 and the virtual machines running on Computer6.
- Add the Contoso Apps group to the Start menu of a computer named Computer7.

End of repeated scenario



Which hardware feature must Computer3 support?

- A. Data Execution Prevention (DEP)
- B. Unified Extensible Firmware Interface (UEFI)
- C. Trusted Platform Module (TPM)
- D. Second LevelAddress Translation (SLAT)

Correct Answer: B

Section: (none)

Explanation

Explanation/Reference: Explanation:

<https://www.microsoft.com/en-us/windows/windows-10-specifications>

QUESTION 62

Note: This question is part of a series of questions that use the same set of answer choices. Each answer choice may be used once, more than once, or not at all.

You have a computer named Computer1. Computer1 has a virtual hard disk (VHD) named Disk1.vhdx. Windows is installed on Disk1.vhdx. Disk1.vhdx is visible in File Explorer as drive E.

You need to configure Computer1 to start from Disk1.vhdx. Hardware virtualization must not be available when Computer1 starts from Disk1.vhdx.

What should you run?

- A. Add-Windows Image
- B. bcdboot.exe
- C. bcdedit.exe
- D. bootcfg.exe
- E. bootim.exe
- F. bootsect.exe
- G. diskpart.exe
- H. Expand-Windows Image

Correct Answer: B

Section: (none)

Explanation



Explanation/Reference: Explanation: <https://msdn.microsoft.com/en-us/windows/hardware/commercialize/manufacture/desktop/boot-to-vhd--native-boot--add-a-virtual-hard-disk-to-the-boot-menu>

QUESTION 63

Note: This question is part of a series of questions that use the same set of answer choices. Each answer choice may be used once, more than once, or not at all.

You have a computer named Computer1 that has a virtual hard disk (VHD) named Disk1.vhdx.

You plan to configure Computer1 for dual boot from Disk1.vhdx.

You need to install Windows on Disk1.vhdx by using dism.exe.

What should you run before you install Windows?

- A. Add-Windows Image
- B. bcdboot.exe

- C. bcdedit.exe
- D. bootcfg.exe
- E. bootim.exe
- F. bootsect.exe
- G. diskpart.exe
- H. Expand-Windows Image

Correct Answer: G

Section: (none)

Explanation

Explanation/Reference: Explanation: <https://msdn.microsoft.com/en-us/windows/hardware/commercialize/manufacture/desktop/boot-to-vhd--native-boot--add-a-virtual-hard-disk-to-the-boot-menu>

QUESTION 64

You have a custom Microsoft Management Console (MMC) named Console 1 that contains several snapins.

Users use Console1 to manage specific computer settings. Users report that every time they close Console1, they are prompted to save the MMC.

You need to prevent the prompts to save Console1.

What should you do?

- A. From the Details settings of the MMC file, modify the Authors property.
- B. From the File menu, click Add/Remove Snap-in. and then click Edit Extensions.
- C. From the File menu, click Options and then modify the console mode.
- D. From the Security settings of the MMC file, modify the permissions.

Correct Answer: C

Section: (none)

Explanation

Explanation/Reference: Explanation: <http://www.tech-recipes.com/rx/9467/how-to-create-custom-microsoft-management-consoles-mmcs-for-managing-servers/>

QUESTION 65

Your network contains a single Active Directory domain named contoso.com. The domain contains a computer named Computer1.

You have five users configured as shown in the following table:

User name	Membership of
Computer1\User1	Guests
Computer1\User2	Users
Computer1\User3	Users Administrators
Contoso\User4	Domain Users
Contoso\User5	Domain Users Domain Admins

Which two users can add a Microsoft account to their Windows account, and then sign in to Computer1 by using the Microsoft account?

- A. User1
- B. User2
- C. User3
- D. User4
- E. User5

Correct Answer: BC

Section: (none)

Explanation

Explanation/Reference:

Explanation:

User2, User3, User4 and User5 can all link a Microsoft account to their Windows account. However, you can only log in with a Microsoft account if your user account is a local user account.

Domain users link Microsoft accounts only to synchronise settings when logging in to different computers. Domain users cannot log in with the Microsoft account.

QUESTION 66

You have a computer named Computer1 that runs Windows 10.

You need to register Computer1 with Microsoft Intune.

What should you do?

- A. From Accounts in the Settings app, click enroll in to device management.
- B. From a command prompt, run the djoin command and specify the /psite parameter.
- C. From System in Control Panel, modify the domain membership.
- D. From Accounts in the Settings app, add a Microsoft account.

Correct Answer: A

Section: (none)

Explanation

Explanation/Reference: Explanation:

<http://henkhoogendoorn.blogspot.co.za/2016/04/enroll-in-to-device-management-in.html>

QUESTION 67

You are evaluating a third-party antivirus application on a computer.

You attempt to uninstall the application, but the application fails to uninstall.

You need to remove the antivirus application from the computer. The solution must preserve user data and installed applications.

What should you do?

- A. Perform a driver rollback.
- B. Perform a restore by using File History.
- C. Restore a System Restore point.
- D. Use the Reset this PC option

Correct Answer: C

Section: (none)

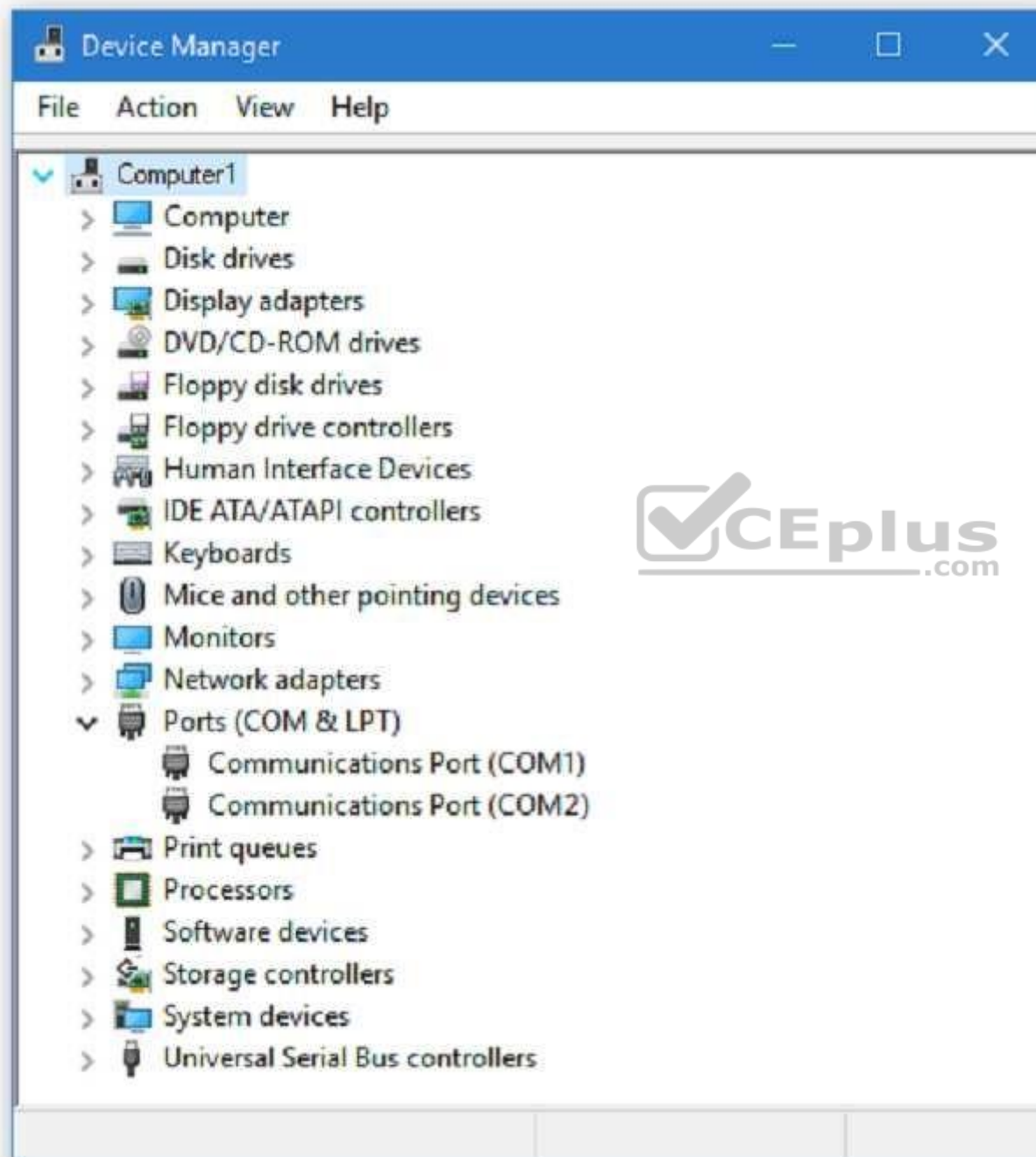
Explanation

Explanation/Reference: Explanation: <https://support.microsoft.com/en-us/help/12415/windows-10-recovery-options>

QUESTION 68

You have a computer named Computer1 that runs Windows 10. Device Manager on Computer1 is configured as shown in the exhibit. (Click the Exhibit button.)





You need to ensure that you can use Communications Port (COM1).

What should you do?

- A. Update the driver for Communications Port (COM1).
- B. Attach a device to Communications Port (COM1), and then click Scan for hardware changes.
- C. Enable Communications Port (COM1).
- D. Modify the IRQ and the I/O Range for Communications Port (COM1).

Correct Answer: C

Section: (none)

Explanation

Explanation/Reference: Explanation: <https://support.microsoft.com/en-us/help/819036/overview-of-the-comdisable-tool>

QUESTION 69

A company has client computers that run Windows 10. The client computer systems frequently use IPSec tunnels to securely transmit data.

You need to configure the IPSec tunnels to use 256-bit encryption keys.

Which encryption type should you use?

- A. 3DES
- B. DES
- C. RSA
- D. AES

Correct Answer: D

Section: (none)

Explanation

Explanation/Reference:

Explanation:

https://en.wikipedia.org/wiki/Advanced_Encryption_Standard

QUESTION 70

A company has client computers that run Windows 10. Each computer has two hard drives.

You need to create a dynamic volume on each computer that maximizes write performance with data fault tolerance.

Which kind of dynamic volume should you create?

- A. Striped Volume
- B. RAID 5 Volume
- C. Spanned Volume
- D. Mirrored Volume

Correct Answer: D

Section: (none)

Explanation

Explanation/Reference: Explanation: [https://technet.microsoft.com/en-us/library/cc737048\(v=ws.10\).aspx#w2k3tr_ddisk_what_zcub](https://technet.microsoft.com/en-us/library/cc737048(v=ws.10).aspx#w2k3tr_ddisk_what_zcub).

QUESTION 71

IPv6 has a vastly larger address space than IPv4. This expansion provides flexibility in allocating addresses and routing traffic and eliminates the primary need for network address translation (NAT).

Do you know how many more bits there are in an IPv4 address compared to an IPv6 address?

- A. 4 times more
- B. 6 times more
- C. Twice as many
- D. 8 times more

Correct Answer: A

Section: (none)

Explanation

Explanation/Reference:

Explanation:

<https://techlog360.com/ipv4-vs-ipv6/>

QUESTION 72

You have a computer named Computer1 that runs Windows 10. Computer1 uses the Current Branch servicing option.

Microsoft releases an upgrade to the Current Branch. The upgrade is installed on Computer1.

You need to revert Computer1 to the previous version of Windows 10.

Which tool should you use?

- A. Programs and Features from Control Panel
- B. Windows Update from the Settings app
- C. Recovery from the Settings app
- D. System from Control Panel

Correct Answer: C

Section: (none)

Explanation

Explanation/Reference: Explanation: <http://www.howtogeek.com/235474/how-to-roll-back-builds-and-uninstall-updates-on-windows-10/>

QUESTION 73

You have a computer named Computer1 that runs Windows 10.

Computer1 is infected by a virus.

You fail to access the Settings app on Computer1 due to the virus.

You need to restart the computer and ensure that Computer1 displays the advanced startup options when the computer restarts.

What are two possible ways to achieve the goal? Each correct answer presents a complete solution.

Note: Each correct selection is worth one point.

- A. From Windows PowerShell, run Restart-Computer Computer1 - Wait - For PowerShell.
- B. From System Configuration select safe boot select minimal, and then click Restart from the Start menu.
- C. From system Configuration, select selective startup, and then click Restart from the start menu.
- D. From a command prompt, run shutdown.exe /r/o.

E. From Power on the start menu, hold the SHIFT key while you click Restart.

Correct Answer: DE

Section: (none)

Explanation

Explanation/Reference:

Explanation:

<https://support.microsoft.com/en-us/instantanswers/f40a95aa-1e34-4907-98ba-a308fd10a786/get-to-safe-mode-and-other-startup-settings-in-windows-10>
<http://www.howtogeek.com/126016/three-ways-to-access-the-windows-8-boot-options-menu/>

QUESTION 74

Your network contains a single Active Directory domain. The domain contains a laptop named Computer1 that runs Windows 10.

A user named User1 uses Computer1. Computer1 connects to two shared printers named Printer1 and Printer2.

Printer1 is located at the office and Printer2 is located at the home of User1.

User1 frequently reports that when attempting to print, the default printer is set to Printer2.

You need to ensure that Printer1 is set to always be the default printer.

What should you do?

- A. Add Printer 2 to a home group.
- B. Disable Let Windows manage my default printer.
- C. Change the priority of Printer1 to 1.
- D. Change the priority of Printer2 to 1.

Correct Answer: B

Section: (none)

Explanation

Explanation/Reference:

Explanation:

<http://www.tenforums.com/tutorials/26138-printer-turn-off-let-windows-10-manage-default-printer.html>

QUESTION 75

A user named User1 has a laptop that runs Windows 10 Pro.

At home, User1 connects to the home network by using an Ethernet connection. User1 reports that he sometimes exceeds his Internet data limit.

You need to prevent the laptop from downloading Windows updates automatically.

What should you do?

- A. From a local Group Policy, modify the Windows Update settings.
- B. From a local Group Policy, modify the Network Connections settings.
- C. From the Settings app, configure a metered connection.
- D. From the Settings app, select Defer upgrades.

Correct Answer: C

Section: (none)

Explanation

Explanation/Reference: Explanation: <http://www.pcworld.com/article/3085136/windows/two-ways-to-control-or-stop-windows-10-updates.html>

QUESTION 76

You have set up a new wireless network for one of your prestigious clients.

The director wants to ensure that only certain designated wireless laptops can connect to the new network to prevent misuse.

What do you need to do?

- A. Use MAC address control
- B. Use IPv4 address control
- C. Use WEP
- D. Use WPA

Correct Answer: A

Section: (none)

Explanation

Explanation/Reference:

Explanation:

http://www.belkin.com/PYRAMID/AdvancedInfo/F5D7633uk4A/Interfaces/UI2/English/wireless_mac_ctrl.html

QUESTION 77

You are the administrator for a company. Devices run Windows 8.1 Pro or Windows 10 Pro. You have an on-premises Active Directory Domain Services (AD DS) domain and a Microsoft Azure Active Directory (Azure AD) environment.

You must deploy the Microsoft Store for Business.

You need to ensure that the environment meets the minimum requirements for the store.

Which two options should you recommend? Each correct answer presents part of the solution.

NOTE: Each correct selection is worth one point.

- A. Upgrade the Windows 8.1 Pro machines to Windows 10 Pro.
- B. Ensure all employees have an Azure AD account.
- C. Ensure all employees have an AD DS account.
- D. Run the **Enable-AppV** Windows PowerShell cmdlet on all computers.

Correct Answer: AB

Section: (none)

Explanation

Explanation/Reference:

References: <https://docs.microsoft.com/en-us/microsoft-store/microsoft-store-for-business-overview>

QUESTION 78

Note: This question is part of a series of questions that use the same scenario. For your convenience, the scenario is repeated in each question. Each question presents a different goal and answer choices, but the text of the scenario is exactly the same in each question in this series.

Start of repeated scenario

Your network contains a single Active Directory domain named adatum.com.

The network contains five servers configured as shown in the following table:

Server name	Domain/workgroup	Role
DC1	Adatum.com	Domain controller
DC2	Adatum.com	Domain controller
Server1	Adatum.com	Member server
Server2	Adatum.com	Member server
Test_Server	Workgroup	File server

All of the servers run Windows Server 2012 R2.

Test_Server has a shared folder named ShareA. Only local users have permissions to ShareA.

The network contains a mainframe computer that is administered by using the Telnet protocol.

The domain contains four client computers configured as shown in the following table:

Computer name	Primary user
Computer1	User1
Computer2	User2
Computer3	User3
Computer4	User4



All of the client computers run the 64-bit version of Windows 10. User3 frequently accesses ShareA. Remote Desktop is enabled on Computer4.

Your company identifies the following requirements:

- Ensure that you can test unsigned device drivers on Computer1.
- Enable Credential Guard on Computer2.
- Run commands and cmdlets remotely on Computer2.
- Configure User Account Control (UAC) on Computer3 to prompt administrators for credentials when elevated privileges are required. ▪

Ensure that User1 can view and interact with a desktop session of User3.

- Ensure that User2 can use Telnet to manage the mainframe.
- Ensure that User4 can use Remote Desktop to access Computer4 remotely.

End of repeated scenario

You need to meet the Credential Guard requirement of Computer2.

Which Windows feature should you enable?

- A. Hyper-V Hypervisor
- B. Windows Process Activation Service (WAS)
- C. Windows Identity Foundation 3.5
- D. Embedded Boot Experience

Correct Answer: A

Section: (none)

Explanation

Explanation/Reference:

Explanation:

References: <https://technet.microsoft.com/en-us/itpro/windows/keep-secure/credential-guard> <https://blogs.technet.microsoft.com/ash/2016/03/02/windows-10-device-guard-and-credential-guard-demystified/>

QUESTION 79

Note: This question is part of a series of questions that use the same set of answer choices. Each answer choice may be used once, more than once, or not at all.

You have a computer named Computer1 that has storage configured as shown in the following table.

Disk name	Size	Storage pool name
Disk1	200 GB	Pool1
Disk2	100 GB	Pool1
Disk3	500 GB	Pool1
Disk4	500 GB	Pool2
Disk5	500 GB	Pool2
Disk6	800 GB	None
Disk7	100 GB	Pool3
Disk8	100 GB	Pool3

Pool3 contains a storage space named Space3 that is 100 GB.

You need to configure Space3 to be 200 GB.

What should you use?

- A. Add-PhysicalDisk
- B. Diskpart
- C. New-VirtualDisk
- D. Remove-PhysicalDisk
- E. Resize-VirtualDisk
- F. Set-StoragePool
- G. Subst
- H. Update-Disk

Correct Answer: E

Section: (none)

Explanation

Explanation/Reference:

Explanation:

References: <https://docs.microsoft.com/en-us/windows-server/storage/storage-spaces/resize-volumes>

QUESTION 80

You are the administrator for a company. All devices run Windows 10 Enterprise.

Users report that their Windows 10 systems are taking longer than normal to boot up.

You need to configure the Windows 10 systems to record the processes and services that are loaded and running during the boot process.

What should you do?

- A. Use the Task Manager tool to enable a boot log.
- B. Use the Task Manager Startup tab to list the process and services that run at startup.
- C. Use the Task Manager Services tab to list the services that start at boot.
- D. Use the System Configuration tool to enable a boot log.

Correct Answer: D

Section: (none)

Explanation

Explanation/Reference:

References: <https://winaero.com/blog/enable-boot-log-windows-10/>

QUESTION 81

Note: This question is part of a series of questions that use the same set of answer choices. Each answer choice may be used once, more than once, or not at all.

You have a computer named Computer1 that has storage configured as shown in the following table.

Disk name	Size	Storage pool name
Disk1	200 GB	Pool1
Disk2	100 GB	Pool1
Disk3	500 GB	Pool1
Disk4	500 GB	Pool2
Disk5	500 GB	Pool2
Disk6	800 GB	None
Disk7	100 GB	Pool3
Disk8	100 GB	Pool3

Pool3 contains a storage space named Space3 that is 100 GB.

Disk8 fails.

You add a new disk named Disk9 to Pool3.

You need to remove Disk8 from Pool3.

What should you use?

- A. Add-PhysicalDisk
- B. Diskpart
- C. New-VirtualDisk
- D. Remove-PhysicalDisk

- E. Resize-VirtualDisk
- F. Set-StoragePool
- G. Subst
- H. Update-Disk

Correct Answer: D

Section: (none)

Explanation

Explanation/Reference:

References: [https://technet.microsoft.com/en-us/library/dn782852\(v=ws.11\).aspx#BKMK_Step6RemoveOldDisk](https://technet.microsoft.com/en-us/library/dn782852(v=ws.11).aspx#BKMK_Step6RemoveOldDisk)

QUESTION 82

You are the administrator for a company. All devices run Windows 10 Enterprise and are joined to an Active Directory Domain Services domain.

Administrators are unable to test network connectivity to Windows 10 devices because ping is being blocked.

You need to be able to ping the devices.

Solution: Create and enable an ICMPv4 Echo Request In allow rule for the Public profile.

Does the solution meet the goal?

- A. Yes
- B. No

Correct Answer: B

Section: (none)

Explanation

Explanation/Reference:

References: <https://www.howtogeek.com/howto/windows-vista/allow-pings-icmp-echo-request-through-your-windows-vista-firewall/>

QUESTION 83

You are the administrator for a company. All devices run Windows 10 Enterprise and are joined to an Active Directory Domain Services domain.

Administrators are unable to test network connectivity to Windows 10 devices because ping is being blocked.

You need to be able to ping the devices.

Solution: Create and enable an ICMPv4 Echo Request In allow rule for the Private profile.

Does the solution meet the goal?

- A. Yes
- B. No

Correct Answer: B

Section: (none)

Explanation

Explanation/Reference:

Explanation:

This solution is almost correct. However as the computers are domain joined, you would have to create the firewall rule in the Domain profile, not the Private profile.

QUESTION 84

You are the administrator for a company. All devices run Windows 10 Enterprise and are joined to an Active Directory Domain Services domain.

Administrators are unable to test network connectivity to Windows 10 devices because ping is being blocked.

You need to be able to ping the devices.

Solution: Turn on **File and Printer Sharing** in the **Advanced Sharing** settings.

Does the solution meet the goal?

- A. Yes
- B. No

Correct Answer: B

Section: (none)

Explanation

Explanation/Reference:

QUESTION 85

A company manages Windows 8.1 Pro and Windows 10 Pro client devices by using Group Policy objects (GPOs). The company plans to migrate from GPOs to mobile device management (MDM) policies.

You need to create an HTML report of the GPO settings that are cross-referenced with supported MDM policies.

Solution: You use the MDM Migration Analysis Tool.

Does the solution meet the goal?

- A. Yes
- B. No

Correct Answer: A

Section: (none)

Explanation

Explanation/Reference:

References: <https://blogs.technet.microsoft.com/cbernier/2018/04/02/windows-10-group-policy-vs-intune-mdm-policy-who-wins/>

QUESTION 86

A company manages Windows 8.1 Pro and Windows 10 Pro client devices by using Group Policy objects (GPOs). The company plans to migrate from GPOs to mobile device management (MDM) policies.

You need to create an HTML report of the GPO settings that are cross-referenced with supported MDM policies.

Solution: You enroll the client computers in the Operations Management Suite.

Does the solution meet the goal?

- A. Yes
- B. No

Correct Answer: B

Section: (none)

Explanation

Explanation/Reference:

QUESTION 87

A company has client devices that run Windows 7 Professional with Service Pack 1 or Windows 8 Pro. The company plans to use Windows telemetry and Upgrade Readiness to upgrade all devices to Windows 10 Pro.

You need to ensure that you can collect the Upgrade Readiness inventory and telemetry data.

What should you do first?

- A. Enable data sharing on the client computers.
- B. Enable connection settings on the client computers.
- C. Upgrade the Windows 8 Pro computers to Windows 8.1 Pro.
- D. Change the Windows 8 Pro computers to Windows 8 Enterprise.
- E. Integrate Microsoft Operations Management Suite to an on-premises System Center Operations Manager (SCOM) server.
- F. Change the Windows 7 Professional computers to Windows 7 Enterprise.
- G. Integrate Microsoft Operations Management Suite to an on-premises System Center Configuration Manager (SCCM) server.

Correct Answer: C

Section: (none)

Explanation

Explanation/Reference:

References: <https://docs.microsoft.com/en-us/windows/deployment/upgrade/upgrade-readiness-requirements>

QUESTION 88

You are the administrator for a company. All devices run Windows 10 Enterprise. You have a group of devices in the human resources (HR) department that use a local D: drive to store sensitive information.

You plan to upgrade all HR devices to increase the local storage capacity by adding a new E: drive.

You have the following new requirements:

- All sensitive documents must be stored locally on a virtual hard disk (VHD).
- Data migration must be quick and have no data loss. ▪

Minimize impacts to the user experience.

You need to meet the requirements.

What should you do?

- A. Download the tool, and run the **disk2vhd** command.
- B. Run the **diskpart** command.
- C. Run the **New-VirtualDisk** Windows PowerShell cmdlet.
- D. Use the Disk Management MMC snap-in.

Correct Answer: A

Section: (none)

Explanation

Explanation/Reference:

References: <http://www.intowindows.com/how-to-create-vhd-from-physical-windows-10-disk/>

QUESTION 89

A company has client devices that run Windows 10 Enterprise. A line-of-business (LOB) app requires that Windows feature updates are tested for up to one year before being deployed. Company policy states that all devices must be updated at least once per year.

You need to ensure that Windows feature updates meet the LOB app requirements.

Which update path should you configure on client devices?

- A. Long-Term Servicing Channel
- B. Slow Ring
- C. Semi-Annual Channel
- D. Release Preview Ring

Correct Answer: B

Section: (none)

Explanation

Explanation/Reference:

References: <https://docs.microsoft.com/en-us/windows/deployment/update/waas-overview#servicing-tools>

QUESTION 90

You are the system administrator for a company. All devices run Windows 10 Enterprise. You have an on-premises Active Directory Domain Services (AD DS) domain as well as a Microsoft Azure Active Directory (Azure AD) environment.

Your on-premises Active Directory infrastructure consists of the following:

- Windows Server 2012 R2 domain controllers
- Windows Server 2012 domain/forest functional level
- Windows Server 2012 Certificate Authority

You are planning a hybrid deployment of Windows Hello for Business.

You need to determine which deployment options are available for your environment.



Which two deployment options can you use? Each correct answer presents a complete solution.

NOTE: Each correct selection is worth one point.

- A. Key trust Group Policy managed
- B. Key trust Modern managed
- C. Certificate trust Modern managed
- D. Certificate trust Mixed managed

Correct Answer: CD

Section: (none)

Explanation

Explanation/Reference:

Explanation:

The two key trust models require Windows Server 2016 domain controllers. The certificate trust models can use Windows Server 2012 R2 domain controllers and a Windows Server 2012 Certificate Authority.

References:

<https://docs.microsoft.com/en-us/windows/security/identity-protection/hello-for-business/hello-hybrid-key-trust-prereqs> <https://docs.microsoft.com/en-us/windows/security/identity-protection/hello-for-business/hello-hybrid-cert-trust-prereqs> <https://docs.microsoft.com/en-us/windows/security/identity-protection/hello-for-business/hello-planning-guide>

QUESTION 91

Note: This question is part of a series of questions that present the same scenario. Each question in the series contains a unique solution that might meet the stated goals. Some question sets might have more than one correct solution, while others might not have a correct solution.

After you answer a question in this scenario, you will NOT be able to return to it. As a result, these questions will not appear in the review screen.

A company has a client device that runs Windows 10 Pro. The device has a folder named Folder1. The folder is configured using the following settings:

Permission type	Group	Action
Share	Administrators	Full Control
Share	Users	Read
Share	Everyone	Modify
NTFS	Administrators	Full Control
NTFS	Users	Modify

A user reports that they cannot change documents when accessing them over the network.

You need to ensure that the users can change documents in the folder.

Solution: You set the Everyone group share permission to Full Control.

Does the solution meet the goal?

- A. Yes
- B. No

Correct Answer: B

Section: (none)

Explanation

Explanation/Reference:

QUESTION 92

Note: This question is part of a series of questions that present the same scenario. Each question in the series contains a unique solution that might meet the stated goals. Some question sets might have more than one correct solution, while others might not have a correct solution.

After you answer a question in this scenario, you will NOT be able to return to it. As a result, these questions will not appear in the review screen.

You are system administrator for manufacturing company. You are responsible for deploying and maintaining the computers for your company. The computers are running a variety of Windows operating system.

You have been tasked with standardizing on Windows 10 Pro. You need to determine the correct supported option for moving each computer to Windows 10.

Solution: Upgrade Windows 7 Professional RTM computers to Windows 10.

Does the solution meet the goal?

- A. Yes
- B. No

Correct Answer: B

Section: (none)

Explanation

Explanation/Reference:

References: <https://docs.microsoft.com/en-us/windows/deployment/upgrade/windows-10-upgrade-paths>

QUESTION 93

You are the desktop administrator for a company. You plan to deploy a new custom application named **App1**.

All employees must be able to find and install the application. Users who are not employees must not be able to find or install the application.

You need to configure access for App1.

What should you do?

- A. Allow access to the Microsoft Store and publish App1.
- B. Run the **Publish-Module** Windows PowerShell cmdlet.
- C. Implement Microsoft Store for Business and publish App1.
- D. Run the **Publish-BCWebContent** Windows PowerShell cmdlet.

Correct Answer: C

Section: (none)

Explanation

**Explanation/Reference:**

References: <https://docs.microsoft.com/en-us/microsoft-store/distribute-apps-from-your-private-store>

QUESTION 94

Note: This question is part of a series of questions that present the same scenario. Each question in the series contains a unique solution that might meet the stated goals. Some question sets might have more than once correct solution, while others might not have a correct solution.

A company has a client device that runs Windows 10 Pro. The device has a folder named Folder1. The folder is configured using the following settings:

Permission type	Group	Action
Share	Administrators	Full Control
Share	Users	Read
Share	Everyone	Modify
NTFS	Administrators	Full Control
NTFS	Users	Modify

A user reports that they cannot change documents when accessing them over the network.

You need to ensure that the users can change documents in the folder.

Solution: You set the Users groups share permission to Full Control.

Does the solution meet the goal?

A. Yes

B. No

Correct Answer: B

Section: (none)

Explanation

Explanation/Reference:



QUESTION 95

Note: This question is part of a series of questions that present the same scenario. Each question in the series contains a unique solution that might meet the stated goals. Some question sets might have more than once correct solution, while others might not have a correct solution.

You are the system administrator for manufacturing company. You are responsible for deploying and maintaining the computers for your company. The computers are running a variety of Windows operating systems.

You have been tasked with standardizing on Windows 10 Pro.

You need to determine the correct supported option for moving each computer to Windows

10. Solution: Upgrade Windows 8.1 Pro computers to Windows 10. Does the solution meet the goal?

A. Yes

B. No

Correct Answer: A

Section: (none)

Explanation

Explanation/Reference:

References: <https://docs.microsoft.com/en-us/windows/deployment/upgrade/windows-10-upgrade-paths>

QUESTION 96

A company plans to use an application triggered virtual private network (VPN) connection. You need to ensure that a VPN connection can be used with the application trigger. Which VPN setting should you configure?

- A. Split tunneling
- B. Idle disconnect timeout
- C. Tunnel type
- D. Authentication method

Correct Answer: A

Section: (none)

Explanation



Explanation/Reference:

References: <https://blogs.technet.microsoft.com/canitpro/2016/01/25/step-by-step-enabling-apps-to-auto-trigger-vpns-in-windows-10/>

QUESTION 97

You are in the process of planning the deployment of Windows 10 Enterprise for an organization.

Most of the devices are used by employees to perform their daily tasks. All devices have Microsoft Office installed. A few specific devices are used to control equipment in the manufacturing process. The application used by these systems has only been tasked to work with Windows 10 Enterprise build 1703.

You need to select the appropriate servicing model for the manufacturing systems so that they are not updated automatically with new Windows 10 build versions. You must have the option of updating the manufacturing systems to new builds after they have been thoroughly tested by the IT team.

Which servicing model should you implement?

- A. Slow Ring
- B. Release Preview Ring
- C. Long-Team Servicing Channel

D. Semi-Annual Channel

Correct Answer: C

Section: (none)

Explanation

Explanation/Reference:

References: <https://docs.microsoft.com/en-us/windows/deployment/update/waas-overview#servicing-channels>

QUESTION 98

Note: This question is part of a series of questions that present the same scenario. Each question in the series contains a unique solution that might meet the stated goals. Some question sets might have more than one correct solution, while others might not have a correct solution.

After you answer a question in this scenario, you will NOT be able to return to it. As a result, these questions will not appear in the review screen.

You are the administrator for a company. All devices run Windows 10 Enterprise and are members of the Adatum.com domain. All drives on the devices are formatted with the NTFS file system and have the default permissions assigned. You have a device which is used by multiple users and stores information for a specific project. The project team members are members of a group named ProjectX.

The system is also used by other people that are not members of the ProjectX team. All files for ProjectX are stored in a folder with the path E:\ProjectX.

You have the following requirements:

- Only members of the ProjectX group must have all permissions on the folder and all of the files in it. ▪
- ProjectX members should not be granted any specific rights to any other folders.

You need to meet the requirements.

Solution: You disable inheritance on the E:\ProjectX folder and specify the Copy option. You assign the Full Control permission to the Project X group.

Does the solution meet the goal?

- A. Yes
- B. No

Correct Answer: B

Section: (none)

Explanation

Explanation/Reference:

QUESTION 99

Note: This question is part of a series of questions that present the same scenario. Each question in the series contains a unique solution that might meet the stated goals. Some question sets might have more than one correct solution, while others might not have a correct solution.

After you answer a question in this scenario, you will NOT be able to return to it. As a result, these questions will not appear in the review screen.

You are the administrator for a company. All devices run Windows 10 Enterprise and are members of the Adatum.com domain. All drives on the devices are formatted with the NTFS file system and have the default permissions assigned. You have a device which is used by multiple users and stores information for a specific project. The project team members are members of a group named ProjectX.

The system is also used by other people that are not members of the ProjectX team. All files for ProjectX are stored in a folder with the path E:\ProjectX.

You have the following requirements:

- Only members of the ProjectX group must have all permissions on the folder and all of the files in it. ▪
- ProjectX members should not be granted any specific rights to any other folders.

You need to meet the requirements.

Solution: You disable inheritance on the E:\ProjectX with the remove option. You assign the Full Control permission to the Adatum\ProjectX group.

Does the solution meet the goal?

- A. Yes
- B. No

Correct Answer: A

Section: (none)

Explanation

Explanation/Reference:

References:

<https://support.microsoft.com/en-us/help/325361/how-to-configure-security-for-files-and-folders-on-a-network-in-window> [https://docs.microsoft.com/en-us/previous-versions/tn-archive/dd277411\(v=technet.10\)](https://docs.microsoft.com/en-us/previous-versions/tn-archive/dd277411(v=technet.10))

QUESTION 100

Note: This question is part of a series of questions that use the same set of answer choices. Each answer choice may be used once, more than once, or not at all.

Your network contains a single Active Directory domain. The domain contains a VPN server that supports all of the VPN protocols.

You have mobile devices that run Windows 10 and have VPN connections to the VPN server.

You need to ensure that only traffic for the corporate network is sent through the VPN server.

What should you do?

- A. Click **Turn on password protected sharing**.
- B. Disable Network Discovery.
- C. Modify the Profile settings of an incoming firewall rule.
- D. Run the **Add-VpnConnectionTriggerApplication** cmdlet.
- E. Run the **New-NetFirewallRule** cmdlet and specify the **-Direction Outbound** parameter.
- F. Run the **New-VpnConnection** cmdlet.
- G. Run the **Set-NetConnectionProfile** cmdlet.
- H. Run the **Set-VPNConnection** cmdlet.

Correct Answer: H

Section: (none)

Explanation

Explanation/Reference: References: <https://docs.microsoft.com/en-us/powershell/module/vpnclient/set-vpnconnection?view=win10-ps>

QUESTION 101

You have five computers that run Windows 8.1 Pro.

You need to perform an upgrade installation of Windows 10 on the computers.

What should you do?

- A. Apply an image of Windows 10 by running **imagex.exe**.
- B. Start the computers from Windows PE, and then run **setup.exe** from a network share that contains the Windows 10 installation source files.
- C. While signed in to Windows 8.1 Pro, run **setup.exe** from a network share that contains the Windows 10 installation source files.
- D. Start the computers from a bootable USB drive that contains the Windows 10 source files.

Correct Answer: C

Section: (none)

Explanation

Explanation/Reference:

References: <http://www.laptopmag.com/articles/how-to-upgrade-windows-10> <https://www.groovypost.com/howto/upgrade-windows-8-1-to-windows-10/>

QUESTION 102

A company has client devices that run Windows 7 Professional with Service Pack 1 or Windows 8 Pro. The company plans to use Windows telemetry and Upgrade Readiness to upgrade all devices to Windows 10 Pro.

You need to ensure that you can collect the Upgrade Readiness inventory and telemetry data.

What should you do first?

- A. Enable data sharing on the client computers.
- B. Enable connection settings on the client computers.
- C. Enroll in the Microsoft Operations Management Suite.
- D. Change the Windows 8 Pro computers to Windows 8 Enterprise.

Correct Answer: C

Section: (none)

Explanation

**Explanation/Reference:**

Explanation:

Upgrade Readiness is offered as a solution in Microsoft Operations Management Suite (OMS) and Azure Log Analytics, a collection of cloud based services for managing on premises and cloud computing environments.

References: <https://docs.microsoft.com/en-us/windows/deployment/upgrade/upgrade-readiness-requirements>

QUESTION 103

You are reconfiguring storage on a computer running Windows 10.

You need to add an existing disk that is already installed in the computer to an existing storage pool.

Which Windows utility or Windows PowerShell cmdlet should you use?

- A. **Set-StoragePool**
- B. **Diskpart**
- C. **Resize-StorageTier**

D. Add-PhysicalDisk

Correct Answer: D

Section: (none)

Explanation

Explanation/Reference:

Explanation:

You should use the Add-PhysicalDisk cmdlet.

The Add-PhysicalDisk cmdlet lets you add a physical disk to the specified storage pool.

You should not use the Diskpart tool. This tool enables you to manage disk objects (disks, partitions, or volumes) by using scripts or direct input at a command prompt. However, it does not support the ability to add a hard disk to a storage pool.

You should not use the Set-StoragePool cmdlet. The Set-StoragePool cmdlet modifies the properties of a specified storage pool, but not the disks assigned to the storage pool.

You should not use the Set-StorageTier cmdlet. This cmdlet is used to increase the size of a storage tier created from a storage pool. It does not let you modify the storage pool.

References:

<https://docs.microsoft.com/en-us/powershell/module/storage/add-physicaldisk?view=win10-ps>

QUESTION 104

You have a reference computer named Computer1 that runs Windows 10. You plan to run sysprep.exe several times on Computer1.

You need to prevent the Windows Product Activation clock from being reset on Computer1.

What should you do?

- A. Set the **ProductKey** option in Sysprep.inf to **XXXXXX-XXXXXX-XXXXXX-XXXXXX-XXXXXX**.
- B. Set the **SkipRearm** option in Unattend.xml to **0**.
- C. Set the **ProductKey** option in Sysprep.inf to **00000-00000-00000-00000-00000**.
- D. Set the **SkipRearm** option in Unattend.xml to **1**.

Correct Answer: D

Section: (none)

Explanation

Explanation/Reference:

Explanation:

SkipRearm is a registry entry which specifies whether to run the Windows Software Licensing Rearm program. Rearming a computer restores Windows Vista and later, to the original licensing state. All licensing and registry data related to activation is either removed or reset. Any grace period timers are reset as well.

- 0 : Specifies that the computer will be rearmed & any grace period timers will be reset
- 1 : Specifies that the computer will not be rearmed & grace period timers will not be reset.

References:

<https://www.thewindowsclub.com/legally-use-windows-without-activating>

QUESTION 105

Note: This question is part of a series of questions that use the same set of answer choices. Each answer choice may be used once, more than once, or not at all.

You have a computer named Computer1.

Computer1 has a virtual hard disk (VHD) named Disk1.vhdx. Disk1.vhdx has an NTFS partition, which is visible in File Explorer as drive E.

You need to provision Windows 10 on Disk1.vhdx.

What should you run?

- A. **Add-WindowsImage**
- B. **bcdboot.exe**
- C. **bcdedit.exe**
- D. **bootcfg.exe**
- E. **bootim.exe**
- F. **bootsect.exe**
- G. **diskpart.exe**
- H. **Expand-
WindowsImage**

Correct Answer: H

Section: (none)

Explanation

Explanation/Reference:

Explanation:

- You can use this command to apply the image and then add a boot entry



Expand-WindowsImage

Expand-WindowsImage -ImagePath "c:\win10Pro.wim" -ApplyPath "e:\\" -Index

- 1 ▪ Add a boot entry using bcdedit. bcdedit /copy {current} /d "win10VHD" bcdedit /set {CLSID} device vhd=[C:]\disk1.vhd bcdedit /set {CLSID} osdevice vhd=[C:]\disk1.vhd

Optionally add an entry in {bootmgr} to make the VHD the default Windows to boot.

bcdedit /set {bootmgr} default {CLSID}

{CLSID} is the long alphanumeric sequence used as an identifier for the VHD file you are using.

- Reboot PC.

Incorrect Answers:

A: The Add-WindowsImage cmdlet adds an additional image to a saved image file.

B: The Bcdboot.exe command creates or fixes Windows boot store.

C: The Bcdedit.exe command manipulates Windows boot store.

D: The Bcdcfg.exe command is an older version of Windows boot. Used to modify boot.ini. Windows XP and prior.

E: Bootim.exe is the new Windows recovery boot menu GUI.

F: The bootsect.exe command is used to repair Windows bootsector, or used to create bootable usb sticks etc.

G: The diskpart.exe command is a disk partition utility. Diskpart can create and attach a VHD but cannot apply an image to one of its partitions, physical or virtual.

QUESTION 106

Note: This question is part of a series of questions that use the same set of answer choices. Each answer choice may be used once, more than once, or not at all.

You have a computer named Computer1 that has storage configured as shown in the following table.

Disk name	Size	Storage pool name
Disk1	200 GB	Pool1
Disk2	100 GB	Pool1
Disk3	500 GB	Pool1
Disk4	500 GB	Pool2
Disk5	500 GB	Pool2
Disk6	800 GB	None
Disk7	100 GB	Pool3
Disk8	100 GB	Pool3

Pool1 contains a storage space named Space1 that is 300 GB.

Pool3 contains a storage space named Space2 that is 100 GB. Pool2 is empty

Disk8 fails.

You add a new disk named Disk9 to Pool3.

You need to remove Disk8 from Pool3.

What should you use?

- A. **Add-PhysicalDisk**
- B. **Diskpart**
- C. **New-VirtualDisk**
- D. **Remove-PhysicalDisk**
- E. **Resize-VirtualDisk**
- F. **Set-StoragePool**
- G. **Subst**

H. Update-Disk

Correct Answer: D

Section: (none)

Explanation

Explanation/Reference:

References: [https://technet.microsoft.com/en-us/library/dn782852\(v=ws.11\).aspx#BKMK_Step6RemoveOldDisk](https://technet.microsoft.com/en-us/library/dn782852(v=ws.11).aspx#BKMK_Step6RemoveOldDisk)

QUESTION 107

In this section, you will see one or more sets of questions with the same scenario and problem. Each question presents a unique solution to the problem, and you must determine whether the solution meets the stated goals. Any of the solutions might solve the problem. It is also possible that none of the solutions solve the problem.

Once you answer a question in this section, you will NOT be able to return to it. As a result, these questions will not appear in the review screen.

Note: This question is part of a series of questions that present the same scenario. Each question in the series contains a unique solution. Determine whether the solution meets the stated goals.

Your network contains a single Active Directory domain named contoso.com. The domain contains two computers named Computer1 and Computer2.

A user named User1 is a member of the local Administrators group on Computer1 and Computer2.

User1 fails to remotely manage the devices on Computer2 by using Device Manager on Computer1.

User1 can connect to Computer2 remotely by using Computer Management.

You need to ensure that User1 can disable a device on Computer2 remotely.

Solution: You modify the Windows Firewall settings on Computer2.

Does this meet the goal?

A. Yes

B. No

Correct Answer: B

Section: (none)

Explanation

Explanation/Reference:

QUESTION 108

Note: This question is part of a series of questions that present the same scenario. Each question in the series contains a unique solution that might meet the stated goals. Some question sets might have more than one correct solution, while others might not have a correct solution.

After you answer a question in this section, you will NOT be able to return to it. As a result, these questions will not appear in the review screen.

You are the administrator for a company. All devices run Windows 10 Enterprise and are joined to an Active Directory Domain Services domain.

Administrators are unable to test network connectivity to Windows 10 devices because ping is being blocked.

You need to be able to ping the devices.

Solution: Enable the File and Printer Sharing (Echo Request – ICMPv4) in Inbound firewall rule.

Does this meet the goal?

- A. Yes
- B. No

Correct Answer: B

Section: (none)

Explanation

Explanation/Reference:



<https://vceplus.com/>