

MS 70-698.105q

Number: 70-698
Passing Score: 800
Time Limit: 120 min
File Version: V1



Website: <https://vceplus.com>
VCE to PDF Converter: <https://vceplus.com/vce-to-pdf/>
Facebook: <https://www.facebook.com/VCE.For.All.VN/>
Twitter : https://twitter.com/VCE_Plus

<https://vceplus.com/>

**Microsoft
70-698**

Installing and Configuring Windows 10

Exam A

QUESTION 1

Your company is developing a Universal Windows Platform (UWP) app named App1. App1 is not published in the Windows Store.

You are provided with an AppX package for App1.

You need to install App1 locally.

What should you do first?

- A. From a Group Policy object (GPO), add a software installation package.
- B. From the Settings app, modify the For developers setting.
- C. Set the AppX Deployment Service (AppXSVC) to Automatic and restart the computer.
- D. Disable User Account Control (UAC).

Correct Answer: B

Section: (none)

Explanation

Explanation/Reference: Explanation: <https://msdn.microsoft.com/windows/uwp/get-started/enable-your-device-for-development>



QUESTION 2

Note: This question is part of a series of questions that use the same scenario. For your convenience, the scenario is repeated in each question. Each question presents a different goal and answer choices, but the text of the scenario is exactly the same in each question in this series.

Start of repeated scenario

Your network contains a single Active Directory domain named contoso.com. All computers are members of the domain and run the 64-bit version of Windows 10 Enterprise.

On a test computer named Computer_Test1, you pin several company-specific applications in a group named Contoso Apps, and then you export the Start menu layout to a file named Contoso.xml.

You install Client Hyper-V on a computer named Computer6.

You identify the following requirements:

- Install the Hyper-V feature on a computer named Computer1.
- Use virtual smart card authentication on a computer named Computer2.
- Enable Secure Boot on a computer named Computer3.
- Connect a computer named Computer4 to a projector by using Miracast.
- Ensure that a user named User1 can use keyboard shortcuts by pressing one key at a time.
- Ensure that you can share the clipboard between Computer6 and the virtual machines running on Computer6.
- Add the Contoso Apps group to the Start menu of a computer named Computer7.

End of repeated scenario

You install all of the Contoso apps on Computer7.

You need to meet the requirements of Computer7.

What should you do?



<https://vceplus.com/>

- A. Run the Import-StartLayout cmdlet.
- B. Copy Contoso.xml to the C:\Users\Default\Start menu folder.
- C. Configure the Start Menu and Taskbar settings in a Group Policy.
- D. Copy Contoso.xml to the C:\ProgramData\Microsoft\Windows\Start Menu folder.

Correct Answer: A

Section: (none)

Explanation

Explanation/Reference:

Explanation:

<https://blogs.technet.microsoft.com/deploymentguys/2016/03/07/windows-10-start-layout-customization/#Exporting> **QUESTION 3**

Note: This question is part of a series of questions that use the same scenario. For your convenience, the scenario is repeated in each question. Each question presents a different goal and answer choices, but the text of the scenario is exactly the same in each question in this series.

Start of repeated scenario

Your network contains a single Active Directory domain named contoso.com. All computers are members of the domain and run the 64-bit version of Windows 10 Enterprise.

On a test computer named Computer_Test1, you pin several company-specific applications in a group named Contoso Apps, and then you export the Start menu layout to a file named Contoso.xml.

You install Client Hyper-V on a computer named Computer6.

You identify the following requirements:

- Install the Hyper-V feature on a computer named Computer1.
- Use virtual smart card authentication on a computer named Computer2.
- Enable Secure Boot on a computer named Computer3.
- Connect a computer named Computer4 to a projector by using Miracast.
- Ensure that a user named User1 can use keyboard shortcuts by pressing one key at a time.
- Ensure that you can share the clipboard between Computer6 and the virtual machines running on Computer6.

Add the Contoso Apps group to the Start menu of a computer named Computer7.

End of repeated scenario

Which hardware feature must Computer4 must support?

- A. a Wi-Fi adapter
- B. a Bluetooth adapter
- C. an HDMI port
- D. a MiniDisplayPort connector

Correct Answer: A

Section: (none)

Explanation

Explanation/Reference:

Explanation:

Miracast requires a Wi-Fi adapter. <https://www.microsoft.com/en-za/windows/windows-10-specifications#sysreqs> <https://www.thewindowsclub.com/set-up-use-miracast-windows-10>

QUESTION 4

Note: This question is part of a series of questions that use the same scenario. For your convenience, the scenario is repeated in each question. Each question presents a different goal and answer choices, but the text of the scenario is exactly the same in each question in this series.

Start of repeated scenario

Your network contains a single Active Directory domain named contoso.com. All computers are members of the domain and run the 64-bit version of Windows 10 Enterprise.

On a test computer named Computer_Test1, you pin several company-specific applications in a group named Contoso Apps, and then you export the Start menu layout to a file named Contoso.xml.

You install Client Hyper-V on a computer named Computer6.

You identify the following requirements:

- Install the Hyper-V feature on a computer named Computer1.
- Use virtual smart card authentication on a computer named Computer2.
- Enable Secure Boot on a computer named Computer3.
- Connect a computer named Computer4 to a projector by using Miracast.
- Ensure that a user named User1 can use keyboard shortcuts by pressing one key at a time.
- Ensure that you can share the clipboard between Computer6 and the virtual machines running on Computer6. ▪

Add the Contoso Apps group to the Start menu of a computer named Computer7.

End of repeated scenario

You need to meet the requirement of Computer6.

What should you configure?

- A. NUMA spanning
- B. enhanced session mode
- C. Hyper-V Guest Service Interface
- D. RemoteFX

Correct Answer: B

Section: (none)

Explanation

Explanation/Reference: Explanation: <https://technet.microsoft.com/en-us/windows-server-docs/compute/hyper-v/learn-more/use-local-resources-on-hyper-v-virtual-machine-with-vmconnect>

QUESTION 5

Note: This question is part of a series of questions that use the same scenario. For your convenience, the scenario is repeated in each question. Each question presents a different goal and answer choices, but the text of the scenario is exactly the same in each question in this series.

Start of repeated scenario

Your network contains a single Active Directory domain named contoso.com. All computers are members of the domain and run the 64-bit version of Windows 10 Enterprise.

On a test computer named Computer_Test1, you pin several company-specific applications in a group named Contoso Apps, and then you export the Start menu layout to a file named Contoso.xml.

You install Client Hyper-V on a computer named Computer6.

You identify the following requirements:

- Install the Hyper-V feature on a computer named Computer1.
- Use virtual smart card authentication on a computer named Computer2.
- Enable Secure Boot on a computer named Computer3.
- Connect a computer named Computer4 to a projector by using Miracast.
- Ensure that a user named User1 can use keyboard shortcuts by pressing one key at a time.
- Ensure that you can share the clipboard between Computer6 and the virtual machines running on Computer6. ▪

Add the Contoso Apps group to the Start menu of a computer named Computer7.

End of repeated scenario

You need to meet the requirement of User1.

Which Ease of Access setting should you configure?

- A. Toggle Keys
- B. Sticky Keys
- C. Filter Keys
- D. Mouse Keys

Correct Answer: B

Section: (none)

Explanation

Explanation/Reference: Explanation: <http://www.pcmech.com/article/how-to-manage-ease-of-access-features-in-windows-10/>

QUESTION 6

Note: This question is part of a series of questions that use the same set of answer choices. Each answer choice may be used once, more than once, or not at all.

Your network contains a single Active Directory domain. The domain contains devices that run Windows 10 Enterprise.

You need to prevent computers from connecting to hosts on subnet 131.107.0.0/24.

What should you do?

- A. Click Turn on password protected sharing.
- B. Disable Network Discovery.
- C. Modify the Profile settings of an incoming firewall rule.
- D. Run the Add-VpnConnectionTriggerApplication cmdlet.
- E. Run the New-NetFirewallRule cmdlet and specify the- Direction Outbound parameter.
- F. Run the New-VpnConnection cmdlet.
- G. Run the Set-NetConnectionProfile cmdlet.
- H. Run the Set-VPNConnection cmdlet.

Correct Answer: E

Section: (none)

Explanation

Explanation/Reference:

Explanation:

eg. **New-NetFirewallRule -Direction OutBound -DisplayName "131Subnet" -Name "131Subnet" -RemoteAddress 131.107.0.0/24 -Action Block**

[https://technet.microsoft.com/en-us/library/jj554908\(v=wps.630\).aspx](https://technet.microsoft.com/en-us/library/jj554908(v=wps.630).aspx)

QUESTION 7

Note: This question is part of a series of questions that use the same set of answer choices. Each answer choice may be used once, more than once, or not at all.

Your network contains a single Active Directory domain. The domain contains computers that run Windows 10 Enterprise.

The computers are configured as shown in the following table:

Computer name	Primary user	Computer type
PC_User1	User1	Laptop
PC_User2	User2	Laptop
PC_User3	User3	Tablet

When User1 works remotely, the user fails to access shared folders on the corporate network.

When User 2 and User3 work remotely, they successfully connect to the shared folders on the corporate network.

You need to ensure that User1 can connect to the shared folders without user interaction.

What should you do?

- A. Click Turn on password protected sharing.
- B. Disable Network Discovery.

- C. Modify the Profile settings of an incoming firewall rule.
- D. Run the Add-VpnConnectionTriggerApplication cmdlet.
- E. Run the New-NetFirewallRule cmdlet and specify the -Direction Outbound parameter.
- F. Run the New-VpnConnection cmdlet.
- G. Run the Set-NetConnectionProfile cmdlet.
- H. Run the Set-VPNConnection cmdlet

Correct Answer: D

Section: (none)

Explanation

Explanation/Reference:

Explanation:

Not F. New-VpnConnection does not seem to be a valid command.

Not H. Set-VpnConnection changes settings of an existing VPN.

Ans. D Add-VpnConnectionTriggerApplication.

<https://technet.microsoft.com/itpro/powershell/windows/vpnclient/add-vpnconnectiontriggerapplication>

QUESTION 8

Note: This question is part of a series of questions that use the same set of answer choices. Each answer choice may be used once, more than once, or not at all.

Your network contains a single Active Directory domain. The domain contains a VPN server that supports all of the VPN protocols.

A user named User1 works from home and has a desktop computer that runs Windows 10 Pro. User1 has an application named App1 that requires access to a server on the corporate network. User1 creates a VPN connection on the computer.

You need to ensure that when User1 opens App1, App1 can access the required data.

What should you do?

- A. Click Turn on password protected sharing.
- B. Disable Network Discovery.

- C. Modify the Profile settings of an incoming firewall rule.
- D. Run the Add-VpnConnectionTriggerApplication cmdlet.
- E. Run the New-NetFirewallRule cmdlet and specify the- Direction Outbound parameter.
- F. Run the New-VpnConnection cmdlet.
- G. Run the Set-NetConnectionProfile cmdlet.
- H. Run the Set-VPNConnection cmdlet.

Correct Answer: D

Section: (none)

Explanation

Explanation/Reference: Explanation:

<https://technet.microsoft.com/itpro/powershell/windows/vpnclient/add-vpnconnectiontriggerapplication>

Add-VpnConnectionTriggerApplication. Setting Add-VpnConnectionTriggerApplication allows App1 to automatically request the VPN connection to ensure it can access the required data.

QUESTION 9

Note: This question is part of a series of questions that use the same set of answer choices. Each answer choice may be used once, more than once, or not at all.

You have 10 computers that run Windows 10 Pro. The computers are in a workgroup.

A computer named PC_User1 has shared folder named Share1. Users are not prompted for credentials when they access Share1.

You modify the permissions on Share1 so that the share is shared only to a user named User1.

You need to ensure that when users from other computers in the workgroup access Share1, they must authenticate by using the credentials of User1.

What should you do?

- A. Click Turn on password protected sharing.
- B. Disable Network Discovery.
- C. Modify the Profile settings of an incoming firewall rule.
- D. Run the Add-VpnConnectionTriggerApplication cmdlet.

- E. Run the New-NetFirewallRule cmdlet and specify the- Direction Outbound parameter.
- F. Run the New-VpnConnection cmdlet.
- G. Run the Set-NetConnectionProfile cmdlet.
- H. Run the Set-VPNConnection cmdlet.

Correct Answer: A

Section: (none)

Explanation

Explanation/Reference:

Explanation:

<http://www.isunshare.com/windows-10/turn-off-or-on-password-protected-sharing-in-windows-10.html>



Advanced sharing settings

Control Panel\All Control Panel Items\Network and Sharing Center\Advanced sharing settings

Search Control Panel

Guest or Public

All Networks

Public folder sharing

When Public folder sharing is on, people on the network, including homegroup members, can access files in the Public folders.

☐ Turn on sharing so anyone with network access can read and write files in the Public folders

☒ Turn off Public folder sharing (people logged on to this computer can still access these folders)

Media streaming

When media streaming is on, people and devices on the network can access pictures, music, and videos on this computer. This computer can also find media on the network.

[Choose media streaming options...](#)

File sharing connections

Windows uses 128-bit encryption to help protect file sharing connections. Some devices don't support 128-bit encryption and must use 40- or 56-bit encryption.

☒ Use 128-bit encryption to help protect file sharing connections (recommended)

☐ Enable file sharing for devices that use 40- or 56-bit encryption

Password protected sharing

When password protected sharing is on, only people who have a user account and password on this computer can access shared files, printers attached to this computer, and the Public folders. To give other people access, you must turn off password protected sharing.

☒ Turn on password protected sharing

☐ Turn off password protected sharing

Save changes

Cancel

The *password protected sharing* option will not appear on domain connected computers.

QUESTION 10

Note: This question is part of a series of questions that use the same set of answer choices. Each answer choice may be used once, more than once, or not at all.

Your network contains a single Active Directory domain. The domain contains a VPN server that supports all of the VPN protocols.

From a computer that runs Windows 10 Pro, a user named User1 creates an SSTP VPN connection to a network named VPN1.

User1 successfully connects to the VPN server. When User1 roams between different Wi-Fi access points, the user loses the connection to the corporate network and must manually re-establish the VPN connection.

You need to ensure that VPN1 automatically maintains the connection while the user roams between Wi-Fi access points.

What should you do?

- A. Click Turn on password protected sharing.
- B. Disable Network Discovery.
- C. Modify the Profile settings of an incoming firewall rule.
- D. Run the Add-VpnConnectionTriggerApplication cmdlet.
- E. Run the New-NetFirewallRule cmdlet and specify the- Direction Outbound parameter.
- F. Run the New-VpnConnection cmdlet.
- G. Run the Set-NetConnectionProfile cmdlet.
- H. Run the Set-VPNConnection cmdlet.

Correct Answer: H

Section: (none)

Explanation

Explanation/Reference:

Explanation:

NOT D.

The user already has a working SSTP VPN connection.. The issue is signal loss when moving around the office and roaming between WiFi access points.

VPN Reconnect, which requires the VPN server to be set up on Windows Server 2008R2 and newer, uses the Internet Key Exchange v2 (IKEv2) tunneling protocol with a MOBIKE extension.

MOBIKE prevents disconnected VPN clients from having to perform IKEv2 renegotiation once Internet connectivity with the VPN server has been reestablished.

Set-VpnConnection [-Name] [[-ServerAddress]] [-TunnelType {Pptp | L2tp | Sstp | Ikev2 | Automatic}] **Change**

connection type from SSTP to IKEv2 [https://docs.microsoft.com/en-us/previous-versions/windows/it-pro/windows-](https://docs.microsoft.com/en-us/previous-versions/windows/it-pro/windows-server-2008-R2-and-2008/dd637803(v=ws.10))

[server-2008-R2-and-2008/dd637803\(v=ws.10\)](https://docs.microsoft.com/en-us/previous-versions/windows/it-pro/windows-server-2008-R2-and-2008/dd637803(v=ws.10)) <https://searchwindowsserver.techtarget.com/definition/VPN-Reconnect>

QUESTION 11

Note: This question is part of a series of questions that use the same set of answer choices. Each answer choice may be used once, more than once, or not at all.

Your network contains a single Active Directory domain. The domain contains a VPN server that supports all of the VPN protocols.

You have mobile devices that run Windows 10 and have VPN connections to the VPN server.

You need to ensure that when users work remotely and connect to the VPN, only traffic for the corporate network is sent through the VPN server.

What should you do?

- A. Click Turn on password protected sharing.
- B. Disable Network Discovery.
- C. Modify the Profile settings of an incoming firewall rule.
- D. Run the Add-VpnConnectionTriggerApplication cmdlet.
- E. Run the New-NetFirewallRule cmdlet and specify the-Direction Outbound parameter.
- F. Run the New-VpnConnection cmdlet.
- G. Run the Set-NetConnectionProfile cmdlet.
- H. Run the Set-VPNConnection cmdlet.

Correct Answer: H

Section: (none)

Explanation

Explanation/Reference:

Explanation:

Need to add the Split Tunneling function. [https://www.tishenko.com/windows-10-and-pptp-vpn-split-](https://www.tishenko.com/windows-10-and-pptp-vpn-split-tunnelling/)

[tunnelling/ https://technet.microsoft.com/itpro/powershell/windows/vpnclient/set-vpnconnection](https://technet.microsoft.com/itpro/powershell/windows/vpnclient/set-vpnconnection)

QUESTION 12

Note: This question is part of a series of questions that use the same set of answer choices. Each answer choice may be used once, more than once, or not at all.

A user connects to a wireless network and receives the following message:

"Do you want to allow your PC to be discoverable by other PCs and devices on this network?"

The user clicks No. The user is unable to browse to the shared folders of other computers on the network by using File Explorer.

You need to ensure that the user can browse to the other computers.

What should you do?

- A. Click Turn on password protected sharing.
- B. Disable Network Discovery.
- C. Modify the Profile settings of an incoming firewall rule.
- D. Run the Add-VpnConnectionTriggerApplication cmdlet.
- E. Run the New-NetFirewallRule cmdlet and specify the -Direction Outbound parameter.
- F. Run the New-VpnConnection cmdlet.
- G. Run the Set-NetConnectionProfile cmdlet.
- H. Run the Set-VPNConnection cmdlet.

Correct Answer: G

Section: (none)

Explanation

Explanation/Reference:

Explanation:

By clicking 'no' the user is put onto the Public network connection profile, which has a more locked down firewall. Use the above command to change to a Private network connection profile, which will loosen up file sharing once more.

<https://technet.microsoft.com/itpro/powershell/windows/netconnection/set-netconnectionprofile> <https://www.itechtics.com/change-network-type-windows-10/>

QUESTION 13

Your network contains a single Active Directory domain that has a Key Management Service (KMS) host.

You deploy Windows 10 to several laptops.

You need to ensure that Windows 10 is activated on the laptops immediately.

Which command should you run?

- A. `ospp.vbs/act`
- B. `slmgr.vbs/dli`
- C. `slmgr.vbs/ato`
- D. `ospp.vbs/dstatus`

Correct Answer: C

Section: (none)

Explanation

Explanation/Reference: Explanation:

[https://technet.microsoft.com/en-us/library/dn502540\(v=ws.11\).aspx](https://technet.microsoft.com/en-us/library/dn502540(v=ws.11).aspx)

QUESTION 14

Your network contains a single Active Directory domain. The domain contains two computers named Computer1 and Computer2.

From Computer1, you need to view the installed devices and their associated drivers on Computer2.

What should you use?

- A. the `Get-PnpDevice` cmdlet
- B. the `Get-WindowsDriver` cmdlet
- C. the `Get-OdbcDriver` cmdlet



D. the driverquery.exe command

Correct Answer: D

Section: (none)

Explanation

Explanation/Reference:

Explanation:

<https://blogs.technet.microsoft.com/askperf/2011/10/21/two-minute-drill-driverquery-exe/>

e.g.command use **driverquery /S 192.168.1.15 /U domainName\userName /P password**

QUESTION 15

You need to create a script to verify the activation status on 100 computers.

What should you use in the script?

- A. the sfc.exe command and the/scannow parameter
- B. the sfc.exe command and the/verifyonly parameter
- C. the slmgr.vbs script and the /ipk parameter
- D. the slmgr.vbs script and the /dli parameter



Correct Answer: D

Section: (none)

Explanation

Explanation/Reference: Explanation:

[https://technet.microsoft.com/en-us/library/dn502540\(v=ws.11\).aspx](https://technet.microsoft.com/en-us/library/dn502540(v=ws.11).aspx)

QUESTION 16

You install Windows 10 on a computer named Computer1. Computer1 is a member of a workgroup and will be used by multiple users to browse the Internet.

You need to ensure that a file named Policy1.docx appears on the desktop of Computer1 for all users who use the computer. The solution must minimize the number of copies of Policy1.docx.

What should you do?



<https://vceplus.com/>

- A. Copy Policy1.docx to C:\Users\Default\Desktop.
- B. From a Group Policy object (GPO), modify the Desktop settings.
- C. Use a Group Policy object (GPO) to configure Folder Redirection.
- D. Copy Policy1.docx to C:\Users\Public\Desktop.

Correct Answer: D

Section: (none)

Explanation



Explanation/Reference: Explanation:

<http://www.digitalcitizen.life/what-public-folder-how-use-it>

QUESTION 17

You have a computer that runs the 32-bit version of Windows 7 Professional with Service Pack 1.

You need to perform an in-place upgrade to Windows 10.

Which two editions of Windows 10 can you upgrade the computer to?

Each correct answer presents a complete solution.

- A. the 32-bit version of Windows 10 Pro
- B. the 64-bit version of Windows 10 Pro

- C. the 32-bit version of Windows 10 Enterprise
- D. the 64-bit version of Windows 10 Enterprise
- E. the 32-bit version of Windows 10 Home

Correct Answer: AC

Section: (none)

Explanation

Explanation/Reference:

Explanation

Not B,D. 32 bit to 32 bit upgrade only.

Not E. Pro is higher than home.

<https://docs.microsoft.com/en-us/windows/deployment/upgrade/windows-10-upgrade-paths> <https://techjourney.net/windows-10-official-upgrade-path-from-windows-788-1/>

QUESTION 18

You have five computers that run Windows 8.1 Pro.

You need to perform an upgrade installation of Windows 10 on the computers.

What are two possible ways to achieve the goal? Each correct answer presents a complete solution.

- A. Apply an image of Windows 10 by running imagex.exe.
- B. Start the computers from Windows PE, and then run setup.exe from a network share that contains the Windows 10 installation source files.
- C. While signed in to Windows 8.1 Pro, run setup.exe from a network share that contains the Windows 10 installation source files.
- D. Start the computers from a bootable USB drive that contains the Windows 10 source files.
- E. Apply updates by using Windows Update.

Correct Answer: CE

Section: (none)

Explanation

Explanation/Reference:

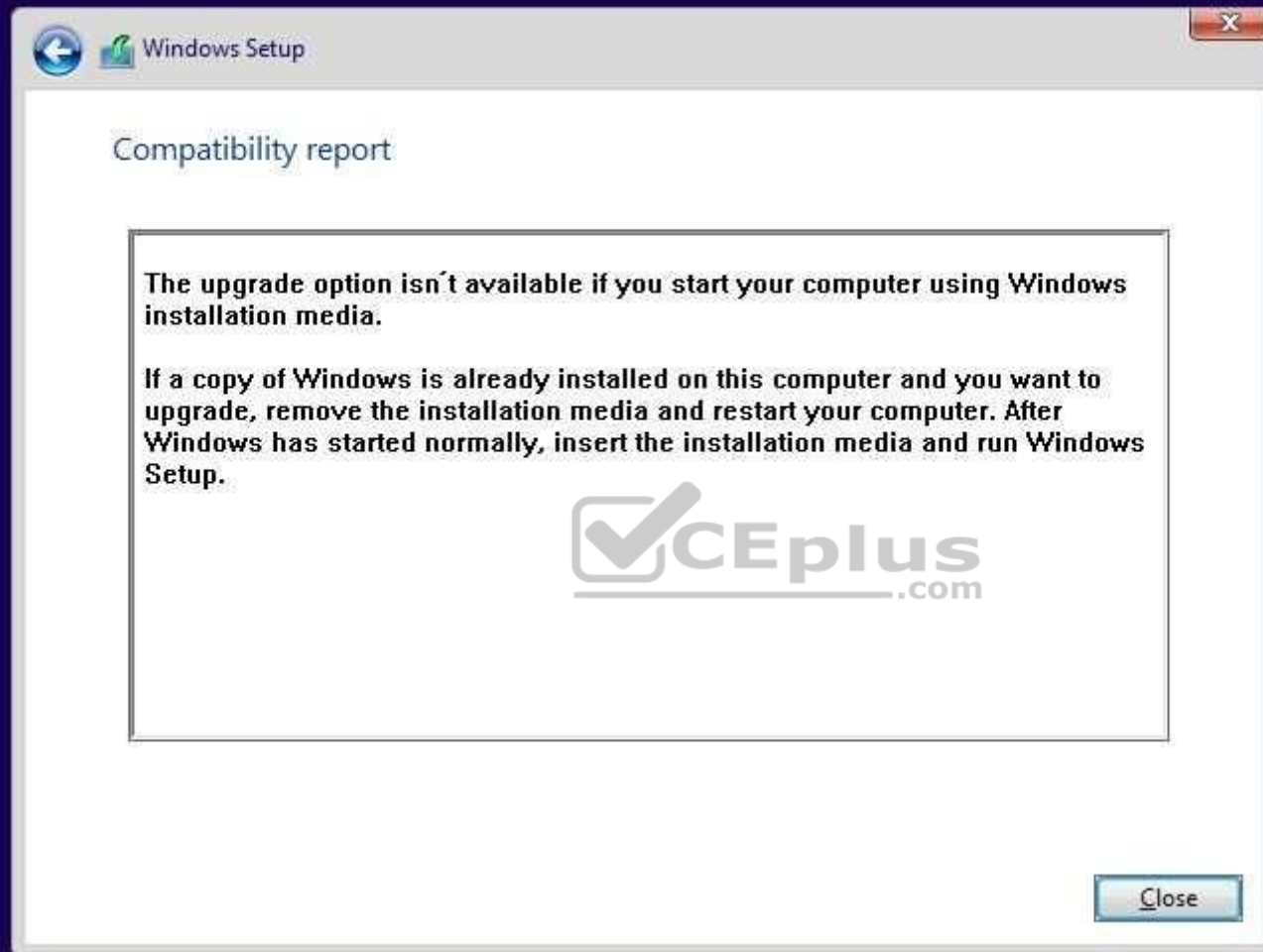
Explanation:

Not A. Applying an image will destroy all data in the current build.

Not B. Upgrade installations need to be started from within an already installed and running Windows.

Not D. Upgrade installations need to be started from within an already installed and running Windows.





<http://www.laptopmag.com/articles/how-to-upgrade-windows-10>

QUESTION 19

You have a computer named Computer1 that runs the 64-bit version of Windows 10 Pro.

You obtain a new driver for a device installed on Computer1. The driver is not digitally signed.

You need to test the installation of the driver on Computer1.

What should you do first?

- A. Run dism.exe and specify the /Add-Driver and /Force-Unsigned parameters.
- B. From User Configuration in Group Policy, configure the Driver Installation settings.
- C. Restart Computer1 by using the advanced startup options.
- D. From Computer Configuration in Group Policy, configure the Driver Installation settings.

Correct Answer: C

Section: (none)

Explanation

Explanation/Reference: Explanation: <https://www.lifewire.com/how-to-access-advanced-startup-options-in-windows-10-or-8-2626229>

QUESTION 20

You have 10 computers that run Windows 10 Pro.

The computers currently receive updates as part of the Current Branch.

You need to configure the computers to receive updates as part of Current Branch for Business.

What should you do?

- A. Select the Defer upgrades check box.
- B. Upgrade to Windows 10 Enterprise.
- C. Change the product key.
- D. Clear the Give me updates for other Microsoft products when I update check box.

Correct Answer: A

Section: (none)

Explanation

Explanation/Reference: Explanation: <http://windowsitpro.com/windows-10/configure-machine-use-current-branch-business-windows-10>

QUESTION 21

You have a computer named Computer1 that runs Windows 10.

On Computer1, C:\Folder1 has the permissions configured as shown in the following table.

Type	Principal	Access	Applies To
Deny	Contoso\User1	Read	This folder, subfolders and files
Allow	Computer1\Administrators	Full control	This folder, subfolders and files
Allow	Contoso\Domain Users	Read & execute	This folder, subfolders and files

You share C:\Folder1 as Folder1 and you grant access to the Everyone group.

Folder1 has the following share settings:

```
ShareState           : Online
AvailabilityType      : NonClustered
ShareType             : FileSystemDirectory
FolderEnumerationMode : AccessBased
CachingMode           : Manual
SmbInstance           : Default
CTimeout             : 0
ConcurrentUserLimit   : 0
EncryptData           : False
Name                  : Folder1
Path                  : C:\Folder1
Scoped                : False
ScopeName              : *
SecurityDescriptor     : O:BAG:DUD:(A;;0x1200a9;;;WD)
```

What level of access does User1 have to Folder1?

- A. User1 cannot see the Folder1 share on the network and cannot connect to Folder1.
- B. User1 can see the Folder1 share on the network and can connect to Folder1.
- C. User1 cannot see the Folder1 share on the network but can connect to Folder1.
- D. User1 can see the Folder1 share on the network but cannot connect to Folder1.

Correct Answer: A

Section: (none)

Explanation

Explanation/Reference:

Explanation:

Access-based enumeration displays only the files and folders that a user has permissions to access.

User1 has no access to Folder1 and consequently cannot view the folder or its contents due to Access-based enumeration.

<https://docs.microsoft.com/en-us/powershell/module/smbshare/get-smbshare?view=winserver2012r2-ps> [https://technet.microsoft.com/en-us/library/jj635727\(v=wps.630\).aspx](https://technet.microsoft.com/en-us/library/jj635727(v=wps.630).aspx)

QUESTION 22

Your company uses a Window Store for Business that contains an app named App1.

You have three computers that are prevented from accessing the Internet.

You need to distribute App1 to the three computers.

What are two possible ways to achieve the goal?

Each correct answer presents a complete solution.

- A. a provisioning package created by using Windows Imaging and Configuration Designer
- B. A deployment from Microsoft Intune.
- C. A deployment from Windows Deployment Services (WDS)
- D. an AppX package deployed by using Deployment Image Servicing and Management (DISM)
- E. an answer file created by using Windows System Image Manager (Windows SIM)

Correct Answer: AD

Section: (none)

Explanation

Explanation/Reference:

Explanation:

<https://technet.microsoft.com/en-us/itpro/windows/deploy/windows-deployment-scenarios-and-tools> <http://www.sconfigmgr.com/2016/04/05/deploy-offline-licensed-universal-apps-offline-from-windows-store-for-business-with-configmgr/>

QUESTION 23

Note: This question is part of a series of questions that present the same scenario. Each question in the series contains a unique solution. Determine whether the solution meets the stated goals.

While performing maintenance on a computer, you open Indexing Options, and then you click Pause.

You complete the computer maintenance.

You need to resume indexing.

Solution: From the Start menu, you click Power and then you click Restart.

Does this meet the goal?

A. Yes

B. No

Correct Answer: A

Section: (none)

Explanation

Explanation/Reference: Explanation: <http://www.techbuzz.in/restart-or-resume-windows-indexing-services-after-pausing.php>

QUESTION 24

Note: This question is part of a series of questions that present the same scenario. Each question in the series contains a unique solution. Determine whether the solution meets the stated goals.

While performing maintenance on a computer, you open Indexing Options, and then you click Pause.

You complete the computer maintenance.

You need to resume indexing.

Solution: From the Services console, you restart the Storage Service service.

Does this meet the goal?

A. Yes

B. No

Correct Answer: B

Section: (none)

Explanation

Explanation/Reference: Explanation: <http://www.techbuzz.in/restart-or-resume-windows-indexing-services-after-pausing.php>

QUESTION 25

Note: This question is part of a series of questions that present the same scenario. Each question in the series contains a unique solution. Determine whether the solution meets the stated goals.

While performing maintenance on a computer, you open Indexing Options, and then you click Pause.

You complete the computer maintenance.

You need to resume indexing.

Solution: From the Services console, you restart the Windows Search service.

Does this meet the goal?

A. Yes

B. No



Correct Answer: A

Section: (none)

Explanation

Explanation/Reference: Explanation: <http://www.techbuzz.in/restart-or-resume-windows-indexing-services-after-pausing.php>

QUESTION 26

Note: This question is part of a series of questions that present the same scenario. Each question in the series contains a unique solution. Determine whether the solution meets the stated goals.

While performing maintenance on a computer, you open Indexing Options, and then you click Pause.

You complete the computer maintenance.

You need to resume indexing.

Solution: You sign out of Windows, and then you sign back in.

Does this meet the goal?

- A. Yes
- B. No

Correct Answer: B

Section: (none)

Explanation

Explanation/Reference: Explanation: <http://www.techbuzz.in/restart-or-resume-windows-indexing-services-after-pausing.php>

QUESTION 27

Note: This question is part of a series of questions that use the same scenario. For your convenience, the scenario is repeated in each question. Each question presents a different goal and answer choices, but the text of the scenario is exactly the same in each question in this series.

Start of repeated scenario

Your network contains a single Active Directory domain named adatum.com. The network contains five servers configured as shown in the following table.

Server name	Domain/workgroup	Role
DC1	Adatum.com	Domain controller
DC2	Adatum.com	Domain controller
Server1	Adatum.com	Member server
Server2	Adatum.com	Member server
Test_Server	Workgroup	File server

All of the servers run Windows Server 2012 R2.

Test_Server has a shared folder named ShareA. Only local users have permissions to ShareA.

The network contains a mainframe computer that is administered by using the Telnet protocol.

The domain contains four client computers configured as shown in the following table:

Computer name	Primary user
Computer1	User1
Computer2	User2
Computer3	User3
Computer4	User4

All of the client computers run the 64-bit version of Windows 10. User3 frequently accesses ShareA. Remote Desktop is enabled on Computer4.

Your company identifies the following requirements:

- Ensure that you can test unsigned device drivers on Computer1 ▪
- Enable Credential Guard on Computer2.
- Run commands and cmdlets remotely on computer2.
- Configure User Account control (UAC) on Computer3 to prompt administrators for credentials when elevated privileges are required. ▪
- Ensure that User1 can view and interact with a desktop session of User3.
- Ensure that User2 can use Telnet to manage the mainframe.
- Ensure that User4 can use Remote Desktop to access Computer4 remotely.

End of repeated scenario

You need to recommend a solution to meet the requirements of User1.

What should you include in the recommendation?

- A. Remote Access Connection Manager
- B. Remote Desktop
- C. Remote Assistance
- D. Windows PowerShell Remoting

Correct Answer: C

Section: (none)

Explanation

Explanation/Reference:

Explanation:

<http://www.technig.com/set-up-windows-remote-assistance/>

QUESTION 28

Note: This question is part of a series of questions that use the same scenario. For your convenience, the scenario is repeated in each question. Each question presents a different goal and answer choices, but the text of the scenario is exactly the same in each question in this series.

Start of repeated scenario

Your network contains a single Active Directory domain named adatum.com. The network contains five servers configured as shown in the following table.

Server name	Domain/workgroup	Role
DC1	Adatum.com	Domain controller
DC2	Adatum.com	Domain controller
Server1	Adatum.com	Member server
Server2	Adatum.com	Member server
Test_Server	Workgroup	File server

All of the servers run Windows Server 2012 R2.

Test_Server has a shared folder named ShareA. Only local users have permissions to ShareA.

The network contains a mainframe computer that is administered by using the Telnet protocol.

The domain contains four client computers configured as shown in the following table:



<https://vceplus.com/>

Computer name	Primary user
Computer1	User1
Computer2	User2
Computer3	User3
Computer4	User4

All of the client computers run the 64-bit version of Windows 10. User3 frequently accesses ShareA. Remote Desktop is enabled on Computer4.

Your company identifies the following requirements:

- Ensure that you can test unsigned device drivers on Computer1 ▪
- Enable Credential Guard on Computer2.
- Run commands and cmdlets remotely on computer2.
- Configure User Account control (UAC) on Computer3 to prompt administrators for credentials when elevated privileges are required. ▪
- Ensure that User1 can view and interact with a desktop session of User3.
- Ensure that User2 can use Telnet to manage the mainframe.
- Ensure that User4 can use Remote Desktop to access Computer4 remotely.

End of repeated scenario

You need to meet the requirement for administering Computer2 remotely.

Which remote management technology should you use?

- A. Windows PowerShell remoting
- B. Telnet
- C. PsExec
- D. Remote Desktop

Correct Answer: A

Section: (none)

Explanation

Explanation/Reference:

Explanation:

<https://msdn.microsoft.com/en-us/powershell/scripting/core-powershell/running-remote-commands>

QUESTION 29

Note: This question is part of a series of questions that use the same scenario. For your convenience, the scenario is repeated in each question. Each question presents a different goal and answer choices, but the text of the scenario is exactly the same in each question in this series.

Start of repeated scenario

Your network contains a single Active Directory domain named adatum.com. The network contains five servers configured as shown in the following table.

Server name	Domain/workgroup	Role
DC1	Adatum.com	Domain controller
DC2	Adatum.com	Domain controller
Server1	Adatum.com	Member server
Server2	Adatum.com	Member server
Test_Server	Workgroup	File server

All of the servers run Windows Server 2012 R2.

Test_Server has a shared folder named ShareA. Only local users have permissions to ShareA.

The network contains a mainframe computer that is administered by using the Telnet protocol.

The domain contains four client computers configured as shown in the following table:

Computer name	Primary user
Computer1	User1
Computer2	User2
Computer3	User3
Computer4	User4

All of the client computers run the 64-bit version of Windows 10. User3 frequently accesses ShareA. Remote Desktop is enabled on Computer4.

Your company identifies the following requirements:

- Ensure that you can test unsigned device drivers on Computer1 ▪

Enable Credential Guard on Computer2.

- Run commands and cmdlets remotely on computer2.
- Configure User Account control (UAC) on Computer3 to prompt administrators for credentials when elevated privileges are required. ▪

Ensure that User1 can view and interact with a desktop session of User3.

- Ensure that User2 can use Telnet to manage the mainframe.
- Ensure that User4 can use Remote Desktop to access Computer4 remotely.

End of repeated scenario

You need to meet the requirement of User4.

What should you do?

- A. Install a Universal Windows Platform (UWP) application.
- B. Modify the settings of a firewall rule.
- C. Install a Windows feature.
- D. Modify the membership of a local group.



Correct Answer: D

Section: (none)

Explanation

Explanation/Reference:

Explanation:

Add the user to the local Remote Desktop Users group or the Administrators local group.

QUESTION 30

Note: This question is part of a series of questions that use the same scenario. For your convenience, the scenario is repeated in each question. Each question presents a different goal and answer choices, but the text of the scenario is exactly the same in each question in this series.

Start of repeated scenario

Your network contains a single Active Directory domain named Adatum.com.

The network contains five servers configured as shown in the following table:

Server name	Domain/workgroup	Role
DC1	Adatum.com	Domain controller
DC2	Adatum.com	Domain controller
Server1	Adatum.com	Member server
Server2	Adatum.com	Member server
Test_Server	Workgroup	File server

All of the servers run Windows Server 2012 R2.

Test_Server has a shared folder named ShareA. Only local users have permissions to ShareA.

The network contains a mainframe computer that is administered by using the Telnet protocol.

The domain contains four client computers configured as shown in the following table:

Computer name	Primary user
Computer1	User1
Computer2	User2
Computer3	User3
Computer4	User4

All of the client computers run the 64-bit version of Windows 10. User3 frequently accesses ShareA. Remote Desktop is enabled on Computer4.

Your company identifies the following requirements:

- Ensure that you can test unsigned device drivers on Computer1.
- Enable Credential Guard on Computer2.
- Run commands and cmdlets remotely on Computer2.
- Configure User Account Control (UAC) on Computer3 to prompt administrators for credentials when elevated privileges are required. ▪

Ensure that User1 can view and interact with a desktop session of User3.

- Ensure that User2 can use Telnet to manage the mainframe.
- Ensure that User4 can use Remote Desktop to access Computer4 remotely.

End of repeated scenario

You need to configure Computer3 to meet the UAC requirement.

What should you use?

- A. User Account Control Settings
- B. Credential Manager
- C. Security Options in the Computer Configuration of the Local Computer Policy.
- D. Security Settings in the User Computer of the Local Computer Policy.

Correct Answer: C

Section: (none)

Explanation

Explanation/Reference:

Explanation:

<http://www.ghacks.net/2013/06/20/how-to-configure-windows-uac-prompt-behavior-for-admins-and-users/>



Local Group Policy Editor

File Action View Help

Local Computer Policy

- Computer Configuration
 - Software Settings
 - Windows Settings
 - Name Resolution Policy
 - Scripts (Startup/Shutdown)
 - Deployed Printers
 - Security Settings
 - Account Policies
 - Local Policies
 - Audit Policy
 - User Rights Assignment
 - Security Options
 - Windows Defender Firewall with Advanced Security
 - Network List Manager Policies
 - Public Key Policies
 - Software Restriction Policies
 - Application Control Policies
 - IP Security Policies on Local Computer
 - Advanced Audit Policy Configuration
 - Policy-based QoS
 - Administrative Templates
 - User Configuration

Policy

- Network security: Allow PKU2U authentication requests to this computer to use online identities.
- Network security: Configure encryption types allowed for Kerberos
- Network security: Do not store LAN Manager hash value on next password change
- Network security: Force logoff when logon hours expire
- Network security: LAN Manager authentication level
- Network security: LDAP client signing requirements
- Network security: Minimum session security for NTLM SSP based (including secure RPC) clients
- Network security: Minimum session security for NTLM SSP based (including secure RPC) servers
- Network security: Restrict NTLM: Add remote server exceptions for NTLM authentication
- Network security: Restrict NTLM: Add server exceptions in this domain
- Network security: Restrict NTLM: Audit Incoming NTLM Traffic
- Network security: Restrict NTLM: Audit NTLM authentication in this domain
- Network security: Restrict NTLM: Incoming NTLM traffic
- Network security: Restrict NTLM: NTLM authentication in this domain
- Network security: Restrict NTLM: Outgoing NTLM traffic to remote servers
- Recovery console: Allow automatic administrative logon
- Recovery console: Allow floppy copy and access to all drives and all folders
- Shutdown: Allow system to be shut down without having to log on
- Shutdown: Clear virtual memory pagefile
- System cryptography: Force strong key protection for user keys stored on the computer
- System cryptography: Use FIPS compliant algorithms for encryption, hashing, and signing
- System objects: Require case insensitivity for non-Windows subsystems
- System objects: Strengthen default permissions of internal system objects (e.g. Symbolic Links)
- System settings: Optional subsystems
- System settings: Use Certificate Rules on Windows Executables for Software Restriction Policies
- User Account Control: Admin Approval Mode for the Built-in Administrator account
- User Account Control: Allow UIAccess applications to prompt for elevation without using the secure desktop
- User Account Control: Behavior of the elevation prompt for administrators in Admin Approval Mode**
- User Account Control: Behavior of the elevation prompt for standard users
- User Account Control: Detect application installations and prompt for elevation
- User Account Control: Only elevate executables that are signed and validated
- User Account Control: Only elevate UIAccess applications that are installed in secure locations

www.vceplus.com - VCE Exam Simulator - Download Any VCE (latest) free Open VCE Exams - VCE to PDF Converter - PDF Online

QUESTION 31

Note: This question is part of a series of questions that use the same scenario. For your convenience, the scenario is repeated in each question. Each question presents a different goal and answer choices, but the text of the scenario is exactly the same in each question in this series.

Start of repeated scenario

Your network contains a single Active Directory domain named adatum.com.

The network contains five servers configured as shown in the following table:

Server name	Domain/workgroup	Role
DC1	Adatum.com	Domain controller
DC2	Adatum.com	Domain controller
Server1	Adatum.com	Member server
Server2	Adatum.com	Member server
Test_Server	Workgroup	File server

All of the servers run Windows Server 2012 R2.

Test_Server has a shared folder named ShareA. Only local users have permissions to ShareA.

The network contains a mainframe computer that is administered by using the Telnet protocol.

The domain contains four client computers configured as shown in the following table:

Computer name	Primary user
Computer1	User1
Computer2	User2
Computer3	User3
Computer4	User4

All of the client computers run the 64-bit version of Windows 10. User3 frequently accesses ShareA. Remote Desktop is enabled on Computer4.

Your company identifies the following requirements:

- Ensure that you can test unsigned device drivers on Computer1.
- Enable Credential Guard on Computer2.
- Run commands and cmdlets remotely on Computer2.
- Configure User Account Control (UAC) on Computer3 to prompt administrators for credentials when elevated privileges are required. ▪

Ensure that User1 can view and interact with a desktop session of User3.

- Ensure that User2 can use Telnet to manage the mainframe.
- Ensure that User4 can use Remote Desktop to access Computer4 remotely.

End of repeated scenario

On Test_Server, you reset the password for User3.

You need to ensure that User3 can access ShareA.

Which tool should you instruct User3 to use on Computer3?

- A. the Get-Credential cmdlet
- B. Credential Manager
- C. Authorization Manager
- D. Active Directory Users and Computers



Correct Answer: B

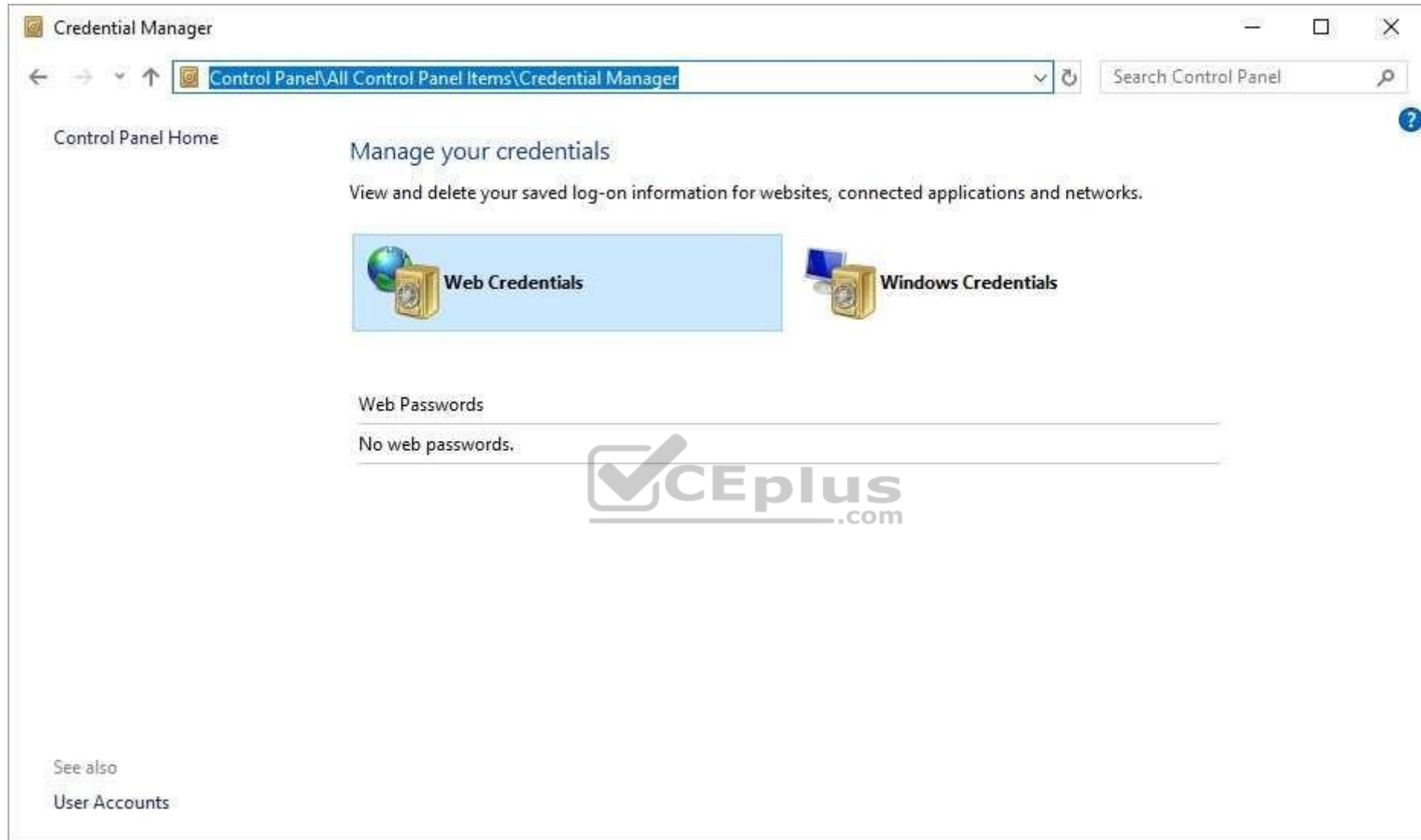
Section: (none)

Explanation

Explanation/Reference:

Explanation:

<http://www.digitalcitizen.life/credential-manager-where-windows-stores-passwords-other-login-details>



QUESTION 32

Note: This question is part of a series of questions that use the same scenario. For your convenience, the scenario is repeated in each question. Each question presents a different goal and answer choices, but the text of the scenario is exactly the same in each question in this series.

Start of repeated scenario

Your network contains a single Active Directory domain named adatum.com.

The network contains five servers configured as shown in the following table:

Server name	Domain/workgroup	Role
DC1	Adatum.com	Domain controller
DC2	Adatum.com	Domain controller
Server1	Adatum.com	Member server
Server2	Adatum.com	Member server
Test_Server	Workgroup	File server

All of the servers run Windows Server 2012 R2.

Test_Server has a shared folder named ShareA. Only local users have permissions to ShareA.

The network contains a mainframe computer that is administered by using the Telnet protocol.

The domain contains four client computers configured as shown in the following table:

Computer name	Primary user
Computer1	User1
Computer2	User2
Computer3	User3
Computer4	User4

All of the client computers run the 64-bit version of Windows 10. User3 frequently accesses ShareA. Remote Desktop is enabled on Computer4.

Your company identifies the following requirements:

- Ensure that you can test unsigned device drivers on Computer1.
- Enable Credential Guard on Computer2.
- Run commands and cmdlets remotely on Computer2.

- Configure User Account Control (UAC) on Computer3 to prompt administrators for credentials when elevated privileges are required. ▪
- Ensure that User1 can view and interact with a desktop session of User3.
- Ensure that User2 can use Telnet to manage the mainframe.
- Ensure that User4 can use Remote Desktop to access Computer4 remotely.

End of repeated scenario

You need to meet the Credential Guard requirement of Computer2.

Which two Windows features should you install? Each correct answer presents part of the solution.

- A. Windows Process Activation Service (WAS)
- B. Embedded BootExperience
- C. Isolated User Mode
- D. Windows Identity Foundation 3.5
- E. Hyper-V Hypervisor

Correct Answer: CE

Section: (none)

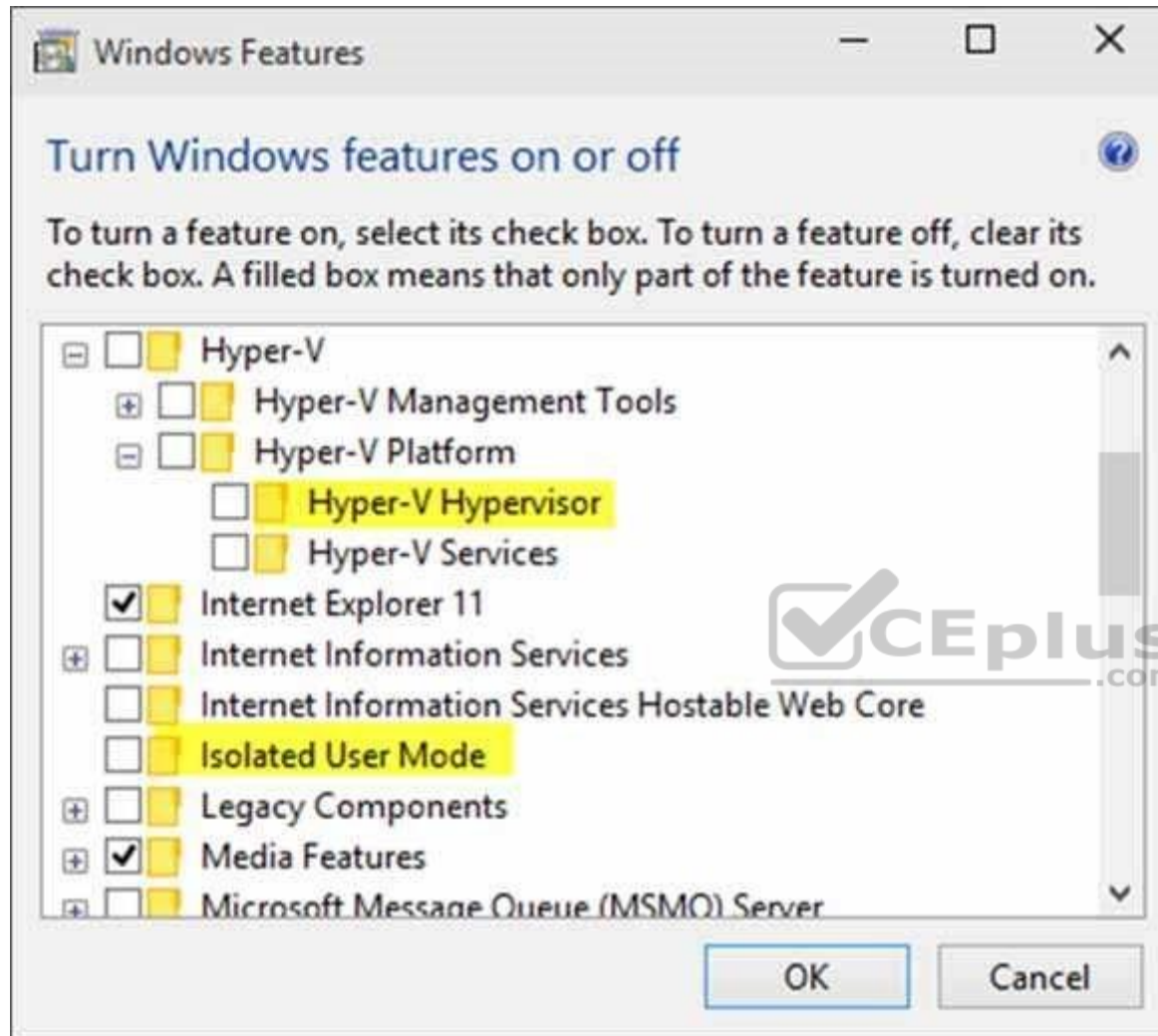
Explanation

Explanation/Reference:

Explanation:

<https://blogs.technet.microsoft.com/ash/2016/03/02/windows-10-device-guard-and-credential-guard-demystified/>





QUESTION 33

Note: This question is part of a series of questions that use the same scenario. For your convenience, the scenario is repeated in each question. Each question presents a different goal and answer choices, but the text of the scenario is exactly the same in each question in this series.

Start of repeated scenario

Your network contains a single Active Directory domain named adatum.com.

The network contains five servers configured as shown in the following table:

Server name	Domain/workgroup	Role
DC1	Adatum.com	Domain controller
DC2	Adatum.com	Domain controller
Server1	Adatum.com	Member server
Server2	Adatum.com	Member server
Test_Server	Workgroup	File server

All of the servers run Windows Server 2012 R2.

Test_Server has a shared folder named ShareA. Only local users have permissions to ShareA.

The network contains a mainframe computer that is administered by using the Telnet protocol.

The domain contains four client computers configured as shown in the following table:

Computer name	Primary user
Computer1	User1
Computer2	User2
Computer3	User3
Computer4	User4

All of the client computers run the 64-bit version of Windows 10. User3 frequently accesses ShareA. Remote Desktop is enabled on Computer4.

Your company identifies the following requirements:

- Ensure that you can test unsigned device drivers on Computer1.
- Enable Credential Guard on Computer2.
- Run commands and cmdlets remotely on Computer2.
- Configure User Account Control (UAC) on Computer3 to prompt administrators for credentials when elevated privileges are required.

- Ensure that User1 can view and interact with a desktop session of User3.
- Ensure that User2 can use Telnet to manage the mainframe.
- Ensure that User4 can use Remote Desktop to access Computer4 remotely.

End of repeated scenario

You need to meet the requirement of User2.

What should you do?

- A. Run tlntadmn.exe
- B. Install a Windows feature.
- C. Modify the membership of the TelnetClients group.
- D. Configure Windows Firewall.

Correct Answer: B

Section: (none)

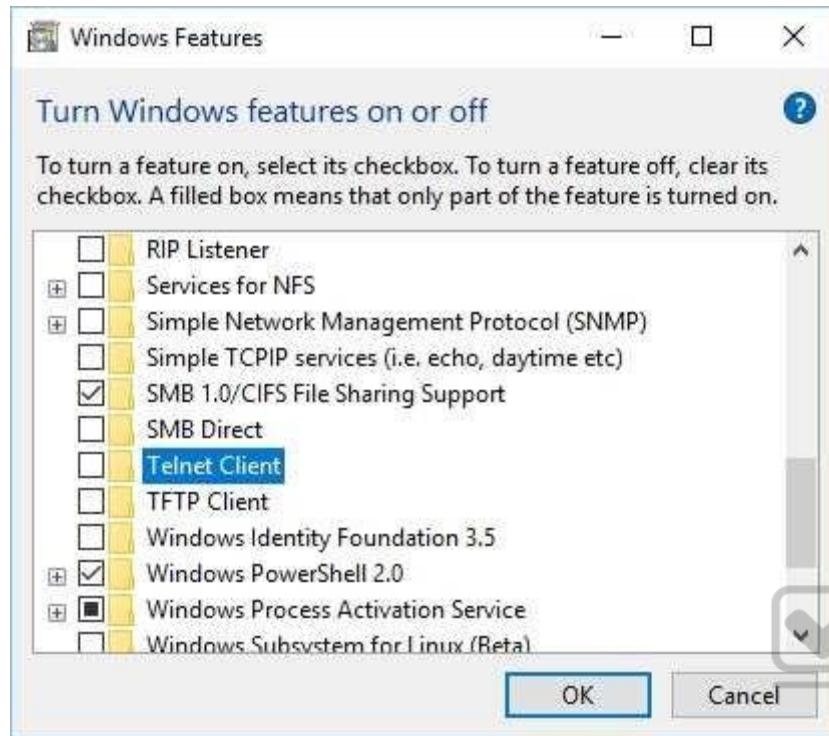
Explanation

Explanation/Reference:

Explanation:

You need the Telnet Client to manage a Telnet Server. The Telnet Client is not installed by default.





Exam B

QUESTION 1

In this section, you will see one or more sets of questions with the same scenario and problem.

Each question presents a unique solution to the problem, and you must determine whether the solution meets the stated goals.

Any of the solutions might solve the problem. It is also possible that none of the solutions solve the problem.

Once you answer a question in this section, you will NOT be able to return to it. As a result, these questions will not appear in the review screen.

You have a computer named Computer1 that runs Windows 10.

File History is turned on.

The user of Computer1 reports that previous versions of D:\Folder\File1.doc are unavailable from the Previous Versions tab.

You need to ensure that the previous versions of the file are created.

Solution: Modify the Backup settings in the Settings app.

Does this meet the goal?

A. Yes

B. No

Correct Answer: A

Section: (none)

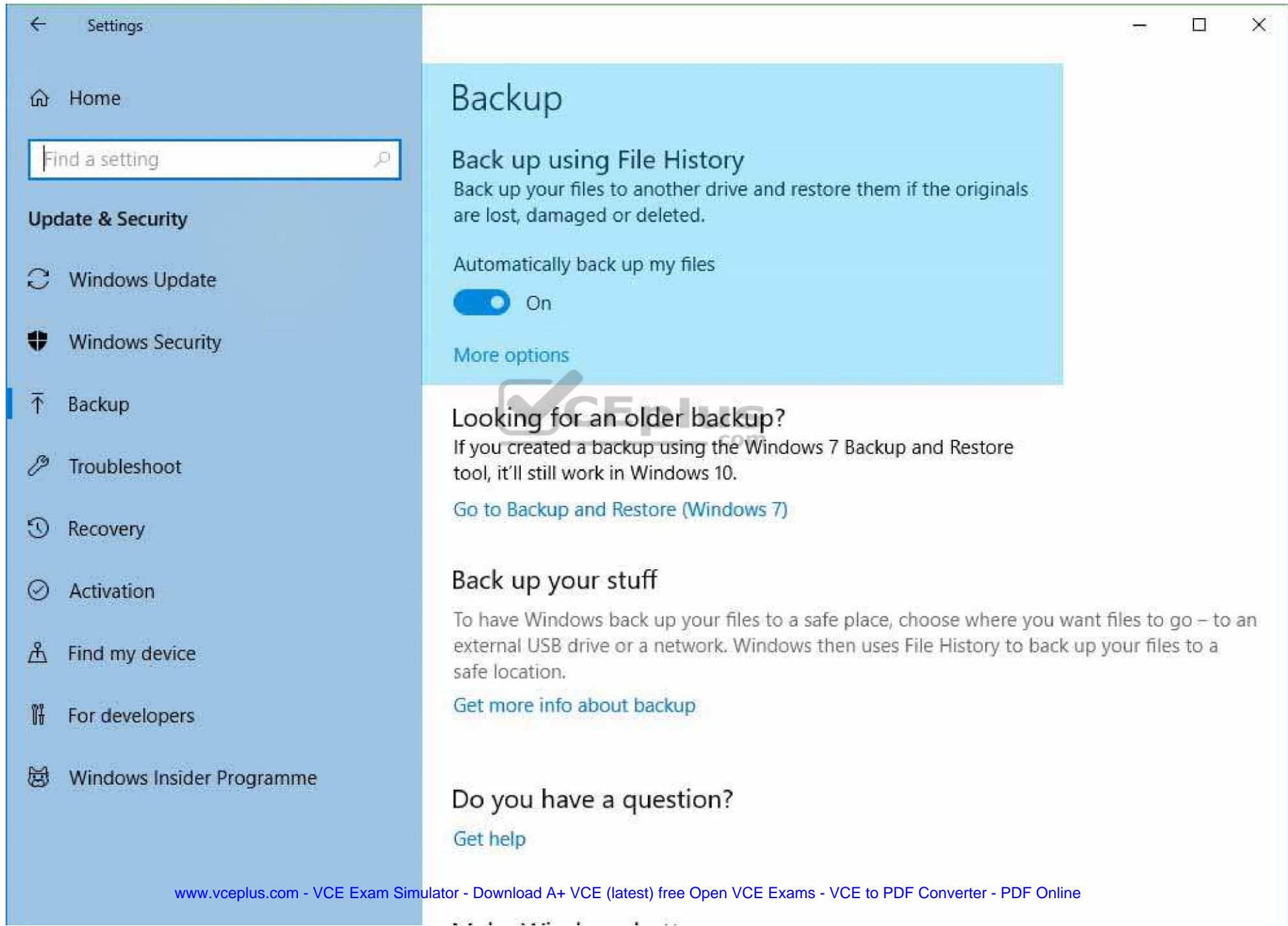
Explanation

Explanation/Reference:

Explanation:

<http://www.pcworld.com/article/2974385/windows/how-to-use-windows-10s-file-history-backup-feature.html>





The screenshot shows the Windows Settings application with the 'Backup' section selected in the left-hand navigation pane. The main content area is titled 'Backup' and features a light blue header. Below the header, there is a section titled 'Back up using File History' with a description: 'Back up your files to another drive and restore them if the originals are lost, damaged or deleted.' A toggle switch for 'Automatically back up my files' is shown in the 'On' position. A link for 'More options' is provided. Below this, a section titled 'Looking for an older backup?' explains that Windows 7 Backup and Restore tools still work in Windows 10, with a link to 'Go to Backup and Restore (Windows 7)'. Another section titled 'Back up your stuff' explains that Windows uses File History to back up files to a safe location, with a link to 'Get more info about backup'. At the bottom, a section titled 'Do you have a question?' includes a link to 'Get help'.

Settings

Home

Find a setting

Update & Security

Windows Update

Windows Security

Backup

Troubleshoot

Recovery

Activation

Find my device

For developers

Windows Insider Programme

Backup

Back up using File History

Back up your files to another drive and restore them if the originals are lost, damaged or deleted.

Automatically back up my files

☒ On

[More options](#)

Looking for an older backup?

If you created a backup using the Windows 7 Backup and Restore tool, it'll still work in Windows 10.

[Go to Backup and Restore \(Windows 7\)](#)

Back up your stuff

To have Windows back up your files to a safe place, choose where you want files to go – to an external USB drive or a network. Windows then uses File History to back up your files to a safe location.

[Get more info about backup](#)

Do you have a question?

[Get help](#)

QUESTION 2

In this section, you will see one or more sets of questions with the same scenario and problem.

Each question presents a unique solution to the problem, and you must determine whether the solution meets the stated goals.

Any of the solutions might solve the problem. It is also possible that none of the solutions solve the problem.

Once you answer a question in this section, you will NOT be able to return to it. As a result, these questions will not appear in the review screen.

You have a computer named Computer1 that runs Windows 10.

File History is turned on.

The user of Computer1 reports that previous versions of D:\Folder\File1.doc are unavailable from the Previous Versions tab.

You need to ensure that the previous versions of the file are created.

Solution: Turn on System Protection for drive D.

Does this meet the goal?

A. Yes

B. No



Correct Answer: B

Section: (none)

Explanation

Explanation/Reference:

Explanation:

System protection creates system restore points.

<http://www.pcworld.com/article/2974385/windows/how-to-use-windows-10s-file-history-backup-feature.html>

QUESTION 3

In this section, you will see one or more sets of questions with the same scenario and problem.

Each question presents a unique solution to the problem, and you must determine whether the solution meets the stated goals.

Any of the solutions might solve the problem. It is also possible that none of the solutions solve the problem.

Once you answer a question in this section, you will NOT be able to return to it. As a result, these questions will not appear in the review screen.

You have a computer named Computer1 that runs Windows 10.

File History is turned on.

The user of Computer1 reports that previous versions of D:\Folder\File1.doc are unavailable from the Previous Versions tab.

You need to ensure that the previous versions of the file are created.

Solution: Create a backup of drive D by using Backup and Restore (Windows 7).

Does this meet the goal?

A. Yes

B. No



Correct Answer: A

Section: (none)

Explanation

Explanation/Reference:

Explanation:

Backup and Restore (Windows 7) is the precursor to File History. It is a lot clunkier to use, which is why it was hardly ever used. It also creates system image backups alongside daily file backups unless you specify not to.

It will backup files other than the C:\ if you add the additional locations to the Document Libraries.

One major flaw is backups can only be created on a drive that is not providing files to the backup. In the above scenario you would need a 3rd disk or partition for the backup.

https://answers.microsoft.com/en-us/windows/forum/windows_7-files/how-to-recover-deleted-files-using-the-restore/3fa24978-dc7e-4a9f-8dc8-de89c3fe963c

<https://blogs.msdn.microsoft.com/b8/2012/07/10/protecting-user-files-with-file-history/> <http://www.howtogeek.com/209080/how-to-restore-previous-versions-of-a-file-on-any-operating-system/>

QUESTION 4

In this section, you will see one or more sets of questions with the same scenario and problem.

Each question presents a unique solution to the problem, and you must determine whether the solution meets the stated goals.

Any of the solutions might solve the problem. It is also possible that none of the solutions solve the problem.

Once you answer a question in this section, you will NOT be able to return to it. As a result, these questions will not appear in the review screen.

You have a computer named Computer1 that runs Windows 10.

File History is turned on.

The user of Computer1 reports that previous versions of D:\Folder\File1.doc are unavailable from the Previous Versions tab.

You need to ensure that the previous versions of the file are created.

Solution: Add D:\Folder\ to the Documents library.

Does this meet the goal?

A. Yes

B. No

Correct Answer: A

Section: (none)

Explanation

Explanation/Reference: Explanation:

<https://support.microsoft.com/en-us/help/17128/windows-8-file-history>

QUESTION 5

Note: This question is part of a series of questions that use the same set of answer choices. Each answer choice may be used once, more than once, or not at all.

You have a computer named Computer1 that has storage configured as shown in the following table:

Disk name	Size	Storage pool name
Disk1	200 GB	Pool1
Disk2	100 GB	Pool1
Disk3	500 GB	Pool1
Disk4	500 GB	Pool2
Disk5	500 GB	Pool2
Disk6	800 GB	None
Disk7	100 GB	Pool3
Disk8	100 GB	Pool3

Pool1 contains a storage space named Space1 that is 300 GB.

Pool3 contains a storage space named Space2 that is 100 GB.

Pool2 is empty.

You need to add Disk6 to Pool1.

What should you use?

- A. Add-PhysicalDisk
- B. Diskpart
- C. New-VirtualDisk

- D. Remove-PhysicalDisk
- E. Resize-VirtualDisk
- F. Set-StoragePool
- G. Subst
- H. Update-Disk

Correct Answer: A

Section: (none)

Explanation

Explanation/Reference: Explanation:

<https://technet.microsoft.com/itpro/powershell/windows/storage/add-physicaldisk>

QUESTION 6

Note: This question is part of a series of questions that use the same set of answer choices. Each answer choice may be used once, more than once, or not at all.

You have a computer named Computer1 that has storage configured as shown in the following table:

Disk name	Size	Storage pool name
Disk1	200 GB	Pool1
Disk2	100 GB	Pool1
Disk3	500 GB	Pool1
Disk4	500 GB	Pool2
Disk5	500 GB	Pool2
Disk6	800 GB	None
Disk7	100 GB	Pool3
Disk8	100 GB	Pool3

Pool1 contains a storage space named Space1 that is 300 GB.

Pool3 contains a storage space named Space2 that is 100 GB.

Pool2 is empty.

Space1 contains 10 folders.

You need to access each folder as a separate drive from Windows Explorer.

What should you use?

- A. Add-PhysicalDisk
- B. Diskpart
- C. New-VirtualDisk
- D. Remove-PhysicalDisk
- E. Resize-VirtualDisk
- F. Set-StoragePool
- G. Subst
- H. Update-Disk

Correct Answer: G

Section: (none)

Explanation



Explanation/Reference: Explanation: <http://www.howtogeek.com/howto/windows-vista/map-a-drive-letter-to-a-folder-the-easy-way-in-windows/>

QUESTION 7

Note: This question is part of a series of questions that use the same set of answer choices. Each answer choice may be used once, more than once, or not at all.

You have a computer named Computer1 that has storage configured as shown in the following table:

Disk name	Size	Storage pool name
Disk1	200 GB	Pool1
Disk2	100 GB	Pool1
Disk3	500 GB	Pool1
Disk4	500 GB	Pool2
Disk5	500 GB	Pool2
Disk6	800 GB	None
Disk7	100 GB	Pool3
Disk8	100 GB	Pool3

Pool1 contains a storage space named Space1 that is 300 GB.

Pool3 contains a storage space named Space2 that is 100 GB.

Pool2 is empty.

You need to add a storage space to Pool2.

What should you use?

- A. Add-PhysicalDisk
- B. Diskpart
- C. New-VirtualDisk
- D. Remove-PhysicalDisk
- E. Resize-VirtualDisk
- F. Set-StoragePool
- G. Subst
- H. Update-Disk

Correct Answer: C

Section: (none)

Explanation

Explanation/Reference: Explanation: <https://technet.microsoft.com/en-us/itpro/powershell/windows/storage/new-virtualdisk>

QUESTION 8

Note: This question is part of a series of questions that use the same set of answer choices. Each answer choice may be used once, more than once, or not at all.

You have a computer named Computer1 that has storage configured as shown in the following table:

Disk name	Size	Storage pool name
Disk1	200 GB	Pool1
Disk2	100 GB	Pool1
Disk3	500 GB	Pool1
Disk4	500 GB	Pool2
Disk5	500 GB	Pool2
Disk6	800 GB	None
Disk7	100 GB	Pool3
Disk8	100 GB	Pool3

Pool1 contains a storage space named Space1 that is 300 GB.

Pool3 contains a storage space named Space2 that is 100 GB.

Pool2 is empty.

You need to add Disk7 to Pool1.

What should you use first?

- A. Add-PhysicalDisk
- B. Diskpart
- C. New-VirtualDisk
- D. Remove-PhysicalDisk

- E. Resize-VirtualDisk
- F. Set-StoragePool
- G. Subst
- H. Update-Disk

Correct Answer: D

Section: (none)

Explanation

Explanation/Reference: Explanation:

<https://technet.microsoft.com/itpro/powershell/windows/storage/remove-physicaldisk>

QUESTION 9

You have a computer named Computer1 that has the following stored credentials:

- A Windows credential for accessing a shared folder on a workgroup computer
 - A Windows credential for accessing Remote Desktop
 - A Windows credential for accessing an HTTP URL
 - A web credential for accessing an HTTPS URL ▪
- A web credential for accessing an HTTP URL



Which two passwords can be viewed in clear text from Credential Manager on Computer1?

Note: Each correct selection is worth one point.



<https://vceplus.com/>

- A. the web credential for accessing the HTTPS URL

- B. the Windows credential for accessing the shared folder
- C. the Windows credential for accessing the HTTP URL
- D. the Windows credential for accessing Remote Desktop
- E. the web credential for accessing the HTTP URL

Correct Answer: AE

Section: (none)

Explanation

Explanation/Reference:

Explanation:

Only web credentials can be displayed. Windows credentials can never be displayed. Windows passwords are not stored in *clear text*.

QUESTION 10

You have a computer named Computer1 that is configured to install updates from Windows Server Update Services (WSUS).

Microsoft releases a new Windows update that is not approved in WSUS.

You need to install the update on Computer1.

What should you do?

- A. From a command prompt, run gpupdate /force /sync.
- B. Click Check online for updates from Microsoft Updates, and then check for updates.
- C. Clear the defer upgrades check box, and then check for updates.
- D. From Windows PowerShell, run the Get-WindowsUpdateLog cmdlet, and then run the Update-Module cmdlet.

Correct Answer: B

Section: (none)

Explanation

Explanation/Reference:

Explanation:

QUESTION 11

You purchase licenses for several apps from the Windows Store and you list the apps in your Windows Store for Business.

You need to tell users how to install the apps.

What should you instruct the users to use?

- A. the Windows Store app and a Microsoft account
- B. a web browser and a Microsoft Azure Active Directory (Azure AD) account
- C. the Windows Store app and a Microsoft Azure Active Directory (Azure AD) account
- D. a web browser and a Microsoft account

Correct Answer: C

Section: (none)

Explanation

Explanation/Reference: Explanation: <https://technet.microsoft.com/en-us/itpro/windows/manage/distribute-apps-from-your-private-store>

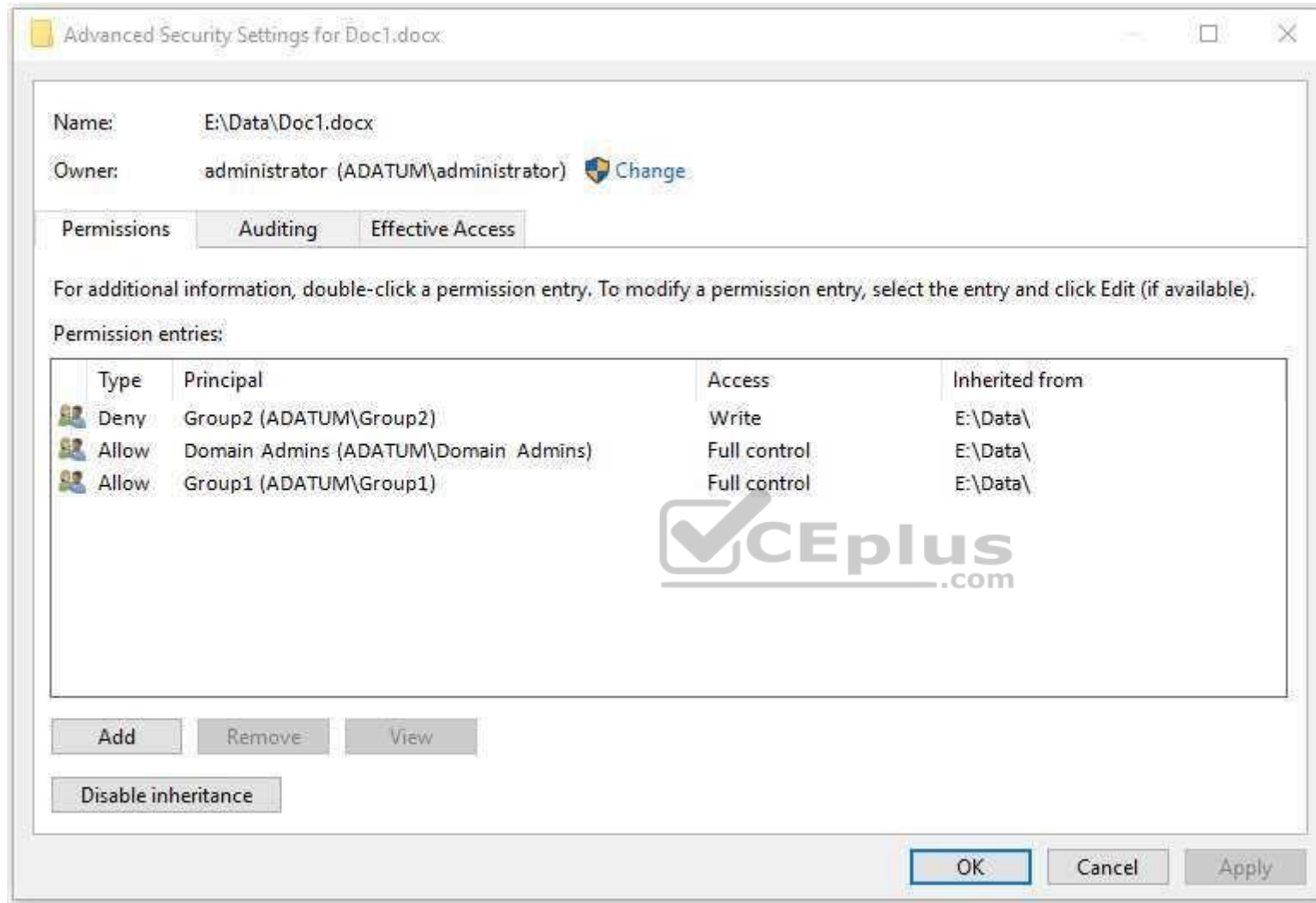
QUESTION 12

You have a computer named Computer1.

A user named User1 is a member of two groups named Group1 and Group2.

You have a file named Doc1.docx that is located in E:\Data.

The file permissions for E:\Data\Doc1.docx are configured as shown in the exhibit. (Click the Exhibit button.)



You need to provide User1 with Write access to Doc1.docx.

What should you do?

A. Grant User1 Full control access to folder E:\Data.

- B. Remove User1 from Group2 and instruct the user to sign out, and then sign back in.
- C. Grant User1 Full control access to the E:\Data\Doc1.docx file, disable inheritance for the file, and then convert the inherited permissions to explicit permissions for the file.
- D. Grant User1 Write access to folder E.

Correct Answer: B

Section: (none)

Explanation

Explanation/Reference:

Explanation:

Group2 is denied access. This will override all other permissions.

QUESTION 13

You have a laptop that has a high resolution display.

The Change the size of the text, apps, and other items setting is set to 175%.

You install a desktop application name App1.

When you start App1, the visual elements are misaligned, and the application interface does not appear as expected.

You need to ensure that App1 is displayed properly without affecting how other applications are displayed.

What should you do?

- A. Create an AppX package for App1.
- B. Run App1 as an administrator.
- C. Modify the Compatibility settings of App1.
- D. Configure an AppLocker rule for App1.

Correct Answer: C

Section: (none)

Explanation

Explanation/Reference: Explanation: <https://support.microsoft.com/en-gb/help/15078/windows-make-older-programs-compatible>

QUESTION 14

You have a laptop named Computer1 that runs Windows 10.

Computer1 connects to a wireless network named WiFi1 and a wireless network named WiFi2. WiFi1 has poor signal and the connection drops frequently. WiFi2 is available only during certain times of the day. WiFi2 has a stronger signal that is more reliable than WiFi1.

You need to configure Computer1 to use WiFi2 whenever possible. WiFi1 should be used when WiFi2 is unavailable.

Which three settings should you configure?

Each correct answer presents part of the solution.

- A. From the properties of WiFi2, select Connect even if the network is not broadcasting its name (SSID)
- B. From the properties of WiFi1, select Connect automatically when this network is in range.
- C. From the properties of WiFi1, select Enable WLAN connection settings.
- D. From the properties of WiFi2, select Connect automatically when this network is in range.
- E. From the properties of WiFi1, select Look for other wireless networks while connected to this network.
- F. From the properties of WiFi2, select Look for other wireless networks while connected to this network.

Correct Answer: BDE

Section: (none)

Explanation

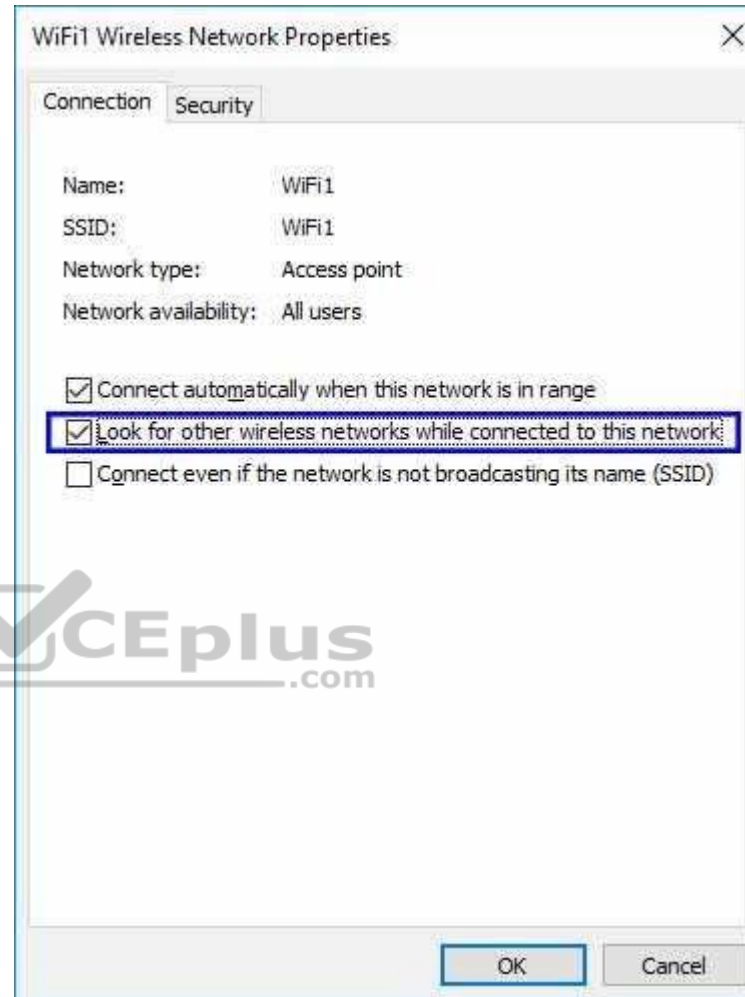
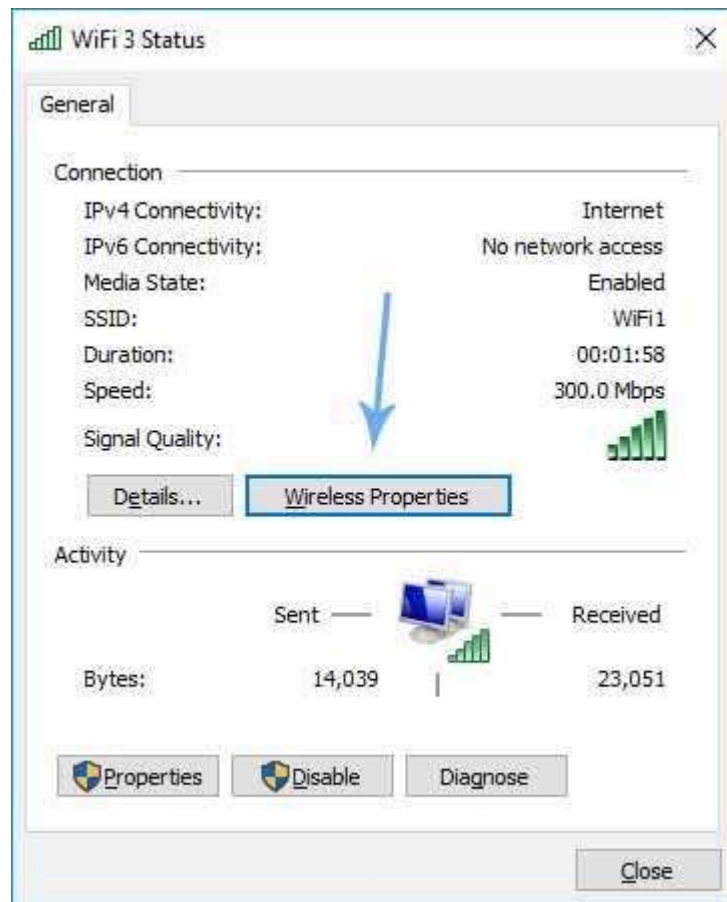
Explanation/Reference:

Explanation:

WiFi2 is the better wireless network but is only available at certain times of the day. WiFi1 is the backup wireless network.

If WiFi2 is available you connect automatically. If not, you connect to WiFi1 automatically. **(answers B and D)**

But you want to connect to WiFi2 as soon as it becomes available. You **'select look for other wireless networks'** while you are connected to WiFi1 **(answer E)**



QUESTION 15

Note: This question is part of a series of questions that present the same scenario.

Each question in the series contains a unique solution. Determine whether the solution meets the stated goals.

Your network contains a single Active Directory domain named contoso.com.

The domain contains two computers named Computer1 and Computer2.

A user named User1 is a member of the local Administrators group on Computer1 and Computer2.

User1 fails to remotely manage the devices on Computer2 by using Device Manager on Computer1.

User1 can connect to Computer2 remotely by using Computer Management.

You need to ensure that User1 can disable a device on Computer2 remotely.

Solution: You enable Remote Desktop on Computer2, and you instruct User1 to use Remote Desktop.

Does this meet the goal?

A. Yes

B. No

Correct Answer: A

Section: (none)

Explanation

Explanation/Reference:

Explanation:

QUESTION 16

Note: This question is part of a series of questions that present the same scenario.

Each question in the series contains a unique solution. Determine whether the solution meets the stated goals.

Your network contains a single Active Directory domain named contoso.com.

The domain contains two computers named Computer1 and Computer2.

A user named User1 is a member of the local Administrators group on Computer1 and Computer2.

User1 fails to remotely manage the devices on Computer2 by using Device Manager on Computer1.



User1 can connect to Computer2 remotely by using Computer Management.

You need to ensure that User1 can disable a device on Computer2 remotely.

Solution: You start the Plug and play and Remote Registry services on Computer2.

Does this meet the goal?

- A. Yes
- B. No

Correct Answer: B

Section: (none)

Explanation

Explanation/Reference:

Explanation:

Windows 10 Device Manager does not support remote connections any longer.

Free third party tools are available. e.g DevManView by Nirsoft.

http://winintro.com/?Category=Windows_10_2016&Policy=Microsoft.Policies.DeviceInstallation%3A%3ADeviceManagement_RPCInterface_Allow

QUESTION 17

Note: This question is part of a series of questions that present the same scenario.

Each question in the series contains a unique solution. Determine whether the solution meets the stated goals.

Your network contains a single Active Directory domain named contoso.com.

The domain contains two computers named Computer1 and Computer2.

A user named User1 is a member of the local Administrators group on Computer1 and Computer2.

User1 fails to remotely manage the devices on Computer2 by using Device Manager on Computer1.

User1 can connect to Computer2 remotely by using Computer Management.

You need to ensure that User1 can disable a device on Computer2 remotely.

Solution: You enable the Allow remote access to the Plug and Play interface Group Policy setting on Computer2.

Does this meet the goal?

- A. Yes
- B. No

Correct Answer: B

Section: (none)

Explanation

Explanation/Reference:

Explanation:

Windows 10 Device Manager does not support remote connections any longer.
Free third party tools are available. e.g DevManView by Nirsoft.



QUESTION 18

Note: This question is part of a series of questions that present the same scenario.
Each question in the series contains a unique solution. Determine whether the solution meets the stated goals.

Your network contains a single Active Directory domain named contoso.com.

The domain contains two computers named Computer1 and Computer2.

A user named User1 is a member of the local Administrators group on Computer1 and Computer2.

User1 fails to remotely manage the devices on Computer2 by using Device Manager on Computer1.

User1 can connect to Computer2 remotely by using Computer Management.

You need to ensure that User1 can disable a device on Computer2 remotely.

Solution: You modify the Windows Firewall settings on Computer2.

Does this meet the goal?

- A. Yes
- B. No

Correct Answer: B

Section: (none)

Explanation

Explanation/Reference:

Explanation:

Remote access to the Plug and Play (PNP) RPC interface has been removed in Windows 8 and onwards.
Free third party tools are available. e.g DevManView by Nirsoft.

<https://support.microsoft.com/en-us/help/2781106/errors-connecting-to-windows-server-2008-r2-or-windows-server-2012-dev>

QUESTION 19

You have a Key Management Service (KMS) host and an administrative workstation named Computer1.

From Computer1, you need to validate the activation status on a computer named Computer2.

What should you run?

- A. Get-RDLicenseConfiguration computer2
- B. slmgr.vbs computer2 /dlv
- C. winrs.exe -r:Computer2 netdom.exe
- D. ospp.vbs /tokact:computer2

Correct Answer: B

Section: (none)

Explanation

Explanation/Reference:

Explanation:

<http://www.howtogeek.com/245445/how-to-use-slmgr-to-change-remove-or-extend-your-windows-license/>

QUESTION 20

You have two computers named Computer1 and Computer2 that run Windows 10. On Computer1, you create a provisioning package named Package1.

You plan to apply the provisioning package to Computer2.

Which file must be applied to Computer2?

- A. Package1.icdproj.xml
- B. Customizations.xml
- C. Package1.ppkg
- D. Package1.cat

Correct Answer: C

Section: (none)

Explanation

Explanation/Reference: Explanation: <https://msdn.microsoft.com/en-us/windows/hardware/commercialize/manufacture/desktop/dism-provisioning-package-command-line-options>

QUESTION 21

You have a computer named Computer1 that has the Hyper-V feature enabled.

You have two virtual machines named VM1 and VM2 hosted on Computer1. VM1 can communicate with VM2 and Computer1. VM1 fails to connect to the Internet. Computer1 can connect to the Internet.

You need to ensure that VM1 can connect to the Internet.

What should you do?

- A. On Computer 1, modify the network settings.
- B. Enable port mirroring on VM1.
- C. Create an external virtual switch and configure VM1 to use the switch.
- D. On VM1, select Enable virtual LAN identification.

Correct Answer: C

Section: (none)

Explanation

Explanation/Reference: Explanation:

<http://www.technig.com/connect-hyper-v-machines-to-internet/>

QUESTION 22

A user named User1 has a computer that runs Windows 10.

User1 reports that Cortana displays news topics that the user wants to suppress.

You need to suppress the news topics from being displayed.

What should you modify?

- A. Reminders
- B. the Location settings
- C. the News app settings
- D. Notebook



Correct Answer: D

Section: (none)

Explanation

Explanation/Reference: Explanation:

<http://www.makeuseof.com/tag/set-cortana-remove-windows-10/>

QUESTION 23

Note: This question is part of a series of questions that use the same scenario. For your convenience, the scenario is repeated in each question. Each question presents a different goal and answer choices, but the text of the scenario exactly the same in each question in this series.

Start of repeated scenario

Your network contains a single Active Directory domain named contoso.com. All computers are members of the domain and run the 64-bit version of Windows 10 Enterprise. On a test computer named Computer_Test1, you pin several company-specific applications in a group named Contoso Apps, and then you export the start menu layout to a file named contoso.xml.

You install Client Hyper-V on a computer named Computer6.

You identify the following requirements:

- Install the Hyper V feature on a computer named Computer1.
- Use virtual smart card authentication on a computer named Computer2.
- Enable Secure Boot on a computer named Computer3.
- Connect a computer named Computer4 to a projector by using Miracast.
- Ensure that a user named User1 can use keyboard shortcuts by pressing one key at a time.
- Ensure that you can share the clipboard between Computer6 and the virtual machines running on Computer6. ▪

Add the Contoso Apps group to the Start menu of a computer named Computer7.

End of repeated scenario

Which hardware feature must Computer2 support?

- A. a smart card reader
- B. Second Level Address Translation (SLAT)
- C. Trusted Platform Module (TPM)
- D. Unified Extensible Firmware Interface (UEFI)

Correct Answer: C

Section: (none)

Explanation

Explanation/Reference: Explanation: <https://blogs.technet.microsoft.com/askds/2016/05/11/setting-up-virtual-smart-card-logon-using-virtual-tpm-for-windows-10-hyper-v-vm-guests/>

QUESTION 24

Note: This question is part of a series of questions that use the same scenario. For your convenience, the scenario is repeated in each question. Each question presents a different goal and answer choices, but the text of the scenario exactly the same in each question in this series.



Start of repeated scenario

Your network contains a single Active Directory domain named contoso.com. All computers are members of the domain and run the 64-bit version of Windows 10 Enterprise. On a test computer named Computer_Test1, you pin several company-specific applications in a group named Contoso Apps, and then you export the start menu layout to a file named contoso.xml.

You install Client Hyper-V on a computer named Computer6.

You identify the following requirements:

- Install the Hyper V feature on a computer named Computer1.
 - Use virtual smart card authentication on a computer named Computer2.
 - Enable Secure Boot on a computer named Computer3.
 - Connect a computer named Computer4 to a projector by using Miracast.
 - Ensure that a user named User1 can use keyboard shortcuts by pressing one key at a time.
 - Ensure that you can share the clipboard between Computer6 and the virtual machines running on Computer6.
- Add the Contoso Apps group to the Start menu of a computer named Computer7.

End of repeated scenario

Which hardware component is required for Computer1?



<https://vceplus.com/>

- A. Trusted Platform Module (TPM)
- B. Trusted Boot
- C. Second Level Address Translation (SLAT)
- D. Secure Boot

Correct Answer: C

Section: (none)

Explanation

Explanation/Reference: Explanation:

<https://www.microsoft.com/en-us/windows/windows-10-specifications>

QUESTION 25

Note: This question is part of a series of questions that use the same scenario. For your convenience, the scenario is repeated in each question. Each question presents a different goal and answer choices, but the text of the scenario exactly the same in each question in this series.

Start of repeated scenario

Your network contains a single Active Directory domain named contoso.com. All computers are members of the domain and run the 64-bit version of Windows 10 Enterprise. On a test computer named Computer_Test1, you pin several company-specific applications in a group named Contoso Apps, and then you export the start menu layout to a file named contoso.xml.

You install Client Hyper-V on a computer named Computer6.

You identify the following requirements:

- Install the Hyper V feature on a computer named Computer1.
- Use virtual smart card authentication on a computer named Computer2.
- Enable Secure Boot on a computer named Computer3.
- Connect a computer named Computer4 to a projector by using Miracast.
- Ensure that a user named User1 can use keyboard shortcuts by pressing one key at a time.
- Ensure that you can share the clipboard between Computer6 and the virtual machines running on Computer6. ▪

Add the Contoso Apps group to the Start menu of a computer named Computer7.

End of repeated scenario

Which hardware feature must Computer3 support?

- A. Data Execution Prevention (DEP)
- B. Unified Extensible Firmware Interface (UEFI)
- C. Trusted Platform Module (TPM)
- D. Second LevelAddress Translation (SLAT)

Correct Answer: B

Section: (none)

Explanation

Explanation/Reference: Explanation:

<https://www.microsoft.com/en-us/windows/windows-10-specifications>

QUESTION 26

You have a custom Microsoft Management Console (MMC) named Console 1 that contains several snapins.

Users use Console1 to manage specific computer settings. Users report that every time they close Console1, they are prompted to save the MMC.

You need to prevent the prompts to save Console1.

What should you do?

- A. From the Details settings of the MMC file, modify the Authors property.
- B. From the File menu, click Add/Remove Snap-in. and then click Edit Extensions.
- C. From the File menu, click Options and then modify the console mode.
- D. From the Security settings of the MMC file, modify the permissions.

Correct Answer: C

Section: (none)

Explanation

Explanation/Reference: Explanation: <http://www.tech-recipes.com/rx/9467/how-to-create-custom-microsoft-management-consoles-mmcs-for-managing-servers/>

QUESTION 27

Your network contains a single Active Directory domain named contoso.com. The domain contains a computer named Computer1.

You have five users configured as shown in the following table:

User name	Membership of
Computer1\User1	Guests
Computer1\User2	Users
Computer1\User3	Users Administrators
Contoso\User4	Domain Users
Contoso\User5	Domain Users Domain Admins

Which two users can add a Microsoft account to their Windows account, and then sign in to Computer1 by using the Microsoft account?

- A. User1
- B. User2
- C. User3
- D. User4
- E. User5

Correct Answer: DE

Section: (none)

Explanation

Explanation/Reference: Explanation: <https://blog.thefullcircle.com/blog/2015/07/14/win10-ad-and-microsoft-account-synchronisation/>

QUESTION 28

Your network contains a single Active Directory domain. The domain contains a laptop named Computer1 that runs Windows 10.

A user named User1 uses Computer1. Computer1 connects to two shared printers named Printer1 and Printer2.

Printer1 is located at the office and Printer2 is located at the home of User1.

User1 frequently reports that when attempting to print, the default printer is set to Printer2.

You need to ensure that Printer1 is the default printer always.

What should you do?

- A. Add Printer 2 to a home group.
- B. Disable Let Windows manage my default printer.
- C. Change the priority of Printer1 to 1.
- D. Change the priority of Printer2 to 1.

Correct Answer: B

Section: (none)

Explanation

Explanation/Reference: Explanation: <http://www.tenforums.com/tutorials/26138-printer-turn-off-let-windows-10-manage-default-printer.html>

QUESTION 29

A user named User1 has a laptop that runs Windows 10 Pro.

At home, User1 connects to the home network by using an Ethernet connection. User1 reports that he sometimes exceeds his Internet data limit.

You need to prevent the laptop from downloading Windows updates automatically.

What should you do?

- A. From a local Group Policy, modify the Windows Update settings.
- B. From a local Group Policy, modify the Network Connections settings.
- C. From the Settings app, configure a metered connection.
- D. From the Settings app, select Defer upgrades.

Correct Answer: C

Section: (none)

Explanation

Explanation/Reference: Explanation: <http://www.pcworld.com/article/3085136/windows/two-ways-to-control-or-stop-windows-10-updates.html>

QUESTION 30

You are using sysprep to prepare a system for imaging.

You want to reset the security ID (SID) and clear the event logs.

Which option should you use?

- A. /generalize
- B. /oobe
- C. /audit
- D. /unattend

Correct Answer: A

Section: (none)

Explanation

Explanation/Reference: Explanation: <https://msdn.microsoft.com/en-us/windows/hardware/commercialize/manufacture/desktop/sysprep-command-line-options>

QUESTION 31

In this section, you will see one or more sets of questions with the same scenario and problem.

Each question presents a unique solution to the problem, and you must determine whether the solution meets the stated goals.

Any of the solutions might solve the problem. It is also possible that none of the solutions solve the problem.

Once you answer a question in this section, you will NOT be able to return to it. As a result, these questions will not appear in the review screen.

Your network contains a single Active Directory domain named contoso.com. The domain contains two computers named Computer1 and Computer2.

A user named User1 is a member of the local Administrators group on Computer1 and Computer2.

User1 fails to access the Event Viewer logs on Computer2 from Computer1. User1 can connect to Computer2 remotely by using Computer Management.

You need to ensure that User1 can use Event Viewer on Computer1 to remotely view the Event Viewer logs on Computer2.

Solution: You run Enable-PSRemoting on Computer1.

Does this meet the goal?

- A. Yes
- B. No

Correct Answer: B
Section: (none)
Explanation

Explanation/Reference: Explanation: <http://www.howtogeek.com/117192/how-to-run-powershell-commands-on-remote-computers/>

QUESTION 32

In this section, you will see one or more sets of questions with the same scenario and problem. Each question presents a unique solution to the problem, and you must determine whether the solution meets the stated goals. Any of the solutions might solve the problem. It is also possible that none of the solutions solve the problem.

Once you answer a question in this section, you will NOT be able to return to it. As a result, these questions will not appear in the review screen.

Your network contains a single Active Directory domain named contoso.com. The domain contains two computers named Computer1 and Computer2.

A user named User1 is a member of the local Administrators group on Computer1 and Computer2.

User1 fails to access the Event Viewer logs on Computer2 from Computer1. User1 can connect to Computer2 remotely by using Computer Management.

You need to ensure that User1 can use Event Viewer on Computer1 to remotely view the Event Viewer logs on Computer2.

Solution: You modify the Windows Firewall settings on Computer2.

Does this meet the goal?

- A. Yes
- B. No

Correct Answer: A

Section: (none)

Explanation

Explanation/Reference: Explanation:

[https://technet.microsoft.com/en-us/library/cc766438\(v=ws.11\).aspx](https://technet.microsoft.com/en-us/library/cc766438(v=ws.11).aspx)

QUESTION 33

In this section, you will see one or more sets of questions with the same scenario and problem.

Each question presents a unique solution to the problem, and you must determine whether the solution meets the stated goals.

Any of the solutions might solve the problem. It is also possible that none of the solutions solve the problem.

Once you answer a question in this section, you will NOT be able to return to it. As a result, these questions will not appear in the review screen.

Your network contains a single Active Directory domain named contoso.com. The domain contains two computers named Computer1 and Computer2.

A user named User1 is a member of the local Administrators group on Computer1 and Computer2.

User1 fails to access the Event Viewer logs on Computer2 from Computer1. User1 can connect to Computer2 remotely by using Computer Management.

You need to ensure that User1 can use Event Viewer on Computer1 to remotely view the Event Viewer logs on Computer2.

Solution: You start the Remote Registry services on Computer2.

Does this meet the goal?

A. Yes

B. No

Correct Answer: B

Section: (none)

Explanation

Explanation/Reference:

Explanation:

[https://technet.microsoft.com/en-us/library/cc754820\(v=ws.11\).aspx](https://technet.microsoft.com/en-us/library/cc754820(v=ws.11).aspx)

Exam C

QUESTION 1

Note: This question is part of a series of questions that use the same set of answer choices. Each answer choice may be used once, more than once, or not at all.

You have a computer that has a dual-boot configuration. Windows 10 Pro is installed on the local disk. Windows 10 Enterprise is installed in a VHDX file named Disk1.vhdx.

You start the computer to Windows 10 Pro, and then you download a driver package.

You need to ensure that the next time the Windows 10 Enterprise installation starts, the driver is installed already.

What should you run first?

- A. Add-WindowsImage
- B. bcdboot.exe
- C. bcdedit.exe
- D. bootcfg.exe
- E. bootim.exe
- F. bootsect.exe
- G. diskpart.exe
- H. Expand-WindowsImage



Correct Answer: G

Section: (none)

Explanation

Explanation/Reference: Explanation:

[https://technet.microsoft.com/en-us/library/dd799267\(v=ws.10\).aspx](https://technet.microsoft.com/en-us/library/dd799267(v=ws.10).aspx)

Use diskpart to attach VHDX file and assign it a drive letter.. Then use DISM to inject the driver package into the mounted VHDX file.

QUESTION 2

Note: This question is part of a series of questions that use the same set of answer choices. Each answer choice may be used once, more than once, or not at all.

You purchase a new USB drive. You apply a custom image of Windows to the USB drive.

You plan to modify the BIOS setting on a computer so that the computer can start from the USB drive.

You need to ensure that you can start the computer by using the USB drive.

What should you run?

- A. Add-Windows Image
- B. bcdboot.exe
- C. bcdedit.exe
- D. bootcfg.exe
- E. bootim.exe
- F. bootsect.exe
- G. diskpart.exe
- H. Expand-Windows Image

Correct Answer: B

Section: (none)

Explanation

Explanation/Reference:

Explanation:



Answer B. bcdboot makes the usb drive bootable by adding BCD store.

If this were a dual boot system you would use **bcdedit** to add an additional boot loader entry to the BCD store for the second disk.

Our example will use E: as the drive letter of the usb drive. All commands to be typed in an Administrator Command Prompt.

1. Apply an image to the usb drive using DISM or any other method that is suitable. eg. **Dism /apply-image /imagefile:d:\sources\install.wim /index:1 /ApplyDir:E:**
2. Make the partition active, where you installed the Windows image (E:), by using Disk Management and by right clicking the correct drive (E:) from the list.
3. Windows needs to be made bootable by using **bcdboot.exe**

Type the below in command prompt pressing enter after each line.

```
E: cd windows\system32  
bcdboot.exe E:\windows /s E: /f  
All
```

4. Change the BIOS setting on the computer to boot from USB as the first enabled disk.

You now have a USB drive you can run Windows 10 Enterprise from. You will still have to finalise the usual routine of setting up Windows.

QUESTION 3

Note: This question is part of a series of questions that use the same set of answer choices. Each answer choice may be used once, more than once, or not at all.

You have a computer named Computer1. Computer1 has a virtual hard disk (VHD) named Disk1.vhdx. Windows is installed on Disk1.vhdx. Disk1.vhdx is visible in File Explorer as drive E.

You need to configure Computer1 to start from Disk1.vhdx. Hardware virtualization must not be available when Computer1 starts from Disk1.vhdx.

What should you run?

- A. Add-Windows Image
- B. bcdboot.exe
- C. bcdedit.exe
- D. bootcfg.exe
- E. bootim.exe
- F. bootsect.exe
- G. diskpart.exe
- H. Expand-Windows Image

Correct Answer: C

Section: (none)

Explanation

Explanation/Reference:

Explanation:

bcdedit /set {identifier} hypervisorlaunchtype off



```
C:\WINDOWS\system32>bcdedit
```

Windows Boot Manager

```
-----
identifier                {bootmgr}
device                    partition=\Device\HarddiskVolume1
description                Windows Boot Manager
locale                    en-GB
inherit                    {globalsettings}
default                    {default}
resumeobject                {be439bfd-63d4-11e8-bdb8-fdbead2af30f}
displayorder                {current}
                            {default}
toolsdisplayorder          {memdiag}
timeout                    30
displaybootmenu            No
```

Windows Boot Loader

```
-----
identifier                {current}
device                    partition=C:
path                        \WINDOWS\system32\winload.exe
description                Windows 10
locale                    en-US
inherit                    {bootloadersettings}
recoverysequence            {d74ffdce-6389-11e8-8571-8cc2d857d226}
displaymessageoverride      Recovery
recoveryenabled            Yes
allowedinmemorysettings    0x15000075
osdevice                    partition=C:
systemroot                \WINDOWS
resumeobject                {be439bfd-63d4-11e8-bdb8-fdbead2af30f}
nx                          OptIn
bootmenupolicy              Standard
```

Windows Boot Loader

```
-----
identifier                {default}
device                    vhd=[C:]\disk1.vhdx
path                        \WINDOWS\system32\winload.exe
description                W10EnterpriseVHD
locale                    en-GB
inherit                    {bootloadersettings}
recoverysequence            {d74ffdd4-6389-11e8-8571-8cc2d857d226}
```

QUESTION 4

Note: This question is part of a series of questions that use the same set of answer choices. Each answer choice may be used once, more than once, or not at all.

You have a computer that has a dual-boot configuration. Windows 10 Enterprise is installed on the local disk. Windows 10 Pro is installed in a VHDX file named Disk1.vhdx. Both of the installations are 64-bit versions.

You start the computer to Windows 10 Enterprise.

You need to ensure that you can install an unsigned driver to Windows 10 Pro when the computer starts in Windows 10 Pro.

What should you run?

- A. Add-WindowsImage
- B. bcdboot.exe
- C. bcdedit.exe
- D. bootcfg.exe
- E. bootim.exe
- F. bootsect.exe
- G. diskpart.exe
- H. Expand-WindowsImage



Correct Answer: C

Section: (none)

Explanation

Explanation/Reference:

Explanation:

You need to add boot entry into the Windows 10 Pro bootloader.

Type ***bcdedit /set*** then add the identifier ***{e967e2ad-a7f8-11e8-8a95-e4a2aa2da0a4}*** then add ***testsigning on***, which will put the identified Windows into test mode for 64bit drivers.

bcdedit /set {e967e2ad-a7f8-11e8-8a95-e4a2aa2da0a4} testsigning on

Administrator: Command Prompt

C:\WINDOWS\system32>bcdedit

Windows Boot Manager

```

-----
identifier                {bootmgr}
device                    partition=\Device\HarddiskVolume1
description                Windows Boot Manager
locale                    en-GB
inherit                    {globalsettings}
default                    {current}
resumeobject                {b7313baa-a7e5-11e8-a2b8-a7deb8aed4d8}
displayorder                {e967e2ad-a7f8-11e8-8a95-e4a2aa2da0a4}
                            {current}
toolsdisplayorder            {memdiag}
timeout                    15
displaybootmenu            Yes
  
```

Windows Boot Loader

```

-----
identifier  → {e967e2ad-a7f8-11e8-8a95-e4a2aa2da0a4}
device      vhd=[C:]\virtual\win1.vhdx
path        \Windows\system32\winload.exe
description  Windows10 Pro Virtual
locale      en-GB
inherit      {bootloadersettings}
recoverysequence {e967e2ae-a7f8-11e8-8a95-e4a2aa2da0a4}
recoveryenabled Yes
testsigning  Yes
allowedinmemorysettings 0x15000075
osdevice     vhd=[C:]\virtual\win1.vhdx
systemroot   \Windows
resumeobject {e967e2ac-a7f8-11e8-8a95-e4a2aa2da0a4}
  
```

<http://www.drivethelife.com/windows-drivers/how-to-disable-driver-signature-enforcement-on-windows-10-8-7-xp-vista.html#part3>

QUESTION 5

Note: This question is part of a series of questions that use the same set of answer choices. Each answer choice may be used once, more than once, or not at all.

You have a computer named Computer1.

Computer1 has a virtual hard disk (VHD) named Disk1.vhdx. Disk1.vhdx has an NTFS partition, which is visible in File Explorer as drive E.

You need to provision Windows 10 on Disk1.vhdx.

What should you run?

- A. Add-WindowsImage
- B. bcdboot.exe
- C. bcdedit.exe
- D. bootcfg.exe
- E. bootim.exe
- F. bootsect.exe
- G. diskpart.exe
- H. Expand-WindowsImage



Correct Answer: H

Section: (none)

Explanation

Explanation/Reference:

Explanation:

Answer H.

There is an error with this question or the answer!!

At first glance the answer should be H, but at the link below, in the first paragraph below the tables it states;

This cmdlet does not apply to virtual hard disk (VHD) files.

<https://docs.microsoft.com/en-us/powershell/module/dism/expand-windowsimage?view=win10-ps>

So,

- Not A. This adds an additional image to a saved image file.
- Not B. This creates or fixes Windows boot store.
- Not C. This manipulates Windows boot store.
- Not D. Older version of Windows boot. Used to modify boot.ini. Windows XP and prior.
- Not E. Bootim is the new Windows recovery boot menu GUI.
- Not F. Used to repair Windows bootsector, or used to create bootable usb sticks etc.

Not G. Is a disk partition utility. Diskpart can create and attach a VHD but cannot apply an image to one of it's partitions, physical or virtual. Dism can, but that is not an option here.

Ans H. The only valid answer remaining is H. Even if MS documentation states otherwise.

Bear in mind the command itself is not invalid, *but the assertion in the documentation that it cannot be used in a VHD.*

-
1. You can use either of these commands to apply the image and then add a bcdedit boot entry.

Expand-WindowsImage in PowerShell

Expand-WindowsImage -ImagePath "c:\win10Pro.wim" -ApplyPath "e:\\" -Index 1

Dism in command prompt:

Dism /apply-image /imagefile:c:\win10Pro.wim /index:1 /ApplyDir:E:

2. Add a boot entry using bcdedit.

```
bcdedit /copy {current} /d "win10VHD" bcdedit  
/set {CLSID} device vhd=[C:]disk1.vhd bcdedit  
/set {CLSID} osdevice vhd=[C:]disk1.vhd
```

Optionally add an entry in {bootmgr} to make the VHD the default Windows to boot.

```
bcdedit /set {bootmgr} default {CLSID}
```

{CLSID} is the long alphanumeric sequence used as an identifier for the VHD file you are using.

3. Reboot PC.

QUESTION 6

Note: This question is part of a series of questions that use the same set of answer choices. Each answer choice may be used once, more than once, or not at all.

You have a computer named Computer1 that has a dual-boot configuration. Computer1 has Windows 8.1 and Windows 10 installed.

You need to configure Computer1 to use only 4 GB of RAM when the computer starts in Windows 10.

What should you run?

- A. Add-WindowsImage
- B. bcdboot.exe
- C. bcdedit.exe
- D. bootcfg.exe
- E. bootim.exe
- F. bootsect.exe
- G. diskpart.exe
- H. Expand-WindowsImage



Correct Answer: C

Section: (none)

Explanation

Explanation/Reference:

Explanation:

<https://docs.microsoft.com/en-us/windows-hardware/drivers/devtest/boot-parameters-to-manipulate-memory> [https://technet.microsoft.com/en-us/library/cc709667\(v=ws.10\).aspx](https://technet.microsoft.com/en-us/library/cc709667(v=ws.10).aspx)

QUESTION 7

Note: This question is part of a series of questions that use the same set of answer choices. Each answer choice may be used once, more than once, or not at all.

You have a computer named Computer1 that has a virtual hard disk (VHD) named Disk1.vhdx.

You plan to configure Computer1 for dual boot from Disk1.vhdx.

You need to install Windows on Disk1.vhdx by using dism.exe.

What should you run before you install Windows?

- A. Add-Windows Image
- B. bcdboot.exe
- C. bcdedit.exe
- D. bootcfg.exe
- E. bootim.exe
- F. bootsect.exe
- G. diskpart.exe
- H. Expand-Windows Image

Correct Answer: G

Section: (none)

Explanation

Explanation/Reference:

Explanation:



Before you can apply an image by using DISM, you have to make the VHDX accessible in MyComputer by providing it a drive letter.

<https://msdn.microsoft.com/en-us/windows/hardware/commercialize/manufacture/desktop/boot-to-vhd--native-boot--add-a-virtual-hard-disk-to-the-boot-menu>

QUESTION 8

You have a reference computer named Computer1 that runs Windows 10. You plan to run sysprep.exe several times on Computer1. You need to prevent the Windows Product Activation clock from being reset on Computer1. What should you do?

- A. Set the ProductKey option in Sysprep.inf to XXXXX-XXXXX-XXXXX-XXXXX-XXXXX.
- B. Set the SkipRearm option in Unattend.xml to 0.
- C. Set the ProductKey option in Sysprep.inf to 00000-00000-00000-00000-00000.
- D. Set the SkipRearm option in Unattend.xml to 1.

Correct Answer: D

Section: (none)

Explanation

Explanation/Reference: Explanation:

<https://www.thewindowsclub.com/legally-use-windows-without-activating>

QUESTION 9

You are the administrator for a company. All devices run Windows 10 Enterprise and are joined to an Active Directory Domain Services domain. Administrators are unable to test network connectivity to Windows 10 devices because ping is being blocked. You need to be able to ping the devices.

Solution: Create and enable an ICMPv4 Echo Request In allow rule for the Public profile. Does the solution meet the goal?

- A. Yes
- B. No

Correct Answer: B

Section: (none)

Explanation

Explanation/Reference:

Explanation:

Since all machines are Windows 10 Enterprise, connected to an **Active Directory Domain**, you will need to create the ICMPv4 Echo Request in the Domain Firewall Profile.

<https://www.howtogeek.com/howto/windows-vista/allow-pings-icmp-echo-request-through-your-windows-vista-firewall/>

QUESTION 10

You are the administrator for a company. All devices run Windows 10 Enterprise and are joined to an Active Directory Domain Services domain. Administrators are unable to test network connectivity to Windows 10 devices because ping is being blocked. You need to be able to ping the devices.

Solution: Create and enable an ICMPv4 Echo Request In allow rule for the Private profile. Does the solution meet the goal?

- A. Yes
- B. No

Correct Answer: B

Section: (none)

Explanation

Explanation/Reference:

Explanation:

Since all machines are Windows 10 Enterprise, connected to an **Active Directory Domain**, you will need to create the ICMPv4 Echo Request in the Domain Firewall Profile.

<https://www.howtogeek.com/howto/windows-vista/allow-pings-icmp-echo-request-through-your-windows-vista-firewall/>

QUESTION 11

You are the administrator for a company. All devices run Windows 10 Enterprise and are joined to an Active Directory Domain Services domain. Administrators are unable to test network connectivity to Windows 10 devices because ping is being blocked. You need to be able to ping the devices.

Solution: Turn on File and Printer Sharing in the Advanced Sharing settings. Does the solution meet the goal?

A. Yes

B. No

Correct Answer: B

Section: (none)

Explanation

Explanation/Reference:

Explanation:

You need to create a firewall rule exception under the Firewall Domain Profile.

QUESTION 12

A company manages Windows 8.1 Pro and Windows 10 Pro client devices by using Group Policy objects (GPOs). The company plans to migrate from GPOs to mobile device management (MDM) policies. You need to create an HTML report of the GPO settings that are cross-referenced with supported MDM policies.

Solution: You use the MDM Migration Analysis Tool.

Does the solution meet the goal?



- A. Yes
- B. No

Correct Answer: A

Section: (none)

Explanation

Explanation/Reference: Explanation:

<https://www.petervanderwoude.nl/post/mdm-migration-analysis-tool/>

QUESTION 13

A company manages Windows 8.1 Pro and Windows 10 Pro client devices by using Group Policy objects (GPOs). The company plans to migrate from GPOs to mobile device management (MDM) policies. You need to create an HTML report of the GPO settings that are cross-referenced with supported MDM policies.

Solution: You run DISM on the client computers and generate a report. Does the solution meet the goal?

- A. Yes
- B. No



Correct Answer: B

Section: (none)

Explanation

Explanation/Reference:

Explanation:

DISM is a file image management tool.

You need to use the MDM Migration Analysis Tool to generate XML and HTML reports.

<https://www.petervanderwoude.nl/post/mdm-migration-analysis-tool/>

QUESTION 14

A company manages Windows 8.1 Pro and Windows 10 Pro client devices by using Group Policy objects (GPOs). The company plans to migrate from GPOs to mobile device management (MDM) policies. You need to create an HTML report of the GPO settings that are cross-referenced with supported MDM policies.

Solution: You enroll the client computers in the Operations Management Suite. Does the solution meet the goal?

- A. Yes
- B. No

Correct Answer: B

Section: (none)

Explanation

Explanation/Reference:

Explanation:

The Microsoft Operations Management Suite (OMS), previously known as Azure Operational Insights, is a software as a service platform that allows an administrator to manage on-premises and cloud IT assets from one console

You need to use the MDM Migration Analysis Tool to generate XML and HTML reports for cross referencing. <https://www.petervanderwoude.nl/post/mdm-migration-analysis-tool/>

QUESTION 15

You are the administrator for a company. All devices run Windows 10 Enterprise build 1703. You plan to deploy Windows Hello for Business to all devices.

You must use Microsoft Azure Active Directory (Azure AD) and manage the devices with Microsoft Intune.

During the deployment process, all devices must be automatically enrolled in mobile device management (MDM) when the device is joined to Azure AD.

You need to ensure that devices are automatically enrolled in MDM.

What should you do?

- A. Configure Azure Multi-Factor Authentication for the user accounts
- B. Update the Windows 10 devices to build 1709
- C. Obtain an Azure AD Premium license for each user account
- D. Implement Active Directory Federation Services (AD FS) with an on-premises Active Directory Domain Services (AD DS) environment.

Correct Answer: B

Section: (none)

Explanation

Explanation/Reference: Explanation: <https://docs.microsoft.com/en-us/windows/client-management/mdm/enroll-a-windows-10-device-automatically-using-group-policy>

Ans B. Starting in Windows 10, version 1709 you can use a Group Policy to trigger auto-enrollment to MDM for Active Directory (AD) domain joined devices.

Not A. Multi factor authentication is just using more than one type of sign in credential for users.

Not C. Azure AD Premium (AADp) license is additional advanced capabilities that can be leveraged from Azure Active Directory.

Not D. Microsoft way of saying 'Active Directory Domain with the Federation Role installed' at a physical business location.

QUESTION 16

You are the administrator for a company. All devices run Windows 10 Pro. File and printer sharing is turned on. Users report that files in the Public folder are being modified and changed by other users on the network. You need to ensure that only specific users and groups can access files in the Public folder share.

What should you do?

- A. Turn off Public folder sharing
- B. Turn off file and printer sharing
- C. Turn on Public folder sharing
- D. Deny the Everyone Group Full Control to the Public folder share



Correct Answer: A

Section: (none)

Explanation

Explanation/Reference:

Explanation:

<https://www.howtogeek.com/school/windows-network-sharing/lesson4/>

Ans A. Turn off public folder sharing and then grant permissions to specific users to provide access.

Not B. If you turn off File and Printer Sharing, there would be zero access to the computer hosting the shares.

Not C. It's already turned on. This is what is causing the problem.

Not D. Denying full control, still leaves the share completely accessible. Users will still have Change and Read, permissions.

Change sharing options for different network profiles

Windows creates a separate network profile for each network you use. You can choose specific options for each profile.

- Private ⌵
- Guest or Public ⌵
- Domain ⌵
- All Networks ⌵

Public folder sharing

When Public folder sharing is on, people on the network, including homegroup members, can access files in the Public folders.

- ☐ Turn on sharing so that anyone with network access can read and write files in the Public folders
- ☒ Turn off Public folder sharing (people logged on to this computer can still access these folders)

Media streaming

When media streaming is on, people and devices on the network can access pictures, music and videos on this computer. This computer can also find media on the network.

[Choose media streaming options...](#)

File sharing connections

Windows uses 128-bit encryption to help protect file sharing connections. Some devices don't support 128-bit encryption and must use 40- or 56-bit encryption.

- ☒ Use 128-bit encryption to help protect file sharing connections (recommended)
- ☐ Enable file sharing for devices that use 40- or 56-bit encryption

QUESTION 17

A company has client devices that run Windows 7 Professional with Service Pack 1 or Windows 8 Pro. The company plans to use Windows Telemetry and Upgrade Readiness to upgrade all devices to Windows 10 Pro.

You need to ensure that you can collect the Upgrade Readiness inventory and telemetry data.

What should you do first?

- A. Enable data sharing on the client computers.
- B. Enable connection settings on the client computers.
- C. Upgrade the Windows 8 Pro computers Windows 8.1 Pro.
- D. Change the Windows 8 Pro computers to Windows 8 Enterprise.

Correct Answer: C

Section: (none)

Explanation

Explanation/Reference: Explanation: <https://docs.microsoft.com/en-us/windows/deployment/upgrade/upgrade-readiness-requirements>

QUESTION 18

You are the administrator for a company. All devices run Windows 10 Enterprise. you have a group of devices in the human resources (HR) department that use a local D: drive to store sensitive information.

You plan to upgrade all HR devices to increase the local storage capacity by adding a new E: drive.

You have the following new requirements:

- All sensitive documents must be stored locally on a virtual hard disk (VHD).
- Data migraton must be quick and have no data loss. ▪

Minimize impact to the user experience.

You need to meet the requirements.

What should you do?

- A. Download the tool, and run the disk2vhd command.

- B. Run the diskpart command.
- C. Run the New-VirtualDisk Windows Powershell cmdlet.
- D. Use the Disk Management snap-in.

Correct Answer: A

Section: (none)

Explanation

Explanation/Reference:

Explanation:

Answer A

Using Microsoft's disk2vhd program from sysinternals is the quickest way to meet the 3 requirements in one fell swoop. A simple GUI to clone drive D: into a VHD file and store it on drive E: Everything can be done from one interface with a few clicks without having to take any pc users offline while the program is running.

<http://www.intowindows.com/how-to-create-vhd-from-physical-windows-10-disk/>

Not B, C, D. These 3 options require multiple steps and commands to complete. And after all that you still need to migrate the old data to the new location. Not quick.



QUESTION 19

A company has client devices that run Windows 10 Enterprise. A line-of-business (LOB) app requires that Windows feature updates are tested for up to one year before being deployed. Company policy states that all devices must be updated at least once per year.

You need to ensure that Windows feature updates meet the LOB app requirements.

Which update path should you configure on client devices?

- A. Long-Term Servicing Channel
- B. Slow Ring
- C. Semi-Annual Channel
- D. Release Preview Ring

Correct Answer: B

Section: (none)

Explanation

Explanation/Reference:

Explanation:

Ans B. Slow ring gets more stable builds, but at a rather slow pace.

Not A. Long-Term Servicing Channel updates are released every few years and even then are not required. Long-Term Servicing Channel is for specialized PC's that do not require new or updated features, but require stability. *Formerly Long-Term Servicing Branch*

Not C. In the Semi-Annual servicing channel, feature updates are available as soon as Microsoft releases them. This will be multiple times per year. *Formerly called Current Branch for Business.*

Not D. Release Preview Ring only receives the builds before the public release of any Windows 10 update. *Part of the Windows Insider program.*

<https://www.windowslatest.com/2018/05/08/microsoft-to-release-more-windows-10-builds-for-slow-ring-insiders/> <https://docs.microsoft.com/en-us/windows/deployment/update/waas-overview#servicing-tools>

QUESTION 20

You are the system administrator for a company. All devices run Windows 10 Enterprise. You have an on-premises Active Directory Domain Services (AD DS) domain as well as a Microsoft Azure Active Directory (Azure AD) environment.

Your on-premises Active Directory infrastructure consists of the following:

- Windows Server 2012 R2 domain controllers
- Windows Server 2012 domain/forest functional level
- Windows Server 2012 Certificate Authority

You are planning a hybrid deployment Windows Hello for Business.

You need to determine which deployment options are available for your environment.

Which two deployment options can you use? Each correct answer presents a complete solution.

NOTE: Each correct selection is worth one point.

- A. Key trust Group Policy managed
- B. Key trust Modern managed
- C. Certificate trust Modern managed
- D. Certificate trust Mixed managed

Correct Answer: CD

Section: (none)

Explanation

Explanation/Reference:

Explanation:

You need to upgrade the Windows Server 2012 forest schema to 2016 currently version 87.

You do not need to install Server 2016 to upgrade the Windows Server 2012 Schema.

All you need access to is the Adprep folder on the Windows Server 2016 install disk. Can get this from the 2016 Eval.

You run Adprep on the Server 2012 domain controller that has the Schema Master Role.

eg. `cd d:\support\adprep\
adprep /forestprep`


To deploy the *Key trust Group Policy managed* or *Key trust Modern managed* you must have **Windows Server 2016 domain controllers in your environment.**

Therefore answers A and B above are incorrect as you would need to install Windows Server 2016 domain controllers in the environment above and as shown in the table below.

Correct answers are C and D.

Hybrid Deployments

The table shows the minimum requirements for each deployment.

Key trust Group Policy managed	 Certificate trust Mixed managed	Key trust Modern managed	 Certificate trust Modern managed
Windows 10, version 1511 or later	Hybrid Azure AD Joined: <i>Minimum:</i> Windows 10, version 1703 <i>Best experience:</i> Windows 10, version 1709 or later (supports synchronous certificate enrollment). Azure AD Joined: Windows 10, version 1511 or later	Windows 10, version 1511 or later	Windows 10, version 1511 or later
Windows Server 2016 Schema	Windows Server 2016 Schema	Windows Server 2016 Schema	Windows Server 2016 Schema
Windows Server 2008 R2 Domain/Forest functional level	Windows Server 2008 R2 Domain/Forest functional level	Windows Server 2008 R2 Domain/Forest functional level	Windows Server 2008 R2 Domain/Forest functional level
Windows Server 2016 Domain Controllers	Windows Server 2008 R2 or later Domain Controllers	Windows Server 2016 Domain Controllers	Windows Server 2008 R2 or later Domain Controllers

<https://docs.microsoft.com/en-us/windows/security/identity-protection/hello-for-business/hello-identity-verification>

QUESTION 21

You are the administrator for a company. All devices run Windows 10 Enterprise.

You issue all users corporate-owned phones that sync with Windows 10 by using Bluetooth.

You need to ensure that Windows 10 systems automatically secure devices when a user leaves their desk.

What should you do?

- A. Configure the 'Lock the machine when smart card is removed' setting.
- B. Implement Windows Hello for Business.
- C. Use a locked screen saver that has a five minute timeout
- D. Implement Dynamic Lock.

Correct Answer: D

Section: (none)

Explanation



Explanation/Reference: Explanation: <https://support.microsoft.com/en-za/help/4028111/windows-lock-your-windows-10-pc-automatically-when-you-step-away-from>

QUESTION 22

You have computers that run Windows 10.

You need to identify both active malware instances and past malware instances from the last three months.

Which command should you run?

- A. Get-EventSubscriber
- B. Get-MpThreatCatalog
- C. Get-WindowsErrorReporting
- D. Get-MpThreatDetection

Correct Answer: D

Section: (none)

Explanation

Explanation/Reference: Explanation:

<https://technet.microsoft.com/en-us/library/dn433290.aspx>

QUESTION 23

Your networks contain a single Active Directory domain.

On a domain controller, an administrator creates a custom Microsoft Management Console (MMC) that uses the Active Directory Users and Computer snap-in.

The domain contains a computer named Computer1 that runs Windows 10. You use the computer to perform management tasks. You copy the custom MMC to the computer.

You need to ensure that you can use MMC and all of the features of the MMC.

What should you do on Computer1?

- A. Enable the Sideload apps developer feature.
- B. Install the Remote Server Administration Tools (RSAT).
- C. Install the Microsoft Application Compatibility Toolkit (ACT).
- D. Disable User Account Control (UAC).

Correct Answer: B

Section: (none)

Explanation

Explanation/Reference: Explanation: <http://blogs.msmvps.com/acefekay/2012/08/24/delegate-active-directory-users-and-computers-aduc-then-create-a-custom-aduc-mmc/>

QUESTION 24

You have a computer named Computer1 that runs Windows 10.

Computer1 has two volumes named C and D. Volume C is formatted NTFS and volume D is formatted exFAT.

You need to ensure that you can recover files stored in D:\Data.

What should you use?

- A. System Restore points
- B. File History
- C. wbadmin.exe
- D. Backup and Restore (Windows 7)

Correct Answer: B

Section: (none)

Explanation

Explanation/Reference:

Explanation:

Drive formatted with exFat does not hinder File History any way.



QUESTION 25

You have a computer named Computer1 that has a 1-TB volume named E.

You need to receive a notification when volume E has less than 100 GB of free space.

Which tool should you use?

- A. Event Viewer
- B. Disk Cleanup
- C. Performance Monitor
- D. System Configuration
- E. Resource Monitor

Correct Answer: C

Section: (none)

Explanation

Explanation/Reference: Explanation:

[https://technet.microsoft.com/en-us/library/cc722414\(v=ws.11\).aspx](https://technet.microsoft.com/en-us/library/cc722414(v=ws.11).aspx)

QUESTION 26

You deploy a new computer named Computer1.

You have a file named Data.docx that is stored in Microsoft OneDrive.

From File Explorer, you attempt to open Data.docx, but you discover that the file is corrupt.

You need to access a previous version of Data.docx.

What should you use?

- A. File History
- B. the Recycle Bin
- C. One Drive online
- D. Backup and Restore (Windows 7)



Correct Answer: C

Section: (none)

Explanation

Explanation/Reference:

Explanation:

Question states; 'you have file that is stored in Microsoft OneDrive'. The standard OneDrive setting is for OneDrive files to be stored online with it's own Previous Versioning. Therefore you use the OneDrive web site to access previous file versions.

File History does not back up files from the OneDrive folder unless settings are specifically changed to do so.

You need to browse to the OneDrive folder on your PC, right click the folder of choice and change the setting '**Always keep on this device**'. The Status setting will change to a green tick and File History will now add this folder to it's backup list.

File History will only back up OneDrive files if you specifically change the settings.

QUESTION 27

You have a computer named Computer1 that runs Windows 10.

File History is turned on.

You have files located in D:\Photos.

You need to ensure that you can recover previous versions of the files in D:\Photos.

What should you do?

- A. Add D:\Photos to the Pictures library.
- B. Turn on System Protection for drive D.
- C. Enable sharing for D:\Photos.
- D. Modify the Recovery settings in the Settings app.

Correct Answer: A

Section: (none)

Explanation

Explanation/Reference: Explanation:

<https://www.enovision.net/use-windows-file-history-folder-drive/>

**QUESTION 28**

You have a computer that runs Windows 10 Pro.

You receive a SMART alert that the hard disk drive will fail soon.

You connect a second external hard disk drive to the computer.

You need to create a backup that you can use to restore the operating system and the user documents to a replacement drive.

What should you use?



<https://vceplus.com/>

- A. vssadmin.exe
- B. wbadmin.exe
- C. Start-WBBackup
- D. Start-OBBackup

Correct Answer: B

Section: (none)

Explanation

Explanation/Reference: Explanation: <http://www.backup-utility.com/windows-10/windows-10-wbadmin-4348.html>



QUESTION 29

A user reports that a computer was slower than expect during the last week.

You need to identify any application failures that occurred during the last week.

Which tool should you use?

- A. Performance Monitor
- B. Task Manager
- C. Resource Monitor
- D. Reliability Monitor

Correct Answer: D

Section: (none)

Explanation

Explanation/Reference:

Explanation:

<http://www.pcworld.com/article/2999237/windows/how-to-use-windows-10s-reliability-monitor-to-fix-and-fine-tune-your-pc.html>

QUESTION 30

You have a computer named Computer1 that runs Windows 10. Computer1 has a printer named Printer1 installed.

You need to configure the settings of Printer1 remotely from another computer.

Which tool should you use on the remote computer?

- A. Device Manager from Control Panel
- B. Print Management from Administrative Tools
- C. Printers & scanners from the Setting app
- D. Devices and Printers from Control Panel



Correct Answer: B

Section: (none)

Explanation

Explanation/Reference:

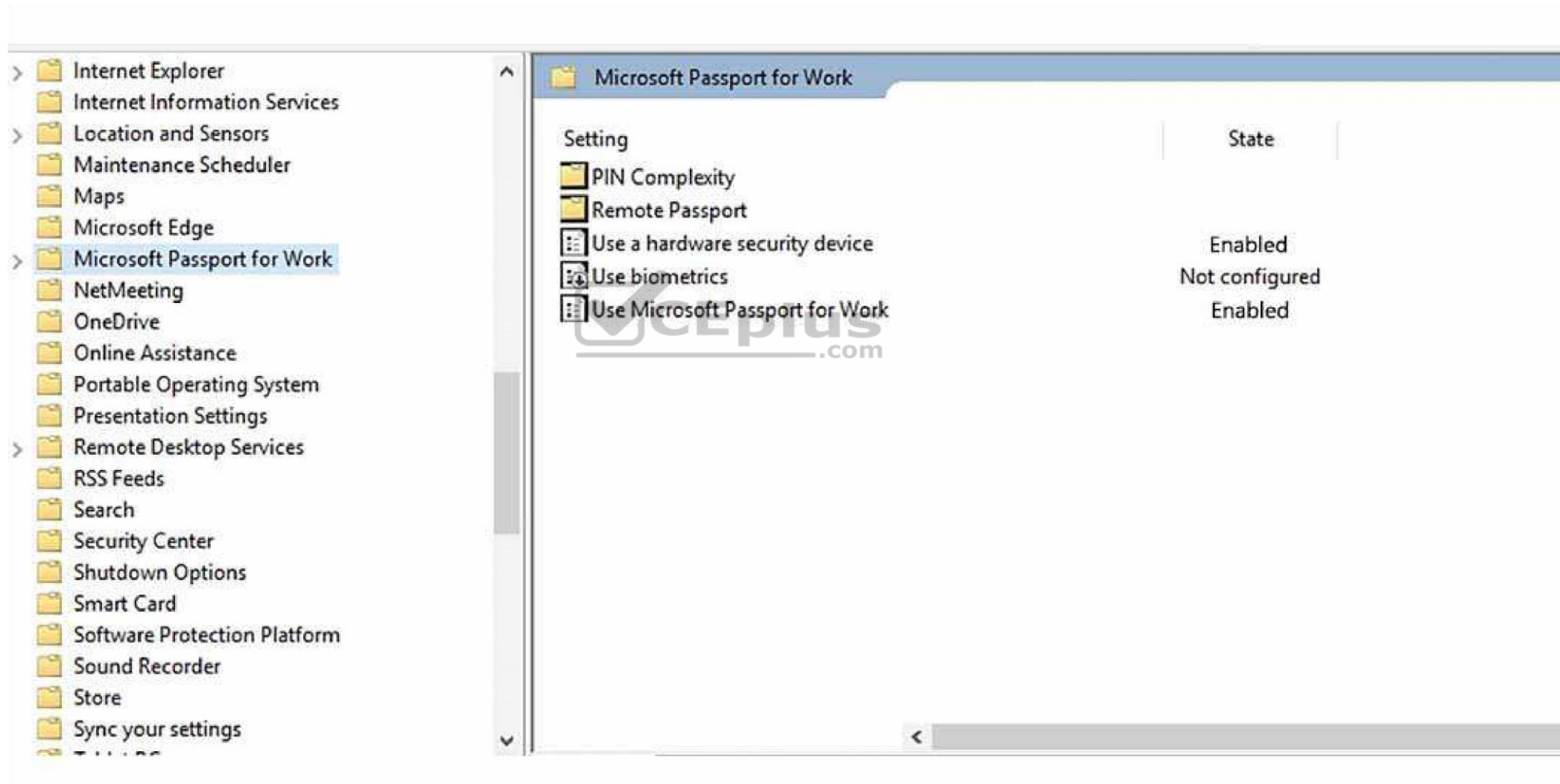
Explanation:

[https://technet.microsoft.com/en-us/library/cc753109\(v=ws.10\).aspx](https://technet.microsoft.com/en-us/library/cc753109(v=ws.10).aspx) [http://www.howto-connect.com/print-management-tool-in-windows-](http://www.howto-connect.com/print-management-tool-in-windows-10/)

10/ **Hot Spot**

QUESTION 1 HOTSPOT

You configure a Group Policy on a computer that runs Windows 10 Enterprise as shown in the following graphic:



Use the drop-down menus to select the answer choice that completes each statement based on the information presented in the graphic.

Hot Area:

Answer Area

To sign in to the computer, the user [answer choice]

	▼
must always enter a pin	
can use a PIN or a hardware security device	
must always use a hardware security device	

For this configuration, a [answer choice] is required.

	▼
USB key protector	
Trusted Platform Module (TPM) chip	
Second Level Address Translation (SLAT) -capable processor	

Correct Answer:

Answer Area

To sign in to the computer, the user [answer choice]

	▼
must always enter a pin	
can use a PIN or a hardware security device	
must always use a hardware security device	

For this configuration, a [answer choice] is required.

	▼
USB key protector	
Trusted Platform Module (TPM) chip	
Second Level Address Translation (SLAT) -capable processor	

Section: (none)

Explanation

Explanation/Reference:

Explanation:

Box1

If Microsoft Passport for Work is enabled, then a **PIN will be required** to access the physical device at all times.

Box2.

NO: USB key protector, is a Bitlocker decryption usb. Every user would need one of these to unlock their devices. Not feasible, practical or cost effective. Most users in business environment would end up losing them.

NO: Second Level Address Translation is a hardware-assisted virtualization technology.


YES. TPM chip built into most newer devices, used for storing RSA encryption keys, specific to the host system. Complements Microsoft Passport nicely.

<https://redmondmag.com/articles/2016/05/01/active-directory.aspx>

QUESTION 2

HOTSPOT

You have the following output from Windows PowerShell:



```
Name                : Spooler
RequiredServices    : {RPCSS, http}
CanPauseAndContinue : False
CanShutDown         : False
CanStop             : False
DisplayName         : Print Spooler
DependentServices   : {Fax}
MachineName         : .
ServiceName         : Spooler
ServicesDependedOn  : {RPCSS, http}
ServiceHandle       : SafeServiceHandle
Status              : Stopped
ServiceType         : Win32OwnProcess, InteractiveProcess
StartType           : Disabled
Site                :
Container           :
```

You need to start the service.

What command should you run first? To answer, select the appropriate options in the answer area.

Each correct selection is worth one point.

Hot Area:

Answer Area

<div>▼</div> <div>Restart-Service</div> <div>Resume-Service</div> <div>Set-Service</div> <div>Start-Service</div>	<i>-Name Spooler</i>	<div>▼</div> <div>\$True</div> <div>-CanShutdown \$False</div> <div>-Force</div> <div>-StartupType Automatic</div> <div>-Status Start</div>
---	----------------------	---

Correct Answer:

Answer Area

	▼
Restart-Service	
Resume-Service	
Set-Service	
Start-Service	

-Name Spooler

	▼
\$True	
-CanShutdown \$False	
-Force	
-StartupType Automatic	
-Status Start	

Section: (none)

Explanation

Explanation/Reference:

Explanation:

The StartType of the service is disabled. This needs to be set to Manual or Automatic before you can start the service.

QUESTION 3 HOTSPOT


You have a Windows Server Update Services (WSUS) server.

You need to configure a computer to receive updates from WSUS. The solution must ensure that the updates are installed only on Sunday at 20:00.

Which two settings should you configure? To answer, select the appropriate settings in the answer area.


Note: Each correct selection is worth one point.

Hot Area:

Local Group Policy Editor		
File Action View Help		
		
Setting	State	Comment
Defer Windows Updates		
Do not display 'Install Updates and Shut Down' option in Shut Down Windows dialog box	Not configured	No
Do not adjust default option to 'Install Updates and Shut Down' in Shut Down Windows dialog box	Not configured	No
Enabling Windows Update Power Management to automatically wake up the system to install scheduled updates	Not configured	No
Turn off auto-restart for updates during active hours	Not configured	No
Specify active hours range for auto-restarts	Not configured	No
Always automatically restart at the scheduled time	Not configured	No
Specify deadline before auto-restart for update installation	Not configured	No
Configure auto-restart reminder notifications for updates	Not configured	No
Turn off auto-restart notifications for update installations	Not configured	No
Configure auto-restart required notification for updates	Not configured	No
Configure Automatic Updates	Not configured	No
Specify intranet Microsoft update service location	Not configured	No
Automatic Updates detection frequency	Not configured	No
Remove access to use all Windows Update features	Not configured	No
Do not connect to any Windows Update Internet locations	Not configured	No
Allow non-administrators to receive update notifications	Not configured	No
Specify Engaged restart transition and notification schedule for updates	Not configured	No
Do not include drivers with Windows Updates	Not configured	No
Turn on Software Notifications	Not configured	No
Allow Automatic Updates immediate installation	Not configured	No
Turn on recommended updates via Automatic Updates	Not configured	No
No auto-restart with logged on users for scheduled automatic updates installations	Not configured	No
Re-prompt for restart with scheduled installations	Not configured	No
Delay Restart for scheduled installations	Not configured	No
Reschedule Automatic Updates scheduled installations	Not configured	No
Configure auto-restart warning notifications schedule for updates	Not configured	No
Update Power Policy for Cart Restarts	Not configured	No
Enable client-side targeting	Not configured	No
Allow signed updates from an intranet Microsoft update service location	Not configured	No

Correct Answer:



Local Group Policy Editor		
File Action View Help		
		
Setting	State	Comment
Defer Windows Updates		
Do not display 'Install Updates and Shut Down' option in Shut Down Windows dialog box	Not configured	No
Do not adjust default option to 'Install Updates and Shut Down' in Shut Down Windows dialog box	Not configured	No
Enabling Windows Update Power Management to automatically wake up the system to install scheduled updates	Not configured	No
Turn off auto-restart for updates during active hours	Not configured	No
Specify active hours range for auto-restarts	Not configured	No
Always automatically restart at the scheduled time	Not configured	No
Specify deadline before auto-restart for update installation	Not configured	No
Configure auto-restart reminder notifications for updates	Not configured	No
Turn off auto-restart notifications for update installations	Not configured	No
Configure auto-restart required notification for updates	Not configured	No
Configure Automatic Updates	Not configured	No
Specify intranet Microsoft update service location	Not configured	No
Automatic Updates detection frequency	Not configured	No
Remove access to use all Windows Update features	Not configured	No
Do not connect to any Windows Update Internet locations	Not configured	No
Allow non-administrators to receive update notifications	Not configured	No
Specify Engaged restart transition and notification schedule for updates	Not configured	No
Do not include drivers with Windows Updates	Not configured	No
Turn on Software Notifications	Not configured	No
Allow Automatic Updates immediate installation	Not configured	No
Turn on recommended updates via Automatic Updates	Not configured	No
No auto-restart with logged on users for scheduled automatic updates installations	Not configured	No
Re-prompt for restart with scheduled installations	Not configured	No
Delay Restart for scheduled installations	Not configured	No
Reschedule Automatic Updates scheduled installations	Not configured	No
Configure auto-restart warning notifications schedule for updates	Not configured	No
Update Power Policy for Cart Restarts	Not configured	No
Enable client-side targeting	Not configured	No
Allow signed updates from an intranet Microsoft update service location	Not configured	No

Section: (none)

Explanation

Explanation/Reference:

Explanation:

Path to settings are Local Computer Policy: Computer Configuration\Administrative Templates\Windows Components\Windows Update

Enabling 'Configure Automatic Updates' will have the **Scheduled Install Day and Time** setting.

Specify intranet will allow the adding of a Server Location.

QUESTION 4

HOTSPOT

You run the Get-Service cmdlet and you receive the following output:




```
Name : Service1
RequiredServices : {}
CanPauseAndContinue : False
CanShutDown : False
CanStop : False
DisplayName : Service1
DependentServices : {Service2}
MachineName : .
ServiceName : Service1
ServicesDependedOn : {}
ServiceHandle :
Status : Stopped
ServiceType : Win32ShareProcess
StartType : Manual
Site :
Container :
```

```
Name : Service2
RequiredServices : {Service1}
CanPauseAndContinue : False
CanShutDown : False
CanStop : False
DisplayName : Service2
DependentServices : {Service3}
MachineName : .
ServiceName : Service2
ServicesDependedOn : {Service1}
ServiceHandle :
Status : Stopped
ServiceType : Win32ShareProcess
StartType : Automatic
Site :
Container :
```

```
Name : Service3
RequiredServices : {Service2}
CanPauseAndContinue : False
CanShutDown : False
CanStop : False
DisplayName : Service3
DependentServices : {}
MachineName : .
ServiceName : Service3
ServicesDependedOn : {Service2}
ServiceHandle :
Status : Stopped
ServiceType : Win32ShareProcess
```

You need to identify what occurs when the status of the services changes.

What should you identify?

To answer, select the appropriate options in the answer area.

Hot Area:

Answer Area

If Service3 starts, the Service1 service:

	▼
remains stopped	
starts	

If Service1 starts, the Service3 service:

	▼
remains stopped	
starts	

If Service2 starts, the Service3 service:

	▼
remains stopped	
starts	

Correct Answer:

Answer Area

If Service3 starts, the Service1 service:

☒ remains stopped
 ☐ starts

If Service1 starts, the Service3 service:

☒ remains stopped
 ☐ starts

If Service2 starts, the Service3 service:

☒ remains stopped
 ☐ starts

Section: (none)

Explanation

Explanation/Reference: Explanation: [https://msdn.microsoft.com/en-us/library/system.serviceprocess.servicecontroller.servicesdependedon\(v=vs.110\).aspx](https://msdn.microsoft.com/en-us/library/system.serviceprocess.servicecontroller.servicesdependedon(v=vs.110).aspx)

QUESTION 5 HOTSPOT

You have an image of Windows 10 that is mounted to C:\Mount.

You create a provisioning package that is stored in C:\Folder.

You need to customize the image by using the provisioning package.

What command should you run? To answer, select the appropriate options in the answer area.

Hot Area:

Correct Answer:

Section: (none)

Answer Area

Dism /Image:

▼

C:\Mount

C:\Mount\Windows

C:\Mount\Windows\Provisioning

/Add-ProvisioningPackage /Packagepath:C:\Folder1\

▼

Custom.appx

Custom.exe

Custom.msi

Custom.msu

Custom.ppkg

Custom.xml

Explanation

Explanation/Reference:

Explanation:

Answer Area

Dism /Image:

▼

C:\Mount

C:\Mount\Windows

C:\Mount\Windows\Provisioning

/Add-ProvisioningPackage /Packagepath:C:\Folder1\

▼

Custom.appx

Custom.exe

Custom.msi

Custom.msu

Custom.ppkg

Custom.xml

Dism /Image=C:\Mount /Add-ProvisioningPackage /PackagePath:C:\Folder1\Custom.ppkg <https://blogs.msdn.microsoft.com/beanexpert/2015/09/10/add-a-provisioning-package-in-an-offline-image-using-dism/>

QUESTION 6 HOTSPOT

A user fails to connect a mouse to a computer.

The user sends you the following output:

PS C:\> Get-PnpDevice -Class Bluetooth

Status	Class	FriendlyName
-----	-----	-----
Unknown	Bluetooth	Device Identification Service
Unknown	Bluetooth	Dell BT Travel Mouse
Unknown	Bluetooth	Microsoft Bluetooth LE Enumerator
Error	Bluetooth	Intel(R) Wireless Bluetooth(R)
Unknown	Bluetooth	Microsoft Bluetooth Enumerator

Use the drop-down menus to select the answer choice that completes each statement based on the information presented in the output:

Hot Area:

A Bluetooth mouse is [answer choice]

▼

ready to pair

paired and working

paired and unresponsive

The error occurs because [answer area]

▼

the computer is in Airplane mode

Bluetooth is turned off in the Settings app

the Bluetooth adapter is disabled in Device Manager

Correct Answer:

A Bluetooth mouse is [answer choice]

▼
ready to pair
paired and working
paired and unresponsive

The error occurs because [answer area]

▼
the computer is in Airplane mode
Bluetooth is turned off in the Settings app
the Bluetooth adapter is disabled in Device Manager

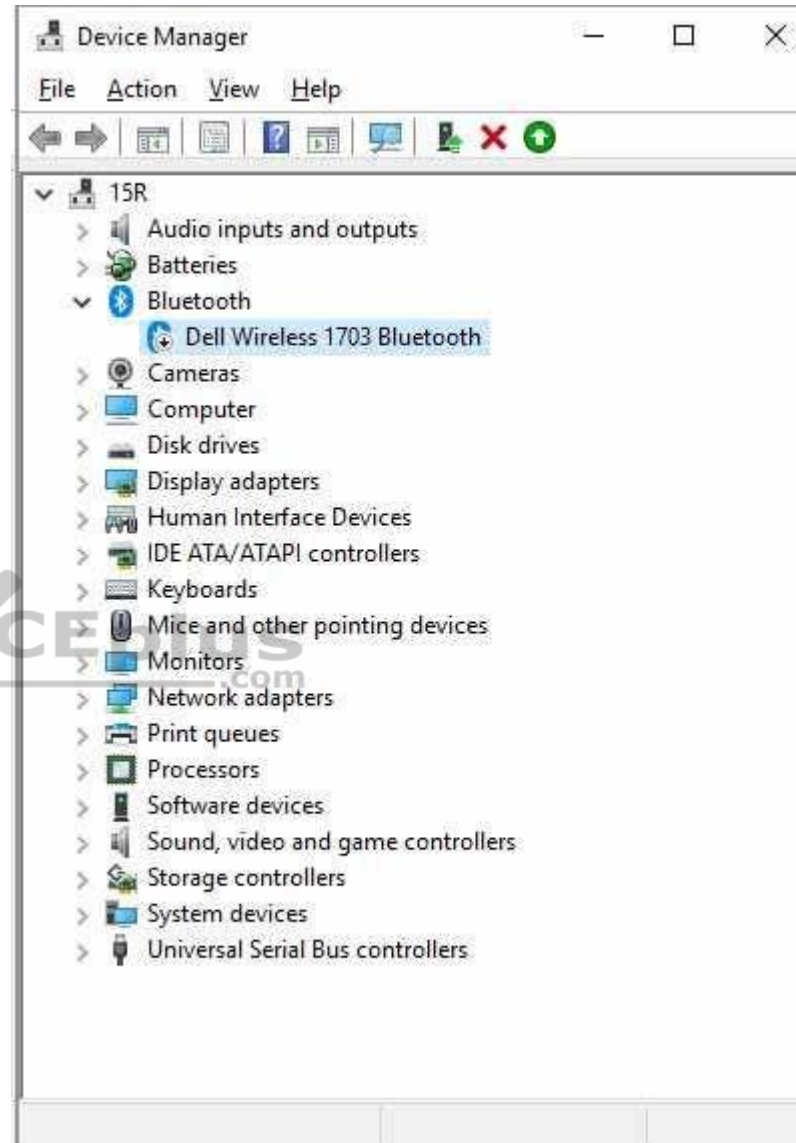
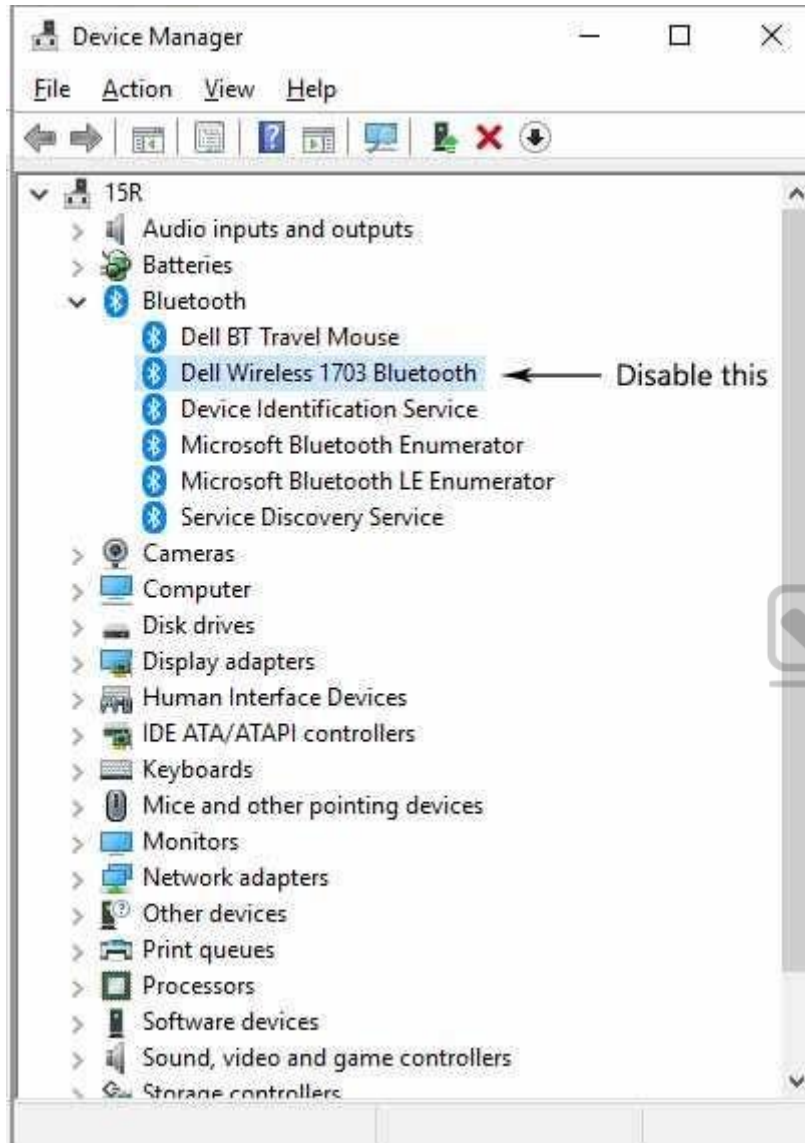
Section: (none)
Explanation

Explanation/Reference:
Explanation:

The mouse is already paired as shown by the **FriendlyName of Dell BT Travel Mouse**. The mouse is not working, therefore it must be **paired and unresponsive**.

If you disable the **Dell Wireless service**, under Bluetooth, this will disable all the other services and put them into **Unknown Status**.

So 'the **Bluetooth adapter is disabled in Device Manager**'.



Once Bluetooth has been turned off, you get exactly replica of error as in the question.

```
Administrator: Windows PowerShell
PS C:\WINDOWS\system32> hostname
15R
PS C:\WINDOWS\system32> get-pnpdevice -class bluetooth
```

Status	Class	FriendlyName
Unknown	Bluetooth	Microsoft Bluetooth LE Enumerator
Unknown	Bluetooth	Service Discovery Service
Unknown	Bluetooth	Dell BT Travel Mouse
Error	Bluetooth	Dell Wireless 1703 Bluetooth
Unknown	Bluetooth	Microsoft Bluetooth Enumerator
Unknown	Bluetooth	Device Identification Service

```
PS C:\WINDOWS\system32>
```

QUESTION 7 HOTSPOT

You have three computers configured as shown in the following table.

Computer name	Operating system	Upgrade requirement
Computer 1	Windows 7	Retain all installed applications.
Computer 2	Windows 7	Remove all locally installed applications, but retain access to the user files.
Computer 3	Windows 8	Remove all locally installed applications.

You plan to migrate the computers to Windows 10.

Which installation option should you use for each computer?

To answer, select the appropriate options in the answer area.

Hot Area:

Computer1:

	▼
Custom	
Upgrade	

Computer2:

	▼
Custom	
Upgrade	



Computer3:

	▼
Custom	
Upgrade	

Correct Answer:

Computer1:

	▼
Custom	
Upgrade	

Computer2:

	▼
Custom	
Upgrade	

Computer3:

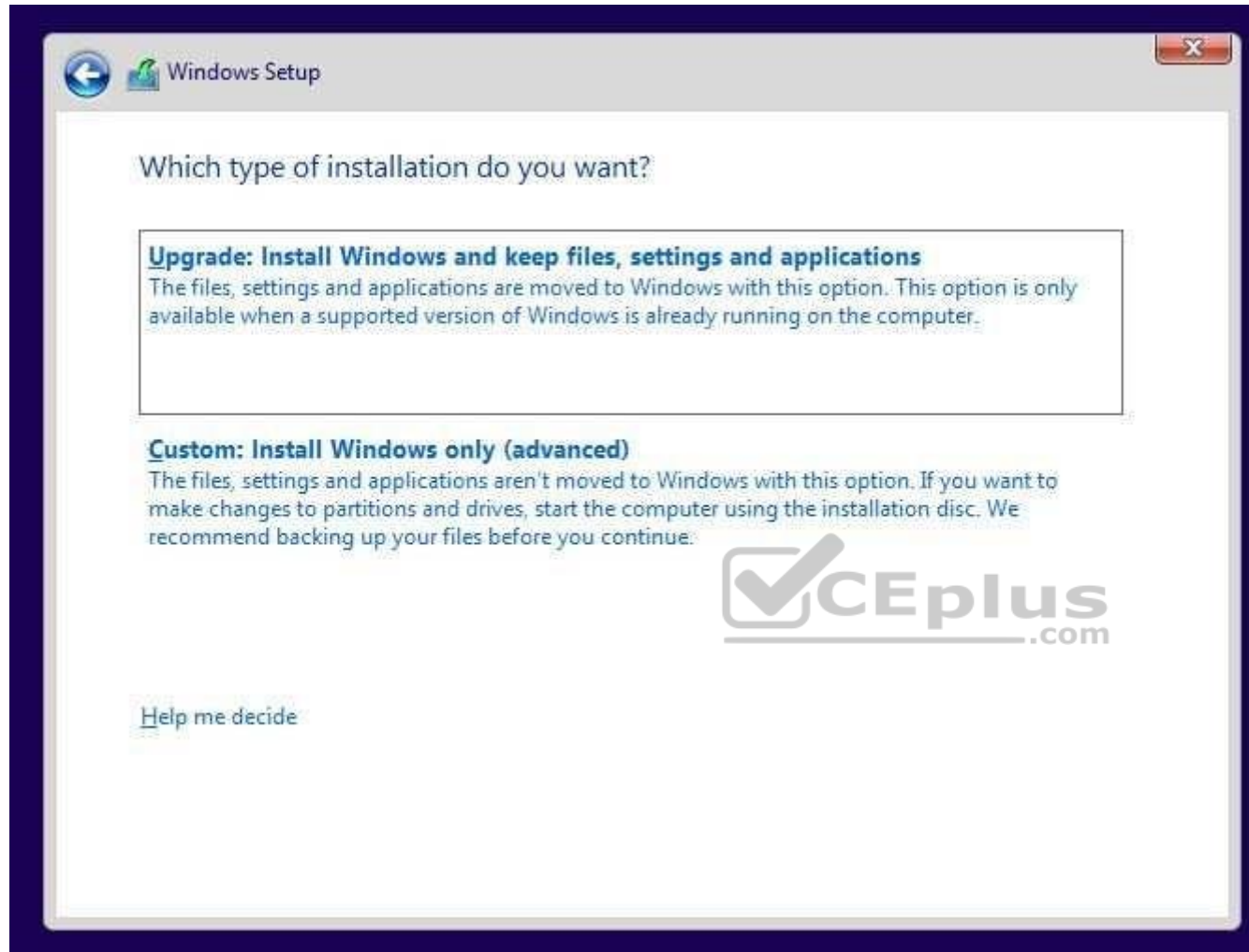
	▼
Custom	
Upgrade	

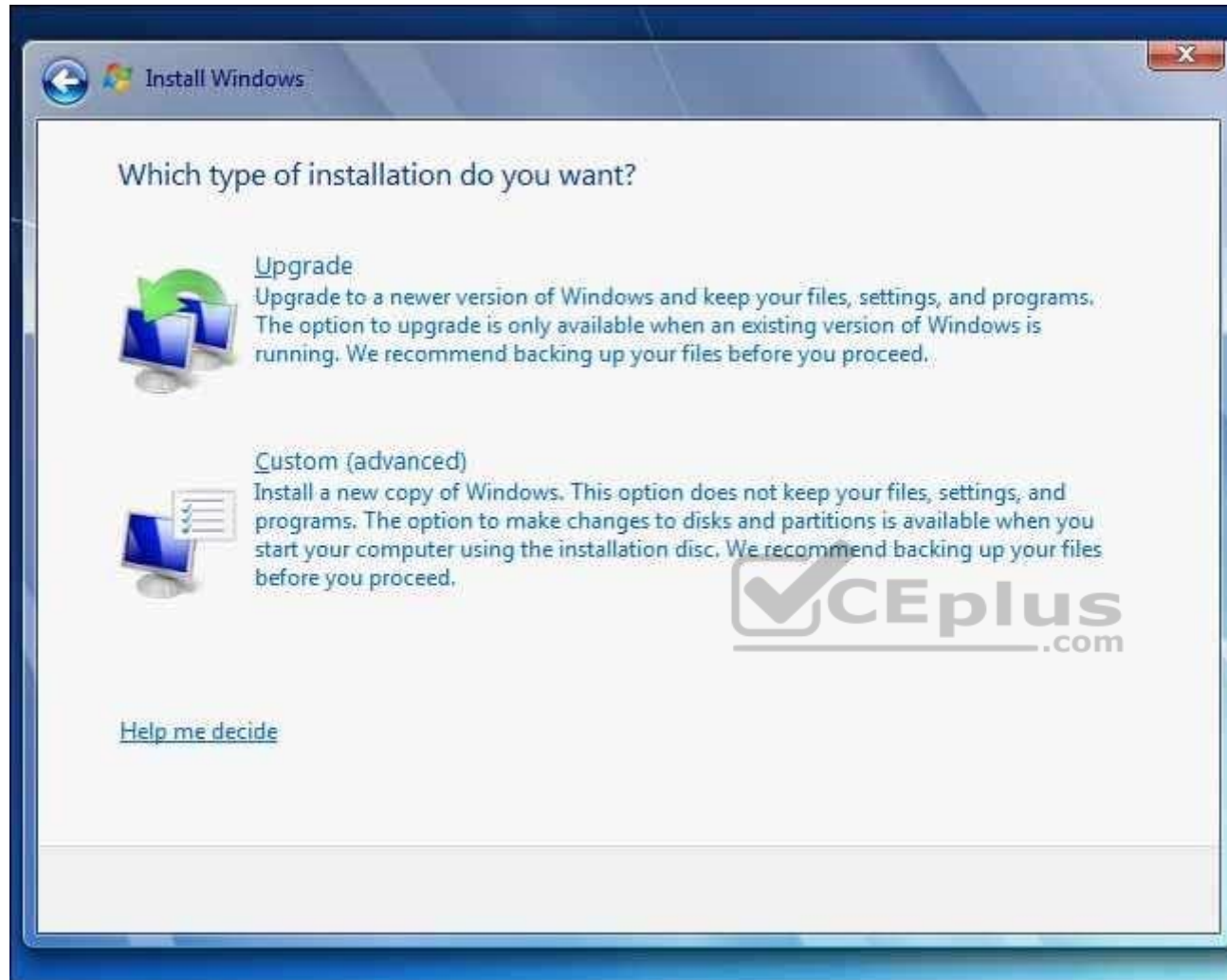
Section: (none)

Explanation

Explanation/Reference:

Explanation:





If you want to keep files, settings or applications then it is an upgrade that is needed. And the upgrade must be started from within a running Windows.

Custom is the same as a clean installation.

<https://technet.microsoft.com/en-us/itpro/windows/deploy/windows-upgrade-and-migration-considerations>

QUESTION 8

Hotspot

You deploy a custom sales application named App1 that needs a dedicated virtual private network (VPN) connection to the company network. You must make App1 available to all users. Other applications must not use the VPN connection. You need to configure the computers to support the new application.

How should you complete the Windows PowerShell commands?

To answer, configure the appropriate options in the dialog box in the answer area.

NOTE: Each correct selection is worth one point.

Hot Area:

Answer Area

	▼
Add-VpnConnectionTriggerApplication	
Add-VpnConnection	
New-VpnServerAddress	
	▼
Set-VpnConnection	
Set-VpnConnectionProxy	
Set-VpnConnectionTriggerTrustedNetwork	

-Name APP1 -ApplicationID C:\contoso\App1.exe

-Name App1 -SplitTunneling \$True

Correct Answer:

Answer Area

	▼
Add-VpnConnectionTriggerApplication	
Add-VpnConnection	
New-VpnServerAddress	
	▼
Set-VpnConnection	
Set-VpnConnectionProxy	
Set-VpnConnectionTriggerTrustedNetwork	

-Name APP1 -ApplicationID C:\contoso\App1.exe

-Name App1 -SplitTunneling \$True

Section: (none)

Explanation

Explanation/Reference:

Explanation:

<https://docs.microsoft.com/en-us/powershell/module/vpnclient/add-vpnconnectiontriggerapplication?view=win10-ps>

Adds applications that automatically trigger a VPN connection when launched.

<https://docs.microsoft.com/en-us/powershell/module/vpnclient/set-vpnconnection?view=win10-ps>

Changes the configuration settings of an existing VPN connection profile.

QUESTION 9

Drag and Drop

You are the system administrator for a company. You plan to run Windows 10 Enterprise on all devices. Groups of devices must implement specific features. You need to determine which type of deployment you should perform for each feature. Which installation types should you use?

To answer, drag the appropriate installation types to the correct features. Each installation type may be used once, more than once, or not at all. You may need to drag the split bar between panes or scroll to view content.

NOTE: Each correct selection is worth one point.

Select and Place:

Installation types

Windows To Go

Local Hard Drive Installation

Windows To Go

Local Hard Drive Installation

Answer Area

Feature

Trusted Platform Module is used.

Hibernate is disabled by default.

Windows Recovery Environment is available.

Installation type

Installation type

Installation type

Installation type

Installation type

Correct Answer:

Installation types

Windows To Go

Answer Area

Feature

Trusted Platform Module is used.

Hibernate is disabled by default.

Windows Recovery Environment is available.

Installation type

Local Hard Drive Installation

Windows To Go

Local Hard Drive Installation

Installation type

Section: (none)
Explanation

Explanation/Reference:

Explanation:

If you want to make use of the Trusted Platform Module, you need to install Windows on a local hard drive. It is not available for Windows to Go.

When a Windows To Go workspace is hibernated, it will only successfully resume on the exact same hardware. Therefore, if a Windows To Go workspace is hibernated on one computer and roamed to another, the hibernation state (and therefore user state) will be lost. To prevent this from happening, **the default settings for a Windows To Go workspace is disable hibernation.**

Default can be change in group policy.

Computer Configuration\Administrative Templates\Windows Components\Portable Operating System\

Windows Recovery Environment is not available, in Windows To Go environment, In the rare case that you need to recover your Windows To Go drive, you should re-image it with a fresh image of Windows. <https://docs.microsoft.com/en-us/windows/deployment/planning/windows-to-go-overview>



<https://vceplus.com/>