

Microsoft.Premium.70-698.by.VCEplus.121q

Number: 70-698 VCEplus
Passing Score: 800
Time Limit: 120 min
File Version: 4.0



Exam Code: 70-698
Exam Name: Installing and Configuring Windows 10
Certification Provider: Microsoft
Corresponding Certification: MCSA
Website: www.vceplus.com



Free Exam: <https://vceplus.com/mcsa-exam-70-698/>

Questions & Answers Exam Engine is rigorously checked before being put up for sale. We make sure there is nothing irrelevant in 70-698 exam products and you get latest questions. We strive to deliver the best 70-698 exam product for top grades in your first attempt.

VCE to PDF Converter : <https://vceplus.com/vce-to-pdf/>
Facebook: <https://www.facebook.com/VCE.For.All.VN/>
Twitter : https://twitter.com/VCE_Plus
Google+ : <https://plus.google.com/+Vcepluscom>
LinkedIn : <https://www.linkedin.com/company/vceplus>

Exam A

QUESTION 1

In this section, you will see one or more sets of questions with the same scenario and problem. Each question presents a unique solution to the problem, and you must determine whether the solution meets the stated goals. Any of the solutions might solve the problem. It is also possible that none of the solutions solve the problem.

Once you answer a question in this section, you will NOT be able to return to it. As a result, these questions will not appear in the review screen.

Note: This question is part of a series of questions that present the same scenario. Each question in the series contains a unique solution. Determine whether the solution meets the stated goals.

You have a computer named Computer1 that runs Windows 10.

File History is turned on.

The user of Computer1 reports that previous versions of D:\Folder\File1.doc are unavailable from the Previous Versions tab.

You need to ensure that the previous versions of the file are created.

Solution: Modify the Backup settings in the Settings app.

Does this meet the goal?

A. Yes

B. No

Correct Answer: A

Section: (none)

Explanation



Explanation/Reference:

QUESTION 2

Once you answer a question in this section, you will NOT be able to return to it. As a result, these questions will not appear in the review screen.

Note: This question is part of a series of questions that present the same scenario. Each question in the series contains a unique solution. Determine whether the solution meets the stated goals.

You have a computer named Computer1 that runs Windows 10.

File History is turned on.

The user of Computer1 reports that previous versions of D:\Folder\File1.doc are unavailable from the Previous Versions tab.

You need to ensure that the previous versions of the file are created.

Solution: Turn on System Protection for drive D.

Does this meet the goal?

A. Yes

B. No

Correct Answer: B

Section: (none)

Explanation

Explanation/Reference:

QUESTION 3

In this section, you will see one or more sets of questions with the same scenario and problem. Each question presents a unique solution to the problem, and you must determine whether the solution meets the stated goals. Any of the solutions might solve the problem. It is also possible that none of the solutions solve the problem.

Once you answer a question in this section, you will NOT be able to return to it. As a result, these questions will not appear in the review screen.

Note: This question is part of a series of questions that present the same scenario. Each question in the series contains a unique solution. Determine whether the solution meets the stated goals.

You have a computer named Computer1 that runs Windows 10.

File History is turned on.

The user of Computer1 reports that previous versions of D:\Folder\File1.doc are unavailable from the Previous Versions tab.

You need to ensure that the previous versions of the file are created.

Solution: Create a backup of drive D by using Backup and Restore (Windows 7).

Does this meet the goal?

A. Yes

B. No



Correct Answer: B

Section: (none)

Explanation

Explanation/Reference:

Creating a backup of drive D will only create a single one-off backup of the files; it will not previous versions of files are created.

<http://www.pcworld.com/article/2974385/windows/how-to-use-windows-10s-file-history-backup-feature.html>

QUESTION 4

Once you answer a question in this section, you will NOT be able to return to it. As a result, these questions will not appear in the review screen.

Note: This question is part of a series of questions that present the same scenario. Each question in the series contains a unique solution. Determine whether the solution meets the stated goals.

You have a computer named Computer1 that runs Windows 10.

File History is turned on.

The user of Computer1 reports that previous versions of D:\Folder\File1.doc are unavailable from the Previous Versions tab.

You need to ensure that the previous versions of the file are created.

Solution: Add D:\Folder\to the Documents library.
Does this meet the goal?

- A. Yes
- B. No

Correct Answer: A

Section: (none)

Explanation

Explanation/Reference:

Explanation:

<https://support.microsoft.com/en-us/help/17128/windows-8-file-history>

QUESTION 5

In this section, you will see one or more sets of questions with the same scenario and problem. Each question presents a unique solution to the problem, and you must determine whether the solution meets the stated goals. Any of the solutions might solve the problem. It is also possible that none of the solutions solve the problem.

Once you answer a question in this section, you will NOT be able to return to it. As a result, these questions will not appear in the review screen.

Note: This question is part of a series of questions that present the same scenario. Each question in the series contains a unique solution. Determine whether the solution meets the stated goals.

Your network contains a single Active Directory domain named contoso.com. The domain contains two computers named Computer1 and Computer2.

A user named User1 is a member of the local Administrators group on Computer1 and Computer2.

User1 fails to access the Event Viewer logs on Computer2 from Computer1. User1 can connect to Computer2 remotely by using Computer Management.

You need to ensure that User1 can use Event Viewer on Computer1 to remotely view the Event Viewer logs on Computer2.

Solution: You start the Remote Registry services on Computer2.

Does this meet the goal?

- A. Yes
- B. No

Correct Answer: B

Section: (none)

Explanation

Explanation/Reference:

Explanation:

[https://technet.microsoft.com/en-us/library/cc754820\(v=ws.11\).aspx](https://technet.microsoft.com/en-us/library/cc754820(v=ws.11).aspx)

QUESTION 6

In this section, you will see one or more sets of questions with the same scenario and problem. Each question presents a unique solution to the problem, and you

must determine whether the solution meets the stated goals. Any of the solutions might solve the problem. It is also possible that none of the solutions solve the problem.

Once you answer a question in this section, you will NOT be able to return to it. As a result, these questions will not appear in the review screen.

Note: This question is part of a series of questions that present the same scenario. Each question in the series contains a unique solution. Determine whether the solution meets the stated goals.

Your network contains a single Active Directory domain named contoso.com. The domain contains two computers named Computer1 and Computer2.

A user named User1 is a member of the local Administrators group on Computer1 and Computer2.

User1 fails to access the Event Viewer logs on Computer2 from Computer1. User1 can connect to Computer2 remotely by using Computer Management.

You need to ensure that User1 can use Event Viewer on Computer1 to remotely view the Event Viewer logs on Computer2.

Solution: You modify the Windows Firewall settings on Computer2.

Does this meet the goal?

A. Yes

B. No

Correct Answer: A

Section: (none)

Explanation

Explanation/Reference:

Explanation:

[https://technet.microsoft.com/en-us/library/cc766438\(v=ws.11\).aspx](https://technet.microsoft.com/en-us/library/cc766438(v=ws.11).aspx)

QUESTION 7

In this section, you will see one or more sets of questions with the same scenario and problem. Each question presents a unique solution to the problem, and you must determine whether the solution meets the stated goals. Any of the solutions might solve the problem. It is also possible that none of the solutions solve the problem.

Once you answer a question in this section, you will NOT be able to return to it. As a result, these questions will not appear in the review screen.

Note: This question is part of a series of questions that present the same scenario. Each question in the series contains a unique solution. Determine whether the solution meets the stated goals.

Your network contains a single Active Directory domain named contoso.com. The domain contains two computers named Computer1 and Computer2.

A user named User1 is a member of the local Administrators group on Computer1 and Computer2.

User1 fails to access the Event Viewer logs on Computer2 from Computer1. User1 can connect to Computer2 remotely by using Computer Management.

You need to ensure that User1 can use Event Viewer on Computer1 to remotely view the Event Viewer logs on Computer2.

Solution: You run Enable-PSRemoting on Computer1.

Does this meet the goal?

A. Yes

B. No

Correct Answer: B

Section: (none)

Explanation

Explanation/Reference:

<http://www.howtogeek.com/117192/how-to-run-powershell-commands-on-remote-computers/>

QUESTION 8

In this section, you will see one or more sets of questions with the same scenario and problem. Each question presents a unique solution to the problem, and you must determine whether the solution meets the stated goals. Any of the solutions might solve the problem. It is also possible that none of the solutions solve the problem.

Once you answer a question in this section, you will NOT be able to return to it. As a result, these questions will not appear in the review screen.

Note: This question is part of a series of questions that present the same scenario. Each question in the series contains a unique solution. Determine whether the solution meets the stated goals.

Your network contains a single Active Directory domain named contoso.com. The domain contains two computers named Computer1 and Computer2.

A user named User1 is a member of the local Administrators group on Computer1 and Computer2.

User1 fails to access the Event Viewer logs on Computer2 from Computer1. User1 can connect to Computer2 remotely by using Computer Management.

You need to ensure that User1 can use Event Viewer on Computer1 to remotely view the Event Viewer logs on Computer2.

Solution: You run winrm quickconfig on Computer2.

Does this meet the goal?

A. Yes

B. No



Correct Answer: B

Section: (none)

Explanation

Explanation/Reference:

Explanation:

[https://msdn.microsoft.com/en-us/library/aa384372\(v=vs.85\).aspx](https://msdn.microsoft.com/en-us/library/aa384372(v=vs.85).aspx)

QUESTION 9

You have a computer that has a local printer.

You need to share the printer.

Which two tools can you use to achieve the goal? Each correct answer presents a complete solution

A. net share from a command prompt

B. Devices and Printers from Control Panel

C. Set-PrintConfiguration from Windows PowerShell

- D. Set-Printer from Windows PowerShell
- E. Printers & scanners from the Settings app

Correct Answer: BD

Section: (none)

Explanation

Explanation/Reference:

QUESTION 10

A user has a laptop named Computer 1 that runs Windows 10 and has a 64-bit application named App1 installed. App1 fails to launch and generates an error message indicating that the application is not supported on this version of Windows. You need to ensure that App1 can run successfully. What should you do?

- A. Create a package that includes App1 by using the Windows Imaging and Configuration Designer (Windows ICD).
- B. Create a fix in the Compatibility Administrator.
- C. Run App1 in the Standard User Analyzer (SUA).
- D. Use the Application Compatibility Manager (ACM) to create an inventory package.

Correct Answer: B

Section: (none)

Explanation

Explanation/Reference:

Explanation:

[https://msdn.microsoft.com/en-us/library/windows/desktop/dd744763\(v=vs.85\).aspx](https://msdn.microsoft.com/en-us/library/windows/desktop/dd744763(v=vs.85).aspx)

QUESTION 11

You have a laptop that has a high resolution display. The Change the size of the text, apps, and other items setting is set to 175%. You install a desktop application named App1. When you start App1, the visual elements are misaligned, and the application interface does not appear as expected. You need to ensure that App1 is displayed properly without affecting how other applications are displayed. What should you do?

- A. Create an AppX package for App1.
- B. Run App1 as an administrator.

- C. Modify the Compatibility settings of App1.
- D. Configure an AppLocker rule for App1.

Correct Answer: C

Section: (none)

Explanation

Explanation/Reference:

QUESTION 12

A user has a computer that runs Windows 10.

The user reports that it takes a very long time to start the computer.

You need to identify which user applications cause the greatest delays when starting the computer.

Which tool should you use?

- A. Performance Monitor
- B. System Configuration
- C. Resource Monitor
- D. Task Manager

Correct Answer: D

Section: (none)

Explanation

Explanation/Reference:

<http://www.pcadvisor.co.uk/how-to/windows/how-change-windows-10-startup-programs-stop-apps-opening-3615075/>

QUESTION 13

You have a computer named Computer1 that has the following four hard disk drives installed:

- Drive 1: A 500-GB OS volume
- Drive 2: A 400-GB data volume
- Drive 3: A 400-GB empty volume
- Drive 4: A 500-GB empty volume

You need to create a two-way mirror by using Storage Spaces. The solution must minimize data loss.

Which drives should you use?

- A. Drive 1 and Drive 2
- B. Drive 1 and Drive 4

- C. Drive 2 and Drive 3
- D. Drive 3 and Drive 4

Correct Answer: D

Section: (none)

Explanation

Explanation/Reference:

Explanation:

www.windowscentral.com/how-use-storage-spaces-windows-10>[http://www. windowscentral.com/how-use-storage-spaces-windows-10](http://www.windowscentral.com/how-use-storage-spaces-windows-10)

QUESTION 14

Your company is developing a Universal Windows Platform (UWP) app named App1. App1 is not published in the Windows Store

You are provided with an AppX package for App1.

You need to install App1 locally.

What should you do first?

- A. From a Group Policy object (GPO), add a software installation package.
- B. From the Settings app, modify the for developers setting.
- C. Set the AppX Deployment Service (AppXSVC) to Automatic and restart the computer.
- D. Disable User Account Control (UAC).

Correct Answer: B

Section: (none)

Explanation

Explanation/Reference:

<https://msdn.microsoft.com/windows/uwp/get-started/enable-your-device-for-development>

QUESTION 15

You purchase licenses for several apps from the Windows Store and you list the apps in your Windows Store for Business.

You need to tell users how to install the apps.

What should you instruct the users to use?

- A. the Windows Store app and a Microsoft account
- B. a web browser and a Microsoft Azure Active Directory (Azure AD) account
- C. the Windows Store app and a Microsoft Azure Active Directory (Azure AD) account
- D. a web browser and a Microsoft account

Correct Answer: C

Section: (none)

Explanation

Explanation/Reference:

Explanation:

<https://technet.microsoft.com/en-us/itpro/windows/manage/distribute-apps-from-your-private-store>

QUESTION 16

Note: This question is part of a series of questions that use the same scenario. For your convenience, the scenario is repeated in each question. Each question presents a different goal and answer choices, but the text of the scenario is exactly the same in each question in this series.

Start of repeated scenario

Your network contains a single Active Directory domain named adatum.com.

The network contains five servers configured as shown in the following table:

Server name Domain/workgroup Role

Server name	Domain/workgroup	Role
DC1	Adatum.com	Domain controller
DC2	Adatum.com	Domain controller
Server1	Adatum.com	Member server
Server2	Adatum.com	Member server
Test Server	Workgroup	File server

All of the servers run Windows Server 2012 R2.

Test_Server has a shared folder named ShareA. Only local users have permissions to ShareA.

The network contains a mainframe computer that is administered by using the Telnet protocol.

The domain contains four client computers configured as shown in the following table:

Computer name	Primary user
Computer1	User1
Computer2	User2
Computer3	User3
Computer4	User4

All of the client computers run the 64-bit version of Windows. User3 frequently accesses ShareA. Remote Desktop is enabled on Computer2.

Your company identifies the following requirements:

- Ensure that you can test unsigned device drivers on Computer1.
- Enable Credential Guard on Computer2.
- Run commands and cmdlets remotely on Computer2.
- Configure User Account Control (UAC) on Computer3 to prompt administrators for credentials when elevated privileges are required.
- Ensure that User1 can view and interact with a desktop session of User3.
- Ensure that User2 can use Telnet to manage the mainframe.
- Ensure that User4 can use Remote Desktop to access Computer4 remotely.

End of repeated scenario

You need to configure Computer3 to meet the UAC requirement. What should you use?

- A. User Account Control Settings
- B. Credential Manager
- C. Security Options in the Computer Configuration of the Local Computer Policy
- D. Security Settings in the User Computer of the Local Computer Policy.

Correct Answer: C

Section: (none)

Explanation

Explanation/Reference:

Your answer is incorrect.

Correct answer: C

Explanation:

<http://www.ghacks.net/2013/06/20/how-to-configure-windows-uac-prompt-behavior-for-admins-and-users/>

QUESTION 17

Note: This question is part of a series of questions that use the same scenario. For your convenience, the scenario is repeated in each question. Each question presents a different goal and answer choices, but the text of the scenario is exactly the same in each question in this series.

Start of repeated scenario

Your network contains a single Active Directory domain named adatum.com.

The network contains five servers configured as shown in the following table:

Server name Domain/workgroup Role

Server name	Domain/workgroup	Role
DC1	Adatum.com	Domain controller
DC2	Adatum.com	Domain controller
Server1	Adatum.com	Member server
Server2	Adatum.com	Member server
<u>Test Server</u>	Workgroup	File server

All of the servers run Windows Server 2012 R2.

Test_Server has a shared folder named ShareA. Only local users have permissions to ShareA.

The network contains a mainframe computer that is administered by using the Telnet protocol.

The domain contains four client computers configured as shown in the following table:

Computer name	Primary user
Computer1	User1
Computer2	User2
Computer3	User3
Computer4	User4

All of the client computers run the 64-bit version of Windows. User3 frequently accesses ShareA. Remote Desktop is enabled on Computer2.

Your company identifies the following requirements:

- Ensure that you can test unsigned device drivers on Computer1.
- Enable Credential Guard on Computer2.
- Run commands and cmdlets remotely on Computer2.

- Configure User Account Control (UAC) on Computer3 to prompt administrators for credentials when elevated privileges are required.
- Ensure that User1 can view and interact with a desktop session of User3.
- Ensure that User2 can use Telnet to manage the mainframe.
- Ensure that User4 can use Remote Desktop to access Computer4 remotely.

End of repeated scenario

On Test_Server, you reset the password for User3.
You need to ensure that User3 can access ShareA.
Which tool should you instruct User3 to use on Computer3?

- A. the Get-Credential cmdlet
- B. Credential Manager
- C. Authorization Manager
- D. Active Directory Users and Computers

Correct Answer: B

Section: (none)

Explanation

Explanation/Reference:

QUESTION 18

Note: This question is part of a series of questions that use the same scenario. For your convenience, the scenario is repeated in each question. Each question presents a different goal and answer choices, but the text of the scenario is exactly the same in each question in this series.

Start of repeated scenario

Your network contains a single Active Directory domain named adatum.com.
The network contains five servers configured as shown in the following table:

Server name	Domain/workgroup	Role
-------------	------------------	------

Server name	Domain/workgroup	Role
DC1	Adatum.com	Domain controller
DC2	Adatum.com	Domain controller
Server1	Adatum.com	Member server
Server2	Adatum.com	Member server
Test Server	Workgroup	File server

All of the servers run Windows Server 2012 R2.

Test_Server has a shared folder named ShareA. Only local users have permissions to ShareA.

The network contains a mainframe computer that is administered by using the Telnet protocol.

The domain contains four client computers configured as shown in the following table:

Computer name	Primary user
Computer1	User1
Computer2	User2
Computer3	User3
Computer4	User4

All of the client computers run the 64-bit version of Windows. User3 frequently accesses ShareA. Remote Desktop is enabled on Computer2.

Your company identifies the following requirements:

- Ensure that you can test unsigned device drivers on Computer1.
- Enable Credential Guard on Computer2.
- Run commands and cmdlets remotely on Computer2.
- Configure User Account Control (UAC) on Computer3 to prompt administrators for credentials when elevated privileges are required.
- Ensure that User1 can view and interact with a desktop session of User3.
- Ensure that User2 can use Telnet to manage the mainframe.
- Ensure that User4 can use Remote Desktop to access Computer4 remotely.

End of repeated scenario

You need to meet the Credential Guard requirement of Computer2.

Which two Windows features should you install? Each correct answer presents part of the solution.

A. Windows Process Activation Service (WAS)

- B. Embedded BootExperience
- C. Isolated User IMode
- D. Windows Identity Foundation 3.5
- E. Hyper-V Hypervisor

Correct Answer: CE

Section: (none)

Explanation

Explanation/Reference:

Explanation:

<https://technet.microsoft.com/en-us/itpro/windows/keep-secure/credential-guard>

QUESTION 19

Note: This question is part of a series of questions that use the same scenario. For your convenience, the scenario is repeated in each question. Each question presents a different goal and answer choices, but the text of the scenario is exactly the same in each question in this series.

Start of repeated scenario

Your network contains a single Active Directory domain named adatum.com. The network contains five servers configured as shown in the following table:

Server name Domain/workgroup Role

Server name	Domain/workgroup	Role
DC1	Adatum.com	Domain controller
DC2	Adatum.com	Domain controller
Server1	Adatum.com	Member server
Server2	Adatum.com	Member server
Test Server	Workgroup	File server

All of the servers run Windows Server 2012 R2.

Test_Server has a shared folder named ShareA. Only local users have permissions to ShareA.

The network contains a mainframe computer that is administered by using the Telnet protocol.

The domain contains four client computers configured as shown in the following table:

Computer name	Primary user
Computer1	User1
Computer2	User2
Computer3	User3
Computer4	User4

All of the client computers run the 64-bit version of Windows. User3 frequently accesses ShareA. Remote Desktop is enabled on Computer2.

Your company identifies the following requirements:

- Ensure that you can test unsigned device drivers on Computer1.
- Enable Credential Guard on Computer2.
- Run commands and cmdlets remotely on Computer2.
- Configure User Account Control (UAC) on Computer3 to prompt administrators for credentials when elevated privileges are required.
- Ensure that User1 can view and interact with a desktop session of User3.
- Ensure that User2 can use Telnet to manage the mainframe.
- Ensure that User4 can use Remote Desktop to access Computer4 remotely.

End of repeated scenario

You need to meet the requirement of User2.
What should you do?

- A. Run tlntadmn.exe
- B. Install a Windows feature.
- C. Modify the membership of the TelnetClients group.
- D. Configure Windows Firewall.

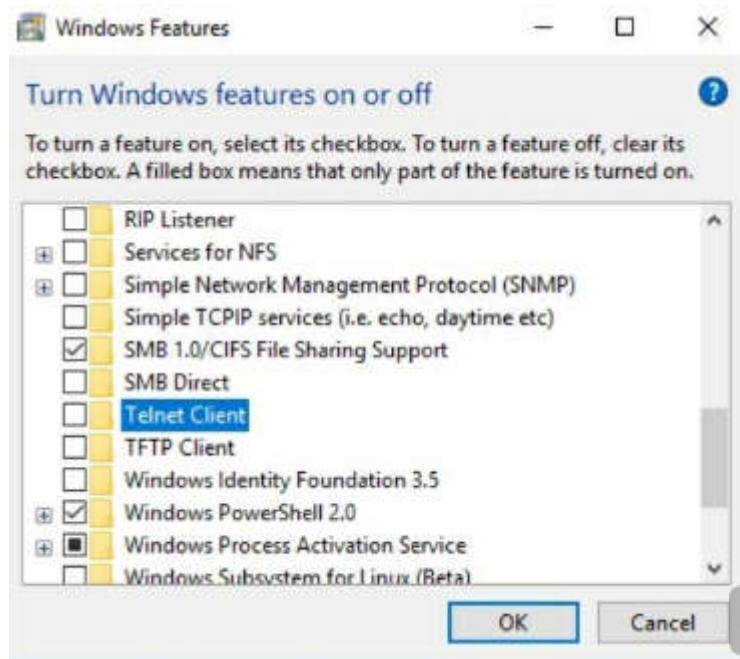
Correct Answer: B

Section: (none)

Explanation

Explanation/Reference:

You need the Telnet Client to manage a Telnet Server. The Telnet Client is not installed by default.



QUESTION 20

Note: This question is part of a series of questions that use the same set of answer choices. Each answer choice may be used once, more than once, or not at all. Your network contains a single Active Directory domain. The domain contains a VPN server that supports all of the VPN protocols. A user named User1 works from home and has a desktop computer that runs Windows 10 Pro. User1 has an application named App1 that requires access to a server on the corporate network. User1 creates a VPN connection on the computer. You need to ensure that when User1 opens App1, App1 can access the required data. What should you do?

- A. Click Turn on password protected sharing.
- B. Disable Network Discovery.
- C. Modify the Profile settings of an incoming firewall rule.
- D. Run the Add-VpnConnectionTriggerApplication cmdlet.
- E. Run the New-NetFirewallRule cmdlet and specify the- Direction Outbound parameter.
- F. Run the New-VpnConnection cmdlet.
- G. Run the Set-NetConnectionProfile cmdlet.
- H. Run the Set-VPNConnection cmdlet.

Correct Answer: D

Section: (none)

Explanation

Explanation/Reference:

Explanation:

[https://technet.microsoft.com/en-us/library/dn296460\(v=wps.630\).aspx](https://technet.microsoft.com/en-us/library/dn296460(v=wps.630).aspx)

QUESTION 21

Note: This question is part of a series of questions that use the same set of answer choices. Each answer choice may be used once, more than once, or not at all.
Your network contains a single Active Directory domain. The domain contains devices that run Windows 10 Enterprise.
You need to prevent computers from connecting to hosts on subnet 131.107.0.0/24.
What should you do?

- A. Click Turn on password protected sharing.
- B. Disable Network Discovery.
- C. Modify the Profile settings of an incoming firewall rule.
- D. Run the Add-VpnConnectionTriggerApplication cmdlet.
- E. Run the New-NetFirewallRule cmdlet and specify the- Direction Outbound parameter.
- F. Run the New-VpnConnection cmdlet.
- G. Run the Set-NetConnectionProfile cmdlet.
- H. Run the Set-VPNConnection cmdlet.

Correct Answer: E

Section: (none)

Explanation

Explanation/Reference:

[https://technet.microsoft.com/en-us/library/jj554908\(v=wps.630\).aspx](https://technet.microsoft.com/en-us/library/jj554908(v=wps.630).aspx)

QUESTION 22

Note: This question is part of a series of questions that use the same set of answer choices. Each answer choice may be used once, more than once, or not at all.
You have 10 computers that run Windows 10 Pro. The computers are in a workgroup.
A computer named PC_User1 has shared folder named Share1. Users are not prompted for credentials when they access Share1.
You modify the permissions on Share1 so that the share is shared only to a user named User1.
You need to ensure that when users from other computers in the workgroup access Share1, they must authenticate by using the credentials of User1.
What should you do?

- A. Click Turn on password protected sharing.
- B. Disable Network Discovery.
- C. Modify the Profile settings of an incoming firewall rule.
- D. Run the Add-VpnConnectionTriggerApplication cmdlet.
- E. Run the New-NetFirewallRule cmdlet and specify the- Direction Outbound parameter.
- F. Run the New-VpnConnection cmdlet.
- G. Run the Set-NetConnectionProfile cmdlet.
- H. Run the Set-VPNConnection cmdlet.

Correct Answer: A

Section: (none)

Explanation

Explanation/Reference:

<http://www.isunshare.com/windows-10/turn-off-or-on-password-protected-sharing-in-windows-10.html>

QUESTION 23

Note: This question is part of a series of questions that use the same set of answer choices. Each answer choice may be used once, more than once, or not at all.

Your network contains a single Active Directory domain. The domain contains a VPN server that supports all of the VPN protocols.

From a computer that runs Windows 10 Pro, a user named User1 creates an SSTP VPN connection to a network named VPN1.

User1 successfully connects to the VPN server. When User1 roams between different Wi-Fi access points, the user loses the connection to the corporate network and must manually re-establish the VPN connection.

You need to ensure that VPN1 automatically maintains the connection while the user roams between Wi-Fi access points.

What should you do?

- A. Click Turn on password protected sharing.
- B. Disable Network Discovery.
- C. Modify the Profile settings of an incoming firewall rule.
- D. Run the Add-VpnConnectionTriggerApplication cmdlet.
- E. Run the New-NetFirewallRule cmdlet and specify the- Direction Outbound parameter.
- F. Run the New-VpnConnection cmdlet.
- G. Run the Set-NetConnectionProfile cmdlet.
- H. Run the Set-VPNConnection cmdlet.

Correct Answer: D

Section: (none)

Explanation

Explanation/Reference:

Explanation:

[https://technet.microsoft.com/en-us/library/dn296460\(v=ws.630\).aspx](https://technet.microsoft.com/en-us/library/dn296460(v=ws.630).aspx)
QUESTION 24

Note: This question is part of a series of questions that use the same set of answer choices. Each answer choice may be used once, more than once, or not at all.

You have a computer named Computer1 that has storage configured as shown in the following table:

Disk name Size Storage pool name

Disk name	Size	Storage pool name
Disk1	200 GB	Pool1
Disk2	100 GB	Pool1
Disk3	500 GB	Pool1
Disk4	500 GB	Pool2
Disk5	500 GB	Pool2
Disk6	800 GB	None
Disk7	100 GB	Pool3
Disk8	100 GB	Pool3

Pool1 contains a storage space named Space 1 that is 300 GB

Pool3 contains a storage space named Space2 that is 100 GB

Pool2 is empty.

You need to add Disk6 to Pool1.

What should you use?

- A. Add-PhysicalDisk
- B. Diskpart
- C. New-VirtualDisk
- D. Remove-PhysicalDisk
- E. Resize-VirtualDisk
- F. Set-StoragePool
- G. Subst
- H. Update-Disk

Correct Answer: A

Section: (none)

Explanation

Explanation/Reference:

Explanation:

[https://technet.microsoft.com/en-us/library/hh848702\(v=ws.630\).aspx](https://technet.microsoft.com/en-us/library/hh848702(v=ws.630).aspx)

QUESTION 25

Note: This question is part of a series of questions that use the same set of answer choices. Each answer once, or not at all.

You have a computer named Computer1 that has storage configured as shown in the following table:

Disk name Size Storage pool name

Disk name	Size	Storage pool name
Disk1	200 GB	Pool1
Disk2	100 GB	Pool1
Disk3	500 GB	Pool1
Disk4	500 GB	Pool2
Disk5	500 GB	Pool2
Disk6	800 GB	None
Disk7	100 GB	Pool3
Disk8	100 GB	Pool3

Pool1 contains a storage space named Space1 that is 300 GB.

Pool3 contains a storage space named Space2 that is 100 GB.

Pool2 is empty.

Space1 contains 10 folders.

You need to access each folder as a separate drive from Windows Explorer

What should you use?

- A. Add-PhysicalDisk
- B. Diskpart
- C. New-VirtualDisk
- D. Remove-PhysicalDisk

- E. Resize-VirtualDisk
- F. Set-StoragePool
- G. Subst
- H. Update-Disk

Correct Answer: G

Section: (none)

Explanation

Explanation/Reference:

<http://www.howtogeek.com/howto/windows-vista/map-a-drive-letter-to-a-folder-the-easy-way-in-windows/>

QUESTION 26

Note: This question is part of a series of questions that use the same set of answer choices. Each answer once, or not at all.

You have a computer named Computer1 that has storage configured as shown in the following table:

Disk name Size Storage pool name

Disk name	Size	Storage pool name
Disk1	200 GB	Pool1
Disk2	100 GB	Pool1
Disk3	500 GB	Pool1
Disk4	500 GB	Pool2
Disk5	500 GB	Pool2
Disk6	800 GB	None
Disk7	100 GB	Pool3
Disk8	100 GB	Pool3

Pool1 contains a storage space named Space 1 that is 300 GB

Pool3 contains a storage space named Space2 that is 100 GB

Pool2 is empty.

You need to add a storage space to Pool2.

What should you use?

- A. Add-PhysicalDisk

- B. Diskpart
- C. New-VirtualDisk
- D. Remove-PhysicalDisk
- E. Resize-VirtualDisk
- F. Set-StoragePool
- G. Subst
- H. Update-Disk

Correct Answer: C

Section: (none)

Explanation

Explanation/Reference:

<https://technet.microsoft.com/en-us/itpro/powershell/windows/storage/new-virtualdisk>

QUESTION 27

Note: This question is part of a series of questions that use the same set of answer choices. Each answer once, or not at all.

You have a computer named Computer1 that has storage configured as shown in the following table:

Disk name Size Storage pool name

Disk name	Size	Storage pool name
Disk1	200 GB	Pool1
Disk2	100 GB	Pool1
Disk3	500 GB	Pool1
Disk4	500 GB	Pool2
Disk5	500 GB	Pool2
Disk6	800 GB	None
Disk7	100 GB	Pool3
Disk8	100 GB	Pool3

Pool1 contains a storage space named Space1 that is 300 GB.

Pool3 contains a storage space named Space2 that is 100 GB.

Pool2 is empty.

You need to add Disk7 to Pool1.
What should you use first?

- A. Add-PhysicalDisk
- B. Diskpart
- C. New-VirtualDisk
- D. Remove-PhysicalDisk
- E. Resize-VirtualDisk
- F. Set-StoragePool
- G. Subst
- H. Update-Disk

Correct Answer: D

Section: (none)

Explanation

Explanation/Reference:

<https://technet.microsoft.com/itpro/powershell/windows/storage/remove-physicaldisk>

QUESTION 28

Note: This question is part of a series of questions that use the same set of answer choices. Each answer choice may be used once, more than once, or not at all.

You have a computer that has a dual-boot configuration. Windows 10 Enterprise is installed on the local disk. Windows 10 Pro is installed in a VHDX file named Disk1.vhdx. Both of the installations are 64-bit versions.

You start the computer to Windows 10 Enterprise.

You need to ensure that you can install an unsigned driver to Windows 10 Pro when the computer starts in Windows 10 Pro.

What should you run?

- A. Add-WindowsImage
- B. bcdboot.exe
- C. bcdedit.exe
- D. bootcfg.exe
- E. bootiin.exe
- F. bootsect.exe
- G. diskpart.exe
- H. Expand-WindowsImage

Correct Answer: C

Section: (none)

Explanation**Explanation/Reference:**

<http://www.drivethelife.com/windows-drivers/how-to-disable-driver-signature-enforcement-on-windows-10-8-7-xp-vista.html#part3>

QUESTION 29

Note: This question is part of a series of questions that use the same set of answer choices. Each answer choice may be used once, more than once, or not at all.

You have a computer named Computer1.

Computer1 has a virtual hard disk (VHD) named Disk1.vhdx. Disk1.vhdx has an NTFS partition, which is visible in File Explorer as drive E.

You need to provision Windows 10 on Disk1.vhdx.

What should you run?

- A. Add-WindowsImage
- B. bcdboot.exe
- C. bcdedit.exe
- D. bootcfg.exe
- E. bootim.exe
- F. bootsect.exe
- G. diskpart.exe
- H. Expand-WindowsImage



Correct Answer: G

Section: (none)

Explanation**Explanation/Reference:**

Explanation:

<https://bcrawfordjr.wordpress.com/2014/10/05/install-windows-10-tech-preview-in-a-bootable-vhd/>

QUESTION 30

Note: This question is part of a series of questions that use the same set of answer choices. Each answer choice may be used once, more than once, or not at all.

You have a computer that has a dual-boot configuration. Windows 10 Pro is installed on the local disk. Windows 10 Enterprise is installed in a VHDX file named Disk1.vhdx.

You start the computer to Windows 10 Pro, and then you download a driver package.

You need to ensure that the next time the Windows 10 Enterprise installation starts, the driver is installed already.

What should you run first?

- A. Add-WindowsImage

- B. bcdboot.exe
- C. bcdedit.exe
- D. bootcfg.exe
- E. bootim.exe
- F. bootsect.exe
- G. diskpart.exe
- H. Expand-WindowsImage

Correct Answer: G

Section: (none)

Explanation

Explanation/Reference:

Explanation:

https://technet.microsoft.com/en-us/library/dd799267{v=ws.10}.aspx#BKMK_addDrivers

QUESTION 31

Note: This question is part of a series of questions that use the same set of answer choices. Each answer choice may be used once, more than once, or not at all.

You have a computer named Computer1 that has a dual-boot configuration. Computer1 has Windows 8.1 and Windows 10 installed.

You need to configure Computer1 to use only 4 GB of RAM when the computer starts in Windows 10.

What should you run?

- A. Add-WindowsImage
- B. bcdboot.exe
- C. bcdedit.exe
- D. bootcfg.exe
- E. bootim.exe
- F. bootsect.exe
- G. . diskpart.exe
- H. Expand-WindowsImage

Correct Answer: C

Section: (none)

Explanation

Explanation/Reference:

Explanation:

<https://technet.microsoft.com/en-us/library/cc709667{v=ws.10}.aspx>

QUESTION 32

Note: This question is part of a series of questions that use the same scenario. For your convenience, the scenario is repeated in each question. Each question presents a different goal and answer choices, but the text of the scenario is exactly the same in each question in this series.

Start of repeated scenario

Your network contains a single Active Directory domain named contoso.com. All computers are members of the domain and run the 64-bit version of Windows 10 Enterprise.

On a test computer named Computer_Test1, you pin several company-specific applications in a group named Contoso Apps, and then you export the Start menu layout to a file named Contoso.xml.

You install Client Hyper-V on a computer named Computer6.

You identify the following requirements:

- Install the Hyper-V feature on a computer named Computer1.
- Use virtual smart card authentication on a computer named Computer2.
- Enable Secure Boot on a computer named Computer3.
- Connect a computer named Computer2 to a projector by using Miracast.
- Ensure that a user named User1 can use keyboard shortcuts by pressing one key at a time.
- Ensure that you can share the clipboard between Computer6 and the virtual machines running on Computer6.
- Add the Contoso Apps group to the Start menu of a computer named Computer7.

End of repeated scenario

You install all of the Contoso apps on Computer7.

You need to meet the requirements of Computer7.

What should you do?

- A. Run the Import-StartLayout cmdlet.
- B. Copy Contoso.xml to the C:\Users\Default\Start menu folder.
- C. Configure the Start Menu and Taskbar settings in a Group Policy.
- D. Copy Contoso.xml to the C:\ProgramData\Microsoft\Windows\Start Menu folder.

Correct Answer: A

Section: (none)

Explanation

Explanation/Reference:

Explanation:

<https://blogs.technet.microsoft.com/deploymentguys/2016/03/07/windows-10-start-layout-customization/#Exporting>

QUESTION 33

Note: This question is part of a series of questions that use the same scenario. For your convenience, the scenario is repeated in each question. Each question presents a different goal and answer choices, but the text of the scenario is exactly the same in each question in this series.

Start of repeated scenario

Your network contains a single Active Directory domain named contoso.com. All computers are members of the domain and run the 64-bit version of Windows 10 Enterprise.

On a test computer named Computer_Test1, you pin several company-specific applications in a group named Contoso Apps, and then you export the Start menu layout to a file named Contoso.xml.

You install Client Hyper-V on a computer named Computer6.

You identify the following requirements:

- Install the Hyper-V feature on a computer named Computer1.
- Use virtual smart card authentication on a computer named Computer2.
- Enable Secure Boot on a computer named Computer3.
- Connect a computer named Computer2 to a projector by using Miracast.
- Ensure that a user named User1 can use keyboard shortcuts by pressing one key at a time.
- Ensure that you can share the clipboard between Computer6 and the virtual machines running on Computer6.
- Add the Contoso Apps group to the Start menu of a computer named Computer7.

End of repeated scenario

Which hardware feature must Computer4 must support?

- A. a Wi-Fi adapter
- B. a Bluetooth adapter
- C. an HDMI port
- D. a MiniDisplayPort connector

Correct Answer: A

Section: (none)

Explanation

Explanation/Reference:

Explanation:

<https://www.microsoft.com/en-za/windows/windows-10-specifications#sysreqs>

QUESTION 34

Note: This question is part of a series of questions that use the same scenario. For your convenience, the scenario is repeated in each question. Each question presents a different goal and answer choices, but the text of the scenario is exactly the same in each question in this series.

Start of repeated scenario

Your network contains a single Active Directory domain named contoso.com. All computers are members of the domain and run the 64-bit version of Windows 10 Enterprise.

On a test computer named Computer_Test1, you pin several company-specific applications in a group named Contoso Apps, and then you export the Start menu layout to a file named Contoso.xml.

You install Client Hyper-V on a computer named Computer6.

You identify the following requirements:

- Install the Hyper-V feature on a computer named Computer1.
- Use virtual smart card authentication on a computer named Computer2.
- Enable Secure Boot on a computer named Computer3.
- Connect a computer named Computer2 to a projector by using Miracast.
- Ensure that a user named User1 can use keyboard shortcuts by pressing one key at a time.
- Ensure that you can share the clipboard between Computer6 and the virtual machines running on Computer6.
- Add the Contoso Apps group to the Start menu of a computer named Computer7.

End of repeated scenario

You need to meet the requirement of Computer6.
What should you configure?

- A. NUMA spanning
- B. enhanced session mode
- C. Hyper-V Guest Service Interface
- D. RemoteFX

Correct Answer: B

Section: (none)

Explanation

Explanation/Reference:

Explanation:

<https://technet.microsoft.com/en-us/windows-server-docs/compute/hyper-v/learn-more/use-local-resources-on-hyper-v-virtual-machine-with-vmconnect>

QUESTION 35

Note: This question is part of a series of questions that use the same scenario. For your convenience, the scenario is repeated in each question. Each question presents a different goal and answer choices, but the text of the scenario is exactly the same in each question in this series.

Start of repeated scenario

Your network contains a single Active Directory domain named contoso.com. All computers are members of the domain and run the 64-bit version of Windows 10 Enterprise.

On a test computer named Computer_Test1, you pin several company-specific applications in a group named Contoso Apps, and then you export the Start menu layout to a file named Contoso.xml.

You install Client Hyper-V on a computer named Computer6.

You identify the following requirements:

- Install the Hyper-V feature on a computer named Computer1.
- Use virtual smart card authentication on a computer named Computer2.
- Enable Secure Boot on a computer named Computer3.
- Connect a computer named Computer2 to a projector by using Miracast.
- Ensure that a user named User1 can use keyboard shortcuts by pressing one key at a time.
- Ensure that you can share the clipboard between Computer6 and the virtual machines running on Computer6.
- Add the Contoso Apps group to the Start menu of a computer named Computer7.

End of repeated scenario

You need to meet the requirement of User1.

Which Ease of Access setting should you configure?

- A. Toggle Keys
- B. Sticky Keys
- C. Filter Keys
- D. Mouse Keys

Correct Answer: B

Section: (none)

Explanation

Explanation/Reference:

<http://www.pcmech.com/article/how-to-manage-ease-of-access-features-in-windows-10/>

QUESTION 36

You have a computer named Computer1.

You obtain a new driver for a device installed on Computer1. The driver package is stored in C:\Drivers and includes the following files

- Driver.inf
- Driver.dll
- Driver.sys
- Driver.cat

You need to install the driver on Computer1 by using File Explorer.

Which file should you use to initiate the installation?

- A. Driver.sys
- B. Driver.dll
- C. Driver.cat
- D. Driver.inf

Correct Answer: D

Section: (none)

Explanation

Explanation/Reference:



QUESTION 37

You have four computers configured as shown in the following table:

Computer name	Trusted Platform Module (TPM) version	Wi-Fi Direct support	Second Level Address Translation (SLAT)-capable processor support	Camera type
Computer1	None	No	Yes	Webcam and illuminated infrared camera
Computer2	1.2	Yes	Yes	illuminated infrared camera
Computer3	2.0	No	Yes	Webcam
Computer4	2.0	Yes	No	Webcam

You need to deploy Windows 10 Enterprise. The deployment must support Miracast, BitLocker Drive Encryption (BitLocker), and Windows Hello with facial recognition.

On which computer should you install Windows 10?

- A. Computer1
- B. Computer2
- C. Computer3
- D. Computer4

Correct Answer: B

Section: (none)

Explanation

Explanation/Reference:

Explanation:

<https://www.microsoft.com/en-za/windows/windows-10-specifications#sysreqs>

QUESTION 38

Your network contains a single Active Directory domain that has a Key Management Service (KMS) host

You deploy Windows 10 to several laptops.

You need to ensure that Windows 10 is activated on the laptops immediately.

Which command should you run?

- A. `ospp.vbs/act`
- B. `slmgr.vbs/dlii`
- C. `slmgr.vbs/ato`
- D. `ospp.vbs/dstatus`

Correct Answer: C

Section: (none)

Explanation

Explanation/Reference:

Explanation:

[https://technet.microsoft.com/en-us/library/dn502540\(v=ws.11\).aspx](https://technet.microsoft.com/en-us/library/dn502540(v=ws.11).aspx)

QUESTION 39

Your network contains a single Active Directory domain. The domain contains two computers named Computer1 and Computer2

From Computer1, you need to view the installed devices and their associated drivers on Computer2.

What should you use?

- A. the Get-PnpDevice cmdlet
- B. the Get-WindowsDriver cmdlet
- C. the Get-OdbcDriver cmdlet
- D. the driverquery.exe command

Correct Answer: D

Section: (none)

Explanation

Explanation/Reference:

Explanation:

<https://blogs.technet.microsoft.com/askperf/2011/10/21/two-minute-drill-driverquery-exe/>

QUESTION 40

You need to create a script to verify the activation status on 100 computers.
What should you use in the script?

- A. the sfc.exe command and the /scannow parameter
- B. the sfc.exe command and the /verifyonly parameter
- C. the slmgr.vbs script and the /ipk parameter
- D. the slmgr.vbs script and the /dli parameter



Correct Answer: D

Section: (none)

Explanation

Explanation/Reference:

Explanation:

[https://technet.microsoft.com/en-us/library/dn502540\(v=ws.11\).aspx](https://technet.microsoft.com/en-us/library/dn502540(v=ws.11).aspx)

QUESTION 41

You install Windows 10 on a computer named Computer1. Computer1 is a member of a workgroup and will be used by multiple users to browse the Internet.

You need to ensure that a file named Policy1.docx appears on the desktop of Computer1 for all users who use the computer. The solution must minimize the number of copies of Policy1.docx.

What should you do?

- A. Copy Policy1.docx to C:\Users\Default\Desktop.