

**70-697.microsoft**

Number: 70-697  
Passing Score: 800  
Time Limit: 120 min



**Website:** <https://vceplus.com>  
**VCE to PDF Converter:** <https://vceplus.com/vce-to-pdf/>  
**Facebook:** <https://www.facebook.com/VCE.For.All.VN/>  
**Twitter :** [https://twitter.com/VCE\\_Plus](https://twitter.com/VCE_Plus)

<https://vceplus.com/>

### **Sections**

1. Manage identity
2. Plan desktop and device deployment
3. Plan and implement a Microsoft Intune device management solution
4. Configure networking
5. Configure storage
6. Manage data access and protection
7. Manage remote access
8. Manage apps
9. Manage updates and recovery
10. Mixed Questions

### **Exam A**

### **QUESTION 1**

You have an Active Directory domain named contoso.com that contains a deployment of Microsoft System Center 2012 Configuration Manager Service Pack 1 (SP1). You have a Microsoft Intune subscription that is synchronized to contoso.com by using the Microsoft Azure Active Directory Synchronization Tool (DirSync.)

You need to ensure that you can use Configuration Manager to manage the devices that are registered to your Microsoft Intune subscription.

Which two actions should you perform? Each correct answer presents a part of the solution.



<https://vceplus.com/>

- A. In Microsoft Intune, create a new device enrollment manager account.
- B. Install and configure Azure Active Directory Synchronization Services (AAD Sync.)
- C. In Microsoft Intune, configure an Exchange Connector.
- D. In Configuration Manager, configure the Microsoft Intune Connector role.
- E. In Configuration Manager, create the Microsoft Intune subscription.

**Correct Answer: DE**

**Section: Plan and implement a Microsoft Intune device management solution Explanation**

**Explanation/Reference:**

Explanation:

To allow Configuration Manager to manage mobile devices in the same context as other devices, it requires you to create a Windows Intune subscription and synchronize user accounts from Active Directory to Microsoft Online. to achieve that, you are required to complete the following tasks: ▪ Sign up for a Windows Intune organizational account

- Add a public company domain and CNAME DNS entry
- Verify users have public domain User Principal Names (UPNs)
- If you plan to use single sign-on, deploy and configure Active Directory Federated Services (ADFS)
- Deploy and Configure Active Directory Synchronization
- Reset users Microsoft Online password – If not using ADFS\*
- Configure Configuration Manager for mobile device management
- **Create the Windows Intune Subscription in the Configuration Manager console**
- **Add the Windows Intune Connector Site System role**
- Verify that Configuration Manager successfully connects to Windows Intune

References: <http://blogs.technet.com/b/configmgrteam/archive/2013/03/20/configuring-configuration-manager-sp1-to-manage-mobile-devices-using-windows-intune.aspx> [www.vceplus.com](http://www.vceplus.com) - VCE Exam Simulator - Download A+ VCE (latest) free Open VCE Exams - VCE to PDF Converter - PDF Online

## QUESTION 2

You have a Microsoft Intune subscription.

You have three security groups named Security1, Security2 and Security3. Security1 is the parent group of Security2. Security2 has 100 users.

You need to change the parent group of Security2 to be Security3.

What should you do first?

- A. Edit the properties of Security1.
- B. Edit the properties of Security2.
- C. Delete security2.
- D. Remove all users from Security2.

**Correct Answer: C**

**Section: Plan and implement a Microsoft Intune device management solution Explanation**

### Explanation/Reference:

Explanation:

You cannot change the parent group of a security group in Microsoft Intune. You can only delete the group and recreate another group with the correct parent. Deleting a group does not delete the users that belong to that group. Therefore, you do not need to remove the users from the group; you can just delete the group and recreate it.

References: <https://technet.microsoft.com/en-gb/library/dn646990.aspx>

## QUESTION 3

A company has 100 client computers that run Windows 10 Enterprise.

A new company policy requires that all client computers have static IPv6 addresses.

You need to assign static IPv6 addresses to the client computers.

Which Network Shell (netsh) command should you run?

- A. add address
- B. set interface
- C. set global
- D. set address

**Correct Answer: A**

**Section: Configure networking**

**Explanation** [www.vceplus.com](http://www.vceplus.com) - VCE Exam Simulator - Download A+ VCE (latest) free Open VCE Exams - VCE to PDF Converter - PDF Online

**Explanation/Reference:**

Explanation:

The *add address* Network Shell (netsh) command adds an IPv6 address to a specified interface.

References: [https://technet.microsoft.com/en-gb/library/cc740203\(v=ws.10\).aspx#BKMK\\_3](https://technet.microsoft.com/en-gb/library/cc740203(v=ws.10).aspx#BKMK_3)

**QUESTION 4**

A company has 10 portable client computers that run Windows 10 Enterprise.

The portable client computers have the network connections described in the following table.

Network name	Connection type	Network profile
CorpWired	Wired	Private
CorpWifi	Wireless	Public
HotSpot	Public hotspot	Public

None of the computers can discover other computers or devices, regardless of which connection they use.

You need to configure the connections so that the computers can discover other computers or devices only while connected to the CorpWired or CorpWifi connections.

What should you do on the client computers?

- A. For the CorpWifi connection, select Yes, turn on sharing and connect to devices.
- B. Turn on network discovery for the Public profile.
- C. Change the CorpWired connection to public. Turn on network discovery for the Public profile. For the HotSpot connection, select **No, don't turn on sharing or connect to devices**.
- D. For the CorpWired connection, select Yes, turn on sharing and connect to devices.
- E. Turn on network discovery for the Private profile.

**Correct Answer: C**

**Section: Configure networking**

**Explanation**

**Explanation/Reference:**

Explanation:

Of the answers given, this is the only single answer that meets the requirements.

Network discovery is a network setting that affects whether your computer can see (find) other computers and devices on the network and whether other computers on the network can see your computer. By default, Windows Firewall blocks network discovery, but you can enable it.

When we change the CorpWired connection to public, all networks will be in the Public profile. Enabling network discovery for the Public profile will enable the computers to see other computers on each network (including HotSpot).

To prevent network discovery on the HotSpot network, we can select **No, don't turn on sharing or connect to devices** for that network. This will disable Network discovery for the computer's connection to the HotSpot network.

### QUESTION 5

You have a computer named Computer1 that runs Windows 10 Enterprise. You add a 1 TB hard drive and create a new volume that has the drive letter D.

You need to limit the amount of space that each user can consume on D: to 200 GB. Members of the Administrators group should have no limit.

Which three actions should you perform? Each correct answer presents part of the solution.

- A. Run fsutil quota violations D:.
- B. Enable the Deny disk space to users exceeding quota limit setting.
- C. Enable the Enable Quota Management setting.
- D. Set a default quota limit.
- E. Run convert D: /FS:NTFS.
- F. Add a quota entry.



**Correct Answer:** BCD

**Section:**    **Configure**       **storage**

**Explanation**

#### **Explanation/Reference:**

Explanation:

To limit the amount of space that each user can consume, you should enable the Enable Quota Management setting, and then enter the appropriate values in the Limit Disk Space To text box and the Set Warning Level To text box, and then select the Deny Disk Space To Users Exceeding Quota Limit check box to enforce identical quota limits for all users.

References: <https://www.windowscentral.com/how-configure-disk-quota-windows-10>

### QUESTION 6

You purchase a new Windows 10 Enterprise desktop computer. You have four external USB hard drives.

You want to create a single volume by using the four USB drives. You want the volume to be expandable, portable and resilient in the event of failure of an individual USB hard drive.

You need to create the required volume.

What should you do?

- A. From Control Panel, create a new Storage Space across 4 USB hard drives. Set resiliency type to **Three-way mirror**.
- B. From Control Panel, create a new Storage Space across 4 USB hard drives. Set resiliency type to **Parity**.
- C. From Disk Management, create a new spanned volume.
- D. From Disk Management, create a new striped volume.

**Correct Answer:** B

**Section:**    **Configure**        **storage**

**Explanation**

**Explanation/Reference:**

Explanation:

Storage Spaces can combine multiple hard drives into a single virtual drive. To create a storage space, you'll have to connect two or more additional internal or external drives to your computer to create a storage pool. You can also specify an arbitrarily large logical size. When your existing drive begins to fill up and nears the physical limit, Windows will display a notification in the Action Center, prompting you to add additional physical storage space. Selecting the Parity resiliency type allows Windows to store parity information with the data, thereby protecting you from a single drive failure.

References:

<http://www.howtogeek.com/109380/how-to-use-windows-8s-storage-spaces-to-mirror-combine-drives/>

<https://technet.microsoft.com/en-us/library/cc772180.aspx> <https://technet.microsoft.com/en-us/library/cc732422.aspx>

**QUESTION**        **7**

**DRAG DROP**

You have a Windows 10 Enterprise computer. You have a 1-terabyte external hard drive.

You purchase a second 1-terabyte external hard drive.

You need to create a fault-tolerant volume that includes both external hard drives. You also need to ensure that additional external hard drives can be added to the volume.

Which three actions should you perform in sequence? To answer, move the appropriate actions from the list of actions to the answer area and arrange them in the correct order.

**Select and Place:**

Actions	Answer Area
Restore your data from the backup.	
From Storage Spaces, create a new storage pool. Set the Resiliency Type to <b>two-way mirror</b> .	
From Storage Spaces, create a new storage pool. Set the Resiliency Type to <b>parity</b> .	
From Storage Spaces, create a new storage pool. Set the Resiliency Type to <b>three-way mirror</b> .	
Back up the existing data on your original external hard drive.	
From Disk Management, create and format a new volume on the second external drive.	
From Disk Management, create a mirrored volume containing the two external drives.	

**Correct Answer:**

Actions	Answer Area
	Back up the existing data on your original external hard drive.
From Storage Spaces, create a new storage pool. Set the Resiliency Type to <b>parity</b> .	From Storage Spaces, create a new storage pool. Set the Resiliency Type to <b>two-way mirror</b> .
From Storage Spaces, create a new storage pool. Set the Resiliency Type to <b>three-way mirror</b> .	Restore your data from the backup.
From Disk Management, create and format a new volume on the second external drive.	
From Disk Management, create a mirrored volume containing the two external drives.	

**Section:** Configure storage

**Explanation**

**Explanation/Reference:**

Explanation:

Storage Spaces can combine multiple hard drives into a single virtual drive. To create a storage space, you'll have to connect two or more additional internal or external drives to your computer to create a storage pool. When creating the pool, any existing data on the disks will be lost. It is therefore important to back up the data if you do not want to lose it. You can also specify an arbitrarily large logical size. When your existing drive begins to fill up and nears the physical limit, Windows will display a notification in the Action Center, prompting you to add additional physical storage space. Selecting the Two-way mirror resiliency type allows Windows to store two copies of your data, so that you won't lose your data if one of your drives fails.

References:

<http://www.howtogeek.com/109380/how-to-use-windows-8s-storage-spaces-to-mirror-combine-drives/>

**QUESTION 8**

[www.vceplus.com](http://www.vceplus.com) - VCE Exam Simulator - Download A+ VCE (latest) free Open VCE Exams - VCE to PDF Converter - PDF Online



You support Windows 10 Enterprise computers that are members of an Active Directory domain. Recently, several domain user accounts have been configured with super-mandatory user profiles.

A user reports that she has lost all of her personal data after a computer restart.

You need to configure the user's computer to prevent possible user data loss in the future.

What should you do?

- A. Remove the .man extension from the user profile name.
- B. Configure Folder Redirection by using the domain group policy.
- C. Configure the user's documents library to include folders from network shares.
- D. Add the .dat extension to the user profile name.

**Correct Answer: B**

**Section: Configure storage**

**Explanation**

**Explanation/Reference:**

Explanation:

Folder Redirection allows administrators to redirect the path of a folder to a new location, which can be a folder on the local computer or a directory on a network file share. Users can then work with documents on a server as if the documents were based on a local drive, but are available to the user from any computer on the network. Folder Redirection can be found under Windows Settings in the console tree by editing domain-based Group Policy via the Group Policy Management Console (GPMC).

References:

<https://technet.microsoft.com/en-gb/library/cc732275.aspx> <http://windowsitpro.com/systems-management/inside-user-profiles>

### **QUESTION 9**

You have a client Windows 10 Enterprise computer. The computer is joined to an Active Directory domain. The computer does not have a Trusted Platform Module (TPM) chip installed.

You need to configure BitLocker Drive Encryption (BitLocker) on the operating system drive.

Which Group Policy object (GPO) setting should you configure?



<https://vceplus.com/>

- A. Allow access to BitLocker-protected fixed data drives from earlier version of Windows.
- B. Require additional authentication at startup.
- C. Allow network unlock at startup.
- D. Configure use of hardware-based encryption for operating system drives.

**Correct Answer: B**

**Section: Configure storage**

**Explanation**



**Explanation/Reference:**

Explanation:

To make use of BitLocker on a drive without TPM, you should run the gpedit.msc command. You must then access the *Require additional authentication at startup* setting by navigating to *Computer Configuration\Administrative Templates\Windows Components\Bit Locker Drive Encryption\Operating System Drives* under Local Computer Policy. You can now enable the feature and tick the *Allow BitLocker without a compatible TPM* checkbox.

References:

<http://www.howtogeek.com/howto/6229/how-to-use-bitlocker-on-drives-without-tpm/> [https://technet.microsoft.com/en-us/library/jj679890.aspx#BKMK\\_depot4](https://technet.microsoft.com/en-us/library/jj679890.aspx#BKMK_depot4)

### QUESTION 10

You administer Windows 10 Enterprise desktop computers that are members of an Active Directory domain.

You want to create an archived copy of user profiles that are stored on the desktops. You create a standard domain user account to run a backup task.

You need to grant the backup task user account access to the user profiles.

What should you do?

- A. Add the backup task account to the Remote Management Users group on a domain controller.
- B. Add the backup task account to the Backup Operators group on every computer.
- C. Add the backup task account to the Backup Operators group on a domain controller.
- D. Set the backup task account as NTFS Owner on all the profiles.

**Correct Answer:** B

**Section:** Configure storage

**Explanation**

**Explanation/Reference:**

Explanation:

The Local Backup Operators group can back up and restore files on a computer, regardless of any permission that protect those files.

References:

<https://technet.microsoft.com/en-us/library/cc771990.aspx> <https://technet.microsoft.com/en-us/library/dn579255.aspx> [https://technet.microsoft.com/en-us/library/cc779180\(v=ws.10\).aspx](https://technet.microsoft.com/en-us/library/cc779180(v=ws.10).aspx)

### QUESTION 11

You have a Windows 10 Enterprise computer.

The computer has a shared folder named C:\Marketing. The shared folder is on an NTFS volume.

The current NTFS and share permissions are configured as follows.

Group name	NTFS permission	Shared folder permission
Everyone	Read and Execute	Read
Marketing	Modify	Full Control

UserA is a member of both the Everyone group and the Marketing group. UserA must access C:\Marketing from across the network. You need to identify the effective permissions of UserA to the C:\Marketing folder.

What permission should you identify?

- A. Full Control
- B. Read and Execute
- C. Read
- D. Modify

**Correct Answer:** D

**Section:** Manage data access and protection **Explanation**

**Explanation/Reference:**

Explanation:

UserA is a member of both the Everyone group and the Marketing group and UserA must access C:\Marketing from across the network.

When accessing a file locally, you combine the NTFS permissions granted to your account either directly or by way of group membership. The 'least' restrictive permission is then the permission that applies.

In this question, the NTFS permission is the least restrictive of Read/Execute and Modify... so Modify is the effective permission.

When accessing a folder or file across the network, you combine the effective NTFS permissions (Modify in this case) with the effective Share permissions granted to your account either directly or by way of group membership (Full Control in this case). The 'most' restrictive permission is then the permission that applies. Modify is more restrictive than Full Control so Modify is the effective permission.

#### QUESTION 12

A company has Windows 10 Enterprise client computers. Client computers are connected to a corporate private network. You deploy a Remote Desktop Gateway, DirectAccess, and a VPN server at the corporate main office.

Users are currently unable to connect from their home computers to their work computers by using Remote Desktop.

You need to ensure that users can remotely connect to their office computers by using Remote Desktop. Users must not be able to access any other corporate network resource from their home computers.

What should you do?

- A. Configure a Virtual Private Network connection.
- B. Configure the local resource settings of the Remote Desktop connection.
- C. Configure a DirectAccess connection.
- D. Configure the Remote Desktop Gateway IP address in the advanced Remote Desktop Connection settings on each client.

**Correct Answer: D**

**Section: Manage remote access**

**Explanation**

**Explanation/Reference:**

Explanation:

The solution is to deploy Remote Desktop Gateway in the office. Remote users can then connect to their computers on the office network by using Remote Desktop client on their home computers configured with the IP address of the Remote Desktop Gateway.

Remote Desktop Gateway (RD Gateway) is a role service that enables authorized remote users to connect to resources on an internal corporate or private network, from any Internet-connected device that can run the Remote Desktop Connection (RDC) client. The network resources can be Remote Desktop Session Host (RD Session Host) servers, RD Session Host servers running RemoteApp programs, or computers with Remote Desktop enabled.

RD Gateway uses the Remote Desktop Protocol (RDP) over HTTPS to establish a secure, encrypted connection between remote users on the Internet and the internal network resources on which their productivity applications run.

RD Gateway provides a comprehensive security configuration model that enables you to control access to specific internal network resources. RD Gateway provides a point-to-point RDP connection, rather than allowing remote users access to all internal network resources.

References: <https://technet.microsoft.com/en-gb/library/cc731150.aspx>

#### QUESTION 13

You manage a network that includes Windows 10 Enterprise computers. All of the computers on the network are members of an Active Directory domain.

The company recently proposed a new security policy that prevents users from synchronizing applications settings, browsing history, favorites, and passwords from the computers with their Microsoft accounts.

You need to enforce these security policy requirements on the computers.

What should you do?

- A. On the Group Policy Object, configure the **Accounts: Block Microsoft accounts** Group Policy setting to **Users can't add Microsoft accounts**.
- B. On the Group Policy Object, configure the **Accounts: Block Microsoft accounts** Group Policy setting to **Users can't add or log on with Microsoft accounts**.
- C. From each computer, navigate to Change Sync Settings and set the **Sync Your Settings** options for Apps, Browser, and Passwords to **Off**.
- D. From each computer, navigate to Change Sync Settings and set the **Sync Your Settings** option to **Off**.

**Correct Answer:** B

**Section:** Manage remote access

**Explanation**

**Explanation/Reference:**

Explanation:

The computers are members of a domain so the users should be using domain user accounts. We need to block the use of Microsoft accounts.

We could use the **Users can't add Microsoft accounts** setting which would mean that users will not be able to create new Microsoft accounts on a computer, switch a local account to a Microsoft account, or connect a domain account to a Microsoft account.

Alternatively, we can also deny the ability to log on to a domain computer with a Microsoft account (and sync computer settings) by using the **Users can't add or log on with Microsoft accounts**. This will ensure that the company policy is enforced.

References: <https://technet.microsoft.com/en-us/library/jj966262.aspx>

#### QUESTION 14

You plan to deploy a Microsoft Azure RemoteApp collection by using a custom template image. The image will contain Microsoft Office 365 ProPlus apps.

You need to ensure that multiple users can run Office 365 ProPlus from the custom template image simultaneously.

What should you include in the configuration file?

- A. <Property Name = "FORCEAPPSHUTDOWN" Value = "FALSE" />
- B. <Product ID = "0365ProPlusRetail" />
- C. <Property Name = "SharedComputerLicensing" Value = "1" />
- D. <Property Name = "AUTOACTIVATE" Value = "1" />

**Correct Answer:** C

**Section:** Manage apps

**Explanation**

**Explanation/Reference:**

[www.vceplus.com](http://www.vceplus.com) - VCE Exam Simulator - Download A+ VCE (latest) free Open VCE Exams - VCE to PDF Converter - PDF Online

Explanation:

To make Microsoft Office 365 ProPlus apps available as RemoteApps, you need to enable Shared computer activation. You do this by including the following text in the configuration file:

```
<Property Name = "SharedComputerLicensing" Value = "1" />
```

Shared computer activation lets you to deploy Office 365 ProPlus to a computer in your organization that is accessed by multiple users. For example, several nurses at a hospital connect to the same remote server to use their applications or a group of workers share a computer at a factory.

The most common shared computer activation scenario is to deploy Office 365 ProPlus to shared computers by using Remote Desktop Services (RDS). By using RDS, multiple users can connect to the same remote computer at the same time. The users can each run Office 365 ProPlus programs, such as Word or Excel, at the same time on the remote computer.

References: <https://technet.microsoft.com/en-us/library/dn782858.aspx>

### QUESTION 15

You are a system administrator for a department that has Windows 10 Enterprise computers in a domain configuration.

You deploy an application to all computers in the domain.

You need to use group policy to restrict certain groups from running the application.

What should you do?

- A. Set up DirectAccess.
- B. Configure AppLocker.
- C. Disable BitLocker.
- D. Run the User State Management Tool.

**Correct Answer: B**

**Section:      Manage      apps**

**Explanation**

**Explanation/Reference:**

Explanation:

AppLocker is a feature in Windows Server 2012, Windows Server 2008 R2, Windows 8, and Windows 7 that advances the functionality of the Software Restriction Policies feature. AppLocker contains new capabilities and extensions that reduce administrative overhead and help administrators control how users can access and use files, such as executable files, scripts, Windows Installer files, and DLLs.

AppLocker rules can be applied to security groups. We can use a group policy to apply AppLocker rules to the security groups to prevent them from running the application.

References: [https://technet.microsoft.com/en-us/library/ee619725\(v=ws.10\).aspx#BKMK\\_WhatRuleConditions](https://technet.microsoft.com/en-us/library/ee619725(v=ws.10).aspx#BKMK_WhatRuleConditions)

### QUESTION 16

[www.vceplus.com](http://www.vceplus.com) - VCE Exam Simulator - Download A+ VCE (latest) free Open VCE Exams - VCE to PDF Converter - PDF Online

You have a computer named Computer1 that runs Windows 10 Enterprise. Computer1 is configured to receive Windows updates from the Internet.

If a user is logged on to Computer1, you need to prevent Computer1 from automatically restarting without the logged on user's consent after the installation of the Windows updates.

What should you do?

- A. Enable the **Defer upgrades** setting.
- B. Edit the Automatic App Update scheduled task.
- C. Configure the **Choose how updates are delivered** setting.
- D. Configure the **Choose how updates are installed** setting.

**Correct Answer: D**

**Section: Manage updates and recovery Explanation**

**Explanation/Reference:**

Explanation:

In the **Choose how updates are installed** setting, you can use the drop-down menu to choose an option:

- Schedule a restart
- Automatically restart

The Schedule a restart option will allow the user to choose when the computer is restarted. Of the answers given, this is the only way to prevent Computer1 from automatically restarting without the logged on user's consent after the installation of the Windows updates.

References:

<http://windows.microsoft.com/en-gb/windows-10/getstarted-choose-how-updates-are-installed>

#### **QUESTION 17**

You use a Windows 8.1 tablet. The tablet receives Windows Update updates automatically from the Internet.

The tablet has Wi-Fi and is connected to a 3G mobile broadband Wi-Fi hot spot.

You need to minimize data usage while connected to this hot spot.

What should you do?

- A. Turn on Airplane Mode.
- B. Disable **File and Print Sharing** for mobile broadband connections.
- C. Configure the interface metric of IP settings for Wi-Fi connection as **1**.
- D. Edit the **Inbound Rule of Windows Firewall**, and then disable Internet Control Message Protocol (ICMP) traffic.
- E. Configure the broadband connection as a metered network.

**Correct Answer: E** [www.vceplus.com](http://www.vceplus.com) - VCE Exam Simulator - Download A+ VCE (latest) free Open VCE Exams - VCE to PDF Converter - PDF Online

## Section: Manage updates and recovery

### Explanation

#### Explanation/Reference:

Explanation:

You can limit the bandwidth used by the broadband connection by configuring it as a metered network. A metered network is a network where data downloaded is 'metered' (measured) and you are charged for the amount of data downloaded.

Setting a connection as metered prevents Windows from automatically using bandwidth in a number of ways including the following:

- **Disables automatic downloading of Windows updates:** Windows won't automatically download updates from Windows Update on metered Internet connections. You'll get a "Download" button you can click whenever you want to install updates.
- **Disables automatic downloading of app updates:** The Windows Store won't automatically download updates for your installed "Store apps" on metered connections, either. Desktop apps like Chrome, Firefox, and others will continue updating themselves normally.
- **Tiles may not update:** Microsoft says that the live tiles on your Start menu or Start screen "may" stop updating on a metered connection:

References: <http://www.howtogeek.com/226722/how-when-and-why-to-set-a-connection-as-metered-on-windows-10/>

#### QUESTION 18

A company has client computers that run Windows 10.

The client computer systems frequently use IPSec tunnels to securely transmit data.

You need to configure the IPSec tunnels to use 256-bit encryption keys.

Which encryption type should you use?

- A. 3DES
- B. DES
- C. RSA
- D. AES

**Correct Answer: D**

**Section: Mixed Questions**

### Explanation

#### Explanation/Reference:

Explanation:

IPSec tunnels can be encrypted by 256-bit AES.

L2TP/IPsec allows multiprotocol traffic to be encrypted and then sent over any medium that supports point-to-point datagram delivery, such as IP or Asynchronous Transfer Mode (ATM).

The L2TP message is encrypted with one of the following protocols by using encryption keys generated from the IKE negotiation process: Advanced Encryption Standard (AES) 256, AES 192, AES 128, and 3DES encryption algorithms.



**QUESTION 19**

You administer a group of 10 client computers that run Windows 10. The client computers are members of a local workgroup. Employees log on to the client computers by using their Microsoft accounts.

The company plans to use Windows BitLocker Drive Encryption. You need to back up the BitLocker recovery key.

Which two options can you use? (Each correct answer presents a complete solution. Choose two.)

- A. Save the recovery key to a file on the BitLocker-encrypted drive.
- B. Save the recovery key in the Credential Store.
- C. Save the recovery key to OneDrive.



<https://vceplus.com/> D.



Print the recovery key.

**Correct Answer:** CD

**Section:** Mixed      **Questions**

**Explanation**

**Explanation/Reference:**

Explanation:

C: The BitLocker recovery key is saved in your OneDrive account in the cloud.

D: The recovery key can be printed.

References: <https://support.microsoft.com/en-us/help/17133/windows-8-bitlocker-recovery-keys-frequently-asked-questions>

**QUESTION 20**

You are using sysprep to prepare a system for imaging.

You want to reset the security ID (SID) and clear the event logs.

Which option should you use?

- A. /generalize
- B. /oobe

- C. /audit
- D. /unattend

**Correct Answer:** A

**Section:** Mixed      **Questions**

**Explanation**

**Explanation/Reference:**

Explanation:

Generalize prepares the Windows installation to be imaged.

If this option is specified, all unique system information is removed from the Windows installation. The security ID (SID) resets, any system restore points are cleared, and event logs are deleted.

The next time the computer starts, the specialize configuration pass runs. A new security ID (SID) is created, and the clock for Windows activation resets, if the clock has not already been reset three times.

#### QUESTION 21

Group Policy is a set of rules which control the working environment of user accounts and computer accounts. Group Policy provides the centralized management and configuration of operating systems, applications and users' settings in an Active Directory environment.

In other words, Group Policy in part controls what users can and can't do on a computer system.

Which one of these policies requires a reboot?

- A. Turn off Windows Defender
- B. Turn off Autoplay for non-volume devices
- C. Disable Active Desktop
- D. Turn off Data Execution Prevention for Explorer

**Correct Answer:** D

**Section:** Mixed      **Questions**

**Explanation**

**Explanation/Reference:**

Explanation:

A reboot is REQUIRED when turning off Data Execution Prevention (DEP) for Explorer.

#### QUESTION 22

Which term is used to refer to installing apps directly to a device without going through the Windows Store?

- A. SQL Injection
- B. BranchCache

- C. DLL Hijack
- D. Sideload

**Correct Answer:** D

**Section:** Mixed Questions

**Explanation**

**Explanation/Reference:**

Explanation:

When you sideload an app, you deploy a signed app package to a device. You maintain the signing, hosting, and deployment of these apps, instead of installing the apps from Windows Store.

### QUESTION 23

IPv6 has a vastly larger address space than IPv4. This expansion provides flexibility in allocating addresses and routing traffic and eliminates the primary need for network address translation (NAT).

Do you know how many more bits there are in an IPv4 address compared to an IPv6 address?

- A. 4 times more
- B. 6 times more
- C. Twice as many
- D. 8 times more



**Correct Answer:** A

**Section:** Mixed Questions

**Explanation**

**Explanation/Reference:**

Explanation:

IPv4 addresses are 32 bit, IPv6 addresses are 128 bit. Four times more bits are used for Ipv6 compared to Ipv4.

### QUESTION 24

You are using sysprep to prepare a system for imaging.

You want to enable end users to customize their Windows operating system, create user accounts, name the computer, and other tasks.

Which sysprep setting should you use?

- A. /oobe
- B. /audit
- C. /generalize
- D. /unattend

**Correct Answer:** A

**Section:** Mixed Questions

**Explanation**

**Explanation/Reference:**

Explanation:

The /oobe option restarts the computer into Windows Welcome mode. Windows Welcome enables end users to customize their Windows operating system, create user accounts, name the computer, and other tasks. Any settings in the oobeSystem configuration pass in an answer file are processed immediately before Windows Welcome starts.

### QUESTION 25

You have set up a new wireless network for one of your prestigious clients.

The director wants to ensure that only certain designated wireless laptops can connect to the new network to prevent misuse.

What do you need to do?

- A. Use MAC address control
- B. Use IPv4 address control
- C. Use WEP
- D. Use WPA



**Correct Answer:** A

**Section:** Mixed Questions

**Explanation**

**Explanation/Reference:**

Explanation:

A media access control address (MAC address), also called a physical address, of a computer which is a unique identifier assigned to network interfaces for communications on the physical network segment. MAC addresses are used as a network address for most IEEE 802 network technologies, including Ethernet and WiFi.

### QUESTION 26

You administer computers that run Windows 10 Enterprise and are members of an Active Directory domain. The computers are encrypted with BitLocker and are configured to store BitLocker encryption passwords in Active Directory.

A user reports that he has forgotten the BitLocker encryption password for volume E on his computer. You need to provide the user a BitLocker recovery key to unlock the protected volume.

Which two actions should you perform? (Each correct answer presents part of the solution. Choose two.)

- A. Ask the user for his computer name.
- B. Ask the user to run the manage-bde-unlock E:-pw command.

- C. Ask the user for his logon name.
- D. Ask the user for a recovery keyID for the protected volume.

**Correct Answer:** AB

**Section:** Mixed Questions

**Explanation**

**Explanation/Reference:**

Explanation:

A: To view the recovery passwords for a computer you would need the computer name:

- In Active Directory Users and Computers, locate and then click the container in which the computer is located. ▪ Right-click the computer object, and then click Properties.
- In the Properties dialog box, click the BitLocker Recovery tab to view the BitLocker recovery passwords that are associated with the particular computer.

B: The Manage-bde: unlock command unlocks a BitLocker-protected drive by using a recovery password or a recovery key.

References:

[https://technet.microsoft.com/en-us/library/dd759200\(v=ws.11\).aspx](https://technet.microsoft.com/en-us/library/dd759200(v=ws.11).aspx) <http://www.concurrency.com/blog/enable-bitlocker-automatically-save-keys-to-active-directory/>

## QUESTION 27

You have a desktop computer that runs Windows 8 Enterprise. You add three new 3-terabyte disks. You need to create a new 9-terabyte volume.

Which two actions should you perform? (Each correct answer presents part of the solution. Choose two.)

- A. From Disk Management, create a new spanned volume.
- B. From Disk Management, convert all of the 3-terabyte disks to GPT.
- C. From PowerShell, run the New-VirtualDisk cmdlet.
- D. From Disk Management, bring all disks offline.
- E. From Diskpart, run the Convert MBR command.
- F. From PowerShell, run the Add-PhysicalDisk cmdlet.

**Correct Answer:** AB

**Section:** Mixed Questions

**Explanation**

**Explanation/Reference:**

Explanation:

B: GPT disks can grow to a very large size. The maximum partition (and disk) size is a function of the operating system version. Windows XP and the original release of Windows Server 2003 have a limit of 2TB per physical disk, including all partitions. For Windows Server 2003 SP1, Windows XP x64 edition, and later versions, the maximum raw partition of 18 exabytes can be supported.

A: A spanned volume is a dynamic volume consisting of disk space on more than one physical disk. If a simple volume is not a system volume or boot volume, you can extend it across additional disks to create a spanned volume, or you can create a spanned volume in unallocated space on a dynamic disk. You can make a spanned volume of GPT disks.

References: [https://msdn.microsoft.com/en-us/library/windows/hardware/dn640535\(v=vs.85\).aspx#gpt\\_faq\\_how\\_big](https://msdn.microsoft.com/en-us/library/windows/hardware/dn640535(v=vs.85).aspx#gpt_faq_how_big) <http://msdn.microsoft.com/en-us/library/windows/hardware/gg463524.aspx>

### QUESTION 28

At home, you use a Windows 10 desktop computer. At work, you use a Windows 10 laptop that is connected to a corporate network. You use the same Microsoft account to log on to both computers.

You have a folder with some personal documents on your desktop computer. The folder must be available and synced between both computers.

You need to ensure that the latest version of these files is available. What should you do?

- A. Create a folder by using OneDrive for Windows. Move all of the personal documents to the new folder.
- B. Move the folder to the Libraries folder. Go to PC Settings. Under Sync your settings, enable App settings.
- C. Right-click the folder and click Properties. Under Security, provide Full Control for the Microsoft account.
- D. Right-click the folder and select Share With, and then select Homegroup (view and edit).

**Correct Answer: A**

**Section: Mixed Questions**

**Explanation**

**Explanation/Reference:**

Explanation:

To save a doc you're working on to OneDrive, select a OneDrive folder from the list of save locations. To move files to OneDrive, open File Explorer and then drag them into a OneDrive folder.

Note: OneDrive (previously SkyDrive, Windows Live SkyDrive, and Windows Live Folders) is a file hosting service that allows users to sync files and later access them from a web browser or mobile device. Users can share files publicly or with their contacts; publicly shared files do not require a Microsoft account to access them. OneDrive is included in the suite of online services formerly known as Windows Live.

References: <https://www.windowscentral.com/how-create-one-large-volume-using-multiple-hard-drives-windows-10> [https://docs.microsoft.com/en-us/previous-versions/windows/it-pro/windows-server-2008-R2-and-2008/cc725671\(v=ws.11\)](https://docs.microsoft.com/en-us/previous-versions/windows/it-pro/windows-server-2008-R2-and-2008/cc725671(v=ws.11))

### QUESTION 29

You have 100 client Windows 10 computers. Users are NOT configured as local administrators. You need to prevent the users from running applications that they downloaded from the Internet, unless the applications are signed by a trusted publisher.

What should you configure in the Security Settings from the Action Center?

- A. Virus protection
- B. User Account Control
- C. Windows SmartScreen settings
- D. Network Access Protection

**Correct Answer:** C

**Section:** Mixed Questions

**Explanation**

**Explanation/Reference:**

Explanation:

SmartScreen checks files that you download from the web against a list of reported malicious software sites and programs known to be unsafe. If it finds a match, SmartScreen will warn you that the download has been blocked for your safety. SmartScreen also checks the files that you download against a list of files that are well known and downloaded by many people who use Internet Explorer. If the file that you're downloading isn't on that list, SmartScreen will warn you.

### QUESTION 30

You are a systems administrator of a small branch office. Computers in the office are joined to a Windows 10 HomeGroup.

The HomeGroup includes one shared printer and several shared folders.

You join a new computer to the HomeGroup and try to access the HomeGroup shared folders. You discover that the shared folders are unavailable, and you receive an error message that indicates the password is incorrect.

You need to reconfigure the new computer in order to access the HomeGroup resources.

What should you do?

- A. Adjust the time settings on the new computer to match the time settings of the HomeGroup computers.
- B. Change the HomeGroup password and re-enter it on the computers of all members of the HomeGroup.
- C. Change the default sharing configuration for the shared folders on the HomeGroup computers.
- D. Reset your account password to match the HomeGroup password.

**Correct Answer:** A

**Section:** Mixed Questions

**Explanation**

**Explanation/Reference:**

Explanation:

Symptoms

When joining a system to a homegroup, you may receive the following error message "The password is incorrect", even though you have typed the password correctly.

Cause

This can be caused by a difference in the Date and Time settings on the computer trying to join the homegroup, and not an invalid password. If the date/time of the computer joining a homegroup is greater than 24 hours apart from the date/time of the system that owns the homegroup, this will cause the error.

#### Resolution

Adjust the date/time settings on the system joining the homegroup, to match the system that owns the homegroup, and then try to join again.

#### QUESTION 31

Your network contains an Active Directory domain. The domain contains 100 Windows 10 client computers. All of the computers secure all connections to computers on the internal network by using IPsec.

The network contains a server that runs a legacy application.

The server does NOT support IPsec.

You need to ensure that some of the Windows 8 computers can connect to the legacy server. The solution must ensure that all other connections are secured by using IPsec. What should you do?



<https://vceplus.com/>

- A. Modify the settings of the Domain Profile.
- B. Create a connection security rule.
- C. Create an inbound firewall rule.
- D. Modify the settings of the Private Profile,

**Correct Answer:** A

**Section:** Mixed Questions

**Explanation**

#### Explanation/Reference:

Explanation:

A firewall profile is a way of grouping settings, such as firewall rules and connection security rules, which are applied to the computer depending on where the computer is connected. On computers running this version of Windows, there are three profiles for Windows Firewall with Advanced Security: Domain, Private, and Public.

The Domain profile is applied to a network adapter when it is connected to a network on which it can detect a domain controller of the domain to which the computer is joined.



References: [https://docs.microsoft.com/en-us/previous-versions/windows/it-pro/windows-server-2008-R2-and-2008/dd448531\(v=ws.10\)](https://docs.microsoft.com/en-us/previous-versions/windows/it-pro/windows-server-2008-R2-and-2008/dd448531(v=ws.10))

### QUESTION 32

You administer Windows 10 Enterprise laptop and desktop computers. Your company uses Active Directory Domain Services (AD DS) and Active Directory Certificate Services (AD CS).

Your company decides that access to the company network for all users must be controlled by two-factor authentication.

You need to configure the computers to meet this requirement.

What should you do?

- A. Install smart card readers on all computers. Issue smart cards to all users.
- B. Enable the Password must meet complexity requirements policy setting. Instruct users to logon by typing their user principal name (UPN) and their strong password.
- C. Create an Internet Protocol security (IPsec) policy on each Windows 10 Enterprise computer to encrypt traffic to and from the domain controller.
- D. Issue photo identification to all users. Instruct all users to create and use a picture password.

**Correct Answer: A**

**Section: Mixed Questions**

**Explanation**



**Explanation/Reference:**

Explanation:

Smart cards contain a microcomputer and a small amount of memory, and they provide secure, tamper-proof storage for private keys and X.509 security certificates.

A smart card is a form of two-factor authentication that requires the user to have a smart card and know the PIN to gain access to network resources.

### QUESTION 33

Your network contains an Active Directory domain and 100 Windows 10 client computers. All software is deployed by using Microsoft Application Virtualization (App-V) 5.0.

Users are NOT configured as local administrators.

Your company purchases a subscription to Microsoft Office 365 that includes Office 365 ProPlus.

You need to create an App-V package for Office 365 ProPlus. What should you do?

- A. Run the Office Customization Tool (OCT), run the App-V Sequencer and then run Setup /Packager.
- B. Download the Office Deployment Tool for Click-to-Run, run the App-V Sequencer and then run Setup /Admin.
- C. Download the Office Deployment Tool for Click-to-Run, run Setup /Download and then run Setup /Packager.
- D. Run the Office Customization Tool (OCT), run Setup /Download and then run the App-V Sequencer.

**Correct Answer:** C

**Section:** Mixed Questions

**Explanation**

**Explanation/Reference:**

Explanation:

The Office Deployment Tool allows the administrator to customize and manage Office 2013 Volume License or Office 365 Click-to-Run deployments.

The Office Deployment Tool Setup runs the following tasks:

Setup /Download – Downloads files to create an Office 15 installation

Setup /Configure – Adds, removes, or configures an Office 15 installation

Setup /Packager – Produces an Office 15 App-V package

#### **QUESTION 34**

You administer computers that run Windows 8 Enterprise and are members of an Active Directory domain. Some volumes on the computers are encrypted with BitLocker.

The BitLocker recovery passwords are stored in Active Directory. A user forgets the BitLocker password to local drive E: and is unable to access the protected volume.

You need to provide a BitLocker recovery key to unlock the protected volume.

Which two actions should you perform? (Each correct answer presents part of the solution. Choose two.)

- A. Ask the user to run the manage-bde-protectors-disable e: command.
- B. Ask the user for his or her logon name.
- C. Ask the user to run the manage-bde-unlock E:-pw command.
- D. Ask the user for his or her computer name.
- E. Ask the user for a recovery key ID for the protected drive.

**Correct Answer:** CD

**Section:** Mixed Questions

**Explanation**

**Explanation/Reference:**

Explanation:

D: To view the recovery passwords for a computer you would need the computer name:

- In Active Directory Users and Computers, locate and then click the container in which the computer is located.
- Right-click the computer object, and then click Properties.
- In the Properties dialog box, click the BitLocker Recovery tab to view the BitLocker recovery passwords that are associated with the particular computer.

C: The Manage-bde: unlock command unlocks a BitLocker-protected drive by using a recovery password or a recovery key.

References:

[https://technet.microsoft.com/en-us/library/dd759200\(v=ws.11\).aspx](https://technet.microsoft.com/en-us/library/dd759200(v=ws.11).aspx) <http://www.concurrency.com/blog/enable-bitlocker-automatically-save-keys-to-active-directory/>

**QUESTION 35**

You are a systems administrator for your company. The company has employees who work remotely by using a virtual private network (VPN) connection from their computers, which run Windows 8 Pro.

These employees use an application to access the company intranet database servers. The company recently decided to distribute the latest version of the application through using a public cloud.

Some users report that every time they try to download the application by using Internet Explorer, they receive a warning message that indicates the application could harm their computer.

You need to recommend a solution that prevents this warning message from appearing, without compromising the security protection of the computers. What should you do?

- A. Publish the application through a public file transfer protocol (FTP) site.
- B. Publish the application through an intranet web site.
- C. Instruct employees to disable the SmartScreen Filter from within the Internet Explorer settings.
- D. Publish the application to Windows Store.

**Correct Answer: B**

**Section: Mixed Questions**

**Explanation**

**Explanation/Reference:**

Explanation:

As the publication is to be published on the cloud, we should publish in through the Windows Store.

**QUESTION 36**

You administer computers that run Windows 8 Enterprise in an Active Directory domain in a single Active Directory Site. All user account objects in Active Directory have the Manager attribute populated. The company has purchased a subscription to Windows Intune. The domain security groups are synchronized with the Microsoft Online directory.

You create a Windows Intune group that specifies a manager as a membership criterion. You notice that the group has no members.

You need to ensure that users that meet the membership criteria are added to the Windows Intune group. What should you do?

- A. Force Active Directory replication within the domain.
- B. Ensure that all user accounts are identified as synchronized users.
- C. Ensure that the user who is performing the search has been synchronized with the Microsoft Online directory.
- D. Synchronize the Active Directory Domain Service (AD DS) with the Microsoft Online directory.

**Correct Answer: B**

**Section: Mixed Questions**

**Explanation**

**Explanation/Reference:**

Explanation:

For users and security groups to appear in the Windows Intune administrator console, you must sign in to the Windows Intune account portal and do one of the following:

- Manually add users or security groups, or both, to the account portal.
- Use Active Directory synchronization to populate the account portal with synchronized users and security groups.

The Windows Intune cloud service enables you to centrally manage and secure PCs through a single web-based console so you can keep your computers, IT staff, and users operating at peak performance from virtually anywhere without compromising the essentials--cost, control, security, and compliance.

References:

<http://technet.microsoft.com/en-us/windows/intune.aspx>

<http://technet.microsoft.com/library/hh441723.aspx>

### **QUESTION 37**

A company has an Active Directory Domain Services (AD DS) domain. All client computers run Windows 10. A local printer is shared from a client computer. The client computer user is a member of the Sales AD security group.

You need to ensure that members of the Sales security group can modify the order of documents in the print queue, but not delete the printer share.

Which permission should you grant to the Sales group?

- A. Manage queue
- B. Manage this printer
- C. Print
- D. Manage documents
- E. Manage spooler

**Correct Answer: D**

**Section: Mixed Questions**

**Explanation**

**Explanation/Reference:**

Explanation:

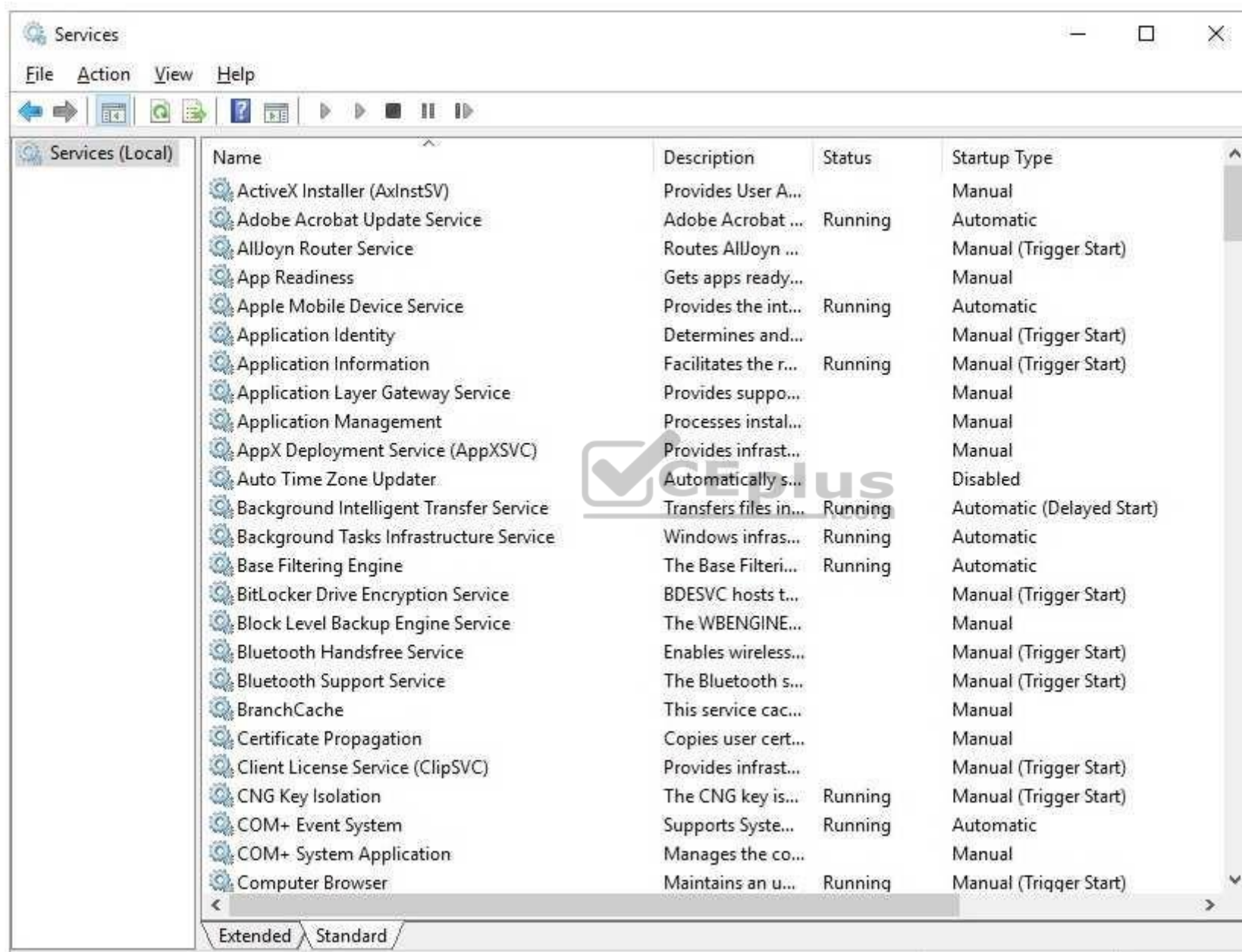
With the Manage Documents permission the user can pause, resume, restart, cancel, and rearrange the order of documents submitted by all other users. The user cannot, however, send documents to the printer or control the status of the printer.

### **QUESTION 38**

You have a computer that runs Windows 10. You have an application control policy on the computer. You discover that the policy is not enforced on the computer.

You open the Services snap-in as shown in the exhibit. (Click the Exhibit button.)





You need to enforce the application control policy on the computer.

What should you do?

- A. Set the Application Identity service Startup Type to Automatic and start the service.
- B. Set the Application Information service Startup Type to Automatic and start the service.
- C. Set the Application Management service Startup Type to Automatic and start the service.
- D. Set the Application Experience service Startup Type to Automatic and start the service.

**Correct Answer:** A

**Section:** Mixed Questions

**Explanation**

**Explanation/Reference:**

Explanation:

AppLocker, and its applications control policies, relies upon the Application Identity Service being active.

Note: When you install Windows 7, the startup type of the Application Identity Service is set to Manual. When testing AppLocker, you should keep the startup type as Manual in case you configure rules incorrectly. In that event, you can just reboot the computer and the AppLocker rules will no longer be in effect. Only when you are sure that your policies are applied correctly should you set the startup type of the Application Identity Service to Automatic.

#### **QUESTION 39**

Your network contains an Active Directory domain. The domain contains 100 computers that run Windows 10.

You plan to develop a line-of-business application and to deploy the application by using Windows Store for Business.

You need to ensure that users can see the private store of your company when they sign in to the Windows Store for Business.

What should you do first?

- A. Provision a Windows Dev Center dev account for each user.
- B. Assign the Windows Store Purchaser role to each user.
- C. Assign the Windows Store Admin role to each user.
- D. Provision a Microsoft Azure Active Directory (Azure AD) account for each user.
- E. Provision a Microsoft account for each user.

**Correct Answer:** D

**Section:** Mixed Questions

**Explanation**

**Explanation/Reference:**

Explanation:

#### **QUESTION 40**

You administer Windows 10 Enterprise client computers in your company network.

You change settings on a reference computer by using the Windows Firewall with Advanced Security tool. You want to apply the same settings to other computers.

You need to save the Windows Firewall with Advanced Security configuration settings from the reference computer. You also need to be able to import the configuration settings into a Group Policy object later.

What should you do?

- A. Open Local Group Policy Editor, select the Windows Firewall with Advanced Security node, and then select the Export Policy action.
- B. Run the netsh advfirewall export c:\settings.wfw command.
- C. Run the netsh firewall export c:\settings.xml command.
- D. Run the netsh advfirewall export c:\settings.xml command

**Correct Answer: B**

**Section: Mixed Questions**

**Explanation**

**Explanation/Reference:**

Explanation:

References: [https://docs.microsoft.com/en-us/previous-versions/windows/it-pro/windows-server-2008-R2-and-2008/cc771920\(v=ws.10\)#BKMK\\_1\\_export](https://docs.microsoft.com/en-us/previous-versions/windows/it-pro/windows-server-2008-R2-and-2008/cc771920(v=ws.10)#BKMK_1_export)

#### QUESTION 41

A company has 100 Windows 10 Enterprise client computers. The client computers are members of a workgroup.

A custom application requires a Windows Firewall exception on each client computer.

You need to configure the exception on the client computers without affecting existing firewall settings.

Which Windows PowerShell cmdlet should you run on each client computer?



<https://vceplus.com/>

- A. Set-NetFirewallRule
- B. New-NetFirewallRule
- C. New-NetIPSecMainModeRule
- D. Set-NetFirewallProfile
- E. Set-NetFirewallSetting



**Correct Answer: B**

**Section: Mixed Questions**

**Explanation**

**Explanation/Reference:**

Explanation:

References: <https://technet.microsoft.com/en-us/library/jj554908.aspx>

#### **QUESTION 42**

You administer Windows 10 Enterprise client computers in your company network.

A user reports that her Internet connection is slower than usual.

You need to identify the Process Identifiers (PIDs) of applications that are making connections to the Internet.

Which command should you run?

- A. netstat -an
- B. netsh show netdls
- C. netsh set audit-logging
- D. netstat -o
- E. ipconfig /showclassid



**Correct Answer: D Section: Mixed Questions Explanation**

**Explanation/Reference:**

Explanation:

#### **QUESTION 43**

You are the network administrator for Contoso, Ltd. Many users have Windows 10 Enterprise laptops, and your IT department configures all of them to use BitLocker on all fixed drives.

Many users carry sensitive corporate data on their USB drives.

You need to enable BitLocker for these USB drives.

Which key protector option should you use?

- A. a smartcard
- B. a startup key
- C. TPM+PIN
- D. TPM+Password

**Correct Answer:** A

**Section:** Mixed Questions

**Explanation**

**Explanation/Reference:**

Explanation:

You have two options. You can choose Password (not TPM+Password) or Smartcard.

References: <https://technet.microsoft.com/en-us/library/ff404223.aspx>

#### **QUESTION 44**

You have a Microsoft Intune subscription.

You need to uninstall the Intune agent from a computer.

What should you do?

- A. From the Groups node in the Microsoft Intune administration portal, click Delete.
- B. From the computer, run the provisioningutil.exe command.
- C. From the computer, run the clui.exe command.
- D. From the computer, use Programs and Features in Control Panel.

**Correct Answer:** B

**Section:** Mixed Questions

**Explanation**

**Explanation/Reference:**

Explanation:

Answer A is close but incorrect. You would need to select Retire/Wipe, not Delete.

References: <https://www.petervanderwoude.nl/post/uninstall-the-microsoft-intune-client/>

#### **QUESTION 45**

Your network contains an Active Directory domain named contoso.local. All users have email addresses in the @contoso.com domain.

You need to ensure that users can register Windows 10 mobile devices for mobile device management (MDM).

Which DNS record should you create?

- A. Enterpriseregistration.adatum.com

- B. Deviceregistration.adatum.com
- C. Deviceregistration.contoso.com
- D. Enterpriseregistration.contoso.com

**Correct Answer:** D

**Section:** Mixed      **Questions**

**Explanation**

**Explanation/Reference:**

Explanation:

References: <https://technet.microsoft.com/en-us/windows/dn771709.aspx>

#### **QUESTION 46**

You support Windows 10 Enterprise laptops. Microsoft BitLocker Administration and Monitoring (MBAM) is deployed on your network on a server named SERVER1.

Company policy requires that laptops with MBAM client installed prompt users to enable BitLocker within 2 hours of being started.

You need to make changes to the Configure MBAM Services Group Policy settings.

Which two actions should you perform? Each correct answer presents part of the solution.

- A. Set Select BitLocker Recovery Information to store to Recovery password only.
- B. Set Select BitLocker Recovery Information to store to Recovery password and key package.
- C. Set Enter status reporting frequency (in minutes) to 120.
- D. Set MBAM Status reporting endpoint to SERVER1.
- E. Set MBAM Recovery and Hardware service endpoint to SERVER1.
- F. Set Enter client checking status frequency (in minutes) to 120.

**Correct Answer:** EF

**Section:** Mixed      **Questions**

**Explanation**

**Explanation/Reference:**

Explanation:

References:

[http://www.projectleadership.net/blogs\\_details.php?id=3519](http://www.projectleadership.net/blogs_details.php?id=3519)

#### **QUESTION 47**

You purchase a new Windows 10 Enterprise desktop computer. You have six external USB hard drives.

You want to create a single volume by using the six USB drives. You want the volume to be expandable, portable, and resilient in the event of simultaneous failure of two USB hard drives.

You need to create the required volume.

What should you do?

- A. From Control Panel, create a new Storage Space across 6 USB hard drives. Set resiliency type to Parity.
- B. From Disk Management, create a new striped volume.
- C. From Disk Management, create a new spanned volume.
- D. From Control Panel, create a new Storage Space across 6 USB hard drives. Set resiliency type to Three-way mirror.

**Correct Answer: D**

**Section: Mixed Questions**

**Explanation**

**Explanation/Reference:**

Explanation:

#### QUESTION 48

Note: This question is part of a series of questions that use the same or similar answer choices. An answer choice may be correct for more than one question in the series. Each question is independent of the other questions in this series. Information and details provided in a question apply only to that question.

You have a computer that runs Windows 10 and is used by 10 users. The computer is joined to an Active Directory domain. All of the users are members of the Administrators group. Each user has an Active Directory account.

You have a Microsoft Word document that contains confidential information.

You need to ensure that you are the only user who can open the document.

What should you configure?

- A. account policies
- B. application control policies
- C. HomeGroup settings
- D. software restriction policies
- E. NTFS permissions
- F. Microsoft OneDrive
- G. share permissions
- H. Encrypting File System (EFS) settings

**Correct Answer: H**

**Section: Mixed Questions**  
**Explanation**

**Explanation/Reference:**

Explanation:

#### **QUESTION 49**

Note: This question is part of a series of questions that use the same or similar answer choices. An answer choice may be correct for more than one question in the series. Each question is independent of the other questions in this series. Information and details provided in a question apply only to that question.

A user successfully accesses \\server1\Sources\App1\. The user cannot access \\server1\Sources\App2\.

You need to ensure that the user can access \\server1\Sources\App2\.

What should you configure?

- A. Microsoft OneDrive
- B. share permissions
- C. account policies
- D. software restriction policies
- E. HomeGroup settings
- F. application control policies
- G. NTFS permissions
- H. Encrypting File System (EFS) settings



**Correct Answer: G**

**Section: Mixed Questions**

**Explanation**

**Explanation/Reference:**

Explanation:

#### **QUESTION 50**

Note: This question is part of a series of questions that use the same or similar answer choices. An answer choice may be correct for more than one question in the series. Each question is independent of the other questions in this series. Information and details provided in a question apply only to that question.

You have an application named App1 installed on a computer named Computer1. Computer1 runs Windows 10. App1 saves data to %UserProfile%\App1\Data.

You need to ensure that you can recover the App1 data if Computer1 fails.

What should you configure?

- A. share permissions
- [www.vceplus.com](http://www.vceplus.com) - VCE Exam Simulator - Download A+ VCE (latest) free Open VCE Exams - VCE to PDF Converter - PDF Online

- B. application control policies
- C. Encrypting File System (EFS) settings
- D. NTFS permissions
- E. HomeGroup settings
  
- F. Microsoft OneDrive
- G. software restriction policies
- H. account policies

**Correct Answer:** F

**Section:** Mixed Questions

**Explanation**

**Explanation/Reference:**

Explanation:

#### QUESTION 51

Note: This question is part of a series of questions that use the same or similar answer choices. An answer choice may be correct for more than one question in the series. Each question is independent of the other questions in this series. Information and details provided in a question apply only to that question.

You have a computer that runs Windows 10 and is used by 10 users. The computer is joined to an Active Directory domain. Each user has an Active Directory account.

You need to ensure that all of the users can access the files located in one another's libraries.

What should you configure?

- A. Microsoft OneDrive
- B. HomeGroup settings
- C. Encrypting File System (EFS) settings
- D. NTFS permissions
- E. Account policies
- F. Share permissions
- G. Software restriction policies
- H. Application control policies

**Correct Answer:** D

**Section:** Mixed Questions

**Explanation**

**Explanation/Reference:**

Explanation: [www.vceplus.com](http://www.vceplus.com) - VCE Exam Simulator - Download A+ VCE (latest) free Open VCE Exams - VCE to PDF Converter - PDF Online

References: <https://www.windowscentral.com/how-take-ownership-files-and-folders-windows-10>

#### QUESTION 52

All client computers in a company's network environment run Windows 10 Enterprise. A client computer has drives that are configured as shown in the following table.

Drive	Location	Type
C:	Internal	Dynamic
D:	Internal	Dynamic
E:	Internal	Optical
F:	External	Basic
Z:	Network	Mapped

You are choosing a backup destination for drive C. You have the following requirements:

- Ensure that the backup file is available if drive C: fails.
  - Ensure that the backup file can be accessed by other computers on the network. ▪
- Support the storage of multiple versions of system image backups.

You need to select a backup destination that meets the requirements.

Which destination should you select?

- A. drive D:
- B. drive F:
- C. drive E:
- D. drive Z:

**Correct Answer: B**

**Section: Mixed Questions**

**Explanation**

**Explanation/Reference:**

Explanation:

References: <https://blogs.technet.microsoft.com/filecab/2009/10/31/learn-more-about-system-image-backup/>

[www.vceplus.com](http://www.vceplus.com) - VCE Exam Simulator - Download A+ VCE (latest) free Open VCE Exams - VCE to PDF Converter - PDF Online

**QUESTION 53**

You have a computer that runs Windows 10.

You install a second hard disk drive on the computer and you create a new volume named E.

You need to enable system protection for volume E.

What should you use?

- A. the Wbadmin command
- B. the Settings app
- C. System Properties
- D. the Set-Volume cmdlet

**Correct Answer: C**

**Section: Mixed Questions**

**Explanation**

**Explanation/Reference:**

Explanation:

**QUESTION 54**

You are configuring two Windows 10 Enterprise client computers: A desktop computer named COMPUTER1 and a portable computer named COMPUTER2.

You have the following requirements:

- Store all personal data in a folder named Data on COMPUTER1.
  - Ensure that you can access all personal data from COMPUTER2, even when a network connection is unavailable. ▪
- Synchronize personal data between the computers twice a day.

You need to configure the computers to meet the requirements.

Which two actions should you perform? Each correct answer presents part of the solution.

- A. From COMPUTER2, connect to COMPUTER1 and configure the Data folder to always be available offline.
- B. From COMPUTER1, connect to COMPUTER2 and configure the Data folder to always be available offline.
- C. In Sync Center, configure a schedule for offline files.
- D. From COMPUTER2, map a network drive to the Data folder on COMPUTER1.
- E. In Sync Center, set up a new sync partnership.

**Correct Answer: CE**

**Section: Mixed Questions**



### Explanation

#### Explanation/Reference:

Explanation:

#### QUESTION 55

Your company has a standard power scheme for the sales team. You are replacing a laptop for a sales associate.

You import the power scheme onto the new laptop.

You need to apply the power scheme.

What should you do?

- A. Modify the power scheme under **Power and Sleep** settings.
- B. Run the **gpupdate /F** command.
- C. Run the **powercfg /S** command.
- D. Modify the advanced power settings.

**Correct Answer: C**

**Section: Mixed Questions**

#### Explanation

#### Explanation/Reference:

Explanation:

You can use the powercfg.exe tool to control power schemes (also named power plans) to use the available sleep states, to control the power states of individual devices, and to analyze the system for common energy-efficiency and battery-life problems.

The powercfg /SETACTIVE or powercfg /S commands make the specified power scheme active on the system.

Note: To Import a Power Plan

1. Open an elevated command prompt.
2. Type the command below into the command prompt, and press Enter to export the power plan.  
powercfg -import "Full path of .pow file"  
Note: Substitute Full path of .pow file in the command above with the actual full path of the .pow file of the power plan you exported.
3. When finished, you can close the command prompt if you like.
4. Users on the PC will now be able to select the imported power plan as their active power plan

References:

[https://msdn.microsoft.com/en-us/library/dn898599\(v=vs.85\).aspx](https://msdn.microsoft.com/en-us/library/dn898599(v=vs.85).aspx) <https://docs.microsoft.com/en-us/windows-hardware/design/device-experiences/powercfg-command-line-options>

#### QUESTION 56

You manage a client Windows 10 Enterprise computer named Computer1.

You have a OneDrive synchronized folder that contains .pdf files.

You need to ensure that you can restore previous versions of the .pdf files.

What should you do?

- A. Enable File History.
- B. Configure System Restore.
- C. Configure Computer1 as a trusted PC.
- D. Enable Sync your settings on Computer1.

**Correct Answer: A**

**Section: Mixed Questions**

**Explanation**

**Explanation/Reference:**

Explanation:

File History regularly backs up versions of your files in the Documents, Music, Pictures, Videos, and Desktop folders and the OneDrive files available offline on your PC. Over time, you'll have a complete history of your files. If the originals are lost, damaged, or deleted, you can restore them.

You can also browse and restore different versions of your files. For example, if you want to restore an older version of a file (even if it wasn't deleted or lost), you can browse through a timeline, select the version you want, and restore it.


#### **QUESTION 57**

A company has an Active Directory Domain Services (AD DS) domain with one physical domain controller. All client computers run Windows 10 Enterprise.

A client computer hosts a Windows 10 Enterprise virtual machine (VM) test environment. The VMs are connected to a private virtual switch that is configured as shown in the Virtual Switch Manager exhibit.



<https://vceplus.com/>


Virtual Switch Manager for COMPUTER1

Virtual Switches

New virtual network switch

New Virtual Switch  
Private virtual switch

Global Network Settings

MAC Address Range  
00-15-5D-E5-CC-00 to 00-15-5D-E...

Virtual Switch Properties

Name:

New Virtual Switch

Notes:

Connection type

What do you want to connect this virtual switch to?

External network:

Atheros AR9285 Wireless Network Adapter

☒ Allow management operating system to share this network adapter  
☐ Enable single-root I/O virtualization (SR-IOV)

Internal network

Private network

VLAN ID

☐ Enable virtual LAN identification for management operating system  

The VLAN identifier specifies the virtual LAN that the management operating system will use for all network communications through this network adapter. This setting does not affect virtual machine networking.

2

Remove

SR-IOV can only be configured when the virtual switch is created. An external virtual switch with SR-IOV enabled cannot be converted to an internal or private switch.

OK

Cancel

Apply

www.vceplus.com - VCE Exam Simulator - Download A+ VCE (latest) free Open VCE Exams - VCE to PDF Converter - PDF Online

The VMs are unable to connect to the domain controller. You have the following requirements:

- Configure the test environment to allow VMs to communicate with the domain controller.
- Ensure that the VMs can communicate with other VMs in the test environment when the domain controller is unavailable.

You need to meet the requirements.

What should you do first?

- A. Create a new virtual switch with an Internal Network connection type.
- B. Change the connection type of the private virtual switch to Internal only.
- C. Create a new virtual switch with a Private Network connection type.
- D. Create a new virtual switch with an External Network connection type.

**Correct Answer: D**

**Section: Mixed Questions**

**Explanation**

**Explanation/Reference:**

Explanation:



#### QUESTION 58

You have a laptop that is a member of a workgroup. The laptop does not have a Trusted Platform Module (TPM) chip.

You plan to enable BitLocker Drive Encryption (BitLocker) for the operating system drive.

What are two methods that you can use to unlock the drive when the laptop restarts? Each correct answer presents a complete solution.

- A. a password
- B. a Near Field Communication (NFC)-enabled portable device
- C. a USB drive
- D. a user account
- E. Network Unlock

**Correct Answer: AC**

**Section: Mixed Questions**

**Explanation**

**Explanation/Reference:**

Explanation:

References:

References: <http://www.howtogeek.com/howto/6229/how-to-use-bitlocker-on-drives-without-tpm/>

#### QUESTION 59

[www.vceplus.com](http://www.vceplus.com) - VCE Exam Simulator - Download A+ VCE (latest) free Open VCE Exams - VCE to PDF Converter - PDF Online

You administer Windows 10 Enterprise client computers that are members of an Active Directory domain that includes Active Directory Certificate Services (AD CS).

You restored a computer from a backup that was taken 45 days ago. Users are no longer able to log on to that computer by using their domain accounts. An error message states that the trust relationship between the computer and the primary domain has failed.

What should you do?

- A. Renew the certificates issued to the client computer.
- B. Reset the passwords of all affected domain users.
- C. Logon as a local administrator and issue the **netdom resetpwd** command. Log off and restart the computer.
- D. Restore the client computer from a known good backup that was taken two weeks earlier than the backup you previously restored.

**Correct Answer: C**

**Section: Mixed Questions**

**Explanation**

**Explanation/Reference:**

Explanation:

References: <http://theitbros.com/fix-trust-relationship-failed-without-domain-rejoining/>

#### **QUESTION 60**

You have an unsecured wireless network for users to connect to from their personal Windows 10 devices. You need to prevent Wi-Fi Sense from sharing information about the unsecured wireless network. What should you do?

- A. Configure the SSID of the unsecured wireless to contain\_optout.
- B. Instruct the users to disable Internet Protocol Version 6 (TCP/IPv6) on their wireless network adapters.
- C. Configure the SSID of the guest wireless to be hidden.
- D. Instruct the users to turn off Network Discovery on their devices.

**Correct Answer: A**

**Section: Mixed Questions**

**Explanation**

**Explanation/Reference:**

Explanation:

References: <http://www.pcworld.com/article/2951824/windows/how-to-disable-windows-10s-wi-fi-sense-password-sharing.html>

#### **QUESTION 61**

You have a computer that runs Windows 10.

[www.vceplus.com](http://www.vceplus.com) - VCE Exam Simulator - Download A+ VCE (latest) free Open VCE Exams - VCE to PDF Converter - PDF Online

You need to block all outbound and inbound communications that occur over TCP 9997, TCP 9999, and TCP 4000.

What is the minimum number of rules that you must create?

- A. 1
- B. 2
- C. 3
- D. 6

**Correct Answer:** D

**Section:** Mixed Questions

**Explanation**

**Explanation/Reference:**

Explanation:

References: [https://technet.microsoft.com/en-us/library/dd421709\(v=ws.10\).aspx](https://technet.microsoft.com/en-us/library/dd421709(v=ws.10).aspx)

#### QUESTION 62

You have a laptop that has connections for three Wi-Fi network named WiFi1, WiFi2, and Wi-Fi 3. You need to ensure that the laptop connects to WiFi1 when multiple WiFi1 networks are available. What should you do?

- A. From Netsh, configure the WLAN context.
- B. From Network Connections in Control Panel, modify the bindings for the WiFi.
- C. From the Windows Settings app, configure the Wi-Fi Sense settings.
- D. From Network Connections in Control Panel, modify the network provider order.

**Correct Answer:** D

**Section:** Mixed Questions

**Explanation**

**Explanation/Reference:**

Explanation:

References: <http://www.quepublishing.com/articles/article.aspx?p=2455390&seqNum=3>

#### QUESTION 63

You administer Windows 10 Enterprise client computers in your company network.

A guest at your company is connected to the Internet as shown in the following exhibit. (Click the exhibit button.)



You need to ensure that the guest user is able to share network resources over Wi-Fi without lowering the overall security of the computer. What should you do?

- A. Configure File and printer sharing settings for Public networks.
- B. Change the network location type to Private.
- C. Change the network location type to Work.
- D. Configure File sharing connections settings for All networks.

**Correct Answer:** D

**Section:** Mixed Questions

**Explanation**

**Explanation/Reference:**

Explanation:

References: [http://www.isunshare.com/windows-10/turn-off-or-on-password-protected-sharing-in-windows-10.html#\\_blank](http://www.isunshare.com/windows-10/turn-off-or-on-password-protected-sharing-in-windows-10.html#_blank)

#### QUESTION 64

You have a Remote Desktop Session Host (RD Session Host) server. The server is accessible from the internal network.

To access the server remotely, you must connect to a Remote Desktop Gateway (RD Gateway) server.

On a laptop, you successfully configure a Remote Desktop connection that you use to access the RD Session Host server from the internal network.

From your home, you attempt to connect to the RD Session Host server by using the Remote Desktop connection, but the connection fails.

You need to connect to the RD Session Host server.

What should you configure on the laptop?

- A. the Remote Assistance settings in System Properties.
- B. the Connect from anywhere settings in Remote Desktop Connection.

- C. the Performance settings in Remote Desktop Connection.
- D. the Remote Desktop settings in System Properties.

**Correct Answer:** B

**Section:** Mixed Questions

**Explanation**

**Explanation/Reference:**

Explanation:

References: [https://technet.microsoft.com/en-us/library/cc770601\(v=ws.11\).aspx](https://technet.microsoft.com/en-us/library/cc770601(v=ws.11).aspx)

#### QUESTION 65

You have a computer that runs Windows 10.

You need to ensure that the next time the computer restarts, the computer starts in safe mode.

What should you use?

- A. the System Configuration utility
- B. the Restore-Computer cmdlet
- C. the Bcdboot command
- D. System in Control Panel



**Correct Answer:** A

**Section:** Mixed Questions

**Explanation**

**Explanation/Reference:**

Explanation:

References: <http://www.digitalcitizen.life/4-ways-boot-safe-mode-windows-10>

#### QUESTION 66

You have a computer named Computer1 that runs Windows 10 Enterprise. You install a Universal app named App1 on Computer1.

You discover that an update for App1 is available.

You need to install the update as soon as possible.

What should you do?

- A. Log off and log on to the Computer1.
- B. From the Windows Update settings, modify the Choose how updates are delivered setting.



- C. From the Windows Update settings, modify the Choose how updates are installed setting.
- D. From the Windows Update settings, click Check for updates.

**Correct Answer:** C

**Section:** Mixed Questions

**Explanation**

**Explanation/Reference:**

Explanation:

References: <http://www.howtogeek.com/223068/what-you-need-to-know-about-windows-update-on-windows-10/>

#### QUESTION 67

You have a Windows 10 Enterprise computer that has File History enabled.

You create a folder named Data in the root of the C: drive.

You need to ensure that Data is protected by File History.

What are two possible ways to achieve the goal? Each correct answer presents a complete solution.

- A. From File Explorer, include Data in an existing library.
- B. Modify the Advanced settings from the File History Control Panel item.
- C. From File Explorer, create a new library that contains Data
- D. From File Explorer, modify the system attribute of Data.

**Correct Answer:** AC

**Section:** Mixed Questions

**Explanation**

**Explanation/Reference:**

Explanation:

References: <http://www.digitalcitizen.life/introducing-windows-8-how-backup-data-file-history>

#### QUESTION 68

**Note: This question is part of a series of questions that use the same or similar answer choices. An answer choice may be correct for more than one question in the series. Each question is independent of the other questions in this series. Information and details in a question apply only to that question.**

You have a mobile device that connects to a 4G network and a laptop.

You work from a remote location that does not have Internet access.

You plan to use the mobile device as a mobile hotspot for the laptop, so that you can access files from the corporate office.

Which Control Panel application should you use on the laptop to connect to the mobile hotspot?

- A. Phone and Modem
- B. RemoteApp and Desktop Connections
- C. System
- D. Credential Manager
- E. Work Folders
- F. Power Options
- G. Sync Center
- H. Network and Sharing Center

**Correct Answer:** H

**Section:** Mixed Questions

**Explanation**

**Explanation/Reference:**

Explanation:



#### QUESTION 69

You have a standalone Windows 10 Enterprise computer that has a single hard drive installed and configured.

You need to identify which storage devices can have content backed up by using File History.

What should you identify?

- A. A writable Blu-ray disc
- B. A writable DVD disc
- C. An internal drive that is formatted NTFS
- D. An SD card that is formatted FAT32

**Correct Answer:** D

**Section:** Mixed Questions

**Explanation**

**Explanation/Reference:**

Explanation:

References: <http://www.laptopmag.com/articles/back-files-file-history-windows-10>

#### QUESTION 70

You support Windows 10 Enterprise computers in a workgroup.

You have configured a local AppLocker policy to prevent users from running versions of app.exe previous to v9.4. Users are still able to run app.exe.

You need to block users from running app.exe by using the minimum administrative effort.

What should you do?

- A. Change the Application Identity service startup mode to automatic and start the service.
- B. Configure enforcement for Windows Installed rules.
- C. Configure a Software Restriction Policy publisher rule.
- D. Run the GPupdate /force command in an relevant command prompt.

**Correct Answer:** A

**Section:** Mixed Questions

**Explanation**

**Explanation/Reference:**

Explanation:

References: [https://technet.microsoft.com/en-us/library/ee791779\(v=ws.10\).aspx](https://technet.microsoft.com/en-us/library/ee791779(v=ws.10).aspx) <https://technet.microsoft.com/en-us/itpro/windows/keep-secure/configure-the-application-identity-service>

#### QUESTION 71

You plan to deploy a Microsoft Azure Remote App collection by using a custom template image. The image will contain Microsoft Office 365 apps. The image will be used to deploy a collection that will be accessed by 50 users.

You need to identify licensing requirements for the deployment.

Which two requirements should you identify? Each correct answer presents part of the solution.

- A. An activated Office 365 ProPlus installation
- B. Windows client access licenses (CALs) assigned to the users
- C. Office 365 ProPlus licenses assigned to the users
- D. Remote Desktop client access licenses (CALs) assigned to the users
- E. Office 365 Enterprise E3 service plan

**Correct Answer:** A

**Section:** Mixed Questions

**Explanation**

**Explanation/Reference:**

Explanation:

References: <https://docs.microsoft.com/en-us/azure/remotapp/remotapp-licensing>

#### QUESTION 72

**Note: This question is part of a series of questions that use the same or similar answer choices. An answer choice may be correct for more than one question in the series. Each question is independent of the other questions in this series. Information and details in a question apply only to that question.**

You have a laptop that is joined to an Active Directory domain.

You establish a WiFi connection to a customer's WiFi network.

You need to identify whether the current network location of the WiFi connection is private or public.

Which Control Panel application should you use?

- A. Phone and Modem
- B. RemoteApp and Desktop Connections
- C. System
- D. Credential Manager
- E. Work Folders
- F. Power Options
- G. Sync Center
- H. Network and Sharing Center



**Correct Answer: H**

**Section: Mixed Questions**

**Explanation**

**Explanation/Reference:**

Explanation:

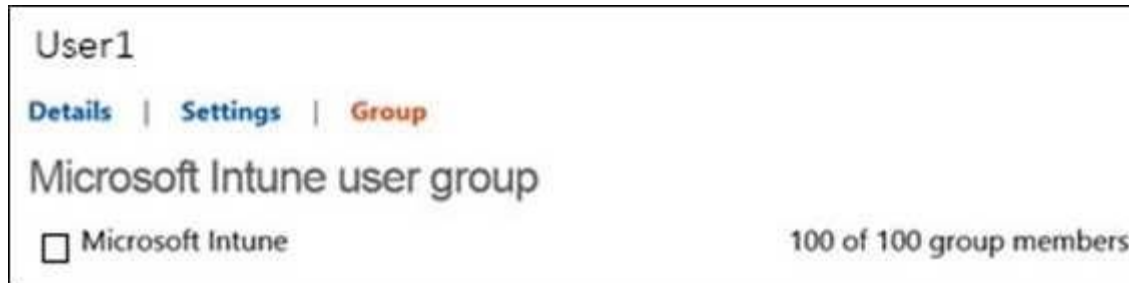
#### QUESTION 73

You have an on-premises Active Directory domain and a Microsoft Azure Active Directory. You have a Microsoft Intune subscription that is linked to the Azure Active Directory.

You configure directory synchronization between the on-premises Active Directory and the Azure Active Directory. You import 100 users into the Azure Active Directory.

Users report that they are unable to sign in to Microsoft Intune. You confirm that each user has a valid Active Directory account and password.

You open the Microsoft Intune Console and see the configuration of User1 as shown in the exhibit. (Click the Exhibit button.)



- A. Activate the synchronized user accounts.
- B. Purchase an Enterprise Mobility Suite subscription.
- C. Configure Microsoft Intune for single sign-on.
- D. Create a new Security Group in Microsoft Intune named Domain Intune Users.

**Correct Answer:** A

**Section:** Mixed Questions

**Explanation**

**Explanation/Reference:**

Explanation:

References: <http://www.robinhobo.com/how-to-setup-microsoft-intune/>

#### QUESTION 74

You have 100 Windows computers that are managed by using Microsoft Intune.

You need to ensure that when a new critical update is released, the update is approved automatically and deployed to the computers within 24 hours of approval.

What should you do from the Microsoft Intune administration portal?

- A. From the Admin node, click Updates, and then create a new automatic approval rule.
- B. From the updates node, select Critical Updates, and then modify the Approval settings.
- C. From the Admin node, click Enrollment Rules, and then modify the device enrollment rules.
- D. From the Policy node, click Configuration Policies, and then create a new Windows policy.
- E. From the Policy node, click Compliance Policies, and then create a new compliance policy.

**Correct Answer:** A

**Section:** Mixed Questions

**Explanation**

**Explanation/Reference:**

Explanation:

References: <https://docs.microsoft.com/en-us/intune/deploy-use/keep-windows-pcs-up-to-date-with-software-updates-in-microsoft-intune>

#### QUESTION 75

A company has Windows 10 Enterprise client computers. A client computer named COMPUTER1 has a shared folder named Folder1 located in the user's Downloads folder. Folder1 is shared only with employees in the Marketing department. All Marketing employees can connect to Folder1 from their client computers.

A Marketing employee is unable to connect to Folder1 from a legacy device that is not compatible with the Windows 10 Enterprise default sharing settings. The device is able to connect to resources on other client computers.

You need to configure COMPUTER1 to allow the device to connect to Folder1.

Which setting should you enable?



<https://vceplus.com/>

- A. Enable file sharing for devices that use 40- or 56-bit encryption
- B. Turn off password protected sharing
- C. Use 128-bit encryption to help protect file sharing connections
- D. Turn off network discovery
- E. Turn on sharing so anyone with network access can read and write files in the Public folders.

**Correct Answer:** A

**Section:** Mixed Questions

**Explanation**

**Explanation/Reference:**

Explanation:

References: <http://www.tenforums.com/tutorials/51024-file-sharing-encryption-level-change-windows-10-a.html>

#### QUESTION 76

You plan to deploy a customized Windows To Go workspace that uses an Unattend.xml file.

You need to prevent a local fixed disk from appearing in File Explorer when a computer starts from Windows To Go.

[www.vceplus.com](http://www.vceplus.com) - VCE Exam Simulator - Download A+ VCE (latest) free Open VCE Exams - VCE to PDF Converter - PDF Online

Which setting should you modify in Unattend.xml?

- A. Start Menu
- B. Storage
- C. Deviceaccess
- D. SanPolicy

**Correct Answer:** D

**Section:** Mixed Questions

**Explanation**

**Explanation/Reference:**

Explanation:

References: [https://technet.microsoft.com/en-us/library/jj592680\(v=ws.11\).aspx](https://technet.microsoft.com/en-us/library/jj592680(v=ws.11).aspx)

#### QUESTION 77

**Note:** This question is part of a series of questions that use the same or similar answer choices. An answer choice may be correct for more than one question in the series. Each question is independent of the other questions in this series. Information and details in a question apply only to that question.

On the corporate network, you have an Active Directory user account. The domain contains a sync share named Share1.

You have a personal computer that runs Windows 10. The computer is a member of a workgroup.

You need to access the files in Share1.

Which Control Panel application should you use?

- A. Phone and Modem
- B. Network and Sharing Center
- C. RemoteApp and Desktop Connections
- D. Power Options
- E. System
- F. Sync Center
- G. Credential Manager
- H. Work Folders

**Correct Answer:** H

**Section:** Mixed Questions

**Explanation**

**Explanation/Reference:**

Explanation:

References: <http://thesolving.com/storage/how-to-set-up-a-work-folders-sync-share-on-windows-server-2012-r2/> <https://support.microsoft.com/en-us/help/27903/windows-10-work-folders-faq>

**QUESTION 78**

**Note:** This question is part of a series of questions that use the same or similar answer choices. An answer choice may be correct for more than one question in the series. Each question is independent of the other questions in this series. Information and details in a question apply only to that question.

Your network contains a shared folder that is located at \\server1\data.

On a computer, you make the shared folder available for offline use.

You need to ensure that you have the most up-to-date version of the folder cached.

Which Control Panel application should you use?

- A. Credential Manager
- B. Phone and Modem
- C. Work Folders
- D. System
- E. RemoteApp and Desktop Connections
- F. Network and Sharing Center
- G. Sync Center
- H. Power Options



**Correct Answer:** C

**Section:** Mixed Questions

**Explanation**

**Explanation/Reference:**

**QUESTION 79**

**Note:** This question is part of a series of questions that use the same or similar answer choices. An answer choice may be correct for more than one question in the series. Each question is independent of the other questions in this series. Information and details in a question apply only to that question.

You make a folder available for offline use.

Currently, the folder is synchronizing and will take approximately 15 minutes to complete.



You need to ensure that the files continue to synchronize when you close the lid of the computer.

Which Control Panel application should you use?

- A. System
- B. RemoteApp and Desktop Connections
- C. Work Folders
- D. Power Options
- E. Network and Sharing Center
- F. Credential Manager
- G. Phone and Modem
- H. Sync Center

**Correct Answer:** D

**Section:** Mixed Questions

**Explanation**

**Explanation/Reference:**



#### QUESTION 80

You administer Windows 10 Enterprise client computers in your company network. A computer that is used by non-administrator users has a directory named C:\Folder1.

A shared collection of Microsoft Excel files is stored in the C:\Folder1 directory, with non-administrator users being granted modify permissions to the directory.

You discover that some files have been incorrectly modified by a user.

You need to determine which users are making changes to the files in the directory.

Which two actions should you perform? Each correct answer presents part of the solution.

**NOTE:** Each correct selection is worth one point.

- A. Set localpolicy: Computer Configuration\Windows Settings\Security Settings\Local Policies\Audit Policy\Audit object access to Failure.
- B. From the Auditing Entry for Folder1, set the Principal to Everyone, and then set the Type to Failure for the Modify permission.
- C. From the Auditing Entry for Folder1, set the Principal to Guests, and then set the Type to Success for the Modify permission.
- D. Set local policy: Computer Configuration\Windows Settings\Security Settings\Local Policies\Audit Policy\Audit object access to Success.
- E. From the Auditing Entry for Folder1, set the Principal to Guests, and then set the Type to Failure for the Modify permission.
- F. From the Auditing Entry for Folder, set the Principal to Everyone, and then set the Type to Success for the Modify permission.

**Correct Answer:** DF

**Section: Mixed Questions**  
**Explanation**

**Explanation/Reference:**

Explanation:

**QUESTION 81**

You provide IT support for a small startup company.

The company wants users to have Read and Write permissions to the company's shared folder. The network consists of a workgroup that uses Windows 10 Enterprise computers. You add each user to a group named NetworkUsers.

You need to grant permissions to the share. You have the following requirements:

- All users must have Read and Write access to existing files.
- Any new files must allow the creator to modify the new file's permissions.

Which two actions should you take? Each correct answer presents part of the solution.

- A. Grant Modify permissions to the NetworkUsers group on the shared folder.
- B. Grant Full Control permissions to the Domain Admins group on the shared folder.
- C. Grant List and Execute permissions to the NetworkUsers group on the shared folder.
- D. Grant Full Control permissions to the Creator Owner group on the shared folder.

**Correct Answer: AD**

**Section: Mixed Questions**

**Explanation**

**Explanation/Reference:**

Explanation:

**QUESTION 82**

A company has Windows 10 Enterprise client computers. Finance department employees store files in the C:\Finance directory. File History is on.

A Finance department employee attempts to restore a file to a previous version by using File History. The file is not available to restore.

You need to establish why the file history is not available and ensure that it is available in the future.

Which two actions should you perform? Each correct answer presents part of the solution.

**NOTE:** Each correct selection is worth one point.

- A. Review the File History backup log.
  - B. Restore the data files from the Previous Versions tab located in the folder properties.
  - C. Set the Protection Settings for drive C to On.
- [www.vceplus.com](http://www.vceplus.com) - VCE Exam Simulator - Download A+ VCE (latest) free Open VCE Exams - VCE to PDF Converter - PDF Online

D. Move the file into a library.

**Correct Answer:** AD

**Section:** Mixed Questions

**Explanation**

**Explanation/Reference:**

Explanation:

### QUESTION 83

You administer Windows 10 Enterprise client computers in your company network.

You need to configure a backup and recovery solution that meets the following requirements:

- Recovers the system if it doesn't start.
- Recovers the system if the hard drive fails.

Which two actions should you perform? Each correct answer presents part of the solution.

NOTE: Each correct selection is worth one point.

- A. Create a system repair disk.
- B. Create a storage space.
- C. Turn on File History.
- D. Configure system protection.
- E. Create a system image backup.



**Correct Answer:** AE

**Section:** Mixed Questions

**Explanation**

**Explanation/Reference:**

Explanation:

### QUESTION 84

You are the desktop administrator for a small company.

The company modifies its policy for retaining company financial documents from six months to three years. You currently use File History, retaining files for six months and saving copies of files every 20 minutes.

You need to adjust your current backup solution to accommodate the policy change.

What should you do?

- A. Set the Keep Saved Versions option in File History to Forever.

- B. Set the backup solution to Recovery model.
- C. Set the Save Copies of Files frequency to Daily.
- D. Set the File History log file setting to Archive the log when full, do not overwrite events.

**Correct Answer:** A

**Section:** Mixed      **Questions**

**Explanation**

**Explanation/Reference:**

Explanation:

You can select one, two years or forever; there is no option for three years. Therefore, the only option is to keep the files forever.

#### **QUESTION 85**

You have a computer that runs Windows 10 and has BitLocker Drive Encryption (BitLocker) configured.

You need to change the BitLocker PIN for the drive.

What should you run?

- A. the bitsadmin.exe command
- B. the Enable-BitLocker cmdlet
- C. the Add-BitLockerKeyProtector cmdlet
- D. the Set-PcdvDeviceUserPassword cmdlet



**Correct Answer:** C

**Section:** Mixed      **Questions**

**Explanation**

**Explanation/Reference:**

Explanation:

#### **QUESTION 86**

You have a Microsoft Intune subscription.

You create two compliance policies named Comp1 and Comp2. You create a configuration policy named ConfigPol1. The settings in each policy do not conflict with other policies.

Comp1 has low security settings. Comp2 has medium security settings. ConfigPol1 has high security settings.

You have a device named Device1. Device1 is a member of groups that have Comp1, Comp2 and ConfigPol1 applied.

You need to identify which policies will be enforced on Device1.

What should you identify?

- A. Comp1 only
- B. Comp2 only
- C. Comp1, Comp2 and ConfigPol1
- D. Comp1 and Comp2 only
- E. Comp1 and ConfigPol1 only
- F. ConfigPol1 only
- G. Comp2 and ConfigPol1 only

**Correct Answer: C**

**Section: Mixed Questions**

**Explanation**

**Explanation/Reference:**

Explanation:

#### **QUESTION 87**

Your network contains an Active Directory domain named contoso.com. All client computers run Windows 10 Enterprise and Microsoft Office 2013. All of the computers are joined to the domain.

Your company purchases a subscription to Office 365. An administrator creates an Office 365 account for each user and deploys a federated solution for Office 365.

You need to prevent the users from being prompted for a user account and a password each time they access services from Office 365.

Which account should you instruct the users to use when they sign in to their computer?

- A. a Microsoft account
- B. a local user account
- C. an Office 365 account
- D. a contoso.com account

**Correct Answer: D**

**Section: Mixed Questions**

**Explanation**

**Explanation/Reference:**

Explanation:

#### **QUESTION 88**

You have a computer named Client1. Client1 is joined to an Active Directory domain.

You need to join Client1 to an Azure Active Directory (Azure AD) tenant.

What should you do first?

- A. From User Accounts in Control Panel, configure the Manage User Accounts settings.
- B. From Computer Management, modify the membership for the Network Configuration Operators group.
- C. From the System in the Settings app, click Disconnect from organization.
- D. From the Local Group Policy Editor, modify the Add workstations to domain policy.

**Correct Answer: C**

**Section: Mixed Questions**

**Explanation**

**Explanation/Reference:**

Explanation: <https://blogs.technet.microsoft.com/enterprisemobility/2015/05/28/azure-ad-join-on-windows-10-devices/>

#### **QUESTION 89**

You administer Windows 10 Enterprise. Your network includes an Active Directory domain and a standalone server in a perimeter network that runs Windows Server 2008 R2.

Your company purchases five new tablets that run Windows 8. The tablets will be used to access domain resources and shared folders located on the standalone server.

You need to implement single sign-on (SSO) authentication for tablet users. You also need to ensure that you can audit personnel access to the shared folder.

Which two actions should you perform? Each correct answer presents part of the solution.

NOTE: Each correct selection is worth one point.

- A. Create a new Microsoft account for each user.
- B. Ensure that the local account for each user on the stand-alone server uses the same password as the corresponding Microsoft account.
- C. Join the tablets to a domain.
- D. Join the tablets to the same workgroup as the stand-alone server.
- E. Enable a guest account on the stand-alone server.
- F. On the stand-alone server, create user accounts that have the same logon names and passwords as the user domain accounts.

**Correct Answer: CF**

**Section: Mixed Questions**

**Explanation**

**Explanation/Reference:**

Explanation: [www.vceplus.com](http://www.vceplus.com) - VCE Exam Simulator - Download A+ VCE (latest) free Open VCE Exams - VCE to PDF Converter - PDF Online

**QUESTION 90**

You support Windows 10 Enterprise computers. Your company protects all laptops by using the BitLocker Network Unlock feature.

Some employees work from home.

You need to ensure that employees can log on to their laptops when they work from home.

What should you do?

- A. Have users run the Manage-bde.exe –unlock command before they disconnect from the company network.
- B. Ensure that the Trusted Platform Module (TPM) chips in the laptops are version 1.2 or greater.
- C. Enable BitLocker To Go.
- D. Provide employees with their BitLocker PINs.

**Correct Answer: D**

**Section: Mixed Questions**

**Explanation**

**Explanation/Reference:**

Explanation:

**QUESTION 91**

You administer Windows 10 Enterprise tablets that are members of an Active Directory domain.

You want to create an archived copy of My Documents folders that are stored on the tablets. You create a standard domain user account to run a backup task.

You need to grant the backup task user account access to the folders.

What should you do?

- A. Add the backup task account to the Remote Management Users group on a domain controller.
- B. Add the backup task account to the Backup Operators group on every tablet.
- C. Add the backup task account to the Backup Operators group on a domain controller.
- D. Set the backup task account as NTFS owner on all the folders.

**Correct Answer: B**

**Section: Mixed Questions**

**Explanation**

**Explanation/Reference:**

Explanation:

**QUESTION 92**

You are an IT professional for a bank. All of the user's files on the external drives are encrypted by using EFS.

You replace a user's computer with a new Windows 10 Enterprise computer. The user needs to connect her external hard drive to the new computer. You have the original computer's certificate and key.

You need to import the certificate and key onto the new computer.

Into which certificate store should you import the certificate and key?

- A. Untrusted Certificates
  - B. Trusted Root Certification Authorities
  - C. Personal
  - D. Trusted Publishers
- Correct Answer: C Section: Mixed Questions Explanation**

**Explanation/Reference:**

Explanation:

**QUESTION 93**

You manage Windows 10 Enterprise desktop and laptop computers for your company. They are part of a Windows Server 2012 R2 Active Directory Domain Services (AD DS) environment. The system administrators implement DFS for flexibility and availability. Laptops are able to connect to the company's private network by using local Ethernet or secure wireless.

Three users report that their files on the server are missing, and they no longer have drive G.

You need to ensure that the three users' computers can access the DFS namespace so that you can troubleshoot by using the DFS client.

What should you do?



<https://vceplus.com/>

- A. Ascertain whether the three users are connected through a wireless or wired connection.
- B. Ensure that the three users have access to the domain NETLOGON share.
- C. Ensure that the Net Logon service is running on all servers that are hosting the DFS namespace.
- D. Verify that a share is defined on the folder to which drive G is being mapped.

**Correct Answer: C** [www.vceplus.com](https://vceplus.com/) - VCE Exam Simulator - Download A+ VCE (latest) free Open VCE Exams - VCE to PDF Converter - PDF Online



**Section:** Mixed Questions  
**Explanation**

**Explanation/Reference:**

Explanation:

**QUESTION 94**

You have a computer named Client1. Client1 is joined to an Active Directory domain.

You need to join Client1 to an Azure Active Directory (Azure AD) tenant.

What should you do first?

- A. From the Local Group Policy Editor, modify the Add workstations to domain policy.
- B. From the network adapter properties, modify the DNS suffix.
- C. From System Control Panel, configure the computer to be a member of a workgroup.
- D. From the System in the Settings app, modify the sign-in options.

**Correct Answer:** D

**Section:** Mixed Questions  
**Explanation**



**Explanation/Reference:** Explanation:

<https://blogs.technet.microsoft.com/enterprisemobility/2015/05/28/azure-ad-join-on-windows-10-devices/>

**QUESTION 95**

You have a computer that runs Windows 10 and has BitLocker Drive Encryption (BitLocker) configured.

You need to change the BitLocker PIN for the drive.

What should you run?

- A. the repair-bde.exe Windows script file
- B. the Enable-BitLocker cmdlet
- C. the bitsadmin.exe command
- D. the manage-bde.exe command

**Correct Answer:** D

**Section:** Mixed Questions  
**Explanation**

**Explanation/Reference:** Explanation: [https://technet.microsoft.com/en-us/library/dd875513\(v=ws.10\).aspx#BKMK\\_changePIN](https://technet.microsoft.com/en-us/library/dd875513(v=ws.10).aspx#BKMK_changePIN)

#### QUESTION 96

A company has an Active Directory Domain Services (AD DS) domain. All client computers run Windows 10 Enterprise.

You are configuring security for a portable client computer that does not have a Trusted Platform Module (TPM) chip installed.

You need to configure local Group Policy to turn on Windows BitLocker Drive Encryption on the computer.

Which two actions should you perform? Each correct answer presents part of the solution.

NOTE Each correct selection is worth one point.

- A. Enable the Enforce drive encryption type on operating system drives policy setting.
- B. Enable the option to allow BitLocker without a compatible TPM.
- C. Enable the Require additional authentication at startup policy setting.
- D. Configure the TPM validation profile to enable Platform Configuration Register indices (PCRs) 0, 2, 4, and 11.

**Correct Answer:** BC

**Section:** Mixed      **Questions**

**Explanation**

**Explanation/Reference:** Explanation:

<https://www.howtogeek.com/howto/6229/how-to-use-bitlocker-on-drives-without-tpm/>

#### QUESTION 97

Your company network includes a main office and multiple small branch offices. All of the computers in the branch offices run Windows 10 Enterprise and are members of an Active Directory domain. The company has no plans to deploy any servers in the branch offices.

Users from some branch offices report that it takes a long time to open documents from a file server that is located in the main office.

You need to enable BranchCache on all computers located in the branch offices.

What should you do?

- A. Open Group Policy Editor and enable BranchCache in Distributed Cache mode for the computers in the branch offices.
- B. Open PowerShell and run the Enable-BCHostedClients cmdlet on the computers in the branch offices.
- C. Open Group Policy Editor and Enable BranchCache in a Hosted Cache mode for the computers in the branch offices.
- D. Open PowerShell, run the Set-BCCache cmdlet on computers in the branch offices.

**Correct Answer:** A

**Section:** Mixed Questions

**Explanation**

**Explanation/Reference:**

Explanation:

<http://www.computerstepbystep.com/set-branchcache-distributed-cache-mode.html> [https://technet.microsoft.com/en-us/library/hh831696\(v=ws.11\).aspx](https://technet.microsoft.com/en-us/library/hh831696(v=ws.11).aspx)

### QUESTION 98

Note: This question is part of a series of questions that use the same or similar answer choices. An answer choice may be correct for more than one question in the series. Each question is independent of the other questions in this series. Information and details provided in a question apply only to that question.

You have five computers that runs Windows 10. Each computer is used by a different user. All of the computers are members of the same workgroup.

You need to ensure that all of the users can access the files located in one another's libraries. Access must be granted based on a shared password.

What should you configure?

- A. share permissions
- B. account policies
- C. HomeGroup settings
- D. application control policies
- E. NTFS permissions
- F. Microsoft OneDrive
- G. Encrypting File System (EFS) settings
- H. software restriction policies



**Correct Answer:** C

**Section:** Mixed Questions

**Explanation**

**Explanation/Reference:** Explanation: <https://support.microsoft.com/en-us/help/17145/windows-homegroup-from-start-to-finish>

### QUESTION 99

You manage desktop computers on your company network. The finance department uses computers that run Windows 7 Enterprise and a 32-bit legacy application. The application has some compatibility issues with Windows 10 Enterprise. The application uses domain single sign-on for authentication.

The vendor releases a new version of the application that is fully compatible with Windows 10 Enterprise. These versions cannot be installed on the same computer due to HKEY\_CURRENT\_USER registry setting conflicts.

You need to migrate the finance department computers Windows 10 Enterprise while meeting the following requirements:

- Users are able to use the original version of the application while validating the new version.
- Once the new version is validated, the old version is removed with minimal effort. ▪

Users authenticate only once to use the application.

Which technology should you choose?

- A. Microsoft Application Compatibility Toolkit (ACT)
- B. Hyper-V
- C. Microsoft Application Virtualization (App-V)
- D. User Experience Virtualization (UE-V)

**Correct Answer:** A

**Section:** Mixed Questions

**Explanation**

**Explanation/Reference:**

Explanation:

[https://technet.microsoft.com/en-us/library/ee449434\(v=ws.10\).aspx](https://technet.microsoft.com/en-us/library/ee449434(v=ws.10).aspx)

#### QUESTION 100

You administer Windows 10 Enterprise tablets that are members of an Active Directory domain. Your company policy allows users to download and install only certain few Windows Store apps.

You have created a new AppLocker Packaged Apps policy to help enforce the company policy.

You need to test the new AppLocker Packaged Apps policy before you implement it for the entire company.

What should you do?

- A. Open PowerShell and run the Get-AppLockerPolicy -Effective cmdlet to retrieve the AppLocker effective policy.
- B. Open Group Policy Management console and enforce the new AppLocker policy in Audit Only mode.
- C. Open Group Policy Management console and run the Group Policy Modeling Wizard.
- D. Open Group Policy Management console and run the Group Policy Results Wizard.

**Correct Answer:** B

**Section:** Mixed Questions

**Explanation**

**Explanation/Reference:**

Explanation:

[https://technet.microsoft.com/en-us/library/hh831440\(v=ws.11\).aspx](https://technet.microsoft.com/en-us/library/hh831440(v=ws.11).aspx) <https://docs.microsoft.com/en-us/windows/device-security/applocker/determine-your-application-control-objectives>

### QUESTION 101

Note: This question is part of a series of questions that use the same or similar answer choices. An answer choice may be correct for more than one question in the series. Each question is independent of the other questions in this series. Information and details in a question apply only to that question.

You need to change the password used for an L2TP VPN connection.

Which Control Panel application should you use?

- A. Work Folders
- B. Phone and Modem
- C. Credential Manager
- D. Sync Center
- E. System
- F. Network and Sharing Center
- G. RemoteApp and Desktop Connections
- H. Power Options

**Correct Answer: F**

**Section: Mixed Questions**

**Explanation**

**Explanation/Reference:**

Explanation:

[https://www.watchguard.com/help/docs/wsm/xtm\\_11/en-us/content/en-us/mvpn/l2tp/l2tp\\_vpn\\_client\\_win7\\_c.html](https://www.watchguard.com/help/docs/wsm/xtm_11/en-us/content/en-us/mvpn/l2tp/l2tp_vpn_client_win7_c.html)

### QUESTION 102

You administer computers that run Windows XP Professional. These computers have a wide range of line of business (LOB) applications installed.

You want to migrate from Windows XP Professional to Windows 10 Enterprise.

You need to identify which application will prompt users for elevated privileges.

What should you do first?

- A. Configure the advanced audit setting on the Windows 10 Enterprise computers before you install the LOB applications.
- B. Install the Microsoft Assessment and Planning (MAP) Toolkit.
- C. Install the Microsoft Application Compatibility Toolkit (ACT).
- D. Install User Experience Virtualization (UE-V) on the Windows 10 Enterprise computers before you install the LOB applications.

**Correct Answer:** C

**Section:** Mixed Questions

**Explanation**

**Explanation/Reference:** Explanation:

[https://technet.microsoft.com/en-us/library/ee449434\(v=ws.10\).aspx](https://technet.microsoft.com/en-us/library/ee449434(v=ws.10).aspx)

### QUESTION 103

A company has an Active Directory Domain Services (AD DS) domain. All client computers run Windows 10 Enterprise and are joined to the domain.

Corporate policy prohibits homegroups on the corporate network.

You need to ensure that client computer network adapter settings do not support joining a homegroup.

What should you do?

- A. Disable IPv6.
- B. Disable IPv4.
- C. Enable IPv6.
- D. Enable IPv4.



**Correct Answer:** A

**Section:** Mixed Questions

**Explanation**

**Explanation/Reference:**

Explanation:

<https://h30434.www3.hp.com/t5/Notebook-Wireless-and-Networking/Windows-10-can-t-set-up-a-homegroup-on-this-computer/td-p/5581558> **QUESTION 104**

You have Windows 10 Enterprise computer at home. You have purchased a new 4-terabyte external drive and attached it to the computer.

You want to create a 2.5-terabyte virtual hard disk (VHD) and store it on the new external drive. You also want to allocate disk space for the virtual disk as needed.

You need to create the required virtual disk.

What should you do?

- A. From Disk Management, select create VHD. For virtual hard disk format, select VHD. For virtual hard type, select Fixed Size.
- B. From Disk Management, select create VHD. For virtual hard disk format, select VHDX. For virtual hard type, select Dynamically.
- C. From Disk Management, select create VHD. For virtual hard disk format, select VHD. For virtual hard type, select Dynamically. D. From Disk Management, select create VHD. For virtual hard disk format, select VHDX. For virtual hard type, select Fixed Size.

**Correct Answer:** B

**Section:** Mixed Questions

**Explanation**

**Explanation/Reference:**

#### QUESTION 105

You have a computer that has the disk configuration shown in the following table:

Disk controller	Size	Purpose
0	128 GB	System and boot
1	256 GB	Not applicable
2	256 GB	Not applicable
3	256 GB	Not applicable

You need to configure a storage space that will provide data redundancy if a disk fails.

The solution must minimize impact if a disk fails.

Which resiliency type should you choose?

- A. three-way mirror
- B. two-way mirror
- C. simple
- D. parity

**Correct Answer:** B

**Section:** Mixed Questions

**Explanation**

**Explanation/Reference:**

References:

[https://social.technet.microsoft.com/wiki/contents/articles/11382.storage-spaces-frequently-asked-questionsfaq.aspx#What\\_types\\_of\\_drives\\_can\\_I\\_use\\_with\\_Storage\\_Spaces](https://social.technet.microsoft.com/wiki/contents/articles/11382.storage-spaces-frequently-asked-questionsfaq.aspx#What_types_of_drives_can_I_use_with_Storage_Spaces)

#### QUESTION 106

A company has Windows 10 Enterprise client computers. Users store data files in their user profile libraries.

You need to ensure that you can restore data files to any date while minimizing system overhead.

Which two actions should you perform? Each answer presents part of the solution.

NOTE Each correct selection is worth one point.

- A. Turn on File History.
- B. Configure Windows 7 File Recovery.
- C. Configure settings to save copies of files daily.
- D. Enable Storage Spaces.

**Correct Answer:** AC

**Section:** Mixed Questions

**Explanation**

**Explanation/Reference:** Explanation: <http://www.pcworld.com/article/2974385/windows/how-to-use-windows-10s-file-history-backup-feature.html>

#### QUESTION 107

You administer Windows 10 Enterprise computers.

Users are able to download applications from the Internet and install them on their computers.

You need to ensure that users can install only digitally signed applications from approved publishers.

What should you do?

- A. Create AppLocker Publisher rules.
- B. Turn on Windows SmartScreen.
- C. Enable the Check for signatures on downloaded programs option.
- D. Add publishers' websites to the Trusted Sites zone.

**Correct Answer:** A

**Section:** Mixed Questions

**Explanation**

**Explanation/Reference:**

#### QUESTION 108

You are a desktop support technician for your company.

You deliver new Windows 10 Enterprise laptops to the software developers. The software developers frequently use laptops to work remotely and are often disconnected from the corporate network. One of the software developers works on an application that must run on Windows XP, Windows Vista, Windows 7, and Windows 10 Enterprise. The software developer needs the ability to test the application natively on each of these operating systems.



You need to provide the software developer with a way to test the application on all operating system versions on the new laptop. The software developer must be able to perform the testing while working remotely without access to corporate resources.

What should you do?

- A. Use Hyper-V to create three virtual machines that provide Windows XP, Windows Vista, and Windows 7 environments.
- B. Install the Windows PE version of Windows XP, Windows Vista, and Windows 7 on three USB drives and boot from each drive to test each operating system version.
- C. Change the compatibility mode settings of the application to Windows XP, Windows Vista, and Windows 7 before testing each operating system version.
- D. Create three virtual machines for Windows XP, Windows Vista, and Windows 7 on a company Windows Server 2012 that is running Hyper-V.

**Correct Answer:** A

**Section:** Mixed      **Questions**

**Explanation**

**Explanation/Reference:**

#### **QUESTION 109**

You support Windows 10 Enterprise desktop computers. Your company has a security policy that controls multiple settings of the desktops through the domain group policy.

The security policy recently was updated to require that access to several built-in Windows 10 Enterprise tools be prohibited to all local users on one of the desktop computers.

You need to implement this new policy.

What should you do?

- A. Configure NTFS permissions.
- B. Create a Windows To Go workspace.
- C. Configure the AppLocker policy.
- D. Enable BitLocker.

**Correct Answer:** C

**Section:** Mixed      **Questions**

**Explanation**

**Explanation/Reference:**

#### **QUESTION 110**

The computers in your company's finance department run Windows XP Professional. These computers have multiple line of business (LOB) applications installed.

You add a new Windows 10 Enterprise computer in the finance department. You discover that an application used by the finance department does not work on this computer.

You need to run the application on the new computer.

What should you do first?

- A. Install Client Hyper-V.
- B. Run Refresh your PC.
- C. Install Windows XP Mode.
- D. Create a Windows To Go workspace.

**Correct Answer: A**

**Section: Mixed Questions**

**Explanation**

**Explanation/Reference:**

#### QUESTION 111

You support Windows 10 Enterprise tablets. The tablets have the Application Virtualization (App-V) client installed.

Company policy requires that all published App-V applications be available to users only when they are connected to the company network.

You need to configure the tablets so that the company policy requirements are enforced.

What should you do?



<https://vceplus.com/>

- A. Configure mandatory profiles for tablet users.
- B. Reset the App-V client FileSystem cache on the tablets.
- C. Disable the Disconnected operation mode on the tablets.
- D. Change user permissions to the App-V applications.

**Correct Answer:** C

**Section:** Mixed Questions

**Explanation**

**Explanation/Reference:**

### QUESTION 112

Your company has Windows 10 Enterprise client computers.

Microsoft Application Virtualization (App-V) is used to deploy applications.

An App-V package named App1 is stored in C:\App1 on each computer.

You need to publish App1 on the computers.

Which two Windows PowerShell commands should you run? Each correct answer presents part of the solution.

NOTE: Each correct selection is worth one point.

- A. **Publish-AppVClientPackage -Name App1 -DynamicUserConfigurationPath C:\App1\config.xml**
- B. **Add-AppVClientPackage C:\App1\config.xml**
- C. **Add-AppVClientPackage C:\App1\App1.appv**
- D. **Publish-AppVClientPackage -Name App1 -DynamicUserConfigurationPath C:\App1\App1.appv**

**Correct Answer:** AC

**Section:** Mixed Questions

**Explanation**

**Explanation/Reference:**

References:

<https://docs.microsoft.com/en-us/microsoft-desktop-optimization-pack/appv-v5/how-to-apply-the-user-configuration-file-by-using-powershell>

### QUESTION 113

**Note:** This question is part of a series of questions that use the same or similar answer choices. An answer choice may be correct for more than one question in the series. Each question is independent of the other questions in this series. Information and details provided in a question apply only to that question.

You have five computers that run Windows 10. You are the only user who uses the computers. All of the computers are members of the same domain.

You need to ensure that you can access any file on any of the computers over the Internet.

What should you configure?

- A. account policies
- B. share permissions
- C. application control policies
- D. NTFS permissions
- E. HomeGroup settings
- F. software restriction policies
- G. Encrypting File System (EFS) settings

H. Microsoft OneDrive

**Correct Answer:** H

**Section:** Mixed Questions

**Explanation**

**Explanation/Reference:**

#### QUESTION 114

**Note:** This question is part of a series of questions that use the same or similar answer choices. An answer choice may be correct for more than one question in the series. Each question is independent of the other questions in this series. Information and details in a question apply only to that question.

You need to enable other users to establish Remote Desktop connections to your computer.

Which Control Panel application should you use?

- A. Credential Manager
- B. Sync Center
- C. System
- D. Power Options
- E. Phone and Modem
- F. RemoteApp and Desktop Connections
- G. Network and Sharing Center
- H. Work Folders

**Correct Answer:** C

**Section:** Mixed Questions

**Explanation**

**Explanation/Reference:**

**QUESTION 115**

You have an Active Directory domain named contoso.com. Work folders are deployed.

A user named User1 has a Windows 10 Home computer that is configured to use Work Folders.

User1 connects a new removable USB drive to the computer.

User1 needs to move the Work Folders to the new drive.

What should User1 do first?

- A. From the Work Folders settings, click Manage Credentials.
- B. From Services, stop the Work Folders service.
- C. From the Work Folders settings, click Stop using Work Folders.
- D. From Services, set the BitLocker Drive Encryption Service to start automatically.

**Correct Answer: C**

**Section: Mixed Questions**

**Explanation**

**Explanation/Reference:**

References: <https://support.microsoft.com/en-us/help/27903/windows-10-work-folders-faq>

**QUESTION 116**

You support Windows 10 Enterprise tablets that are part of a workgroup.

You have been given a tablet on which Windows Mobility Center will not start.

You need to make it possible to start Windows Mobility Center on the tablet.

What should you do?

- A. Run gpedit.msc and set Turn off Windows Mobility Center to Not Configured.
- B. Repair the installation of Windows Mobility Center by using Programs and Features.
- C. Turn on XPS Services by using Turn Windows features on or off in Programs and Features.
- D. Run control.exe, and then select Programs and Features. Click Turn Windows features on or off.

**Correct Answer: A**

**Section: Mixed Questions**

**Explanation**

**Explanation/Reference:**

[www.vceplus.com](http://www.vceplus.com) - VCE Exam Simulator - Download A+ VCE (latest) free Open VCE Exams - VCE to PDF Converter - PDF Online

**QUESTION 117**

You have 100 Windows computers that are managed by using Microsoft Intune.

You need to ensure that when a new critical update is released, the update is approved automatically and deployed to the computers within 24 hours of approval.

What should you do from the Microsoft Intune administration portal?

- A. From the Updates node, select Critical Updates, and then modify the Approval settings.
- B. From the Admin node, click Enrollment Rules, and then modify the device enrollment rules.
- C. From the Admin node, click Updates, and then create a new automatic approval rule.
- D. From the Policy node, click Compliance Policies, and then create a new compliance policy.
- E. From the Policy node, click Configuration Policies, and then create a new Windows policy.

**Correct Answer: C**

**Section: Mixed Questions**

**Explanation**

**Explanation/Reference:**

Explanation:

Automatic approval rules – These rules automatically approve specified types of update and reduce your administrative overhead. For example, you might want to automatically approve all critical software updates.

References: <https://docs.microsoft.com/en-us/intune-classic/deploy-use/keep-windows-pcs-up-to-date-with-software-updates-in-microsoft-intune>

**QUESTION 118**

Your company has a main office and a branch office. Each office contains several servers that run Windows Server 2012.

You need to configure BranchCache for the client computers in the branch office. The solution must ensure that all of the cached content is in a central location.

What should you run on each client computer?

- A. the **Enable-BCDistributed** cmdlet
- B. the **Enable-BCHostedClient** cmdlet
- C. the **Enable-BCLocal** cmdlet
- D. the **Enable-BCHostedServer** cmdlet

**Correct Answer: D**

**Section: Mixed Questions**

**Explanation**

**Explanation/Reference:**

**QUESTION 119**

You administer a Windows 10 Enterprise computer.

The computer is configured to encrypt several folders by using a self-signed Encrypted File System (EFS) certificate.

You need to make a backup copy of the encryption keys.

What should you do?

- A. Open the Certificates console and connect to the user account certificates. Export the self-signed EFS certificate from the Trusted People folder to a Canonical Encoding Rules (CER) file.
- B. Open the Certificates console and connect to the user account certificates. Find the personal self-signed EFS certificate and export it to a Personal Information Exchange (PFX) file.
- C. Open the Certificates console and connect to the user account certificates. Export the personal self-signed EFS certificate from the Trusted Root Certification Authority folder to a Personal Information Exchange (PFX) file.
- D. Open the Certificates console and connect to the computer account certificates. Export the self-signed EFS certificate from the Trusted People folder to a Canonical Encoding Rules (CER) file.

**Correct Answer:** B

**Section:** Mixed      **Questions**

**Explanation**



**Explanation/Reference:**

**QUESTION 120**

You administer Windows 10 Enterprise computers that are members of an Active Directory domain.

Some volumes on the computers are encrypted with BitLocker. The BitLocker recovery passwords are stored in Active Directory. A user forgets the BitLocker password to local drive E: and is unable to access the protected volume.

You need to provide a BitLocker recovery key to unlock the protected volume.

Which two actions should you perform? Each correct answer presents part of the solution.

NOTE: Each correct selection is worth one point.

- A. Ask the user for his or her logon name.
- B. Ask the user for a recovery key ID for the protected drive.
- C. Ask the user for his or her computer name.
- D. Ask the user to run the **manage-bde -protectors -disable e:** command.

**Correct Answer:** CD

**Section: Mixed Questions**  
**Explanation**

**Explanation/Reference:**

**QUESTION 121**

You have a portable Windows 10 Enterprise computer.

You are creating a backup plan. You have the following requirements:

- Automatically back up the files in your Documents folder every hour.
  - Ensure that you can recover different versions of the backed-up files. ▪
- Do not back up the Windows operating system files.

You need to configure the computer to meet the requirements.

Which two actions should you perform? Each correct answer presents part of the solution.

NOTE: Each correct selection is worth one point.

- A. Connect an external hard drive to the computer.
- B. Turn on File History.
- C. Create a volume mount point in your Documents folder.
- D. Schedule a task to create a restore point every hour.
- E. Create a recovery drive on drive C.

**Correct Answer: AB**

**Section: Mixed Questions**  
**Explanation**

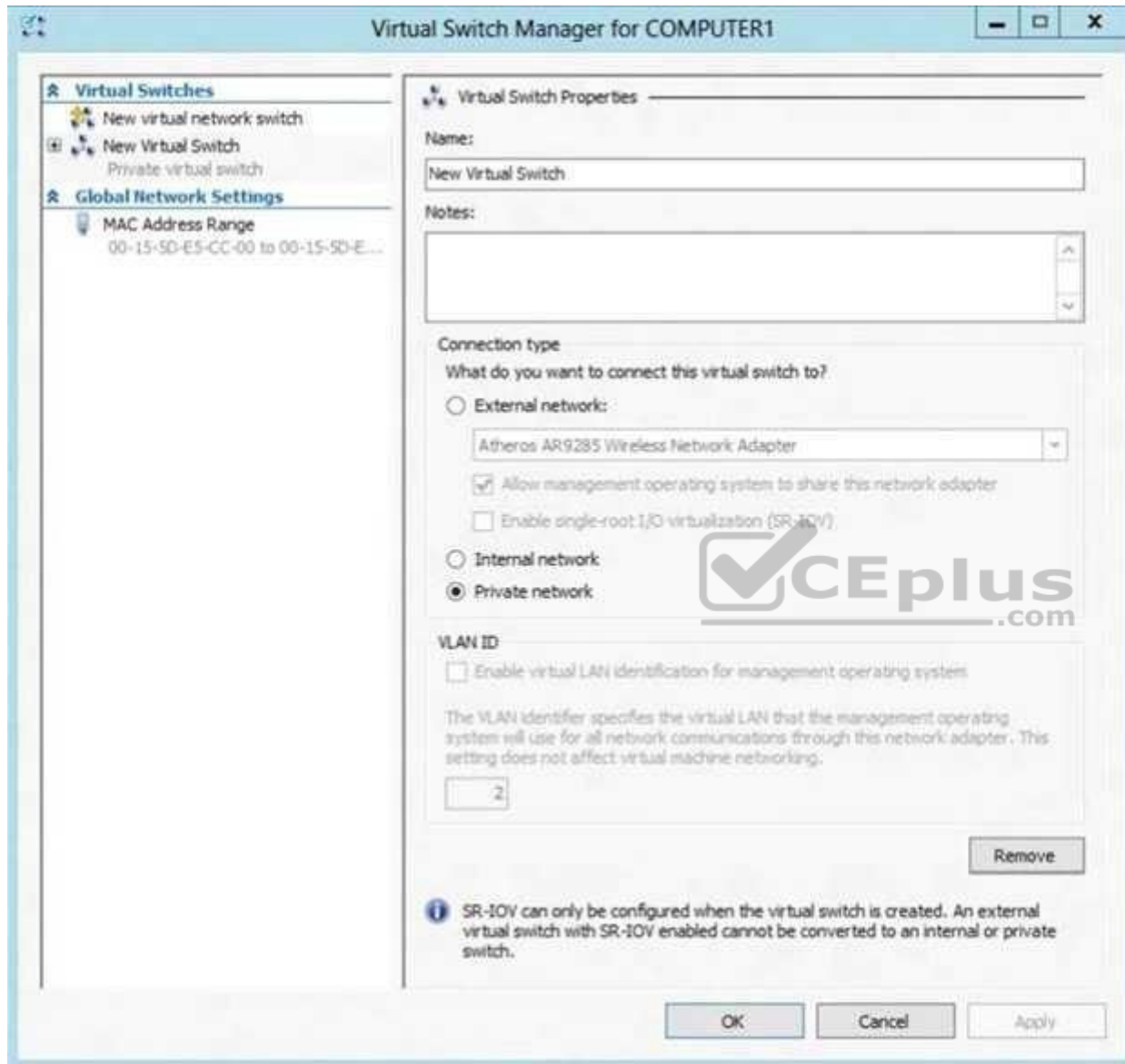
**Explanation/Reference:**

**QUESTION 122**

A company has an Active Directory Domain Services (AD DS) domain with one physical domain controller. All client computers run Windows 10 Enterprise.

A client computer hosts a Windows 10 Enterprise virtual machine (VM) test environment. The VMs are connected to a private virtual switch that is configured as shown in the Virtual Switch Manager exhibit.





You have the following requirements:

- Configure the test environment to allow VMs to communicate with the host machine. ▪
- Minimize impact on the host machine.

You need to meet the requirements. [www.vceplus.com](http://www.vceplus.com) - VCE Exam Simulator - Download A+ VCE (latest) free Open VCE Exams - VCE to PDF Converter - PDF Online

What should you do first?

- A. Change the VLAN ID of the private virtual switch to Enable Virtual LAN identification.
- B. Create a new virtual switch with a Private Network connection type.
- C. Create a new virtual switch with an External Network connection type.
- D. Create a new virtual switch with an Internal Network connection type.

**Correct Answer: D**

**Section: Mixed Questions**

**Explanation**

**Explanation/Reference:**

Explanation:

Virtual switches/ Hyper-V VLAN - you can create 3 different types of virtual switches depending the needs of your virtual machines and one single machine can use multiple virtual NICs that is member of different Virtual Switches.

- External - This virtual switch binds to the physical network adapter and create a new adapter you can see in Control Panel\Network and Internet\Network Connections so if a virtual machine needs contact outside the host machine this one is a must.

- Internal - This virtual switch can be used to connect all virtual machines and the host machine but cannot go outside that. ▪

Private - This virtual switch can only be used by the virtual host

### Hyper-V Networking: Three types of Virtual Networks:

Type	Parent OS	VMs on Same HV	VMs on Remote HV	LAN	Remark
External	x	x	x	x	Conn. Lost Temporarily
Internal	x	x			
Private		x			
Dedicated		x		x	

Configuring Virtual Networks Private will not allow communication with the host machine. External will allow communication with the host machine but also allow access to other machines on the host machine's network which is not a requirement.

References:

<http://john.bryntze.net/jbkb-v2/certification-exam-70-687-configuring-windows-8-part-2-configure-hardware-and-applications-16/>

### QUESTION 123

You administer Windows 10 Enterprise computers. You have secured the computers by using BitLocker.

You have distributed a new application to the computers. Users report that file associations for ZIP archives is broken and users are unable to open ZIP files.

You need to design a solution that recovers file association. You also need to ensure that BitLocker encryption settings are maintained.

What should you do? [www.vceplus.com](http://www.vceplus.com) - VCE Exam Simulator - Download A+ VCE (latest) free Open VCE Exams - VCE to PDF Converter - PDF Online

- A. Restore computer from the latest restore point.
- B. Modify setting in Change default settings for media or devices.
- C. Delete the HKEY CLASSES\_ROOT\exefile\shell\open\command registry key.
- D. Select Reset your PC.

**Correct Answer:** A

**Section:** Mixed Questions

**Explanation**

**Explanation/Reference:**

#### QUESTION 124

You have a computer that runs Windows 10.

You need to ensure that the next time the computer restarts, the computer starts in safe mode.

What should you use?

- A. the **Restore-Computer** cmdlet
- B. the **Bcdedit** command
- C. the **Restart-Computer** cmdlet
- D. the **Bootcfg** command



**Correct Answer:** B

**Section:** Mixed Questions

**Explanation**

**Explanation/Reference:**

#### QUESTION 125

Your network contains an Active Directory domain. All client computers run Windows 10 Enterprise.

Your company uses virtual smart cards.

A user named User1 requires a virtual smart card on a new client computer named Computer1.

Which two actions should you perform? Each correct answer presents part of the solution.

NOTE: Each correct selection is worth one point.

- A. Run the **tpmvscmgr.exe** command.
- B. Enroll Computer1 for a certificate.

- C. Run the **Enable-BitLocker** cmdlet.
- D. Enroll User1 for a certificate.

**Correct Answer:** AD

**Section:** Mixed Questions

**Explanation**

**Explanation/Reference:**

#### QUESTION 126

Your network contains an Active Directory domain. The domain contains 100 computers that run Windows 10.

You plan to develop a line-of-business application and to deploy the application by using Windows Store for Business.

You need to ensure that users can see the private store of your company when they sign in to the Windows Store for Business.

What should you do first?

- A. Provision a Windows Dev Center dev account for each user.
- B. Provision a Microsoft Azure Active Directory (Azure AD) account for each user.
- C. Assign the Windows Store Purchaser role to each user.
- D. Assign the Windows Store Admin role to each user.
- E. Provision a Microsoft account for each user.

**Correct Answer:** B

**Section:** Mixed Questions

**Explanation**

**Explanation/Reference:**

#### QUESTION 127

You are a systems administrator for your company. The company has employees who work remotely by using a virtual private network (VPN) connection from their computers, which run Windows 10 Enterprise.

These employees use an application to access the company intranet database servers. The company recently decided to distribute the latest version of the application through using a public cloud.

Some users report that every time they try to download the application by using Internet Explorer, they receive a warning message that indicates the application could harm their computer.

You need to recommend a solution that prevents this warning message from appearing, without compromising the security protection of the computers.

What should you do?

- A. Publish the application through a public file transfer protocol (FTP) site.
- B. Publish the application through an intranet web site.
- C. Instruct employees to disable the SmartScreen Filter from within the Internet Explorer settings.
- D. Digitally sign the application by using a trusted certificate, and then update the default App Package Deployment policy on all computers.

**Correct Answer:** D

**Section:** Mixed Questions

**Explanation**

**Explanation/Reference:**

#### QUESTION 128

You support Windows 10 Enterprise desktop computers and tablets that are members of an Active Directory domain. The domain includes Active Directory Certificate Services. All users use virtual smart cards to log on to their computers.

A domain user wants to log on to both his desktop computer and his tablet computer by using the same domain user account.

You need to configure the desktop and tablet computers to support two-factor authentication for the same domain user account.

What should you do?

- A. Enroll the user for two separate certificates based on the Smartcard Logon template. Install one certificate in a virtual smart card on each of the user's computers/
- B. After the user has logged on to one computer, disable the Trusted Platform Module (TPM) on the second computer. Run the tpmvscmgr.exe utility on each of the computers.
- C. Issue a temporary physical smart card. Use this smart card for an initial logon on each computer, then disconnect the tablet from the office network and destroy the temporary smart card.
- D. Export the private key from the desktop computer. Import the private key to the tablet.

**Correct Answer:** A

**Section:** Mixed Questions

**Explanation**

**Explanation/Reference:**

#### QUESTION 129

You configure VPN auto trigger for five Windows 10 Enterprise computers. When you test the computers, they trigger the VPN all the time, even in the office.

You need to configure VPN auto trigger to function only when VPN is required.

Which command should you use?



<https://vceplus.com/>

- A. `Set -VpnConnectionTriggerDnsConfiguration [ -Name] <string> [ -DnsSuffix <String>] [ -DnsIPAddress <string[]>] [ -DnsSuffixSearchList`
- B. `Add -VpnConnectionTriggerApplication [ -Name] <string> -ApplicationID <String[]> -PassThru`
- C. `Add -VpnConnectionTriggerTrusted Network [ -Name] <string> [ -DnsSuffix] <string[]>`
- D. `Add -VpnConnectionTriggerDnsConfiguration [ -Name] <string> -DnsSuffix <String> [ -DnsIPAddress <string[]>] -PassThru`

**Correct Answer:** C

**Section:** Mixed Questions

**Explanation**

**Explanation/Reference:**



### QUESTION 130

Your company uses Microsoft Office 365.

You need to ensure that users are prompted to label and classify documents while they edit documents.

Solution: You import the data from on-premises to Office 365.

Does the solution meet the goal?

- A. Yes
- B. No

**Correct Answer:** B

**Section:** Mixed Questions

**Explanation**

**Explanation/Reference:**

References: <https://docs.microsoft.com/en-us/information-protection/deploy-use/configure-policy>

You manage a corporate network. All servers run Windows Server 2016. All servers and client devices are joined to an Active Directory Domain Services (AD DS) domain named adatum.com. The use of VPN servers on the network is strictly prohibited.

Users must be able to access the corporate network in addition to Work Folders when they work at home on Windows 10 devices. You install, configure, and publish the certificate revocation list (CRL) for an internal Active Directory Certificate Services (AD CS) server.

You need to configure the environment to allow your users to register devices.

Solution: You create a DNS CNAME record of enterpriseregistration.adatum.com. You deploy a Web Application Proxy server and point the DNS record to your Web Application Proxy server.

Does the solution meet the goal?

- A. Yes
- B. No

**Correct Answer: B**

**Section: Mixed Questions**

**Explanation**

**Explanation/Reference:**

References: <https://blog.nextxpert.com/2013/11/27/publishing-work-folders-with-web-application-proxy-2/>

### QUESTION 132

You manage a corporate network. All servers run Windows Server 2016. All servers and client devices are joined to an Active Directory Domain Services (AD DS) domain named adatum.com. The use of VPN servers on the network is strictly prohibited.

Users must be able to access the corporate network in addition to Work Folders when they work at home on Windows 10 devices. You install, configure, and publish the certificate revocation list (CRL) for an internal Active Directory Certificate Services (AD CS) server.

You need to configure the environment to allow your users to register devices.

Solution: You create a DNS CNAME record of enterpriseregistration.adatum.com. You deploy Active Directory Federation Services (AD FS) and point the DNS record to your AD FS server. You deploy a Web Application Proxy server for the clients to connect to establish Internet connectivity to the device registration connection.

Does the solution meet the goal?

- A. Yes
- B. No

**Correct Answer: A**

**Section: Mixed Questions**

**Explanation**

**Explanation/Reference:**

References: <https://blog.nextxpert.com/2013/11/27/publishing-work-folders-with-web-application-proxy-2/>

**QUESTION 133**

You manage a corporate network. All servers run Windows Server 2016. All servers and client devices are joined to an Active Directory Domain Services (AD DS) domain named adatum.com. The use of VPN servers on the network is strictly prohibited.

Users must be able to access the corporate network in addition to Work Folders when they work at home on Windows 10 devices. You install, configure, and publish the certificate revocation list (CRL) for an internal Active Directory Certificate Services (AD CS) server.

You need to configure the environment to allow your users to register devices.

Solution: You create a DNS A record of deviceregistration.adatum.com. You deploy Active Directory Federation Services (AD FS) and point the DNS record to your AD FS server. You deploy a Web Application Proxy server for the clients to establish Internet connectivity for the device registration.

Does the solution meet the goal?

- A. Yes
- B. No

**Correct Answer: B**

**Section: Mixed Questions**  
**Explanation**

**Explanation/Reference:**

References: <https://blog.nextxpert.com/2013/11/27/publishing-work-folders-with-web-application-proxy-2/>

**QUESTION 134**

You work for a company that uses customized applications. The applications are published to 150 Windows 10 Enterprise laptops that are deployed in the field. All users must use the same version of the applications at the same time.

You need to deploy and manage the applications updates centrally.

What should you do?

- A. Deploy the applications as a Microsoft Application Virtualization.
- B. Use System Center Configuration Manager to deploy the application updates to the client.
- C. Deploy application updates as a shim through System Center Configuration.
- D. Use Intune to deploy the applications with the appropriate settings through the Windows Store.

**Correct Answer: B**

**Section: Mixed Questions**  
**Explanation**



**Explanation/Reference:**

References: <https://docs.microsoft.com/en-us/sccm/mdm/deploy-use/management-tasks-applications#deploying-and-monitoring-apps> <https://docs.microsoft.com/en-us/sccm/apps/deploy-use/revise-and-supersede-applications#application-supersedence>

**QUESTION 135**

Your network contains an Active Directory domain named contoso.com.

A user receives the following error message when attempting to sign in to a computer: "The trust relationship between this workstation and the primary domain failed."

You need to ensure that the user can sign in to the computer by using a domain user account.

Which tool should you use?

- A. Netstat
- B. Netsh
- C. Netdom
- D. Netcfg

**Correct Answer: C**

**Section: Mixed Questions**

**Explanation**

**Explanation/Reference:**

References: <https://www.petenetlive.com/KB/Article/0000504>

**QUESTION 136**

You support Windows 10 Enterprise computers that are members of an Active Directory domain. All of the computers have a dedicated recovery partition.

A computer indicates that the domain is unavailable. The password of a local administrator account on the computer is unknown. You need to reset the password for the local administrator account on the computer.

What should you do?

- A. Run Windows To Go workspace from a USB flash drive.
- B. Run the Windows 10 Enterprise installation wizard from a USB flash drive.
- C. Run Microsoft Diagnostic and Recovery Tool (DaRT) from a USB flash drive.
- D. Run Windows Recovery Environment (WinRE) from a recovery partition.

**Correct Answer: C**

**Section: Mixed Questions**

**Explanation**

**Explanation/Reference:**

References: <https://www.top-password.com/knowledge/reset-windows-10-password.html>

**QUESTION 137**

**Note: This question is part of a series of questions that use the same or similar answer choices. An answer choice may be correct for more than one question in the series. Each question is independent of the other questions in this series. Information and details provided in a question apply only to that question.**

You have five computers that run Windows 10. The computers are used for testing and cannot connect to the Internet. You are the only user who uses the computers. All of the computers are members of the same domain.

One of the computers contains a folder named Folder1.

You need to ensure that you can access Folder1 from any of the computers.

What should you configure?

- A. HomeGroup settings
- B. OneDrive for Business
- C. NTFS permissions
- D. Encrypting File System (EFS) settings
- E. share permissions
- F. application control policies
- G. account policies
- H. software restriction policies



**Correct Answer: A**

**Section: Mixed Questions**

**Explanation**

**Explanation/Reference:**

References: <https://www.teamknowhow.com/kit-guide/computing/laptops/dell/inspiron-13-5000/how-to-set-up-file-sharing-on-windows-10>

**QUESTION 138**

**This question is part of a series of questions that use the same or similar answer choices. An answer choice may be correct for more than one question in the series. Each question is independent of the other questions in this series. Information and details provided in a question apply only to that question.**

You have a computer that runs Windows 10 and is used by 10 users. The computer is joined to an Active Directory domain. Each user has an Active Directory account.

You need to ensure that all of the users can access the files located in one another's libraries.

Which two options should you configure? Each correct answer presents a complete solution.

**NOTE:** Each correct selection is worth one point.

- A. account policies
- B. NTFS permissions
- C. share permissions
- D. application control policies
- E. software restriction policies
- F. Encrypting File System (EFS) settings
- G. OneDrive for Business
- H. HomeGroup settings

**Correct Answer:** BH

**Section:** Mixed Questions

**Explanation**

**Explanation/Reference:**

#### QUESTION 139

You are the system administrator for a company. All devices run Windows 10 and use a variety of Microsoft Store for Business apps. All user reports issues updating a Windows Store app.

You need to troubleshoot the issue.

Winch three actions should you perform? Each correct answer presents a complete solution.

**NOTE:** Each correct selection is worth one point.

- A. Run the **SFC** command.
- B. Run the **repair-bde** command.
- C. Run the **net start wuauserv** command.
- D. Run the Windows App Troubleshooter.
- E. Use the Programs and Features Control Panel applet to repair the application.

**Correct Answer:** ADE

**Section:** Mixed Questions

**Explanation**

**Explanation/Reference:**

References: <https://windowsreport.com/windows-10-app-store-doesn-t-update/#6>

#### QUESTION 140

[www.vceplus.com](http://www.vceplus.com) - VCE Exam Simulator - Download A+ VCE (latest) free Open VCE Exams - VCE to PDF Converter - PDF Online

You administer a corporate network. Employees use docking stations for Windows 10 devices when the employees are working in their offices.

The wireless adapters of the devices are connected to a specific network. The docking stations are connected to a separate network that uses twisted pair cabling.

You need to ensure that the devices can access all resources from each network using either network adapter.

What should you do?

- A. Configure a network bridge.
- B. Configure Internet Connection Sharing (ICS).
- C. Configure VPN Reconnect.
- D. Turn on Network Discovery.

**Correct Answer: C**

**Section: Mixed Questions**

**Explanation**

**Explanation/Reference:**

References: [https://docs.microsoft.com/en-us/previous-versions/windows/it-pro/windows-server-2008-R2-and-2008/dd637803\(v=ws.10\)](https://docs.microsoft.com/en-us/previous-versions/windows/it-pro/windows-server-2008-R2-and-2008/dd637803(v=ws.10))

#### **QUESTION 141**

A company installs a line-of-business (LOB) app on a server that runs Remote Desktop Services.

You need to ensure that you can publish the application by using RemoteApp.

What should you do first?

- A. Create a personal desktop session collection.
- B. Manually assign users to a session host.
- C. Create a pooled desktop collection.
- D. Automatically assign users to a session host.

**Correct Answer: C**

**Section: Mixed Questions**

**Explanation**

**Explanation/Reference:**

References: <https://docs.microsoft.com/en-us/windows-server/remote/remote-desktop-services/rds-create-collection#create-a-pooled-desktop-session-collection>

#### **QUESTION 142**

You have a Windows Server 2012 R2 server that runs Remote Desktop services.

Users report that they cannot connect to RemoteApp programs. You observe that users do not know the proper connection details to access the Remote Desktop Web Access server. [www.vceplus.com](http://www.vceplus.com) - VCE Exam Simulator - Download A+ VCE (latest) free Open VCE Exams - VCE to PDF Converter - PDF Online

You need to simplify the process for connecting from Windows 10 devices to the Remote Desktop Web Access server.

What should you create?

- A. Connection Manager Administration Kit connection profile
- B. Remote Desktop Connection configuration file
- C. Windows Remote Management script
- D. client configuration file

**Correct Answer:** A

**Section:** Mixed Questions

**Explanation**

**Explanation/Reference:**

References: [https://docs.microsoft.com/en-us/previous-versions/windows/it-pro/windows-server-2008-R2-and-2008/cc753977\(v=ws.10\)](https://docs.microsoft.com/en-us/previous-versions/windows/it-pro/windows-server-2008-R2-and-2008/cc753977(v=ws.10))

#### **QUESTION 143**

A company has Windows 10 Enterprise client computers. File History is on.

An employee downloads data to a folder on drive D named Archives.

You need to ensure that the user can restore files from the Archives folder by using File History.

What should you do?

- A. Configure the File History advanced settings to include the Archives folder.
- B. Create a library named History and add the Archives folder to the library.
- C. From the File History configuration options, change the drive and select the Archives folder.
- D. Move the Archives folder into the Windows system folder.

**Correct Answer:** B

**Section:** Mixed Questions

**Explanation**

**Explanation/Reference:**

#### **QUESTION 144**

A company has Windows 10 Enterprise client computers. Users store data files in their user profile libraries.

You need to ensure that users can restore data files to any date while minimizing system overhead.

Which two actions should you perform? Each answer presents part of the solution.

**NOTE:** Each correct selection is worth one point.

- A. Add each user to the local Backup Operations group.
- B. Turn on system protection.
- C. Configure settings to save copies of files daily.
- D. Turn on File History.

**Correct Answer:** CD

**Section:** Mixed      **Questions**

**Explanation**

**Explanation/Reference:**

References: <http://www.pcworld.com/article/2974385/windows/how-to-use-windows-10s-file-history-backup-feature.html>

#### **QUESTION 145**

You administer Windows 10 devices for an organization. All devices are joined to the domain contoso.com. All network printers are managed in the domain. You have a group named Printer Administrators. You grant this group permissions to manage all printer settings. You add all mobile users to the Printer Administrators group. Each office locations has Web Services for Devices (WSD) printers available.

Managers report that network printers are not available when they move between office locations. Managers must be able to use printers in each office location.

You need to troubleshoot the manager's computer for printing issues.

Which three actions should you perform? Each correct answer is part of the solution.

**NOTE:** Each correct selection is worth one point.

- A. Ensure that the network type is set to domain.
- B. Ensure that the network type is set to public.
- C. Ensure that File and Printer Sharing is turned on.
- D. Ensure that Network Discovery is turned on.
- E. Update the Printing Preferences settings.

**Correct Answer:** CDE

**Section:** Mixed      **Questions**

**Explanation**

**Explanation/Reference:**

References: [http://support.brother.com/g/b/faqend.aspx?c=us\\_ot&lang=en&prod=p750weus&faqid=faqp00100003\\_000](http://support.brother.com/g/b/faqend.aspx?c=us_ot&lang=en&prod=p750weus&faqid=faqp00100003_000) <https://support.microsoft.com/en-sg/help/4028622/windows-10-how-to-set-a-default-printer>

#### **QUESTION 146**

You work for a small company that recently upgraded to Windows 10 Enterprise computers.

The HR department stores sensitive data in a folder named Personnel Files.

You need to encrypt this folder only, and no other data.

What are two possible ways to achieve this goal? Each correct answer presents a complete solution.

**NOTE:** Each correct selection is worth one point.

- A. Use EFS.
- B. Use cipher.exe.C. Use BitLocker
- D. Use RFFS.

**Correct Answer:** AB

**Section:** Mixed Questions

**Explanation**

**Explanation/Reference:**

References: <https://windowsreport.com/encrypt-files-folders-windows-10/> <https://support.microsoft.com/en-us/help/298009/cipher-exe-security-tool-for-the-encrypting-file-system>

#### QUESTION 147

A company has Windows 10 Enterprise client computers. The company uses Windows BitLocker Drive Encryption and BitLocker Network Unlock on all client computers.

You need to collect information about BitLocker Network Unlock status.

Which command should you run?

- A. Run the **BitLockerWizard** command.
- B. Run the **manage-bde** command.
- C. Run the **BdeHdCfg** command.
- D. Run the **bitsadmin** command.

**Correct Answer:** B

**Section:** Mixed Questions

**Explanation**

**Explanation/Reference:**

References: [https://docs.microsoft.com/en-us/previous-versions/windows/it-pro/windows-7/dd875513\(v=ws.10\)#BKMK\\_status](https://docs.microsoft.com/en-us/previous-versions/windows/it-pro/windows-7/dd875513(v=ws.10)#BKMK_status)

#### QUESTION 148

[www.vceplus.com](http://www.vceplus.com) - VCE Exam Simulator - Download A+ VCE (latest) free Open VCE Exams - VCE to PDF Converter - PDF Online

A company has an Active Directory Domain Services (AD DS) domain with Windows 10 Enterprise client computers.

You need to minimize the amount of Trusted Platform Module (TPM) authorization information that is stored in the registry.

What should you do?

- A. Create a Group Policy Object (GPO) that enables the Turn on TPM Local Encryption policy setting.
- B. Enable Platform Configuration Register indices (PCRs) 0, 2, 4, and 11 for the Configure TPM validation profile for native UEFI firmware configuration policy setting.
- C. Create a Group Policy Object (GPO) that disables the Configure the level of TPM owner authorization information available to operating system policy setting.
- D. Create a Group Policy Object (GPO) that sets the Configure the level of TPM owner authorization information available to operating system policy setting to None.

**Correct Answer:** D

**Section:** Mixed      **Questions**

**Explanation**

**Explanation/Reference:**

References: [https://docs.microsoft.com/en-us/previous-versions/windows/it-pro/windows-8.1-and-8/jj679889\(v=ws.11\)#BKMK\\_tpmgp\\_oauthos](https://docs.microsoft.com/en-us/previous-versions/windows/it-pro/windows-8.1-and-8/jj679889(v=ws.11)#BKMK_tpmgp_oauthos)

#### QUESTION 149

You are the system administrator for a company. All employees have devices that run Windows 10. Employees store many files on network shares.

You need to ensure that employees keep a copy of files from network shares on their devices, even when the devices are not connected to the company network.

What should you first?

- A. Run the **SettingSyncHost.exe** command.
- B. Enable File History.
- C. Create a new pool and storage space.
- D. Run the **Set-FileShare** Windows PowerShell cmdlet.
- E. Enable Offline Files.

**Correct Answer:** E

**Section:** Mixed      **Questions**

**Explanation**

**Explanation/Reference:**

References: <https://www.howtogeek.com/98793/how-to-use-offline-files-in-windows-to-cache-your-networked-files-offline/>

#### QUESTION 150

You have a Windows To Go workspace on a USB memory drive.

[www.vceplus.com](http://www.vceplus.com) - VCE Exam Simulator - Download A+ VCE (latest) free Open VCE Exams - VCE to PDF Converter - PDF Online



When you attempt to start a computer from the drive, you receive the following error message:

“Your PC/Device needs to be repaired. The application or operating system couldn't be loaded because a required file is missing or contains errors.”

You need to repair the Windows To Go workspace.

What should you do?

- A. Restart the computer in safe mode, and then perform a system restore.
- B. Restart the computer, and then select the Last Known Good Configuration.
- C. Reapply the Windows To Go image to the USB memory drive.
- D. Restart the computer by using a recovery disk, and then perform a system restore.

**Correct Answer: C**

**Section: Mixed Questions**

**Explanation**

**Explanation/Reference:**

References: <https://docs.microsoft.com/en-us/windows/deployment/planning/windows-to-go-frequently-asked-questions#a-href-idwtg-faq-recoveryadoes-windowsrecovery-environment-work-with-windows-to-go-whats-the-guidance-for-recovering-a-windows-to-go-drive>

#### QUESTION 151

You have a Microsoft Intune subscription.

You need to uninstall the Intune agent from a computer.

What should you do?



<https://vceplus.com/>

- A. From the Groups node in the Microsoft Intune administration portal, click **Retire/Wipe**.
- B. From the computer, use Programs and Features in Control Panel.
- C. From the Groups node in the Microsoft Intune administration portal, click **Remote Lock** on the Remote Tasks menu.
- D. From the computer, run the **cltui.exe** command.

**Correct Answer:** A

**Section:** Mixed Questions

**Explanation**

**Explanation/Reference:**

References: <https://www.petervanderwoude.nl/post/uninstall-the-microsoft-intune-client/>

#### QUESTION 152

A company implements Microsoft Office 365.

You must prevent credit card numbers and other sensitive information in documents from being sent externally.

You need to ensure that the data is protected on all devices.

What are two possible ways to achieve the goal? Each correct answer presents a complete solution.

**NOTE:** Each correct selection is worth one point.

- A. Configure a data loss prevention (DLP) policy.
- B. Configure a Microsoft Intune mobile device management (MDM) policy.
- C. Implement Microsoft Azure Rights Management.
- D. Configure a threat management policy.

**Correct Answer:** AC

**Section:** Mixed Questions

**Explanation**

**Explanation/Reference:**

References: <https://msdn.microsoft.com/en-us/library/mt718319.aspx> <https://docs.microsoft.com/en-us/information-protection/understand-explore/what-is-azure-rms>

#### QUESTION 153

You administer Windows 10 Enterprise desktops.

You discover that a company employee enabled file encryption on several folders by using a self-signed Encrypted File System (EFS) certificate.

You need to ensure that you are able to decrypt the encrypted files if the user profile is deleted.

What should you do?

- A. Open the Certificates console and connect to the user account certificates. Export the personal self-signed EFS certificate from the Trusted Root Certification Authority folder to a Personal Information Exchange (PFX) file.

- B. Open the Certificates console and connect to the user account certificates. Find the personal self-signed EFS certificate and export it to a Personal Information Exchange (PFX) file.
- C. Open the Certificates console and connect to the computer account certificates. Export the self-signed EFS certificate from the Trusted People folder to a Canonical Encoding Rules (CER) file.
- D. Open the Certificates console and connect to the user account certificates. Export the self-signed EFS certificate from the Trusted People folder to a Canonical Encoding Rules (CER) file.

**Correct Answer:** B

**Section:** Mixed      **Questions**

**Explanation**

**Explanation/Reference:**

References: <https://docs.microsoft.com/en-us/windows/security/information-protection/windows-information-protection/create-and-verify-an-efs-dra-certificate>

#### QUESTION 154

You are the system administrator for a company. You have a developer that uses Storage Spaces on their Windows 10 device. The developer has a storage pool that contains five drives. You add four drives to the existing pool on the developer's computer.

You need to ensure that the developer can quickly use the space of the new drives.

Which command or Windows PowerShell cmdlet should you run?

- A. **Optimize-StoragePool**
- B. **Enable-StorageHighAvailability**
- C. **fsutil**
- D. **defrag**
- E. **diskpart**

**Correct Answer:** A

**Section:** Mixed      **Questions**

**Explanation**

**Explanation/Reference:**

References: <https://docs.microsoft.com/en-us/powershell/module/storage/optimize-storagepool?view=win10-ps>

#### QUESTION 155

A company has an Active Directory Domain Services (AD DS) domain. All client computers run Windows 10 Enterprise. A client computer named COMPUTER1 has a shared printer named PRINTER1 installed and Remote Desktop enabled.

A user named Intern is a member of a security group named Sales. The Sales group is a member of the Remote Desktop Users group on COMPUTER1. Only the Sales group has access to PRINTER1.

You need to configure COMPUTER1 to meet the following requirements:

- Allow all members of the Sales group other than Intern to establish Remote Desktop connections to COMPUTER1.
- Allow Intern to print to PRINTER1.

What should you do?

- A. Remove the Sales group from the Remote Desktop Users group.
- B. Assign Intern the Deny log on through Remote Desktop Services user right.
- C. Assign Intern the Deny access to this computer from the network user right. Assign the Sales group the Allow log on locally user right.
- D. Remove Intern from the Sales group.

**Correct Answer: D**

**Section: Mixed Questions**

**Explanation**

**Explanation/Reference:**

#### QUESTION 156

A company has an Active Directory Domain Services (AD DS) domain. All client computers run Windows 10 Enterprise and are joined to the domain.

You have the following requirements:

- Ensure that files in shared network folders are available offline.
- Minimize all data access times.
- Reduce network bandwidth usage.

You need to configure Group Policy settings to meet the requirements.

What should you do first?

- A. Enable the Synchronize all offline files when logging on policy setting.
- B. Enable and configure the Configure slow-link mode policy setting.
- C. Enable the Enable file synchronization on costed networks policy setting.
- D. Enable and configure the Specify administratively assigned Offline Files policy setting.

**Correct Answer: C**

**Section: Mixed Questions**

**Explanation**

**Explanation/Reference:**

References: [https://docs.microsoft.com/en-us/previous-versions/windows/it-pro/windows-server-2012-R2-and-2012/hh968298\(v=ws.11\)](https://docs.microsoft.com/en-us/previous-versions/windows/it-pro/windows-server-2012-R2-and-2012/hh968298(v=ws.11))

#### QUESTION 157

You connect a portable Windows 10 Enterprise computer to a corporate network by using a VPN connection.

[Windows 10 Enterprise computer to a corporate network by using a VPN connection.](#)

[VCE to PDF Converter - PDF Online](#)

You are unable to access websites on the Internet only when you are using the VPN connection.

You need to ensure that you can access websites when connected to the corporate network.

What should you do?

- A. In the TCP/IPv4 properties of the VPN connection, disable the Use default gateway on remote network setting.
- B. Configure the VPN connection to use only PPTP.
- C. In the TCP/IPv4 properties of the VPN connection, enable the Use default gateway on remote network setting.
- D. Configure the VPN connection to use only L2TP/IPSec.
- E. In the TCP/IPv4 properties of the local area connection, disable the Automatic metric setting.

**Correct Answer: A**

**Section: Mixed Questions**

**Explanation**

**Explanation/Reference:**

References: <https://support.microsoft.com/en-za/help/317025/you-cannot-connect-to-the-internet-after-you-connect-to-a-vpn-server>

#### QUESTION 158

**Note: This question is part of a series of questions that use the same or similar answer choices. An answer choice may be correct for more than one question in the series. Each question is independent of the other questions in this series. Information and details provided in a question apply only to that question.**

You support Windows 10 Enterprise desktop computers and tablets. All of the computers are able to connect to your company network from the Internet by using DirectAccess.

Your company wants to deploy a new application to the tablets. The deployment solution must meet the following requirements: ▪

The application is stored locally on the tablets.

- Access to the applications is protected with extra logon credentials, in addition to a standard domain account used by users.
- The application utilizes the least amount of network bandwidth. ▪ The application must maintain access to the current desktop.

You need to deploy the new application to the tablets.

What should you do?

- A. Deploy the application as an Application Virtualization (App-V) package. Install the App-V 4.6 client on the tablets.
- B. Deploy the application as a published application on the Remote Desktop server. Create a Remote Desktop connection on the tablets.
- C. Install the application on a local drive on the tablets.
- D. Install the application in a Windows To Go workspace.
- E. Install Hyper-V on tablets. Install the application on a virtual machine.

- F. Publish the application to Windows Store.
- G. Install the application within a separate Windows 10 Enterprise installation in a virtual hard disk (VHD) file. Configure the tablets with dual boot.
- H. Install the application within a separate Windows 10 Enterprise installation in a VHDX file. Configure tablets with dual boot.

**Correct Answer:** A

**Section:** Mixed Questions

**Explanation**

**Explanation/Reference:**

#### QUESTION 159

**Note:** This question is part of a series of questions that use the same or similar answer choices. An answer choice may be correct for more than one question in the series. Each question is independent of the other questions in this series. Information and details provided in a question apply only to that question.

You support Windows 10 Enterprise desktop computers and tablets. All of the computers are able to connect to your company network from the Internet by using DirectAccess.

Your company wants to deploy a new application to the tablets. The deployment solution must meet the following requirements:

- Users have offline access to the application only within the first seven days following their latest online session. ▪

The application uses the least amount of disk space.

You need to deploy the new application to the tablets.

What should you do?

- A. Deploy the application as an Application Virtualization (App-V) package. Install the App-V 4.6 client on the tablets.
- B. Deploy the application as a published application on the Remote Desktop server. Create a Remote Desktop connection on the tablets.
- C. Install the application on a local drive on the tablets.
- D. Install the application in a Windows To Go workspace.
- E. Install Hyper-V on tablets. Install the application on a virtual machine.
- F. Publish the application to Windows Store.
- G. Install the application within a separate Windows 10 Enterprise installation in a virtual hard disk (VHD) file. Configure the tablets with dual boot.
- H. Install the application within a separate Windows 10 Enterprise installation in a VHDX file. Configure tablets with dual boot.

**Correct Answer:** F

**Section:** Mixed Questions

**Explanation**

**Explanation/Reference:**

**QUESTION 160**

**Note:** This question is part of a series of questions that use the same or similar answer choices. An answer choice may be correct for more than one question in the series. Each question is independent of the other questions in this series. Information and details provided in a question apply only to that question.

You support Windows 10 Enterprise desktop computers and tablets. All of the computers are able to connect to your company network from the Internet by using DirectAccess.

Your company wants to deploy a new application to the tablets. The deployment solution must meet the following requirements:

- The application is not accessible if a user is working offline.
- The application is isolated from other applications.
- The application uses the least amount of disk space.

You need to deploy the new application to the tablets.

What should you do?

- A. Deploy the application as an Application Virtualization (App-V) package. Install the App-V 4.6 client on the tablets.
- B. Deploy the application as a published application on the Remote Desktop server. Create a Remote Desktop connection on the tablets.
- C. Install the application on a local drive on the tablets.
- D. Install the application in a Windows To Go workspace.
- E. Install Hyper-V on tablets. Install the application on a virtual machine.
- F. Publish the application to Windows Store.
- G. Install the application within a separate Windows 10 Enterprise installation in a virtual hard disk (VHD) file. Configure the tablets with dual boot.
- H. Install the application within a separate Windows 10 Enterprise installation in a VHDX file. Configure tablets with dual boot.

**Correct Answer:** B

**Section:** Mixed      **Questions**

**Explanation**

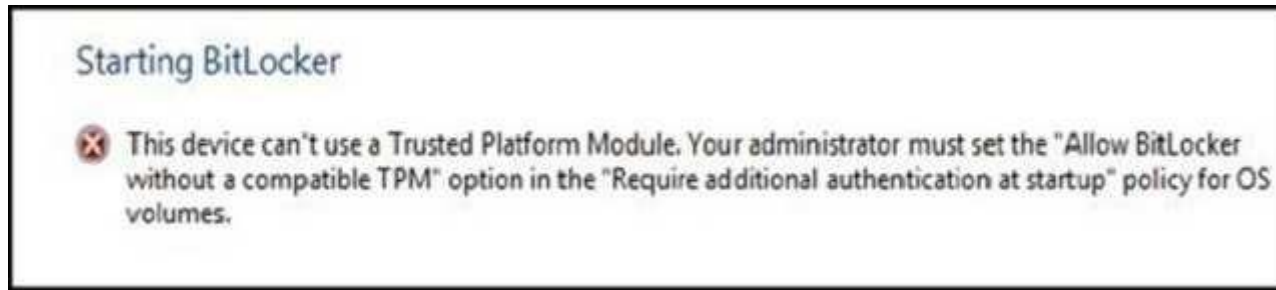
**Explanation/Reference:**

**QUESTION 161**

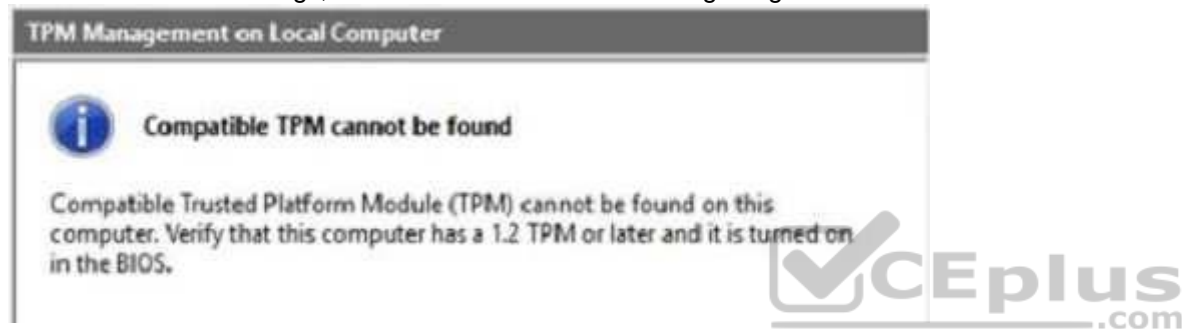
**HOTSPOT**

You provide support for a small company. The company purchases a Windows 10 Enterprise laptop for an employee who travels often.

The company wants to use BitLocker to secure the hard drive for the laptop in case it is lost or stolen. While attempting to enable BitLocker, you receive the error message shown in the following image:

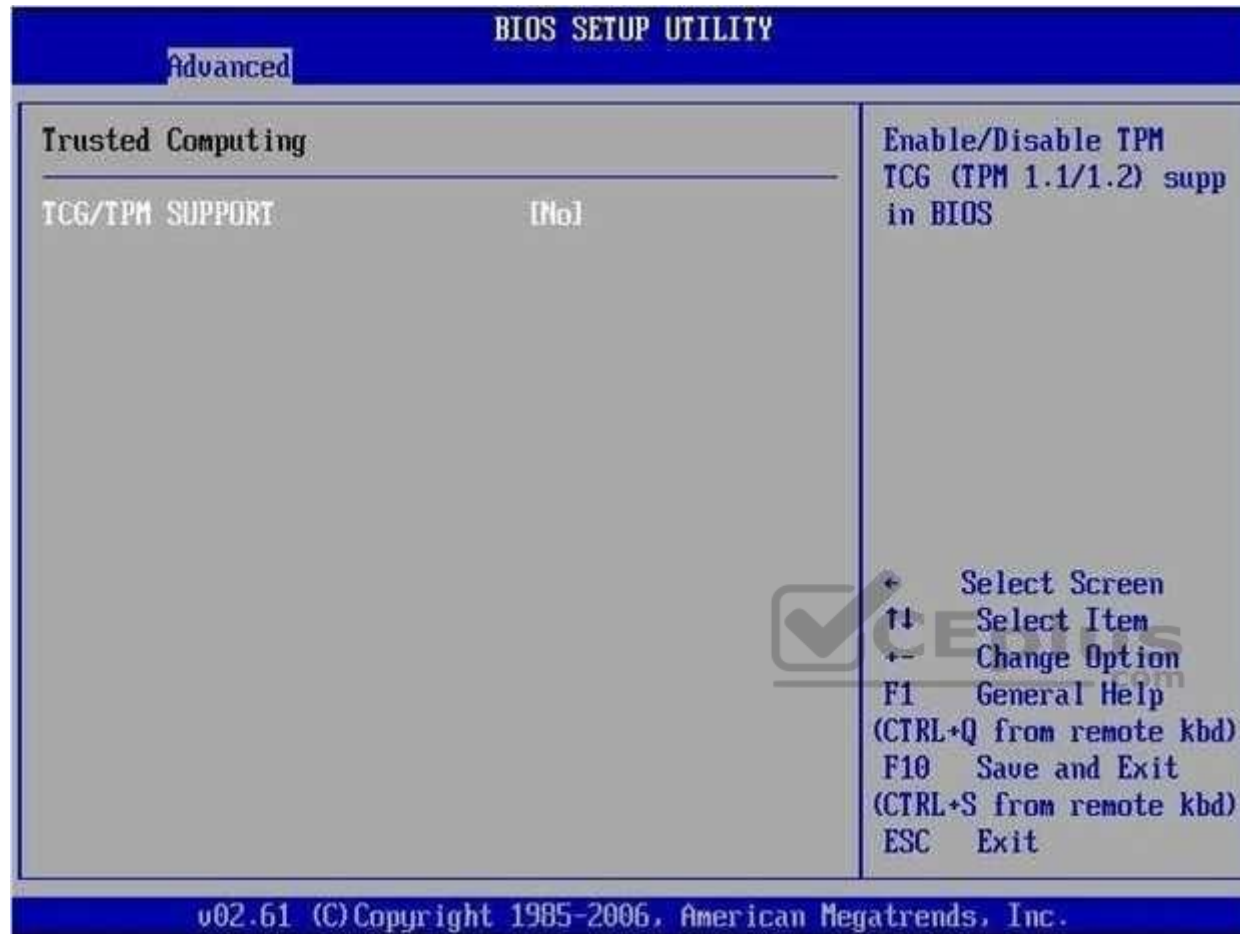


You view the TPM settings, which are shown in the following image:



Finally, you view the BIOS, which is shown in the following image:





For each of the following statement, select Yes if the statement is true. Otherwise, select No.

**NOTE:** Each correct selection is worth one point.

**Hot Area:**

### Answer Area

	Yes	No
A supported configuration for BitLocker is possible on this laptop.	<input type="radio"/>	<input type="radio"/>
The laptop BIOS supports TPM.	<input type="radio"/>	<input type="radio"/>
The laptop supports the necessary version of TPM.	<input type="radio"/>	<input type="radio"/>

Correct Answer:

### Answer Area

	Yes	No
A supported configuration for BitLocker is possible on this laptop.	<input checked="" type="radio"/>	<input type="radio"/>
The laptop BIOS supports TPM.	<input type="radio"/>	<input checked="" type="radio"/>
The laptop supports the necessary version of TPM.	<input type="radio"/>	<input checked="" type="radio"/>

Section: Mixed Questions  
Explanation

Explanation/Reference:

Explanation: [www.vceplus.com](http://www.vceplus.com) - VCE Exam Simulator - Download A+ VCE (latest) free Open VCE Exams - VCE to PDF Converter - PDF Online

References: <https://blogs.technet.microsoft.com/hugofe/2010/10/29/bitlocker-without-tpm/>

**QUESTION 162**

**HOTSPOT**

You use a Windows 10 Enterprise laptop that is configured with a VPN connection to the Windows Server 2012 Direct Access service on the company network.

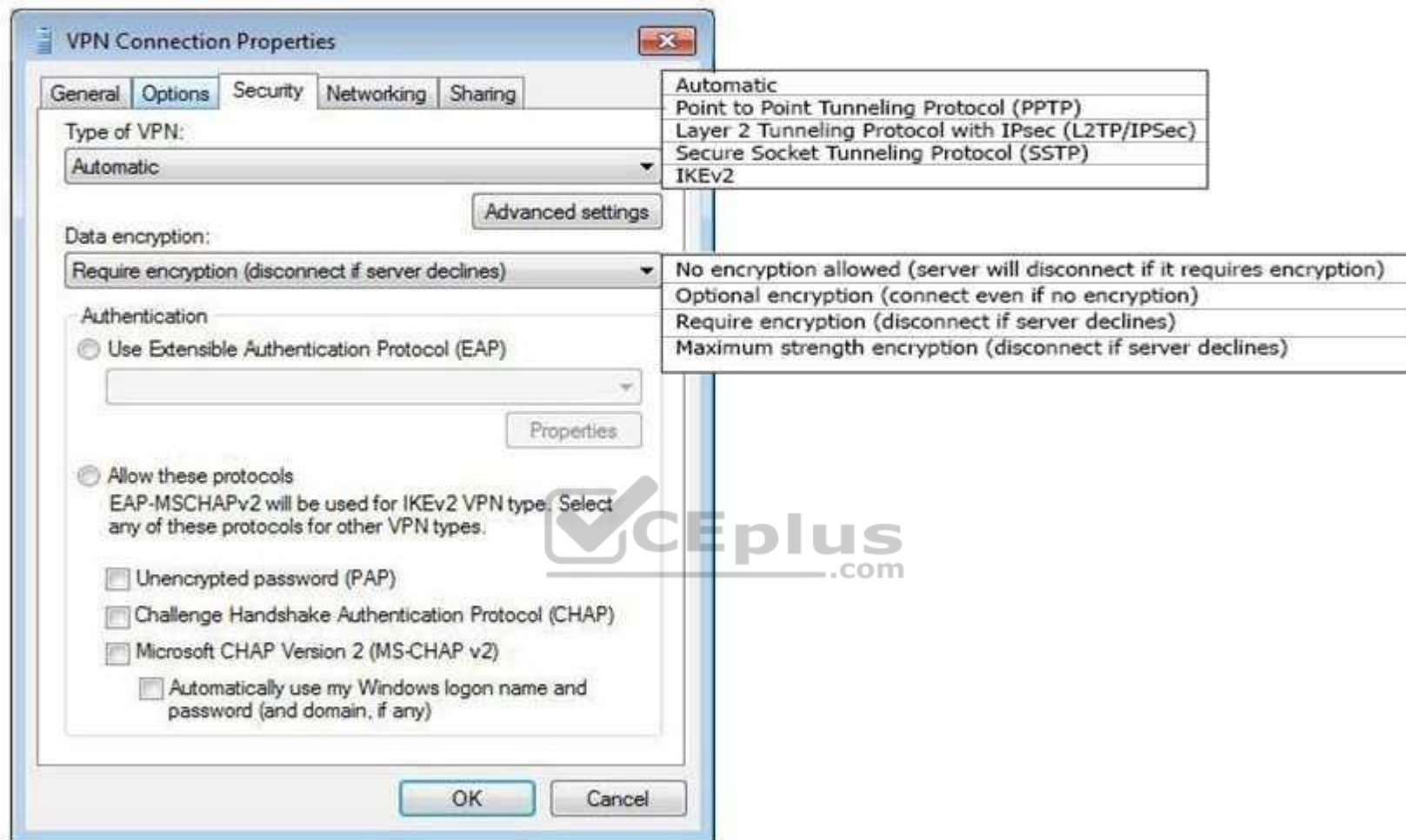
You use the VPN connection over a mobile broadband Internet connection. Internet connectivity is often interrupted.

You need to configure your laptop to use the Windows 10 Enterprise VPN Reconnect feature with a 15-minute network outage time setting.

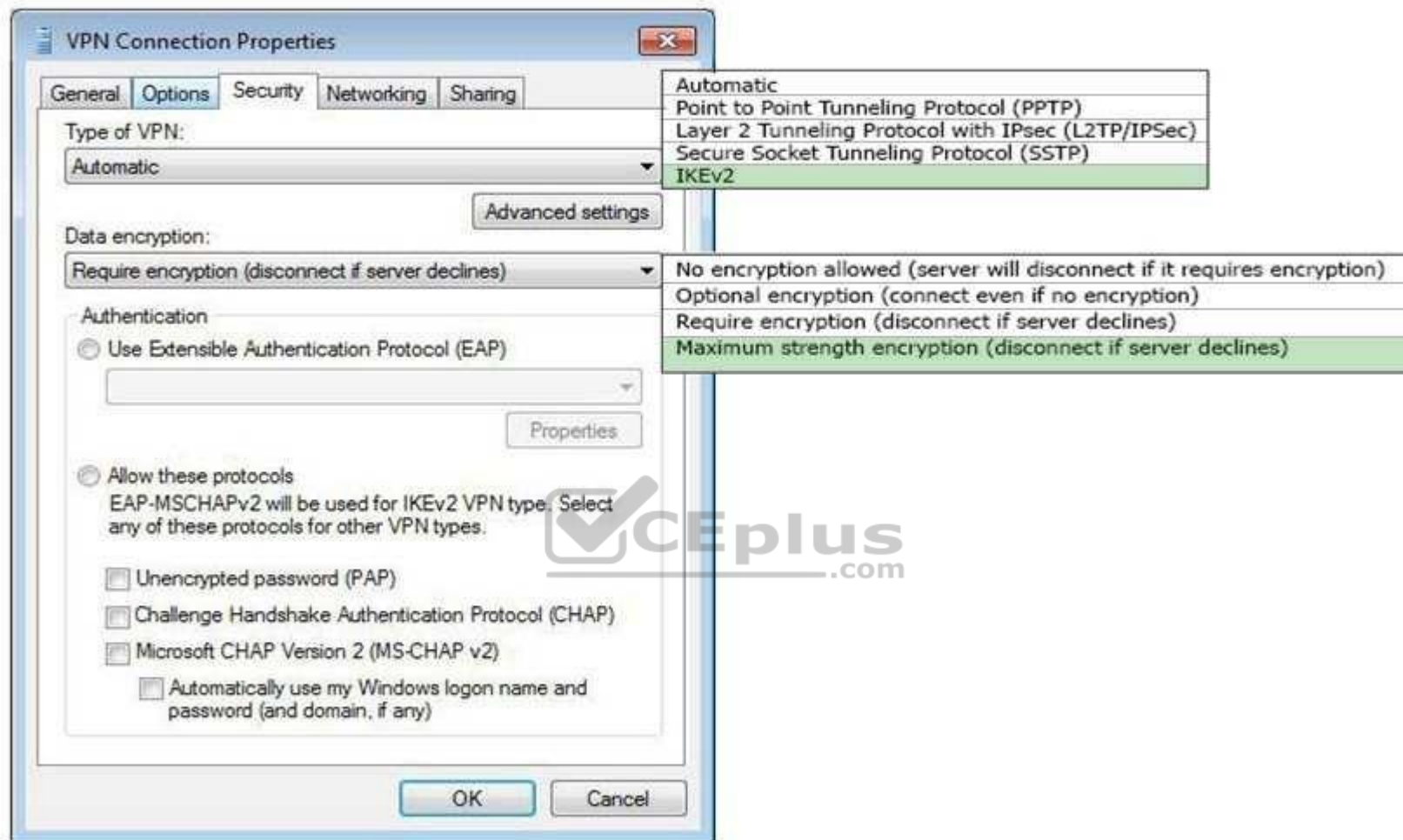
Which two VPN Connection Properties should you select? To answer, select the appropriate objects in the answer area.

**Hot Area:**





**Correct Answer:**



**Section:** Mixed **Questions**

**Explanation**

**Explanation/Reference:**

Explanation:

References:

<https://docs.microsoft.com/en-us/windows-server/remote/remote-access/vpn/always-on-vpn/deploy/vpn-deploy-client-vpn-connections>

<https://blogs.technet.microsoft.com/rasblog/2009/01/14/vpn-reconnect-a-new-tunnel-for-mobility/>

**QUESTION 163**

You have Windows 10 Enterprise desktop computers and a Windows 10 Enterprise laptop computer.

You connect from the desktop to the laptop by using Remote Desktop. You are unable to copy any files between the desktop and the laptop during the Remote Desktop session.

You need to ensure that you can copy files between the computers during the Remote Desktop session.

What should you do?

- A. On the desktop, add the laptop to the trusted hosts in Windows Remote Management (WinRM).
- B. On the laptop, open Remote Desktop Connection and configure the Local devices and resources settings.
- C. On the desktop, open Remote Desktop Connection and configure the Local devices and resources settings.
- D. On the laptop, add the desktop to the trusted hosts in Windows Remote Management (WinRM).

**Correct Answer:** C

**Section:** Mixed Questions

**Explanation**

**Explanation/Reference:**

References: <https://www.technipages.com/unable-to-copy-and-paste-to-remote-desktop-session>

#### QUESTION 164

You provide IT support for a small business.

A member of the team needs the ability to use Remote Desktop and VPN to access a desktop computer from a laptop when traveling. This desktop computer is running Windows 10 Enterprise, while the laptop is running Windows 8.

You need to set up a secure Remote Desktop connection on the desktop computer.

Which two actions should you perform? Each correct answer presents part of the solution.

**NOTE:** Each correct selection is worth one point.

- A. Make the user account a standard user.
- B. Allow remote connections.
- C. Require Network Level Authentication.
- D. Disable Remote Assistance connections.

**Correct Answer:** BC

**Section:** Mixed Questions

**Explanation**

**Explanation/Reference:**

References: <https://docs.microsoft.com/en-us/windows-server/remote/remote-desktop-services/clients/remote-desktop-allow-access>

**QUESTION 165**

A company has an Active Directory Domain Services (AD DS) domain with Windows 10 Enterprise client computers.

You need to configure 20 portable computers so that they sleep after 20 minutes when running on battery power. You must accomplish this goal by using the least amount of administrative effort.

Which two actions should you perform? Each correct answer presents part of the complete solution.

**NOTE:** Each correct selection is worth one point.

- A. Create a Group Policy object (GPO) that configures the Sleep Management settings.
- B. Edit the local Group Policy to configure the Power Management settings.
- C. Edit the local Group Policy to configure the Shut Down options.
- D. Link the Group Policy object (GPO) to the organizational unit containing the portable computers.
- E. Create a Group Policy object (GPO) that configures the Power Management settings.

**Correct Answer:** AD

**Section:** Mixed **Questions**

**Explanation**

**Explanation/Reference:**

References: <http://sourcedaddy.com/windows-7/configuring-power-management-settings-using-group-policy.html>

**QUESTION 166**

You have a Windows 10 Enterprise computer. The computer has 500 gigabytes (GB) of free disk space.

You receive a request to extract several files from a 200-GB virtual hard drive (VHD) file. You copy the file to your computer.

You need to access data from the VHD file.

What should you do?

- A. From PowerShell, run the **Get-Volume** cmdlet.
- B. From Windows Explorer, right-click the VHD file and mount the disk.
- C. From Disk Management, select **Create VHD** and point to the VHD file.
- D. From Disk Management, rescan the disks.

**Correct Answer:** B

**Section:** Mixed **Questions**

**Explanation**

**Explanation/Reference:**

References: <https://www.howtogeek.com/51174/mount-and-umount-a-vhd-file-in-windows-explorer-via-a-right-click/>

**QUESTION 167**

Your network contains an Active Directory domain. The domain contains Windows 10 Enterprise client computers.

Users frequently use USB drives to store sensitive files that are used on multiple computers.

Your corporate security policy states that all removable storage devices such as USB data drives, must be encrypted.

You need to ensure that if a user forgets the password for a USB disk that is encrypted by using BitLocker To Go, the user can resolve the issue themselves.

What should you do?

- A. Instruct the user to open BitLocker Drive Encryption, select Back up recovery key, and then select Save to a file.
- B. From an elevated command prompt, run **Manage-BDE -ForceRecovery**.
- C. For each computer, create a USB startup key.
- D. Implement the BitLocker Network Unlock feature.

**Correct Answer: A**

**Section: Mixed Questions**

**Explanation**

**Explanation/Reference:**

Explanation:

You can save a copy of the BitLocker recovery key to a file, a USB flash drive, or printed a hard copy.

References: <https://support.microsoft.com/en-za/help/17133/windows-8-bitlocker-recovery-keys-frequently-asked-questions>

**QUESTION 168**

A company has Windows 10 Enterprise client computers. The corporate network is configured for IPv4 and Ipv6.

You need to disable Media Sensing for IPv6 on the client computers without affecting IPv4 communications.

What should you do on each client computer?

- A. Run the **Set-NetIPv4Protocol** Windows PowerShell cmdlet.
- B. Run the **Disable-NetAdapterBinding** Windows PowerShell cmdlet.
- C. Run the **Set-NetIPv6Protocol** Windows PowerShell cmdlet.
- D. Run the **Disable-NetAdapter** Windows PowerShell cmdlet.

**Correct Answer: C**

**Section: Mixed Questions**

**Explanation**

**Explanation/Reference:** [www.vceplus.com](http://www.vceplus.com) - VCE Exam Simulator - Download A+ VCE (latest) free Open VCE Exams - VCE to PDF Converter - PDF Online



References: <https://docs.microsoft.com/en-us/powershell/module/nettcpip/set-netipv6protocol?view=win10-ps>

#### QUESTION 169

You administer Windows 10 Enterprise client computers in your company network. The company has an Active Directory Domain Services (AD DS) domain named contoso.com. The domain contains a DNS server that is configured to lease IPv4 and IPv6 addresses.

A client computer named Computer1 is configured to obtain IPv4 and IPv6 addresses automatically.

A user reports that an IPv6-enabled application named App1 is not working on Computer1.

You discover that Computer1 has an IPv6 address prefix of FE80:: You are able to ping Computer1 successfully by using IPv4, but when you use IPv6, your ping requests time out.

You need to ensure that Computer1 will support App1.

Which command should you use?

- A. **ipconfig /renew6**
- B. **ipconfig /setclassid6**
- C. **ipconfig /renew**
- D. **ipconfig /release6**



**Correct Answer: C**

**Section: Mixed Questions**

**Explanation**

**Explanation/Reference:**

References: <https://technet.microsoft.com/en-us/library/cc938688.aspx>

#### QUESTION 170

A company has an Active Directory Domain Services domain. All client computers run Windows 10 Enterprise and are joined to the domain.

You run the **ipconfig** command on a client computer. The following output depicts the results.

Ethernet adapter Local Area Connection 3:

```
Connection-specific DNS Suffix....:
IPv4 Address.....:192.168.1.102
Subnet Mask .....:255.255.255.0
Default Gateway .....:
```

Tunnel adapter isatap.{DFCE21ED-2EE5-46BA-93BE-97743DE6FC94}:

```
Media State:.....: Media disconnected
Connection-specific DNS Suffix....:
```

You need to ensure that you can establish a DirectAccess connection from the client computer to the network.

What should you do?

- A. Configure a static IPv4 address.
- B. Remove the computer from the domain.
- C. Enable IPV6 on the network adapter.
- D. Create a new VPN connection.



**Correct Answer: C**

**Section: Mixed Questions**

**Explanation**

**Explanation/Reference:**

References: <https://docs.microsoft.com/en-us/windows-server/remote/remote-access/directaccess/single-server-wizard/da-basic-configure-s1-infrastructure>

#### **QUESTION 171**

You administer Windows 10 Enterprise laptops. The laptops are configured to connect to an unsecured wireless access point. You plan to configure the wireless access point to encrypt wireless traffic and turn off SSID broadcast.

You need to ensure the laptops will join the secured wireless network automatically after the configuration changes.

What should you do?

- A. Create a network profile.
- B. Create an ad hoc network.
- C. Set Network Discovery to Enabled for the Public profile.
- D. Set the Unidentified Networks Properties User permissions to User can change location.

**Correct Answer: A** [www.vceplus.com](http://www.vceplus.com) - VCE Exam Simulator - Download A+ VCE (latest) free Open VCE Exams - VCE to PDF Converter - PDF Online

**Section:** Mixed Questions  
**Explanation**

**Explanation/Reference:**

References: <http://ecross.mvps.org/howto/connect-to-wireless-network-with-windows-10.htm>

**QUESTION 172**

A Windows 10 Enterprise client computer has two hard disk drives: a system drive and a data drive.

You are preparing to back up the computer prior to installing a developing software product. You have the following requirements: ▪

The system disk that is part of the backup must be mountable from within Windows.

- The system disk that is part of the backup must be bootable.
- The backup must be viable to restore in the event of a hard disk failure. ▪

The backup must contain data from both hard disk drives.

You need to select a backup method.

Which method should you use?



<https://vceplus.com/>

- A. system image
- B. storage pool
- C. File History
- D. system repair disk

**Correct Answer:** A

**Section:** Mixed Questions  
**Explanation**

**Explanation/Reference:**

References: <https://www.howtogeek.com/239312/how-to-restore-system-image-backups-on-windows-7-8-and-10/>

**QUESTION 173**

You have a computer named Computer1 that runs Windows 10 Enterprise.

You need to identify the locations that you can select as a File History drive.

What are two possible locations? Each correct answer presents a complete solution?

- A. the operating system volume
- B. an unformatted partition
- C. a non-system volume
- D. a network share

**Correct Answer:** CD

**Section:** Mixed Questions

**Explanation**

**Explanation/Reference:**

Explanation:

You can use a non-system volume as a File History drive. This can be a volume on a hard drive in a computer, a Virtual Hard Drive (VHD) or an external USB drive.

You can also use a network share as a File History drive.

In the File History Control Panel item, you can click the "Select Drive" option. This will display a list of all detected drives that are suitable for use as the File History drive. Under the list of drives, there is a link "Add Network Location". You can click the link and browse to or enter the path to the network share.

Incorrect Answers:

A: You cannot use the operating system volume (usually the C: drive) as the File History drive.

B: The volume used for the File History drive must be a formatted volume.

References: <http://computerbeginnersguides.com/blog/2015/08/23/enable-file-history-backups-in-windows-10/>

#### **QUESTION 174**

You administer Windows 10 Enterprise computers in your company network.

The computers are configured to allow remote connections.

You attempt to create a Remote Desktop Connection to a computer named Computer1.

You receive the following message:

"Remote Desktop can't connect to the remote computer."

You are able to ping Computer1.

You discover that Remote Desktop Firewall rules are not present on Computer1.

You need to connect to Computer1 by using Remote Desktop.

Which PowerShell commands should you run on Computer1?

- A. **Set-NetFirewallRule -Name RemoteSvcAdmin-in-TCP -Enable True**
- B. **Set -NetFirewallRule -Name RemoteFwAdmin-In-TCP -Enable True**
- C. **New-NetFirewallRule -DisplayName RdpTCPIn -localPort 3389 - Protocol TCP**
- D. **New-NetFirewallRule -DisplayName RdpTCPout -localPort 3389 - Protocol TCP  
-Direction Out -Action Allow**

**Correct Answer:** C

**Section:** Mixed Questions

**Explanation**

**Explanation/Reference:**

Explanation:

New-NetFirewallRule

Creates a new inbound or outbound firewall rule and adds the rule to the target computer.

Syntax

New-NetFirewallRule -DisplayName <String> [-Action <Action> ] [-AsJob] [-Authentication

<Authentication> ] [- CimSession <CimSession[]> ] [-Description <String> ] [-Direction <Direction> ] [-DynamicTarget <DynamicTransport> ] [-EdgeTraversalPolicy <EdgeTraversal> ] [-Enabled <Enabled> ] [-Encryption <Encryption> ] [-GPOSession <String> ] [-Group <String> ] [-IcmpType <String[]> ] [-InterfaceAlias <WildcardPattern[]> ] [-InterfaceType <InterfaceType> ] [-LocalAddress <String[]> ] [-LocalOnlyMapping <Boolean> ] [-LocalPort <String[]> ] [-LocalUser<String> ] [-LooseSourceMapping <Boolean> ] [-Name <String> ] [-OverrideBlockRules<Boolean> ] [-Owner <String> ] [- Package <String> ] [-Platform <String[]> ] [-PolicyStore<String> ] [-Profile <Profile> ] [-Program <String> ] [-Protocol <String> ] [-RemoteAddress<String[]> ] [- RemoteMachine <String> ] [-RemotePort <String[]> ] [-RemoteUser <String> ] [-Service <String> ] [- ThrottleLimit <Int32> ] [-Confirm] [-WhatIf] [ <CommonParameters>] TheNew-NetFirewallRule cmdlet creates an inbound or outbound firewall rule and adds the rule to the target computer.

[http://en.wikipedia.org/wiki/Remote\\_Desktop\\_Protocol](http://en.wikipedia.org/wiki/Remote_Desktop_Protocol)

Remote Desktop Protocol

By default, the server listens on TCP port 3389 and UDP port 3389.

References: <https://docs.microsoft.com/en-us/powershell/module/netsecurity/new-netfirewallrule?view=winserver2012r2-ps>

**QUESTION 175**

You have a laptop. Recently, you discovered that the battery life on the laptop is less than expected.

You need to generate a report that lists the expected battery life after a full charge and that shows historical battery life.

What should you use?

- A. The Power & sleep setting in the Settings app
- B. the **Powercfg** command
- C. Power Options in Control Panel
- D. Performance Monitor

**Correct Answer:** B

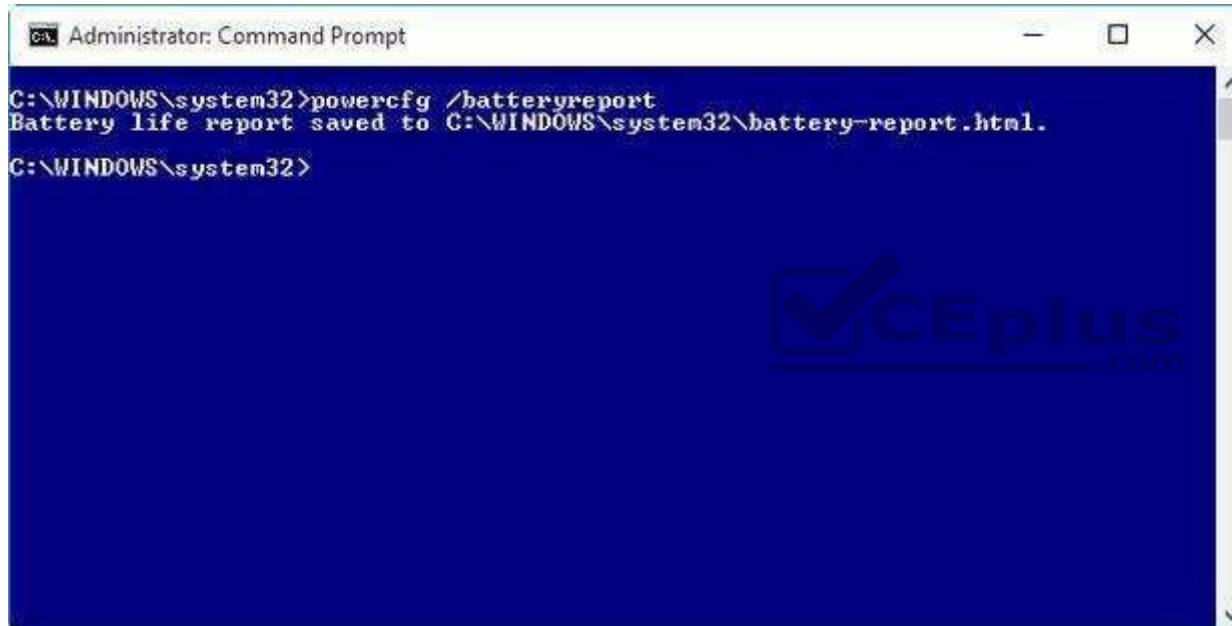
**Section:** Mixed Questions  
**Explanation**

**Explanation/Reference:**

Explanation:

Launching the PowerCfg command and running the Battery Report is easy once you know how.

To begin, you'll need to open an Administrator Command Prompt, which you can do by right-clicking on the Start button and selecting the Command Prompt (Admin) command. Then, type the command: `powercfg /batteryreport` and press [Enter]. The Power Configuration Utility will immediately compile the report and display the message shown in Figure A. Figure A



```
C:\WINDOWS\system32>powercfg /batteryreport
Battery life report saved to C:\WINDOWS\system32\battery-report.html.
C:\WINDOWS\system32>
```

References: <https://www.howtogeek.com/217255/use-the-hidden-powercfg-tool-to-optimize-battery-life-on-windows/>

**QUESTION 176**

You have a computer named C1 that runs Windows 10 Enterprise. C1 is member of a home-group.

You plan to join C1 to MS Azure AD tenant named T1.

You need to ensure that an Azure AD user named User1 is a member of the local Administrators group on C1, when C1 is joined to Azure AD.

What should you do?

- A. From azure classic portal modify the membership of T1 global admin group
- B. From the settings app on C1, set up assigned access
- C. From settings app on C1, modify the Work access settings
- D. From settings app on C1, modify the Family & other user settings

**Correct Answer:** A

**Section:** Mixed Questions

**Explanation**

**Explanation/Reference:**

References:

<https://docs.microsoft.com/en-us/azure/active-directory-domain-services/active-directory-ds-admin-guide-join-windows-vm>

<http://www.tomsitpro.com/articles/windows-10-azure-active-directory-domain,2-27.html>

#### QUESTION 177

All computers are connected to homgroup. User wants to share a printer.

The printer function for the computer it is attached to.

You verify that printers are enabled under homegroup settings, but the printer does not appear on the network.

The user is able to share documents and access other shared printers in the homegroup.

You need to allow other users to use the printer.

What should you do?

- A. Enable sharing under the printer properties
- B. map the printer on the client computers
- C. update the printer driver to a version that supports homegroup sharing
- D. disable and reenale the sharing of printers under homegroup on the computer

**Correct Answer:** A

**Section:** Mixed Questions

**Explanation**

**Explanation/Reference:**

References: <https://www.howtogeek.com/howto/windows-7/share-files-and-printers-in-windows-7-with-homegroup/>

#### QUESTION 178

A company has client computer that run Win 10 enterprise.

The corporate network is configured for IPv4 and IPv6.

You need to disable IPv6 on the client computer without affecting IPv4 communicatins.

What should you do on each computer?

- A. Run the **Set-NetIPv4Protocol** Windows PowerShell cmdlet
- B. Run the **Set-NetIPv6Protocol** Windows PowerShell cmdlet

- C. Run **Disable-NetAdapter** Windows PowerShell cmdlet
- D. Run the **Disable-NetAdapterBinding** Windows PowerShell cmdlet

**Correct Answer:** D

**Section:** Mixed      **Questions**

**Explanation**

**Explanation/Reference:**

References: <http://juventusitprofessional.blogspot.co.za/2013/11/powershell-windows-2012-disable-ipv6.html>

#### **QUESTION 179**

You manage a branch office of a company named Contoso.

The branch office contains 20 computers that run Windows 10 Enterprise.

The main office of Contoso hosts a Win Server Update Service server. (WSUS). Branch office computers are configured to download updates from the Internet. You need to prevent computers in the branch office from sharing updates with other computers. What should you do?

- A. Modify the branch cache hosted mode settings
- B. Modify branch cache distributed cache mode settings
- C. Modify the Chose how updates are delivered settings
- D. Deploy a downstream WSUS server to the branch office



**Correct Answer:** C

**Section:** Mixed      **Questions**

**Explanation**

**Explanation/Reference:**

References: <https://www.howtogeek.com/223068/what-you-need-to-know-about-windows-update-on-windows-10/>

#### **QUESTION 180**

Your network contains an Active Directory domain.

Roaming profiles are stored in \\server1\profiles.

The content of the profiles share is shown in the following graphic.



Name	Date modified	Type	Size
User1	2016/09/30 11:51 AM	File folder	
User1.v2	2016/09/30 11:51 AM	File folder	
User1.v3	2016/09/30 11:51 AM	File folder	
User1.v5	2016/09/30 11:51 AM	File folder	
User2	2016/09/30 11:51 AM	File folder	
User2.v2	2016/09/30 11:51 AM	File folder	
User2.v3	2016/09/30 11:51 AM	File folder	
User2.v5	2016/09/30 11:51 AM	File folder	
User3	2016/09/30 11:51 AM	File folder	
User3.v2	2016/09/30 11:51 AM	File folder	
User3.v5	2016/09/30 11:51 AM	File folder	



A user named User2 works from a computer that runs Windows 8.

User2 reports an issue with a user profile.

You need to view the contents of the user profile.

Which folder should you open?

- A. User1
- B. User2.v5
- C. User2.v2
- D. User2.v3

**Correct Answer:** D

**Section:** Mixed Questions

**Explanation**

**Explanation/Reference:**

Explanation:

Client operating system version	Server operating system version	Profile extension
Windows XP	Windows Server 2003 Windows Server 2003 R2	none
Windows Vista Windows 7	Windows Server 2008 Windows Server 2008 R2	v2
Windows 8	Windows Server 2012	v3
Windows 8.1	Windows Server 2012 R2	v4
Windows 10	Windows Server Technical Preview	v5

References: <https://docs.microsoft.com/en-us/windows/client-management/mandatory-user-profile>

#### QUESTION 181

You need to create a new connection to the Internet that uses PPOE.

Which Control Panel application should you use?

- A. System
- B. Credential Manager
- C. Work Folders
- D. Network and Sharing Center
- E. Power Options
- F. RemoteApp and Desktop Connections
- G. Sync Center
- H. Phone and Modem

**Correct Answer: D**

**Section: Mixed Questions**

**Explanation**

**Explanation/Reference:**

References: <https://www.online-tech-tips.com/windows-7/network-and-sharing-center-overview/>

#### QUESTION 182

You support Windows 10 Enterprise desktop computers that are members of an Active Directory domain. Standard domain user accounts are configured with mandatory user profiles. [www.vceplus.com](http://www.vceplus.com) - VCE Exam Simulator - Download A+ VCE (latest) free Open VCE Exams - VCE to PDF Converter - PDF Online

Several users have been transferred to a different department.

You need to allow the users to modify their profiles.

What should you do?

- A. Change the extension of the NTUSER file in the user profile directory to .dat
- B. Configure Folder Redirection by using Group Policy
- C. Configure the user's document library to include folders from network shares
- D. Remove the .man extension from the user profile name

**Correct Answer:** A

**Section:** Mixed      **Questions**

**Explanation**

**Explanation/Reference:**

References: [https://msdn.microsoft.com/en-us/library/windows/desktop/bb776895\(v=vs.85\).aspx](https://msdn.microsoft.com/en-us/library/windows/desktop/bb776895(v=vs.85).aspx)

#### QUESTION 183

**Note:** This question is part of a series of questions that present the same scenario. Each question in the series contains a unique solution that might meet the stated goals. Some question sets might have more than one correct solution, while others might not have a correct solution.

**After you answer a question in this section, you will NOT be able to return to it. As a result, these questions will not appear in the review screen.**

A company has a forest trust with a partner organization. Users from both organizations log on to devices that run Windows 8.1.

You plan to replace the devices with devices running Windows 10.

You need to migrate user profiles from both forests using the least amount of administrative effort.

Solution: You migrate each profile individually by using the User State Migration Tool (USMT).

Does the solution meet the goal?

- A. Yes
- B. No

**Correct Answer:** B

**Section:** Mixed Questions

**Explanation**

**Explanation/Reference:**



<https://vceplus.com/>

