

70-741.exam.120q

Number: 70-741
Passing Score: 800
Time Limit: 120 min



Website: <https://vceplus.com>
VCE to PDF Converter: <https://vceplus.com/vce-to-pdf/>
Facebook: <https://www.facebook.com/VCE.For.All.VN/>
Twitter : https://twitter.com/VCE_Plus

<https://www.vceplus.com/>

70-741

Networking with Windows Server 2016

Exam A

QUESTION 1

Note: This question is part of a series of questions that present the same scenario. Each question in the series contains a unique solution that might meet the stated

goals. Some question sets might have more than one correct solution, while others might not have a correct solution.

After you answer a question in this sections, you will NOT be able to return to it. As a result, these questions will not appear in the review screen.

Your network contains an Active Directory domain named contoso.com. The domain contains a member server named Server1 that runs Windows Server 2016 and has the DNS Server role installed. Automatic scavenging of stale records is enabled and the scavenging period is set to 10 days.

All client computers dynamically register their names in the contoso.com DNS zone on Server1.

You discover that the names of multiple client computers that were removed from the network several weeks ago can still be resolved.

You need to configure Server1 to automatically remove the records of the client computers that have been offline for more than 10 days.

Solution: You set the Time to live (TTL) value of all of the records in the zone.

Does this meet the goal?



- A. Yes
- B. No

Correct Answer: B

Section: (none)

Explanation

Explanation/Reference:

Explanation: <https://technet.microsoft.com/en-us/library/cc958972.aspx>

QUESTION 2

Note: This question is part of a series of questions that present the same scenario. Each question in the series contains a unique solution that might meet the stated goals. Some question sets might have more than one correct solution, while others might not have a correct solution.

After you answer a question in this sections, you will NOT be able to return to it. As a result, these questions will not appear in the review screen.

Your network contains an Active Directory domain named contoso.com. The domain contains a member server named Server1 that runs Windows Server 2016 and has the DNS Server role installed. Automatic scavenging of stale records is enabled and the scavenging period is set to 10 days.

All client computers dynamically register their names in the contoso.com DNS zone on Server1.

You discover that the names of multiple client computers that were removed from the network several weeks ago can still be resolved.

You need to configure Server1 to automatically remove the records of the client computers that have been offline for more than 10 days.

Solution: You modify the Zone Aging/Scavenging properties of the zone.

Does this meet the goal?

- A. Yes
- B. No

Correct Answer: A

Section: (none)

Explanation

Explanation/Reference:

Explanation: [https://technet.microsoft.com/en-us/library/cc771362\(v=ws.10\).aspx](https://technet.microsoft.com/en-us/library/cc771362(v=ws.10).aspx)

QUESTION 3

Note: This question is part of a series of questions that present the same scenario. Each question in the series contains a unique solution. Determine whether the solution meets the stated goals.

Your network contains an Active Directory domain named contoso.com. The domain contains a DNS server named Server1. All client computers run Windows 10.

On Server1, you have the following zone configuration.

ZoneName	ZoneType	IsAutoCreated	IsDsIntegrated	IsReverseLookupZone	IsSigned
-----	-----	-----	-----	-----	-----
_msdcs.contoso.com	Primary	False	True	False	False
adatum.com	Forwarder	False	False	False	False
contoso.com	Primary	False	True	False	False
fabrikam.com	Primary	False	False	False	True
TrustAnchors	Primary	False	True	False	False

You have the following subnets defined on Server1.

Name	IPV4Subnet	IPV6Subnet
Subnet1	{10.0.0.0/24}	
Subnet2	{10.0.1.0/24}	
Subnet3	{192.168.15.0/24}	
Subnet4	{172.16.1.0/24}	

You need to prevent Server1 from resolving queries from DNS clients located on Subnet4. Server1 must resolve queries from all other DNS clients.

Solution: From a Group Policy object (GPO) in the domain, you modify the Network List Manager Policies.

Does this meet the goal?

- A. Yes
- B. No

Correct Answer: B

Section: (none)

Explanation



Explanation/Reference:

Explanation: [https://technet.microsoft.com/en-us/library/jj966256\(v=ws.11\).aspx](https://technet.microsoft.com/en-us/library/jj966256(v=ws.11).aspx)

QUESTION 4

Note: This question is part of a series of questions that present the same scenario. Each question in the series contains a unique solution. Determine whether the solution meets the stated goals.

Your network contains an Active Directory domain named contoso.com. The domain contains a DNS server named Server1. All client computers run Windows 10.

On Server1, you have the following zone configuration.

ZoneName	ZoneType	IsAutoCreated	IsDsIntegrated	IsReverseLookupZone	IsSigned
_msdcs.contoso.com	Primary	False	True	False	False
adatum.com	Forwarder	False	False	False	False
contoso.com	Primary	False	True	False	False
fabrikam.com	Primary	False	False	False	True
TrustAnchors	Primary	False	True	False	False

You have the following subnets defined on Server1.

Name	IPv4Subnet	IPv6Subnet
Subnet1	{10.0.0.0/24}	
Subnet2	{10.0.1.0/24}	
Subnet3	{192.168.15.0/24}	
Subnet4	{172.16.1.0/24}	

You need to prevent Server1 from resolving queries from DNS clients located on Subnet4. Server1 must resolve queries from all other DNS clients.

Solution: From Windows Firewall with Advanced Security on Server1, you create an inbound rule.

Does this meet the goal?

- A. Yes
- B. No

Correct Answer: A

Section: (none)

Explanation

Explanation/Reference:

Explanation:

References: [https://technet.microsoft.com/en-us/library/dd421709\(v=ws.10\).aspx](https://technet.microsoft.com/en-us/library/dd421709(v=ws.10).aspx)

QUESTION 5

Note: This question is part of a series of questions that present the same scenario. Each question in the series contains a unique solution. Determine whether the solution meets the stated goals.

Your network contains an Active Directory domain named contoso.com. The domain contains a DNS server named Server1. All client computers run Windows 10.

On Server1, you have the following zone configuration.

ZoneName	ZoneType	IsAutoCreated	IsDsIntegrated	IsReverseLookupZone	IsSigned
-----	-----	-----	-----	-----	-----
_msdcs.contoso.com	Primary	False	True	False	False
adatum.com	Forwarder	False	False	False	
contoso.com	Primary	False	True	False	False
fabrikam.com	Primary	False	False	False	True
TrustAnchors	Primary	False	True	False	False

You have the following subnets defined on Server1.

Name	IPv4Subnet	IPv6Subnet
-----	-----	-----
Subnet1	(10.0.0.0/24)	
Subnet2	(10.0.1.0/24)	
Subnet3	(192.168.15.0/24)	
Subnet4	(172.16.1.0/24)	

You need to prevent Server1 from resolving queries from DNS clients located on Subnet4. Server1 must resolve queries from all other DNS clients.

Solution: From Windows PowerShell on Server1, you run the **Add-DnsServerQueryResolutionPolicy** cmdlet.

Does this meet the goal?

- A. Yes
- B. No

Correct Answer: A

Section: (none)

Explanation

Explanation/Reference:

References: <https://docs.microsoft.com/en-us/powershell/module/dns/server/add-dns-server-query-resolution-policy?view=win10-ps>

QUESTION 6

HOTSPOT

Your network contains an Active Directory domain named contoso.com. The domain contains a domain-based Distributed File System (DFS) namespace named Namespace1. Namespace1 has the following configuration.

```

State                : Online
Flags                : Insite Referrals
Type                 : Domain V2
Path                 : \\Contoso.con.\Namespace1
TimeToLiveSec        : 300
Description           :
NamespacePath        : \\Contoso.con.\Namespace1
TimeToLive           : 300
GrantAdminAccess      : {CONTOSO\Domain Admins, NT AUTHORITY\SYSTEM,
                        CONTOSO\Enterprise Admins}
PSComputerName        :
CimClass              : Root/Microsoft/Windows/dfs:MSFT_DFSNamespace
CimInstanceProperties : {Description, Flags, NamespacePath, State...}
CimSystemProperties    : Microsoft.Management.Infrastructure.CimSystemProperties
  
```

Namespace1 has a folder named Folder1.

Folder1 has the targets shown in the following table.

Site name	Path
Site1	\\Server1\Folder1
Site2	\\Server2\Folder1



You have the site links shown in the following table.

Site link name	Site in site link	Link cost
Site1 to Site2	Site1 and Site2	10
Site1 to Site3	Site1 and Site3	50

For each of the following statements, select Yes if the statement is true. Otherwise, select No.

Hot Area:

Answer Area

Statements	Yes	No
If a user in Site1 tries to connect to Folder1, the user will connect to \\Server1\Folder1 always.	<input type="radio"/>	<input type="radio"/>
If a user in Site2 tries to connect to Folder1, the user will connect to \\Server2\Folder1 always.	<input type="radio"/>	<input type="radio"/>
If a user in Site3 tries to connect to Folder1, the user will connect to either \\Server1\Folder1 or Server2\Folder1	<input type="radio"/>	<input type="radio"/>

Correct Answer:

Answer Area

Statements	Yes	No
If a user in Site1 tries to connect to Folder1, the user will connect to \\Server1\Folder1 always.	<input checked="" type="radio"/>	<input type="radio"/>
If a user in Site2 tries to connect to Folder1, the user will connect to \\Server2\Folder1 always.	<input checked="" type="radio"/>	<input type="radio"/>
If a user in Site3 tries to connect to Folder1, the user will connect to either \\Server1\Folder1 or Server2\Folder1	<input type="radio"/>	<input checked="" type="radio"/>

Section: (none)

Explanation

Explanation/Reference:

Explanation:

“Insight Referrals” is enabled. Therefore, a user in Site 3 can only connect to a server in Site3; the user will not be directed to Site1 or Site2.

References: <https://ittutorials.net/microsoft/windows-server-2016/configure-dfs/>

QUESTION 7

Your company has a main office in London and a branch office in Seattle. The offices connect to each other by using a WAN link.

In the London office, you have a Distributed File System (DFS) server named FS1 that contains a folder named Folder1.

In the Seattle office, you have a DFS server named FS2.

All servers run Windows Server 2016.

You configure replication of Folder1 to FS2.

Users in both offices frequently add files in Folder1.

You monitor DFS Replication, and you discover excessive replication over the WAN link during business hours.

You need to reduce the amount of bandwidth used for replication during business hours. The solution must ensure that the users can continue to save content to Folder1.

What should you do?

- A. Modify the quota settings on Folder1 on FS2.
- B. Modify the properties of the replication group.
- C. Configure the copy of Folder1 on FS2 as read-only.
- D. Modify the replicated folder properties of Folder1 on FS1.

Correct Answer: B

Section: (none)

Explanation

Explanation/Reference:

Explanation:

QUESTION 8

Your company owns the public Internet IP address range of 131.107.20.0 to 131.107.20.255.

You need to create a subnet that supports four hosts. The solution must minimize the number of addresses available to the subnet.

Which subnet should you use?

- A. 131.107.20.16/28
- B. 131.107.20.16/30
- C. 131.107.20.0/29
- D. 131.107.20.0 with subnet mask 255.255.255.224

Correct Answer: C

Section: (none)

Explanation

Explanation/Reference:

References: <http://jodies.de/ipcalc?host=131.107.20.0&mask1=29&mask2=>

QUESTION 9

You have a server named Server1 that runs Windows Server 2016. Server1 has the following routing table.

Network Destination	Netmask	Gateway	Interface	Metric
0.0.0.0	0.0.0.0	192.168.2.1	192.168.2.92	10
10.0.0.0	255.0.0.0	On-link	10.10.0.11	261
10.10.0.11	255.255.255.25	On-link	10.10.0.11	261
10.20.200.0	255.255.255.0	10.10.0.2	10.10.0.11	5
10.255.255.255	255.255.255.255	On-link	10.10.0.11	261
127.0.0.0	255.0.0.0	On-link	127.0.0.1	306
127.0.0.1	255.255.255.255	On-link	127.0.0.1	306
127.255.255.255	255.255.255.255	On-link	127.0.0.1	306
172.16.0.0	255.240.0.0	On-link	172.16.0.1	261
172.16.0.1	255.255.255.255	On-link	172.16.0.1	261
172.31.255.255	255.255.255.255	On-link	172.16.0.1	261
192.168.2.0	255.255.255.0	On-link	192.168.2.92	266
192.168.2.92	255.255.255.255	On-link	192.168.2.92	266
192.168.2.255	255.255.255.255	On-link	192.168.2.92	266
224.0.0.0	240.0.0.0	On-link	127.0.0.1	306
224.0.0.0	240.0.0.0	On-link	172.16.0.1	261
224.0.0.0	240.0.0.0	On-link	10.10.0.11	261
224.0.0.0	240.0.0.0	On-link	192.168.2.92	266
255.255.255.255	255.255.255.255	On-link	127.0.0.1	306
255.255.255.255	255.255.255.255	On-link	172.16.0.1	261
255.255.255.255	255.255.255.255	On-link	10.10.0.11	261
255.255.255.255	255.255.255.255	On-link	192.168.2.92	266

What will occur when Server1 attempts to connect to a host that has an IP address of 172.20.10.50?



<https://www.vceplus.com/>

- A. Server1 will attempt to connect directly to 172.20.10.50.
- B. Server1 will route the connection to 10.10.0.2.
- C. Server1 will silently drop the connection attempt.
- D. Server1 will route the connection to 192.168.2.1.

Correct Answer: D

Section: (none)

Explanation



Explanation/Reference:

Explanation: <http://www.techrepublic.com/article/understanding-routing-tables/>

QUESTION 10

Your company has two main offices. The offices are located in London and Seattle. All servers run Windows Server 2016.

In the Seattle office, you have a Distributed File System (DFS) server named FS1. FS1 has a folder named Folder1 that contains large Windows image files.

In the London office, you deploy a DFS server named FS2, and you then replicate Folder1 to FS2.

After several days, you discover that the replication of certain files failed to complete.

You need to ensure that all of the files in Folder1 can replicate to FS2.

What should you do?

- A. Modify the disk quota of the drive that contains Folder1.
- B. From a command prompt, run `dfsutil /purgemupcache`.
- C. Create a quota for Folder1 by using File Server Resource Manager (FSRM).

D. Modify the size of staging area of Folder1.

Correct Answer: D

Section: (none)

Explanation

Explanation/Reference:

QUESTION 11

You have a server named Server1 that runs Windows Server 2016 and is configured as a domain controller.

You install the DNS Server server role on Server1.

You plan to store a DNS zone in a custom Active Directory partition.

You need to create a new Active Directory partition for the zone.

What should you use?

- A. Set-DnsServer
- B. Active Directory Sites and Services
- C. Dns.exe
- D. Dnscmd.exe
- E. **New-ADObject**
- F. Active Directory Administrative Center
- G. DNS Manager

Correct Answer: D

Section: (none)

Explanation

Explanation/Reference:

Explanation:

dnscmd <ServerName> /CreateDirectoryPartition <FQDN>

References: https://docs.microsoft.com/en-us/windows-server/administration/windows-commands/dnscmd#BKMK_5

QUESTION 12

You have an application named App1. App1 is distributed to multiple Hyper-V virtual machines in a multitenant environment.

You need to ensure that the traffic is distributed evenly among the virtual machines that host App1.

What should you include in the environment?

- A. Network Controller and Windows Server Network Load Balancing (NLB) nodes
- B. an RAS Gateway and Windows Server Software Load Balancing (SLB) nodes
- C. an RAS Gateway and Windows Server Network Load Balancing (NLB) nodes
- D. Network Controller and Windows Server Software Load Balancing (SLB) nodes

Correct Answer: B

Section: (none)

Explanation

Explanation/Reference:

Explanation: [https://technet.microsoft.com/en-us/library/mt403307\(v=ws.11\).aspx#bkmk_slb](https://technet.microsoft.com/en-us/library/mt403307(v=ws.11).aspx#bkmk_slb)

QUESTION 13

You have an Active Directory domain that contains several Hyper-V hosts that run Windows Server 2016.

You plan to deploy network virtualization and to centrally manage Datacenter Firewall policies.

Which component must you install for the planned deployment?

- A. the Data Center Bridging feature
- B. the Network Controller server role
- C. the Routing role service
- D. the Canary Network Diagnostics feature

Correct Answer: B

Section: (none)

Explanation

Explanation/Reference:

Explanation: [https://technet.microsoft.com/en-us/library/mt403307\(v=ws.11\).aspx#bkmk_slb](https://technet.microsoft.com/en-us/library/mt403307(v=ws.11).aspx#bkmk_slb)

QUESTION 14

You have two Hyper-V hosts named Server1 and Server2 that run Windows Server 2016. Server1 and Server2 are connected to the same network.

On Server1 and Server2, you create an external network switch named Switch1.

You have the virtual machine shown in the following table.

Virtual machine name	IP address	Subnet mask	Hyper-V host
VM1	192.168.1.16	255.255.255.0	Server1
VM2	192.168.1.32	255.255.255.0	Server2
VM3	192.168.1.48	255.255.255.0	Server2

All three virtual machines are connected to Switch1.

You need to prevent applications in VM3 from being able to capture network traffic from VM1 or VM2. The solution must ensure that VM1 retains network connectivity.

What should you do?

- A. Configure network virtualization for VM1 and VM2.
- B. Modify the subnet mask of VM1 and VM2.
- C. On Server2, configure the VLAN ID setting of Switch1.
- D. On Server2, create an external switch and connect VM3 to the switch.

Correct Answer: A

Section: (none)

Explanation

Explanation/Reference:

Explanation: <https://blogs.technet.microsoft.com/networking/2016/10/26/network-virtualization-with-ws2016-sdn/>

QUESTION 15

Your network contains multiple wireless access points (WAPs) that use WPA2-Personal authentication. The network contains an enterprise root certification authority (CA).

The security administrator at your company plans to implement WPA2-Enterprise authentication on the WAPs.

To support the authentication change, you deploy a server that has Network Policy Server (NPS) installed.

You need to configure NPS to authenticate the wireless clients.

What should you do on the NPS server?

- A. Add RADIUS clients and configure network policies.
- B. Create a remote RADIUS server group and configure connection request policies.
- C. Create a remote RADIUS server group and install a server certificate.

D. Add RADIUS clients and configure connection request policies.

Correct Answer: A

Section: (none)

Explanation

Explanation/Reference:

References: <https://ittrainingday.wordpress.com/2013/12/25/how-to-configure-a-windows-radius-server-for-802-1x-wireless-or-wired-connections/>

QUESTION 16

Your company has 5,000 users who work remotely.

You have 40 VPN servers that host the remote connections for the users.

You plan to deploy a RADIUS solution that contains five RADIUS servers.

You need to ensure that client authentication requests are distributed evenly between the five RADIUS servers.

What should you do?

- A. Install the Network Load Balancing role service on all of the RADIUS server. Configure all of the RADIUS clients to connect to a virtual IP address.
- B. Deploy RAS Gateway to a new server. Configure all of the RADIUS clients to connect to RAS Gateway.
- C. Install the Failover Clustering role service on all of the RADIUS servers. Configure all of the RADIUS clients to connect to the IP address of the cluster.
- D. Deploy a RADIUS proxy to a new server. Configure all of the RADIUS clients to connect to the RADIUS proxy.

Correct Answer: D

Section: (none)

Explanation

Explanation/Reference:

Explanation: [https://technet.microsoft.com/en-us/library/dd197433\(v=ws.10\).aspx](https://technet.microsoft.com/en-us/library/dd197433(v=ws.10).aspx)

QUESTION 17

Your network contains an Active Directory forest named contoso.com. The functional level of the forest is Windows Server 2012.

The forest contains five domain controllers and five VPN servers that run Windows Server 2016.

Five hundred users connect to the VPN servers daily.

You need to configure a new server named Server1 as a RADIUS server.

What should you do first?

- A. On Server1, deploy the Remote Access server role.
- B. On Server1, deploy the Network Policy and Access Services role.
- C. On a domain controller, set the forest functional level to Windows Server 2016.
- D. On each VPN server, run the New-NpsRadiusClient cmdlet.

Correct Answer: B

Section: (none)

Explanation

Explanation/Reference:

Explanation: <http://www.nyazit.com/configure-network-policy-server-2016/>

QUESTION 18

Your network contains an Active Directory forest named contoso.com. The forest contains two domains named contoso.com and litwareinc.com.

Your company recently deployed DirectAccess for the members of a group named DA_Computers. All client computers are members of DA_Computers.

You discover that DirectAccess clients can access the resources located in the contoso.com domain only. The clients can access the resources in the litwareinc.com domain by using an L2TP VPN connection to the network.

You need to ensure that the DirectAccess clients can access the resources in the litwareinc.com domain.

What should you do?

- A. From a Group Policy object (GPO), modify the Name Resolution Policy Table (NRPT).
- B. From the properties of the servers in litwareinc.com, configure the delegation settings.
- C. On an external DNS server, create a zone delegation for litwareinc.com.
- D. Add the servers in litwareinc.com to the RAS and IAS Servers group.

Correct Answer: A

Section: (none)

Explanation

Explanation/Reference:

Explanation: <https://blogs.technet.microsoft.com/tomshinder/2010/04/01/directaccess-client-location-awareness-nrpt-name-resolution/>

QUESTION 19

You have a server named Server1 that runs Windows Server 2016. Server1 is located on the perimeter network, and only inbound TCP port 443 is allowed to connect Server1 from the Internet.

You install the Remote Access server role on Server1.

You need to configure Server1 to accept VPN connections over port 443.

Which VPN protocol should you use?

- A. PPTP
- B. SSTP
- C. L2TP
- D. IKEv2

Correct Answer: B

Section: (none)

Explanation

Explanation/Reference:

Explanation: [https://technet.microsoft.com/en-us/library/dd458955\(v=ws.10\).aspx](https://technet.microsoft.com/en-us/library/dd458955(v=ws.10).aspx)

QUESTION 20

You have an Active Directory domain named Contoso.com. The domain contains servers named Server1 and Server2 that run Windows Server 2016.

You install the Remote Access server role on Server1. You install the Network Policy and Access Services server role on Server2.

You need to configure Server1 to use Server2 as a RADIUS server.

What should you do?



<https://www.vceplus.com/>

- A. From the Connection Manager Administration Kit, create a Connection Manager profile.
- B. From Routing and Remote Access, configure the authentication provider.
- C. From Active Directory Users and Computers, modify the Delegation settings of the Server1 computer account.
- D. From Server Manager, create an Access Policy.

Correct Answer: B

Section: (none)

Explanation

Explanation/Reference:

QUESTION 21

You company has a main office in London. The company has 1,000 users who are located in many countries.

You plan to deploy a large remote access solution for the company.

The London office has three servers named Server1, Server2, and Server3 that run Windows Server 2016.

You plan to use Server1 as a VPN server, Server2 as a RADIUS proxy, and Server3 as a RADIUS server.

You need to configure Server2 to support the planned deployment.

Which three actions should you perform on Server2? Each correct answer presents part of the solution.

- A. Create a connection request policy.
- B. Deploy a Windows container.
- C. Add a RADIUS client.
- D. Create a network policy.
- E. Create a remote RADIUS server group.

Correct Answer: ACE

Section: (none)

Explanation

Explanation/Reference:

References: <https://ittrainingday.wordpress.com/2014/01/03/how-to-configure-radius-proxy-servers/>

QUESTION 22

You have a server named Host1 that runs Windows Server 2016.

You configure Host1 as a virtualization host and create 20 new virtual machines on Host1.

You need to ensure that all of the virtual machines can connect to the Internet through Host1.

Which three actions should you perform? Each correct answer presents part of the solution.

- A. On a virtual machine, install the Remote Access server role.

- B. From the properties of each virtual machine, enable virtual LAN identification.
- C. From the properties of each virtual machine, connect to the virtual machine switch.
- D. On Host1, configure the network address translation (NAT) network.
- E. On Host1, create an internal virtual machine switch and specify an IP address for the switch.

Correct Answer: CDE

Section: (none)

Explanation

Explanation/Reference:

Explanation: [https://technet.microsoft.com/en-us/library/ee449441\(v=ws.10\).aspx](https://technet.microsoft.com/en-us/library/ee449441(v=ws.10).aspx)

QUESTION 23

Note: This question is part of a series of questions that use the same or similar answer choices. An answer choice may be correct for more than one question in the series. Each question is independent of the other questions in this series. Information and details provided in a question apply only to that question.

You have a DHCP server named Server1 that has three network cards. Each network card is configured to use a static IP address.

You need to prevent all client computers that have physical address beginning with 98-5F from leasing an IP address from Server1.

What should you do?

- A. From the properties of Scope1, modify the Conflict detection attempts setting.
- B. From the properties of Scope1, configure Name Protection.
- C. From the properties of IPv4, configure the bindings.
- D. From IPv4, create a new filter.
- E. From the properties of Scope1, create an exclusion range.
- F. From IPv4, run the DHCP Policy Configuration Wizard.
- G. From Control Panel, modify the properties of Ethernet.
- H. From Scope1, create a reservation.

Correct Answer: D

Section: (none)

Explanation

Explanation/Reference:

Explanation:

References: [https://technet.microsoft.com/en-us/library/ee941125\(v=ws.10\).aspx](https://technet.microsoft.com/en-us/library/ee941125(v=ws.10).aspx)

QUESTION 24

Note: This question is part of a series of questions that use the same or similar answer choices. An answer choice may be correct for more than one question in the series. Each question is independent of the other questions in this series. Information and details provided in a question apply only to that question.

You have a DHCP server named Server1 that has an IPv4 scope named Scope1.

Users report that when they turn on their client computers, it takes a long time to access the network.

You validate that it takes a long time for the computers to receive an IP address from Server1.

You monitor the network traffic and discover that Server1 issues five ping commands on the network before leasing an IP address.

You need to reduce the amount of time it takes for the computers to receive an IP address.

What should you do?

- A. From the properties of Scope1, modify the Conflict detection attempts setting.
- B. From the properties of Scope1, configure Name Protection.
- C. From the properties of IPv4, configure the bindings.
- D. From IPv4, create a new filter.
- E. From the properties of Scope1, create an exclusion range.
- F. From IPv4, run the DHCP Policy Configuration Wizard.
- G. From Control Panel, modify the properties of Ethernet.
- H. From Scope1, create a reservation.



Correct Answer: A

Section: (none)

Explanation

Explanation/Reference:

Explanation: [https://technet.microsoft.com/en-us/library/ee941125\(v=ws.10\).aspx](https://technet.microsoft.com/en-us/library/ee941125(v=ws.10).aspx)

QUESTION 25

Note: This question is part of a series of questions that use the same scenario. For your convenience, the scenario is repeated in each question. Each question presents a different goal and answer choices, but the text of the scenario is exactly the same in each question in this series.

Your network contains an Active Directory domain named contoso.com. The functional level of the domain is Windows Server 2012.

The network uses an address space of 192.168.0.0/16 and contains multiple subnets.

The network is not connected to the Internet.

The domain contains three servers configured as shown in the following table.

Server name	Configuration
Server1	Domain controller and DNS server
Server2	Member server
Server3	DHCP server

Client computers obtain TCP/IP settings from Server3.

You add a second network adapter to Server2. You connect the new network adapter to the Internet. You install the Routing role service on Server2.

Server1 has four DNS zones configured as shown in the following table.

DNS zone name	Type	Zone file name
Contoso.com	Active Directory-integrated	None
Fabrikam.com	Primary	Fabrikam.com.dns
Tailspintoys.com	Primary	Tailspintoys.com.dns
168.192.in-addr.arpa	Primary	168.192.in-addr.arpa.dns

You need to ensure that when a computer is removed from the network, the associated records are deleted automatically after 15 days.

Which two actions should you perform? Each correct answer presents part of the solution.

- A. Create a scheduled task that runs the Remove-Computer cmdlet.
- B. Modify the Zone Aging/Scavenging Properties of the zone.
- C. Modify the Time to live (TTL) value of the start of authority (SOA) record.
- D. Set the Scavenging period of Server1.
- E. Modify the Expires after value of the start of authority (SOA) record.

Correct Answer: BD

Section: (none) **Explanation**

Explanation/Reference:

Explanation: [https://technet.microsoft.com/en-us/library/cc771362\(v=ws.10\).aspx](https://technet.microsoft.com/en-us/library/cc771362(v=ws.10).aspx)

QUESTION 26

Note: This question is part of a series of questions that use the same scenario. For your convenience, the scenario is repeated in each question. Each question presents a different goal and answer choices, but the text of the scenario is exactly the same in each question in this series.

Your network contains an Active Directory domain named contoso.com. The functional level of the domain is Windows Server 2012.

The network uses an address space of 192.168.0.0/16 and contains multiple subnets.

The network is not connected to the Internet.

The domain contains three servers configured as shown in the following table.

Server name	Configuration
Server1	Domain controller and DNS server
Server2	Member server
Server3	DHCP server

Client computers obtain TCP/IP settings from Server3.

You add a second network adapter to Server2. You connect the new network adapter to the Internet. You install the Routing role service on Server2.

Server1 has four DNS zones configured as shown in the following table.

DNS zone name	Type	Zone file name
Contoso.com	Active Directory-integrated	None
Fabrikam.com	Primary	Fabrikam.com.dns
Tailspintoys.com	Primary	Tailspintoys.com.dns
168.192.in-addr.arpa	Primary	168.192.in-addr.arpa.dns

What should you do to enable Server2 as a NAT server?

- A. From Routing and Remote Access, add an interface.
- B. From Windows PowerShell, run the New-RoutingGroupConnector cmdlet.
- C. From Routing and Remote Access, add a routing protocol.
- D. From Windows PowerShell, run the Install-WindowsFeature cmdlet.

Correct Answer: C

Section: (none)

Explanation

Explanation/Reference:

Explanation:

References: [https://technet.microsoft.com/en-us/library/dd469812\(v=ws.11\).aspx](https://technet.microsoft.com/en-us/library/dd469812(v=ws.11).aspx)

QUESTION 27

Note: This question is part of a series of questions that use the same scenario. For your convenience, the scenario is repeated in each question. Each question presents a different goal and answer choices, but the text of the scenario is exactly the same in each question in this series.

Your network contains an Active Directory domain named contoso.com. The functional level of the domain is Windows Server 2012.

The network uses an address space of 192.168.0.0/16 and contains multiple subnets.

The network is not connected to the Internet.

The domain contains three servers configured as shown in the following table.

Server name	Configuration
Server1	Domain controller and DNS server
Server2	Member server
Server3	DHCP server

Client computers obtain TCP/IP settings from Server3.

You add a second network adapter to Server2. You connect the new network adapter to the Internet. You install the Routing role service on Server2.

Server1 has four DNS zones configured as shown in the following table.

DNS zone name	Type	Zone file name
Contoso.com	Active Directory-integrated	None
Fabrikam.com	Primary	Fabrikam.com.dns
Tailspintoys.com	Primary	Tailspintoys.com.dns
168.192.in-addr.arpa	Primary	168.192.in-addr.arpa.dns

You need to ensure that when a record is added dynamically to fabrikam.com, only the computer that created the record can modify the record. The solution must allow administrators to modify all of the records in fabrikam.com.

What should you do?

- A. Change fabrikam.com to an Active Directory-integrated zone.
- B. Raise the functional level of the domain.
- C. Modify the security settings of the Fabrikam.com.dns file.
- D. Modify the Start of Authority (SOA) settings of fabrikam.com

Correct Answer: A

Section: (none)

Explanation

Explanation/Reference:

Explanation: [https://technet.microsoft.com/en-us/library/cc753751\(v=ws.11\).aspx](https://technet.microsoft.com/en-us/library/cc753751(v=ws.11).aspx)

QUESTION 28

You have servers named Server1 and DHCP1. Both servers run Windows Server 2016. DHCP1 contains an IPv4 scope named Scope1.

You have 1,000 client computers.

You need to configure Server1 to lease IP addresses for Scope1. The solution must ensure that Server1 is used to respond to up to 30 percent of the DHCP client requests only.

You install the DHCP Server server role on Server1.

What should you do next?

- A. From the DHCP console, run the Configure Failover wizard.
- B. From Server Manager, install the Network Load Balancing feature.
- C. From Server Manager, install the Failover Clustering feature.
- D. From the DHCP console, create a superscope.

Correct Answer: A

Section: (none)

Explanation

Explanation/Reference:

Explanation: [https://technet.microsoft.com/en-us/library/hh831385\(v=ws.11\).aspx](https://technet.microsoft.com/en-us/library/hh831385(v=ws.11).aspx)

QUESTION 29

Note: This question is part of a series of questions that present the same scenario. Each question in the series contains a unique solution. Determine whether the solution meets the stated goals.

Your network contains an Active Directory domain named contoso.com. The domain contains a DNS server named Server1. All client computers run Windows 10. On Server1, you have the following zone configuration.

ZoneName	ZoneType	IsAutoCreated	IsDnsIntegrated	IsReverseLookupZone	IsSigned
_msdcs.contoso.com	Primary	False	True	False	False
0.in-addr.arpa	Primary	True	False	True	False
127.in-addr.arpa	Primary	True	False	True	False
255.in-addr.arpa	Primary	True	False	True	False
adatum.com	Forwarder	False	False	False	
contoso.com	Primary	False	True	False	False
fabrikam.com	Primary	False	True	False	True
TrustAnchors	Primary	False	True	False	False

You need to ensure that all of the client computers in the domain perform DNSSEC validation for the fabrikam.com namespace.

Solution: From a Group Policy object (GPO) in the domain, you add a rule to the Name Resolution Policy Table (NRPT). Does this meet the goal?

- A. Yes
- B. No

Correct Answer: A

Section: (none)

Explanation

Explanation/Reference:

Explanation:

The NRPT stores configurations and settings that are used to deploy DNS Security Extensions (DNSSEC), and also stores information related to DirectAccess, a remote access technology.

Note: The Name Resolution Policy Table (NRPT) is a new feature available in Windows Server 2008 R2. The NRPT is a table that contains rules you can configure to specify DNS settings or special behavior for names or namespaces. When performing DNS name resolution, the DNS Client service checks the NRPT before sending a DNS query. If a DNS query or response matches an entry in the NRPT, it is handled according to settings in the policy. Queries and responses that do not match an NRPT entry are processed normally.

References: [https://technet.microsoft.com/en-us/library/ee649207\(v=ws.10\).aspx](https://technet.microsoft.com/en-us/library/ee649207(v=ws.10).aspx)

QUESTION 30

Note: This question is part of a series of questions that present the same scenario. Each question in the series contains a unique solution. Determine whether the solution meets the stated goals.

Your network contains an Active Directory domain named contoso.com. The domain contains a DNS server named Server1. All client computers run Windows 10. On Server1, you have the following zone configuration.

ZoneName	ZoneType	IsAutoCreated	IsDnsIntegrated	IsReverseLookupZone	IsSigned
_msdcs.contoso.com	Primary	False	True	False	False
0.in-addr.arpa	Primary	True	False	True	False
127.in-addr.arpa	Primary	True	False	True	False
255.in-addr.arpa	Primary	True	False	True	False
adatum.com	Forwarder	False	False	False	
contoso.com	Primary	False	True	False	False
fabrikam.com	Primary	False	True	False	True
TrustAnchors	Primary	False	True	False	False

You need to ensure that all of the client computers in the domain perform DNSSEC validation for the fabrikam.com namespace. Solution: From Windows PowerShell on Server1, you run the **Add-DnsServerTrustAnchor** cmdlet. Does this meet the goal?

- A. yes
- B. No

Correct Answer: B

Section: (none)

Explanation

Explanation/Reference:

Explanation:

The Add-DnsServerTrustAnchor command adds a trust anchor to a DNS server. A trust anchor (or trust “point”) is a public cryptographic key for a signed zone. Trust anchors must be configured on every nonauthoritative DNS server that will attempt to validate DNS data. Trust Anchors have no direct relation to DSSEC validation.

References:

<https://docs.microsoft.com/en-us/powershell/module/dnsserver/add-dnsservertrustanchor?view=win10-ps> [https://technet.microsoft.com/en-us/library/dn593672\(v=ws.11\).aspx](https://technet.microsoft.com/en-us/library/dn593672(v=ws.11).aspx)

QUESTION 31

Note: This question is part of a series of questions that present the same scenario. Each question in the series contains a unique solution that might meet the stated goals. Some question sets might have more than one correct solution, while others might not have a correct solution.

After you answer a question in this section, you will NOT be able to return to it. As a result, these questions will not appear in the review screen.

Your network contains an Active Directory domain named contoso.com. The domain contains a DNS server named Server1. All client computers run Windows 10.

On Server1, you have the following zone configuration.

ZoneName	ZoneType	IsAutoCreated	IsDsIntegrated	IsReverseLookupZone	IsSigned
_msdcs.contoso.com	Primary	False	True	False	False
adatum.com	Forwarder	False	False	False	False
contoso.com	Primary	False	True	False	False
fabrikam.com	Primary	False	False	False	True
TrustAnchors	Primary	False	True	False	False

You have the following subnets defined on Server1.

Name	IPv4Subnet	IPv6Subnet
Subnet1	{10.0.0.0/24}	
Subnet2	{10.0.1.0/24}	
Subnet3	{192.168.15.0/24}	
Subnet4	{172.16.1.0/24}	

You need to prevent Server1 from resolving queries from DNS clients located on Subnet4. Server1 must resolve queries from all other DNS clients.

Solution: From the Security setting of each zone on Server1, you modify the permissions.

Does this meet the goal?

- A. Yes
- B. No

Correct Answer: B

Section: (none)

Explanation

Explanation/Reference:

QUESTION 32

You have an IP Address Management (IPAM) server named IPAM1 that runs Windows Server 2016. IPAM1 manages 10 DHCP servers.

You need provide a user with the ability to track which clients receive which IP addresses from DHCP. The solution must minimize administrative privileges.

- A. IPAM MSM Administrators

- B. IPAM ASM Administrators
- C. IPAM IP Audit Administrators
- D. IPAM User

Correct Answer: C

Section: (none)

Explanation

Explanation/Reference:

References: [https://technet.microsoft.com/en-us/library/jj878348\(v=ws.11\).aspx](https://technet.microsoft.com/en-us/library/jj878348(v=ws.11).aspx)

QUESTION 33

You have a remote access server named Server1 that runs Windows Server 2016. Server1 has DirectAccess enabled.

You have a proxy server named Server2. All computers on the internet connect to the Internet by using the proxy.

On Server1, you run the command **Set-DAClient -Force Tunnel Enabled**.

You need to ensure that when a Direct Access client connects to the network, the client accesses all the Internet resources through the proxy.

What should you run on Server1?

- A. **Set-DnsClientGlobalSetting**
- B. **Set-DAEntryPoint**
- C. **Set-DnsClientNrptRule**
- D. **Set-DnsClientNrptGlobal**
- E. **Set-DAServer**
- F. **Set-DANetworkLocationServer**

Correct Answer: C

Section: (none)

Explanation

Explanation/Reference:

References: <https://directaccess.richardhicks.com/2017/07/27/directaccess-force-tunneling-and-proxy-server-configuration/>

QUESTION 34

You have a server named Server1 that runs Windows Server 2016. Server1 has the DHCP Server and the Windows Deployment Service server roles installed.

Server1 is located on the same subnet as client computers.

You need to ensure that clients can perform a PXE boot from Server1.

Which two IPv4 options should you configure in DHCP? Each correct answer presents part of the solution.

NOTE: Each correct selection is worth one point.

- A. 003 Router
- B. 066 Boot Server Host Name
- C. 015 DNS Domain Name
- D. 006 DNS ServersE. 060 Option 60

Correct Answer: BE

Section: (none)

Explanation

Explanation/Reference:

QUESTION 35

Refer to the exhibit:

Your network contains an Active Directory forest named fabrikam.com. The forest contains the servers configured as shown in the following table:

Server name	Configuration
FabDC1	Domain controller and DNS server
FabFS1	DHCP server and file server
FabRA1	Remote access server
FabRS1	Network Policy Server (NPS) server
FabRP1	Network Policy Server (NPS) server

You plan to implement a VPN. FabRA1 will use the RADIUS proxy for authentication.

You need to ensure that VPN clients can be authenticated and can access internal resources. The solution must ensure that FabRS1 is used as a RADIUS server and FabRP1 is used as a RADIUS proxy.

Which two actions should you perform? Each correct answer presents part of the solution.

NOTE: Each correct selection is worth one point.

- A. Create a connection request policy on FabRS1.
- B. Create a connection request policy on FabRP1.

- C. Create a network policy on FabRS1.
- D. Delete the default connection request policy on FabRS1.
- E. Create a network policy on FabRP1.

Correct Answer: BC

Section: (none)

Explanation

Explanation/Reference:

QUESTION 36

You have a test environment that includes two servers named Server1 and Server2. The servers run Windows Server 2016. You need to ensure that you can implement SMB Direct between the servers. Which feature should the servers support?

- A. Remote Direct Memory Access (RDMA)
- B. Multipath I/O (MPIO)
- C. Virtual Machine queue (VMQ)
- D. Single root I/O virtualization (SR-IOV)



Correct Answer: A

Section: (none)

Explanation

Explanation/Reference:

References: [https://technet.microsoft.com/en-us/library/jj134210\(v=ws.11\).aspx](https://technet.microsoft.com/en-us/library/jj134210(v=ws.11).aspx)

QUESTION 37

You have a DHCP server named Server1.

Server1 has an IPv4 scope that serves 75 client computers that run Windows 10.

When you review the address leases in the DHCP console, you discover several leases for devices that you do not recognize.

You need to ensure that only the 75 Windows 10 computers can obtain a lease from the scope.

What should you do?

- A. Run the **Add-DhcpServer4ExclusionRange** cmdlet.
- B. Create and enable a DHCP filter.

- C. Create a DHCP policy for the scope.
- D. Run the **Add-DhcpServer4OptionDefinition** cmdlet.

Correct Answer: C

Section: (none)

Explanation

Explanation/Reference:

QUESTION 38

You have a DHCP server named Server1.

Server1 has an IPv4 scope that contains 100 addresses for a subnet named Subnet1. Subnet1 provides guest access to the Internet. There are never more than 20 client computers on Subnet1 simultaneously; however, the computers that connect to Subnet1 are rarely the same computers.

You discover that some client computers are unable to access the network. The computers that have the issue have IP addresses in the range of 169.254.0.0/16.

You need to ensure that all of the computers can connect successfully to the network to access the Internet.

What should you do?

- A. Create a new scope that uses IP addresses in the range of 169.254.0.0/16.
- B. Modify the scope options.
- C. Modify the lease duration.
- D. Configure Network Access Protection (NAP) integration on the existing scope.

Correct Answer: C

Section: (none)

Explanation

Explanation/Reference:

QUESTION 39

You have an Active Directory forest that contains 30 servers and 6,000 client computers.

You deploy a new DHCP server that runs Windows Server 2016.

You need to retrieve the list of the authorized DHCP servers.

Which command should you run?

- A. **Get-DCHPServerDatabase**
- B. **Netstat-p IP -s -a**
- C. **Get-DHCPServerInDc**
- D. **Show-ADAuthenticationPolicyExpression-AllowedToAuthenticateTo**
- E. **Netsh DHCP server initiate auth**
- F. **Get-DHCPServerSetting**

Correct Answer: C

Section: (none)

Explanation

Explanation/Reference:

References: <https://docs.microsoft.com/en-us/powershell/module/dhcpserver/get-dhcpserverindc?view=win10-ps>

QUESTION 40

Note: This question is part of a series of questions that present the same scenario. Each question in the series contains a unique solution that might meet the stated goals. Some question sets might have more than one correct solution, while others might not have a correct solution.

After you answer a question in this section, you will NOT be able to return to it. As a result, these questions will not appear in the review screen.

You have a Hyper-V host named Server1. Server1 connects to your corporate network.

Server1 has the virtual switches configured as shown in the following table.

Virtual switch name	Virtual switch type
Private1	Private
Internal1	Internal
External1	External

Server1 has two virtual machines named VM1 and VM2 that run Windows Server 2016. VM1 connects to Private1. VM2 has two network adapters.

You need to ensure that VM1 connects to the corporate network by using NAT.

Solution: You connect VM2 to Private1 and External1. You run the **New-NetNatIpAddress** and the **New-NetNat** cmdlets on VM2. You configure VM1 to use VM2 as the default gateway.

Does this meet the goal?



<https://www.vceplus.com/>

- A. Yes
- B. No

Correct Answer: B

Section: (none)

Explanation

Explanation/Reference:



QUESTION 41

Note: This question is part of a series of questions that present the same scenario. Each question in the series contains a unique solution that might meet the stated goals. Some question sets might have more than one correct solution, while others might not have a correct solution.

After you answer a question in this section, you will NOT be able to return to it. As a result, these questions will not appear in the review screen.

You have a Hyper-V host named Server 1. Server1 connects to your corporate network.

Server1 has the virtual switches configured as shown in the following table.

Virtual switch name	Virtual switch type
Private1	Private
Internal1	Internal
External1	External

Server1 has two virtual machines named VM1 and VM2 that run Windows Server 2016. VM1 connects to Private1. VM2 has two network adapters.

You need to ensure that VM1 connects to the corporate network by using NAT.

Solution: You connect VM2 to Private1 and External1. You install the Remote Access server on VM2, and you configure NAT in the Routing and Remote Access console. You configure VM1 to use VM2 as the default gateway.

Does this meet the goal?

- A. Yes
- B. No

Correct Answer: A

Section: (none)

Explanation

Explanation/Reference:

QUESTION 42

Note: This question is part of a series of questions that present the same scenario. Each question in the series contains a unique solution that might meet the stated goals. Some question sets might have more than one correct solution, while others might not have a correct solution.

After you answer a question in this sections, you will NOT be able to return to it. As a result, these questions will not appear in the review screen.

Your network contains an Active Directory domain named adatum.com. The domain contains two DHCP servers named Server1 and Server2.

Server1 has the following IP configuration.

```
PS C:\> Get-DhcpServerv4Scope | fl ScopeId, SubnetMask, StartRange, EndRange, ActivatePolicies ; Get-DhcpServerSetting
```

```
ScopeId           : 172.16.0.0
SubnetMask         : 255.255.0.0
StartRange         : 172.16.0.20
EndRange           : 172.16.0.100
ActivatePolicies   : True
```

```
IsDomainJoined     : True
IsAuthorized        : False
DynamicBootp        : True
RestoreStatus       : False
ConflictDetectionAttempts : 0
NpsUnreachableAction : Full
NapEnabled          : False
ActivatePolicies     : True
```

Server2 has the following IP configuration.

```
PS C:\> Get-DhcpServerv4Scope | fl ScopeId, SubnetMask, StartRange, EndRange, ActivatePolicies ; Get-DhcpServerSetting

ScopeId           : 172.16.0.0
SubnetMask         : 255.255.0.0
StartRange         : 172.16.0.80
EndRange           : 172.16.0.150
ActivatePolicies   : True

IsDomainJoined     : True
IsAuthorized       : False
DynamicBootp       : True
RestoreStatus      : False
ConflictDetectionAttempts : 3
NpsUnreachableAction : Full
NapEnabled         : False
ActivatePolicies   : True
```

Some users report that sometimes they cannot access the network because of conflicting IP addresses.

You need to configure DHCP to avoid leasing addresses that are in use already.

Solution: On Server1, you modify the ActivatePolicies setting of the scope.

Does this meet the goal?

- A. Yes
- B. No

Correct Answer: B

Section: (none)

Explanation

Explanation/Reference:

QUESTION 43

Note: This question is part of a series of questions that present the same scenario. Each question in the series contains a unique solution that might meet the stated goals. Some question sets might have more than one correct solution, while others might not have a correct solution.

After you answer a question in this sections, you will NOT be able to return to it. As a result, these questions will not appear in the review screen.

Your network contains an Active Directory domain named adatum.com. The domain contains two DHCP servers named Server1 and Server2.

Server1 has the following IP configuration.

```
PS C:\> Get-DhcpServerv4Scope | fl ScopeId, SubnetMask, StartRange, EndRange, ActivatePolicies ; Get-DhcpServerSetting
```

```
ScopeId           : 172.16.0.0
SubnetMask         : 255.255.0.0
StartRange         : 172.16.0.20
EndRange           : 172.16.0.100
ActivatePolicies   : True
```

```
IsDomainJoined     : True
IsAuthorized        : False
DynamicBootp        : True
RestoreStatus       : False
ConflictDetectionAttempts : 0
NpsUnreachableAction : Full
NapEnabled          : False
ActivatePolicies    : True
```



Server2 has the following IP configuration.

```
PS C:\> Get-DhcpServerv4Scope | fl ScopeId, SubnetMask, StartRange, EndRange, ActivatePolicies ; Get-DhcpServerSetting
```

```
ScopeId           : 172.16.0.0
SubnetMask         : 255.255.0.0
StartRange         : 172.16.0.80
EndRange           : 172.16.0.150
ActivatePolicies   : True
```

```
IsDomainJoined     : True
IsAuthorized        : False
DynamicBootp        : True
RestoreStatus       : False
ConflictDetectionAttempts : 3
NpsUnreachableAction : Full
NapEnabled          : False
ActivatePolicies    : True
```

Some users report that sometimes they cannot access the network because of conflicting IP addresses.

You need to configure DHCP to avoid leasing addresses that are in use already.

Solution: On Server1, you modify the EndRange IP address of the scope.

Does this meet the goal?

- A. Yes
- B. No

Correct Answer: A

Section: (none)

Explanation

Explanation/Reference:

QUESTION 44

Note: This question is part of a series of questions that present the same scenario. Each question in the series contains a unique solution that might meet the stated goals. Some question sets might have more than one correct solution, while others might not have a correct solution.

After you answer a question in this sections, you will NOT be able to return to it. As a result, these questions will not appear in the review screen.

Your network contains an Active Directory forest named contoso.com. The forest has three sites located in London, Paris, and Berlin.

The London site contains a web server named Web1 that runs Windows Server 2016.

You need to configure Web1 as an HTTP content server for the hosted cache servers located in the Paris and Berlin sites.

Solution: You install the Static Content role service, and then you restart the IIS Admin Service.

Does this meet the goal?

- A. Yes
- B. No

Correct Answer: B

Section: (none)

Explanation

Explanation/Reference:

QUESTION 45

Note: This question is part of a series of questions that present the same scenario. Each question in the series contains a unique solution that might meet the stated goals. Some question sets might have more than one correct solution, while others might not have a correct solution.

After you answer a question in this sections, you will NOT be able to return to it. As a result, these questions will not appear in the review screen.

Your network contains an Active Directory forest named contoso.com. The forest has three sites located in London, Paris, and Berlin.

The London site contains a web server named Web1 that runs Windows Server 2016.

You need to configure Web1 as an HTTP content server for the hosted cache servers located in the Paris and Berlin sites.

Solution: You install the BranchCache feature, and then you start the BranchCache service.

Does this meet the goal?

- A. Yes
- B. No

Correct Answer: A

Section: (none)

Explanation



Explanation/Reference:

QUESTION 46

Note: This question is part of a series of questions that present the same scenario. Each question in the series contains a unique solution that might meet the stated goals. Some question sets might have more than one correct solution, while others might not have a correct solution.

After you answer a question in this sections, you will NOT be able to return to it. As a result, these questions will not appear in the review screen.

Your network contains an Active Directory forest named contoso.com. The forest has three sites located in London, Paris, and Berlin.

The London site contains a web server named Web1 that runs Windows Server 2016.

You need to configure Web1 as an HTTP content server for the hosted cache servers located in the Paris and Berlin sites.

Solution: You install the Deployment Server role service, and then you restart the World Wide Web Publishing Service.

Does this meet the goal?

- A. Yes

B. No

Correct Answer: B

Section: (none)

Explanation

Explanation/Reference:

QUESTION 47

Note: This question is part of a series of questions that present the same scenario. Each question in the series contains a unique solution that might meet the stated goals. Some question sets might have more than one correct solution, while others might not have a correct solution.

After you answer a question in this sections, you will NOT be able to return to it. As a result, these questions will not appear in the review screen.

You have a server named Server1 that has the Network Policy and Access Services server role installed.

You create a Shared Secret Network Policy Server (NPS) template named Template1.

You need to view the shared secret string used for Template1.

Solution: From Windows PowerShell, you run **Get-NpsSharedSecretTemplate -Name Template1**.

Does this meet the goal?

A. Yes

B. No

Correct Answer: B

Section: (none)

Explanation

Explanation/Reference:

QUESTION 48

Note: This question is part of a series of questions that present the same scenario. Each question in the series contains a unique solution that might meet the stated goals. Some question sets might have more than one correct solution, while others might not have a correct solution.

After you answer a question in this sections, you will NOT be able to return to it. As a result, these questions will not appear in the review screen.

You have a server named Server1 that has the Network Policy and Access Services server role installed.

You create a Shared Secret Network Policy Server (NPS) template named Template1.

You need to view the shared secret string used for Template1.

Solution: From the Network Policy Server console, you export the configuration, and you view the exported XML file.

Does this meet the goal?

- A. Yes
- B. No

Correct Answer: A

Section: (none)

Explanation

Explanation/Reference:

QUESTION 49

Note: This question is part of a series of questions that present the same scenario. Each question in the series contains a unique solution that might meet the stated goals. Some question sets might have more than one correct solution, while others might not have a correct solution.

After you answer a question in this sections, you will NOT be able to return to it. As a result, these questions will not appear in the review screen.

You have a server named Server1 that has the Network Policy and Access Services server role installed.

You create a Shared Secret Network Policy Server (NPS) template named Template1.

You need to view the shared secret string used for Template1.

Solution: From the Network Policy Server console, you view the properties of Template1.

Does this meet the goal?

- A. Yes
- B. No

Correct Answer: B

Section: (none)

Explanation

Explanation/Reference:

QUESTION 50

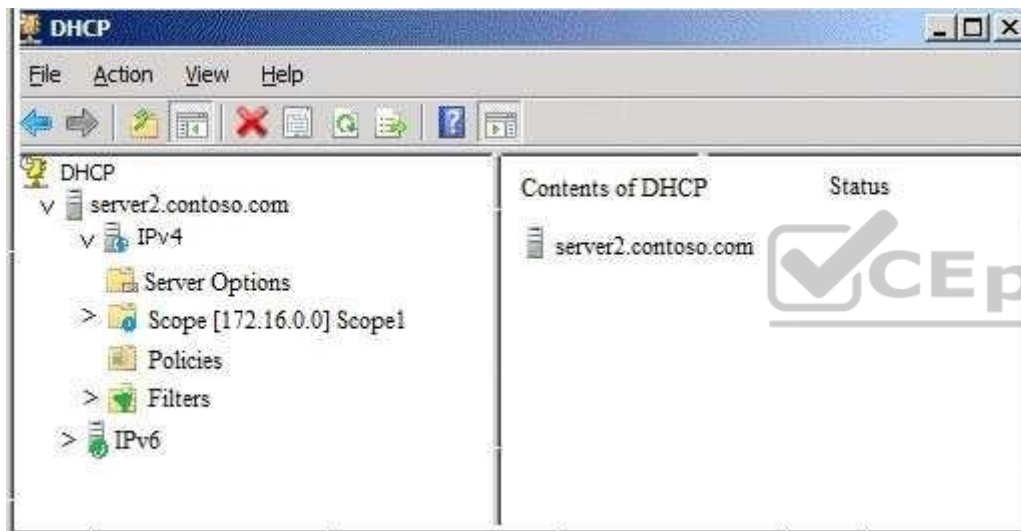
Note: This question is part of a series of questions that present the same scenario. Each question in the series contains a unique solution that might meet the stated goals. Some question sets might have more than one correct solution, while others might not have a correct solution.

After you answer a question in this sections, you will NOT be able to return to it. As a result, these questions will not appear in the review screen.

Your network contains an Active Directory domain named contoso.com. The domain contains a DHCP server named Server2 than runs Windows Server 2016.

Users report that their client computers fail to obtain an IP address.

You open the DHCP console as shown in the Exhibit. (Click the Exhibit button.)



Scope1 has an address range of 172.16.0.10 to 172.16.0.100 and a prefix length of 23 bits.

You need to ensure that all of the client computers on the network can obtain an IP address from Server2.

Solution: You run the **Set-DhcpServerv4MulticastScope** cmdlet.

Does this meet the goal?

- A. Yes
- B. No

Correct Answer: B

Section: (none)

Explanation

Explanation/Reference:

QUESTION 51

You manage a Windows Server 2016 software-defined network.

Network Controller is installed on a three-node domain-joined cluster of virtual machines.

You need to add a new access control list (ACL) for the network controller to the network interface on a tenant virtual machine. The ACL will have only one rule that prevents only outbound traffic from the 10.10.10.0/24 subnet.

You plan to run the following Windows PowerShell commands.

```
$ruleproperties = new-object Microsoft.Windows.NetworkController.AclRuleProperties
$ruleproperties.SourcePortRange = "0-65535"
$ruleproperties.DestinationPortRange = "0-65535"
$ruleproperties.Action = "Deny"
$ruleproperties.Priority = "100"
$ruleproperties.Type = "Outbound"
$ruleproperties.Logging = "Enabled"
```

Which three remaining properties should you add to the rule? Each correct answer presents part of the solution. (Choose three.)

NOTE: Each correct selection is worth one point.

- A. \$ruleproperties.SourceAddressPrefix = "10.10.10.0/24"
- B. \$ruleproperties.DestinationAddressPrefix = "10.10.10.0/24"
- C. \$ruleproperties.Protocol = "ALL"
- D. \$ruleproperties.Protocol = "TCP"
- E. \$ruleproperties.SourceAddressPrefix = "*"
- F. \$ruleproperties.DestinationAddressPrefix = "*"

Correct Answer: ACF

Section: (none)

Explanation

Explanation/Reference:

QUESTION 52

Note: This question is part of a series of questions that present the same scenario. Each question in the series contains a unique solution. Determine whether the solution meets the stated goals.

Your network contains an Active Directory domain named contoso.com. The domain contains a DNS server named Server1. All client computers run Windows 10.

On Server1, you have the following zone configuration.

ZoneName	ZoneType	IsAutoCreated	IsDnsIntegrated	IsReverseLookupZone	IsSigned
_msdcs.contoso.com	Primary	False	True	False	False
0.in-addr.arpa	Primary	True	False	True	False
127.in-addr.arpa	Primary	True	False	True	False
255.in-addr.arpa	Primary	True	False	True	False
adatum.com	Forwarder	False	False	False	False
contoso.com	Primary	False	True	False	False
fabrikam.com	Primary	False	True	False	True
TrustAnchors	Primary	False	True	False	False

You need to ensure that all of the client computers in the domain perform DNSSEC validation for the fabrikam.com namespace.

Solution: From a Group Policy object (GPO) in the domain, you modify the Network List Manager Policies.

Does this meet the goal?

- A. Yes
- B. No

Correct Answer: B

Section: (none)

Explanation

Explanation/Reference:

Explanation:

Network List Manager Policies are security settings that you can use to configure different aspects of how networks are listed and displayed on one computer or on many computers.

Network List Manager Policies are not related to DNSSEC.

References: [https://technet.microsoft.com/en-us/library/jj966256\(v=ws.11\).aspx](https://technet.microsoft.com/en-us/library/jj966256(v=ws.11).aspx)

QUESTION 53

Note: This question is part of a series of questions that use the same or similar answer choices. An answer choice may be correct for more than one question in the series. Each question is independent of the other questions in this series. Information and details provided in a question apply only to that question.

You have multiple servers that run Windows Server 2016. You have a server named Server1 that is configured as a domain controller and a DNS server.

You need to create an Active Directory-integrated zone on Server1.

What should you run?

- A. **dism.exe**
- B. **dns.exe**
- C. **dnscmd.exe**
- D. **netsh.exe**
- E. **Set-DhcpServerDatabase**
- F. **Set-DhcpServerv4DnsSetting**
- G. **Set-DhcpServerv6DnsSetting**
- H. **Set-DNSServerSetting**

Correct Answer: C

Section: (none)

Explanation

Explanation/Reference:

QUESTION 54

Note: This question is part of a series of questions that use the same or similar answer choices. An answer choice may be correct for more than one question in the series. Each question is independent of the other questions in this series. Information and details provided in a question apply only to that question.

You have multiple servers that run Windows Server 2016.

The DNS Server server role is installed on a server named Server1.

You need to configure Server1 to use a DNS forwarder that has an IP address of 192.168.10.15.

What should you run?

- A. **dism.exe**

- B. **dns.exe**
- C. **dnscmd.exe**
- D. **netsh.exe**
- E. **Set-DhcpServerDatabase**
- F. **Set-DhcpServerv4DnsSetting**
- G. **Set-DhcpServerv6DnsSetting**
- H. **Set-DNSServerSetting**

Correct Answer: C

Section: (none)

Explanation

Explanation/Reference:

QUESTION 55

Note: This question is part of a series of questions that use the same or similar answer choices. An answer choice may be correct for more than one question in the series. Each question is independent of the other questions in this series. Information and details provided in a question apply only to that question.

You have a server named Server1 that runs Windows Server 2016.

You install the DHCP Server server role on Server1.

You need to authorize DHCP on Server1.

What should you run?

- A. **dism.exe**
- B. **dns.exe**
- C. **dnscmd.exe**
- D. **netsh.exe**
- E. **Set-DhcpServerDatabase**
- F. **Set-DhcpServerv4DnsSetting**
- G. **Set-DhcpServerv6DnsSetting**
- H. **Set-DNSServerSetting**

Correct Answer: D

Section: (none)

Explanation

Explanation/Reference:

QUESTION 56

Note: This question is part of a series of questions that use the same or similar answer choices. An answer choice may be correct for more than one question in the series. Each question is independent of the other questions in this series. Information and details provided in a question apply only to that question.

You have multiple servers that run Windows Server 2016.

You need to install the DNS Server server role on one of the servers.

What should you run?

- A. **dism.exe**
- B. **dns.exe**
- C. **dnscmd.exe**
- D. **netsh.exe**
- E. **Set-DhcpServerDatabase**
- F. **Set-DhcpServerv4DnsSetting**
- G. **Set-DhcpServerv6DnsSetting**
- H. **Set-DNSServerSetting**



Correct Answer: A

Section: (none)

Explanation

Explanation/Reference:

QUESTION 57

You have a server named Server1 that runs Windows Server 2016.

You need to configure Server1 as a multitenant RAS Gateway.

What should you install on Server1?

- A. the Network Controller server role
- B. the Data Center Bridging feature

- C. the Remote Access server role
- D. the Network Policy and Access Services server role

Correct Answer: C

Section: (none)

Explanation

Explanation/Reference:

QUESTION 58

You have a server named Server1 that runs Windows Server 2016. You install the Hyper-V server role on Server1. Server1 has eight network adapters that are dedicated to virtual machines. The network adapters are Remote Direct Memory Access (RDMA)-enabled.

You plan to use Software Defined Networking (SDN). You will host the virtual machines for multiple tenants on the Hyper-V host.

You need to ensure that the network connections for the virtual machines are resilient if one or more physical network adapters fail.

What should you implement?

- A. single root I/O virtualization (SR-IOV)
- B. NIC Teaming on the Hyper-V host
- C. virtual Receive-side Scaling (vRSS)
- D. Switch Embedded Teaming (SET)



Correct Answer: D

Section: (none)

Explanation

Explanation/Reference:

QUESTION 59

You have a Hyper-V host named Server1 that runs Windows Server 2016. Server1 has two network adapters that are Remote Direct Memory Access (RDMA)enabled.

You need to verify whether Switch Embedded Teaming (SET) is enabled.

Which cmdlet should you use?

- A. **Get-NetworkSwitchFeature**
- B. **Get-VMNetworkAdapter**

- C. **Get-VMSwitch**
- D. **Get-VMNetworkAdapterFailoverConfiguration**

Correct Answer: C

Section: (none)

Explanation

Explanation/Reference:

QUESTION 60

You have a server named Server1 that runs Windows Server 2016.

Server1 has two network cards. One network card connects to your internal network and the other network card connects to the Internet.

You plan to use Server1 to provide Internet connectivity for client computers on the internal network.

You need to configure Server1 as a network address translation (NAT) server.

Which server role or role service should you install on Server1 first?

- A. Web Application Proxy
- B. DirectAccess and VPN (RAS)
- C. Network Controller
- D. Routing

Correct Answer: D

Section: (none)

Explanation

Explanation/Reference:

QUESTION 61

Your network contains an Active Directory domain named contoso.com. The domain contains a DHCP server named Server1 that runs Windows Server 2016.

You have a DHCP scope for the 10.0.0.0/24 IP subnet. One hundred and fifty clients reside in the subnet. Fifty of the DHCP clients are NOT domain-joined.

You need to ensure that DHCP clients without a configured DNS suffix register automatically in a DNS zone named workgroup.contoso.com. The other DHCP clients must register in the DNS zone of their respective domain.

What should you do?

- A. Configure the 015 DNS Domain Name scope option in the 10.0.0.0/24 DHCP scope.
- B. Configure the DNS properties of the 10.0.0.0/24 DHCP scope.
- C. Create a DHCP policy that has a condition based on the fully qualified domain name (FQDN) criterion. Configure the IP address range properties of the policy.
- D. Create a DHCP policy that has a condition based on the fully qualified domain name (FQDN) criterion. Configure the DNS properties of the policy.

Correct Answer: D

Section: (none)

Explanation

Explanation/Reference:

QUESTION 62

You have two DNS servers named Server1 and Server2.

All client computers run Windows 10 and are configured to use Server1 for DNS name resolution.

Server2 hosts a primary zone named contoso.com.

Your network recently experienced several DNS spoofing attacks on the contoso.com zone.

You need to prevent further attacks from succeeding.

What should you do on Server2?

- A. Sign the contoso.com zone.
- B. Configure Response Rate Limiting (RRL).
- C. Configure DNS-based Authentication of Named Entities (DANE) for the contoso.com zone.
- D. Configure the contoso.com zone to be Active Directory-integrated.

Correct Answer: A

Section: (none)

Explanation

Explanation/Reference:

QUESTION 63

You have a Microsoft Azure subscription and an on-premises network.

To the on-premises network, you deploy a new server named Server1 that runs Windows Server 2016. In Azure, you configure a virtual gateway on an Azure virtual network.

You need to ensure that the computers on the on-premises network can access virtual machines on the Azure virtual network.

What should you do on Server1?

- A. Install the Remote Access server role. From the Routing and Remote Access Server Setup Wizard, select Secure connection between two private networks.
- B. Install the Data Center Bridging (DCB) feature, and then run the **Install-RemoteAccess** cmdlet.
- C. Install the Remote Access server role. From the Routing and Remote Access Server Setup Wizard, select Virtual private network (VPN) access and NAT.
- D. Install the Data Center Bridging (DCB) feature, and then run the **Enable-RemoteAccessRoutingDomain** cmdlet.

Correct Answer: A

Section: (none)

Explanation

Explanation/Reference:

QUESTION 64

Your network contains an Active Directory domain. The domain contains a certification authority (CA) and a Network Policy Server (NPS) server.

You plan to deploy Remote Access Always On VPN.

Which authentication method should you use?

- A. Microsoft: EAP-TTLS
- B. Microsoft: Secured password
- C. Microsoft: Protected EAP
- D. Microsoft: EAP-AKA



Correct Answer: C

Section: (none)

Explanation

Explanation/Reference:

QUESTION 65

You have a DNS server named Server1 that runs Windows Server 2016. Server1 has an Active Directory-integrated zone named adatum.com.

All client computers run Windows 10.

You recently encountered unexpected responses to DNS client queries in the adatum.com zone.

You need to log all the records written to the zone.

Which cmdlet should you run?

- A. **Add-DnsServerQueryResolutionPolicy**
- B. **Set-DnsServerDsSetting**
- C. **Set-DnsServerDiagnostics**
- D. **Set-DnsServer**

Correct Answer: C

Section: (none)

Explanation

Explanation/Reference:

QUESTION 66

You have a DHCP server named Server1 that runs Windows Server 2016.

You plan to implement IPv6 on your network.

You need to configure Server1 for stateless DHCPv6.

What should you do from the DHCP console?



<https://www.vceplus.com/>

- A. Configure the Advanced Properties for Server1
- B. Configure the IPv6 Server Options
- C. Create an IPv6 scope
- D. Configure the General IPv6 Properties

Correct Answer: B

Section: (none)

Explanation

Explanation/Reference:

QUESTION 67

You have two servers named Server1 and Server2 that run Windows Server 2016. Both servers have the DHCP Server server role installed.

Server1 has a DHCP scope named Scope1. Server2 has a DHCP scope named Scope2.

You need to ensure that client computers can get an IP address if a single DHCP server fails. You must be able to control the percentage of requests to which each DHCP server responds during normal network operations.

What should you do?

- A. Add Server1 and Server2 as nodes in a failover cluster, and then configure the DHCP Server server role.
- B. Add Server1 and Server2 as nodes in a failover cluster, and then configure the quorum mode.
- C. On Server1 and Server2, configure DHCP failover for Scope1 and Scope2.
- D. Add Server1 and Server2 as nodes in a failover cluster, and then configure port rules for UDP 67 and UDP 68.

Correct Answer: C

Section: (none)

Explanation



Explanation/Reference:

QUESTION 68

You are implementing a new network. The network contains a DHCP server named DHCP1 that runs Windows Server 2016. DHCP1 contains a scope named Scope1 for the 192.168.0/24 subnet.

Your company has the following policy for allocating IP addresses: ▪

All server addresses must be excluded from DHCP scopes

- All client computers must receive IP addresses from Scope1
- All Windows servers must have IP addresses in the range of 192.168.0.200 to 192.168.0.240
- All other network devices must have IP addresses in the range of 192.168.0.180 to 192.168.0.199

You deploy a print device named Print1.

You need to ensure that Print1 adheres to the policy for allocating IP addresses.

Which command should you use?

A. **Add-DhcpServerv4Lease**

- B. Add-DhcpServv4ExclusionRange
- C. Add-DhcpServv4Filter
- D. Add-DhcpServv4Reservation

Correct Answer: D

Section: (none)

Explanation

Explanation/Reference:

QUESTION 69

Your network contains an Active Directory domain named contoso.com that contains a domain controller named DC1. All DNS servers for the network run BIND 10.

Your perimeter network contains a DHCP server named DHCP1 that runs Windows Server 2016. DHCP1 is a member of a workgroup named WORKGROUP. DHCP1 provides IP address leases to guests accessing the Wi-Fi network.

Several engineers access the network remotely by using a VPN connection to a remote access server that runs Windows Server 2016. All of the VPN connections use certificate-based authentication and are subject to access policies in Network Policy Server (NPS). Certificates are issued by an enterprise certification authority (CA) named CA1.

All Windows computers on the network are activated by using Key Management Service (KMS). On-premises users use Remote Desktop Services (RDS).

You plan to deploy IP Address Management (IPAM) to the network.

Which action can you perform on the network by using IPAM?

- A. Manage the DNS zones on the DNS servers.
- B. Audit logon events on the RDS server.
- C. Audit authentication events from DC1.
- D. Manage activations on the KMS server.
- E. Create DHCP reservations on DHCP1.
- F. Audit certificate enrollment requests on CA1.

Correct Answer: C

Section: (none)

Explanation

Explanation/Reference:

QUESTION 70

You have a server named Server1 that runs Windows Server 2016. Server1 is an IP Address Management (IPAM) server that collects DHCP and DNS logs and events for your entire network.

You need to get the IP addresses that were assigned to a client computer named Computer1 during the last week.

What should you do on Server1?

- A. From the IPAM node in Server Manager, click **IP Address Space**, and then review the IP Address Inventory.
- B. Open Event Viewer and click **Windows Logs**. Filter the Security log for Computer1.
- C. Run the **Get-IpamDhcpConfigurationEvent** cmdlet.
- D. Run the **Get-IpamIpAddressAuditEvent** cmdlet.
- E. Open Event Viewer and click **Windows Logs**. Filter the Forwarded Events log for Computer1.
- F. Run the **Get-IpamAddress** cmdlet.

Correct Answer: D

Section: (none)

Explanation

Explanation/Reference:



QUESTION 71

HOTSPOT

Your network contains an Active Directory domain named contoso.com. The domain contains a DNS server named Server1.

Server1 is configured to use a forwarder named Server2 that has an IP address of 10.0.0.10. Server2 can resolve names hosted on the Internet successfully. Server2 hosts a primary DNS zone named adatum.com.

On Server1, you have the following zone configuration.

ZoneName	ZoneType	IsAutoCreated	IsDsIntegrated	IsReverseLookupZone	IsSigned
-----	-----	-----	-----	-----	-----
.	Primary	False	False	False	False
_msdcs.contoso.com	Primary	False	True	False	False
contoso.com	Primary	False	True	False	False
fabrikam.com	Secondary	False	False	False	False

The "." zone contains the following records.

HostName	RecordType	Type	Timestamp	TimeToLive	RecordData
@	NS	2	0	01:00:00	server1.contoso.com
@	SOA	6	0	01:00:00	[1][server1.contoso.com.][hostm...
server1.contoso.com	A	1	0	01:00:00	10.0.0.4

For each of the following statements, select Yes if the statement is true. Otherwise, select No.

Hot Area:

Answer Area

Statements	Yes	No
Server1 can resolve host names that are in the adatum.com zone on Server2.	<input type="radio"/>	<input type="radio"/>
Server1 can resolve www.microsoft.com to an IP address successfully.	<input type="radio"/>	<input type="radio"/>
Server1 can resolve host names that are in the contoso.com zone.	<input type="radio"/>	<input type="radio"/>

Correct Answer:

Answer Area

Statements	Yes	No
Server1 can resolve host names that are in the adatum.com zone on Server2.	<input type="radio"/>	<input checked="" type="radio"/>
Server1 can resolve www.microsoft.com to an IP address successfully.	<input type="radio"/>	<input checked="" type="radio"/>
Server1 can resolve host names that are in the contoso.com zone.	<input checked="" type="radio"/>	<input type="radio"/>

Section: (none)

Explanation

Explanation/Reference:



QUESTION 72

You have multiple servers that run Windows Server 2016 and are configured as VPN servers.

You deploy a server named NPS1 that has Network Policy Server (NPS) installed.

You need to configure NPS1 to accept authentication requests from the VPN servers.

What should you configure on NPS1?

- A. From RADIUS Clients and Servers, add a remote RADIUS server group.
- B. From Policies, add a connection request policy.
- C. From Policies, add a network policy.
- D. From RADIUS Clients and Servers, add RADIUS clients.

Correct Answer: D

Section: (none)

Explanation

Explanation/Reference:

QUESTION 73

You are deploying a small network that has 30 client computers. The network uses the 192.168.1.0/24 address space. All computers obtain IP configurations from a DHCP server named Server1.

You install a server named Server2 that runs Windows Server 2016. Server2 has two network adapters named Internal and Internet. Internet connects to an Internet Service Provider (ISP) and obtains the 131.107.0.10 IP address. Internal connects to the internal network and is configured to use the 192.168.1.250 IP address.

You need to provide Internet connectivity for the client computers.

What should you do?

- A. On Server2, select the Internet and Internal network adapters and bridge the connections. From the DHCP console on Server1, authorize Server2.
- B. On Server1, stop the DHCP server. On the Internal network adapter on Server2, enable Internet Connection Sharing (ICS).
- C. On Server2 run the **New-NetNat -Name NAT1 -InternalInterfaceAddressPrefix 192.168.1.0/24** cmdlet. Configure Server1 to provide the 003 Router option of 131.107.0.10.
- D. Install the Routing role service on Server2 and configure the NAT routing protocol. Configure Server1 to provide the 003 Router option of 192.168.1.250.
- E. Install the Routing role service on Server2 and configure the NAT routing protocol. Configure Server1 to provide the 003 Router option of 131.107.0.10.

Correct Answer: D

Section: (none)

Explanation

Explanation/Reference:

QUESTION 74

You have a DHCP server named Server1 that runs Windows Server 2016.

You have a single IP subnet.

Server1 has an IPv4 scope named Scope1. Scope1 has an IP address range of 10.0.1.10 to 10.0.1.200 and a length of 24 bits.

You need to create a second logical IP network on the subnet. The subnet will use an IP address range of 10.0.2.10 to 10.0.2.200 and a length of 24 bits.

What should you do?

- A. Create a second scope, and then create a superscope.
- B. Create a superscope, and then configure an exclusion range in Scope1.
- C. Create a new scope, and then modify the IPv4 bindings.
- D. Create a second scope, and then run the DHCP Split-Scope Configuration Wizard.

Correct Answer: A

Section: (none)

Explanation

Explanation/Reference:

QUESTION 75

You have a virtual machine named VM1 that runs Windows Server 2016. VM1 hosts a service that requires high network throughput.

VM1 has a virtual network adapter that connects to a Hyper-V switch named vSwitch1. vSwitch1 has one network adapter. The network adapter supports Remote Direct Memory Access (RDMA), the single root I/O virtualization (SR-IOV) interface, Quality of Service (QoS), and Receive Side Scaling (RSS).

You need to ensure that the traffic from VM1 can be processed by multiple networking processors.

Which Windows PowerShell command should you run on the host of VM1?

- A. **Set-NetAdapterRss**
- B. **Set-NetAdapterRdma**
- C. **Set-NetAdapterQos**
- D. **Set-NetAdapterSriov**



Correct Answer: A

Section: (none)

Explanation

Explanation/Reference:

QUESTION 76

Note: This question is part of a series of questions that use the same or similar answer choices. An answer choice may be correct for more than one question in the series. Each question is independent of the other questions in this series. Information and details provided in a question apply only to that question.

Your network contains Windows and non-Windows devices.

You have a DHCP server named Server1 that has an IPv4 scope named Scope1.

You need to prevent a client computer that uses the same name as an existing registration from updating the registration.

What should you do?

- A. From the properties of Scope1, modify the Conflict detection attempts setting.
- B. From the properties of Scope1, configure Name Protection.
- C. From the properties of IPv4, configure the bindings.
- D. From IPv4, create a new filter.
- E. From the properties of Scope1, create an exclusion range.
- F. From IPv4 run the DHCP Policy Configuration Wizard.
- G. From Control Panel, modify the properties of Ethernet.
- H. From Scope1, create a reservation.

Correct Answer: B

Section: (none)

Explanation

Explanation/Reference:

QUESTION 77

Note: This question is part of a series of questions that present the same scenario. Each question in the series contains a unique solution that might meet the stated goals. Some question sets might have more than one correct solution, while others might not have a correct solution.

After you answer a question in this sections, you will NOT be able to return to it. As a result, these questions will not appear in the review screen.

Your network contains an Active Directory domain named contoso.com.

You need to create a Nano Server image named Nano1 that will be used as a virtualization host. The windows server 2016 source files are located in drive D.

Solution: You run the following cmdlet.

New-NanoServerImage –Edition Datacenter –DeploymentType Host –Package Microsoft-NanoServerSCVMM-Package –MediaPath ‘D:\’ -TargetPath C:\nano1\Nano1.wim –ComputerName Nano1 – Domainname Contoso.com

Does this meet the goal?

- A. Yes
- B. NO

Correct Answer: B

Section: (none)

Explanation

Explanation/Reference:

QUESTION 78

Note: This question is part of a series of questions that present the same scenario. Each question in the series contains a unique solution that might meet the stated goals. Some question sets might have more than one correct solution, while others might not have a correct solution.

After you answer a question in this sections, you will NOT be able to return to it. As a result, these questions will not appear in the review screen.

Your network contains an Active Directory domain named contoso.com.

You need to create a Nano Server image named Nano1 that will be used as a virtualization host. The windows server 2016 source files are located in drive D.

Solution: You run the following cmdlet.

**New-NanoServerImage -Edition Datacenter -DeploymentType Host -Package
Microsoft-NanoServerCompute-Package -MediaPath 'D:\' -TargetPath C:\Nano1\Nano1.wim
-ComputerName Nano1 -DomainName Contoso.com**

Does this meet the goal?

- A. Yes
- B. No

Correct Answer: A

Section: (none)

Explanation

Explanation/Reference:



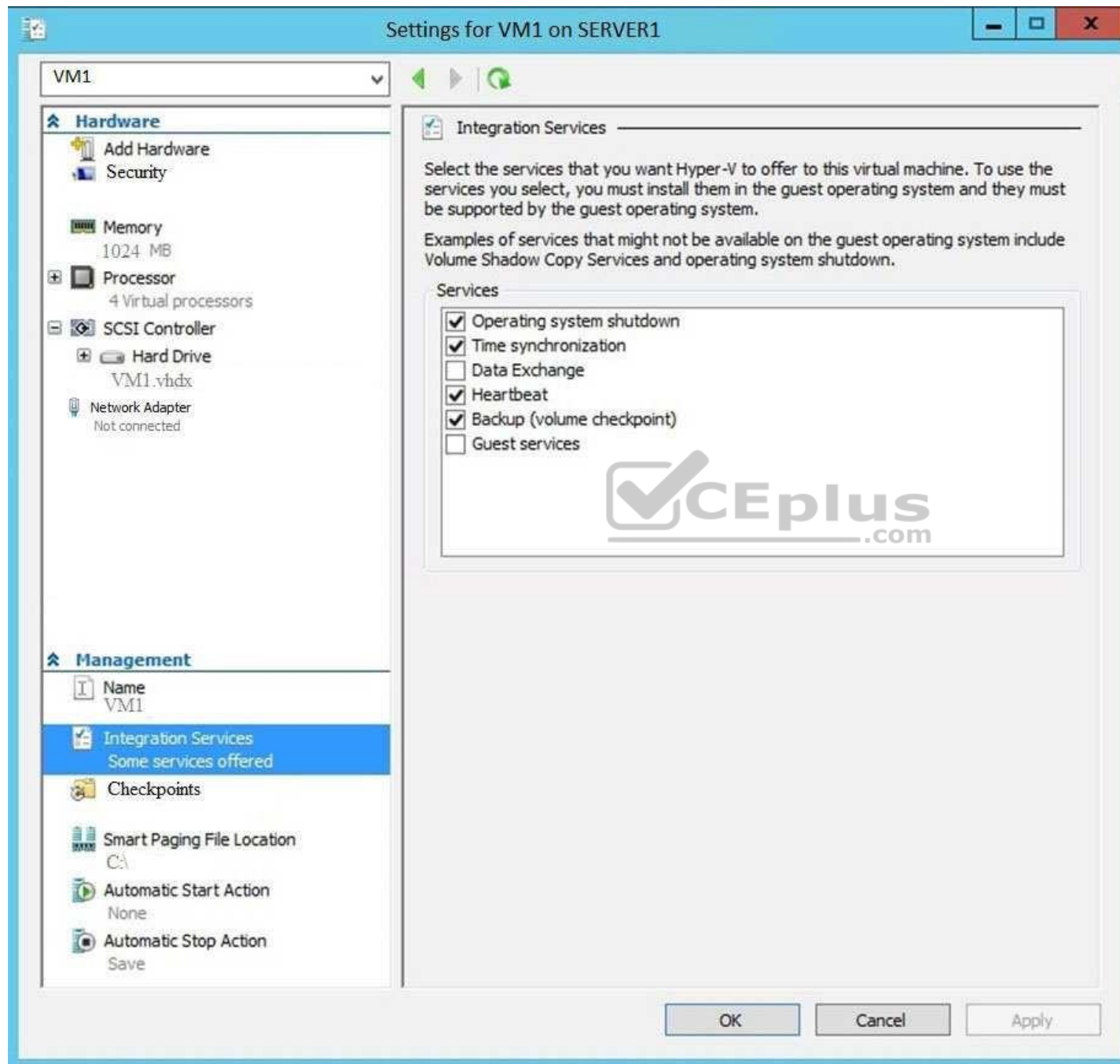
QUESTION 79

Note: This question is part of a series of questions that present the same scenario. Each question in the series contains a unique solution that might meet the stated goals. Some question sets might have more than one correct solution, while others might not have a correct solution.

After you answer a question in this sections, you will NOT be able to return to it. As a result, these questions will not appear in the review screen.

You have a Hyper-V host named Server1 that hosts a virtual machine named VM1. Server1 and VM1 run Windows Server 2016.

The settings for VM1 are configured as shown in the exhibit below.



Solution: You need to enable the Data Exchange integration service for VM1.

Does this meet the goal?

- A. Yes
- B. No

Correct Answer: B

Section: (none)

Explanation

Explanation/Reference:

QUESTION 80

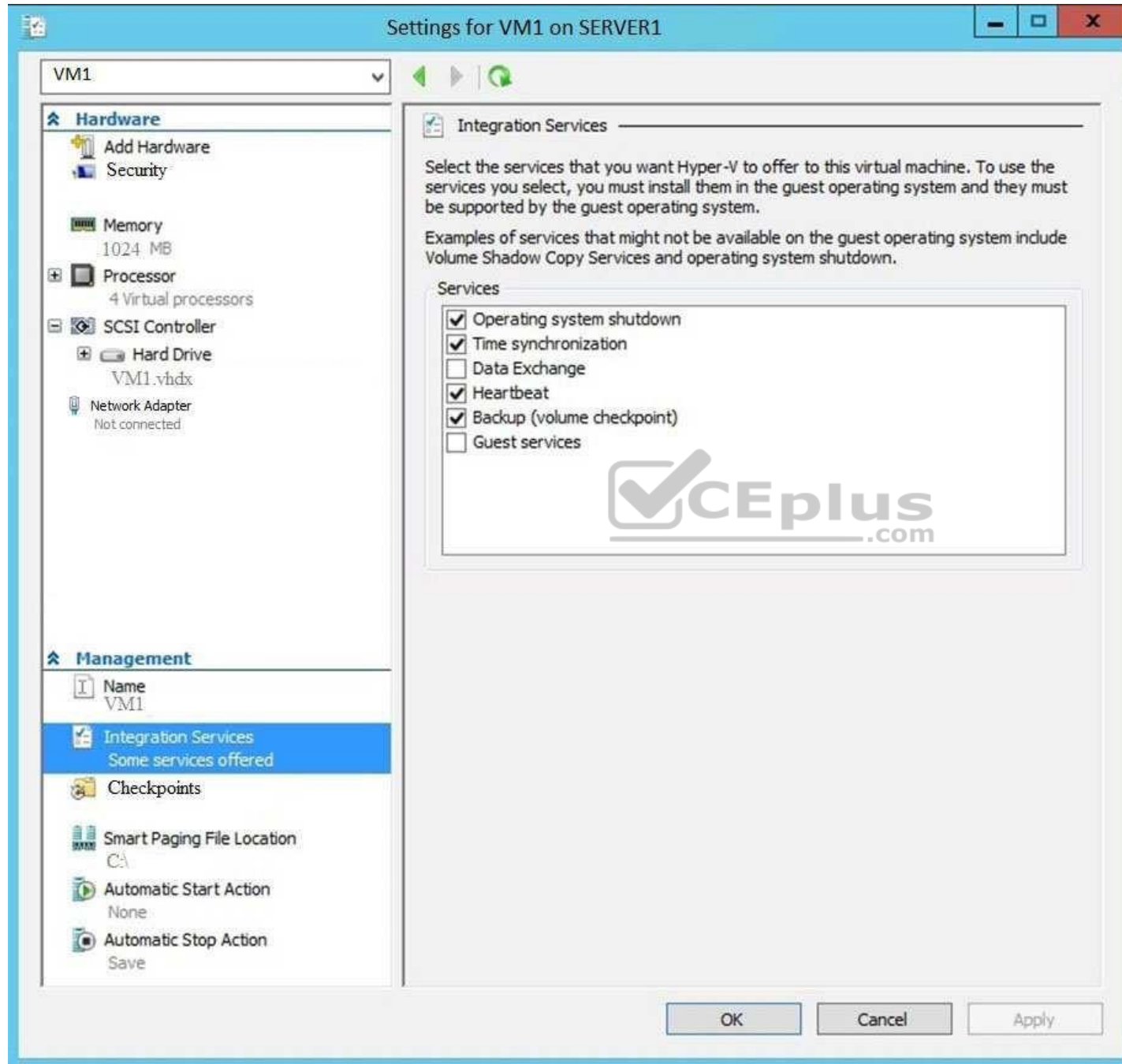
Note: This question is part of a series of questions that present the same scenario. Each question in the series contains a unique solution that might meet the stated goals. Some question sets might have more than one correct solution, while others might not have a correct solution.

After you answer a question in this sections, you will NOT be able to return to it. As a result, these questions will not appear in the review screen.

You have a Hyper-V host named Server1 that hosts a virtual machine named VM1. Server1 and VM1 run Windows Server 2016.

The settings for VM1 are configured as shown in the exhibit below.

You need to ensure that you can use the Copy-VMFile cmdlet on Server1 to copy files from VM1.



Solution: You enable the Guest Service integration service for VM1.

Does this meet the goal?

- A. Yes
- B. No

Correct Answer: A

Section: (none)

Explanation

Explanation/Reference:

QUESTION 81

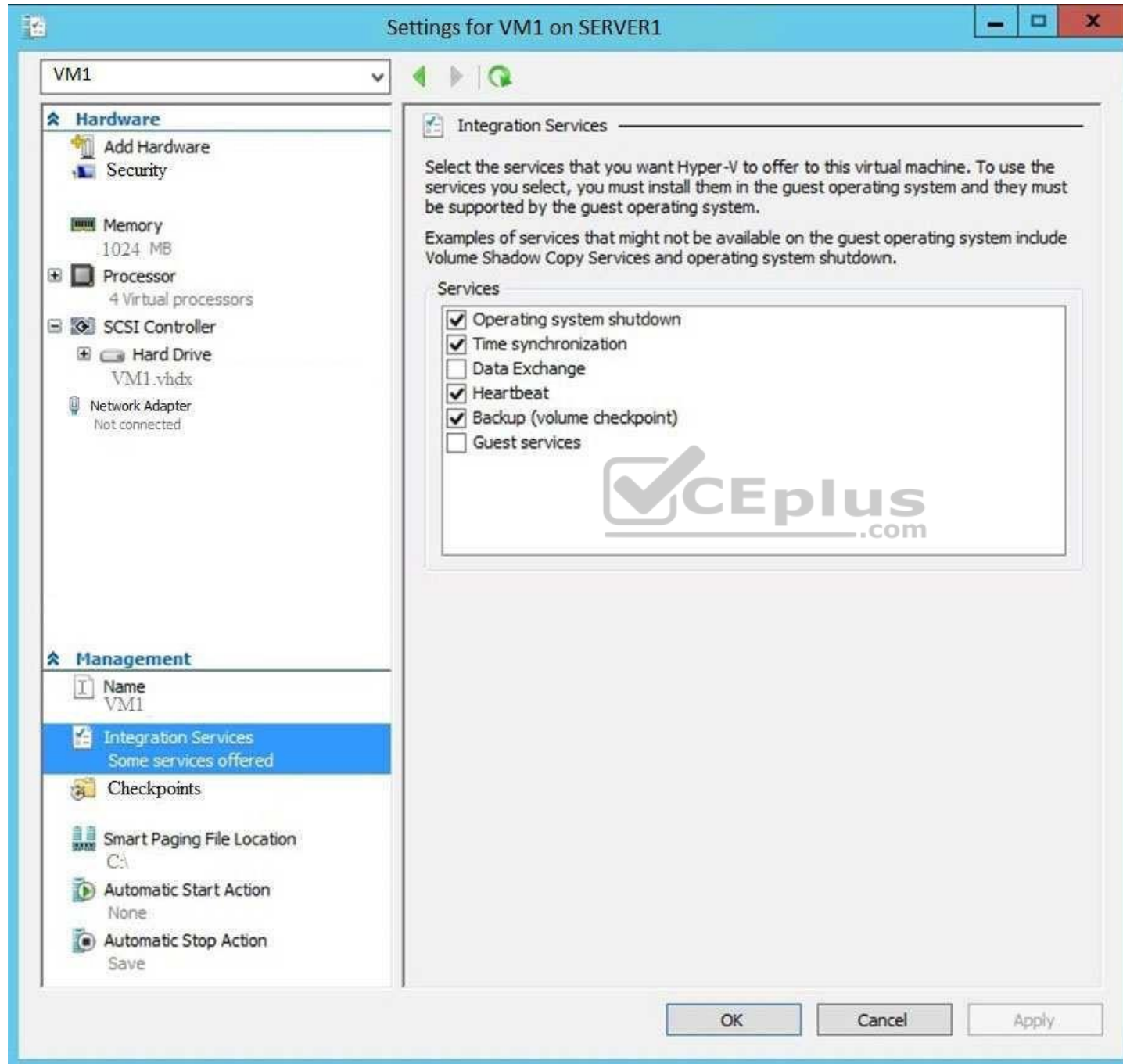
Note: This question is part of a series of questions that present the same scenario. Each question in the series contains a unique solution that might meet the stated goals. Some question sets might have more than one correct solution, while others might not have a correct solution.

After you answer a question in this sections, you will NOT be able to return to it. As a result, these questions will not appear in the review screen.

You have a Hyper-V host named Server1 that hosts a virtual machine named VM1. Server1 and VM1 run Windows Server 2016.

The settings for VM1 are configured as shown in the exhibit below.

You need to ensure that you can use the Copy-VMFile cmdlet on Server1 to copy files from VM1.



Solution: You start the Hyper-V Guest Service Interface service on VM1.

Does this meet the goal?

- A. Yes
- B. No

Correct Answer: B

Section: (none)

Explanation

Explanation/Reference:

QUESTION 82

You have two Hyper-V hosts named Server1 and Server2 that run windows server 2012 R2. The servers are nodes in a failover cluster named Cluster1.

You perform a rolling upgrade of the cluster nodes to Windows Server 2016.

You need to ensure that you can implement the Virtual Machine Load Balancing feature.

Which cmdlet should you use?

- A. **Update-ClusterFunctionalLevel**
- B. **Set-CauClusterRole**
- C. **Update-ClusterNetWorkNameResource**
- D. **Set-ClusterGroupSet**

Correct Answer: A

Section: (none)

Explanation

Explanation/Reference:

QUESTION 83

You have a Scale-Out File Server that has a share named Share1. Share1 contains a virtual disk file named Disk1.vhd.

You plan to create a guest failover cluster.

You need to ensure that you can use the virtual disk as a shared virtual disk for the guest failover cluster.

You need to ensure that you can use the Copy-VMFile cmdlet on Server1 to copy files from VM1.

Which cmdlet should you use?

- A. **Optimize-VHD**
- B. **Optimize-VHDSets**
- C. **Convert-VHD**
- D. **Set-VHD**

Correct Answer: C

Section: (none)

Explanation

Explanation/Reference:

QUESTION 84

A company named Contoso, Ltd has five Hyper-V hosts that are configured as shown in the following table.

Hyper-V host name	Configuration
Server1	Windows Server 2012 R2 and an Intel Xeon E7 processor
Server2	Windows Server 2012 R2 and an Intel i7 processor
Server3	Windows Server 2016 and an Intel i7 processor
Server4	Windows Server 2016 and an AMD Opteron processor
Server5	Windows Server 2016 and an Intel Xeon E7 processor

What are two valid live migration scenarios for virtual machines in your environment? (Choose two.)

- A. from Server1 to Server5
- B. from Server4 to Server5

- C. from Server2 to Server3
- D. from Server3 to Server4

Correct Answer: AC

Section: (none)

Explanation

Explanation/Reference:

QUESTION 85

You need to implement network virtualization.

On which object should you configure the virtual subnet ID?

- A. Virtual switch
- B. Hyper-V server
- C. VM
- D. Virtual network adapter

Correct Answer: D

Section: (none)

Explanation

Explanation/Reference:

QUESTION 86

Note: This question is part of a series of questions that present the same scenario. Each question in the series contains a unique solution that might meet the stated goals. Some question sets might have more than one correct solution, while others might not have a correct solution.

After you answer a question in this sections, you will NOT be able to return to it. As a result, these questions will not appear in the review screen.

Your network contains an Active Directory forest named contoso.com. The forest has three sites located in London, Paris, and Berlin.

The London site contains a web server named Web1 that runs Windows Server 2016.

You need to configure Web1 as an HTTP content server for the hosted cache servers located in the Paris and Berlin sites.

Solution: You install the DFS Replication role service, and then you start the Network Connections service.

Does this meet the goal?

- A. Yes
- B. No

Correct Answer: B

Section: (none)

Explanation

Explanation/Reference:

QUESTION 87

Note: This question is part of a series of questions that present the same scenario. Each question in the series contains a unique solution that might meet the stated goals. Some question sets might have more than one correct solution, while others might not have a correct solution.

After you answer a question in this sections, you will NOT be able to return to it. As a result, these questions will not appear in the review screen.

You have a server named Server1 that runs Windows Server 2016. Server1 is configured as a VPN server. Server1 is configured to allow domain users to establish VPN connections from 06:00 to 18:00 every day of the week.

You need to ensure that domain users can establish VPN connections only between Monday and Friday.

Solution: From Active Directory Users and Computers, you modify the Dial-in Properties of the user accounts.

Does this meet the goal?

- A. Yes
- B. No

Correct Answer: B

Section: (none)

Explanation

Explanation/Reference:

QUESTION 88

Note: This question is part of a series of questions that present the same scenario. Each question in the series contains a unique solution that might meet the stated goals. Some question sets might have more than one correct solution, while others might not have a correct solution.

After you answer a question in this sections, you will NOT be able to return to it. As a result, these questions will not appear in the review screen.

You have a server named Server1 that runs Windows Server 2016. Server1 is configured as a VPN server. Server1 is configured to allow domain users to establish VPN connections from 06:00 to 18:00 everyday of the week.

You need to ensure that domain users can establish VPN connections only between Monday and Friday.

Solution: From Routing and Remote Access, you configure the Properties of Server1.

Does this meet the goal?

- A. Yes
- B. No

Correct Answer: B

Section: (none)

Explanation

Explanation/Reference:

QUESTION 89

You have 2000 devices. One hundred of the devices are mobile devices that have physical addresses beginning with 98-5F.

You have a DHCP server named Server1.

You need to ensure that the mobile devices register their host name by using a DNS suffix of mobile.contoso.com.

What should you do on Server1?

- A. From the properties of Scope1, modify the Conflict detection attempts setting.
- B. From the properties of Scope1, configure Name Protection.
- C. From the Properties of IPV4, configure the bindings.
- D. From IPV4, create a new filter.
- E. From the properties of Scope1, create an exclusion range.
- F. From IPv4, run the DHCP Policy Configuration Wizard.
- G. From Control Panel, modify the properties of Ethernet.
- H. From Scope1, create a reservation

Correct Answer: F

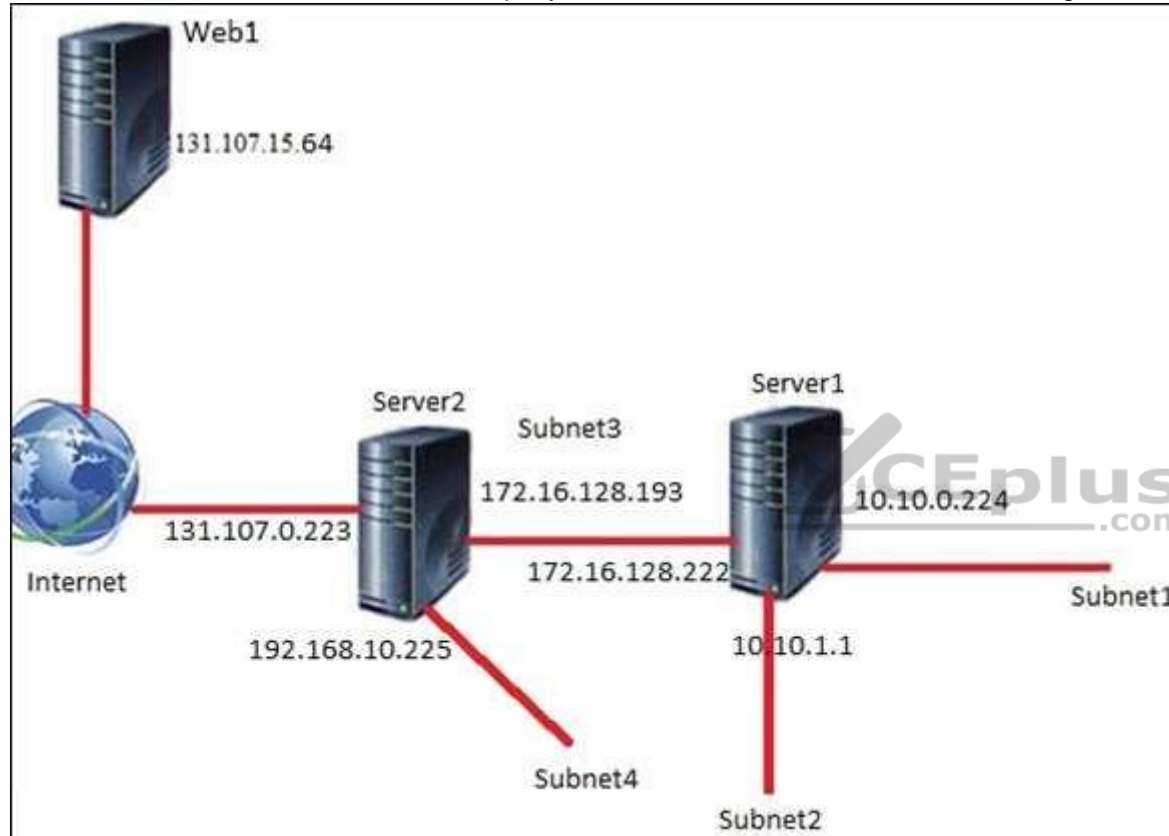
Section: (none)

Explanation

Explanation/Reference:

QUESTION 90

You are a network administrator for a company named Contoso, Ltd. The network is configured as shown in the exhibit.



You install the Remote Access server role on Server2. Server2 has the following configured:

- Network address translation (NAT)
- The DHCP Server server role



<https://www.vceplus.com/>

The Security Policy of Contoso states that only TCP ports 80 and 443 are allowed from the internet to Server2.

You identify the following requirements:

- Add 28 devices to subnet2 for a temporary project.
- Configure Server2 to accept VPN connections from the internet.
- Ensure that devices on Subnet2 obtain TCP/IP settings from DHCP on Server2.

You add a computer to subnet1. The computer has an IP address of 10.10.0.129. Web1 receives a request from the new computer and sends a response.

To which IP address will Web1 reply?

- A. 10.10.0.129
- B. 10.10.0.224
- C. 131.107.0.223
- D. 172.16.128.222

Correct Answer: C

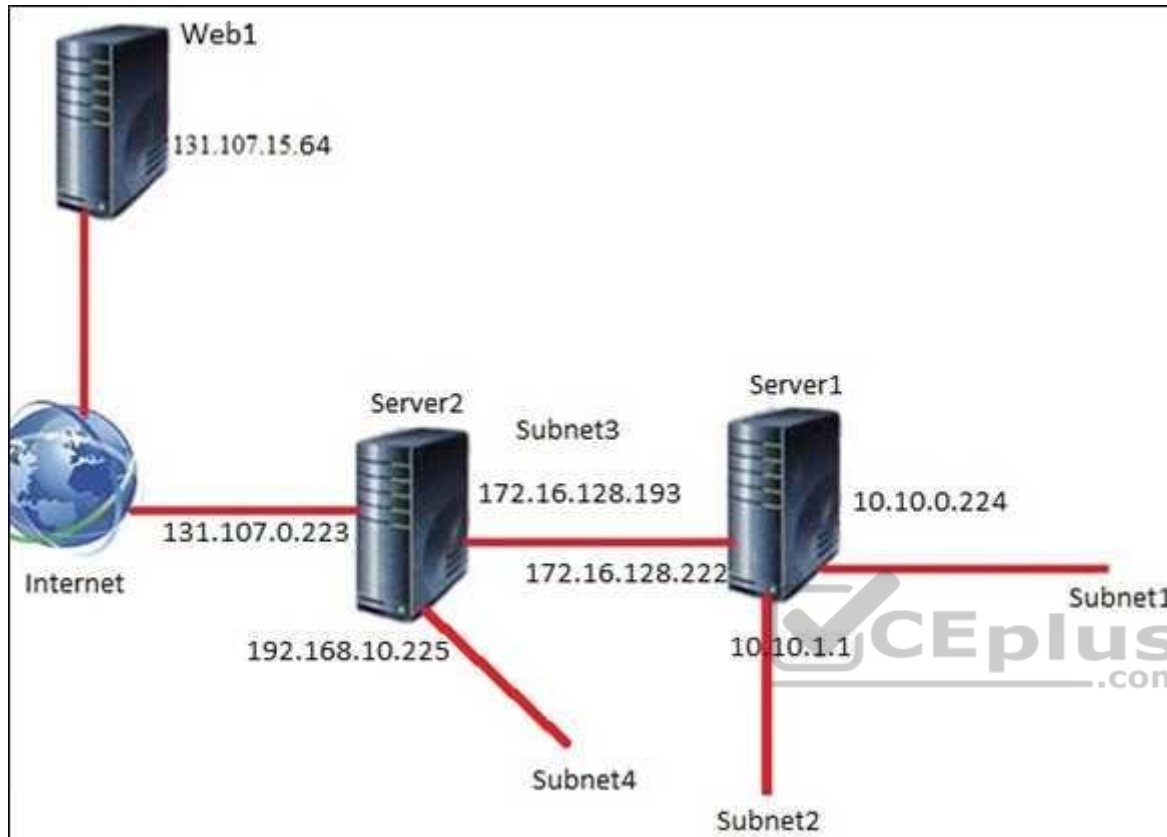
Section: (none)

Explanation

Explanation/Reference:

QUESTION 91

You are a network administrator for a company named Contoso, Ltd. The network is configured as shown in the exhibit.



You install the Remote Access server role on Server2. Server2 has the following configured:

- Network address translation (NAT) ▪

The DHCP Server server role

The Security Policy of Contoso states that only TCP ports 80 and 443 are allowed from the internet to Server2.

You identify the following requirements:

- Add 28 devices to subnet2 for a temporary project.
- Configure Server2 to accept VPN connections from the internet.
- Ensure that devices on Subnet2 obtain TCP/IP settings from DHCP on Server2.

What should you do to meet the DHCP connectivity requirement for Subnet2?

A. Install the Routing role service on Server2.

- B. Install the IP address Management (IPAM) Server feature on Server2.
- C. Install the Routing role service on Server1.
- D. Install the DHCP Server server role on Server1.

Correct Answer: C

Section: (none)

Explanation

Explanation/Reference:

QUESTION 92

Your network contains three subnets, a production subnet that contains production servers, a development network that contains development servers, and a client network that contains client computers.

The development network is used to test applications and reproduces servers that are located on the production network. The development network and the production network use the same IP address range.

A developer has a client computer on the client network. The developer reports that when he attempts to connect to the IP address 10.10.1.6 from his computer, he connects to a server on the production network.

You need to ensure that when the developer connects to 10.10.1.6, he connects to a sever on the development network.

Which cmdlet should you use?

- A. **New-NetNeighbor**
- B. **New-NetRoute**
- C. **Set-NetTcpSetting**
- D. **Set-NetNeighbor**

Correct Answer: B

Section: (none)

Explanation

Explanation/Reference:

QUESTION 93

Note: This question is part of a series of questions that present the same scenario. Each question in the series contains a unique solution that might meet the stated goals. Some question sets might have more than one correct solution, while others might not have a correct solution.

After you answer a question in this sections, you will NOT be able to return to it. As a result, these questions will not appear in the review screen.

Your network contains an Active Directory domain named adatum.com. The domain contains two DHCP servers named Server1 and Server2.

Server1 has the following IP configuration.

```
PS C:\> Get-DhcpServerv4Scope | fl ScopeId, SubnetMask, StartRange, EndRange,  
ActivatePolicies ; Get-DhcpServerSetting
```

```
ScopeId          : 172.16.0.0  
SubnetMask        : 255.255.0.0  
StartRange        : 172.16.0.20  
EndRange          : 172.16.0.100  
ActivatePolicies  : True
```

```
IsDomainJoined    : True  
IsAuthorized       : False  
DynamicBootp      : True  
RestoreStatus     : False  
ConflictDetectionAttempts : 0  
NpsUnreachableAction : Full  
NapEnabled        : False  
ActivatePolicies  : True
```



Server2 has the following IP configuration.

```
PS C:\> Get-DhcpServerv4Scope | fl ScopeId, SubnetMask, StartRange, EndRange,  
ActivatePolicies ; Get-DhcpServerSetting
```

```
ScopeId           : 172.16.0.0  
SubnetMask        : 255.255.0.0  
StartRange        : 172.16.0.80  
EndRange          : 172.16.0.150  
ActivatePolicies  : True
```

```
IsDomainJoined    : True  
IsAuthorized      : False  
DynamicBootp      : True  
RestoreStatus     : False  
ConflictDetectionAttempts : 3  
NpsUnreachableAction : Full  
NapEnabled        : False  
ActivatePolicies  : True
```



Some users report that sometimes they cannot access the network because of conflicting IP addresses.

You need to configure DHCP to avoid leasing addresses that are in use already.

Solution: On Server2, you modify the StartRange IP address of the scope.

Does this meet the goal?

- A. Yes
- B. No

Correct Answer: A

Section: (none)

Explanation

Explanation/Reference:

QUESTION 94

Note: This question is part of a series of questions that present the same scenario. Each question in the series contains a unique solution. Determine whether the solution meets the stated goals. Some question sets might have more than one correct solution, while others might not have a correct solution.

After you answer a question in this section, you will NOT be able to return to it. As a result, these questions will not appear in the review screen.

Your network contains an Active Directory domain named contoso.com. The domain contains a DNS server named Server1. All client computers run Windows 10.

On Server1, you have the following zone configuration.

ZoneName	ZoneType	IsAutoCreated	IsDsIntegrated	IsReverseLookupZone	IsSigned
_msdcs.contoso.com	Primary	False	True	False	False
0.in-addr.arpa	Primary	True	False	True	False
127.in-addr.arpa	Primary	True	False	True	False
255.in-addr.arpa	Primary	True	False	True	False
adatum.com	Forwarder	False	False	False	False
contoso.com	Primary	False	True	False	False
fabrikam.com	Primary	False	True	False	True
TrustAnchors	Primary	False	True	False	False

You need to ensure that all of the client computers in the domain perform DNSSEC validation for the fabrikam.com namespace.

Solution: From Windows PowerShell on Server1, you run the **Export-DnsServerDnsSecPublicKey** cmdlet.

Does this meet the goal?

- A. Yes
- B. No

Correct Answer: B

Section: (none)

Explanation

Explanation/Reference:

References: <https://docs.microsoft.com/en-us/powershell/module/dnsserver/export-dnsserverdnssecpublickey?view=win10-ps>

QUESTION 95

HOTSPOT

Your network contains an Active Directory forest named contoso.com. The forest contains the VPN servers configured as shown in the following table.

VPN server name	IP address
VPN1	172.16.0.254
VPN2	172.16.1.254
VPN3	10.10.0.254

You are configuring a Network Policy Server (NPS) server named Server1. Server1 has the following RADIUS clients.



Name	: NPSCClient1
Address	: 172.16.0.254
AuthAttributeRequired	: True
SharedSecret	: Pa\$\$wOrd
VendorName	: RADIUS Standard
Enabled	: False
Name	: NPSCClient2
Address	: 172.16.1.254
AuthAttributeRequired	: False
SharedSecret	: Pa\$\$wOrd
VendorName	: RADIUS Standard
Enabled	: True
Name	: NPSCClient3
Address	: 131.107.0.10
AuthAttributeRequired	: True
SharedSecret	: Pa\$\$wOrd
VendorName	: RADIUS Standard
Enabled	: True

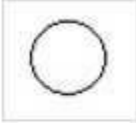

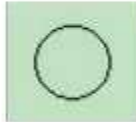
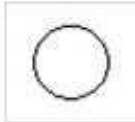

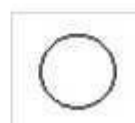
All three VPN servers are configured to use Server1 for RADIUS authentication. All of the users in contoso.com are allowed to establish a VPN connection. For each of the following statements, select YES if the statement is true. Otherwise, select No.

NOTE: Each correct selection is worth one point.

Hot Area:

Statements	Yes	No
The contoso.com users can authenticate successfully when they establish a VPN connection to VPN1.	<input type="radio"/>	<input type="radio"/>
The contoso.com users can authenticate successfully when they establish a VPN connection to VPN2.	<input type="radio"/>	<input type="radio"/>
The contoso.com users can authenticate successfully when they establish a VPN connection to VPN3.	<input type="radio"/>	<input type="radio"/>

Correct Answer:

Statements	Yes	No
The contoso.com users can authenticate successfully when they establish a VPN connection to VPN1.		
The contoso.com users can authenticate successfully when they establish a VPN connection to VPN2.		
The contoso.com users can authenticate successfully when they establish a VPN connection to VPN3.		

Section: (none)

Explanation

Explanation/Reference:

Explanation:

References: <https://docs.microsoft.com/en-us/windows-server/remote/remote-access/vpn/always-on-vpn/deploy/vpn-deploy-nps>

QUESTION 96

You have a server named Server1 that runs Windows Server 2016. Server1 will be used as a VPN server. You need to configure Server1 to support VPN Reconnect.

Which VPN protocol should you use?

A. SSTP

- B. IKEv2
- C. PPTP
- D. L2TP

Correct Answer: D

Section: (none)

Explanation

Explanation/Reference:

QUESTION 97

Your network contains an Active Directory domain named contoso.com. The domain contains a Hyper-V host.

You are deploying Software Defined Network (SDN) by using Windows Server 2016.

You deploy a virtual machine that runs Windows Server 2016, and you install the Network Controller server role.

You need to configure the virtual machine as the network controller.

What should you do?

- A. Run the **Install-NetworkControllerCluster** cmdlet and set **ClientAuthentication** to **X509**.
- B. Run the **Install-NetworkController** cmdlet and set **ClientAuthentication** to **None**.
- C. Run the **Install-NetworkControllerCluster** cmdlet and set **ClientAuthentication** to **None**.
- D. Run the **Install-NetworkController** cmdlet and set **ClientAuthentication** to **Kerberos**.

Correct Answer: D

Section: (none)

Explanation

Explanation/Reference:

References: https://github.com/MicrosoftDocs/windowsserverdocs/blob/master/WindowsServerDocs/networking/sdn/deploy/Deploy-Network-Controller-using-Windows-PowerShell.md#bkmk_script

QUESTION 98

Note: This question is part of a series of questions that use the same or similar answer choices. An answer choice may be correct for more than one question in the series. Each question is independent of the other questions in this series. Information and details provided in a question apply only to that question.

Your company has five departments, including a web research department.

You have a DHCP server named Server1 and two DNS servers named DNS1 and DNS2.

Server1 has an Ipv4 scope named Scope1. All client computers are configured to use DNS1 for name resolution.

You need to ensure that users in the web research department use DNS2 for name resolution.

What should you do on Server1?

- A. From the properties of Scope1, modify the Conflict detection attempts setting.
- B. From the properties of Scope1, configure Name Protection.
- C. From the properties of IPv4, configure the bindings.
- D. From IPv4, create a new filter.
- E. From the properties of Scope1, create an exclusion range.
- F. From IPv4, run the DHCP Policy Configuration Wizard.
- G. From Control Panel, modify the properties of Ethernet.
- H. From Scope1, create a reservation.

Correct Answer: A

Section: (none)

Explanation



Explanation/Reference:

References: <https://technet.microsoft.com/en-us/library/ff606371.aspx>

QUESTION 99

Note: This question is part of a series of questions that use the same scenario. For your convenience, the scenario is repeated in each question. Each question presents a different goal and answer choices, but the text of the scenario is exactly the same in each question in this series.

Start of repeated scenario.

Your network contains an Active Directory domain named contoso.com. The functional level of the domain is Windows Server 2012.

The network uses an address space of 192.168.0.0/16 and contains multiple subnets.

The network is not connected to the Internet.

The domain contains three servers configured as shown in the following table.

Server name	Configuration
Server1	Domain controller and DNS server
Server2	Member server
Server3	DHCP server

Client computers obtain TCP/IP settings from Server3.

You add a second network adapter to Server2. You connect the new network adapter to the Internet. You install the Routing role service on Server2.

Server1 has four DNS zones configured as shown in the following table.

DNS zone name	Type	Zone file name
Contoso.com	Active Directory-integrated	None
Fabrikam.com	Primary	Fabrikam.com.dns
Tailspintoys.com	Primary	Tailspintoys.com.dns
168.192.in-addr.arpa	Primary	168.192.in-addr.arpa.dns

End of repeated scenario.

You need to ensure that when computers query for records in tailspintoys.com, the query results are based on the subnet of the computer that generates the query.

What should you do?

- A. Modify the Priority settings of each resource record.
- B. Configure DNS policies.
- C. Create zone delegation records.
- D. Enable DNS round robin.

Correct Answer: B

Section: (none)

Explanation

Explanation/Reference:

References: <https://docs.microsoft.com/en-us/windows-server/networking/dns/deploy/dns-policies-overview>

QUESTION 100

You have an IP Address Management (IPAM) server named Server1 that runs Windows Server 2016. You have five DHCP servers. Server1 manages all of the DHCP servers.

On Server1, an administrator uses Purge Event Catalog Data to remove all of the events from the last 30 days.

You need to view all of these lease requests that were denied during the last two days.

What should you do?

- A. On each DHCP server, run the \Microsoft\Windows\Server Manager\CleanUpOldPerfLogs scheduled task, and then review the event catalog on Server1.
- B. On Server1, run the Purge Event Catalog Data action and then open **Event Viewer** on Server1.
- C. Review the log data in C:\Windows\System32\ipam\Database on Server1.
- D. On each DHCP server, review the DHCP Server operational event log.

Correct Answer: C

Section: (none)

Explanation

Explanation/Reference:

**QUESTION 101**

Your company owns the public Internet IP address range of 131.107.20.0 to 131.107.20.255.

You need to create a subnet that supports four hosts. The solution must minimize the number of addresses available to the subnet.

Which subnet should you use?

- A. 131.107.20.16 with subnet mask 255.255.255.248
- B. 131.107.20.16/28
- C. 131.107.20.0/27
- D. 131.107.20.16/30

Correct Answer: A

Section: (none)

Explanation

Explanation/Reference:

QUESTION 102

You have Hyper-V host named Server1.

Server1 has a network adapter that has virtual machine queue (VMQ) enabled. The network adapter connects at 10 Gbps and has an IPV4 address.

Server1 hosts a virtual machine named VM1. VM1 has a single network adapter and four processors.

You need to distribute the network processing load across the VM1 processors.

What should you do?

- A. From Windows PowerShell on Server1, run the **Enable-NetAdapterPacketDirect** cmdlet.
- B. From Windows PowerShell on VM1, run the **Enable-NetAdapterPacketDirect** cmdlet.
- C. From Device Manager on VM1, configure Receive Side Scaling.
- D. From Windows PowerShell on Server1, run the **Enable-NetAdapterRSS** cmdlet.

Correct Answer: C

Section: (none)

Explanation

Explanation/Reference:

References:

<https://docs.microsoft.com/en-us/windows-server/networking/technologies/vrss/vrss-enable>

QUESTION 103

Note: This question is part of a series of questions that present the same scenario. Each question in the series contains a unique solution that might meet the stated goals. Some question sets might have more than one correct solution, while others might not have a correct solution.

After you answer a question in this sections, you will NOT be able to return to it. As a result, these questions will not appear in the review screen.

You have an IP Address Management (IPAM) server named IPAM1 that runs Windows Server 2016. IPAM1 manages all of the DHCP servers on your network.

You are troubleshooting an issue for a client that fails to receive an IP address from DHCP.

You need to ensure that from IPAM1, you can view all of the event data for the DHCP leases from the last 24 hours.

Solution: From Task Scheduler, you run the Microsoft\Windows\IPAM\Audit task.

Does this meet the goal?

- A. Yes
- B. No

Correct Answer: B

Section: (none)

Explanation

Explanation/Reference:

QUESTION 104

Note: This question is part of a series of questions that present the same scenario. Each question in the series contains a unique solution that might meet the stated goals. Some question sets might have more than one correct solution, while others might not have a correct solution.

After you answer a question in this sections, you will NOT be able to return to it. As a result, these questions will not appear in the review screen.

You have an IP Address Management (IPAM) server named IPAM1 that runs Windows Server 2016. IPAM1 manages all of the DHCP servers on your network.

You are troubleshooting an issue for a client that fails to receive an IP address from DHCP.

You need to ensure that from IPAM1, you can view all of the event data for the DHCP leases from the last 24 hours.

Solution: From Windows PowerShell, you run the **Invoke-IpamServerProvisioning** cmdlet.

Does this meet the goal?

A. Yes

B. No

Correct Answer: B

Section: (none)

Explanation

Explanation/Reference:

QUESTION 105

Note: This question is part of a series of questions that present the same scenario. Each question in the series contains a unique solution that might meet the stated goals. Some question sets might have more than one correct solution, while others might not have a correct solution.

After you answer a question in this sections, you will NOT be able to return to it. As a result, these questions will not appear in the review screen.

You have a server named Server1 that has the Network Policy and Access Services server role installed.

You create a Shared Secret Network Policy Server (NPS) template named Template1.

You need to view the shared secret string used for Template1.

Solution: From the Network Policy Server console, you export the templates, and you view the exported XML file.

Does this meet the goal?

- A. Yes
- B. No

Correct Answer: B

Section: (none)

Explanation

Explanation/Reference:

QUESTION 106

Note: This question is part of a series of questions that present the same scenario. Each question in the series contains a unique solution that might meet the stated goals. Some question sets might have more than one correct solution, while others might not have a correct solution.

After you answer a question in this sections, you will NOT be able to return to it. As a result, these questions will not appear in the review screen.

You are implementing a secure network. The network contains a DHCP server named Server1 that runs Windows Server 2016.

You create a DHCP allow filter that contains all of the computers on the network that are authorized to receive IP addresses.

You discover that unauthorized computers can obtain an IP address from Server1.

You need to ensure that only authorized computers can receive an IP address from Server1.

Solution: You run the following command: **Set-DhcpServerv4FilterList -ComputerName Server1 -Allow False -Deny True**

Does this meet the goal?

- A. Yes
- B. No

Correct Answer: B

Section: (none)

Explanation

Explanation/Reference:

QUESTION 107

Note: This question is part of a series of questions that present the same scenario. Each question in the series contains a unique solution that might meet the stated goals. Some question sets might have more than one correct solution, while others might not have a correct solution.

After you answer a question in this sections, you will NOT be able to return to it. As a result, these questions will not appear in the review screen.

You are implementing a secure network. The network contains a DHCP server named Server1 that runs Windows Server 2016.

You create a DHCP allow filter that contains all of the computers on the network that are authorized to receive IP addresses.

You discover that unauthorized computers can obtain an IP address from Server1.

You need to ensure that only authorized computers can receive an IP address from Server1.

Solution: You run the following command: **Add-DHCPServerv4Filter –ComputerName Server1 –MacAddress * -List Allow**

Does this meet the goal?

- A. Yes
- B. No

Correct Answer: A

Section: (none)

Explanation

Explanation/Reference:

QUESTION 108

You have a virtual machine named Server1 that runs Windows Server 2016.

You plan to use Server1 as part of a Software Defined Networking (SDN) solution.

You need to implement the Border Gateway Protocol (BGP) on Server1.

What should you install?

- A. the Peer Name Resolution Protocol (PNRP) feature
- B. the Routing role service
- C. the Network Device Enrollment Service role service
- D. the Network Policy and Access Services server role

Correct Answer: B

Section: (none)

Explanation

Explanation/Reference:

References: <https://docs.microsoft.com/en-us/windows-server/remote/remote-access/bgp/border-gateway-protocol-bgp>

QUESTION 109

Note: This question is part of a series of questions that present the same scenario. Each question in the series contains a unique solution that might meet the stated goals. Some question sets might have more than one correct solution, while others might not have a correct solution.

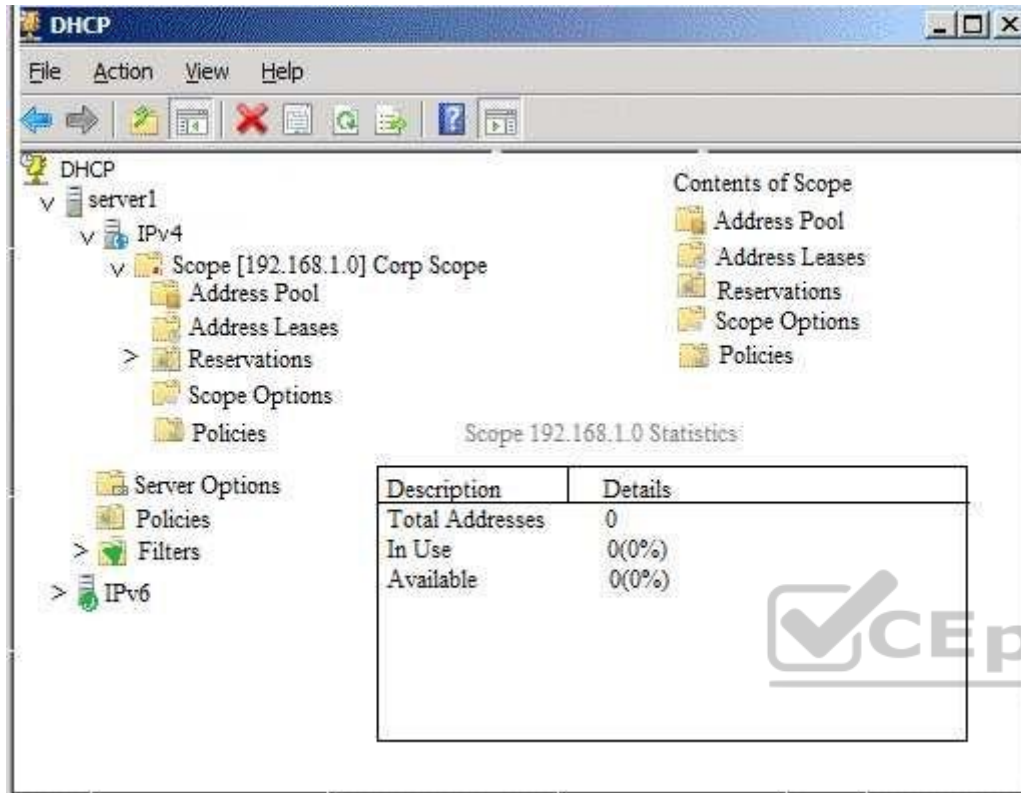
After you answer a question in this sections, you will NOT be able to return to it. As a result, these questions will not appear in the review screen.

Your network contains an Active Directory domain named contoso.com. The domain contains a DHCP server named Server1. All client computers run Windows 10 and are configured as DHCP clients.

Your helpdesk received calls today from users who failed to access the network from their Windows 10 computer.

You open the DHCP console as shown in the exhibit. (Click the **Exhibit** button.)





You need to ensure that all of the Windows 10 computers can receive a DHCP lease.

Solution: You authorize the server.

Does this meet the goal?

- A. Yes
- B. No

Correct Answer: B

Section: (none)

Explanation

Explanation/Reference:

QUESTION 110

You are deploying Software Defined Networking (SDN) by using Windows Server 2016.

You plan to deploy a three-node Network Controller cluster. You plan to use virtual machines for the network controller and the management client. The virtual machines will NOT be domain-joined.

You need to configure authentication for the cluster.

Which command should you run?

- A. **Install-NetworkController -Node @{Node1, Node2, Node3} -ClientAuthentication X509**
- B. **Install-NetworkControllerCluster -Node @{Node1, Node1, Node3} -ClientAuthentication Kerberos**
- C. **Install-NetworkControllerCluster -Node @{Node1, Node1, Node3} -ClientAuthentication X509**
- D. **Install-NetworkControllerCluster -Node @{Node1, Node1, Node3} -ClientAuthentication None**
- E. **Install-NetworkController -Node @{Node1, Node2, Node3} -ClientAuthentication Kerberos**

Correct Answer: C

Section: (none)

Explanation


Explanation/Reference:

References: <https://docs.microsoft.com/en-us/windows-server/networking/sdn/security/nc-security>




QUESTION 111

You have a Hyper-V host names Server1 that runs Windows Server 2016. Server1 has multiple network adapters that have virtual machine queue (VMQ) enabled.

On Server1, you create a virtual machine named VM1 as shown in the exhibit. (Click the Exhibit button.)


Settings for VM1 on SERVER1

VM1






Hardware

- Add Hardware
- BIOS
 - Boot from CD
- Security
 - Key Storage Drive disabled
- Memory
 - 512 MB
- Processor
 - 1 Virtual processor
- IDE Controller 0
 - Hard Drive
 - VM1.vhdx
- IDE Controller 1
 - DVD Drive
 - None
- SCSI Controller
- Network Adapter
 - External Network
- COM 1
 - None
- COM 2
 - None
- Diskette Drive
 - None

Management

- Name
 - VM1
- Integration Services**
 - No services offered
- Checkpoints
 - Production
- Smart Paging File Location
 - C:\VMs\VM1\


Integration Services

Select the services that you want Hyper-V to offer to this virtual machine. To use the services you select, they must be supported by the guest operating system.

Examples of services that might not be available on the guest operating system include Volume Shadow Copy Services and operating system shutdown.

Services

☐ Operating system shutdown
 ☐ Time synchronization
 ☐ Data Exchange
 ☐ Heartbeat
 ☐ Backup (volume checkpoint)
 ☐ Guest services

You need to ensure that you can use virtual Receive-side Scaling (vRSS) on VM1.

What should you do?

- A. Add additional memory.
- B. Add additional processors.
- C. Add additional network adapters.
- D. Enable the Data Exchange integration service.

Correct Answer: B

Section: (none)

Explanation

Explanation/Reference:

References: <https://docs.microsoft.com/en-us/windows-server/networking/technologies/vrss/vrss-top>

QUESTION 112

You have a remote access server named Server1 that runs Windows Server 2016. Server1 has DirectAccess enabled.

You have a proxy server named Server2. All computers on the internet connect to the Internet by using the proxy.

On Server1, you run the command **Set-DAClient -ForceTunnel Enabled**.

You need to ensure that when a Direct Access client connects to the network, the client accesses all the Internet resources through the proxy.

What should you run on Server1?



<https://www.vceplus.com/>

- A. **Set-DAClient**
- B. **Set-DnsClientGlobalSetting**
- C. **Set-DAClientDNSConfiguration**

D. Set-DAEntryPoint**Correct Answer: C****Section: (none)****Explanation****Explanation/Reference:**

References:

<https://docs.microsoft.com/en-us/powershell/module/remoteaccess/set-daclientdnsconfiguration?view=win10-ps>**QUESTION 113**

You have a DNS server named Server1 that runs Windows Server 2016. Server1 has two Active Directory-integrated zones named contoso.com and adatum.com.

All client computers run Windows 10.

Server1 recently experienced millions of erroneous DNS queries causing a denial of service.

You need to reduce the likelihood that a similar attack will cause a denial of service. The solution must ensure that Server1 continuous to resolve names for clients.

What should you do?

- A. Implement DNS-based Authentication of Named Entities (DANE)
- B. Enable Response Rate Limiting (RRL) on Server1
- C. Configure DNS policies on Server1
- D. Sign both adatum.com and contoso.com zones

Correct Answer: B**Section: (none)****Explanation****Explanation/Reference:**

References:

<https://blogs.technet.microsoft.com/teamdhcp/2015/08/28/response-rate-limiting-in-windows-dns-server/>**QUESTION 114**

Your network contains an Active Directory domain named contoso.com that contains a domain controller named DC1. All DNS servers for the network run BIND 10.

Your perimeter network contains a DHCP server named DHCP1 that runs Windows Server 2016. DHCP1 is a member of a workgroup named WORKGROUP. DHCP1 provides IP address leases to guests accessing the Wi-Fi network.

Several engineers access the network remotely by using a VPN connection to a remote access server that runs Windows Server 2016. All of the VPN connections use certificate-based authentication and are subject to access policies in Network Policy Server (NPS). Certificates are issued by an enterprise certification authority (CA) named CA1.

All Windows computers on the network are activated by using Key Management Service (KMS). On-premises users use Remote Desktop Services (RDS).

You plan to deploy IP Address Management (IPAM) to the network.

Which action can you perform on the network by using IPAM?

- A. Audit user and device logon event from NPS.
- B. Audit logon events on the RDS server.
- C. Audit configuration changes to the remote access server.
- D. Audit certificate enrollment requests on CA1.

Correct Answer: A

Section: (none)

Explanation

Explanation/Reference:

References:

<https://blogs.technet.microsoft.com/canitpro/2013/08/15/step-by-step-setup-windows-server-2012-ipam-in-your-environment/>

QUESTION 115

You have a server named Server1 that runs Windows Server 2016.

Server1 is in a workgroup and has the DNS Server role installed.

You need to enable DNS analytical diagnostic logging on Server1.

What should you do?

- A. From Local Group Policy Editor, configure Audit Policy.
- B. From DNS Manager, configure Monitoring.
- C. From Windows PowerShell, run the **Enable-DnsServerPolicy** cmdlet.
- D. From DNS Manager, configure Event Logging.
- E. From Event Viewer, configure DNS-Server Applications and Services Logs.

Correct Answer: E

Section: (none)

Explanation**Explanation/Reference:**

References:

<https://www.yourdigitalmind.com/tutorials/how-to-enable-dns-logging-and-diagnostics-in-windows-server-2012-r2/>

QUESTION 116

Your network contains an Active Directory domain named contoso.com. The domain contains a server named Server1 that runs Windows Server 2016.

Server1 has IP Address Management (IPAM) installed. IPAM is configured to use the Group Policy based provisioning method. The prefix for the IPAM Group Policy objects (GPOs) is IP.

From Group Policy Management, you manually rename the IPAM GPOs to have a prefix of IPAM.
You need to modify the GPO prefix used by IPAM.

What should you do?

- A. Click **Configure server discovery** in Server Manager.
- B. Run the **Set-IpamConfiguration** cmdlet.
- C. Click **Provision the IPAM server** in Server Manager.
- D. Run the **Invoke-IpamGpoProvisioning** cmdlet.



Correct Answer: B

Section: (none)

Explanation**Explanation/Reference:**

Explanation:

The Set-IpamConfiguration cmdlet modifies the configuration for the computer that runs the IPAM server.

The -GpoPrefix<String> parameter specifies the unique Group Policy object (GPO) prefix name that IPAM uses to create the group policy objects. Use this parameter only when the value of the ProvisioningMethod parameter is set to Automatic.

References:

<https://technet.microsoft.com/en-us/library/jj590816.aspx>

QUESTION 117

Your network contains an Active directory forest named contoso.com. The forest has a Distributed File System (DFS) namespace named \\contoso.com\namespace1\

The domain contains a file server named Server1 that runs Windows Server 2016.

You create a folder named Folder1 on Server1.

You need to use Folder1 as a target for Namespace1.

Which two cmdlets should you use? Each correct answer presents part of the solution.

NOTE: Each correct selection is worth one point.

- A. **Grant-DfsnAccess**
- B. **New-DfsnFolder**
- C. **New-DfsReplicatedFolder**
- D. **New-DfsnFolderTarget**
- E. **New-SmbShare**
- F. **Install-WindowsFeature**

Correct Answer: AD

Section: (none)

Explanation

Explanation/Reference:

References:

<https://docs.microsoft.com/en-us/powershell/module/dfs/new-dfsnewfoldertarget?view=win10-ps> <https://docs.microsoft.com/en-us/powershell/module/dfs/grant-dfsaccess?view=win10-ps>

QUESTION 118

Note: This question is part of a series of questions that present the same scenario. Each question in the series contains a unique solution that might meet the stated goals. Some question sets might have more than one correct solution, while others might not have a correct solution.

After you answer a question in this section, you will NOT be able to return to it. As a result, these questions will not appear in the review screen.

You have a Hyper-V host named Server 1. The network adapters on Server1 have single root I/O virtualization (SR-IOV) enabled.

Server1 hosts a virtual machine named VM1 that runs Windows Server 2016.

You need to identify whether SR-IOV is used by VM1.

Solution: You sign in to VM1. You run the **Get-NetAdapterSriov** cmdlet.

Does this meet the goal?



A. Yes

B. No

Correct Answer: A

Section: (none)

Explanation

Explanation/Reference:

References:

<https://docs.microsoft.com/en-us/powershell/module/netadapter/get-netadaptersriov?view=win10-ps>

QUESTION 119

Note: This question is part of a series of questions that present the same scenario. Each question in the series contains a unique solution that might meet the stated goals. Some question sets might have more than one correct solution, while others might not have a correct solution.

After you answer a question in this section, you will NOT be able to return to it. As a result, these questions will not appear in the review screen.

You have a Hyper-V host named Server 1. The network adapters on Server1 have single root I/O virtualization (SR-IOV) enabled.

Server1 hosts a virtual machine named VM1 that runs Windows Server 2016.

You need to identify whether SR-IOV is used by VM1.

Solution: You sign in to VM1. You view the properties of the network connections.

Does this meet the goal?

A. Yes

B. No

Correct Answer: B

Section: (none)

Explanation

Explanation/Reference:

QUESTION 120

You are deploying a small network that has 30 client computers. The network uses the 192.168.1.0/24 address space. All computers obtain IP configurations from a DHCP server named Server1.

You install a server named Server2 that runs Windows Server 2016. Server2 has two network adapters named Internal and Internet. Internet connects to an Internet Service Provider (ISP) and obtains the 131.107.0.10 IP address. Internal connects to the internal network and is configured to use the 192.168.1.250 IP address.

You need to provide Internet connectivity for the client computers.

What should you do?

- A. On Server1, stop the DHCP server. On the Internal network adapter on Server2, enable Internet Connection Sharing (ICS).
- B. On Server2 run the **New-NetNat -Name NAT1 -InternalIPInterfaceAddressPrefix 192.168.1.0/24** cmdlet. Configure Server1 to provide the 003 Router option of 192.168.1.250.
- C. On Server1, stop the DHCP server. On the Internet adapter on Server2, enable internet Connection Sharing (ICS).
- D. Recreate the DHCP scope on Server1 to lease addresses from the 131.107.0.0/24 address space. On Server2, change the IP address of the internal network adapter to 131.107.0.1. Configure Server1 to provide the 003 Router option of 131.107.0.1.

Correct Answer: B

Section: (none)

Explanation

Explanation/Reference:



<https://www.vceplus.com/>