

70-741.microsoft

Number: 70-741

Passing Score: 800

Time Limit: 120 min



VCE to PDF Converter : <https://vceplus.com/vce-to-pdf/>

Facebook: <https://www.facebook.com/VCE.For.All.VN/>

Twitter : https://twitter.com/VCE_Plus

Google+ : <https://plus.google.com/+Vcepluscom>

LinkedIn : <https://www.linkedin.com/company/vceplus>

<https://vceplus.com/>

Exam A

QUESTION 1

Your company has a main office in London and a branch office in Seattle. The offices connect to each other by using a WAN link.

In the London office, you have a Distributed File System (DFS) server named FS1 that contains a folder named Folder1.

In the Seattle office, you have a DFS server named FS2.

All servers run Windows Server 2016.

You configure replication of Folder1 to FS2.

Users in both offices frequently add files in Folder1.

You monitor DFS Replication, and you discover excessive replication over the WAN link during business hours.

You need to reduce the amount of bandwidth used for replication during business hours. The solution must ensure that the users can continue to save content to Folder1.

What should you do?



<https://vceplus.com/>

- A. Modify the quota settings on Folder1 on FS2.
- B. Modify the properties of the replication group.
- C. Configure the copy of Folder1 on FS2 as read-only.
- D. Modify the replicated folder properties of Folder1 on FS1.

Correct Answer: B

Section: (none)

Explanation

Explanation/Reference:

Explanation:

QUESTION 2

Your company owns the public Internet IP address range of 131.107.20.0 to 131.107.20.255.

You need to create a subnet that supports four hosts. The solution must minimize the number of addresses available to the subnet.

Which subnet should you use?

- A. 131.107.20.16/28
- B. 131.107.20.16/30
- C. 131.107.20.0/29
- D. 131.107.20.0 with subnet mask 255.255.255.224

Correct Answer: C

Section: (none)

Explanation



Explanation/Reference:

Explanation:

<http://jodies.de/ipcalc?host=131.107.20.0&mask1=29&mask2=>

QUESTION 3

You have a server named Server1 that runs Windows Server 2016. Server1 has the following routing table.

Network Destination	Netmask	Gateway	Interface	Metric
0.0.0.0	0.0.0.0	192.168.2.1	192.168.2.92	10
10.0.0.0	255.0.0.0	On-link	10.10.0.11	261
10.10.0.11	255.255.255.25	On-link	10.10.0.11	261
10.20.200.0	255.255.255.0	10.10.0.2	10.10.0.11	5
10.255.255.255	255.255.255.255	On-link	10.10.0.11	261
127.0.0.0	255.0.0.0	On-link	127.0.0.1	306
127.0.0.1	255.255.255.255	On-link	127.0.0.1	306
127.255.255.255	255.255.255.255	On-link	127.0.0.1	306
172.16.0.0	255.240.0.0	On-link	172.16.0.1	261
172.16.0.1	255.255.255.255	On-link	172.16.0.1	261
172.31.255.255	255.255.255.255	On-link	172.16.0.1	261
192.168.2.0	255.255.255.0	On-link	192.168.2.92	266
192.168.2.92	255.255.255.255	On-link	192.168.2.92	266
192.168.2.255	255.255.255.255	On-link	192.168.2.92	266
224.0.0.0	240.0.0.0	On-link	127.0.0.1	306
224.0.0.0	240.0.0.0	On-link	172.16.0.1	261
224.0.0.0	240.0.0.0	On-link	10.10.0.11	261
224.0.0.0	240.0.0.0	On-link	192.168.2.92	266
255.255.255.255	255.255.255.255	On-link	127.0.0.1	306
255.255.255.255	255.255.255.255	On-link	172.16.0.1	261
255.255.255.255	255.255.255.255	On-link	10.10.0.11	261
255.255.255.255	255.255.255.255	On-link	192.168.2.92	266

What will occur when Server1 attempts to connect to a host that has an IP address of 172.20.10.50?

- A. Server1 will attempt to connect directly to 172.20.10.50.
- B. Server1 will route the connection to 10.10.0.2.
- C. Server1 will silently drop the connection attempt.
- D. Server1 will route the connection to 192.168.2.1.

Correct Answer: D

Section: (none)

Explanation

Explanation/Reference:

Explanation: <http://www.techrepublic.com/article/understanding-routing-tables/>

QUESTION 4

You have a server that is configured as a hosted BranchCache server.

You discover that a Service Connection Point (SCP) is missing for the BranchCache server.

What should you run to register the SCP?

- A. setspn.exe
- B. Reset-BC
- C. ntdsutil.exe
- D. Enable-BCHostedServer

Correct Answer: D

Section: (none)

Explanation

Explanation/Reference:

Explanation: [https://technet.microsoft.com/en-us/library/jj862376\(v=ws.11\).aspx](https://technet.microsoft.com/en-us/library/jj862376(v=ws.11).aspx)



QUESTION 5

Your company has two main offices. The offices are located in London and Seattle. All servers run Windows Server 2016.

In the Seattle office, you have a Distributed File System (DFS) server named FS1. FS1 has a folder named Folder1 that contains large Windows image files.

In the London office, you deploy a DFS server named FS2, and you then replicate Folder1 to FS2.

After several days, you discover that the replication of certain files failed to complete.

You need to ensure that all of the files in Folder1 can replicate to FS2.

What should you do?

- A. Modify the disk quota of the drive that contains Folder1.
- B. From a command prompt, run dfsutil /purgemupcache.
- C. Create a quota for Folder1 by using File Server Resource Manager (FSRM).

D. Modify the size of staging area of Folder1.

Correct Answer: D

Section: (none)

Explanation

Explanation/Reference:

QUESTION 6

You have a server named Server1 that runs Windows Server 2016 and is configured as a domain controller.

You install the DNS Server server role on Server1.

You plan to store a DNS zone in a custom Active Directory partition.

You need to create a new Active Directory partition for the zone.

What should you use?

- A. Set-DnsServer
- B. Active Directory Sites and Services
- C. Dns.exe
- D. Dnscmd.exe



Correct Answer: D

Section: (none)

Explanation

Explanation/Reference:

Explanation:

Explanation:

dnscmd <ServerName> /CreateDirectoryPartition <FQDN>

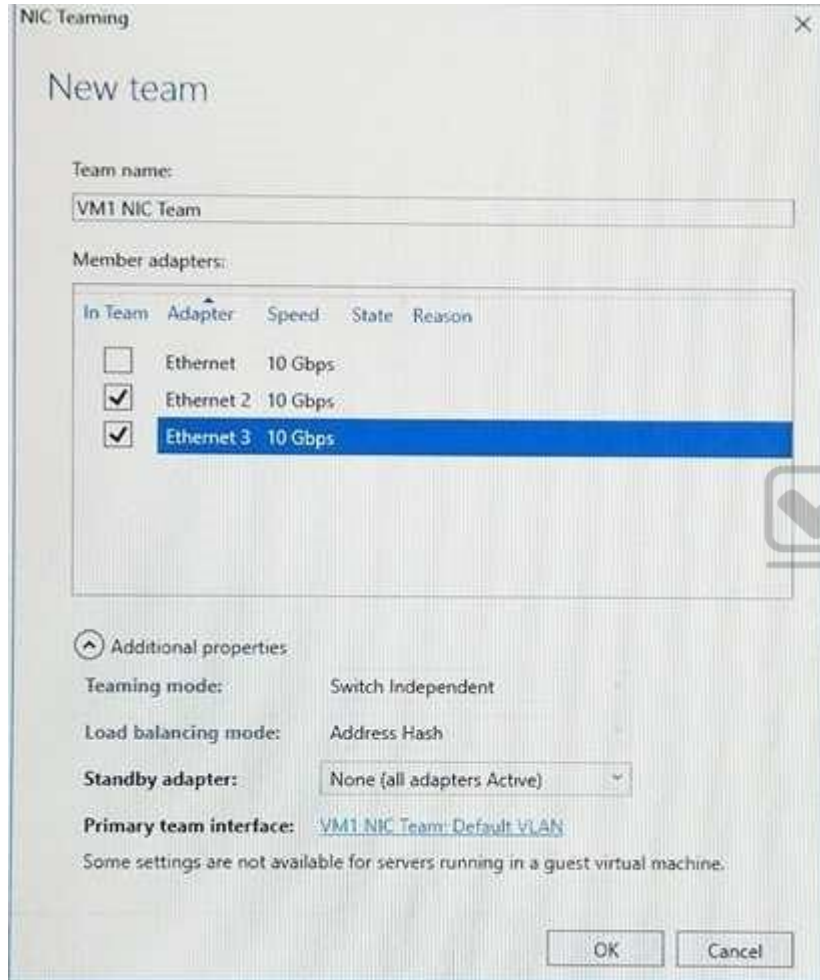
References: https://docs.microsoft.com/en-us/windows-server/administration/windows-commands/dnscmd#BKMK_5

QUESTION 7

You have a server named Server1 that runs Windows Server 2016. Server1 is a Hyper-V host that hosts a virtual machine named VM1.

Server1 has three network adapter cards that are connected to virtual switches named vSwitch1, vSwitch2 and vSwitch3.

You configure NIC Teaming on VM1 as shown in the exhibit. (Click the Exhibit button.)



You need to ensure that VM1 will retain access to the network if a physical network adapter card fails on Server1.

What should you do?

- A. From Windows PowerShell on VM1, run the Set-VmNetworkAdapterTeamMapping cmdlet.
- B. From Hyper-V Manager on Server1, modify the settings on VM1.
- C. From Windows PowerShell on Server1, run the Set-VmNetworkAdapterFailoverConfiguration cmdlet.
- D. From the properties of the NIC team on VM1, add the adapter named Ethernet to the NIC team.

Correct Answer: B

Section: (none)

Explanation

Explanation/Reference:

Explanation:

References: <https://technet.microsoft.com/en-us/windows-server-docs/networking/technologies/nic-teaming/nic-teaming>

QUESTION 8

You have an application named App1. App1 is distributed to multiple Hyper-V virtual machines in a multitenant environment.

You need to ensure that the traffic is distributed evenly among the virtual machines that host App1.

What should you include in the environment?

- A. Network Controller and Windows Server Network Load Balancing (NLB) nodes
- B. an RAS Gateway and Windows Server Software Load Balancing (SLB) nodes
- C. an RAS Gateway and Windows Server Network Load Balancing (NLB) nodes
- D. Network Controller and Windows Server Software Load Balancing (SLB) nodes

Correct Answer: B

Section: (none)

Explanation

Explanation/Reference:

Explanation: [https://technet.microsoft.com/en-us/library/mt403307\(v=ws.11\).aspx#bkmk_slb](https://technet.microsoft.com/en-us/library/mt403307(v=ws.11).aspx#bkmk_slb)

QUESTION 9

You have an Active Directory domain that contains several Hyper-V hosts that run Windows Server 2016.

You plan to deploy network virtualization and to centrally manage Datacenter Firewall policies.

Which component must you install for the planned deployment?



<https://vceplus.com/>

- A. the Data Center Bridging feature
- B. the Network Controller server role
- C. the Routing role service
- D. the Canary Network Diagnostics feature

Correct Answer: B

Section: (none)

Explanation

Explanation/Reference:

Explanation: [https://technet.microsoft.com/en-us/library/mt403307\(v=ws.11\).aspx#bkmk_slb](https://technet.microsoft.com/en-us/library/mt403307(v=ws.11).aspx#bkmk_slb)

QUESTION 10

You have two Hyper-V hosts named Server1 and Server2 that run Windows Server 2016. Server1 and Server2 are connected to the same network.

On Server1 and Server2, you create an external network switch named Switch1.

You have the virtual machine shown in the following table.

Virtual machine name	IP address	Subnet mask	Hyper-V host
VM1	192.168.1.16	255.255.255.0	Server1
VM2	192.168.1.32	255.255.255.0	Server2
VM3	192.168.1.48	255.255.255.0	Server2

All three virtual machines are connected to Switch1.

You need to prevent applications in VM3 from being able to capture network traffic from VM1 or VM2. The solution must ensure that VM1 retains network connectivity.

What should you do?

- A. Configure network virtualization for VM1 and VM2.
- B. Modify the subnet mask of VM1 and VM2.
- C. On Server2, configure the VLAN ID setting of Switch1.
- D. On Server2, create an external switch and connect VM3 to the switch.

Correct Answer: A

Section: (none)

Explanation

Explanation/Reference: Explanation:

<https://blogs.technet.microsoft.com/networking/2016/10/26/network-virtualization-with-ws2016-sdn/>

QUESTION 11

Your company has 10 offices. Each office has a local network that contains several Hyper-V hosts that run Windows Server 2016. All of the offices are connected by high speed, low latency WAN links.

You need to ensure that you can use QoS policies for Live Migration traffic between the offices.

Which component should you install?

- A. the Data Center Bridging feature
- B. the Routing role service
- C. the Network Controller server role
- D. the Multipath I/O feature
- E. the Canary Network Diagnostics feature

Correct Answer: A

Section: (none)

Explanation

Explanation/Reference:

Explanation:

References: [https://technet.microsoft.com/en-us/library/jj735302\(v=ws.11\).aspx](https://technet.microsoft.com/en-us/library/jj735302(v=ws.11).aspx)

QUESTION 12

Your network contains multiple wireless access points (WAPs) that use WPA2-Personal authentication. The network contains an enterprise root certification authority (CA).

The security administrator at your company plans to implement WPA2-Enterprise authentication on the WAPs.

To support the authentication change, you deploy a server that has Network Policy Server (NPS) installed.

You need to configure NPS to authenticate the wireless clients.

What should you do on the NPS server?

- A. Add RADIUS clients and configure network policies.
- B. Create a remote RADIUS server group and configure connection request policies.
- C. Create a remote RADIUS server group and install a server certificate.
- D. Add RADIUS clients and configure connection request policies.

Correct Answer: A

Section: (none)

Explanation

Explanation/Reference:

Explanation: <https://ittrainingday.com/2013/12/25/how-to-configure-a-windows-radius-server-for-802-1x-wireless-or-wired-connections/>

QUESTION 13

Your company has 5,000 users who work remotely.

You have 40 VPN servers that host the remote connections for the users.

You plan to deploy a RADIUS solution that contains five RADIUS servers.

You need to ensure that client authentication requests are distributed evenly between the five RADIUS servers.

What should you do?

- A. Install the Network Load Balancing role service on all of the RADIUS server. Configure all of the RADIUS clients to connect to a virtual IP address.

- B. Deploy RAS Gateway to a new server. Configure all of the RADIUS clients to connect to RAS Gateway.
- C. Install the Failover Clustering role service on all of the RADIUS servers. Configure all of the RADIUS clients to connect to the IP address of the cluster.
- D. Deploy a RADIUS proxy to a new server. Configure all of the RADIUS clients to connect to the RADIUS proxy.

Correct Answer: D

Section: (none)

Explanation

Explanation/Reference:

Explanation: [https://technet.microsoft.com/en-us/library/dd197433\(v=ws.10\).aspx](https://technet.microsoft.com/en-us/library/dd197433(v=ws.10).aspx)

QUESTION 14

Your network contains an Active Directory forest named contoso.com. The functional level of the forest is Windows Server 2012.

The forest contains five domain controllers and five VPN servers that run Windows Server 2016.

Five hundred users connect to the VPN servers daily.

You need to configure a new server named Server1 as a RADIUS server.

What should you do first?

- A. On Server1, deploy the Remote Access server role.
- B. On Server1, deploy the Network Policy and Access Services role.
- C. On a domain controller, set the forest functional level to Windows Server 2016.
- D. On each VPN server, run the New-NpsRadiusClient cmdlet.

Correct Answer: B

Section: (none)

Explanation

Explanation/Reference:

Explanation: <http://www.nyazit.com/configure-network-policy-server-2016/>

QUESTION 15

Your network contains an Active Directory forest named contoso.com. The forest contains two domains named contoso.com and litwareinc.com.

Your company recently deployed DirectAccess for the members of a group named DA_Computers. All client computers are members of DA_Computers.

You discover that DirectAccess clients can access the resources located in the contoso.com domain only. The clients can access the resources in the litwareinc.com domain by using an L2TP VPN connection to the network.

You need to ensure that the DirectAccess clients can access the resources in the litwareinc.com domain.

What should you do?

- A. From a Group Policy object (GPO), modify the Name Resolution Policy Table (NRPT).
- B. From the properties of the servers in litwareinc.com, configure the delegation settings.
- C. On an external DNS server, create a zone delegation for litwareinc.com.
- D. Add the servers in litwareinc.com to the RAS and IAS Servers group.

Correct Answer: A

Section: (none)

Explanation

Explanation/Reference:

Explanation: <https://blogs.technet.microsoft.com/tomshinder/2010/04/01/directaccess-client-location-awareness-nrpt-name-resolution/>

QUESTION 16

You have a server named Server1 that runs Windows Server 2016. Server1 is located on the perimeter network, and only inbound TCP port 443 is allowed to connect Server1 from the Internet.

You install the Remote Access server role on Server1.

You need to configure Server1 to accept VPN connections over port 443.

Which VPN protocol should you use?

- A. PPTP
- B. SSTP
- C. L2TP
- D. IKEv2

Correct Answer: B

Section: (none)

Explanation

Explanation/Reference:

Explanation: [https://technet.microsoft.com/en-us/library/dd458955\(v=ws.10\).aspx](https://technet.microsoft.com/en-us/library/dd458955(v=ws.10).aspx)

QUESTION 17

You have an Active Directory domain named Contoso.com. The domain contains servers named Server1 and Server2 that run Windows Server 2016.

You install the Remote Access server role on Server1. You install the Network Policy and Access Services server role on Server2.

You need to configure Server1 to use Server2 as a RADIUS server.

What should you do?

- A. From the Connection Manager Administration Kit, create a Connection Manager profile.
- B. From Routing and Remote Access, configure the authentication provider.
- C. From Active Directory Users and Computers, modify the Delegation settings of the Server1 computer account.
- D. From Server Manager, create an Access Policy.

Correct Answer: B

Section: (none)

Explanation

Explanation/Reference:

QUESTION 18

Your company has a main office in London. The company has 1,000 users who are located in many countries.

You plan to deploy a large remote access solution for the company.

The London office has three servers named Server1, Server2, and Server3 that run Windows Server 2016.

You plan to use Server1 as a VPN server, Server2 as a RADIUS proxy, and Server3 as a RADIUS server.

You need to configure Server2 to support the planned deployment.

Which three actions should you perform on Server2? Each correct answer presents part of the solution.



<https://vceplus.com/>

- A. Create a connection request policy.
- B. Deploy a Windows container.
- C. Add a RADIUS client.
- D. Create a network policy.
- E. Create a remote RADIUS server group.

Correct Answer: ACE

Section: (none)

Explanation



Explanation/Reference:

Explanation: <https://ittrainingday.com/2014/01/03/how-to-configure-radius-proxy-servers/>

QUESTION 19

You have a server named Host1 that runs Windows Server 2016.

You configure Host1 as a virtualization host and create 20 new virtual machines on Host1.

You need to ensure that all of the virtual machines can connect to the Internet through Host1.

Which three actions should you perform? Each correct answer presents part of the solution.

- A. On a virtual machine, install the Remote Access server role.
- B. From the properties of each virtual machine, enable virtual LAN identification.
- C. From the properties of each virtual machine, connect to the virtual machine switch.
- D. On Host1, configure the network address translation (NAT) network.

E. On Host1, create an internal virtual machine switch and specify an IP address for the switch.

Correct Answer: CDE

Section: (none)

Explanation

Explanation/Reference:

Explanation: [https://technet.microsoft.com/en-us/library/ee449441\(v=ws.10\).aspx](https://technet.microsoft.com/en-us/library/ee449441(v=ws.10).aspx)

QUESTION 20

Note: This question is part of a series of questions that use the same or similar answer choices. An answer choice may be correct for more than one question in the series. Each question is independent of the other questions in this series. Information and details provided in a question apply only to that question.

You have a DHCP server named Server1 that has three network cards. Each network card is configured to use a static IP address. Each network card connects to a different network segment.

Server1 has an IPv4 scope named Scope1.

You need to ensure that Server1 only uses one network card when leasing IP addresses in Scope1.

What should you do?

- A. From the properties of Scope1, modify the Conflict detection attempts setting.
- B. From the properties of Scope1, configure Name Protection.
- C. From the properties of IPv4, configure the bindings.
- D. From IPv4, create a new filter.
- E. From the properties of Scope1, create an exclusion range.
- F. From IPv4, run the DHCP Policy Configuration Wizard.
- G. From Control Panel, modify the properties of Ethernet.
- H. From Scope1, create a reservation.

Correct Answer: C

Section: (none)

Explanation

Explanation/Reference:

Explanation: [https://technet.microsoft.com/en-us/library/cc770650\(v=ws.11\).aspx](https://technet.microsoft.com/en-us/library/cc770650(v=ws.11).aspx)

QUESTION 21

Note: This question is part of a series of questions that use the same or similar answer choices. An answer choice may be correct for more than one question in the series. Each question is independent of the other questions in this series. Information and details provided in a question apply only to that question.

You have a DHCP server named Server1 that has three network cards. Each network card is configured to use a static IP address.

You need to prevent all client computers that have physical address beginning with 98-5F from leasing an IP address from Server1.

What should you do?

- A. From the properties of Scope1, modify the Conflict detection attempts setting.
- B. From the properties of Scope1, configure Name Protection.
- C. From the properties of IPv4, configure the bindings.
- D. From IPv4, create a new filter.
- E. From the properties of Scope1, create an exclusion range.
- F. From IPv4, run the DHCP Policy Configuration Wizard.
- G. From Control Panel, modify the properties of Ethernet.
- H. From Scope1, create a reservation.



Correct Answer: D

Section: (none)

Explanation

Explanation/Reference:

Explanation:

References: [https://technet.microsoft.com/en-us/library/ee941125\(v=ws.10\).aspx](https://technet.microsoft.com/en-us/library/ee941125(v=ws.10).aspx)

QUESTION 22

Note: This question is part of a series of questions that use the same or similar answer choices. An answer choice may be correct for more than one question in the series. Each question is independent of the other questions in this series. Information and details provided in a question apply only to that question.

You have a DHCP server named Server1 that has an IPv4 scope named Scope1.

Users report that when they turn on their client computers, it takes a long time to access the network.

You validate that it takes a long time for the computers to receive an IP address from Server1.

You monitor the network traffic and discover that Server1 issues five ping commands on the network before leasing an IP address.

You need to reduce the amount of time it takes for the computers to receive an IP address.

What should you do?

- A. From the properties of Scope1, modify the Conflict detection attempts setting.
- B. From the properties of Scope1, configure Name Protection.
- C. From the properties of IPv4, configure the bindings.
- D. From IPv4, create a new filter.
- E. From the properties of Scope1, create an exclusion range.
- F. From IPv4, run the DHCP Policy Configuration Wizard.
- G. From Control Panel, modify the properties of Ethernet.
- H. From Scope1, create a reservation.

Correct Answer: A

Section: (none)

Explanation

Explanation/Reference:

Explanation: [https://technet.microsoft.com/en-us/library/ee941125\(v=ws.10\).aspx](https://technet.microsoft.com/en-us/library/ee941125(v=ws.10).aspx)



QUESTION 23

Note: This question is part of a series of questions that use the same scenario. For your convenience, the scenario is repeated in each question. Each question presents a different goal and answer choices, but the text of the scenario is exactly the same in each question in this series.

Your network contains an Active Directory domain named contoso.com. The functional level of the domain is Windows Server 2012.

The network uses an address space of 192.168.0.0/16 and contains multiple subnets.

The network is not connected to the Internet.

The domain contains three servers configured as shown in the following table.

Server name	Configuration
Server1	Domain controller and DNS server
Server2	Member server
Server3	DHCP server

Client computers obtain TCP/IP settings from Server3.

You add a second network adapter to Server2. You connect the new network adapter to the Internet. You install the Routing role service on Server2.

Server1 has four DNS zones configured as shown in the following table.

DNS zone name	Type	Zone file name
Contoso.com	Active Directory-integrated	None
Fabrikam.com	Primary	Fabrikam.com.dns
Tailspintoys.com	Primary	Tailspintoys.com.dns
168.192.in-addr.arpa	Primary	168.192.in-addr.arpa.dns

You need to ensure that when a computer is removed from the network, the associated records are deleted automatically after 15 days.

Which two actions should you perform? Each correct answer presents part of the solution.

- A. Create a scheduled task that runs the Remove-Computer cmdlet.
- B. Modify the Zone Aging/Scavenging Properties of the zone.
- C. Modify the Time to live (TTL) value of the start of authority (SOA) record.
- D. Set the Scavenging period of Server1.
- E. Modify the Expires after value of the start of authority (SOA) record.

Correct Answer: BD

Section: (none)

Explanation

Explanation/Reference:

Explanation: [https://technet.microsoft.com/en-us/library/cc771362\(v=ws.10\).aspx](https://technet.microsoft.com/en-us/library/cc771362(v=ws.10).aspx)

QUESTION 24

Note: This question is part of a series of questions that use the same scenario. For your convenience, the scenario is repeated in each question. Each question presents a different goal and answer choices, but the text of the scenario is exactly the same in each question in this series.

Your network contains an Active Directory domain named contoso.com. The functional level of the domain is Windows Server 2012.

The network uses an address space of 192.168.0.0/16 and contains multiple subnets.

The network is not connected to the Internet.

The domain contains three servers configured as shown in the following table.

Server name	Configuration
Server1	Domain controller and DNS server
Server2	Member server
Server3	DHCP server

Client computers obtain TCP/IP settings from Server3.

You add a second network adapter to Server2. You connect the new network adapter to the Internet. You install the Routing role service on Server2.

Server1 has four DNS zones configured as shown in the following table.

DNS zone name	Type	Zone file name
Contoso.com	Active Directory-integrated	None
Fabrikam.com	Primary	Fabrikam.com.dns
Tailspintoys.com	Primary	Tailspintoys.com.dns
168.192.in-addr.arpa	Primary	168.192.in-addr.arpa.dns

What should you do to enable Server2 as a NAT server?

- A. From Routing and Remote Access, add an interface.
- B. From Windows PowerShell, run the New-RoutingGroupConnector cmdlet.
- C. From Routing and Remote Access, add a routing protocol.
- D. From Windows PowerShell, run the Install-WindowsFeature cmdlet.

Correct Answer: C

Section: (none)

Explanation

Explanation/Reference:

Explanation:

References: [https://technet.microsoft.com/en-us/library/dd469812\(v=ws.11\).aspx](https://technet.microsoft.com/en-us/library/dd469812(v=ws.11).aspx)

QUESTION 25

Note: This question is part of a series of questions that use the same scenario. For your convenience, the scenario is repeated in each question. Each question presents a different goal and answer choices, but the text of the scenario is exactly the same in each question in this series.

Your network contains an Active Directory domain named contoso.com. The functional level of the domain is Windows Server 2012.

The network uses an address space of 192.168.0.0/16 and contains multiple subnets.

The network is not connected to the Internet.

The domain contains three servers configured as shown in the following table.

Server name	Configuration
Server1	Domain controller and DNS server
Server2	Member server
Server3	DHCP server

Client computers obtain TCP/IP settings from Server3.

You add a second network adapter to Server2. You connect the new network adapter to the Internet. You install the Routing role service on Server2.

Server1 has four DNS zones configured as shown in the following table.

DNS zone name	Type	Zone file name
Contoso.com	Active Directory-integrated	None
Fabrikam.com	Primary	Fabrikam.com.dns
Tailspintoys.com	Primary	Tailspintoys.com.dns
168.192.in-addr.arpa	Primary	168.192.in-addr.arpa.dns

You need to ensure that when a record is added dynamically to fabrikam.com, only the computer that created the record can modify the record. The solution must allow administrators to modify all of the records in fabrikam.com.

What should you do?

- A. Change fabrikam.com to an Active Directory-integrated zone.
- B. Raise the functional level of the domain.
- C. Modify the security settings of the Fabrikam.com.dns file.
- D. Modify the Start of Authority (SOA) settings of fabrikam.com

Correct Answer: A

Section: (none)

Explanation

Explanation/Reference:

Explanation: [https://technet.microsoft.com/en-us/library/cc753751\(v=ws.11\).aspx](https://technet.microsoft.com/en-us/library/cc753751(v=ws.11).aspx)

QUESTION 26

Note: This question is part of a series of questions that use the same scenario. For your convenience, the scenario is repeated in each question. Each question presents a different goal and answer choices, but the text of the scenario is exactly the same in each question in this series.

Your network contains an Active Directory domain named contoso.com. The functional level of the domain is Windows Server 2012.

The network uses an address space of 192.168.0.0/16 and contains multiple subnets.

The network is not connected to the Internet.

The domain contains three servers configured as shown in the following table.

Server name	Configuration
Server1	Domain controller and DNS server
Server2	Member server
Server3	DHCP server

Client computers obtain TCP/IP settings from Server3.

You add a second network adapter to Server2. You connect the new network adapter to the Internet. You install the Routing role service on Server2.

Server1 has four DNS zones configured as shown in the following table.

DNS zone name	Type	Zone file name
Contoso.com	Active Directory-integrated	None
Fabrikam.com	Primary	Fabrikam.com.dns
Tailspintoys.com	Primary	Tailspintoys.com.dns
168.192.in-addr.arpa	Primary	168.192.in-addr.arpa.dns

You need to create a zone to ensure that Server1 can resolve single-label names.

What should you name the zone on Server1?

- A. . (root)
- B. WINS
- C. NetBIOS
- D. GlobalNames

Correct Answer: D

Section: (none)

Explanation



Explanation/Reference:

Explanation: [https://technet.microsoft.com/en-us/library/cc816610\(v=ws.10\).aspx](https://technet.microsoft.com/en-us/library/cc816610(v=ws.10).aspx)

QUESTION 27

You have servers named Server1 and DHCP1. Both servers run Windows Server 2016. DHCP1 contains an IPv4 scope named Scope1.

You have 1,000 client computers.

You need to configure Server1 to lease IP addresses for Scope1. The solution must ensure that Server1 is used to respond to up to 30 percent of the DHCP client requests only.

You install the DHCP Server server role on Server1.

What should you do next?

- A. From the DHCP console, run the Configure Failover wizard.
- B. From Server Manager, install the Network Load Balancing feature.

- C. From Server Manager, install the Failover Clustering feature.
- D. From the DHCP console, create a superscope.

Correct Answer: A

Section: (none)

Explanation

Explanation/Reference:

Explanation: [https://technet.microsoft.com/en-us/library/hh831385\(v=ws.11\).aspx](https://technet.microsoft.com/en-us/library/hh831385(v=ws.11).aspx)

QUESTION 28

Note: This question is part of a series of questions that present the same scenario. Each question in the series contains a unique solution. Determine whether the solution meets the stated goals.

Your network contains an Active Directory domain named contoso.com. The domain contains a DNS server named Server1. All client computers run Windows 10. On Server1, you have the following zone configuration.

ZoneName	ZoneType	IsAutoCreated	IsDnsIntegrated	IsReverseLookupZone	IsSigned
_msdcs.contoso.com	Primary	False	True	False	False
0.in-addr.arpa	Primary	True	False	True	False
127.in-addr.arpa	Primary	True	False	True	False
255.in-addr.arpa	Primary	True	False	True	False
adatum.com	Forwarder	False	False	False	False
contoso.com	Primary	False	True	False	False
fabrikam.com	Primary	False	True	False	True
TrustAnchors	Primary	False	True	False	False

You need to ensure that all of the client computers in the domain perform DNSSEC validation for the fabrikam.com namespace.

Solution: From a Group Policy object (GPO) in the domain, you add a rule to the Name Resolution Policy Table (NRPT). Does this meet the goal?



<https://vceplus.com/>

- A. Yes
- B. No

Correct Answer: A

Section: (none)

Explanation

Explanation/Reference:

Explanation:

The NRPT stores configurations and settings that are used to deploy DNS Security Extensions (DNSSEC), and also stores information related to DirectAccess, a remote access technology.

Note: The Name Resolution Policy Table (NRPT) is a new feature available in Windows Server 2008 R2. The NRPT is a table that contains rules you can configure to specify DNS settings or special behavior for names or namespaces. When performing DNS name resolution, the DNS Client service checks the NRPT before sending a DNS query. If a DNS query or response matches an entry in the NRPT, it is handled according to settings in the policy. Queries and responses that do not match an NRPT entry are processed normally.

References: [https://technet.microsoft.com/en-us/library/ee649207\(v=ws.10\).aspx](https://technet.microsoft.com/en-us/library/ee649207(v=ws.10).aspx)

QUESTION 29

Note: This question is part of a series of questions that present the same scenario. Each question in the series contains a unique solution. Determine whether the solution meets the stated goals.

Your network contains an Active Directory domain named contoso.com. The domain contains a DNS server named Server1. All client computers run Windows 10. On Server1, you have the following zone configuration.

ZoneName	ZoneType	IsAutoCreated	IsDnsIntegrated	IsReverseLookupZone	IsSigned
_msdcs.contoso.com	Primary	False	True	False	False
0.in-addr.arpa	Primary	True	False	True	False
127.in-addr.arpa	Primary	True	False	True	False
255.in-addr.arpa	Primary	True	False	True	False
adatum.com	Forwarder	False	False	False	
contoso.com	Primary	False	True	False	False
fabrikam.com	Primary	False	True	False	True
TrustAnchors	Primary	False	True	False	False

You need to ensure that all of the client computers in the domain perform DNSSEC validation for the fabrikam.com namespace. Solution: From Windows PowerShell on Server1, you run the **Add-DnsServerTrustAnchor** cmdlet. Does this meet the goal?

- A. yes
- B. No

Correct Answer: B

Section: (none)

Explanation

Explanation/Reference:

Explanation:

The Add-DnsServerTrustAnchor command adds a trust anchor to a DNS server. A trust anchor (or trust “point”) is a public cryptographic key for a signed zone. Trust anchors must be configured on every nonauthoritative DNS server that will attempt to validate DNS data. Trust Anchors have no direct relation to DSSEC validation.

References:

<https://technet.microsoft.com/en-us/library/jj649932.aspx>

[https://technet.microsoft.com/en-us/library/dn593672\(v=ws.11\).aspx](https://technet.microsoft.com/en-us/library/dn593672(v=ws.11).aspx)

QUESTION 30

Name	IPv4Subnet	IPv6Subnet
-----	-----	-----
Subnet1	{10.0.0.0/24}	
Subnet2	{10.0.1.0/24}	
Subnet3	{192.168.15.0/24}	
Subnet4	{172.16.1.0/24}	

You need to prevent Server1 from resolving queries from DNS clients located on Subnet4. Server1 must resolve queries from all other DNS clients. Solution: From the Security setting of each zone on Server1, you modify the permissions. Does this meet the goal?

- A. Yes
- B. No

Correct Answer: B

Section: (none)

Explanation



Explanation/Reference:

QUESTION 31

You have an IP Address Management (IPAM) server named IPAM1 that runs Windows Server 2016. IPAM1 manages 10 DHCP servers.

You need provide a user with the ability to track which clients receive which IP addresses from DHCP. The solution must minimize administrative privileges.

- A. IPAM MSM Administrators
- B. IPAM ASM Administrators
- C. IPAM IP Audit Administrators
- D. IPAM User

Correct Answer: C

Section: (none)

Explanation

Explanation/Reference:

References: [https://technet.microsoft.com/en-us/library/jj878348\(v=ws.11\).aspx](https://technet.microsoft.com/en-us/library/jj878348(v=ws.11).aspx)

QUESTION 32

You have an IP Address Management (IPAM) deployment that is used to manage all of the DNS servers on your network. IPAM is configured to use Group Policy provisioning.

You discover that a user adds a new mail exchanger (MX) record to one of the DNS zones.

You want to identify which user added the record.

You open Event Catalog on an IPAM server, and you discover that the most recent event occurred yesterday.

You need to ensure that the operational events in the event catalog are never older than one hour.

What should you do?

- A. From the properties on the DNS zones, modify the refresh interval.
- B. From an IPAM_DNS Group Policy object (GPO), modify the Group Policy refresh interval.
- C. From Task Scheduler, modify the Microsoft\Windows\IPAM\Audit task.
- D. From Task Scheduler, create a scheduled task that runs the **Update-IpamServer** cmdlet.

Correct Answer: C

Section: (none)

Explanation

Explanation/Reference:

References: [https://technet.microsoft.com/en-us/library/jj878342\(v=ws.11\).aspx](https://technet.microsoft.com/en-us/library/jj878342(v=ws.11).aspx)

QUESTION 33

You have a remote access server named Server1 that runs Windows Server 2016. Server1 has DirectAccess enabled.

You have a proxy server named Server2. All computers on the internet connect to the Internet by using the proxy.

On Server1, you run the command **Set-DAClient -Force Tunnel Enabled**.

You need to ensure that when a Direct Access client connects to the network, the client accesses all the Internet resources through the proxy.

What should you run on Server1?

- A. **Set-DnsClientGlobalSetting**

- B. Set-DAEntryPoint
- C. Set-DnsClientNrptRule
- D. Set-DnsClientNrptGlobal

Correct Answer: C

Section: (none)

Explanation

Explanation/Reference:

References: <https://directaccess.richardhicks.com/2017/07/27/directaccess-force-tunneling-and-proxy-server-configuration/>

QUESTION 34

You have a server named Server1 that runs Windows Server 2016. Server1 has the DHCP Server and the Windows Deployment Service server roles installed.

Server1 is located on the same subnet as client computers.

You need to ensure that clients can perform a PXE boot from Server1.

Which two IPv4 options should you configure in DHCP? Each correct answer presents part of the solution.

NOTE: Each correct selection is worth one point.

- A. 003 Router
- B. 066 Boot Server Host Name
- C. 015 DNS Domain Name
- D. 006 DNS ServersE. 060 Option 60

Correct Answer: BE

Section: (none)

Explanation

Explanation/Reference:

QUESTION 35

Refer to the exhibit:

Server name	Configuration
FabDC1	Domain controller and DNS server
FabFS1	DHCP server and file server
FabRA1	Remote access server
FabRS1	Network Policy Server (NPS) server
FabRP1	Network Policy Server (NPS) server

You plan to implement a VPN. FabRA1 will use the RADIUS proxy for authentication.

You need to ensure that VPN clients can be authenticated and can access internal resources. The solution must ensure that FabRS1 is used as a RADIUS server and FabRP1 is used as a RADIUS proxy.

Which two actions should you perform? Each correct answer presents part of the solution.

- A. Create a connection request policy on FabRS1.
- B. Create a connection request policy on FabRP1.
- C. Create a network policy on FabRS1.
- D. Delete the default connection request policy on FabRS1.
- E. Create a network policy on FabRP1.



Correct Answer: BC

Section: (none)

Explanation

Explanation/Reference:

QUESTION 36

You have a test environment that includes two servers named Server1 and Server2. The servers run Windows Server 2016. You need to ensure that you can implement SMB Direct between the servers. Which feature should the servers support?

- A. Remote Direct Memory Access (RDMA)
- B. Multipath I/O (MPIO)

- C. Virtual Machine queue (VMQ)
- D. Single root I/O virtualization (SR-IOV)

Correct Answer: A

Section: (none)

Explanation

Explanation/Reference:

References: [https://technet.microsoft.com/en-us/library/jj134210\(v=ws.11\).aspx](https://technet.microsoft.com/en-us/library/jj134210(v=ws.11).aspx)

QUESTION 37

You have a Hyper-V server named Server1 that runs Windows Server 2016. Server1 has an IP address of 192.168.1.78.

Server1 has a container named Container1 that hosts a web application on port 84. Container1 has an IP address of 172.16.5.6.

Container1 has a port mapping from port 80 on Server1 to port 84 on Container1.

You have a server named Server2 that has an IP address of 192.168.1.79.

You need to connect to the web application from Server2.

To which IP address and port should you connect?



<https://vceplus.com/>

- A. 172.16.5.6:80
- B. 192.168.1.78:80C. 172.16.5.6:84
- D. 192.168.1.78:84

Correct Answer: B

Section: (none)

Explanation

Explanation/Reference:

References: <https://www.assistanz.com/configure-port-mapping-for-windows-container/>

QUESTION 38

You have a DHCP server named Server1.

Server1 has an IPv4 scope that serves 75 client computers that run Windows 10.

When you review the address leases in the DHCP console, you discover several leases for devices that you do not recognize.

You need to ensure that only the 75 Windows 10 computers can obtain a lease from the scope.

What should you do?

- A. Run the **Add-DhcpServer4ExclusionRange** cmdlet.
- B. Create and enable a DHCP filter.
- C. Create a DHCP policy for the scope.
- D. Run the **Add-DhcpServer4OptionDefinition** cmdlet.



Correct Answer: C

Section: (none)

Explanation

Explanation/Reference:

QUESTION 39

You have a DHCP server named Server1.

Server1 has an IPv4 scope that contains 100 addresses for a subnet named Subnet1. Subnet1 provides guest access to the Internet. There are never more than 20 client computers on Subnet1 simultaneously; however, the computers that connect to Subnet1 are rarely the same computers.

You discover that some client computers are unable to access the network. The computers that have the issue have IP addresses in the range of 169.254.0.0/16.

You need to ensure that all of the computers can connect successfully to the network to access the Internet.

What should you do?

- A. Create a new scope that uses IP addresses in the range of 169.254.0.0/16.
- B. Modify the scope options.
- C. Modify the lease duration.
- D. Configure Network Access Protection (NAP) integration on the existing scope.

Correct Answer: C

Section: (none)

Explanation

Explanation/Reference:

QUESTION 40

You have an Active Directory forest that contains 30 servers and 6,000 client computers.

You deploy a new DHCP server that runs Windows Server 2016.

You need to retrieve the list of the authorized DHCP servers.

Which command should you run?

- A. **Get-DCHPServerDatabase**
- B. **Netstat-p IP -s -a**
- C. **Get-DHCPServerInDc**
- D. **Show-ADAuthenticationPolicyExpression-AllowedToAuthenticateTo**

Correct Answer: C

Section: (none)

Explanation

Explanation/Reference:

References: <https://docs.microsoft.com/en-us/powershell/module/dhcpserver/get-dhcpserverindc?view=win10-ps>

QUESTION 41

Note: This question is part of a series of questions that present the same scenario. Each question in the series contains a unique solution. Determine whether the solution meets the stated goals.

Refer to exhibit:



Private1	Private
Internal1	Internal
External1	External

Server1 has two virtual machines named VM1 and VM that run Windows Server 2016. VM1 connects to Private1. VM2 has two network adapters.

You need to ensure that VM1 connects to the corporate network by using NAT.

Solution: You connect VM2 to Private1 and External1. You run the **New-NetNatIpAddress** and the **New-NetNat** cmdlets on VM2. You configure VM1 to use VM2 as the default gateway.

Does this meet the goal?

- A. Yes
- B. No

Correct Answer: B

Section: (none)

Explanation

Explanation/Reference:

QUESTION 42

Note: This question is part of a series of questions that present the same scenario. Each question in the series contains a unique solution. Determine whether the solution meets the stated goals.

Refer to exhibit:

Private1	Private
Internal1	Internal
External1	External

Server1 has two virtual machines named VM1 and VM that run Windows Server 2016. VM1 connects to Private1. VM2 has two network adapters.

You need to ensure that VM1 connects to the corporate network by using NAT.

Solution: You connect VM1 to Internal1. You run the **New-NetNatIpAddress** and the **New-NetNat** cmdlets on Server1. You configure VM1 to use Server1 as the default gateway.

Does this meet the goal?

- A. Yes
- B. No

Correct Answer: A

Section: (none)

Explanation

Explanation/Reference:

QUESTION 43

Note: This question is part of a series of questions that present the same scenario. Each question in the series contains a unique solution. Determine whether the solution meets the stated goals.

Refer to exhibit:

Private1	Private
Internal1	Internal
External1	External

Server1 has two virtual machines named VM1 and VM that run Windows Server 2016. VM1 connects to Private1. VM2 has two network adapters.

You need to ensure that VM1 connects to the corporate network by using NAT.

Solution: You connect VM2 to Private1 and External1. You install the Remote Access server on VM2, and you configure NAT in the Routing and Remote Access console. You configure VM1 to use VM2 as the default gateway.

Does this meet the goal?

- A. Yes
- B. No

Correct Answer: A

Section: (none)

Explanation

Explanation/Reference:

QUESTION 44

Note: This question is part of a series of questions that present the same scenario. Each question in the series contains a unique solution that might meet the stated goals. Some question sets might have more than one correct solution, while others might not have a correct solution.

After you answer a question in this sections, you will NOT be able to return to it. As a result, these questions will not appear in the review screen.

Your network contains an Active Directory domain named adatum.com. The domain contains two DHCP servers named Server1 and Server2.

Server1 has the following IP configuration.



```
PS C:\> Get-DhcpServerv4Scope | fl ScopeId, SubnetMask, StartRange, EndRange, ActivatePolicies ; Get-DhcpServerSetting
```

```
ScopeId           : 172.16.0.0
SubnetMask         : 255.255.0.0
StartRange         : 172.16.0.20
EndRange           : 172.16.0.100
ActivatePolicies   : True
```

```
IsDomainJoined     : True
IsAuthorized        : False
DynamicBootp       : True
RestoreStatus       : False
ConflictDetectionAttempts : 0
NpsUnreachableAction : Full
NapEnabled          : False
ActivatePolicies    : True
```

Server2 has the following IP configuration.



After you answer a question in this sections, you will NOT be able to return to it. As a result, these questions will be removed from your question bank screen.

```
PS C:\> Get-DhcpServerv4Scope | fl ScopeId, SubnetMask, StartRange, EndRange, ActivatePolicies
```

```
ScopeId           : 172.16.0.0
SubnetMask         : 255.255.0.0
StartRange         : 172.16.0.80
EndRange           : 172.16.0.150
ActivatePolicies   : True
```

```
IsDomainJoined     : True
IsAuthorized        : False
DynamicBootp       : True
RestoreStatus       : False
ConflictDetectionAttempts : 3
NpsUnreachableAction : Full
NapEnabled          : False
ActivatePolicies    : True
```

Some users report that sometimes they cannot access the network because of conflicting IP addresses.

You need to configure DHCP to avoid leasing addresses that are in use already.

Solution: On Server1, you modify the ActivatePolicies setting of the scope.

Does this meet the goal?

- A. Yes
- B. No

Correct Answer: B

Section: (none)

Explanation

Explanation/Reference:

QUESTION 45

Your network contains an Active Directory domain named adatum.com. The domain contains two DHCP servers named Server1 and Server2.

Server1 has the following IP configuration.

```
PS C:\> Get-DhcpServerv4Scope | fl ScopeId, SubnetMask, StartRange, EndRange, ActivatePolicies ; Get-DhcpServerSetting
```

```
ScopeId           : 172.16.0.0
SubnetMask         : 255.255.0.0
StartRange         : 172.16.0.20
EndRange           : 172.16.0.100
ActivatePolicies   : True

IsDomainJoined     : True
IsAuthorized        : False
DynamicBootp       : True
RestoreStatus      : False
ConflictDetectionAttempts : 0
NpsUnreachableAction : Full
NapEnabled          : False
ActivatePolicies    : True
```



Server2 has the following IP configuration.

Note: This question is part of a series of questions that present the same scenario. Each question in the series contains a unique solution that might meet the stated goals. Some question sets might have more than one correct solution, while others might not have a correct solution.

After you answer a question in this sections, you will NOT be able to return to it. As a result, these questions will be removed from your question bank.

```
PS C:\> Get-DhcpServerv4Scope | fl ScopeId, SubnetMask, StartRange, EndRange, ActivatePolicies
```

```
ScopeId           : 172.16.0.0
SubnetMask         : 255.255.0.0
StartRange         : 172.16.0.80
EndRange           : 172.16.0.150
ActivatePolicies   : True

IsDomainJoined     : True
IsAuthorized       : False
DynamicBootp       : True
RestoreStatus      : False
ConflictDetectionAttempts : 3
NpsUnreachableAction : Full
NapEnabled         : False
ActivatePolicies   : True
```

Some users report that sometimes they cannot access the network because of conflicting IP addresses.

You need to configure DHCP to avoid leasing addresses that are in use already.

Solution: On Server1, you modify the EndRange IP address of the scope.

Does this meet the goal?

- A. Yes
- B. No

Correct Answer: A

Section: (none)

Explanation

Explanation/Reference:

QUESTION 46

Your network contains an Active Directory domain named adatum.com. The domain contains two DHCP servers named Server1 and Server2.

Server1 has the following IP configuration.

```
PS C:\> Get-DhcpServerv4Scope | fl ScopeId, SubnetMask, StartRange, EndRange, ActivatePolicies ; Get-DhcpServerSetting

ScopeId           : 172.16.0.0
SubnetMask         : 255.255.0.0
StartRange        : 172.16.0.20
EndRange          : 172.16.0.100
ActivatePolicies  : True

IsDomainJoined    : True
IsAuthorized      : False
DynamicBootp      : True
RestoreStatus     : False
ConflictDetectionAttempts : 0
NpsUnreachableAction : Full
NapEnabled        : False
ActivatePolicies  : True
```



Server2 has the following IP configuration.

Note: This question is part of a series of questions that present the same scenario. Each question in the series contains a unique solution that might meet the stated goals. Some question sets might have more than one correct solution, while others might not have a correct solution.

After you answer a question in this sections, you will NOT be able to return to it. As a result, these questions will be removed from your question bank screen.

```
PS C:\> Get-DhcpServerv4Scope | fl ScopeId, SubnetMask, StartRange, EndRange, ActivatePolicies
```

```
ScopeId           : 172.16.0.0
SubnetMask         : 255.255.0.0
StartRange         : 172.16.0.80
EndRange           : 172.16.0.150
ActivatePolicies   : True
```

```
IsDomainJoined     : True
IsAuthorized        : False
DynamicBootp       : True
RestoreStatus       : False
ConflictDetectionAttempts : 3
NpsUnreachableAction : Full
NapEnabled          : False
ActivatePolicies    : True
```

Some users report that sometimes they cannot access the network because of conflicting IP addresses.

You need to configure DHCP to avoid leasing addresses that are in use already.

Solution: On Server2, you modify the ConflictDetectionAttempts value for IPv4.

Does this meet the goal?

- A. Yes
- B. No

Correct Answer: B

Section: (none)

Explanation

Explanation/Reference:

QUESTION 47

Your network contains an Active Directory forest named contoso.com. The forest has three sites located in London, Paris, and Berlin.

The London site contains a web server named Web1 that runs Windows Server 2016.

You need to configure Web1 as an HTTP content server for the hosted cache servers located in the Paris and Berlin sites.

Solution: You install the Static Content role service, and then you restart the IIS Admin Service.

Does this meet the goal?

<https://vceplus.com/>

A. Yes



B. No



Correct Answer: B

S
e
c
t
i
o
n
:
(
n
o

Note: This question is part of a series of questions that present the same scenario. Each question in the series contains a unique solution that might meet the stated goals. Some question sets might have more than one correct solution, while others might not have a correct solution.

After you answer a question in this sections, you will NOT be able to return to it. As a result, these questions will not appear in the review screen.

n
e
)
E
x
p
l
a
n
a
t
i
o
n

Explanation/Reference:

QUESTION 48

Note: This question is part of a series of questions that present the same scenario. Each question in the series contains a unique solution that might meet the stated goals. Some question sets might have more than one correct solution, while others might not have a correct solution.

After you answer a question in this sections, you will NOT be able to return to it. As a result, these questions will not appear in the review screen.

Your network contains an Active Directory forest named contoso.com. The forest has three sites located in London, Paris, and Berlin.

The London site contains a web server named Web1 that runs Windows Server 2016.

You need to configure Web1 as an HTTP content server for the hosted cache servers located in the Paris and Berlin sites.

Solution: You install the BranchCache feature, and then you start the BranchCache service.

Does this meet the goal?

- A. Yes
- B. No

Correct Answer: A

Section: (none) **Explanation**

Explanation/Reference:

QUESTION 49

Note: This question is part of a series of questions that present the same scenario. Each question in the series contains a unique solution that might meet the stated goals. Some question sets might have more than one correct solution, while others might not have a correct solution.

After you answer a question in this sections, you will NOT be able to return to it. As a result, these questions will not appear in the review screen.

Your network contains an Active Directory forest named contoso.com. The forest has three sites located in London, Paris, and Berlin.

The London site contains a web server named Web1 that runs Windows Server 2016.

You need to configure Web1 as an HTTP content server for the hosted cache servers located in the Paris and Berlin sites.

Solution: You install the Deployment Server role service, and then you restart the World Wide Web Publishing Service.

Does this meet the goal?

- A. Yes
- B. No

Correct Answer: B

Section: (none) **Explanation**

Explanation/Reference:

QUESTION 50

Note: This question is part of a series of questions that present the same scenario. Each question in the series contains a unique solution that might meet the stated goals. Some question sets might have more than one correct solution, while others might not have a correct solution.

After you answer a question in this sections, you will NOT be able to return to it. As a result, these questions will not appear in the review screen.

Your network contains an Active Directory domain named contoso.com. The domain contains a member server named Server1 that runs Windows Server 2016 and has the DNS Server server role installed. Automatic scavenging of stale records is enabled and the scavenging period is set to 10 days.

All client computers dynamically register their names in the contoso.com DNS zone on Server1.

You discover that the names of multiple client computers that were removed from the network several weeks ago can still be resolved.

You need to configure Server1 to automatically remove the records of the client computers that have been offline for more than 10 days.

Solution: You set the Expires after value of the zone.

Does this meet the goal?

- A. Yes
- B. No

Correct Answer: B

Section: (none)

Explanation

Explanation/Reference:



QUESTION 51

Note: This question is part of a series of questions that present the same scenario. Each question in the series contains a unique solution that might meet the stated goals. Some question sets might have more than one correct solution, while others might not have a correct solution.

After you answer a question in this sections, you will NOT be able to return to it. As a result, these questions will not appear in the review screen.

You have a server named Server1 that has the Network Policy and Access Services server role installed.

You create a Shared Secret Network Policy Server (NPS) template named Template1.

You need to view the shared secret string used for Template1.

Solution: From Windows PowerShell, you run **Get-NpsSharedSecretTemplate -Name Template1**.

Does this meet the goal?

- A. Yes

B. No

Correct Answer: B

Section: (none) **Explanation**

Explanation/Reference:

QUESTION 52

Note: This question is part of a series of questions that present the same scenario. Each question in the series contains a unique solution that might meet the stated goals. Some question sets might have more than one correct solution, while others might not have a correct solution.

After you answer a question in this sections, you will NOT be able to return to it. As a result, these questions will not appear in the review screen.

You have a server named Server1 that has the Network Policy and Access Services server role installed.

You create a Shared Secret Network Policy Server (NPS) template named Template1.

You need to view the shared secret string used for Template1.

Solution: From the Network Policy Server console, you export the configuration, and you view the exported XML file.

Does this meet the goal?

A. Yes

B. No

Correct Answer: A

Section: (none) **Explanation**

Explanation/Reference:

QUESTION 53

Note: This question is part of a series of questions that present the same scenario. Each question in the series contains a unique solution that might meet the stated goals. Some question sets might have more than one correct solution, while others might not have a correct solution.

After you answer a question in this sections, you will NOT be able to return to it. As a result, these questions will not appear in the review screen.

You have a server named Server1 that has the Network Policy and Access Services server role installed.

You create a Shared Secret Network Policy Server (NPS) template named Template1.

You need to view the shared secret string used for Template1.

Solution: From the Network Policy Server console, you view the properties of Template1.

Does this meet the goal?

- A. Yes
- B. No

Correct Answer: B

Section: (none)

Explanation

Explanation/Reference:

QUESTION 54

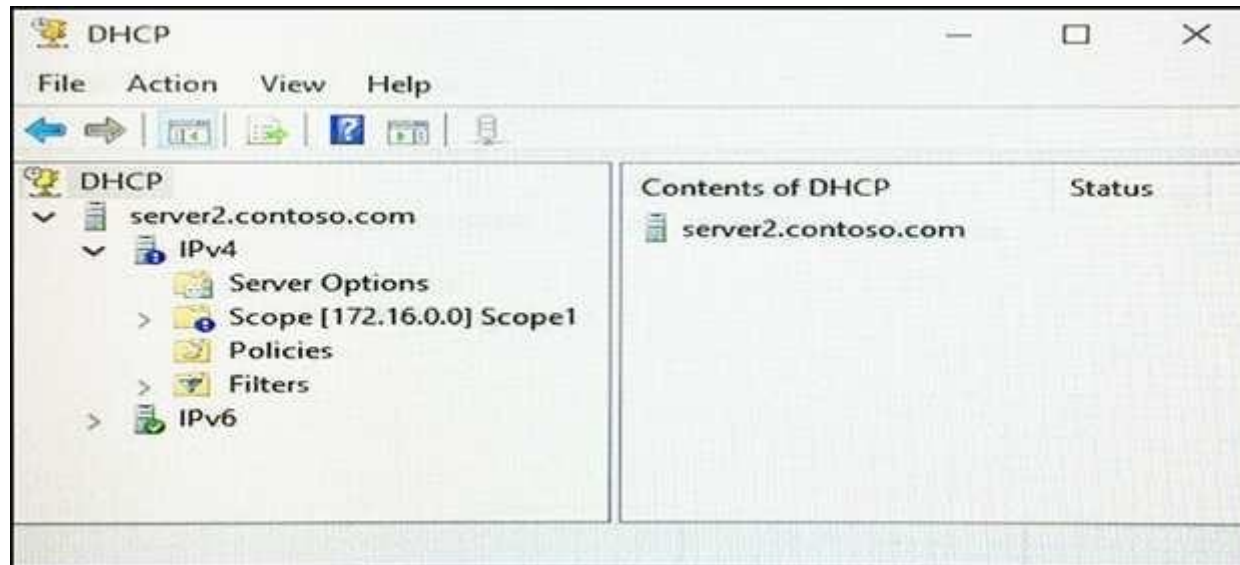
Note: This question is part of a series of questions that present the same scenario. Each question in the series contains a unique solution that might meet the stated goals. Some question sets might have more than one correct solution, while others might not have a correct solution.

After you answer a question in this sections, you will NOT be able to return to it. As a result, these questions will not appear in the review screen.

Your network contains an Active Directory domain named contoso.com. The domain contains a DHCP server named Server2 than runs Windows Server 2016.

Users report that their client computers fail to obtain an IP address.

You open the DHCP console as shown in the Exhibit. (Click the Exhibit button.)



Scope1 has an address range of 172.16.0.10 to 172.16.0.100 and a prefix length of 23 bits.

You need to ensure that all of the client computers on the network can obtain an IP address from Server2.

Solution: You run the **Set-DhcpServerv4MulticastScope** cmdlet.

Does this meet the goal?

- A. Yes
- B. No

Correct Answer: B Section: (none) Explanation

Explanation/Reference:

QUESTION 55

You manage a Windows Server 2016 software-defined network.

Network Controller is installed on a three-node domain-joined cluster of virtual machines.

You need to add a new access control list (ACL) for the network controller to the network interface on a tenant virtual machine. The ACL will have only one rule that prevents only outbound traffic from the 10.10.10.0/24 subnet.

You plan to run the following Windows PowerShell commands.

```
$ruleproperties = new-object Microsoft.Windows.NetworkController.AclRuleProperties
$ruleproperties.SourcePortRange = "0-65535"
$ruleproperties.DestinationPortRange = "0-65535"
$ruleproperties.Action = "Deny"
$ruleproperties.Priority = "100"
$ruleproperties.Type = "Outbound"
$ruleproperties.Logging = "Enabled"
```

Which three remaining properties should you add to the rule? Each correct answer presents part of the solution. (Choose three.)

NOTE: Each correct selection is worth one point.

- A. \$ruleproperties.SourceAddressPrefix = "10.10.10.0/24"
- B. \$ruleproperties.DestinationAddressPrefix = "10.10.10.0/24"
- C. \$ruleproperties.Protocol = "ALL"
- D. \$ruleproperties.Protocol = "TCP"
- E. \$ruleproperties.SourceAddressPrefix = "*"
- F. \$ruleproperties.DestinationAddressPrefix = "*"



Correct Answer: ACF

Section: (none) **Explanation**

Explanation/Reference:

QUESTION 56

Note: This question is part of a series of questions that present the same scenario. Each question in the series contains a unique solution. Determine whether the solution meets the stated goals.

Your network contains an Active Directory domain named contoso.com. The domain contains a DNS server named Server1. All client computers run Windows 10.

On Server1, you have the following zone configuration.

ZoneName	ZoneType	IsAutoCreated	IsDnsIntegrated	IsReverseLookupZone	IsSigned
_msdcs.contoso.com	Primary	False	True	False	False
0.in-addr.arpa	Primary	True	False	True	False
127.in-addr.arpa	Primary	True	False	True	False
255.in-addr.arpa	Primary	True	False	True	False
adatum.com	Forwarder	False	False	False	False
contoso.com	Primary	False	True	False	False
fabrikam.com	Primary	False	True	False	True
TrustAnchors	Primary	False	True	False	False

You need to ensure that all of the client computers in the domain perform DNSSEC validation for the fabrikam.com namespace.

Solution: From a Group Policy object (GPO) in the domain, you modify the Network List Manager Policies.

Does this meet the goal?

- A. Yes
- B. No

Correct Answer: B

Section: (none) Explanation

Explanation/Reference:

Explanation:

Network List Manager Policies are security settings that you can use to configure different aspects of how networks are listed and displayed on one computer or on many computers.

Network List Manager Policies are not related to DNSSEC.

References: [https://technet.microsoft.com/en-us/library/jj966256\(v=ws.11\).aspx](https://technet.microsoft.com/en-us/library/jj966256(v=ws.11).aspx)

QUESTION 57

Note: This question is part of a series of questions that use the same or similar answer choices. An answer choice may be correct for more than one question in the series. Each question is independent of the other questions in this series. Information and details provided in a question apply only to that question.

You have multiple servers that run Windows Server 2016. You have a server named Server1 that is configured as a domain controller and a DNS server.

You need to create an Active Directory-integrated zone on Server1.

What should you run?

- A. **dism.exe**
- B. **dns.exe**
- C. **dnscmd.exe**
- D. **netsh.exe**
- E. **Set-DhcpServerDatabase**
- F. **Set-DhcpServerv4DnsSetting**
- G. **Set-DhcpServerv6DnsSetting**
- H. **Set-DNSServerSetting**

Correct Answer: C

Section: (none) Explanation

Explanation/Reference:

QUESTION 58

Note: This question is part of a series of questions that use the same or similar answer choices. An answer choice may be correct for more than one question in the series. Each question is independent of the other questions in this series. Information and details provided in a question apply only to that question.

Your network contains an Active Directory domain named contoso.com. The domain contains a DHCP server named Server2 that runs Windows Server 2016.

Server2 has 10 IPv4 scopes.

You need to ensure that the scopes are backed up every 30 minutes to the folder D:\DHCPBackup.

What should you run?



<https://vceplus.com/>

- A. **dism.exe**

- B. **dns.exe**
- C. **dnscmd.exe**
- D. **netsh.exe**
- E. **Set-DhcpServerDatabase**
- F. **Set-DhcpServerv4DnsSetting**
- G. **Set-DhcpServerv6DnsSetting**
- H. **Set-DNSServerSetting**

Correct Answer: E

Section: (none) **Explanation**

Explanation/Reference:

QUESTION 59

Note: This question is part of a series of questions that use the same or similar answer choices. An answer choice may be correct for more than one question in the series. Each question is independent of the other questions in this series. Information and details provided in a question apply only to that question.

You have multiple servers that run Windows Server 2016.

The DNS Server server role is installed on a server named Server1.

You need to configure Server1 to use a DNS forwarder that has an IP address of 192.168.10.15.

What should you run?

- A. **dism.exe**
- B. **dns.exe**
- C. **dnscmd.exe**
- D. **netsh.exe**
- E. **Set-DhcpServerDatabase**
- F. **Set-DhcpServerv4DnsSetting**
- G. **Set-DhcpServerv6DnsSetting**
- H. **Set-DNSServerSetting**

Correct Answer: C

Section: (none) **Explanation**

Explanation/Reference:

QUESTION 60

Note: This question is part of a series of questions that use the same or similar answer choices. An answer choice may be correct for more than one question in the series. Each question is independent of the other questions in this series. Information and details provided in a question apply only to that question.

You have a server named Server1 that runs Windows Server 2016.

You install the DHCP Server server role on Server1.

You need to authorize DHCP on Server1.

What should you run?

- A. **dism.exe**
- B. **dns.exe**
- C. **dnscmd.exe**
- D. **netsh.exe**
- E. **Set-DhcpServerDatabase**
- F. **Set-DhcpServerv4DnsSetting**
- G. **Set-DhcpServerv6DnsSetting**
- H. **Set-DNSServerSetting**



Correct Answer: D

Section: (none) **Explanation**

Explanation/Reference:

QUESTION 61

Note: This question is part of a series of questions that use the same or similar answer choices. An answer choice may be correct for more than one question in the series. Each question is independent of the other questions in this series. Information and details provided in a question apply only to that question.

You have multiple servers that run Windows Server 2016.

You need to install the DNS Server server role on one of the servers.

What should you run?

- A. **dism.exe**
- B. **dns.exe**
- C. **dnscmd.exe**
- D. **netsh.exe**
- E. **Set-DhcpServerDatabase**
- F. **Set-DhcpServerv4DnsSetting**
- G. **Set-DhcpServerv6DnsSetting**
- H. **Set-DNSServerSetting**

Correct Answer: A Section: (none) Explanation

Explanation/Reference:

QUESTION 62

You have a server named Server1 that runs Windows Server 2016.

You need to configure Server1 as a multitenant RAS Gateway.

What should you install on Server1?

- A. the Network Controller server role
- B. the Data Center Bridging feature
- C. the Remote Access server role
- D. the Network Policy and Access Services server role

Correct Answer: C Section: (none) Explanation

Explanation/Reference:

QUESTION 63

You have a server named Server1 that runs Windows Server 2016. You install the Hyper-V server role on Server1. Server1 has eight network adapters that are dedicated to virtual machines. The network adapters are Remote Direct Memory Access (RDMA)-enabled.

You plan to use Software Defined Networking (SDN). You will host the virtual machines for multiple tenants on the Hyper-V host.

You need to ensure that the network connections for the virtual machines are resilient if one or more physical network adapters fail.

What should you implement?

- A. single root I/O virtualization (SR-IOV)
- B. NIC Teaming on the Hyper-V host
- C. virtual Receive-side Scaling (vRSS)
- D. Switch Embedded Teaming (SET)

Correct Answer: D

Section: (none) Explanation

Explanation/Reference:

QUESTION 64

You have a Hyper-V host named Server1 that runs Windows Server 2016. Server1 has two network adapters that are Remote Direct Memory Access (RDMA) enabled.

You need to verify whether Switch Embedded Teaming (SET) is enabled.

Which cmdlet should you use?

- A. **Get-NetworkSwitchFeature**
- B. **Get-VMNetworkAdapter**
- C. **Get-VMSwitch**
- D. **Get-VMNetworkAdapterFailoverConfiguration**

Correct Answer: C

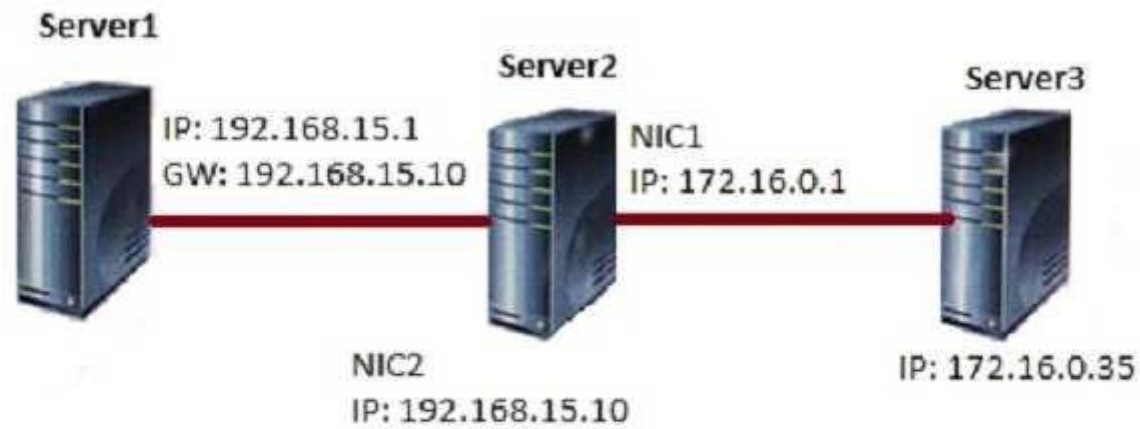
Section: (none) Explanation

Explanation/Reference:

QUESTION 65

You have three servers named Server1, Server2, and Server3 that run Windows Server 2016. On all three servers, Windows Firewall is configured to allow ICMP traffic. Server2 has two network adapters named NIC1 and NIC2.

Your network is configured as shown in the exhibit. (Click the Exhibit button.)



The parameters for NIC2 on Server1 are shown in the following output.

Interface NIC2 Parameters

```
-----  
IfLuid           : ethernet_32770  
IfIndex          : 2  
State            : connected  
Metric           : 15  
Link MTU         : 1500 bytes  
Reachable Time   : 15000 ms  
Base Reachable Time : 30000 ms  
Retransmission Interval : 1000 ms  
DAD Transmits    : 3  
Site Prefix Length : 64  
Site Id          : 1  
Forwarding       : disabled  
Advertising      : disabled  
Neighbor Discovery : enabled  
Neighbor Unreachability Detection : enabled  
Router Discovery  : dhcp  
Managed Address Configuration : enabled  
Other Stateful Configuration : enabled  
Weak Host Sends   : disabled  
Weak Host Receives : disabled  
Use Automatic Metric : enabled  
Ignore Default Routes : disabled  
Advertised Router Lifetime : 1800 seconds  
Advertise Default Route : disabled  
Current Hop Limit : 0  
Force ARPND Wake up patterns : disabled  
Directed MAC Wake up patterns : disabled  
ECN capability    : application
```

Which ping request will result in a reply from the destination host?

- A. From Server2, ping 192.168.15.1
- B. From Server3, ping 192.168.15.1

- C. From Server1, ping 172.16.0.1
- D. From Server1, ping 172.16.0.35

Correct Answer: A

Section: (none) **Explanation**

Explanation/Reference:

QUESTION 66

You have a server named Server1 that runs Windows Server 2016.

Server1 has two network cards. One network card connects to your internal network and the other network card connects to the Internet.

You plan to use Server1 to provide Internet connectivity for client computers on the internal network.

You need to configure Server1 as a network address translation (NAT) server.

Which server role or role service should you install on Server1 first?

- A. Web Application Proxy
- B. DirectAccess and VPN (RAS)
- C. Network Controller
- D. Routing

Correct Answer: D

Section: (none) **Explanation**

Explanation/Reference:

QUESTION 67

Your network contains an Active Directory domain named contoso.com. The domain contains a DHCP server named Server1 that runs Windows Server 2016.

You have a DHCP scope for the 10.0.0.0/24 IP subnet. One hundred and fifty clients reside in the subnet. Fifty of the DHCP clients are NOT domain-joined.

You need to ensure that DHCP clients without a configured DNS suffix register automatically in a DNS zone named workgroup.contoso.com. The other DHCP clients must register in the DNS zone of their respective domain.

What should you do?

- A. Configure the 015 DNS Domain Name scope option in the 10.0.0.0/24 DHCP scope.
- B. Configure the DNS properties of the 10.0.0.0/24 DHCP scope.
- C. Create a DHCP policy that has a condition based on the fully qualified domain name (FQDN) criterion. Configure the IP address range properties of the policy.
- D. Create a DHCP policy that has a condition based on the fully qualified domain name (FQDN) criterion. Configure the DNS properties of the policy.

Correct Answer: D

Section: (none) **Explanation**

Explanation/Reference:

QUESTION 68

You have two DNS servers named Server1 and Server2.

All client computers run Windows 10 and are configured to use Server1 for DNS name resolution.

Server2 hosts a primary zone named contoso.com.

Your network recently experienced several DNS spoofing attacks on the contoso.com zone.

You need to prevent further attacks from succeeding.

What should you do on Server2?

- A. Sign the contoso.com zone.
- B. Configure Response Rate Limiting (RRL).
- C. Configure DNS-based Authentication of Named Entities (DANE) for the contoso.com zone.
- D. Configure the contoso.com zone to be Active Directory-integrated.

Correct Answer: A

Section: (none) **Explanation**

Explanation/Reference:

QUESTION 69

You have a Microsoft Azure subscription and an on-premises network.

To the on-premises network, you deploy a new server named Server1 that runs Windows Server 2016. In Azure, you configure a virtual gateway on an Azure virtual network.

You need to ensure that the computers on the on-premises network can access virtual machines on the Azure virtual network.



<https://vceplus.com/>

What should you do on Server1?

- A. Install the Remote Access server role. From the Routing and Remote Access Server Setup Wizard, select Secure connection between two private networks.
- B. Install the Data Center Bridging (DCB) feature, and then run the **Install-RemoteAccess** cmdlet.
- C. Install the Remote Access server role. From the Routing and Remote Access Server Setup Wizard, select Virtual private network (VPN) access and NAT.
- D. Install the Data Center Bridging (DCB) feature, and then run the **Enable-RemoteAccessRoutingDomain** cmdlet.

Correct Answer: A

Section: (none) **Explanation**

Explanation/Reference:

QUESTION 70

Your network contains an Active Directory domain. The domain contains a certification authority (CA) and a Network Policy Server (NPS) server.

You plan to deploy Remote Access Always On VPN.

Which authentication method should you use?

- A. Microsoft: EAP-TTLS
- B. Microsoft: Secured password
- C. Microsoft: Protected EAP
- D. Microsoft: EAP-AKA

Correct Answer: C

Section: (none)

Explanation

Explanation/Reference:

QUESTION 71

You have a DNS server named Server1 that runs Windows Server 2016. Server1 has an Active Directory-integrated zone named adatum.com.

All client computers run Windows 10.

You recently encountered unexpected responses to DNS client queries in the adatum.com zone.

You need to log all the records written to the zone.

Which cmdlet should you run?

- A. **Add-DnsServerQueryResolutionPolicy**
- B. **Set-DnsServerDsSetting**
- C. **Set-DnsServerDiagnostics**
- D. **Set-DnsServer**

Correct Answer: C

Section: (none)

Explanation

Explanation/Reference:

QUESTION 72

You have a DHCP server named Server1 that runs Windows Server 2016.

You plan to implement IPv6 on your network.

You need to configure Server1 for stateless DHCPv6.

What should you do from the DHCP console?

- A. Configure the Advanced Properties for Server1
- B. Configure the IPv6 Server Options
- C. Create an IPv6 scope
- D. Configure the General IPv6 Properties

Correct Answer: B

Section: (none)

Explanation

Explanation/Reference:

QUESTION 73

Your company has three offices. The offices are located in Seattle, Chicago, and Montreal.

You are configuring a new WAN link between the three offices by using the Remote Access server role in Windows Server 2016. You will use Border Gateway Protocol (BGP) as a routing protocol between the sites.

You need to configure the server in the Seattle office for BGP routing.

What should you do first?

- A. From Routing and Remote Access, add a new IPv4 routing protocol
- B. From Windows PowerShell, run the **Add-BgpPeer** cmdlet and specify the *-LocalASN* parameter
- C. From Routing and Remote Access, add a new IPv6 routing protocol
- D. From Windows PowerShell, run the **Add-BgpRouter** cmdlet and specify the *-LocalASN* parameter

Correct Answer: D

Section: (none)

Explanation

Explanation/Reference:

QUESTION 74

You are deploying a small network that has 30 client computers. The network uses the 192.168.1.0/24 address space. All computers obtain IP configurations from a DHCP server named Server1.

You install a server named Server2 that runs Windows Server 2016. Server2 has two network adapters named Internal and Internet. Internet connects to an

Internet Service Provider (ISP) and obtains the 131.107.0.10 IP address. Internal connects to the internal network and is configured to use the 192.168.1.250 IP address.

You need to provide Internet connectivity for the client computers.

What should you do?

- A. On Server2, select the Internet and Internal network adapters and bridge the connections. From the DHCP console on Server1, authorize Server2.
- B. On Server1, stop the DHCP server. On the Internal network adapter on Server 2, enable Internet Connection Sharing (ICS).
- C. On Server2 run the New-NetNat -Name NAT1 -InternalIPInterfaceAddressPrefix 192.168.1.0/24 cmdlet. Configure Server1 to provide the 003 Router option of 131.107.0.10.
- D. Install the Routing role service on Server2 and configure the NAT routing protocol. Configure Server1 to provide the 003 Router option of 192.168.1.250.

Correct Answer: D

Section: (none) **Explanation**

Explanation/Reference:

QUESTION 75

You have a DHCP server named Server1 that runs Windows Server 2016.

You have a single IP subnet.

Server1 has an IPv4 scope named Scope1. Scope1 has an IP address range of 10.0.1.10 to 10.0.1.200 and a length of 24 bits.

You need to create a second logical IP network on the subnet. The subnet will use an IP address range of 10.0.2.10 to 10.0.2.200 and a length of 24 bits.

What should you do?

- A. Create a second scope, and then create a superscope.
- B. Create a superscope, and then configure an exclusion range in Scope1.
- C. Create a new scope, and then modify the IPv4 bindings.
- D. Create a second scope, and then run the DHCP Split-Scope Configuration Wizard.

Correct Answer: A

Section: (none) **Explanation**

Explanation/Reference:

QUESTION 76

You have a virtual machine named VM1 that runs Windows Server 2016. VM1 hosts a service that requires high network throughput.

VM1 has a virtual network adapter that connects to a Hyper-V switch named vSwitch1. vSwitch1 has one network adapter. The network adapter supports Remote Direct Memory Access (RDMA), the single root I/O virtualization (SR-IOV) interface, Quality of Service (QoS), and Receive Side Scaling (RSS).

You need to ensure that the traffic from VM1 can be processed by multiple networking processors.

Which Windows PowerShell command should you run on the host of VM1?

- A. **Set-NetAdapterRss**
- B. **Set-NetAdapterRdma**
- C. **Set-NetAdapterQos**
- D. **Set-NetAdapterSriov**

Correct Answer: A Section:

(none) Explanation

Explanation/Reference:

QUESTION 77

Your network contains an Active Directory domain named contoso.com. The domain contains a domain-based Distributed File System (DFS) namespace named Namespace1 that has access-based enumeration enabled. Namespace1 has a folder named folder1. Folder1 has a target of \\Server1\Folder1.

The Permission for folder1 are configured as shown in the following table.

Account name	Permission type	Permission
User1	NTFS	None
User1	Share	Change
User1	DFS	Read
User2	NTFS	Read
User2	Share	Full control
User2	DFS	None

Access-based enumeration is disabled for the share of Folder1.

You need to ensure that both User1 and User2 can see Folder1 when they access \\Contoso.com\NameSpace1.

What should you do?

- A. Enable access-based enumeration for Folder1.
- B. Disable access-based enumeration for Namespace1.
- C. Assign User1 the read NTFS permission to Folder1
- D. Deny User1 the read DFS permission to Folder1.

Correct Answer: B

Section: (none) Explanation

Explanation/Reference:

QUESTION 78

Note: This question is part of a series of questions that use the same or similar answer choices. An answer choice may be correct for more than one question in the series. Each question is independent of the other questions in this series. Information and details provided in a question apply only to that question.

Your network contains Windows and non-Windows devices.

You have a DHCP server named Server1 that has an IPv4 scope named Scope1.

You need to prevent a client computer that uses the same name as an existing registration from updating the registration.

What should you do?

- A. From the properties of Scope1, modify the Conflict detection attempts setting.
- B. From the properties of Scope1, configure Name Protection.
- C. From the properties of IPv4, configure the bindings.
- D. From IPv4, create a new filter.
- E. From the properties of Scope1, create an exclusion range.
- F. From IPv4 run the DHCP Policy Configuration Wizard.
- G. From Control Panel, modify the properties of Ethernet.
- H. From Scope1, create a reservation.

Correct Answer: B

Section: (none)

Explanation

Explanation/Reference:

QUESTION 79

Note: This question is part of a series of questions that present the same scenario. Each question in the series contains a unique solution that might meet the stated goals. Some question sets might have more than one correct solution, while others might not have a correct solution.

After you answer a question in this sections, you will NOT be able to return to it. As a result, these questions will not appear in the review screen.

Your network contains an Active Directory domain named contoso.com.

You need to create a Nano Server image named Nano1 that will be used as a virtualization host. The windows server 2016 source files are located in drive D.

Solution: You run the following cmdlet.

New-NanoServerImage -Edition Datacenter -DeploymentType Host -Package Microsoft-NanoServerSCVMM-Package -MediaPath 'D:\' -TargetPath C:\nano1\Nano1.wim -ComputerName Nano1 -Domainname Contoso.com

Does this meet the goal?

- A. Yes
- B. NO

Correct Answer: B

Section: (none) Explanation

Explanation/Reference:

QUESTION 80

Note: This question is part of a series of questions that present the same scenario. Each question in the series contains a unique solution that might meet the stated goals. Some question sets might have more than one correct solution, while others might not have a correct solution.

After you answer a question in this sections, you will NOT be able to return to it. As a result, these questions will not appear in the review screen.

Your network contains an Active Directory domain named contoso.com.

You need to create a Nano Server image named Nano1 that will be used as a virtualization host. The windows server 2016 source files are located in drive D.

Solution: You run the following cmdlet.

New-NanoServerImage -Edition Datacenter -DeploymentType Host -Package Microsoft-NanoServerCompute-Package -MediaPath 'D:\' -TargetPath C:\Nano1\Nano1.wim -ComputerName Nano1 -DomainName Contoso.com

Does this meet the goal?

- A. Yes
- B. No

Correct Answer: A

Section: (none) Explanation

Explanation/Reference:

QUESTION 81

Note: This question is part of a series of questions that present the same scenario. Each question in the series contains a unique solution that might meet the stated goals. Some question sets might have more than one correct solution, while others might not have a correct solution.

After you answer a question in this sections, you will NOT be able to return to it. As a result, these questions will not appear in the review screen.

Your network contains an Active Directory domain named contoso.com.

You need to create a Nano Server image named Nano1 that will be used as a virtualization host. The windows server 2016 source files are located in drive D.

Solution: You run the following cmdlet.

**New-NanoServerImage -Edition Datacenter -DeploymentType Host -Compute
-Media 'D:\' -TargetPath c:\Nano1\Nano1.wim -ComputerName Nano1 -DomainName Contoso.com** Does

this meet the goal?



<https://vceplus.com/>

- A. Yes
- B. No

Correct Answer: A

Section: (none) **Explanation**

Explanation/Reference:

QUESTION 82

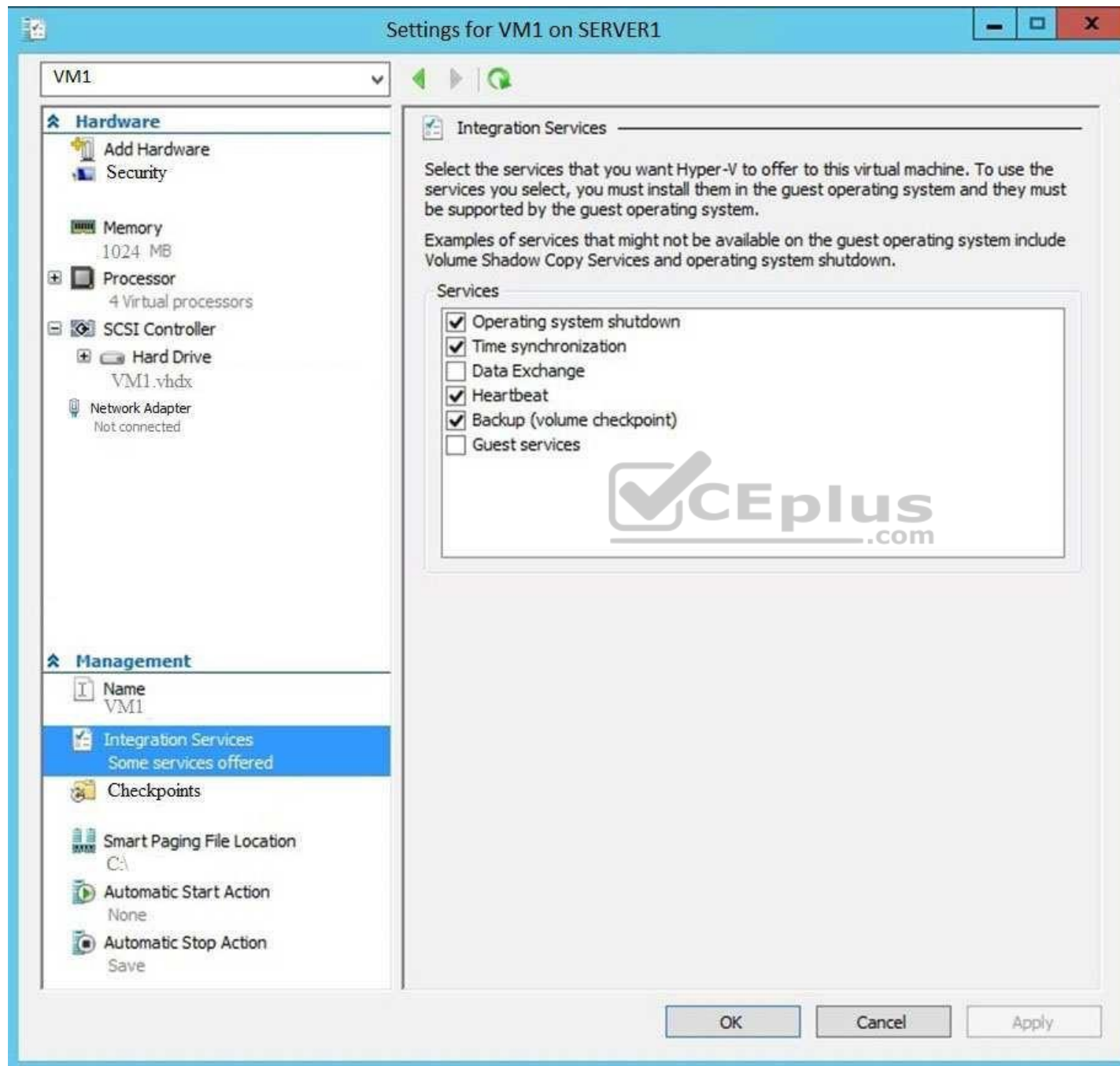
Note: This question is part of a series of questions that present the same scenario. Each question in the series contains a unique solution that might meet the stated goals. Some question sets might have more than one correct solution, while others might not have a correct solution.

After you answer a question in this sections, you will NOT be able to return to it. As a result, these questions will not appear in the review screen.

You have a Hyper-V host named Server1 that hosts a virtual machine named VM1. Server1 and VM1 run Windows Server 2016.

The settings for VM1 are configured as shown in the exhibit below.





You need to ensure that you can use the Copy-VMFile cmdlet on Server1 to copy files from VM1.

Solution: You need to enable the Data Exchange integration service for VM1.

Does this meet the goal?

- A. YES
- B. NO

Correct Answer: B

Section: (none)

Explanation

Explanation/Reference:

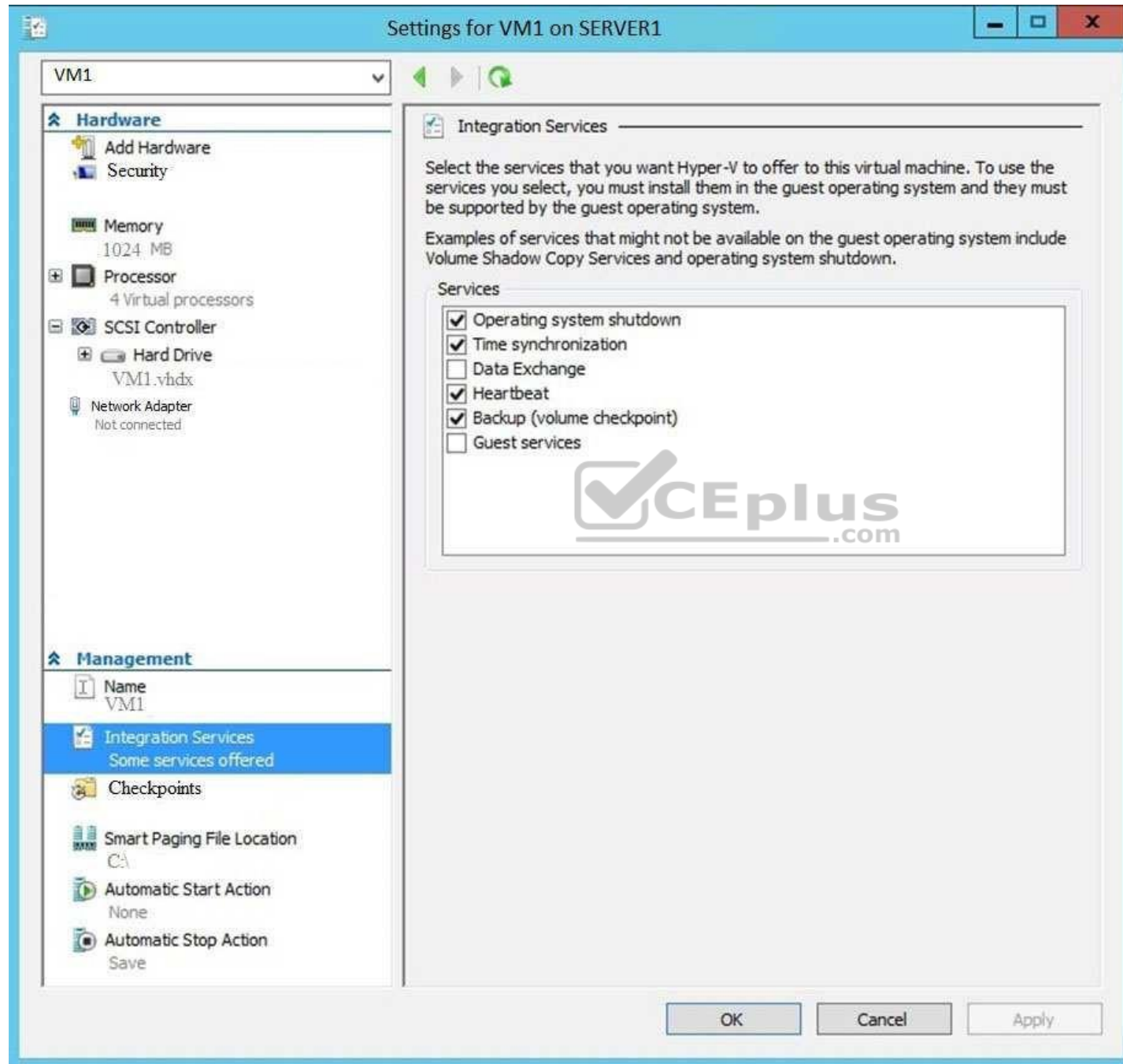
QUESTION 83

Note: This question is part of a series of questions that present the same scenario. Each question in the series contains a unique solution that might meet the stated goals. Some question sets might have more than one correct solution, while others might not have a correct solution.

After you answer a question in this sections, you will NOT be able to return to it. As a result, these questions will not appear in the review screen.

You have a Hyper-V host named Server1 that hosts a virtual machine named VM1. Server1 and VM1 run Windows Server 2016.

The settings for VM1 are configured as shown in the exhibit below.



You need to ensure that you can use the Copy-VMFile cmdlet on Server1 to copy files from VM1.

Solution: You enable the Guest Service integration service for VM1.

Does this meet the goal?

- A. YES
- B. NO

Correct Answer: A

Section: (none)

Explanation

Explanation/Reference:

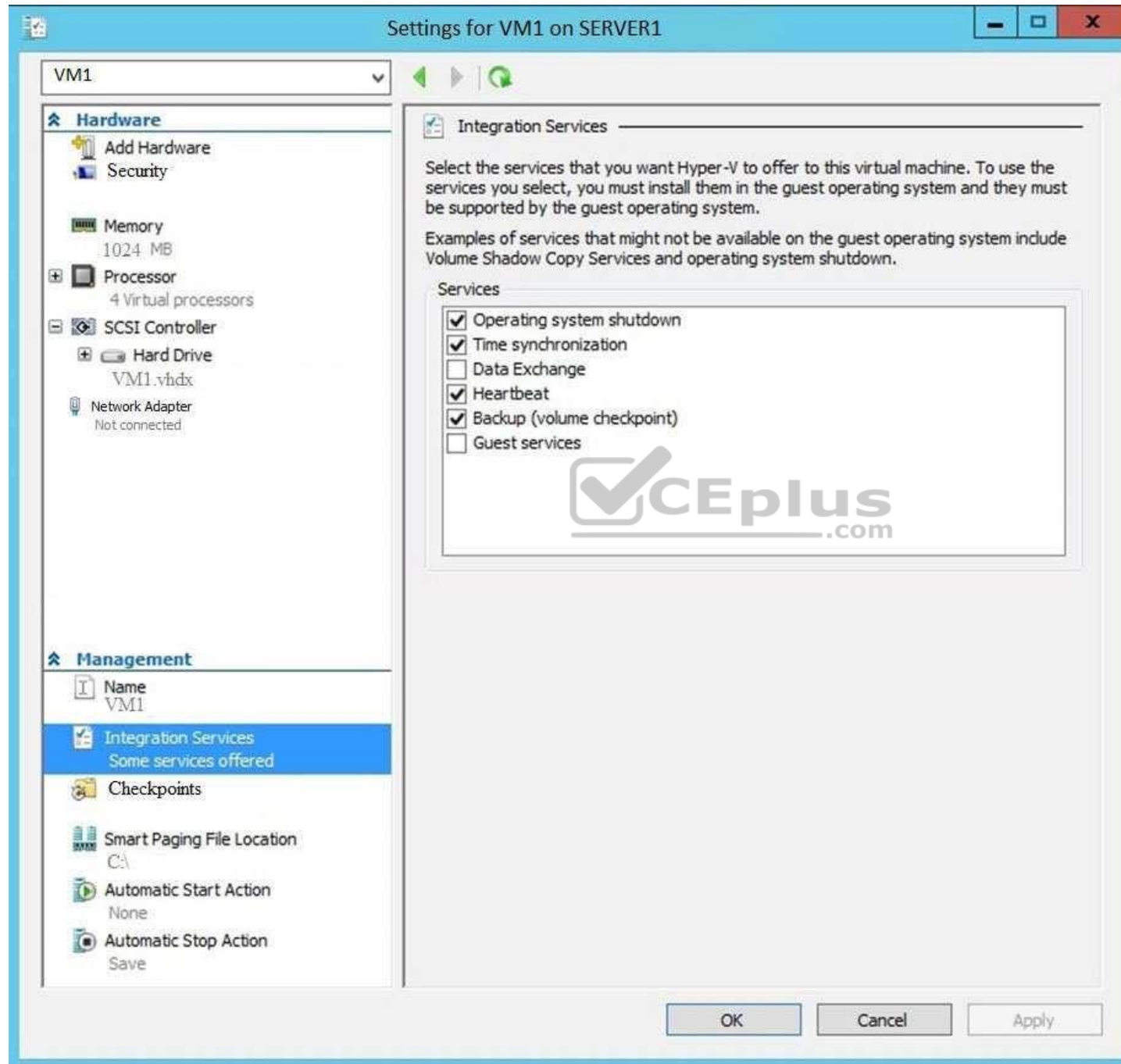
QUESTION 84

Note: This question is part of a series of questions that present the same scenario. Each question in the series contains a unique solution that might meet the stated goals. Some question sets might have more than one correct solution, while others might not have a correct solution.

After you answer a question in this sections, you will NOT be able to return to it. As a result, these questions will not appear in the review screen.

You have a Hyper-V host named Server1 that hosts a virtual machine named VM1. Server1 and VM1 run Windows Server 2016.

The settings for VM1 are configured as shown in the exhibit below.



You need to ensure that you can use the Copy-VMFile cmdlet on Server1 to copy files from VM1.

Solution: You start the Hyper-V Guest Service Interface service on VM1.

Does this meet the goal?

- A. YES
- B. NO

Correct Answer: B

Section: (none) Explanation

Explanation/Reference:

QUESTION 85

You have two Hyper-V hosts named Server1 and Server2 that run windows server 2012 R2. The servers are nodes in a failover cluster named Cluster1.

You perform a rolling upgrade of the cluster nodes to Windows Server 2016.

You need to ensure that you can implement the Virtual Machine Load Balancing feature.

Which cmdlet should you use?

- A. **Update-ClusterFunctionalLevel**
- B. **Set-CauClusterRole**
- C. **Update-ClusterNetWorkNameResource**
- D. **Set-ClusterGroupSet**

Correct Answer: A

Section: (none) Explanation

Explanation/Reference:

QUESTION 86

You have a Scale-Out File Server that has a share named Share1. Share1 contains a virtual disk file named Disk1.vhd.

You plan to create a guest failover cluster.

You need to ensure that you can use the virtual disk as a shared virtual disk for the guest failover cluster.

Which cmdlet should you use?

- A. Optimize-VHD
- B. Optimize-VHDSets
- C. Convert-VHD
- D. Set-VHD

Correct Answer: C

Section: (none) **Explanation**

Explanation/Reference:

QUESTION 87

Your network contains an Active Directory domain named contoso.com. The domain contains a Hyper-V host named Server1 that runs Windows Server 2016.

Server1 hosts four machines that are members of the domain. The virtual machines are configured as shown in the following table.

Virtual machine name	Operating system	Virtual machine generation	Type of VHD file
VM1	Windows 10	2	VHD
VM2	Windows Server 2016	2	VHD
VM3	Windows Server 2012 R2	2	VHDX
VM4	Windows Server 2016	1	VHDX

Which virtual machines can you manage by using PowerShell Direct?

- A. Only VM2
- B. VM1, VM2, and VM4
- C. only VM4

D. VM1, VM2, and VM3

Correct Answer: B Section: (none)

Explanation

Explanation/Reference:

QUESTION 88

A company named Contoso, Ltd has five Hyper-V hosts that are configured as shown in the following table.

Hyper-V host name	Configuration
Server1	Windows Server 2012 R2 and an Intel Xeon E7 processor
Server2	Windows Server 2012 R2 and an Intel i7 processor
Server3	Windows Server 2016 and an Intel i7 processor
Server4	Windows Server 2016 and an AMD Opteron processor
Server5	Windows Server 2016 and an Intel Xeon E7 processor

What are two valid live migration scenarios for virtual machines in your environment? (Choose two.)

- A. from Server1 to Server5
- B. from Server4 to Server5
- C. from Server2 to Server3
- D. from Server3 to Server4

Correct Answer: AC

Section: (none) **Explanation**

Explanation/Reference:

QUESTION 89

You need to implement network virtualization.

On which object should you configure the virtual subnet ID?

- A. Virtual switch
- B. Hyper-V server
- C. VM
- D. Virtual network adapter

Correct Answer: D

Section: (none) **Explanation**

Explanation/Reference:

QUESTION 90

Note: This question is part of a series of questions that present the same scenario. Each question in the series contains a unique solution that might meet the stated goals. Some question sets might have more than one correct solution, while others might not have a correct solution.

After you answer a question in this sections, you will NOT be able to return to it. As a result, these questions will not appear in the review screen.

Your network contains an Active Directory forest named contoso.com. The forest has three sites located in London, Paris, and Berlin.

The London site contains a web server named Web1 that runs Windows Server 2016.

You need to configure Web1 as an HTTP content server for the hosted cache servers located in the Paris and Berlin sites.

Solution: You install the DFS Replication role service, and then you start the Network Connections service.

Does this meet the goal?

- A. Yes
- B. No

Correct Answer: B

Section: (none) **Explanation**

Explanation/Reference:

QUESTION 91

Note: This question is part of a series of questions that present the same scenario. Each question in the series contains a unique solution that might meet the stated goals. Some question sets might have more than one correct solution, while others might not have a correct solution.

After you answer a question in this sections, you will NOT be able to return to it. As a result, these questions will not appear in the review screen.

You have a server named Server1 that runs Windows Server 2016. Server1 is configured as a VPN server. Server1 is configured to allow domain users to establish VPN connections from 06:00 to 18:00 everyday of the week.

You need to ensure that domain users can establish VPN connections only between Monday and Friday.

Solution: From Active Directory Users and Computers, you modify the Dial-in Properties of the user accounts.

Does this meet the goal?

- A. Yes
- B. No

Correct Answer: B

Section: (none)

Explanation

Explanation/Reference:



QUESTION 92

Note: This question is part of a series of questions that present the same scenario. Each question in the series contains a unique solution that might meet the stated goals. Some question sets might have more than one correct solution, while others might not have a correct solution.

After you answer a question in this sections, you will NOT be able to return to it. As a result, these questions will not appear in the review screen.

You have a server named Server1 that runs Windows Server 2016. Server1 is configured as a VPN server. Server1 is configured to allow domain users to establish VPN connections from 06:00 to 18:00 everyday of the week.

You need to ensure that domain users can establish VPN connections only between Monday and Friday.

Solution: From Server Manager, you modify the Access Policies on Server1.

Does this meet the goal?

- A. Yes
- B. No

Correct Answer: A

Section: (none)

Explanation

Explanation/Reference:

QUESTION 93

Note: This question is part of a series of questions that present the same scenario. Each question in the series contains a unique solution that might meet the stated goals. Some question sets might have more than one correct solution, while others might not have a correct solution.

After you answer a question in this sections, you will NOT be able to return to it. As a result, these questions will not appear in the review screen.

You have a server named Server1 that runs Windows Server 2016. Server1 is configured as a VPN server. Server1 is configured to allow domain users to establish VPN connections from 06:00 to 18:00 everyday of the week.

You need to ensure that domain users can establish VPN connections only between Monday and Friday.

Solution: From Routing and Remote Access, you configure the Properties of Server1.

Does this meet the goal?

- A. Yes
- B. No



Correct Answer: B

Section: (none)

Explanation

Explanation/Reference:

QUESTION 94

You have 2000 devices. One hundred of the devices are mobile devices that have physical addresses beginning with 98-5F.

You have a DHCP server named Server1.

You need to ensure that the mobile devices register their host name by using a DNS suffix of mobile.contoso.com.

- A. From the properties of Scope1, modify the Conflict detection attempts setting.
- B. From the properties of Scope1, configure Name Protection.

- C. From the Properties of IPV4, configure the bindings.
- D. From IPV4, create a new filter.
- E. From the properties of Scope1, create an exclusion range.
- F. From IPV4, run the DHCP Policy Configuration Wizard.
- G. From Control Panel, modify the properties of Ethernet.
- H. From Scope1, create a reservation

Correct Answer: F Section: (none) Explanation Explanation/Reference:



<https://vceplus.com/>