

70-740

Number: 70-740
Passing Score: 800
Time Limit: 120 min
File Version: 1

70-740



Website: <https://vceplus.com>

VCE to PDF Converter: <https://vceplus.com/vce-to-pdf/>

Facebook: <https://www.facebook.com/VCE.For.All.VN/>

Twitter : https://twitter.com/VCE_Plus

<https://vceplus.com/>

Exam A

QUESTION 1

Note: This question is part of a series of questions that present the same scenario. Each question in the series contains a unique solution that might meet the stated goals. Some question sets might have more than one correct solution, while others might not have a correct solution.

After you answer a question in this section, you will NOT be able to return to it. As a result, these questions will not appear in the review screen.

You have two servers that run Windows Server 2016.

You plan to create a Network Load Balancing (NLB) cluster that will contain both servers.

You need to configure the network cards on the servers for the planned NLB configuration.

Solution: You configure the network cards to be on the same subnet and to have static IP addresses. You configure the cluster to use multicast.



<https://vceplus.com/>

Does this meet the goal?

- A. Yes
- B. No

Correct Answer: A

Section: (none)

Explanation

Explanation/Reference:

Explanation:

Following are the hardware requirements to run an NLB cluster.

- All hosts in the cluster must reside on the same subnet.
- There is no restriction on the number of network adapters on each host, and different hosts can have a different number of adapters.

- Within each cluster, all network adapters must be either multicast or unicast. NLB does not support a mixed environment of multicast and unicast within a single cluster.
- If you use the unicast mode, the network adapter that is used to handle client-to-cluster traffic must support changing its media access control (MAC) address.

Following are the software requirements to run an NLB cluster.

- Only TCP/IP can be used on the adapter for which NLB is enabled on each host. Do not add any other protocols (for example, IPX) to this adapter.
- The IP addresses of the servers in the cluster must be static.

References: <https://technet.microsoft.com/en-us/windows-server-docs/networking/technologies/network-load-balancing>

QUESTION 2

Note: This question is part of a series of questions that present the same scenario. Each question in the series contains a unique solution that might meet the stated goals. Some question sets might have more than one correct solution, while others might not have a correct solution.

After you answer a question in this section, you will NOT be able to return to it. As a result, these questions will not appear in the review screen.

You have two servers that run Windows Server 2016.

You plan to create a Network Load Balancing (NLB) cluster that will contain both servers.

You need to configure the network cards on the servers for the planned NLB configuration.

Solution: You configure the network cards to be on the same subnet and to have static IP addresses. You configure the cluster to use unicast.

Does this meet the goal?

- A. Yes
- B. No

Correct Answer: A

Section: (none)

Explanation

Explanation/Reference:

Explanation:

Following are the hardware requirements to run an NLB cluster.

- All hosts in the cluster must reside on the same subnet.
- There is no restriction on the number of network adapters on each host, and different hosts can have a different number of adapters.

- Within each cluster, all network adapters must be either multicast or unicast. NLB does not support a mixed environment of multicast and unicast within a single cluster.
- If you use the unicast mode, the network adapter that is used to handle client-to-cluster traffic must support changing its media access control (MAC) address.

Following are the software requirements to run an NLB cluster.

- Only TCP/IP can be used on the adapter for which NLB is enabled on each host. Do not add any other protocols (for example, IPX) to this adapter. ▪
- The IP addresses of the servers in the cluster must be static.



the series contains a unique solution that might not have a correct solution.

References: <https://technet.microsoft.com/en-us/windows-server-docs/networking/technologies/network-load-balancing>

QUESTION 3

Note: This question is part of a series of questions that present the same scenario. Each question in meet the stated goals. Some question sets might have more than one correct solution, while others might. After you answer a question in this section, you will NOT be able to return to it. As a result, these questions will not appear in the review screen.

You are a server administrator at a company named Contoso, Ltd.

Contoso has a Windows Server 2016 Hyper-V environment configured as shown in the following table.

Hyper-V host name	Configuration	Virtual switch name
Host1	<ul style="list-style-type: none"> - Uses an Intel processor - Is a member of a SAN named SAN1 	Switch1
Host2	<ul style="list-style-type: none"> - Uses an AMD processor - Has local storage only 	Switch2
Host3	<ul style="list-style-type: none"> - Uses an Intel processor - Is a member of a SAN named SAN1 	Switch1
Host4	<ul style="list-style-type: none"> - Uses an Intel processor - Has local storage only 	Switch2

All of the virtual switches are of the external type.

You need to ensure that you can move virtual machines between the hosts without causing the virtual machines to disconnect from the network.

Solution: You implement live migration by using Host3 and Host4.

Does this meet the goal?

Correct Answer:

Section: (none)

Explanation

Explanation/Reference:

Explanation:

QUESTION 4

Note: This question is part of a series of questions that present the same scenario. Each question in the series contains a unique solution that might meet the stated goals. Some question sets might have more than one correct solution, while others might not have a correct solution. After you answer a question in this section, you will NOT be able to return to it. As a result, these questions will not appear in the review screen.

- A. Yes
- B. NoA

You are a server administrator at a company named Contoso, Ltd.

Contoso has a Windows Server 2016 Hyper-V environment configured as shown in the following table.

Hyper-V host name	Configuration	Virtual switch name
Host1	<ul style="list-style-type: none">- Uses an Intel processor- Is a member of a SAN named SAN1	Switch1
Host2	<ul style="list-style-type: none">- Uses an AMD processor- Has local storage only	Switch2
Host3	<ul style="list-style-type: none">- Uses an Intel processor- Is a member of a SAN named SAN1	Switch1
Host4	<ul style="list-style-type: none">- Uses an Intel processor- Has local storage only	Switch2

All of the virtual switches are of the external type.

You need to ensure that you can move virtual machines between the hosts without causing the virtual machines to disconnect from the network.

Solution: You implement live migration by using Host1 and Host2.

Does this meet the goal?

Correct Answer:

Section: (none)

Explanation

Explanation/Reference:

Explanation:

QUESTION 5

Note: This question is part of a series of questions that present the same scenario. Each question in the series contains a unique solution that might meet the stated goals. Some question sets might have more than one correct solution, while others might not have a correct solution. After you answer a question in this section, you will NOT be able to return to it. As a result, these questions will not appear in the review screen.

A. Yes

B. NoB

You are a server administrator at a company named Contoso, Ltd.

Contoso has a Windows Server 2016 Hyper-V environment configured as shown in the following table.

Hyper-V host name	Configuration	Virtual switch name
Host1	<ul style="list-style-type: none">- Uses an Intel processor- Is a member of a SAN named SAN1	Switch1
Host2	<ul style="list-style-type: none">- Uses an AMD processor- Has local storage only	Switch2
Host3	<ul style="list-style-type: none">- Uses an Intel processor- Is a member of a SAN named SAN1	Switch1
Host4	<ul style="list-style-type: none">- Uses an Intel processor- Has local storage only	Switch2

All of the virtual switches are of the external type.

You need to ensure that you can move virtual machines between the hosts without causing the virtual machines to disconnect from the network.

Solution: You implement a Hyper-V Replica between Host2 and Host4.

Does this meet the goal?

Correct Answer:

Section: (none)

Explanation

Explanation/Reference:

Explanation:

QUESTION 6

Note: This question is part of a series of questions that present the same scenario. Each question in the series contains a unique solution that might meet the stated goals. Some question sets might have more than one correct solution, while others might not have a correct solution. After you answer a question in this section, you will NOT be able to return to it. As a result, these questions will not appear in the review screen.

A. Yes

B. NoB



Correct Answer:

Section: (none)

Explanation

Explanation/Reference:

Explanation:

QUESTION 7

Note: This question is part of a series of questions that present the same scenario. Each question in the series contains a unique solution that might meet the stated goals. Some question sets might have more than one correct solution, while others might not have a correct solution.

After you answer a question in this section, you will NOT be able to return to it. As a result, these questions will not appear in the review screen.

Your network contains an Active Directory forest.

You install Windows Server 2016 on 10 virtual machines.

You need to deploy the Web Server (IIS) server role identically to the virtual machines.

Solution: You use Windows PowerShell Desired State Configuration (DSC) to create a default configuration, and then you apply the configuration to the virtual machines.

Does this meet the goal?

- A. Yes
- B. No

Correct Answer: A

Section: (none)

Explanation

**Explanation/Reference:**

Explanation:

DSC gives us a declarative model for system configuration management. What that really means is that we can specify how we want a workstation or server (a 'node') to be configured and we leave it to PowerShell and the Windows Workflow engine to make it happen on those target 'nodes'. We don't have to specify how we want it to happen.

The main advantages of DSC are:

- To simplify your sysadmin tasks by configuring one or more devices automatically
- To be able to configure machines identically with the aim to standardize them
- To ensure, at a given time, that the configuration of a machine always be identical to its initial configuration, so as to avoid drift ▪

Deployment on demand as a Cloud strategy, or 'en masse', is largely automated and simplified

References:

<https://www.simple-talk.com/sysadmin/powershell/powershell-desired-state-configuration-the-basics/>

QUESTION 7

Note: This question is part of a series of questions that present the same scenario. Each question in the series contains a unique solution that might meet the stated goals. Some question sets might have more than one correct solution, while others might not have a correct solution.

After you answer a question in this section, you will NOT be able to return to it. As a result, these questions will not appear in the review screen.

Your network contains an Active Directory forest.

You install Windows Server 2016 on 10 virtual machines.

You need to deploy the Web Server (IIS) server role identically to the virtual machines.

Solution: You create a software installation package, and then you publish the package to the virtual machines by using a Group Policy object (GPO).

Does this meet the goal?

- A. Yes
- B. No

Correct Answer: B

Section: (none)

Explanation

Explanation/Reference:

Explanation:



QUESTION 8

Note: This question is part of a series of questions that present the same scenario. Each question in the series contains a unique solution that might meet the stated goals. Some question sets might have more than one correct solution, while others might not have a correct solution.

After you answer a question in this section, you will NOT be able to return to it. As a result, these questions will not appear in the review screen.

You have a server named Server1 that runs Windows Server 2016.

Server1 hosts a line-of-business application named App1. App1 has a memory leak that occasionally causes the application to consume an excessive amount of memory.

You need to log an event in the Application event log whenever App1 consumes more than 4 GB of memory.

Solution: You create a performance counter data collector.

Does this meet the goal?

- A. Yes

B. No

Correct Answer: B

Section: (none)

Explanation

Explanation/Reference:

Explanation:

QUESTION 9

Note: This question is part of a series of questions that present the same scenario. Each question in the series contains a unique solution that might meet the stated goals. Some question sets might have more than one correct solution, while others might not have a correct solution.

After you answer a question in this section, you will NOT be able to return to it. As a result, these questions will not appear in the review screen.

You have a server named Server1 that runs Windows Server 2016.

Server1 hosts a line-of-business application named App1. App1 has a memory leak that occasionally causes the application to consume an excessive amount of memory.

You need to log an event in the Application event log whenever App1 consumes more than 4 GB of memory.

Solution: You create a performance counter alert data collector.

Does this meet the goal?

A. Yes

B. No

Correct Answer: A

Section: (none)

Explanation

Explanation/Reference:

Explanation:

QUESTION 10

Note: This question is part of a series of questions that present the same scenario. Each question in the series contains a unique solution that might meet the stated goals. Some question sets might have more than one correct solution, while others might not have a correct solution.

After you answer a question in this section, you will NOT be able to return to it. As a result, these questions will not appear in the review screen.

You have a server named Server1 that runs Windows Server 2016.

Server1 hosts a line-of-business application named App1. App1 has a memory leak that occasionally causes the application to consume an excessive amount of memory.

You need to log an event in the Application event log whenever App1 consumes more than 4 GB of memory.

Solution: You create a system configuration information data collector.

Does this meet the goal?

- A. Yes
- B. No

Correct Answer: B

Section: (none)

Explanation

Explanation/Reference:

Explanation:



QUESTION 11

You have a Hyper-V host named Server1 that runs Windows Server 2016.

Server1 has a virtual machine named VM1. VM1 is configured to run the Docker daemon.

On VM1, you have a container network that uses transparent mode.

You need to ensure that containers that run on VM1 can obtain IP addresses from DHCP.

What should you do?

- A. On VM1, run **Get-VMNetworkAdapter-VMName VM1 | Set-VMNetworkAdapter -MacAddressSpoofing On**.
- B. On VM1, run **docker network connect**.
- C. On Server1, run **docker network connect**.
- D. On Server1, run **Get-VMNetworkAdapter -VMName VM1 | Set-VMNetworkAdapter -MacAddressSpoofing On**.

Correct Answer: D

Section: (none)

Explanation

Explanation/Reference:

Explanation:

To use DHCP for IP assignment on a virtual container host enable MACAddressSpoofing

If the container host is virtualized, and you wish to use DHCP for IP assignment, you must enable MACAddressSpoofing on the virtual machine's network adapter. Otherwise, the Hyper-V host will block network traffic from the containers in the VM with multiple MAC addresses.

You can enable MACAddressSpoofing with this PowerShell command:

```
PS C:\> Get-VMNetworkAdapter -VMName ContainerHostVM | Set-VMNetworkAdapter -MacAddressSpoofing On
```

References: <https://docs.microsoft.com/en-us/virtualization/windowscontainers/container-networking/advanced>

QUESTION 12

You have a server that runs Windows Server 2016.

The server contains a storage pool named Pool1. Pool1 contains five physical disks named Disk1, Disk2, Disk3, Disk4, and Disk5.

A virtual disk named VirtualDisk1 is stored in Pool1. VirtualDisk1 uses the parity storage layout.

Disk3 fails.

You need to remove Disk3 from Pool1.

Which two commands should you run? Each correct answer presents part of the solution.

- A. **Update-StoragePool -FriendlyName Pool1**
- B. **Set-ResiliencySetting -StoragePool Pool1 -PhysicalDiskRedundancyDefault 4**
- C. **Reset-PhysicalDisk -FriendlyName Disk3**
- D. **Set-PhysicalDisk -FriendlyName Disk3 -Usage Retired**
- E. **Remove-PhysicalDisk -FriendlyName Disk3**

Correct Answer: DE

Section: (none)

Explanation

Explanation/Reference:

Explanation:

QUESTION 13

You have an Active Directory domain named Contoso.com. The domain contains servers named Server1, Server2 and Server3 that run Windows Server 2016.

Server1 and Server 2 are nodes in a Hyper-V cluster named Cluster1. You add a Hyper-V Replica Broker role named Broker1 to Cluster1.

Server3 is Hyper-V server. A virtual machine VM1 runs on Server3.

Live Migration is enabled on all three servers and it is configured to use Kerberos authentication only.

You need to ensure that you can perform the migration of VM1 to Server2.

What should you do?

- A. Modify the **Storage Migration** settings on Server3.
- B. Modify the **Cluster** permissions for Cluster1.
- C. Add the Server3 computer account to the **Replicator** group on Server1 and Server2.
- D. Modify the **Delegation** settings of the Server3 computer account.

Correct Answer: D

Section: (none)

Explanation

Explanation/Reference:

Explanation:

If you have decided to use Kerberos to authenticate live migration traffic, configure constrained delegation. This involves modifying the Delegation settings of the source server, which is Server3 in this instance.

References: [https://technet.microsoft.com/en-us/library/jj134199\(v=ws.11\).aspx#BKMK_Step1](https://technet.microsoft.com/en-us/library/jj134199(v=ws.11).aspx#BKMK_Step1)

QUESTION 14

You have a Windows Server 2016 Hyper-V failover cluster that contains two nodes named Node1 and Node2.

On Node1, you create a virtual machine named VM01 by using Hyper-V Manager.

You need to configure VM01 to move to Node2 automatically if Node1 becomes unavailable.

What should you do?

- A. From **Failover Cluster Manager**, run **Configure Role** actions.
- B. From **Hyper-V Manager**, click **VM01**, and click **Enable Replication**.
- C. From **Hyper-V Manager**, click **Node1**, and then modify the Hyper-V settings.
- D. From **Windows PowerShell**, run the **Enable-VMReplicationcmdlet**.

Correct Answer: A

Section: (none)

Explanation

Explanation/Reference:

Explanation:

If you have VMs on cluster nodes that are not currently cluster resources, it's a simple process to make them highly available, provided they're using cluster storage (such as a Cluster Shared Volume):

1. Start Failover Cluster Manager.
2. Expand the cluster Roles.
3. Select the Configure Role... action.
4. Click Next to the introduction wizard.
5. In the Select Role dialog box, select Virtual Machine as the type and click Next.
6. Select all the virtual machines you want to make highly available and click Next.
7. Click Next to the confirmation.
8. Click Finish to the report, which should show Success for all. If there are Warnings, check and resolve problems if needed

References: <http://windowsitpro.com/hyper-v/make-vm-highly-available-windows-server-2012>

QUESTION 15

Your network contains three Hyper-V hosts. You add all of the hosts to a cluster.

You need to create highly available storage spaces that connect to directly attached storage on the hosts.

Which cmdlet should you use?

- A. **Add-ClusterDisk**
- B. **Enable-ClusterStorageSpacesDirect**
- C. **Update-ClusterVirtualMachineConfiguration**
- D. **Set-StoragePool**

Correct Answer: B

Section: (none)

Explanation

Explanation/Reference:

Explanation:

QUESTION 16

You have four servers named Server1, Server2, Server3, and Server4 that run Windows Server 2016. Each server has a single 4-TB SATA hard disk.

To each server you attach a new 4-TB SATA hard disk.

You need to create a new storage cluster that uses Storage Spaces Direct. The storage pool must contain all of the new disks.

Which command should you run before you enable Storage Space Direct?

- A. **Add-ClusterSharedVolume -Name "Disk 1" -Cluster Cluster1**
- B. **New-Cluster -Name Cluster1 -Node 'Server1', 'Server2', 'Server3', 'Server4' -NoStorage**
- C. **Get-ClusterAvailableDisk -Cluster Cluster1 | Add-ClusterDisk**
- D. **New-ClusterStorageEnclosure -id 1 -name Cluster1 -type jbod -ConnectionString "Server1,Server2,Server3,Server4"**

Correct Answer: B

Section: (none)

Explanation

Explanation/Reference:

Explanation:

QUESTION 17

Note: This question is part of a series of questions that use the same scenario. For your convenience, the scenario is repeated in each question. Each question presents a different goal and answer choices, but the text of the scenario is exactly the same in each question in this series.

Your network contains an Active Directory domain named contoso.com. The functional level of the forest and the domain is Windows Server 2008 R2. All servers in the domain run Windows Server 2016 Standard. The domain contains 300 client computers that run either Windows 8.1 or Windows 10.

The domain contains nine servers that are configured as shown in the following table.

Name	Configuration	Planned changes
Server1	Domain controller	None
Server2	File server	Run Failover Clustering and Storage Spaces Direct
Server3	File server	Run Failover Clustering and Storage Spaces Direct
Server4	Hyper-V host	Run shielded virtual machines
Server5	Hyper-V host	None
Server6	Member server	Run Active Directory Federation Services (AD FS)
VM1	Virtual machine hosted on Server5	None
VM2	Virtual machine hosted on Server5	None
VM3	Virtual machine hosted on Server5	None

The virtual machines are configured as follows:

- Each virtual machine has one virtual network adapter.
- VM1 and VM2 are part of a Network Load Balancing (NLB) cluster.
- All of the servers on the network can communicate with all of the virtual machines.

On Server4, you plan to provision a new volume that will be used to create large, fixed-size VHDX files.

Which type of file system should you use for the new volume to minimize the amount of time required to create the VHDX files?

- A. ReFS
- B. NTFS
- C. CSVFS
- D. exFAT

Correct Answer: A

Section: (none)

Explanation

Explanation/Reference:

Explanation:

QUESTION 18

Note: This question is part of a series of questions that use the same scenario. For your convenience, the scenario is repeated in each question. Each question presents a different goal and answer choices, but the text of the scenario is exactly the same in each question in this series.

Your network contains an Active Directory domain named contoso.com. The functional level of the forest and the domain is Windows Server 2008 R2. All servers in the domain run Windows Server 2016 Standard. The domain contains 300 client computers that run either Windows 8.1 or Windows 10.

The domain contains nine servers that are configured as shown in the following table.

Name	Configuration	Planned changes
Server1	Domain controller	None
Server2	File server	Run Failover Clustering and Storage Spaces Direct
Server3	File server	Run Failover Clustering and Storage Spaces Direct
Server4	Hyper-V host	Run shielded virtual machines
Server5	Hyper-V host	None
Server6	Member server	Run Active Directory Federation Services (AD FS)
VM1	Virtual machine hosted on Server5	None
VM2	Virtual machine hosted on Server5	None
VM3	Virtual machine hosted on Server5	None

The virtual machines are configured as follows:

- Each virtual machine has one virtual network adapter.
- VM1 and VM2 are part of a Network Load Balancing (NLB) cluster.
- All of the servers on the network can communicate with all of the virtual machines.

You need to minimize the likelihood that a virtual machine running malicious code will consume excessive resources on Server5.

What should you do?

- A. Configure the virtual machines as shielded virtual machines.
- B. Run the **Set-VMProcessor** cmdlet and specify the **-EnableHostResourceProtection** parameter.
- C. Run the **Set-VMProcessor** cmdlet and specify the **-MaximumCountPerNumaNode** parameter.
- D. Configure **VM Network Adapter Isolation**.

Correct Answer: B

Section: (none)

Explanation

Explanation/Reference:

Explanation:

QUESTION 19

Note: This question is part of a series of questions that use the same or similar answer choices. An answer choice may be correct for more than one question in the series. Each question is independent of the other questions in this series. Information and details provided in a question apply only to that question.

You have a Hyper-V host named Server1 that runs Windows Server 2016. Server1 has a dynamically expanding virtual hard disk (VHD) file that is 900 GB. The VHD contains 400 GB of free space.

You need to reduce the amount of disk space used by the VHD.

What should you run?

- A. the **Mount-VHD** cmdlet
- B. the **Diskpart** command
- C. the **Set-VHD** cmdlet
- D. the **Set-VM** cmdlet
- E. the **Set-VMHost** cmdlet
- F. the **Set-VMProcessor** cmdlet
- G. the **Install-WindowsFeature** cmdlet
- H. the **Optimize-VHD** cmdlet

Correct Answer: H

Section: (none)

Explanation

Explanation/Reference:

Explanation:

QUESTION 20

Note: This question is part of a series of questions that use the same or similar answer choices. An answer choice may be correct for more than one question in the series. Each question is independent of the other questions in this series. Information and details provided in a question apply only to that question.

You have a Hyper-V host named Server1 that runs Windows Server 2016. Server1 has a virtual machine named VM1 that uses a single VHDX file. VM1 is configured as shown in the following table.

Configuration	Details
Virtual machine generation	V2
Operating system	Windows 8
File system	NTFS
Number of partitions	1
Disk type	Basic
Unallocated disk space	100 GB

You plan to use VM1 as a virtual Machine Template to deploy shielded virtual machines.

You need to ensure that VM1 can be used to deploy shielded virtual machines.

What should you run?

- A. the **Mount-VHD** cmdlet
- B. the **Diskpart** command
- C. the **Set-VHD** cmdlet
- D. the **Set-VM** cmdlet
- E. the **Set-VMHost** cmdlet
- F. the **Set-VMProcessor** cmdlet
- G. the **Install-WindowsFeature** cmdlet
- H. the **Optimize-VHD** cmdlet

Correct Answer: B

Section: (none)

Explanation

Explanation/Reference:

Explanation:

The VHDX requires two partitions.

QUESTION 21

Note: This question is part of a series of questions that use the same scenario. For your convenience, the scenario is repeated in each question. Each question presents a different goal and answer choices, but the text of the scenario is exactly the same in each question in this series.

A company named Contoso, Ltd. has several servers that run Windows Server 2016. Contoso has a Hyper-V environment that uses failover clustering and Windows Server Update Services (WSUS). The environment contains several Windows containers and several virtual machines.

The WSUS deployment contains one upstream server that is located on the company's perimeter network and several downstream servers located on the internal network. A firewall separates the upstream server from the downstream servers.

You plan to deploy a human resources application to a new server named HRServer5. HRServer5 contains a FAT32-formatted data volume.

The CIO of Contoso identifies the following requirements for the company's IT department:

- Deploy a failover cluster to two new virtual machines.
- Store all application databases by using Encrypted File System (EFS).
- Ensure that each Windows container has a dedicated IP address assigned by a DHCP server.
- Produce a report that lists the processor time used by all of the processes on a server named Server1 for five hours.
- Encrypt all communication between the internal network and the perimeter network, including all WSUS communications.
- Automatically load balance the virtual machines hosted in the Hyper-V cluster when processor utilization exceeds 70 percent.

What should you do to prepare the data volume on HRServer5 to store the databases required for the human resources application?

- A. Format the data volume by using ReFS.
- B. Enable Trusted Platform Module (TPM) on HRServer5.
- C. Format the data volume by using NTFS.
- D. Enable BitLocker Drive Encryption (BitLocker) on the data volume.

Correct Answer: C

Section: (none)

Explanation

Explanation/Reference:

Explanation:

QUESTION 22

Your network contains a new Active Directory domain named contoso.com.

You have a security policy that states that new servers should run Nano Server whenever possible.

Which server role can be deployed on a Nano Server?

- A. Active Directory Domain Services
- B. DHCP Server
- C. Network Policy and Access Services
- D. Web Server (IIS)
- E. Remote Desktop Services
- F. Windows Server Update Services

Correct Answer: D

Section: (none)

Explanation

**Explanation/Reference:**

Explanation:

QUESTION 23

You have a server named Server1 that runs Windows Server 2016.

The Windows Server 2016 installation media is mounted as drive D.

You copy the NanoServerImageGenerator folder from the D:\NanoServer folder to the C:\NanoServer folder.

You need to create a custom Nano Server image that includes the Hyper-V server role. The image will be used to deploy Nano Servers to physical servers.

Which two commands should you run? Each correct answer presents part of the solution.

- A. **New-NanoServerImage –Edition Standard –DeploymentType Guest –MediaPath D:\ -TargetPath .\NanoServerImage\NanoServer.wim –Compute**
- B. **Install-PackageProvider NanoServerPackage**
- C. **Import-PackageProvider NanoServerPackage**

- D. `New-NanoServerImage -Edition Standard -DeploymentType Host -MediaPath D:\ -TargetPath .\NanoServerImage\NanoServer.wim -Compute`
E. `Import-Module C:\NanoServer\NanoServerImageGenerator`

Correct Answer: DE

Section: (none)

Explanation

Explanation/Reference:

Explanation:

References:

<https://technet.microsoft.com/en-us/windows-server-docs/get-started/nano-server-quick-start>

QUESTION 24

You have a server named Server1 that runs Windows Server 2016.

You need to install the DNS Server role on Server1.

What should you run?

- A. the `Install-Package cmdlet`
B. the `Add-WindowsPackage cmdlet` C. the `Install-WindowsFeature cmdlet`



<https://vceplus.com/>

- D. the `setup.exe` command

Correct Answer: C

Section: (none)

Explanation

Explanation/Reference:

References: <https://docs.microsoft.com/en-us/powershell/module/servermanager/install-windowsfeature?view=winserver2012r2-ps>

QUESTION 25

You have a server named Server1 that runs Windows Server 2016.

Server1 has Internet connectivity.

You have a Nano Server image.

You need to download and save a Nano Server package in the Nano Server image. The package is NOT included in the Windows Server 2016 installation media.

Which two cmdlets should you run on Server1? Each correct answer presents part of the solution.

- A. **Set-PackageSource**
- B. **Install-PackageProvider**
- C. **Add-AppxProvisionedPackage**
- D. **Save-NanoServerPackage**
- E. **Add-WindowsPackage**

Correct Answer: BD

Section: (none)

Explanation

Explanation/Reference:

Explanation:

QUESTION 26

You have a server named Server1 that runs Windows Server 2016 and has the Hyper-V server role installed.

On server1, you plan to create a virtual machine named VM1.

You need to ensure that you can start VM1 from the network.

What are two possible ways to achieve the goal? Each correct answer presents a complete solution.

- A. Create a generation 2 virtual machine.
- B. Create a generation 1 virtual machine and run the **Enable-NetAdapterPackageDirectcmdlet**.



- C. Create a generation 1 virtual machine that has a legacy network adapter.
- D. Create a generation 1 virtual machine and configure a single root I/O virtualization (SRV-IO) interface for the network adapter.

Correct Answer: AC

Section: (none)

Explanation

Explanation/Reference:

Explanation:

QUESTION 27

You have a Hyper-V host named Server1 that runs Windows Server 2016. Server1 has two virtual machines named VM1 and VM2.

You discover that VM1 and VM2 can communicate with Server1 over the network.

You need to ensure that VM1 and VM2 can communicate with each other only. The solution must prevent VM1 and VM2 from communicating with Server1.

Which cmdlet should you use?

- A. **Set-VMSwitch**
- B. **Enable-VMSwitchExtension**
- C. **Set-NetNeighbor**
- D. **Remove-VMSwitchTeamMember**



Correct Answer: A

Section: (none)

Explanation

Explanation/Reference:

Explanation:

QUESTION 28

You have a Hyper-V host named Server1 that runs Windows Server 2016. Server1 contains four virtual machines that are configured as shown in the following table.

Virtual machine name	Configuration
VM1	A shielded virtual machine that runs Windows Server 2012 R2
VM2	A shielded virtual machine that runs Windows Server 2016
VM3	A virtual machine that runs Windows Server 2012 R2 and has Secure Boot enabled
VM4	A virtual machine that runs Windows Server 2016 and has all of its drivers protected by using BitLocker Drive Encryption (BitLocker)

To which virtual machine or machines can you connect by using Virtual Machine Connection from Hyper-V Manager?

- A. VM1, VM2, VM3, and VM4
- B. VM4 only
- C. VM1 and VM2 only
- D. VM3 and VM4 only
- E. VM2 only

Correct Answer: D

Section: (none)

Explanation

Explanation/Reference:

Explanation:



QUESTION 29

Note: This question is part of a series of questions that use the same or similar answer choices. An answer choice may be correct for more than one question in the series. Each question is independent of the other questions in this series. Information and details provided in a question apply only to that question.

You have a two-node Hyper-V cluster named Cluster1 at a primary location and a stand-alone Hyper-V host named Server1 at a secondary location.

A virtual machine named VM1 runs on Cluster1.

You configure a Hyper-V Replica of VM1 to Server1.

You need to perform a Test Failover of VM1.

Which tool should you use?

- A. the **clussvc.exe** command
- B. the **cluster.exe** command
- C. the Computer Management snap-in
- D. the **configurehyperv.exe** command
- E. the Disk Management snap-in
- F. the Failover Cluster Manager snap-in
- G. the Hyper-V Manager snap-in
- H. the **Server Manager** app

Correct Answer: G

Section: (none)

Explanation

Explanation/Reference:

Explanation:

QUESTION 30

Note: This question is part of a series of questions that use the same or similar answer choices. An answer choice may be correct for more than one question in the series. Each question is independent of the other questions in this series. Information and details provided in a question apply only to that question.

You have three servers named Server1, Server2, and Server3 that run Windows Server 2016.

The servers are configured only with the components listed in the table below:

Server name	Components installed
Server1	Hyper-V server role
Server2	Hyper-V server role
Server3	iSCSI Target Server role service

You need to create a Hyper-V cluster.

Which tool should you use first?

- A. the **clussvc.exe** command
- B. the **cluster.exe** command
- C. the Computer Management snap-in
- D. the **configurehyperv.exe** command
- E. the Disk Management snap-in
- F. the Failover Cluster Manager snap-in
- G. the Hyper-V Manager snap-in
- H. the Server Manager app

Correct Answer: H

Section: (none)

Explanation

Explanation/Reference:

Explanation:

QUESTION 31

You have a Nano Server named Nano1. Which cmdlet should you use to identify whether the DNS Server role is installed on Nano1?

- A. **Find-NanoServerPackage**
- B. **Get-Package**
- C. **Find-Package**
- D. **Get-WindowsOptionalFeature**

Correct Answer: D

Section: (none)

Explanation

Explanation/Reference:

Explanation:

QUESTION 32

Note: In this section, you'll see one or more sets of questions with the same scenario and problem. Each question presents a unique solution to the problem, and you must determine whether the solution meets the stated goals. Any of the solutions might solve the problem. It is also possible that none of the solutions solve the problem.

Once you answer a question in this section, you will NOT be able to return to it. As a result these questions will not appear in the review screen.

Note: This question is part of a series of questions that present the same scenario. Each question in the series contains a unique solution. Determine whether the solution meets the stated goals.

Your network contains an Active Directory forest named contoso.com. The forest contains a member server named Server1 that runs Windows Server 2016. All domain controllers run Windows Server 2012 R2. Contoso.com has the following configuration:

```
PS C:\> (Get-ADForest). ForestMode Windows2008R2Forest
PS C:\> (Get-ADDomain). DomainMode Windows2008R2Domain
PS C:\>
```

You plan to deploy an Active Directory Federation Services (AD FS) farm on Server1 and to configure device registration. You need to configure Active Directory to support the planned deployment.

Solution: You raise the domain functional level to Windows Server 2012 R2.

Does this meet the goal?

- A. Yes
- B. No

Correct Answer: B

Section: (none)

Explanation

Explanation/Reference:

Explanation:

QUESTION 33

You have a server named Server1 that runs Windows Server 2016. You need to configure Server1 as a multitenant RAS Gateway. What should you install on Server1?

- A. the **Network Policy** and **Access Services** server role
- B. the **Remote Access** server role
- C. the **Data Center Bridging** feature
- D. the **Network Controller** server role

Correct Answer: B

Section: (none)

Explanation

Explanation/Reference:

Explanation:

QUESTION 34

Note: In this section, you'll see one or more sets of questions with the same scenario and problem. Each question presents a unique solution to the problem, and you must determine whether the solution meets the stated goals. Any of the solutions might solve the problem. It is also possible that none of the solutions solve the problem.

Once you answer a question in this section, you will NOT be able to return to it. As a result these questions will not appear in the review screen.

Note: This question is part of a series of questions that present the same scenario. Each question in the series contains a unique solution. Determine whether the solution meets the stated goals.

Your network contains an Active Directory forest named contoso.com. The forest contains a member server named Server1 that runs Windows Server 2016. All domain controllers run Windows Server 2012 R2. Contoso.com has the following configuration:

```
PS C:\> (Get-ADForest). ForestMode Windows2008R2Forest
PS C:\> (Get-ADDomain). DomainMode Windows2008R2Domain
PS C:\>
```

You plan to deploy an Active Directory Federation Services (AD FS) farm on Server1 and to configure device registration. You need to configure Active Directory to support the planned deployment.

Solution: You raise the forest functional level to Windows Server 2012 R2.

Does this meet the goal?

- A. Yes
- B. No

Correct Answer: B

Section: (none)

Explanation

Explanation/Reference:

Explanation:

New installations of AD FS 2016 require the Active Directory 2016 schema (minimum version 85)

QUESTION 35

You have a server named Served that runs Windows Server 2016. Server1 will be used as a VPN server. You need to configure Server1 to support VPN Reconnect. Which VPN protocol should you use?

- A. PPTP
- B. L2TP
- C. SSTPD. IKEv2

Correct Answer: D

Section: (none)

Explanation

Explanation/Reference:

Explanation:

QUESTION 36

You have a server named Server1 that runs Windows Server 2016. You install the Docker daemon on Server1. You need to configure the Docker daemon to accept connections only on TCP port 64500.

What should you do?

- A. Run the `New-NetFirewallRule` cmdlet
- B. Run the `Set-Service Windows PowerShell` cmdlet
- C. Edit the `daemon.json` file
- D. Edit the `configuration.json` file
- E. Modify the routing table on Server1
- F. Run the `sc control` command
- G. Run the `Set-NetFirewallPortFilter` cmdlet

Correct Answer: C

Section: (none)

Explanation

Explanation/Reference:

Explanation:

The preferred method for configuring the Docker Engine on Windows is using a configuration file. The configuration file can be found at 'C:\ProgramData\Docker\config\daemon.json'. If this file does not already exist, it can be created.

Note: The Docker Engine can also be configured by modifying the Docker service using the `sc config` command.

References: <https://docs.microsoft.com/en-us/virtualization/windowscontainers/manage-docker/configure-docker-daemon>

QUESTION 37

Note: This question is part of a series of questions that use the same similar answer choices. An answer choice may be correct for more than one question in the series. Each question is independent of the other questions in this series. Information and details provided in a question apply only to that question.

You have two servers named Server1 and Server2 that run Windows Server 2016. Server1 and Server2 have the Hyper-V server role installed. An iSCSI SAN connects to the network.

You create a LUN on the SAN and configure both servers to connect to the iSCSI target. You create a failover cluster and add Server1 and Server2 to the cluster.

You connect both servers to the iSCSI target and format the shared storage. You need to add the shared storage to the cluster. The solution must ensure that virtual machines running on both nodes can access the shared storage simultaneously.

Which tool should you use?

- A. the **clussvc.exe** command
- B. the **cluster.exe** command
- C. the Computer Management snap-in
- D. the **configurehyperv.exe** command
- E. the Disk Management snap-in
- F. the Failover Cluster Manager snap-in
- G. the Hyper-V Manager snap-in
- H. the **Server Manager** app

Correct Answer: F

Section: (none)

Explanation

Explanation/Reference:

Explanation:

QUESTION 38



You have an Active Directory domain named Contoso.com. The domain contains servers named Server1 and Server2 that run Windows Server 2016. You install the Remote Access server role on Server1. You install the Network Policy and Access Services server role on Server2. You need to configure Server1 to use Server2 as a RADIUS server. What should you do?

- A. From **Routing and Remote Access**, configure the authentication provider.
- B. From the **Connection Manager Administration Kit**, create a **Connection Manager** profile.
- C. From **Server Manager**, create an **Access Policy**.
- D. From **Active Directory Users and Computers**, modify the **Delegation** settings of the Server1 computer account.

Correct Answer: A

Section: (none)

Explanation

Explanation/Reference:

Explanation:

QUESTION 39

You have an application named App1. App1 is distributed to multiple Hyper-V virtual machines in a multitenant environment. You need to ensure that the traffic is distributed evenly among the virtual machines that host App1. What should you include in the environment?

- A. Network Controller and Windows Server Network Load Balancing (NLB) nodes
- B. Network Controller and Windows Server Software Load Balancing (SLB) nodes
- C. a RAS Gateway and Windows Server Network Load Balancing (NLB) nodes
- D. a RAS Gateway and Windows Server Software Load Balancing (SLB) nodes

Correct Answer: D

Section: (none)

Explanation

Explanation/Reference:

Explanation:

QUESTION 40

Note: In this section, you'll see one or more sets of questions with the same scenario and problem. Each question presents a unique solution to the problem, and you must determine whether the solution meets the stated goals. Any of the solutions might solve the problem. It is also possible that none of the solutions solve the problem.

Once you answer a question in this section, you will NOT be able to return to it. As a result, these questions will not appear in the review screen.

Note: This question is part of a series of questions that present the same scenario. Each question in the series contains a unique solution. Determine whether the solution meets the stated goals.

Your network contains an Active Directory domain named contoso.com. The domain contains a DNS server named Server1. All client computers run Windows 10. On Server1, you have the following zone configuration:

ZoneName	ZoneType	IsAutoCreated	IsDsIntegrated	IsReverseLookupZone	IsSign
-----	-----	-----	-----	-----	-----
_msdcs.contoso.com	Primary	False	True	False	False
adatum.com	Forwarder	False	False	False	False
contoso.com	Primary	False	True	False	False
fabrikam.com	Primary	False	False	False	True
TrustAnchors	Primary	False	True	False	False

You have the following subnets defined on Server1.

Name	IPv4Subnet	IPv6Subnet
----	-----	-----
Subnet1	(10.0.0.0/24)	
Subnet2	(10.0.1.0/24)	
Subnet3	(192.168.15.0/24)	
Subnet4	(172.16.1.0/24)	

You need to prevent Server1 from resolving queries from DNS clients located on Subnet4. Server1 must resolve queries from all other DNS clients.

Solution: From Windows PowerShell on Server1, you run the **Export-DnsServerDnsSecPublicKey** cmdlet.

Does this meet the goal?

- A. Yes
- B. No

Correct Answer: B

Section: (none)

Explanation

Explanation/Reference:

Explanation:

QUESTION 41

Note: This question is part of a series of questions that use the same similar answer choices. An answer choice may be correct for more than one question in the series. Each question is independent of the other questions in this series. Information and details provided in a question apply only to that question.

You have a two-node Hyper-V cluster named Cluster1.

As virtual machine named VM1 runs on Cluster1. You need to configure monitoring of VM1.

The solution must move VM1 to a different node if the Print Spooler service on VM1 stops unexpectedly.

Which tool should you use?

- A. the **clussvc.exe** command
- B. the **cluster.exe** command
- C. the Computer Management console
- D. the **configurehyperv.exe** command
- E. the Disk Management console
- F. the Failover Cluster Manager console
- G. the Hyper-V Manager console
- H. the Server Manager app

Correct Answer: F

Section: (none)

Explanation



Explanation/Reference:

Explanation:

QUESTION 42

You have a failover cluster named Cluster1. A virtual machine named VM1 is a highly available virtual machine that runs on Cluster1. A custom application named App1 runs on VM1. You need to configure monitoring of VM1. If App1 adds an error entry to the Application event log, VM1 should be automatically rebooted and moved to another cluster node. Which tool should you use?

- A. Hyper-V Manager
- B. Failover Cluster Manager
- C. Server Manager
- D. Resource Monitor

Correct Answer: B

Section: (none)

Explanation

Explanation/Reference:

Explanation:

QUESTION 43

Your company has 10 offices. Each office has a local network that contains several Hyper-V hosts that run Windows Server 2016. All of the offices are connected by high speed, low latency WAN links.

You need to ensure that you can use QoS policies for Live Migration traffic between the offices. Which component should you install?

- A. the **Multipath I/O** feature
- B. the **Routing** role service
- C. the **Network Controller** server role
- D. the **Canary Network Diagnostics** feature
- E. the **Data Center Bridging** feature

Correct Answer: CE

Section: (none)

Explanation

Explanation/Reference:

Explanation:

**QUESTION 44**

Note: This question is part of a series of questions that use the same or similar answer choices. An answer choice may be correct for more than one question in the series. Each question is independent of the other questions in this series. Information and details provided in a question apply only to that question.

You have a Hyper-V host named Server1 that runs Windows Server 2016. You plan to deploy several shielded virtual machines on Server1. You deploy a Host Guardian on a new server.

You need to ensure that Server1 can host shielded virtual machines.

What should you run first?

- A. the **Mount-VHD** cmdlet
- B. the **Diskpart** command
- C. the **Set-VHD** cmdlet
- D. the **Set-VM** cmdlet

- E. the **Set-VMHost** cmdlet
- F. the **Set-VMProcessor** cmdlet
- G. the **Install-WindowsFeature** cmdlet
- H. the **Optimize-VHD** cmdlet

Correct Answer: G

Section: (none)

Explanation

Explanation/Reference:

Explanation:

QUESTION 45

Your network contains an Active Directory domain named contoso.com. The domain contains two servers named Server1 and Server2 that run Windows Server 2016. The servers have the same hardware configuration.

You need to asynchronously replicate volume F: from Server1 to Server2.

What should you do?

- A. Run **New-SRPartnership** and specify the **-ReplicationMode** parameter.
- B. Install the **Failover Clustering** feature and create a new cluster resource group.
- C. Install the **Failover Clustering** feature and use **Cluster Shared Volumes (CSV)**.
- D. Run **Set-DfsrServiceConfiguration** and specify the **-RPCPort** parameter.

Correct Answer: A

Section: (none)

Explanation

Explanation/Reference:

Explanation:

QUESTION 46

You have a Nano Server named Nano1. You deploy several containers to Nano1 that use an image named Image1. You need to deploy a new container to Nano1 that uses Image1. What should you run?

- A. the **Install-NanoServerPackage** cmdlet

- B. the **Install-WindowsFeature** cmdlet
- C. the **docker load** command
- D. the **docker run** command

Correct Answer: D

Section: (none)

Explanation

Explanation/Reference:

Explanation:

QUESTION 47

You deploy a Hyper-V server named Served in an isolated test environment. The test environment is prevented from accessing the Internet. Server1 runs the Datacenter edition of Windows Server 2016. You plan to deploy the following guest virtual machines on the server:

Quantity	Operating system	Domain member
10	Windows Server 2012 R2	Yes
4	Windows Server 2016	No
5	Windows Server 2016	Yes

Which activation model should you use for the virtual machines?

- A. Multiple Activation Key (MAK)
- B. Automatic Virtual Machine Activation (AVMA)
- C. Original Equipment Manufacturer (OEM) key
- D. Key Management Service (KMS)

Correct Answer: B

Section: (none)

Explanation

Explanation/Reference:

Explanation:

QUESTION 48

Note: In this section, you'll see one or more sets of questions with the same scenario and problem. Each question presents a unique solution to the problem, and you must determine whether the solution meets the stated goals. Any of the solutions might solve the problem. It is also possible that none of the solutions solve the problem.

Once you answer a question in this section, you will NOT be able to return to it. As a result, these questions will not appear in the review screen.

Note: This question is part of a series of questions that present the same scenario. Each question in the series contains a unique solution. Determine whether the solution meets the stated goals.

Your network contains an Active Directory domain named contoso.com. The domain contains a DNS server named Server1. All client computers run Windows 10. On Server1, you have the following zone configuration:

ZoneName	ZoneType	IsAutoCreated	IsDsIntegrated	IsReverseLookupZone	IsSign
-----	-----	-----	-----	-----	-----
_msdcs.contoso.com	Primary	False	True	False	False
adatum.com	Forwarder	False	False	False	False
contoso.com	Primary	False	True	False	False
fabrikam.com	Primary	False	False	False	True
TrustAnchors	Primary	False	True	False	False

You have the following subnets defined on Server1.

Name	IPv4Subnet	IPv6Subnet
----	-----	-----
Subnet1	(10.0.0.0/24)	
Subnet2	(10.0.1.0/24)	
Subnet3	(192.168.15.0/24)	
Subnet4	(172.16.1.0/24)	



You need to prevent Server1 from resolving queries from DNS clients located on Subnet4. Server1 must resolve queries from all other DNS clients.

Solution: From a Group Policy object (GPO) in the domain, you modify the Network List Manager Policies (NLMP).

Does this meet the goal?

- A. Yes
- B. No

Correct Answer: B

Section: (none)

Explanation

Explanation/Reference:

Explanation:

QUESTION 49

Note: In this section, you'll see one or more sets of questions with the same scenario and problem. Each question presents a unique solution to the problem, and you must determine whether the solution meets the stated goals. Any of the solutions might solve the problem. It is also possible that none of the solutions solve the problem.

Once you answer a question in this section, you will NOT be able to return to it. As a result, these questions will not appear in the review screen.

Note: This question is part of a series of questions that present the same scenario. Each question in the series contains a unique solution. Determine whether the solution meets the stated goals.

Your network contains an Active Directory domain named contoso.com. The domain contains a DNS server named Server1. All client computers run Windows 10. On Server1, you have the following zone configuration:

ZoneName	ZoneType	IsAutoCreated	IsDsIntegrated	IsReverseLookupZone	IsSign
msdcs.contoso.com	Primary	False	True	False	False
adatum.com	Forwarder	False	False	False	False
contoso.com	Primary	False	True	False	False
fabrikam.com	Primary	False	False	False	True
TrustAnchors	Primary	False	True	False	False

You have the following subnets defined on Server1.

Name	IPv4Subnet	IPv6Subnet
Subnet1	(10.0.0.0/24)	
Subnet2	(10.0.1.0/24)	
Subnet3	(192.168.15.0/24)	
Subnet4	(172.16.1.0/24)	

You need to prevent Server1 from resolving queries from DNS clients located on Subnet4. Server1 must resolve queries from all other DNS clients.

Solution: From Windows PowerShell on Server1, you run the **Add-DnsServerTrustAnchor** cmdlet.

Does this meet the goal?

- A. Yes
- B. No

Correct Answer: B

Section: (none)

Explanation

Explanation/Reference:

Explanation:

QUESTION 50

You have a Scale-Out File Server that has a share named Share1. Share1 contains a virtual disk file named Disk1.vhd.

You plan to create a guest failover cluster.

You need to ensure that you can use the virtual disk as a shared virtual disk for the guest failover cluster.

Which cmdlet should you use?

- A. Optimize-VHDSets
- B. Set-VHD
- C. Convert-VHD
- D. Optimize-VHD

Correct Answer: C

Section: (none)

Explanation

Explanation/Reference:

References: <https://4sysops.com/archives/hyper-v-cluster-with-shared-vhd-create-vhdx-files-and-cluster/>

QUESTION 51

Your network contains an Active Directory forest named contoso.com.

The forest contains a member server named Server1 that runs Windows Server 2016. Server1 is located in the perimeter network.

You install the Active Directory Federation Services server role on Server1. You create an Active Directory Federation Services (ADFS) farm by using a certificate that has a subject name of sts.contoso.com.

You need to enable certificate authentication from the Internet on Server1.

Which two inbound TCP ports should you open on the firewall? Each correct answer presents part of the solution.



- A. 389
- B. 443
- C. 3389
- D. 8531
- E. 49443

Correct Answer: BE

Section: (none)

Explanation

Explanation/Reference:

Explanation:

QUESTION 52

Note: In this section, you'll see one or more sets of questions with the same scenario and problem. Each question presents a unique solution to the problem, and you must determine whether the solution meets the stated goals. Any of the solutions might solve the problem. It is also possible that none of the solutions solve the problem.

Once you answer a question in this section, you will NOT be able to return to it. As a result, these questions will not appear in the review screen.

Note: This question is part of a series of questions that present the same scenario. Each question in the series contains a unique solution. Determine whether the solution meets the stated goals.

Your network contains an Active Directory domain named contoso.com. The domain contains a DNS server named Server1. All client computers run Windows 10. On Server1, you have the following zone configuration:

ZoneName	ZoneType	IsAutoCreated	IsDsIntegrated	IsReverseLookupZone	IsSign
_msdcs.contoso.com	Primary	False	True	False	False
adatum.com	Forwarder	False	False	False	False
contoso.com	Primary	False	True	False	False
fabrikam.com	Primary	False	False	False	True
TrustAnchors	Primary	False	True	False	False

You have the following subnets defined on Server1.

Name	IPv4Subnet	IPv6Subnet
Subnet1	(10.0.0.0/24)	
Subnet2	(10.0.1.0/24)	
Subnet3	(192.168.15.0/24)	
Subnet4	(172.16.1.0/24)	

You need to prevent Server1 from resolving queries from DNS clients located on Subnet4. Server1 must resolve queries from all other DNS clients.

Solution: From the Security setting of each zone on Server1, you modify the permissions.

Does this meet the goal?

- A. Yes
- B. No

Correct Answer: B

Section: (none)

Explanation

Explanation/Reference:

Explanation:

QUESTION 53

You have a server named Server1 that runs Windows Server 2016. The Docker daemon runs on Server1.

You need to ensure that members of a security group named Docker Administrators can administer Docker.

What should you do?

- A. Run the **Set-Service** cmdlet.

- B. Modify the Security settings of **Dockerd.exe**.
- C. Edit the Configuration.json file.
- D. Run the **sc config** command.
- E. Run the **sc privs** command.
- F. Add Docker Administrators to the local Administrators group.
- G. Modify the Security settings of `Docker.exe`.

Correct Answer: D

Section: (none)

Explanation

Explanation/Reference:

Explanation:

The preferred method for configuring the Docker Engine on Windows is using a configuration file. The configuration file can be found at 'C:\ProgramData\Docker\config\daemon.json'. If this file does not already exist, it can be created.

The Docker Engine can also be configured by modifying the Docker service using the sc config command.

References: <https://docs.microsoft.com/en-us/virtualization/windowscontainers/manage-docker/configure-docker-daemon>

QUESTION 54

Note: In this section, you'll see one or more sets of questions with the same scenario and problem. Each question presents a unique solution to the problem, and you must determine whether the solution meets the stated goals. Any of the solutions might solve the problem. It is also possible that none of the solutions solve the problem.

Once you answer a question in this section, you will NOT be able to return to it. As a result, these questions will not appear in the review screen.

Note: This question is part of a series of questions that present the same scenario. Each question in the series contains a unique solution. Determine whether the solution meets the stated goals.

Your network contains an Active Directory domain named contoso.com. The domain contains a DNS server named Server1. All client computers run Windows 10. On Server1, you have the following zone configuration:

ZoneName	ZoneType	IsAutoCreated	IsDsIntegrated	IsReverseLookupZone	IsSign
_msdcs.contoso.com	Primary	False	True	False	False
adatum.com	Forwarder	False	False	False	False
contoso.com	Primary	False	True	False	False
fabrikam.com	Primary	False	False	False	True
TrustAnchors	Primary	False	True	False	False

You have the following subnets defined on Server1.

Name	IPv4Subnet	IPv6Subnet
Subnet1	(10.0.0.0/24)	
Subnet2	(10.0.1.0/24)	
Subnet3	(192.168.15.0/24)	
Subnet4	(172.16.1.0/24)	

You need to prevent Server1 from resolving queries from DNS clients located on Subnet4. Server1 must resolve queries from all other DNS clients.

Solution: From Windows Firewall with Advanced Security on Server1, you create an inbound rule.

Does this meet the goal?

- A. Yes
- B. No

Correct Answer: A

Section: (none)

Explanation

Explanation/Reference:

Explanation:

QUESTION 55

You need to modify the GPO prefix by IPAM. What should you do?

- A. Run the **Set-IpamConfiguration** cmdlet
- B. Click **Provision the IPAM server** in **Server Manager**
- C. Click **Configure server discovery** in **Server Manager**
- D. Run the **Invoke-IpamGpoProvisioning** cmdlet

Correct Answer: A

Section: (none)

Explanation

Explanation/Reference:

Explanation:

QUESTION 56

You have a server named Server1 that runs Windows Server 2016. Server1 is a Hyper-V host that hosts a virtual machine named VM1. Server1 has three network adapter cards. That connect to a virtual switch named vSwitch1. You configure NIC Teaming on VM1 as shown in the exhibit:



NIC Teaming

New team

Team name:
Converged NIC Team

Member adapters:

In Team	Adapter	Speed	State	Reason
<input type="checkbox"/>	Ethernet	1 Gbps		
<input checked="" type="checkbox"/>	Ethernet 2	1 Gbps		
<input checked="" type="checkbox"/>	Ethernet 3	1 Gbps		

^ Additional properties

Teaming mode: Switch Independent

Load balancing mode: Dynamic

Standby adapter: None (all adapters Active)

Primary team interface: Converged NIC Team, Default VLAN

OK Cancel

You need to ensure that VM1 will retain access to the network if a physical adapter card fails on Server1. What should you do?

- A. From **Hyper-V Manager** on Server1, modify the settings of VM1.
- B. From **Windows PowerShell** on Server1, run the **Set-VmSwitch** cmdlet.
- C. From the properties of the NIC team on VM1, add the adapter named Ethernet to the NIC team.
- D. From the properties of the NIC team on VM1, change the load balancing of the NIC team.

Correct Answer: A

Section: (none)

Explanation

Explanation/Reference:

Explanation:

QUESTION 57

Note: This question is part of a series of questions that use the same similar answer choices. An answer choice may be correct for more than one question in the series. Each question is independent of the other questions in this series. Information and details provided in a question apply only to that question.

You have an Active Directory domain that contains two Hyper-V servers named Server1 and Server2. Server1 has Windows Server 2016 installed. Server2 has Windows Server 2012 R2 installed. Each Hyper-V server has three network cards. Each network card is connected to a different subnet. Server1 contains a dedicated migration network. Server2 contains a virtual machine named VM5.

You plan to perform a live migration of VM5 to Server1. You need to ensure that Server1 uses all available networks to perform the live migration of VM5.

What should you run?

- A. the **Mount-VHD** cmdlet
- B. the **Diskpart** command
- C. the **Set-VHD** cmdlet
- D. the **Set-VM** cmdlet
- E. the **Set-VMHost** cmdlet
- F. the **Set-VMProcessor** cmdlet
- G. the **Install-WindowsFeature** cmdlet
- H. the **Optimize-VHD** cmdlet

Correct Answer: E

Section: (none)

Explanation**Explanation/Reference:**

Explanation:

QUESTION 58

Note: This question is part of a series of questions that present the same scenario. Each question in the series contains a unique solution that might meet the stated goals. Some question sets might have more than one correct solution, while others might not have a correct solution.

After you answer a question in this section, you will NOT be able to return to it. As a result, these questions will not appear in the review screen.

You have a server named Server1 that runs Windows Server 2016.

Server1 hosts a line-of-business application named App1. App1 has a memory leak that occasionally causes the application to consume an excessive amount of memory.

You need to log an event in the Application event log whenever App1 consumes more than 4 GB of memory.

Solution: You create an event trace data collector.

Does this meet the goal?

- A. Yes
- B. No



Correct Answer: B

Section: (none)

Explanation**Explanation/Reference:**

Explanation:

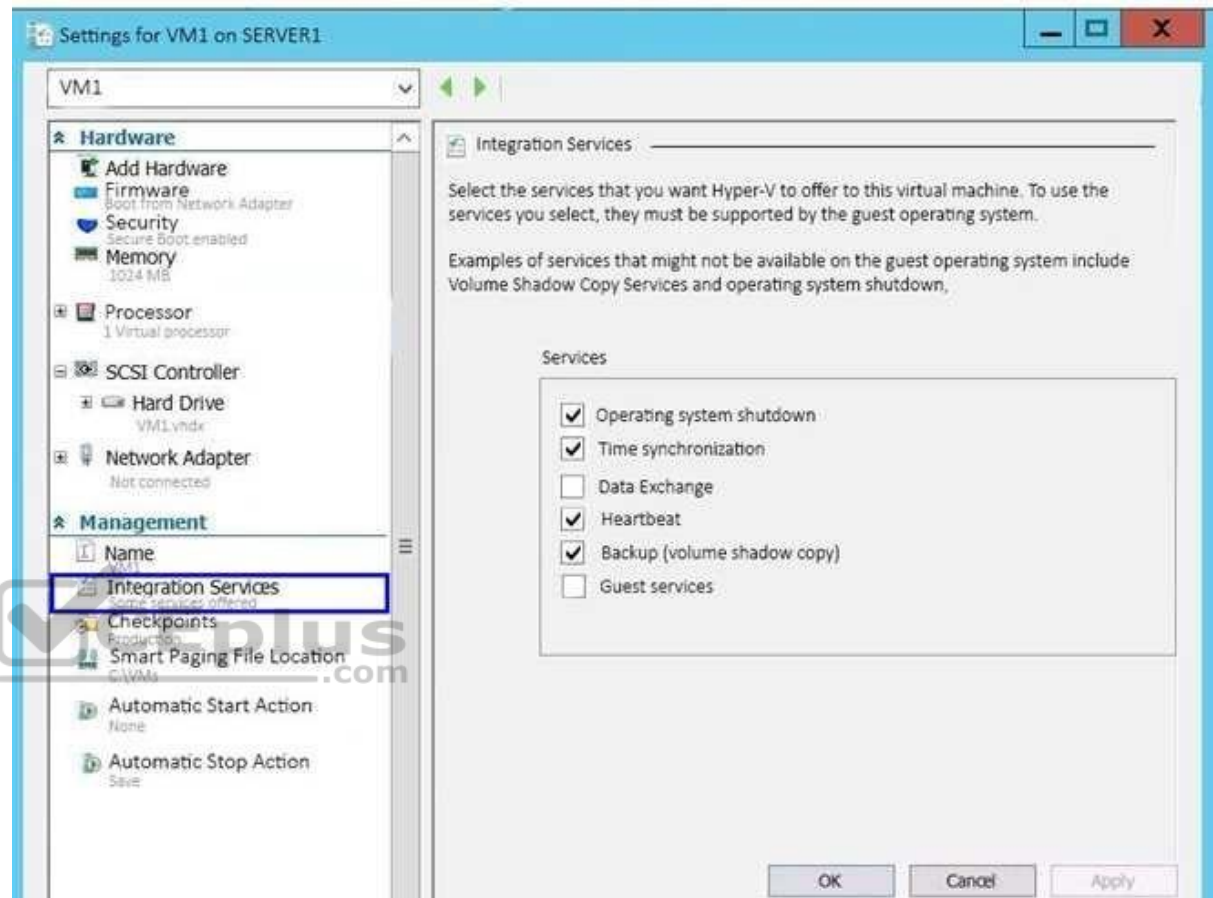
QUESTION 59

Note: This question is part of a series of questions that present the same scenario. Each question in the series contains a unique solution that might meet the stated goals. Some question sets might have more than one correct solution, while others might not have a correct solution.

After you answer a question in this section, you will NOT be able to return to it. As a result, these questions will not appear in the review screen.

You have a Hyper-V host named Server1 that hosts a virtual machine named VM1. Server1 and VM1 run Windows Server 2016.

The settings for VM1 are configured as shown in the exhibit. (Click the Exhibit button.)



You need to ensure that you can use the **Copy-VMFile** cmdlet on Server1 to copy files from VM1.

Solution: You start the Hyper-V Guest Service Interface service on VM1.

Does this meet the goal?

- A. Yes
- B. No

Correct Answer:

Section: (none)

Explanation

Explanation/Reference:

Explanation:

A

References:

[https://technet.microsoft.com/en-us/library/dn798297\(v=ws.11\).aspx](https://technet.microsoft.com/en-us/library/dn798297(v=ws.11).aspx)

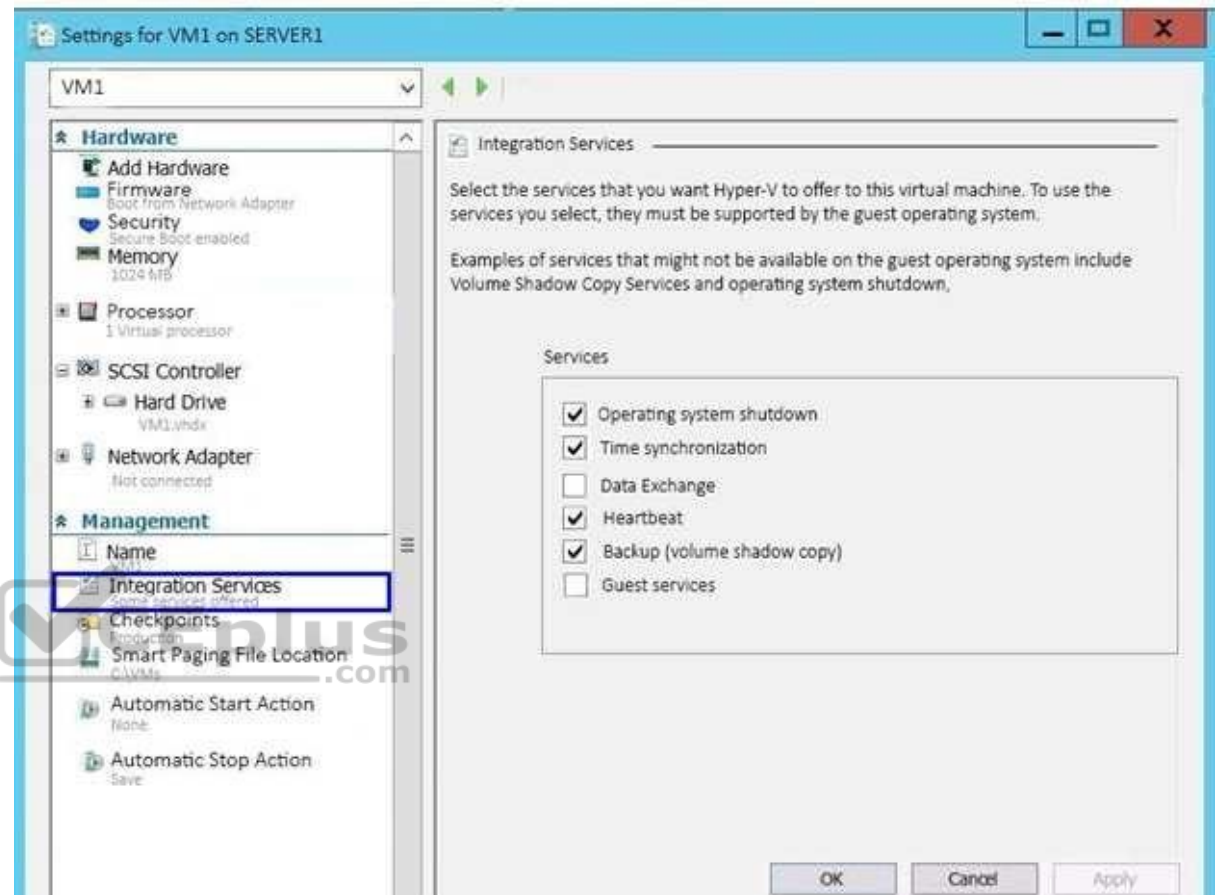
QUESTION 60

Note: This question is part of a series of questions that present the same scenario. Each question in the series contains a unique solution that might meet the stated goals. Some question sets might have more than one correct solution, while others might not have a correct solution.

After you answer a question in this section, you will NOT be able to return to it. As a result, these questions will not appear in the review screen.

You have a Hyper-V host named Server1 that hosts a virtual machine named VM1. Server1 and VM1 run Windows Server 2016.

The settings for VM1 are configured as shown in the exhibit. (Click the Exhibit button.)



You need to ensure that you can use the **Copy-VMFile** cmdlet on Server1 to copy files from VM1.

Solution: You connect VM1 to an internal virtual switch.

Does this meet the goal?

- A. Yes
- B. No

Correct Answer:

Section: (none)

Explanation

Explanation/Reference:

Explanation:

B

QUESTION 61

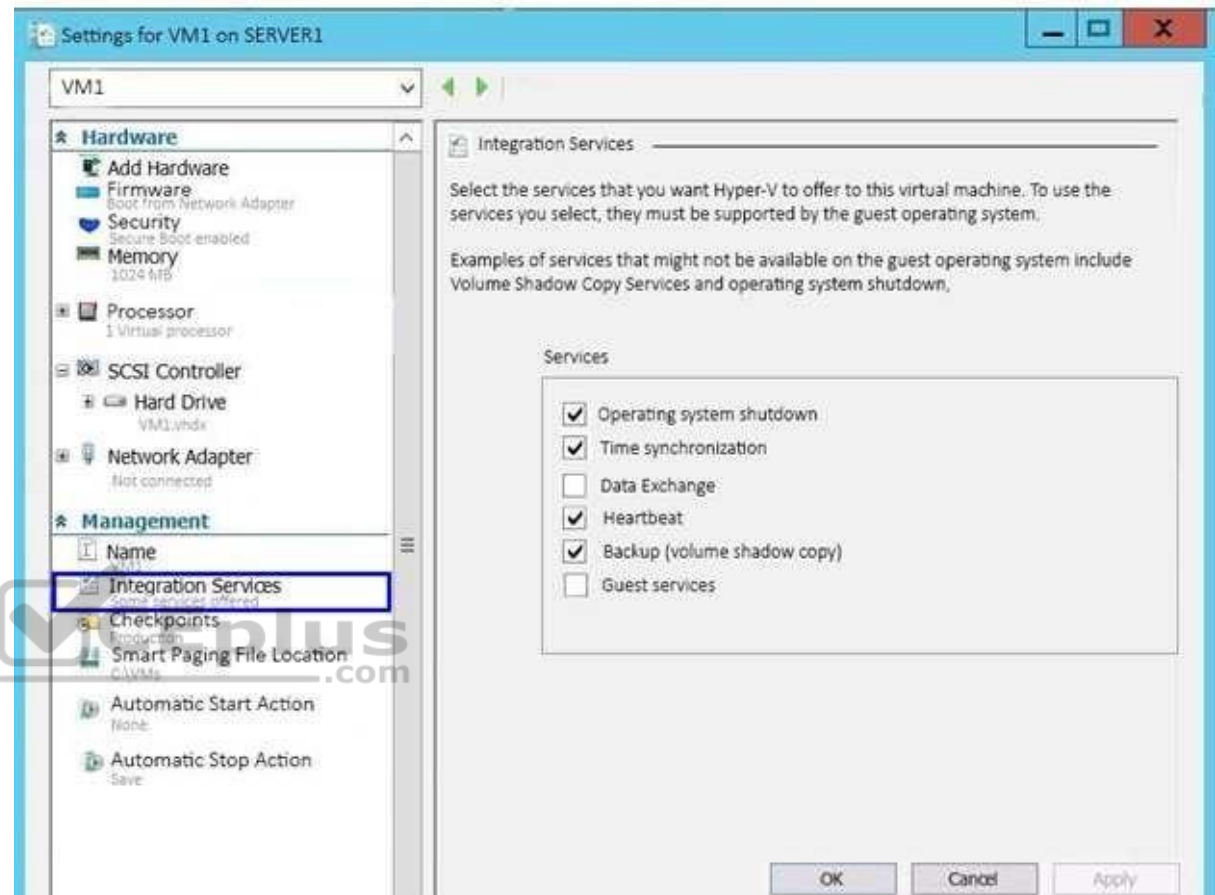
Note: This question is part of a series of questions that present the same scenario. Each question in the series contains a unique solution that might meet the stated goals. Some question sets might have more than one correct solution, while others might not have a correct solution.

After you answer a question in this section, you will NOT be able to return to it. As a result, these questions will not appear in the review screen.

You have a Hyper-V host named Server1 that hosts a virtual machine named VM1. Server1 and VM1 run Windows Server 2016.

The settings for VM1 are configured as shown in the exhibit. (Click the Exhibit button.)





You need to ensure that you can use the **Copy-VMFile** cmdlet on Server1 to copy files from VM1.

Solution: You enable the Data Exchange integration service for VM1.

Does this meet the goal?

- A. Yes
- B. No

Correct Answer:

Section: (none)

Explanation

Explanation/Reference:

Explanation:

B

References:

[https://technet.microsoft.com/en-us/library/dn798297\(v=ws.11\).aspx](https://technet.microsoft.com/en-us/library/dn798297(v=ws.11).aspx)

QUESTION 62

Note: This question is part of a series of questions that present the same scenario. Each question in the series contains a unique solution that might meet the stated goals. Some question sets might have more than one correct solution, while others might not have a correct solution.

After you answer a question in this section, you will NOT be able to return to it. As a result, these questions will not appear in the review screen.

You network contains an Active Directory domain named contoso.com.

You need to create a Nano Server image named Nano1 that will be used as a virtualization host. The Windows Server 2016 source files are located in drive D.

Solution: You run the following cmdlet.

```
New-NanoServerImage -Edition Datacenter -DeploymentType Host -Package  
Microsoft-NanoServer-SCVMM-Package -MediaPath 'D:\' -TargetPath  
C:\Nano1\Nano1.wim -ComputerName Nano1 -DomainName Contoso.com
```

Does this meet the goal?

- A. Yes
- B. No

Correct Answer: B

S
e
c
t
i
o
n
:
(
n
o
n
e
)
E
x
p
l
a
n
a
t
i
o
n

E
x
p
l
a
n
a
t
i
o



- A. Yes
- B. No

Correct Answer:

Section: (none)

Explanation

Explanation/Reference:

Explanation:

n
/
R
e
f
e
r
e
n
c
e
:
E
x
p
l
a
n
a
t
i
o
n
:



QUESTION 63

Note: This question is part of a series of questions that present the same scenario. Each question in the series contains a unique solution that might meet the stated goals. Some question sets might have more than one correct solution, while others might not have a correct solution.

After you answer a question in this section, you will NOT be able to return to it. As a result, these questions will not appear in the review screen.

You network contains an Active Directory domain named contoso.com.

You need to create a Nano Server image named Nano1 that will be used as a virtualization host. The Windows Server 2016 source files are located in drive D.

Solution: You run the following cmdlet.

```
New-NanoServerImage -Edition Datacenter -DeploymentType Host -Compute  
-MediaPath 'D:\' -TargetPath C:\Nano1\Nano1.wim -ComputerName Nano1  
-DomainName Contoso.com
```

Does this meet the goal?

- A. Yes
- B. No

Correct Answer: A

Section: (none)

Explanation

Explanation/Reference:

Explanation:



QUESTION 64

Note: This question is part of a series of questions that present the same scenario. Each question in the series contains a unique solution that might meet the stated goals. Some question sets might have more than one correct solution, while others might not have a correct solution.

After you answer a question in this section, you will NOT be able to return to it. As a result, these questions will not appear in the review screen.

You network contains an Active Directory domain named contoso.com.

You need to create a Nano Server image named Nano1 that will be used as a virtualization host. The Windows Server 2016 source files are located in drive D.

Solution: You run the following cmdlet.

```
New-NanoServerImage -Edition Datacenter -DeploymentType Host -Package Microsoft-NanoServer-Compute-Package -MediaPath 'D:\' -TargetPath C:  
\Nano1\Nano1.wim -ComputerName Nano1 -DomainName Contoso.com
```

Does this meet the goal?

- A. Yes
- B. No

Correct Answer: A

Section: (none)

Explanation

Explanation/Reference:

Explanation:

QUESTION 65

Note: This question is part of a series of questions that use the same scenario. For your convenience, the scenario is repeated in each question. Each question presents a different goal and answer choices, but the text of the scenario is exactly the same in each question in this series.

Your network contains an Active Directory domain named contoso.com. The functional level of the forest and the domain is Windows Server 2008 R2. All servers in the domain run Windows Server 2016 Standard. The domain contains 300 client computers that run either Windows 8.1 or Windows 10.

The domain contains nine servers that are configured as shown in the following table.

Name	Configuration	Planned changes
Server1	Domain controller	None
Server2	File server	Run Failover Clustering and Storage Spaces Direct
Server3	File server	Run Failover Clustering and Storage Spaces Direct
Server4	Hyper-V host	Run shielded virtual machines
Server5	Hyper-V host	None
Server6	Member server	Run Active Directory Federation Services (AD FS)
VM1	Virtual machine hosted on Server5	None
VM2	Virtual machine hosted on Server5	None
VM3	Virtual machine hosted on Server5	None

The virtual machines are configured as follows:

- Each virtual machine has one virtual network adapter.
- VM1 and VM2 are part of a Network Load Balancing (NLB) cluster.
- All of the servers on the network can communicate with all of the virtual machines.

You plan to implement nested virtual machines on VM1.

Which two features will you be prevented from using for VM1?

- A. NUMA spanning
- B. live migration
- C. Dynamic Memory
- D. Smart Paging

Correct Answer: BC

Section: (none)

Explanation

Explanation/Reference:

Explanation:

References:

<https://blogs.technet.microsoft.com/virtualization/2015/10/13/windows-insider-preview-nested-virtualization/>

QUESTION 66

Note: This question is part of a series of questions that use the same scenario. For your convenience, the scenario is repeated in each question. Each question presents a different goal and answer choices, but the text of the scenario is exactly the same in each question in this series.

Your network contains an Active Directory domain named contoso.com. The functional level of the forest and the domain is Windows Server 2008 R2. All servers in the domain run Windows Server 2016 Standard. The domain contains 300 client computers that run either Windows 8.1 or Windows 10.

The domain contains nine servers that are configured as shown in the following table.

Name	Configuration	Planned changes
Server1	Domain controller	<i>None</i>
Server2	File server	Run Failover Clustering and Storage Spaces Direct
Server3	File server	Run Failover Clustering and Storage Spaces Direct
Server4	Hyper-V host	Run shielded virtual machines
Server5	Hyper-V host	<i>None</i>
Server6	Member server	Run Active Directory Federation Services (AD FS)
VM1	Virtual machine hosted on Server5	<i>None</i>
VM2	Virtual machine hosted on Server5	<i>None</i>
VM3	Virtual machine hosted on Server5	<i>None</i>

The virtual machines are configured as follows:

- Each virtual machine has one virtual network adapter.
- VM1 and VM2 are part of a Network Load Balancing (NLB) cluster.
- All of the servers on the network can communicate with all of the virtual machines.

You create a new NLB cluster that contains VM3.

You need to ensure that VM2 can remain in the original cluster and be added to the new cluster.

What should you do first?

- A. Add a new virtual network adapter to VM2.
- B. Install the Web Application Proxy server role on VM2 and VM3.
- C. Modify the default port rule.
- D. Change the cluster operation mode.

Correct Answer: A

Section: (none) Explanation

Explanation/Reference:

Explanation:



QUESTION 67

You have a Windows container host named Server1.

On Server1, you create a container named Container1.

You need to mount C:\ContainerFiles from Server1 to Container1.

What should you run?

- A. **dockerd --storage-opt dm.mountopt=ContainerFiles**
- B. **docker run -it -v c:\ContainerFiles Container1**
- C. **dockerd --storage-opt dm.datadev=/c/ContainerFiles**
- D. **docker run -it -vc:\ContainerFiles:c:\ContainerFiles Container1**

Correct Answer: D

Section: (none) Explanation

Explanation/Reference: Explanation:

QUESTION 68

You have a server named Server1 that runs Windows Server 2016. The Docker daemon runs on Server1. You need to ensure that members of a security group named Docker Administrators can administer Docker.



<https://vceplus.com/> What should you do?

- A. Run the **sc privs** ommand.
- B. Edit the Daemon.json file.
- C. Add **Docker Administrators** to the local Administrators group.
- D. Edit the Configuration.json file.
- E. Modify the Security settings of **Docker.exe**.
- F. Run the **Set-Service** cmdlet.



Correct Answer: B

Section: (none) **Explanation**

Explanation/Reference:

Explanation:

The preferred method for configuring the Docker Engine on Windows is using a configuration file. The configuration file can be found at 'C:\ProgramData\Docker\config\daemon.json'. If this file does not already exist, it can be created.

Note: The Docker Engine can also be configured by modifying the Docker service using the sc config command.

References: <https://docs.microsoft.com/en-us/virtualization/windowscontainers/manage-docker/configure-docker-daemon>

QUESTION 69

You have a Hyper-V host that runs Windows Server 2016.

You need to identify the amount of processor resources consumed by Hyper-V and virtual machines.

Which counter should you use from Performance Monitor?

- A. \Hyper-V Hypervisor\Logical Processors
- B. \Hyper-V Hypervisor Root Virtual Processor(_Total)\% Guest Run Time
- C. \Hyper-V Hypervisor Virtual Processor(_Total)\% Hypervisor Run Time
- D. \Hyper-V Hypervisor Virtual Processor(_Total)\% Total Run Time
- E. \Hyper-V Hypervisor Logical Processor(_Total)\% Total Run Time

Correct Answer: E

Section: (none) **Explanation**

Explanation/Reference:

QUESTION 70

You have a server named Server1 that runs Windows Server 2016.

The disks on Server1 are configured as shown in the following table.

Volume	Type	File System	Capacity
C:	Attached locally	NTFS	150 GB
D:	Attached locally	exFAT	100 GB
E:	Attached locally	NTFS	20 GB
F:	Attached locally	ReFS	1 TB
G:	iSCSI LUN	NTFS	2 TB

Windows Server 2016 is installed in C:\Windows.

On which two volumes can you enable data deduplication? Each correct answer presents a complete solution.

- A. C:
- B. D:
- C. E:
- D. F:
- E. G:

Correct Answer: CE

Section: (none)

Explanation

Explanation/Reference:

Explanation:

QUESTION 71

You have a Windows Server 2016 failover cluster named Cluster1 that contains three nodes named Server1, Server2, and Server3. Each node hosts several virtual machines. The virtual machines are configured to fail over to another node in Cluster1 if the hosting node fails.

You need to ensure that if the Cluster service fails on one of the nodes, the virtual machine of that node will fail over immediately.

Which setting should you configure?

- A. **FailureConditionLevel**
- B. **QuarantineDuration**
- C. **ResiliencyPeriod**
- D. **ResiliencyLevel**

Correct Answer: D

Section: (none)

Explanation

Explanation/Reference:

Explanation:

References: <https://blogs.msdn.microsoft.com/clustering/2015/06/03/virtual-machine-compute-resiliency-in-windows-server-2016/>

QUESTION 72

Note: This question is part of a series of questions that use the same or similar answer choices. An answer choice may be correct for more than one question in the series. Each question is independent of the other questions in this series. Information and details provided in a question apply only to that question.

You have a Hyper-V host named Server1 that runs Windows Server 2016. Server1 has a virtual machine that uses a virtual hard disk (VHD) named disk1.vhdx.

You receive the following warning message from Event Viewer: "One or more virtual hard disks have a physical sector size that is smaller than the physical sector size of the storage on which the virtual hard disk file is located." You need to resolve the problem that causes the warning message.

What should you run?



- A. the **Mount-VHD** cmdlet
- B. the **Diskpart** command
- C. the **Set-VHD** cmdlet
- D. the **Set-VM** cmdlet
- E. the **Set-VMHost** cmdlet
- F. the **Set-VMProcessor** cmdlet
- G. the **Install-WindowsFeature** cmdlet
- H. the **Optimize-VHD** cmdlet

Correct Answer: C

Section: (none)

Explanation

Explanation/Reference:

Explanation:

References: [https://technet.microsoft.com/en-us/library/hh848561\(v=wps.630\).aspx](https://technet.microsoft.com/en-us/library/hh848561(v=wps.630).aspx)

QUESTION 73

You deploy two servers that run Windows Server 2016.

You install the Failover Clustering feature on both servers.

You need to create a workgroup cluster.

What should you do?

- A. Configure both of the server to be in a workgroup named Workgroup. Configure the Cluster Service to log on as Network Service. Run the **New-Cluster** cmdlet and specify an administrative access point of **None**.
- B. Create matching local administrative accounts on both of the servers. Assign the same primary DNS suffix to both of the servers. Run the **New-Cluster** cmdlet and specify an administrative access point of **DNS**.
- C. Configure both of the server to be in a workgroup named Workgroup. Configure the Cluster Service to log on as Network Service. Run the **New-Cluster** cmdlet and specify an administrative access point of **DNS**.
- D. Create matching local administrative accounts on both of the servers. Assign the same primary DNS suffix to both of the servers. Run the **New-Cluster** cmdlet and specify an administrative access point of **None**

Correct Answer: B

Section: (none)

Explanation

Explanation/Reference: Explanation:

References: <https://rlevchenko.com/2015/09/07/workgroup-and-multi-domain-clusters-in-windows-server-2016/>

QUESTION 74

You have two Hyper-V hosts named Server1 and Server2 that run Windows Server 2016. The hosts are nodes in failover cluster.

You have a virtual machine named VM1. VM1 connects to a virtual switch named vSwitch1.

You discover that VM1 automatically live migrates when vSwitch temporarily disconnects.

You need to prevent VM1 from being live migrated when vSwitch1 temporarily disconnects.

What should you do?

- A. Run the **Set-VMNetworkAdapter** cmdlet and set StormLimit to **0**.
- B. From the network adapter setting of VM1, disable the Heartbeat integration service.
- C. Run the **Set-VMNetworkAdapter** cmdlet and set IsManagementOS to **False**.
- D. From the network adapter setting of VM1, disable the Protected network setting.

Correct Answer: D

Section: (none) **Explanation**

Explanation/Reference: Explanation:

QUESTION 75

You have a container host named Server1 that runs Windows Server 2016.

You need to start a Hyper-V container on Server1.

Which parameter should you use with the **docker run** command?

- A. **--isolation**
- B. **--expose**
- C. **--runtime**
- D. **--entrypoint**
- E. **--privileged**

Correct Answer: A

Section: (none) Explanation

Explanation/Reference: Explanation:

QUESTION 76

You have three Hyper-V hosts named Server1, Server2, and Server3 that run Windows Server 2016. The servers are nodes in a failover cluster.

The failover cluster contains two virtual machines named VM1 and VM2. The roles for VM1 and VM2 have the following configurations.



```
PS C:\> Get-ClusterGroup vm1,vm2 | fl *
```

```
AntiAffinityClassNames : {}
AutoFailbackType        : 0
ColdStartSetting        : 0
Cluster                 : Cluster1
DefaultOwner            : 1
Description              :
GroupType               : VirtualMachine
FailoverPeriod          : 6
FailoverThreshold       : 4294967295
FailbackWindowEnd       : 4294967295
FailbackWindowStart     : 4294967295
IsCoreGroup             : False
Name                    : vm1
OwnerNode               : Server1
PersistentState         : 1
PreferredSite           : {}
Priority                : 0
ReliliencyPeriod        : 429467295
State                   : Online
StatusInformation       : 0
Id                      : d02c87d1-8alc-4fffb-b87d-adf059416f25
```

```
AntiAffinityClassNames : {}
AutoFailbackType        : 0
ColdStartSetting        : 0
Cluster                 : Cluster1
DefaultOwner            : 1
Description              :
GroupType               : VirtualMachine
FailoverPeriod          : 6
FailoverThreshold       : 4294967295
FailbackWindowEnd       : 4294967295
FailbackWindowStart     : 4294967295
IsCoreGroup             : False
Name                    : vm2
OwnerNode               : Server1
PersistentState         : 1
PreferredSite           : {}
Priority                : 3000
ResiliencyPeriod        : 4294967295
State                   : Online
StatusInformation       : 0
Id                      : ab38e657-bfcf-463d-a88b-d4e99aff4ef1
```

All of the nodes in the failover cluster have sufficient resources to run VM1 and VM2 concurrently.

VM1 and VM2 fail over to Server3.

What is the state of each virtual machine after the failover?

- A. Both VM1 and VM2 are stopped.
- B. Both VM1 and VM2 are running.
- C. VM1 is stopped and VM2 is running.
- D. VM1 is stopped and VM2 is paused.

Correct Answer: C

Section: (none) Explanation

Explanation/Reference:

Explanation:

References: [https://msdn.microsoft.com/en-us/library/jj151956\(v=vs.85\).aspx](https://msdn.microsoft.com/en-us/library/jj151956(v=vs.85).aspx)

QUESTION 77

Your network contains an Active Directory domain named contoso.com. The domain contains two servers named Server1 and Server2 that run Windows Server 2016.

Each server has an operating system disk and four data disks. All of the disks are locally attached SATA disks. Each disk is a basic disk, is initialized as an MBR disk, and has a single NTFS volume.

You plan to implement Storage Spaces Direct by using the data disks on Server1 and Server2.

You need to prepare the data disks for the Storage Spaces Direct implementation.

What should you do?

- A. Format the volumes on the data disks as exFAT.
- B. Initialize the data disks as GPT disks and create an ReFS volume on each disk.
- C. Convert the data disks to dynamic disks.
- D. Delete the volumes from the data disks.

Correct Answer: D

Section: (none) Explanation

Explanation/Reference: Explanation:

QUESTION 78

Your network contains a new Active Directory domain named contoso.com.

You have a security policy that states that new servers should run Nano Server whenever possible.

Which server role can be deployed on a Nano Server?

- A. **Active Directory Certificate Services**
- B. **DHCP Server**
- C. **Remote Desktop Services**
- D. **DNSServer**

Correct Answer: D Section:

(none) Explanation

Explanation/Reference: Explanation:

QUESTION 79

You have an Active Directory domain named contoso.com.

The computers in contoso.com are installed by using Windows Deployment Services.

You have a server named Server1 that runs Windows Server 2016. Server1 is a member of contoso.com. Server1 has the Hyper-V role installed. Virtual machines on Server1 are connected to an external switch named Switch1.

You create a virtual machine named VM1 on Server1 by running the following cmdlets.

```
New-VM VM1
Add-VMHardDiskDrive -VMName VM1 -ControllerType IDE -Path c:\VMs\Disk1.vhd
Add-VMNetworkAdapter -VMName VM1
```

You need to ensure that you can install the operating system on VM1 by using Windows Deployment Services.

What should you do?

- A. Modify the **DefaultFlowMinimumBandwidthWeight** parameter of Switch1.
- B. Add a SCSI controller to VM1.

- C. Add a legacy network adapter to VM1.
- D. Modify the **SwitchType** parameter of Switch1.

Correct Answer: C

Section: (none) **Explanation**

Explanation/Reference: Explanation:

QUESTION 80

Note: This question is part of a series of questions that present the same scenario. Each question in the series contains a unique solution that might meet the stated goals. Some question sets might have more than one correct solution, while others might not have a correct solution.

After you answer a question in this section, you will NOT be able to return to it. As a result, these questions will not appear in the review screen.

Your network contains an Active Directory forest.

You install Windows Server 2016 on 10 virtual machines.

You need to deploy the Web Server (IIS) server role identically to the virtual machines.

Solution: From Windows System Image Manager, you create an answer file, you copy the file to C:\Sysprep on each virtual machine, and then you run the ApplyImage cmdlet.

Does this meet the goal?

- A. Yes
- B. No

Correct Answer: B **Section:** (none) **Explanation**

Explanation/Reference:

QUESTION 81

You have a server named Server1 that runs Windows Server 2016.

On Server1, you use the Basic template to create a new Data Collector Set named CollectorSet1.

You need to configure CollectorSet1 to generate performance alerts.

What should you do before you start CollectorSet1?

- A. Modify the performance counter data collector of CollectorSet1.
- B. Add a new data collector to CollectorSet1.
- C. Modify the configuration data collector of CollectorSet1.
- D. Add a new task to CollectorSet1.

Correct Answer: B

Section: (none)

Explanation

Explanation/Reference:

Explanation:

We need to add performance counter alert data collector to the set.

QUESTION 82

You plan to install a Nano Server on a physical server named Nano1. Nano1 will host several virtual machines that will use live migration.

Which package should you install on Nano1?

- A. **Microsoft-NanoServer-SecureStartup-Package**
- B. **Microsoft-NanoServer-ShieldedVM-Package**
- C. **Microsoft-NanoServer-Compute-Package**
- D. **Microsoft-NanoServer-FailoverCluster-Package**
- E. **Microsoft-NanoServer-Storage –Package**



Correct Answer: C

Section: (none) **Explanation**

Explanation/Reference:

QUESTION 83

You have a Hyper-V host named Server1 that runs Windows Server 2016. Server1 hosts a virtual machine named VM1 that runs Windows Server 2016.

You install the Hyper-V server role on VM1.

You need to ensure that the virtual machines hosted on VM1 can communicate with the virtual machines hosted on Server1.

What should you do?

- A. On Server1, run the **Set-VmNetworkAdapterIsolation** cmdlet and specify the **–MultiTenantStack Off** parameter.

- B. On VM1, run the **Set-VMNetworkAdapter** cmdlet and specify the **–MacAddressSpoofing Off** parameter.
- C. On VM1, run the **Set-VmNetworkAdapterIsolation** cmdlet and specify the **–MultiTenantStack On** parameter.
- D. On Server1, run the **Set-VMNetworkAdapter** cmdlet and specify the **–MacAddressSpoofing On** parameter.

Correct Answer: D

Section: (none) **Explanation**

Explanation/Reference:

QUESTION 84

You have two servers that run Windows Server 2016. The servers are configured as shown in the following table.

Server name	Workgroup	DNS suffix
Server1	Workgroup1	None
Server2	Workgroup2	Contoso.com

You need to create a failover cluster that contains both servers.

Which two commands should you run? Each correct answer presents part of the solution.

NOTE: Each correct selection is worth one point.

- A. `wmic ComputerSystem Set Workgroup= "Workgroup2"`
- B. `New-Cluster -Name Cluster1 -Node Server1, Server2 -AdministrativeAccessPoint DNS`
- C. `New-Cluster -Name Cluster1 -Node Server1, Server2 -AdministrativeAccessPoint ActiveDirectoryAndDns`
- D. `New-Cluster -Name Cluster1 -Node Server1, Server2 -AdministrativeAccessPoint None`
- E. `netdom computername Server1 /MakePrimary:server1.contoso.com`

Correct Answer: AB

Section: (none) **Explanation**

Explanation/Reference:

QUESTION 85

You have two servers named Server1 and Server 2 that run Windows Server 2016.

You plan to implement Storage Replica to replicate the contents of volumes on Server1 and Server2.

You need to ensure that the replication traffic between the servers is limited to a maximum of 100 Mbps. Which cmdlet should you run?

- A. **Set-NetworkController**
- B. **Set-NetUDPSetting**
- C. **Set-NetQosPolicy**
- D. **Set-NetTCPSetting**

Correct Answer: C

Section: (none) Explanation

Explanation/Reference:

References: [https://technet.microsoft.com/en-us/library/hh967471\(v=wps.630\).aspx](https://technet.microsoft.com/en-us/library/hh967471(v=wps.630).aspx)

QUESTION 86

You have a server named Server1 that runs Windows Server 2016. Server1 has the Containers feature installed.

You create a text file that contains the commands that will be used to automate the creation of new containers. You need to ensure that the commands in the text file are used when you create new containers. What should you name the file?

- A. Bootstrap.ini
- B. Config.ini
- C. Dockerfile
- D. Unattend.txt

Correct Answer: C

Section: (none) Explanation

Explanation/Reference:

<https://www.digitalocean.com/community/tutorials/docker-explained-using-dockerfiles-to-automate-building-of-images>

QUESTION 87

You have Hyper-V virtual machines that run 50 web servers, 10 Microsoft SQL Server servers, 10 files servers, and eight domain controllers.

You need to implement a backup strategy that meets the following requirements:

- Backs up all servers
- Centralizes backup management

- Performs application-level backups
- Provides the ability to perform bare metal recovery What should you use?

- A. Microsoft Azure VM Backup
- B. Microsoft Azure Backup Agent
- C. Windows Server Backup
- D. Microsoft Azure Backup Server

Correct Answer: D

Section: (none) **Explanation**

Explanation/Reference:

References: <https://docs.microsoft.com/en-us/azure/backup/backup-introduction-to-azure-backup>

QUESTION 88

You create a Storage Spaces Direct hyper-converged failover cluster. The cluster contains three nodes and a 1-TB Storage Spaces Direct volume.

The cluster will store virtual machines.

You plan to extend the volume by adding an additional 3 TB.

What is the minimum amount of extra disk capacity required to accommodate extending the volume?

- A. 3TB on the coordinator node
- B. 3 TB per node
- C. 4 TB per node
- D. 4 TB on the coordinator node

Correct Answer: B

Section: (none) **Explanation**

Explanation/Reference:

<https://docs.microsoft.com/en-us/windows-server/storage/storage-spaces/drive-symmetry-considerations>

QUESTION 89

You have a Hyper-V failover cluster that contains three nodes. Virtual machines are distributed evenly across the cluster nodes.

You need to ensure that if a node loses connectivity from the other nodes, the virtual machines on the node will be transitioned to one of the remaining nodes after one minute.

Which settings should you modify?

- A. **QuaranteneDuration** and **QuarantineThreshold**
- B. **SameSubnetDelay** and **CrossSubnetDelay**
- C. **QuorumArbitrationTimeMax** and **RequestReplyTimeout**
- D. **ResiliencyPeriod** and **ResiliencyLevel**

Correct Answer: D

Section: (none) **Explanation**

Explanation/Reference:

References: <https://blogs.msdn.microsoft.com/clustering/2015/06/03/virtual-machine-compute-resiliency-in-windows-server-2016/>

QUESTION 90

You have a Nano Server that runs Windows Server 2016. The Nano Server runs on a physical machine.

You have not installed any packages on the server.

You attach a new disk to the server, and you initialize the disk as a GPT disk.

You need to create a ReFS-formatted volume on the new disk.

What should you do first?

- A. From the physical server, log on to the Nano Server Recovery Console.
- B. Install the Microsoft NanoServer-Host-Package package.
- C. Run the **Format-Volume** cmdlet and specify the **-FileSystem** switch.
- D. Install the Microsoft NanoServer-Storage-Package package.

Correct Answer: D

Section: (none) **Explanation**

Explanation/Reference:

QUESTION 91

Note: This question is part of a series of questions that present the same scenario. Each question in the series contains a unique solution that might meet the stated goals. Some question sets might have more than one correct solution, while others might not have a correct solution.

After your answer a question in this section, you will NOT be able to return to it. As a result, these questions will not appear in the review screen.

You have a server named Server1 that runs Windows Server 2016.

You plan to use Windows Server Backup to back up all of the data on Server1.

You create a new volume on Server1.

You need to ensure that the new volume can be used as a backup target.

The backup target must support incremental backups.

Solution: You mount the volume to C:\Backup, and you format the volume by using NTFS.

Does this meet the goal?

- A. Yes
- B. No



Correct Answer: A

Section: (none) **Explanation**

Explanation/Reference:

QUESTION 92

You create a Nano server image named Nano1.vhdx by using the **New-NanoServerImage** cmdlet.

You attach Nano1.vhdx to a Generation 1 virtual machine named Nano1.

When you start Nano1, you get the following error message:

"Boot failure. Reboot and select proper Boot device or Insert Boot Media in selected Boot device"

You need to successfully start Nano server.

What should you do?

- A. Attach Nano1.vhdx to a SCSI controller.
- B. Recreate Nano1 as a Generation 2 virtual machine.
- C. Increase the memory of Nano1 to 512 Mb.
- D. Modify the BIOS settings of Nano1.

Correct Answer: B

Section: (none) Explanation

Explanation/Reference:

Explanation:

A Generation 1 VM cannot boot from a vhdx disk; only a Generation 2 VM can boot from a vhdx disk.

QUESTION 93

You have two servers named Server1 and Server2 that run Windows Server 2016.

You plan to implement Storage Replica to replicate the contents of volumes on Server1 to Server2.

You need to ensure that the replication traffic between the servers is limited to a maximum of 100 Mbps.

Which cmdlet should you run?

- A. **Set-NetUDPSetting**
- B. **New-StorageQosPolicy**
- C. **Set-SmbBandwidthLimit**
- D. **Set-NetTCPSetting**
- E. **New-NetTransportFilter**
- F. **Set-NetworkController**
- G. **Set-NetUDPSetting**

Correct Answer: C Section: (none) Explanation

Explanation/Reference:

Reference: <https://docs.microsoft.com/en-us/powershell/module/smbshare/set-smbbandwidthlimit?view=win10-ps> **QUESTION 94**

Note: This question is part of a series of questions that use the same or similar answer choices. An answer choice may be correct for more than one question in the series. Each question is independent of the other questions in this series. Information and details provided in a question apply only to that question.

You have two servers named Server1 and Server2 that run Windows Server 2016. Server1 and Server2 have the Hyper-V server role installed and are nodes in a failover cluster.

On Server1, an administrator creates a virtual machine named VM1.

You need to configure VM1 for high availability.

Which tool should you use?

- A. the **clussvc.exe** command
- B. the **cluster.exe** command
- C. the Computer Management snap-in
- D. the **configurehyperv.exe** command
- E. the Disk Management snap-in
- F. the Failover Cluster Manager snap-in
- G. the Hyper-V Manager snap-in
- H. the Server Manager app

Correct Answer: F

Section: (none)

Explanation

Explanation/Reference: References: <http://windowsitpro.com/hyper-v/make-vm-highly-available-windows-server-2012>

QUESTION 95

You have a server named Server1 that runs Windows Server 2016.

Server1 has four SCSI disks and a storage pool named Pool1 that contains three disks.

You create a virtual disk named Disk 1 that uses a mirrored layout.

You create a partition named Partition1 that uses all of the available space on Disk 1.

You need to extend Partition1.

What should you do first?

- A. From Windows PowerShell, run the **Resize-VirtualDisk** cmdlet.
- B. From Windows PowerShell, run the **Resize-VHD** cmdlet.
- C. From Disk Management, modify the properties of Partition1.

- D. From Windows PowerShell, run the **Resize-Partition** cmdlet.
- E. From Windows PowerShell, run the **Resize-StorageTier** cmdlet.
- F. From Disk Management, extend a volume.
- G. From Windows PowerShell, run the **Expand-IscsiVirtualDisk** cmdlet.

Correct Answer: A

Section: (none)

Explanation

Explanation/Reference:

QUESTION 96

You have a Hyper-V host named Server1 that runs Windows Server 2016.

The host has two virtual machines (VMs) named VM1 and VM2.

On the Hyper-V host, you create two virtual disks named Disk1 and Disk2.

You plan to create a test environment for Storage Spaces Direct.

You need to configure the VMs to connect to the virtual disks.

What should you use?

- A. An iSCSI target
- B. A virtual SCSI controller
- C. A virtual fibre channel adapter
- D. A virtual IDE controller

Correct Answer: B

Section: (none) **Explanation**

Explanation/Reference:

References: <https://blogs.msdn.microsoft.com/clustering/2015/05/27/testing-storage-spaces-direct-using-windows-server-2016-virtual-machines/>

QUESTION 97

Your network contains an Active Directory domain.

The domain contains two Hyper-V hosts.

You plan to perform live migrations between the hosts.

You need to ensure that the live migration traffic is authenticated by using Kerberos.

What should you do first?

- A. From Server Manager, install the Host Guardian Service server role on a domain controller.
- B. From Active Directory Users and Computers, add the computer accounts for both servers to the Cryptographic Operators group.
- C. From Active Directory Users and Computers, modify the Delegation properties of the computer accounts for both servers.
- D. From Server Manager, install the Host Guardian Service server role on both servers.

Correct Answer: C Section:

(none) Explanation

Explanation/Reference:

Explanation:

If you have decided to use Kerberos to authenticate live migration traffic, configure constrained delegation before you proceed to the rest of the steps.

QUESTION 98

Note: This question is part of a series of questions that present the same scenario. Each question in the series contains a unique solution that might meet the stated goals. Some question sets might have more than one correct solution, while others might not have a correct solution.

After your answer a question in this section, you will NOT be able to return to it.

As a result, these questions will not appear in the review screen.

Your network contains an Active Directory forest named contoso.com.

You need to identify which server is the schema master.

Solution: From Windows PowerShell, you run **Get-ADDomainController -Discover -Service 2**.

Does this meet the goal?

- A. Yes
- B. No

Correct Answer: B

Section: (none) Explanation

Explanation/Reference:

References: <https://blogs.technet.microsoft.com/mempson/2007/11/08/how-to-find-out-who-has-your-fsrm-roles/>

QUESTION 99

You have Nano Server image named Disk1.vhdx.

You mount Disk1.vhdx.

You need to add a folder that contains several files to the image.

Which tool or cmdlet you should use?

- A. **Copy-Item**
- B. **Add-WindowsImage**
- C. **Add-WindowsPackage**
- D. **Edit-NanoServerImage**
- E. Dism
- F. Nano Server Image Builder

Correct Answer: A

Section: (none)

Explanation

Explanation/Reference:



QUESTION 100

Your network contains an Active Directory domain. The domain contains a new file server named Server1 that runs a Server Core installation of Windows Server 2016.

Server1 has an ReFS-formatted volume D: and NTFS-formatted volume E:. The volumes do not contain any data.

You install the Data Deduplication role service on Server1.

You need to implement Data Deduplication for volumes on D: and E:.

Solution: From Windows PowerShell, you run **Format-Volume D: -FileSystem EXFat** and **Enable-DeDupVolume -Volume D:,E:.**

Does this meet the goal?

- A. Yes

B. No

Correct Answer: B

Section: (none) **Explanation**

Explanation/Reference:

QUESTION 101

Note: This question is part of a series of questions that present the same scenario. Each question in the series contains a unique solution that might meet the stated goals. Some question sets might have more than one correct solution, while others might not have a correct solution.

After your answer a question in this section, you will NOT be able to return to it. As a result, these questions will not appear in the review screen.

Your network contains an Active Directory forest named contoso.com.

You need to identify which server is the schema master.

Solution: From a command prompt, you run **netdom query fsmo**.

Does this meet the goal?

A. Yes

B. No

Correct Answer: A **Section:** (none) **Explanation**

Explanation/Reference:

References: <https://blogs.technet.microsoft.com/mempson/2007/11/08/how-to-find-out-who-has-your-fsmo-roles/>

QUESTION 102

You have two servers named Server1 and Server2.

A firewall exists between Server1 and Server2.

Both servers run Windows Server Update Services (WSUS).

Server1 downloads updates from Microsoft update.

Server2 must synchronize updates from Server1.

Which port should to open on the firewall?

- A. 80
- B. 443
- C. 3389
- D. 8530

Correct Answer: D

Section: (none) **Explanation**

Explanation/Reference:

QUESTION 103

You have a server named Server1 that runs Windows Server 2016.

You need to configure Server1 as a Web Application Proxy.

Which server role or role service should you install on Server1?

- A. Web Server (IIS)
- B. Network Policy and Access ServicesC. Direct Access and VPN (RAS)
- D. Active Directory Federation Services
- E. Remote Access

Correct Answer: E

Section: (none) **Explanation**

Explanation/Reference:

QUESTION 104

Your network contains an Active Directory domain. The domain contains a new file server named Server1 that runs a Server Core installation of Windows Server 2016.

Server1 has an ReFS-formatted volume D: and NTFS-formatted volume E:.

The volumes do not contain any data.

You install the Data Deduplication role service on Server1.

You need to implement Data Deduplication for volumes on D: and E:.

Solution: From Windows PowerShell, you run **Enable-DeDupVolume-Volume D:,E:**.

Does this meet the goal?

- A. Yes
- B. No

Correct Answer: B

Section: (none)

Explanation

Explanation/Reference:

QUESTION 105

Note: This question is part of a series of questions that present the same scenario. Each question in the series contains a unique solution that might meet the stated goals. Some question sets might have more than one correct solution, while others might not have a correct solution.

After you answer a question in this section, you will NOT be able to return to it. As a result, these questions will not appear in the review screen.

Your network contains an Active Directory forest named contoso.com.

You need to identify which server is the schema master.

Solution: You open Active Directory Users and Computers, right-click contoso.com in the console tree, and then click Operations Master.

Does this meet the goal?

- A. Yes
- B. No

Correct Answer: B

Section: (none) Explanation

Explanation/Reference:

Explanation:

This solution only shows the domain FSMO roles, not the forest FSMO roles.

References:

<https://blogs.technet.microsoft.com/mempson/2007/11/08/how-to-find-out-who-has-your-fsmo-roles/>

QUESTION 106

You have two Hyper-V hosts named Server1 and Server2 that run Windows Server 2016.

Server1 and Server2 are connected to the same network.

On Server1 and Server2, you create an external network switch named Switch1.

You have the virtual machines shown in the following table.

Virtual machine name	IP address	Subnet mask	Hyper-V host
VM1	192.168.1.16	255.255.255.0	Server1
VM2	192.168.1.32	255.255.255.0	Server2
VM3	192.168.1.48	255.255.255.0	Server2

All three virtual machines are connected to Switch1.

You need to prevent applications in VM3 from being able to capture network traffic from VM1 or VM2. The solution must ensure that VM1 retains network connectivity.

What should you do?

- A. On Server2, configure the VLAN ID setting of Switch1.
- B. On Server2, create an external switch and connect VM3 to the switch.
- C. Modify the subnet mask of VM1 and VM2.
- D. Configure network virtualization for VM1 and VM2.

Correct Answer: D

Section: (none) Explanation

Explanation/Reference:

QUESTION 107

Note: This question is part of a series of questions that present the same scenario. Each question in the series contains a unique solution that might meet the stated goals. Some question sets might have more than one correct solution, while others might not have a correct solution.

After you answer a question in this section, you will NOT be able to return to it. As a result, these questions will not appear in the review screen.

You have a server named Server1 that runs Windows Server 2016.

You plan to use Windows Server Backup to back up all of the data on Server1.

You create a new volume on Server1.

You need to ensure that the new volume can be used as a backup target.

The backup target must support incremental backups.

Solution: You mount the volume to C:\Backup, and you format the volume by using exFAT.

Does this meet the goal?

A. Yes

B. No

Correct Answer: B

Section: (none) Explanation

Explanation/Reference:



QUESTION 108

Note: This question is part of a series of questions that present the same scenario. Each question in the series contains a unique solution that might meet the stated goals. Some question sets might have more than one correct solution, while others might not have a correct solution.

After you answer a question in this section, you will NOT be able to return to it. As a result, these questions will not appear in the review screen.

You have a server named Server1 that runs Windows Server 2016.

You plan to use Windows Server Backup to back up all of the data on Server1.

You create a new volume on Server1.

You need to ensure that the new volume can be used as a backup target.

The backup target must support incremental backups.

Solution: You mount the volume to C:\Backup, and you format the volume by using FAT32.

Does this meet the goal?

A. Yes

B. No

Correct Answer: B Section:
(none) Explanation

Explanation/Reference:

QUESTION 109

In this section, you will see one or more sets of questions with the same scenario and problem. Each question presents a unique solution to the problem, and you determine whether the solution meets the stated goals. More than one solution might solve the problem. It is also possible that none of the solutions solve the problem.

After you answer a question in this section, you will NOT be able to return to it. As a result, these questions will not appear in the review screen.

Your network contains an Active Directory domain. The domain contains a new file server named Server1 that runs a Server Core installation of Windows Server 2016.

Server1 has an ReFS-formatted volume D: and NTFS-formatted volume E: The volumes do not contain any data.

You install the Data Deduplication role service on Server1.

You need to implement Data Deduplication for volumes on D: and E:.

Solution: From Windows PowerShell, you run **Format-Volume E: -Filesystem ReFS** and **Enable-DeDupVolume -Volume D:,E:**.

Does this meet the goal?

- A. Yes
- B. No

Correct Answer: B
Section: (none) Explanation

Explanation/Reference:

QUESTION 110

Note: This question is part of a series of questions that present the same scenario. Each question in the series contains a unique solution that might meet the stated goals. Some question sets might have more than one correct solution, while others might not have a correct solution.

After you answer a question in this section, you will NOT be able to return to it. As a result, these questions will not appear in the review screen.

You have an Exchange Server 2016 organization.

Some users access the mailbox on their mobile device by using Exchange ActiveSync.

You need to prevent the users from synchronizing more than one month of email or calendar data to their device.

Solution: You deploy an Allow/Block/Quarantine policy.

Does this meet the goal?

- A. Yes
- B. No

Correct Answer: B

Section: (none) Explanation

Explanation/Reference:

QUESTION 111

Note: This question is part of a series of questions that present the same scenario. Each question in the series contains a unique solution that might meet the stated goals. Some question sets might have more than one correct solution, while others might not have a correct solution.

After you answer a question in this section, you will NOT be able to return to it. As a result, these questions will not appear in the review screen.

You network contains an Active Directory domain named contoso.com.

You need to create a Nano Server image named Nano1 that will be used as a virtualization host. The Windows Server 2016 source files are located in drive D.

Solution: You run the following cmdlet.

```
New-NanoServerImage -Edition Datacenter -DeploymentType Host  
-Defender EnableEMS -MediaPath 'D:\' -TargetPath  
C:\Nano1\Nano1.wim -ComputerName Nano1 -DomainName Contoso.com
```

Does this meet the goal?

- A. Yes
- B. No

Correct Answer: B

Section: (none)

Explanation

Explanation/Reference:

QUESTION 112

Note: This question is part of a series of questions that present the same scenario. Each question in the series contains a unique solution that might meet the stated goals. Some question sets might have more than one correct solution, while others might not have a correct solution.

After you answer a question in this section, you will NOT be able to return to it. As a result, these questions will not appear in the review screen.

You network contains an Active Directory forest named contoso.com. The forest contains a child domain named eu.contoso.com.

You plan to implement live migration between two Hyper-V hosts that run Windows Server 2016. The hosts are configured as shown in the following table.

Host name	Configuration
Host1	<ul style="list-style-type: none">• Is a member of the contoso.com domain• Uses an Intel Xeon processor released in 2012• Has an external virtual switch named Switch1• Hosts a virtual machine named VM1 that connects to Switch1
Host2	<ul style="list-style-type: none">• Is a member of the eu.contoso.com domain• Uses an Intel Xeon processor released in 2016• Has an external virtual switch named Switch1

You need to ensure that you can perform a live migration of VM1 from Host1 to Host2.

Solution: On Host1 and Host2, you create a private switch named Priv1, and then you connect VM1 to Priv1.

Does meet the goal?

A. Yes

B. No

Correct Answer: B Section:
(none) Explanation

Explanation/Reference:

QUESTION 113

Note: This question is part of a series of questions that present the same scenario. Each question in the series contains a unique solution that might meet the stated goals. Some question sets might have more than one correct solution, while others might not have a correct solution.

After you answer a question in this section, you will NOT be able to return to it. As a result, these questions will not appear in the review screen.

You network contains an Active Directory forest named contoso.com. The forest contains a child domain named eu.contoso.com.

You plan to implement live migration between two Hyper-V hosts that run Windows Server 2016. The hosts are configured as shown in the following table.

Host name	Configuration
Host1	<ul style="list-style-type: none">• Is a member of the contoso.com domain• Uses an Intel Xeon processor released in 2012• Has an external virtual switch named Switch1• Hosts a virtual machine named VM1 that connects to Switch1
Host2	<ul style="list-style-type: none">• Is a member of the eu.contoso.com domain• Uses an Intel Xeon processor released in 2016• Has an external virtual switch named Switch1

You need to ensure that you can perform a live migration of VM1 from Host1 to Host2.

Solution: You move Host2 to the contoso.com domain.

Does meet the goal?

- A. Yes
- B. No

Correct Answer: B
Section: (none) Explanation

Explanation/Reference:

QUESTION 114

Note: This question is part of a series of questions that present the same scenario. Each question in the series contains a unique solution that might meet the stated goals. Some question sets might have more than one correct solution, while others might not have a correct solution.

After you answer a question in this section, you will NOT be able to return to it. As a result, these questions will not appear in the review screen.

You have a server named Server1 that runs Windows Server 2016.

You plan to use Windows Server Backup to back up all of the data on Server1.

You create a new volume on Server1.

You need to ensure that the new volume can be used as a backup target.

The backup target must support incremental backups.

Solution: You assign a drive letter to the volume, and you format the volume by using exFAT.

Does this meet the goal?

- A. Yes
- B. No

Correct Answer: B

Section: (none) Explanation

Explanation/Reference:

QUESTION 115

Your network contains an Active Directory domain named contoso.com. The domain contains a Hyper-V host named Server1 that runs Windows Server 2016.

Server1 hosts four virtual machines that are members of the domain. The virtual machines are configured as shown in the following table.

Virtual machine name	Operating system	Virtual machine generation	Type of VHD file
VM1	Windows 10	2	VHD
VM2	Windows Server 2016	2	VHD
VM3	Windows Server 2012 R2	2	VHDx
VM4	Windows Server 2016	1	VHDx

Which virtual machines can you manage by using PowerShell Direct?

- A. VM1, VM2, and VM3
- B. VM1, VM2, and VM4
- C. only VM2
- D. only VM4

Correct Answer: B

Section: (none) **Explanation**

Explanation/Reference: Explanation:

To use PowerShell Direct, the host operating system must run at least Windows 10 or Windows Server 2016.

References: <https://docs.microsoft.com/en-us/windows-server/virtualization/hyper-v/manage/manage-windows-virtual-machines-with-powershell-direct#whatsrequired-to-use-powershell-direct>

QUESTION 116

You have two Hyper-V hosts named Server1 and Server2 that run Windows Server 2016. The hosts are nodes in failover cluster.

A highly available virtual machine named VM1 is running on Server1.

You need to move VM1 to Server2 while minimizing downtime.

What should you do?

- A. From Windows PowerShell, run **Move-ClusterGroup**
- B. From Hyper-V Manager, use the **Move** action.
- C. From Failover Cluster Manager, use the **Move Virtual Machine Storage** option.
- D. From Windows PowerShell, run **Move-VM**.

Correct Answer: A

Section: (none) **Explanation**

Explanation/Reference:

QUESTION 117

You have two Hyper-V hosts named Server1 and Server2 that run Windows Server 2016. Server1 hosts a virtual machine named VM1 that is in a Running state.

On Server1, you export VM1 and then you import VM1 on Server2.

What is the current state of VM1 on Server2?

- A. Paused
- B. Off
- C. Saved
- D. Running

Correct Answer: C

Section: (none) **Explanation**

Explanation/Reference:

References: <https://blog.workinghardinit.work/2016/06/16/live-export-a-running-virtual-machine-or-a-checkpoint/>

QUESTION 118

You have a file server named Server1 that runs Windows Server 2016.

Object access auditing is configured on Server1.

You need to filter the Security event log to show all log entries that relate to a user named User1.

What should you do?

- A. Right-click the **Security** log, and then click **Filter Current Log...** On the Filter tab, type a value in the User box.
- B. Right-click the **Security** log, and then click **Filter Current Log...** On the Filter tab, select a value from the Event sources box.
- C. Right-click the **Security** log, and then click **Create Custom View...** On the Filter tab, type a value in the User box.
- D. Right-click the **Security** log, and then click **Filter Current Log...** On the XML tab, modify the QueryList entry and set an EventData tag.

Correct Answer: A

Section: (none)

Explanation

Explanation/Reference:

Explanation:

Right clicking the event log name and selecting the "Filter Current Log" will display various options for filtering the event log.

These options are:

- Time logged: There are pre-canned filters for the last hour, last 12 hours, last 24 hours, last week and last 30 days. Additionally you can specify a custom range.
- Event level: Choose to show only events that match the specified level critical, warning etc.
- Event Source: Select to only see events from MSI Installer, DHCP client etc.
- EventID: Specify the event ID.
- Keywords: Specify filters based on Audit Failure, Audit success
- User
- Computer(s)

References: <https://blogs.technet.microsoft.com/rmilne/2014/08/06/quick-tip-event-viewer-filtering/>

QUESTION 119

You have a Hyper-V host named Server1 that runs Windows Server 2016. Server1 has an external virtual switch named Switch1. Server1 hosts a virtual machine named VM1 that runs Windows Server 2016. VM1 has one network adapter. The network adapter connects to Switch1.

You need to limit the maximum network bandwidth available to VM1 to 100 Mbps. The solution must limit the bandwidth for VM1 only.

Which cmdlet should you run?

- A. **Set-NetAdapter**
- B. **Set-VMNetworkAdapter**
- C. **Set-VM**
- D. **Set-NetAdapterVmq**
- E. **Set-NetworkSwitchPortProperty**

Correct Answer: B **Section:**
(none) Explanation

Explanation/Reference:

The Set-VMNetworkAdapterVlan cmdlet configures virtual LAN settings for the traffic through a virtual network adapter.

Incorrect Answers:

A: The Set-NetAdapter cmdlet sets the basic properties of a network adapter such as virtual LAN (VLAN) identifier (ID) and MAC address. C:

The Set-VM cmdlet configures a virtual machine.

D: The Set-NetAdapterVmq cmdlet sets the virtual machine queue (VMQ) properties of a network adapter. VMQ is a scaling networking technology for Hyper-V switch that improves network throughput by distributing processing of network traffic for multiple virtual machines among multiple processors.

References:

<http://www.itprotoday.com/virtualization/restrict-bandwidth-virtual-machine>

<https://docs.microsoft.com/en-us/powershell/module/hyper-v/set-vmnetworkadaptervlan?view=win10-ps> <https://docs.microsoft.com/en-us/powershell/module/netadapter/set-netadapter?view=win10-ps> <https://docs.microsoft.com/en-us/powershell/module/hyper-v/set-vm?view=win10-ps> <https://docs.microsoft.com/en-us/powershell/module/netadapter/set-netadaptervmq?view=win10-ps>

QUESTION 120

You have a Windows Server 2016 failover cluster that contains two servers named Server1 and Server2.

The Cluster Service on Server1 fails.

You need to identify the cause of the failure.

What should you do?

- A. From Windows PowerShell, run the **Get-ClusterNode** cmdlet.
- B. From Event Viewer, review the Application event log.
- C. From Windows PowerShell, run the **Get-ClusterLog** cmdlet.
- D. From Event Viewer, review the System event log.

Correct Answer: C Section:

(none) Explanation

Explanation/Reference:

References: <https://blogs.msdn.microsoft.com/clustering/2015/05/14/windows-server-2016-failover-cluster-troubleshooting-enhancements-cluster-log/>

QUESTION 121

You have a server named Server1 that is an iSCSI target. You have a server named Server2 that runs Windows Server 2016. Server2 has an iSCSI disk named Disk1 that is hosted on Server1. Disk1 contains one volume that is assigned a drive letter of E.

You need to increase the size of Disk1.

What should you do?

- A. Run the **Resize-IscsiVirtualDisk** cmdlet and specify the *-ComputerName Server2* parameter.
- B. Run the **Resize-IscsiVirtualDisk** cmdlet and specify the *-ComputerName Server1* parameter.
- C. Run the **Resize-Partition** cmdlet and specify the *-ComputerName Server1* parameter.
- D. Run the **Resize- Partition** cmdlet and specify the *-ComputerName Server2* parameter.

Correct Answer: B

Section: (none)

Explanation

Explanation/Reference:

The Resize-IscsiVirtualDisk cmdlet resizes a virtual disk either by expanding or compacting an existing virtual disk.

The -ComputerName parameter specifies the computer name, or IP address, of the remote computer, if this cmdlet is run on a remote computer. If you do not specify a value for this parameter, the cmdlet uses the local computer.

Incorrect Answers:

A: Resize-IscsiVirtualDisk would be run on Server2. Server2 has an iSCSI disk named Disk1 that is hosted on Server1. Therefore, Server1 would be specified in the -ComputerName parameter.

C, D: The Resize-Partition cmdlet resizes a partition and the underlying file system. It does not take a -ComputerName parameter.

References:

<https://docs.microsoft.com/en-us/powershell/module/iscsitarget/resize-iscsvirtualdisk?view=win10-ps> <https://docs.microsoft.com/en-us/powershell/module/storage/resize-partition?view=win10-ps>

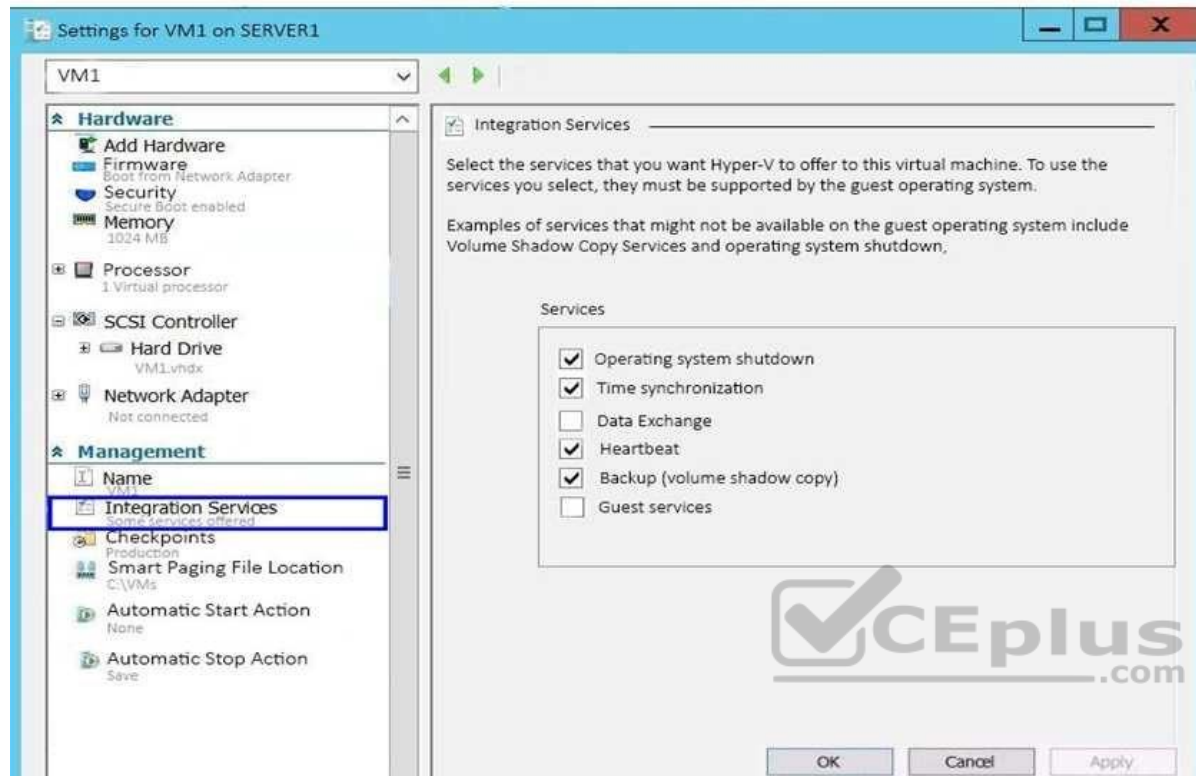
QUESTION 122

Note: This question is part of a series of questions that present the same scenario. Each question in the series contains a unique solution that might meet the stated goals. Some question sets might have more than one correct solution, while others might not have a correct solution.

After you answer a question in this section, you will NOT be able to return to it. As a result, these questions will not appear in the review screen.

You have a Hyper-V host named Server1 that hosts a virtual machine named VM1. Server1 and VM1 run Windows Server 2016.

The settings for VM1 are configured as shown in the exhibit. (Click the **Exhibit** button.)



You need to ensure that you can use the Copy-VMFile cmdlet on Server1 to copy files from VM1.

Solution: You enable the Guest services integration service for VM1.

Does this meet the goal?

A. Yes

B. No

Correct Answer: A

Section: (none)

Explanation

Explanation/Reference:

Explanation:

The guest service allows the Hyper-V administrator to copy files to a running virtual machine without using a network connection. Beforehand the only way to copy files to the virtual machine was for both the virtual machine and the host be connected to same network and then either use file services to copy file or to create a remote desktop session to the virtual machine and copy files via RDS session.

To copy a file to a virtual machine you need to use the Copy-VMFile PowerShell cmdlet. References:

[https://technet.microsoft.com/en-us/library/dn798297\(v=ws.11\).aspx](https://technet.microsoft.com/en-us/library/dn798297(v=ws.11).aspx)

QUESTION 123

You have a server named Server1 that runs Windows Server 2016.

Server1 has four SCSI disks and a storage pool named Pool1 that contains three disks.

You create a virtual disk named Disk 1 that uses a mirrored layout.

You create a partition named Partition1 that uses all of the available space on Disk 1.

You need to extend Partition1.

What should you do first?

- A. From Windows PowerShell, run the `Resize-Partition` cmdlet.
- B. From Disk Management, modify the properties of Partition1.
- C. From the Storage Pools page in Server Manager, extend a virtual disk.
- D. From Disk Management, extend a volume.
- E. From Windows PowerShell, run the `Resize-VHD` cmdlet.
- F. From Windows PowerShell, run the `Resize-StorageTier` cmdlet.
- G. From Windows PowerShell, run the `Expand-IscsiVirtualDisk` cmdlet.

Correct Answer: C

Section: (none)

Explanation

Explanation/Reference:

References: <https://charbelnemnom.com/2015/03/step-by-step-how-to-extend-and-resize-a-two-way-mirrored-storage-tiered-space-storagespaces-ws2012r2/>

QUESTION 124

You have a Hyper-V host named Server1 that runs Windows Server 2016. Server1 hosts a virtual machine named VM1.

You need to provide VM1 with direct access to a graphics processing unit (GPU) on Server1.

What should you do first?

- A. On VM1, install the Quality Windows Audio Video Experience (qWave) feature.
- B. Dismount the display adapter on Server1.
- C. In the settings of VM1, add a RemoteFX 3D Video Adapter.
- D. Disable the display adapter device on Server1.

Correct Answer: D

Section: (none)

Explanation

Explanation/Reference: Explanation:

Before the physical device is allowed to be passed through to the VM, the device must be disabled on the host system. The physical device must be accessible/available exclusively to the VM only.

References:

Introduction to Windows Server 2016 Hyper-V DiscreteDevice Assignment, page 5 <https://lenovopress.com/lp0088.pdf>

QUESTION 125

Note: This question is part of a series of questions that use the same scenario. For your convenience, the scenario is repeated in each question. Each question presents a different goal and answer choices, but the text of the scenario is exactly the same in each question in this series.

A company named Contoso, Ltd. has several servers that run Windows Server 2016. Contoso has a Hyper-V environment that uses failover clustering and Windows Server Update Services (WSUS). The environment contains several Windows containers and several virtual machines.

The WSUS deployment contains one upstream server that is located on the company's perimeter network and several downstream servers located on the internal network. A firewall separates the upstream server from the downstream servers.

You plan to deploy a human resources application to a new server named HRServer5. HRServer5 contains a FAT32-formatted data volume.

The CIO of Contoso identifies the following requirements for the company's IT department:

- Deploy a failover cluster to two new virtual machines.
- Store all application databases by using Encrypted File System (EFS).
- Ensure that each Windows container has a dedicated IP address assigned by a DHCP server.
- Produce a report that lists the processor time used by all of the processes on a server named Server1 for five hours.
- Encrypt all communication between the internal network and the perimeter network, including all WSUS communications.
- Automatically load balance the virtual machines hosted in the Hyper-V cluster when processor utilization exceeds 70 percent.

Which networking mode should you configure for the Windows containers?

- A. 12tunnel
- B. 12bridge
- C. network address translation (NAT)
- D. transparent

Correct Answer: D

Section: (none)

Explanation

Explanation/Reference:

Explanation:

From the scenario:

- Ensure that each Windows container has a dedicated IP address assigned by a DHCP server.

Transparent mode supports static or dynamic (using external DHCP server) IP allocation and assignment from IP addresses within container host's network prefix.

Incorrect Answers:

A: L2Tunnel mode is reserved for private and public cloud deployments when containers are running on a tenant VM.

B: L2Bridge mode only supports static IP assignment.

C: NAT is the default network mode and attaches containers to a private IP subnet. This mode supports dynamic IP allocation and assignment but by Host Networking Service (HNS) from internal NAT subnet prefix.

References:

<https://docs.microsoft.com/en-us/virtualization/windowscontainers/container-networking/advanced> <https://techcommunity.microsoft.com/t5/Containers/Windows-Container-Networking/ba-p/382298>

QUESTION 126

Your network contains an Active Directory domain named contoso.com. All servers run Windows Server 2016.

As a domain administrator, you log on to a server named Server2 and open Windows PowerShell.

You need to establish an interactive PowerShell session to a server named Server1.

Which command should you run?

- A. **New-PSSession -Name Server1**
- B. **Enter-PSSession -ComputerName Server1**
- C. **Enable-PSRemoting Server1**
- D. **Set-PSSessionConfiguration -AccessMode Remote -Name Server1**

Correct Answer: B

Section: (none) **Explanation**

Explanation/Reference:

QUESTION 127

You have two servers named Server1 and Server2 that run Windows Server 2016.

Server1 and Server2 are nodes in a Network Load Balancing (NLB) cluster. The Web Server server role is installed on each node.

Users report that when they submit web form data, sometimes the data is not stored, and they must fill in the form again.

You need to resolve the issue. The solution must ensure that connections are load balanced between Server1 and Server2.

What should you do in the NLB cluster?

- A. Modify the existing port rules.
- B. Modify the Cluster operation mode.
- C. Add the Microsoft Load Balancing/Failover Provider service to all of the network adapters.
- D. Add an IP address.

Correct Answer: B

Section: (none)

Explanation

Explanation/Reference:

References:

<https://geekdudes.wordpress.com/2017/01/17/network-load-balancing-cluster-in-windows-server-2016/>

QUESTION 128

You have a Windows Server 2016 failover cluster named Cluster1 that contains four nodes named Server1, Server2, Server3, and Server4. Cluster1 hosts 40 virtual machines that are distributed evenly across the nodes.

Server1 and Server2 are located in a data center in Madrid. Server3 and Server4 are located in a data center in Barcelona.

You need to ensure that when you pause a node, the clustered virtual machines will always attempt to move automatically to another node in the same data center before attempting to move to a node in the other data center.

Which two actions should you perform? Each correct answer presents part of the solution.

- A. Run the **New-ClusterFaultDomain** cmdlet.

- B. Run the **Add-ClusterGroup** cmdlet.
- C. Configure a file share witness for each data center.
- D. Run the **Set-ClusterFaultDomain** cmdlet.
- E. Create an Active Directory site for each data center.
- F. Change the quorum configuration of the cluster to **Node Majority**.

Correct Answer: BC

Section: (none) **Explanation**

Explanation/Reference:

QUESTION 129

You have a Hyper-V host named Server1 that runs Windows Server 2016. Server1 hosts a virtual machine named VM1. VM1 has the following settings:

- Nested virtualization is enabled. ▪
- Dynamic Memory is disabled.

VM1 is currently running.

You need to adjust the amount of memory assigned to VM1 as quickly as possible.

What should you do first?

- A. Change the memory buffer setting of VM1.
- B. Pause VM1.
- C. Shut down VM1.
- D. Enable Dynamic Memory for VM1.

Correct Answer: C

Section: (none) **Explanation**

Explanation/Reference:

References: <https://docs.microsoft.com/en-us/virtualization/hyper-v-on-windows/user-guide/nested-virtualization>

QUESTION 130

Note: This question is part of a series of questions that present the same scenario. Each question in the series contains a unique solution that might meet the stated goals. Some question sets might have more than one correct solution, while others might not have a correct solution.

After you answer a question in this section, you will NOT be able to return to it. As a result, these questions will not appear in the review screen.

You have a server named Server1 that runs Windows Server 2016. Server1 has the Hyper-V server role and Docker installed.

You pull the Microsoft/iis Docker image to Server1.

You need to view the available space in the Microsoft/iis Docker image.

Solution: You run the command `docker run -d Microsoft/iis`.

You open Disk Management on Server1.

Does this meet the goal?

- A. Yes
- B. No

Correct Answer: B

Section: (none) Explanation

Explanation/Reference:

QUESTION 131

Note: This question is part of a series of questions that present the same scenario. Each question in the series contains a unique solution that might meet the stated goals. Some question sets might have more than one correct solution, while others might not have a correct solution.

After you answer a question in this section, you will NOT be able to return to it. As a result, these questions will not appear in the review screen.

You have two servers that run Windows Server 2016.

You have a server named Server1 that runs Windows Server 2016. Server1 has the Hyper-V server role and Docker installed.

You pull the Microsoft/iis Docker image to Server1.

You need to view the available space in the Microsoft/iis Docker image.

Solution: You run the following commands.

```
docker run --name container1 --isolation hyperv -d Microsoft/iis
docker exec -i container1 cmd.exe dir
```

Does this meet the goal?

- A. Yes
- B. No

Correct Answer: B Section:
(none) Explanation

Explanation/Reference:

QUESTION 132

Note: This question is part of a series of questions that present the same scenario. Each question in the series contains a unique solution that might meet the stated goals. Some question sets might have more than one correct solution, while others might not have a correct solution.

After you answer a question in this section, you will NOT be able to return to it. As a result, these questions will not appear in the review screen.

You have two servers that run Windows Server 2016.

You have a server named Server1 that runs Windows Server 2016. Server1 has the Hyper-V server role and Docker installed.

You pull the Microsoft/iis Docker image to Server1.

You need to view the available space in the Microsoft/iis Docker image.

Solution: You run the following commands.

```
docker run -name container1 -d Microsoft/iis
docker exec -i container1 cmd.exe dir
```

Does this meet the goal?

- A. Yes
- B. No

Correct Answer: A
Section: (none)
Explanation

Explanation/Reference:

References: https://docs.docker.com/engine/reference/commandline/container_exec/#options <https://www.windows-commandline.com/get-file-size-directory-size-command/>

QUESTION 133

You have four servers named Server1, Server2, Server3, and Server4 that run Windows Server 2016. Server1 and Server2 have the Hyper-V server role installed. Server1 hosts a virtual machine named VM1. Server2 hosts a virtual machine named VM2. Server3 hosts the disks and the configurations of both virtual machines on an SMB share named VMShare. All servers are joined to an Active Directory domain.

You use Server4 to manage Hyper-V operations on Server1 and Server2.

From Server4, you attempt to perform a live migration of VM1 and VM2, but you receive the following error message: “No credentials are available in the security package”.

You need to ensure that you can perform the live migration of VM1 and VM2 between Server1 and Server2 while signed in to Server4.

What should you do?

- A. From Active Directory Users and Computers, modify the properties of Server4. Configure the Delegation settings to trust the computer for delegation of cifs.
- B. From Windows PowerShell on Server3, run the Remove-SMBMultiChannelConstraint cmdlet, and then assign Server4 Full Control permissions to VMShare.
- C. From Active Directory Users and Computers, modify the properties of Server1 and Server2. Configure the Delegation settings to trust the computers for delegation of the Microsoft Virtual System Migration Service.
- D. From Active Directory Users and Computers, modify the properties of your user account. Modify the Account is sensitive and cannot be delegated setting.

Correct Answer: C

Section: (none) Explanation

Explanation/Reference:

References: <https://docs.microsoft.com/en-us/windows-server/virtualization/hyper-v/deploy/set-up-hosts-for-live-migration-without-failover-clustering>

QUESTION 134

You have a server that runs Windows Server 2016 Standard.

You create a new three-way mirror storage space. You format the storage space by using ReFS.

Which two features can you use on the new storage space? Each correct answer presents a complete solution.

- A. Shrink volume
- B. long file names
- C. Encrypting File System (EFS)
- D. disk quotas
- E. file and folder permissions

Correct Answer: BE

Section: (none) **Explanation**

Explanation/Reference:

References:

<https://docs.microsoft.com/en-us/windows-server/storage/refs/refs-overview>

QUESTION 135

Note: This question is part of a series of questions that present the same scenario. Each question in the series contains a unique solution that might meet the stated goals. Some question sets might have more than one correct solution, while others might not have a correct solution.

After you answer a question in this section, you will NOT be able to return to it. As a result, these questions will not appear in the review screen.

You network contains an Active Directory forest named contoso.com. The forest contains a child domain named eu.contoso.com.

You plan to implement live migration between two Hyper-V hosts that run Windows Server 2016. The hosts are configured as shown in the following table.

Host name	Configuration
Host1	<ul style="list-style-type: none">• Is a member of the contoso.com domain• Uses an Intel Xeon processor released in 2012• Has an external virtual switch named Switch1• Hosts a virtual machine named VM1 that connects to Switch1
Host2	<ul style="list-style-type: none">• Is a member of the eu.contoso.com domain• Uses an Intel Xeon processor released in 2016• Has an external virtual switch named Switch1

You need to ensure that you can perform a live migration of VM1 from Host1 to Host2.

Solution: You replace the processor in Host1 with a processor that is identical to the processor in Host2.

Does meet the goal?

A. Yes

B. No

Correct Answer: B

Section: (none) **Explanation**

Explanation/Reference:

QUESTION 136

Note: This question is part of a series of questions that present the same scenario. Each question in the series contains a unique solution that might meet the stated goals. Some question sets might have more than one correct solution, while others might not have a correct solution.

After you answer a question in this section, you will NOT be able to return to it. As a result, these questions will not appear in the review screen.

You have a server named Server1 that runs Windows Server 2016. Server1 has the Hyper-V server role and Docker installed.

You pull the Microsoft/iis Docker image to Server1.

You need to view the available space in the Microsoft/iis Docker image.

Solution: You run the command `docker run --isolation hyperv -d microsoft/iis`.

You open Disk Management on Server1.

Does this meet the goal?

- A. Yes
- B. No



Correct Answer: B

Section: (none)

Explanation

Explanation/Reference:

QUESTION 137

You have a Nano Server named Nano1.

Nano1 is configured to perform real-time protection scans by using Windows Defender.

You need to ensure that all of the files located in D:\App1\Data are excluded from the real-time protection scans.

What should you do?

- A. Run the `Add-MpPreference` cmdlet and specify the `-ExclusionPath` parameter
- B. Run the `Import-ShieldingDataFile` cmdlet and specify the `-ShieldingDataFilePath` parameter

- C. Run the `Protect-ShieldingDataFile` cmdlet and specify the `-ShieldingDataFilePath` parameter
- D. Run the `Get-ChildItem` cmdlet and specify the `-Exclude` parameter
- E. From the properties of the D:\App1\Data folder, enable the Hidden attribute.
- F. From the properties of the D:\App1\Data folder, modify the permissions
- G. From a command prompt, run the `attrib` command and specify the `-s` parameter.

Correct Answer: A

Section: (none)

Explanation

Explanation/Reference: References:

<https://docs.microsoft.com/en-us/windows/security/threat-protection/windows-defender-antivirus/configure-extension-file-exclusions-windows-defender-antivirus>

QUESTION 138

You have a server named Server1 that runs Windows Server 2016 and has the File and Storage Services server role installed.

Server1 has an ReFS-formatted volume named Volume1 that is 512 GB. Volume1 is mounted as C:\App1\temp.

You need to ensure that you can enable deduplication of Volume1.

What should you do?

- A. Format Volume1.
- B. Unmount Volume1.
- C. Install a Windows feature.
- D. Initialize the physical disk that contains Volume1.

Correct Answer: C

Section: (none)

Explanation

Explanation/Reference:

References:

<https://docs.microsoft.com/en-us/windows-server/storage/data-deduplication/install-enable> <https://docs.microsoft.com/en-us/windows-server/storage/refs/refs-overview>

QUESTION 139

You plan to deploy three servers that will run Windows Server 2016. The servers will be configured as shown in the following table.

Server name	Hard disk configuration
Server1	Disk1: 250-GB, NTFS-formatted Disk2: 4-TB, ReFS-formatted
Server2	Disk1: 1-TB, NTFS-formatted Disk2: 2-TB, NTFS-formatted Disk3: 500-GB, exFAT-formatted
Server3	Disk1: 8-TB, NTFS-formatted Disk2: 2-TB, ReFS-formatted Disk3: 1-TB, ReFS-formatted

You need to ensure that you can use all of the available space on each disk.

What is one of the disks that you must initialize as a GPT disk?

- A. Disk3 on Server3
- B. Disk1 on Server2
- C. Disk2 on Server2
- D. Disk1 on Server3
- E. Disk2 on Server3
- F. Disk1 on Server1
- G. Disk3 on Server2

Correct Answer: D

Section: (none) **Explanation**

Explanation/Reference:

Explanation:

GPT is more robust and allows for volumes bigger than 2 TB. The two disks that are larger than 2 TB are Disk2 on Server1 and Disk1 on Server3.

References: <https://docs.microsoft.com/en-us/windows-server/storage/disk-management/initialize-new-disks#about-partition-styles-GPT-and-MBR>

QUESTION 140

You have two Hyper-V hosts named Server1 and Server2 that run Windows Server 2012 R2. The servers are nodes in a failover cluster named Cluster1.

You perform a rolling upgrade of the cluster nodes to Windows Server 2016.

You need to ensure that you can implement the Virtual Machine Load Balancing feature.

Which cmdlet should you use?

- A. **Update-ClusterNetWorkNameResource**
- B. **Set-ClusterGroupSet**
- C. **Set-CauClusterRole**
- D. **Update-ClusterFunctionalLevel**

Correct Answer: D

Section: (none) **Explanation**

Explanation/Reference:

References:

<https://docs.microsoft.com/en-us/windows-server/failover-clustering/cluster-operating-system-rolling-upgrade#cluster-os-rolling-upgrade-process>

QUESTION 141

You have a Windows Server 2016 failover cluster named Cluster1 that contains four nodes named Server1, Server2, Server3, and Server4.

You need to configure Cluster1 to use directly attached storage to store several virtual machines.

You run the **Enable-ClusterStorageSpacesDirect** cmdlet on Server1.

What should you do next?

- A. Run the **Enable-ClusterStorageSpacesDirect** cmdlet on the other three nodes.
- B. Create volumes.
- C. Create a storage pool.
- D. Run the **Add-ClusterResource** cmdlet on all of the nodes.

Correct Answer: B

Section: (none)

Explanation

Explanation/Reference:

References:

<https://medium.com/beyond-the-helpdesk/setting-up-and-configuring-storage-spaces-direct-in-windows-server-2016-4d2be85a8f7d>

QUESTION 142

You have a Hyper-V server named Server1 that runs Windows Server 2012 R2.

Server1 hosts a virtual machine named VM1 that runs Windows Server 2016. VM1 connects to an external virtual switch named Switch1.

You can ping VM1 from Server1.

You upgrade Server1 to Windows Server 2016.

You need to ensure that you can connect to VM1 by using PowerShell Direct.

What should you do?

- A. Configure the firewall rules on Server1.
- B. Enable the Hyper-V extensible switch extensions on Server1.
- C. Upgrade the configuration version of VM1.
- D. Configure the firewall rules on VM1.

Correct Answer: C

Section: (none)

Explanation



Explanation/Reference:

References:

<https://docs.microsoft.com/en-us/windows-server/virtualization/hyper-v/deploy/upgrade-virtual-machine-version-in-hyper-v-on-windows-or-windows-server>

QUESTION 143

You have a server named Server1 that runs Windows Server 2016. Windows Defender is enabled on Server1.

Server1 runs an application named App1 that stores various types of files in Microsoft OneDrive for Business, MicrosoftOneDrive, and Microsoft SharePoint Online. App1 also interacts with several local services.

You need to prevent Windows Defender from scanning any files opened by App1.

What should you do on Server1?

- A. From the Windows Defender settings, configure a file exclusion.
- B. Run the `New-ClPolicy` cmdlet.
- C. Modify the real-time protection settings in Windows Defender.
- D. From the Windows Defender settings, configure a process exclusion.

E. Run the `Set-ExecutionPolicy cmdlet`.

F. Run the `New-AppLockerPolicy cmdlet`.

Correct Answer: D

Section: (none)

Explanation

Explanation/Reference:

References:

<https://docs.microsoft.com/en-us/windows/security/threat-protection/windows-defender-antivirus/configure-process-opened-file-exclusions-windows-defenderantivirus> <https://docs.microsoft.com/en-us/windows/security/threat-protection/windows-defender-antivirus/configure-server-exclusions-windows-defender-antivirus>

QUESTION 144

You have a server named Server1 that runs Windows Server 2016. Server1 has two network adapters that support single root I/O virtualization (SR-IOV). The network adapters are from two different vendors.

You plan to install the Hyper-V server role on Server1, and then to create a virtual machine named VM1 that runs Windows Server 2016. VM1 will use SR-IOV.

You need to ensure that VM1 can use both network adapters for load balancing and failover.

What should you do?

- A. On Server1, create two virtual switches without embedded teaming. On VM1, create one NIC team.
- B. On Server1, create one virtual switch without embedded teaming. On VM1, create one NIC team.
- C. On Server1, create one NIC team. On VM1, create one NIC team.
- D. On Server1, create one virtual switch that has embedded teaming. On VM1, create two NIC teams.

Correct Answer: A

Section: (none)

Explanation

Explanation/Reference:

QUESTION 145

You have a server named Server1 that runs Windows Server 2016.

Server1 is a Docker host.

You are creating a Dockerfile to build a Docker image.

You need to add a file named File1.txt from Server1 to C:\Folder1\ in the Docker image.

What are two possible commands that you can use to achieve the goal? Each correct answer presents a complete solution.

NOTE: Each correct selection is worth one point.

- A. COPY file1.txt c:/folder1/
- B. copy-item file1.txt folder1\file1.txt
- C. ROBOCOPY file1.txt \folder1\
- D. XCOPY file1.txt c:\folder1\
- E. ADD file1.txt /folder1/

Correct Answer: AE

Section: (none) **Explanation**

Explanation/Reference: References: <https://docs.microsoft.com/en-us/virtualization/windowscontainers/manage-docker/manage-windows-dockerfile>



QUESTION 146

You plan to deploy three servers that will run Windows Server 2016. The servers will be configured as shown in the following table.

Server name	Hard disk configuration
Server1	Disk1: 250-GB, NTFS-formatted Disk2: 4-TB, ReFS-formatted
Server2	Disk1: 1-TB, NTFS-formatted Disk2: 2-TB, NTFS-formatted Disk3: 500-GB, exFAT-formatted
Server3	Disk1: 8-TB, NTFS-formatted Disk2: 2-TB, ReFS-formatted Disk3: 1-TB, ReFS-formatted

You need to ensure that you can use all of the available space on each disk.

What is one of the disks that you must initialize as a GPT disk?

- A. Disk2 on Server1
- B. Disk1 on Server2
- C. Disk1 on Server1
- D. Disk3 on Server3
- E. Disk2 on Server2
- F. Disk2 on Server3

Correct Answer: A

Section: (none) **Explanation**

Explanation/Reference:

Explanation:

GPT is more robust and allows for volumes bigger than 2 TB. The two disks that are larger than 2 TB are Disk2 on Server1 and Disk1 on Server3.

References:

<https://docs.microsoft.com/en-us/windows-server/storage/disk-management/initialize-new-disks#about-partition-styles-GPT-and-MBR>

QUESTION 147

Your network contains an Active Directory domain named adatum.com. The domain contains a Network Load Balancing (NLB) cluster as shown in the exhibit. (Click the Exhibit button.)

Network Load Balancing Manager

File
Cluster
Host
Options
Help

Network Load Balancing Cluste

NLB.Adatum.com (192.168.10.50)

SERVER1 (Ethernet 2)

SERVER2 (Ethernet 2)

SERVER3 (Ethernet 2)

Host configuration information for hosts in cluster NLB.Adatum.com

Host (interface)	Status	Dedicated IP ...	Dedicated IP s...	Host	Initial host st...
SERVER1 (Ethernet 2)	Suspended	192.168.10.1	255.255.255.0	1	started
SERVER2 (Ethernet 2)	Converged	192.168.10.2	255.255.255.0	2	started
SERVER3 (Ethernet 2)	Stopped	192.168.10.3	255.255.255.0	3	started

Log En...	Date	Time	Cluster	Host	Description
0040	7/8/2017	2:07:53 AM	192.168.10...	SERVER2	End configuration change
00401	7/8/2017	2:07:53 AM	192.168.10...	SERVER1	Update 6 succeeded [double click for details...]
0042	7/8/2017	2:07:53 AM	192.168.10...	SERVER1	End configuration change

Which hosts will respond to requests sent to nlb.adatum.com?

- A. Server1 only

- B. Server2 only
- C. Server1 and Server2 only
- D. Server1, Server2, and Server3

Correct Answer: B

Section: (none)

Explanation

Explanation/Reference:

QUESTION 148

You have a server named Server1 that runs Windows Server 2016.

The server has an application named App1. App1 writes entries to the Application event log when errors are encountered. The events have IDs of either 111 or 112.

You need to restart the service whenever either of these events is logged.

What should you do?

- A. From Windows PowerShell, run the `Get-SMSEvent` cmdlet and pipe the output to the `Start-NetEventSession` cmdlet.
- B. From Event Viewer, create a subscription that has a filter for the event IDs.
- C. From Event Viewer, use the Create Basic Task Wizard for each event ID.
- D. From Windows PowerShell, run the `Get-Event` cmdlet and pipe the output to the `Start-NetEventSession` cmdlet.
- E. From Windows PowerShell, run the `Write-EventLog` cmdlet and specify the `-EventID` parameter and the `-Source` parameter.
- F. From Event Viewer, create a custom view that has a filter for the event IDs.
- G. From Performance Monitor, add an Event Trace Session data collector that uses the Microsoft-Windows-Eventlog provider.

Correct Answer: C

Section: (none)

Explanation

Explanation/Reference:

QUESTION 149

You have a Network Load Balancing (NLB) cluster that contains two nodes named Server1 and Server2. The nodes run Windows Server 2016.

The NLB cluster has the following configuration.

```

ClusterName      :
IPAddress        : 172.16.4.1
Name             :
ClusterIPAddress : 172.16.4.1
ClusterNetworkMask : 255.255.0.0
ClusterMacAddress : 02-bf-ac-10-04-01
OperationMode    : UNICAST
BdaReverseHash   : False
BdaTeamActive    : False
BdaTeamId        :
BdaTeamMaster    : False

```

IPAddress	State	Start	End	Protocol	Mode	Affinity	Timeout
All	Enabled	0	65535	Both	Multiple	Single	0

You deploy the Web Server (IIS) server role identically to both servers.

You need to configure NLB to load balance requests between the web servers. HTTP requests must be stateless. HTTPS requests must be stateful.

What should you do? Each correct answer presents part of the solution.

- A. Modify the Cluster operation mode.
- B. Suspend the cluster.
- C. Drainstop the cluster.
- D. Add a new port rule.
- E. Edit the existing port rule.

Correct Answer: CD

Section: (none) **Explanation**

Explanation/Reference:

References:

<https://www.ntweekly.com/2017/09/04/failover-nlb-cluster-host-member/> <https://docs.microsoft.com/en-us/windows-server/networking/technologies/network-load-balancing>

QUESTION 150

You have a server named Server1 that runs Windows Server 2016. Windows Defender is enabled on Server1.

Server1 runs an application named App1 that stores various types of files in Microsoft OneDrive for Business, MicrosoftOneDrive, and Microsoft SharePoint Online. App1 also interacts with several local services.

You need to prevent Windows Defender from scanning any files opened by App1.

What should you do on Server1?

- A. Run the `Set-ExecutionPolicy` cmdlet.
- B. Run the `New-AppLockerPolicy` cmdlet.
- C. Modify the real-time protection settings in Windows Defender.
- D. Run the `Add-MpPreference` cmdlet.
- E. Modify the cloud-based protection settings in Windows Defender.
- F. Run the `New-CiPolicy` cmdlet.

Correct Answer: D

Section: (none) Explanation

Explanation/Reference: References: <https://docs.microsoft.com/en-us/windows/security/threat-protection/windows-defender-antivirus/configure-process-opened-file-exclusions-windows-defenderantivirus> <https://docs.microsoft.com/en-us/windows/security/threat-protection/windows-defender-antivirus/configure-server-exclusions-windows-defender-antivirus>

QUESTION 151

You have a server named Server1. Server1 contains a drive named D that has Data Deduplication enabled.

You delete 1 TB of files from drive D.

You need to ensure that you can use all the disk space that was used by the deleted files as soon as possible.

What should you run?

- A. the `Update-DedupStatus` cmdlet
- B. the **ThroughputOptimization** task from the Task Scheduler
- C. the **WeeklyGarbageCollection** task from the Task Scheduler
- D. the `Set-DedupVolume` cmdlet

Correct Answer: C

Section: (none) Explanation

Explanation/Reference:

References:

<https://social.technet.microsoft.com/wiki/contents/articles/13848.dedupe-ensure-deduplication-garbage-collection-jobs-are-enabled.aspx>

<https://docs.microsoft.com/en-us/windows-server/storage/data-deduplication/advanced-settings>

QUESTION 152

You have a server named Server1 that runs Windows Server 2016.

You need to install the DNS Server role on Server1.

What should you run?

- A. the `Add-WindowsPackage` cmdlet
- B. the `dnscmd.exe` command
- C. the `optionalfeatures.exe` command
- D. the `Add-WindowsFeature` cmdlet
- E. the `Install-Package` cmdlet
- F. the `dns.exe` command



Correct Answer: D

Section: (none) Explanation

Explanation/Reference:

Explanation:

The `Add-WindowsFeature` cmdlet installs one or more roles, role services, or features on either the local or a specified remote server that is running Windows Server 2008 R2. This cmdlet has been replaced by the `Install-WindowsFeature` cmdlet in Windows Server 2012 R2.

References:

<https://docs.microsoft.com/en-us/powershell/module/servermanager/install-windowsfeature?view=winserver2012r2-ps>

QUESTION 153

You have a Windows Server 2016 Server Core named Server1.

Server1 is configured to perform real-time protection scans by using Windows Defender.

You need to ensure that all of the files located in `D:\App1\Data` are excluded from the real-time protection scans.

What should you do?

- A. Run the `Set-MpPreference` cmdlet and specify the `-ExclusionPath` parameter
- B. Run the `Get-ChildItem` cmdlet and specify the `-Exclude` parameter
- C. From the properties of the `D:\App1\Data` folder, modify the permissions
- D. From a command prompt, run the `attrib` command and specify the `-s` parameter
- E. From the properties `D:\App1\Data` folder, enable the Hidden attribute.
- F. Run the `Import-ShieldingDataFile` cmdlet and specify the `-ShieldingDataFilePath` parameter
- G. Run the `Protect-ShieldingDataFile` cmdlet and specify the `-ShieldingDataFilePath` parameter

Correct Answer: A

Section: (none) **Explanation**

Explanation/Reference:

Explanation:

The `Set-MpPreference` cmdlet configures preferences for Windows Defender scans and updates.

References:

<https://docs.microsoft.com/en-us/powershell/module/defender/set-mppreference?view=win10-ps>

QUESTION 154

You have a Hyper-V host named `Server1` that runs Windows Server 2016. `Server1` hosts a virtual machine named `VM1` that runs Windows Server 2012. `VM1` has the following configuration.


```
C:\>Get-VM VM1 | fl Version, HardDrives, DynamicMemoryEnabled, Generation, MemoryStartup
```

```
Version           : 5.0
HardDrives        : {Hard drive on IDE controller number 0 at location 0}
DynamicMemoryEnabled : False
Generation         : 1
MemoryStartup      : 536870912
```

```
C:\>Get-VMIntegrationService VM1
```

VMName	Name	Enabled	PrimaryStatusDescription	SecondaryStatusDescription
VM1	Guest Service Interface	False	OK	
VM1	Heartbeat	False	OK	
VM1	Key-Value Pair Exchange	False	OK	
VM1	Shutdown	False	OK	
VM1	Time Synchronization	False	OK	
VM1	VSS	False	OK	



You discover that when you back up Server1, VM1 temporarily pauses.

You need to ensure that you can back up Server1 without causing downtime on VM1.

What should you do?

- A. Increase the memory on VM1
- B. Connect the hard disk drive of VM1 to an SCSI controller
- C. Update the virtual machine version of VM1
- D. Upgrade VM1 to Windows Server 2016
- E. Enable the VSS integration service on VM1

Correct Answer: E Section: (none) Explanation

Explanation/Reference:

References: <https://www.starwindsoftware.com/blog/hyper-v-backup-challenges-windows-server-2016-needs-to-address>

QUESTION 155

You have a server named Server1 that runs Windows Server 2016. The Docker daemon runs on Server1. You need to configure the Docker daemon to accept connections only on TCP port 64500.

What should you do?

- A. Modify the routing table on Server1
- B. Run the `Set-Service Windows PowerShell` cmdlet
- C. Edit the `configuration.json` file
- D. Run the `sc config` command
- E. Run the `Set-NetFirewallPortFilter` cmdlet
- F. Run the `New-NetFirewallRule` cmdlet
- G. Run the `sc control` command

Correct Answer: D

Section: (none) Explanation

Explanation/Reference:

Explanation:

The preferred method for configuring the Docker Engine on Windows is using a configuration file. The configuration file can be found at 'C:\ProgramData\Docker\config\daemon.json'. If this file does not already exist, it can be created.

The Docker Engine can also be configured by modifying the Docker service using the `sc config` command.

References:

<https://docs.microsoft.com/en-us/virtualization/windowscontainers/manage-docker/configure-docker-daemon>

QUESTION 156

You have a server named Server1. Server1 contains a drive named D that has Data Deduplication enabled.

You delete 1 TB of files from drive D.

You need to ensure that you can use all the disk space that was used by the deleted files as soon as possible.

What should you run?

- A. the **BackgroundOptimization** task from the Task Scheduler
- B. the **WeeklyScrubbing** task from the Task Scheduler
- C. the `Start-DedupJob` cmdlet and the `-Type GarbageCollection` parameter
- D. the `Set-DedupVolume` cmdlet

E. the `Start-DedupJob` cmdlet and the `-Type Optimization` parameter

Correct Answer: C

Section: (none) **Explanation**

Explanation/Reference:

References: <https://docs.microsoft.com/en-us/powershell/module/deduplication/start-dedupjob?view=win10-ps>

QUESTION 157

Your network contains an on-premises Active Directory domain. The domain contains 25 servers that run Windows Server 2016.

You have a hybrid deployment of Microsoft Azure Active Directory (Azure AD).

You plan to manage the servers by using Windows Admin Center.

You install Windows Admin Center on one of the servers.

You need to ensure that connections to Windows Admin Center are authenticated by using multi-factor authentication (MFA).

What should you do first?

- A. Install an extension to Windows Admin Center
- B. Configure Allowed groups
- C. Register the gateway to Azure AD
- D. Import a certificate by using Windows Admin Center

Correct Answer: C

Section: (none) **Explanation**

Explanation/Reference:

References:

<https://docs.microsoft.com/en-us/windows-server/manage/windows-admin-center/configure/user-access-control>

QUESTION 158

You have a server named Server1 that runs Windows Server 2016. Server1 contains a volume named D. Volume D contains the folders shown in the following table.

Name	Size	Description
Folder1	200 GB	Contains Microsoft Word documents and PowerPoint presentations that are encrypted by using EFS
Folder2	200 GB	Contains several VHDX files that contain installations of Windows 10
Folder3	200 GB	Contains uncompressed BMP images
Folder4	200 GB	Application source files for different versions of Microsoft Office

You enable Data Deduplication.

Which folder will benefit the least from Data Deduplication?

- A. Folder2
- B. Folder3
- C. Folder1
- D. Folder4



Correct Answer: C

Section: (none) Explanation

Explanation/Reference:

References:

<https://docs.microsoft.com/en-us/windows-server/storage/data-deduplication/overview>

QUESTION 159

You have a server named Server1. Server1 contains a volume that has Data Deduplication enabled.

You need to reduce the amount of memory allocated to the Data Deduplication process.

Which cmdlet should you run?

- A. **Enable-DedupVolume**
- B. **Update-Dedupstatus**
- C. **Set-DedupVolume**
- D. **Set-DedupSchedule**

Correct Answer: D

Section: (none) **Explanation**

Explanation/Reference:

References: <https://docs.microsoft.com/en-us/windows-server/storage/data-deduplication/advanced-settings> <https://docs.microsoft.com/en-us/powershell/module/deduplication/set-dedupschedule?view=win10-ps>

QUESTION 160

You need to capture a Windows Server 2016 Datacenter image to a WIM file. The solution must exclude the C:\Windows.old folder.

Which two actions should you perform? Each correct answer presents part of the solution.

NOTE: Each correct selection is worth one point.

- A. Run Windows Configuration Designer and select the **Advanced provisioning** option
- B. Create a text file that contains an [ExclusionException] section
- C. Create a text file that contains an [ExclusionList] section
- D. Run dism.exe and specify the /ConfigFile parameter
- E. Run dism.exe and specify the /Scratchdir parameter
- F. Create a text file that contains an [CompressionExclusionList] section

Correct Answer: CD

Section: (none) **Explanation**

Explanation/Reference: References:

<https://docs.microsoft.com/en-us/windows-hardware/manufacture/desktop/dism-image-management-command-line-options-s14> <https://docs.microsoft.com/en-us/windows-hardware/manufacture/desktop/dism-configuration-list-and-wimscriptini-files-winnext>

QUESTION 161

You have a five-node failover cluster named Cluster1. All the nodes run Windows Server 2012 R2. All the nodes run on physical hardware.

You need to upgrade Cluster1 to Windows Server 2016. The solution must minimize administrative effort and costs.

What should you do first?

- A. Add a Windows Server 2016 node to Cluster1
- B. Create a new Windows Server 2016 failover cluster
- C. Enable Cluster-Aware updating (CAU) on Cluster1
- D. Drain and evict a node from Cluster1

Correct Answer: D

Section: (none) **Explanation**

Explanation/Reference: References: <https://docs.microsoft.com/en-us/windows-server/failover-clustering/upgrade-option-same-hardware>

QUESTION 162

You are building a failover cluster named Cluster1.

You plan to add the following cluster roles to Cluster1:

- DHCP Server named DHCP1
- iSCSI Target Server named ISCSI1
- Scale-Out File Server named SOFS1

Which roles require a Cluster Shared Volumes (CSV) disk?

- A. ISCSI1 only
- B. SOFS1 and ISCSI1 only
- C. DHCP1, SOFS1, and ISCSI1
- D. SOFS1 only



Correct Answer: D **Section:** (none) **Explanation**

Explanation/Reference:

References:

[https://docs.microsoft.com/en-us/previous-versions/windows/it-pro/windows-server-2012-r2-and-2012/hh831349\(v=ws.11\)](https://docs.microsoft.com/en-us/previous-versions/windows/it-pro/windows-server-2012-r2-and-2012/hh831349(v=ws.11))

QUESTION 163

You have a Hyper-V host named Server1 that hosts a virtual machine named VM1. VM1 runs Windows Server 2016 and is configured as shown in the following table.

Setting	Value
Generation	1
Configuration version	8.0
Dynamic Memory	Enabled
Integration Services	Disabled

You need to ensure that you can manually increase and decrease the amount of memory allocated to VM1 while VM1 is running.

What should you do?

- A. Disable Dynamic Memory
- B. Enable Integration Services
- C. Upgrade the configuration version

Correct Answer: A

Section: (none) **Explanation**

Explanation/Reference:

References: <https://www.altaro.com/hyper-v/hot-add-remove-memory-hyper-v-2016/>

QUESTION 164

You have a file server named FS1 that contains 10 shared folders. The folders contain user data.

A new security requirement states that all data transmissions involving the user data must be encrypted.

You need to configure FS1 to meet the security requirement.

Which command should you run?

- A. `Set-SmbServerConfiguration -EncryptData $true`
- B. `Set-SmbServerConfiguration -EnableSMB1Protocol $false`
- C. `Set-SmbClientConfiguration -EnableInsecureGuestLogons $false`
- D. `Set-SmbClientConfiguration -EnableSecuritySignature $true`

Correct Answer: A

Section: (none) **Explanation**

Explanation/Reference: References: <https://docs.microsoft.com/en-us/powershell/module/smbshare/set-smbserverconfiguration?view=win10-ps>

QUESTION 165

You have three servers named Server1, Server2, and Server3. The servers are members of a Network Load Balancing (NLB) cluster named Cluster1.

You need to configure the handling priority for the traffic on port 443.

What should you do in Network Load Balancing Manager?

- A. From the cluster properties, configure the host priority
- B. From the host properties, configure the Filtering mode of a port rule
- C. From the host properties, configure the host priority
- D. From the cluster properties, configure the Filtering mode of a port rule

Correct Answer: A

Section: (none) **Explanation**

Explanation/Reference: References:

<https://support.microsoft.com/en-za/help/323437/how-to-configure-network-load-balancing-parameters-in-windows-server-2>

QUESTION 166

You have a server named Server1 that runs Windows Server 2016.

You install the Server for NFS server role on Server1.

You need to ensure that you can create NFS shares on Server1 by using the **NFS Share – Advanced** share profile.

Which additional server role should you install?

- A. File Server VSS Agent Service B. Work Folders
- C. File Server Resource Manager
- D. Print and Document Services



Correct Answer: C

Section: (none) **Explanation**

Explanation/Reference:

Explanation:

Enable the File Server Resource Manager role if you want use some advance features of NFS

References: <https://www.vkernel.ro/blog/installing-and-configuring-nfs-on-windows-server-2012r2>

QUESTION 167

Your network contains an Active Directory domain. The domain contains two servers named Server1 and Server2.

On Server1, you create a PowerShell Desired State Configuration (DSC) script stored in a file named Config.ps1.

You need to compile Config.ps1 so that the script can be applied to Server2 by using PowerShell DSC.

What should you run?

- A. mofcomp.exe
- B. Start-DscConfiguration
- C. Publish-DscConfiguration
- D. config.ps1

Correct Answer: A

Section: (none) **Explanation**

Explanation/Reference:

References: <https://docs.microsoft.com/en-us/windows/win32/wmisdk/compiling-mof-files>

<https://docs.microsoft.com/en-us/powershell/dsc/configurations/configurations>

QUESTION 168

Note: This question is part of a series of questions that present the same scenario. Each question in the series contains a unique solution that might meet the stated goals. Some question sets might have more than one correct solution, while others might not have a correct solution.

After your answer a question in this section, you will NOT be able to return to it. As a result, these questions will not appear in the review screen.

Your network contains an Active Directory domain. The domain contains a server named Server1 that runs Windows Server 2016.

Server1 contains a virtual disk named Disk1.vhdx in a folder named D:\Folder1. Disk1.vhdx contains an installation of Windows Server 2016.

You need to add the Telnet Client feature to Disk1.vhdx while the installation is offline.

Solution: At a command prompt, you run `dism.exe` to mount an image, enable a feature, and then dismount the image.

Does this meet the goal?

- A. Yes
- B. No

Correct Answer: A

Section: (none) **Explanation**

Explanation/Reference:

References:

<https://docs.microsoft.com/en-us/windows-hardware/manufacture/desktop/enable-or-disable-windows-features-using-dism>

QUESTION 169

Note: This question is part of a series of questions that present the same scenario. Each question in the series contains a unique solution that might meet the stated goals. Some question sets might have more than one correct solution, while others might not have a correct solution.

After your answer a question in this section, you will NOT be able to return to it. As a result, these questions will not appear in the review screen.

Your network contains an Active Directory domain. The domain contains a server named Server1 that runs Windows Server 2016.

Server1 contains a virtual disk named Disk1.vhdx in a folder named D:\Folder1. Disk1.vhdx contains an installation of Windows Server 2016.

You need to add the Telnet Client feature to Disk1.vhdx while the installation is offline.

Solution: You run Windows Configuration Designer, select the **Advanced provisioning** option, and then export a provisioning package.

Does this meet the goal?

- A. Yes
- B. No

Correct Answer: B

Section: (none) **Explanation**

Explanation/Reference:



QUESTION 170

Note: This question is part of a series of questions that present the same scenario. Each question in the series contains a unique solution that might meet the stated goals. Some question sets might have more than one correct solution, while others might not have a correct solution.

After your answer a question in this section, you will NOT be able to return to it. As a result, these questions will not appear in the review screen.

Your network contains an Active Directory domain. The domain contains a server named Server1 that runs Windows Server 2016.

Server1 contains a virtual disk named Disk1.vhdx in a folder named D:\Folder1. Disk1.vhdx contains an installation of Windows Server 2016.

You need to add the Telnet Client feature to Disk1.vhdx while the installation is offline.

Solution: From PowerShell, you run the `Install-WindowsFeature` cmdlet and specify the `-vhd` parameter.

Does this meet the goal?

- A. Yes
- B. No

Correct Answer: B

Section: (none) **Explanation**

Explanation/Reference:



<https://vceplus.com/>

