

Microsoft.Premium.70-740.by.VCEplus.270q

Number: 70-740 VCEplus
Passing Score: 800
Time Limit: 120 min
File Version: 8.2



Exam Code: 70-740

Exam Name: Installation, Storage, and Compute with Windows Server 2016

Certification Provider: Microsoft

Corresponding Certifications: MCSA, MCSA 2016

Website: www.vceplus.com

FREE Exam: <https://vceplus.com/mcsa-exam-70-740/>

Questions & Answers Exam Engine is rigorously checked before being put up for sale. We make sure there is nothing irrelevant in 70-740 exam products and you get latest questions. We strive to deliver the best 70-740 exam product for top grades in your first attempt.

Website: <https://vceplus.com>

VCE to PDF Converter: <https://vceplus.com/vce-to-pdf/>

Facebook: <https://www.facebook.com/VCE.For.All.VN/>

Twitter : https://twitter.com/VCE_Plus

Sections

1. <https://vceplus.com/mcsa-exam-70-740/>

Group Exam A

QUESTION 1

You have a server named Server1 that runs Windows Server 2016. The Docker daemon runs on Server1. You need to ensure that members of a security group named Docker Administrators can administer Docker. What should you do?

- A. Run the Set-Service cmdlet
- B. Modify the Security settings of Dockerd.exe.
- C. Edit the Configuration.json file.
- D. Run the sc config command.

Correct Answer: C

Section: (none)

Explanation

Explanation/Reference:

References: <https://docs.microsoft.com/en-us/virtualization/windowscontainers/manage-docker/configure-docker-daemon>

QUESTION 2

You have a Hyper-V host that runs Windows Server 2016.

You need to identify the amount of processor resources consumed by Hyper-V and virtual machines.

Which counter should you use from Performance Monitor?

- A. \Hyper-V Hypervisor\Logical Processors
- B. \Hyper-V Hypervisor Virtual Processor(_Total)\% Hypervisor Run Time.
- C. \Hyper-V Hypervisor Logical Processor(_Total)\% Total Run Time
- D. \Hyper-V Hypervisor Root Virtual Processor(_Total)\% Guest Run Time

Correct Answer: C

Section: (none)

Explanation

Explanation/Reference:

QUESTION 3

You have a Windows Server 2016 failover cluster that has a cluster network named ClusterNetwork1.

You need to ensure that ClusterNetwork1 is enabled for cluster communication only.

What command should you run? To answer, select the appropriate options in the answer area.

Answer Area

(

▼
Get-ClusterNetwork
Get-ClusterResource
Set-ClusterParameter
Update-ClusterIPResource

 ClusterNetwork1) .

▼
ID
Metric
Role
State

 =1

A.

Answer Area

(

▼
Get-ClusterNetwork
Get-ClusterResource
Set-ClusterParameter
Update-ClusterIPResource

 ClusterNetwork1) .

▼
ID
Metric
Role
State

 =1

Correct Answer: A

Section: (none)

Explanation

Explanation/Reference:

QUESTION 4

Your network contains three Hyper-V hosts. You add all of the hosts to a duster.

You need to create highly available storage spaces that connect to directly attached storage on the hosts.

Which cmdlet should you use?

- A. Enable-ClusterStorageSpacesDirect
- B. Add-ClusterDisk
- C. Update-ClusterVirtualMachineConfiguration
- D. Set-StoragePool

Correct Answer: A

Section: (none)

Explanation

Explanation/Reference:

Storage Spaces Direct (S2D) uses industry-standard servers with local-attached drives to create highly available, highly scalable software-defined storage.

Storage Spaces Direct is included in Windows Server 2016 Datacenter.

To enable S2D:

PS C:\>Enable-ClusterStorageSpacesDirect -CimSession

Note: If this command is run locally on one of the cluster nodes, the -CimSession parameter is not necessary.

Ref:<https://docs.microsoft.com/en-us/windows-server/storage/storage-spaces/storage-spaces-direct-overview>

QUESTION 5

HOTSPOT

You are deploying Network Load Balancing (NLB) to three web servers named Server1, Server2, and Server3. The web servers have the following IP addresses:

Server1: 192.168.2.101

Server2: 192.168.2.102

Server3: 192.168.2.103

The IP address used by NLB is 192.168.2.120.

Which IP address or addresses will be configured on each server? To answer, select the appropriate options in the answer area.

Answer Area

Server1:

	▼
192.168.2.101 only	
192.168.2.120 only	
192.168.2.101 and 192.168.2.120 only	
192.168.2.101, 192.168.2.102, and 192.168.2.103 only	
192.168.2.101, 192.168.2.102, 192.168.2.103 and 192.168.2.120	

Server2:

	▼
192.168.2.102 only	
192.168.2.120 only	
192.168.2.102 and 192.168.2.120 only	
192.168.2.101, 192.168.2.102, and 192.168.2.103 only	
192.168.2.101, 192.168.2.102, 192.168.2.103 and 192.168.2.120	

Server3:

	▼
192.168.2.103 only	
192.168.2.120 only	
192.168.2.103 and 192.168.2.120 only	
192.168.2.101, 192.168.2.102, and 192.168.2.103 only	
192.168.2.101, 192.168.2.102, 192.168.2.103 and 192.168.2.120	

A.

Answer Area

Server1:

192.168.2.101 only
192.168.2.120 only
192.168.2.101 and 192.168.2.120 only
192.168.2.101, 192.168.2.102, and 192.168.2.103 only
192.168.2.101, 192.168.2.102, 192.168.2.103 and 192.168.2.120

Server2:

192.168.2.102 only
192.168.2.120 only
192.168.2.102 and 192.168.2.120 only
192.168.2.101, 192.168.2.102, and 192.168.2.103 only
192.168.2.101, 192.168.2.102, 192.168.2.103 and 192.168.2.120

Server3:

192.168.2.103 only
192.168.2.120 only
192.168.2.103 and 192.168.2.120 only
192.168.2.101, 192.168.2.102, and 192.168.2.103 only
192.168.2.101, 192.168.2.102, 192.168.2.103 and 192.168.2.120

Correct Answer: A

Section: (none)

Explanation

Explanation/Reference:

QUESTION 6

Note: This question-is part of a series of questions that use the same or similar answer choices. An answer choice may be correct for more than one question-in the series. Each question-is independent of the other questions in this series.

Information and details provided in a question-apply only to that question.

You have a Hyper-V host named Server1 that runs Windows Server 2016. You plan to deploy several shielded virtual machines on Server1

You deploy a Host Guardian on a new server.
You need to ensure that Server1 can host shielded virtual machines.
What should you run first?

- A. the Set-VM cmdlet
- B. the Set-VMHost cmdlet
- C. the Set-VMProcessor cmdlet
- D. the Install-WindowsFeature cmdlet

Correct Answer: D

Section: (none)

Explanation

Explanation/Reference:

QUESTION 7

You have an Active Directory domain named contoso.com.

The computers in contoso.com are installed by using Windows Deployment Services.

You have a server named Server1 that runs Windows Server 2016 and is a member of contoso.com. Server1 has the Hyper-V role installed. Virtual machines on Server1 are connected to an external switch named Switch1.

You create a virtual machine named VM1 on Server1 by running the following cmdlets.

```
Add-VM VM1
Add-VMHardDiskDrive -VMName VM1 -ControllerType IDE -Path c:\VMs\Disk1.vhd
Add-VMNetworkAdapter -VMName VM1
```

You need to ensure that you can install the operating system on VM1 by using Windows Deployment Services.

What should you do?

- A. Add a SCSI controller to VM1.
- B. Modify the DefaultFlowMinimumBandwidthWeight parameter of Switch1
- C. Modify the SwitchType parameter of Switch1
- D. Add a legacy network adapter to VM1

Correct Answer: D

Section: (none)

Explanation

Explanation/Reference:

QUESTION 8

Note: This question-is part of a series of questions that use the same scenario. For your convenience, the scenario is repeated in each question. Each question-presents a different goal and answer choices, but the text of the scenario is exactly the same in each question-in this series.

Start of repeated scenario

Your network contains an Active Directory domain named contoso.com. The functional level of the forest and the domain is Windows Server 2008 R2. All servers in the domain run Windows Server 2016 Standard. The domain contains 300 client computers that run either Windows 8.1 or Windows 10. The domain contains nine servers that are configured as shown in the following table.

Server name	Configuration	Planned changes
Server1	Domain controller	None
Server2	File server	Run Failover Clustering and Storage Spaces Direct
Server3	File server	Run Failover Clustering and Storage Spaces Direct
Server4	Hyper-V host	Run shielded virtual machines
Server5	Hyper-V host	None
Server6	Member server	Run Active Directory Federation Services (AD FS)
VM1	Virtual machine hosted on Server 5	None
VM2	Virtual machine hosted on Server 5	None
VM3	Virtual machine hosted on Server 5	None

The virtual machines are configured as follows:

Each virtual machine has one virtual network adapter. VM1 and VM2 are part of a Network Load Balancing (NLB) cluster. All of the servers on the network can communicate with all of the virtual machines.

End of repeated scenario.

You plan to implement nested virtual machines on VM1.

Which two features will you be prevented from using for VM1?

- A. live migration
- B. NUMA spanning
- C. Dynamic Memory
- D. Smart Paging

Correct Answer: AC

Section: (none)

Explanation

Explanation/Reference:

<https://blogs.technet.microsoft.com/virtualization/2015/10/13/windows-insider-preview-nested-virtualization/>

QUESTION 9

Note: This question-is part of a series of questions that use the same scenario. For your convenience, the scenario is repeated in each question. Each question-presents a different goal and answer choices, but the text of the scenario is exactly the same in each question-in this series.

Start of repeated scenario

Your network contains an Active Directory domain named contoso.com.

The functional level of the forest and the domain is Windows Server 2008 R2.

All servers in the domain run Windows Server 2016 Standard.

The domain contains 300 client computers that run either Windows 8.1 or Windows 10. The domain contains nine servers that are configured as shown in the following table.

Name	Configuration	Planned changes
Server1	Domain controller	None
Server2	File server	Run Failover Clustering and Storage Spaces Direct
Server3	File server	Run Failover Clustering and Storage Spaces Direct
Server4	Hyper-V host	Run shielded virtual machines
Server5	Hyper-V host	None
Server6	Member server	Run Active Directory Federation Services (AD FS)
VM1	Virtual machine hosted on Server5	None
VM2	Virtual machine hosted on Server5	None
VM3	Virtual machine hosted on Server5	None

The virtual machines are configured as follows:

Each virtual machine has one virtual network adapter.

VM1 and VM2 are part of a Network Load Balancing (NLB) cluster.

All of the servers on the network can communicate with all of the virtual machines.

End of repeated scenario.

You create a new NLB cluster that contains VM3.

You need to ensure that VM2 can remain in the original cluster and be added to the new cluster. What should you do first?

- A. Add a new virtual network adapter to VM2.
- B. Change the cluster operation mode.
- C. Modify the default port rule.
- D. Install the Web Application Proxy server role on VM2 and VM3.

Correct Answer: A

Section: (none)

Explanation

Explanation/Reference:



QUESTION 10

You have three Hyper-V hosts named Server1, Server2, and Server3 that run Windows Server 2016. The servers are nodes in a failover cluster.

The failover cluster contains two virtual machines named VM1 and VM2. The roles for VM1 and VM2 have the following configurations.

```
PS C:\> Get-ClusterGroup vm1,vm2 | fl *
```

```
AntiAffinityClassNames : {}
AutoFailbackType        : 0
ColdStartSetting        : 0
Cluster                 : Cluster1
DefaultOwner            : 1
Description              :
GroupType                : VirtualMachine
FailoverPeriod          : 6
FailoverThreshold       : 4294967295
FailbackWindowEnd       : 4294967295
FailbackWindowStart     : 4294967295
IsCoreGroup             : False
Name                    : vm1
OwnerNode                : Server1
PersistentState          : 1
PreferredSite            : {}
Priority                 : 0
ReliliencyPeriod        : 429467295
State                   : Online
StatusInformation        : 0
Id                      : d02c87d1-8alc-4ffb-b87d-adf059416f25
```

```
AntiAffinityClassNames : {}
AutoFailbackType        : 0
ColdStartSetting        : 0
Cluster                 : Cluster1
DefaultOwner            : 1
Description              :
GroupType                : VirtualMachine
FailoverPeriod          : 6
FailoverThreshold       : 4294967295
FailbackWindowEnd       : 4294967295
FailbackWindowStart     : 4294967295
IsCoreGroup             : False
Name                    : vm2
OwnerNode                : Server1
PersistentState          : 1
PreferredSite            : {}
Priority                 : 3000
ResiliencyPeriod        : 4294967295
State                   : Online
StatusInformation        : 0
Id                      : ab38e657-bfcf-463d-a88b-d4e99aff4ef1
```

All of the nodes in the failover cluster have sufficient resources to run VM1 and VM2 concurrently.
VM1 and VM2 fail over to Server3.
What is the state of each virtual machine after the failover?

- A. Both VM1 and VM2 are running.
- B. VM1 is stopped and VM2 is running.
- C. Both VM1 and VM2 are stopped.
- D. VM1 is stopped and VM2 is paused.

Correct Answer: B

Section: (none)

Explanation

Explanation/Reference:

[https://msdn.microsoft.com/en-us/library/jj151956\(v=vs.85\).aspx](https://msdn.microsoft.com/en-us/library/jj151956(v=vs.85).aspx)

QUESTION 11

You have a Scale-Out File Server that has a share named Share1. Share1 contains a virtual disk file named Disk1.vhd. You plan to create a guest failover duster. You need to ensure that you can use the virtual disk as a shared virtual disk for the guest failover duster. Which cmdlet should you use?

- A. Optimize-VHDSets
- B. Set-VHD
- C. Convert-VHD
- D. Optimize-VHD

Correct Answer: C

Section: (none)

Explanation

Explanation/Reference:

References: <https://4sysops.com/archives/hyper-v-cluster-with-shared-vhd-create-vhdx-files-and-cluster/>

QUESTION 12

Your network contains an Active Directory domain named contoso.com. The domain contains two servers named Server1 and Server2 that run Windows Server 2016. Each server has an operating system disk and four data disks. All of the disks are locally attached SATA disks. Each disk is a basic disk, is initialized as an MBR disk, and has a single NTFS volume.

You plan to implement Storage Spaces Direct by using the data disks on Serve1 and Server2
You need to prepare the data disks for the Storage Spaces Direct implementation.
What should you do?

- A. Initialize the data disks as GPT disks and create an ReFS volume on each disk
- B. Format the volumes on the data disks as exFAT.
- C. Delete the volumes from the data disks.
- D. Convert the data disks to dynamic disks.

Correct Answer: C

Section: (none)

Explanation

Explanation/Reference:

QUESTION 13

You have container host named Serve1 that runs Windows Server 2016.
You need to start a Hyper-V container on Serve1.
Which parameter should you use with the docker run command?

- A. --expose
- B. --entrypoint
- C. --runtime
- D. --isolation
- E. --privileged

Correct Answer: D

Section: (none)

Explanation

Explanation/Reference:

QUESTION 14

You have a server named Server1 that runs Windows Server 2016. Server1 has four SCSI disks and a storage pool named Pool1 that contains three disks.
You create a virtual disk named Disk 1 that uses a mirrored layout
You create a partition named Partition1 that uses all of the available space on Disk 1.
You need to extend Partition1.

What should you do first?

- A. From Windows PowerShell, run the Expand-IscsiVirtualDisk cmdlet.
- B. From Windows PowerShell, run the Resize-VirtualDisk cmdlet.
- C. From Windows PowerShell, run the Resize-StorageTier cmdlet.
- D. From Disk Management, modify the properties of Partition1.

Correct Answer: B

Section: (none)

Explanation

Explanation/Reference:

QUESTION 15

You have two Hyper-V hosts named Server1 and Server2 that run Windows Server 2016. The hosts are nodes in failover cluster.

You have a virtual machine named VM1. VM1 connects to a virtual switch named vSwitch1.

You discover that VM1 automatically live migrates when vSwitch temporarily disconnects.

You need to prevent VM1 from being live migrated when vSwitch1 temporarily disconnects.

What should you do?

- A. Run the Set-VMNetworkAdapter cmdlet and set StormLimit to 0.
- B. From the network adapter setting of VM1, disable the Heartbeat integration service.
- C. Run the Set-VMNetworkAdapter cmdlet and set IsManagementOS to False.
- D. From the network adapter setting of VM1, disable the Protected network setting.

Correct Answer: D

Section: (none)

Explanation

Explanation/Reference:

QUESTION 16

You have a Nano Server that runs Windows Server 2016. The Nano Server runs on a physical machine.

You have not installed any packages on the server.

You attach a new disk to the server, and you initialize the disk as a GPT disk.

You need to create an RefS-formatted volume on the new disk. What should you do first?

- A. From the physical server, log on to the Nano Server Recovery Console.
- B. Install the Microsoft-Nano-Server-Host-Package package.
- C. Run me Format-Volume cmdlet and specify the -FileSystem switch.
- D. Install the Microsoft NanoServer-Storage-Package package.

Correct Answer: D

Section: (none)

Explanation

Explanation/Reference:

QUESTION 17

You create a Nano server image named Nano1.vhdx by using the New-NanoServerImage cmdlet.

You attach Nano1.vhdx to a Generation 1 virtual machine named Nano1. When you start Nano1, you get the following error message:

"Boot failure. Reboot and select proper Boot device or Insert Boot Media in selected Boot device"

You need to successfully start Nano server.
What should you do?



- A. Attach Nano1.vhdx to a SCSIcontroller.
- B. Recreate Nano1 as a Generation 2 virtual machine.
- C. Increase the memory of Nano1 to 512 Mb.
- D. Modify the BIOS settings of Nano1.

Correct Answer: B

Section: (none)

Explanation

Explanation/Reference:

Explanation:

A Generation 1 VM cannot boot from a vhdx disk; only a Generation 2 VM can boot from an vhdx disk.

QUESTION 18

Note: This question-is part of a series of questions that use the same scenario. For your convenience, repeated in each question. Each question-presents a different goal and answer choices, but the text of exactly the same in each question-in this series.

Your network contains an Active Directory domain named contoso.com. The functional level of the forest and Windows Server 2008 R2. All servers in the domain run Windows Server 2016 Standard. The domain contains that run either Windows 8.1 or Windows 10. The domain contains nine servers that are configured as shown in the following table.

- A. Add a new virtual network adapter to VM2.
- B. Change the cluster operation mode.
- C. Modify the default rule.
- D. Install the Web Application Proxy server role on VM2 and VM3.

Correct Answer: B

Section: (none)

Explanation

Explanation/Reference:

QUESTION 19

You have a Hyper-V host named Server1 that runs Windows Server 2016. The host has two virtual machines (VMs) named VM1 and VM2. On the Hyper-V host, you create two virtual disks named Disk1 and Disk2. You plan to create a test environment for Storage Spaces Direct. You need to configure the VMs to connect to the virtual disks. What should you use?

- A. An iSCSI target
- B. A virtual SCSI controller
- C. A virtual fiber channel adapter
- D. A virtual IDE controller

Correct Answer: B

Section: (none)

Explanation

Explanation/Reference:

Explanation: <https://blogs.msdn.microsoft.com/clustering/2015/05/27/testing-storage-spaces-direct-usingwindows-server-2016-virtual-machines/>

QUESTION 20

Your network contains an Active Directory domain. The domain contains two Hyper-V hosts. You plan to perform live migrations between the hosts.

You need to ensure that the live migration traffic is authenticated by using Kerberos. What should you do first?

- A. From Server Manager, install the Host Guardian Service server role on a domain controller.
- B. From Active Directory Users and Computers, add the computer accounts for both servers to the Cryptographic Operators group.
- C. From Active Directory Users and Computers, modify the Delegation properties of the computer accounts for both servers.
- D. From Server Manager, install the Host Guardian Service server role on both servers.

Correct Answer: C

Section: (none)

Explanation

Explanation/Reference:

Explanation:

If you have decided to use Kerberos to authenticate live migration traffic, configure constrained delegation before you proceed to the rest of the steps.
To configure constrained delegation

QUESTION 21

A company named Contoso, Ltd has five Hyper-V hosts that are configured as shown in the following table.

Hyper-V host name	Configuration
Server1	Windows Server 2012 R2 and an Intel Xeon E7 processor
Server2	Windows Server 2012 R2 and an Intel i7 processor
Server3	Windows Server 2016 and an Intel i7 processor
Server4	Windows Server 2016 and an AMD Opteron processor
Server5	Windows Server 2016 and an Intel Xeon E7 processor

What are two valid live migration scenarios for virtual machines in your environment? Each correct answer presents a complete solution.

- A. from Server4 to Server5
- B. from Server1 to Server5
- C. from Server3 to Server4
- D. from Server2 to Server3

Correct Answer: BD

Section: (none)

Explanation

Explanation/Reference:

QUESTION 22

After you answer a question-in this section, you will NOT be able to return to it.

As a result, these questions will not appear in the review screen.

You have a server named Server1 that runs Windows Server 2016.

You plan to use Windows Server Backup to back up all of the data on Server1.

You create a new volume on Server1.

You need to ensure that the new volume can be used as a backup target.

The backup target must support incremental backups.

Solution: You mount the volume to C:\Backup, and you format the volume by using exFAT. Does this meet the goal?

A. Yes

B. No

Correct Answer: B

Section: (none)

Explanation

Explanation/Reference:

QUESTION 23

Note: This question-is part of a series of questions that present the same scenario. Each question-in the series contains a unique solution that might meet the stated goals. Some question-sets might have more than one correct solution, while others might not have a correct solution.

After your answer a question-in this section, you will NOT be able to return to it.

As a result, these questions will not appear in the review screen.

Your network contains an Active Directory forest named contoso.com.

You need to identify which server is the schema master.

Solution: From Windows PowerShell, you run Get-ADDomainController -Discover -Service 2. Does this meet the goal?

A. Yes

B. No



Correct Answer: B

Section: (none)

Explanation

Explanation/Reference:

Explanation:

<https://blogs.technet.microsoft.com/mempson/2007/11/08/how-to-find-out-who-has-your-fsmoroles/>

QUESTION 24

You have Nano Setver image named Disk1.vhdx.

You mount Disk1.vhdx.

You need to add a folder that contains several files to the image.

Which tool or cmdlet you should use?

- A. Copy-Item
- B. Add-WindowsImage
- C. Add-WindowsPackage
- D. Edit-NanoServerImage

Correct Answer: A

Section: (none)

Explanation



Explanation/Reference:

QUESTION 25

You have a Hyper-V host named Server1 that runs Windows Server 2016.

Server1 hosts a virtual machine.

You need to provide VM1 with direct access to a graphics processing unit (GPU) on Server1. What should you do first?

- A. Disable the display adapter device on Server1.
- B. In the settings of VM1, add a RemoteFX 3D Video Adapter.
- C. On VM1, install the Quality Windows Audio Video Experience (qWave) feature.
- D. Dismount the display adapter on Server1.

Correct Answer: B

Section: (none)

Explanation

Explanation/Reference:

QUESTION 26

You have a server named Server1 that runs Windows Server 2016.

The server has an application named App1. App1 writes entries to the Application event log when errors are encountered. The events have IDs of either 111 or 112.

You need to restart the service whenever either of these events is logged.

What should you do?

- A. From Windows PowerShell, run the Write-EventLog cmdlet and specify the-EventID parameter and the -Source parameter.
- B. From Event Viewer, create a custom view that has a filter for the event IDs.
- C. From Event Viewer, create a subscription that has a filter for the event IDs.
- D. From Task Scheduler, use Create Task to create one task that includes triggers for both event IDs.

Correct Answer: D

Section: (none)

Explanation



Explanation/Reference:

QUESTION 27

You deploy two servers that run Windows Server 2016.

You install the Failovers Clustering feature on both servers.

You need to create a workgroup cluster.

What should you do?

- A. Create matching local administrative accounts on both of the servers. Assign the same primary DNS suffix to both of the servers. Run the New-Cluster cmdlet and specify an administrative access point of None.
- B. Configure both of the server to be in a workgroup named Workgroup. Configure the Cluster Service to log on as Network Service. Run the New-Cluster cmdlet and specify an administrative access point of DNS.
- C. Create matching local administrative accounts on both of the servers. Assign the same primary DNS suffix to both of the servers. Run the New-Cluster cmdlet and specify an administrative access point of DNS.
- D. Configure both of the server to be in a workgroup named Workgroup. Configure the Cluster Service to log on as Network Service. Run the New-Cluster

cmdlet and specify an administrative access point of None.

Correct Answer: C

Section: (none)

Explanation

Explanation/Reference:

References:

<https://rlevchenko.com/2015/09/07/workgroup-and-multi-domain-clusters-in-windows-server-2016/>

QUESTION 28

Note: This question-is part of a series of questions that present the same scenario. Each question-in the series contains a unique solution that might meet the stated goals. Some question-sets might have more than one correct solution, while others might not have a correct solution.

After your answer a question-in this section, you will NOT be able to return to it. As a result, these questions will not appear in the review screen.

Your network contains an Active Directory forest named contoso.com.

You need to identify which server is the schema master.

Solution: From a command prompt, you run netdom query fsmo. Does this meet the goal?

A. Yes

B. No



Correct Answer: A

Section: (none)

Explanation

Explanation/Reference:

Explanation: <https://blogs.technet.microsoft.com/mempson/2007/11/08/how-to-find-out-who-has-your-fsmoroles/>

QUESTION 29

You have two servers named Server1 and Server2.

A firewall exists between Server1 and Server2.

Both servers run Windows Server Update Services (WSUS).

Server1 downloads updates from Microsoft update.

Server2 must synchronize updates from Server1.

Which port should to open on the firewall?

A. 80

B. 443

- C. 3389
- D. 8530

Correct Answer: D

Section: (none)

Explanation

Explanation/Reference:

QUESTION 30

You have a server named Server1 that runs Windows Server 2016. Windows Defender is enable.....

Server1 runs an application named App1 that stores various types of files in Microsoft One..... and Microsoft SharePoint Online. App1 also interacts with several local services.

You need to prevent Windows Defender from scanning any files opened by App1. What should you do on Server1?

- A. Modify the real-time protection settings in Windows Defender.
- B. Modify the cloud-based protection settings in Windows Defender.
- C. Run the New-AppLockerPolicy cmdlet.
- D. From the Windows Defender settings, configure a process exclusion.

Correct Answer: B

Section: (none)

Explanation

Explanation/Reference:

QUESTION 31

You have a server named Server1 that is an iSCSI target.

You Have a server named Server2 that runs Windows Server 2016.

Server2 has an iSCSI disk named Disk 1 that is

Disk 1 contains one volume that is assigned a drive letter of E:

You need to increase the size of Disk 1.

What should you do?

- A. Run the Resize-Partition cmdlet and specify the -ComputerName Server2 parameter.
- B. Run the Resize-IscsiVirtualDisk cmdlet and specify the -ComputerName Server2 parameter.
- C. Run the Resize-IscsiVirtualDisk cmdlet and specify the -ComputerName Server1 parameter.

D. Run the Resize-Partition cmdlet and specify the -ComputerName Server1 parameter.

Correct Answer: B

Section: (none)

Explanation

Explanation/Reference:

QUESTION 32

Your network contains an Active Directory domain. The domain contains a new file server named Server1 that runs a Server Core installation of Windows Server 2016.

Server1 has an ReFS-formatted volume D: and NTFS-formatted volume E:.

The volumes do not contain any data.

You install the Data Deduplication role service on Server1.

You need to implement Data Deduplication for volumes on D: and E:.

Solution: From Windows PowerShell, you run Format-Volume D: -FileSystem EXFat and EnableDeDupVolume -Volume D:,E:.

Does this meet the goal?

A. Yes

B. No



Correct Answer: B

Section: (none)

Explanation

Explanation/Reference:

QUESTION 33

You have two servers named Server1 and Server 2 that run Windows Server 2016. You plan to implement Storage Replica to replicate the contents of volumes on Server1 and Server2. You need to ensure that the replication traffic between the servers is limited to a maximum of 100 Mbps.

Which cmdlet should you run?

A. New-NetQosPolicy

B. Set-NetworkController

C. New-NetTransportFilter

D. New-StorageQosPolicy

Correct Answer: A

Section: (none)

Explanation

Explanation/Reference:

[https://technet.microsoft.com/en-us/library/hh967471\(v=wps.630\).aspx](https://technet.microsoft.com/en-us/library/hh967471(v=wps.630).aspx)

QUESTION 34

You have a server named Server1 that runs Windows Server 2016 and is configured as a domain controller.

You install the DNS Server server role on Server1.

You plan to store a DNS zone in a custom Active Directory partition.

You need to create a new Active Directory partition for the zone.

What should you use?

- A. Set-DnsServer
- B. Active Directory Sites and Services
- C. Dns.exe
- D. Dnscmd.exe

Correct Answer: D

Section: (none)

Explanation



Explanation/Reference:

Explanation:

[https://technet.microsoft.com/en-us/library/ee649181\(v=ws.10\).aspx](https://technet.microsoft.com/en-us/library/ee649181(v=ws.10).aspx)

QUESTION 35

Active Directory Recycle Bin is enabled.

You discover that a support technician accidentally removed 100 users from an Active Directory group named Group1 an hour ago.

You need to restore the membership of Group1.

What should you do?

- A. Perform tombstone reanimation.
- B. Export and import data by using Dsamain.
- C. Perform a non-authoritative restore.
- D. Recover the items by using Active Directory Recycle Bin.

Correct Answer: B

Section: (none)

Explanation

Explanation/Reference:

Explanation:

A group has been modified. Nothing has been deleted. Therefore, answers A and D will not work.

Answer C would work if it was an authoritative restore, but not a non-authoritative restore. The solution is to recover an earlier copy of the group from a backup or active directory snapshot by using DSadmin.

QUESTION 36

Note: This question-is part of a series of questions that use the same scenario. For your convenience, the scenario is repeated in each question. Each question-presents a different goal and answer choices, but the text of the scenario is exactly the same in each question-in this series.

Start of repeated scenario

Your network contains an Active Directory domain named contoso.com.

The functional level of the forest and the domain is Windows Server 2008 R2.

All servers in the domain run Windows Server 2016 Standard.

The domain contains 300 client computers that run either Windows 8.1 or Windows 10. The domain contains nine servers that are configured as shown in the following table.

Name	Configuration	Planned changes
Server1	Domain controller	None
Server2	File server	Run Failover Clustering and Storage Spaces Direct
Server3	File server	Run Failover Clustering and Storage Spaces Direct
Server4	Hyper-V host	Run shielded virtual machines
Server5	Hyper-V host	None
Server6	Member server	Run Active Directory Federation Services (AD FS)
VM1	Virtual machine hosted on Server5	None
VM2	Virtual machine hosted on Server5	None
VM3	Virtual machine hosted on Server5	None

The virtual machines are configured as follows:

- Each virtual machine has one virtual network adapter.
- VM1 and VM2 are part of a Network Load Balancing (NLB) cluster.

-All of the servers on the network can communicate with all of the virtual machines.

End of repeated scenario.

You create a new NLB cluster that contains VM3.

You need to ensure that VM2 can remain in the original cluster and be added to the new cluster. What should you do first?

- A. Add a new virtual network adapter to VM2.
- B. Install the Web Application Proxy server role on VM2 and VM3.
- C. Change the cluster operation mode.
- D. Modify the default port rule.

Correct Answer: A

Section: (none)

Explanation

Explanation/Reference:

QUESTION 37

You have two Hyper-V hosts named Server1 and Server2 that run Windows Server 2016. Server1 hosts a virtual machine named VM1 that is in a Running state.

On Server1, you export VM1 and then you import VM1 on Server2.

What is the current state of VM1 on Server2?

- A. Off
- B. Saved
- C. Running
- D. Paused

Correct Answer: B

Section: (none)

Explanation

Explanation/Reference:

References: <https://blog.workinghardinit.work/2016/06/16/live-export-a-running-virtual-machine-or-a-checkpoint/>

QUESTION 38

You have a server named Server1 that runs Windows Server 2016.
You need to configure Server1 as a Web Application Proxy.
Which server role or role service should you install on Server1?

- A. Web Server (IIS)
- B. Network Policy and Access Services
- C. Direct Access and VPN (RAS)
- D. Active Directory Federation Services
- E. Remote Access

Correct Answer: E

Section: (none)

Explanation

Explanation/Reference:

QUESTION 39

You have a server named Server1.
You enable BitLocker Drive Encryption (BitLocker) on Server1.
You need to change the password for the Trusted Platform Module (TPM) chip. What should you run on Server1?

- A. Initialize-Tpm
- B. Import-TpmOwnerAuth
- C. repair-bde.exe
- D. bdehdcfg.exe

Correct Answer: B

Section: (none)

Explanation

Explanation/Reference:

QUESTION 40

Your network contains an Active Directory domain. The domain contains a new file server named Server1 that runs a Server Core installation of Windows Server 2016.
Server1 has an ReFS-formatted volume D: and NTFS-formatted volume E:.
The volumes do not contain any data.

You install the Data Deduplication role service on Server1.

You need to implement Data Deduplication for volumes on D: and E:.

Solution: From Windows PowerShell, you run Enable-DeDupVolume-Volume D:,E:. Does this meet the goal?

- A. Yes
- B. No

Correct Answer: B

Section: (none)

Explanation

Explanation/Reference:

QUESTION 41

Note: This question-is part of a series of questions that use the same scenario. For your convenience, the scenario is repeated in each question. Each question-presents a different goal and answer choices, but the text of the scenario is exactly the same in each question-in this series.

A company named Contoso, Ltd, has several servers that run Windows Server 2016. Contoso has a Hyper-V environment that failover clustering and Windows Server Update Services (WSUS). The environment contains several Windows containers and virtual machines. The WSUS deployment contains one upstream server that is located on the company's perimeter network and several

- A. Create a firewall rule to allow TCP port 8531.
- B. Require SSL on the ClientWebService virtual directory.
- C. Create a firewall rule to allow TCP port 443.
- D. Require SSL on the Inventory virtual directory.

Correct Answer: AC

Section: (none)

Explanation

Explanation/Reference:

QUESTION 42

Note: This question-is part of a series of questions that present the same scenario. Each question-in the series contains a unique solution that might meet the stated goals. Some question-sets might have more than one correct solution, while others might not have a correct solution.

After you answer a question-in this section, you will NOT be able to return to it. As a result, these questions will not appear in the review screen.
Your network contains an Active Directory forest named contoso.com.
You need to identify which server is the schema master.
Solution: You open Active Directory Users and Computers, right-click contoso.com in the console tree, and then click Operations Master.
Does this meet the goal?

- A. Yes
- B. No

Correct Answer: B
Section: (none)
Explanation

Explanation/Reference:

Explanation:

This solution only shows the domain FSMO roles, not the forest FSMO roles.

<https://blogs.technet.microsoft.com/mempson/2007/11/08/how-to-find-out-who-has-your-fsmoroles/>

QUESTION 43

You have a Hyper-V host named Server1 that runs Windows Server 2016. Server1 hosts a virtual machine named VM1. VM1 is in a workgroup. VM1 is currently in a running state.

You need to create 10 copies of VM1 on Server1 in the least amount of time possible. Which cmdlets should you use?

- A. Stop-VM, and then Import-VM
- B. Export-VM, and then Import-VM
- C. Checkpoint-VM, and then New-VM
- D. Copy-VMFile, and then New-VM

Correct Answer: B
Section: (none)
Explanation

Explanation/Reference:

QUESTION 44

Your network contains an Active Directory domain. The domain contains a new file server named Server1 that runs a Server Core installation of Windows Server 2016.

Server1 has an ReFS-formatted volume D: and NTFS-formatted volume E: The volumes do not contain any data.

You install the Data Deduplication role service on Server1.

You need to implement Data Deduplication for volumes on D: and E:.

Solution: From Windows PowerShell, you run Format-Volume E: -FileSystem ReFS and EnableDeDupVolume -Volume D:,E:.

Does this meet the goal?

A. Yes

B. No

Correct Answer: B

Section: (none)

Explanation

Explanation/Reference:

QUESTION 45

You need to implement network virtualization.

On which object should you configure the virtual subnet ID?

A. Virtual switch

B. Hyper-V server

C. VM

D. Virtual network adapter



Correct Answer: A

Section: (none)

Explanation

Explanation/Reference:

QUESTION 46

Your Network contains one Active Directory domain named contoso.com.

You pilot DirectAccess on the network.

During the pilot deployment, you enable DirectAccess only for a group Contoso\Test Computers. Once the pilot is complete, you need to enable DirectAccess for all the client computers in the domain.

What should you do?

A. From Windows PowerShell, run the Set-DAClient cmdlet.

- B. From Windows PowerShell, run the Set-DirectAccess cmdlet.
- C. From Active Directory Users and Computers, modify the membership of the Windows Authorization Access Group.
- D. From Group Policy Management, modify the security filtering of an object named Direct Access Client Setting Group Policy.

Correct Answer: D

Section: (none)

Explanation

Explanation/Reference:

QUESTION 47

You have two Hyper-V hosts named Server1 and Server2 that run Windows Server 2016.

Server1 and Server2 are connected to the same network.

On Server1 and Server2, you create an external network switch named Switch1. You have the virtual machines shown in the following table.

Virtual machine name	IP address	Subnet mask	Hyper-V host
VM1	192.168.1.16	255.255.255.0	Server1
VM2	192.168.1.32	255.255.255.0	Server2
VM3	192.168.1.48	255.255.255.0	Server2

All three virtual machines are connected to Switch1.

You need to prevent applications in VM3 from being able to capture network traffic from VM1 or VM2. The solution must ensure that VM1 retains network connectivity. What should you do?

- A. On Server2, configure the VLAN ID setting of Switch1.
- B. On Server2, create an external switch and connect VM3 to the switch.
- C. Modify the subnet mask of VM1 and VM2.
- D. Configure network virtualization for VM1 and VM2.

Correct Answer: D

Section: (none)

Explanation

Explanation/Reference:

QUESTION 48

Note: This question-is part of a series of questions that present the same scenario. Each question-in the series contains a unique solution that might meet the stated goals. Some question-sets might have more than one correct solution, while others might not have a correct solution.

After you answer a question-in this section, you will NOT be able to return to it. As a result, these questions will not appear in the review screen.

You have a server named Server1 that runs Windows Server 2016.

Server1 hosts a line-of-business application named App1. App1 has a memory leak that occasionally causes the application to consume an excessive amount of memory.

You need to log an event in the Application event log whenever App1 consumes more than 4 GB of memory.

Solution: You create an event trace data collector.

Does this meet the goal?

- A. Yes
- B. No

Correct Answer: B

Section: (none)

Explanation

Explanation/Reference:

QUESTION 49

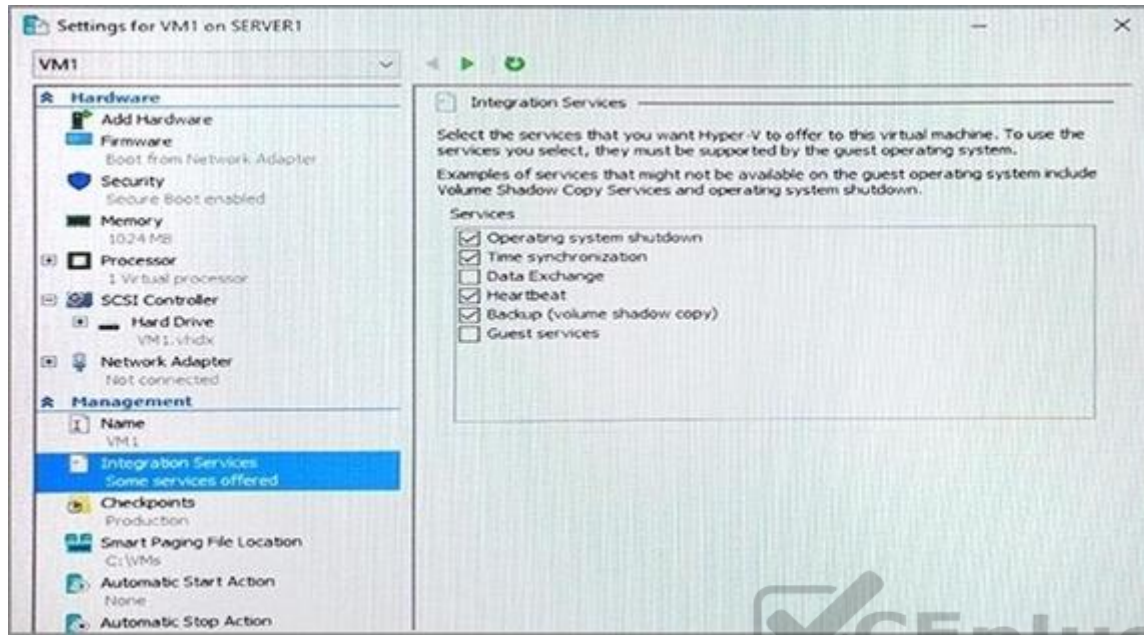
Note: This question-is part of a series of questions that present the same scenario. Each question-in the series contains a unique solution that might meet the stated goals. Some question-sets might have more than one correct solution, while others might not have a correct solution.

After you answer a question-in this section, you will NOT be able to return to it. As a result, these questions will not appear in the review screen.

You have a Hyper-V host named Server1 that hosts a virtual machine named VM1. Server1 and VM1 run Windows Server 2016.

The settings for VM1 are configured as shown in the exhibit. (Click the Exhibit button.)





You need to ensure that you can use the Copy-VMFile cmdlet on Server1 to copy files from VM1.

Solution: You start the Hyper-V Guest Service Interface service on VM1.

Does this meet the goal?

- A. Yes
- B. No

Correct Answer: A

Section: (none)

Explanation

Explanation/Reference:

Explanation:

[https://technet.microsoft.com/en-us/library/dn798297\(v=ws.11\).aspx](https://technet.microsoft.com/en-us/library/dn798297(v=ws.11).aspx)

QUESTION 50

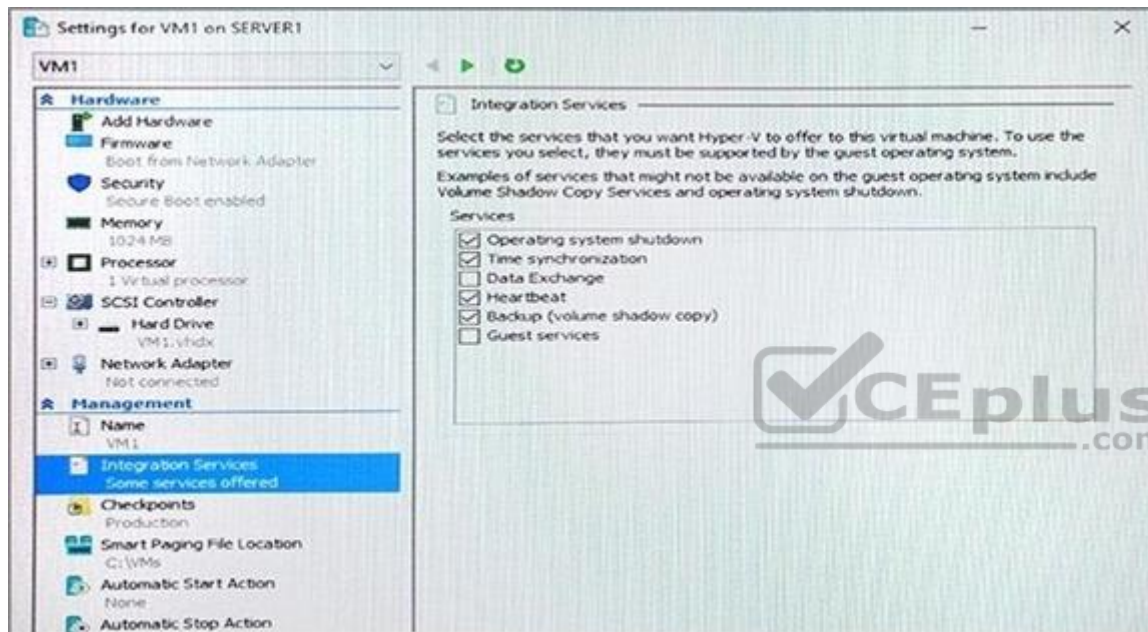
Note: This question-is part of a series of questions that present the same scenario. Each question-in the series contains a unique solution that might meet the

stated goals. Some question-sets might have more than one correct solution, while others might not have a correct solution.

After you answer a question-in this section, you will NOT be able to return to it. As a result, these questions will not appear in the review screen.

You have a Hyper-V host named Server1 that hosts a virtual machine named VM1. Server1 and VM1 run Windows Server 2016.

The settings for VM1 are configured as shown in the exhibit. (Click the Exhibit button.)



You need to ensure that you can use the Copy-VMFile cmdlet on Server1 to copy files from VM1.

Solution: You connect VM1 to an internal virtual switch.

Does this meet the goal?

- A. Yes
- B. No

Correct Answer: B
Section: (none)

Explanation

Explanation/Reference:

QUESTION 51

You have a server named Server 1 that runs Windows Server 2016 server. Server1 has the Docker daemon configured and has a container named Contained. You need to mount the folder C:\Folder1 on Server1 to C:\Containerfotoer in Contained. Which command should you run?

Copy-ContainerFile	-Name Container1 -Path	C:\Folder1 C:\ContainerFolder	Container1
Docker	run -it -v	%windir%\ContainerFolder	Server1
Set-Service			

Hot Area:

Answer Area

Copy-ContainerFile	-Name Container1 -Path	C:\Folder1 C:\ContainerFolder	Container1
Docker	run -it -v	%windir%\ContainerFolder	Server1
Set-Service			

Correct Answer:

Answer Area

Copy-ContainerFile	-Name Container1 -Path	C:\Folder1 C:\ContainerFolder	Container1
Docker	run -it -v	%windir%\ContainerFolder	Server1
Set-Service			

Section: (none)

Explanation

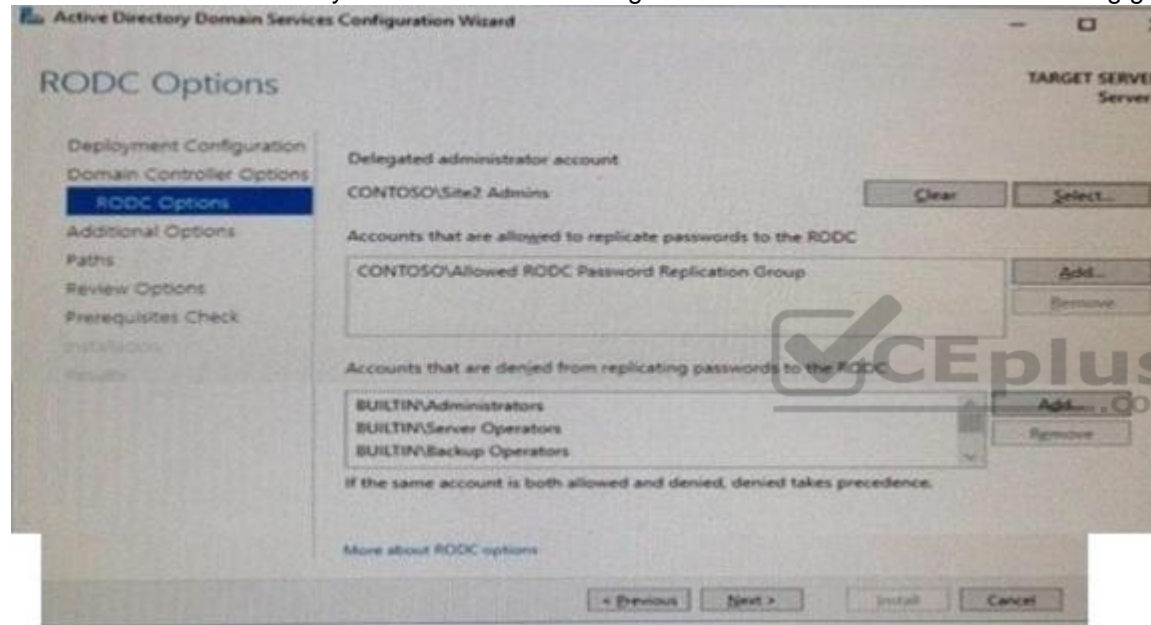
Explanation/Reference:

QUESTION 52

Your network contains an Active Directory forest.

The forest contains two sites named Site1 and Site2. Site1 contains 10 domain controllers Site1 and Site2 connect to each other by using a WAN link.

You run the Active Directory Domain Services Configuration Wizard as shown in the following graphic.



Server3 is the only server in Site2.

Use the drop-down menus to select the answer choice that completes each statement based on the information graphic.

Hot Area:

Members of the Site2 Admins group will be able to [answer choice] on Server 3.

make updates to SYSVOL content
manage the password replication policy
stop and start Active Directory Domain Services (AD DS)



If the WAN link fails, users who are members of the Allowed RODC Password Replication Group [answer choice] in Site2.

will be prevented from logging on
will log on with reduced security rights
can log on if they have previously logged on

Correct Answer:

Members of the Site2 Admins group will be able to [answer choice] on Server 3.

make updates to SYSVOL content
manage the password replication policy
stop and start Active Directory Domain Services (AD DS)



If the WAN link fails, users who are members of the Allowed RODC Password Replication Group [answer choice] in Site2.

will be prevented from logging on
will log on with reduced security rights
can log on if they have previously logged on

Section: (none)

Explanation

Explanation/Reference:

QUESTION 53

Your network contains an Active Directory forest.

The forest contains two domain controllers named DC1 and DC2 that run Windows Server 2016.

DC1 holds all of the operations master roles.

DC1 experiences a hardware failure.

You plan to use an automated process that will create 1000 user accounts.

You need to ensure that the automated process can complete successfully.

Which command should you run? To answer, select the appropriate options in the answer area.

<input type="text"/> <input type="text"/>	-identity "DC2" -OperationMasterRole	<input type="text"/> <input type="text"/>	<input type="text"/> <input type="text"/>
<input type="text"/>		<input type="text"/>	<input type="text"/>
<input type="text"/>		<input type="text"/>	<input type="text"/>
<input type="text"/>		<input type="text"/>	<input type="text"/>

Hot Area:

<input type="text"/> <input type="text"/>	-identity "DC2" -OperationMasterRole	<input type="text"/> <input type="text"/>	<input type="text"/> <input type="text"/>
<input type="text"/>		<input type="text"/>	<input type="text"/>
<input type="text"/>		<input type="text"/>	<input type="text"/>
<input type="text"/>		<input type="text"/>	<input type="text"/>

Correct Answer:

<input type="text"/> <input type="text"/>	-identity "DC2" -OperationMasterRole	<input type="text"/> <input type="text"/>	<input type="text"/> <input type="text"/>
<input type="text"/>		<input type="text"/>	<input type="text"/>
<input type="text"/>		<input type="text"/>	<input type="text"/>
<input type="text"/>		<input type="text"/>	<input type="text"/>

Section: (none)

Explanation

Explanation/Reference:

Explanation:

"MoveADDirectoryServerOperatingMasterRole" command is used to transfer or seize a domain role from another domain controller. "RIDMaster" is the role responsible for creating directory objects, such as adding new users. "-Force" is require to seize a role, which is necessary when a role is held on a domain controller that is offline. If the domain controller was online, you would not use the "Force" option.

QUESTION 54

Your network contains an Active Directory domain named contoso.com.

The domain contains four servers named Server1, Server2, Server3, and Server4 that run Windows Server 2016. Server1 and Server2 are nodes in Hyper-V cluster named Cluster1. You have a highly available virtual machine named VM1. Server1 is the owner node of VM1. Server3 and Server4 are nodes of a scale-out file server named Cluster2. The storage on Server1 is configured as shown in the following table.

Location	Type
C:\ClusterStorage\Volume1	iSCSI Cluster Shared Volumes (CSV)
D:\	A locally attached disk
E:\	An iSCSI LUN
\\Cluster2\Share1	A file share on Cluster2

You need to move the virtual disk of VM1 to a different location. What should you do? To answer, select the appropriate options in the answer area.

Hot Area:

Tool you should move the virtual disk of VM1:

☐ Disk Management
☐ Failover Cluster Manager
☐ Hyper-V Manager
☐ Server Manager

VCEplus
VCE To PDF - Free Practice Exam

Location to which you should move the virtual disk of VM1:

☐ \\Cluster2\Share1
☐ D:\
☐ E:\

Correct Answer:

Tool you should move the virtual disk of VM1:

	▼
Disk Management	
Failover Cluster Manager	
Hyper-V Manager	
Server Manager	



VCE To PDF - Free Practice Exam

Location to which you should move the virtual disk of VM1:

	▼
\\Cluster2\Share1	
D:\	
E:\	

Section: (none)

Explanation

Explanation/Reference:



QUESTION 55

You have a server named Server1 that runs Windows Server 2016. Server1 is a Hyper-V host. You have two network adapter cards on Server1 that are Remote Direct Memory Access (RDMA) -capable.

You need to aggregate the bandwidth of the network adapter cards for a virtual machine on Server1.

The solution must ensure that the virtual machine can use the RDMA capabilities of the network adapter cards.

Which command should you run first? To answer, select the appropriate options in the answer area.

Hot Area:

	▼	-Name Production -NetAdapterName "NIC 1", "NIC 2"		▼	\$true
Add-NetLbfoTeamNic				-EnableEmbeddedTeaming	
Add-VmNetworkAdapter				-EnableIov	
New-NetLbfoTeam				-EnablePacketDirect	
Add-VmSwitch					

Correct Answer:

<input type="checkbox"/> Add-NetLbfoTeamNic Add-VmNetworkAdapter New-NetLbfoTeam Add-VmSwitch	-Name Production -NetAdapterName "NIC 1", "NIC 2"	<input type="checkbox"/> -EnableEmbeddedTeaming -EnableIov -EnablePacketDirect	\$true
---	---	---	--------

Section: (none)

Explanation

Explanation/Reference:

QUESTION 56

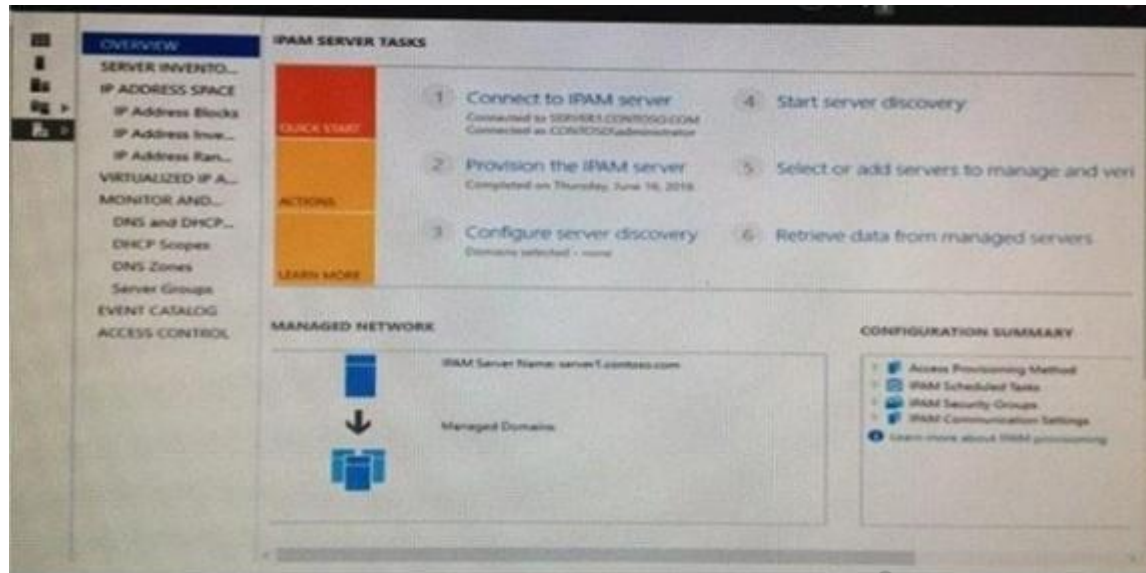
Your company has a testing environment that contains an Active Directory domain named contoso.com.

The domain contains a server named Server1 that runs Windows Server 2016. Server1 has IP Address Management (IPAM) installed IPAM has the following configuration.

Version	: 6.3.0.1
Port	: 4885
ProvisioningMethod	: Automatic
GpoPrefix	: IPAM
HMACKey	: System.Security.SecureString



The IPAM Overview page from Server Manager is shown in the IPAM Overview exhibit.



The group policy configurations are shown in the GPO exhibit.



For each of the following statements, select Yes if the statement is true Otherwise, select No.

Hot Area:

Statements	Yes	No
If a DNS server is added to contoso.com, the server will be discovered by IPAM automatically.	<input type="radio"/>	<input type="radio"/>
If you manually add a DHCP server named Server3 to IPAM and set the Manageability status to Managed, the IPAM_DHCP Group Policy will apply to Server3.	<input type="radio"/>	<input type="radio"/>
If you click Start server discovery, the domain controllers in contoso.com will be discovered by IPAM.	<input type="radio"/>	<input type="radio"/>

Correct Answer:

Statements	Yes	No
If a DNS server is added to contoso.com, the server will be discovered by IPAM automatically.	<input type="radio"/>	<input checked="" type="radio"/>
If you manually add a DHCP server named Server3 to IPAM and set the Manageability status to Managed, the IPAM_DHCP Group Policy will apply to Server3.	<input checked="" type="radio"/>	<input type="radio"/>
If you click Start server discovery, the domain controllers in contoso.com will be discovered by IPAM.	<input type="radio"/>	<input checked="" type="radio"/>

Section: (none)

Explanation

Explanation/Reference:

QUESTION 57

Your network contains an Active Directory domain named contoso.com.

The domain contains a DNS server named Server1.

Server1 is configured to use a forwarder named server2.contoso.com that has an IP address of 10.0.0.10.

You need to prevent Server1 from using root hints if the forwarder is unavailable.

What command should you run? To answer, select the appropriate options in the answer area.

<input type="checkbox"/>	<input type="checkbox"/>
Suspend-DnsServerZone	-Name *.* -PassThru
Set-DnsServer	-IPAddress 10.0.0.10
Set-DnsServerForwarder	-NameServer server2.contoso.com
Set-DnsServerRootHint	-UseRootHints \$false

Hot Area:

<input type="checkbox"/>	<input type="checkbox"/>
Suspend-DnsServerZone	-Name *.* -PassThru
Set-DnsServer	-IPAddress 10.0.0.10
Set-DnsServerForwarder	-NameServer server2.contoso.com
Set-DnsServerRootHint	-UseRootHints \$false

Correct Answer:

<input type="checkbox"/>	<input type="checkbox"/>
Suspend-DnsServerZone	-Name *.* -PassThru
Set-DnsServer	-IPAddress 10.0.0.10
Set-DnsServerForwarder	-NameServer server2.contoso.com
Set-DnsServerRootHint	-UseRootHints \$false

Section: (none)

Explanation

Explanation/Reference:

QUESTION 58

Your network contains an Active Directory forest named contoso.com.

The forest contains an Active Directory Federation Services (AD FS) farm.

You install Windows Server 2016 on a server named Server2.

You need to configure Server2 as a node in the federation server farm.

Which cmdlets should you run? To answer, select the appropriate options in the answer area.

Hot Area:



Answer Area

First cmdlet to run:

	▼
Install-AdfsFarm	
Install-Package	
Install-WindowsFeature	

Second cmdlet to run:

	▼
Install-AdfsFarm	
New-AdfsOrganization	
Set-AdfsFarmInformation	
Set-Adfsproperties	
Add-AdfsFarmNode	

Correct Answer:

Answer Area

First cmdlet to run:

	▼
Install-AdfsFarm	
Install-Package	
Install-WindowsFeature	

Second cmdlet to run:

	▼
Install-AdfsFarm	
New-AdfsOrganization	
Set-AdfsFarmInformation	
Set-Adfsproperties	
Add-AdfsFarmNode	

Section: (none)
Explanation

Explanation/Reference:

QUESTION 59

You have a server named Server1 that runs Windows Server 2016. Server1 has the Windows Application proxy role service installed.

You plan to deploy Remote Desktop Gateway (RD Gateway) services.

Clients will connect to the RD Gateway services by using various types of devices including:

Windows, iOS and Android devices.

You need to publish the RD Gateway services through the Web Application Proxy.

Which command should you run? To answer, select the appropriate options in the answer area.

▼

Add-WebApplicationProxyApplication
Set-WebApplicationProxyApplication
Set-WebApplicationProxyConfiguration

-BackendServerURL 'https://rdg.contoso.com/rdg1/'
-ExternalCertificateThumbprint
'1a2b3c4d5e6f1a2b3c4d5e6f1a2b3c4d5e6f1a2b'
-ExternalURL 'https://rdg.contoso.com/rdg1'
-Name 'RDG1'
-ExternalPreAuthentication

▼

ADFS
ADFSforOAuth
ClientCertificate
PassThrough

-ADFSRelyingPartyName 'Default provider'

-BackendServerAuthenticationSPN 'HTTP/RDG1'

Hot Area:

<div style="border: 1px solid black; padding: 2px;"> <div style="text-align: right;">▼</div> <div style="background-color: #e0f0ff; padding: 2px;">Add-WebApplicationProxyApplication</div> <div style="background-color: #e0f0ff; padding: 2px;">Set-WebApplicationProxyApplication</div> <div style="background-color: #e0f0ff; padding: 2px;">Set-WebApplicationProxyConfiguration</div> </div>		-BackendServerURL 'https://rdg.contoso.com/rdg1/' -ExternalCertificateThumbprint '1a2b3c4d5e6f1a2b3c4d5e6f1a2b3c4d5e6f1a2b' -ExternalURL 'https://rdg.contoso.com/rdg1/' -Name 'RDG1'
-ExternalPreAuthentication	<div style="border: 1px solid black; padding: 2px;"> <div style="text-align: right;">▼</div> <div style="background-color: #e0f0ff; padding: 2px;">ADFS</div> <div style="background-color: #e0f0ff; padding: 2px;">ADFSforOAuth</div> <div style="background-color: #e0f0ff; padding: 2px;">ClientCertificate</div> <div style="background-color: #e0f0ff; padding: 2px;">PassThrough</div> </div>	-ADFSRelyingPartyName 'Default provider'
-BackendServerAuthenticationSPN 'HTTP/RDG1'		

Correct Answer:

<div style="border: 1px solid black; padding: 2px;"> <div style="text-align: right;">▼</div> <div style="background-color: #e0f0ff; padding: 2px;">Add-WebApplicationProxyApplication</div> <div style="background-color: #e0f0ff; padding: 2px;">Set-WebApplicationProxyApplication</div> <div style="background-color: #e0f0ff; padding: 2px;">Set-WebApplicationProxyConfiguration</div> </div>		-BackendServerURL 'https://rdg.contoso.com/rdg1/' -ExternalCertificateThumbprint '1a2b3c4d5e6f1a2b3c4d5e6f1a2b3c4d5e6f1a2b' -ExternalURL 'https://rdg.contoso.com/rdg1/' -Name 'RDG1'
-ExternalPreAuthentication	<div style="border: 1px solid black; padding: 2px;"> <div style="text-align: right;">▼</div> <div style="background-color: #e0f0ff; padding: 2px;">ADFS</div> <div style="background-color: #e0f0ff; padding: 2px;">ADFSforOAuth</div> <div style="background-color: #e0f0ff; padding: 2px;">ClientCertificate</div> <div style="background-color: #e0f0ff; padding: 2px;">PassThrough</div> </div>	-ADFSRelyingPartyName 'Default provider'
-BackendServerAuthenticationSPN 'HTTP/RDG1'		

Section: (none)

Explanation

Explanation/Reference:

QUESTION 60

You have a server that runs Windows Server 2016.

You run the commands shown in the following output PS G:\> Get-DedupVolume | fl.

```
PS G:\> Get-DedupVolume | fl
```

```
Volume                : G:
VolumeId               : \\?\Volume{2efa2f6e-db4a-4bb1-aal5-31ae8b073d16}\
Enabled                : True
UsageType              : Default
DataAccessEnabled      : True
Capacity               : 923.87 GB
FreeSpace              : 393.98 GB
UsedSpace              : 529.89 GB
UnoptimizedSize        : 1008.7 GB
SavedSpace              : 478.82 GB
SavingRate              : 47 %
MinimumFileAgeDays     : 3
MinimumFileSize         : 32768
NoCompress              : False
ExcludeFolder           :
ExcludeFileType         :
ExcludeFileTypeDefault : {edb, jrs}
NoCompressionFileType  : {asf, mov, wma, wmv...}
ChunkRedundancyThreshold : 100
Verify                  : False
OptimizeInUseFiles      : False
OptimizePartialFiles    : False
```

```
PS G:\> Get-Date
```

```
Tuesday, June 21, 2016 5:29:58 PM
```

```
PS G:\DC01> dir | select Mode,LastWriteTime,Length,Name | ft -AutoSize
```

Mode	LastWriteTime	Length	Name
d----	2/18/2015 11:54:56 AM		Snapshots
d----	2/18/2015 12:11:42 PM		Virtual Machines
-a---	6/21/2016 5:27:40 PM	51539608064	DC01.vhd
-a---	6/18/2016 7:00:00 AM	12400	Readme.txt
-a---	1/5/2015 7:00:00 AM	3939235840	Software.iso

For each of the following statements, select Yes if the statement is true. Otherwise, select No.

Hot Area:

Statements	Yes	No
DC01.vhd will be processed by deduplication	<input type="radio"/>	<input type="radio"/>
Readme.txt will be processed by deduplication.	<input type="radio"/>	<input type="radio"/>
Software.iso will be processed by deduplication.	<input type="radio"/>	<input type="radio"/>

Correct Answer:

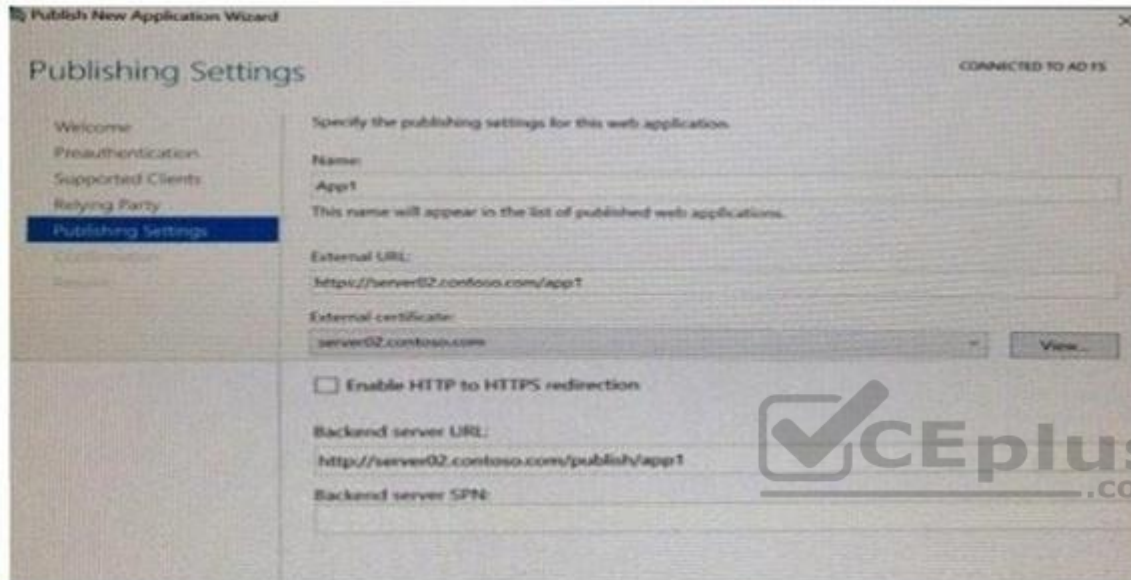
Statements	Yes	No
DC01.vhd will be processed by deduplication	<input type="radio"/>	<input checked="" type="radio"/>
Readme.txt will be processed by deduplication.	<input type="radio"/>	<input checked="" type="radio"/>
Software.iso will be processed by deduplication.	<input checked="" type="radio"/>	<input type="radio"/>

Section: (none)
Explanation

Explanation/Reference:

QUESTION 61

You have a server named Served that runs Windows Server 2016. Server1 has the Windows Application Proxy role service installed. You are publishing an application named App1 that will use Integrated. Windows authentication as shown in the following graphic.



Publishing Settings CONNECTED TO AD FS

Specify the publishing settings for this web application.

Name: App1
This name will appear in the list of published web applications.

External URL: http://server02.contoso.com/app1

External certificate: server02.contoso.com View...

☐ Enable HTTP to HTTPS redirection

Backend server URL: http://server02.contoso.com/publish/app1

Backend server SPN:

Use the drop-down menus to select the answer choice that completes each statement based on the information presented in the graphic.

Hot Area:

Before you can complete the wizard, you must [answer choice]

change the external certificate
configure the Backend server SPN
select Enable HTTP to HTTPS redirection



To ensure that users can access App1 externally, you must change the External URL to [answer choice.]

https://app1.contoso.com/app1
https://server02.contoso.com/app1
https://server02.contoso.com/publish/app1

Correct Answer:

Before you can complete the wizard, you must [answer choice]

change the external certificate
configure the Backend server SPN
select Enable HTTP to HTTPS redirection



To ensure that users can access App1 externally, you must change the External URL to [answer choice.]

https://app1.contoso.com/app1
https://server02.contoso.com/app1
https://server02.contoso.com/publish/app1

Section: (none)

Explanation

Explanation/Reference:

QUESTION 62

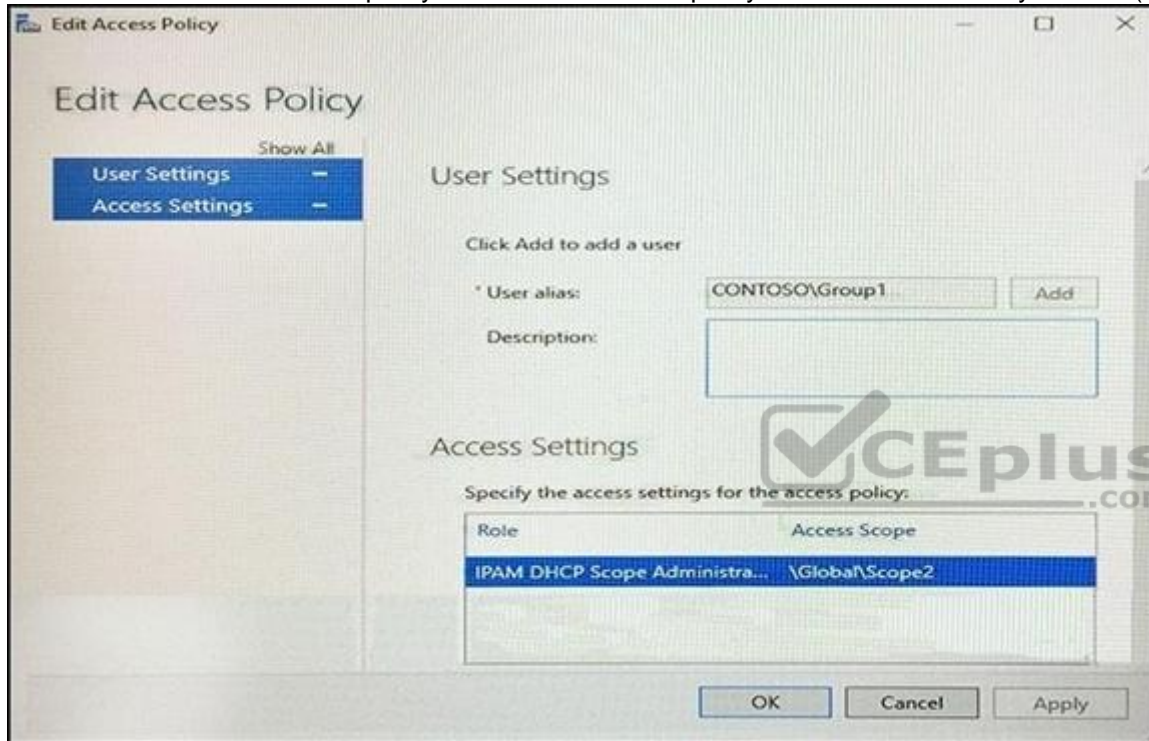
Hotspot

You network contains an Active Directory named contoso.com.

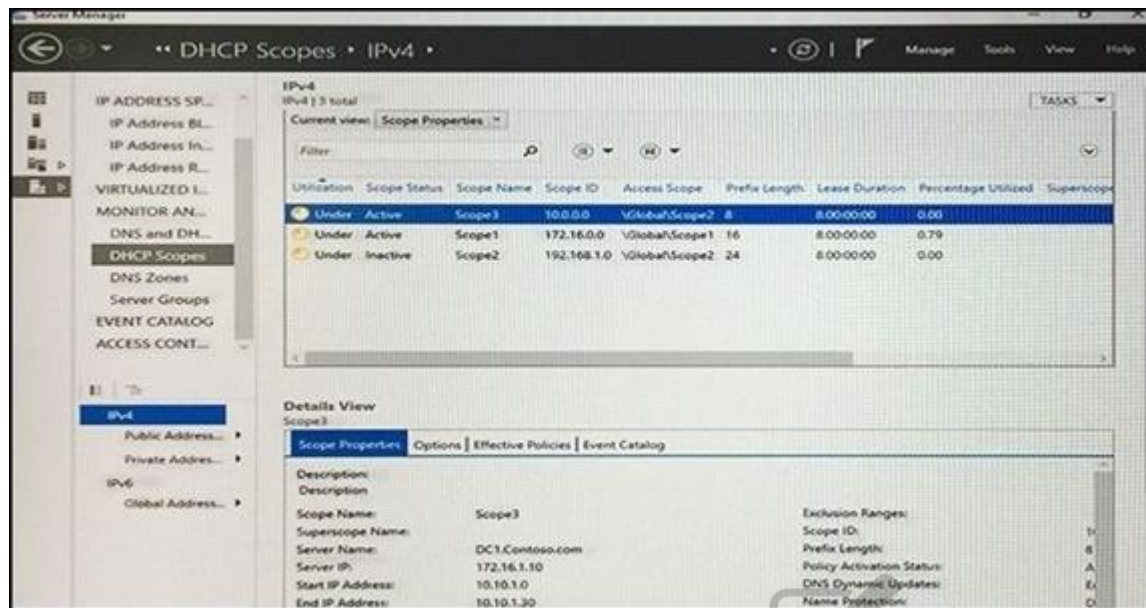
The domain contains two servers named Server1 and Server2 that run Windows Server 2016. Server1 has IP Address Management (IPAM) installed. Server2 has the DHCP Server role installed. The IPAM server retrieves data from Server2.

The domain has two users named User1 and User2 and a group named Group1. User1 is the only member of Group1.

Server1 has one IPAM access policy. You edit the access policy as shown in the Policy exhibit. (Click the Exhibit button.)



The DHCP scopes are configured as shown in the Scopes Exhibit. (Click the Exhibit button.)



For each of the following statements, select Yes if the statement is true. Otherwise, select No.

Hot Area:

Answer Area

Statements	Yes	No
User1 can modify the description of Scope1.	<input type="radio"/>	<input type="radio"/>
User2 can modify the description of Scope1.	<input type="radio"/>	<input type="radio"/>
User1 can modify the description of Scope2.	<input type="radio"/>	<input type="radio"/>

Correct Answer:

Answer Area

Statements	Yes	No
User1 can modify the description of Scope1.	<input checked="" type="radio"/>	<input type="radio"/>
User2 can modify the description of Scope1.	<input type="radio"/>	<input checked="" type="radio"/>
User1 can modify the description of Scope2.	<input checked="" type="radio"/>	<input type="radio"/>

Section: (none)

Explanation

Explanation/Reference:

[https://technet.microsoft.com/en-us/library/dn268500\(v=ws.11\).aspx](https://technet.microsoft.com/en-us/library/dn268500(v=ws.11).aspx)

QUESTION 63

Hotspot

Your company has a main office and a branch office.

The two offices connect to each other by using a WAN link.

Your network contains an Active Directory forest named contoso.com. The forest contains a domain controller named DC1.

All of the domain controllers are located in the main office.

You install a read-only domain controller (RODC) named RODC1 in the branch office.

You create a user account for a new user named User1.

You add User1 to the Allowed RODC Password Replication Group. User1 starts work on Monday.

You are notified that the WAN link will be down for maintenance on Monday.

You need to ensure that User1 can log on in the branch office site on Monday.

Which command should you run? To answer, select the appropriate options in the answer area.

Hot Area:

Answer Area

clonepr	/prp
ldifde	/replicate
repadmin	/rodcpwdrepl
replmon	/syncall

rodcl.fabrikam.com dcl.fabrikam.com "cn=user1,ou=users,dc=fabrikam,DC=com"

Correct Answer:

Answer Area

clonepr	/prp
ldifde	/replicate
repadmin	/rodcpwdrepl
replmon	/syncall

rodcl.fabrikam.com dcl.fabrikam.com "cn=user1,ou=users,dc=fabrikam,DC=com"

Section: (none)

Explanation

Explanation/Reference:

[https://technet.microsoft.com/en-us/library/cc742095\(v=ws.11\).aspx](https://technet.microsoft.com/en-us/library/cc742095(v=ws.11).aspx)

QUESTION 64

Hotspot

Your network contains an Active Directory domain named contoso.com. The domain contains three servers named Server1, Server2, and Server3 that run Windows Server 2016. Server1 has IP Address Management (IPAM) installed. Server2 and Server3 have the DHCP Server role installed and have several DHCP scopes configured.

The IPAM server retrieves data from Server2 and Server3.

A domain user named User1 is a member of the groups shown in the following table.

Server name	Group
Server2	DHCP Administrators
Server3	DHCP Users

On Server1, you create a security policy for User1. The policy grants the IPAM DHCP Scope Administrator Role with the \Global access scope to the user. Which actions can User1 perform? To answer, select the appropriate options in the answer area.

Hot Area:

Answer Area

From Server Manager on Server1, User1 can modify the description of the DHCP scopes:

☐ On Server2 only
 ☐ On Server3 only
 ☐ On both Server2 and Server3

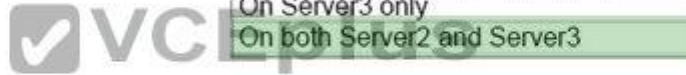
From Server Manager on Server1, User1 can create a new DHCP scope:

☐ On Server2 only
 ☐ On Server3 only
 ☐ On both Server2 and Server3

Correct Answer:

Answer Area

From Server Manager on Server1, User1 can modify the description of the DHCP scopes:



VCE To PDF - Free Practice Exam

From Server Manager on Server1, User1 can create a new DHCP scope:

On Server2 only
On Server3 only
On both Server2 and Server3

On Server2 only
On Server3 only
On both Server2 and Server3

Section: (none)

Explanation

Explanation/Reference:

[https://technet.microsoft.com/en-us/library/dn268500\(v=ws.11\).aspx](https://technet.microsoft.com/en-us/library/dn268500(v=ws.11).aspx)

QUESTION 65

Hotspot

You have a Windows Server 2016 failover cluster that contains two servers named Server1 and Server2.

You need to apply patches to Server1.

Which two commands should you run before you apply the patches? To answer, select the appropriate options in the answer area.

Hot Area:

Answer Area

First command:

Invoke-Command Server2 { Start-ClusterGroup }
Invoke-Command Server2 { Start-ClusterResource }
Move-ClusterGroup -Node Server2
Set-ClusterOwnerNode -Owner Server2
Set-ClusterParameter -Name Owner -Value Server2

Second command:

Stop-ClusterGroup
Stop-ClusterResource
Suspend-ClusterNode
Suspend-ClusterResource

Correct Answer:

Answer Area

First command:

Invoke-Command Server2 { Start-ClusterGroup }
Invoke-Command Server2 { Start-ClusterResource }
Move-ClusterGroup -Node Server2
Set-ClusterOwnerNode -Owner Server2
Set-ClusterParameter -Name Owner -Value Server2

Second command:

Stop-ClusterGroup
Stop-ClusterResource
Suspend-ClusterNode
Suspend-ClusterResource

Section: (none)

Explanation

Explanation/Reference:

QUESTION 66

Hotspot

You have four Hyper-V hosts named Server1, Server2, Server3 and Server4 that run Windows Server 2016. The hosts are nodes in a failover cluster. The failover cluster is configured to balance virtual machines when a node is more than 80 percent loaded. You need to configure the failover cluster to balance the virtual machines when the load of a node is more than five percent higher than the average for the nodes. Which command should you run? To answer, select the appropriate options in the answer area.

Hot Area:

Answer Area

▼	▼
Get-Cluster	AutoBalanceLevel=3
Get-ClusterNode	AutoBalancedMode=1
Get-ClusterParameter	DynamicQuorum=1
Get-ClusterResource	MinimumPreemptorPriority=5



Correct Answer:

Answer Area

▼	▼
Get-Cluster	AutoBalanceLevel=3
Get-ClusterNode	AutoBalancedMode=1
Get-ClusterParameter	DynamicQuorum=1
Get-ClusterResource	MinimumPreemptorPriority=5

Section: (none)

Explanation

Explanation/Reference:

QUESTION 67

Hotspot

You deploy a new Hyper-V host named Server1 that runs Windows Server 2016.

You implement receive side scaling (RSS) on Server1.

The chipset on Server1 does not support NetDMA.

All of the equipment on your network supports 10-Gbps connectivity.

On Server1, you deploy a virtual machine named VM1.

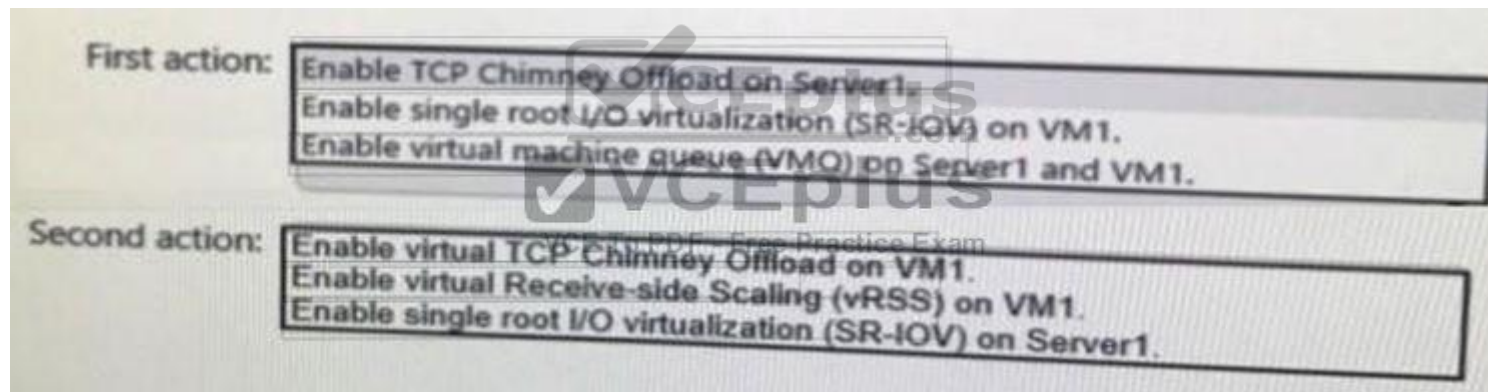
You configure VM1 to aggregate all of the Windows and non-Windows log files for all of the servers on the network.

VM1 has four virtual processors.

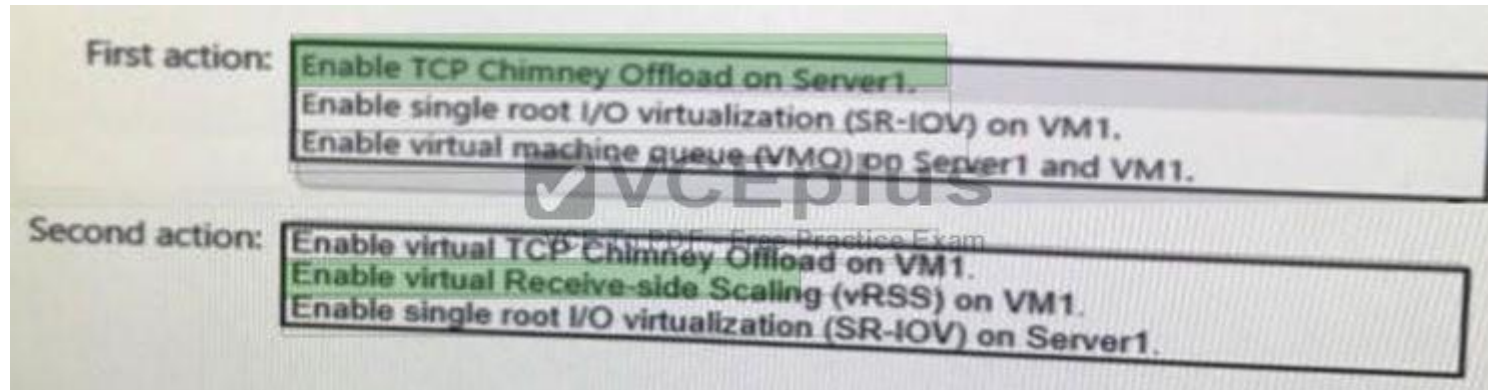
You discover that VM1 drops packets.

Which two options should you run? To answer, select the appropriate options in the answer area.

Hot Area:



Correct Answer:



Section: (none)

Explanation

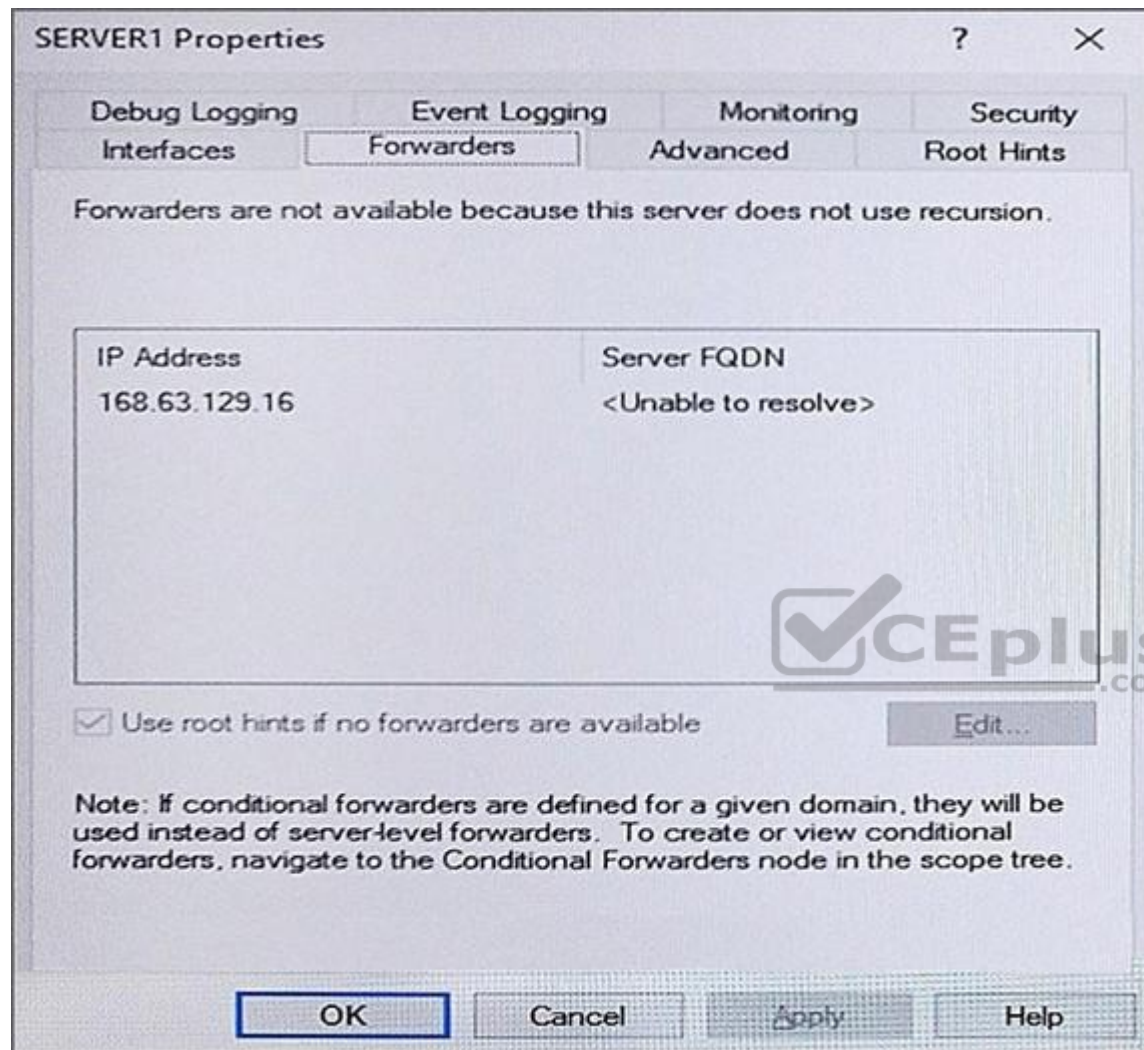
Explanation/Reference:

QUESTION 68

Hotspot

You have a DNS server named Server1.

The forwarders are configured as shown in the Forwarders exhibit. (Click the Exhibit button.)



The Advanced Settings are configured as shown in the Advanced exhibit. (Click the Exhibit button.)

SERVER1 Properties

Debug Logging Event Logging Monitoring Security

Interfaces Forwarders **Advanced** Root Hints

Server version number:
10.0 14300 (0x37dc)

Server options:

- ☒ Disable recursion (also disables forwarders)
- ☐ Enable BIND secondaries
- ☐ Fail on load if bad zone data
- ☒ **Enable round robin**
- ☒ Enable netmask ordering
- ☒ Secure cache against pollution

Name checking: Multibyte (UTF8)

Load zone data on startup: From Active Directory and registry

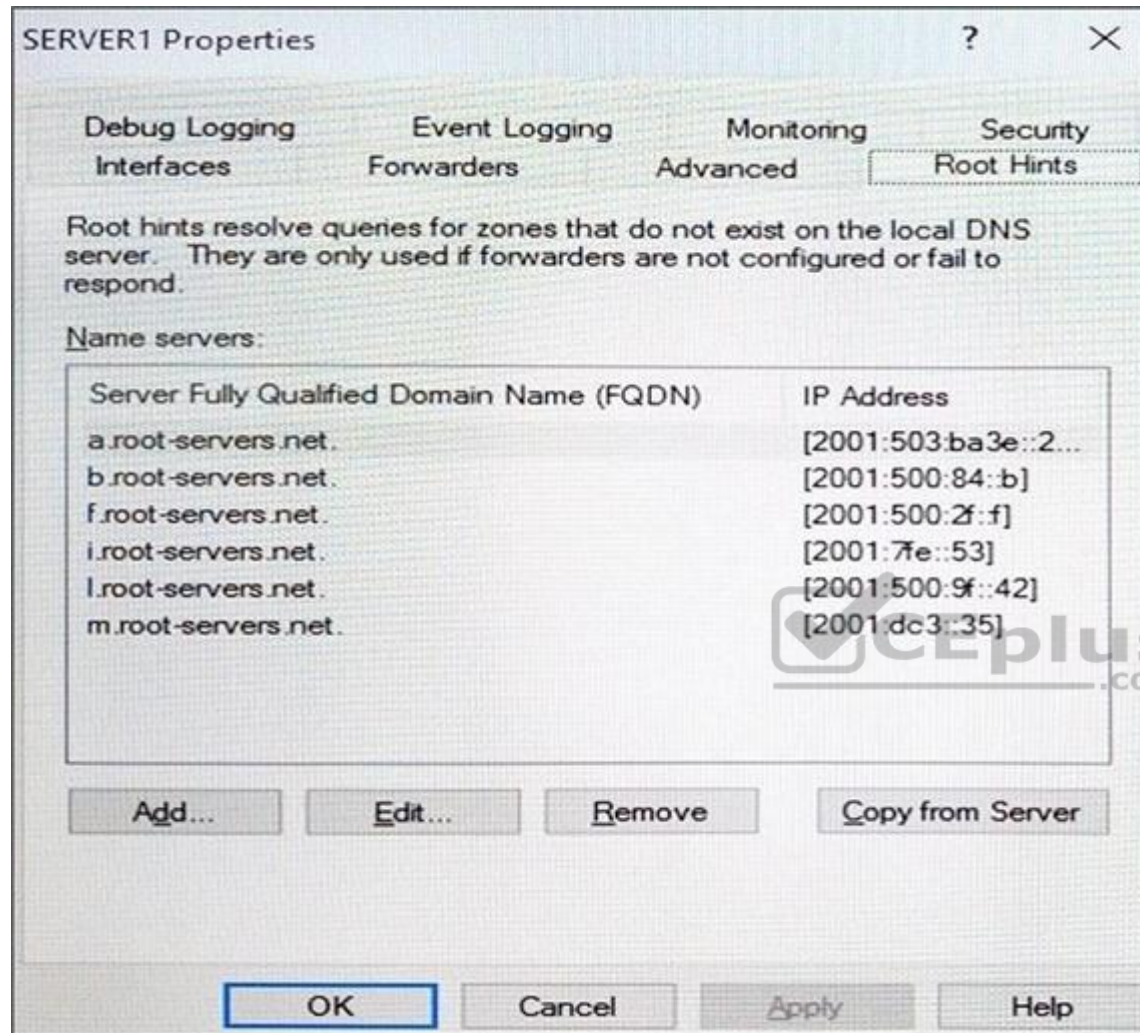
☐ Enable automatic scavenging of stale records

Scavenging period: 0 days

Reset to Default

OK Cancel Apply Help

The Root Hints are configured as shown in the Root Hints exhibit. (Click the Exhibit button.)



Server1 does not contain any DNS zones.

For each of the following statements, select Yes if the statement is true. Otherwise, select No.

Hot Area:

Answer Area

Statements	Yes	No
Server1 can resolve the names of hosts that are located on the Internet.	<input type="radio"/>	<input type="radio"/>
From Server1 Properties, if you perform a test from the Monitoring tab, the recursive test will pass.	<input type="radio"/>	<input type="radio"/>
Server1 is configured as a root DNS server.	<input type="radio"/>	<input type="radio"/>

Correct Answer:

Answer Area

Statements	Yes	No
Server1 can resolve the names of hosts that are located on the Internet.	<input type="radio"/>	<input checked="" type="radio"/>
From Server1 Properties, if you perform a test from the Monitoring tab, the recursive test will pass.	<input type="radio"/>	<input checked="" type="radio"/>
Server1 is configured as a root DNS server.	<input type="radio"/>	<input checked="" type="radio"/>

Section: (none)

Explanation

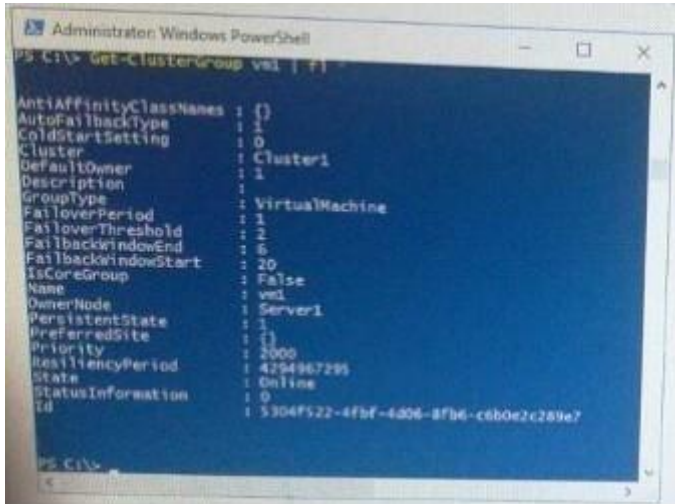
Explanation/Reference:

Recursion is disabled so internet hosts cannot be resolved. The recursive test fails because recursion is disabled. Server1 is not configured as a root server. The forwarders list would be greyed out if it was.

QUESTION 69

Hotspot

A virtual machine named VM1 is running in the failover cluster. The role for VM1 is configured as shown in the following exhibit.



```

PS C:\> Get-ClusterGroup vml | fl
AntiAffinityClassNames : {}
AutoFailbackType        : 1
ColdStartSetting        : 0
Cluster                 : Cluster1
DefaultOwner            : 1
Description              :
GroupType               : VirtualMachine
FailoverPeriod          : 1
FailoverThreshold       : 2
FailbackWindowEnd       : 6
FailbackWindowStart     : 20
IsCoreGroup             : False
Name                    : vml
OwnerNode                : Server1
PersistentState         : 1
PreferredSite            : {}
Priority                 : 2000
ResiliencyPeriod        : 4294967295
State                   : Online
StatusInformation       : 0
Id                      : 5304F522-4fbf-4d06-8fb6-cdb0e2c289e7
  
```

Use the drop-down menus to select the answer choice that completes each statement based on the Information presented in the graphic.

Hot Area:

Answer Area

If VM1 fails three time in one hour, VM1 will [answer choice].

	▼
fail over to a different node	
remain in a failed state	
restart on the same node	

If VM1 fails over to a different node at 14:00, VM1 will fail back to the preferred node [answer choice].

	▼
as soon as possible	
automatically at 20:00	
if the current node is highly loaded	
only when triggered manually	

Correct Answer:

Answer Area

If VM1 fails three time in one hour, VM1 will [answer choice].

▼

- fail over to a different node
- remain in a failed state
- restart on the same node

If VM1 fails over to a different node at 14.00, VM1 will fail back to the preferred node [answer choice].

▼

- as soon as possible
- automatically at 20:00
- if the current node is highly loaded
- only when triggered manually

Section: (none)

Explanation

Explanation/Reference:

[https://msdn.microsoft.com/en-us/library/aa369665\(v=vs.85\).aspx](https://msdn.microsoft.com/en-us/library/aa369665(v=vs.85).aspx)

QUESTION 70

Hotspot

You have a server named Server1 that runs Windows Server 2016.

Server1 is a Hyper-V host.

You run the commands shown in the following graphic:



```

Select Administrator: Windows PowerShell
Windows PowerShell
Copyright (C) 2016 Microsoft Corporation. All rights reserved.
PS C:\Users\ServerAdmin> New-VaSwitch -Name TEAM1 -NetAdapterName "NIC 1", "NIC 2" -EnableEmbeddedTeaming $true
PS C:\Users\ServerAdmin> Set-VaSwitch -Name TEAM1 -NetAdapterName "NIC 1"
  
```

Use the drop-down menus to select the answer choice that completes each statement based on the information presented in the graphic.

Hot Area:

Answer Area

After running the commands, TEAM1 contains [answer choice] network adapters.



If you run **Add-VmSwitchTeamMember -VmSwitchName TEAM1 -NetAdapterName "NIC4"**, TEAM1 will contain [answer choice] network adapters.

	▼
one	
two	
three	

	▼
one	
two	
three	
four	

Correct Answer:

Answer Area



After running the commands, TEAM1 contains [answer choice] network adapters.



If you run **Add-VmSwitchTeamMember -VmSwitchName TEAM1 -NetAdapterName "NIC4"**, TEAM1 will contain [answer choice] network adapters.

	▼
one	
two	
three	

	▼
one	
two	
three	
four	

Section: (none)
Explanation

Explanation/Reference:

QUESTION 71

Hotspot

Your network contains an Active Directory forest named contoso.com.

You need to add a new domain named fabrikam.com to the forest.

What command should you run? To answer, select the appropriate options in the answer area.

Hot Area:

Answer Area

	-DomainType
Install-ADDSDomain	TreeDomain
Install-ADDSDomainController	ChildDomain
Install-ADDSTForest	

-InstallDns:\$true -NewDomainName fabrikam.com -ParentDomainName contoso.com

Correct Answer:

Answer Area

	-DomainType
Install-ADDSDomain	TreeDomain
Install-ADDSDomainController	ChildDomain
Install-ADDSTForest	

-InstallDns:\$true -NewDomainName fabrikam.com -ParentDomainName contoso.com

Section: (none)

Explanation

Explanation/Reference:

[https://technet.microsoft.com/en-us/library/hh974722\(v=wps.630\).aspx](https://technet.microsoft.com/en-us/library/hh974722(v=wps.630).aspx)

QUESTION 72

Drag and Drop Question

Your network contains two Hyper-V servers named Server1 and Server2 has Windows Server 2012 R2 installed. Server2 has Windows Server 2016 installed.

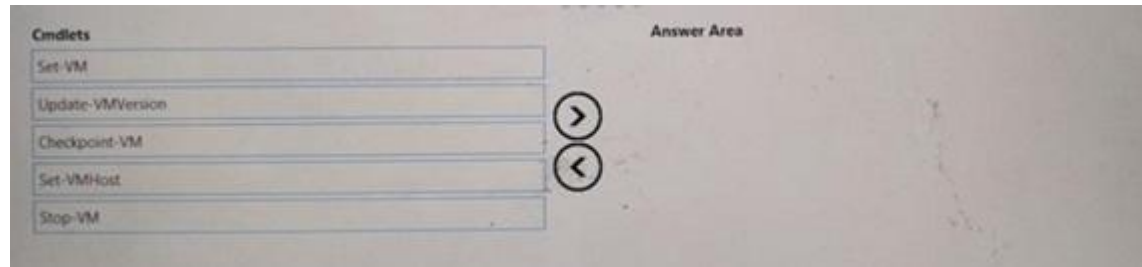
You perform a live migration of a virtual machine named VM1 from Server1 to Server2.

You need to create a production checkpoint for VM1 on Server2.

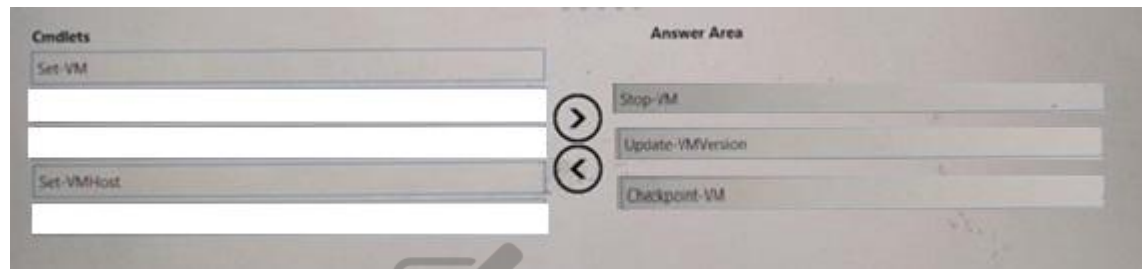
What three Windows PowerShell cmdlets should you run in sequence? To answer, move the appropriate Windows PowerShell cmdlets from the list of actions to the answer.

Cmdlets	Answer Area
Set-VM	
Update-VMVersion	
Checkpoint-VM	
Set-VMHost	
Stop-VM	

Select and Place:



Correct Answer:



Section: (none)

Explanation

Explanation/Reference:

QUESTION 73

You are deploying DirectAccess to a server named DA1. DA1 will be located behind a firewall and will have a single network adapter. The intermediary network will be IPv4.

You need to configure firewall to support DirectAccess.

Which firewall rules should you create for each type of traffic? To answer, drag the appropriate ports and protocols to the correct traffic types. Each port and protocol may be used once, more than once, or not at all. You may need to drag the split bar between panes or scroll to view content

Select and Place:

Ports and Protocols		Answer Area	
IP protocol ID 1	IP Protocol ID 41	Teredo traffic:	
TCP 443	UDP 3544	6to4 traffic:	
		IP-HTTPS:	

Correct Answer:

Ports and Protocols		Answer Area	
IP protocol ID 1		Teredo traffic:	UDP 3544
		6to4 traffic:	IP Protocol ID 41
		IP-HTTPS:	TCP 443

Section: (none)

Explanation

Explanation/Reference:

QUESTION 74

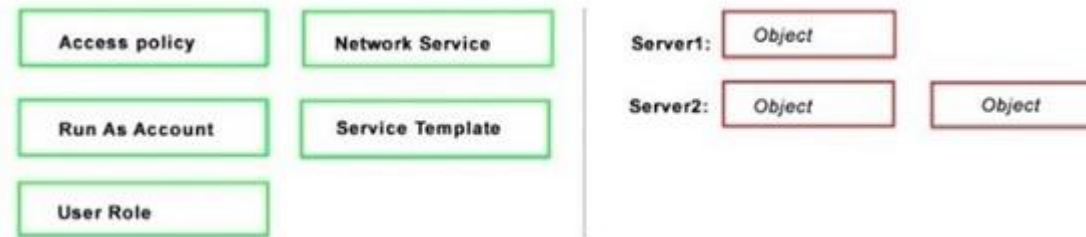
Your network contains an Active Directory domain named contoso.com.

The domain contains two servers named Server1 and Server2 that run Windows Server 2016. Server1 has IP Address Management (IPAM) installed. Server2 has Microsoft System Center 2016. Virtual Machine Manager (VMM) installed.

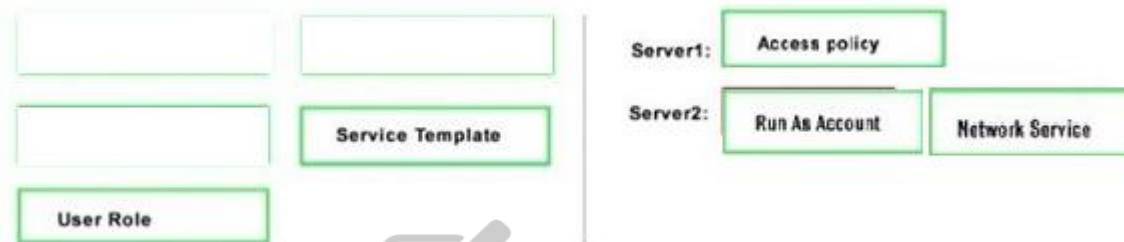
You need to integrate IPAM and VMM.

Which types of objects should you create on each server? To answer, drag the appropriate object types to the correct servers. Each object type may be used once, more than once, or not at all. You may need to drag the split bar between panes or scroll to view content.

Select and Place:



Correct Answer:



Section: (none)
Explanation

Explanation/Reference:

QUESTION 75

Note: This question is part of a series of questions that use the same scenario. For your convenience, the scenario is repeated in each question. Each question presents a different goal and answer choices, but the text of the scenario is exactly the same in each question in this series.

Start of Repeated Scenario:

Your network contains an Active Directory domain named contoso.com. The functional level of the forest and the domain is Windows Server 2008 R2. All servers in the domain run Windows Server 2016 Standard. The domain contains 300 client computers that run either Windows 8.1 or Windows 10. The domain contains nine servers that are configured as shown in the following table.

Name	Configuration	Planned changes
Server1	Domain controller	None
Server2	File server	Run Failover Clustering and Storage Spaces Direct
Server3	File server	Run Failover Clustering and Storage Spaces Direct
Server4	Hyper-V host	Run shielded virtual machines
Server5	Hyper-V host	None
Server6	Member server	Run Active Directory Federation Services (AD FS)
VM1	Virtual machine hosted on Server5	None
VM2	Virtual machine hosted on Server5	None
VM3	Virtual machine hosted on Server5	None

The virtual machines are configured as follows:

Each virtual machine has one virtual network adapter. VM1 and VM2 are part of a Network Load Balancing (NLB) cluster. - All of the servers on the network can communicate with all of the virtual machines.

End of repeated Scenario.

You need to install the correct edition of Windows Server 2016 to support the planned changes for Server2, Server3, Server4 and Server6. Which edition or editions should you choose for each server? To answer, drag the appropriate editions to the correct servers.

Select and Place:

Editions

Standard only	Datacenter only
Standard or Datacenter	



Answer Area

Server2:	Edition
Server3:	Edition
Server4:	Edition
Server6:	Edition

Correct Answer:

Editions

Standard only	Datacenter only
Standard or Datacenter	



Answer Area

Server2:	Datacenter only
Server3:	Datacenter only
Server4:	Datacenter only
Server6:	Standard or Datacenter

Section: (none)

Explanation

Explanation/Reference:

QUESTION 76

Drag and Drop

You have a file server named Server1 that runs Windows Server 2016.

You need to create a report that lists all of the sharp permissions assigned to the security principals on Server1.

How should you complete the command? To answer, drag the appropriate cmdlets to the correct targets. Each cmdlet may be used once, more than once, or not at all. You may need to drag the split bar between panes or scroll to view content.

Select and Place:

Cmdlets

Get-Acl

Get-SmbClientConfiguration

Get-SmbShare

Set-SmbPathAcl

Get-Credential

Get-SmbDelegation

Get-SmbShareAccess

Answer Area

Cmdlet

Cmdlet

Correct Answer:

Cmdlets	Answer Area
Get-Acl	Get-SmbShare Get-SmbShareAccess
Get-SmbClientConfiguration	
Set-SmbPathAcl	
Get-Credential	
Get-SmbDelegation	

Section: (none)

Explanation

Explanation/Reference:



QUESTION 77

Drag and Drop

You have a Hyper-V host named Server1 that runs Windows Server 2016.

The installation source files for Windows Server 2016 are located in D:\Source.

You need to create a Nano Server image.

Which cmdlets should you run? To answer, drag the appropriate cmdlets to the correct targets. Each cmdlet may be used once, more than once, or not at all.

You may need to drag the split bar between panes or scroll to view content.

Select and Place:

Cmdlets	Answer Area
Add-WindowsImage	First cmdlet to run: cmdlet
Import-Module	Second cmdlet to run: cmdlet
Install-Module	
New-NanoServerImage	
New-WindowsCustomImage	

Correct Answer:

Cmdlets	Answer Area
Add-WindowsImage	First cmdlet to run: Import-Module
	Second cmdlet to run: New-NanoServerImage
Install-Module	
New-WindowsCustomImage	

Section: (none)

Explanation

Explanation/Reference:

Step 1: Import Module

Import-Module .\NanoServerImageGenerator.psm1

Step 2: New New-NanoServerImage

Create Nano Server Image VHDX

New-NanoServerImage -MediaPath .\Files -BasePath.\Base TargetPath .\Images\NanoVMGA.vhdx

References: <https://technet.microsoft.com/en-us/windows-server-docs/get-started/deploy-nanoserver>

QUESTION 78

DRAG DROP

You have a Hyper-V host named Server1 that runs Windows Server 2016.

Server 1 hosts a virtual machine named VM1 that runs Windows Server 2016.

Server1 has a USB 3.0 device attached to a PCI Express (PCIe) bus.

You need to provide VM1 with pass-through access to the USB 3.0 device.

Which three actions should you perform in sequence? To answer, move the appropriate actions from the list of actions to the answer area and arrange them in the correct order.

Select and Place:



Actions

On Server1, run the **Dismount-VMHostAssignableDevice** cmdlet.

On Server1, run the **Add-VMAssignableDevice** cmdlet

On Server1, run the **Disable-PnPDevice** cmdlet

On VM1, run the **Enable-PnPDevice** cmdlet

On VM1, ran the **Mount-VMHostAssignable Device** cmdlet

Answer Area

1

2

3

Correct Answer:

Actions

On VM1, run the Enable-PnPDevice cmdlet
On VM1, ran the Mount-VMHostAssignable Device cmdlet

Answer Area

- 1 On Server1, run the **Disable-PnPDevice** cmdlet
- 2 On Server1, run the **Dismount-VMHostAssignableDevice** cmdlet.
- 3 On Server1, run the **Add-VMAssignableDevice** cmdlet

Section: (none)

Explanation

Explanation/Reference:

References:

<https://blogs.technet.microsoft.com/heyscriptingguy/2016/07/14/passing-through-devices-to-hyper-v-vms-by-using-discrete-device-assignment/>

QUESTION 79

Drag and Drop

Your network contains an Active Directory domain named contoso.com.

The domain contains a server named Server1 that runs Windows Server 2016.


You install IP Address Management (IPAM) on Server1.

You need to manually start discovery of the servers that IPAM can manage in contoso.com. Which three cmdlets should you run in sequence? To answer, move


the appropriate cmdlets from the list of cmdlets to the answer area and arrange them in the correct order.


Select and Place:

Cmdlets	Answer Area
Add-IpamAddress	
Add-IpamDiscoveryDomain	
Add-IpamSubnet	
Update-IpamServer	
Invoke-IpamServerProvisioning	
Start-ScheduledTask	



VCE To PDF - Free Practice Exam





Correct Answer:

Cmdlets

Add-IpamSubnet

Update-IpamServer

Start-ScheduledTask

Answer Area

Add-IpamDiscoveryDomain

Add-IpamAddress

Invoke-IpamServerProvisioning

⬅
➡
⬆
⬇

Section: (none)

Explanation

Explanation/Reference:

<https://technet.microsoft.com/itpro/powershell/windows/ipam/add-ipamdiscoverydomain> <https://technet.microsoft.com/itpro/powershell/windows/ipam/add-ipamserverinventory> <https://technet.microsoft.com/itpro/powershell/windows/ipam/invoke-ipamserverprovisioning>

QUESTION 80

Drag and Drop

Your network contains an Active Directory domain. The domain contains two domain controllers named DC1 and DC2. DC2 is a virtual machine that is hosted on a Hyper-V host named HyperV1. DC1 holds the PDC emulator operations master role.

You need to create a new domain controller named DC3 by using domain controller cloning. Which five actions should you perform in sequence before you can import the cloned virtual machine? To answer, move the appropriate actions from the list of actions to the answer area and arrange them in the correct order.

NOTE: More than one order of answer choices is correct. You will receive credit for any of the correct orders you select.

Select and Place:

Actions

Stop DC2.

Run the **New-ADDCCloneConfigFile** cmdlet.

Modify the group membership of DC3.

Export DC2.

Run the **Get-ADDCCloningExcludedApplicationList** cmdlet.

Modify the group membership of DC2.

Answer Area



Correct Answer:

Actions	Answer Area
	Modify the group membership of DC2.
	Run the Get-ADDCCloningExcludedApplicationList cmdlet.
Modify the group membership of DC3.	Run the New-ADDCCloneConfigFile cmdlet.
	Stop DC2.
	Export DC2.

Navigation icons: Left arrow, Right arrow, Up arrow, Down arrow.

Section: (none)

Explanation

Explanation/Reference:

QUESTION 81

Drag and Drop

You are preparing an image of Windows Server 2016.

The image is missing the driver for a network adapter that is required in your environment.

You need to ensure that the image contains the network adapter driver.

Which three cmdlets should you use in sequence? To answer, move the appropriate cmdlets from the list of cmdlets to the answer area and arrange them in the correct order.

Select and Place:

Cmdlets

Mount-WindowsImage

Add-WindowsDriver

Get-WindowsImage

Save-WindowsImage

Add-WindowsFeature

Dismount-WindowsImage

Optimize-WindowsImage

Answer Area

1

2

3

Correct Answer:

Cmdlets

Get-WindowsImage
Save-WindowsImage
Add-WindowsFeature
Optimize-WindowsImage

Answer Area

1	Mount-WindowsImage
2	Add-WindowsDriver
3	Dismount-WindowsImage

Section: (none)

Explanation

Explanation/Reference:

QUESTION 82

Drag and Drop

You have a server named Server1 that runs Windows Server 2016.

On Server1 you use the Basic template to create a new Data Collector Set named CollectorSet1.
You need to configure data collection for the performance counters. The configuration must support the following requirements:

Data collection must run on a schedule.

Data collection must stop if there is less than 1 GB of free disk space.

What should you modify to meet each requirement? To answer, drag the appropriate settings to the correct requirements. Each setting may be used once, more than once, or not at all. You may need to drag the Split bar between panes or scroll to view content.

Select and Place:

Settings to Modify

The Data Manager settings of
CollectorSet1

The properties of the performance
counter data collector

The properties of CollectorSet1

Answer Area

Data collection must run on a schedule:

Setting to modify

Data collection must stop if there is less
than 1 GB of free disk space:

Setting to modify

Correct Answer:

Settings to Modify

The properties of the performance counter data collector

Answer Area

Data collection must run on a schedule:

The properties of CollectorSet1

Data collection must stop if there is less than 1 GB of free disk space:

The Data Manager settings of CollectorSet1

Section: (none)

Explanation

Explanation/Reference:



QUESTION 83

Drag and Drop

You have a server named Server1 that runs Windows Server 2016.

On Server1, you create a Nano Server image named Disk1.vhdx.

You need to start Server1 by using Disk1.vhdx.

Which three actions should you perform in sequence? To answer, move the appropriate actions from the list of actions to the answer area and arrange them in the correct order.

Select and Place:

Actions

Restart Server1.

Run the `bcdboot.exe` command.

Run the `bootcfg.exe` command.

Run the `Edit-NanoServerImage` cmdlet.

Mark a partition as active.

Mount Disk1.vhdx.

Answer Area



Correct Answer:

Actions	Answer Area
	Mount Disk1.vhdx.
Run the bcdboot.exe command.	Run the bootcfg.exe command.
	Restart Server1.
Run the Edit-NanoServerImage cmdlet.	
Mark a partition as active.	

Navigation icons: Left arrow, Right arrow, Up arrow, Down arrow.

Section: (none)

Explanation

Explanation/Reference:

QUESTION 84

Drag and Drop

Your network contains an Active Directory domain named contoso.com.

The domain contains a server named Server1 that runs Windows Server 2016.

Server1 allows inbound connectivity from all computers in the contoso.com domain.

Server1 has an IP address of 192.168.0.10.

Server1 hosts a Windows container named Container1. Container1 hosts a website that is accessible on port 80.

You need to ensure that you can use the Docker(?) client to manage Container1 from any computer in the domain.

Which four cmdlets should you run in sequence? To answer, move the appropriate cmdlets from the list of cmdlets to the answer area and arrange them in the

correct order.

Select and Place:

Actions

Restart-Service docker

New-ContainerNetwork- Name nat1 – Mode NAT- SubnetPrefix 192.168.0.0/24 – GatewatAddress 192.168.0.10

Add-Content
'c:\programdata\docker\config\daemon.json'
'{"hosts": [{"tcp://127.0.0.1:80", "npip: //"}]}'

Add-Content
'c:\programdata\docker\config\daemon.json'
'{"hosts": [{"tcp://0.0.0.0:2375", "npip: //"}]}'

New-Item-Type File
c:\programData\docker\config\daemon.json

Answer Area

>

<

^

v

Correct Answer:

www.vceplus.com - VCE Exam Simulator - Download A+ VCE (latest) free Open VCE Exams - VCE to PDF Converter - PDF Online

Actions

New-ContainerNetwork- Name nat1 –
Mode NAT- SubnetPrefix 192.168.0.0/24 –
GatewatAddress 192.168.0.10

Add-Content
'c:\programdata\docker\config\daemon.json'
'{"hosts": [{"tcp://127.0.0.1:80", "npip: //"}]}'

Answer Area

New-Item-Type File
c:\programData\docker\config\daemon.json

Add-Content
'c:\programdata\docker\config\daemon.json'
'{"hosts": [{"tcp://0.0.0.0:2375", "npip: //"}]}'

Restart-Service docker

⏪
⏩

Section: (none)

Explanation

Explanation/Reference:

<https://glennsarti.github.io/blog/getting-started-with-windows-containers/>

<https://docs.microsoft.com/en-us/virtualization/windowscontainers/manage-containers/containernetworking>

QUESTION 85

DRAG DROP

You have a server named Server1 that runs Windows Server 2016. Server1 has the Hyper-V server role installed and hosts a virtual machine named VM1. Server1 has an NVMe storage device. Currently, the device is assigned to VM1 through a Discrete Device Assignment.

You need to make the storage device available to Server1.

Which four actions should you perform in sequence? To answer, move the appropriate actions from the list of actions to the answer area and arrange them in the correct order.

Select and Place:

Actions

Run the Remove-VMAssignableDevice cmdlet.

Run the Mount-VMHostAssignableDevice cmdlet.

Stop VM1.

Enable the device in Device Manager.

Disable the device in Device Manager.

Answer Area

Correct Answer:

Actions

Disable the device in Device Manager.

Answer Area

Stop VM1.
Run the Remove-VMAssignableDevice cmdlet.
Run the Mount-VMHostAssignableDevice cmdlet.
Enable the device in Device Manager.

Section: (none)

Explanation

Explanation/Reference:

Explanation:

If you want to return the device back to its original state, you will need to stop the VM and issue the following cmdlets:

Remove-VMAssignableDevice

Mount-VMHostAssignableDevice

You can then re-enable the device in device manager.

References: <https://docs.microsoft.com/en-us/windows-server/virtualization/hyper-v/deploy/deploying-storage-devices-using-dda#removing-a-device-and-returning-it-to-the-host>