

70-345

Number: 70-345
Passing Score: 800
Time Limit: 120 min



Designing and Deploying Microsoft Exchange Server 2016

Version 2.0



Question Set 1**QUESTION 1**

You have an exchange server 2016 organization. The organization contains a Mailbox server named EX01. EX01 contains a mailbox database named DB01.

The volume that contains DB01 fails.

You need to perform a dial-tone recovery of the database.

What should you create first?

- A. a new Recovery Storage Group
- B. a new mailbox database
- C. a mailbox move request
- D. a mailbox restore request
- E. a lagged database copy

Correct Answer: B

Section: [none]

Explanation

Explanation/Reference:

References:

[https://technet.microsoft.com/en-gb/library/dd979810\(v=exchg.150\).aspx](https://technet.microsoft.com/en-gb/library/dd979810(v=exchg.150).aspx)

QUESTION 2

You have three Hyper-V hosts that each have 20 processor cores and 64 GB of RAM. Nine virtual machines are deployed to the hosts as shown in the following table.

Virtual machine name	Hyper-V host name	Number of processor cores	Amount of memory (GB)
DC1	Host1	4	8
FileServer1	Host1	4	8
WAP1	Host1	4	4
DC2	Host2	4	8
SQL1	Host2	12	32
ADFS1	Host2	4	8
Skype1	Host3	12	16
SharePoint1	Host3	12	16
SCOM1	Host3	8	12

Host1 is located in New York, Host2 is located in Los Angeles, and Host3 is located in Denver. None of the virtual machines use dynamic memory.

You plan to deploy a two-node Exchange Server 2016 database availability group (DAG) by using the virtual machines. Each node will have 12 processor cores and 24 GB of memory.

You are evaluating whether you can use the existing servers for the deployment or whether you must purchase additional servers.

You need to recommend where to place the Exchange servers. The solution must minimize costs.

What is the best recommendation to achieve the goal? More than one answer choice may achieve the goal. Select the **BEST** answer.

- A. One Exchange server on Host1 and one Exchange server on a new Hyper-V host.
- B. One Exchange server on Host1 and one Exchange server on Host3.
- C. Both Exchange servers on Host1.
- D. One Exchange server on Host1 and one Exchange server on Host2.
- E. One Exchange server on Host2 and one Exchange server on Host3.

Correct Answer: E

Section: [none]

Explanation

Explanation/Reference:

QUESTION 3

You have an Exchange Server 2016 organization. The organization contains five Mailbox servers. The servers are members of a database availability group (DAG). All of the databases in the DAG are replicated to all of the members.

You plan to perform scheduled maintenance on a Mailbox server named MBX3 that will place the server offline for up to an hour.

You need to ensure that any active databases on MBX3 are activated on other DAG members before performing the maintenance.

Which cmdlet should you use?

- A. Set-MailboxDatabaseCopy
- B. Stop-DatabaseAvailabilityGroup
- C. Resume-MailboxDatabaseCopy
- D. Set-MailboxServer

Correct Answer: D

Section: [none]

Explanation

Explanation/Reference:

Explanation: Use the DatabaseCopyActivationDisabledAndMoveNow parameter.

References:

[https://technet.microsoft.com/en-us/library/aa998651\(v=exchg.160\).aspx?f=255&MSPPErr=-2147217396](https://technet.microsoft.com/en-us/library/aa998651(v=exchg.160).aspx?f=255&MSPPErr=-2147217396)

QUESTION 4

You have an Exchange Server 2016 organization. The organization contains a database availability group (DAG).

You need to identify the number of transaction logs that are in replay queue.

Which cmdlet should you use?

- A. Test-ServiceHealth
- B. Test-ReplicationHealth
- C. Get-DatabaseAvailabilityGroup

D. Get-MailboxDatabaseCopyStatus

Correct Answer: D

Section: [none]

Explanation

Explanation/Reference:

References:

[https://technet.microsoft.com/en-us/library/bb691314\(v=exchg.160\).aspx?f=255&MSPPErr=-2147217396](https://technet.microsoft.com/en-us/library/bb691314(v=exchg.160).aspx?f=255&MSPPErr=-2147217396)

QUESTION 5

Your company has a data center. The data center contains a server that has Exchange Server 2016 and the Mailbox server role installed. Outlook anywhere clients connect to the Mailbox server by using the name outlook.contoso.com.

The company plans to open a second data center and to provision a database availability group (DAG) that spans both data centers.

You need to ensure that Outlook Anywhere clients can connect if one of the data centers becomes unavailable.

What should you add to DNS?

- A. one A record
- B. two TXT records
- C. two SRV records
- D. one MX record



Correct Answer: A

Section: [none]

Explanation

Explanation/Reference:

References:

[https://technet.microsoft.com/en-gb/library/dd638104\(v=exchg.150\).aspx?f=255&MSPPErr=-2147217396](https://technet.microsoft.com/en-gb/library/dd638104(v=exchg.150).aspx?f=255&MSPPErr=-2147217396)

QUESTION 6

HOTSPOT

You deploy a server named ex01.contoso.com that has Exchange Server 2016 installed.

You need to ensure that when users connect to the URL of http://ex01.contoso.com, they access Outlook on the web over a secure connection.

How should you configure the Default Web Site? To answer, select appropriate options in the selected area.

Hot Area:

Redirect requests to:

http://ex01.contoso.com
http://ex01.contoso.com/owa
https://ex01.contoso.com
https://ex01.contoso.com/owa

Require SSL:

Disable
Enable

Correct Answer:

Redirect requests to:

http://ex01.contoso.com
http://ex01.contoso.com/owa
https://ex01.contoso.com
https://ex01.contoso.com/owa

Require SSL:

Disable
Enable

Section: [none]

Explanation

Explanation/Reference:

QUESTION 7

Your company has two offices. The offices are located in San Francisco and Los Angeles. Each office contains a data center. Each data center has a

local connection to the Internet.

You deploy an Exchange Server 2016 organization named Contoso and install three servers in each data center. All of the servers are members of a single database availability group (DAG). Each data center hosts 2,000 mailboxes that replicate to the other data center.

You create four records in DNS. The records are configured as shown in the following table.

Record Name	Type	Points to	Zone
Lamail.contoso.com	A	Los Angeles data center	Public
Sfmail.contoso.com	A	San Francisco data center	Public
Mail.contoso.com	CNAME	Lamail.contoso.com Sfmail.contoso.com	Public
Mail.contoso.com	A	Los Angeles data center	Internal

You need to recommend a client access solution for the organization to meet the following requirements:

When connecting from the Internet, all users must connect to the same namespace for Outlook on the Web.

If a connection to the Internet fails at one data center, all users must be able to access their mailbox from the Internet.

When connecting from the Internet, all user connections to Exchange ActiveSync must be balanced equally across both data centers.

What is the best recommendation to achieve the goal? More than one answer choice may achieve the goal. Select the BEST answer.

- A. In the San Francisco office, configure the internal URLs of the servers to use the internal URL of sfmail.contoso.com. In the Los Angeles office, configure the internal URLs of the servers to use the internal URL of lamail.contoso.com.
- B. In the San Francisco office, configure the external URLs of the servers to use the internal URL of sfmail.contoso.com. In the Los Angeles office, configure the internal URLs of the servers to use the external URL of lamail.contoso.com.
- C. Deploy a hardware-based load balancer to each office and configure all of the internal URLs to use mail.contoso.com.
- D. Deploy a hardware-based load balancer to each office and configure all of the external URLs to use mail.contoso.com.

Correct Answer: D

Section: [none]

Explanation

Explanation/Reference:

References: <http://www.msexchange.org/articles-tutorials/exchange-2016-articles/high-availability-recovery/load-balancing-exchange-server-2016-part2.html>

QUESTION 8

How is the IBM Content Template Catalog delivered for installation?

- A. as an EXE file
- B. as a ZIP file of XML files
- C. as a Web Application Archive file
- D. as a Portal Application Archive file

Correct Answer: D

Section: [none]

Explanation

Explanation/Reference:

References:

<https://greenhouse.lotus.com/plugins/plugincatalog.nsf/assetDetails.xsp?action=editDocument&documentId=6506DAAAF92F201585257AFA0005B9E7>

QUESTION 9

You have an Exchange Server 2016 organization.

You need to ensure that users in each department download an Offline Address Book (OAB) that only contains the users in their department. The solution must ensure that all of the users can continue to see all the other users in the organization.

Which three actions should you perform? Each correct answer presents part of the solution.

- A. Create an OAB for each department
- B. Modify the properties for each user mailbox.
- C. Create an address book policy (ABP) for each department.
- D. Create an address list for each department.
- E. Modify the properties of the default OAB.
- F. Create an email address policy for each department.

Correct Answer: ABC

Section: [none]

Explanation

Explanation/Reference:

References:

[https://technet.microsoft.com/en-us/library/hh529942\(v=exchg.150\).aspx](https://technet.microsoft.com/en-us/library/hh529942(v=exchg.150).aspx)

[https://technet.microsoft.com/en-us/library/hh529948\(v=exchg.150\).aspx](https://technet.microsoft.com/en-us/library/hh529948(v=exchg.150).aspx)

QUESTION 10

HOTSPOT

You are designing an Exchange Server 2016 organization. The organization will use a single namespace of mail.contoso.com for all client access

protocols.

You plan to use load balancers.

You identify the following requirements for the load balancing solution:

- The Edge Transport server log files must contain the original IP address of the SMTP hosts.
- Clients must be able to connect only when they use the approved hostnames and the approved virtual directories.

You need to identify which type of load balancer meets each requirement.

What should you identify? To answer, select the appropriate options in the answer area.

Hot Area:

Answer area

The Edge Transport server log files must contain the original IP address of the SMTP client:

Layer 4 only
Layer 7 only
Both Layer 4 and Layer 7

Users must be able to connect only when they use the approved hostnames and the approved virtual directories:

Layer 4 only
Layer 7 only
Both Layer 4 and Layer 7

Correct Answer:

Answer area

The Edge Transport server log files must contain the original IP address of the SMTP client:

Layer 4 only
Layer 7 only
Both Layer 4 and Layer 7

Users must be able to connect only when they use the approved hostnames and the approved virtual directories:

Layer 4 only
Layer 7 only
Both Layer 4 and Layer 7

Section: [none]

Explanation

Explanation/Reference:

References:

http://pdfs.loadbalancer.org/Microsoft_Exchange_2016_Deployment_Guide.pdf Page 9-13

QUESTION 11

HOTSPOT

You have a hybrid Exchange Server 2016 organization.

Users use Outlook on the web. All mailboxes currently reside on-premises.

You have an internal public key infrastructure (PKI) that uses a certification authority (CA) named CA1. Certificates are issued to users to sign and encrypted email messages.

You move a mailbox to Exchange Online and you discover that the mailbox fails to exchange signed or encrypted email messages from the on-premises mailbox users.

You need to ensure that all of the mailboxes that were moved to Exchange Online can send encrypted email messages to the on-premises mailboxes.

The mailboxes must also be able to receive encrypted email messages from the on-premises mailboxes.

You export the required certificates to a file named Export.sst.

What command should you run next? To answer, select appropriate options in the answer area.

Hot Area:

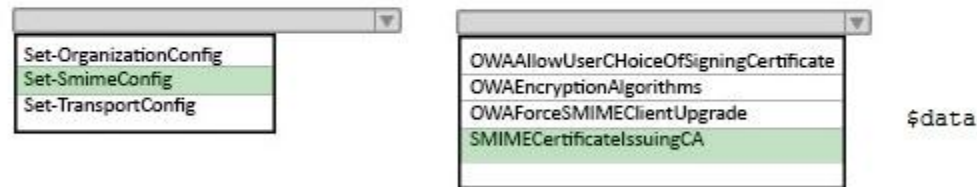
\$data=Get-Content Export.sst -Encoding Byte

Set-OrganizationConfig	OWAAllowUserChoiceOfSigningCertificate
Set-SmimeConfig	OWAEncryptionAlgorithms
Set-TransportConfig	OWAForceSMIMEClientUpgrade
	SMIMECertificateIssuingCA

\$data

Correct Answer:

```
$data=Get-Content Export.SST -Encoding Byte
```



Section: [none]

Explanation

Explanation/Reference:

References:

<http://blogs.technet.com/b/exchange/archive/2014/12/15/how-to-configure-s-mime-in-office-365.aspx>

QUESTION 12

Your company has an Exchange Server 2016 organization named contoso.com.

You need to recommend a solution that meets following requirements:

- A user named User1 must be able to send email messages by using an alias of sales@contoso.com in the From field.
- Recipients of the messages must be prevented from the identifying the actual sender of the message.
- User1 and a user named User2 must each receive a copy of replies to sales@contoso.com

What should you recommend?

- A. Create a distribution group named Sales that has an alias of Sales. Add User1 and User2 to the group. Assign the Send As permissions to User1.
- B. Create a shared mailbox named Sales that has an Alias of Sales. Assign the Receive As permission User1 and User2. Assign the Send As permissions to User1.
- C. Create a shared mailbox named Sales that has an Alias of Sales. Assign the Receive As permission User1 and User2. Assign the Send on Behalf permission to User1.
- D. Create a distribution group named Sales that has an alias of Sales. Add User1 and User2 to the group. Assign the send on Behalf permission to User1.

Correct Answer: A

Section: [none]

Explanation

Explanation/Reference:

References:

<http://exchangeserverpro.com/exchange-2010-send-as-permissions-distribution-group/>

QUESTION 13

You have an Exchange Server 2016 organization. The organization contains several servers.

Users in the marketing department often send Information Rights Management (IRM)-protected email messages. The IRM-protected messages are excluded from eDiscovery searches.

You need to configure the Exchange Server Organization to ensure that the contents of the mailboxes of the marketing department users are searched for all messages that contain the word ProjectX. The solution must prevent the email messages from being deleted permanently.

Your user account is a member of the required role group.

Which three actions should you perform? Each correct answer presents part of the solution.

- A. Run the **New-Mailbox** cmdlet
- B. Run the **New-MailboxSearch** cmdlet
- C. Run the **Set-IRMConfiguration** cmdlet
- D. Run the **Search-Mailbox** cmdlet
- E. Export the results from the discovery mailbox to a personal folders (PST) file, and then use Microsoft Outlook to open the PST file.
- F. Use Outlook on the web to open the discovery mailbox.

Correct Answer: BCE

Section: [none]

Explanation

Explanation/Reference:

References:

[https://technet.microsoft.com/en-us/library/dn440164\(v=exchg.160\).aspx?f=255&MSPPErr=-2147217396](https://technet.microsoft.com/en-us/library/dn440164(v=exchg.160).aspx?f=255&MSPPErr=-2147217396)

[https://technet.microsoft.com/en-us/library/dd353189\(v=exchg.160\).aspx](https://technet.microsoft.com/en-us/library/dd353189(v=exchg.160).aspx)

QUESTION 14

HOTSPOT

Your company has an Exchange Server 2016 organization.

You plan to allow several users to access the mailboxes of the other group.

You need to ensure that a user named User1 can read and delete the email messages in the mailbox of a user named User2. User1 must add the mailbox of User2 manually to the Microsoft Outlook profile.

What command should you run? To answer, select the appropriate options in the answer area.

Hot Area:

Answer Area

Add-MailboxFolderPermission Add-MailboxPermission	-Identify User1 -Identify User2	-User User1 -User User2
-AccessRight ExternalAccount -AccessRight FullAccess -AccessRight ReadPermission	-Atomapping \$false -Atomapping \$true -Confirm \$false -Confirm \$true	-inheritanceType A11

Correct Answer:

Answer Area

Add-MailboxFolderPermission Add-MailboxPermission	-Identify User1 -Identify User2	-User User1 -User User2
-AccessRight ExternalAccount -AccessRight FullAccess -AccessRight ReadPermission	-Atomapping \$false -Atomapping \$true -Confirm \$false -Confirm \$true	-inheritanceType A11

Section: [none]
Explanation

Explanation/Reference:

References:

[https://technet.microsoft.com/en-us/library/bb124097\(v=exchg.160\).aspx?f=255&MSPPErrors=-2147217396](https://technet.microsoft.com/en-us/library/bb124097(v=exchg.160).aspx?f=255&MSPPErrors=-2147217396)

QUESTION 15

You are planning an Exchange Server 2016 organization. The organization will contain a Mailbox server named EX01.

Users will have primary SMTP email addresses in the following domains:

- Contoso.com
- Fabrikam.com
- Cohowinery.com
- Wingtiptoy.com

You need to add a DNS record to provide Autodiscover for each domain.
Which type of record should you create in each zone?

- A. CERT
- B. A
- C. MINFO
- D. PTR

Correct Answer: A

Section: [none]

Explanation

Explanation/Reference:

References:

<http://www.techieshelp.com/create-autodiscover-record/>

**QUESTION 16**

DRAG DROP

You need to configure a distribution group named CustomerService that has the following configurations:

- A user named CSManager must be the only user allowed to add members to CustomerService.
- All email messages sent to CustomerService must be approved by CSManager.
- External users must be allowed to send email messages to CustomerService.

You configure CSManager as the group owner.

What should you configure in the Exchange admin center for each requirement? To answer, drag the appropriate configurations to the correct requirements. Each configuration may be used once, more than once, or not at all. You may need to drag the split bar, between panes or scroll to view content.

Select and Place:

Configurations

Delivery Management

Membership Approval

Moderation

Ownership

Answer Area

A user named CSManager must be the only user allowed to add members to CustomerService:

Configuration

All email messages sent to CustomerService must be approved by CSManager:

Configuration

External users must be allowed to send email messages to CustomerService:

Configuration

Correct Answer:

Configurations

Membership Approval



Answer Area

A user named CSManager must be the only user allowed to add members to CustomerService:

Ownership

All email messages sent to CustomerService must be approved by CSManager:

Moderation

External users must be allowed to send email messages to CustomerService:

Delivery Management

Section: [none]

Explanation

Explanation/Reference:

References:

<http://msexchangeguru.com/2015/10/19/groups/>

QUESTION 17

You have an Exchange Server 2016 organization. The organization contains accepted domains for contoso.com and litwareinc.com. The antimalware engine is enabled on Mailbox servers and uses the default policy. You do not create any custom malware rules. You need to notify internal senders when a malware attachment is detected. The rule must apply only when the recipient domain is contoso.com.

Which two cmdlets should you use? Each correct answer presents part of the solution.

- A. Set-MalwareFilterPolicy
- B. New-MalwareFilterRule
- C. New-MalwareFilterPolicy
- D. Set-MalwareFilterRule

Correct Answer: BC

Section: [none]

Explanation

Explanation/Reference:

References:

[https://technet.microsoft.com/en-us/library/dn306062\(v=exchg.160\).aspx?f=255&MSPPErr=-2147217396](https://technet.microsoft.com/en-us/library/dn306062(v=exchg.160).aspx?f=255&MSPPErr=-2147217396)

[https://technet.microsoft.com/en-us/library/jj215680\(v=exchg.160\).aspx?f=255&MSPPErr=-2147217396](https://technet.microsoft.com/en-us/library/jj215680(v=exchg.160).aspx?f=255&MSPPErr=-2147217396)

QUESTION 18

You have an Exchange Server 2016 organization. The organization contains three Mailbox servers. The servers are configured as shown in the following table.

Server Name	Active Directory site
EX01	Site1
EX02	Site2
EX03	Site3

You have distribution group named Group1. Group1 contains three members. The members are configured as shown in the following table.

User Name	Mailbox server
User1	EX01
User2	EX02
User3	EX03

You discover that when User1 sends email messages to Group1, all of the messages are delivered to EX02 first.

You need to identify why the email messages sent to Group1 are sent to EX02 instead.
What should you identify?

- A. EX02 is configured as an expansion server.
- B. The arbitration mailbox is hosted on EX02.
- C. Site2 has universal group membership caching enabled.
- D. Site2 is configured as a hub site.

Correct Answer: A

Section: [none]

Explanation

Explanation/Reference:

References:

[https://technet.microsoft.com/en-us/library/aa998825\(v=exchg.150\).aspx](https://technet.microsoft.com/en-us/library/aa998825(v=exchg.150).aspx)

QUESTION 19

Your network contains an Active Directory forest that has the site topology shown in the diagram.



You have an Exchange Server 2016 organization. The organization contains three servers. The servers are configured as shown in the following table.

Server Name	Active Directory site
EX01	Site1
EX02	Site2
EX03	Site3

You have the users described as shown in the following table.

User Name	Mailbox server
User1	EX01
User2	EX02
User3	EX03

You need to ensure that any email messages sent from User1 to User3 are sent to EX02 first, and then delivered to EX03.

What should you configure?

- A. Site 2 as a hub site
- B. EX02 as an expansion server
- C. the Exchange cost for the site link from Site 2 to Site 3
- D. the Exchange cost for the site link from Site 1 to Site 2

Correct Answer: A

Section: [none]

Explanation

Explanation/Reference:

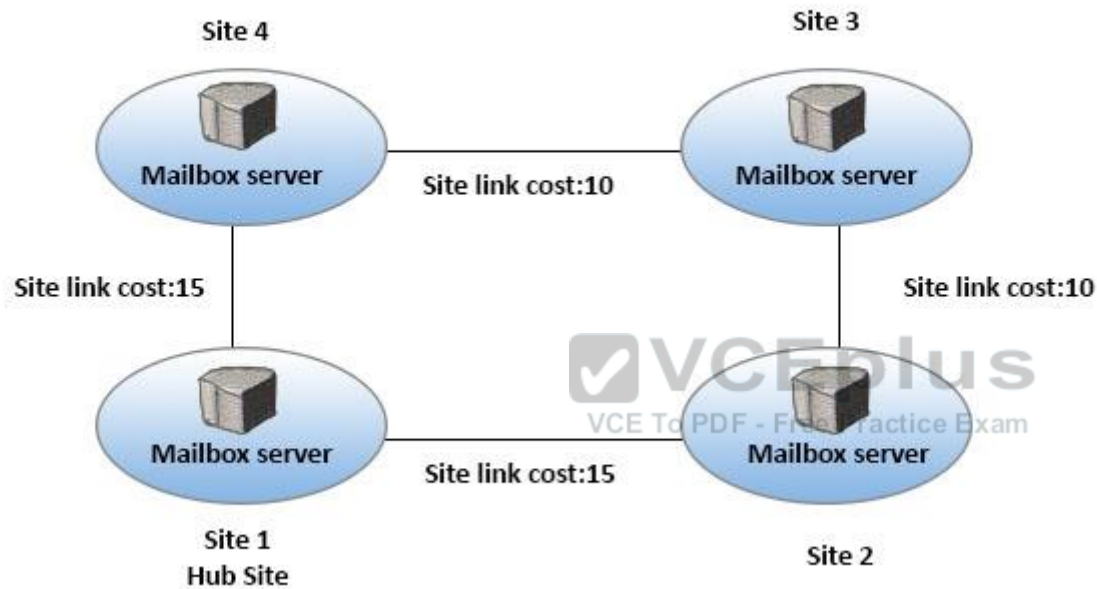
References:

[https://technet.microsoft.com/en-us/library/aa998825\(v=exchg.150\).aspx](https://technet.microsoft.com/en-us/library/aa998825(v=exchg.150).aspx)

QUESTION 20

HOTSPOT

You have an Exchange Server 2016 organization. The Active directory sites are configured as shown in the following graphic.



Use the drop-down menus to select the answer choice that completes each statement based on the information presented in the graphic.

Hot Area:

Answer Area

When a user from Site 4 sends an email message to user in Site 2, the message will be [answer choice].

▼
sent directly to Site 2
relayed throguh Site 1
relayed throguh Site 3

If the server in Site 2 fails, all of the email messages sent from Site 4 to Site 2 will be queued on a server in [answer choice].

▼
Site 1
Site 3
Site 4

Correct Answer:

Answer Area

When a user from Site 4 sends an email message to user in Site 2, the message will be [answer choice].

▼
sent directly to Site 2
relayed throguh Site 1
relayed throguh Site 3

If the server in Site 2 fails, all of the email messages sent from Site 4 to Site 2 will be queued on a server in [answer choice].

▼
Site 1
Site 3
Site 4

Section: [none]
Explanation

Explanation/Reference:

References:

[https://technet.microsoft.com/en-us/library/jj916681\(v=exchg.150\).aspx](https://technet.microsoft.com/en-us/library/jj916681(v=exchg.150).aspx)

[https://technet.microsoft.com/en-us/library/aa996299\(v=exchg.150\).aspx?f=255&MSPPErr=-2147217396](https://technet.microsoft.com/en-us/library/aa996299(v=exchg.150).aspx?f=255&MSPPErr=-2147217396)

QUESTION 21

Your company has three offices. The offices are located in New York, London and Sydney. The offices connect to each other by using a WAN link. Each office connects directly to the Internet.

The company has an Exchange Server organization. The organization contains six mailbox servers. The servers are configured as shown in the following table.

Server name	Office	Active Directory site	Database Availability group
EX1	New York	Site1	DAG1
EX2	New York	Site1	DAG1
EX3	London	Site2	DAG1
EX4	London	Site2	DAG1
EX5	Sydney	Site3	DAG1
EX6	Sydney	Site3	DAG1

Each office is configured to use a different Send connector to send email messages to the Internet. You need to ensure that the servers route email messages that have Internet recipients through their respective site only.

What should you modify?

- A. the permissions of each Send connector
- B. the settings of the site links
- C. the cost of each Send connector
- D. the scope of each Send connector

Correct Answer: D

Section: [none]

Explanation

Explanation/Reference:

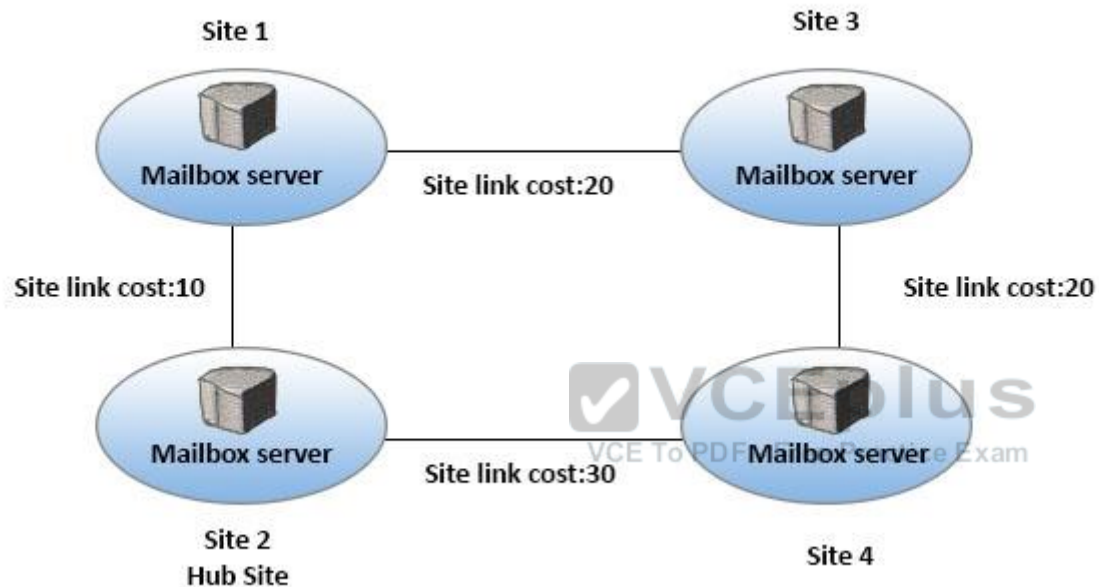
References:

[https://msdn.microsoft.com/en-us/library/aa998662\(v=exchg.160\).aspx?f=255&MSPPErr=-2147217396](https://msdn.microsoft.com/en-us/library/aa998662(v=exchg.160).aspx?f=255&MSPPErr=-2147217396)

QUESTION 22

HOTSPOT

You have an Exchange Server 2016 organization. The Active directory sites are configured as shown in the following graphic.



Use the drop-down menus to select the answer choice that completes each statement based on the information presented in the graphic.

Hot Area:

Answer Area

A message that leaves Site 1 to a destination mailbox in Site 4 will be received next at [answer choice].

Site 2
Site 3
Site 4

A message that leaves Site 3 to a destination mailbox in Site 2 will be received next at [answer choice].

Site 1
Site 2
Site 4

Correct Answer:

Answer Area

A message that leaves Site 1 to a destination mailbox in Site 4 will be received next at [answer choice].

Site 2
Site 3
Site 4

A message that leaves Site 3 to a destination mailbox in Site 2 will be received next at [answer choice].

Site 1
Site 2
Site 4

Section: [none]
Explanation

Explanation/Reference:

References:

<http://blogs.technet.com/b/exchange/archive/2006/09/15/3394889.aspx>

QUESTION 23

HOTSPOT

You have an Exchange Server 2016 organization.
All users use Microsoft Outlook 2016.

You need to configure the Exchange Server organization to meet following requirements:

- Users must be prevented from receiving a notification when they attempt to send an email message to distribution groups that contain less than 100 members.
- Users must be notified before they send email messages to an unmonitored mailbox named Service1.

Which cmdlet should you run to meet each requirement? To answer, drag appropriate cmdlets to the correct requirements. Each cmdlet must be used once, more than once, or not at all. You may need to drag the split bar between panes or scroll to view content.

Hot Area:

Answer Area

Users must be prevented from receiving a notification when they attempt to send an email message to distribution groups that contain less than 100 members:

Set-DistributionGroup
Set-OrganizationConfig
Set-PolicyTipConfig
Set-TransportConfig

Users must be notified before they send email messages to an unmonitored mailbox named Service1:

Set-Mailbox
Set-OrganizationConfig
Set-PolicyTipConfig
Set-TransportConfig



Correct Answer:

Answer Area

Users must be prevented from receiving a notification when they attempt to send an email message to distribution groups that contain less than 100 members:

Set-DistributionGroup
Set-OrganizationConfig
Set-PolicyTipConfig
Set-TransportConfig

Users must be notified before they send email messages to an unmonitored mailbox named Service1:

Set-Mailbox
Set-OrganizationConfig
Set-PolicyTipConfig
Set-TransportConfig

Section: [none]

Explanation

Explanation/Reference:

References:

[https://technet.microsoft.com/en-us/library/bb123981\(v=exchg.160\).aspx](https://technet.microsoft.com/en-us/library/bb123981(v=exchg.160).aspx)

[https://technet.microsoft.com/en-gb/library/jj619307\(v=exchg.150\).aspx](https://technet.microsoft.com/en-gb/library/jj619307(v=exchg.150).aspx)

QUESTION 24

DRAG DROP

Your company has an Exchange Server 2016 organization. The organization contains three servers and 2,000 mailboxes.

The organization audits all access to user mailboxes.

The company's security policy has the following requirements:

- Audit the name of each administrator who modifies the Exchange Server organization settings.
- Reduce the amount of audit log information generated by a service account named Service1.
- Create an audit entry when an administrator modifies the permissions of another administrative mailbox.

You need to identify which PowerShell cmdlets must be used to meet the requirements.

Which PowerShell cmdlet should you identify for each requirement? To answer, drag the appropriate cmdlets to the correct requirements. Each cmdlet may be used once, more than once or not at all. You may need to drag the split bar between panes or scroll to view content.

Select and Place:

Cmdlets

Set-AdminAuditLogConfig
Set-MailboxAuditBypassAssociation
Set-OrganizationConfig
Write-AdminAuditLog

Answer Area

Reduce the amount of audit log information generated by Service 1:	Cmdlet
Create an Audit entry when an administrator modifies the permissions of another administrative mailbox:	Cmdlet
Audit the name of each administrator who modifies the Exchange Server organization settings:	Cmdlet

Correct Answer:

Cmdlets

Set-AdminAuditLogConfig

Set-MailboxAuditBypassAssociation

Set-OrganizationConfig

Write-AdminAuditLog

Answer Area

Reduce the amount of audit log information
generated by Service 1:

Set-MailboxAuditBypassAssociation

Create an Audit entry when an administrator modifies
the permissions of another administrative mailbox:

Set-AdminAuditLogConfig

Audit the name of each administrator who modifies
the Exchange Server organization settings:

Set-AdminAuditLogConfig

Section: [none]

Explanation**Explanation/Reference:**

Explanation:

Box 1: Set-MailboxAuditBypassAssociation

Box 2: Set-AdminAuditLogConfig

Box 3: Set-AdminAuditLogConfig

References:

[https://technet.microsoft.com/en-us/library/ff696758\(v=exchg.160\).aspx](https://technet.microsoft.com/en-us/library/ff696758(v=exchg.160).aspx)

[https://technet.microsoft.com/en-us/library/dd298169\(v=exchg.160\).aspx](https://technet.microsoft.com/en-us/library/dd298169(v=exchg.160).aspx)

[https://technet.microsoft.com/en-us/library/dd335144\(v=exchg.160\).aspx](https://technet.microsoft.com/en-us/library/dd335144(v=exchg.160).aspx)

QUESTION 25**HOTSPOT**

You run the **Get-DlpPolicy** cmdlet and you receive the following output.

```
RunspaceID      : 07479925-f4bf-4bb2-80e0-4d1eab557dfe
Name            : Policy1
Version         : 15.0.3.0
ContentVersion  : 4
ImmutableID     : 4bf920ba-536b-4370-8dc2-4f71157702f1
State           : Enabled
Mode            : AuditAndNotify
Description     :
PublisherName   : Microsoft
Keywords        : {}
Identity        : Policy1
DistinguishedName : CN=CPolicy1,CN=Rules,CN=Transport
                  SettingsCN=Contoso,CN=Microsoft
                  Exchange,CN=Services,CN=Configuration,
                  DC=contoso,DC=com
Guid            : a0a95206-02a3-4f24-a913-a74dbbc8db01
OrganizationID  :
IsValid         : True
WhenChanged     : 9/15/2015 12:13:25 AM
ExchangeVersion : 0.20 (15.0.0.0)
MaximumSupportedExchangeObjectVersion : 0.20 (15.0.0.0)
IsReadOnly      : False
ObjectState     : Unchanged
```

Use the drop-down menus to select the answer choice that completes each statement based on the information presented in the output.

Hot Area:

Answer Area

If a message matches the conditions of the policy, the message will be
[answer choice].

▼
blocked and the sender will be notified
blocked without notifying the sender
send to the recipient

If a message matches the conditions of the policy, a [answer choice]
will appear in Microsoft Outlook.

▼
mail tip
non-delivery report (NDR)
policy tip

Correct Answer:

Answer Area

If a message matches the conditions of the policy, the message will be
[answer choice].

▼
blocked and the sender will be notified
blocked without notifying the sender
send to the recipient

If a message matches the conditions of the policy, a [answer choice]
will appear in Microsoft Outlook.

▼
mail tip
non-delivery report (NDR)
policy tip

Section: [none]
Explanation

Explanation/Reference:

QUESTION 26
HOTSPOT

You have an Exchange Server organization. The organization contains four servers. The servers configured as shown in the following table.

Server name	Exchange Server version	Role	Configuration
EX1	2013	Client Access Server	Provides MAPI access for a third-party application
EX2	2013	Mailbox Server	Hosts public folders that are accessed by using Microsoft Outlook 2013
EX3	2010	Mailbox Server, Hub Transport server	Filters the content of all email messages from the Internet by using the content filtering agent
EX4	2010	Mailbox server	Provides retention by using managed folders

You plan to upgrade the organization to Exchange Server 2016.

You need to identify which servers have functionalities that can be fully achieved by using Exchange Server 2016.

What should you identify? To answer, select the appropriate options in the answer area.

Hot Area:

Answer Area

All the functionalities in EX01 can be achieved by using Exchange Server 2016:

	▼
Yes	
No	

All the functionalities in EX02 can be achieved by using Exchange Server 2016:

	▼
Yes	
No	

All the functionalities in EX03 can be achieved by using Exchange Server 2016:

	▼
Yes	
No	

All the functionalities in EX04 can be achieved by using Exchange Server 2016:

	▼
Yes	
No	

Correct Answer:

Answer Area

All the functionalities in EX01 can be achieved by using Exchange Server 2016:

	▼
Yes	
No	

All the functionalities in EX02 can be achieved by using Exchange Server 2016:

	▼
Yes	
No	

All the functionalities in EX03 can be achieved by using Exchange Server 2016:

	▼
Yes	
No	

All the functionalities in EX04 can be achieved by using Exchange Server 2016:

	▼
Yes	
No	

Section: [none]

Explanation

Explanation/Reference:

References:

[https://technet.microsoft.com/en-us/library/jj619283\(v=exchg.160\).aspx](https://technet.microsoft.com/en-us/library/jj619283(v=exchg.160).aspx)

[https://technet.microsoft.com/en-us/library/jj552408\(v=exchg.160\).aspx](https://technet.microsoft.com/en-us/library/jj552408(v=exchg.160).aspx)

QUESTION 27

HOTSPOT

You have an Exchange Server 2016 organization and a Microsoft Office 365 subscription configured in a hybrid deployment. The deployment contains 500 user mailboxes.

Users who have mailboxes in Office 365 report that they cannot view the availability information of users who have mailboxes in Exchange Server 2016.

You need to ensure that the users hosted in Office 365 can view the availability information of the mailboxes hosted in on-premises Exchange Server.

Which command should you run on an Exchange Server? To answer, select the appropriate options in the answer area.

Hot Area:

Answer Area

Add-AvailabilityAddressSpace

Set-AvailabilityConfig

Set-OutlookAnywhere

Set-WebServicesVirtualDirectory

-identify EX1/EWS(Default Website)

-identify EX1/OWA(Default Website)

-IISAuthentication NTLM

-ExternalURL

-InternalURL

<https://mail.contoso.com/ews/Exchange.asmx>

Correct Answer:

Answer Area

▼

Add-AvailabilityAddressSpace
Set-AvailabilityConfig
Set-OutlookAnywhere
Set-WebServicesVirtualDirectory

▼

-identify EX1/EWS(Default Website)
-identify EX1/OWA(Default Website)
-IISAuthentication NTLM

▼

-ExternalURL
-InternalURL

`https://mail.contoso.com/ews/Exchange.asmx`

Section: [none]

Explanation

Explanation/Reference:



QUESTION 28

You have an Exchange Server 2016 organization.
You plan to migrate some of the users to Exchange Online.

You run the Microsoft Office 365 Hybrid Configuration Wizard and you discover that the Get-FederationInformation cmdlet fails to retrieve the required information.

You need to identify which DNS record must be configured to resolve the failure.

What should you identify?

- A. an MX record for SMTP domain
- B. an A record for a Mailbox server
- C. a PTR record for the Mailbox server
- D. an A record for Autodiscover

Correct Answer: D

Section: [none]

Explanation

Explanation/Reference:

References:

<http://blogs.technet.com/b/mikehall/archive/2013/08/21/office-365-insight-into-the-hybrid-configuration-wizard-part-2.aspx>

QUESTION 29

HOTSPOT

You have an Exchange Server 2010 organization.

You plan to upgrade to Exchange Server 2016.

You have two active directory sites configured as shown in the following table.

Site Name	Internet-facing
Brussels	No
New York	Yes



You have five servers configured as shown in the following table.

Server name	Exchange Server version	Role	Active Directory site
EX01	2010	Mailbox server	Brussels
CAS01	2010	Client Access server, Hub Transport server	Brussels
EX02	2010	Mailbox server	Brussels
CAS02	2010	Client Access server, Hub Transport server	New York
EX03	2016	Mailbox server	New York

You have three users who have mailboxes configured as shown in the following table.

User Name	Mailbox server location
User1	EX01
User2	EX02
User3	EX03

You have the following configurations:

The OWA virtual directory ExternalURL on CAS01 is <https://mail.brussels.contoso.com/owa>.

The OWA virtual directory ExternalURL on CAS02 is \$null.

The OWA virtual directory ExternalURL on EX03 is <https://mail.contoso.com/owa>.

All users connect to <https://mail.contoso.com/owa> to access Outlook on the web.

For each of the following statements, select Yes, if the statement is true. Otherwise, select No.

Hot Area:

Answer Area

Statements

Yes

User1 will be redirected to CAS01 when accessing Outlook on the web from the Internet.

☐

User2 will be redirected to CAS02 when accessing Outlook on the web from the Internet.

☐

User3 will be proxied to CAS02 when accessing Outlook on the web from the Internet.

☐

Correct Answer:

Answer Area

Statements

Yes

User1 will be redirected to CAS01 when accessing Outlook on the web from the Internet.

☒

User2 will be redirected to CAS02 when accessing Outlook on the web from the Internet.

☐

User3 will be proxied to CAS02 when accessing Outlook on the web from the Internet.

☒

Section: [none]

Explanation

Explanation/Reference:**QUESTION 30****DRAG DROP**

You have an Exchange Server 2016 organization.

You run the Microsoft Office 365 Hybrid Configuration Wizard and you move all the mailboxes to Exchange Online.

You need to ensure that all of the email services remain available after you remove the Exchange Server 2016 servers from the organization.

Which DNS records should you modify? To answer, drag the appropriate record types to the correct DNS zones. Each record type may be used once, more than once, or not at all. You may need to drag the split bar between panes or scroll to view content.

Select and Place:

Record Types		Answer Area
Autodiscover	Record to modify in the internal DNS zone:	Record Type
MX		
NX	Record to modify in the public DNS zone:	Record Type
SRV		Record Type

Correct Answer:

Record Types	Answer Area
Autodiscover	Record to modify in the internal DNS zone: Autodiscover
MX	Record to modify in the public DNS zone: Autodiscover
NX	
SRV	MX

Section: [none]

Explanation

Explanation/Reference:



QUESTION 31

You have an Exchange Server organization. The organization contains servers that have Exchange Server 2010 and Exchange Server 2016 installed.

You establish a hybrid deployment between Exchange Server and Microsoft Office 365.
Some users have on-premises mailboxes and personal archives in Exchange Online.

You discover that you are unable to use In-Place eDiscovery to search user mailboxes and Exchange Online Archiving archives concurrently.

You need to recommend a solution to ensure that In-Place eDiscovery can search the mailboxes and the personal archives concurrently.

What should you include in the recommendation?

- A. OAuth authentication
- B. an organization relationship
- C. a retention policy
- D. the Mailbox Replication service (MRS)

Correct Answer: A

Section: [none]

Explanation

Explanation/Reference:

References:

[https://technet.microsoft.com/en-us/library/dd298021\(v=exchg.160\).aspx](https://technet.microsoft.com/en-us/library/dd298021(v=exchg.160).aspx)

QUESTION 32

DRAG DROP

You have an Exchange Server 2010 organization. The organization has 500 mailboxes and three servers. The servers are configured as shown in the following table.

Server name	Role
EX10MBX	Mailbox Server
EX10CH	Client Access server, Hub Transport server
EX10EDGE	Edge Transport server

EX10EDGE is located in the perimeter network. EX10CH has an Edge Subscription. All Internet mail flows through EX10EDGE.

You deploy an Exchange Server 2016 Mailbox server named EX16MBX to the organization. You deploy an Exchange Server 2016 Edge Transport server named EX16EDGE to the perimeter network.

You need to transition all Internet mail to flow through EX16EDGE. The solution must minimize disruptions to the mail flow.

Which three actions should you perform in sequence? To answer, move the appropriate actions from the list of actions to the answer area and arrange them in the correct order.

Select and Place:

Actions

Answer Area

Configure the perimeter Firewall to forward HTTPS traffic to EX16EDGE.

Modify the Edge Subscription on EX10CH.

Remove the Edge Subscription on EX10CH and EX10EDGE.

Create an Edge Subscription between EX16EDGE and EX16MBX.

Configure the perimeter firewall to forward SMTP traffic to EX16EDGE.

Create an Edge Subscription between EX10EDGE and EX16MBX.



Correct Answer:

Actions	Answer Area
Configure the perimeter Firewall to forward HTTPS traffic to EX16EDGE.	Create an Edge Subscription between EX16EDGE and EX16MBX.
Modify the Edge Subscription on EX10CH.	Configure the perimeter firewall to forward SMTP traffic to EX16EDGE.
	Remove the Edge Subscription on EX10CH and EX10EDGE.
Create an Edge Subscription between EX10EDGE and EX16MBX.	

Section: [none]

Explanation

Explanation/Reference:

QUESTION 33

You need to configure the virtual directories for the Exchange Server organization.

Which three commands should you use? Each correct answer presents part of the solution.

- A. Set-MapiVirtualDirectory -ExternalUrl "https://office-online.contoso.com/hosting/discovery"
- B. Set-ActiveSyncVirtualDirectory -ExternalUrl "https://mail.contoso.com/Microsoft-Server-ActiveSync"
- C. Set-WebServicesVirtualDirectory -ExternalUrl "https://mail.contoso.com/ews/exchange.asmx"
- D. Set-AutodiscoverVirtualDirectory -ExternalUrl "https://autodiscover.contoso.com/autodiscover/autodiscover.xml"
- E. Set-OwaVirtualDirectory -ExternalUrl "https://mail.contoso.com/owa"

Correct Answer: BCD

Section: [none]

Explanation

Explanation/Reference:

B: Use the Set-ActiveSyncVirtualDirectory cmdlet to modify existing Microsoft Exchange ActiveSync virtual directories that are used in Internet Information Services (IIS) on Exchange servers.

C: Use the Set-WebServicesVirtualDirectory cmdlet to modify existing Exchange Web Services virtual directories that are used in Internet Information Services (IIS) on Microsoft Exchange servers.

D: Use the Set-AutodiscoverVirtualDirectory cmdlet to configure Autodiscover virtual directories that are used in Internet Information Services (IIS) on Exchange servers.

Incorrect Answers:

A: Use the Set-MapiVirtualDirectory cmdlet to modify Messaging Application Programming Interface (MAPI) virtual directories that are used in Internet Information Services (IIS) on Microsoft Exchange servers. servers. A MAPI virtual directory is used by supported versions of Microsoft Outlook to connect to mailboxes by using the MAPIHTTP protocol.

E: Use the Set-OwaVirtualDirectory cmdlet to modify existing Outlook on the web virtual directories that are used in Internet Information Services (IIS) on Exchange servers.

References:

[https://technet.microsoft.com/en-us/library/bb123679\(v=exchg.160\).aspx](https://technet.microsoft.com/en-us/library/bb123679(v=exchg.160).aspx)

[https://technet.microsoft.com/en-us/library/aa998601\(v=exchg.160\).aspx](https://technet.microsoft.com/en-us/library/aa998601(v=exchg.160).aspx)

QUESTION 34

You have an Exchange Server 2016 organization.

Users report that they receive an Autodiscover error when they attempt to configure a Microsoft Outlook profile.

You need to view the URLs that are returned to the users when they attempt to establish an Autodiscover connection.

Which command should you run from an Exchange server?

- A. Test-OutlookConnectivity
- B. Test-OutlookWebServices
- C. Test-WebServicesConnectivity
- D. Test-MAPIConnectivity

Correct Answer: B

Section: [none]

Explanation

Explanation/Reference:

Use the Test-OutlookWebServices cmdlet to verify the Autodiscover service settings for Microsoft Outlook on a computer running Microsoft Exchange Server that has the Client Access server role installed.

Incorrect Answers:

A: Use the Test-OutlookConnectivity cmdlet to test end-to-end Microsoft Outlook client connectivity in the Microsoft Exchange organization. This includes testing for both Outlook Anywhere (RPC over HTTP) and MAPI over HTTP connections.

References: <http://exchangeserverpro.com/exchange-2013-test-outlook-web-service/>

QUESTION 35

HOTSPOT

You deploy an Exchange Server 2016 organization. The organization contains two servers. The servers are configured as shown in the following table.

Server name	Role
Ex01.contoso.local	Mailbox server
Ex02.contoso.local	Mailbox server

The default self-signed certificates are installed on both servers.

All of the users in the organization work from home and from customer locations.

You purchase a Layer 7 hardware-based load balancer. You configure SSL bridging without session affinity for Outlook on the web connections. The load balancer has an internal fully qualified domain name (FQDN) of lb1.contoso.local.

DNS servers are configured to resolve mail.contoso.com names to the external IP address of the load balancer.

You need to recommend which names must be included in the certificates installed on the load balancers and the Exchange servers.

What should you recommend for each certificate? To answer, select the appropriate options in the answer area.

Hot Area:

Answer Area

Load balancer:

	▼
Lb1.contoso.com	
Lb1.contoso.local	
Mail.contoso.com	

Ex01.contoso.local:

	▼
Ex01.contoso.com	
Ex01.contoso.local	
Mail.contoso.com	

Ex02.contoso.local:

	▼
Ex02.contoso.com	
Ex02.contoso.local	
Mail.contoso.com	

Correct Answer:

Answer Area

Load balancer:

	▼
Lb1.contoso.com	
Lb1.contoso.local	
Mail.contoso.com	

Ex01.contoso.local:

	▼
Ex01.contoso.com	
Ex01.contoso.local	
Mail.contoso.com	

Ex02.contoso.local:

	▼
Ex02.contoso.com	
Ex02.contoso.local	
Mail.contoso.com	

Section: [none]

Explanation

Explanation/Reference:

QUESTION 36**HOTSPOT**

You are planning an Exchange Server 2016 organization. The organization will contain two servers. The servers will be configured as shown in the following table.

Server name	Active Directory site
EX01	New York
EX02	London

You plan to purchase an SSL certificate that contains the following names:

Mail.contoso.com

Mail.london.contoso.com

Mail.newyork.contoso.com

You plan to configure a solution for the sites in New York and London. DNS will resolve the names as shown in the following table.

Host name	Resolves to
Mail.contoso.com	IP addresses of the servers in the New York and London sites
Mail.newyork.contoso.com	IP address of the server in the New York site
Mail.london.contoso.com	IP address of the server in the London site

You need to configure the client protocols to meet the following requirements:

Users who connect to their mailbox by using Outlook on the web must connect directly to a server in the site that hosts their mailbox.

All Exchange ActiveSync users must connect to the same namespace.

How should you configure the virtual directories? To answer, select the appropriate options in the answer area.

Hot Area:

Answer Area

EX01 OWA virtual directory ExternalUrl:

	▼
https://ex01.contoso.com/owa	
https://mail.contoso.com/owa	
https://mail.london.contoso.com/owa	
https://mail.newyork.contoso.com/owa	

EX02 OWA virtual directory ExternalUrl:

	▼
https://ex02.contoso.com/owa	
https://mail.contoso.com/owa	
https://mail.london.contoso.com/owa	
https://mail.newyork.contoso.com/owa	

EX01 ActiveSync virtual directory ExternalUrl:

	▼
https://ex01.contoso.com/Microsoft-Server-ActiveSync	
https://mail.contoso.com/Microsoft-Server-ActiveSync	
https://mail.london.contoso.com/Microsoft-Server-ActiveSync	

EX02 ActiveSync virtual directory ExternalUrl:

	▼
https://ex02.contoso.com/Microsoft-Server-ActiveSync	
https://mail.contoso.com/Microsoft-Server-ActiveSync	
https://mail.london.contoso.com/Microsoft-Server-ActiveSync	

Correct Answer:

Answer Area

EX01 OWA virtual directory ExternalUrl:

	▼
https://ex01.contoso.com/owa	
https://mail.contoso.com/owa	
https://mail.london.contoso.com/owa	
https://mail.newyork.contoso.com/owa	

EX02 OWA virtual directory ExternalUrl:

	▼
https://ex02.contoso.com/owa	
https://mail.contoso.com/owa	
https://mail.london.contoso.com/owa	
https://mail.newyork.contoso.com/owa	

EX01 ActiveSync virtual directory ExternalUrl:

	▼
https://ex01.contoso.com/Microsoft-Server-ActiveSync	
https://mail.contoso.com/Microsoft-Server-ActiveSync	
https://mail.london.contoso.com/Microsoft-Server-ActiveSync	

EX02 ActiveSync virtual directory ExternalUrl:

	▼
https://ex02.contoso.com/Microsoft-Server-ActiveSync	
https://mail.contoso.com/Microsoft-Server-ActiveSync	
https://mail.london.contoso.com/Microsoft-Server-ActiveSync	

Section: [none]
Explanation

Explanation/Reference:**QUESTION 37**

Your company has an Exchange Server 2016 organization.

All users have a primary mailbox and archive mailboxes.

You create a new retention policy for the users. The policy includes the following types of tags:

A default retention policy tag (RPT) applied to the mailbox: The tag is configured to move email messages older than three years to the archive.
An RPT applied to the users' Sent Items folder: The tag is configured to move email messages older than one year to the archive.

The corporate retention policy is applied to all of the mailboxes.

A user creates a personal tag named Tag1. The personal tag is configured to delete items permanently after 180 days.
The user sends an email message that uses Tag1.
You need to identify what will occur to the message. What should you identify?

- A. The message will be deleted in six months.
- B. The message will be moved to the archive in one year.
- C. The message will be moved to the archive in one year and deleted six months later.
- D. The message will be moved to the archive in three years.

Correct Answer: A

Section: [none]

Explanation

Explanation/Reference:

Personal tags allow your users to determine how long an item should be retained. For example, the mailbox can have a DPT to delete items in seven years, but a user can create an exception for items such as newsletters and automated notifications by applying a personal tag to delete them in three days.

References: [https://technet.microsoft.com/en-us/library/dd297955\(v=exchg.150\).aspx](https://technet.microsoft.com/en-us/library/dd297955(v=exchg.150).aspx)

QUESTION 38

You have an Exchange Server 2016 organization. The organization contains 5,000 mailboxes.

All users connect to their mailbox by using Microsoft Outlook and Outlook on the web.

You need to ensure that all of the users are notified before they send an email message to a distribution group named Executives.

Which cmdlet should you use?

- A. New-TransportRule
- B. Set-Mailbox
- C. New-PolicyTipConfig
- D. Set-DistributionGroup
- E. Set-DLPPolicy

Correct Answer: A

Section: [none]

Explanation

Explanation/Reference:

You can use a transport rule with the condition The recipient is a member of. This condition matches messages that contain recipients who are members of the specified distribution group. The distribution group can be listed in the To, Cc, or Bcc fields.

Incorrect Answers:

D: Use the Set-DistributionGroup cmdlet to modify the settings of existing distribution groups or mail-enabled security groups.

E: Use the Set-DlpPolicy cmdlet to modify data loss prevention (DLP) policies in your organization.

References: [https://technet.microsoft.com/en-us/library/dd638183\(v=exchg.160\).aspx](https://technet.microsoft.com/en-us/library/dd638183(v=exchg.160).aspx)

QUESTION 39

DRAG DROP

You have an Exchange Server 2016 organization. The organization contains 2,000 mailboxes.

You need to provide administrators with the ability to perform the following tasks:

An administrator named Admin1 must be able to create custom message classifications.

An administrator named Admin2 must be able to create retention tags.

Which management role group should you assign to each administrator? To answer, drag the appropriate role groups to the correct administrators. Each role group may be used once, more than once, or not at all. You may need to drag the split bar between panes or scroll to view content.

Select and Place:

Role Groups

Compliance Management

Discovery Management

Recipient Management

Records Management

Answer Area

Admin1

Role group

Admin2

Role group

Correct Answer:

Role Groups	Answer Area
Compliance Management	Admin1 Records Management
Discovery Management	Admin2 Records Management
Recipient Management	
Records Management	

Section: [none]

Explanation

Explanation/Reference:

Explanation:

Box 1: Records Management

Box 2: Records Management

Users who are members of the Records Management role group can configure compliance features, such as retention policy tags, message classifications, transport rules, and more.

Incorrect Answers:

* Compliance Management

Users who are members of the Compliance Management role group can configure and manage Exchange compliance configuration in accordance with their policies.

* Discovery Management

Administrators or users who are members of the Discovery Management role group can perform searches of mailboxes in the Exchange organization for data that meets specific criteria and can also configure litigation holds on mailboxes.

* Administrators who are members of the Recipient Management role group have administrative access to create or modify Exchange recipients within the Exchange organization.

References: [https://technet.microsoft.com/en-us/library/dd638105\(v=exchg.150\).aspx#Builtin](https://technet.microsoft.com/en-us/library/dd638105(v=exchg.150).aspx#Builtin)

QUESTION 40

You have an Exchange Server 2016 organization. The organization contains 2,000 mailboxes and 100 distribution groups.

You create a distribution group named Managers and you add 20 users to the group.

You need to ensure that the members of Managers can create new groups and modify the membership of those groups.

Which three actions should you perform? Each correct answer presents part of the solution.

- A. Create a role assignment policy named Managers.
- B. Create a new role group named Managers.
- C. Assign an address book policy (ABP).
- D. Add the MyBaseOptions and MyDistributionGroupMembership management roles the Managers role assignment policy.
- E. Assign the role assignment policy.
- F. Assign a sharing policy.
- G. Add the MyBaseOptions and MyDistributionGroups management roles to the Managers role assignment policy.

Correct Answer: AEG

Section: [none]

Explanation

Explanation/Reference:

AE: Management roles can be further combined into larger groupings called management role groups and management role assignment policies, which enable management of feature areas and recipient configuration.

G: The MyDistributionGroups role type is associated with roles that enable individual users to create, modify, and view distribution groups and modify, view, remove, and add members to distribution groups they own.

The MyBaseOptions management role enables individual users to view and modify the basic configuration of their own mailbox and associated settings.

Incorrect Answers:

D: The MyDistributionGroupMembership role type is associated with roles that enable individual users to view and modify their membership in distribution groups in an organization, provided that those distribution groups allow manipulation of group membership.

References: [https://technet.microsoft.com/en-us/library/dd298116\(v=exchg.150\).aspx](https://technet.microsoft.com/en-us/library/dd298116(v=exchg.150).aspx)

QUESTION 41

Your company has an Exchange Server 2016 organization and a Microsoft Office 365 subscription configured in a hybrid deployment.

You configure the synchronization of on-premises Active Directory accounts to Office 365.

All users connect to email services by using Outlook 2016.

You plan to deploy Office 365 Message Encryption for the mailboxes of two executives named Exec1 and Exec2. The mailboxes are hosted in Office 365.

You need to recommend which actions must be performed to ensure that all of the email messages sent from Exec1 and Exec2 to any recipient on the Internet are encrypted.

Which two actions should you recommend? Each correct answer presents part of the solution.

- A. Deploy Microsoft Azure Rights Management (Azure RMS) to the Office 365 subscription.
- B. Deploy Active Directory Rights Management Services (AD RMS) to the network.
- C. Run the Set-MsolUserLicense cmdlet.
- D. From the Office 365 Exchange admin center, create a rule.
- E. Install a certificate on the computer of Exec1 and the computer of Exec2.
- F. From the on-premises Exchange admin center, create a transport rule.

Correct Answer: AF

Section: [none]

Explanation

Explanation/Reference:

A: Office 365 Message Encryption requires the Azure Rights Management service. Once you have a subscription to this service, you can activate it.

Note: Encryption options for Office 365:

- * Azure RMS, including both IRM capabilities and OME
- * S/MIME
- * TLS
- * Encryption of data at rest (through BitLocker)

F: As an administrator, you can create transport rules to enable Microsoft Office 365 Message Encryption. This lets you encrypt any outgoing email messages and remove encryption from encrypted messages coming from inside your organization or from replies to encrypted messages sent from your organization.

To use the transport rule to encrypt messages, your organization must have Windows Azure Rights Management set up for Office 365 Message Encryption.

References: <https://docs.microsoft.com/en-us/rights-management/deploy-use/activate-service>
<https://technet.microsoft.com/en-us/library/dn569289.aspx>

QUESTION 42

HOTSPOT

You have an Exchange Server 2016 organization. The organization contains 20 resource mailboxes.

You need to ensure that an administrator named Admin1 approves all of the meeting requests sent to the mailboxes.

What command should you run? To answer, select the appropriate options in the answer area.

Hot Area:

Answer Area

Get-Mailbox -recipienttypedetails RoomMailbox |

	▼
New-ManagementRole	
Set-CalendarProcessing	
Set-CasMailbox	
Set-MailboxAutoReplyConfiguration	
Set-User	

	▼
-AssistantName	
-AutomateProcessing	
-Manager	
-OrganizerInfo	
-ResourceDelegates	

Admin1



Correct Answer:

Answer Area

Get-Mailbox -recipienttypedetails RoomMailbox |

	▼
New-ManagementRole	
Set-CalendarProcessing	
Set-CasMailbox	
Set-MailboxAutoReplyConfiguration	
Set-User	

	▼
-AssistantName	
-AutomateProcessing	
-Manager	
-OrganizerInfo	
-ResourceDelegates	

Admin1

Section: [none]

Explanation

Explanation/Reference:

Explanation:

Box 1: Set-CalendarProcessing:

Use the Set-CalendarProcessing cmdlet to modify calendar processing options for resource mailboxes, which include the Calendar Attendant, resource booking assistant, and calendar configuration. Note that this cmdlet is effective only on resource mailboxes.

Box 2: - ResourceDelegates

The ResourceDelegates parameter specifies a comma-separated list of users who are resource mailbox delegates. Resource mailbox delegates can approve or reject requests sent to the resource mailbox.

Incorrect Answers:

* Not Set-MailboxAutoReplyConfiguration:

Use the Set-MailboxAutoReplyConfiguration cmdlet to configure Automatic Replies settings for a specific mailbox.

References: [https://technet.microsoft.com/en-us/library/dd335046\(v=exchg.160\).aspx](https://technet.microsoft.com/en-us/library/dd335046(v=exchg.160).aspx)

QUESTION 43

You are planning an Exchange Server 2016 organization. The organization will contain a Mailbox server named EX01.

Users will have primary SMTP email addresses in the following domains:

Contoso.com

Fabrikam.com

Cohowinery.com

Wingtiptoy.com



You need to add a DNS record to provide Autodiscover for each domain. Which type of record should you create in each zone?

- A. PTR
- B. MX
- C. TXT
- D. A

Correct Answer: D

Section: [none]

Explanation

Explanation/Reference:

Example:

FQDN: autodiscover.contoso.com

DNS record type: A

Value: 172.16.10.11

References: [https://technet.microsoft.com/en-us/library/mt473798\(v=exchg.150\).aspx](https://technet.microsoft.com/en-us/library/mt473798(v=exchg.150).aspx)

QUESTION 44**DRAG DROP**

You need to configure the Sender Policy Framework (SPF) for a domain named contoso.com to ensure that only the following senders are authorized to send email for contoso.com:

Hosts listed in the contoso.com MX records

IP addresses in the 131.107.1.0/24 subnet

How should you configure the DNS record for the SPF? To answer, drag the appropriate values to the correct targets. Each value may be used once, more than once, or not at all. You may need to drag the split bar between panes or scroll to view content.

Select and Place:



Values

?all

+all

-all

131.107.1.0/24

A

contoso.com

IP4

MX

Answer Area

contoso.com IN TXT "v=spf1

Value

: Value

V

Correct Answer:

Values

?all

+all

A

MX

Answer Area

contoso.com IN TXT "v=spf1

IP4

: 131.107.1.0/24

c

Section: [none]

Explanation

Explanation/Reference:

Explanation:

A typical SPF TXT record for Office 365 has the following syntax:

v=spf1 [<ip4>|<ip6>:<IP address>] [include:<domain name>] <enforcement rule>

Enforcement rule is usually one of the following:

-all

Indicates hard fail. If you know all of the authorized IP addresses for your domain, list them in the SPF TXT record and use the -all (hard fail) qualifier. Also, if you are only using SPF, that is, you are not using DMARC or DKIM, you should use the -all qualifier. We recommend that you use always this qualifier.

References: [https://technet.microsoft.com/en-us/library/mt712724\(v=exchg.150\).aspx](https://technet.microsoft.com/en-us/library/mt712724(v=exchg.150).aspx)

QUESTION 45

HOTSPOT

Your company has an Exchange Server 2016 organization. The organization contains two Mailbox servers and one Edge Transport server.

You need to modify the anti-spam strategy of the organization to resolve the following issues:

Users in the marketing department report that most email messages identified as spam are legitimate.

Users in the human resources department report that they receive hundreds of email messages daily, which contain the phrase "Free Vacation".

Which cmdlet should you use to resolve each issue? To answer, select the appropriate options in the answer area.

Hot Area:

Answer Area



The marketing department users report that most email messages identified as spam are legitimate:

	▼
Set-DistributionGroup	
Set-Mailbox	
Set-OrganizationConfig	
Set-TransportConfig	

The human resources department users report that they receive hundreds of email messages daily, which contain the phrase "Free Vacation":

	▼
Set-ContentFilterConfig	
Set-DistributionGroup	
Set-OrganizationConfig	
Set-TransportServer	

Correct Answer:

Answer Area

The marketing department users report that most email messages identified as spam are legitimate:

	▼
Set-DistributionGroup	
Set-Mailbox	
Set-OrganizationConfig	
Set-TransportConfig	

The human resources department users report that they receive hundreds of email messages daily, which contain the phrase "Free Vacation":

	▼
Set-ContentFilterConfig	
Set-DistributionGroup	
Set-OrganizationConfig	
Set-TransportServer	

Section: [none]

Explanation

Explanation/Reference:

Explanation:

Box 1: Set-DistributionGroup

Box 2: Set-ContentFilterConfig

Use the Set-ContentFilterConfig cmdlet to modify the content filter configuration on a Mailbox server or an Edge Transport server. Content filtering evaluates inbound email messages by assessing the probability that the messages are legitimate or spam.

References: [https://technet.microsoft.com/en-us/library/bb124739\(v=exchg.160\).aspx](https://technet.microsoft.com/en-us/library/bb124739(v=exchg.160).aspx)

QUESTION 46

HOTSPOT

You have an Exchange Server 2016 organization. The organization contains 5,000 mailboxes.

All of the users in the organization share their Calendar with the users in two domains named contoso.com and fabrikam.com.

You need to prevent the organization users from sharing their Calendar with the users in the contoso.com domain.

What command should you run? To answer, select the appropriate options in the answer area.

Hot Area:

Answer Area

	▼
Set-CasMailbox	
Set-Mailbox	
Set-SharingPolicy	

identity "Default Sharing Policy (DEFAULT)"

-domains contos
-domains fabrika

Correct Answer:

Answer Area

	▼
Set-CasMailbox	
Set-Mailbox	
Set-SharingPolicy	

identity "Default Sharing Policy (DEFAULT)"

-domains contos
-domains fabrika

Section: [none]

Explanation

Explanation/Reference:

Explanation:

Use the Set-SharingPolicy cmdlet to modify existing sharing policies that control how users inside your organization can share free/busy and contact information with users outside your organization.

This example modifies the sharing policy Fabrikam for Fabrikam.com, which is a domain outside your organization. This policy allows users in the Fabrikam domain to see simple free/busy information.

Set-SharingPolicy -Identity Fabrikam -Domains "mail.Fabrikam.com: CalendarSharingFreeBusySimple"

References: [https://technet.microsoft.com/en-us/library/dd297931\(v=exchg.160\).aspx](https://technet.microsoft.com/en-us/library/dd297931(v=exchg.160).aspx)

