

H13-622

Number: H13-622  
Passing Score: 800  
Time Limit: 120 min  
File Version: 1.0

H13-622



**Website:** <https://vceplus.com>

**VCE to PDF Converter:** <https://vceplus.com/vce-to-pdf/>

**Facebook:** <https://www.facebook.com/VCE.For.All.VN/>

**Twitter :** [https://twitter.com/VCE\\_Plus](https://twitter.com/VCE_Plus)

<https://vceplus.com/>

## Exam A

### QUESTION 1

The HUAWEI OceanStor 9000 can be managed using web browsers. If an OceanStor 9000 storage system uses default settings, which of the following entered in the browser address box is correct?

- A. https://IP:httpsport/webui
- B. http://IP:httpsport/tools
- C. http://IP:httpsport
- D. https://IP:httpsport

**Correct Answer:** A

**Section:** (none)

**Explanation**

**Explanation/Reference:**

### QUESTION 2

Which command is used to monitor the CPU usage in performance optimization of the N8500 clustered NAS storage systems?.



<https://vceplus.com/>

- A. sar -u 3 3
- B. sar -r 3 3
- C. sar -n DEV 2 2
- D. sar -n CPU 2 2

**Correct Answer:** A

**Section: (none)**

**Explanation**

**Explanation/Reference:**

**QUESTION 3**

The HUAWEI OceanStor Toolkit V100R001 is used for information collection. When importing a service package, you can find the service package in the datacollect folder under toolcases.

- A. True
- B. False

**Correct Answer: A**

**Section: (none)**

**Explanation**

**Explanation/Reference:**

**QUESTION 4**

Which of the following statements about the InfoQuota feature of the OceanStor 9000 are correct? (Select three.)

- A. Quotas can be set based on users.
- B. Quotas can be set based on user groups.
- C. Quotas can be set for file directories.
- D. Quotas can be set for files.

**Correct Answer: ABC**

**Section: (none)**

**Explanation**

**Explanation/Reference:**

**QUESTION 5**

Which of the following storage units are used by an N8500 clustered NAS system? (Select three)

- A. S2200T
- B. S2600T

- C. S5500T
- D. S6800T

**Correct Answer:** BCD

**Section:** (none)

**Explanation**

**Explanation/Reference:**

#### QUESTION 6

Which of the following statements about CIFS service parameter settings on an OceanStor 9000 storage system is incorrect?

- A. When the domain authentication mode is used, local users are not allowed to access CIFS shared directories.
- B. When the user authentication mode is used, domain users are not allowed to access CIFS shared directories.
- C. If you want users to access CIFS shared directories without entering user names or passwords, enable the guest mode.

**Correct Answer:** A

**Section:** (none)

**Explanation**

**Explanation/Reference:**



#### QUESTION 7

A customer has purchased a 4-node N8500 clustered NAS storage system. The enterprise-edition engine nodes have two CPUs, 10GE network ports, and 48 GB cache. The performance of an engine node reaches 700 MB/s. The back-end storage uses the S5600T, which is configured with 80 SAS disks divided into eight 9disk RAID 5 groups. Each RAID group has one hot spare disk. The performance of each SAS disk in the 9-disk RAID 5 groups is 30 MB/s. According to the preceding information, what is the overall performance of the N8500 without considering other factors?

- A. 700 MB/s
- B. 2800 MB/s
- C. 1920 MB/s
- D. 2400 MB/s

**Correct Answer:** C

**Section:** (none)

**Explanation**

**Explanation/Reference:**

**QUESTION 8**

Which of the following are considered when planning the deployment of an N8000 clustered NAS storage system? (Select three)

- A. Evenly distribute service loads among all cluster nodes. Employ port bonding to increase network bandwidths and enhance protection capability.
- B. Plan the types of file systems for the storage system based on the performance and data integrity requirements of customers' environments.
- C. Plan various RAID groups for the storage system to address the data integrity and read/write performance requirements of different application scenarios.
- D. Select operating systems based on application requirements.

**Correct Answer:** ABC

**Section:** (none)

**Explanation**

**Explanation/Reference:**

**QUESTION 9**

If an OceanStor 9000 storage system consists of four M nodes and uses 10GE for the back-end network, how many IP addresses must be planned for the backend storage network segment?



<https://vceplus.com/>

- A. 8
- B. 12
- C. 6
- D. 10

**Correct Answer:** B

**Section: (none)**

**Explanation**

**Explanation/Reference:**

**QUESTION 10**

In an OceanStor 9000 storage system, hard quotas are set for user A to access the /dir directory. The recommended threshold is 3 GB, the soft threshold is 4 GB, the grace period is 10 days, and the hard threshold is 6 GB. If user A has written 3.1 GB data in the /dir directory, which of the following statements are correct? (Select two.)

- A. The system reports an alarm indicating that the threshold is exceeded.
- B. User A can continue to write data in the /dir directory.
- C. User A can continue to write data in the /dir directory for another 10 days.
- D. User A cannot continue to write data in the /dir directory.

**Correct Answer: AB**

**Section: (none)**

**Explanation**

**Explanation/Reference:**



**QUESTION 11**

When configuring an N8500 clustered NAS engine, a user must specify the start and end physical IP addresses and the start and end virtual IP addresses.

- A. True
- B. False

**Correct Answer: B**

**Section: (none)**

**Explanation**

**Explanation/Reference:**

**QUESTION 12**

Which of the following statements about N8500 troubleshooting is incorrect?

- A. Check file system configurations, and then check storage device configurations.
- B. Check network connection, and then check NAS device configurations.
- C. Check device indicators, and then check system logs.
- D. Check the status of storage unit disk enclosures, and then check the status of storage unit controller enclosures.

**Correct Answer:** D

**Section:** (none)

**Explanation**

**Explanation/Reference:**

#### **QUESTION 13**

In performance optimization of the N8500 clustered NAS storage systems, which of the following issues must the maintenance personnel be aware of concerning LUNs and controllers? (Select three.)

- A. Create only one LUN for each RAID group.
- B. Set LUNs to forcible write back without mirroring.
- C. Ensure that the owning controller and the working controller of a LUN are the same.
- D. Disks that compose a file system are evenly distributed on controllers.

**Correct Answer:** ACD

**Section:** (none)

**Explanation**

**Explanation/Reference:**

#### **QUESTION 14**

Which of the following statements about the VCS services and resources provided by a clustered NAS system are correct? (Select three.)

- A. A dependency relationship between service groups can be defined.
- B. A dependency relationship between resources can be defined.
- C. Each resource corresponds to one agent.
- D. Resource dependency relationships can be defined in a cyclic manner.

**Correct Answer:** ABC

**Section:** (none)

**Explanation**

**Explanation/Reference:**

**QUESTION 15**

The CIFS sharing of the OceanStor 9000 supports local user authentication and AD domain user authentication.

- A. True
- B. False

**Correct Answer: A**

**Section: (none)**

**Explanation**

**Explanation/Reference:**

**QUESTION 16**

A customer has purchased an N8500 clustered NAS storage system configured with SATA and NL-5AS disks. In order to strike a balance between RAID reliability and read/write performance, which of the following configuration plans is recommended?

- A. 11-disk RAID 5 and one hot spare disk
- B. 11-disk RAID 6 and one hot spare disk
- C. 4-disk RAID10
- D. 9-disk RAID 5

**Correct Answer: B**

**Section: (none)**

**Explanation**

**Explanation/Reference:**

**QUESTION 17**

The flexible space of the OceanStor 9000 is attributed to the scale-out architecture, scalability from 3 to 288 nodes, and support for global namespace.

- A. True
- B. False



**Correct Answer:** A

**Section:** (none)

**Explanation**

**Explanation/Reference:**

#### QUESTION 18

A NAS storage system is dedicated to storing and managing which of the following data types?



<https://vceplus.com/>

- A. Block data
- B. File data
- C. Object data
- D. Consecutive data blocks

**Correct Answer:** B

**Section:** (none)

**Explanation**

**Explanation/Reference:**

#### QUESTION 19

When configuring file systems for the N8500 clustered NAS storage systems, you are advised to configure a file system size not larger than 32 TB and the size of small-file storage applications not larger than 16 TB to achieve satisfactory reliability and data recovery speed. (The small files here refer to the files with an average size of 1 MB.)

- A. True

B. False

**Correct Answer:** B

**Section:** (none)

**Explanation**

**Explanation/Reference:**

#### **QUESTION 20**

You can use the HUAWEI OceanStor Toolkit to perform the operations such as preventive maintenance, information collection, and upgrade for the HUAWEI OceanStor 9000.

A. True

B. False

**Correct Answer:** A

**Section:** (none)

**Explanation**

**Explanation/Reference:**



#### **QUESTION 21**

Which of the following statements about the system services of the OceanStor 9000 are correct? (Select two)

A. The MDS service manages the metadata of a file system.

B. The DS service stores file data but not metadata on the storage system.

C. The CMS service manages physical nodes in a cluster.

D. In an OceanStor 9000 storage system, some nodes provide the MDS service and some nodes provide the DS service.

**Correct Answer:** AC

**Section:** (none)

**Explanation**

**Explanation/Reference:**

**QUESTION 22**

Scale-out is a horizontal expansion architecture that addresses the needs and challenges caused by rapid data growth and complex data changes. The scale-out architecture features distributed processing, online expansion, data sharing, and clustering.

- A. True
- B. False

**Correct Answer:** A

**Section:** (none)

**Explanation**

**Explanation/Reference:**

**QUESTION 23**

Multiple users access a multimedia VOD application at different bit rates. Which prefetch policy should be selected for the LUNs on the background N8500 clustered NAS storage system?

- A. No prefetch
- B. Constant prefetch
- C. Intelligent prefetch
- D. Variable prefetch



**Correct Answer:** D

**Section:** (none)

**Explanation**

**Explanation/Reference:**

**QUESTION 24**

You can check VCS cluster logs by viewing the Engine\_A.log file in the /var/VRTSvcs/log directory on an N8500 storage system.

- A. True
- B. False

**Correct Answer:** A

**Section: (none)**

**Explanation**

**Explanation/Reference:**

**QUESTION 25**

A 2-node N8500 clustered NAS engine is a 4 U enclosure. The heartbeat links between the two nodes are set up based on the internal PCIe channels.

- A. True
- B. False

**Correct Answer: B**

**Section: (none)**

**Explanation**

**Explanation/Reference:**

**QUESTION 26**

Which command is used to check whether a file system is mounted using the support account for N8500 V200R001?

- A. cfsmntadm display
- B. cfsmountadm display
- C. cfsmntadm show
- D. cfsmountadm show

**Correct Answer: A**

**Section: (none)**

**Explanation**

**Explanation/Reference:**

**QUESTION 27**

In an N8500 clustered NAS system, the engine enclosures exchange cluster control information over a Fibre Channel heartbeat network.

- A. True
- B. False

**Correct Answer:** B

**Section:** (none)

**Explanation**

**Explanation/Reference:**

#### **QUESTION 28**

In an N8500 system, if an engine node is faulty and the other components are in the normal state, the consequences do not include which of the following?

- A. The N8500 cannot be managed.
- B. LUNs on the storage units become unavailable.
- C. Service performance deteriorates.
- D. The NFS file sharing service becomes abnormal.

**Correct Answer:** B

**Section:** (none)

**Explanation**

**Explanation/Reference:**



#### **QUESTION 29**

Which of the following are possible challenges facing massive data management? (Select two.)

- A. How to implement quick data searches for higher retrieval efficiency
- B. How to ensure data authenticity and prevent data cheating
- C. How to implement PB-level storage of various data
- D. How to save storage resources by reducing the data amount

**Correct Answer:** AC

**Section:** (none)

**Explanation**

**Explanation/Reference:**

#### **QUESTION 30**

Which are the possible causes for file read/write performance decrease? (Select three)

- A. A slow disk or bad sector exists,
- B. The Fibre Channel port has a high bit error rate.
- C. The LUN has been set to write back.
- D. The prefetch policy does not apply to service data changes.

**Correct Answer:** ABD

**Section:** (none)

**Explanation**

**Explanation/Reference:**

#### QUESTION 31

If the service disk in slot 35 on a C node of the OceanStor 9000 is faulty, you are supposed to find this disk at the front panel of the C node and then replace it.

- A. True
- B. False



**Correct Answer:** B

**Section:** (none)

**Explanation**

**Explanation/Reference:**

#### QUESTION 32

Before installing software for an OceanStor 9000 storage system, you must prepare required tools, cables, and software packages. Which of the following statements about this preparation is incorrect?

- A. The SSH client software is required for remote access.
- B. An FTP upload tool is required for uploading installation packages to storage nodes.
- C. The OceanStor 9000 storage system software is required, which contains the OceanStor SystemReporter suite.
- D. A network cable is required for connecting the management PC to the OceanStor 9000 management network port.

**Correct Answer:** C

**Section: (none)**

**Explanation**

**Explanation/Reference:**

**QUESTION 33**

Which of the following statements about the configuration of the file system snapshot feature provided by an N8500 clustered NAS system are incorrect? (Select two)

- A. A file system snapshot can be created manually or automatically.
- B. The maximum number of snapshots created for a file system is 256.
- C. A snapshot that is automatically created is in online state by default.
- D. A snapshot can be automatically removed by the system.

**Correct Answer: BC**

**Section: (none)**

**Explanation**

**Explanation/Reference:**

**QUESTION 34**

In an N8500 clustered NAS system, at most how many 1 Gbit/s service ports can a single clustered NAS engine node provide?

- A. 4
- B. 8
- C. 12
- D. 16

**Correct Answer: D**

**Section: (none)**

**Explanation**

**Explanation/Reference:**

**QUESTION 35**

In the OceanStor 9000, a file pool is a collection of files that have specific characteristics. A file pool policy defines the rules for storing a file pool in a node pool.

- A. True
- B. False

**Correct Answer:** A

**Section:** (none)

**Explanation**

**Explanation/Reference:**

### QUESTION 36

Which of the following statements about the CIFS share are correct? (Select two)

- A. CIFS normal share enables a directory to be accessed by all users.
- B. CIFS homedir share enables a directory to be accessed by all users.
- C. In Normal mode, a client can access a share through only one VIP.
- D. Compared with the Normal mode, the Cluster mode provides higher data reliability but lower performance.

**Correct Answer:** AB

**Section:** (none)

**Explanation**

**Explanation/Reference:**

### QUESTION 37

An N8500 clustered NAS engine can be connected to a SAN storage array over a Fibre Channel network and a SAS network concurrently.

- A. True
- B. False

**Correct Answer:** B

**Section:** (none)

**Explanation**

**Explanation/Reference:**



**QUESTION 38**

In the IB networking solution of the OceanStor 9000, which of the following statements about the IP address planning of the front-end service network is correct?



<https://vceplus.com/>

- A. Two static IP addresses on the front-end service network must be planned for each node.
- B. Four dynamic IP addresses on the front-end service network must be allocated to each node for the IP address pool used by the InfoLink function.
- C. One InfoLink DNS IP address on the front-end service network must be planned.
- D. One floating IP address on the front-end service network must be planned for each node.

**Correct Answer:** D

**Section:** (none)

**Explanation**



**Explanation/Reference:**

**QUESTION 39**

Which of the following statements about the N8500 configuration prerequisites are correct? (Select three)

- A. The heartbeat network ports of the clustered NAS engine are correctly connected to the heartbeat network.
- B. The service network ports of the clustered NAS engine are not connected to the customer's service network before they are configured.
- C. The clustered NAS engine is correctly powered on and the statuses of the indicators are normal.
- D. Hardware installation and cable connection of the clustered NAS engine are complete.

**Correct Answer:** ACD

**Section:** (none)

**Explanation**

**Explanation/Reference:**

**QUESTION 40**

Which of the following statements about CIFS are correct? (Select two.)

- A. CIFS transmits data based on TCP.
- B. CIFS transmits data based on UDP.
- C. CIFS is a file sharing protocol used on Linux.
- D. CIFS is a file sharing protocol used on Windows.

**Correct Answer:** AD

**Section:** (none)

**Explanation**

**Explanation/Reference:**

**QUESTION 41**

Which of the following statements about the application scenarios of different nodes of the HUAWEI OceanStor 9000 big data storage systems is correct?

- A. The mini-capacity node applies to small-capacity scenarios.
- B. The performance node applies to large-capacity and high-bandwidth scenarios.
- C. The capacity node applies to OPS-intensive scenarios.
- D. None of the above is correct.

**Correct Answer:** A

**Section:** (none)

**Explanation**

**Explanation/Reference:**

**QUESTION 42**

If an engine node of an N8500 storage system cannot be started, which of the following measures is incorrect?

- A. Replace the CPUs.
- B. Replace the memory.
- C. Replace the Fibre Channel interface cards.
- D. Replace the main board.

**Correct Answer:** C

**Section:** (none)

**Explanation**

**Explanation/Reference:**

#### **QUESTION 43**

Compared with a relational database, which of the following are advantages of NoSQL? (Select three)

- A. Flexible scalability
- B. High availability
- C. High cost-effectiveness
- D. Feature richness

**Correct Answer:** ABC

**Section:** (none)

**Explanation**

**Explanation/Reference:**



#### **QUESTION 44**

The fencing function provided by an N8500 prevents split-brain from occurring. Which of the following statements about fencing are correct? (Select three)

- A. Monitors GAB and checks the changes of cluster members.
- B. Ensures the single view of cluster members.
- C. Prevents multiple nodes from using a volume manger to access the shared storage.
- D. Automatically recovers the master node if the cluster becomes abnormal.

**Correct Answer:** ABC

**Section:** (none)

**Explanation**

**Explanation/Reference:**

#### **QUESTION 45**

Which of the following statements about different service applications' storage performance and capacity requirements are correct?

- A. Compared with an email application, an enterprise OLTP/OLAP database requires higher storage performance.
- B. Compared with picture and video applications, a large-sized relational database requires a larger storage capacity.
- C. Compared with the content delivery network application, the backup and archive services require higher storage performance.
- D. Compared with a real-time online service system, scientific computing requires higher storage performance.

**Correct Answer:** A

**Section:** (none)

**Explanation**

**Explanation/Reference:**

#### QUESTION 46

Which of the following must be considered before you optimize the performance of an N8500 clustered NAS storage system? (Select three)

- A. Evaluate the feasibility of the performance target based on your experience.
- B. Use a fixed testing environment for performance optimization.
- C. Determine the testing mode based on services to ensure the comparability of the test results.
- D. Performance optimization has no impact on ongoing services. You do not need to worry about the pressure on services.

**Correct Answer:** ABC

**Section:** (none)

**Explanation**

**Explanation/Reference:**

#### QUESTION 47

A NAS storage system supports file system sharing, and the underlying protocol transmits data based on iSCSI.

- A. True
- B. False

**Correct Answer:** B

**Section:** (none)

**Explanation**

**Explanation/Reference:**

#### QUESTION 48

Which of the following statements about the file system mirroring feature provided by an N8500 clustered NAS system are incorrect? (Select two)

- A. The N8500 supports a maximum of two mirrors for a single file system.
- B. Resources of different storage pools can be selected to implement file system mirroring.
- C. File system mirroring allows users to select three mirroring layout types.
- D. In the same service scenario, mirrored-stripe and striped-mirror provide the same data reliability and performance.

**Correct Answer:** AD

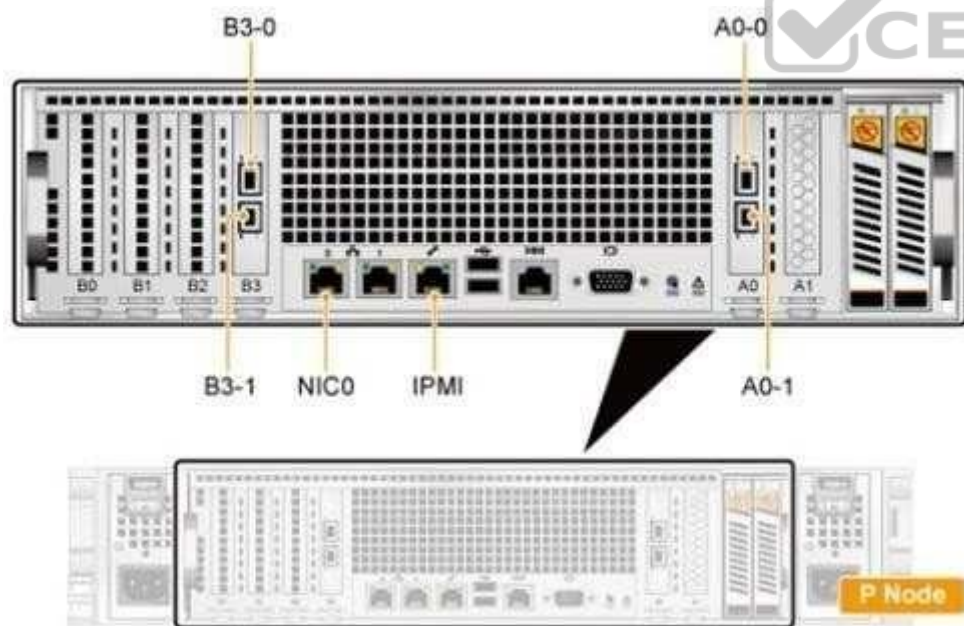
**Section:** (none)

**Explanation**

**Explanation/Reference:**

#### QUESTION 49

An OceanStor 9000 storage system uses GE for the front-end network and 10GE for the back-end network. Which of the following statements is incorrect about the ports on the P node as shown in the figure?



- A. Ports AO-1 and AO-1 are connected to the 10GE switch. A back-end network IP address must be planned for each of the two ports.
- B. Ports B3-0 and B3-1 are connected to the front-end service switch. A front-end network IP address must be planned for each of the two ports.
- C. NIC 0 is connected to the management and maintenance switch. You do not need to assign an IP address for this port.
- D. Port IPMI is connected to the management and maintenance switch. You do not need to assign an IP address for this port.

**Correct Answer:** D

**Section:** (none)

**Explanation**

**Explanation/Reference:**

#### QUESTION 50

In performance optimization of the N8500 clustered NAS storage systems, the top command is run and the following output is displayed:

```
top - 01:06:48 up 1:22, 1 user, load average: 0.06, 0.60, 0.48 Tasks: 29 total, 1 running, 28 sleeping, 0 stopped, 0 zombie Cpu(s): 0.3% us, 1.0% sy, 0.0% ni, 98.7% id, 0.0% wa, 0.0% hi, 0.0% si Mem: 191272k total, 173656k used, 17616k free, 22052k buffers Swap: 192772k total, 0k used, 192772k free, 123988k cached
```

Which of the following statements is incorrect?

- A. up 1:22 indicates the current system time.
- B. load average indicates the average length of task queues.
- C. 0.3% us in Cpu(s) indicates the CPU occupation percentage of user space.
- D. 17616k free in Mem indicates the total capacity of free memory.

**Correct Answer:** A

**Section:** (none)

**Explanation**

**Explanation/Reference:**

#### QUESTION 51

Which of the following statements about the file system used by the OceanStor 9000 is incorrect?

- A. The file system provides a unified file system namespace.
- B. The name of the namespace provided by the file system is the same as the system name.
- C. The root directory of the namespace does not provide sharing or access.
- D. Added capacity can be directly obtained from the storage pool.

**Correct Answer:** C

**Section:** (none)

**Explanation**

**Explanation/Reference:**

#### **QUESTION 52**

Which of the following are included in Hadoop? (Select three)

- A. HDFS
- B. HBase
- C. MapReduce
- D. MPP DB

**Correct Answer:** ABC

**Section:** (none)

**Explanation**

**Explanation/Reference:**



#### **QUESTION 53**

Compared with traditional RAID algorithms, the Erasure Code redundancy technology provides higher reliability and more flexible redundancy policies. Which of the following statements about Erasure Code is incorrect?

- A. Data to be written is divided into multiple data blocks of the same size.
- B. The Erasure Code algorithm calculates N parity blocks for every M consecutive data blocks. (The value of N is smaller than that of M.)
- C. M+N data blocks are concurrently stored to different nodes.
- D. In Erasure Code storage mode, a concurrent failure of N-1 disks is tolerated.

**Correct Answer:** D

**Section:** (none)

**Explanation**

**Explanation/Reference:**

#### **QUESTION 54**

Which of the following disks are used by an N8500 clustered NAS engine as system disks?

- A. Fibre Channel disks
- B. SAS disks
- C. SATA disks
- D. SSDs

**Correct Answer:** D

**Section:** (none)

**Explanation**

**Explanation/Reference:**

#### QUESTION 55

Which of the following issues are resolved by big data storage security technology? (Select three)

- A. Integrity
- B. Confidentiality
- C. Availability
- D. Continuity



**Correct Answer:** ABC

**Section:** (none)

**Explanation**

**Explanation/Reference:**

#### QUESTION 56

Based on full interconnection of data channels and communication channels, a clustered NAS system employs cluster volume management to manage global storage space. Specifically, any nodes in a cluster can access the same storage space using the same volume device name, ensuring access consistency.

- A. True
- B. False

**Correct Answer:** A



**Section: (none)**

**Explanation**

**Explanation/Reference:**

**QUESTION 57**

The stripe file system data of an N8500 clustered NAS storage system is stored on multiple data disks in the same way as data in RAID 0. The stripe file system provides high read/write performance but low security.



A. True

B. False

**Correct Answer: A**

**Section: (none)**

**Explanation**

**Explanation/Reference:**

**QUESTION 58**

Which of the following statements about the OceanStor Toolkit installation of the OceanStor 9000 is incorrect?

A. The OceanStor Toolkit can be installed on any storage node.

B. The PC used for installation is connected to a storage node through port eth0.

C. The IP address of the network port used to upload the OceanStor Toolkit must be configured on the same network segment as the management network.

D. After the OceanStor Toolkit is successfully installed, enter <https://xx.xx.xx.xx:8088/tools> in the Internet Explorer address box to go to the login page.

**Correct Answer: C**

**Section: (none)**

**Explanation**

**Explanation/Reference:**

**QUESTION 59**

Which of the following statements about IP address planning for the N8500 clustered HAS storage systems is incorrect?

- A. Each service network port, management network port on an engine node, and management network port on a storage unit must have a physical IP address.
- B. Each service network port and management network port on an engine node must have a virtual IP address.
- C. Ensure that the physical IP address and virtual IP address of each port reside on the same network segment.
- D. It is recommended that the console IP address reside on the same network segment as the service network.

**Correct Answer: A**

**Section: (none)**

**Explanation**

**Explanation/Reference:**



**QUESTION 60**

Which of the following statements about the high availability daemon (HAD) function of an N8500 clustered NAS system are correct? (Select three.)

- A. Each host in the N8500 cluster runs a HAD process.
- B. The hastart command can be executed to enable the had and hashadow services to automatically start.
- C. HAD is used to monitor and manage the statuses of all services on the clustered NAS system.
- D. The clustered system uses hashadow to monitor the HAD process. If HAD becomes abnormal, hashadow can restart HAD.

**Correct Answer: ABD**

**Section: (none)**

**Explanation**

**Explanation/Reference:**

**QUESTION 61**

When a NAS client attempts to connect to an OceanStor 9000 node, the user must enter the management IP address of the node.

- A. True
- B. False

**Correct Answer:** B

**Section:** (none)

**Explanation**

**Explanation/Reference:**

#### **QUESTION 62**

Which of the following does not demonstrate the characteristics of big data?

- A. Analysis of the popularity of China railway lines during the Spring Festival travel rush in
- B. Analysis and forecast of global influenza with the use of search engines
- C. Analysis of final exam scores of a university student
- D. Data recording and analysis of a Chinese moon landing project

**Correct Answer:** C

**Section:** (none)

**Explanation**



**Explanation/Reference:**

#### **QUESTION 63**

Which of the following statements about the software features of the OceanStor 9000 are correct? (Select two)

- A. The maximum supported file system capacity is 40 PB.
- B. The maximum supported data recovery speed is 1 TB/hour.
- C. Each node uses the cache on the node exclusively.
- D. Thin provisioning and thick provisioning are both supported.

**Correct Answer:** AB

**Section:** (none)

**Explanation**

**Explanation/Reference:**

**QUESTION 64**

In N8500 clustered NAS system V200R001, how many redundant heartbeat links are set up between two nodes?

- A. 1
- B. 2
- C. 3
- D. 4

**Correct Answer:** B

**Section:** (none)

**Explanation**

**Explanation/Reference:**

**QUESTION 65**

Which of the following are the mandatory hardware components of an N8500 clustered NASsystem? (Select two)

- A. Fibre Channel switch
- B. T series storage array
- C. NAS engine
- D. Ethernet switch

**Correct Answer:** BC

**Section:** (none)

**Explanation**

**Explanation/Reference:**

**QUESTION 66**

Which are the key parameters used to evaluate the performance of an N8500 clustered NAS storage system? (Select three.)

- A. Number of network ports per engine node
- B. Number and model of CPUs and memory capacity per engine node
- C. Communication links between the NAS engine and the storage units
- D. NAS engine operating system and version

**Correct Answer:** ABC

**Section:** (none)

**Explanation**

**Explanation/Reference:**

**QUESTION 67**

The CAP principle that a distributed database complies with involves three elements: consistency, availability, and partition tolerance. Which of the following statements about the CAP principle that a distributed database complies with are correct? (Select three)

- A. In a distributed database, a maximum of two elements can be implemented concurrently.
- B. Partition tolerance is the basic requirement for a distributed database.
- C. For most distributed databases oriented to web applications, the CPA design typically sacrifices consistency for high availability.
- D. Partition tolerance is the basic requirement for a traditional relational database.

**Correct Answer:** ABC

**Section:** (none)

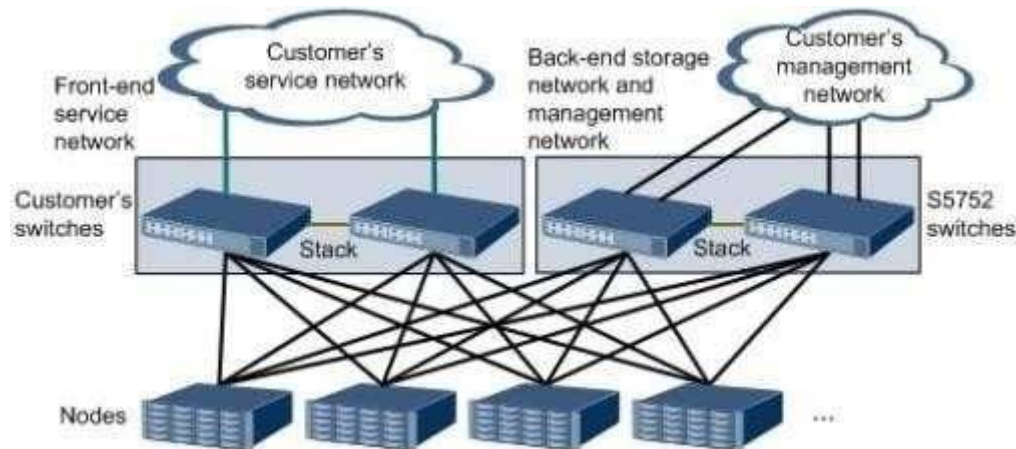
**Explanation**

**Explanation/Reference:**

**QUESTION 68**

The OceanStor 9000 in the figure adopts GE networking and enables the InfoLink function for front-end services. How many IP address should be planned for the front-end service network?





- A. 8
- B. 10
- C. 24
- D. 26

**Correct Answer:** D

**Section:** (none)

**Explanation**

**Explanation/Reference:**

#### QUESTION 69

The 10GE networking of an OceanStor 9000 uses a CE6850-48S4Q-EI switch. Which of the following statements about the switch are correct? (Select two)

- A. The switch supports a maximum of 32 10GE 5FP+ Ethernet optical ports.
- B. The switch supports four 40GE QSFP+ Ethernet optical ports.
- C. The 10GE ports on the switch can be used for interconnection between downstream storage nodes or connection between storage nodes and the upstream service network.
- D. The 40GE ports are used for switch stacking.

**Correct Answer:** BD

**Section: (none)**

**Explanation**

**Explanation/Reference:**

**QUESTION 70**

Which of the following statements about the LUN planning of the N8500 clustered NAS storage systems are correct? (Select three)

- A. The maximum capacity of a LUN is 16 TB.
- B. LUNs in one RAID group belong to the same controller.
- C. The 64 KB stripe depth is recommended for random services.
- D. It is recommended that LUNs with heavy loads be in different RAID groups.

**Correct Answer: ABD**

**Section: (none)**

**Explanation**

**Explanation/Reference:**



**QUESTION 71**

Which of the following types of clients are supported by NFS sharing of the OceanStor 9000? (Select three)

- A. Host name
- B. IP address
- C. Network group
- D. AD domain

**Correct Answer: ABC**

**Section: (none)**

**Explanation**

**Explanation/Reference:**

**QUESTION 72**

Which of the following is the correct N8500 configuration procedure?

- A. Go to the welcome page. > Confirm the networking. > Select a configuration file. > Configure storage units. > Configure the NAS engine. > Configure the device location. > Complete the deployment.
- B. Confirm the networking. > Go to the welcome page. > Select a configuration file. > Configure storage units. > Configure the NAS engine. > Configure the device location. > Complete the deployment.
- C. Confirm the networking. > Go to the welcome page. > Configure storage units. > Select a configuration file. > Configure the NAS engine. > Configure the device location. > Complete the deployment.
- D. Confirm the networking. > Go to the welcome page. > Select a configuration file. > Configure the NAS engine. > Configure storage units. > Configure the device location. > Complete the deployment.

**Correct Answer:** B

**Section:** (none)

**Explanation**

**Explanation/Reference:**

#### **QUESTION 73**

If the application scenario of an N8500 clustered NAS system is Mac OS, the OS can access shared files on the N8500 through NFS.

- A. True
- B. False

**Correct Answer:** A

**Section:** (none)

**Explanation**

**Explanation/Reference:**

#### **QUESTION 74**

The hardware faults of an engine node in an N8500 storage system do not include which of the following?

- A. Cluster node faults
- B. Fibre Channel interface card faults
- C. RAID card faults
- D. Power and fan faults

**Correct Answer:** C



**Section: (none)**

**Explanation**

**Explanation/Reference:**

**QUESTION 75**

Which of the following statements about the software installation of the OceanStor 9000 are correct? (Select two.)

- A. Before installing software, configure switches on the back-end storage network and the management network.
- B. The OceanStor Toolkit must be installed on all storage nodes.
- C. The OceanStor SystemReporter can be installed on any Windows server with qualified hardware and software.
- D. You must purchase a license for the OceanStor SystemReporter.

**Correct Answer: AC**

**Section: (none)**

**Explanation**

**Explanation/Reference:**



**QUESTION 76**

Object storage encryption ensures data security based on the following levels: track check, slice check, object check, and packet check.

- A. True
- B. False

**Correct Answer: A**

**Section: (none)**

**Explanation**

**Explanation/Reference:**

**QUESTION 77**

Typically, how many storage units can be configured for a 4-node N8500 to implement direct- connection networking?



<https://vceplus.com/>

- A. 1
- B. 2
- C. 3
- D. 4

**Correct Answer:** B

**Section:** (none)

**Explanation**

**Explanation/Reference:**



#### QUESTION 78

On Huawei N8500 V200R001, `gabconfig -a` can be executed to query the port communication status of a GAB member in a cluster. Port `h gen` is the communication port of which member?

- A. CFS
- B. VCS
- C. CVM
- D. Heartbeat membership

**Correct Answer:** B

**Section:** (none)

**Explanation**

**Explanation/Reference:**

**QUESTION 79**

Which of the following statements about the principle of the file system snapshot feature provided by an N8500 clustered NAS system are correct? (Select two)

- A. When a snapshot is created, a block mapping pointing to the data on the file system is generated.
- B. If an original data block needs to be replaced for the first time, the new data block is copied to the snapshot reservation area.
- C. If an original data block is replaced for the first time, the block mapping in the snapshot points to the data block in the snapshot reservation area.
- D. If a data block that has replaced an original data block needs to be replaced by a new data block, the new data block is copied to the snapshot reservation area.

**Correct Answer:** AC

**Section:** (none)

**Explanation**

**Explanation/Reference:**

**QUESTION 80**

Which of the following are considered when planning the deployment of an N8000 clustered NAS storage system? (Select three.)

- A. Evenly distribute service loads among all cluster nodes, Employ port bonding to increase network bandwidths and enhance protection capability.
- B. Plan the types of file systems for the storage system based on the performance and data integrity requirements of customers' environments.
- C. Plan various RAID groups for the storage system to address the data integrity and read/write performance requirements of different application scenarios.
- D. Select operating systems based on application requirements.

**Correct Answer:** ABC

**Section:** (none)

**Explanation**

**Explanation/Reference:**

**QUESTION 81**

An NS500 clustered NIAS system provides file system sharing. Which of the following statements about the N8500's file system mechanism and related features are correct? (Select three)

- A. The N8500 clustered file system VxFS is not a log file system, and it supports a capacity of over 2 TB.

- B. The file system snapshot feature employs the copy-on-write mechanism and shares the storage space of partitions or volumes with other file sets.
- C. The snapshots provided by the N8500 are based on the file system level.
- D. File system snapshot, mirroring, and replication are implemented based on storage checkpoints.

**Correct Answer:** BCD

**Section:** (none)

**Explanation**

**Explanation/Reference:**

### QUESTION 82

In Linux, the iostat command is run and the following output is displayed:

```
# iostat
```

```
Linux 2.6.9-8.11.EVAL (ts3-150,ts.cn.tlan)02/01/2014 avg-cpu: %user%nice%sys %iowait%idle  
12.010.002.152.3083,54
```

```
Device: tpsBlk_read/sBlk_wrtn/sBlk_readBlk_wrtn  
hda7.13200.1234.73640119111076
```

Which of the following statements are correct? (Select two.)

- A. The CPU usage of I/O wait is 2.3%.
- B. The number of I/O requests sent per second is 7.13.
- C. The number of blocks read per second is 640119.
- D. The CPU usage of application operation is 2,15%.



**Correct Answer:** AB

**Section:** (none)

**Explanation**

**Explanation/Reference:**

### QUESTION 83

Hadoop is an open-source software framework for distributed processing of massive data. Hadoop has performance and cost advantages in terms of unstructured data processing.

- A. True
- B. False

**Correct Answer:** A

**Section:** (none)

**Explanation**

**Explanation/Reference:**

#### **QUESTION 84**

Which of the following statements about the DST feature of an N8500 clustered NAS system are incorrect? (Select three)

- A. DST involves three tiers.
- B. Each tier can contain many volumes.
- C. All files are initially stored on tier 1.
- D. The location where metadata is stored cannot be manually specified.

**Correct Answer:** ACD

**Section:** (none)

**Explanation**

**Explanation/Reference:**



#### **QUESTION 85**

For N800 V200R001, you can log in to the storage system using the support account and run `fsck -t vxfs -o full -y /dev/vx/dsk/sfsdg/fs001` to implement full verification for the fs001 file system.

- A. True
- B. False

**Correct Answer:** A

**Section:** (none)

**Explanation**

**Explanation/Reference:**

#### **QUESTION 86**

Which of the following is an unstructured data application?

- A. ERP
- B. HIS database
- C. Education VoD
- D. Enterprise financial system

**Correct Answer:** C

**Section:** (none)

**Explanation**

**Explanation/Reference:**

#### **QUESTION 87**

Which components of an N8500 clustered NAS system reside in the user space? (Select two)

- A. File system layer
- B. Application layer
- C. User management
- D. Operating system layer

**Correct Answer:** BC

**Section:** (none)

**Explanation**

**Explanation/Reference:**

#### **QUESTION 88**

When planning IP addresses for the back-end storage network of the OceanStor 9000 which uses IB networking, you must plan two back-end storage IP addresses and one temporary IP address for each node.

- A. True
- B. False

**Correct Answer:** A

**Section:** (none)

**Explanation**

**Explanation/Reference:**

**QUESTION 89**

The OceanStor 9000 externally provides a single file system that is managed by a unified file system namespace. All the objects involved in user operations such as storing files, setting a share, and managing permission reside in this namespace. Which of the following statements about a namespace are correct? (Select three.)

- A. During the startup of the OceanStor 9000, a namespace is automatically created with the same name as that of the OceanStor 9000.
- B. As the root directory of the entire system, a namespace cannot be shared or accessed, However, its subdirectories can be shared and accessed,
- C. A unified namespace provides a unified storage resource pool where storage space can be centrally managed and allocated.
- D. All shared directories are subdirectories in the unified namespace,

**Correct Answer:** ACD

**Section:** (none)

**Explanation**

**Explanation/Reference:**



**QUESTION 90**

Which command is used to query the NFS sharing status for N8500 V200R001?

- A. hagr -status
- B. hagr -state | grep NFS
- C. service NFS status
- D. service NFS show

**Correct Answer:** B

**Section:** (none)

**Explanation**

**Explanation/Reference:**

**QUESTION 91**

If homedir is enabled and a directory is specified, the OceanStor 9000 will automatically create a user directory for each user in the specified directory when local users or domain users access the OceanStor 9000 from clients for the first time. The users are authorized to read and write their own user directories. Other users, however, cannot access those user directories by default.

- A. True
- B. False

**Correct Answer:** A

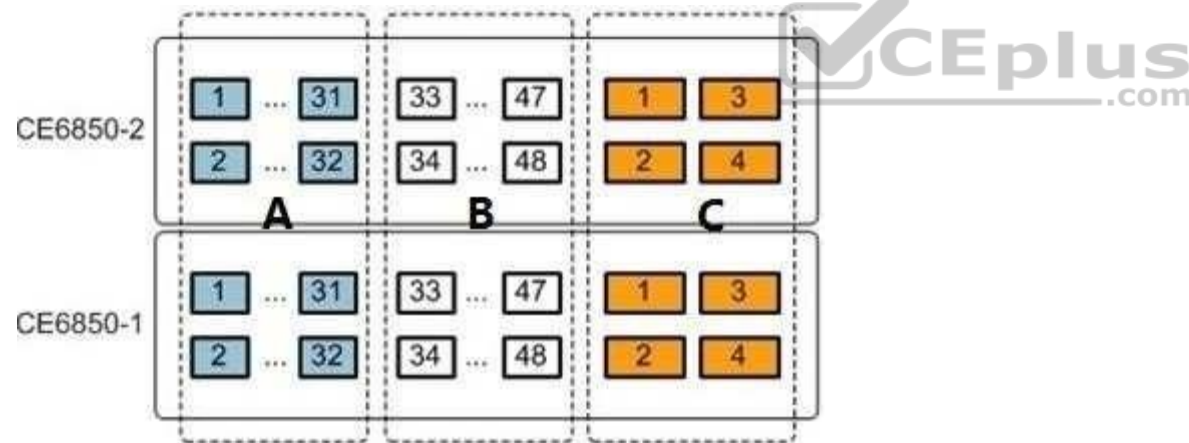
**Section:** (none)

**Explanation**

**Explanation/Reference:**

#### QUESTION 92

The following figure shows the ports of two CE6850 switches when the OceanStor 9000 uses GE for the front-end network and 10GE for the back-end network. If the OceanStor 9000 uses C nodes, the ports in which area of the CE6850 switch must ports AO-0 and A0-1 on all the C nodes be connected to?



- A. A
- B. B
- C. C
- D. You do not need to connect C nodes to the CE6850 switch.



**Correct Answer:** A

**Section:** (none)

**Explanation**

**Explanation/Reference:**



<https://vceplus.com/>

