

H13-622.examcollection.premium.exam.178q

Number: H13-622
Passing Score: 800
Time Limit: 120 min
File Version: 1.0



H13-622

HCNP Storage CBDS (Constructing Big Data Storage)

Version 1.0



Exam A**QUESTION 1**

The HUAWEI OceanStor 9000 can be managed using web browsers. If an OceanStor 9000 storage system uses default settings, which of the following entered in the browser address box is correct?

- A. https://IP:httpsport/webui
- B. http://IP:httpsport/tools
- C. http://IP:httpsport
- D. https://IP:httpsport

Correct Answer: A

Section: (none)

Explanation

Explanation/Reference:

QUESTION 2

Which command is used to monitor the CPU usage in performance optimization of the N8500 clustered NAS storage systems?

- A. sar -u 3 3
- B. sar -r 3 3
- C. sar -n DEV 2 2
- D. sar -n CPU 2 2

Correct Answer: A

Section: (none)

Explanation

Explanation/Reference:

QUESTION 3

The HUAWEI OceanStor Toolkit V100R001 is used for information collection. When importing a service package, you can find the service package in the datacollect folder under toolcases.

- A. True
- B. False

Correct Answer: A

Section: (none)

Explanation

Explanation/Reference:

QUESTION 4

Which of the following statements about the InfoQuota feature of the OceanStor 9000 are correct? (Select three.)

- A. Quotas can be set based on users.
- B. Quotas can be set based on user groups.
- C. Quotas can be set for file directories.
- D. Quotas can be set for files.

Correct Answer: ABC

Section: (none)

Explanation

Explanation/Reference:



QUESTION 5

Which of the following storage units are used by an N8500 clustered NAS system? (Select three)

- A. S2200T
- B. S2600T
- C. S5500T
- D. S6800T

Correct Answer: BCD

Section: (none)

Explanation

Explanation/Reference:

QUESTION 6

Which of the following statements about CIFS service parameter settings on an OceanStor 9000 storage system is incorrect?

- A. When the domain authentication mode is used, local users are not allowed to access CIFS shared directories.

- B. When the user authentication mode is used, domain users are not allowed to access CIFS shared directories.
- C. If you want users to access CIFS shared directories without entering user names or passwords, enable the guest mode.

Correct Answer: A

Section: (none)

Explanation

Explanation/Reference:

QUESTION 7

A customer has purchased a 4-node N8500 clustered NAS storage system. The enterprise-edition engine nodes have two CPUs, 10GE network ports, and 48 GB cache. The performance of an engine node reaches 700 MB/s. The back-end storage uses the S5600T, which is configured with 80 SAS disks divided into eight 9-disk RAID 5 groups. Each RAID group has one hot spare disk. The performance of each SAS disk in the 9-disk RAID 5 groups is 30 MB/s. According to the preceding information, what is the overall performance of the N8500 without considering other factors?

- A. 700 MB/s
- B. 2800 MB/s
- C. 1920 MB/s
- D. 2400 MB/s

Correct Answer: C

Section: (none)

Explanation

Explanation/Reference:



QUESTION 8

Which of the following are considered when planning the deployment of an N8000 clustered NAS storage system? (Select three)

- A. Evenly distribute service loads among all cluster nodes. Employ port bonding to increase network bandwidths and enhance protection capability.
- B. Plan the types of file systems for the storage system based on the performance and data integrity requirements of customers' environments.
- C. Plan various RAID groups for the storage system to address the data integrity and read/write performance requirements of different application scenarios.
- D. Select operating systems based on application requirements.

Correct Answer: ABC

Section: (none)

Explanation

Explanation/Reference:**QUESTION 9**

If an OceanStor 9000 storage system consists of four M nodes and uses 10GE for the back-end network, how many IP addresses must be planned for the back-end storage network segment?

- A. 8
- B. 12
- C. 6
- D. 10

Correct Answer: B

Section: (none)

Explanation

Explanation/Reference:**QUESTION 10**

In an OceanStor 9000 storage system, hard quotas are set for user A to access the /dir directory. The recommended threshold is 3 GB, the soft threshold is 4 GB, the grace period is 10 days, and the hard threshold is 6 GB. If user A has written 3.1 GB data in the /dir directory, which of the following statements are correct? (Select two.)

- A. The system reports an alarm indicating that the threshold is exceeded.
- B. User A can continue to write data in the /dir directory.
- C. User A can continue to write data in the /dir directory for another 10 days.
- D. User A cannot continue to write data in the /dir directory.

Correct Answer: AB

Section: (none)

Explanation

Explanation/Reference:**QUESTION 11**

When configuring an N8500 clustered NAS engine, a user must specify the start and end physical IP addresses and the start and end virtual IP addresses.

- A. True
- B. False

Correct Answer: B

Section: (none)

Explanation

Explanation/Reference:

QUESTION 12

Which of the following statements about N8500 troubleshooting is incorrect?

- A. Check file system configurations, and then check storage device configurations.
- B. Check network connection, and then check NAS device configurations.
- C. Check device indicators, and then check system logs.
- D. Check the status of storage unit disk enclosures, and then check the status of storage unit controller enclosures.

Correct Answer: D

Section: (none)

Explanation

Explanation/Reference:



QUESTION 13

In performance optimization of the N8500 clustered NAS storage systems, which of the following issues must the maintenance personnel be aware of concerning LUNs and controllers? (Select three.)

- A. Create only one LUN for each RAID group.
- B. Set LUNs to forcible write back without mirroring.
- C. Ensure that the owning controller and the working controller of a LUN are the same.
- D. Disks that compose a file system are evenly distributed on controllers.

Correct Answer: ACD

Section: (none)

Explanation

Explanation/Reference:

QUESTION 14

Which of the following statements about the VCS services and resources provided by a clustered NAS system are correct? (Select three.)

- A. A dependency relationship between service groups can be defined.
- B. A dependency relationship between resources can be defined.
- C. Each resource corresponds to one agent.
- D. Resource dependency relationships can be defined in a cyclic manner.

Correct Answer: ABC

Section: (none)

Explanation

Explanation/Reference:

QUESTION 15

The CIFS sharing of the OceanStor 9000 supports local user authentication and AD domain user authentication.

- A. True
- B. False



Correct Answer: A

Section: (none)

Explanation

Explanation/Reference:

QUESTION 16

A customer has purchased an N8500 clustered NAS storage system configured with SATA and NL-5AS disks. In order to strike a balance between RAID reliability and read/write performance, which of the following configuration plans is recommended?

- A. 11-disk RAID 5 and one hot spare disk
- B. 11-disk RAID 6 and one hot spare disk
- C. 4-disk RAID 10
- D. 9-disk RAID 5

Correct Answer: B

Section: (none)

Explanation

Explanation/Reference:

QUESTION 17

The flexible space of the OceanStor 9000 is attributed to the scale-out architecture, scalability from 3 to 288 nodes, and support for global namespace.

- A. True
- B. False

Correct Answer: A

Section: (none)

Explanation

Explanation/Reference:

QUESTION 18

A NAS storage system is dedicated to storing and managing which of the following data types?

- A. Block data
- B. File data
- C. Object data
- D. Consecutive data blocks

Correct Answer: B

Section: (none)

Explanation

Explanation/Reference:

QUESTION 19

When configuring file systems for the N8500 clustered NAS storage systems, you are advised to configure a file system size not larger than 32 TB and the size of small-file storage applications not larger than 16 TB to achieve satisfactory reliability and data recovery speed. (The small files here refer to the files with an average size of 1 MB.)

- A. True
- B. False

Correct Answer: B

Section: (none)

Explanation

Explanation/Reference:

QUESTION 20

You can use the HUAWEI OceanStor Toolkit to perform the operations such as preventive maintenance, information collection, and upgrade for the HUAWEI OceanStor 9000.

A. True

B. False

Correct Answer: A

Section: (none)

Explanation

Explanation/Reference:



QUESTION 21

Which of the following statements about the system services of the OceanStor 9000 are correct? (Select two)

A. The MDS service manages the metadata of a file system.

B. The DS service stores file data but not metadata on the storage system.

C. The CMS service manages physical nodes in a cluster.

D. In an OceanStor 9000 storage system, some nodes provide the MDS service and some nodes provide the DS service.

Correct Answer: AC

Section: (none)

Explanation

Explanation/Reference:

QUESTION 22

Scale-out is a horizontal expansion architecture that addresses the needs and challenges caused by rapid data growth and complex data changes. The scale-out architecture features distributed processing, online expansion, data sharing, and clustering.

A. True

B. False

Correct Answer: A

Section: (none)

Explanation

Explanation/Reference:

QUESTION 23

Multiple users access a multimedia VOD application at different bit rates. Which prefetch policy should be selected for the LUNs on the background N8500 clustered NAS storage system?

- A. No prefetch
- B. Constant prefetch
- C. Intelligent prefetch
- D. Variable prefetch

Correct Answer: D

Section: (none)

Explanation

Explanation/Reference:



QUESTION 24

You can check VCS cluster logs by viewing the Engine_A.log file in the /var/VRTSvcs/log directory on an N8500 storage system.

- A. True
- B. False

Correct Answer: A

Section: (none)

Explanation

Explanation/Reference:

QUESTION 25

A 2-node N8500 clustered NAS engine is a 4 U enclosure. The heartbeat links between the two nodes are set up based on the internal PCIe channels.

- A. True
- B. False

Correct Answer: B

Section: (none)

Explanation

Explanation/Reference:

QUESTION 26

Which command is used to check whether a file system is mounted using the support account for N8500 V200R001?

- A. cfsmntadm display
- B. cfsmountadm display
- C. cfsmntadm show
- D. cfsmountadm show

Correct Answer: A

Section: (none)

Explanation

Explanation/Reference:



QUESTION 27

In an N8500 clustered NAS system, the engine enclosures exchange cluster control information over a Fibre Channel heartbeat network.

- A. True
- B. False

Correct Answer: B

Section: (none)

Explanation

Explanation/Reference:

QUESTION 28

In an N8500 system, if an engine node is faulty and the other components are in the normal state, the consequences do not include which of the following?

- A. The N8500 cannot be managed.
- B. LUNs on the storage units become unavailable.
- C. Service performance deteriorates.
- D. The NFS file sharing service becomes abnormal.

Correct Answer: B

Section: (none)

Explanation

Explanation/Reference:

QUESTION 29

Which of the following are possible challenges facing massive data management? (Select two.)

- A. How to implement quick data searches for higher retrieval efficiency
- B. How to ensure data authenticity and prevent data cheating
- C. How to implement PB-level storage of various data
- D. How to save storage resources by reducing the data amount

Correct Answer: AC

Section: (none)

Explanation

Explanation/Reference:

QUESTION 30

Which are the possible causes for file read/write performance decrease? (Select three)

- A. A slow disk or bad sector exists,
- B. The Fibre Channel port has a high bit error rate.
- C. The LUN has been set to write back.
- D. The prefetch policy does not apply to service data changes.

Correct Answer: ABD

Section: (none)

Explanation

Explanation/Reference:**QUESTION 31**

If the service disk in slot 35 on a C node of the OceanStor 9000 is faulty, you are supposed to find this disk at the front panel of the C node and then replace it.

- A. True
- B. False

Correct Answer: B

Section: (none)

Explanation

Explanation/Reference:**QUESTION 32**

Before installing software for an OceanStor 9000 storage system, you must prepare required tools, cables, and software packages. Which of the following statements about this preparation is incorrect?

- A. The SSH client software is required for remote access.
- B. An FTP upload tool is required for uploading installation packages to storage nodes.
- C. The OceanStor 9000 storage system software is required, which contains the OceanStor SystemReporter suite.
- D. A network cable is required for connecting the management PC to the OceanStor 9000 management network port.

Correct Answer: C

Section: (none)

Explanation

Explanation/Reference:**QUESTION 33**

Which of the following statements about the configuration of the file system snapshot feature provided by an N8500 clustered NAS system are incorrect? (Select two)

- A. A file system snapshot can be created manually or automatically.
- B. The maximum number of snapshots created for a file system is 256.
- C. A snapshot that is automatically created is in online state by default.
- D. A snapshot can be automatically removed by the system.

Correct Answer: BC

Section: (none)

Explanation

Explanation/Reference:

QUESTION 34

In an N8500 clustered NAS system, at most how many 1 Gbit/s service ports can a single clustered NAS engine node provide?

- A. 4
- B. 8
- C. 12
- D. 16

Correct Answer: D

Section: (none)

Explanation

Explanation/Reference:



QUESTION 35

In the OceanStor 9000, a file pool is a collection of files that have specific characteristics. A file pool policy defines the rules for storing a file pool in a node pool.

- A. True
- B. False

Correct Answer: A

Section: (none)

Explanation

Explanation/Reference:

QUESTION 36

Which of the following statements about the CIFS share are correct? (Select two)

- A. CIFS normal share enables a directory to be accessed by all users.

- B. CIFS homedir share enables a directory to be accessed by all users.
- C. In Normal mode, a client can access a share through only one VIP.
- D. Compared with the Normal mode, the Cluster mode provides higher data reliability but lower performance.

Correct Answer: AB

Section: (none)

Explanation

Explanation/Reference:

QUESTION 37

An N8500 clustered NAS engine can be connected to a SAN storage array over a Fibre Channel network and a SAS network concurrently.

- A. True
- B. False

Correct Answer: B

Section: (none)

Explanation

Explanation/Reference:



QUESTION 38

In the IB networking solution of the OceanStor 9000, which of the following statements about the IP address planning of the front-end service network is correct?

- A. Two static IP addresses on the front-end service network must be planned for each node.
- B. Four dynamic IP addresses on the front-end service network must be allocated to each node for the IP address pool used by the InfoLink function.
- C. One InfoLink DNS IP address on the front-end service network must be planned.
- D. One floating IP address on the front-end service network must be planned for each node.

Correct Answer: D

Section: (none)

Explanation

Explanation/Reference:

QUESTION 39

Which of the following statements about the N8500 configuration prerequisites are correct? (Select three)

- A. The heartbeat network ports of the clustered NAS engine are correctly connected to the heartbeat network.
- B. The service network ports of the clustered NAS engine are not connected to the customer's service network before they are configured.
- C. The clustered NAS engine is correctly powered on and the statuses of the indicators are normal.
- D. Hardware installation and cable connection of the clustered NAS engine are complete.

Correct Answer: ACD

Section: (none)

Explanation

Explanation/Reference:

QUESTION 40

Which of the following statements about CIFS are correct? (Select two.)

- A. CIFS transmits data based on TCP.
- B. CIFS transmits data based on UDP.
- C. CIFS is a file sharing protocol used on Linux.
- D. CIFS is a file sharing protocol used on Windows.



Correct Answer: AD

Section: (none)

Explanation

Explanation/Reference:

QUESTION 41

Which of the following statements about the application scenarios of different nodes of the HUAWEI OceanStor 9000 big data storage systems is correct?

- A. The mini-capacity node applies to small-capacity scenarios.
- B. The performance node applies to large-capacity and high-bandwidth scenarios.
- C. The capacity node applies to OPS-intensive scenarios.
- D. None of the above is correct.

Correct Answer: A

Section: (none)

Explanation**Explanation/Reference:****QUESTION 42**

If an engine node of an N8500 storage system cannot be started, which of the following measures is incorrect?

- A. Replace the CPUs.
- B. Replace the memory.
- C. Replace the Fibre Channel interface cards.
- D. Replace the main board.

Correct Answer: C

Section: (none)

Explanation**Explanation/Reference:****QUESTION 43**

Compared with a relational database, which of the following are advantages of NoSQL? (Select three)

- A. Flexible scalability
- B. High availability
- C. High cost-effectiveness
- D. Feature richness

Correct Answer: ABC

Section: (none)

Explanation**Explanation/Reference:****QUESTION 44**

The fencing function provided by an N8500 prevents split-brain from occurring. Which of the following statements about fencing are correct? (Select three)

- A. Monitors GAB and checks the changes of cluster members.

- B. Ensures the single view of cluster members.
- C. Prevents multiple nodes from using a volume manger to access the shared storage.
- D. Automatically recovers the master node if the cluster becomes abnormal.

Correct Answer: ABC

Section: (none)

Explanation

Explanation/Reference:

QUESTION 45

Which of the following statements about different service applications' storage performance and capacity requirements are correct?

- A. Compared with an email application, an enterprise OLTP/OLAP database requires higher storage performance.
- B. Compared with picture and video applications, a large-sized relational database requires a larger storage capacity.
- C. Compared with the content delivery network application, the backup and archive services require higher storage performance.
- D. Compared with a real-time online service system, scientific computing requires higher storage performance.

Correct Answer: A

Section: (none)

Explanation



Explanation/Reference:

QUESTION 46

Which of the following must be considered before you optimize the performance of an N8500 clustered NAS storage system? (Select three)

- A. Evaluate the feasibility of the performance target based on your experience.
- B. Use a fixed testing environment for performance optimization.
- C. Determine the testing mode based on services to ensure the comparability of the test results.
- D. Performance optimization has no impact on ongoing services. You do not need to worry about the pressure on services.

Correct Answer: ABC

Section: (none)

Explanation

Explanation/Reference:

QUESTION 47

A NAS storage system supports file system sharing, and the underlying protocol transmits data based on iSCSI.

- A. True
- B. False

Correct Answer: B

Section: (none)

Explanation

Explanation/Reference:

QUESTION 48

Which of the following statements about the file system mirroring feature provided by an N8500 clustered NAS system are incorrect? (Select two)

- A. The N8500 supports a maximum of two mirrors for a single file system.
- B. Resources of different storage pools can be selected to implement file system mirroring.
- C. File system mirroring allows users to select three mirroring layout types.
- D. In the same service scenario, mirrored-stripe and striped-mirror provide the same data reliability and performance.

Correct Answer: AD

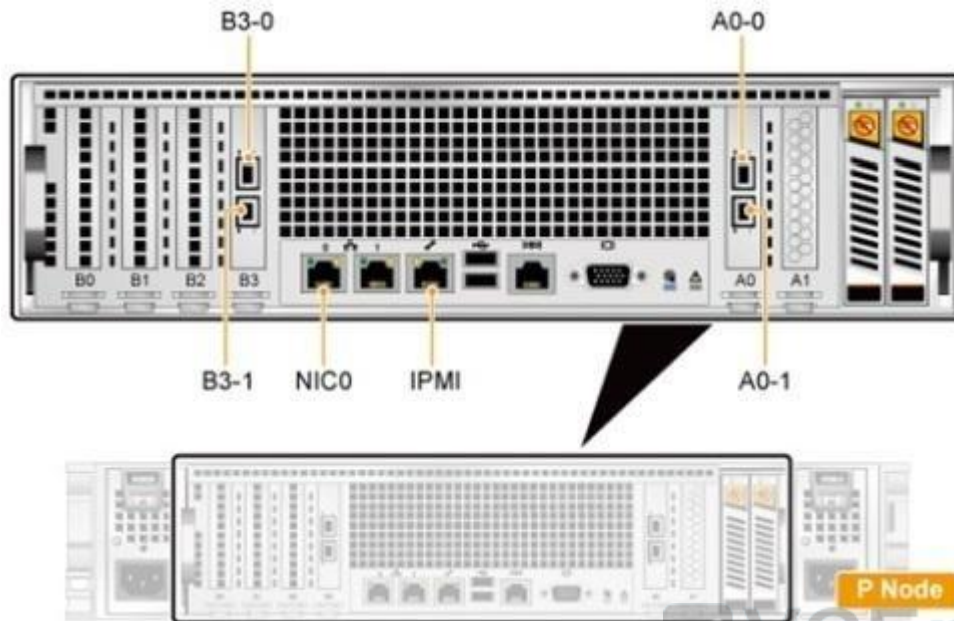
Section: (none)

Explanation

Explanation/Reference:

QUESTION 49

An OceanStor 9000 storage system uses GE for the front-end network and 10GE for the back- end network. Which of the following statements is incorrect about the ports on the P node as shown in the figure?



- A. Ports A0-0 and A0-1 are connected to the 10GE switch. A back-end network IP address must be planned for each of the two ports.
- B. Ports B3-0 and B3-1 are connected to the front-end service switch. A front-end network IP address must be planned for each of the two ports.
- C. NIC 0 is connected to the management and maintenance switch. You do not need to assign an IP address for this port.
- D. Port IPMI is connected to the management and maintenance switch. You do not need to assign an IP address for this port.

Correct Answer: D

Section: (none)

Explanation

Explanation/Reference:

QUESTION 50

In performance optimization of the N8500 clustered NAS storage systems, the top command is run and the following output is displayed:

```
top - 01:06:48 up 1:22, 1 user, load average: 0.06, 0.60, 0.48 Tasks: 29 total, 1 running, 28 sleeping, 0 stopped, 0 zombie Cpu(s): 0.3% us, 1.0% sy, 0.0% ni, 98.7% id, 0.0% wa, 0.0% hi, 0.0% si Mem: 191272k total, 173656k used, 17616k free, 22052k buffers Swap: 192772k total, 0k used, 192772k free, 123988k cached
```

Which of the following statements is incorrect?

- A. up 1:22 indicates the current system time.

- B. load average indicates the average length of task queues.
- C. 0.3% us in Cpu(s) indicates the CPU occupation percentage of user space.
- D. 17616k free in Mem indicates the total capacity of free memory.

Correct Answer: A

Section: (none)

Explanation

Explanation/Reference:

QUESTION 51

Which of the following statements about the file system used by the OceanStor 9000 is incorrect?

- A. The file system provides a unified file system namespace.
- B. The name of the namespace provided by the file system is the same as the system name.
- C. The root directory of the namespace does not provide sharing or access.
- D. Added capacity can be directly obtained from the storage pool.

Correct Answer: C

Section: (none)

Explanation



Explanation/Reference:

QUESTION 52

Which of the following are included in Hadoop? (Select three)

- A. HDFS
- B. HBase
- C. MapReduce
- D. MPP DB

Correct Answer: ABC

Section: (none)

Explanation

Explanation/Reference:

QUESTION 53

Compared with traditional RAID algorithms, the Erasure Code redundancy technology provides higher reliability and more flexible redundancy policies. Which of the following statements about Erasure Code is incorrect?

- A. Data to be written is divided into multiple data blocks of the same size.
- B. The Erasure Code algorithm calculates N parity blocks for every M consecutive data blocks.
(The value of N is smaller than that of M.)
- C. M+N data blocks are concurrently stored to different nodes.
- D. In Erasure Code storage mode, a concurrent failure of N-1 disks is tolerated.

Correct Answer: D

Section: (none)

Explanation

Explanation/Reference:

QUESTION 54

Which of the following disks are used by an N8500 clustered NAS engine as system disks?

- A. Fibre Channel disks
- B. SAS disks
- C. SATA disks
- D. SSDs

Correct Answer: D

Section: (none)

Explanation

Explanation/Reference:

QUESTION 55

Which of the following issues are resolved by big data storage security technology? (Select three)

- A. Integrity
- B. Confidentiality
- C. Availability
- D. Continuity

Correct Answer: ABC

Section: (none)

Explanation

Explanation/Reference:

QUESTION 56

Based on full interconnection of data channels and communication channels, a clustered NAS system employs cluster volume management to manage global storage space. Specifically, any nodes in a cluster can access the same storage space using the same volume device name, ensuring access consistency.

A. True

B. False

Correct Answer: A

Section: (none)

Explanation

Explanation/Reference:



QUESTION 57

The stripe file system data of an N8500 clustered NAS storage system is stored on multiple data disks in the same way as data in RAID 0. The stripe file system provides high read/write performance but low security.

A. True

B. False

Correct Answer: A

Section: (none)

Explanation

Explanation/Reference:

QUESTION 58

Which of the following statements about the OceanStor Toolkit installation of the OceanStor 9000 is incorrect?

A. The OceanStor Toolkit can be installed on any storage node.

- B. The PC used for installation is connected to a storage node through port eth0.
- C. The IP address of the network port used to upload the OceanStor Toolkit must be configured on the same network segment as the management network.
- D. After the OceanStor Toolkit is successfully installed, enter https://xx.xx.xx.xx:8088/tools in the Internet Explorer address box to go to the login page.

Correct Answer: C

Section: (none)

Explanation

Explanation/Reference:

QUESTION 59

Which of the following statements about IP address planning for the N8500 clustered HAS storage systems is incorrect?

- A. Each service network port, management network port on an engine node, and management network port on a storage unit must have a physical IP address.
- B. Each service network port and management network port on an engine node must have a virtual IP address.
- C. Ensure that the physical IP address and virtual IP address of each port reside on the same network segment.
- D. It is recommended that the console IP address reside on the same network segment as the service network.

Correct Answer: A

Section: (none)

Explanation

Explanation/Reference:

QUESTION 60

Which of the following statements about the high availability daemon (HAD) function of an N8500 clustered NAS system are correct? (Select three.)

- A. Each host in the N8500 cluster runs a HAD process.
- B. The hstart command can be executed to enable the had and hashadow services to automatically start.
- C. HAD is used to monitor and manage the statuses of all services on the clustered NAS system.
- D. The clustered system uses hashadow to monitor the HAD process. If HAD becomes abnormal, hashadow can restart HAD.

Correct Answer: ABD

Section: (none)

Explanation

Explanation/Reference:

QUESTION 61

When a NAS client attempts to connect to an OceanStor 9000 node, the user must enter the management IP address of the node.

- A. True
- B. False

Correct Answer: B

Section: (none)

Explanation

Explanation/Reference:

QUESTION 62

Which of the following does not demonstrate the characteristics of big data?

- A. Analysis of the popularity of China railway lines during the Spring Festival travel rush in
- B. Analysis and forecast of global influenza with the use of search engines
- C. Analysis of final exam scores of a university student
- D. Data recording and analysis of a Chinese moon landing project

Correct Answer: C

Section: (none)

Explanation

Explanation/Reference:

QUESTION 63

Which of the following statements about the software features of the OceanStor 9000 are correct? (Select two)

- A. The maximum supported file system capacity is 40 PB.
- B. The maximum supported data recovery speed is 1 TB/hour.
- C. Each node uses the cache on the node exclusively.
- D. Thin provisioning and thick provisioning are both supported.

Correct Answer: AB

Section: (none)

Explanation

Explanation/Reference:

QUESTION 64

In N8500 clustered NAS system V200R001, how many redundant heartbeat links are set up between two nodes?

- A. 1
- B. 2
- C. 3
- D. 4

Correct Answer: B

Section: (none)

Explanation

Explanation/Reference:

QUESTION 65

Which of the following are the mandatory hardware components of an N8500 clustered NAS system? (Select two)

- A. Fibre Channel switch
- B. T series storage array
- C. NAS engine
- D. Ethernet switch

Correct Answer: BC

Section: (none)

Explanation

Explanation/Reference:

QUESTION 66

Which are the key parameters used to evaluate the performance of an N8500 clustered NAS storage system? (Select three.)

- A. Number of network ports per engine node

- B. Number and model of CPUs and memory capacity per engine node
- C. Communication links between the NAS engine and the storage units
- D. NAS engine operating system and version

Correct Answer: ABC

Section: (none)

Explanation

Explanation/Reference:

QUESTION 67

The CAP principle that a distributed database complies with involves three elements: consistency, availability, and partition tolerance. Which of the following statements about the CAP principle that a distributed database complies with are correct? (Select three)

- A. In a distributed database, a maximum of two elements can be implemented concurrently.
- B. Partition tolerance is the basic requirement for a distributed database.
- C. For most distributed databases oriented to web applications, the CPA design typically sacrifices consistency for high availability.
- D. Partition tolerance is the basic requirement for a traditional relational database.

Correct Answer: ABC

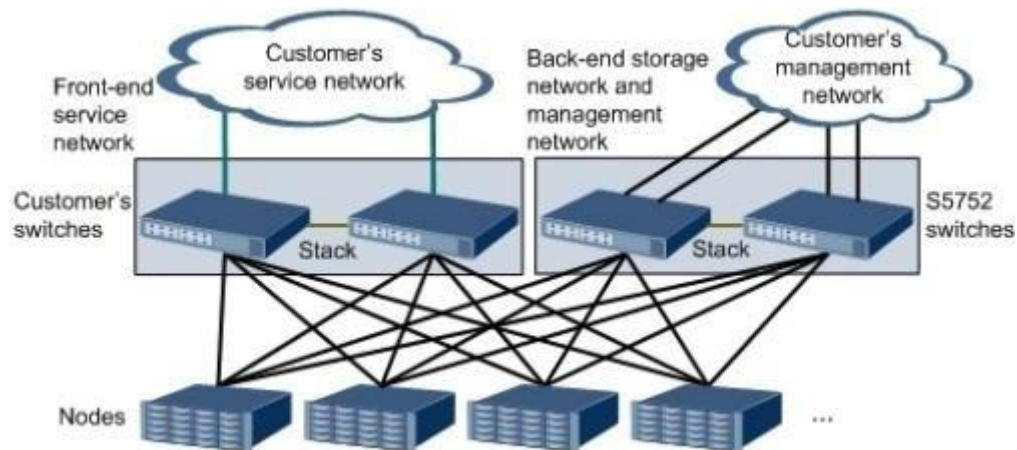
Section: (none)

Explanation

Explanation/Reference:

QUESTION 68

The OceanStor 9000 in the figure adopts GE networking and enables the InfoLink function for front-end services. How many IP address should be planned for the front-end service network?



- A. 8
- B. 10
- C. 24
- D. 26

Correct Answer: D
Section: (none)
Explanation



Explanation/Reference:

QUESTION 69

The 10GE networking of an OceanStor 9000 uses a CE6850-48S4Q-EI switch. Which of the following statements about the switch are correct? (Select two)

- A. The switch supports a maximum of 32 10GE 5FP+ Ethernet optical ports.
- B. The switch supports four 40GE QSFP+ Ethernet optical ports.
- C. The 10GE ports on the switch can be used for interconnection between downstream storage nodes or connection between storage nodes and the upstream service network.
- D. The 40GE ports are used for switch stacking.

Correct Answer: BD
Section: (none)
Explanation

Explanation/Reference:

QUESTION 70

Which of the following statements about the LUN planning of the N8500 clustered NAS storage systems are correct? (Select three)

- A. The maximum capacity of a LUN is 16 TB.
- B. LUNs in one RAID group belong to the same controller.
- C. The 64 KB stripe depth is recommended for random services.
- D. It is recommended that LUNs with heavy loads be in different RAID groups.

Correct Answer: ABD

Section: (none)

Explanation

Explanation/Reference:

QUESTION 71

Which of the following types of clients are supported by NFS sharing of the OceanStor 9000? (Select three)

- A. Host name
- B. IP address
- C. Network group
- D. AD domain

Correct Answer: ABC

Section: (none)

Explanation

Explanation/Reference:

QUESTION 72

Which of the following is the correct N8500 configuration procedure?

- A. Go to the welcome page. > Confirm the networking. > Select a configuration file. > Configure storage units. > Configure the NA5 engine. > Configure the device location. > Complete the deployment.
- B. Confirm the networking. > Go to the welcome page. > Select a configuration file. > Configure storage units. > Configure the NAS engine. > Configure the device location. > Complete the deployment.

- C. Confirm the networking. > Go to the welcome page. > Configure storage units. > Select a configuration file. > Configure the NAS engine. > Configure the device location. > Complete the deployment.
- D. Confirm the networking. > Go to the welcome page. > Select a configuration file. > Configure the NAS engine. > Configure storage units. > Configure the device location. > Complete the deployment.

Correct Answer: B

Section: (none)

Explanation

Explanation/Reference:

QUESTION 73

If the application scenario of an N8500 clustered NAS system is Mac OS, the OS can access shared files on the N8500 through NFS.

- A. True
- B. False

Correct Answer: A

Section: (none)

Explanation

Explanation/Reference:



QUESTION 74

The hardware faults of an engine node in an N8500 storage system do not include which of the following?

- A. Cluster node faults
- B. Fibre Channel interface card faults
- C. RAID card faults
- D. Power and fan faults

Correct Answer: C

Section: (none)

Explanation

Explanation/Reference:

QUESTION 75

Which of the following statements about the software installation of the OceanStor 9000 are correct? (Select two.)

- A. Before installing software, configure switches on the back-end storage network and the management network.
- B. The OceanStor Toolkit must be installed on all storage nodes.
- C. The OceanStor SystemReporter can be installed on any Windows server with qualified hardware and software.
- D. You must purchase a license for the OceanStor SystemReporter.

Correct Answer: AC

Section: (none)

Explanation

Explanation/Reference:

QUESTION 76

Object storage encryption ensures data security based on the following levels: track check, slice check, object check, and packet check.

- A. True
- B. False

Correct Answer: A

Section: (none)

Explanation

Explanation/Reference:



QUESTION 77

Typically, how many storage units can be configured for a 4-node N8500 to implement direct- connection networking?

- A. 1
- B. 2
- C. 3
- D. 4

Correct Answer: B

Section: (none)

Explanation

Explanation/Reference:

QUESTION 78

On Huawei N8500 V200R001, gabconfig -a can be executed to query the port communication status of a GAB member in a cluster. Port h gen is the communication port of which member?

- A. CFS
- B. VCS
- C. CVM
- D. Heartbeat membership

Correct Answer: B

Section: (none)

Explanation

Explanation/Reference:

QUESTION 79

Which of the following statements about the principle of the file system snapshot feature provided by an N8500 clustered NAS system are correct? (Select two)

- A. When a snapshot is created, a block mapping pointing to the data on the file system is generated.
- B. If an original data block needs to be replaced for the first time, the new data block is copied to the snapshot reservation area.
- C. If an original data block is replaced for the first time, the block mapping in the snapshot points to the data block in the snapshot reservation area.
- D. If a data block that has replaced an original data block needs to be replaced by a new data block, the new data block is copied to the snapshot reservation area.

Correct Answer: AC

Section: (none)

Explanation

Explanation/Reference:

QUESTION 80

Which of the following are considered when planning the deployment of an N8000 clustered NAS storage system? (Select three.)

- A. Evenly distribute service loads among all cluster nodes, Employ port bonding to increase network bandwidths and enhance protection capability.
- B. Plan the types of file systems for the storage system based on the performance and data integrity requirements of customers' environments.

- C. Plan various RAID groups for the storage system to address the data integrity and read/write performance requirements of different application scenarios.
- D. Select operating systems based on application requirements.

Correct Answer: ABC

Section: (none)

Explanation

Explanation/Reference:

QUESTION 81

An NS500 clustered NIAS system provides file system sharing. Which of the following statements about the N8500's file system mechanism and related features are correct? (Select three)

- A. The N8500 clustered file system VxFS is not a log file system, and it supports a capacity of over 2 TB.
- B. The file system snapshot feature employs the copy-on-write mechanism and shares the storage space of partitions or volumes with other file sets.
- C. The snapshots provided by the N8500 are based on the file system level.
- D. File system snapshot, mirroring, and replication are implemented based on storage checkpoints.

Correct Answer: BCD

Section: (none)

Explanation

Explanation/Reference:

QUESTION 82

In Linux, the iostat command is run and the following output is displayed:

```
# iostat
```

```
Linux 2.6.9-8.11.EVAL (ts3-150,ts.cn.tlan)02/01/2014 avg-cpu: %user%nice%sys %iowait%idle
```

```
12.010.002.152.3083,54
```

```
Device: tpsBlk_read/sBlk_wrtn/sBlk_readBlk_wrtn
```

```
hda7.13200.1234.73640119111076
```

Which of the following statements are correct? (Select two.)

- A. The CPU usage of I/O wait is 2.3%.
- B. The number of I/O requests sent per second is 7.13.
- C. The number of blocks read per second is 640119.
- D. The CPU usage of application operation is 2,15%.

Correct Answer: AB

Section: (none)

Explanation

Explanation/Reference:

QUESTION 83

Hadoop is an open-source software framework for distributed processing of massive data. Hadoop has performance and cost advantages in terms of unstructured data processing.

- A. True
- B. False

Correct Answer: A

Section: (none)

Explanation

Explanation/Reference:



QUESTION 84

Which of the following statements about the DST feature of an N8500 clustered NAS system are incorrect? (Select three)

- A. DST involves three tiers.
- B. Each tier can contain many volumes.
- C. All files are initially stored on tier 1.
- D. The location where metadata is stored cannot be manually specified.

Correct Answer: ACD

Section: (none)

Explanation

Explanation/Reference:

QUESTION 85

For N800 V200R001, you can log in to the storage system using the support account and run `fsck -t vxfs -o full -y /dev/vx/dsk/sfsdg/fs001` to implement full verification for the fs001 file system.

- A. True

B. False

Correct Answer: A

Section: (none)

Explanation

Explanation/Reference:

QUESTION 86

Which of the following is an unstructured data application?

- A. ERP
- B. HIS database
- C. Education VoD
- D. Enterprise financial system

Correct Answer: C

Section: (none)

Explanation

Explanation/Reference:



QUESTION 87

Which components of an N8500 clustered NAS system reside in the user space? (Select two)

- A. File system layer
- B. Application layer
- C. User management
- D. Operating system layer

Correct Answer: BC

Section: (none)

Explanation

Explanation/Reference:

QUESTION 88

When planning IP addresses for the back-end storage network of the OceanStor 9000 which uses IB networking, you must plan two back-end storage

IP addresses and one temporary IP address for each node.

- A. True
- B. False

Correct Answer: A

Section: (none)

Explanation

Explanation/Reference:

QUESTION 89

The OceanStor 9000 externally provides a single file system that is managed by a unified file system namespace. All the objects involved in user operations such as storing files, setting a share, and managing permission reside in this namespace. Which of the following statements about a namespace are correct? (Select three.)

- A. During the startup of the OceanStor 9000, a namespace is automatically created with the same name as that of the OceanStor 9000.
- B. As the root directory of the entire system, a namespace cannot be shared or accessed, However, its subdirectories can be shared and accessed,
- C. A unified namespace provides a unified storage resource pool where storage space can be centrally managed and allocated.
- D. All shared directories are subdirectories in the unified namespace,

Correct Answer: ACD

Section: (none)

Explanation

Explanation/Reference:

QUESTION 90

Which command is used to query the NFS sharing status for N8500 V200R001?

- A. hagr -status
- B. hagr -state | grep NFS
- C. service NFS status
- D. service NFS show

Correct Answer: B

Section: (none)

Explanation

Explanation/Reference:

QUESTION 91

If homedir is enabled and a directory is specified, the OceanStor 9000 will automatically create a user directory for each user in the specified directory when local users or domain users access the OceanStor 9000 from clients for the first time. The users are authorized to read and write their own user directories. Other users, however, cannot access those user directories by default.

- A. True
- B. False

Correct Answer: A

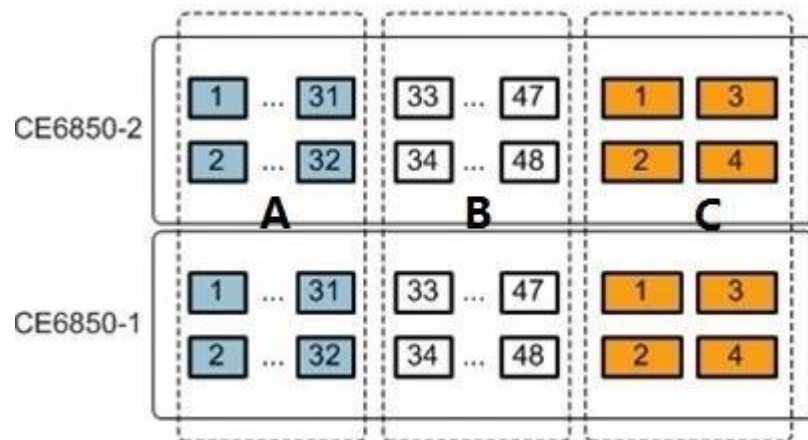
Section: (none)

Explanation

Explanation/Reference:

QUESTION 92

The following figure shows the ports of two CE6850 switches when the OceanStor 9000 uses GE for the front-end network and 10GE for the back-end network. If the OceanStor 9000 uses C nodes, the ports in which area of the CE6850 switch must ports AO-0 and A0-1 on all the C nodes be connected to?



- A. A

- B. B
- C. C
- D. You do not need to connect C nodes to the CE6850 switch.

Correct Answer: A

Section: (none)

Explanation

Explanation/Reference:

QUESTION 93

An N8500 clustered NAS engine does not need to be equipped with power modules.

- A. True
- B. False

Correct Answer: A

Section: (none)

Explanation

Explanation/Reference:



QUESTION 94

An application requires high write performance and moderate reliability. To ensure that the N8500 clustered NAS storage system delivers the optimal write performance, set the LUN write policy to write back with mirroring.

- A. True
- B. False

Correct Answer: B

Section: (none)

Explanation

Explanation/Reference:

QUESTION 95

Which of the following statements about the file pool and file pool policies of the OceanStor 9000 is incorrect?

- A. One file can belong to different file pools,
- B. File pool policies come with priorities. For files, only the file pool policy of the highest priority takes effect.
- C. The characteristics of a file pool are in an AND relationship.
- D. File pool policies are available only after the InfoTier license is activated.

Correct Answer: C

Section: (none)

Explanation

Explanation/Reference:

QUESTION 96

The networking of an HUAWEI OceanStor 9000 big data storage system includes which of the following? (Select three)

- A. Front-end service network
- B. Back-end storage network
- C. Internal communication network
- D. IPMI management network

Correct Answer: ABD

Section: (none)

Explanation

Explanation/Reference:

QUESTION 97

The OceanStor 9000 WushanFS supports online node expansion. The storage capacity and computing capability are increased linearly, providing linearly increasing throughput and concurrency capabilities for users.

- A. True
- B. False

Correct Answer: A

Section: (none)

Explanation

Explanation/Reference:

QUESTION 98

It is recommended that the OceanStor 9000 use 10GE for both the front-end and back-end networks.

- A. A. True
- B. False

Correct Answer: B

Section: (none)

Explanation

Explanation/Reference:

QUESTION 99

In an N8500 clustered NAS system, the Veritas Volume Manager (VxVM) is located between the operating system and the data management system. The VxVM accesses disks using the interface provided by the operating system, makes the physical storage devices connected to hosts invisible, and provides a logical device layer for the data management system. The logical devices on this layer are called VxVM volumes.

- A. True
- B. False

Correct Answer: A

Section: (none)

Explanation

Explanation/Reference:

QUESTION 100

The OceanStor 9000 can be installed in a Huawei-supplied cabinet only,

- A. True
- B. False

Correct Answer: B

Section: (none)

Explanation

Explanation/Reference:

QUESTION 101

Which of the following statements about reading and writing an N8500 clustered NAS file system mirror and the best practices are correct? (Select three)

- A. Equivalent to RAID 01, Mirrored-stripe is to perform file system mirroring based on striping, A mirror provides data redundancy, and data is distributed across multiple disks.
- B. Mirror is equivalent to RAID 1, Data that needs to be written to a file system is simultaneously written to two mirrors and data is read from the two mirrors based on a round- robin policy (I/Os are evenly distributed to paths in a round-robin manner).
- C. Regarding the use of Mirror, it is recommended that the space of the source file system be provided by one storage array and that of the mirrored file system be provided by another. Mirror is recommended for scenarios that require high reliability.
- D. Mirrored-stripe is suitable for scenarios that require high reliability. The performance of Mirrored-stripe is the same as that of Mirror.

Correct Answer: ABC

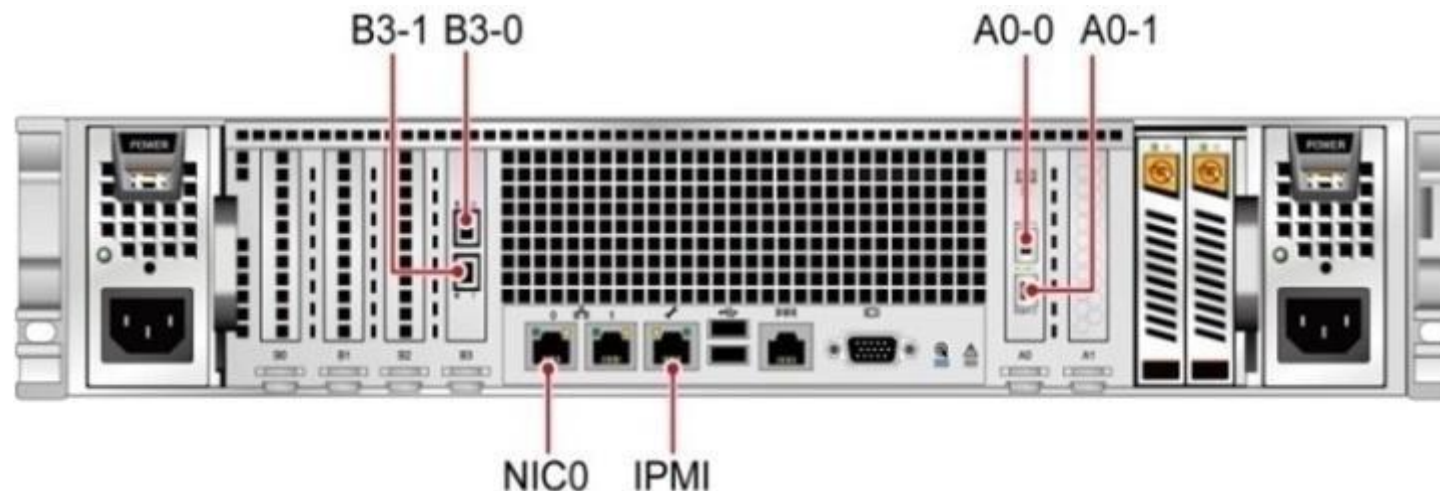
Section: (none)

Explanation

Explanation/Reference:

QUESTION 102

The figure shows the rear view of a P node in an OceanStor 9000. When its front-end is a 10GE network and its back-end is an IB network, NICs 0 on all nodes in the basic cabinet must be connected to the GE switches in the same cabinet.



- A. True

B. False

Correct Answer: B

Section: (none)

Explanation

Explanation/Reference:

QUESTION 103

Which data protection levels can be configured for an OceanStor 9000 storage system that consists of 10 nodes? (Select two.)

A. RAID1

B. 6+3

C. 6+4

D. 6+5

Correct Answer: BC

Section: (none)

Explanation

Explanation/Reference:



QUESTION 104

When you are using the OceanStor Toolkit to deploy an OceanStor 9000 storage system, you must configure the front-end network mask, front-end network gateway, back-end network mask, back-end network gateway, management network mask, and management network gateway in the configuration file of the OceanStor Toolkit.

A. True

B. False

Correct Answer: B

Section: (none)

Explanation

Explanation/Reference:

QUESTION 105

An N8500 clustered NAS system has many services that help implement system functions, such as NFS and CIFS basic service groups. Which of the

following is not a resource agent of the NFS service group?

- A. NIC
- B. Hashadow
- C. Disk
- D. IP

Correct Answer: D

Section: (none)

Explanation

Explanation/Reference:

QUESTION 106

When an engine node of an N8500 clustered NAS storage system needs to connect to multiple ports on a controller of a storage unit, ensure that ports on different interface modules are used.

- A. True
- B. False

Correct Answer: A

Section: (none)

Explanation

Explanation/Reference:



QUESTION 107

Which of the following statements about the file sharing protocols of the OceanStor 9000 are correct? (Select three)

- A. The OceanStor 9000 supports NFS and CIFS file sharing protocols.
- B. The OceanStor 9000 is compatible with various operating systems, allowing file resource sharing in a heterogeneous network environment.
- C. The sharing is by files.
- D. The sharing service supports automatic load balancing.

Correct Answer: ABD

Section: (none)

Explanation

Explanation/Reference:**QUESTION 108**

You are required to check the installation environment before installing software on an OceanStor 9000 storage system. Which of the following conditions does not meet these requirements?

- A. The OceanStor 9000 consists of three P nodes and one C node.
- B. The storage nodes run SU5E Linux Enterprise Server 11 (x86_64) SP1.
- C. The PC used for installation runs Windows 7.
- D. The PC used for installation runs Internet Explorer 9.

Correct Answer: A

Section: (none)

Explanation

Explanation/Reference:**QUESTION 109**

Which of the following statements about the VxVM implementation mechanism employed by an N8500 are correct? (Select two)

- A. The capacity of a physical disk and that of a virtual disk are the same.
- B. A plex consists of virtual disks.
- C. A volume consists of subdisks.
- D. The capacity of a volume can be larger than the maximum capacity of a single physical disk.

Correct Answer: AD

Section: (none)

Explanation

Explanation/Reference:**QUESTION 110**

Which of the following statements about the InfoTier feature of the OceanStor 9000 are correct? (Select two)

- A. The InfoTier license must be purchased.
- B. This feature can be used only when the storage system has different types of nodes.
- C. This feature can be used when the storage system has different types of disks.

D. After this feature is enabled, you can set the high and low watermarks for a specified node pool.

Correct Answer: AB

Section: (none)

Explanation

Explanation/Reference:

QUESTION 111

If the file system sharing services are interrupted on an N8500 storage system, which of the following information must be collected for troubleshooting? (Select three)

- A. Alarm information
- B. Operations performed after the fault occurred
- C. Clustered NAS configuration information
- D. Number of storage unit disk enclosures

Correct Answer: ABC

Section: (none)

Explanation

Explanation/Reference:



QUESTION 112

In an OceanStor 9000 storage system, the management IP address is 100.16.100.3, the front-end service network segment is from 192.168.100.1 to 192.168.100.20, the dir001 directory is shared, and the share path is /dir001. Which of the following statements about the share access are correct? (Select two)

- A. The clients that attempt to access the share must interwork with IP address 100.16.100.3.
- B. The clients that attempt to access the share must interwork with any IP address in the network segment from 192.168.100.1 to 192.168.100.20.
- C. If the client runs the 5U5E operating system, use the mount -t nfs ipaddress:\dir001 \mnt command to mount the share.
- D. If the client runs the SUSE operating system, use the mount -t nfs ipaddress:/dir001 /mnt command to mount the share.

Correct Answer: BD

Section: (none)

Explanation

Explanation/Reference:

QUESTION 113

When using the OceanStor Toolkit to deploy an OceanStor 9000 storage system, the IP addresses specified in IP address segment in the Configure DHCP area can only be use for the deployment. After the deployment is successful, the IP addresses of each node are changed to those as planned in the configuration file.

- A. True
- B. False

Correct Answer: A

Section: (none)

Explanation

Explanation/Reference:

QUESTION 114

In an OceanStor 9000 storage system, the calculate quota is set to 50 GB for user A to access the /dir directory. When the amount of data that user A writes exceeds 50 GB in the /dir directory, the system allows user A to continue to write data in the /dir directory.

- A. True
- B. False



Correct Answer: A

Section: (none)

Explanation

Explanation/Reference:

QUESTION 115

Which of the following interface cards can be installed in the PCIe expansion slot on the P node of the OceanStor 9000? (Select three)

- A. 2-portTOE 10GE network adapter
- B. 2-port IB network adapter
- C. 2-port GE network adapter
- D. 2-port 8 Gbit/s Fibre Channel interface card

Correct Answer: ABC

Section: (none)

Explanation

Explanation/Reference:**QUESTION 116**

Which of the following statements about the 10 Gigabit Ethernet (10GE) is incorrect?

- A. 10GE, an Ethernet transmission standard, become IEEE Std 802.3ae-2002 in 2002.
- B. 10GE enables an Ethernet to transmit data at a rate of 10 Gbit/s, 10 times the rate of GE.
- C. 10GE defines full-duplex and half-duplex links which are generally connected by network switches.
- D. 10GE implements access at a high bandwidth and low latency. 10GE is suitable for scenarios such as media & entertainment, high-performance computing, and OLAP.

Correct Answer: C

Section: (none)

Explanation

Explanation/Reference:**QUESTION 117**

If the InfoLink license is not activated in an OceanStor 9000 storage system, the system cannot balance loads coming from clients.

- A. True
- B. False

Correct Answer: B

Section: (none)

Explanation

Explanation/Reference:**QUESTION 118**

If an OceanStor 9000 storage system consists of three P nodes and uses GE for the front-end network, how many IP addresses must be planned for the front-end service network segment?

- A. 17
- B. 18
- C. 19
- D. 20

Correct Answer: D

Section: (none)

Explanation

Explanation/Reference:

QUESTION 119

Which of the following statements about NewSQL databases are correct? (Select three)

- A. MPP databases are not NewSQL databases.
- B. NewSQLdatabases have the capability to store and manage massive data.
- C. NewSQLdatabases support ACID and SQL as traditional databases do.
- D. NewSQLindicates various new databases that provide scalability and high performance.

Correct Answer: BCD

Section: (none)

Explanation

Explanation/Reference:



QUESTION 120

If the back-end storage performance of an N8500 storage system deteriorates, which of the following items can be skipped during troubleshooting?

- A. Whether the sharing services are disabled
- B. Whether the batteries on the storage units are faulty
- C. Whether a link between the engine and a storage unit is down
- D. Whether the storage system has slow disks

Correct Answer: A

Section: (none)

Explanation

Explanation/Reference:

QUESTION 121

In an N8500, metadata is classified into many types. Different nodes process different types of metadata. Metadata is classified into which of the following types? (Select three)

- A. Super block
- B. Log area
- C. Allocation unit
- D. Folder

Correct Answer: ABC

Section: (none)

Explanation

Explanation/Reference:

QUESTION 122

The figure shows the file pool policy configured for an OceanStor 9000 storage system. The monitoring and migration time is 2: 00-4: 00 a.m. every day. At 9: 00 a.m. on Monday, file A was created in the \example\test directory. By 10: 00 a.m., file A had been read and written for 15 times and the file size became 150 MB. After that, file A was no longer accessed. At 9: 00 a.m. on Tuesday, in which tier is file A stored?

Policy Name	Policy Parameter	Target Storage Tier	Policy Priority
Policy 1	File size < 100 MB	High-performance tier	Highest
	Number of I/Os > 20		
Policy 2	File size ≥ 100 MB	High-bandwidth tier	Relatively higher
	Number of I/Os ≤ 20		
Policy 3	File path: \example	High-performance tier	Relatively lower
Policy 4	File size < 1 MB	Small data tier	Relatively lower

- A. Small-data tier

- B. High-performance tier
- C. High-bandwidth tier

Correct Answer: C

Section: (none)

Explanation

Explanation/Reference:

QUESTION 123

Which of the following file system configurations are correct for the N8500 clustered NAS storage systems? (Select two.)

- A. Set not more than 16 columns in a stripe file system to prevent serious data discretization.
- B. Set a block size to 8192 when the file system size is larger than 1TB.
- C. Set the number of columns consistent with that of RAID groups for a stripe file system
- D. You are advised to disable quotas if the number of files exceeds 40 million.

Correct Answer: BC

Section: (none)

Explanation

Explanation/Reference:



QUESTION 124

An N8500 clustered NAS storage system cannot be logged in to using the master account. Which is the possible cause?

- A. The console IP address conflicts with another IP address on the network.
- B. The network port corresponding to the console IP address is not connected to a network cable or is in the shutdown state.
- C. The user name and password have been changed.
- D. A heartbeat link is down.

Correct Answer: D

Section: (none)

Explanation

Explanation/Reference:

QUESTION 125

Which of the following are characteristics of big data? (Select three)

- A. Huge data volume
- B. Authentic and valid data
- C. Fast data circulation
- D. Various data types

Correct Answer: ACD

Section: (none)

Explanation

Explanation/Reference:

QUESTION 126

An OceanStor 9000 storage system is deployed using the OceanStor Toolkit. Which of the following statements about the settings of the OceanStor Toolkit configuration file are correct? (Select two)

- A. The cluster name can be set to 9000cluster.
- B. If the InfoLink license has not been purchased, you may skip the InfoLink DNS configuration.
- C. The front-end network gateway will serve as the default gateway of all storage nodes after being configured.
- D. The data redundancy ratio is the default ratio of all directories on the OceanStor 9000.

Correct Answer: CD

Section: (none)

Explanation

Explanation/Reference:

QUESTION 127

Which of the following network file sharing protocols are supported by a NAS storage system? (Select two.)

- A. FAT32
- B. NTFS
- C. NFS
- D. CIFS

Correct Answer: CD

Section: (none)

Explanation

Explanation/Reference:

QUESTION 128

In an N8500 clustered NAS system, which of the following commands are commonly used to query a cluster's detailed resource information? (Select two.)

- A. hares -state
- B. hares -display
- C. hagr -dep
- D. hagr -state

Correct Answer: AB

Section: (none)

Explanation

Explanation/Reference:



QUESTION 129

In the OceanStor 9000, a node pool is a collection of nodes that have the same characteristics such as physical type and access performance, and DST allows a user to divide physical nodes in the same file system into node pools.

- A. True
- B. False

Correct Answer: A

Section: (none)

Explanation

Explanation/Reference:

QUESTION 130

Which of the following can be used to manage secure access to NFS shares? (Select two.)

- A. AD
- B. NIS

- C. LDAP
- D. Homedir

Correct Answer: BC

Section: (none)

Explanation

Explanation/Reference:

QUESTION 131

The three mainstream storage forms are as follows: 1)SAN storage that provides block resources; 2)NAS storage that provides file system resources;3) object-based storage (OBS). SAN storage and NAS storage are traditional storage forms. Which of the following statements about the characteristics of the three storage forms are correct? (Select three.)

- A. In traditional storage forms, disks are partitioned, file systems record file structures based on a tree relationship, and metadata is used to identify the use of blocks.
- B. Objects are the basic units of OBS. Each object is a composite of data and data property sets.
- C. In the OBS mechanism, data and metadata are stored and managed in a distributed manner.
- D. OBS is typically oriented to structured data applications.

Correct Answer: ABC

Section: (none)

Explanation

Explanation/Reference:

QUESTION 132

In an N8500 clustered NAS system, underlying virtualization is implemented by the VxVM component. The virtual objects managed by the VxVM are VM disks, disk groups, subdisks, and plexes. Which of the following statements is incorrect?

- A. A VM disk is controlled by the VxVM and typically located in a disk group. Each VM disk corresponds to at least one physical disk or disk partition.
- B. A disk group is a collection of VM disks.
- C. A subdisk is the basic unit for the VxVM to allocate disk space. To improve the efficiency of underlying resource use, a subdisk can be a group of inconsecutive disk blocks.
- D. A plex consists of one or multiple subdisks on one or multiple physical disks. Each plex contains a duplicate of the data selected in a volume.

Correct Answer: C

Section: (none)

Explanation

Explanation/Reference:**QUESTION 133**

The license must be purchased for which of the following software features of the OceanStor 9000? (Select three.)

- A. WushanFS
- B. InfoLink
- C. InfoQuota
- D. InfoTier

Correct Answer: BCD

Section: (none)

Explanation

Explanation/Reference:**QUESTION 134**

If the name of a shared directory is dirttest in an OceanStor 9000 storage system, local users who have permission can access the directory by entering *.*.*dirttest, where *.*.* must be the front-end service IP address of the node that provides storage space for the dirttest directory.

- A. True
- B. False

Correct Answer: B

Section: (none)

Explanation

Explanation/Reference:**QUESTION 135**

Which of the following storage services can the N8500 clustered NAS system that employs the integrated networking mode provide for application servers? (Select three.)

- A. CIFS
- B. 10 Gbit/s iSCSI SAN
- C. SASSAN
- D. FCSAN

Correct Answer: ABD

Section: (none)

Explanation

Explanation/Reference:

QUESTION 136

Which of the following statements about the login information of the OceanStor 9000 after its software installation is complete are incorrect?

- A. The account and default password for logging in to the OceanStor DeviceManager are admin and Admin @storage respectively.
- B. To log in to the OceanStor DeviceManager from Internet Explorer, enter https://xx.xx.xx.xx:8088, where xx.xx.xx.xx is the management IP address of the OceanStor 9000.
- C. The default password for the default account root of the Linux operating system running on a storage node is root@storage.
- D. To log in to the IPMI of a storage node on Internet Explorer, enter https://xx.xx.xx.xx, where xx.xx.xx.xx is the IP address of the IPMI port on the storage node.

Correct Answer: C

Section: (none)

Explanation

Explanation/Reference:



QUESTION 137

The master account is used to enter the CLI mode of N8500 V200R001. Which of the following operations can be performed related to NFS? (Select three.)

- A. nfs server show
- B. nfs server status
- C. nfs server start
- D. nfs server stop

Correct Answer: BCD

Section: (none)

Explanation

Explanation/Reference:

QUESTION 138

A customer's OceanStor 9000 big data storage system uses GE for the front-end network and 10GE for the back-end network. If the OceanStor 9000 is configured with four C nodes, only a basic cabinet is required.

- A. True
- B. False

Correct Answer: A

Section: (none)

Explanation

Explanation/Reference:

QUESTION 139

For one or more Windows clients to access the storage resources on an OceanStor 9000 storage system, the administrator needs to create a directory under the root directory on the specified storage node and authorize the new directory to the target user or user group.

- A. True
- B. False

Correct Answer: B

Section: (none)

Explanation

Explanation/Reference:

**QUESTION 140**

The OceanStor 9000 can be installed in a Huawei-supplied cabinet only.

- A. True
- B. False

Correct Answer: B

Section: (none)

Explanation

Explanation/Reference:

QUESTION 141

The OceanStor 9000 allows users to define file pool policies based on file attributes and I/O frequency. Which of the following statements about file pool policies are correct? (Select three.)

- A. A create policy is used to determine the initial location where a newly created file is to be stored. Such a policy includes the following items: file storage path, file name, and UID/GID.
- B. A relocate policy is used to determine the target location where a file is to be migrated.
- C. A delete policy is used to determine when to delete a file from the system.
- D. A modify policy is used to determine how to modify a file.

Correct Answer: ABC

Section: (none)

Explanation

Explanation/Reference:

QUESTION 142

Which of the following statements about the intelligent load balancing feature of the OceanStor 9000 are correct? (Select three.)

- A. Performance is balanced among all nodes. Capacity cannot be balanced among all nodes.
- B. Nodes can be divided into zones. An independent load balancing policy and an independent domain name can be configured for each zone.
- C. Load balancing policies can be based on CPU usage, memory usage, bandwidth usage, number of network connections, and/or node capability.
- D. The OceanStor 9000 provides the load balancing service based on round robin, CPU usage, or the number of connections to a node.

Correct Answer: BCD

Section: (none)

Explanation

Explanation/Reference:

QUESTION 143

The %util value of back-end disks frequently exceeds 90% after the iostat command is run. This indicates that the bandwidth utilization is high and performance bottlenecks exist.

- A. True
- B. False

Correct Answer: A

Section: (none)

Explanation

Explanation/Reference:

QUESTION 144

An N8500 provides synchronous volume mirroring, which is similar to implementation of RAID 1 for the file system.

- A. True
- B. False

Correct Answer: A

Section: (none)

Explanation

Explanation/Reference:

QUESTION 145

Which of the following statements about Huawei 9000 big data solutions is incorrect?

- A. Huawei big data storage products support InfiniBand/IOGE/GE networking modes.
- B. Huawei big data storage products employ scale-out architecture.
- C. Huawei big data storage products are based on the MPP DB.
- D. Huawei big data storage products support dynamic storage tiering (DST).

Correct Answer: C

Section: (none)

Explanation

Explanation/Reference:

QUESTION 146

When planning RAID for an N8500 clustered NAS storage system, you are advised to configure RAID 10 for database services and random read/write services.

- A. True
- B. False

Correct Answer: A

Section: (none)

Explanation

Explanation/Reference:

QUESTION 147

Which of the following device indicator states will not appear after an OceanStor storage system powers up and operates properly?

- A. The system Alarm indicators are off.
- B. The disk Running indicators are steady green.
- C. The disk Alarm/Location indicators are steady red.
- D. The system Running indicators on the GE switches are blinking green.

Correct Answer: C

Section: (none)

Explanation

Explanation/Reference:



QUESTION 148

NFS is a method of sharing disk files between UNIX operating systems. NFS is also a file system protocol that allows applications on a client to store and obtain data on server disks through a network.

- A. True
- B. False

Correct Answer: A

Section: (none)

Explanation

Explanation/Reference:

QUESTION 149

Which of the following statements about the file system planning of the N8500 clustered NAS storage systems are correct? (Select two)

- A. A file system has at most 10 million files.
- B. A directory has at most 10,000 files.

- C. A file system has at most 10 levels of directories.
- D. A file system has at most 10,000 directories.

Correct Answer: BC

Section: (none)

Explanation

Explanation/Reference:

QUESTION 150

Which of the following statements about the performance optimization check items of the N8500 clustered NAS storage systems are correct? (Select three)

- A. Check whether the BBUs are faulty. If only one BBU is faulty, the current write policy of LUNs changes to write through.
- B. Log in to the ISM and check whether alarms indicating slow disk response exist.
- C. Check on the ISM whether bit errors exist on Fibre Channel ports.
- D. Check whether front-end service ports are functioning at the optimal rate. For example, check whether the port rate is 4 Gbit/s when the bandwidth is 8 Gbit/s.

Correct Answer: BCD

Section: (none)

Explanation

Explanation/Reference:



QUESTION 151

Which of the following statements about IP address planning for the N8500 clustered NAS storage systems is incorrect?

- A. Each service network port, management network port on an engine node, and management network port on a storage unit must have a physical IP address.
- B. Each service network port and management network port on an engine node must have a virtual IP address.
- C. Ensure that the physical IP address and virtual IP address of each port reside on the same network segment.
- D. It is recommended that the console IP address reside on the same network segment as the service network.

Correct Answer: B

Section: (none)

Explanation

Explanation/Reference:**QUESTION 152**

The HUAWEI OceanStor Toolkit V100R001 is used for preventive maintenance. The preventive maintenance wizard does not include which of the following?

- A. Select Devices
- B. Select Check Items
- C. Set Check Policy
- D. Export Check Policy

Correct Answer: D

Section: (none)

Explanation

Explanation/Reference:**QUESTION 153**

A big data processing system involves five layers: data collection, data storage, data processing, data analysis, and data application and presentation. Which of the following statements about the five layers are correct? (Select two)

- A. Data collection is implemented based on data sources. Attention must be paid to the use of structured and unstructured database technologies.
- B. Data storage resolves the massive data storage issue. Attention must be paid to data variety and heterogeneous data convergence.
- C. Data processing features high velocity. Attention must be paid to the parallel computing technology.
- D. Data analysis and application highlight data value. Attention must be paid attention to data mining, business intelligence, and data search.

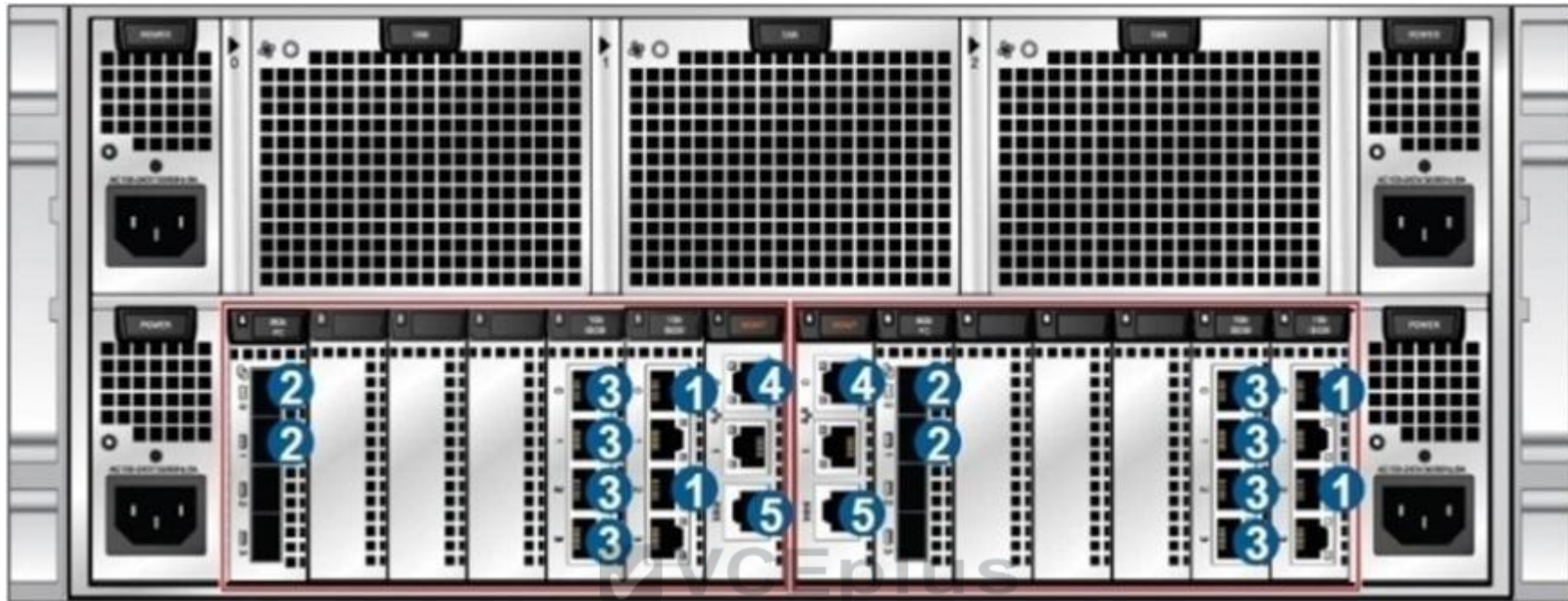
Correct Answer: CD

Section: (none)

Explanation

Explanation/Reference:**QUESTION 154**

There are four types of ports on the N8500 clustered NAS engine nodes: heartbeat port, management port, service port, and storage port. Which of the following statements about the port types in the figure are correct? (Select two.)



VCE To PDF - Free Practice Exam

- A. 1 indicates a service port.
- B. 2 indicates a storage port.
- C. 3 indicates a heartbeat port.
- D. 4 indicates a management port.

Correct Answer: BD

Section: (none)

Explanation

Explanation/Reference:

QUESTION 155

An N8500 clustered NAS system is equipped with four engine nodes and each engine node provides four service network ports. How many virtual IP addresses must be planned for the N8500?

- A. 15
- B. 16

- C. 17
- D. 18

Correct Answer: C

Section: (none)

Explanation

Explanation/Reference:

QUESTION 156

In the cluster communication architecture employed by an N8500 clustered NAS system, modules such as the resource agent, HAD, GAB, and Low Latency Transport (LLT) must collaborate to implement cluster communication. Which of the following statements about the work mechanisms of these modules are correct? (Select three)

- A. The agent monitors the resources of each system and provides the status information for the HAD of each machine.
- B. If a cluster node is abnormal or faulty, the HAD takes correct actions, for example, performing a failover.
- C. The GAB implements a point-to-point communication mechanism. The master node sends the other cluster nodes the information that needs to be synchronized.
- D. LLT is a MAC-layer protocol unrelated to IP layer.



Correct Answer: ABD

Section: (none)

Explanation

Explanation/Reference:

QUESTION 157

InfiniBand is used for communication between servers, between a server and a storage device, and between a server and a network.

- A. True
- B. False

Correct Answer: A

Section: (none)

Explanation

Explanation/Reference:

QUESTION 158

Which of the following statements about the InfoLink feature of the OceanStor 9000 are correct? (Select two.)

- A. If clients attempt to access the OceanStor 9000 using domain names, the InfoLink license must be activated.
- B. If clients attempt to access the OceanStor 9000 using domain names, a DNS server must be configured.
- C. If a node becomes faulty, the system provides the failover function. This function does not need the InfoLink license to be activated.
- D. After the InfoLink license is activated, the system balances loads based on round robin, CPU usage, number of node connections, node throughput, and comprehensive node loads.

Correct Answer: AD

Section: (none)

Explanation

Explanation/Reference:

QUESTION 159

Which of the following components comprise the Storage Foundation of an N8500 clustered NASsystem? (Select two)

- A. VxVM
- B. VCS
- C. VxFS
- D. SFS



Correct Answer: AC

Section: (none)

Explanation

Explanation/Reference:

QUESTION 160

Which of the following service ports are provided by an N8500 clustered NAS system? (Select two.)

- A. GE
- B. 10GE
- C. Fibre Channel
- D. SAS

Correct Answer: AB

Section: (none)

Explanation

Explanation/Reference:

QUESTION 161

Which are the characteristics of the OceanStor 9000 M node? (Select two.)

- A. 2U
- B. Up to 12 service disk slots
- C. Applicable to scenarios requiring large capacity
- D. Standard configuration: 2 x 6-core CPUs

Correct Answer: AB

Section: (none)

Explanation

Explanation/Reference:

QUESTION 162

In the cluster communication architecture employed by an NS500 clustered NAS system, modules such as the resource agent, HAD, GAB, and Low Latency Transport (LLT) must collaborate to implement cluster communication. Which of the following statements about the work mechanisms of these modules are correct? (Select three)

- A. The agent monitors the resources of each system and provides the status information for the HAD of each machine.
- B. If a cluster node is abnormal or faulty, the HAD takes correct actions, for example, performing a failover.
- C. The GAB implements a point-to-point communication mechanism. The master node sends the other cluster nodes the information that needs to be synchronized.
- D. LLT is a MAC-layer protocol unrelated to IP layer.

Correct Answer: ABD

Section: (none)

Explanation

Explanation/Reference:

QUESTION 163

Which of the following statements about the characteristics of the file system snapshot feature provided by an N8500 clustered NAS system are

incorrect? (Select two.)

- A. A snapshot and the file system each use independent storage space to ensure data reliability.
- B. A file system snapshot is a view identical with the file system.
- C. File system snapshots are readable, writable, and independent of the file system.
- D. You can create multiple snapshots for a file system. However, you cannot create a snapshot for an existing snapshot.

Correct Answer: AD

Section: (none)

Explanation

Explanation/Reference:

QUESTION 164

Which of the following statements about the Global Cache technology employed by the WushanFS are correct? (Select three.)

- A. Global Cache enables the memory space on all storage servers to form a unified memory resources pool logically.
- B. Data cached on a node cannot be hit by the read/write service of another node.
- C. Global Cache helps improve the sharing of memory resources among nodes.
- D. The WushanFS uses the distributed lock mechanism to implement global management of cached data. The same service data is cached only on one node. Another node that needs to access the service data can apply for a lock to obtain the cached data.

Correct Answer: ACD

Section: (none)

Explanation

Explanation/Reference:

QUESTION 165

If the internal link is faulty in an N8500 clustered NAS storage system, which of the following items can be skipped during troubleshooting?

- A. The heartbeat network between engines
- B. The network between an engine and a disk enclosure
- C. The Fibre Channel network between an engine and a storage unit
- D. The network between a storage unit controller enclosure and a storage unit disk enclosure

Correct Answer: B

Section: (none)

Explanation**Explanation/Reference:****QUESTION 166**

An N8500 clustered NAS system is equipped with six engine nodes and four S5500T storage arrays. Each engine node provides eight service network ports. How many IP addresses must be configured for the N8500?

- A. 103
- B. 104
- C. 105
- D. 106

Correct Answer: C

Section: (none)

Explanation**Explanation/Reference:****QUESTION 167**

Which command is used to check whether the file system is in the online state for N8500 V200R001?

- A. storage fs list
- B. storage fs online
- C. storage fs status
- D. storage fs status show

Correct Answer: A

Section: (none)

Explanation**Explanation/Reference:****QUESTION 168**

A customer has purchased an N8500 clustered NAS storage system configured with ten 1 TB SAS disks and twelve 1 TB NL-SAS disks. Two RAID groups are planned. RAID group 1 is a RAID 5 consisting of nine SAS disks. RAID group 2 is a RAID 6 consisting of 11 NL-SAS disks. Two global hot spare disks are configured. What is the available capacity of the storage system?

- A. 20 TB
- B. 14 TB
- C. 15.6 TB
- D. 18.4 TB

Correct Answer: C

Section: (none)

Explanation

Explanation/Reference:

QUESTION 169

The InfoLink function is enabled on an OceanStor 9000 storage system. If the node to which a client connects becomes faulty and a failover occurs, which of the following statements is incorrect?

- A. If the client accesses a shared directory through CIFS, the failover will cause disconnection and the client will need to reconnect to the storage system.
- B. If the client accesses a shared directory through NFS V4, the failover will cause disconnection and the client will need to reconnect to the storage system.
- C. If the client accesses a shared directory through NFS V4, the failover will not affect the connection.
- D. If the client accesses a shared directory through NFS V3, the failover will not affect the connection.

Correct Answer: C

Section: (none)

Explanation

Explanation/Reference:

QUESTION 170

The mirrored-stripe file system of the N8500 clustered NAS storage systems is ideal for scenarios that require high data security and read/write performance. Which of the following is the major technical feature of the mirrored-stripe file system?

- A. Data is striped and then mirrored, as in RAID 01.
- B. Data is mirrored and then striped, as in RAID 10.
- C. Data is stored in sequence on data disks that compose the file system.
- D. Data is stored in an interlaced manner on multiple data disks that compose the file system.

Correct Answer: A

Section: (none)

Explanation

Explanation/Reference:

QUESTION 171

If an application server cannot access the storage resources of an N8500 storage system, which of the following operations can be performed for troubleshooting? (Select three.)

- A. Log in to the ISM to check alarms.
- B. Check the indicators on the storage system.
- C. Reinstall the ISM software.
- D. Restart the sharing service.

Correct Answer: ABD

Section: (none)

Explanation

Explanation/Reference:



QUESTION 172

Which of the following technologies is not suitable for the challenges brought by big data?

- A. FCSAN
- B. Object Storage
- C. Cluster
- D. 10GE or infiniband

Correct Answer: A

Section: (none)

Explanation

Explanation/Reference:

QUESTION 173

Which of the following are necessary components of the NAS storage system architecture? (Select three.)

- A. Accessible storage array

- B. File system
- C. Interface provided for other devices to access the file system
- D. Fibre Channel switch

Correct Answer: ABC

Section: (none)

Explanation

Explanation/Reference:

QUESTION 174

In a NetBackup-based N8500 file system backup network, all the nodes of the N8500 must be connected to both the NetBackup master server and media servers.

- A. True
- B. False

Correct Answer: B

Section: (none)

Explanation

Explanation/Reference:



QUESTION 175

Which of the following is the correct sequence for powering on an OceanStor storage system?

- A. Connect the cabinet to the external power supply. -> Connect the PDUs to the external power supply. -> Power on the storage nodes. -> Power on the switches. -> Power on the KVM. -> Power on the SMS modem.
- B. Connect the cabinet to the external power supply. -> Connect the PDUs to the external power supply. -> Power on the switches. -> Power on the KVM. -> Power on the storage nodes. -> Power on the SMS modem.
- C. Connect the cabinet to the external power supply. -> Connect the PDUs to the external power supply. -> Power on the KVM. -> Power on the storage nodes. -> Power on the switches. -> Power on the SMS modem.
- D. Connect the cabinet to the external power supply. -> Connect the PDUs to the external power supply. -> Power on the KVM. -> Power on the storage nodes. -> Power on the SMS modem. -> Power on the switches.

Correct Answer: B

Section: (none)

Explanation

Explanation/Reference:**QUESTION 176**

Which of the following statements about the indicators on an N8500 clustered NAS system are correct? (Select two.)

- A. A power module runs properly if its indicator is steady red.
- B. The system is being started if the power indicator on the NAS service module blinks green.
- C. The data transmission rate is 4 Gbit/s if the port indicator on the NAS service 10GE interface card is steady blue.
- D. Data is being transmitted if the Active indicator of the management network port blinks orange.

Correct Answer: BD

Section: (none)

Explanation

Explanation/Reference:**QUESTION 177**

Which of the following statements about the simple file system of the N8500 clustered NAS storage systems is incorrect?

- A. Data of a simple file system is stored in sequence on the data disks where the file system resides.
- B. A simple file system reads and writes multiple subdisks simultaneously, providing higher performance than reading and writing a single disk.
- C. The volume of a simple file system is formed by the subdisks of multiple data disks.
- D. The simple file system is applicable to scenarios having no special performance or security requirements.

Correct Answer: B

Section: (none)

Explanation

Explanation/Reference:**QUESTION 178**

The N8500 clustered NAS storage system supports bonding of multiple service network ports.

Which of the following statements about bond4 and bond6 are correct? (Select three)

- A. The bond4 mode has unbalanced load issues in the "gatewayed" topology.
- B. The bond6mode allocates and adjusts loads based on the workloads on the bond ports.
- C. The bond6 mode supports fault tolerance whereas the bond4 mode does not.

D. The adaptive load balancing supported by the bond6 mode will definitely cause frequent switchovers among network adapters, increasing the system overhead.

Correct Answer: ABD

Section: (none)

Explanation

Explanation/Reference:

