

H12-261.58q

Number: H12-261
Passing Score: 800
Time Limit: 120 min

H12-261



Website: <https://vceplus.com>
VCE to PDF Converter: <https://vceplus.com/vce-to-pdf/>
Facebook: <https://www.facebook.com/VCE.For.All.VN/>
Twitter : https://twitter.com/VCE_Plus

<https://www.vceplus.com/>

HCIE-Routing&Switching (written) (Huawei Certified Internetwork Expert-Routing & Switching)

Exam A

QUESTION 1

RTA:

```
interface Ethernet0/0
ip address 10.1.1.1 255.255.255.0
interface Ethernet0/1
ip address 30.1.1.1 255.255.255.0
ospf 100
area 0.0.0.0
network 10.1.1.0 0.0.0.255
network 30.1.1.0 0.0.0.255
```

RTB:

```
interface Ethernet0/0
ip address 10.1.1.2 255.255.255.0
interface Ethernet0/1
ip address 20.1.1.2 255.255.255.0
ospf 100
area 0.0.0.0
network 10.1.1.0 0.0.0.255
ospf 200
area 0.0.0.0
network 20.1.1.0 0.0.0.255
```

RTC:

```
interface Ethernet0/0
ip address 30.1.1.2 255.255.255.0
interface Ethernet0/1
ip address 20.1.1.1 255.255.255.0
ospf 200
area 0.0.0.0
network 20.1.1.0 0.0.0.255
network 30.1.1.0 0.0.0.255
```



Based on the preceding networking and configurations, which of the following statements is true?



- A. Route flapping occurs
- B. RTB and RTC cannot establish a neighbor relationship
- C. RTA and RTB cannot establish a neighbor relationship
- D. A neighbor relationship can be established; all network segments are reachable

Correct Answer: D

Section: (none)

Explanation

Explanation/Reference:



QUESTION 2

When a router is building a routing table from different routing protocols, which of the following will determine the routes to be installed in the routing table?



Website: <https://vceplus.com>

VCE to PDF Converter: <https://vceplus.com/vce-to-pdf/>

Facebook: <https://www.facebook.com/VCE.For.All.VN/>

Twitter : https://twitter.com/VCE_Plus

<https://www.vceplus.com/>

- A. The fastest routing process
- B. uniqueness
- C. Higher preference value
- D. The route with the largest next-hop address
- E. Low Router ID

Correct Answer: C

Section: (none)

Explanation

Explanation/Reference:



QUESTION 3

Which of the following statements are NOT true regarding the TCP sliding window protocol? (Multiple Choice)

- A. The initial window offer is advertised by the sender
- B. If the retransmission timer expires without the sender receiving an ACK message, the receiver retransmits the packet to the sender.
- C. The size of the sliding window can only increase or stay the same
- D. It allows the transmission of multiple frames before waiting for an acknowledgment
- E. The receiver is required to acknowledge the data packets transmitted by the sender
- F. The sender need not transmit a full window's worth of data

Correct Answer: AC

Section: (none)

Explanation

Explanation/Reference:

QUESTION 4

What is the destination IP address of routing update packets sent by RIPv2?

- A. 255.255.255.255
- B. 224.0.0.1
- C. 224.0.0.5
- D. 224.0.0.9
- E. 224.0.0.10

Correct Answer: D

Section: (none)

Explanation

Explanation/Reference:

QUESTION 5

The LS Sequence Number field is used to detect expired and duplicate LSAs. This field is a signed 32-bit integer and therefore the minimum LS Sequence Number is 0x80000000.

- A. FALSE
- B. TRUE



Correct Answer: A

Section: (none)

Explanation

Explanation/Reference:

QUESTION 6

Which types of prefixes will a router running BGP most likely advertise to an IBGP peer, assuming it is not configured as a route reflector?

- A. Prefixes received from EBGp peers and prefixes received from route reflectors
- B. All prefixes in its routing table
- C. Prefixes received from EBGp peers and prefixes locally originated via network statements or imported
- D. Prefixes received from other IBGP peers, prefixes received from EBGp peers, and prefixes imported to BGP
- E. Prefixes received from other IBGP peers and prefixes received from router reflectors
- F. Prefixes received from any other BGP peer and prefixes locally originated via network statements or imported

Correct Answer: C

Section: (none)

Explanation

Explanation/Reference:

QUESTION 7

In a data communication session between two hosts, the session layer in the OSI model generally communicates with what other layer of the OSI model?

- A. The physical layer of the peer
- B. The peer's presentation layer
- C. The peer's session layer
- D. The peer's application layer
- E. The data link layer of the peer

Correct Answer: C

Section: (none)

Explanation

Explanation/Reference:



QUESTION 8

If a router receives a BGP route carrying the no-export community attribute, which of the following actions does the router take?

- A. Does not advertise the route to other BGP routers
- B. Discards the route directly
- C. Advertises the route to IBGP peers only
- D. Advertises the route normally, but does not use it to forward data

Correct Answer: C

Section: (none)

Explanation

Explanation/Reference:

QUESTION 9

Which of the following are found in a basic Network Layer Packet? (Multiple Choice.)

- A. Network Layer Header
- B. Path records
- C. Data Link Layer Header
- D. Upper Layer Data
- E. Network Layer Trailer

Correct Answer: ADE

Section: (none)

Explanation

Explanation/Reference:

QUESTION 10

With regard to TCP headers, which control bit tells the receiver to reset the TCP connection?

- A. SND
- B. CLR
- C. PSH
- D. SYN
- E. RST
- F. ACK

Correct Answer: E

Section: (none)

Explanation

Explanation/Reference:

QUESTION 11

Two routers configured to run BGP have been connected to a firewall, one on the inside interface and one on the outside interface. BGP has been configured so the two routers should peer, including the correct BGP session endpoint addresses and the correct BGP session hop-count limit (EBGP multihop). What is a good first test to see if BGP will work across the firewall?

- A. There is no way to make BGP work across a firewall without special configuration, so there is no simple test that will show you if BGP will work, other than trying to start the peering session.
- B. Attempt to Telnet from the router connected to the inside of the firewall to the router connected to the outside of the firewall. If Telnet works, BGP will work, since telnet and BGP both use TCP to transport data
- C. There is no way to make BGP work across a firewall
- D. Ping from the router connected to the inside interface of the firewall to the router connected to the outside interface of the firewall. If you can ping between them, BGP should work, since BGP uses IP to transport packets.

Correct Answer: B

Section: (none)

Explanation

Explanation/Reference:

QUESTION 12

Which of the following can be used for BGP route selection? (Multiple Choice)

- A. DSCP
- B. IP-PREFIX
- C. ACL
- D. AS-PATH-FILTER



Correct Answer: BCD

Section: (none)

Explanation

Explanation/Reference:

QUESTION 13

Authentication can be configured in the IS-IS protocol to enhance IS-IS security. The IS-IS authentication functions include interface authentication, area authentication, and routing domain authentication.

- A. FALSE
- B. TRUE

Correct Answer: B

Section: (none)

Explanation

Explanation/Reference:

QUESTION 14

You must configure a router for Policy Based Routing (PBR). PBR allows network administrators to implement routing policies to allow or deny paths on which of the following? (Multiple Choice)

- A. Protocol
- B. Identification of a particular end system
- C. Application
- D. Throughput
- E. Size of packets

Correct Answer: ABCE

Section: (none)

Explanation

Explanation/Reference:



QUESTION 15

An AS-path-filter uses the regular expression $^{[0-9]}+ \$$ to indicate all as-path attributes.

- A. TRUE
- B. FALSE

Correct Answer: B

Section: (none)

Explanation

Explanation/Reference:

QUESTION 16

Which of the following scenarios can an AS-path-filter be used for? (Multiple Choice)

- A. Apply clauses in a route-policy
- B. Filtering the routes received from a BGP peer based on the as-path attributes of the routes, for example, peer X.X.X.X as path-filter import
- C. Filtering the routes sent to a BGP peer based on the as-path attributes of the routers, for example, peer X.X.X.X as-path-filter export
- D. If-match clauses in a route-policy

Correct Answer: ABC

Section: (none)

Explanation

Explanation/Reference:

QUESTION 17

Which of the following statements are true about RIPng? (Multiple Choice)



Website: <https://vceplus.com>

VCE to PDF Converter: <https://vceplus.com/vce-to-pdf/>

Facebook: <https://www.facebook.com/VCE.For.All.VN/>

Twitter : https://twitter.com/VCE_Plus

<https://www.vceplus.com/>

- A. RIPng does not have an authentication mechanism
- B. Each RIPng update packet contains a maximum of 25 routes
- C. RIPng supports MD5 authentication

- D. RIPng uses the link local address to send update packets
- E. RIPng supports a maximum of 32 hops

Correct Answer: AD

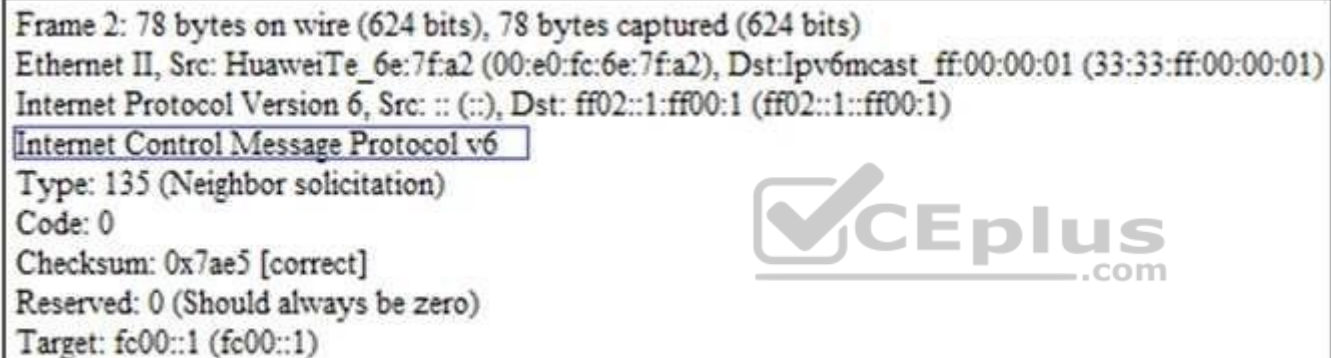
Section: (none)

Explanation

Explanation/Reference:

QUESTION 18

An IPv6 device with the address of FC00::1 connects to the network and captures the following data packet. What is function of the data packet?



Frame 2: 78 bytes on wire (624 bits), 78 bytes captured (624 bits)
Ethernet II, Src: HuaweiTe_6e:7f:a2 (00:e0:fc:6e:7f:a2), Dst:Ipv6mcast_ff:00:00:01 (33:33:ff:00:00:01)
Internet Protocol Version 6, Src: :: (::), Dst: ff02::1:ff00:1 (ff02::1:ff00:1)
Internet Control Message Protocol v6
Type: 135 (Neighbor solicitation)
Code: 0
Checksum: 0x7ae5 [correct]
Reserved: 0 (Should always be zero)
Target: fc00::1 (fc00::1)

- A. There are multiple routers on the network segment. One router advertises router redirect messages to the IPv6 device.
- B. The router on this network segment tests the working status of the IPv6 device
- C. The IPv6 device implements self-loop tests
- D. Another device on this network segment requests to resolve the Layer 2 address of the IPv6 device
- E. The IPv6 device requests the address of the egress router
- F. The IPv6 device checks address configuration of other devices on the network

Correct Answer: F

Section: (none)

Explanation

Explanation/Reference:

QUESTION 19

Which of the following are legal representations of the IPv6 prefix 12AB00000000CD30? (Multiple Choice)

- A. 12AB::CD3::/64
- B. 12AB::CD30/64
- C. 12AB::0000:0000:CD30:0000:0000:0000/64
- D. 12AB:0:0:CD3::/64
- E. 12AB:0:0:CD3/64

Correct Answer: BC

Section: (none)

Explanation

Explanation/Reference:

QUESTION 20

Source Specific Multicast (SSM) is being used throughout the HW IP Multicast network. Which of the following three statements about SSM are true? (Choose three.)

- A. SSM uses Shortest-Path Trees Only
- B. There are no RPs to worry about
- C. SSM is best suited for applications that are of the Many-to-Many category
- D. SSM uses shared Trees only
- E. The use of SSM is recommended when there are many sources and it is desirable to keep the amount of mroute state in the routers in the network to a minimum.
- F. SSM is best suited for applications that are of one-to-many category

Correct Answer: ABF

Section: (none)

Explanation

Explanation/Reference:

QUESTION 21

The default SSM group address range is 232.0.0.0/8. Which of the following configurations can be performed to modify the SSM group address range?

- A. Run the ssm-policy advanced-acl-number command in the system view to configure the SSM group address range
- B. Run the ssm-policy basic-acl-number command in the system view to configure the SSM group address range
- C. Run the ssm-policy advanced-acl-number command in the PIM view to configure the SSM group address range
- D. Run the ssm-policy basic-acl-number command in the PIM view to configure the SSM group address range

Correct Answer: D

Section: (none)

Explanation

Explanation/Reference:

QUESTION 22

Routers HW1 and HW2 are IP Multicast routers. These routers use (S, G) entries for multicast packet forwarding. Which of the following address types are used in the "S" entry?

- A. The block of administratively scoped multicast addresses
- B. Source Specific multicast addresses
- C. SDP/SAP addresses
- D. Any class A, Class B, or Class C host address
- E. GLOP addresses



Correct Answer: D

Section: (none)

Explanation

Explanation/Reference:

QUESTION 23

Which of the following are differences between PIM-SM and PIM-DM? (Multiple Choice)

- A. PIM-SM has RPTs and SPTs but PIM-DM has only RPTs
- B. BSRs/RPs exist only on a PIM-SM network, not on a PIM-DM network
- C. PIM-SM is applicable to a network with few receivers; PIM-DM is applicable to a network with a larger number of receivers
- D. Whether in PIM-SM or PIM-DM mode, receiver hosts must join multicast groups through IGMP

Correct Answer: BCD

Section: (none)

Explanation

Explanation/Reference:

QUESTION 24

A (*,G) multicast entry is associated with which multicast type of feature within the HW IP multicast network? (Multiple Choice)

- A. Shared tree
- B. Dense Mode
- C. Source tree
- D. Sparse Mode
- E. Dense Tree
- F. PIM bidirectional

Correct Answer: ADF

Section: (none)

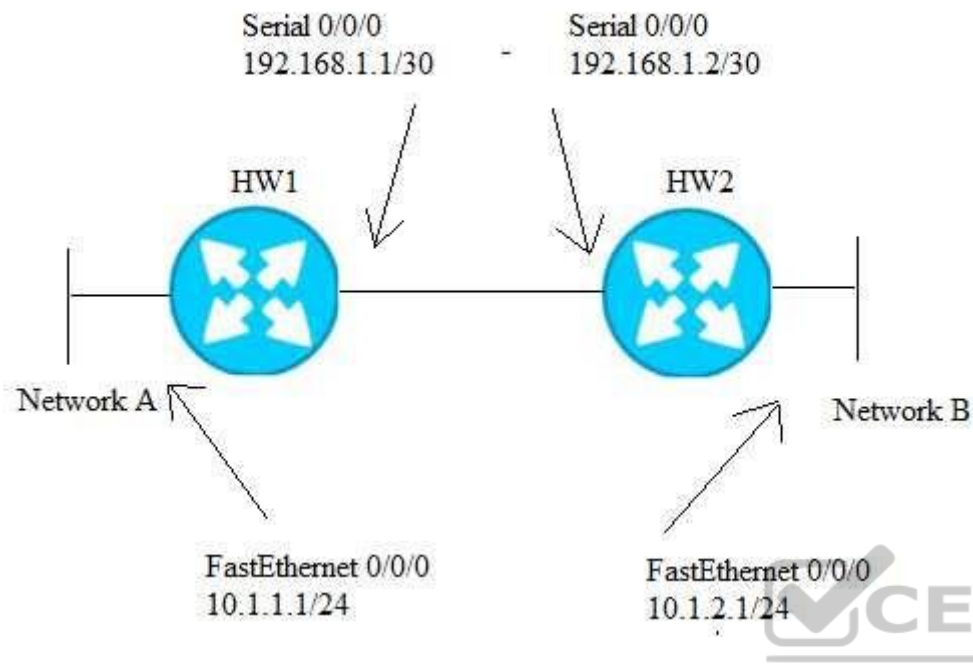
Explanation

Explanation/Reference:



QUESTION 25

The HW network consists of Network A and B that are connected via Router HW1 and Router HW2. The HW network is shown in the following exhibit. To set up an IPsec VPN between routers HW1 and HW2, which of the following crypto access-lists must be configured on Router HW1 in order to send LAN to LAN traffic across the encrypted VPN tunnel?



- A. rule permit ip source 10.1.2.0 0.0.0.255 destination 10.1.1.0 0.0.0.255
- B. rule permit ip source 10.1.1.0 0.0.0.255 destination 192.168.1.2 0
- C. rule permit ip source 192.168.1.1 0 destination 192.168.1.2 0
- D. rule permit ip source 10.1.1.0 0.0.0.255 destination 10.1.2.0 0.0.0.255
- E. rule permit ip source 192.168.1.1 0 destination 10.1.2.0 0.0.0.255

Correct Answer: D

Section: (none)

Explanation

Explanation/Reference:

QUESTION 26

Before configuring AAA, you need to define the RADIUS server. The following commands can be used to define it.

[Huawei]radius-server template EXAM

[Huawei-radius-EXAM] radius-server shared-key cipher HUAwei123

[Huawei-radius-EXAM] radius-server authentication 10.7.66.66 1812

[Huawei-radius-EXAM] radius-server authorization 10.7.66.66 1812

[Huawei-radius-EXAM] radius-server accounting 10.7.66.66 1813

[Huawei-radius-EXAM] radius-server retransmit 2

A. FALSE

B. TRUE

Correct Answer: B

Section: (none)

Explanation

Explanation/Reference:

QUESTION 27

From the list of applications below, identify the TCP port numbers used for 443, 179,137,110, and 23 in the proper sequence:

A. HTTPS, BGP, NetBios Name Server, POP3, Telnet

B. Finger, DHCP Server, NetBios Name Server, POP3, Telnet

C. BGP, POP3, SNMP, TFTP, Telnet

D. LDAP, SNMP, TFTP, POP3, Telnet

E. HTTPS, SNMP, POP3, DNS, Telnet



Correct Answer: A

Section: (none)

Explanation

Explanation/Reference:

QUESTION 28

Which of the following statements are false about Weighted Round Robin (WRR)? (Multiple Choice)

A. WRR is a congestion management technology

B. WRR prevents congestion on the network

C. WRR ensures important traffic being forwarded first

D. WRR ensures that all queues being serviced

E. WRR cannot be used on gigabit-ethernet interfaces

Correct Answer: BE

Section: (none)

Explanation

Explanation/Reference:

QUESTION 29

Which of the following are functions of Random Early Discard (RED)?

- A. Avoiding global synchronization for TCP traffic
- B. Performs rate limiting on the specified data traffic
- C. Ensuring that high priority traffic gets sent first
- D. Preventing starvation in lower priority queues
- E. Minimizing packet delay jitter

Correct Answer: AE

Section: (none)

Explanation

Explanation/Reference:



QUESTION 30

Which of the following statements about VRRP load balancing are false? (Multiple Choice)

- A. When configuring priorities, you must ensure that the same router server as the master router in three VRRP backup groups
- B. To implement load balancing, default network gateways of hosts on a LAN must be configured as IP addresses of different virtual routers
- C. Multiple VRRP backup groups can be created on an interface of a router. The router can serve as the master router in one VRRP backup group and the backup router in other VRRP backup groups.
- D. VRRP local balancing requires that at least two virtual routers transmit services at the same time.

Correct Answer: ABC

Section: (none)

Explanation

Explanation/Reference:

QUESTION 31

On a BGP/MPLS Ipv4 VPN, OSPF, LDP, and static routes are configured. Which of the following protocols must be enabled with GR to achieve NSF on PEs?
(Multiple Choice)

- A. Static routes
- B. MPLS LDP
- C. OSPF
- D. BGP

Correct Answer: BCD

Section: (none)

Explanation

Explanation/Reference:

QUESTION 32

SWA and SWB are connected through two physical Ethernet links. SWA has the following interface configurations:

```
[SWA]interface GigabitEthernet1/0/1
[SWA-GigabitEthernet1/0/1]port link-type trunk
[SWA-GigabitEthernet1/0/1]port trunk allow-pass vlan 1 10 100 [SWA]interface GigabitEthernet 1/0/2
[SWA-GigabitEthernet1/0/2]port link-type trunk
[SWA-GigabitEthernet1/0/2]port trunk allow-pass vlan 1 10
```

The two links are aggregated.

Assume that the configuration on SWB is correct. Given this information, which of the following statements are true?

- A. GigabitEthernet1/0/1 and GigabitEthernet1/0/1 can be added to the same LAG without changing the current configurations.
- B. After link aggregation is configured on SWA and SWB, if MSTP is enabled on them, GigabitEthernet1/0/1 and GigabitEthernet1/0/2 enter the Forwarding state in MSTP.
- C. GigabitEthernet1/0/1 and GigabitEthernet1/0/2 can be added to the same LAG only after the configuration of GigabitEthernet1/0/2 is changed to be the same as that of GigabitEthernet1/0/1.
- D. GigabitEthernet1/0/1 and GigabitEthernet1/0/2 cannot be added to the same LAG because the allowed VLANs are different.

Correct Answer: A

Section: (none)

Explanation

Explanation/Reference:

QUESTION 33

Which of the following statements regarding the process of sending and receiving data frames on a port in access link-type is true?

- A. Tagged data frames that are received are directly discarded.
- B. Only untagged data frames are received.
- C. VLAN tags are removed before data frames are sent.
- D. A switch learns the destination MAC address in the data frames when they are received on the switch's port.

Correct Answer: C

Section: (none)

Explanation

Explanation/Reference:



QUESTION 34

How long will a Huawei running RSTP wait before aging out the BPDUs on an interface?

- A. Hello time interval
- B. 6 seconds
- C. MaxAge interval
- D. BPDUs on the interface will not be aged out
- E. Forward delay

Correct Answer: C

Section: (none)

Explanation

Explanation/Reference:

Reference: <https://support.huawei.com/enterprise/en/doc/EDOC1000088827?section=j00h>

QUESTION 35

Which of the following statements regarding LACP are true?

- A. You can run the following commands to delete member interfaces from an Eth-Trunk:
- ```
interface GigabitEthernet0/0/1
shutdown
interface
GigabitEthernet0/0/1 undo
eth-trunk 1 interface
GigabitEthernet0/0/1 undo
shutdown
```
- B. You can run the following commands to prevent frequent flapping due to physical link faults on an Eth-Trunk:
- ```
interface eth-trunk 1 lacp
preempt enable lacp preempt
delay delay-time
```
- C. You can run the following commands to add member interfaces to an Eth-Trunk:
- ```
interface GigabitEthernet0/0/1
shutdown interface eth-trunk
1

trunkport GigabitEthernet0/0/1
interface GigabitEthernet0/0/1
undo shutdown
```
- D. You can run the following commands to enable load balancing based on source IP addresses for an Eth-Trunk:
- ```
interface eth-trunk 1 load-
balance src-dst-ip
```

Correct Answer: A

Section: (none)

Explanation

Explanation/Reference:

QUESTION 36

Which of the following statements regarding PPPoE data frames are true?

- A. The Ethernet_Type field has a fixed value of 0x8863.
- B. The Session_ID field of a PPP session must be the value specified in the Discovery phase and cannot be changed.

- C. When PPPoE is used to transmit session data, Code must be set to 0x0.
- D. After a PPPoE session is set up, all Ethernet packets are unicast.

Correct Answer: B

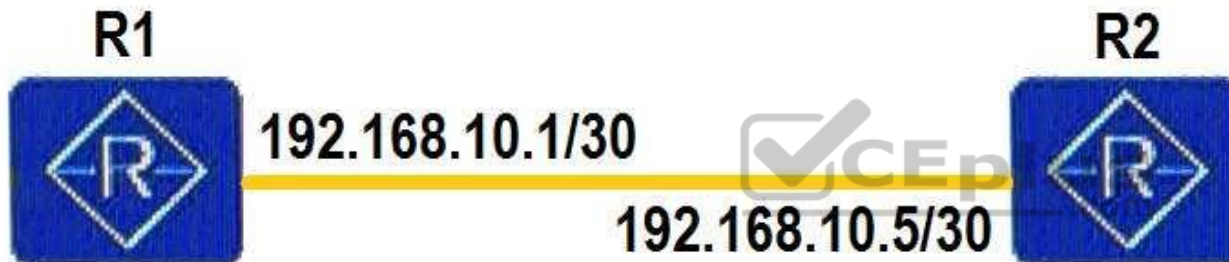
Section: (none)

Explanation

Explanation/Reference:

QUESTION 37

As shown in the figure below, R1 and R2 are connected through a PPP link, and the IP addresses on the directly connected interfaces are not on the same network segment. R1 and R2 can communicate with each other through the directly connected interfaces. However, communication on the Ethernet link fails if the IP addresses on the directly connected interfaces are on the same network segment. What are the causes of this?



- A. The Ethernet header does not need to be encapsulated into data packets between R1 and R2 that are directly connected through a POS interface, and ARP does not need to be used to obtain MAC addresses.
- B. R1 and R2 that are directly connected through a POS interface learn the MAC address of each other using LCP, and ARP does not need to be used to obtain MAC addresses.
- C. R1 and R2 that are directly connected through a POS interface learn the 24-bit subnet route of each other through IPCP.
- D. R1 and R2 that are directly connected through a POS interface learn the 32-bit host route of each other through IPCP.

Correct Answer: D

Section: (none)

Explanation

Explanation/Reference:

QUESTION 38

Routes received from AS100 match the AS-Path filter configured using the ip as-path-filter 10 permit_100\$ command.

- A. TRUE
- B. FALSE

Correct Answer: A

Section: (none)

Explanation

Explanation/Reference:

QUESTION 39

Which of the following attributes cannot be directly referenced by the if-match clause of route-policies?

- A. Community-filter
- B. IP-prefix
- C. AS-Path-filter
- D. Regular expression



Correct Answer: D

Section: (none)

Explanation

Explanation/Reference:

Reference: <http://support.huawei.com/enterprise/pages/doc/subfile/docDetail1.jsp?contentId=DOC1000027467&partNo=10152>

QUESTION 40

The figure shows router data. Which of the following statements is false?

<R3>display isis lsdb

Database information for ISIS(1)

Level-1 Link State Database

LSPID	Seq Num	Checksum	Holdtime	Length	ATT/P/OL
0001.0000.0000.00-00	0x00000015	0xdd22	491	109	0/0/0
0002.0000.0000.00-00	0x00000011	0xfe96	675	88	1/0/0
0002.0000.0000.01-00	0x00000006	0xbd04	656	55	0/0/0
0003.0000.0000.00-00*	0x00000027	0xffe7	676	119	1/0/0

Total LSP(s) : 4

*(In TLV) -Leaking Route, *(By LSPID) -Self LSP, +-Self LSP(Extended),
ATT-Attached, P-Partition, OL-Overload

Level-2 Link state Database

LSPID	Seq Num	Checksum	Holdtime	Length	ATT/P/OL
0002.0000.0000.00-00	0x0000000b	0x11ff	678	102	0/0/0
0002.0000.0000.01-00	0x00000002	0xc5ff	656	55	0/0/0
0003.0000.0000.00-00*	0x0000002d	0xb696	674	130	0/0/0
0003.0000.0000.03-00*	0x00000008	0xac40	673	56	0/0/0
0004.0000.0000.00-00	0x00000010	0x90cb	861	88	0/0/0

Total LSP(s) : 5

*(In TLV) -Leaking Route, *(By LSPID) -Self LSP, +-Self LSP(Extended),
ATT-Attached, P-Partition, OL-Overload

- A. The system ID of R3 is 0003.0000.0000.
- B. R3 is a level-1-2 router.
- C. R3 is the DIS of a Level-1 link.
- D. R3 is the DIS of a Level-2 link.

Correct Answer: C

Section: (none)

Explanation

Explanation/Reference:

QUESTION 41

Which of the following configurations regarding OSPFv3 route aggregation are true?

- A. [Huawei]ospfv3 1
[Huawei-ospfv3-1]asbr-summary fc00:0:0:: 48 cost 20 tag 100
- B. [Huawei]ospfv3 1
[Huawei-ospfv3-1]abr-summary fc00:0:0:: 48 cost 400
- C. [Huawei]ospfv3 1
[Huawei-ospfv3-1]area 1
[Huawei-ospfv3-1-area-0.0.0.1]abr-summary fc00:0:0:: 48 cost 400
- D. [Huawei]ospfv3 1
[Huawei-ospfv3-1]area 1
[Huawei-ospfv3-1-area-0.0.0.1]asbr-summary fc00:0:0:: 48 cost 20 tag 100
- E. [Huawei]interface gigabitethernet 1/0/0
[Huawei-GigabitEthernet1/0/0]asbr-summary fc00:0:0:: 48 cost 20

Correct Answer: A

Section: (none)

Explanation

Explanation/Reference:

Reference: <https://support.huawei.com/enterprise/en/doc/EDOC1000102430?section=k00a>

QUESTION 42

Which of the following AS-Path attribute values can be matched by the AS-Path filter configured using ip as-path filter 1 permit .*(100|400)\$command?

- A. 100
- B. 3100
- C. 300 4200
- D. 1234 1400

Correct Answer: ABD

Section: (none)

Explanation

Explanation/Reference:

QUESTION 43

Which of the following statements regarding the stub area and NSSA in OSPF is false?

- A. The Type 5 LSA cannot be flooded to a stub area, but can be flooded to an NSSA.
- B. The Type 3 LSA can be flooded to a stub area and an NSSA.
- C. The Type 4 LSA cannot be flooded to a stub area and an NSSA.
- D. The Type 7 LSA cannot be flooded to a stub area, but can be flooded to an NSSA.

Correct Answer: A

Section: (none)

Explanation

Explanation/Reference:



QUESTION 44

Type 5 LSAs in OSPF are used to transmit external routes. Which of the following statements regarding Type 5 LSAs is false?

- A. Type 5 LSAs are advertised by ASBRs and flooded on OSPF networks except stub areas and NSSAs.
- B. Filtering policies can be configured on ABRs or ASBRs to filter Type 5 LSAs.
- C. A Type 5 LSA contains the FA address, which is 0.0.0.0. The FA address is reserved only and does not take effect.
- D. Routers in the same area as the ASBR can calculate external routes through intra-area LSAs and Type 5 LSAs.

Correct Answer: C

Section: (none)

Explanation

Explanation/Reference:

QUESTION 45

Which of the following statements regarding the stub area in OSPF are true?

- A. A virtual link cannot pass through a stub area.
- B. A backbone area cannot be configured as a stub area.
- C. Type 7 LSAs cannot be flooded to a stub area.
- D. A stub area contains no ASBR.

Correct Answer: ABD

Section: (none)

Explanation

Explanation/Reference:

Reference: <https://support.huawei.com/enterprise/de/doc/EDOC1000141870/4c544c36/example-for-configuring-an-ospf-stub-area>

QUESTION 46

Which of the following statements regarding BGP confederations is false?

- A. By default, sub-AS numbers of a confederation are advertised to BGP peers outside the confederation.
- B. A BGP confederation divided an AS into several sub-Ass. Ass outside a confederation still consider the confederation as an AS.
- C. Confederations can easily detect routing loops inside an AS because EBGP is run between sub-AS's.
- D. Sub-Ass within a BGP confederation can use private AS numbers. For Huawei NE and AR routers, a maximum of 32 sub-Ass can be configured in a BGP confederation.

Correct Answer: A

Section: (none)

Explanation

Explanation/Reference:

QUESTION 47

Which layers are shared in the OSI reference model and TCP/IP model?

- A. Presentation layer
- B. Application layer
- C. Transport layer

- D. Session layer
- E. Data link layer

Correct Answer: BCE

Section: (none)

Explanation

Explanation/Reference:

QUESTION 48

In an existing OSPF network, which types of LSAs cause the SPF calculation?

- A. Type 1 LSA
- B. Type 3 LSA
- C. Type 4 LSA
- D. Type 2 LSA
- E. Type 5 LSA

Correct Answer: AD

Section: (none)

Explanation

Explanation/Reference:

QUESTION 49

Which of the following statements regarding IS-IS route leaking are true?

- A. IS-IS route leaking can be configured in IPv6 environments.
- B. In IS-IS route leaking, the routes to be leaked cannot be summary routes.
- C. IS-IS route leaking will not cause neighbor flapping.
- D. IS-IS route is used to prevent route loops.
- E. IS-IS route leaking can be configured on Level-1 routers.

Correct Answer: A

Section: (none)

Explanation

Explanation/Reference:

QUESTION 50

Which of the following statements regarding IS-IS route summarization is true?

- A. Route summarization can be configured and takes effect on all types of routers.
- B. Route summarization takes effect only on Level-2 routers.
- C. Route summarization takes effect only on Level-1 routers.
- D. Route summarization takes effect only on Level-1-2 routers.

Correct Answer: A

Section: (none)

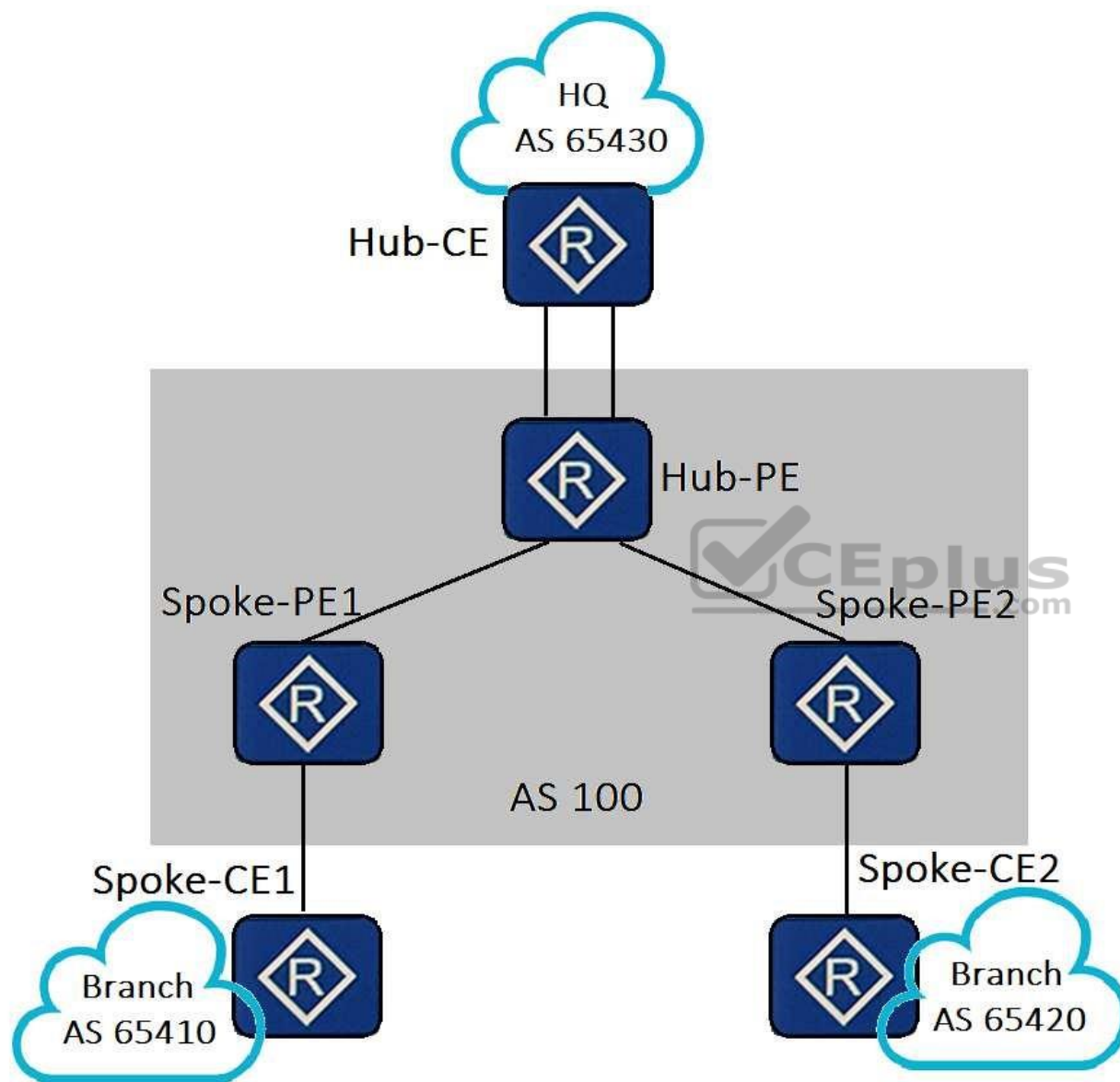
Explanation

Explanation/Reference:

Reference: <https://support.huawei.com/enterprise/en/doc/EDOC1100069334/8552081d/configuring-is-is-route-summarization>

QUESTION 51

As shown in the figure below, an enterprise wants to implement secure access between the headquarters and branches through MPLS VPN. VPN traffic of branches must be forwarded through the headquarters for traffic monitoring. Which of the following statements regarding this solution is false?



- A. When the Hub-CE and Hub-PE use EBGp to transmit routing information, the Hub-PE must be able to accept routes with the AS number repeated once so that routes advertised by the Hub-CE can be received.
- B. OSPF can be used to exchange routing information between Hub-CEs and Hub-Pes as well as between Spoke-Pes and Spoke-CEs.
- C. BGP can be used to exchange VPN routing information between CEs and Pes.
- D. The MP-IBGP peer relationship can be established between Spoke-Pes to exchange VPN routing information.

Correct Answer: A

Section: (none)

Explanation

Explanation/Reference:

QUESTION 52

Which of the following statements regarding the inter-AS MPLS VPN are false?

- A. In inter-AS VPN Option B mode, an MP-EBGP peer relationship needs to be established between two ASBRs.
- B. In inter-AS VPN Option B mode, two ASBR-Pes are interconnected through multiple interfaces (including sub-interfaces), each interface is associated with one VPN, and each ASBR-PE considers the remote device as a CE.
- C. In inter-AS VPN Option A mode, the routes advertised between two ASBRs are common IPv4 routes.
- D. In inter-AS VPN Option C solution 2, if only LDP is used to advertise public network labels, three labels need to be used during packet forwarding.

Correct Answer: D

Section: (none)

Explanation

Explanation/Reference:

QUESTION 53

Which of the following statements regarding LDP reliability is false?

- A. By default, the policy for manually configuring LDP FRR specifies that backup routes with 32-bit addresses should trigger the setup of a backup LDP LSP.
- B. Synchronization between LDP and IGP requires suppression of IGP route advertisement to achieve consistent LDP and IGP.
- C. LDP FRR can generate an LSP as the backup of the primary LSP based on Label Mapping messages that are not from the optimal next hop. LDP FRR establishes forwarding entries for the backup LSP.
- D. LDP Graceful Restart (GR) leverages the separation of the forwarding plane and control plane by MPLS to ensure uninterrupted traffic transmission during a protocol restart or active/standby switchover.

Correct Answer: A

Section: (none)

Explanation

Explanation/Reference:

QUESTION 54

The display mpls lsp command is run on a router to check LSP information. The command output is as follows:

```
[Huawei]display mpls lsp
```

LSP Information: LDP LSP

FEC	In/Out Label	In/Out IF	Vrf Name
1.1.1.1/32	NULL/1024	-GE0/0/2	
1.1.1.1/32	1027/1024	-GE0/0/2	
2.2.2.2/32	NULL/3	-GE0/0/2	
2.2.2.2/32	1028/3	-GE0/0/2	
3.3.3.3/32	NULL/3	-GE0/0/0	
3.3.3.3/32	1026/3	-GE0/0/0	
4.4.4.4/32	3/NULL	-/-	



Which of the following statements is true?

- A. When sending a data packet with the destination IP address 4.4.4.4, the router sends it directly without any label added.
- B. After receiving a data packet with label 1024, the router changes the label to label 1027 and then sends the packet.
- C. When sending a data packet with the destination IP address 2.2.2.2, the router sends it directly without any label added.
- D. When sending a data packet with the destination IP address 3.3.3.3, the router adds label 1026 to the packet before sending it.

Correct Answer: A

Section: (none)

Explanation

Explanation/Reference:

QUESTION 55

SSM is enabled on the entire IP multicast network. Which of the following statements regarding SSM are true?

- A. No RP is required.
- B. Only the RTP is used for SSM.
- C. SSM is recommended when multiple sources are available on the network and the multicast route is simple.
- D. SSM is applicable to one-to-many applications.
- E. Only the SPT is used for SSM.

Correct Answer: AD

Section: (none)

Explanation

Explanation/Reference:

QUESTION 56

What advantages does IGMPv2 have over IGMPv1?

- A. The Source-Specific Query message is added.
- B. The Group-Specific Query message is added.
- C. The Leave message is added.
- D. The maximum response time field is added.



Correct Answer: C

Section: (none)

Explanation

Explanation/Reference:

QUESTION 57

Which of the following operations can implement fast fault detection on a multicast network?

- A. Shorten the holdtime of Join or Prune messages.
- B. Shorten the interval for sending Join or Prune messages.
- C. Shorten the interval of PIM Hello messages.
- D. Set up BFD for PM sessions between PIM SM neighbors.

Correct Answer: D

Section: (none)

Explanation

Explanation/Reference:

QUESTION 58

Which of the following is not included in a digital certificate?

- A. Digital envelope
- B. Issuer
- C. Public key information
- D. Digital signature

Correct Answer: A

Section: (none)

Explanation

Explanation/Reference:



Website: <https://vceplus.com>

VCE to PDF Converter: <https://vceplus.com/vce-to-pdf/>

Facebook: <https://www.facebook.com/VCE.For.All.VN/>

Twitter : https://twitter.com/VCE_Plus

<https://www.vceplus.com/>

