

H12-261

Number: H12-261
Passing Score: 800
Time Limit: 120 min
File Version: 1.0



Website: <https://vceplus.com>
VCE to PDF Converter: <https://vceplus.com/vce-to-pdf/>
Facebook: <https://www.facebook.com/VCE.For.All.VN/>
Twitter : https://twitter.com/VCE_Plus

<http://www.vceplus.com/>

Exam A

QUESTION 1

```
[SWA]display stp brief
```

MSTID	Port	Role	STP State	Protection
0	Ethernet1/0/12	DESI	FORWARDING	NONE
0	Ethernet1/0/15	ROOT	FORWARDING	NONE
1	Ethernet1/0/12	DESI	FORWARDING	NONE
1	Ethernet1/0/15	DESI	FORWARDING	NONE
2	Ethernet1/0/12	DESI	FORWARDING	NONE
2	Ethernet1/0/15	ROOT	FORWARDING	NONE

On the MSTP network as shown in the figure, what is the role of the switch in MSTI 1 according to the configuration?

- A. Root switch
- B. Slave switch
- C. Non-root switch
- D. None of the above

Correct Answer: A

Section: (none)

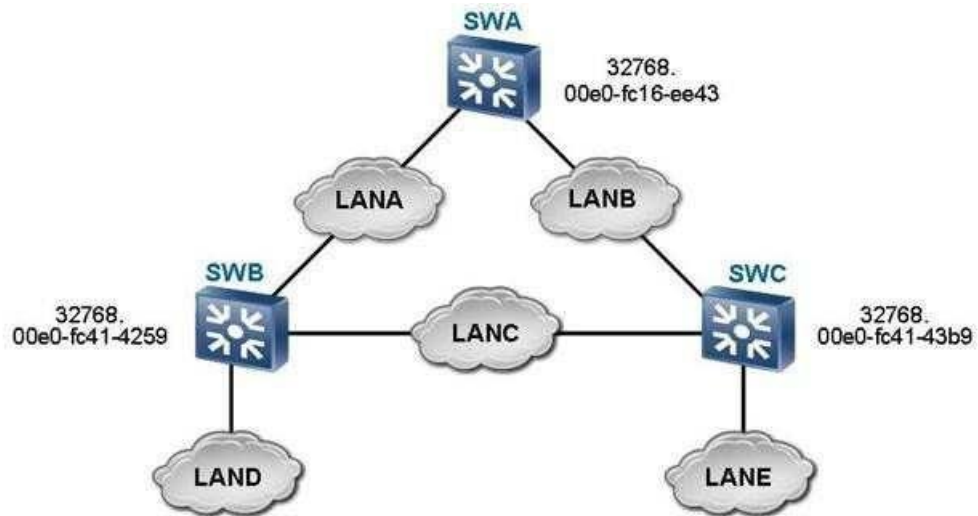
Explanation

Explanation/Reference:

appropriate.

QUESTION 2





As shown in the figure, which switch is the root switch according to the configuration?



<http://www.vceplus.com/>

- A. SWA
- B. SWB
- C. SWC
- D. None of the above

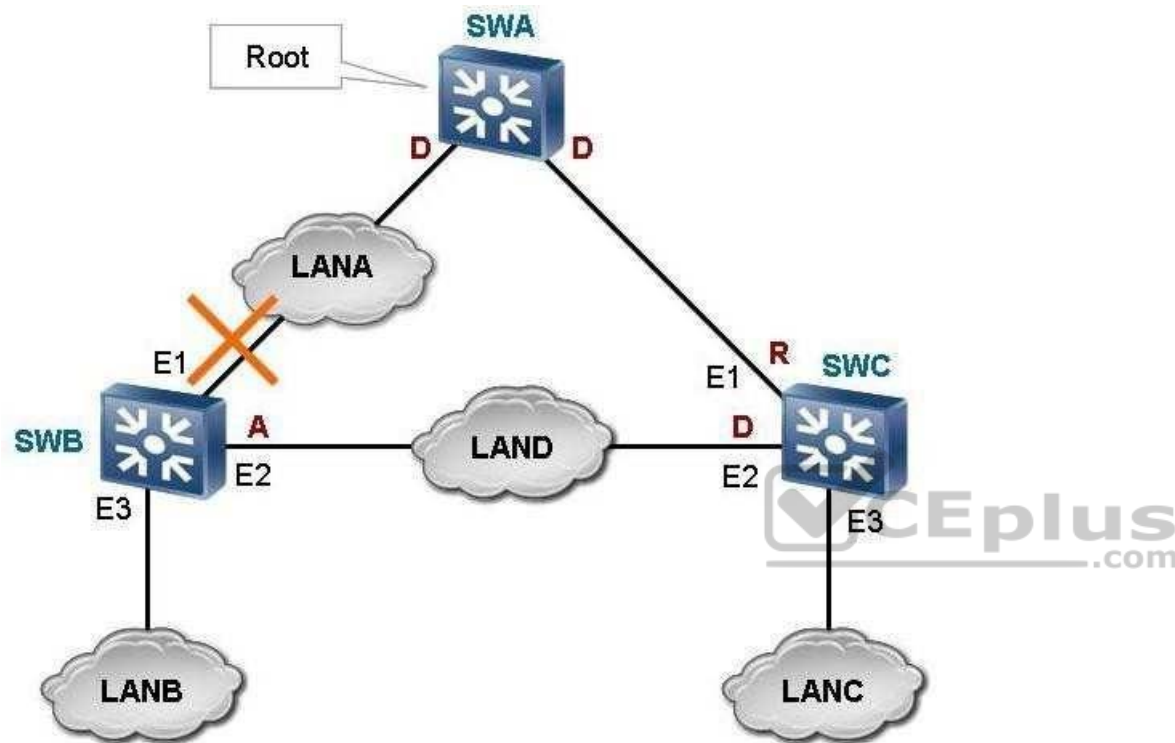
Correct Answer: A

Section: (none)

Explanation

Explanation/Reference:

QUESTION 3



On the RSTP network as shown in the figure, what RSTP operations will occur after the E1 port of SWB fails? (Select 3 Answers)

- A. SWB deletes the MAC address entries with the E1 port as the destination interface.
- B. The spanning tree is recalculated and the E2 port is elected as the new root port.
- C. All the interfaces in forwarding state send topology change notifications (TCNs) to notify other switches of the topology change.
- D. All the non-edge ports in forwarding state send TCNs to notify other switches of the topology change.

Correct Answer: ABD

Section: (none)

Explanation

Explanation/Reference:

QUESTION 4

Which is the port state defined in RSTP?

- A. Discarding
- B. Learning
- C. Forwarding
- D. All of the above

Correct Answer: D

Section: (none)

Explanation

Explanation/Reference:

QUESTION 5

RSTP has all functions that STP has and it is backward compatible with STP.

- A. True
- B. False

Correct Answer: A

Section: (none)

Explanation

Explanation/Reference:

QUESTION 6

RSTP adopts fast convergence mechanism. So, there is no Forward Delay interval in RSTP.

- A. True
- B. False

Correct Answer: B
Section: (none)
Explanation

Explanation/Reference:

QUESTION 7

Two switches are directly connected to each other and they are working in full duplex mode. By default, RSTP will consider the link between the switches as point-to-point link.

- A. True
- B. False

Correct Answer: A
Section: (none)
Explanation

Explanation/Reference:
sophisticated.

QUESTION 8

In RSTP network environment, a port can be set as edge port when it is directly connected with terminal.

- A. True
- B. False

Correct Answer: A
Section: (none)
Explanation

Explanation/Reference:

QUESTION 9

Which of the following statements about RSTP and STP is true?

- A. STP has more port states than RSTP.
- B. The port roles used in RSTP is less than the port roles used in STP.
- C. Since RSTP adopts fast convergence mechanism, it does not have Learning state which is available in STP.

D. Same as STP, the ports will enter into Listening state once the RSTP has been enabled. Then, the ports can receive BPDU and calculate the spanning tree.

Correct Answer: A

Section: (none)

Explanation

Explanation/Reference:

QUESTION 10

In a switching network that runs RSTP, the topology change notification message will not be sent when the switch detects that the Alternate Port is failed.



A. True

B. False

Correct Answer: A

Section: (none)

Explanation

Explanation/Reference:

authentic answer.

QUESTION 11

When the topology of a network running RSTP changes, what happens after the change?

A. Flooding on the entire network.

B. The aging time of MAC address entries is changed.

C. Some MAC address entries are deleted.

D. All of the above

Correct Answer: C

Section: (none)

Explanation

Explanation/Reference:

QUESTION 12

Which ports defined by RSTP cannot work in Forwarding state? (Select 2 Answers)

- A. Root Port
- B. Designated Port
- C. Backup Port
- D. Alternate Port

Correct Answer: CD

Section: (none)

Explanation

Explanation/Reference:

exact.



QUESTION 13

On an RSTP network, when an edge port is in protected state, what operation is performed after the edge port receives BPDUs?

- A. The edge port forwards BPDUs.
- B. The edge port discards BPDUs.
- C. The edge port is shut down.
- D. The edge port obtains required information from BPDUs.

Correct Answer: C

Section: (none)

Explanation

Explanation/Reference:

QUESTION 14

In RSTP, the port status can be discarding and learning. Which statements about the port status are true? (Select 2 Answers)

- A. The port in discarding or learning state does not forward data frames.
- B. The port in discarding state does not learn MAC addresses.
- C. The port in learning state does not learn MAC addresses.
- D. All of the above

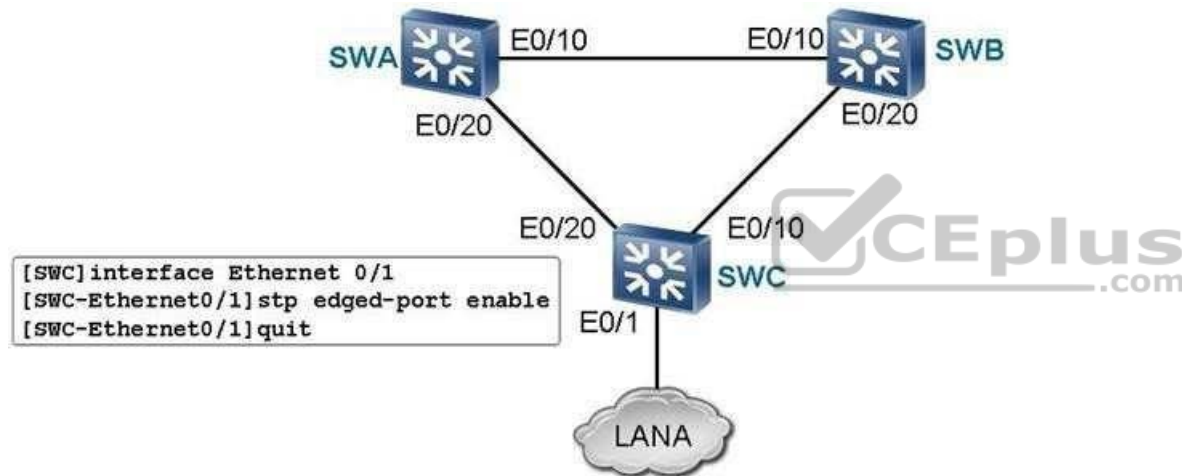
Correct Answer: AB

Section: (none)

Explanation

Explanation/Reference:

QUESTION 15



On the RSTP network as shown in the figure, what is the port role of SWC E0/1 according to the configuration? (Select 2 Answers)

- A. Designated port
- B. Root port
- C. Alternate port
- D. Edge port

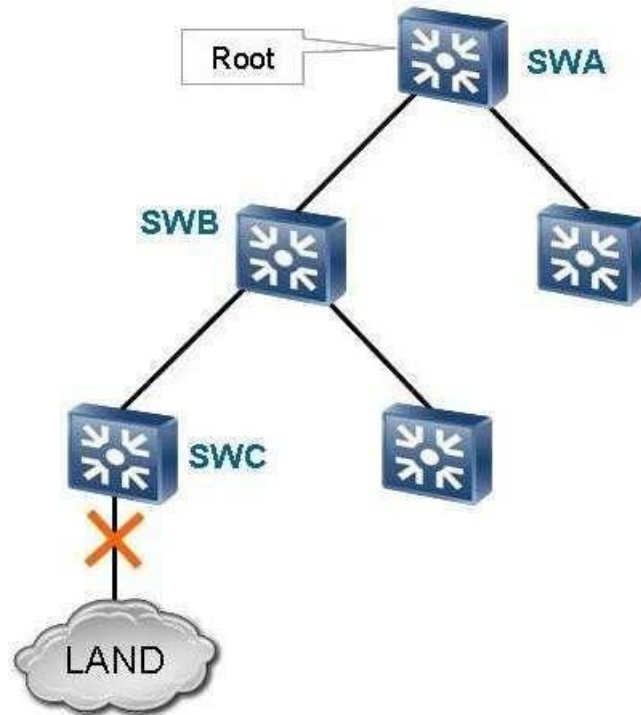
Correct Answer: AD

Section: (none)

Explanation

Explanation/Reference:

QUESTION 16



As shown in the figure, when the link between SWC and LAND is faulty, through which path are TCA BPDUs sent?

- A. From SWA to SWB
- B. From SWB to SWC
- C. From SWB to SWA
- D. From SWC to SWB

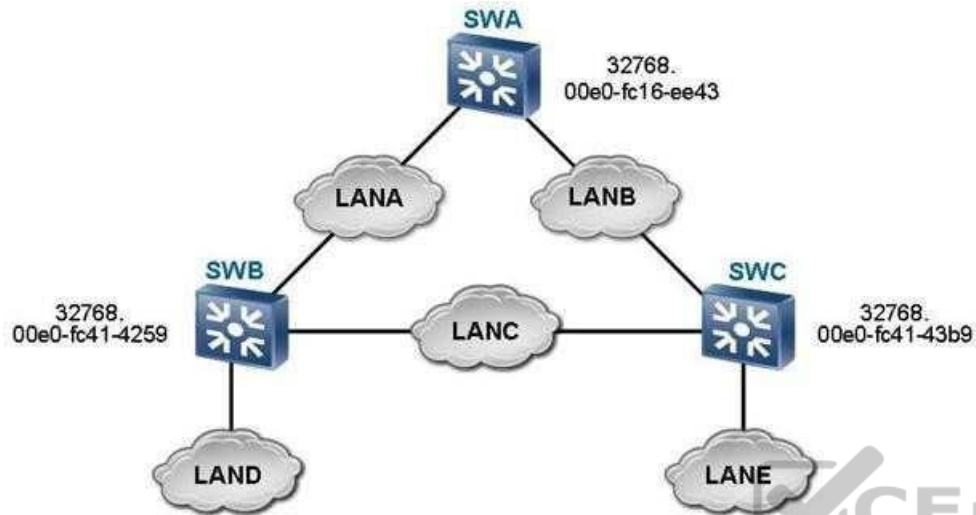
Correct Answer: B

Section: (none)

Explanation

Explanation/Reference:

QUESTION 17



As shown in the figure, when the STP network runs properly, which device does the designated port of LANC reside?

- A. SWA
- B. SWB
- C. SWC
- D. None of the above

Correct Answer: B

Section: (none)

Explanation

Explanation/Reference:

QUESTION 18

In STP configuration, which statement about BPDUs is true?

- A. BPDUs cannot be sent from the designated port.
- B. BPDUs can be sent only from the designated port.
- C. BPDUs can be sent from any port.
- D. None of the above.

Correct Answer: B

Section: (none)

Explanation

Explanation/Reference:

QUESTION 19

On an STP network, after the network topology changes, which BPDUs are sent during flooding of topology change information on the entire network?

- A. BPDUs with the TCN flag
- B. BPDUs with the TCA flag
- C. BPDUs with the TC flag
- D. All of the above

Correct Answer: D

Section: (none)

Explanation

Explanation/Reference:

QUESTION 20

After an STP switch starts, it considers itself as the root switch. Which statements about BDPU parameter setting are true? (Select 3 Answers)



<http://www.vceplus.com/>

- A. The switch is the designated root.
- B. The designated cost is 0.
- C. The switch is the designated bridge.
- D. The designated port is 0.

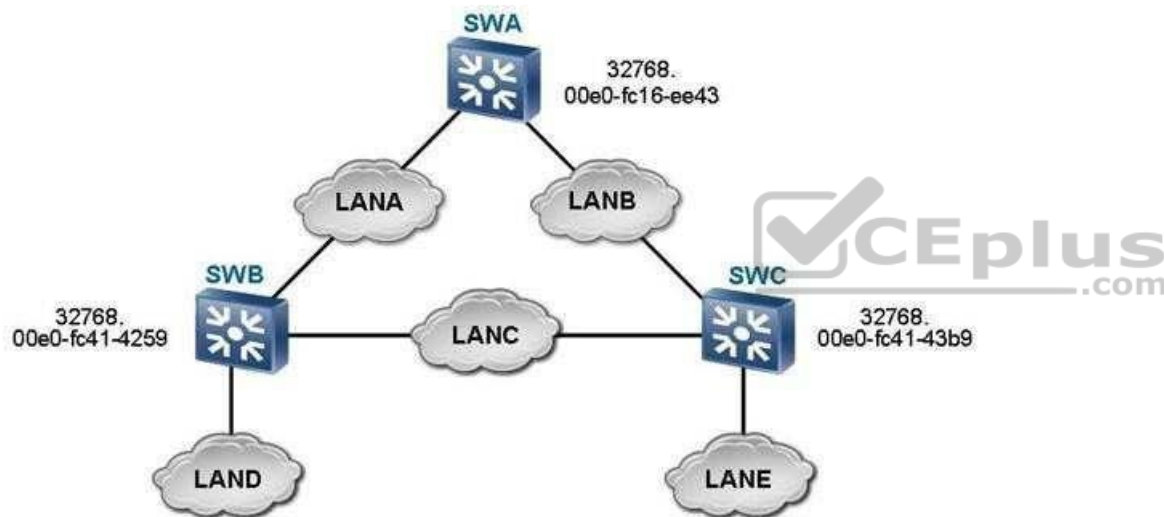
Correct Answer: ABC

Section: (none)

Explanation

Explanation/Reference:

QUESTION 21



On the STP network as shown in the figure, which device may be the blocked port belong to?

- A. SWA
- B. SWB
- C. SWC
- D. None of the above

Correct Answer: C

Section: (none)

Explanation

Explanation/Reference:

QUESTION 22

QinQ provides a simplified Layer 2 VPN tunnel.

- A. True
- B. False

Correct Answer: A

Section: (none)

Explanation

Explanation/Reference:

QUESTION 23

Which statements about QinQ are true? (Select 2 Answers)



- A. QinQ saves VLANs on the public network.
- B. To avoid VLAN conflict, the customer must negotiate with the service provider before modifying the VLANs on its private network.
- C. When the service provider upgrades the network, the configurations on the user network do not need to be modified.
- D. All of the above

Correct Answer: AC

Section: (none)

Explanation

Explanation/Reference:

QUESTION 24

Some vendors set the TPID value in the outer VLAN tag of QinQ packets to the non-protocol value.

To be compatible with these vendors' devices, the TPID value on Huawei switches is adjustable.

Which is the default value of the TPID value on Huawei switches?

- A. 0x9200
- B. 0x9100
- C. 0x8200
- D. 0x8100

Correct Answer: D

Section: (none)

Explanation

Explanation/Reference:

QUESTION 25

Which types of interfaces can be configured with selective QinQ? (Select 2 Answers)

- A. Access interface
- B. Trunk interface
- C. Hybrid interface
- D. dot1q-tunnel interface



Correct Answer: BC

Section: (none)

Explanation

Explanation/Reference:

QUESTION 26

The STP protocol can prevent broadcast storms caused by loops on the Layer 2 network.

- A. True
- B. False

Correct Answer: A

Section: (none)

Explanation

Explanation/Reference:

QUESTION 27

The STP protocol cannot prevent MAC address table flapping caused by loops on the Layer 2 network.

- A. True
- B. False

Correct Answer: B

Section: (none)

Explanation

Explanation/Reference:

QUESTION 28

Which are the port roles defined in STP?

- A. Root Port
- B. Designated Port
- C. Alternate Port
- D. All of the above

Correct Answer: D

Section: (none)

Explanation

Explanation/Reference:

QUESTION 29

How many port states are defined by STP?

- A. 3
- B. 4
- C. 5



D. 6

Correct Answer: C

Section: (none)

Explanation

Explanation/Reference:

QUESTION 30

Each STP switch has a unique switch ID. Which two entries does the switch ID contain?



<http://www.vceplus.com/>



- A. Two-byte switch priority
- B. Six-byte MAC address
- C. Two-byte switch priority and six-byte MAC address
- D. Six-byte switch priority and six-byte MAC address

Correct Answer: C

Section: (none)

Explanation

Explanation/Reference:

QUESTION 31

On an STP network, before the interface status transits from non-forwarding to forwarding, how many Forward Delay intervals does the interface wait for?

- A. 2
- B. 3
- C. 4
- D. 5

Correct Answer: A

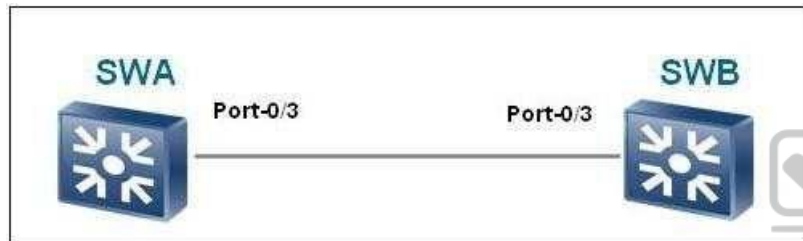
Section: (none)

Explanation

Explanation/Reference:

QUESTION 32

If loop exists and STP is not enabled, the switch will not operate normally.



- A. True
- B. False

Correct Answer: A

Section: (none)

Explanation

Explanation/Reference:

QUESTION 33

Which of the following statements about STP Designated Port is true?

- A. Each of the bridge can have one Designated Port only.
- B. Designated Port is responsible for forwarding packets to its connected network segments.

- C. The only path leading to the Root Bridge is through Designated Port.
- D. Designated Port forwards the data packet from its corresponding switch to the Root Switch.

Correct Answer: B

Section: (none)

Explanation

Explanation/Reference:

QUESTION 34

Which of the following statements about STP Designated Port is true?

- A. Each of the bridge can have one Designated Port only.
- B. Designated Port is responsible for forwarding packets to its connected network segments.
- C. The only path leading to the Root Bridge is through Designated Port.
- D. Designated Port forwards the data packet from its corresponding switch to the Root Switch.

Correct Answer: B

Section: (none)

Explanation



Explanation/Reference:

QUESTION 35

Which of the following statements is not the advantage of STP?

- A. STP can manage the redundant links. When the working link is down, network connectivity can be restored.
- B. STP can prevent loops
- C. STP can prevent broadcast storm
- D. STP can save network bandwidth

Correct Answer: D

Section: (none)

Explanation

Explanation/Reference:

QUESTION 36

Which of the following standards defines STP?

- A. 802.1J
- B. 802.1X
- C. 802.1D
- D. 802.1P

Correct Answer: C

Section: (none)

Explanation

Explanation/Reference:

QUESTION 37

STP elects ()

- A. One bridge as the Root Bridge and another one as the Backup Root Bridge
- B. One bridge as the Root Bridge
- C. Two bridges as the Root Bridge
- D. One Designated Bridge

Correct Answer: B

Section: (none)

Explanation

Explanation/Reference:

QUESTION 38

STP distributes configuration message by sending BPDU packet to each other.

- A. True
- B. False

Correct Answer: A

Section: (none)

Explanation

Explanation/Reference:

QUESTION 39

In STP, BPDU packet is carried by ().

- A. IP packet
- B. TCP packet
- C. Ethernet frame
- D. UDP packet

Correct Answer: C

Section: (none)

Explanation

Explanation/Reference:



QUESTION 40

In a switching network that has been enabled with STP protocol, the priorities of all the switches are the same. The MAC address of switch1 is 00-e0-fc-00-00-40, MAC address of switch2 is 00- e0-fc-00-00-10, MAC address of switch3 is 00-e0-fc-00-00-20, and MAC address of switch4 is 00-e0-fc-00-00-80. Which of the switches will be elected as the Root Bridge?



<http://www.vceplus.com/>

- A. Switch1
- B. Switch2
- C. Switch3

D. Switch4

Correct Answer: B

Section: (none)

Explanation

Explanation/Reference:

QUESTION 41

A switching network has been enabled with STP protocol. To provide fast access speed to the file server for most of the users, the switch that is directly connected with file server is configured as the root bridge.

A. True

B. False

Correct Answer: A

Section: (none)

Explanation

Explanation/Reference:



QUESTION 42

Which of the following statements about the link failure detection in STP protocol is not true?

A. When network topology is stable, the Designated Port sends BPDU packet at every Hello Time interval.

B. When network topology is stable, BPDU packets will be transmitted periodically.

C. When the port does not receive new BPDU within a certain interval, the old configuration BPDU will time out and the link failure can be detected.

D. The port sends Configuration BPDU at every Hello Time interval. When the link fails, Configuration BPDU cannot be sent out. As a result, this port can detect the link failure.

Correct Answer: D

Section: (none)

Explanation

Explanation/Reference:

QUESTION 43

Which of the following statements about STP is not true?

- A. STP can manage redundant links.
- B. STP can block redundant links to eliminate loops
- C. STP can prevent temporary loss of connectivity
- D. STP can make LAN switch operate normally in a network with loops

Correct Answer: C

Section: (none)

Explanation

Explanation/Reference:

QUESTION 44

According to OSI reference model, Layer 2 LAN switch operates at ().

- A. Physical layer
- B. Data link layer
- C. IP layer
- D. Application layer



Correct Answer: B

Section: (none)

Explanation

Explanation/Reference:

QUESTION 45

According to the STP protocol, a certain field in the BPDU identifies the root switch. That is, if the BPDU sent by a switch contains this field, this switch is considered as the root switch. What is this field?

- A. Root Identifier
- B. Root Path Cost
- C. Bridge Identifier
- D. Port Identifier

Correct Answer: A

Section: (none)

Explanation

Explanation/Reference:

QUESTION 46

Which are the two parts in the port identifier of the uplink interface on a non-root switch?

- A. 1-bit port priority and 1-bit port number
- B. 1-bit port priority and 2-bit port number
- C. 2-bit port priority and 1-bit port number
- D. 2-bit port priority and 2-bit port number

Correct Answer: A

Section: (none)

Explanation

Explanation/Reference:

QUESTION 47

In the network diagram, which switch will be selected as the root switch?

- A. SWA
- B. SWB
- C. SWC
- D. None of the above

Correct Answer: A

Section: (none)

Explanation

Explanation/Reference:

QUESTION 48

Which statements about the PVID on the access interface are true? (Select 3 Answers)

- A. When receiving a packet without the VLAN tag, the interface adds the VLAN tag to the packet and sets the VID in the tag to the default VLAN ID.

- B. When receiving a packet with a VLAN tag, the interface compares the VLAN ID in the tag with the default VLAN ID. If they are the same, the interface forwards the packets; otherwise, the interface discards the packets.
- C. When the interface sends a packet with a VLAN tag that contains the default VLAN ID, the system removes the VLAN tag of the packet, and then forwards the packet.
- D. None of the above.

Correct Answer: ABC

Section: (none)

Explanation

Explanation/Reference:

QUESTION 49

Which statement about the hybrid interface is true?

- A. A hybrid interface can only be connected to network device.
- B. A hybrid interface can only be connected to host.
- C. A hybrid interface can be connected to host or network device.
- D. A hybrid interface cannot be configured with VLAN ID.

Correct Answer: C

Section: (none)

Explanation

Explanation/Reference:

QUESTION 50

Which statement about MUX VLAN is false?

- A. Principal VLAN
- B. Subordinate VLAN
- C. Subordinate group VLAN
- D. Guest VLAN

Correct Answer: D

Section: (none)

Explanation

Explanation/Reference:



<http://www.vceplus.com/>

