

**H12-261**

Number: H12-261  
Passing Score: 800  
Time Limit: 120 min  
File Version: 1.0



**Website:** <https://vceplus.com>  
**VCE to PDF Converter:** <https://vceplus.com/vce-to-pdf/>  
**Facebook:** <https://www.facebook.com/VCE.For.All.VN/>  
**Twitter :** [https://twitter.com/VCE\\_Plus](https://twitter.com/VCE_Plus)

<http://www.vceplus.com/>

## Exam A

### QUESTION 1

Some vendors set the TPID value in the outer VLAN tag of QinQ packets to the non-protocol value.

To be compatible with these vendors' devices, the TPID value on Huawei switches is adjustable.

Which is the default value of the TPID value on Huawei switches?



<http://www.vceplus.com/>

- A. 0x9200
- B. 0x9100
- C. 0x8200
- D. 0x8100



**Correct Answer:** D

**Section:** (none)

**Explanation**

**Explanation/Reference:**

### QUESTION 2

Which types of interfaces can be configured with selective QinQ? (Select 2 Answers)

- A. Access interface
- B. Trunk interface
- C. Hybrid interface
- D. dot1q-tunnel interface

**Correct Answer:** BC

**Section:** (none)

**Explanation**

**Explanation/Reference:**

### QUESTION 3

In a switching network that has been enabled with STP protocol, the priorities of all the switches are the same. The MAC address of switch1 is 00-e0-fc-00-00-40, MAC address of switch2 is 00- e0-fc-00-00-10, MAC address of switch3 is 00-e0-fc-00-00-20, and MAC address of switch4 is 00-e0-fc-00-00-80. Which of the switches will be elected as the Root Bridge?

- A.  
Switch1
- B.  
Switch2
- C.  
Switch3
- D. Switch4

**Correct Answer:** B

**Section:** (none)

**Explanation**

**Explanation/Reference:**

### QUESTION 4

A switching network has been enabled with STP protocol. To provide fast access speed to the file server for most of the users, the switch that is directly connected with file server is configured as the root bridge.

- A. True
- B. False

**Correct Answer:** A

**Section:** (none)

**Explanation**

**Explanation/Reference:**



### QUESTION 5

Which of the following statements about the link failure detection in STP protocol is not true?

- A. When network topology is stable, the Designated Port sends BPDU packet at every Hello Time interval.
- B. When network topology is stable, BPDU packets will be transmitted periodically.
- C. When the port does not receive new BPDU within a certain interval, the old configuration BPDU will time out and the link failure can be detected.
- D. The port sends Configuration BPDU at every Hello Time interval. When the link fails, Configuration BPDU cannot be sent out. As a result, this port can detect the link failure.

**Correct Answer:** D

**Section:** (none)

**Explanation**

**Explanation/Reference:**

answer is approved.

### QUESTION 6

Which of the following statements about STP is not true?

- A. STP can manage redundant links.
- B. STP can block redundant links to eliminate loops
- C. STP can prevent temporary loss of connectivity
- D. STP can make LAN switch operate normally in a network with loops



**Correct Answer:** C

**Section:** (none)

**Explanation**

**Explanation/Reference:**

confirmed answer.

### QUESTION 7

According to OSI reference model, Layer 2 LAN switch operates at ( ).

- A. Physical layer
- B. Data link layer
- C. IP layer

D. Application layer

**Correct Answer:** B

**Section:** (none)

**Explanation**

**Explanation/Reference:**

#### **QUESTION 8**

According to the STP protocol, a certain field in the BPDU identifies the root switch. That is, if the BPDU sent by a switch contains this field, this switch is considered as the root switch. What is this field?

- A. Root Identifier
- B. Root Path Cost
- C. Bridge Identifier
- D. Port Identifier

**Correct Answer:** A

**Section:** (none)

**Explanation**

**Explanation/Reference:**



#### **QUESTION 9**

Which are the two parts in the port identifier of the uplink interface on a non-root switch?

- A. 1-bit port priority and 1-bit port number
- B. 1-bit port priority and 2-bit port number
- C. 2-bit port priority and 1-bit port number
- D. 2-bit port priority and 2-bit port number

**Correct Answer:** A

**Section:** (none)

**Explanation**

**Explanation/Reference:**

**QUESTION 10**

In the network diagram, which switch will be selected as the root switch?



<http://www.vceplus.com/>

- A. SWA
- B. SWB
- C. SWC
- D. None of the above

**Correct Answer:** A

**Section:** (none)

**Explanation**

**Explanation/Reference:**

true.

**QUESTION 11**

Which statements about the PVID on the access interface are true? (Select 3 Answers)

- A. When receiving a packet without the VLAN tag, the interface adds the VLAN tag to the packet and sets the VID in the tag to the default VLAN ID.
- B. When receiving a packet with a VLAN tag, the interface compares the VLAN ID in the tag with the default VLAN ID. If they are the same, the interface forwards the packets; otherwise, the interface discards the packets.
- C. When the interface sends a packet with a VLAN tag that contains the default VLAN ID, the system removes the VLAN tag of the packet, and then forwards the packet.
- D. None of the above.

**Correct Answer:** ABC

**Section:** (none)

**Explanation**

**Explanation/Reference:**

valid.

**QUESTION 12**

Which statement about the hybrid interface is true?

- A. A hybrid interface can only be connected to network device.
- B. A hybrid interface can only be connected to host.
- C. A hybrid interface can be connected to host or network device.
- D. A hybrid interface cannot be configured with VLAN ID.

**Correct Answer:** C

**Section:** (none)

**Explanation**

**Explanation/Reference:**

right,

**QUESTION 13**

Which statement about MUX VLAN is false?

- A. Principal VLAN
- B. Subordinate VLAN
- C. Subordinate group VLAN
- D. Guest VLAN

**Correct Answer:** D

**Section:** (none)

**Explanation**

**Explanation/Reference:****QUESTION 14**

Which statements about the MUX VLAN configuration are true? (Select 2 Answers)

[Quidway]vlan 10

[Quidway-vlan10]mux-vlan



[Quidway-vlan10]subordinate group 11  
[Quidway-vlan10]subordinate separate 12

- A. VLAN 10 is the principal VLAN
- B. VLAN 11 is the principal VLAN
- C. VLAN 12 is the subordinate separate VLAN

**Correct Answer:** AC

**Section:** (none)

**Explanation**

**Explanation/Reference:**

#### **QUESTION 15**

When configuring VLAN mapping, you must set the priority of outer VLAN ID.

- A. True
- B. False

**Correct Answer:** B

**Section:** (none)

**Explanation**



**Explanation/Reference:**

#### **QUESTION 16**

The port isolation function can isolate the ports on the same switch.

- A. True
- B. False

**Correct Answer:** A

**Section:** (none)

**Explanation**

**Explanation/Reference:**



**QUESTION 17**

Which statements are false?

- A. The VLAN mapping function is usually configured on the edge node of a public network.
- B. The VLAN mapping function can save VLAN resources on a public network.
- C. VLAN mapping allows private networks on different VLANs to communicate with each other over the ISP network.
- D. VLAN mapping allows only the private networks on the same VLAN to communicate with each other.

**Correct Answer:** D

**Section:** (none)

**Explanation**

**Explanation/Reference:**

**QUESTION 18**

Which statements about VLAN are true? (Select 3 Answers)

- A. The VLAN improves network security. Users on different VLANs cannot communicate with each other.
- B. The VLAN improves network processing efficiency. Users on different VLANs are separated from each other. Therefore, the size of a broadcast domain is reduced.
- C. Layer 2 forwarding is only based on destination MAC addresses, and is irrelevant to VLAN configuration.
- D. The VLAN technology is a management method that controls the communication between terminals.

**Correct Answer:** ABD

**Section:** (none)

**Explanation**

**Explanation/Reference:**

**QUESTION 19**

Which statements about the VLAN on S series switches are true? (Select 2 Answers)

- A. The VLAN IDs on the switch range from 1 to 4090.
- B. The switch has a default VLAN.
- C. The priority value in the VLAN tag can be changed on the switch.
- D. A VLAN tag contains one byte.

**Correct Answer:** BC

**Section:** (none)

**Explanation**

**Explanation/Reference:**

#### QUESTION 20

If the customer requires high mobility and easy management, the staff of different departments can be added to different VLANs. In addition, these VLANs are located on different IP subnets. Which VLAN allocation mode can meet these requirements?



<http://www.vceplus.com/>



- A. VLAN allocation based on source IP addresses
- B. VLAN allocation based on destination IP addresses
- C. VLAN allocation based on source IP addresses and source MAC addresses
- D. VLAN allocation based on destination MAC addresses and destination IP addresses

**Correct Answer:** A

**Section:** (none)

**Explanation**

**Explanation/Reference:**

#### QUESTION 21

Which statements about the access interface are true? (Select 3 Answers)

- A. Only the VLAN whose ID is the same as the PVID of the access interface are allowed on the access interface.
- B. When receiving an untagged frame, the access interface adds its own PVID to the frame.
- C. The access interface sends only untagged frames to the peer device.

D. None of the above.

**Correct Answer:** ABC

**Section:** (none)

**Explanation**

**Explanation/Reference:**

#### **QUESTION 22**

Which statement is false?

- A. The switch supports 1:1 VLAN mapping.
- B. The switch does not support N:1 VLAN mapping on an interface.
- C. The switch can perform VLAN mapping for double-tagged packets.
- D. The switch can map the outer VLAN ID of packets to another VLAN ID.

**Correct Answer:** B

**Section:** (none)

**Explanation**

**Explanation/Reference:**



#### **QUESTION 23**

Which statement about VLAN is false?

- A. A VLAN tag contains a 3-bit priority field. The priority value ranges from 0 to 7. It is used for differentiated service forwarding.
- B. The priority in the VLAN tag can be mapped to the internal priority of the switch, for differentiated service forwarding.
- C. The priority in the VLAN tag can be changed on the switch.
- D. The priority in the VLAN tag cannot be changed.

**Correct Answer:** D

**Section:** (none)

**Explanation**

**Explanation/Reference:**

**QUESTION 24**

Which statements are true? (Select 3 Answers)

- A. The routing ARP proxy allows the hosts on different physical networks of the same network segment to communicate with each other.
- B. The intra-VLAN ARP proxy allows isolated users on a VLAN to communicate with each other.
- C. The inter-VLAN ARP proxy allows hosts on different VLANs to communicate with each other through Layer 3.
- D. The inter-VLAN ARP proxy function can't be enabled on the VLANIF interface of the super VLAN to implement communication between sub-VLANs.

**Correct Answer:** ABC

**Section:** (none)

**Explanation**

**Explanation/Reference:**

**QUESTION 25**

Which statement about VLAN mapping is true?

- A. The interface configured with VLAN mapping must be a hybrid interface.
- B. The same VLANs on different interfaces cannot be mapped to different VLANs.
- C. Different VLANs on the same interface can be mapped to the same VLAN.
- D. Any types of interfaces can be configured with VLAN mapping.

**Correct Answer:** C

**Section:** (none)

**Explanation**

**Explanation/Reference:**

**QUESTION 26**

Which statement about port isolation configuration is false?

- A. Port isolation can be used for Layer 2 isolation.
- B. In port isolation mode, ports are isolated at Layer 2 but can communicate at Layer 3 by default.
- C. Before the port isolation function takes effect on an interface, the port isolation function must be enabled first.
- D. The port-isolate enable command can run in the system view.

**Correct Answer:** D

**Section:** (none)

**Explanation**

**Explanation/Reference:**

#### **QUESTION 27**

Which VLAN assignment methods are supported by the Huawei S9300? (Select 3 Answers)

- A. Assigning VLANs based on Layer 7 protocols
- B. Assigning VLANs based on protocols
- C. Assigning VLANs based on IP subnets
- D. Assigning VLANs based on MAC addresses

**Correct Answer:** BCD

**Section:** (none)

**Explanation**

**Explanation/Reference:**

#### **QUESTION 28**

Which statements about VLAN aggregation are true? (Select 3 Answers)

- A. "multiple" VLANs (broadcast domains) are on the same physical network; therefore, different VLANs belong to the same subnet.
- B. VLAN aggregation can save IP addresses.
- C. Only the super VLAN requires an IP address, but sub-VLANs do not need.
- D. The VLAN that is used to separate broadcast domains is called super VLAN.

**Correct Answer:** ABC

**Section:** (none)

**Explanation**

**Explanation/Reference:**

#### **QUESTION 29**

Which statement about VLAN mapping is false?

- A. VLAN mapping is also called VLAN translation.
- B. VLAN mapping can implement translation between C-VLAN IDs and S-VLAN IDs.
- C. VLAN mapping can be configured.
- D. VLAN mapping means that a VLAN tag is added to packets.

**Correct Answer:** D

**Section:** (none)

**Explanation**

**Explanation/Reference:**

#### QUESTION 30

Which statement about the VLAN on a Layer 2 switch is true?



<http://www.vceplus.com/>

- A. The CFI in the VLAN tag specifies whether the priority in the VLAN tag is valid.
- B. The VLAN tag is located in the Layer 2 header of a packet.
- C. The CFI in the VLAN tag contains two bits.
- D. A VLAN on the switch is a broadcast domain. The broadcast domains are separated.

**Correct Answer:** A

**Section:** (none)

**Explanation**

**Explanation/Reference:**

#### QUESTION 31

Which statements about VLAN configuration are true? (Select 2 Answers)

- A. You can enter the VLAN view at the same time you create a VLAN.
- B. If you run undo vlan, the VLAN is invalid, but still exists. You do not need to create the VLAN when you use it next time.
- C. You can configure a character string of VLAN description. The length of the character string is not limited.
- D. If you do not enter the VLAN ID when running the display vlan command, information about all VLANs will be displayed.

**Correct Answer:** AD

**Section:** (none)

**Explanation**

**Explanation/Reference:**

### QUESTION 32

Which statement about the following configuration is true?

```
port link-type hybrid port
hybrid pvidvlan 2 port
hybrid untagged vlan 2
port hybrid tagged vlan 3
```



- A. The default VLAN of the interface is VLAN 2.
- B. The port hybrid tagged vlan 3 command configures the VLAN for a hybrid interface. Frames in the VLAN then pass through the hybrid interface in untagged mode.
- C. The port hybrid untagged vlan 2 command configures the VLAN for a hybrid interface. Frames in the VLAN then pass through the hybrid interface in tagged mode.
- D. All of the above.

**Correct Answer:** A

**Section:** (none)

**Explanation**

**Explanation/Reference:**

### QUESTION 33

Which statements about VLAN mapping are true? (Select 2 Answers)

- A. When sending a frame from the local VLAN, the switch replaces the VLAN tag in the frame with another VLAN tag.
- B. When receiving a frame from another VLAN, the switch replaces the VLAN tag of the frame with the local VLAN tag.
- C. When an interface receives a frame from another VLAN, it does not replace the VLAN tag of the frame. The interface replaces the VLAN tag of the frame with another VLAN tag only when it sends a frame.
- D. The interface replaces the VLAN tag of only the frame received from another VLAN, but does not change the VLAN tag of the frame it sends out.

**Correct Answer:** AB

**Section:** (none)

**Explanation**

**Explanation/Reference:**

#### **QUESTION 34**

Which statements are true? (Select 3 Answers)

- A. Port isolation is a mechanism that controls the access between switch interfaces.
- B. Port isolation is an isolation mechanism at the physical layer.
- C. Port isolation prevents the computers connected to different ports from accessing each other.
- D. Port isolation can be configured based on VLANs.

**Correct Answer:** ABC

**Section:** (none)

**Explanation**

**Explanation/Reference:**

#### **QUESTION 35**

Which statements are true? (Select 3 Answers)

- A. The sub-VLANs are configured in the super VLAN view.
- B. VLANs 1 to 4094 can be configured as a super VLAN.
- C. The aggregate-vlan command is used to configure the super VLAN.
- D. A VLAN to be configured as a super VLAN cannot contain any interface.

**Correct Answer:** ACD

**Section:** (none)

**Explanation**



**Explanation/Reference:**

**QUESTION 36**

Which statements about VLAN allocation are true? (Select 3 Answers)

- A. The IP subnet VLAN is used to send the packets from the specified network segment or IP address over the specified VLAN.
- B. The MAC address- or IP subnet-based VLAN is valid for only the untagged packets.
- C. The protocol-based VLAN has a higher priority than the IP subnet-based VLAN.
- D. The protocol-based VLAN indicates that service types on the network are bound to VLANs.

**Correct Answer:** ABD

**Section:** (none)

**Explanation**

**Explanation/Reference:**

**QUESTION 37**

Which is contained in the GVRP VLAN deregistration message?



- A. Specified VLAN ID
- B. Specified IP address
- C. Specified MAC address
- D. Known port number

**Correct Answer:** C

**Section:** (none)

**Explanation**

**Explanation/Reference:**

**QUESTION 38**

On a switch running GVRP, each interface is considered as a participant. The participants can exchange information.

- A. True
- B. False

**Correct Answer:** A

**Section:** (none)

**Explanation**

**Explanation/Reference:**

**QUESTION 39**

When the GVRP registration mode is FORBIDDEN, no VLAN can be created or registered on the interface. In addition, which VLANs are deregistered on the interface?

- A. All VLANs except VLAN 1
- B. All VLANs except VLAN 4095
- C. All VLANs
- D. All VLANs except the VLAN specified by the user

**Correct Answer:** A

**Section:** (none)

**Explanation**

**Explanation/Reference:**



**QUESTION 40**

Which are contained in a GARP participant? (Select 2 Answers)



<http://www.vceplus.com/>

- A. GARP Application
- B. GARP Information Propagation (GIP)

- C. GARP Information Declaration (GID)
- D. Interface LLC

**Correct Answer:** AC

**Section:** (none)

**Explanation**

**Explanation/Reference:**

#### QUESTION 41

When the GVRP registration mode is FIXED, which statement is true?

- A. VLANs can be manually created and registered on the interface, and can also be dynamically registered and deregistered on the interface.
- B. VLANs cannot be manually created and registered on the interface, but can be dynamically registered and deregistered on the interface.
- C. VLANs can be manually created and registered on the interface, but cannot be dynamically registered or deregistered on the interface.
- D. VLANs cannot be manually created and registered on the interface, and cannot be dynamically registered or deregistered on the interface.

**Correct Answer:** C

**Section:** (none)

**Explanation**



**Explanation/Reference:**

#### QUESTION 42

Which statements about the relationship between GVRP and GARP are true? (Select 2 Answers)

- A. GVRP, GARP, and GMRP are the standards of the same type.
- B. GVRP and GARP are defined by IEEE 802.1p.
- C. GVRP is based on GARP, and is an application of GARP.
- D. GVRP is a new definition of GARP.

**Correct Answer:** BC

**Section:** (none)

**Explanation**

**Explanation/Reference:**

#### QUESTION 43

GARP involves various messages. Besides JoinIn message and Leave message, which are also the GARP messages? (Select 3 Answers)

- A. Notice
- B. Empty
- C. JoinEmpty
- D. LeaveAll

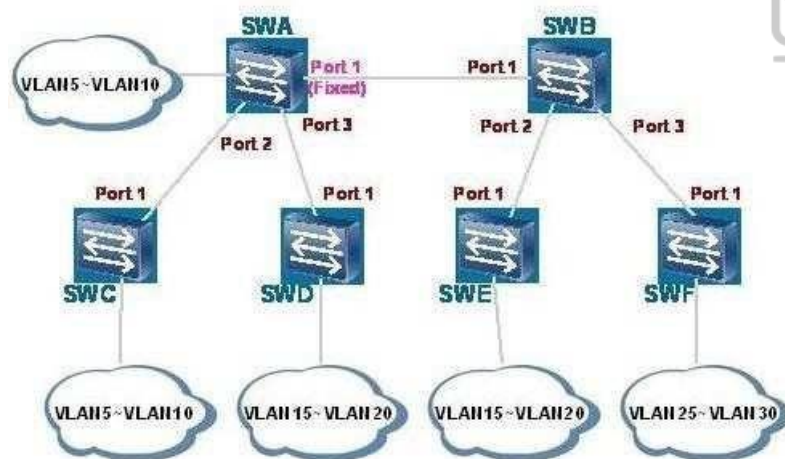
**Correct Answer:** BCD

**Section:** (none)

**Explanation**

**Explanation/Reference:**

#### QUESTION 44



As shown in the figure, port 1 of switch A is configured with the Fixed mode, and other ports are configured with the Normal mode. The trunk interfaces allow all VLANs. Which VLANs are registered on port 1 of switch C? (Select 3 Answers)

- A. VLAN 1
- B. VLAN 5 to VLAN 10
- C. VLAN 15 to VLAN 20
- D. VLAN 25 to VLAN 30

**Correct Answer:** ABC

**Section:** (none)

**Explanation**

**Explanation/Reference:**

#### **QUESTION 45**

If 802.1x authentication is enabled on an interface, MAC address authentication (enabled by the mac-authen enable command) and direct authentication (enabled by the direct-authen enable command) cannot be enabled on the interface.

- A. True
- B. False

**Correct Answer:** A

**Section:** (none)

**Explanation**

**Explanation/Reference:**

#### **QUESTION 46**

Which are 802.1x authentication modes? (Select 2 Answers)

- A. EAP relay mode
- B. Proxy mode
- C. EAP termination mode
- D. Remote mode

**Correct Answer:** AC

**Section:** (none)

**Explanation**



**Explanation/Reference:**

**QUESTION 47**

Before configuring 802.1x services, you need to determine the configuration roadmap and prepare data.

Which are general steps in the configuration roadmap? (Select 3 Answers)

- A. Configure a Tftp server.
- B. Configure an AAA authentication template.
- C. Configure a domain.
- D. Configure 802.1x authentication.

**Correct Answer:** BCD

**Section:** (none)

**Explanation**

**Explanation/Reference:**

**QUESTION 48**

After detecting a user with a new MAC address, the switch initiates an EAP authentication request. If the client does not respond and the MAC address bypass authentication is not configured, which statement is false?

- A. If the client does not respond after the number of authentication requests reaches a specified value, the switch considers that the client software is not installed.
- B. All permissions of the user are prohibited.
- C. The user is allowed to access only the isolated zone.
- D. Detection is initiated again after a period of time.

**Correct Answer:** B

**Section:** (none)

**Explanation**

**Explanation/Reference:**

**QUESTION 49**

The Layer 2 packet header in EAPoL packets is | DMAC | SMAC | TYPE | EAPOL | FCS |.

Which statements are true? (Select 3 Answers)

- A. The destination address of packets is a specified MAC address.
- B. The destination address of packets is a unicast MAC address.
- C. EAPoL packets cannot be forwarded by switches.
- D. The source MAC address of packets is the MAC address of the interface that sends packets.

**Correct Answer:** ACD

**Section:** (none)

**Explanation**

**Explanation/Reference:**

#### QUESTION 50

The dot1x command is used to enable 802.1x authentication globally or on an interface. Which statements about the undo dot1x command are true? (Select 3 Answers)



<http://www.vceplus.com/>

- A. It is used to disable 802.1x authentication globally.
- B. It will disconnect online users from the interface; therefore, use the command with caution.
- C. It is used to disable 802.1x authentication on an interface.
- D. Ensure that there are no online users before you run the undo dot1x command. Otherwise, running the undo dot1x command fails.

**Correct Answer:** ACD

**Section:** (none)

**Explanation**

**Explanation/Reference:**

#### QUESTION 51

The dot1x authentication-method command is used to set the 802.1x authentication mode. Which is the most secure authentication mode?

- A. PAP
- B. EAP
- C. CHAP
- D. EAP-TTLS

**Correct Answer:** C

**Section:** (none)

**Explanation**

**Explanation/Reference:**

Topic 2, Volume B

#### QUESTION 52

Which statements about guest VLAN configuration are true? (Select 3 Answers)

- A. The guest VLAN must be created before you configure the guest VLAN.
- B. The default VLAN of the interface cannot be configured as the guest VLAN.
- C. Different interfaces can be configured with different guest VLANs.
- D. An interface can be configured with up to eight guest VLANs.

**Correct Answer:** ABC

**Section:** (none)

**Explanation**

**Explanation/Reference:**

#### QUESTION 53

If you have run the dot1x port-method command with the port parameter specified (port-based 802.1x authentication), the maximum number of users on an interface changes to 1. In this case, which statements are true? (Select 2 Answers)

- A. You can run the dot1x max-user command to change the maximum number of access users.
- B. You cannot run the dot1x max-user command to set the maximum number of access users.
- C. You need to run the undo dot1x port-method command, and then set the maximum number of access users.
- D. All of the above

**Correct Answer:** BC



**Section: (none)**

**Explanation**

**Explanation/Reference:**

**QUESTION 54**

What is the function of DHCP Offer messages?

- A. DHCP Offer messages are broadcast by the client to detect the available server.
- B. DHCP Offer messages are sent by the server to respond to the DHCP Discover messages sent by the client. Certain configuration parameters are specified in the Offer messages.
- C. DHCP Offer messages are sent by the client to apply to the server for configuration parameters, configuration confirmation, or extension of the IP address lease.
- D. DHCP Offer messages are sent from the server to the client. They contain configuration parameters such as including the IP address.

**Correct Answer: B**

**Section: (none)**

**Explanation**

**Explanation/Reference:**



**QUESTION 55**

The option field in DHCP messages uses the CLV mode.

- A. True
- B. False

**Correct Answer: A**

**Section: (none)**

**Explanation**

**Explanation/Reference:**

**QUESTION 56**

Which encapsulation mode is used for DHCP messages?

- A. TCP encapsulation
- B. RTP encapsulation
- C. UDP encapsulation
- D. PPP encapsulation

**Correct Answer:** C

**Section:** (none)

**Explanation**

**Explanation/Reference:**

#### **QUESTION 57**

The option field in DHCP messages has a fixed length of four bytes.

- A. True
- B. False

**Correct Answer:** B

**Section:** (none)

**Explanation**



**Explanation/Reference:**

#### **QUESTION 58**

When the DHCP relay receives a DHCP request message in which the giaddr (gateway IP address) field is 0, how does the DHCP relay process the DHCP request message?

- A. The DHCP relay fills its IP address in the giaddr field and transmits the DHCP request message to the DHCP server in unicast mode.
- B. The DHCP relay fills its IP address in the giaddr field and transmits the DHCP request message in broadcast mode.
- C. The DHCP relay retains the value of the giaddr field and transmits the DHCP request message to the DHCP server in unicast mode.
- D. The DHCP relay retains the value of the giaddr field and transmits the DHCP request message in broadcast mode.

**Correct Answer:** A

**Section:** (none)

**Explanation**

**Explanation/Reference:**

**QUESTION 59**

What is the sequence of applying for an IP address in DHCP?

1. The host sends a DHCP Request message to apply for an IP address.
2. The DHCP server replies with a DHCP Offer message.
3. The host sends a DHCP Discovery message to search for the DHCP server.
4. The DHCP server replies with a DHCP ACK message after receiving the DHCP Request message.

- A. 1-2-3-4
- B. 1-4-3-2
- C. 3-2-1-4
- D. 3-4-1-2

**Correct Answer:** C

**Section:** (none)

**Explanation**

**Explanation/Reference:**

**QUESTION 60**

If the lease of a client IP address is not extended after 87.5% of the lease is reached, which message is used by the client to extend the IP address lease?

- A. DHCP Release broadcast message
- B. DHCP Release unicast message
- C. DHCP Request broadcast message
- D. DHCP Request unicast message

**Correct Answer:** C

**Section:** (none)

**Explanation**

**Explanation/Reference:**



<http://www.vceplus.com/>

