

H12-224.exam.360q

Number: H12-224
Passing Score: 0
Time Limit: 120 min



Website: <https://vceplus.com>
VCE to PDF Converter: <https://vceplus.com/vce-to-pdf/>
Facebook: <https://www.facebook.com/VCE.For.All.VN/>
Twitter : https://twitter.com/VCE_Plus

<https://vceplus.com/>

H12-224

Huawei Certified Datacom Professional - Fast Certification – ENU

Exam A

QUESTION 1

Which are 802.1x authentication modes? (Choose two.)



<https://vceplus.com/>

- A. EAP relay mode
- B. Proxy mode
- C. EAP termination mode
- D. Remote mode

Correct Answer: AC

Section: (none)

Explanation

Explanation/Reference:



QUESTION 2

STP elects ()

- A. One bridge as the Root Bridge and another one as the Backup Root Bridge
- B. One bridge as the Root Bridge
- C. Two bridges as the Root Bridge
- D. One Designated Bridge

Correct Answer: B

Section: (none)

Explanation

Explanation/Reference:

QUESTION 3

How many port states are defined by STP?

- A. 3
- B. 4
- C. 5
- D. 6

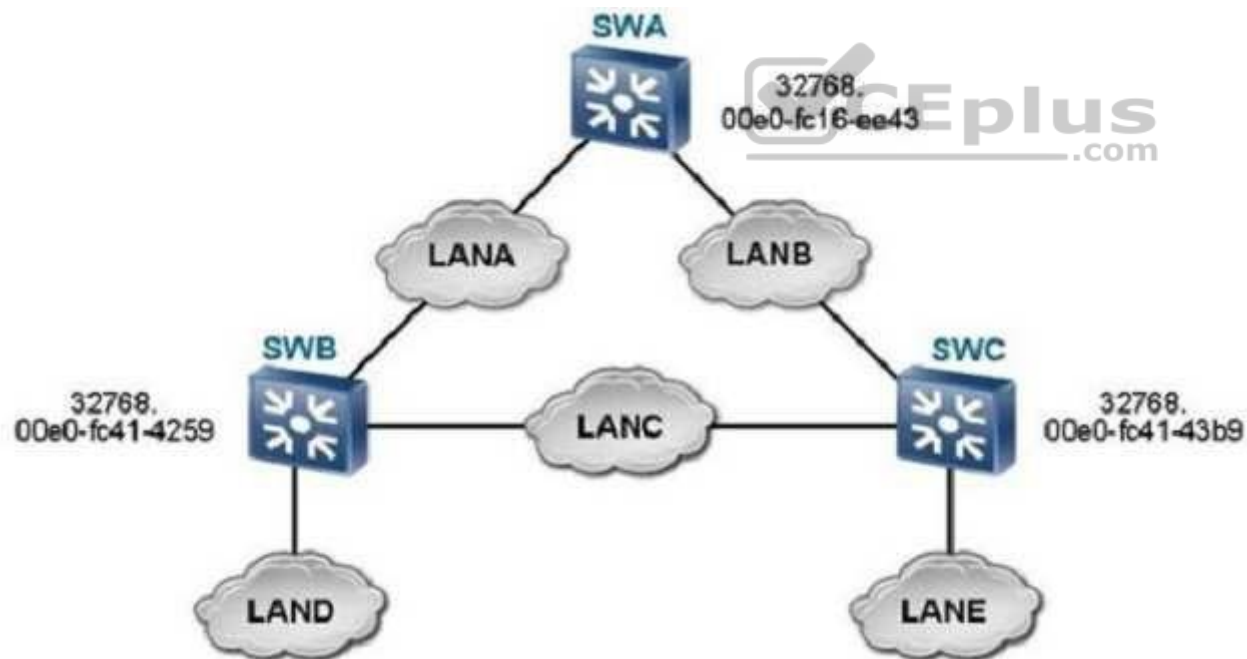
Correct Answer: C

Section: (none)

Explanation

Explanation/Reference:

QUESTION 4



As shown in the figure, when the STP network runs properly, which device does the designated port of LANC reside?

- A. SWA
- B. SWB
- C. SWC
- D. None of the above

Correct Answer: B

Section: (none)

Explanation

Explanation/Reference:

QUESTION 5

Each STP switch has a unique switch ID. Which two entries does the switch ID contain?

- A. Two-byte switch priority
- B. Six-byte MAC address
- C. Two-byte switch priority and six-byte MAC address
- D. Six-byte switch priority and six-byte MAC address



Correct Answer: C

Section: (none)

Explanation

Explanation/Reference:

QUESTION 6

Where is the MPLS label in a data frame?

- A. Behind the Layer 3 header and before the Layer 2 header
- B. Behind the Layer 2 header and before the Layer 3 header
- C. In the Layer 3 header
- D. Before the Layer 2 header

Correct Answer: B

Section: (none)

Explanation

Explanation/Reference:

QUESTION 7

The option field in DHCP messages uses the CLV mode.

- A. True
- B. False

Correct Answer: A

Section: (none)

Explanation

Explanation/Reference:

QUESTION 8

What is the POP action in MPLS?

- A. The top label is removed from the MPLS label stack.
- B. The top label is added to the MPLS label stack.
- C. The top label is replaced with another value.
- D. The top label is replaced with the label of another group.

Correct Answer: A

Section: (none)

Explanation

Explanation/Reference:

QUESTION 9

The core of the MPLS technology is label switching.





<https://vceplus.com/>

- A. True
- B. False

Correct Answer: A

Section: (none)

Explanation

Explanation/Reference:



QUESTION 10

Which statements about guest VLAN configuration are true? (Choose three.)

- A. The guest VLAN must be created before you configure the guest VLAN.
- B. The default VLAN of the interface cannot be configured as the guest VLAN.
- C. Different interfaces can be configured with different guest VLANs.
- D. An interface can be configured with up to eight guest VLANs.

Correct Answer: ABC

Section: (none)

Explanation

Explanation/Reference:

QUESTION 11

ICMP packets are sent in a Smurf attack and UDP packets are sent in a Fraggle attack.

- A. True
- B. False

Correct Answer: A

Section: (none)

Explanation

Explanation/Reference:

QUESTION 12

Packet loss occurs only on the packet receiver.

- A. True
- B. False

Correct Answer: B

Section: (none)

Explanation

Explanation/Reference:



QUESTION 13

Two Eudemons in dual-system hot backup can be working in Active-Active mode or Active-Standby mode.

- A. True
- B. False

Correct Answer: A

Section: (none)

Explanation

Explanation/Reference:

QUESTION 14

Which of the following indicators are performance indicators of the Eudemon? (Choose three.)

- A. Throughput of large-sized or small-sized packets

- B. Number of the interface
- C. VPN performance
- D. Process delay

Correct Answer: ABD

Section: (none)

Explanation

Explanation/Reference:

QUESTION 15

The NAT multi-instance function on the Eudemon independently maintains a NAT table for each instance to provide address translation services for instances.

- A. True
- B. False

Correct Answer: A

Section: (none)

Explanation

Explanation/Reference:



QUESTION 16

Configuring a firewall to work in transparent mode does not change the network topology.

- A. True
- B. False

Correct Answer: A

Section: (none)

Explanation

Explanation/Reference:

QUESTION 17

The data transmission rate depends on the bandwidth.

- A. True
- B. False

Correct Answer: A

Section: (none)

Explanation

Explanation/Reference:

QUESTION 18

Which of the following information do you check to directly identify a fault in the firewall if the data transmission is interrupted?

- A. Session table
- B. Log
- C. Global statistics about the firewall
- D. Alarms

Correct Answer: A

Section: (none)

Explanation



Explanation/Reference:

QUESTION 19

What about all outgoing labels in the label forwarding table of a device for different routes with the same next hop?

- A. They must be different.
- B. They must be the same.
- C. They may be the same.

Correct Answer: A

Section: (none)

Explanation

Explanation/Reference:

QUESTION 20

The TCP SYN flood attack usually occurs during the TCP handshake process. How many handshakes are required to set up a TCP connection?

- A. 1
- B. 2
- C. 3
- D. 4

Correct Answer: C

Section: (none)

Explanation

Explanation/Reference:

QUESTION 21

Congestion management provides means to manage and control traffic when traffic congestion occurs.

- A. True
- B. False

Correct Answer: A

Section: (none)

Explanation

Explanation/Reference:

QUESTION 22

IP addresses added to the blacklist of the Eudemon cannot be deleted.



<https://vceplus.com/>

- A. True
- B. False

Correct Answer: B

Section: (none)

Explanation

Explanation/Reference:

QUESTION 23

Two Eudemons in dual-system hot backup mode can be working in Active-Active mode or Active-Standby mode.

- A. True
- B. False

Correct Answer: A

Section: (none)

Explanation

Explanation/Reference:



QUESTION 24

What are the functions of DHCP snooping? (Choose three.)

- A. Defend against DoS attacks initiated by changing the CHADDR field
- B. Defend against bogus DHCP server attacks
- C. Defend against Packet Sniffer Mitigation
- D. Defend against man-in-the-middle attacks and IP/MAC spoofing attacks

Correct Answer: ABD

Section: (none)

Explanation

Explanation/Reference:

QUESTION 25

After an interface on a firewall is added to a zone, the interface belongs to the zone.

- A. True
- B. False

Correct Answer: A

Section: (none)

Explanation

Explanation/Reference:

QUESTION 26

QoS provides services of different qualities to meet various application requirements, including dedicated bandwidth, decreased packet loss ratio, short packet transmission delay, and decreased delay and jitter.

- A. True
- B. False

Correct Answer: A

Section: (none)

Explanation



Explanation/Reference:

QUESTION 27

If the lease of a client IP address is not extended after 87.5% of the lease is reached, which message is used by the client to extend the IP address lease?

- A. DHCP Release broadcast message
- B. DHCP Release unicast message
- C. DHCP Request broadcast message
- D. DHCP Request unicast message

Correct Answer: C

Section: (none)

Explanation

Explanation/Reference:

QUESTION 28

To enable an Eudemon in routing mode to work like a router, you need to assign IP addresses to interfaces and enable dynamic or static routing protocols on the Eudemon.

- A. True
- B. False

Correct Answer: A

Section: (none)

Explanation

Explanation/Reference:

QUESTION 29

Which of the following statements about the security policies for the Eudemon are true? (Choose two.)

- A. By default, a user in the Local zone can access other zones.
- B. By default, a user in the Trust zone can access the DMZ.
- C. By default, a user in the Untrust zone cannot access the Trust zone.
- D. By default, a user in a zone of the firewall cannot access any other zone of the firewall.

Correct Answer: CD

Section: (none)

Explanation

Explanation/Reference:

QUESTION 30

By which can an IP-based advanced ACL filter packets? (Choose five.)

- A. Source IP address and its subnet mask
- B. Destination IP address and its subnet mask
- C. Protocol type
- D. TCP or UDP port number
- E. Priority of the data packet
- F. Length of the data packet

Correct Answer: ABCDE

Section: (none)

Explanation

Explanation/Reference:

QUESTION 31

IP unnumbered is to borrow an IP address from an interface. If an interface has multiple IP addresses, all its IP addresses will be borrowed and the primary address will continue after these IP addresses are borrowed.



<https://vceplus.com/>



A. True

B. False

Correct Answer: B

Section: (none)

Explanation

Explanation/Reference:

QUESTION 32

When two Eudemons are working in dual-system hot backup mode, their session tables are backed up in real time.

A. True

B. False

Correct Answer: A

Section: (none)

Explanation

Explanation/Reference:

QUESTION 33

Which of the following statements about the firewall technology are true? (Choose three.)

- A. The network gateway of the application layer checks application-layer data carried in packets passing through the gateway.
- B. The network gateway for session status detection checks session information carried in packets only at the session layer.
- C. During packet filtering, the session status is checked and the whole data stream is analyzed.
- D. Address proxy replaces IP addresses and port numbers of hosts within the network with the IP address and port number of the proxy device or router. **Correct**

Answer: ABD

Section: (none)

Explanation

Explanation/Reference:



QUESTION 34

The Eudemon can control traffic and connections based on IP addresses.

- A. True
- B. False

Correct Answer: A

Section: (none)

Explanation

Explanation/Reference:

QUESTION 35

In the scenario where packets are sent and received along different paths, which of the following functions needs to be disabled on the firewall?

- A. Status detection
- B. Attack defense
- C. Packet filtering
- D. Status backup

Correct Answer: A

Section: (none)

Explanation

Explanation/Reference:

QUESTION 36

The variation in packet delay is called jitter.

- A. True
- B. False

Correct Answer: A

Section: (none)

Explanation

Explanation/Reference:



QUESTION 37

Which of the following firewalls is the most popular?

- A. Packet filtering firewall
- B. Stateful firewall
- C. Proxy firewall
- D. Anti-virus firewall

Correct Answer: B

Section: (none)

Explanation

Explanation/Reference:

QUESTION 38

The multi-channel protocol is used to establish at least two channels (sessions) for communications or services.

- A. True
- B. False

Correct Answer: A

Section: (none)

Explanation

Explanation/Reference:

QUESTION 39

Which messages are sent from the client to the server? (Choose three.)

- A. DHCP NAK
- B. DHCP REQUEST
- C. DHCP DISCOVER
- D. DHCP RELEASE

Correct Answer: BCD

Section: (none)

Explanation

Explanation/Reference:

QUESTION 40

In DiffServ mode, before the application program sends packets, it needs to confirm that the network has reserved resources for packet transmission.

- A. True
- B. False

Correct Answer: B

Section: (none)

Explanation

Explanation/Reference:

QUESTION 41

The Eudemon generates a blacklist upon detecting an attack.

- A. True
- B. False

Correct Answer: A

Section: (none)

Explanation

Explanation/Reference:

QUESTION 42

Which encapsulation mode is used for the MPLS protocol on an Ethernet network?

- A. Packet mode
- B. Frame mode
- C. Transport mode
- D. Channel mode
- E. Pipe mode



Correct Answer: B

Section: (none)

Explanation

Explanation/Reference:

QUESTION 43

Which of the following DDoS attacks can the Eudemon 1000E defend against? (Choose three.)

- A. SYN flood
- B. UDP flood
- C. ICMP flood
- D. SQL flood

Correct Answer: ABC

Section: (none)

Explanation

Explanation/Reference:

QUESTION 44

Which of the following attacks are DDoS attacks? (Choose four.)



<https://vceplus.com/>

- A. SYN flood
- B. SYN/ACK flood
- C. UDP flood
- D. FTP attack
- E. HTTP get flood



Correct Answer: ABCE

Section: (none)

Explanation

Explanation/Reference:

QUESTION 45

Which of the following statements about NAT are true? (Choose three.)

- A. NAT is short for "network address translation".
- B. NAT, also called address proxy, is used for translation between private and public network addresses.
- C. Hosts within the intranet can access the extranet without using NAT.

D. NAT can effectively resolve the problem of IP address shortage.

Correct Answer: ABD

Section: (none)

Explanation

Explanation/Reference:

QUESTION 46

In which of the following modes can the Eudemon be working? (Choose three.)

- A. Routing mode
- B. Transparent mode
- C. Composite mode
- D. Transfer mode

Correct Answer: ABC

Section: (none)

Explanation

Explanation/Reference:



QUESTION 47

The end-to-end delay is the sum of transmission delays, processing delays, and queuing delays along the packet forwarding path.

- A. True
- B. False

Correct Answer: A

Section: (none)

Explanation

Explanation/Reference:

QUESTION 48

An address needs to be allocated to a host connected to the network temporarily or a group of IP addresses need to be allocated to the hosts that do not require permanent IP addresses. Which address allocation mode does the DHCP server use?

- A. Automatic allocation
- B. Dynamic allocation
- C. Manual allocation
- D. All of the above

Correct Answer: B

Section: (none)

Explanation

Explanation/Reference:

QUESTION 49

The urgent pointer in the flag field of an IPv4 packet header is generally used for OOB data transmission.

- A. True
- B. False

Correct Answer: A

Section: (none)

Explanation

Explanation/Reference:

QUESTION 50

Which fields does the DHCP binding table contain? (Choose three.)

- A. MAC address
- B. route table
- C. IP address lease time
- D. Interface and VLAN

Correct Answer: ACD

Section: (none)

Explanation

Explanation/Reference:

QUESTION 51

QoS in best-effort service mode uses which of the following queue scheduling technology?

- A. FIFO
- B. WFQ
- C. PQ
- D. RR

Correct Answer: A

Section: (none)

Explanation

Explanation/Reference:

QUESTION 52

Security policies for the firewall are applied to interzones but not to interfaces.

- A. True
- B. False

Correct Answer: A

Section: (none)

Explanation

Explanation/Reference:

QUESTION 53

Which of the following technologies does the Eudemon use to defense against Anti-DDoS attacks? (Choose five.)

- A. TCP agent
- B. Source authentication and detection
- C. Crc check
- D. Fingerprint identification (characteristics detection)
- E. Abnormal session detection

F. Traffic control

Correct Answer: ABDEF

Section: (none)

Explanation

Explanation/Reference:

QUESTION 54

Status detection is an advanced communication filtering mechanism. It checks the application layer protocol and monitors the status of the connection-based application layer protocol. For all connections, the status information about each connection is maintained by ASPF and is used to dynamically determine whether to permit or deny data packets to firewalls.

A. True

B. False

Correct Answer: A

Section: (none)

Explanation

Explanation/Reference:



QUESTION 55

Network address translation (NAT) translates only IP address information.

A. True

B. False

Correct Answer: B

Section: (none)

Explanation

Explanation/Reference:

QUESTION 56

Which of the following attacks are prevented after an IP address and MAC address are bound on the Eudemon? (Choose two.)

- A. IP address spoofing
- B. MAC address spoofing
- C. DoS attack
- D. DDoS attack

Correct Answer: AB

Section: (none)

Explanation

Explanation/Reference:

QUESTION 57

Different virtual firewall instances on an Eudemon must be configured with the same security policy.

- A. True
- B. False

Correct Answer: B

Section: (none)

Explanation

Explanation/Reference:



QUESTION 58

What are the types of DDoS attacks? (Choose three.)

- A. Attacks by special packets
- B. Scanning attack
- C. Sniff attack
- D. Application-layer attack

Correct Answer: ABD

Section: (none)

Explanation

Explanation/Reference:

QUESTION 59

What is the function of the client IP address field in DHCP messages?

- A. It is used by the client in bound, renew, or rebinding state to respond to ARP request packets.
- B. It specifies the IP address allocated by the DHCP server to a client.
- C. It specifies the next server address used in the BootStrap and is contained in DHCP Offer or DHCP ACK messages.
- D. It specifies the DHCP relay address.

Correct Answer: A

Section: (none)

Explanation

Explanation/Reference:

QUESTION 60

How many default zones does the Eudemon supporting multi-instance have?



<https://vceplus.com/>

- A. Two
- B. Three
- C. Four
- D. Five

Correct Answer: D

Section: (none)

Explanation

Explanation/Reference:

QUESTION 61

The Eudemon that is working in transparent mode detects processes data at Layer 2. Its interfaces are not configured with IP addresses.

- A. True
- B. False

Correct Answer: A

Section: (none)

Explanation

Explanation/Reference:

QUESTION 62

The firewall can be working in routing mode, transparent mode, or composite mode. The default mode is the composite mode.

- A. True
- B. False

Correct Answer: B

Section: (none)

Explanation

Explanation/Reference:

**QUESTION 63**

Which encapsulation mode is used for DHCP messages?

- A. TCP encapsulation
- B. RTP encapsulation
- C. UDP encapsulation
- D. PPP encapsulation

Correct Answer: C

Section: (none)

Explanation

Explanation/Reference:

QUESTION 64

The blacklist function on the firewall can filter packets based on destination IP addresses. A destination IP address can be dynamically added to or deleted from the blacklist.

- A. True
- B. False

Correct Answer: B

Section: (none)

Explanation

Explanation/Reference:

QUESTION 65

What about all outgoing labels in the label forwarding table of a device for the same route with the same next hop?

- A. They must be different.
- B. They must be the same.
- C. They may be the same.

Correct Answer: B

Section: (none)

Explanation

Explanation/Reference:

QUESTION 66

Which of the following high availability (HA) features are supported by the Eudemon 1000E? (Choose two.)

- A. Dual-system hot backup
- B. Multi-system hot backup
- C. Dual-system load balancing

D. Multi-system load balancing

Correct Answer: AC

Section: (none)

Explanation

Explanation/Reference:

QUESTION 67

Two Eudemons in dual-system hot backup mode use Huawei Redundancy Protocol (HRP) to back up key information (such as configuration commands and session status) between the active and standby devices.

A. True

B. False

Correct Answer: A

Section: (none)

Explanation

Explanation/Reference:

QUESTION 68

MPLS is a switching standard defined by the IETF. Which devices exist on the MPLS network? (Choose two.)

A. LSR

B. LER

C. Label distribution router

D. Label transmit router

Correct Answer: AB

Section: (none)

Explanation

Explanation/Reference:

QUESTION 69

The Per-Hop Behavior (PHB) defines the policy and priority applied to a packet when traversing a hop (such as a DS) in a DiffServ network.

- A. True
- B. False

Correct Answer: A

Section: (none)

Explanation

Explanation/Reference:

QUESTION 70

Which of the following data traffic is incoming data traffic on the Eudemon? (Choose two.)

- A. Data traffic from a Trust zone to a demilitarized zone (DMZ)
- B. Data traffic from an Untrust zone to a DMZ
- C. Data traffic from a Local zone to a Trust zone
- D. Data traffic from an Untrust zone to a Local zone

Correct Answer: BD

Section: (none)

Explanation

Explanation/Reference:



QUESTION 71

The Eudemon supports load balancing between multiple uplinks.

- A. True
- B. False

Correct Answer: A

Section: (none)

Explanation

Explanation/Reference:

QUESTION 72

The Eudemon does not support port mapping.

- A. True
- B. False

Correct Answer: B

Section: (none)

Explanation

Explanation/Reference:

QUESTION 73

Which of the following are performance parameters of the firewall? (Choose three.)

- A. Throughput
- B. Maximum number of interface
- C. Number of new connections per second
- D. Process delay

Correct Answer: ACD

Section: (none)

Explanation

Explanation/Reference:

QUESTION 74

Which of the following solutions effectively defend against ARP attacks? (Choose three.)

- A. Binding a MAC address and an IP address
- B. Enabling the ARP attack protection function on a Huawei switching device
- C. Adding network segments to different VLANs on a switch
- D. Enabling IP packet filtering

Correct Answer: ABC

Section: (none)

Explanation



Explanation/Reference:

QUESTION 75

A firewall filters packets exchanged between zones but does not filter packets exchanged between interfaces in the same zone.



<https://vceplus.com/>

- A. True
- B. False

Correct Answer: A

Section: (none)

Explanation



Explanation/Reference:

QUESTION 76

What is the function of DHCP Offer messages?

- A. DHCP Offer messages are broadcast by the client to detect the available server.
- B. DHCP Offer messages are sent by the server to respond to the DHCP Discover messages sent by the client. Certain configuration parameters are specified in the Offer messages.
- C. DHCP Offer messages are sent by the client to apply to the server for configuration parameters, configuration confirmation, or extension of the IP address lease.
- D. DHCP Offer messages are sent from the server to the client. They contain configuration parameters such as including the IP address.

Correct Answer: B

Section: (none)

Explanation

Explanation/Reference:

QUESTION 77

The option field in DHCP messages has a fixed length of four bytes.

- A. True
- B. False

Correct Answer: B

Section: (none)

Explanation

Explanation/Reference:

QUESTION 78

When an Eudemon is working in composite mode, some of its interfaces are configured with IP addresses (Layer 3 interfaces) and the other interfaces are not configured with IP addresses (Layer 2 interfaces). To enable dual-system hot backup on an Eudemon, you can configure the Eudemon to work in composite mode.

- A. True
- B. False

Correct Answer: A

Section: (none)

Explanation

Explanation/Reference:

QUESTION 79

Virtual firewalls on the Eudemon are not allowed to access each other by default unless a security policy is specified.

- A. True
- B. False

Correct Answer: A

Section: (none)

Explanation

Explanation/Reference:

QUESTION 80

In a Land attack, the source address and destination address of an SYN packet are both the IP address of the attacked object or a loopback address.

- A. True
- B. False

Correct Answer: A

Section: (none)

Explanation

Explanation/Reference:

QUESTION 81

The firewall does not use security rules to filter packets exchanged between interfaces in the same zone.

- A. True
- B. False

Correct Answer: A

Section: (none)

Explanation

Explanation/Reference:

QUESTION 82

When the DHCP relay receives a DHCP request message in which the giaddr (gateway IP address) field is 0, how does the DHCP relay process the DHCP request message?

- A. The DHCP relay fills its IP address in the giaddr field and transmits the DHCP request message to the DHCP server in unicast mode.
- B. The DHCP relay fills its IP address in the giaddr field and transmits the DHCP request message in broadcast mode.

- C. The DHCP relay retains the value of the giaddr field and transmits the DHCP request message to the DHCP server in unicast mode.
- D. The DHCP relay retains the value of the giaddr field and transmits the DHCP request message in broadcast mode.

Correct Answer: A

Section: (none)

Explanation

Explanation/Reference:

QUESTION 83

Assume that the traceroute test is used to detect the packet forwarding path and tracer packets have passed through the firewall. Which of the following attack protection functions needs to be disabled to normally display the tracer result?

- A. ICMP-redirect
- B. ICMP-unreachable
- C. Tracer
- D. Smurf

Correct Answer: C

Section: (none)

Explanation

Explanation/Reference:

QUESTION 84

If only some devices on a network run MPLS (MPLS domain is encapsulated in the IP packet header), labels are generated only for direct routes of devices running MPLS.

Labels are not generated for the routes originated from other devices running IP protocols.

- A. True
- B. False

Correct Answer: A

Section: (none)

Explanation

Explanation/Reference:

QUESTION 85

What is the recommended minimum delay for HRP preemption on the Eudemon?

- A. 120s
- B. 60s
- C. 10s
- D. 5s

Correct Answer: B

Section: (none)

Explanation

Explanation/Reference:

QUESTION 86

MPLS is a switching standard defined by the IETF. Which device adds or deletes labels?

- A. Label distribution router
- B. LER
- C. LSR
- D. Label transmit router

Correct Answer: B

Section: (none)

Explanation

Explanation/Reference:

QUESTION 87

Which of the following is the priority value of the DMZ on the Eudemon?

- A. 10
- B. 50
- C. 75

D. 85

Correct Answer: B

Section: (none)

Explanation

Explanation/Reference:

QUESTION 88

Which of the following NAT functions are supported by the Eudemon? (Choose three.)

- A. NAT/PAT
- B. IPv4 to IPv6 NAT
- C. Bidirectional NAT
- D. NAT server

Correct Answer: ACD

Section: (none)

Explanation

Explanation/Reference:



QUESTION 89

What are the types of firewalls developed so far? (Choose three.)

- A. Packet filtering firewall
- B. Proxy firewall
- C. Anti-virus firewall
- D. Stateful firewall

Correct Answer: ABD

Section: (none)

Explanation

Explanation/Reference:

QUESTION 90

Which of the following statements about the zone priorities of the Eudemon are true? (Choose three.)

- A. The priority of the Local zone is 100.
- B. The priority of the Trust zone is 80.
- C. The priority of the Untrust zone is 5.



<https://vceplus.com/> D. The

priority of the DMZ is 50.

Correct Answer: ACD

Section: (none)

Explanation

Explanation/Reference:

**QUESTION 91**

The traditional packet loss policy uses the Tail-Drop method.

- A. True
- B. False

Correct Answer: A

Section: (none)

Explanation

Explanation/Reference:

QUESTION 92

What are the similarities of DHCP and BOOTP? (Choose two.)

- A. They work in client/server model.
- B. They work in static address allocation mode.
- C. They can dynamically obtain DNS addresses.
- D. They use the same packet structure.

Correct Answer: AD

Section: (none)

Explanation

Explanation/Reference:

QUESTION 93

Users can change the priorities of default zones on the firewall as required.

- A. True
- B. False



Correct Answer: B

Section: (none)

Explanation

Explanation/Reference:

QUESTION 94

Which of the following attacks can Eudemon defend against? (Choose three.)

- A. SYN-Flood
- B. SQL inject
- C. Port Scan
- D. Ping-Death

Correct Answer: ACD

Section: (none)

Explanation

Explanation/Reference:

QUESTION 95

How many user-defined security zones at most are configured on an Eudemon?

- A. 3
- B. 4
- C. 5
- D. 6

Correct Answer: A

Section: (none)

Explanation

Explanation/Reference:



QUESTION 96

Which statements about DHCP snooping are true? (Choose three.)

- A. The DHCP snooping binding table contains dynamic binding entries and static binding entries.
- B. DHCP snooping distinguishes the trusted interface and untrusted interfaces and discards DHCP Reply messages from untrusted interfaces.
- C. The static binding table is manually configured on the inbound interface and the aging time can also be manually set.
- D. When DHCP snooping is used at Layer 2, the interface information can be obtained for the binding table even if the Option 82 function is not configured.

Correct Answer: ABD

Section: (none)

Explanation

Explanation/Reference:

QUESTION 97

Which of the following commands is used to display the detailed information about the Eudemon?

- A. Display firewall statistic system
- B. Display firewall session table raw both-direction

- C. Display firewall session table verbose
- D. Display firewall session table detail

Correct Answer: C

Section: (none)

Explanation

Explanation/Reference:

QUESTION 98

The NAT function enabled on the Eudemon does not greatly affect system performance.

- A. True
- B. False

Correct Answer: A

Section: (none)

Explanation

Explanation/Reference:



QUESTION 99

When a client applies for an IP address through DHCP, which message is the unicast message?

- A. DHCP OFFER
- B. DHCP REQUEST
- C. DHCP DISCOVER
- D. None of the above

Correct Answer: D

Section: (none)

Explanation

Explanation/Reference:

QUESTION 100

What is the maximum number of security zones supported by the Eudemon?

- A. 256
- B. 128
- C. 32
- D. 16

Correct Answer: D

Section: (none)

Explanation

Explanation/Reference:

QUESTION 101

If you have run the dot1x port-method command with the port parameter specified (port-based 802.1x authentication), the maximum number of users on an interface changes to 1. In this case, which statements are true? (Choose two.)

- A. You can run the dot1x max-user command to change the maximum number of access users.
- B. You cannot run the dot1x max-user command to set the maximum number of access users.
- C. You need to run the undo dot1x port-method command, and then set the maximum number of access users.
- D. All of the above

Correct Answer: BC

Section: (none)

Explanation

Explanation/Reference:

QUESTION 102

What is the sequence of applying for an IP address in DHCP?

1. The host sends a DHCP Request message to apply for an IP address.
2. The DHCP server replies with a DHCP Offer message.
3. The host sends a DHCP Discovery message to search for the DHCP server.
4. The DHCP server replies with a DHCP ACK message after receiving the DHCP Request message.

- A. 1-2-3-4
- B. 1-4-3-2
- C. 3-2-1-4
- D. 3-4-1-2

Correct Answer: C

Section: (none)

Explanation

Explanation/Reference:

QUESTION 103

The IPSec function on the Eudemon supports NAT traversal.

- A. True
- B. False

Correct Answer: A

Section: (none)

Explanation

Explanation/Reference:



QUESTION 104

To process fragmented service packets on an NAT-enabled firewall, which of the following functions needs to be enabled?

- A. Transparent fragment transmission
- B. Fragment cache
- C. Fragment reassembly
- D. MTU check

Correct Answer: B

Section: (none)

Explanation

Explanation/Reference:

QUESTION 105

Based on specific rules, traffic classification identifies packets having the same characteristics. Traffic classification is the prerequisite and basis for differentiated services.

- A. True
- B. False

Correct Answer: A

Section: (none)

Explanation

Explanation/Reference:

QUESTION 106

You cannot set an aging time for the blacklist of the Eudemon.

- A. True
- B. False

Correct Answer: B

Section: (none)

Explanation

Explanation/Reference:

QUESTION 107

Which of the following packet drop policies can be applied to the congestion avoidance mechanism? (Choose three.)

- A. Tail-drop
- B. RED
- C. WRED
- D. WFQ

Correct Answer: ABC

Section: (none)

Explanation



Explanation/Reference:

QUESTION 108

When recovering from a fault, the active link in a Smart Link group remains blocked and traffic is not switched back to it. In this way, traffic keeps stable.

- A. True
- B. False

Correct Answer: A

Section: (none)

Explanation

Explanation/Reference:

QUESTION 109

RTA connected to a LAN by e0/0 whose IP address is 10.1.1.251 and network Mask is 255.255.255.0. Now create a virtual router with ID 1 and virtual IP address 10.1.1.254 on RTA. Which of the following commands are correct?

- A. [RTA-Ethernet0/0]vrrpvrid 1 virtual-ip 10.1.1.254
- B. [RTA]vrrpvrid 1 virtual-ip 10.1.1.254
- C. [RTA-Ethernet0/0]vrrpvrid 1 virtual-ip 10.1.1.254 mask 255.255.255.0
- D. [RTA]vrrpvrid 1 virtual-ip 10.1.1.254 mask 255.255.255.0

Correct Answer: A

Section: (none)

Explanation

Explanation/Reference:

QUESTION 110

To provide services of different qualities, you can classify services based on such packet information as the packet priority, source IP address, destination IP address, and port number. Which of the following QoS technology can be used to service classification?

- A. Traffic policing
- B. Traffic shaping
- C. Complex traffic classification

D. Congestion management

Correct Answer: C

Section: (none)

Explanation

Explanation/Reference:

QUESTION 111

Which of the following statements about different detection intervals at both ends of a BFD session is true?

- A. The BFD session can be set up and the greater detection interval is used after negotiation.
- B. The BFD session can be set up and the smaller detection interval is used after negotiation.
- C. The BFD session can be set up and each end sends detection packets at its own interval.
- D. The BFD session cannot be set up.

Correct Answer: A

Section: (none)

Explanation

Explanation/Reference:



QUESTION 112

By using VRRP, the backup router in a VRRP backup group immediately becomes the master router after detecting a fault and instructs its attached hosts to perform a master/slave switchover accordingly. This ensures that services will recover within a short period of time.



<https://vceplus.com/>

A. True

B. False

Correct Answer: B

Section: (none)

Explanation

Explanation/Reference:

QUESTION 113

Assume that the VRID of a VRRP virtual router is 100 and the virtual IP address of the virtual router is 192.168.1.1, which of the following addresses is the virtual MAC address of the virtual router?

A. 00-00-5E-00-01-64

B. 00-00-5E-00-01-01

C. 01-00-5E-00-01-64

D. 01-00-5E-00-01-01

Correct Answer: A

Section: (none)

Explanation

Explanation/Reference:

QUESTION 114

Which of the following are popular link efficiency mechanisms? (Choose two.)

A. IPHC

B. LFI

C. HDLC

D. PPP

Correct Answer: AB

Section: (none)

Explanation

Explanation/Reference:



QUESTION 115

In traffic policing using two token buckets, tokens are put into the CBS bucket at the committed information rate (CIR).



```
[RTB]display ospf error
      OSPF Process 1 with Router ID 2.2.2.2
      OSPF error statistics:
General packet errors:
0  : IP: received my own packet      0  : Bad packet
0  : Bad version                    0  : Bad checksum
7  : Bad area id                    0  : Drop on unnumbered interface
0  : Bad virtual link               0  : Bad authentication type
0  : Bad authentication key         0  : Packet too small
0  : Packet size>ip length          0  : Transmit error
0  : Interface down                 0  : Unknown neighbor

HELLO packet errors:
0  : Netmask mismatch               0  : Hello timer mismatch
0  : Dead timer mismatch            0  : Extern option mismatch
9  : Router id confusion            0  : Virtual neighbor unknown
0  : NBMA neighbor unknown

DD packet errors:
0  : Neighbor state low              0  : Router id confusion
0  : Extern option mismatch          0  : Unknown LSA type
0  : MTU option mismatch

LS ACK packet errors:
0  : Neighbor state low              0  : Bad ack
0  : Duplicate ack                  0  : Unknown LSA type

LS REQ packet errors:
0  : Neighbor state low              0  : Empty request
0  : Bad request

LS UPD packet errors:
0  : Neighbor state low              0  : Newer self-generate LSA
0  : LSA checksum bad               0  : Received less recent LSA
0  : Unknown LSA type

Opaque errors:
0  : 9-out of flooding scope        0  : 10-out of flooding scope
0  : 11-out of flooding scope

Retransmission for packet over Limitation errors:
0  : Number for DD Packet            0  : Number for Update Packet
```


The peak burst size (PBS) bucket is filled in only after the CBS bucket is full.

- A. True
- B. False

Correct Answer: A

Section: (none)

Explanation

Explanation/Reference:

QUESTION 116

Which of the following authentication modes does VRRP use? (Choose three.)

- A. No authentication
- B. Simple text password
- C. MD5
- D. CHAP

Correct Answer: ABC

Section: (none)

Explanation

Explanation/Reference:

QUESTION 117

Which of the following addresses is the destination address of VRRP packets?

- A. 224.0.0.18
- B. 224.0.0.19
- C. 224.0.1.18
- D. 224.0.1.19

Correct Answer: A

Section: (none)

Explanation



Explanation/Reference:

QUESTION 118

A BFD session is set up following the three-way handshake during which parameters for the BFD session are negotiated. After the BFD session is set up, modifying the detection time parameters does not take effect.

- A. True
- B. False

Correct Answer: B

Section: (none)

Explanation

Explanation/Reference:

QUESTION 119

Which of the following statements about traffic policing are true? (Choose three.)

- A. Is used to limit the traffic transmission rate.
- B. Is used to color packets.
- C. Caches packets whose transmission rate exceeds the limit.
- D. Re-marks packets with priorities.

Correct Answer: ABD

Section: (none)

Explanation

Explanation/Reference:

QUESTION 120

Which of the following statements are correct regarding MAC address of VRRP packet?
(Choose two.)

```
[SWC]display stp brief
```

MSTID	Port	Role	STP State	Protection
0	Ethernet1/0/2	DESI	FORWARDING	NONE
0	Ethernet1/0/3	DESI	FORWARDING	NONE
0	Ethernet1/0/12	ALTE	DISCARDING	NONE
0	Ethernet1/0/13	ROOT	FORWARDING	NONE
1	Ethernet1/0/2	DESI	FORWARDING	NONE
1	Ethernet1/0/12	ROOT	FORWARDING	NONE
1	Ethernet1/0/13	ALTE	DISCARDING	NONE
2	Ethernet1/0/3	DESI	FORWARDING	NONE
2	Ethernet1/0/12	ALTE	DISCARDING	NONE
2	Ethernet1/0/13	ROOT	FORWARDING	NONE

- A. The destination MAC is broadcast MAC address.
- B. The destination MAC is multicast MAC address.
- C. The source address is virtual MAC address.
- D. The source address is physical MAC address of Master.



Correct Answer: BC

Section: (none)

Explanation

Explanation/Reference:

QUESTION 121

Which of the following statements about the refreshing mechanism in the case of link switchover in a Smart Link group is false?

- A. MAC and ARP entries are refreshed automatically against traffic.
- B. The Smart Link group uses a new link to send Flush packets.
- C. When the active link recovers from a fault, Flush packets are sent to refresh entries.
- D. When recovering from a fault, the active link remains blocked and traffic is not switched back to it. In this way, traffic keeps stable. **Correct Answer:** C

Section: (none)

Explanation

Explanation/Reference:

QUESTION 122

Assume that the WRED policy for packets with the priority of AF21 is that the length of the queue for saving packets ranges from 35 to 40, and the discarding percentage is 50%. When a packet with the priority being AF21 arrives, which of the following statements are true? (Choose three.)

- A. If the average length of the queue is smaller than 35, the packet is added to the queue.
- B. If the length of the queue ranges between 35 and 40, the packet may be discarded with a possibility of 50%.
- C. If the average length of the queue is greater than 40, the packet is added to the queue.
- D. If the average length of the queue is greater than 40, the packet is discarded.

Correct Answer: ABD

Section: (none)

Explanation

Explanation/Reference:



QUESTION 123

Which of the following PHB types are defined in IETF DiffServ? (Choose three.)

- A. Default PH
- B. Class-Selector PHB
- C. Fast Forwarding PHB
- D. Assured Forwarding PHB

Correct Answer: ABD

Section: (none)

Explanation

Explanation/Reference:

QUESTION 124

Which of the following statements are correct regarding the function of VRRP?

- A. VRRP can improve the reliability of default gateway.
- B. VRRP increase the convergence speed of routing protocol.
- C. VRRP is mainly used for traffic balance.
- D. VRRP can provide one default gateway for different network segments, it simplifies the gateway configuration for PC.

Correct Answer: A

Section: (none)

Explanation

Explanation/Reference:

QUESTION 125

Which of the following statements are correct regarding priority in VRRP?

- A. The IP address owner always uses 255 as its priority regardless its config priority.
- B. The IP address owner always uses 0 as its priority regardless its config priority.
- C. We can configure the priority as 0 to make the router never attend the Master election.
- D. If a VRRP router changes from Master to Slave, it will send out a VRRP message with priority 0 in the network.

Correct Answer: A

Section: (none)

Explanation

Explanation/Reference:

QUESTION 126

Which of the following statements about a backup router in a VRRP backup group are true? (Choose three.)

- A. It receives VRRP packets from the master router and determines whether the master router is functioning properly.
- B. It does not respond to the ARP requests sent from a virtual IP address.
- C. It forwards an IP packet whose destination MAC address is a virtual MAC address.
- D. It discards an IP packet whose destination IP address is a virtual IP address.

Correct Answer: ABD

Section: (none)

Explanation

Explanation/Reference:

QUESTION 127

Most fields in IP headers of packets in the same data flow are identical. You can compress these fields to improve the link transmission efficiency.

- A. True
- B. False

Correct Answer: A

Section: (none)

Explanation

Explanation/Reference:

QUESTION 128

When a local BFD session in the Init state receives packets with the Stat field being Down, the local BFD session changes its status to Down.

- A. True
- B. False

Correct Answer: A

Section: (none)

Explanation

Explanation/Reference:

QUESTION 129

In traffic shaping, the packet whose transmission rate exceeds the rate limit will be discarded or re-marked.



<https://vceplus.com/>

A. True B.
False

Correct Answer: B

Section: (none)

Explanation

Explanation/Reference:



QUESTION 130

BFD packets are classified into control packets and echo packets.

A. True
B. False

Correct Answer: A

Section: (none)

Explanation

Explanation/Reference:

QUESTION 131

Assume that the following WRED policies are used in QoS:

The length of the queue for saving DSCP packets with the priority being AF21 ranges from 35 to 40.

The length of the queue for saving DSCP packets with the priority being AF22 ranges from 30 to 40.

The length of the queue for saving DSCP packets with the priority being AF23 ranges from 25 to 40.
In the case of congestion, DSCP packets with which of the following priority value will be discarded first?

- A. AF21
- B. AF22
- C. AF23
- D. All the same

Correct Answer: C

Section: (none)

Explanation

Explanation/Reference:

QUESTION 132

Availability identifies the utility of a system. The availability of the system increases if the MTBF decreases or the MTTR increases.

- A. True
- B. False



Correct Answer: B

Section: (none)

Explanation

Explanation/Reference:

QUESTION 133

Traffic policing usually uses which of the following QoS technologies?

- A. GTS
- B. LR
- C. CAR
- D. WRED

Correct Answer: C

Section: (none)

Explanation

Explanation/Reference:

QUESTION 134

Assume that there are four flows a, b, c, and d, the transmission rate of each flow is 50 Mbit/s, and the total bandwidth of the interface for flow transmission is 100 Mbit/s. In the case of congestion, PQ is available for flow a. WFQ is available for flows b, c, and d, with the weight proportion being 1:2:3:4. Which of the following statement about the interface bandwidth allocated to each flow is true? (Choose two.)

- A. The interface bandwidth allocated to flow a is 100 Mbit/s.
- B. The interface bandwidth allocated to flow a is 50 Mbit/s.
- C. The interface bandwidth allocated to flows b is 10 Mbit/s and interface bandwidths allocated to flows c and d are 20 Mbit/s each.
- D. The interface bandwidth allocated to flows b is 25 Mbit/s and interface bandwidths allocated to flows c and d are 12.5 Mbit/s each.

Correct Answer: BC

Section: (none)

Explanation

Explanation/Reference:



QUESTION 135

Which of the following statements about the VRRP working process is false?

- A. The router with the highest priority is elected as the master router.
- B. The master router sends gratuitous ARP packets to inform connected devices or hosts of its virtual MAC address.
- C. If the master router fails, the backup router with the highest priority is elected as the new master router.
- D. To ensure fast convergence, a backup router immediately becomes the master router if the priority of the backup router is higher than the priority of the master router.

Correct Answer: D

Section: (none)

Explanation

Explanation/Reference:

QUESTION 136

Based on fields IP precedence, MPLS EXP, or 802.1p, packets can be classified into how many service types?

- A. 4
- B. 6
- C. 7
- D. 8

Correct Answer: D

Section: (none)

Explanation

Explanation/Reference:

QUESTION 137

IP network can provide various packet forwarding service, the service demands that users care during packet forwarding include. (Choose three.)

- A. Throughput
- B. Delay
- C. Cost
- D. Loss of packet

Correct Answer: ABD

Section: (none)

Explanation

Explanation/Reference:

QUESTION 138

QoS includes which of the following aspects? (Choose three.)

- A. Transmission bandwidth
- B. Transmission delay and jitter
- C. Packet loss ratio
- D. Network security

Correct Answer: ABC

Section: (none)

Explanation

Explanation/Reference:



QUESTION 139

Which of the following link efficiency mechanism can be used to compress RTP and TCP packet headers?

- A. IPHC
- B. LFI
- C. PPP
- D. All of the above

Correct Answer: A

Section: (none)

Explanation

Explanation/Reference:

QUESTION 140

The Committed Access Rate (CAR) technology uses the token bucket (TB) to control traffic.

- A. True
- B. False

Correct Answer: A

Section: (none)

Explanation

Explanation/Reference:

QUESTION 141

Which of the following statements about the jitter and delay are true? (Choose three.)

- A. The end-to-end delay is the sum of transmission delays, processing delays, and queuing delays along the packet forwarding path.
- B. The variation in packet delay is called jitter.
- C. The jitter depends on the delay. The lower the delay, the less the jitter.
- D. The jitter is independent of the delay.

Correct Answer: ABC



Section: (none)

Explanation

Explanation/Reference:

QUESTION 142

Assume that congestion occurs on the outbound interface, packet A is cached in the PQ, and packet B is cached in the WFQ, which of the following statement about packet scheduling is true?

- A. Packet A is scheduled first.
- B. Packet B is scheduled first.
- C. Packets A and B are scheduled at the same time.
- D. Packets A and B are discarded.

Correct Answer: A

Section: (none)

Explanation

Explanation/Reference:



QUESTION 143

Which of the following are disadvantages of the traditional tail drop mechanism? (Choose three.)

- A. TCP global synchronization
- B. TCP starvation
- C. High Average Link Utilization
- D. Packet drop is not based on priorities

Correct Answer: ABD

Section: (none)

Explanation

Explanation/Reference:

QUESTION 144

QoS can provide different quality of service according to different demands, which of the following are functions of QoS? (Choose three.)

- A. Providing private bandwidth for users
- B. Reducing cost of the network
- C. Congestion management and avoidance
- D. Specifying priority of packets

Correct Answer: ACD

Section: (none)

Explanation

Explanation/Reference:

QUESTION 145

Which of the following statements about the VRRP authentication is false?

- A. VRRP provides no authentication.
- B. VRRP provides the simple text authentication.
- C. VRRP provides the MD5 authentication.
- D. VRRP provides the RSA key authentication.

Correct Answer: D

Section: (none)

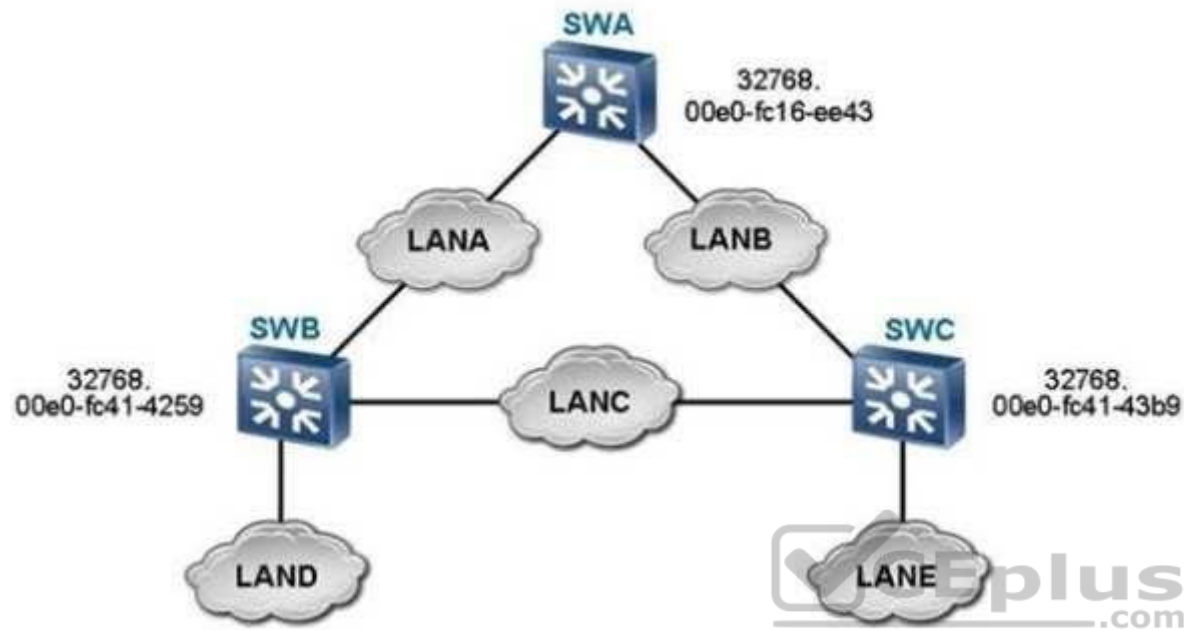
Explanation

Explanation/Reference:



QUESTION 146

Which of the following statements about the mVRRP backup group is false?



<https://vceplus.com/>

- A. Multiple service VRRP backup group can be bound to one mVRRP backup group.
- B. An mVRRP backup group can serve as a service VRRP backup group and thus be bound to another mVRRP backup group.
- C. One service VRRP backup group can be bound to only one mVRRP backup group.

- D. After multiple service VRRP backup groups are bound to an mVRRP backup group, the mVRRP backup group determines the status of all the service VRRP backup groups by sending VRRP packets. This can reduce the number of VRRP packets to be sent and improve the packet processing efficiency.

Correct Answer: B

Section: (none)

Explanation

Explanation/Reference:

QUESTION 147

Which of the following information in a packet can be marked or re-marked?

- A. IP DSCP, IP precedence, and 802.1p information
- B. IP source and destination addresses
- C. MAC address
- D. Any information in the packet

Correct Answer: A

Section: (none)

Explanation



Explanation/Reference:

QUESTION 148

Congestion occurs when a link or node is carrying so much data that its quality of service deteriorates.

- A. True
- B. False

Correct Answer: A

Section: (none)

Explanation

Explanation/Reference:

QUESTION 149

If the Open message sent from a BGP speaker has the GR capability field but no <AFI, SAFI> field, the BGP speaker has no backup forwarding table. Such a BGP speaker functions as only the GR helper to help its neighbors complete the GR process.

- A. True
- B. False

Correct Answer: A

Section: (none)

Explanation

Explanation/Reference:

QUESTION 150

The NSF function takes effect only after the GR function is enabled on two directly connected routers that use static routes for communication between users in different network segments.

- A. True
- B. False

Correct Answer: B

Section: (none)

Explanation

Explanation/Reference:

QUESTION 151

None Stop Forwarding (NSF) is an important high availability (HA) technology. It ensures the normal data forwarding even in the case of a fault in the control plane of the router, protecting key services on the network from interruption.

- A. True
- B. False

Correct Answer: A

Section: (none)

Explanation



Explanation/Reference:

QUESTION 152

Ethernet0/0 of RTA and Ethernet0/0 of RTB connect to the same LAN, both are enabled with VRRP. Create a virtual router with ID 1 and virtual IP address 10.1.1.254. Which of the following commands can make RTB Master without modifying the priority of RTA?

- A. [RTB-Ethernet0/0]vrrpvrid 1 priority 200
- B. [RTB-Ethernet0/0]vrrpvrid 1 virtual-ip 10.1.1.254 priority 200
- C. [RTB-Ethernet0/0]vrrpvrid 1 force-master
- D. [RTB]vrrpvrid 1 force-master

Correct Answer: A

Section: (none)

Explanation

Explanation/Reference:

QUESTION 153

A VRRP backup group is able to track the status of an interface. If the interface configured with a VRRP backup group fails or any interface on the router fails, the VRRP backup group provides a backup for the faulty interface.

- A. True
- B. False

Correct Answer: A

Section: (none)

Explanation

Explanation/Reference:

QUESTION 154

What is the legal virtual MAC address in VRRP?

- A. 01-01-5E-00-01-01
- B. 01-00-5E-00-01-00
- C. 00-00-5E-00-01-01

D. 01-01-5E-00-00-01

Correct Answer: C

Section: (none)

Explanation

Explanation/Reference:

QUESTION 155

Simple traffic classification can be performed based on which of the following information in IPv4 packets? (Choose two.)

- A. DSCP
- B. IP precedence
- C. EXP
- D. 802.1p

Correct Answer: AB

Section: (none)

Explanation

Explanation/Reference:



QUESTION 156

Which of the following statements about a backup router in a VRRP backup group are true? (Choose three.)

- A. It receives VRRP packets from the master router and determines whether the master router is functioning properly.
- B. It responds to the ARP requests sent from a virtual IP address.
- C. It discards an IP packet whose destination MAC address is a virtual MAC address.
- D. It discards an IP packet whose destination IP address is a virtual IP address.

Correct Answer: ACD

Section: (none)

Explanation

Explanation/Reference:

QUESTION 157

The formula for calculating the MTTR is: $MTTR = \text{Fault detection time} + \text{Board replacement time} + \text{System initialization time} + \text{Link recovery time} + \text{Route convergence time} + \text{Forwarding recovery time}$. The smaller the addends are, the smaller the MTTR is and the higher the device availability is.

- A. True
- B. False

Correct Answer: A

Section: (none)

Explanation

Explanation/Reference:

QUESTION 158

Which of the following is not the BFD fault detection mode?

- A. Asynchronous mode
- B. Demand mode
- C. Echo mode
- D. Peer mode

Correct Answer: D

Section: (none)

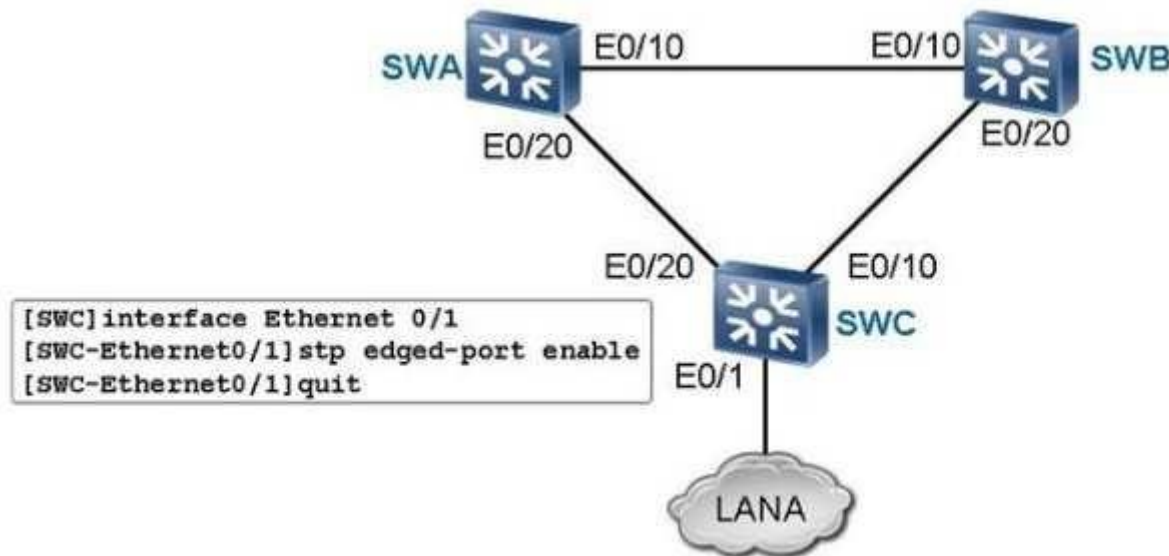
Explanation

Explanation/Reference:

QUESTION 159

Which of the following statements about the mVRRP backup group are true? (Choose three.)





- A. An mVRRP backup group can be bound to other service VRRP backup groups.
- B. An mVRRP backup group cannot be bound to multiple service VRRP backup groups but can function as a service VRRP group to be bound to another mVRRP group.
- C. After a VRRP backup group member is bound to an mVRRP backup group, the state machine of the VRRP backup group member becomes dependent. That is, the VRRP backup group member deletes the protocol timer, and no longer sends or receives packets, and implements its state machine by directly copying the status of the mVRRP backup group.
- D. A VRRP backup group member can be bound to only one mVRRP backup group.

Correct Answer: ACD

Section: (none)

Explanation

Explanation/Reference:

QUESTION 160

Which of the following congestion avoidance mechanisms can be used to avoid global TCP synchronization? (Choose two.)

- A. RED
- B. WRED
- C. FIFO
- D. WFQ

Correct Answer: AB

Section: (none)

Explanation

Explanation/Reference:

QUESTION 161

Which of the following statement about the jitter and delay is false?

- A. The jitter depends on the delay.
- B. The variation in packet delay is called jitter.
- C. The lower the delay is, the less the jitter is.
- D. The jitter is independent of the delay.



Correct Answer: D

Section: (none)

Explanation

Explanation/Reference:

QUESTION 162

The interface IP address and virtual IP address configured for VRRP must not be identical.

- A. True
- B. False

Correct Answer: B

Section: (none)

Explanation

Explanation/Reference:

QUESTION 163

Which of the following statements are correct regarding default gateway of PC in the network running VRRP?

- A. Configure only one gateway for the PC which is the IP address of Master.
- B. Configure only one gateway for the PC which is the IP address of virtual router.
- C. Configure two gateways for the PC which are the IP addresses of Master and Slave.
- D. Configure three gateways for the PC which are the IP addresses of Master, Slave and virtual router.

Correct Answer: B

Section: (none)

Explanation

Explanation/Reference:

QUESTION 164

In traffic policing using two token buckets & two-rate, when the CIR is set to 1 Mbit/s and the PIR is set to 2 Mbit/s, what is the maximum transmission rate for the traffic in green?

- A. 1 Mbit/s
- B. 2 Mbit/s
- C. 3 Mbit/s
- D. 4 Mbit/s

Correct Answer: A

Section: (none)

Explanation

Explanation/Reference:

QUESTION 165

WFQ can effectively control the delay and jitter by means of configuring weights for different services.

- A. True
- B. False

Correct Answer: A

Section: (none)

Explanation

Explanation/Reference:

QUESTION 166

The IP packet has a special field to mark the QoS. For example, the last 6 bits in the ToS field of an IPv4 packet mark the DSCP value.

- A. True
- B. False

Correct Answer: B

Section: (none)

Explanation

Explanation/Reference:

QUESTION 167

Which of the following statements about the device state change is correct after failure in the intermediate link for transmitting VRRP heartbeats?

- A. The status of the master and slave devices remains unchanged.
- B. Both the master and slave devices enter the Master state.
- C. Both the master and slave devices enter the Slave state.
- D. Both the master and slave devices enter the Initial state.

Correct Answer: B

Section: (none)

Explanation

Explanation/Reference:

QUESTION 168

IP QoS models include: (Choose three.)



<https://vceplus.com/>

- A. Best-Effort
- B. Integrated Service
- C. Differentiated Service
- D. FIFO Service

Correct Answer: ABC

Section: (none)

Explanation

Explanation/Reference:



QUESTION 169

The virtual router uses a virtual MAC address but not the actual MAC address of the interface to respond to an ARP request.

- A. True
- B. False

Correct Answer: A

Section: (none)

Explanation

Explanation/Reference:

QUESTION 170

A VRRP virtual router can have one or more IP addresses.

- A. True
- B. False

Correct Answer: A

Section: (none)

Explanation

Explanation/Reference:

QUESTION 171

After the session is re-established between the BGP GR helper and its neighbor, original forwarding entries are deleted.

- A. True
- B. False

Correct Answer: B

Section: (none)

Explanation

Explanation/Reference:



QUESTION 172

Which of the following statements about the master router in a VRRP backup group are true? (Choose three.)

- A. It regularly sends VRRP packets.
- B. It uses a virtual MAC address to respond to ARP requests sent from a virtual IP address.
- C. It forwards an IP packet whose destination MAC address is a physical MAC address.
- D. It changes to the Backup state if the priority carried in the received packet is greater than its own priority.

Correct Answer: ABD

Section: (none)

Explanation

Explanation/Reference:

QUESTION 173

The reliability of a product or a system is generally evaluated with the two indicators of Mean Time to Repair (MTTR) and Mean Time Between Failures (MTBF).

- A. True
- B. False

Correct Answer: A

Section: (none)

Explanation

Explanation/Reference:

QUESTION 174

During the GR of dynamic routing protocols (such as OSPF and BGP) neighbor relationships remain unchanged.

- A. True
- B. False

Correct Answer: B

Section: (none)

Explanation

Explanation/Reference:



QUESTION 175

Complex traffic classification matches packets with rules and then takes actions to matching packets.

- A. True
- B. False

Correct Answer: A

Section: (none)

Explanation

Explanation/Reference:

QUESTION 176

Which of the following technologies are available for traffic shaping? (Choose two.)

- A. GTS B.
- LR
- C. CAR
- D. WRED

Correct Answer: AB

Section: (none)

Explanation

Explanation/Reference:

QUESTION 177

Which statement about OSPF is false?

- A. Hello packets are used to discover and maintain neighbor relationships. On a broadcast network or an NBMA network, Hello packets can also be used to elect a DR and a BDR.
- B. DD packets describe summary LSDB information by carrying LSA headers.
- C. The intervals at which two routers send Hello packets must be consistent; otherwise, a neighbor relationship cannot be established between them.
- D. DD packets contain headers of all LSAs for periodic LSDB synchronization between OSPF neighbors.

Correct Answer: D

Section: (none)

Explanation

Explanation/Reference:

QUESTION 178

A device can be assigned an IP address 192.168.13.175, with the mask being 255.255.255.240.

- A. True
- B. False

Correct Answer: B

Section: (none)

Explanation

Explanation/Reference:

QUESTION 179

Which of the following statements about OSPF authentication are false? (Choose two.)

- A. Entering a password in cipher text is allowed.
- B. The ospf authentication-mode md5 1 huawei command and the ospf authentication-mode md5 1 plain huawei command have the same function.
- C. If passwords are configured for both an area and an interface, the password configured for the area is used.
- D. The ospf authentication-mode simple huawei command and the ospf authentication-mode simple plain Huawei command have the same function.

Correct Answer: BC

Section: (none)

Explanation

Explanation/Reference:

QUESTION 180

Which of the following rules should a network administrator obey when the network administrator uses the VLSM technology to plan subnets? (Choose three.)

- A. A subnet is composed of all summarized routes.
- B. A subnet can address a host or be further subnetted.
- C. The Update message of a routing protocol in use must carry subnet mask information.
- D. The summarized networks must have the same high-order bit.

Correct Answer: BCD

Section: (none)

Explanation

Explanation/Reference:

QUESTION 181

For network segment 192.168.2.16/28, how many hosts it can hold at most?

- A. 16 B.
- 8

- C. 15
- D. 14
- E. 7

Correct Answer: D
Section: (none)
Explanation

Explanation/Reference:
QUESTION 182

Which of the following addresses can be used on a public network? (Choose two.)

- A. 172.30.0.1/16
- B. 127.254.11.15/16
- C. 172.15.12.7/16
- D. 193.168.10.4/16

Correct Answer: CD
Section: (none)
Explanation



Explanation/Reference:

QUESTION 183

Different network segments can be in the same OSPF area and the same network segment can be in different OSPF areas.

- A. True
- B. False

Correct Answer: B
Section: (none)
Explanation

Explanation/Reference:

QUESTION 184

What is the maximum bits of a Class B address can be used for subnet?

- A. 8
- B. 14
- C. 16
- D. 22

Correct Answer: B

Section: (none)

Explanation

Explanation/Reference:

QUESTION 185

A company reserves the network segment 172.29.100.0/26 for some remote small-scale sites and each site has 5 IP devices to connect to this network segment. Which of the following VLSM masks can be used to provide minimum number of hosts to meet such a requirement?

- A. /27
- B. /28
- C. /29
- D. /30



Correct Answer: C

Section: (none)

Explanation

Explanation/Reference:

QUESTION 186

Which of the following network or link type is not the basic network or link type defined in OSPF?

- A. P2P
- B. P2MP
- C. Broadcast
- D. Virtual link

Correct Answer: D

Section: (none)

Explanation

Explanation/Reference:

QUESTION 187

An OSPF neighbor relationship fails to be established and the display ospf error command output is as follows.



```
[RTB]display ospf error
      OSPF Process 1 with Router ID 2.2.2.2
      OSPF error statistics:
General packet errors:
0  : IP: received my own packet      0  : Bad packet
0  : Bad version                    0  : Bad checksum
0  : Bad area id                    0  : Drop on unnumbered interface
0  : Bad virtual link               0  : Bad authentication type
3  : Bad authentication key          0  : Packet too small
0  : Packet size>ip length           0  : Transmit error
0  : Interface down                 0  : Unknown neighbor

HELLO packet errors:
0  : Netmask mismatch                0  : Hello timer mismatch
0  : Dead timer mismatch             0  : Extern option mismatch
    : Router id confusion            0  : Virtual neighbor unknown
0  : NBMA neighbor unknown

DD packet errors:
0  : Neighbor state low              0  : Router id confusion
0  : Extern option mismatch          0  : Unknown LSA type
0  : MTU option mismatch

LS ACK packet errors:
0  : Neighbor state low              0  : Bad ack
0  : Duplicate ack                  0  : Unknown LSA type

LS REQ packet errors:
0  : Neighbor state low              0  : Empty request
0  : Bad request

LS UPD packet errors:
0  : Neighbor state low              0  : Newer self-generate LSA
0  : LSA checksum bad               0  : Received less recent LSA
0  : Unknown LSA type

Opaque errors:
0  : 9-out of flooding scope         0  : 10-out of flooding scope
0  : 11-out of flooding scope

Retransmission for packet over Limitation errors:
0  : Number for DD Packet            0  : Number for Update Packet
0  : Number for Request Packet

Receive Grace LSA errors:
```


Which of the following is the possible cause?

- A. Router IDs conflict.
- B. Area IDs are mismatched.
- C. Network masks are inconsistent.
- D. Authentication types are inconsistent.

Correct Answer: D

Section: (none)

Explanation

Explanation/Reference:

QUESTION 188

Which of the following statements about LACP are true? (Choose two.)

- A. It complies with IEEE 802.3az.
- B. A device enabled with LACP exchanges Link Aggregation Control Protocol Data Units (LACPDUs) with its peer.
- C. Devices at both ends determine the active interface according to the interface priority of the active device.

Correct Answer: BC

Section: (none)

Explanation

Explanation/Reference:

QUESTION 189

Assume that the subnet mask is 255.255.255.248. Which of the following addresses are valid host addresses? (Choose three.)

- A. 192.168.200.87
- B. 196.123.142.190



<https://vceplus.com/>

- C. 223.168.210.100
- D. 220.100.100.154

Correct Answer: BCD

Section: (none)

Explanation

Explanation/Reference:



QUESTION 190

Which of the following statements is false?

- A. An ABR maintains an LSDB for each area. There are many LSDBs on an ABR.
- B. The metric of an ASE LSA can be specified when an external route is imported. The default value is 1.
- C. The external routing information carries a Tag label for transmitting additional information of the route. It is commonly used in a routing policy. The default value of the Tag label is 0.
- D. The Link State ID in an ASBR-Summary-LSA is the Router ID of the ASBR.

Correct Answer: C

Section: (none)

Explanation

Explanation/Reference:

QUESTION 191

If the Router Priority of a router is set to 0, this router cannot be elected as a DR or a BDR.

- A. True
- B. False

Correct Answer: A

Section: (none)

Explanation

Explanation/Reference:

QUESTION 192

Only Router-LSAs and Network-LSAs are involved in intra-area route calculations.

- A. True
- B. False

Correct Answer: A

Section: (none)

Explanation

Explanation/Reference:



QUESTION 193

Which of the following statements about Flush packets in a Smart Link group are true? (Choose three.)

- A. A Smart Link group sends Flush packets to instruct other devices to update the address table.
- B. Flush packets use IEEE 802.3 encapsulation.
- C. The destination MAC address of Flush packets is an unknown unicast address, which is used to distinguish protocols.
- D. The destination MAC address of Flush packets is a special multicast address, which is used to distinguish protocols.

Correct Answer: ABC

Section: (none)

Explanation

Explanation/Reference:

QUESTION 194

Which of the following statements about Stub areas is false?

- A. The difference between a Stub area and a Totally Stubby area is that the Totally Stubby area cannot contain summary-LSAs.
- B. The ABR in the Stub area generates a default route to guide forwarding of packets destined for other area.
- C. A Transit area cannot be configured as a Stub area.
- D. Any Stub area can be configured as a Totally Stubby area.

Correct Answer: A

Section: (none)

Explanation

Explanation/Reference:

QUESTION 195

Each router running OSPF has a router ID. A router ID is a 32-bit integer and uniquely identifies a router. Hence, even of routers in different ASs, the router IDs must be different.

- A. True
- B. False

Correct Answer: B

Section: (none)

Explanation

Explanation/Reference:

QUESTION 196

Which of the following statements about link aggregation are true? (Choose three.)

- A. Link aggregation can be performed in manual load balancing or LACP mode. In manual loading balancing mode, LACP is enabled; in LACP mode, LACP is enabled too.
- B. In manual load balancing mode, all active member interfaces forward data and perform load balancing.
- C. In static LACP mode, the creation of the Eth-Trunk and the addition of member interfaces to the Eth-Trunk are performed manually. Compared with link aggregation in manual load balancing mode, active interfaces in static LACP mode are selected by sending LACP Data Units (LACPDUs).

- D. In dynamic LACP mode, the creation of the Eth-Trunk, the addition of member interfaces, and the selection of active interfaces are performed based on LACP negotiation.

Correct Answer: BCD

Section: (none)

Explanation

Explanation/Reference:

QUESTION 197

Which of the following can speed up OSPF fast convergence? (Choose two.)

- A. Configuring dynamic BFD for OSPF
- B. Adjusting the interval at which OSPF calculation is performed
- C. Configuring the interval at which an LSA are retransmitted
- D. Configuring the maximum number of external LSAs in the LSDB

Correct Answer: AB

Section: (none)

Explanation



Explanation/Reference:

QUESTION 198

Which of the attributes must exist in the BGP Update messages? (Choose three.)

- A. LOCAL_PREF
- B. NEXT_HOP
- C. ORIGIN
- D. AS_PATH

Correct Answer: BCD

Section: (none)

Explanation

Explanation/Reference:

QUESTION 199

Which of the following LSAs are flooded within a single area? (Choose three.)

- A. Router LSA
- B. Network LSA
- C. Summary LSA
- D. AS External LSA

Correct Answer: ABC

Section: (none)

Explanation

Explanation/Reference:

QUESTION 200

BGP peers are automatically discovered by exchanging multicast packets.

- A. True
- B. False



Correct Answer: B

Section: (none)

Explanation

Explanation/Reference:

QUESTION 201

Which statements about the Local-Preference attribute are true? (Choose two.)

- A. Based on BGP route selection rules, the Local-Preference attribute has a lower priority than the Preferred-Value attribute. This means that BGP compares Local-Preference attributes of routes after comparing Preferred-Value attributes of them.
- B. The Local-Preference attribute of a BGP route defaults to 0.
- C. The Local-Preference attribute is used to select an exit point from the local AS for data flows.
- D. Based on BGP route selection rules, the Local-Preference attribute has a lower priority than the MED attribute. This means that BGP compares LocalPreference attributes of routes after comparing MED attributes of them.

Correct Answer: AC

Section: (none)

Explanation

Explanation/Reference:

QUESTION 202

The ABR of an NSSA will not advertise Type-4 and Type-5 LSAs to an NSSA but can import external routes into the NSSA.

A. True

B. False

Correct Answer: A

Section: (none)

Explanation

Explanation/Reference:



QUESTION 203

In transit AS, why do core routers run BGP?

A. Eliminate route loops

B. Ensure data packets can be transmitted to the external destination addresses

C. Optimize network within an AS

D. Ensure only one export

Correct Answer: B

Section: (none)

Explanation

Explanation/Reference:

QUESTION 204

Which command can trigger the advertisement of BGP routes without interrupting a BGP connection?

- A. Reset bgp
- B. Refresh bgp all external
- C. Refresh bgp all internal
- D. RR-filter

Correct Answer: B

Section: (none)

Explanation

Explanation/Reference:

QUESTION 205

Which of the following BGP filters can be used to set route attributes?

- A. Ip-prefix
- B. Route-policy
- C. As-path-filer
- D. Community-filter

Correct Answer: B

Section: (none)

Explanation

Explanation/Reference:

QUESTION 206

A BGP finite state machine has the following states:

Active
OpenConfirm
Idle
Establish
OpenSent

What is the state transition sequence in which the BGP peer relationship is established?

- A. Idle-OpenSent-OpenConfirmActive-Establish
- B. Idle-Active-OpenSent-OpenConfirm-Establish



- C. Active-Idle-OpenSent-OpenConfirm-Establish
- D. Idle-Active-OpenConfirm-OpenSent-Establish

Correct Answer: B

Section: (none)

Explanation

Explanation/Reference:

QUESTION 207

In OSPF protocol, which of the following elements are used by Network LSA to describe broadcast network segment or NBMA network segment? (Choose three.)

- A. Link ID
- B. Net mask
- C. Attached Router list
- D. Metric

Correct Answer: ABC

Section: (none)

Explanation



Explanation/Reference:

QUESTION 208

When the import-route command is used to import routes to BGP, which statement is false?

- A. The import-route command can import IGP routes, direct routes, and static routes to BGP.
- B. A process ID must be specified if OSPF routes, or RIP routes are imported to BGP.
- C. By default, the Origin attribute of imported routes is IGP.
- D. Routing policies can be used to filter the routes imported from other routing protocols.

Correct Answer: C

Section: (none)

Explanation

Explanation/Reference:

QUESTION 209

Which of the BGP attributes are Well-known mandatory attributes? (Choose three.)

- A. ORIGIN
- B. AS_PATH
- C. NEXT_HOP
- D. MED
- E. LOCAL_PREF
- F. COMMUNITY

Correct Answer: ABC

Section: (none)

Explanation

Explanation/Reference:

QUESTION 210

Which of the following statements about an AS-External-LSA are true? (Choose three.)

- A. The Link State ID field specifies the network segment address for an advertised destination.



<https://vceplus.com/>

- B. The Advertising Router field specifies the Router ID of an ASBR.
- C. The Net mask field specifies the network mask of an advertised destination.
- D. The Link State ID and Advertising Router fields are used together to uniquely identify an AS-External-LSA.

Correct Answer: ABC

Section: (none)

Explanation

Explanation/Reference:

QUESTION 211

Which of the BGP attributes is Optional transitive attribute?

- A. ORIGIN
- B. AS_PATH
- C. NEXT_HOP
- D. MED
- E. LOCAL_PREF
- F. COMMUNITY

Correct Answer: B

Section: (none)

Explanation

Explanation/Reference:



QUESTION 212

Which attributes are well-known community attributes? (Choose three.)

- A. NO_EXPORT (0xFFFFF01)
- B. NO_ADVERTISE (0xFFFFF02)
- C. NO_EXPORT_SUBCONFED
- D. AS(2Byte):Number(2Byte)

Correct Answer: ABC

Section: (none)

Explanation

Explanation/Reference:

QUESTION 213

OSPF uses SPF algorithm to calculate SPF tree according to topology. Which of the following statements are correct regarding SPF tree node? (Choose two.)

- A. The node on SPF tree indicates router and port.
- B. There are two types of SPF tree node Transit node and Stub node.
- C. The router node on SPF tree is one type of Stub nodes.
- D. The router node on SPF tree is one type of Transit nodes.

Correct Answer: BD

Section: (none)

Explanation

Explanation/Reference:

QUESTION 214

What is the Origin attribute of the BGP route that is imported by using the import-route command?

- A. IGP
- B. EGP
- C. Incomplete
- D. Unknown



Correct Answer: C

Section: (none)

Explanation

Explanation/Reference:

QUESTION 215

How does the route Community attribute set by routing policies affect route selection?

- A. The Community attribute directly affects route selection, because it must be compared in route selection.
- B. The Community attribute does not affect route selection, because it is a non-transitive attribute and cannot be transmitted between routers.
- C. The Community attribute indirectly affects route selection. Routes are classified by the Community attribute. Different route attributes such as the LocalPreference and MED can be set for routes in different communities, which affects route selection.

Correct Answer: C

Section: (none)

Explanation

Explanation/Reference:

QUESTION 216

In OSPF area, RTA and RTB interconnect through FE interface. which of the following commands can be used to configure the link cost between RTA and RTB as 10? (Choose two.)

- A. Use command "ospf cost 10" on two routers
- B. Use command "ospf cost 5" on two routers
- C. Use command "bandwidth-reference 500" on two routers to change bandwidth-reference value
- D. Use command "bandwidth-reference 1000" on two routers to change bandwidth-reference

Correct Answer: AD

Section: (none)

Explanation

Explanation/Reference:



QUESTION 217

BGP is an inter-AS routing protocol. Which statements about BGP are true? (Choose three.)

- A. BGP adopts a reliable transmission protocol.
- B. BGP supports automatic peer discovery.
- C. BGP supports incremental route update.
- D. BGP supports various routing policies.

Correct Answer: ACD

Section: (none)

Explanation

Explanation/Reference:

QUESTION 218

Which statement is true if MD5 authentication is configured during the configuration of a BGP peer?

- A. All the routers in the same AS must use the same MD5 password.
- B. A pair of BGP peers must use the same MD5 password.
- C. All BGP peers of a router must use the same MD5 password.
- D. Every BGP peer of a router must use a unique MD5 password.

Correct Answer: B

Section: (none)

Explanation

Explanation/Reference:

QUESTION 219

In OSPF protocol, which of the following elements are used to describe one link? (Choose three.)

- A. Link ID
- B. Data
- C. Network Mask
- D. Metric



Correct Answer: ABD

Section: (none)

Explanation

Explanation/Reference:

QUESTION 220

A failure in establishing a BGP peer relationship can be addressed by checking the TCP connectivity and BGP peer configurations.

- A. True
- B. False

Correct Answer: A

Section: (none)

Explanation

Explanation/Reference:

QUESTION 221

In which state have BGP peers not established any connection and not initiated a connection request?

- A. Established
- B. OpenSent
- C. Active
- D. Idle

Correct Answer: D

Section: (none)

Explanation

Explanation/Reference:

QUESTION 222

OSPF uses SPF algorithm to calculate SPF tree according to topology. What is the node of the SPF tree?

- A. Router
- B. Router and network segment
- C. Port and network segment
- D. Router and port



Correct Answer: B

Section: (none)

Explanation

Explanation/Reference:

QUESTION 223

Which of the following conditions must be met for importing routes to BGP by using the network command? (Choose two.)

- A. The routes are optimal in the IP routing table.
- B. The routes do not need to match the specified mask length.
- C. The routes match the specified mask length.
- D. The routes are IGP routes.

Correct Answer: AC

Section: (none)

Explanation

Explanation/Reference:

QUESTION 224

Type 2-external routes always take precedence over Type 1-external routes.

- A. True
- B. False

Correct Answer: B

Section: (none)

Explanation

Explanation/Reference:

QUESTION 225

What kind of the BGP attributes does AS-Path attribute belong to? (Choose two.)

- A. Mandatory
- B. Transitive
- C. Optional
- D. Non-transitive

Correct Answer: AB

Section: (none)

Explanation

Explanation/Reference:

QUESTION 226

Which of the following statements belong to BGP COMMUNITY attribute? (Choose three.)

- A. NO_EXPORT
- B. NO_ADVERTISE

- C. LOCAL_EXPORT_SUBCONFED
- D. NO_BROADCAST

Correct Answer: ABC

Section: (none)

Explanation

Explanation/Reference:

QUESTION 227

The router ID configured in the system view takes precedence over the router ID configured in the BGP view.

- A. True
- B. False

Correct Answer: B

Section: (none)

Explanation

Explanation/Reference:



QUESTION 228

In the BGP routing table, if there are two BGP routes with the same destination address but different next hops, which statement about the two BGP routes is true?

- A. Both BGP routes are advertised to other BGP peers.
- B. Only the optimal route selected from the two BGP routes is advertised to other BGP peers.

Correct Answer: B

Section: (none)

Explanation

Explanation/Reference:

QUESTION 229

Which of the following statements is false?

- A. The metric of a Type-1 external route is the sum of the AS internal metric (metric to reach an ASBR) and the AS external metric (metric from the ASBR to the destination network).
- B. The metric of a Type-2 external route is only the AS external metric.
- C. The metric of an external route is the sum of the AS external metric and the AS internal metric.
- D. The prerequisite for setting Forwarding Address to a non-zero value is that the next hop of the external route imported into OSPF is within the OSPF routing area.

Correct Answer: C

Section: (none)

Explanation

Explanation/Reference:

QUESTION 230

If the hold timers in the Open messages sent from BGP Peer A and Peer B are 180s and 90s respectively, what is the interval at which Keepalive messages are sent after Peer A and Peer B have established a BGP peer relationship?

- A. 180s
- B. 90s
- C. 60s
- D. 30s



Correct Answer: D

Section: (none)

Explanation

Explanation/Reference:

QUESTION 231

Which TCP port is used by BGP?



<https://vceplus.com/>

- A. 520
- B. 89
- C. 179
- D. 180

Correct Answer: C

Section: (none)

Explanation

Explanation/Reference:



QUESTION 232

Assume that the following commands are run to configure BGP:

```
timerkeepalive 30 hold 90
```

```
peer 1.1.1.2 timer keepalive 10 hold 30
```

Which statements about the configurations are true? (Choose two.)

- A. The global configuration is preferred. Therefore, the timer values for peer 1.1.1.2 are "keepalive 30 hold 90."
- B. The peer configuration is preferred. Therefore, the timer values for peer 1.1.1.2 are "keepalive 10 hold 30."
- C. The smaller one between the global and peer timer values is used. Therefore, the timer values of peer 1.1.1.2 is "keepalive 10 hold 30".
- D. The default configuration is "timer keepalive 60 hold 180." Therefore, peer 1.1.1.2 can detect connection faults faster than the default configuration.

Correct Answer: BD

Section: (none)

Explanation

Explanation/Reference:

QUESTION 233

What is private AS number?

- A. 65410-65535 B. 1-64511
- C. 64512-65535
- D. 64511-65535

Correct Answer: C

Section: (none)

Explanation

Explanation/Reference:



QUESTION 234

Which statement about BGP is false?

- A. BGP runs over TCP.
- B. BGP is an enhanced distance-vector routing protocol.
- C. BGP uses port number 189.
- D. BGP is an inter-AS routing protocol.

Correct Answer: C

Section: (none)

Explanation

Explanation/Reference:

QUESTION 235

In OSPF protocol, which of the following statements are incorrect regarding Link ID of Router LSA? (Choose two.)

- A. In Point-to-Point link type, Link ID is the neighbor's Interface IP address.
- B. InTransNet link type, Link ID is the network address of TransNet network segment.
- C. InStubNet link type, Link ID is the network address of Stub network.
- D. In Virtual link type, Link ID is the neighbor's Router ID of virtual link.

Correct Answer: AB

Section: (none)

Explanation

Explanation/Reference:

QUESTION 236

The Origin attribute of the BGP route that is imported by using the network command is IGP.

- A. True
- B. False

Correct Answer: A

Section: (none)

Explanation

Explanation/Reference:



QUESTION 237

In the process of calculating SPF tree, the cost from a node to root node equals to metric listed in the Router LSA generated by the node.

- A. True
- B. False

Correct Answer: B

Section: (none)

Explanation

Explanation/Reference:

QUESTION 238

Which command must be configured to establish a BGP peer relationship between indirectly connected EBGP peers?

- A. Peer connect-interface
- B. Peer valid-ttl-hops
- C. Peer ignore
- D. Peer ebgp-max-hop

Correct Answer: D

Section: (none)

Explanation

Explanation/Reference:

QUESTION 239

Using the peer connect-interface command to establish “multiple” peer relationships between two routers connected through “multiple” links is recommended.

- A. True
- B. False



Correct Answer: A

Section: (none)

Explanation

Explanation/Reference:

QUESTION 240

Which following BGP attribute can used to define a set of prefixes with the same characteristics?

- A. Origin
- B. Nexthop
- C. Community
- D. MED

Correct Answer: C

Section: (none)

Explanation

Explanation/Reference:

QUESTION 241

Which types of packets are supported by BGP? (Choose three.)

- A. Hello
- B. Notification
- C. Update
- D. Route-refresh

Correct Answer: ABC

Section: (none)

Explanation

Explanation/Reference:

QUESTION 242

Which BGP attribute is not a well-known mandatory attribute?

- A. Origin
- B. Nexthop
- C. AS-Path
- D. MED

Correct Answer: D

Section: (none)

Explanation

Explanation/Reference:

QUESTION 243

By default, what are the LOCAL_PREF and PREFERRED-VALUE in VRP system?

- A. 0,32768 B. 100,0
- C. 255,100



D. 32768,0

Correct Answer: B

Section: (none)

Explanation

Explanation/Reference:

QUESTION 244

Which of the following statements are false? (Choose three.)

- A. An ASBR-Summary-LSA describes the route to an ASBR and is flooded within an AS.
- B. An ASE-LSA describes the route to an external AS and is flooded to an external AS.
- C. An AS-External-LSA does not belong to any specific area.
- D. The metric of a Type-1 external route is the AS external metric only.

Correct Answer: ABD

Section: (none)

Explanation

Explanation/Reference:



QUESTION 245

If a router receives two BGP routes (M and N) that contain the following attributes,

Network	NextHop	MED	LocPrf	PrefVal	Path/Ogn
M 192.168.1.0	10.1.1.1	30	0	100	i
N 192.168.1.0	10.1.1.2	20	0	100	200i

Which route is the optimal route based on BGP route selection rules?

- A. The optimal route is route M because its AS_Path is shorter than that of route N.
- B. The optimal route is route N because its MED value is smaller than that of route M.
- C. The optimal route is determined randomly.

Correct Answer: A

Section: (none)

Explanation

Explanation/Reference:

QUESTION 246

Which parameters are carried in a BGP Open message? (Choose three.)

- A. Local AS number
- B. BGP ID
- C. Keepalive timer
- D. Holder timer
- E. Current peer status

Correct Answer: ABD

Section: (none)

Explanation

Explanation/Reference:



QUESTION 247

In BGP, performing MD5 authentication between BGP peers can protect them from DoS attacks.

- A. True B.
- False

Correct Answer: A

Section: (none)

Explanation

Explanation/Reference:

QUESTION 248

Only one BGP process can be configured on a router.

- A. True
- B. False

Correct Answer: A

Section: (none)

Explanation

Explanation/Reference:

QUESTION 249

In OSPF, the process of calculating shortest path tree can be divided into two phases, calculate Transit node first, then calculate Stub network.

- A. True
- B. False

Correct Answer: A

Section: (none)

Explanation

Explanation/Reference:



QUESTION 250

Which BGP attributes can be used to prevent routing loops? (Choose three.)

- A. Originator_ID
- B. Aggregator C. Cluster_List
- D. AS-Path

Correct Answer: ACD

Section: (none)

Explanation

Explanation/Reference:

QUESTION 251

Which methods can be used to import local routes to BGP? (Choose two.)

- A. Run the network command.
- B. Receive routes from peers.
- C. Run the summary automatic command.
- D. Run the import command.

Correct Answer: AD

Section: (none)

Explanation

Explanation/Reference:

QUESTION 252

Whatever changes occur in the BGP routing table, a BGP Speaker advertises all the optimal routes in the BGP routing table to its BGP peer.

- A. True
- B. False

Correct Answer: B

Section: (none)

Explanation

Explanation/Reference:

QUESTION 253

Which of the connection types that Router LSA can describe? (Choose three.)

- A. Point-to-point
- B. Star
- C. Transit
- D. Virtual link

Correct Answer: ACD

Section: (none)

Explanation



Explanation/Reference:

QUESTION 254

In the VRP, by default, a BGP router does not automatically send a Refresh packet to request its BGP peer to retransmit an Update packet after the inbound routing policy of the BGP peer changes.



<https://vceplus.com/>

- A. True
- B. False

Correct Answer: B

Section: (none)

Explanation

Explanation/Reference:

QUESTION 255

Which statements about prerequisites to establishing a BGP peer relationship are true? (Choose two.)

- A. BGP peers have been manually configured.
- B. A TCP connection has been established between two neighboring routers.
- C. BGP peers have exchanged routing information.
- D. MD5 authentication has been configured on BGP peers.

Correct Answer: AB



Section: (none)

Explanation

Explanation/Reference:

QUESTION 256

Based on BGP route selection rules, how are Origin attributes listed in descending order of priority?

- A. EGP > IGP > Incomplete
- B. IGP > Incomplete > EGP
- C. Incomplete > EGP > IGP
- D. IGP > EGP > Incomplete

Correct Answer: D

Section: (none)

Explanation

Explanation/Reference:



QUESTION 257

Based on BGP route selection rules, the route with the smallest MED value is preferred.

- A. True
- B. False

Correct Answer: A

Section: (none)

Explanation

Explanation/Reference:

QUESTION 258

In the VRP, by default, a BGP router automatically retransmits an Update packet to its BGP peer after the outbound routing policy of the BGP peer changes.

- A. True
- B. False

Correct Answer: A

Section: (none)

Explanation

Explanation/Reference:

QUESTION 259

How does a BGP router process the received route whose next hop is unreachable?

- A. The BGP router sends an error message to the router that has sent the Update message.
- B. The BGP router accepts this route and adds it to the BGP routing table. This route, however, is neither preferred nor added to the IP routing table for packet forwarding.
- C. The BGP router refuses this route.
- D. The BGP router accepts this route and adds it to the BGP routing table. This route can participate in route selection and may be selected as the optimal route to be added to the IP routing table for packet forwarding.

Correct Answer: B

Section: (none)

Explanation

Explanation/Reference:



QUESTION 260

IGP routes can be installed into the BGP routing table by running either the network or import-route command.

- A. True
- B. False

Correct Answer: A

Section: (none)

Explanation

Explanation/Reference:

QUESTION 261

Which statements about the process of establishing a BGP peer relationship are true? (Choose three.)

- A. There may be two TCP connections during the establishment of the BGP peer relationship.
- B. If two TCP connections are established between BGP peers, one connection functions as the primary connection, and the other as the backup connection.
- C. If two TCP connections are established between BGP peers, one TCP connection is torn down.
- D. If there are "multiple" TCP connections between BGP peers, BGP keeps the TCP connection initiated by the peer with a greater BGP router ID.

Correct Answer: ACD

Section: (none)

Explanation

Explanation/Reference:

QUESTION 262

Which of the BGP attributes will not be advertised to other neighbor AS?

- A. LOCAL_PREF
- B. AS_PATH
- C. COMMUNITY
- D. ORIGIN



Correct Answer: A

Section: (none)

Explanation

Explanation/Reference:

QUESTION 263

Which statements about BGP route advertisement are true? (Choose two.)

- A. All BGP routes learned from BGP peers are advertised to other BGP peers.
- B. Only the routes learned from an IGP are advertised to other BGP peers.
- C. By default, the routes learned from IBGP peers are not advertised to other IBGP peers.
- D. Only the optimal routes are advertised to other BGP peers.

Correct Answer: CD

Section: (none)

Explanation

Explanation/Reference:

QUESTION 264

An Autonomous System (AS) is a set of routers under a single technical administration, using the same routing policy.

- A. True
- B. False

Correct Answer: A

Section: (none)

Explanation

Explanation/Reference:

QUESTION 265

Which statements about the AS number range are true? (Choose three.)

- A. If 2-byte AS numbers are supported, a private AS number ranges from 32768 to 65535.
- B. If 2-byte AS numbers are supported, a private AS number ranges from 64512 to 65535.
- C. If 2-byte AS numbers are supported, an AS number ranges from 1 to 65535.
- D. If 4-byte AS numbers are supported, a 4-byte AS number is in the x.y format. Here, "x" and "y" are integers ranging from 1 to 65535 and 0 to 65535 respectively.

Correct Answer: BCD

Section: (none)

Explanation

Explanation/Reference:

QUESTION 266

Which BGP attributes are optional in a BGP Update packet? (Choose two.)

- A. Origin

- B. Nexthop
- C. Local-Preference
- D. MED

Correct Answer: CD

Section: (none)

Explanation

Explanation/Reference:

QUESTION 267

BGP is an exterior gateway protocol which runs among ASs. It focuses on routes control and selection of optimal routes rather than discovery and calculation of routes.

- A. True
- B. False

Correct Answer: A

Section: (none)

Explanation

Explanation/Reference:



QUESTION 268

When a TCP connection works properly, what is the status of the BGP peer relationship if the peer AS number configured for a BGP router is inconsistent with the AS number of its BGP peer?

- A. Idle
- B. Active
- C. OpenSent
- D. Establish

Correct Answer: B

Section: (none)

Explanation

Explanation/Reference:

QUESTION 269

The BGP Community attribute is a well-known mandatory attribute.

- A. True
- B. False

Correct Answer: B

Section: (none)

Explanation

Explanation/Reference:

QUESTION 270

Which of the followings is used to avoid route loops in BGP?

- A. Use ORIGIN attribute to record route origin
- B. Use AS_PATH attribute to record all ASs during a route passing from the local area to the destination in a certain order
- C. Use NEXT_HOP attribute to record next hop of the route
- D. Use MED attribute to influence export selection of other AS

Correct Answer: B

Section: (none)

Explanation

Explanation/Reference:

QUESTION 271

Which BGP attribute is usually used to determine the path along which data flows enter an AS?

- A. Router ID
- B. Nexthop
- C. Local-Preference
- D. MED

Correct Answer: D

Section: (none)

Explanation

Explanation/Reference:

QUESTION 272

Which parameters are optional for configuring a BGP peer? (Choose two.)

- A. IP address
- B. Description
- C. Password
- D. AS-number

Correct Answer: BC

Section: (none)

Explanation

Explanation/Reference:



QUESTION 273

Assume that a TCP connection works properly, and the peer AS number configured for a BGP router is different from the AS number of its BGP peer. During the establishment of a BGP session, the BGP router exchanges routing information with its peer, and finds that its peer AS number is different from the AS number of the peer. Therefore, the BGP router sends a Notification message to the peer, indicating that the establishment of a BGP session fails. Which message can be identified by the Error Code field in the Notification message?

- A. Route-refresh
- B. Open
- C. Keepalive
- D. Update

Correct Answer: B

Section: (none)

Explanation

Explanation/Reference:

QUESTION 274

Which statements about BGP well-known mandatory attributes are true? (Choose three.)

- A. Well-known mandatory attributes must be identified by all BGP routers.
- B. Well-known mandatory attributes must be transmitted between BGP peers.
- C. Well-known mandatory attributes are optional in an Update packet, and can be carried in an Update packet as needed.
- D. Well-known mandatory attributes must be carried in an Update packet.

Correct Answer: ABD

Section: (none)

Explanation

Explanation/Reference:

QUESTION 275

Which statements about BGP route selection rules are true? (Choose three.)



<https://vceplus.com/>

- A. BGP first ignores routes with unreachable next hops.
- B. A summarized route takes precedence over a non-summarized route.
- C. IBGP routes take precedence over EBGP routes.
- D. If other conditions of routes are the same, the route with the shortest Cluster_List is preferred.

Correct Answer: ABD

Section: (none)

Explanation

Explanation/Reference:

QUESTION 276

Which of the following statements are correct regarding intra-area route calculation of OSPF? (Choose two.)

- A. Every OSPF router only uses one Router LSA to describe local active link state for one area.
- B. Every OSPF uses more than one Router LSA to describe local active link state for one area.
- C. One Router LSA only describes one link.
- D. One Router LSA describes more than one link.

Correct Answer: AD

Section: (none)

Explanation

Explanation/Reference:

QUESTION 277

The import-route limit command is used to set the maximum number of external routers that can be imported into an OSPF process.

- A. True
- B. False



Correct Answer: A

Section: (none)

Explanation

Explanation/Reference:

QUESTION 278

Which of the statements describes the way BGP update routes?

- A. Broadcasts all of the routes periodically
- B. Update all of the routes using multicast address periodically
- C. Only update the changed routes and the new routes
- D. Update routes when BGP peer requests

Correct Answer: C

Section: (none)

Explanation

Explanation/Reference:

QUESTION 279

Which of the following statements is false?

- A. Each OSPF router uses only one Router-LSA to describe the status of local links in an area.
- B. Link types described by a Router-LSA include P2P, P2MP, TransNet, and StubNet.
- C. A Network-Summary-LSA describes the metric of the route from an ABR to a destination network segment.
- D. Routing information can be exchanged between a backbone area and a non-backbone area but cannot be exchanged between two non-backbone areas.

Correct Answer: B

Section: (none)

Explanation

Explanation/Reference:



QUESTION 280

Which one of the statements describes the relationship between BGP and AS correctly?

- A. BGP only runs between ASs, and cannot run within an AS.
- B. BGP is an EGP running between ASs, and IGP runs within an AS such as OSPF, RIP and IS-IS.
- C. BGP builds up network topology by exchanging link-state information among ASs.
- D. BGP cannot run between ASs.

Correct Answer: B

Section: (none)

Explanation

Explanation/Reference:

QUESTION 281

Generally, the performance of an IP-prefix-filter is higher than that of an ACL.

- A. True
- B. False

Correct Answer: A

Section: (none)

Explanation

Explanation/Reference:

QUESTION 282

An IP-prefix-filter is used to filter IP prefixes and data packets.

- A. True
- B. False

Correct Answer: B

Section: (none)

Explanation

Explanation/Reference:



QUESTION 283

In BGP, which type of message is periodically exchanged between BGP peers to maintain a BGP peer relationship?

- A. Open
- B. Hello
- C. Route-refresh
- D. Keepalive

Correct Answer: D

Section: (none)

Explanation

Explanation/Reference:

QUESTION 284

In the VRP, by default, the routes imported by BGP are not automatically summarized.

- A. True
- B. False

Correct Answer: A

Section: (none)

Explanation

Explanation/Reference:

QUESTION 285

Which type of BGP route will be added to the BGP routing table?

- A. All BGP routes learned from peers
- B. Only the routes learned from IBGP peers
- C. Only the routes learned from EBGP peers
- D. Only optimal routes

Correct Answer: A

Section: (none)

Explanation

Explanation/Reference:

QUESTION 286

An ACL is used to match routing information or data packet addresses so as to filter out the unmatched routing information or data packets.

- A. True
- B. False

Correct Answer: A

Section: (none)

Explanation

Explanation/Reference:



QUESTION 287

Which of the following BGP routing policies can be used to filter routes? (Choose two.)

- A. Ip-prefix
- B. Reflect-client
- C. Route-policy
- D. Next-hop-local

Correct Answer: AC

Section: (none)

Explanation

Explanation/Reference:

QUESTION 288

Which statements about the MED attribute are true? (Choose three.)

- A. Based on BGP route selection rules, the MED attribute takes precedence over the AS_Path, Preferred-Value, Local-Preference, and Origin attributes.
- B. The MED attribute of a BGP route defaults to 100.
- C. By default, BGP compares MED attributes of only the routes from the same AS. If the compare-different-as-med command is configured, BGP can compare the MED attributes of the routes from different ASs.
- D. By default, if the MED value of a BGP route is not specified, the value 0 is used. If the bestroute med-none-as-maximum command is configured, the maximum MED value 4294967295 is used.

Correct Answer: ACD

Section: (none)

Explanation

Explanation/Reference:

QUESTION 289

Once a BGP connection is established, a BGP Speaker advertises all the optimal routes in the BGP routing table to its BGP peer.

- A. True
- B. False

Correct Answer: A

Section: (none)

Explanation

Explanation/Reference:

QUESTION 290

Based on BGP route selection rules, a local route that is automatically summarized takes precedence over a local route that is manually summarized.

- A. True
- B. False

Correct Answer: B

Section: (none)

Explanation

Explanation/Reference:



QUESTION 291

Which method is used to establish session between the BGP peers?

- A. Telnet
- B. Send Hello packet
- C. UDP
- D. TCP

Correct Answer: D

Section: (none)

Explanation

Explanation/Reference:

QUESTION 292

Which of the following statements are correct regarding BGP attribute? (Choose two.)

- A. Till now, there are 16 BGP attributes
- B. BGP attribute can be extended to 256 types
- C. Well-known discretionary attribute may not be included in each BGP update message, such as Origin attribute
- D. AS_PATH is an Optional Transitive attribute

Correct Answer: AB

Section: (none)

Explanation

Explanation/Reference:

QUESTION 293

In a route-policy, which BGP attributes can be invoked by if-match clauses? (Choose three.)

- A. Local-Preference
- B. AS-Path
- C. MED
- D. Community



Correct Answer: BCD

Section: (none)

Explanation

Explanation/Reference:

QUESTION 294

Based on BGP route selection rules, the route with the lowest Local-Preference is preferred.

- A. True
- B. False

Correct Answer: B

Section: (none)

Explanation

Explanation/Reference:

QUESTION 295

In a route-policy, which BGP attributes can be used to define apply clauses? (Choose three.)

- A. Local-Preference
- B. Tag
- C. Origin
- D. AS-Path

Correct Answer: ACD

Section: (none)

Explanation

Explanation/Reference:

QUESTION 296

Which switching technology reduces the size of broadcast domain?

- A. VLAN
- B. Trunk
- C. RARP
- D. STP



Correct Answer: A

Section: (none)

Explanation

Explanation/Reference:

QUESTION 297

According to the OSI reference model, Layer 2 LAN switch operates at Q.

- A. physical layer
- B. data link layer
- C. network layer
- D. application layer

Correct Answer: B

Section: (none)

Explanation

Explanation/Reference:

QUESTION 298

Layer 3 switch has layer 2 capability as well as layer 3 routing capability.

A. True

B. False

Correct Answer: A

Section: (none)

Explanation

Explanation/Reference:

QUESTION 299

The default-route originate command in the RIP protocol is used to advertise a default RIP route to peers. By using this command, which of the following attributes can be set for the default route?

A. Tag

B. Cost

C. Interface

D. Nexthop

Correct Answer: B

Section: (none)

Explanation

Explanation/Reference:

QUESTION 300

Which of the following route selection tools is used in multiple routing protocols, can be configured with match conditions, and consists of if-match and apply clauses?

- A. AS-path-filter
- B. IP-prefix
- C. Route-policy
- D. Community-filter

Correct Answer: C

Section: (none)

Explanation

Explanation/Reference:

QUESTION 301

You cannot set an aging time for the blacklist of the USG.

- A. TRUE
- B. FALSE

Correct Answer: B

Section: (none)

Explanation

Explanation/Reference:



QUESTION 302

Which of the following routes match this ACL filter? (Choose two.)

```
"acl number 2001
```

```
rule 0 permit source 1.1.1.0 0.0.254.255"
```

- A. 1.1.1.1/32
- B. 1.1.2.1/32
- C. 1.1.3.1/32
- D. 1.1.4.1/32

Correct Answer: AC

Section: (none)

Explanation**Explanation/Reference:****QUESTION 303**

OSPF supports two authentication modes: area authentication and interface authentication.
These two modes cannot be configured at the same time.

- A. TRUE
- B. FALSE

Correct Answer: B**Section: (none)****Explanation****Explanation/Reference:****QUESTION 304**

Which of the following statements is false?



- A. A Router-LSA describes the local link state information of a router.
- B. A Network-ISA describes the link state information of a broadcast network or an NBMA network segment.
- C. A virtual link is a virtual adjacency in the backbone area (Area 0).
- D. An AS-external-ISA describes the means to reach an ASBR.

Correct Answer: D**Section: (none)****Explanation****Explanation/Reference:****QUESTION 305**

Which of the following statements about the Reverse Path Forwarding (RPF) mechanism are true? (Choose two.)

- A. Multicast RPF does not depend on unicast routing.
- B. All multicast protocols adopt the RPF mechanism.

- C. A router discards the received multicast packets if the packets fail the RPF check.
- D. The RPF mechanism has two functions: 1. It prevents multicast routing loops; 2. It avoids forwarding redundant multicast data packets.

Correct Answer: CD

Section: (none)

Explanation

Explanation/Reference:

QUESTION 306

What are the functions of route filtering? (Choose three.)

- A. Avoids sub-optimal routes generated in route importing.
- B. Avoids routing loops.
- C. Affects route selection by changing route attributes.
- D. Implements accurate route importing and controls route advertisement.

Correct Answer: ABD

Section: (none)

Explanation



Explanation/Reference:

QUESTION 307

The preceding information is generated after a router receives a Report message from group 225.0.0.1 through Ethernet 6/1/0.


```
<Quidway>dis igmp group verbose
IGMP interface group report information
Ethernet6/1/0(10.1.1.1):
Total 1 IGMP Group reported
Group: 225.0.0.1
Uptime: 00:09:03
Expires: 00:02:09
Last reporter: 10.1.1.30
Last-member-query-counter: 0
Last-member-query-timer-expiry: off
Group mode: exclude
Version1-host-present-timer-expiry: off
Version2-host-present-timer-expiry: 00:02:09
```

Which type of Report message will not be processed by the router?



<https://vceplus.com/>

- A. IS_IN
- B. ALLOW
- C. BLOCK
- D. TO_IN

Correct Answer: C

Section: (none)

Explanation

Explanation/Reference:

QUESTION 308

Which of the following attacks are prevented after an IP address and MAC address are bound on the USG? (Choose two.)

- A. IP address spoofing
- B. MAC address spoofing
- C. DoS attack
- D. DDoS attack

Correct Answer: AB

Section: (none)

Explanation

Explanation/Reference:

QUESTION 309

An IP network can provide various packet forwarding services. Users are concerned about which of the following during packet forwarding? (Choose three.)

- A. Throughput
- B. Delay
- C. Cost
- D. Loss of packet

Correct Answer: ABD

Section: (none)

Explanation

Explanation/Reference:

QUESTION 310

How many hosts are available per subnet if you apply a /21 mask to the class B network?

- A. 510

- B. 512
- C. 1022
- D. 2046

Correct Answer: D

Section: (none)

Explanation

Explanation/Reference:

QUESTION 311

Which of the following route selection mechanisms can adopt user-defined policies to determine data forwarding paths flexibly based on ACLs or packet lengths?

- A. AS-path-filter
- B. IP-prefix
- C. Route-policy
- D. Policy-based-route

Correct Answer: D

Section: (none)

Explanation



Explanation/Reference:

QUESTION 312

What are the functions of an IGMPv2 Query message? (Choose three.)

- A. A router sends IGMPv2 Query messages to collect group memberships of receiver hosts.
- B. A router sends IGMPv2 Query messages to elect a querier.
- C. If a router can periodically send IGMPv2 Query messages, it indicates that the router runs properly.
- D. Based on IGMPv2 Query messages, receiver hosts can obtain the address of a querier and unicast Report messages to the querier.

Correct Answer: ABC

Section: (none)

Explanation

Explanation/Reference:

QUESTION 313

What are the differences between the IGMP versions? (Choose two.)

- A. IGMPv1/v2 cannot elect queriers but IGMPv3 can.
- B. In IGMPv2/v3, members can actively leave groups, whereas in IGMPv1 members cannot actively leave groups.
- C. IGMPv1/v2 do not support the SSM model but IGMPv3 supports.
- D. IGMPv1/v2 do not support group-specific Query messages but IGMPv3 supports.

Correct Answer: BC

Section: (none)

Explanation

Explanation/Reference:

QUESTION 314

IGMP interface group report information
Ethernet6/1/1(40.1.1.1):



Total 1 IGMP Group reported
Group: 232.0.0.1
Uptime: 00:00:22
Expires: off
Last reporter: 40.1.1.3
Last-member-query-counter: 0
Last-member-query-timer-expiry: off
Group mode: include
Version1-host-present-timer-expiry: off
Version2-host-present-timer-expiry: off
Source list:
Source: 20.1.1.56
Uptime: 00:00:22
Expires: 00:05:08
Last-member-query-counter: 3
Last-member-query-timer-expiry: 00:00:01
Source: 20.1.1.57
Uptime: 00:00:22
Expires: 00:00:17
Last-member-query-counter: 3
Last-member-query-timer-expiry: 00:00:01



The preceding information shows the entry status of an IGMP interface on Ethernet 6/1/1 on a router. Assume IGMP sends the group-and-source-specific Query message. Which of the following statements is true?

- A. IGMP respectively sends two messages: The source carried in one of the messages is 20.1.1.56 with the S flag bit not set; the source carried in the other message is 20.1.1.57, with the S flag bit set to 1.
- B. IGMP respectively sends two messages: The source carried in one of the messages is 20.1.1.56 with the S flag bit set to 1; the source carried in the other message is 20.1.1.57, with the S flag bit not set.

- C. IGMP sends one message carrying two sources 20.1.1.56 and 20.1.1.57, with the S flag bit set to 1.
- D. IGMP sends one message carrying two sources 20.1.1.56 and 20.1.1.57, with the S flag bit not set.

Correct Answer: B

Section: (none)

Explanation

Explanation/Reference:

QUESTION 315

Which of the following route selection tools can be used in “multiple” routing protocols, be configured with matching conditions, and be composed of if-match and apply clauses?

- A. AS-path-filter
- B. IP-prefix
- C. Route-policy
- D. Community-filter

Correct Answer: C

Section: (none)

Explanation

Explanation/Reference:

QUESTION 316

Which of the following protocols support default route advertisement by using commands? (Choose three.)

- A. RIP
- B. OSPF
- C. BGP
- D. Static

Correct Answer: ABC

Section: (none)

Explanation



Explanation/Reference:

QUESTION 317

MPLS is a switching standard defined by the IETF. Which of the following devices exist on the MPLS network? (Choose two.)

- A. LSR
- B. LER
- C. Label distribution router
- D. Label transmit router

Correct Answer: AB

Section: (none)

Explanation

Explanation/Reference:

QUESTION 318

An ACL is a series of orderly rules composed of permit | deny clauses. Which of the following attributes cannot be used for defining an ACL rule?

- A. Source address
- B. Destination address
- C. Port number
- D. AS-Path

Correct Answer: D

Section: (none)

Explanation

Explanation/Reference:

QUESTION 319

The configurations of the defined route-policy Set-cost are as follows:

ipip-prefix 1 permit 10.1.0.0 16

route-policy Set-cost permit node 10

if-matchip-prefix 1

apply cost 300

route-policy Set-cost permit node 20

apply cost 200

Which of the following statements is true?

- A. The route 10.1.0.0/16 matches node 10 and its cost is set to 300.
- B. The route 10.1.0.0/16 matching node 10 also matches node 20 subsequently and its cost is finally set to 200.
- C. Costs of all routes will be set to 200.
- D. All routes that fail to match node 10 will be denied.

Correct Answer: A

Section: (none)

Explanation

Explanation/Reference:

QUESTION 320

Divide the network by using VLAN can (). (Choose two.)

- A. Support more network layer protocols
- B. Restrict the scope of broadcast domain
- C. Increase the collision
- D. Guarantee the security

Correct Answer: BD

Section: (none)

Explanation**Explanation/Reference:****QUESTION 321**

Which statements regarding the PVID on the access interface are true? (Choose three.)

- A. If a packet without VLAN tag is received, the interface adds a VLAN tag to the packets and sets the VID as the default VLAN ID.
- B. If a packet with VLAN tag is received, the interface compares the VLAN ID in the tag with the default VLAN ID. If they are the same, the interface forwards the packets; otherwise, the interface discards the packets.
- C. When the interface sends a packet with a VLAN tag that contains the default VLAN ID, the system removes the VLAN tag of the packet, and then forwards the packet.
- D. PVID on access interface is set to 1 by default and can't be changed.

Correct Answer: ABC**Section:** (none)**Explanation****Explanation/Reference:****QUESTION 322**

Which of the following is the multicast distribution tree maintained by PIM-DM?

- A. SPT
- B. CBT
- C. RPT
- D. STP

Correct Answer: A**Section:** (none)**Explanation****Explanation/Reference:****QUESTION 323**

Which of the following route entries match IP-Prefix defined below? (Choose two.)

ipip-prefix test index 10 permit 192.168.0.0 16 greater-equal 24 less-equal 28

- A. 192.168.1.0/24 B.
192.10.2.0/24
- C. 192.168.3.0/25
- D. 192.168.4.0/30

Correct Answer: AC

Section: (none)

Explanation

Explanation/Reference:

QUESTION 324

What is the range of VLAN IDs?

- A. 1~1000
- B. 0~4095
- C. 0~4096
- D. 1~4096



Correct Answer: B

Section: (none)

Explanation

Explanation/Reference:

QUESTION 325

What is the function for the command "InterfaceVlan-interface Vlan-ID"?

- A. Create a VLAN
- B. Create or enter VLAN interface view
- C. Configure a VLAN for port
- D. Configure PVID

Correct Answer: B

Section: (none)

Explanation

Explanation/Reference:

QUESTION 326

Which of the following route entries matches ACL 2001 that is defined below?

```
ipip-prefix 1 permit 10.1.0.0 16
```

```
route-policy Set-cost permit node 10
```

```
if-matchip-prefix 1
```

```
apply cost 300
```

```
route-policy Set-cost permit node 20
```

```
apply cost 200
```

- A. 1.2.3.0/24,1.2.4.0/24, 1.2.5.0/24, 1.2.6.0/24,1.2.7.0/24,1.2.8.0/24
- B. 1.0.0.0/8,1.2.0.0/16,1.2.3.0/24,1.2.4.0/24, 1.2.5.0/24, 1.2.6.0/24,1.2.7.0/24,1.2.8.0/24
- C. 1.2.3.0/24,1.2.5.0/24,1.2.7.0/24
- D. 1.2.0.0/16,1.2.4.0/24,1.2.6.0/24,1.2.8.0/24

Correct Answer: C

Section: (none)

Explanation

Explanation/Reference:

QUESTION 327

The route selection tool route-policy can filter and set BGP attributes based on pre-defined conditions. Therefore, this tool is commonly used to define policies for BGP peers and often used in route generation.

- A. True
- B. False

Correct Answer: A

Section: (none)

Explanation

Explanation/Reference:

QUESTION 328

Which of the following statements about comparison between ACL and IP-Prefix are true? (Choose two.)

- A. Both ACL and IP-Prefix can be used for route filtering
- B. Both ACL and IP-Prefix can be used for data packet filtering
- C. ACL can be used for data packet filtering and route filtering, but IP-Prefix can only be used for route filtering
- D. IP-Prefix can be used for data packet filtering and route filtering, but ACL can only be used for route filtering

Correct Answer: AC

Section: (none)

Explanation

Explanation/Reference:



QUESTION 329

Route filtering can filter not only routing information but also link-status information.

- A. True
- B. False

Correct Answer: B

Section: (none)

Explanation

Explanation/Reference:

QUESTION 330

VLANs isolate broadcast domains, eliminate broadcast storms, and enhance data security.



<https://vceplus.com/>

- A. TRUE
- B. FALSE

Correct Answer: A

Section: (none)

Explanation

Explanation/Reference:



QUESTION 331

A OSPF network may be structured, or subdivided into routing areas. Such routing areas are a set of network segments.

- A. TRUE
- B. FALSE

Correct Answer: A

Section: (none)

Explanation

Explanation/Reference:

QUESTION 332

RSTP has all functions of STP and it is backwards compatible with STP.

- A. TRUE

B. FALSE

Correct Answer: A

Section: (none)

Explanation

Explanation/Reference:

QUESTION 333

Which of the following protocols support the multicast ASM service model? (Choose two.)

- A. PIM-SM and IGMPv2
- B. PIM-SSM and IGMPv3
- C. BGP and OSPF
- D. PIM-DM and IGMPv2

Correct Answer: AD

Section: (none)

Explanation

Explanation/Reference:



QUESTION 334

The USG supports load balancing between multiple uplinks.

- A. TRUE
- B. FALSE

Correct Answer: A

Section: (none)

Explanation

Explanation/Reference:

QUESTION 335

Policy-based routing and routing policy affect the forwarding of data packets in different ways: A routing policy mainly controls packet forwarding. According to the routing policy, packets can be forwarded with no need to use a routing table; policy-based routing mainly controls the importing, advertising, and receiving of routing information so as to affect the forwarding of data packets.

A. True

B. False

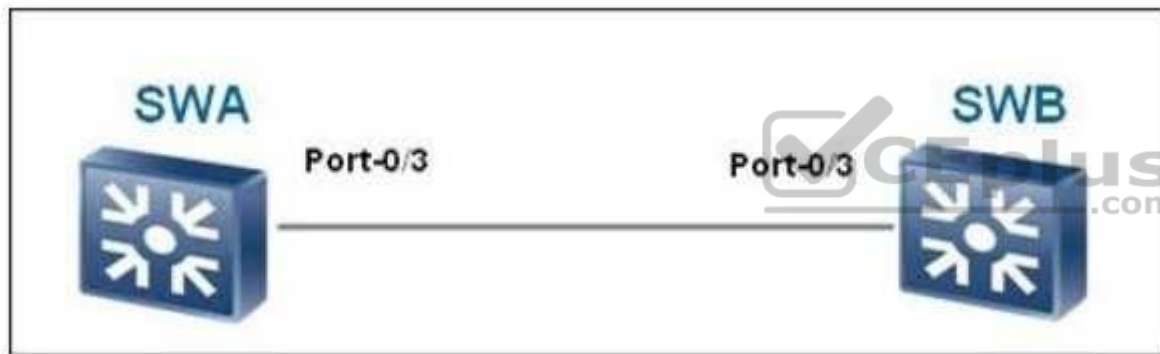
Correct Answer: B

Section: (none)

Explanation

Explanation/Reference:

QUESTION 336



As shown in the figure, SWA and SWB are two switches. Which statements are true? (Choose three.)

A. Port0/3 can be an access interface

B. Port0/3 can be a hybrid interface

C. Port0/3 can be a trunk interface

D. None of the above

Correct Answer: ABC

Section: (none)

Explanation

Explanation/Reference:

QUESTION 337

In IPv4, which of the following is the SSM address range allocated by the IANA?

- A. 232.0.0.0/24
- B. 225.0.0.0/8
- C. 232.0.0.0/8
- D. 239.0.0.0/8

Correct Answer: D

Section: (none)

Explanation

Explanation/Reference:

QUESTION 338

The "import-route limit" command is used to set a maximum number of imported routes that can be imported into an OSPF routing process.

- A. TRUE
- B. FALSE

Correct Answer: A

Section: (none)

Explanation

Explanation/Reference:

QUESTION 339

Which of the following statements about ACL type are true? (Choose three.)

- A. ACL consists of basic ACL, advanced ACL and interface-based ACL
- B. ACL ranging from 2000 to 2999 belongs to advanced ACL
- C. ACL ranging from 3000 to 3999 belongs to advanced ACL
- D. Advanced ACL can be used to match either destination address or source address

Correct Answer: ACD

Section: (none)

Explanation

Explanation/Reference:

QUESTION 340

Which of the following tools cannot be used for route filtering?

- A. Filter-policy
- B. IP-prefix
- C. Route-policy
- D. Policy-based-route

Correct Answer: D

Section: (none)

Explanation

Explanation/Reference:



QUESTION 341

Which of the following route entries matches ACL 2001 that is defined below?

1.0.0.0/8 , 1.2.0.0/16, 1.2.3.0/24, 1.2.4.0/24, 1.2.5.0/24, 1.2.6.0/24, 1.2.7.0/24, 1.2.8.0/24

ACL 2001:

Basic ACL2001, 1 rule

Acl's step is 5

rule 0 permit source 1.2.0.0 0.0.254.255

- A. 1.2.3.0/24, 1.2.4.0/24, 1.2.5.0/24, 1.2.6.0/24, 1.2.7.0/24, 1.2.8.0/24
- B. 1.0.0.0/8 , 1.2.0.0/16, 1.2.3.0/24, 1.2.4.0/24, 1.2.5.0/24, 1.2.6.0/24, 1.2.7.0/24, 1.2.8.0/24
- C. 1.2.3.0/24, 1.2.5.0/24, 1.2.7.0/24
- D. 1.2.0.0/16, 1.2.4.0/24, 1.2.6.0/24, 1.2.8.0/24

Correct Answer: D

Section: (none)

Explanation

Explanation/Reference:

QUESTION 342

How does an IGMP router maintain group memberships on the network? (Choose two.)

- A. The router maintains a timer for each group membership. If the router receives a Report message from a receiver host, it refreshes the timer of the group membership of this host; if the router does not receive any Report message from a receiver host before the timer expires, it deletes the group membership of this host.
- B. The router periodically sends Query messages. After a receiver host receives the Query message, the receiver host sends a Report message.
- C. A receiver host periodically sends a Report message.
- D. The router deletes a group membership only when it receives a Leave message for this group.

Correct Answer: AB

Section: (none)

Explanation

Explanation/Reference:



QUESTION 343

How many types of topology change messages are defined in RSTP?

- A. 1
- B. 2
- C. 3
- D. 4

Correct Answer: A

Section: (none)

Explanation

Explanation/Reference:

QUESTION 344

How many bits of the multicast MAC address are used for multicast IP address mapping?

- A. 24
- B. 22
- C. 25
- D. 23

Correct Answer: D

Section: (none)

Explanation

Explanation/Reference:

QUESTION 345

The IGMP protocol runs between a host and its directly connected multicast router.

- A. True
- B. False



Correct Answer: A

Section: (none)

Explanation

Explanation/Reference:

QUESTION 346

Which of the following routers have multicast routing entries even when there is no receiver on the network? (Choose two.)

- A. Source's DR
- B. Receiver router
- C. Intermediate router
- D. RP

Correct Answer: AD

Section: (none)

Explanation

Explanation/Reference:

QUESTION 347

Which of the following statements regarding IP address 224.0.0.1 are correct? (Choose two.)

- A. It is a multicast IP address.
- B. It is a private IP address.
- C. It represents all the hosts and routers.
- D. It represents all the routers.

Correct Answer: AC

Section: (none)

Explanation

Explanation/Reference:

QUESTION 348

Which bits in a VLAN tag indicates 802.1Q?



<https://vceplus.com/>

- A. 0x9100
- B. 0x8808
- C. 0x8100
- D. 0x8800

Correct Answer: C



Section: (none)

Explanation

Explanation/Reference:

QUESTION 349

Which of the following statements regarding VLAN configuration are true? (Choose two.)

- A. You can enter the VLAN view and create a VLAN at the same time.
- B. Running undoVLANinvalidates the VLAN but the VLAN still exists. You do not need to recreate the VLAN to use it.
- C. You can configure a description string of VLAN. The length of the string is unlimited.
- D. If the VLAN ID is not entered when running the displayVLANcommand, all information about the VLAN will be displayed.

Correct Answer: AD

Section: (none)

Explanation

Explanation/Reference:



QUESTION 350

Dividing a network using VLANs can (). (Choose two.)

- A. Support more network layer protocols
- B. Restrict the scope of broadcast domains
- C. Increase the number of collision domains
- D. Guarantee data security

Correct Answer: BD

Section: (none)

Explanation

Explanation/Reference:

QUESTION 351

By default, the cost of an OSPF interface is calculated based on the bandwidth. The formula to calculate the cost is reference bandwidth/interface bandwidth.

- A. TRUE
- B. FALSE

Correct Answer: A

Section: (none)

Explanation

Explanation/Reference:

QUESTION 352

All routing protocols can deliver default routes, supporting both forcible delivery and non-forcible delivery.

- A. True
- B. False

Correct Answer: B

Section: (none)

Explanation

Explanation/Reference:



QUESTION 353

How many multicast IP addresses can be represented by the same multicast MAC address?

- A. 1
- B. 23
- C. 32
- D. 24

Correct Answer: C

Section: (none)

Explanation

Explanation/Reference:

QUESTION 354

Which of the following statements about RPs are true? (Choose three.)

- A. Different group addresses on a PIM-SM network can correspond to different RPs.
- B. An RP is the root of an RPT.
- C. An RP is elected out of BSRs.
- D. All routers on a PIM-SM network must know the location of RPs.

Correct Answer: ABD

Section: (none)

Explanation

Explanation/Reference:

QUESTION 355

Which of the following routes matches the ACL filter given below?

“ad number 2001 rule 0
permit source 1.1.0.0 0”

- A. 1.1.1.1/32
- B. 1.1.1.0/24
- C. 1.1.0.0/16
- D. 1.0.0.0/8



Correct Answer: C

Section: (none)

Explanation

Explanation/Reference:

QUESTION 356

What is the maximum number of hosts that a network segment 192.168.2.16/28 can support?

- A. 16
- B. 8
- C. 15
- D. 14
- E. 7

Correct Answer: D

Section: (none)

Explanation

Explanation/Reference:

QUESTION 357

When importing routes discovered by other routing protocols, a routing protocol may need to import only the routes that meet the conditions and set attributes of the imported routes to meet the requirement of the protocol. In such a case, a route-policy can be created.

- A. True
- B. False

Correct Answer: A

Section: (none)

Explanation

Explanation/Reference:

QUESTION 358

Which of the following protocols support the multicast ASM model? (Choose two.)

- A. PIM-SM and IGMPv2
- B. PIM-SSM and IGMPv3
- C. BGP and OSPF
- D. PIM-DM and IGMPv2

Correct Answer: AD

Section: (none)

Explanation

Explanation/Reference:

QUESTION 359

Which interface is connected to the user-side interface?

- A. Access interface

- B. Trunk interface
- C. Hybrid interface
- D. All of the above

Correct Answer: A

Section: (none)

Explanation

Explanation/Reference:

QUESTION 360

The Internet Group Management Protocol (IGMP) runs between hosts and their immediately neighboring multicast routers.

- A. TRUE
- B. FALSE

Correct Answer: A

Section: (none)

Explanation

Explanation/Reference:



<https://vceplus.com/>