

H12-224.exam.365q

Number: H12-224
Passing Score: 800
Time Limit: 120 min



Website: <https://vceplus.com>
VCE to PDF Converter: <https://vceplus.com/vce-to-pdf/>
Facebook: <https://www.facebook.com/VCE.For.All.VN/>
Twitter : https://twitter.com/VCE_Plus

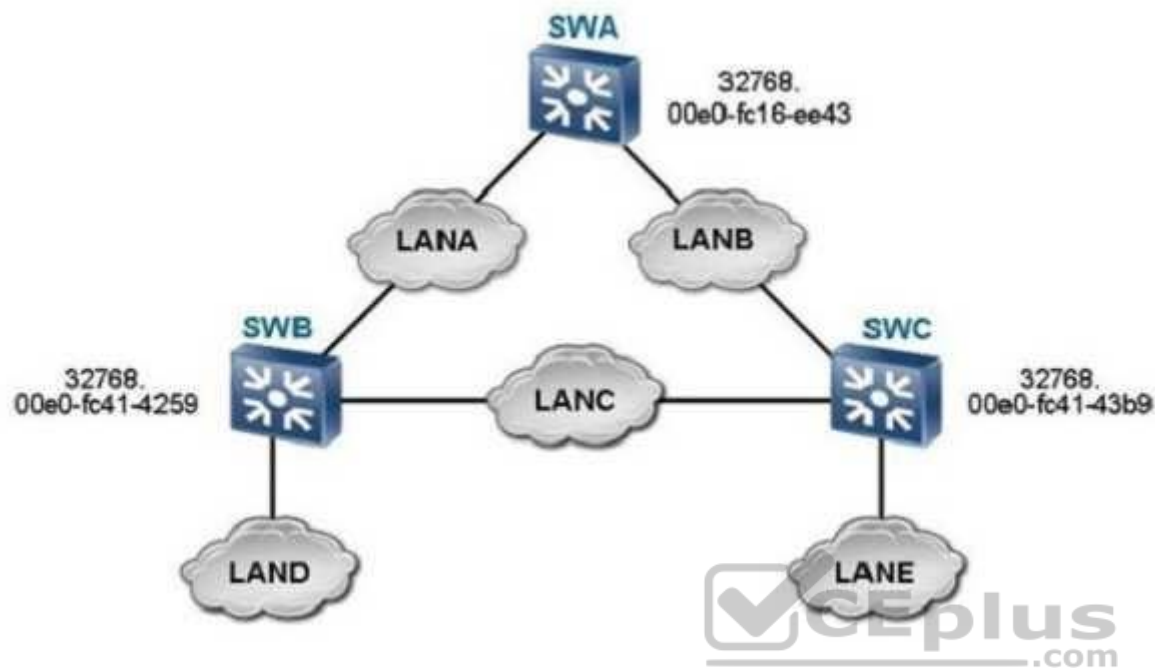
<https://vceplus.com/>

H12-224

Huawei Certified Datacom Professional - Fast Certification – ENU

Exam A

QUESTION 1



As shown in the figure, which switch is the root switch according to the configuration?



<https://vceplus.com/>

- A. SWA
- B. SWB
- C. SWC
- D. None of the above

Correct Answer: A

Section: (none)

Explanation

Explanation/Reference:

QUESTION 2

The STP protocol can prevent broadcast storms caused by loops on the Layer 2 network.

A. True

B. False

Correct Answer: A

Section: (none)

Explanation

Explanation/Reference:

QUESTION 3



```
[SWC]display stp brief
```

MSTID	Port	Role	STP State	Protection
0	Ethernet1/0/2	DESI	FORWARDING	NONE
0	Ethernet1/0/3	DESI	FORWARDING	NONE
0	Ethernet1/0/12	ALTE	DISCARDING	NONE
0	Ethernet1/0/13	ROOT	FORWARDING	NONE
1	Ethernet1/0/2	DESI	FORWARDING	NONE
1	Ethernet1/0/12	ROOT	FORWARDING	NONE
1	Ethernet1/0/13	ALTE	DISCARDING	NONE
2	Ethernet1/0/3	DESI	FORWARDING	NONE
2	Ethernet1/0/12	ALTE	DISCARDING	NONE
2	Ethernet1/0/13	ROOT	FORWARDING	NONE

According to the figure, what is the status of Ethernet1/0/13 in MSTI 1?

- A. Forwarding
- B. Discarding
- C. Learning
- D. None of the above

Correct Answer: B

Section: (none)

Explanation

Explanation/Reference:

QUESTION 4

Which types of interfaces can be configured with selective QinQ? (Choose two.)

- A. Access interface
- B. Trunk interface
- C. Hybrid interface
- D. dot1q-tunnel interface



Correct Answer: BC

Section: (none)

Explanation

Explanation/Reference:

QUESTION 5

Which of the following statements about the link failure detection in STP protocol is not true?

- A. When network topology is stable, the Designated Port sends BPDU packet at every Hello Time interval.
- B. When network topology is stable, BPDU packets will be transmitted periodically.
- C. When the port does not receive new BPDU within a certain interval, the old configuration BPDU will time out and the link failure can be detected.
- D. The port sends Configuration BPDU at every Hello Time interval. When the link fails, Configuration BPDU cannot be sent out. As a result, this port can detect the link failure.

Correct Answer: D

Section: (none)

Explanation

Explanation/Reference:

QUESTION 6

Which statement about the hybrid interface is true?

- A. A hybrid interface can only be connected to network device.
- B. A hybrid interface can only be connected to host.
- C. A hybrid interface can be connected to host or network device.
- D. A hybrid interface cannot be configured with VLAN ID.

Correct Answer: C

Section: (none)

Explanation

Explanation/Reference:



QUESTION 7

Which statements are true? (Choose three.)

- A. Port isolation is a mechanism that controls the access between switch interfaces.
- B. Port isolation is an isolation mechanism at the physical layer.
- C. Port isolation prevents the computers connected to different ports from accessing each other.
- D. Port isolation can be configured based on VLANs.

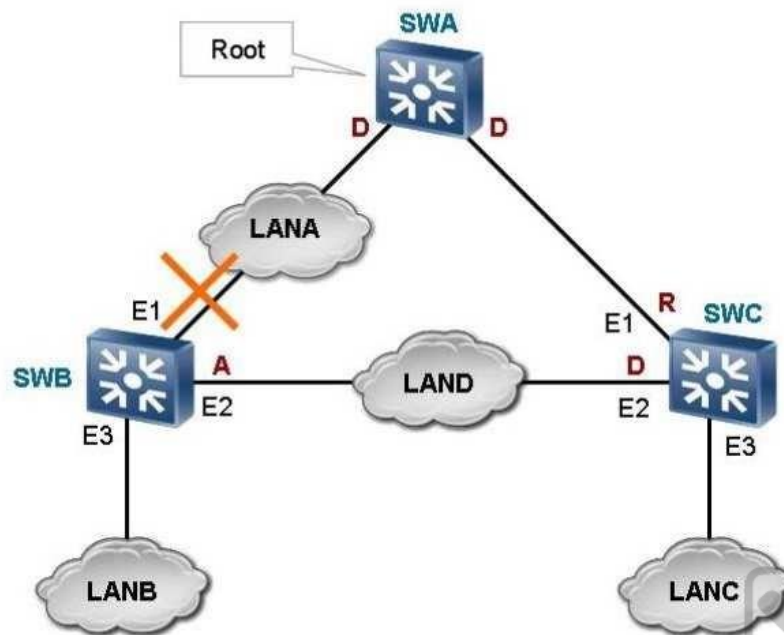
Correct Answer: ABC

Section: (none)

Explanation

Explanation/Reference:

QUESTION 8



On the RSTP network as shown in the figure, what RSTP operations will occur after the E1 port of SWB fails? (Choose three.)

- A. SWB deletes the MAC address entries with the E1 port as the destination interface.
- B. The spanning tree is recalculated and the E2 port is elected as the new root port.
- C. All the interfaces in forwarding state send topology change notifications (TCNs) to notify other switches of the topology change.
- D. All the non-edge ports in forwarding state send TCNs to notify other switches of the topology change.

Correct Answer: ABD

Section: (none)

Explanation

Explanation/Reference:

QUESTION 9

According to the MSTP protocol, each MST instance calculates an independent spanning tree by using the RSTP algorithm.

A. True B.
False

Correct Answer: A

Section: (none)

Explanation

Explanation/Reference:

QUESTION 10

When the GVRP registration mode is FORBIDDEN, no VLAN can be created or registered on the interface. In addition, which VLANs are deregistered on the interface?

- A. All VLANs except VLAN 1
- B. All VLANs except VLAN 4095
- C. All VLANs
- D. All VLANs except the VLAN specified by the user

Correct Answer: A

Section: (none)

Explanation

Explanation/Reference:

QUESTION 11

Which statement about the VLAN on a Layer 2 switch is true?

- A. The CFI in the VLAN tag specifies whether the priority in the VLAN tag is valid.
- B. The VLAN tag is located in the Layer 2 header of a packet.
- C. The CFI in the VLAN tag contains two bits.
- D. A VLAN on the switch is a broadcast domain. The broadcast domains are separated.

Correct Answer: A

Section: (none)

Explanation

Explanation/Reference:

QUESTION 12

Which statement about VLAN mapping is false?

- A. VLAN mapping is also called VLAN translation.
- B. VLAN mapping can implement translation between C-VLAN IDs and S-VLAN IDs.
- C. VLAN mapping can be configured.
- D. VLAN mapping means that a VLAN tag is added to packets.

Correct Answer: D

Section: (none)

Explanation

Explanation/Reference:

QUESTION 13

Which are the port roles defined in STP?



<https://vceplus.com/>

- A. Root Port
- B. Designated Port
- C. Alternate Port
- D. All of the above

Correct Answer: D

Section: (none)

Explanation

Explanation/Reference:

QUESTION 14

QinQ provides a simplified Layer 2 VPN tunnel.

- A. True
- B. False

Correct Answer: A

Section: (none)

Explanation

Explanation/Reference:

QUESTION 15

Which VLAN assignment methods are supported by the Huawei S9300? (Choose three.)

- A. Assigning VLANs based on Layer 7 protocols
- B. Assigning VLANs based on protocols
- C. Assigning VLANs based on IP subnets
- D. Assigning VLANs based on MAC addresses

Correct Answer: BCD

Section: (none)

Explanation

Explanation/Reference:

QUESTION 16

Which statement about MUX VLAN is false?

- A. Principal VLAN
- B. Subordinate VLAN
- C. Subordinate group VLAN
- D. Guest VLAN

Correct Answer: D

Section: (none)

Explanation

Explanation/Reference:

QUESTION 17

Which is contained in the GVRP VLAN deregistration message?

- A. Specified VLAN ID
- B. Specified IP address
- C. Specified MAC address
- D. Known port number

Correct Answer: C

Section: (none)

Explanation

Explanation/Reference:



QUESTION 18

Which statements are true? (Choose three.)

- A. The sub-VLANs are configured in the super VLAN view.
- B. VLANs 1 to 4094 can be configured as a super VLAN.
- C. The aggregate-vlan command is used to configure the super VLAN.
- D. A VLAN to be configured as a super VLAN cannot contain any interface.

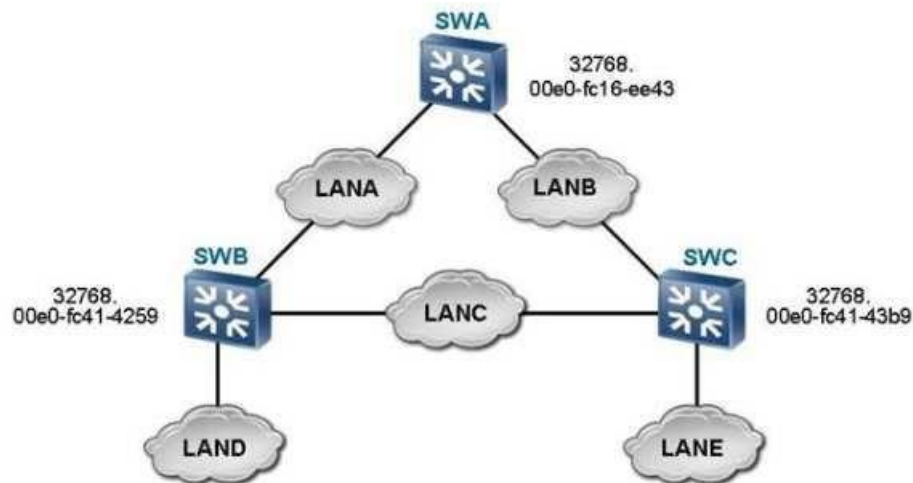
Correct Answer: ACD

Section: (none)

Explanation

Explanation/Reference:

QUESTION 19



On the STP network as shown in the figure, which device may be the blocked port belong to?

- A. SWA
- B. SWB
- C. SWC
- D. None of the above

Correct Answer: C

Section: (none)

Explanation

Explanation/Reference:

QUESTION 20

Which statements about the VLAN on S series switches are true? (Choose two.)

- A. The VLAN IDs on the switch range from 1 to 4090.
- B. The switch has a default VLAN.
- C. The priority value in the VLAN tag can be changed on the switch.
- D. A VLAN tag contains one byte.

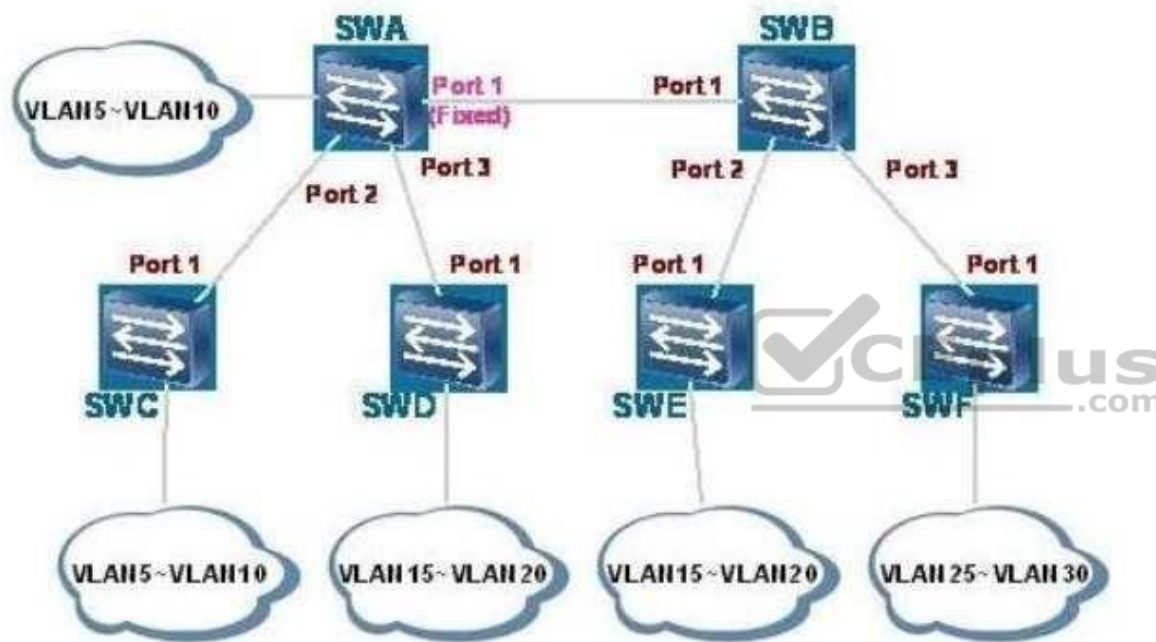
Correct Answer: BC

Section: (none)

Explanation

Explanation/Reference:

QUESTION 21



As shown in the figure, port 1 of switch A is configured with the Fixed mode, and other ports are configured with the Normal mode. The trunk interfaces allow all VLANs. Which VLANs are registered on port 1 of switch C? (Choose three.)

- A. VLAN 1
- B. VLAN 5 to VLAN 10
- C. VLAN 15 to VLAN 20
- D. VLAN 25 to VLAN 30

Correct Answer: ABC

Section: (none)

Explanation

Explanation/Reference:

QUESTION 22

In STP configuration, which statement about BPDUs is true?

- A. BPDUs cannot be sent from the designated port.
- B. BPDUs can be sent only from the designated port.
- C. BPDUs can be sent from any port.
- D. None of the above.

Correct Answer: B

Section: (none)

Explanation

Explanation/Reference:



QUESTION 23

Which statements about the relationship between GVRP and GARP are true? (Choose two.)

- A. GVRP, GARP, and GMRP are the standards of the same type.
- B. GVRP and GARP are defined by IEEE 802.1p.
- C. GVRP is based on GARP, and is an application of GARP.
- D. GVRP is a new definition of GARP.

Correct Answer: BC

Section: (none)

Explanation

Explanation/Reference:

QUESTION 24

On an RSTP network, when an edge port is in protected state, what operation is performed after the edge port receives BPDUs?

- A. The edge port forwards BPDUs.
- B. The edge port discards BPDUs.
- C. The edge port is shut down.
- D. The edge port obtains required information from BPDUs.

Correct Answer: C

Section: (none)

Explanation

Explanation/Reference:

QUESTION 25

On an STP network, before the interface status transits from non-forwarding to forwarding, how many Forward Delay intervals does the interface wait for?



<https://vceplus.com/>

- A. 2
- B. 3
- C. 4
- D. 5

Correct Answer: A

Section: (none)

Explanation

Explanation/Reference:

QUESTION 26

The dot1x command is used to enable 802.1x authentication globally or on an interface. Which statements about the undo dot1x command are true? (Choose three.)

- A. It is used to disable 802.1x authentication globally.
- B. It will disconnect online users from the interface; therefore, use the command with caution.
- C. It is used to disable 802.1x authentication on an interface.
- D. Ensure that there are no online users before you run the undo dot1x command. Otherwise, running the undo dot1x command fails.

Correct Answer: ACD

Section: (none)

Explanation

Explanation/Reference:

QUESTION 27

Which is the port state defined in RSTP?

- A. Discarding
- B. Learning
- C. Forwarding
- D. All of the above



Correct Answer: D

Section: (none)

Explanation

Explanation/Reference:

QUESTION 28

Which statements about VLAN mapping are true? (Choose two.)

- A. When sending a frame from the local VLAN, the switch replaces the VLAN tag in the frame with another VLAN tag.
- B. When receiving a frame from another VLAN, the switch replaces the VLAN tag of the frame with the local VLAN tag.

- C. When an interface receives a frame from another VLAN, it does not replace the VLAN tag of the frame. The interface replaces the VLAN tag of the frame with another VLAN tag only when it sends a frame.
- D. The interface replaces the VLAN tag of only the frame received from another VLAN, but does not change the VLAN tag of the frame it sends out.

Correct Answer: AB

Section: (none)

Explanation

Explanation/Reference:

QUESTION 29

Some vendors set the TPID value in the outer VLAN tag of QinQ packets to the non-protocol value. To be compatible with these vendors' devices, the TPID value on Huawei switches is adjustable. Which is the default value of the TPID value on Huawei switches?

- A. 0x9200
- B. 0x9100
- C. 0x8200
- D. 0x8100



Correct Answer: D

Section: (none)

Explanation

Explanation/Reference:

QUESTION 30

In a switching network that runs RSTP, the topology change notification message will not be sent when the switch detects that the Alternate Port is failed.

- A. True
- B. False

Correct Answer: A

Section: (none)

Explanation

Explanation/Reference:

QUESTION 31

Which statements about the access interface are true? (Choose three.)

- A. Only the VLAN whose ID is the same as the PVID of the access interface are allowed on the access interface.
- B. When receiving an untagged frame, the access interface adds its own PVID to the frame.
- C. The access interface sends only untagged frames to the peer device.
- D. None of the above.

Correct Answer: ABC

Section: (none)

Explanation

Explanation/Reference:

QUESTION 32

Which are contained in a GARP participant? (Choose two.)

- A. GARP Application
- B. GARP Information Propagation (GIP)
- C. GARP Information Declaration (GID)
- D. Interface LLC



Correct Answer: AC

Section: (none)

Explanation

Explanation/Reference:

QUESTION 33

On a switch running GVRP, each interface is considered as a participant. The participants can exchange information.

- A. True
- B. False

Correct Answer: A

Section: (none)

Explanation

Explanation/Reference:

QUESTION 34

Which statement about VLAN is false?

- A. VLAN tag contains a 3-bit priority field. The priority value ranges from 0 to 7. It is used for differentiated service forwarding.
- B. The priority in the VLAN tag can be mapped to the internal priority of the switch, for differentiated service forwarding.
- C. The priority in the VLAN tag can be changed on the switch.
- D. The priority in the VLAN tag cannot be changed.

Correct Answer: D

Section: (none)

Explanation

Explanation/Reference:



QUESTION 35

In RSTP, which statements about the alternate port and backup port are true? (Choose two.)

- A. The alternate port is a backup of the root port.
- B. The backup port is a backup of the designated port.
- C. The switch that the backup port belongs to is not the designated switch on the network segment connected to the interface.
- D. The switch that the alternate port belongs to is the designated switch on the network segment connected to the interface.

Correct Answer: AB

Section: (none)

Explanation

Explanation/Reference:

QUESTION 36

RSTP has all functions that STP has and it is backward compatible with STP.

- A. True
- B. False

Correct Answer: A

Section: (none)

Explanation

Explanation/Reference:

QUESTION 37

STP distributes configuration message by sending BPDU packet to each other.

- A. True
- B. False

Correct Answer: A

Section: (none)

Explanation

Explanation/Reference:



QUESTION 38

The Layer 2 packet header in EAPoL packets is | DMAC | SMAC | TYPE | EAPOL | FCS |.

Which statements are true? (Choose three.)

- A. The destination address of packets is a specified MAC address.
- B. The destination address of packets is a unicast MAC address.
- C. EAPoL packets cannot be forwarded by switches.
- D. The source MAC address of packets is the MAC address of the interface that sends packets.

Correct Answer: ACD

Section: (none)

Explanation

Explanation/Reference:

QUESTION 39

Which statements about the MUX VLAN configuration are true? (Choose two.)

[Quidway]vlan 10

[Quidway-vlan10]mux-vlan

[Quidway-vlan10]subordinate group 11

[Quidway-vlan10]subordinate separate 12

- A. VLAN 10 is the principal VLAN
- B. VLAN 11 is the principal VLAN
- C. VLAN 12 is the subordinate separate VLAN

Correct Answer: AC

Section: (none)

Explanation

Explanation/Reference:



QUESTION 40

[SWA]display stp brief				
MSTID	Port	Role	STP State	Protection
0	Ethernet1/0/12	DESI	FORWARDING	NONE
0	Ethernet1/0/15	ROOT	FORWARDING	NONE
1	Ethernet1/0/12	DESI	FORWARDING	NONE
1	Ethernet1/0/15	DESI	FORWARDING	NONE
2	Ethernet1/0/12	DESI	FORWARDING	NONE
2	Ethernet1/0/15	ROOT	FORWARDING	NONE

On the MSTP network as shown in the figure, what is the role of the switch in MSTID according to the configuration?

- A. Root switch
- B. Slave switch

- C. Non-root switch
- D. None of the above

Correct Answer: A

Section: (none)

Explanation

Explanation/Reference:

QUESTION 41

Which of the following statements about RSTP and STP is true?

- A. STP has more port states than RSTP.
- B. The port roles used in RSTP is less than the port roles used in STP.
- C. Since RSTP adopts fast convergence mechanism, it does not have Learning state which is available in STP.
- D. Same as STP, the ports will enter into Listening state once the RSTP has been enabled. Then, the ports can receive BPDU and calculate the spanning tree.

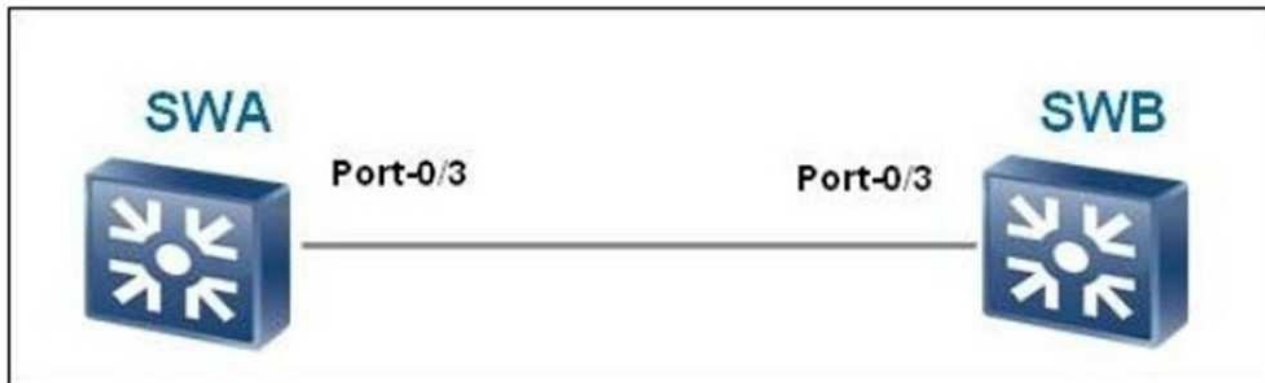
Correct Answer: A

Section: (none)

Explanation

Explanation/Reference:

QUESTION 42



- A. True
- B. False

Correct Answer: A

Section: (none)

Explanation

Explanation/Reference:

QUESTION 43

Which statements about VLAN configuration are true? (Choose two.)

- A. You can enter the VLAN view at the same time you create a VLAN.
- B. If you run undo vlan, the VLAN is invalid, but still exists. You do not need to create the VLAN when you use it next time.
- C. You can configure a character string of VLAN description. The length of the character string is not limited.
- D. If you do not enter the VLAN ID when running the display vlan command, information about all VLANs will be displayed.

Correct Answer: AD

Section: (none)

Explanation

Explanation/Reference:

QUESTION 44

Which of the following statements is not the advantage of STP?



<https://vceplus.com/>

- A. STP can manage the redundant links. When the working link is down, network connectivity can be restored.
- B. STP can prevent loops
- C. STP can prevent broadcast storm
- D. STP can save network bandwidth

Correct Answer: D

Section: (none)

Explanation

Explanation/Reference:

QUESTION 45

RSTP adopts fast convergence mechanism. So, there is no Forward Delay interval in RSTP.

- A. True
- B. False

Correct Answer: B

Section: (none)

Explanation

Explanation/Reference:



QUESTION 46

On an STP network, after the network topology changes, which BPDUs are sent during flooding of topology change information on the entire network?

- A. BPDUs with the TCN flag
- B. BPDUs with the TCA flag
- C. BPDUs with the TC flag
- D. All of the above

Correct Answer: D

Section: (none)

Explanation

Explanation/Reference:

QUESTION 47

According to OSI reference model, Layer 2 LAN switch operates at ().

- A. Physical layer
- B. Data link layer
- C. IP layer
- D. Application layer

Correct Answer: B

Section: (none)

Explanation

Explanation/Reference:

QUESTION 48

Which statements about VLAN are true? (Choose three.)

- A. The VLAN improves network security. Users on different VLANs cannot communicate with each other.
- B. The VLAN improves network processing efficiency. Users on different VLANs are separated from each other. Therefore, the size of a broadcast domain is reduced.
- C. Layer 2 forwarding is only based on destination MAC addresses, and is irrelevant to VLAN configuration.
- D. The VLAN technology is a management method that controls the communication between terminals.

Correct Answer: ABD

Section: (none)

Explanation

Explanation/Reference:

QUESTION 49

In STP, BPDU packet is carried by ().

- A. IP packet
- B. TCP packet
- C. Ethernet frame

D. UDP packet

Correct Answer: C

Section: (none)

Explanation

Explanation/Reference:

QUESTION 50

Which statements about VLAN allocation are true? (Choose three.)

- A. The IP subnet VLAN is used to send the packets from the specified network segment or IP address over the specified VLAN.
- B. The MAC address- or IP subnet-based VLAN is valid for only the untagged packets.
- C. The protocol-based VLAN has a higher priority than the IP subnet-based VLAN.
- D. The protocol-based VLAN indicates that service types on the network are bound to VLANs.

Correct Answer: ABD

Section: (none)

Explanation

Explanation/Reference:



QUESTION 51

According to the STP protocol, a certain field in the BPDU identifies the root switch. That is, if the BPDU sent by a switch contains this field, this switch is considered as the root switch. What is this field?

- A. Root Identifier
- B. Root Path Cost
- C. Bridge Identifier
- D. Port Identifier

Correct Answer: A

Section: (none)

Explanation

Explanation/Reference:

QUESTION 52

In the network diagram, which switch will be selected as the root switch?

- A. SWA
- B. SWB
- C. SWC
- D. None of the above

Correct Answer: A

Section: (none)

Explanation

Explanation/Reference:

QUESTION 53

Which are 802.1x authentication modes? (Choose two.)

- A. EAP relay mode
- B. Proxy mode
- C. EAP termination mode
- D. Remote mode



Correct Answer: AC

Section: (none)

Explanation

Explanation/Reference:

QUESTION 54

STP elects ()

- A. One bridge as the Root Bridge and another one as the Backup Root Bridge
- B. One bridge as the Root Bridge
- C. Two bridges as the Root Bridge
- D. One Designated Bridge

Correct Answer: B

Section: (none)

Explanation

Explanation/Reference:

QUESTION 55

Which of the following information do you check to directly identify a fault in the firewall if the data transmission is interrupted?

- A. Session table
- B. Log
- C. Global statistics about the firewall
- D. Alarms

Correct Answer: A

Section: (none)

Explanation

Explanation/Reference:



QUESTION 56

What about all outgoing labels in the label forwarding table of a device for different routes with the same next hop?

- A. They must be different.
- B. They must be the same.
- C. They may be the same.

Correct Answer: A

Section: (none)

Explanation

Explanation/Reference:

QUESTION 57

The TCP SYN flood attack usually occurs during the TCP handshake process. How many handshakes are required to set up a TCP connection?

- A. 1

- B. 2
- C. 3
- D. 4

Correct Answer: C

Section: (none)

Explanation

Explanation/Reference:

QUESTION 58

Congestion management provides means to manage and control traffic when traffic congestion occurs.

- A. True
- B. False

Correct Answer: A

Section: (none)

Explanation

Explanation/Reference:



QUESTION 59

IP addresses added to the blacklist of the Eudemon cannot be deleted.

- A. True
- B. False

Correct Answer: B

Section: (none)

Explanation

Explanation/Reference:

QUESTION 60

Two Eudemons in dual-system hot backup mode can be working in Active-Active mode or Active-Standby mode.

- A. True
- B. False

Correct Answer: A

Section: (none)

Explanation

Explanation/Reference:

QUESTION 61

What are the functions of DHCP snooping? (Choose three.)

- A. Defend against DoS attacks initiated by changing the CHADDR field
- B. Defend against bogus DHCP server attacks
- C. Defend against Packet Sniffer Mitigation
- D. Defend against man-in-the-middle attacks and IP/MAC spoofing attacks

Correct Answer: ABD

Section: (none)

Explanation

Explanation/Reference:

QUESTION 62

After an interface on a firewall is added to a zone, the interface belongs to the zone.

- A. True
- B. False

Correct Answer: A

Section: (none)

Explanation

Explanation/Reference:

QUESTION 63

QoS provides services of different qualities to meet various application requirements, including dedicated bandwidth, decreased packet loss ratio, short packet transmission delay, and decreased delay and jitter.

- A. True
- B. False

Correct Answer: A

Section: (none)

Explanation

Explanation/Reference:

QUESTION 64

If the lease of a client IP address is not extended after 87.5% of the lease is reached, which message is used by the client to extend the IP address lease?



<https://vceplus.com/>

- A. DHCP Release broadcast message
- B. DHCP Release unicast message
- C. DHCP Request broadcast message
- D. DHCP Request unicast message

Correct Answer: C

Section: (none)

Explanation

Explanation/Reference:

QUESTION 65

To enable an Eudemon in routing mode to work like a router, you need to assign IP addresses to interfaces and enable dynamic or static routing protocols on the Eudemon.

- A. True
- B. False

Correct Answer: A

Section: (none)

Explanation

Explanation/Reference:

QUESTION 66

Which of the following statements about the security policies for the Eudemon are true? (Choose two.)

- A. By default, a user in the Local zone can access other zones.
- B. By default, a user in the Trust zone can access the DMZ.
- C. By default, a user in the Untrust zone cannot access the Trust zone.
- D. By default, a user in a zone of the firewall cannot access any other zone of the firewall.

Correct Answer: CD

Section: (none)

Explanation

Explanation/Reference:

QUESTION 67

By which can an IP-based advanced ACL filter packets? (Choose five.)

- A. Source IP address and its subnet mask
- B. Destination IP address and its subnet mask
- C. Protocol type
- D. TCP or UDP port number
- E. Priority of the data packet
- F. Length of the data packet

Correct Answer: ABCDE

Section: (none)

Explanation

Explanation/Reference:

QUESTION 68

IP unnumbered is to borrow an IP address from an interface. If an interface has multiple IP addresses, all its IP addresses will be borrowed and the primary address will continue after these IP addresses are borrowed.

- A. True
- B. False

Correct Answer: B

Section: (none)

Explanation

Explanation/Reference:



QUESTION 69

When two Eudemons are working in dual-system hot backup mode, their session tables are backed up in real time.

- A. True
- B. False

Correct Answer: A

Section: (none)

Explanation

Explanation/Reference:

QUESTION 70

Which of the following statements about the firewall technology are true? (Choose three.)

- A. The network gateway of the application layer checks application-layer data carried in packets passing through the gateway.
- B. The network gateway for session status detection checks session information carried in packets only at the session layer.

- C. During packet filtering, the session status is checked and the whole data stream is analyzed.
- D. Address proxy replaces IP addresses and port numbers of hosts within the network with the IP address and port number of the proxy device or router.

Correct Answer: ABD

Section: (none)

Explanation

Explanation/Reference:

QUESTION 71

The Eudemon can control traffic and connections based on IP addresses.

- A. True
- B. False

Correct Answer: A

Section: (none)

Explanation

Explanation/Reference:



QUESTION 72

In the scenario where packets are sent and received along different paths, which of the following functions needs to be disabled on the firewall?

- A. Status detection
- B. Attack defense
- C. Packet filtering
- D. Status backup

Correct Answer: A

Section: (none)

Explanation

Explanation/Reference:

QUESTION 73

The variation in packet delay is called jitter.

- A. True
- B. False

Correct Answer: A

Section: (none)

Explanation

Explanation/Reference:

QUESTION 74

Which of the following firewalls is the most popular?

- A. Packet filtering firewall
- B. Stateful firewall
- C. Proxy firewall
- D. Anti-virus firewall

Correct Answer: B

Section: (none)

Explanation

Explanation/Reference:



QUESTION 75

The multi-channel protocol is used to establish at least two channels (sessions) for communications or services.

- A. True
- B. False

Correct Answer: A

Section: (none)

Explanation

Explanation/Reference:

QUESTION 76

Which messages are sent from the client to the server? (Choose three.)

- A. DHCP NAK
- B. DHCP REQUEST
- C. DHCP DISCOVER D. DHCP RELEASE

Correct Answer: BCD

Section: (none)

Explanation

Explanation/Reference:

QUESTION 77

In DiffServ mode, before the application program sends packets, it needs to confirm that the network has reserved resources for packet transmission.

- A. True
- B. False

Correct Answer: B

Section: (none)

Explanation

Explanation/Reference:



QUESTION 78

The Eudemon generates a blacklist upon detecting an attack.

- A. True
- B. False

Correct Answer: A

Section: (none)

Explanation

Explanation/Reference:

QUESTION 79

Which encapsulation mode is used for the MPLS protocol on an Ethernet network?

- A. Packet mode
- B. Frame mode
- C. Transport mode
- D. Channel mode
- E. Pipe mode

Correct Answer: B

Section: (none)

Explanation

Explanation/Reference:

QUESTION 80

Which of the following DDoS attacks can the Eudemon 1000E defend against? (Choose three.)

- A. SYN flood
- B. UDP flood
- C. ICMP flood
- D. SQL flood



Correct Answer: ABC

Section: (none)

Explanation

Explanation/Reference:

QUESTION 81

Which of the following attacks are DDoS attacks? (Choose four.)

- A. SYN flood
- B. SYN/ACK flood
- C. UDP flood
- D. FTP attack

E. HTTP get flood

Correct Answer: ABCE

Section: (none)

Explanation

Explanation/Reference:

QUESTION 82

Which of the following statements about NAT are true? (Choose three.)

- A. NAT is short for "network address translation".
- B. NAT, also called address proxy, is used for translation between private and public network addresses.
- C. Hosts within the intranet can access the extranet without using NAT.
- D. NAT can effectively resolve the problem of IP address shortage.

Correct Answer: ABD

Section: (none)

Explanation

Explanation/Reference:



QUESTION 83

In which of the following modes can the Eudemon be working? (Choose three.)

- A. Routing mode
- B. Transparent mode
- C. Composite mode
- D. Transfer mode

Correct Answer: ABC

Section: (none)

Explanation

Explanation/Reference:

QUESTION 84

The end-to-end delay is the sum of transmission delays, processing delays, and queuing delays along the packet forwarding path.

- A. True
- B. False

Correct Answer: A

Section: (none)

Explanation

Explanation/Reference:

QUESTION 85

Two Eudemons in dual-system hot backup mode use Huawei Redundancy Protocol (HRP) to back up key information (such as configuration commands and session status) between the active and standby devices.

- A. True
- B. False

Correct Answer: A

Section: (none)

Explanation

Explanation/Reference:

QUESTION 86

MPLS is a switching standard defined by the IETF. Which devices exist on the MPLS network? (Choose two.)

- A. LSR
- B. LER
- C. Label distribution router
- D. Label transmit router

Correct Answer: AB

Section: (none)

Explanation



Explanation/Reference:

QUESTION 87

The Per-Hop Behavior (PHB) defines the policy and priority applied to a packet when traversing a hop (such as a DS) in a DiffServ network.

- A. True
- B. False

Correct Answer: A

Section: (none)

Explanation

Explanation/Reference:

QUESTION 88

Which of the following data traffic is incoming data traffic on the Eudemon? (Choose two.)



<https://vceplus.com/>

- A. Data traffic from a Trust zone to a demilitarized zone (DMZ)
- B. Data traffic from an Untrust zone to a DMZ
- C. Data traffic from a Local zone to a Trust zone
- D. Data traffic from an Untrust zone to a Local zone

Correct Answer: BD

Section: (none)

Explanation

Explanation/Reference:

QUESTION 89

The Eudemon supports load balancing between multiple uplinks.

- A. True
- B. False

Correct Answer: A

Section: (none)

Explanation

Explanation/Reference:

QUESTION 90

The Eudemon does not support port mapping.

- A. True
- B. False

Correct Answer: B

Section: (none)

Explanation

Explanation/Reference:

**QUESTION 91**

Which of the following are performance parameters of the firewall? (Choose three.)

- A. Throughput
- B. Maximum number of interface
- C. Number of new connections per second
- D. Process delay

Correct Answer: ACD

Section: (none)

Explanation

Explanation/Reference:

QUESTION 92

Which of the following solutions effectively defend against ARP attacks? (Choose three.)

- A. Binding a MAC address and an IP address
- B. Enabling the ARP attack protection function on a Huawei switching device
- C. Adding network segments to different VLANs on a switch
- D. Enabling IP packet filtering

Correct Answer: ABC

Section: (none)

Explanation

Explanation/Reference:

QUESTION 93

A firewall filters packets exchanged between zones but does not filter packets exchanged between interfaces in the same zone.

- A. True
- B. False



Correct Answer: A

Section: (none)

Explanation

Explanation/Reference:

QUESTION 94

What is the function of DHCP Offer messages?

- A. DHCP Offer messages are broadcast by the client to detect the available server.
- B. DHCP Offer messages are sent by the server to respond to the DHCP Discover messages sent by the client. Certain configuration parameters are specified in the Offer messages.
- C. DHCP Offer messages are sent by the client to apply to the server for configuration parameters, configuration confirmation, or extension of the IP address lease.
- D. DHCP Offer messages are sent from the server to the client. They contain configuration parameters such as including the IP address.

Correct Answer: B

Section: (none)

Explanation

Explanation/Reference:

QUESTION 95

The option field in DHCP messages has a fixed length of four bytes.

A. True B.

False

Correct Answer: B

Section: (none)

Explanation

Explanation/Reference:

QUESTION 96

When an Eudemon is working in composite mode, some of its interfaces are configured with IP addresses (Layer 3 interfaces) and the other interfaces are not configured with IP addresses (Layer 2 interfaces). To enable dual-system hot backup on an Eudemon, you can configure the Eudemon to work in composite mode.

A. True

B. False

Correct Answer: A

Section: (none)

Explanation

Explanation/Reference:

QUESTION 97

Virtual firewalls on the Eudemon are not allowed to access each other by default unless a security policy is specified.

A. True

B. False

Correct Answer: A

Section: (none)

Explanation

Explanation/Reference:

QUESTION 98

In a Land attack, the source address and destination address of an SYN packet are both the IP address of the attacked object or a loopback address.

A. True B.

False

Correct Answer: A

Section: (none)

Explanation

Explanation/Reference:

QUESTION 99

The firewall does not use security rules to filter packets exchanged between interfaces in the same zone.

A. True

B. False

Correct Answer: A

Section: (none)

Explanation

Explanation/Reference:

QUESTION 100

When the DHCP relay receives a DHCP request message in which the giaddr (gateway IP address) field is 0, how does the DHCP relay process the DHCP request message?

A. The DHCP relay fills its IP address in the giaddr field and transmits the DHCP request message to the DHCP server in unicast mode.

B. The DHCP relay fills its IP address in the giaddr field and transmits the DHCP request message in broadcast mode.

- C. The DHCP relay retains the value of the giaddr field and transmits the DHCP request message to the DHCP server in unicast mode.
- D. The DHCP relay retains the value of the giaddr field and transmits the DHCP request message in broadcast mode.

Correct Answer: A

Section: (none)

Explanation

Explanation/Reference:

QUESTION 101

Assume that the traceroute test is used to detect the packet forwarding path and tracert packets have passed through the firewall. Which of the following attack protection functions needs to be disabled to normally display the tracert result?

- A. ICMP-redirect
- B. ICMP-unreachable
- C. Tracert
- D. Smurf

Correct Answer: C

Section: (none)

Explanation



Explanation/Reference:

QUESTION 102

If only some devices on a network run MPLS (MPLS domain is encapsulated in the IP packet header), labels are generated only for direct routes of devices running MPLS.

Labels are not generated for the routes originated from other devices running IP protocols.

- A. True
- B. False

Correct Answer: A

Section: (none)

Explanation

Explanation/Reference:

QUESTION 103

What is the recommended minimum delay for HRP preemption on the Eudemon?

- A. 120s
- B. 60s
- C. 10s
- D. 5s

Correct Answer: B

Section: (none)

Explanation

Explanation/Reference:

QUESTION 104

MPLS is a switching standard defined by the IETF. Which device adds or deletes labels?

- A. Label distribution router
- B. LER
- C. LSR
- D. Label transmit router



Correct Answer: B

Section: (none)

Explanation

Explanation/Reference:

QUESTION 105

Which of the following is the priority value of the DMZ on the Eudemon?

- A. 10
- B. 50
- C. 75
- D. 85

Correct Answer: B

Section: (none)

Explanation

Explanation/Reference:

QUESTION 106

Which of the following NAT functions are supported by the Eudemon? (Choose three.)

- A. NAT/PAT
- B. IPv4 to IPv6 NAT
- C. Bidirectional NAT
- D. NAT server

Correct Answer: ACD

Section: (none)

Explanation

Explanation/Reference:



QUESTION 107

What are the types of firewalls developed so far? (Choose three.)

- A. Packet filtering firewall
- B. Proxy firewall
- C. Anti-virus firewall
- D. Stateful firewall

Correct Answer: ABD

Section: (none)

Explanation

Explanation/Reference:

QUESTION 108

Which of the following statements about the zone priorities of the Eudemon are true? (Choose three.)

- A. The priority of the Local zone is 100.
- B. The priority of the Trust zone is 80.
- C. The priority of the Untrust zone is 5.
- D. The priority of the DMZ is 50.

Correct Answer: ACD

Section: (none)

Explanation

Explanation/Reference:

QUESTION 109

The traditional packet loss policy uses the Tail-Drop method.



<https://vceplus.com/>

- A. True
- B. False

Correct Answer: A

Section: (none)

Explanation

Explanation/Reference:

QUESTION 110

What are the similarities of DHCP and BOOTP? (Choose two.)

- A. They work in client/server model.
- B. They work in static address allocation mode.
- C. They can dynamically obtain DNS addresses.
- D. They use the same packet structure.

Correct Answer: AD

Section: (none)

Explanation

Explanation/Reference:

QUESTION 111

Users can change the priorities of default zones on the firewall as required.

- A. True
- B. False

Correct Answer: B

Section: (none)

Explanation

Explanation/Reference:



QUESTION 112

Which of the following attacks can Eudemon defend against? (Choose three.)

- A. SYN-Flood
- B. SQL inject
- C. Port Scan
- D. Ping-Death

Correct Answer: ACD

Section: (none)

Explanation

Explanation/Reference:

QUESTION 113

How many user-defined security zones at most are configured on an Eudemon?

- A. 3
- B. 4
- C. 5
- D. 6

Correct Answer: A

Section: (none)

Explanation

Explanation/Reference:

QUESTION 114

Which statements about DHCP snooping are true? (Choose three.)

- A. The DHCP snooping binding table contains dynamic binding entries and static binding entries.
- B. DHCP snooping distinguishes the trusted interface and untrusted interfaces and discards DHCP Reply messages from untrusted interfaces.
- C. The static binding table is manually configured on the inbound interface and the aging time can also be manually set.
- D. When DHCP snooping is used at Layer 2, the interface information can be obtained for the binding table even if the Option 82 function is not configured.

Correct Answer: ABD

Section: (none)

Explanation

Explanation/Reference:

QUESTION 115

Which of the following commands is used to display the detailed information about the Eudemon?

- A. Display firewall statistic system
- B. Display firewall session table raw both-direction
- C. Display firewall session table verbose
- D. Display firewall session table detail

Correct Answer: C

Section: (none)

Explanation

Explanation/Reference:

QUESTION 116

The NAT function enabled on the Eudemon does not greatly affect system performance.

- A. True
- B. False

Correct Answer: A

Section: (none)

Explanation

Explanation/Reference:

QUESTION 117

When a client applies for an IP address through DHCP, which message is the unicast message?

- A. DHCP OFFER
- B. DHCP REQUEST
- C. DHCP DISCOVER
- D. None of the above

Correct Answer: D

Section: (none)

Explanation

Explanation/Reference:

QUESTION 118

What is the maximum number of security zones supported by the Eudemon?

- A. 256

- B. 128
- C. 32
- D. 16

Correct Answer: D

Section: (none)

Explanation

Explanation/Reference:

QUESTION 119

If you have run the dot1x port-method command with the port parameter specified (port-based 802.1x authentication), the maximum number of users on an interface changes to 1. In this case, which statements are true? (Choose two.)

- A. You can run the dot1x max-user command to change the maximum number of access users.
- B. You cannot run the dot1x max-user command to set the maximum number of access users.
- C. You need to run the undo dot1x port-method command, and then set the maximum number of access users.
- D. All of the above

Correct Answer: BC

Section: (none)

Explanation

Explanation/Reference:

QUESTION 120

What is the sequence of applying for an IP address in DHCP?

1. The host sends a DHCP Request message to apply for an IP address.
2. The DHCP server replies with a DHCP Offer message.
3. The host sends a DHCP Discovery message to search for the DHCP server.
4. The DHCP server replies with a DHCP ACK message after receiving the DHCP Request message.

- A. 1-2-3-4
- B. 1-4-3-2
- C. 3-2-1-4

D. 3-4-1-2

Correct Answer: C

Section: (none)

Explanation

Explanation/Reference:

QUESTION 121

The IPSec function on the Eudemon supports NAT traversal.

A. True

B. False

Correct Answer: A

Section: (none)

Explanation

Explanation/Reference:



QUESTION 122

To process fragmented service packets on an NAT-enabled firewall, which of the following functions needs to be enabled?

A. Transparent fragment transmission

B. Fragment cache

C. Fragment reassembly

D. MTU check

Correct Answer: B

Section: (none)

Explanation

Explanation/Reference:

QUESTION 123

Based on specific rules, traffic classification identifies packets having the same characteristics. Traffic classification is the prerequisite and basis for differentiated services.

- A. True
- B. False

Correct Answer: A

Section: (none)

Explanation

Explanation/Reference:

QUESTION 124

You cannot set an aging time for the blacklist of the Eudemon.

- A. True
- B. False

Correct Answer: B

Section: (none)

Explanation

Explanation/Reference:

QUESTION 125

Which of the following packet drop policies can be applied to the congestion avoidance mechanism? (Choose three.)

- A. Tail-drop
- B. RED
- C. WRED
- D. WFQ

Correct Answer: ABC

Section: (none)

Explanation

Explanation/Reference:



QUESTION 126

When recovering from a fault, the active link in a Smart Link group remains blocked and traffic is not switched back to it. In this way, traffic keeps stable.

- A. True
- B. False

Correct Answer: A

Section: (none)

Explanation

Explanation/Reference:

QUESTION 127

QoS includes which of the following aspects? (Choose three.)

- A. Transmission bandwidth
- B. Transmission delay and jitter
- C. Packet loss ratio
- D. Network security

Correct Answer: ABC

Section: (none)

Explanation

Explanation/Reference:

QUESTION 128

Which of the following link efficiency mechanism can be used to compress RTP and TCP packet headers?

- A. IPHC
- B. LFI
- C. PPP
- D. All of the above

Correct Answer: A

Section: (none)

Explanation

Explanation/Reference:



QUESTION 129

The Committed Access Rate (CAR) technology uses the token bucket (TB) to control traffic.

- A. True
- B. False

Correct Answer: A

Section: (none)

Explanation

Explanation/Reference:

QUESTION 130

Which of the following statements about the jitter and delay are true? (Choose three.)



<https://vceplus.com/>

- A. The end-to-end delay is the sum of transmission delays, processing delays, and queuing delays along the packet forwarding path.
- B. The variation in packet delay is called jitter.
- C. The jitter depends on the delay. The lower the delay, the less the jitter.
- D. The jitter is independent of the delay.

Correct Answer: ABC

Section: (none)

Explanation

Explanation/Reference:

QUESTION 131

Assume that congestion occurs on the outbound interface, packet A is cached in the PQ, and packet B is cached in the WFQ, which of the following statement about packet scheduling is true?

- A. Packet A is scheduled first.
- B. Packet B is scheduled first.
- C. Packets A and B are scheduled at the same time.
- D. Packets A and B are discarded.

Correct Answer: A

Section: (none)

Explanation

Explanation/Reference:

QUESTION 132

Which of the following are disadvantages of the traditional tail drop mechanism? (Choose three.)

- A. TCP global synchronization
- B. TCP starvation
- C. High Average Link Utilization
- D. Packet drop is not based on priorities



Correct Answer: ABD

Section: (none)

Explanation

Explanation/Reference:

QUESTION 133

QoS can provide different quality of service according to different demands, which of the following are functions of QoS? (Choose three.)

- A. Providing private bandwidth for users
- B. Reducing cost of the network
- C. Congestion management and avoidance
- D. Specifying priority of packets

Correct Answer: ACD

Section: (none)

Explanation

Explanation/Reference:

QUESTION 134

Which of the following statements about the VRRP authentication is false?

- A. VRRP provides no authentication.
- B. VRRP provides the simple text authentication.
- C. VRRP provides the MD5 authentication.
- D. VRRP provides the RSA key authentication.

Correct Answer: D

Section: (none)

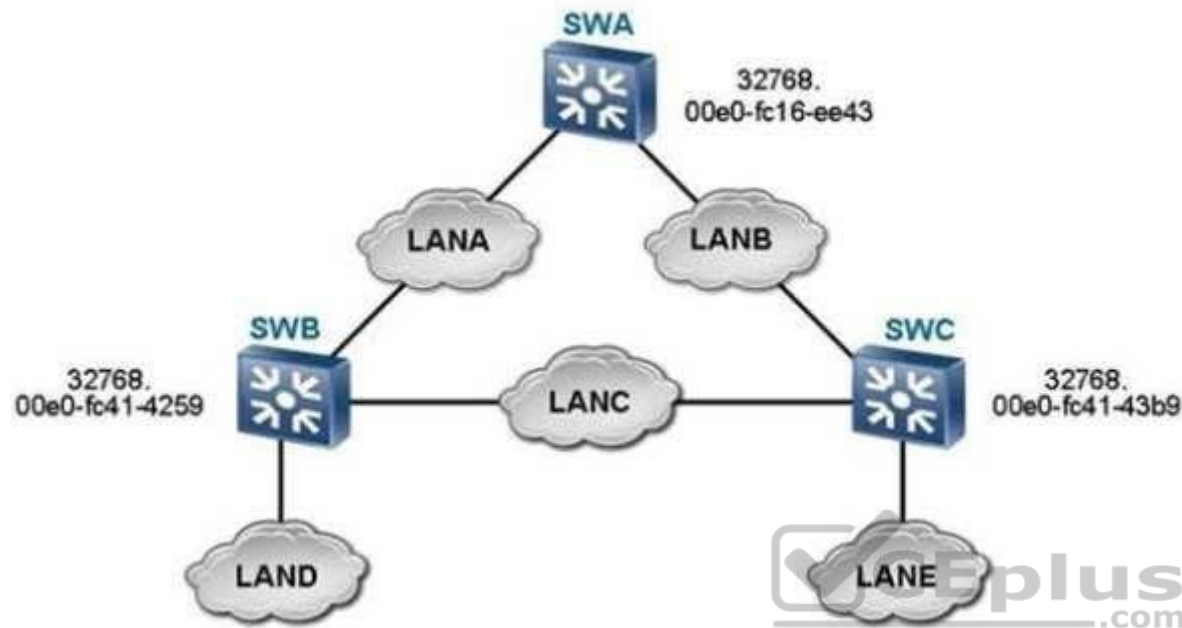
Explanation

Explanation/Reference:



QUESTION 135

Which of the following statements about the mVRRP backup group is false?



- A. Multiple service VRRP backup group can be bound to one mVRRP backup group.
- B. An mVRRP backup group can serve as a service VRRP backup group and thus be bound to another mVRRP backup group.
- C. One service VRRP backup group can be bound to only one mVRRP backup group.
- D. After multiple service VRRP backup groups are bound to an mVRRP backup group, the mVRRP backup group determines the status of all the service VRRP backup groups by sending VRRP packets. This can reduce the number of VRRP packets to be sent and improve the packet processing efficiency.

Correct Answer: B

Section: (none)

Explanation

Explanation/Reference:

QUESTION 136

Which of the following information in a packet can be marked or re-marked?

- A. IP DSCP, IP precedence, and 802.1p information
- B. IP source and destination addresses
- C. MAC address
- D. Any information in the packet

Correct Answer: A

Section: (none)

Explanation

Explanation/Reference:

QUESTION 137

Congestion occurs when a link or node is carrying so much data that its quality of service deteriorates.

- A. True
- B. False

Correct Answer: A

Section: (none)

Explanation

Explanation/Reference:



QUESTION 138

If the Open message sent from a BGP speaker has the GR capability field but no <AFI, SAFI> field, the BGP speaker has no backup forwarding table. Such a BGP speaker functions as only the GR helper to help its neighbors complete the GR process.

- A. True
- B. False

Correct Answer: A

Section: (none)

Explanation

Explanation/Reference:

QUESTION 139

The NSF function takes effect only after the GR function is enabled on two directly connected routers that use static routes for communication between users in different network segments.

- A. True
- B. False

Correct Answer: B

Section: (none)

Explanation

Explanation/Reference:

QUESTION 140

None Stop Forwarding (NSF) is an important high availability (HA) technology. It ensures the normal data forwarding even in the case of a fault in the control plane of the router, protecting key services on the network from interruption.

- A. True
- B. False



Correct Answer: A

Section: (none)

Explanation

Explanation/Reference:

QUESTION 141

Ethernet0/0 of RTA and Ethernet0/0 of RTB connect to the same LAN, both are enabled with VRRP. Create a virtual router with ID 1 and virtual IP address 10.1.1.254. Which of the following commands can make RTB Master without modifying the priority of RTA?

- A. [RTB-Ethernet0/0]vrrpvrid 1 priority 200
- B. [RTB-Ethernet0/0]vrrpvrid 1 virtual-ip 10.1.1.254 priority 200
- C. [RTB-Ethernet0/0]vrrpvrid 1 force-master
- D. [RTB]vrrpvrid 1 force-master

Correct Answer: A

Section: (none)

Explanation

Explanation/Reference:

QUESTION 142

A VRRP backup group is able to track the status of an interface. If the interface configured with a VRRP backup group fails or any interface on the router fails, the VRRP backup group provides a backup for the faulty interface.

- A. True
- B. False

Correct Answer: A

Section: (none)

Explanation

Explanation/Reference:



QUESTION 143

What is the legal virtual MAC address in VRRP?

- A. 01-01-5E-00-01-01
- B. 01-00-5E-00-01-00
- C. 00-00-5E-00-01-01
- D. 01-01-5E-00-00-01

Correct Answer: C

Section: (none)

Explanation

Explanation/Reference:

QUESTION 144

Simple traffic classification can be performed based on which of the following information in IPv4 packets? (Choose two.)

- A. DSCP

- B. IP precedence
- C. EXP
- D. 802.1p

Correct Answer: AB

Section: (none)

Explanation

Explanation/Reference:

QUESTION 145

Which of the following statements about a backup router in a VRRP backup group are true? (Choose three.)

- A. It receives VRRP packets from the master router and determines whether the master router is functioning properly.
- B. It responds to the ARP requests sent from a virtual IP address.
- C. It discards an IP packet whose destination MAC address is a virtual MAC address.
- D. It discards an IP packet whose destination IP address is a virtual IP address.

Correct Answer: ACD

Section: (none)

Explanation

Explanation/Reference:

QUESTION 146

The formula for calculating the MTTR is: $MTTR = \text{Fault detection time} + \text{Board replacement time} + \text{System initialization time} + \text{Link recovery time} + \text{Route convergence time} + \text{Forwarding recovery time}$. The smaller the addends are, the smaller the MTTR is and the higher the device availability is.

- A. True
- B. False

Correct Answer: A

Section: (none)

Explanation

Explanation/Reference:

QUESTION 147

Which of the following is not the BFD fault detection mode?

- A. Asynchronous mode
- B. Demand mode
- C. Echo mode
- D. Peer mode

Correct Answer: D

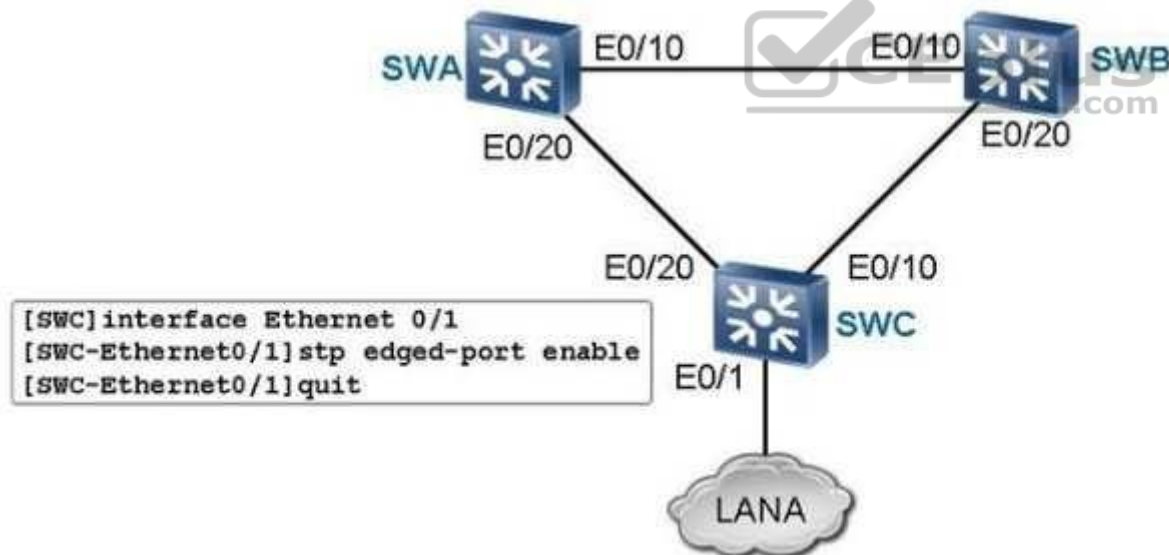
Section: (none)

Explanation

Explanation/Reference:

QUESTION 148

Which of the following statements about the mVRRP backup group are true? (Choose three.)



- A. An mVRRP backup group can be bound to other service VRRP backup groups.

- B. An mVRRP backup group cannot be bound to multiple service VRRP backup groups but can function as a service VRRP group to be bound to another mVRRP group.
- C. After a VRRP backup group member is bound to an mVRRP backup group, the state machine of the VRRP backup group member becomes dependent. That is, the VRRP backup group member deletes the protocol timer, and no longer sends or receives packets, and implements its state machine by directly copying the status of the mVRRP backup group.
- D. A VRRP backup group member can be bound to only one mVRRP backup group.

Correct Answer: ACD

Section: (none)

Explanation

Explanation/Reference:

QUESTION 149

Which of the following congestion avoidance mechanisms can be used to avoid global TCP synchronization? (Choose two.)

- A. RED
- B. WRED
- C. FIFO
- D. WFQ



Correct Answer: AB

Section: (none)

Explanation

Explanation/Reference:

QUESTION 150

Which of the following statement about the jitter and delay is false?

- A. The jitter depends on the delay.
- B. The variation in packet delay is called jitter.
- C. The lower the delay is, the less the jitter is.
- D. The jitter is independent of the delay.

Correct Answer: D

Section: (none)

Explanation

Explanation/Reference:

QUESTION 151

The interface IP address and virtual IP address configured for VRRP must not be identical.



A. True

B. False

Correct Answer: B

Section: (none)

Explanation

Explanation/Reference:

QUESTION 152

Which of the following statements are correct regarding default gateway of PC in the network running VRRP?

- A. Configure only one gateway for the PC which is the IP address of Master.
- B. Configure only one gateway for the PC which is the IP address of virtual router.
- C. Configure two gateways for the PC which are the IP addresses of Master and Slave.
- D. Configure three gateways for the PC which are the IP addresses of Master, Slave and virtual router.

Correct Answer: B

Section: (none)

Explanation

Explanation/Reference:

QUESTION 153

In traffic policing using two token buckets & two-rate, when the CIR is set to 1 Mbit/s and the PIR is set to 2 Mbit/s, what is the maximum transmission rate for the traffic in green?

- A. 1 Mbit/s
- B. 2 Mbit/s
- C. 3 Mbit/s
- D. 4 Mbit/s

Correct Answer: A

Section: (none)

Explanation

Explanation/Reference:



QUESTION 154

WFQ can effectively control the delay and jitter by means of configuring weights for different services.

- A. True
- B. False

Correct Answer: A

Section: (none)

Explanation

Explanation/Reference:

QUESTION 155

The IP packet has a special field to mark the QoS. For example, the last 6 bits in the ToS field of an IPv4 packet mark the DSCP value.

- A. True
- B. False

Correct Answer: B

Section: (none)

Explanation

Explanation/Reference:

QUESTION 156

Which of the following statements about the device state change is correct after failure in the intermediate link for transmitting VRRP heartbeats?

- A. The status of the master and slave devices remains unchanged.
- B. Both the master and slave devices enter the Master state.
- C. Both the master and slave devices enter the Slave state.
- D. Both the master and slave devices enter the Initial state.

Correct Answer: B

Section: (none)

Explanation

Explanation/Reference:

QUESTION 157

IP QoS models include: (Choose three.)

- A. Best-Effort
- B. Integrated Service
- C. Differentiated Service
- D. FIFO Service

Correct Answer: ABC

Section: (none)

Explanation

Explanation/Reference:

QUESTION 158

The virtual router uses a virtual MAC address but not the actual MAC address of the interface to respond to an ARP request.

- A. True
- B. False

Correct Answer: A

Section: (none)

Explanation

Explanation/Reference:

QUESTION 159

A VRRP virtual router can have one or more IP addresses.

- A. True
- B. False

Correct Answer: A

Section: (none)

Explanation

Explanation/Reference:

QUESTION 160

After the session is re-established between the BGP GR helper and its neighbor, original forwarding entries are deleted.

- A. True
- B. False

Correct Answer: B

Section: (none)

Explanation

Explanation/Reference:

QUESTION 161

Which of the following statements about the master router in a VRRP backup group are true? (Choose three.)

- A. It regularly sends VRRP packets.
- B. It uses a virtual MAC address to respond to ARP requests sent from a virtual IP address.
- C. It forwards an IP packet whose destination MAC address is a physical MAC address.
- D. It changes to the Backup state if the priority carried in the received packet is greater than its own priority.

Correct Answer: ABD

Section: (none)

Explanation

Explanation/Reference:

QUESTION 162

The reliability of a product or a system is generally evaluated with the two indicators of Mean Time to Repair (MTTR) and Mean Time Between Failures (MTBF).

- A. True
- B. False



Correct Answer: A

Section: (none)

Explanation

Explanation/Reference:

QUESTION 163

During the GR of dynamic routing protocols (such as OSPF and BGP) neighbor relationships remain unchanged.

- A. True
- B. False

Correct Answer: B

Section: (none)

Explanation

Explanation/Reference:

QUESTION 164

Complex traffic classification matches packets with rules and then takes actions to matching packets.

- A. True
- B. False

Correct Answer: A

Section: (none)

Explanation

Explanation/Reference:

QUESTION 165

Which of the following technologies are available for traffic shaping? (Choose two.)

- A. GTS B. LR
- C. CAR
- D. WRED



Correct Answer: AB

Section: (none)

Explanation

Explanation/Reference:

QUESTION 166

Traffic shaping uses queues to cache traffic whose transmission rate exceeds the limit.

Which of the following statement about traffic shaping is not true?

- A. Compared with traffic policing, traffic shaping is advanced in terms of caching burst traffic.
- B. With traffic shaping, packets can be transmitted at an even rate.
- C. Caching packets in the queue increases the packet delay in case of congestion.
- D. In case of congestion, traffic shaping causes the packet loss ratio to increase.

Correct Answer: D

Section: (none)

Explanation

Explanation/Reference:

QUESTION 167

Which of the following statements are correct regarding VRRP?

- A. Only Master can process the data packets sending to virtual router.
- B. Only Slave can process the data packets sending to virtual router.
- C. Both Master and Slave can process the data packets sending to the same virtual router to realize load balance.
- D. By default, only Master can process the data packets sending to virtual router; but we can do some configuration to make the Slave process the data packets sending to virtual router.

Correct Answer: A

Section: (none)

Explanation

Explanation/Reference:



QUESTION 168

Which of the following statement about QoS in DiffServ mode is false?

- A. The parameter field in the IP packet header informs devices on the network of the QoS requirements of the application.
- B. Every device on the packet transmission paths can learn the service request types by analyzing the IP packet header.
- C. Before sending packets, the application program needs to confirm that the network has reserved resources for packet transmission.
- D. DiffServ is a QoS solution based on packets.

Correct Answer: C

Section: (none)

Explanation

Explanation/Reference:

QUESTION 169

In addition to traffic rate limit, the CAR can mark packets with colors. If one token bucket & one-rate is used in traffic policing and the number of tokens is insufficient, packets are marked with which of the following color?

- A. Red
- B. Green
- C. Yellow
- D. Blue

Correct Answer: A

Section: (none)

Explanation

Explanation/Reference:

QUESTION 170

BFD is a common fast detection technology. It implements the fast switchover function only when collaborating with other fast switchover technologies.

- A. True
- B. False



Correct Answer: A

Section: (none)

Explanation

Explanation/Reference:

QUESTION 171

Which of the following statement about packet marking is false?

- A. The QoSInfo field of the packet can be marked.
- B. The DSCP and IP precedence fields of the IP packet can be marked.
- C. The 802.1p field of the VLAN packet can be marked.
- D. The IP address of the packet can be marked.

Correct Answer: D

Section: (none)

Explanation

Explanation/Reference:

QUESTION 172

BFD (a fast detection technology) enabled on a device quickly identifies a fault and reports the fault to the appropriate protocol module after detecting a master/slave switchover on the neighboring device. This causes the protocol module to quit the GR. As such, BFD and GR cannot be used together.

- A. True
- B. False

Correct Answer: B

Section: (none)

Explanation

Explanation/Reference:



QUESTION 173

OSPF directly runs over the IP protocol. Its IP protocol number is 89.

- A. True
- B. False

Correct Answer: A

Section: (none)

Explanation

Explanation/Reference:

QUESTION 174

Which of the following statements about link aggregation are true? (Choose three.)

- A. Link aggregation binds a group of physical interfaces together as a logical interface to increase the bandwidth and reliability.
- B. Link aggregation complies with IEEE 802.3az.
- C. The logical link formed by bundling multiple physical links together is called a link aggregation group (LAG) or a trunk.

D. Active and inactive interfaces exist in link aggregation. Active interfaces forward data, whereas inactive interfaces do not.

Correct Answer: ACD

Section: (none)

Explanation

Explanation/Reference:

QUESTION 175

When links are switched in a Smart Link group, which of the following mechanisms can be used to refresh MAC and ARP entries? (Choose three.)

- A. MAC and ARP entries are refreshed automatically with respect to traffic.
- B. The Smart Link group uses a new link to send Flush packets.
- C. MAC entries are refreshed after the aging time expires.
- D. ARP entries are refreshed after the aging time expires

Correct Answer: ABC

Section: (none)

Explanation

Explanation/Reference:



QUESTION 176

Which of the following statements about the BFD asynchronous mode are true? (Choose two.)



<https://vceplus.com/>

- A. The local system regularly sends BFD control packets, and the remote system detects the BFD control packets sent from the local system.

- B. The local system detects the BFD control packets sent by itself.
- C. If one system does not receive any BFD packets from its peer within a detection period, it advertises a session Down event.
- D. Each system confirms its connections with other systems in a particular method. After a BFD session is set up, BFD control packets are no longer sent.

Correct Answer: AC

Section: (none)

Explanation

Explanation/Reference:

QUESTION 177

Routes 172.1.12.0/24, 172.1.13.0/24, 172.1.14.0/24, and 172.1.15.0/24 can be summarized into route 172.1.8.0/21.

- A. True
- B. False

Correct Answer: A

Section: (none)

Explanation

Explanation/Reference:



QUESTION 178

Which of the following statements are true? (Choose three.)

- A. The neighbor state machine can transition from the Down state to the Exchange state.
- B. The neighbor state machine can transition from the Down state to the Init state.
- C. The neighbor state machine can transition from the Init state to the Exstart state.
- D. The neighbor state machine can transition from the Init state to the 2-Way state.

Correct Answer: BCD

Section: (none)

Explanation

Explanation/Reference:

QUESTION 179

A router receives a data packet, with the destination address being 195.26.17.4. Which subnet is this address in?

- A. 195.26.0.0/21
- B. 195.26.16.0/20 C. 195.26.8.0/22
- D. 195.26.20.0/22

Correct Answer: B

Section: (none)

Explanation

Explanation/Reference:

QUESTION 180

Which of the following statements about the reliability requirement level are true? (Choose three.)

- A. Faults seldom occur in the system software or hardware.
- B. System functions are affected by faults.
- C. System functions are affected by faults but can rapidly recover.
- D. System functions can be ensured by using redundancy design, switchover policy, and high success rate in switchover.

Correct Answer: ACD

Section: (none)

Explanation

Explanation/Reference:

QUESTION 181

The value of ospfdr-priority ranges from 0 to 255 and the default value is 64.

- A. True
- B. False

Correct Answer: B

Section: (none)

Explanation

Explanation/Reference:

QUESTION 182

For a network like 175.25.128.0/19, the mask value is?

- A. 255.255.0.0
- B. 255.255.224.0
- C. 255.255.24.0
- D. Different based on the address type

Correct Answer: B

Section: (none)

Explanation

Explanation/Reference:

QUESTION 183

Which of the following statements about Stub areas is false?

- A. An AS-external-LSA cannot be advertised to a Stub area.
- B. The ABR in the Stub area generates a default route to guide forwarding of packets destined for other areas.
- C. A Transit area cannot be configured as a Stub area.
- D. Any area can be configured as a Stub area.

Correct Answer: D

Section: (none)

Explanation

Explanation/Reference:

QUESTION 184

If the network address 172.29.100.0/16 is subnetted, which of the following valid VLSM subnets can be obtained?

- A. 172.29.100.8/28
- B. 172.29.100.32/28
- C. 172.29.100.60/28

D. 172.29.100.104/28

Correct Answer: B

Section: (none)

Explanation

Explanation/Reference:

QUESTION 185

Which of the followings are OSPF packet type? (Choose three.)

- A. LSA
- B. LS Request
- C. LSP
- D. LS Update
- E. LS Ack

Correct Answer: BDE

Section: (none)

Explanation

Explanation/Reference:



QUESTION 186

The IP address 0.0.0.0 indicates ().

- A. Network address
- B. Broadcast address of specially designated network segment
- C. All networks
- D. Broadcast address of all nodes of local network segment

Correct Answer: C

Section: (none)

Explanation

Explanation/Reference:

QUESTION 187

What is the link ID of an ASBR-Summary-LSA?

- A. OSPF Router ID of an LSA's originator
- B. Port IP address of the DR on the described network segment
- C. Address of the destination network segment
- D. Router ID of the destination ASBR

Correct Answer: D

Section: (none)

Explanation

Explanation/Reference:

QUESTION 188

When the GR Restarter performs the active/standby switchover, the neighbor performs which of the following operations when detecting that a TCP disconnection? (Choose three.)

- A. Keeping the routing tables of various address families advertised by the GR Restarter during negotiation, marking entries in these tables with stale tags, and starting a stale timer
- B. Starting a restart timer.
- C. Clearing all routing entries and forwarding entries related to the GR restarter if the GR restarter fails to re-establish the BGP connection with the neighbor after the restart timer expires.
- D. Remaining the neighbor relationship unchanged.

Correct Answer: ABC

Section: (none)

Explanation

Explanation/Reference:

QUESTION 189

On a broadcast network or an NBMA network, not all neighbors need to set up adjacencies. Therefore, the concept about the adjacency is applicable to only the broadcast network or the NBMA network.

- A. True

B. False

Correct Answer: B

Section: (none)

Explanation

Explanation/Reference:

QUESTION 190

Which is the default network mask length of 219.25.23.56?

- A. 8
- B. 16
- C. 24
- D. 32

Correct Answer: C

Section: (none)

Explanation

Explanation/Reference:



QUESTION 191

If both the ospf cost and bandwidth-reference commands are configured on an interface, the value set in the ospf cost command is used as the cost of the interface.

- A. True
- B. False

Correct Answer: A

Section: (none)

Explanation

Explanation/Reference:

QUESTION 192

The vlink-peer command is used to specify a peer IP address for setting up a virtual link.

- A. True
- B. False

Correct Answer: B

Section: (none)

Explanation

Explanation/Reference:

QUESTION 193

The bandwidth-reference parameter is measured in Mbit/s.

- A. True
- B. False

Correct Answer: A

Section: (none)

Explanation



Explanation/Reference:

QUESTION 194

Which of the following statements about BFD are true? (Choose three.)

- A. It cannot be used to detect MPLS networks.
- B. It provides low-load and short-duration detection for paths between adjacent forwarding engines.
- C. It provides a unified mechanism for detecting all types of media and BFD-supporting protocols.
- D. It is a bidirectional detection mechanism.

Correct Answer: BCD

Section: (none)

Explanation

Explanation/Reference:

QUESTION 195

Which of the following statements about the Monitor Link group is false?

- A. A Monitor Link group has uplink and downlink interfaces.
- B. A Monitor Link group has one uplink interface and several downlink interfaces.
- C. In a Monitor Link group, the status of the downlink interface changes in accordance with the status of the uplink interface.
- D. The Smart Link group can only serve as a downlink interface.

Correct Answer: D

Section: (none)

Explanation

Explanation/Reference:

QUESTION 196

An OSPF neighbor relationship fails to be established and the display ospf error command output is as follows.



```
[RTB]display ospf error
      OSPF Process 1 with Router ID 2.2.2.2
      OSPF error statistics:
General packet errors:
0  : IP: received my own packet      0  : Bad packet
0  : Bad version                    0  : Bad checksum
7  : Bad area id                    0  : Drop on unnumbered interface
0  : Bad virtual link              0  : Bad authentication type
0  : Bad authentication key        0  : Packet too small
0  : Packet size>ip length         0  : Transmit error
0  : Interface down               0  : Unknown neighbor
HELLO packet errors:
0  : Netmask mismatch              0  : Hello timer mismatch
0  : Dead timer mismatch          0  : Extern option mismatch
9  : Router id confusion          0  : Virtual neighbor unknown
0  : NBMA neighbor unknown
DD packet errors:
0  : Neighbor state low            0  : Router id confusion
0  : Extern option mismatch        0  : Unknown LSA type
0  : MTU option mismatch
LS ACK packet errors:
0  : Neighbor state low            0  : Bad ack
0  : Duplicate ack                0  : Unknown LSA type
LS REQ packet errors:
0  : Neighbor state low            0  : Empty request
0  : Bad request
LS UPD packet errors:
0  : Neighbor state low            0  : Newer self-generate LSA
0  : LSA checksum bad             0  : Received less recent LSA
0  : Unknown LSA type
Opaque errors:
0  : 9-out of flooding scope      0  : 10-out of flooding scope
0  : 11-out of flooding scope
Retransmission for packet over Limitation errors:
0  : Number for DD packet          0  : Number for Update Packet
0  : Number for Request Packet
```

Which of the following is the probable cause?

- A. Router IDs conflict.
- B. Area IDs are mismatched.
- C. Network masks are inconsistent.
- D. Authentication types are inconsistent.

Correct Answer: B

Section: (none)

Explanation

Explanation/Reference:

QUESTION 197

A network administrator needs to construct a small-scale network containing only 22 hosts and the ISP assigns only one public IP address as the egress address. Which of the following addresses can be used by the network administrator to plan the network?

- A. 10.11.12.16/28
- B. 172.31.255.128/27
- C. 192.168.1.0/28
- D. 209.165.202.128/27



Correct Answer: B

Section: (none)

Explanation

Explanation/Reference:

QUESTION 198

Which of the following statements about state transition are true? (Choose three.)

- A. The neighbor state machine transitions from the Loading state to the Full state if a LoadingDone event occurs.
- B. The neighbor state machine transitions from the Exstart state to the Full state if a NegotiationDone event occurs.
- C. The neighbor state machine transitions from the Exchange state to the Full state if an ExchangeDone event occurs.
- D. The neighbor state machine transitions from the Exchange state to the Loading state if an ExchangeDone event occurs.

Correct Answer: ACD

Section: (none)

Explanation

Explanation/Reference:

QUESTION 199

On a non-broadcast network, OSPF has two operating modes: NBMA and P2MP.

- A. True
- B. False

Correct Answer: A

Section: (none)

Explanation

Explanation/Reference:



QUESTION 200

The most remarkable characteristic of OSPF is that OSPF supports the link-state algorithm.

- A. True
- B. False

Correct Answer: A

Section: (none)

Explanation

Explanation/Reference:

QUESTION 201

The ABR in a Totally Stubby area will not advertise Type-3, Type-4, and Type-5 LSAs to the Totally Stubby area. Instead, the ABR will advertise a default route to the Totally Stubby area to guide forwarding of packets destined for other areas.

- A. True
- B. False

Correct Answer: A

Section: (none)

Explanation

Explanation/Reference:

QUESTION 202

What is the maximum bits of a Class C address can be used for subnet?

- A. 6
- B. 8
- C. 12
- D. 14

Correct Answer: A

Section: (none)

Explanation

Explanation/Reference:



QUESTION 203

Which of the following statements about the setup of a BFD session are true? (Choose three.)



<https://vceplus.com/>

- A. A BFD session can be set up in either static or dynamic mode.
- B. A static BFD session is set up by manually configuring BFD session parameters and delivering requests for setting up a BFD session. BFD session parameters include the local and remote discriminators.

- C. A dynamic BFD session is set up by dynamically allocating local discriminators.
- D. Static and dynamic BFD sessions are not differentiated.

Correct Answer: ABC

Section: (none)

Explanation

Explanation/Reference:

QUESTION 204

Which of the following statements about the Smart Link group is false?

- A. A Smart Link group has two interfaces at most. The two interfaces if configured are an active interface and a standby interface.
- B. Among the two interfaces in a Smart Link group, one is in the active state and the other one in the standby state in normal situations.
- C. When the active interface goes down, the Smart Link group automatically blocks it and changes the status of the standby interface to active.
- D. When the active interface recovers from a fault, traffic will be switched back to it immediately.

Correct Answer: D

Section: (none)

Explanation

Explanation/Reference:

QUESTION 205

Different from a Stub area, an NSSA supports Type-5 LSAs.

- A. True
- B. False

Correct Answer: B

Section: (none)

Explanation

Explanation/Reference:

QUESTION 206

Which of the following are characteristics of a high availability network? (Choose two.)

- A. Faults seldom occur.
- B. Services can be quickly restored when a fault occurs.
- C. Faults never occur.
- D. Services can only be manually restored when a fault occurs.

Correct Answer: AB

Section: (none)

Explanation

Explanation/Reference:

QUESTION 207

Which of the following statements about NSSA commands is false?

- A. If the default-route-advertise parameter is set, a Type-7 default route is generated.
- B. The no-import-route parameter is used to prevent the importing of AS external routes in the form of Type-7 LSAs into an NSSA.
- C. The no-summary parameter is used to prevent the advertisement of Type-3 and Type-4 LSAs in an area.
- D. The set-n-bit parameter indicates that an N-bit will be set in a DD packet.

Correct Answer: A

Section: (none)

Explanation

Explanation/Reference:

QUESTION 208

Which of the following Statement is false?


```
[RTA]display ospf peer
OSPF Process 1 with Router ID 1.1.1.1
Neighbors
Area 0.0.0.0 interface 10.1.1.1(Ethernet0/0)'s neighbor(s)
Router ID: 2.2.2.2   Address: 10.1.1.2
State: Full Mode: Nbr is Master Priority: 1
DR: 10.1.1.1 BDR: 10.1.1.2
Dead timer expires in 35s
Neighbor has been up for 04:35:02
```

- A. The OSPF Router ID of the local router is 1.1.1.1.
- B. The OSPF Router ID of the neighbor is 2.2.2.2.
- C. The OSPF Router ID of the neighbor is larger and thus the neighbor acts as a DR.
- D. The local router acts as slave.

Correct Answer: C

Section: (none)

Explanation



Explanation/Reference:

QUESTION 209

One class B network 155.16.0.0, the mask is 255.255.255.192. then subnet quantity available is (), the host quantity in every subnet at most is ()

- A. 512126
- B. 102464
- C. 102462
- D. 256254
- E. 192254

Correct Answer: C

Section: (none)

Explanation

Explanation/Reference:

QUESTION 210

The NBMA mode requires all the routers in the network to be fully connected; otherwise, it does not function.

- A. True
- B. False

Correct Answer: B

Section: (none)

Explanation

Explanation/Reference:

QUESTION 211

Which of the following statements about the BFD echo function are true? (Choose three.)

- A. The local system sends a series of BFD Echo packets, and the remote system loops the packets back through its forwarding channel.
- B. If the local system receives several consecutive Echo packets, it advertises a session Down event.
- C. The echo function can work together with the asynchronous or demand detection mode.
- D. The echo function can take the place of fault detection by sending BFD control packets.

Correct Answer: ACD

Section: (none)

Explanation

Explanation/Reference:

QUESTION 212

Which of the following statements about VLSM characteristics are true? (Choose two.)

- A. VLSM supports both IPv4 and IPv6.
- B. VLSM supports overlapped address ranges.
- C. VLSM provides more proper route summarization information in the routing table.
- D. VLSM allows a subnet to be divided into smaller subnets.

Correct Answer: CD

Section: (none)

Explanation

Explanation/Reference:

QUESTION 213

Which of the following statements about the BFD demand mode are true? (Choose two.)

- A. The local system periodically sends BFD control packets, and the remote system detects the BFD control packets sent from the local system.
- B. The local system detects the BFD control packets sent by itself.
- C. If one system does not receive any BFD packets from its peer within a detection period, it advertises a session Down event.
- D. Each system confirms its connections with other systems in a particular method. After a BFD session is set up, BFD control packets are no longer sent.

Correct Answer: BD

Section: (none)

Explanation

Explanation/Reference:



QUESTION 214

Different types of networks cannot establish an adjacency in the Full state.

- A. True
- B. False

Correct Answer: B

Section: (none)

Explanation

Explanation/Reference:

QUESTION 215

A Class C network needs to be divided into five subnets and each subnet needs to contain a maximum of 20 hosts. Which of the following subnet masks is used?

- A. 255.255.255.192

- B. 255.255.255.240
- C. 255.255.255.224
- D. 255.255.255.248

Correct Answer: C
Section: (none)
Explanation

Explanation/Reference:

QUESTION 216

How many Class C networks does the summarized route 192.168.134.0/22 cover?

- A. 2
- B. 4
- C. 8
- D. 16

Correct Answer: B
Section: (none)
Explanation



Explanation/Reference:

QUESTION 217

When two routers exchange LSDB information by exchanging DD packets, a master/slave relationship is established between the two routers. The router with a larger router ID is the master.

- A. True
- B. False

Correct Answer: A
Section: (none)
Explanation

Explanation/Reference:

QUESTION 218

The subnet mask of a class A address is 255.255.240.0, how many bits are used to divide subnet?

- A. 4
- B. 5
- C. 9
- D. 12

Correct Answer: D

Section: (none)

Explanation

Explanation/Reference:

QUESTION 219

In VRP 5.7, which of the following dynamic protocols support GR? (Choose three.)

- A. MPLS LDP/RSVP
- B. IS-IS/OSPF
- C. BGP
- D. MSTP



Correct Answer: ABC

Section: (none)

Explanation

Explanation/Reference:

QUESTION 220

Which of the following address types are reserved for multicast use?

- A. Class A
- B. Class B
- C. Class E
- D. Class D

Correct Answer: D

Section: (none)

Explanation

Explanation/Reference:

QUESTION 221

Which of the following messages exist only in PIM-SM? (Choose two.)

- A. Join/Prune
- B. Assert
- C. Bootstrap
- D. Register

Correct Answer: CD

Section: (none)

Explanation

Explanation/Reference:



QUESTION 222

Assume that the subnet mask is 255.255.255.248. Which of the following addresses are valid host addresses? (Choose three.)

- A. 192.168.200.87
- B. 196.123.142.190
- C. 223.168.210.100
- D. 220.100.100.154

Correct Answer: BCD

Section: (none)

Explanation

Explanation/Reference:

QUESTION 223

Which of the following statements is false?

- A. An ABR maintains an LSDB for each area. There are many LSDBs on an ABR.
- B. The metric of an ASE LSA can be specified when an external route is imported. The default value is 1.
- C. The external routing information carries a Tag label for transmitting additional information of the route. It is commonly used in a routing policy. The default value of the Tag label is 0.
- D. The Link State ID in an ASBR-Summary-LSA is the Router ID of the ASBR.

Correct Answer: C

Section: (none)

Explanation

Explanation/Reference:

QUESTION 224

If the Router Priority of a router is set to 0, this router cannot be elected as a DR or a BDR.



<https://vceplus.com/>

- A. True
- B. False

Correct Answer: A

Section: (none)

Explanation

Explanation/Reference:

QUESTION 225

Only Router-LSAs and Network-LSAs are involved in intra-area route calculations.

- A. True
- B. False

Correct Answer: A

Section: (none)

Explanation

Explanation/Reference:

QUESTION 226

Which of the following statements about Flush packets in a Smart Link group are true? (Choose three.)

- A. A Smart Link group sends Flush packets to instruct other devices to update the address table.
- B. Flush packets use IEEE 802.3 encapsulation.
- C. The destination MAC address of Flush packets is an unknown unicast address, which is used to distinguish protocols.
- D. The destination MAC address of Flush packets is a special multicast address, which is used to distinguish protocols.

Correct Answer: ABC

Section: (none)

Explanation

Explanation/Reference:

QUESTION 227

Which of the following statements about Stub areas is false?

- A. The difference between a Stub area and a Totally Stubby area is that the Totally Stubby area cannot contain summary-LSAs.
- B. The ABR in the Stub area generates a default route to guide forwarding of packets destined for other area.
- C. A Transit area cannot be configured as a Stub area.
- D. Any Stub area can be configured as a Totally Stubby area.

Correct Answer: A

Section: (none)

Explanation

Explanation/Reference:

QUESTION 228

Each router running OSPF has a router ID. A router ID is a 32-bit integer and uniquely identifies a router. Hence, even of routers in different ASs, the router IDs must be different.

- A. True
- B. False

Correct Answer: B

Section: (none)

Explanation

Explanation/Reference:

QUESTION 229

Which of the following statements about link aggregation are true? (Choose three.)

- A. Link aggregation can be performed in manual load balancing or LACP mode. In manual loading balancing mode, LACP is enabled; in LACP mode, LACP is enabled too.
- B. In manual load balancing mode, all active member interfaces forward data and perform load balancing.
- C. In static LACP mode, the creation of the Eth-Trunk and the addition of member interfaces to the Eth-Trunk are performed manually. Compared with link aggregation in manual load balancing mode, active interfaces in static LACP mode are selected by sending LACP Data Units (LACPDUs).
- D. In dynamic LACP mode, the creation of the Eth-Trunk, the addition of member interfaces, and the selection of active interfaces are performed based on LACP negotiation.

Correct Answer: BCD

Section: (none)

Explanation

Explanation/Reference:

QUESTION 230

Which of the following can speed up OSPF fast convergence? (Choose two.)

- A. Configuring dynamic BFD for OSPF
- B. Adjusting the interval at which OSPF calculation is performed
- C. Configuring the interval at which an LSA are retransmitted

D. Configuring the maximum number of external LSAs in the LSDB

Correct Answer: AB

Section: (none)

Explanation

Explanation/Reference:

QUESTION 231

Which of the attributes must exist in the BGP Update messages? (Choose three.)

- A. LOCAL_PREF
- B. NEXT_HOP
- C. ORIGIN
- D. AS_PATH

Correct Answer: BCD

Section: (none)

Explanation

Explanation/Reference:



QUESTION 232

Which of the following LSAs are flooded within a single area? (Choose three.)

- A. Router LSA
- B. Network LSA
- C. Summary LSA
- D. AS External LSA

Correct Answer: ABC

Section: (none)

Explanation

Explanation/Reference:

QUESTION 233

BGP peers are automatically discovered by exchanging multicast packets.

- A. True
- B. False

Correct Answer: B

Section: (none)

Explanation

Explanation/Reference:

QUESTION 234

Which statements about the Local-Preference attribute are true? (Choose two.)

- A. Based on BGP route selection rules, the Local-Preference attribute has a lower priority than the Preferred-Value attribute. This means that BGP compares Local-Preference attributes of routes after comparing Preferred-Value attributes of them.
- B. The Local-Preference attribute of a BGP route defaults to 0.
- C. The Local-Preference attribute is used to select an exit point from the local AS for data flows.
- D. Based on BGP route selection rules, the Local-Preference attribute has a lower priority than the MED attribute. This means that BGP compares LocalPreference attributes of routes after comparing MED attributes of them.

Correct Answer: AC

Section: (none)

Explanation

Explanation/Reference:

QUESTION 235

The ABR of an NSSA will not advertise Type-4 and Type-5 LSAs to an NSSA but can import external routes into the NSSA.

- A. True
- B. False

Correct Answer: A

Section: (none)

Explanation

Explanation/Reference:

QUESTION 236

In transit AS, why do core routers run BGP?

- A. Eliminate route loops
- B. Ensure data packets can be transmitted to the external destination addresses
- C. Optimize network within an AS
- D. Ensure only one export

Correct Answer: B

Section: (none)

Explanation

Explanation/Reference:

QUESTION 237

Which command can trigger the advertisement of BGP routes without interrupting a BGP connection?

- A. Reset bgp
- B. Refresh bgp all external
- C. Refresh bgp all internal
- D. RR-filter

Correct Answer: B

Section: (none)

Explanation

Explanation/Reference:

QUESTION 238

Which of the following BGP filters can be used to set route attributes?

- A. Ip-prefix
- B. Route-policy
- C. As-path-filer

D. Community-filter

Correct Answer: B

Section: (none)

Explanation

Explanation/Reference:

QUESTION 239

A BGP finite state machine has the following states:

Active
OpenConfirm
Idle
Establish
OpenSent

What is the state transition sequence in which the BGP peer relationship is established?

- A. Idle-OpenSent-OpenConfirmActive-Establish
- B. Idle-Active-OpenSent-OpenConfirm-Establish
- C. Active-Idle-OpenSent-OpenConfirm-Establish
- D. Idle-Active-OpenConfirm-OpenSent-Establish

Correct Answer: B

Section: (none)

Explanation

Explanation/Reference:

QUESTION 240

In OSPF protocol, which of the following elements are used by Network LSA to describe broadcast network segment or NBMA network segment? (Choose three.)

- A. Link ID
- B. Net mask
- C. Attached Router list
- D. Metric

Correct Answer: ABC

Section: (none)

Explanation

Explanation/Reference:

QUESTION 241

When the import-route command is used to import routes to BGP, which statement is false?

- A. The import-route command can import IGP routes, direct routes, and static routes to BGP.
- B. A process ID must be specified if OSPF routes, or RIP routes are imported to BGP.
- C. By default, the Origin attribute of imported routes is IGP.
- D. Routing policies can be used to filter the routes imported from other routing protocols.

Correct Answer: C

Section: (none)

Explanation

Explanation/Reference:



QUESTION 242

Which of the BGP attributes are Well-known mandatory attributes? (Choose three.)

- A. ORIGIN
- B. AS_PATH
- C. NEXT_HOP
- D. MED
- E. LOCAL_PREF
- F. COMMUNITY

Correct Answer: ABC

Section: (none)

Explanation

Explanation/Reference:

QUESTION 243

Which of the following statements about an AS-External-LSA are true? (Choose three.)

- A. The Link State ID field specifies the network segment address for an advertised destination.
- B. The Advertising Router field specifies the Router ID of an ASBR.
- C. The Net mask field specifies the network mask of an advertised destination.
- D. The Link State ID and Advertising Router fields are used together to uniquely identify an AS-External-LSA.

Correct Answer: ABC

Section: (none)

Explanation

Explanation/Reference:

QUESTION 244

Which of the BGP attributes is Optional transitive attribute?

- A. ORIGIN
- B. AS_PATH
- C. NEXT_HOP
- D. MED
- E. LOCAL_PREF
- F. COMMUNITY



Correct Answer: B

Section: (none)

Explanation

Explanation/Reference:

QUESTION 245

Which attributes are well-known community attributes? (Choose three.)

- A. NO_EXPORT (0xFFFFF01)
- B. NO_ADVERTISE (0xFFFFF02)
- C. NO_EXPORT_SUBCONFED

D. AS(2Byte):Number(2Byte)

Correct Answer: ABC

Section: (none)

Explanation

Explanation/Reference:

QUESTION 246

OSPF uses SPF algorithm to calculate SPF tree according to topology. Which of the following statements are correct regarding SPF tree node? (Choose two.)

- A. The node on SPF tree indicates router and port.
- B. There are two types of SPF tree node Transit node and Stub node.
- C. The router node on SPF tree is one type of Stub nodes.
- D. The router node on SPF tree is one type of Transit nodes.

Correct Answer: BD

Section: (none)

Explanation

Explanation/Reference:



QUESTION 247

What is the Origin attribute of the BGP route that is imported by using the import-route command?

- A. IGP
- B. EGP
- C. Incomplete
- D. Unknown

Correct Answer: C

Section: (none)

Explanation

Explanation/Reference:

QUESTION 248

How does the route Community attribute set by routing policies affect route selection?

- A. The Community attribute directly affects route selection, because it must be compared in route selection.
- B. The Community attribute does not affect route selection, because it is a non-transitive attribute and cannot be transmitted between routers.
- C. The Community attribute indirectly affects route selection. Routes are classified by the Community attribute. Different route attributes such as the LocalPreference and MED can be set for routes in different communities, which affects route selection.

Correct Answer: C

Section: (none)

Explanation

Explanation/Reference:

QUESTION 249

In OSPF area, RTA and RTB interconnect through FE interface. which of the following commands can be used to configure the link cost between RTA and RTB as 10? (Choose two.)

- A. Use command "ospf cost 10" on two routers
- B. Use command "ospf cost 5" on two routers
- C. Use command "bandwidth-reference 500" on two routers to change bandwidth-reference value
- D. Use command "bandwidth-reference 1000" on two routers to change bandwidth-reference

Correct Answer: AD

Section: (none)

Explanation

Explanation/Reference:

QUESTION 250

BGP is an inter-AS routing protocol. Which statements about BGP are true? (Choose three.)

- A. BGP adopts a reliable transmission protocol.
- B. BGP supports automatic peer discovery.
- C. BGP supports incremental route update.
- D. BGP supports various routing policies.

Correct Answer: ACD

Section: (none)

Explanation

Explanation/Reference:

QUESTION 251

Which statement is true if MD5 authentication is configured during the configuration of a BGP peer?



- A. All the routers in the same AS must use the same MD5 password.
- B. A pair of BGP peers must use the same MD5 password.
- C. All BGP peers of a router must use the same MD5 password.
- D. Every BGP peer of a router must use a unique MD5 password.

Correct Answer: B

Section: (none)

Explanation

Explanation/Reference:

QUESTION 252

In OSPF protocol, which of the following elements are used to describe one link? (Choose three.)

- A. Link ID
- B. Data
- C. Network Mask

D. Metric

Correct Answer: ABD

Section: (none)

Explanation

Explanation/Reference:

QUESTION 253

A failure in establishing a BGP peer relationship can be addressed by checking the TCP connectivity and BGP peer configurations.

A. True

B. False

Correct Answer: A

Section: (none)

Explanation

Explanation/Reference:



QUESTION 254

In which state have BGP peers not established any connection and not initiated a connection request?

A. Established

B. OpenSent

C. Active

D. Idle

Correct Answer: D

Section: (none)

Explanation

Explanation/Reference:

QUESTION 255

OSPF uses SPF algorithm to calculate SPF tree according to topology. What is the node of the SPF tree?

- A. Router
- B. Router and network segment
- C. Port and network segment
- D. Router and port

Correct Answer: B

Section: (none)

Explanation

Explanation/Reference:

QUESTION 256

Which of the following conditions must be met for importing routes to BGP by using the network command? (Choose two.)

- A. The routes are optimal in the IP routing table.
- B. The routes do not need to match the specified mask length.
- C. The routes match the specified mask length.
- D. The routes are IGP routes.



Correct Answer: AC

Section: (none)

Explanation

Explanation/Reference:

QUESTION 257

Type 2-external routes always take precedence over Type 1-external routes.

- A. True
- B. False

Correct Answer: B

Section: (none)

Explanation

Explanation/Reference:

QUESTION 258

What kind of the BGP attributes does AS-Path attribute belong to? (Choose two.)

- A. Mandatory
- B. Transitive
- C. Optional
- D. Non-transitive

Correct Answer: AB

Section: (none)

Explanation

Explanation/Reference:

QUESTION 259

Which of the following statements belong to BGP COMMUNITY attribute? (Choose three.)

- A. NO_EXPORT
- B. NO_ADVERTISE
- C. LOCAL_EXPORT_SUBCONFED
- D. NO_BROADCAST

Correct Answer: ABC

Section: (none)

Explanation

Explanation/Reference:

QUESTION 260

The router ID configured in the system view takes precedence over the router ID configured in the BGP view.

- A. True
- B. False

Correct Answer: B

Section: (none)

Explanation

Explanation/Reference:

QUESTION 261

In the BGP routing table, if there are two BGP routes with the same destination address but different next hops, which statement about the two BGP routes is true?

- A. Both BGP routes are advertised to other BGP peers.
- B. Only the optimal route selected from the two BGP routes is advertised to other BGP peers.

Correct Answer: B

Section: (none)

Explanation

Explanation/Reference:



QUESTION 262

Which of the following statements is false?

- A. The metric of a Type-1 external route is the sum of the AS internal metric (metric to reach an ASBR) and the AS external metric (metric from the ASBR to the destination network).
- B. The metric of a Type-2 external route is only the AS external metric.
- C. The metric of an external route is the sum of the AS external metric and the AS internal metric.
- D. The prerequisite for setting Forwarding Address to a non-zero value is that the next hop of the external route imported into OSPF is within the OSPF routing area.

Correct Answer: C

Section: (none)

Explanation

Explanation/Reference:

QUESTION 263

If the hold timers in the Open messages sent from BGP Peer A and Peer B are 180s and 90s respectively, what is the interval at which Keepalive messages are sent after Peer A and Peer B have established a BGP peer relationship?

- A. 180s
- B. 90s
- C. 60s
- D. 30s

Correct Answer: D

Section: (none)

Explanation

Explanation/Reference:

QUESTION 264

Which TCP port is used by BGP?

- A. 520 B. 89
- C. 179
- D. 180



Correct Answer: C

Section: (none)

Explanation

Explanation/Reference:

QUESTION 265

Assume that the following commands are run to configure BGP:

```
timerkeepalive 30 hold 90
```

```
peer 1.1.1.2 timer keepalive 10 hold 30
```

Which statements about the configurations are true? (Choose two.)

- A. The global configuration is preferred. Therefore, the timer values for peer 1.1.1.2 are "keepalive 30 hold 90."
- B. The peer configuration is preferred. Therefore, the timer values for peer 1.1.1.2 are "keepalive 10 hold 30."
- C. The smaller one between the global and peer timer values is used. Therefore, the timer values of peer 1.1.1.2 is "keepalive 10 hold 30".
- D. The default configuration is "timer keepalive 60 hold 180." Therefore, peer 1.1.1.2 can detect connection faults faster than the default configuration.

Correct Answer: BD

Section: (none)

Explanation

Explanation/Reference:

QUESTION 266

What is private AS number?

- A. 65410-65535 B. 1-64511
- C. 64512-65535
- D. 64511-65535

Correct Answer: C

Section: (none)

Explanation

Explanation/Reference:

QUESTION 267

Which statement about BGP is false?

- A. BGP runs over TCP.
- B. BGP is an enhanced distance-vector routing protocol.
- C. BGP uses port number 189.
- D. BGP is an inter-AS routing protocol.

Correct Answer: C

Section: (none)

Explanation

Explanation/Reference:

QUESTION 268

In OSPF protocol, which of the following statements are incorrect regarding Link ID of Router LSA? (Choose two.)

- A. In Point-to-Point link type, Link ID is the neighbor's Interface IP address.
- B. InTransNet link type, Link ID is the network address of TransNet network segment.
- C. InStubNet link type, Link ID is the network address of Stub network.
- D. In Virtual link type, Link ID is the neighbor's Router ID of virtual link.

Correct Answer: AB

Section: (none)

Explanation

Explanation/Reference:

QUESTION 269

The Origin attribute of the BGP route that is imported by using the network command is IGP.

- A. True
- B. False

Correct Answer: A

Section: (none)

Explanation

Explanation/Reference:

QUESTION 270

In the process of calculating SPF tree, the cost from a node to root node equals to metric listed in the Router LSA generated by the node.

- A. True
- B. False

Correct Answer: B

Section: (none)

Explanation

Explanation/Reference:

QUESTION 271

Which command must be configured to establish a BGP peer relationship between indirectly connected EBGP peers?

- A. Peer connect-interface
- B. Peer valid-ttl-hops
- C. Peer ignore
- D. Peer ebgp-max-hop

Correct Answer: D

Section: (none)

Explanation

Explanation/Reference:



QUESTION 272

Using the peer connect-interface command to establish "multiple" peer relationships between two routers connected through "multiple" links is recommended.

- A. True
- B. False

Correct Answer: A

Section: (none)

Explanation

Explanation/Reference:

QUESTION 273

Which following BGP attribute can be used to define a set of prefixes with the same characteristics?

- A. Origin
- B. Nexthop

- C. Community
- D. MED

Correct Answer: C

Section: (none)

Explanation

Explanation/Reference:

QUESTION 274

Which types of packets are supported by BGP? (Choose three.)

- A. Hello
- B. Notification
- C. Update
- D. Route-refresh

Correct Answer: ABC

Section: (none)

Explanation

Explanation/Reference:



QUESTION 275

In the VRP, by default, the routes imported by BGP are not automatically summarized.

- A. True
- B. False

Correct Answer: A

Section: (none)

Explanation

Explanation/Reference:

QUESTION 276

Which type of BGP route will be added to the BGP routing table?

- A. All BGP routes learned from peers
- B. Only the routes learned from IBGP peers
- C. Only the routes learned from EBGP peers
- D. Only optimal routes

Correct Answer: A

Section: (none)

Explanation

Explanation/Reference:

QUESTION 277

An ACL is used to match routing information or data packet addresses so as to filter out the unmatched routing information or data packets.

- A. True
- B. False



Correct Answer: A

Section: (none)

Explanation

Explanation/Reference:

QUESTION 278

Which of the following BGP routing policies can be used to filter routes? (Choose two.)



<https://vceplus.com/>

- A. Ip-prefix
- B. Reflect-client
- C. Route-policy
- D. Next-hop-local

Correct Answer: AC

Section: (none)

Explanation

Explanation/Reference:

QUESTION 279

Which statements about the MED attribute are true? (Choose three.)

- A. Based on BGP route selection rules, the MED attribute takes precedence over the AS_Path, Preferred-Value, Local-Preference, and Origin attributes.
- B. The MED attribute of a BGP route defaults to 100.
- C. By default, BGP compares MED attributes of only the routes from the same AS. If the compare-different-as-med command is configured, BGP can compare the MED attributes of the routes from different ASs.
- D. By default, if the MED value of a BGP route is not specified, the value 0 is used. If the bestroute med-none-as-maximum command is configured, the maximum MED value 4294967295 is used.

Correct Answer: ACD

Section: (none)

Explanation

Explanation/Reference:

QUESTION 280

Once a BGP connection is established, a BGP Speaker advertises all the optimal routes in the BGP routing table to its BGP peer.

- A. True
- B. False

Correct Answer: A

Section: (none)

Explanation

Explanation/Reference:

QUESTION 281

Based on BGP route selection rules, a local route that is automatically summarized takes precedence over a local route that is manually summarized.

- A. True
- B. False

Correct Answer: B

Section: (none)

Explanation

Explanation/Reference:

QUESTION 282

Which method is used to establish session between the BGP peers?

- A. Telnet
- B. Send Hello packet
- C. UDP
- D. TCP

Correct Answer: D

Section: (none)

Explanation

Explanation/Reference:

QUESTION 283

Which of the following statements are correct regarding BGP attribute? (Choose two.)

- A. Till now, there are 16 BGP attributes
- B. BGP attribute can be extended to 256 types
- C. Well-known discretionary attribute may not be included in each BGP update message, such as Origin attribute

D. AS_PATH is an Optional Transitive attribute

Correct Answer: AB

Section: (none)

Explanation

Explanation/Reference:

QUESTION 284

In a route-policy, which BGP attributes can be invoked by if-match clauses? (Choose three.)

- A. Local-Preference
- B. AS-Path
- C. MED
- D. Community

Correct Answer: BCD

Section: (none)

Explanation

Explanation/Reference:



QUESTION 285

Based on BGP route selection rules, the route with the lowest Local-Preference is preferred.

- A. True
- B. False

Correct Answer: B

Section: (none)

Explanation

Explanation/Reference:

QUESTION 286

In a route-policy, which BGP attributes can be used to define apply clauses? (Choose three.)

- A. Local-Preference
- B. Tag
- C. Origin
- D. AS-Path

Correct Answer: ACD

Section: (none)

Explanation

Explanation/Reference:

QUESTION 287

What is the function of well-known community attribute NO_EXPORT_SUBCONFED in BGP?

- A. Routes received carrying this value cannot be advertised outside the confederation
- B. Routes received carrying this value cannot be advertised to any BGP peers
- C. Routes received carrying this value cannot be advertised to any EBGP peers
- D. All above statements are wrong

Correct Answer: C

Section: (none)

Explanation

Explanation/Reference:

QUESTION 288

The system can perform ACL rule matching only based on the configuration order of rules.

- A. True
- B. False

Correct Answer: B

Section: (none)

Explanation

Explanation/Reference:

QUESTION 289

If different routing protocols run on different networks and these networks need to share routing information, route importing can be used.

- A. True
- B. False

Correct Answer: A

Section: (none)

Explanation

Explanation/Reference:

QUESTION 290

If the peer default-route-advertise command is used to advertise a default BGP route to peers, how will this operation affect the local BGP routing table?

- A. An inactive default route will be generated in the local BGP routing table and this route will not be delivered to the IP routing table.
- B. An active default route will be generated in the local BGP routing table and this route will be delivered to the IP routing table.
- C. The local BGP routing table will not be affected and no default route will be generated in the local BGP routing table.
- D. A default route will be generated in the local BGP routing table and whether to deliver this route to the IP routing table depends on route selection results.

Correct Answer: C

Section: (none)

Explanation

Explanation/Reference:

QUESTION 291

Which of the following technologies can reduce the scale of broadcast domain?

- A. VLAN
- B. Trunk
- C. RARP
- D. STP

Correct Answer: A

Section: (none)

Explanation

Explanation/Reference:

QUESTION 292

Which of the following are multicast routing protocols? (Choose three.)

- A. DVMRP
- B. PIM-DM
- C. F OSPF
- D. F PIM-SM

Correct Answer: ABD

Section: (none)

Explanation

Explanation/Reference:



QUESTION 293

Which switching technology reduces the size of broadcast domain?

- A. VLAN
- B. Trunk
- C. RARP
- D. STP

Correct Answer: A

Section: (none)

Explanation

Explanation/Reference:

QUESTION 294

According to the OSI reference model, Layer 2 LAN switch operates at Q.

- A. physical layer
- B. data link layer
- C. network layer
- D. application layer

Correct Answer: B

Section: (none)

Explanation

Explanation/Reference:

QUESTION 295

Layer 3 switch has layer 2 capability as well as layer 3 routing capability.

- A. True
- B. False

Correct Answer: A

Section: (none)

Explanation

Explanation/Reference:

QUESTION 296

The default-route originate command in the RIP protocol is used to advertise a default RIP route to peers. By using this command, which of the following attributes can be set for the default route?

- A. Tag
- B. Cost
- C. Interface
- D. Nexthop

Correct Answer: B

Section: (none)

Explanation

Explanation/Reference:

QUESTION 297

Which of the following route selection tools is used in multiple routing protocols, can be configured with match conditions, and consists of if-match and apply clauses?

- A. AS-path-filter
- B. IP-prefix
- C. Route-policy
- D. Community-filter

Correct Answer: C

Section: (none)

Explanation

Explanation/Reference:



QUESTION 298

You cannot set an aging time for the blacklist of the USG.

- A. TRUE
- B. FALSE

Correct Answer: B

Section: (none)

Explanation

Explanation/Reference:

QUESTION 299

Which of the following routes match this ACL filter? (Choose two.)

```
"acl number 2001
```

```
rule 0 permit source 1.1.1.0 0.0.254.255"
```

- A. 1.1.1.1/32
- B. 1.1.2.1/32
- C. 1.1.3.1/32
- D. 1.1.4.1/32

Correct Answer: AC

Section: (none)

Explanation

Explanation/Reference:

QUESTION 300

OSPF supports two authentication modes: area authentication and interface authentication.
These two modes cannot be configured at the same time.

- A. TRUE
- B. FALSE

Correct Answer: B

Section: (none)

Explanation

Explanation/Reference:



QUESTION 301

Which of the following statements is false?

- A. A Router-LSA describes the local link state information of a router.
- B. A Network-ISA describes the link state information of a broadcast network or an NBMA network segment.
- C. A virtual link is a virtual adjacency in the backbone area (Area 0).
- D. An AS-external-ISA describes the means to reach an ASBR.

Correct Answer: D

Section: (none)

Explanation

Explanation/Reference:

QUESTION 302

Which of the following statements about the Reverse Path Forwarding (RPF) mechanism are true? (Choose two.)

- A. Multicast RPF does not depend on unicast routing.
- B. All multicast protocols adopt the RPF mechanism.
- C. A router discards the received multicast packets if the packets fail the RPF check.
- D. The RPF mechanism has two functions: 1. It prevents multicast routing loops; 2. It avoids forwarding redundant multicast data packets.

Correct Answer: CD

Section: (none)

Explanation

Explanation/Reference:

QUESTION 303

What are the functions of route filtering? (Choose three.)

- A. Avoids sub-optimal routes generated in route importing.
- B. Avoids routing loops.
- C. Affects route selection by changing route attributes.
- D. Implements accurate route importing and controls route advertisement.

Correct Answer: ABD

Section: (none)

Explanation

Explanation/Reference:

QUESTION 304

The preceding information is generated after a router receives a Report message from group 225.0.0.1 through Ethernet 6/1/0.



```
<Quidway>dis igmp group verbose
IGMP interface group report information
Ethernet6/1/0(10.1.1.1):
Total 1 IGMP Group reported
Group: 225.0.0.1
Uptime: 00:09:03
Expires: 00:02:09
Last reporter: 10.1.1.30
Last-member-query-counter: 0
Last-member-query-timer-expiry: off
Group mode: exclude
Version1-host-present-timer-expiry: off
Version2-host-present-timer-expiry: 00:02:09
```

Which type of Report message will not be processed by the router?

- A. IS_IN
- B. ALLOW
- C. BLOCK
- D. TO_IN

Correct Answer: C

Section: (none)

Explanation

Explanation/Reference:

QUESTION 305

Which of the following attacks are prevented after an IP address and MAC address are bound on the USG? (Choose two.)

- A. IP address spoofing
- B. MAC address spoofing
- C. DoS attack

D. DDoS attack

Correct Answer: AB

Section: (none)

Explanation

Explanation/Reference:

QUESTION 306

An IP network can provide various packet forwarding services. Users are concerned about which of the following during packet forwarding? (Choose three.)

- A. Throughput
- B. Delay
- C. Cost
- D. Loss of packet

Correct Answer: ABD

Section: (none)

Explanation

Explanation/Reference:



QUESTION 307

How many hosts are available per subnet if you apply a /21 mask to the class B network?

- A. 510
- B. 512
- C. 1022
- D. 2046

Correct Answer: D

Section: (none)

Explanation

Explanation/Reference:

QUESTION 308

Which of the following route selection mechanisms can adopt user-defined policies to determine data forwarding paths flexibly based on ACLs or packet lengths?

- A. AS-path-filter
- B. IP-prefix
- C. Route-policy
- D. Policy-based-route

Correct Answer: D

Section: (none)

Explanation

Explanation/Reference:

QUESTION 309

What are the functions of an IGMPv2 Query message? (Choose three.)

- A. A router sends IGMPv2 Query messages to collect group memberships of receiver hosts.
- B. A router sends IGMPv2 Query messages to elect a querier.
- C. If a router can periodically send IGMPv2 Query messages, it indicates that the router runs properly.
- D. Based on IGMPv2 Query messages, receiver hosts can obtain the address of a querier and unicast Report messages to the querier.

Correct Answer: ABC

Section: (none)

Explanation

Explanation/Reference:

QUESTION 310

What are the differences between the IGMP versions? (Choose two.)

- A. IGMPv1/v2 cannot elect queriers but IGMPv3 can.
- B. In IGMPv2/v3, members can actively leave groups, whereas in IGMPv1 members cannot actively leave groups.
- C. IGMPv1/v2 do not support the SSM model but IGMPv3 supports.

D. IGMPv1/v2 do not support group-specific Query messages but IGMPv3 supports.

Correct Answer: BC

Section: (none)

Explanation

Explanation/Reference:

QUESTION 311

What is the maximum number of bits that can be used for subnetting, when the network address is a Class C address?

- A. 6
- B. 8
- C. 12
- D. 14

Correct Answer: A

Section: (none)

Explanation

Explanation/Reference:



QUESTION 312

The most remarkable characteristic of OSPF is that it can support the link-state algorithm.



<https://vceplus.com/>

- A. TRUE

B. FALSE

Correct Answer: A

Section: (none)

Explanation

Explanation/Reference:

QUESTION 313

Which of the following statements about multicast MAC addresses are true? (Choose three.)

- A. The high-order 24 bits of a multicast MAC address are 0x01005e and the low-order 23 bits of a multicast MAC address are the same as the low-order 23 bits of a multicast IP address.
- B. One multicast MAC address maps 32 IP multicast addresses.
- C. Multicast MAC addresses are used at the link layer to identify receivers that are in the same multicast group.
- D. One multicast MAC address maps only one IP multicast address.

Correct Answer: ABC

Section: (none)

Explanation



Explanation/Reference:

QUESTION 314

IGMP interface group report information

Ethernet6/1/1(40.1.1.1):

```
Total 1 IGMP Group reported
Group: 232.0.0.1
Uptime: 00:00:22
Expires: off
Last reporter: 40.1.1.3
Last-member-query-counter: 0
Last-member-query-timer-expiry: off
Group mode: include
Version1-host-present-timer-expiry: off
Version2-host-present-timer-expiry: off
Source list:
Source: 20.1.1.56
Uptime: 00:00:22
Expires: 00:05:08
Last-member-query-counter: 3
Last-member-query-timer-expiry: 00:00:01
Source: 20.1.1.57
Uptime: 00:00:22
Expires: 00:00:17
Last-member-query-counter: 3
Last-member-query-timer-expiry: 00:00:01
```



The preceding information shows the entry status of an IGMP interface on Ethernet 6/1/1 on a router. Assume IGMP sends the group-and-source-specific Query message. Which of the following statements is true?

- A. IGMP respectively sends two messages: The source carried in one of the messages is 20.1.1.56 with the S flag bit not set; the source carried in the other message is 20.1.1.57, with the S flag bit set to 1.
- B. IGMP respectively sends two messages: The source carried in one of the messages is 20.1.1.56 with the S flag bit set to 1; the source carried in the other message is 20.1.1.57, with the S flag bit not set.

- C. IGMP sends one message carrying two sources 20.1.1.56 and 20.1.1.57, with the S flag bit set to 1.
- D. IGMP sends one message carrying two sources 20.1.1.56 and 20.1.1.57, with the S flag bit not set.

Correct Answer: B

Section: (none)

Explanation

Explanation/Reference:

QUESTION 315

Which of the following route selection tools can be used in “multiple” routing protocols, be configured with matching conditions, and be composed of if-match and apply clauses?

- A. AS-path-filter
- B. IP-prefix
- C. Route-policy
- D. Community-filter

Correct Answer: C

Section: (none)

Explanation

Explanation/Reference:

QUESTION 316

Which of the following protocols support default route advertisement by using commands? (Choose three.)

- A. RIP
- B. OSPF
- C. BGP
- D. Static

Correct Answer: ABC

Section: (none)

Explanation



Explanation/Reference:

QUESTION 317

MPLS is a switching standard defined by the IETF. Which of the following devices exist on the MPLS network? (Choose two.)

- A. LSR
- B. LER
- C. Label distribution router
- D. Label transmit router

Correct Answer: AB

Section: (none)

Explanation

Explanation/Reference:

QUESTION 318

An ACL is a series of orderly rules composed of permit | deny clauses. Which of the following attributes cannot be used for defining an ACL rule?

- A. Source address
- B. Destination address
- C. Port number
- D. AS-Path

Correct Answer: D

Section: (none)

Explanation

Explanation/Reference:

QUESTION 319

The configurations of the defined route-policy Set-cost are as follows:

```
ipip-prefix 1 permit 10.1.0.0 16
```

```
route-policy Set-cost permit node 10
```

```
if-matchip-prefix 1
```

```
apply cost 300
```

```
route-policy Set-cost permit node 20
```

```
apply cost 200
```

Which of the following statements is true?

- A. The route 10.1.0.0/16 matches node 10 and its cost is set to 300.
- B. The route 10.1.0.0/16 matching node 10 also matches node 20 subsequently and its cost is finally set to 200.
- C. Costs of all routes will be set to 200.
- D. All routes that fail to match node 10 will be denied.

Correct Answer: A

Section: (none)

Explanation

Explanation/Reference:

QUESTION 320

Divide the network by using VLAN can (). (Choose two.)

- A. Support more network layer protocols
- B. Restrict the scope of broadcast domain
- C. Increase the collision
- D. Guarantee the security

Correct Answer: BD

Section: (none)

Explanation**Explanation/Reference:****QUESTION 321**

Which statements regarding the PVID on the access interface are true? (Choose three.)

- A. If a packet without VLAN tag is received, the interface adds a VLAN tag to the packets and sets the VID as the default VLAN ID.
- B. If a packet with VLAN tag is received, the interface compares the VLAN ID in the tag with the default VLAN ID. If they are the same, the interface forwards the packets; otherwise, the interface discards the packets.
- C. When the interface sends a packet with a VLAN tag that contains the default VLAN ID, the system removes the VLAN tag of the packet, and then forwards the packet.
- D. PVID on access interface is set to 1 by default and can't be changed.

Correct Answer: ABC**Section:** (none)**Explanation****Explanation/Reference:****QUESTION 322**

Which of the following is the multicast distribution tree maintained by PIM-DM?

- A. SPT
- B. CBT
- C. RPT
- D. STP

Correct Answer: A**Section:** (none)**Explanation****Explanation/Reference:****QUESTION 323**

Which of the following route entries match IP-Prefix defined below? (Choose two.)

ipip-prefix test index 10 permit 192.168.0.0 16 greater-equal 24 less-equal 28

- A. 192.168.1.0/24 B.
192.10.2.0/24
- C. 192.168.3.0/25
- D. 192.168.4.0/30

Correct Answer: AC

Section: (none)

Explanation

Explanation/Reference:

QUESTION 324

What is the range of VLAN IDs?

- A. 1~1000
- B. 0~4095
- C. 0~4096
- D. 1~4096



Correct Answer: B

Section: (none)

Explanation

Explanation/Reference:

QUESTION 325

What is the function for the command "InterfaceVlan-interface Vlan-ID"?

- A. Create a VLAN
- B. Create or enter VLAN interface view
- C. Configure a VLAN for port
- D. Configure PVID

Correct Answer: B

Section: (none)

Explanation

Explanation/Reference:

QUESTION 326

Which of the following route entries matches ACL 2001 that is defined below?

```
ipip-prefix 1 permit 10.1.0.0 16
```

```
route-policy Set-cost permit node 10
```

```
if-matchip-prefix 1
```

```
apply cost 300
```

```
route-policy Set-cost permit node 20
```

```
apply cost 200
```

- A. 1.2.3.0/24,1.2.4.0/24, 1.2.5.0/24, 1.2.6.0/24,1.2.7.0/24,1.2.8.0/24
- B. 1.0.0.0/8,1.2.0.0/16,1.2.3.0/24,1.2.4.0/24, 1.2.5.0/24, 1.2.6.0/24,1.2.7.0/24,1.2.8.0/24
- C. 1.2.3.0/24,1.2.5.0/24,1.2.7.0/24
- D. 1.2.0.0/16,1.2.4.0/24,1.2.6.0/24,1.2.8.0/24

Correct Answer: C

Section: (none)

Explanation

Explanation/Reference:

QUESTION 327

The route selection tool route-policy can filter and set BGP attributes based on pre-defined conditions. Therefore, this tool is commonly used to define policies for BGP peers and often used in route generation.

- A. True
- B. False

Correct Answer: A

Section: (none)

Explanation

Explanation/Reference:

QUESTION 328

Which of the following statements about comparison between ACL and IP-Prefix are true? (Choose two.)

- A. Both ACL and IP-Prefix can be used for route filtering
- B. Both ACL and IP-Prefix can be used for data packet filtering
- C. ACL can be used for data packet filtering and route filtering, but IP-Prefix can only be used for route filtering
- D. IP-Prefix can be used for data packet filtering and route filtering, but ACL can only be used for route filtering

Correct Answer: AC

Section: (none)

Explanation

Explanation/Reference:



QUESTION 329

Route filtering can filter not only routing information but also link-status information.

- A. True
- B. False

Correct Answer: B

Section: (none)

Explanation

Explanation/Reference:

QUESTION 330

VLANs isolate broadcast domains, eliminate broadcast storms, and enhance data security.

A. TRUE B.
FALSE

Correct Answer: A

Section: (none)

Explanation

Explanation/Reference:

QUESTION 331

A OSPF network may be structured, or subdivided into routing areas. Such routing areas are a set of network segments.

A. TRUE
B. FALSE

Correct Answer: A

Section: (none)

Explanation

Explanation/Reference:



QUESTION 332

RSTP has all functions of STP and it is backwards compatible with STP.

A. TRUE
B. FALSE

Correct Answer: A

Section: (none)

Explanation

Explanation/Reference:

QUESTION 333

Which of the following protocols support the multicast ASM service model? (Choose two.)

- A. PIM-SM and IGMPv2
- B. PIM-SSM and IGMPv3
- C. BGP and OSPF
- D. PIM-DM and IGMPv2

Correct Answer: AD

Section: (none)

Explanation

Explanation/Reference:

QUESTION 334

The USG supports load balancing between multiple uplinks.



<https://vceplus.com/>

- A. TRUE
- B. FALSE

Correct Answer: A

Section: (none)

Explanation

Explanation/Reference:

QUESTION 335

Policy-based routing and routing policy affect the forwarding of data packets in different ways: A routing policy mainly controls packet forwarding. According to the routing policy, packets can be forwarded with no need to use a routing table; policy-based routing mainly controls the importing, advertising, and receiving of routing information so as to affect the forwarding of data packets.

- A. True
- B. False

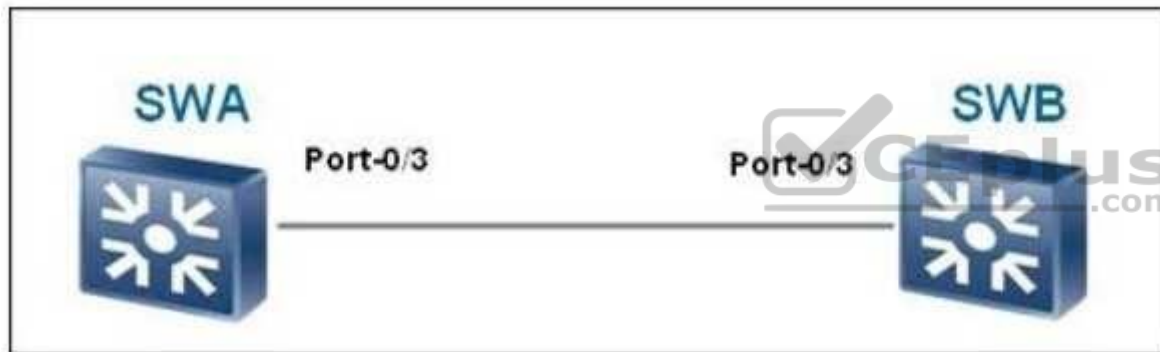
Correct Answer: B

Section: (none)

Explanation

Explanation/Reference:

QUESTION 336



As shown in the figure, SWA and SWB are two switches. Which statements are true? (Choose three.)

- A. Port0/3 can be an access interface
- B. Port0/3 can be a hybrid interface
- C. Port0/3 can be a trunk interface
- D. None of the above

Correct Answer: ABC

Section: (none)

Explanation

Explanation/Reference:

QUESTION 337

In IPv4, which of the following is the SSM address range allocated by the IANA?

- A. 232.0.0.0/24
- B. 225.0.0.0/8
- C. 232.0.0.0/8
- D. 239.0.0.0/8

Correct Answer: D

Section: (none)

Explanation

Explanation/Reference:

QUESTION 338

The "import-route limit" command is used to set a maximum number of imported routes that can be imported into an OSPF routing process.

- A. TRUE
- B. FALSE

Correct Answer: A

Section: (none)

Explanation

Explanation/Reference:

QUESTION 339

Which of the following statements about ACL type are true? (Choose three.)

- A. ACL consists of basic ACL, advanced ACL and interface-based ACL
- B. ACL ranging from 2000 to 2999 belongs to advanced ACL
- C. ACL ranging from 3000 to 3999 belongs to advanced ACL
- D. Advanced ACL can be used to match either destination address or source address

Correct Answer: ACD

Section: (none)

Explanation

Explanation/Reference:

QUESTION 340

Which of the following tools cannot be used for route filtering?

- A. Filter-policy
- B. IP-prefix
- C. Route-policy
- D. Policy-based-route

Correct Answer: D

Section: (none)

Explanation

Explanation/Reference:



QUESTION 341

Which of the following route entries matches ACL 2001 that is defined below?

1.0.0.0/8 ,1.2.0.0/16,1.2.3.0/24,1.2.4.0/24, 1.2.5.0/24, 1.2.6.0/24,1.2.7.0/24,1.2.8.0/24

ACL 2001:

Basic ACL2001, 1 rule

Acl's step is 5

rule 0 permit source 1.2.0.0 0.0.254.255

- A. 1.2.3.0/24,1.2.4.0/24, 1.2.5.0/24, 1.2.6.0/24,1.2.7.0/24,1.2.8.0/24
- B. 1.0.0.0/8 ,1.2.0.0/16,1.2.3.0/24,1.2.4.0/24, 1.2.5.0/24, 1.2.6.0/24,1.2.7.0/24,1.2.8.0/24
- C. 1.2.3.0/24,1.2.5.0/24,1.2.7.0/24
- D. 1.2.0.0/16,1.2.4.0/24,1.2.6.0/24,1.2.8.0/24

Correct Answer: D

Section: (none)

Explanation

Explanation/Reference:

QUESTION 342

How does an IGMP router maintain group memberships on the network? (Choose two.)

- A. The router maintains a timer for each group membership. If the router receives a Report message from a receiver host, it refreshes the timer of the group membership of this host; if the router does not receive any Report message from a receiver host before the timer expires, it deletes the group membership of this host.
- B. The router periodically sends Query messages. After a receiver host receives the Query message, the receiver host sends a Report message.
- C. A receiver host periodically sends a Report message.
- D. The router deletes a group membership only when it receives a Leave message for this group.

Correct Answer: AB

Section: (none)

Explanation

Explanation/Reference:



QUESTION 343

How many types of topology change messages are defined in RSTP?

- A. 1
- B. 2
- C. 3
- D. 4

Correct Answer: A

Section: (none)

Explanation

Explanation/Reference:

QUESTION 344

How many bits of the multicast MAC address are used for multicast IP address mapping?

- A. 24
- B. 22
- C. 25
- D. 23

Correct Answer: D

Section: (none)

Explanation

Explanation/Reference:

QUESTION 345

The IGMP protocol runs between a host and its directly connected multicast router.

- A. True
- B. False



Correct Answer: A

Section: (none)

Explanation

Explanation/Reference:

QUESTION 346

Which of the following routers have multicast routing entries even when there is no receiver on the network? (Choose two.)

- A. Source's DR
- B. Receiver router
- C. Intermediate router
- D. RP

Correct Answer: AD

Section: (none)

Explanation

Explanation/Reference:

QUESTION 347

Which of the following statements regarding IP address 224.0.0.1 are correct? (Choose two.)

- A. It is a multicast IP address.
- B. It is a private IP address.
- C. It represents all the hosts and routers.
- D. It represents all the routers.

Correct Answer: AC

Section: (none)

Explanation

Explanation/Reference:



QUESTION 348

Which bits in a VLAN tag indicates 802.1Q?

- A. 0x9100
- B. 0x8808
- C. 0x8100
- D. 0x8800

Correct Answer: C

Section: (none)

Explanation

Explanation/Reference:

QUESTION 349

Which of the following statements regarding VLAN configuration are true? (Choose two.)

- A. You can enter the VLAN view and create a VLAN at the same time.
- B. Running undoVLANinvalidates the VLAN but the VLAN still exists. You do not need to recreate the VLAN to use it.
- C. You can configure a description string of VLAN. The length of the string is unlimited.
- D. If the VLAN ID is not entered when running the displayVLANcommand, all information about the VLAN will be displayed.

Correct Answer: AD

Section: (none)

Explanation

Explanation/Reference:

QUESTION 350

Dividing a network using VLANs can (). (Choose two.)

- A. Support more network layer protocols
- B. Restrict the scope of broadcast domains
- C. Increase the number of collision domains
- D. Guarantee data security



Correct Answer: BD

Section: (none)

Explanation

Explanation/Reference:

QUESTION 351

By default, the cost of an OSPF interface is calculated based on the bandwidth. The formula to calculate the cost is reference bandwidth/interface bandwidth.

- A. TRUE
- B. FALSE

Correct Answer: A

Section: (none)

Explanation

Explanation/Reference:

QUESTION 352

Which of the following routes matches the ACL filter given below?

“ad number 2001
rule 0 permit source 1.1.0.0 0”

- A. 1.1.1.1/32
- B. 1.1.1.0/24
- C. 1.1.0.0/16
- D. 1.0.0.0/8

Correct Answer: C

Section: (none)

Explanation

Explanation/Reference:

QUESTION 353

What is the maximum number of hosts that a network segment 192.168.2.16/28 can support?

- A. 16
- B. 8
- C. 15
- D. 14
- E. 7

Correct Answer: D

Section: (none)

Explanation

Explanation/Reference:

QUESTION 354

When importing routes discovered by other routing protocols, a routing protocol may need to import only the routes that meet the conditions and set attributes of the imported routes to meet the requirement of the protocol. In such a case, a route-policy can be created.

- A. True

B. False

Correct Answer: A

Section: (none)

Explanation

Explanation/Reference:

QUESTION 355

Which of the following protocols support the multicast ASM model? (Choose two.)

- A. PIM-SM and IGMPv2
- B. PIM-SSM and IGMPv3
- C. BGP and OSPF
- D. PIM-DM and IGMPv2

Correct Answer: AD

Section: (none)

Explanation

Explanation/Reference:



QUESTION 356

Which interface is connected to the user-side interface?

- A. Access interface
- B. Trunk interface
- C. Hybrid interface
- D. All of the above

Correct Answer: A

Section: (none)

Explanation

Explanation/Reference:

QUESTION 357

The Internet Group Management Protocol (IGMP) runs between hosts and their immediately neighboring multicast routers.

- A. TRUE
- B. FALSE

Correct Answer: A

Section: (none)

Explanation

Explanation/Reference:

QUESTION 358

The link that connects a PC to a switch is ().

- A. Access Link
- B. Trunk Link
- C. Hybrid Link
- D. ISL Link

Correct Answer: A

Section: (none)

Explanation

Explanation/Reference:

QUESTION 359

Which of the following is the port state defined by RSTP?

- A. Discarding
- B. Learning
- C. Forwarding
- D. All of the above

Correct Answer: D



Section: (none)

Explanation

Explanation/Reference:

QUESTION 360

Which of the following statements about costs of routing protocols is false?

- A. Because different routing protocols have the same basis for calculating route costs, it is recommended to adopt automatic cost converting in route importing.
- B. Because different routing protocols have different bases for calculating route costs, it is recommended to perform manual configuration for cost converting in route importing.
- C. Costs of OSPF routes is generally based on bandwidth and therefore OSPF cost value ranges is wide.
- D. Costs of RIP routes are generally based on hops and therefore the RIP cost value range is narrow.

Correct Answer: A

Section: (none)

Explanation

Explanation/Reference:



QUESTION 361

What are the functions of route filtering? (Choose three.)

- A. Avoids sub-optimal routes generated during route import.
- B. Avoids routing loops.
- C. Affects route selection by changing route attributes.
- D. Implements accurate route importing and controls route advertisement.

Correct Answer: ABD

Section: (none)

Explanation

Explanation/Reference:

QUESTION 362

Which of the following methods are supported by OSPF for delivering default routes? (Choose three.)

- A. Delivery by an ABR
- B. Delivery by a Backbone Router
- C. Forcible delivery
- D. Non-forcible delivery

Correct Answer: ACD

Section: (none)

Explanation

Explanation/Reference:

QUESTION 363

Which of the following is the priority value of the DMZ on the USG?

- A. 10
- B. 50
- C. 75
- D. 85



Correct Answer: B

Section: (none)

Explanation

Explanation/Reference:

QUESTION 364

Which of the following situations will occur after multicast load balance is configured? (Choose three.)

- A. If there are no equal-cost unicast routes, multicast load balance will fail to function.
- B. If group address-based load splitting is used, balanced entry distribution over equal-cost routes cannot be ensured because of hash algorithm limitations.
- C. Balanced entry distribution over equal-cost routes can be ensured as long as multicast load balance is configured.
- D. In multicast load splitting, traffic may not be balanced among equal-cost routes. This is because multicast load balance is based on multicast entries but not based on multicast data packets.

Correct Answer: ABD

Section: (none)

Explanation

Explanation/Reference:

QUESTION 365

ACL rules are matched based on the configured order only.

A. TRUE

B. FALSE

Correct Answer: B

Section: (none)

Explanation

Explanation/Reference:



<https://vceplus.com/>