

Passguide.H12-224 (604Q)

VCEplus.com

Number: H12-224
Passing Score: 800
Time Limit: 120 min
File Version: 6.5



H12-224

Huawei Certified Datacom Professional - Fast Certification – ENU

- A) I have just passed the exam this morning in hong kong 90%. i confirm this exam dump is 100% valid. with this, you don't need anything else for the exam. cheers, and thanks to VCE file.
- B) This dump is complete and confirmed.
- C) Passed today morning with this dumps..... guys be careful there were some extra confusing options to puzzle the candidates and All the Best these dumps are still 100 % valid. thanks
- D) Useful tool for prepping for the exam but I would say try the exam by complete grip on questions.
- E) I refer it to you, if you want to successes with good result.

Exam A

QUESTION 1

Some vendors set the TPID value in the outer VLAN tag of QinQ packets to the non-protocol value.

To be compatible with these vendors' devices, the TPID value on Huawei switches is adjustable.

Which is the default value of the TPID value on Huawei switches?

- A. 0x9200
- B. 0x9100
- C. 0x8200
- D. 0x8100

Correct Answer: D

Section: (none)

Explanation

Explanation/Reference:

QUESTION 2

Which types of interfaces can be configured with selective QinQ? (Select 2 Answers)

- A. Access interface
- B. Trunk interface
- C. Hybrid interface
- D. dot1q-tunnel interface

Correct Answer: BC

Section: (none)

Explanation

Explanation/Reference:

QUESTION 3

In a switching network that has been enabled with STP protocol, the priorities of all the switches are the same. The MAC address of switch1 is 00-e0-fc-00-00-40, MAC address of switch2 is 00-e0-fc-00-00-10, MAC address of switch3 is 00-e0-fc-00-00-20, and MAC address of switch4 is 00-e0-fc-00-00-80. Which of the switches will be elected as the Root Bridge?

- A. Switch1
- B. Switch2
- C. Switch3
- D. Switch4

Correct Answer: B

Section: (none)

Explanation

Explanation/Reference:

QUESTION 4

A switching network has been enabled with STP protocol. To provide fast access speed to the file server for most of the users, the switch that is directly connected with file server is configured as the root bridge.

- A. True
- B. False

Correct Answer: A

Section: (none)

Explanation

Explanation/Reference:

QUESTION 5

Which of the following statements about the link failure detection in STP protocol is not true?

- A. When network topology is stable, the Designated Port sends BPDU packet at every Hello Time interval.
- B. When network topology is stable, BPDU packets will be transmitted periodically.
- C. When the port does not receive new BPDU within a certain interval, the old configuration BPDU will time out and the link failure can be detected.
- D. The port sends Configuration BPDU at every Hello Time interval. When the link fails, Configuration BPDU cannot be sent out. As a result, this port can detect the link failure.

Correct Answer: D

Section: (none)

Explanation

Explanation/Reference:

answer is approved.

QUESTION 6

Which of the following statements about STP is not true?

- A. STP can manage redundant links.
- B. STP can block redundant links to eliminate loops
- C. STP can prevent temporary loss of connectivity
- D. STP can make LAN switch operate normally in a network with loops

Correct Answer: C

Section: (none)

Explanation

Explanation/Reference:

confirmed answer.

QUESTION 7

According to OSI reference model, Layer 2 LAN switch operates at ().

- A. Physical layer
- B. Data link layer
- C. IP layer
- D. Application layer

Correct Answer: B

Section: (none)

Explanation

Explanation/Reference:**QUESTION 8**

According to the STP protocol, a certain field in the BPDU identifies the root switch. That is, if the BPDU sent by a switch contains this field, this switch is considered as the root switch. What is this field?

- A. Root Identifier

- B. Root Path Cost
- C. Bridge Identifier
- D. Port Identifier

Correct Answer: A

Section: (none)

Explanation

Explanation/Reference:

QUESTION 9

Which are the two parts in the port identifier of the uplink interface on a non-root switch?

- A. 1-bit port priority and 1-bit port number
- B. 1-bit port priority and 2-bit port number
- C. 2-bit port priority and 1-bit port number
- D. 2-bit port priority and 2-bit port number

Correct Answer: A

Section: (none)

Explanation

Explanation/Reference:

QUESTION 10

In the network diagram, which switch will be selected as the root switch?

- A. SWA
- B. SWB
- C. SWC
- D. None of the above

Correct Answer: A

Section: (none)

Explanation

Explanation/Reference:

true.

QUESTION 11

Which statements about the PVID on the access interface are true? (Select 3 Answers)

- A. When receiving a packet without the VLAN tag, the interface adds the VLAN tag to the packet and sets the VID in the tag to the default VLAN ID.
- B. When receiving a packet with a VLAN tag, the interface compares the VLAN ID in the tag with the default VLAN ID. If they are the same, the interface forwards the packets; otherwise, the interface discards the packets.
- C. When the interface sends a packet with a VLAN tag that contains the default VLAN ID, the system removes the VLAN tag of the packet, and then forwards the packet.
- D. None of the above.

Correct Answer: ABC

Section: (none)

Explanation

Explanation/Reference:

valid.

QUESTION 12

Which statement about the hybrid interface is true?

- A. A hybrid interface can only be connected to network device.
- B. A hybrid interface can only be connected to host.
- C. A hybrid interface can be connected to host or network device.
- D. A hybrid interface cannot be configured with VLAN ID.

Correct Answer: C

Section: (none)

Explanation

Explanation/Reference:

right,

QUESTION 13

Which statement about MUX VLAN is false?

- A. Principal VLAN
- B. Subordinate VLAN

- C. Subordinate group VLAN
- D. Guest VLAN

Correct Answer: D

Section: (none)

Explanation

Explanation/Reference:

QUESTION 14

Which statements about the MUX VLAN configuration are true? (Select 2 Answers)

```
[Quidway]vlan 10
[Quidway-vlan10]mux-vlan
[Quidway-vlan10]subordinate group 11
[Quidway-vlan10]subordinate separate 12
```

- A. VLAN 10 is the principal VLAN
- B. VLAN 11 is the principal VLAN
- C. VLAN 12 is the subordinate separate VLAN

Correct Answer: AC

Section: (none)

Explanation

Explanation/Reference:

QUESTION 15

When configuring VLAN mapping, you must set the priority of outer VLAN ID.

- A. True
- B. False

Correct Answer: B

Section: (none)

Explanation

Explanation/Reference:

QUESTION 16

The port isolation function can isolate the ports on the same switch.

- A. True
- B. False

Correct Answer: A

Section: (none)

Explanation

Explanation/Reference:

QUESTION 17

Which statements are false?

- A. The VLAN mapping function is usually configured on the edge node of a public network.
- B. The VLAN mapping function can save VLAN resources on a public network.
- C. VLAN mapping allows private networks on different VLANs to communicate with each other over the ISP network.
- D. VLAN mapping allows only the private networks on the same VLAN to communicate with each other.

Correct Answer: D

Section: (none)

Explanation

Explanation/Reference:

QUESTION 18

Which statements about VLAN are true? (Select 3 Answers)

- A. The VLAN improves network security. Users on different VLANs cannot communicate with each other.
- B. The VLAN improves network processing efficiency. Users on different VLANs are separated from each other. Therefore, the size of a broadcast domain is reduced.
- C. Layer 2 forwarding is only based on destination MAC addresses, and is irrelevant to VLAN configuration.
- D. The VLAN technology is a management method that controls the communication between terminals.

Correct Answer: ABD

Section: (none)

Explanation

Explanation/Reference:

QUESTION 19

Which statements about the VLAN on S series switches are true? (Select 2 Answers)

- A. The VLAN IDs on the switch range from 1 to 4090.
- B. The switch has a default VLAN.
- C. The priority value in the VLAN tag can be changed on the switch.
- D. A VLAN tag contains one byte.

Correct Answer: BC

Section: (none)

Explanation

Explanation/Reference:

QUESTION 20

If the customer requires high mobility and easy management, the staff of different departments can be added to different VLANs. In addition, these VLANs are located on different IP subnets. Which VLAN allocation mode can meet these requirements?

- A. VLAN allocation based on source IP addresses
- B. VLAN allocation based on destination IP addresses
- C. VLAN allocation based on source IP addresses and source MAC addresses
- D. VLAN allocation based on destination MAC addresses and destination IP addresses

Correct Answer: A

Section: (none)

Explanation

Explanation/Reference:

QUESTION 21

Which statements about the access interface are true? (Select 3 Answers)

- A. Only the VLAN whose ID is the same as the PVID of the access interface are allowed on the access interface.
- B. When receiving an untagged frame, the access interface adds its own PVID to the frame.
- C. The access interface sends only untagged frames to the peer device.
- D. None of the above.

Correct Answer: ABC

Section: (none)

Explanation

Explanation/Reference:

QUESTION 22

Which statement is false?

- A. The switch supports 1:1 VLAN mapping.
- B. The switch does not support N:1 VLAN mapping on an interface.
- C. The switch can perform VLAN mapping for double-tagged packets.
- D. The switch can map the outer VLAN ID of packets to another VLAN ID.

Correct Answer: B

Section: (none)

Explanation

Explanation/Reference:

QUESTION 23

Which statement about VLAN is false?

- A. A VLAN tag contains a 3-bit priority field. The priority value ranges from 0 to 7. It is used for differentiated service forwarding.
- B. The priority in the VLAN tag can be mapped to the internal priority of the switch, for differentiated service forwarding.
- C. The priority in the VLAN tag can be changed on the switch.
- D. The priority in the VLAN tag cannot be changed.

Correct Answer: D

Section: (none)

Explanation

Explanation/Reference:

QUESTION 24

Which statements are true? (Select 3 Answers)

- A. The routing ARP proxy allows the hosts on different physical networks of the same network segment to communicate with each other.
- B. The intra-VLAN ARP proxy allows isolated users on a VLAN to communicate with each other.
- C. The inter-VLAN ARP proxy allows hosts on different VLANs to communicate with each other through Layer 3.
- D. The inter-VLAN ARP proxy function can't be enabled on the VLANIF interface of the super VLAN to implement communication between sub-VLANs.

Correct Answer: ABC

Section: (none)

Explanation

Explanation/Reference:

QUESTION 25

Which statement about VLAN mapping is true?

- A. The interface configured with VLAN mapping must be a hybrid interface.
- B. The same VLANs on different interfaces cannot be mapped to different VLANs.
- C. Different VLANs on the same interface can be mapped to the same VLAN.
- D. Any types of interfaces can be configured with VLAN mapping.

Correct Answer: C

Section: (none)

Explanation

Explanation/Reference:

QUESTION 26

Which statement about port isolation configuration is false?

- A. Port isolation can be used for Layer 2 isolation.
- B. In port isolation mode, ports are isolated at Layer 2 but can communicate at Layer 3 by default.
- C. Before the port isolation function takes effect on an interface, the port isolation function must be enabled first.
- D. The port-isolate enable command can run in the system view.

Correct Answer: D

Section: (none)

Explanation

Explanation/Reference:

QUESTION 27

Which VLAN assignment methods are supported by the Huawei S9300? (Select 3 Answers)

- A. Assigning VLANs based on Layer 7 protocols
- B. Assigning VLANs based on protocols
- C. Assigning VLANs based on IP subnets
- D. Assigning VLANs based on MAC addresses

Correct Answer: BCD

Section: (none)

Explanation

Explanation/Reference:

QUESTION 28

Which statements about VLAN aggregation are true? (Select 3 Answers)

- A. "multiple" VLANs (broadcast domains) are on the same physical network; therefore, different VLANs belong to the same subnet.
- B. VLAN aggregation can save IP addresses.
- C. Only the super VLAN requires an IP address, but sub-VLANs do not need.
- D. The VLAN that is used to separate broadcast domains is called super VLAN.

Correct Answer: ABC

Section: (none)

Explanation

Explanation/Reference:

QUESTION 29

Which statement about VLAN mapping is false?

- A. VLAN mapping is also called VLAN translation.
- B. VLAN mapping can implement translation between C-VLAN IDs and S-VLAN IDs.
- C. VLAN mapping can be configured.
- D. VLAN mapping means that a VLAN tag is added to packets.

Correct Answer: D

Section: (none)

Explanation

Explanation/Reference:

QUESTION 30

Which statement about the VLAN on a Layer 2 switch is true?

- A. The CFI in the VLAN tag specifies whether the priority in the VLAN tag is valid.
- B. The VLAN tag is located in the Layer 2 header of a packet.
- C. The CFI in the VLAN tag contains two bits.
- D. A VLAN on the switch is a broadcast domain. The broadcast domains are separated.

Correct Answer: A

Section: (none)

Explanation

Explanation/Reference:

QUESTION 31

Which statements about VLAN configuration are true? (Select 2 Answers)

- A. You can enter the VLAN view at the same time you create a VLAN.
- B. If you run undo vlan, the VLAN is invalid, but still exists. You do not need to create the VLAN when you use it next time.

- C. You can configure a character string of VLAN description. The length of the character string is not limited.
- D. If you do not enter the VLAN ID when running the display vlan command, information about all VLANs will be displayed.

Correct Answer: AD

Section: (none)

Explanation

Explanation/Reference:

QUESTION 32

Which statement about the following configuration is true?

```
port link-type hybrid
port hybrid pvidvlan 2
port hybrid untagged vlan 2
port hybrid tagged vlan 3
```

- A. The default VLAN of the interface is VLAN 2.
- B. The port hybrid tagged vlan 3 command configures the VLAN for a hybrid interface. Frames in the VLAN then pass through the hybrid interface in untagged mode.
- C. The port hybrid untagged vlan 2 command configures the VLAN for a hybrid interface. Frames in the VLAN then pass through the hybrid interface in tagged mode.
- D. All of the above.

Correct Answer: A

Section: (none)

Explanation

Explanation/Reference:

QUESTION 33

Which statements about VLAN mapping are true? (Select 2 Answers)

- A. When sending a frame from the local VLAN, the switch replaces the VLAN tag in the frame with another VLAN tag.
- B. When receiving a frame from another VLAN, the switch replaces the VLAN tag of the frame with the local VLAN tag.
- C. When an interface receives a frame from another VLAN, it does not replace the VLAN tag of the frame. The interface replaces the VLAN tag of the frame with another VLAN tag only when it sends a frame.

D. The interface replaces the VLAN tag of only the frame received from another VLAN, but does not change the VLAN tag of the frame it sends out.

Correct Answer: AB

Section: (none)

Explanation

Explanation/Reference:

QUESTION 34

Which statements are true? (Select 3 Answers)

- A. Port isolation is a mechanism that controls the access between switch interfaces.
- B. Port isolation is an isolation mechanism at the physical layer.
- C. Port isolation prevents the computers connected to different ports from accessing each other.
- D. Port isolation can be configured based on VLANs.

Correct Answer: ABC

Section: (none)

Explanation

Explanation/Reference:

QUESTION 35

Which statements are true? (Select 3 Answers)

- A. The sub-VLANs are configured in the super VLAN view.
- B. VLANs 1 to 4094 can be configured as a super VLAN.
- C. The aggregate-vlan command is used to configure the super VLAN.
- D. A VLAN to be configured as a super VLAN cannot contain any interface.

Correct Answer: ACD

Section: (none)

Explanation

Explanation/Reference:

QUESTION 36

Which statements about VLAN allocation are true? (Select 3 Answers)

- A. The IP subnet VLAN is used to send the packets from the specified network segment or IP address over the specified VLAN.
- B. The MAC address- or IP subnet-based VLAN is valid for only the untagged packets.
- C. The protocol-based VLAN has a higher priority than the IP subnet-based VLAN.
- D. The protocol-based VLAN indicates that service types on the network are bound to VLANs.

Correct Answer: ABD

Section: (none)

Explanation

Explanation/Reference:

QUESTION 37

Which is contained in the GVRP VLAN deregistration message?

- A. Specified VLAN ID
- B. Specified IP address
- C. Specified MAC address
- D. Known port number

Correct Answer: C

Section: (none)

Explanation

Explanation/Reference:

QUESTION 38

On a switch running GVRP, each interface is considered as a participant. The participants can exchange information.

- A. True
- B. False

Correct Answer: A

Section: (none)

Explanation

Explanation/Reference:

QUESTION 39

When the GVRP registration mode is FORBIDDEN, no VLAN can be created or registered on the interface. In addition, which VLANs are deregistered on the interface?

- A. All VLANs except VLAN 1
- B. All VLANs except VLAN 4095
- C. All VLANs
- D. All VLANs except the VLAN specified by the user

Correct Answer: A

Section: (none)

Explanation

Explanation/Reference:

QUESTION 40

Which are contained in a GARP participant? (Select 2 Answers)

- A. GARP Application
- B. GARP Information Propagation (GIP)
- C. GARP Information Declaration (GID)
- D. Interface LLC

Correct Answer: AC

Section: (none)

Explanation

Explanation/Reference:

QUESTION 41

When the GVRP registration mode is FIXED, which statement is true?

- A. VLANs can be manually created and registered on the interface, and can also be dynamically registered and deregistered on the interface.

- B. VLANs cannot be manually created and registered on the interface, but can be dynamically registered and deregistered on the interface.
- C. VLANs can be manually created and registered on the interface, but cannot be dynamically registered or deregistered on the interface.
- D. VLANs cannot be manually created and registered on the interface, and cannot be dynamically registered or deregistered on the interface.

Correct Answer: C

Section: (none)

Explanation

Explanation/Reference:

QUESTION 42

Which statements about the relationship between GVRP and GARP are true? (Select 2 Answers)

- A. GVRP, GARP, and GMRP are the standards of the same type.
- B. GVRP and GARP are defined by IEEE 802.1p.
- C. GVRP is based on GARP, and is an application of GARP.
- D. GVRP is a new definition of GARP.

Correct Answer: BC

Section: (none)

Explanation

Explanation/Reference:

QUESTION 43

GARP involves various messages. Besides JoinIn message and Leave message, which are also the GARP messages? (Select 3 Answers)

- A. Notice
- B. Empty
- C. JoinEmpty
- D. LeaveAll

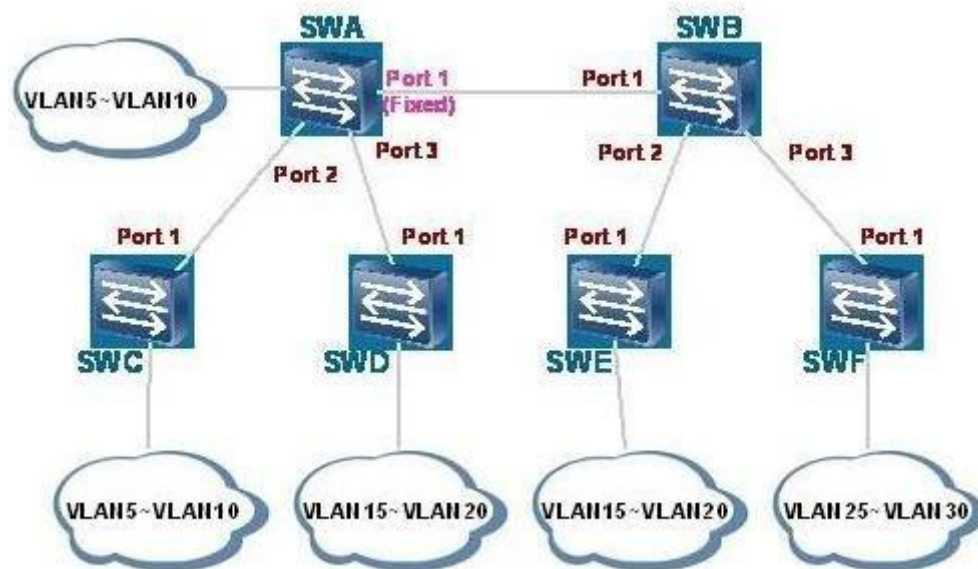
Correct Answer: BCD

Section: (none)

Explanation

Explanation/Reference:

QUESTION 44



As shown in the figure, port 1 of switch A is configured with the Fixed mode, and other ports are configured with the Normal mode. The trunk interfaces allow all VLANs. Which VLANs are registered on port 1 of switch C? (Select 3 Answers)

- A. VLAN 1
- B. VLAN 5 to VLAN 10
- C. VLAN 15 to VLAN 20
- D. VLAN 25 to VLAN 30

Correct Answer: ABC

Section: (none)

Explanation

Explanation/Reference:

QUESTION 45

If 802.1x authentication is enabled on an interface, MAC address authentication (enabled by the mac-authen enable command) and direct authentication (enabled by the direct-authen enable command) cannot be enabled on the interface.

- A. True
- B. False

Correct Answer: A

Section: (none)

Explanation

Explanation/Reference:

QUESTION 46

Which are 802.1x authentication modes? (Select 2 Answers)

- A. EAP relay mode
- B. Proxy mode
- C. EAP termination mode
- D. Remote mode

Correct Answer: AC

Section: (none)

Explanation

Explanation/Reference:

QUESTION 47

Before configuring 802.1x services, you need to determine the configuration roadmap and prepare data.

Which are general steps in the configuration roadmap? (Select 3 Answers)

- A. Configure a Tftp server.
- B. Configure an AAA authentication template.
- C. Configure a domain.
- D. Configure 802.1x authentication.

Correct Answer: BCD

Section: (none)

Explanation

Explanation/Reference:

QUESTION 48

After detecting a user with a new MAC address, the switch initiates an EAP authentication request. If the client does not respond and the MAC address bypass authentication is not configured, which statement is false?

- A. If the client does not respond after the number of authentication requests reaches a specified value, the switch considers that the client software is not installed.
- B. All permissions of the user are prohibited.
- C. The user is allowed to access only the isolated zone.
- D. Detection is initiated again after a period of time.

Correct Answer: B

Section: (none)

Explanation

Explanation/Reference:

QUESTION 49

The Layer 2 packet header in EAPoL packets is | DMAC | SMAC | TYPE | EAPOL | FCS |.
Which statements are true? (Select 3 Answers)

- A. The destination address of packets is a specified MAC address.
- B. The destination address of packets is a unicast MAC address.
- C. EAPoL packets cannot be forwarded by switches.
- D. The source MAC address of packets is the MAC address of the interface that sends packets.

Correct Answer: ACD

Section: (none)

Explanation

Explanation/Reference:

QUESTION 50

The dot1x command is used to enable 802.1x authentication globally or on an interface. Which statements about the undo dot1x command are true? (Select 3 Answers)

- A. It is used to disable 802.1x authentication globally.
- B. It will disconnect online users from the interface; therefore, use the command with caution.
- C. It is used to disable 802.1x authentication on an interface.
- D. Ensure that there are no online users before you run the undo dot1x command. Otherwise, running the undo dot1x command fails.

Correct Answer: ACD

Section: (none)

Explanation

Explanation/Reference:

QUESTION 51

The dot1x authentication-method command is used to set the 802.1x authentication mode. Which is the most secure authentication mode?

- A. PAP
- B. EAP
- C. CHAP
- D. EAP-TTLS

Correct Answer: C

Section: (none)

Explanation

Explanation/Reference:

Topic 2, Volume B

QUESTION 52

Which statements about guest VLAN configuration are true? (Select 3 Answers)

- A. The guest VLAN must be created before you configure the guest VLAN.
- B. The default VLAN of the interface cannot be configured as the guest VLAN.
- C. Different interfaces can be configured with different guest VLANs.
- D. An interface can be configured with up to eight guest VLANs.

Correct Answer: ABC

Section: (none)

Explanation

Explanation/Reference:

QUESTION 53

If you have run the dot1x port-method command with the port parameter specified (port-based 802.1x authentication), the maximum number of users on an interface changes to 1. In this case, which statements are true? (Select 2 Answers)

- A. You can run the dot1x max-user command to change the maximum number of access users.
- B. You cannot run the dot1x max-user command to set the maximum number of access users.
- C. You need to run the undo dot1x port-method command, and then set the maximum number of access users.
- D. All of the above

Correct Answer: BC

Section: (none)

Explanation

Explanation/Reference:

QUESTION 54

What is the function of DHCP Offer messages?

- A. DHCP Offer messages are broadcast by the client to detect the available server.
- B. DHCP Offer messages are sent by the server to respond to the DHCP Discover messages sent by the client. Certain configuration parameters are specified in the Offer messages.
- C. DHCP Offer messages are sent by the client to apply to the server for configuration parameters, configuration confirmation, or extension of the IP address lease.
- D. DHCP Offer messages are sent from the server to the client. They contain configuration parameters such as including the IP address.

Correct Answer: B

Section: (none)

Explanation

Explanation/Reference:

QUESTION 55

The option field in DHCP messages uses the CLV mode.

- A. True
- B. False

Correct Answer: A

Section: (none)

Explanation

Explanation/Reference:

QUESTION 56

Which encapsulation mode is used for DHCP messages?

- A. TCP encapsulation
- B. RTP encapsulation
- C. UDP encapsulation
- D. PPP encapsulation

Correct Answer: C

Section: (none)

Explanation

Explanation/Reference:

QUESTION 57

The option field in DHCP messages has a fixed length of four bytes.

- A. True
- B. False

Correct Answer: B

Section: (none)

Explanation

Explanation/Reference:

QUESTION 58

When the DHCP relay receives a DHCP request message in which the giaddr (gateway IP address) field is 0, how does the DHCP relay process the DHCP request message?

- A. The DHCP relay fills its IP address in the giaddr field and transmits the DHCP request message to the DHCP server in unicast mode.
- B. The DHCP relay fills its IP address in the giaddr field and transmits the DHCP request message in broadcast mode.
- C. The DHCP relay retains the value of the giaddr field and transmits the DHCP request message to the DHCP server in unicast mode.
- D. The DHCP relay retains the value of the giaddr field and transmits the DHCP request message in broadcast mode.

Correct Answer: A

Section: (none)

Explanation

Explanation/Reference:

QUESTION 59

What is the sequence of applying for an IP address in DHCP?

1. The host sends a DHCP Request message to apply for an IP address.
2. The DHCP server replies with a DHCP Offer message.
3. The host sends a DHCP Discovery message to search for the DHCP server.
4. The DHCP server replies with a DHCP ACK message after receiving the DHCP Request message.

- A. 1-2-3-4
- B. 1-4-3-2
- C. 3-2-1-4
- D. 3-4-1-2

Correct Answer: C

Section: (none)

Explanation

Explanation/Reference:

QUESTION 60

If the lease of a client IP address is not extended after 87.5% of the lease is reached, which message is used by the client to extend the IP address lease?

- A. DHCP Release broadcast message
- B. DHCP Release unicast message
- C. DHCP Request broadcast message
- D. DHCP Request unicast message

Correct Answer: C

Section: (none)

Explanation

Explanation/Reference:

QUESTION 61

If only some devices on a network run MPLS (MPLS domain is encapsulated in the IP packet header), labels are generated only for direct routes of devices running MPLS. Labels are not generated for the routes originated from other devices running IP protocols.

- A. True
- B. False

Correct Answer: A

Section: (none)

Explanation

Explanation/Reference:

QUESTION 62

The core of the MPLS technology is label switching.

- A. True
- B. False

Correct Answer: A

Section: (none)

Explanation

Explanation/Reference:

QUESTION 63

What about all outgoing labels in the label forwarding table of a device for the same route with the same next hop?

- A. They must be different.
- B. They must be the same.
- C. They may be the same.

Correct Answer: B

Section: (none)

Explanation

Explanation/Reference:

QUESTION 64

What about all outgoing labels in the label forwarding table of a device for different routes with the same next hop?

- A. They must be different.
- B. They must be the same.
- C. They may be the same.

Correct Answer: A

Section: (none)

Explanation

Explanation/Reference:

QUESTION 65

What is the POP action in MPLS?

- A. The top label is removed from the MPLS label stack.
- B. The top label is added to the MPLS label stack.
- C. The top label is replaced with another value.
- D. The top label is replaced with the label of another group.

Correct Answer: A

Section: (none)

Explanation

Explanation/Reference:

QUESTION 66

MPLS is a switching standard defined by the IETF. Which devices exist on the MPLS network? (Select 2 Answers)

- A. LSR
- B. LER
- C. Label distribution router
- D. Label transmit router

Correct Answer: AB

Section: (none)

Explanation

Explanation/Reference:

QUESTION 67

MPLS is a switching standard defined by the IETF. Which device adds or deletes labels?

- A. Label distribution router
- B. LER
- C. LSR
- D. Label transmit router

Correct Answer: B

Section: (none)

Explanation

Explanation/Reference:

QUESTION 68

Which encapsulation mode is used for the MPLS protocol on an Ethernet network?

- A. Packet mode

- B. Frame mode
- C. Transport mode
- D. Channel mode
- E. Pipe mode

Correct Answer: B

Section: (none)

Explanation

Explanation/Reference:

QUESTION 69

Where is the MPLS label in a data frame?

- A. Behind the Layer 3 header and before the Layer 2 header
- B. Behind the Layer 2 header and before the Layer 3 header
- C. In the Layer 3 header
- D. Before the Layer 2 header

Correct Answer: B

Section: (none)

Explanation

Explanation/Reference:

QUESTION 70

In which of the following modes can the Eudemon be working? (Select 3 Answers)

- A. Routing mode
- B. Transparent mode
- C. Composite mode
- D. Transfer mode

Correct Answer: ABC

Section: (none)

Explanation

Explanation/Reference:

QUESTION 71

The firewall can be working in routing mode, transparent mode, or composite mode. The default mode is the composite mode.

- A. True
- B. False

Correct Answer: B

Section: (none)

Explanation

Explanation/Reference:

QUESTION 72

Configuring a firewall to work in transparent mode does not change the network topology.

- A. True
- B. False

Correct Answer: A

Section: (none)

Explanation

Explanation/Reference:

QUESTION 73

The firewall does not use security rules to filter packets exchanged between interfaces in the same zone.

- A. True
- B. False

Correct Answer: A

Section: (none)

Explanation

Explanation/Reference:

QUESTION 74

Network address translation (NAT) translates only IP address information.

- A. True
- B. False

Correct Answer: B

Section: (none)

Explanation

Explanation/Reference:

QUESTION 75

IP unnumbered is to borrow an IP address from an interface. If an interface has multiple IP addresses, all its IP addresses will be borrowed and the primary address will continue after these IP addresses are borrowed.

- A. True
- B. False

Correct Answer: B

Section: (none)

Explanation

Explanation/Reference:

QUESTION 76

When two Eudemons are working in dual-system hot backup mode, their session tables are backed up in real time.

- A. True
- B. False

Correct Answer: A

Section: (none)

Explanation

Explanation/Reference:

QUESTION 77

How many default zones does the Eudemon supporting multi-instance have?

- A. Two
- B. Three
- C. Four
- D. Five

Correct Answer: D

Section: (none)

Explanation

Explanation/Reference:

QUESTION 78

Which of the following is the priority value of the DMZ on the Eudemon?

- A. 10
- B. 50
- C. 75
- D. 85

Correct Answer: B

Section: (none)

Explanation

Explanation/Reference:

QUESTION 79

Users can change the priorities of default zones on the firewall as required.

- A. True
- B. False

Correct Answer: B

Section: (none)

Explanation

Explanation/Reference:

QUESTION 80

What are the types of firewalls developed so far? (Select 3 Answers)

- A. Packet filtering firewall
- B. Proxy firewall
- C. Anti-virus firewall
- D. Stateful firewall

Correct Answer: ABD

Section: (none)

Explanation

Explanation/Reference:

QUESTION 81

Which of the following firewalls is the most popular?

- A. Packet filtering firewall
- B. Stateful firewall
- C. Proxy firewall
- D. Anti-virus firewall

Correct Answer: B

Section: (none)

Explanation

Explanation/Reference:

QUESTION 82

To enable an Eudemon in routing mode to work like a router, you need to assign IP addresses to interfaces and enable dynamic or static routing protocols on the

Eudemon.

- A. True
- B. False

Correct Answer: A

Section: (none)

Explanation

Explanation/Reference:

QUESTION 83

The Eudemon that is working in transparent mode detects processes data at Layer 2. Its interfaces are not configured with IP addresses.

- A. True
- B. False

Correct Answer: A

Section: (none)

Explanation

Explanation/Reference:

QUESTION 84

When an Eudemon is working in composite mode, some of its interfaces are configured with IP addresses (Layer 3 interfaces) and the other interfaces are not configured with IP addresses (Layer 2 interfaces). To enable dual-system hot backup on an Eudemon, you can configure the Eudemon to work in composite mode.

- A. True
- B. False

Correct Answer: A

Section: (none)

Explanation

Explanation/Reference:

QUESTION 85

Two Eudemons in dual-system hot backup can be working in Active-Active mode or Active- Standby mode.

- A. True
- B. False

Correct Answer: A

Section: (none)

Explanation

Explanation/Reference:

QUESTION 86

The Eudemon supports load balancing between multiple uplinks.

- A. True
- B. False

Correct Answer: A

Section: (none)

Explanation

Explanation/Reference:

QUESTION 87

How many user-defined security zones at most are configured on an Eudemon?

- A. 3
- B. 4
- C. 5
- D. 6

Correct Answer: A

Section: (none)

Explanation

Explanation/Reference:

QUESTION 88

Different virtual firewall instances on an Eudemon must be configured with the same security policy.

- A. True
- B. False

Correct Answer: B

Section: (none)

Explanation

Explanation/Reference:

QUESTION 89

Virtual firewalls on the Eudemon are not allowed to access each other by default unless a security policy is specified.

- A. True
- B. False

Correct Answer: A

Section: (none)

Explanation

Explanation/Reference:

QUESTION 90

IP addresses added to the blacklist of the Eudemon cannot be deleted.

- A. True
- B. False

Correct Answer: B

Section: (none)

Explanation

Explanation/Reference:

QUESTION 91

You cannot set an aging time for the blacklist of the Eudemon.

- A. True
- B. False

Correct Answer: B

Section: (none)

Explanation

Explanation/Reference:

QUESTION 92

The Eudemon generates a blacklist upon detecting an attack.

- A. True
- B. False

Correct Answer: A

Section: (none)

Explanation

Explanation/Reference:

QUESTION 93

The TCP SYN flood attack usually occurs during the TCP handshake process. How many handshakes are required to set up a TCP connection?

- A. 1
- B. 2
- C. 3
- D. 4

Correct Answer: C

Section: (none)

Explanation

Explanation/Reference:

QUESTION 94

The Eudemon can control traffic and connections based on IP addresses.

- A. True
- B. False

Correct Answer: A

Section: (none)

Explanation

Explanation/Reference:

QUESTION 95

What is the maximum number of security zones supported by the Eudemon?

- A. 256
- B. 128
- C. 32
- D. 16

Correct Answer: D

Section: (none)

Explanation

Explanation/Reference:

QUESTION 96

Which of the following data traffic is incoming data traffic on the Eudemon? (Select 2 Answers)

- A. Data traffic from a Trust zone to a demilitarized zone (DMZ)
- B. Data traffic from an Untrust zone to a DMZ
- C. Data traffic from a Local zone to a Trust zone
- D. Data traffic from an Untrust zone to a Local zone

Correct Answer: BD

Section: (none)

Explanation

Explanation/Reference:

QUESTION 97

Security policies for the firewall are applied to interzones but not to interfaces.

- A. True
- B. False

Correct Answer: A

Section: (none)

Explanation

Explanation/Reference:

QUESTION 98

The multi-channel protocol is used to establish at least two channels (sessions) for communications or services.

- A. True
- B. False

Correct Answer: A

Section: (none)

Explanation

Explanation/Reference:

QUESTION 99

ICMP packets are sent in a Smurf attack and UDP packets are sent in a Fraggle attack.

- A. True
- B. False

Correct Answer: A

Section: (none)

Explanation

Explanation/Reference:

QUESTION 100

The urgent pointer in the flag field of an IPv4 packet header is generally used for OOB data transmission.

- A. True
- B. False

Correct Answer: A

Section: (none)

Explanation

Explanation/Reference:

QUESTION 101

A firewall filters packets exchanged between zones but does not filter packets exchanged between interfaces in the same zone.

- A. True
- B. False

Correct Answer: A

Section: (none)

Explanation

Explanation/Reference:

QUESTION 102

Two Eudemons in dual-system hot backup mode can be working in Active-Active mode or Active-Standby mode.

- A. True
- B. False

Correct Answer: A

Section: (none)

Explanation

Explanation/Reference:

QUESTION 103

Two Eudemons in dual-system hot backup mode use Huawei Redundancy Protocol (HRP) to back up key information (such as configuration commands and session status) between the active and standby devices.

- A. True
- B. False

Correct Answer: A

Section: (none)

Explanation

Explanation/Reference:

QUESTION 104

After an interface on a firewall is added to a zone, the interface belongs to the zone.

- A. True
- B. False

Correct Answer: A

Section: (none)

Explanation

Explanation/Reference:

QUESTION 105

Which of the following statements about the security policies for the Eudemon are true? (Select 2 Answers)

- A. By default, a user in the Local zone can access other zones.
- B. By default, a user in the Trust zone can access the DMZ.
- C. By default, a user in the Untrust zone cannot access the Trust zone.
- D. By default, a user in a zone of the firewall cannot access any other zone of the firewall.

Correct Answer: CD

Section: (none)

Explanation

Explanation/Reference:

QUESTION 106

Which of the following statements about the zone priorities of the Eudemon are true? (Select 3 Answers)

- A. The priority of the Local zone is 100.
- B. The priority of the Trust zone is 80.
- C. The priority of the Untrust zone is 5.
- D. The priority of the DMZ is 50.

Correct Answer: ACD

Section: (none)

Explanation

Explanation/Reference:

QUESTION 107

Status detection is an advanced communication filtering mechanism. It checks the application layer protocol and monitors the status of the connection-based application layer protocol. For all connections, the status information about each connection is maintained by ASPF and is used to dynamically determine whether to permit or deny data packets to firewalls.

- A. True
- B. False

Correct Answer: A

Section: (none)

Explanation

Explanation/Reference:

QUESTION 108

Which of the following statements about the firewall technology are true? (Select 3 Answers)

- A. The network gateway of the application layer checks application-layer data carried in packets passing through the gateway.
- B. The network gateway for session status detection checks session information carried in packets only at the session layer.
- C. During packet filtering, the session status is checked and the whole data stream is analyzed.
- D. Address proxy replaces IP addresses and port numbers of hosts within the network with the IP address and port number of the proxy device or router.

Correct Answer: ABD

Section: (none)

Explanation

Explanation/Reference:

QUESTION 109

The NAT multi-instance function on the Eudemon independently maintains a NAT table for each instance to provide address translation services for instances.

- A. True
- B. False

Correct Answer: A

Section: (none)

Explanation

Explanation/Reference:

QUESTION 110

The IPSec function on the Eudemon supports NAT traversal.

- A. True
- B. False

Correct Answer: A

Section: (none)

Explanation

Explanation/Reference:

QUESTION 111

The NAT function enabled on the Eudemon does not greatly affect system performance.

- A. True
- B. False

Correct Answer: A

Section: (none)

Explanation

Explanation/Reference:

QUESTION 112

The Eudemon does not support port mapping.

- A. True
- B. False

Correct Answer: B

Section: (none)

Explanation

Explanation/Reference:

QUESTION 113

The blacklist function on the firewall can filter packets based on destination IP addresses. A destination IP address can be dynamically added to or deleted from the blacklist.

- A. True
- B. False

Correct Answer: B

Section: (none)

Explanation

Explanation/Reference:

QUESTION 114

In a Land attack, the source address and destination address of an SYN packet are both the IP address of the attacked object or a loopback address.

- A. True
- B. False

Correct Answer: A

Section: (none)

Explanation

Explanation/Reference:

QUESTION 115

Which of the following attacks are prevented after an IP address and MAC address are bound on the Eudemon? (Select 2 Answers)

- A. IP address spoofing
- B. MAC address spoofing
- C. DoS attack
- D. DDoS attack

Correct Answer: AB

Section: (none)

Explanation

Explanation/Reference:

QUESTION 116

Which of the following solutions effectively defend against ARP attacks? (Select 3 Answers)

- A. Binding a MAC address and an IP address
- B. Enabling the ARP attack protection function on a Huawei switching device
- C. Adding network segments to different VLANs on a switch
- D. Enabling IP packet filtering

Correct Answer: ABC

Section: (none)

Explanation

Explanation/Reference:

QUESTION 117

Which of the following NAT functions are supported by the Eudemon? (Select 3 Answers)

- A. NAT/PAT
- B. IPv4 to IPv6 NAT
- C. Bidirectional NAT
- D. NAT server

Correct Answer: ACD

Section: (none)

Explanation

Explanation/Reference:

QUESTION 118

Which of the following attacks can Eudemon defend against? (Select 3 Answers)

- A. SYN-Flood
- B. SQL inject
- C. Port Scan
- D. Ping-Death

Correct Answer: ACD

Section: (none)

Explanation

Explanation/Reference:

QUESTION 119

Which of the following are performance parameters of the firewall? (Select 3 Answers)

- A. Throughput
- B. Maximum number of interface
- C. Number of new connections per second

D. Process delay

Correct Answer: ACD

Section: (none)

Explanation

Explanation/Reference:

QUESTION 120

By which can an IP-based advanced ACL filter packets? (Select 5 Answers)

- A. Source IP address and its subnet mask
- B. Destination IP address and its subnet mask
- C. Protocol type
- D. TCP or UDP port number
- E. Priority of the data packet
- F. Length of the data packet

Correct Answer:

Section: (none)

Explanation

Explanation/Reference:

Answer: A, B, C, D, E

QUESTION 121

Which of the following statements about NAT are true? (Select 3 Answers)

- A. NAT is short for "network address translation".
- B. NAT, also called address proxy, is used for translation between private and public network addresses.
- C. Hosts within the intranet can access the extranet without using NAT.
- D. NAT can effectively resolve the problem of IP address shortage.

Correct Answer: ABD

Section: (none)

Explanation

Explanation/Reference:

QUESTION 122

Which of the following DDoS attacks can the Eudemon 1000E defend against? (Select 3 Answers)

- A. SYN flood
- B. UDP flood
- C. ICMP flood
- D. SQL flood

Correct Answer: ABC

Section: (none)

Explanation

Explanation/Reference:

QUESTION 123

Which of the following high availability (HA) features are supported by the Eudemon 1000E? (Select 2 Answers)

- A. Dual-system hot backup
- B. Multi-system hot backup
- C. Dual-system load balancing
- D. Multi-system load balancing

Correct Answer: AC

Section: (none)

Explanation

Explanation/Reference:

QUESTION 124

Which of the following indicators are performance indicators of the Eudemon? (Select 3 Answers)

- A. Throughput of large-sized or small-sized packets
- B. Number of the interface
- C. VPN performance
- D. Process delay

Correct Answer: ABD

Section: (none)

Explanation

Explanation/Reference:

QUESTION 125

To process fragmented service packets on an NAT-enabled firewall, which of the following functions needs to be enabled?

- A. Transparent fragment transmission
- B. Fragment cache
- C. Fragment reassembly
- D. MTU check

Correct Answer: B

Section: (none)

Explanation

Explanation/Reference:

QUESTION 126

In the scenario where packets are sent and received along different paths, which of the following functions needs to be disabled on the firewall?

- A. Status detection
- B. Attack defense
- C. Packet filtering
- D. Status backup

Correct Answer: A

Section: (none)

Explanation

Explanation/Reference:

QUESTION 127

Which of the following information do you check to directly identify a fault in the firewall if the data transmission is interrupted?

- A. Session table
- B. Log
- C. Global statistics about the firewall
- D. Alarms

Correct Answer: A

Section: (none)

Explanation

Explanation/Reference:

QUESTION 128

Assume that the traceroute test is used to detect the packet forwarding path and tracert packets have passed through the firewall. Which of the following attack protection functions needs to be disabled to normally display the tracert result?

- A. ICMP-redirect
- B. ICMP-unreachable
- C. Tracert
- D. Smurf

Correct Answer: C

Section: (none)

Explanation

Explanation/Reference:

QUESTION 129

What is the recommended minimum delay for HRP preemption on the Eudemon?

- A. 120s
- B. 60s
- C. 10s
- D. 5s

Correct Answer: B

Section: (none)

Explanation

Explanation/Reference:

QUESTION 130

Which of the following commands is used to display the detailed information about the Eudemon?

- A. Display firewall statistic system
- B. Display firewall session table raw both-direction
- C. Display firewall session table verbose
- D. Display firewall session table detail

Correct Answer: C

Section: (none)

Explanation

Explanation/Reference:

QUESTION 131

Which of the following technologies does the Eudemon use to defense against Anti-DDoS attacks? (Select 5 Answers)

- A. TCP agent
- B. Source authentication and detection
- C. Crc check
- D. Fingerprint identification (characteristics detection)
- E. Abnormal session detection
- F. Traffic control

Correct Answer:

Section: (none)

Explanation

Explanation/Reference:

Answer: A, B, D, E, F

QUESTION 132

What are the types of DDoS attacks? (Select 3 Answers)

- A. Attacks by special packets
- B. Scanning attack
- C. Sniff attack
- D. Application-layer attack

Correct Answer: ABD

Section: (none)

Explanation

Explanation/Reference:

QUESTION 133

Which of the following attacks are DDoS attacks? (Select 4 Answers)

- A. SYN flood
- B. SYN/ACK flood
- C. UDP flood
- D. FTP attack
- E. HTTP get flood

Correct Answer: ABCE

Section: (none)

Explanation

Explanation/Reference:

QUESTION 134

QoS provides services of different qualities to meet various application requirements, including dedicated bandwidth, decreased packet loss ratio, short packet transmission delay, and decreased delay and jitter.

- A. True
- B. False

Correct Answer: A

Section: (none)

Explanation

Explanation/Reference:

QUESTION 135

The variation in packet delay is called jitter.

- A. True
- B. False

Correct Answer: A

Section: (none)

Explanation

Explanation/Reference:

QUESTION 136

The end-to-end delay is the sum of transmission delays, processing delays, and queuing delays along the packet forwarding path.

- A. True
- B. False

Correct Answer: A

Section: (none)

Explanation

Explanation/Reference:

QUESTION 137

The data transmission rate depends on the bandwidth.

- A. True
- B. False

Correct Answer: A

Section: (none)

Explanation

Explanation/Reference:

QUESTION 138

Packet loss occurs only on the packet receiver.

- A. True
- B. False

Correct Answer: B

Section: (none)

Explanation

Explanation/Reference:

QUESTION 139

Based on specific rules, traffic classification identifies packets having the same characteristics. Traffic classification is the prerequisite and basis for differentiated services.

- A. True
- B. False

Correct Answer: A

Section: (none)

Explanation

Explanation/Reference:

QUESTION 140

Congestion management provides means to manage and control traffic when traffic congestion occurs.

- A. True
- B. False

Correct Answer: A

Section: (none)

Explanation

Explanation/Reference:

QUESTION 141

The traditional packet loss policy uses the Tail-Drop method.

- A. True
- B. False

Correct Answer: A

Section: (none)

Explanation

Explanation/Reference:

QUESTION 142

QoS in best-effort service mode uses which of the following queue scheduling technology?

- A. FIFO
- B. WFQ
- C. PQ
- D. RR

Correct Answer: A

Section: (none)

Explanation

Explanation/Reference:

obvious answer.

QUESTION 143

In DiffServ mode, before the application program sends packets, it needs to confirm that the network has reserved resources for packet transmission.

- A. True
- B. False

Correct Answer: B

Section: (none)

Explanation

Explanation/Reference:

QUESTION 144

The Per-Hop Behavior (PHB) defines the policy and priority applied to a packet when traversing a hop (such as a DS) in a DiffServ network.

- A. True
- B. False

Correct Answer: A

Section: (none)

Explanation

Explanation/Reference:

Topic 3, Volume C

QUESTION 145

In traffic shaping, the packet whose transmission rate exceeds the rate limit will be discarded or re-marked.

- A. True
- B. False

Correct Answer: B

Section: (none)

Explanation

Explanation/Reference:

answer is assessed.

QUESTION 146

WFQ can effectively control the delay and jitter by means of configuring weights for different services.

- A. True
- B. False

Correct Answer: A

Section: (none)

Explanation

Explanation/Reference:

QUESTION 147

Congestion occurs when a link or node is carrying so much data that its quality of service deteriorates.

- A. True
- B. False

Correct Answer: A

Section: (none)

Explanation

Explanation/Reference:

QUESTION 148

Most fields in IP headers of packets in the same data flow are identical. You can compress these fields to improve the link transmission efficiency.

- A. True
- B. False

Correct Answer: A

Section: (none)

Explanation

Explanation/Reference:

QUESTION 149

Which of the following information in a packet can be marked or re-marked?

- A. IP DSCP, IP precedence, and 802.1p information
- B. IP source and destination addresses
- C. MAC address
- D. Any information in the packet

Correct Answer: A

Section: (none)

Explanation

Explanation/Reference:

QUESTION 150

Simple traffic classification can be performed based on which of the following information in VLAN packets?

- A. DSCP
- B. IP precedence
- C. MPLX EXP
- D. 802.1p

Correct Answer: D

Section: (none)

Explanation

Explanation/Reference:

QUESTION 151

QoS includes which of the following aspects? (Select 3 Answers)

- A. Transmission bandwidth
- B. Transmission delay and jitter
- C. Packet loss ratio
- D. Network security

Correct Answer: ABC

Section: (none)

Explanation

Explanation/Reference:

QUESTION 152

QoS can be performed in which of the following modes? (Select 3 Answers)

- A. Best-effort service
- B. Integrated service
- C. Differentiated service
- D. Assured forwarding service

Correct Answer: ABC

Section: (none)

Explanation

Explanation/Reference:

QUESTION 153

Based on classification rules, traffic classification can be divided into which of the following types? (Select 2 Answers)

- A. Simple traffic classification
- B. Complex traffic classification
- C. On-demand traffic classification
- D. Service traffic classification

Correct Answer: AB

Section: (none)

Explanation

Explanation/Reference:

QUESTION 154

Simple traffic classification can be performed based on which of the following information in IPv4 packets? (Select 2 Answers)

- A. DSCP
- B. IP precedence
- C. EXP
- D. 802.1p

Correct Answer: AB

Section: (none)

Explanation

Explanation/Reference:

QUESTION 155

Which of the following technologies are available for traffic shaping? (Select 2 Answers)

- A. GTS
- B. LR
- C. CAR
- D. WRED

Correct Answer: AB

Section: (none)

Explanation

Explanation/Reference:

QUESTION 156

In case of congestion, which of the following indexes will affect QoS? (Select 3 Answers)

- A. Transmission delay
- B. Transmission jitter
- C. Packet loss ratio
- D. Transmission distance

Correct Answer: ABC

Section: (none)

Explanation

Explanation/Reference:

QUESTION 157

Simple traffic classification in QoS classifies packets based on the 5-tuple information, including the source IP address, source port number, protocol number, destination IP address, and destination port number.

- A. True
- B. False

Correct Answer: B

Section: (none)

Explanation

Explanation/Reference:

QUESTION 158

Complex traffic classification matches packets with rules and then takes actions to matching packets.

- A. True
- B. False

Correct Answer: A

Section: (none)

Explanation

Explanation/Reference:

QUESTION 159

Which of the following statement about the jitter and delay is false?

- A. The jitter depends on the delay.
- B. The variation in packet delay is called jitter.
- C. The lower the delay is, the less the jitter is.
- D. The jitter is independent of the delay.

Correct Answer: D

Section: (none)

Explanation

Explanation/Reference:

QUESTION 160

Which of the following statement about QoS in DiffServ mode is false?

- A. The parameter field in the IP packet header informs devices on the network of the QoS requirements of the application.
- B. Every device on the packet transmission paths can learn the service request types by analyzing the IP packet header.
- C. Before sending packets, the application program needs to confirm that the network has reserved resources for packet transmission.
- D. DiffServ is a QoS solution based on packets.

Correct Answer: C

Section: (none)

Explanation

Explanation/Reference:

QUESTION 161

Which of the following statement about packet marking is false?

- A. The QoSInfo field of the packet can be marked.
- B. The DSCP and IP precedence fields of the IP packet can be marked.
- C. The 802.1p field of the VLAN packet can be marked.
- D. The IP address of the packet can be marked.

Correct Answer: D

Section: (none)

Explanation

Explanation/Reference:

QUESTION 162

Based on fields IP precedence, MPLS EXP, or 802.1p, packets can be classified into how many service types?

- A. 4
- B. 6
- C. 7
- D. 8

Correct Answer: D

Section: (none)

Explanation

Explanation/Reference:

QUESTION 163

Which of the following queue scheduling technology can achieve better fairness?

- A. WFQ
- B. PQ
- C. CQ
- D. RR

Correct Answer: A

Section: (none)

Explanation

Explanation/Reference:

QUESTION 164

Which of the following statements about traffic policing are true? (Select 3 Answers)

- A. Is used to limit the traffic transmission rate.
- B. Is used to color packets.
- C. Caches packets whose transmission rate exceeds the limit.
- D. Re-marks packets with priorities.

Correct Answer: ABD

Section: (none)

Explanation

Explanation/Reference:

QUESTION 165

Traffic shaping uses queues to cache traffic whose transmission rate exceeds the limit. Which of the following statement about traffic shaping is not true?

- A. Compared with traffic policing, traffic shaping is advanced in terms of caching burst traffic.
- B. With traffic shaping, packets can be transmitted at an even rate.
- C. Caching packets in the queue increases the packet delay in case of congestion.
- D. In case of congestion, traffic shaping causes the packet loss ratio to increase.

Correct Answer: D

Section: (none)

Explanation

Explanation/Reference:

QUESTION 166

Traffic policing usually uses which of the following QoS technologies?

- A. GTS
- B. LR
- C. CAR
- D. WRED

Correct Answer: C

Section: (none)

Explanation

Explanation/Reference:

QUESTION 167

Which of the following link efficiency mechanism can be used to compress RTP and TCP packet headers?

- A. IPHC
- B. LFI
- C. PPP
- D. All of the above

Correct Answer: A

Section: (none)

Explanation

Explanation/Reference:

QUESTION 168

Which of the following statements about the jitter and delay are true? (Select 3 Answers)

- A. The end-to-end delay is the sum of transmission delays, processing delays, and queuing delays along the packet forwarding path.
- B. The variation in packet delay is called jitter.
- C. The jitter depends on the delay. The lower the delay, the less the jitter.
- D. The jitter is independent of the delay.

Correct Answer: ABC

Section: (none)

Explanation

Explanation/Reference:

QUESTION 169

Which of the following PHB types are defined in IETF DiffServ? (Select 3 Answers)

- A. Default PH
- B. Class-Selector PHB
- C. Fast Forwarding PHB
- D. Assured Forwarding PHB

Correct Answer: ABD

Section: (none)

Explanation

Explanation/Reference:

QUESTION 170

Which of the following are disadvantages of the traditional tail drop mechanism? (Select 3 Answers)

- A. TCP global synchronization
- B. TCP starvation

- C. High Average Link Utilization
- D. Packet drop is not based on priorities

Correct Answer: ABD

Section: (none)

Explanation

Explanation/Reference:

QUESTION 171

Which of the following packet drop policies can be applied to the congestion avoidance mechanism? (Select 3 Answers)

- A. Tail-drop
- B. RED
- C. WRED
- D. WFQ

Correct Answer: ABC

Section: (none)

Explanation

Explanation/Reference:

QUESTION 172

Which of the following congestion avoidance mechanisms can be used to avoid global TCP synchronization? (Select 2 Answers)

- A. RED
- B. WRED
- C. FIFO
- D. WFQ

Correct Answer: AB

Section: (none)

Explanation

Explanation/Reference:

QUESTION 173

Which of the following are popular link efficiency mechanisms? (Select 2 Answers)

- A. IPHC
- B. LFI
- C. HDLC
- D. PPP

Correct Answer: AB

Section: (none)

Explanation

Explanation/Reference:

QUESTION 174

In traffic policing using two token buckets, tokens are put into the CBS bucket at the committed information rate (CIR). The peak burst size (PBS) bucket is filled in only after the CBS bucket is full.

- A. True
- B. False

Correct Answer: A

Section: (none)

Explanation

Explanation/Reference:

QUESTION 175

Exhibit:

Based on the DSCP field (first 6 bits of the ToS field), packets can be classified into how many types?

- A. 4
- B. 8
- C. 16
- D. 64

Correct Answer: D

Section: (none)

Explanation

Explanation/Reference:

QUESTION 176

In addition to traffic rate limit, the CAR can mark packets with colors. If one token bucket & one-rate is used in traffic policing and the number of tokens is insufficient, packets are marked with which of the following color?

- A. Red
- B. Green
- C. Yellow
- D. Blue

Correct Answer: A

Section: (none)

Explanation

Explanation/Reference:

QUESTION 177

In traffic policing using two token buckets & two-rate, when the CIR is set to 1 Mbit/s and the PIR is set to 2 Mbit/s, what is the maximum transmission rate for the traffic in green?

- A. 1 Mbit/s
- B. 2 Mbit/s
- C. 3 Mbit/s
- D. 4 Mbit/s

Correct Answer: A

Section: (none)

Explanation

Explanation/Reference:

QUESTION 178

Complex traffic classification can be performed based on which of the following packet information? (Select 3 Answers)

- A. Packet priority
- B. Source and destination addresses
- C. Total Length of the Packet
- D. Source and destination port numbers

Correct Answer: ABD

Section: (none)

Explanation

Explanation/Reference:

QUESTION 179

Assume that there are four flows a, b, c, and d, the transmission rate of each flow is 50 Mbit/s, and the total bandwidth of the interface for flow transmission is 100 Mbit/s. In the case of congestion, WFQ is available for flows a, b, c, and d, with the weight proportion being 1:2:3:4. Which of the following statement about the interface bandwidth allocated to each flow is true?

- A. Interface bandwidths allocated to flows a, b, c, and d are 10 Mbit/s, 20 Mbit/s, 30 Mbit/s, and 40 Mbit/s respectively.
- B. Interface bandwidths allocated to flows a, b, c, and d are 50 Mbit/s, 50 Mbit/s, 0 Mbit/s, and 0 Mbit/s respectively.
- C. Interface bandwidths allocated to flows a, b, c, and d are 40 Mbit/s, 30 Mbit/s, 20 Mbit/s, and 10 Mbit/s respectively.
- D. Flows a, b, c, and d are discarded.

Correct Answer: A

Section: (none)

Explanation

Explanation/Reference:

QUESTION 180

Assume that congestion occurs on the outbound interface, packet A is cached in the PQ, and packet B is cached in the WFQ, which of the following statement about packet scheduling is true?

- A. Packet A is scheduled first.
- B. Packet B is scheduled first.
- C. Packets A and B are scheduled at the same time.

D. Packets A and B are discarded.

Correct Answer: A

Section: (none)

Explanation

Explanation/Reference:

QUESTION 181

Assume that the following WRED policies are used in QoS:

The length of the queue for saving DSCP packets with the priority being AF21 ranges from 35 to 40.

The length of the queue for saving DSCP packets with the priority being AF22 ranges from 30 to 40.

The length of the queue for saving DSCP packets with the priority being AF23 ranges from 25 to 40.

In the case of congestion, DSCP packets with which of the following priority value will be discarded first?

- A. AF21
- B. AF22
- C. AF23
- D. All the same

Correct Answer: C

Section: (none)

Explanation

Explanation/Reference:

QUESTION 182

Assume that there are four flows a, b, c, and d, the transmission rate of each flow is 50 Mbit/s, and the total bandwidth of the interface for flow transmission is 100 Mbit/s. In the case of congestion, PQ is available for flow a. WFQ is available for flows b, c, and d, with the weight proportion being 1:2:3:4. Which of the following statement about the interface bandwidth allocated to each flow is true? (Select 2 Answers)

- A. The interface bandwidth allocated to flow a is 100 Mbit/s.
- B. The interface bandwidth allocated to flow a is 50 Mbit/s.
- C. The interface bandwidth allocated to flows b is 10 Mbit/s and interface bandwidths allocated to flows c and d are 20 Mbit/s each.
- D. The interface bandwidth allocated to flows b is 25 Mbit/s and interface bandwidths allocated to flows c and d are 12.5 Mbit/s each.

Correct Answer: BC

Section: (none)

Explanation

Explanation/Reference:

QUESTION 183

Assume that the WRED policy for packets with the priority of AF21 is that the length of the queue for saving packets ranges from 35 to 40, and the discarding percentage is 50%. When a packet with the priority being AF21 arrives, which of the following statements are true? (Select 3 Answers)

- A. If the average length of the queue is smaller than 35, the packet is added to the queue.
- B. If the length of the queue ranges between 35 and 40, the packet may be discarded with a possibility of 50%.
- C. If the average length of the queue is greater than 40, the packet is added to the queue.
- D. If the average length of the queue is greater than 40, the packet is discarded.

Correct Answer: ABD

Section: (none)

Explanation

Explanation/Reference:

QUESTION 184

The interface IP address and virtual IP address configured for VRRP must not be identical.

- A. True
- B. False

Correct Answer: B

Section: (none)

Explanation

Explanation/Reference:

QUESTION 185

A VRRP virtual router can have one or more IP addresses.

- A. True

B. False

Correct Answer: A

Section: (none)

Explanation

Explanation/Reference:

QUESTION 186

The virtual router uses a virtual MAC address but not the actual MAC address of the interface to respond to an ARP request.

A. True

B. False

Correct Answer: A

Section: (none)

Explanation

Explanation/Reference:

QUESTION 187

A VRRP backup group is able to track the status of an interface. If the interface configured with a VRRP backup group fails or any interface on the router fails, the VRRP backup group provides a backup for the faulty interface.

A. True

B. False

Correct Answer: A

Section: (none)

Explanation

Explanation/Reference:

QUESTION 188

By using VRRP, the backup router in a VRRP backup group immediately becomes the master router after detecting a fault and instructs its attached hosts to perform a master/slave switchover accordingly. This ensures that services will recover within a short period of time.

- A. True
- B. False

Correct Answer: B

Section: (none)

Explanation

Explanation/Reference:

QUESTION 189

Which of the following statements are correct regarding VRRP?

- A. Only Master can process the data packets sending to virtual router.
- B. Only Slave can process the data packets sending to virtual router.
- C. Both Master and Slave can process the data packets sending to the same virtual router to realize load balance.
- D. By default, only Master can process the data packets sending to virtual router; but we can do some configuration to make the Slave process the data packets sending to virtual router.

Correct Answer: A

Section: (none)

Explanation

Explanation/Reference:

QUESTION 190

Which of the following statements are correct regarding the function of VRRP?

- A. VRRP can improve the reliability of default gateway.
- B. VRRP increase the convergence speed of routing protocol.
- C. VRRP is mainly used for traffic balance.
- D. VRRP can provide one default gateway for different network segments, it simplifies the gateway configuration for PC.

Correct Answer: A

Section: (none)

Explanation

Explanation/Reference:

QUESTION 191

Which of the following statements are correct regarding default gateway of PC in the network running VRRP?

- A. Configure only one gateway for the PC which is the IP address of Master.
- B. Configure only one gateway for the PC which is the IP address of virtual router.
- C. Configure two gateways for the PC which are the IP addresses of Master and Slave.
- D. Configure three gateways for the PC which are the IP addresses of Master, Slave and virtual router.

Correct Answer: B

Section: (none)

Explanation

Explanation/Reference:

QUESTION 192

Which of the following authentication modes does VRRP use? (Select 3 Answers)

- A. No authentication
- B. Simple text password
- C. MD5
- D. CHAP

Correct Answer: ABC

Section: (none)

Explanation

Explanation/Reference:

QUESTION 193

What is the legal virtual MAC address in VRRP?

- A. 01-01-5E-00-01-01
- B. 01-00-5E-00-01-00
- C. 00-00-5E-00-01-01
- D. 01-01-5E-00-00-01

Correct Answer: C

Section: (none)

Explanation

Explanation/Reference:

QUESTION 194

Which of the following statements are correct regarding Master in VRRP? (Select 2 Answers)

```
[SWA]display stp
-----[CIST Global Info] [Mode MSTP]-----
CIST Bridge           :0.000f-e212-f8e1
Bridge Times          :Hello 2s MaxAge 20s FWDly 15s MaxHop 30
CIST Root/ERPC        :0.000f-e212-f8e1 / 0
CIST RegRoot/IRPC     :0.000f-e212-f8e1 / 0
CIST RootPortId       :0.0
BPDU-Protection       :disabled
CIST Root Type        :PRIMARY root
TC or TCN received    :3
Time since last TC    :0 days 1h:23m:36s
```

- A. The router with highest priority will become Master.
- B. The router with smallest priority will become Slave.
- C. The router with highest priority may not always be Master.
- D. The router with smallest priority may not always be Slave.

Correct Answer: CD

Section: (none)

Explanation

Explanation/Reference:

QUESTION 195

Which of the following statements are correct regarding priority in VRRP?

- A. The IP address owner always uses 255 as its priority regardless its config priority.
- B. The IP address owner always uses 0 as its priority regardless its config priority.
- C. We can configure the priority as 0 to make the router never attend the Master election.
- D. If a VRRP router changes from Master to Slave, it will send out a VRRP message with priority 0 in the network.

Correct Answer: A

Section: (none)

Explanation

Explanation/Reference:

QUESTION 196

Which of the following statements about the device state change is correct after failure in the intermediate link for transmitting VRRP heartbeats?

- A. The status of the master and slave devices remains unchanged.
- B. Both the master and slave devices enter the Master state.
- C. Both the master and slave devices enter the Slave state.
- D. Both the master and slave devices enter the Initial state.

Correct Answer: B

Section: (none)

Explanation

Explanation/Reference:

QUESTION 197

Which of the following statements about the VRRP working process is false?

- A. The router with the highest priority is elected as the master router.
- B. The master router sends gratuitous ARP packets to inform connected devices or hosts of its virtual MAC address.
- C. If the master router fails, the backup router with the highest priority is elected as the new master router.
- D. To ensure fast convergence, a backup router immediately becomes the master router if the priority of the backup router is higher than the priority of the master

router.

Correct Answer: D

Section: (none)

Explanation

Explanation/Reference:

QUESTION 198

Assume that the VRID of a VRRP virtual router is 100 and the virtual IP address of the virtual router is 192.168.1.1, which of the following addresses is the virtual MAC address of the virtual router?

- A. 00-00-5E-00-01-64
- B. 00-00-5E-00-01-01
- C. 01-00-5E-00-01-64
- D. 01-00-5E-00-01-01

Correct Answer: A

Section: (none)

Explanation

Explanation/Reference:

QUESTION 199

Which of the following addresses is the destination address of VRRP packets?

- A. 224.0.0.18
- B. 224.0.0.19
- C. 224.0.1.18
- D. 224.0.1.19

Correct Answer: A

Section: (none)

Explanation

Explanation/Reference:

QUESTION 200

Which of the following numbers is the protocol number of VRRP packets?

- A. 112
- B. 113
- C. 114
- D. 115

Correct Answer: A

Section: (none)

Explanation

Explanation/Reference:

QUESTION 201

Which of the following statements about the VRRP authentication is false?

- A. VRRP provides no authentication.
- B. VRRP provides the simple text authentication.
- C. VRRP provides the MD5 authentication.
- D. VRRP provides the RSA key authentication.

Correct Answer: D

Section: (none)

Explanation

Explanation/Reference:

QUESTION 202

RTA connected to a LAN by e0/0 whose IP address is 10.1.1.251 and network Mask is 255.255.255.0. Now create a virtual router with ID 1 and virtual IP address 10.1.1.254 on RTA.

Which of the following commands are correct?

- A. [RTA-Ethernet0/0]vrrpvrid 1 virtual-ip 10.1.1.254
- B. [RTA]vrrpvrid 1 virtual-ip 10.1.1.254
- C. [RTA-Ethernet0/0]vrrpvrid 1 virtual-ip 10.1.1.254 mask 255.255.255.0

D. [RTA]vrripvid 1 virtual-ip 10.1.1.254 mask 255.255.255.0

Correct Answer: A

Section: (none)

Explanation

Explanation/Reference:

QUESTION 203

Ethernet0/0 of RTA and Ethernet0/0 of RTB connect to the same LAN, both are enabled with VRRP. Create a virtual router with ID 1 and virtual IP address 10.1.1.254. Which of the following commands can make RTB Master without modifying the priority of RTA?

- A. [RTB-Ethernet0/0]vrripvid 1 priority 200
- B. [RTB-Ethernet0/0]vrripvid 1 virtual-ip 10.1.1.254 priority 200
- C. [RTB-Ethernet0/0]vrripvid 1 force-master
- D. [RTB]vrripvid 1 force-master

Correct Answer: A

Section: (none)

Explanation

Explanation/Reference:

QUESTION 204

Which of the following statements are correct regarding VRRP advertisement message?

- A. VRRP has two kinds of advertisement message, one is sent by Master, the other is sent by Slave.
- B. VRRP has one kind of advertisement message which is sent by Master.
- C. VRRP has one kind of advertisement message which is sent by Slave.
- D. VRRP has two kinds of advertisement message, one is used for Master election, the other one is used in stable network after Master election.

Correct Answer: B

Section: (none)

Explanation

Explanation/Reference:

QUESTION 205

Which of the following statements are correct regarding MAC address of VRRP packet? (Select 2 Answers)

```
[SWC]display stp brief
```

MSTID	Port	Role	STP State	Protection
0	Ethernet1/0/2	DESI	FORWARDING	NONE
0	Ethernet1/0/3	DESI	FORWARDING	NONE
0	Ethernet1/0/12	ALTE	DISCARDING	NONE
0	Ethernet1/0/13	ROOT	FORWARDING	NONE
1	Ethernet1/0/2	DESI	FORWARDING	NONE
1	Ethernet1/0/12	ROOT	FORWARDING	NONE
1	Ethernet1/0/13	ALTE	DISCARDING	NONE
2	Ethernet1/0/3	DESI	FORWARDING	NONE
2	Ethernet1/0/12	ALTE	DISCARDING	NONE
2	Ethernet1/0/13	ROOT	FORWARDING	NONE

- A. The destination MAC is broadcast MAC address.
- B. The destination MAC is multicast MAC address.
- C. The source address is virtual MAC address.
- D. The source address is physical MAC address of Master.

Correct Answer: BC

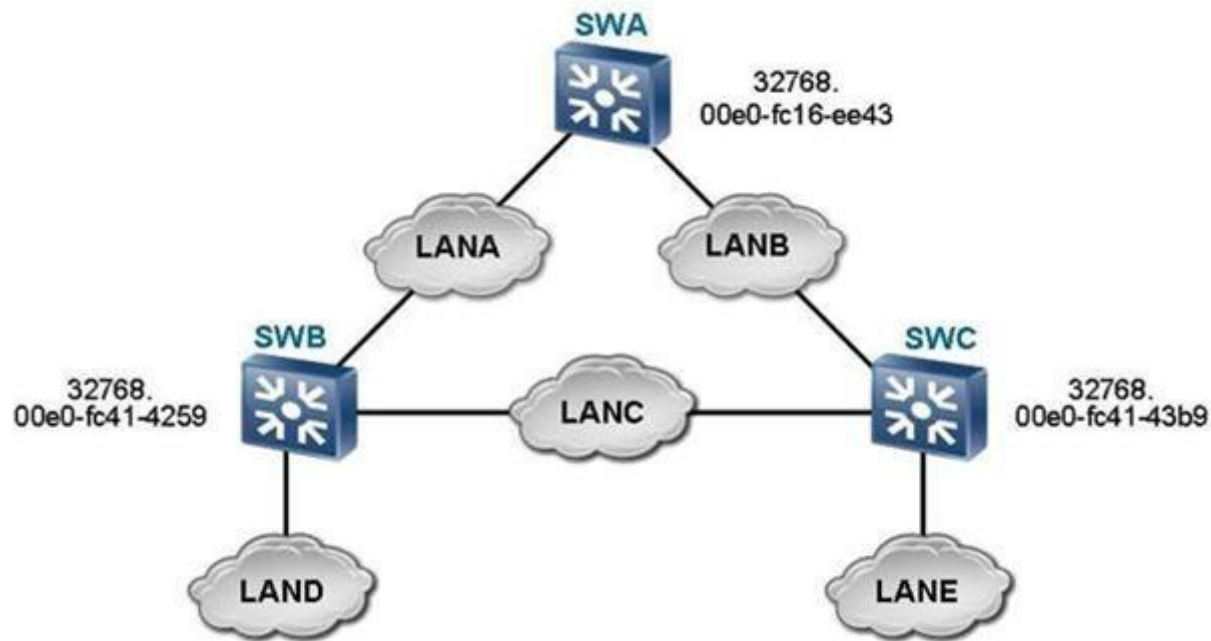
Section: (none)

Explanation

Explanation/Reference:

QUESTION 206

Which of the following statements about the mVRRP backup group is false?



- A. Multiple service VRRP backup group can be bound to one mVRRP backup group.
- B. An mVRRP backup group can serve as a service VRRP backup group and thus be bound to another mVRRP backup group.
- C. One service VRRP backup group can be bound to only one mVRRP backup group.
- D. After multiple service VRRP backup groups are bound to an mVRRP backup group, the mVRRP backup group determines the status of all the service VRRP backup groups by sending VRRP packets. This can reduce the number of VRRP packets to be sent and improve the packet processing efficiency.

Correct Answer: B

Section: (none)

Explanation

Explanation/Reference:

QUESTION 207

Which of the following statements about VRRP are true? (Select 3 Answers)

- A. VRRP is a redundancy protocol designed for a multicast- or broadcast-capable LAN such as the Ethernet. VRRP ensures that traffic is switched to another

router when the next-hop router for a host on the LAN fails. This guarantees the reliability and non-stop forwarding of services.

- B. In VRRP, two virtual router ID and a virtual IP address need to be configured on a router to generate a virtual MAC address. A virtual router is formed.
- C. Hosts on a network can communication with a virtual router without knowing any information about physical routers on the network.
- D. A virtual router consists of a master router and several backup routers. The master router forwards packets. When the master router fails, a backup router takes over as the master router.

Correct Answer: ACD

Section: (none)

Explanation

Explanation/Reference:

QUESTION 208

Which of the following statements about VRRP are true? (Select 3 Answers)

- A. VRRP determines the roles of routers (master or backup) in a virtual router based on their priorities.
- B. If a backup router works in non-preemption mode and has a higher priority than the master router, it will become the master router unless the master router fails.
- C. After a backup router in preemption mode receives a VRRP packet from the master router, it compares its priority with the priority carried in the VRRP packet. If its priority is higher than the priority of the master router, it preempts to be the master router; if not, it remains in the backup state.
- D. If two routers competing for the master router have the same priority, the router with a higher interface IP address becomes the master router.

Correct Answer: ACD

Section: (none)

Explanation

Explanation/Reference:

QUESTION 209

Which of the following statements about the master router in a VRRP backup group are true? (Select 3 Answers)

- A. It regularly sends VRRP packets.
- B. It uses a virtual MAC address to respond to ARP requests sent from a virtual IP address.
- C. It forwards an IP packet whose destination MAC address is a physical MAC address.
- D. It changes to the Backup state if the priority carried in the received packet is greater than its own priority.

Correct Answer: ABD

Section: (none)

Explanation

Explanation/Reference:

QUESTION 210

Which of the following statements about a backup router in a VRRP backup group are true? (Select 3 Answers)

- A. It receives VRRP packets from the master router and determines whether the master router is functioning properly.
- B. It does not respond to the ARP requests sent from a virtual IP address.
- C. It forwards an IP packet whose destination MAC address is a virtual MAC address.
- D. It discards an IP packet whose destination IP address is a virtual IP address.

Correct Answer: ABD

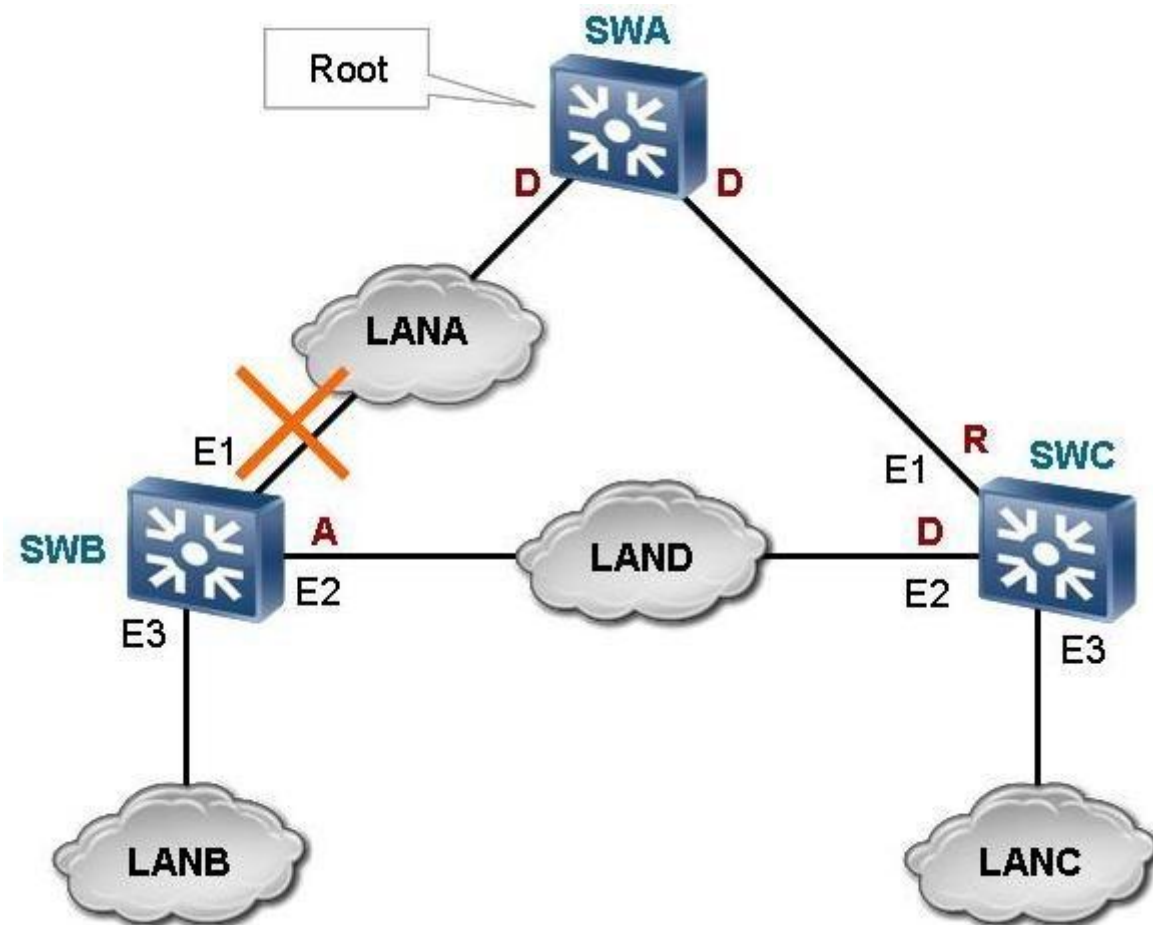
Section: (none)

Explanation

Explanation/Reference:

QUESTION 211

Which of the following statements about VRRP fast switchover are true? (Select 3 Answers)



- A. When VRRP is used to track a BFD or EFM session, if a tracked BFD or EFM session status changes, the BFD or EFM module notifies the VRRP module of the change. After that, the VRRP module implements a rapid master/backup switchover.
- B. A VRRP backup group can monitor a peer BFD session, a link BFD session, and a normal BFD session at the same time. In addition, it can monitor the interface status.
- C. When the status of a BFD session detected by a VRRP backup group changes, the master/slave switchover of routers in the VRRP backup group occurs by changing priorities of the master and slave routers.
- D. A VRRP backup group can monitor several BFD sessions at the same time. The status changes of these BFD sessions affect each other.

Correct Answer: ABC

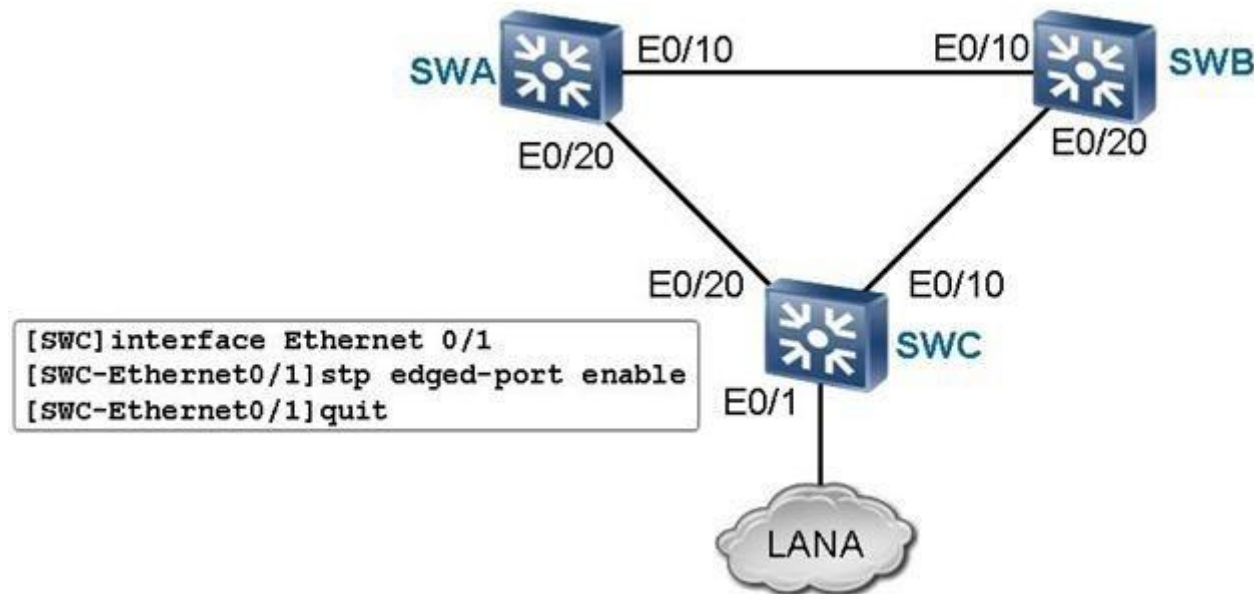
Section: (none)

Explanation

Explanation/Reference:

QUESTION 212

Which of the following statements about the mVRRP backup group are true? (Select 3 Answers)



- A. An mVRRP backup group can be bound to other service VRRP backup groups.
- B. An mVRRP backup group cannot be bound to multiple service VRRP backup groups but can function as a service VRRP group to be bound to another mVRRP group.
- C. After a VRRP backup group member is bound to an mVRRP backup group, the state machine of the VRRP backup group member becomes dependent. That is, the VRRP backup group member deletes the protocol timer, and no longer sends or receives packets, and implements its state machine by directly copying the status of the mVRRP backup group.
- D. A VRRP backup group member can be bound to only one mVRRP backup group.

Correct Answer: ACD

Section: (none)

Explanation

Explanation/Reference:

QUESTION 213

Which of the following statements about a backup router in a VRRP backup group are true? (Select 3 Answers)

- A. It receives VRRP packets from the master router and determines whether the master router is functioning properly.
- B. It responds to the ARP requests sent from a virtual IP address.
- C. It discards an IP packet whose destination MAC address is a virtual MAC address.
- D. It discards an IP packet whose destination IP address is a virtual IP address.

Correct Answer: ACD

Section: (none)

Explanation

Explanation/Reference:

QUESTION 214

The reliability of a product or a system is generally evaluated with the two indicators of Mean Time to Repair (MTTR) and Mean Time Between Failures (MTBF).

- A. True
- B. False

Correct Answer: A

Section: (none)

Explanation

Explanation/Reference:

QUESTION 215

Availability identifies the utility of a system. The availability of the system increases if the MTBF decreases or the MTTR increases.

- A. True
- B. False

Correct Answer: B

Section: (none)

Explanation

Explanation/Reference:

QUESTION 216

The formula for calculating the MTTR is: $MTTR = \text{Fault detection time} + \text{Board replacement time} + \text{System initialization time} + \text{Link recovery time} + \text{Route convergence time} + \text{Forwarding recovery time}$. The smaller the addends are, the smaller the MTTR is and the higher the device availability is.

A. True

B. False

Correct Answer: A

Section: (none)

Explanation

Explanation/Reference:

QUESTION 217

None Stop Forwarding (NSF) is an important high availability (HA) technology. It ensures the normal data forwarding even in the case of a fault in the control plane of the router, protecting key services on the network from interruption.

A. True

B. False

Correct Answer: A

Section: (none)

Explanation

Explanation/Reference:

QUESTION 218

None Stop Forwarding (NSF) is an important HA technology. It keeps neighbor relationships unchanged even in the case of a fault in the control plane of the router, protecting key services on the network from interruption.

- A. True
- B. False

Correct Answer: B

Section: (none)

Explanation

Explanation/Reference:

QUESTION 219

The NSF function takes effect only after the GR function is enabled on two directly connected routers that use static routes for communication between users in different network segments.

- A. True
- B. False

Correct Answer: B

Section: (none)

Explanation

Explanation/Reference:

QUESTION 220

During the GR of dynamic routing protocols (such as OSPF and BGP) neighbor relationships remain unchanged.

- A. True
- B. False

Correct Answer: B

Section: (none)

Explanation

Explanation/Reference:

QUESTION 221

BFD (a fast detection technology) enabled on a device quickly identifies a fault and reports the fault to the appropriate protocol module after detecting a master/slave switchover on the neighboring device. This causes the protocol module to quit the GR. As such, BFD and GR cannot be used together.

- A. True
- B. False

Correct Answer: B

Section: (none)

Explanation

Explanation/Reference:

QUESTION 222

BFD is a common fast detection technology. It implements the fast switchover function only when collaborating with other fast switchover technologies.

- A. True
- B. False

Correct Answer: A

Section: (none)

Explanation

Explanation/Reference:

QUESTION 223

BFD detects the link status immediately after a BFD session is set up. If BFD parameters are modified or deleted at one end of the BFD session, the other end will consider such a modification or deletion as a fault and services will be then affected. Therefore, exercise caution when modifying or deleting BFD parameters.

- A. True
- B. False

Correct Answer: B

Section: (none)

Explanation

Explanation/Reference:

QUESTION 224

BFD packets are classified into control packets and echo packets.

- A. True
- B. False

Correct Answer: A

Section: (none)

Explanation

Explanation/Reference:

QUESTION 225

A BFD session is set up following the three-way handshake during which parameters for the BFD session are negotiated. After the BFD session is set up, modifying the detection time parameters does not take effect.

- A. True
- B. False

Correct Answer: B

Section: (none)

Explanation

Explanation/Reference:

QUESTION 226

When a local BFD session in the Init state receives packets with the Stat field being Down, the local BFD session changes its status to Down.

- A. True
- B. False

Correct Answer: A

Section: (none)

Explanation

Explanation/Reference:

QUESTION 227

When recovering from a fault, the active link in a Smart Link group remains blocked and traffic is not switched back to it. In this way, traffic keeps stable.

- A. True
- B. False

Correct Answer: A

Section: (none)

Explanation

Explanation/Reference:

QUESTION 228

The dynamic LACP requires devices at both ends to exchange protocol packets, while the static LACP does not require so.

- A. True
- B. False

Correct Answer: B

Section: (none)

Explanation

Explanation/Reference:

QUESTION 229

If the Open message sent from a BGP speaker has the GR capability field but no <AFI, SAFI> field, the BGP speaker has no backup forwarding table. Such a BGP speaker functions as only the GR helper to help its neighbors complete the GR process.

- A. True
- B. False

Correct Answer: A

Section: (none)

Explanation

Explanation/Reference:

QUESTION 230

After the session is re-established between the BGP GR helper and its neighbor, original forwarding entries are deleted.

- A. True
- B. False

Correct Answer: B

Section: (none)

Explanation

Explanation/Reference:

QUESTION 231

Which of the following is not the BFD fault detection mode?

- A. Asynchronous mode
- B. Demand mode
- C. Echo mode
- D. Peer mode

Correct Answer: D

Section: (none)

Explanation

Explanation/Reference:

QUESTION 232

Which LSA is used by OSPF to implement GR?

- A. Type-3 LSA
- B. Type-5 LSA
- C. Type-9 LSA
- D. Type-10 LSA

Correct Answer: C

Section: (none)

Explanation

Explanation/Reference:

QUESTION 233

BFD control packets are encapsulated in UDP packets for transmission. Which of the following is the destination port number for single-hop BFD control packets?

- A. 3784
- B. 4784
- C. 5784
- D. 6784

Correct Answer: A

Section: (none)

Explanation

Explanation/Reference:

QUESTION 234

Which of the following BFD versions is supported in VRP 5.7?

- A. Version 0
- B. Version 1
- C. Version 2
- D. Version 3

Correct Answer: B

Section: (none)

Explanation

Explanation/Reference:

QUESTION 235

Which of the following statements about different detection intervals at both ends of a BFD session is true?

- A. The BFD session can be set up and the greater detection interval is used after negotiation.
- B. The BFD session can be set up and the smaller detection interval is used after negotiation.
- C. The BFD session can be set up and each end sends detection packets at its own interval.
- D. The BFD session cannot be set up.

Correct Answer: A

Section: (none)

Explanation

Explanation/Reference:

QUESTION 236

Which of the following statements about the refreshing mechanism in the case of link switchover in a Smart Link group is false?

- A. MAC and ARP entries are refreshed automatically against traffic.
- B. The Smart Link group uses a new link to send Flush packets.
- C. When the active link recovers from a fault, Flush packets are sent to refresh entries.
- D. When recovering from a fault, the active link remains blocked and traffic is not switched back to it. In this way, traffic keeps stable.

Correct Answer: C

Section: (none)

Explanation

Explanation/Reference:

Topic 4, Volume D

QUESTION 237

Which of the following statements about the Monitor Link group is false?

- A. A Monitor Link group has uplink and downlink interfaces.
- B. A Monitor Link group has one uplink interface and several downlink interfaces.
- C. In a Monitor Link group, the status of the downlink interface changes in accordance with the status of the uplink interface.
- D. The Smart Link group can only serve as a downlink interface.

Correct Answer: D

Section: (none)

Explanation

Explanation/Reference:

QUESTION 238

Which of the following statements about the Smart Link group is false?

- A. A Smart Link group has two interfaces at most. The two interfaces if configured are an active interface and a standby interface.
- B. Among the two interfaces in a Smart Link group, one is in the active state and the other one in the standby state in normal situations.
- C. When the active interface goes down, the Smart Link group automatically blocks it and changes the status of the standby interface to active.
- D. When the active interface recovers from a fault, traffic will be switched back to it immediately.

Correct Answer: D

Section: (none)

Explanation

Explanation/Reference:

QUESTION 239

Assume that the VRID of a VRRP virtual router is 100 and the virtual IP address of the virtual router is 192.168.1.1, which of the following addresses is the virtual MAC address of the virtual router?

- A. 00-00-5E-00-01-64
- B. 00-00-5E-00-01-01
- C. 01-00-5E-00-01-64
- D. 01-00-5E-00-01-01

Correct Answer: A

Section: (none)

Explanation

Explanation/Reference:

QUESTION 240

Which of the following are characteristics of a high availability network? (Select 2 Answers)

- A. Faults seldom occur.
- B. Services can be quickly restored when a fault occurs.
- C. Faults never occur.
- D. Services can only be manually restored when a fault occurs.

Correct Answer: AB

Section: (none)

Explanation

Explanation/Reference:

QUESTION 241

Which of the following statements about the reliability requirement level are true? (Select 3 Answers)

- A. Faults seldom occur in the system software or hardware.
- B. System functions are affected by faults.
- C. System functions are affected by faults but can rapidly recover.
- D. System functions can be ensured by using redundancy design, switchover policy, and high success rate in switchover.

Correct Answer: ACD

Section: (none)

Explanation

Explanation/Reference:

QUESTION 242

Which of the following are end-to-end link protection modes? (Select 3 Answers)

- A. 1: 1
- B. M: N
- C. N: 1
- D. 1+1

Correct Answer: ABD

Section: (none)

Explanation

Explanation/Reference:

QUESTION 243

In VRP 5.7, which of the following dynamic protocols support GR? (Select 3 Answers)

- A. MPLS LDP/RSVP
- B. IS-IS/OSPF
- C. BGP
- D. MSTP

Correct Answer: ABC

Section: (none)

Explanation

Explanation/Reference:

QUESTION 244

Which of the following statements about BFD are true? (Select 3 Answers)

- A. It cannot be used to detect MPLS networks.
- B. It provides low-load and short-duration detection for paths between adjacent forwarding engines.
- C. It provides a unified mechanism for detecting all types of media and BFD-supporting protocols.
- D. It is a bidirectional detection mechanism.

Correct Answer: BCD

Section: (none)

Explanation

Explanation/Reference:

QUESTION 245

Which of the following statements about the setup of a BFD session are true? (Select 3 Answers)

- A. A BFD session can be set up in either static or dynamic mode.
- B. A static BFD session is set up by manually configuring BFD session parameters and delivering requests for setting up a BFD session. BFD session parameters include the local and remote discriminators.
- C. A dynamic BFD session is set up by dynamically allocating local discriminators.
- D. Static and dynamic BFD sessions are not differentiated.

Correct Answer: ABC

Section: (none)

Explanation

Explanation/Reference:

QUESTION 246

Which of the following statements about BFD Echo packets are true? (Select 2 Answers)

- A. The Echo packet format is not defined in BFD.
- B. The Echo packet format is defined in BFD.
- C. Echo packets use UDP destination port number 3785.
- D. Echo packets use UDP destination port number 3784.

Correct Answer: AC

Section: (none)

Explanation

Explanation/Reference:

QUESTION 247

Which of the following statements about BFD control packets are true? (Select 3 Answers)

- A. A BFD control packet is encapsulated in a UDP packet for transmission. Authentication fields in a BFD control packet are optional.
- B. BFD detection is not available in VRP 5.7.
- C. Echo packets use UDP destination port number 3784.
- D. Echo packets use UDP destination port number 3785.

Correct Answer: ABC

Section: (none)

Explanation

Explanation/Reference:

QUESTION 248

Which of the following statements about the BFD asynchronous mode are true? (Select 2 Answers)

- A. The local system regularly sends BFD control packets, and the remote system detects the BFD control packets sent from the local system.
- B. The local system detects the BFD control packets sent by itself.

- C. If one system does not receive any BFD packets from its peer within a detection period, it advertises a session Down event.
- D. Each system confirms its connections with other systems in a particular method. After a BFD session is set up, BFD control packets are no longer sent.

Correct Answer: AC

Section: (none)

Explanation

Explanation/Reference:

QUESTION 249

Which of the following statements about the BFD demand mode are true? (Select 2 Answers)

- A. The local system periodically sends BFD control packets, and the remote system detects the BFD control packets sent from the local system.
- B. The local system detects the BFD control packets sent by itself.
- C. If one system does not receive any BFD packets from its peer within a detection period, it advertises a session Down event.
- D. Each system confirms its connections with other systems in a particular method. After a BFD session is set up, BFD control packets are no longer sent.

Correct Answer: BD

Section: (none)

Explanation

Explanation/Reference:

QUESTION 250

Which of the following statements about the BFD echo function are true? (Select 3 Answers)

- A. The local system sends a series of BFD Echo packets, and the remote system loops the packets back through its forwarding channel.
- B. If the local system receives several consecutive Echo packets, it advertises a session Down event.
- C. The echo function can work together with the asynchronous or demand detection mode.
- D. The echo function can take the place of fault detection by sending BFD control packets.

Correct Answer: ACD

Section: (none)

Explanation

Explanation/Reference:

QUESTION 251

Which of the following statements about a Smart Link group are true? (Select 3 Answers)

- A. Smart Link group consists of a maximum of two interfaces. Where there are two interfaces, one is an active interface, and the other a standby interface.
- B. Of the two interfaces in a Smart Link group, one is active, and the other is standby.
- C. When an active interface goes Down, the Smart Link group automatically blocks it and changes the status of the standby interface to active.
- D. When an active interface recovers, the standby interface is blocked and traffic is switched back to the active interface.

Correct Answer: ABC

Section: (none)

Explanation

Explanation/Reference:

QUESTION 252

Which of the following statements about Flush packets in a Smart Link group are true? (Select 3 Answers)

- A. A Smart Link group sends Flush packets to instruct other devices to update the address table.
- B. Flush packets use IEEE 802.3 encapsulation.
- C. The destination MAC address of Flush packets is an unknown unicast address, which is used to distinguish protocols.
- D. The destination MAC address of Flush packets is a special multicast address, which is used to distinguish protocols.

Correct Answer: ABC

Section: (none)

Explanation

Explanation/Reference:

QUESTION 253

When links are switched in a Smart Link group, which of the following mechanisms can be used to refresh MAC and ARP entries? (Select 3 Answers)

- A. MAC and ARP entries are refreshed automatically with respect to traffic.
- B. The Smart Link group uses a new link to send Flush packets.
- C. MAC entries are refreshed after the aging time expires.
- D. ARP entries are refreshed after the aging time expires

Correct Answer: ABC

Section: (none)

Explanation

Explanation/Reference:

QUESTION 254

Which of the following statements about link aggregation are true? (Select 3 Answers)

- A. Link aggregation binds a group of physical interfaces together as a logical interface to increase the bandwidth and reliability.
- B. Link aggregation complies with IEEE 802.3az.
- C. The logical link formed by bundling multiple physical links together is called a link aggregation group (LAG) or a trunk.
- D. Active and inactive interfaces exist in link aggregation. Active interfaces forward data, whereas inactive interfaces do not.

Correct Answer: ACD

Section: (none)

Explanation

Explanation/Reference:

QUESTION 255

Which of the following statements about link aggregation are true? (Select 3 Answers)

- A. Link aggregation can be performed in manual load balancing or LACP mode. In manual loading balancing mode, LACP is enabled; in LACP mode, LACP is enabled too.
- B. In manual load balancing mode, all active member interfaces forward data and perform load balancing.
- C. In static LACP mode, the creation of the Eth-Trunk and the addition of member interfaces to the Eth-Trunk are performed manually. Compared with link aggregation in manual load balancing mode, active interfaces in static LACP mode are selected by sending LACP Data Units (LACPDU).
- D. In dynamic LACP mode, the creation of the Eth-Trunk, the addition of member interfaces, and the selection of active interfaces are performed based on LACP negotiation.

Correct Answer: BCD

Section: (none)

Explanation

Explanation/Reference:

QUESTION 256

Which of the following statements about LACP are true? (Select 2 Answers)

- A. It complies with IEEE 802.3az.
- B. A device enabled with LACP exchanges Link Aggregation Control Protocol Data Units (LACPDUs) with its peer.
- C. Devices at both ends determine the active interface according to the interface priority of the active device.

Correct Answer: BC

Section: (none)

Explanation

Explanation/Reference:

QUESTION 257

Which of the following can speed up OSPF fast convergence? (Select 2 Answers)

- A. Configuring dynamic BFD for OSPF
- B. Adjusting the interval at which OSPF calculation is performed
- C. Configuring the interval at which an LSA are retransmitted
- D. Configuring the maximum number of external LSAs in the LSDB

Correct Answer: AB

Section: (none)

Explanation

Explanation/Reference:

QUESTION 258

When the GR Restarter performs the active/standby switchover, the neighbor performs which of the following operations when detecting that a TCP disconnection? (Select 3 Answers)

- A. Keeping the routing tables of various address families advertised by the GR Restarter during negotiation, marking entries in these tables with stale tags, and starting a stale timer
- B. Starting a restart timer.
- C. Clearing all routing entries and forwarding entries related to the GR restarter if the GR restarter fails to re-establish the BGP connection with the neighbor after the restart timer expires.

D. Remaining the neighbor relationship unchanged.

Correct Answer: ABC

Section: (none)

Explanation

Explanation/Reference:

QUESTION 259

A device can be assigned an IP address 192.168.13.175, with the mask being 255.255.255.240.

A. True

B. False

Correct Answer: B

Section: (none)

Explanation

Explanation/Reference:

QUESTION 260

How many Class C networks does the summarized route 192.168.134.0/22 cover?

A. 2

B. 4

C. 8

D. 16

Correct Answer: B

Section: (none)

Explanation

Explanation/Reference:

QUESTION 261

The IP address 0.0.0.0 indicates ().

- A. Network address
- B. Broadcast address of specially designated network segment
- C. All networks
- D. Broadcast address of all nodes of local network segment

Correct Answer: C

Section: (none)

Explanation

Explanation/Reference:

QUESTION 262

What is the network address for 190.233.27.13/16?

- A. 190.0.0.0
- B. 190.233.0.0
- C. 190.233.27.0
- D. 190.233.27.1

Correct Answer: B

Section: (none)

Explanation

Explanation/Reference:

QUESTION 263

Which of the following address types are reserved for multicast use?

- A. Class A
- B. Class B
- C. Class E
- D. Class D

Correct Answer: D

Section: (none)

Explanation

Explanation/Reference:

QUESTION 264

Which is the default network mask length of 219.25.23.56?

- A. 8
- B. 16
- C. 24
- D. 32

Correct Answer: C

Section: (none)

Explanation

Explanation/Reference:

QUESTION 265

What is the maximum bits of a Class B address can be used for subnet?

- A. 8
- B. 14
- C. 16
- D. 22

Correct Answer: B

Section: (none)

Explanation

Explanation/Reference:

QUESTION 266

The subnet mask of a class A address is 255.255.240.0, how many bits are used to divide subnet?

- A. 4
- B. 5

- C. 9
- D. 12

Correct Answer: D

Section: (none)

Explanation

Explanation/Reference:

QUESTION 267

What is the maximum bits of a Class C address can be used for subnet?

- A. 6
- B. 8
- C. 12
- D. 14

Correct Answer: A

Section: (none)

Explanation

Explanation/Reference:

QUESTION 268

How many hosts are available per subnet if apply a /21 mask to the class B network?

- A. 510
- B. 512
- C. 1022
- D. 2046

Correct Answer: D

Section: (none)

Explanation

Explanation/Reference:

QUESTION 269

For a network like 175.25.128.0/19, the mask value is?

- A. 255.255.0.0
- B. 255.255.224.0
- C. 255.255.24.0
- D. Different based on the address type

Correct Answer: B

Section: (none)

Explanation

Explanation/Reference:

QUESTION 270

The network 154.27.0.0 without any subnet can support() hosts?

- A. 254
- B. 1024
- C. 65,534
- D. 16,777,206

Correct Answer: C

Section: (none)

Explanation

Explanation/Reference:

QUESTION 271

One class B network 155.16.0.0, the mask is 255.255.255.192. then subnet quantity available is () , the host quantity in every subnet at most is ()

- A. 512 126
- B. 1024 64
- C. 1024 62
- D. 256 254

E. 192 254

Correct Answer: C

Section: (none)

Explanation

Explanation/Reference:

QUESTION 272

For network segment 192.168.2.16/28, how many hosts it can hold at most?

A. 16

B. 8

C. 15

D. 14

E. 7

Correct Answer: D

Section: (none)

Explanation

Explanation/Reference:

QUESTION 273

A company reserves the network segment 172.29.100.0/26 for some remote small-scale sites and each site has 5 IP devices to connect to this network segment. Which of the following VLSM masks can be used to provide minimum number of hosts to meet such a requirement?

A. /27

B. /28

C. /29

D. /30

Correct Answer: C

Section: (none)

Explanation

Explanation/Reference:

QUESTION 274

If the network address 172.29.100.0/16 is subnetted, which of the following valid VLSM subnets can be obtained?

- A. 172.29.100.8/28
- B. 172.29.100.32/28
- C. 172.29.100.60/28
- D. 172.29.100.104/28

Correct Answer: B

Section: (none)

Explanation

Explanation/Reference:

QUESTION 275

A router receives a data packet, with the destination address being 195.26.17.4. Which subnet is this address in?

- A. 195.26.0.0/21
- B. 195.26.16.0/20
- C. 195.26.8.0/22
- D. 195.26.20.0/22

Correct Answer: B

Section: (none)

Explanation

Explanation/Reference:

QUESTION 276

The address space 172.28.100.0/24 is currently used. If the subnet mask 172.28.100.0/30 is used to divide this address space into several subnets serving WAN links, how many subnets in total can the address space be divided into?

- A. 30
- B. 64
- C. 126

D. 254

Correct Answer: B

Section: (none)

Explanation

Explanation/Reference:

QUESTION 277

A Class C network needs to be divided into five subnets and each subnet needs to contain a maximum of 20 hosts. Which of the following subnet masks is used?

A. 255.255.255.192

B. 255.255.255.240

C. 255.255.255.224

D. 255.255.255.248

Correct Answer: C

Section: (none)

Explanation

Explanation/Reference:

QUESTION 278

Which of the following statements about VLSM characteristics are true? (Select 2 Answers)

A. VLSM supports both IPv4 and IPv6.

B. VLSM supports overlapped address ranges.

C. VLSM provides more proper route summarization information in the routing table.

D. VLSM allows a subnet to be divided into smaller subnets.

Correct Answer: CD

Section: (none)

Explanation

Explanation/Reference:

QUESTION 279

A network administrator needs to construct a small-scale network containing only 22 hosts and the ISP assigns only one public IP address as the egress address. Which of the following addresses can be used by the network administrator to plan the network?

- A. 10.11.12.16/28
- B. 172.31.255.128/27
- C. 192.168.1.0/28
- D. 209.165.202.128/27

Correct Answer: B

Section: (none)

Explanation

Explanation/Reference:

QUESTION 280

Which of the following IP addresses are network addresses? (Select 2 Answers)

- A. 64.104.3.7/28
- B. 192.168.12.64/26
- C. 192.135.12.191/26
- D. 198.18.12.16/28

Correct Answer: BD

Section: (none)

Explanation

Explanation/Reference:

QUESTION 281

What are the advantages of subnet division? (Select 2 Answers)

- A. Isolating broadcast traffic
- B. Improving network QoS
- C. Increasing the IP address usage
- D. Improving network reliability

Correct Answer: AC

Section: (none)

Explanation

Explanation/Reference:

QUESTION 282

Routes 172.1.12.0/24, 172.1.13.0/24, 172.1.14.0/24, and 172.1.15.0/24 can be summarized into route 172.1.8.0/21.

A. True

B. False

Correct Answer: A

Section: (none)

Explanation

Explanation/Reference:

QUESTION 283

Assume that the subnet mask is 255.255.255.248. Which of the following addresses are valid host addresses? (Select 3 Answers)

A. 192.168.200.87

B. 196.123.142.190

C. 223.168.210.100

D. 220.100.100.154

Correct Answer: BCD

Section: (none)

Explanation

Explanation/Reference:

QUESTION 284

Which of the following addresses can be used on a public network? (Select 2 Answers)

A. 172.30.0.1/16

- B. 127.254.11.15/16
- C. 172.15.12.7/16
- D. 193.168.10.4/16

Correct Answer: CD

Section: (none)

Explanation

Explanation/Reference:

QUESTION 285

Which of the following rules should a network administrator obey when the network administrator uses the VLSM technology to plan subnets? (Select 3 Answers)

- A. A subnet is composed of all summarized routes.
- B. A subnet can address a host or be further subnetted.
- C. The Update message of a routing protocol in use must carry subnet mask information.
- D. The summarized networks must have the same high-order bit.

Correct Answer: BCD

Section: (none)

Explanation

Explanation/Reference:

QUESTION 286

A company has four departments. Department A has 80 PCs, Departments B and C both have 20 PCs, and Department D has 30 PCs. Assuming the IP address 192.168.1.0/x is used, which of the following statements are true if the VLSM technology is used to divide subnets? (Select 2 Answers)

- A. Plan subnet 192.168.1.0/25 for Department A. The range of host addresses is 1 to 126.
- B. Plan subnet 192.168.1.128/27 for Department B. The range of host addresses is 129 to 159.
- C. Plan subnet 192.168.1.160/27 for Department C. The range of host addresses is 161 to 190.
- D. Plan subnet 192.168.1.192/27 for Department D. The range of host addresses is 192 to 222.

Correct Answer: AC

Section: (none)

Explanation

Explanation/Reference:

QUESTION 287

OSPF supports the combination of a group of network segments. Such a group is also called an area. In other words, an area is a set of network segments.

- A. True
- B. False

Correct Answer: A

Section: (none)

Explanation

Explanation/Reference:

QUESTION 288

Different network segments can be in the same OSPF area and the same network segment can be in different OSPF areas.

- A. True
- B. False

Correct Answer: B

Section: (none)

Explanation

Explanation/Reference:

QUESTION 289

OSPF supports two authentication modes: area authentication and interface authentication. The two authentication modes cannot be configured at the same time.

- A. True
- B. False

Correct Answer: B

Section: (none)

Explanation

Explanation/Reference:

QUESTION 290

Each router running OSPF has a router ID. A router ID is a 32-bit integer and uniquely identifies a router. Hence, even of routers in different ASs, the router IDs must be different.

- A. True
- B. False

Correct Answer: B

Section: (none)

Explanation

Explanation/Reference:

QUESTION 291

The most remarkable characteristic of OSPF is that OSPF supports the link-state algorithm.

- A. True
- B. False

Correct Answer: A

Section: (none)

Explanation

Explanation/Reference:

right answer.

QUESTION 292

OSPF directly runs over the IP protocol. Its IP protocol number is 89.

- A. True
- B. False

Correct Answer: A

Section: (none)

Explanation

Explanation/Reference:

QUESTION 293

If the Router Priority of a router is set to 0, this router cannot be elected as a DR or a BDR.

- A. True
- B. False

Correct Answer: A

Section: (none)

Explanation

Explanation/Reference:

QUESTION 294

On a non-broadcast network, OSPF has two operating modes: NBMA and P2MP.

- A. True
- B. False

Correct Answer: A

Section: (none)

Explanation

Explanation/Reference:

QUESTION 295

By default, the cost of an OSPF interface is related to interface bandwidth. The algorithm for calculating the cost is: $\text{bandwidth-reference}/\text{bandwidth}$.

- A. True
- B. False

Correct Answer: A

Section: (none)

Explanation

Explanation/Reference:

QUESTION 296

A Router ID is optional in the OSPF configuration.

- A. True
- B. False

Correct Answer: A

Section: (none)

Explanation

Explanation/Reference:

100% fit answer.

QUESTION 297

The value of ospfdr-priority ranges from 0 to 255 and the default value is 64.

- A. True
- B. False

Correct Answer: B

Section: (none)

Explanation

Explanation/Reference:

QUESTION 298

A broadcast and an NBMA network, each having two or more routers, must both have a DR and a BDR.

- A. True
- B. False

Correct Answer: B

Section: (none)

Explanation

Explanation/Reference:

QUESTION 299

Which of the following network or link type is not the basic network or link type defined in OSPF?

- A. P2P
- B. P2MP
- C. Broadcast
- D. Virtual link

Correct Answer: D

Section: (none)

Explanation

Explanation/Reference:

QUESTION 300

The vlink-peer command is used to specify a peer IP address for setting up a virtual link.

- A. True
- B. False

Correct Answer: B

Section: (none)

Explanation

Explanation/Reference:

QUESTION 301

Different types of networks cannot establish an adjacency in the Full state.

- A. True
- B. False

Correct Answer: B

Section: (none)

Explanation

Explanation/Reference:

QUESTION 302

On a broadcast network or an NBMA network, not all neighbors need to set up adjacencies. Therefore, the concept about the adjacency is applicable to only the broadcast network or the NBMA network.

- A. True
- B. False

Correct Answer: B

Section: (none)

Explanation

Explanation/Reference:

QUESTION 303

When two routers exchange LSDB information by exchanging DD packets, a master/slave relationship is established between the two routers. The router with a larger router ID is the master.

- A. True
- B. False

Correct Answer: A

Section: (none)

Explanation

Explanation/Reference:

QUESTION 304

If both the ospf cost and bandwidth-reference commands are configured on an interface, the value set in the ospf cost command is used as the cost of the interface.

- A. True
- B. False

Correct Answer: A

Section: (none)

Explanation

Explanation/Reference:

QUESTION 305

The bandwidth-reference parameter is measured in Mbit/s.

- A. True
- B. False

Correct Answer: A

Section: (none)

Explanation

Explanation/Reference:

QUESTION 306

Which statement about OSPF is false?

- A. The router with a higher Router Priority also has a higher DR election priority.
- B. When two routers have the same Router Priorities, the router with a larger Router ID has a higher DR election priority.
- C. If a DR fails, the BDR automatically takes over as the DR and a new BDR is elected.
- D. If a BDR fails, the DR will not take over as the BDR and awaits the fault recovery of the BDR. No new BDR will be elected.

Correct Answer: D

Section: (none)

Explanation

Explanation/Reference:

QUESTION 307

Which of the following statements about OSPF authentication are false? (Select 2 Answers)

- A. Entering a password in cipher text is allowed.
- B. The ospf authentication-mode md5 1 huawei command and the ospf authentication-mode md5 1 plain huawei command have the same function.
- C. If passwords are configured for both an area and an interface, the password configured for the area is used.
- D. The ospf authentication-mode simple huawei command and the ospf authentication-mode simple plain huawei command have the same function.

Correct Answer: BC

Section: (none)

Explanation

Explanation/Reference:

QUESTION 308

Which of the following statements about route summary are true? (Select 2 Answers)

- A. Advertise is the default parameter of the abr-summary command. If neither advertise nor not- advertise is specified in the abr-summary command, advertise is used.
- B. Not-advertise is the default parameter of the abr-summary command. If neither advertise nor not-advertise is specified in the abr-summary command, not-advertise is used.
- C. The abr-summary command is run in the OSPF view.
- D. The asbr-summary command is run in the OSPF view.

Correct Answer: AD

Section: (none)

Explanation

Explanation/Reference:

QUESTION 309

Which of the following statements about a neighbor state machine is true?

- A. The Attempt state appears only on an NBMA network or a broadcast network.
- B. The Attempt state appears only on an NBMA network or a P2MP network.
- C. LSR packets can be sent in the Exchange state.
- D. The Full state indicates that LSDB synchronization is complete. No LSDB information will be exchanged.

Correct Answer: C

Section: (none)

Explanation

Explanation/Reference:

QUESTION 310

The NBMA mode requires all the routers in the network to be fully connected; otherwise, it does not function.

- A. True
- B. False

Correct Answer: B

Section: (none)

Explanation

Explanation/Reference:

QUESTION 311

What are the OSPF message types? (Select 4 Answers)

- A. Hello
- B. Database Description
- C. Link State Request
- D. Link State Update
- E. Link State Advertisement

Correct Answer: ABCD

Section: (none)

Explanation

Explanation/Reference:

QUESTION 312

Which statement about OSPF is false?

- A. Hello packets are used to discover and maintain neighbor relationships. On a broadcast network or an NBMA network, Hello packets can also be used to elect a DR and a BDR.
- B. DD packets describe summary LSDB information by carrying LSA headers.
- C. The intervals at which two routers send Hello packets must be consistent; otherwise, a neighbor relationship cannot be established between them.
- D. DD packets contain headers of all LSAs for periodic LSDB synchronization between OSPF neighbors.

Correct Answer: D

Section: (none)

Explanation

Explanation/Reference:

QUESTION 313

Which statements about OSPF packets are true? (Select 3 Answers)

- A. Hello packets can be sent after OSPF is enabled on an interface.
- B. LS Request packets are sent only after an adjacency is established.
- C. LS Update packets contain detailed LSA information for LSDB synchronization.
- D. LS Update packets are sent only after an adjacency is established.

Correct Answer: ABC

Section: (none)

Explanation

Explanation/Reference:

QUESTION 314

Which of the following statements about state transition are true? (Select 3 Answers)

- A. The neighbor state machine transitions from the Loading state to the Full state if a LoadingDone event occurs.
- B. The neighbor state machine transitions from the Exstart state to the Full state if a NegotiationDone event occurs.
- C. The neighbor state machine transitions from the Exchange state to the Full state if an ExchangeDone event occurs.
- D. The neighbor state machine transitions from the Exchange state to the Loading state if an ExchangeDone event occurs.

Correct Answer: ACD

Section: (none)

Explanation

Explanation/Reference:

QUESTION 315

Which of the following statements are true? (Select 3 Answers)

- A. The neighbor state machine can transition from the Down state to the Exchange state.
- B. The neighbor state machine can transition from the Down state to the Init state.
- C. The neighbor state machine can transition from the Init state to the Exstart state.
- D. The neighbor state machine can transition from the Init state to the 2-Way state.

Correct Answer: BCD

Section: (none)

Explanation

Explanation/Reference:

QUESTION 316

An OSPF neighbor relationship fails to be established and the display ospf error command output is as follows. Which of the following is the probable cause?

- A. Router IDs conflict.
- B. Area IDs are mismatched.
- C. Network masks are inconsistent.
- D. Authentication types are inconsistent.

Correct Answer: B

Section: (none)

Explanation

Explanation/Reference:

QUESTION 317

An OSPF neighbor relationship fails to be established and the display ospf error command output is as follows. Which of the following is the possible cause?

- A. Router IDs conflict.
- B. Area IDs are mismatched.
- C. Network masks are inconsistent.
- D. Authentication types are inconsistent.

Correct Answer: D

Section: (none)

Explanation

Explanation/Reference:

QUESTION 318

An OSPF neighbor relationship fails to be established and the display ospf error command output is as follows.
Which of the following is the possible cause?

- A. Router IDs conflict.
- B. Area IDs are mismatched.
- C. Network masks are inconsistent.
- D. Authentication passwords are inconsistent.

Correct Answer: D

Section: (none)

Explanation

Explanation/Reference:

QUESTION 319

An OSPF neighbor relationship fails to be established and the display ospf error command output is as follows.
Which of the following is the possible cause?

- A. Router IDs conflict.
- B. Area IDs are mismatched.
- C. Network masks are inconsistent.
- D. Authentication types are inconsistent.

Correct Answer: A

Section: (none)

Explanation

Explanation/Reference:

QUESTION 320

An OSPF neighbor relationship fails to be established and the display ospf error command output is as follows.
Which of the following is the possible cause?

- A. Router IDs conflict.
- B. Area IDs are mismatched.
- C. Network masks are inconsistent.
- D. Authentication types are inconsistent.

Correct Answer: C

Section: (none)

Explanation

Explanation/Reference:

QUESTION 321

Which of the following statements are correct regarding Network LSA in OSPF network? (Select 2 Answers)

- A. Network LSA is generated by ABR.
- B. Only the router which connects NBMA or Broadcast Network may generate Network LSA.
- C. DR uses Network LSA to describe routers that have established adjacency relation with it in the network.
- D. Network LSA is flooded in the whole AS.

Correct Answer: BC

Section: (none)

Explanation

Explanation/Reference:

QUESTION 322

Which of the followings are OSPF packet type? (Select 3 Answers)

- A. LSA
- B. LS Request
- C. LSP
- D. LS Update
- E. LS Ack

Correct Answer: BDE

Section: (none)

Explanation

Explanation/Reference:

QUESTION 323

Which of the following elements together uniquely identify a LSA? (Select 3 Answers)

- A. LS type
- B. Link state ID
- C. Advertising Router
- D. LS Sequence number

Correct Answer: ABC

Section: (none)

Explanation

Explanation/Reference:

QUESTION 324

Which of the following statements are correct regarding how OSPF detects old and duplicate LSAs? (Select 3 Answers)

- A. The smaller the sequence number, the more recent the LSA.
- B. The smaller the LS age, the more recent the LSA.
- C. When router generates a new LSA at the first time, it will use 0x80000001 as the sequence number.
- D. An LSA can be flushed from routing domain by setting its LSA age to Maxage.

Correct Answer: BCD

Section: (none)

Explanation

Explanation/Reference:

QUESTION 325

ABRs of a Stub area do not flood Type-5 and Type-4 LSAs to the Stub area. Therefore, the Stub area does not have the external AS routing capability. ABRs of the Stub area advertise a default route to the stub area to guide packet forwarding to the external of the AS.

- A. True
- B. False

Correct Answer: A

Section: (none)

Explanation

Explanation/Reference:

QUESTION 326

The ABR in a Totally Stubby area will not advertise Type-3, Type-4, and Type-5 LSAs to the Totally Stubby area. Instead, the ABR will advertise a default route to the Totally Stubby area to guide forwarding of packets destined for other areas.

- A. True
- B. False

Correct Answer: A

Section: (none)

Explanation

Explanation/Reference:

QUESTION 327

Different from a Stub area, an NSSA supports Type-5 LSAs.

- A. True
- B. False

Correct Answer: B

Section: (none)

Explanation

Explanation/Reference:

QUESTION 328

Only Router-LSAs and Network-LSAs are involved in intra-area route calculations.

- A. True
- B. False

Correct Answer: A

Section: (none)

Explanation

Explanation/Reference:

QUESTION 329

ABRs advertise link status information about connected non-backbone areas to the backbone area. The backbone area then advertises the routing information to other non-backbone areas. Link status information about the backbone area cannot be advertised to non-backbone areas.

- A. True
- B. False

Correct Answer: B

Section: (none)

Explanation

Explanation/Reference:

QUESTION 330

What is the link ID of an ASBR-Summary-LSA?

- A. OSPF Router ID of an LSA's originator
- B. Port IP address of the DR on the described network segment
- C. Address of the destination network segment
- D. Router ID of the destination ASBR

Correct Answer: D

Section: (none)

Explanation

Explanation/Reference:

QUESTION 331

Which of the following Statement is false?

```
[RTA]display ospf peer
OSPF Process 1 with Router ID 1.1.1.1
Neighbors
Area 0.0.0.0 interface 10.1.1.1(Ethernet0/0)'s neighbor(s)
RouterID: 2.2.2.2    Address: 10.1.1.2
State: Full  Mode: Nbr is Master  Priority: 1
DR: 10.1.1.1  BDR: 10.1.1.2
Dead timer expires in 35s
Neighbor has been up for 04:35:02
```

- A. The OSPF Router ID of the local router is 1.1.1.1.
- B. The OSPF Router ID of the neighbor is 2.2.2.2.
- C. The OSPF Router ID of the neighbor is larger and thus the neighbor acts as a DR.
- D. The local router acts as slave.

Correct Answer: C

Section: (none)

Explanation

Explanation/Reference:

QUESTION 332

Which of the following statements about Stub areas is false?

- A. An AS-external-LSA cannot be advertised to a Stub area.
- B. The ABR in the Stub area generates a default route to guide forwarding of packets destined for other areas.
- C. A Transit area cannot be configured as a Stub area.
- D. Any area can be configured as a Stub area.

Correct Answer: D

Section: (none)

Explanation

Explanation/Reference:

QUESTION 333

Which of the following statements about Stub areas is false?

- A. The difference between a Stub area and a Totally Stubby area is that the Totally Stubby area cannot contain summary-LSAs.
- B. The ABR in the Stub area generates a default route to guide forwarding of packets destined for other area.
- C. A Transit area cannot be configured as a Stub area.
- D. Any Stub area can be configured as a Totally Stubby area.

Correct Answer: A

Section: (none)

Explanation

Explanation/Reference:

QUESTION 334

Which of the following statements is false?

- A. A Router-LSA is used to describe the local link status information of a router.
- B. A Network-LSA is used to describe the link status information of a broadcast network or an NBMA network segment.
- C. A virtual link is a virtual adjacency in the backbone area (Area 0).
- D. An AS-External-LSA describes how to reach an ASBR.

Correct Answer: D

Section: (none)

Explanation

Explanation/Reference:

QUESTION 335

Which of the following statements is false?

- A. An ABR maintains an LSDB for each area. There are many LSDBs on an ABR.
- B. The metric of an ASE LSA can be specified when an external route is imported. The default value is 1.

- C. The external routing information carries a Tag label for transmitting additional information of the route. It is commonly used in a routing policy. The default value of the Tag label is 0.
- D. The Link State ID in an ASBR-Summary-LSA is the Router ID of the ASBR.

Correct Answer: C

Section: (none)

Explanation

Explanation/Reference:

QUESTION 336

Which of the following statements about NSSA commands is false?

- A. If the default-route-advertise parameter is set, a Type-7 default route is generated.
- B. The no-import-route parameter is used to prevent the importing of AS external routes in the form of Type-7 LSAs into an NSSA.
- C. The no-summary parameter is used to prevent the advertisement of Type-3 and Type-4 LSAs in an area.
- D. The set-n-bit parameter indicates that an N-bit will be set in a DD packet.

Correct Answer: A

Section: (none)

Explanation

Explanation/Reference:

Topic 5, Volume E

QUESTION 337

Which of the following statements is false?

- A. Each OSPF router uses only one Router-LSA to describe the status of local links in an area.
- B. Link types described by a Router-LSA include P2P, P2MP, TransNet, and StubNet.
- C. A Network-Summary-LSA describes the metric of the route from an ABR to a destination network segment.
- D. Routing information can be exchanged between a backbone area and a non-backbone area but cannot be exchanged between two non-backbone areas.

Correct Answer: B

Section: (none)

Explanation

Explanation/Reference:

QUESTION 338

Which of the following LSAs are flooded within a single area? (Select 3 Answers)

- A. Router LSA
- B. Network LSA
- C. Summary LSA
- D. AS External LSA

Correct Answer: ABC

Section: (none)

Explanation

Explanation/Reference:

QUESTION 339

Which of the following statements about an AS-External-LSA are true? (Select 3 Answers)

- A. The Link State ID field specifies the network segment address for an advertised destination.
- B. The Advertising Router field specifies the Router ID of an ASBR.
- C. The Net mask field specifies the network mask of an advertised destination.
- D. The Link State ID and Advertising Router fields are used together to uniquely identify an AS- External-LSA.

Correct Answer: ABC

Section: (none)

Explanation

Explanation/Reference:

QUESTION 340

Which of the following statements are false? (Select 3 Answers)

- A. An ASBR-Summary-LSA describes the route to an ASBR and is flooded within an AS.
- B. An ASE-LSA describes the route to an external AS and is flooded to an external AS.
- C. An AS-External-LSA does not belong to any specific area.
- D. The metric of a Type-1 external route is the AS external metric only.

Correct Answer: ABD

Section: (none)

Explanation

Explanation/Reference:

QUESTION 341

Which of the following statements is false?

- A. The metric of a Type-1 external route is the sum of the AS internal metric (metric to reach an ASBR) and the AS external metric (metric from the ASBR to the destination network).
- B. The metric of a Type-2 external route is only the AS external metric.
- C. The metric of an external route is the sum of the AS external metric and the AS internal metric.
- D. The prerequisite for setting Forwarding Address to a non-zero value is that the next hop of the external route imported into OSPF is within the OSPF routing area.

Correct Answer: C

Section: (none)

Explanation

Explanation/Reference:

QUESTION 342

The ABR of an NSSA will not advertise Type-4 and Type-5 LSAs to an NSSA but can import external routes into the NSSA.

- A. True
- B. False

Correct Answer: A

Section: (none)

Explanation

Explanation/Reference:

QUESTION 343

Which of the following statements are correct regarding intra-area route calculation of OSPF? (Select 2 Answers)

- A. Every OSPF router only uses one Router LSA to describe local active link state for one area.
- B. Every OSPF uses more than one Router LSA to describe local active link state for one area.
- C. One Router LSA only describes one link.
- D. One Router LSA describes more than one link.

Correct Answer: AD

Section: (none)

Explanation

Explanation/Reference:

QUESTION 344

In OSPF, the process of calculating shortest path tree can be divided into two phases, calculate Transit node first, then calculate Stub network.

- A. True
- B. False

Correct Answer: A

Section: (none)

Explanation

Explanation/Reference:

QUESTION 345

In the process of calculating SPF tree, the cost from a node to root node equals to metric listed in the Router LSA generated by the node.

- A. True
- B. False

Correct Answer: B

Section: (none)

Explanation

Explanation/Reference:

QUESTION 346

In OSPF protocol, which of the following elements are used to describe one link? (Select 3 Answers)

- A. Link ID
- B. Data
- C. Network Mask
- D. Metric

Correct Answer: ABD

Section: (none)

Explanation

Explanation/Reference:

QUESTION 347

OSPF uses SPF algorithm to calculate SPF tree according to topology. What is the node of the SPF tree?

- A. Router
- B. Router and network segment
- C. Port and network segment
- D. Router and port

Correct Answer: B

Section: (none)

Explanation

Explanation/Reference:

QUESTION 348

In OSPF protocol, which of the following elements are used by Network LSA to describe broadcast network segment or NBMA network segment? (Select 3 Answers)

- A. Link ID
- B. Net mask
- C. Attached Router list
- D. Metric

Correct Answer: ABC

Section: (none)

Explanation

Explanation/Reference:

QUESTION 349

Type 2-external routes always take precedence over Type 1-external routes.

A. True

B. False

Correct Answer: B

Section: (none)

Explanation

Explanation/Reference:

QUESTION 350

The import-route limit command is used to set the maximum number of external routes that can be imported into an OSPF process.

A. True

B. False

Correct Answer: A

Section: (none)

Explanation

Explanation/Reference:

QUESTION 351

Which of the connection types that Router LSA can describe? (Select 3 Answers)

A. Point-to-point

B. Star

C. Transit

D. Virtual link

Correct Answer: ACD

Section: (none)

Explanation

Explanation/Reference:

QUESTION 352

In OSPF area, RTA and RTB interconnect through FE interface. which of the following commands can be used to configure the link cost between RTA and RTB as 10? (Select 2 Answers)

- A. Use command "ospf cost 10" on two routers
- B. Use command "ospf cost 5" on two routers
- C. Use command "bandwidth-reference 500" on two routers to change bandwidth-reference value
- D. Use command "bandwidth-reference 1000" on two routers to change bandwidth-reference

Correct Answer: AD

Section: (none)

Explanation

Explanation/Reference:

QUESTION 353

In OSPF protocol, which of the following statements are incorrect regarding Link ID of Router LSA? (Select 2 Answers)

- A. In Point-to-Point link type, Link ID is the neighbor's Interface IP address.
- B. InTransNet link type, Link ID is the network address of TransNet network segment.
- C. InStubNet link type, Link ID is the network address of Stub network.
- D. In Virtual link type, Link ID is the neighbor's Router ID of virtual link.

Correct Answer: AB

Section: (none)

Explanation

Explanation/Reference:

QUESTION 354

OSPF uses SPF algorithm to calculate SPF tree according to topology. Which of the following statements are correct regarding SPF tree node? (Select 2 Answers)

- A. The node on SPF tree indicates router and port.
- B. There are two types of SPF tree node Transit node and Stub node.
- C. The router node on SPF tree is one type of Stub nodes.
- D. The router node on SPF tree is one type of Transit nodes.

Correct Answer: BD

Section: (none)

Explanation

Explanation/Reference:

QUESTION 355

An Autonomous System (AS) is a set of routers under a single technical administration, using the same routing policy.

- A. True
- B. False

Correct Answer: A

Section: (none)

Explanation

Explanation/Reference:

QUESTION 356

In BGP, which type of message is periodically exchanged between BGP peers to maintain a BGP peer relationship?

- A. Open
- B. Hello
- C. Route-refresh
- D. Keepalive

Correct Answer: D

Section: (none)

Explanation

Explanation/Reference:

QUESTION 357

BGP peers are automatically discovered by exchanging multicast packets.

- A. True
- B. False

Correct Answer: B

Section: (none)

Explanation

Explanation/Reference:

QUESTION 358

In which state have BGP peers not established any connection and not initiated a connection request?

- A. Established
- B. OpenSent
- C. Active
- D. Idle

Correct Answer: D

Section: (none)

Explanation

Explanation/Reference:

QUESTION 359

Only one BGP process can be configured on a router.

- A. True
- B. False

Correct Answer: A

Section: (none)

Explanation

Explanation/Reference:

QUESTION 360

The router ID configured in the system view takes precedence over the router ID configured in the BGP view.

A. True

B. False

Correct Answer: B

Section: (none)

Explanation

Explanation/Reference:

QUESTION 361

A failure in establishing a BGP peer relationship can be addressed by checking the TCP connectivity and BGP peer configurations.

A. True

B. False

Correct Answer: A

Section: (none)

Explanation

Explanation/Reference:

QUESTION 362

Which statement about BGP is false?

A. BGP runs over TCP.

B. BGP is an enhanced distance-vector routing protocol.

C. BGP uses port number 189.

D. BGP is an inter-AS routing protocol.

Correct Answer: C

Section: (none)

Explanation

Explanation/Reference:

QUESTION 363

Which command must be configured to establish a BGP peer relationship between indirectly connected EBGP peers?

- A. Peer connect-interface
- B. Peer valid-ttl-hops
- C. Peer ignore
- D. Peer ebgp-max-hop

Correct Answer: D

Section: (none)

Explanation

Explanation/Reference:

QUESTION 364

In transit AS, why do core routers run BGP?

- A. Eliminate route loops
- B. Ensure data packets can be transmitted to the external destination addresses
- C. Optimize network within an AS
- D. Ensure only one export

Correct Answer: B

Section: (none)

Explanation

Explanation/Reference:

QUESTION 365

Which method is used to establish session between the BGP peers?

- A. Telnet
- B. Send Hello packet
- C. UDP
- D. TCP

Correct Answer: D

Section: (none)

Explanation

Explanation/Reference:

QUESTION 366

BGP is an exterior gateway protocol which runs among ASs. It focuses on routes control and selection of optimal routes rather than discovery and calculation of routes.

- A. True
- B. False

Correct Answer: A

Section: (none)

Explanation

Explanation/Reference:

QUESTION 367

Which one of the statements describes the relationship between BGP and AS correctly?

- A. BGP only runs between ASs, and can not run within an AS.
- B. BGP is an EGP running between ASs, and IGP runs within an AS such as OSPF, RIP and IS- IS.
- C. BGP builds up network topology by exchanging link-state information among Ass.
- D. BGP can not run between Ass.

Correct Answer: B

Section: (none)

Explanation

Explanation/Reference:

QUESTION 368

What is private AS number?

- A. 65410-65535
- B. 1-64511
- C. 64512-65535
- D. 64511-65535

Correct Answer: C

Section: (none)

Explanation

Explanation/Reference:

QUESTION 369

Which TCP port is used by BGP?

- A. 520
- B. 89
- C. 179
- D. 180

Correct Answer: C

Section: (none)

Explanation

Explanation/Reference:

QUESTION 370

Which of the statements describes the way BGP update routes?

- A. Broadcasts all of the routes periodically

- B. Update all of the routes using multicast address periodically
- C. Only update the changed routes and the new routes
- D. Update routes when BGP peer requests

Correct Answer: C

Section: (none)

Explanation

Explanation/Reference:

QUESTION 371

In BGP, performing MD5 authentication between BGP peers can protect them from DoS attacks.

- A. True
- B. False

Correct Answer: A

Section: (none)

Explanation

Explanation/Reference:

QUESTION 372

How does a BGP router process the received route whose next hop is unreachable?

- A. The BGP router sends an error message to the router that has sent the Update message.
- B. The BGP router accepts this route and adds it to the BGP routing table. This route, however, is neither preferred nor added to the IP routing table for packet forwarding.
- C. The BGP router refuses this route.
- D. The BGP router accepts this route and adds it to the BGP routing table. This route can participate in route selection and may be selected as the optimal route to be added to the IP routing table for packet forwarding.

Correct Answer: B

Section: (none)

Explanation

Explanation/Reference:

QUESTION 373

Once a BGP connection is established, a BGP Speaker advertises all the optimal routes in the BGP routing table to its BGP peer.

- A. True
- B. False

Correct Answer: A

Section: (none)

Explanation

Explanation/Reference:

QUESTION 374

Whatever changes occur in the BGP routing table, a BGP Speaker advertises all the optimal routes in the BGP routing table to its BGP peer.

- A. True
- B. False

Correct Answer: B

Section: (none)

Explanation

Explanation/Reference:

QUESTION 375

Which command can trigger the advertisement of BGP routes without interrupting a BGP connection?

- A. Reset bgp
- B. Refresh bgp all external
- C. Refresh bgp all internal
- D. RR-filter

Correct Answer: B

Section: (none)

Explanation

Explanation/Reference:

QUESTION 376

IGP routes can be installed into the BGP routing table by running either the network or import- route command.

- A. True
- B. False

Correct Answer: A

Section: (none)

Explanation

Explanation/Reference:

QUESTION 377

In the VRP, by default, a BGP router automatically retransmits an Update packet to its BGP peer after the outbound routing policy of the BGP peer changes.

- A. True
- B. False

Correct Answer: A

Section: (none)

Explanation

Explanation/Reference:

QUESTION 378

In the VRP, by default, a BGP router does not automatically send a Refresh packet to request its BGP peer to retransmit an Update packet after the inbound routing policy of the BGP peer changes.

- A. True
- B. False

Correct Answer: B

Section: (none)

Explanation

Explanation/Reference:

QUESTION 379

Which of the following BGP filters can be used to set route attributes?

- A. Ip-prefix
- B. Route-policy
- C. As-path-filer
- D. Community-filter

Correct Answer: B

Section: (none)

Explanation

Explanation/Reference:

QUESTION 380

In the VRP, by default, the routes imported by BGP are not automatically summarized.

- A. True
- B. False

Correct Answer: A

Section: (none)

Explanation

Explanation/Reference:

QUESTION 381

Based on BGP route selection rules, a local route that is automatically summarized takes precedence over a local route that is manually summarized.

- A. True
- B. False

Correct Answer: B

Section: (none)

Explanation

Explanation/Reference:

QUESTION 382

Which parameters are optional for configuring a BGP peer? (Select 2 Answers)

- A. IP address
- B. Description
- C. Password
- D. AS-number

Correct Answer: BC

Section: (none)

Explanation

Explanation/Reference:

QUESTION 383

Which types of packets are supported by BGP? (Select 3 Answers)

- A. Hello
- B. Notification
- C. Update
- D. Route-refresh

Correct Answer: ABC

Section: (none)

Explanation

Explanation/Reference:

QUESTION 384

A BGP finite state machine has the following states:

Active

OpenConfirm
Idle
Establish
OpenSent

What is the state transition sequence in which the BGP peer relationship is established?

- A. Idle-OpenSent-OpenConfirmActive-Establish
- B. Idle-Active-OpenSent-OpenConfirm-Establish
- C. Active-Idle-OpenSent-OpenConfirm-Establish
- D. Idle-Active-OpenConfirm-OpenSent-Establish

Correct Answer: B

Section: (none)

Explanation

Explanation/Reference:

QUESTION 385

If the hold timers in the Open messages sent from BGP Peer A and Peer B are 180s and 90s respectively, what is the interval at which Keepalive messages are sent after Peer A and Peer B have established a BGP peer relationship?

- A. 180s
- B. 90s
- C. 60s
- D. 30s

Correct Answer: D

Section: (none)

Explanation

Explanation/Reference:

QUESTION 386

In the BGP routing table, if there are two BGP routes with the same destination address but different next hops, which statement about the two BGP routes is true?

- A. Both BGP routes are advertised to other BGP peers.

B. Only the optimal route selected from the two BGP routes is advertised to other BGP peers.

Correct Answer: B

Section: (none)

Explanation

Explanation/Reference:

QUESTION 387

When the import-route command is used to import routes to BGP, which statement is false?

- A. The import-route command can import IGP routes, direct routes, and static routes to BGP.
- B. A process ID must be specified if OSPF routes, or RIP routes are imported to BGP.
- C. By default, the Origin attribute of imported routes is IGP.
- D. Routing policies can be used to filter the routes imported from other routing protocols.

Correct Answer: C

Section: (none)

Explanation

Explanation/Reference:

QUESTION 388

Which statement is true if MD5 authentication is configured during the configuration of a BGP peer?

- A. All the routers in the same AS must use the same MD5 password.
- B. A pair of BGP peers must use the same MD5 password.
- C. All BGP peers of a router must use the same MD5 password.
- D. Every BGP peer of a router must use a unique MD5 password.

Correct Answer: B

Section: (none)

Explanation

Explanation/Reference:

QUESTION 389

Which methods can be used to import local routes to BGP? (Select 2 Answers)

- A. Run the network command.
- B. Receive routes from peers.
- C. Run the summary automatic command.
- D. Run the import command.

Correct Answer: AD

Section: (none)

Explanation

Explanation/Reference:

QUESTION 390

BGP is an inter-AS routing protocol. Which statements about BGP are true? (Select 3 Answers)

- A. BGP adopts a reliable transmission protocol.
- B. BGP supports automatic peer discovery.
- C. BGP supports incremental route update.
- D. BGP supports various routing policies.

Correct Answer: ACD

Section: (none)

Explanation

Explanation/Reference:

QUESTION 391

Which statements about prerequisites to establishing a BGP peer relationship are true? (Select 2 Answers)

- A. BGP peers have been manually configured.
- B. A TCP connection has been established between two neighboring routers.
- C. BGP peers have exchanged routing information.
- D. MD5 authentication has been configured on BGP peers.

Correct Answer: AB

Section: (none)

Explanation

Explanation/Reference:

QUESTION 392

Which statements about BGP route advertisement are true? (Select 2 Answers)

- A. All BGP routes learned from BGP peers are advertised to other BGP peers.
- B. Only the routes learned from an IGP are advertised to other BGP peers.
- C. By default, the routes learned from IBGP peers are not advertised to other IBGP peers.
- D. Only the optimal routes are advertised to other BGP peers.

Correct Answer: CD

Section: (none)

Explanation

Explanation/Reference:

QUESTION 393

Which of the following conditions must be met for importing routes to BGP by using the network command? (Select 2 Answers)

- A. The routes are optimal in the IP routing table.
- B. The routes do not need to match the specified mask length.
- C. The routes match the specified mask length.
- D. The routes are IGP routes.

Correct Answer: AC

Section: (none)

Explanation

Explanation/Reference:

QUESTION 394

Using the peer connect-interface command to establish "multiple" peer relationships between two routers connected through "multiple" links is recommended.

- A. True
- B. False

Correct Answer: A

Section: (none)

Explanation

Explanation/Reference:

QUESTION 395

Which parameters are carried in a BGP Open message? (Select 3 Answers)

- A. Local AS number
- B. BGP ID
- C. Keepalive timer
- D. Holder timer
- E. Current peer status

Correct Answer: ABD

Section: (none)

Explanation

Explanation/Reference:

QUESTION 396

When a TCP connection works properly, what is the status of the BGP peer relationship if the peer AS number configured for a BGP router is inconsistent with the AS number of its BGP peer?

- A. Idle
- B. Active
- C. OpenSent
- D. Establish

Correct Answer: B

Section: (none)

Explanation

Explanation/Reference:

QUESTION 397

Assume that a TCP connection works properly, and the peer AS number configured for a BGP router is different from the AS number of its BGP peer. During the establishment of a BGP session, the BGP router exchanges routing information with its peer, and finds that its peer AS number is different from the AS number of the peer. Therefore, the BGP router sends a Notification message to the peer, indicating that the establishment of a BGP session fails. Which message can be identified by the Error Code field in the Notification message?

- A. Route-refresh
- B. Open
- C. Keepalive
- D. Update

Correct Answer: B

Section: (none)

Explanation

Explanation/Reference:

QUESTION 398

Which statements about the process of establishing a BGP peer relationship are true? (Select 3 Answers)

- A. There may be two TCP connections during the establishment of the BGP peer relationship.
- B. If two TCP connections are established between BGP peers, one connection functions as the primary connection, and the other as the backup connection.
- C. If two TCP connections are established between BGP peers, one TCP connection is torn down.
- D. If there are "multiple" TCP connections between BGP peers, BGP keeps the TCP connection initiated by the peer with a greater BGP router ID.

Correct Answer: ACD

Section: (none)

Explanation

Explanation/Reference:

QUESTION 399

In a route-policy, which BGP attributes can be invoked by if-match clauses? (Select 3 Answers)

- A. Local-Preference
- B. AS-Path
- C. MED
- D. Community

Correct Answer: BCD

Section: (none)

Explanation

Explanation/Reference:

QUESTION 400

In a route-policy, which BGP attributes can be used to define apply clauses? (Select 3 Answers)

- A. Local-Preference
- B. Tag
- C. Origin
- D. AS-Path

Correct Answer: ACD

Section: (none)

Explanation

Explanation/Reference:

QUESTION 401

Which statements about the AS number range are true? (Select 3 Answers)

- A. If 2-byte AS numbers are supported, a private AS number ranges from 32768 to 65535.
- B. If 2-byte AS numbers are supported, a private AS number ranges from 64512 to 65535.
- C. If 2-byte AS numbers are supported, an AS number ranges from 1 to 65535.
- D. If 4-byte AS numbers are supported, a 4-byte AS number is in the x.y format. Here, "x" and "y" are integers ranging from 1 to 65535 and 0 to 65535 respectively.

Correct Answer: BCD

Section: (none)

Explanation

Explanation/Reference:

QUESTION 402

Assume that the following commands are run to configure BGP:

```
timerkeepalive 30 hold 90  
peer 1.1.1.2 timer keepalive 10 hold 30
```

Which statements about the configurations are true? (Select 2 Answers)

- A. The global configuration is preferred. Therefore, the timer values for peer 1.1.1.2 are "keepalive 30 hold 90."
- B. The peer configuration is preferred. Therefore, the timer values for peer 1.1.1.2 are "keepalive 10 hold 30."
- C. The smaller one between the global and peer timer values is used. Therefore, the timer values of peer 1.1.1.2 is "keepalive 10 hold 30".
- D. The default configuration is "timer keepalive 60 hold 180." Therefore, peer 1.1.1.2 can detect connection faults faster than the default configuration.

Correct Answer: BD

Section: (none)

Explanation

Explanation/Reference:

QUESTION 403

Based on BGP route selection rules, the route with the lowest Local-Preference is preferred.

- A. True
- B. False

Correct Answer: B

Section: (none)

Explanation

Explanation/Reference:

QUESTION 404

Based on BGP route selection rules, the route with the smallest MED value is preferred.

- A. True
- B. False

Correct Answer: A

Section: (none)

Explanation

Explanation/Reference:

QUESTION 405

Which BGP attribute is usually used to determine the path along which data flows enter an AS?

- A. Router ID
- B. Nexthop
- C. Local-Preference
- D. MED

Correct Answer: D

Section: (none)

Explanation

Explanation/Reference:

QUESTION 406

Which of the BGP attributes are Well-known mandatory attributes? (Select 3 Answers)

- A. ORIGIN
- B. AS_PATH
- C. NEXT_HOP
- D. MED
- E. LOCAL_PREF
- F. COMMUNITY

Correct Answer: ABC

Section: (none)

Explanation

Explanation/Reference:

QUESTION 407

Which of the BGP attributes is Optional transitive attribute?

- A. ORIGIN
- B. AS_PATH
- C. NEXT_HOP
- D. MED
- E. LOCAL_PREF
- F. COMMUNITY

Correct Answer: B

Section: (none)

Explanation

Explanation/Reference:

QUESTION 408

Which of the BGP attributes will not be advertised to other neighbor AS?

- A. LOCAL_PREF
- B. AS_PATH
- C. COMMUNITY
- D. ORIGIN

Correct Answer: A

Section: (none)

Explanation

Explanation/Reference:

QUESTION 409

Which of the attributes must exist in the BGP Update messages? (Select 3 Answers)

- A. LOCAL_PREF
- B. NEXT_HOP
- C. ORIGIN
- D. AS_PATH

Correct Answer: BCD

Section: (none)

Explanation

Explanation/Reference:

QUESTION 410

By default, what are the LOCAL_PREF and PREFERRED-VALUE in VRP system?

- A. 0,32768
- B. 100,0
- C. 255,100
- D. 32768,0

Correct Answer: B

Section: (none)

Explanation

Explanation/Reference:

QUESTION 411

Which of the followings is used to avoid route loops in BGP?

- A. Use ORIGIN attribute to record route origin
- B. Use AS_PATH attribute to record all ASs during a route passing from the local area to the destination in a certain order
- C. Use NEXT_HOP attribute to record next hop of the route
- D. Use MED attribute to influence export selection of other AS

Correct Answer: B

Section: (none)

Explanation

Explanation/Reference:

QUESTION 412

What is the function of well-known community attribute NO_EXPORT_SUBCONFED in BGP?

- A. Routes received carrying this value cannot be advertised outside the confederation
- B. Routes received carrying this value cannot be advertised to any BGP peers
- C. Routes received carrying this value cannot be advertised to any EBGP peers
- D. All above statements are wrong

Correct Answer: C

Section: (none)

Explanation

Explanation/Reference:

QUESTION 413

What kind of the BGP attributes does AS-Path attribute belong to ? (Select 2 Answers)

- A. Mandatory
- B. Transitive
- C. Optional
- D. Non-transitive

Correct Answer: AB

Section: (none)

Explanation

Explanation/Reference:

QUESTION 414

Which of the following statements are correct regarding BGP attribute? (Select 2 Answers)

- A. Till now, there are 16 BGP attributes
- B. BGP attribute can be extended to 256 types

- C. Well-known discretionary attribute may not be included in each BGP update message, such as Origin attribute
- D. AS_PATH is an Optional Transitive attribute

Correct Answer: AB

Section: (none)

Explanation

Explanation/Reference:

QUESTION 415

Which of the following statements belong to BGP COMMUNITY attribute ? (Select 3 Answers)

- A. NO_EXPORT
- B. NO_ADVERTISE
- C. LOCAL_EXPORT_SUBCONFED
- D. NO_BROADCAST

Correct Answer: ABC

Section: (none)

Explanation

Explanation/Reference:

QUESTION 416

The Origin attribute of the BGP route that is imported by using the network command is IGP.

- A. True
- B. False

Correct Answer: A

Section: (none)

Explanation

Explanation/Reference:

QUESTION 417

The BGP Community attribute is a well-known mandatory attribute.

- A. True
- B. False

Correct Answer: B

Section: (none)

Explanation

Explanation/Reference:

QUESTION 418

Which following BGP attribute can used to define a set of prefixes with the same characteristics?

- A. Origin
- B. Nexthop
- C. Community
- D. MED

Correct Answer: C

Section: (none)

Explanation

Explanation/Reference:

QUESTION 419

Based on BGP route selection rules, how are Origin attributes listed in descending order of priority?

- A. EGP > IGP > Incomplete
- B. IGP > Incomplete > EGP
- C. Incomplete > EGP > IGP
- D. IGP > EGP > Incomplete

Correct Answer: D

Section: (none)

Explanation

Explanation/Reference:

QUESTION 420

What is the Origin attribute of the BGP route that is imported by using the import-route command?

- A. IGP
- B. EGP
- C. Incomplete
- D. Unknown

Correct Answer: C

Section: (none)

Explanation

Explanation/Reference:

QUESTION 421

If a router receives two BGP routes (M and N) that contain the following attributes,

Network	NextHop	MED	LocPrf	PrefVal	Path/Ogn
M 192.168.1.0	10.1.1.1	30	0	100	i
N 192.168.1.0	10.1.1.2	20	0	100	200i

Which route is the optimal route based on BGP route selection rules?

- A. The optimal route is route M because its AS_Path is shorter than that of route N.
- B. The optimal route is route N because its MED value is smaller than that of route M.
- C. The optimal route is determined randomly.

Correct Answer: A

Section: (none)

Explanation

Explanation/Reference:

QUESTION 422

Which type of BGP route will be added to the BGP routing table?

- A. All BGP routes learned from peers
- B. Only the routes learned from IBGP peers
- C. Only the routes learned from EBGP peers
- D. Only optimal routes

Correct Answer: A

Section: (none)

Explanation

Explanation/Reference:

QUESTION 423

How does the route Community attribute set by routing policies affect route selection?

- A. The Community attribute directly affects route selection, because it must be compared in route selection.
- B. The Community attribute does not affect route selection, because it is a non-transitive attribute and cannot be transmitted between routers.
- C. The Community attribute indirectly affects route selection. Routes are classified by the Community attribute. Different route attributes such as the Local-Preference and MED can be set for routes in different communities, which affects route selection.

Correct Answer: C

Section: (none)

Explanation

Explanation/Reference:

QUESTION 424

Which BGP attributes are optional in a BGP Update packet? (Select 2 Answers)

- A. Origin
- B. Nexthop
- C. Local-Preference
- D. MED

Correct Answer: CD

Section: (none)

Explanation

Explanation/Reference:

QUESTION 425

Which statements about BGP well-known mandatory attributes are true? (Select 3 Answers)

- A. Well-known mandatory attributes must be identified by all BGP routers.
- B. Well-known mandatory attributes must be transmitted between BGP peers.
- C. Well-known mandatory attributes are optional in an Update packet, and can be carried in an Update packet as needed.
- D. Well-known mandatory attributes must be carried in an Update packet.

Correct Answer: ABD

Section: (none)

Explanation

Explanation/Reference:

QUESTION 426

Which statements about the Local-Preference attribute are true? (Select 2 Answers)

- A. Based on BGP route selection rules, the Local-Preference attribute has a lower priority than the Preferred-Value attribute. This means that BGP compares Local-Preference attributes of routes after comparing Preferred-Value attributes of them.
- B. The Local-Preference attribute of a BGP route defaults to 0.
- C. The Local-Preference attribute is used to select an exit point from the local AS for data flows.
- D. Based on BGP route selection rules, the Local-Preference attribute has a lower priority than the MED attribute. This means that BGP compares Local-Preference attributes of routes after comparing MED attributes of them.

Correct Answer: AC

Section: (none)

Explanation

Explanation/Reference:

QUESTION 427

Which BGP attribute is not a well-known mandatory attribute?

- A. Origin
- B. Nexthop
- C. AS-Path
- D. MED

Correct Answer: D

Section: (none)

Explanation

Explanation/Reference:

QUESTION 428

Which attributes are well-known community attributes? (Select 3 Answers)

- A. NO_EXPORT (0xFFFFFFF01)
- B. NO_ADVERTISE (0xFFFFFFF02)
- C. NO_EXPORT_SUBCONFED
- D. AS(2Byte):Number(2Byte)

Correct Answer: ABC

Section: (none)

Explanation

Explanation/Reference:

QUESTION 429

Which statements about BGP route selection rules are true? (Select 3 Answers)

- A. BGP first ignores routes with unreachable next hops.
- B. A summarized route takes precedence over a non-summarized route.
- C. IBGP routes take precedence over EBGP routes.
- D. If other conditions of routes are the same, the route with the shortest Cluster_List is preferred.

Correct Answer: ABD

Section: (none)

Explanation

Explanation/Reference:

QUESTION 430

Which BGP attributes can be used to prevent routing loops? (Select 3 Answers)

- A. Originator_ID
- B. Aggregator
- C. Cluster_List
- D. AS-Path

Correct Answer: ACD

Section: (none)

Explanation

Explanation/Reference:

QUESTION 431

Which of the following BGP routing policies can be used to filter routes? (Select 2 Answers)

- A. Ip-prefix
- B. Reflect-client
- C. Route-policy
- D. Next-hop-local

Correct Answer: AC

Section: (none)

Explanation

Explanation/Reference:

QUESTION 432

Which statements about the MED attribute are true? (Select 3 Answers)

- A. Based on BGP route selection rules, the MED attribute takes precedence over the AS_Path, Preferred-Value, Local-Preference, and Origin attributes.
- B. The MED attribute of a BGP route defaults to 100.
- C. By default, BGP compares MED attributes of only the routes from the same AS. If the compare-different-as-med command is configured, BGP can compare the MED attributes of the routes from different ASs.
- D. By default, if the MED value of a BGP route is not specified, the value 0 is used. If the bestroute med-none-as-maximum command is configured, the maximum MED value 4294967295 is used.

Correct Answer: ACD

Section: (none)

Explanation

Explanation/Reference:

QUESTION 433

An ACL is used to match routing information or data packet addresses so as to filter out the unmatched routing information or data packets.

- A. True
- B. False

Correct Answer: A

Section: (none)

Explanation

Explanation/Reference:

QUESTION 434

The system can perform ACL rule matching only based on the configuration order of rules.

- A. True
- B. False

Correct Answer: B

Section: (none)

Explanation

Explanation/Reference:

QUESTION 435

An IP-prefix-filter is used to filter IP prefixes and data packets.

- A. True
- B. False

Correct Answer: B

Section: (none)

Explanation

Explanation/Reference:

QUESTION 436

Generally, the performance of an IP-prefix-filter is higher than that of an ACL.

- A. True
- B. False

Correct Answer: A

Section: (none)

Explanation

Explanation/Reference:

Topic 6, Volume F

QUESTION 437

Default routes between routers are a low-cost solution. This is because using default routes requires less system resources than maintaining a complete routing table.

- A. True
- B. False

Correct Answer: A

Section: (none)

Explanation

Explanation/Reference:

QUESTION 438

The `acl[number] acl-number [match-order { auto | config }]` command is used to configure an ACL. In this command, `acl-number` specifies the number of an ACL. For an advanced ACL, what is the range of its `acl-number`?

- A. 1000 to 3999
- B. 2000 to 2999
- C. 3000 to 3999
- D. 0 to 1000

Correct Answer: C

Section: (none)

Explanation

Explanation/Reference:

QUESTION 439

Route filtering can filter not only routing information but also link-status information.

- A. True
- B. False

Correct Answer: B

Section: (none)

Explanation

Explanation/Reference:

QUESTION 440

For link-status routing protocols, filtering routes in the inbound direction actually cannot block the transmission of link-status information. The filtering effect is that routes cannot be injected into the local routing table but neighbors can still receive complete route status information and calculate complete routes.

- A. True
- B. False

Correct Answer: A

Section: (none)

Explanation

Explanation/Reference:

QUESTION 441

All routing protocols can deliver default routes, supporting both forcible delivery and non- forcible delivery.

- A. True
- B. False

Correct Answer: B

Section: (none)

Explanation

Explanation/Reference:

QUESTION 442

The default-route originate command in the RIP protocol is used to advertise a default RIP route to peers. By using this command, which of the following attributes can be set for the default route?

- A. Tag
- B. Cost
- C. Interface
- D. Nexthop

Correct Answer: B

Section: (none)

Explanation

Explanation/Reference:

QUESTION 443

An ACL is a series of orderly rules composed of permit | deny clauses. Which of the following attributes cannot be used for defining an ACL rule?

- A. Source address

- B. Destination address
- C. Port number
- D. AS-Path

Correct Answer: D

Section: (none)

Explanation

Explanation/Reference:

QUESTION 444

Which of the following routes matches this ACL filter? "acl number 2001
rule 0 permit source 1.1.0.0 0"

- A. 1.1.1.1/32
- B. 1.1.1.0/24
- C. 1.1.0.0/16
- D. 1.0.0.0/8

Correct Answer: C

Section: (none)

Explanation

Explanation/Reference:

QUESTION 445

What does the IP-prefix-filter "ipip-prefix test index 10 deny 0.0.0.0 0 less-equal 32" mean?

- A. Matching only default routes
- B. Matching all routes
- C. Denying only default routes
- D. Denying all routes

Correct Answer: D

Section: (none)

Explanation

Explanation/Reference:

QUESTION 446

Which of the following route selection mechanisms can adopt user-defined policies to determine data forwarding paths flexibly based on ACLs or packet lengths?

- A. AS-path-filter
- B. IP-prefix
- C. Route-policy
- D. Policy-based-route

Correct Answer: D

Section: (none)

Explanation

Explanation/Reference:

QUESTION 447

Which of the following statements about costs of routing protocols is false?

- A. Because different routing protocols have the same basis for calculating route costs, it is recommended to adopt automatic cost converting in route importing.
- B. Because different routing protocols have different bases for calculating route costs, it is recommended to perform manual configuration for cost converting in route importing.
- C. Costs of OSPF routes is generally based on bandwidth and therefore OSPF cost value ranges is wide.
- D. Costs of RIP routes are generally based on hops and therefore the RIP cost value range is narrow.

Correct Answer: A

Section: (none)

Explanation

Explanation/Reference:

QUESTION 448

Which of the following routing protocols support import-route? (Select 3 Answers)

- A. OSPF
- B. RIP

- C. BGP
- D. Static

Correct Answer: ABC

Section: (none)

Explanation

Explanation/Reference:

QUESTION 449

Which of the following tools cannot be used for route filtering?

- A. Filter-policy
- B. IP-prefix
- C. Route-policy
- D. Policy-based-route

Correct Answer: D

Section: (none)

Explanation

Explanation/Reference:

QUESTION 450

Which of the following routes match this ACL filter? (Select 2 Answers) "acl number 2001
rule 0 permit source 1.1.1.0 0.0.254.255"

- A. 1.1.1.1/32
- B. 1.1.2.1/32
- C. 1.1.3.1/32
- D. 1.1.4.1/32

Correct Answer: AC

Section: (none)

Explanation

Explanation/Reference:

QUESTION 451

Which of the following route prefixes match this IP-prefix-filter? (Select 3 Answers) "ipip-prefix test index 10 permit 10.0.0.0 16 greater-equal 24 less-equal 28"

- A. 10.0.1.0/23
- B. 10.0.1.0/24
- C. 10.0.1.0/25
- D. 10.0.1.0/28

Correct Answer: BCD

Section: (none)

Explanation

Explanation/Reference:

QUESTION 452

If the peer default-route-advertise command is used to advertise a default BGP route to peers, how will this operation affect the local BGP routing table?

- A. An inactive default route will be generated in the local BGP routing table and this route will not be delivered to the IP routing table.
- B. An active default route will be generated in the local BGP routing table and this route will be delivered to the IP routing table.
- C. The local BGP routing table will not be affected and no default route will be generated in the local BGP routing table.
- D. A default route will be generated in the local BGP routing table and whether to deliver this route to the IP routing table depends on route selection results.

Correct Answer: C

Section: (none)

Explanation

Explanation/Reference:

QUESTION 453

Which of the following protocols support default route advertisement by using commands? (Select 3 Answers)

- A. RIP
- B. OSPF
- C. BGP
- D. Static

Correct Answer: ABC

Section: (none)

Explanation

Explanation/Reference:

QUESTION 454

If a BGP peer is configured with "multiple" route selection tools for route filtering, which of the following statements are true? (Select 2 Answers)

- A. The routes received from the BGP peer are matched first with IP-prefix and then with route-policy.
- B. The routes received from the BGP peer are matched first with route-policy and then with IP-prefix.
- C. The routes sent to the BGP peer are matched first with IP-prefix and then with route-policy.
- D. The routes sent to the BGP peer are matched first with route-policy and then with IP-prefix.

Correct Answer: AC

Section: (none)

Explanation

Explanation/Reference:

QUESTION 455

What are the functions of route filtering? (Select 3 Answers)

- A. Avoids sub-optimal routes generated in route importing.
- B. Avoids routing loops.
- C. Affects route selection by changing route attributes.
- D. Implements accurate route importing and controls route advertisement.

Correct Answer: ABD

Section: (none)

Explanation

Explanation/Reference:

QUESTION 456

Which of the following methods are supported by OSPF for delivering default routes? (Select 3 Answers)

- A. Delivery by an ABR
- B. Delivery by an Backbone Router
- C. Forcible delivery
- D. Non-forcible delivery

Correct Answer: ACD

Section: (none)

Explanation

Explanation/Reference:

QUESTION 457

Which of the following route selection tools can be used in "multiple" routing protocols, be configured with matching conditions, and be composed of if-match and apply clauses?

- A. AS-path-filter
- B. IP-prefix
- C. Route-policy
- D. Community-filter

Correct Answer: C

Section: (none)

Explanation

Explanation/Reference:

QUESTION 458

If different routing protocols run on different networks and these networks need to share routing information, route importing can be used.

- A. True
- B. False

Correct Answer: A

Section: (none)

Explanation

Explanation/Reference:

QUESTION 459

Which of the following statements about comparison between ACL and IP-Prefix are true? (Select 2 Answers)

- A. Both ACL and IP-Prefix can be used for route filtering
- B. Both ACL and IP-Prefix can be used for data packet filtering
- C. ACL can be used for data packet filtering and route filtering, but IP-Prefix can only be used for route filtering
- D. IP-Prefix can be used for data packet filtering and route filtering, but ACL can only be used for route filtering

Correct Answer: AC

Section: (none)

Explanation

Explanation/Reference:

QUESTION 460

Which of the following statements about ACL type are true? (Select 3 Answers)

- A. ACL consists of basic ACL, advanced ACL and interface-based ACL
- B. ACL ranging from 2000 to 2999 belongs to advanced ACL
- C. ACL ranging from 3000 to 3999 belongs to advanced ACL
- D. Advanced ACL can be used to match either destination address or source address

Correct Answer: ACD

Section: (none)

Explanation

Explanation/Reference:

QUESTION 461

Which of the following route entries matches ACL 2001 that is defined below?

1.0.0.0/8 ,1.2.0.0/16,1.2.3.0/24,1.2.4.0/24, 1.2.5.0/24, 1.2.6.0/24,1.2.7.0/24,1.2.8.0/24 ACL 2001:
Basic ACL 2001, 1 rule
Acl's step is 5

rule 0 permit source 1.2.1.0 0.0.254.255

- A. 1.2.3.0/24,1.2.4.0/24, 1.2.5.0/24, 1.2.6.0/24,1.2.7.0/24,1.2.8.0/24
- B. 1.0.0.0/8, 1.2.0.0/16,1.2.3.0/24,1.2.4.0/24, 1.2.5.0/24, 1.2.6.0/24,1.2.7.0/24,1.2.8.0/24
- C. 1.2.3.0/24,1.2.5.0/24,1.2.7.0/24
- D. 1.2.0.0/16,1.2.4.0/24,1.2.6.0/24,1.2.8.0/24

Correct Answer: C

Section: (none)

Explanation

Explanation/Reference:

QUESTION 462

Which of the following route entries matches ACL 2001 that is defined below?

1.0.0.0/8 ,1.2.0.0/16,1.2.3.0/24,1.2.4.0/24, 1.2.5.0/24, 1.2.6.0/24,1.2.7.0/24,1.2.8.0/24 ACL 2001:

Basic ACL 2001, 1 rule

Acl's step is 5

rule 0 permit source 1.2.0.0 0.0.254.255

- A. 1.2.3.0/24,1.2.4.0/24, 1.2.5.0/24, 1.2.6.0/24,1.2.7.0/24,1.2.8.0/24
- B. 1.0.0.0/8 ,1.2.0.0/16,1.2.3.0/24,1.2.4.0/24, 1.2.5.0/24, 1.2.6.0/24,1.2.7.0/24,1.2.8.0/24
- C. 1.2.3.0/24,1.2.5.0/24,1.2.7.0/24
- D. 1.2.0.0/16,1.2.4.0/24,1.2.6.0/24,1.2.8.0/24

Correct Answer: D

Section: (none)

Explanation

Explanation/Reference:

QUESTION 463

Which of the following route entries match IP-Prefix defined below? (Select 2 Answers) ipip-prefix test index 10 permit 192.168.0.0 16 greater-equal 24 less-equal 28

- A. 192.168.1.0/24

- B. 192.10.2.0/24
- C. 192.168.3.0/25
- D. 192.168.4.0/30

Correct Answer: AC

Section: (none)

Explanation

Explanation/Reference:

QUESTION 464

The route selection tool route-policy can filter and set BGP attributes based on pre-defined conditions. Therefore, this tool is commonly used to define policies for BGP peers and often used in route generation.

- A. True
- B. False

Correct Answer: A

Section: (none)

Explanation

Explanation/Reference:

QUESTION 465

When importing routes discovered by other routing protocols, a routing protocol may need to import only the routes that meet the conditions and set attributes of the imported routes to meet the requirement of the protocol. In such a case, a route-policy can be created.

- A. True
- B. False

Correct Answer: A

Section: (none)

Explanation

Explanation/Reference:

QUESTION 466

Policy-based routing and routing policy affect the forwarding of data packets in different ways:

A routing policy mainly controls packet forwarding. According to the routing policy, packets can be forwarded with no need to use a routing table; policy-based routing mainly controls the importing, advertising, and receiving of routing information so as to affect the forwarding of data packets.

- A. True
- B. False

Correct Answer: B

Section: (none)

Explanation

Explanation/Reference:

QUESTION 467

The configurations of the defined route-policy Set-cost are as follows:

```
ipip-prefix 1 permit 10.1.0.0 16
route-policy Set-cost permit node 10
if-matchip-prefix 1
apply cost 300
route-policy Set-cost permit node 20
apply cost 200
```

Which of the following statements is true?

- A. The route 10.1.0.0/16 matches node 10 and its cost is set to 300.
- B. The route 10.1.0.0/16 matching node 10 also matches node 20 subsequently and its cost is finally set to 200.
- C. Costs of all routes will be set to 200.
- D. All routes that fail to match node 10 will be denied.

Correct Answer: A

Section: (none)

Explanation

Explanation/Reference:

QUESTION 468

One route-policy may have several nodes and each node has a node ID. Each node may have "multiple" if-match and apply clauses. Which of the following

statements are true? (Select 2 Answers)

- A. Different nodes are in an OR relationship.
- B. Different nodes are in an AND relationship.
- C. If-match clauses under a node are in an AND relationship.
- D. If-match clauses under a node are in an OR relationship.

Correct Answer: AC

Section: (none)

Explanation

Explanation/Reference:

QUESTION 469

Which of the following is not supported by policy-based route for specifying the data forwarding path?

- A. Source address
- B. Port number
- C. Destination address
- D. Packet length

Correct Answer: B

Section: (none)

Explanation

Explanation/Reference:

QUESTION 470

The unicast and multicast technologies are both outstanding in solving the problem of one source and "multiple" destinations for efficient P2MP data transmission.

- A. True
- B. False

Correct Answer: B

Section: (none)

Explanation

Explanation/Reference:

QUESTION 471

The IGMP protocol runs between a host and its directly connected multicast router.

- A. True
- B. False

Correct Answer: A

Section: (none)

Explanation

Explanation/Reference:

QUESTION 472

Which of the following statements regarding IP address 224.0.0.1 are correct? (Select 2 Answers)

- A. It is a multicast IP address.
- B. It is a private IP address.
- C. It represents all the hosts and routers.
- D. It represents all the routers.

Correct Answer: AC

Section: (none)

Explanation

Explanation/Reference:

QUESTION 473

How many multicast IP addresses can be represented by the same multicast MAC address?

- A. 1
- B. 23
- C. 32
- D. 24

Correct Answer: C

Section: (none)

Explanation

Explanation/Reference:

QUESTION 474

How many bits of the multicast MAC address are used for multicast IP address mapping?

- A. 24
- B. 22
- C. 25
- D. 23

Correct Answer: D

Section: (none)

Explanation

Explanation/Reference:

QUESTION 475

Which of the following protocols are multicast routing protocol? (Select 3 Answers)

- A. DVMRP
- B. PIM-DM
- C. OSPF
- D. PIM-SM

Correct Answer: ABD

Section: (none)

Explanation

Explanation/Reference:

QUESTION 476

Which of the following commands is used to display check information of IGMP enabled interface?

- A. [Quidway]showipigmp interface
- B. [Quidway]displayigmp interface
- C. [Quidway]showipigmp
- D. [Quidway]displayip interface

Correct Answer: B

Section: (none)

Explanation

Explanation/Reference:

QUESTION 477

Which of the following commands is used to display the IGMP routing table?

- A. Display igmp group
- B. Display igmp interface
- C. Display igmp routing-table
- D. Display igmp

Correct Answer: C

Section: (none)

Explanation

Explanation/Reference:

QUESTION 478

Which of the following is the multicast distribution tree maintained by PIM-DM?

- A. SPT
- B. CBT
- C. RPT
- D. STP

Correct Answer: A

Section: (none)

Explanation

Explanation/Reference:

QUESTION 479

In IPv4, which of the following is the SSM address range allocated by the IANA?

- A. 232.0.0.0/24
- B. 225.0.0.0/8
- C. 232.0.0.0/8
- D. 239.0.0.0/8

Correct Answer: D

Section: (none)

Explanation

Explanation/Reference:

QUESTION 480

Which of the following problems can be solved by IGMP Snooping?

- A. Receiver hosts support only IGMPv2 but the SSM model is used on the network.
- B. A large number of receiver hosts exist on the network and a router receives large quantities of IGMP Report messages.
- C. Multicast data packets are broadcast on Layer 2 devices.
- D. Validity of IGMP Report messages.

Correct Answer: C

Section: (none)

Explanation

Explanation/Reference:

QUESTION 481

In PIM-DM, which of the following messages needs to be sent by a downstream interface when the downstream interface recovers to the forwarding state from the prune state?

- A. Join
- B. Assert
- C. Prune
- D. Graft

Correct Answer: D

Section: (none)

Explanation

Explanation/Reference:

QUESTION 482

Which of the following routers can initiate SPT switchover on a PIM-SM network? (Select 2 Answers)

- A. Last-hop router
- B. Intermediate router
- C. RP
- D. Source's DR

Correct Answer: AC

Section: (none)

Explanation

Explanation/Reference:

QUESTION 483

Which of the following messages exist only in PIM-SM? (Select 2 Answers)

- A. Join/Prune
- B. Assert
- C. Bootstrap
- D. Register

Correct Answer: CD

Section: (none)

Explanation

Explanation/Reference:

QUESTION 484

Which of the following statements about the Reverse Path Forwarding (RPF) mechanism are true? (Select 2 Answers)

- A. Multicast RPF does not depend on unicast routing.
- B. All multicast protocols adopt the RPF mechanism.
- C. A router discards the received multicast packets if the packets fail the RPF check.
- D. The RPF mechanism has two functions: 1. It prevents multicast routing loops; 2. It avoids forwarding redundant multicast data packets.

Correct Answer: CD

Section: (none)

Explanation

Explanation/Reference:

QUESTION 485

How does an IGMP router maintain group memberships on the network? (Select 2 Answers)

- A. The router maintains a timer for each group membership. If the router receives a Report message from a receiver host, it refreshes the timer of the group membership of this host; if the router does not receive any Report message from a receiver host before the timer expires, it deletes the group membership of this host.
- B. The router periodically sends Query messages. After a receiver host receives the Query message, the receiver host sends a Report message.
- C. A receiver host periodically sends a Report message.
- D. The router deletes a group membership only when it receives a Leave message for this group.

Correct Answer: AB

Section: (none)

Explanation

Explanation/Reference:

QUESTION 486

Which of the following statements about multicast MAC addresses are true? (Select 3 Answers)

- A. The high-order 24 bits of a multicast MAC address are 0x01005e and the low-order 23 bits of a multicast MAC address are the same as the low-order 23 bits of a multicast IP address.
- B. One multicast MAC address maps 32 IP multicast addresses.
- C. Multicast MAC addresses are used at the link layer to identify receivers that are in the same multicast group.
- D. One multicast MAC address maps only one IP multicast address.

Correct Answer: ABC

Section: (none)

Explanation

Explanation/Reference:

QUESTION 487

Which of the following protocols support the multicast ASM model? (Select 2 Answers)

- A. PIM-SM and IGMPv2
- B. PIM-SSM and IGMPv3
- C. BGP and OSPF
- D. PIM-DM and IGMPv2

Correct Answer: AD

Section: (none)

Explanation

Explanation/Reference:

QUESTION 488

Which of the following multicast protocols can generate multicast distribution trees?

- A. MBGP
- B. MSDP
- C. IGMP
- D. PIM

Correct Answer: D

Section: (none)

Explanation

Explanation/Reference:

QUESTION 489

What are the differences between the IGMP versions? (Select 2 Answers)

- A. IGMPv1/v2 cannot elect queriers but IGMPv3 can.
- B. In IGMPv2/v3, members can actively leave groups, whereas in IGMPv1 members cannot actively leave groups.
- C. IGMPv1/v2 do not support the SSM model but IGMPv3 supports.
- D. IGMPv1/v2 do not support group-specific Query messages but IGMPv3 supports.

Correct Answer: BC

Section: (none)

Explanation

Explanation/Reference:

QUESTION 490

What are the functions of an IGMPv2 Query message? (Select 3 Answers)

- A. A router sends IGMPv2 Query messages to collect group memberships of receiver hosts.
- B. A router sends IGMPv2 Query messages to elect a querier.
- C. If a router can periodically send IGMPv2 Query messages, it indicates that the router runs properly.
- D. Based on IGMPv2 Query messages, receiver hosts can obtain the address of a querier and unicast Report messages to the querier.

Correct Answer: ABC

Section: (none)

Explanation

Explanation/Reference:

QUESTION 491

Which of the following statements about RPs are true? (Select 3 Answers)

- A. Different group addresses on a PIM-SM network can correspond to different RPs.
- B. An RP is the root of an RPT.

- C. An RP is elected out of BSRs.
- D. All routers on a PIM-SM network must know the location of RPs.

Correct Answer: ABD

Section: (none)

Explanation

Explanation/Reference:

QUESTION 492

Which of the following statements about DR are true? (Select 3 Answers)

- A. In DR election, among the routers of the same DR priority, the router with the lowest IP address is elected.
- B. A source's DR is responsible for sending Register messages to an RP.
- C. A receiver's DR is responsible for sending Join messages to a multicast source or an RP.
- D. An Assert winner on a shared network segment may not be a DR.

Correct Answer: BCD

Section: (none)

Explanation

Explanation/Reference:

QUESTION 493

Which of the following situations will occur after multicast load balance is configured? (Select 3 Answers)

- A. If there are no equal-cost unicast routes, multicast load balance will fail to function.
- B. If group address-based load splitting is used, balanced entry distribution over equal-cost routes cannot be ensured because of hash algorithm limitations.
- C. Balanced entry distribution over equal-cost routes can be ensured as long as multicast load balance is configured.
- D. In multicast load splitting, traffic may not be balanced among equal-cost routes. This is because multicast load balance is based on multicast entries but not based on multicast data packets.

Correct Answer: ABD

Section: (none)

Explanation

Explanation/Reference:

QUESTION 494

Which of the following statements about a multicast distribution tree are true? (Select 3 Answers)

- A. Multicast distribution trees are classified into two types: SPT and RPT.
- B. The PIM-SM protocol can generate both RPTs and SPTs.
- C. The PIM-SSM protocol can generate only SPTs.
- D. The PIM-DM protocol can generate both RPTs and SPTs.

Correct Answer: ABC

Section: (none)

Explanation

Explanation/Reference:

QUESTION 495

The preceding information is generated after a router receives a Report message from group 225.0.0.1 through Ethernet 6/1/0.

```
<Quidway>dis igmp group verbose
IGMP interface group report information
Ethernet6/1/0(10.1.1.1):
Total 1 IGMP Group reported
Group: 225.0.0.1
Uptime: 00:09:03
Expires: 00:02:09
Last reporter: 10.1.1.30
Last-member-query-counter: 0
Last-member-query-timer-expiry: off
Group mode: exclude
Version1-host-present-timer-expiry: off
Version2-host-present-timer-expiry: 00:02:09
```

Which type of Report message will not be processed by the router?

- A. IS_IN
- B. ALLOW
- C. BLOCK
- D. TO_IN

Correct Answer: C

Section: (none)

Explanation

Explanation/Reference:

QUESTION 496

IGMP interface group report information

Ethernet6/1/1(40.1.1.1):
Total 1 IGMP Group reported
Group: 232.0.0.1
Uptime: 00:00:22
Expires: off
Last reporter: 40.1.1.3
Last-member-query-counter: 0
Last-member-query-timer-expiry: off
Group mode: include
Version1-host-present-timer-expiry: off
Version2-host-present-timer-expiry: off
Source list:
Source: 20.1.1.56
Uptime: 00:00:22
Expires: 00:05:08
Last-member-query-counter: 3
Last-member-query-timer-expiry: 00:00:01
Source: 20.1.1.57
Uptime: 00:00:22
Expires: 00:00:17
Last-member-query-counter: 3
Last-member-query-timer-expiry: 00:00:01

The preceding information shows the entry status of an IGMP interface on Ethernet 6/1/1 on a router.

Assume IGMP sends the group-and-source-specific Query message. Which of the following statements is true?

- A. IGMP respectively sends two messages: The source carried in one of the messages is 20.1.1.56 with the S flag bit not set; the source carried in the other message is 20.1.1.57, with the S flag bit set to 1.
- B. IGMP respectively sends two messages: The source carried in one of the messages is 20.1.1.56 with the S flag bit set to 1; the source carried in the other message is 20.1.1.57, with the S flag bit not set.
- C. IGMP sends one message carrying two sources 20.1.1.56 and 20.1.1.57, with the S flag bit set to 1.
- D. IGMP sends one message carrying two sources 20.1.1.56 and 20.1.1.57, with the S flag bit not set.

Correct Answer: B

Section: (none)

Explanation

Explanation/Reference:

QUESTION 497

Which of the following routers have multicast routing entries even when there is no receiver on the network? (Select 2 Answers)

- A. Source's DR
- B. Receiver router
- C. Intermediate router
- D. RP

Correct Answer: AD

Section: (none)

Explanation

Explanation/Reference:

QUESTION 498

RTA is a source's DR and RTB is an RP. A multicast source sends multicast data to RTA but RTB cannot find any information about the multicast source (registered by using the PIM Register message). Why? (Select 3 Answers)

- A. RTB has no unicast routes to RTA.
- B. RTA fails to learn RP information.
- C. RTA has no unicast routes to RTB.
- D. The RP learned by RTA is not RTB.

Correct Answer: BCD

Section: (none)

Explanation

Explanation/Reference:

QUESTION 499

VLANs isolate broadcast domains, eliminates broadcast storms, and enhances information security.

- A. True
- B. False

Correct Answer: A

Section: (none)

Explanation

Explanation/Reference:

QUESTION 500

Before establishing a network, we must create VLANs. The users that do not need to communicate with each other should be added to the same VLAN for isolation.

- A. True
- B. False

Correct Answer: B

Section: (none)

Explanation

Explanation/Reference:

QUESTION 501

Which types of interfaces are supported by Huawei switches after the VLAN function is configured? (Select 3 Answers)

- A. Access interface
- B. Trunk interface
- C. Hybrid interface

D. Dialer interface

Correct Answer: ABC

Section: (none)

Explanation

Explanation/Reference:

QUESTION 502

Which interface is connected to the user-side interface?

- A. Access interface
- B. Trunk interface
- C. Hybrid interface
- D. All of the above

Correct Answer: A

Section: (none)

Explanation

Explanation/Reference:

QUESTION 503

A VLAN can be regarded as a ()

- A. collision domain
- B. broadcast domain
- C. management domain
- D. congestion domain

Correct Answer: B

Section: (none)

Explanation

Explanation/Reference:

QUESTION 504

Which of the following technologies can reduce the scale of broadcast domain?

- A. VLAN
- B. Trunk
- C. RARP
- D. STP

Correct Answer: A

Section: (none)

Explanation

Explanation/Reference:

QUESTION 505

Divide the network by using VLAN can (). (Select 2 Answers)

- A. Support more network layer protocols
- B. Restrict the scope of broadcast domain
- C. Increase the collision
- D. Guarantee the security

Correct Answer: BD

Section: (none)

Explanation

Explanation/Reference:

QUESTION 506

The link that connects a PC to a switch is ().

- A. Access Link
- B. Trunk Link
- C. Hybrid Link
- D. ISL Link

Correct Answer: A

Section: (none)

Explanation

Explanation/Reference:

QUESTION 507

What is the function for the command "InterfaceVlan-interface Vlan-ID"?

- A. Create a VLAN
- B. Create or enter VLAN interface view
- C. Configure a VLAN for port
- D. Configure PVID

Correct Answer: B

Section: (none)

Explanation

Explanation/Reference:

QUESTION 508

Layer 3 switch has layer 2 capability as well as layer 3 routing capability.

- A. True
- B. False

Correct Answer: A

Section: (none)

Explanation

Explanation/Reference:

QUESTION 509

What is the range of VLAN IDs?

- A. 1~1000

- B. 0~4095
- C. 0~4096
- D. 1~4096

Correct Answer: B

Section: (none)

Explanation

Explanation/Reference:

QUESTION 510

Which bits in a VLAN tag indicates 802.1Q?

- A. 0x9100
- B. 0x8808
- C. 0x8100
- D. 0x8800

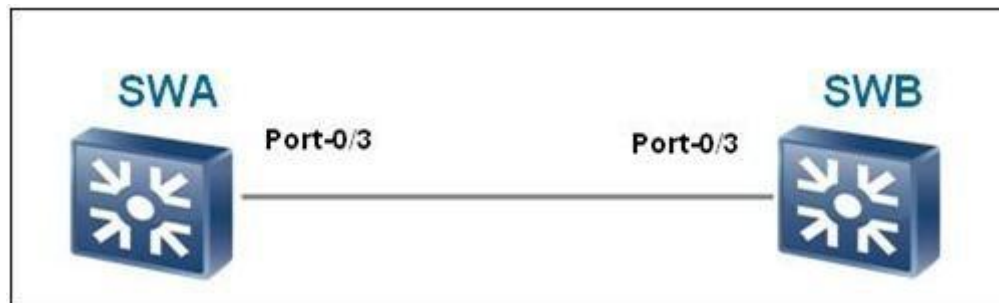
Correct Answer: C

Section: (none)

Explanation

Explanation/Reference:

QUESTION 511



As shown in the figure, SWA and SWB are two switches. Which statements are true? (Select 3 Answers)

- A. Port0/3 can be an access interface
- B. Port0/3 can be a hybrid interface
- C. Port0/3 can be a trunk interface
- D. None of the above

Correct Answer: ABC

Section: (none)

Explanation

Explanation/Reference:

QUESTION 512

How many types of topology change messages are defined in RSTP?

- A. 1
- B. 2
- C. 3
- D. 4

Correct Answer: A

Section: (none)

Explanation

Explanation/Reference:

New Questions

FormA

QUESTION 513

Which of the following statements is false?

- A. A Router-LSA describes the local link state information of a router.
- B. A Network-ISA describes the link state information of a broadcast network or an NBMA network segment.
- C. A virtual link is a virtual adjacency in the backbone area (Area 0).
- D. An AS-external-ISA describes the means to reach an ASBR.

Correct Answer: D

Section: (none)

Explanation

Explanation/Reference:

QUESTION 514

An IP address 192.168.13.175 with the subnet mask 255.255.255.2 can be assigned to a device.

- A. TRUE
- B. FALSE

Correct Answer: B

Section: (none)

Explanation

Explanation/Reference:

QUESTION 515

Which of the following statements is true regarding the function of VRRP?

- A. VRRP can improve default gateway reliability.
- B. VRRP increases the routing protocol convergence speed.
- C. VRRP is mainly used for traffic balance.
- D. VRRP can provide one default gateway for different network segments, simplifying the PC gateway configuration.

Correct Answer: A

Section: (none)

Explanation

Explanation/Reference:

QUESTION 516

MPLS is a switching standard defined by the IETF. Which of the following devices exist on the MPLS network? (Select 2 answers)

- A. LSR
- B. LER

- C. Label distribution router
- D. Label transmit router

Correct Answer: AB

Section: (none)

Explanation

Explanation/Reference:

QUESTION 517

Which type of BGP route can be added to the BGP routing table?

- A. All BGP routes learned from peers
- B. Only the routes learned from IBGP peers
- C. Only the routes learned from EBGP peers
- D. Only optimal routes

Correct Answer: A

Section: (none)

Explanation

Explanation/Reference:

QUESTION 518

Which of the following describes the relationship between BGP and AS?

- A. BGP only runs between ASs, and cannot run within an AS.
- B. BGP is an EGP used by ASs to exchange routing information with other ASs.
- C. BGP builds network topologies by exchanging link-state information between ASs.
- D. BGP cannot run between ASs.

Correct Answer: B

Section: (none)

Explanation

Explanation/Reference:

QUESTION 519

VLANs isolate broadcast domains, eliminate broadcast storms, and enhance data security.

- A. TRUE
- B. FALSE

Correct Answer: A

Section: (none)

Explanation

Explanation/Reference:

QUESTION 520

Which of the following statements regarding RPs are true? (Select 3 answers)

- A. Different group addresses on a PIM-SM network corresponds to different RPs.
- B. An RP is the root of an RPT.
- C. An RP is elected out of BSRs.
- D. All routers on a PIM-SM network must automatically discover the location of RPs.

Correct Answer: ABD

Section: (none)

Explanation

Explanation/Reference:

QUESTION 521

BGP is an exterior gateway protocol which runs between ASs. It focuses on the control of route propagation and selection of optimal routes rather than discovery and calculation of routes.

- A. TRUE
- B. FALSE

Correct Answer: A

Section: (none)

Explanation

Explanation/Reference:

QUESTION 522

The USG supports load balancing between multiple uplinks.

- A. TRUE
- B. FALSE

Correct Answer: A

Section: (none)

Explanation

Explanation/Reference:

QUESTION 523

Which of the following route selection tools is used in multiple routing protocols, can be configured with match conditions, and consists of if-match and apply clauses?

- A. AS-path-filter
- B. IP-prefix
- C. Route-policy
- D. Community-filter

Correct Answer: C

Section: (none)

Explanation

Explanation/Reference:

QUESTION 524

What is the maximum number of hosts that a network segment 192.168.2.16/28 can support?

- A. 16
- B. 8
- C. 15

- D. 14
- E. 7

Correct Answer: D

Section: (none)

Explanation

Explanation/Reference:

QUESTION 525

OSPF supports two authentication modes: area authentication and interface authentication. These two modes cannot be configured at the same time.

- A. TRUE
- B. FALSE

Correct Answer: B

Section: (none)

Explanation

Explanation/Reference:

QUESTION 526

A OSPF network may be structured, or subdivided into routing areas. Such routing areas are a set of network segments.

- A. TRUE
- B. FALSE

Correct Answer: A

Section: (none)

Explanation

Explanation/Reference:

QUESTION 527

For label switched packets that contain the same source and destination address and are transmitted via the same interface, the label switch path 0

- A. Must be different.

- B. Must be the same.
- C. May be the same.

Correct Answer: B

Section: (none)

Explanation

Explanation/Reference:

QUESTION 528

How many default zones does the USG supporting multi-instance have?

- A. Two
- B. Three
- C. Four
- D. Five

Correct Answer: D

Section: (none)

Explanation

Explanation/Reference:

QUESTION 529

Which of the following is the port state defined by RSTP?

- A. Discarding
- B. Learning
- C. Forwarding
- D. All of the above

Correct Answer: D

Section: (none)

Explanation

Explanation/Reference:

QUESTION 530

The most remarkable characteristic of OSPF is that it can support the link-state algorithm.

- A. TRUE
- B. FALSE

Correct Answer: A

Section: (none)

Explanation

Explanation/Reference:

QUESTION 531

An IP network can provide various packet forwarding services. Users are concerned about which of the following during packet forwarding? (Select 3 answers)

- A. Throughput
- B. Delay
- C. Cost
- D. Loss of packet

Correct Answer: ABD

Section: (none)

Explanation

Explanation/Reference:

QUESTION 532

To which attribute type does the BGP AS-Path attribute belong?

- A. Well-known Mandatory
- B. Well-known Discretionary
- C. Optional Transitive
- D. Optional Non-transitive

Correct Answer: A

Section: (none)

Explanation

Explanation/Reference:

QUESTION 533

Which of the following is the address range assigned by IANA for SSM service in IPv4?

- A. 232.0.0.0/24
- B. 225.0.0.0/8
- C. 232.0.0.0/8
- D. 239.0.0.0/8

Correct Answer: D

Section: (none)

Explanation

Explanation/Reference:

QUESTION 534

How many multicast IP addresses can be represented by an IP multicast MAC address?

- A. 1
- B. 23
- C. 32
- D. 24

Correct Answer: C

Section: (none)

Explanation

Explanation/Reference:

QUESTION 535

The option field in a DHCP message uses the CLV mode.

- A. TRUE

B. FALSE

Correct Answer: A

Section: (none)

Explanation

Explanation/Reference:

QUESTION 536

Which statements regarding the PVID on the access interface are true? (Select 3 answers)

- A. If a packet without VLAN tag is received, the interface adds a VLAN tag to the packets and sets the VID as the default VLAN ID.
- B. If a packet with VLAN tag is received, the interface compares the VLAN ID in the tag with the default VLAN ID. If they are the same, the interface forwards the packets; otherwise, the interface discards the packets.
- C. When the interface sends a packet with a VLAN tag that contains the default VLAN ID, the system removes the VLAN tag of the packet, and then forwards the packet.
- D. PVID on access interface is set to 1 by default and cant changed.

Correct Answer: ABC

Section: (none)

Explanation

Explanation/Reference:

trustful.

QUESTION 537

What are the advantages of subnetting? (Select 2 answers)

- A. Isolating broadcast traffic
- B. Improving network QoS
- C. Increasing the IP address usage
- D. Improving network reliability

Correct Answer: AC

Section: (none)

Explanation

Explanation/Reference:

QUESTION 538

What are the functions of route filtering? (Select 3 answers)

- A. Avoids sub-optimal routes generated during route import.
- B. Avoids routing loops.
- C. Affects route selection by changing route attributes.
- D. Implements accurate route importing and controls route advertisement.

Correct Answer: ABD

Section: (none)

Explanation

Explanation/Reference:

QUESTION 539

Which of the following statements is NOT an advantage of STP?

- A. STP can establish redundant links as a backup if the initial link fails.
- B. STP can prevent loops
- C. STP can prevent broadcast storms
- D. STP can save network bandwidth

Correct Answer: D

Section: (none)

Explanation

Explanation/Reference:

answer is assessed.

QUESTION 540

Which of the following is the priority value of the DMZ on the USG?

- A. 10
- B. 50
- C. 75
- D. 85

Correct Answer: B

Section: (none)

Explanation

Explanation/Reference:

QUESTION 541

Which of the following are multicast routing protocols? (Select 3 answers)

- A. DVMRP
- B. PIM-DM
- C. F OSPF
- D. F PIM-SM

Correct Answer: ABD

Section: (none)

Explanation

Explanation/Reference:

QUESTION 542

By default, the cost of an OSPF interface is calculated based on the bandwidth. The formula to calculate the cost is reference bandwidth/interface bandwidth.

- A. TRUE
- B. FALSE

Correct Answer: A

Section: (none)

Explanation

Explanation/Reference:

assessed answer.

QUESTION 543

When an edge port is in the protected state on an RSTP network, which of the following operations is performed by the edge port immediately after receiving BPDUs?

- A. The edge port forwards BPDUs.
- B. The edge port discards BPDUs.
- C. The edge port is shut down.
- D. The edge port obtains required information from BPDUs.

Correct Answer: C

Section: (none)

Explanation

Explanation/Reference:

QUESTION 544

How many hosts are available per subnet if you apply a /21 mask to the class B network?

- A. 510
- B. 512
- C. 1022
- D. 2046

Correct Answer: D

Section: (none)

Explanation

Explanation/Reference:

QUESTION 545

What is the maximum number of bits that can be used for subnetting, when the network address is a Class C address?

- A. 6
- B. 8
- C. 12
- D. 14

Correct Answer: A

Section: (none)

Explanation

Explanation/Reference:

QUESTION 546

A 32-bit MPLS header consists of a 20-bit label used for packet forwarding, a 3-bit EXP field that identifies the IP packet priority, a 1-bit bottom-of-stack flag that identifies the last label, and an 8-bit ITL field. Which statement about the ITL field is true?

- A. It is used to prevent packet forwarding loops, similar to the TTL field in an IP header.
- B. It is used for label management.
- C. It specifies the upstream device in label distribution
- D. It controls the LSR.

Correct Answer: A

Section: (none)

Explanation

Explanation/Reference:

QUESTION 547

What is the network address for the IP address 190.233.27.13/16?

- A. 190.0.0.0
- B. 190.233.0.0
- C. 190.233.27.0
- D. 190.233.27.1

Correct Answer: B

Section: (none)

Explanation

Explanation/Reference:

QUESTION 548

Which of the following attacks are prevented after an IP address and MAC address are bound on the USG? (Select 2 answers)

- A. IP address spoofing

- B. MAC address spoofing
- C. DoS attack
- D. DDoS attack

Correct Answer: AB

Section: (none)

Explanation

Explanation/Reference:

QUESTION 549

Which switching technology reduces the size of broadcast domain?

- A. VLAN
- B. Trunk
- C. RARP
- D. STP

Correct Answer: A

Section: (none)

Explanation

Explanation/Reference:

QUESTION 550

Which of the following statements are true regarding VRRP?

- A. Only the Master can process the data packets being sent to the virtual router.
- B. Only the Slave can process the data packets being sent to the virtual router.
- C. Both Master and Slave can process the data packets being sent to the same virtual router to realize load balance.
- D. By default, only the Master can process the data packets being sent to the virtual router; but certain configurations can make the Slave process the data packets being sent to the virtual router.

Correct Answer: A

Section: (none)

Explanation

Explanation/Reference:

QUESTION 551

The Internet Group Management Protocol (IGMP) runs between hosts and their immediately neighboring multicast routers.

- A. TRUE
- B. FALSE

Correct Answer: A

Section: (none)

Explanation

Explanation/Reference:

QUESTION 552

RSTP has all functions of STP and it is backwards compatible with STP.

- A. TRUE
- B. FALSE

Correct Answer: A

Section: (none)

Explanation

Explanation/Reference:

QUESTION 553

Congestion management provides a means to manage and control traffic when traffic congestion occurs.

- A. TRUE
- B. FALSE

Correct Answer: A

Section: (none)

Explanation

Explanation/Reference:

QUESTION 554

ACL rules are matched based on the configured order only.

- A. TRUE
- B. FALSE

Correct Answer: B

Section: (none)

Explanation

Explanation/Reference:

QUESTION 555

According to the OSI reference model, Layer 2 LAN switch operates at Q.

- A. physical layer
- B. data link layer
- C. network layer
- D. application layer

Correct Answer: B

Section: (none)

Explanation

Explanation/Reference:

QUESTION 556

Which of the following routes matches the ACL filter given below?

"ad number 2001

rule 0 permit source 1.1.0.0 0"

- A. 1.1.1.1/32
- B. 1.1.1.0/24

- C. 1.1.0.0/16
- D. 1.0.0.0/8

Correct Answer: C

Section: (none)

Explanation

Explanation/Reference:

QUESTION 557

On a STP network, which of the following BPDUs are sent during flooding of information throughout the network due to STP topology change?

- A. BPDUs with the TCN flag
- B. BPDUs with the TCA flag
- C. BPDUs with the TC flag
- D. All of the above

Correct Answer: D

Section: (none)

Explanation

Explanation/Reference:

QUESTION 558

The "import-route limit" command is used to set a maximum number of imported routes that can be imported into an OSPF routing process.

- A. TRUE
- B. FALSE

Correct Answer: A

Section: (none)

Explanation

Explanation/Reference:

QUESTION 559

Dividing a network using VLANs can (). (Select 2 answers)

- A. Support more network layer protocols
- B. Restrict the scope of broadcast domains
- C. Increase the number of collision domains
- D. Guarantee data security

Correct Answer: BD

Section: (none)

Explanation

Explanation/Reference:

QUESTION 560

Which of the following protocols support the multicast ASM service model? (Select 2 answers)

- A. PIM-SM and IGMPv2
- B. PIM-SSM and IGMPv3
- C. BGP and OSPF
- D. PIM-DM and IGMPv2

Correct Answer: AD

Section: (none)

Explanation

Explanation/Reference:

QUESTION 561

You cannot set an aging time for the blacklist of the USG.

- A. TRUE
- B. FALSE

Correct Answer: B

Section: (none)

Explanation

Explanation/Reference:

QUESTION 562

Which of the following statements regarding VLAN configuration are true? (Select 2 answers)

- A. You can enter the VLAN view and create a VLAN at the same time.
- B. Running undo VLAN invalidates the VLAN but the VLAN still exists. You do not need to recreate the VLAN to use it.
- C. You can configure a description string of VLAN. The length of the string is unlimited.
- D. If the VLAN ID is not entered when running the display VLAN command, all information about the VLAN will be displayed.

Correct Answer: AD

Section: (none)

Explanation

Explanation/Reference:

QUESTION 563

How many bits of the MAC address space is available for mapping IP multicast addresses?

- A. 24
- B. 22
- C. 25
- D. 23

Correct Answer: A

Section: (none)

Explanation

Explanation/Reference:

QUESTION 564

An OSPF neighbor relationship fails to establish and the OSPF error information is displayed as follows. Which of the following is most likely the cause?

[RTB]display ospf error

OSPF Process 1 with Router ID 2.2.2.2

OSPF error statistics:

General packet errors:

0	: IP: received my own packet	0	: Bad packet
0	: Bad version	0	: Bad checksum
0	: Bad area id	0	: Drop on unnumbered interface
0	: Bad virtual link	0	: Bad authentication type
0	: Bad authentication key	0	: Packet too small
0	: Packet size > ip length	0	: Transmit error
0	: Interface down	0	: Unknown neighbor

HELLO packet errors:

0	: Netmask mismatch	0	: Hello timer mismatch
0	: Dead timer mismatch	0	: Extern option mismatch
9	: Router id confusion	0	: Virtual neighbor unknown
0	: NBMA neighbor unknown		

DD packet errors:

0	: Neighbor state low	0	: Router id confusion
0	: Extern option mismatch	0	: Unknown LSA type
0	: MTU option mismatch		

LS ACK packet errors:

0	: Neighbor state low	0	: Bad ack
0	: Duplicate ack	0	: Unknown LSA type

LS REQ packet errors:

0	: Neighbor state low	0	: Empty request
0	: Bad request		

LS UPD packet errors:

0	: Neighbor state low	0	: Newer self-generate LSA
0	: LSA checksum bad	0	: Received less recent LSA
0	: Unknown LSA type		

Opaque errors:

- A. Router IDs conflict.
- B. Area IDs are mismatched.
- C. Network masks are inconsistent.
- D. Authentication types are inconsistent.

Correct Answer: C

Section: (none)

Explanation

Explanation/Reference:

QUESTION 565

To provide services of different qualities, you can classify services based on such packet information as the packet priority, source IP address, destination IP address, and port number. Which of the following QoS technology can be used to service classification?

- A. Traffic policing
- B. Traffic shaping
- C. Complex traffic classification
- D. Congestion management

Correct Answer: C

Section: (none)

Explanation

Explanation/Reference:

QUESTION 566

Which of the following are factors that affect QoS? (Select 3 Answers)

- A. Bandwidth
- B. Cost
- C. Jitter
- D. Loss of packet

Correct Answer: ACD

Section: (none)

Explanation

Explanation/Reference:

QUESTION 567

If an MSTP switch detects that the neighboring switch works in RSTP mode, which mode does the MSTP switch work?

- A. STP mode
- B. RSTP mode
- C. MSTP mode
- D. All of the above

Correct Answer: B

Section: (none)

Explanation

Explanation/Reference:

QUESTION 568

Which problems on a single spanning tree network can be solved by MSTP? (Select 3 Answers)

- A. Traffic forwarding paths in some VLANs are faulty.
- B. Traffic cannot be load balanced.
- C. The second best path problem may occur.
- D. The network reliability cannot be improved.

Correct Answer: ABC

Section: (none)

Explanation

Explanation/Reference:

QUESTION 569

```
[SWC]display stp brief
```

MSTID	Port	Role	STP State	Protection
0	Ethernet1/0/2	DESI	FORWARDING	NONE
0	Ethernet1/0/3	DESI	FORWARDING	NONE
0	Ethernet1/0/12	ALTE	DISCARDING	NONE
0	Ethernet1/0/13	ROOT	FORWARDING	NONE
1	Ethernet1/0/2	DESI	FORWARDING	NONE
1	Ethernet1/0/12	ROOT	FORWARDING	NONE
1	Ethernet1/0/13	ALTE	DISCARDING	NONE
2	Ethernet1/0/3	DESI	FORWARDING	NONE
2	Ethernet1/0/12	ALTE	DISCARDING	NONE
2	Ethernet1/0/13	ROOT	FORWARDING	NONE

According to the figure, what is the status of Ethernet1/0/13 in MSTI 1?

- A. Forwarding
- B. Discarding
- C. Learning
- D. None of the above

Correct Answer: B

Section: (none)

Explanation

Explanation/Reference:

exact answer.

QUESTION 570

In RSTP, which statements about the alternate port and backup port are true? (Select 2 Answers)

- A. The alternate port is a backup of the root port.
- B. The backup port is a backup of the designated port.
- C. The switch that the backup port belongs to is not the designated switch on the network segment connected to the interface.

D. The switch that the alternate port belongs to is the designated switch on the network segment connected to the interface.

Correct Answer: AB

Section: (none)

Explanation

Explanation/Reference:

QUESTION 571

According to the MSTP protocol, each MST instance calculates an independent spanning tree by using the RSTP algorithm.

A. True

B. False

Correct Answer: A

Section: (none)

Explanation

Explanation/Reference:

QUESTION 572

The following is the command output on a root switch of an MSTP region. How many switches are located in the MSTP region?

A. Less than 10

B. Less than 20

C. Less than 30

D. Less than 40

Correct Answer: C

Section: (none)

Explanation

Explanation/Reference:

QUESTION 573

On the RSTP network with STP devices, which packets does an RSTP switch use to notify the STP switches of the topology change?

- A. RSTP BPDUs with the TC flag
- B. STP BPDUs with the TCN flag
- C. RSTP BPDUs with the TCA flag
- D. STP BPDUs with the TCA flag

Correct Answer: B

Section: (none)

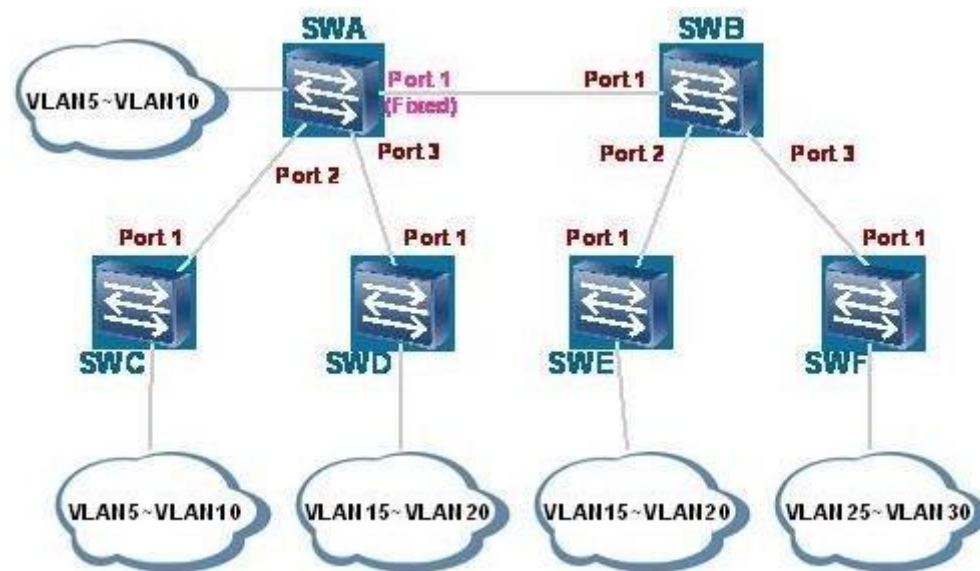
Explanation

Explanation/Reference:

valid.

QUESTION 574

What are the same fields in RSTP BPDUs and STP BPDUs? (Select 2 Answers)



- A. TCN
- B. TC
- C. TCA
- D. All of the above

Correct Answer: BC

Section: (none)

Explanation

Explanation/Reference:

QUESTION 575

What is the function of the client IP address field in DHCP messages?

- A. It is used by the client in bound, renew, or rebinding state to respond to ARP request packets.
- B. It specifies the IP address allocated by the DHCP server to a client.
- C. It specifies the next server address used in the BootStrap and is contained in DHCP Offer or DHCP ACK messages.
- D. It specifies the DHCP relay address.

Correct Answer: A

Section: (none)

Explanation

Explanation/Reference:

answer is corrected.

QUESTION 576

```
[SWA]display stp brief
```

MSTID	Port	Role	STP State	Protection
0	Ethernet1/0/12	DESI	FORWARDING	NONE
0	Ethernet1/0/15	ROOT	FORWARDING	NONE
1	Ethernet1/0/12	DESI	FORWARDING	NONE
1	Ethernet1/0/15	DESI	FORWARDING	NONE
2	Ethernet1/0/12	DESI	FORWARDING	NONE
2	Ethernet1/0/15	ROOT	FORWARDING	NONE

On the MSTP network as shown in the figure, what is the role of the switch in MSTI 1 according to the configuration?

- A. Root switch
- B. Slave switch

- C. Non-root switch
- D. None of the above

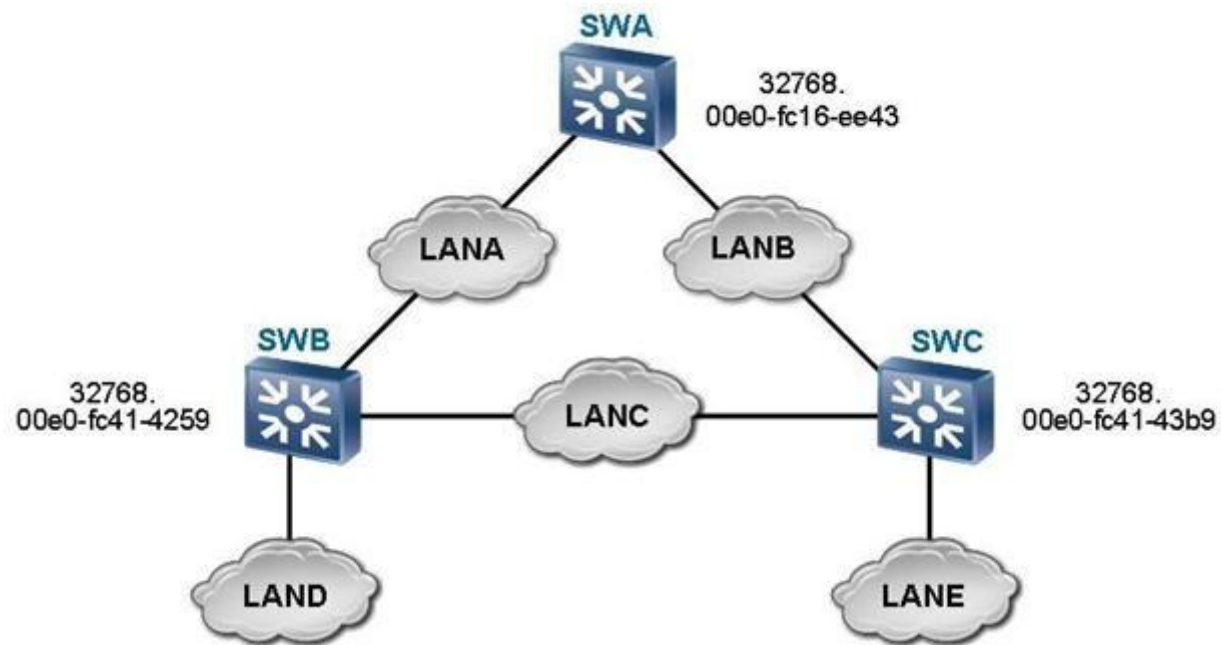
Correct Answer: A

Section: (none)

Explanation

Explanation/Reference:
appropriate.

QUESTION 577



As shown in the figure, which switch is the root switch according to the configuration?

- A. SWA
- B. SWB
- C. SWC
- D. None of the above

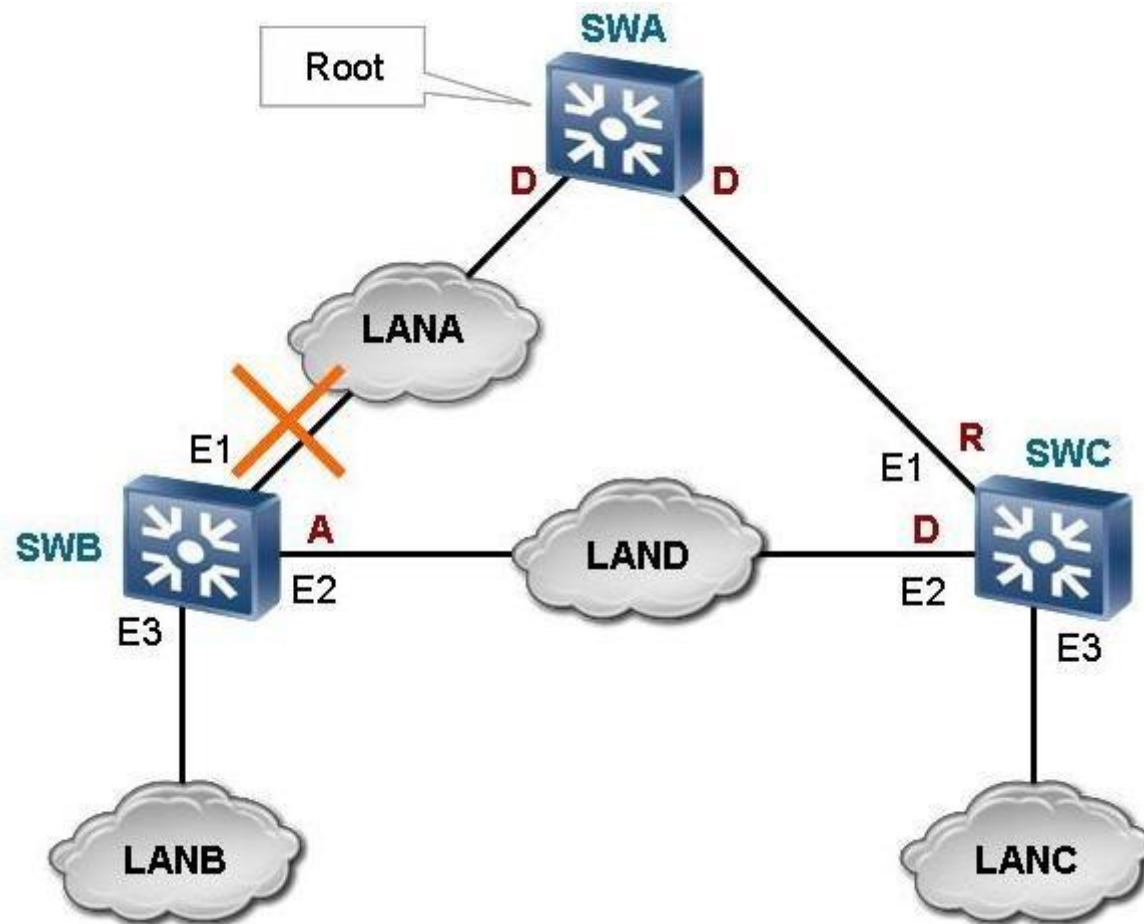
Correct Answer: A

Section: (none)

Explanation

Explanation/Reference:

QUESTION 578



On the RSTP network as shown in the figure, what RSTP operations will occur after the E1 port of SWB fails? (Select 3 Answers)

- A. SWB deletes the MAC address entries with the E1 port as the destination interface.
- B. The spanning tree is recalculated and the E2 port is elected as the new root port.
- C. All the interfaces in forwarding state send topology change notifications (TCNs) to notify other switches of the topology change.
- D. All the non-edge ports in forwarding state send TCNs to notify other switches of the topology change.

Correct Answer: ABD

Section: (none)

Explanation

Explanation/Reference:

QUESTION 579

Two switches are directly connected to each other and they are working in full duplex mode. By default, RSTP will consider the link between the switches as point-to-point link.

- A. True
- B. False

Correct Answer: A

Section: (none)

Explanation

Explanation/Reference:
sophisticated.

QUESTION 580

In RSTP network environment, a port can be set as edge port when it is directly connected with terminal.

- A. True
- B. False

Correct Answer: A

Section: (none)

Explanation

Explanation/Reference:

QUESTION 581

Which of the following statements about RSTP and STP is true?

- A. STP has more port states than RSTP.
- B. The port roles used in RSTP is less than the port roles used in STP.
- C. Since RSTP adopts fast convergence mechanism, it does not have Learning state which is available in STP.
- D. Same as STP, the ports will enter into Listening state once the RSTP has been enabled. Then, the ports can receive BPDU and calculate the spanning tree.

Correct Answer: A

Section: (none)

Explanation

Explanation/Reference:

QUESTION 582

In a switching network that runs RSTP, the topology change notification message will not be sent when the switch detects that the Alternate Port is failed.

- A. True
- B. False

Correct Answer: A

Section: (none)

Explanation

Explanation/Reference:

authentic answer.

QUESTION 583

When the topology of a network running RSTP changes, what happens after the change?

- A. Flooding on the entire network.
- B. The aging time of MAC address entries is changed.
- C. Some MAC address entries are deleted.
- D. All of the above

Correct Answer: C

Section: (none)

Explanation

Explanation/Reference:

QUESTION 584

Which ports defined by RSTP cannot work in Forwarding state? (Select 2 Answers)

- A. Root Port
- B. Designated Port
- C. Backup Port
- D. Alternate Port

Correct Answer: CD

Section: (none)

Explanation

Explanation/Reference:

exact.

QUESTION 585

In STP configuration, which statement about BPDUs is true?

- A. BPDUs cannot be sent from the designated port.
- B. BPDUs can be sent only from the designated port.
- C. BPDUs can be sent from any port.
- D. None of the above.

Correct Answer: B

Section: (none)

Explanation

Explanation/Reference:

QUESTION 586

Which of the following standards defines STP?

- A. 802.1J
- B. 802.1X
- C. 802.1D
- D. 802.1P

Correct Answer: C

Section: (none)

Explanation

Explanation/Reference:

QUESTION 587

STP elects ()

- A. One bridge as the Root Bridge and another one as the Backup Root Bridge
- B. One bridge as the Root Bridge
- C. Two bridges as the Root Bridge
- D. One Designated Bridge

Correct Answer: B

Section: (none)

Explanation

Explanation/Reference:

QUESTION 588

On an STP network, after the network topology changes, which BPDUs are sent during flooding of topology change information on the entire network?

- A. BPDUs with the TCN flag
- B. BPDUs with the TCA flag
- C. BPDUs with the TC flag
- D. All of the above

Correct Answer: D

Section: (none)

Explanation

Explanation/Reference:

QUESTION 589

After an STP switch starts, it considers itself as the root switch. Which statements about BDPU parameter setting are true? (Select 3 Answers)

- A. The switch is the designated root.
- B. The designated cost is 0.
- C. The switch is the designated bridge.
- D. The designated port is 0.

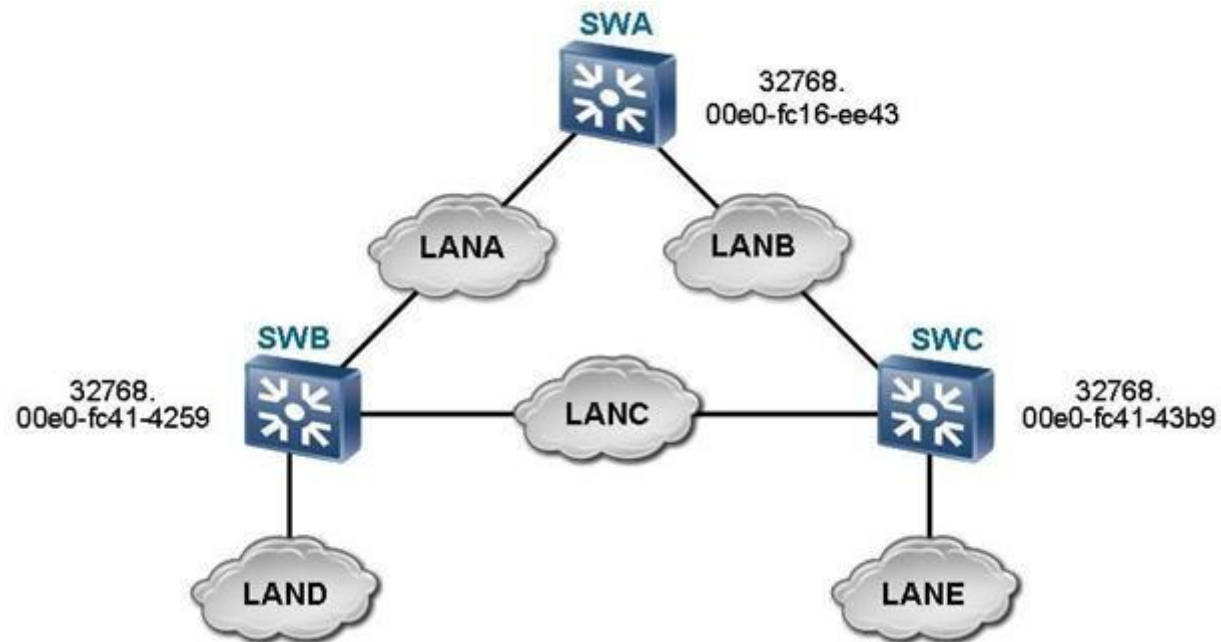
Correct Answer: ABC

Section: (none)

Explanation

Explanation/Reference:

QUESTION 590



On the STP network as shown in the figure, which device may be the blocked port belong to?

- A. SWA
- B. SWB
- C. SWC
- D. None of the above

Correct Answer: C

Section: (none)

Explanation

Explanation/Reference:

QUESTION 591

QinQ provides a simplified Layer 2 VPN tunnel.

- A. True

B. False

Correct Answer: A

Section: (none)

Explanation

Explanation/Reference:

QUESTION 592

Which statements about QinQ are true? (Select 2 Answers)

- A. QinQ saves VLANs on the public network.
- B. To avoid VLAN conflict, the customer must negotiate with the service provider before modifying the VLANs on its private network.
- C. When the service provider upgrades the network, the configurations on the user network do not need to be modified.
- D. All of the above

Correct Answer: AC

Section: (none)

Explanation

Explanation/Reference:

QUESTION 593

Which are the port roles defined in STP?

- A. Root Port
- B. Designated Port
- C. Alternate Port
- D. All of the above

Correct Answer: D

Section: (none)

Explanation

Explanation/Reference:

QUESTION 594

How many port states are defined by STP?

- A. 3
- B. 4
- C. 5
- D. 6

Correct Answer: C

Section: (none)

Explanation

Explanation/Reference:

QUESTION 595

Each STP switch has a unique switch ID. Which two entries does the switch ID contain?

- A. Two-byte switch priority
- B. Six-byte MAC address
- C. Two-byte switch priority and six-byte MAC address
- D. Six-byte switch priority and six-byte MAC address

Correct Answer: C

Section: (none)

Explanation

Explanation/Reference:

QUESTION 596

On an STP network, before the interface status transits from non-forwarding to forwarding, how many Forward Delay intervals does the interface wait for?

- A. 2
- B. 3
- C. 4
- D. 5

Correct Answer: A

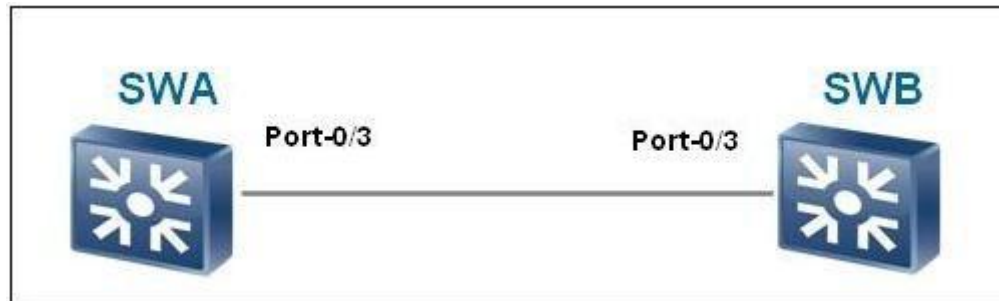
Section: (none)

Explanation

Explanation/Reference:

QUESTION 597

If loop exists and STP is not enabled, the switch will not operate normally.



A. True

B. False

Correct Answer: A

Section: (none)

Explanation

Explanation/Reference:

QUESTION 598

Which of the following statements about STP Designated Port is true?

- A. Each of the bridge can have one Designated Port only.
- B. Designated Port is responsible for forwarding packets to its connected network segments.
- C. The only path leading to the Root Bridge is through Designated Port.
- D. Designated Port forwards the data packet from its corresponding switch to the Root Switch.

Correct Answer: B

Section: (none)

Explanation

Explanation/Reference:

QUESTION 599

Which of the following statements about STP Designated Port is true?

- A. Each of the bridge can have one Designated Port only.
- B. Designated Port is responsible for forwarding packets to its connected network segments.
- C. The only path leading to the Root Bridge is through Designated Port.
- D. Designated Port forwards the data packet from its corresponding switch to the Root Switch.

Correct Answer: B

Section: (none)

Explanation

Explanation/Reference:

QUESTION 600

Which of the following statements is not the advantage of STP?

- A. STP can manage the redundant links. When the working link is down, network connectivity can be restored.
- B. STP can prevent loops
- C. STP can prevent broadcast storm
- D. STP can save network bandwidth

Correct Answer: D

Section: (none)

Explanation

Explanation/Reference:

QUESTION 601

The STP protocol can prevent broadcast storms caused by loops on the Layer 2 network.

- A. True
- B. False

Correct Answer: A

Section: (none)

Explanation

Explanation/Reference:

QUESTION 602

The STP protocol cannot prevent MAC address table flapping caused by loops on the Layer 2 network.

- A. True
- B. False

Correct Answer: B

Section: (none)

Explanation

Explanation/Reference:

QUESTION 603

STP distributes configuration message by sending BPDU packet to each other.

- A. True
- B. False

Correct Answer: A

Section: (none)

Explanation

Explanation/Reference:

QUESTION 604

In STP, BPDU packet is carried by ().

- A. IP packet
- B. TCP packet
- C. Ethernet frame
- D. UDP packet

Correct Answer: C

Section: (none)

Explanation

Explanation/Reference:

answer is assessed.