

## NSE5\_FMG-5.4.fortinet

Number: NSE5\_FMG-5.4

Passing Score: 800

Time Limit: 120 min



**Website:** <https://vceplus.com>

**VCE to PDF Converter:** <https://vceplus.com/vce-to-pdf/>

**Facebook:** <https://www.facebook.com/VCE.For.All.VN/>

**Twitter :** [https://twitter.com/VCE\\_Plus](https://twitter.com/VCE_Plus)

<https://vceplus.com/>

## Exam A

### QUESTION 1

An administrator would like to authorize a newly-installed AP using **AP Manager**. What steps does the administrator need to perform to authorize an AP?



<https://vceplus.com/>

- A. Authorize the new AP using **AP Manager** and wait until the change is updated on the FortiAP. Changes to the AP's state do not require installation.
- B. Changes to the AP's state must be performed directly on the managed FortiGate.
- C. Authorize the new AP using **AP Manager** and install the policy package changes on the managed FortiGate.
- D. Authorize the new AP using **AP Manager** and install the device level settings on the managed FortiGate.

**Correct Answer:** D

**Section:** (none)

**Explanation**

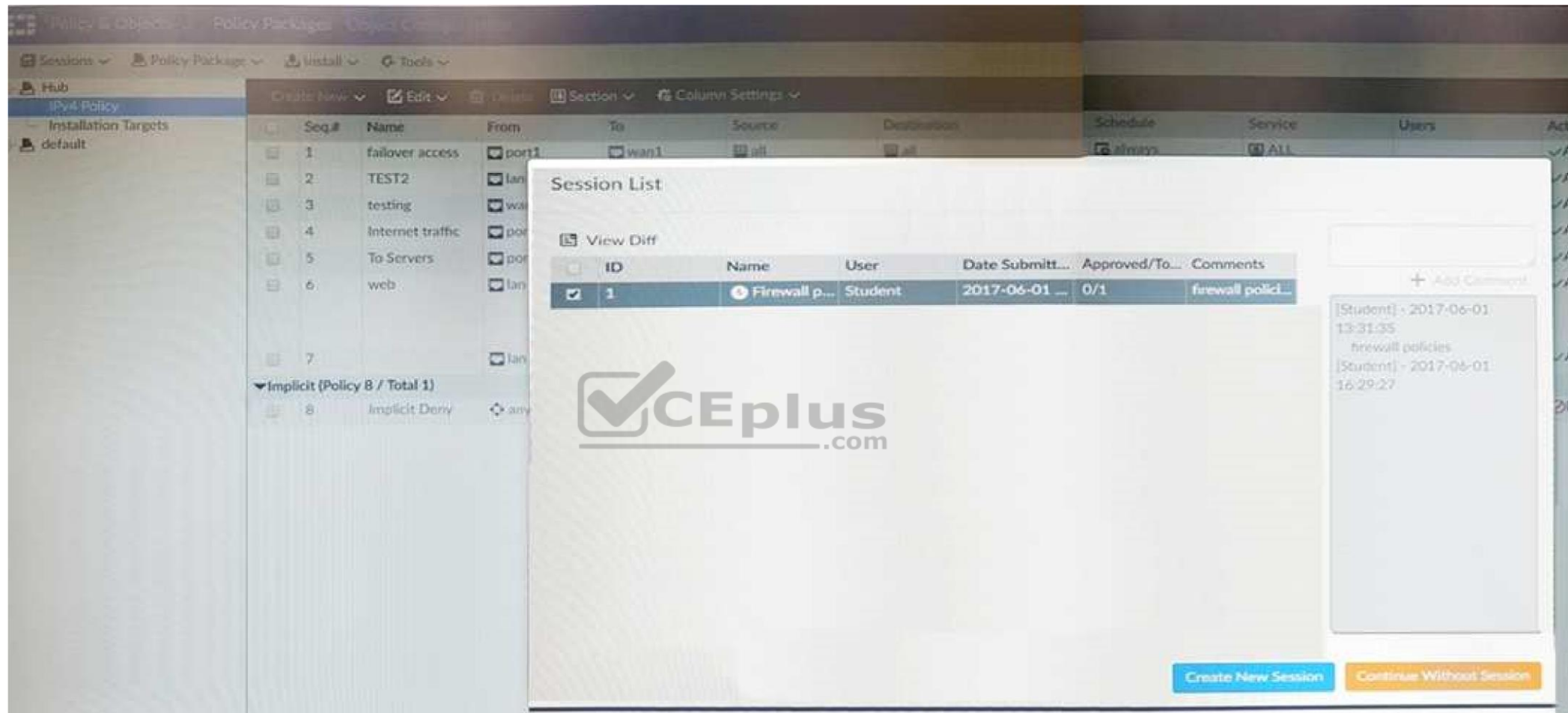
**Explanation/Reference:**

### QUESTION 2

An administrator has assigned a global policy package to custom ADOM1. What will happen if the administrator tries to create a new policy package in custom ADOM1?

- A. When a new policy package is created, you need to reapply the global policy package to the ADOM.
- B. When creating a new policy package, can select the option to assign the global policies to the new package.
- C. When a new policy package is created, it automatically assigns the global policies to the new package.
- D. When a new policy package is created, you must assign the global policy package from the global ADOM.

Correct Answer: B  
Section: (none)



**Explanation**

**Explanation/Reference:**

**QUESTION 3**

View the following exhibit:

An administrator, Trainer, who is assigned the `Super_User` profile, is trying to approve a workflow session that was submitted by another administrator, Student. However, Trainer is unable to approve the workflow session. What can prevent an admin account that has `Super_User` rights over the device from approving a workflow session?

- A. Trainer must close Student's workflow session before approving the request.
- B. Trainer does not have full rights over this ADOM.
- C. Trainer is not a part of workflow approval group.
- D. Student, who submitted the workflow session, must first self-approve the request.

**Correct Answer:** C

**Section:** (none)

**Explanation**

**Explanation/Reference:**

#### QUESTION 4

View the following exhibit:

```
FortiManager# diagnose dvm device list
There are currently 1 devices/vdoms managed:
TYPE  OID  SN      HA  IP      Name          ADOM      IPS      FIRMWARE
fmg/   176  FGVM01  -   10.200.1.1  Local-FortiGate MY_ADOM    8.0..    5.0 MR4 (1011)
faz enabled                                     (regular)
| - STATUS: db: modified; conf: in sync; cond: pending; dm: retrieved; conn: up

| - vdom: [3]root flags: 0 adom:My_ADOM pkg: [imported]Local-FortiGate_root
```

What of the following statements are true regarding the output? (Choose two.)

- A. Configuration changes have been installed to FortiGate and represents FortiGate configuration has been changed.

- B. The latest revision history for the managed FortiGate does match with the FortiGate running configuration.
- C. The latest revision history for the managed FortiGate does not match with the device-level database.
- D. Configuration changes directly made on the FortiGate have been automatically updated to device-level database.

**Correct Answer:** AD

**Section:** (none)

**Explanation**

**Explanation/Reference:**

#### QUESTION 5

An administrator wants to delete an address object that is currently referenced in a firewall policy. Which one of the following statements is true?

- A. FortiManager will replace the deleted address object with the all address object in the referenced firewall policy.
- B. FortiManager will disable the status of the referenced firewall policy.
- C. FortiManager will not allow the administrator to delete a referenced address object.
- D. FortiManager will replace the deleted address object with the **none** address object in the referenced firewall policy.

**Correct Answer:** C

**Section:** (none)

**Explanation**

**Explanation/Reference:**

#### QUESTION 6

What are the factory default settings on FortiManager? (Choose three.)

- A. Password is fortinet
- B. port1 interface IP address is 192.168.1.99/24



<https://vceplus.com/>

- C. **Service Access** is enabled on port1
- D. Username is admin
- E. **Reports** and **Event Monitor** panes are enabled

**Correct Answer:** BCD

**Section:** (none)

**Explanation**

**Explanation/Reference:**



#### QUESTION 7

View the following exhibit:

Starting log (Run on device)

Start installing

Local-FortiGate \$ config user device

Local-FortiGate (device) \$ edit "mydevice"

new entry 'mydevice' added

Local-FortiGate (mydevice) \$ next

MAC address can not be 0

node\_check\_object fail! for mac 00:00:00:00:00:00

Attribute 'mac' value '00:00:00:00:00:00' checking fail -33

Command fail. Return code 1

Local-FortiGate (device) \$ end

...

Local-FortiGate \$ config firewall policy

Local-FortiGate (policy) \$ edit 2

new entry '2' added

Local-FortiGate (2) \$ set name "Device\_policy"

Local-FortiGate (2) \$ set uuid 64...

Local-FortiGate (2) \$ set srcintf "port3"

Local-FortiGate (2) \$ set dstintf "port1"

Local-FortiGate (2) \$ set srcaddr "all"

Local-FortiGate (2) \$ set dstaddr "all"

Local-FortiGate (2) \$ set action accept

Local-FortiGate (2) \$ set schedule "always"

Local-FortiGate (2) \$ set service "ALL"

Local-FortiGate (2) \$ set devices "mydevice"

entry not found in datasource

value parse error before 'mydevice'

Command fail. Return code -3



Which statement is true regarding this failed installation log?

- A. Policy ID 2 is installed without a source address.
- B. Policy ID 2 is installed without a source device.
- C. Policy ID 2 will not be installed.
- D. Policy ID 2 is installed in disabled state.

**Correct Answer:** A

**Section:** (none)

**Explanation**

**Explanation/Reference:**

#### QUESTION 8

View the following exhibit, which shows the **Download Import Report**:

```
Start to import config from device(Remote-FortiGate)vdom(root)to adom(MyADOM),
package(Remote-FortiGate)
"firewall address",SUCCESS,"(name=REMOTE_SUBNET,oid=580,new object)"
"firewall policy",SUCCESS,"(name=1,oid=990, new object)"
"firewall policy",FAIL,"(name=ID:2(#2),oid=991,reason=interface(interface binding
contradiction.detail:any<-port6)binding fail)"
```

Why it is failing to import firewall policy ID 2?

- A. The address object used in policy ID 2 already exist in ADOM database with **any** as interface association and conflicts with address object interface association locally on the FortiGate.
- B. Policy ID 2 is configured from interface **any** to **port6**. FortiManager rejects to import this policy because **any** interface does not exist on FortiManager.
- C. Policy ID 2 for this managed FortiGate already exists on FortiManager in policy package named **Remote-FortiGate**.
- D. Policy ID 2 does not have **ADOM Interface** mapping configured on FortiManager.

**Correct Answer:** B



Section: (none)

Explanation

Explanation/Reference:

#### QUESTION 9

An administrator is unable to log in to FortiManager. Which one of the following troubleshooting step should you take to resolve the issue?

- A. Make sure **FortiManager Access** is enabled in the administrator profile.
- B. Make sure ADOMs are enabled and the administrator has access to the **Global ADOM**.
- C. Make sure **Offline Mode** is disabled.
- D. Make sure the administrator IP address is part of the trusted hosts.

Correct Answer: D

Section: (none)

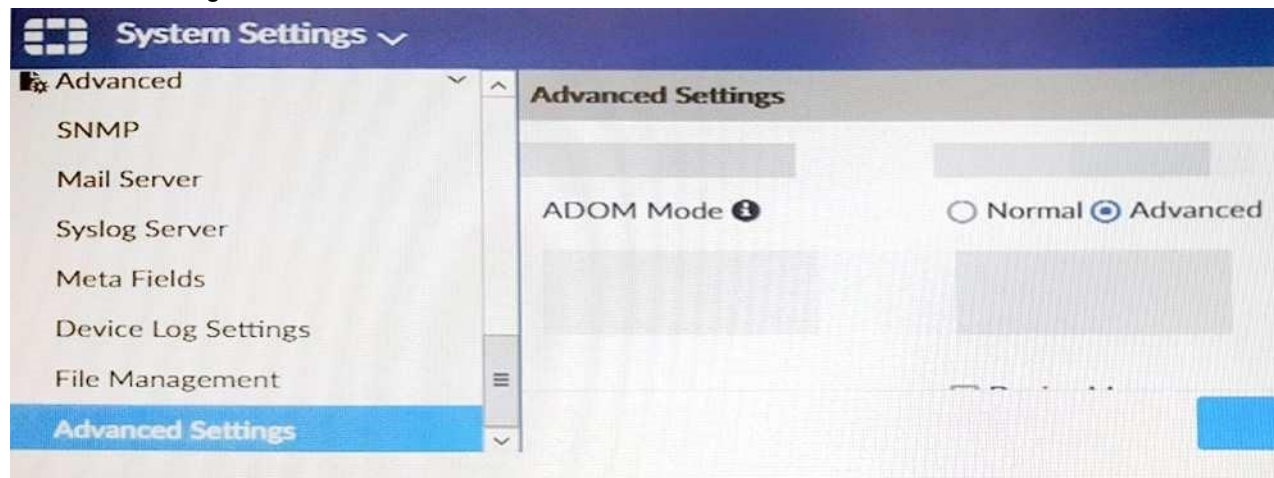
Explanation

Explanation/Reference:



#### QUESTION 10

View the following exhibit.



Which of the following statements are true based on this configuration setting? (Choose two.)

- A. This setting will enable the ADOMs feature on FortiManager.
- B. This setting is applied globally to all ADOMs.
- C. This setting will allow assigning different VDOMs from the same FortiGate to different ADOMs.
- D. This setting will allow automatic updates to the policy package configuration for a managed device.

**Correct Answer:** BC

**Section:** (none)

**Explanation**

**Explanation/Reference:**

#### QUESTION 11

Which of the following statements are true regarding ADOM revisions? (Choose two.)

- A. ADOM revisions can save the current state of all policy packages and objects for an ADOM.
- B. ADOM revisions can significantly increase the size of the configuration backups.
- C. ADOM revisions can create **System Checkpoints** for the FortiManager configuration.
- D. ADOM revisions can save the current state of the whole ADOM.

**Correct Answer:** AB

**Section:** (none)

**Explanation**

**Explanation/Reference:**

#### QUESTION 12

What does a policy package status of **Modified** indicate?

- A. Policy package configuration has been changed on FortiManager and changes have not yet been installed on the managed device.
- B. The policy package was never imported after a device was registered on FortiManager.
- C. FortiManager is unable to determine the policy package status.
- D. Policy configuration has been changed on a managed device and changes have not yet been imported into FortiManager.

**Correct Answer:** A

**Section:** (none)

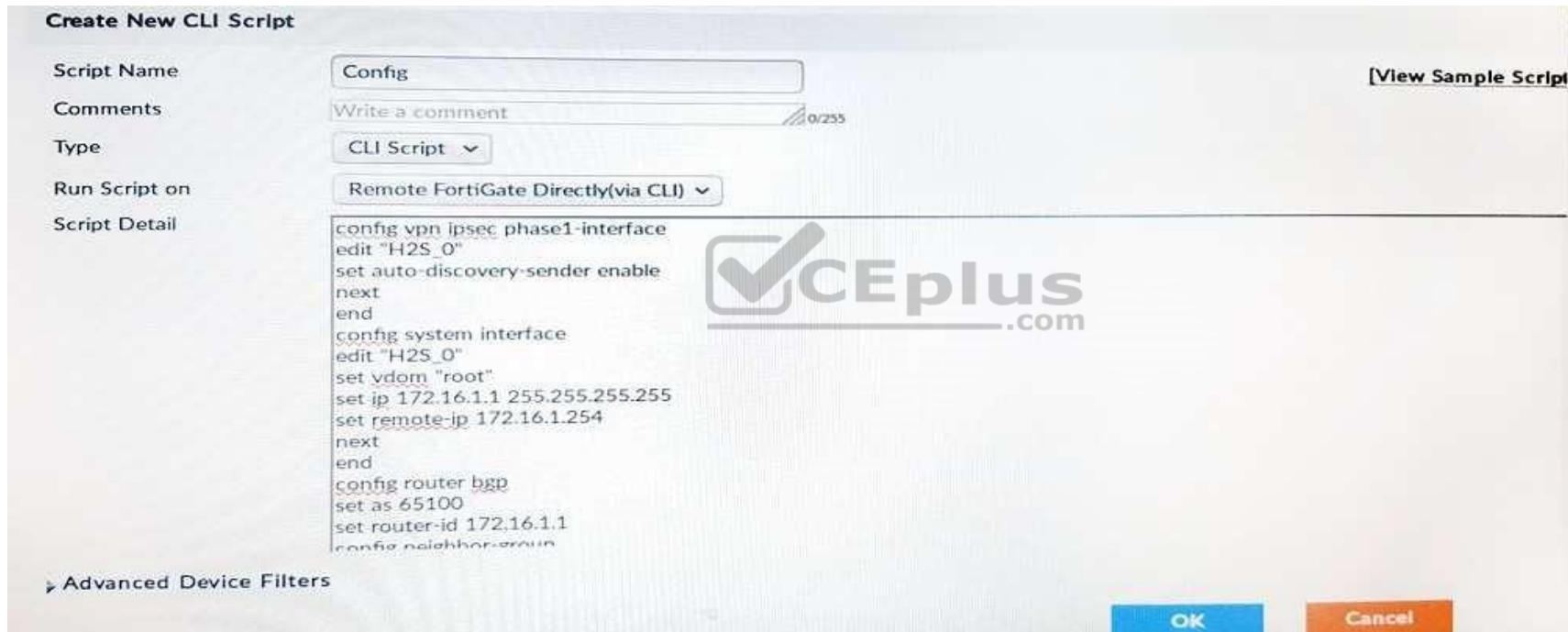
**Explanation**

**Explanation/Reference:**

Reference: [http://help.fortinet.com/fmgr/50hlp/56/5-6-1/FortiManager\\_Admin\\_Guide/1200\\_Policy%20and%20Objects/0800\\_Managing%20policy%20packages/2200\\_Policy%20Package%20Installation%20targets.htm](http://help.fortinet.com/fmgr/50hlp/56/5-6-1/FortiManager_Admin_Guide/1200_Policy%20and%20Objects/0800_Managing%20policy%20packages/2200_Policy%20Package%20Installation%20targets.htm)

### QUESTION 13

View the following exhibit:



**Create New CLI Script**

Script Name:  [View Sample Script]

Comments:  0/255

Type:

Run Script on:

Script Detail

```

config vpn ipsec phase1-interface
edit "H2S_0"
set auto-discovery-sender enable
next
end
config system interface
edit "H2S_0"
set vdom "root"
set ip 172.16.1.1 255.255.255.255
set remote-ip 172.16.1.254
next
end
config router bgp
set as 65100
set router-id 172.16.1.1
config neighbor-group

```

Advanced Device Filters

OK Cancel

Which of the following statements are true if the script is executed using **Remote FortiGate Directly(via CLI)** option? (Choose two)



<https://vceplus.com/>

- A. FortiManager provides a preview of CLI commands before executing this script on a managed FortiGate.
- B. FortiManager will create a new revision history.
- C. FortiManager will auto-update FortiManager's device-level database.
- D. You must install these changes using **Install Wizard**.

**Correct Answer:** AC

**Section:** (none)

**Explanation**

**Explanation/Reference:**



#### QUESTION 14

What configuration setting for FortiGate is part of a device-level database on FortiManager?

- A. Routing
- B. Security profiles
- C. VIP and IP Pools
- D. Firewall policies

**Correct Answer:** D

**Section:** (none)

**Explanation**

**Explanation/Reference:**

#### QUESTION 15

```
# diagnose fmupdate view-serverlist fds
Fortiguard Server Comm : Enabled
Server Override Mode : Loose
FDS server list :
Index Address Port TimeZone Distance Source
-----
*0 10.0.1.50 8890 -5 0 CL
1 96.45.33.89 443 -5 0 FDN
2 96.45.32.81 443 -5 0 FDN
...
38 fds1.fortinet.com 443 -5 0 DEF
```

View the following exhibit:

How will FortiManager try to get updates for antivirus and IPS?

- A. From the list of configured override servers with ability to fall back to public FDN servers
- B. From the configured override server list only.
- C. From the default server `fds1.fortinet.com`.
- D. From public FDN servers with highest index number only.

**Correct Answer:** A

**Section:** (none)

**Explanation**

**Explanation/Reference:**

#### QUESTION 16

An administrator ran the reload failure command; `diagnose test deploymanager reload config <deviceid>` on FortiManager. What does this command do?

- A. It compares and provides differences in configuration on FortiManager with the current running configuration of the specified FortiGate.
- B. It installs the provisioning template configuration on the specified FortiGate.
- C. It downloads the latest configuration from the specified FortiGate and performs a reload operation on the device database.
- D. It installs the latest configuration on the specified FortiGate and updates the revision history database.

**Correct Answer:** C

**Section:** (none)

**Explanation**

**Explanation/Reference:**

Explanation:

diagnose test deploymanager reloadconf : Reload configuration from the FortiGate

Reference:

<https://docs.fortinet.com/uploaded/files/3874/FortiManager%205.6.0%20CLI%20Reference.pdf>

#### QUESTION 17

What does the `diagnose cdb check policy-assignment` command do?

- A. Fixes incorrect ADOM-level object references based on the firewall policies.
- B. Internally upgrades existing ADOMs to the same ADOM version in order to clean up and correct the ADOM syntax.
- C. Verifies and checks dynamic mappings, and removes invalid dynamic mappings.
- D. Verifies and corrects global ADOM policy package assignments that have been disassociated from an ADOM.

**Correct Answer:** C

**Section:** (none)

**Explanation**

**Explanation/Reference:**

#### QUESTION 18

Which of the following statements are true regarding schedule backup of FortiManager? (Choose two.)

- A. Can be configured from the CLI and GUI.
- B. Does not back up firmware images saved on FortiManager.
- C. Backs up all devices and the FortiGuard database.

D. Supports FTP, SCP, and SFTP.

**Correct Answer:** AD

**Section:** (none)

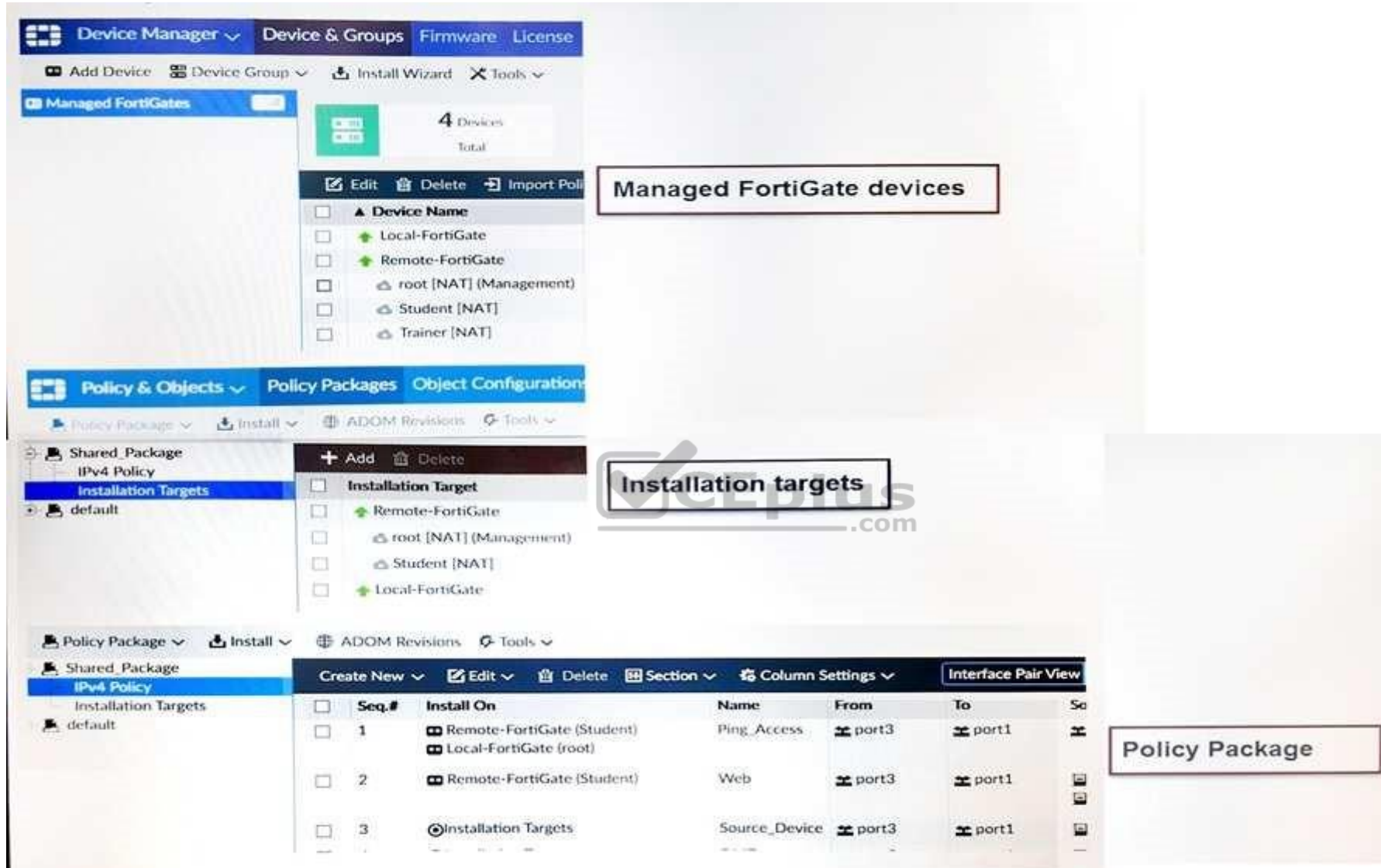
**Explanation**

**Explanation/Reference:**

#### **QUESTION 19**

View the following exhibit:





The screenshot displays the FortiGate configuration interface with three main sections highlighted by callouts:

- Managed FortiGate devices:** Located in the 'Device Manager' tab, showing a list of devices including Local-FortiGate, Remote-FortiGate, root [NAT] (Management), Student [NAT], and Trainer [NAT].
- Installation targets:** Located in the 'Policy & Objects' tab, showing a list of installation targets including Remote-FortiGate, root [NAT] (Management), Student [NAT], and Local-FortiGate.
- Policy Package:** Located in the 'Policy Packages' tab, showing a table of policy packages with columns for Seq.#, Install On, Name, From, To, and So.

Seq.#	Install On	Name	From	To	So
1	Remote-FortiGate (Student) Local-FortiGate (root)	Ping_Access	port3	port1	
2	Remote-FortiGate (Student)	Web	port3	port1	
3	Installation Targets	Source_Device	port3	port1	

Which one of the following statements is true regarding installation targets in the **Install On** column?



- A. Policy seq.# 3 will be installed on all managed devices and VDOMs that are listed under **Installation Targets**.
- B. Policy seq.# 3 will be installed on the **Trainer[NAT]** VDOM only.
- C. Policy seq.# 3 will not be installed on any managed device.
- D. The **Install On** column value represents successful installations on the managed devices.

**Correct Answer:** B

**Section:** (none)

**Explanation**

**Explanation/Reference:**

