

101.250q

Number: 101

Passing Score: 800

Time Limit: 120 min



**Website:** <https://vceplus.com>

**VCE to PDF Converter:** <https://vceplus.com/vce-to-pdf/>

**Facebook:** <https://www.facebook.com/VCE.For.All.VN/>

**Twitter :** [https://twitter.com/VCE\\_Plus](https://twitter.com/VCE_Plus)

<https://vceplus.com/>

101

**Application Delivery Fundamentals**

## Exam A

### QUESTION 1

To make complex access policies easier to manage, an administrator can create a policy containing several policy actions, and then add instances of it within the policy using the \_\_\_\_\_. (Fill in)

- A. Deployment Wizard
- B. Setup Wizard
- C. Policy Wizard
- D. Visual Wizard

**Correct Answer:** A

**Section:** (none)

**Explanation**

**Explanation/Reference:**

Explanation:

### QUESTION 2

The Policy Builder benefits include:

- A. Doesn't require in depth web application knowledge
- B. Only requires limited ASM knowledge
- C. All of the above
- D. Very low administrative impact

**Correct Answer:** C



<https://vceplus.com/>

**Section: (none)**

**Explanation**

**Explanation/Reference:**

Explanation:

**QUESTION 3**

Which of the following is a benefit of using iRules?

- A. They provide a secure connection between a client and LTM
- B. They enable granular control of traffic
- C. They can be used as templates for creating new applications
- D. They can use Active Directory to authenticate and authorize users
- E. They provide an automated way to create LTM objects

**Correct Answer: B**

**Section: (none)**

**Explanation**

**Explanation/Reference:**

Explanation:



**QUESTION 4**

APM provides access control lists at which two OSI layers? (Choose two.)

- A. Layer 5
- B. Layer 4
- C. Layer 7
- D. Layer 6
- E. Layer 2

**Correct Answer: BC**

**Section: (none)**

**Explanation**

**Explanation/Reference:**

Explanation:

**QUESTION 5**

Which four F5 products are on the TMOS platform? (Choose four.)

- A. ARX
- B. GTM
- C. WOM
- D. APM
- E. ASM
- F. Firepass

**Correct Answer:** BCDE

**Section:** (none)

**Explanation**

**Explanation/Reference:**

Explanation:

#### QUESTION 6

Which of the following is NOT a profile type on the BIG-IP?

- A. Protocol
- B. Application
- C. Persistence
- D. Authentication
- E. SSL



**Correct Answer:** B

**Section:** (none)

**Explanation**

**Explanation/Reference:**

Explanation:

#### QUESTION 7

What are the two most common methods of placing a BIG-IP device into a network environment? (Choose two.)

- A. Channeled configuration
- B. VLAN configuration

- C. NAT configuration
- D. SNAT configuration
- E. Asymmetric configuration
- F. Routed configuration

**Correct Answer:** DF

**Section:** (none)

**Explanation**

**Explanation/Reference:**

Explanation:

#### **QUESTION 8**

Which of the following is NOT a benefit of using SSL offload?

- A. It increases the bandwidth between the client and LTM.
- B. It enables LTM to decrypt traffic, examine the payload, and then re-encrypt before sending it to a pool member.
- C. The organization requires far less SSL certificates.
- D. The CPU processing load on backend servers is reduced.
- E. It enables iRules to be used on traffic arriving to LTM that is encrypted.

**Correct Answer:** A

**Section:** (none)

**Explanation**

**Explanation/Reference:**

Explanation:

SSL offload:

It enables LTM to decrypt traffic, examine the payload, and then re-encrypt before sending it to a pool member.

The organization requires far less SSL certificates.

The CPU processing load on backend servers is reduced.

It enables iRules to be used on traffic arriving to LTM that is encrypted.

#### **QUESTION 9**

When using a routed configuration, the real server must point to the LTM as the \_\_\_\_\_.

- A. NTP Server

- B. DNS Server
- C. Virtual IP
- D. WINS server
- E. Default gateway

**Correct Answer:** E

**Section:** (none)

**Explanation**

**Explanation/Reference:**

Explanation:

**QUESTION 10**

TCP Express is licensed separately from LTM

- A. True
- B. False

**Correct Answer:** B

**Section:** (none)

**Explanation**

**Explanation/Reference:**

Explanation:

TCP Express is licensed including in LTM

**QUESTION 11**

LTM can only load balance outbound traffic by using iRules



<https://vceplus.com/>

- A. True
- B. False

**Correct Answer:** A

**Section:** (none)

**Explanation**

**Explanation/Reference:**

Explanation:

### QUESTION 12

Which two of these statements about OneConnect are true? (Choose two.)

- A. It decreases the CPU load on LTM
- B. It aggregates multiple client connections into a single server connection
- C. It decreases the amount of traffic between multiple clients and LTM
- D. It requires SNAT to be configured
- E. It decreases the CPU load on pool members

**Correct Answer:** BE

**Section:** (none)

**Explanation**

**Explanation/Reference:**

Explanation:

### QUESTION 13

Which three of these software modules can you layer on top of LTM on a BIG-IP device? (Choose three.)

- A. Web Accelerator
- B. APM
- C. ARX
- D. GTM
- E. Firepass
- F. Enterprise Manager

**Correct Answer:** ABD



**Section: (none)**

**Explanation**

**Explanation/Reference:**

Explanation:

These software modules can you layer on top of LTM on a BIG-IP device are AAM, APM and GTM.

**QUESTION 14**

Which two of the following options can LTM use when all of the pool members are not available or if the pool is overloaded?

- A. Floating IPs
- B. Fallback host
- C. Auto last hop
- D. SNAT automap
- E. Pool offload
- F. Priority group activation

**Correct Answer: D**

**Section: (none)**

**Explanation**



**Explanation/Reference:** Explanation: [http://support.f5.com/kb/en-us/products/bigip\\_ltm/manuals/product/lrm\\_configuration\\_guide\\_10\\_0\\_0/lrm\\_pools.html](http://support.f5.com/kb/en-us/products/bigip_ltm/manuals/product/lrm_configuration_guide_10_0_0/lrm_pools.html)

**QUESTION 15**

A top-level DNS zone uses a CNAME record to point to a sub-zone. Which of the following is an example of a sub-zone?

- A. www.F5.com/sub
- B. www.F5.com
- C. www.gslb.F5.com
- D. .com
- E. f5.com

**Correct Answer: C**

**Section: (none)**

**Explanation**

**Explanation/Reference:**

Explanation:

**QUESTION 16**

Which four of the monitoring methods listed below can GTM use to determine the status and performance of BIG-IP and servers? (Choose four.)

- A. ping
- B. Application monitors
- C. Inband monitors
- D. SSH
- E. iQuery
- F. SNMP

**Correct Answer:** ABEF

**Section:** (none)

**Explanation**

**Explanation/Reference:**

Explanation:

[http://support.f5.com/kb/en-us/products/big-ip\\_gtm/manuals/product/gtm-concepts-11-30/1.html](http://support.f5.com/kb/en-us/products/big-ip_gtm/manuals/product/gtm-concepts-11-30/1.html)

Configuring

GTM to determine packet gateway health and availability [http://support.f5.com/kb/en-us/products/big-ip\\_gtm/manuals/product/gtm-implementations11-5-0/9.html](http://support.f5.com/kb/en-us/products/big-ip_gtm/manuals/product/gtm-implementations11-5-0/9.html) sol13690:

Troubleshooting BIG-IP GTM synchronization and iQuery connections (11.x) <http://support.f5.com/kb/en-us/solutions/public/13000/600/sol13690.html>

**QUESTION 17**

GTM can load balance to LTM in addition to non-BIG-IP hosts.

- A. True
- B. False

**Correct Answer:** A

**Section:** (none)

**Explanation**

**Explanation/Reference:**

**QUESTION 18**

Which of the following is NOT included on the F5 DevCentral site?

- A. Subscription purchasing options
- B. Actual iRules written by other customers
- C. iRules reference materials
- D. Forums
- E. The F5 iRule editor

**Correct Answer:** A

**Section:** (none)

**Explanation**

**Explanation/Reference:**

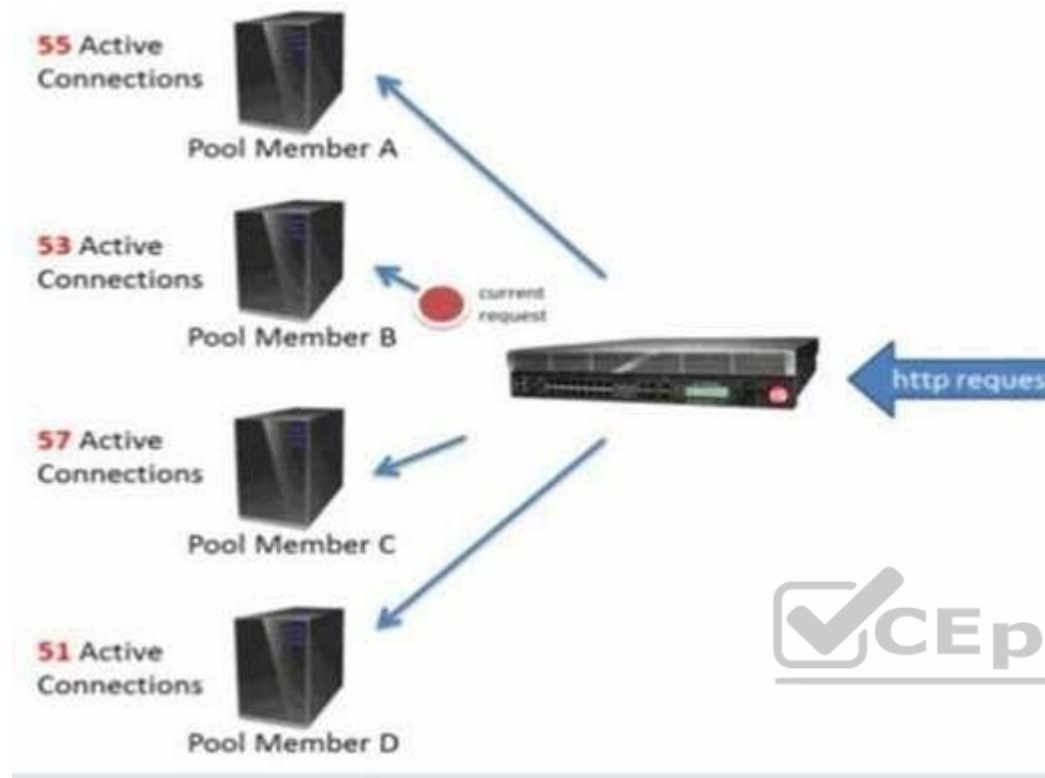
Explanation:

Subscription purchasing options is in Partner Resource Center

**QUESTION 19**

If LTM uses the least connections load balancing method, which pool member in the following diagram receives the next request?





- A. A
- B. B
- C. C
- D. D

**Correct Answer:** B

**Section:** (none)

**Explanation**

**Explanation/Reference:**

Explanation:

**QUESTION 20**

Why does deploying LTM into an existing network immediately improve security?

- A. Only requests for specific ports are allowed through LTM.
- B. All traffic through LTM is checked for DDoS attacks.
- C. No traffic is allowed through LTM until it has been specified.
- D. All users must authenticate before accessing applications through LTM.
- E. Only LAN administrators can access resources through LTM.

**Correct Answer:** C

**Section:** (none)

**Explanation**

**Explanation/Reference:**

Explanation:

#### QUESTION 21

You can use an HTTP class profile to forward traffic that matches which three of these types of criteria? (Choose three.)

- A. Port
- B. HTTP header
- C. URI path
- D. User name
- E. Protocol
- F. Host name



**Correct Answer:** BCF

**Section:** (none)

**Explanation**

**Explanation/Reference:**

Explanation:

#### QUESTION 22

When an optimized TCP connection exists between LTM and the pool member, LTM can accept server responses faster than the client. What is the name of this feature?



<https://vceplus.com/>

- A. HTTP caching
- B. OneConnect
- C. TCP connection queuing
- D. Content spooling
- E. Priority activation

**Correct Answer:** D

**Section:** (none)

**Explanation**

**Explanation/Reference:**

Explanation:

#### QUESTION 23

As a full TCP proxy, LTM acts as the termination point for both requests from the client and responses from the server.

- A. True
- B. False

**Correct Answer:** A

**Section:** (none)

**Explanation**

**Explanation/Reference:**

Explanation:

#### QUESTION 24

FastCache will NOT work with compressed objects.



- A. True
- B. False

**Correct Answer:** A

**Section:** (none)

**Explanation**

**Explanation/Reference:**

Explanation:

#### **QUESTION 25**

GTM uses Auto Discovery to add virtual servers from both LTM and non-BIG-IP load balancers.

- A. True
- B. False

**Correct Answer:** B

**Section:** (none)

**Explanation**

**Explanation/Reference:**

Explanation:



#### **QUESTION 26**

Which four of the following statements about LDNS probes are true? (Choose four.)

- A. Only GTM devices can act as a prober.
- B. They check each requesting LDNS that has made a request of the GTM.
- C. They can determine available cache size on the client.
- D. They are used to develop path metrics.
- E. They verify the link between a data center and an LDNS.
- F. Probing only takes place if GTM is configured to use dynamic load balancing.

**Correct Answer:** BDEF

**Section:** (none)

**Explanation**

**Explanation/Reference:**

Explanation:

**QUESTION 27**

Since F5 built GTM on the TMOS platform it can exist on the same BIGIP device as LTM:

- A. True
- B. False

**Correct Answer:** A

**Section:** (none)

**Explanation**

**Explanation/Reference:**

Explanation:

**QUESTION 28**

An administrator is adding GTM to the network infrastructure. Which of the following requirements would lead them to select an Authoritative Screening architecture rather than Delegation?

- A. They want GTM to examine all DNS queries.
- B. They want GTM to make load balancing decisions based on metrics.
- C. They have data centers in several countries.
- D. They are using several operating systems for the local DNS servers.

**Correct Answer:** C

**Section:** (none)

**Explanation**

**Explanation/Reference:**

Explanation:

**QUESTION 29**

The BIG-IP full proxy architecture has full visibility from the client to the server and from the server to the client.

What security benefit does this provide to customers?

- A. Offloads security functionality from other devices such as network firewalls and Intrusion Prevention Systems (IPS), which may experience performance degradation when inspecting DNS queries and responses.
- B. provides enhanced support for DNS servers.
- C. Establishes highly detailed policies based on your customer's business in requirements, performs multiple factors of authentication, detects corporate versus non-corporate devices, checks OS patch levels, and determines antivirus patch levels.
- D. Provides industry-leading knowledge of application behavior as it travels through a network, and it applies that knowledge to security because it knows how an application behaves at any point in the reply request process

**Correct Answer:** D

**Section:** (none)

**Explanation**

**Explanation/Reference:**

Explanation:

**QUESTION 30**

Select the key reasons F5 is able to handle DNS DDoS attacks so effectively? Select two.

- A. F5 can ensure a DNS DDoS attack is not successful.
- B. F5 has high performance DNS services.
- C. F5 can answer the DNS queries directly.
- D. With Global Traffic Manager (GTM), F5 completely stops all DNS DDoS attacks.
- E. F5 can ensure a customer never faces a DNS DDoS attack.

**Correct Answer:** CE

**Section:** (none)

**Explanation**

**Explanation/Reference:**

Explanation:



**QUESTION 31**

If a customer has an application that uses a customized protocol, what LTM feature can help optimize the traffic from the application?

- A. iRules
- B. Network virtual servers
- C. HTTP classes
- D. Packet filtering
- E. Transparent virtual servers

**Correct Answer:** A

**Section:** (none)

**Explanation**

**Explanation/Reference:**

Explanation:

**QUESTION 32**

An LTM object represents a downstream server that hosts a secure Web site and contains the IP address and port combination 192.168.9.250:443. What is this object?

- A. Self IP
- B. Virtual Server
- C. Pool
- D. Node
- E. Pool Member

**Correct Answer:** E

**Section:** (none)

**Explanation**

**Explanation/Reference:**

Explanation:

**QUESTION 33**

Adding more RAM to a GTM device drastically improves query performance.

- A. True
- B. False

**Correct Answer:** B

**Section:** (none)

**Explanation**

**Explanation/Reference:**

Explanation:

**QUESTION 34**

Which of the following are four of the security benefits of TMOS? (Choose four.)

- A. It verifies traffic based on antivirus signatures.
- B. It provides protection against DDoS.
- C. It uses SYN cookies and dynamic connection reapers.
- D. It supplies guidance for poorly developed applications.
- E. It denies all traffic that hasn't been defined.
- F. It can hide confidential information from outbound traffic.

**Correct Answer:** BCEF

**Section:** (none)

**Explanation**

**Explanation/Reference:**

Explanation:

### QUESTION 35

Which of the following statements about cookie persistence is NOT true?

- A. The cookie's timeout value can be customized.
- B. They are F5's preferred persistence method.
- C. No persistence information is placed on LTM.
- D. Web servers must be configured to send cookies to clients.
- E. They do not add a performance impact on LTM.

**Correct Answer:** D

**Section:** (none)

**Explanation**

**Explanation/Reference:**

Explanation:



### QUESTION 36

An LTM object that represents a downstream server contains the IP address 192.168.9.250 and no port. What is this object?

- A. Pool member
- B. Virtual server
- C. Pool
- D. Self IP
- E. Node

**Correct Answer:** E

**Section:** (none)

**Explanation**

**Explanation/Reference:**

Explanation:

**QUESTION 37**

Which three of these file types work well with HTTP compression? (Choose three.)

- A. MP4 videos
- B. Digital photos
- C. Text files
- D. Static HTML Web pages
- E. CD quality songs
- F. Microsoft Word documents

**Correct Answer:** CDF

**Section:** (none)

**Explanation**

**Explanation/Reference:**

Explanation:

**QUESTION 38**

When using a redundant pair of LTMs, it is most advantageous to use them in an Active/Active scenario because this provides additional load balancing capabilities.

- A. True
- B. False

**Correct Answer:** B

**Section:** (none)

**Explanation**

**Explanation/Reference:**

Explanation:

**QUESTION 39**

Which of the following are four of the benefits of the TMOS architecture? (Choose four.)

- A. User authentication
- B. Server-side optimization
- C. Dynamic DDoS protection
- D. Web application security

- E. Client-side optimization
- F. Antivirus checking

**Correct Answer:** BCDE

**Section:** (none)

**Explanation**

**Explanation/Reference:**

Explanation:

#### QUESTION 40

In order to further accelerate applications, the external router can direct subsequent client traffic to bypass LTM and communicate directly with the server.

- A. True
- B. False

**Correct Answer:** B

**Section:** (none)

**Explanation**

**Explanation/Reference:**



#### QUESTION 41

Application templates save the time it typically takes to create nodes, pools, pool members, virtual servers, and monitors.

- A. True
- B. False

**Correct Answer:** A

**Section:** (none)

**Explanation**

**Explanation/Reference:**

Explanation:

#### QUESTION 42

In a routed configuration, what does LTM do with the packet before sending it to the pool member?

- A. Change the source IP and the destination IP address

- B. Leave it unchanged and forward it
- C. Change the source IP address
- D. Change the destination IP address

**Correct Answer:** D

**Section:** (none)

**Explanation**

**Explanation/Reference:**

Explanation:

#### **QUESTION 43**

If the BIG-IP device is NOT always located between the client and the server, it will NOT provide full optimization and security.



<https://vceplus.com/>

- A. True
- B. False

**Correct Answer:** A

**Section:** (none)

**Explanation**

**Explanation/Reference:**

Explanation:

#### **QUESTION 44**

CSRF is difficult to detect because:

- A. The attacks are requests a user should be allowed to make

- B. The attacks always utilize obfuscation
- C. The attacks are always encrypted
- D. All of the above

**Correct Answer:** A

**Section:** (none)

**Explanation**

**Explanation/Reference:**

Explanation:

#### **QUESTION 45**

Information leakage is a major obstacle to achieving PCI DSS compliance.

- A. True
- B. False

**Correct Answer:** A

**Section:** (none)

**Explanation**

**Explanation/Reference:**

Explanation:

#### **QUESTION 46**

What is NOT a benefit of using a SNAT?

- A. ASM can be deployed easily
- B. No changes are needed on the servers
- C. Fail open is easy to add
- D. Higher performance than other configuration

**Correct Answer:** D

**Section:** (none)

**Explanation**

**Explanation/Reference:**

Explanation:



**QUESTION 47**

ASM offers the most extensive, effective, and simplest to configure CSRF protection in the WAF market.

- A. True
- B. False

**Correct Answer:** A

**Section:** (none)

**Explanation**

**Explanation/Reference:**

Explanation:

**QUESTION 48**

APM provides access control lists at which two OSI layers

- A. Layer 6
- B. Layer 5
- C. Layer 7
- D. Layer 4
- E. Layer 3
- F. Layer 2



**Correct Answer:** CD

**Section:** (none)

**Explanation**

**Explanation/Reference:**

Explanation:

**QUESTION 49**

Which of the following statements about Web server offload is NOT true?

- A. It performs rate shaping to reduce overflow.
- B. It forces the client browser to use multiple connections streams.
- C. It uses OneConnect to reduce multiple TCP connections.
- D. It utilizes cached content to prevent unnecessary trips for the same content.
- E. It uses specialized hardware for SSL offload.

**Correct Answer:** B

**Section:** (none)

**Explanation**

**Explanation/Reference:**

Explanation:

**QUESTION 50**

A network administrator tells you that they do NOT need WebAccelerator because their Web application is fine. What is your best response?

- A. Challenge them to run performance testing on their Web site.
- B. Access their Web site with them to display its response.
- C. Request a follow up meeting within the next three months.
- D. Ask for an opportunity to speak with the CIO or a member of their Web application team.

**Correct Answer:** D

**Section:** (none)

**Explanation**

**Explanation/Reference:**

Explanation:



**QUESTION 51**

When sizing a WebAccelerator deployment, you should base the WA capacity on the LTMcapacity.

- A. True
- B. False

**Correct Answer:** B

**Section:** (none)

**Explanation**

**Explanation/Reference:**

Explanation:

**QUESTION 52**

IP Enforcer blocks IP addresses that have repeatedly and regularly attacked the site.

- A. True

B. False

**Correct Answer:** A

**Section:** (none)

**Explanation**

**Explanation/Reference:**

Explanation:

#### **QUESTION 53**

One reason APM beats the competition is its ability to perform both user authentication and authorization on a single device.

A. True

B. False

**Correct Answer:** A

**Section:** (none)

**Explanation**

**Explanation/Reference:**

Explanation:



#### **QUESTION 54**

Which three of these scenarios should you identify as being an APM opportunity? (Choose three.)

- A. An organization using Novell Netware for authentication.
- B. An organization that has been recently fined for failing security compliance.
- C. An organization with a traveling sales force.
- D. An organization with a single location and no remote employees.
- E. An organization that needs to ensure users are using Symantec antivirus software.
- F. An organization sharing a public Web site for all Internet users.

**Correct Answer:** BCE

**Section:** (none)

**Explanation**

**Explanation/Reference:**

Explanation:

**QUESTION 55**

Using WOM for vMotion transfers across the WAN prevents VMware users from experiencing interruptions.

- A. True
- B. False

**Correct Answer:** A

**Section:** (none)

**Explanation**

**Explanation/Reference:**

Explanation:

**QUESTION 56**

The administrator must specify APM access control entries as either L4 or L7.

- A. True
- B. False

**Correct Answer:** B

**Section:** (none)

**Explanation**

**Explanation/Reference:**

Explanation:

**QUESTION 57**

Which of the following is a client-side action in the Visual Policy Editor that prevents external access and deletes any files created during a secure access session?

- A. Windows Group Policy
- B. Resource Assign
- C. Protected Workspace
- D. Virtual Keyboard
- E. Browser Cache and Session Control

**Correct Answer:** C

**Section:** (none)

**Explanation**



**Explanation/Reference:**

Explanation:

**QUESTION 58**

Mobile device browsers typically display Web pages more slowly than PC browsers.

- A. True
- B. False

**Correct Answer:** A

**Section:** (none)

**Explanation**

**Explanation/Reference:**

Explanation:

**QUESTION 59**

Which two of the following factors are often responsible for poor Web application performance? (Choose two.)

- A. The time it takes to generate an HTTP request.
- B. The time it takes to deliver the HTTP response over the network.
- C. The time it takes to display the HTTP response in the browser.
- D. The time it takes to generate the HTTP response.

**Correct Answer:** BD

**Section:** (none)

**Explanation**

**Explanation/Reference:**

Explanation:

**QUESTION 60**

WebAccelerator uses three tiers to improve performance. What are the three tiers? (Choose three.)

- A. Bandwidth offload
- B. Client offload
- C. Application offload
- D. Protocol offload
- E. Web server offloadF. Network offload

**Correct Answer:** CEF

**Section:** (none)

**Explanation**

**Explanation/Reference:**

Explanation:

**QUESTION 61**

Application trends and drivers that increase the need for application security are:

- A. Intelligent Browsers
- B. Webification
- C. Targeted attacks
- D. All the above

**Correct Answer:** D

**Section:** (none)

**Explanation**

**Explanation/Reference:**



**QUESTION 62**

Which WOM feature replaces a long byte pattern, such as "100000111000110101", with a shorter reference to the pattern?

- A. Symmetric adaptive compression
- B. Symmetric data deduplication
- C. Bandwidth allocation
- D. Application protocol acceleration
- E. TCP optimization

**Correct Answer:** B

**Section:** (none)

**Explanation**

**Explanation/Reference:**

Explanation:

**QUESTION 63**

In order to ensure that a specific file type is never moved down to a secondary file tier, the administrator should:

- A. Set up an automated bot that accesses that file once a week.
- B. This is not possible on the ARX.
- C. Set a policy that the file type remains on primary storage.
- D. Instruct the end users to put the file in a non-tiered directory.

**Correct Answer:** C

**Section:** (none)

**Explanation**

**Explanation/Reference:**

Explanation:

#### QUESTION 64

How does the ARX eliminate the disruption caused by re-provisioning storage?

- A. By identifying data that has not been modified and moving it to a secondary tier.
- B. By reducing the time necessary to run a complete backup.
- C. By allowing system administrators to apply policy to specific types data.
- D. By automating capacity balancing and allowing seamless introduction of file systems into the environment after the ARX is installed.

**Correct Answer:** D

**Section:** (none)

**Explanation**

**Explanation/Reference:**

Explanation:

#### QUESTION 65

Which of the following statements is true about ARX's capacity balancing ability?

- A. When new files are created, the ARX can determine in real time where to place each file based on the available space on each storage device
- B. When configuring the ARX, customers can choose to implement either an age-based policy or a capacity based policy, but are not able to run both policies at the same time
- C. All files created at approximately the same time (within 10 minutes) will be stored on the same tier of storage to minimize latency and improve the user experience
- D. The ARX balances capacity within tiers A storage, but cannot balance capacity across tiers of storage

**Correct Answer:** A

**Section:** (none)

**Explanation**

**Explanation/Reference:**

Explanation:

**QUESTION 66**

The ARX is like a mini network manager. It is able to check the health of the environment and can raise alerts when thresholds are reached.

- A. True
- B. False

**Correct Answer:** A

**Section:** (none)

**Explanation**

**Explanation/Reference:**

Explanation:

**QUESTION 67**

In the current version of BIG-IP, what happens if the GTM does not find a wide IP that matches the DNS request?



<https://vceplus.com/>

- A. It sends a broadcast request to all GTM devices.
- B. It uses iQuery to request the information from LTM.
- C. It sends a request to its configured backup GTM device.
- D. It sends an un-resolvable error to the client.
- E. It sends the request to an external DNS.

**Correct Answer:** E

**Section:** (none)

**Explanation**

**Explanation/Reference:**

Explanation:

**QUESTION 68**

In most cases, F5 recommends using round robin load balancing.

- A. True
- B. False

**Correct Answer:** B

**Section:** (none)

**Explanation**

**Explanation/Reference:**

Explanation:

Using round robin load balancing is recommended when Server is not so strong and using easy WebApplication.

**QUESTION 69**

Which four of the following items are physical objects used by GTM?

- A. Virtual servers
- B. Links
- C. Servers
- D. Wide IPs
- E. Data centers
- F. Pools

**Correct Answer:** ABCE

**Section:** (none)

**Explanation**

**Explanation/Reference:**

Explanation:

These components include:

Data centers, Servers, Links, Virtual servers

[http://support.f5.com/kb/en-us/products/bigip\\_gtm/manuals/product/gtm\\_config\\_10\\_2/gtm\\_components\\_overview.html](http://support.f5.com/kb/en-us/products/bigip_gtm/manuals/product/gtm_config_10_2/gtm_components_overview.html)

Links

+ Wide IPs + Data centers + Pools

Links

+ Wide IPs + Data centers + Virtual servers

Links

+ Servers + Virtual servers + Pools the physical network, such as data centers, servers, and links, and the components that comprise the logical network, such as wide IPs, pools, and global settings. Most of the configuration components you build using the Configuration utility are saved to the wideip.conf file. Logical objects/components include: Listeners - Pools - Wide IPs - Distributed applications

### QUESTION 70

Which four are GTM server static load balancing modes? (Choose four.)

- A. Return to DNS
- B. CPU
- C. Packet Rate
- D. Drop Packet
- E. Round Robin
- F. Static Persist



**Correct Answer:** ADEF

**Section:** (none)

**Explanation**

**Explanation/Reference:**

Explanation:

Global Traffic Manager supports the following static load balancing modes:

Drop Packet

Fallback IP

Global Availability

None

Ratio

Return to DNS

Round Robin

Static Persist

Topology

**QUESTION 71**

The F5 Application Delivery Firewall has the ability to outperform traditional and next generation firewalls during DDoS attacks by leveraging the performance and scalability of BIG-IP to hand extremely high loads, including high throughput, high connection count, and high number of connections per second.

- A. True
- B. False

**Correct Answer:** A

**Section:** (none)

**Explanation**

**Explanation/Reference:**

Explanation:

**QUESTION 72**

What is the main cause of high latency in a Web application?

- A. The version, the client's browser
- B. The distance between the client and Web server
- C. The number of CPUs on the Web server
- D. The size of the objects on the page



**Correct Answer:** B

**Section:** (none)

**Explanation**

**Explanation/Reference:**

Explanation:

**QUESTION 73**

Which three of these are the potential ending options for branches in the Visual Policy Editor? (Choose three.)

- A. Reject
- B. Fallback
- C. Allow
- D. Deny
- E. Limit

F. Redirect

**Correct Answer:** CDF

**Section:** (none)

**Explanation**

**Explanation/Reference:**

Explanation:

**QUESTION 74**

Which of the following is NOT a logging option within an APM access control entry?

- A. Packet
- B. Verbose
- C. Nominal
- D. Summary
- E. None

**Correct Answer:** C

**Section:** (none)

**Explanation**

**Explanation/Reference:**

Explanation:

**QUESTION 75**

Administrators can specify an APM access profile when defining a virtual server in LTM.

- A. True
- B. False

**Correct Answer:** A

**Section:** (none)

**Explanation**

**Explanation/Reference:**

Explanation:

**QUESTION 76**



Using Fast Cache with ASM will:

- A. Improve user experience
- B. Improve server performance
- C. All of the above
- D. Improve BIG-IP ASM performance

**Correct Answer:** C

**Section:** (none)

**Explanation**

**Explanation/Reference:**

Explanation:

#### QUESTION 77

Which four of these statements regarding object size and WebAccelerator performance are true? (Choose four.)

- A. Large objects such as video cache well
- B. Large objects allow fewer requests per second
- C. Large objects result in higher throughput
- D. Small objects result in higher throughput
- E. Small objects such as images cache well
- F. Small objects allow more requests per second



**Correct Answer:** BCEF

**Section:** (none)

**Explanation**

**Explanation/Reference:**

Explanation:

#### QUESTION 78

Which four of these scenarios will benefit from F5's WAN Optimization Module? (Choose four.)

- A. An international organization with data centers in different countries.
- B. An organization that does not want to rely on using tape backup.
- C. An organization with one site but hundreds of Web servers.

- D. An organization whose users create extremely large files.
- E. An organization that expects their Web site usage to double in the next year.
- F. An organization attempting to lower costs by reducing the number of data centers.

**Correct Answer:** ABDF

**Section:** (none)

**Explanation**

**Explanation/Reference:**

Explanation:

#### **QUESTION 79**

Which is NOT a function of ASM?

- A. Attack signature enforcement
- B. HTTP protocol enforcement
- C. Network security
- D. Parameter value enforcement

**Correct Answer:** C

**Section:** (none)

**Explanation**

**Explanation/Reference:**

Explanation:

#### **QUESTION 80**

Replicating a large database between sites could take several hours without WOM, and only several minutes with WOM.

- A. True
- B. False

**Correct Answer:** A

**Section:** (none)

**Explanation**

**Explanation/Reference:**

Explanation:



**QUESTION 81**

What technology does ARX use to create a logical abstraction of the physical storage environment?

- A. Data de-duplication
- B. File virtualization
- C. Server virtualization
- D. SSL encryption

**Correct Answer:** B

**Section:** (none)

**Explanation**

**Explanation/Reference:**

Explanation:

**QUESTION 82**

Using file virtualization, what can the ARX do for customers?

- A. Match data to the most appropriate tier of storage (e.g. critical data on tier 1 storage; older data on secondary storage tier).
- B. All of the above.
- C. Move individual files or entire file systems in real-time without disruption of down-time.
- D. Automate many storage management tasks such as storage tiering, dynamic capacity balancing, and no disruptive data migration.

**Correct Answer:** B

**Section:** (none)

**Explanation**

**Explanation/Reference:**

Explanation:

**QUESTION 83**

A customer says his business wouldn't benefit from buying ARX because it already has block based storage virtualization in place. Is he right? Why or why not?

- A. Yes. Block based storage virtualization is just another name for file virtualization.
- B. No. ARX allows customers to implement storage tiering benefits, but block based storage virtualization does not.
- C. Yes. Block based storage virtualization offers the same functionality as ARX's file virtualization, although it uses slightly different technology.

D. No. Both technologies attempt to solve similar problems, but only the ARX allows the customer to have visibility into their data and apply business policy at the file level. Block based virtualization has no visibility into the type of data.

**Correct Answer:** D

**Section:** (none)

**Explanation**

**Explanation/Reference:**

Explanation:

#### **QUESTION 84**

Select F5 platforms have which three certifications? (Choose three.)

- A. FIPS
- B. SECG
- C. NEBS
- D. IEEE
- E. Common Criteria
- F. AFSSI

**Correct Answer:** ACE

**Section:** (none)

**Explanation**

**Explanation/Reference:**

Explanation:

#### **QUESTION 85**

Which three of the following are some of the methods that F5 uses with its environmental stress screening chamber? (Choose three.)

- A. Varying the voltage from extreme high to extreme low.
- B. Running a product 300 to 500 times on each cycle.
- C. Repairing failed components until they function properly.
- D. Alternate temperature from -5 degrees Celsius to 60 degrees Celsius.
- E. Ensuring continual functioning through fire or flooding conditions.

**Correct Answer:** ABD

**Section: (none)**

**Explanation**

**Explanation/Reference:**

Explanation:

**QUESTION 86**

The ARX can see \_\_\_\_\_ when a data modification takes place and will cue that file to be migrated back to the primary tier.

- A. In real time
- B. Nightly
- C. Weekly
- D. At the time of a system scan
- E. When scheduled by administrator

**Correct Answer: A**

**Section: (none)**

**Explanation**

**Explanation/Reference:**

Explanation:



**QUESTION 87**

For a typical business, what percentage of data does the ARX usually move to a secondary tier?

- A. 20-30%
- B. 50-60%
- C. 80-90%
- D. 0-10%

**Correct Answer: C**

**Section: (none)**

**Explanation**

**Explanation/Reference:**

Explanation:

**QUESTION 88**

What is the main business driver for bringing Enterprise Manager into the network infrastructure?

- A. Consolidate management of administrator and user accounts
- B. Consolidate management of licenses
- C. Consolidate management of SSL certificates
- D. Consolidate management of BIG-IP devices
- E. Consolidate management of access policies

**Correct Answer:** D

**Section:** (none)

**Explanation**

**Explanation/Reference:**

Explanation:

#### **QUESTION 89**

To function properly, an Enterprise Manager device is required within each data center.

- A. True
- B. False

**Correct Answer:** B

**Section:** (none)

**Explanation**

**Explanation/Reference:**

Explanation:

#### **QUESTION 90**

ARX will detect any modification to a file on the second tier because all clients are being \_\_\_\_\_ by the ARX to get to the storage.

- A. Moved
- B. Copied
- C. Proxied
- D. Backed up
- E. Deleted

**Correct Answer:** C

**Section: (none)**

**Explanation**

**Explanation/Reference:**

Explanation:

**QUESTION 91**

The ARX saves customers time, money and frustration through a stub-based system that makes a slight modification to each file in order to more efficiently sort and store end user data.

- A. True
- B. False

**Correct Answer: B**

**Section: (none)**

**Explanation**

**Explanation/Reference:**

Explanation:

**QUESTION 92**

Which two of the following statements are accurate descriptions of the ARX index? (Choose two.)

- A. The ARX index stores the bulk of its data as bit arrays and answers most questions by performing bitwise logical operations on these bitmaps.
- B. The ARX index contains the index keys in sorted order, with the leaf level of the index containing the pointer to the page and the row number in the data page.
- C. The ARX index is the key enabler of transparent data mobility because the ARX tracks where files reside at all times, from creation through migration and deletion.
- D. The ARX index is 100% disposable and can be rebuilt at any point in time without disrupting client or application access to data.

**Correct Answer: BD**

**Section: (none)**

**Explanation**

**Explanation/Reference:**

Explanation:

**QUESTION 93**

To share device information with F5 technical support, a customer must either verbally share the information over the phone or copy and send the information in an Email.

- A. True
- B. False

**Correct Answer:** B

**Section:** (none)

**Explanation**

**Explanation/Reference:**

Explanation:

#### **QUESTION 94**

When installing LTM on different VIPRION performance blades, each instance of LTM needs to be licensed separately.

- A. True
- B. False

**Correct Answer:** B

**Section:** (none)

**Explanation**

**Explanation/Reference:**

Explanation:



#### **QUESTION 95**

The VIPRION provides hot-pluggable capabilities for which four of these types of hardware? (Choose four.)

- A. LCD displays
- B. Fan trays
- C. Memory
- D. Power supplies
- E. Performance blades
- F. CompactFlash

**Correct Answer:** BCDE

**Section:** (none)

**Explanation**

**Explanation/Reference:**

Explanation:

The VIPRION provides hot-pluggable capabilities for Fan trays, Memory, Power supplies, and Performance blades

**QUESTION 96**

A customer wants the best possible throughput but only has a maximum of 3RU rack space. Which F5 platform should you recommend?

- A. BIG-IP 11050
- B. VIPRION with only 1 performance blade
- C. BIG-IP 8950
- D. BIG-IP 8900
- E. VIPRION with 4 performance blades

**Correct Answer:** A

**Section:** (none)

**Explanation**

**Explanation/Reference:**

Explanation:

**QUESTION 97**

Which of the following business benefits does storage tiering offer to customers?

- A. Reduces time for backups because data on the secondary tier can have a less time intensive backup policy applied to it.
- B. All of the above.
- C. Enables customers to apply a more aggressive RTO/RPO for business critical Tier-1 unstructured data.
- D. Reduces money spent on storage since the majority of data can be moved to less expensive secondary tier storage.

**Correct Answer:** B

**Section:** (none)

**Explanation**

**Explanation/Reference:**

Explanation:

**QUESTION 98**

An age-based policy is set up on the ARX that retains only data modified in the last 3 months on tier 1 storage and moves the rest of the data to secondary storage. What happens when the end user tries to access data that has not been touched in 6 months?

- A. The end user is unaware that the data has been moved to secondary tier storage and is able to access the data without difficulty.
- B. The networking mapping window appears, allowing the end user to re-establish direct access to the data even though it has been moved to secondary storage.
- C. An error message appears saying "File is no longer available."
- D. A message appears explaining that the file has been archived, and a link to the new secondary storage tier location is provided.

**Correct Answer:** A

**Section:** (none)

**Explanation**

**Explanation/Reference:**

Explanation:

#### **QUESTION 99**

Although not all modules run on all platforms, each F5 hardware platform can run LTM plus at least one additional software module.

- A. True
- B. False

**Correct Answer:** A

**Section:** (none)

**Explanation**



**Explanation/Reference:**

Explanation:

#### **QUESTION 100**

\_\_\_\_\_ % of F5 products are sent through thorough software testing before being sold to customers.

- A. 100
- B. 50
- C. 60
- D. 80

**Correct Answer:** A

**Section:** (none)

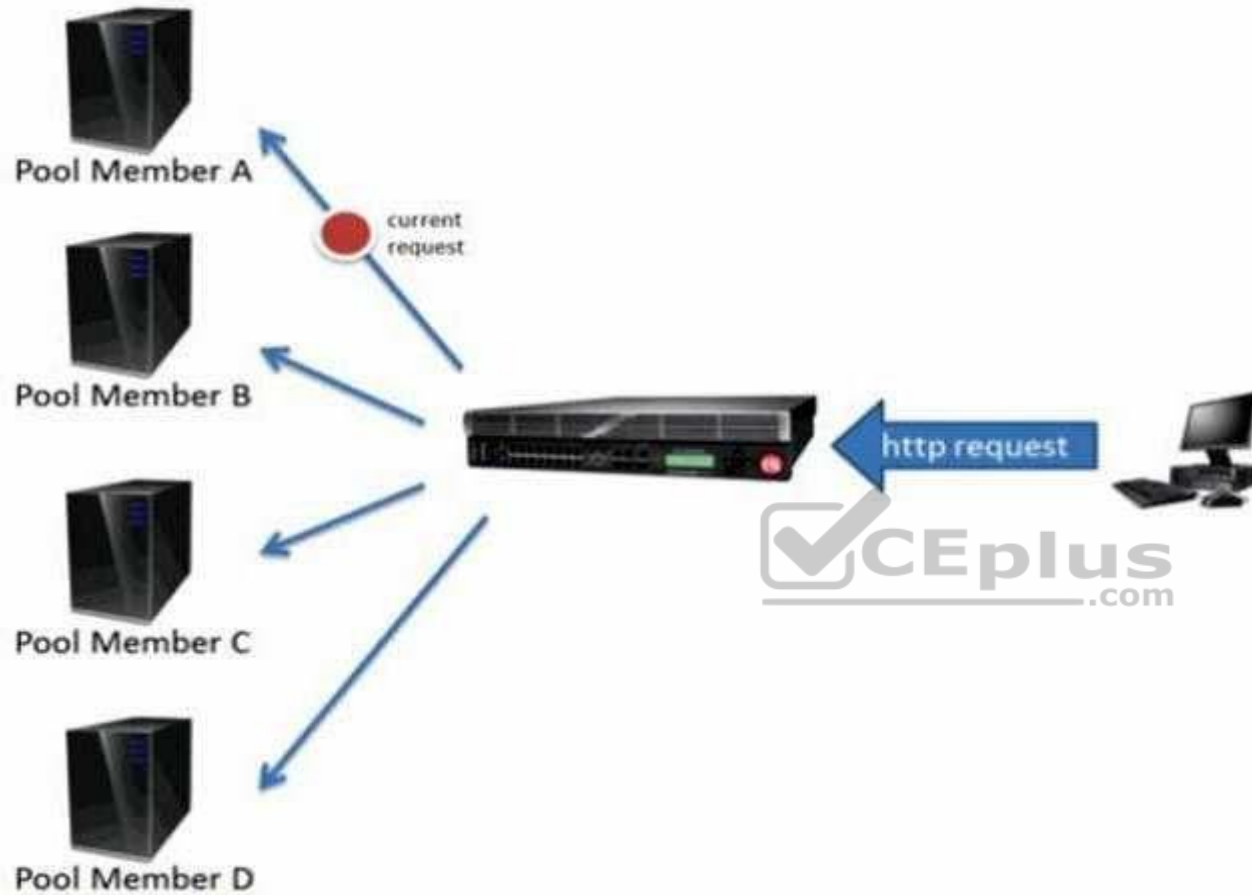
**Explanation**

**Explanation/Reference:**

Explanation:

# QUESTION 101

If LTM uses the round robin load balancing method, which pool member in the diagram above will receive the next request?





<https://vceplus.com/>

- A. A
- B. C
- C. D
- D. B

**Correct Answer:** D

**Section:** (none)  
**Explanation**

**Explanation/Reference:**  
Explanation:

LTM uses the round robin load balancing method so after A will be B.

**QUESTION 102**

All members of a pool must share the same service port?

- A. True
- B. False

**Correct Answer:** B  
**Section:** (none)  
**Explanation**

**Explanation/Reference:**  
Explanation:



**QUESTION 103**

When using SNAT, which additional IP addresses will the BIG-IP system change? (Choose two.)

- A. The source IP address on the client to BIG-IP request packet.
- B. The source IP address on the BIG-IP to pool member request packet.
- C. The destination IP address on the BIG-IP to pool member request packet.
- D. The source IP address on the BIG-IP to client response packet.
- E. The destination IP address on the BIG-IP to client response packet.
- F. The destination IP address on the pool member to BIG-IP response packet.

**Correct Answer:** BE

**Section:** (none)

**Explanation**

**Explanation/Reference:**

Explanation:

**QUESTION 104**

Which two of the following statements about how TMOS typically manages traffic between a client and server are accurate? (Choose two.)

- A. It changes the destination address before forwarding a request to the server.
- B. It changes the destination address before sending a response to the client.
- C. It changes the source address before sending a response to the client.
- D. It changes the source address before forwarding a request to the server.

**Correct Answer:** BD

**Section:** (none)

**Explanation**

**Explanation/Reference:**

Explanation:

**QUESTION 105**

Select the key question you would use to ask your customer related to DNS attacks?

- A. Do you over-provision your DNS infrastructure?
- B. Do you regularly update BIND or some other DNS application to the latest release?
- C. Do you rely on your network firewall to protect your DNS server?

D. How do you secure your DNS infrastructure against attacks?

**Correct Answer:** D

**Section:** (none)

**Explanation**

**Explanation/Reference:**

Explanation:

#### **QUESTION 106**

When a business is hacked, they often lose more than money. What are the other consequences to a business as a result of being hacked? Select two.

- A. Helpful third party reviews of the security needs of the customer's web applications.
- B. Valuable free press that occurs as companies address hacking incidents.
- C. Penalties related to non-compliance with laws and regulations.
- D. Final resolution of all security vulnerabilities of the business' web applications.
- E. Loss of customers when slow connections drive customers to competitor's site.

**Correct Answer:** AD

**Section:** (none)

**Explanation**

**Explanation/Reference:**

Explanation:

#### **QUESTION 107**

Complete the statement below by choosing the correct word or phrase to complete the sentence. By identifying IP addresses and security categories associated with malicious activity, the BIG-IP \_\_\_\_\_ service can incorporate dynamic lists of threatening IP addresses into the BIG-IP platform, adding context to policy decisions.

- A. Edge Client
- B. iRules
- C. LTM
- D. IP intelligence
- E. iApps

**Correct Answer:** D

**Section: (none)**

**Explanation**

**Explanation/Reference:**

Explanation:

**QUESTION 108**

Select the best word or phrase to complete the following sentence.

Using the \_\_\_\_\_ feature in GTM, F5's Application Delivery Firewall solution can handle a significantly higher number of queries than traditional DNS servers.

- A. DNS Express
- B. BIND
- C. Site availability request
- D. Location-based routing

**Correct Answer: A**

**Section: (none)**

**Explanation**

**Explanation/Reference:**

Explanation:



**QUESTION 109**

Which aspect of F5's Intelligent Services Platform helps you extend your security conversation to include F5 professionals and customers?

- A. Modular Functionality
- B. iApps
- C. TMOS
- D. DevCentral

**Correct Answer: D**

**Section: (none)**

**Explanation**

**Explanation/Reference:**

Explanation:

**QUESTION 110**

Why is BIG-IP ASM ideally suited to protect against layer 7 attacks, including HTTP and HTTPS/SSL traffic, when compared to an intrusion prevention system (IPS)?

- A. An intrusion prevention system (IPS) is based on Packet Filtering.
- B. An IPS doesn't have the visibility into HTTPS traffic. it doesn't understand what applications are in the network.
- C. An IPS only focus on operating system attacks; it doesn't understand what application are in the network.
- D. An IPS can only look at overall traffic patterns; it doesn't understand what applications are in the network.

**Correct Answer:** D

**Section:** (none)

**Explanation**

**Explanation/Reference:**

Explanation:

#### QUESTION 111

The F5 Visual Policy Editor (VPE) is unique to the F5 BIG-IP APM module; no other access management tool has this capability. Select the features that the VPE provides. Select two.

- A. Develop customized reports on user access
- B. Customize landing or login pages
- C. Establish highly detailed policies based on customer business requirements
- D. Configure authentication server objects
- E. Perform multiple factors of authentication

**Correct Answer:** CE

**Section:** (none)

**Explanation**

**Explanation/Reference:**

Explanation:

#### QUESTION 112

The F5 Visual Policy Editor (VPE) is unique to the F5 BIG-IP APM module; no other access management tool has this capability. Select the features that the VPE provides. Select two.

- A. Determines antivirus patch levels
- B. Customizes landing or login page

- C. Provides vulnerability scanning
- D. Checks operating system patch levels
- E. Assigns a lease pool address

**Correct Answer:** AD

**Section:** (none)

**Explanation**

**Explanation/Reference:**

Explanation:

### QUESTION 113

Select the two best questions you would use to ask your customer about their current web access management solution. Select two.

- A. What impact are slow remote access connections having on productivity?
- B. Are you using Google multi-factor authentication?
- C. Is user authentication data sitting on partner systems outside your control?
- D. Have you standardized on Androids or iPhones?
- E. How are you planning to extend Exchange to your mobile users?
- F. How do you think a global remote access deployment with integrated acceleration and availability services might benefit your business?

**Correct Answer:** AF

**Section:** (none)

**Explanation**

**Explanation/Reference:**

Explanation:

### QUESTION 114

Data centers often rely on either traditional firewalls or next generation firewalls. Select the core weakness of the traditional or next generation firewalls when it comes to DDoS attacks.

- A. They are limited in amount of connections per second and the amount of sustained connections they can handle
- B. The cost performance ratio of next generation firewalls is too high.
- C. The agility of traditional firewalls is too limited when it comes to DDoS attacks.
- D. Data center traffic is primarily outbound.

**Correct Answer:** A

**Section:** (none)

**Explanation**

**Explanation/Reference:**

Explanation:

#### **QUESTION 115**

Why does the F5 Application Delivery Firewall solution mitigate SSL attacks more effectively than any other firewalls?

- A. Because F5 has unlimited capacity to handle SSL traffic.
- B. Because F5 has full visibility and control of SSL traffic.
- C. Because F5 has a separate iApp to handle SSL traffic.
- D. Because F5 supports large SSL key sizes.

**Correct Answer:** B

**Section:** (none)

**Explanation**

**Explanation/Reference:**

Explanation:



#### **QUESTION 116**

Assume a client's traffic is being processed only by a NAT; no SNAT or virtual server processing takes place. Also assume that the NAT definition specifies a NAT address and an origin address while all other settings are left at their defaults. If the origin server were to initiate traffic via the BIG-IP, what changes, if any, would take place when the BIG-IP processes such packets?

- A. The BIG-IP would drop the request since the traffic didn't arrive destined to the NAT address.
- B. The source address would not change, but the destination address would be changed to the NAT address.
- C. The source address would be changed to the NAT address and destination address would be left unchanged.
- D. The source address would not change, but the destination address would be changed to a self-IP of the BIG-IP.

**Correct Answer:** C

**Section:** (none)

**Explanation**

**Explanation/Reference:**

**QUESTION 117**

A site wishes to perform source address translation on packets arriving from the Internet for clients using some pools but not others. The determination is not based on the client's IP address, but on the pool they are load balanced to. What could best accomplish this goal?

- A. A SNAT for all addresses could be defined, and then disable the SNAT processing for select pools.
- B. The decision to perform source address translation is always based on VLAN. Thus, the goal cannot be achieved.
- C. For each virtual server, regardless their default load balancing pools, association with SNAT pools could vary dependent upon need.
- D. The decision to perform source address translation is always based on a client's address (or network). Thus, this goal cannot be achieved.

**Correct Answer:** A

**Section:** (none)

**Explanation**

**Explanation/Reference:**

**QUESTION 118**

Which parameters are set to the same value when a pair of BIG-IP devices are synchronized?

- A. host names
- B. system clocks
- C. profile definitions
- D. VLAN failsafe settings
- E. MAC masquerade addresses

**Correct Answer:** C

**Section:** (none)

**Explanation**

**Explanation/Reference:**

**QUESTION 119**

As a part of the Setup Utility, the administrator sets the host name for the BIG-IP.

What would be the result if the two systems in a redundant pair were set to the same host name?

- A. Host names do not matter in redundant pair communication.
- B. In a redundant pair, the two systems will always have the same host name. The parameter is synchronized between the systems.

- C. The first time the systems are synchronized the receiving system will be assigned the same self-IP addresses as the source system.
- D. When the administrator attempts to access the configuration utility using the host name, they will always connect to the active system.

**Correct Answer:** C

**Section:** (none)

**Explanation**

**Explanation/Reference:**

#### QUESTION 120

Where is persistence mirroring configured?

- A. It is always enabled.
- B. It is part of a pool definition.
- C. It is part of a profile definition.
- D. It is part of a virtual server definition.

**Correct Answer:** C

**Section:** (none)

**Explanation**



**Explanation/Reference:**

#### QUESTION 121

Assume the bigd daemon fails on the active system. Which three are possible results? (Choose three.)

- A. The active system will restart the bigd daemon and continue in active mode.
- B. The active system will restart the TMM daemon and continue in active mode.
- C. The active system will reboot and the standby system will go into active mode.
- D. The active system will failover and the standby system will go into active mode.
- E. The active system will continue in active mode but gather member and node state information from the standby system.

**Correct Answer:** ACD

**Section:** (none)

**Explanation**

**Explanation/Reference:**

**QUESTION 122**

Which process or system can be monitored by the BIG-IP system and used as a failover trigger in a redundant pair configuration.

- A. bandwidth utilization
- B. duplicate IP address
- C. CPU utilization percentage
- D. VLAN communication ability

**Correct Answer:** D

**Section:** (none)

**Explanation**

**Explanation/Reference:**

**QUESTION 123**

A virtual server is defined per the charts. The last five client connections were to members C, D, A, B, B. Given the conditions shown in the above graphic, if a client with IP address 205.12.45.52 opens a connection to the virtual server, which member will be used for the connection?

| VS_Web_Pool Settings |                 | Web_Pool Parametrs         |                   |
|----------------------|-----------------|----------------------------|-------------------|
| Destination:         | 10.10.20.100:80 | Load Balancing:            | Least Connections |
| Profiles:            | TCP, HTTP       | Priority Group Activation: | Less Than 2       |
| iRules:              | None            | Monitor:                   | Custom_HTTP       |
| Default Pool:        | Web_Pool        |                            |                   |
| Persistence:         | None            |                            |                   |

| Web_Pool Member Statistic and Settings |              |                 |                      |                     |             |
|--|--------------|-----------------|----------------------|---------------------|-------------|
| Member                                 | Member Ratio | Member Priority | Outstanding Requests | Current Connections | Status      |
| A: 172.16.20.1:80                      | 3            | 5               | 4                    | 56                  | Unavailable |
| B: 172.16.20.2:80                      | 3            | 4               | 4                    | 42                  | Available   |
| C: 172.16.20.3:80                      | 3            | 5               | 4                    | 54                  | Unavailable |
| D: 172.16.20.4:80                      | 1            | 3               | 1                    | 22                  | Available   |
| E: 172.16.20.5:80                      | 1            | 1               | 1                    | 18                  | Available   |

- A. 172.16.20.1:80
  - B. 172.16.20.2:80
  - C. 172.16.20.3:80
  - D. 172.16.20.4:80
  - E. 172.16.20.5:80
- Correct Answer: D**

**Section: (none)**

**Explanation**

**Explanation/Reference:**

**QUESTION 124**

Which statement is correct if a TOP-based monitor is assigned to an LTM System and an HTTP-based monitor is assigned to one of that LTM System's Virtual Servers?

- A. The Virtual Server status is based on the TCP monitor only.
- B. The Virtual Server status is based on the HTTP monitor only.
- C. GTM Systems do not allow monitors on both an LTM System and one of its Virtual Servers.
- D. The Virtual Server status is based on both the TOP and HTTP monitor; if either fails, the Virtual Server is unavailable.
- E. The Virtual Server status is based on both the TOP and HTTP monitor; if either succeeds, the Virtual Server is available.

**Correct Answer:** B

**Section:** (none)

**Explanation**

**Explanation/Reference:**



**QUESTION 125**

Assume a BIG-IP has no NATs or SNATs configured. Which two scenarios are possible when client traffic arrives on a BIG-IP that is NOT destined to a self-IP? (Choose two.)

- A. If the destination of the traffic does not match a virtual server, the traffic will be discarded.
- B. If the destination of the traffic does not match a virtual server, the traffic will be forwarded based on routing tables.
- C. If the destination of the traffic matches a virtual server, the traffic will be processed per the virtual server definition. If the destination of the traffic matches a virtual server, the traffic will be processed per the virtual server definition.
- D. If the destination of the traffic matches a virtual server, the traffic will be forwarded, but it cannot be load balanced since no SNAT has been configured.

**Correct Answer:** AC

**Section:** (none)

**Explanation**

**Explanation/Reference:**

**QUESTION 126**

You have a pool of servers that need to be tested. All of the servers but one should be tested every 10 seconds, but one is slower and should only be tested every 20 seconds. How do you proceed?

- A. It cannot be done. All monitors test every five seconds.
- B. It can be done, but will require assigning monitors to each pool member.
- C. It cannot be done. All of the members of a pool must be tested at the same frequency.
- D. It can be done by assigning one monitor to the pool and a different monitor to the slower pool member.

**Correct Answer:** D

**Section:** (none)

**Explanation**

**Explanation/Reference:**

#### **QUESTION 127**

If a client's browser does not accept cookies, what occurs when the client connects to a virtual server using cookie persistence?

- A. The connection request is not processed.
- B. The connection request is sent to a policy.server. The connection request is sent to a policy.server.
- C. The connection request is load balanced to an available pool member.
- D. The connection request is refused and the client is sent a "server not available" message.

**Correct Answer:** C

**Section:** (none)

**Explanation**

**Explanation/Reference:**

#### **QUESTION 128**

The incoming client IP address is 195.64.45.52 and the last five connections have been sent to members A, C, E, D and B. Given the virtual server, pool, and persistence definitions and statistics shown in the above graphic, which member will be used for the next connection?

| Persistence Table                               |               |               |
|---|---------------|---------------|
| All entries for the one virtual server and pool |               |               |
| Persistence Values                              | Member        | Age (Seconds) |
| 200.10.0.0                                      | 10.10.20.1:80 | 63            |
| 201.12.0.0                                      | 10.10.20.3:80 | 43            |
| 153.15.0.0                                      | 10.10.20.2:80 | 76            |
| 205.12.0.0                                      | 10.10.20.4:80 | 300           |
| 195.64.0.0                                      | 10.10.20.3:80 | 22            |
| 198.22.0.0                                      | 10.10.20.5:80 | 176           |
| 214.77.0.0                                      | 10.10.20.1:80 | 43            |

| Web_Pool Statistics |              |                 |                              |                  |           |
|---------------------|--------------|-----------------|------------------------------|------------------|-----------|
| Member              | Member Ratio | Member Priority | Outstanding Layer 7 Requests | Connection Count | Status    |
| 10.10.20.1:80       | 3            | 5               | 6                            | 18               | Available |
| 10.10.20.2:80       | 3            | 5               | 6                            | 12               | Available |
| 10.10.20.3:80       | 3            | 5               | 12                           | 5                | Disabled  |
| 10.10.20.4:80       | 1            | 1               | 8                            | 19               | Offline   |
| 10.10.20.5:80       | 1            | 1               | 4                            | 9                | Available |

| Virtual Server, Pool and Persistence Profile Settings |                 |                     |                   |                         |                |
|---|-----------------|---------------------|-------------------|-------------------------|----------------|
| VS_Web_Pool Settings                                  |                 | Web_Pool Settings   |                   | Source Persist Settings |                |
| Destination   | 172.160.22.3:80 | Load balancing      | Least Connections | Mode                    | Source Address |
| Profile(s)  | TCP             | Priority Activation | Less than 2       | Netmask                 | 255.255.0.0    |
| Pool  | Web_Pool        | Montitir            | Done              | Timeout                 | 360 seconds    |
| iRules  | None            |                     |                   |                         |                |
| Persistence   | Source_Persist  |                     |                   |                         |                |

A. 10.10.20.1:80

- B. 10.10.20.2:80
- C. 10.10.20.3:80
- D. 10.10.20.4:80
- E. 10.10.20.5:80
- F. It cannot be determined with the information given.

**Correct Answer:** C

**Section:** (none)

**Explanation**

**Explanation/Reference:**

#### QUESTION 129

Which statement is true concerning cookie persistence.

- A. Cookie persistence allows persistence independent of IP addresses.
- B. Cookie persistence allows persistence even if the data are encrypted from client to pool member.
- C. Cookie persistence uses a cookie that stores the virtual server, pool name, and member IP address in clear text.
- D. If a client's browser accepts cookies, cookie persistence will always cause a cookie to be written to the client's file system.

**Correct Answer:** A

**Section:** (none)

**Explanation**

**Explanation/Reference:**

#### QUESTION 130

A site wishes to perform source address translation on packets from some clients but not others. The determination is not based on the client's IP address, but on the virtual servers their packets arrive on. What could best accomplish this goal?

- A. A SNAT for all addresses could be defined, and then disable the SNAT processing for select VLANs.
- B. Some virtual servers could be associated with SNAT pools and others not associated with SNAT pools.
- C. The decision to perform source address translation is always based on VLAN. Thus, the goal cannot be achieved.
- D. The decision to perform source address translation is always based on a client's address (or network). Thus, this goal cannot be achieved.

**Correct Answer:** B

**Section: (none)**

**Explanation**

**Explanation/Reference:**

**QUESTION 131**

Assume a client's traffic is being processed only by a NAT; no SNAT or virtual server processing takes place. Also assume that the NAT definition specifies a NAT address and an origin address while all other settings are left at their defaults. If a client were to initiate traffic to the NAT address, what changes, if any, would take place when the BIG-IP processes such packets?

- A. The source address would not change, but the destination address would be translated to the origin address.
- B. The destination address would not change, but the source address would be translated to the origin address.
- C. The source address would not change, but the destination address would be translated to the NAT's address.
- D. The destination address would not change, but the source address would be translated to the NAT's address.

**Correct Answer: A**

**Section: (none)**

**Explanation**

**Explanation/Reference:**



**QUESTION 132**

Which IP address will the client address be changed to when SNAT automap is specified within a Virtual Server configuration?

- A. The floating self IP address on the VLAN where the packet leaves the system.
- B. The floating self IP address on the VLAN where the packet arrives on the system.
- C. It will alternate between the floating and nonfloating self IP address on the VLAN where the packet leaves the system so that port exhaustion is avoided.
- D. It will alternate between the floating and nonfloating self IP address on the VLAN where the packet arrives on the system so that port exhaustion is avoided.

**Correct Answer: A**

**Section: (none)**

**Explanation**

**Explanation/Reference:**

**QUESTION 133**

Which three iRule events are likely to be seen in iRules designed to select a pool for load balancing. (Choose 3)

- A. CLIENT\_DATA
- B. SERVER\_DATA
- C. HTTP\_REQUEST
- D. HTTP\_RESPONSE
- E. CLIENT\_ACCEPTED
- F. SERVER\_SELECTED
- G. SERVER\_CONNECTED

**Correct Answer:** ACE

**Section:** (none)

**Explanation**

**Explanation/Reference:**

#### **QUESTION 134**

Which event is always triggered when a client initially connects to a virtual server configured with an HTTP profile?

- A. HTTP\_DATA
- B. CLIENT\_DATA
- C. HTTP\_REQUEST
- D. CLIENT\_ACCEPTED

**Correct Answer:** D

**Section:** (none)

**Explanation**

**Explanation/Reference:**

#### **QUESTION 135**

A virtual server is listening at 10.10.1.100:any and has the following iRule associated with it:

```
when CLIENT_ACCEPTED { if {[TCP::local_port] equals 80 } { pool pool1 }  
elseif  
{[TCP::local_port] equals 443 } { pool pool2 }  
If a user connects to 10.10.1.100 and port 22, which pool will receive  
the request?
```

- A. pool1
- B. pool2
- C. None. The request will be dropped.
- D. Unknown. The pool cannot be determined from the information provided.

**Correct Answer:** D

**Section:** (none)

**Explanation**

**Explanation/Reference:**

#### QUESTION 136

Which statement is true about the synchronization process, as performed by the Configuration Utility or by typing `b config sync` all?

- A. The process should always be run from the standby system.
- B. The process should always be run from the system with the latest configuration.
- C. The two `/config/BIG-IP.conf` configuration files are synchronized (made identical) each time the process is run.
- D. Multiple files, including `/config/BIG-IP.conf` and `/config/BIG-IP_base.conf`, are synchronized (made identical) each time the process is run.

**Correct Answer:** C

**Section:** (none)

**Explanation**

**Explanation/Reference:**

#### QUESTION 137

Which statement is true concerning the default communication between a redundant pair of BIG-IP devices?

- A. Communication between the systems cannot be effected by port lockdown settings.
- B. Data for both connection and persistence mirroring are shared through the same TCP connection.
- C. Regardless of the configuration, some data is communicated between the systems at regular intervals.
- D. Connection mirroring data is shared through the serial failover cable unless network failover is enabled.

**Correct Answer:** B

**Section:** (none)

**Explanation**

**Explanation/Reference:**

#### QUESTION 138

When upgrading a BIG-IP redundant pair, what happens when one system has been updated but the other has not?

- A. Synching should not be performed.
- B. The first system to be updated will assume the Active role.
- C. This is not possible since both systems are updated simultaneously.
- D. The older system will issue SNMP traps indicating a communication error with the partner.

**Correct Answer:** A

**Section:** (none)

**Explanation**

**Explanation/Reference:**

#### QUESTION 139

Given that VLAN failsafe is enabled on the external VLAN and the network that the active BIG-IP's external VLAN is connected to has failed, which statement is always true about the results?



<https://vceplus.com/>

- A. The active system will note the failure in the HA table.
- B. The active system will reboot and the standby system will go into active mode.
- C. The active system will failover and the standby system will go into active mode.
- D. The active system will restart the traffic management module to eliminate the possibility that BIG-IP is the cause for the network failure.

**Correct Answer:** A

**Section:** (none)

**Explanation**

**Explanation/Reference:**



#### QUESTION 140

Assuming there are open connections through an active system's virtual servers and a failover occurs, by default, what happens to the connections?

- A. All open connections are lost.
- B. All open connections are maintained.
- C. When persistence mirroring is enabled, open connections are maintained even if a failover occurs.
- D. Long-lived connections such as Telnet and FTP are maintained, but short-lived connections such as HTTP are lost.
- E. All open connections are lost, but new connections are initiated by the newly active BIG-IP, resulting in minimal client downtime.

**Correct Answer:** A

**Section:** (none)

**Explanation**

**Explanation/Reference:**

**QUESTION 141**

Which action will take place when a failover trigger is detected by the active system?

- A. The active device will take the action specified for the failure.
- B. The standby device also detects the failure and assumes the active role.
- C. The active device will wait for all connections to terminate and then failover.
- D. The standby device will begin processing virtual servers that have failed, but the active device will continue servicing the functional virtual servers.

**Correct Answer:** A

**Section:** (none)

**Explanation**

**Explanation/Reference:**

**QUESTION 142**

Assuming that systems are synchronized, which action could take place if the failover cable is connected correctly and working properly, but the systems cannot communicate over the network due to external network problems.

- A. If network failover is enabled, the standby system will assume the active mode.
- B. Whether or not network failover is enabled, the standby system will stay in standby mode.
- C. Whether or not network failover is enabled, the standby system will assume the active mode.
- D. If network failover is enabled, the standby system will go into active mode but only until the network recovers.

**Correct Answer:** B

**Section:** (none)

**Explanation**

**Explanation/Reference:**

**QUESTION 143**

The following iRule is being used within a persistence profile on a virtual server. Assuming the following HTTP requests are made within the same timeout window, what is the maximum number of persistence records that will be created iRule:

```
rule Persist_Universal { when HTTP_REQUEST { persist uie [findstr  
[HTTP ::uri] "?" 8 3] } Requests:
```

```
#1 http: //www.test.com/input.html?test1 45ABR80  
#2 http ://www.test.com/input .html?test1 35PDC72  
#3 http://www.test. com/input.html?test1 25ABR76  
#4 http ://www.test.com/input.html?test1 45MN088  
#5 http ://www.test. com/input.html?test1 55ABR98  
#6 http://www.test.com/input.html?test1 45PDC60  
#7 http ://www.test. com/input.html?test1 75ABC50  
#8 http://www.test.com/input.html?test1 25MN055  
#9 http://www.test. com/input.html?test1 45ABC70  
#10 http://www.test.com/input.html?test135 PDC4
```

- A. 4
- B. 3
- C. 10
- D. It cannot be determined from the given data.
- E. 5
- F. 1
- G. 0



**Correct Answer:** A

**Section:** (none)

**Explanation**

**Explanation/Reference:**

#### QUESTION 144

Why would an administrator capture monitor traffic between a BIG-IP and servers?

- A. Viewing monitor traffic could help the administrator to define a more robust monitor.

- B. If a client were having difficulty logging into a load balanced SSH server, viewing and analyzing the connection process would determine the reason.
- C. Only client traffic may be captured; monitor traffic may not be captured.
- D. If client traffic to servers was failing, viewing and analyzing monitor traffic would determine the reason.

**Correct Answer:** A

**Section:** (none)

**Explanation**

**Explanation/Reference:**

#### **QUESTION 145**

Which statement is true concerning packet filters?

- A. In addition to administrator-created filters, there always exists a "deny all" filter that processes traffic last.
- B. Filters cannot prevent access to the management port.
- C. The order of filters does not affect which traffic is accepted or denied.
- D. Filters cannot prevent the BIG\_IP syncing process from taking place.

**Correct Answer:** B

**Section:** (none)

**Explanation**

**Explanation/Reference:**

#### **QUESTION 146**

Which action CANNOT be performed by an iRule?

- A. Direct a connection request to a specific pool.
- B. Substitute a server's response with alternate data.
- C. Change the virtual server's default pool.
- D. Direct a client's request to a pool based on the client's browser's language.
- E. Limit a given client to a set amount of bandwidth.
- F. Discard a client before connecting to a server.

**Correct Answer:** C

**Section:** (none)

**Explanation**

**Explanation/Reference:**

#### QUESTION 147

Which three statements are true about SNATs? (Choose three.)

- A. SNAT s provide bidirectional traffic initiation.
- B. SNAT s support UDP, TCP, and ICMP traffic.
- C. SNAT s provide a many-to-one mapping between IP addresses.
- D. SNAT addresses can be identical to virtual server IP addresses.

**Correct Answer:** BC

**Section:** (none)

**Explanation**

**Explanation/Reference:**

#### QUESTION 148

Given the configuration shown below, if a connection request arrived on the BIG-IP with a source address of 200.10.10.10:1050 and a destination of 150.10.10.75:80, what would the source IP address of the associated packet be when it arrived on the chosen member of the web\_pool self 150.10.10.1 { netmask 255.255.255.0 unit 1 floating enable vlan external allow tcp https } self 10.10.1.1 { netmask 255.255.255.0 unit 1 floating enable vlan internal allow default } pool web\_pool { member 10.10.1.11:80 member 10.10.1.12:80 member 10.10.1.13:80 } snatpool client\_pool { member 10.10.1.100 member 150.10.10.15 } virtual VS\_web { destination 150.10.10.10:80 ip protocol tcp snat automap pool web\_pool } virtual VS\_network { destination 150.10.1 0.0: any mask 255.255.255.0 snatpool client\_pool ip protocol tcp pool web\_pool } virtual VS\_network { destination 150.10.1 0.0: any mask 255.255.255.0 snatpool client\_pool ip protocol tcp pool web\_pool }

- A. 10.10.1.1
- B. 200.10.10.10
- C. 10.10.1.100
- D. 150.10.10.15

**Correct Answer:** C

**Section:** (none)

**Explanation**

**Explanation/Reference:**

**QUESTION 149**

When a virtual server has an HTTP profile with compression enabled, which traffic is compressed by the BIG-IP?

- A. selected traffic from the BIG-IP to the client
- B. all sever-side traffic for that virtual server
- C. selected traffic from the pool member to the BIG-IP
- D. all client-side traffic for that virtual server

**Correct Answer:** A

**Section:** (none)

**Explanation**

**Explanation/Reference:**

**QUESTION 150**

Which three parameters could be used to determine whether a connection request will have the source address translated as the request is processed? (Choose three.)

- A. the client's router's IP address
- B. the client's browser's preferred language
- C. the client's IP netmask
- D. the client's TCP port
- E. the client's IP address
- F. the client IP fragment offset



**Correct Answer:** BDE

**Section:** (none)

**Explanation**

**Explanation/Reference:**

**QUESTION 151**

A BIG-IP has the following objects configured:

- A SNAT pool with 2 members: 150.10.33.33 and 10.10.1.33
- A load balancing pool with 5 members: 10.10.1.110.10.1.5:80
- The BIG-IP has two self
- IP addresses: 150.10.10.10 and 10.10.1.10

A virtual server at 150.10.30.30:80 that is associated with both the SNAT pool and the load balancing pool. If a client at IP address 200.10.10.10 initiates a connection to the virtual server, what will the source IP address be in the packets sent to the chosen pool member?

- A. 150.10.33.33
- B. 10.10.1.33
- C. 10.10.1.10
- D. 150.10.30.30
- E. 200.10.10.10
- F. It could be any of the addresses of the members of the load balancing pool.

**Correct Answer:** B

**Section:** (none)

**Explanation**

**Explanation/Reference:**

#### QUESTION 152

When defining a load balancing pool using the command line, if the load balancing method is not specified, what is the result?

- A. The default load balancing method would be used.
- B. The load balancing method of the previous pool would be used.
- C. The system would prompt the user for a load balancing method.
- D. An error would be displayed since no load balancing method was specified.

**Correct Answer:** A

**Section:** (none)

**Explanation**

**Explanation/Reference:**

**QUESTION 153**

What occurs when a save-config command is issued?

- A. The current configuration files are backed up.
- B. The current configuration files are verified for syntax, then the running configuration is installed in memory.
- C. The current configuration files are loaded into memory.
- D. The current configuration files are saved into an archive format.

**Correct Answer:** A

**Section:** (none)

**Explanation**

**Explanation/Reference:**

**QUESTION 154**

How many events can be referenced in a given iRule?

- A. iRules are limited to one event, but a virtual server could be associated with multiple rules.
- B. iRules can have multiple events.
- C. Exactly one.
- D. iRules can have up to event if one is client-side and one is server-side.

**Correct Answer:** B

**Section:** (none)

**Explanation**

**Explanation/Reference:**

**QUESTION 155**

Which tool is used on BIG-IP systems to capture data packets?

- A. tcpdump
- B. snoop
- C. ethereal
- D. qkview

**Correct Answer:** A

**Section:** (none)

**Explanation**

**Explanation/Reference:**

#### **QUESTION 156**

Which statement concerning virtual servers is true?

- A. Virtual servers can keep idle server connections open indefinitely.
- B. Virtual servers can compress data between the BIG-IP and servers.
- C. Virtual servers cannot perform load balancing without performing address translation.
- D. Virtual servers can reuse connections between the BIG-IP and server for multiple HTTP GETs.
- E. Virtual server processing always translates the virtual server address to the address of the chosen pool member.

**Correct Answer:** D

**Section:** (none)

**Explanation**

**Explanation/Reference:**



#### **QUESTION 157**

Which two statements are true concerning capabilities of current BIG-IP platforms? (Choose two.)

- A. The 1600 hosts more ports than the 3900.
- B. All current BIG-IP platform use both an ASIC. And CPU(s) to process traffic.
- C. All current BIG-IP platform can perform hardware compression.
- D. Only 2U BIG-IP Platform have an option of a second power supply.
- E. All BIG-IP have capacity to perform bulk encryption I decryption of SSL traffic independent of the CPU.

**Correct Answer:** BE

**Section:** (none)

**Explanation**

**Explanation/Reference:**

**QUESTION 158**

Which is the result when multiple monitors are assigned to a pool member?

- A. The member is marked available if sufficient monitors succeed, and as unavailable if insufficient monitors succeed.
- B. The member is marked as available if any of the monitors succeed.
- C. The member is marked as unavailable if any of the monitors fails.
- D. The member is marked available if all monitors succeed, and as marginal if one or more monitors fail(s).

**Correct Answer:** A

**Section:** (none)

**Explanation**

**Explanation/Reference:**

**QUESTION 159**

An LTM has the 3 virtual servers, four self IP addresses defined and the networks shown in the exhibit. Selected options for each object are shown below. Settings not shown are at their defaults.



VirtualServer1

Destination: 10.10.2.102:443 netmask 255.255.255.255

Pool: Pool with 3 members in the 172.16/16 network

VirtualServer2

Destination: 10.10.2.102:\* netmask 255.255.255.255

Pool: Pool with 3 members in the 192.168/16 network

VirtualServer3

Destination: 10.10.2.0:80 netmask 255.255.255.0

Type: IP Forwarding

SNAT1 Source IP: All Addresses

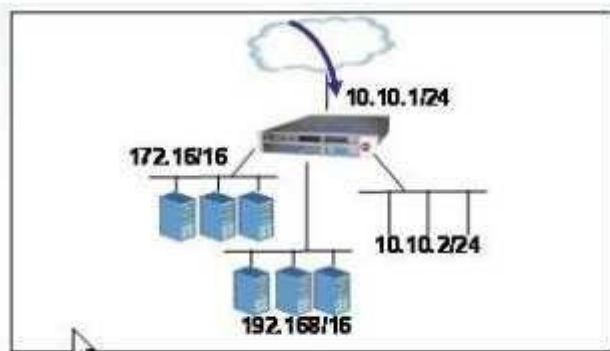
SNAT Address: SNAT Pool

with 2 members 172.16.20.50 and 192.168.10.50

Self IPs 192.168.1.1; 172.16.1.1; 10.10.2.1;

10.10.1.1

A connection attempt is made with a source IP and port of 10.20.100.50:2222 and a destination IP and port of 10.10.2.102:80. When the request is processed, what will be the destination IP address?



- A. Destination IP: 10.10.2.102
- B. The request will be dropped.
- C. Destination IP: pool member in the 192.168/16 network
- D. Destination IP: pool member in the 172.16/16 network

**Correct Answer: C**

**Section: (none)**

**Explanation**

**Explanation/Reference:**

### QUESTION 160

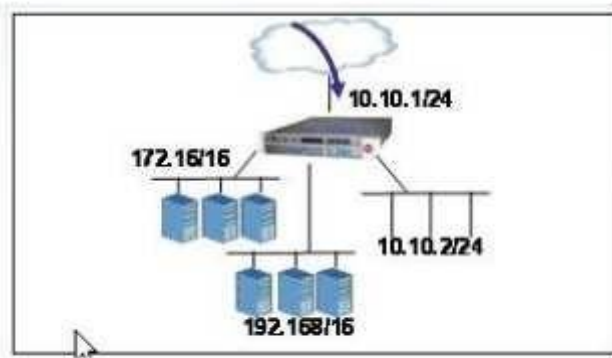
An LTM has the 3 virtual servers, a SNAT, four self IP addresses defined and the networks shown in the exhibit. Selected options for each object are shown below. Settings not shown are at their defaults.

```
VirtualServer1
Destination: 10.10.2.102:80 netmask
255.255.255.255
Pool: Pool with 3 members in the 172.16/16 network

VirtualServer2
Destination: 10.10.2.102:* netmask 255.255.255.255
Pool: Pool with 3 members in the 192.168/16 network

VirtualServer3
Destination: 10.10.2.0:80 netmask 255.255.255.0
Type:
IP Forwarding
SNAT1
Source IP: All Addresses
SNATAddress: SNAT Pool with 2 members 172.16.20.50 and 192.168.10.50
Self IPs 192.168.1.1;
172.16.1.1; 10.10.2.1; 10.10.1.1
```

A connection attempt is made with a source IP and port of 10.20.100.50:2222 and a destination IP and port of 10.10.2.102:80. When the request is processed, what will be the destination IP address?



A. Destination IP: 10.10.2.10

- B. Destination IP: pool member in the 192.168/16 network.
- C. Destination IP: pool member in the 172.16/16 network
- D. The request will be dropped.

**Correct Answer:** A

**Section:** (none)

**Explanation**

**Explanation/Reference:**

#### QUESTION 161

A site wishes to use an external monitor. Other than what is coded in the monitor script, what information must be configured on the BIG-IP for the monitor to be functional? (Choose two.)

- A. BIG-IP services that are running on the system to be tested.
- B. BIG-IP the IP addresses of the devices that will be tested. Must know which
- C. BIG-IP node or member the result are to be applied to. Must know all
- D. BIG-IP must know the name of the program.
- E. BIG-IP must know which function the program is going to test. Must know

**Correct Answer:** CD

**Section:** (none)

**Explanation**

**Explanation/Reference:**

#### QUESTION 162

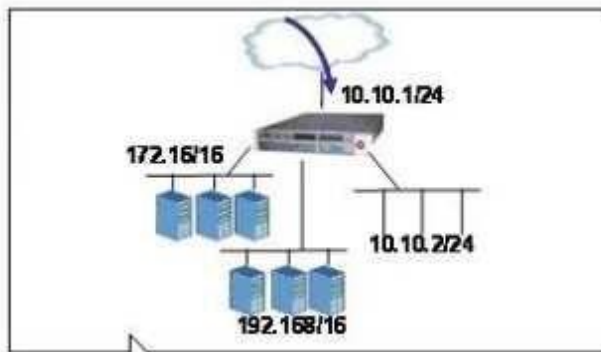
An LTM has the 3 virtual servers, 2 SNATs, four self IP addresses defined and the networks shown in the graphic below. Selected options for each object are shown below. Settings not shown are at their defaults. Assume port exhaustion has not been reached.

```
VirtualServer1
Destination: 10.10.2.102:80 netmask 255.255.255.255
Pool: Pool with 3 members in the 172.16/16 network SNAT Automap
configured

VirtualServer2
Destination: 10.10.2.102:* netmask 255.255.255.255
Pool: Pool with 3 members in the 192.168/16 network

VirtualServer3
Destination: 10.10.2.0:80 netmask 255.255.255.0
Type: IP Forwarding
SNATI Source IP: 10.10.0.0 netmask 255.255.0.0
SNATAddress: SNAT Pool with 2 members 172.16.20.50 and 192.168.10.50
SNAT2
Source IP: All Addresses
SNAT Address: 10.10.2.102 Floating Self IPs 192.168.1.1; 172.16.1.1;
10.10.2.1; 10.10.1.1
```

A connection attempt is made with a source IP and port of 10.20.10.50:2222 and a destination IP and port of 10.10.2.102:80. When the request is processed, what will be the source and destination IP addresses?



A. Source IP: 10.20.10.50; Destination IP: pool member in the 172.16/16 network

- B. Source IP: 172316.20.50; Destination IP: pool member in the 182.16/16 network
- C. Source IP: 192.168.1.1; Destination IP: pool member in the 192.168/16 network
- D. The request will be dropped.
- E. Source IP: 10.20.10.50; Destination IP: pool member in the 192.168/16 network
- F. Source IP: 182.16.1.1; Destination IP: pool member in the 172316/16 network
- G. Source IP: 192.168.10.50; Destination IP: pool member in the 192.168/16 network
- H. Source IP:192.168.10.50; Destination IP: pool member in the 192.168./16 network

**Correct Answer:** F

**Section:** (none)

**Explanation**

**Explanation/Reference:**

#### QUESTION 163

The partial configuration below includes an iRule, a virtual server, and pools. When traffic from the client at 160.10.10.10:2056 connects to the virtual server Test\_VS and sends an HTTP request, what will the client's source address be translated to as the traffic is sent to the chosen pool member?

```
pool Test_Pool { member 10.10.10.10:80 member 10.10.10.11:80 } snatpool  
lower_range  
{ member 10.10.10.1 } snatpool upper_range { member 10.10.10.2 }  
rule Test_iRule { when CLIENT_ACCEPTED.{ if { [TCP::local_port] <  
2024 }{ snatpool  
lower_range } else { snatpool upper_range }  
virtual Test_VS { destination 200.10.10.1 :http pool Test_Pool rule  
Test_i Rule }
```

- A. 160.10.10.10
- B. It could be either 10.10.10.10 or 10.10.10.11.
- C. 10.10.10.2
- D. 200.10.10.1
- E. 10.10.10.1

**Correct Answer:** E

**Section:** (none)

**Explanation**

**Explanation/Reference:**

**QUESTION 164**

What is the expected difference between two source address persistence profiles if profile A has a mask of 255.255.255.0 and profile B has a mask of 255.255.0.0?

- A. Profile A will have more clients matching existing persistence records.
- B. There are no detectable differences.
- C. Profile B has a greater potential number of persistence records.
- D. Profile B will have fewer persistence records for the same client base.

**Correct Answer:** D

**Section:** (none)

**Explanation**

**Explanation/Reference:**

**QUESTION 165**

A monitor has been defined using the HTTP monitor template. The send and receive strings were customized, but all other settings were left at their defaults. Which resources can the monitor be assigned to?

- A. only specific pool members
- B. most virtual servers
- C. most nodes
- D. most pools

**Correct Answer:** D

**Section:** (none)

**Explanation**

**Explanation/Reference:**

**QUESTION 166**

When DNS\_REV is used as the probe protocol by the GTM System, which information is expected in the response from the probe?

- A. a reverse name lookup of the GTM System

- B. the list of root servers known by the local DNS
- C. the FQDN of the local DNS being probed for metric information
- D. the revision number of BIND running on the requesting DNS server

**Correct Answer:** C

**Section:** (none)

**Explanation**

**Explanation/Reference:**

#### **QUESTION 167**

Which three can be a part of a pool's definition? (Choose three.)

- A. Link
- B. Monitors
- C. Wide IPs
- D. Persistence
- E. Data Centers
- F. Virtual Servers



**Correct Answer:** BDF

**Section:** (none)

**Explanation**

**Explanation/Reference:**

#### **QUESTION 168**

A GTM System would like to ensure that a given LTM System is reachable and iQuery communication is allowed prior to sending it client request. What would be the simplest monitor template to use?

- A. TCP
- B. ICMP
- C. HTTP
- D. BIG-IP
- E. SNMP

**Correct Answer:** D

**Section:** (none)

**Explanation**

**Explanation/Reference:**

#### **QUESTION 169**

A GTM System performs a name resolution that is not a Wide-IP. The name is in a domain for which the GTM System is authoritative. Where does the information come from?

- A. It comes from BIND database (zone) files on the GTM System.
- B. GTM System cannot resolve a host name that is not a Wide-IP.
- C. It comes from the database of previously cached name resolutions.
- D. It comes from a zone transfer initiated when the request was received.

**Correct Answer:** A

**Section:** (none)

**Explanation**

**Explanation/Reference:**



#### **QUESTION 170**

A site wishes to delegate the name .mysite.com to a GTM System. Which entry would be appropriate in their current DNS servers?

- A. www.mysite.com. IN A 132.26.33.15
- B. 15.33.addrin.arpa.com IN PRT .wiw.mysite.com.
- C. iw.mysite.com. IN CNAME wwip.mysite.com.
- D. wwmysite.com. IN DEL wiwGTM.mysite.com.

**Correct Answer:** C

**Section:** (none)

**Explanation**

**Explanation/Reference:**

#### **QUESTION 171**

Which statement about root DNS servers is true?

- A. Root servers have databases of all registered DNS servers.
- B. Root servers have databases of the DNS servers for top-level domains.
- C. Root servers have databases of DNS servers for each geographical area. They direct requests to appropriate LDNS servers.
- D. Root servers have databases of commonly accessed sites. They also cache entries for additional servers as requests are made.

**Correct Answer:** B

**Section:** (none)

**Explanation**

**Explanation/Reference:**

#### QUESTION 172

What is the advantage of specifying three load balancing methods when load balancing within pools?



<https://vceplus.com/>

- A. Specifying three methods allows the GTM System to use all three methods simultaneously.
- B. Specifying three methods allows the GTM System to choose the optimal method for each name resolution.
- C. Specifying three methods allows the GTM System alternate methods if insufficient data is available for other methods.
- D. Specifying three methods allows the GTM System to rotate between the three methods so that no one method is used too often.

**Correct Answer:** C

**Section:** (none)

**Explanation**

**Explanation/Reference:**

#### QUESTION 173

A pool is using Round Trip Time as its load balancing method (Alternate: Round Robin; Fallback:None). The last five resolutions have been C, D, C, D, C. Given the current conditions shown in the table below, which address will be used for the next resolution?

|   | Wide-IP<br>Virtual Server<br>(Site Address) | Persistence / TTL  | Ratio | Order | Virtual<br>Server<br>Connections | LDNS<br>Round<br>Trip Time | Status |
|---|---|--------------------|-------|-------|----------------------------------|----------------------------|--------|
| A | 198.13.1.1:80                               | Not Enabled / 3600 |       | 1     | 32                               | 243 ms                     | Down   |
| B | 64.24.21.2:81                               | Not Enabled / 3600 |       | 2     | 33                               | 267 ms                     | Up     |
| C | 197.70.2.3:80                               | Not Enabled / 3600 |       | 3     | 99                               | 2437 ms                    | Up     |
| D | 216.33.2.4:80                               | Not Enabled / 3600 |       | 4     | 100                              | 300 ms                     | Down   |

- A. A
- B. B
- C. C
- D. D

**Correct Answer:** B

**Section:** (none)

**Explanation**

**Explanation/Reference:**

#### QUESTION 174

What are some changes that must be made on the GTM System so that log messages are sent to centralized System Log servers?

- A. The IP address of the server must be added to the wideip.conf file.
- B. The IP address of the server must be added to the syslogng.conf file.
- C. The IP address of the server and valid user id/password combination must be added to the hosts.allow file.
- D. The IP address of the server and valid user id/password combination must be added to the syslog ng.conf file.

**Correct Answer:** B

**Section:** (none)

**Explanation**

**Explanation/Reference:**

**QUESTION 175**

What are two advantages of the Quality of Service (QoS) load balancing method? (Choose two.)

- A. It resolves requests to the site with the highest QoS value in the IP header.
- B. It combines multiple load balancing metric values in a single load balancing method.
- C. It allows the GTM administrator to place relative values on each metric used to determine the optimum site.
- D. It allows the GTM System to select the optimum virtual server based on all available path and server metrics.

**Correct Answer:** BC

**Section:** (none)

**Explanation**

**Explanation/Reference:**

**QUESTION 176**

When is a Virtual Server hosted by an LTM System defined with two IP addresses?

- A. Two addresses are used to define the Virtual Server when it is managed by redundant LTM Systems.
- B. Two addresses are used to define some Virtual Servers so that the GTM System can choose the better address when resolving the name.
- C. Two addresses are used to define Virtual Servers when the LTM System hosting it is behind a firewall that is translating the Virtual Server address.
- D. Two addresses are used to define a Virtual Server when the Wide-IP should resolve to a different address depending on which LTM System is active.

**Correct Answer:** C

**Section:** (none)

**Explanation**

**Explanation/Reference:**

**QUESTION 177**

What is a characteristic of iQuery?

- A. It uses SSH.
- B. It uses SSL.
- C. It uses SCP.
- D. It uses HTTPS.

**Correct Answer:** B

**Section:** (none)

**Explanation**

**Explanation/Reference:**

#### **QUESTION 178**

Listeners that correspond to nonfloating self IP addresses are stored in which configuration file?

- A. /config/BIG-IP.conf
- B. /config/BIG-IP\_base.conf
- C. /config/gtm/wideip.conf
- D. /config/BIG-IP\_local.conf

**Correct Answer:** D

**Section:** (none)

**Explanation**

**Explanation/Reference:**



#### **QUESTION 179**

How do you support non intelligent DNS resolution in an environment with GTM Systems and standard DNS servers? (Choose two.)

- A. The GTM System must be a secondary server in all of your zones.
- B. Your GTM System must delegate some DNS names to the DNS Servers.
- C. Your DNS servers may delegate some DNS names to the GTM Systems.
- D. The GTM System may have a Listener set for your DNS server's address.
- E. The GTM System may have a Listener set for the GTM's loopback address.

**Correct Answer:** CD

**Section:** (none)

**Explanation**

**Explanation/Reference:**

#### **QUESTION 180**

What is the purpose of the GTM Systems Address Exclusion List concerning local DNS servers?

- A. to prevent probing of specific local DNSs
- B. to prevent name resolution to specific Virtual Servers
- C. to prevent name resolution for requests from specific local DNSs
- D. to prevent probing of any local DNS servers by specific F5 devices

**Correct Answer:** A

**Section:** (none)

**Explanation**

**Explanation/Reference:**

#### **QUESTION 181**

The BIG-IP ASM System is configured with a virtual server that contains an HTTP class profile and the protected pool members are associated within the HTTP class profile pool definition. The status of this virtual server is unknown (Blue). Which of the following conditions will make this virtual server become available (Green)?

- A. Assign a successful monitor to the virtual server
- B. Assign a successful monitor to the members of the HTTP class profile pool
- C. Associate a fallback host to the virtual server and assign a successful monitor to the fallback host
- D. Associate a default pool to the virtual server and assign a successful monitor to the pool members

**Correct Answer:** D

**Section:** (none)

**Explanation**

**Explanation/Reference:**

#### **QUESTION 182**

Which of the following does not pertain to protecting the Requested Resource (URI) element?

- A. File type validation
- B. URL name validation
- C. Domain cookie validation
- D. Attack signature validation

**Correct Answer:** C

**Section: (none)**

**Explanation**

**Explanation/Reference:**

**QUESTION 183**

Which of the following protocol protections is not provided by the Protocol Security Manager?

- A. FTP
- B. SSH
- C. HTTP
- D. SMTP

**Correct Answer: B**

**Section: (none)**

**Explanation**

**Explanation/Reference:**



**QUESTION 184**

There are many user roles configurable on the BIG-IP ASM System. Which of the following user roles have access to make changes to ASM policies? (Choose three.)

- A. Guest
- B. Operator
- C. Administrator
- D. Web Application Security Editor
- E. Web Application Security Administrator

**Correct Answer: CDE**

**Section: (none)**

**Explanation**

**Explanation/Reference:**

**QUESTION 185**

Which of the following methods of protection is not available within the Protocol Security Manager for FTP protection?

- A. Session timeout
- B. Command length
- C. Allowed commands
- D. Anonymous FTP restriction

**Correct Answer:** A

**Section:** (none)

**Explanation**

**Explanation/Reference:**

#### **QUESTION 186**

Which of the following can be associated with an XML profile?

- A. Flow
- B. Method
- C. Parameter
- D. File type

**Correct Answer:** C

**Section:** (none)

**Explanation**

**Explanation/Reference:**

#### **QUESTION 187**

An HTTP class is available

- A. on any BIG-IP LTM system
- B. only when ASM is licensed.
- C. only when ASM or WA are licensed.
- D. only when a specific license key is required.

**Correct Answer:** A

**Section:** (none)

**Explanation**



**Explanation/Reference:**

**QUESTION 188**

Which of the following methods of protection operates on server responses?

- A. Dynamic parameter protection
- B. Response code validation and response scrubbing
- C. Response code validation and HTTP method validation
- D. HTTP RFC compliancy check and metacharacter enforcement

**Correct Answer: B**

**Section: (none)**

**Explanation**

**Explanation/Reference:**

**QUESTION 189**

Which of the following is not a configurable parameter data type?

- A. Email
- B. Array
- C. Binary
- D. Decimal

**Correct Answer: B**

**Section: (none)**

**Explanation**

**Explanation/Reference:**

**QUESTION 190**

There are multiple HTTP class profiles assigned to a virtual server. Each profile has Application Security enabled. Which statement is true?

- A. Traffic will process through every HTTP class profile every time.
- B. Traffic will process through the first HTTP class profile that it matches and then stops.
- C. Traffic will process through one HTTP class profile and if the traffic matches another profile, BIG-IP System will send a redirect to the client.

D. Traffic will only process through the HTTP class profile that it matches but always processes through the whole list and will process through each HTTP class profile it matches.

**Correct Answer:** B

**Section:** (none)

**Explanation**

**Explanation/Reference:**

#### QUESTION 191

A security audit has determined that your web application is vulnerable to a cross site scripting attack. Which of the following measures are appropriate when building a security policy? (Choose two.)

- A. Cookie length must be restricted to 1024 bytes.
- B. Attack signature sets must be applied to any user input parameters.
- C. Parameter data entered for explicit objects must be checked for minimum and maximum values.
- D. Parameter data entered for flow level parameters must allow some metacharacters but not others.

**Correct Answer:** BD

**Section:** (none)

**Explanation**

**Explanation/Reference:**

#### QUESTION 192

Which statement is correct concerning differences between BIG-IP ASM platforms?

- A. The 3900 has more ports than the 6800.
- B. The 3900 and 6800 have the same number of ports.
- C. The 3900 and 6800 can support both the module and standalone versions of BIG-IP ASM.
- D. The 3900 can support both module and standalone versions of BIG-IP ASM whereas the 6800 can support only the module version of BIG-IP ASM.

**Correct Answer:** D

**Section:** (none)

**Explanation**

**Explanation/Reference:**

**QUESTION 193**

Which of the following mitigation techniques is based on anomaly detection? (Choose two)

- A. Brute force attack prevention
- B. Cross site request forgery prevention
- C. Web scraping attack prevention
- D. Parameter tampering prevention

**Correct Answer:** AC

**Section:** (none)

**Explanation**

**Explanation/Reference:**

**QUESTION 194**

Which of the following are default settings when using the Policy Builder to build a security policy based on the QA lab deployment scenario? (Choose two.)

- A. All learned entities are placed in staging.
- B. Attack signatures are not placed in staging
- C. The security policy is placed in blocking mode
- D. Tightening is enabled only on file types and parameters.

**Correct Answer:** BC

**Section:** (none)

**Explanation**

**Explanation/Reference:**

**QUESTION 195**

Which of the following statements are incorrect regarding protection of web services? (Choose two.)

- A. The BIG-IP ASM System checks to ensure web services use cookies.
- B. The BIG-IP ASM System parses XML requests and XML responses.
- C. The BIG-IP ASM System checks to ensure XML documents are well formed.

- D. The BIG-IP ASM System uses attack signatures to enforce negative security logic.
- E. The BIG-IP ASM System checks for XML syntax, schema validation, and WSDL validation.

**Correct Answer:** AB

**Section:** (none)

**Explanation**

**Explanation/Reference:**

#### **QUESTION 196**

Which of the following is correct regarding static parameters?

- A. A static parameter is stored in a frame cookie.
- B. A static parameter is predefined by the web application logic.
- C. A static parameter is learned only by using the Deployment Wizard.
- D. A static parameter is mapped once when creating the application flow model.

**Correct Answer:** B

**Section:** (none)

**Explanation**



**Explanation/Reference:**

#### **QUESTION 197**

Sensitive parameter is a feature used to hide sensitive information from being displayed in which of the following?

- A. Client request
- B. Server response
- C. GUI and logs of BIG-IP ASM System
- D. Configuration file of BIG-IP ASM System

**Correct Answer:** C

**Section:** (none)

**Explanation**

**Explanation/Reference:**

**QUESTION 198**

Tightening is a feature of which type of entity?

- A. Explicit URLs
- B. Attack signatures
- C. Flow login URLs
- D. Wildcard parameters

**Correct Answer:** D

**Section:** (none)

**Explanation**

**Explanation/Reference:**

**QUESTION 199**

A client sends a request to a virtual server <http://www.foo.com> configured on the BIG-IP ASM System. The virtual server has an HTTP class profile associated with Application Security enabled, all class filters set to match all, and a pool consisting of [foo.com](http://www.foo.com) members. The virtual server also has a default pool associated with it. When the client sends a request for <http://www.foo.com>, this traffic will be forwarded to which of the following?

- A. The fallback host
- B. The default pool
- C. The HTTP class profile pool
- D. The request will be dropped

**Correct Answer:** C

**Section:** (none)

**Explanation**

**Explanation/Reference:**

**QUESTION 200**

Which of the following is correct concerning HTTP classes?

- A. A single web application can be used by several HTTP classes
- B. A virtual server can only have one web application associated with it
- C. A single ASM enabled HTTP class can be used by multiple virtual servers

D. Each ASM enabled HTTP class can have several active security policies associated with it

**Correct Answer:** C

**Section:** (none)

**Explanation**

**Explanation/Reference:**

#### **QUESTION 201**

When initially configuring the BIG-IP System using the config tool, which of the following parameters can be configured? (Choose three.)

- A. System hostname
- B. Netmask of the management port
- C. IP address of the management port
- D. Default route of the management port
- E. Port lockdown of the management port

**Correct Answer:** BCD

**Section:** (none)

**Explanation**

**Explanation/Reference:**



#### **QUESTION 202**

Which method of protection is not provided by the Rapid Deployment policy template?

- A. Data leakage
- B. Buffer overflow
- C. HTTP protocol compliance
- D. Dynamic parameter validation

**Correct Answer:** D

**Section:** (none)

**Explanation**

**Explanation/Reference:**

**QUESTION 203**

Which HTTP response code ranges indicate an error condition? (Choose two.)

- A. 1xx
- B. 2xx
- C. 3xx
- D. 4xx
- E. 5xx

**Correct Answer:** DE

**Section:** (none)

**Explanation**

**Explanation/Reference:**

**QUESTION 204**

The Web Application Security Administrator user role can perform which of the following functions? (Choose two.)

- A. Modify HTTP class profiles
- B. Create new HTTP class profiles
- C. Create new Attack signature sets
- D. Assign HTTP class profiles to virtual servers
- E. Configure Advanced options within the BIG-IP ASM System

**Correct Answer:** CE

**Section:** (none)

**Explanation**

**Explanation/Reference:**

**QUESTION 205**

On a BIG-IP ASM 3600, in standalone mode, which of the following pool configurations is valid?

- A. Pool named vs\_pool with 1 pool member, no persistence, and no load balancing method
- B. Pool named vs\_pool with 1 pool member, cookie persistence, and ratio load balancing method

- C. Pool named vs\_pool with 2 pool members, cookie persistence, and ratio load balancing method
- D. Pool named vs\_pool with 3 pool members, source IP persistence, and least connections load balancing method

**Correct Answer:** A

**Section:** (none)

**Explanation**

**Explanation/Reference:**

#### **QUESTION 206**

Which level of parameter assumes the highest precedence in BIG-IP ASM System processing logic?

- A. Flow
- B. Object
- C. Global
- D. URL

**Correct Answer:** A

**Section:** (none)

**Explanation**



**Explanation/Reference:**

#### **QUESTION 207**

When initially configuring the BIG-IP system using the config utility, which two parameters can be set. (Choose two.)

- A. the netmask of the SCCP
- B. the IP address of the SCCP
- C. the port lockdown settings for the SCCP
- D. the netmask of the host via the management port
- E. the IP address of the host via the management port
- F. the port lockdown settings for the host via the management port

**Correct Answer:** DE

**Section:** (none)

**Explanation**

**Explanation/Reference:**

**QUESTION 208**

A site has six members in a pool. All of the servers have been designed, built, and configured with the same applications. It is known that each client's interactions vary significantly and can affect the performance of the servers. If traffic should be sent to all members on a regular basis, which load balancing mode is most effective if the goal is to maintain a relatively even load across all servers.

- A. Ratio
- B. Priority
- C. Observed
- D. Round Robin

**Correct Answer:** C

**Section:** (none)

**Explanation**

**Explanation/Reference:**

**QUESTION 209**

A site has six members in a pool. Three of the servers are new and have more memory and a faster processor than the others. Assuming all other factors are equal and traffic should be sent to all members, which two load balancing methods are most appropriate? (Choose two.)

- A. Ratio
- B. Priority
- C. Observed
- D. Round Robin

**Correct Answer:** AC

**Section:** (none)

**Explanation**

**Explanation/Reference:**

**QUESTION 210**

Which two can be a part of a pool's definition? (Choose two.)

- A. rule(s)

- B. profile(s)
- C. monitor(s)
- D. persistence type
- E. load balancing mode

**Correct Answer:** CE

**Section:** (none)

**Explanation**

**Explanation/Reference:**

#### QUESTION 211

A standard virtual server has been associated with a pool with multiple members. Assuming all other settings are left at their defaults, which statement is always true concerning traffic processed by the virtual server?

- A. The client IP address is unchanged between the client-side connection and the server-side connection.
- B. The server IP address is unchanged between the client-side connection and the server-side connection.
- C. The TCP ports used in the client-side connection are the same as the TCP ports server-side connection.
- D. The IP addresses used in the client-side connection are the same as the IP addresses used in the server-side connection.

**Correct Answer:** A

**Section:** (none)

**Explanation**

**Explanation/Reference:**

#### QUESTION 212

Monitors can be assigned to which three resources? (Choose three.)

- A. NATs
- B. pools
- C. iRules
- D. nodes
- E. SNATs
- F. pool members

G. virtual servers

**Correct Answer:** BDF

**Section:** (none)

**Explanation**

**Explanation/Reference:**

#### QUESTION 213

A site would like to ensure that a given web server's default page is being served correctly prior to sending it client traffic. They assigned the A site would like to ensure that a given web server's default page is being served correctly prior to sending it client traffic. They be assigned the default HTTP monitor to the pool. What would the member status be if it sent an unexpected response to the GET request default HTTP monitor to the pool?



<https://vceplus.com/>

- A. The pool member would be marked offline (red).
- B. The pool member would be marked online (green).
- C. The pool member would be marked unknown (blue).
- D. The pool member would alternate between red and green.

**Correct Answer:** B

**Section:** (none)

**Explanation**

**Explanation/Reference:**

#### QUESTION 214

A site is load balancing to a pool of web servers. Which statement is true concerning BIG-IP's ability to verify whether the web servers are functioning properly or not?

- A. Web server monitors can test the content of any page on the server.
- B. Web server monitors always verify the contents of the index.html page.
- C. Web server monitors can test whether the server's address is reachable, but cannot test a page's content.
- D. Web server monitors can test the content of static web pages, but cannot test pages that would require the web server to dynamically build content.

**Correct Answer:** A

**Section:** (none)

**Explanation**

**Explanation/Reference:**

#### **QUESTION 215**

The current status of a given pool is offline (red). Which condition could explain that state? Assume the descriptions below include all monitors assigned for each scenario.

- A. No monitors are currently assigned to any pool, member or node.
- B. The pool has a monitor assigned to it, and none of the pool members passed the test. The pool has a monitor assigned to it, and none of the pool members passed the test.
- C. The pool has a monitor assigned to it, and only some of the pool's members passed the test.
- D. A monitor is assigned to all nodes and all nodes have passed the test. The pool's members have no specific monitor assigned to them.

**Correct Answer:** B

**Section:** (none)

**Explanation**

**Explanation/Reference:**

#### **QUESTION 216**

You need to terminate client SSL traffic at the BIG-IP and also to persist client traffic to the same pool member based on a BIG-IP supplied cookie. Which four are profiles that would normally be included in the virtual server's definition? (Choose four.)

- A. TCP
- B. HTTP
- C. HTTPS
- D. ClientSSL

- E. ServerSSL
- F. CookieBased Persistence

**Correct Answer:** ABDF

**Section:** (none)

**Explanation**

**Explanation/Reference:**

#### QUESTION 217

Which three statements describe a characteristic of profiles? (Choose three.)

- A. Default profiles cannot be created or deleted.
- B. Custom profiles are always based on a parent profile.
- C. A profile can be a child of one profile and a parent of another.
- D. All changes to parent profiles are propagated to their child profiles.
- E. While most virtual servers have at least one profile associated with them, it is not required.

**Correct Answer:** ABC

**Section:** (none)

**Explanation**

**Explanation/Reference:**

#### QUESTION 218

A virtual server is defined using a source address based persistence profile. The last five connections were A, B, C, A, C. Given the conditions shown in the graphic, if a client with IP address 205.12.45.52 opens a connection to the virtual server, which member will be used for the connection?

| All entries for the one virtual server and pool |               |               |
|---|---------------|---------------|
| Persistence Values                              | Member        | Age (Seconds) |
| 200.10.0.0                                      | 10.10.20.1:80 | 63            |
| 201.12.0.0                                      | 10.10.20.3:80 | 43            |
| 153.15.0.0                                      | 10.10.20.2:80 | 76            |
| 205.12.0.0                                      | 10.10.20.4:80 | 300           |
| 195.64.0.0                                      | 10.10.20.3:80 | 22            |
| 198.22.0.0                                      | 10.10.20.5:80 | 176           |
| 214.77.0.0                                      | 10.10.20.1:80 | 43            |

| Web_Pool Statistics |              |                 |                              |                  |           |
|---------------------|--------------|-----------------|------------------------------|------------------|-----------|
| Member              | Member Ratio | Member Priority | Outstanding Layer 7 Requests | Connection Count | Status    |
| 10.10.20.1:80       | 3            | 5               | 6                            | 18               | Available |
| 10.10.20.2:80       | 3            | 5               | 6                            | 12               | Available |
| 10.10.20.3:80       | 3            | 5               | 12                           | 5                | Disabled  |
| 10.10.20.4:80       | 1            | 1               | 8                            | 19               | Offline   |
| 10.10.20.5:80       | 1            | 1               | 4                            | 9                | Available |

| Virtual Server, Pool and Persistence Profile Settings |                 |                     |                   |                         |                |
|---|-----------------|---------------------|-------------------|-------------------------|----------------|
| VS_Web_Pool Settings                                  |                 | Web_Pool Settings   |                   | Source Persist Settings |                |
| Destination   | 172.160.22.3:80 | Load balancing      | Least Connections | Mode                    | Source Address |
| Profile(s)  | TCP             | Priority Activation | Less than 2       | Netmask                 | 255.255.0.0    |
| Pool  | Web_Pool        | Montitir            | Done              | Timeout                 | 360 seconds    |
| iRules  | None            |                     |                   |                         |                |
| Persistence   | Source_Persist  |                     |                   |                         |                |

A. 10.10.20.1:80

- B. 10.10.20.2:80
- C. 10.10.20.3:80
- D. 10.10.20.4:80
- E. 10.10.20.5:80

**Correct Answer:** B

**Section:** (none)

**Explanation**

**Explanation/Reference:**

**QUESTION 219**

How is persistence configured?



| Persistence Table<br>All entries for the one virtual server and pool |               |               |
|--|---------------|---------------|
| Persistence Values   | Member        | Age (Seconds) |
| 200.10.0.0   | 10.10.20.1:80 | 63            |
| 201.12.0.0   | 10.10.20.3:80 | 43            |
| 153.15.0.0   | 10.10.20.2:80 | 76            |
| 205.12.0.0   | 10.10.20.4:80 | 300           |
| 195.64.0.0   | 10.10.20.3:80 | 22            |
| 198.22.0.0   | 10.10.20.5:80 | 176           |
| 214.77.0.0   | 10.10.20.1:80 | 43            |

| Web_Pool Statistics |              |                 |                              |                  |           |
|---------------------|--------------|-----------------|------------------------------|------------------|-----------|
| Member              | Member Ratio | Member Priority | Outstanding Layer 7 Requests | Connection Count | Status    |
| 10.10.20.1:80       | 3            | 5               | 6                            | 18               | Available |
| 10.10.20.2:80       | 3            | 5               | 6                            | 12               | Available |
| 10.10.20.3:80       | 3            | 5               | 12                           | 5                | Disabled  |
| 10.10.20.4:80       | 1            | 1               | 8                            | 19               | Offline   |
| 10.10.20.5:80       | 1            | 1               | 4                            | 9                | Available |

| Virtual Server, Pool and Persistence Profile Settings |                 |                     |                   |                         |                |
|---|-----------------|---------------------|-------------------|-------------------------|----------------|
| VS_Web_Pool Settings                                  |                 | Web_Pool Settings   |                   | Source Persist Settings |                |
| Destination   | 172.160.22.3:80 | Load balancing      | Least Connections | Mode                    | Source Address |
| Profile(s)  | TCP             | Priority Activation | Less than 2       | Netmask                 | 255.255.0.0    |
| Pool  | Web_Pool        | Montitir            | Done              | Timeout                 | 360 seconds    |
| iRules  | None            |                     |                   |                         |                |
| Persistence   | Source_Persist  |                     |                   |                         |                |

A. Persistence is an option within each pool's definition.

- B. Persistence is a profile type; an appropriate profile is created and associated with virtual server.
- C. Persistence is a global setting; once enabled, load balancing choices are superceded by the persistence method that is specified.
- D. Persistence is an option for each pool member. When a pool is defined, each member's definition includes the option for persistence.

**Correct Answer:** B

**Section:** (none)

**Explanation**

**Explanation/Reference:**

#### **QUESTION 220**

Assume a virtual server has a ServerSSL profile. What SSL certificates are required on the pool members.

- A. No SSL certificates are required on the pool members.
- B. The pool members SSL certificates must only exist.
- C. The pool members SSL certificates must be issued from a certificate authority.
- D. The pool members SSL certificates must be created within the company hosting the BIG-IPs.

**Correct Answer:** B

**Section:** (none)

**Explanation**

**Explanation/Reference:**

#### **QUESTION 221**

Which statement is true concerning SNATs using automap?

- A. Only specified self-IP addresses are used as automap addresses.
- B. SNATs using automap will translate all client addresses to an automap address.
- C. A SNAT using automap will preferentially use a floating self-IP over a nonfloating self-IP.
- D. A SNAT using automap can be used to translate the source address of all outgoing traffic to the same address regardless of which VLAN the traffic is sent through.

**Correct Answer:** C

**Section:** (none)

**Explanation**

**Explanation/Reference:**

**QUESTION 222**

Which two statements are true about NATs? (Choose two.)

- A. NATs support UDP, TCP, and ICMP traffic.
- B. NATs can be configured with mirroring enabled or disabled.
- C. NATs provide a one-to-one mapping between IP addresses.
- D. NATs provide a many-to-one mapping between IP addresses.

**Correct Answer:** AC

**Section:** (none)

**Explanation**

**Explanation/Reference:**

**QUESTION 223**

Which statement describes a typical purpose of iRules?

- A. iRules can be used to add individual control characters to an HTTP data stream.
- B. iRules can be used to update the timers on monitors as a server load changes.
- C. iRules can examine a server response and remove it from a pool if the response is unexpected
- D. iRules can be used to look at client requests and server responses to choose a pool member to select for load balancing.

**Correct Answer:** A

**Section:** (none)

**Explanation**

**Explanation/Reference:**

**QUESTION 224**

A virtual server is listening at 10.10.1.100:80 and has the following iRule associated with it:

```
when HTTP_REQUEST { if { [HTTP::header UserAgent] contains "MSIE" }  
  { pool MSIE_pool }  
  else { pool Mozilla_pool }
```

If a user connects to `http://10.10.1.100/foo.html` and their browser does not specify a UserAgent, which pool will receive the request?

- A. MSIE\_pool
- B. Mozilla\_pool
- C. None. The request will be dropped.
- D. Unknown. The pool cannot be determined from the information provided.

**Correct Answer:** B

**Section:** (none)

**Explanation**

**Explanation/Reference:**

#### QUESTION 225

Which event is always triggered when the client sends data to a virtual server using TCP?

- A. HTTP\_DATA
- B. CLIENT\_DATA
- C. HTTP\_REQUEST
- D. VS\_CONNECTED

**Correct Answer:** B

**Section:** (none)

**Explanation**

**Explanation/Reference:**

#### QUESTION 226

A virtual server is listening at `10.10.1.100:any` and has the following iRule associated with it:

```
when CLIENT_ACCEPTED { if {[TCP::local_port] equals 21 } { pool  
ftppool } elseif {[TCP::local_port] equals 23 } { pool telnetpool }
```

If a user connects to 10.10.1.100 and port 22, which pool will receive the request?

- A. ftp pool
- B. telnet pool
- C. None. The request will be dropped.
- D. Unknown. The pool cannot be determined from the information provided.

**Correct Answer:** D

**Section:** (none)

**Explanation**

**Explanation/Reference:**

#### QUESTION 227

When configuring a Virtual Server to use an iRule with an HTTP\_REQUEST event, which lists required steps in a proper order to create all necessary objects?

- A. create profiles, create the iRule, create required pools, create the Virtual Server
- B. create the Virtual Server, create required pools, create the iRule, edit the Virtual Server
- C. create a custom HTTP profile, create required pools, create the Virtual Server, create the iRule
- D. create required pools, create a custom HTTP profile, create the iRule, create the Virtual Server

**Correct Answer:** B

**Section:** (none)

**Explanation**

**Explanation/Reference:**

#### QUESTION 228

Which statement is true concerning a functional iRule?

- A. iRules use a proprietary syntax language.
- B. iRules must contain at least one event declaration.

- C. iRules must contain at least one conditional statement.
- D. iRules must contain at least one pool assignment statement.

**Correct Answer:** B

**Section:** (none)

**Explanation**

**Explanation/Reference:**

#### **QUESTION 229**

Which statement about Generic Host Servers is true?

- A. GTM Systems can initiate a big3d agent on Generic Host Servers.
- B. GTM Systems cannot provide path metrics for Virtual Servers managed by a Generic Host Server.
- C. GTM Systems can monitor a Generic Host Server and can cause a Generic Host Server to act as a Statistics Collection Server.
- D. GTM Systems can monitor a Generic Host Server but cannot cause a Generic Host Server to act as a Statistics Collection Server.

**Correct Answer:** D

**Section:** (none)

**Explanation**



**Explanation/Reference:**

#### **QUESTION 230**

When configuring monitors for individual pool members, which three options can be selected? (Choose three.)

- A. inherit the pool's monitor
- B. choose a default monitor
- C. inherit the Wide-IP's monitor
- D. assign a monitor to the specific pool member
- E. do not assign any monitor to the specific pool member

**Correct Answer:** ADE

**Section:** (none)

**Explanation**

**Explanation/Reference:**

**QUESTION 231**

What does the BIG-IP\_add script do?

- A. add BIG-IP servers to the wideip.conf file
- B. add an existing GTM System to a sync group
- C. synchronize configuration files between BIG-IP Systems
- D. exchange web certificates and keys between BIG-IP Systems

**Correct Answer: D**

**Section: (none)**

**Explanation**

**Explanation/Reference:**

**QUESTION 232**

Which dynamic load balancing mode affects load balancing decisions based on path metrics?

- A. Packet Rate
- B. Completion Rate
- C. Least Connections
- D. Virtual Server Capacity

**Correct Answer: B**

**Section: (none)**

**Explanation**

**Explanation/Reference:**

**QUESTION 233**

If the GTM System receives a packet destined for one of its Listener addresses the GTM will process the request \_\_\_\_\_

- A. either through Wide-IP processing or BIND processing
- B. through Wide-IP processing and may process it through BIND processing
- C. through BIND processing and may process it through Wide-IP processing
- D. through Wide-IP processing and BIND processing and choose the best answer between the two

**Correct Answer:** B

**Section:** (none)

**Explanation**

**Explanation/Reference:**

**QUESTION 234**

Which file contains the list of events for which the GTM System will send traps to an SNMP manager?

- A. /etc/snmpd.conf
- B. /etc/syslogng.conf
- C. /etc/alertd/alert.conf
- D. /etc/gtm\_snmptrap.conf

**Correct Answer:** C

**Section:** (none)

**Explanation**

**Explanation/Reference:**



**QUESTION 235**

What occurs when a load command is issued?

- A. rootBIG-IPsystem[Active][tmios.ltm.pool]#create pooh members add {170.16.20.1:80}



<https://vceplus.com/>

- B. rootBIG-IPsystem[Active][tmios.ltm.pool]#create pooh members add {172.16.20.1:80}

- C. rootBIG-IPsystem[Active][tmsh.ltm.pool]#create pool members add {172.16.20.1:80} }
- D. rootBIG-IPsystem[Active][tmsh.ltm.pool]#create pool members add {172.16.20.1:80{priority group 2}}

**Correct Answer:** A

**Section:** (none)

**Explanation**

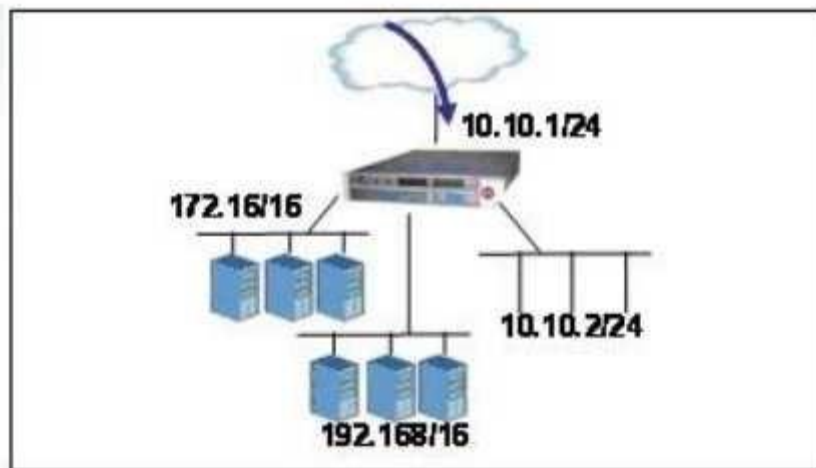
**Explanation/Reference:**

### QUESTION 236

An LTM has the 3 virtual servers, 2 SNATs, four self IP addresses defined and the networks shown in the exhibit. Selected options for each object are shown below. Settings not shown are at their defaults. Assume port exhaustion has not been reached.

```
VirtualServer1
Destination: 10.10.2.102:80 netmask 255.255.255.255
Pool: Pool with 3 members in the 172.16.16 network
SNAT Automap configured V
VirtualServer2
Destination: 10.10.2.102:* netmask 255.255.255.255
Transparent with 3 pool members in the 192.168/16 network
VirtualServer3
Destination: 10.10.2.0:80 netmask 255.255.255.0
Type: IP Forwarding
SNAT1 Source IP: 10.10.0.0 netmask 255.255.0.0
SNAT Address: SNAT Pool with 2 members 172.16.20.50 and 192.168.10.50
SNAT2 Source IP: All Addresses
SNAT Address: 10.10.2.103
Floating Self IPs 192.168.1.1; 172.16.1.1; 10.10.2.1; 10.10.1.1
```

A connection attempt is made with a source IP and port of 10.20.100.50:2222 and a destination IP and port of 10.10.2.102:443. When the request is processed, what will be the source and destination IP addresses?



- A. Source IP: 10.10.2.103; Destination IP: pool member in the 192.168/16 network
- B. Source IP: 10.10.201; Destination IP: pool member in the 192.168/16 network
- C. Source IP: 10.10.2.103; Destination IP: 10.10.2.102
- D. The request will be dropped.
- E. Source IP: 10.20.10.50; Destination IP: pool member in the 192.168/16 network
- F. Source IP: 10.10.201; Destination IP: 10.102.102

**Correct Answer:** C

**Section:** (none)

**Explanation**

**Explanation/Reference:**

### QUESTION 237

How is traffic flow through transparent virtual servers different from typical virtual servers?

- A. Traffic flow through transparent virtual servers must be forwarded through a single routing device.
- B. Traffic flow through transparent virtual servers does not have IP address translation performed.
- C. Traffic flow through transparent virtual servers is not load balanced.

- D. Traffic flow through transparent virtual servers is bridged (leave IP and MAC.addresses intact) rather than routed (leave IP address intact but change the MAC.addresses).

**Correct Answer:** B

**Section:** (none)

**Explanation**

**Explanation/Reference:**

#### **QUESTION 238**

A monitor has been defined with an alias port of 443. All other options are left at their defaults. The administrator wishes to assign it to a pool of members where the members' ports vary. Which is the result?

- A. For each member, if the member port is not 443, the member will be marked down. For each member, if the member port is not 443, the member will be marked down.
- B. For each member, the monitor will test member node at port 443. For each member, the monitor will test the member node at port 443.
- C. For each member. If it is running an SSL service at the member port, the monitor may work. Otherwise, the monitor will fail and the member for each member, if it is running an SSL service at the member port, the monitor may work. Otherwise, the monitor will fail and the member will be marked down. D. This assignment is not allowed since the port do not match.

**Correct Answer:** B

**Section:** (none)

**Explanation**

**Explanation/Reference:**

#### **QUESTION 239**

After editing and saving changes to the configuration file containing virtual servers, what is the immediate result?

- A. The new configuration is verified and loaded.
- B. The new configuration is verified not loaded.
- C. The new configuration is verified.
- D. The new configuration is loaded but not verified.
- E. The new configuration is neither verified not loaded.
- F. The new configuration is verified and loaded if is it syntactically correct.

**Correct Answer:** E

**Section:** (none)

**Explanation**

**Explanation/Reference:**

#### **QUESTION 240**

Learning suggestions in the Policy Building pages allow for which of the following? (Choose two.)

- A. XML-based parameters and associated schema are automatically learned.
- B. Blocking response pages can be automatically generated from web site content.
- C. Flow level parameters are displayed when found and can be accepted into the current policy.
- D. The administrator may modify whether the BIG-IP ASM System will learn, alarm, or block detected violations.
- E. Maximum acceptable values for length violations are calculated and can be accepted into the security policy by the administrator.

**Correct Answer:** CE

**Section:** (none)

**Explanation**

**Explanation/Reference:**



#### **QUESTION 241**

Under what condition must an appliance license be reactivated?

- A. Licenses only have to be reactivated for RMAs no other situations.
- B. Licenses generally have to be reactivated during system software upgrades.
- C. Licenses only have to be reactivated when new features are added (IPv6, Routing Modules, etc.) no other situations.
- D. Never. Licenses are permanent for the platform regardless the version of software installed.

**Correct Answer:** B

**Section:** (none)

**Explanation**

**Explanation/Reference:**

**QUESTION 242**

Which three methods can be used for initial access to a BIG-IP system. (Choose three.)

- A. CLI access to the serial console port
- B. SSH access to the management port
- C. SSH access to any of the switch ports
- D. HTTP access to the management port
- E. HTTP access to any of the switch ports
- F. HTTPS access to the management port
- G. HTTPS access to any of the switch ports

**Correct Answer:** ABF

**Section:** (none)

**Explanation**

**Explanation/Reference:**

**QUESTION 243**

When implementing Data Guard, BIG-IP ASM scans for suspicious patterns in? (Choose two.)

- A. All client requests
- B. All server responses
- C. Specific client requests
- D. Specific server responses

**Correct Answer:** BD

**Section:** (none)

**Explanation**

**Explanation/Reference:**

**QUESTION 244**

A web client accesses a web application using what protocol?

- A. TCP
- B. XML

C. HTML

D. HTTP

**Correct Answer:** D

**Section:** (none)

**Explanation**

**Explanation/Reference:**

#### **QUESTION 245**

In the following request, which portion represents a parameter name?

A. Yes

B. User

C. Week1

D. Financials

**Correct Answer:** B

**Section:** (none)

**Explanation**



**Explanation/Reference:**

#### **QUESTION 246**

Which of the following is not a method of protection for user-input parameters?

A. Value extraction

B. Attack signatures

C. Length restriction

D. Meta character enforcement

**Correct Answer:** A

**Section:** (none)

**Explanation**

**Explanation/Reference:**

**QUESTION 247**

By default, BIG-IP ASM allows which of the following HTTP methods in a client request? (Choose three.)

- A. PUT
- B. GET
- C. POST
- D. HEAD
- E. TRACE

**Correct Answer:** BCD

**Section:** (none)

**Explanation**

**Explanation/Reference:**

**QUESTION 248**

The Flow Login feature prevents which web vulnerability from occurring?

- A. Buffer overflow
- B. Cookie poisoning
- C. Forceful browsing
- D. Cross site scripting

**Correct Answer:** C

**Section:** (none)

**Explanation**

**Explanation/Reference:**

**QUESTION 249**

On a standalone BIG-IP ASM system, which of the following configuration is valid?

- A. Pool named http\_pool with 1 pool member, no persistence, and no load balancing method
- B. Pool named http\_pool with 3 pool members, cookie persistence, and ratio load balancing method
- C. Pool named http\_pool with 2 pool members, source IP persistence, and least connections load balancing method

D. Pool named http\_pool with 3 pool members, cookie persistence, and least connections load balancing method **Correct Answer: A**

**Section: (none)**

**Explanation**

**Explanation/Reference:**

**QUESTION 250**

Which of the following user roles have access to make changes to security policies? (Choose two.)

- A. Guest
- B. Operator
- C. Administrator
- D. Web Application Security Editor

**Correct Answer: CD**

**Section: (none)**

**Explanation**

**Explanation/Reference:**



<https://vceplus.com/>