

**F5.Testinside.101.v2014-11-08.by.Ernest.234q**

Number: 771-101  
Passing Score: 800  
Time Limit: 120 min  
File Version: 30.5



**Exam Code:101**

**Exam Name:Application Delivery Fundamentals**



**Exam A****QUESTION 1**

To make complex access policies easier to manage, an administrator can create a containing several policy actions, and then add instances of it within the policy. (Fill in)

- A. Visual Policy Editor
- B. Policy Editor
- C. Visual Editor
- D. something

**Correct Answer:** A

**Section:** (none)

**Explanation**

**Explanation/Reference:**

**QUESTION 2**

To make complex access policies easier to manage, an administrator can create a containing several policy actions, and then add instances of it within the policy. (Fill in)

- A. Deployment Wizard'
- B. Deployment Wizard
- C. Deployment Wiza
- D. something else

**Correct Answer:** A

**Section:** (none)

**Explanation**

**Explanation/Reference:**

**QUESTION 3**

The Policy Builder benefits include

- A. Doesn't require in depth web application knowledge
- B. Only requires limited ASM knowledge
- C. All of the above

D. Very low administrative impact

**Correct Answer:** C

**Section:** (none)

**Explanation**

**Explanation/Reference:**

#### **QUESTION 4**

Very low administrative impact

- A. The attacks are requests a user should be allowed to make
- B. The attacks always utilize obfuscation
- C. The attacks are always encrypted
- D. All of the above

**Correct Answer:** D

**Section:** (none)

**Explanation**

**Explanation/Reference:**



#### **QUESTION 5**

APM administrators can configure access policies granting users which two types of access?

- A. CIFS access
- B. Client/server access
- C. Web application access
- D. Proxy access
- E. RDC access

**Correct Answer:**

**Section:** (none)

**Explanation**

**Explanation/Reference:**

**QUESTION 6**

APM provides access control lists at which two OSI layers,

- A. Layer 5
- B. Layer 4
- C. Layer 7
- D. Layer 6
- E. Layer 2

**Correct Answer:** BC

**Section:** (none)

**Explanation**

**Explanation/Reference:**

**QUESTION 7**

What is the default management port IP address of a new BIG-IP system?

**Correct Answer:** 192.168.1.245

**Section:** (none)

**Explanation**

**Explanation/Reference:**

**QUESTION 8**

True or false? TMOS is an F5 software module that runs on the BIG-IP platform.

- A. True
- B. False

**Correct Answer:** B

**Section:** (none)

**Explanation**

**Explanation/Reference:**

TMOS is multi-module OS on Big-IP platform

**QUESTION 9**

Which four F5 products are on the TMOS platform?

- A. ARX
- B. GTM
- C. WOM
- D. APM
- E. ASM
- F. Firepass

**Correct Answer:** BCDE

**Section:** (none)

**Explanation**

**Explanation/Reference:**

ARX , Firepass is in other platforms

**QUESTION 10**

Which of the following is **NOT** a profile type on the BIG-IP?

- A. Protocol
- B. Application
- C. Persistence
- D. Authentication
- E. SSL

**Correct Answer:** B

**Section:** (none)

**Explanation**

**Explanation/Reference:**

**QUESTION 11**

True or false? The BIG-IP determines the lowest connection speed between the client and the server and then uses that for both connections.

- A. True
- B. False

**Correct Answer:** B

**Section: (none)**

**Explanation**

**Explanation/Reference:**

**QUESTION 12**

True or false, Another name for the F5 OneConnect feature is TCP multiplexing.

- A. True
- B. False

**Correct Answer: A**

**Section: (none)**

**Explanation**

**Explanation/Reference:**

**QUESTION 13**

LTM runs on.....F5's proprietary product platform. (Fill in the correct answer)

- A. ARX
- B. Firepass
- C. Acopia
- D. TMOS

**Correct Answer: D**

**Section: (none)**

**Explanation**

**Explanation/Reference:**

**QUESTION 14**

Which programming language is the basis for F5 iRules?

- A. Lisp
- B. C++
- C. Java

- D. TCL
- E. AWK

**Correct Answer:** D

**Section:** (none)

**Explanation**

**Explanation/Reference:**

#### QUESTION 15

What are the two most common methods of placing a BIG-IP device into a network environment?

- A. Channeled configuration
- B. VLAN configuration
- C. NAT configuration
- D. SNAT configuration
- E. Asymmetric configuration
- F. Routed configuration

**Correct Answer:** DF

**Section:** (none)

**Explanation**

**Explanation/Reference:**



#### QUESTION 16

Which of the following is **NOT** a benefit of using SSL offload?

- A. it increases the bandwidth between the client and LTM
- B. It enables LTM to decrypt traffic, examine the payload, and then re-encrypt before sending it to a pool member
- C. The organization requires far less SSL certificates
- D. The CPU processing load on backend servers is reduced
- E. It enables iRules to be used on traffic arriving to LTM that is encrypted

**Correct Answer:** A

**Section:** (none)

**Explanation**

**Explanation/Reference:**

SSL offload:

It enables LTM to decrypt traffic, examine the payload, and then re-encrypt before sending it to a pool member  
The organization requires far less SSL certificates  
The CPU processing load on backend servers is reduced  
It enables iRules to be used on traffic arriving to LTM that is encrypted

**QUESTION 17**

When using a routed configuration, the real server must point to the LTM as the.....

- A. NTP Server
- B. DNS Server
- C. Virtual IP
- D. WINS server
- E. Default gateway

**Correct Answer:** E

**Section:** (none)

**Explanation**

**Explanation/Reference:**

**QUESTION 18**

True or false? TCP Express is licensed separately from LTM

- A. True
- B. False

**Correct Answer:** B

**Section:** (none)

**Explanation**

**Explanation/Reference:**

TCP Express is licensed including in LTM

**QUESTION 19**

True or false? LTM can only load balance outbound traffic by using iRules

- A. True



B. False

**Correct Answer:** A

**Section:** (none)

**Explanation**

**Explanation/Reference:**

#### QUESTION 20

Which two of these statements about OneConnect are true?

- A. It decreases the CPU load on LTM
- B. It aggregates multiple client connections into a single server connection
- C. It decreases the amount of traffic between multiple clients and LTM
- D. It requires SNAT to be configured
- E. It decreases the CPU load on pool members

**Correct Answer:** BE

**Section:** (none)

**Explanation**

**Explanation/Reference:**



#### QUESTION 21

GTM solves which **three** of these standard DNS limitations?

- A. It can verify that a host is available before resolving a host name for a client
- B. It can use HTTPS for the connection between itself and the client
- C. It can ensure that clients remain at the same data center for stateful applications
- D. It can verify that a client does not have any viruses before sending the IP address
- E. It has more complex load balancing methods

**Correct Answer:** ACE

**Section:** (none)

**Explanation**

**Explanation/Reference:**

GTM solves three of these standard DNS limitations  
It can verify that a host is available before resolving a host name for a client  
It can ensure that clients remain at the same data center for stateful applications  
It has more complex load balancing methods

**QUESTION 22**

True or false, Using IP Geolocation, an organization can always direct a client request from France to a data center in Dublin.

- A. True
- B. False

**Correct Answer:** A

**Section:** (none)

**Explanation**

**Explanation/Reference:**

**QUESTION 23**

Which of the following is a benefit of using iRules?

- A. They can be used as templates for creating new applications
- B. They provide an automated way to create LTM objects
- C. They can use Active Directory to authenticate and authorize users
- D. They provide a secure connection between a client and LTM
- E. They enable granular control of traffic

**Correct Answer:** E

**Section:** (none)

**Explanation**

**Explanation/Reference:**

"They enable granular control of traffic" is the best choice!

**QUESTION 24**

Which three of these software modules can you layer on top of LTM on a BIG-IP device?

- A. Web Accelerator
- B. APM
- C. ARX

- D. GTM
- E. Firepass
- F. Enterprice Manager

**Correct Answer:** ABD

**Section:** (none)

**Explanation**

**Explanation/Reference:**

these software modules can you layer on top of LTM on a BIG-IP device are AAM, APM and GTM

#### **QUESTION 25**

True or false, Customers can purchase LTM as a stand-alone product, or layer it with additional software modules to increase the functionality of the BIG-IP device

- A. True
- B. False

**Correct Answer:** A

**Section:** (none)

**Explanation**

**Explanation/Reference:**



#### **QUESTION 26**

Which two of the following options can LTM use when all of the pool members are not available or if the pool is overloaded?

- A. Floating IPs
- B. Fallback host
- C. Auto last hop
- D. SNAT automap
- E. Pool offload
- F. Priority group activation

**Correct Answer:**

**Section:** (none)

**Explanation**

**Explanation/Reference:**

load balancing pool algorithm

1 là Auto last hop + SNAT automap

2 là Pool offload + Fallback host

3. Pool offload + Priority group activation

hy vọng là Pool offload + Auto last hop là đúng

A pool-member can have three different states:

- enable (all connections are allowed)

- disabled (only active and persisted connections are allowed)

- force offline (only active connections are allowed)

All these three states will keep the overall pool status as green, because at least active connections (e.g. long term session as FTP or SSH) are allowed.

The status of a pool will only turn into red, if all pool-members are marked as down by its monitor.

[http://support.f5.com/kb/en-us/products/big-ip\\_ltm/manuals/product/lrm\\_configuration\\_guide\\_10\\_0\\_0/lrm\\_pools.html](http://support.f5.com/kb/en-us/products/big-ip_ltm/manuals/product/lrm_configuration_guide_10_0_0/lrm_pools.html)

#### QUESTION 27

True or false? The least connections load balancing method functions best when all pool members share similar characteristics.

A. True

B. False

**Correct Answer:** A

**Section:** (none)

**Explanation**

**Explanation/Reference:**

#### QUESTION 28

The layer 3 security feature..... Cookies protects against SYN floods, DoS, and DDoS attacks. (Fill in)

**Correct Answer:** contain / include

**Section:** (none)

**Explanation**

**Explanation/Reference:**

#### QUESTION 29

A top-level DNS zone uses a CNAME record to point to a sub-zone. Which of the following is an example of a sub-zone?

- A. www.F5.com/sub
- B. www.F5.com
- C. www.gslb.F5.com
- D. .com
- E. f5.com

**Correct Answer:** C

**Section:** (none)

**Explanation**

**Explanation/Reference:**

### QUESTION 30

A.....object maps a FQDN to virtual servers. (Fill in)

**Correct Answer:** Wide IP

**Section:** (none)

**Explanation**

**Explanation/Reference:**



### QUESTION 31

Which **three** of the following must be done in order for GTM to properly communicate LTM?

- A. Connect the GTM and LTM with a network crossover cable
- B. Synchronize the big3d versions between GTM and LTM
- C. Add the LTM object to the GTM configuration
- D. Configure the GTM and LTM to use MAC masquerading
- E. Ensure that GTM and LTM use the same floating IP address
- F. Exchange SSL certificates between the two devices

**Correct Answer:** BCF

**Section:** (none)

**Explanation**

**Explanation/Reference:**

**Integrating LTM systems with GTM systems on a network**

Running the bigip\_add utility

Determine the self IP addresses of the BIG-IP LTM systems that you want to communicate with BIG-IP GTM.

Run the bigip\_add utility on BIG-IP GTM. This utility exchanges SSL certificates so that each system is authorized to communicate with the other. When the LTM and GTM systems use the same version of the big3d agent, you run the bigip\_add utility to authorize communications between the systems.

[http://support.f5.com/kb/en-us/products/big-ip\\_gtm/manuals/product/gtm-implementations-11-3-0/7.html](http://support.f5.com/kb/en-us/products/big-ip_gtm/manuals/product/gtm-implementations-11-3-0/7.html)

Note: The BIG-IP GTM and BIG-IP LTM systems must have TCP port 4353 open through the firewall between the systems. The BIG-IP systems connect and communicate through this port.

### QUESTION 32

**True or false?** DNSSEC is a GTM add-on licensing feature.

- A. True
- B. False

**Correct Answer:** A

**Section:** (none)

**Explanation**

**Explanation/Reference:**

DNSSEC is a GTM feature



### QUESTION 33

GTM uses the F5.....protocol to synchronize performance metrics between GTM devices. (Fill in)

**Correct Answer:** iQuery

**Section:** (none)

**Explanation**

**Explanation/Reference:**

### QUESTION 34

Which **four** of the monitoring methods listed below can GTM use to determine the status and performance of BIG-IP and servers?

- A. ping
- B. Application monitors
- C. Inband monitors
- D. SSH
- E. iQuery

F. SNMP

**Correct Answer:** ABEF

**Section:** (none)

**Explanation**

**Explanation/Reference:**

[http://support.f5.com/kb/en-us/products/big-ip\\_gtm/manuals/product/gtm-concepts-11-3-0/1.html](http://support.f5.com/kb/en-us/products/big-ip_gtm/manuals/product/gtm-concepts-11-3-0/1.html)

**Configuring GTM to determine packet gateway health and availability**

[http://support.f5.com/kb/en-us/products/big-ip\\_gtm/manuals/product/gtm-implementations-11-5-0/9.html](http://support.f5.com/kb/en-us/products/big-ip_gtm/manuals/product/gtm-implementations-11-5-0/9.html)

**sol13690: Troubleshooting BIG-IP GTM synchronization and iQuery connections (11.x)**

<http://support.f5.com/kb/en-us/solutions/public/13000/600/sol13690.html>

#### **QUESTION 35**

What happens when the data center that GTM recommends for a client is unavailable

- A. GTM uses cached information to determine an alternate route
- B. GTM queries the local DNS server
- C. GTM sends subsequent queries to the next preferred data center
- D. GTM directs the client to use its DNS cache to select an alternate location
- E. The client continues to attempt to access the preferred data center

**Correct Answer:** C

**Section:** (none)

**Explanation**

**Explanation/Reference:**

#### **QUESTION 36**

True or false? GTM can load balance to LTM in addition to non-BIG-IP hosts.

- A. True
- B. False

**Correct Answer:** A

**Section:** (none)

**Explanation**

**Explanation/Reference:**

**QUESTION 37**

Which of the following is NOT included on the F5 DevCentral site?

- A. Subscription purchasing options
- B. Actual iRules written by other customers
- C. iRules reference materials
- D. Forums
- E. The F5 iRule editor

**Correct Answer: A**

**Section: (none)**

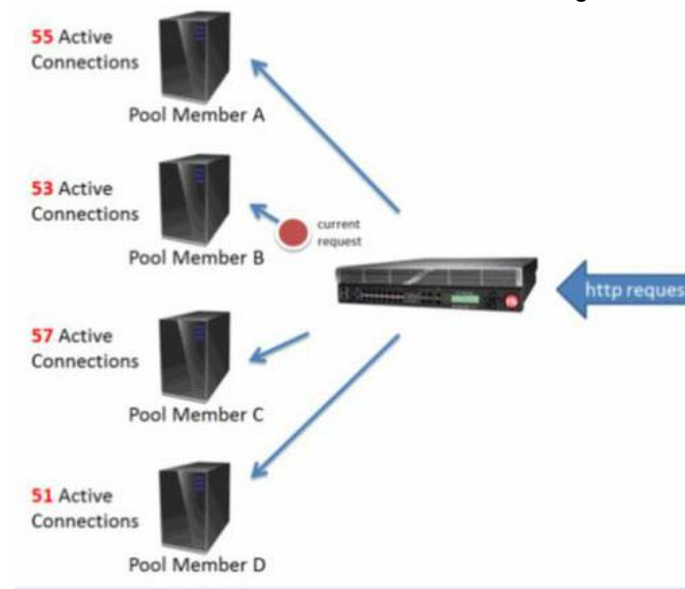
**Explanation**

**Explanation/Reference:**

Subscription purchasing options is in Partner Resource Center

**QUESTION 38**

If LTM uses the least connections load balancing method, which pool member in the following diagram receives the next request?





- A. A
- B. B
- C. C
- D. D

**Correct Answer:** B

**Section:** (none)

**Explanation**

**Explanation/Reference:**

#### **QUESTION 39**

Why does deploying LTM into an existing network immediately improve security?

- A. Only requests for specific ports are allowed through LTM
- B. All traffic through LTM is checked for DDoS attacks
- C. No traffic is allowed through LTM until it has been specified
- D. All users must authenticate before accessing applications through LTM
- E. Only LAN administrators can access resources through LTM

**Correct Answer:** C

**Section:** (none)

**Explanation**

**Explanation/Reference:**

#### **QUESTION 40**

You can use an HTTP class profile to forward traffic that matches which **three** of these types of criteria?

- A. Port
- B. HTTP header
- C. URI path
- D. User name
- E. Protocol
- F. Host name

**Correct Answer:** BCF

**Section:** (none)

**Explanation**

**Explanation/Reference:**

**QUESTION 41**

When an optimized TCP connection exists between LTM and the pool member, LTM can accept server responses faster than the client. What is the name of this feature?

- A. HTTP caching
- B. OneConnect
- C. TCP connection queuing
- D. Content spooling
- E. Priority activation

**Correct Answer:** D

**Section:** (none)

**Explanation**

**Explanation/Reference:**



**QUESTION 42**

True or false? As a full TCP proxy, LTM acts as the termination point for both requests from the client and responses from the server.

- A. True
- B. False

**Correct Answer:** A

**Section:** (none)

**Explanation**

**Explanation/Reference:**

**QUESTION 43**

True or false? FastCache will **NOT** work with compressed objects.

- A. True

B. False

**Correct Answer:** A

**Section:** (none)

**Explanation**

**Explanation/Reference:**

#### **QUESTION 44**

Which of the following can be accomplished using iRules?

- A. Track inbound and outbound traffic
- B. Perform deep packet inspection
- C. Inspect traffic and drop it
- D. All of the above
- E. Intercept traffic and redirect it

**Correct Answer:** D

**Section:** (none)

**Explanation**

**Explanation/Reference:**



#### **QUESTION 45**

True or false? GTM uses Auto Discovery to add virtual servers from both LTM and non-BIG-IP load balancers.

- A. True
- B. False

**Correct Answer:** B

**Section:** (none)

**Explanation**

**Explanation/Reference:**

#### **QUESTION 46**

Which four of the following statements about LDNS probes are true?

- A. Only GTM devices can act as a prober
- B. They check each requesting LDNS that has made a request of the GTM
- C. They can determine available cache size on the client
- D. They are used to develop path metrics
- E. They verify the link between a data center and an LDNS
- F. Probing only takes place if GTM is configured to use dynamic load balancing

**Correct Answer:** BDEF

**Section:** (none)

**Explanation**

**Explanation/Reference:**

#### **QUESTION 47**

True or false? Similar to LTM monitors, GTM monitors use both an **Interval** and a **Timeout** value.

- A. True
- B. False

**Correct Answer:** A

**Section:** (none)

**Explanation**

**Explanation/Reference:**



#### **QUESTION 48**

True or false? Since F5 built GTM on the TMOS platform it can exist on the same BIGIP device as LTM

- A. True
- B. False

**Correct Answer:** A

**Section:** (none)

**Explanation**

**Explanation/Reference:**

**QUESTION 49**

An administrator is adding GTM to the network infrastructure. Which of the following requirements would lead them to select an Authoritative Screening architecture rather than Delegation?

- A. They want GTM to examine all DNS queries
- B. They want GTM to make load balancing decisions based on metrics
- C. They have data centers in several countries
- D. They are using several operating systems for the local DNS servers

**Correct Answer: C**

**Section: (none)**

**Explanation**

**Explanation/Reference:**

**QUESTION 50**

True or false? Adding more RAM to a GTM device drastically improves query performance.

- A. True
- B. False



**Correct Answer: B**

**Section: (none)**

**Explanation**

**Explanation/Reference:**

**QUESTION 51**

Which of the following is a benefit of using iRules?

- A. They provide a secure connection between a client and LTM
- B. They enable granular control of traffic
- C. They can be used as templates for creating new applications
- D. They can use Active Directory to authenticate and authorize users
- E. They provide an automated way to create LTM objects

**Correct Answer: B**

**Section: (none)**

**Explanation****Explanation/Reference:****QUESTION 52**

Which of the following is **NOT** a profile type on the BIG-IP?

- A. Authentication
- B. Persistence
- C. Application
- D. Protocol
- E. SSL

**Correct Answer:** C

**Section:** (none)

**Explanation****Explanation/Reference:****QUESTION 53**

Which of the following are the **three** main business drivers for placing LTM into a network?

- A. Secure the connection between WAN sites
- B. Improve application availability and scalability
- C. Authenticate and authorize users
- D. Boost application performance
- E. Include application security
- F. Act as a Web application firewall

**Correct Answer:** BDE

**Section:** (none)

**Explanation****Explanation/Reference:****QUESTION 54**

If a customer has an application that uses a customized protocol, what LTM feature can help optimize the traffic from the application?

- A. iRules
- B. Network virtual servers
- C. HTTP classes
- D. Packet filtering
- E. Transparent virtual servers

**Correct Answer:** A

**Section:** (none)

**Explanation**

**Explanation/Reference:**

#### QUESTION 55

Which of the following is **NOT** a benefit of using SSL offload?

- A. It enables iRules to be used on traffic arriving to LTM that is encrypted
- B. The CPU processing led on backend servers is reduced
- C. It enables LTM to decrypt traffic, examine the payload, and the re-encrypt before sending it to a pool member
- D. The organization requires far less SSL certificates
- E. It increases the bandwidth between the client and LTM

**Correct Answer:** E

**Section:** (none)

**Explanation**

**Explanation/Reference:**

#### QUESTION 56

True or false, The least connections load balancing method functions best when all pool members share similar characteristics.

- A. True
- B. False

**Correct Answer:** A

**Section:** (none)

**Explanation**

**Explanation/Reference:****QUESTION 57**

An LTM object represents a downstream server that hosts a secure Web site and contains the IP address and port combination 192.168.9.250:443. What is this object?

- A. Self IP
- B. Virtual Server
- C. Pool
- D. Node
- E. Pool Member

**Correct Answer:** E

**Section:** (none)

**Explanation**

**Explanation/Reference:****QUESTION 58**

True or false? Adding more RAM to a GTM device drastically improves query performance.

- A. True
- B. False

**Correct Answer:** B

**Section:** (none)

**Explanation**

**Explanation/Reference:****QUESTION 59**

Which of the following are **four** of the security benefits of TMOS?

- A. it verifies traffic based on antivirus signatures
- B. It provides protection against DDoS
- C. It uses SYN cookies and dynamic connection reapers
- D. It supplies guidance for poorly developed applications



- E. It denies all traffic that hasn't been defined
- F. It can hide confidential information from outbound traffic

**Correct Answer:** BCEF

**Section:** (none)

**Explanation**

**Explanation/Reference:**

#### **QUESTION 60**

True or false? The BIG-IP determines the lowest connection speed between the client and the server and then uses that for both connections.

- A. True
- B. False

**Correct Answer:** B

**Section:** (none)

**Explanation**

**Explanation/Reference:**



#### **QUESTION 61**

True or false? The LTM "Manager" authentication role can create iRules.

- A. True
- B. False

**Correct Answer:** A

**Section:** (none)

**Explanation**

**Explanation/Reference:**

#### **QUESTION 62**

Which two of these statements about OneConnect are true?

- A. It decreases the CPU load on LTM
- B. It aggregates multiple client connections into a single server connection

- C. It requires SNAT to be configured
- D. It decreases the amount of traffic between multiple clients and LTM
- E. It decreases the CPU load on pool members

**Correct Answer:** BE

**Section:** (none)

**Explanation**

**Explanation/Reference:**

#### **QUESTION 63**

Which of the following statements about cookie persistence is **NOT** true?

- A. The cookie's timeout value can be customized
- B. They are F5's preferred persistence method
- C. No persistence information is placed on LTM
- D. Web servers must be configured to send cookies to clients
- E. They do not add a performance impact on LTM

**Correct Answer:** D

**Section:** (none)

**Explanation**

**Explanation/Reference:**

#### **QUESTION 64**

When using a routed configuration, the real server must point to the LTM as the.....

- A. Default gateway
- B. Virtual IP
- C. DNS server
- D. NTP server
- E. WINS server

**Correct Answer:** A

**Section:** (none)

**Explanation**

**Explanation/Reference:****QUESTION 65**

An LTM object that represents a downstream server contains the IP address 192.168.9.250 and no port. What is this object?

- A. Pool member
- B. Virtual server
- C. Pool
- D. Self IP
- E. Node

**Correct Answer:** E

**Section:** (none)

**Explanation**

**Explanation/Reference:****QUESTION 66**

Which **three** of the metrics listed below can GTM use when making load balancing decisions for a client?

- A. TCP payload
- B. IP geolocation
- C. Hop count
- D. Round trip time
- E. Browser user agent

**Correct Answer:** BCD

**Section:** (none)

**Explanation**

**Explanation/Reference:****QUESTION 67**

True or false, In order to improve GTM performance, administrators should use multiple complex monitors to ensure resources are functioning properly

- A. True
- B. False

**Correct Answer:** B

**Section:** (none)

**Explanation**

**Explanation/Reference:**

**QUESTION 68**

Which **three** of the following are unique differentiators for F5 in the marketplace?

- A. VLANs
- B. Load-balancing pools
- C. Secure remote access
- D. TMOS
- E. OneConnect
- F. iRules

**Correct Answer:** DEF

**Section:** (none)

**Explanation**

**Explanation/Reference:**



**QUESTION 69**

Which **three** of these file types work well with HTTP compression?

- A. MP4 videos
- B. Digital photos
- C. Text files
- D. Static HTML Web pages
- E. CD quality songs
- F. Microsoft Word documents

**Correct Answer:** CDF

**Section:** (none)

**Explanation**

**Explanation/Reference:**

**QUESTION 70**

Match each persistence method with the correct statement describing it:

- A. Cookie persistence
- B. Source address persistence
- C. SSL persistence
- D. Universal persistence

**Build List and Reorder:**

Ordered List Title	Answer Choices Title
<div style="border: 1px solid #ccc; height: 150px; margin-top: 10px;"></div>	<div style="border: 1px solid #ccc; padding: 5px; margin-top: 10px;"> <p>LTM creates a record mapping the client's IP to the pool member's IP</p> <p>All persistence information is stored on the client's PC</p> <p>Can use iRules to customize the persistence options</p> <p>May not work well with secure Web sites that require session updates</p> </div>
<div style="display: flex; justify-content: center; gap: 20px;"> <span style="border: 1px solid #ccc; padding: 2px 10px;">&lt;&lt; Move</span> <span style="border: 1px solid #ccc; padding: 2px 10px;">Remove &gt;&gt;</span> </div>	

**Correct Answer:**

All persistence information is stored on the client's PC

LTM creates a record mapping the client's IP to the pool member's IP

May not work well with secure Web sites that require session updates

Can use iRules to customize the persistence options

**Section: (none)**

**Explanation**

**Explanation/Reference:**

**QUESTION 71**

Which **two** of the following LTM load balancing methods require the least amount of resources?

- A. Round robin
- B. Ratio
- C. Observed
- D. Fastest
- E. Predictive
- F. Least connections

**Correct Answer:** AB

**Section:** (none)

**Explanation**

**Explanation/Reference:**



**QUESTION 72**

True or false? When using a redundant pair of LTMs, it is most advantageous to use them in an Active/Active scenario because this provides additional load balancing capabilities.

- A. True
- B. False

**Correct Answer:** B

**Section:** (none)

**Explanation**

**Explanation/Reference:**

**QUESTION 73**

Which **three** of these software modules can you layer on top of LTM on a BIG-IP device?

- A. Enterprise Manage
- B. ARX

- C. APM
- D. FirePass
- E. Web **Accelerator**
- F. GTM

**Correct Answer:** CEF

**Section:** (none)

**Explanation**

**Explanation/Reference:**

#### **QUESTION 74**

An LTM object contains both IP address and port combinations 20.18.9.250:80 and 20.18.9.251:80 and host the same Web application. What is this object?

- A. Pool
- B. Self-IP
- C. Node
- D. Pool member
- E. Virtual Server



**Correct Answer:** A

**Section:** (none)

**Explanation**

**Explanation/Reference:**

#### **QUESTION 75**

Which of the following are **four** of the benefits of the TMOS architecture?

- A. User authentication
- B. Server-side optimization
- C. Dynamic DDoS protection
- D. Web application security
- E. Client-side optimization
- F. Antivirus checking

**Correct Answer:** BCDE

**Section:** (none)

**Explanation**

**Explanation/Reference:**

#### **QUESTION 76**

True or false? In order to further accelerate applications, the external router can direct subsequent client traffic to bypass LTM and communicate directly with the server.

A. True

B. False

**Correct Answer:** B

**Section:** (none)

**Explanation**

**Explanation/Reference:**

#### **QUESTION 77**

LTM runs on.....F5's proprietary product platform. (Fill in the correct answer)

**Correct Answer:** TMOS

**Section:** (none)

**Explanation**

**Explanation/Reference:**

#### **QUESTION 78**

True or False? When using only LTM in redundant pairs, a customer can load balance to multiple data center

A. True

B. False

**Correct Answer:** B

**Section:** (none)

**Explanation**

**Explanation/Reference:**



**QUESTION 79**

True or false? Application templates save the time it typically takes to create nodes, pools, pool members, virtual servers, and monitors.

- A. True
- B. False

**Correct Answer: A**

**Section: (none)**

**Explanation**

**Explanation/Reference:**

**QUESTION 80**

Which of the following TMOS feature enables BIG-IP to scale performance based to the available CPU cores?

- A. Clustered multi-processing
- B. OneConnect
- C. HTTP class
- D. Session persistence
- E. Auto Last Hop



**Correct Answer: A**

**Section: (none)**

**Explanation**

**Explanation/Reference:**

**QUESTION 81**

In a routed configuration, what does LTM do with the packet before sending it to the pool member?

- A. Change the source IP and the destination IP address
- B. Leave it unchanged and forward it
- C. Change the source IP address
- D. Change the destination IP address

**Correct Answer: D**

Section: (none)

Explanation

Explanation/Reference:

#### QUESTION 82

True or false? When using only LTM in redundant pairs, a customer can load balance to multiple data centers.

- A. True
- B. False

Correct Answer: B

Section: (none)

Explanation

Explanation/Reference:

#### QUESTION 83

True or false? Similar to LTM monitors, GTM monitors use both an **Interval** and a **Timeout** value.

- A. True
- B. False
- C.
- D.

Correct Answer: A

Section: (none)

Explanation

Explanation/Reference:

#### QUESTION 84

True or false? If the BIG-IP device is **NOT** always located between the client and the server, it will **NOT** provide full optimization and security.

- A. True
- B. False
- C.

D.

**Correct Answer:** A

**Section:** (none)

**Explanation**

**Explanation/Reference:**

#### **QUESTION 85**

True or false? TCP Express enables LTM to use different TCP settings for the connection between the client and LTM, and the connection between LTM and the pool member.

A. True

B. False

**Correct Answer:** A

**Section:** (none)

**Explanation**

**Explanation/Reference:**



#### **QUESTION 86**

Where do you configure GTM client persistence?

**Case Study Title (Case Study):**

- A. On a DNS listener object
- B. On a wide IP object
- C. Within a load balancing method
- D. On a DNS pool object
- E. On a virtual server object

**Correct Answer:** B

**Section:** (none)

**Explanation**

**Explanation/Reference:**

**QUESTION 87**

Administrators can configure which **three** of the following load balancing options in GTM?

- A. Alternate
- B. Fallback
- C. Required
- D. Preferred
- E. Backup
- F. Optional

**Correct Answer:** ABD

**Section:** (none)

**Explanation**

**Explanation/Reference:**

**QUESTION 88**

Over the years, F5 has led the industry in which of the four following areas?

- A. Security
- B. Acceleration
- C. Application availability
- D. Application scalability
- E. Application design
- F. Remote access

**Correct Answer:** ABD

**Section:** (none)

**Explanation**

**Explanation/Reference:**

**QUESTION 89**

Which of the following is **NOT** a method that TMOS uses to improve the performance of applications?

- A. Caching HTTP data

- B. Optimizing the TCP connection between the client and the BIG-IP device
- C. Offloading SSL decryption from downstream servers
- D. Discarding unnecessary data from server responses before sending to the client
- E. Compressing HTTP data

**Correct Answer:** D

**Section:** (none)

**Explanation**

**Explanation/Reference:**

#### **QUESTION 90**

True or false? The drawback to having BIG-IP act as a full application proxy is the decrease in application performance.

- A. True
- B. False

**Correct Answer:** B

**Section:** (none)

**Explanation**

**Explanation/Reference:**



#### **QUESTION 91**

Which of the following are the **three** main business drivers for placing LTM into a network?

- A. Secure the connection between WAN sites
- B. Authenticate and authorize users
- C. Act as a Web application firewall
- D. Include application security
- E. Boost application performance
- F. Improve application availability and scalability

**Correct Answer:** DEF

**Section:** (none)

**Explanation**

**Explanation/Reference:**

**QUESTION 92**

What are the two most common methods of placing a BIG-IP device into a network environment?

- A. VLAN configuration
- B. Asymmetric configuration
- C. SNAT configuration
- D. Routed configuration
- E. NAT configuration
- F. Channeled configuration

**Correct Answer:** CD

**Section:** (none)

**Explanation**

**Explanation/Reference:**

**QUESTION 93**

The Policy Builder benefits include:

- A. Doesn't require in depth web application knowledge
- B. Only requires limited ASM knowledge
- C. All of the above
- D. Very low administrative impact

**Correct Answer:** C

**Section:** (none)

**Explanation**

**Explanation/Reference:**

**QUESTION 94**

CSRF is difficult to detect because:

- A. The attacks are requests a user should be allowed to make
- B. The attacks always utilize obfuscation
- C. The attacks are always encrypted

D. All of the above

**Correct Answer:** A

**Section:** (none)

**Explanation**

**Explanation/Reference:**

**QUESTION 95**

True or False? Information leakage is a major obstacle to achieving PCI DSS compliance.

A. True

B. False

**Correct Answer:** A

**Section:** (none)

**Explanation**

**Explanation/Reference:**



**QUESTION 96**

Requests that do not meet the ASM security policies can:

A. Generate learning suggestions

B. Be blocked

C. All of the above

D. Be logged

**Correct Answer:** C

**Section:** (none)

**Explanation**

**Explanation/Reference:**

**QUESTION 97**

What is **NOT** a benefit of using a SNAT?

A. ASM can be deployed easily

- B. No changes are needed on the servers
- C. Fail open is easy to add
- D. Higher performance than other configuration

**Correct Answer:** D

**Section:** (none)

**Explanation**

**Explanation/Reference:**

#### **QUESTION 98**

ASM's Web Scraping protection:

- A. Is simple to configure
- B. Cannot accommodate good scrapers
- C. Will protect the site by blocking all requests
- D. Is difficult to configure

**Correct Answer:** A

**Section:** (none)

**Explanation**

**Explanation/Reference:**



#### **QUESTION 99**

True or False, The PCI compliance report is proof that a company is secure.

- A. True
- B. False

**Correct Answer:** B

**Section:** (none)

**Explanation**

**Explanation/Reference:**

#### **QUESTION 100**

True or False? ASM offers the most extensive, effective, and simplest to configure CSRF protection in the WAF market.



- A. True
- B. False

**Correct Answer:** A  
**Section:** (none)  
**Explanation**

**Explanation/Reference:**

#### **QUESTION 101**

The APM Dashboard enables administrators to monitor which two of these metrics?

- A. Number of active sessions
- B. Number of new sessions
- C. Number of denied users
- D. Number of users from each country

**Correct Answer:** AB  
**Section:** (none)  
**Explanation**



**Explanation/Reference:**

#### **QUESTION 102**

True or false? Although APM can interoperate with LTM, it is unable to use iRules for advanced processing.

- A. True
- B. false

**Correct Answer:** B  
**Section:** (none)  
**Explanation**

**Explanation/Reference:**

#### **QUESTION 103**

APM provides access control lists at which two OSI layers

- A. Layer 6
- B. Layer 5
- C. Layer 7
- D. Layer 4
- E. Layer 3
- F. Layer 2

**Correct Answer:** CD

**Section:** (none)

**Explanation**

**Explanation/Reference:**

#### **QUESTION 104**

Which of the following statements about Web server offload is **NOT** true?

- A. It performs rate shaping to reduce overflow
- B. It forces the client browser to use multiple connections streams
- C. It uses OneConnect to reduce multiple TCP connections
- D. It utilizes cached content to prevent unnecessary trips for the same content
- E. It uses specialized hardware for SSL offload

**Correct Answer:** B

**Section:** (none)

**Explanation**

**Explanation/Reference:**

#### **QUESTION 105**

A network administrator tells you that they do **NOT** need WebAccelerator because their Web application is fine. What is your best response?

- A. Challenge them to run performance testing on their Web site
- B. Access their Web site with them to display its response
- C. Request a follow up meeting within the next three months
- D. Ask for an opportunity to speak with the CIO or a member of their Web application team

**Correct Answer:** D

**Section:** (none)

**Explanation**

**Explanation/Reference:**

**QUESTION 106**

True or false? When sizing a WebAccelerator deployment, you should base the WA capacity on the LTM capacity.

- A. True
- B. False

**Correct Answer:** B

**Section:** (none)

**Explanation**

**Explanation/Reference:**

**QUESTION 107**

Which **three** of the following are benefits of adding WebAccelerator to the network infrastructure?

- A. It adds a layer , security to a Web site
- B. It speeds up a secure Web site
- C. It reduces the need to purchase additional bandwidth
- D. It analyzes Web content, and caches and compresses it accordingly
- E. It improves the performance , large object file transfers

**Correct Answer:** BCD

**Section:** (none)

**Explanation**

**Explanation/Reference:**

**QUESTION 108**

True or False? IP Enforcer blocks IP addresses that have repeatedly and regularly attacked the site.

- A. True
- B. False

**Correct Answer:** A

**Section:** (none)

**Explanation**

**Explanation/Reference:**

**QUESTION 109**

True or false? One reason APM beats the competition is its ability to perform both user authentication and authorization on a single device.

A. True

B. False

**Correct Answer:** A

**Section:** (none)

**Explanation**

**Explanation/Reference:**

**QUESTION 110**

Which **three** of these scenarios should you identify as being an APM opportunity?

- A. An organization using Novell Netware for authentication
- B. An organization that has been recently fined for failing security compliance
- C. An organization with a traveling sales force
- D. An organization with a single location and no remote employees
- E. An organization that needs to ensure users are using Symantec antivirus software
- F. An organization sharing a public Web site for all Internet users

**Correct Answer:** BCE

**Section:** (none)

**Explanation**

**Explanation/Reference:**

**QUESTION 111**

When an administrator creates a new access policy in the Visual Policy Editor, which **three** options are included by default?

- A. A fallback option
- B. An Allow Ad box
- C. A Deny End box
- D. An empty Resource Assign item
- E. A Start box
- F. A Block All option

**Correct Answer:** ACE

**Section:** (none)

**Explanation**

**Explanation/Reference:**

#### **QUESTION 112**

Poor Web application performance contributes to which **four** of these issues for businesses?

- A. A Web site that goes unused
- B. Increased support calls
- C. Loss of users
- D. Loss of revenue
- E. DDoS attacks
- F. Identity theft



**Correct Answer:** ABCD

**Section:** (none)

**Explanation**

**Explanation/Reference:**

#### **QUESTION 113**

True or false? Organizations moving towards a cloud solution are good candidates for F5 WOM solutions.

- A. True
- B. False

**Correct Answer:** A

**Section:** (none)

**Explanation**

**Explanation/Reference:**

**QUESTION 114**

True or false? Using WOM for vMotion transfers across the WAN prevents VMware users from experiencing interruptions.

- A. True
- B. False

**Correct Answer: A**

**Section: (none)**

**Explanation**

**Explanation/Reference:**

**QUESTION 115**

True or false, The administrator must specify APM access control entries as either L4 or L7.

- A. True
- B. False

**Correct Answer: B**

**Section: (none)**

**Explanation**

**Explanation/Reference:**

**QUESTION 116**

True or false? Administrators can customize APM to resemble other internal Web applications in the organization.

- A. True
- B. False

**Correct Answer: A**

**Section: (none)**

**Explanation**

**Explanation/Reference:****QUESTION 117**

Which of the following is a client-side action in the Visual Policy Editor that prevents external access and deletes any files created during a secure access session?

- A. Windows Group Policy
- B. Resource Assign
- C. Protected Workspace
- D. Virtual Keyboard
- E. Browser Cache and Session Control

**Correct Answer: C**

**Section: (none)**

**Explanation**

**Explanation/Reference:****QUESTION 118**

True or false? The main drawback to using an APM Deployment Wizard is that it is not possible to edit the resulting objects, including the access policy.

- A. True
- B. False

**Correct Answer: B**

**Section: (none)**

**Explanation**

**Explanation/Reference:****QUESTION 119**

True or false? Mobile device browsers typically display Web pages more slowly than PC browsers.

- A. True
- B. False

**Correct Answer: A**

**Section: (none)**

**Explanation****Explanation/Reference:****QUESTION 120**

Which two of the following factors are often responsible for poor Web application performance?

- A. The time it takes to generate an HTTP request
- B. The time it takes to deliver the HTTP response over the network
- C. The time it takes to display the HTTP response in the browser
- D. The time it takes to generate the HTTP response

**Correct Answer:** BD

**Section:** (none)

**Explanation****Explanation/Reference:****QUESTION 121**

WebAccelerator uses **three** tiers to improve performance. What are the **three** tiers?

- A. Bandwidth offload
- B. Client offload
- C. Application offload
- D. Protocol offload
- E. Web server offload
- F. Network offload

**Correct Answer:** CEF

**Section:** (none)

**Explanation****Explanation/Reference:****QUESTION 122**

ASM can detect Layer 7 DoS attacks by which **four** ways of monitoring:



- A. Monitoring for a threshold of increased number of transactions per second per URL
- B. Monitoring for a % change in transactions per second per URL
- C. Monitoring for a % change in server latency or TPS
- D. Monitoring for a threshold of increased server latency or TPS
- E. Monitoring ASM policy builder performance
- F. Monitoring BIG-IP CPU utilization
- G. Deep Packet inspection

**Correct Answer:** ABCD

**Section:** (none)

**Explanation**

**Explanation/Reference:**

#### QUESTION 123

Application trends and drivers that increase the need for application security are

- A. Intelligent Browsers
- B. Webification
- C. Targeted attacks
- D. All the above



**Correct Answer:** D

**Section:** (none)

**Explanation**

**Explanation/Reference:**

#### QUESTION 124

The Rapid Deployment Policy is used to:

- A. Improve web site performance
- B. Quickly protect web sites for most common attacks
- C. Improve ASM performance
- D. Provide wizard functionality for quick policy creation

**Correct Answer:** B

**Section: (none)**

**Explanation**

**Explanation/Reference:**

**QUESTION 125**

ASM combined with LTM provides protection against:

- A. Layer 7 DoS attacks
- B. All of the above
- C. Layer 4 DoS attacks
- D. DDoS attacks

**Correct Answer: B**

**Section: (none)**

**Explanation**

**Explanation/Reference:**



**QUESTION 126**

True or false? When using a single BIG-IP with APM, an organization can support up to 60,000 concurrent remote access users.

- A. True
- B. False

**Correct Answer: A**

**Section: (none)**

**Explanation**

**Explanation/Reference:**

**QUESTION 127**

True or false? An F5 customer must install WebAccelerator on top of LTM

- A. True
- B. False

**Correct Answer: B**

**Section: (none)**

**Explanation**

**Explanation/Reference:**

**QUESTION 128**

True or false? The Protected Workspace client-side action provides more client-side security than the Cache and Session Control action.

- A. True
- B. False

**Correct Answer: A**

**Section: (none)**

**Explanation**

**Explanation/Reference:**

**QUESTION 129**

WebAccelerator uses **three** tiers to improve performance. What are the **three** tiers?

- A. Web server offload
- B. Network offload
- C. Client offload
- D. Protocol offload
- E. Application offload
- F. Bandwidth offload

**Correct Answer: ABE**

**Section: (none)**

**Explanation**

**Explanation/Reference:**

**QUESTION 130**

Which WOM feature replaces a long byte pattern, such as "100000111000110101", with a shorter reference to the pattern?

- A. Symmetric adaptive compression

- B. Symmetric data deduplication
- C. Bandwidth allocation
- D. Application protocol acceleration
- E. TCP optimization

**Correct Answer:** B

**Section:** (none)

**Explanation**

**Explanation/Reference:**

#### QUESTION 131

In order to ensure that a specific file type is never moved down to a secondary file tier, the administrator should:

- A. set up an automated bot that accesses that file once a week
- B. This is not possible on the ARX
- C. set a policy that the file type remains on primary storage
- D. Instruct the end users to put the file in a non-tiered directory

**Correct Answer:** C

**Section:** (none)

**Explanation**

**Explanation/Reference:**

#### QUESTION 132

How does the ARX eliminate the disruption caused by re-provisioning storage?

- A. By identifying data that has not been modified and moving it to a secondary tier
- B. By reducing the time necessary to run a complete backup
- C. By allowing system administrators to apply policy to specific types , data
- D. By automating capacity balancing and allowing seamless introduction of file systems into the environment after the ARX is installed.

**Correct Answer:** D

**Section:** (none)

**Explanation**

**Explanation/Reference:**

**QUESTION 133**

Which of the following statements is true about ARX's capacity balancing ability?

- A. When new files are created, the ARX can determine in real time where to place each file based on the available space on each storage device
- B. When configuring the ARX, customers can choose to implement either an age-based policy or a capacity-based policy, but are not able to run both policies at the same time
- C. All files created at approximately the same time (within 10 minutes) will be stored on the same tier of storage to minimize latency and improve the user experience
- D. The ARX balances capacity within tiers A storage, but cannot balance capacity across tiers of storage

**Correct Answer:** A

**Section:** (none)

**Explanation**

**Explanation/Reference:**

**QUESTION 134**

True or false? The Device Inventory option in Enterprise Manager can replace an organization's static **Excel** spreadsheet containing similar data.

- A. True
- B. False

**Correct Answer:** A

**Section:** (none)

**Explanation**

**Explanation/Reference:**

**QUESTION 135**

Which of the following statements best describes the ARX architecture?

- A. The ARX's split path architecture has a data path that handles the most common operations, and a control path that handles other operations requiring deeper inspection and updating of the index
- B. The ARX's architecture has redundancy built in, allowing a single ARX to be deployed in most use cases which provides a huge cost savings to customers
- C. All of the above
- D. it is a software agent that installs on the storage device

**Correct Answer:** A

**Section:** (none)

**Explanation**

**Explanation/Reference:**

**QUESTION 136**

True or false? The ARX is like a mini network manager. It is able to check the health of the environment and can raise alerts when thresholds are reached.

- A. True
- B. False

**Correct Answer:** A

**Section:** (none)

**Explanation**

**Explanation/Reference:**



**QUESTION 137**

Which **two** of the following are costs businesses may face in dealing with unstructured data?

- A. Lost productivity due to server downtime
- B. Buying backup media
- C. Buying additional storage capacity
- D. Paying to convert unstructured data into structured data

**Correct Answer:** BC

**Section:** (none)

**Explanation**

**Explanation/Reference:**

**QUESTION 138**

Place the following items in the order that the BIG-IP device uses when processing a packet.

**Build List and Reorder:**

Ordered List Title	Answer Choices Title
<div><div>▲▼</div><div></div></div>	<div>Look for a match for a packet filter rule</div> <div>Check if the destination matches a NAT</div> <div>Look for a virtual server address match</div> <div>Examine the source IP address for a standalone SNAT match</div> <div>Check for a match with a Self IP address</div> <div>Search for an existing connection</div>
<div>&lt;&lt; Move</div> <div>Remove &gt;&gt;</div>	

**Correct Answer:**



**Section: (none)**  
**Explanation**

**Explanation/Reference:**

cái này c ng ch a có câu tr l i cu i, ã có 3 l a ch n sai

Place the following items in the order that the BIG-IP device uses when processing a packet.

1. Look for a match for a packet filter rule
2. Check if the destination matches a NAT
3. Look for a virtual server address match
4. Examine the source IP address for a standalone SNAT match
5. Check for a match with a Self IP address
6. Search for an existing connection

1. Check for a match with a Self IP address
2. Search for an existing connection
3. Examine the source IP address for a standalone SNAT match
4. Look for a virtual server address match
5. Check if the destination matches a NAT
6. Look for a match for a packet filter rule



1. Check for a match with a Self IP address
2. Search for an existing connection
3. Examine the source IP address for a standalone SNAT match
4. Check if the destination matches a NAT
5. Look for a virtual server address match
6. Look for a match for a packet filter rule

**QUESTION 139**

In the current version of BIG-IP, what happens if the GTM does not find a wide IP that matches the DNS request?

- A. It sends a broadcast request to all GTM devices
- B. It uses iQuery to request the information from LTM
- C. It sends a request to its configured backup GTM device
- D. It sends an un-resolvable error to the client
- E. It sends the request to an external DNS



**Correct Answer:** E

**Section:** (none)

**Explanation**

**Explanation/Reference:**

**QUESTION 140**

True or false? Using IP Geolocation, an organization can always direct a client request from France to a data center in Dublin.

- A. True
- B. False

**Correct Answer:** A

**Section: (none)**

**Explanation**

**Explanation/Reference:**

**QUESTION 141**

True or false? In most cases, F5 recommends using round robin load balancing.

- A. True
- B. False

**Correct Answer: B**

**Section: (none)**

**Explanation**

**Explanation/Reference:**

using round robin load balancing is recommended when Server is not so strong and using easy Web Application!

**QUESTION 142**

Which **three** of the following statements describe a data center object?

- A. It attempts to match a DNS request with a configured wide IP
- B. It is attached to multiple Internet links
- C. It becomes available for use when an assigned server is up
- D. It retains statistics for each data center
- E. It is a logical representation of a physical location
- F. It specifies how users access the Internet

**Correct Answer: BC**

**Section: (none)**

**Explanation**

**Explanation/Reference:**

correcting help said:

A + B + C

A + C + E

C + D + E

**QUESTION 143**

Which four of the following items are physical objects used by GTM?

- A. Virtual servers
- B. Links
- C. Servers
- D. Wide IPs
- E. Data centers
- F. Pools

**Correct Answer:** ABCE

**Section:** (none)

**Explanation**

**Explanation/Reference:**

These components include:

**Data centers, Servers, Links, Virtual servers**

[http://support.f5.com/kb/en-us/products/big-ip\\_gtm/manuals/product/gtm\\_config\\_10\\_2/gtm\\_components\\_overview.html](http://support.f5.com/kb/en-us/products/big-ip_gtm/manuals/product/gtm_config_10_2/gtm_components_overview.html)

c dump là câu hỏi 76, đã có 3 lựa chọn sai:

Links + Wide IPs + Data centers + Pools

Links + Wide IPs + Data centers + Virtual servers

Links + Servers + Virtual servers + Pools

the physical network, such as data centers, servers, and links, and the components that comprise the logical network, such as wide IPs, pools, and global settings. Most of the configuration components you build using the Configuration utility are saved to the wideip.conf file.

Logical objects/components include: Listeners - Pools - Wide IPs - Distributed applications

**QUESTION 144**

Which three are GTM server dynamic load balancing modes:

- A. Packet Rate
- B. Virtual Server Score
- C. CPU
- D. Fallback IP
- E. Ratio

**Correct Answer:** ABC

**Section: (none)**

**Explanation**

**Explanation/Reference:**

The Global Traffic Manager supports the following dynamic load balancing modes:

Completion Rate

CPU

Hops

Kilobytes/Second

Least Connections

Packet Rate

Quality of Service (QoS)

Round Trip Times (RTT)

Virtual Server Score

VS Capacity



**QUESTION 145**

Which four are GTM server static load balancing modes?

- A. Return to DNS
- B. CPU
- C. Packet Rate
- D. Drop Packet
- E. Round Robin
- F. Static Persist

**Correct Answer:** ADEF

**Section: (none)**

**Explanation**

**Explanation/Reference:**

Global Traffic Manager supports the following static load balancing modes:

Drop Packet

Fallback IP

Global Availability

None

Ratio

Return to DNS

Round Robin

Static Persist

Topology

**QUESTION 146**

True or False. The F5 Application Delivery Firewall has the ability to outperform traditional and next generation firewalls during DDoS attacks by leveraging the performance and scalability of BIG-IP to handle extremely high loads, including high throughput, high connection count, and high number of connections per second.

A. True

B. False

**Correct Answer:** A

**Section:** (none)

**Explanation**

**Explanation/Reference:**

**Exam B****QUESTION 1**

True or false? Another name for the F5 OneConnect feature is TCP multiplexing

- A. True
- B. False

**Correct Answer:** A

**Section:** (none)

**Explanation**

**Explanation/Reference:**

**QUESTION 2**

True or false? TMOS is an F5 software module that runs on the BIG-IP platform.

- A. True
- B. False

**Correct Answer:** B

**Section:** (none)

**Explanation**

**Explanation/Reference:**

**QUESTION 3**

What is the main cause of high latency in a Web application?

- A. The version , the client's browser
- B. The distance between the client and Web server
- C. The number of CPUs on the Web server
- D. The size of the objects on the page

**Correct Answer:** B

**Section:** (none)

**Explanation**

**Explanation/Reference:**



**QUESTION 4**

Match these terms with their description.

- A. Disaster recovery SLA
- B. Recovery point objective
- C. Recovery time objective

**Build List and Reorder:**

Ordered List Title	Answer Choices Title
<div><div>▲▼</div><div></div></div>	<div>The amount of data that can be lost</div> <div>How fast operations need to return to normal</div> <div>Measured by RPOs and RTOs</div>

**Correct Answer:**

Measured by RPOs and RTOs

The amount of data that can be lost

How fast operations need to return to normal

**Section: (none)**

**Explanation**

**Explanation/Reference:**

**QUESTION 5**

True or False? Network Security personnel are entirely responsible for web application security.

- A. True
- B. False

**Correct Answer:** B

**Section:** (none)

**Explanation**

**Explanation/Reference:**

**QUESTION 6**

ASM Geolocation reporting provides information regarding:

- A. The number of attacks from a specific state
- B. The types of attacks from a city
- C. All of the above
- D. The countries from which the attacks originated

**Correct Answer:** D

**Section:** (none)

**Explanation**

**Explanation/Reference:**



**QUESTION 7**

Which **three** of the following are benefits of adding WebAccelerator to the network infrastructure?

- A. It speeds up a secure Web site
- B. It reduces the need to purchase additional bandwidth
- C. It analyzes Web content, and caches and compresses it accordingly
- D. It adds a layer of security to a Web site
- E. It improves the performance of large object file transfers

**Correct Answer:** ABC

**Section:** (none)

**Explanation**

**Explanation/Reference:**



**QUESTION 8**

What is **NOT** a benefit of using a SNAT?

- A. ASM can be deployed easily
- B. No changes are needed on the servers
- C. Higher performance than other configurations
- D. Fail open is easy to add

**Correct Answer:** C

**Section:** (none)

**Explanation**

**Explanation/Reference:**

**QUESTION 9**

An inline ASM configuration requires:

- A. Two network connections
- B. None of the above
- C. Two disk drives
- D. Two power supplies



**Correct Answer:** A

**Section:** (none)

**Explanation**

**Explanation/Reference:**

**QUESTION 10**

Which **three** of these are the potential ending options for branches in the Visual Policy Editor?

- A. Reject
- B. Fallback
- C. Allow
- D. Deny
- E. Limit

F. Redirect

**Correct Answer:** CDF

**Section:** (none)

**Explanation**

**Explanation/Reference:**

#### QUESTION 11

True or false? The Protected Workspace client-side action provides more client-side security than the Cache and Session Control action.

A. True

B. False

**Correct Answer:** A

**Section:** (none)

**Explanation**

**Explanation/Reference:**



#### QUESTION 12

Which of the following is **NOT** a logging option within an APM access control entry?

A. Packet

B. Verbose

C. Nominal

D. Summary

E. None

**Correct Answer:** C

**Section:** (none)

**Explanation**

**Explanation/Reference:**

#### QUESTION 13

True or false? Administrators can specify an APM access profile when defining a virtual server in LTM.

- A. True
- B. False

**Correct Answer:** A

**Section:** (none)

**Explanation**

**Explanation/Reference:**

#### **QUESTION 14**

Using Fast Cache with ASM will:

- A. Improve user experience
- B. Improve server performance
- C. All of the above
- D. Improve BIG-IP ASM performance

**Correct Answer:** C

**Section:** (none)

**Explanation**

**Explanation/Reference:**



#### **QUESTION 15**

ASM provides antivirus protection by:

- A. Extracting files being uploaded and sending them to an AV system via ICAP
- B. Running a local antivirus program on the BIG-IP
- C. None of the above
- D. Using IP Penalty enforcement to block requests from hackers IPs

**Correct Answer:** A

**Section:** (none)

**Explanation**

**Explanation/Reference:**

Supported ICAP Servers in TMOS 11.5:

ANTI-VIRUS VENDOR	ANTI-VIRUS VERSION	VALUE OF VIRUS_HEADER_NAME
McAfee® VirusScan Enterprise	7.0	X-Infection-Found, X-Virus-Name
Trend Micro InterScan Web Security	5.0.1013	X-Virus-ID
Symantec Protection Engine	7.0.2.4	X-Violations-Found
Kaspersky Anti-Virus	5.5	X-Virus-ID

**QUESTION 16**

APM can verify which **four** of the following details before granting a user access to a resource?

- A. The user's Web browser
- B. The user's computer
- C. User's hard drive encryption software
- D. Groups the user is a member of
- E. The network speed
- F. The user's username

**Correct Answer:** ABDF

**Section:** (none)

**Explanation**

**Explanation/Reference:**

**QUESTION 17**

Which **four** of these benefits does APM provide?

- A. Enables remote access by several thousand simultaneous users
- B. Basic Web application firewall capabilities
- C. User authentication based on identity
- D. Acceleration of Web content to the client
- E. Granular authorization to resources
- F. Client workstation security checking

**Correct Answer:** ACEF

**Section:** (none)

**Explanation**

**Explanation/Reference:****QUESTION 18**

Which four of these statements regarding object size and WebAccelerator performance are true?

- A. Large objects such as video cache well
- B. Large objects allow fewer requests per second
- C. Large objects result in higher throughput
- D. Small objects result in higher throughput
- E. Small objects such as images cache well
- F. Small objects allow more requests per second

**Correct Answer:** BCEF

**Section:** (none)

**Explanation**

**Explanation/Reference:****QUESTION 19**

Which **four** of these scenarios will benefit from F5's WAN Optimization Module?

- A. An international organization with data centers in different countries
- B. An organization that does not want to rely on using tape backup
- C. An organization with one site but hundreds of Web servers
- D. An organization whose users create extremely large files
- E. An organization that expects their Web site usage to double in the next year
- F. An organization attempting to lower costs by reducing the number of data centers

**Correct Answer:** ABDF

**Section:** (none)

**Explanation**

**Explanation/Reference:****QUESTION 20**

An administrator is planning on solving latency issues by placing the backup data center in a neighboring city to the primary data center. Why isn't this an effective solution?

- A. It does not provide an acceptable disaster recovery solution
- B. It won't improve latency between the data centers
- C. It won't improve the backup time from the primary data center to the backup data center
- D. Users near the data centers will find their connections going back and forth between the two site
- E. It costs more to have the data centers close together than further apart

**Correct Answer:** A

**Section:** (none)

**Explanation**

**Explanation/Reference:**

It does not provide an acceptable disaster recovery solution, it is so close

#### **QUESTION 21**

Which is **NOT** an **ASM** protection method for cross site scripting:

- A. Signatures
- B. URI chacactsr set limiting
- C. Token injection
- D. Parameter character set limiting



**Correct Answer:** C

**Section:** (none)

**Explanation**

**Explanation/Reference:**

#### **QUESTION 22**

Which item is **NOT** a function of a properly deployed and configured ASM?

- A. Detects attacks
- B. Stops hackers from attacking
- C. Provides protection visibility
- D. Provides security agility

**Correct Answer:** B

**Section:** (none)

**Explanation**

**Explanation/Reference:**

**QUESTION 23**

Which is **NOT** a function of ASM:

- A. Attack signature enforcement
- B. HTTP protocol enforcement
- C. Network security
- D. Parameter value enforcement

**Correct Answer: C**

**Section: (none)**

**Explanation**

**Explanation/Reference:**

**QUESTION 24**

True or False? WOM speeds up large file data transfer across the WAN between a Windows client and a Windows file Server.

- A. True
- B. False

**Correct Answer:**

**Section: (none)**

**Explanation**

**Explanation/Reference:**

**QUESTION 25**

Which item is **NOT** a function of ASM?

- A. Provides authentication and authorization services
- B. Logs and reports full HTTP messages
- C. Provides comprehensive Web application security
- D. Provides application level performance information

**Correct Answer:** A

**Section:** (none)

**Explanation**

**Explanation/Reference:**

**QUESTION 26**

Learning suggestions can be the result of:

- A. A false positive
- B. A malicious attack
- C. A change in the web site content
- D. All the above

**Correct Answer:** D

**Section:** (none)

**Explanation**

**Explanation/Reference:**



**QUESTION 27**

True or False? Identifying users by their IP address is a sufficient method of performing authentication and authorization.

- A. True
- B. False

**Correct Answer:** B

**Section:** (none)

**Explanation**

**Explanation/Reference:**

**QUESTION 28**

True or false? A user's access to resources can change based on the computer they connect from.

- A. True
- B. False



**Correct Answer:** A  
**Section:** (none)  
**Explanation**

**Explanation/Reference:**

**QUESTION 29**

True or false? Replicating a large database between sites could take several hours without WOM, and only several minutes with WOM.

- A. True
- B. False

**Correct Answer:** A  
**Section:** (none)  
**Explanation**

**Explanation/Reference:**

**QUESTION 30**

Brute force protection will:

- A. Block a user after a specified number , unsuccessful login attempts
- B. Block a user after a specified number of page requests are attempted
- C. None of the above
- D. Block a user from downloading too much content from the site

**Correct Answer:** A  
**Section:** (none)  
**Explanation**

**Explanation/Reference:**

**QUESTION 31**

What technology does ARX use to create a logical abstraction of the physical storage environment?

- A. Data de-duplication
- B. File virtualization
- C. Server virtualization

D. SSL encryption

**Correct Answer:** B

**Section:** (none)

**Explanation**

**Explanation/Reference:**

### QUESTION 32

Using file virtualization, what can the ARX do for customers?

- A. Match data to the most appropriate tier of storage (e.g. critical data on tier 1 storage; older data on secondary storage tier)
- B. All of the above
- C. Move individual files or entire file systems in real-time without disruption of down-time
- D. Automate many storage management tasks such as storage tiering, dynamic capacity balancing, and non-disruptive data migration

**Correct Answer:** B

**Section:** (none)

**Explanation**

**Explanation/Reference:**



### QUESTION 33

A customer says his business wouldn't benefit from buying ARX because it already has block based storage virtualization in place. Is he right? Why or why not?

- A. Yes. Block based storage virtualization is just another name for file virtualization
- B. No. ARX allows customers to implement storage tiering benefits, but block based storage virtualization does not
- C. Yes. Block based storage virtualization offers the same functionality as ARX's file virtualization, although it uses slightly different technology.
- D. No. Both technologies attempt to solve similar problems, but only the ARX allows the customer to have visibility into their data and apply business policy at the file level. Block based virtualization has no visibility into the type of data.

**Correct Answer:** D

**Section:** (none)

**Explanation**

**Explanation/Reference:**

**QUESTION 34**

Which of the following statements is true about ARX's capacity balancing ability?

- A. When new files are created, the ARX can determine in real time where to place each file based on the available space on each storage device
- B. When configuring the ARX, customers can choose to implement either an age-based policy or a capacity-based policy, but are not able to run both policies at the same time
- C. All files created a approximately the same time (within 10 minutes) will be stored on the same tier of storage to minimize latency and improve the user experience
- D. The ARX balances capacity within tiers of storage, but cannot balance capacity across tiers of storage

**Correct Answer:** A

**Section:** (none)

**Explanation**

**Explanation/Reference:**

**QUESTION 35**

Select F5 platforms have which three certifications?



- A. FIPS
- B. SECG
- C. NEBS
- D. IEEE
- E. Common Criteria
- F. AFSSI

**Correct Answer:** ACE

**Section:** (none)

**Explanation**

**Explanation/Reference:**

**QUESTION 36**

Which **three** of the following are some of the methods that F5 uses with its environmental stress screening chamber?

- A. Varying the voltage from extreme high to extreme low

- B. Running a product 300 to 500 times on each cycle
- C. Repairing failed components until they function properly
- D. Alternate temperature from -5 degrees Celsius to 60 degrees Celsius
- E. Ensuring continual functioning through fire or flooding conditions

**Correct Answer:** ABD

**Section:** (none)

**Explanation**

**Explanation/Reference:**

#### **QUESTION 37**

The ARX can see ..... when a data modification takes place and will cue that file to be migrated back to the primary tier.

- A. In real time
- B. Nightly
- C. Weekly
- D. At the time of a system scan
- E. When scheduled by administrator

**Correct Answer:** A

**Section:** (none)

**Explanation**

**Explanation/Reference:**

#### **QUESTION 38**

Match the five elements of the intelligent file virtualization with the appropriate ARX feature.

- A. Real Time
- B. Non-Disruptive**
- C. Heterogeneous**
- D. Data Integrity
- E. Scale and Performance

**Build List and Reorder:**

Ordered List Title	Answer Choices Title
<div><div>▲▼</div><div></div></div>	<p>The ARX preserves existing client presentation and data attributes such as server names, links, Object links, UNC paths, and solutions</p> <p>The ARX uses standard CIFS and NFS protocols for tiering, and does not required a propriatetary API. This allows ARX tiering to works across multiple vendors and protocols.</p> <p>The ARX is design to support tens of thousands of users and billions of files. It also scales to support multiple storage devices</p> <p>The ARX provides an in-line ontelligence which means as files are created, policies may be applied to them so they can be stored appropriately</p> <p>The ARX does not modify any of the backend data and does not use links or stubs. The ARX migrates files tranparently and preserves all attributes as well as the original parent directory structure.</p>

<< Move

Remove >>

**Correct Answer:**

The ARX provides an in-line intelligence which means as files are created, policies may be applied to them so they can be stored appropriately

The ARX preserves existing client presentation and data attributes such as server names, links, Object links, UNC paths, and solutions

The ARX uses standard CIFS and NFS protocols for tiering, and does not require a proprietary API. This allows ARX tiering to work across multiple vendors and protocols.

The ARX does not modify any of the backend data and does not use links or stubs. The ARX migrates files transparently and preserves all attributes as well as the original parent directory structure.

The ARX is designed to support tens of thousands of users and billions of files. It also scales to support multiple storage devices

**Section: (none)**  
**Explanation**

**Explanation/Reference:**

**QUESTION 39**

ARX can classify data based on all of the following EXCEPT:

- A. Paths
- B. File Size
- C. Extensions
- D. Security Level
- E. File Name

**Correct Answer: D**  
**Section: (none)**  
**Explanation**

**Explanation/Reference:****QUESTION 40**

For a typical business, what percentage of data does the ARX usually move to a secondary tier?

- A. 20-30%
- B. 50-60%
- C. 80-90%
- D. 0-10%

**Correct Answer: C**

**Section: (none)**

**Explanation**

**Explanation/Reference:****QUESTION 41**

It is common for free storage space to exist somewhere in a business network that is not easy for storage administrators to utilize. What solution can the ARX provide in this situation?

- A. The ARX identifies the exact location of the free storage, which allows network administrators to target those locations when provisioning additional storage
- B. The ARX extends the capacity of each server by 10-15, through intelligent file virtualization
- C. The ARX uses the extra storage for transaction logs and index files
- D. The ARX allows the customer to pool storage from anywhere within the enterprise and capacity balance the overflow across devices

**Correct Answer: D**

**Section: (none)**

**Explanation**

**Explanation/Reference:****QUESTION 42**

Which of the following does **NOT** describe network performance management?

- A. Updating software on various devices
- B. Seeing graphs in near real-time

- C. Visibility into multiple network devices
- D. Being alerted to an issue as it happens
- E. Viewing virtual server statistics

**Correct Answer:** A

**Section:** (none)

**Explanation**

**Explanation/Reference:**

#### **QUESTION 43**

What is the main business driver for bringing Enterprise Manager into the network infrastructure?

- A. Consolidate management of administrator and user accounts
- B. Consolidate management of licenses
- C. Consolidate management of SSL certificates
- D. Consolidate management of BIG-IP devices
- E. Consolidate management of access policies

**Correct Answer:** D

**Section:** (none)

**Explanation**

**Explanation/Reference:**



#### **QUESTION 44**

True or false? To function properly, an Enterprise Manager device is required within each data center.

- A. True
- B. False

**Correct Answer:** B

**Section:** (none)

**Explanation**

**Explanation/Reference:**



**QUESTION 45**

Which two F5 platforms include specialized compression hardware?

- A. 4200
- B. 3900
- C. 1600
- D. 11050
- E. 6900
- F. 8900

**Correct Answer:** EF

**Section:** (none)

**Explanation**

**Explanation/Reference:**

**QUESTION 46**

ARX will detect any modification to a file on the second tier because all clients are being ..... by the ARX to get to the storage.

- A. Moved
- B. Copied
- C. Proxied
- D. Backed up
- E. Deleted

**Correct Answer:** C

**Section:** (none)

**Explanation**

**Explanation/Reference:**

**QUESTION 47**

In the next few years, 75% of new storage capacity will shift to unstructured data (also known as file data). Which two of the following are examples of unstructured data?

- A. CAD drawings
- B. Location data in a GIS (geographic information system)

- C. Customer records and product records in a CRM (customer relationship management) database
- D. Microsoft Office and PDF documents

**Correct Answer:** AD

**Section:** (none)

**Explanation**

**Explanation/Reference:**

#### QUESTION 48

True or false? The ARX saves customers time, money and frustration through a stub-based system that makes a slight modification to each file in order to more efficiently sort and store end user data.

- A. True
- B. False

**Correct Answer:** B

**Section:** (none)

**Explanation**

**Explanation/Reference:**



#### QUESTION 49

Which **two** of the following statements are accurate descriptions of the ARX index?

- A. The ARX index stores the bulk of its data as bit arrays and answers most questions by performing bitwise logical operations on these bitmaps
- B. The ARX index contains the index keys in sorted order, with the leaf level of the index containing the pointer to the page and the row number in the data page
- C. The ARX index is the key enabler of transparent data mobility because the ARX tracks where files reside at all times, from creation through migration and deletion
- D. The ARX index is 100% disposable and can be rebuilt at any point in time without disrupting client or application access to data

**Correct Answer:** BD

**Section:** (none)

**Explanation**

**Explanation/Reference:**

**QUESTION 50**

ARX will detect any modification to a file on the second tier because all clients are being ..... by the ARX to get to the storage.

- A. Deleted
- B. Copied
- C. Backed up
- D. Proxied
- E. Moved

**Correct Answer:** D

**Section:** (none)

**Explanation**

**Explanation/Reference:**

**QUESTION 51**

True or false? To share device information with F5 technical support, a customer must either verbally share the information over the phone or copy and send the information in an Email.

- A. True
- B. False



**Correct Answer:** B

**Section:** (none)

**Explanation**

**Explanation/Reference:**

**QUESTION 52**

True or false? When installing LTM on different VIPRION performance blades, each instance of LTM needs to be licensed separately.

- A. True
- B. False

**Correct Answer:** B

**Section:** (none)

**Explanation**

**Explanation/Reference:**

**QUESTION 53**

The VIPRION provides hot-pluggable capabilities for which four of these types of hardware?

- A. LCD displays
- B. Fan trays
- C. Memory
- D. Power supplies
- E. Performance blades
- F. CompactFlash

**Correct Answer:** BCDE

**Section:** (none)

**Explanation**

**Explanation/Reference:**

The VIPRION provides hot-pluggable capabilities for Fan trays, Memory, Power supplies ,and Performance blades

**QUESTION 54**

A customer wants the best possible throughput but only has a maximum of 3RU rack space. Which F5 platform should you recommend?

- A. BIG-IP 11050
- B. VIPRION with only 1 performance blade
- C. BIG-IP 8950
- D. BIG-IP 8900
- E. VIPRION with 4 performance blades

**Correct Answer:** A

**Section:** (none)

**Explanation**

**Explanation/Reference:**

**QUESTION 55**

Which of the following business benefits does storage tiering offer to customers?

- A. Reduces time for backups because data on the secondary tier can have a less time-intensive backup policy applied to it
- B. All of the above

- C. Enables customers to apply a more aggressive RTO/RPO for business critical Tier-1 unstructured data
- D. Reduces money spent on storage since the majority of data can be moved to less expensive secondary tier storage

**Correct Answer:** B

**Section:** (none)

**Explanation**

**Explanation/Reference:**

#### QUESTION 56

An age-based policy is set up on the ARX that retains only data modified in the last 3 months on tier 1 storage and moves the rest of the data to secondary storage. What happens when the end user tries to access data that has not been touched in 6 months?

- A. The end user is unaware that the data has been moved to secondary tier storage and is able to access the data without difficulty
- B. The networking mapping window appears, allowing the end user to re-establish direct access to the data even though it has been moved to secondary storage
- C. An error message appears saying "File is no longer unavailable."
- D. A message appears explaining that the file has been archived, and a link to the new secondary storage tier location is provided

**Correct Answer:** A

**Section:** (none)

**Explanation**

**Explanation/Reference:**

#### QUESTION 57

True or False? Although not all modules run on all platforms, each F5 hardware platform can run LTM plus at least one additional software module.

- A. True
- B. False

**Correct Answer:** A

**Section:** (none)

**Explanation**

**Explanation/Reference:**

#### QUESTION 58

True or false? The production version of BIG-IP Virtual Edition is limited to 200 Mbps throughput.

- A. True
- B. False

**Correct Answer:** B

**Section:** (none)

**Explanation**

**Explanation/Reference:**

The production version of BIG-IP Virtual Edition can be at 25Mbps / 200Mbps / 1Gbps / or 5Gbps throughput served and maybe higher in the next versions

#### QUESTION 59

What percentage of storage in a typical environment is actively used and modified?

- A. 5%
- B. 50%
- C. 25%
- D. 10%
- E. 90%



**Correct Answer:** D

**Section:** (none)

**Explanation**

**Explanation/Reference:**

#### QUESTION 60

.....% of F5 products are sent through thorough software testing before being sold to customers

- A. 100
- B. 50
- C. 60
- D. 80

**Correct Answer:** A

**Section:** (none)

**Explanation**

**Explanation/Reference:**

**QUESTION 61**

Which of these statements about a stream profile is false?

- A. It is applied to an HTTP class profile
- B. It is not recommended for telnet traffic
- C. It can replace one data string for another for all traffic going through a virtual server
- D. It applies to both inbound and outbound traffic
- E. It will not inspect HTTP headers when an HTTP profile is present

**Correct Answer:** A

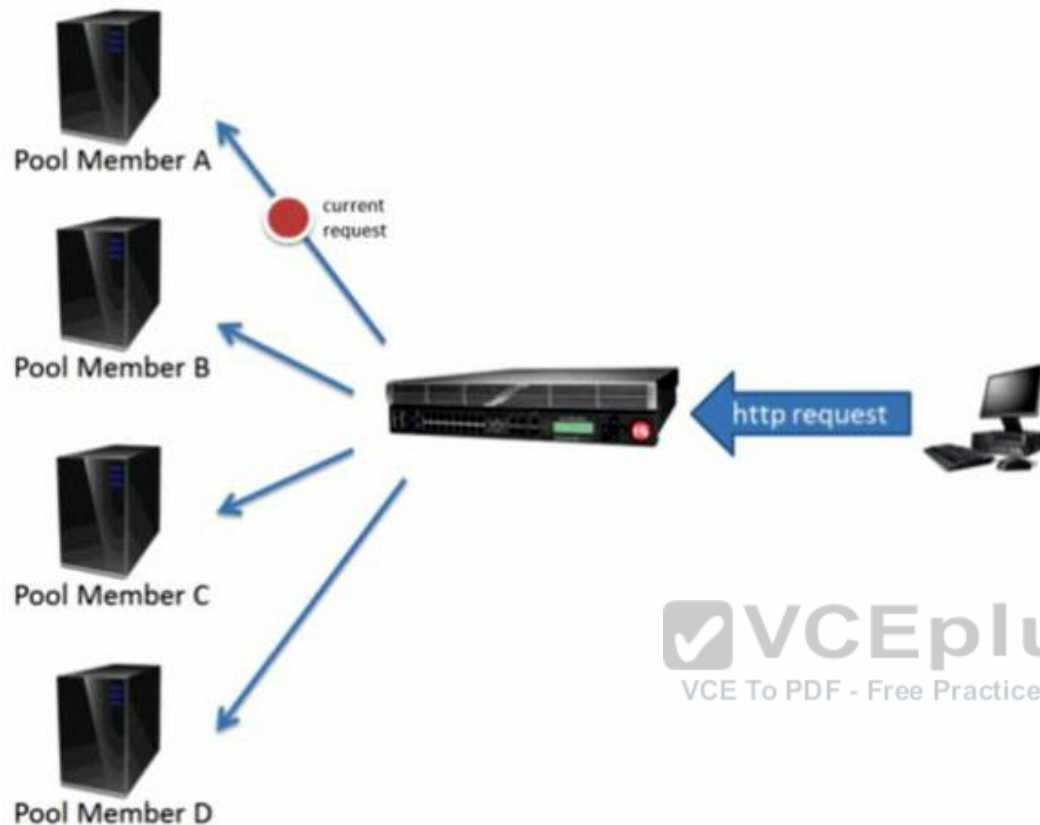
**Section:** (none)

**Explanation**

**Explanation/Reference:**

**QUESTION 62**

If LTM uses the round robin load balancing method, which pool member in the diagram above will receive the next request



- A. A
- B. C
- C. D
- D. B

**Correct Answer:** D

**Section:** (none)

**Explanation**

**Explanation/Reference:**

LTM uses the round robin load balancing method so after A will be B

**QUESTION 63**



Basic F5 IP Geolocation provides which **four** types of client information?

- A. State
- B. Continent
- C. Postal code
- D. City
- E. Carrier
- F. Country

**Correct Answer:** AB EF

**Section:** (none)

**Explanation**

**Explanation/Reference:**

ã có 2 l a ch n sai

State - Country - Continent - City  
State - Country - Postal code - City

The BIG-IP system uses geolocation software to identify the geographic location of a client or web application user. The default IP geolocation database provides IPv4 addresses at the continent, country, state, ISP, and organization levels, and IPv6 addresses at the continent and country levels. The database consists of the following files:

F5GeoIP.dat  
F5GeoIPv6.dat  
F5GeoIPISP.dat  
F5GeoIPOrg.dat

#### QUESTION 64

Which **three** of the following must be done in order for GTM to properly communicate LTM?

- A. Ensure that GTM and LTM use the same floating IP address
- B. Exchange SSL certificates between the two
- C. Configure the GTM and LTM to use MAC masquerading
- D. Connect the GTM and LTM with a network crossover cable
- E. Synchronize the big3d versions between GTM and LTM
- F. Add the LTM object to the GTM configuration

**Correct Answer:** BEF

**Section: (none)**

**Explanation**

**Explanation/Reference:**

gi ng câu tr l i c a câu h i 31 Exam A

**Integrating LTM systems with GTM systems on a network**

Running the bigip\_add utility

Determine the self IP addresses of the BIG-IP LTM systems that you want to communicate with BIG-IP GTM.

Run the bigip\_add utility on BIG-IP GTM. This utility exchanges SSL certificates so that each system is authorized to communicate with the other.

When the LTM and GTM systems use the same version of the big3d agent, you run the bigip\_add utility to authorize communications between the systems.

[http://support.f5.com/kb/en-us/products/big-ip\\_gtm/manuals/product/gtm-implementations-11-3-0/7.html](http://support.f5.com/kb/en-us/products/big-ip_gtm/manuals/product/gtm-implementations-11-3-0/7.html)

Note: The BIG-IP GTM and BIG-IP LTM systems must have TCP port 4353 open through the firewall between the systems. The BIG-IP systems connect and communicate through this port.

**QUESTION 65**

True or false? All members of a pool must share the same service port?

- A. True
- B. False

**Correct Answer: B**

**Section: (none)**

**Explanation**

**Explanation/Reference:**

F5 cho phép thành viên c a Pool share d ch v nh khác port --> bá o!

**QUESTION 66**

When using SNAT, which additional IP addresses will the BIG-IP system change? Select two.

- A. The source IP address on the client to BIG-IP request packet.
- B. The source IP address on the BIG-IP to pool member request packet.
- C. The destination IP address on the BIG-IP to pool member request packet.
- D. The source IP address on the BIG-IP to client response packet.
- E. The destination IP address on the BIG-IP to client response packet.
- F. The destination IP address on the pool member to BIG-IP response packet.

**Correct Answer: BE**

**Section: (none)**

**Explanation****Explanation/Reference:****QUESTION 67**

Which two of the following statements about how TMOS typically manages traffic between a client and server are accurate?

- A. It changes the destination address before forwarding a request to the server
- B. It changes the destination address before sending a response to the client
- C. It changes the source address before sending a response to the client
- D. It changes the source address before forwarding a request to the server

**Correct Answer:**

**Section: (none)**

**Explanation****Explanation/Reference:**

ã m t l n sai khi ch n B và D

**QUESTION 68**

Match the security-related term with the correct definition.

1. Demilitarized zone (DMZ)
2. Denial of service (DoS)
3. DNS Express
4. DNS Security Extensions (DNSSEC)
5. Endpoint inspection

**Build List and Reorder:**

Ordered List Title	Answer Choices Title
<div><div>▲▼</div><div></div></div>	<div>- A set of standards created to address vulnerabilities in the Domain Name System (DNS) and protect it from online threats.</div> <div>- An attack that floods a network or server with requests and data making it unavailable.</div> <div>- Ensures a client device does not present a security risk before it is granted a remote-access connection to the network.</div> <div>- A portion of an enterprise network that sits behind a firewall but outside of or segmented from the internal network.</div> <div>- A high-speed, in-memory authoritative DNS slave that can dramatically reduce the DNS server infrastructure.</div>
	<div>&lt;&lt; Move</div> <div>Remove &gt;&gt;</div>

**Correct Answer:**

- A portion of an enterprise network that sits behind a firewall but outside of or segmented from the internal network.  
network.
- An attack that floods a network or server with requests and data making it unavailable.
- A high-speed, in-memory authoritative DNS slave that can dramatically reduce the DNS server infrastructure.
- A set of standards created to address vulnerabilities in the Domain Name System (DNS) and protect it from online threats.
- Ensures a client device does not present a security risk before it is granted a remote-access connection to the network.

**Section: (none)**

**Explanation**

**Explanation/Reference:**



**QUESTION 69**

What feature of the F5 Exchange solution helps administrators to streamline implementation for added security and granular control?

- A. iControl
- B. Enterprise Manager
- C. iApps
- D. WebAccelerator

**Correct Answer: A**

**Section: (none)**

**Explanation**

**Explanation/Reference:**

ch a ch c l m có th b sai

**QUESTION 70**

Select the key question you would use to ask your customer related to DNS attacks?

- A. Do you over-provision your DNS infrastructure?
- B. Do you regularly update BIND or some other DNS application to the latest release?
- C. Do you rely on your network firewall to protect your DNS server?
- D. How do you secure your DNS infrastructure against attacks?

**Correct Answer:** D

**Section:** (none)

**Explanation**

**Explanation/Reference:**

How do you secure your DNS infrastructure against attacks? câu hỏi giám thi p hay nh t

#### **QUESTION 71**

When a business is hacked, they often lose more than money. What are the other consequences to a business as a result of being hacked? Select two.

- A. Helpful third party reviews of the security needs of the customer's web applications
- B. Valuable free press that occurs as companies address hacking incidents
- C. Penalties related to non-compliance with laws and regulations
- D. Final resolution of all security vulnerabilities of the business' web applications
- E. Loss of customers when slow connections drive customers to competitor's site

**Correct Answer:** AD

**Section:** (none)

**Explanation**

**Explanation/Reference:**

#### **QUESTION 72**

Match the security-related term with the correct definition.

1. OWASP Top 10
2. Secure Socket Layer (SSL)
3. Bot
4. Certificate

5. Content scrubbing

**Build List and Reorder:**

Ordered List Title	Answer Choices Title
<div><div>▲▼</div><div></div></div>	<div>- Obfuscating identify information to prevent confidential information from being sent in a web application response.</div> <div>- A list of the 10 most dangerous current Wseb application security flaws. along with effecte methods of dealing with those flaws.</div> <div>- Malicious software placed on other people's computers to perform automated tasks over the Internet.</div> <div>- A cryptographic protocol used to secure communications over the Internet.</div> <div>- A digitally signed statement issued by a trusted organization that contains information about an entity and the entity's public key.</div>

<< Move  
Remove >>

**Correct Answer:**

- A list of the 10 most dangerous current Wse application security flaws, along with effective methods of dealing with those flaws.
- A cryptographic protocol used to secure communications over the Internet.
- Malicious software placed on other people's computers to perform automated tasks over the Internet.
- A digitally signed statement issued by a trusted organization that contains information about an entity and the entity's public key.
- Obfuscating identify information to prevent confidential information from being sent in a web application response.

**Section: (none)**

**Explanation**

**Explanation/Reference:**



**QUESTION 73**

Complete the statement below by choosing the correct word or phrase to complete the sentence.

By identifying IP addresses and security categories associated with malicious activity, the BIG-IP..... service can incorporate dynamic lists of threatening IP addresses into the BIG-IP platform, adding context to policy decisions.

- A. Edge Client
- B. iRules
- C. LTM
- D. IP intelligence
- E. iApps

**Correct Answer: D**

**Section: (none)**

**Explanation**

**Explanation/Reference:**



**QUESTION 74**

Even though F5 is an application delivery controller, it can also effectively mitigate attacks directed at the network layer.

- A. True
- B. False

**Correct Answer: A**

**Section: (none)**

**Explanation**

**Explanation/Reference:**

**QUESTION 75**

Select the best word or phrase to complete the following sentence.

Using the.....feature in GTM, F5's Application Delivery Firewall solution can handle a significantly higher number of queries than traditional DNS servers.

- A. DNS Express
- B. BIND
- C. Site availability request
- D. Location-based routing



**Correct Answer: A**

**Section: (none)**

**Explanation**

**Explanation/Reference:**

**QUESTION 76**

If your customer has a policy requirement that cannot be handled in the Visual Policy Editor, what would you use to supplement the Visual Policy Editor?

- A. iApps
- B. TMOS
- C. iControl
- D. iRules

**Correct Answer: D**

**Section: (none)**

**Explanation**

**Explanation/Reference:**

**QUESTION 77**

Which aspect of F5's Intelligent Services Platform helps you extend your security conversation to include F5 professionals and customers?

- A. Modular Functionality
- B. iApps
- C. TMOS
- D. DevCentral

**Correct Answer: D**

**Section: (none)**

**Explanation**

**Explanation/Reference:**

DevCentral is the community include F5 professionals and customers

**QUESTION 78**

Why is BIG-IP ASM ideally suited to protect against layer 7 attacks, including HTTP and HTTPS/SSL traffic, when compared to an intrusion prevention system (IPS)?

- A. An intrusion prevention system (IPS) is base on Packet Filtering
- B. An IPS doesn't have the visibility into HTTPS traffic. it doesn't understand what applications are in the network.
- C. An IPS only focus op operating system attacks; it doesn't understand what application are in the network
- D. An IPS can only look at overall traffic patterns; it doesn't understand what applications are in the network

**Correct Answer: D**

**Section: (none)**

**Explanation**

**Explanation/Reference:**

**QUESTION 79**

The F5 Visual Policy Editor (VPE) is unique to the F5 BIG-IP APM module; no other access management tool has this capability. Select the features that the VPE provides.

**Select two**

- A. Develop customized reports on user access
- B. Customize landing or login pages
- C. Establish highly detailed policies based on customer business requirements
- D. Configure authentication server objects
- E. Perform multiple factors of authentication

**Correct Answer:** CE

**Section:** (none)

**Explanation**

**Explanation/Reference:**

#### QUESTION 80

The F5 Visual Policy Editor (VPE) is unique to the F5 BIG-IP APM module; no other access management tool has this capability. Select the features that the VPE provides.

**Select two.**

- A. Determines antivirus patch levels
- B. Customizes landing or login page
- C. Provides vulnerability scanning
- D. Checks operating system patch levels
- E. Assigns a lease pool address



**Correct Answer:** AD

**Section:** (none)

**Explanation**

**Explanation/Reference:**

#### QUESTION 81

Select the two best questions you would use to ask your customer about their current **web access management** solution.

**Select two.**

- A. What impact are slow remote access connections having on productivity?
- B. Are you using Google multi-factor authentication?
- C. Is user authentication data sitting on partner systems outside your control,

- D. Have you standardized on Androids or iPhones?
- E. How are you planning to extend Exchange to your mobile users?
- F. How do you think a global remote access deployment with integrated acceleration and availability services might benefit your business?

**Correct Answer:** AF

**Section:** (none)

**Explanation**

**Explanation/Reference:**

#### **QUESTION 82**

Data centers often rely on either traditional firewalls or next generation firewalls. Select the core weakness of the traditional or next generation firewalls when it comes to DDoS attacks.

- A. They are limited in amount of connections per second and the amount of sustained connections they can handle
- B. The cost performance ratio of next generation firewalls is too high.
- C. The agility of traditional firewalls is too limited when it comes to DDoS attacks.
- D. Data center traffic is primarily outbound.

**Correct Answer:** A

**Section:** (none)

**Explanation**

**Explanation/Reference:**



#### **QUESTION 83**

Select the question you would ask your customer related to DNS attacks. Based on the material, choose the most appropriate question.

- A. How do you secure your DNS infrastructure against attacks?
- B. Do you rely on your network firewall to protect your DNS server?
- C. Do you over-provision your DNS infrastructure?
- D. Do you regularly update BIND or some other DNS application to the latest release?

**Correct Answer:** A

**Section:** (none)

**Explanation**

**Explanation/Reference:**

**QUESTION 84**

Why does the F5 Application Delivery Firewall solution mitigate SSL attacks more effectively than any other firewalls?

- A. Because F5 has unlimited capacity to handle SSL traffic.
- B. Because F5 has full visibility and control of SSL traffic.
- C. Because F5 has a separate iApp to handle SSL traffic.
- D. Because F5 supports large SSL key sizes.

**Correct Answer:** B

**Section:** (none)

**Explanation**

**Explanation/Reference:**

**Exam C****QUESTION 1**

The BIG-IP full proxy architecture has full visibility from the client to the server and from the server to the client. What security benefit does this provide to customers?

- A. Offloads security functionality from other devices such as network firewalls and Intrusion Prevention Systems (IPS), which may experience performance degradation when inspecting DNS queries and responses.
- B. provides..... DNS servers.
- C. Establishes highly detailed policies based on your customer's business in requirements, performs multiple factors of authentication, detects corporate versus non-corporate devices, checks OS patch levels, and determines antivirus patch levels.
- D. Provides industry-leading knowledge of application behavior as it travels through a \*3, network, and it applies that knowledge to security because it knows how an application behaves at any point in the reply-request process

**Correct Answer:**

**Section: (none)**

**Explanation**

**Explanation/Reference:**

**QUESTION 2**

Select the key reasons F5 is able to handle DNS DDoS attacks so effectively?

Select two.

- A. F5 can ensure a DNS DDoS attack is not successful.
- B. F5 has high performance DNS services.
- C. F5 can answer the DNS queries directly.
- D. With Global Traffic Manager (GTM), F5 completely stops all DNS DDoS attacks.
- E. F5 can ensure a customer never faces a DNS DDoS attack.

**Correct Answer:**

**Section: (none)**

**Explanation**

**Explanation/Reference:**

**QUESTION 3**

Select the key messages you want to give your customers about F5's ability to offer a better experience at reduced costs when it comes specifically to

single sign-on.

Select two.

ff5deprca);.ciodne,sa seamless

heamntliecsasteasciceegltoati net iejrrnearlsanadnexternal resources via SSO and applications that the user is authorized to Use. provides access °  
n'Y' those

oF5's single sign-on seamlessly integrates with all major single sign-on products while maintaining a highly positive security posture. rdieitnhtiFty%°  
ndrgaacncizaesti°mnsacnaagneremaelinzteinafrmas°treucct°urT wsineflmaintainingexlbi d lartggrhalytepdpositive  
security posture.

ndFe5p.siosymingelentssign-on reduces costs by allowing specialized modular platform

- A.
- B.
- C.
- D.

**Correct Answer:**

**Section: (none)**

**Explanation**

**Explanation/Reference:**

Câu h i 9-s Sale Security Accreditation