

HP0-D30.Test-king

Number: HP0-D30
Passing Score: 800
Time Limit: 120 min
File Version: 14.0

Exam code: HP0-D30

Exam name: Navigating the Journey to Cloud

Version 14.0

Exam A

QUESTION 1

What is a key benefit of an HP Converged Infrastructure solution?

- A. It changes IT processes to align with current datacenter environments.
- B. It provides separation of silos in datacenter management.
- C. It provides security for shared environments.
- D. It helps accelerate IT for better business results.

Correct Answer: D

Section: (none)

Explanation

Explanation/Reference:

Reference:

<ftp://ftp.hp.com/pub/c-products/solutions/Converged-Infrastructure-Overview-White-Paper-4AA0-4829ENW.lowres.pdf>

QUESTION 2

An existing HP CloudSystem Matrix customer wants to quickly integrate OpenStack into their cloud environment. Which option should you recommend to quickly enable OpenStack cloudcapabilities?

- A. Manage the environment with HP Cloud Server Automation in a side-by-side architecture.
- B. Manage the environment with HP CloudSystem Matrix in a parallel architecture.
- C. Manage the environment with HP CloudSystem Foundation in a sidecar architecture.
- D. Manage the environment with OpenStackK in a vertical architecture

Correct Answer: A

Section: (none)

Explanation

Explanation/Reference:

Reference:

<http://www8.hp.com/h20195/V2/GetPDF.aspx/4AA4-1753ENW.pdf>

QUESTION 3

A customer plans to deploy a new SAP platform and wants HP to manage the infrastructure. This customer is concerned about security and requires that the application be maintained in their data center. Which HP cloud solution meets the customer's requirements?

- A. HP CloudSystem Enterprise
- B. HP CloudSystem Foundation

- C. HP Helion Public Cloud
- D. HP Helion Managed Private Cloud

Correct Answer: B

Section: (none)

Explanation

Explanation/Reference:

Reference:

<http://www8.hp.com/h20195/V2/GetPDF.aspx/4AA4-1753ENW.pdf>

QUESTION 4

How does infrastructure convergence enable organizations to accelerate time-to-business value?

- A. It converges Software as a Service (SaaS) with Platform as a Service (PaaS) into a single solution.
- B. It dramatically lowers CAPEX and OPEX by using a virtual appliance, thus eliminating the need for hardware resources.
- C. It increases operational efficiency by leveraging hybrid and public cloud offerings.
- D. It turns technology silos into adaptive pools of assets that can be shared and managed as a service.

Correct Answer: D

Section: (none)

Explanation

Explanation/Reference:

Reference:

<http://www8.hp.com/h20195/V2/getpdf.aspx/4AA3-6034ENW.pdf?ver=2.0>

QUESTION 5

What are goals of the HP Converged Infrastructure strategy? (Select two.)

- A. out-of-the-box network automation
- B. aggregation portals
- C. better data center utilization
- D. reduced time spent on running and maintaining infrastructure

Correct Answer: CD

Section: (none)

Explanation

Explanation/Reference:

Reference:

http://h17007.www1.hp.com/docs/ci/Measuring_the_Business_Value_of_CI_in_the_Data_Center.pdf

QUESTION 6

You are planning an HP CloudSystem solution for your customer. What demonstrates that the planned solution is valid, fulfills the needs of the customer, and can be integrated in the customer's environment?

- A. Reference Architecture
- B. Proof of Concept
- C. HP Flexible Capacity Analysis Tools
- D. HP Product Bulletin

Correct Answer: B

Section: (none)

Explanation

Explanation/Reference:

Reference:

<http://h20195.www2.hp.com/V2/getpdf.aspx/4AA4-8543ENW.pdf>

QUESTION 7

An SMB customer is interested in a cloud service model for their new application that reduce their requirements for hardware and ongoing IT support. Which cloud service model best fits the customer's requirements?

- A. private cloud
- B. IaaS
- C. SaaS
- D. hybrid cloud

Correct Answer: C

Section: (none)

Explanation

Explanation/Reference:

QUESTION 8

A major oil company needs real-time analytics from their worldwide installation base of oil wells. After meeting with the customer, you determine that the solution requires automatically uploading environmental data to a centralized data warehouse and providing real-time analytics at an extreme scale. Which HP software solution should you recommend?

- A. HP CloudSystem Foundation
- B. HP Converged System 100
- C. HP Autonomy IDOL
- D. HP Vertica
- E. HP Enterprise Security

Correct Answer: E

Section: (none)

Explanation

Explanation/Reference:

Reference:

http://h17007.www1.hp.com/docs/enterprise/servers/cloudsystem/webhelp/content/s_license-about-isc.html

QUESTION 9

Which portals or tools are available in HP CloudSystem Enterprise?(Select three.)

- A. HP Cloud Capacity Planning
- B. HP CloudSystem portal
- C. HP Insight Control
- D. HP Infrastructure Orchestration Designer
- E. HP CSA Marketplace portal

Correct Answer: ABE

Section: (none)

Explanation

Explanation/Reference:

Reference:

<http://h20195.www2.hp.com/v2/getpdf.aspx/4aa0-5550enw.pdf>

QUESTION 10

An enterprise banking customer asks you to recommend a one-stop solution for their customer account representatives. This solution should replace their aging fleet of desktop and laptop computers and centralize management to reduce staffing requirements. Which solution should you recommend?

- A. HP BladeSystem Infrastructure Management
- B. HP ConvergedSystem 700 for Hosted Desktops
- C. HP CloudSystem Enterprise
- D. HP ConvergedSystem 100 for Hosted Desktops

E. HP ConvergedSystem 300 for Vertica

Correct Answer: B

Section: (none)

Explanation

Explanation/Reference:

QUESTION 11

Which HP security solution provides in-line intruder protection for physical and virtual servers?

- A. ArcSight
- B. Fortify
- C. TippingPoint
- D. Network Automation

Correct Answer: C

Section: (none)

Explanation

Explanation/Reference:

Reference:

<http://www8.hp.com/in/en/software-solutions/network-security/>

QUESTION 12

In HP CloudSystem Foundation, which user interface is used to request a service?

- A. HP Helion Portal
- B. HP CloudSystem Portal
- C. HP OneView
- D. HP CloudSystem Console

Correct Answer: B

Section: (none)

Explanation

Explanation/Reference:

Reference:

<http://www8.hp.com/h20195/V2/getpdf.aspx/4AA5-2652ENW.pdf?ver=1.0>

QUESTION 13

Which HP Converged Systems for Virtualization does HP offer? (Select three)

- A. ConvergedSystem 100
- B. ConvergedSystem 700x
- C. ConvergedSystem 900
- D. ConvergedSystem 700
- E. ConvergedSystem 500
- F. ConvergedSystem 300

Correct Answer: BDF

Section: (none)

Explanation

Explanation/Reference:

Reference:

<http://www8.hp.com/h20195/V2/getpdf.aspx/4AA5-2652ENW.pdf?ver=1.0>

QUESTION 14

A customer recently upgraded from HP CloudSystem Foundation to HP CloudSystem Enterprise. Which new features are now available? (Select three.)

- A. HP UCMDB
- B. lifecycle management for hybrid cloud services
- C. open APIs for administrative and cloud service functions
- D. drag-and-drop designer
- E. HP CSA Marketplace Portal

Correct Answer: BDE

Section: (none)

Explanation

Explanation/Reference:

Reference:

<http://h20195.www2.hp.com/v2/getpdf.aspx/4aa0-5550enw.pdf>

QUESTION 15

A customer wants to provide Infrastructure-as-a-Service (IaaS) for their internal Windows and HP-UX production environments. Which HP cloud solution should you recommend?

- A. HP CloudSystem Foundation

- B. HP CloudSystem Enterprise
- C. HP Helion Community Edition
- D. HP Managed Virtual Private Cloud

Correct Answer: D

Section: (none)

Explanation

Explanation/Reference:

Reference:

<http://www8.hp.com/in/en/software-solutions/network-security/>

QUESTION 16

A customer is evaluating FlexPod+ CIAC/UCS Director and asks you what comparable solution HP has to offer. Which solution should you present?

- A. HP CloudSystem Foundation
- B. HP Converged System for Virtualization
- C. HP Converged System for Vertica
- D. HP CloudSystem Enterprise

Correct Answer: B

Section: (none)

Explanation

Explanation/Reference:

QUESTION 17

A retail customer is deploying a new application for online ordering. They have statistics to show that usage of their existing IT infrastructure is less than 20% during most of the year, but spikes above 85% during the holiday season. Which feature of the HP Helion Public Cloud would reduce their capital expenses to support the new application?

- A. pay-per-use
- B. self-service
- C. high performance
- D. security

Correct Answer: C

Section: (none)

Explanation

Explanation/Reference:

QUESTION 18

Which features are provided by HP OneView? (Select two.)

- A. graphical infrastructure designer
- B. self-service portal
- C. firmware management and updates
- D. smart search and map view
- E. bursting to CloudSystem providers

Correct Answer: BD

Section: (none)

Explanation

Explanation/Reference:

Reference:

<http://www8.hp.com/in/en/software-solutions/network-security/>

QUESTION 19

Which HP Storage products are integrated into the HP ConvergedSystems? (Select two.)

- A. HP XP7 array
- B. HP Enterprise Virtual Array
- C. HP StoreVirtual VSA
- D. HP MSA2040
- E. HP 3Par StoreServ

Correct Answer: CE

Section: (none)

Explanation

Explanation/Reference:

Reference:

<http://www8.hp.com/in/en/products/data-storage/3parstoreserv.html>

QUESTION 20

Which HP offering provides the customer with an out-of-the-box optimized hardware solution?

- A. HP Converged System
- B. HP Helion
- C. HP CloudSystem Foundation
- D. HP CloudSystem Enterprise

Correct Answer: A

Section: (none)

Explanation

Explanation/Reference:

Reference:

<http://www8.hp.com/us/en/cloud/cloudsystem.html>

QUESTION 21

HP OneView is used to manage which configuration settings? (Select two.)

- A. HP CloudSystem Enterprise
- B. HP CloudSystem Foundation
- C. Server BIOS
- D. HP Helion Cloud
- E. Virtual Machine
- F. HP Virtual Connect

Correct Answer: BD

Section: (none)

Explanation

Explanation/Reference:

Reference:

<http://h20195.www2.hp.com/v2/getpdf.aspx/4aa0-5550enw.pdf>

QUESTION 22

Which statement is true about HP OneView?

- A. It replaces HP Server Automation.
- B. It requires HP Virtual Connect Enterprise Manager to be installed.
- C. It is a next-generation converged infrastructure IT management platform.
- D. It is the next-generation technology for HP Operations Orchestration.

Correct Answer: C

Section: (none)

Explanation

Explanation/Reference:

Reference:

<http://www8.hp.com/us/en/products/server-software/product-detail.html?oid=3601866>

QUESTION 23

During a meeting with a long-term HP BladeSystem customer, you hear the IT director mention that their staff is overloaded and constantly being pulled from critical projects to build new virtual machines for internal customers. Which functionality within the HP CloudSystem solutions can help solve this staffing issue?

- A. system management
- B. capacity management
- C. virtualization
- D. orchestration

Correct Answer: D

Section: (none)

Explanation

Explanation/Reference:

QUESTION 24

A customer requests that you perform a TCO/ROI analysis that uses industry research metrics and financial calculations that are based on independent financial modeling. Which tool should you choose to ensure third-party credibility?

- A. Alinean ROI Analyst
- B. BladeSystem ROI Model
- C. Hyperscale-Moonshot TCO Calculator
- D. 4P Consolidation Calculator

Correct Answer: B

Section: (none)

Explanation

Explanation/Reference:

Reference:

<http://www8.hp.com/us/en/products/server-software/product-detail.html?oid=3601866>

QUESTION 25

Which technology reduces storage networking costs, speeds up provisioning, lowers latency, and reduces the number of components that must be configured in a converged infrastructure environment?

- A. virtual SAN technology
- B. flat SAN technology
- C. hybrid SAN technology
- D. mesh SAN technology

Correct Answer: C

Section: (none)

Explanation

Explanation/Reference:

QUESTION 26

You are using HP OneView to manage a group of HP Virtual Connect (VC) modules. Which statement is true regarding Virtual Connect Enterprise Manager (VCEM) in this environment?

- A. VCEM can still be used to update the VC modules.
- B. VCEM is still required to manage fewer than four enclosures.
- C. VCEM is no longer required.
- D. You can now manage VCEM groups that are located in different regions.

Correct Answer: A

Section: (none)

Explanation

Explanation/Reference:

Reference:

http://h20565.www2.hp.com/hpsc/doc/public/display?docId=emr_na-c02102153

QUESTION 27

What are key features offered by HP Converged System 700x for Virtualization? (Select two.)

- A. optional EMC storage
- B. up to 16 HP BladeSystem c7000 enclosures
- C. designed for growth
- D. flexible configurations

E. third-party SAN switching

Correct Answer: CD

Section: (none)

Explanation

Explanation/Reference:

QUESTION 28

Which function is in the demand layer of the HP Cloud Functional Reference Architecture?

- A. Software Defined Networking
- B. service delivery
- C. infrastructure services
- D. service catalog and repository

Correct Answer: D

Section: (none)

Explanation

Explanation/Reference:

Reference:

http://h30507.www3.hp.com/t5/Cloud-Source-Blog/Dissecting-Cloud-Functional-Reference-Architecture-The-Demand/ba-p/127161#.VT_CyyGqqko

QUESTION 29

What are the HP ConvergedSystem solutions for Big Data? (Select four.)

- A. ConvergedSystem for HBase
- B. ConvergedSystem for SAP HANA
- C. ConvergedSystem for Microsoft Analytics Platform
- D. ConvergedSystem for Casandra
- E. ConvergedSystem for HAVEn
- F. ConvergedSystem for Vertica

Correct Answer: BCEF

Section: (none)

Explanation

Explanation/Reference:

QUESTION 30

Which technology enables customers to migrate storage volumes between any HP 3PAR Storage System online, non-disruptively, and without complex planning or dependency on additional tools?

- A. HP 3PAR Thin Provisioning
- B. HP 3PAR Peer Persistence
- C. HP 3PAR StoreServ Online Import
- D. HP 3PAR Peer Motion

Correct Answer: B

Section: (none)

Explanation

Explanation/Reference:

Reference:

http://h30507.www3.hp.com/t5/Cloud-Source-Blog/Dissecting-Cloud-Functional-Reference-Architecture-The-Demand/ba-p/127161#.VT_CyyGqqko

QUESTION 31

What are the key technology pillars of the HP Converged Infrastructure Reference Architecture?(Select four)

- A. OpenStack
- B. HP Operations Orchestration
- C. HP Data Center Smart Grid
- D. HP OneView
- E. HP FlexFabric
- F. Virtual resource pools
- G. RESTful APIs

Correct Answer: BDEG

Section: (none)

Explanation

Explanation/Reference:

QUESTION 32

Which HP family of products offers a fast-track to an HP Converged Infrastructure solution?

- A. HP Virtual Connect
- B. HP ConvergedSystem
- C. HP Moonshot
- D. HP storeServ

Correct Answer: D

Section: (none)

Explanation

Explanation/Reference:

Reference:

<http://www8.hp.com/in/en/products/data-storage/3parstoreserv.html>

QUESTION 33

Your customer recently purchased an HP ConvergedSystem 300 for Virtualization solution. Which key elements from the solution management software can be used to manage their solution? (Select two.)

- A. HP 3PAR StoreServ management software
- B. HP Cloud Server Automation
- C. HP OneView
- D. HP Helion Portal
- E. HP StoreVirtual VSA management software

Correct Answer: AC

Section: (none)

Explanation

Explanation/Reference:

QUESTION 34

Which HP services are available for HP Converged Infrastructure solutions? (Select two.)

- A. HP Datacenter Care services
- B. HP Proactive Care services
- C. HP Helion Professional services
- D. HP Converged Infrastructure Care services
- E. HP Helion Enterprise services

Correct Answer: BE

Section: (none)

Explanation

Explanation/Reference:

Reference:

<http://www8.hp.com/in/en/products/data-storage/3parstoreserv.html>

QUESTION 35

Which user interface is used to assign a provider network to an instance in HP CloudSystem Foundation?

- A. HP Helian Portal
- B. HP CloudSystem Portal
- C. HP OneView
- D. HP CloudSystem Console

Correct Answer: D

Section: (none)

Explanation

Explanation/Reference:

Reference:

<http://h20564.www2.hp.com/hpsc/doc/public/display?docId=c04273697>

QUESTION 36

What are the key business benefits of moving to a hybrid cloud? (Select two.)

- A. cost-effective service delivery for peak demand
- B. outsourced third-party management
- C. increased security
- D. ability to use an existing infrastructure
- E. government regulation compliance

Correct Answer: BD

Section: (none)

Explanation

Explanation/Reference:

QUESTION 37

What is the definition of a network set in HP OneView?

- A. a set of Logical Interconnect Groups
- B. a set of server profiles
- C. a set of VLANs
- D. a set of network downlink ports

Correct Answer: D

Section: (none)

Explanation

Explanation/Reference:

Reference:

<http://www8.hp.com/h20195/V2/getpdf.aspx/4AA5-1386ENW.pdf?ver=2.0>

QUESTION 38

Which functionality does HP CloudSystem Foundation provide?

- A. It provides a wired-once, virtual, and highly scalable network fabric, to consolidate the network infrastructure.
- B. It integrates storage and networking at the administration level, as well as at the architect and user levels.
- C. It reduces and controls energy usage by delivering power and cooling to the data center on demand.
- D. It provides a common management platform that extends from infrastructure to application across servers, storage, and network.

Correct Answer: A

Section: (none)

Explanation

Explanation/Reference:

Reference:

http://www.hp.com/hpinfo/newsroom/press_kits/2011/InteropLasVegas2011/DCRA.pdf

QUESTION 39

A customer wants to be able to maintain consistent operating system patch levels. Which CloudSystem software component manages compliance and enforces software policies?

- A. Server Automation
- B. SiteScope
- C. Universal Configuration Management Database
- D. Aggregation Platform for SaaS

Correct Answer: D

Section: (none)

Explanation

Explanation/Reference:

QUESTION 40

What abstracts the physical switched network and uses high-level policies instead of device-level configurations?

- A. Spanning Tree Protocol
- B. Software Defined Networking
- C. Virtual Connect
- D. VLAN tagging

Correct Answer: C

Section: (none)

Explanation

Explanation/Reference:

Reference:

http://www.hp.com/hpinfo/newsroom/press_kits/2011/InteropLasVegas2011/DCRA.pdf

QUESTION 41

Which hypervisors are supported in HP CloudSystem Foundation? (Select two.)

- A. Citrix XenServer
- B. HP CloudSystem Virtual Machine Manager
- C. Oracle VirtualBox
- D. VMware vSphere
- E. HP Helion Virtual Machine Manager
- F. Red Hat KVM

Correct Answer: BE

Section: (none)

Explanation

Explanation/Reference:

QUESTION 42

Which user interface is used to define a new provider network in HP CloudSystem Foundation?

- A. HP OneView
- B. HP CloudSystem Console
- C. HP CloudSystem Portal
- D. HP Helion Portal

Correct Answer: C

Section: (none)

Explanation

Explanation/Reference:

Reference:

<http://h20564.www2.hp.com/hpsc/doc/public/display?docId=c04273697>

QUESTION 43

Match the term with its definition.

Hot Area:

Monitoring	<div>The process of collecting server, storage, network, and application availability and performance data ▼</div> <div>A set of actions that execute customer-specific IT tasks</div> <div>A design blueprint that specifies requirements for an infrastructure service</div> <div>The process of creating a service from a service template</div>
Workflow	<div>The process of collecting server, storage, network, and application availability and performance data ▼</div> <div>A set of actions that execute customer-specific IT tasks</div> <div>A design blueprint that specifies requirements for an infrastructure service</div> <div>The process of creating a service from a service template</div>
Provisioning	<div>The process of collecting server, storage, network, and application availability and performance data ▼</div> <div>A set of actions that execute customer-specific IT tasks</div> <div>A design blueprint that specifies requirements for an infrastructure service</div> <div>The process of creating a service from a service template</div>
Service Template	<div>The process of collecting server, storage, network, and application availability and performance data ▼</div> <div>A set of actions that execute customer-specific IT tasks</div> <div>A design blueprint that specifies requirements for an infrastructure service</div> <div>The process of creating a service from a service template</div>

Correct Answer:

Monitoring	<div> <div>The process of collecting server, storage, network, and application availability and performance data ▼</div> <div>A set of actions that execute customer-specific IT tasks</div> <div>A design blueprint that specifies requirements for an infrastructure service</div> <div>The process of creating a service from a service template</div> </div>
Workflow	<div> <div>The process of collecting server, storage, network, and application availability and performance data ▼</div> <div>A set of actions that execute customer-specific IT tasks</div> <div>A design blueprint that specifies requirements for an infrastructure service</div> <div>The process of creating a service from a service template</div> </div>
Provisioning	<div> <div>The process of collecting server, storage, network, and application availability and performance data ▼</div> <div>A set of actions that execute customer-specific IT tasks</div> <div>A design blueprint that specifies requirements for an infrastructure service</div> <div>The process of creating a service from a service template</div> </div>
Service Template	<div> <div>The process of collecting server, storage, network, and application availability and performance data ▼</div> <div>A set of actions that execute customer-specific IT tasks</div> <div>A design blueprint that specifies requirements for an infrastructure service</div> <div>The process of creating a service from a service template</div> </div>

Section: (none)

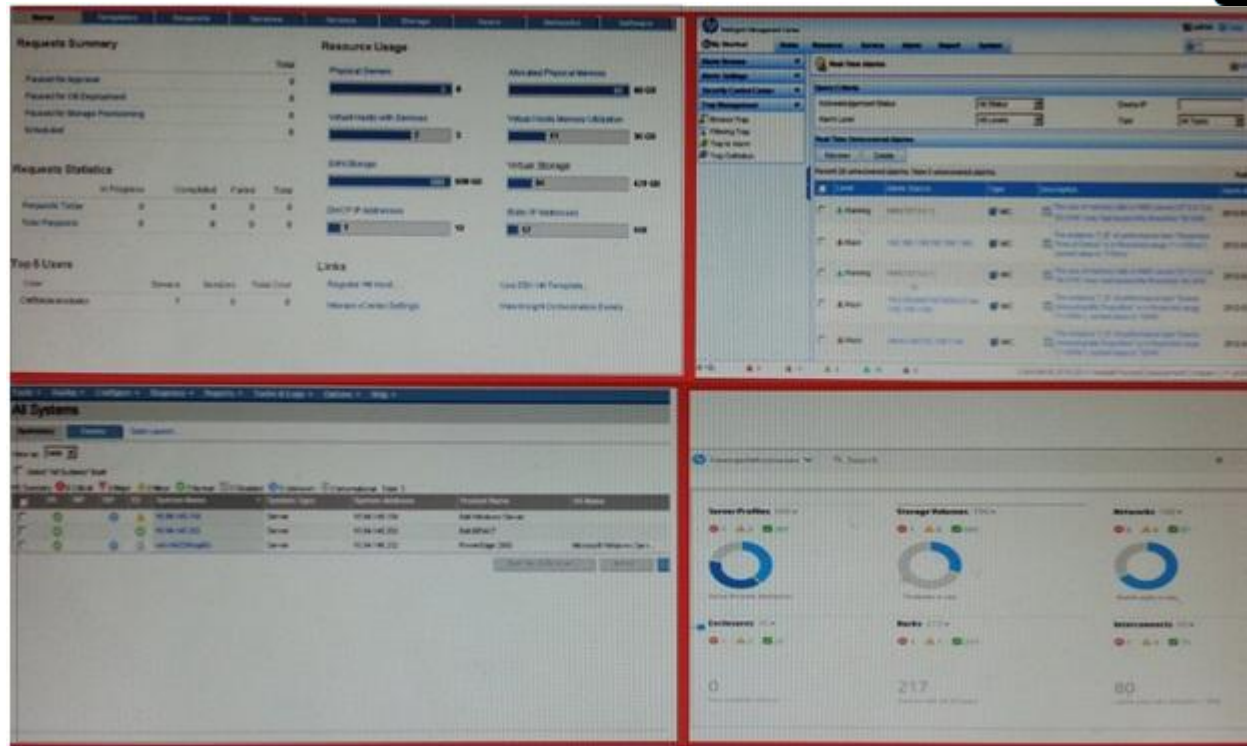
Explanation

Explanation/Reference:

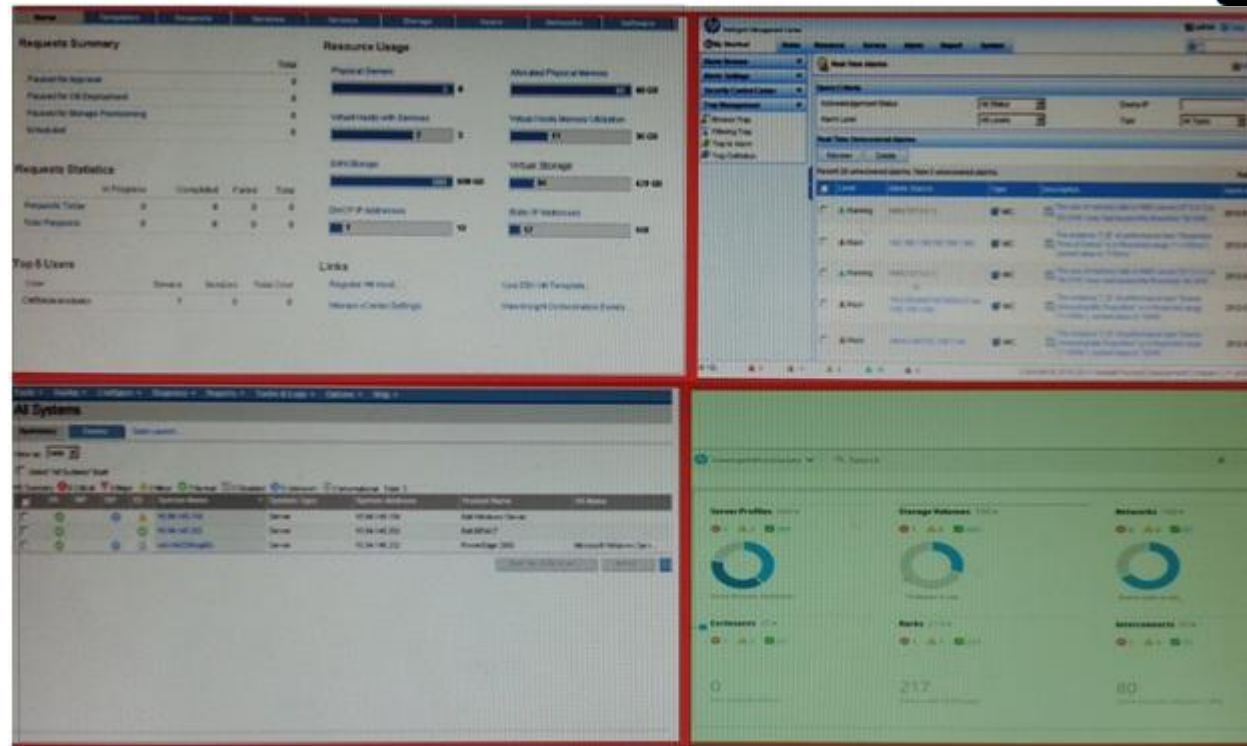
QUESTION 44

Select the screenshot that shows the management dashboard for HP OneView.

Hot Area:



Correct Answer:



Section: (none)
Explanation

Explanation/Reference:

QUESTION 45

Click on the portal entry that allows a customer to order services and manage their own service instances within HP CloudSystem.

Hot Area:



Correct Answer:



Section: (none)
Explanation

Explanation/Reference:

QUESTION 46

A customer tells you during a cloud workshop that they are interested in taking the most practical steps to move their traditional data center to a private cloud. Most of their environment is running on standard Windows-based ProLiant DL servers with local storage.

Place the steps below in the sequence that would be most practical to move your customer to a private cloud.

Select and Place:

Self Service Applications	1	
Virtualize and automate	2	
Self Service Infrastructure	3	
Standardize and consolidate	3	

Correct Answer:

	1	Standardize and consolidate
	2	Virtualize and automate
	3	Self Service Infrastructure
	3	Self Service Applications

Section: (none)

Explanation

Explanation/Reference:

QUESTION 47

Match the service model with its example.

Hot Area:

Paas	<div><div></div><div>Server Running Windows</div><div>Hosted Exchange</div><div>LAMP Stack</div></div>
IaaS	<div><div></div><div>Server Running Windows</div><div>Hosted Exchange</div><div>LAMP Stack</div></div>
SaaS	<div><div></div><div>Server Running Windows</div><div>Hosted Exchange</div><div>LAMP Stack</div></div>

Correct Answer:

Paas	<div><div></div><div>Server Running Windows</div><div>Hosted Exchange</div><div>LAMP Stack</div></div>
IaaS	<div><div></div><div>Server Running Windows</div><div>Hosted Exchange</div><div>LAMP Stack</div></div>
SaaS	<div><div></div><div>Server Running Windows</div><div>Hosted Exchange</div><div>LAMP Stack</div></div>

Section: (none)

Explanation

Explanation/Reference: