

**HP0-Y52.exam**

Number: HP0-Y52  
Passing Score: 800  
Time Limit: 120 min



**HP0-Y52**

**Applying HP FlexNetwork Fundamentals**

**Exam A****QUESTION 1**

What is one difference between Network Segment-based discovery and ARP-based discovery on HP Intelligent Management Center (IMC)?

- A. With Network Segment-based discovery, IMC can discover multiple devices. With ARP-based discovery, IMC can only discover one device; the administrator must re-run ARP-based discovery to discover a second device.
- B. With Network Segment-based discovery, network device login settings must match login settings on IMC. With ARP-based discovery, only ARP settings must match.
- C. With Network Segment-based discovery, network device SNMP settings must match SNMP settings on IMC. With ARP-based discovery, only ARP settings must match.
- D. With Network Segment-based discovery, the administrator enters a range of IP addresses to discover. With ARP-based discovery, the administrator enters one seed IP address, and IMC dynamically learns more IP addresses to discover.

**Correct Answer:** D

**Section:** (none)

**Explanation**

**Explanation/Reference:**

**QUESTION 2**

Refer to the exhibit.

```
[Comware] display ip routing-table
Routing Tables: Public
Destinations : 7 Routes : 7
```

Destination/Mask	Proto	Pre	Cost	NextHop	Interface
10.2.0.0/18	OSPF	10	110	10.1.1.5	Vlan3
10.2.64.0/18	OSPF	10	130	10.1.1.13	Vlan5
10.2.128.0/17	OSPF	10	30	10.1.1.5	Vlan3
10.2.192.0/17	OSPF	10	40	10.1.1.13	Vlan5

<-output omitted->

The exhibit shows partial output of the HP Comware `display ip routing-table` command. Note the *Pre* or *preference* column.

On an HP ProVision switch, what is the corresponding term used for the *Pre* column in the Comware output shown in the exhibit?

- A. protocol ranking
- B. administrative distance
- C. cost
- D. metric

**Correct Answer:** B

**Section:** (none)

**Explanation**

**Explanation/Reference:**

### QUESTION 3

A server connects to a port on an HP Comware switch. The network administrator wants to ensure that:

- the port remains forwarding during Multiple Spanning Tree Protocol (MSTP) topology changes, and
- changes in the port status do not cause MSTP topology changes.

Which statement describes how the administrator can accomplish this?

- A. The administrator must manually configure the port as an STP edge port.
- B. The administrator can lower the port's root path cost to zero.
- C. The administrator can accept the default behavior of auto-edge.
- D. The administrator can configure the port as an MSTP master port.

**Correct Answer:** B

**Section:** (none)

**Explanation**

**Explanation/Reference:**

### QUESTION 4

Refer to the exhibit.

```
<Switch> display port trunk
Interface          PVID    VLAN passing
GE1/0/19           1       1,11
```

The network administrator has configured this port to permit all VLANs. The output in the exhibit indicates that the port is only passing VLANs 1 and 11. The administrator wants the port to pass VLAN 12 as well.

What should the administrator do to accomplish this?

- A. Enable IP routing.
- B. Add VLAN 12 to the switch.
- C. Change the port link-type to hybrid.
- D. Change the port link-type to access.

**Correct Answer:** A

**Section:** (none)

**Explanation**

**Explanation/Reference:**

## QUESTION 5

```
<Switch-1> display ip routing-table protocol static
Public Routing Table : Static
Summary Count : 1

Static Routing table Status : < Active>
Summary Count : 1

Destination/Mask Proto Pre Cost NextHop Interface
10.1.20.0/24      Static 60 0 10.1.255.5 XG1/0/25

<Switch-2> display ip routing-table protocol static
Public Routing Table : Static
Summary Count : 2

Static Routing table Status : < Active>
Summary Count : 2

Destination/Mask Proto Pre Cost NextHop Interface
10.1.10.0/24     Static 60 0 10.1.255.6 XG1/0/25
10.1.20.0/24     Static 60 0 10.1.255.10 XG1/0/26
```

```
<Switch-3> display ip routing-table protocol static
Public Routing Table : Static
Summary Count : 2

Static Routing table Status : < Active>
Summary Count : 2

Destination/Mask Proto Pre Cost NextHop
10.1.10.0/24     Static 60 0 10.1.255.
10.1.20.0/24     Static 60 0 10.1.255.

<Switch-4> display ip routing-table protocol static
Public Routing Table : Static
Summary Count : 1

Static Routing table Status : < Active>
Summary Count : 1

Destination/Mask Proto Pre Cost NextHop
10.1.10.0/24     Static 60 0 10.1.255.9
```

All of the switches in Exhibit 1 are routing switches. Exhibit 2 shows the routes configured on these switches. The direct (connected) routes are not shown, but assume that links are configured with the IP addresses shown in Exhibit 1.

The network administrator wants to protect communications between clients and servers in case Link 1 fails. What should the administrator do to protect these communications in this failover situation?

- A. Add a redundant route to 10.1.10.0/24 on Switch-4 and a redundant route to 10.1.20.0/24 on Switch-1.
- B. Add a redundant route to 10.1.20.0/24 on Switch-1 and a redundant route to 10.1.20.0/24 on Switch-2.
- C. Add a redundant route to 10.1.10.0/24 on Switch-1 and a redundant route to 10.1.20.0/24 on Switch-4.
- D. Add a redundant route to 10.1.20.0/24 on Switch-1 and a redundant route to 10.1.10.0/24 on Switch-2.

**Correct Answer:** A

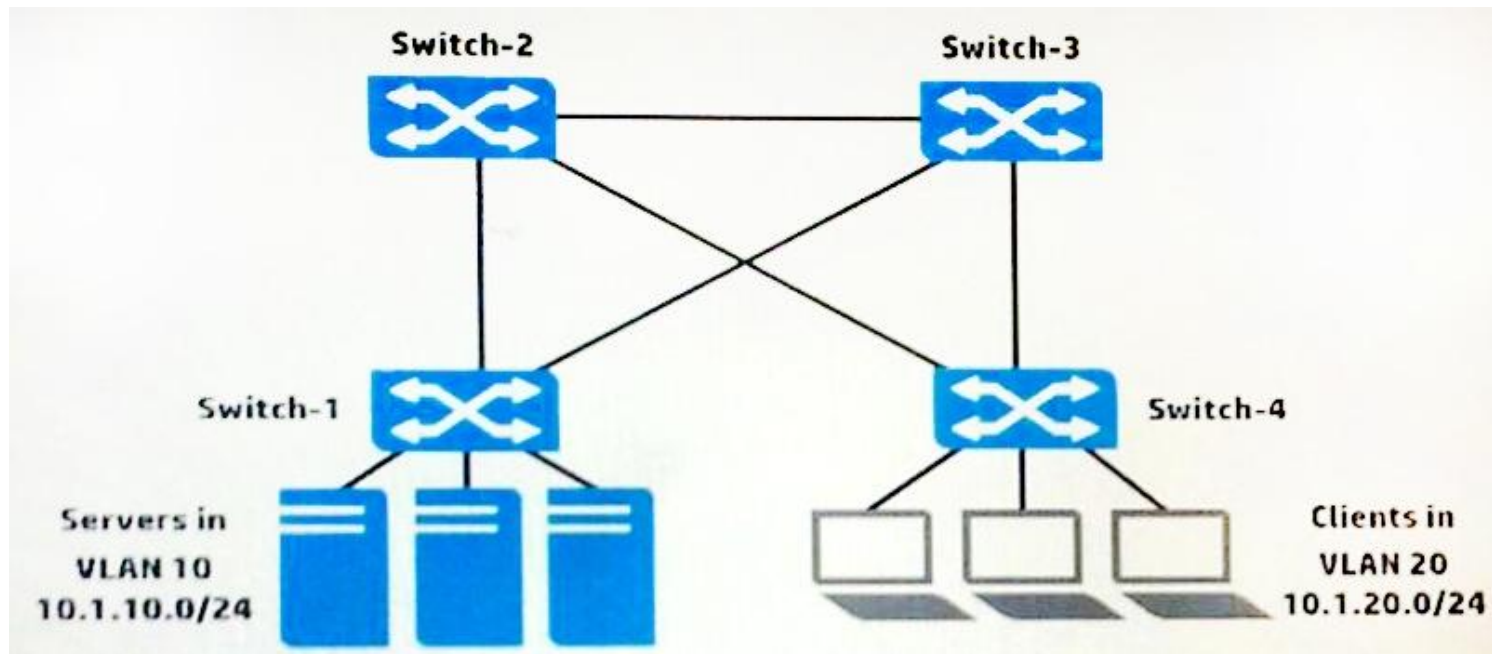
**Section:** (none)

**Explanation**

**Explanation/Reference:**

## QUESTION 6

Refer to the exhibit.



The switches in the exhibit are all HP Comware switches that run Multiple Spanning Tree Protocol (MSTP).

The network administrator wants to ensure that each switch-to-switch link is in its own subnet. The administrator also wants to make sure that all of the links are available for routing during normal operation. How should the administrator configure the physical switch-to-switch interfaces to accomplish these goals?

- A. Configure them as trunk ports that permit VLANs 10 and 20.
- B. Configure them as any type of port, and make sure spanning tree is enabled on them.
- C. Configure them as route-mode ports.
- D. Configure them as hybrid ports that carry VLAN 10 and 20 as untagged.

**Correct Answer: A**

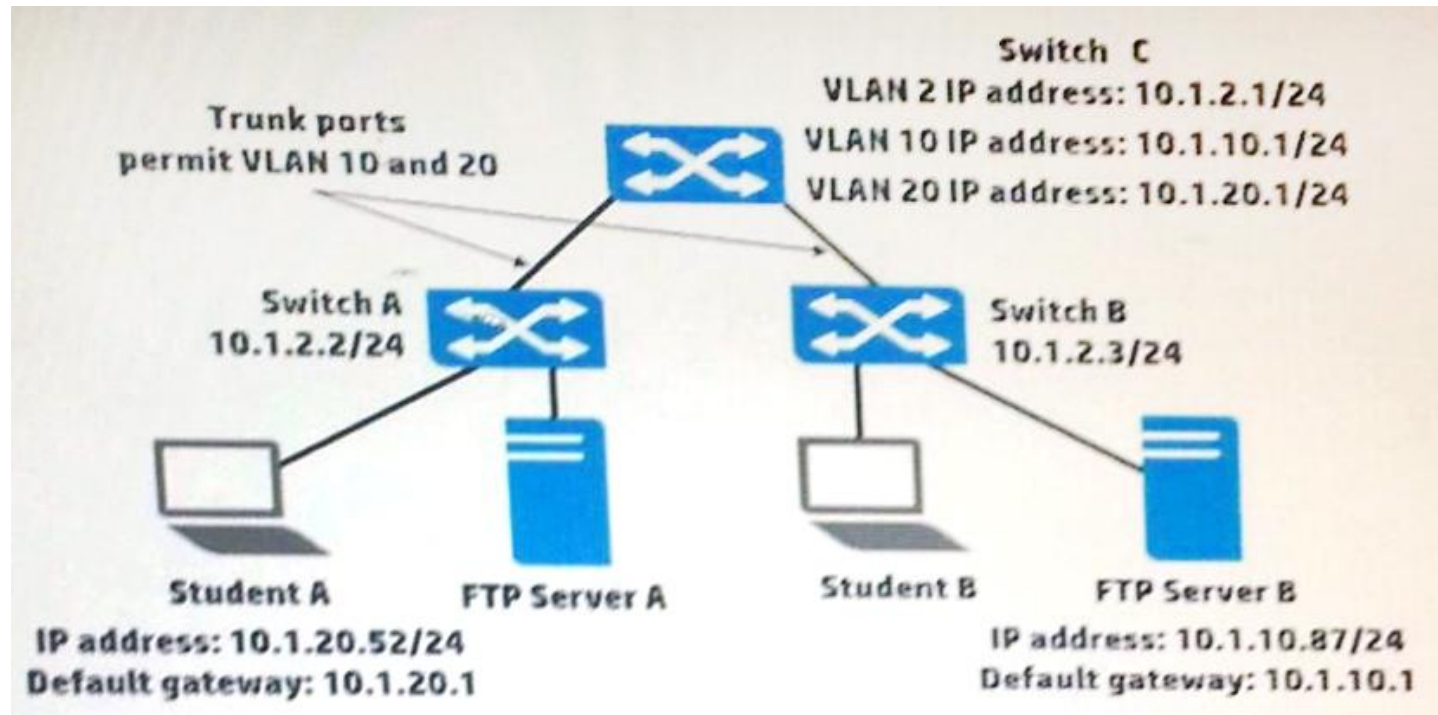
**Section: (none)**

**Explanation**

**Explanation/Reference:**

**QUESTION 7**

Refer to the exhibit.



Assume that Student A's ARP table is empty. Student A is preparing to send an FTP packet to FTP Server B and needs to discover the proper destination MAC address. For which IP address does Student A send an ARP request?

- A. 10.1.10.1
- B. 10.1.10.87
- C. 10.1.2.2
- D. 10.1.20.1

**Correct Answer:** D

**Section:** (none)

**Explanation**

**Explanation/Reference:**

**QUESTION 8**

Which HP software platform provides centralized network management, monitoring, and configuration of wired and wireless network infrastructure devices, as well as traffic monitoring, user management, and other capabilities?

- A. HP IntelligentManagement Center (IMC)
- B. HP Intelligent Resilient Framework (IRF)
- C. HP Virtual Cloud Networking (VCN)
- D. HP Virtual Connect FlexFabric

**Correct Answer:** A

**Section:** (none)

**Explanation**

**Explanation/Reference:**

**QUESTION 9**

Which statement is true about wireless technologies?

- A. 802.11b/g uses an 802.11a-compatible frequency
- B. 802.11a has higher data rates than 802.11g does.
- C. 802.11n users MIMO technology to improve throughput
- D. 802.11a uses the less crowded 2.4 GHz range

**Correct Answer:** C

**Section:** (none)

**Explanation**

**Explanation/Reference:**

**QUESTION 10**

A network administrator enters this command on an HP ProVision switch with IP routing enabled:

```
ip route 0.0.0.0/0 10.1.1.1 metric 10 distance 10
```

This is the only IP route to 0.0.0.0/0 on the switch. What is the effect?

- A. The switch uses this route for all traffic that does not match a specific route in its routing table.
- B. The switch uses this route for all traffic unless the traffic matches a route with a lower administrative distance than 10.

- C. The switch uses this route to route all traffic from 10.1.1.1.
- D. The switch uses this route for all traffic unless the traffic matches a route with a lower cost than 10.

**Correct Answer:** C

**Section:** (none)

**Explanation**

**Explanation/Reference:**

#### **QUESTION 11**

##### **HOTSPOT**

Match the description with the 802.11 standard. (Each option may be used only once.)

**Hot Area:**

**Supports channel bonding**

802.11n
802.11ac
802.11ax
802.11be

**Supports data rates up to 54 Mbps and operates in the 2.4 GHz band**

802.11b
802.11g
802.11n
802.11ac

**Supports data rates up to 54 Mbps and operates in the 5 GHz band**

802.11a
802.11n
802.11ac
802.11ax

**Supports only data rates up to 11 Mbps**

802.11b
802.11g
802.11n
802.11ax

**Correct Answer:**

Supports channel bonding

802.11n
802.11ac
802.11ax
802.11be

Supports data rates up to 54 Mbps and operates in the 2.4 GHz band

802.11b
802.11g
802.11n
802.11ac

Supports data rates up to 54 Mbps and operates in the 5 GHz band

802.11a
802.11n
802.11ac
802.11ax

Supports only data rates up to 11 Mbps

802.11b
802.11g
802.11n
802.11ax

Section: (none)

Explanation

Explanation/Reference:

#### QUESTION 12

A network administrator is managing an HP Comware switch from the CLI. Which action can the administrator only perform in User view?

- A. verifying connectivity with traceroute or ping tools
- B. creating a VLAN and assigning ports to it
- C. executing `display` commands
- D. viewing files located in flash memory

Correct Answer: D

Section: (none)

Explanation

Explanation/Reference:

#### QUESTION 13

Refer to the exhibit.

```
Provision# show vlans ports 1
```

```
Status and Counters - VLAN Information - for ports 1
```

VLAN ID	Name		Status	Voice	Jumbo
-----	-----	+	-----	-----	-----
1	VLAN1		Port-based	No	No
10	VLAN10		Port-based	No	No
20	VLAN20		Port-based	No	No

A network administrator enters the command shown in the exhibit to check the VLANs on an HP ProVision switch interface. The administrator wants to

discover which VLANs are tagged and untagged on the port. What can the administrator do to accomplish this?

- A. Enter the `show vlans ports 1` command but add `detail` at the end of the command.
- B. View all VLANs on the switch by entering the `show vlans` command without a VLAN ID.
- C. View the physical interface by entering the `show interface brief` command.
- D. Enter the `show interfaces all` command.

**Correct Answer:** A

**Section:** (none)

**Explanation**

**Explanation/Reference:**

#### QUESTION 14

Which HP device or port type can modify, read, and respond with frames that include 802.1Q VLAN tags?

- A. Comware *trunk* ports
- B. Comware *route-mode* ports
- C. ProVision *loopback* ports
- D. ProVision *untagged* ports

**Correct Answer:** A

**Section:** (none)

**Explanation**

**Explanation/Reference:**

#### QUESTION 15

Refer to the exhibit.

```
<Comware> dir
Directory of cfa0:/
```

```
 0 drw-      6985954   Apr 26  2007  21:06:29  logfile
 1 -rw-      3141842   Apr 27  2007  04:37:17  main.app
 2 -rw-         1518   Apr 26  2007  12:05:38  config.cfg
 3 -rw-         2045   May 04  2007  15:50:01  backcfg.cfg
 4 -rwh         428   Apr 27  2007  16:41:21  hostkey
 5 -rwh         572   Apr 27  2007  16:41:31  serverkey
14605 KB total (1955 KB free)
```

```
<Comware> dir /all
Directory of cfa0:/
```

```
 0 drw-      6985954   Apr 26  2007  21:06:29  logfile
 1 -rw-      3141842   Apr 27  2007  04:37:17  main.app
 2 -rw-         1518   Apr 26  2007  12:05:38  config.cfg
 3 -rw-         2045   May 04  2007  15:50:01  backcfg.cfg
 4 -rwh         428   Apr 27  2007  16:41:21  hostkey
 5 -rwh         572   Apr 27  2007  16:41:31  serverkey
 6 -rw-     2737556   Oct 12  2007  01:31:44  [old.app]
14605 KB total (1955 KB free)
```

A network administrator is upgrading the operating system on an HP Comware switch. When copying the new image from a TFTP server to the flash of the switch, the process fails because there is not enough flash to store the new operating system. The new operating system is 3.2MB in size. The administrator then executes the commands shown in the exhibit above.

Which action should the administrator perform to solve this problem?

- A. Execute the `reset recycle-bin` command, and perform the TFTP transfer again.
- B. Execute the `clear flash` command, and perform the TFTP transfer again.
- C. Reformat flash, and perform the TFTP transfer again.
- D. Execute the `delete old.app` command, and perform the TFTP transfer again.

**Correct Answer:** C

**Section:** (none)

**Explanation**

**Explanation/Reference:**

#### QUESTION 16

A company wants a modular switch for the access layer at its main campus and for several branch offices. Which HP Switch Series is best suited for this role?

- A. HP 11900
- B. HP 12900
- C. HP 5900
- D. HP 5400R

**Correct Answer:** A

**Section:** (none)

**Explanation**

**Explanation/Reference:**

#### QUESTION 17

Which methods can a network administrator use to upgrade the operating system of an HP ProVision switch? (Select two.)

- A. USB
- B. FTP
- C. SCP
- D. SFTP

**Correct Answer:** CD

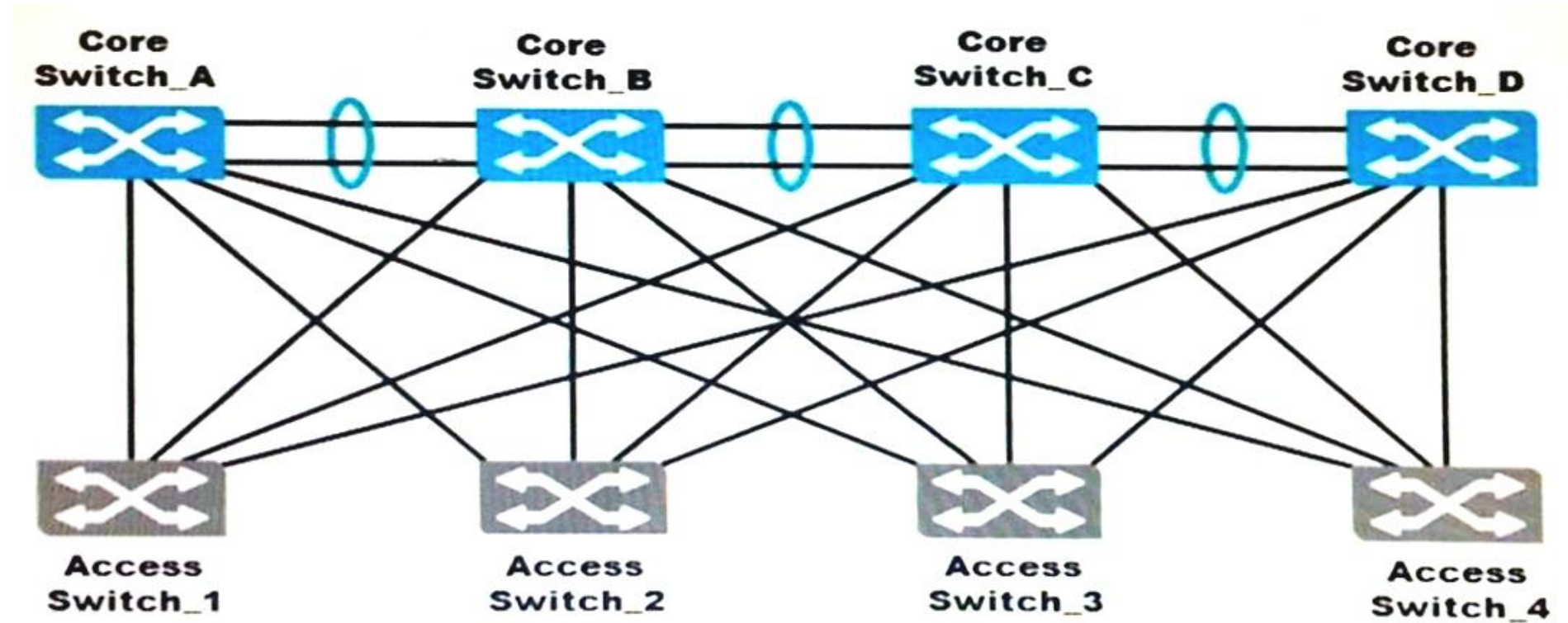
**Section:** (none)

**Explanation**

Explanation/Reference:

**QUESTION 18**

Refer to the exhibit.



The topology shown in this exhibit implements Multiple Spanning Tree Protocol (MSTP), where all the switches are in the same region.

How many MSTP instances, besides the Internal Spanning Tree (IST) or instance 0, does this network need in order to have effective load sharing on the uplinks from the access switches?

- A. two
- B. three
- C. four
- D. five

**Correct Answer:** D

**Section:** (none)

**Explanation**

**Explanation/Reference:**

**QUESTION 19**

Which command can a network administrator execute on an HP Comware switch to manage configuration files?

- A. delete
- B. startup-default
- C. write file
- D. write memory

**Correct Answer:** B

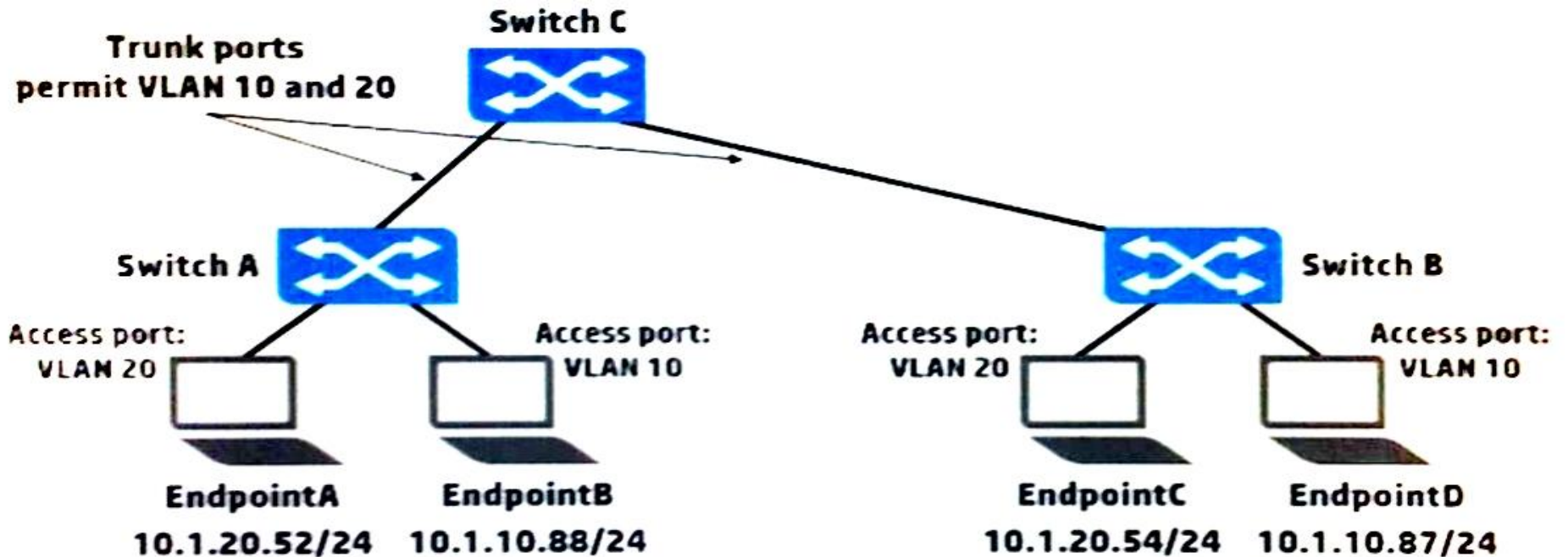
**Section:** (none)

**Explanation**

**Explanation/Reference:**

**QUESTION 20**

Refer to the exhibit.



Which endpoint or endpoints receive broadcast ARP requests sent by EndpointA?

- A. EndpointB, EndpointC, and EndpointD
- B. EndpointB only
- C. EndpointB and EndpointC only
- D. EndpointC only

**Correct Answer:** A

**Section:** (none)

**Explanation**

**Explanation/Reference:**

#### QUESTION 21

Refer to the exhibits.

Exhibit 1

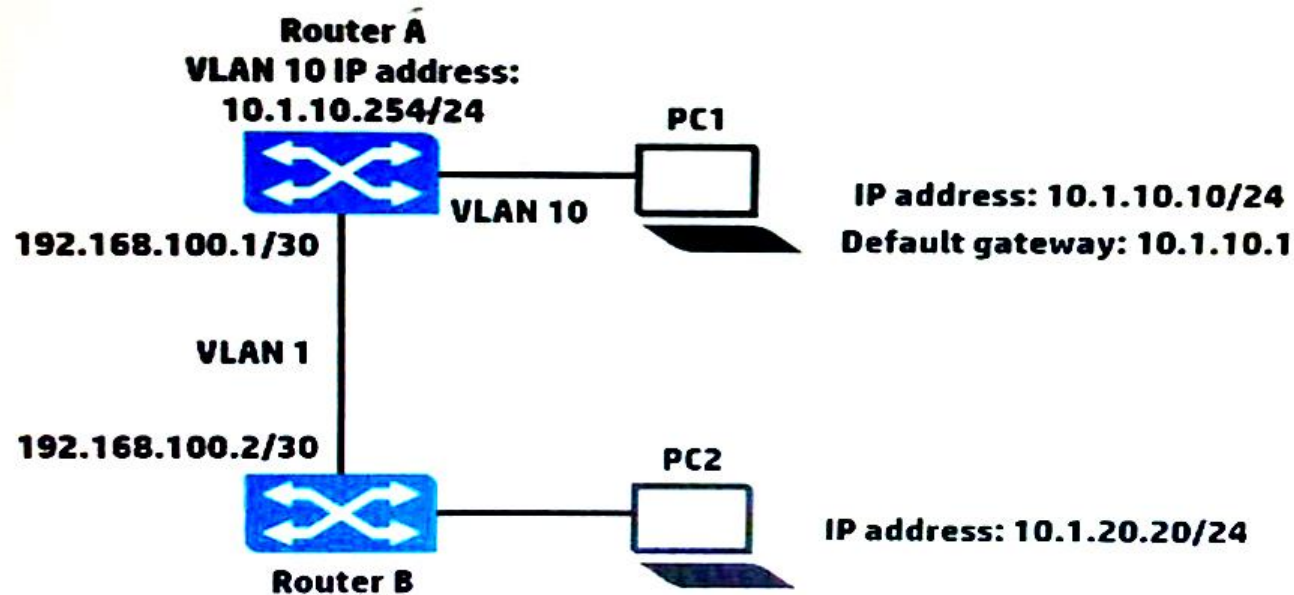


Exhibit 2

#### Router A IP routing table

Destination Mask	Proto	NextHop	Interface
10.1.10.0/24	Direct	10.1.10.254	vlan10
10.1.20.0/24	Static	192.168.100.2	vlan1
192.168.100.0/30	Direct	192.168.100.1	vlan1

PC1 cannot reach PC2. Based on the exhibits, what could be causing this error?

- A. PC1 has the wrong IP address for its default gateway setting.
- B. Router A has a direct route, instead of a static route, to 10.1.10.0/24.
- C. The next hop address for the 10.1.20.0/24 route is incorrect.
- D. Router A has an invalid subnet mask for the VLAN 1 subnet.

**Correct Answer: B**

**Section: (none)**

**Explanation****Explanation/Reference:****QUESTION 22**

What does the `traceroute` command identify on an HP ProVision switch?

- A. each Layer 3 device between the switch and a destination
- B. the path to each router connected to the switch
- C. debug output tracing entries to the routing table
- D. each physical device between the switch and a destination

**Correct Answer:** B

**Section:** (none)

**Explanation****Explanation/Reference:**

Reference: <http://www.manualslib.com/manual/73005/Hp-Procurve-2520.html?page=488>

**QUESTION 23**

An HP ProVision switch is operating at its factory default settings. A network administrator connects the switch to a VLAN with a DHCP server. The switch-to-switch connection is carrying untagged traffic. The administrator wants to log in to the switch CLI using Telnet.

How should the administrator contact the switch and log in?

- A. Contact the switch at its DHCP-assigned IP address and log in with the default password *hp*.
- B. Contact the switch at its default IP address 192.168.1.1/24 and log in without entering a password.
- C. Contact the switch at its DHCP-assigned IP address and log in without entering a password.
- D. Contact the switch at its default IP address 192.168.1.1/24 and log in with the default password *hp*.

**Correct Answer:** B

**Section:** (none)

**Explanation****Explanation/Reference:****QUESTION 24**

Which statement correctly defines the management capabilities of an HP MultiService Mobility (MSM) access point (AP)?

- A. The AP only supports controlled mode.
- B. The AP operates in autonomous mode by default, but can be changed to controlled mode.
- C. The AP operates in controlled mode by default, but can be changed to autonomous mode.
- D. The AP only supports autonomous mode.

**Correct Answer:** C

**Section:** (none)

**Explanation**

**Explanation/Reference:**

#### **QUESTION 25**

Two switches are members in an active Intelligent Resilient Framework (IRF) virtual device. A network administrator joins a third switch to the IRF virtual device. Which switch is now the master?

- A. The current master of the IRF virtual device always remains the master.
- B. The switch with the lowest member ID always becomes the master.
- C. The switch with the lowest priority value always becomes the master.
- D. The switch with the highest priority value always becomes the master.

**Correct Answer:** D

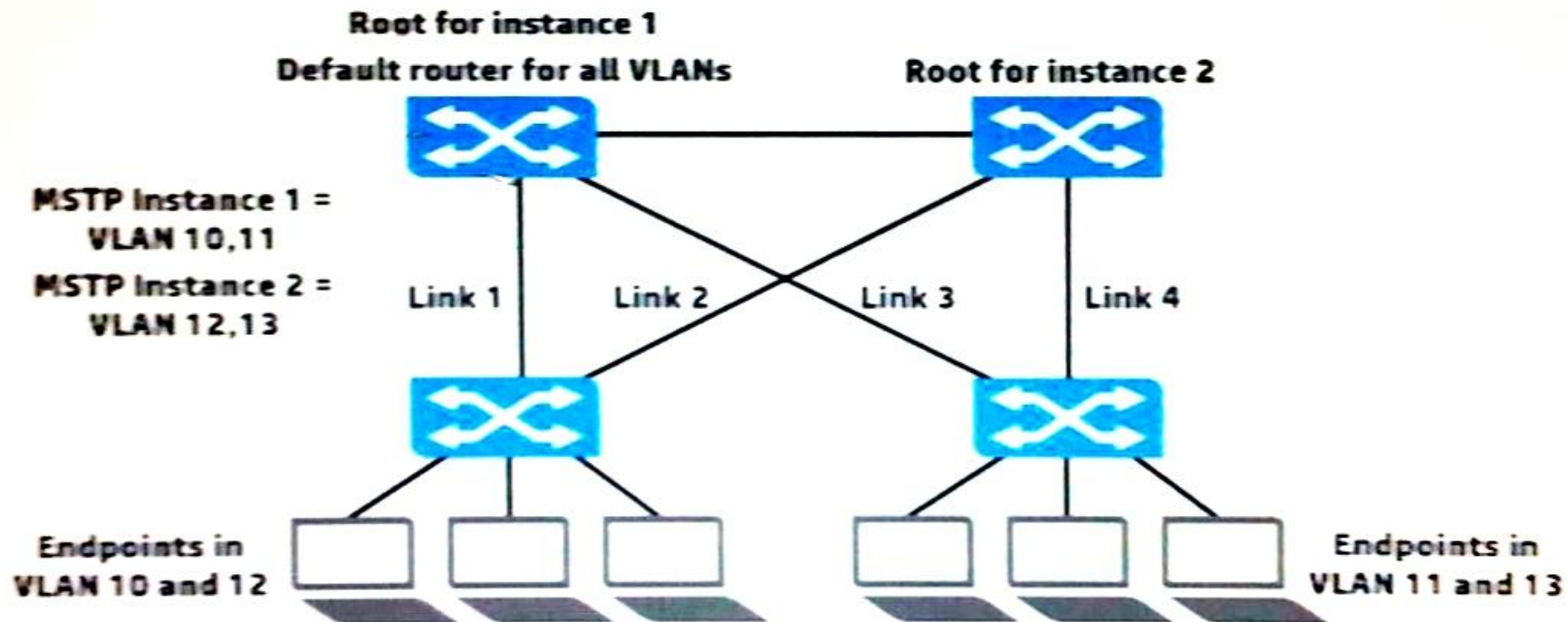
**Section:** (none)

**Explanation**

**Explanation/Reference:**

#### **QUESTION 26**

Refer to the exhibit.



The network administrator is setting up Multiple Spanning Tree Protocol (MSTP) with the settings shown in the exhibit. All the switches are in the same region. The administrator has requested help determining which VLANs each switch-to-switch link should carry. What is a recommendation for this topology?

- A. To prevent disruptions during link failure, Links 1-4 should carry VLANs 10-13.
- B. To optimize forwarding, Links 1 and 2 should only carry VLANs 10 and 12, and Links 3 and 4 should only carry VLANs 11 and 13.
- C. To ensure compatibility with MSTP, Links 1-4 should be untagged in VLAN 1 and have no tagged VLAN assignments.
- D. To optimize forwarding, Links 1 and 3 should only carry VLANs 10 and 11, and Links 2 and 4 should only carry VLANs 12 and 13.

**Correct Answer:** D

**Section:** (none)

**Explanation**

**Explanation/Reference:**

#### QUESTION 27

Refer to the exhibit.

```
<Comware> display link-aggregation verbose
```

```
Loadsharing Type: Shar -- Loadsharing, NonS -- Non-Loadsharing
Port Status: S -- Selected, U -- Unselected
Flags: A -- LACP_Activity, B -- LACP_Timeout, C -- Aggregation,
       D -- Synchronization, E -- Collecting, F -- Distributing,
       G -- Defaulted, H -- Expired
```

```
Aggregation Interface: Bridge-Aggregation1
Aggregation Mode: Dynamic
Loadsharing Type: Shar
System ID: 0x8000, d07e-28ce-c94f
```

```
Local:
```

Port	Status	Priority	Oper-Key	Flag
GE1/0/3	S	32768	1	{ACDEFG}
GE1/0/4	U	32768	1	{ACG}

```
<-output omitted->
```

A network administrator has implemented link aggregation on an HP Comware switch using LACP. The two ports are functioning at the data link layer between the Comware switch and its neighboring switch. The administrator executes the `display link-aggregation verbose` command and notices the flags shown in the exhibit.

What does this indicate?

- A. The links are up, but both links are blocked by LACP.
- B. The links are up, but are blocked because they are using duplicate operational keys.

- C. The links are up, but LACP negotiation has failed on them.
- D. The links are up, but LACP is not configured on this link aggregation.

**Correct Answer:** D

**Section:** (none)

**Explanation**

**Explanation/Reference:**

#### QUESTION 28

Refer to the exhibit.

```
[Comware] telnet server enable
[Comware] user-interface vty 0 15
[Comware-ui-vty0-15] authentication-mode password
[Comware-ui-vty0-15] set authentication password cipher password1
[Comware-ui-vty0-15] user privilege level 1
[Comware-ui-vty0-15] quit
[Comware] super authentication-mode local
[comware] super password level 3 cipher password2
```

An HP Comware switch is using its default user-interface settings. The network administrator then enters the commands shown in the exhibit. What correctly describes how an admin user must now log in?

- A. When the admin user logs in to the console port, the admin user must enter either a password of *password1* or *password2*.
- B. When the admin user logs in using Telnet, the admin user must enter either a password of *password1* or *password2*.
- C. When the admin logs in using Telnet, the admin user must enter a password of *password1* and is given level 1 privileges.
- D. When the admin user logs in to the console port, the admin user must enter a password of *password1* and is given level 3 privileges.

**Correct Answer:** D

**Section:** (none)

**Explanation**

**Explanation/Reference:**

**QUESTION 29**

Which term refers to aggregated links on HP ProVision switches?

- A. smart linking
- B. meshing
- C. EtherChannels
- D. trunking

**Correct Answer: D**

**Section: (none)**

**Explanation**

**Explanation/Reference:**

Reference: ProCurve uses the term “Trunk” to describe a group of aggregated links. HP Port Trunking and LACP serve to allow several physical links to operate as one logical link.

**QUESTION 30**

Which credential is required to validate SNMPv2c write requests?

- A. Community string
- B. Scheme
- C. MD5 authkey
- D. AAA authentication

**Correct Answer: A**

**Section: (none)**

**Explanation**

**Explanation/Reference:**

**QUESTION 31**

A customer is implementing an access layer solution with four HP Comware switches in an Intelligent Resilient Framework (IRF) virtual device or domain. The customer expects to add two additional switches of the same model and would like to add them to the existing IRF virtual device. What must the customer verify?

- A. that the IRF virtual device has spanning tree enabled on it
- B. that the new switches are both assigned the same member ID as the master of the existing IRF virtual device

- C. that the IRF virtual device is using a daisy chain topology to provide better resilience
- D. that the switch model supports at least six switches in an IRF virtual device

**Correct Answer:** A

**Section:** (none)

**Explanation**

**Explanation/Reference:**

### QUESTION 32

A tagged frame arrives on a switch port that is not a tagged member of the VLAN indicated by the frame ID. What do fundamental VLAN operating rules require the switch to do with that frame?

- A. Ignore the VLAN tag and forward the frame, based on destination MAC address.
- B. Forward a copy of the frame to the default gateway.
- C. Attempt best effort delivery by flooding a copy of the frame to all other VLANs.
- D. Drop the frame.

**Correct Answer:** D

**Section:** (none)

**Explanation**

**Explanation/Reference:**

### QUESTION 33

A network administrator wants to disable physical interfaces 13-24 on an HP ProVision switch. How can the administrator do this?

- A. Create a named port group for interfaces 13-24. Then disable the named port group.
- B. Use the `interface <ID> disable` command. Specify 13-24 for the ID.
- C. Assign the range of interfaces to a VLAN. Then, disable the VLAN.
- D. Create a named range for interfaces 13-24. Then, disable the named range.

**Correct Answer:** D

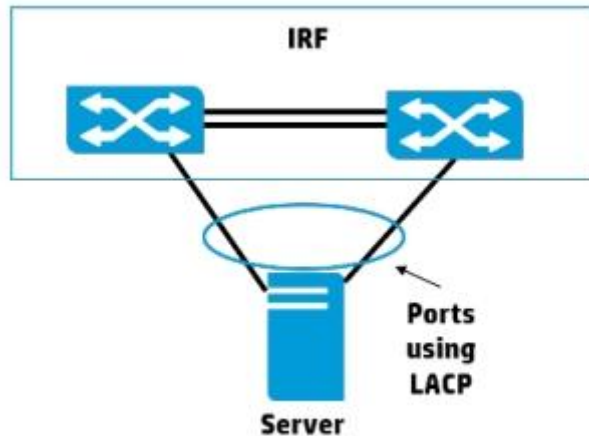
**Section:** (none)

**Explanation**

**Explanation/Reference:**

**QUESTION 34**

Refer to Exhibit.



The server shown in the exhibit requires redundant links, and The link aggregation should use LACP. What should the administrator configure on the 1RF virtual switch?

- A. a bridge aggregation interface that uses static link aggregation mode
- B. a bridge aggregation interface that uses dynamic link aggregation mode
- C. two interfaces that are set to trunk for the port-link type
- D. two interfaces that are set to hybrid for the port-link type

**Correct Answer:** B

**Section:** (none)

**Explanation**

**Explanation/Reference:**

**QUESTION 35**

Refer to the exhibit.

```
Provision-1# show version
Image stamp:
/ws/swbuilddm/KA_rel_irvine_qaoft/code/build/tam(swbuilddm_KA_rel_irvine_qaoft_re
l_irvine)
Mar 13 2013 11:26:17
KA.15.10.0011
542
Boot Image: Primary
```

What can a network administrator determine from the output in the exhibit?

- A. The switch will boot the primary software on its next boot.
- B. The switch has no software stored in the secondary slot.
- C. The switch is using the config file in the primary slot for its startup-config.
- D. The switch booted the primary software on its previous boot.

**Correct Answer: D**

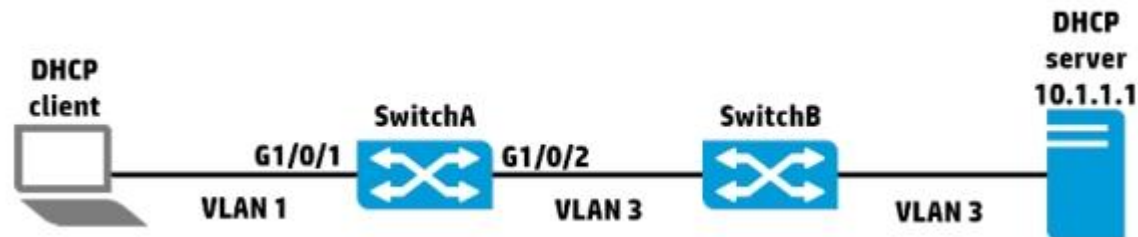
**Section: (none)**

**Explanation**

**Explanation/Reference:**

#### QUESTION 36

Refer to the Exhibit.



A network administrator needs to configure DHCP on SwitchA. Assume that SwitchA is an HPE Comware switch and is using the default settings for DHCP. The administrator configures the following information:

```
[SwitchA] dhcp relay server-group 1 ip 10.1.1.1  
[SwitchA] interface vlan-interface 1  
[SwitchA-Vlan-interface1] dhcp select relay  
[SwitchA-Vlan-interface1] dhcp relay server-select 1  
[SwitchA-Vlan-interface1] quit
```

The administrator then has the DHCP client try to acquire addressing information, but the process fails. What should the administrator do to solve this problem?

- A. Execute the routing command on SwitchA.
- B. Execute the dhcp enable command on SwitchA.
- C. Configure DHCP relay on SwitchB.
- D. Enable DHCP Snooping on SwitchA.

**Correct Answer:** B

**Section:** (none)

**Explanation**

**Explanation/Reference:**

#### QUESTION 37

A network administrator needs to restrict access to the console port of an HPE Comware switch. When a user connects to the console port and opens a terminal session, the switch should prompt the user for a password. How should the administrator configure user interfaces on the Comware switch?

- A. Set the authentication mode to password on the VTY 0 15 interfaces and then set the password on the VTY 0 15 interfaces.
- B. Set the authentication mode to scheme on the VTY 0 15 interfaces and then set the password globally.
- C. Set the authentication mode to password on the AUX 0 interface and then set the password on the AUX 0 interface.
- D. Set the authentication mode to scheme on the AUX 0 interface and then set the password globally.

**Correct Answer:** C

**Section:** (none)

**Explanation**

**Explanation/Reference:**

#### QUESTION 38

An administrator is configuring OSPF on an HP ProVision switch. What is one of the steps that the administrator must take?

- A. The administrator must create an OSPF area before assigning a VLAN interface to that area.
- B. The administrator must set a global router ID before enabling OSPF.
- C. The administrator must set an OSPF router ID before enabling OSPF.
- D. The administrator must assign a VLAN interface its IP address before specifying the corresponding network in an OSPF area.

**Correct Answer:** A

**Section:** (none)

**Explanation**

**Explanation/Reference:**

#### **QUESTION 39**

What is one difference between the 802.11g and 802.11n standards?

- A. 802.11g can operate on the 5Ghz band.
- B. 802.11n can operate on the 2.4Ghz band.
- C. 802.11n supports multiple spatial streams with MIMO.
- D. 802.11g supports channel bonding of multiple channels.

**Correct Answer:** C

**Section:** (none)

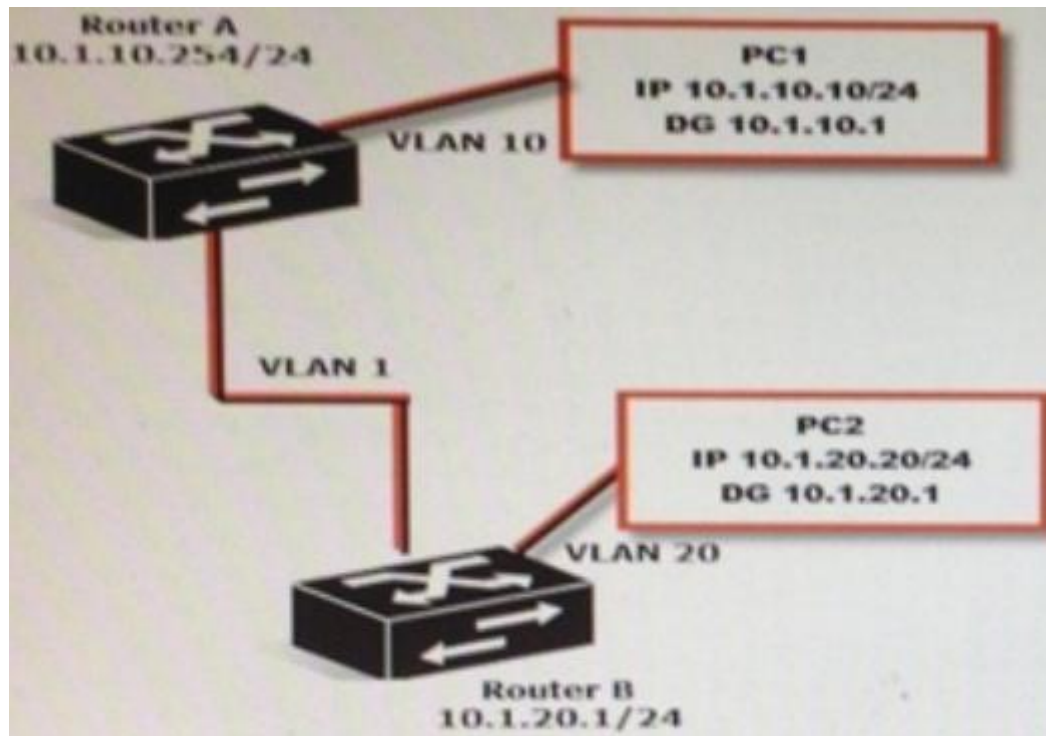
**Explanation**

**Explanation/Reference:**

#### **QUESTION 40**

Refer to the exhibit.

Exhibit: Network diagram and routing tables



Router A			
Destination/Mask	Proto	NextHop	Interface
10.1.10.0/24	Direct	10.1.10.254	vlan10
10.1.20.0/24	Static	192.168.100.2	vlan1
192.168.100.9/30	Direct	192.168.100.1	vlan1

Router B			
Destination/Mask	Proto	NextHop	Interface
10.1.10.0/24	Direct	192.168.100.1	vlan1
10.1.20.0/24	Static	10.1.20.1	vlan20
192.168.100.9/30	Direct	192.168.100.2	vlan1

Why does traffic from PC1 fail to reach PC2?

A. Only static routes have been enabled

- B. The subnet mask is incorrect on the routers
- C. There is no route back from router B
- D. A default gateway setting is incorrect

**Correct Answer: C**

**Section: (none)**

**Explanation**

**Explanation/Reference:**

#### **QUESTION 41**

Refer to the Exhibit.

Exhibit: HP Comware switch configuration.

```
[Comware] vlan 100
[Comware-vlan100] quit
[Comware] vlan 200
[Comware-vlan200] quit
[Comware] interface g1/0/22
[Comware-GigabitEthernet1/0/22] port link-type trunk
[Comware-GigabitEthernet1/0/22] port trunk permit vlan 100 200
[Comware-GigabitEthernet1/0/22] quit
```

A network administrator configures the Comware switch, as shown in the exhibit. The network administrator then connects a cable from the Comware's g1/0/22 interface to port 5 on an HP ProVision switch. Which configuration will successfully establish connection for VLAN 1, 100, and 200 between the two switches?

- A. ProVision (config) # vlan 100  
ProVision (config) # vlan 200  
ProVision (config) # vlan 100 tagged 5  
ProVision (config) # vlan 200 tagged 5
- B. ProVision (config) # vlan 100  
ProVision (config) # vlan 200  
ProVision (config) # interface 5 tagged 100 200
- C. ProVision (config) # vlan 100  
ProVision (config) # vlan 200  
ProVision (config) # interface 5 tagged 100  
ProVision (config) # interface 5 tagged 200
- D. ProVision (config) # vlan 100 200  
ProVision (config) # vlan 100 200 tagged 5

**Correct Answer:** A

**Section:** (none)

**Explanation**

**Explanation/Reference:**

#### **QUESTION 42**

Which HP solution delivers automated virtual machine orchestrator, automatic synchronization of network connectivity information, and visibility to performance of wired and wireless users?

- A. Unified Wired-WLAN modules and switches
- B. Intelligent Management Center (IMC)
- C. Virtual Connect FlexFabric
- D. Intelligent Resilient Framework

**Correct Answer:** B

**Section:** (none)

**Explanation**

**Explanation/Reference:**

Reference: <http://h17007.www1.hp.com/docs/mark/4AA3-4496ENW.pdf>

#### **QUESTION 43**

Which method of link aggregation do both HP ProVision and Comware switches support?

- A. Static LACP
- B. Fast Ethernet
- C. Dynamic LACP
- D. Distributed Trunking

**Correct Answer:** A

**Section:** (none)

**Explanation**

**Explanation/Reference:**

#### **QUESTION 44**

What is a valid reason to choose an 802.11a wireless implementation?

- A. It supports a large range (distance) from the AP at a given data speed
- B. It has fewer available channels than 802.11b/g, enabling easier deployment
- C. It has transmission speed higher than 802.11n
- D. It will not interface with an 802.11b/g installation.

**Correct Answer:** D

**Section:** (none)

**Explanation**

**Explanation/Reference:**

#### QUESTION 45

A customer has an HP ProVision switch capable of Layer 3 forwarding; however, Layer 3 forwarding is disabled. The switch has an IP address in the management VLAN, where the default gateway is 10.1.1.1, which ProVision command should the network administrator use so the ProVision switch can access the Intelligent Management Center (IMC) server in a different VLAN?

- A. IP default-gateway 10.1.1.1
- B. IP route 0.0.0.0 255.255.255.255 10.1.1.1
- C. Default-route 10.1.1.1
- D. IP route 0.0.0.0 0.0.0.0 10.1.1.1

**Correct Answer:** D

**Section:** (none)

**Explanation**

**Explanation/Reference:**

Explanation:

A default route is a special static route that applies to all traffic. Typically, when the router receives a packet that it does not know how to forward, it drops it. A default route allows the router to forward all such packets toward the destination most likely to be able to route them.

To configure a default route, enter a route to a destination address of all zeros with an all-zero subnet mask. The all-zero subnet mask indicates to the router that a packet's IP address does not have to match any of the destination address bits in order for the route to be valid. Because the router always matches traffic to the most specific route, it will only use the default route for traffic that would otherwise be dropped.

To configure the default route, move to the global configuration mode context and enter this command:

Syntax: ip route 0.0.0.0 [0.0.0.0 | /0] <next hop A.B.C.D | forwarding interface ID>

[<administrative distance>]

The ProCurve Secure Router allows you to enter the default route in CIDR notation.

Reference: <ftp://ftp.hp.com/pub/networking/software/B-C11-Routing.pdf>

#### QUESTION 46

On an HP Comware switch, which view must an administrator access in order to execute the debug command?

- A. Manager
- B. Operator
- C. System
- D. User

**Correct Answer:** D

**Section:** (none)

**Explanation**

**Explanation/Reference:**

#### **QUESTION 47**

An HP Provision switch has port A1 connected to port g1/0/1 of an HP Comware switch. The ProVision port has the following configuration: vlan 1 untag A1 vlan 10 tag A1 vlan 20 tag A1

Which Comware configuration will allow the three VLANs to successfully pass traffic between the two switches?

- A. interface g1/0/1  
port link-type trunk  
port trunk permit vlan 1 10 20
- B. interface g1/0/1 port trunk encapsulation dot1q  
port trunk native vlan 1  
port trunk permit vlan 1 10 20
- C. interface g1/0/1 port trunk  
port trunk  
permit auto-vlan
- D. interface g1/0/1 port trunk  
port trunk  
permit auto-vlan

**Correct Answer:** A

**Section:** (none)

**Explanation**

**Explanation/Reference:**